

A population-based serological survey of *Vibrio cholerae* antibody titers in Ouest Department, Haiti in the year prior to the 2022 cholera outbreak

Authors:

Christy H. Clutter^{1,2,#}, Molly B. Klarman^{3,#}, Youseline Cajusma³, Emilie T. Cato³, Md. Abu Sayeed³, Lindsey Brinkley³, Owen Jensen², Chantale Baril⁴, V. Madsen Beau De Rochars⁵, Andrew S. Azman⁶, Maureen T. Long^{7,8}, Derek Cummings^{7,8}, Daniel T. Leung^{1,2,*}, Eric J. Nelson^{7,8*}

¹Division of Infectious Disease, University of Utah, Salt Lake City, Utah, USA

²Division of Microbiology & Immunology, University of Utah, Salt Lake City, Utah, USA

³University of Florida, Departments of Pediatrics and Environmental and Global Health, Gainesville, Florida, USA

⁴Université d'État d'Haïti (UEH), Port au Prince, Haiti

⁵Department of Health Services Research, Management and Policy, School of Public Health and Health Professions, University of Florida, Gainesville, Florida, USA

⁶Department of Epidemiology, Bloomberg School of Public Health, Johns Hopkins University, Baltimore, Maryland, USA

⁷Department of Comparative Diagnostic and Population Medicine, College of Veterinary Medicine, University of Florida, Gainesville, Florida, USA

⁸University of Florida, Emerging Pathogens Institute, Gainesville, Florida, USA

#These first authors contributed equally to this article

*These senior authors contributed equally to this article

Corresponding author:

Christy H. Clutter. Division of Microbiology and Immunology, University of Utah. Salt Lake City, Utah, USA

Email: christy.clutter@hsc.utah.edu

Key words: Cholera, Haiti, Outbreak, Serosurvey, ELISA, Vibriocidal, Correlates of Protection, Dried Blood Spots

1 **ABSTRACT**

2 After three years with no confirmed cholera cases in Haiti, an outbreak of *Vibrio cholerae* O1
3 emerged in October 2022. Levels of pre-existing antibodies provide an estimate of prior
4 immunologic exposure, reveal potentially relevant immune responses, and set a baseline for
5 future serosurveillance. We analyzed dried blood spots collected in 2021 from a population-
6 weighted representative cross-sectional serosurvey in two communes in the Ouest Department of
7 Haiti. We found lower levels of circulating IgG and IgA antibodies against *V. cholerae*
8 lipopolysaccharide (LPS, IgG and IgA $p < 0.0001$) in those below 5 years of age compared to
9 those five years and older. Among a subset of patients with higher titers of antibodies, we were
10 unable to detect any functional (vibriocidal) antibodies. In conclusion, the lack of detectable
11 functional antibodies, and age-discordant levels of *V. cholerae* LPS IgG, suggest that populations
12 in Haiti may be highly susceptible to cholera disease, especially among young children.

13 INTRODUCTION

14 In October 2010, the UN peacekeeping mission accidentally introduced cholera into post-
15 earthquake Haiti (1–6). Over the next nine years, approximately 820,000 cholera cases and
16 10,000 deaths were recorded (7). A response was ultimately organized through a national
17 elimination plan (8), and the last confirmed case of cholera was reported in late January of 2019
18 (9). In February of 2022, following a 3-year period with no confirmed cases, the Haitian Ministry
19 of Health was optimistic that cholera elimination had been achieved (10). Unfortunately, 10
20 months later, in a period of instability that compromised access to clean water and sanitation,
21 two cases of cholera were confirmed on October 2nd of 2022 and a new outbreak started, which
22 as of January 31, 2023, had led to more than 27,000 suspected cases and 560 registered deaths
23 (11).

24 Phylogenetic analyses suggested the current strain was a descendent of the *Vibrio*
25 *cholerae* O1 Ogawa strain responsible for the original outbreak (12,13). Combatting this new
26 outbreak is challenged by security and humanitarian crises (14,15); however, legacy knowledge
27 and infrastructure remain from the previous outbreak (16,17). There may also be protective
28 immunity afforded by prior infection or vaccination. In the absence of ongoing transmission,
29 younger populations not present in the prior outbreak period would be immunologically naïve
30 and at higher risk of infection. This hypothesis is supported by a report of high rates of young
31 children presenting with cholera (18).

32 Upon exposure to toxigenic *V. cholerae*, the adaptive antibody response is dominated by
33 two epitopes: cholera toxin and lipopolysaccharide (LPS) (19). However, the most clearly
34 defined non-mechanistic correlate of protection for cholera is the presence of vibriocidal
35 antibodies. These antibodies are functional bactericidal antibodies that target the O-specific

36 antigen of the *V. cholerae* LPS (20–22). Circulating antibody titers peak within several weeks
37 post-infection and slowly wane to baseline over the ensuing months to years, with high levels of
38 inter-individual variability (21). Killed whole-cell oral cholera vaccines (OCVs), such as those
39 distributed in the Haiti vaccine campaigns conducted in Haiti, are on average 58% effective for
40 the first two years, declining to 26% by four years post-vaccination (23). Children under five
41 years of age show approximately half the level of protection by OCV at 2-year follow-up relative
42 to adults (24).

43 Given that natural infections were not reported, nor vaccinations administered in the three
44 years prior to the 2022 outbreak, we investigated the presence of *V. cholerae*-specific antibodies
45 in adults and children by analyzing samples collected in a cross-sectional serological survey in
46 two communes in the Ouest Department of Haiti conducted prior to the 2022 outbreak.

47 **METHODS**

48 **Ethics statement.** The study was reviewed and approved by the Comité National de Bioéthique
49 (National Bioethics Committee of Haiti; 2021-12), the Institutional Review Boards at University
50 of Florida (IRB202002290), and the University of Utah (IRB_00111137).

51 **Study design.** Cross-sectional serological survey.

52 **Study population and setting.** This study was conducted from February 24th to August 25th,
53 2021, in the communes of Gressier and Leogane, in the Ouest Department of Haiti. This semi-
54 urban and rural region experienced a cumulative attack rate of 5.1-7.5% (25) early in the original
55 cholera outbreak (2010-2012). Cases decreased substantially over time so that towards the end of
56 the outbreak the entirety of the Ouest Department reported 841 cases in 2018 (26). This region
57 was not covered in mass OCV campaigns (27–29).

58 **Sampling and randomization.** Households were randomly sampled geographically and
59 proportionally to population density across the 477 sq km study area. A sampling grid was
60 constructed inside the study area with 149 total grid cells using ArcGIS (ESRI). Grid cells were
61 stratified by population density (low 0-399, medium 400-1511, high 1512-4664) and the sample
62 schema was established *a priori*. Twenty-five grid cells were randomly chosen proportional to
63 population density (2 low, 5 medium, 18 high). An additional 6 low density grid cells were
64 added to have statistical power to conduct future stratified analyses on population density effects.
65 Logistical constraints resulted in 25 grid-cells sampled (6 low, 3 medium, 15 high) out of the 31
66 intended to be sampled. Within each grid cell sampled, 21 points were randomly distributed and
67 enclosed by Thiessen polygons. Within each polygon, one household was enrolled and sampled;
68 the intention was to enroll from 18 of the 21 polygons per selected grid cell; the remaining 3
69 were used as ‘back-up’ polygons. The order that grid cells were sampled was randomized.

70 **Participant recruitment.** Haitian staff navigated to each grid cell and polygon (via car,
71 motorcycle, or foot) using ArcGIS Collector (ESRI). The first household reached upon entering
72 the targeted polygon was screened. If the household declined participation or was ineligible,
73 screening continued by proceeding to the next closest house, while remaining within the
74 polygon. A ‘spin the bottle’ app was used to determine the ‘closest’ house if there were multiple
75 equidistant neighboring houses. This process was repeated until either one household was
76 enrolled per polygon (18 total per grid cell) or all households within the polygon were screened.

77 **Participant inclusion criteria, consent process, and incentives.** Eligibility criteria included a
78 household with one adult head of household (HoH) who provided written consent to complete a
79 household survey and at least two household members who provided written consent to provide a
80 dried blood spot (DBS) sample and respond to a household member survey. Parents/guardians 18

81 years and older provided consent for their minor children and children ≥ 7 years provided assent.
82 Households with a single member were eligible if both consent for the surveys and DBS sample
83 were provided. There was no lower age limit for eligibility. A 500 Gourde (\$4.50 US) phone
84 credit was provided to HoH participants to facilitate contact with the study hotline for questions.
85 **Sample collection.** DBS sampling was performed by finger stick, or heel stick in children <1
86 year, and spotted onto Whatman 903 Protein Saver cards.
87 **Data collection.** The HoH survey queried family demographics and socioeconomic status. The
88 household member survey asked about current and past symptoms and history relating to
89 diarrheal syndromes. Vaccination and disease history were self-reported. Children under 5 years
90 were measured for basic parameters of malnutrition (mid-upper arm circumference (MUAC),
91 weight, and height).
92 **DBS Eluates.** Using a hole puncher, nine 6mm spots were punched from the blood circles on
93 each DBS card and placed into a microcentrifuge tube containing 600 μL of a 1X PBS-Tween
94 solution. The samples were then placed on a tube rocker at speed 50 rpm overnight at 4°C. The
95 next day the samples were centrifuged at 10,500 x g for 2 minutes. The supernatant was removed
96 and stored at -80°C until ready for further use.
97 **ELISA.** Enzyme-linked immunosorbent assays (ELISAs) were performed on all DBS specimens
98 (n=861). Nunc Maxisorp flat-bottom plates (Sigma-Aldrich) were coated overnight with either *V.*
99 *cholerae* O1 Ogawa-specific LPS (gift of Edward Ryan, Massachusetts General Hospital) or
100 monosialoganglioside (GM₁, Sigma-Aldrich) at 1 $\mu\text{g}/\text{mL}$. Plates that had been coated with GM₁
101 were washed in phosphate buffered saline (PBS) with 0.05% Tween20 (PBST), blocked in PBST
102 + 1% bovine serum albumin (BSA), and coated for a second night in cholera toxin subunit B
103 (CtxB, Sigma-Aldrich) at 2.5 $\mu\text{g}/\text{mL}$. Following coating, plates were blocked, incubated with

104 DBS eluates that were diluted 1:7.5 in PBST + 0.1% BSA, incubated in 1:1000 horseradish
105 peroxidase (HRP) conjugated secondary antibody, either goat-anti-human IgG or IgA (Jackson
106 ImmunoResearch), and developed in TMB substrate solution (Thermo Scientific). Immediately
107 after addition of TMB, plates were placed on a BioTek ELx800 plate reader and read kinetically
108 at 405nm once every minute for eight minutes. Maximum slope (MaxV) values were normalized
109 against a positive control for each plate to generate ELISA units. Positive controls were
110 convalescent plasma from confirmed cholera cases, diluted 1:100. Negative controls were naïve
111 serum (Sigma-Aldrich), also diluted 1:100.

112 **Vibriocidal antibody assay.** The criteria to select samples for vibriocidal antibody assays were
113 those samples with an IgG ELISA titer two standard deviations above the mean for either LPS
114 IgG or CtxB IgG. The assay was conducted via a previously described DBS eluate-adapted drop-
115 plate vibriocidal method (30) and adapted for this study. *V. cholerae* O1 El Tor Ogawa strain
116 (X25049) were grown overnight on thiosulfate-citrate-bile salts-sucrose (TCBS) *Vibrio*-selective
117 agar, after which 2-3 colonies were cultured in Luria-Betani (LB) broth, washed several times
118 with sterile PBS and adjusted to an OD₆₀₀ of 0.3. DBS samples were diluted 1:5 in sterile PBS,
119 heat-inactivated at 56°C, and then serially diluted 1:2 horizontally across a flat-bottom
120 Nunclon™ Delta Surface 96-well plate (Thermo Scientific). Each 96-well-plate included three
121 growth controls and three negative controls. Each batch included at least one monoclonal
122 antibody positive control. Samples and positive controls were cultured for 1hr in a growth
123 solution containing the normalized *V. cholerae* culture (OD₆₀₀ = 0.3) and guinea pig complement
124 (Sigma-Aldrich). Negative controls were cultured with sterile PBS. Plate controls were
125 subsequently plated in 5µL drops onto LB agar. Positive control and participant samples were
126 plated onto TCBS agar (selective media for *V. cholerae*) and cultured overnight at 37°C. Titers

127 were determined as the reciprocal of the first dilution in which the culture drop shows serrated
128 edges or individual colonies.

129 **Statistical Analyses.** Statistical comparisons between two populations were assessed with an
130 unpaired, two-tailed Student's t test. Significance was determined at $p \leq 0.05$. Generalized
131 additive models (GAMs) with a spline to fit age were used to assess the relationship of age and
132 antibody distribution. R version 4.1.3 with the mgcv package was used to fit the splines.

133 **RESULTS**

134 In this cross-sectional serological survey, we collected DBS samples from 861 enrolled
135 adult ($n=564$) and child (<18 years, $n=297$) participants (Table 1); 62.6% were female. A small
136 percentage of participants self-reported prior cholera vaccination ($n=10/861$, 1.2%) or self-
137 reported clinical disease ($n=37/861$, 4.3%).

138 Antibody titers for *V. cholerae* LPS and CtxB were measured across the population for
139 both IgG and IgA isotypes (Figure 1A). Children less than 5 years old had significantly lower
140 titers of both LPS IgG and IgA ($p < 0.0001$, Figure 2A-B, Supplemental Table 1) compared to
141 children and adults 5 and older. CtxB IgG was elevated in children under 5 ($p=0.0033$),
142 specifically within 1-2-year-old children ($p=0.0024$ and $p=0.0011$ respectively, Figure 2C).
143 There was a significant difference between children under 5, older children, and adults with
144 respect to CtxB IgA, but this was driven by the youngest children under 1 year of age, who may
145 lack antibody for reasons unrelated to exposure (Figure 2D). Medians, p-values and interquartile
146 ranges are presented in Supplemental Table 1. Using generalized additive model (GAM) based
147 splines, we estimated a significant positive non-linear association of IgA isotypes with age (LPS:
148 effective degrees of freedom (EDF) 3.4, $p < 2e-16$; CtxB: EDF 2.0, $p < e-16$) (Supplemental Figure

149 1). This association was not significant for IgG isotypes (LPS: EDF 4.9, $p=0.12$; CtxB: EDF 1.0,
150 $p=0.13$).

151 Vibriocidal assays were conducted on the subset of participant samples ($n=51/861$, 5.9%)
152 that had IgG titers for either LPS or CtxB at two standard deviations above the mean. No
153 samples tested had detectable vibriocidal responses (Figure 1B).

154 **DISCUSSION**

155 In this cross-sectional serological survey in a regional population within Haiti, we
156 detected low rates of circulating IgG and IgA antibodies against lipopolysaccharide (LPS) and
157 cholera toxin subunit B (CtxB). Within the context of increasing antibody response with age,
158 children 1-4 years of age had lower antibody titers against LPS IgG and LPS IgA compared to
159 adults and children over five. Children 1-2 years old had elevated titers of CtxB IgG, which may
160 reflect the cross-reactive nature of CtxB antibodies with the heat-labile toxin (LT) of
161 enterotoxigenic *Escherichia coli*, which has the highest force of infection (measured by
162 seroconversion rate per child-year) among enteric pathogens in Haitian children (31). Due to the
163 inherent cross-reactivity of CtxB, LPS IgG is more specific for exposure history to *V. cholerae*
164 and IgG is more meaningful for age-related comparisons. However, no functional (vibriocidal)
165 antibodies, which is the best available correlate of protection for cholera, were detected.

166 The serologic assays used in our study have been demonstrated to be associated with
167 prior infection with *V. cholerae* O1 based on longitudinal studies of culture-confirmed cholera
168 patients (21), and also demonstrated to be associated with protection against disease in studies of
169 household contacts of index cases and in human challenge studies (21,32,33). Our data are
170 consistent with limited recent disease transmission and antigenic exposure in this community,

171 especially among young children that were born in the period with little to no circulating
172 pandemic *V. cholerae*. These serologic data suggest that the Haitian communities surveyed may
173 have limited pre-existing immunologic protection against cholera, especially among children
174 under 5 years of age.

175 The 2022 outbreak was caused by a *V. cholerae* Ogawa isolate that aligns with isolates
176 circulating during the 2010-2019 outbreak (12,13). In the period between outbreaks, the degree
177 to which *V. cholerae* circulated in human and environmental reservoirs at a level below the
178 threshold detectable by the surveillance infrastructure is unknown. The intersection between low
179 levels of circulating cholera and declining population immunity were likely important factors
180 that put Haiti at risk of this new outbreak. These factors, combined with the collapse of clean
181 water and sanitation infrastructure, likely catalyzed the 2022 outbreak.

182 The findings in this study must be considered within the context of the study limitations.
183 First, there was a risk of enrollment bias because only 28% of the households screened consented
184 to participate, which is lower than other studies in the area that employed similar recruitment
185 methods (34); given oversampling among low density grid cells, the ‘true’ distribution across the
186 population would need adjustment if these data are used as a baseline for future serosurveillance
187 research. Second, the observations of lower IgA antibody titers in children 1-4 may be part of a
188 larger trend of increasing IgA antibody responses with age, representing a confounding factor,
189 and thus may not reflect specific exposures as hypothesized. Third, The ELISA was limited by
190 the availability of quantitative and matrix-matched controls, leading to the use of convalescent
191 plasma as a positive control, and naïve serum as a negative control. Fourth, the selection of
192 samples with high ELISA units for vibriocidal assays may have missed samples with lower
193 antibody levels but harboring functional antibodies. It is possible that matrix differences between

194 DBS and serum/plasma may have impacted the analysis. Finally, our serosurvey was limited to
195 two adjacent communes in the Ouest Department of Haiti, and our findings may not be
196 generalizable to other locations in the country.

197 **CONCLUSION**

198 In conclusion, our population-based serosurvey of two Haitian communities revealed a
199 lack of functional antibodies, and significantly lower *V. cholerae* LPS-specific IgG antibodies
200 among young children. Our findings suggest that populations in Haiti may be highly susceptible
201 to cholera disease and outbreaks, especially among young children.

202

203 **Acknowledgements**

204 We are grateful to the participants as well as the team who conducted the survey in Haiti. We
205 would like to thank the administrators and leadership at the Emerging Pathogens Institute and the
206 Department of Pediatrics at the University of Florida for their ongoing support. We also honor
207 the dedication and support of the Ministry of Public Health and Population (Ministère de la Santé
208 Publique et de la Population - MSPP) for their commitment to the health of the Haitian
209 population despite the profound period of instability.

210 **Conflict of Interest Disclosures.** The authors declare that they have no competing interests.

211 **Funding.** Funding for this study was provided through grant support to DTL from the National
212 Institute of Allergy and Infectious Diseases (R01 AI135115) and EJM from the Children Miracle
213 Network (Florida).

214 **Role of the Funder/Sponsor:** The sponsors had no role in the design and conduct of the study;
215 collection, management, analysis, and interpretation of the data; preparation, review, or approval
216 of the manuscript; and decision to submit the manuscript for publication.

217 **Abbreviations and Acronyms**

218	LPS	Lipopolysaccharide
219	CtxB	Cholera toxin subunit B
220	DBS	Dried blood spot
221	ELISA	Enzyme-linked immunosorbent assay
222	IgG, IgA	Immunoglobulin G, Immunoglobulin A

223 **Table 1. Participant Characteristics**

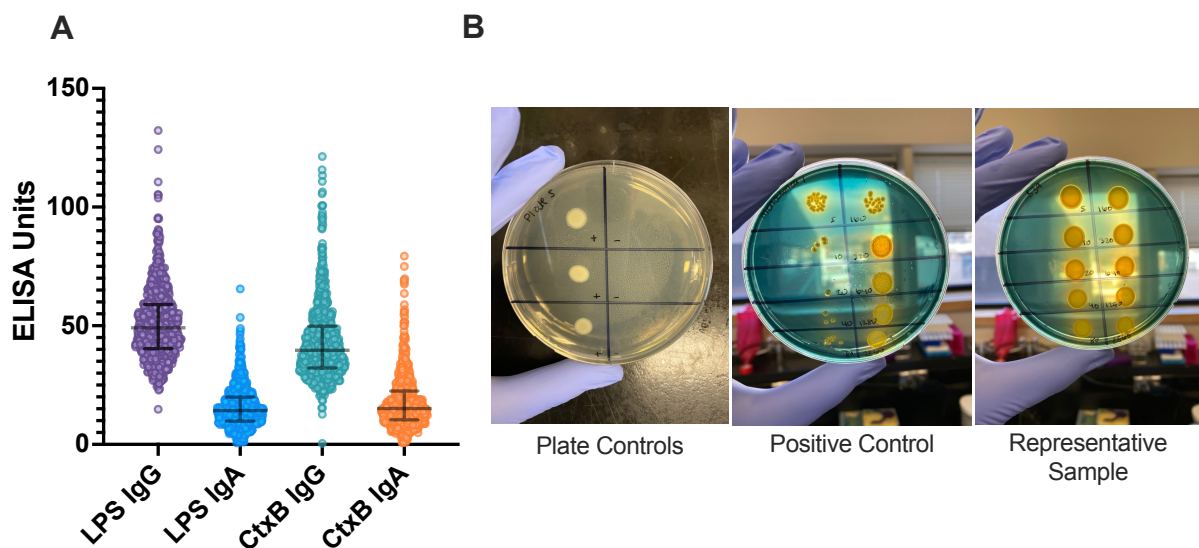
224

Characteristic	Number (n)	Percentage of Total
<i>Total Participants</i>	861	100
Sex		
<i>Male</i>	322	37.4%
<i>Female</i>	539	62.6%
Age		
<i>Adult ≥18</i>	564	65.5%
<i>Children <18</i>	297	34.5%
<i>Children <5</i>	112	13%
Cholera Vaccination Status		
<i>Vaccinated</i>	10	1.2%
<i>Not Vaccinated</i>	847	98.4%
<i>Unsure</i>	4	0.4%
Prior Infection		
<i>Yes</i>	37	4.3%
<i>No</i>	822	95.5%
<i>Unsure</i>	2	0.2%

225

226

227 **FIGURE 1**

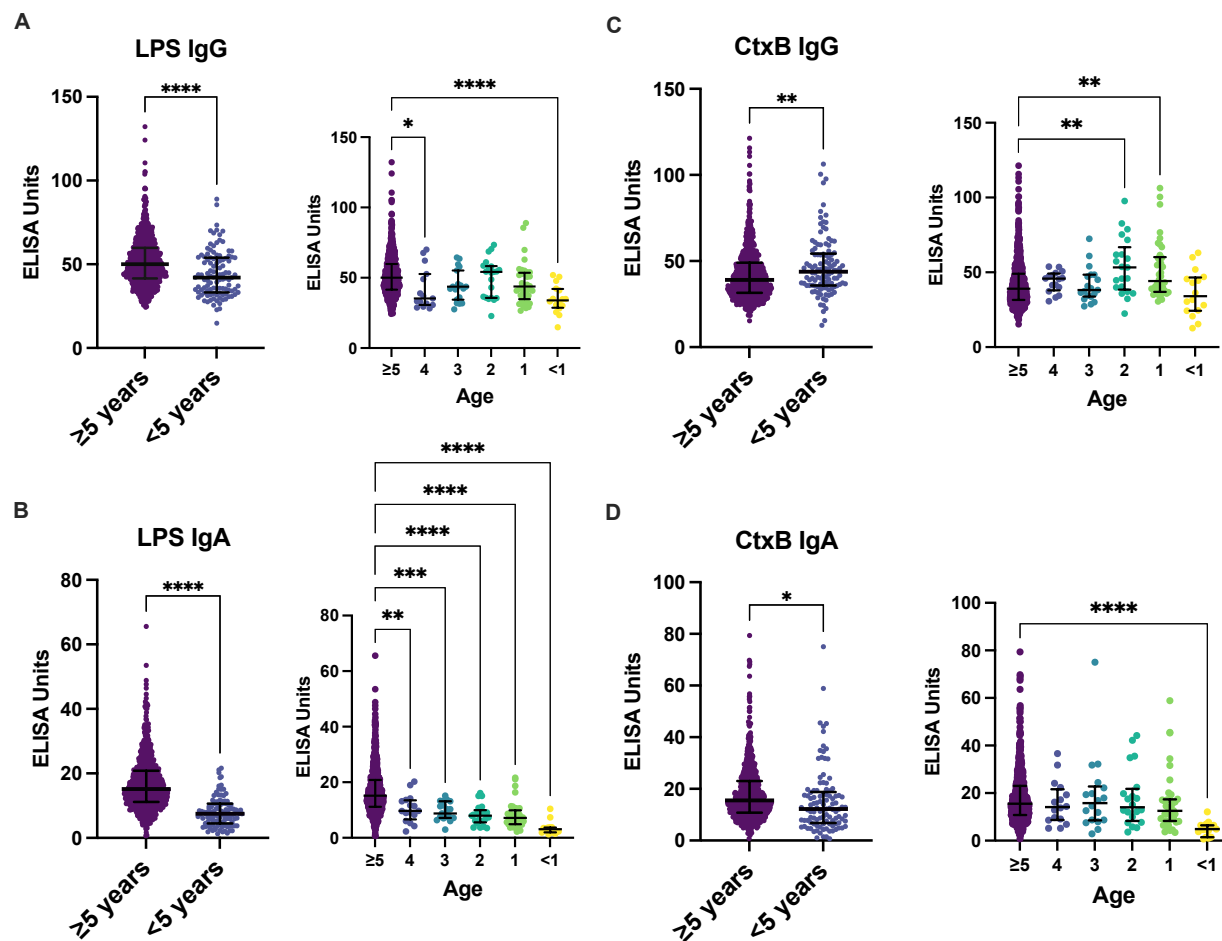


228

229 **Figure 1. *Vibrio cholerae* specific and functional antibodies.** Enzyme-linked immunosorbent
230 assays (ELISAs) were performed on all 861 samples for LPS and CtxB, for both IgG and IgA
231 serotypes (A). Samples that were two standard deviations above the mean for LPS or CtxB IgG
232 (n=51) were assayed for functional (vibriocidal) antibodies (B). Abbreviations: LPS =
233 lipopolysaccharide; CtxB = cholera toxin subunit B. Median and interquartile ranges are
234 displayed (A).

235

236 **FIGURE 2**



237

238

239 **Figure 2. Antibody titers by age, vaccination status, and prior infection.** Antibody titers for
240 LPS and CtxB were compared between children under 5 years old (n=112) and adults and
241 children five and older for LPS IgG (A), LPS IgA (B), CtxB IgG (C) and CtxB IgA. Statistical
242 comparisons between ≥5 and <5 were made using an unpaired two-tailed student's t test.
243 Individual year-by-year comparisons were compared by one-way ANOVA. Significance is
244 annotated as follows: *p≤ 0.05, **p≤ 0.01 ***p≤ 0.001 ****p≤ 0.0001.

245 REFERENCES

246

- 247 1. Lantagne D, Balakrish Nair G, Lanata CF, Cravioto A. The Cholera Outbreak in Haiti: Where
248 and How did it begin? In: Nair GB, Takeda Y, editors. Cholera Outbreaks [Internet]. Berlin,
249 Heidelberg: Springer; 2014 [cited 2022 Dec 16]. p. 145–64. (Current Topics in Microbiology
250 and Immunology). Available from: https://doi.org/10.1007/82_2013_331
- 251 2. Chin CS, Sorenson J, Harris JB, Robins WP, Charles RC, Jean-Charles RR, et al. The Origin
252 of the Haitian Cholera Outbreak Strain. *N Engl J Med*. 2011 Jan 6;364(1):33–42.
- 253 3. Frerichs RR, Keim PS, Barrais R, Piarroux R. Nepalese origin of cholera epidemic in Haiti.
254 *Clin Microbiol Infect*. 2012 Jun;18(6):E158–63.
- 255 4. Farmer P, Almazor CP, Bahnsen ET, Barry D, Bazile J, Bloom BR, et al. Meeting Cholera’s
256 Challenge to Haiti and the World: A Joint Statement on Cholera Prevention and Care. Small
257 PLC, editor. *PLoS Negl Trop Dis*. 2011 May 31;5(5):e1145.
- 258 5. Piarroux R, Frerichs RR. Cholera and blame in Haiti. *Lancet Infect Dis*. 2015
259 Dec;15(12):1380–1.
- 260 6. Jenson D, Szabo V. Cholera in Haiti and Other Caribbean Regions, 19th Century. *Emerg*
261 *Infect Dis*. 2011 Nov;17(11):2130–5.
- 262 7. Cholera - Haiti. Geneva, Switzerland: World Health Organization; 2022.
- 263 8. National plan for the elimination of cholera in Haiti; 2013-2022. Port au Prince, Haiti:
264 Republic of Haiti Ministry of Public Health and Population National Directorate for Water
265 Supply and Sanitation; 2013.
- 266 9. Santé WHO= O mondiale de la. Cholera 2019 – Choléra 2019. Vol. 95, Weekly
267 Epidemiological Record = Relevé épidémiologique hebdomadaire. World Health
268 Organization = Organisation mondiale de la Santé; 2020. p. 441–8.
- 269 10. 4 février 2019 – 4 février 2022 – trois (3) ans SANS CHOLÉRA en Haïti [Internet]. Le
270 Ministère de la Communication République d’Haïti. 2022. Available from:
271 [https://www.communication.gouv.ht/2022/02/4-fevrier-2019-4-fevrier-2022-trois-3-ans-](https://www.communication.gouv.ht/2022/02/4-fevrier-2019-4-fevrier-2022-trois-3-ans-sans-cholera-en-haiti/)
272 [sans-cholera-en-haiti/](https://www.communication.gouv.ht/2022/02/4-fevrier-2019-4-fevrier-2022-trois-3-ans-sans-cholera-en-haiti/)
- 273 11. Epidemiological Update - Cholera - January 31, 2023 [Internet]. Pan American Health
274 Organization / World Health Organization; 2023 Jan. Available from:
275 <https://www.paho.org/en/documents/epidemiological-update-cholera-31-january-2023>
- 276 12. Rubin DHF, Zingl FG, Leitner DR, Ternier R, Compere V, Marseille S, et al. Reemergence
277 of Cholera in Haiti. *N Engl J Med*. 2022 Nov 30;NEJMc2213908.

- 278 13. Mavian CN, Tagliamonte MS, Alam MT, Sakib SN, Cash MN, Riva A, et al. Re-emergence
279 of cholera in Haiti linked to environmental *V. cholerae* O1 Ogawa strains [Internet].
280 Infectious Diseases (except HIV/AIDS); 2022 Nov [cited 2022 Dec 19]. Available from:
281 <http://medrxiv.org/lookup/doi/10.1101/2022.11.21.22282526>
- 282 14. Daniels JP. Cholera surges in Haiti. *The Lancet*. 2022 Dec;400(10367):1913.
- 283 15. Taylor L. Haiti's hospitals plan to close amid fuel shortages. *BMJ*. 2022 Oct 3;o2379.
- 284 16. Rebaudet S, Bulit G, Gaudart J, Michel E, Gazin P, Evers C, et al. The case-area targeted
285 rapid response strategy to control cholera in Haiti: a four-year implementation study. Gurley
286 E, editor. *PLoS Negl Trop Dis*. 2019 Apr 16;13(4):e0007263.
- 287 17. Rebaudet S, Dély P, Boncy J, Henrys JH, Piarroux R. Toward Cholera Elimination, Haiti.
288 *Emerg Infect Dis*. 2021 Nov;27(11):2932–6.
- 289 18. Severe K, Alcenat N, Rouzier V. Resurgence of Cholera in Haiti amidst Humanitarian
290 Crises. *N Engl J Med*. 2022 Nov 30;NEJMc2213782.
- 291 19. Kauffman RC, Bhuiyan TR, Nakajima R, Mayo-Smith LM, Rashu R, Hoq MR, et al. Single-
292 Cell Analysis of the Plasmablast Response to *Vibrio cholerae* Demonstrates Expansion of
293 Cross-Reactive Memory B Cells. *mBio*. 2016 Dec 20;7(6):e02021-16.
- 294 20. Aktar A, Rahman MA, Afrin S, Akter A, Uddin T, Yasmin T, et al. Plasma and memory B
295 cell responses targeting O-specific polysaccharide (OSP) are associated with protection
296 against *Vibrio cholerae* O1 infection among household contacts of cholera patients in
297 Bangladesh. *Small PLC*, editor. *PLoS Negl Trop Dis*. 2018 Apr 23;12(4):e0006399.
- 298 21. Azman AS, Lessler J, Luquero FJ, Bhuiyan TR, Khan AI, Chowdhury F, et al. Estimating
299 cholera incidence with cross-sectional serology. *Sci Transl Med*. 2019 Feb
300 20;11(480):eaau6242.
- 301 22. Iyer AS, Harris JB. Correlates of Protection for Cholera. *J Infect Dis*. 2021 Dec
302 20;224(Supplement_7):S732–7.
- 303 23. Bi Q, Ferreras E, Pezzoli L, Legros D, Ivers LC, Date K, et al. Protection against cholera
304 from killed whole-cell oral cholera vaccines: a systematic review and meta-analysis. *Lancet*
305 *Infect Dis*. 2017 Oct;17(10):1080–8.
- 306 24. Qadri F, Wierzba TF, Ali M, Chowdhury F, Khan AI, Saha A, et al. Efficacy of a Single-
307 Dose, Inactivated Oral Cholera Vaccine in Bangladesh. *N Engl J Med*. 2016 May
308 5;374(18):1723–32.
- 309 25. Barzilay EJ, Schaad N, Magloire R, Mung KS, Boncy J, Dahourou GA, et al. Cholera
310 Surveillance during the Haiti Epidemic — The First 2 Years. *N Engl J Med*. 2013 Feb
311 14;368(7):599–609.

- 312 26. Haiti Cholera figures; As of 31 January 2019. [Internet]. United Nations Office for the
313 Coordination of Humanitarian Affairs.; 2019. Available from:
314 [https://www.humanitarianresponse.info/sites/www.humanitarianresponse.info/files/documen](https://www.humanitarianresponse.info/sites/www.humanitarianresponse.info/files/documents/files/ocha-hti-cholera-figures-20190131_en.pdf)
315 [ts/files/ocha-hti-cholera-figures-20190131_en.pdf](https://www.humanitarianresponse.info/sites/www.humanitarianresponse.info/files/documents/files/ocha-hti-cholera-figures-20190131_en.pdf)
- 316 27. Ivers LC, Teng JE, Lascher J, Raymond M, Weigel J, Victor N, et al. Use of Oral Cholera
317 Vaccine in Haiti: A Rural Demonstration Project. *Am J Trop Med Hyg.* 2013 Oct
318 9;89(4):617–24.
- 319 28. Rouzier V, Severe K, Juste MAJ, Peck M, Perodin C, Severe P, et al. Cholera Vaccination in
320 Urban Haiti. *Am J Trop Med Hyg.* 2013 Oct 9;89(4):671–81.
- 321 29. Haiti’s Ministry of Health organizing a vaccination campaign against cholera in areas
322 affected by Hurricane Matthew, supported by PAHO-WHO, UNICEF and other partners.
323 Pan American Health Organization; 2016.
- 324 30. Iyer AS, Azman AS, Bouhenia M, Deng LO, Anderson CP, Graves M, et al. Dried Blood
325 Spots for Measuring *Vibrio cholerae*-specific Immune Responses. Kosek M, editor. *PLoS*
326 *Negl Trop Dis.* 2018 Jan 29;12(1):e0006196.
- 327 31. Arnold BF, Martin DL, Juma J, Mkocho H, Ochieng JB, Cooley GM, et al. Enteropathogen
328 antibody dynamics and force of infection among children in low-resource settings. *eLife.*
329 2019 Aug 19;8:e45594.
- 330 32. Harris JB, LaRocque RC, Chowdhury F, Khan AI, Logvinenko T, Faruque ASG, et al.
331 Susceptibility to *Vibrio cholerae* infection in a cohort of household contacts of patients with
332 cholera in Bangladesh. *PLoS Negl Trop Dis.* 2008 Apr 9;2(4):e221.
- 333 33. Haney DJ, Lock MD, Simon JK, Harris J, Gurwith M. Antibody-Based Correlates of
334 Protection Against Cholera Analysis of a Challenge Study in a Cholera-Naïve Population.
335 *Clin Vaccine Immunol CVI.* 2017 May 31;24(8):e00098-17, CVI.00098-17.
- 336 34. Klarman M, Schon J, Cajusma Y, Maples S, Beau de Rochars VEM, Baril C, et al.
337 Opportunities to catalyse improved healthcare access in pluralistic systems: a cross-sectional
338 study in Haiti. *BMJ Open.* 2021 Nov;11(11):e047367.

339

340

341

342