

Text: 3,274 words
Abstract: 349 words
Tables: 1
Figures: 4
Supplemental tables: 2
Supplemental figures: 5

Mental distress among Norwegian adults during the Covid-19 pandemic: predictors of initial response and subsequent trajectories

Li Lu, PhD^{*1,2,3}; Laurie J. Hannigan, PhD^{*3-5}; Ragnhild E Brandlistuen, PhD^{6,7}; Ragnar Nesvåg, PhD³; Lill Trogstad, PhD⁸; Per Magnus, PhD⁹; Anna Bára Unnarsdóttir, MPH¹⁰; Unnur A. Valdimarsdóttir, PhD¹⁰⁻¹²; Ole A Andreassen, PhD^{2,13}; Helga Ask, PhD^{3,14}

*Joint first authors

1. Health Management and Policy Institute, School of Public Policy and Administration, Xi'an Jiaotong University, Xi'an, China
2. NORMENT Centre, Institute of Clinical Medicine, University of Oslo, Oslo, Norway.
3. Department of Mental Disorders, Norwegian Institute of Public Health, Oslo, Norway.
4. Nic Waals Institute, Lovisenberg Diaconal Hospital, Oslo, Norway.
5. Population Health Sciences, Bristol Medical School, University of Bristol, Bristol, UK.
6. Department of Child Health and Development, Norwegian Institute of Public Health, Oslo, Norway.
7. The Norwegian Mother, Father and Child Cohort Study (MoBa), Norwegian Institute of Public Health, Oslo, Norway.
8. Division of Infection Control, Norwegian Institute of Public Health, Oslo, Norway
9. Centre for Fertility and Health, Norwegian Institute of Public Health, Oslo, Norway.
10. Centre of Public Health Sciences, Faculty of Medicine, School of Health Sciences, University of Iceland, Reykjavik, Iceland.
11. Unit of Integrative Epidemiology, Department of Environmental Medicine (IMM), Karolinska Institutet, Stockholm, Sweden.
12. Department of Epidemiology, Harvard TH Chan School of Public Health, Boston, Massachusetts, USA.
13. NORMENT Centre, Division of Mental Health and Addiction, Oslo University Hospital, Oslo, Norway.
14. Department of Psychology, PROMENTA Research Center, University of Oslo, Oslo, Norway

Corresponding author

Li Lu, liser@outlook.com

Phone number: +8613997128809 (Li)

School of Public Policy and Administration, Xi'an Jiaotong University, Xi'an, China & NORMENT Centre, Institute of Clinical Medicine, University of Oslo, Oslo, Norway

Helga Ask, Helga.Ask@fhi.no

Phone number: +47 959 49 267 (Helga)

Department of Mental Disorders, Norwegian Institute of Public Health, Oslo, Norway

Summary

Background Understanding factors associated with mental distress during a pandemic is imperative for planning interventions to reduce the negative mental health impact of future crises. Our aim was to identify factors associated with change in levels of mental distress in the Norwegian adult population at the onset of the Covid-19 pandemic, relative to pre-pandemic levels, and with longitudinal changes in mental distress until vaccination against Covid-19 became widespread in Norway (the first 1.5 years of the pandemic).

Methods The Norwegian Mother, Father and Child Cohort Study (MoBa) is a prospective longitudinal study with baseline recruitment from 1999-2009. Baseline characteristics and eight waves of data collection during the pandemic (between March 2020 and September 2021) were used for this analysis. Mental distress was measured with the 5-item version of Hopkins Symptoms Checklist (HSCL-5). A piecewise latent growth model was fitted to identify initial change in mental distress (March-early April 2020, adjusting for pre-pandemic mental distress measured during prior years of data collection) and longitudinal changes across the pandemic in three distinct periods.

Findings Our sample consisted of 105 972 adult participants (59.6% females). Mental distress levels peaked at the beginning of the pandemic. Several factors were associated with initial increases in distress: chronic medical conditions, living alone, history of psychiatric disorders, relatively lower educational background, female sex, younger age, and obesity. Several of these factors were also associated with long-term change. Being quarantined or having to isolate was associated with the likelihood of increasing distress during the pandemic. We observed a reduction in distress associated with Covid-19 vaccination status, while being infected with SARS-CoV-2 was associated with increasing distress late in the pandemic.

Interpretation Pre-pandemic vulnerability factors – like having a chronic disease – as well as Covid-19-related factors – like being quarantined or infected by SARS-CoV-2 – were associated with increased mental distress during the pandemic. This knowledge is important for planning of interventions to support vulnerable individuals during pandemics and other health crises.

Funding The Norwegian Ministry of Health, and Care Services and the Ministry of Education and Research. NordForsk, The Research Council of Norway, The South-Eastern Norway Regional Health Authority.

Key words: mental distress trajectory; Covid-19; latent growth modelling; MoBa; quarantine;

Introduction

Being infected with severe acute respiratory syndrome coronavirus 2 (SARS-CoV-2) has been associated with worsened mental health, particularly for the most severely infected (i.e., being hospitalized or bedridden for several days)¹⁻³. Worsened mental health in the population during the pandemic, regardless of infection status, has also been widely reported; including increases in symptoms of anxiety⁴⁻⁸, depression^{4,6-8}, elevated psychological distress^{3,9-11}, sleep problems^{5,6}, and loneliness^{11,12}. Social and environmental changes necessitated by the pandemic and often imposed by governments might have played a direct or indirect role in driving these changes¹³. However, with much of the research into the relative importance of SARS-CoV-2 infection and public health measures on mental health during the pandemic cross-sectional in design and based on convenience samples, data from population-based, prospective cohorts are urgently needed.

Identifying factors associated with vulnerability and resilience trajectories of mental distress during the coronavirus (Covid-19) pandemic are key for planning targeted interventions to reduce the negative mental impact of future pandemics and for preventing future global health crises. However, since most existing studies lack data on pre-pandemic mental health, there is no way to ascertain how specific the vulnerability or resilience-associated factors they identify are to mental health changes associated with the pandemic; nor to rule out reverse causation. One study showed that female gender, young age, lower income and educational attainment, living alone and having pre-existing mental health conditions were risk factors for anxiety and depression at the start of lockdown, differences were still evident 20 weeks later⁸. Yet, the study lacked comparable pre-pandemic data, meaning that it was possible that these factors were generally associated with mental health changes across time, and not specifically predictive of changes in the context of the pandemic. The use of large population-based longitudinal data, with long follow-up periods, and rich individual-level information on pre-pandemic mental health can help address this problem.

Using the prospectively and contemporaneously collected data from over 100 000 participants of the Norwegian Mother, Father and Child Cohort Study (MoBa), we first aimed to estimate initial and longitudinal changes in mental distress in the Norwegian adult population during the Covid-19 pandemic, from onset to majority vaccination. At different points during the pandemic, the Norwegian government issued several orders and restrictions, such as closure of schools, remote work, stricter border controls, etc¹⁴. Norway went back to normal everyday life in September 2021, 18 months after employing restrictions¹⁴ and shortly after reaching the milestone of seeing the majority of its population fully vaccinated against the disease. Next, we aimed to identify factors that put individuals at increased risk of worse trajectories of mental health during the pandemic. Crucially, with adjustment for pre-pandemic levels of mental distress based on the same measures of symptomatology, we could estimate the role of other predictors on mental

distress trajectories during the pandemic while controlling for individuals' average levels of pre-pandemic mental distress.

Based on the existing literature^{8,15}, we hypothesized that level of mental distress would be elevated at the initial stage of the pandemic, with recovery over time, and pandemic exposures such as income loss, SARS-CoV-2 infections, or quarantine experience would be associated with increases in the level of mental distress experienced during the pandemic.

Methods

MoBa is an ongoing, population-based pregnancy cohort study conducted by the Norwegian Institute of Public Health^{16,17}. Participants were recruited from all over Norway from 1999-2009. The women consented to participation in 41% of the pregnancies. The cohort now includes 114 500 children, 95 200 mothers and 75 200 fathers. The establishment of MoBa was based on a license from the Norwegian Data Protection Agency and approval from The Regional Committees for Medical and Health Research Ethics. The MoBa cohort is now based on regulations related to the Norwegian Health Registry Act. The current study was approved by The Regional Committees for Medical and Health Research Ethics (14140). All survey participants provided informed consent. In the current study we use pre-pandemic data from version 12 of the quality-assured data files released for research in January 2019.

From March 2020, web-based questionnaires were sent to all adult MoBa participants every second week to collect Covid-19-related information. Participants reported their mental distress in eight waves of data collection (shown alongside the average daily number of new cases of SARS-CoV-2 and level of national mitigating strategies to alleviate the Covid-19 pandemic in Norway in Figure 1). *Wave 1* to *8* were respectively responded to from March 31-April 14, 2020, April 14-29, 2020, April 29-May 12, 2020, August 19-September 1, 2020, December 8-21, 2020, February 2-17, 2021, April 28-May 11, 2021 and September 16-29, 2021. Details of each data collection (wave) during the pandemic included in this study are described in the Supplement. We included participants with data from at least three of the eight waves of Covid-19 data collections (N = 105 972).

Measures

Outcomes

Mental distress was measured using the 5-item version of the Hopkins Symptoms Checklist (HSCL-5), where participants report their experience of two symptoms of anxiety and three symptoms of depression during the past two weeks¹⁸. Each item has 4 response options, ranging from "not at all" (1) to "extremely" (4). HSCL-5 has been widely used and is validated with good psychometric properties in the Norwegian population (Cronbach's α : 0.87) and in other countries^{19,20}. We excluded records with two or more missing items.

Covariates

We used the mean of two previous HSCL-5 measures as an indicator of *average levels of mental distress across pre-pandemic years*. These included responses on the first available measure, collected between October 1999 and July 2009 (in the mother's 15th week of gestation) and on the most recent measure before the pandemic (collected when the children were 8 years for the mothers and in year 2015 for the fathers). If data for one measure point was missing, we used the score on the other as indicator of pre-pandemic mental distress.

Baseline sociodemographic characteristics included sex, age, education level, and living condition in Wave 1, i.e., living alone. *Health factors* included current Body Mass Index (BMI), which was assessed during the pandemic; history of psychiatric disorders; and chronic medical conditions, that were reported in Wave 1-3. *Covid-19-related variables* included income loss, determined by the question included in data collections during the two first time periods; SARS-CoV-2 infection, measured in all waves; and being in quarantine. Information concerning vaccination (SARS-CoV-2) status was available in the surveys Wave 6-8. Details of the construction of each variable are reported in the Supplement.

Statistical analyses

Piecewise latent growth modelling based on data from the eight waves during the pandemic was performed to allow for a nonlinear pattern across time. As a result, our model has one intercept and three slopes, one for each period (see Figure 1 and model illustration in Figure S1). Individual characteristics and health factors were included as predictors of variation in the intercept and all slopes in a single model, equivalent to a multiple regression. In addition, the period-specific Covid-19-related variables were included as predictors for relevant slopes. We ran our model both with and without adjusting for pre-pandemic mental distress, to investigate which predictors were general rather than specific to mental health changes in a pandemic context. All data analyses were performed using *lavaan* version 0.6-9²¹ in R version 4.0.0²² via RStudio²³. Full Information Maximum Likelihood estimation was used to handle the missing values²⁴. We used False discovery rate (FDR) to correct for multiple testing.

Code and data availability

All analytic code is openly available online at <https://github.com/psychgen/covid19-adult-mental-distress-trajectories>. The consent given by the participants does not open for storage of data on an individual level in repositories or journals. Researchers who want access to datasets for replication should apply through helsedata.no.

Role of the funding source

The funder of the study had no role in study design, data collection, data analysis, data interpretation, or writing of the report.

Results

Descriptive statistics are presented in Table 1. The mean mental distress level was highest at the initial stage of the pandemic (mean=7.08, 95% CI=7.06-7.10), and higher than pre-pandemic mental distress (6.09, 95% CI=6.08-6.11). There was an overall pattern of decreasing symptoms of mental distress during the first period of the pandemic, increasing symptoms during the second period, and decreasing symptoms in the final period (Figure S2). Inter-individual variability in mental distress trajectories was substantial, with significant variance terms for each of the growth factors. The model fit was relatively good (i.e., with a root mean square error of approximation (RMSEA) <.06 and comparative fit index (CFI) >.95)²⁵.

Predictors of change in mental distress levels at the onset of the pandemic

Baseline sociodemographic and health characteristics

The associations of all covariates with initial distress level and the change across the three periods before and after adjusting for pre-pandemic level of distress are shown in Table S1 and Table S2, respectively. Chronic medical conditions (see Table S2 for parameter estimates), living alone ($\beta = 0.28$ [SE = 0.03]), female sex ($\beta = 0.11$ [0.01]), history of psychiatry disorders ($\beta = 0.17$ [0.01]), relative educational background (Table S2) and obesity ($\beta = 0.03$ [0.01]) were associated with initial increases in mental distress (i.e., after adjustment for pre-pandemic mental distress). Additionally, being 35-44 years (relative to 45-54), was associated with a slight initial increase ($\beta = 0.04$ [0.01]).

Figure 2 shows the differences in standardized association estimates between covariates and initial mental distress before and after adjusting for pre-pandemic mental distress. Virtually all effects were attenuated after adjustment for pre-pandemic mental distress. Effect sizes for history of mental disorders and younger age more than halved after adjustment, rendering the association between young age and initial changes in distress at the onset of the pandemic non-significant.

Predictors of change in mental distress over the course of the pandemic

Baseline sociodemographic and health characteristics

Figure 3 shows model-predicted mean HSCL scores stratified according to each baseline characteristic. Sex was the only factor influencing change across all three time periods, with females showing more rapid change in symptoms ($\beta_1 = -0.08$ [0.01]; $\beta_2 = 0.14$ [0.02]; $\beta_3 = -0.07$ [0.01]). Change in symptoms during the first period was also associated with individuals' educational background, with those with the most education more likely to experience increases in symptoms ($\beta_1 = 0.13$ [0.02]) and those with the least education more likely to experience decreases ($\beta_1 = -0.10$ [0.04]). In addition, those with the highest BMI ($\beta_1 = 0.06$ [0.02]), living alone ($\beta_1 = 0.14$ [0.06]), and with a history of psychiatric disorders ($\beta_1 = 0.06$ [0.02])

were also more likely to experience symptom increases during this period, while those with more chronic medical conditions were more likely to see reductions (having seen, on average, much greater increases at the onset of the pandemic; Table S2). During the second period, the likelihood of experiencing reducing symptoms was associated with older age (particularly being older than 65; $\beta_2 = -0.28$ [0.12]) and living alone ($\beta_2 = -0.21$ [0.07]), reflecting a regression to the mean after prior increases in these groups. The likelihood of symptom increases continued to rise slightly for 34-44 year-olds (relative to those in the age band above; $\beta_2 = 0.04$ [0.01]). The likelihood of symptom decreases during third period was associated with obesity ($\beta_3 = -0.09$ [0.02]), having chronic medical conditions (Table S2), again likely reflecting a reversion to the mean after earlier increases. Younger age continued to be associated with the likelihood of symptoms increasing – most notably among the youngest group (25-34 years; $\beta_3 = 0.16$ [0.07]).

Covid-19-related factors

For the Covid-19-related factors (Figure 4), the likelihood of experiencing increases in mental distress in the first period was associated with significant income loss due to the pandemic in this period ($\beta_1 = 0.12$ [0.02]), as well as being quarantined or having to isolate during this period ($\beta_1 = 0.08$ [0.01]). During the second period, being vaccinated was associated with likelihood of symptom reduction ($\beta_2 = -0.18$ [0.03]) while symptom increases were again more likely among individuals quarantined during this period ($\beta_2 = 0.11$ [0.01]). In the final period, those who suffered income loss during the prior period were more likely to see symptom reduction ($\beta_3 = -0.15$ [0.02]), while SARS-CoV-2 infection was associated with likelihood of symptom increases ($\beta_3 = 0.10$ [0.04]) for the first time (case numbers had remained very low in Norway during the two prior periods).

The effect of adjusting for pre-pandemic mental distress on estimated associations between covariates and change during each period are displayed in Figures S3-S5).

Discussion

Using prospectively collected data from a large nationwide cohort, we found that several factors were associated with initial increases in mental distress in the beginning of the pandemic. These included having chronic medical conditions or a history of mental disorders, relative lower educational background, female sex, living alone, and obesity, which were also associated with longitudinal change. Being quarantined and losing income due to Covid-19 were associated with likelihood of increasing distress during the first year of the pandemic. We found that having received the Covid-19 vaccination was associated with decreasing symptoms during the second period while SARS-CoV-2 infection was independently associated with increasing symptoms of mental distress only towards the end of the study period, which coincided with the first substantial rise in case numbers in Norway.

To isolate factors not just related to mental health in general, but to changes in mental health during the pandemic, we adjusted our models for pre-pandemic mental distress. A majority of studies regarding mental health and Covid-19 so far have been based on online recruitment and data collected after the start of the pandemic^{7,8,26}, without knowledge of pre-pandemic mental distress. We found the strength of associations with mental distress during the pandemic are reduced after adjustment for pre-pandemic data, particularly for variables such as age, history of psychiatric disorders, living alone, sex, education and chronic medical conditions. Findings from previous studies that did not control for these factors are likely to conflate general and specific effects on mental health and should be interpreted as such. To the extent that such findings are interpreted as being specific to the context of the pandemic, our results show that they are likely to be substantially inflated.

Our findings show that female sex and younger age were associated with higher initial level and more change in mental distress across time. This is in line with the results from a UK study performing growth models on anxiety- and depressive symptoms⁸. It is documented that women are more likely to suffer from mental health problems than men^{4,9,12,13}, and females had higher increase than males in prevalence of major depressive and anxiety disorders during Covid-19, particularly in younger age groups¹³. During the pandemic, additional carer and household responsibilities due to school closures or family members becoming unwell are more likely to fall on women^{13,27}. We also found that women demonstrated faster improvements in anxiety and depression symptoms during the first period.

Living alone was associated with both a higher initial level and less rapid recovery during the first period. Factors like living alone and loneliness have repeatedly been linked to mental health¹², also before the pandemic²⁸. Interestingly, we observed that being older than 65 was associated with a relative reductions in risk for mental distress at the onset of, and during the pandemic. This was despite older age being a known risk factor for more severe disease from relatively early in the pandemic. Interacting sociodemographic factors, such as relative insulation from economic concerns or living in less densely populated areas and potential increase in social support may explain this somewhat counter-intuitive finding.

Individuals with chronic medical conditions presented with a substantial increase in mental distress at the initial stage of the pandemic, showed reversion towards the mean over time, similar to the UK study⁸. Obesity was slightly predictive of increases in mental distress at the onset and for the early phase of the pandemic, and reversion toward the mean came later, during the period when vaccination became widespread. Obesity and chronic medical conditions are risk factors for Covid-19 severity²⁹, which was also communicated extensively during the first stages of the pandemic. This, followed by the implementation of greater shielding and infection control measures, as well as adjustment to perceived vulnerability, could explain the early increases and subsequent decreases in mental distress for these factors. Our findings of

pre-existing mental illness as a significant predictor of mental problems were expected as it has been widely reported^{3,30,31}, although again we confirm that this is specific to the pandemic context by appropriately controlling for earlier symptoms. It is also worth noting that in contrast to medical comorbidities and obesity, individuals with pre-existing vulnerabilities to psychiatric disorders showed no reversion to the mean at all during our study period, suggesting that individuals with these vulnerabilities should be prioritised for support in analogous future situations.

Covid-19-related characteristics, such as loss of income and being quarantined were associated with slower improvement during the first period. Economic loss is one significant adversity in the context of Covid-19, and could be where Covid-19 related stress partially originates from³². Being quarantined was associated with a greater likelihood of experiencing increases in symptoms during the second period. In addition to the obvious possibility that people were concerned that exposure to infected individuals might lead to them developing the disease, social isolation to mitigate the spread of the novel coronavirus may have led to loneliness, which is associated with increased mental health problems³³. During the second period, the likelihood of seeing symptoms of distress decrease was associated with being vaccinated. This protective effect of vaccination has been observed previously³⁴. Decrease in mental distress symptoms during the third period was more rapid among those with significant income loss in the previous period. The greater improvement of those with income loss could be partially explained by the government mitigation strategies including unemployment benefit, i.e., more compensation would be offered under new rules¹⁴; and possible easing of economic and employment pressures. Individuals infected with SARS-CoV-2 were more likely to experience increased mental distress during the third period than those not infected. A negative association between SARS-CoV-2 infection and mental health have been observed in several studies^{2,3,13} while our study extends the literature by robustly controlling for pre-pandemic levels of distress.

Our findings extend current knowledge and provide important implications for future studies by taking the advantage of the longitudinal design and pre-pandemic information available in the MoBa cohort with data between the onset of the Covid-19 pandemic and majority vaccination against Covid-19. However, the results should be interpreted in light of some limitations. First, the current study only included MoBa parent participants, therefore the results cannot necessarily be generalised to the adult population without children. The initial participation rate in MoBa was 41% of invited pregnant women, with previously described overrepresentation of healthier and more highly educated women as compared to the general population³⁵. A second limitation concerns our inability to draw any strong causal conclusions about links between individual characteristics and trajectories of mental distress based on observational data.

In conclusion, our results identify several vulnerability factors, including living alone, obesity, history of psychiatry disorders that represent risk factors for both initial and longitudinal increases in mental distress

in the context of the Covid-19 pandemic. Significant influences, too, of quarantine status, vaccination, and income loss due to the pandemic show that public health and governmental policies and priorities are likely to be influential at the level of individual mental health among citizens. These findings are important for planning of future public health responses to reduce the mental health impact of Covid-19 and similar future global health crises, as well as to optimize the allocation of health service resources and the design of prevention and intervention efforts.

Financial support

The MoBa Cohort Study is supported by the Norwegian Ministry of Health and Care Services and the Ministry of Education and Research. The COVIDMENT project was supported by NordForsk through the funding to 'Mental morbidity trajectories in Covid-19 across risk populations of five nations' (Project number: 105668). HA, RB and RN were supported by the Research Council of Norway (324620). L.J.H. was supported by the South-Eastern Norway Regional Health Authority (#2018058, #2019097).

Conflicts of Interest

OAA is a consultant to HealthLytix.

Acknowledgement

We thank all the participating families in Norway who take part in the ongoing MoBa cohort study. The authors are grateful for technical support in statistics from Dr. Baeksan Yu.

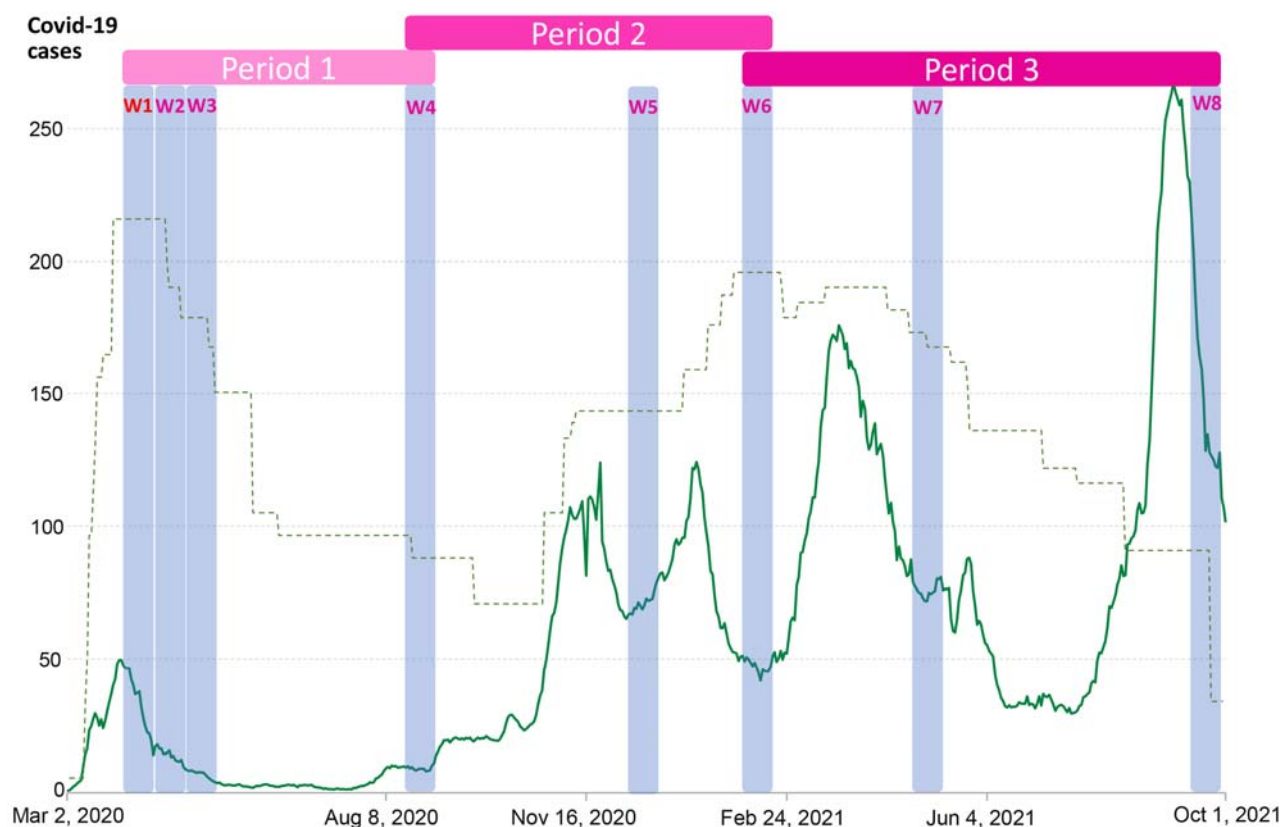
Contributors

REB, LT and HA involved in designing the data collections of the MoBa cohort. LL, LJH and HA designed the analytical strategy and all authors helped to interpret the findings. LL, LJH and HA conducted the literature review and drafted the manuscript. All authors revised the manuscript for critical content and approved the final version of the manuscript. LJH and HA had access to and verified all the data and all authors could access the data on request.

Reference

1. Wiersinga WJ, Rhodes A, Cheng AC, Peacock SJ, Prescott HC. Pathophysiology, Transmission, Diagnosis, and Treatment of Coronavirus Disease 2019 (COVID-19): A Review. *Jama* 2020; **324**(8): 782-93.
2. Magnúsdóttir I, Lovik A, Unnarsdóttir AB, et al. Acute COVID-19 severity and mental health morbidity trajectories in patient populations of six nations: an observational study. *Lancet Public Health* 2022; **7**(5): e406-e16.
3. Pierce M, McManus S, Hope H, et al. Mental health responses to the COVID-19 pandemic: a latent class trajectory analysis using longitudinal UK data. *The lancet Psychiatry* 2021; **8**(7): 610-9.
4. Batterham PJ, Calear AL, McCallum SM, et al. Trajectories of depression and anxiety symptoms during the COVID-19 pandemic in a representative Australian adult cohort. *The Medical journal of Australia* 2021; **214**(10): 462-8.
5. Taquet M, Luciano S, Geddes JR, Harrison PJ. Bidirectional associations between COVID-19 and psychiatric disorder: retrospective cohort studies of 62 354 COVID-19 cases in the USA. *The lancet Psychiatry* 2021; **8**(2): 130-40.
6. Zhou J, Liu L, Xue P, Yang X, Tang X. Mental Health Response to the COVID-19 Outbreak in China. *Am J Psychiatry* 2020; **177**(7): 574-5.
7. Shevlin M, Butter S, McBride O, et al. Refuting the myth of a 'tsunami' of mental ill-health in populations affected by COVID-19: evidence that response to the pandemic is heterogeneous, not homogeneous. *Psychol Med* 2021: 1-9.
8. Fancourt D, Steptoe A, Bu F. Trajectories of anxiety and depressive symptoms during enforced isolation due to COVID-19 in England: a longitudinal observational study. *The lancet Psychiatry* 2021; **8**(2): 141-9.
9. Daly M, Sutin AR, Robinson E. Longitudinal changes in mental health and the COVID-19 pandemic: evidence from the UK Household Longitudinal Study. *Psychol Med* 2020: 1-10.
10. Shanahan L, Steinhoff A, Bechtiger L, et al. Emotional distress in young adults during the COVID-19 pandemic: evidence of risk and resilience from a longitudinal cohort study. *Psychol Med* 2020: 1-10.
11. Hansen T, Sevenius Nilsen T, Knapstad M, et al. Covid-fatigued? A longitudinal study of Norwegian older adults' psychosocial well-being before and during early and later stages of the COVID-19 pandemic. *Eur J Ageing* 2021: 1-11.
12. Bu F, Steptoe A, Fancourt D. Loneliness during a strict lockdown: Trajectories and predictors during the COVID-19 pandemic in 38,217 United Kingdom adults. *Social science & medicine (1982)* 2020; **265**: 113521.
13. COVID-19 Mental Disorders Collaborators. Global prevalence and burden of depressive and anxiety disorders in 204 countries and territories in 2020 due to the COVID-19 pandemic. *Lancet* 2021.
14. The Norwegian Government. Timeline: news from Norwegian Ministries about the Coronavirus disease Covid-19. <https://www.regjeringen.no/en/topics/koronavirus-covid-19/timeline-for-news-from-norwegian-ministries-about-the-coronavirus-disease-covid-19/id2692402/>. Accessed 7 Dec 2021. 2022.
15. Salanti G, Peter N, Tonia T, et al. The Impact of the COVID-19 Pandemic and Associated Control Measures on the Mental Health of the General Population : A Systematic Review and Dose-Response Meta-analysis. *Ann Intern Med* 2022; **175**(11): 1560-71.
16. Magnus P, Birke C, Vejrurp K, et al. Cohort Profile Update: The Norwegian Mother and Child Cohort Study (MoBa). *Int J Epidemiol* 2016; **45**(2): 382-8.
17. Magnus P, Irgens LM, Haug K, Nystad W, Skjaerven R, Stoltenberg C. Cohort profile: the Norwegian Mother and Child Cohort Study (MoBa). *Int J Epidemiol* 2006; **35**(5): 1146-50.
18. Tambs K, Moum T. How well can a few questionnaire items indicate anxiety and depression? *Acta Psychiatr Scand* 1993; **87**(5): 364-7.
19. Schmalbach B, Zenger M, Tibubos AN, Kliem S, Petrowski K, Brähler E. Psychometric Properties of Two Brief Versions of the Hopkins Symptom Checklist: HSCL-5 and HSCL-10. *Assessment* 2021; **28**(2): 617-31.
20. Strand BH, Dalgard OS, Tambs K, Rognerud M. Measuring the mental health status of the Norwegian population: a comparison of the instruments SCL-25, SCL-10, SCL-5 and MHI-5 (SF-36). *Nord J Psychiatry* 2003; **57**(2): 113-8.

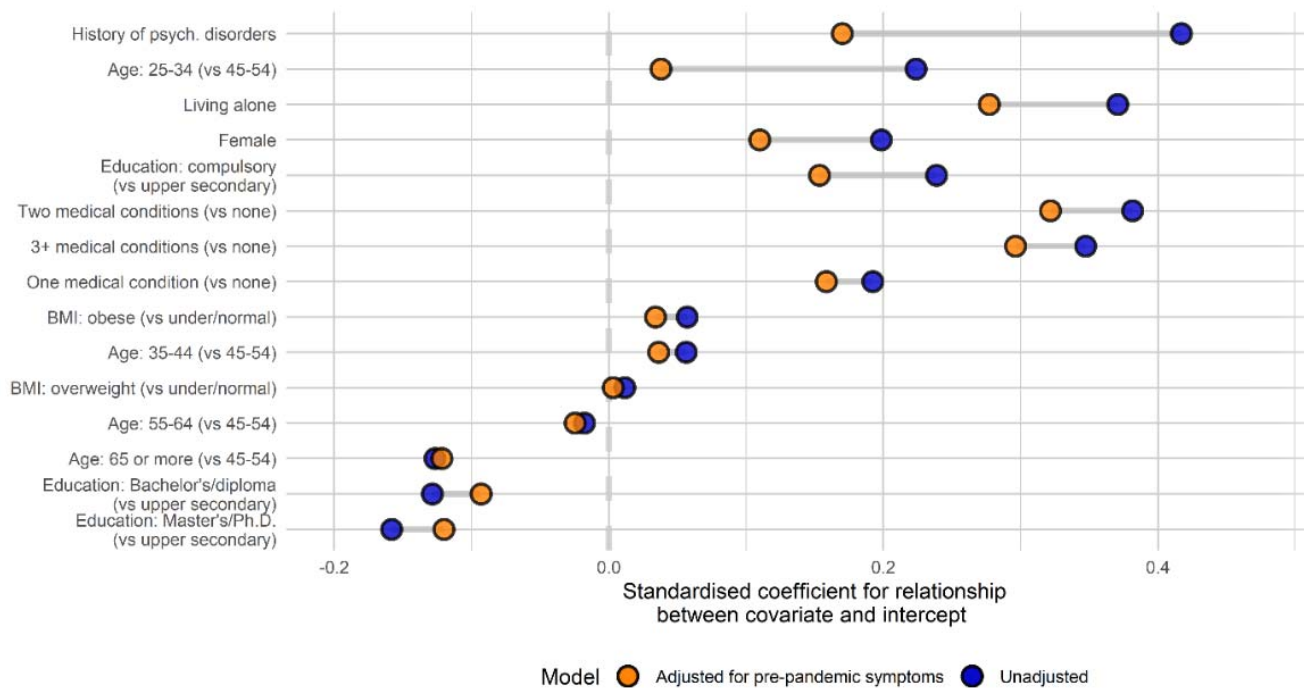
21. Rosseel Y. lavaan: An R Package for Structural Equation Modeling. *Journal of Statistical Software* 2012; **48**(2): 1 - 36.
22. R Core Team. R: A language and environment for statistical computing. R Foundation for Statistical Computing, Vienna, Austria. URL <https://www.R-project.org/>. 2020.
23. RStudio Team. RStudio: Integrated Development for R. *RStudio, Inc, Boston, MA* URL <http://www.rstudio.com/> 2020.
24. Enders CK, Bandalos DL. The relative performance of full information maximum likelihood estimation for missing data in structural equation models. *Structural equation modeling* 2001; **8**(3): 430-57.
25. Hu LT, Bentler PM. Cutoff criteria for fit indexes in covariance structure analysis: Conventional criteria versus new alternatives. *Structural equation modeling: a multidisciplinary journal* 1999; **6**(1): 1-55.
26. Saunders R, Buckman JEJ, Fonagy P, Fancourt D. Understanding different trajectories of mental health across the general population during the COVID-19 pandemic. *Psychol Med* 2021: 1-9.
27. Burki T. The indirect impact of COVID-19 on women. *Lancet Infect Dis* 2020; **20**(8): 904-5.
28. Coyle CE, Dugan E. Social isolation, loneliness and health among older adults. *Journal of aging and health* 2012; **24**(8): 1346-63.
29. Gao F, Zheng KI, Wang XB, et al. Obesity Is a Risk Factor for Greater COVID-19 Severity. *Diabetes Care* 2020; **43**(7): e72-e4.
30. Breslau N, Roth T, Rosenthal L, Andreski P. Sleep disturbance and psychiatric disorders: a longitudinal epidemiological study of young adults. *Biol Psychiatry* 1996; **39**(6): 411-8.
31. North CS, Nixon SJ, Shariat S, et al. Psychiatric disorders among survivors of the Oklahoma City bombing. *Jama* 1999; **282**(8): 755-62.
32. Pfefferbaum B, North CS. Mental health and the Covid-19 pandemic. *New England Journal of Medicine* 2020; **383**(6): 510-2.
33. Killgore WDS, Cloonan SA, Taylor EC, Dailey NS. Loneliness: A signature mental health concern in the era of COVID-19. *Psychiatry Res* 2020; **290**: 113117.
34. Xiao Y, Yip PS, Pathak J, Mann JJ. Association of Social Determinants of Health and Vaccinations With Child Mental Health During the COVID-19 Pandemic in the US. *JAMA Psychiatry* 2022; **79**(6): 610-21.
35. Bulik CM, Von Holle A, Hamer R, et al. Patterns of remission, continuation and incidence of broadly defined eating disorders during early pregnancy in the Norwegian Mother and Child Cohort Study (MoBa). *Psychol Med* 2007; **37**(8): 1109-18.



Date of each wave (data collection): Wave 1, March 31-April 14, 2020; Wave 2, April 14-29, 2020; Wave 3, April 29-May 12, 2020; Wave 4, August 19-September 1, 2020; Wave 5, December 8-21, 2020; Wave 6, February 2-17, 2021; Wave 7, April 28-May 11, 2021; Wave 8, September 16-29, 2021.

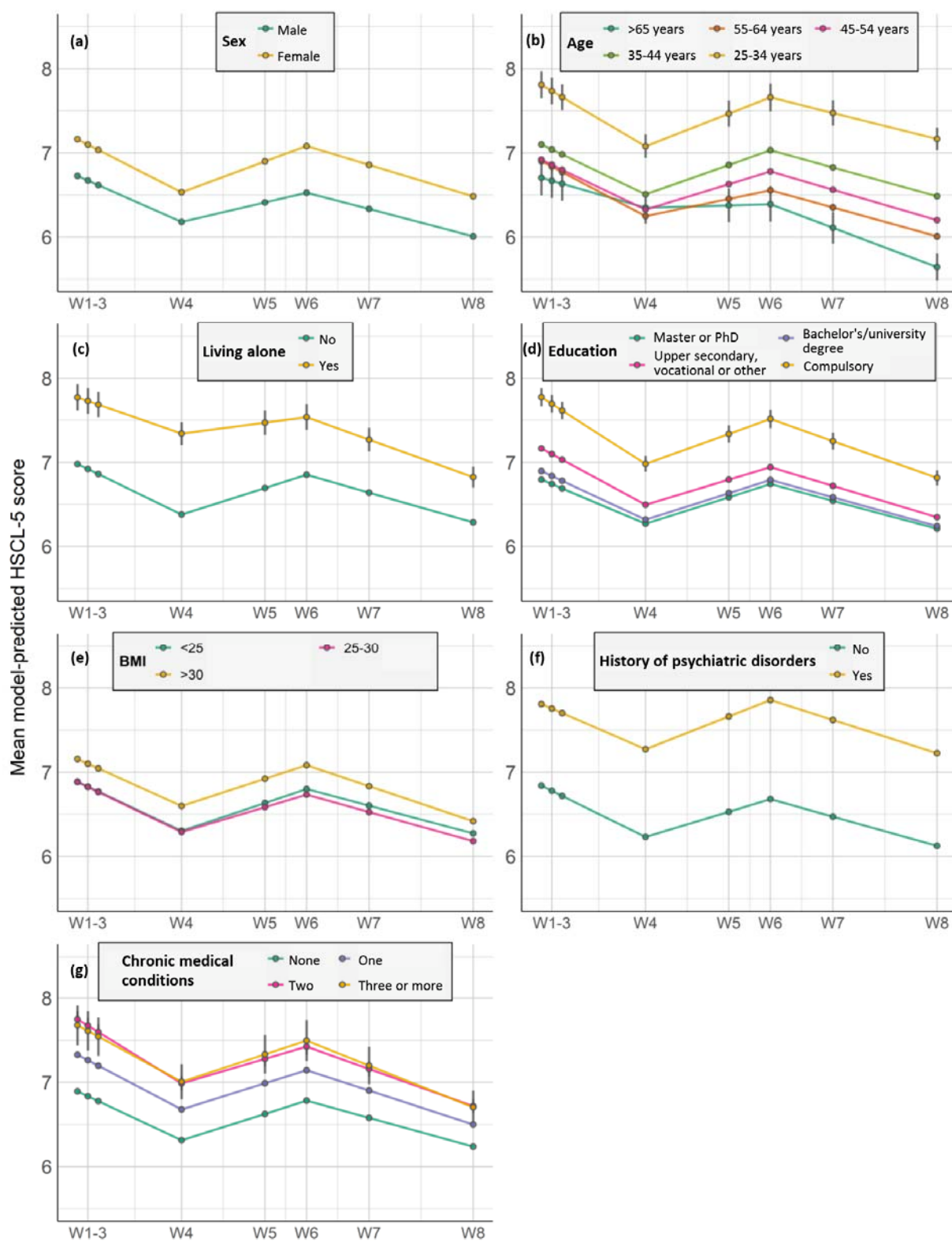
Notes: The green line shows daily new confirmed Covid-19 cases in Norway per million people. The dotted line indicates Covid-19 Stringency Index – a composite measure based on nine response indicators including school closures, workplace closures and travel bans (unscaled, but show the relative stringency across time periods). Source: Oxford Covid-19 Government Response Tracker, Blavatnik School of Government, University of Oxford. OurWorldInData.org/coronavirus. Periods 1/2/3 are defined according to the general trend in restrictions and in order that each period contains at least 3 waves of data collection for modelling of linear slopes – see the Supplementary Material for further details

Figure 1: Timing of MoBa Covid-19 data collections (W1-W8) including Hopkins Symptom Checklist-5.



History of psych. Disorders: History of psychiatric disorders; BMI: Body Mass Index.

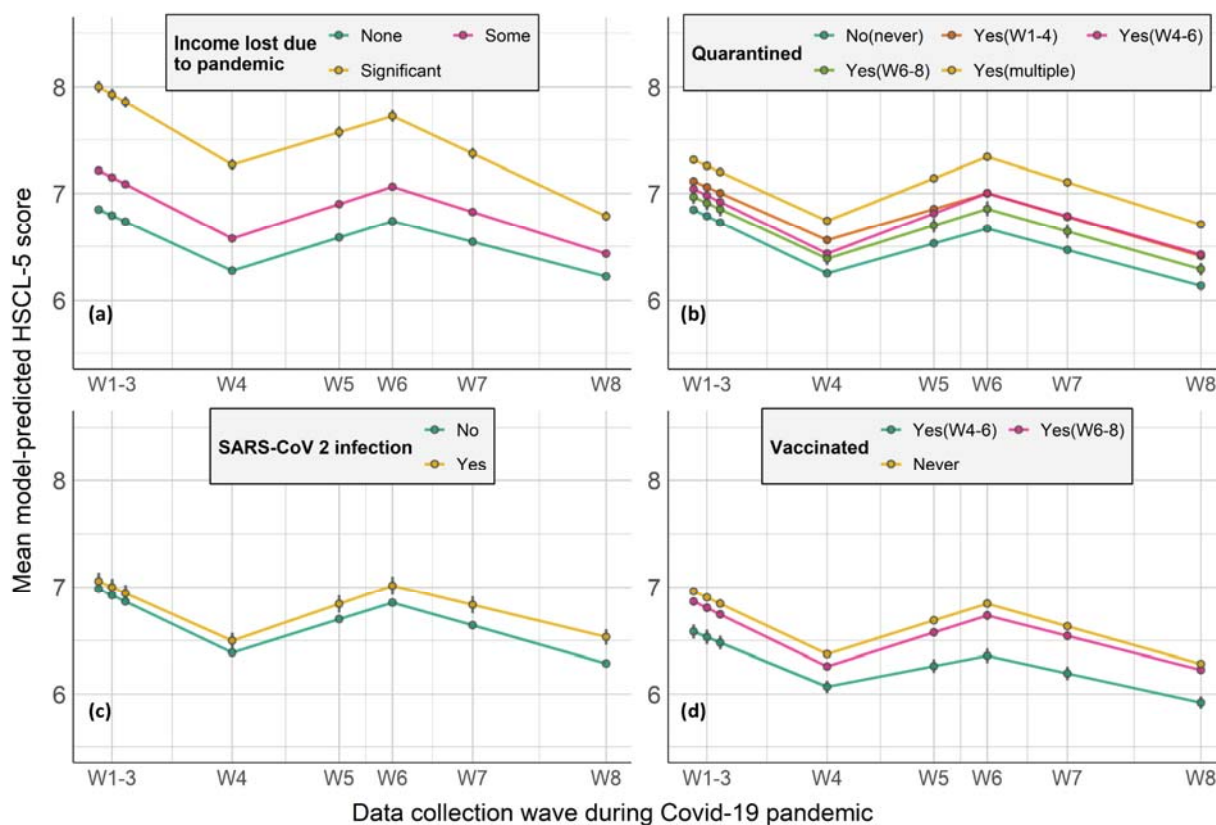
Figure 2: Associations between covariates and initial mental distress before and after adjusting for pre-pandemic mental distress. Note: Covariates are ordered by change in coefficient between the two models.



Data collection wave during Covid-19 pandemic

Notes: HSL-5= 5-item version of the Hopkins Symptoms Checklist. Error bar represents 95% confidence intervals; Medical comorbidities= Chronic medical conditions.

Figure 3: Model-predicted growth trajectories of estimated average mental distress score across waves of data collection (W1-W8) by participant characteristics.



Notes: HSCL-5= 5-item version of the Hopkins Symptoms Checklist. Error bar represents 95% confidence intervals.

Figure 4: Model-predicted growth trajectories of estimated average mental distress score across waves of data collection (W1-W8) by Covid-19-related factors.

Table 1 Descriptive characteristics for included sample (N=105 972)

Variables		n	% ^a	Mean (se)
Pre-pandemic mental distress		101 982	96,2	6,09 (0.01)
Mental distress in	Wave 1	99 851	94,2	7,08 (0.01)
	Wave 2	99 640	94,0	6,92 (0.01)
	Wave 3	97 189	91,7	6,78 (0.01)
	Wave 4	60 736	57,3	6,34 (0.01)
	Wave 5	66 774	63,0	6,97 (0.01)
	Wave 6	82 374	77,7	6,73 (0.01)
	Wave 7	75 670	71,4	6,59 (0.01)
	Wave 8	72 447	68,4	6,26 (0.01)
Sex:	Male	42 800	40,4	
	Female	63 172	59,6	
Age group (years)	25-34	829	0,8	
	35-44	36 433	34,4	
	45-54	61 653	58,2	
	55-64	6594	6,2	
	65 or more	314	0,3	
	Missing	149	0,1	
Education	Master or PhD	30 610	28,9	
	Bachelor's/university degree	37 123	35,0	
	Upper secondary, vocational or other	30 846	29,1	
	Compulsory	2230	2,1	
	Missing	5163	4,9	
BMI	<25 (Underweight or normal)	33 978	32,1	
	25-30 (Overweight)	29 358	27,7	
	>30 (Obese)	13 433	12,7	
	Missing	29 203	27,6	
History of psychiatric disorders	Yes	16 017	15,1	
N chronic medical conditions	1	17 315	16,3	
	2	2428	2,3	
	>2	447	0,4	
Living alone during the pandemic	No	98 672	93,1	
	Yes	1114	1,1	
	Missing	6186	5,8	
PANDEMIC-SPECIFIC MEASURES DURING THE FIRST PERIOD				
Income loss	No	83 394	78,7	
	Yes, some loss	14 885	14,0	
	Yes, significant loss	6445	6,1	
	Missing	1248	1,2	
SARS-CoV-2 infection		379	0,4	
Being quarantined/isolated		19 560	18,5	
PANDEMIC-SPECIFIC MEASURES DURING THE SECOND PERIOD				
Income loss	No	82 077	77,5	
	Yes, some loss	16 268	15,4	
	Yes, significant loss	7346	6,9	
	Missing	281	0,3	
SARS-CoV-2 infection		1203	1,1	
Being quarantined/isolated		27 620	26,1	
Vaccinated (SARS-CoV-2)		2182	2,1	
PANDEMIC-SPECIFIC MEASURES DURING THE THIRD PERIOD				
SARS-CoV-2 infection		2405	2,3	
Being quarantined/isolated		8463	8,0	
Vaccinated (SARS-CoV-2)		9323	8,8	

BMI: Body Mass Index. N chronic medical conditions: Number of chronic medical conditions.

^a Values in % column indicate rate of non-missingness in the analytic sample for the first 9 rows, and the breakdown of the sample across groups thereafter.