

How Much of the Outcome Improvement after Successful Recanalization is Explained by Follow-up Infarct Volume Reduction?

Helge Kniep¹, MD; Lukas Meyer¹, MD; Gabriel Broocks¹, MD; Matthias Bechstein¹, MD; Friederike Austein¹, MD; Rosalie McDonough^{1,2}, MD; Caspar Brekenfeld¹, MD; Fabian Flottmann¹, MD; Milani Deb-Chatterji³, MD; Anna Alegiani⁴, MD; Uta Hanning¹, MD; Götz Thomalla³, MD; Jens Fiehler¹, MD; Susanne Gellißen¹, MD.

for the German Stroke Registry – Endovascular Treatment (GSR – ET).

¹ Department of Diagnostic and Interventional Neuroradiology, University Medical Center Hamburg-Eppendorf, Hamburg, Germany

² Department of Radiology, University of Calgary, Calgary, Alberta, Canada

³ Department of Neurology, University Medical Center Hamburg-Eppendorf, Hamburg, Germany

⁴ Department of Neurology, Asklepios Klinik Altona, Hamburg, Germany

Short title: Mediation of Outcome by Infarct Volume Reduction

Corresponding Author:

Helge Kniep, MD, Dr. med. Dipl.-Ing.

Department of Diagnostic and Interventional Neuroradiology

University Medical Center Hamburg-Eppendorf

Martinstraße 52, 20246 Hamburg, Germany

Phone: +49 40 7410 52746, Fax: +49 40 7410 40114

Email: h.kniep@uke.de

Total Word Count: 4150

NOTE: This preprint reports new research that has not been certified by peer review and should not be used to guide clinical practice.

ABSTRACT

Background: Follow-up infarct volume (FIV) is used as surrogate for treatment efficiency in Mechanical Thrombectomy (MT). In contrast to these assumptions, previous works suggest that MT-related infarct volume reduction has only limited association with outcome comparing MT vs. medical care. It remains unclear to what extent the causal relationship between successful recanalization vs. persistent occlusion and functional outcome is explained by treatment-related reduction in FIV. Results might allow quantification of pathophysiological effects and could improve the understanding of the value of FIV as imaging endpoint in clinical trials.

Methods: All patients from our institution enrolled in the German Stroke Registry from 05/2015-12/2019 with anterior circulation stroke, availability of the relevant clinical data and follow-up CT were analyzed. A mediation analysis was conducted to investigate the effect of successful recanalization ($Tici \geq 2b$) on good functional outcome ($90d\ mRS \leq 2$) with mediation through final infarct volume.

Results: 429 patients were included. 309(72 %) patients had a successful recanalization and 127(39%) achieved good functional outcome. Probability of good outcome was significantly associated with age ($OR=0.89, p<0.001$), pre-stroke mRS ($OR=0.38, p<0.001$), FIV ($OR=0.98, p<0.001$), hypertension ($OR=2.08, p<0.05$) and successful recanalization ($OR=3.57, p<0.01$). Using linear regression in the mediator pathway, FIV was significantly associated with ASPECTS (Coefficient(Co)=-26.13, $p<0.001$), NIHSS admission (Co=3.69, $p<0.001$), age (Co=-1.18, $p<0.05$) and successful recanalization (Co=-85.22, $p<0.001$). Mediation analysis suggest a 23 percentage points (pp) increase of probability of good functional outcome (95%CI:16pp-29pp) in patients with successful

recanalization. 56% (95%CI:38%-78%) of the improvement in good outcome was explained FIV reduction.

Conclusions: 56% of the improvement of functional outcome after successful recanalization is explained by FIV reduction. Results corroborate established pathophysiological assumptions and confirm the value of infarct volume as imaging endpoint in clinical trials. 44% of the improvement in outcome is not explained by FIV reduction and reflects the remaining mismatch between radiological and clinical outcome measures.

Trial Registration: <https://clinicaltrials.gov/ct2/show/NCT03356392> (NCT03356392)

INTRODUCTION

Mechanical thrombectomy (MT) has been shown to improve functional outcome in patients with anterior circulation stroke due to intracranial large vessel occlusion ¹. It is assumed that the positive treatment effect of MT is caused by fast reperfusion resulting in the salvage and preservation of brain tissue, as indicated by significantly smaller infarct volumes at follow-up imaging compared to patients without successful recanalization ^{1,2}. Furthermore, many studies showed a strong association between the extent of ischemic tissue injury assessed at follow-up imaging and functional outcome at 90 days ³⁻⁷. In consequence, follow-up infarct volume (FIV) has been suggested as an early surrogate of treatment efficacy. In contrast to these assumptions, previous works applying formal testing through mediation analysis suggest that MT-related infarct volume reduction explains only 12% to 14% of the beneficial effect on outcome in patients undergoing MT vs. standard medical care ^{2,8-10}. However, these results reflect the explanatory capacity of FIV comparing patients undergoing MT and any recanalization status with patients receiving standard medical care. It remains unclear to what extent the causal relationship between successful recanalization vs. persistent occlusion and functional outcome is explained by treatment-related reduction in FIV. We therefore investigated whether and to what extent FIV mediates the relationship between successful recanalization and functional outcome. We hypothesized that FIV reduction through successful recanalization significantly explains improvement in functional outcome of patients with acute ischemic stroke.

METHODS

The study was approved by the ethics committee of the chamber of physicians at Ludwig-Maximilians University LMU, Munich (689-15) as the leading ethics committee, in

accordance with the Declaration of Helsinki ¹¹. Approval by local ethics committees or institutional review boards is obtained for all participating sites according to local regulations.

Patients

All patients from the University Medical Center Hamburg-Eppendorf (Germany) prospectively enrolled in the German Stroke Registry-Endovascular Treatment (GSR-ET) between June 2015 and December 2019 were analyzed (ClinicalTrials.gov Identifier: NCT03356392). GSR-ET is an ongoing, open label, prospective, multicenter registry of 25 sites in Germany collecting consecutive patients undergoing MT. A detailed description of the GSR-ET study design has been published recently ^{12,13}. The main inclusion criteria of GSR-ET are diagnosis of acute ischemic stroke due to large vessel occlusion, initiation of an endovascular procedure for treatment, and age ≥ 18 years, according to national guidelines. There are no exclusion criteria. For this study, all patients with anterior circulation stroke, availability of relevant clinical data and availability of a follow-up Computed Tomography (CT) of the brain performed 12 hours to 14 days after mechanical thrombectomy (MT) were included. The corresponding author has access to the registry data acquired in the above-mentioned enrolment period. The data that support the findings of this study are available from the GSR-ET registry and the corresponding author, restrictions may apply to the availability of these data.

Image analysis

Manual segmentation of FIV was performed on follow-up CT scans (slice thickness 4.0 mm) by a senior neuroradiologist with more than 9 years of clinical experience (FA). When multiple follow-up imaging data were available, the latest scan within the time window (12 hours to 2 weeks) was selected for assessment.

Statistics

Standard descriptive statistics were used for all study end points. Univariable distribution of metric variables was described with mean and interquartile range (IQR), ordinal variables with median and IQR and categorical variables with absolute and relative frequencies.

ANOVA tests and Mann-Whitney U tests were used to test for group differences. Categorical variables were compared using chi-squared tests.

Good functional outcome was defined as modified Rankin scale (mRS) 0 to 2 at day 90 after the index procedure. Multivariable logistic regression analysis was performed to identify the independent predictors of good functional outcome. Odds ratios (OR) with 95% confidence intervals (CI) and p-values were calculated for selected variables. Linear regression was used to identify the independent predictors of FIV. Relevant factors were determined using backward variable selection procedures based on the Akaike information criterion (AIC). For the mediation model, all factors significantly associated with good outcome in the logistic regression analysis and all factors significantly associated with FIV in the linear regression analysis were selected, models were additionally controlled for sex and administration of i.v. thrombolysis.

Mediation analysis^{14,15} was used to evaluate to what extent the reduction of FIV after successful recanalization explains functional outcome at day 90 in patients undergoing MT. Mediation models consider the impact of a mediator variable M that is hypothesized to transmit the influence of independent variables X onto an outcome Y. The underlying regression models were defined according to Mackinnon and Dwyer¹⁶. Mediation analysis was conducted in adherence to the requirements defined by Baron and Kenny¹⁴ employing algorithms proposed by Imai, Keele and Tingley¹⁷ and Imai, Keele and Yamamoto¹⁸ that allow estimation of causal mediation effects for linear and nonlinear relationships with continuous and discrete mediators, and various types of outcome variables. Effects were

assessed through the average causal mediation effect (ACME) and the average direct effect (ADE) with FIV as mediator variable, good functional status at 90d defined as mRS ≤ 2 as outcome variable and successful recanalization defined as TIC1 $\geq 2b$ as treatment variable. Confidence intervals of the mediation analysis were derived using quasi-Bayesian approximation. 2-sided p-values < 0.05 was considered to be statistically significant. All analyses were carried out using R 3.6.2 with the *mediation* package 4.5.0¹⁹.

RESULTS

In total, 429 patients fulfilled the inclusion criteria and required data points were available. 309 (72 %) patients received a successful recanalization and 127 (39%) achieved good functional outcome. Patients with good clinical outcome had higher ASPECTS (8 vs. 7, $p < 0.001$), lower FIV (32.3 ml vs 138.9 ml, $p < 0.001$), were younger (67.1 vs. 75.9, $p < 0.001$), had lower mean pre-stroke mRS (3rd quartile 0 vs. 1, $p < 0.001$), lower NIHSS at admission (13 vs. 16, $p < 0.001$), received more often i.v. thrombolysis (72% vs. 52%) and had higher rates of successful recanalization (90% vs. 65%) (Table 1).

Results of logistic regression analysis suggest that probability of good outcome was significantly associated with age (OR = 0.89, $p < 0.001$), pre-stroke mRS (OR = 0.38, $p < 0.001$), FIV (OR = 0.98, $p < 0.001$), hypertension (OR = 2.08, $p < 0.05$) and successful recanalization (OR = 3.57, $p < 0.01$). ASPECTS (OR = 1.00), NIHSS at admission (OR = 0.96) and i.v. thrombolysis (OR = 1.79) did not reach significance at p-value < 0.05 (Figure 2). Using linear regression in the mediator pathway, FIV was significantly associated with ASPECTS (Coefficient (Co) = -26.13, $p < 0.001$), NIHSS at admission (Co = 3.69, $p < 0.001$), age (Co = -1.18, $p < 0.05$) and successful recanalization (Co = -85.22, $p < 0.001$). According to

these results, the loss of one ASPECTS point led to a mean increase of FIV by 26 ml and successful recanalization was associated with a lowering of FIV by 85 ml (Figure 1).

All requirements for mediation relationship according to Baron and Kenny ¹⁴ were fulfilled: Regression analysis of the direct path confirmed significant association of the independent predictors and the mediator FIV with the probability for good outcome. Furthermore, significant coefficients were observed for the regression of the mediator on the independent predictors. All effect metrics were significant at p-value < 0.001. The layout of the mediation model is depicted in Figure 2.

Results of the mediation analysis suggest a 23 percentage points (pp) increase of probability of good functional outcome (95% confidence interval (CI): 16pp – 29pp) in patients with successful recanalization. 13pp (95% CI: 9pp – 18pp) of the effect was mediated by FIV. 56% (95% CI: 38% - 78%) of the treatment effect was explained FIV reduction following successful recanalization with MT (Table 2).

DISCUSSION

Our analysis based on 429 patients with acute ischemic stroke confirms that FIV after MT is associated with functional outcome and partially mediates the relationship between MT and functional outcome at 90 days after successful recanalization. Our results indicate that 56 % of the total treatment effect of successful recanalization in patients with anterior circulation stroke is explained by FIV reduction, suggesting that additional characteristics and mechanisms such as infarct location, extent and severity of brain tissue damage, delayed neurological improvement capacity, effective rehabilitation, prevention of late adverse events and other unknown factors account for the remaining 44% of the treatment effect.

Several studies have previously addressed the association of FIV with functional outcome after an occlusion of the anterior circulation. In concordance with our results, it was demonstrated that FIV after MT in anterior circulation strokes serves as a reliable predictor for 90 day functional outcome⁴⁻⁷. Those studies also found that patients treated with MT had significantly smaller FIVs compared with controls treated with best medical treatment.

Furthermore, four recent studies examined if the relationship between treatment and functional outcome was mediated by FIV^{2,8-10}. Two of these studies^{2,9} reported that FIV did not mediate the relationship between treatment and functional outcome. In the other two studies^{8,10}, only a small proportion (12-14 %) of the treatment effect was reported to be explained by FIV reduction. In contrast, our analysis indicates that FIV reduction explains 56% of the improvement in functional outcome after successful recanalization. However, these studies evaluated the effect of MT versus best medical treatment on functional outcome and did not assess the effect of successful recanalization. In comparison, our study only included patients treated with MT and evaluates the effect of successful recanalization on FIV, long term functional outcome and the extend of mediation through FIV. Based on the observed higher percentage of explained treatment effect, it could be concluded that in comparison to MT vs best medical treatment, the effect of successful recanalization might be more clearly and pathophysiologically more directly associated with FIV reduction.

It is noteworthy that in our study the beneficial effect of successful recanalization on functional outcome was mainly explained by FIV reduction. It therefore can be assumed that FIV reduction is a significant factor leading to improved outcome in patients undergoing MT. However, our study also holds important information on the remaining mismatch between radiological and clinical outcome measures after treatment as 44% of the improvement in outcome is not explained by FIV reduction. For example, FIV cannot capture external effects not related to MT, such as efficiency of rehabilitation, adverse events due to comorbidities or

respiratory infections, which are known as significant determinants of higher morbidity and mortality in stroke patients²⁰. Moreover, FIV does not consider the exact location and the eloquence of the affected brain areas. Also, former studies have reported significant infarct growth between 24 hours and 1 week of follow-up²¹ and little is known about infarct progression after the 1-week follow-up period. These prolonged pathophysiological processes might reduce the predictive power of FIV for long term functional outcome.

Our results corroborate established pathophysiological assumptions and confirm the value of infarct volume as imaging endpoint in clinical trials.

Observed improvement of functional outcome of 23pp after successful recanalization corresponding to a number-needed to treat of 4.3 reflects numbers reported for large RCTs investigating the effect of MT²²⁻²⁸.

Our study has limitations. First, selecting the last scan for each patient for FIV assessment could have led to a bias, as patients with adverse events post treatment might have had higher chances of receiving late imaging. Second, the analysis is based on a binarized functional outcome measure, which might oversimplify the problem. However, binarization of 90d mRS with regards to good functional outcome ($mRS \leq 2$) is an established approach for the definition of clinical endpoints. In addition, patients with a history of stroke might present with relatively poor clinical outcomes, weakening the overall association of FIV with functional outcome. However, pre-mRS was included as covariate in our model. Third, to generate valid results from mediation analysis, unmeasured confounding must not exist between parameters in the hypothetical causal model. This is a strong assumption, especially when considering that the many interconnected biological processes are not fully understood and might vary on patient-specific level. However, we can expect that this unmeasured confounding effect is reduced, as relevant predictors of functional outcome after MT were considered during the design of the causal model. Fourth, the proportions of the association

of successful recanalization with functional outcome explained by FIV could never reach the theoretical value of 0% or 100% due to the underlying assumptions of the hypothetical causal model.

Conclusions

56% of the improvement of functional outcome after successful recanalization is explained by FIV reduction. Results corroborate established pathophysiological assumptions and confirm the value of infarct volume as imaging endpoint in clinical trials. 44% of the improvement in outcome is not explained by FIV reduction and reflects the remaining mismatch between radiological and clinical outcome measures.

ACKNOWLEDGMENTS

Authors acknowledge the German Stroke Registry (GSR) investigators and the GSR steering committee: Prof. Dr. med. Joachim Röther (Asklepios Klinik Altona, Hamburg); Prof. Dr. med. Bernd Eckert (Asklepios Klinik Altona, Hamburg); Dr. med. Michael Braun (Bezirkskrankenhaus Günzburg); Prof. Dr. med. Gerhard F. Hamann (Bezirkskrankenhaus Günzburg); PD Dr. med. Eberhard Siebert (Charité –Benjamin Franklin und Campus Charité); Prof. Dr. med. Christian Nolte (Charité –Benjamin Franklin und Campus Charité); Dr. med. Sarah Zweynert (Charité - Campus Virchow Klinikum, Berlin); Dr. med. Georg Bohner (Charité - Campus Virchow Klinikum, Berlin); Prof. Dr. med. Jörg Berrouschot (Klinikum Altenburger Land); Dr. med. Albrecht Bormann (Klinikum Altenburger Land); Dr. med. Christoffer Kraemer (Klinikum Lüneburg); PD Dr. med. Hannes Leischner (Klinikum Lüneburg); Dr. med. Jörg Hattingen (KRH Klinikum Nordstadt Hannover); Dr. med. Martina Petersen (Klinikum Osnabrück); Prof. Dr. med. Florian Stögbauer (Klinikum Osnabrück); PD Dr. med. Boeckh-Behrens (Klinikum r.d.Isar); Dr. med. Silke Wunderlich (Klinikum r.d.Isar); Dr. med. Alexander Ludolph (Sana Klinikum Offenbach); Dr. med. Karl-Heinz Henn (Sana Klinikum Offenbach); Prof. Dr. med. Christian Gerloff (UKE Hamburg-Eppendorf); Prof. Dr. med. Jens Fiehler (UKE Hamburg-Eppendorf); Prof. Dr. med. Götz Thomalla (UKE Hamburg-Eppendorf); Asklepios Klinik Altona, Hamburg (UKE Hamburg-Eppendorf); Dr. med. Anna Alegiani (Asklepios Klinik Altona, Hamburg); Dr. med. Maximilian Schell (UKE Hamburg-Eppendorf); PD Dr. med. Arno Reich (Uniklinik RWTH Aachen); Prof. Dr. med. Omid Nikoubashman (Uniklinik RWTH Aachen); Prof. Dr. med. Franziska Dorn (Uniklinik Bonn); Prof. Dr. med. Gabor Petzold (Uniklinik Bonn); Prof. Dr. med. Jan Liman (Klinikum Nürnberg); Dr. med. Jan Hendrik Schäfer (Uniklinik Frankfurt/Main); Dr. med. Fee Keil (Uniklinik Frankfurt/Main); Prof. Dr. med. Klaus Gröschel (Universitätsmedizin Mainz); Dr. med. Timo Uphaus (Universitätsmedizin Mainz); Prof. Dr. med. Peter Schellinger (Universitätsklinik Johannes Wesling Klinikum Minden); Prof. Dr. Jan Borggreffe (Universitätsklinik Johannes Wesling Klinikum Minden); Dr. med. Steffen Tiedt (Uniklinik München (LMU)); PD Dr. med. Lars Kellert (Uniklinik München (LMU));

PD Dr. med. Christoph Trumm (Uniklinik München (LMU)); Prof. Dr. med. Ulrike Ernemann (Universitätsklinik Tübingen); PD Dr. med. Sven Poli (Universitätsklinik Tübingen); Prof. Dr. med. Christian Riedel (Universitätsmedizin Göttingen); PD Dr. med. Marielle Sophie Ernst (Universitätsmedizin Göttingen).

SOURCES OF FUNDING

This research received no specific grant from any funding agency in the public, commercial, or not-for-profit sectors.

CONFLICTS OF INTEREST

Helge Kniep and Fabian Flottmann are consultants for Eppdata GmbH. Helge Kniep is shareholder of Eppdata GmbH.

Milani Deb-Chatterji has received research grants from the Werner Otto Stiftung and serves in the advisory board of the PRECIOUS Trial.

Tobias Faizy has received research grants from the Deutsche Forschungsgemeinschaft / German Research Foundation.

Götz Thomalla received fees as consultant from Acandis, Boehringer Ingelheim, Bayer, and Portola, and fees as lecturer from Acandis, Alexion, Amarin, Bayer, Boehringer-Ingelheim, BMS/Pfizer, Daiichii Sankyo and Portola. He serves in the board of the TEA Stroke Study and of ESO.

Jens Fiehler is consultant for Cerenovus, Medtronic, Microvention, Penumbra, Phenox, Roche and Tonbridge. He serves in the advisory board of Stryker and Phenox. He is stock holder of Tegus Medical, Eppdata and Vastrax.

REFERENCES

1. Goyal M, Menon BK, van Zwam WH, Dippel DW, Mitchell PJ, Demchuk AM, Davalos A, Majoie CB, van der Lugt A, de Miquel MA, et al. Endovascular thrombectomy after large-vessel ischaemic stroke: a meta-analysis of individual patient data from five randomised trials. *Lancet*. 2016;387:1723-1731. doi: 10.1016/S0140-6736(16)00163-X
2. Jovin TG, Chamorro A, Cobo E, de Miquel MA, Molina CA, Rovira A, San Roman L, Serena J, Abilleira S, Ribo M, et al. Thrombectomy within 8 hours after symptom onset in ischemic stroke. *N Engl J Med*. 2015;372:2296-2306. doi: 10.1056/NEJMoa1503780
3. Yoo AJ, Chaudhry ZA, Nogueira RG, Lev MH, Schaefer PW, Schwamm LH, Hirsch JA, Gonzalez RG. Infarct volume is a pivotal biomarker after intra-arterial stroke therapy. *Stroke*. 2012;43:1323-1330. doi: 10.1161/STROKEAHA.111.639401
4. Zaidi SF, Aghaebrahim A, Urra X, Jumaa MA, Jankowitz B, Hammer M, Nogueira R, Horowitz M, Reddy V, Jovin TG. Final infarct volume is a stronger predictor of outcome than recanalization in patients with proximal middle cerebral artery occlusion treated with endovascular therapy. *Stroke*. 2012;43:3238-3244. doi: 10.1161/STROKEAHA.112.671594
5. Albers GW, Goyal M, Jahan R, Bonafe A, Diener HC, Levy EI, Pereira VM, Cognard C, Yavagal DR, Saver JL. Relationships Between Imaging Assessments and Outcomes in Solitaire With the Intention for Thrombectomy as Primary Endovascular Treatment for Acute Ischemic Stroke. *Stroke*. 2015;46:2786-2794. doi: 10.1161/STROKEAHA.115.010710
6. Al-Ajlan FS, Goyal M, Demchuk AM, Minhas P, Sabiq F, Assis Z, Willinsky R, Montanera WJ, Rempel JL, Shuaib A, et al. Intra-Arterial Therapy and Post-Treatment Infarct Volumes: Insights From the ESCAPE Randomized Controlled Trial. *Stroke*. 2016;47:777-781. doi: 10.1161/STROKEAHA.115.012424
7. Boers AMM, Jansen IGH, Beenen LFM, Devlin TG, San Roman L, Heo JH, Ribo M, Brown S, Almekhlafi MA, Liebeskind DS, et al. Association of follow-up infarct volume with functional outcome in acute ischemic stroke: a pooled analysis of seven

- randomized trials. *J Neurointerv Surg*. 2018;10:1137-1142. doi: 10.1136/neurintsurg-2017-013724
8. Boers AMM, Jansen IGH, Brown S, Lingsma HF, Beenen LFM, Devlin TG, Román LS, Heo J-H, Ribó M, Almekhlafi MA, et al. Mediation of the Relationship Between Endovascular Therapy and Functional Outcome by Follow-up Infarct Volume in Patients With Acute Ischemic Stroke. *JAMA Neurology*. 2019;76:194-202. doi: 10.1001/jamaneurol.2018.3661
 9. Al-Ajlan FS, Al Sultan AS, Minhas P, Assis Z, de Miquel MA, Millan M, San Roman L, Tomassello A, Demchuk AM, Jovin TG, et al. Posttreatment Infarct Volumes when Compared with 24-Hour and 90-Day Clinical Outcomes: Insights from the REVASCAT Randomized Controlled Trial. *AJNR Am J Neuroradiol*. 2018;39:107-110. doi: 10.3174/ajnr.A5463
 10. Compagne KCJ, Boers AMM, Marquering HA, Berkhemer OA, Yoo AJ, Beenen LFM, van Oostenbrugge RJ, van Zwam WH, Roos Y, Majoie CB, et al. Follow-up infarct volume as a mediator of endovascular treatment effect on functional outcome in ischaemic stroke. *Eur Radiol*. 2019;29:736-744. doi: 10.1007/s00330-018-5578-9
 11. Helsinki Do. World Medical Association Declaration of Helsinki: ethical principles for medical research involving human subjects. *Jama*. 2013;310:2191-2194. doi: 10.1001/jama.2013.281053
 12. Alegiani AC, Dorn F, Herzberg M, Wollenweber FA, Kellert L, Siebert E, Nolte CH, von Rennenberg R, Hattingen E, Petzold GC, et al. Systematic evaluation of stroke thrombectomy in clinical practice: The German Stroke Registry Endovascular Treatment. *Int J Stroke*. 2019;14:372-380. doi: 10.1177/1747493018806199
 13. Wollenweber FA, Tiedt S, Alegiani A, Alber B, Bangard C, Berrouschot J, Bode FJ, Boeckh-Behrens T, Bohner G, Bormann A, et al. Functional Outcome Following Stroke Thrombectomy in Clinical Practice. *Stroke*. 2019;50:2500-2506. doi: 10.1161/STROKEAHA.119.026005
 14. Baron RM, Kenny DA. The moderator–mediator variable distinction in social psychological research: Conceptual, strategic, and statistical considerations. *Journal of Personality and Social Psychology*. 1986;51:1173-1182. doi: 10.1037/0022-3514.51.6.1173

15. Judd CM, Kenny DA. Process Analysis: Estimating Mediation in Treatment Evaluations. *Evaluation Review*. 1981;5:602-619. doi: 10.1177/0193841x8100500502
16. Mackinnon DP, Dwyer JH. Estimating Mediated Effects in Prevention Studies. *Evaluation Review*. 1993;17:144-158. doi: 10.1177/0193841x9301700202
17. Imai K, Keele L, Tingley D. A general approach to causal mediation analysis. *Psychological methods*. 2010;15:309-334. doi: 10.1037/a0020761
18. Imai K, Keele L, Yamamoto T. Identification, Inference and Sensitivity Analysis for Causal Mediation Effects. *Statistical Science*. 2010;25. doi: 10.1214/10-STS321
19. Tingley D, Tepper H, Mit Y, Keele L, State P, Imai K. Mediation: R Package for Causal Mediation Analysis. *Journal of Statistical Software*. 2014;59. doi: 10.18637/jss.v059.i05
20. Suda S, Aoki J, Shimoyama T, Suzuki K, Sakamoto Y, Katano T, Okubo S, Nito C, Nishiyama Y, Mishina M, et al. Stroke-associated infection independently predicts 3-month poor functional outcome and mortality. *Journal of neurology*. 2018;265:370-375. doi: 10.1007/s00415-017-8714-6
21. Bucker A, Boers AM, Bot JCJ, Berkhemer OA, Lingsma HF, Yoo AJ, Zwam WHv, Oostenbrugge RJv, Lugt Avd, Dippel DWJ, et al. Associations of Ischemic Lesion Volume With Functional Outcome in Patients With Acute Ischemic Stroke. *Stroke*. 2017;48:1233-1240. doi: doi:10.1161/STROKEAHA.116.015156
22. Goyal M, Demchuk AM, Menon BK, Eesa M, Rempel JL, Thornton J, Roy D, Jovin TG, Willinsky RA, Sapkota BL, et al. Randomized assessment of rapid endovascular treatment of ischemic stroke. *N Engl J Med*. 2015;372:1019-1030. doi: 10.1056/NEJMoa1414905
23. Jovin TG, Chamorro A, Cobo E, de Miquel MA, Molina CA, Rovira A, San Román L, Serena J, Abilleira S, Ribó M, et al. Thrombectomy within 8 hours after symptom onset in ischemic stroke. *N Engl J Med*. 2015;372:2296-2306. doi: 10.1056/NEJMoa1503780
24. Saver JL, Goyal M, Bonafe A, Diener HC, Levy EI, Pereira VM, Albers GW, Cognard C, Cohen DJ, Hacke W, et al. Stent-retriever thrombectomy after intravenous t-PA vs. t-PA alone in stroke. *N Engl J Med*. 2015;372:2285-2295. doi: 10.1056/NEJMoa1415061

25. Campbell BC, Mitchell PJ, Kleinig TJ, Dewey HM, Churilov L, Yassi N, Yan B, Dowling RJ, Parsons MW, Oxley TJ, et al. Endovascular therapy for ischemic stroke with perfusion-imaging selection. *N Engl J Med*. 2015;372:1009-1018. doi: 10.1056/NEJMoa1414792
26. Guo X, Miao Z. Advances in mechanical thrombectomy for acute ischaemic stroke from large vessel occlusions. *Stroke and Vascular Neurology*. 2021;6:649-657. doi: 10.1136/svn-2021-000972
27. Nogueira RG, Jadhav AP, Haussen DC, Bonafe A, Budzik RF, Bhuva P, Yavagal DR, Ribo M, Cognard C, Hanel RA, et al. Thrombectomy 6 to 24 Hours after Stroke with a Mismatch between Deficit and Infarct. *N Engl J Med*. 2018;378:11-21. doi: 10.1056/NEJMoa1706442
28. Berkhemer OA, Fransen PS, Beumer D, van den Berg LA, Lingsma HF, Yoo AJ, Schonewille WJ, Vos JA, Nederkoorn PJ, Wermer MJ, et al. A randomized trial of intraarterial treatment for acute ischemic stroke. *N Engl J Med*. 2015;372:11-20. doi: 10.1056/NEJMoa1411587

TABLES

Table 1: Study cohort clinical characteristics.

Parameter	Functional Outcome		Total (N=429)	p value
	good (N=127) 90d mRS ≤ 2	poor (N=302) 90d mRS > 2		
Age				< 0.001
- Mean (SD)	67.1 (12.0)	75.9 (11.5)	73.3 (12.3)	
- Q1, Q3	60.0, 77.0	69.0, 84.0	65.0, 82.0	
Sex (f)	49 (39%)	174 (58%)	223 (52%)	< 0.001
Prestroke mRS				< 0.001
- Median	0	0	0	
- Q1, Q3	0, 0	0, 1	0, 1	
NIHSS admission				< 0.001
- Mean (SD)	13	16	16	
- Q1, Q3	9, 17	13, 19	12, 19	
ASPECTS				0.002
- Median	8	7	8	
- Q1, Q3	7, 9	6, 9	6, 9	
Hypertension	81 (64%)	204 (68%)	285 (66%)	0.450
Diabetes	13 (10%)	52 (17%)	65 (15%)	0.066
Dyslipidemia	14 (11%)	40 (13%)	54 (13%)	0.527
Atrial fibrillation	38 (30%)	111 (37%)	149 (35%)	0.175
I.v. thrombolysis	92 (72%)	157 (52%)	249 (58%)	< 0.001
Successful recanalization (Tici ≥2b)	114 (90%)	195 (65%)	309 (72%)	< 0.001
Follow-up infarct volume (ml)				< 0.001
- Mean (SD)	32.3 (56.7)	138.9 (161.8)	107.4 (147.4)	
- Q1, Q3	2.6, 30.2	18.7, 215.1	10.6, 170.2	

Abbreviations: mRS: Modified Rankin Score; SD: Standard Deviation; NIHSS: National Institutes of Health Stroke Scale; ASPECTS: Alberta Stroke Program Early CT Score; Tici: Thrombolysis in Cerebral Infarction.

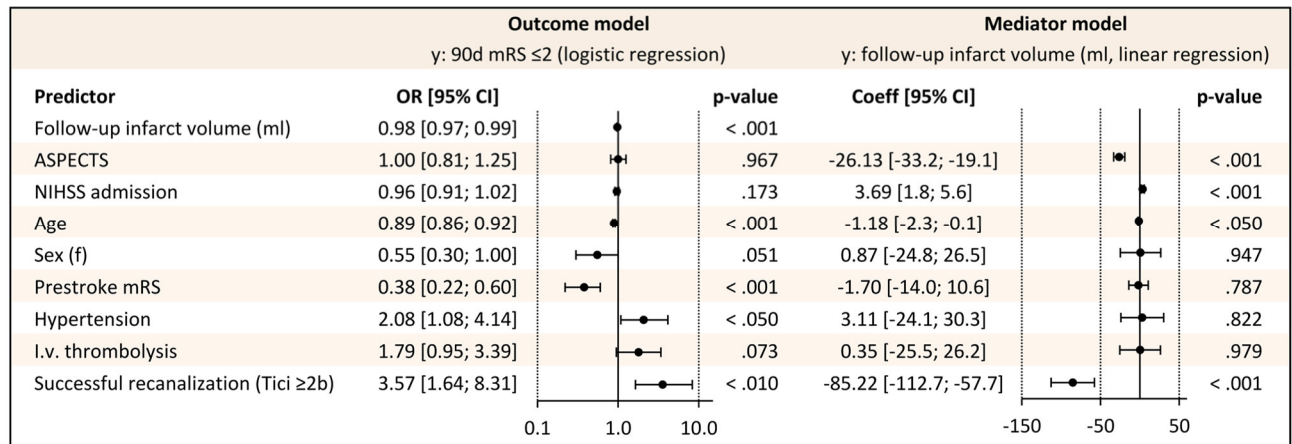
Table 2: Mediation analysis results.

Outcome: 90d mRS \leq 2			
Treatment: TICI \geq 2b vs. $<$ 2b			
Mediator: Follow-up infarct volume (FIV)			
Increase of probability of 90d mRS \leq 2	Estimate	95% CI	p-value
Total effect	23.1pp	[16pp; 29pp]	$<$ 0.001
Direct effect	10.2pp	[4pp; 17pp]	$<$ 0.001
Effect mediated by FIV	13.0pp	[9pp; 18pp]	$<$ 0.001
% of total effect mediated by FIV	55.9%	[38%; 78%]	$<$ 0.001

Abbreviations: mRS: Modified Rankin Score; TICI: Thrombolysis in Cerebral Infarction; FIV: Follow-up infarct volume

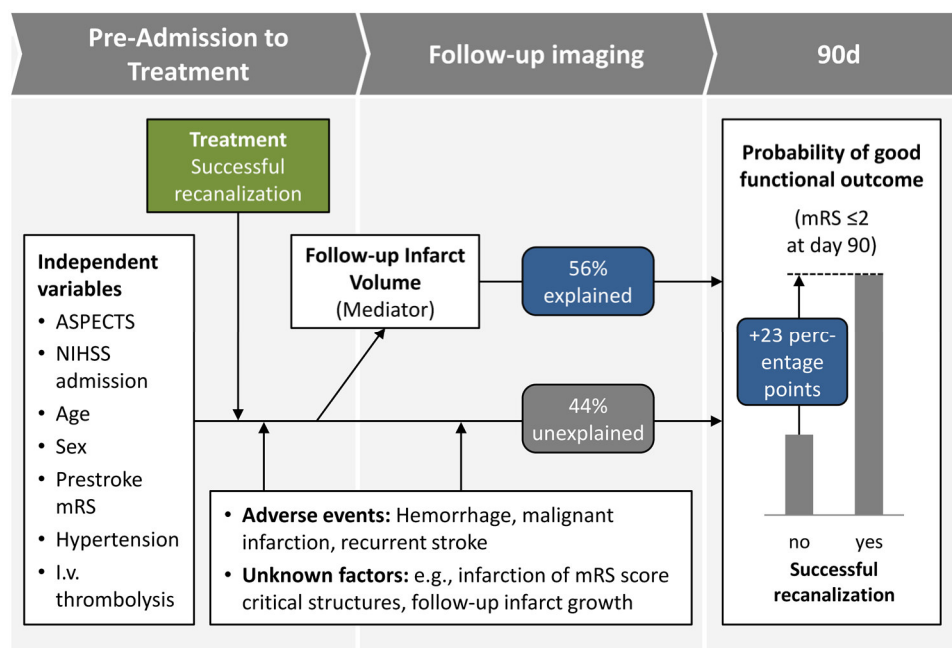
FIGURES

Figure 1: Mediation model regression analysis.



Abbreviations: mRS: Modified Rankin Score; SD: Standard Deviation; NIHSS: National Institutes of Health Stroke Scale; ASPECTS: Alberta Stroke Program Early CT Score; Tici: Thrombolysis in Cerebral Infarction.

Figure 2: Mediation model layout and result overview.



Abbreviations: mRS: Modified Rankin Score; SD: Standard Deviation; NIHSS: National Institutes of Health Stroke Scale; ASPECTS: Alberta Stroke Program Early CT Score; Tici: Thrombolysis in Cerebral Infarction.

Pre-Admission to Treatment

Follow-up imaging

90d

Treatment Successful recanalization

Independent variables

- ASPECTS
- NIHSS admission
- Age
- Sex
- Prestroke mRS
- Hypertension
- I.v. thrombolysis

Follow-up Infarct Volume (Mediator)

56% explained

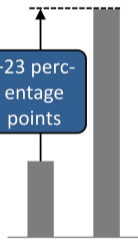
44% unexplained

- **Adverse events:** Hemorrhage, malignant infarction, recurrent stroke
- **Unknown factors:** e.g., infarction of mRS score critical structures, follow-up infarct growth

Probability of good functional outcome

(mRS ≤ 2 at day 90)

+23 percentage points



no yes

Successful recanalization

Outcome model

y: 90d mRS ≤ 2 (logistic regression)

Mediator model

y: follow-up infarct volume (ml, linear regression)

Predictor	OR [95% CI]	p-value	Coeff [95% CI]	p-value
Follow-up infarct volume (ml)	0.98 [0.97; 0.99]	< .001		
ASPECTS	1.00 [0.81; 1.25]	.967	-26.13 [-33.2; -19.1]	< .001
NIHSS admission	0.96 [0.91; 1.02]	.173	3.69 [1.8; 5.6]	< .001
Age	0.89 [0.86; 0.92]	< .001	-1.18 [-2.3; -0.1]	< .050
Sex (f)	0.55 [0.30; 1.00]	.051	0.87 [-24.8; 26.5]	.947
Prestroke mRS	0.38 [0.22; 0.60]	< .001	-1.70 [-14.0; 10.6]	.787
Hypertension	2.08 [1.08; 4.14]	< .050	3.11 [-24.1; 30.3]	.822
I.v. thrombolysis	1.79 [0.95; 3.39]	.073	0.35 [-25.5; 26.2]	.979
Successful recanalization (Tici $\geq 2b$)	3.57 [1.64; 8.31]	< .010	-85.22 [-112.7; -57.7]	< .001

The forest plot displays the results for the Outcome model (logistic regression) and the Mediator model (linear regression). The Outcome model shows Odds Ratios (OR) with 95% Confidence Intervals (CI) and p-values for each predictor. The Mediator model shows Coefficients with 95% CI and p-values. Vertical dashed lines indicate the null values (OR = 1.0 and Coeff = 0). Horizontal lines represent the 95% CI for each predictor.