

Title: Seroreversion to *Chlamydia trachomatis* Pgp3 antigen among young children in a hyperendemic region of Amhara, Ethiopia

Authors: Christine Tedijanto¹, Solomon Aragie², Sarah Gwyn³, Dionna M. Wittberg¹, Taye Zeru⁴, Zerihun Tadesse², Ambahun Chernet², Isabel Thompson¹, Scott D. Nash⁵, Thomas M. Lietman^{1,6,7}, Diana L. Martin³, Jeremy D. Keenan^{1,6}, Benjamin F. Arnold^{1,6}

Author affiliations:

¹ Francis I. Proctor Foundation, University of California San Francisco, San Francisco, CA, USA

² The Carter Center Ethiopia, Addis Ababa, Ethiopia

³ Division of Parasitic Diseases and Malaria, Centers for Disease Control and Prevention, Atlanta, GA, USA

⁴ Amhara Public Health Institute, Bahir Dar, Ethiopia

⁵ The Carter Center, Atlanta, GA, USA

⁶ Department of Ophthalmology, University of California San Francisco, San Francisco, CA, USA

⁷ Department of Epidemiology and Biostatistics, University of California San Francisco, San Francisco, CA, USA

Corresponding author:

Benjamin F. Arnold, PhD

Associate Professor

Francis I. Proctor Foundation

University of California, San Francisco

ben.arnold@ucsf.edu

ABSTRACT

Monitoring trachoma transmission with antibody data requires characterization of decay in IgG to *Chlamydia trachomatis* antigens. In a three-year longitudinal cohort in a high transmission setting, we estimated a median IgG half-life of 3 years and a seroreversion rate of 2.5 (95% CI: 1.6, 3.8) per 100 person-years.

INTRODUCTION

Trachoma, caused by repeated conjunctival infection with *Chlamydia trachomatis* (*Ct*), is targeted for elimination as a public health problem by 2030. Control programs currently rely on clinical markers, including trachomatous inflammation—follicular (TF), an early indicator of inflammation, and trachomatous trichiasis, a sign of severe disease progression. However, clinical signs are prone to measurement error. PCR-detected *Ct* infections are an objective alternative, but as populations approach elimination infections become rare which poses a challenge for surveillance [1]. Antibody responses among children are being explored as an objective, sensitive marker of *Ct* exposure across transmission settings [2].

Population-level monitoring of trachoma using serology has focused on IgG responses to the Pgp3 antigen [2]. Studies have demonstrated marked increases in seroprevalence with age in trachoma endemic regions and limited antibody responses in populations near elimination [3–5]. A key summary statistic from the age-seroprevalence curve is the seroconversion rate, which is one measure of *Ct* force of infection [4]. In the absence of seroreversion, IgG seropositivity by age reflects the cumulative incidence of prior exposure to *Ct* infection in the population. Seroreversion is a change from seropositive to seronegative status, and, if common, then failing to account for seroreversion could bias estimates and the interpretation of standard analyses of age-seroprevalence curves. Few longitudinal studies have measured Pgp3 IgG decay over time, and all have been conducted in Tanzania's Kongwa District. Seroreversion rate estimates range from 0 cases within six months after mass distribution of azithromycin (MDA) [6] to 6.4% after one year (6.4 per 100 child-years) in the absence of MDA [7] and 4.0% after 6 months (8 per 100 child-years) in the presence of MDA [8].

Better characterization of seroreversion and the rate at which Pgp3 IgG levels decay among children across a range of transmission settings will aid the development and interpretation of seroepidemiologic models of trachoma transmission. Our goal was to estimate the decay rate of Pgp3 IgG levels and the seroreversion rate in a longitudinal cohort of children 1-9 years old in a hyperendemic region of Amhara, Ethiopia.

METHODS

The WASH Upgrades for Health in Amhara (WUHA) cluster-randomized trial studied the effect of an integrated water, sanitation, and hygiene (WASH) intervention on ocular chlamydial infection (NCT02754583) [9]. The study enrolled 40 rural communities in the Wag Hemra Zone. Clinical disease, *Ct* infections, and serology were measured annually for three years in a longitudinal cohort of children aged 0–5 years at baseline. Approximately 30 randomly selected children per community were included, and infants under one year of age were newly enrolled in the longitudinal cohort at each annual visit.

Conjunctival swabs were collected from a random sample of 30 children per community at each visit, often including children in the longitudinal cohort. Swabs were tested for *Ct* DNA at the Amhara Public Health Institute in Bahir Dar, Ethiopia using the Abbott RealTime assay [9]. Dried

blood spots were collected on TropBio filter paper and tested for IgG responses to Pgp3 in a multiplex bead assay on the Luminex platform using the same bead set for all samples. IgG responses >1113 median fluorescence intensity minus background (MFI-bg) were classified as seropositive using a receiver operator characteristic curve cutoff from reference samples [10]. Research was approved by the human subjects review board at the University of California, San Francisco. Each participant or guardian provided verbal consent before any study activity.

Before the trial, MDA was conducted annually for 7 years in the study area but had not sufficiently controlled trachoma [11]. MDA was suspended during the study period. Between baseline and 36 months, TF prevalence among 1-9 year-olds remained fairly constant from 63% to 57% [12] and ocular *Ct* infection among 0-5 year-olds increased from 11% to 32% with no difference between the control and intervention groups [9].

We estimated the seroreversion rate (SRR) in the cohort using Poisson regression with cluster-level random effects and an offset for person-years. Due to incomplete data for some children, we assessed serostatus over one-year intervals and only included one-year intervals with serology measurements at both time points. We assumed that changes in serostatus occurred halfway through the year. This analysis focused on seroreversion, but we additionally estimated the seroconversion rate (SCR) using the same method. Measurements from children <1 year old were excluded from this analysis to avoid the influence of maternal antibody waning. We evaluated differences in SRR by age (1–5 years vs. 6–9 years), time period, and initial IgG level by adding covariates to the model. We estimated IgG half-life using an exponential decay model among children who began a one-year interval seropositive, ended the year with a negative or equivocal PCR test, and did not have an increase in IgG levels.

This analysis was conducted in R version 4.2.0 (2022-04-22). Data and replication files are available: <https://osf.io/xquyd/>.

RESULTS

The analysis included 4,327 serology measurements from 1,511 unique children. We excluded 27 children who were determined to have mis-labeled blood specimens at one or more time points based on photography, anthropometry, and IgG levels. After filtering to one-year intervals with serology measurements at both ends, the analysis included 2,428 one-year intervals from 1,221 unique children (81%). Over the study period, seroprevalence among children in the longitudinal cohort increased from 30 to 51% (**Figure 1A**). The seroconversion rate (SCR) in the longitudinal cohort was 13.1 per 100 person-years (95% CI: 9.2, 18.4).

Seroreversion was rare: among 886 one-year intervals where children were seropositive at the beginning, 864 (98%) remained seropositive after one year (**Figure 1B**). Among seropositive children, IgG levels remained high and were consistent with a durable response, though there was some waning of IgG among children who were PCR negative or equivocal for *Ct* infection at the end of the interval (**Figure 1B**). There were 22 seroreversions during 875 seropositive person-years at risk, corresponding to a SRR of 2.5 per 100 person-years (95% CI: 1.7, 3.8).

The estimated median IgG half-life was 3.0 years (IQR: 0.8, 9.6). Based on the slope of IgG decay among children who were seropositive at the beginning of the interval and PCR negative/equivocal at the end of the interval (**Figure 1B**), there appeared to be two decay rates, perhaps due to boosting between measurements or measurement error. Among the 20 children with >4 fold decrease in IgG levels (6 of whom seroreverted), median IgG half-life was 0.38 years (IQR: 0.27, 0.44). Seroreversion rates were lower: from months 24 to 36 of the study (SRR ratio compared to months 0 to 12: 0.26; 95% CI: 0.07, 0.97, **Figure 1C**) and among 6-9-year-olds (SRR ratio compared to 1–5-year-olds: 0.59; 95% CI: 0.17, 1.98, **Figure 1D**), though not statistically significant. Of 22 seroreversions, 14 were among children with IgG MFI-bg <10^{3.5} at the beginning of the interval with substantially lower seroreversion rates at higher IgG levels (**Figure 1E**).

DISCUSSION

In a hyperendemic region of Amhara, Ethiopia in the absence of MDA we found that seroreversion was rare and anti-*Ct* Pgp3 IgG antibody response was durable among children 1-9 years old, with a median half-life of 3 years. The IgG seroreversion rate was 2.5 per 100 person-years (95% CI: 1.6, 3.8) and seroreversion rates were lower at the end of the study amidst higher *Ct* transmission, among older children, and among children with higher initial IgG levels. To our knowledge, these are the first estimates of Pgp3 seroreversion rates in a high transmission setting. Strengths of the study include a well-characterized, three-year longitudinal cohort with paired measures that included clinical signs of trachoma, *Ct* infection measured with PCR, and IgG measured on a multiplex bead assay using a consistent bead set.

Our findings are similar to recent estimates of 6.4% seroreversion after one year in the absence of MDA [7] and 4% after 6 months in the presence of MDA in Kongwa, Tanzania [8], but may be slightly lower due to higher ongoing transmission (11% to 32% PCR prevalence) compared to Kongwa (4.9% to 6.3% PCR baseline prevalence). Consistent with the results of our subgroup analyses, in Kongwa the SRR decreased with clinical disease activity and higher starting antibody levels.

This analysis had limitations. Children were followed longitudinally but some missed visits, leading to incomplete data. For this reason, we used an open cohort design and focused on changes in serostatus at one-year intervals to maximize follow-up time for analysis. A child could have seroconverted and reverted between annual visits, but that would be unlikely with the estimated 3-year IgG half-life. Since the cohort aged over time, we cannot fully disentangle the effects of age and study month on the seroreversion rate. Finally, this study was conducted in a hyperendemic context with increasing transmission so findings may not generalize to lower transmission settings.

Trachoma programs are considering the use of serology to monitor transmission and recrudescence as populations approach elimination. In this longitudinal cohort, 2-3% of seropositive children experienced seroreversion of IgG responses to *Ct* antigen Pgp3 each

year, demonstrating that seroreversion is unlikely to influence estimates of seroconversion rates among young children in hyperendemic settings.

FUNDING

This work was supported by the National Institute of Allergy and Infectious Disease [R01-AI158884 to B.F.A.] and the National Eye Institute [UG1-EY023939 to J.D.K.].

CONFLICT OF INTEREST

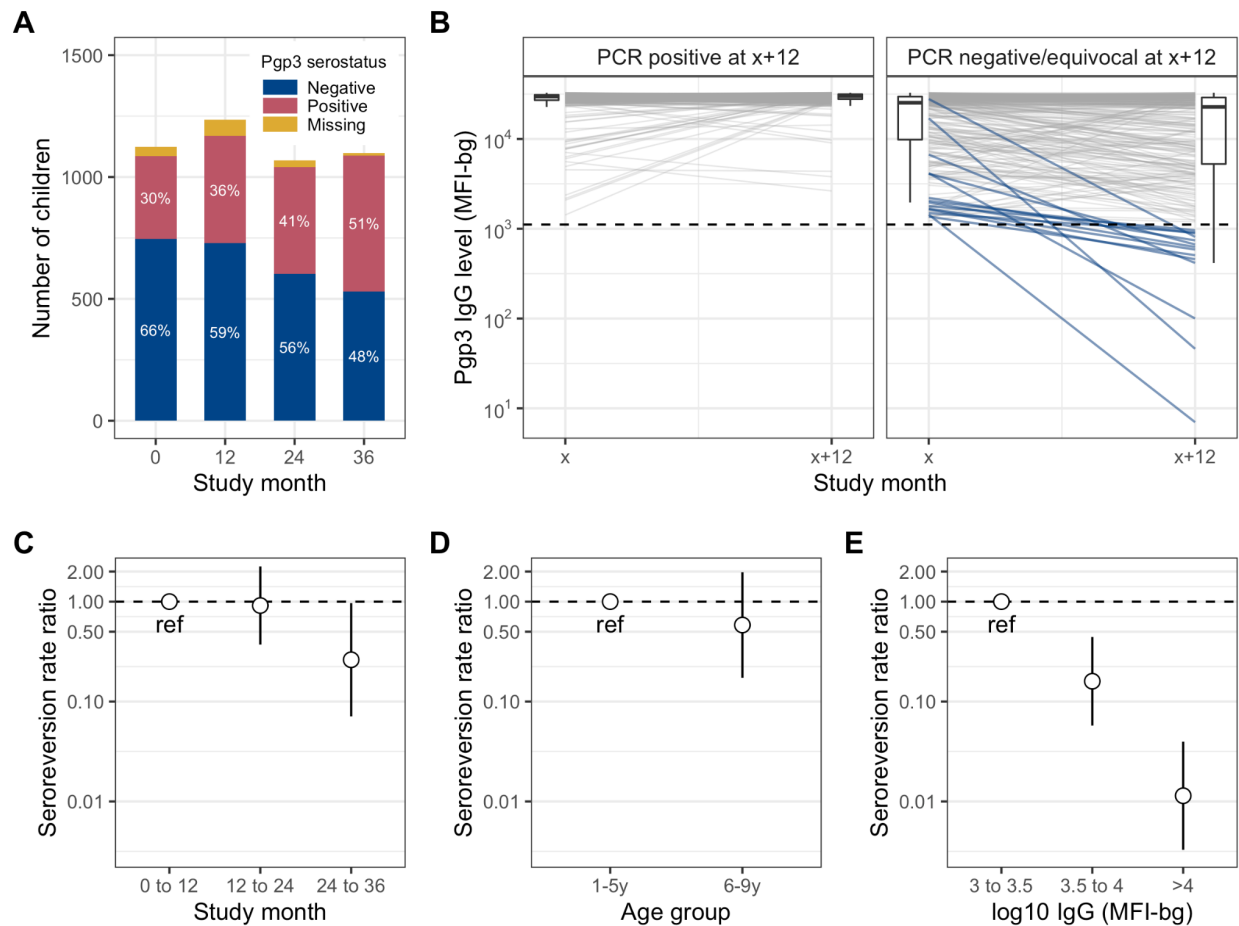
The authors report no conflicts of interest. The findings and conclusions in this article are those of the authors and do not necessarily represent the official position of the National Institutes of Health or the Centers for Disease Control and Prevention. Use of trade names is for identification only and does not imply endorsement by the Public Health Service or by the U.S. Department of Health and Human Services.

ACKNOWLEDGEMENTS

The authors would like to thank Abbott for its donation of the m2000 Realtime molecular diagnostics system and consumables.

Figure 1. Antibody responses over time and seroreversion by subgroups

(A) Serostatus to *C. trachomatis* Pgp3 IgG antibodies among children in the longitudinal cohort by month after baseline. (B) Pgp3 IgG responses by *C. trachomatis* infection status among children who were seropositive at the beginning of a one-year period (x). Dashed horizontal line represents seropositivity cutoff of 1113 MFI-bg. Colored lines highlight children who seroreverted. Boxplots summarize median (thick horizontal line) and IQR (thin horizontal lines) at beginning and end of each interval. PCR results at time point x+12 were missing for 784 (32%) intervals due to random sampling for PCR testing in the cohort. (C) Rate ratios and 95% CIs (on log scale) comparing seroreversion over time. (D) Rate ratios and 95% CIs (on log scale) comparing seroreversion by age group. (E) Rate ratios and 95% CIs (on log scale) comparing seroreversion by \log_{10} MFI-bg level at the beginning of the one-year interval.



REFERENCES

1. Ramadhani AM, Derrick T, Macleod D, Holland MJ, Burton MJ. The Relationship between Active Trachoma and Ocular Chlamydia trachomatis Infection before and after Mass Antibiotic Treatment. *PLoS Negl Trop Dis* **2016**; 10:e0005080.
2. Martin DL, Saboyà-Díaz MI, Abashawl A, et al. The use of serology for trachoma surveillance: Current status and priorities for future investigation. *PLoS Negl Trop Dis* **2020**; 14:e0008316.
3. Goodhew EB, Priest JW, Moss DM, et al. CT694 and pgp3 as serological tools for monitoring trachoma programs. *PLoS Negl Trop Dis* **2012**; 6:e1873.
4. Martin DL, Bid R, Sandi F, et al. Serology for trachoma surveillance after cessation of mass drug administration. *PLoS Negl Trop Dis* **2015**; 9:e0003555.
5. Nash SD, Astale T, Nute AW, et al. Population-Based Prevalence of Chlamydia trachomatis Infection and Antibodies in Four Districts with Varying Levels of Trachoma Endemicity in Amhara, Ethiopia. *Am J Trop Med Hyg* **2021**; 104:207–215.
6. Goodhew EB, Morgan SMG, Switzer AJ, et al. Longitudinal analysis of antibody responses to trachoma antigens before and after mass drug administration. *BMC Infect Dis* **2014**; 14:216.
7. West SK, Munoz B, Kaur H, et al. Longitudinal change in the serology of antibodies to Chlamydia trachomatis pgp3 in children residing in a trachoma area. *Sci Rep* **2018**; 8:3520.
8. West SK, Munoz B, Mkocho H, Gaydos CA, Quinn TC. The effect of Mass Drug Administration for trachoma on antibodies to Chlamydia trachomatis pgp3 in children. *Sci Rep* **2020**; 10:15225.
9. Aragie S, Wittberg DM, Tadesse W, et al. Water, sanitation, and hygiene for control of trachoma in Ethiopia (WUHA): a two-arm, parallel-group, cluster-randomised trial. *Lancet Glob Health* **2022**; 10:e87–e95.
10. Migchelsen SJ, Martin DL, Southisombath K, et al. Defining Seropositivity Thresholds for Use in Trachoma Elimination Studies. *PLoS Negl Trop Dis* **2017**; 11:e0005230.
11. Stewart AEP, Zerihun M, Gessese D, et al. Progress to Eliminate Trachoma as a Public Health Problem in Amhara National Regional State, Ethiopia: Results of 152 Population-Based Surveys. *Am J Trop Med Hyg* **2019**; 101:1286–1295.
12. Tedijanto C, Aragie S, Tadesse Z, et al. Predicting future community-level ocular Chlamydia trachomatis infection prevalence using serological, clinical, molecular, and geospatial data. *PLoS Negl Trop Dis* **2022**; 16:e0010273.