

1 **Title:** Seroreversion to *Chlamydia trachomatis* Pgp3 antigen among children in a hyperendemic  
2 region of Amhara, Ethiopia

3  
4 **Authors:** Christine Tedijanto<sup>1</sup>, Solomon Aragie<sup>2</sup>, Sarah Gwyn<sup>3</sup>, Dionna M. Wittberg<sup>1</sup>, Taye  
5 Zeru<sup>4</sup>, Zerihun Tadesse<sup>2</sup>, Ambahun Chernet<sup>2</sup>, Isabel J.B. Thompson<sup>1</sup>, Scott D. Nash<sup>5</sup>, Thomas  
6 M. Lietman<sup>1,6,7</sup>, Diana L. Martin<sup>3</sup>, Jeremy D. Keenan<sup>1,6</sup>, Benjamin F. Arnold<sup>1,6</sup>

7  
8 **Author affiliations:**

9 <sup>1</sup> Francis I. Proctor Foundation, University of California San Francisco, San Francisco, CA, USA

10 <sup>2</sup> The Carter Center Ethiopia, Addis Ababa, Ethiopia

11 <sup>3</sup> Division of Parasitic Diseases and Malaria, Centers for Disease Control and Prevention,  
12 Atlanta, GA, USA

13 <sup>4</sup> Amhara Public Health Institute, Bahir Dar, Ethiopia

14 <sup>5</sup> The Carter Center, Atlanta, GA, USA

15 <sup>6</sup> Department of Ophthalmology, University of California San Francisco, San Francisco, CA,  
16 USA

17 <sup>7</sup> Department of Epidemiology and Biostatistics, University of California San Francisco, San  
18 Francisco, CA, USA

19

20

21 **Corresponding author:**

22 Benjamin F. Arnold, PhD

23 Associate Professor

24 Francis I. Proctor Foundation

25 University of California, San Francisco

26 [ben.arnold@ucsf.edu](mailto:ben.arnold@ucsf.edu)

27

28

29

30 **ABSTRACT**

31

32 Monitoring trachoma transmission with antibody data requires characterization of decay in IgG  
33 to *Chlamydia trachomatis* antigens. In a three-year longitudinal cohort in a high transmission  
34 setting, we estimated a median IgG half-life of 3 years and a seroreversion rate of 2.5 (95% CI:  
35 1.6, 3.5) per 100 person-years.

36 Key words: *Chlamydia trachomatis*, trachoma, antibody, IgG, seroepidemiology, Ethiopia

37 **INTRODUCTION**

38

39 Trachoma, caused by repeated conjunctival infection with *Chlamydia trachomatis*, is targeted for  
40 elimination as a public health problem by 2030. Control programs currently rely on clinical  
41 markers, including trachomatous inflammation—follicular (TF), an early indicator of  
42 inflammation, and trachomatis trichiasis, a sign of severe disease progression. However, clinical  
43 signs are prone to measurement error. PCR-detected chlamydia infections are an objective  
44 alternative, but as populations approach elimination infections become rare which poses a  
45 challenge for surveillance [1]. Antibody responses among children are being explored as an  
46 objective, sensitive marker of chlamydia exposure across transmission settings [2].

47

48 Population-level monitoring of trachoma using serology has focused on IgG responses to the  
49 Pgp3 antigen [2]. Studies have demonstrated marked increases in seroprevalence with age in  
50 trachoma endemic regions and limited antibody responses in populations near elimination [3–5].

51 A key summary statistic from the age-seroprevalence curve is the seroconversion rate, which is  
52 one measure of chlamydia force of infection [6]. In the absence of seroreversion, IgG  
53 seropositivity by age reflects the cumulative incidence of prior exposure to chlamydia infection in  
54 the population. Seroreversion is a change from seropositive to seronegative status, and, if  
55 common, then failing to account for seroreversion could bias estimates and the interpretation of  
56 standard analyses of age-seroprevalence curves. Few longitudinal studies have measured  
57 Pgp3 IgG decay over time, and all have been conducted in Tanzania’s Kongwa District.

58 Seroreversion rate estimates range from 0 cases within six months after mass drug  
59 administration (MDA) of azithromycin [7] to 12.1% over 36 months (4 per 100 child-years) [8],  
60 6.4% after one year (6.4 per 100 child-years) [9], to 4.0% after 6 months (8 per 100 child-years)  
61 [10].

62

63 Better characterization of seroreversion and the rate at which Pgp3 IgG levels decay among  
64 children across a range of transmission settings will aid the development and interpretation of  
65 seroepidemiologic models of trachoma transmission. Our goal was to estimate the decay rate of  
66 Pgp3 IgG levels and the seroreversion rate in a longitudinal cohort of children 1-9 years old in a  
67 hyperendemic region of Amhara, Ethiopia.

68

## 69 **METHODS**

70

71 The WASH Upgrades for Health in Amhara (WUHA) cluster-randomized trial studied the effect  
72 of an integrated water, sanitation, and hygiene (WASH) intervention on ocular chlamydial  
73 infection (NCT02754583) [11]. The study enrolled 40 rural communities in the Wag Hemra  
74 Zone. Clinical disease, chlamydia infections, and serology were measured annually for three  
75 years in a longitudinal cohort of children aged 0–5 years at baseline. Approximately 30  
76 randomly selected children per community were included, and infants under one year of age  
77 were newly enrolled in the longitudinal cohort at each annual visit. Once a child was enrolled in  
78 the longitudinal cohort, the study continued to test for infection and antibody responses even if  
79 they were 6–9 years.

80

81 Conjunctival swabs were collected from a random sample of 30 children per community at each  
82 visit, often including children in the longitudinal cohort. Swabs were tested for chlamydia DNA at  
83 the Amhara Public Health Institute in Bahir Dar, Ethiopia using the Abbott RealTime assay [11].  
84 Dried blood spots were collected on TropBio filter paper and tested for IgG responses to Pgp3  
85 in a multiplex bead assay on the Luminex platform using the same bead set for all samples. IgG  
86 was quantified using median fluorescence intensity minus background (MFI-bg) and responses  
87 >1113 were classified as seropositive using a receiver operator characteristic curve cutoff from  
88 reference samples [12]. Research was approved by the human subjects review board at the

89 University of California, San Francisco. Each participant or guardian provided verbal consent  
90 before any study activity.

91  
92 Before the trial, MDA was conducted annually for 7 years in the study area but had not  
93 sufficiently controlled trachoma [13]. MDA was suspended during the study period. Between  
94 baseline and 36 months, TF prevalence among 1-9 year-olds remained fairly constant from 63%  
95 to 57% [14] and ocular chlamydia infection among 0-5 year-olds increased from 11% to 32%  
96 with no difference between the control and intervention groups [11].

97  
98 We estimated incidence rates non-parametrically and using Poisson regression with cluster-  
99 level random effects and an offset for person-years. Because this was an open cohort where  
100 children might have incomplete data across time points, we assessed serostatus over one-year  
101 intervals and only included one-year intervals with serology measurements at both time points.  
102 We assumed that changes in serostatus occurred halfway through the year. This analysis  
103 focused on the seroreversion rate (SRR), but we additionally estimated the seroconversion rate  
104 (SCR) using the same method. Measurements from children <1 year old were excluded from  
105 this analysis to avoid the influence of maternal antibody waning. We evaluated differences in  
106 SRR by age (1–5 years vs. 6–9 years), time period, and initial IgG level by adding covariates to  
107 the model. We estimated IgG half-life using an exponential decay model among children who  
108 began a one-year interval seropositive, ended the year with a negative or equivocal PCR test,  
109 and did not have an increase in IgG levels.

110  
111 This analysis was conducted in R version 4.3.0 (2023-04-21). Data and replication files are  
112 available: <https://osf.io/xquyd/>.

113

114 **RESULTS**

115

116 The analysis included 4,327 serology measurements from 1,511 unique children. We excluded  
117 27 children who were determined to have mis-labeled blood specimens at one or more time  
118 points based on photography, anthropometry, and IgG levels. After filtering to one-year intervals  
119 with serology measurements at both ends, the analysis included 2,428 one-year intervals from  
120 1,221 unique children (81%). Children who did not contribute were similar to those with partial  
121 (47%) or complete (33%) measurements over the 3-year period, but had more missing values  
122 for other trachoma indicators (**Supplementary Table 1**). Over the study period, seroprevalence  
123 among children in the longitudinal cohort increased from 30 to 51% as the cohort aged  
124 (**Supplementary Table 2**). The seroconversion rate (SCR) in the longitudinal cohort was 15.3  
125 per 100 person-years (95% CI: 11.0, 20.8).

126

127 Seroreversion was rare: among 886 one-year intervals where children were seropositive at the  
128 beginning, 864 (98%) remained seropositive after one year. Among seropositive children, IgG  
129 levels remained high and were consistent with a durable response (**Figure 1A**), though there  
130 was some waning of IgG among children who were PCR negative or equivocal for chlamydia  
131 infection at the end of the interval (**Figure 1B**). There were 22 seroreversions during 875  
132 seropositive person-years at risk, corresponding to a SRR of 2.5 per 100 person-years (95% CI:  
133 1.6, 3.5). The estimated median IgG half-life was 3.0 years (IQR: 0.8, 9.6). Based on the slope  
134 of IgG decay among children who were seropositive at the beginning of the interval and PCR  
135 negative/equivocal at the end of the interval (**Figure 1B**), there appeared to be two decay rates,  
136 perhaps due to boosting between measurements or measurement error. Among the 20 children  
137 with >4 fold decrease in IgG levels (6 of whom seroreverted), median IgG half-life was 0.38  
138 years (IQR: 0.27, 0.44). Seroreversion rates were lower: from months 24 to 36 of the study  
139 (SRR ratio compared to months 0 to 12: 0.26; 95% CI: 0.07, 0.97, **Figure 2A**) and among 6-9-

140 year-olds (SRR ratio compared to 1–5-year-olds: 0.59; 95% CI: 0.17, 1.98, **Figure 2B**), though  
141 not statistically significant. Of 22 seroreversions, 14 were among children with IgG MFI-bg  $<10^{3.5}$   
142 at the beginning of the interval with substantially lower seroreversion rates at higher IgG levels  
143 (**Figure 2C**).

144

## 145 **DISCUSSION**

146

147 In a hyperendemic region of Amhara, Ethiopia in the absence of MDA we found that  
148 seroreversion was rare and anti-chlamydia Pgp3 IgG antibody response was durable among  
149 children 1-9 years old, with a median half-life of 3 years. The IgG seroreversion rate was 2.5 per  
150 100 person-years (95% CI: 1.6, 3.5) and seroreversion rates were lower at the end of the study  
151 amidst higher chlamydia transmission, among older children, and among children with higher  
152 initial IgG levels. To our knowledge, these are the first estimates of Pgp3 seroreversion rates in  
153 a high transmission setting. Strengths of the study include a well-characterized, three-year  
154 longitudinal cohort with paired measures that included clinical signs of trachoma, chlamydia  
155 infection measured with PCR, and IgG measured on a multiplex bead assay using a consistent  
156 bead set.

157

158 Our findings are similar to recent estimates of 6.4% seroreversion after one year in the absence  
159 of MDA [9] and 4% after 6 months in the presence of MDA in Kongwa, Tanzania [10], but may  
160 be slightly lower due to higher ongoing transmission (11% to 32% PCR prevalence) compared  
161 to Kongwa (4.9% to 6.3% PCR baseline prevalence). Higher SCR and lower SRR estimates in  
162 the present study likely reflect repeated infections that boost and maintain IgG levels above  
163 seropositivity cutoffs. Consistent with the results of our subgroup analyses, in Kongwa the SRR  
164 decreased with clinical disease activity and higher starting antibody levels.

165

166 This analysis had limitations. Children were followed longitudinally but some missed visits,  
167 leading to incomplete data. For this reason, we used an open cohort design and focused on  
168 changes in serostatus at one-year intervals to maximize follow-up time for analysis. If children  
169 who missed visits were systematically younger with higher seroprevalence, that could lead to a  
170 biased under-estimate of the SRR. Yet, children who went missing appeared similar based on  
171 age, seropositivity status, and other trachoma markers at enrollment to those with complete  
172 follow-up (**Supplementary Table 1**). A child could have seroconverted and reverted between  
173 annual visits. Although unlikely given the estimated 3-year IgG half-life, if transient changes in  
174 serostatus occurred between annual measurements, perhaps more likely amongst the youngest  
175 children [8], it would lead to an underestimate of seroconversion and seroreversion rates.  
176 Nevertheless, if trachoma control programs monitor serology with at most an annual frequency,  
177 the estimates presented in this study should be informative. Since the cohort aged over time, we  
178 cannot fully disentangle the effects of age and study month on the seroreversion rate. Finally,  
179 this study was conducted in a hyperendemic context with increasing transmission so findings  
180 may not generalize to lower transmission settings.

181  
182 Trachoma programs are considering the use of serology to monitor transmission and  
183 recrudescence as populations approach elimination. In hyperendemic settings, serological  
184 measures of transmission serve as a baseline against which progress can be measured. In this  
185 longitudinal cohort, 2-3% of seropositive children experienced seroreversion of IgG responses  
186 to chlamydia antigen Pgp3 each year, demonstrating that seroreversion is unlikely to influence  
187 estimates of seroconversion rates among young children in hyperendemic settings.

188

189

190

191



192 **FUNDING**

193 This work was supported by the National Institute of Allergy and Infectious Disease [R01-  
194 AI158884 to B.F.A.] and the National Eye Institute [UG1-EY023939 to J.D.K.].

195

196 **CONFLICT OF INTEREST**

197 The authors report no conflicts of interest. The findings and conclusions in this article are those  
198 of the authors and do not necessarily represent the official position of the National Institutes of  
199 Health or the Centers for Disease Control and Prevention. Use of trade names is for  
200 identification only and does not imply endorsement by the Public Health Service or by the U.S.  
201 Department of Health and Human Services.

202

203 **ACKNOWLEDGEMENTS**

204 The authors would like to thank Abbott for its donation of the m2000 Realtime molecular  
205 diagnostics system and consumables.

206

207

208

209 **REFERENCES**

- 210
- 211 1. Ramadhani AM, Derrick T, Macleod D, Holland MJ, Burton MJ. The Relationship between  
212 Active Trachoma and Ocular Chlamydia trachomatis Infection before and after Mass  
213 Antibiotic Treatment. *PLoS Negl Trop Dis.* **2016**; 10(10):e0005080.
  - 214 2. Martin DL, Saboyà-Díaz MI, Abashawl A, et al. The use of serology for trachoma  
215 surveillance: Current status and priorities for future investigation. *PLoS Negl Trop Dis.*  
216 **2020**; 14(9):e0008316.
  - 217 3. Goodhew EB, Priest JW, Moss DM, et al. CT694 and pgp3 as serological tools for  
218 monitoring trachoma programs. *PLoS Negl Trop Dis.* **2012**; 6(11):e1873.
  - 219 4. Martin DL, Bid R, Sandi F, et al. Serology for trachoma surveillance after cessation of  
220 mass drug administration. *PLoS Negl Trop Dis.* **2015**; 9(2):e0003555.
  - 221 5. Nash SD, Astale T, Nute AW, et al. Population-Based Prevalence of Chlamydia  
222 trachomatis Infection and Antibodies in Four Districts with Varying Levels of Trachoma  
223 Endemicity in Amhara, Ethiopia. *Am J Trop Med Hyg.* **2021**; 104(1):207–215.
  - 224 6. Tedijanto C, Solomon AW, Martin DL, et al. Monitoring transmission intensity of trachoma  
225 with serology. *Nat Commun.* **2023**; 14(1):3269.
  - 226 7. Goodhew EB, Morgan SMG, Switzer AJ, et al. Longitudinal analysis of antibody responses  
227 to trachoma antigens before and after mass drug administration. *BMC Infect Dis.* **2014**;  
228 14:216.
  - 229 8. Chen X, Munoz B, Mkocha H, et al. Risk of seroconversion and seroreversion of antibodies  
230 to Chlamydia trachomatis pgp3 in a longitudinal cohort of children in a low trachoma  
231 prevalence district in Tanzania. *PLoS Negl Trop Dis.* **2022**; 16(7):e0010629.
  - 232 9. West SK, Munoz B, Kaur H, et al. Longitudinal change in the serology of antibodies to  
233 Chlamydia trachomatis pgp3 in children residing in a trachoma area. *Sci Rep.* **2018**;  
234 8(1):3520.
  - 235 10. West SK, Munoz B, Mkocha H, Gaydos CA, Quinn TC. The effect of Mass Drug  
236 Administration for trachoma on antibodies to Chlamydia trachomatis pgp3 in children. *Sci*  
237 *Rep.* **2020**; 10(1):15225.
  - 238 11. Aragie S, Wittberg DM, Tadesse W, et al. Water, sanitation, and hygiene for control of  
239 trachoma in Ethiopia (WUHA): a two-arm, parallel-group, cluster-randomised trial. *Lancet*  
240 *Glob Health.* **2022**; 10(1):e87–e95.
  - 241 12. Migchelsen SJ, Martin DL, Southisombath K, et al. Defining Seropositivity Thresholds for  
242 Use in Trachoma Elimination Studies. *PLoS Negl Trop Dis.* **2017**; 11(1):e0005230.
  - 243 13. Stewart AEP, Zerihun M, Gessese D, et al. Progress to Eliminate Trachoma as a Public  
244 Health Problem in Amhara National Regional State, Ethiopia: Results of 152 Population-  
245 Based Surveys. *Am J Trop Med Hyg.* **2019**; 101(6):1286–1295.

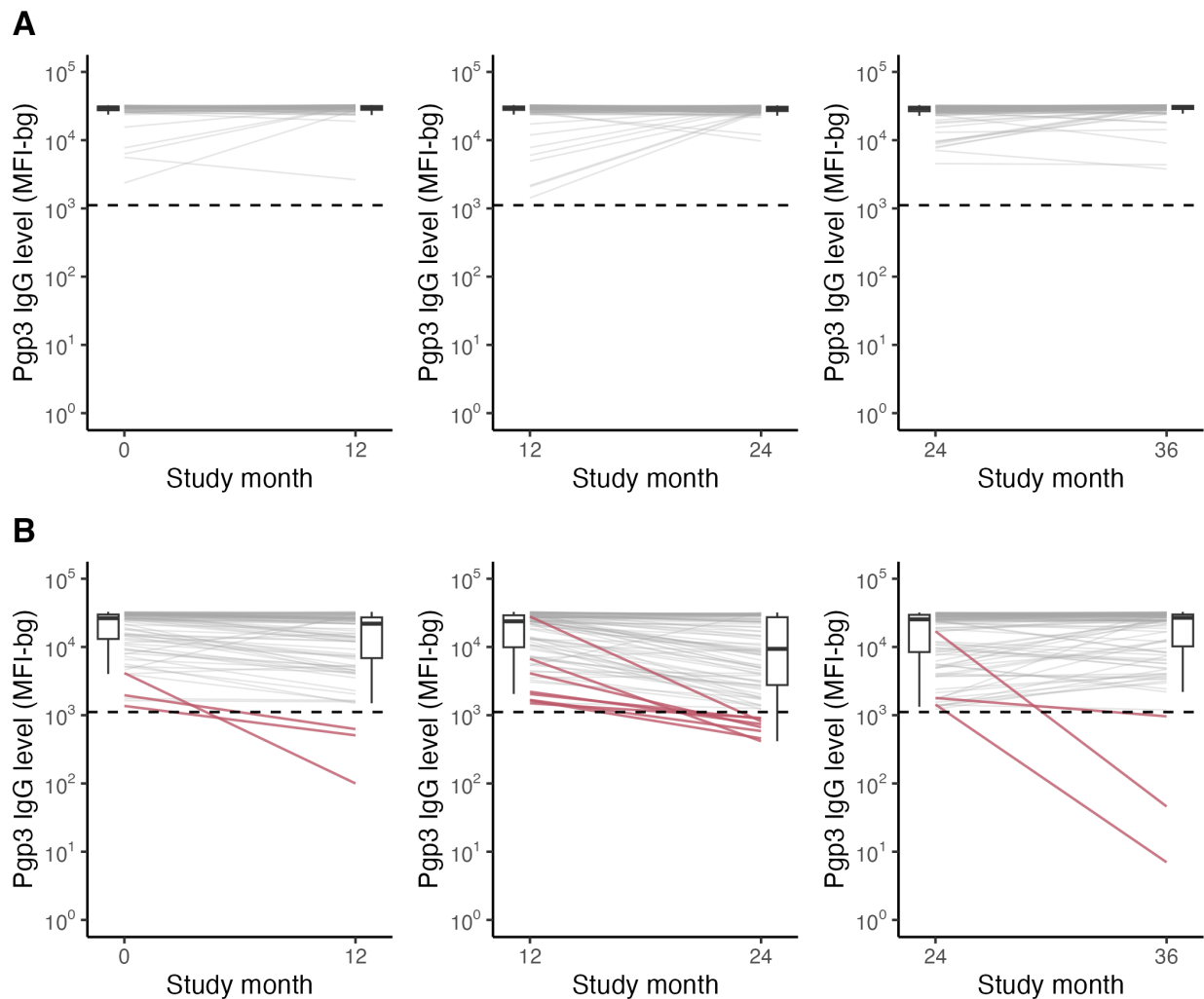
- 246 14. Tedijanto C, Aragie S, Tadesse Z, et al. Predicting future community-level ocular  
247 Chlamydia trachomatis infection prevalence using serological, clinical, molecular, and  
248 geospatial data. PLoS Negl Trop Dis. **2022**; 16(3):e0010273.

249

250

251 **Figure 1. Antibody responses over time by *C. trachomatis* infection status**  
252 Pgp3 IgG responses among children who were seropositive at the beginning of each one-year  
253 interval and (A) PCR-positive compared to (B) PCR-negative or -equivocal for *C. trachomatis*  
254 infection at the end of the interval. Dashed horizontal line represents seropositivity cutoff of  
255 1113 MFI-bg. Solid red lines in panel B identify children who seroreverted. Boxplots summarize  
256 median (thick horizontal line) and IQR (thin horizontal lines) at beginning and end of each  
257 interval. PCR results at the end of the interval were missing for 784 (32%) intervals due to  
258 random sampling for PCR testing in the cohort.

259



260

261

262

263

264 **Figure 2. Seroreversion by subgroups**

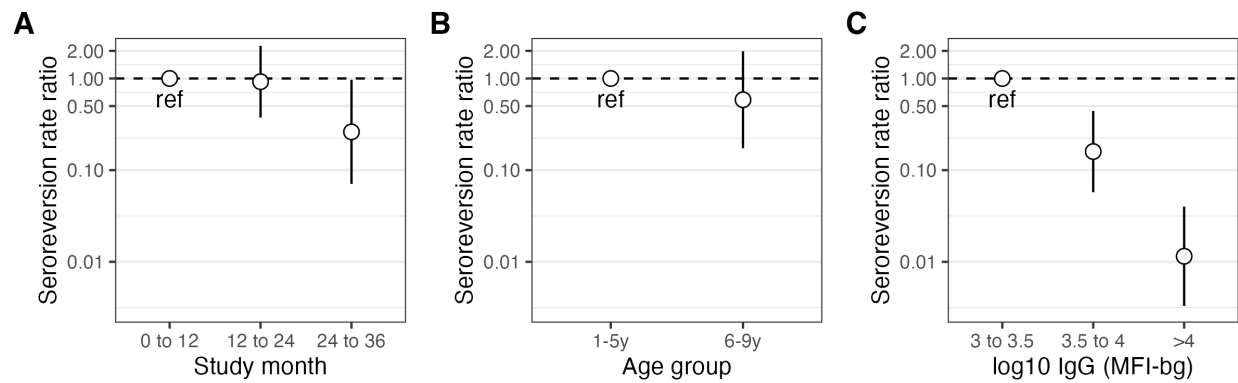
265 (A) Rate ratios and 95% CIs (on log scale) comparing seroreversion over time. (B) Rate ratios

266 and 95% CIs (on log scale) comparing seroreversion by age group. (C) Rate ratios and 95% CIs

267 (on log scale) comparing seroreversion by IgG level at the beginning of the one-year interval.

268 Estimates underlying this figure are provided in Supplementary Table 3.

269



270

271 **SUPPLEMENTAL MATERIAL**

272  
 273 **Supplementary Table 1.** Summary of child characteristics in the longitudinal cohort at  
 274 enrollment, number of measurements and annual periods contributed to the analysis by follow-  
 275 up status. Children who did not contribute to the analysis (Excluded) did not have two adjacent  
 276 serology measurements in annual surveys. Children who had complete follow-up were  
 277 measured four times and contributed to three annual risk periods.  
 278

	<b>Excluded (N=290)</b>	<b>Partial Follow-up (N=716)</b>	<b>Complete Follow-up (N=505)</b>	<b>Overall (N=1,511)</b>
<b>Age, years</b>				
Mean (SD)	2.81 (2.19)	2.88 (1.41)	3.00 (1.32)	2.91 (1.56)
<b>Pgp3 IgG (MFI-bg)</b>				
Negative	196 (67.6%)	494 (69.0%)	349 (69.1%)	1,039 (68.8%)
Positive	94 (32.4%)	222 (31.0%)	156 (30.9%)	472 (31.2%)
<b>Trachomatis Follicular (TF)</b>				
Negative	91 (31.4%)	279 (39.0%)	179 (35.4%)	549 (36.3%)
Positive	109 (37.6%)	360 (50.3%)	306 (60.6%)	775 (51.3%)
Missing	90 (31.0%)	77 (10.8%)	20 (4.0%)	187 (12.4%)
<b><i>C. trachomatis</i> PCR</b>				
Negative	182 (62.8%)	568 (79.3%)	442 (87.5%)	1,192 (78.9%)
Positive	27 (9.3%)	107 (14.9%)	60 (11.9%)	194 (12.8%)
Missing	81 (27.9%)	41 (5.7%)	3 (0.6%)	125 (8.3%)
<b>First survey measured</b>				
0 (baseline)	176 (60.7%)	397 (55.4%)	505 (100%)	1078 (71.3%)
12 m	51 (17.6%)	282 (39.4%)	0 (0%)	333 (22.0%)
24 m	39 (13.4%)	37 (5.2%)	0 (0%)	76 (5.0%)
36 m	24 (8.3%)	0 (0%)	0 (0%)	24 (1.6%)
<b>Measurements (num.)</b>				
1	173 (59.7%)	0 (0%)	0 (0%)	173 (11.4%)
2	117 (40.3%)	248 (34.6%)	0 (0%)	365 (24.2%)
3	0 (0%)	468 (65.4%)	0 (0%)	468 (31.0%)
4	0 (0%)	0 (0%)	505 (100%)	505 (33.4%)
<b>Annual risk periods contributed</b>				
0	290 (100%)	0 (0%)	0 (0%)	290 (19.2%)
1	0 (0%)	519 (72.5%)	0 (0%)	519 (34.3%)
2	0 (0%)	197 (27.5%)	0 (0%)	197 (13.0%)
3	0 (0%)	0 (0%)	505 (100%)	505 (33.4%)

279

280

281  
282  
283  
284

**Supplementary Table 2.** Sample size, age distribution, and seroprevalence in the longitudinal cohort, by month of the study.

<b>Study month</b>	<b>Total number of children with serology samples</b>	<b>Median age in months (IQR)</b>	<b>Seroprevalence (%)</b>
0	1,078	36 (24-48)	31.4
12	1,155	48 (35-60)	37.6
24	1,015	60 (47-72)	42.2
36	1,079	72 (60-96)	51.3

285  
286

287  
288  
289  
290  
291  
292

**Supplementary Table 3.** Seroconversion rate (SCR) and seroreversion rate (SRR) estimates overall and by subgroups. Children who were Pgp3 negative (–) at the beginning of a one-year period were at risk for seroconversion, and those who were Pgp3 positive (+) were at risk for seroreversion.

	Seroconversion Rate*				Seroreversion Rate*			
	N child Pgp3-	Person-years at risk	Incident conversion	SCR	N child Pgp3+	Person-years at risk	Incident conversion	SRR
<b>Overall</b>	1542	1432.5	219	15.3	886	875.0	22	2.5
<b>Study Period</b>								
0–12m	566	522.5	87	16.7	256	251.5	9	3.6
12–24m	536	501.5	69	13.8	308	303.0	10	3.3
24–36m	440	408.5	63	15.4	322	320.5	3	0.9
<b>Child age</b>								
0 – 5 y	1310	1214.0	192	15.8	698	688.5	19	2.8
6 – 9 y	231	217.5	27	12.4	187	185.5	3	1.6
<b>IgG level†</b>								
[0.0, 3.0]	1536	1427.0	218	15.3	0	0.0	0	--
(3.0, 3.5]	6	5.5	1	18.2	47	40.0	14	35.0
(3.5, 4.0]	0	0.0	0	--	92	89.5	5	5.6
(4.0, 5.0]	0	0.0	0	--	747	745.5	3	0.4

293  
294  
295  
296  
297

\* SCR: Seroconversion rate per 100 person-years, SRR: Seroreversion rate per 100 person-years

† Pgp3 IgG level at the start of the one-year period, in log<sub>10</sub> units of Median Florescence Intensity minus background (MFI-bg) measured on the Luminex platform.