

1 **A prospective study on tumour response assessment methods after**
2 **neoadjuvant endocrine therapy in early oestrogen receptor positive breast**
3 **cancer**

4 **Running title:** Tumour response after neoadjuvant endocrine therapy in early
5 ER positive breast cancer

6 Joanna I. López-Velazco^{1*}, Sara Manzano^{1*}, María Otaño², Kepa Elorriaga²,
7 Núria Bultó², Julio Herrero², Ainhara Lahuerta^{1,2}, Virginia Segur², Isabel
8 Álvarez-López^{1,2}, Maria M. Caffarel^{1,3#} and Ander Urruticoechea^{1,2#}

9

10 ¹ Biodonostia Health Research Institute, San Sebastian, Spain. ² Gipuzkoa
11 Cancer Unit, OSI Donostialdea - Onkologikoa Foundation, San Sebastian,
12 Spain. ³ IKERBASQUE, Basque Foundation for Science, Bilbao, Spain.

13 *These authors share first authorship. #These authors share senior and
14 corresponding authorship.

15 # **Corresponding authors:** Dr Maria M. Caffarel, Biodonostia Health
16 Research Institute, Paseo Dr Begiristain s/n, San Sebastian, 20014, Spain.
17 Email: maria.caffarel@biodonostia.org, Tel: +34 943328193. // Dr Ander
18 Urruticoechea, Onkologikoa Foundation, Paseo Dr Begiristain 121, San
19 Sebastian, 20014, Spain. Email: anderu@onkologikoa.org, Tel: +34
20 943328400.

21 **Conflict of interest:** The authors have declared that no conflict of interest
22 exists.

23

24 **Word count (*Introduction to discussion*):** 3446

25 **Abstract**

26 Neoadjuvant endocrine therapy (NET) in oestrogen receptor-positive/HER2-
27 negative breast cancer (ER+/HER2- BC) allows real-time evaluation of drug
28 efficacy and biological changes upon estrogenic deprivation. Clinical and
29 pathological evaluation after NET may be used to obtain prognostic and
30 predictive information of tumour response. Scales developed to evaluate
31 response after neoadjuvant chemotherapy are not useful and there are not
32 many validated biomarkers to assess response to NET. In this prospective
33 study, we analysed radiological and pathological tumour response of 104
34 postmenopausal ER+/HER2- BC patients, treated with NET for a mean of 7
35 months. Our results show that radiological evaluation underestimates
36 pathological tumour size, although it can be used to assess tumour response. In
37 addition, we propose that the tumour cellularity size (TCS), calculated as the
38 product of the residual tumour cellularity in the surgical specimen and the
39 tumour pathological size, could become a new tool to standardize response
40 assessment to NET. It is simple, reproducible and correlates with the existing
41 biomarkers. Our findings shed light on the dynamics of NET response,
42 challenge the paradigm of the ability of NET to decrease surgical volume and
43 point to the utility of the TCS to quantify the scattered tumour response usually
44 produced by endocrine therapy.

45 **Keywords:** Neoadjuvant endocrine therapy, aromatase inhibitors, tumour
46 cellularity size, oestrogen receptor (ER) positive breast cancer, pathological and
47 radiological tumour response, preoperative endocrine prognostic index (PEPI)
48 score, Ki67.

49 **Background**

50 Oestrogen receptor positive (ER+)/human epidermal growth factor receptor 2
51 negative (HER2-) breast cancer (hereafter referred to as ER+ BC) represents
52 almost 70% of all breast malignancies. Antiestrogenic or endocrine therapy is
53 the cornerstone of ER+ BC treatment, being the neoadjuvant (preoperative)
54 setting a very attractive scenario to find novel biomarkers of response and
55 therapeutic strategies¹. This is an urgent clinical need because long-term
56 resistance to endocrine therapy is a common event¹. Neoadjuvant endocrine
57 therapy (NET) results in pathological and clinical response rates similar to those
58 observed with neoadjuvant chemotherapy (NCT) although with lower toxicity^{2,3}.
59 Three pioneer clinical trials (IMPACT, PROACT and P024) demonstrated that
60 NET is effective in downsizing ER+ BC and facilitating breast-conserving
61 surgery (BCS) and showed greater efficacy for aromatase inhibitors compared
62 with tamoxifen⁴⁻⁶. As a consequence of these and other studies, NET, given for
63 4–8 months, is nowadays recommended by international guidelines for
64 postmenopausal women presenting ER+ BC⁷⁻⁹. An important advantage of NET
65 is that it allows “in vivo” evaluation of response, hence granting real-time
66 examination of drug efficacy as well as investigation of the biological and
67 molecular changes that occur after estrogenic deprivation. However, the lack of
68 useful biomarkers of long-term efficacy of therapy has precluded the
69 development of the neoadjuvant strategy for endocrine therapies.

70 In the management of patients under neoadjuvant systemic therapy (either NET
71 or NCT) two important evaluations are performed. First, a preoperative
72 assessment of radiological tumour response (rad-TR) determines the response
73 grade and establishes the surgical strategy¹⁰⁻¹². Next, surgical specimens are
74 histopathologically evaluated to obtain prognostic information according to
75 pathological tumour response (path-TR) scales^{10,12}. In the case of BC patients
76 treated with NCT, there are well-established parameters to measure tumour
77 response, such as RECIST criteria, Miller & Payne and Sataloff grading scales,
78 and residual cancer burden value¹³⁻¹⁶. However, only Preoperative Endocrine
79 Therapy Prognostic Index (PEPI) score and Ki67 levels have been validated as
80 prognostic markers after NET¹⁷⁻¹⁹. Hence, tumours that show substantial down-
81 staging after NET and present low Ki67 levels and PEPI score at surgery have

82 an excellent long-term prognosis even without chemotherapy^{1,11,19,20}. Both Ki67
83 levels after NET and PEPI score have been shown to predict long-term
84 outcomes (e.g., relapse-free survival). However, they are not optimal and they
85 are not routinely used due to, among other reasons, a lack of Ki67
86 measurement standardisation²¹. In the clinical practice, understanding the
87 impact of tumour response to NET in long-term outcome will help clinicians to
88 individualize adjuvant treatment for ER+ BC. In contrast to what happens for
89 NCT, pathologic complete response (pCR) after NET is a rare event and is not
90 a useful marker of prognosis given its low likelihood^{3,17,22}. In fact, previous
91 studies suggest that ER+ BC tumours after neoadjuvant systemic therapy
92 present a “diffuse cell loss” response at pathological level, which is
93 characterized by a distribution of the tumour in multiple scattered foci or small
94 groups of tumour cells without affecting overall tumour size²³.

95 In this context, there is an urgent need for the identification of robust,
96 reproducible biomarkers of response to NET with long term prognostic value.
97 Ideally, these new biomarkers should be candidates for initial validation in
98 retrospective series. In addition, the mentioned diffuse cell loss in ER+ BC
99 patients treated with NET needs to be better characterized. In order to
100 investigate the dynamics of tumour response, we generated a prospectively
101 collected series of ER+ BC patients treated with NET. We characterised and
102 compared tumour response by ultrasound scan (USS) and/or magnetic
103 resonance imaging (MRI) with pathological tumour size (path-TS). Finally, we
104 described a new biomarker with potential prognostic implications, called tumour
105 cellularity size (TCS), which could help to characterize the response to NET in
106 ER+ BC by an estimation of the diffuse cell loss.

107 **Methods**

108 **Study population**

109 We analysed clinical data from a cohort of patients treated in our institution
110 between 2005 and 2019 following a homogenous therapeutic protocol. Data
111 were prospectively collected and retrospectively analysed. All were
112 postmenopausal women with histologically confirmed, untreated, invasive,
113 operable, larger than 10 mm and amenable for radiological follow-up,
114 ER+/HER2- non-metastatic breast cancer. Patients had to be treated for at least
115 3 months with NET prior to surgery with curative intention. The administered
116 NET was an aromatase inhibitor except contraindicated. Informed consent was
117 obtained from all patients.

118 **Imaging and histopathological analysis**

119 Tumour baseline assessment was performed by breast USS and/or MRI.
120 Clinical response by USS was evaluated after 2 months of treatment and
121 repeated every 2 months. MRI and/or USS were also performed before surgery
122 to evaluate radiological tumour response (rad-TR). Surgical breast specimens
123 were evaluated by the pathologist to determine pathological tumour response
124 (path-TR), tumour size (path-TS) and residual tumour cellularity (%). Clinical
125 (assessed by MRI and USS) or pathological tumour size corresponds to the
126 major diameter of the tumour in millimetres (mm) and T-stage of the primary
127 tumour was defined according to AJCC Cancer Staging Manual²⁴.

128 Immunohistochemistry analyses were performed in baseline formalin-fixed
129 paraffin-embedded biopsies and surgical specimens to determine the
130 expression of ER, progesterone receptor (PgR) and Ki67 levels, using
131 international standards^{25,26}. ER, PgR and Ki67 were recorded as continuous
132 variables. The positivity cut-off for ER and PgR was $\geq 10\%$ of stained nuclei.
133 Ki67 score was defined as the percentage of tumour cells with Ki67 positive
134 nuclear staining. At least 1000 tumour nuclei were counted per sample,
135 according to the recommendations of Dowsett et al., 2011²⁵. The change in
136 Ki67 (ΔKi67) after NET was calculated using the following equation: $\Delta\text{Ki67} =$
137 $[(\text{Ki67} (\%) \text{ in surgery specimen}) - (\text{Ki67} (\%) \text{ in baseline biopsy})] / (\text{Ki67} (\%) \text{ in}$
138 $\text{baseline biopsy})$. Consequently, ΔKi67 values ranged between -1 to 1. ΔKi67

139 results were categorized into three groups depending on their magnitude of
140 change. $\Delta\text{Ki67} = -1$ means that Ki67 changes to zero in the surgery specimen.
141 $\Delta\text{Ki67} = > -1$ to < 0 means that the tumour presented a decrease in Ki67
142 expression. Finally, $\Delta\text{Ki67} \geq 0$ means that the tumour did not present any
143 change in Ki67 expression or that Ki67 expression in the surgery specimen was
144 greater than the one on baseline biopsy.

145 Rad-TR was defined using mRECIST 1.1 criteria¹³. According with this criteria,
146 complete responses (CR) were defined as tumour disappearance and partial
147 responses (PR) were defined as the reduction of the tumour diameter by $\geq 30\%$.
148 An increase $\geq 20\%$ in tumour diameter was qualified as progressive disease
149 (PD). The rest of situations were qualified as stable disease (SD).

150 Path-TR was quantified using a modified Miller and Payne grading scale^{14,27}. In
151 this scale, response grades 1 and 2 (no change or less than 30% loss of tumour
152 cells, respectively) were regarded as SD. Grades 3 and 4 (reduction in tumour
153 cells between 30-90% and $> 90\%$, respectively) were considered as pathologic
154 PR. Grade 5 (defined as no malignant cells identifiable in the tumour niche) was
155 considered pathologic CR (pCR). In binary analyses, path-TR was defined as
156 loss of tumour cells $\geq 30\%$ (grades 3-5) and no path-TR as $<30\%$ (grades 1-2).

157 Modified PEPI (mPEPI) score was determined on the basis of tumour
158 characteristics of surgical specimen (i.e. tumour size, nodal involvement status
159 and Ki67 staining), as previously published^{18,28}. Patients were classified into 3
160 mPEPI risk groups (I=0, II=1-3 and III=4+).

161 TCS, the novel score we introduce in this study, was calculated as the product
162 of tumour cellularity in the surgical sample (%) and tumour diameter (path-TS,
163 in mm).

164 **Statistical analyses**

165 Statistical analyses were performed using GraphPad Prism version 9. For the
166 descriptive statistical analyses, minimum, maximum and mean values were
167 used. For Gaussians distributions, paired Student's t-test was used to compare
168 differences between two groups. For non-Gaussian distributions, Wilcoxon
169 matched-pairs or Kruskal-Wallis tests were performed. Chi-square or Fisher's
170 tests were used to determine differences between expected frequencies.

171 Spearman's r coefficient (ρ) for analyses, were used to quantify correlations
172 (both with a 95% of confidence interval). P values < 0.05 were considered
173 statistically significant. Unless otherwise specified, histograms represent mean
174 values \pm standard error of the mean (SEM).

175 **Results**

176 **Tumour characteristics and change in tumour biomarkers after NET**

177 104 patients with early ER+/HER2 breast cancer were included in our study.
178 The study population presented a mean age at diagnosis of 69 (47-93) years
179 and the mean NET duration before surgery was 7 months (3-39). The mean
180 tumour size was 25 mm (10-90) assessed by MRI and 18 mm (40-70) by USS.
181 The main administered NET drug was letrozole (n=100), but some patients also
182 received anastrozole (n=2), tamoxifen (n=1), or exemestane (n=1). One patient
183 was diagnosed with bilateral disease and her two tumours were independently
184 considered in our analyses. The principal characteristics of the tumours and
185 their surgical management as well as the pathological changes after NET are
186 summarised in Table 1. No significant decrease of histological grade was
187 observed after NET ($p = 0.12$). Ki67, ER and PgR expression was assessed in
188 all tumours pre- and post- NET treatment. As seen in previous studies using
189 similar cohorts (Toi et al. 2011; Martí et al. 2022), NET significantly decreased
190 all these three parameters, being the changes in Ki67 and PgR the most
191 significant (both $p < 0.0001$, Table 1 and supplementary material, Figure S1).
192 While only 13 patients (12%) were cN+ before treatment, 26 patients (25%)
193 were pN+ at pathological assessment. Regarding pathological tumour response
194 to NET, only one case of pCR was recorded and most cases (72%) showed
195 partial path-TR (Table 2). Most patients (81%) fell into low (I, n=34, 35%) and
196 intermediate (II, n=45, 46%) mPEPI risk groups. These results are in agreement
197 with the response rates obtained in similar series^{8,10,12}.

198 **Radiological examination of tumour size after NET underestimates** 199 **pathological tumour size**

200 To determine which is the best radiological technique to predict pathological
201 tumour size (path-TS) after NET, we compared tumour size measured by MRI
202 and USS before and after treatment. As expected, radiological tumour size (rad-
203 TS), measured by MRI or USS, both at diagnosis and after NET (just before
204 surgery), significantly correlated with path-TS (Figure 1A-D). Surprisingly, our
205 results showed that path-TS correlated better with tumour size assessed by
206 MRI and USS at diagnosis than after NET (Figure 1A). This may suggest that

207 the radiological evaluation before surgery may not be a very precise technique
208 to assess tumour size after NET. To better visualize this, we compared the
209 mean value of tumour size assessed by each radiological technique, before and
210 after NET, and by path-TS. As shown in Figure 1E, MRI/USS measurements
211 after NET were significantly lower than path-TS and, interestingly, radiological
212 measures at diagnosis were more similar to path-TS than the measures after
213 treatment. Actually, MRI and USS before surgery underestimated path-TS in
214 77% (76/99) and 92% (84/91) of the cases, respectively.

215 Importantly, we also found that this disagreement in tumour size estimation by
216 imaging and histopathological analysis affects the concordance between
217 radiological (rad-TR) and pathological (path-TR) tumour response (Table 2).
218 Complete rad-TR was observed in 27 (by MRI) and 16 (by USS) patients while
219 only one patient presented a pCR by pathological assessment. To better
220 visualize these discrepancies, we plotted the correlation between rad- and path-
221 TR. As shown in Figure 2A-B, we found that rad-TR assessed by MRI
222 correlated better with path-TR than rad-TR assessed by USS, although both
223 associations were statistically significant. Interestingly, we observed that a
224 considerable number of tumours presented a complete (100%) rad-TR after
225 NET but presented a low path-TR (G2 or G3, highlighted in red in Figure 2A-B).
226 Taken together, our data indicate that the radiological examination of tumour
227 size after NET and before surgery underestimates path-TS bearing surgical
228 implications for the definition of tumour area.

229 Next, we evaluated the association between rad- and path-TR with the two most
230 accepted prognostic markers after NET: Ki67 levels and mPEPI score^{11,18,28}. As
231 expected, pathological responders presented significantly lower Ki67 levels at
232 surgery and mPEPI score (Figure 2C-D). Regarding rad-TR, both prognostic
233 markers were associated with tumour response assessed by MRI (Figure 2E-F),
234 but, in the case of USS, there was not association between tumour response
235 and Ki67 and PEPI score (Figure 2G-H).

236 In summary, our data support that radiological evaluation of tumour size after
237 NET underestimates pathological tumour size and indicate that MRI could be
238 more reliable than USS to assess response to NET.

239 **Tumour cellularity size is a new parameter to standardize the assessment**
240 **of residual tumour content after NET**

241 Diffuse cell loss has been observed as a common pattern of tumour response
242 after neoadjuvant therapies in ER+ (luminal) tumours²³. In an attempt to better
243 assess tumour response after NET, we propose a novel parameter called
244 tumour cellularity size (TCS). TCS is the product of tumour cellularity (%) and
245 tumour diameter (path-TS, in mm) and estimates the volume of remaining cells
246 in the tumour bed after NET. First, we evaluated how TCS relates to radiological
247 tumour size and response (Figure 3). As seen in Figure 3A, TCS values were
248 much lower than path-TS and more similar to MRI or USS measures after NET
249 compared to rad-TS at diagnosis or path-TS. We then analysed how TCS
250 associates with radiological and pathological response (Figure 3B-D). Our
251 results showed that TCS inversely correlated with path-TR and with MRI rad-TR
252 (Figure 3B-C). However, the association between TCS and rad-TR determined
253 by USS was not significant (Figure 3D), in line with previous results supporting
254 that MRI may be more adequate than USS to quantify response to NET. Taken
255 together, our data indicate that TCS can quantify the tumour “diffuse cell loss”
256 response observed in ER+ BC tumours after NET, and may capture better the
257 biological response of those tumours and explain why the radiological pre-
258 operative assessment of tumour size underestimates the path-TS.

259 In order to further evaluate if TCS can be used as a biomarker of response and
260 prognosis for patients undergoing NET, we evaluated its association with
261 changes in Ki67 (Δ Ki67) (Figure 3E-G) and Ki67 levels at surgery
262 (supplementary material, Figure S2), well-established prognostic markers after
263 NET. We observed that Δ Ki67 and Ki67 expression at surgery correlated better
264 with TCS than with tumour cellularity or path-TS (Figure 3E-G, and
265 supplementary material, Figure S2A-C). Consequently, tumours with high
266 residual Ki67 expression (Δ Ki67 > 0 and high Ki67 expression at surgery) also
267 present a high TCS, suggesting that TCS could be a promising biomarker of
268 response to NET.

269 Finally, to identify an initial cut-off value for which TCS can divide patients
270 responding to NET from no responder patients, we analysed the relationship of
271 TCS quartiles with Ki67 (Figure 4 and supplementary material, Figure S3A-B).

272 As mentioned before, TCS is positively correlated with Ki67 at surgery and
273 Δ Ki67 (Figure S3). Tumours with TCS <2.5 mm (Q1) showed significantly lower
274 Ki67 levels at surgery and Δ Ki67 compared with tumours with TCS \geq 2.5 mm
275 (Q2, Q3 and Q4, Figure 4), suggesting that a TCS value <2.5 mm could be
276 used as a good cut-off value to identify patients responding to NET. However,
277 more studies in independent cohorts with associated survival data are needed.

278 Discussion

279 There are different reasons why neoadjuvant endocrine therapy (NET) is a very
280 promising and attractive therapeutic strategy for ER+ BC patients. First, it is less
281 toxic than neoadjuvant chemotherapy albeit resulting in similar pathological and
282 clinical response rates and, indeed, it is already recommended by international
283 guidelines for post-menopausal women³. Finally, it represents an ideal scenario
284 for clinical research as it allows real time investigation of drug efficacy and of
285 the molecular and biological changes in tumours after endocrine treatment. This
286 may lead to the identification of novel biomarkers of response and new
287 therapeutic strategies. However, NET remains an underused tool for ER+ BC
288 because monitoring response is challenging, among other reasons^{3,29}. Many
289 NET clinical trials use the radiological response rate (by pre-operative
290 evaluation with USS, mammography or MRI using RECIST 1.1 criteria) and
291 improvement of BCS rates as a primary objective to demonstrate
292 effectiveness^{3,11,12}. However, our results, obtained from a prospectively
293 collected series of 104 ER+ BC patients treated with NET, prove that the pre-
294 operative radiological evaluation after NET underestimates path-TS. Previous
295 reports have also shown that radiological and clinical evaluation after NET
296 underestimate the lesion size¹⁰, although Reis and cols found this difference
297 negligible³⁰. Clinically, these discrepancies between radiological and
298 pathological responses may have strong surgical implications for the definition
299 of lesion area and our data suggest that the radiological evaluation of tumour
300 size should not be determinant to plan the resection area. In fact, the AJCC
301 recommends that imaging findings after NET, NCT and radiotherapy are not
302 considered elements of initial clinical staging²⁴.

303 In addition, our data show that radiological complete responses almost never
304 parallel pCR. In our series, 26% and 15% of patients showed complete
305 radiological response by MRI and USS, respectively, but only 1 patient
306 achieved pCR. In fact, pCR after NET is a rare event and only occurs in less
307 than 1% of the cases³. Usually, residual disease is found even in very good
308 responder tumours, in the form of microscopically scattered residual cancer
309 nests in the tumour bed [30]. This scattered or diffuse cell loss response is also
310 observed after neoadjuvant chemotherapy in ER+ tumours²³.

311 While pathological assessment considers the maximum area occupied by the
312 tumour and does not capture this scattered response, radiological evaluation
313 after NET may reflect the diffuse cell loss response. This could explain why rad-
314 TS after NET did not reflect path-TS in the surgery specimens in our cohort and
315 challenges the paradigm of NET as a tool to increase the BCS rates for ER+
316 BC. The difference between radiological and pathological evaluation of
317 neoadjuvant systemic treatment (NST) is less frequently observed in triple-
318 negative and non-luminal HER2+ tumours, which tend to present a shrinkage or
319 concentric response (also called tumour collapse) to NST²³.

320 Nevertheless, we should also take into consideration that the complete
321 response assessed by MRI may capture biological events with potential
322 prognostic/predictive value, including normalization of tumour vessels. Hence,
323 the event of CR by MRI, even without pCR, may define a prognostic category
324 that deserves further study.

325 Despite the discrepancies between radiological and pathological evaluation of
326 tumour response to NET, clinical and radiological monitoring of tumour
327 response during the course of NET are necessary to early detect disease
328 progression. Our data indicate that MRI is preferable than USS to assess
329 response to NET, as 1) path-TR correlated better with rad-TR assessed by MRI
330 than by USS and 2) MRI rad-TR was significantly associated with reduction of
331 Ki67 in the surgical specimen and lower mPEPI score, the two most accepted
332 prognostic markers after NET^{11,18,28}. This association was not statistically
333 significant in the case of USS. Our results are in agreement with previous
334 reports supporting the use of MRI as the most accurate tool among other
335 methods (clinical examination, USS and mammography) to assess tumour
336 response to NST in breast cancer^{3,31}.

337 As mentioned above, the diffuse cell loss response observed in ER+ tumours
338 as a response to NST represents a challenge to evaluate tumour response to
339 NET. We hypothesize that the parameter tumour cellularity size (TCS),
340 presented herein, can be used to assess the scattered response to NET as it
341 estimates the multiple scattered foci of tumour cells in the tumour niche. TCS is
342 the product of tumour cellularity (%) and tumour diameter (path-TS, in mm) in
343 the post-treatment surgical sample. We found that TCS significantly associated

344 with rad-TR evaluated with MRI. As previously discussed, only PEPI score and
345 Ki67 expression under treatment are validated prognostic markers for NET¹⁷⁻¹⁹.
346 Importantly, TCS correlated better with Δ Ki67 than the percentage of tumour
347 cellularity in the post-treatment sample and the path-TS. This may indicate that
348 reduction in Ki67 expression is related to the tumour cellularity content even
349 when the path-TS does not change after NET. The association between TCS
350 and mPEPI score could not be evaluated as they are not independent variables
351 since both include path-TS in their calculation²⁸.

352 In summary, our results shed light on two clinically relevant and unanswered
353 questions in the context of NET highlighted by Sella and cols³. One of them is
354 which is the optimal imaging technique to pre-surgically evaluate residual
355 disease after NET. Our data supports the use of MRI over USS, but also prove
356 that both imaging techniques underestimate pathological tumour size. As
357 mentioned, this points to careful consideration of clinical and radiological TR to
358 define the surgical resection tumour area and challenge the paradigm of the
359 reduction of surgical volume by NET given that the initial radiological
360 assessment seems to be the best value to define the tumour area even after
361 therapy. The second unanswered question is the need of novel biomarkers to
362 assess pathological response to NET. We propose a new biomarker called
363 tumour cellularity size (TCS) that could be a promising candidate to use in
364 combination with changes in Ki67, although it should be validated in larger
365 cohorts.

366 **Additional information**

367 Supplementary information is available at BJC's website

368 **Acknowledgements**

369 We are grateful to the members of our laboratory for critical discussion of this
370 work and to the Pathology Services of Hospital Donostia and Onkologikoa
371 Foundation for technical assistance.

372 **Ethics Approval**

373 The study was conducted in accordance with the Declaration of Helsinki and
374 Good Clinical Practice guidelines as well as authorised by the Spain Health
375 Authority and the local Ethics Committee.

376 **Authors' contributions**

377 JILV, SM, AU and MMC analysed the data and wrote the manuscript. AU
378 designed the study. AU and MMC co-supervised the study. KE analysed
379 histopathology. VS and NB analysed imaging data. JILV, MO, AL, JH, IAL and
380 AU collected and analysed patient data.

381 **Funding**

382 This work was funded by Instituto de Salud Carlos III (ISCIII) grants:
383 PI21/01208, PI20/01253, CP18/00076 and FI19/00193 co-funded by the
384 European Union, Basque Department of Health (2020111040), Fundación
385 SEOM (SEOM Avon Fellowship 2020) and Ikerbasque Basque Research
386 Foundation. The group also received funds from the breast cancer patient's
387 charity Katxalin and from Roche Farma S.A. JILV is funded by an AECC PhD
388 Fellowship (PRDGI19007LOPE).

389 **Data availability statement**

390 The data for this study are available upon reasonable request.

391 **Consent for publication and competing interests**

392 We verify that each author consents the publication of this manuscript and
393 authors have no conflicts of interest to declare.

394 REFERENCES

- 395 1. Burstein, H. J. Systemic Therapy for Estrogen Receptor–Positive, HER2-
396 Negative Breast Cancer. *N. Engl. J. Med.* **383**, 2557–2570 (2020).
- 397 2. Spring, L. M., Gupta, A., Reynolds, K. L., Gadd, M. A., Ellisen, L. W.,
398 Isakoff, S. J. et al. Neoadjuvant endocrine therapy for estrogen receptor-
399 positive breast cancer a systematic review and meta-Analysis. *JAMA*
400 *Oncol.* **2**, 1477–1486 (2016).
- 401 3. Sella, T., Weiss, A., Mittendorf, E. A., King, T. A., Pilewskie, M., Giuliano,
402 A. E. et al. Neoadjuvant Endocrine Therapy in Clinical Practice: A Review.
403 *JAMA Oncol.* **7**, 1700–1708 (2021).
- 404 4. Eiermann, W., Paepke, S., Appfelstaedt, J., Llombart-Cussac, A., Eremin,
405 J., Vinholes, J. et al. Preoperative treatment of postmenopausal breast
406 cancer patients with letrozole: A randomized double-blind multicenter
407 study. *Ann. Oncol. Off. J. Eur. Soc. Med. Oncol.* **12**, 1527–1532 (2001).
- 408 5. Cataliotti, L., Buzdar, A. U., Noguchi, S., Bines, J., Takatsuka, Y.,
409 Petrakova, K. et al. Comparison of anastrozole versus tamoxifen as
410 preoperative therapy in postmenopausal women with hormone receptor-
411 positive breast cancer: the Pre-Operative “Arimidex” Compared to
412 Tamoxifen (PROACT) trial. *Cancer* **106**, 2095–2103 (2006).
- 413 6. Smith, I. E., Dowsett, M., Ebbs, S. R., Dixon, J. M., Skene, A., Blohmer,
414 J.-U. et al. Neoadjuvant treatment of postmenopausal breast cancer with
415 anastrozole, tamoxifen, or both in combination: the Immediate
416 Preoperative Anastrozole, Tamoxifen, or Combined with Tamoxifen
417 (IMPACT) multicenter double-blind randomized trial. *J. Clin. Oncol. Off. J.*
418 *Am. Soc. Clin. Oncol.* **23**, 5108–5116 (2005).
- 419 7. Korde, L. A., Somerfield, M. R., Carey, L. A., Crews, J. R., Denduluri, N.,
420 Hwang, E. S. et al. Neoadjuvant Chemotherapy, Endocrine Therapy, and
421 Targeted Therapy for Breast Cancer: ASCO Guideline. *J. Clin. Oncol.* **39**,
422 1485–1505 (2021).
- 423 8. Martí, C., Yébenes, L., Oliver, J. M., Moreno, E., Frías, L., Berjón, A. et al.
424 The Clinical Impact of Neoadjuvant Endocrine Treatment on Luminal-like

- 425 Breast Cancers and Its Prognostic Significance: Results from a Single-
426 Institution Prospective Cohort Study. *Curr. Oncol.* **29**, 2199–2210 (2022).
- 427 9. Cardoso, F., Kyriakides, S., Ohno, S., Penault-Llorca, F., Poortmans, P.,
428 Rubio, I. T. et al. Early breast cancer: ESMO Clinical Practice Guidelines
429 for diagnosis, treatment and follow-up. *Ann. Oncol. Off. J. Eur. Soc.*
430 *Med. Oncol.* **30**, 1674 (2019).
- 431 10. Lerebours, F., Rivera, S., Mouret-Reynier, M. A., Alran, S., Venat-Bouvet,
432 L., Kerbrat, P. et al. Randomized phase 2 neoadjuvant trial evaluating
433 anastrozole and fulvestrant efficacy for postmenopausal, estrogen
434 receptor–positive, human epidermal growth factor receptor 2–negative
435 breast cancer patients: Results of the UNICANCER CARMINA 02 french
436 trial. *Cancer* **122**, 3032–3040 (2016).
- 437 11. Ueno, T., Saji, S., Masuda, N., Kuroi, K., Sato, N., Takei, H. et al. Impact
438 of clinical response to neoadjuvant endocrine therapy on patient
439 outcomes: A follow-up study of JFMC34-0601 multicentre prospective
440 neoadjuvant endocrine trial. *ESMO Open* **3**, (2018).
- 441 12. Skriver, S. K., Laenkholm, A. V., Rasmussen, B. B., Handler, J.,
442 Grundtmann, B., Tvedskov, T. F. et al. Neoadjuvant letrozole for
443 postmenopausal estrogen receptor-positive, HER2-negative breast
444 cancer patients, a study from the Danish Breast Cancer Cooperative
445 Group (DBCG). *Acta Oncol. (Madr)*. **57**, 31–37 (2018).
- 446 13. Eisenhauer, E. A., Therasse, P., Bogaerts, J., Schwartz, L. H., Sargent,
447 D., Ford, R. et al. New response evaluation criteria in solid tumours:
448 Revised RECIST guideline (version 1.1). *Eur. J. Cancer* **45**, 228–247
449 (2009).
- 450 14. Ogston, K. N., Miller, I. D., Payne, S., Hutcheon, A. W., Sarkar, T. K.,
451 Smith, I. et al. A new histological grading system to assess response of
452 breast cancers to primary chemotherapy: Prognostic significance and
453 survival. *Breast* **12**, 320–327 (2003).
- 454 15. Sataloff, D. M., Mason, B. A., Prestipino, A. J., Seinige, U. L., Lieber, C.
455 P. & Baloch, Z. Pathologic response to induction chemotherapy in locally
456 advanced carcinoma of the breast: a determinant of outcome. *J. Am.*

- 457 *Coll. Surg.* **180**, 297–306 (1995).
- 458 16. Symmans, W. F., Wei, C., Gould, R., Yu, X., Zhang, Y., Liu, M. et al.
459 Long-Term Prognostic Risk After Neoadjuvant Chemotherapy Associated
460 With Residual Cancer Burden and Breast Cancer Subtype. *J. Clin.*
461 *Oncol. Off. J. Am. Soc. Clin. Oncol.* **35**, 1049–1060 (2017).
- 462 17. Lerebours, F., Pulido, M., Fourme, E., Debled, M., Becette, V., Bonnefoi,
463 H. et al. Predictive factors of 5-year relapse-free survival in HR+/HER2-
464 breast cancer patients treated with neoadjuvant endocrine therapy:
465 pooled analysis of two phase 2 trials. *Br. J. Cancer* **122**, 759–765 (2020).
- 466 18. Suman, V. J., Ellis, M. J. & Ma, C. X. The ALTERNATE trial: Assessing a
467 biomarker driven strategy for the treatment of post-menopausal women
468 with Er+/Her2- invasive breast cancer. *Chinese Clinical Oncology* vol. 4
469 (2015).
- 470 19. Guarneri, V., Dieci, M. V., Bisagni, G., Frassoldati, A., Bianchi, G. V., De
471 Salvo, G. L. et al. De-escalated therapy for HR+/HER2+ breast cancer
472 patients with Ki67 response after 2-week letrozole: Results of the
473 PerELISA neoadjuvant study. *Ann. Oncol.* **30**, 921–926 (2019).
- 474 20. Smith, I., Robertson, J., Kilburn, L., Wilcox, M., Evans, A., Holcombe, C.
475 et al. Long-term outcome and prognostic value of Ki67 after perioperative
476 endocrine therapy in postmenopausal women with hormone-sensitive
477 early breast cancer (POETIC): an open-label, multicentre, parallel-group,
478 randomised, phase 3 trial. *Lancet Oncol.* **21**, 1443–1454 (2020).
- 479 21. Ellis, M. J., Suman, V. J., Hoog, J., Goncalves, R., Sanati, S., Creighton,
480 C. J. et al. Ki67 proliferation index as a tool for chemotherapy decisions
481 during and after neoadjuvant aromatase inhibitor treatment of breast
482 cancer: Results from the American college of surgeons oncology group
483 Z1031 trial (alliance). *J. Clin. Oncol.* **35**, 1061–1069 (2017).
- 484 22. Cortazar, P., Zhang, L., Untch, M., Mehta, K., Costantino, J. P., Wolmark,
485 N. et al. Pathological complete response and long-term clinical benefit in
486 breast cancer: The CTNeoBC pooled analysis. *Lancet* **384**, 164–172
487 (2014).

- 488 23. Heil, J., Kuerer, H. M., Pfob, A., Rauch, G., Sinn, H. P., Golatta, M. et al.
489 Eliminating the breast cancer surgery paradigm after neoadjuvant
490 systemic therapy: current evidence and future challenges. *Annals of*
491 *Oncology* vol. 31 61–71 (2020).
- 492 24. Hortobagyi, G. N., Connolly, J. L., Orsi, C. J. D., Edge, S. B., Mittendorf,
493 E. A., Rugo, H. S. et al. *AJCC Cancer Staging Manual 8th Edition.*
494 *Definitions* (2020). doi:10.32388/b30ldk.
- 495 25. Dowsett, M., Nielsen, T. O., A'Hern, R., Bartlett, J., Coombes, R. C.,
496 Cuzick, J. et al. Assessment of Ki67 in Breast Cancer: Recommendations
497 from the international Ki67 in breast cancer working Group. *Journal of the*
498 *National Cancer Institute* vol. 103 1656–1664 (2011).
- 499 26. Hammond, M. E. H., Hayes, D. F., Dowsett, M., Allred, D. C., Hagerty, K.
500 L., Badve, S. et al. American Society of Clinical Oncology/College Of
501 American Pathologists guideline recommendations for
502 immunohistochemical testing of estrogen and progesterone receptors in
503 breast cancer. *J. Clin. Oncol. Off. J. Am. Soc. Clin. Oncol.* **28**, 2784–
504 2795 (2010).
- 505 27. Skriver, S. K., Jensen, M. B., Knoop, A. S., Ejlersen, B. & Laenkholm, A.
506 V. Tumour-infiltrating lymphocytes and response to neoadjuvant letrozole
507 in patients with early oestrogen receptor-positive breast cancer: Analysis
508 from a nationwide phase II DBCG trial. *Breast Cancer Res.* **22**, (2020).
- 509 28. Ellis, M. J., Tao, Y., Luo, J., A'Hern, R., Evans, D. B., Bhatnagar, A. S. et
510 al. Outcome prediction for estrogen receptor-positive breast cancer based
511 on postneoadjuvant endocrine therapy tumor characteristics. *J. Natl.*
512 *Cancer Inst.* **100**, 1380–1388 (2008).
- 513 29. Martí, C. & Sánchez-méndez, J. I. The present and future of neoadjuvant
514 endocrine therapy for breast cancer treatment. *Cancers* vol. 13 (2021).
- 515 30. Reis, J., Lindstrøm, J. C., Boavida, J., Gjesdal, K. I., Park, D., Bahrami, N.
516 et al. Accuracy of breast MRI in patients receiving neoadjuvant endocrine
517 therapy: comprehensive imaging analysis and correlation with clinical and
518 pathological assessments. *Breast Cancer Res. Treat.* **184**, 407–420
519 (2020).

520 31. Fowler, A. M., Mankoff, D. A. & Joe, B. N. Imaging Neoadjuvant Therapy
521 Response in Breast Cancer. *Radiology* **285**, 358–375 (2017).

522

523 **Figure legends**

524 **Figure 1. Comparison between pathological and radiological tumour size**
525 **before and after neoadjuvant endocrine treatment (NET).** (A-D) Correlation
526 of pathological tumour size (path-TS) with MRI (A and C) and USS (B and D)
527 measurements at diagnosis (A-B) and after NET (C-D). Spearman correlation
528 coefficients (ρ) and p values are shown. (E) Comparison of radiological
529 tumour size (assessed by MRI and USS at diagnosis and after NET) with path-
530 TS. p values were calculated using Kruskal-Wallis test.

531 **Figure 2. Evaluation of radiological tumour response (rad-TR) after NET by**
532 **comparison with pathological tumour response (path-TR) and prognostic**
533 **biomarkers for NET.** (A-B) Rad-TR was assessed by MRI (A) and USS (B) and
534 evaluated by mRECIST 1.1 criteria. Path-TR was evaluated using a modified
535 Miller and Payne grading scale. In the upper square, tumours presenting
536 complete response by MRI (A) or USS (B), but partial response (G2-G3) by
537 path-TR, are highlighted in red. (C, E and G) Analysis of Ki67 levels at surgery
538 in tumours classified according to their p values were calculated (A//). (D, F and
539 H) Contingency analyses of the association between modified PEPI (mPEPI)
540 score and path-TR (D) and rad-TR by MRI (F) or USS (H). p values were
541 calculated using Kruskal-Wallis test (A-C, E, G) or Chi-square test (D, F and H).
542 CR: complete response, PR: partial response, SD: stable disease, and PD:
543 progression disease.

544 **Figure 3. Tumour cellularity size (TCS) as a new parameter to measure**
545 **response to NET.** (A) Comparison of radiological tumour size (assessed by
546 MRI and USS, before and after NET) with TCS. Dotted line indicates the mean
547 of path-TS obtained for those tumours. (B-D) Association between TCS and
548 pathological (path-TR) (B) and radiological response assessed by MRI (C) or
549 USS (D). (E-G) Association between TCS (E), tumour cellularity (F) and
550 pathological tumour size (path-TS) (G) with changes in Ki67 (Δ Ki67) after NET.
551 p values were calculated using Kruskal-Wallis test.

552 **Figure 4. Identification of a tumour cellularity size (TCS) cut-off value to**
553 **discriminate patients according to their response to NET.** (A-B) Ki67 levels

554 at surgery (A) and Δ Ki67 (B) in tumours with low (quartile 1, Q1) versus high
555 (Q2, Q3 and Q4) TCS. p values were calculated using Mann Whitney test.

Figure 1

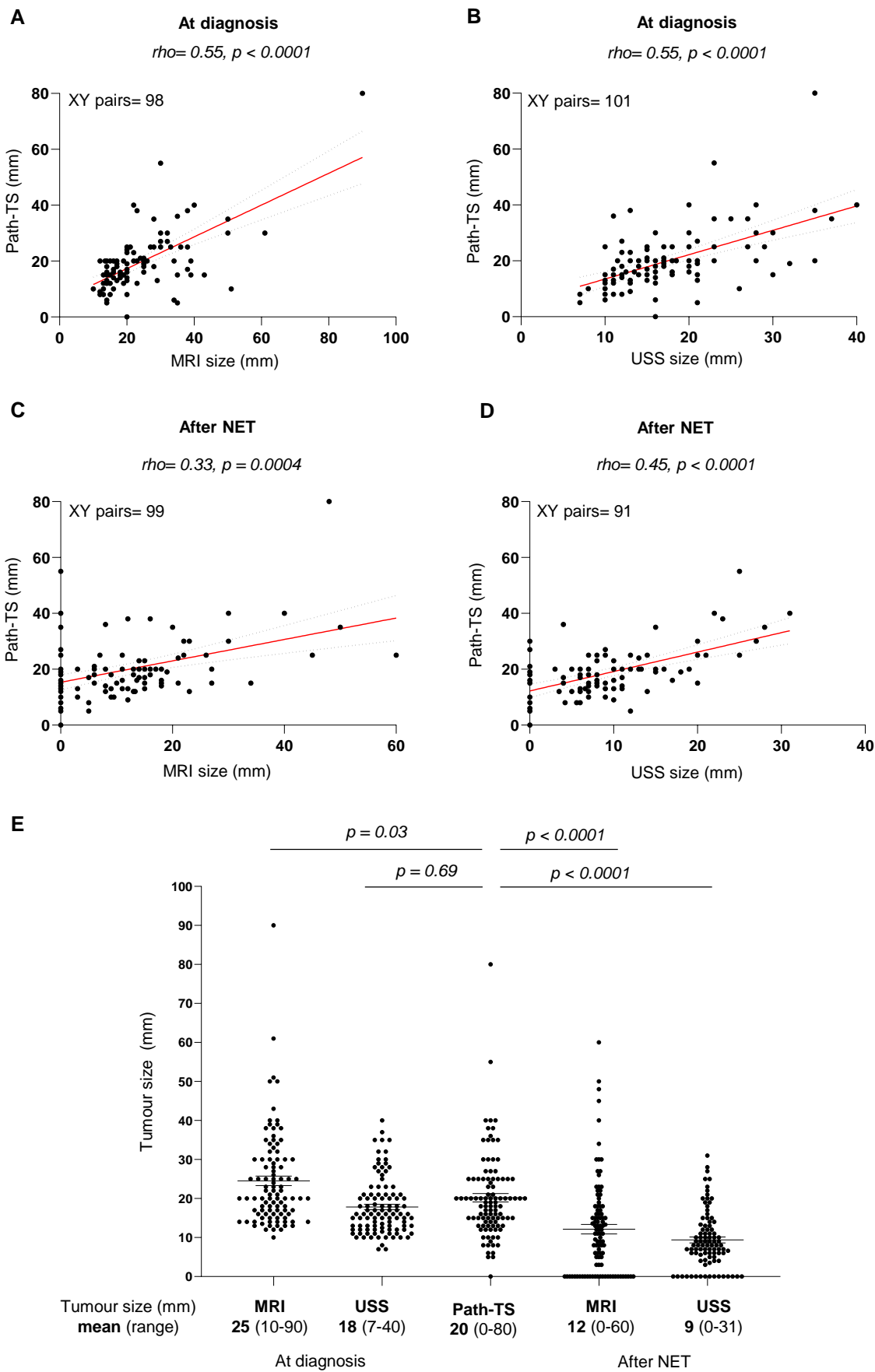


Figure 2

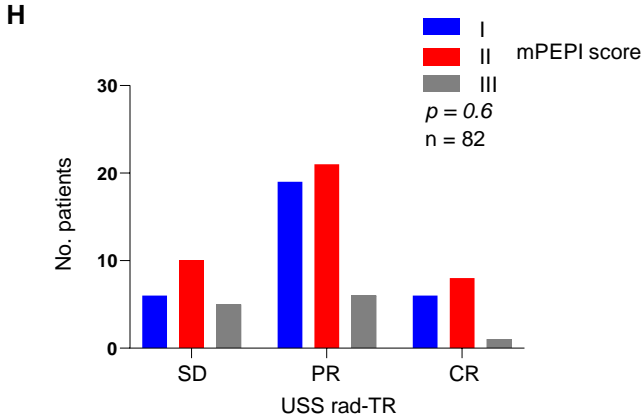
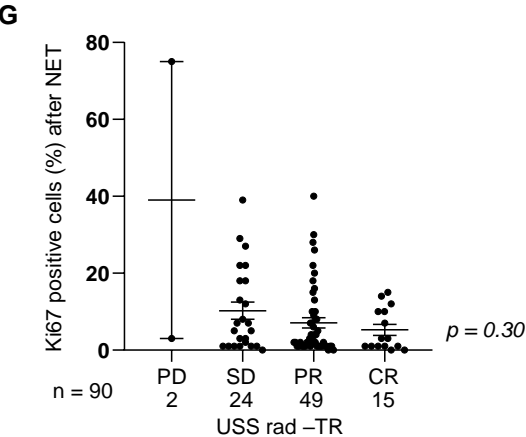
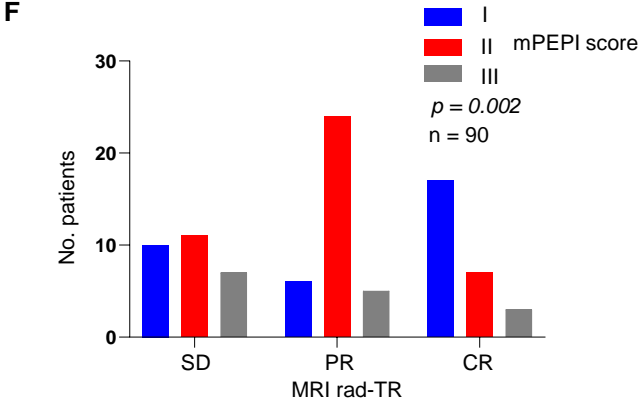
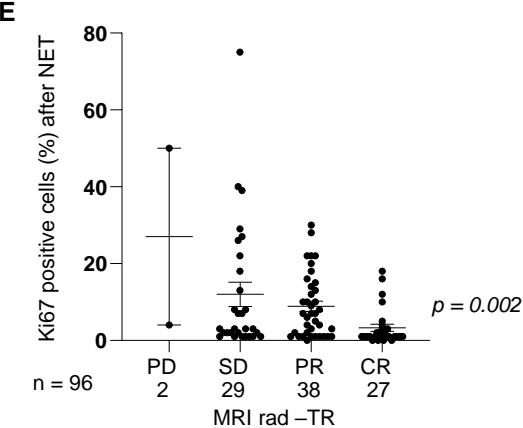
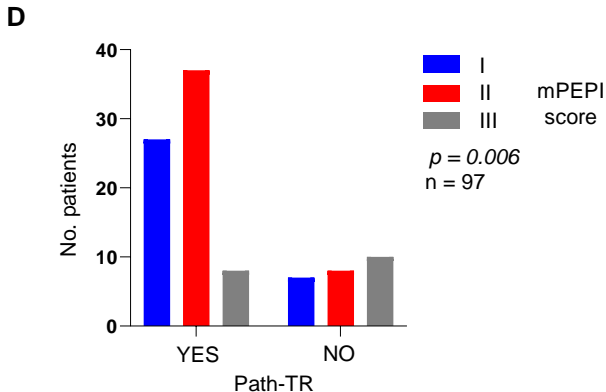
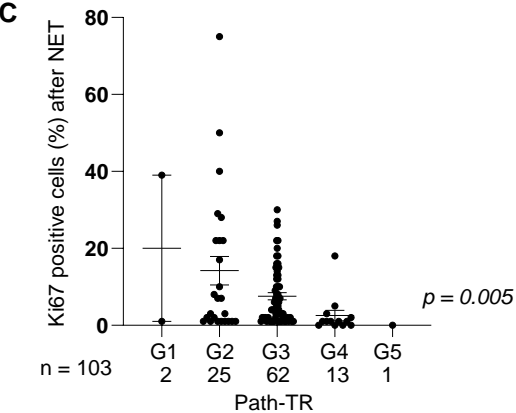
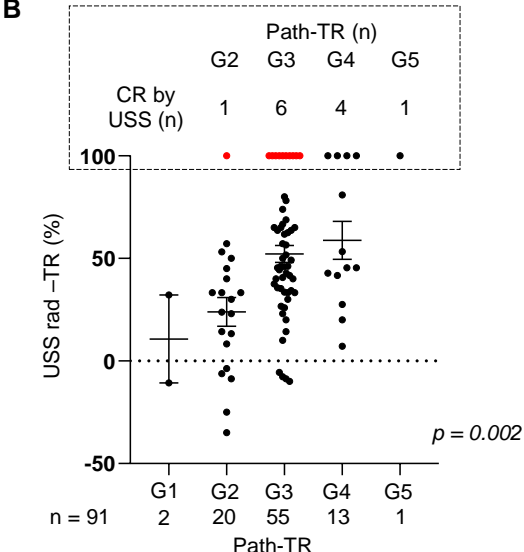
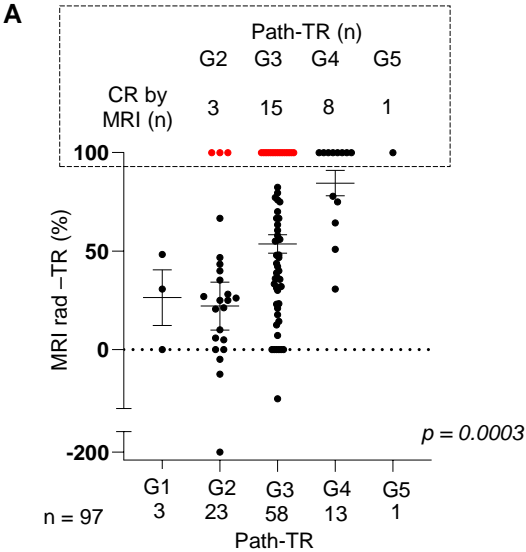


Figure 3

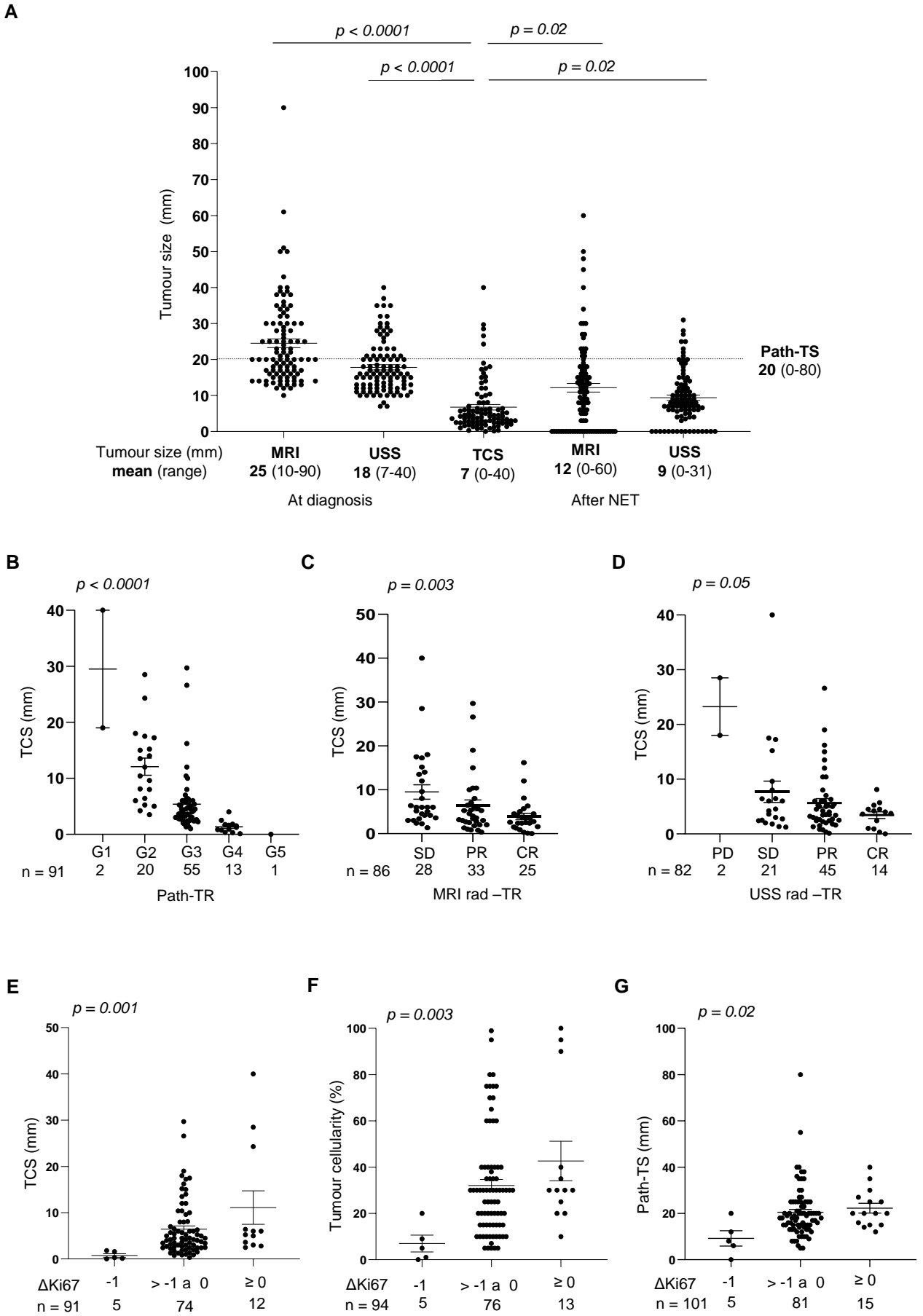


Figure 4

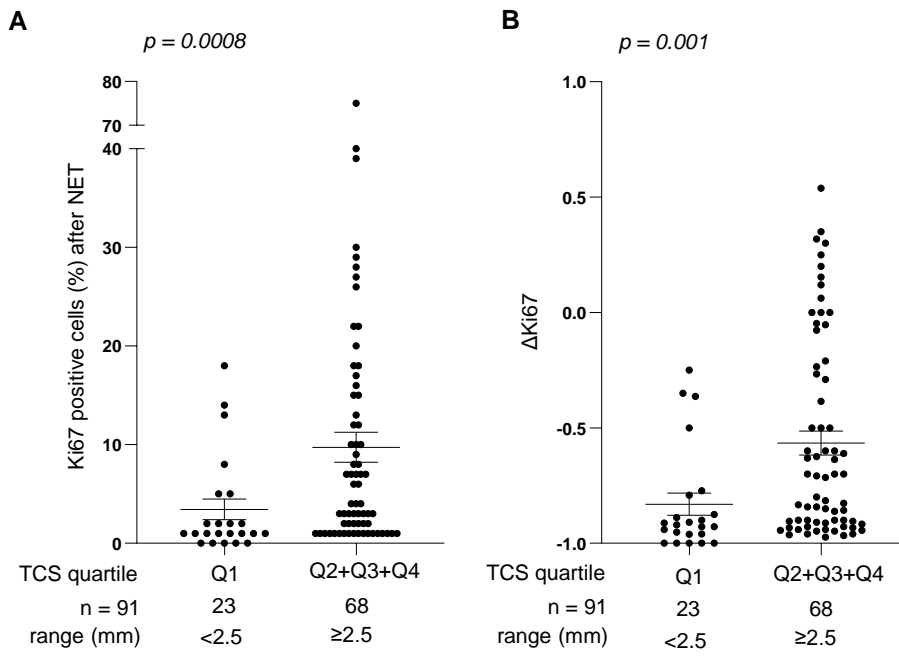


Table 1. Histopathological information and surgical management of tumours included in our series. *One patient was diagnosed with bilateral disease and her two tumours were independently considered in the histopathological analysis and in its surgical management. ^aOne tumour was not evaluable for biological characteristics at surgery because the patient achieved a pCR. c/yp axillary node status was determined clinically and pathologically before and after NET, respectively. BCS: Breast-conserving surgery. N/A: not available.

| Characteristics | Before NET (n = 105*) | After NET (n = 104 ^a) |
|-----------------------------------|--------------------------|--------------------------------------|
| Histological grade [n (%)] | | |
| I | 23 (22) | 34 (33) |
| II | 78 (74) | 69 (66) |
| III | 4 (4) | 1 (1) |
| Histological type [n (%)] | | |
| Ductal | 86 (82) | 85 (82) |
| Lobular | 10 (10) | 12 (12) |
| Other special type | 9 (8) | 7 (6) |
| c/yp axillary node status [n (%)] | | |
| Negative | 91 (87) | 72 (69) |
| Positive | 13 (12) | 26 (25) |
| N/A | 1 (1) | 7 (6) |
| Positive cells (%) [mean (range)] | | |
| Ki67 | 20 (3-60) | 9 (0-75) |
| Oestrogen receptor | 94 (20-100) | 90 (0-99) |
| Progesterone receptor | 63 (1-100) | 15 (0-99) |
| Breast surgery performed [n (%)]* | | |
| BCS | | 95 (90) |
| Modified radical mastectomy | | 10 (10) |

Table 2. Radiological (Rad-) and pathological (Path-) tumour response (TR) after NET. Rad-TR was evaluated by mRECIST 1.1 criteria and path-TR was measured using a modified Miller and Payne grading scale. N/A: not available.

| Rad-TR type [n (%)] | MRI | USS | Path-TR [n (%)] |
|---------------------|---------|---------|-----------------|
| N/A | 7 (7) | 14 (13) | 0 (0) |
| Complete | 27 (26) | 16 (15) | 1 (1) |
| Partial | 40 (38) | 49 (47) | 76 (72) |
| Stable disease | 29 (27) | 24 (23) | 28 (27) |
| Progressive disease | 2 (2) | 2 (2) | 0 (0) |