

1 **Administration of *Bifidobacterium animalis* subsp. *lactis* Strain BB-12[®] in**
2 **Healthy Children: Characterization, Functional Composition, and**
3 **Metabolism of the Gut Microbiome**

4 Carlotta Vizioli^{1,2}, Rosario Jaime-Lara^{2,3,4}, Scott G. Daniel⁵, Alexis Franks³, Ana F.
5 Diallo⁶, Kyle Bittinger⁵, Tina P. Tan⁷, Daniel J. Merenstein⁷, Brianna Brooks³,
6 Paule V. Joseph^{*2,3}, Katherine A. Maki^{8*}

7

8

9 ¹ National Institute of Neurological Disease and Stroke, National Institutes of Health,
10 Department of Health and Human Services, Bethesda, MD

11 ² National Institute on Alcohol Abuse and Alcoholism National Institutes of Health, Department
12 of Health and Human Services, Bethesda, MD

13 ³ National Institute of Nursing Research, National Institutes of Health, Department of Health and
14 Human Services, Bethesda, MD

15 ⁴ UCLA School of Nursing, University of California Los Angeles, Los Angeles, CA

16 ⁵ Division of Gastroenterology, Hepatology, and Nutrition, Children's Hospital of Philadelphia,
17 Philadelphia, PA

18 ⁶ Institute of Inclusion, Inquiry & Innovation (iCubed), Family and Community Health Nursing,
19 School of Nursing, Virginia Commonwealth University, Richmond, VA

20 ⁷ Department of Family Medicine, Georgetown University Medical Center, Washington, DC

21 ⁸ Translational Biobehavioral and Health Disparities Branch, National Institutes of Health,
22 Clinical Center, Bethesda, MD, 20814

23 *PVJ and KAM are co-senior authors.

24 Corresponding Author: Paule V. Joseph, Ph.D., MS, FNP-BC, CTN-B, National Institute of
25 Nursing Research, National Institutes of Health, Department of Health, and Human Services, 1
26 Cloister Court, Bldg 60 Rm 270, Bethesda, MD 20892; paule.joseph@nih.gov

27

28 Manuscript Word Count:

29 Tables/Figures: 1/7

30 **Abbreviations**

31	FC	Fold Change
32	FDR	False Discovery Rate
33	GI	Gastrointestinal
34	PCA	Principal Component Analysis
35	PCoA	Principal Coordinate Analysis
36	PERMANOVA	Permutational Analysis of Variance
37	RA	Relative Abundance
38	S2	Two-strain (<i>Streptococcus thermophilus</i> and <i>Lactobacillus delbrueckii</i>)
39		Yogurt Group
40	S2+BB12	Two-strain (<i>Streptococcus thermophilus</i> and <i>Lactobacillus delbrueckii</i>)
41		plus <i>Bifidobacterium animalis</i> subsp. <i>lactis</i> strain BB-12 Yogurt Group
42	TMAO	Trimethylamine N-oxide

43

44

45 **Keywords:** probiotics; gut microbiome; *L. delbrueckii*; *B. animalis* BB-12; *S. thermophilus*;
46 metagenomics; metabolomics, children

47

48 **Trial Registration:** NCT001652287

49

50 **Abstract**

51 The consumption of probiotics may influence children's gut microbiome and metabolome, which
52 may reflect shifts in gut microbial diversity composition and metabolism. These potential
53 changes might have a beneficial impact on health. However, there is a lack of evidence
54 investigating the effect of probiotics on the gut microbiome and metabolome of children. We
55 aimed to examine the potential impact of a two (*Streptococcus thermophilus* and *Lactobacillus*
56 *delbrueckii*; S2) vs. three (S2 + *Bifidobacterium animalis* subsp. *lactis* strain BB-12) strain-
57 supplemented yogurt. Included in this study were 59 participants, aged one to five years old,
58 recruited to phase I of a double-blinded, randomized controlled trial. Fecal samples were
59 collected at baseline, after the intervention, and at twenty days post-intervention discontinuation,
60 and untargeted metabolomics and shotgun metagenomics were performed. Shotgun
61 metagenomics and metabolomic analyses showed no global changes in either intervention
62 group's gut microbiome alpha or beta diversity indices. The relative abundance of the two and
63 three intervention bacteria increased in the S2 and S2 + BB12 groups, respectively, from *Day*
64 *0* to *Day 10*. In the S2+BB12 group, the abundance of several fecal metabolites was reduced
65 at *Day 10*, including alanine, glycine, lysine, phenylalanine, serine, and valine. These fecal
66 metabolite changes did not occur in the S2 group. Future research using longer probiotic
67 intervention durations and in children at risk for gastrointestinal disorders may elucidate if
68 functional metabolite changes confer a protective gastrointestinal effect.

69

70

71

72

73

74

75

76

77

78 **Introduction**

79 The gut microbiome is comprised of the entire gastrointestinal (GI) microbial
80 community, including bacteria, fungi, viruses, and their genes. Metagenomic analysis captures a
81 comprehensive summary of the microbiome, *i.e.*, microbial diversity and their ecological niches
82 (microbial function). [1] Gut colonization starts prenatally and continues after birth. The gut
83 microbiome in early infancy begins to stabilize early in life. [2] Several mechanisms, including
84 birth mode, [3] type of milk received, [4] and environmental factors, [5] shape the development
85 of the gut microbiome from infancy to adulthood. The environment and diet during the first two
86 to five years turn an immature microbiota into a more stable, resilient, adult-like gut microbial
87 community. [5] The human gut microbiome influences nutritional absorption, immune health,
88 and behavior. [6] Pre-clinical and clinical studies suggest that the gut microbiota-immune system
89 crosstalk may be responsible for long-term health. [7, 8] Disruptions to a healthy gut microbiome
90 are observed during disease states and across chronic illnesses, including inflammatory and
91 immune disorders. [9-11]

92 Probiotics are defined by the International Scientific Association for Probiotics and
93 Prebiotics as “live microorganisms that, when administered in adequate amounts, confer a health
94 benefit on the host”. [12] Probiotics are increasingly used in commercial products because of
95 their potential benefits on the gut microbiota that have been shown to exert positive effects on
96 host physiology. [12, 13] The mechanism of action by which probiotics confer health benefits are
97 diverse and include: colonization and normalization of perturbed intestinal microbial
98 populations, competitive exclusion of pathogens, and modulation of the immune system via
99 production of anti-inflammatory factors. [14]

100 Probiotics have been used in treatment of GI symptoms and prevention or management of
101 GI disorders. Several studies have shown that probiotic strains from the *Bifidobacterium* genus
102 promote the growth of beneficial bacteria, inhibit pathogenic microorganisms by secreting
103 antibacterial factors, [15] competitive adhesion to intestinal epithelial cells [14] improve GI
104 barrier, [16, 17] promoting the formation of mucous layers maintaining of intestinal immune
105 homeostasis, [18] and lower inflammatory cytokines. [19] Moreover, consumption of
106 *Lactobacillus* and *Bifidobacterium* genera have been associated with improved mental health and
107 memory function in pre-clinical and human studies. [20-23]

108 There is increasing interest in using probiotics as a tool to maintain and restore a healthy
109 gut microbiota. While evidence supports their use in some GI diseases, the impact of probiotics
110 on healthy gut microbiota and its metabolism is still unclear in both adults and children. [24-27]
111 Few studies have examined the effect of probiotics in healthy adults, [26-28] and even fewer
112 have studied the effect of probiotics in healthy children. [29] Although *Bifidobacterium animalis*
113 subsp. *lactis* BB-12 (BB-12) is among the most common probiotic supplements and has
114 previously been demonstrated to be well-tolerated by healthy children, [30] there are limited
115 studies examining the effects of BB-12 on structural and functional characteristics of the gut
116 microbiome in children ages one to five years old. [30]

117 Metabolites produced by gut microorganisms have been identified in modulating human
118 health, including the immune system, metabolic, and neurobehavioral traits. [14, 21, 28, 31, 32]
119 Furthermore, emerging studies suggest that probiotics' effects on intestinal metabolites may
120 contribute to intestinal health and immune function. [32-36] Thus, there is growing interest in the
121 link between probiotic administration and the subsequent impact on metabolite changes in the
122 context of human health and disease. Shotgun metagenomics sequencing and untargeted

123 metabolomics technologies have grown exponentially in the last decade providing a key tool to
124 closer examine the microbial characterization, function, and metabolism in a sample (*e.g.*, fecal
125 or tissue samples). Therefore, metabolomics offers an efficient and accurate strategy of exploring
126 the biological role of how probiotics may impact the pediatric gut microbiome, including how
127 these metabolites respond to different combinations of symbiotic bacteria administration (*i.e.*,
128 *Bifidobacterium* vs. *Lactobacillus* spp. probiotic genera). [37]

129 Exploring the effect of probiotics on the gut microbiome and metabolome in healthy
130 children may provide more extensive insight into the relationship between probiotics, gut
131 microbiota, metabolites, and human health. This may aid in developing more effective methods
132 of assessing gut health by simultaneously characterizing the gut microbiome and functional
133 impacts of microbiome community changes on the metabolome. Furthermore, GI disorders are
134 among the most common ailments reported in pediatric primary care. Therefore, utilizing our
135 approach including microbiome and metabolome analyses to characterize structural and
136 functional responses of gut microbiota to two probiotics combinations (*Streptococcus*
137 *thermophilus* and *Lactobacillus delbrueckii* [S2] vs. *Streptococcus thermophilus*, *Lactobacillus*
138 *delbrueckii*, and *Bifidobacterium animalis* subsp. *lactis* strain BB-12 [S2+BB12]) in children is
139 an important first step to design future research evaluating the efficacy of probiotics in the
140 prevention of dysbiosis-associated GI disorders.

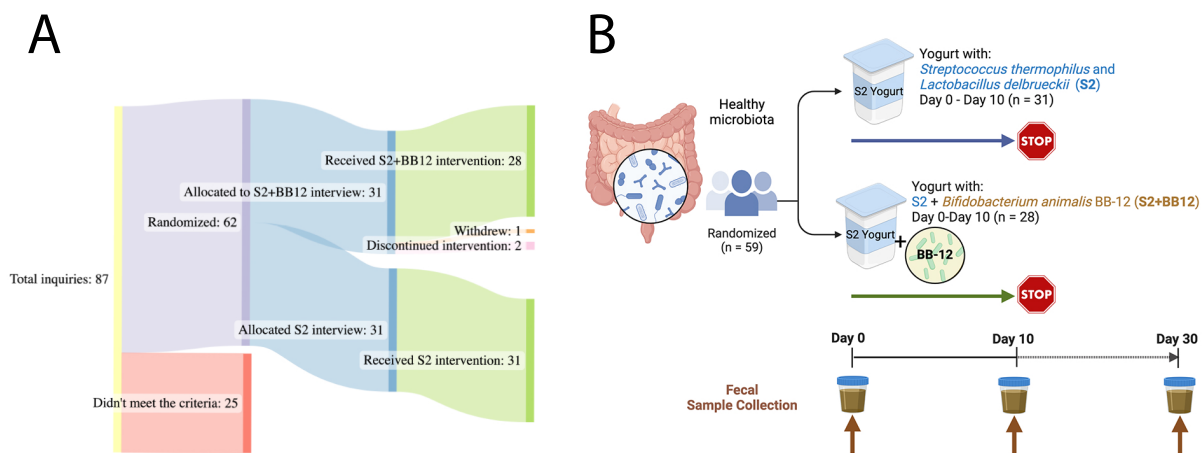
141 To date, few studies have been conducted to examine the effect of probiotics on gut
142 microbial compositional and functional structure combined with associated fecal metabolome
143 changes in healthy children. Thus, this study uses shotgun metagenomic sequencing and
144 untargeted fecal metabolomics to examine the effects induced by the consumption of yogurt with
145 and without the BB-12 probiotic strain (BB12) in healthy children aged one to five years old.

146 This study builds upon findings by Tan et al. [30] using shotgun metagenomics sequencing for
147 microbiome analysis and the integration of metabolomic data.

148 Results

149 Participant Characteristics

150 A total of 59 healthy participants between the ages of one and five years (mean age
151 =2.38±1.22) were included in the study (Figure 1A). The yogurt was administered to the
152 participants for ten consecutive days. Fecal samples were analyzed at baseline (*Day 0*), ten (*Day*
153 *10*), and 30 (*Day 30*) days from both S2+BB12 (n = 25, 28, and 25, respectively) and S2 (n = 31,
154 30, and 30, respectively) groups (Figure 1B).



155
156 **Figure 1:** Study Design: A total of 59 children, aged one to five years old, were analyzed for this double-
157 blinded, randomized controlled study (A). The participants consumed yogurt with two (S2 group) vs.
158 three (S2+BB12 group) probiotics' strains (B). The participants consumed yogurt during ten consecutive
159 days. Fecal samples were collected before the intervention (*Day 0*), after ten days of yogurt consumption
160 (*Day 10*), and after ten days of yogurt consumption discontinuation (*Day 30*).

161
162 Participants were relatively divided equally between males and females (n = 28 males
163 and n = 31 females). Most of the participants included were White (n = 40). Additional
164 demographic information from the included participants is displayed in Table 1.

165

166

Table 1. Participants demographics

		Overall n=59	S2 n=31	S2+BB12 n=28
Age	Mean (SD)	2.38 (1.22)	2.42 (1.21)	2.35 (1.26)
Gender (n)	Male	28	13	15
	Female	31	18	13
Race (n)	Indian/Alaskan	1		1
	Black or African	8	4	4
	White/Caucasian	40	17	23
	Other/more than one race	7	6	1
Ethnicity (n)	Hispanic/Latino	8	5	3

167

168 *Metagenomic analyses*

169 The administration of BB-12, in addition to *S. thermophilus* and *L. delbrueckii*,
170 influenced the composition of the gut microbiome, although there were no overt global
171 microbiome changes quantified by alpha and beta diversity indices. Species richness and
172 Shannon indices were not significantly different between the S2 and S2+BB12 groups at *Day 10*
173 ($p = .565$ and $p = .462$, respectively) or *Day 30* ($p = .669$ and $p = .104$, respectively; Figure 2A-
174 B). Similarly, there were no group differences in beta diversity (based on Bray-Curtis
175 dissimilarity) at *Day 10* ($R^2 = 0.02$, $p = .318$; Figure 2C) or *Day 30* ($R^2 = 0.02$, $p = .3537$; Figure
176 S1). These findings agree with previously reported results by Tan et al. using 16S rRNA analysis
177 [30].

178 We built upon these findings by using shotgun metagenomics, which allowed us to
179 observe differential abundant taxa at the species level. As expected, the metagenomic analysis
180 showed an increase of *B. animalis* in the S2+BB12 group. *B. animalis* abundance was
181 significantly impacted by the administration of the BB12 supplemented yogurt (group \times time $p <$

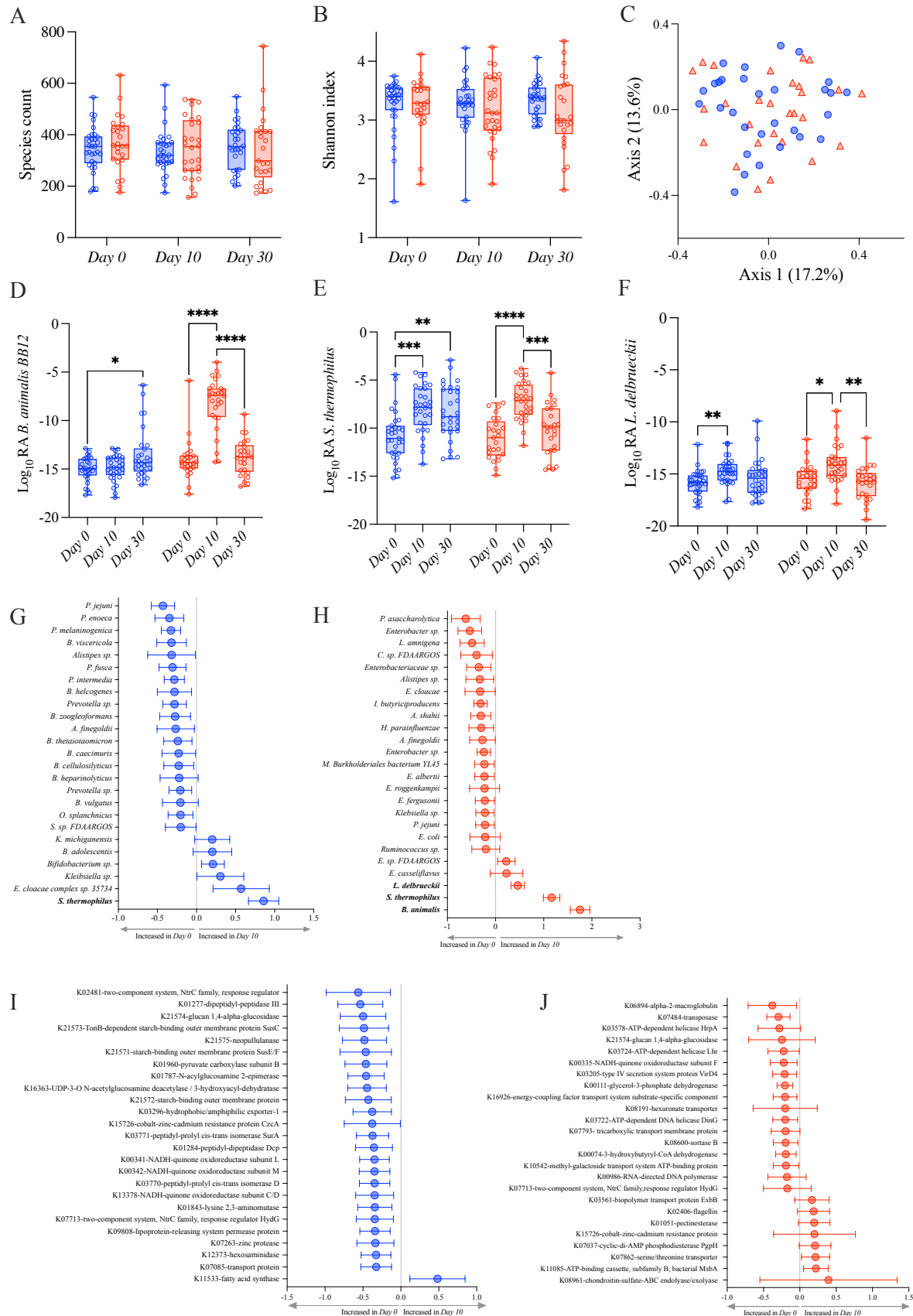
182 .001; Figure 2D). We observed an effect of time, but not group, in *L. delbrueckii* (time $p < .001$;
183 group $p = .405$). *S. thermophilus*'s relative abundance were significantly different in time and
184 group x time interaction (time $p < .001$; group $p = .349$; group x time $p = .020$) (Figure 2E-F). As
185 expected, *post hoc* testing showed in the S2+BB12 group a statistically significant increase
186 comparing *Day 0 vs. Day 10* in BB-12 ($p < .001$), *S. thermophilus* ($p < .001$), and *L. delbrueckii*
187 ($p = .018$) abundances. Similarly, *Day 10 vs. Day 30* comparison showed a statistically
188 significant decrease in BB-12 ($p < .001$), *S. thermophilus* ($p = .001$), and *L. delbrueckii* ($p =$
189 $.004$) abundances (Figure 2D-F). In the S2 group, we found statistically significant differences in
190 *Day 0 vs. Day 10* comparison of *S. thermophilus* ($p < .001$) and *L. delbrueckii* ($p = .005$)
191 abundances. Interestingly, BB-12 increased comparing *Day 0* to *Day 30* in the same group ($p =$
192 $.016$).

193 We then focused our analyses on within-group differences in both groups from *Day 0* to
194 *Day 10*, as both groups received a probiotic intervention (S2 vs. S2+BB12) and were healthy
195 children. The 25 taxa with the greatest change in relative abundance between *Day 0* and *Day 10*
196 were evaluated in order to observe the effect on individual microbial taxa following a ten-day
197 administration of two (S2) vs. three (S2+BB12) strains of probiotics. In addition to the
198 intervention bacteria that changed in the S2+BB12 group, we observed that the mean relative
199 abundance was lower than the control group for seven taxa belonging to *Prevotella* genus,
200 though the difference was not statistically significant after correction for multiple comparisons:
201 *P. intermedia* ($p = .999$), *P. melaninogenica* ($p = .574$), and *P. jejuni* ($p = .444$) (Figure 2G,
202 Supplemental Table 1). Other top changing bacteria S2+BB12 group were decreased relative
203 abundance in bacterial species from *Day 0* to *Day 10*, but they did not remain statistically

204 significant after FDR correction including *I. butyriciproducens* ($p = .999$), *Enterobacter sp. FY-*
205 *07* ($p = .999$), and *P. asaccharolytica* ($p = .999$; Figure 2H, Supplemental Table 1).

206 When we analyzed the differential abundance of gene orthologs, we found that the
207 relative abundance of the glucan 1,4-alpha-glucosidase and response regulator HydG genes
208 decreased from *Day 0* to *Day 10* in both groups, (Figure 2I-J). These differences were also not
209 statistically significant before or after FDR correction (Supplemental Table 1). Except for one
210 ortholog (fatty acid synthase [K11533]), all the 25 top changing gene orthologs were decreased
211 in the S2 group after ten days of probiotics administration, although these decreases were not
212 statistically significant (Figure 2I). An overall trend of decreased orthologs relative abundance
213 from *Day 0* to *Day 10* was similar in the S2+BB12 group, except for eight orthologs that had a
214 non-statistically significant increase following BB12 administration (Figure 2J).

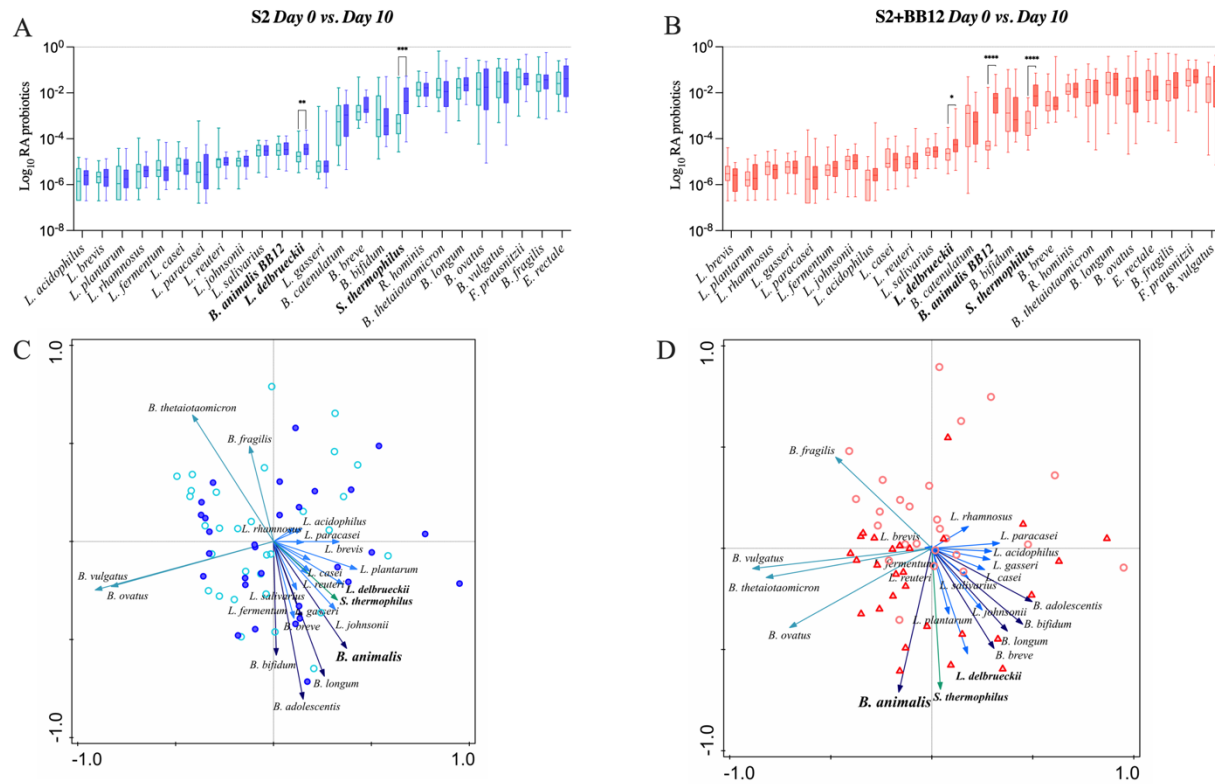
215



217 **Figure 2:** Observed species (A) and Shannon (B) alpha diversity indices showing no differences
218 comparing S2 (blue) and S2+BB12 (red) groups. PCoA based on Bray-Curtis dissimilarity followed by a
219 PERMANOVA ($p=.318$) showing no separation among samples. Relative abundances of the three strains
220 used in the S2 and S2+BB12 interventions: *B. animalis* (D), *S. thermophilus* (E), and *L. delbruekii* (F)
221 during time comparing S2 (blue) and S2+BB12 groups (red). Top 25 changing taxa (G-H) and gene
222 orthologs (I-J) between *Day 0* and *Day 10* in S2 (G-I) and S2+BB12 (H-J) groups identified by linear
223 model.

224

225 We selected 18 known probiotic strains identified through literature search (Supplemental
226 Table 2), to observe if the administration of two (S2) vs. three (S2+BB12) probiotic strains
227 would influence the abundance other known probiotics. Most of the identified probiotic-
228 associated taxa belonged to *Lactobacillus*, *Bacteroides*, and *Bifidobacterium* genera, and were
229 commonly used as probiotic supplements in the food industry or clinical trials (see Supplemental
230 Table 2 for references). We observed that the abundance of targeted probiotic-associated bacteria
231 increased from *Day 0* to *Day 10* in 61% (11/18) of selected taxa in the S2 group (Figure 3A) and
232 72% (13/18) of taxa in the S2+BB12 (Figure 3B) group, but most of the differences did not reach
233 statistical significance. Nevertheless, cumulative bacterial responses changes of probiotic-
234 associated bacteria differed according to intervention group. For example, we observed no
235 pattern in samples distribution in the S2 group (Figure 3C), while in the S2+BB12 group we can
236 observe a separation of *Day 0* vs. *Day 10* samples (Figure 3D). In the S2+BB12 group, many of
237 the *Day 10* probiotic-associated bacteria clustered with *B. animalis*, indicating similar response
238 to the probiotic (Figure 3D).



239

240 **Figure 3:** Relative abundances of selected probiotic taxa are plotted in S2 (A) and S2+BB12 (B)
 241 groups after ten days of probiotic intervention (*Day 0* vs. *Day 10*). Post-selection PCA shows selected
 242 probiotics following ten days of probiotics administration in S2 (C) and S2+BB12 (D) groups. The
 243 difference in *S. thermophilus* and *B. animalis* between *Day 0* and *Day 10* abundances are statistically
 244 significant different ($p < .0001$ for both) in S2+BB12 group. *Day 10* is represented by the darkest color all
 245 plots. In PCA, different arrows colors refer to different genera: Blue, light blue, dark green, and green
 246 represent *Bifidobacterium*, *Lactobacillus*, *Bacteroides*, and *Streptococcus* genera respectively. Each arrow
 247 points in the direction of the steepest increase of the values for the corresponding feature. The angle
 248 between arrows indicates the correlation between the different features (positive when the angle is sharp
 249 and negative when the angle is larger than 90 degrees). The length of the arrow is a measure of fit for the
 250 feature.

251

252 *Metabolomic analyses*

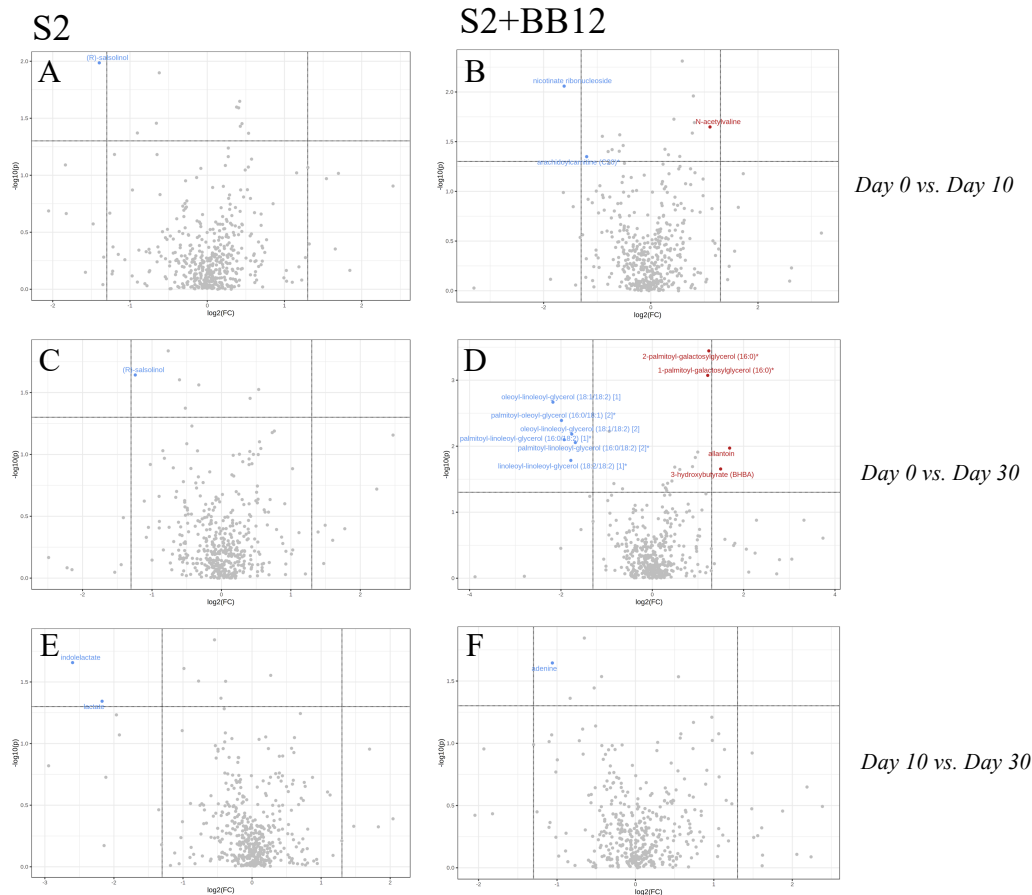
253 The untargeted metabolomic analysis identified 734 metabolites. To evaluate the impact
 254 of S2 vs. S2+BB12 probiotics on the metabolome, we performed both exploratory analyses
 255 quantifying differences in all annotated metabolites and hypothesis-driven metabolomics
 256 analyses focused on amino acid-associated and short chain fatty acid metabolites.

257 After excluding xenobiotics, we conducted exploratory metabolomic analyses on 601
258 biochemicals. We analyzed the differences between *Day 0 vs. Day 10*, *Day 10 vs. Day 30*, and
259 *Day 0 vs. Day 30* within the S2 and S2+BB12 groups (Supplemental Table 3). Metabolites
260 changes [t-test (raw p -value=.05) and FC analysis (threshold = 2)] comparing *Day 0 vs. Day 10*
261 and *Day 0 vs. Day 30* in S2 (Figure 4A, C, E) and S2+BB12 (Figure 4B, D, F) groups are
262 presented. We found greater changes in the S2+BB12 group compared to the S2 group (14 vs.
263 three metabolites). After ten days of yogurt consumption, we found an increase of N-acetylvaline
264 (raw p =.022 FC=2.151) and a decrease of arachidoylcarnitine (C20) * (raw p =.045 FC=.436) and
265 nicotinate ribonucleoside (raw p =.009 FC=.326). *Day 0 vs. Day 30* comparison exhibited several
266 changes in lipids decreased at Day 30 belonging to diacylglycerol metabolism: linoleoyl-
267 linoleoyl-glycerol (18:2/18:2) [1]* (raw p =.016 FC=0.29), palmitoyl-linoleoyl-glycerol
268 (16:0/18:2) [2]* (raw p =.009 FC=.311), palmitoyl-linoleoyl-glycerol (16:0/18:2) [1]* (raw
269 p =.008 FC=.263), oleoyl-linoleoyl-glycerol (18:1/18:2) [2] (raw p =.007 FC=.295), palmitoyl-
270 oleoyl-glycerol (16:0/18:1) [2]* (raw p =.004 FC=.252), and oleoyl-linoleoyl-glycerol (18:1/18:2)
271 [1] (raw p =.002 FC=0.221). The glycerolipids 2-palmitoyl-galactosylglycerol (16:0)* (raw
272 p <.001 FC=2.358) and 1-palmitoyl-galactosylglycerol (16:0)* (raw p =.001 FC=2.319), were
273 increased together with 3-hydroxybutyrate (BHBA) (raw p =.022 FC=2.821). Comparing *Day 10*
274 vs. *Day 30*, we found adenine decreased at *Day 30* (raw p =.023 FC=0.48).

275 In the S2 group, the amino acid (R)-salsolinol was decreased after ten days of
276 intervention (*Day 0 vs. Day 10*) (raw p =.01 FC=.38) and 20 days after yogurt consumption
277 discontinuation (*Day 0 vs. Day 30*) (raw p =.023 FC=.423). Lactate and indolelactate were also
278 decreased looking at *Day 0 vs. Day 30* comparison (FC=0.222, raw p =.045 and FC=0.165, raw

279 $p = .022$, respectively). PCA of untargeted metabolites showed no separation between the time
280 points in any group (Supplemental Figure S2 A-F).

281



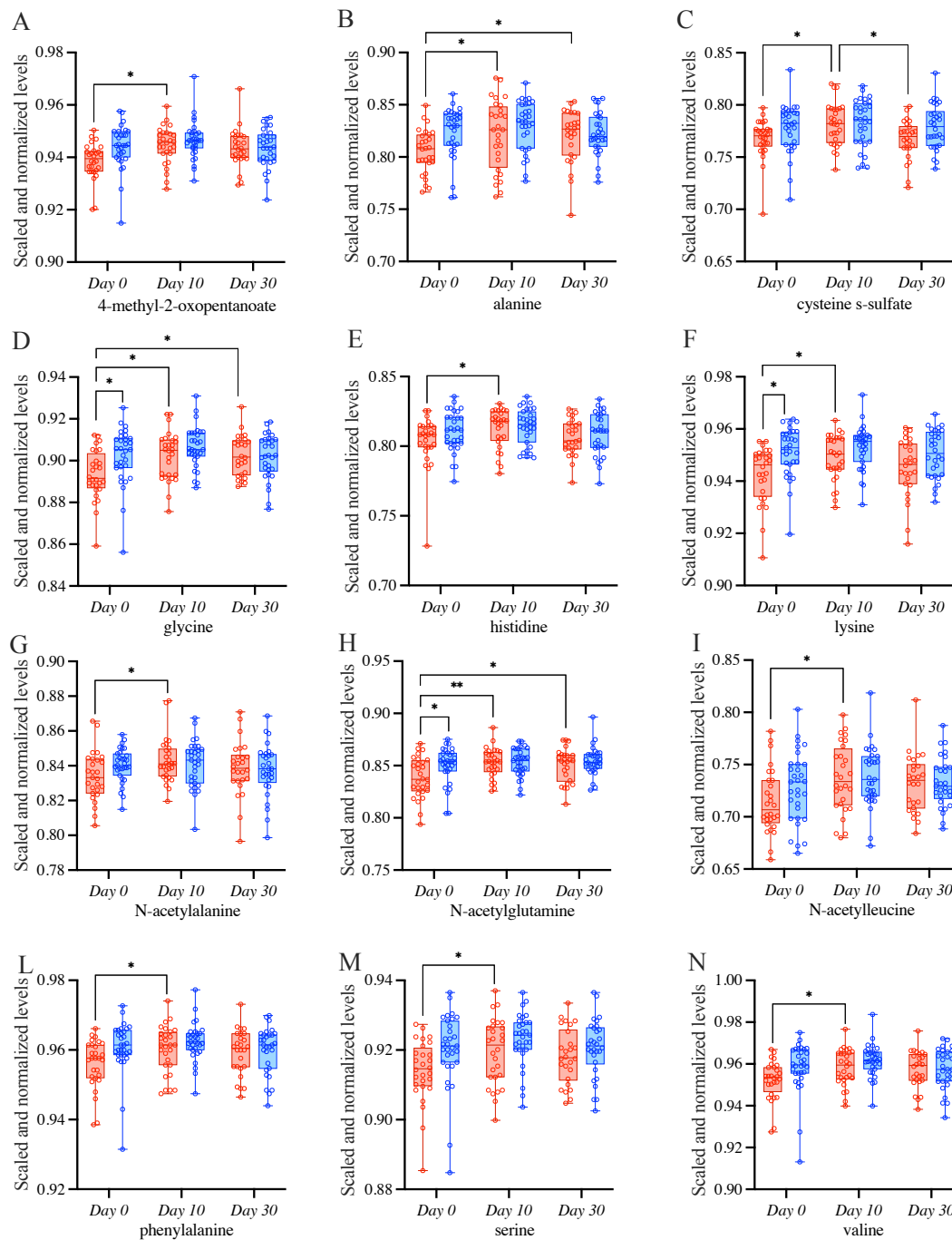
282

283 **Figure 4:** Volcano plot ($p < .05$, $FC > 2$) comparing *Day 0 vs. Day 10* (A, B), *Day 0 vs. Day 30*
284 (C, D), and *Day 10 vs. Day 30* (E, F) within S2 and S2+BB12 respectively. Metabolites in red/blue
285 represent metabolites increased/decreased at *Day 10* (A, B) and *Day 30* (C-F).

286

287 Next, we focused on evaluating differences in specific metabolites associated with amino
288 acid metabolism or biosynthesis, as we hypothesized that they would be impacted by probiotic
289 intervention and associated with the gut microbiome in both groups. There were several amino-
290 acid associated metabolites that differed as a result of time in both groups (Supplemental Table
291 4) including 3-methyl-2-oxobutyrate ($p = .004$), 3-methyl-2-oxovalerate ($p = .025$), alanine

292 ($p=.001$), glutamate ($p=.034$), isoleucine ($p=.020$), and valine ($p=.004$), among others.
293 Conversely, glycine ($p=.025$), indolelactate ($p=.034$), N-acetylserine ($p=.049$), and
294 pyroglutamine ($p=.007$) had significant group x time effects as a result of the S2 and S2+BB12
295 probiotic interactions (Supplemental Table 4). In the S2+BB12 group, average fecal metabolite
296 abundances of 4-methyl-2-oxopentanoate, alanine, cysteine s-sulfate, glycine, histidine, lysine,
297 N-acetylalanine, N-acetylglutamine, N-acetylleucine, phenylalanine, serine and valine were
298 significantly lower at *Day 10* (versus baseline *Day 0*; Figure 5 A-N). Alanine, glycine, and N-
299 acetylglutamine metabolite levels continued to be lower twenty days after the S2+BB12
300 probiotic was discontinued (*Day 30*) versus baseline (Figure 5B, D, H), while fecal cysteine s-
301 sulfate levels increased back to baseline levels after probiotic discontinuation.
302

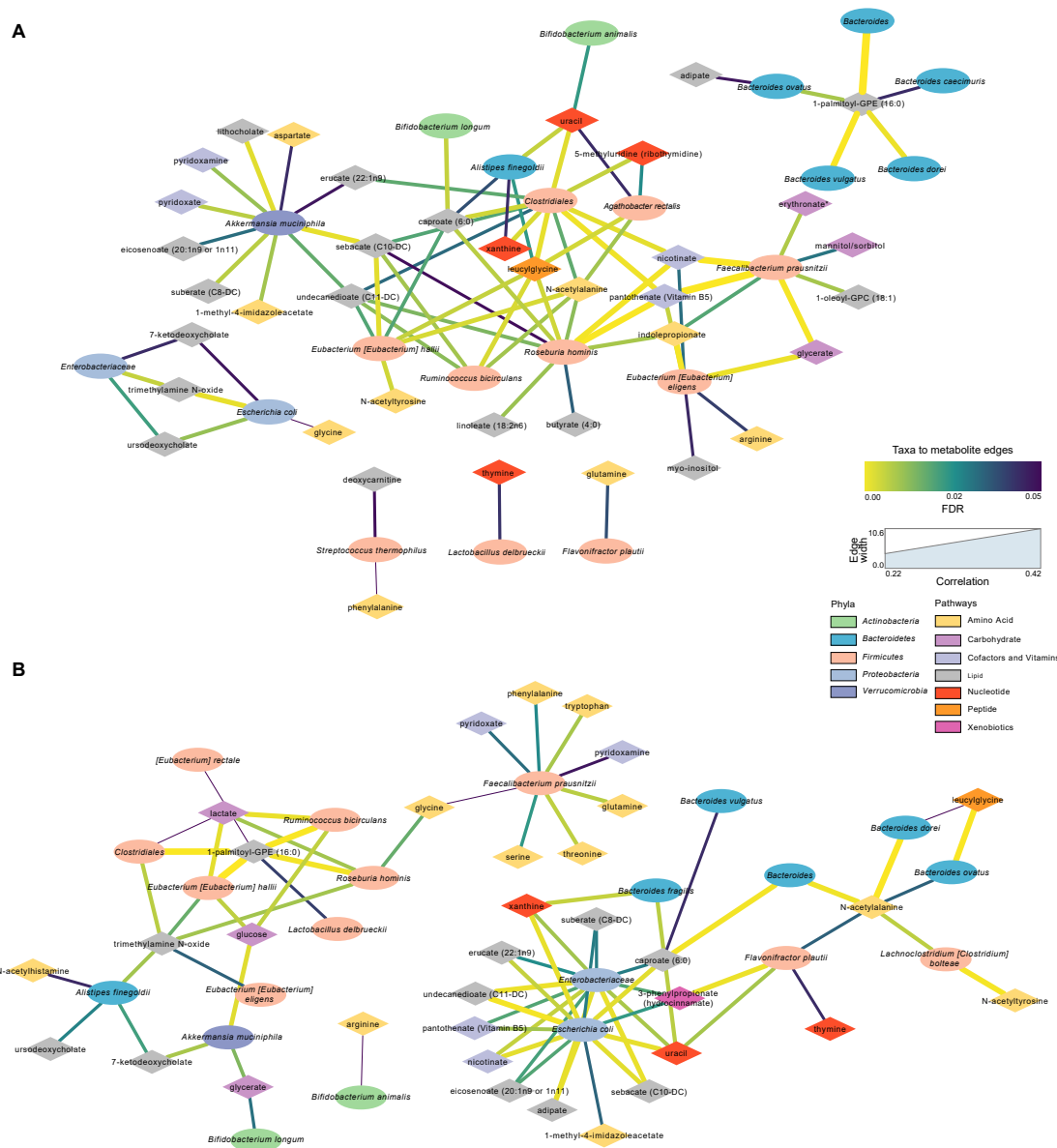


303

304 **Figure 5.** Targeted metabolomic analysis on amino acids was used to study the differences comparing
 305 *Day 0 vs. Day 10, Day 0 vs. Day 30, and Day 10 vs. Day 30* within S2 (blue) and S2+BB12 (red) groups.
 306 Linear mixed-effects model followed by post hoc pairwise testing with Tukey's correction (when
 307 appropriate) were performed. All mixed model results of selected amino acid-associated metabolites and
 308 post hoc testing results (when group, time, or group * time model results were significant) are listed in
 309 Supplemental Table 3.
 310

316 **Figure 6:** Heatmap representing FDR corrected correlations between microbial taxa and metabolites in S2
317 and S2+BB12 groups. Red and blue represent negative and positive correlations respectively. Stars
318 indicate FDR values: * = FDR < .05, ** = FDR < .01, and *** = FDR < .001.
319

320 Metabolites that were significantly positively correlated with Enterobacteriaceae and
321 *Escherichia coli* included trimethylamine N-oxide (TMAO), ursodeoxycholate, 7-
322 ketodeoxycholate, and glycine (Figure 7). Other taxa that had multiple significant positive
323 associations with metabolites included *Akkermansia muciniphila*, *Eubacterium hallii*, *Roseburia*
324 *hominis*, and Clostridiales. Of the supplemented probiotic bacteria, *B. animalis* was positively
325 associated with uracil, *S. thermophilus* with deoxycarnitine and phenylalanine, and *L. delbrueckii*
326 with thymine. Known products of bacteria such as nicotinate (vitamin B3), pantothenate (vitamin
327 B5) correlated positively with Clostridiales, *R. hominis*, *F. prausnitzii*, and *E. eligens* (Figure
328 7A).



329

330 **Figure 7. Significant microbial taxa and metabolite associations:** Network analyses in samples across
 331 *Day 0*, *Day 10*, and *Day 30* within S2 and S2+BB12 groups. **A.** Network generated from microbial taxa
 332 (ellipses) that passed filtering and microbial-associated metabolites (diamonds) identified from previous
 333 work [38] showing only positive correlations. **B.** Same network but showing only negative correlations.
 334 Width of edges is proportional to Spearman correlation coefficient and edge color is mapped to the FDR
 335 value or the correlation test. All correlations between selected taxa and metabolites and statistical
 336 significance testing results are listed in **Supplemental Table 5**.
 337

338 Several amino acids correlated negatively with *F. prausnitzii* and *R. hominis*, including
 339 glutamine, lactate, threonine, tryptophan and TMAO (Figure 7B). Lactate was also negatively

340 associated with *A. rectalis*, *R. bicirculans*, *E. hallii*, and Clostridiales; glucose with *R.*
341 *bicirculans*, *E. hallii*, and *A. muciniphila*; and glycerate with *A. muciniphila* and *B. longum*.
342 Among the probiotics of interest, *B. animalis* correlated negatively with arginine and *L.*
343 *delbrueckii* with 1-palmitoyl-GPE (16:0). Uracil was positively associated with Clostridiales, *A.*
344 *fingoldii*, and *E. rectale*. Uracil was also negatively correlated with *B. dorei*, *F. plautii*,
345 Enterobacteriaceae and *E. coli*.

346

347 **DISCUSSION**

348 This randomized, controlled study aimed to observe the differences following the
349 administration of yogurt supplemented with two (S2) vs. three (S2+BB12) probiotic strains in
350 healthy children. We studied probiotics consumption effects on the fecal microbiome and
351 metabolome comparing baseline, post-ten days (*Day 10*), and post-30 days (*Day 30*) following
352 yogurt administration. There were no significant differences in the global metagenomic or
353 metabolomic profiles between healthy children receiving two (S2) vs. three (S2+BB12) probiotic
354 strains for 10 days. Nevertheless, we observed a significant increase (*Day 0* to *Day 10*) in the
355 relative abundance of the two and three probiotics administered in the S2 and S2+BB12 groups,
356 respectively, indicating the intervention had a measurable impact on the bacteria of interest in the
357 gut microbiome. Interestingly, in the S2 group, *S. thermophilus* species appear to maintain a
358 sustained increase over time, maintaining the significant increase in relative abundance from *Day*
359 *0* vs. *Day 30*. As both cohorts of children received a probiotic cocktail and the intervention lasted
360 over a short period of time, the lack of strong association between groups in global microbiome
361 changes is not surprising and suggests a resilient and stable gut microbiota in this cohort of
362 healthy children ages one to five. Nevertheless, existing literature reports about infant's and

363 children's gut microbiota stability are conflicting. [39] [2] Infant and children's gut microbiota
364 are thought to be immature and therefore more susceptible to perturbations. In line with other
365 studies [40, 41] our data show short-term effects of probiotic administrations in both groups on
366 the gut microbiome and metabolome. The children's gut microbiota stability observed in this
367 study is consistent with the parent study's findings. [30]

368 Most studies examining the health benefits of probiotics have focused on people with
369 pathologies. However, few studies have examined the effects of probiotics on healthy individuals
370 and even fewer have examined the use of probiotics in children. A review of probiotic
371 supplementation in healthy adults found that probiotic supplementation led to a transient increase
372 in the concentration of supplement-specific bacteria but failed to support the ability of probiotics
373 to cause persistent changes in gut microbiota. [42] This is consistent with our results finding a
374 significant increase in the concentration of the supplement-specific bacteria BB-12, following ten
375 days of BB-12 supplementation. Importantly, as reported in adults, these results were temporary.
376 On *Day 30* (20 days following the termination of the BB-12 supplementation), there were no
377 significant differences in the concentration of BB-12 in the S2+BB12 group.

378 As yogurts and other dairy products commonly supplemented with probiotics often
379 possess other beneficial characteristics, such as a high calcium content, these properties of
380 probiotics could allow consumers to benefit from the nutritional components without risking
381 disruption to their microbiota and health. This potential beneficial shift to probiotic-associated
382 bacteria that we demonstrated in the S2+BB12 group (Figure 3) supports the theory that a
383 probiotic intervention may provide a net positive contribution to the gut microbiome ecosystem
384 without conferring strong effects on specific individual bacteria. These findings are also
385 consistent with the concept of emergent properties which postulates that individual properties

386 cannot entirely be explained by their individual components. [43] Therefore, in the context of the
387 current study, although no significant differences following the interventions were observed,
388 there was a global shift towards the increase of bacteria belonging to *Bifidobacterium* and
389 *Lactobacillus* genera, commonly used probiotics. The combined effects of these bacteria could
390 have more functional implications and protective effects than individual bacterial changes
391 supporting the use of probiotics to prevent gastrointestinal disorders in children, although more
392 research is needed to validate this notion.

393 Species belonging to *Bifidobacterium* genus were highly abundant in both groups at the
394 three time points. Bifidobacteria are highly represented in children, as they use milk
395 oligosaccharides as a carbon source and to restrict human milk oligosaccharides availability to
396 other microorganisms [44]. In addition to the parent study findings, our metagenomic approach
397 allowed a low-level taxonomic affiliation, revealing differences among species belonging to the
398 same genus as in the case of *Bifidobacterium*. It explains why *Bifidobacterium* genus was not
399 among the differentially abundant species in the previous study, *i.e.*, because different
400 *Bifidobacterium* species were abundant in the experimental group (S2+BB12) and in the control
401 group S2 (*e.g.*, *B. catenulatum*, *B. pseudocatenulatum*). Additionally, this metagenomic approach
402 adds to the existing literature of the genomic potential of the microbial community underlying
403 microbiome-host interactions.

404 Because the fecal metabolome is influenced by different factors, these changes could
405 reflect shifts of dietary intake, digestion, microbial degradation, and host absorption. When we
406 analyzed the fecal metabolome and microbial diversity using both participant groups, we found
407 associations between metabolites (*e.g.*, uracil, deoxycarnitine, and thymine) and microorganisms.
408 Uracil was positively associated with Clostridiales family, *A. finegoldii*, *B. animalis*, and *E.*

409 *rectale*. *B. dorei*, *F. plautii*, Enterobacteriaceae family, and *E. coli* were negatively correlated
410 with uracil. During infections, the immune response triggered by uracil promotes pathogen
411 bacteria elimination, intestinal cell repair, and host homeostasis. [45] Thymine was positively
412 associated with *L. delbrueckii*, the probiotic used in both interventions, and negatively correlated
413 to *F. plautii*. Thymine was found to accelerate microbial metabolisms and ROS production
414 improving antibiotic efficacy both *in vitro* and *in vivo*. [46] Deoxycarnitine, positively associated
415 with *S. thermophilus*, was linked to increased intestinal permeability. [47] This suggests that the
416 fecal metabolome may influence gut immune function, permeability, and homeostasis.

417 A strength of our study is that it was a randomized, blinded controlled trial conducted on
418 children ages one to five years old, an age group that is rarely studied in probiotic research.
419 Additionally, we incorporated and integrated both metagenomic and metabolomic analyses to
420 characterize the effect of BB-12 supplemented yogurt on the children's gut-microbiome and
421 metabolism. This unique integration allowed us to test more system-wide and functional effects
422 on the gut microbiome as a result of two probiotic interventions, providing more comprehensive
423 data on gut health. However, this study examined short-term changes of probiotics over a ten-day
424 period, and more studies should be conducted to investigate the long-term effects on probiotic
425 consumption in this age group. Additionally, we did not incorporate information of dietary intake
426 in the current analysis.

427 More studies are needed to elucidate the mechanistic pathways by which probiotics such
428 as BB-12 can affect mucosal barrier functions and innate immunity. Future studies should
429 expand upon the findings presented in this double-blinded, randomized controlled trial and
430 examine the interplay of diet and probiotics on metabolites and microbiota in children.
431 Additionally, further research is needed to investigate environmental factors that influence the

432 impacts of probiotics on children's health status and behavior. The long-term supplementation
433 BB-12 on this population and its longitudinal effects during development should also be
434 examined. This would allow for more in-depth knowledge of the impact that probiotics have on
435 gut microbial communities in developing children as they age. Additionally, future research in
436 children at risk for gastrointestinal disorders may elucidate if these functional metabolite changes
437 as a result of S2+BB12 probiotic intervention confer a protective gastrointestinal effect.

438 In conclusion, the results from this deep metagenomic and metabolomic characterization
439 of the gut microbiome and metabolome of children following BB-12 consumption did not show
440 significant differences between the groups, although net positive emergent property effects were
441 witnessed in the S2+BB12 group over time. The functional redundancy in healthy microbial
442 systems and metabolic stability reflects no changes in the microbial diversity, although we did
443 observe a separation effect in the S2+BB12 group as a result of the three-strain intervention
444 when we focused on probiotic-associated and beneficial bacteria reported the literature. Our
445 study validated previous results from Tan *et. al* and allowed a more in-depth taxonomic
446 characterization of the microorganisms, their genes, and their metabolites. We detected higher
447 abundances of two of the probiotic intervention bacterial taxa (*B. animalis* and *S. thermophilus*)
448 in study subjects receiving the based S2 probiotic intervention + BB12, but no individual
449 taxonomic changes occurred in the S2 only group. Finally, although we did not see global fecal
450 metabolome response to either probiotic, several fecal metabolites were decreased in the
451 S2+BB12 group, indicating a net functional impact of the addition of BB12 to the probiotic
452 intervention. Future research replicating these results across different patient populations will
453 confirm the therapeutic use of BB12 as a probiotic intervention to exert beneficial impacts on the
454 pediatric gastrointestinal system.

455

456 **Materials and Methods**

457 *Study Design, Participants, and Setting*

458 Participants ages one to five years old were recruited through the Capital Area Primary
459 Care Research Network for phase I of a double-blinded, randomized controlled study (protocol
460 NCT001652287). Participants included in this study were children whose parents/caregivers
461 were able to read, write, and speak either English or Spanish and had access to a telephone and
462 refrigerator. Eligible participants provided written informed consent were enrolled and
463 randomized as described by Tina et al to either the BB-12[®] or control yogurt drink by family
464 cluster. The study protocol was approved by the Georgetown University Institutional Review
465 Board (IRB No. 2012-1112, Washington, DC). The independent Data Safety Monitoring Board
466 reviewed the protocol before study initiation and checked adverse event data at approximately
467 33%, 50% and 66% data completion. Additional monitoring was conducted by the FDA/CBER,
468 under IND#13691 and the National Institutes of Health (NIH), National Center for
469 Complementary and Integrative Health (NCCIH), including its Office of Clinical and Regulatory
470 Affairs. Participants' eligibility criteria are described in Tan et al., [30] which included the
471 absence of lactose intolerance and chronic conditions, such as diabetes and asthma. The
472 participants were asked not to consume any products containing probiotics for 14 days before
473 initiating the yogurt intervention and throughout the entire intervention period. The base yogurt
474 was prepared with live starter cultures of *Streptococcus thermophilus* and *Lactobacillus*
475 *delbrueckii* probiotics (referred to as the two strain [S2] yogurt group), as described in Tan et al.
476 [30]. At baseline, the children were randomized into two groups called S2 or S2+BB12.
477 Participants in the S2 group (n = 31) were administered 112 g of the base yogurt beverage
478 (containing *Streptococcus thermophilus* and *Lactobacillus delbrueckii* only). In contrast,

479 participants in the S2+BB12 group (n = 28) were administered the base yogurt beverage, with an
480 additional 1×10^{10} colony-forming units of BB12 per serving per day. The yogurt was
481 administered to the participants for ten consecutive days.

482 **Sample Collection and Processing**

483 Fecal samples were collected at baseline (*Day 0*), following ten days of yogurt
484 consumption (*Day 10*), and 20 days following discontinuation of yogurt administration (*Day 30*),
485 and immediately stored after collection at -80°C . Samples from days zero, ten and 30 were then
486 thawed, and approximately 100 mg of the samples were sent to Microbiome Center of the
487 Children's Hospital of Philadelphia (n = 169) for microbiome analysis and another 100mg were
488 sent to Metabolon Inc. (Morrisville, NC, USA; n = 174) for metabolomic analyses.

489 ***Metagenomic profiling***

490 The DNA used for the metagenomic analysis was extracted using the DNeasy PowerSoil
491 Kit (Qiagen, Hilden, Germany) and quantified with the Quant-iT PicoGreen Assay Kit
492 (Molecular Probes). Shotgun libraries were generated from 0.5ng DNA using the Nextera XT
493 Library Prep Kit (Illumina, San Diego, CA, USA) and libraries were sequenced on an Illumina
494 HiSeq 2500 in High Output mode to produce paired-end 125bp sequence reads. Extraction
495 blanks and nucleic acid-free water were processed along with experimental samples to
496 empirically assess environmental and reagent contamination. A laboratory-generated mock
497 community consisting of DNA from *Vibrio campbellii* and Lambda phage was included as a
498 positive sequencing control.

499 ***Metabolomic analysis***

500 The metabolomic analysis was performed using untargeted ultra-performance liquid
501 chromatography-tandem mass spectrometry (UPLC/MS/MS, Waters ACQUITY, Milford, MA,

502 USA), as described previously [48]. Briefly, the fecal samples were prepared using the
503 automated MicroLab STAR system (Hamilton Company, Franklin, MA, USA) and extracted at a
504 constant per-mass basis. Proteins were removed using methanol precipitation (Glen Mills
505 GenoGrinder 2000), followed by centrifugation. The samples were processed using four
506 methods: reverse phase (RP)-UPLC/MS/MS with electrospray ionization (ESI), in both positive
507 (optimized for hydrophilic and hydrophobic compounds, respectively) and negative modes, and
508 hydrophilic interaction chromatography (HILIC)-UPLC/MS/MS-ESI in negative ion mode. The
509 raw UPLC/MS/MS data were integrated into ion peaks organized by mass, retention time/index,
510 and peak area. Metabolites were annotated by comparison of individual spectra to a standard
511 reference library, and area-under-the-curve analysis was performed for peak quantification.

512 ***Statistical Analysis***

513 For gut microbiome and metabolome analyses, we studied within and between group
514 differences after ten days of probiotic consumption (*Day 10*) and 20 days post probiotic
515 discontinuation (*Day 30*). Shotgun metagenomic data were analyzed using Sunbeam. [49] The
516 abundance of bacteria was estimated using Kraken. [50] Taxa that were above 0.1% abundance
517 in any sample were used for differential abundance testing, and differential abundance analysis
518 was performed using linear models of Log₁₀ transformed relative abundances. Reads were
519 mapped to the KEGG database [51] using Diamond [52] to estimate the abundance of bacterial
520 gene orthologs. Alpha diversity within samples in the S2 and S2+BB12 groups were assessed by
521 computing the expected number of species at a sequencing depth of 1,000 reads and the Shannon
522 index. To evaluate community-level differences between S2 and S2+BB12 group fecal samples,
523 beta diversity was calculated using Bray-Curtis dissimilarity matrices, visualized using Principal

524 Coordinates Analysis (PCoA) plots, and relationships within and between S2 and S2+BB12
525 groups were compared using the PERMANOVA test.

526 The top 25 most abundant bacterial taxa and gene orthologs from shotgun metagenomics
527 sequencing were selected using linear models to evaluate the taxa with greatest estimated change
528 in Log_{10} transformed relative abundance for the given comparison. Probiotic-associated bacteria,
529 previously demonstrated to be short chain fatty acid (SCFA)-producers and beneficial for GI
530 health, [53] were determined from the literature (Supplemental Table 2). The impact of the S2 vs.
531 S2+BB12 probiotic strains on overall probiotic-associated bacterial relative abundance was
532 additionally measured and visualized by CANOCO version 5 [54] in a post-selection PCA to
533 evaluate the effect of targeted probiotic strain administration on bacterial responses of taxa
534 known to be linked to gut microbiome health.

535 Exploratory and hypothesis-driven metabolite analyses were performed with untargeted
536 metabolite data processed by Metabolon Inc. using MetaboAnalyst 5.0
537 (<https://www.metaboanalyst.ca/>)[55] and R. [56] Metabolites with 20% or more missing values
538 were excluded from the exploratory analyses. Missing values, if any, were imputed as 1/5 of the
539 minimum positive value of each feature. Metabolite values were median-scaled and Log_{10}
540 transformed. Wilcoxon rank-sum test, fold change (FC) analyses (FC threshold = 2), and
541 Principal Component Analysis (PCA) were performed to analyze differences between *Day 0 vs.*
542 *Day 10, Day 0 vs. Day 30, and Day 0 vs. Day 30* within the S2 and S2+BB12 groups and
543 between groups within each time point.

544 Hypothesis-driven metabolite analyses were additionally performed in metabolites
545 associated with the amino acid super pathways (*i.e.*, glycine, serine and threonine metabolism,
546 alanine and aspartate metabolism, *etc.*), and SCFAs, as these metabolites are strongly associated

547 with gut microbial community characteristics. [9] Linear mixed-effects model followed by *post*
548 *hoc* pairwise testing (when appropriate) and Tukey's correction were performed in JMP
549 statistical analysis platform. [57]

550 To create a network of metabolite-taxa correlation pairs, filtering was applied to
551 metabolites as above as well as restricting to bacterial substrates and products based on previous
552 work [58]. Briefly, metabolite substrates were defined as those that were increased after
553 treatment with antibiotics and products were those that decreased. [38] Microbial taxa at the
554 species level were filtered to include taxa present at > 0.01% mean relative abundance and taxa
555 that changed in the S2+BB12 treatment group (*i.e.*, *Lactobacillus delbrueckii*, *Streptococcus*
556 *thermophilus*, and BB-12). Spearman correlation testing was then performed on each microbe-
557 metabolite pair with FDR correction applied to p-values. Network diagrams of bacteria and
558 metabolites were generated using Cytoscape v3.9.1. [59] Metabolites that significantly correlated
559 with *L. delbrueckii*, *S. thermophilus*, and BB-12 were additionally tested for intervention-
560 associated change over time. Statistical significance was defined as *p*-values or FDR corrected *p*-
561 values < .05 for all statistical analyses.

562

563

564

565

566

567

568

569

570 **Figures and Tables:**

571 Figure 1AB = Study Design and Intervention

572 Figure 2AJ = Metagenomic results

573 Figure 3AD = Other Probiotics Comparison

574 Figure 4 AF = Metabolite Volcano Plots

575 Figure 5AN = Selected Metabolites Analysis

576 Figure 6 = Heatmap Microbiome/Metabolome

577 Figure 7AB = Network Analysis (Metagenomics/Metabolomics)

578

579 Figure S1 = Metagenomics PCoA Day 30

580 Figure S2 = Metabolite PCA

581 Table 1 = Participants Demographics

582

583 Supplemental table 1 = Top_25_linear_model_KEGG

584 Supplemental table 2 = Probiotics selection

585 Supplemental table 3 = Metabolites and Pathways Volcano plot

586 Supplemental table 4 = Selected_metabolite_model_results

587 Supplemental table 5 = Table_S5_26_taxa_to_479_metab_correlations

588 Supplemental table 6 = Table_S6_26_taxa_to_79_metab_network

589

590 **Acknowledgements:** The authors would like to thank Dr. Joan Austin for her review and edits
591 and Dr. Jennifer J. Barb for bioinformatics consultative support. A special thanks to the
592 participants of this study and the Georgetown Microbiome Group.

593 **Author contributions:**

594 Concept and design: Drs. Merenstein and Joseph

595 Acquisition of data, sample processing: Tan, Dr. Merenstein, Ms. Franks, Ms. Brooks

596 Statistical Analysis, or interpretation of data: Dr. Vizioli, Ms. Franks, Dr. Daniel, Dr. Bittinger,
597 Dr. Jaime-Lara, Dr. Maki, Dr. Joseph

598 Drafting of the manuscript: Dr. Vizioli, Dr. Diallo, Ms. Franks, Ms. Brooks, Dr. Jaime-Lara, Dr.
599 Maki, Dr. Joseph

600 Critical revision of the manuscript for important intellectual content: Dr. Diallo, Dr. Merenstein,
601 Dr. Tan, Brooks, Dr. Joseph, Dr. Scott, Dr. Bittinger

602 Administrative, technical, or material support: Dr. Joseph

603 Obtained funding: Drs. Joseph & Merenstein

604 Study supervision: Drs. Merenstein & Joseph

605 **Competing interest declaration:** D.J.M. previously served as a paid expert Howard University
606 and Bayer. D.J.M. has done legal work for Visniome VSL#3, Golo for Life and President of the
607 International Scientific Association for Probiotics and Prebiotics (ISAPP) board. The remaining
608 authors have no conflicts of interest to declare.

609 **Role of study sponsors:** The funding sources had no role in the design and conduct of the study;
610 collection, management, analysis, and interpretation of the data; preparation, review, or approval
611 of the manuscript; and decision to submit the manuscript for publication.

612 **Funding/support:** PVJ is supported by National Institute of Alcohol Abuse and Alcoholism
613 under award number, Z01AA000135, the National Institute of Nursing Research and the
614 Rockefeller University Heilbrunn Nurse Scholar Award. PVJ is supported by the Office of
615 Workforce Diversity, and the Office of Workforce Diversity, National Institutes of Health
616 Distinguished Scholar Program. Intramural Research Training Award (to ATF, RJJ, and BEB).
617 RJJ is supported by the Center of Compulsive Behaviors Fellowship, National Institutes of
618 Health. Funding from Dannon to Tan, T.P., & Merenstein, D.J., the Department of Family
619 Medicine, Georgetown University Medical Center, Washington, DC. KAM is supported by
620 intramural research funds at the National Institutes of Health, Clinical Center.

621 **Data availability:** All data produced in the present study are available upon reasonable request
622 to the authors. Data was also submitted to SRA under project number PRJNA929986.

623 **Author's Note:** The content is solely the responsibility of the authors and does not necessarily
624 represent the official views of the National Institutes of Health.

625

References

- 626 1. Wang, W.L., et al., *Application of metagenomics in the human gut microbiome*.
627 World J Gastroenterol, 2015. **21**(3): p. 803-14.
- 628 2. Bäckhed, F., et al., *Dynamics and Stabilization of the Human Gut Microbiome*
629 *during the First Year of Life*. Cell Host Microbe, 2015. **17**(5): p. 690-703.
- 630 3. Yuan, C., et al., *Association Between Cesarean Birth and Risk of Obesity in*
631 *Offspring in Childhood, Adolescence, and Early Adulthood*. JAMA Pediatr, 2016.
632 **170**(11): p. e162385.
- 633 4. Mayer-Davis, E.J., et al., *Breast-feeding and risk for childhood obesity: does*
634 *maternal diabetes or obesity status matter?* Diabetes Care, 2006. **29**(10): p.
635 2231-7.
- 636 5. Yatsunencko, T., et al., *Human gut microbiome viewed across age and*
637 *geography*. Nature, 2012. **486**(7402): p. 222-7.
- 638 6. Jungersen, M., et al., *The Science behind the Probiotic Strain Bifidobacterium*
639 *animalis subsp. lactis BB-12((R))*. Microorganisms, 2014. **2**(2): p. 92-110.
- 640 7. Kostic, A.D., et al., *The dynamics of the human infant gut microbiome in*
641 *development and in progression toward type 1 diabetes*. Cell Host Microbe,
642 2015. **17**(2): p. 260-73.
- 643 8. Stiemsma, L.T. and K.B. Michels, *The Role of the Microbiome in the*
644 *Developmental Origins of Health and Disease*. Pediatrics, 2018. **141**(4).
- 645 9. Neis, E.P., C.H. Dejong, and S.S. Rensen, *The role of microbial amino acid*
646 *metabolism in host metabolism*. Nutrients, 2015. **7**(4): p. 2930-46.
- 647 10. Stinson, L.F., M.S. Payne, and J.A. Keelan, *Planting the seed: Origins,*
648 *composition, and postnatal health significance of the fetal gastrointestinal*
649 *microbiota*. Crit Rev Microbiol, 2017. **43**(3): p. 352-369.
- 650 11. Boulangé, C.L., et al., *Impact of the gut microbiota on inflammation, obesity, and*
651 *metabolic disease*. Genome Med, 2016. **8**(1): p. 42.
- 652 12. Hill, C., et al., *Expert consensus document. The International Scientific*
653 *Association for Probiotics and Prebiotics consensus statement on the scope and*
654 *appropriate use of the term probiotic*. Nat Rev Gastroenterol Hepatol, 2014.
655 **11**(8): p. 506-14.
- 656 13. Hojsak, I., et al., *Guidance on the use of probiotics in clinical practice in children*
657 *with selected clinical conditions and in specific vulnerable groups*. Acta Paediatr,
658 2018. **107**(6): p. 927-937.
- 659 14. Plaza-Diaz, J., et al., *Mechanisms of Action of Probiotics*. Adv Nutr, 2019.
660 **10**(suppl_1): p. S49-s66.
- 661 15. Moroni, O., et al., *Inactivation of adhesion and invasion of food-borne Listeria*
662 *monocytogenes by bacteriocin-producing Bifidobacterium strains of human*
663 *origin*. Applied and Environmental Microbiology, 2006. **72**(11): p. 6894-6901.
- 664 16. Srutkova, D., et al., *Bifidobacterium longum CCM 7952 Promotes Epithelial*
665 *Barrier Function and Prevents Acute DSS-Induced Colitis in Strictly Strain-*
666 *Specific Manner*. PLoS One, 2015. **10**(7): p. e0134050.
- 667 17. Schroeder, B.O., et al., *Bifidobacteria or Fiber Protects against Diet-Induced*
668 *Microbiota-Mediated Colonic Mucus Deterioration*. Cell Host Microbe, 2018.
669 **23**(1): p. 27-40.e7.

- 670 18. Artis, D., *Epithelial-cell recognition of commensal bacteria and maintenance of*
671 *immune homeostasis in the gut*. Nature Reviews Immunology, 2008. **8**(6): p. 411-
672 420.
- 673 19. Xue, L., et al., *Probiotics may delay the progression of nonalcoholic fatty liver*
674 *disease by restoring the gut microbiota structure and improving intestinal*
675 *endotoxemia*. Sci Rep, 2017. **7**: p. 45176.
- 676 20. Sharma, R., et al., *Psychobiotics: The Next-Generation Probiotics for the Brain*.
677 Curr Microbiol, 2021. **78**(2): p. 449-463.
- 678 21. Mörkl, S., et al., *Probiotics and the Microbiota-Gut-Brain Axis: Focus on*
679 *Psychiatry*. Curr Nutr Rep, 2020. **9**(3): p. 171-182.
- 680 22. Savignac, H.M., et al., *Bifidobacteria modulate cognitive processes in an anxious*
681 *mouse strain*. Behav Brain Res, 2015. **287**: p. 59-72.
- 682 23. Griffin, S.M., et al., *Restorative effects of probiotics on memory impairment in*
683 *sleep-deprived mice*. Nutr Neurosci, 2022: p. 1-11.
- 684 24. Suez, J., et al., *The pros, cons, and many unknowns of probiotics*. Nat Med,
685 2019. **25**(5): p. 716-729.
- 686 25. Wilkins, T. and J. Sequoia, *Probiotics for Gastrointestinal Conditions: A Summary*
687 *of the Evidence*. Am Fam Physician, 2017. **96**(3): p. 170-178.
- 688 26. Merenstein, D., et al., *Bifidobacterium animalis subsp. lactis BB-12 Protects*
689 *against Antibiotic-Induced Functional and Compositional Changes in Human*
690 *Fecal Microbiome*. Nutrients, 2021. **13**(8): p. 2814.
- 691 27. Suez, J., et al., *Post-Antibiotic Gut Mucosal Microbiome Reconstitution Is*
692 *Impaired by Probiotics and Improved by Autologous FMT*. Cell, 2018. **174**(6): p.
693 1406-1423.e16.
- 694 28. McKean, J., et al., *Probiotics and Subclinical Psychological Symptoms in Healthy*
695 *Participants: A Systematic Review and Meta-Analysis*. J Altern Complement
696 Med, 2017. **23**(4): p. 249-258.
- 697 29. Łukasik, J., S. Salminen, and H. Szajewska, *Rapid review shows that probiotics*
698 *and fermented infant formulas do not cause d-lactic acidosis in healthy children*.
699 Acta Paediatr, 2018. **107**(8): p. 1322-1326.
- 700 30. Tan, T.P., et al., *Safety of Bifidobacterium animalis Subsp. Lactis (B. lactis)*
701 *Strain BB-12-Supplemented Yogurt in Healthy Children*. J Pediatr Gastroenterol
702 Nutr, 2017. **64**(2): p. 302-309.
- 703 31. Arpaia, N., et al., *Metabolites produced by commensal bacteria promote*
704 *peripheral regulatory T-cell generation*. Nature, 2013. **504**(7480): p. 451-5.
- 705 32. LeBlanc, J.G., et al., *Beneficial effects on host energy metabolism of short-chain*
706 *fatty acids and vitamins produced by commensal and probiotic bacteria*. Microb
707 Cell Fact, 2017. **16**(1): p. 79.
- 708 33. Conlon, M.A. and A.R. Bird, *The Impact of Diet and Lifestyle on Gut Microbiota*
709 *and Human Health*. Nutrients, 2015. **7**(1): p. 17-44.
- 710 34. Dai, Z.L., G. Wu, and W.Y. Zhu, *Amino acid metabolism in intestinal bacteria:*
711 *links between gut ecology and host health*. Front Biosci (Landmark Ed), 2011.
712 **16**: p. 1768-86.
- 713 35. den Besten, G., et al., *The role of short-chain fatty acids in the interplay between*
714 *diet, gut microbiota, and host energy metabolism*. Journal of Lipid Research,
715 2013. **54**(9): p. 2325-2340.

- 716 36. Lee, S.H., et al., *The Therapeutic Effect of a Multistrain Probiotic on Diarrhea-*
717 *Predominant Irritable Bowel Syndrome: A Pilot Study.* Gastroenterol Res Pract,
718 2018. **2018**: p. 8791916.
- 719 37. Riekeberg, E. and R. Powers, *New frontiers in metabolomics: from measurement*
720 *to insight.* F1000Res, 2017. **6**: p. 1148.
- 721 38. Tanes, C., et al., *Role of dietary fiber in the recovery of the human gut*
722 *microbiome and its metabolome.* Cell Host Microbe, 2021. **29**(3): p. 394-407.e5.
- 723 39. Kumbhare, S.V., et al., *Factors influencing the gut microbiome in children: from*
724 *infancy to childhood.* J Biosci, 2019. **44**(2).
- 725 40. Laursen, M.F., et al., *Administration of two probiotic strains during early*
726 *childhood does not affect the endogenous gut microbiota composition despite*
727 *probiotic proliferation.* BMC Microbiology, 2017. **17**(1): p. 175.
- 728 41. Wang, S., et al., *A randomized, double blind, parallel, placebo-controlled study to*
729 *investigate the efficacy of Lactobacillus paracasei N1115 in gut development of*
730 *young children.* Food Sci Nutr, 2021. **9**(11): p. 6020-6030.
- 731 42. Khalesi, S., et al., *A review of probiotic supplementation in healthy adults: helpful*
732 *or hype?* European Journal of Clinical Nutrition, 2019. **73**(1): p. 24-37.
- 733 43. Ponge, J.F., *Emergent properties from organisms to ecosystems: towards a*
734 *realistic approach.* Biol Rev Camb Philos Soc, 2005. **80**(3): p. 403-11.
- 735 44. Turrone, F., D. van Sinderen, and M. Ventura, *Genomics and ecological overview*
736 *of the genus Bifidobacterium.* Int J Food Microbiol, 2011. **149**(1): p. 37-44.
- 737 45. Lee, K.A., et al., *Bacterial-derived uracil as a modulator of mucosal immunity and*
738 *gut-microbe homeostasis in Drosophila.* Cell, 2013. **153**(4): p. 797-811.
- 739 46. Liu, Y., et al., *Thymine Sensitizes Gram-Negative Pathogens to Antibiotic Killing.*
740 *Frontiers in Microbiology, 2021. 12.*
- 741 47. Ghonimy, A., et al., *The Impact of Carnitine on Dietary Fiber and Gut Bacteria*
742 *Metabolism and Their Mutual Interaction in Monogastrics.* Int J Mol Sci, 2018.
743 **19**(4).
- 744 48. Vizioli, C., et al., *Untargeted Metabolomic Approach Shows No Differences in*
745 *Subcutaneous Adipose Tissue of Diabetic and Non-Diabetic Subjects*
746 *Undergoing Bariatric Surgery: An Exploratory Study.* Biol Res Nurs, 2021. **23**(1):
747 p. 109-118.
- 748 49. Clarke, E.L., et al., *Sunbeam: an extensible pipeline for analyzing metagenomic*
749 *sequencing experiments.* Microbiome, 2019. **7**(1): p. 46.
- 750 50. Wood, D.E. and S.L. Salzberg, *Kraken: ultrafast metagenomic sequence*
751 *classification using exact alignments.* Genome Biol, 2014. **15**(3): p. R46.
- 752 51. Ogata, H., et al., *KEGG: Kyoto Encyclopedia of Genes and Genomes.* Nucleic
753 *Acids Res, 1999. 27*(1): p. 29-34.
- 754 52. Buchfink, B., C. Xie, and D.H. Huson, *Fast and sensitive protein alignment using*
755 *DIAMOND.* Nat Methods, 2015. **12**(1): p. 59-60.
- 756 53. Markowiak-Kopeć, P. and K. Śliżewska, *The Effect of Probiotics on the*
757 *Production of Short-Chain Fatty Acids by Human Intestinal Microbiome.*
758 *Nutrients, 2020. 12*(4).
- 759 54. Braak, C.t. and P. Milauer. *CANOCO Reference Manual and User's Guide to*
760 *Canoco for Windows: Software for Canonical Community Ordination (Version 4).*
761 1998.

- 762 55. Chong, J., et al., *MetaboAnalyst 4.0: towards more transparent and integrative*
763 *metabolomics analysis*. *Nucleic Acids Res*, 2018. **46**(W1): p. W486-w494.
- 764 56. R Development Core Team, *R: A language and environment for statistical*
765 *computing*. 2013, R Foundation for Statistical Computing: Vienna, Austria.
- 766 57. Ye, C., et al., *Design of experiment and data analysis by JMP®(SAS institute) in*
767 *analytical method validation*. *Journal of pharmaceutical and biomedical analysis*,
768 2000. **23**(2-3): p. 581-589.
- 769 58. Tanes, C., et al., *Role of dietary fiber in the recovery of the human gut*
770 *microbiome and its metabolome*. *Cell host & microbe*, 2021. **29**(3): p. 394-
771 407.e5.
- 772 59. Shannon, P., et al., *Cytoscape: a software environment for integrated models of*
773 *biomolecular interaction networks*. *Genome Res*, 2003. **13**(11): p. 2498-504.
- 774