

1                   Population mobility and the development of Botswana's  
2                   generalized HIV epidemic: a network analysis  
3  
4  
5

6                   Janet Song<sup>1</sup>, Justin T. Okano<sup>1</sup>, Joan Ponce<sup>1</sup>, Lesego Busang<sup>2</sup>, Khumo Seipone<sup>2</sup>,  
7   Eugenio Valdano<sup>3</sup>, Sally Blower<sup>1+</sup>  
8  
9

10 **Affiliations:**

11 <sup>1</sup>Center for Biomedical Modeling, Department of Psychiatry and Biobehavioral Sciences, Semel  
12 Institute for Neuroscience and Human Behavior, David Geffen School of Medicine, University  
13 of California, Los Angeles, CA 90095.

14 <sup>2</sup>The African Comprehensive HIV/AIDS Partnerships (ACHAP), Gaborone, Botswana.

15 <sup>3</sup>Sorbonne Université, INSERM, Institut Pierre Louis d'Epidémiologie et de Santé Publique,  
16 IPLESP, F75012, Paris, France.

17  
18 <sup>+</sup>Corresponding author: [sblower@mednet.ucla.edu](mailto:sblower@mednet.ucla.edu)

19 **ABSTRACT**

20 The majority of people with HIV live in sub-Saharan Africa, where HIV epidemics are generalized.  
21 For these epidemics to develop, populations need to be mobile. However, population-level  
22 mobility has not yet been studied in the context of the development of generalized HIV epidemics.  
23 Here we do so by studying historical migration data from Botswana which has one of the most  
24 severe generalized HIV epidemics worldwide; in 2021, HIV prevalence was 21%. The country  
25 reported its first AIDS case in 1985 when it began to rapidly urbanize. We hypothesize that, during  
26 the development of Botswana's epidemic, the population was highly mobile and there were  
27 substantial urban-to-rural and rural-to-urban migratory flows. We test this hypothesis by  
28 conducting a network analysis using a historical time series (1981 to 2011) of micro-census data  
29 from Botswana. We found 10% of the population moved their residency annually, complex  
30 migration networks connected urban with rural areas, and there were very high rates of rural-to-  
31 urban migration. Notably, we also found mining towns were both important in-flow and out-flow  
32 migration hubs; consequently, there was a very high turnover of residents in towns. Our results  
33 support our hypothesis, and together, provide one explanation for the development of Botswana's  
34 generalized epidemic.

## 35 INTRODUCTION:

36 Over 25 million people live with HIV infection in sub-Saharan Africa. All of the HIV epidemics in  
37 this continent are generalized: in these type of epidemics, the epidemic is dispersed throughout  
38 the country. Therefore, a population needs to be highly mobile in order for a generalized epidemic  
39 to have developed. However, although the epidemiology of HIV in sub-Saharan Africa has been  
40 widely studied (Farley et al., 2022; Read et al., 2022), the role of population-level mobility patterns  
41 in the development of generalized HIV epidemics has not been assessed for any country on the  
42 continent. Botswana has one of the most severe HIV epidemics worldwide, and reported its first  
43 AIDS case in the early 1980s. Since then, the epidemic has become generalized and hyper-  
44 endemic: in 2021, HIV prevalence in adults (15 to 64) was 21% (Mine et al., 2022). Simultaneous  
45 to the development of its generalized HIV epidemic, Botswana has undergone rapid urbanization.  
46 It was predominantly rural in 1981 (Tarver, 1984; Tarver & Miller, 1987), but had become  
47 predominantly urban (Statistics Botswana, 2014) by 2011; by that time Botswana's HIV epidemic  
48 had stabilized (CSO Botswana & NACA, 2009). We hypothesize that – during the development  
49 of Botswana's epidemic – there was a high level of population mobility, and substantial urban-to-  
50 rural migratory flows. We test this hypothesis by conducting a network analysis using a historical  
51 time series of micro-census (i.e., individual-level) data collected in Botswana. These data contain  
52 information both on migration and urbanization. The time series covers the time period from when  
53 the epidemic was first apparent to when it stabilized in 2011. We use these data: (i) to estimate  
54 the annual incidence (at the national level) of internal migration over three decades (1981 to  
55 2011), (ii) to characterize migrants on the basis of gender and age, (iii) to reconstruct internal  
56 migration networks (in order to identify large-scale population movements and connectivity  
57 patterns), (iv) to identify migration hubs, and (v) to quantify urban-to-rural and rural-to-urban  
58 migratory flows. The Government of Botswana defines internal migration as residents changing  
59 their place of permanent residence within their home country. We discuss our results in the  
60 context of understanding the development of the generalized hyper-endemic HIV epidemic in  
61 Botswana.

62  
63 Between 1981 and 2011, the population of Botswana increased from just under one million to  
64 over two million (Statistics Botswana, 2014) and the country became progressively urbanized. In  
65 1981, the vast majority of the population lived in small rural villages. Only ~18% of the population  
66 were living in urban areas (Statistics Botswana, 2014): either in one of the two cities (Gaborone,  
67 the capital, or Francistown) or one of the four towns (Lobatse, Selebi Phikwe, Orapa, and  
68 Jwaneng). Lobatse is an administrative center, and the other three are mining towns. Selebi

69 Phikwe is based on copper and nickel mining, and was founded in the early 1970s. Orapa and  
70 Jwaneng are based on mining diamonds, and were founded in the late 1960s and early 1980s,  
71 respectively. By 2011, only ~36% of the population were living in rural areas (Statistics Botswana,  
72 2014). The remaining population were living in one of the three types of urban centers: a city  
73 (there were still only two cities), a town (there were now five towns following the 1991 addition of  
74 Sowa, a mining town for soda ash) or an urban village. In Botswana, an urban village is defined  
75 as a settlement with at least 5,000 individuals and 75% of the workforce engaged in non-  
76 agricultural economic activities (Statistics Botswana, 2014). The urban villages developed by in  
77 situ urbanization, which is defined as rural settlements transforming into urban areas by  
78 expanding their non-agricultural activities and increasing economic linkages with neighboring  
79 areas (Moriconi-Ebrard et al., 2020). Botswana consists of 28 administrative districts (Figure 2—  
80 figure supplement 1) (Okano et al., 2021). Each city and town are separate administrative districts,  
81 and the remaining 21 districts contain at least one urban village and many rural villages.

82  
83 A great deal is known about the epidemiology of HIV in Botswana in terms of the increase in  
84 prevalence and geographic variation in prevalence (Magosi et al., 2022; Novitsky et al., 2015;  
85 Novitsky et al., 2020; Okano et al., 2021). The first case of AIDS was reported in 1985 from the  
86 nickel mining town of Selebi Phikwe (African Natural Resources Center, 2016); in the late 1980s,  
87 additional cases were reported from two diamond mining towns (Jwaneng and Orapa) and the  
88 city, Francistown. In 1990, the first HIV Sentinel Surveillance Survey of antenatal clinic (ANC)  
89 attendees (15 to 49 years old) was conducted in Gaborone and in one rural district (Boteti): HIV  
90 prevalence was found to be 6% and 4%, respectively (UNAIDS & World Health Organization,  
91 2004). In 1992, a national sentinel surveillance survey began and was conducted annually to  
92 2011. National prevalence in pregnant women was found to have already reached a very high  
93 level (18%) by 1992, and continued to increase for the next eight years: 23% by 1993, 32% by  
94 1995, and 39% by 2000 (UNAIDS & World Health Organization, 2004). Based on the ANC data  
95 (UNAIDS & World Health Organization, 2004), HIV prevalence in the cities and the mines was  
96 the highest. In Francistown, prevalence was 8% in 1991, 24% by 1992, and 44% by 2000. In  
97 Gaborone, prevalence rose from 15% in 1992 to 36% by 2000. In the mining town of Selebi  
98 Phikwe, prevalence rose from 27% in 1994 to 50% by 2000. By the late 1990s, a high AIDS  
99 morbidity and mortality rate in miners led the diamond mining company Debswana to conduct an  
100 HIV prevalence survey of its (male) employees. The survey took place in 1999: 29% of miners  
101 were found to be infected with HIV (Barnett et al., 2002). The first population-level survey in  
102 Botswana to test participants for HIV (BAIS II, the Botswana AIDS Impact Survey) was conducted

103 in 2004 (NACA & CSO Botswana, 2005). It found that, at that time, prevalence in the general  
104 population was ~29% in women and ~20% in men aged 15 to 49 years old. Notably, phylogenetic  
105 studies have shown that viral lineages have dispersed widely throughout Botswana suggesting  
106 large-scale population-level movements have occurred (Magosi et al., 2022; Novitsky et al., 2015;  
107 Novitsky et al., 2020).

108

## 109 **RESULTS:**

### 110 **Estimated incidence of internal migration:**

111 We estimated the Crude Migration Intensity (CMI) (Bell et al., 2002) for Botswana in the 12 months  
112 before each census was conducted (i.e., between 1980 and 1981, 1990 and 1991, 2000 and  
113 2001, and 2010 and 2011). The CMI represents the overall incidence, or level of internal  
114 migration, per hundred residents over a specified time interval (Bell et al., 2002); it is an indicator  
115 of the propensity of the population to move, and is a measure of migration both between districts  
116 and within districts. The CMI remained markedly high and constant: 9.05 per hundred persons  
117 between 1980 and 1981, 10.45 per hundred persons between 1990 and 1991, 10.73 per hundred  
118 persons between 2000 and 2001, and 10.33 per hundred persons between 2010 and 2011. We  
119 found that migrants were more likely to move between districts than to move within districts; this  
120 propensity, calculated as a ratio (the number of migrants moving between districts relative to the  
121 number of migrants moving within districts), increased over time from 1.25 (1981) to 2.40 (2001  
122 and 2011).

123

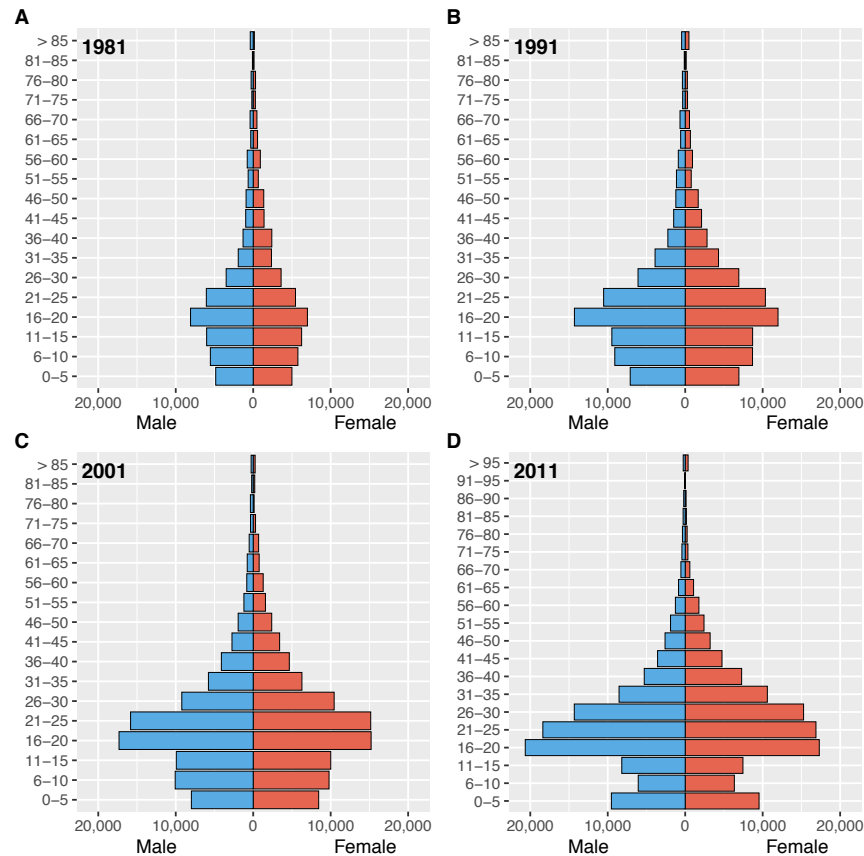
### 124 **Age profiles of migrants:**

125 Gender-stratified age profiles of migrants are presented in Figure 1. These results show that the  
126 type of individual who migrated within Botswana at the time of each census was markedly similar,  
127 with respect to gender and age. Approximately 50% of migrants were women, and the most  
128 common age to migrate (for both women and men) was between 16 and 20 years old.

129

### 130 **Migratory flows:**

131 To reconstruct the internal migration networks, we first calculated migratory flows between  
132 districts. We define a district-level migratory flow as the number of migrants who changed their  
133 residency from one district to another during the 12 months prior to the census. The migratory  
134 flows for each district (within district, in-flow, and out-flow) are listed in Table 1 (1980-1981), Table  
135 2 (1990-1991), Table 3 (2000-2001), and Table 4 (2010-2011). Over three decades (between  
136 1981 and 2011), the number of migrants more than doubled (as did the population of Botswana).



137

138 **Figure 1: Gender-stratified age profiles of internal migrants by census year. (A) 1981, (B)**  
 139 **1991, (C) 2001, and (D) 2011.**

140

141 In 1981, the two cities and four towns were fairly small. The capital, Gaborone, had a population  
 142 of 56,860 and Francistown had a population of only 31,120. The populations of the four towns  
 143 ranged in size from 5,200 to 27,430. The number of individuals who lived in the other districts  
 144 ranged in size from 1,050 in the Okavango Delta to 111,820 in Kweneng. All of these districts had  
 145 an in-flow, and/or out-flow, of migrants (Table 1). More than half also had a fairly high within district  
 146 migration intensity (WDMI): for example, in Central Bobonong, ~7% of residents moved from one  
 147 rural village to another between 1980 and 1981. Migratory flows continued to increase over the  
 148 next three decades (Tables 2-4), as the population size increased and the country became  
 149 progressively urbanized.

150

151 We also estimated the annual turnover rate in each district in the year before each census (Tables  
 152 1-4). This rate is defined as the net change in the district's annual migration rate per hundred  
 153 residents. A negative rate signifies that the district's population size decreased, a positive rate

154 signifies that it increased. By far, the highest turnover rates were in 1981 (Table 1). In that year,  
 155 the highest turnover rate was in the mining town, Jwaneng.  
 156

ID	District	Class	Population	Number of Migrants			Metric	
				Within	In	Out	WDMI	Turnover
1	Gaborone	C	56,390	120	7,750	6,110	0.22	3.00
2	Francistown	C	31,090	50	4,730	3,880	0.17	2.81
3	Lobatse	T	18,110	0	1,940	2,260	0.00	-1.74
4	Selebi Phikwe	T	27,210	50	4,080	3,850	0.19	0.85
5	Orapa	T	6,330	0	810	890	0.00	-1.25
6	Jwaneng	T	5,120	0	2,310	710	0.00	45.45
10	Southern	R	103,190	7,120	3,330	3,390	6.90	-0.06
11	Barolong	R	14,290	170	340	770	1.15	-2.92
20	South East	R	30,880	330	2,000	1,000	1.10	3.35
30	Kweneng	R	109,890	5,970	2,010	2,450	5.41	-0.40
40	Kgatleng	R	43,110	1,740	1,330	1,960	3.98	-1.44
50	Central Serowe	R	93,260	5,240	3,350	4,480	5.55	-1.20
51	Central Mahalapye	R	78,910	3,120	2,530	3,200	3.92	-0.84
52	Central Bobonong	R	44,160	3,100	1,840	2,730	6.88	-1.98
53	Central Boteti	R	24,620	1,940	1,200	1,050	7.93	0.61
54	Central Tutume	R	74,850	2,790	3,230	3,940	3.69	-0.94
55	Central Tuli Block	R	2,740	20	530	0	0.90	23.98
60	North East	R	36,360	890	1,890	2,480	2.41	-1.60
70	Ngamiland South	R	58,160	2,870	1,280	1,360	4.93	-0.14
71	Ngamiland North	R	7,760	90	140	310	1.13	-2.14
72	Chobe	R	7,390	480	370	380	6.49	-0.14
73	Okavango Delta	R	1,020	20	150	20	2.25	14.61
80	Ghanzi	R	17,890	1,620	390	530	8.99	-0.78
90	Kgalagadi South	R	14,910	690	450	420	4.64	0.20
91	Kgalagadi North	R	8,880	170	430	240	1.96	2.19
Botswana			916,520	38,590	48,410	48,410	4.21	0

157  
 158 **Table 1: Migration metrics by district, 1980-81.** The table presents each district's urban/rural  
 159 classification, population size, total number of migrants (both within and between districts), within  
 160 district migration intensity per 100 residents (WDMI), and population turnover. The urban/rural  
 161 classes were: city (C), town (T), or predominantly rural (R). Population sizes are tabulated for  
 162 residents for whom there was one-year migration data. Turnover was calculated as the net  
 163 change in the annual migration rate per 100 residents.

164

ID	District	Class	Population	Number of Migrants			Metric	
				Within	In	Out	WDMI	Turnover
1	Gaborone	C	137,680	550	15,350	14,620	0.40	0.53
2	Francistown	C	67,740	70	8,110	6,510	0.11	2.42
3	Lobatse	T	26,570	0	3,130	2,640	0.00	1.88
4	Selebi Phikwe	T	40,480	30	4,920	4,110	0.08	2.04
5	Orapa	T	8,120	0	900	1,080	0.00	-2.17
6	Jwaneng	T	10,520	0	1,450	1,800	0.00	-3.22
7	Sowa	T	1,640	0	780	410	0.00	29.13
10	Southern	R	125,400	5,200	5,020	6,460	4.10	-1.14
11	Barolong	R	18,050	420	700	1,400	2.24	-3.73
20	South East	U	42,320	900	3,280	2,150	2.18	2.74
31	Kweneng East	PU	140,810	6,650	8,060	6,480	4.78	1.13
32	Kweneng West	R	27,700	1,360	1,630	1,430	4.95	0.73
40	Kgatleng	PU	55,180	2,670	3,040	3,200	4.82	-0.29
50	Central Serowe	R	126,810	7,050	7,350	6,900	5.58	0.36
51	Central Mahalapye	R	97,030	5,360	4,690	6,360	5.43	-1.69
52	Central Bobonong	R	51,220	2,780	2,220	3,320	5.31	-2.10
53	Central Boteti	R	37,630	2,190	1,980	1,770	5.85	0.56
54	Central Tutume	R	98,940	3,590	5,000	6,960	3.56	-1.94
60	North East	R	41,470	1,040	2,830	3,290	2.48	-1.10
70	Ngamiland South	PU	60,450	4,650	2,470	4,400	7.45	-3.09
71	Ngamiland North	R	33,750	620	2,650	650	1.95	6.30
72	Chobe	PU	12,500	700	1,320	1,100	5.70	1.79
80	Ghanzi	R	26,110	1,970	820	810	7.55	0.04
90	Kgalagadi South	R	19,250	1,010	910	780	5.28	0.68
91	Kgalagadi North	R	10,970	410	740	720	3.74	0.18
Botswana (Total)			1,318,340	49,220	89,350	89,350	3.73	0

165

166 **Table 2: Migration metrics by district, 1990-91.** The table presents each district's urban/rural  
 167 classification, population size, total number of migrants (both within and between districts), within  
 168 district migration intensity per 100 residents (WDMI), and population turnover. The urban/rural  
 169 classes were: city (C), town (T), predominantly urban (U), partially urban (PU) and predominantly  
 170 rural (R). Population sizes are tabulated for residents for whom there was one-year migration  
 171 data. Turnover was calculated as the net change in the annual migration rate per 100 residents.  
 172

173



174

ID	District	Class	Population	Number of Migrants			Metric	
				Within	In	Out	WDMI	Turnover
1	Gaborone	C	195,150	1,360	22,100	25,420	0.69	-1.67
2	Francistown	C	83,900	220	9,060	9,620	0.26	-0.66
3	Lobatse	T	31,510	170	3,660	4,120	0.53	-1.44
4	Selebi Phikwe	T	50,420	110	5,420	5,630	0.22	-0.41
5	Orapa	T	8,770	10	1,450	1,100	0.12	4.16
6	Jwaneng	T	15,360	70	2,870	2,330	0.47	3.64
7	Sowa	T	3,150	0	680	790	0.00	-3.37
10	Southern	R	113,600	4,850	6,940	7,670	4.24	-0.64
11	Barolong	R	45,450	1,310	3,310	3,070	2.90	0.53
12	Ngwaketse West	U	10,840	380	930	1,000	3.48	-0.64
20	South East	U	59,670	690	6,030	3,680	1.20	4.10
31	Kweneng East	U	185,880	6,010	11,760	9,540	3.27	1.21
32	Kweneng West	R	39,110	2,040	2,220	2,540	5.17	-0.81
40	Kgatleng	PU	73,460	2,270	4,250	4,090	3.10	0.22
50	Central Serowe	PU	151,830	5,750	9,830	10,780	3.76	-0.62
51	Central Mahalapye	PU	110,010	4,560	6,250	6,980	4.12	-0.66
52	Central Bobonong	PU	64,330	2,710	4,090	3,420	4.26	1.05
53	Central Boteti	PU	47,110	3,780	3,110	2,140	8.19	2.10
54	Central Tutume	R	121,520	4,390	6,630	8,030	3.57	-1.14
60	North East	R	49,930	1,310	3,740	3,630	2.63	0.22
70	Ngamiland South	U	69,370	2,350	4,890	4,320	3.42	0.83
71	Ngamiland North	R	52,820	2,550	2,130	2,190	4.82	-0.11
72	Chobe	PU	16,250	750	1,700	990	4.83	4.57
80	Ghanzi	R	32,370	3,090	1,570	2,030	9.41	-1.40
90	Kgalagadi South	R	25,260	1,680	1,400	1,420	6.65	-0.08
91	Kgalagadi North	R	16,510	910	1,700	1,190	5.69	3.19
Botswana (Total)			1,673,580	53,320	127,720	127,720	3.19	0

175

176 **Table 3: Migration metrics by district, 2000-01.** The table presents each district's urban/rural  
177 classification, population size, total number of migrants (both within and between districts), within  
178 district migration intensity per 100 residents (WDMI), and population turnover. The urban/rural  
179 classes were: city (C), town (T), predominantly urban (U), partially urban (PU) and predominantly  
180 rural (R). Population sizes are tabulated for residents for whom there was one-year migration  
181 data. Turnover was calculated as the net change in the annual migration rate per 100 residents.  
182

183

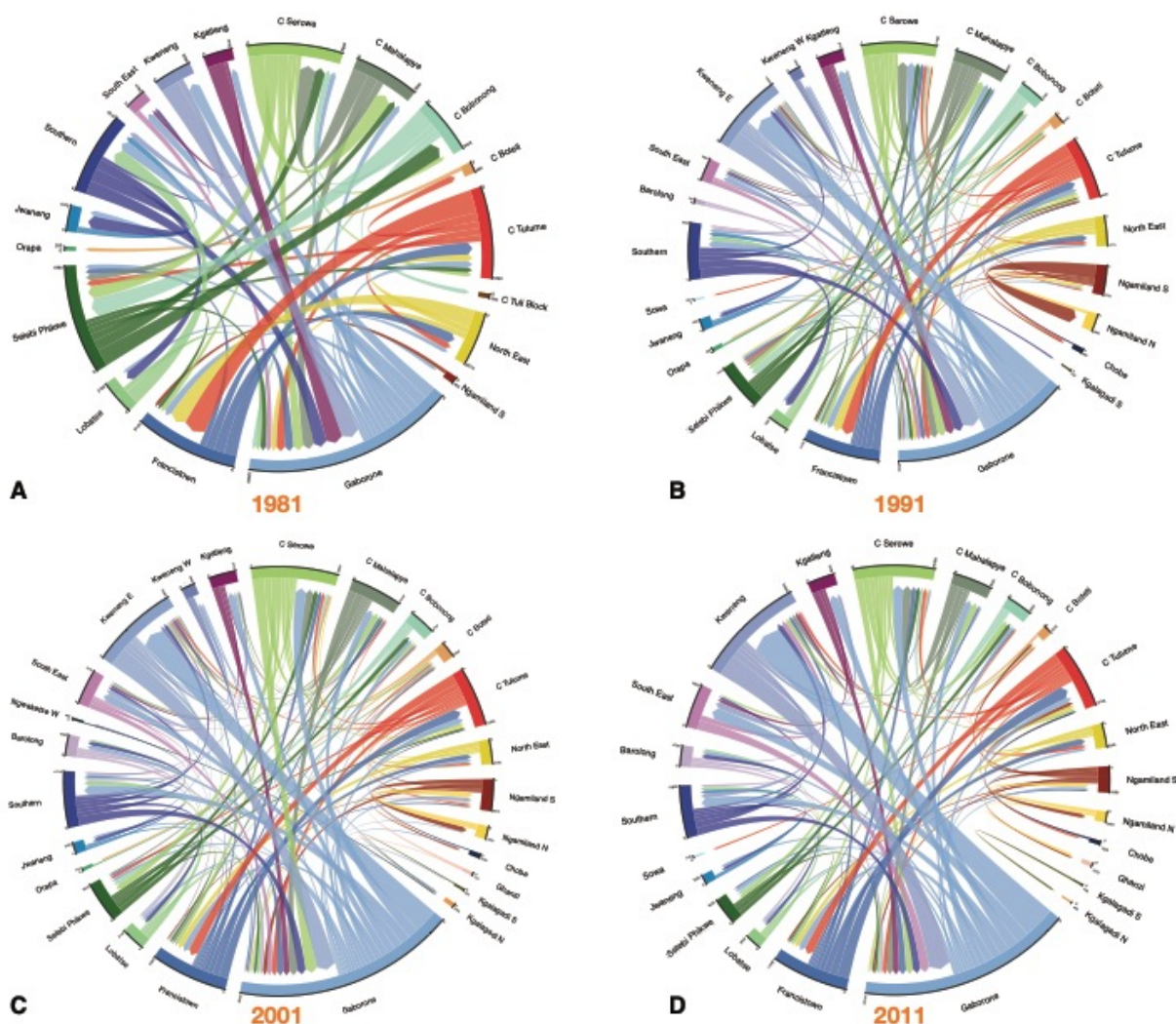
ID	District	Class	Population	Number of Migrants			Metric	
				Within	In	Out	WDMI	Turnover
1	Gaborone	C	232,550	850	22,250	29,540	0.37	-3.04
2	Francistown	C	99,580	150	9,420	12,880	0.15	-3.36
3	Lobatse	T	28,990	60	3,150	3,790	0.21	-2.16
4	Selebi Phikwe	T	49,630	60	4,830	5,260	0.12	-0.86
5	Orapa	T	9,230	0	1,420	1,810	0.00	-4.05
6	Jwaneng	T	17,910	40	3,200	2,970	0.22	1.30
7	Sowa	T	3,580	10	870	660	0.28	6.23
10	Southern	U	128,210	4,230	7,940	8,210	3.30	-0.21
11	Barolong	R	54,390	2,120	3,810	3,340	3.90	0.87
12	Ngwaketse West	U	13,810	620	990	890	4.49	0.73
20	South East	U	83,970	1,020	9,210	5,700	1.22	4.36
30	Kweneng	U	299,620	10,270	18,180	12,380	3.43	1.97
40	Kgatleng	U	90,840	2,280	5,690	5,060	2.51	0.70
50	Central Serowe	PU	178,670	8,250	11,840	10,890	4.62	0.53
51	Central Mahalapye	PU	118,350	4,250	6,450	7,370	3.59	-0.77
52	Central Bobonong	PU	71,310	3,020	5,170	4,290	4.24	1.25
53	Central Boteti	PU	57,420	3,420	3,660	3,040	5.96	1.09
54	Central Tutume	PU	146,540	5,470	9,680	9,400	3.73	0.19
60	North East	R	59,800	2,050	4,750	4,060	3.43	1.17
70	Ngamiland South	U	89,710	2,980	4,460	6,210	3.32	-1.91
71	Ngamiland North	R	59,780	3,060	1,770	2,520	5.12	-1.24
72	Chobe	R	21,830	1,000	2,590	1,940	4.58	3.07
73	Okavango Delta	R	2,080	50	350	110	2.40	13.04
80	Ghanzi	R	42,720	3,810	2,520	1,950	8.92	1.35
81	CKGR	R	230	10	130.00	60	4.35	43.75
90	Kgalagadi South	R	29,900	1,540	1,390	1,720	5.15	-1.09
91	Kgalagadi North	U	20,510	1,090	1,660	1,300	5.31	1.79
Botswana (Total)			2,011,160	61,710	147,380	147,380	3.07	0

184

185 **Table 4: Migration metrics by district, 2010-11.** The table presents each district's urban/rural  
186 classification, population size, total number of migrants (both within and between districts), within  
187 district migration intensity per 100 residents (WDMI), and population turnover. The urban/rural  
188 classes were: city (C), town (T), predominantly urban (U), partially urban (PU) and predominantly  
189 rural (R). Population sizes are tabulated for residents for whom there was one-year migration  
190 data. Turnover was calculated as the net change in the annual migration rate per 100 residents.  
191 The Central Kgalagadi Game Reserve district is denoted CKGR.

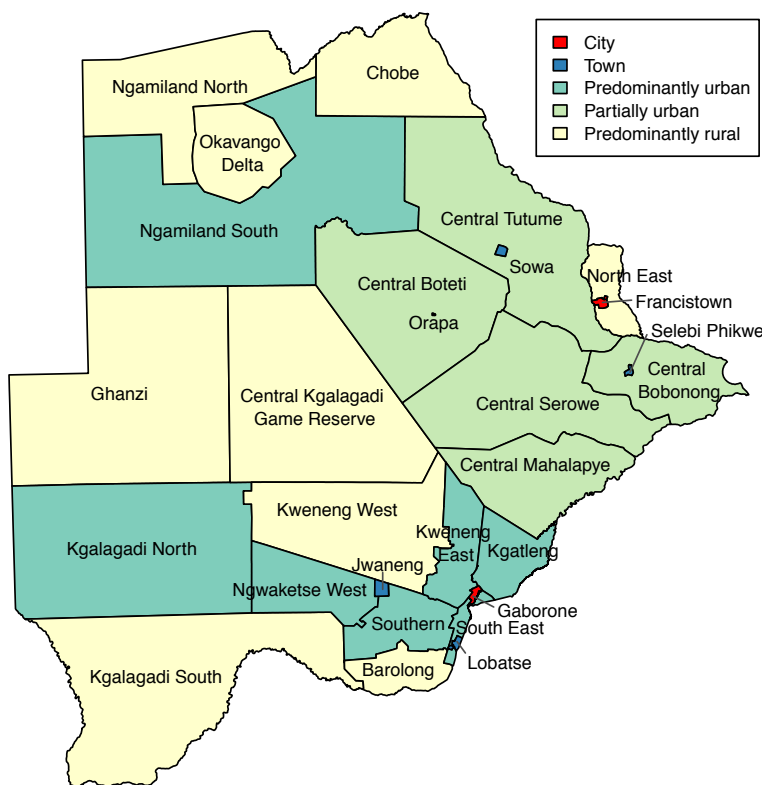
192 **Reconstructed internal migration networks:**

193 The chord diagrams (Figure 2) show the reconstructed internal migration networks, based on the  
194 micro-census data, between: 1980-81 (Figure 2A), 1990-91 (Figure 2B), 2000-01 (Figure 2C),  
195 and 2010-11 (Figure 2D). Each district is a node in the network. Networks are shown in terms of  
196 the magnitude of the migratory in-flows and out-flows between districts, and the effect of these  
197 flows on connecting different districts throughout the country: two districts are connected if they



198  
199 **Figure 2: Chord diagrams by census year. (A) 1981, (B) 1991, (C) 2001, and (D) 2011.** Each  
200 diagram shows the internal migration network of the general population in the 12 months prior to  
201 the census. Each color represents a different administrative district. The thickness of each line is  
202 proportional to the number of migrants that moved between the two connected districts. The  
203 angular width of each district is proportional to the total number of migrants who moved into, or  
204 out of, that district. For clarity, in (A)-(C) only connections with greater than 200 migrants are  
205 shown, and in (D) only connections with greater than 400 migrants are shown. Consequently,  
206 some districts are not shown in the chord diagram. The total number of migrants (in and out) of  
207 every district is listed in Tables 1-4.

208 have a migratory flow between them. Even the earliest migration network in 1981 – when  
209 Botswana was predominantly rural – can be seen to be fairly complex and shows a high degree  
210 of connectivity amongst the districts, although the migratory flows and counter-flows are fairly  
211 small. Notably, in all four networks, many of the flows and counter-flows are similar in magnitude.  
212 Both the magnitude of the migratory flows, and counter-flows, increased with time (between 1981  
213 and 2011) as the population increased in size.



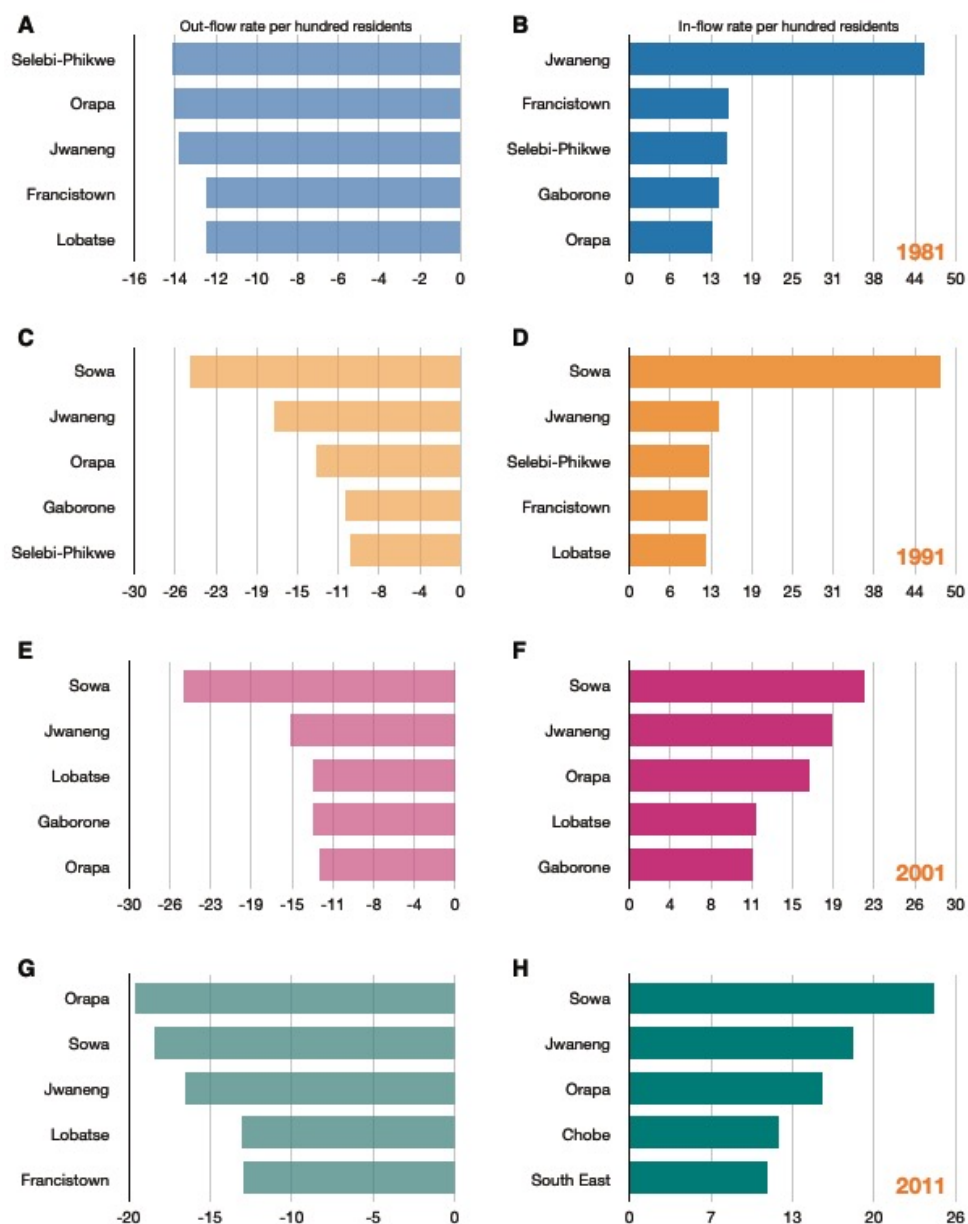
214  
215 **Figure 2**—supplement 1: Map of Botswana with current district names, colored by class.  
216

217 **In-flow and out-flow migration hubs:**

218 Out-flow and in-flow migration hubs are shown in Figure 3. Notably, the towns (Jwaneng, Selebi  
219 Phikwe, Sowa, Lobatse, and Orapa) were amongst the top five out-flow and in-flow migration  
220 hubs at every census period.

221  
222 In 1981, the top in-flow hub was the diamond mining town, Jwaneng: 45% of the town's population  
223 consisted of migrants who had moved to the town between 1980 and 1981 (Figure 3B). At that  
224 time, Jwaneng was also an important out-flow hub: 14% of the town's population moved to another  
225 district between 1980 and 1981 (Figure 3A). The ego networks for Jwaneng show the districts  
226 that migrants returned to (Figure 4A), and the districts that they came from (Figure 4B). It can be

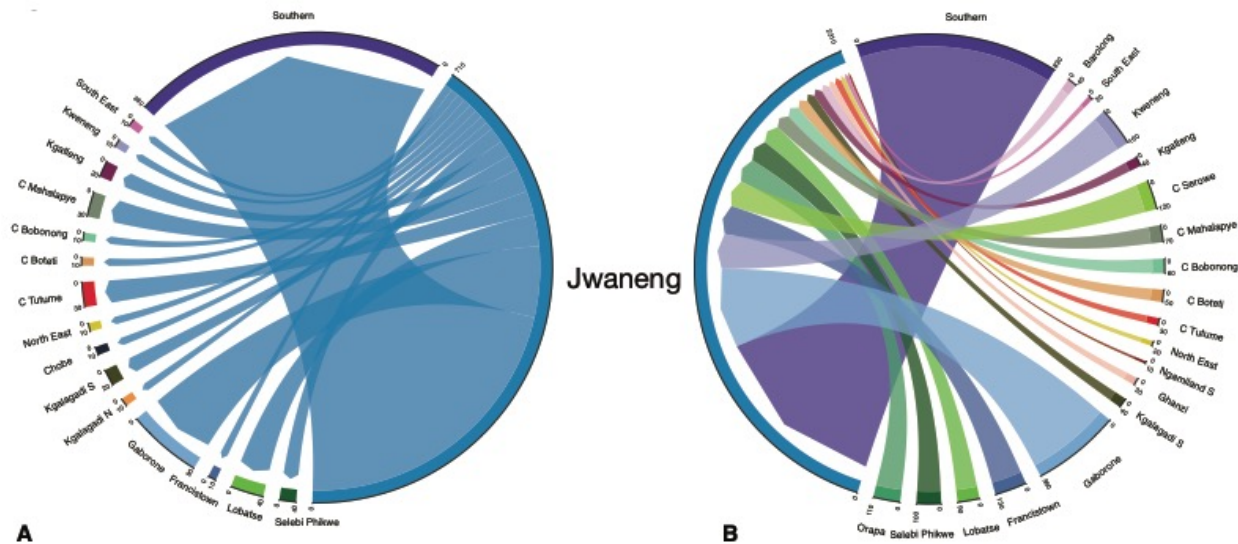
227



228

229 **Figure 3: The top five out-flow and in-flow migration hubs by census year. (A)** Top out-flow  
 230 hubs in 1981, **(B)** Top in-flow hubs in 1981, **(C)** Top out-flow hubs in 1991, **(D)** Top in-flow hubs  
 231 in 1991, **(E)** Top out-flow hubs in 2001, **(F)** Top in-flow hubs in 2001, **(G)** Top out-flow hubs in  
 232 2011, **(H)** Top in-flow hubs in 2011. Out-flow hubs are sorted by the rate per hundred residents  
 233 of a district's population that moves out to another district; in-flow hubs are sorted by the rate per  
 234 hundred residents of a district's population that moves in from another district.  
 235

236 seen that migrants moved between the other mining towns, the two cities, and many of the rural  
 237 districts, with the majority of migrants moving between Jwaneng and Southern, a district abutting  
 238 the town (Figure 2—figure supplement 1).



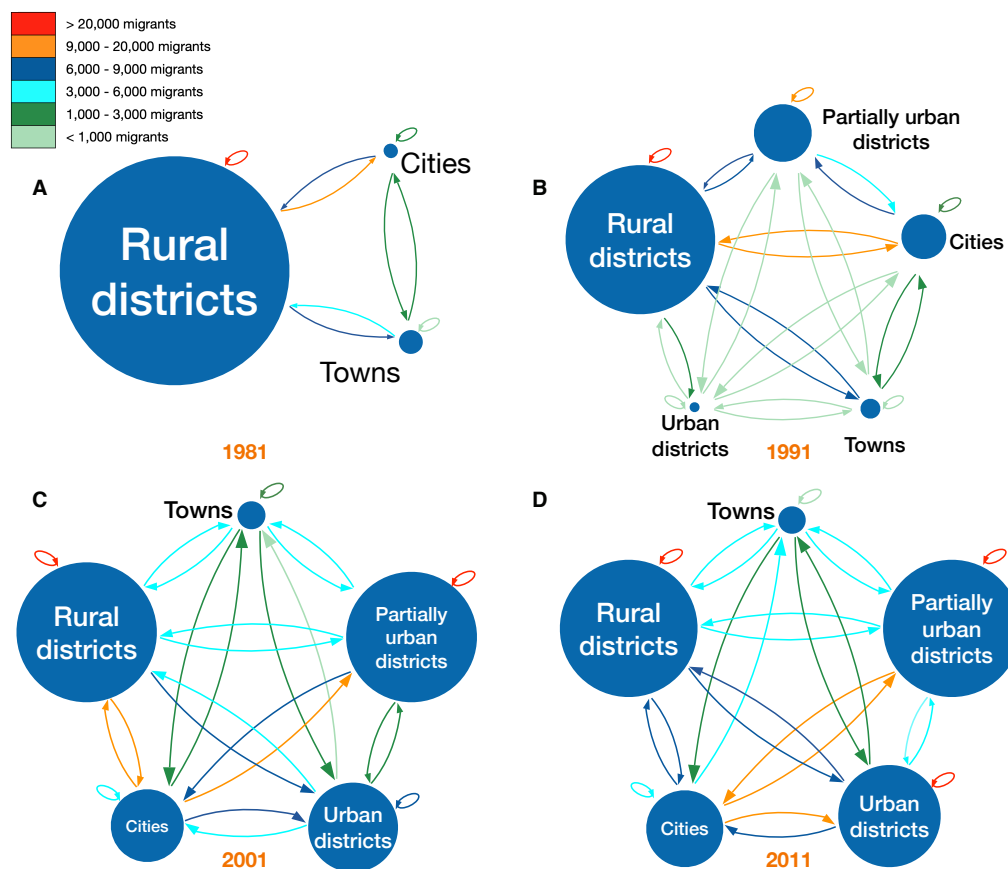
239 **A**  
 240 **Figure 4: Ego network of Jwaneng.** The chord diagrams show migrants flowing **(A)** out of, and  
 241 **(B)** into, the diamond mining town in 1981.

242  
 243 In 1991 and 2001, the top out-flow (and in-flow) hub was the mining town, Sowa. In 1991, 48% of  
 244 the population consisted of migrants who had moved to the town in the previous 12 months  
 245 (Figure 3D); 25% of the town's population moved to another district between 1990 and 1991  
 246 (Figure 3C). In 2001, 22% of the population consisted of migrants who had moved to the town in  
 247 the previous 12 months (Figure 3F); 25% of the town's population moved to another district in  
 248 2000-2001 (Figure 3E).

249  
 250 Francistown was an important in-flow and out-flow hub between 1980 and 1981. In 1981, 15% of  
 251 the population consisted of migrants who had moved to the town in the previous 12 months  
 252 (Figure 3B); 13% of the town's population moved to another district between 1980 and 1981  
 253 (Figure 3A). The city was also an important in-flow hub in 1991 (Figure 3D) and out-flow hub in  
 254 2011 (Figure 3G). Gaborone was only an important out-flow hub in 1991 and 2001 (Figure 3C  
 255 and Figure 3E); it was also an important in-flow hub in 1981 and 2001 (Figure 3B and Figure 3F).

256  
 257 **Quantifying urban-to-rural and rural-to-urban migratory flows:**  
 258 The internal migration networks for each of the four time periods (1981, 1991, 2001, and 2011)  
 259 are presented in terms of our urban/rural classification framework, both as schemata (Figure 5)  
 260 and as Sankey diagrams (Figure 6). Both the schemata and the Sankey diagrams show the  
 261 magnitude of the migratory flows amongst the five classes in the 12 months before each census.  
 262 Between 1981 and 2011 the overall percentage of the population living in urban areas increased

263 more than 3.5 fold (from ~18% to ~64%) (Statistics Botswana, 2014), and the internal migration  
 264 networks changed substantially over that period.

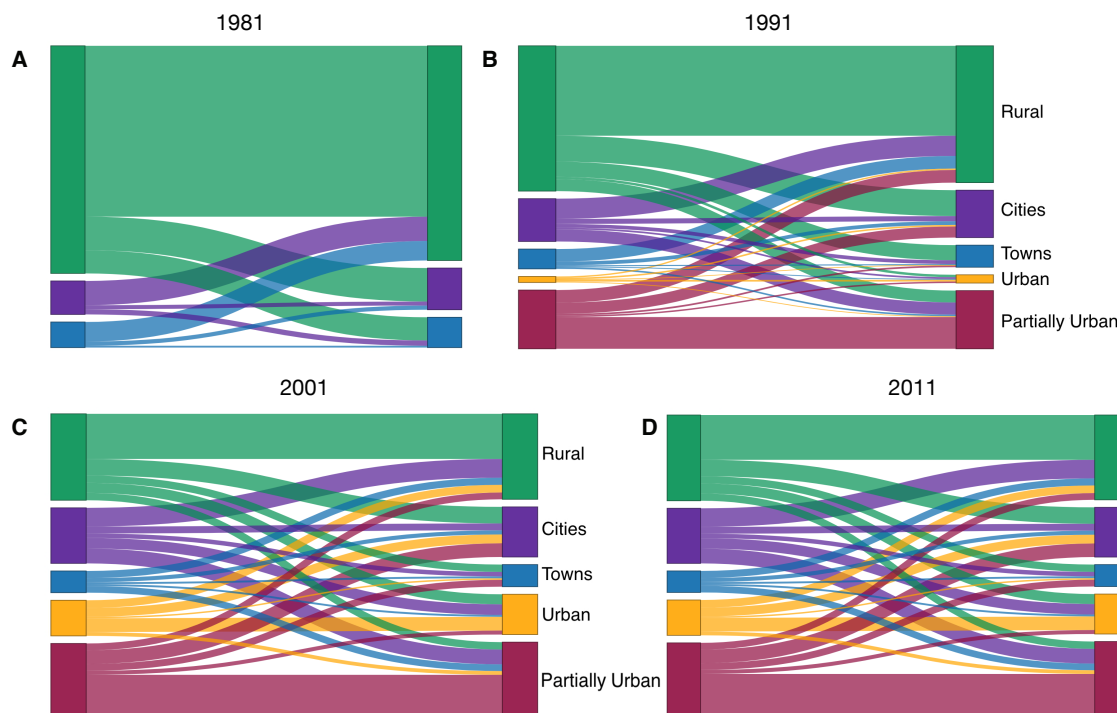


265  
 266 **Figure 5: Schemata of urban/rural classification framework by census year. (A)** 1981, **(B)**  
 267 1991, **(C)** 2001, and **(D)** 2011. Circles represent the five classes based on an urban/rural  
 268 classification (see Methods). The radius of each circle is proportional to the number of residents  
 269 living in the districts in that specific class. The color of each arrow indicates the size of the net  
 270 migration between classes. The class designation (city, town, predominantly urban, partially  
 271 urban, predominantly rural) of each district over time is provided in Tables 1-4.  
 272

273 In 1981, there were only six districts (the two cities and four towns) that were urban areas (Table  
 274 1, Figure 5A, and Figure 6A). The other districts contained several hundred small rural villages  
 275 and no urbanized areas. Almost all districts had an in-flow and out-flow of migrants: notably, rural-  
 276 to-urban, and counter flows (urban-to-rural) are apparent. Taken together the results show that in  
 277 1981 the population was very mobile, the majority of migratory flows were within and amongst  
 278 rural districts, and rural-to-urban migrations were greater than urban-to-rural counter-flows.  
 279

280 By 1991, due to in situ urbanization, one previously rural district (South East) had become  
 281 predominantly urban, and four districts (Kweneng East, Kgatleng, Ngamiland South, and Chobe)

282 had become partially urban (Table 2). Migratory flows appear to be fairly symmetrical (in terms of  
283 the number of migrants who moved between pairs of districts) throughout the country (Figure 5B  
284 and Figure 6B). The towns had increased ~1.5 fold since 1981, and the cities had more than  
285 doubled in size. As at the time of the previous census, there were considerable rural-to-urban and  
286 urban-to-rural migratory flows.



287  
288 **Figure 6: Sankey diagrams showing urban/rural classification framework by census year.**  
289 **(A)** 1981, **(B)** 1991, **(C)** 2001, and **(D)** 2011. The diagrams show the relative magnitude of  
290 migratory flows between the different classes over time. Cities are shown in purple, towns in blue,  
291 predominantly urban districts in gold, partially urban districts in magenta, and predominantly rural  
292 districts in green. The class designation (city, town, predominantly urban, partially urban,  
293 predominantly rural) of each district over time is provided in Tables 1-4.  
294

295 By 2001, considerably more in situ urbanization had occurred: since 1981, four districts had  
296 become predominantly urban, six districts partially urban, and only nine districts remained  
297 predominantly rural (Table 3). Notably, some of the migratory flows were now asymmetric: the  
298 number of migrants moving from the cities to the predominantly urban and partially urban districts  
299 were greater than the counter-flows (Figure 5C and Figure 6C). The growth rate of towns  
300 remained approximately the same as in the previous decade, but the growth rate of the cities had  
301 decreased to ~1.4 fold; these rates depended upon the number of migrants, births, and deaths.  
302



303 By 2011, twelve districts had become predominantly or partially urbanized (Table 4). The growth  
304 rate of cities had decreased to ~1.2 fold, and the towns had not increased substantially in size. At  
305 this time, while most flows were symmetric, migrants were disproportionately leaving the cities in  
306 favor of towns and urban villages (Figure 5D and Figure 6D). Approximately 42% of the population  
307 were living in these urban villages; there was at least one urban village in every district.

308

## 309 **DISCUSSION:**

310

311 Our results support our hypothesis that – during the development of Botswana’s generalized HIV  
312 epidemic (i.e., between 1981 and 2011) – there was a high level of population mobility, and  
313 substantial urban-to-rural migratory flows. Using our time series of historical data, we found ~10%  
314 of the population moved their residency in the 12 months before each census in 1981, 1991,  
315 2001, and 2011. The constancy of this value at each census suggests that the annual migration  
316 rate in Botswana was stable at ~10% for each year between 1981 and 2011. Notably, the type of  
317 migrants also remained constant over this time period: evenly split by gender, with younger people  
318 more likely to migrate. We found that migration occurred within districts, as well as between  
319 districts, but that migration between districts was more common. Even in 1981, at the beginning  
320 of the period of rapid urbanization, the migration network was highly connected and therefore  
321 large-scale population movements linked almost all of the districts in the country. Notably, we  
322 found at each census, that although the number of urbanized districts increased (as did their  
323 population size) the vast majority of migratory flows between the rural and developing urban  
324 districts were balanced by counter-flows.

325

326 Our results provide insights into how HIV could have diffused through the population of Botswana  
327 as the epidemic became generalized. The first cases of AIDS in Botswana were reported in the  
328 1980s (African Natural Resources Center, 2016); this suggests that HIV may have been  
329 circulating in Botswana in the 1970s, as HIV has an incubation period of 10 to 12 years (Hendriks  
330 et al., 1993; Muñoz et al., 1989). One phylogenetic study indicates that HIV was introduced into  
331 Botswana in the 1960s, but exponential growth did not begin until the 1980s (Wilkinson et al.,  
332 2015). Another study suggests that HIV spread southwards from Kinshasa (the epicenter of the  
333 HIV epidemic) in the Democratic Republic of the Congo via travelers on the railroad that was built  
334 in the 1800s (Faria et al., 2014); notably, this railroad goes through Francistown. It is possible that  
335 HIV was introduced into the mining towns of Botswana from overseas or South Africa. In the  
336 1970s and 1980s many young men from Botswana went to work in the mines in South Africa,

337 returning as the mining industry became established in their home country. Our results show that,  
338 by 1981, the migration networks (for women and men) linked almost every district in Botswana;  
339 this indicates that residents from Francistown (UNAIDS & World Health Organization, 2004) and  
340 the mining towns (Barnett et al., 2002) could have seeded sub-epidemics in multiple rural districts  
341 throughout the country. HIV could then have spread widely within these districts due to the high  
342 rates of within-district migration. Due to the high migration rates, the sub-epidemics in rural  
343 districts were likely to have been seeded numerous times. When HIV was first introduced into  
344 rural districts, the sub-epidemics in these districts may have been maintained by source-sink  
345 dynamics (Okano et al., 2020): districts where transmission was high enough to be self-sustaining  
346 (e.g., mining towns) could have maintained sub-epidemics in rural districts where transmission  
347 was too low to be self-sustaining. Our results suggest that migratory flows between high and low  
348 prevalence areas are likely to have existed, at least from the early 1980s onwards. These flows  
349 would have functioned as “transmission corridors” (Okano et al., 2021), and created high risk  
350 flows (Valdano et al., 2021). Taken together, our quantitative results show that the highly-  
351 connected migration networks, with high migratory flows and increasing urbanization, could have  
352 contributed to the development of Botswana’s generalized epidemic.

353  
354 Our results also provide insights into how the Botswana epidemic could have become hyper-  
355 endemic. Migrants have been shown to be at high risk of acquiring HIV infection (Camlin &  
356 Charlebois, 2019; Dobra et al., 2017; Olawore et al., 2018); our results suggest that, due to  
357 migration alone, each year ~10% of the population of Botswana was at high risk. The migrants in  
358 Botswana were young women and men, a group generally at the highest risk of infection through  
359 sexual transmission. Mining towns and cities would have been transmission hot-spots (for both  
360 women and men) due to high levels of risky sexual behavior (as evidenced by high prevalence  
361 (Barnett et al., 2002)) and a high probability of encountering an HIV-infected individual as a sex  
362 partner. Due to the high prevalence (Barnett et al., 2002; UNAIDS & World Health Organization,  
363 2004), high turnover rates, and a high level of connectivity to other districts, the mining towns and  
364 cities could have functioned as geographically-defined core groups for sexual transmission (for  
365 both women and men). Some individuals could have been part of a high-risk core group when  
366 they were living in the cities and mining towns, and decreased their risky behavior when they  
367 returned to the rural districts. For example, FSWs in Botswana can have an extremely high  
368 number of sex partners in mining towns and urban areas (~7 per week) and remain as FSWs for  
369 ~4 years (Ministry of Health Botswana, 2013). Notably we found that the mining towns and cities  
370 were both migration in-flow hubs and migration out-flow hubs. The fact that they were migration

371 in-flow hubs would have led to a high in-flow of uninfected individuals from rural districts; the fact  
372 that they were migration out-flow hubs would have led to a high out-flow of HIV-infected individuals  
373 to rural districts. Therefore, rural-to-urban migration coupled with urban-to-rural migration could  
374 have been a very important driver in the Botswana epidemic becoming hyper-endemic. Without  
375 this driver, prevalence could have reached very high levels in the mining towns and cities, but  
376 remained fairly low in rural districts.

377  
378 Our study has several limitations. First, we have examined only internal migration (i.e., migration  
379 that takes place within a country), and have not included international migration. However, for the  
380 three-decade time period that we have investigated, the number of international migrants to  
381 Botswana was much smaller than the number of internal migrants (Statistics Botswana, 2014;  
382 Statistics Botswana, 2015). Second, all of our analyses are focused on Botswana in order to  
383 analyze the impact of migration networks on a hyper-endemic epidemic; we have not evaluated  
384 migration networks in other African countries. We recommend that studies, such as we have  
385 conducted here, are conducted in these other countries by analyzing a time series of historical  
386 micro-census data, especially in the only other two countries in sub-Saharan Africa that have  
387 generalized hyper-endemic HIV epidemics: Eswatini and Lesotho. Third, a potential limitation is  
388 that the IPUMS data are samples rather than the complete censuses; we used this approach as  
389 it is generally not possible to obtain complete census data due to privacy reasons. Fourth, while  
390 we have gained insights into understanding the development of the generalized hyper-endemic  
391 HIV epidemic in Botswana, we have not conducted an analysis of the transmission dynamics of  
392 the epidemic in order to explore these insights. This is the focus of current research in which we  
393 are analyzing a geospatial mathematical model of the epidemiological evolution of the HIV  
394 epidemic in Botswana. Fifth, we have examined only two processes that affected the evolution of  
395 Botswana's epidemic, other factors could also have been important.

396  
397 All HIV epidemics in SSA are generalized; HIV can only diffuse through a population by the  
398 movement of people. To our knowledge, our study is the first to study population-level mobility  
399 patterns and rates in any country in sub-Saharan Africa. Taken together, our results identify  
400 particular characteristics of migration in Botswana that could explain why HIV prevalence rose to  
401 very high levels in many districts throughout the country. Migratory behavior in other countries  
402 with generalized epidemics may be very different. For example, migrants in other African  
403 countries tend to have a very male-biased sex ratio; consequently, women are unlikely to have  
404 seeded multiple sub-epidemics throughout these countries. If mining towns and cities in these

405 countries were not migratory in-flow and out-flow hubs with high turnover of their populations, as  
406 in Botswana, they would not have served as major sources of infection. Botswana has recently  
407 achieved the 95-95-95 targets that UNAIDS specified needed to be reached by 2030 in order to  
408 eliminate HIV: 95% of people living with HIV to be diagnosed, 95% of the diagnosed to be on  
409 treatment, and 95% of those on treatment to be virally suppressed (Mine et al., 2022). However,  
410 transmission is continuing (Magosi et al., 2022), as is urbanization and large-scale population  
411 movements (Okano et al., 2021). The same processes that we have identified that may have  
412 contributed to the development of the generalized hyper-endemic HIV epidemic in Botswana may  
413 prevent the elimination of HIV.

414

## 415 **MATERIALS AND METHODS:**

### 416 **Data:**

417 To conduct our analyses, we used representative samples of micro-census data extracted from  
418 the IPUMS-International (Integrated Public Use Microdata Series-International) database  
419 (Minnesota Population Center, 2020): micro-census data are anonymized individual-level data  
420 (Ruggles et al., 2015). IPUMS-International currently disseminates data from 547 censuses and  
421 surveys in 103 countries worldwide (Minnesota Population Center, 2020). The Botswana dataset  
422 consists of representative 10% samples from the original censuses, and includes anonymized  
423 individual-level data on age, gender, and residence (current, as well as 12 months prior). The  
424 data also includes individual survey weights that allow for population-level estimation (Ruggles et  
425 al., 2015).

426

427 To examine historical trends in internal migration networks and urbanization, we analyzed data  
428 collected in the 1981, 1991, 2001, and 2011 censuses. We used data on internal migration that  
429 had occurred in the 12 months prior to each census: an individual was classified as a migrant if  
430 they had changed their permanent residency within that 1-year interval.

431

### 432 **Estimating the incidence of internal migration:**

433 We estimated the incidence of internal migration by calculating the CMI. This statistic represents  
434 the overall incidence, or level of internal migration (between district plus within district), per  
435 hundred residents over a year. The mathematical definition of the CMI is given in Equation 1:

$$CMI = 100 \cdot \frac{M}{P} \quad (1)$$

436 where  $M$  is the total number of internal migrants and  $P$  is the population size of Botswana in a  
437 given year.  $M$  is calculated as  $M = \sum_i D_i = \sum_i O_i$  where  $D_i$  represents the in-flows to each district  
438  $i$ , and  $O_i$  represents the out-flows to each district  $i$ .

439

#### 440 **Constructing gender-stratified age structure pyramids:**

441 We aggregated the migration data from each census by gender and age (using 5-year age  
442 groupings) to construct population pyramids; these pyramids show the age-gender demographics  
443 of all individuals internally migrating in the 12 months prior to each census.

444

#### 445 **Calculating migratory flows:**

446 We define a district-level migratory flow as the number of migrants who change their residency  
447 from one district to another during the 12 months prior to the census. We calculated migratory  
448 flows between each pair of districts. The country consists of 28 administrative districts (Okano et  
449 al., 2021). Each city and town are separate administrative districts.

450

#### 451 **Calculating annual turn-over rates:**

452 We defined the annual turn-over rate for a district as the net change in its annual migration rate  
453 per hundred residents.

$$TO_i = 100 \cdot \frac{[D_i - O_i]}{P_i} \quad (2)$$

454 Here the turn-over rate  $TO_i$  for district  $i$  is a function of the number of in-migrants  $D_i$  and out-  
455 migrants  $O_i$  within the past year, and its population  $P_i$  at the beginning of the year.

456

#### 457 **Reconstructing migration networks:**

458 We used the micro-census data to construct Origin-Destination (OD) matrices: the origin was the  
459 district that an individual lived in 12 months prior to the census, the destination was the district  
460 they lived in at the time of the census. Coefficients of these matrices specify the number of  
461 migrants who moved between each pair of districts in the 12 months prior to each census.

462

#### 463 **Identifying in-flow and out-flow migration hubs:**

464 Migration hubs are those districts where recent migration has a sizeable impact on the size of the  
465 resident population, by either bringing it down (out-flow hubs) or increasing it (in-flow hubs) above  
466 the average. In-flow migration hubs were identified by calculating the total number of in-migrants  
467 to a node/district and dividing by the district's population that year. Out-flow migration hubs were

468 identified by calculating the total number of out-migrants to a node/district and dividing by the  
469 district's population that year. We list the top five in-flow and out-flow hubs each census year.

470

#### 471 **Quantifying urban-to-rural and rural-to-urban migratory flows:**

472 To measure and visualize migratory flows during urbanization, we developed a classification  
473 framework. This framework enables us to measure the magnitude of migratory flows and counter-  
474 flows between districts (based upon their degree of urbanization), and distinguishes between  
475 urban-to-rural and rural-to-urban flows.

476

477 The framework consists of five classes. The classes (at any point in time) are defined based on  
478 the degree of urbanization of the districts at the time of the most recent census: (i) predominantly  
479 rural (< 40% of the population living in urban areas), (ii) partially urban (40%-60% of the population  
480 living in urban areas), (iii) predominantly urban (> 60% of the population living in urban areas),  
481 (iv) town (100% of the population living in urban areas), or (v) city (100% of the population living  
482 in urban areas). Classes (i), (ii), and (iii) only include urban areas that develop by in situ  
483 urbanization, i.e., rural villages transforming into urban villages. There are migratory flows and  
484 counter-flows between the five classes, and flows within each of the five classes: therefore, 25  
485 migratory flows/counter-flows are possible.

486

487 The classification framework can be visualized in two formats: (i) a schematic figure showing the  
488 five classes, the number of residents in each class, and migratory flows (and counter-flows)  
489 amongst and within the classes, and (ii) Sankey diagrams showing the number of migrants who  
490 move within, and between, the five classes.

491

492 We used the micro-census data to parameterize the framework for Botswana. Specifically, we  
493 estimated – at the time of each census – the population size of each district, and determined how  
494 many individuals lived in rural and urban areas. We used these estimates to classify all districts  
495 into one of the five classes. We then calculated the migratory flows and counter-flows between,  
496 and within, districts in the 12 months prior to each survey. These parameter estimates are given  
497 for 1981 census (Table 1), the 1991 census (Table 2), the 2001 census (Table 3), and the 2011  
498 census (Table 4). Between each census, districts change in size due to births, deaths and  
499 migration. Also, between each census, districts can be reclassified based upon their increase in  
500 urbanization.

501

502 **References:**

- 503
- 504 African Natural Resources Center. (2016). *Debswana Diamond Company and the Government*  
505 *of Botswana: an HIV/AIDS public-private partnership programme.*  
506 <https://www.afdb.org/fileadmin/uploads/afdb/Documents/Publications/anrc/DEBSWANA>  
507 [ENG\\_HR\\_PAGES.pdf](https://www.afdb.org/fileadmin/uploads/afdb/Documents/Publications/anrc/DEBSWANA) [Accessed October 17, 2022].
- 508 Barnett, T., Fantan, T., Mbakile, B., & Whiteside, A. (2002). *The private sector responds to the*  
509 *epidemic: Debswana—a global benchmark.* Geneva, Switzerland: UNAIDS.
- 510 Bell, M., Blake, M., Boyle, P., Duke-Williams, O., Rees, P., Stillwell, J., & Hugo, G. (2002). Cross-  
511 national comparison of internal migration: Issues and measures. *Journal of the Royal*  
512 *Statistical Society: Series A (Statistics in Society)*, 165(3), 435-464.
- 513 Camlin, C. S., & Charlebois, E. D. (2019). Mobility and its effects on HIV acquisition and treatment  
514 engagement: Recent theoretical and empirical advances. *Current HIV/AIDS Reports*,  
515 16(4), 314-323. doi:10.1007/s11904-019-00457-2
- 516 CSO Botswana, & NACA. (2009). *2008 Botswana AIDS Impact Survey III: Statistical Report.*  
517 <https://microdata.statsbots.org.bw/index.php/catalog/13/download/77> [Accessed October  
518 12, 2022].
- 519 Dobra, A., Barnighausen, T., Vandormael, A., & Tanser, F. (2017). Space-time migration patterns  
520 and risk of HIV acquisition in rural South Africa. *AIDS*, 31(1), 137-145.  
521 doi:10.1097/qad.0000000000001292
- 522 Faria, N. R., Rambaut, A., Suchard, M. A., Baele, G., Bedford, T., Ward, M. J., Tatem, A. J.,  
523 Sousa, J. D., Arinaminpathy, N., Pépin, J., Posada, D., Peeters, M., Pybus, O. G., &  
524 Lemey, P. (2014). The early spread and epidemic ignition of HIV-1 in human populations.  
525 *Science*, 346(6205), 56-61. doi:10.1126/science.1256739
- 526 Farley, S. M., Wang, C., Bray, R. M., Low, A. J., Delgado, S., Hoos, D., Kakishozi, A. N., Harris,  
527 T. G., Nyirenda, R., Wadonda, N., Li, M., Amuri, M., Juma, J., Kancheya, N., Pietersen, I.,  
528 Mutenda, N., Natanael, S., Aoko, A., Ngugi, E. W., Asimwe, F., Lecher, S., Ward, J.,  
529 Chikwanda, P., Mugurungi, O., Moyo, B., Nkurunziza, P., Aibo, D., Kabala, A., Biraro, S.,  
530 Ndagije, F., Musuka, G., Ndongmo, C., Shang, J., Dokubo, E. K., Dimite, L. E.,  
531 McCullough-Sanden, R., Bissek, A. C., Getaneh, Y., Eshetu, F., Nkumbula, T., Tenthani,  
532 L., Kayigamba, F. R., Kirungi, W., Musinguzi, J., Balachandra, S., Kayirangwa, E., Ayite,  
533 A., West, C. A., Bodika, S., Sleeman, K., Patel, H. K., Brown, K., Voetsch, A. C., El-Sadr,  
534 W. M., & Justman, J. J. (2022). Progress towards the UNAIDS 90-90-90 targets among

- 535 persons aged 50 and older living with HIV in 13 African countries. *J Int AIDS Soc*, 25 Suppl  
536 4, e26005. doi:10.1002/jia2.26005
- 537 Hendriks, J. C., Medley, G. F., van Griensven, G. J., Coutinho, R. A., Heisterkamp, S. H., & van  
538 Druten, H. A. (1993). The treatment-free incubation period of AIDS in a cohort of  
539 homosexual men. *AIDS*, 7(2), 231-239. doi:10.1097/00002030-199302000-00012
- 540 Magosi, L. E., Zhang, Y., Golubchik, T., DeGruttola, V., Tchetgen Tchetgen, E., Novitsky, V.,  
541 Moore, J., Bachanas, P., Segolodi, T., Lebelonyane, R., Pretorius Holme, M., Moyo, S.,  
542 Makhema, J., Lockman, S., Fraser, C., Essex, M. M., & Lipsitch, M. (2022). Deep-  
543 sequence phylogenetics to quantify patterns of HIV transmission in the context of a  
544 universal testing and treatment trial - BCPP/Ya Tsie trial. *eLife*, 11, e72657.  
545 doi:10.7554/eLife.72657
- 546 Mine, M., Stafford, K., Laws, R., Marima, R., Lekone, P., Ramaabya, D., Makhaola, K.,  
547 Mapondera, P., Wray-Gordon, F., & Agbakwuru, C. (2022). *Botswana achieved the Joint*  
548 *United Nations Programme on HIV/AIDS (UNAIDS) 95-95-95 targets: results from the Fifth*  
549 *Botswana HIV/AIDS Impact Survey (BAIS V), 2021*. Paper presented at the The 24th  
550 International AIDS Conference, Montreal, Canada.
- 551 Ministry of Health Botswana. (2013). *2012 Mapping, Size Estimation & Behavioral and Biological*  
552 *Surveillance Survey (BBSS) of HIV/STI Among Select High-Risk Sub-Populations in*  
553 *Botswana*. [https://www.fhi360.org/sites/default/files/media/documents/BBSS\\_2012](https://www.fhi360.org/sites/default/files/media/documents/BBSS_2012_Final.pdf)  
554 [Final.pdf](https://www.fhi360.org/sites/default/files/media/documents/BBSS_2012_Final.pdf) [Accessed October 3, 2022].
- 555 Minnesota Population Center. (2020). *Integrated Public Use Microdata Series (IPUMS),*  
556 *International: Version 7.3 [dataset]*. <https://doi.org/10.18128/D020.V7.3> [Accessed June  
557 4, 2020].
- 558 Moriconi-Ebrard, F., Heinrigs, P., & Trémolières, M. (2020). *Africa's Urbanisation Dynamics 2020:*  
559 *Africapolis, Mapping a New Urban Geography*: OECD, Sahel and West Africa Club  
560 Secretariat.
- 561 Muñoz, A., Wang, M. C., Bass, S., Taylor, J. M., Kingsley, L. A., Chmiel, J. S., & Polk, B. F. (1989).  
562 Acquired immunodeficiency syndrome (AIDS)-free time after human immunodeficiency  
563 virus type 1 (HIV-1) seroconversion in homosexual men. Multicenter AIDS Cohort Study  
564 Group. *American Journal of Epidemiology*, 130(3), 530-539.  
565 doi:10.1093/oxfordjournals.aje.a115367
- 566 NACA, & CSO Botswana. (2005). *Botswana AIDS Impact Survey II: Statistical Report*.  
567 [https://www.statsbots.org.bw/sites/default/files/stats\\_report%282%29.pdf](https://www.statsbots.org.bw/sites/default/files/stats_report%282%29.pdf) [Accessed  
568 October 12, 2022].



- 569 Novitsky, V., Kühnert, D., Moyo, S., Widenfelt, E., Okui, L., & Essex, M. (2015). Phylodynamic  
570 analysis of HIV sub-epidemics in Mochudi, Botswana. *Epidemics*, 13, 44-55.  
571 doi:10.1016/j.epidem.2015.07.002
- 572 Novitsky, V., Zahralban-Steele, M., Moyo, S., Nkhisang, T., Maruapula, D., McLane, M. F.,  
573 Leidner, J., Bennett, K., Wirth, K. E., Gaolathe, T., Kadima, E., Chakalisa, U., Pretorius  
574 Holme, M., Lockman, S., Mmalane, M., Makhema, J., Gaseitsiwe, S., DeGruttola, V., &  
575 Essex, M. (2020). Mapping of HIV-1C transmission networks reveals extensive spread of  
576 viral lineages across villages in Botswana treatment-as-prevention trial. *The Journal of*  
577 *Infectious Diseases*, 222(10), 1670-1680. doi:10.1093/infdis/jiaa276
- 578 Okano, J. T., Busang, L., Seipone, K., Valdano, E., & Blower, S. (2021). The potential impact of  
579 country-level migration networks on HIV epidemics in sub-Saharan Africa: the case of  
580 Botswana. *The Lancet. HIV*, 8(12), e787-e792. doi:10.1016/s2352-3018(21)00267-8
- 581 Okano, J. T., Sharp, K., Valdano, E., Palk, L., & Blower, S. (2020). HIV transmission and source-  
582 sink dynamics in sub-Saharan Africa. *The Lancet. HIV*, 7(3), e209-e214.  
583 doi:10.1016/s2352-3018(19)30407-2
- 584 Olawore, O., Tobian, A. A. R., Kagaayi, J., Bazaale, J. M., Nantume, B., Kigozi, G., Nankinga, J.,  
585 Nalugoda, F., Nakigozi, G., Kigozi, G., Gray, R. H., Wawer, M. J., Ssekubugu, R., Santelli,  
586 J. S., Reynolds, S. J., Chang, L. W., Serwadda, D., & Grabowski, M. K. (2018). Migration  
587 and risk of HIV acquisition in Rakai, Uganda: a population-based cohort study. *The Lancet.*  
588 *HIV*, 5(4), e181-e189. doi:10.1016/s2352-3018(18)30009-2
- 589 Read, S. W., Kim, P., Marovich, M., Dieffenbach, C. W., & Fauci, A. S. (2022). Forty years of  
590 investment in HIV research: progress towards ending the HIV pandemic and preparation  
591 for future pandemics. *J Int AIDS Soc*, 25(12), e26039. doi:10.1002/jia2.26039
- 592 Ruggles, S., McCaa, R., Sobek, M., & Cleveland, L. (2015). The IPUMS collaboration: integrating  
593 and disseminating the world's population microdata. *Journal of Demographic Economics*,  
594 81(2), 203-216.
- 595 Statistics Botswana. (2014). *Population and Housing Census 2011: Analytical Report*.  
596 [https://www.statsbots.org.bw/sites/default/files/publications/Population %26 Housing](https://www.statsbots.org.bw/sites/default/files/publications/Population%20Housing%20Census%20Dissemination%20analytical%20report.pdf)  
597 [Census Dissemination analytical report .pdf](https://www.statsbots.org.bw/sites/default/files/publications/Population%20Housing%20Census%20Dissemination%20analytical%20report.pdf) [Accessed March 21, 2022].
- 598 Statistics Botswana. (2015). *Population and Housing Census 2011: National Statistical Tables*.  
599 [https://www.statsbots.org.bw/sites/default/files/publications/national\\_statisticsreport.pdf](https://www.statsbots.org.bw/sites/default/files/publications/national_statisticsreport.pdf)  
600 [Accessed April 20, 2020].
- 601 Tarver, J. D. (1984). Migration of the population of Botswana. *Pula*, 4(1), 80-94.

- 602 Tarver, J. D., & Miller, H. M. (1987). Rural-urban migration in a developing country: Botswana,  
603 Africa. *Africa Quarterly*, 24(1-2), 22-33.
- 604 UNAIDS, & World Health Organization. (2004). *Botswana: Epidemiological Fact Sheet - 2004*  
605 *Update*. [https://data.unaids.org/publications/fact-sheets01/botswana\\_en.pdf](https://data.unaids.org/publications/fact-sheets01/botswana_en.pdf) [Accessed  
606 October 11, 2022].
- 607 Valdano, E., Okano, J. T., Colizza, V., Mitonga, H. K., & Blower, S. (2021). Using mobile phone  
608 data to reveal risk flow networks underlying the HIV epidemic in Namibia. *Nature*  
609 *Communications*, 12(1), 2837. doi:10.1038/s41467-021-23051-w
- 610 Wilkinson, E., Engelbrecht, S., & de Oliveira, T. (2015). History and origin of the HIV-1 subtype C  
611 epidemic in South Africa and the greater southern African region. *Scientific Reports*, 5,  
612 16897. doi:10.1038/srep16897

613 **Data availability statement:** All data needed to evaluate the conclusions in the paper are  
614 presented in the paper, or freely available for registered users at the IPUMS International website:  
615 <https://doi.org/10.18128/D020.V7.3>. We note that we did not collect these data, nor are they  
616 permitted to be posted to other repositories. All code needed to reproduce all parts of this analysis  
617 are available from the first author's GitHub page: [https://github.com/janetsong80/pop-mobility-](https://github.com/janetsong80/pop-mobility-botswana-hiv)  
618 [botswana-hiv](https://github.com/janetsong80/pop-mobility-botswana-hiv) (copy archived at: <https://zenodo.org/badge/latestdoi/594401539>).

619  
620 **Acknowledgements:**

621 We acknowledge the Central Statistics Office (CSO) Botswana for collecting the data archived by  
622 IPUMS. We are grateful to Nelson Freimer for discussions throughout the course of this research.

623  
624 **Author contributions:**

625 Conceptualization: LB, KS, SB

626 Methodology: JS, JTO, JP, EV

627 Software: JS, JP

628 Validation: JS, JTO

629 Formal analysis: JS, JTO, JP

630 Visualization: JTO, JP

631 Supervision: SB

632 Writing—original draft: SB

633 Writing—review & editing: JS, JTO, JP, LB, KS, EV, SB

634 Funding acquisition: SB

635

636 **Competing interests:** All authors declare that they have no competing interests.

637

638 **Funding:**

639 JS, JTO, JP, and SB acknowledge the financial support of the National Institute of Allergy and  
640 Infectious Diseases, National Institutes of Health grants R56 AI152759 and R01 AI167713.