

1 Outcomes of possible and probable rheumatic fever: a cohort study
2 using northern Australian register data, 2013-2019

3

4 Laura Goddard^{1,2}, Mirjam Kaestli^{1,3}, Enes Makalic², Anna P. Ralph^{1*}

5

6 1. Global and Tropical Health Division, Menzies School of Health Research, Charles
7 Darwin University, Darwin, Northern Territory, Australia

8 2. School of Global and Population Health, University of Melbourne, Melbourne, Victoria,
9 Australia

10 3. Research Institute for the Environment and Livelihoods, Charles Darwin University,
11 Darwin, Northern Territory, Australia

12

13 *Corresponding author

14 E-mail: anna.ralph@menzies.edu.au

15 Abstract

16 Background: Outcomes after acute rheumatic fever (ARF) diagnosis are variable, ranging from
17 recovery to development of severe rheumatic heart disease (RHD). There is no diagnostic
18 test. Evaluation using the Australian clinical diagnostic criteria can result in a diagnosis of
19 'definite', 'probable' or 'possible' ARF. The 'possible' category was introduced in 2013 in
20 Australia's Northern Territory (NT). Our aim was to compare longitudinal outcomes after a
21 diagnosis of definite, probable or possible ARF.

22 Methods: We extracted data from the NT RHD register for Indigenous Australians with an
23 initial diagnosis of ARF during the 5.5-year study period (01/01/2013 – 30/06/2019).
24 Descriptive statistics were used to describe the demographic and clinical characteristics at
25 initial ARF diagnosis. Kaplan-Meier curves were used to assess the probability of survival free
26 of disease progression and the cumulative incidence risk at each year since initial diagnosis
27 was calculated. Cox proportional hazards regression was used to determine whether time to
28 disease progression differed according to ARF diagnosis and whether progression was
29 associated with specific predictors at diagnosis. A multinomial logistic regression model was
30 performed to assess whether ARF diagnosis was associated with RHD outcome and to assess
31 associations between ARF diagnosis and clinical manifestations. A generalised linear mixed
32 model (GLMM) was developed to assess any differences in the long-term antibiotic adherence
33 between ARF diagnosis categories and to examine longitudinal trends in adherence.

34 Results: There were 913 initial ARF cases, 732 with normal baseline echocardiography. Of
35 these, 92 (13%) experienced disease progression: definite ARF 61/348 (18%); probable ARF
36 20/181 (11%); possible ARF 11/203 (5%). The proportion of ARF diagnoses that were
37 uncertain (i.e. possible or probable) increased over time, from 22/78 (28%) in 2013 to 98/193
38 (51%) in 2018. Cumulative incidence risk of any disease progression at 5.5 years was 33.6
39 (23.6–46.2) for definite ARF, 13.5 (8.8–20.6) for probable and 11.4% (95% CI 6.0–21.3) for
40 possible ARF. The probability of disease-free survival was lowest for definite ARF and highest

41 for possible ARF ($p=0.004$). Cox proportional hazards regression indicated that disease
42 progression was 2.19 times more likely in those with definite ARF than those with possible
43 ARF ($p=0.026$). Progression to RHD was reported in 37/348 (11%) definite ARF, 10/181 (6%)
44 probable ARF, and 5/203 (2%) possible ARF. The multinomial logistic regression model
45 demonstrated a significantly higher risk of progression from no RHD to RHD if the initial
46 diagnosis was definite compared to possible ARF ($p<0.001$ for both mild and moderate-severe
47 RHD outcomes). The GLMM estimated that patients with definite ARF had a significantly
48 higher adherence to antibiotic prophylaxis compared with probable ARF ($p=0.024$).

49 Conclusion: These data indicate that the ARF diagnostic categories are being applied
50 appropriately, are capturing more uncertain cases over time, provide a useful way to stratify
51 risk and guide prognosis, and can help inform practice. Possible ARF is not entirely benign;
52 some cases progress to RHD.

53 Introduction

54 In Australia, high burdens of acute rheumatic fever (ARF) and rheumatic heart disease (RHD)
55 occur among Aboriginal and Torres Strait Islander peoples, particularly across northern and
56 central Australia.(1) There is no diagnostic test for ARF. This impairs case detection and
57 opportunities for early intervention with antibiotic secondary prophylaxis.(2) The Jones Criteria
58 are syndromic criteria to diagnose ARF, dividing the clinical features into major and minor
59 manifestations based on their prevalence and specificity.(3) The Jones Criteria have been
60 regularly revised in response to evolving clinical knowledge and epidemiology, to reduce
61 overdiagnosis in high-resource settings where ARF has become uncommon.(4-6) As a result,
62 they became less sensitive for detection of cases in high-incidence populations. Different
63 considerations were therefore added for high-risk groups (3, 5, 6), but to further avoid missed
64 diagnoses in high-prevalence Aboriginal communities in Australia, additional diagnostic
65 categories of 'possible' and 'probable' ARF were proposed.(7) This proposal was adopted and
66 since 2013, diagnoses in Australia have been grouped as: possible ARF, probable ARF,
67 definite ARF, and RHD. The distinction between probable and possible is subjective and
68 requires thoughtful clinical decision making. These categories were further clarified in the
69 revised 2020 Australian Guidelines (Box 1).(3) This is in contrast to international guidelines
70 that only articulate two categories: definite and probable ARF.(6)

71

72 **Box 1: Acute rheumatic fever diagnostic categories, 2020 Australian Guidelines (6)**

Definite ARF: acute presentation which fulfils the 2015 Revised Jones diagnostic criteria for ARF.

Probable ARF: acute presentation which does not fulfil Jones diagnostic criteria for ARF, missing one major or one minor criterion or lacking evidence of preceding streptococcal infection, but ARF is still considered the most likely diagnosis.

Possible ARF: acute presentation which does not fulfil Jones diagnostic criteria for ARF, missing one major or one minor criterion or lacking evidence of preceding streptococcal infection, and ARF is considered uncertain but cannot be ruled out.

73

74 Previous research has described progression from ARF to RHD and other outcomes such as
75 morbidity and mortality rates.(8, 9) In Australia's Northern Territory (NT), the risk of
76 progression from definite ARF to RHD is high, with a cumulative incidence of progression of
77 27.1% at 1 year after diagnosis, 44.0% at 5 years and 51.9% at 10 years.(9) Adherence to
78 penicillin to prevent rheumatic fever recurrences reduces risk, with a dose-dependent
79 effect.(10) Previous studies routinely exclude possible ARF and often also exclude probable
80 ARF cases, so long-term outcomes of these diagnoses remain unknown.

81

82 To provide patients with better prognostic information, determine whether clinicians appear to
83 be applying diagnostic categories appropriately, and reflect on whether current management
84 guidelines (3) are appropriate, the aim of this study is to describe patient outcomes after a
85 diagnosis of possible or probable (collectively, 'uncertain') ARF, compared with definite ARF.
86 Further aims are to determine whether uncertain diagnoses differ from definite ARF in
87 demographic or clinical characteristics, severity of RHD if there is progression to RHD, and
88 penicillin adherence over time.

89

90 **Methods**

91 **Study design and data sources**

92 We used a retrospective cohort design and Cox proportional hazards regression to analyse
93 the probability of disease progression after an initial diagnosis of ARF. Sub-analyses on initial
94 ARF diagnoses with RHD outcome and adherence to penicillin adherence were conducted

95 using multinomial logistic regression and generalised linear mixed-effects models (GLMM)
96 respectively. Data were extracted from the NT RHD Register (the Register) for a 5.5-year
97 period (01/01/2013 – 30/06/2019). The Register was established in 1997 as a tool to support
98 and coordinate care. Since then, all notified cases of ARF (including recurrent episodes) and
99 RHD in the NT have been recorded, capturing approximately 3,500 individuals at the time of
100 data extraction. The Register includes data on patient demographics, clinical features of ARF
101 and RHD, medical appointments and secondary penicillin prophylaxis, which is generally
102 required long-term after probable and definite ARF, and short term (12 months) after possible
103 ARF. Mortality data from the NT Births, Deaths and Marriages database are reviewed monthly
104 and integrated with the Register.

105

106 Study population and sample

107 The study population was defined as Indigenous Australians residing in the NT, which is
108 approximately 74,546 or 30% of the total NT population.(11, 12) The Register contained
109 information on 1,140 individuals with 1,567 diagnoses during the study period. Indigenous
110 Australians residing in the NT who were registered with an initial diagnosis of possible,
111 probable or definite ARF on the Register during the study period were included. Exclusions
112 comprised non-Indigenous people (11; 1%); cases whose first documented ARF episode was
113 labelled a recurrence (216; 19%); and concurrent ARF and RHD diagnoses (180; 16%). Those
114 whose first documented episode was labelled a recurrence were assumed to have had a
115 previous diagnosis of ARF before the study period began or in a different jurisdiction. One
116 case whose initial diagnosis date was on the final day of the study period was excluded from
117 the disease progression analyses due to a survival time of zero. Concurrent ARF and RHD
118 diagnoses (180 cases) were similarly excluded from disease progression analyses since they
119 had a disease-free survival time of zero. These cases represent severe ARF which has
120 already progressed to RHD at the time of first echocardiogram, or ARF occurring in someone

121 with previously unrecognised latent RHD, or documentation of rheumatic carditis in the register
122 as RHD (since distinguishing rheumatic carditis from established RHD is not always possible,
123 and misclassification may occur during clinical reporting or data entry). The exclusions mean
124 that the most severe form of ARF (definite ARF with carditis classified as RHD, or carditis
125 complicating RHD), were excluded from the Cox regressions but were still accounted for in
126 the multinomial model. The final sample size for the Cox regression was 732 cases and 913
127 cases for the multinomial model.

128

129 Outcomes

130 The main outcome of interest was time to disease progression. Disease progression was
131 defined as progression from possible to probable ARF, definite ARF or RHD; probable to
132 definite ARF or RHD; or definite ARF to definite ARF recurrence or RHD at any time during
133 the study period (Table 1). Individuals could progress and regress more than once during the
134 study period, however only the first progression was counted.

135

136 **Table 1. Definitions of disease progression**

Initial ARF diagnosis	Subsequent diagnosis
ARF possible	ARF probable, ARF definite or RHD
ARF probable	ARF definite or RHD
ARF definite	ARF definite recurrence or RHD

137

138 We also calculated the proportion of those without baseline carditis who progressed to RHD
139 and the risk to develop mild or moderate to severe RHD compared to no RHD based on initial
140 ARF diagnosis.

141

142 Adherence to secondary prophylaxis with benzathine benzylpenicillin (BPG) was calculated
143 as the percentage of received doses / prescribed doses x100. BPG is usually required once
144 every 28 days for ARF secondary prophylaxis, i.e. 13 doses per year, but may be prescribed
145 every 21 days, i.e. 17 doses per year, in more severe or breakthrough cases. The number of

146 prescribed doses was estimated by dividing the number of days that BPG was prescribed (last
147 dose date minus first dose date) divided by 21 or 28 for 3-weekly and 4-weekly BPG
148 respectively. Adherence calculations were restricted to cases that had been prescribed at least
149 6 doses of BPG (equivalent to 168 days for a 4-weekly regimen). Adherence was considered
150 good if $\geq 80\%$ of injections were received.

151

152 Predictors

153 Predictors used in the analyses included initial ARF diagnosis, sex, age group, clinical
154 manifestations, and adherence to secondary prophylaxis. Initial ARF diagnosis was defined
155 as the first diagnosis of possible, probable or definite ARF on the Register. Sex was classified
156 as per the NT RHD register (male, female, unknown). Age at initial diagnosis was grouped as
157 0-4, 5-14, 15-24, ≥ 25 years; these have different risk profiles for ARF and RHD.(3) Clinical
158 manifestations were grouped as major manifestations (carditis; arthritis or 'joint'; Sydenham's
159 Chorea; and subcutaneous nodules and erythema marginatum or 'skin'), minor manifestations
160 (fever; elevated ESR or CRP; prolonged P-R interval on ECG), and evidence of Group A
161 streptococcal infection (elevated serological titre or cultured from throat swab) as per the
162 RHD Australia Clinical Guidelines.(3) The definition of adherence is described in the outcomes
163 section. Individuals who had missing data for adherence are excluded from analyses as these
164 data are unlikely to be missing at random and keeping these individuals in the analysis may
165 therefore introduce bias.

166

167 Statistical analysis

168 Descriptive statistics were used to describe the demographic and clinical characteristics at
169 initial ARF diagnosis (possible, probable, definite). Kaplan-Meier curves and log rank test were
170 used to assess the probability of survival free of disease progression and the cumulative
171 incidence risk at each year since initial diagnosis was calculated. Cox proportional hazards

172 regression was used to determine whether time to disease progression differed according to
173 ARF diagnosis category (definite, probable, possible), and whether it was predicted by age
174 group at diagnosis, sex, adherence to secondary prophylaxis or clinical manifestations (joint
175 manifestation-only and joint manifestation with carditis and/or chorea) at diagnosis. Hazard
176 ratios, 95% CI and p-values are reported.

177

178 A multinomial logistic regression model was performed to assess whether ARF diagnosis type
179 (definite, probable, possible) was associated with RHD outcome (no RHD, mild RHD
180 moderate-severe RHD). Moderate and severe RHD were combined to increase observations
181 per group level. Predictors included age group, sex, drug adherence and clinical
182 manifestations (carditis-only or joint manifestations-only. Chorea-only was excluded due to
183 the small number of observations). Multinomial logistic regression was also used to assess
184 associations between clinical manifestations (Jones major criteria) and ARF diagnosis.
185 Relative risk ratios, 95% confidence intervals (CI) and p-values were calculated for clinical
186 manifestations, age at diagnosis and sex, using definite ARF as the reference group.

187

188 A GLMM (beta regression family) was developed to assess any differences in the long-term
189 antibiotic adherence between ARF diagnosis categories and examine longitudinal trends in
190 adherence (glmmTMB package in R). This took into account the number of years receiving
191 BPG prophylaxis and a random intercept for patient identification. Model residuals were
192 checked for lack of patterns across fitted values and predictors (DHARMA package) and no
193 temporal autocorrelation.

194

195 Data were analysed using STATA version 15.1 (STATA Corp, College Station, TX), R (v4.1.3;
196 R Project for Statistical Computing, Vienna, Austria) and Microsoft Excel (2016).

197

198 Ethics approval

199 Study approval was granted by the Human Research Ethics Committee of the Northern
 200 Territory Department of Health and Menzies School of Health Research (2019-3482). This
 201 approval was registered with the University of Melbourne's Medicine and Dentistry Human
 202 Ethics Sub-Committee (1955194). Access to register data was approved by the data
 203 custodian, Top End Health Service, NT Department of Health.

204

205 Results

206 Demographic and clinical characteristics

207 During the study period there were 913 initial diagnoses of ARF among eligible register
 208 participants: 509 (56%) definite, 196 (21%) probable and 208 (23%) possible ARF. All ARF
 209 types were more common among females than males and in those aged 5-14 years compared
 210 with other age groups (**Error! Reference source not found.**).

211

212 Table 2. Characteristics at initial acute rheumatic fever diagnosis among Indigenous
 213 Australians, NT, 2013-2019

Characteristic	ARF						Total	
	Possible		Probable		Definite		n	(%)
	n	(%)	n	(%)	n	(%)		
Cases	208	(100)	196	(100)	509	(100)	913	(100)
Sex								
Male	97	(47)	87	(44)	243	(48)	427	(47)
Female	111	(53)	109	(56)	266	(52)	486	(53)
Age group (years)								
0-4	25	(12)	11	(6)	27	(5)	63	(7)
5-14	113	(54)	92	(47)	298	(59)	503	(55)
15-24	37	(18)	53	(27)	107	(21)	197	(22)
≥25	33	(16)	40	(20)	77	(15)	150	(16)
Median, IQR	10	6-19	14	9-22	12	9-18	15	8-19
Year of diagnosis								
2013	9	(4)	13	(7)	56	(11)	78	(9)
2014	13	(6)	11	(6)	72	(14)	96	(11)
2015	18	(9)	28	(14)	77	(15)	123	(13)
2016	40	(19)	36	(18)	81	(16)	157	(17)

2017	38	(18)	52	(27)	87	(17)	177	(19)
2018	58	(28)	40	(20)	95	(19)	193	(21)
2019*	32	(15)	16	(8)	41	(8)	89	(10)
Adherence (%)								
<50	16	(7)	22	(11)	52	(10)	90	(10)
50-79	47	(23)	57	(29)	120	(24)	224	(24)
80-99	47	(23)	55	(28)	164	(32)	266	(29)
≥100	36	(17)	36	(19)	109	(21)	181	(20)
Unknown †	62	(30)	26	(13)	64	(13)	152	(17)
Clinical manifestation ‡								
Major								
Carditis	6	(3)	14	(7)	167	(33)	187	(20)
Joint	172	(83)	182	(93)	433	(85)	787	(86)
Sydenham chorea	3	(1)	0	(0)	62	(12)	65	(7)
Skin	2	(1)	1	(1)	7	(1)	10	(1)
Minor								
Fever	51	(24)	60	(31)	340	(67)	451	(49)
Elevated ESR or CRP	12	(14)	9	(6)	11	(2)	32	(5)
Prolonged P-R interval on ECG	10	(5)	19	(10)	196	(39)	225	(25)
Other								
Elevated GAS serological titre	183	(88)	168	(86)	480	(94)	831	(91)
GAS cultured from throat swab	5	(2)	7	(4)	18	(4)	30	(3)
Not recorded	6	(3)	1	(1)	0	(0)	7	(1)

214 ARF = acute rheumatic fever; GAS = group A beta haemolytic streptococcus; ESR =
215 erythrocyte sedimentation rate; CRP = C-reactive protein; ECG = electrocardiogram; CM =
216 clinical manifestation

217 * Note: only 6 months of data

218 † Note: includes those where prophylaxis data is not recorded and where prophylaxis was
219 prescribed for <6 months.

220 ‡ Note: cases may have more than one clinical manifestation, therefore the total does not
221 add up to 100%

222 ¥ Note: Elevated GAS serological titre or GAS cultured from throat swab only

223

224 Joint pain was the most common major Jones criterion for all ARF diagnostic categories.

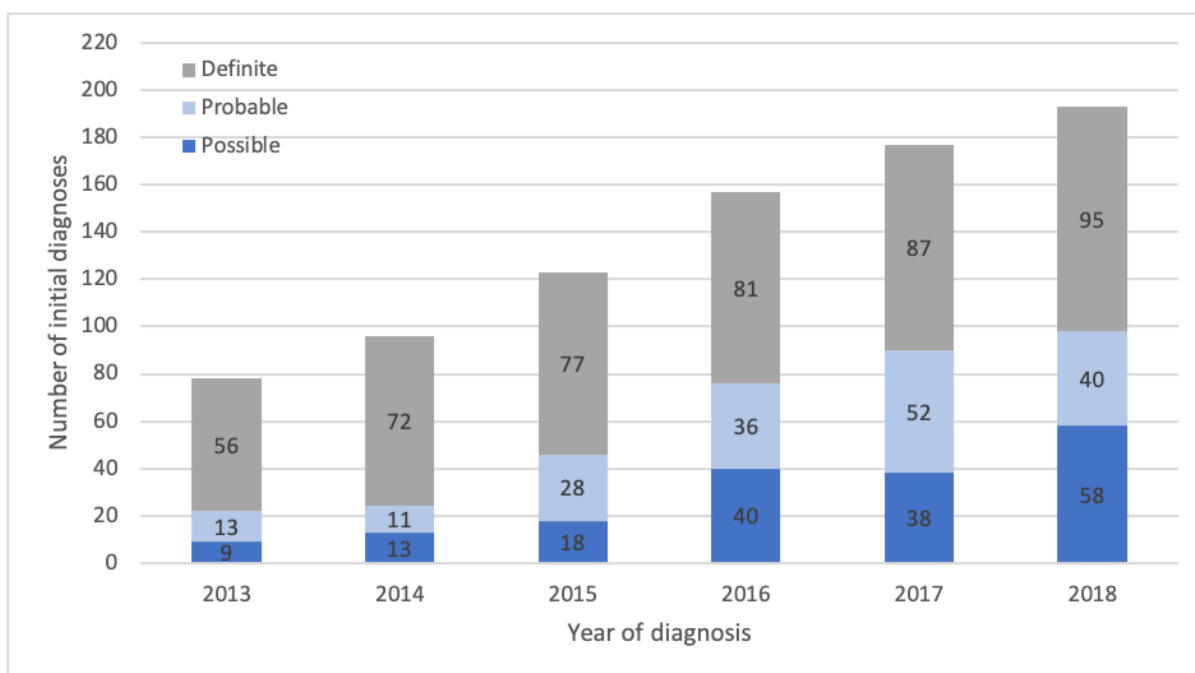
225 Evidence of streptococcal infection (considered essential) was missing in 2% of cases

226 classified as definite ARF, and in approximately 10% of possible and probable ARF cases.

227 There were 2 deaths during the study period. The proportion of those adhering to penicillin

228 secondary prophylaxis was similar for possible and probable ARF but higher for definite ARF

229 (Table 2): the proportion receiving $\geq 80\%$ of scheduled BPG injections was 37% and 46%
230 among possible and probable cases respectively, compared with 56% among definite ARF
231 cases. However, the proportion of possible ARF cases with unknown adherence was double
232 that among probable ARF and definite ARF cases (**Error! Reference source not found.**).
233 Each year, the number of ARF diagnoses increased (Fig 1).



234
235 **Fig 1: Number of ARF diagnoses among Indigenous Australians, Northern Territory,**
236 **2013-2018. ARF indicates acute rheumatic fever.**
237

238 The proportion that was uncertain increased from 22/78 (28%) in 2013 when these diagnostic
239 categories started to be recorded, to 98/193 (51%) in 2018 (**Error! Reference source not**
240 **found.**).

241

242 Disease progression

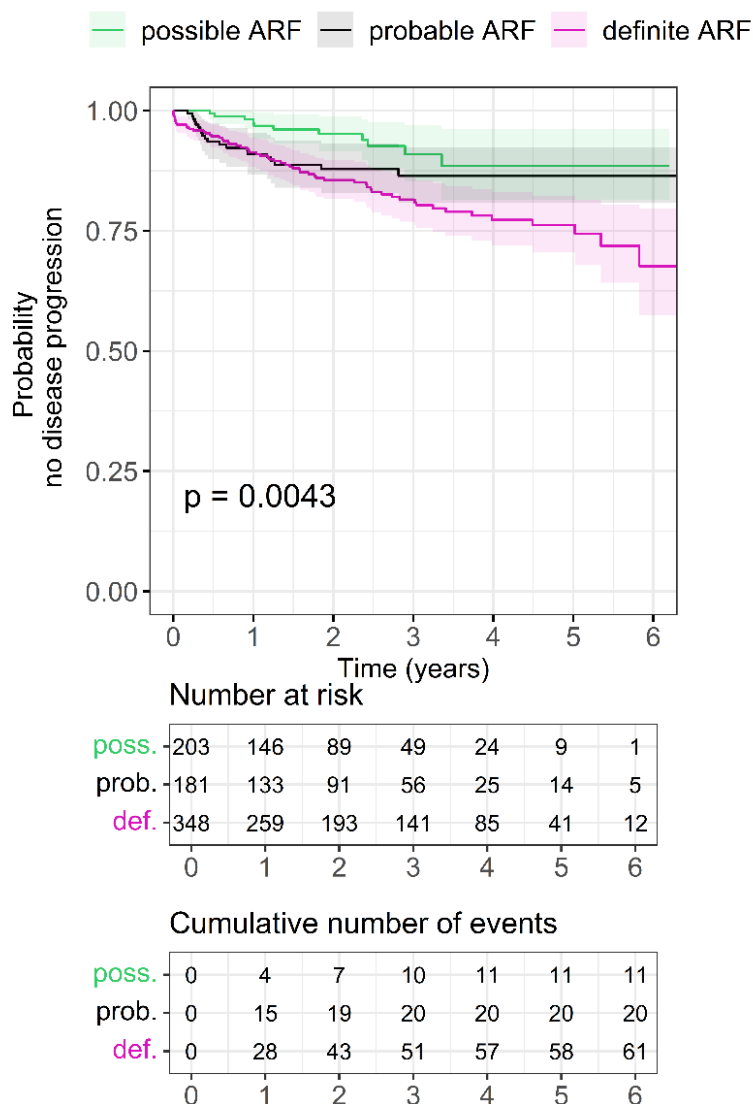
243 After excluding cases with zero disease-free survival time, a total of 92 (13%) cases
244 experienced disease progression during the study period. Of those with an initial diagnosis of
245 definite ARF, 61/348 (18%) experienced disease progression, compared to 20/181 (11%) with
246 probable ARF and 11/203 (5%) with possible ARF. Of those who progressed, 37/61 (61%)

247 with definite ARF, 10/20 (50%) with probable ARF, and 5/11 (45%) with possible ARF (total of
248 52/92 or 57%) were diagnosed with RHD during the study period. Overall, progression to RHD
249 was reported in 37/348 (11%) definite ARF, 10/181 (6%) probable ARF, and 5/203 (2%)
250 possible ARF.

251

252 Possible ARF had the best probability of survival free of disease progression and definite ARF
253 had the worst survival probability ($p=0.0043$; log rank test; Fig 2).

254



255

256 **Fig 2: Kaplan-Meier progression-free survival estimates by initial ARF diagnosis among**
257 **Indigenous Australians, Northern Territory, 2013-2019.** ARF = acute rheumatic fever.

258

259 For possible and probable ARF, the risk of disease progression continued to increase each
260 year up to 4 years and 3 years since initial diagnosis respectively. For definite ARF, the risk
261 of disease progression continued to increase each year of the follow-up period (Table 3).

262

263 **Table 3: Cumulative incidence risk of disease progression by year of follow-up among**
264 **Indigenous Australians, Northern Territory, 2013-2019**

Year	Possible ARF %, CI (95%)	Probable ARF %, CI (95%)	Definite ARF %, CI (95%)
1	2.46 (0.93 – 6.44)	9.03 (5.54 – 14.55)	8.66 (6.05 – 12.32)
2	4.85 (2.31 – 10.03)	12.13 (7.87 – 18.45)	14.43 (10.87 – 19.02)
3	9.05 (4.72 – 17.00)	13.54 (8.78 – 20.59)	17.98 (13.83 – 23.19)
4	11.44 (5.97 – 21.33)	13.54 (8.78 – 20.59)	22.19 (17.22 – 28.33)
5	11.44 (5.97 – 21.33)	13.54 (8.78 – 20.59)	23.26 (18.01 – 29.73)
5.5*	11.44 (5.97 – 21.33)	13.54 (8.78 – 20.59)	33.55 (23.61 – 46.21)

265 *Only six months of data are available for the final year

266

267 Cox proportional hazards regression indicated that disease progression was 2.19 times more
268 likely in those with definite ARF than those with possible ARF (p=0.026) (Table 4).

269
270

Table 4. Cox proportional hazards analysis of predictors associated with disease progression among Indigenous Australians, Northern Territory, 2013-2019

Variable	Hazard Ratio	Confidence Interval (95%)	P value
ARF Diagnosis			
Possible ARF	Ref		
Probable ARF	1.44	0.66 – 3.15	0.353
Definite ARF	2.19	1.10 – 4.34	0.026
Sex			
Male	Ref		
Female	1.06	0.67 – 1.67	0.811
Age group (years)			
0-4	0.73	0.26 – 2.06	0.552
5-14	Ref		
15-24	1.28	0.75 – 2.20	0.366
≥25	1.71	0.93 – 3.15	0.084
Adherence			
<50%	0.31	0.09 – 1.11	0.072
50-79%	1.48	0.66 – 3.29	0.337
80-99%	Ref		
≥100%	2.22	0.86 – 5.78	0.100
Clinical manifestations			
Carditis and/or chorea with or without joint manifestation	Ref		
Joint manifestation only (i.e. no carditis, no chorea)	0.48	0.24 – 0.95	0.035

271
272

ARF = acute rheumatic fever
Note:

273
274
275
276

1. Sample size for this analysis is 595 cases (137 cases missing drug adherence data and 181 cases with zero survival time were excluded)
2. Proportional hazard assumptions were not met for drug adherence nor joint manifestation and therefore, an interaction term with linear time was fitted for these 2 factors (likelihood ratio test $\text{Chi}^2(3) = 14.9$; $\text{Chi}^2(1) = 7.4$, $P < 0.01$ for both). The time varying effect for joint manifestation was 1.7 ($P = 0.012$) and 2.0 for prophylaxis adherence of <50% ($P = 0.010$), both indicating a weakening protective effect with time.

277 The analysis also indicated that having joint manifestations only with no carditis nor chorea at
 278 initial diagnosis of ARF was protective, with this group being 52% less likely to experience
 279 disease progression compared with those who had other clinical manifestations including
 280 carditis and/or chorea at initial diagnosis and with or without joint manifestation ($p=0.035$)
 281 (Table 4). Disease progression was equally likely between sexes and age groups. In this
 282 dataset, the association between penicillin adherence and progression was counterintuitive
 283 and not statistically significant. People who had higher adherence were those who had disease
 284 progression (Table 4).

285

286 Risk of developing rheumatic heart disease

287 The proportion of those who had no baseline carditis but still progressed to RHD is presented
 288 by clinical manifestation (joint-only or chorea-only) in Table 5. Of those who progressed to
 289 RHD with joint-only manifestations, 46% (17/37) progressed after one year. Of those who
 290 progressed to RHD with chorea-only manifestations, only 3% (1/30) progressed after one year.
 291 An additional case with neither chorea nor joint manifestations also progressed to RHD after
 292 one year, bringing the total cases with progression to RHD after one year to be 19 cases.

293

294 **Table 5: Progression to RHD by clinical manifestation among Indigenous Australians,**
 295 **Northern Territory, 2013-2019**

ARF diagnosis	Joint-only with no baseline echocardiographic pathology		Chorea-only with no baseline echocardiographic pathology	
	Total cases N	Progression to RHD n (%)	Total cases N	Progression to RHD n (%)
Possible ARF	167	4 (2%)	2	0 (0%)
Probable ARF	164	10 (6%)	0	-
Definite ARF	229	23 (10%)	28	3 (11%)
All ARF / total	560	37 (7%)	30	3 (10%)

296 ARF = acute rheumatic fever

297 Note: 181 cases with zero survival time were excluded from this analysis

298 The multinomial logistic regression model demonstrated a significantly higher risk of
299 progression from no RHD to RHD if the initial diagnosis was definite compared to possible
300 ARF ($p < 0.001$ for both mild and moderate-severe RHD outcomes) (Table 6).

301
302

Table 6: Multinomial logistic regression of initial ARF diagnosis and development of RHD, by RHD severity, among Indigenous Australians, Northern Territory, 2013-2019

Multinomial model	Relative Risk Ratio	Confidence Interval (95%)	P value
Risk to develop mild RHD compared to no RHD after an initial ARF diagnosis			
ARF diagnosis			
ARF possible	Ref		
ARF probable	2.27	0.91-5.64	0.078
ARF definite	6.39	2.85-14.35	< 0.001 ***
Age group			
<= 4 yrs	0.29	0.07-1.26	0.098
5-14 yrs	Ref		
15-24 yrs	1.71	1.04-2.81	0.034 *
>=25 yrs	1.98	1.11-3.54	0.021 *
Clinical Manifestations			
Carditis only – Yes	0.95	0.27-3.32	0.939
Joint only – Yes	0.49	0.32-0.76	0.002 **
Adherence			
<50%	0.49	0.24-1.01	0.054
50-79%	0.77	0.47-1.26	0.294
80-99%	Ref		0.591
≥100%	0.86	0.50-1.48	
Gender – Female			0.084
Risk to develop moderate to severe RHD compared to no RHD after an initial ARF diagnosis			
ARF diagnosis			
ARF possible	Ref		
ARF probable	2.51	0.46-13.72	0.289
ARF definite	13.92	3.22-60.16	<0.001***
Age group			
<= 4 yrs	1.80	0.64-5.04	0.261
5-14 yrs	Ref		
15-24 yrs	1.88	0.98-3.61	0.059
>=25 yrs	2.11	0.94-4.72	0.071
Clinical Manifestations			

Carditis only – Yes	3.14	1.11-8.82	0.030*
Joint only – Yes	0.19	0.11-0.34	<0.001***
Drug adherence			
<50%	0.20	0.06-0.74	0.015*
50-79%	0.67	0.34-1.31	0.237
80-99%	Ref		
≥100%	1.41	0.75-2.66	0.281
Gender – Female	0.90	0.52-1.55	0.710

303 ARF = acute rheumatic fever; ESR = erythrocyte sedimentation rate; CRP = C-reactive protein; ECG = electrocardiograph; GAS = Group A
304 Streptococcus; *** P<0.001; ** P<0.010; * P<0.050
305 Note: sample size for this analysis is 761 cases (151 cases missing drug adherence data were excluded)

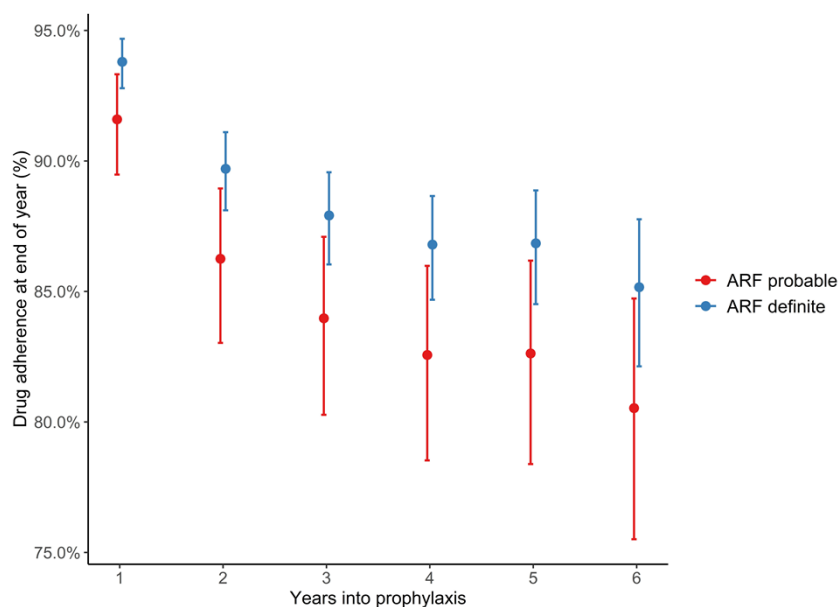
306 There was a strong protective effect for those with joint manifestations only, with a 51%
307 reduced risk to progress to mild RHD and an 81% reduced risk to progress to moderate or
308 severe RHD from no RHD, with all other covariates held constant ($p < 0.001$ for both; Table 6).
309 There was a three-fold increased risk of developing moderate-severe RHD compared to no
310 RHD for patients with carditis-only clinical manifestation ($p = 0.030$).

311

312 Penicillin adherence

313 The GLMM estimated that patients with definite ARF had a significantly higher adherence to
314 antibiotic prophylaxis compared with probable ARF ($p = 0.024$). Possible ARF, requiring only
315 12 months of treatment, was excluded from adherence comparisons. Time on prophylaxis was
316 also significantly inversely associated with adherence, with adherence being higher in the first
317 year after diagnosis and falling in years 2 to 6 after ARF diagnosis, for both definite and
318 probable ARF ($p < 0.001$ for all) (Fig 3).

319



320

321 **Fig 3: Drug adherence by initial ARF diagnosis and year since diagnosis among**
322 **Indigenous Australians, Northern Territory, 2013-2019.**

323 ARF = acute rheumatic fever.

324

325 Discussion

326 To our knowledge, this is the first time that outcomes of possible and probable ARF have been
327 determined. We show that since introduction of these diagnostic categories, they now make
328 up over 40% of all initial ARF diagnoses in the Australian jurisdiction with the highest ARF
329 burden. The diagnostic categories appear to be well applied by clinicians: the vast majority of
330 children and young people diagnosed with possible ARF (95%) and probable ARF (89%) did
331 not progress to definite ARF or RHD. These data are reassuring both for clinicians about the
332 appropriate application of these diagnostic categories, and for patients and their families about
333 the likelihood of a good outcome. However, the fact that some patients do progress
334 emphasises that the Revised Jones criteria can still be inadequately sensitive in a high-burden
335 environment, and the categories of ‘possible’ and ‘probable’ ARF add value by capturing some
336 true cases who require institution of secondary prevention and appropriate clinical follow up.

337
338 Our findings highlight that definite, probable and possible ARF represent three distinct
339 diagnostic categories with different prognoses. In a high-incidence setting, including the
340 category of ‘possible’ ARF captures an important patient group who might otherwise receive
341 an alternative generic diagnosis such as ‘viral illness’ or ‘musculoskeletal pain’. International
342 guidelines currently only articulate two categories: definite and probable ARF.(6) While many
343 people labelled with possible ARF in our dataset may never have had true ARF, is not entirely
344 benign; 4/200 (2%) with an initial diagnosis of possible ARF and a normal echocardiogram
345 developed RHD; 3 within 12 months (1.5%), and 1 within 24 months (0.5%). The inability to
346 predict which individuals are the ones most likely to progress highlights the need for
347 biomarkers to diagnose and risk-stratify ARF. More research in this domain is needed.(13)
348 Current Australian guidelines recommend 12 months of secondary prophylaxis after a
349 diagnosis of possible ARF.(3) Our findings support this approach, since development of RHD
350 more than 12 months after ‘possible ARF’ appears to be no more common than the

351 background population RHD risk, based on RHD population prevalence of 2% in 5-9 year old
352 children undergoing echocardiographic screening, and 6.8% in 10-15 year olds, in a high-
353 burden NT setting.(14)

354

355 Healthcare providers appear to be increasingly confident in accurately applying 'probable' and
356 'possible' ARF diagnoses since 2013 when these were defined and introduced into the NT
357 register. When total ARF diagnoses are captured, our data show that the increases over time
358 chiefly represent improving detection of uncertain cases from 22/78 (28%) in 2013 to 98/193
359 (51%) in 2018, with a smaller proportional increase in numbers of definite ARF (Fig 1). Efforts
360 to improve detection have included promotion of accessible clinical practice guidelines (2, 3,
361 15) and a diagnosis calculator available for smartphone use.(16)

362

363 The clinical manifestations of ARF we report are supported by previous NT data,(17) showing
364 arthritis to be most common major criterion followed by carditis then chorea, with almost all
365 additionally having fever.(18) Rheumatic carditis detected on echocardiogram is diagnostic of
366 definite ARF and should not be classified as possible or probable ARF. Possible and probable
367 cases noted to have echocardiographic valvar disease may have had known RHD and
368 presented with an acute illness not meeting criteria for definite ARF. When a child with RHD
369 presents with fever or elevated inflammatory markers, distinguishing ARF from other febrile
370 conditions with underlying RHD can be difficult and may result in a 'possible' or 'probable' ARF
371 diagnosis; the child is already prescribed penicillin prophylaxis but a new ARF diagnosis may
372 alter the duration of prophylaxis depending on their age. Sydenham chorea is synonymous
373 with ARF; once alternative causes of chorea have been excluded, a child with chorea
374 (especially if from a high-risk setting such as the NT) receives a diagnosis of definite ARF.
375 The possible and probable cases in this study noted to have chorea may, for instance, have
376 had a transient movement disorder not clearly evident as Sydenham chorea. Definite ARF
377 diagnoses require demonstration of recent streptococcal infection, except for when Sydenham

378 chorea is present, the onset of which might be very delayed.(3) The small number of definite
379 cases who lacked evidence of streptococcal infection on serology or throat swab may have
380 had chorea, may have had serological tests too early in disease without opportunity for
381 convalescent serology to be done, or the clinician may have chosen to override the
382 recommended diagnostic criteria.

383

384 The cumulative incidence risk of disease progression per year for those diagnosed with
385 possible ARF stopped increasing at 11%, 4 years from initial diagnosis, and for those
386 diagnosed with probable ARF at 14%, 3 years from initial diagnosis. In contrast, the cumulative
387 incidence risk of disease progression after definite ARF continued to increase each year since
388 initial diagnosis, from 9% at 1 year to 34% at 5.5 years from initial diagnosis (Table 3). While
389 the trend of increasing risk of disease progression from initial diagnosis largely concurs with
390 previous studies, the cumulative incidence risk of progression to RHD after definite ARF was
391 lower in our study. For example, a study of 1997-2013 Northern Territory data found that the
392 cumulative risk of progression from definite ARF to RHD increased from 27% at 1 year from
393 initial diagnosis to 52% at 10 years since initial diagnosis,(9) and another study of 1997-2010
394 data reported that the risk of progression from definite ARF to RHD was 35% at 1 year and
395 61% at 10 years.(19) The lower rate of disease progression in our study may reflect exclusion
396 of the most-severe ARF cases from cumulative incidence calculations, since they already had
397 the outcome of interest (RHD) at baseline. Other explanations may include improving delivery
398 of secondary prophylaxis which occurred during our study period(20), or greater clinical
399 detection over time of more subtle ARF cases which are less likely to progress, which the
400 increasing ARF detection rates reported here suggest.

401

402 Cox proportional hazards analysis demonstrated that those with more certain ARF were more
403 likely to experience disease progression (compared to those with possible ARF). The risk of
404 progression from no RHD to RHD was significantly higher if the initial diagnosis was definite

405 ARF compared to possible ARF ($p < 0.001$ for both mild and moderate-severe RHD outcomes)
406 (Table 6). Those who had only joint manifestations at initial diagnosis of ARF were 52% less
407 likely to experience disease progression (compared to carditis and/or chorea). Joint-only
408 manifestations, which may only fulfill criteria for possible or probable ARF, may in other
409 settings be labelled as ‘post streptococcal reactive arthritis’, considered to be a separate entity
410 from ARF.(21, 22) However, since 6.6% (37/560) of people still developed RHD in our series
411 after initial joint-only presentations, we consider a diagnosis of ARF and provision of
412 secondary prophylaxis to be safer in our context.

413

414 In this dataset, people with ARF who had greater penicillin adherence were also those with a
415 higher risk of disease progression - but this association was not statistically significant (Table
416 4). Furthermore, of the cases that progressed (and had adherence data), less than half (40/86;
417 47%) were adherent to $\geq 80\%$ of their BPG injections and adherence for both definite and
418 probable ARF cases was shown to decline over time from initial diagnosis (Figure 3). These
419 findings may be attributable to the association between disease severity and adherence.
420 Previous research using the same NT register, but an earlier time period, identified that those
421 with most severe disease (e.g. requiring surgery) were those who were subsequently most
422 adherent, potentially attributable to higher-level health system supports implemented for these
423 high-risk individuals, and greater patient understanding of the risks of non-adherence. (10)
424 The same paper showed a clear protective effect of adherence on ARF outcomes when
425 adherence prior to the event of interest was examined. Therefore, we conclude that adherence
426 reduces ARF recurrences or RDH progression, but in this dataset, we were unable to
427 demonstrate this relationship. Also, we used percent adherence which does not necessarily
428 factor in ‘days at risk’(10); that is, the timing of dose administration (e.g. 13 BPG doses may
429 be given in a 12 month period, but if there are gaps of greater than 28 days, then the patient
430 will be at risk of ARF recurrence during those times).

431

432 Strengths of this study include that it is the first to include outcomes for possible and probable
433 ARF cases and that ARF is notifiable in the NT and therefore ARF diagnoses are well captured
434 and documented in the NT RHD Register. A limitation of this study is that a longer period of
435 follow-up time may have captured more events. For example, disease progression from ARF
436 to RHD is known to still occur at 10 years from initial diagnosis.(19) However, for possible and
437 probable ARF, the risk of disease progression appeared to stabilise approximately 4 years
438 from initial diagnosis (within the 5.5-year study timeframe). Another limitation is missed
439 diagnoses of ARF; up to 75% of newly diagnosed cases of RHD in northern Australia have
440 not been previously diagnosed with ARF.(3, 23) As noted, concurrent ARF and RHD
441 diagnoses were excluded since they had a disease-free survival time of zero so could not be
442 included in analysis of progression. Exclusion of these most severe ARF cases impacted
443 sample size and statistical rigour, follow-up time and the ability to calculate median survival
444 time, an important factor in the interpretation of survival data.(24)

445

446 **Conclusion**

447 This study provides much needed data about the likelihood of disease progression for children
448 and young people given a diagnosis of possible and probable ARF. Children and their families
449 can be reassured that possible ARF, probable ARF and ARF affecting the joints only, carry
450 relatively good prognoses. These diagnoses are more consistent with post-streptococcal
451 reactive arthritis than true ARF. However, secondary prophylaxis with penicillin is still of critical
452 importance given the morbidity of recurrences and the small but present risk of progression to
453 RHD. The data provide good news that clinicians appear to be detecting and reporting more
454 cases of uncertain ARF over time, a critical step in avoiding missed opportunities for
455 prevention.

456

457 Acknowledgements

458 This project was undertaken as part of the Master of Public Health at the University of
459 Melbourne. The authors would like to thank Dr Jessica de Dassel, RHD Registry Data Analyst,
460 and Dr Vicki Krause, Northern Territory Centre for Disease Control Director, for facilitating the
461 data request and approval.

462

463 References

- 464 1. Katzenellenbogen, J. M., Bond-Smith D., Seth R. J., Dempsey K., Cannon J., Stacey
465 I., et al. Contemporary Incidence and Prevalence of Rheumatic Fever and Rheumatic
466 Heart Disease in Australia Using Linked Data: The Case for Policy Change. *Journal of*
467 *the American Heart Association*. 2020;9(19):e016851.
- 468 2. Ralph, A. P., Currie B. J., Noonan S., Wade V. The 2020 Australian guideline for
469 prevention, diagnosis and management of acute rheumatic fever and rheumatic heart
470 disease. *Medical Journal of Australia*. 2021;214(5):220-227.
- 471 3. RHD Australia (ARF/RHD writing group). The 2020 Australian guideline for
472 prevention, diagnosis and management of acute rheumatic fever and rheumatic
473 heart disease (3rd edition). Australia2020.
- 474 4. Dajani, A. S., Ayoub E., Bierman F. Z., Bisno A. L., Denny F. W., Durack D. T., et al.
475 Guidelines for the diagnosis of rheumatic fever: Jones Criteria, 1992 update. *Journal of*
476 *the American Medical Association*. 1992;268(15):2069-2073.
- 477 5. WHO Study Group on Rheumatic Fever and Rheumatic Heart Disease. Rheumatic
478 fever and rheumatic heart disease: report of a WHO expert consultation, Geneva, 20
479 October - 1 November 2001. Geneva, Switzerland: World Health Organization; 2004.
- 480 6. Gewitz, M. H., Baltimore R. S., Tani L. Y., Sable C. A., Shulman S. T., Carapetis J., et
481 al. Revision of the Jones Criteria for the diagnosis of acute rheumatic fever in the era
482 of Doppler echocardiography: a scientific statement from the American Heart
483 Association. *Circulation*. 2015;131(20):1806-1818.
- 484 7. Ralph, A., Jacups S., McGough K., McDonald M., Currie B. J. The Challenge of Acute
485 Rheumatic Fever Diagnosis in a High-Incidence Population: A Prospective Study and
486 Proposed Guidelines for Diagnosis in Australia's Northern Territory. *Heart, Lung and*
487 *Circulation*. 2006;15(2):113-118.
- 488 8. Carapetis, J. R., Currie B. J., Mathews J. D. Cumulative incidence of rheumatic fever
489 in an endemic region: a guide to the susceptibility of the population? *Epidemiology and*
490 *Infection*. 2000;124(2):239-244.
- 491 9. He, V. Y. F., Condon J. R., Ralph A. P., Zhao Y., Roberts K., de Dassel J. L., et al.
492 Long-term outcomes from acute rheumatic fever and rheumatic heart disease a data-
493 linkage and survival analysis approach. *Circulation*. 2016;134(3):222-232.
- 494 10. de Dassel, J. L., de Klerk N., Carapetis J. R., Ralph A. P. How Many Doses Make a
495 Difference? An Analysis of Secondary Prevention of Rheumatic Fever and Rheumatic
496 Heart Disease. *Journal of the American Heart Association*. 2018;7(24):1-22.
- 497 11. Australia Bureau of Statistics. Australian demographic statistics Canberra, Australia:
498 Australia Bureau of Statistics; 2018 [Available from:
499 [https://www.ausstats.abs.gov.au/ausstats/subscriber.nsf/0/5E432E26B9EB0D28CA25](https://www.ausstats.abs.gov.au/ausstats/subscriber.nsf/0/5E432E26B9EB0D28CA25841E00129B45/$File/31010_dec%202018.pdf)
500 [841E00129B45/\\$File/31010_dec%202018.pdf](https://www.ausstats.abs.gov.au/ausstats/subscriber.nsf/0/5E432E26B9EB0D28CA25841E00129B45/$File/31010_dec%202018.pdf).

- 501 12. Australian Bureau of Statistics. Estimated resident Aboriginal and Torres Strait
502 Islander and Non-Indigenous population, States and Territories, Remoteness Areas -
503 30 June 2016 Canberra, Australia: Australian Bureau of Statistics; 2016 [Available
504 from:
505 [https://www.abs.gov.au/AUSSTATS/abs@.nsf/DetailsPage/3238.0.55.001June%2020](https://www.abs.gov.au/AUSSTATS/abs@.nsf/DetailsPage/3238.0.55.001June%202016?OpenDocument)
506 [16?OpenDocument](https://www.abs.gov.au/AUSSTATS/abs@.nsf/DetailsPage/3238.0.55.001June%202016?OpenDocument).
507 13. Ralph, A. P., Yan J., Remenyi B., Mayo M., Webb R., Wilson N., et al. Searching for a
508 technology-driven acute rheumatic fever test: The START study protocol. *BMJ Open*.
509 2021;11(9):e053720.
510 14. Francis, J. R., Fairhurst H., Hardefeldt H., Brown S., Ryan C., Brown K., et al.
511 Hyperendemic rheumatic heart disease in a remote Australian town identified by
512 echocardiographic screening. *Medical Journal of Australia*. 2020;213(3):118-123.
513 15. Ralph, A. P., Currie B. J. Therapeutics for rheumatic fever and rheumatic heart
514 disease. *Australian Prescriber*. 2022;45(4):104-112.
515 16. Fisher, E., Currie B. J., Ralph A. P., James C., Mosca D. Evaluation of an ARF
516 diagnosis calculator: a survey and content analysis. *BMC Medical Informatics and*
517 *Decision Making*. 2022;22(1):77-88.
518 17. Jack, S., Moreland N. J., Meagher J., Fittock M., Galloway Y., Ralph A. P.
519 Streptococcal Serology in Acute Rheumatic Fever Patients: Findings From 2 High-
520 income, High-burden Settings. *The Pediatric Infectious Disease Journal*. 2019;38(1):1-
521 6.
522 18. Carapetis, J. R., Beaton A., Cunningham M. W., Guilherme L., Karthikeyan C., Mayosi
523 B. M., et al. Acute rheumatic fever and rheumatic heart disease. *Nature Reviews*.
524 2016;2:1-24.
525 19. Lawrence, J. G., Carapetis J. R., Griffiths K., Edwards K., Condon J. R. Acute
526 rheumatic fever and rheumatic heart disease incidence and progression in the
527 Northern Territory of Australia, 1997 to 2010. *Circulation*. 2013;128(5):492-501.
528 20. Ralph, A. P., Read C., Johnston V., de Dassel J. L., Bycroft K., Mitchell A., et al.
529 Improving delivery of secondary prophylaxis for rheumatic heart disease in remote
530 Indigenous communities: study protocol for a stepped-wedge randomised trial. *Trials*.
531 2016;17(1):51-63.
532 21. van der Helm-van Mil, A. H. M. Acute rheumatic fever and poststreptococcal reactive
533 arthritis reconsidered. *Current Opinion in Rheumatology*. 2010;22(4):437-442.
534 22. Barash, J., Mashiach E., Navon-Elkan P., Berkun Y., Harel L., Tauber T., et al.
535 Differentiation of post-streptococcal reactive arthritis from acute rheumatic fever.
536 *Journal of Pediatrics*. 2008;153(5):696-699.
537 23. Hardie, K., de Dassel J. L., Ralph A. P. RHD elimination: action needed beyond
538 secondary prophylaxis. *Australian and New Zealand Journal of Public Health*.
539 2020;44(5):427.
540 24. Betensky, R. A. Measures of follow-up in time-to-event studies: Why provide them and
541 what should they be? *Clinical Trials*. 2015;12(4):403-408.
542