

1 **The fading of the mpox outbreak among men who have sex with**
2 **men: a mathematical modelling study**

3

4 **Maria Xiridou¹, Fuminari Miura^{1,2}, Philippe Adam^{3,4}, Eline Op de Coul¹, John de Wit^{3,5},**
5 **Jacco Wallinga^{1,6}**

6

7 ¹ *Centre for Infectious Disease Control, National Institute of Public Health and the*
8 *Environment, Bilthoven, the Netherlands*

9 ² *Center for Marine Environmental Studies, Ehime University, Ehime, Japan*

10 ³ *Centre for Social Research in Health, UNSW Sydney, Sydney, NSW, Australia*

11 ⁴ *Institute for Prevention and Social Research, Utrecht, the Netherlands*

12 ⁵ *Interdisciplinary Social Science, Utrecht University, Utrecht, the Netherlands*

13 ⁶ *Department of Biomedical Data Sciences, Leiden University Medical Center (LUMC),*
14 *Leiden, the Netherlands*

15

16 **Corresponding author:** Maria Xiridou, Centre for Infectious Diseases Control, Department
17 of Epidemiology and Surveillance, National Institute of Public Health and the Environment,
18 PO Box 1, 3720 BA Bilthoven, The Netherlands. Tel: +31629642155. Email:
19 maria.xiridou@rivm.nl.

20

21 **Short title:** Modelling mpox (monkeypox) among MSM.

22

23 **Keywords:** monkeypox, mpox, men who have sex with men, MSM, mathematical model,

24 **NOTE:** This preprint reports new research that has not been certified by peer review and should not be used to guide clinical practice.
immunity, vaccination, sexual behaviour.

25 **Author contributions:** Conceptualisation, study design: MX, JW, PA, FM. Data curation,
26 data collection: PA, JdW. Data analyses: MX, PA, FM, EOdc, JdW. Model development and
27 analyses: MX. Literature search: MX, FM, PA, EOdc. Scenario investigation, interpretation,
28 writing: all authors.

29
30 **Availability of data and materials:** The data for the numbers of daily mpox cases in the
31 Netherlands described in this study can be freely and openly accessed on the website of the
32 National Institute of Public Health and the Environment (RIVM) of the Netherlands:
33 <https://www.rivm.nl/en/mpox>. The data from the “COVID-19, Sex, and Intimacy Survey” and
34 the survey “Monkeypox: a new challenge for your sex life” are third party data and are not
35 freely available; enquiries for data access can be addressed to Prof. J. de Wit. Description of
36 data from the “COVID-19, Sex, and Intimacy Survey” have been published in Xiridou et al.
37 *Sex Transm Diseases* 2020; 49:145-153. The code for the model analyses is available at
38 <https://github.com/rivm-syso/fadingmpoxoutbreak>.

39
40
41 **Counts:** Text: 3,472/3,500 words; abstract, 200/200 words; inserts: 7/7 tables or figures
42 (4panels max); 35/50 references.

43
44 **Short summary:** Modelling study shows that the decline in mpox cases among MSM in the
45 Netherlands was due to infection-induced immunity among those with high sexual activity
46 levels, but was accelerated by behavioural adaptations. The outbreak could have faded even
47 without vaccination.

48 **ABSTRACT**

49

50 **Background**

51 In the Netherlands, the number of mpox cases started declining before mpox vaccination was
52 initiated. Most cases were men who have sex with men (MSM). We investigated whether the
53 decline in mpox could be attributed to infection-induced immunity or behavioural adaptations.

54

55 **Methods**

56 We developed a transmission model and accounted for possible behavioural adaptations: less
57 casual partners and shorter time until MSM with mpox refrain from sexual contacts.

58

59 **Results**

60 Without behavioural adaptations, the peak in modelled cases matched observations, but the
61 decline was less steep than observed. With behavioural adaptations in the model, we found a
62 decline of 16-18% in numbers of casual partners in June and 13-22% in July 2022. Model
63 results showed a halving of the infectious period before refraining from sex. When
64 vaccination started, 57% of MSM with very high sexual activity in the model had been
65 infected. Model scenarios revealed that the outbreak could have waned by November 2022
66 even without vaccination.

67

68 **Conclusions**

69 The limited duration of the mpox outbreak in the Netherlands can be ascribed to infection-
70 induced immunity among MSM with high sexual activity levels. The subsequent decline was
71 accelerated by behavioural adaptations. Immunity among those most sexually active is
72 essential to impede mpox resurgence.

73 **Introduction**

74 Mpox (formerly known as monkeypox) is a zoonotic disease caused by the monkeypox virus
75 (MPXV) [1]. In May-July 2022, mpox outbreaks were reported, mostly among men who have
76 sex with men (MSM) [2, 3]. The number of cases peaked within 2-3 months in most countries
77 and then declined [2]. Several factors may have contributed to the abrupt decline, including
78 increased immunity due to MPXV infection, increased awareness and behavioural adaptations
79 in the affected population, and public health interventions [3-5].

80 In the Netherlands, the first mpox diagnosis was on 20 May 2022. The number of mpox cases
81 increased sharply in June 2022, but started declining in the second week of July 2022 [6],
82 about two weeks before the start of the national mpox vaccination programme, on 25 July
83 2022 [7]. In May and June 2022, there was large media coverage of the mpox outbreak and
84 that raised awareness of a new threat among MSM. In the second half of June 2022, health
85 communication messages about mpox were disseminated in the media [7, 8]. Information
86 campaigns about mpox were also undertaken in commercial sex venues, such as gay bars,
87 sauna's, sex clubs, and at festivals [7]. Also, it was recommended to refrain from sexual or
88 physical contacts when mpox was suspected or diagnosed [9]. In an online survey carried out
89 in August 2022, many participants reported to be willing to refrain from close physical and
90 sexual contacts in case of MPXV infection, that they had reduced their number of sexual
91 partners since the start of the outbreak, and they avoided visits to gay sex venues [9]. These
92 reports were consistent with the fact that sex venues and parties in Amsterdam experienced a
93 considerable drop in numbers of visitors in July 2022 [10].

94 We assessed the contribution of different factors that may have led to the decline in the
95 number of mpox cases observed in the Netherlands before the start of the mpox vaccination
96 programme. We developed a mathematical model that describes the transmission of MPXV
97 via sexual or intimate contacts among MSM and fitted the model to numbers of mpox cases

98 in the Netherlands until 25 July 2022, when the mpox vaccination programme started. To
99 disentangle the impact of immunity due to infection and the impact of behavioural adaptations
100 from the impact of vaccination in shaping the course of the outbreak, we examined also model
101 scenarios without the vaccination programme until the end of 2022.

102

103

104 **Methods**

105

106 *The transmission model*

107 We developed a deterministic compartmental model that describes MPXV transmission
108 among MSM (Figure 1). The model parameters are defined in Tables 1-3. We accounted only
109 for transmission via sexual or intimate contacts with either main regular sex partners or casual
110 sex partners, a distinction that follows earlier modelling of sexual relationships [11-13]. In
111 this paper, the notion of “main regular sex partner” refers to a person with whom an
112 individual engages in regular or ongoing sexual activity, typically (but not exclusively) within
113 a committed relationship. Other relationships involving sexual contacts are referred to as
114 casual partnerships in this study. Considering sexual or intimate contacts sufficient for MPXV
115 transmission, for simplicity, we assumed one such contact per casual partner. In the model,
116 MSM were divided into four groups, based on level of sexual activity, that was measured in
117 terms of the total number of sex partners men have: very low, fairly low, fairly high, and very
118 high sexual activity (Table 2).

119

120

121 *The course of mpox infection*

122 After infection, individuals are initially exposed but not yet infectious; later, they become
123 infectious, but may not (yet) have symptoms [14, 15]. In the model, we assumed that
124 infectious individuals may start refraining from sexual or intimate contacts a few days after
125 becoming infectious, when they have symptoms or test positive for MPXV [15, 16]. MSM
126 refraining from sexual/intimate contacts can still transmit MPXV (due to imperfect adherence
127 or because they refrain only from specific types of contacts), but with a lower probability,
128 compared to those not refraining from sexual/intimate contacts [16]. Most mpox cases recover
129 after a few weeks and become immune [17].

130

131 *Vaccinated MSM*

132 Smallpox vaccination was ended in the Netherlands in 1974. Based on the fraction of the male
133 population 17-66 years old in the Netherlands being born before 1974, in the model we
134 assumed that 25% of MSM in 2022 were vaccinated in the past and that still offers some
135 protection against mpox [7]. As we had no data to establish the percentage vaccinated in the
136 past in each sexual activity group separately, we assumed the same percentage (25%) in all
137 activity groups. The importance of this assumption was examined in sensitivity analyses (see
138 paragraph below). From the second week of June 2022, close contacts of individuals
139 diagnosed with mpox were offered vaccination with a single dose of Imvanex®. To account
140 for these vaccinations, we included in the model a small vaccination rate from 8 June 2022
141 onwards among those with the highest level of sexual activity.

142

143

144

145 *Data*

146 We used data on the daily numbers of mpox cases from the national surveillance system for
147 notifiable infectious diseases [7]. The numbers of confirmed mpox cases were ordered
148 according to date of symptom onset, throughout the analyses presented in this study. The
149 earliest date of symptom onset among confirmed mpox cases in the Netherlands was 27 April
150 2022.

151

152 *Possible behavioural adaptations*

153 We examined two possible adaptations: (1) MSM starting earlier to refrain from sexual
154 contacts, thus resulting in shorter duration of the infectious period while not refraining from
155 sex and (2) a decline in the number of casual partners [7]. We investigated scenarios with
156 these behavioural adaptations taking place (a) only in July 2022 or (b) in June and in July
157 2022 [9, 10]. The magnitude and timing of the adaptations were obtained from the fitting
158 process.

159

160 *Model fitting*

161 The model was calibrated to the number of mpox cases using a Bayesian approach. We
162 defined uniform prior distributions for the uncertain parameters (Table 1) and sampled 10,000
163 combinations of parameter values. In a first step, we started the model calculations with three
164 infectious unvaccinated cases in the subgroup with very high sexual activity level. With each
165 combination of parameter values, we computed the daily number of mpox cases and its
166 Poisson likelihood up to 5 July 2022, for the scenarios with adaptations only in July 2022
167 (and up to 17 June 2022, for the scenarios with adaptations in June and July 2022) – Table 3
168 shows parameters relating to the behavioural adaptations. This provided us the posterior

169 distributions of all uncertain parameters except those relating to the behavioural adaptations
170 that occurred in June/July 2022. In a second step, we used the posterior distributions obtained
171 from the first step and fitted the model to data for the remaining days until 25 July 2022. The
172 prior distributions of the parameters in the first and the second step are shown in Tables 1 and
173 3, respectively. The posterior distributions are shown in Tables S1-S3 in the Supplement.

174

175 *Sensitivity analyses*

176 Based on the size of the male population 17-66 years old [18] and available data on the
177 prevalence of same-sex behaviour [19], we assumed that the number of MSM in 2022 was
178 250,000. Due to uncertainty in those estimates, we repeated the analyses with a population
179 size of 200,000 or 300,000 MSM. Also, we carried out sensitivity analyses for the fraction of
180 the population that had been vaccinated before 1974 via the old smallpox vaccination
181 programme. In our main results, we assumed that 25% of the current MSM population had
182 been vaccinated in the past. We examined also two scenarios where (a) the percentage
183 vaccinated in the past was higher among those with higher levels of sexual activity: 23%,
184 25%, 30%, 40% vaccinated in the group with very low, fairly low, fairly high, or very high
185 level of sexual activity, respectively; and (b) the percentage vaccinated in the past was higher
186 among those with lower levels of sexual activity: 29%, 25%, 15%, 10% vaccinated in the
187 group with very low, fairly low, fairly high, or very high level of sexual activity, respectively.
188 These percentages were chosen in such a way that in the overall MSM population 25% was
189 vaccinated in the past.

190

191

192

193 *Hypothetical scenarios for the course of the outbreak without vaccination*

194 Earlier work has indicated that the mpox outbreaks could fade out within a few months even
195 without vaccination or other major interventions [4, 5, 12, 20]. To investigate this for the
196 mpox outbreak in the Netherlands, we examined hypothetical scenarios for the course of the
197 mpox outbreak until the end of 2022, without the mpox vaccination programme.

198 We undertook model calculations until 31 December 2022 for the following scenarios: (a)
199 without behavioural adaptations and (b) with behavioural adaptations in July 2022. For both
200 scenarios, the parameter values were those obtained via the fitting process using data up to 25
201 July 2022. Also, we investigated whether new introductions of mpox cases could elicit a
202 resurgence in mpox. For the scenario with behavioural adaptations in July 2022, we examined
203 two scenarios with import of unvaccinated infectious mpox cases into the group with very
204 high sexual activity level: (a) import of 20 cases on 1 November 2022 or (b) import of 1 case
205 per day from 1 November until 31 December 2022.

206

207

208 **Results**

209

210 *The decline in the mpox outbreak with and without behavioural adaptations*

211 Without behavioural adaptations in the model, the daily number of mpox cases among MSM
212 started declining around 8 July 2022, but the decline was less steep than observed (Figure 2a).
213 The epidemic curve in the overall MSM population paralleled the epidemic curve in the group
214 with very high sexual activity level (Figure 2b). Allowing for behavioural adaptations in July
215 2022, we found a decline of 13% (95% credible interval (CrI), 1-28%), 15% (95% CrI, 1-
216 29%), and 24% (95% CrI, 1-30%) in numbers of casual partners of MSM with low, fairly

217 high, and very high sexual activity, respectively, compared to before the mpox outbreak
218 (Table S1 in Supplement). The infectious period while not refraining from sexual contacts
219 was reduced from 6.0 days (95% CrI, 4.4-7.8 days) in May-June 2022 to 2.6 days (95% CrI,
220 2.0-4.3 days) in July 2022. The timing of these behavioural adaptations was calculated from
221 the model at 7 July 2022 and there was a rather sharp decline in the number of cases thereafter
222 (Table S1 and Figure 2c). With behavioural adaptations in June and July 2022, we found that
223 the numbers of casual partners of MSM with low, fairly high, and very high sexual activity
224 were reduced by 17%, 16%, and 18%, respectively, in June; and by 13%, 18%, and 22%,
225 respectively, in July (Table S1). The infectious period while not refraining from sexual
226 contacts was 6.9 days in May, 5.6 days in June, and 2.4 days in July 2022 (Table S1). The
227 adaptations occurred as of 21 June and 10 July 2022 (Table S1 and Figure 2d).

228

229 *Distribution of mpox cases according to level of sexual activity*

230 By 25 July 2022, 64% of mpox cases were MSM with very high and 18% with fairly high
231 levels of sexual activity (Figure 3a,b). At that point, 57% (95% CrI, 33-66%) of the group
232 with a very high sexual activity level had been infected with MPXV (Figure 3c), but only
233 1.1% (95% CrI, 0.9-1.3%) of the overall MSM population. Of all MPXV infections in the
234 model until 25 July 2022, the infecting partner was a man with very high, fairly high, fairly
235 low, or very low sexual activity in 76.7%, 18.7%, 3.9%, and 0.7% of infections, respectively
236 (Figure 3d).

237

238 *Sensitivity analyses for the size of the MSM population*

239 With a smaller population of 200,000 MSM (Figure S2, Table S2), the modelled decline in
240 the daily number of cases started earlier and the number of cases in the very high sexual

241 activity group was lower than in the scenario with 250,000 MSM. In a larger population of
242 300,000 MSM, the outbreak without behavioural adaptations would have been more severe
243 than what we observed in the data (Figure S3, Table S2). The number of mpox cases in the
244 model started declining around 20 July 2022, about ten days later than observed (Figure S3a).
245 The fraction of the group with very high sexual activity level that had been infected with
246 MPXV by 25 July 2022 was 66% in a population of 200,000 MSM and 45% in a population
247 of 300,000 MSM (Figure 3c).

248 With different percentages of MSM vaccinated in the past across the different sexual activity
249 groups, the results were similar (Figure S4, Table S3). The transmission probability per sexual
250 act was estimated at 0.60 (95% CrI, 0.47-0.80) with higher percentage vaccinated among
251 those with higher numbers of sex partners (Table S3); 0.42 (95% CrI, 0.32-0.68), with higher
252 percentage vaccinated among those with lower numbers of sex partners (Table S3); and 0.48
253 (95% CrI, 0.39-0.81), in the scenario with the same percentage vaccinated in all activity
254 groups (Table S1).

255

256 *Hypothetical scenarios for the course of the outbreak without vaccination*

257 Figure 4 shows the daily numbers of mpox cases from the model and from data until 31
258 December 2022. Without behavioural adaptations in 2022, the outbreak would have faded out
259 by December 2022 in 90% of the modelled outcomes (Figure 4a and S5). With behavioural
260 adaptations in July 2022, the outbreak would have faded out by November 2022 (Figure 5b).
261 Import of unvaccinated infectious MSM with very high level of sexual activity resulted in a
262 small increase in mpox cases. With import of 20 cases on 1 November 2022, we found 41
263 (95% CrI, 30-106) additional mpox cases (Figure 4c); with import of one case per day from 1

264 November to 31 December 2022, we found 81 (95% CrI, 63-211) additional cases (Figure
265 4d), compared to the scenario without import.

266

267

268 **Discussion**

269 We developed a transmission model of the mpox outbreak among MSM and fitted this model
270 to the daily numbers of mpox notifications in the Netherlands. We demonstrated that
271 depletion of susceptibles among MSM with very high levels of sexual activity may have
272 limited further growth of the mpox epidemic, but could not solely account for the rapid
273 decline after the peak. This suggests that behavioural adaptations may have accelerated the
274 decrease in mpox cases. Furthermore, our findings suggest that, even without the mpox
275 vaccination programme, the level of immunity due to infection among MSM with a very high
276 level of sexual activity was sufficiently high to lead to the fading out of the outbreak by
277 November 2022.

278 The major strength of our study is that we quantified the contribution of infection-induced
279 immunity and the contribution of behavioural adaptations in shaping the outbreak. The model,
280 informed by the daily numbers of registered mpox cases during the rise and the decline of the
281 mpox outbreak, allowed us to explore counterfactual situations and to show that the outbreak
282 could have waned by the end of 2022 even without mpox vaccination or behavioural
283 adaptations.

284 We incorporated heterogeneity in sexual activity by dividing the population into groups with
285 different levels of sexual activity and captured the assortative mixing of highly active
286 individuals that is characteristic of sexual contact networks. This modelling approach has the
287 advantage of being well established, validated, and extensively studied in the past four

288 decades in the context of several sexually transmitted infections [21-24]. Other modelling
289 approaches, such as stochastic networks and individual-based models, allow for a more
290 detailed simulation of the initial and final phase of the outbreak, with very few infections, but
291 at the cost of parsimony and transparency.

292 Our study is in agreement with the theory developed via earlier studies. Heterogeneity in the
293 number of sexual partners and assortative mixing may enhance the selective spread of
294 infection among individuals with higher sexual activity; individuals with higher activity levels
295 are more likely to get infected earlier in the course of the outbreak (see [21, 22] and
296 references herein). Our findings also agree with previous studies on MPXV transmission
297 showing that a very small group of MSM with high level of sexual activity can be sufficient
298 to cause large outbreaks in very short time [12, 20] and a decline in numbers of casual
299 partners could reduce the epidemic size of mpox [4, 12]. Our results correspond well also
300 with a study that showed how the observed decline in mpox cases could be primarily
301 attributed to infection-induced immunity [5]. The present study extends earlier findings as our
302 results quantify the contribution of infection-induced immunity and the contribution of
303 behavioural adaptations and reveal how these factors shaped the outbreak. In contrast with
304 other studies projecting smaller outbreaks [25] or more severe and longer-lasting outbreaks
305 [4, 12, 13], we found that the size of the mpox outbreak was large but self-limited and could
306 have died out within a few months even without behavioural adaptations or vaccination.

307 We showed that, without behavioural adaptations, the decline in mpox cases in a larger
308 population of 300,000 MSM started later than what we observed in the data. This suggests
309 that the observed decline could have been possible only with behavioural adaptations. Our
310 results suggest that a reduction in numbers of sexual partners considerably expedited the
311 decline in mpox cases. MSM may have started changing their behaviour with the first news of
312 mpox in the general media and the mpox campaigns that were conducted in gay sex venues

313 and media [10, 26] possibly contributed to strengthen the early behavioural adaptations and to
314 develop rational and evidence-based risk reduction strategies to mitigate MPXV transmission.
315 This demonstrates the importance of accurate and timely communication with populations at
316 risk .and is essential for public health response, since similar outbreaks could occur with other
317 pathogens when introduced into subpopulations with sufficiently high contact levels. The
318 mpox vaccination programme possibly accelerated the impact of awareness and behavioural
319 adaptations and offered protection against mpox at the individual level. Vaccination also
320 reduced the risk of resurgence of mpox, since it enhanced immunity at the population level.
321 Our model can be used to investigate the impact of vaccination and how vaccination can be
322 employed in the long run for some subgroups of MSM. Furthermore, our model could be
323 extended to account for transitioning across sexual activity groups.

324 Our study has important implications for the prevention of mpox outbreaks in the future.
325 Prevention can be achieved by maintaining a high level of immunity among those with the
326 highest sexual activity level. First, it should be taken into account that this is not a closed
327 fixed group and there may be changes in its consistency over long time periods. For example,
328 MSM with low levels of sexual activity who did not receive vaccination in 2022 might
329 become more sexually active and replenish the pool of susceptible MSM with high level of
330 sexual activity [22], thus making a new mpox outbreak possible. Second, in assessing the
331 effectiveness of public health messages, it is important to consider the venues that the target
332 group might visit. Having sex in sex clubs and parties has been identified as an independent
333 predictor of MPXV infection [9]. Third, sexual mixing according to age is assortative. The
334 protection from the smallpox vaccine in our analyses is overestimated for MSM less than 45
335 years and underestimated for MSM older than 45 years. For the current study this has a
336 limited impact, but for future prevention of mpox outbreaks it is important to include the
337 changing distribution of immunity with age. Furthermore, caution is needed when

338 extrapolating our results to other populations. We allowed for only limited behavioural
339 changes. With the high transmission potential of MPXV, it is possible that with less
340 assortative sexual mixing, the virus could have spread faster among the groups of MSM with
341 low sexual activity levels. In that case, infection-induced immunity within the group with
342 very high sexual activity level might have increased slower than in our analyses, making
343 persistence more likely. Then fading of the outbreak would not have been possible without
344 major behavioural changes. However, this is unlikely for the mpox outbreak in the
345 Netherlands, since monthly numbers of STI diagnoses, tests, and consultations were more or
346 less stable throughout 2022 [27], therefore, we have no evidence of a major decline in
347 numbers of sexual partners of MSM. Finally, recent reports point to the possibility of
348 reinfections [28], but this was not accounted for in this study.

349 In conclusion, we demonstrated that depletion of susceptible MSM with high levels of sexual
350 activity as well as behavioural adaptations accounted for the timing and speed of the decline
351 in mpox cases among MSM in the Netherlands. The level of immunity due to infection within
352 the subgroup of MSM with the highest level of sexual activity was build up so fast that the
353 outbreak could have waned within a few months, even without interventions or behavioural
354 adaptations. The risk of a resurgence of mpox in the short term seems very low, even with
355 import of mpox infections.

356

357 **Acknowledgements:** The authors would like to thank Paul Zantkuijl (Soa Aids Nederland)
358 for information on mpox messages in media and health promotion platforms for MSM in the
359 Netherlands and for information about the reduction in visitors in clubs and sex venues in
360 Amsterdam in July 2022. Anonymous club owners are also thanked for providing the above
361 information. We express our gratitude to the participants, the research teams, and the
362 organizations involved in the “COVID-19, Sex, and Intimacy Survey” and the survey
363 “Monkeypox: a new challenge for your sex life” led by Philippe Adam and John de Wit. Both
364 surveys were conducted in partnership between Utrecht University, the Institute for
365 Prevention and Social Research (IPSR Utrecht), Soa Aids Nederland, and the National
366 Institute of Public Health and Environment (RIVM). We thank the anonymous reviewers for
367 providing comments and suggestions that substantially improved the paper.

368

369 **Conflicts of interest and funding:** The authors declare that no competing interests exist.
370 Fuminary Miura acknowledges funding from Japan Society for the Promotion of Science
371 (Number 20J00793). The funding source had no involvement in the analyses or interpretation
372 of results.

373 **Figure legends**

374

375 **Figure 1.** Flow diagram of the model for monkeypox virus (MPXV) infections. Individuals in
376 the model are divided into classes according to stage of mpox infection, vaccination status,
377 and whether they are refraining from sexual contacts. Unvaccinated individuals can be
378 susceptible to MPXV (S_{ui}), exposed to MPXV (E_{ui}), infectious not refraining from sexual
379 contacts (I_{ui}), or infectious but refraining from sexual contacts (Y_{ui}). Individuals vaccinated in
380 the past can be susceptible (S_{vi}), exposed (E_{vi}), infectious not refraining or refraining from
381 sexual contacts (I_{vi} , Y_{vi}). Individuals vaccinated in 2022 can be susceptible (S_{pi}), exposed
382 (E_{pi}), infectious not refraining or refraining from sexual contacts (I_{pi} , Y_{pi}). Infectious cases
383 may need hospitalization (H_i). After recovery, they are immune (R_i). These classes are further
384 divided into four subclasses according to level of sexual activity. In the model, we accounted
385 for exit out of the population at a per capita rate μ that is not shown in the diagram.

386

387 **Figure 2.** The daily number of mpox cases among MSM in the Netherlands from 27 April to
388 25 July 2022. Black bullets show data from the national database of notifiable diseases of the
389 Netherlands. All other results were calculated from the model. Mpox cases are shown
390 according to date of symptom onset. The orange box-plots show the daily numbers of mpox
391 cases in the overall MSM population: (a) without behavioural adaptations; (c) with
392 behavioural adaptations only in July 2022; (d) with behavioural adaptations in June and July
393 2022. (b) Median daily number of mpox cases in the overall MSM population (black line), in
394 the groups with high sexual activity level (red lines), and in the groups with low sexual
395 activity level (blue lines). In (c), (d), the vertical grey lines show medians (solid lines) and
396 95% credible intervals (dashed lines) of the day at which the behavioural adaptations

397 occurred, as obtained from the model fitting. Model results were calculated in a population of
398 250,000 MSM.

399

400 **Figure 3.** The role of subgroups of MSM with different levels of sexual activity, as calculated
401 from the model, for the scenarios with behavioural adaptations in July 2022. (a) Distribution
402 of cumulative mpox cases until 25 July 2022. (b) Distribution of daily mpox cases. (c) Percent
403 of MSM with very high sexual activity being susceptible to monkeypox virus. (d) Distribution
404 of new monkeypox virus infections among MSM according to the sexual activity group of the
405 infecting individual. In (a), (c) results with population of 200,000; 250,000; or 300,000 MSM;
406 in (b), (d) results with population of 250,000 MSM.

407

408 **Figure 4.** Daily number of mpox cases among MSM in the Netherlands from 27 April to 31
409 December 2022. Black bullets show data obtained from the national database of notifiable
410 infectious diseases of the Netherlands. Orange box-plots show medians and interquartile
411 ranges calculated from the model in a population of 250,000 MSM. Vertical solid grey lines
412 show the last day of each calendar month. (a) Without behavioural adaptations. (b) With
413 behavioural adaptations in July 2022. (c) With behavioural adaptations in July 2022 and
414 import of 20 unvaccinated infectious mpox cases into the group with very high level of sexual
415 activity on 1 November 2022. (d) With behavioural adaptations in July 2022 and import of
416 one infectious case per day (in the group with very high level of sexual activity) from 1
417 November to 31 December 2022.

418

419 **References**

- 420 1. Fine PE, Jezek Z, Grab B, Dixon H. The transmission potential of monkeypox virus in human
421 populations. *Int J Epidemiol.* 1988;17(3):643-50.
- 422 2. WHO. 2022 Mpox (monkeypox) outbreak: global trends, 13 December 2022. 2022. Accessed 28
423 December 2022. Available from:
424 https://worldhealthorg.shinyapps.io/mpox_global/_w_77b7113a/#section-fns.
- 425 3. European Centre for Disease Prevention and Control. Monkeypox multi-country outbreak - second
426 update 18 October 2022. Accessed 28 December 2022. Available from:
427 [https://www.ecdc.europa.eu/sites/default/files/documents/Monkeypox-multi-country-outbreak-](https://www.ecdc.europa.eu/sites/default/files/documents/Monkeypox-multi-country-outbreak-second-update.pdf)
428 [second-update.pdf](https://www.ecdc.europa.eu/sites/default/files/documents/Monkeypox-multi-country-outbreak-second-update.pdf).
- 429 4. Brand SPC, Cavallaro M, Hilton J, Guzman-Rincon L, House T, Keeling MJ, et al. The role of
430 vaccination and public awareness in medium-term forecasts of monkeypox incidence in the United
431 Kingdom. medRxiv posted August 17, 2022.
- 432 5. Murayama H, Pearson CAB, Abbott S, Miura F, Jung S, Fearon E, et al. Accumulation of
433 immunity in heavy-tailed sexual contact networks shapes monkeypox outbreak sizes. medRxiv
434 posted November 15, 2022.
- 435 6. National Institute of Public Health and the Environment (RIVM). Monkeypox, 3 November 2022.
436 Available from: <https://www.rivm.nl/en/monkeypox>.
- 437 7. van Ewijk C, Miura F, van Rijckevorsel G, de Vries H, Welkers M, van den Berg O, et al.
438 Monkeypox outbreak in the Netherlands in 2022: public health response, epidemiological and
439 clinical characteristics of the first 1000 cases and protection of the first-generation smallpox
440 vaccine. *Euro Surveill.* 2023;28:2200772
- 441 8. Man Tot Man. Do this if you have monkeypox. Updated 19 July 2022. Available from:
442 <https://www.mantotman.nl/en/do-this-if-you-have-monkeypox>.

- 443 9. Adam PCG, Op de Coul ELM, Bos H, Zantkuijl P, Zuilhof W, Xiridou M, et al. Monkeypox-
444 related changes in behaviour among MSM in the Netherlands and their impact on the monkeypox
445 outbreak: using behavioural research and theorising to inform the monkeypox response. Utrecht
446 University and Institute for Prevention and Social Research, Utrecht, the Netherlands; 2022.
- 447 10. Soa Aids Nederland. Samenwerking zorg en horeca onmisbaar in aanpak monkeypox-uitbraak.
448 Updated 6 October 2022. Available from: [https://www.soaids.nl/nl/professionals/
449 actueel/nieuwsbericht/samenwerking-zorg-horeca-onmisbaar-in-aanpak-monkeypox-uitbraak](https://www.soaids.nl/nl/professionals/actueel/nieuwsbericht/samenwerking-zorg-horeca-onmisbaar-in-aanpak-monkeypox-uitbraak).
- 450 11. Jenness SM, Le Guillou A, Chandra C, Mann LM, Sanchez T, Westreich D, et al. Projected HIV
451 and Bacterial Sexually Transmitted Infection Incidence Following COVID-19-Related Sexual
452 Distancing and Clinical Service Interruption. *J Infect Dis.* 2021;223(6):1019-28.
- 453 12. Spicknall IH, Pollock ED, Clay PA, Oster AM, Charniga K, Masters N, et al. Modeling the Impact
454 of Sexual Networks in the Transmission of Monkeypox virus Among Gay, Bisexual, and Other
455 Men Who Have Sex with Men - United States, 2022. *MMWR Morb Mortal Wkly Rep.*
456 2022;71(35):1131-5.
- 457 13. Van Dijck C, Hens N, Kenyon C, Tsoumanis A. The roles of unrecognized monkeypox cases,
458 contact isolation and vaccination in determining epidemic size in Belgium. A modelling study. *Clin
459 Infect Dis.* 2023;76:e1421-23.
- 460 14. Beer E, Rao VB. A systematic review of the epidemiology of human monkeypox outbreaks and
461 implications for outbreak strategy. *PLoS Negl Trop Dis.* 2019;13:e0007791.
- 462 15. World Health Organization. Monkeypox Key Facts, 19 May 2022.
- 463 16. European Centre for Disease Prevention and Control. Considerations for contact tracing during the
464 monkeypox outbreak in Europe, 2022 (28 June 2022).
- 465 17. Di Giulio DB, Eckburg PB. Human monkeypox: an emerging zoonosis. *Lancet Infect Dis.*
466 2004;4(1):15-25.

- 467 18. Statistics Netherlands. The Netherlands in figures 2022. Accessed 15 November 2022. Available
468 from: <https://opendata.cbs.nl/#/CBS/en>.
- 469 19. Rutgers NISSO Group. Sexual health in the Netherlands. Delft: Eburon; 2006.
- 470 20. Endo A, Murayama H, Abbott S, Ratnayake R, Pearson CAB, Edmunds WJ, et al. Heavy-tailed
471 sexual contact networks and monkeypox epidemiology in the global outbreak, 2022. *Science*.
472 2022;378:90-4.
- 473 21. Yorke J, Heathcote H, Nold A. Dynamics and control of the transmission of gonorrhoea. *Sex*
474 *Transm Dis*. 1978;5:51-6.
- 475 22. Anderson RM, May RM. Infectious diseases of humans; dynamics and control. 1st ed ed. Oxford:
476 Oxford University Press; 1992.
- 477 23. Hethcote HW, Yorke J. Gonorrhoea transmission dynamics and control. *Lecture Notes in*
478 *Biomathematics* 56. 1984.
- 479 24. Xiridou M, Heijne J, Adam P, Op de Coul E, Matser A, de Wit J, et al. How the Disruption in
480 Sexually Transmitted Infection Care Due to the COVID-19 Pandemic Could Lead to Increased
481 Sexually Transmitted Infection Transmission Among Men Who Have Sex With Men in The
482 Netherlands: A Mathematical Modeling Study. *Sex Transm Dis*. 2022;49(2):145-53.
- 483 25. Bisanzio D, Reithinger R. Keep calm and carry on: projected case burden and duration of the 2022
484 monkeypox outbreak in non-endemic countries. *medRxiv* 2022.
- 485 26. Soa Aids Nederland. Uit de praktijk: 2 plekjes op de eikel, dat is toch geen monkeypox? Updated
486 30 June 2022. Available from: [https://www.soaids.nl/nl/professionals/themas/seksoa-](https://www.soaids.nl/nl/professionals/themas/seksoa-magazine/uit-praktijk-2-plekjes-op-eikel-dat-is-toch-geen-monkeypox)
487 [magazine/uit-praktijk-2-plekjes-op-eikel-dat-is-toch-geen-monkeypox](https://www.soaids.nl/nl/professionals/themas/seksoa-magazine/uit-praktijk-2-plekjes-op-eikel-dat-is-toch-geen-monkeypox).
- 488 27. Miura F, Backer JA, van Rijckevorsel G, Bavalia R, Raven S, Petrignani M, et al. Time scales of
489 human mpox transmission in the Netherlands. *J Infect Dis*. 2023. In print.

- 490 28.National Institute of Public Health and the Environment (RIVM). Thermometer sexual health April
491 2023.
- 492 29.Raccagni AR, Canetti D, Mileto D, Tamburini AM, Candela C, Albarello L, et al. Two individuals
493 with potential monkeypox virus reinfection. *Lancet*. Published online 6 April 2023.
- 494 30.Miura F, van Ewijk CE, Backer JA, Xiridou M, Franz E, Op de Coul E, et al. Estimated incubation
495 period for monkeypox cases confirmed in the Netherlands, May 2022. *Euro Surveill*.
496 2022;27(24):2200448.
- 497 31.Bankuru SV, Kossol S, Hou W, Mahmoudi P, Rychtář J, Taylor D. A game-theoretic model of
498 Monkeypox to assess vaccination strategies. *PeerJ*. 2020;8:e9272.
- 499 32.Brosius I, Van Dijck C, Coppens J, Vandenhove L, Bangwen E, Vanroye F, et al. Pre- and
500 asymptomatic viral shedding in high-risk contacts of monkeypox cases: a prospective cohort study.
501 *medRxiv* 2022.
- 502 33.Kozlov M. How deadly is monkeypox? What scientists know
503 [https://www.nature.com/articles/d41586-022-02931-1#:~:text=](https://www.nature.com/articles/d41586-022-02931-1#:~:text=Out%20of%20more%20than%2057%2C000,over%20the%20past%20few%20decades.2022)
504 [Out%20of%20more%20than%2057%2C000,over%20the%20past%20few%20decades.2022](https://www.nature.com/articles/d41586-022-02931-1#:~:text=Out%20of%20more%20than%2057%2C000,over%20the%20past%20few%20decades.2022) [
- 505 34.Fink D, Callaby H, Luintel A, Beynon W, Bond H, Lim E, et al. Clinical features and management
506 of individuals admitted to hospital with monkeypox and associated complications across the UK: a
507 retrospective cohort study. *Lancet Infect Dis*. Published online 22 December 2022.
- 508 35.Adam PCG, Op de Coul ELM, Zantkuijl P, Bos H, Xiridou M, Blom C, et al. An assessment of
509 rates and covariates of mpox diagnosis and vaccination provides evidence to refine eligibility
510 criteria for mpox vaccination among gay, bisexual, and other men who have sex with men in the
511 Netherlands. *medRxiv preprint*. 2023:<https://doi.org/10.1101/2023.02.28.23286578>.
- 512
513
514

515 Table 1. Model parameters[#]

Parameter		Value	Source
Duration latent period, days	$1/\theta$	5-8	[13-17, 29]
Days infectious total ^s	$\frac{1}{\gamma} + \frac{1}{\delta}$	14-28	[13, 15-17, 20, 30]
Days infectious not-refraining from sex	$1/\delta$	2-8	[12, 13, 16, 31]
Days infectious refraining from sex	$1/\gamma$		
Probability of transmission per sexual contact	β_s	0.1-0.9	[12, 14, 30]
Vaccine efficacy for vaccines administered in the past	$1 - \sigma_1$	50-65%	Data [‡]
Vaccine efficacy for vaccines administered in 2022	$1 - \sigma_2$	80-90%	[1, 15, 16]
Mpox-related death rate	μ_d	0.0004	[32, 33]
Factor reducing infectiousness of those vaccinated in the past	v_1	$v_1 = \sigma_1$	
Factor reducing infectiousness of those vaccinated in 2022	v_2	$v_2 = \sigma_2$	
Hospitalization rate	ζ	0.01-0.02	Data [‡] , [33]
% of MSM who were in the past vaccinated against smallpox		25%	[18]
Rate of entry into and exit out of the population*	μ	0.02/year	
Mixing parameter for main regular partnerships	ϵ_M	0.1-0.9	
Mixing parameter for casual partnerships	ϵ_C	0.1-0.9	
Vaccination rate, per day**	φ_{ki}	0.0003-0.0005	
Factor reducing transmission from infectious in abstinence	w	0.15-0.7	[16]
Number of MSM in the Netherlands		250,000	[18, 19]
Number casual partners/day, MSM very high sexual activity group		0.7-1.0	Table 2

516 [#] Parameters with a range were included in the Latin Hypercube Sampling.

517 [§] The total number of days a mpox case is infectious is the sum of the days being infectious not in sexual abstinence and the
518 days being infectious in abstinence.

519 * Based on assumption that MSM are sexually active approximately for 50 years.

520 [‡] Data from the national database of notifiable infectious diseases of the Netherlands [7].

521 ** The vaccination rate is φ_{1i} for uninfected and φ_{2i} for exposed individuals of activity group i . Range of values shown is
522 for fairly high and very high sexual activity groups, from 7 June 2022, chosen such that the weekly number of vaccinations
523 was 0.5-1.5 times the weekly number of cases, assuming that in this period approximately one contact of each diagnosed case
524 was vaccinated. The vaccination rate for the low activity groups was zero throughout the calculations.

525

526 Table 2. Parameters that depend on the sexual activity group of individuals.

Parameter for activity group i	Activity group			
	Very low	Fairly low	Fairly high	Very high
% in specific activity group*	45.1%	36.4%	17.7%	0.7%
Rate of forming main regular partnerships per year* (α_{Mi})	0.1	0.2	0.7	0.7
Number of sex contacts per main regular partner per day (u_i)	0.03	0.06	0.14	0.14
% with main regular partner* (q_i)	60%	51%	54%	42%
Number of casual partners per day* (α_{ci})	0.006	0.044	0.139	0.7-1.0

527 * Parameters estimated from data from the first round of the “COVID-19, Sex, and Intimacy Survey” [24]. We used only data
 528 from the questions relating to sexual activity in the second half of 2019 (before the start of the pandemic in the Netherlands).
 529 Men in the very high sexual activity group reported more than 100 partners in the second half of 2019.

530

531 Table 3. Prior distributions of uncertain parameters relating to the adaptations in behaviour of MSM that may
 532 have occurred in June/July 2022. Values were sampled from the uniform distribution with the ranges shown in
 533 this table.

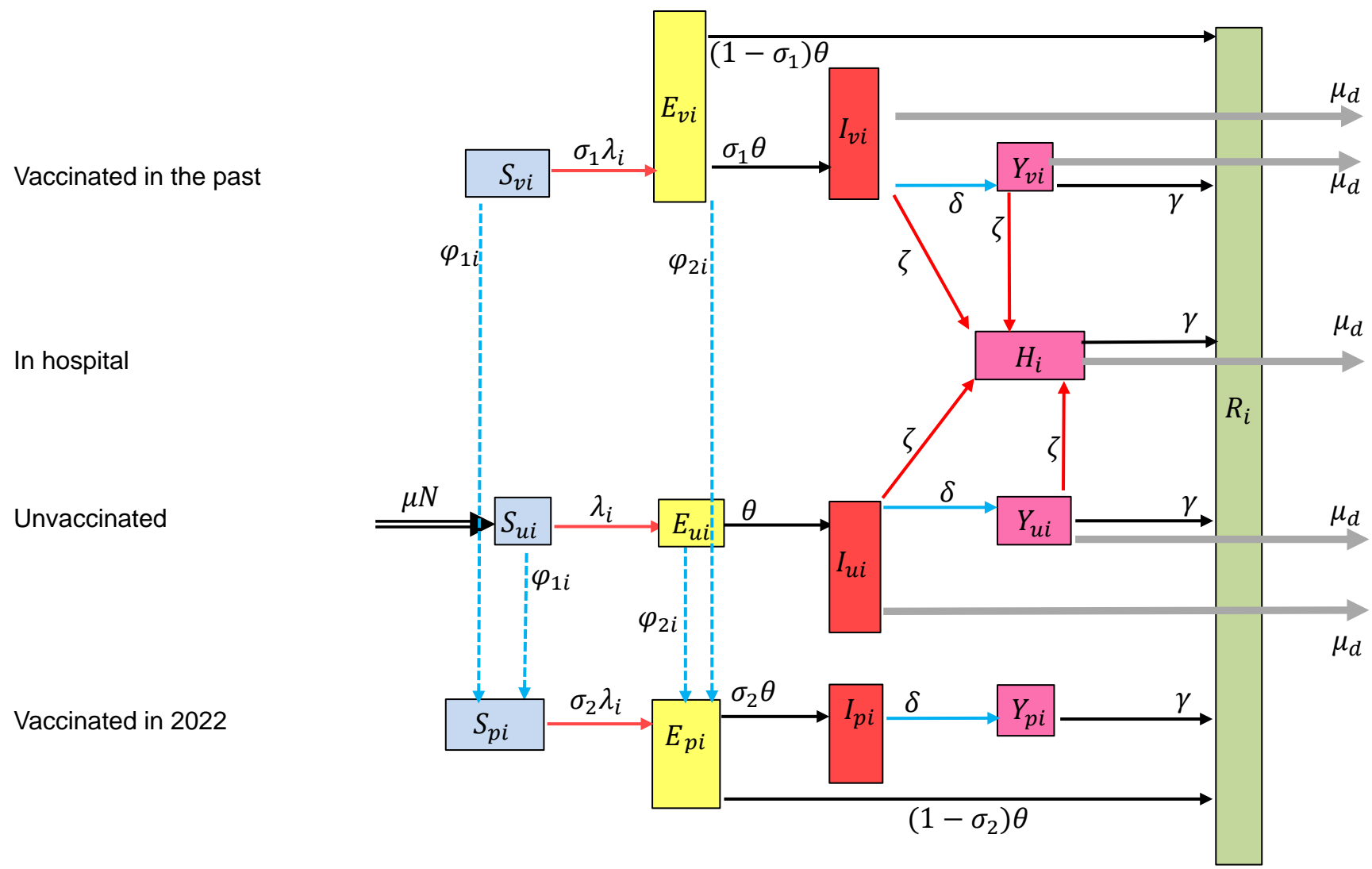
	Days infectious not refraining from sexual contacts	Reduction* in number casual partners of group		
		Low**	Fairly high	Very high
Scenario with adaptations at one time point:				
After T_2	2-8	0-30%	0-30%	0-30%
Scenario with adaptations at two time points:				
Between T_1 and T_2	2-8	0-30%	0-30%	0-30%
After T_2	2-8	0-30%	0-30%	0-30%
Dates when adaptations occurred:				
T_1		17-27 June 2022		
T_2		5-15 July 2022		

534 * It was assumed that the number of casual partners of activity group i was α_{ci} at the beginning of the outbreak (as estimated
 535 from the data – see Table 2) and was reduced to $(1 - D_{ij}) * \alpha_{ci}$ after day T_j , with D_{ij} sampled from the uniform distribution
 536 between 0 and 0.3. The maximum of 30% reduction was based on preliminary results from the survey “Monkeypox: a new
 537 challenge for your sex life” [9, 34] and reports from club owners in Amsterdam who experienced reduced numbers of visitors
 538 in July 2022, with the reduction reaching its maximum at the end of July 2022 with approximately 30% less visitors (P.
 539 Zantkuijl, personal communication).

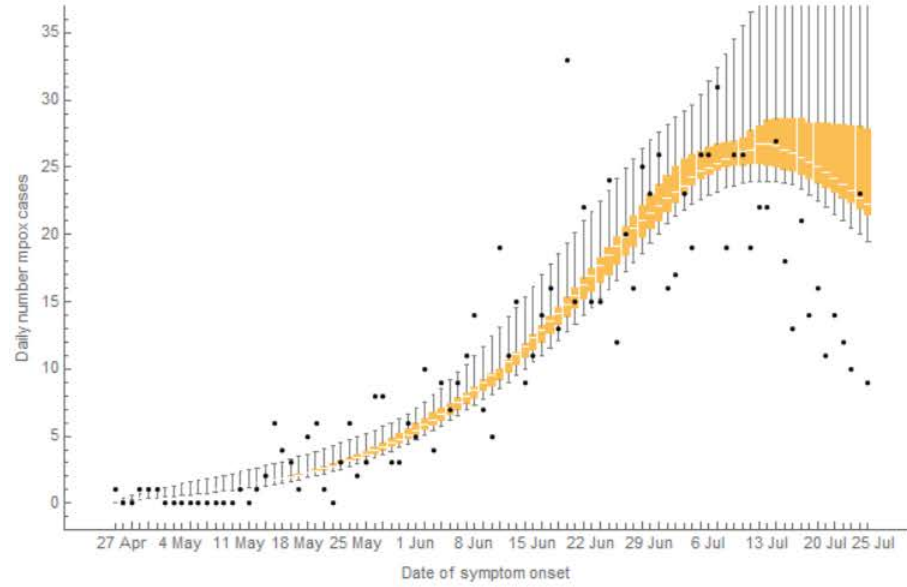
540 **Change applied to both very-low and fairly-low activity groups.

541

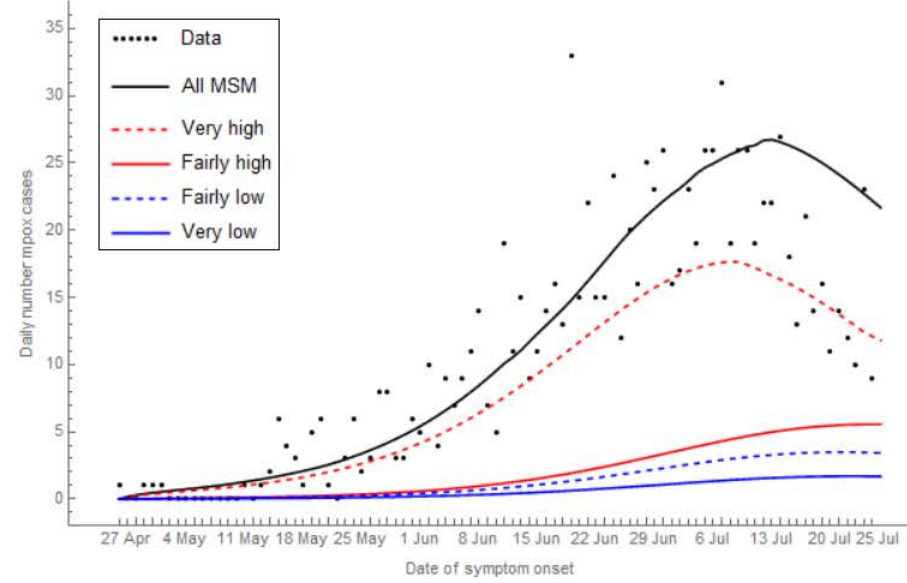
Uninfected Exposed Infectious not refraining from sex Infectious refraining from sex Recovered & immune



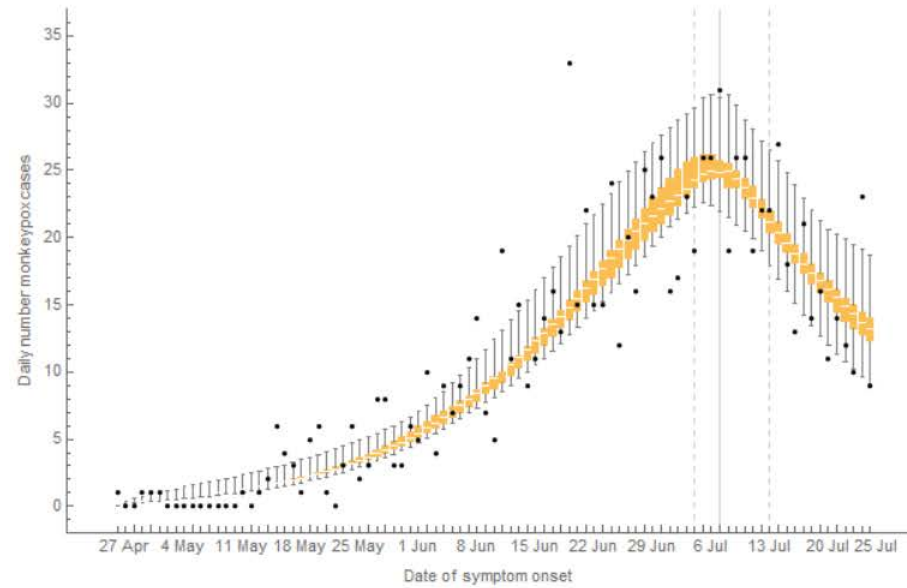
(a)



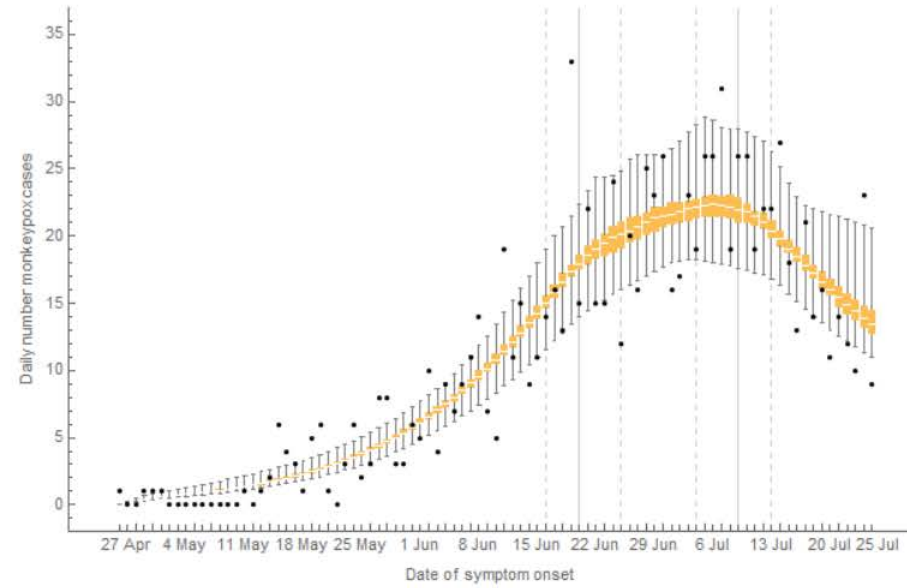
(b)

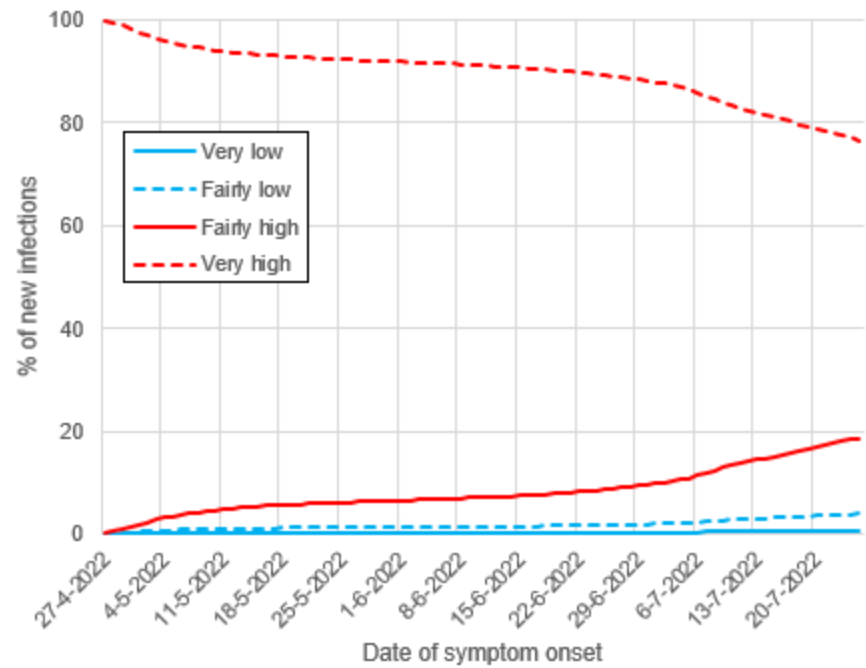
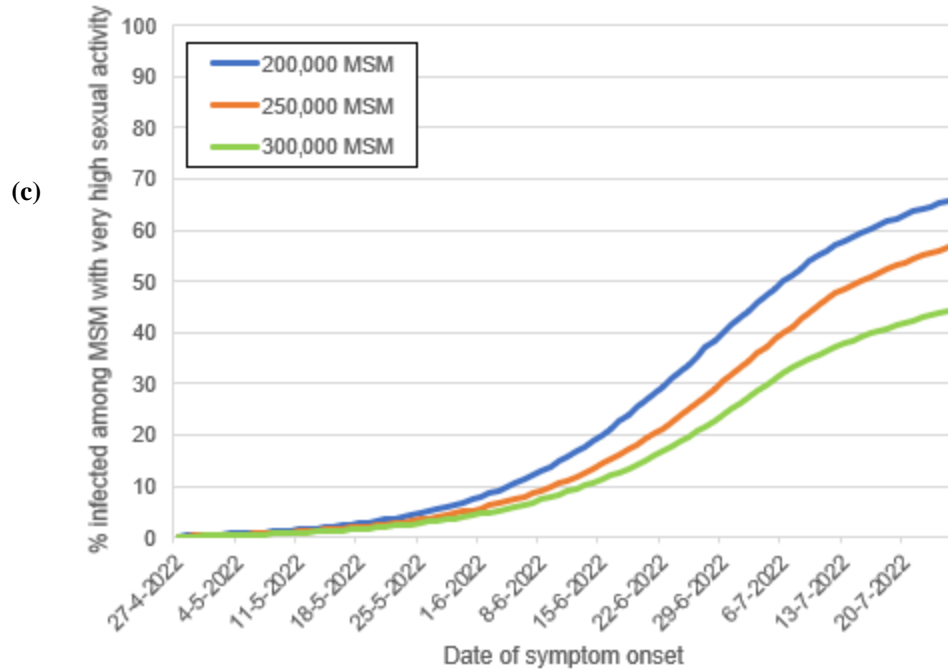
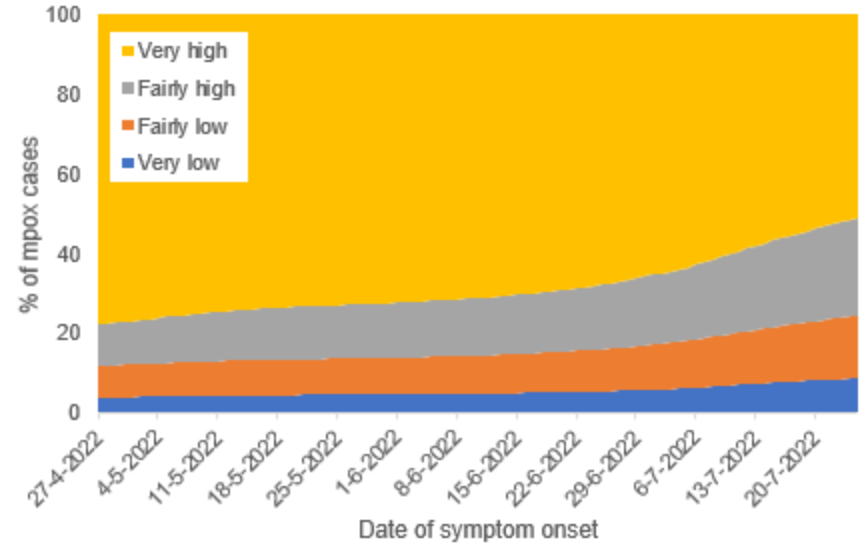
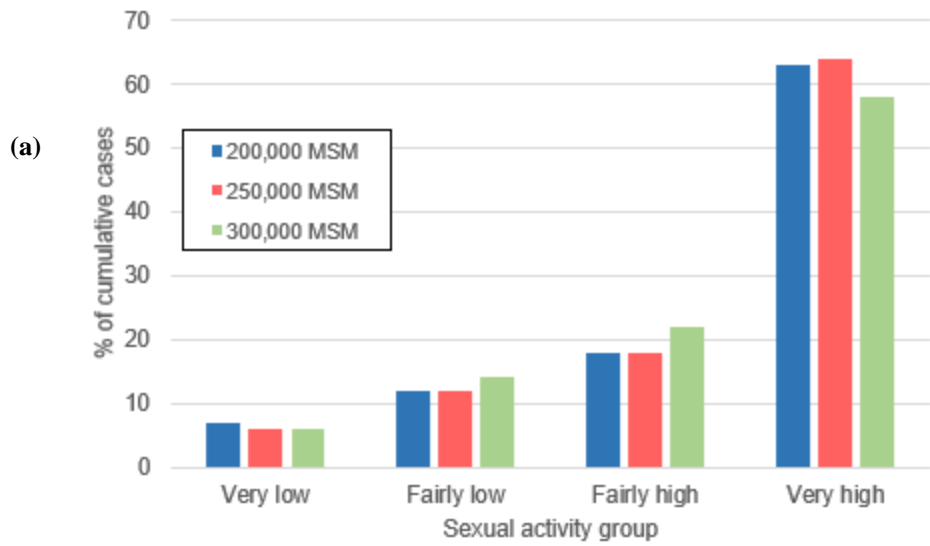


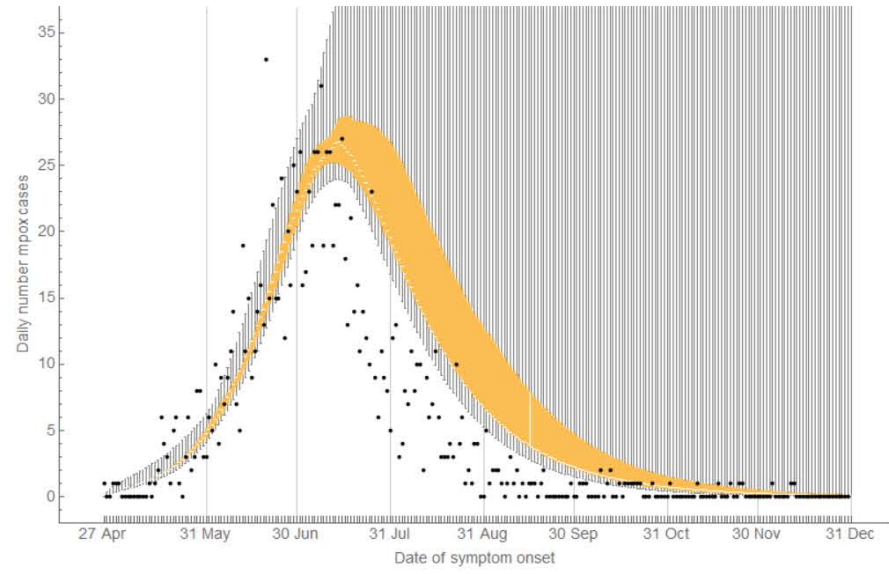
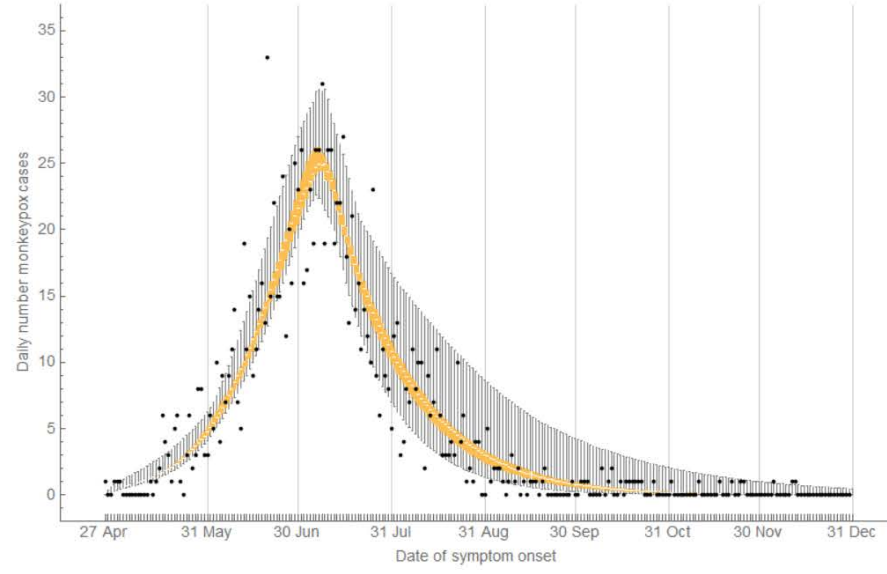
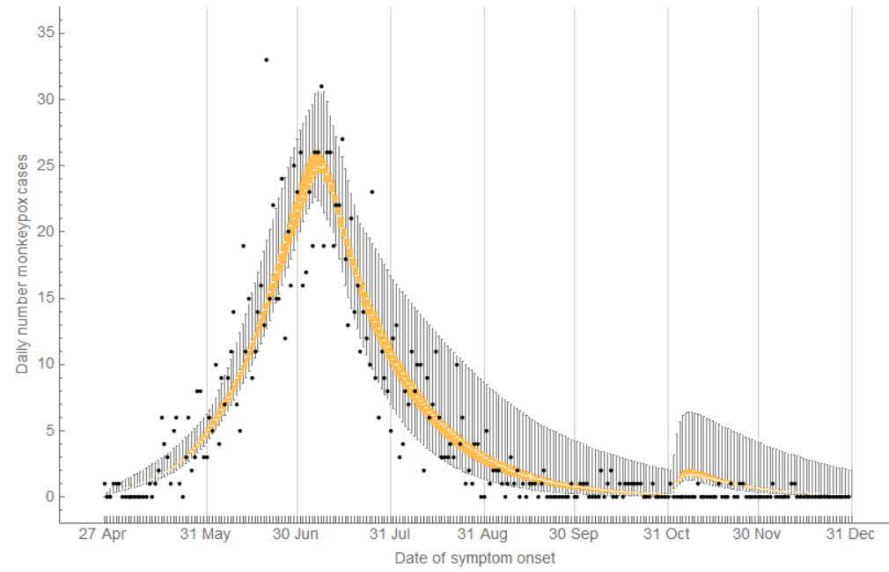
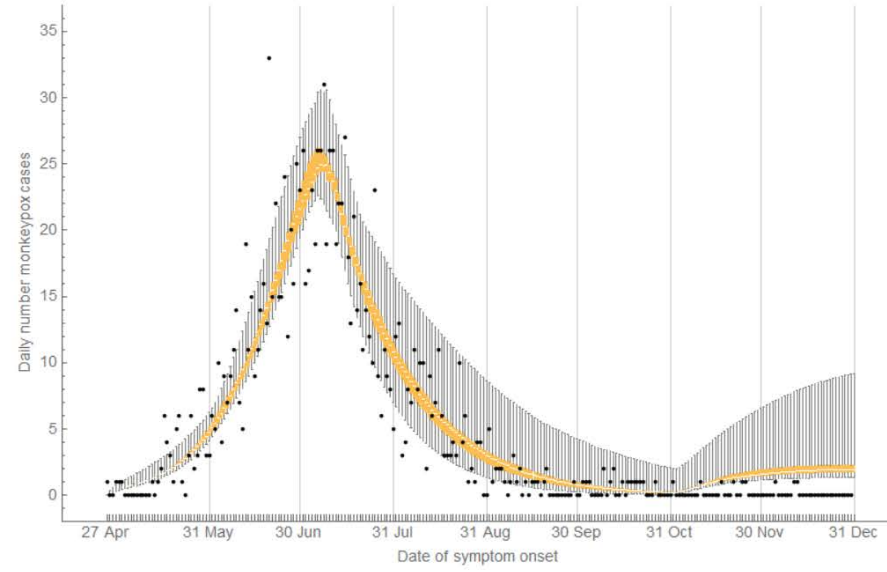
(c)



(d)





(a)**(b)****(c)****(d)**

1 **The fading of the mpox outbreak among men who have sex with men: a**
2 **mathematical modelling study**

3

4 **Maria Xiridou, Fuminari Miura, Philippe Adam, Eline Op de Coul, John de Wit, Jacco**
5 **Wallinga**

6

7 **SUPPLEMENT**

8

9 **The transmission model**

10 We developed a deterministic compartmental model that describes monkeypox virus (MPXV) transmission
11 among men who have sex with men (MSM). A schematic diagram of the model is shown in Figure 1 in the main
12 text. We accounted only for transmission via sexual or intimate contacts among main (steady) and casual sex
13 partners (for brevity, referred to as “sexual contacts”).

15 **Sexual partners**

16 MSM were divided into $G = 4$ sexual activity groups, based on the total number of partners with whom they had
17 sexual/intimate contacts. The number of these partners was obtained from data from the first round of the
18 “COVID-19, Sex, and Intimacy Survey”, carried out in the summer of 2020 [1]. The survey was focussed on the
19 impact of the first wave of the pandemic. However, as reference, participants were asked also about their sexual
20 behaviour in the second half of 2019. We used the data of 2019, as representative of sexual activity without the
21 temporal fluctuations caused by the COVID-19 pandemic, but also because participants were asked to report the
22 number of male partners with whom they “had sex/intimacy in the second half of 2019”. Based on this number,
23 we divided the population into four sexual activity groups: very low, fairly low, fairly high, and very high
24 activity. The parameters relating to sexual behaviour of each activity group are shown in Table 2.

26 **The course of MPXV infection**

27 Individuals enter the population as susceptible (S_{ui}) when they become sexually active. After infection,
28 individuals are exposed but not infectious (E_{ui}) and later become infectious (I_{ui}). When individuals have
29 symptoms and/or they are tested positive for MPXV infection, they may refrain from physical/sexual contacts or
30 may be in isolation/confinement. We refer to these individuals as “refraining from sexual contacts” (Y_{ui}). We
31 assumed that individuals start refraining from sexual contacts $1/\delta$ days after becoming infectious; infectious
32 cases refraining from sexual contacts can still infect others, with a lower probability of transmission, for
33 instance, because they do not completely refrain from sex contacts. Most of the infectious mpox cases recover
34 after a few weeks and become immune (R_i), but a small fraction of the infectious cases may develop
35 complications and need hospitalization (H_i) or die due to mpox.

36 Individuals born before 1974 were vaccinated in their first year of age against smallpox and that protects against
37 MPXV infection and/or disease. Smallpox vaccination ended in 1974 in the Netherlands. Therefore, we assumed
38 that in 2022 approximately 25% of sexually active MSM is vaccinated (S_{vi}) via the old smallpox vaccination
39 programmes, based on the age distribution of adult men in the Netherlands [2, 3]. We assumed that vaccinated
40 men can still get infected with MPXV (and become exposed, E_{vi}), but at a lower rate than that for unvaccinated
41 individuals. Vaccinated exposed individuals have a lower rate of becoming infectious (I_{vi}), than unvaccinated
42 exposed individuals. Vaccinated infectious cases may refrain from sexual contacts (Y_{vi}). We assumed that
43 vaccination reduces the level of infectivity of vaccinated infectious cases, but the recovery rate, the
44 hospitalization rate, and the MPXV-related death rate are similar for vaccinated and unvaccinated individuals.
45 To account for different levels of protection by the old and the new vaccines, in the model we included
46 individuals vaccinated in 2022 separately from those who had been vaccinated in the past (before 1974). The
47 respective compartments in the model are denoted with S_{pi} , E_{pi} , I_{pi} , Y_{pi} (uninfected, exposed, infectious not
48 refraining from sexual contacts, infectious refraining from sexual contacts, respectively) with the subscript
49 p denoting those vaccinated in 2022 by means of pre-exposure or post-exposure prophylaxis. Susceptible
50 individuals (unvaccinated or vaccinated in the past) may be vaccinated in 2022 at a rate φ_{1i} . Exposed individuals
51 (unvaccinated or vaccinated in the past) may be vaccinated in 2022 at a rate φ_{2i} . The vaccination rates φ_{1i} and
52 φ_{2i} depend on the activity group i . We assumed that the protection of the new vaccine (against infection and
53 disease) is higher than that from the old vaccine (Table 1). Both vaccine protections were modelled as a
54 proportional reduction in the transmission rate.
55 Hospitalized cases may die due to mpox or recover and become immune (R_i). All MSM entering the sexually
56 active population in 2022 are unvaccinated and susceptible to MPXV.

57

58 **Model equations**

59 The model is described by the system of ordinary differential equations shown below. The subscript u denotes
60 unvaccinated individuals, v denotes individuals vaccinated in the past (with the old vaccine), p denotes
61 individuals vaccinated in 2022 (with the new vaccine), and $i = 1, 2, \dots, G$ denotes the i -th sexual activity group.

62 Equations for unvaccinated individuals:

$$63 \frac{dS_{ui}}{dt} = -(\lambda_i + \varphi_{1i} + \mu)S_{ui} + \mu N_i$$

$$64 \quad \frac{dE_{ui}}{dt} = \lambda_i S_{ui} - (\varphi_{2i} + \theta + \mu) E_{ui}$$

$$65 \quad \frac{dI_{ui}}{dt} = \theta E_{ui} - (\delta + \zeta + \mu + \mu_d) I_{ui}$$

$$66 \quad \frac{dY_{ui}}{dt} = \delta I_{ui} - (\gamma + \zeta + \mu + \mu_d) Y_{ui}$$

67 Equations for individuals vaccinated in the past:

$$68 \quad \frac{dS_{vi}}{dt} = -(\sigma_1 \lambda_i + \varphi_{1i} + \mu) S_{vi}$$

$$69 \quad \frac{dE_{vi}}{dt} = \sigma_1 \lambda_i S_{vi} - (\theta + \varphi_{2i} + \mu) E_{vi}$$

$$70 \quad \frac{dI_{vi}}{dt} = \sigma_1 \theta E_{vi} - (\delta + \zeta + \mu + \mu_d) I_{vi}$$

$$71 \quad \frac{dY_{vi}}{dt} = \delta I_{vi} - (\gamma + \zeta + \mu + \mu_d) Y_{vi}$$

72 Equations for individuals vaccinated in 2022:

$$73 \quad \frac{dS_{pi}}{dt} = \varphi_{1i}(S_{ui} + S_{vi}) - (\sigma_2 \lambda_i + \mu) S_{pi}$$

$$74 \quad \frac{dE_{pi}}{dt} = \sigma_2 \lambda_i S_{pi} + \varphi_{2i}(E_{ui} + E_{vi}) - (\theta + \mu) E_{pi}$$

$$75 \quad \frac{dI_{pi}}{dt} = \sigma_2 \theta E_{pi} - (\delta + \mu) I_{pi}$$

$$76 \quad \frac{dY_{pi}}{dt} = \delta I_{pi} - (\gamma + \mu) Y_{pi}$$

77 Equations for recovered/immune and hospitalized individuals:

$$78 \quad \frac{dR_i}{dt} = \gamma(Y_{ui} + Y_{vi} + Y_{pi} + H_i) + (1 - \sigma_1)\theta E_{vi} + (1 - \sigma_2)\theta E_{pi} - \mu R_i$$

$$79 \quad \frac{dH_i}{dt} = \zeta(I_{ui} + I_{vi} + Y_{ui} + Y_{vi}) - (\gamma + \mu + \mu_d) H_i$$

80 The parameters and variables in these equations are explained in the following sections and in Tables 1-3.

81 **Transmission rate**

82 The rate at which MSM in activity group i get infected with MPXV is $\lambda_i = \lambda_{mi} + \lambda_{ci}$, where λ_{mi} and λ_{ci} denote
83 the rates of getting infected by main and casual partners, respectively:

- 84 • The rate of getting infected by main regular partners:

85
$$\lambda_{mi} = q_i \sum_{k=u,v,p} \sum_{j=1}^4 m_{Mij} [1 - (1 - \beta_{sk})^{u_{ij}}] \frac{I_{kj} + wY_{kj}}{N_j}$$

86

- 87 • The rate of getting infected by casual partners:

88
$$\lambda_{ci} = \alpha_{ci} \sum_{k=u,v,p} \sum_{j=1}^4 \beta_{sk} m_{Cij} \frac{I_{kj} + wY_{kj}}{N_j}$$

89 In these equations, the following notation is used:

- 90 • q_i is the fraction of MSM of activity group i with a main regular partner.
- 91 • u_{ij} is the frequency of sex contacts between main sexual partners of activity groups i, j , calculated as $u_{ij} =$
92 $(u_i + u_j)/2$, from the contact frequency u_i and u_j of sexual activity groups i and j , respectively.
- 93 • β_{sk} is the probability of transmission of MPXV per sexual/intimate contact from an infectious individual
94 who is unvaccinated ($k = u$), vaccinated in the past ($k = v$), or vaccinated in 2022 ($k = p$), with $\beta_{su} = \beta_s$,
95 $\beta_{sv} = v_1\beta_s$, $\beta_{sp} = v_2\beta_s$. The probability β_s of transmission per sexual contact with an unvaccinated
96 individual is reduced by v_1 for those who were vaccinated in the past and by v_2 for those vaccinated in
97 2022.
- 98 • w is a factor reducing the transmission potential of an infectious individual practicing sexual abstinence
99 compared to infectious individuals not in abstinence.
- 100 • α_{ci} is the number of casual sex contacts per day for men in activity group i .
- 101 • N_j is the total size of activity group j and $N = \sum_{j=1}^G N_j$ is the total size of the MSM population.
- 102 • m_{Mij} and m_{Cij} are parameters that define the level of mixing between sexual activity groups i, j , when
103 forming main and casual partnerships, respectively. These are defined by the equations:

104
$$m_{Mij} = \varepsilon_M \delta_{ij} + (1 - \varepsilon_M) \frac{\alpha_{Mj} N_j}{\sum_{v=1}^G \alpha_{Mv} N_v} \quad \text{and} \quad m_{cij} = \varepsilon_c \delta_{ij} + (1 - \varepsilon_c) \frac{\alpha_{cj} N_j}{\sum_{v=1}^G \alpha_{cv} N_v},$$

105 where δ_{ij} is the Kronecker delta (being equal to 1, if $i = j$; and equal to 0, otherwise) and the parameters
106 $\varepsilon_s, \varepsilon_c$ determine the level of assortativeness in mixing of activity groups when forming main and casual
107 partnerships, respectively (if $\varepsilon_i = 1$, then mixing is assortative; if $\varepsilon_i = 0$, then mixing is proportionate).

108

109 **The size of the MSM population**

110 Estimates of the size of the MSM population vary from 111,072 [4] to 392,000 [5]. The variation depends
111 mostly on the ages included in the estimate (for instance, from 15 or 17 years old; up to 65 or 69 years old) and
112 the definition of MSM (men who had sex with men in the previous six/twelve months; or ever having sex with
113 men; or identifying themselves as homosexual/bisexual). Based on the size of the male population [2] and
114 prevalence estimates of same-sex behaviour [5], we assumed that the number of MSM in 2022 was around
115 250,000. Due to uncertainty about this estimate, we repeated the analyses with 200,000 MSM and 300,000
116 MSM.

117

118 **Adaptations that may have occurred in the first three months of the outbreak**

119 By ordering diagnosed mpox cases according to date of symptom onset, the peak was between 6 and 10 July
120 2022. The first diagnosis of mpox was on 20 May 2022. By the beginning of June, the number of diagnoses was
121 increasing and there were messages about mpox in the news, social media, and MSM websites [6-9]. This has
122 probably enhanced awareness among MSM and health care practitioners, enabling earlier recognition of mpox
123 symptoms, even during the prodromal phase with systemic symptoms like fever, fatigue, and ache. In an online
124 survey carried out in August 2022, most MSM responded correctly to questions about symptomatology and
125 routes of transmission of mpox and reported to be willing to refrain from close physical and sexual contacts if
126 they were infected with MPXV [10]. As the severity of the outbreak was increasing, MSM were possibly more
127 willing to refrain from sexual/intimate contacts when they suspected or were diagnosed with MPXV infection,
128 thus reducing the time they were infectious and not yet refraining from sexual contacts. The spread of
129 information about mpox and the severity of the outbreak may have also influenced the sexual behaviour of
130 MSM. In the same survey, more than half of the participants reported a reduction in their sexual activity due to
131 the mpox outbreak [10]. Furthermore, sex venues and parties reported low numbers of visitors in July 2022 [11],

132 with the reduction reaching its maximum at the end of July, when some club owners observed up to 30% less
133 visitors than what was expected (P. Zantkuijl, personal communication). This points to a decline in sexual
134 activity of men visiting these accommodations.

135 Therefore, in this study, we examined two possible adaptations: (a) MSM may start refraining from sexual
136 contacts earlier during the infectious period, thus resulting in shorter infectious period while not refraining from
137 sexual contacts and (b) a reduction in the number of casual partners. The level and the timing of the adaptations
138 was obtained from the fitting process. We examined two scenarios with adaptations either (a) at one time point
139 T_2 in the period 5-15 July 2022 or (b) at two time points T_1 in the period 17-27 June 2022 and T_2 in the period 5-
140 15 July 2022. These time periods were close to messages placed on ManTotMan socials and the announcement
141 of the Dutch government on 7 July 2022 to start with the monkeypox vaccination programme.

142 We included a reduction D_{4j} in the number of casual partners of men in the very high sexual activity group, D_{3j}
143 for men in the fairly high sexual activity group, and a reduction D_{2j} for men in the very low and fairly low
144 sexual activity groups. The reduction D_{ij} occurred on day $T_j = T_1$ or $T_j = T_2$. The six values D_{ij} ($i = 2,3,4$ and
145 $j = 1,2$) were sampled from the same range (0-30% reduction), since we are uncertain about the occurrence of
146 the decline. Similarly, we sampled three values for the duration of the infectious period before refraining from
147 sexual contacts: one for the duration in the beginning of the outbreak, a second value for the period between T_1
148 and T_2 , and a third value for the period after T_2 . All three values were sampled from the same range (2-8 days)
149 since we were uncertain whether an adaptation in this duration occurred and when.

150

151 **Model fitting**

152 The model was fitted to data on the number of diagnosed mpox cases using a Bayesian approach. Parameters
153 relating to sexual behaviour were estimated from data or obtained from the literature (Table 2), except from: (a)
154 the two parameters for assortativeness in sexual mixing and (b) the number of casual partners of the group with a
155 very high sexual activity level. These were included as uncertain parameters, due to lack of reliable data and
156 because the model results were very sensitive to these parameters (based on our preliminary analyses). Further,
157 most of the parameters relating to mpox were uncertain (Table 1) and were obtained via the fitting process.

158

159

160 The uncertain parameters were divided into two groups:

- 161 1. Parameters relating to behavioural adaptations that occurred in June/July 2022 (Table 3): adaptation in the
162 number of casual partners; adaptation in the number of days that an individual is infectious and not in
163 abstinence; and two parameters for the timing of these adaptations.
- 164 2. Main parameters (Table 1): all the other parameters, except those relating to the adaptations that occurred in
165 June/July 2022.

166 The fitting process was carried out in two steps:

- 167 1. In the first step, we fitted the model to the numbers of daily mpox cases registered in the national database
168 of notifiable infectious diseases of the Netherlands until 17 June or until 5 July 2022. We defined uniform
169 prior distributions for the uncertain parameters (Tables 1). Using Latin Hypercube Sampling [12], we
170 sampled 10,000 combinations of values from the prior distributions and repeated the model calculations
171 with each parameter combination. From the model, we calculated the daily numbers of mpox cases with
172 each parameter combination. We calculated the Poisson likelihood of the above numbers, thus obtaining the
173 posterior distributions of the uncertain parameters (except those relating to the behavioural adaptations in
174 June/July 2022), reflecting the situation in the beginning of the outbreak.
- 175 2. In the second step, we used the posterior distributions obtained from the first step of the fitting process and
176 fitted the model to data from 17 June or 5 July 2022 until 25 July 2022. The modelled mpox cases were
177 compared with the respective data with date of symptom onset in this time interval. We calculated their
178 Poisson likelihood and obtained the posterior distributions of the uncertain parameters relating to
179 behavioural adaptations that occurred in June/July 2022.

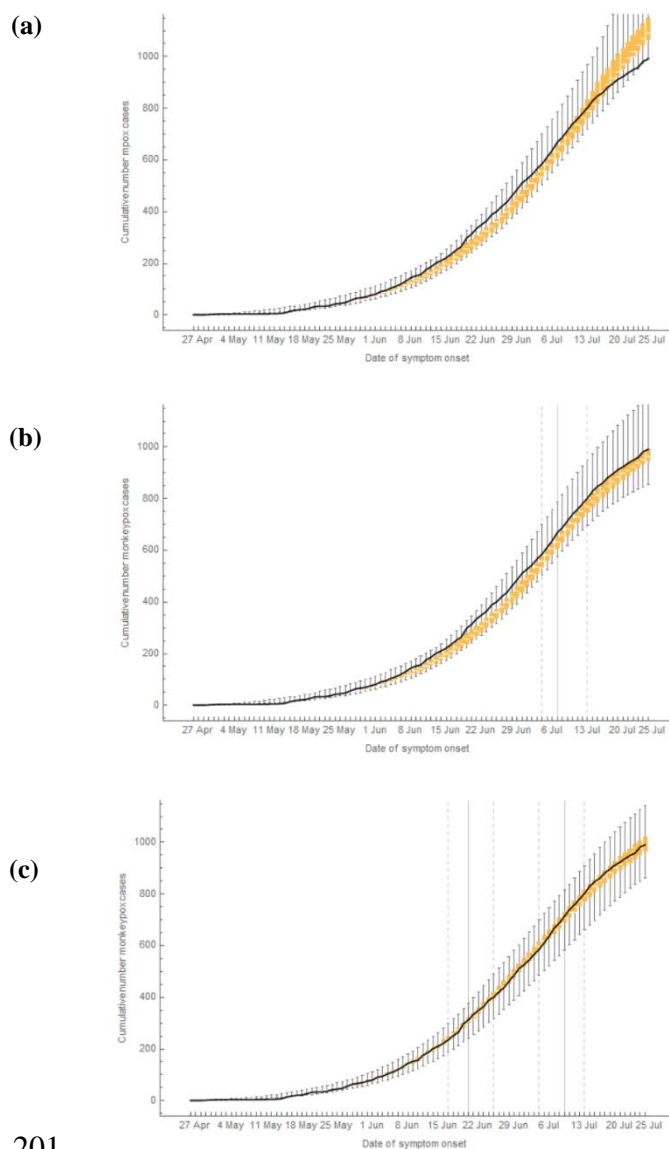
180

181 **Data sources**

182 The following data sources were used in this study.

183 *National surveillance system for notifiable diseases (OSIRIS)*: Individuals seeking mpox testing or presenting
184 with symptoms suggestive of mpox to general practitioners or health centres were referred and notified to the
185 regional public health service for mpox diagnostics [9]. Notification of confirmed mpox cases from regional
186 public health services to the National Institute of Public Health and the Environment was accompanied by a
187 questionnaire with demographical, clinical, and epidemiological information of cases. The numbers of confirmed

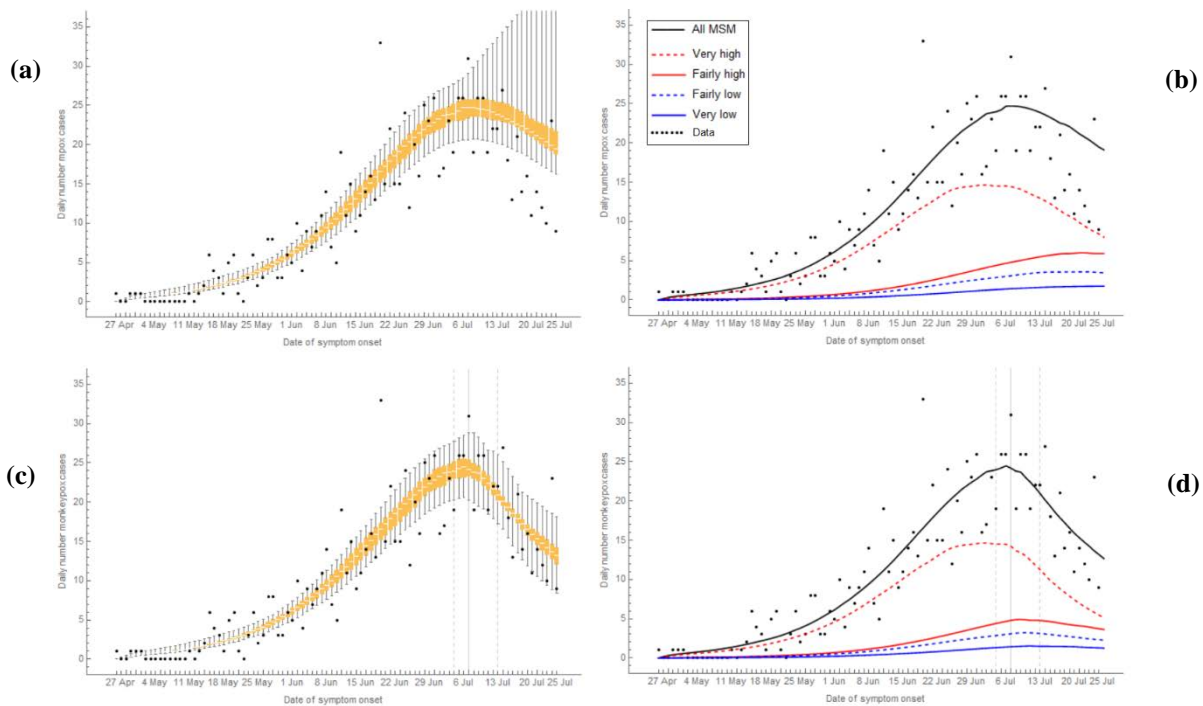
188 mpox cases according to date of symptom onset were extracted from this database. These numbers were
189 continuously updated during the outbreak and were available online on <https://www.rivm.nl/mpox-apenpokken>.
190 *COVID-19, Sex, and Intimacy Survey*: This is a repeated cross-sectional self-report survey. The first round of
191 data collection was carried out from the end of July 2020 to the beginning of September 2020 [13, 14].
192 Participants were recruited via social media advertisement on Facebook and Instagram. People were eligible to
193 participate if they: lived in the Netherlands, were 18 years or older, identified as male and ever had sex with a
194 man. All participants provided informed consent and received no compensation. Only responses from eligible
195 participants who fully completed the questionnaire were used for the analyses presented here. The aim of the
196 survey was to investigate the impact of the COVID-19 pandemic on sexual behaviour. Therefore, respondents
197 were asked to report on their sexual behaviour during the first half of 2020 and, as reference, their sexual
198 behaviour during the last six months of 2019. In the present study, we used data only from the responses for the
199 period July-December 2019. For these questions, 5,683 participants reported their sexual behaviour.
200



201

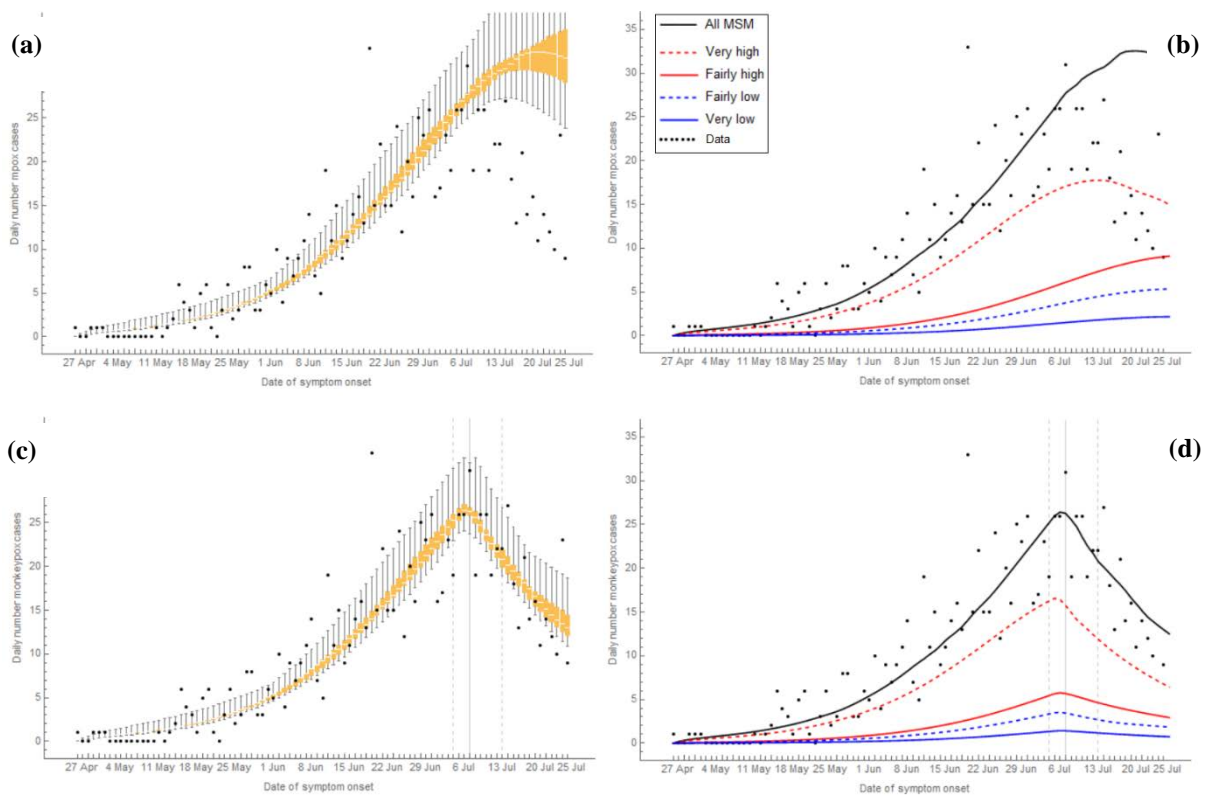
202 **Figure S1.** The cumulative number of mpoX cases among MSM in the Netherlands from 27 April to 25 July
203 2022. Cases are shown according to date of symptom onset (on horizontal axes). Solid black line shows data
204 from 27 April to 25 July 2022, from the national database of notifiable infectious diseases of the Netherlands.
205 Orange box-plots show the medians and interquartile ranges obtained from the model in a population of 250,000
206 MSM (a) without behavioural adaptations; (b) with behavioural adaptations only in July 2022; (c) with
207 behavioural adaptations in June and in July 2022. In (b)-(c), the vertical grey lines show the medians (solid line)
208 and the 95% credible intervals (dashed lines) of the time point at which the adaptations occurred, as obtained
209 from the model fitting.

210



211 **Figure S2.** The daily number of mpox cases among MSM in the Netherlands from 27 April to 25 July 2022.
212 Black bullets show data from the national database of notifiable diseases of the Netherlands; the other lines were
213 calculated from the model. Mpox cases are shown according to date of symptom onset. Left panels: box-plots of
214 daily number of mpox cases in the overall MSM population. Right panels: median daily number of mpox cases
215 in the overall MSM population (black line), in the groups with high sexual activity level (red lines), and in the
216 groups with low sexual activity level (blue lines). (a), (b): without behavioural adaptations; (c), (d): with
217 behavioural adaptations in July 2022. Vertical grey lines show median (solid line) and 95% credible interval
218 (dashed lines) of the day at which the behavioural adaptations occurred, as obtained from the model fitting.
219 Model results were calculated in a population of 200,000 MSM.

220

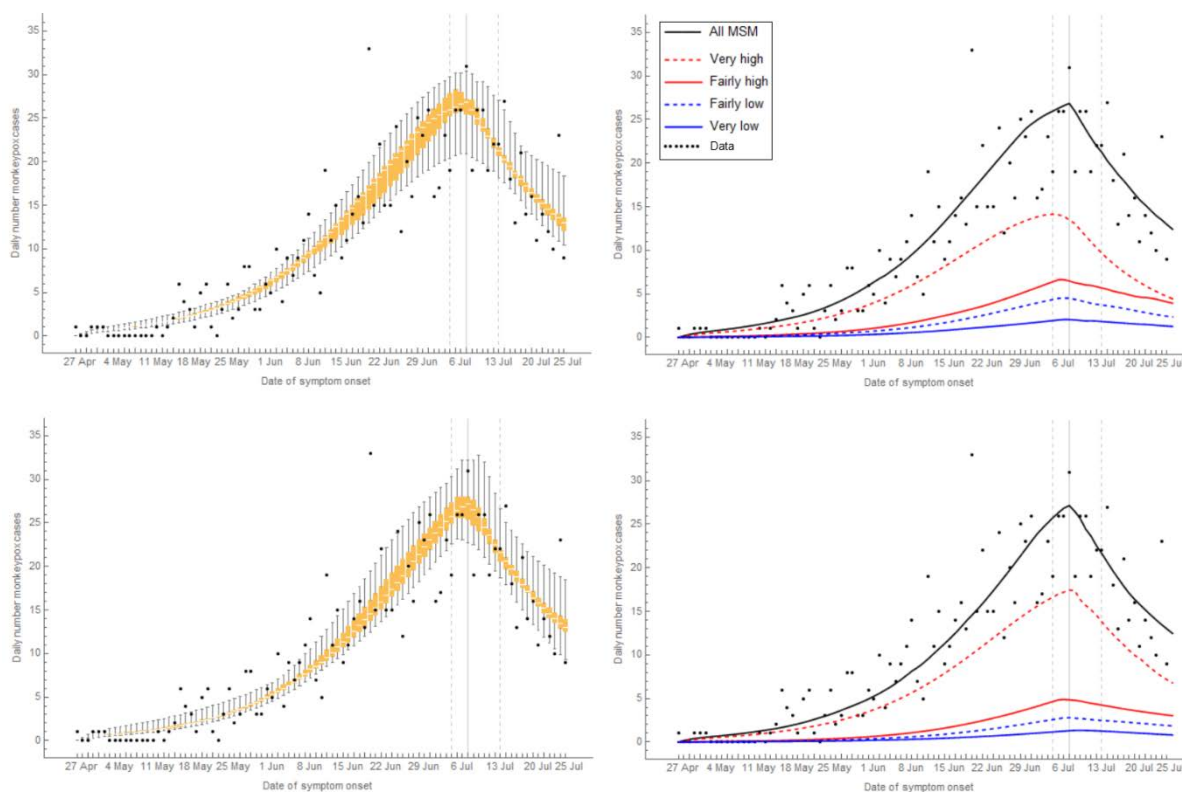


221

222 **Figure S3.** The daily number of mpox cases among MSM in the Netherlands from 27 April to 25 July 2022.

223 Black bullets show data from the national database of notifiable diseases of the Netherlands; the other lines were
 224 calculated from the model. Mpox cases are shown according to date of symptom onset. Left panels: box-plots of
 225 daily number of mpox cases in the overall MSM population. Right panels: median daily number of mpox cases
 226 in the overall MSM population (black line), in the groups with high sexual activity level (red lines), and in the
 227 groups with low sexual activity level (blue lines). (a), (b): without behavioural adaptations; (c), (d): with
 228 behavioural adaptations in July 2022. Vertical grey lines show median (solid line) and 95% credible interval
 229 (dashed lines) of the day at which the behavioural adaptations occurred, as obtained from the model fitting.

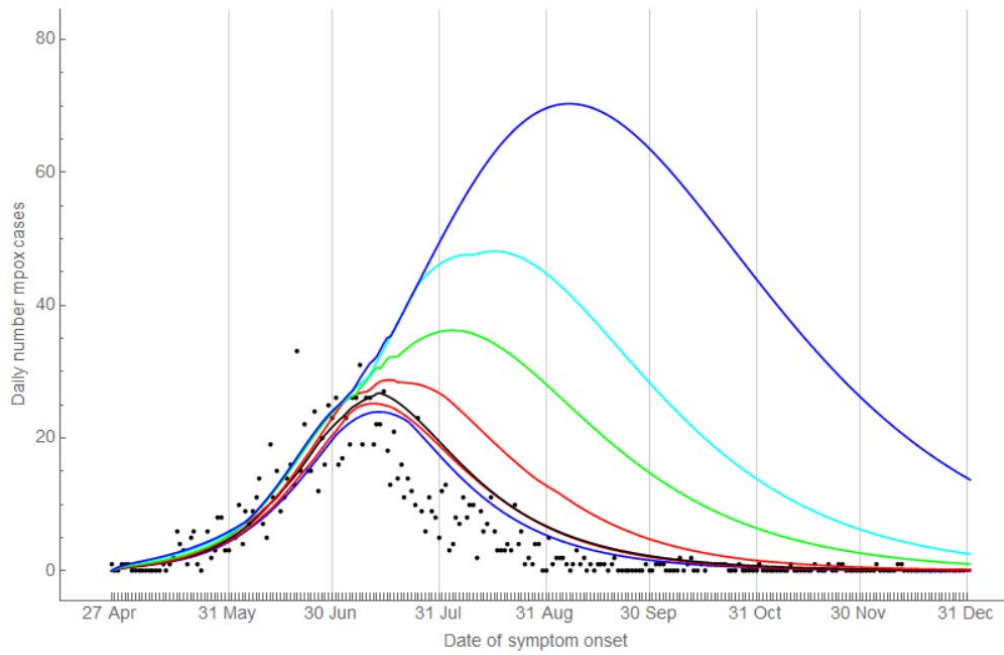
230 Model results were calculated in a population of 300,000 MSM.



231

232 **Figure S4.** Sensitivity analyses for the percentage of the population being vaccinated in the past (before 1974),
233 via the old smallpox vaccination programme. Two scenarios are shown, with behavioural adaptations in July
234 2022, in a population of 250,000 MSM, of whom 25% in total had been vaccinated in the past. Top panels: the
235 percentage vaccinated in the past was the highest in the group with the highest level of sexual activity: 23%,
236 25%, 30%, 40% vaccinated in the group with very low, fairly low, fairly high, or very high level of sexual
237 activity, respectively. Bottom panels: the percentage vaccinated in the past was the highest in the group with the
238 lowest level of sexual activity: 29%, 25%, 15%, 10% vaccinated in the group with very low, fairly low, fairly
239 high, or very high level of sexual activity, respectively. Numbers shown are the daily numbers of mpox cases
240 among MSM in the Netherlands from 27 April to 25 July 2022, from the data (black bullets) and from the model
241 (orange box plots and lines) – the plots are as explained in Figure S3.

242



243

244 **Figure S5.** The daily number of mpox cases among MSM in the Netherlands from 27 April to 31 December
245 2022, in the scenario without behavioural adaptations. Black bullets show data from the national database of
246 notifiable diseases of the Netherlands, as shown in Figure 4a in the main text. The lines were calculated from the
247 model. Mpox cases are shown according to date of symptom onset. Black line: median; red lines: interquartile
248 range; blue lines, 95% credible interval; cyan line, upper 5th percentile; green line, upper 10th percentile. Vertical
249 grey lines show the last day of each calendar month. Model results were calculated in a population of 250,000
250 MSM.

251
252
253

Table S1. Posterior distributions of uncertain model parameters obtained from the fitting process for the two scenarios with adaptations in behaviour of MSM only in July 2022 or in June and July 2022. Results shown are the medians and 95% credible intervals, in a population of 250,000 MSM.

	Adaptations only in July 2022			Adaptations in June & July 2022		
	Median	95% range		Median	95% range	
Latent period, days ($1/\theta$)	5.67	5.03	6.97	5.80	5.10	7.81
Infectious period ($1/\gamma + 1/\delta$)	16.75	14.27	24.07	18.41	14.26	24.46
Transmission probability per sex act	0.48	0.39	0.81	0.48	0.39	0.67
Number casual partners per day, very-high activity group	0.89	0.73	1.00	0.90	0.73	1.00
Factor reducing transmission when in abstinence (w)	19%	15%	37%	22%	16%	46%
Assortativeness mixing with main partners (ϵ_M)	0.72	0.13	0.88	0.69	0.12	0.85
Assortativeness mixing with casual partners (ϵ_C)	0.87	0.20	0.90	0.84	0.48	0.90
Vaccination rate before 25 July 2022	0.04%	0.03%	0.05%	0.04%	0.03%	0.05%
Efficacy old vaccine ($v_1 = \sigma_1$)	56%	52%	65%	58%	50%	63%
Efficacy new vaccine ($v_2 = \sigma_2$)	85%	80%	90%	85%	80%	89%
Hospitalization rate, ζ	1%	1%	2%	2%	1%	2%
Days infectious not refraining from sex, before T_1	6.05	4.45	7.80	6.89	3.74	7.78
Days infectious not refraining from sex, between T_1 and T_2	As before T_1			5.60	2.94	7.83
Days infectious not refraining from sex, after T_2	2.55	2.00	4.31	2.44	2.02	4.87
Date of adaptations in June, T_1	Not applicable			21-6-2022	17-6-2022	26-6-2022
Date of adaptations in July, T_2	7-7-2022	5-7-2022	11-7-2022	10-7-2022	5-7-2022	14-7-2022
% reduction casual partners, low activity groups, after T_2	13%	1%	28%	13%	0%	28%
% reduction casual partners, fairly-high activity group, after T_2	15%	1%	29%	18%	3%	29%
% reduction casual partners, very-high activity group, after T_2	24%	1%	30%	22%	4%	30%
% reduction casual partners, low activity groups, between T_1 and T_2	Not applicable			17%	2%	29%
% reduction casual partners, fairly-high activity group, between T_1 and T_2				16%	1%	29%
% reduction casual partners, very-high activity group, between T_1 and T_2				18%	1%	29%

254

255 **Table S2.** Posterior distributions of uncertain model parameters obtained from the fitting process for the scenario with adaptations in behaviour of MSM only in July 2022.
 256 Results shown are the medians and 95% credible intervals, in a population of 200,000 or 300,000 MSM.

257

	200,000 MSM			300,000 MSM		
	Median	95% range		Median	95% range	
Latent period, days ($1/\theta$)	5.51	5.04	7.77	5.67	5.04	7.74
Infectious period ($1/\gamma + 1/\delta$)	18.41	14.51	26.75	15.54	14.22	25.88
Transmission probability per sex act	0.50	0.39	0.66	0.49	0.45	0.81
Number casual partners per day, very-high activity group	0.91	0.72	1.00	0.90	0.72	0.98
Factor reducing transmission when in abstinence (w)	23%	17%	60%	20%	15%	30%
Assortativeness mixing with main partners (ϵ_M)	0.72	0.31	0.87	0.75	0.14	0.88
Assortativeness mixing with casual partners (ϵ_C)	0.85	0.66	0.89	0.75	0.20	0.89
Vaccination rate before 25 July 2022	0.04%	0.03%	0.05%	0.04%	0.03%	0.05%
Efficacy old vaccine ($v_1 = \sigma_1$)	57%	50%	65%	56%	51%	65%
Efficacy new vaccine ($v_2 = \sigma_2$)	85%	80%	90%	82%	80%	90%
Hospitalization rate, ζ	2%	1%	2%	2%	1%	2%
Days infectious not refraining from sex, before T_2	6.20	2.73	7.87	5.82	4.62	7.98
Days infectious not refraining from sex, after T_2	2.80	2.02	6.60	2.24	2.02	2.80
Date of adaptations in July, T_2	8-7-2022	5-7-2022	14-7-2022	6-7-2022	5-7-2022	9-7-2022
% reduction casual partners, low activity groups, after T_2	13%	0%	29%	11%	0%	28%
% reduction casual partners, fairly-high activity group, after T_2	17%	1%	29%	14%	1%	29%
% reduction casual partners, very-high activity group, after T_2	22%	2%	29%	22%	2%	29%

258

259 **Table S3.** Sensitivity analysis for the percentage of MSM vaccinated in the past via the old smallpox vaccination programme. Posterior distributions of uncertain model
 260 parameters obtained from the fitting process for the scenario with adaptations in behaviour of MSM only in July 2022. Results shown are the medians and 95% credible
 261 intervals, in a population of 250,000 MSM.

262

	Higher % vaccinated in group with highest level of sexual activity*			Higher % vaccinated in group with lowest level of sexual activity**		
	Median	95% range		Median	95% range	
Latent period, days ($1/\theta$)	5.67	5.11	6.76	5.53	5.02	6.92
Infectious period ($1/\gamma + 1/\delta$)	16.08	14.48	26.54	17.61	14.48	26.61
Transmission probability per sex act	0.60	0.47	0.80	0.42	0.32	0.68
Number casual partners per day, very-high activity group	0.90	0.73	0.98	0.85	0.73	0.99
Factor reducing transmission when in abstinence (w)	21%	16%	41%	20%	16%	37%
Assortativeness mixing with main partners (ϵ_M)	0.75	0.21	0.90	0.67	0.10	0.88
Assortativeness mixing with casual partners (ϵ_C)	0.79	0.27	0.90	0.82	0.33	0.90
Vaccination rate before 25 July 2022	0.04%	0.03%	0.05%	0.04%	0.03%	0.05%
Efficacy old vaccine ($v_1 = \sigma_1$)	59%	50%	65%	55%	51%	64%
Efficacy new vaccine ($v_2 = \sigma_2$)	84%	81%	89%	82%	80%	90%
Hospitalization rate, ζ	2%	1%	2%	2%	1%	2%
Days infectious not refraining from sex, before T_2	6.31	4.25	7.82	6.68	3.80	7.98
Days infectious not refraining from sex, after T_2	2.41	2.08	4.36	2.36	2.01	4.24
Date of adaptations in July, T_2	6-7-2022	5-7-2022	11-7-2022	6-7-2022	5-7-2022	10-7-2022
% reduction casual partners, low activity groups, after T_2	16%	2%	29%	12%	1%	29%
% reduction casual partners, fairly-high activity group, after T_2	20%	1%	30%	16%	3%	28%
% reduction casual partners, very-high activity group, after T_2	23%	4%	29%	26%	5%	30%

263

264 * The percentage vaccinated in the past in the group with very low, fairly low, fairly high, or very high level of sexual activity was 23%, 25%, 30%, 40%, respectively. This
 265 results in a total of 25% being vaccinated in the total MSM population.

266 ** The percentage vaccinated in the past in the group with very low, fairly low, fairly high, or very high level of sexual activity was 29%, 25%, 15%, 10%, respectively. This
 267 results in a total of 25% being vaccinated in the total MSM population.

268 **References**

- 269 1. Xiridou M, Heijne J, Adam P, Op de Coul E, Matser A, de Wit J, et al. How the Disruption in
270 Sexually Transmitted Infection Care Due to the COVID-19 Pandemic Could Lead to Increased
271 Sexually Transmitted Infection Transmission Among Men Who Have Sex With Men in The
272 Netherlands: A Mathematical Modeling Study. *Sex Transm Dis.* 2022;49(2):145-53. doi:
273 10.1097/olq.0000000000001551. PubMed PMID: 34475357.
- 274 2. Statistics Netherlands. The Netherlands in figures 2022 [3 July 2022]. Available from:
275 <https://opendata.cbs.nl/#/CBS/en>.
- 276 3. National Institute of Public Health and the Environment (RIVM). Online National System of
277 Registration of Infectious Diseases (OSIRIS): National Institute of Public Health and the Environment
278 (RIVM); 2021 [Accessed: 13 December 2021]. Available from: [https://www.rivm.nl/sniv/handleiding-](https://www.rivm.nl/sniv/handleiding-osiris)
279 [osiris](https://www.rivm.nl/sniv/handleiding-osiris).
- 280 4. Marcus U, Hickson F, Weatherburn P, Schmidt AJ. Estimating the size of the MSM
281 populations for 38 European countries by calculating the survey-surveillance discrepancies (SSD)
282 between self-reported new HIV diagnoses from the European MSM internet survey (EMIS) and
283 surveillance-reported HIV diagnoses among MSM in 2009. *BMC Public Health.* 2013;13:919. Epub
284 2013/10/04. doi: 10.1186/1471-2458-13-919. PubMed PMID: 24088198; PubMed Central PMCID:
285 PMC3850943.
- 286 5. Rutgers NISSO Group. Sexual health in the Netherlands. Delft: Eburon; 2006.
- 287 6. Man Tot Man. Do this if you have monkeypox. [Accessed: 24 January 2023]. Available from:
288 <https://www.mantotman.nl/en/do-this-if-you-have-monkeypox>.
- 289 7. Soa Aids Nederland. Uit de praktijk: 2 plekjes op de eikel, dat is toch geen monkeypox?
290 Published online: 30 June 2022. Accessed 15 November 2022. Available from:
291 [https://www.soa aids.nl/nl/professionals/themas/seksoa-magazine/uit-praktijk-2-plekjes-op-eikel-dat-](https://www.soa aids.nl/nl/professionals/themas/seksoa-magazine/uit-praktijk-2-plekjes-op-eikel-dat-is-toch-geen-monkeypox)
292 [is-toch-geen-monkeypox](https://www.soa aids.nl/nl/professionals/themas/seksoa-magazine/uit-praktijk-2-plekjes-op-eikel-dat-is-toch-geen-monkeypox).

- 293 8. NOS Nieuws. In the Netherlands 167 persons diagnosed with monkeypox by now (original
294 title: "In Nederland nu bij 167 mensen apenpokkenbesmetting vastgesteld"): NOS; 2022 [Accessed 15
295 November 2022]. Available from: [https://nos.nl/artikel/2433610-in-nederland-nu-bij-167-mensen-
apenpokkenbesmetting-vastgesteld](https://nos.nl/artikel/2433610-in-nederland-nu-bij-167-mensen-
296 apenpokkenbesmetting-vastgesteld).
- 297 9. van Ewijk C, Miura F, van Rijckevorsel G, de Vries H, Welkers M, van den Berg O, et al.
298 Monkeypox outbreak in the Netherlands in 2022: public health response, epidemiological and clinical
299 characteristics of the first 1000 cases and protection of the first-generation smallpox vaccine.
300 *Eurosurveillance*. 2023;28:2200772 Epub 23/3/2023.
- 301 10. Adam PCG, Op de Coul ELM, Bos H, Zantkuijl P, Zuillhof W, Xiridou M, et al. Monkeypox-
302 related changes in behaviour among MSM in the Netherlands and their impact on the monkeypox
303 outbreak: using behavioural research and theorising to inform the monkeypox response. Utrecht
304 University and Institute for Prevention and Social Research, Utrecht, the Netherlands, 2022.
- 305 11. Soa Aids Nederland. Samenwerking zorg en horeca onmisbaar in aanpak monkeypox-uitbraak
306 [Accessed 15 November 2022]. Available from: [https://www.soaaid.nl/nl/professionals/
actueel/nieuwsbericht/samenwerking-zorg-horeca-onmisbaar-in-aanpak-monkeypox-uitbraak](https://www.soaaid.nl/nl/professionals/
307 actueel/nieuwsbericht/samenwerking-zorg-horeca-onmisbaar-in-aanpak-monkeypox-uitbraak).
- 308 12. McKay KDB, R.J.; Conover, W.J. A comparison of three methods for selecting values of input
309 variable in the analysis of output from a computer code. *Technometrics* 1979;21:239-45.
- 310 13. Adam P, Op de Coul E, Zuillhof W, Zantkuijl P, den Daas C, de Wit J. Changes in MSM's
311 sexual activity, PrEP use, and access to HIV/STI testing during and after the first Dutch COVID-19
312 lockdown. *Sexually Transmitted Infections*. 2021;97(Supplement 1):A26.
- 313 14. Adam PCG, Zuillhof W, Den Daas C, Op de Coul E, Zantkuijl P, Paolucci J, et al. Reduction
314 in the magnitude of COVID-19-associated changes in sexual activity and disruption in HIV/STI
315 testing or PrEP use among MSM responding to the 2nd COVID-19, sex and intimacy survey.
316 National Conference on HIV; 23 November 2021; Virtual2021.

317