

Food Insecurity amid COVID-19 Lockdowns: Assessing Sociodemographic Indicators of Vulnerability in Harar and Kersa, Ethiopia

Jonathan A. Muir^{1†}, Merga Dheresa^{2†}, Zachary J. Madewell³, Tamirat Getachew², Gezahegn Mengesha², Cynthia G. Whitney¹, Nega Assefa^{2‡}, and Solveig A. Cunningham^{1‡}

†Co-first authors

‡Co-senior authors

Affiliations

1. Emory University, Atlanta, GA, United States
2. Haramaya University, Harar, Ethiopia
3. Center for Global Health, Centers for Disease Control and Prevention, Atlanta, GA, United States

Corresponding author: Jonathan A. Muir, Emory University, Atlanta, GA, United States, jamuir@emory.edu

Short title: Food Insecurity amid COVID-19 Lockdowns in Ethiopia

ABSTRACT

Objective The COVID-19 pandemic was associated with widespread social disruptions, as governments implemented lockdowns to quell disease spread. To advance knowledge of consequences for households in lower-income countries, we examine food insecurity during the pandemic period. **Design** Cross-sectional study using logistic regression to examine factors associated with food insecurity. Data were collected between August and September of 2021 through a Health and Demographic Surveillance System (HDSS) using a survey instrument focused on knowledge regarding the spread of COVID-19; food availability; COVID-19 related shocks/coping; under-five child healthcare services; and healthcare services for pregnant women. **Setting** The study is set in two communities in Eastern Ethiopia, one rural and one urban. **Participants** A random sample of 880 households residing in Kersa and Harar. **Results** Roughly 16% of households reported not having enough food to eat during the pandemic, an increase of 6% since before the pandemic. After adjusting for other variables, households were more likely to report food insecurity if they were living in an urban area, were a larger household, had a family member lose employment, reported an increase in food prices, or were food insecure before the pandemic. Households were less likely to report food insecurity if they were wealthier or had higher household income. **Discussion** After taking other characteristics into consideration, households in urban areas were at higher risk for food insecurity. These findings point to the need for expanding food assistance programs to more urban areas to help mitigate the impact of lockdowns on more vulnerable households.

1 INTRODUCTION

2 COVID-19 was associated with one of the largest disruptions to life in the 21st century. Beyond
3 immediate health effects,[1] the pandemic also had social and economic implications as government-
4 enforced lockdowns were implemented with the goal of mitigating the pace and severity of the
5 disease.[2] To comply with these lockdowns, many businesses had to close in-person offices or
6 shops; for some, this meant closing permanently. Healthcare providers also had to restrict in-person
7 access to patients and/or decrease their services. These lockdowns are also thought to have affected
8 the health of children by limiting families' ability to access food—especially in isolated regions of
9 resource-limited countries.[3-13] Information on the extent to which households living in non-western
10 countries have experienced resource restrictions and other hardships remains limited due to
11 incomplete or nonexistent population health surveillance.[14] We utilized data from an existing Health
12 and Demographic Surveillance System (HDSS) with catchment areas situated in an urban area of the
13 Harari People's National Regional State and a rural area within the district of Kersa in Eastern
14 Ethiopia. We employed a social vulnerabilities framework[15, 16] that considered both social
15 inequalities and place inequalities as components of vulnerability to analyze food insecurity in the
16 context of the pandemic.

17 18 BACKGROUND

19 Food security is the condition in which “all people, at all times, have physical, social, and economic
20 access to sufficient, safe, and nutritious food that meets their dietary needs and food preferences for
21 an active and healthy life.”[17] It has been described across four dimensions: food availability, food
22 accessibility, food utilization and food stability.[6] It is anticipated that households around the world,
23 especially in resource-limited countries, have experienced increases in food *insecurity* due to the
24 social and economic repercussions of COVID-19.[3-13] Pathways through which lockdowns may
25 exacerbate food insecurities include movement restrictions, food supply chain disruptions,
26 disruptions to informal markets, food price increases, reductions in individual or household income
27 due to job loss or business closure, and loss of access to government food programs.[7] Although
28 mortality directly related to COVID-19 is lower among children and pregnant women compared to
29 older adults, reductions in access to basic nutrition, coupled with disruptions in access to
30 preventative maternal and child healthcare, may increase mortality and morbidity among young
31 children and pregnant women.[4, 18-22] Particular concern has been raised regarding health
32 consequences of pandemic-related lockdowns in sub-Saharan Africa.[8]

33

34 **COVID-19 Lockdowns in Sub-Saharan Africa and Ethiopia**

35 In sub-Saharan Africa, national governments have taken substantial efforts to quell the spread of
36 COVID-19.[2, 23] Implementation of physical distancing, sanitary measures, and encouragement of
37 personal responsibility have been used to help slow the spread of disease. In particular, communities
38 have been tasked with monitoring self-isolation measures, physical distancing, and quarantining. A
39 notable challenge that many sub-Saharan Africa countries have likely faced during pandemic-related
40 lockdowns is food insecurity.[3-9] Many countries in Sub-Saharan Africa rely on food imports,
41 particularly in urban areas; lockdowns and related border closures may compromise these food
42 supply chains, leading to food shortages and price increases.[8] Coupled with on-going climate
43 change, pests, and emerging crop diseases, it is anticipated that there will be many who are indirectly
44 hurt by the pandemic in addition to those directly affected by COVID-19. This is likely the case
45 Ethiopia, where the government responded with stringent measures to mitigate the pace and severity
46 of COVID-19.[24]

47
48 Mitigation efforts in Ethiopia included establishing lockdowns, enforcing social distancing, and
49 placing emphasis on hygiene protocols; these efforts were initially adopted on March 16th of 2020,
50 tightened on March 20th, and a five-month state of emergency was declared on April 10th. [24] Yet,
51 social and economic disparities across different sociodemographic groups and geospatial
52 inequalities may have resulted in uneven implementation of these efforts.[11] Populations in urban
53 centers may have been better equipped to receive information about these directives compared to
54 rural populations that face communication barriers.[25] Rural populations likely confronted challenges
55 with implementing some measures due to limited access to handwashing facilities or lack spare
56 rooms in their dwellings for social distancing or quarantine; however lower population density may
57 have aided in social distancing between households.[25] Social and economic disparities may also
58 have resulted in differential vulnerability to adverse consequences of mitigation efforts.

59 60 **Vulnerability to Food Insecurity in Ethiopia**

61 Vulnerability, broadly defined, is the cumulative effect of cultural, economic, institutional, political,
62 and social processes that modify socioeconomic differences in the experience of and recovery from
63 hazards.[15, 26] In the context of disasters, it is often not the hazard itself that creates the disaster;
64 rather, the disaster is the impact on individual and community coping patterns and the inputs and
65 outputs of social systems.[27-29] Social vulnerability is partially the result of social disparities that
66 shape or influence the susceptibility of different groups to hazards while also controlling their
67 capacity to respond.[15, 16] Factors often associated with vulnerability include demographic

68 characteristics such as age, ethnicity, race, and sex; socioeconomic status (e.g., income, wealth,
69 employment, and/or education); household composition (e.g., presence of children or elderly); and
70 housing and transportation.[30] However, social vulnerability also involves place disparities stemming
71 from characteristics of communities and the built environment that contribute to the vulnerability of
72 place. For example, differential availability of scarce resources between urban and rural areas may
73 exacerbate social vulnerabilities to hazards.[16, 31, 32] To understand the broader consequences of
74 the pandemic, it is important to consider economic, political, and social markers of vulnerability at
75 both the individual and community level.[23]

76
77 In Ethiopia, food insecurity was prevalent prior to the onset of the pandemic with those already
78 burdened by poverty at greater risk for experiencing food insecurity; it is anticipated that COVID-19
79 has exacerbated this vulnerability.[7, 11] Households hit with an economic shock such as a job loss
80 or loss of income during the pandemic are likely at high risk for experiencing food insecurity, as they
81 must reduce expenditures to adapt to the economic shock.[9, 33] Disadvantaged groups such as
82 women and children, people working in the informal sector or unemployed, those with limited financial
83 resources, those with medical conditions, and those relying on emergency food aid are also at high
84 risk.[23, 34] Rural populations in Ethiopia are at elevated risk for food insecurity as climate change,
85 severe drought, conflict, and environmental degradation have culminated in societal shocks affecting
86 livelihoods, particularly for farmers.[16, 35, 36] However, understanding geospatial differences in
87 vulnerability is complicated because international and national food programs were established to
88 provide food aid to needy populations, especially in rural areas, prior to the onset of the pandemic.[37]
89 Given their strong emphasis on addressing food insecurity in rural areas, these programs may not
90 reach food insecure households living in urban areas.[37, 38] Differential vulnerability requires
91 targeted, context specific interventions to address ancillary consequences of the pandemic such as
92 increases in food insecurity.[39] To help inform such interventions and increase their precision and
93 efficacy, we analyze demographic, economic, and social factors associated with food insecurity
94 during the pandemic.

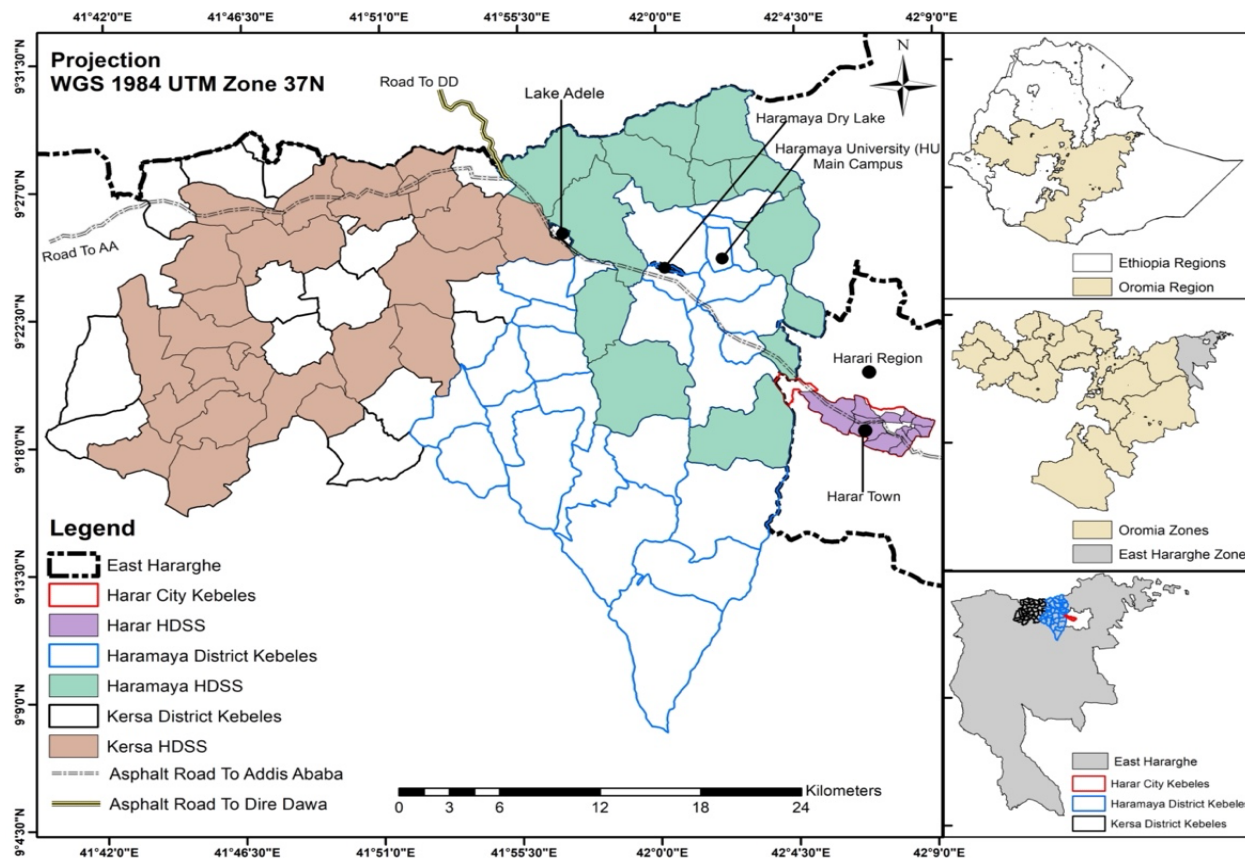
95

96 **METHODS**

97 **Study setting**

98 The setting for this study is a predominantly rural area in the district of Kersa and an urban area in
99 the Harari People's National Regional State in Eastern Ethiopia.[40, 41] The rural area consists of 24
100 kebeles (a neighborhood or ward representing the lowest level of local government), and covers 353
101 km² with a population of 135,754 in 25,653 households. The urban area consists of 12 kebeles, a

102 population of 55,773 in 14,768 households, across 25.4 km². [41] The population has been followed
103 through a Health and Demographic Surveillance System since 2012, with demographic and health-
104 related information regularly collected (see Figure 1).
105



106
107 **Figure 1. The Harar and Kersa Health and Demographic Surveillance Systems (HDSS) within East Hararghe,**
108 **Oromia, Ethiopia.** The smaller map panels on the right identify the location of the HDSS catchment areas within the
109 East Haraghe Zone of the Oromia region in Ethiopia. The HDSS catchment in Haramaya (depicted in green) was in
110 development during the data collection period, so households from this catchment were not included in this study.
111

112 Study design

113 This study is part of a broader investigation within the Child Health and Mortality Prevention
114 Surveillance (CHAMPS) network to understand the implications of COVID-19 lockdowns for child
115 health and mortality [33, 42]. We developed and administered a short quantitative instrument
116 designed to understand how the pandemic and related lockdowns may have affected livelihood, food
117 availability, and healthcare. Households were selected using simple random sampling. The sample
118 size was set to 440 each from the rural (Kersa) and urban (Harar) catchment areas (total sample size
119 of 880 households). The sample size was specified to detect prevalence of changes in accessing

120 care. *A priori* specifications were 50% of the population experiencing changes, 95% CI, precision of
121 0.05 and non-response adjustment of 10%.

122
123 The data collection instrument was organized into five sections: knowledge regarding the spread of
124 COVID-19; food availability; COVID-19 related shocks/coping; under-five child healthcare services;
125 and healthcare services for pregnant women (see Supplementary Methods) [43]. Questions in the
126 survey instrument related to hardships associated with the pandemic period asked respondents to
127 consider whether they had experienced hardships since March of 2020. Data were collected by HDSS
128 enumerators in August and September 2021 through tablet-based in-person interviews with heads
129 of households or their spouse. Households' responses were linked with their data from the most
130 recent HDSS round, which had occurred in 2021, to incorporate information on age, sex, occupation,
131 and education of the head of household; the number of children under 5 years of age and the number
132 of elderly adults (over 60 years) in the household; and household assets and residence construction
133 materials. All data were collected digitally using tablets that were programmed with the
134 corresponding survey instruments.

135
136 Data quality assurance and cleaning followed standard operating procedures for the HDSS[40, 44].
137 Inconsistent or missing data were flagged for data collectors to correct. Field supervisors and the
138 field coordinator selected a random sample of questionnaires for re-visits to verify the recorded
139 information. Implementation of the module was approved by the Institutional Health Research Ethics
140 Review Committee (IHRERC); approval reference number Ref.No.IHRERC/127/2021.

141
142 **Measures**
143 The variable of interest is *food insecurity*, indicating that a household reported not having enough
144 food to eat at any point since March 2020 based on responses to the question: “*Since the beginning*
145 *of the COVID lockdown, has it happened that your household did not have enough food to eat?*” The
146 variable is coded as 0 = no, 1 = yes. Additional variables identified the reasons that a household was
147 unable to get enough food, with respondents able to report multiple reasons: *couldn't afford to buy*
148 *more food; couldn't go out to buy food, afraid to go out to buy food; couldn't get groceries or meals*
149 *delivered; and stores did not have the food I wanted.*

150
151 Right-hand side variables were information on the head of household and characteristics of the
152 household and its homestead. Head of household variables were *age* (coded as 1 = less than 40
153 years, 2 = 41 to 44 years, 3 = 45 to 60 years, and 4 = sixty years and above); *sex* (coded as male = 0

154 and female = 1); *ethnicity* (coded as Amhara = 1 (reference) and other = 2, which included Oromo,
155 Somali, Gurage, Harari and Tigray); *education* (coded as no formal education = 0 (reference), any
156 level of education = 1); *occupation* (coded as 1 = farmer (reference), 2 = student, 3 = professional, 4
157 = sales, 5 = housewife, 6 = daily laborer, 7 = other employment, 8 = unemployed/retired). Household
158 variables were *urbanicity* (coded as urban (Harar) = 1 and rural (Kersa) = 0); *household size* (coded as
159 1 = 1-2 individuals (reference), 2 = 3-4 individuals, 3 = 5-6 individuals, 4 = 7-8 individuals, 5 = 9+
160 individuals); *children under 5* (coded as 0 = no, 1 = yes); *adults over age 60* (coded as 0 = no, 1 =
161 yes); monthly *income* (coded into quartiles as 1 = 0-1,200 Birr Ethiopia Birr (reference), 2 = 1,201-
162 2,000 Birr, 3 = 2,001-3,000 Birr, 4 = 3,001-4,600 Birr, and 5 = 4,600+)¹; *wealth index* based on a list
163 of household assets (coded as an 1 = poorest (reference), 2 = poorer, 3 = middle, 4 = richer, 5 =
164 richest)²; *job loss* by any household member since March of 2020 (coded as 0 = no, 1 = yes); *food*
165 *price increase* noticed by the household after March of 2020 (coded as 0 = no, 1 = yes); and *pre-*
166 *COVID food insecurity* (coded as 0 = no, 1 = yes)³.

167

168 **Analytic Strategy**

169 Data cleaning and analyses were performed using R version 4.2.0.[45] Education and occupation
170 related data were missing for nine household heads and observations for these households were
171 removed from analyses that included these variables. Data on pre-pandemic food insecurity was
172 missing for one household. There were no other missing values for the variables used.

173

174 Descriptive statistics were generated to assess the prevalence of food insecurity and other hardships
175 and sociodemographic characteristics. Pearson's Chi-square tests were used for preliminary
176 evaluation of associations between household characteristics and food insecurity. Unadjusted
177 logistic regression models were used to analyze associations with food insecurity (results available
178 upon request). Adjusted logistic regression was then used to control for other characteristics.

179

180 Several pathway-specific models were examined prior to fitting the final model and are available upon
181 request. The variables described above were selected for inclusion in the final adjusted logistic
182 regression because there was theoretical justification for association with food insecurity. We

¹ Based on exchange rates at the time of the survey, this is roughly equivalent to 1 = 88+ USD (reference), 2 = 55 to 87 USD, 3 = 30 to 54 USD, and 4 = Less than 30 USD.

² For information on the principal components analysis used to compute the index, see Supplemental Materials.

³ Based on responses to the question: "Before mid-March 2020, did it ever happen that your household did not have enough food to eat?" from the CHAMPS Ethiopia Lockdown Module.

183 assessed model fit with comparison of AIC and BIC scores—both scores were the smallest for the
184 fully adjusted model, indicating that this model had superior fit compared to simpler or pathway-
185 specific models. Results are reported as Adjusted Odds Ratios (AOR) with 95% confidence intervals
186 (95% CI) and visualized with forest plots.[46, 47] Given anticipated differences in demographic,
187 economic, and social characteristics between households living in urban vs. rural areas, effect
188 modification was evaluated using interaction terms; however, the results of these analyses were not
189 statistically significant so they were not retained. Finally, a secondary analysis was conducted
190 wherein only those respondents who reported that their household had no difficulty obtaining
191 sufficient food prior to March of 2020 were included. This analysis examined factors associated with
192 the change from food secure prior to COVID-19 to food insecure during the pandemic. For this
193 analysis, some variables from the primary analysis such as ethnicity could not be included due to
194 lack of variation; other variables required recoding to due to sample size limitations.

195

196 **RESULTS**

197 A majority of households (63.3%) were headed by a male household member (Table 1). Average age
198 of the household head was 43 years with a standard deviation of 15. Oromo and Amhara were the
199 most common ethnicities, with 551 (62.6%) household heads identifying as Oromo and 222 (25.2%)
200 as Amhara. A majority (57.9%) of household heads had obtained at least some education; their most
201 common occupations were farmer (36.4%) and professional (18.3%). The majority of households
202 resided in urban areas (62.8%). The median number of household members was 5 with a standard
203 deviation of 2.4. Roughly a third of households reported having at least one child under the age of 5.
204 About a quarter of households had at least one adult family member over the age of 60. About 10%
205 of households reported that they were unable to obtain sufficient food prior to the onset of the
206 pandemic; a majority of these households (94%) continued to report food insecurity during the
207 pandemic.

208

209 Since the onset of the pandemic, 15.7% of households reported not having enough food to eat, an
210 increase of 5.8% from pre-pandemic levels; 59.5% of households reported an increase in food prices;
211 and 55.5% of households reported having at least one family member lose a job during this period.
212 Of the reasons reported by respondents for their household not being able to obtain sufficient food,
213 roughly 88% reported that they couldn't afford to buy more food, approximately 41% reported that
214 they couldn't get out to buy food, 23% of respondents reported fearing to go out and buy food, 20%
215 of respondents reported that they couldn't have groceries delivered, and 17% of respondents
216 reported that stores didn't have the food they wanted.

217 **Table 1: Descriptive Statistics and Chi-Square Values for HDSS Households**

		Household Food Insecurity						χ^2	p-value
		Total		No		Yes			
		n=880	%	n=742	84%	n=138	16%		
Head of Household Characteristics									
Age	<40	218	25%	190	26%	28	20%	3.5	0.324
	41-50	265	30%	224	30%	41	29%		
	51-60	179	20%	149	20%	30	21%		
	60+	218	25%	176	24%	42	30%		
Sex	Female	303	34%	257	35%	46	33%	0.2	0.622
	Male	577	66%	482	65%	95	67%		
Ethnicity	Amhara	222	25%	210	28%	12	9%	23.8	<0.001
	Other	658	75%	529	72%	129	91%		
Education	No Formal Education	361	41%	278	38%	83	59%	21.9	<0.001
	Some Level of Education	510	58%	453	62%	57	40%		
Occupation	Farmer	320	36%	250	34%	70	50%	25.7	<0.001
	Student	59	7%	55	7%	4	3%		
	Professional	161	18%	152	21%	9	6%		
	Sales	75	9%	63	9%	12	9%		
	Housewife	81	9%	67	9%	14	10%		
	Day Laborer	67	8%	54	7%	13	9%		
	Other work	21	2%	18	2%	3	2%		
	Unemployed/Retired	87	10%	72	10%	15	11%		
Household Level Characteristics									
Urbanicity	Kersa (Rural)	440	50.0%	361	48.8%	79	56.0%	2.4	0.118
	Harar (Urban)	440	50.0%	378	51.2%	62	44.0%		
Household Size	1-2	146	16.6%	127	17.2%	19	13.5%	9.5	0.050
	3-4	257	29.2%	219	29.6%	38	27.0%		
	5-6	247	28.1%	215	29.1%	32	22.7%		
	7-8	171	19.4%	138	18.7%	33	23.4%		
	9+	59	6.7%	43	5.8%	16	11.3%		
Children Under Age 5	No	578	65.7%	496	67.1%	82	58.2%	4.2	0.040
	Yes	302	34.3%	243	32.9%	59	41.8%		
Adults Over Age 60	No	644	73.2%	552	74.7%	92	65.2%	5.4	0.020
	Yes	236	26.8%	187	25.3%	49	34.8%		
Income (Birr)	4,600+	174	19.8%	164	22.2%	10	7.1%	25.6	<0.001
	3,001 - 4,600	134	15.2%	119	16.1%	15	10.6%		
	2,001 - 3,000	168	19.1%	139	18.8%	29	20.6%		
	1,201 - 2,000	210	23.9%	166	22.5%	44	31.2%		
	0 - 1,200	193	21.9%	150	20.3%	43	30.5%		
Wealth Index	Richest	179	20.3%	175	23.7%	4	2.8%	44.5	<0.001
	Richer	173	19.7%	153	20.7%	20	14.2%		
	Middle	180	20.5%	144	19.5%	36	25.5%		
	Poorer	173	19.7%	136	18.4%	37	26.2%		
	Poorest	175	19.9%	131	17.7%	44	31.2%		
Job Loss	No	392	44.5%	347	47.0%	45	31.9%	10.2	<0.001
	Yes	488	55.5%	392	53.0%	96	68.1%		
Food Price Increase	No	356	40.5%	326	44.1%	30	21.3%	25.6	<0.001
	Yes	524	59.5%	413	55.9%	111	78.7%		
Pre-Covid Food Insecurity	No	792	90.0%	733	99.2%	59	41.8%	438.6	<0.001
	Yes	87	9.9%	5	0.7%	82	58.2%		

n= 880.

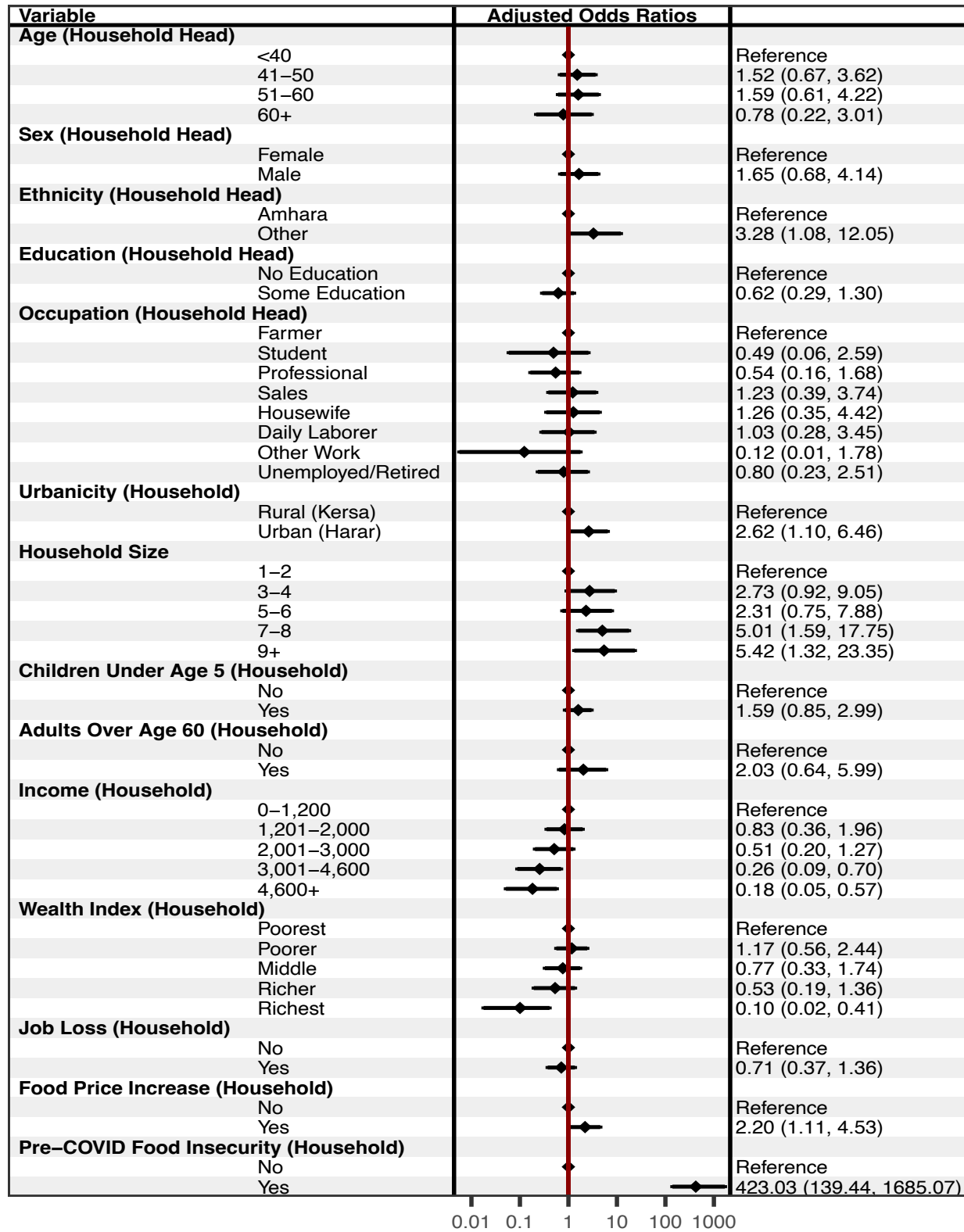
Data source: CHAMPS Ethiopia Lockdown Module data and CHAMPS Ethiopia Health and Demographic Surveillance data.

Notes: Nine observations were missing for head of household's education and occupation. One observation was missing for whether a household had experienced food insecurity prior to the onset of COVID-19. The "other" category for ethnicity included: Oromo, Somali, Gurage, Harari, Tigray, and "other". One observation was missing for whether a household had experienced food insecurity prior to the onset of COVID-19.

218
219
220
221
222
223
224

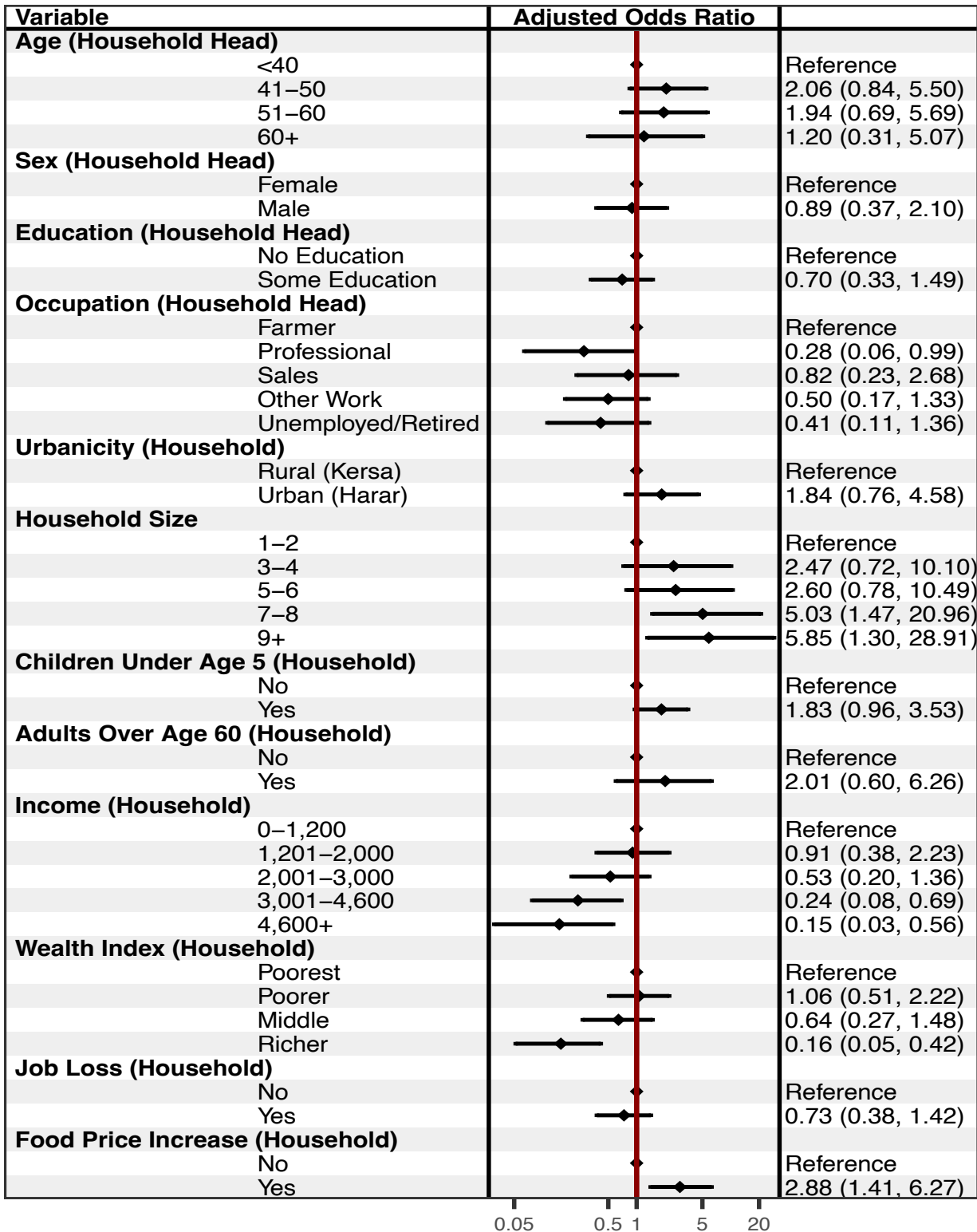
225 After adjusting for other characteristics (see Figure 2), households were more likely to report food
226 insecurity if the household head identified as an ethnic group other than the Amhara (AOR = 3.28,
227 95% CI [1.08, 12.05]) or if their residence was located in an urban compared to a rural area (AOR =
228 2.62, 95% CI [1.10, 6.46]). Compared to households with 1 to 2 household members, larger
229 households were more likely to have reported food insecurity; for example, for households with 7-8
230 members, the adjusted odds of reporting food insecurity were 5.42 times higher (95% CI [1.32,
231 23.35]). Compared to households with less than 1,200 Birr of monthly income, households with higher
232 income were less likely to report food insecurity; for example, AOR = 0.18 (95% CI [0.05, 0.57]) for
233 households with more than 4,600 Birr per month. Households in the wealthiest quintile were less
234 likely to report food insecurity compared to the poorest households, AOR = 0.18, 95% CI [0.05, 0.57]).
235 Households that observed increases in food prices were more likely to experience food insecurity
236 (AOR = 2.20, 95% CI [1.11, 4.53]). Finally, after adjusting for other characteristics, households that
237 reported food insecurity prior to the pandemic were more likely to report food insecurity during the
238 pandemic (AOR = 423.03, 95% CI [139.44, 1685.07]). Interaction terms for evaluating effect
239 modification between urban vs. rural residence and other characteristics were only statistically
240 significant for job loss during the pandemic—urban households that had had a job loss were most
241 likely to report insufficient food. All other associations were similar for urban and rural households.

242
243 In the secondary analysis that examined only those households that had indicated that they were
244 food secure prior to the onset of the pandemic (see Figure 3), larger households were more likely to
245 have reported food insecurity; for example, for households with 7-8 members, the adjusted odds of
246 reporting food insecurity were 5.03 times higher (95% CI [1.47, 20.96]). Compared to households
247 with less than 1,200 Birr of monthly income, households with higher income were less likely to report
248 food insecurity; for example, AOR = 0.15 (95% CI [0.03, 0.56]) for households with more than 4,600
249 Birr per month. Richer households were less likely to report food insecurity compared to the poorest
250 households, AOR = 0.16, 95% CI [0.05, 0.42]). Households that observed increases in food prices
251 were more likely to experience food insecurity (AOR = 2.88, 95% CI [1.41, 6.27]). Ethnicity was
252 dropped from the model due to lack of variation—only those households with a household head other
253 than the Amhara became food insecure during the pandemic. Similarly, no households from the
254 richest wealth quintile became food insecure during the pandemic.



255
256
257
258

Figure 2. Adjusted Associations with Food Insecurity Among Households Living in Harar and Kersa, Ethiopia (n=870). The forest plot presents Adjusted Odds Ratios with 95% confidence intervals from an adjusted logistic regression model. Education and Occupation had 9 missing values.



259
260
261
262
263

Figure 3. Adjusted Associations with Food Insecurity Among Previously Food Secure Households Living in Harar and Kersa, Ethiopia (n=870). The forest plot presents Adjusted Odds Ratios with 95% confidence intervals from an adjusted logistic regression model. Education and Occupation had 9 missing values.

264 **DISCUSSION**

265 In this study we examined the overall prevalence and the development of household food insecurity
266 during the pandemic in a rural and an urban community in eastern Ethiopia. Of the 10% of households
267 that reported having difficulty obtaining sufficient food prior to the onset of the pandemic, 94%
268 reported continued food insecurity during the pandemic. An additional 6% of households developed
269 food insecurity during the pandemic (these households reported having difficulty obtaining sufficient
270 food during the pandemic period, even though they did not have difficulties before). This level of
271 increase is somewhat lower than national level increases reported in other studies, but consistent
272 with findings that food insecurity increases were moderate in Oromia.[38] To contextualize this
273 increase in food insecurity, we note that at the time these data were collected there were 39,779
274 households living within these communities. Applying the 6% increase to the entire population would
275 correspond to an additional 2,387 households reporting food insecurity during the pandemic. The
276 primary reason that households reported they were unable to obtain sufficient food was that it was
277 too expensive. Additional reasons reported by a number of households included the inability to go
278 out and buy food due to lockdown restrictions and fear to go out and buy food during the COVID-
279 19 pandemic.

280
281 Overall, households were more likely to report experiencing food insecurity during the pandemic if
282 they were already food insecure prior to COVID-19. The pandemic degenerated the food security of
283 additional households that were vulnerable due to poverty or geospatial isolation; households were
284 more likely to report experiencing food insecurity if they resided in an urban vs. a rural area, had a
285 larger number of household members, had less monthly income, and were poorer compared to other
286 households in the community. The pattern of association for both monthly income and household
287 wealth is suggestive of a dose response to lower levels of household wealth and less monthly income.
288 These associations are consistent with risk factors reported in studies from resource limited
289 countries.[6, 11-13] Shocks during the pandemic associated with increased risk of food insecurity
290 included increases in food prices and job loss; however, only increases in food prices were
291 associated with households reporting that they were unable to obtain sufficient food after adjusting
292 for pre-pandemic food insecurity.[6] Interventions should anticipate that households experiencing
293 these shocks are at risk of food insecurity. Within the scope of the social vulnerability framework that
294 we employed, we found both household level characteristics as well as community level
295 characteristic associated with food insecurity; however, we found minimum between community
296 variation for the associations between household level characteristics and food insecurity, the

297 exception to these results is that the negative association between job loss and food insecurity was
298 amplified in urban areas.

299
300 One limitation of this study, common to studies using HDSS data, is that the findings reported here
301 are not generalizable outside of the communities under study.[14] As an observational study, other
302 limitations include potential recall bias due to the extended length of time considered in the study or
303 unmeasured variable bias; for example, having data on household participation in Ethiopia's
304 Productive Safety Net Program (PSNP) may have helped contextualize our results, particularly the
305 relatively lower increase in food insecurity reported by households as other studies with access to
306 this information have noted that increases in food insecurity during the pandemic were more
307 moderate (less than 3%) for PSNP recipients.[38]

308
309 An additional limitation is that, given the broader goal of understanding how households'
310 circumstances changed during the pandemic, our measure of food insecurity is less comprehensive
311 and does not adopt standard indices of food insecurity,[48] such as a household dietary diversity
312 score.[49] Implementing a more comprehensive measure may have improved our ability to identify
313 households that became food insecure during the pandemic in addition to the 6% that we have
314 reported on in this study. As a cross-sectional study, we cannot draw causal inferences. Given
315 findings from other studies that suggest hardships associated with COVID-19 lockdowns are
316 temporary,[7] scholars should collect and analyze longitudinal data to evaluate changes in food
317 insecurity over time. In the context of demographic surveillance systems, follow-up data collection
318 using the same survey instrument is easy to attach to subsequent rounds of data collection already
319 being fielded. A concern common to studies involving complex humanitarian crises is that we are
320 unable to distinguish between the effects of the pandemic and possible impacts of the armed conflict
321 in the northern regions of Ethiopia that was temporarily contiguous with the pandemic.[50] However,
322 the political tension and civil conflict in Ethiopia have occurred primarily in the northernmost region
323 of Tigray, which is more than 400 km from the HDSS.

324
325 By identifying factors associated with households' inability to obtain sufficient food during the
326 pandemic period, our findings have policy implications. Established food assistance programs are
327 critical to support, even bolster, during pandemic periods as households previously identified as food
328 insecure will continue to require assistance. However, our findings suggest that after taking other
329 characteristics into consideration, households in urban areas were at higher risk for food insecurity.
330 These findings point to the need for flexibility in applying food assistance programs that may have

331 hitherto focused on assisting rural areas; intervention policies should consider the expansion of these
332 programs to more urban areas in the context of pandemics that cause major shocks to food supply
333 chains and other economic disruptions. Households in urban areas are particularly vulnerable to food
334 insecurity when economic shocks result in loss of employment for household members. Given these
335 findings, policies and practices that aim to mitigate the negative consequences of outbreaks should
336 consider supplemental economic assistance to provide aid to households hit by broader economic
337 shocks. These steps could mitigate the impact of lockdowns on more vulnerable households.

338

339

340

341

342

343

344

345

346

347

348

349

350

351

352

353

354

355

356

357

358 **Declarations**

359 **Ethics approval and consent to participate:** This study was conducted according to the guidelines
360 in the Declaration of Helsinki; all procedures involving research study participants, including digital
361 data collection using tablets that were programmed with the corresponding survey instruments, were
362 approved by the Institutional Health Research Ethics Review Committee (IHRERC), College of Health
363 and Medical Sciences, Harar Campus, Ethiopia; approval reference number
364 Ref.No.IHRERC/127/2021. Written informed consent was obtained for participants who were able to
365 read and write. For participants who were unable to read or write, the informed consent statement
366 was read and oral informed consent from the participant was obtained, recorded, and witnessed.
367 These procedures for obtaining written or oral informed consent were approved by the Institutional
368 Health Research Ethics Review Committee (IHRERC), College of Health and Medical Sciences, Harar
369 Campus, Ethiopia; approval reference number Ref.No.IHRERC/127/2021.

370 **Consent for publication:** Not applicable.

371 **Availability of data and materials:** Data from the survey questionnaire on impacts of the COVID-19
372 pandemic and related lockdowns, and supporting documentation, are accessible through the
373 CHAMPS Population Surveillance data repository hosted by UNC Dataverse
374 (<https://doi.org/10.15139/S3/CZO1IX>) [43]. The HDSS data analyzed in tandem with the COVID-19
375 survey data during the current study are available from Merga Dheresa of the corresponding author
376 upon reasonable request.

377 **Competing interests:** The authors declare no conflict of interests.

378 **Funding:** This work was supported, in whole or in part, by grant OPP1126780 from the Bill & Melinda
379 Gates Foundation to Dr Cynthia Whitney. Under the grant conditions of the Foundation, a Creative
380 Commons Attribution 4.0 Generic License has already been assigned to the Author Accepted
381 Manuscript version that might arise from this submission.

382 **Authors' contributions:** J.M., S.C., N.A., M.D., and C.W. conceptualized and developed the
383 methods for the study. M.D., N.A., T.G., G.M., and G.D. performed the data collection. J.M. and Z.M.

384 carried out the formal analysis. J.M. wrote the original manuscript draft. J.M., M.D., Z.M., T.G., G.D.,
385 G.M., C.W., N.A., and S.C. reviewed and revised the manuscript. C.W., S.C., and N.A provided
386 supervision for the study. C.W. acquired funding.

387 **Acknowledgements:** Not applicable.

388 **Disclaimers:** The findings and conclusions in this report are those of the authors and do not
389 necessarily represent the views of the US Centers for Disease Control and Prevention.

390

391

392

393 **REFERENCES**

- 394 1. Wang H, Paulson KR, Pease SA, Watson S, Comfort H, Zheng P, Aravkin AY, Bisignano
395 C, Barber RM, Alam T: **Estimating excess mortality due to the COVID-19 pandemic:
396 a systematic analysis of COVID-19-related mortality, 2020–21.** *The Lancet* 2022.
- 397 2. Baldwin RE, Weder B: **Mitigating the COVID Economic Crisis: Act Fast and Do
398 Whatever It Takes:** CEPR press; 2020.
- 399 3. Picchioni F, Goulao LF, Roberfroid D: **The Impact of COVID-19 on Diet Quality, Food
400 Security and Nutrition in Low and Middle Income Countries: A Systematic Review
401 of the Evidence.** *Clinical Nutrition* 2021.
- 402 4. Osendarp S, Akuoku JK, Black RE, Headey D, Ruel M, Scott N, Shekar M, Walker N,
403 Flory A, Haddad L: **The COVID-19 Crisis Will Exacerbate Maternal and Child
404 Undernutrition and Child Mortality in Low-and Middle-Income Countries.** *Nature
405 Food* 2021, **2**(7):476-484.
- 406 5. Akseer N, Kandru G, Keats EC, Bhutta ZA: **COVID-19 Pandemic and Mitigation
407 Strategies: Implications for Maternal and Child Health and Nutrition.** *The American
408 Journal of Clinical Nutrition* 2020, **112**(2):251-256.
- 409 6. Onyango EO, Crush J, Owuor S: **Preparing for COVID-19: Household Food Insecurity
410 and Vulnerability to Shocks in Nairobi, Kenya.** *PLoS ONE* 2021, **16**(11):e0259139.
- 411 7. Hirvonen K, de Brauw A, Abate GT: **Food Consumption and Food Security During the
412 COVID-19 Pandemic in Addis Ababa.** *American Journal of Agricultural Economics*
413 2021, **103**(3):772-789.
- 414 8. Ayanlade A, Radeny M: **COVID-19 and Food Security in Sub-Saharan Africa:
415 implications of Lockdown during Agricultural Planting Seasons.** *npj Science of Food*
416 2020, **4**(1):1-6.
- 417 9. Hirvonen K, Abate GT, de Brauw A: **Survey Suggests Rising Risk of Food and Nutrition
418 Insecurity in Addis Ababa, Ethiopia, as COVID-19 Restrictions Continue.** *IFPRI book
419 chapters* 2020:46-49.
- 420 10. Chitiga M, Henseler M, Mabugu RE, Maisonnave H: **How COVID-19 pandemic worsens
421 the economic situation of women in South Africa.** *The European Journal of
422 Development Research* 2021:1-18.
- 423 11. Fikire AH, Zegeye MB: **Determinants of Rural Household Food Security Status in
424 North Shewa Zone, Amhara Region, Ethiopia.** *The Scientific World Journal* 2022, **2022**.
- 425 12. Manfrinato CV, Marino A, Condé VF, Maria do Carmo PF, Stedefeldt E, Tomita LY: **High
426 prevalence of food insecurity, the adverse impact of COVID-19 in Brazilian favela.**
427 *Public health nutrition* 2021, **24**(6):1210-1215.
- 428 13. Banna M, Al H, Sayeed A, Kundu S, Kagstrom A, Sultana M, Begum MR, Khan MSI:
429 **Factors associated with household food insecurity and dietary diversity among day
430 laborers amid the COVID-19 pandemic in Bangladesh.** *BMC nutrition* 2022, **8**(1):1-11.
- 431 14. Clark S, Wakefield J, McCormick T, Ross M: **Hyak Mortality Monitoring System:
432 Innovative Sampling and Estimation Methods–Proof of Concept by Simulation.**
433 *Global Health, Epidemiology and Genomics* 2018, **3**.
- 434 15. Cutter SL, Boruff BJ, Shirley WL: **Social vulnerability to environmental hazards.** In:
435 *Hazards vulnerability and environmental justice.* edn.: Routledge; 2012: 143-160.

- 436 16. Cutter SL, Barnes L, Berry M, Burton C, Evans E, Tate E, Webb J: **A place-based model**
437 **for understanding community resilience to natural disasters.** *Global environmental*
438 *change* 2008, **18**(4):598-606.
- 439 17. Summit W: **Rome declaration on world food security and world food summit.** *Plan of*
440 *action Roma, FAO* 1996, **43**.
- 441 18. Elavarasan RM, Pugazhendhi R: **Restructured Society and Environment: A Review on**
442 **Potential Technological Strategies to Control the COVID-19 Pandemic.** *Science of The*
443 *Total Environment* 2020, **725**:138858.
- 444 19. Robertson T, Carter ED, Chou VB, Stegmuller AR, Jackson BD, Tam Y, Sawadogo-Lewis
445 T, Walker N: **Early Estimates of the Indirect Effects of the COVID-19 Pandemic on**
446 **Maternal and Child Mortality in Low-Income and Middle-Income Countries: A**
447 **Modeling Study.** *The Lancet Global Health* 2020, **8**(7):e901-e908.
- 448 20. Dowd JB, Andriano L, Brazel DM, Rotondi V, Block P, Ding X, Liu Y, Mills MC:
449 **Demographic Science Aids in Understanding the Spread and Fatality Rates of**
450 **COVID-19.** *Proceedings of the National Academy of Sciences* 2020, **117**(18):9696-9698.
- 451 21. Onder G, Rezza G, Brusaferro S: **Case-Fatality Rate and Characteristics of Patients**
452 **Dying in Relation to COVID-19 in Italy.** *Jama* 2020, **323**(18):1775-1776.
- 453 22. Ruan Q, Yang K, Wang W, Jiang L, Song J: **Clinical Predictors of Mortality Due to**
454 **COVID-19 Based on an Analysis of Data of 150 Patients From Wuhan, China.**
455 *Intensive care medicine* 2020, **46**(5):846-848.
- 456 23. Goshu D, Ferede T, Diriba G, Ketema M: **Economic and Welfare Effects of COVID-19**
457 **and Responses in Ethiopia: Initial Insights.** In.: Ethiopian Economic Policy Research
458 Institute; 2020.
- 459 24. Shigute Z, Mebratie AD, Alemu G, Bedi A: **Containing the Spread of COVID-19 in**
460 **Ethiopia.** *Journal of Global Health* 2020, **10**(1).
- 461 25. Baye K: **COVID-19 Prevention Measures in Ethiopia: Current Realities and**
462 **Prospects,** vol. 141: International Food Policy Research Institute; 2020.
- 463 26. Spielman SE, Tuccillo J, Folch DC, Schweikert A, Davies R, Wood N, Tate E: **Evaluating**
464 **Social Vulnerability Indicators: Criteria and Their Application to the Social**
465 **Vulnerability Index.** *Natural Hazards* 2020, **100**(1):417-436.
- 466 27. Muir JA, Cope MR, Angeningsih LR, Jackson JE, Brown RB: **Migration and Mental**
467 **Health in the Aftermath of Disaster: Evidence From MT. Merapi, Indonesia.**
468 *International journal of environmental research and public health* 2019, **16**(15):2726.
- 469 28. Muir JA, Cope MR, Angeningsih LR, Jackson JE: **To Move Home or Move On?**
470 **Investigating the Impact of Recovery Aid on Migration Status as a Potential Tool for**
471 **Disaster Risk Reduction in the Aftermath of Volcanic Eruptions in Merapi,**
472 **Indonesia.** *International Journal of Disaster Risk Reduction* 2020, **46**:101478.
- 473 29. Perry RW: **What is a Disaster?** In: *Handbook of Disaster Research.* edn.: Springer; 2007:
474 1-15.
- 475 30. Flanagan BE, Gregory EW, Hallisey EJ, Heitgerd JL, Lewis B: **A Social Vulnerability**
476 **Index for Disaster Management.** *Journal of Homeland Security and Emergency*
477 *Management* 2011, **8**(1).
- 478 31. Muir JA: **Another mHealth? Examining Motorcycles as a Distance Demolishing**
479 **Determinant of Health Care Access in South and Southeast Asia.** *Journal of Transport*
480 *& Health* 2018, **11**:153-166.

- 481 32. Sanders SR, Muir JA, Brown RB: **Overcoming Geographic Penalties of Inequality: The**
482 **Effects of Distance-Demolishing Technologies on Household Well-Being in Vietnam.**
483 *Asian Journal of Social Science* 2018, **46**(3):260-280.
- 484 33. Muir JA, Deresa M, Madewell ZJ, Getachew T, Mangesha G, Whitney CG, Assefa N,
485 Cunningham SA: **Household Hardships during the COVID-19 Pandemic: Examining**
486 **Household Vulnerability and Responses to Pandemic Related Shocks in Eastern**
487 **Ethiopia.** *medRxiv* 2023:2023.2002. 2001.23285322.
- 488 34. Bedeke SB: **Food insecurity and coping strategies: a perspective from Kersa district,**
489 **East Hararghe Ethiopia.** *Food Science and Quality Management* 2012, **5**(3):19-27.
- 490 35. Gebru M, Remans R, Brouwer ID, Baye K, Melesse MB, Covic N, Habtamu F, Abay AH,
491 Hailu T, Hirvonen K: **Food systems for healthier diets in Ethiopia: Toward a research**
492 **agenda.** *IFPRI Discussion Paper* 2018.
- 493 36. Haile D, Seyoum A, Azmeraw A: **Food and nutrition security impacts of resilience**
494 **capacity: Evidence from rural Ethiopia.** *Journal of Agriculture and Food Research*
495 2022, **8**:100305.
- 496 37. Clay DC, Molla D, Habtewold D: **Food aid targeting in Ethiopia: A study of who needs**
497 **it and who gets it.** *Food policy* 1999, **24**(4):391-409.
- 498 38. Abay K, Berhane G, Hoddinott J, Tafere K: **COVID-19 and food security in Ethiopia:**
499 **do social protection programs protect?** 2020.
- 500 39. Juntunen L: **Addressing Social Vulnerability to Hazards.** University of Oregon Eugene;
501 2004.
- 502 40. Assefa N, Oljira L, Baraki N, Demena M, Zelalem D, Ashenafi W, Dedefo M: **HDSS**
503 **profile: the Kersa Health and Demographic Surveillance System.** *International Journal*
504 *of Epidemiology* 2016, **45**(1):94-101.
- 505 41. Cunningham SA, Shaikh NI, Nhacolo A, Raghunathan PL, Kotloff K, Naser AM,
506 Mengesha MM, Adedini SA, Misore T, Onuwchekwa UU: **Health and Demographic**
507 **Surveillance Systems within the Child Health and Mortality Prevention Surveillance**
508 **Network.** *Clinical Infectious Diseases* 2019, **69**(Supplement_4):S274-S279.
- 509 42. Nhacolo A, Madewell ZJ, Muir JA, Saco C, Xerinda EG, Matsena T, Bassat Q, Whitney
510 CG, Mandomando I, Cunningham SA: **Knowledge of COVID-19 Symptoms,**
511 **Transmission, and Prevention: Evidence from Health and Demographic Surveillance**
512 **in Southern Mozambique.** *medRxiv* 2023:2023.2003. 2031.23288026.
- 513 43. Dheresa M, Muir JA, Madewell ZJ, Getachew T, Daraje G, Mengesha G, Whitney CG,
514 Assefa N, Cunningham SA: **COVID-19 Impact Data for the CHAMPS HDSS**
515 **Network: Data from Harar and Kersa, Ethiopia.** In., V1 edn: UNC Dataverse; 2023.
- 516 44. Cunningham SA, Muir JA: **Data Cleaning.** In: *The Cambridge Handbook of Research*
517 *Methods and Statistics for the Social and Behavioral Sciences: Volume 1: Building a*
518 *Program of Research (Cambridge Handbooks in Psychology, pp 443-467).* Volume 1, edn.
519 Edited by Nichols AL, Edlund JE. Cambridge: Cambridge University Press; 2023.
- 520 45. R Core Team: **R: A Language and Environment for Statistical Computing.** In. Vienna,
521 Austria: R Foundation for Statistical Computing; 2022.
- 522 46. Yeh J, D'Amico F: **Forest plots: data summaries at a glance.** *Journal of Family Practice*
523 2004, **53**(12):1007-1008.
- 524 47. Lewis SC, Keerie C, Assi V: **Forest Plot.** In: *Wiley StatsRef: Statistics Reference Online.*
525 edn.: 1-6.

- 526 48. Maxwell D, Vaitla B, Coates J: **How do indicators of household food insecurity measure**
527 **up? An empirical comparison from Ethiopia.** *Food policy* 2014, **47**:107-116.
- 528 49. Swindale A, Bilinsky P: **Household dietary diversity score (HDDS) for measurement**
529 **of household food access: indicator guide.** *Washington, DC: Food and Nutrition*
530 *Technical Assistance Project, Academy for Educational Development* 2006.
- 531 50. Muir JA: **Societal Shocks as Social Determinants of Health:** The Ohio State University;
532 2021.
- 533 51. Rutstein SO: **Steps to Constructing the New DHS Wealth Index.** *Rockville, MD: ICF*
534 *International* 2015.
- 535 52. Hjelm L, Mathiassen A, Miller D, Wadhwa A: **Creation of a wealth index.** *United Nations*
536 *World Food Programme* 2017.
- 537 53. Fry K, Firestone R, Chakraborty NM: **Measuring Equity With Nationally**
538 **Representative Wealth Quintiles.** *Washington DC* 2014.
- 539

540 **SUPPLEMENT A. WEALTH INDEX GENERATION**

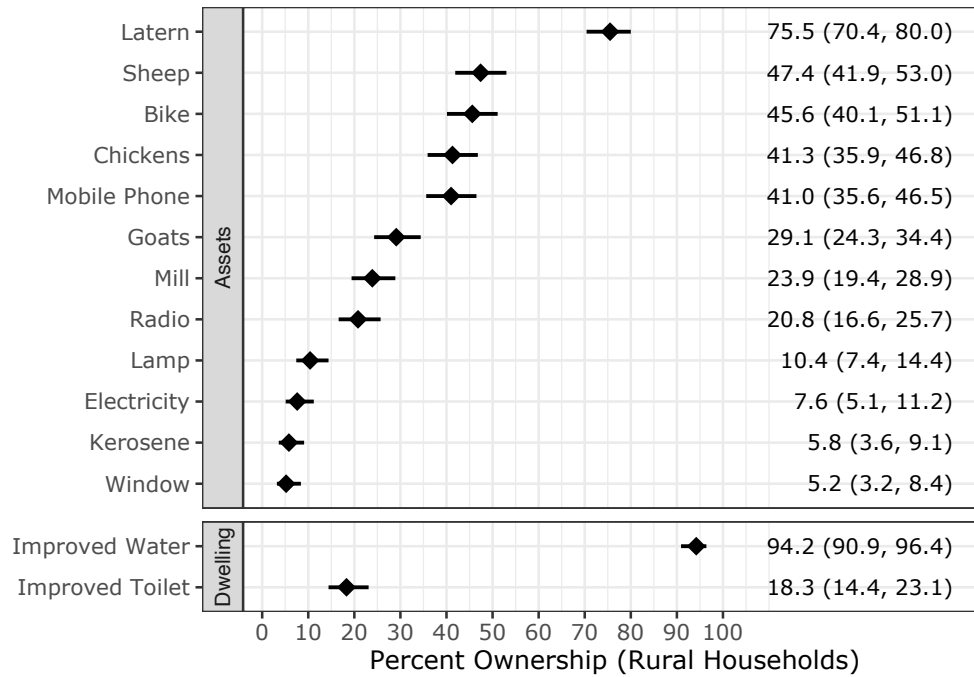
541 A wealth index was generated based on a collection of assets and construction materials for the main
542 dwelling of a given household. To generate the index, we followed recommendations from the DHS
543 and the World Food Programme (WFP) that summarize steps for calculating an asset based wealth
544 index,[51, 52] including coding instructions for Stata,[53] and an adaptation of this coding process
545 implemented in R.[31, 50] Using these documents to guide us, we generated our wealth index by
546 identifying a list of household assets for inclusion in our index computation, recoded all household
547 assets into dichotomous variables; recoded dwelling materials into improved vs. non-improved
548 dichotomous variables; divided our sample into rural and urban subsamples and assessed level of
549 representation of a given variable within the rural and urban subsamples (per WFP recommendations,
550 a given variable was included in further calculations if percent ownership ranged between 5 and 95
551 percent); employed principal components analysis with varimax rotation to calculate component
552 scores for those households living in either rural or urban areas, which explained 45% of the variation
553 in both subsamples; extracted and combined the PCA scores of the first component from the urban
554 and rural subsamples; and finally organized the scores into wealth quintiles to generate a composite
555 asset index. The resulting wealth quintiles are presented in Figure (4). The distribution of assets
556 owned by households as well as the materials used for constructing a household’s residence are
557 presented as percentages in Figure (5).



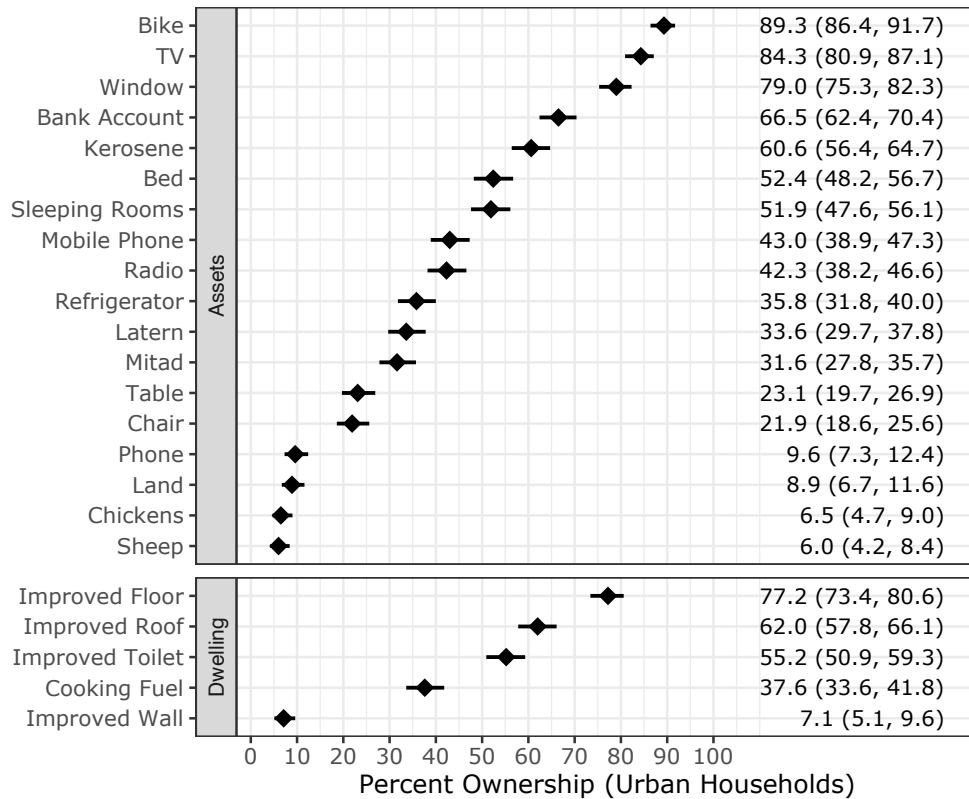
558

559

Figure 4. Household Wealth Index Distribution



560



561

562

563

Figure 5. Households Asset Ownership and Dwelling Construction Materials included in Wealth Index