

Food Insecurity amid COVID-19 Lockdowns: Assessing Sociodemographic Indicators of Vulnerability in Harar and Kersa, Ethiopia

Jonathan A. Muir^{1†}, Merga Dheresa^{2‡}, Zachary J. Madewell³, Tamirat Getachew², Gezahegn Mengesha², Cynthia G. Whitney¹, Nega Assefa^{2‡}, and Solveig A. Cunningham^{1‡}

†Co-first authors

‡Co-senior authors

Affiliations

1. Emory University, Atlanta, GA, United States
2. Haramaya University, Harar, Ethiopia
3. Center for Global Health, Centers for Disease Control and Prevention, Atlanta, GA, United States

Corresponding author: Jonathan A. Muir, Emory University, Atlanta, GA, United States, jamuir@emory.edu

Short title: Food Insecurity amid COVID-19 Lockdowns in Ethiopia

ABSTRACT

Objective The COVID-19 pandemic was associated with widespread social disruptions, as governments implemented lockdowns to quell disease spread. To advance knowledge of consequences for households in lower-income countries, we examine food insecurity during the pandemic period. **Design** Cross-sectional study using logistic regression to examine factors associated with food insecurity. Data were collected between August and September of 2021 through a Health and Demographic Surveillance System (HDSS) using a survey instrument focused on knowledge regarding the spread of COVID-19; food availability; COVID-19 related shocks/coping; under-five child healthcare services; and healthcare services for pregnant women. **Setting** The study is set in two communities in Eastern Ethiopia, one rural and one urban. **Participants** A random sample of 880 households residing in Kersa and Harar. **Results** Roughly 16% of households reported not having enough food to eat during the pandemic, an increase of 6% since before the pandemic. After adjusting for other variables, households were more likely to report food insecurity if they were living in an urban area, were a larger household, had a family member lose employment, reported an increase in food prices, or were food insecure before the pandemic. Households were less likely to report food insecurity if they were wealthier or had higher household income. **Discussion** After taking other characteristics into consideration, households in urban areas were at higher risk for food insecurity. These findings point to the need for expanding food assistance programs to more urban areas to help mitigate the impact of lockdowns on more vulnerable households.

1 INTRODUCTION

2 COVID-19 was associated with one of the largest disruptions to life in the 21st century. Beyond immediate
3 health effects,⁽¹⁾ the pandemic also had social and economic implications as government-enforced
4 lockdowns were implemented with the goal of mitigating the pace and severity of the disease.⁽²⁾ To
5 comply with these lockdowns, many businesses had to close in-person offices or shops; for some, this
6 meant closing permanently. Healthcare providers also had to restrict in-person access to patients and/or
7 decrease their services. These lockdowns are also thought to have affected the health of children by
8 limiting families' ability to access food—especially in isolated regions of resource-limited countries.⁽³⁻¹³⁾
9 Information on the extent to which households living in non-western countries have experienced
10 resource restrictions and other hardships remains limited due to incomplete or nonexistent population
11 health surveillance.⁽¹⁴⁾ We utilized data from an existing Health and Demographic Surveillance System
12 (HDSS) with catchment areas situated in an urban area of the Harari People's National Regional State and
13 a rural area within the district of Kersa in Eastern Ethiopia. We employed a social vulnerabilities
14 framework^(15, 16) that considered both social inequalities and place inequalities as components of
15 vulnerability to analyze food insecurity in the context of the pandemic.

16

17 BACKGROUND

18 Food security is the condition in which “all people, at all times, have physical, social, and economic
19 access to sufficient, safe, and nutritious food that meets their dietary needs and food preferences for
20 an active and healthy life.”⁽¹⁷⁾ It has been described across four dimensions: food availability, food
21 accessibility, food utilization and food stability.⁽⁶⁾ It is anticipated that households around the world,
22 especially in resource-limited countries, have experienced increases in food *insecurity* due to the social
23 and economic repercussions of COVID-19.⁽³⁻¹³⁾ Pathways through which lockdowns may exacerbate food
24 insecurities include movement restrictions, food supply chain disruptions, disruptions to informal markets,
25 food price increases, reductions in individual or household income due to job loss or business closure, and
26 loss of access to government food programs.⁽⁷⁾ Although mortality directly related to COVID-19 is lower
27 among children and pregnant women compared to older adults, reductions in access to basic nutrition,
28 coupled with disruptions in access to preventative maternal and child healthcare, may increase mortality
29 and morbidity among young children and pregnant women.^(4, 18-22) Particular concern has been raised
30 regarding health consequences of pandemic-related lockdowns in sub-Saharan Africa.⁽⁸⁾

31

32 COVID-19 Lockdowns in Sub-Saharan Africa and Ethiopia

33 In sub-Saharan Africa, national governments have taken substantial efforts to quell the spread of COVID-
34 19.^(2, 23) Implementation of physical distancing, sanitary measures, and encouragement of personal
35 responsibility have been used to help slow the spread of disease. In particular, communities have been
36 tasked with monitoring self-isolation measures, physical distancing, and quarantining. A notable challenge
37 that many sub-Saharan Africa countries have likely faced during pandemic-related lockdowns is food
38 insecurity.⁽³⁻⁹⁾ Many countries in Sub-Saharan Africa rely on food imports, particularly in urban areas;
39 lockdowns and related border closures may compromise these food supply chains, leading to food
40 shortages and price increases.⁽⁸⁾ Coupled with on-going climate change, pests, and emerging crop diseases,
41 it is anticipated that there will be many who are indirectly hurt by the pandemic in addition to those
42 directly affected by COVID-19. This is likely the case Ethiopia, where the government responded with
43 stringent measures to mitigate the pace and severity of COVID-19.⁽²⁴⁾

44
45 Mitigation efforts in Ethiopia included establishing lockdowns, enforcing social distancing, and placing
46 emphasis on hygiene protocols; these efforts were initially adopted on March 16th of 2020, tightened on
47 March 20th, and a five-month state of emergency was declared on April 10th.⁽²⁴⁾ Yet, social and economic
48 disparities across different sociodemographic groups and geospatial inequalities may have resulted in
49 uneven implementation of these efforts.⁽¹¹⁾ Populations in urban centers may have been better equipped to
50 receive information about these directives compared to rural populations that face communication
51 barriers.⁽²⁵⁾ Rural populations likely confronted challenges with implementing some measures due to
52 limited access to handwashing facilities or lack spare rooms in their dwellings for social distancing or
53 quarantine; however lower population density may have aided in social distancing between households.⁽²⁵⁾
54 Social and economic disparities may also have resulted in differential vulnerability to adverse
55 consequences of mitigation efforts.

56

57 Vulnerability to Food Insecurity in Ethiopia

58 Vulnerability, broadly defined, is the cumulative effect of cultural, economic, institutional, political, and
59 social processes that modify socioeconomic differences in the experience of and recovery from hazards.^{(15,}
60 ²⁶⁾ In the context of disasters, it is often not the hazard itself that creates the disaster; rather, the disaster is
61 the impact on individual and community coping patterns and the inputs and outputs of social systems.⁽²⁷⁻²⁹⁾
62 Social vulnerability is partially the result of social disparities that shape or influence the susceptibility of

63 different groups to hazards while also controlling their capacity to respond.^(15, 16) Factors often associated
64 with vulnerability include demographic characteristics such as age, ethnicity, race, and sex; socioeconomic
65 status (e.g., income, wealth, employment, and/or education); household composition (e.g., presence of
66 children or elderly); and housing and transportation.⁽³⁰⁾ However, social vulnerability also involves place
67 disparities stemming from characteristics of communities and the built environment that contribute to the
68 vulnerability of place. For example, differential availability of scarce resources between urban and rural
69 areas may exacerbate social vulnerabilities to hazards.^(16, 31, 32) To understand the broader consequences of
70 the pandemic, it is important to consider economic, political, and social markers of vulnerability at both
71 the individual and community level.⁽²³⁾

72
73 In Ethiopia, food insecurity was prevalent prior to the onset of the pandemic with those already burdened
74 by poverty at greater risk for experiencing food insecurity; it is anticipated that COVID-19 has
75 exacerbated this vulnerability.^(7, 11) Households hit with an economic shock such as a job loss or loss of
76 income during the pandemic are likely at high risk for experiencing food insecurity, as they must reduce
77 expenditures to adapt to the economic shock.⁽⁹⁾ Disadvantaged groups such as women and children, people
78 working in the informal sector or unemployed, those with limited financial resources, those with medical
79 conditions, and those relying on emergency food aid are also at high risk.^(23, 33) Rural populations in
80 Ethiopia are at elevated risk for food insecurity as climate change, severe drought, conflict, and
81 environmental degradation have culminated in societal shocks affecting livelihoods, particularly for
82 farmers.^(16, 34, 35) However, understanding geospatial differences in vulnerability is complicated because
83 international and national food programs were established to provide food aid to needy populations,
84 especially in rural areas, prior to the onset of the pandemic.⁽³⁶⁾ Given their strong emphasis on addressing
85 food insecurity in rural areas, these programs may not reach food insecure households living in urban
86 areas.^(36, 37) Differential vulnerability requires targeted, context specific interventions to address ancillary
87 consequences of the pandemic such as increases in food insecurity.⁽³⁸⁾ To help inform such interventions
88 and increase their precision and efficacy, we analyze demographic, economic, and social factors associated
89 with food insecurity during the pandemic.

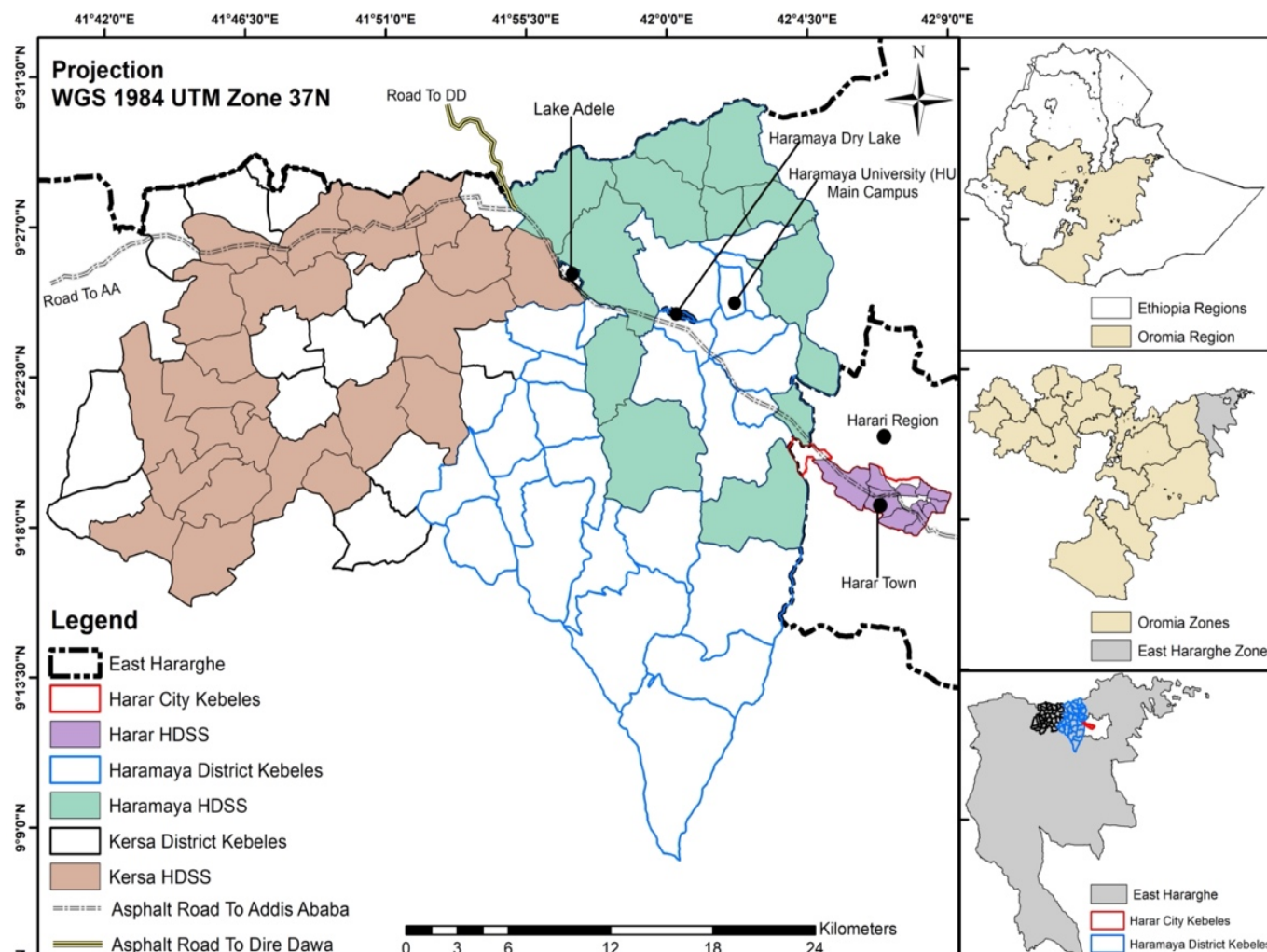
90

91 **METHODS**

92 **Study setting**

93 The setting for this study is a predominantly rural area in the district of Kersa and an urban area in the
94 Harari People's National Regional State in Eastern Ethiopia.^(39, 40) The rural area consists of 24 kebeles (a
95 neighborhood or ward representing the lowest level of local government), and covers 353 km² with a
96 population of 135,754 in 25,653 households. The urban area consists of 12 kebeles, a population of 55,773
97 in 14,768 households, across 25.4 km².⁽⁴⁰⁾ The population has been followed through a Health and
98 Demographic Surveillance System since 2012, with demographic and health-related information regularly
99 collected (see Figure 1).

100



101
102 Figure 1. The Harar and Kersa Health and Demographic Surveillance Systems (HDSS) within East Hararghe, Oromia,
103 Ethiopia. The smaller map panels on the right identify the location of the HDSS catchment areas within the East Hararghe
104 Zone of the Oromia region in Ethiopia. The HDSS catchment in Haramaya (depicted in green) was in development during
105 the data collection period, so households from this catchment were not included in this study.
106

107 **Study design**

108 This study is part of a broader investigation within the Child Health and Mortality Prevention
109 Surveillance (CHAMPS) network⁽³⁹⁾ to understand the implications of COVID-19 lockdowns for child
110 health and mortality. We developed and administered a short quantitative instrument designed to
111 understand how the pandemic and related lockdowns may have affected livelihood, food availability, and
112 healthcare. Households were selected using simple random sampling. The sample size was set to 440 each
113 from the rural (Kersa) and urban (Harar) catchment areas (total sample size of 880 households). The
114 sample size was specified to detect prevalence of changes in accessing care. A priori specifications were
115 50% of the population experiencing changes, 95% CI, precision of 0.05 and non-response adjustment of
116 10%.

117
118 The data collection instrument was organized into five sections: knowledge regarding the spread of
119 COVID-19; food availability; COVID-19 related shocks/coping; under-five child healthcare services; and
120 healthcare services for pregnant women. Questions in the survey instrument related to hardships
121 associated with the pandemic period asked respondents to consider whether they had experienced
122 hardships since March of 2020. Data were collected by HDSS enumerators in August and September 2021
123 through tablet-based in-person interviews with heads of households or their spouse. Households’
124 responses were linked with their data from the most recent HDSS round, which had occurred in 2021, to
125 incorporate information on age, sex, occupation, and education of the head of household; the number of
126 children under 5 years of age and the number of elderly adults (over 60 years) in the household; and
127 household assets and residence construction materials.

128
129 Data quality assurance and cleaning followed standard operating procedures for the HDSS^(39, 41).
130 Inconsistent or missing data were flagged for data collectors to correct. Field supervisors and the field
131 coordinator selected a random sample of questionnaires for re-visits to verify the recorded information.
132 Implementation of the module was approved by the Institutional Health Research Ethics Review
133 Committee (IHRERC); approval reference number Ref.No.IHRERC/127/2021.

134
135 **Measures**
136 The variable of interest is *food insecurity*, indicating that a household reported not having enough food to
137 eat at any point since March 2020 based on responses to the question: “*Since the beginning of the COVID*
138 *lockdown, has it happened that your household did not have enough food to eat?*” The variable is coded

139 as 0 = no, 1 = yes. Additional variables identified the reasons that a household was unable to get enough
140 food, with respondents able to report multiple reasons: *couldn't afford to buy more food; couldn't go out*
141 *to buy food, afraid to go out to buy food; couldn't get groceries or meals delivered; and stores did not have*
142 *the food I wanted.*

143
144 Right-hand side variables were information on the head of household and characteristics of the household
145 and its homestead. Head of household variables were *age* (coded as 1 = less than 40 years, 2 = 41 to 44
146 years, 3 = 45 to 60 years, and 4 = sixty years and above); *sex* (coded as male = 0 and female = 1); *ethnicity*
147 (coded as Amhara = 1 (reference) and other = 2, which included Oromo, Somali, Gurage, Harari and
148 Tigray); *education* (coded as no formal education = 0 (reference), any level of education = 1); *occupation*
149 (coded as 1 = farmer (reference), 2 = student, 3 = professional, 4 = sales, 5 = housewife, 6 = daily laborer, 7 =
150 other employment, 8 = unemployed/retired). Household variables were *urbanicity* (coded as urban (Harar)
151 = 1 and rural (Kersa) = 0); *household size* (coded as 1 = 1-2 individuals (reference), 2 = 3-4 individuals, 3 =
152 5-6 individuals, 4 = 7-8 individuals, 5 = 9+ individuals); *children under 5* (coded as 0 = no, 1 = yes); *adults*
153 *over age 60* (coded as 0 = no, 1 = yes); monthly *income* (coded into quartiles as 1 = 0-1,200 Birr Ethiopia
154 Birr (reference), 2 = 1,201-2,000 Birr, 3 = 2,001-3,000 Birr, 4 = 3,001-4,600 Birr, and 5 = 4,600+)¹; *wealth*
155 *index* based on a list of household assets (coded as an 1 = poorest (reference), 2 = poorer, 3 = middle, 4 =
156 richer, 5 = richest)²; *job loss* by any household member since March of 2020 (coded as 0 = no, 1 = yes); *food*
157 *price increase* noticed by the household after March of 2020 (coded as 0 = no, 1 = yes); and *pre-COVID*
158 *food insecurity* (coded as 0 = no, 1 = yes)³.

159

160 Analytic Strategy

161 Data cleaning and analyses were performed using R version 4.2.0.⁽⁴²⁾ Education and occupation related
162 data were missing for nine household heads and observations for these households were removed from
163 analyses that included these variables. Data on pre-pandemic food insecurity was missing for one
164 household. There were no other missing values for the variables used.

¹ Based on exchange rates at the time of the survey, this is roughly equivalent to 1 = 88+ USD (reference), 2 = 55 to 87 USD, 3 = 30 to 54 USD, and 4 = Less than 30 USD.

² For information on the principal components analysis used to compute the index, see Supplemental Materials.

³ Based on responses to the question: “Before mid-March 2020, did it ever happen that your household did not have enough food to eat?” from the CHAMPS Ethiopia Lockdown Module.

165
166 Descriptive statistics were generated to assess the prevalence of food insecurity and other hardships and
167 sociodemographic characteristics. Pearson's Chi-square tests were used for preliminary evaluation of
168 associations between household characteristics and food insecurity. Unadjusted logistic regression models
169 were used to analyze associations with food insecurity (results available upon request). Adjusted logistic
170 regression was then used to control for other characteristics.

171
172 Several pathway-specific models were examined prior to fitting the final model and are available upon
173 request. The variables described above were selected for inclusion in the final adjusted logistic regression
174 because there was theoretical justification for association with food insecurity. We assessed model fit with
175 comparison of AIC and BIC scores—both scores were the smallest for the fully adjusted model, indicating
176 that this model had superior fit compared to simpler or pathway-specific models. Results are reported as
177 Adjusted Odds Ratios (AOR) with 95% confidence intervals (95% CI) and visualized with forest plots.^(43, 44)
178 Given anticipated differences in demographic, economic, and social characteristics between households
179 living in urban vs. rural areas, effect modification was evaluated using interaction terms; however, the
180 results of these analyses were not statistically significant so they were not retained. Finally, a secondary
181 analysis was conducted wherein only those respondents who reported that their household had no
182 difficulty obtaining sufficient food prior to March of 2020 were included. This analysis examined factors
183 associated with the change from food secure prior to COVID-19 to food insecure during the pandemic. For
184 this analysis, some variables from the primary analysis such as ethnicity could not be included due to lack
185 of variation; other variables required recoding to due to sample size limitations.

186
187 **RESULTS**

188 A majority of households (63.3%) were headed by a male household member (Table 1). Average age of the
189 household head was 43 years with a standard deviation of 15. Oromo and Amhara were the most common
190 ethnicities, with 551 (62.6%) household heads identifying as Oromo and 222 (25.2%) as Amhara. A
191 majority (57.9%) of household heads had obtained at least some education; their most common
192 occupations were farmer (36.4%) and professional (18.3%). The majority of households resided in urban
193 areas (62.8%). The median number of household members was 5 with a standard deviation of 2.4. Roughly
194 a third of households reported having at least one child under the age of 5. About a quarter of households
195 had at least one adult family member over the age of 60. About 10% of households reported that they

196 were unable to obtain sufficient food prior to the onset of the pandemic; a majority of these households
197 (94%) continued to report food insecurity during the pandemic.

198
199 Since the onset of the pandemic, 15.7% of households reported not having enough food to eat, an increase
200 of 5.8% from pre-pandemic levels; 59.5% of households reported an increase in food prices; and 55.5% of
201 households reported having at least one family member lose a job during this period. Of the reasons
202 reported by respondents for their household not being able to obtain sufficient food, roughly 88%
203 reported that they couldn't afford to buy more food, approximately 41% reported that they couldn't get
204 out to buy food, 23% of respondents reported fearing to go out and buy food, 20% of respondents reported
205 that they couldn't have groceries delivered, and 17% of respondents reported that stores didn't have the
206 food they wanted.

207

208 **Table 1: Descriptive Statistics and Chi-Square Values for HDSS Households**

		Household Food Insecurity						χ^2	p-value
		Total	%	No	%	Yes	%		
		n=880		n=742	84%	n=138	16%		
Head of Household Characteristics									
Age	<40	218	25%	190	26%	28	20%	3.5	0.324
	41-50	265	30%	224	30%	41	29%		
	51-60	179	20%	149	20%	30	21%		
	60+	218	25%	176	24%	42	30%		
Sex	Female	303	34%	257	35%	46	33%	0.2	0.622
	Male	577	66%	482	65%	95	67%		
Ethnicity	Amhara	222	25%	210	28%	12	9%	23.8	<0.001
	Other	658	75%	529	72%	129	91%		
Education	No Formal Education	361	41%	278	38%	83	59%	21.9	<0.001
	Some Level of Education	510	58%	453	62%	57	40%		
Occupation	Farmer	320	36%	250	34%	70	50%	25.7	<0.001
	Student	59	7%	55	7%	4	3%		
	Professional	161	18%	152	21%	9	6%		
	Sales	75	9%	63	9%	12	9%		
	Housewife	81	9%	67	9%	14	10%		
	Day Laborer	67	8%	54	7%	13	9%		
	Other work	21	2%	18	2%	3	2%		
Unemployed/Retired	87	10%	72	10%	15	11%			
Household Level Characteristics									
Urbanicity	Kersa (Rural)	440	50.0%	361	48.8%	79	56.0%	2.4	0.118
	Harar (Urban)	440	50.0%	378	51.2%	62	44.0%		
Household Size	1-2	146	16.6%	127	17.2%	19	13.5%	9.5	0.050
	3-4	257	29.2%	219	29.6%	38	27.0%		
	5-6	247	28.1%	215	29.1%	32	22.7%		
	7-8	171	19.4%	138	18.7%	33	23.4%		
	9+	59	6.7%	43	5.8%	16	11.3%		
Children Under Age 5	No	578	65.7%	496	67.1%	82	58.2%	4.2	0.040
	Yes	302	34.3%	243	32.9%	59	41.8%		
Adults Over Age 60	No	644	73.2%	552	74.7%	92	65.2%	5.4	0.020
	Yes	236	26.8%	187	25.3%	49	34.8%		
Income (Birr)	4,600+	174	19.8%	164	22.2%	10	7.1%	25.6	<0.001
	3,001 - 4,600	134	15.2%	119	16.1%	15	10.6%		
	2,001 - 3,000	168	19.1%	139	18.8%	29	20.6%		
	1,201 - 2,000	210	23.9%	166	22.5%	44	31.2%		
	0 - 1,200	193	21.9%	150	20.3%	43	30.5%		
Wealth Index	Richest	179	20.3%	175	23.7%	4	2.8%	44.5	<0.001
	Richer	173	19.7%	153	20.7%	20	14.2%		
	Middle	180	20.5%	144	19.5%	36	25.5%		
	Poorer	173	19.7%	136	18.4%	37	26.2%		
	Poorest	175	19.9%	131	17.7%	44	31.2%		
Job Loss	No	392	44.5%	347	47.0%	45	31.9%	10.2	<0.001
	Yes	488	55.5%	392	53.0%	96	68.1%		
Food Price Increase	No	356	40.5%	326	44.1%	30	21.3%	25.6	<0.001
	Yes	524	59.5%	413	55.9%	111	78.7%		
Pre-Covid Food Insecurity	No	792	90.0%	733	99.2%	59	41.8%	438.6	<0.001
	Yes	87	9.9%	5	0.7%	82	58.2%		

n= 880.

Data source: CHAMPS Ethiopia Lockdown Module data and CHAMPS Ethiopia Health and Demographic Surveillance data.

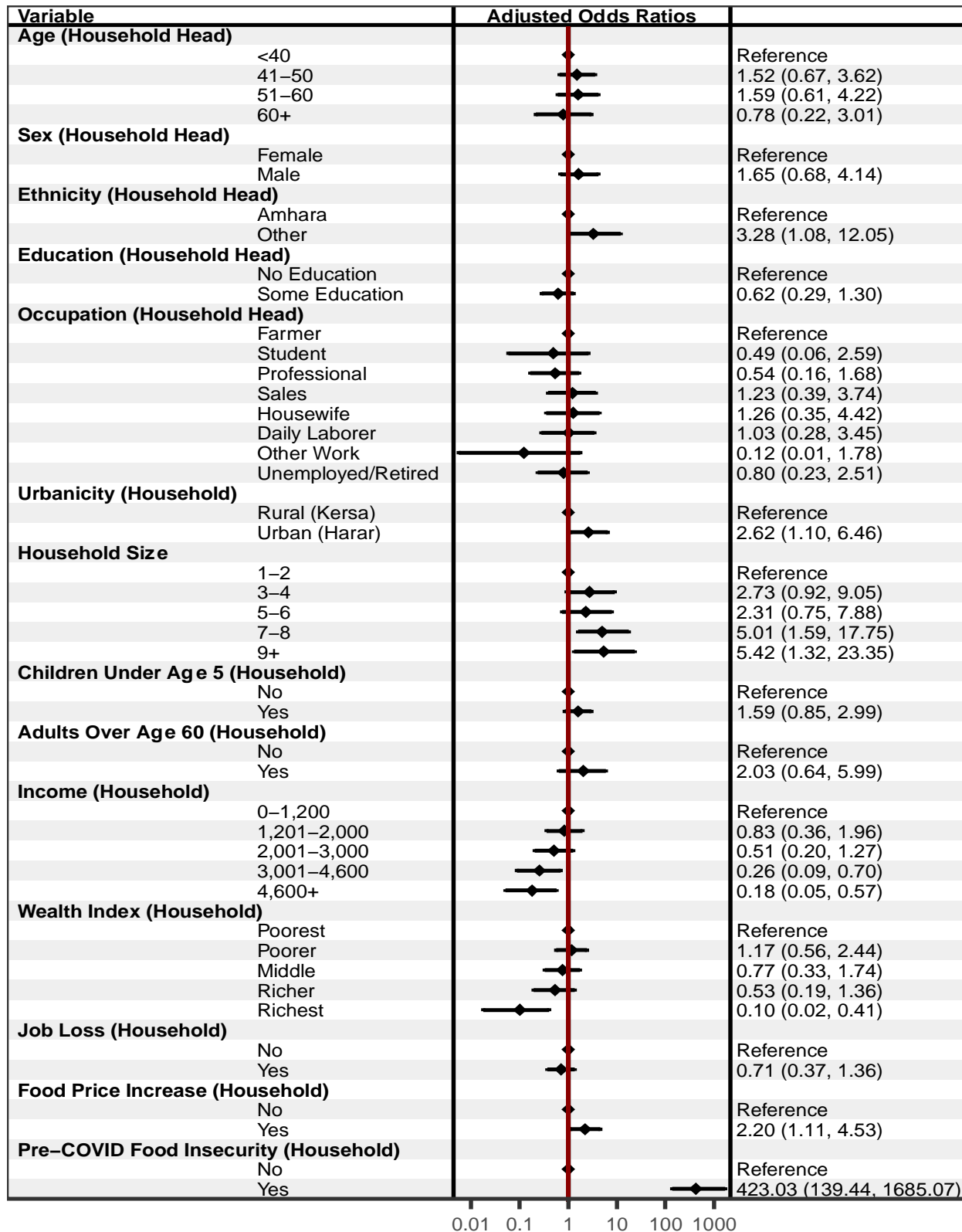
Notes: Nine observations were missing for head of household's education and occupation. One observation was missing for whether a household had experienced food insecurity prior to the onset of COVID-19. The "other" category for ethnicity included: Oromo, Somali, Gurage, Harari, Tigray, and "other". One observation was missing for whether a household had experienced food insecurity prior to the onset of COVID-19.

209
210
211
212
213
214
215

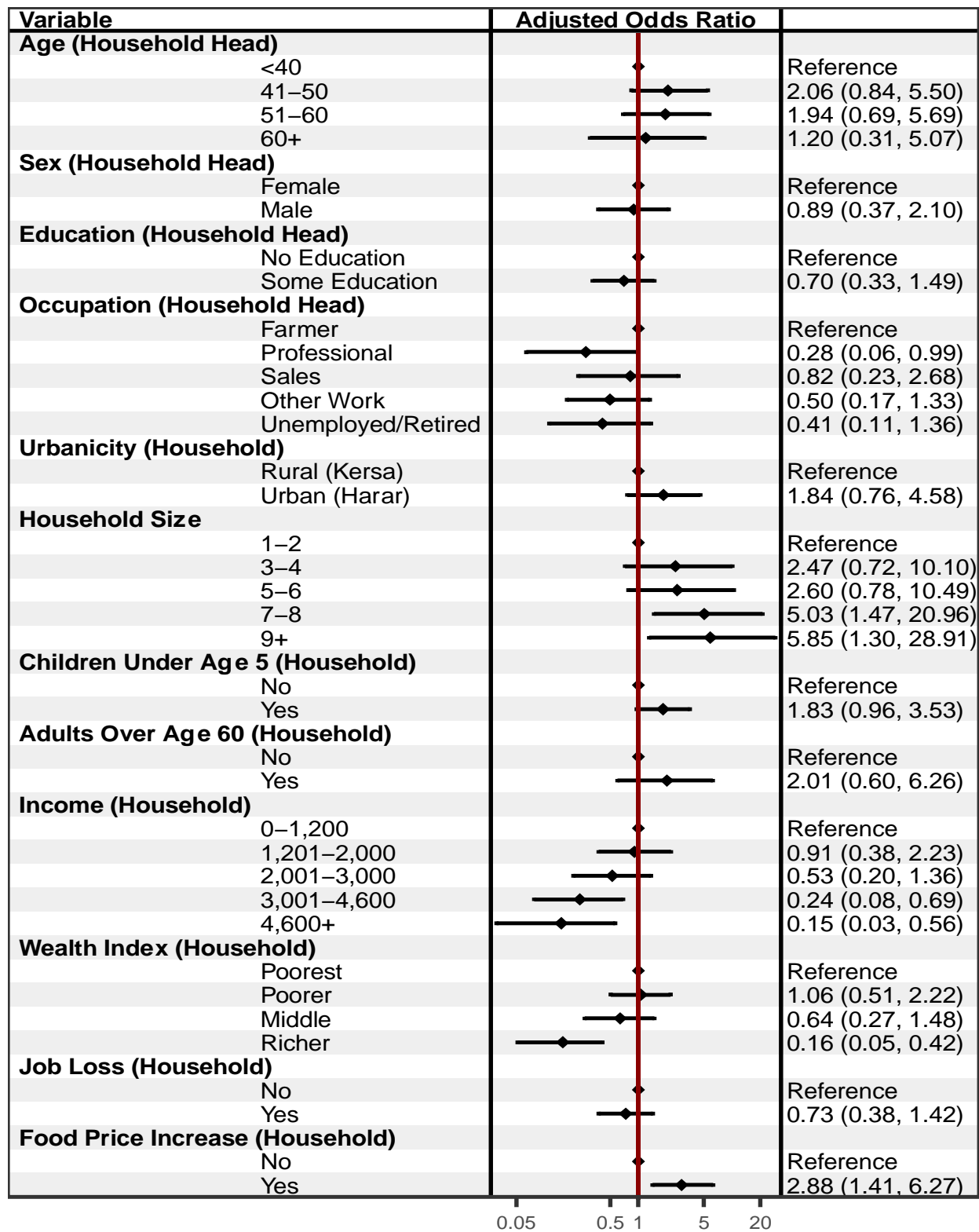
216 After adjusting for other characteristics (see Figure 2), households were more likely to report food
217 insecurity if the household head identified as an ethnic group other than the Amhara (AOR = 3.28, 95%

218 CI [1.08, 12.05]) or if their residence was located in an urban compared to a rural area (AOR = 2.62, 95%
219 CI [1.10, 6.46]). Compared to households with 1 to 2 household members, larger households were more
220 likely to have reported food insecurity; for example, for households with 7-8 members, the adjusted odds
221 of reporting food insecurity were 5.42 times higher (95% CI [1.32, 23.35]). Compared to households with
222 less than 1,200 Birr of monthly income, households with higher income were less likely to report food
223 insecurity; for example, AOR = 0.18 (95% CI [0.05, 0.57]) for households with more than 4,600 Birr per
224 month. Households in the wealthiest quintile were less likely to report food insecurity compared to the
225 poorest households, AOR = 0.18, 95% CI [0.05, 0.57]). Households that observed increases in food prices
226 were more likely to experience food insecurity (AOR = 2.20, 95% CI [1.11, 4.53]). Finally, after adjusting
227 for other characteristics, households that reported food insecurity prior to the pandemic were more likely
228 to report food insecurity during the pandemic (AOR = 423.03, 95% CI [139.44, 1685.07]). Interaction
229 terms for evaluating effect modification between urban vs. rural residence and other characteristics were
230 only statistically significant for job loss during the pandemic—urban households that had had a job loss
231 were most likely to report insufficient food. All other associations were similar for urban and rural
232 households.

233
234 In the secondary analysis that examined only those households that had indicated that they were food
235 secure prior to the onset of the pandemic (see Figure 3), larger households were more likely to have
236 reported food insecurity; for example, for households with 7-8 members, the adjusted odds of reporting
237 food insecurity were 5.03 times higher (95% CI [1.47, 20.96]). Compared to households with less than
238 1,200 Birr of monthly income, households with higher income were less likely to report food insecurity;
239 for example, AOR = 0.15 (95% CI [0.03, 0.56]) for households with more than 4,600 Birr per month.
240 Richer households were less likely to report food insecurity compared to the poorest households, AOR =
241 0.16, 95% CI [0.05, 0.42]). Households that observed increases in food prices were more likely to
242 experience food insecurity (AOR = 2.88, 95% CI [1.41, 6.27]). Ethnicity was dropped from the model due
243 to lack of variation—only those households with a household head other than the Amhara became food
244 insecure during the pandemic. Similarly, no households from the richest wealth quintile became food
245 insecure during the pandemic.



246
 247 Figure 2. Adjusted Associations with Food Insecurity Among Households Living in Harar and Kersa, Ethiopia
 248 (n=870). The forest plot presents Adjusted Odds Ratios with 95% confidence intervals from an adjusted logistic
 249 regression model. Education and Occupation had 9 missing values.



250
 251 Figure 3. Adjusted Associations with Food Insecurity Among Previously Food Secure Households Living in
 252 Harar and Kersa, Ethiopia (n=870). The forest plot presents Adjusted Odds Ratios with 95% confidence
 253 intervals from an adjusted logistic regression model. Education and Occupation had 9 missing values.

254 **DISCUSSION**

255 In this study we examined the overall prevalence and the development of household food insecurity
256 during the pandemic in a rural and an urban community in eastern Ethiopia. Of the 10% of households
257 that reported having difficulty obtaining sufficient food prior to the onset of the pandemic, 94% reported
258 continued food insecurity during the pandemic. An additional 6% of households developed food
259 insecurity during the pandemic (these households reported having difficulty obtaining sufficient food
260 during the pandemic period, even though they did not have difficulties before). This level of increase is
261 somewhat lower than national level increases reported in other studies, but consistent with findings that
262 food insecurity increases were moderate in Oromia.⁽³⁷⁾ To contextualize this increase in food insecurity,
263 we note that at the time these data were collected there were 39,779 households living within these
264 communities. Applying the 6% increase to the entire population would correspond to an additional 2,387
265 households reporting food insecurity during the pandemic. The primary reason that households reported
266 they were unable to obtain sufficient food was that it was too expensive. Additional reasons reported by a
267 number of households included the inability to go out and buy food due to lockdown restrictions and fear
268 to go out and buy food during the COVID-19 pandemic.

269
270 Overall, households were more likely to report experiencing food insecurity during the pandemic if they
271 were already food insecure prior to COVID-19. The pandemic degenerated the food security of additional
272 households that were vulnerable due to poverty or geospatial isolation; households were more likely to
273 report experiencing food insecurity if they resided in an urban vs. a rural area, had a larger number of
274 household members, had less monthly income, and were poorer compared to other households in the
275 community. The pattern of association for both monthly income and household wealth is suggestive of a
276 dose response to lower levels of household wealth and less monthly income. These associations are
277 consistent with risk factors reported in studies from resource limited countries.^(6, 11-13) Shocks during the
278 pandemic associated with increased risk of food insecurity included increases in food prices and job loss;
279 however, only increases in food prices were associated with households reporting that they were unable to
280 obtain sufficient food after adjusting for pre-pandemic food insecurity.⁽⁶⁾ Interventions should anticipate
281 that households experiencing these shocks are at risk of food insecurity. Within the scope of the social
282 vulnerability framework that we employed, we found both household level characteristics as well as
283 community level characteristic associated with food insecurity; however, we found minimum between
284 community variation for the associations between household level characteristics and food insecurity, the

285 exception to these results is that the negative association between job loss and food insecurity was
286 amplified in urban areas.

287 One limitation of this study, common to studies using HDSS data, is that the findings reported here are not
288 generalizable outside of the communities under study.⁽¹⁴⁾ As an observational study, other limitations
289 include potential recall bias due to the extended length of time considered in the study or unmeasured
290 variable bias; for example, having data on household participation in Ethiopia's Productive Safety Net
291 Program (PSNP) may have helped contextualize our results, particularly the relatively lower increase in
292 food insecurity reported by households as other studies with access to this information have noted that
293 increases in food insecurity during the pandemic were more moderate (less than 3%) for PSNP
294 recipients.⁽³⁷⁾

295
296 An additional limitation is that, given the broader goal of understanding how households' circumstances
297 changed during the pandemic, our measure of food insecurity is less comprehensive and does not adopt
298 standard indices of food insecurity,⁽⁴⁵⁾ such as a household dietary diversity score.⁽⁴⁶⁾ Implementing a more
299 comprehensive measure may have improved our ability to identify households that became food insecure
300 during the pandemic in addition to the 6% that we have reported on in this study. As a cross-sectional
301 study, we cannot draw causal inferences. Given findings from other studies that suggest hardships
302 associated with COVID-19 lockdowns are temporary,⁽⁷⁾ scholars should collect and analyze longitudinal
303 data to evaluate changes in food insecurity over time. In the context of demographic surveillance systems,
304 follow-up data collection using the same survey instrument is easy to attach to subsequent rounds of data
305 collection already being fielded. A concern common to studies involving complex humanitarian crises is
306 that we are unable to distinguish between the effects of the pandemic and possible impacts of the armed
307 conflict in the northern regions of Ethiopia that was temporarily contiguous with the pandemic.⁽⁴⁷⁾
308 However, the political tension and civil conflict in Ethiopia have occurred primarily in the northernmost
309 region of Tigray, which is more than 400 km from the HDSS.

310
311 By identifying factors associated with households' inability to obtain sufficient food during the pandemic
312 period, our findings have policy implications. Established food assistance programs are critical to support,
313 even bolster, during pandemic periods as households previously identified as food insecure will continue
314 to require assistance. However, our findings suggest that after taking other characteristics into
315 consideration, households in urban areas were at higher risk for food insecurity. These findings point to

316 the need for flexibility in applying food assistance programs that may have hitherto focused on assisting
317 rural areas; intervention policies should consider the expansion of these programs to more urban areas in
318 the context of pandemics that cause major shocks to food supply chains and other economic disruptions.
319 Households in urban areas are particularly vulnerable to food insecurity when economic shocks result in
320 loss of employment for household members. Given these findings, policies and practices that aim to
321 mitigate the negative consequences of outbreaks should consider supplemental economic assistance to
322 provide aid to households hit by broader economic shocks. These steps could mitigate the impact of
323 lockdowns on more vulnerable households.

324

325

326

327 REFERENCES

- 328 1. Wang H, Paulson KR, Pease SA *et al.* (2022) Estimating excess mortality due to the
329 COVID-19 pandemic: a systematic analysis of COVID-19-related mortality, 2020–21.
330 *The Lancet*.
- 331 2. Baldwin RE & Weder B (2020) *Mitigating the COVID Economic Crisis: Act Fast and Do*
332 *Whatever It Takes*: CEPR press.
- 333 3. Picchioni F, Goulao LF Roberfroid D (2021) The Impact of COVID-19 on Diet Quality,
334 Food Security and Nutrition in Low and Middle Income Countries: A Systematic Review
335 of the Evidence. *Clinical Nutrition*.
- 336 4. Osendarp S, Akuoku JK, Black RE *et al.* (2021) The COVID-19 Crisis Will Exacerbate
337 Maternal and Child Undernutrition and Child Mortality in Low-and Middle-Income
338 Countries. *Nature Food* 2, 476-484.
- 339 5. Akseer N, Kandru G, Keats EC *et al.* (2020) COVID-19 Pandemic and Mitigation
340 Strategies: Implications for Maternal and Child Health and Nutrition. *The American*
341 *Journal of Clinical Nutrition* 112, 251-256.
- 342 6. Onyango EO, Crush J Owuor S (2021) Preparing for COVID-19: Household Food
343 Insecurity and Vulnerability to Shocks in Nairobi, Kenya. *PLoS ONE* 16, e0259139.
- 344 7. Hirvonen K, de Brauw A Abate GT (2021) Food Consumption and Food Security During
345 the COVID-19 Pandemic in Addis Ababa. *American Journal of Agricultural Economics*
346 103, 772-789.
- 347 8. Ayanlade A & Radeny M (2020) COVID-19 and Food Security in Sub-Saharan Africa:
348 implications of Lockdown during Agricultural Planting Seasons. *npj Science of Food* 4,
349 1-6.
- 350 9. Hirvonen K, Abate GT de Brauw A (2020) Survey Suggests Rising Risk of Food and
351 Nutrition Insecurity in Addis Ababa, Ethiopia, as COVID-19 Restrictions Continue.
352 *IFPRI book chapters*, 46-49.
- 353 10. Chitiga M, Henseler M, Mabugu RE *et al.* (2021) How COVID-19 pandemic worsens the
354 economic situation of women in South Africa. *The European Journal of Development*
355 *Research*, 1-18.
- 356 11. Fikire AH & Zegeye MB (2022) Determinants of Rural Household Food Security Status
357 in North Shewa Zone, Amhara Region, Ethiopia. *The Scientific World Journal* 2022.
- 358 12. Manfrinato CV, Marino A, Condé VF *et al.* (2021) High prevalence of food insecurity,
359 the adverse impact of COVID-19 in Brazilian favela. *Public health nutrition* 24, 1210-
360 1215.
- 361 13. Banna M, Al H, Sayeed A *et al.* (2022) Factors associated with household food insecurity
362 and dietary diversity among day laborers amid the COVID-19 pandemic in Bangladesh.
363 *BMC nutrition* 8, 1-11.
- 364 14. Clark S, Wakefield J, McCormick T *et al.* (2018) Hyak Mortality Monitoring System:
365 Innovative Sampling and Estimation Methods—Proof of Concept by Simulation. *Global*
366 *Health, Epidemiology and Genomics* 3.
- 367 15. Cutter SL, Boruff BJ Shirley WL (2012) Social vulnerability to environmental hazards.
368 In *Hazards vulnerability and environmental justice*, pp. 143-160: Routledge.
- 369 16. Cutter SL, Barnes L, Berry M *et al.* (2008) A place-based model for understanding
370 community resilience to natural disasters. *Global environmental change* 18, 598-606.

- 371 17. Summit W (1996) Rome declaration on world food security and world food summit. *Plan*
372 *of action Roma*, FAO 43.
- 373 18. Elavarasan RM & Pugazhendhi R (2020) Restructured Society and Environment: A
374 Review on Potential Technological Strategies to Control the COVID-19 Pandemic.
375 *Science of The Total Environment* 725, 138858.
- 376 19. Robertson T, Carter ED, Chou VB *et al.* (2020) Early Estimates of the Indirect Effects of
377 the COVID-19 Pandemic on Maternal and Child Mortality in Low-Income and Middle-
378 Income Countries: A Modeling Study. *The Lancet Global Health* 8, e901-e908.
- 379 20. Dowd JB, Andriano L, Brazel DM *et al.* (2020) Demographic Science Aids in
380 Understanding the Spread and Fatality Rates of COVID-19. *Proceedings of the National*
381 *Academy of Sciences* 117, 9696-9698.
- 382 21. Onder G, Rezza G Brusaferrero S (2020) Case-Fatality Rate and Characteristics of Patients
383 Dying in Relation to COVID-19 in Italy. *Jama* 323, 1775-1776.
- 384 22. Ruan Q, Yang K, Wang W *et al.* (2020) Clinical Predictors of Mortality Due to COVID-
385 19 Based on an Analysis of Data of 150 Patients From Wuhan, China. *Intensive care*
386 *medicine* 46, 846-848.
- 387 23. Goshu D, Ferede T, Diriba G *et al.* (2020) *Economic and Welfare Effects of COVID-19*
388 *and Responses in Ethiopia: Initial Insights*. Ethiopian Economic Policy Research
389 Institute.
- 390 24. Shigute Z, Mebratie AD, Alemu G *et al.* (2020) Containing the Spread of COVID-19 in
391 Ethiopia. *Journal of Global Health* 10.
- 392 25. Baye K (2020) *COVID-19 Prevention Measures in Ethiopia: Current Realities and*
393 *Prospects*. vol. 141: International Food Policy Research Institute.
- 394 26. Spielman SE, Tuccillo J, Folch DC *et al.* (2020) Evaluating Social Vulnerability
395 Indicators: Criteria and Their Application to the Social Vulnerability Index. *Natural*
396 *Hazards* 100, 417-436.
- 397 27. Muir JA, Cope MR, Angeningsih LR *et al.* (2019) Migration and Mental Health in the
398 Aftermath of Disaster: Evidence From MT. Merapi, Indonesia. *International journal of*
399 *environmental research and public health* 16, 2726.
- 400 28. Muir JA, Cope MR, Angeningsih LR *et al.* (2020) To Move Home or Move On?
401 Investigating the Impact of Recovery Aid on Migration Status as a Potential Tool for
402 Disaster Risk Reduction in the Aftermath of Volcanic Eruptions in Merapi, Indonesia.
403 *International Journal of Disaster Risk Reduction* 46, 101478.
- 404 29. Perry RW (2007) What is a Disaster? In *Handbook of Disaster Research*, pp. 1-15:
405 Springer.
- 406 30. Flanagan BE, Gregory EW, Hallisey EJ *et al.* (2011) A Social Vulnerability Index for
407 Disaster Management. *Journal of Homeland Security and Emergency Management* 8.
- 408 31. Muir JA (2018) Another mHealth? Examining Motorcycles as a Distance Demolishing
409 Determinant of Health Care Access in South and Southeast Asia. *Journal of Transport &*
410 *Health* 11, 153-166.
- 411 32. Sanders SR, Muir JA Brown RB (2018) Overcoming Geographic Penalties of Inequality:
412 The Effects of Distance-Demolishing Technologies on Household Well-Being in
413 Vietnam. *Asian Journal of Social Science* 46, 260-280.
- 414 33. Bedeke SB (2012) Food insecurity and coping strategies: a perspective from Kersa
415 district, East Hararghe Ethiopia. *Food Science and Quality Management* 5, 19-27.

- 416 34. Gebru M, Remans R, Brouwer ID *et al.* (2018) Food systems for healthier diets in
417 Ethiopia: Toward a research agenda. *IFPRI Discussion Paper*.
- 418 35. Haile D, Seyoum A Azmeraw A (2022) Food and nutrition security impacts of resilience
419 capacity: Evidence from rural Ethiopia. *Journal of Agriculture and Food Research* 8,
420 100305.
- 421 36. Clay DC, Molla D Habtewold D (1999) Food aid targeting in Ethiopia: A study of who
422 needs it and who gets it. *Food policy* 24, 391-409.
- 423 37. Abay K, Berhane G, Hoddinott J *et al.* (2020) COVID-19 and food security in Ethiopia:
424 do social protection programs protect?
- 425 38. Juntunen L (2004) Addressing Social Vulnerability to Hazards, University of Oregon
426 Eugene.
- 427 39. Assefa N, Oljira L, Baraki N *et al.* (2016) HDSS profile: the Kersa Health and
428 Demographic Surveillance System. *International Journal of Epidemiology* 45, 94-101.
- 429 40. Cunningham SA, Shaikh NI, Nhacolo A *et al.* (2019) Health and Demographic
430 Surveillance Systems within the Child Health and Mortality Prevention Surveillance
431 Network. *Clinical Infectious Diseases* 69, S274-S279.
- 432 41. Cunningham SA & Muir JA (In Press) Data Cleaning. In *The Cambridge Handbook of*
433 *Research Methods and Statistics for the Social and Behavioral Sciences: Volume 1:*
434 *Building a Program of Research*, vol. 1: Cambridge University Press.
- 435 42. R Core Team (2022) R: A Language and Environment for Statistical Computing. Vienna,
436 Austria: R Foundation for Statistical Computing.
- 437 43. Yeh J & D'Amico F (2004) Forest plots: data summaries at a glance. *Journal of Family*
438 *Practice* 53, 1007-1008.
- 439 44. Lewis SC, Keerie C Assi V Forest Plot. In *Wiley StatsRef: Statistics Reference Online*,
440 pp. 1-6.
- 441 45. Maxwell D, Vaitla B Coates J (2014) How do indicators of household food insecurity
442 measure up? An empirical comparison from Ethiopia. *Food policy* 47, 107-116.
- 443 46. Swindale A & Bilinsky P (2006) Household dietary diversity score (HDDS) for
444 measurement of household food access: indicator guide. *Washington, DC: Food and*
445 *Nutrition Technical Assistance Project, Academy for Educational Development*.
- 446 47. Muir JA (2021) *Societal Shocks as Social Determinants of Health: The Ohio State*
447 *University*.
- 448 48. Rutstein SO (2015) Steps to Constructing the New DHS Wealth Index. *Rockville, MD:*
449 *ICF International*.
- 450 49. Hjelm L, Mathiassen A, Miller D *et al.* (2017) Creation of a wealth index. *United Nations*
451 *World Food Programme*.
- 452 50. Fry K, Firestone R Chakraborty NM (2014) Measuring Equity With Nationally
453 Representative Wealth Quintiles. *Washington DC*.

454

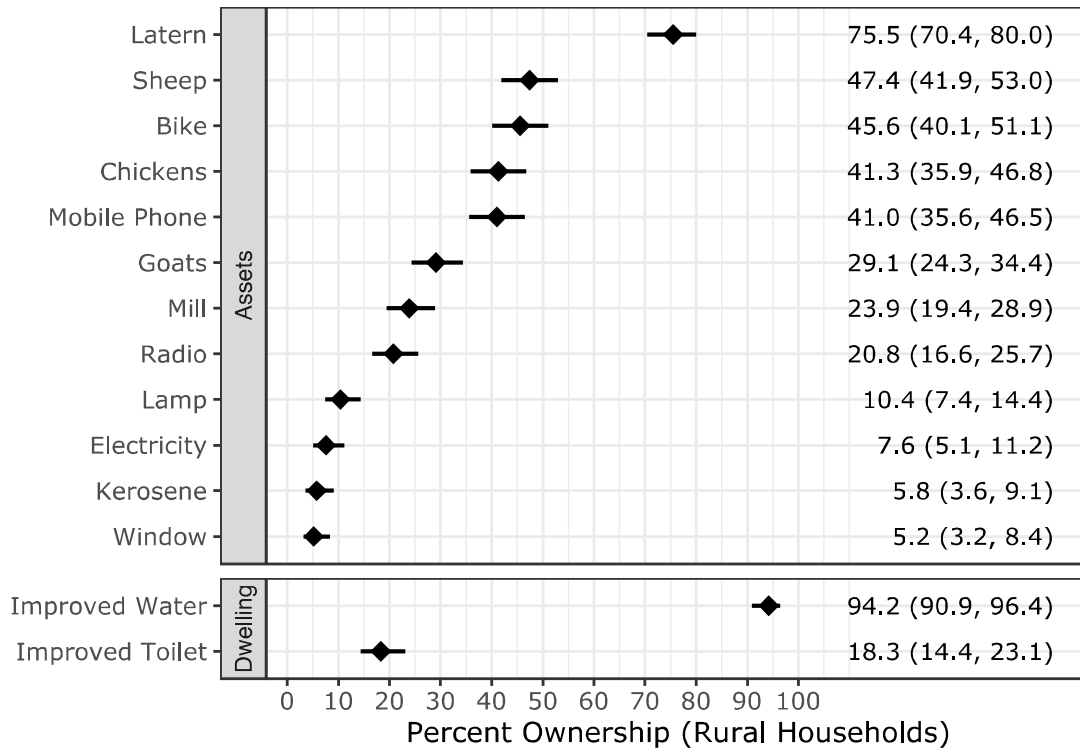
455 SUPPLEMENT A. WEALTH INDEX GENERATION

456 A wealth index was generated based on a collection of assets and construction materials for the main
457 dwelling of a given household. To generate the index, we followed recommendations from the DHS and
458 the World Food Programme (WFP) that summarize steps for calculating an asset based wealth index,^(48, 49)
459 including coding instructions for Stata,⁽⁵⁰⁾ and an adaptation of this coding process implemented in R.^(31, 47)
460 Using these documents to guide us, we generated our wealth index by identifying a list of household assets
461 for inclusion in our index computation, recoded all household assets into dichotomous variables; recoded
462 dwelling materials into improved vs. non-improved dichotomous variables; divided our sample into rural
463 and urban subsamples and assessed level of representation of a given variable within the rural and urban
464 subsamples (per WFP recommendations, a given variable was included in further calculations if percent
465 ownership ranged between 5 and 95 percent); employed principal components analysis with varimax
466 rotation to calculate component scores for those households living in either rural or urban areas, which
467 explained 45% of the variation in both subsamples; extracted and combined the PCA scores of the first
468 component from the urban and rural subsamples; and finally organized the scores into wealth quintiles to
469 generate a composite asset index. The resulting wealth quintiles are presented in Figure (4). The
470 distribution of assets owned by households as well as the materials used for constructing a household's
471 residence are presented as percentages in Figure (5).

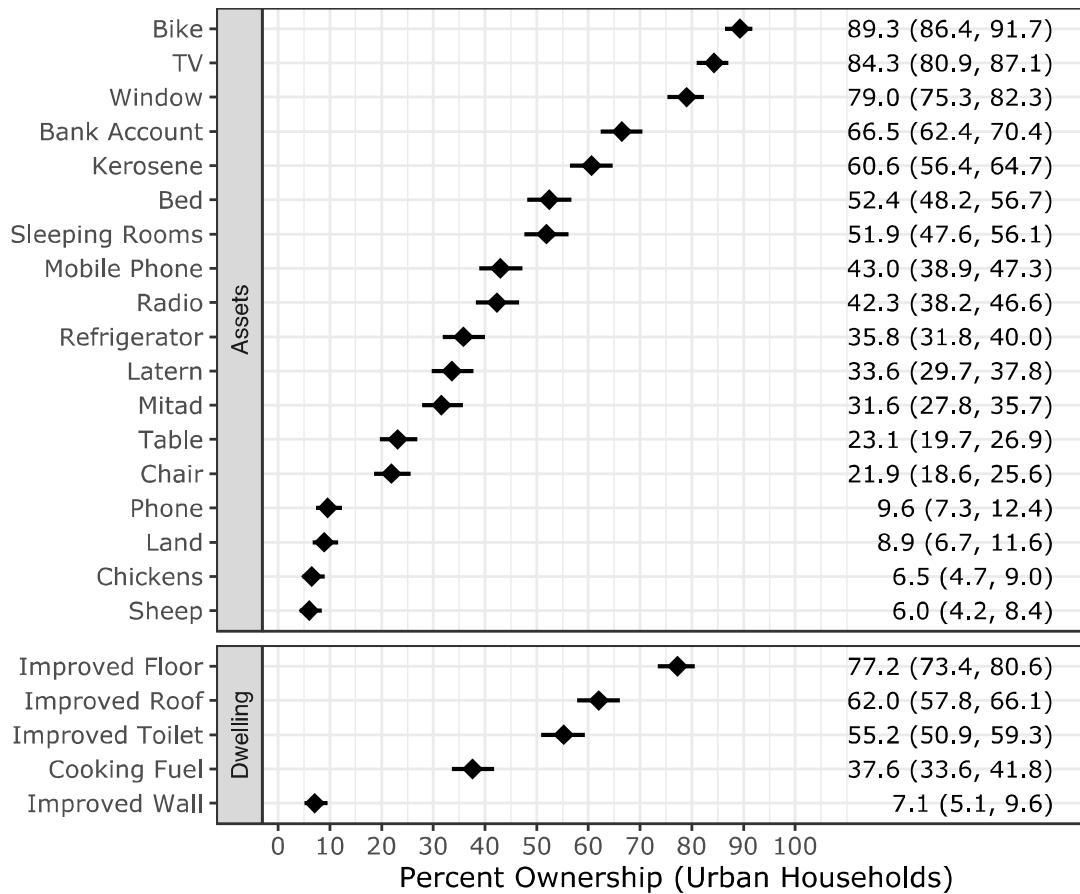


472

473 **Figure 4.** Household Wealth Index Distribution



474



475

476

Figure 5. Households Asset Ownership and Dwelling Construction Materials included in Wealth Index