

# 1 Molecular Epidemiology and Diversity of SARS-CoV-2 in Ethiopia, 2020- 2 2022

3

4

5 Abay Sisay<sup>1, 2, ¶, \*</sup>, Derek Tshiabuila<sup>3, 4, ¶</sup>, Abraham Tesfaye<sup>1, 5</sup>, Gerald Mboowa<sup>6</sup>, Samuel O. Oyola<sup>7</sup>,  
6 Sofonias Kifle Tesema<sup>6</sup>, Cheryl Baxter<sup>3, 4</sup>, Darren Martin<sup>3, 4</sup>, Richard Lessells<sup>3, 4</sup>, Houriiyah Tegally<sup>3, 4</sup>,  
7 Stephanie van Wyk<sup>3, 4</sup>, Monika Moir<sup>3, 4</sup>, Jennifer Giandhari<sup>3, 4</sup>, Sureshnee Pillay<sup>3, 4</sup>, Lavanya Singh<sup>3, 4</sup>,  
8 Yajna Ramphal<sup>3, 4</sup>, Arisha Maharaj<sup>3, 4</sup>, Yusasha Pillay<sup>3, 4</sup>, Akhil Maharaj<sup>3, 4</sup>, Yeshnee Naidoo<sup>3, 4</sup>,  
9 Upasana Ramphal<sup>3, 4</sup>, Lucious Chabuka<sup>3, 4</sup>, Eduan Wilkinson<sup>3, 4</sup>, Tulio de Oliveira<sup>3, 4, 8</sup>, Adey Feleke  
10 Desta<sup>2</sup> and James E. San<sup>3, 4, \*</sup>

11

12 <sup>1</sup>Department of Medical Laboratory Sciences, College of Health Sciences, Addis Ababa University,  
13 Addis Ababa, Ethiopia

14 <sup>2</sup>Department of Microbial, Cellular, and Molecular Biology, College of Natural and Computational  
15 Sciences, Addis Ababa University, Addis Ababa, Ethiopia.

16 <sup>3</sup>KwaZulu-Natal Research Innovation and Sequencing Platform (KRISP), Nelson R Mandela School  
17 of Medicine, University of KwaZulu-Natal, Durban, South Africa.

18 <sup>4</sup>Centre for Epidemic Response and Innovation (CERI), School of Data Science and Computational  
19 Thinking, Stellenbosch University, Stellenbosch, South Africa.

20 <sup>5</sup>Diagnostic Unit, Center for Innovative Drug Development and Therapeutic Trials for Africa, CDT-  
21 Africa, Addis Ababa, Ethiopia

22 <sup>6</sup>Institute of Pathogen Genomics, Africa Center for Disease Control and Prevention (Africa CDC),  
23 Addis Ababa, Ethiopia.

24 <sup>7</sup>International Livestock Research Institute (ILRI), Nairobi, Kenya.

25 <sup>8</sup>Department of Global Health, University of Washington; Seattle, USA.

26

27

28 \*Corresponding author(s): Abay Sisay ([abay.sisay@aau.edu.et](mailto:abay.sisay@aau.edu.et)), San E James  
29 ([sanemmanueljames@gmail.com](mailto:sanemmanueljames@gmail.com))

30 ¶ These authors contributed equally to this work

31 **Abstract**

32 Ethiopia is the second most populous country in Africa and the sixth most affected by  
33 COVID-19 on the continent. Despite having experienced five infection waves, >499 000  
34 cases, and ~7 500 COVID-19-related deaths as of January 2023, there is still no  
35 detailed genomic epidemiological report on the introduction and spread of SARS-CoV-2  
36 in Ethiopia. In this study, we reconstructed and elucidated the COVID-19 epidemic  
37 dynamics. Specifically, we investigated the introduction, local transmission, ongoing  
38 evolution, and spread of SARS-CoV-2 during the first four infection waves using 353  
39 high-quality near-whole genomes sampled in Ethiopia. Our results show that whereas  
40 viral introductions seeded the first wave, subsequent waves were seeded by local  
41 transmission. The B.1.480 lineage emerged in the first wave and notably remained in  
42 circulation even after the emergence of the Alpha variant. The B.1.480 was out-  
43 competed by the Delta variant. Notably, Ethiopia's lack of local sequencing capacity was  
44 further limited by sporadic, uneven, and insufficient sampling that limited the  
45 incorporation of genomic epidemiology in the epidemic public health response in  
46 Ethiopia. These results highlight Ethiopia's role in SARS-CoV-2 dissemination and the  
47 urgent need for balanced, near-real-time genomic sequencing.

48

49 **Keywords:** COVID-19, Molecular epidemiology, SARS-CoV-2, Whole Genome Sequence, Ethiopia

## 50 **Introduction**

51 Ethiopia is a landlocked country in Eastern Africa [1, 2]. It is further one of the most  
52 populous countries on the continent, and following the global trend, has accordingly  
53 endured severe economic and healthcare burdens due to the ongoing COVID-19  
54 pandemic [3,4]. On 13 March 2020, the Federal Ministry of Health in Ethiopia reported  
55 its first COVID-19 case in Addis Ababa. By February 2022, Ethiopia had recorded  
56 approximately 494,760 confirmed cases and 7,572 deaths [5, 6]. Despite various  
57 pandemic mitigation strategies implemented by the government (Table S1), the  
58 number of COVID-19 cases continued to rise. Ethiopia currently constitutes one of the  
59 most severely affected countries on the African continent. On the 8<sup>th</sup> of April 2020, the  
60 Ethiopian government declared a 5-month national state of emergency to control and  
61 contain the growth rate of the local epidemic and support mitigation mechanisms [7,8].  
62 These emergency measures included the closing of schools and other academic  
63 institutes, restrictions on large gatherings, and implementation of mask mandates.  
64 These restrictions were complemented by encouraging social distancing and hand  
65 washing using multimedia campaigns [7, 9, 10]. While genetic diversity is a major  
66 driver of epidemic dynamics, until now, no detailed molecular epidemiology and  
67 genetic diversity analyses of SARS-CoV-2 have been performed in Ethiopia. To  
68 address this problem, we analyzed 353 high-quality near complete SARS-CoV-2  
69 genomes sampled in Ethiopia against a globally representative set to characterize the  
70 introduction, transmission, and spread of SARS-CoV-2 in Ethiopia.

## 71 **Materials and Methods**

### 72 **Ethical Consideration**

73 This study was reviewed and got approved by Addis Ababa University, College of  
74 Health Science Institutional Review Board (IRB) (IRB # 029/20/Lab), IRB of the  
75 Department of Medical Laboratory Sciences, Addis Ababa University (reference #-  
76 MLS/174/21), IRB office of Addis Ababa City Administration Health Bureau,  
77 AAPHREML (Reference #- AAHB/4039/227) and also from Addis Ababa University,  
78 College of Natural and Computational Science IRB (IRB #- CNCSDO/604/13/2021),  
79 by Yekatit 12 Hospital Medical College (IRB protocol # 75/20) and also reviewed and

80 approved by the Federal Democratic Republic of Ethiopia National Ethics Committee  
81 at the Ministry of Science and Higher Education (MoSHE) (IRB #021/246/820/21).

## 82 **Study Design, Period, and Setting**

83 We leveraged samples collected from confirmed Ethiopian SARS-CoV-2 cases  
84 recorded between July 2020 and February 2022 to produce whole and near-whole  
85 genomes. Specifically, whole genome sequencing (WGS) was carried out on a subset  
86 of RT-PCR positive samples (N=353) collected during the first four waves of the  
87 pandemic in Ethiopia. The genomes can be further classified according to the  
88 sampling strategy, i.e., community surveillance (n=170), contacts of confirmed cases  
89 (n=78), and suspected cases (symptomatic but yet to be confirmed by laboratory  
90 results) (n=105), (Figure S2). Nasopharyngeal (NP) swab specimens were collected  
91 using 2ml of Viral Transport Medium (VTM), (China, Miraclean Technology Co., Ltd.,  
92 [www.mantacc.com](http://www.mantacc.com)) from patients in Addis Ababa, Amhara, Oromia, and the Southern  
93 Nations, Nationalities, and Peoples Regional States (provinces) of the country. The  
94 number of samples selected from each region was based on the epidemic distribution  
95 of the diseases across the country (Figure S3). These areas are known to have high  
96 population densities and cover almost three-quarters of the country's inhabitants [11,  
97 12]. Only samples with cycle threshold (Ct) values under 30 were considered viable  
98 and submitted for sequencing

## 99 **Quality Assurance**

100 We implemented a comprehensive total quality management system to ensure the  
101 quality of our sequence data throughout the process (from pre-analytical to post-  
102 analytical). The specimens with RT-PCR Ct values <30 were stored in a -80°C freezer  
103 at Arsho Advance Medical Laboratories Plc: an ISO 15189 accredited laboratory [13].

## 104 **RNA Extraction and Viral Detection**

105 Extraction, purification, and viral detection using RT-PCR were done as per our  
106 previous work and respective manufacturer recommendations [14-17]. Viral detection  
107 was done at the Ethiopian Public Health Institute (EPHI), AAPHREM center  
108 laboratory, Yekatit 12 Hospital, Arsho medical laboratory, and Addis Ababa University.

109 These were amongst the established RT-PCR laboratories where the majority of  
110 COVID-19 testing was performed. SARS-CoV-2 positive samples from the first three  
111 waves of the pandemic were shipped to CERI/KRISP (South Africa), and from the  
112 fourth wave (103) to ILRI (Kenya) for whole genome sequencing. All biological  
113 specimens were transported following a triple packaging biosafety and biosecurity  
114 protocol.

### 115 **Next-Generation Sequencing of SARS-CoV-2**

116 WGS was performed using either the Illumina or the Oxford Nanopore Technology  
117 (ONT) sequencing platforms. Briefly, RNA was extracted on the automated Chemagic  
118 360 system (Perkin Elmer) as per the manufacturer's instructions. Samples were lysed  
119 using proteinase K and bound using silica magnetic beads. Beads were then washed  
120 and the RNA was eluted and stored at -80 °C until use. SuperScript IV reverse  
121 transcriptase (Life Technologies) was then used, in combination with random hexamer  
122 primers, to convert extracted RNA to complementary DNA. Gene-specific multiplex  
123 PCR using the ARCTIC protocol was then performed. PCR was used to generate 400  
124 base pair (bp) amplicons, with an overlap of 70 bp to cover the 30 kilobases (kb)  
125 SARS-CoV-2 genome. PCR products were purified using AmpureXP purification  
126 beads (Beckman Coulter, High Wycombe, UK), and quantification was performed  
127 using the Qubit double-strand DNA (dsDNA) High Sensitivity Assay Kit on a Qubit 4.0  
128 instrument (Life Technologies). These libraries were then used for Illumina MiSeq and  
129 ONT GridION sequencing.

130 Illumina MiSeq indexed paired-end libraries were prepared using the Nextera DNA  
131 Flex Library Prep Kits (Illumina) as per the manufacturer's instructions. Tagmented  
132 amplicons were barcoded with a unique barcode using the Nextera CD Indexes  
133 (Illumina), which allows for library pooling. Prior to pooling, libraries were normalized  
134 to 4 nM and pooled, then denatured using sodium acetate. Pooled libraries were then  
135 diluted and spiked with 1 % PhiX Control v3 and sequenced using a 500-cycle v2  
136 MiSeq Reagent Kit on the Illumina MiSeq instrument (Illumina, San Diego, CA, USA)  
137 [18]. ONT Native Barcoding Expansion kits were used for ONT GridION sequencing  
138 according to the manufacturer's protocol. Samples were multiplexed on the FLO-

139 MIN106 flowcells and ran on the GridION X5. The MinKNOW software was used to  
140 monitor sequencing performance in real-time [19].

141

## 142 **Metadata Management**

143 Clinical and demographic metadata were collected from the confirmed cases using a  
144 structured assessment tool by trained healthcare professionals at the triage of the  
145 health facilities and from the community. A medical record number (MRN) was  
146 assigned to each patient as a unique anonymous identifier as their names were not  
147 linked to the MRNs submitted to sequence repositories such as GISAID,  
148 EPI\_SET\_221214bg doi: [10.55876/gis8.221214bg](https://doi.org/10.55876/gis8.221214bg).

## 149 **Sequence Alignment, Assembly, and Phylogenetic Analysis**

150 Fastq sequences were assembled using Genome Detective 1.133 ([http://www.](http://www.genomedetective.com)  
151 [genomedetective.com](http://www.genomedetective.com)) [20] and the Coronavirus tool [21]. The initial assemblies  
152 obtained from Genome Detective were visualized and manually edited using Geneious  
153 Prime version 2022.2.2 [22,23] to remove low-quality mutations. Nextclade was used  
154 to determine the quality control profiles of the sequences. The quality metrics used for  
155 the sequences in this study included genome coverage greater than 80%, ensured the  
156 removal of unknown frameshifts, stop codon, and clustered mutations. Additionally,  
157 submissions with exceedingly high and missing data (N) <3000Ns) were excluded  
158 from downstream analyses. Nextclade was further employed to assign clades and  
159 lineage classifications to the sequences [24,25]. Sequences that met these quality  
160 control thresholds were deposited in the GISAID (<https://www.gisaid.org/>) database,  
161 EPI\_SET\_221214bg doi: [10.55876/gis8.221214bg](https://doi.org/10.55876/gis8.221214bg) ].

162 To present a comprehensive analysis of the genomic epidemiology of SARS-CoV-2 in  
163 Ethiopia, the genomes generated in this study were combined with a globally  
164 representative set of genomes (n= 13589) that were sampled during the same period.  
165 All samples from the bordering countries to Ethiopia were included in the analysis to  
166 better model the relationship between Ethiopia and its Neighbors and infer cross-  
167 border transmission. This did not cause a sampling bias as these countries were

168 already characterized by a low number of sequences. Additionally, all global  
169 sequences belonging to the B.1.480 lineage which was predominant in Ethiopia and  
170 remained in circulation across the first three waves were included. Together, this  
171 resulted in a dataset of 13,942 genomes. Acknowledgment was given to the  
172 sequencing laboratories that contributed to the analysis set (EPI\_SET\_221214bg,  
173 DOI: [10.55876/gis8.221214bg](https://doi.org/10.55876/gis8.221214bg)).

174 Sequences were aligned using NextAlign [26] to obtain a good codon alignment of the  
175 sequences. A maximum likelihood tree topology was inferred from the resulting  
176 alignment in IQTREE 2 [27] using the General Time Reversible model of nucleotide  
177 substitution [28] The inferred phylogeny was used along with the associated metadata  
178 that was obtained from GISAID, to map discrete geographical locations to each of the  
179 tips and infer locations for the internal nodes. This was done using the Migration  
180 package extension of TreeTime [29]. A custom Python script was then used to count  
181 the number of discrete changes occurring as we transcended the topology from the  
182 root towards the tips. In essence, this provided a crude estimate of the number and  
183 timing of viral exchanges (import-export) between Ethiopia and the rest of the world.

## 184 **Data Analysis and Visualization**

185 The data were analyzed and visualized using R version 4.2.0 using available  
186 packages and custom scripts. The tree was visualized using the R package ggtree  
187 version 3.0.4[30].

188

189

190

191

## 192 **Results**

193

### 194 **Socio-demographic Characteristics of the Study Participants along with SARS-** 195 **CoV-2 Variants of Concerns (VOCs)**

196 A total of 1300 nasopharyngeal swabs were collected from four provinces in the  
197 country. These samples included 181 (51.3%) specimens obtained from female  
198 patients while 172 (48.7%) were sampled from male patients. The patient ages ranged  
199 between 2 and 86 years old, although most of the cases were between 21- and 30-  
200 year-old patients, with an overall estimated median age of 31.45 (IQR=26-46) years.  
201 More than 77 % of the patients presented with mild cases ([Table 1](#)). Of these, we  
202 discarded 300 due to their high CT values (i.e., > 30). The remaining 1000 samples  
203 were subjected to the library preparation and 808 yielded sufficient RNA for WGS  
204 following RT-PCR amplification. The WGS resulted in 353 SARS-CoV-2 sequences  
205 that passed bioinformatics quality controls. (i.e., with genome coverage greater than  
206 80%, a limited number of private mutations, no clustered mutations, and no misplaced  
207 stop codons). [Figure S2](#) illustrates a detailed breakdown of the sample processing.  
208 During the study period, a combination of genetically distinct SARS-CoV-2 lineages  
209 were identified. The majority of these assemblies (91.7%) were classified as variants  
210 of concern (VOC).

### 211 **Local Epidemic Dynamics**

212 To illuminate the local epidemic dynamics in Ethiopia, we performed an in-depth study  
213 of the 353 high-quality SARS-CoV-2 genomes ([Figure 1](#)). The study period  
214 corresponds with the first four COVID-19 waves experienced in the country. The first  
215 wave occurred between August and September 2020, the second between February  
216 and March 2021, and the third occurred between July and October 2021. Each wave  
217 was characterized by higher rates of transmission and fatality than previous waves  
218 ([Figure 1A](#)). Notably, the third wave was more severe and lasted longer than the two  
219 previous waves. The fourth wave began with an uptick in cases in December 2021  
220 and continued to February 2022. The wave was characterized by the highest rates of



221 community transmission yet observed (Figure 1A). However, compared to the global  
222 trend at the time, it resulted in fewer deaths.

223 Across the four waves, the peak number of new cases remained relatively consistent  
224 with the first and third waves reflecting a 7-day rolling average of approximately 1500  
225 individuals. The second wave had a slightly higher 7-day rolling average of 2000  
226 individuals whilst the fourth had the highest at over 4000 individuals (Figure 1A). The  
227 number of new deaths across each wave had a similar trend to the average number of  
228 new cases with the second and third waves having the highest number of new deaths  
229 at approximately 50 individuals per day (Figure 1B). Vaccine rollout commenced in  
230 April 2021 in Ethiopia and by February 2022, approximately 25% of the population had  
231 received at least one dose of Oxford-AstraZeneca or Sinopharm COVID-19 vaccines  
232 (Figure 1B).

### 233 **Phylogenetic reconstruction and Variant Detection in Ethiopia**

234 Ancestral state reconstruction showed that viral imports into Ethiopia occurred  
235 between August 2020 and January 2021, with the majority of importation events  
236 occurring in August 2020 [n=123], December 2020 [n=130], and January 2021 [n=169]  
237 (Figure 1C). In comparison, September and November 2020 corresponded with the  
238 highest numbers of inferred SARS-CoV-2 exports from Ethiopia (n=109 and n =137,  
239 respectively; Figure 1D, Figure S4). The majority of inferred importation events were  
240 from Eastern Africa [n=324] origins, whereas most of the inferred exportation events  
241 were generally attributed to Western European and Asian origins (n=20 and n=141  
242 respectively). Overall, we identified 570 importation and 446 exportation events during  
243 the study period.

244 Our early sequences sampled between November and December 2020 represented  
245 two lineages, B.1/B.1.1 and B.1.480, with most of the sequences classified as  
246 B.1/B.1.1. These two lineages continued to circulate throughout the first quarter of  
247 2021 (January to March). The B.1.480 lineage was thought to have originated in  
248 Ethiopia. In our study, 21 genome assemblies were assigned to this emerging lineage.  
249 (EPI\_SET\_230126dy, doi: 10.55876/gis8.230126dy). Phylogenetic inference

250 supported that this lineage was a monophyletic clade. Despite its persistence in  
251 Ethiopian populations for an extended period, this variant did not disseminate globally  
252 as was observed for other VOC and ultimately only constituted only 473 GISAID  
253 submissions during the progression of the pandemic, EPI\_SET\_230126vf, doi:  
254 10.55876/gis8.230126vf. Nevertheless, according to GISAID submissions, this lineage  
255 was detected in neighboring countries such as Kenya, Somalia, Djibouti, and Guinea-  
256 Bissau. This lineage was further disseminated internationally where it was detected in  
257 Australia, the United States of America, Canada, Japan, Israel, Hong Kong, and South  
258 Korea. This period was followed by the detection and rise to dominance of VOCs in  
259 the country.

260 In January 2021, the first case of the Alpha variant was detected. Within a span of  
261 one month, it had reached equal prevalence to B.1/B.1.1. The B.1.1 continued to  
262 circulate in low prevalence with the cases detected until May 2021. Alpha was  
263 however short-lived as the Delta variant emerged. The Delta variant was first detected  
264 in February 2021. Thereafter, it quickly outcompeted all other lineages (Figure S5). By  
265 April, it had become the most prevalent variant. The predominant Delta variant sub  
266 lineages were AY.120 (116 sequences, 46.4%) and B.1.617.2 (50 sequences, 20%).  
267 The Delta variant seeded the 3<sup>rd</sup> wave in Ethiopia. Although no sequence data was  
268 available from September to December 2021, the majority of the cases sampled and  
269 sequenced from January 2022 were attributed to the Omicron lineage (Fig 1A & 2A).  
270 Over the course of the study period, we identified 37 distinct lineages in circulation  
271 (Fig 2 A, Fig 2B, Figure S6).

272 The phylogenetic reconstruction revealed close relatedness (not substantially  
273 observed levels of divergence) among sequences assigned to the same lineages.  
274 However, this observation did not hold for samples assigned to the Delta variant  
275 (Figure 2C). Sequences attributed to the Delta variant showed greater variation in  
276 sequence composition. Moreover, higher levels of phylogenetic clusters, associated  
277 with community transmission, were observed during the study period. Phylogenetic  
278 clusters and associated community transmission events were also observed for the  
279 Omicron lineage (Figure 2C).

280

## 281 **Discussion**

282 In this study, we investigated the introduction of SARS-CoV-2 viral lineages, local  
283 transmission, and its evolution within Ethiopia. This study represents the first of its  
284 kind as no other molecular epidemiology investigation has been conducted for this  
285 country and provided an overview of the pandemic progression relative to a global  
286 context. Our results show that SARS-CoV-2 was introduced into Ethiopia on multiple  
287 occasions, with most introductions originating from Eastern African countries. These  
288 introductions included 37 distinct SARS-CoV-2 lineages and four VOCs, namely  
289 Alpha, Beta, Delta, and Omicron lineages. Of the introduced lineages the B1.480  
290 persisted and remained in circulation from December 2020 to August of 2021.

291 Our findings show that as of February 2022, Ethiopia had experienced four distinct  
292 COVID-19 waves. Although various preventive strategies such as the mandatory  
293 wearing of masks, and media awareness campaigns were adopted together with a  
294 mandatory 14-day self-quarantine regulation for all international travelers arriving in  
295 the country [5], Ethiopia remained vulnerable to SARS-CoV-2 introductions. Our  
296 results showed that despite preventative measures viral introduction events continued  
297 to occur and were followed by community transmission. This in turn facilitated a  
298 continued increase in case numbers. This could be attributed to the partial restriction  
299 of public transport which is an import mode of SARS-CoV-2 transmission [5, 31].  
300 During lockdowns, the operation of economic activities did not cease as they were  
301 deemed necessary to support the already fragile economic and socioeconomic  
302 situation of the country. This made lockdowns ineffective in preventing local  
303 transmission and epidemic growth. By 30 April 2021, the total number of cases and  
304 deaths had surpassed 257442 and 3688, respectively [1, 3], and has currently  
305 increased to >499000 and 7500 deaths.

306 Our findings show that Ethiopia experienced poor sampling mostly limited to Addis  
307 Ababa. Temporal sampling was also hampered by periods of limited sampling and,  
308 lack of local sequencing capacity resulting in substantial delays that in turn may cause

309 the degradation of samples during transit. Yet, an in-depth understanding of the  
310 COVID-19 pandemic progression in Ethiopia remains of paramount importance to aid  
311 the navigation of ongoing and future pandemics within these regions [32]. Indeed,  
312 Ethiopia has had several viral outbreaks in recent history, in addition to the ongoing  
313 COVID-19 pandemic. Some of the notable outbreaks include Measles, and mosquito-  
314 borne illnesses such as Yellow fever, Chikungunya, and Malaria [32, 33]. Thus,  
315 scaling up of local and regional pathogen genomic sequencing capacity and a robust  
316 pathogen genomic surveillance infrastructure is thus required to shorten the  
317 turnaround time and to allow for early public health response [34]. Additionally, during  
318 the onset of the pandemic, a survey on outbreak readiness highlighted a dire need for  
319 not only pathogen surveillance in Ethiopia but Ethiopia further scored only 52% on the  
320 Ready Score index, which shows that the nation still has progress to be made to  
321 increase case tracing and identification, increase healthcare and testing facilities,  
322 provide clear operational guidelines on preventive measures across various  
323 organizations, businesses, and community settings, as well as proactive steps to  
324 maintain life during social and economic lockdowns[3, 35]. Ethiopia, as with many  
325 other African countries, has limited resources to deal with these outbreaks, and often  
326 depends on international aid to help control and prevent these diseases [10, 36, 37].

327 Over the course of four waves, we estimated 570 introductions and 446 exportation  
328 events occurred. This is consistent with the relatively small number of lineages  
329 identified during the study period, although could also be attributed to under and  
330 sparse sampling that likely omitted lineages circulating at low prevalence. The short  
331 generation time associated with RNA viruses could also imply that viruses circulating  
332 during the period preceding the emergence of Omicron that became extinct would not  
333 have been detected. The phylogenetic inference and that of the geographical  
334 distribution of the Ethiopian-emerging B.1.480 lineage suggest that Ethiopia serves as  
335 a source for viral introductions not only to neighboring countries but also further  
336 abroad. Ethiopia serves as a travel hub for this African region connecting this region in  
337 Africa to neighboring countries and further abroad. Possible disease dissemination  
338 was most likely a result of travel to and from Ethiopia via air, land, and waterways [37,  
339 38]. Ethiopia is strategically located on the Red Sea, making it an important transit

340 point for goods moving between Africa, the Middle East, and Asia. The main  
341 international airport in Ethiopia is Addis Ababa Bole International Airport facilitates  
342 high travel volumes which most likely contributed to viral amplification in the country  
343 followed by Ethiopian-originating viral exportation events. It is therefore imperative to  
344 have concerted, collaborative action to achieve pandemic mitigation.

345 We observed a reduction in the number of new deaths reported during the fourth  
346 wave. This is consistent with the immunity acquired protection from a large number of  
347 infections from the preceding waves and increases in the total number of vaccinated  
348 individuals. A seroprevalence study among health care workers revealed a  
349 seropositivity rate of 39.6% [39] while another study the estimated the prevalence rate  
350 at over 50% [40]. However, only about 0.4% of the population has reportedly been  
351 infected with COVID-19: much fewer than the estimated seroprevalence rates  
352 estimated for the population. Therefore, taken together these statistics suggest that  
353 case numbers may remain widely underreported. Reduced testing further hinders  
354 effective genome surveillance as fewer samples were available to be subjected to  
355 whole genome analyses and influences the accuracy of epidemiological conclusions  
356 drawn.

357 In comparison to other countries, Ethiopia has very low vaccination coverage. As of  
358 December 2021, at least 1 000 000 Ethiopians had been vaccinated. It is important to  
359 note that COVID-19 vaccines in Ethiopia were prioritized based on criteria such as  
360 occupation, age, medical condition, people that work in aggregate settings, the elderly,  
361 and people with comorbidities known to increase the risk of adverse COVID-19  
362 outcomes[41]. Moreover, priority was given to those deemed as frontline medical staff,  
363 followed by non-frontline medical staff. This strategy was effective in slowing the  
364 evolutionary rate of the virus as SARS-CoV-2 is prone to evolution in  
365 immunosuppressed individuals experiencing chronic infection [42-44]. Vaccination has  
366 also been shown to decrease the overall SARS-CoV-2 infection rate from 9.0% (95%  
367 CrI: 8.4% – 9.4%) without vaccination to 4.6% (95% CrI: 4.3% – 5.0%) with the  
368 highest relative reduction noted among individuals aged 65 and above. Adverse

369 outcomes, such as deaths, are reduced by approximately 69.3% (95% CrI: 65.5%-  
370 73.1%) with lowered vaccination coverage [45].

371 Analysis of genomes and lineages across the study period highlighted the changes in  
372 the population dynamics of the viral lineages circulating in Ethiopia. The B.1 and B.1.1  
373 lineages dominated the first wave, persisted throughout the next two waves, and were  
374 characterized by the well-known D614G mutation [46]. This mutation has been linked  
375 to increased viral replication and transmissibility [38, 46]. Subsequent waves were  
376 dominated by the VOCs Alpha, Beta, Delta, and Omicron. These VOCs evolved to  
377 evade overcome host immunity from infection with ancestral viruses and vaccination.  
378 By doing so these newly emerging variants fueled renewed infectious waves and were  
379 often associated with increased transmissibility compared to their genetic  
380 predecessors [47-49]. The Omicron variant (specifically, lineage BA.1.1) had a  
381 reproduction number four times higher than Delta. It is considered the fifth variant of  
382 concern first detected in November/December 2021 [50-53].

383 One important lineage in the context of Ethiopia was the B.1.480, a distinct B lineage,  
384 which emerged during the second wave. This variant was responsible for 2.77% of the  
385 sampled cases. Notably, this variant was previously detected in passengers  
386 originating from not only Ethiopia but also with those originating from European  
387 countries such as the United Kingdom and France, as well as from travelers from  
388 United Arab Emirates [50-53]). Unlike other VOCs, this lineage did not reach global  
389 transmission and has only 473 submissions to the GISAID platform, however, it did  
390 persist in Ethiopian populations for extended periods of time. Other worrisome  
391 mutations carried by this lineage included the Spike mutation M1229I and D614G  
392 [46,47,49,54 ].

393 In conclusion, the changing nature of the pandemic over time in Ethiopia has been  
394 driven by lineage turnovers that, while dominated by VOCs and B.1.480, include other  
395 lineages (A, B.1, B.1.1). Results from this study, and that of others (ref listed above),  
396 showed that despite pandemic mitigation strategies implemented by the country,  
397 Ethiopia remained vulnerable to viral introduction events and served as a source of

398 viral introductions internationally. The COVID-19 pandemic is still ongoing and the  
399 evolution of the virus is continuing to yield new variants some of which will likely reflect  
400 altered viral behavior such as increased transmissibility, immune evasiveness, or  
401 altered pathogenicity. It is therefore crucial that ongoing genomic surveillance be  
402 strengthened and conducted to present real-time data generation to determine the  
403 geographic distribution of these variants and enable the implementation of appropriate  
404 disease mitigation strategies.

## 405 **Acronyms /abbreviations**

|            |  |
|------------|--|
| AAPHREML   | Addis Ababa public health research and emergency management laboratory |
| AAU        | Addis Ababa University   |
| ACDC       | Africa center for disease prevention and control                       |
| CERI       | Centre for Epidemic Response and Innovation                            |
| CI         | Confidence Interval  |
| CT         | Cycle Threshold  |
| GISAID     | Global Initiative on Sharing All Influenza Data                        |
| KRISP      | KwaZulu-Natal Research Innovation and Sequencing Platform              |
| NAAT       | Nucleic Acid Amplification Tests                                       |
| PCR        | Polymerase Chain Reaction  |
| RNA        | Ribose Nucleic Acid  |
| RT-PCR     | Reverse Transcriptase Polymerase Chain Reaction                        |
| SARS-CoV-2 | severe acute respiratory syndrome novel corona virus-2                 |
| VOCs       | Variants of Concern  |
| VTM        | Virus Transport Medium   |
| WHO        | World Health Organization  |
| SDG        | sustainable development goal   |
| COVID-19   | Coronavirus disease 2019   |

406

## 407 **Funding**

408 This research was financed by Addis Ababa University through the COVID-19-AAU  
409 research fund for staff with a reference #- PR/5.15/590/12/20 and adaptive research  
410 and problem-solving projects with Ref # AR/043/2021 and RD/PY-148/2021. Also, this  
411 work was realized by the generous financial and technical support of the AU through  
412 Africa CDC, PGI. No more external funding was received. The APC was funded by  
413 Africa Pathogen Genomics Initiative (Africa PGI).

414 The funders had no role in the study design, data collection, analysis, decision to  
415 publish, or preparation of the manuscript. The contents are purely the responsibilities  
416 of the authors and did not represent and reflect the view of the founder.

## 417 **Author Contributions**

418 AS and AFD conceived and designed the experiments; AS, DT and SEJ performed  
419 the data analysis and experiments; AS, DT, AFD and SEJ analyzed the data; GM, SO,



420 SKT, CB, DM, RL, HT, MM, SvW, EW, TDO contributed materials/analysis tools; AT,  
421 AFD and SEM supervise the work; AS, DT, SvW and SEJ wrote the paper. All  
422 authors read the final version of the manuscript.

### 423 **Informed Consent Statement**

424 All participants gave written informed consent for participation and publication.

### 425 **Declaration of Competing Interest**

426 We all the authors declare that we have no known competing interests or personal  
427 relationships that could have appeared to influence the work reported in this research  
428 paper.

### 429 **Data availability**

430 All the generated sequences used for this manuscript have been deposited in the  
431 GISAID sequence database and are purely publicly available. However, it's subject to  
432 the terms and conditions of the GISAID database, <https://www.gisaid.org/>, GISAID  
433 Identifier: EPI\_SET\_221214bg, DOI: [10.55876/gis8.221214bg](https://doi.org/10.55876/gis8.221214bg).

### 434 **Acknowledgment**

435 We would like to acknowledge Addis Ababa University for giving us the opportunity  
436 and financing the research. This work is realized with the generous financial and  
437 technical support of Africa CDC, PGI

438 We are very grateful and acknowledge the CERI and KRISP (South Africa) & ILRI  
439 (Kenya) for supporting this work by performing the whole genomic sequencing.

440 We also wish to extend our gratitude to Arsho Medical Laboratories for supporting this  
441 research by giving us a -80 °C refrigerator for centrally storing our specimens.

442 Last but not least we are very glad and thankful to Retina Pharmaceutical for  
443 supporting this work by availing required pharmaceutical inquiries.

444

445

446

447

448 **Reference**

- 449 1. Ethiopia: the World  
450 Bank.<https://www.worldbank.org/en/country/ethiopia/overview> . Accessed on 25  
451 Jan 2023.
- 452 2. Ebssa Wakwaya. "The promise of regional projects for Africa's landlocked  
453 countries: Focusing on Ethiopia." *African Journal of Political Science and*  
454 *International Relations* 9.2 (2015): 67-75
- 455 3. Zhang W, Persoz L, Hakiza S, Biru L, Girmatsion L. Impact of COVID-19 on  
456 Food Security in Ethiopia. *Epidemiologia*. 2022; 3(2):161-178.  
457 <https://doi.org/10.3390/epidemiologia3020013>
- 458 4. [https://www.un.org/ohrlls/sites/www.un.org.ohrlls/files/impact\\_of\\_covid19\\_and](https://www.un.org/ohrlls/sites/www.un.org.ohrlls/files/impact_of_covid19_and_responses_in_llcs.pdf)  
459 [responses\\_in\\_llcs.pdf](https://www.un.org/ohrlls/sites/www.un.org.ohrlls/files/impact_of_covid19_and_responses_in_llcs.pdf)
- 460 5. University JH. Johns Hopkins University JH. worldometers COVID-19 Daily  
461 update 2022 [Available from: <https://www.worldometers.info/coronavirus/>.
- 462 6. World Health Organization (WHO Africa). First case of COVID-19 confirmed in  
463 Ethiopia. [https://www.afro.who.int/news/first-case-covid-19-confirmed-](https://www.afro.who.int/news/first-case-covid-19-confirmed-ethiopia#:~:text=March%2013%2C%202020%2C%20The%20Federal,in%20C)  
464 [ethiopia#:~:text=March%2013%2C%202020%2C%20The%20Federal,in%20C](https://www.afro.who.int/news/first-case-covid-19-confirmed-ethiopia#:~:text=March%2013%2C%202020%2C%20The%20Federal,in%20C)  
465 [hina%20in%20December%202019](https://www.afro.who.int/news/first-case-covid-19-confirmed-ethiopia#:~:text=March%2013%2C%202020%2C%20The%20Federal,in%20C).
- 466 7. Lanyero B, Edea ZA, Musa EO, Watore SH, Mandalia ML, Livinus MC, et al.  
467 Readiness and early response to COVID-19: achievements, challenges, and  
468 lessons learnt in Ethiopia. *BMJ global health*. 2021; 6(6).
- 469 8. Ethiopian Public Health Institute, EPHI. COVID-19 PANDEMIC  
470 PREPAREDNESS AND RESPONSE IN ETHIOPIA WEEKLY BULLETIN Nov  
471 2021 [updated 2022. Available from: <https://ephi.gov.et/download/pheoc/>.
- 472 9. WHO. COVID-19 Preparedness Bulletin Ethiopia 2020 [Available from:  
473 <https://extranet.who.int/sph/covid-19-preparedness-bulletin-ethiopia>.
- 474 10. Amhare AF, Tao Y, Li R, Zhang L. Early and Subsequent Epidemic  
475 Characteristics of COVID-19 and Their Impact on the Epidemic Size in

- 476 Ethiopia. *Front Public Health*. 2022;10: 834592. Published 2022 May 11.  
477 doi:10.3389/fpubh.2022.834592
- 478 11. Leulseged TW, Abebe KG, Hassen IS, et al. COVID-19 disease severity and  
479 associated factors among Ethiopian patients: A study of the millennium COVID-  
480 19 care center. *PLoS One*. 2022;17(1):e0262896. Published 2022 Jan 27.  
481 doi:10.1371/journal.pone.0262896
- 482 12. Abdella S, Riou S, Tessema M, et al. Prevalence of SARS-CoV-2 in urban and  
483 rural Ethiopia: Randomized household serosurveys reveal level of spread  
484 during the first wave of the pandemic. *EClinicalMedicine*. 2021; 35:100880.  
485 Published 2021 May 7. doi:10.1016/j.eclinm.2021.100880
- 486 13. Edgar RC. MUSCLE: multiple sequence alignment with high accuracy and high  
487 throughput. *Nucleic acids research*. 2004;32(5):1792-7.
- 488 14. Sisay A, Abera A, Dufera B, Endrias T, Tasew G, Tesfaye A, et al. Diagnostic  
489 accuracy of three commercially available one step RT-PCR assays for the  
490 detection of SARS-CoV-2 in resource limited settings. *PloS one*. 2022;  
491 17(1):e0262178.
- 492 15. MOLBIOL T. RT-PCR test kits and VirSNiP Mutation Assays for strain  
493 surveillance [Available from: <https://www.tib-molbiol.de/covid-19>.
- 494 16. World Health Organization W. Emergency Use Listing Procedure for in vitro  
495 diagnostics 2020 [Available from: [https://www.who.int/teams/regulation-  
496 prequalification/eul/in-vitro-emergency-use-listing-procedure](https://www.who.int/teams/regulation-prequalification/eul/in-vitro-emergency-use-listing-procedure).
- 497 17. BGI. Real-Time Fluorescent RT-PCR Kit for Detecting SARS-CoV-2 2020  
498 [Available from: [https://www.bgi.com/us/sars-cov-2-real-time-fluorescent-rt-pcr-  
499 kit-ivd/](https://www.bgi.com/us/sars-cov-2-real-time-fluorescent-rt-pcr-kit-ivd/)
- 500 18. Tshiabuila D, Giandhari J, Pillay S, et al. Comparison of SARS-CoV-2  
501 sequencing using the ONT GridION and the Illumina MiSeq. *BMC Genomics*.  
502 2022; 23(1):319. Published 2022 Apr 22. doi:10.1186/s12864-022-08541-5
- 503 19. Pembaur A, Sallard E, Weil PP, Ortelt J, Ahmad-Nejad P, Postberg J.  
504 Simplified Point-of-Care Full SARS-CoV-2 Genome Sequencing Using  
505 Nanopore Technology. *Microorganisms*. 2021; 9(12).

- 506 20. Vilsker M, Moosa Y, Nooij S, et al. Genome Detective: an automated system for  
507 virus identification from high-throughput sequencing data. *Bioinformatics*.  
508 2019;35(5):871-873. doi:10.1093/bioinformatics/bty695
- 509 21. Cleemput S, Dumon W, Fonseca V, et al. Genome Detective Coronavirus  
510 Typing Tool for rapid identification and characterization of novel coronavirus  
511 genomes. *Bioinformatics*. 2020;36(11):3552-3555.  
512 doi:10.1093/bioinformatics/btaa145
- 513 22. Larsson A. AliView: a fast and lightweight alignment viewer and editor for large  
514 datasets. *Bioinformatics (Oxford, England)*. 2014; 30(22):3276-8.
- 515 23. Edgar RC. MUSCLE: multiple sequence alignment with high accuracy and high  
516 throughput. *Nucleic acids research*. 2004; 32(5):1792-7.
- 517 24. Shu Y, McCauley J. GISAID: Global initiative on sharing all influenza data -  
518 from vision to reality. *Euro surveillance: bulletin Europeen sur les maladies*  
519 *transmissibles = European communicable disease bulletin*. 2017;22(13).
- 520 25. Nextclade. Next clade. <https://clades.nextstrain.org/> 2021 [Available from:  
521 <https://clades.nextstrain.org/>].
- 522 26. Aksamentov I., Neher R. Nextalign: Viral Genome Reference Alignment.  
523 [(accessed on 16 Jan 2023)]. Available  
524 online: <https://github.com/neherlab/nextalign>
- 525 27. Minh BQ, Schmidt HA, Chernomor O, Schrempf D, Woodhams MD, von  
526 Haeseler A, Lanfear R. IQ-TREE 2: New Models and Efficient Methods for  
527 Phylogenetic Inference in the Genomic Era. *Mol Biol Evol*. 2020 May  
528 1;37(5):1530-1534. doi: 10.1093/molbev/msaa015.
- 529 28. Gatto L, Catanzaro D, Milinkovitch MC. Assessing the applicability of the GTR  
530 nucleotide substitution model through simulations. *Evol Bioinform Online*.  
531 2007;2:145-155. Published 2007 Feb 4.
- 532 29. Pavel Sagulenko, Vadim Puller, Richard A Neher, TreeTime: Maximum-  
533 likelihood phylodynamic analysis, *Virus Evolution*, Volume 4, Issue 1, January  
534 2018, vex042, <https://doi.org/10.1093/ve/vex042>

- 535 30. Yu G, Smith DK, Zhu H, Guan Y, Lam TT-Y. ggtree: an r package for  
536 visualization and annotation of phylogenetic trees with their covariates and  
537 other associated data. *Methods in Ecology and Evolution*. 2017;8(1):28-36.
- 538 31. Ellingjord-Dale, M., Kalleberg, K.T., Istre, M.S. *et al.* The use of public transport  
539 and contraction of SARS-CoV-2 in a large prospective cohort in Norway. *BMC*  
540 *Infect Dis* 22, 252 (2022). <https://doi.org/10.1186/s12879-022-07233-5>
- 541 32. Mekuriaw W, Kinde S, Kindu B, Mulualem Y, Hailu G, Gebresilassie A, et.,al.  
542 Epidemiological, Entomological, and Climatological Investigation of the 2019  
543 Dengue Fever Outbreak in Gewane District, Afar Region, North-East  
544 Ethiopia. *Insects*. 2022; 13(11):1066. <https://doi.org/10.3390/insects13111066>
- 545 33. Mengesha Tsegaye, M., Beyene, B., Ayele, W. *et al.* Sero-prevalence of yellow  
546 fever and related Flavi viruses in Ethiopia: a public health perspective. *BMC*  
547 *Public Health* **18**, 1011 (2018). <https://doi.org/10.1186/s12889-018-5726-9>
- 548 34. Tegally H, San JE, Cotten M, et al. The evolving SARS-CoV-2 epidemic in  
549 Africa: Insights from rapidly expanding genomic surveillance. *Science*.  
550 2022;378(6615):eabq5358. doi:10.1126/science.abq5358
- 551 35. Abagero A, Ragazzoni L, Hubloue I, Barone-Adesi F, Lamine H, Addissie A,  
552 Della Corte F, Valente M. A Review of COVID-19 Response Challenges in  
553 Ethiopia. *Int. J. Environ. Res. Public Health*. 2022; 19(17):11070.  
554 <https://doi.org/10.3390/ijerph191711070>
- 555 36. Tessema GA, Kinfu Y, Dachew BA, Tesema AG, Assefa Y, Alene KA, et al.  
556 The COVID-19 pandemic and healthcare systems in Africa: a scoping review of  
557 preparedness, impact and response. *BMJ global health*. 2021;6(12):e007179.
- 558 37. Nigussie H. The Coronavirus Intervention in Ethiopia and the Challenges for  
559 Implementation. *Front. Commun.*, 21 May 2021 Sec. Health Communication  
560 Volume 6 – 2021. <https://doi.org/10.3389/fcomm.2021.562512>
- 561 38. Ngeh S, Vogt F, Sikazwe CT, et al. Travel-associated SARS-CoV-2  
562 transmission documented with whole genome sequencing following a long-haul  
563 international flight. *J Travel Med*. 2022;29(6):taac057. doi:10.1093/jtm/taac057

- 564 39. Gelanew T, Seyoum B, Mulu A, et al. High seroprevalence of anti-SARS-CoV-2  
565 antibodies among Ethiopian healthcare workers. *BMC Infect Dis.*  
566 2022;22(1):261. Published 2022 Mar 16. doi:10.1186/s12879-022-07247-z
- 567 40. Gudina EK, Ali S, Girma E, et al. Seroepidemiology and model-based  
568 prediction of SARS-CoV-2 in Ethiopia: longitudinal cohort study among front-  
569 line hospital workers and communities. *Lancet Glob Health.* 2021;9(11):e1517-  
570 e1527. doi:10.1016/S2214-109X(21)00386-7
- 571 41. COVID-19 Vaccine tracker. [https://www.reuters.com/graphics/world-](https://www.reuters.com/graphics/world-coronavirus-tracker-and-maps/vaccination-rollout-and-access/)  
572 [coronavirus-tracker-and-maps/vaccination-rollout-and-access/](https://www.reuters.com/graphics/world-coronavirus-tracker-and-maps/vaccination-rollout-and-access/)
- 573 42. Kemp, S.A., Collier, D.A., Datir, R.P. *et al.* SARS-CoV-2 evolution during  
574 treatment of chronic infection. *Nature* 592, 277–282 (2021).  
575 <https://doi.org/10.1038/s41586-021-03291-y>
- 576 43. Wilkinson SAJ, Richter A, Casey A, Osman H, Mirza JD, Stockton J, et al.  
577 Recurrent SARS-CoV-2 mutations in immunodeficient patients. *Virus evolution.*  
578 2022;8(2):veac050.
- 579 44. Weigang, S., Fuchs, J., Zimmer, G. *et al.* Within-host evolution of SARS-CoV-2  
580 in an immunosuppressed COVID-19 patient as a source of immune escape  
581 variants. *Nat Commun* 12, 6405 (2021). [https://doi.org/10.1038/s41467-021-](https://doi.org/10.1038/s41467-021-26602-3)  
582 [26602-3](https://doi.org/10.1038/s41467-021-26602-3)
- 583 45. Moghadas SM, Vilches TN, Zhang K, et al. The impact of vaccination on  
584 COVID-19 outbreaks in the United States. Preprint. *medRxiv.*  
585 2021;2020.11.27.20240051. Published 2021 Jan 2.  
586 doi:10.1101/2020.11.27.20240051
- 587 46. Korber B, Fischer WM, Gnanakaran S, et al. Tracking Changes in SARS-CoV-2  
588 Spike: Evidence that D614G Increases Infectivity of the COVID-19 Virus. *Cell.*  
589 2020;182(4):812-827.e19. doi:10.1016/j.cell.2020.06.043
- 590 47. Harvey, W.T., Carabelli, A.M., Jackson, B. *et al.* SARS-CoV-2 variants, spike  
591 mutations and immune escape. *Nat Rev Microbiol* 19, 409–424 (2021).  
592 <https://doi.org/10.1038/s41579-021-00573-0>
- 593 48. Liu Y, Rocklöv J. The reproductive number of the Delta variant of SARS-CoV-2  
594 is far higher compared to the ancestral SARS-CoV-2 virus. *J Travel Med.* 2021

595 Oct 11;28(7):taab124. doi: 10.1093/jtm/taab124. PMID: 34369565; PMCID:  
596 PMC8436367.

597 49. Thakur S, Sasi S, Pillai SG, et al. SARS-CoV-2 Mutations and Their Impact on  
598 Diagnostics, Therapeutics and Vaccines. *Front Med (Lausanne)*. 2022;9:  
599 815389. Published 2022 Feb 22. doi:10.3389/fmed.2022.815389

600 50. Shrivastava S, Mhaske ST, Modak MS, Virkar RG, Pisal SS, Mishra AC, et al.  
601 Emergence of two distinct variants of SARS-CoV-2 and an explosive second  
602 wave of COVID-19: the experience of a tertiary care hospital in Pune, India.  
603 *Archives of virology*. 2022; 167(2):393-403.

604 51. Dhama K, Nainu F, Frediansyah A, Yatoo MI, Mohapatra RK, Chakraborty S, et  
605 al. Global emerging Omicron variant of SARS-CoV-2: Impacts, challenges and  
606 strategies. *Journal of Infection and Public Health*. 2023; 16(1):4-14.

607 52. Zhou Y, Zhi H, Teng Y. The outbreak of SARS-CoV-2 Omicron lineages,  
608 immune escape, and vaccine effectivity. *J Med Virol*. 2022;10.1002/jmv.28138.  
609 doi:10.1002/jmv.28138

610 53. Corriero A, Ribezzi M, Mele F, Angrisani C, Romaniello F, Daleno A, et., al.  
611 COVID-19 Variants in Critically Ill Patients: A Comparison of the Delta and  
612 Omicron Variant Profiles. *Infectious Disease Reports*. 2022; 14(3):492-500.  
613 <https://doi.org/10.3390/idr14030052>

614 54. Dubey, A., Choudhary, S., Kumar, P. et al. Emerging SARS-CoV-2 Variants:  
615 Genetic Variability and Clinical Implications. *Curr Microbiol* **79**, 20 (2022).  
616 <https://doi.org/10.1007/s00284-021-02724-1>

617

618

619

620

621

622

623

624

625 **Tables, Figures and Supplementary Files**

626 **Table 1.** Socio-demographic characteristics of study participants along with VOC of SARS-CoV-2 in  
627 Ethiopia, 2020-2022.

| Variable                                      | Class                       | Frequency (%) | Variant (VOC) |      |       |         |
|---|-----------------------------|---------------|---------------|------|-------|---------|
|   |                             |               | Alpha         | Beta | Delta | Omicron |
| Sex   | Female                      | 181 (51.3)    | 10            | 2    | 99    | 57      |
|   | Male                        | 172 (48.7)    | 7             | 1    | 102   | 46      |
| Age Range (years)                             | 1-20                        | 40 (11.3)     | 7             | 1    | 19    | 8       |
|   | 21-30                       | 121 (34.3)    | 1             | 1    | 80    | 25      |
|   | 31-40                       | 84 (23.8)     | 5             | 1    | 43    | 30      |
|   | 41-50                       | 41 (11.6)     | 2             | 0    | 25    | 12      |
|   | 51-60                       | 21 (10.2)     | 2             | 0    | 18    | 15      |
|   | >60                         | 31 (8.8)      | 0             | 0    | 16    | 13      |
| Reason for testing (during sampling)          | Suspect                     | 107 (30.3)    | 6             | 1    | 133   | 2       |
|   | Contacts of confirmed cases | 79 (22.4)     | 8             | 2    | 45    | 1       |
|   | Community Surveillance      | 167 (47.3)    | 3             | 0    | 23    | 100     |
| Clinical Status of the clients while sampling | Asymptomatic*               | 53 (15)       | 3             | 0    | 37    | 5       |
|   | Mild                        | 273 (77.3)    | 14            | 3    | 142   | 94      |
|   | Sever                       | 27 (7.7)      | 0             | 0    | 22    | 4       |

628 \*Asymptomatic – a person has tested positive for COVID-19 but never exhibits any signs or symptoms of the  
629 disease  
630

631 *Figure 1: SARS-CoV-2 epidemiology and variant turnover in Ethiopia: (a) 7-day rolling*  
632 *average for the number of new SARS-CoV-2 cases. Others, represented in blue, comprise*  
633 *mostly B lineages including B, B.1, and B.1.1 lineages. The size of the dot is indicative of the*  
634 *variant proportion in the population. (b) The proportion of individuals that have received at*  
635 *least one vaccine dose in Ethiopia compared to the number of new deaths that occurred. (c)*  
636 *Summary of the mean number of detected introductions into Ethiopia binned by month for*  
637 *different regions across the dataset. (d) Summary of the mean number of detected*  
638 *exportations out of Ethiopia to different regions binned by month.*

639 *Figure 2: SARS-CoV-2 lineage diversity in Ethiopia. (A) Proportions of SARS-CoV-2 lineages,*  
640 *classified by Pangolin nomenclature, circulating between June 2020 and February 2022 in*  
641 *Ethiopia. (B) Absolute counts of SARS-CoV-2 genomes throughout the study period. Only*  
642 *VOCs and major lineages are listed in the legend. (C) Maximum-Likelihood phylogeny of 353*  
643 *SARS-CoV-2 genomes. Branches are colored by lineage.*

644

645

646



647 **List of Supplementary Files**

648 Table S1- Timeline of COVID-19 and major events following the first confirmed cases  
649 in Ethiopia

650 Figure S2- Consortium Diagram of Sampling for Molecular Epidemiology and Diversity  
651 of SARS-CoV-2 in Ethiopia

652 Figure S3- The sampling area covers in Ethiopia

653 Figure S4-Major SARS-CoV-2 lineages of detected imported and exported Ethiopia  
654 between June 2020 and February 2022

655 Figure S5- SARS-CoV-2 Delta VOC sub tree molecular clock, Ethiopia.

656 Figure S6-Major SARS-CoV-2 lineages identified Ethiopia between June 2020 and  
657 February 2022

658

659

660

661

662

663

664

665

666

667

668

669

670

671

672

673

674

675

676

677

678

679

680

681

682

683

684

685

686 **Table S1 Summary of the COVID-19 timeline and major events following the first**  
 687 **confirmed cases in Ethiopia**

| Timeline   | Major events   | Remark |
|--|--|--------|
| December 2019/January 2020                                   | Wuhan City, Hubei Province, China, which was reported to the WHO on 31 December 2019. Wuhan, China, was reported in January 2020   |        |
| 27 January 2020  | Prior to the WHO's declaration of a global pandemic, the federal democratic republic of Ethiopia Council of Ministers 'activated' a National Public Health Emergency Preparedness Centre, EOC and began preparations to deal with a potential outbreak of Covid-19   |        |
| 30 January 2020  | the Director-General of the WHO declared COVID-19 a Public Health Emergency of International Concern   |        |
| 7 February 2020  | Ethiopia set up the national Influenza and Arboviruses reference laboratory as the first COVID-19 testing laboratory in the country with the support from WHO and ACDC.  |        |
| March 11, 2020-  | WHO declared COVID-19 as a Pandemic  |        |
| March 13, 2020,<br>***                                       | On 12 March 2020, a week after entering the country from Burkina Faso, a 48-year-old Japanese national presented <b>himself</b> at a public health center in the capital city, Addis Ababa, and was diagnosed as having COVID-19. Since Ethiopia did not have the capacity to test for COVID-19 at the onset. Thus, samples were initially transported for testing to the National Institute for Communicable Diseases (NICD) Laboratory in South Africa |        |
| 15 March 2020  | The second confirmed case from Ethiopian nationalities (three additional )cases of the COVID-19 were reported  |        |
| 20 March 2020  | Anyone entering the country/international travelers/ should stay in quarantine for up to 14 days at their costs  |        |
| 23 March 2020  | Ethiopia closed all land borders and deployed security forces to halt the movement of people along the borders (National lockdown....)   |        |
| 24 March 2020  | <ul style="list-style-type: none"> <li>● banned all public gatherings and sports events</li> <li>● The closure of bars and clubs</li> <li>● all federal employees were to work from home, except those designated by each ministry and federal agency as essential workers</li> </ul>  |        |
| 05 April 2020  | The First COVID-19-related confirmed death   |        |
| 8 April 2020   | A state of emergency was declared giving authorities across-the-board powers to battle the disease   |        |
| 06 March 2021<br><i>*after a year of pathogen occurrence</i> | The first genome sequence of SARS-CoV-2 sampled from Ethiopia was submitted to the GISAID database   |        |
| 13March, 2021  | First vaccination started  |        |

688 \*\*\* Form 13 March-Mid April 2020-Sample were tested by referral to NICD, the country had no RT-PCR testing  
 689 center during this time  
 690

691 **Figure S2--**Consortium Diagram of Sampling for Molecular Epidemiology and Diversity of SARS-CoV-2  
692 in Ethiopia

693

694

695

696

697

698

699

700

701

702

703

704

705

706

707

708

709

710

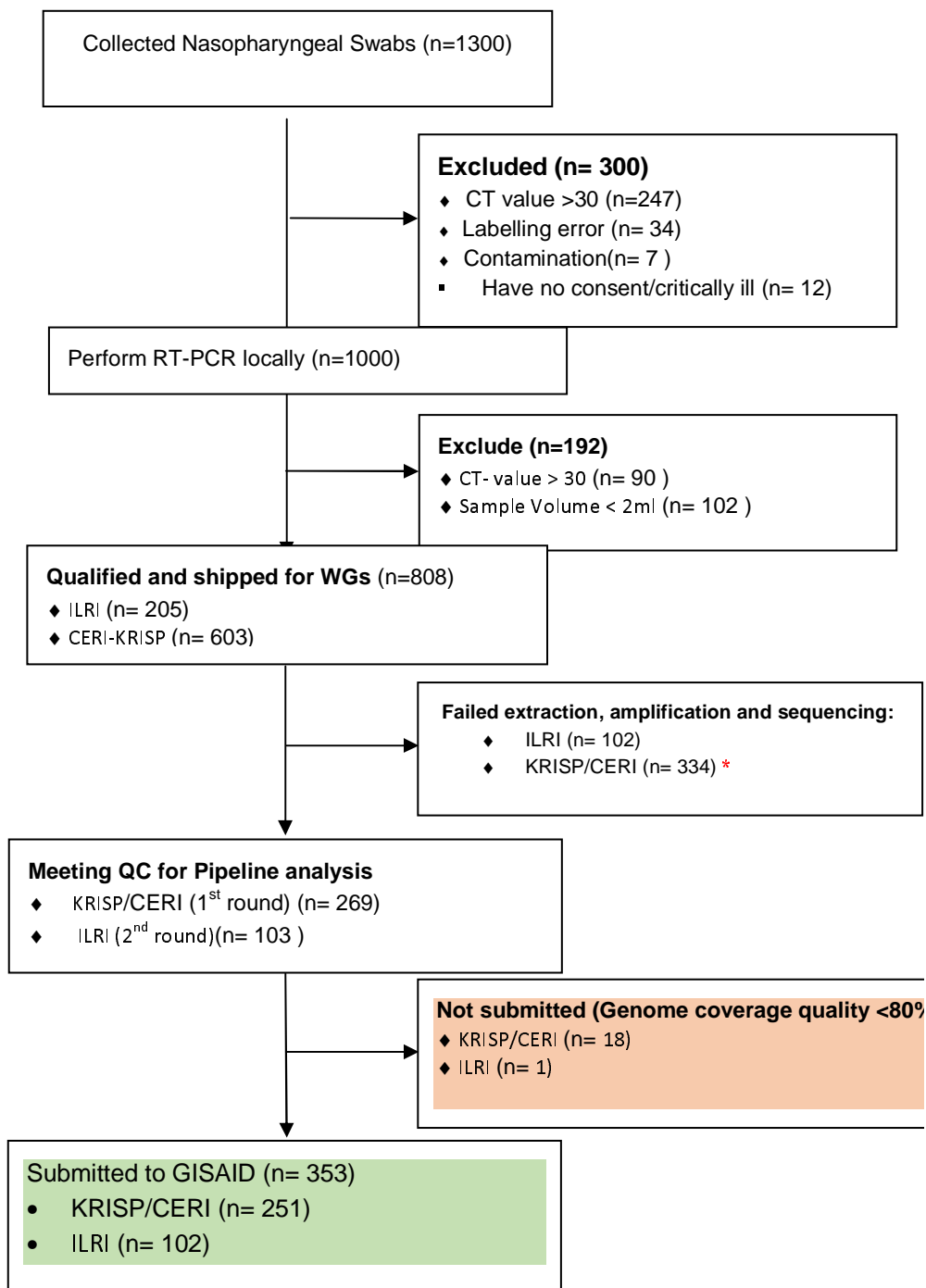
711

712

713

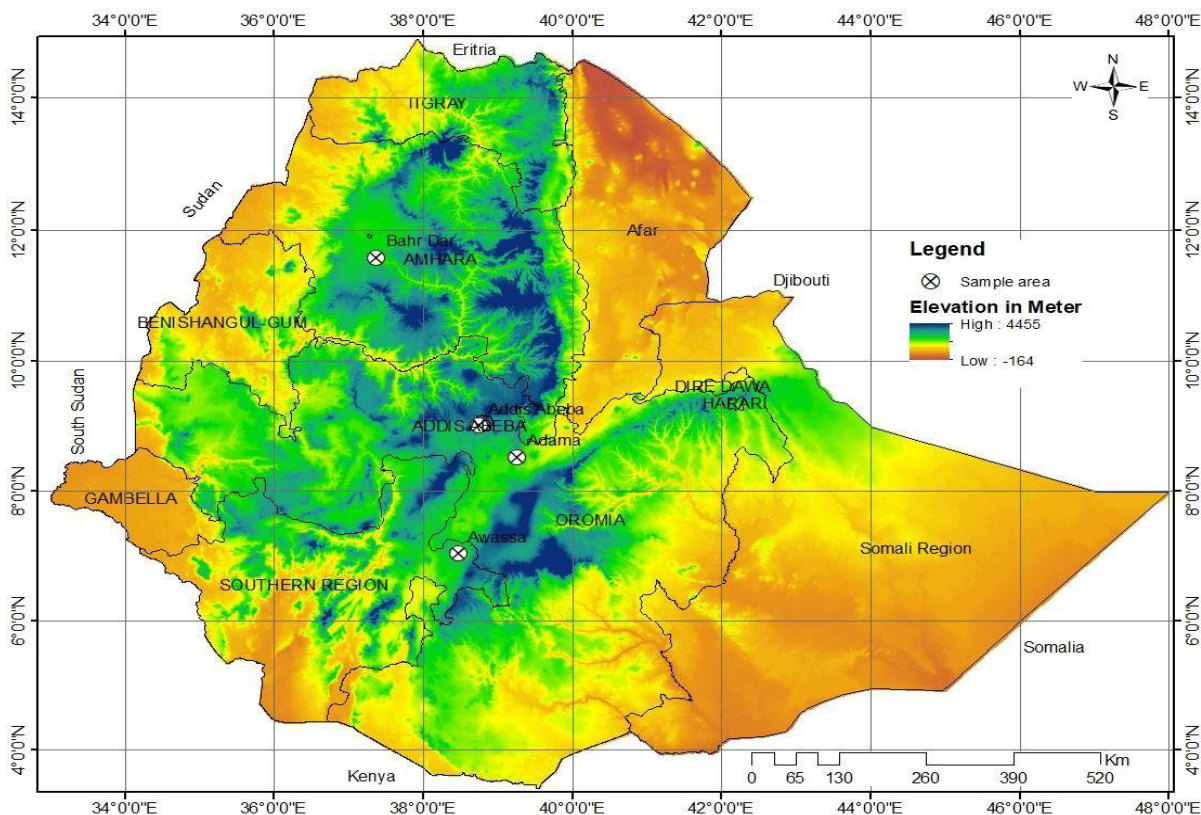
714

715



\*because of old specimen, long shipping time, backlog seq., temp not maintained ...

716 Figure - S3a- Sampling area for Molecular Epidemiology and Diversity of SARS-CoV-2 in Ethiopia



717

718 Table S3b: Sequence proportion of the regional government

| Name of Regional | Proportion of sequencing (%) |
|------------------|------------------------------|
| Addis Ababa      | 80%                          |
| Oromia           | 8%                           |
| Amhara           | 5%                           |
| SNNPR and Sidama | 5%                           |
| Others           | 2%                           |

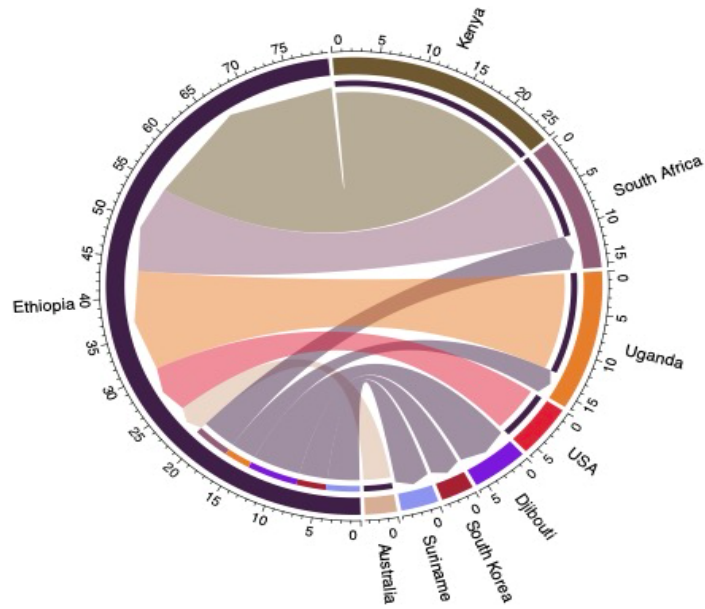
719

720

721

722

723

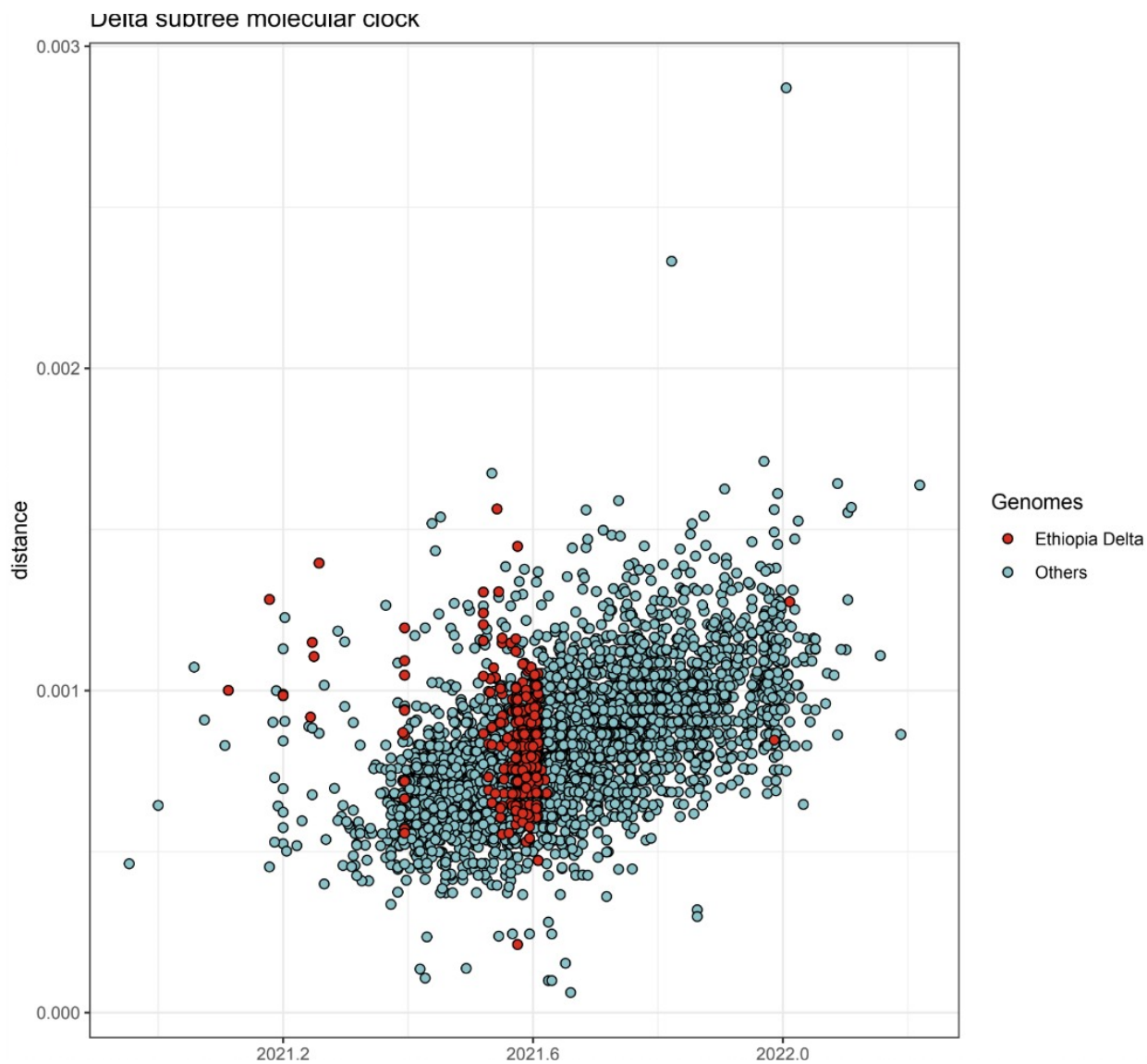


724

725 **Figure S 4**-Major SARS-CoV-2 lineages of detected imported and exported Ethiopia between June  
726 2020 and February 2022

727

728



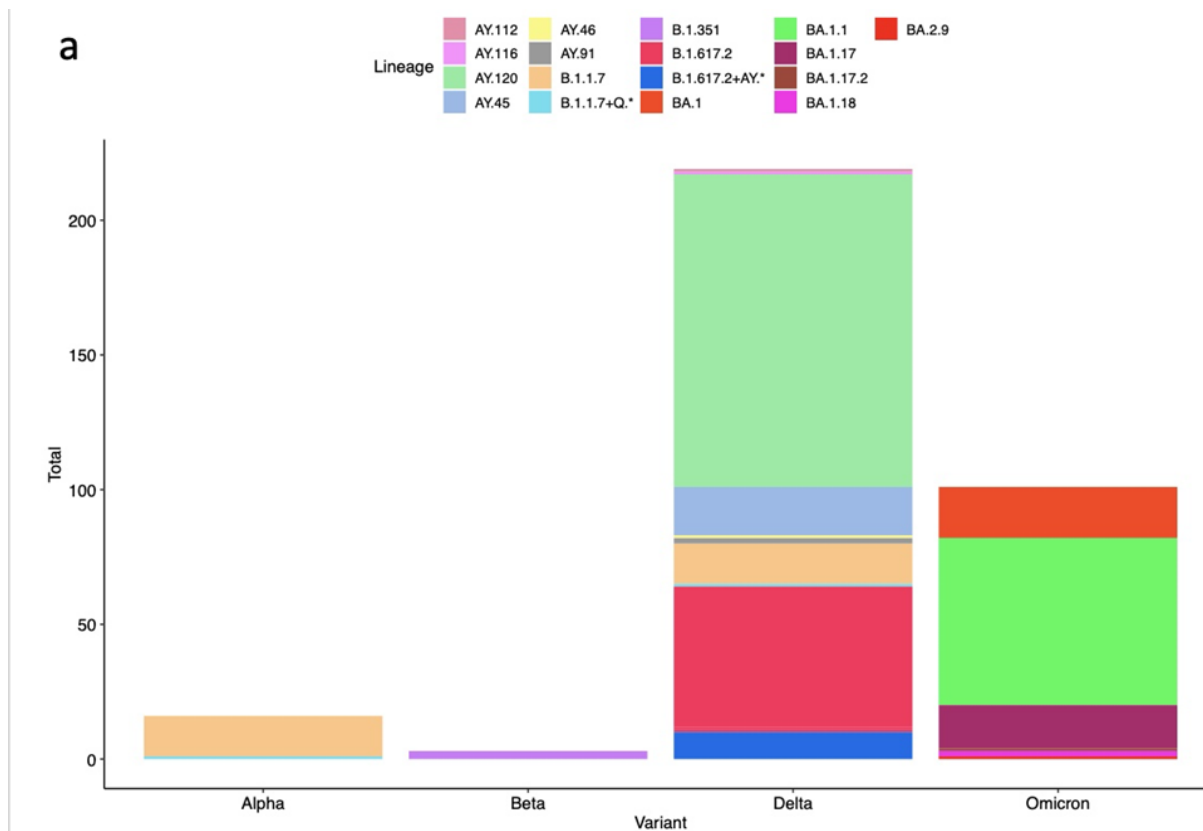
729

730 **Figure S 5** - SARS-CoV-2 Delta VOC sub tree molecular clock, Ethiopia.

731

732

733



734

735

Figure S 5-Major SARS-CoV-2 lineages circulating in Ethiopia between June 2020 and February 2022

736

737

738



### Ethiopia

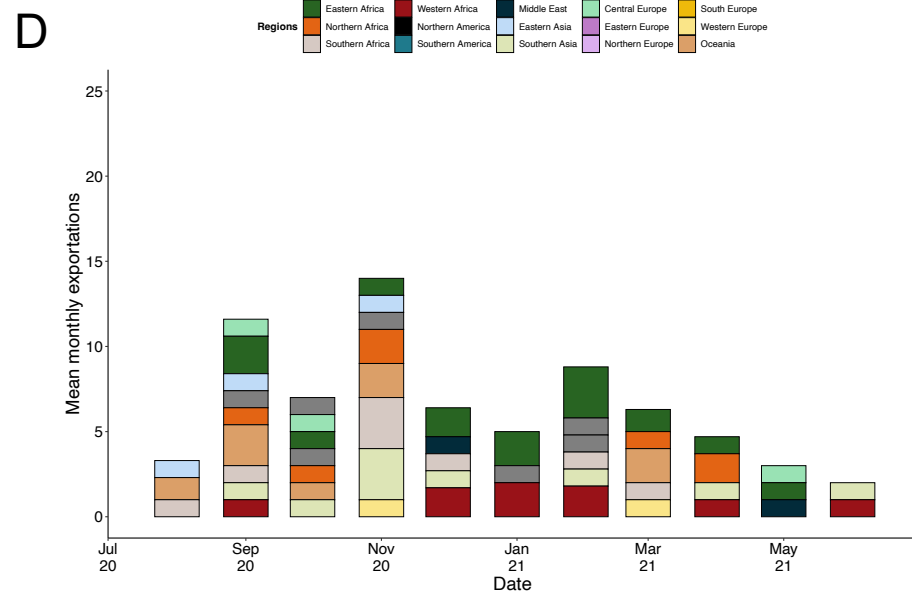
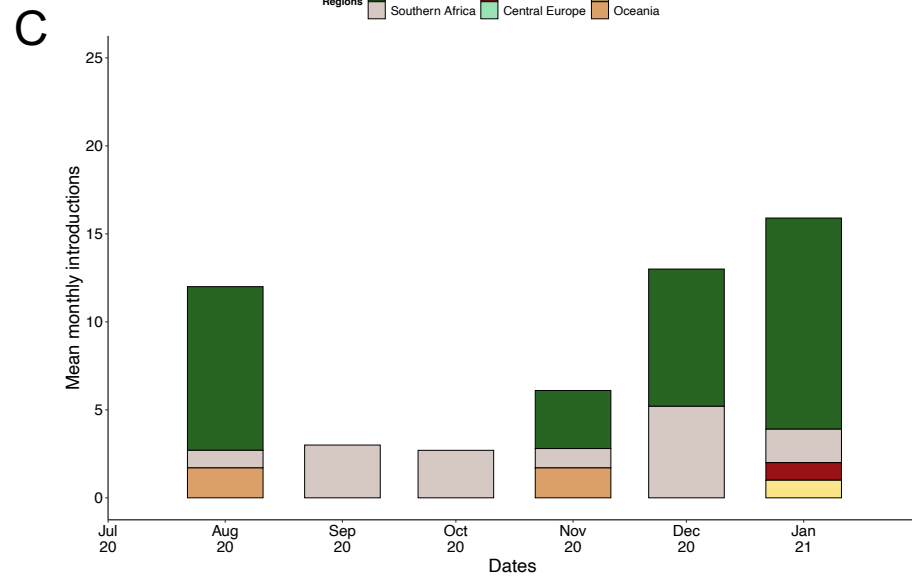
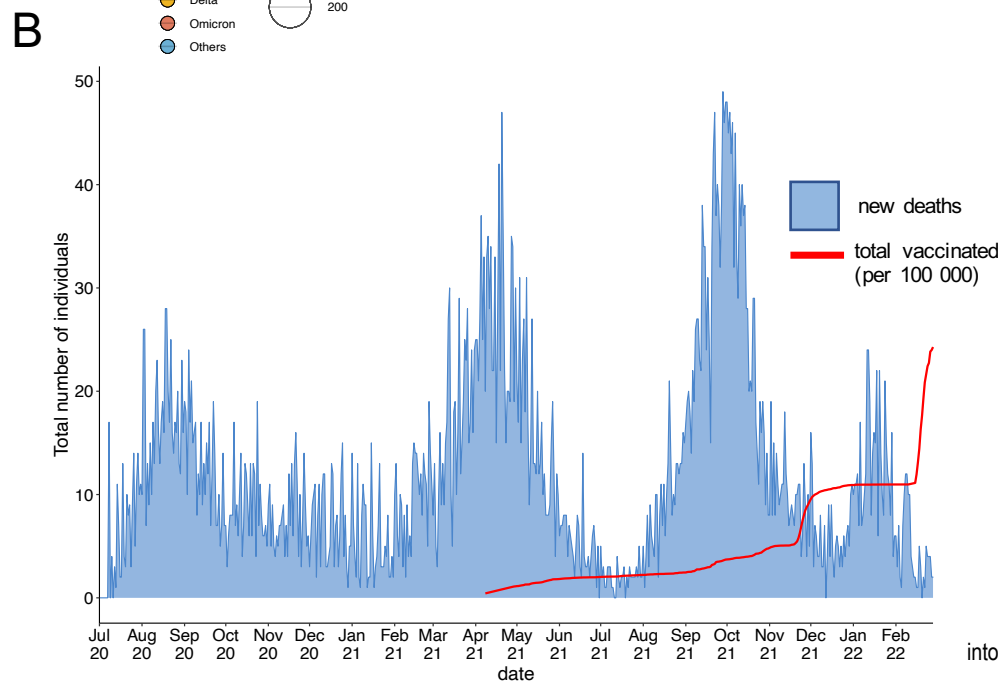
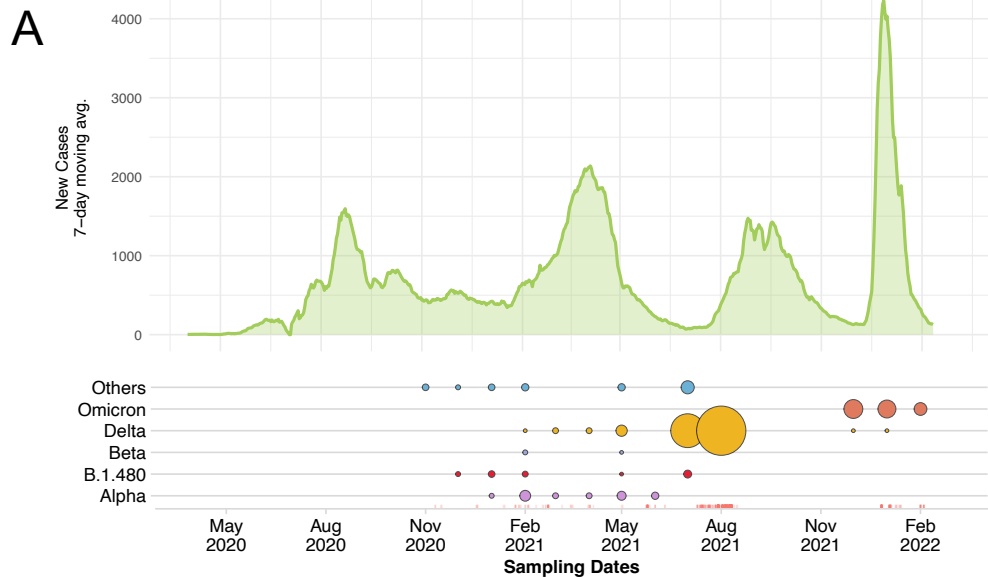


Figure 1: SARS-CoV-2 epidemiology and variant turnover in Ethiopia: (a) 7-day rolling average for the number of new SARS-CoV-2 cases. Size of the dot is indicative of the variant proportion in the population. (b) The proportion of individuals that have received at least one vaccine dose in Ethiopia compared to the number of new deaths that occurred. (c) Summary of the mean number of detected introductions into Ethiopia binned by month (d) Summary of the mean number of detected exportations out of Ethiopia to different regions binned by month.

