

1 ***The development of a guidance document for interprofessional collaborative advance care***
2 ***planning in dementia care***

3 **Running title: Interprofessional collaboration and ACP in palliative dementia care**

4 *Khemai C.*^{1 ¶}, *Janssen D.J.A.*^{1,2 ¶}, *Van Dongen J.*^{3&}, *Biesmans J.M.A.*^{1,4&}, *Bolt S.R.*^{1&}, *Schols*
5 *J.M.G.A.*^{1 ¶}, *Meijers J.M.M.*^{1, 4 ¶*}

6
7 ¹ *Department of Health Services Research, Care and Public Health Research Institute, Living Lab in*
8 *Ageing and Long-term Care, Maastricht University, Maastricht, Duboisdomein 30, 6229 GT, the*
9 *Netherlands.*

10 ² *Department of Research and Education, Ciro, Hornerheide 1, 6085 NM Horn, the Netherlands.*

11 ³ *Research Centre for Community Care, Zuyd University of Applied Sciences, Nieuw Eyckholt 300, 6419*
12 *DJ Heerlen, the Netherlands.*

13 ⁴ *Zuyderland Care, Zuyderland Medical Centre, Dr. H. van der Hoffplein 1, 6162 BG Sittard-Geleen, the*
14 *Netherlands.*

15

16 **Corresponding author*

17 *E-mail: j.meijers@maastrichtuniversity.nl*

18

19

20

21

22

23

24

25 **Abstract**

26 Advance care planning (ACP) is an essential part of palliative dementia care and should embrace a
27 collaborative approach involving persons with dementia, family members and various healthcare
28 professionals (HCPs). This study aimed to develop a guidance document for IPC in ACP in dementia
29 care for HCPs from nursing homes, using a mixed-method design and taking an appreciative inquiry
30 approach comprising semi-structured focus groups and interviews with HCPs. The study participants
31 (N=18) included certified nurses, registered nurses, a quality nurse, nurse specialists, team leaders,
32 physicians specialized in old age medicine, psychologists, and a teacher/researcher (mean age 43.8
33 years; 79% female). The data analysis indicated six elements to include in the guidance document.
34 The first three elements concerned common awareness of collaborative ACP in dementia care, role
35 clarification for various professions, and actively working towards shared goals in collaborative ACP
36 in dementia care. The last three themes focused on the dynamic processes in collaborative ACP in
37 dementia care: interprofessional communication, coordination, monitoring and evaluation. This
38 study provides a guidance document that HCPs could use in practice to identify the elements they
39 can address to improve collaborative ACP in dementia care.

40

41 **Keywords:** *Dementia; Interprofessional collaboration; Advance care planning; Nursing homes*

42

43 **Introduction**

44 Dementia is a neurodegenerative disease with disorders in at least two cognitive domains, which
45 leads to functional impediments to daily life¹. The progressive and incurable character of dementia²
46 asks for timely advance care planning (ACP), which is defined as a process ‘to enable individuals to
47 define goals and preferences for future medical treatment and care, to discuss these goals and
48 preferences with family and healthcare professionals (HCPs), and to record and review these
49 preferences if appropriate’³. Proxy ACP is used for persons with advanced dementia who have lost
50 their decision-making capacity⁴. In proxy ACP, the proxy decision-maker (often a family member) is

51 involved in the conversations and has the ultimate legal responsibility⁴. Timely ACP involving the
52 person with dementia is needed before they lose their decision-making capacity⁵ in order to prepare
53 family members for this challenging task⁶, and ensure that they can make end-of-life decisions in line
54 with the preferences of their relative with dementia⁷.

55
56 ACP is known to decrease burdensome care movements and medical treatments⁸⁻¹⁰, maintain
57 autonomy^{11, 12}, improve overall end-of-life care¹³, and improve the quality of palliative care (PC)¹⁴ for
58 persons with dementia. Despite the importance of initiating ACP at an early stage due to cognitive
59 decline^{15, 16} and preferably when still living at home¹⁷, ACP is rarely initiated among persons with
60 dementia in the home care setting^{17, 18}. As 92% of persons with dementia die in a nursing home
61 (NH)¹⁹, with a median survival rate of two and a half years after the move²⁰, it is necessary to conduct
62 or/and evaluate ACP in NHs ideally prior to²¹, or soon after the move²². Nevertheless, ACP (involving
63 family members) is not enacted for every Dutch resident with dementia directly after the move to
64 the NH^{23, 24}.

65
66 ACP is considered as a shared responsibility of persons with dementia⁵, family members²⁵ and the
67 interprofessioneal team^{26, 27}. For example, physicians^{28, 29}, nurses^{28, 30-32}, psychologists³³, social
68 workers^{28, 34}, and priests^{28, 35}. To date, a few guidances or practical tools on how to conduct ACP
69 conversations in dementia care have been documented³⁶⁻³⁸. However, there is no guidance for IPC in
70 ACP for persons with dementia exists. This study thus aimed to develop such guidance for HCPs, by
71 describing the essential elements for IPC regarding ACP in dementia care.

72

73 **Methods**

74 *Design and setting*

75 This study is part of the larger Desired Dementia Care Towards End of Life (DEDICATED) research
76 project, which aims to improve quality of PC for persons with dementia living at home or in a NH, and

77 during the move from home to the NH³⁹. The current study describes the development of the
78 *DEDICATED collaborative approach for advance care planning in dementia care* guidance document.
79 The overall development process consisted of five steps (Fig 1 and online Supplement I). The present
80 article describes the final step of the development process. A mixed-method design and appreciative
81 inquiry approach were used. The Consolidated criteria for Reporting Qualitative research (COREQ)⁴⁰
82 was followed (Supplement II). Appreciative inquiry comprises four phases: the Discovery phase,
83 Dream phase, Design phase, and Destiny phase⁴¹.
84 First, we undertook the Discovery and Dream phases of the appreciative inquiry. During the
85 interprofessional focus groups and interviews with nurses, physicians, team leaders and
86 psychologists from NHs, we focussed on exploring the current state of and their wishes and needs in
87 collaborative ACP in dementia care (the Discovery phase of the appreciative inquiry approach). Next,
88 we conducted unidisciplinary focus groups and interviews to discuss, elaborate and refine the initial
89 results (the Dream and Design phases of the appreciative inquiry approach). During these
90 unidisciplinary focus groups and interviews, we also clarified how the diverse roles of the HCPs
91 complemented each other in ACP. We asked for further explanations about the identified themes
92 and for possible solutions to challenges in collaborative advance care planning in dementia. Finally,
93 we discussed the elements of the *DEDICATED collaborative approach for advance care planning*
94 guidance document in an interprofessional reflection meeting in which participants provided their
95 feedback on the selected elements (Destiny phase of the appreciative inquiry approach). After
96 development of the guidance document, we performed member checks in which we asked the
97 participants to check for accuracy and whether the information provided resonated with the input
98 they provided⁴².

99

100 **Fig 1. Development process of the guidance document for DEDICATED collaborative advance care**
101 **planning in dementia care.** Abbreviations: IPC = Interprofessional collaboration; ACP = Advance care
102 planning; IP = interprofessional.

103 *Sampling, data collection and data analysis*

104 We used different non-probability purposive and snowballing sampling techniques to recruit
105 participants for Step V⁴³. During every interview and focus group, two female DEDICATED-team
106 members were involved. Detailed information about data collection is provided in Supplement III. All
107 participants provided verbal and written informed consent. The semi-structured interview guide used
108 during the development process was based on literature describing crucial PC elements in dementia
109 care^{44, 45}, aspects of IPC⁴⁶⁻⁵¹, IPC regarding ACP^{8, 52-55}, existing assessment tools and questionnaires
110 about IPC^{56, 57}, and appreciative inquiry phases (Supplement IV). No field notes were made.
111 Information was audio recorded and transcribed in clean verbatim style. C.K. undertook inductive
112 content analysis by identifying meaning units and condensing them from the transcripts, and
113 developing codes, categories and themes⁵⁸. These findings were discussed with J.M.M. and the
114 participants from the interviews and focus groups to ensure the internal reliability of the data⁵⁹. The
115 coding tree is provided in Supplement V. We reached code saturation at the eight transcript (first
116 unidisciplinary focus group) and meaning saturation at the tenth transcript (third unidisciplinary duo-
117 interview). Transcript were not returned to the participants for comments or corrections.

118

119 **Results**

120 Five of the twenty-three candidates declined to participate due to high workload. Eighteen
121 participants contributed to Step V of the development process of the guidance document on
122 collaborative ACP in dementia care: two certified nurses, three registered nurses, one quality nurse,
123 two nurse specialists, three team leaders, three elderly care physicians, three psychologists, and one
124 teacher/researcher (Supplement VI). The participants had a mean age of 43.8 years (mean 42.5
125 years; range 55.0 years) and were predominantly women (79%). Approximately 40% of the
126 participants had at least ten years of work experience in their current profession. Each
127 interprofessional focus group or interview lasted approximately one hour and 11 minutes. The mean
128 interview time for unidisciplinary focus groups or interviews was one hour and 48 minutes. The

129 reflection meeting lasted for two hours and five minutes. The identified themes are depicted in Fig 2.

130 The key quotes of the participants are displayed in Table 1.

131

132 **Fig 2. Identified themes that describe the elements for optimal interprofessional collaboration in**
 133 **advance care planning for persons with dementia living in nursing homes.** The white asterisks refer
 134 to the themes that arose from the interprofessional focus groups and interviews. The black asterisks
 135 refer to the themes that arose from the unidisciplinary focus groups and interviews.

136

137 **Table 1. Key quotes of the participants.**

138

Theme	Key quote(s)
<i>Theme 1. The meaning of advance care planning</i>	<p><i>“Advance care planning is actually what I ask persons with dementia and their families: ‘What should I know from you in order to provide preferred care, not just right now at this moment, but also later on if you are not doing so well”. (Nurse Specialist)</i></p>
<i>Theme 2. The timing and continuity of advance care planning</i>	<p><i>“These advance care planning conversations should be conducted in an earlier phase. Currently, these conversations are conducted when something happens. That is too late”. (Certified Nurse Assistant)</i></p> <p><i>“Advance care planning conversations should be conducted as soon as possible, but should also be customised to the person with dementia and their family members, and be conducted on a regular basis. Otherwise, there is a danger that people think it is just a task that should be checked off and then you are done with it.” (Physician specialized in old age medicine)</i></p>

<p><i>Theme 3. Lacking information from the home care setting</i></p>	<p><i>“Advance care planning information is often not present in patient files and transferred during the NH admission. During the file transfer, information regarding general healthcare domains such as physical, participation, mental wellbeing etc. is often documented, but nothing is mentioned about their personal life, or wishes and needs regarding the end-of-life.” (Psychologist)</i></p>
<p><i>Theme 4. Creating role clarity in advance care planning</i></p>	<p><i>“Advance care planning is a subject in which I am not really involved. I also asked my colleagues about this subject, and this is something in which currently the physician plays a major role, but not psychologists. There is also scarce literature about the role of psychologists in ACP. So, I really think that we need to define the role of a psychologist in ACP.” (Psychologist)</i></p>
<p><i>Theme 5. Having shared visions</i></p>	<p><i>“We actually never talked in our team about our mission in advance care planning”. (Team leader)</i></p>
<p><i>Theme 6. Sharing perspectives & making shared-decisions</i></p>	<p><i>“In the end, it is the physician or/and nurse specialist who officially makes the final decision and it depends on how approachable the physician is about receiving your input and how assertive you are to about making a shared decision. With most physicians, I make shared-decisions; however, in some rare cases, I did encounter authoritative physicians, and then I noticed that as a nurse or psychologist, it becomes difficult to say anything.” (Psychologist)</i></p> <p><i>“It is important to discuss care aspects in an early phase with persons with dementia and talk about the things they want, but in many cases when the situation changes, you still have to conduct conversations at that moment with</i></p>

	<p><i>the client and family member in order to make a choice, which is difficult to secure. Eventually, the physician has the final say.” (Certified Nurse Assistant)</i></p>
<p><i>Theme 7. From advance care planning information to actions</i></p>	<p><i>“The information that is discussed during the meetings (i.e. multidisciplinary team, resident, physician-nurse and psychologist-nurse meetings) is included in the reports, but you do not have the time to verbally explain the reasoning behind the agreements that are made to all colleagues.” (Registered Nurse)</i></p>
<p><i>Theme 8. Having a facilitating organisation</i></p>	<p><i>“I plead for regular short verbal information transfers and resident meetings. In practice, in my opinion, we write everything, but let’s be honest, if you read the reports of 20 residents, you have already forgotten about the first five when you to start with your shift. When someone tells you, what is important and what not to provide suitable care, than it is easy to memorize. But now these important verbal information transfer moments have disappeared from our organization.”</i></p> <p><i>(Nurse Specialist)</i></p>
<p><i>Theme 9. Evaluating the interprofessional collaboration process and end-of-life care</i></p>	<p><i>“There was a case in which a resident had an euthanasia statement, but was declared incompetent. We all agreed not to execute any life-prolonging treatments. However, during an acute situation, the physician on duty still decided otherwise and family was fine with it, but this action was not in accordance with our NH policy. This is a good case to evaluate, because there was a shared-decision, but still a different action was executed: how did that happen and how can we learn from this?” (Team leader)</i></p>

139
140

141

142 ***Theme 1. The meaning of ACP***

143 Most nurses and psychologists indicated that they either had not heard about ACP or did not
144 structurally use the term in daily practice. The majority emphasized that many of their colleagues did
145 not realize that dementia is a life-limiting disease and that PC, with ACP as one of the components, is
146 applicable before the end-of-life. They also mentioned the stigma around PC, because many HCPs,
147 persons with dementia and family members often misconceive PC as a synonym of end-of-life care.
148 Others brought up the existence of different terms for ACP, such as proactive care planning, end-of-
149 life planning or future care planning, which can cause confusion. All participants suggested using one
150 term (ACP), and noted that the term ACP does not only focus on medical aspects. The participants
151 described ACP as a necessary process to improve autonomy and person-centred care directly after
152 NH admission and during the end-of-life phase of persons with dementia in NHs. They underlined the
153 importance of communicating realistic expectations about living in a NH, as most residents with
154 dementia had reached an advanced stage at time of admission. Discussing preferences regarding life-
155 sustaining treatments (e.g. resuscitation, hospitalisation and mechanical ventilation), medical
156 palliative treatments (e.g. morphine and palliative sedation), psychosocial aspects (e.g. coping with
157 life and death), and spiritual wishes (e.g. rituals during end-of-life) were reported as part of ACP.

158

159 ***Theme 2. The timing and continuity of ACP***

160 Participants mentioned the importance of conducting ACP in an early phase, preferably in the home
161 care setting with the person with dementia and their family, due to the increasing cognitive decline
162 of a the person with dementia. The participants said that in most cases ACP did not take place in the
163 home care setting. They usually conducted ACP conversations between two and six weeks after the
164 move. However, they explained that in daily practice these conversations are usually initiated at the
165 sixth week after the moving day and often after common adverse events during dementia care, such
166 as pneumonia. Moreover, ACP conversations in NHs are only conducted with family members,
167 because most persons with dementia were partly or not at all able to participate. Because of lack of

168 timely ACP, the family needs to make acute treatment decisions during common adverse events,
169 which causes distress in family members. According to the participants, ACP conversations should
170 ideally occur prior to the move.

171
172 Participants noted that the focus of ACP should be on the conversations themselves, rather than
173 solely making decisions and documenting end-of-life wishes. ACP conversations should be ongoing
174 conversations, as the needs and wishes of persons with dementia and their family change during the
175 care trajectory. Participants also emphasized the importance of identifying the coping styles used by
176 persons with dementia and their families, because this coping style forms the basis for conducting
177 customized ACP conversations, adjusted to their willingness, acceptance, expectations, wishes and
178 needs.

179
180

181 ***Theme 3. Lacking information from the home care setting***

182 The participants unambiguously said that ACP information is often lacking in file transfer during the
183 move, which means that the wishes and needs of persons with dementia remain unknown, as
184 most persons with dementia suffer from a limited ability to express their preferences when they
185 arrive at the NH. Receiving ACP information from the home care setting was valued, because it
186 served as a basis from which to conduct follow-up ACP conversations with persons with dementia
187 and family members. Transferring ACP information also prevents family members having to repeat
188 information and make unprepared end-of-life decisions in acute situations. Many participants
189 explained that either the client counsellor (HCP who facilitates the NH transition) or designated nurse
190 assistant from the NH could also play a role in retrieving information about end-of-life wishes prior to
191 the move.

192
193

194 ***Theme 4. Creating role clarity in ACP***

195 Collaborating with other disciplines to integrate diverse perspectives was perceived as valuable,
196 however, most participants explained that that ACP in current practice is mostly limited to nurse
197 specialists, physicians specialized in old age medicine, and spiritual caregivers. All participants
198 mentioned that expertise from other HCPs in NHs, such as client counsellors, spiritual caregivers,
199 activity therapists, music therapists, and other allied healthcare professionals, is necessary. The
200 participants mainly brought up the issue of the existing lack of role clarity within ACP, and the lack of
201 proactively consulting each other.

202
203 General as well as discipline-specific roles can be distinguished regarding the role division among
204 nurses, psychologists, physicians, and team leaders. A general role (e.g. a role that all HCPs execute)
205 includes being the HCP who conducts the ACP conversation. Most important nurse-specific roles
206 include acting as first contact person or trust person, getting to know the person (i.e. making life
207 books) and acting as a central coordinator by signalling diverse HCPs to initiate or play a role in ACP.
208 Core tasks mentioned by psychologists included providing psycho-education about ACP and support
209 to family members and communicating with persons with dementia and family members about
210 psychosocial needs and wishes regarding ACP. Physicians specialized in old age medicine and nurse
211 specialists are responsible for the medical care of the client, making decisions about treatments,
212 making referrals to other HCPs, and explaining the ACP policies. Compared to all the above HCPs,
213 team leaders particularly ensure optimal conditions for IPC; monitor IPC; mediate between nurses,
214 and physicians and allied healthcare professionals; coach the care team; and coordinate IPC at a
215 department or team level with respect to ACP.

216
217 The participants stated that regardless of the willingness or preparedness of the persons with
218 dementia and/or their family, HCPs should at least introduce ACP and provide information about its
219 importance. All participants revealed a lack of structured collaborative ACP within their care

220 organisations and wished for a clear overview in which all HCPs are assigned a position and task.
221 Most participants agreed with the procedure in which the nurse assistant who acts as first contact
222 person conducts the first ACP conversation in which they for example, introduce the subject of ACP,
223 identifies the proxy decision-maker and discusses the expectations of the persons with dementia and
224 their family. This designated nurse assistant should subsequently conduct the second ACP
225 conversation together with the elderly care physician and discuss medical-related topics such as
226 resuscitation. Afterwards, other HCPs such as psychologists and spiritual caregivers could carry out
227 ACP conversations, and all involved HCPs should keep each other informed about the ACP
228 conversations conducted, and any agreements made.

229

230 ***Theme 5. Having shared visions***

231 From all the participants, team leaders expressed the need to develop a team vision and mission in
232 order to make sure everyone is on the same page and works in a similar way towards a shared
233 outcome in ACP. Team leaders explained that they may not be directly involved in cases, but they
234 have a important role in standing strong for the team vision and mission, and have a clear role in
235 supporting HCPs in providing PC. During the focus groups and interviews, the participants developed
236 a vision and mission, core values, objectives and specific action points to work towards a shared
237 outcome for IPC in ACP (Supplement VII). The participants explained that according to their team
238 vision for ACP in dementia care, quality of life and the end-of-life of persons with dementia should be
239 treated as having equal importance. They noted their mission to achieve the shared involvement of
240 persons with dementia, family members and diverse HCPs for the optimal wellbeing and comfort of
241 the person with dementia. One of the most important team objectives was to involve persons with
242 dementia when possible, and conduct formal and informal ACP conversations with persons with
243 dementia and their family members on a regular basis. All participants reported that a major team
244 action to integrate ACP in daily practice involves defining ACP as a standard agenda point for family
245 meetings, team meetings and one-on-one meetings among HCPs.

246

247 ***Theme 6. Sharing perspectives & making shared-decisions***

248 Two team leaders, a registered nurse, a quality nurse and a psychologist occasionally noticed the
249 presence of ‘physician dominance’ with respect to sharing perspectives, which limits the opportunity
250 of other HCPs to provide input. Hierarchy was not the only impeding factor, however, as providing
251 input also relies on (mostly nurses) having a proactive and assertive attitude when presenting your
252 voice, and clearly describing situations from the resident’s perspective. Moreover, all team leaders,
253 nurse specialists and a registered nurse also mentioned the lack of competencies regarding PC and
254 ACP held by nurses as regards providing PC for persons with dementia. Correspondingly, physicians
255 and nurse specialists agreed that some nurses indeed have difficulties reporting objectively and tell
256 the story from the resident’s perspective, as they usually offer their own perspective. They felt that
257 some nurses did not feel confident enough to share their perspective, recommendations or advice,
258 and emphasized the importance of including the perspectives of nurses, as they are the closest and
259 core HCPs, and able to actually know the person with dementia. The physicians and nurse specialists
260 explained that they often proactively ask for a nurse’s input so as to hear their voice. Team leaders
261 also explained that in situations where consensus becomes difficult to achieve or there is conflict
262 among the collaborators, they fulfil the role of an independent referee who leads the discussion and
263 aims to seek the best suitable solution.

264

265 All participants agreed that reaching consensus starts with providing information, sharing, and
266 understanding diverse perspectives. A transparent atmosphere in which all HCPs have an equal say
267 and a PC culture exists is needed to enable this. The majority pointed out the importance of
268 explaining the consequences of an end-of-life decision to family members. For example, most family
269 members initially did not understand the HCP’s decision to withhold artificial nutrition and hydration
270 during the dying phase. However, when the HCPs explained that doing so would prolong the dying
271 phase and increase the risk of choking and pneumonia, they understood the process of dying better,

272 felt relieved and were able to make appropriate informed shared decisions. Building and cherishing a
273 relationship with the family members is essential in dementia care, because although the
274 participants always wanted to involve the person with dementia in conversations about end-of-life
275 care, this was not always possible due to their cognitive decline.

276

277 ***Theme 7. From ACP information to actions***

278 All participants discerned the existence of two worlds with respect to transferring information: 1) the
279 participating HCPs at the meeting, and 2) the remaining members of the care team (mostly
280 registered nurses, and certified and uncertified nurses), who need to understand how these
281 agreements were made. In practice, regular formal meetings in which ACP information could be
282 shared include interprofessional team meetings, family meetings, resident meetings, physician-nurse
283 meetings and psychologist-nurse meetings. Resident meetings had different aims and characteristics,
284 all residents were discussed during these meetings from a practical daily life perspective, and most
285 nurses were allowed to participate. In the other meetings, a designated nursing assistant or nurse
286 often participated and represented the group of nurses. Most participants then confirmed that they
287 had short communication lines and explained that they were able to approach each other easily. For
288 example, when participants wish to have a ‘quick chat’ or need ‘quick advice or a decision to be
289 made’, they referred to corridor communications or making phone calls. Some participants suggested
290 that every HCP should take the responsibility to transfer information to their colleagues through
291 verbal communication and documentation. HCPs from one of the care organisations expressed their
292 dissatisfaction at having two different systems: a medical care plan (only accessible to allied
293 healthcare professionals and physicians) and a holistic care plan (only accessible to the nurses).
294 These two systems impeded collaboration, especially with respect to the follow-up of advice, as the
295 nurses were not able to understand the process of decision-making.

296

297

298 ***Theme 8. Having a facilitating organisation***

299 The participants distinguished three types of support: team, department and organisation support.
300 Team support involved specialized HCPs such as a PC consultant (HCP specialized in PC) who is able
301 to hold in-depth ACP conversations and provide practical advice on ACP to other HCPs. Participants
302 from one care organisation mentioned that department support could include enabling suitable
303 digital systems, and improving verbal information transfer. On an organisational level, all participants
304 noted that their care organisations consisted of steering groups of diverse HCPs, policy makers or
305 managers, who focus on securing ACP in practice, improving ACP competencies (e.g. arranging e-
306 learning modules about ACP), and supporting the ACP vision.

307

308 ***Theme 9. Evaluating the IPC process and end-of-life care***

309 Most of the structured evaluation moments referred to decisions taken, tasks performed and care
310 outcomes such as overall end-of-life care for persons with dementia, the satisfaction of family
311 members, and the extent to which HCPs acted according to NH policies. In practice, ad hoc
312 evaluation moments were organised and interprofessional team meetings were utilized to evaluate
313 cases. One team leader explained that their organisation additionally organised quarterly reflection
314 sessions to reflect on structural collaboration and discuss aspects such as task divisions. The
315 participants found it important to ask family members whether they were satisfied with the care
316 given to the person with dementia, and their involvement and role in ACP during regular family
317 meetings. They explained that they conducted family meetings with family members six weeks after
318 the moving day of the person with dementia, and afterwards semi-annually. Some participants even
319 asked family members to participate in interprofessional team meetings for interim evaluations.

320

321 **Reflection meeting**

322 On the basis of the themes above, we discussed a draft version of the guidance document during the
323 reflection meeting (Supplement VIII). We formulated six items based on participant feedback and

324 rephrased these items into six main questions (Fig 3). We show the relationship between the themes
325 of Step Five and the main questions in Supplement IX. Fig 3 provides a summary of the guidance
326 document. The definitive guidance document is provided in Supplement X.

327

328 **Fig 3. Infographic *DEDICATED-collaborative approach for advance care planning in dementia care***

329

330 **Discussion**

331 Our study showed that nine themes are essential for optimal IPC in ACP for persons with dementia
332 living in NHs. These nine themes resulted in the six elements of the guidance document for IPC in
333 ACP for persons with dementia in NHs. Many studies have emphasized the lack of role clarity among
334 HCPs^{9,60}. This is the first study to outline the similar and complementary roles of diverse HCPs in ACP
335 for persons with dementia. Our finding that nurses should initiate ACP conversations with persons
336 with dementia and their family concurs with Jones et al. (2016)⁶¹ and Cotter et al. (2018)⁶². This
337 initiating role is best suited to nurses because they often have the opportunity to build a relationship
338 with persons with dementia and their family⁶³. This relationship facilitates starting ACP conversations
339 in dementia care³⁶ and the PC needs of persons with dementia to be addressed⁶⁴. Moreover, in
340 accordance with Kim et al. (2021), nurses act as care coordinators as they communicate closely with
341 other HCPs to monitor ACP in dementia care⁶⁵. In Dutch NHs, team leaders are seen as following a
342 distinct profession and part of the care team⁶⁶. We demonstrated that team leaders have a leading
343 role in guiding the team vision. Research has shown that creating clarity about the team vision is
344 significantly associated with positive team performance⁶⁷. This could also facilitate role clarification,
345 because developing goals related to the team vision enables each team member to understand the
346 direction in which to move⁶⁸ and to clarify their role in this journey⁶⁷.

347

348 An increased common awareness is required among HCPs that dementia is a life-limiting disease and
349 that the integration of a PC approach is necessary in dementia care⁶⁹. We suggest that the awareness

350 of ACP is related to applying a PC approach in dementia care. This is supported by the findings of
351 Beck et al. (2015), who argue it is necessary to apply a PC approach in order to realize the initiation of
352 ACP in dementia care, because they are connected to each other⁷⁰. The literature also indicates
353 improving knowledge of HCPs about ACP as a facilitator for conducting ACP in dementia care⁷¹. In
354 contrast with Rietze et al. (2015)⁷², our study demonstrated that physicians actively searched for
355 ways to involve nurses in decision-making processes about ACP. This is supported by Kastbom et al.
356 (2019), a study that underlined integrating diverse views in order to receive input and support from
357 each other⁷³. Furthermore, as confirmed by van der Steen et al. (2021)⁷⁴, our study showed that
358 physicians wish nurses to have a proactive attitude, be competent and report objectively. Most
359 studies about IPC targeted nurse-physician collaborations⁷⁵⁻⁷⁷. In our study, we additionally showed
360 that psychologists share these three collaboration needs. We also discovered that interpersonal
361 aspects such as the confidence⁷⁸ and power differences⁷⁵ described by other studies could also affect
362 IPC in ACP. We did not discuss other factors of influence, however, such as cultural beliefs⁷⁹ or
363 confusion about legal matters⁷¹.

364

365 **Strengths and limitations**

366 This is the first study outlining general and complementary roles of four professions in collaborative
367 ACP in dementia care. We performed investigator triangulation, whereby different researchers and
368 various HCPs provided their input and thereby increased the validity of our analysis⁸⁰. Applying
369 appreciative inquiry also allowed participants to co-create the guidance document in a structured
370 manner⁸¹. The generalisability of our results is limited, however, because we used a non-probability
371 sampling method⁸⁰ and conducted the research in Dutch NHs. Dutch NHs employ their own staff
372 from various professions, and thus have an intrinsically interprofessional character⁸². Moreover, we
373 did not include other HCPs involved in ACP in dementia care such as NH managers, chaplains and
374 social workers. Nevertheless, this study provides insight into the diverse roles of four different
375 professions in ACP for persons with dementia resulting in a practical guidance document for HCPs.

376

377 **Conclusion**

378 Our findings show that the meaning of ACP, timing and continuity of ACP, transferring ACP
379 information prior to the move, creating role clarity in ACP, having a shared vision, sharing
380 perspectives and making shared-decisions, going from ACP information to actions, having a
381 facilitating organisation, and evaluating IPC process and end-of-life care are crucial elements in an
382 interprofessional collaborative approach in dementia care. A major implication of this study is that
383 there is a need to increase the awareness and importance of PC and ACP, build a shared vision and
384 clarify the general and complementary roles of the diverse professions. This study also provided a
385 general and practical description of how to conduct ACP conversations in a collaborative way. We
386 indicated that IPC regarding ACP does not solely concern the NH itself, but also extends to the home
387 care setting. We thus highlighted the need for the optimal information transfer of end-of-life wishes
388 during the move for persons with dementia. Future research should explore the interplay between
389 HCPs from the home care and NH settings concerning ACP in dementia.

390

391 **Funding**

392 This study was supported by the Netherlands Organisation for Health Research and Development
393 (Grant agreement no. 844001405), which had no role in the study design, analysis and
394 documentation of the results.

395

396

397 **Conflict of interest**

398 The authors declare that they have no known competing financial interests or personal relationships
399 that could have appeared to influence the work reported in this paper.

400

401

402 **Disclosure statement**

403 The authors report there are not competing interests to declare.

404

405

406 **References**

407

- 408 1. Black DW and Grant JE. DSM-5 guidebook : the essential companion to the Diagnostic and
409 statistical manual of mental disorders, fifth edition. Fifth edition. ed. [Washington, DC]: American
410 Psychiatric Publishing, 2014.
- 411 2. Karlawish J, Jack CR, Jr., Rocca WA, et al. Alzheimer's disease: The next frontier-Special
412 Report 2017. *Alzheimer's & dementia : the journal of the Alzheimer's Association* 2017; 13: 374-380.
413 2017/03/21. DOI: 10.1016/j.jalz.2017.02.006.
- 414 3. Rietjens JAC, Sudore RL, Connolly M, et al. Definition and recommendations for advance care
415 planning: an international consensus supported by the European Association for Palliative Care.
416 *Lancet Oncol* 2017; 18: e543-e551. 2017/09/09. DOI: 10.1016/s1470-2045(17)30582-x.
- 417 4. Jox RJ. Lost decisional capacity – lost chance of Advance Care Planning? *Bioethics Forum*
418 2016. DOI: 10.24894/BF.2016.09028.
- 419 5. Piers R, Albers G, Gilissen J, et al. Advance care planning in dementia: recommendations for
420 healthcare professionals. *BMC palliative care* 2018; 17: 88. 2018/06/24. DOI: 10.1186/s12904-018-
421 0332-2.
- 422 6. Livingston G, Leavey G, Manela M, et al. Making decisions for people with dementia who lack
423 capacity: qualitative study of family carers in UK. *BMJ (Clinical research ed)* 2010; 341: c4184.
424 2010/08/20. DOI: 10.1136/bmj.c4184.
- 425 7. Harrison Dening K, King M, Jones L, et al. Advance Care Planning in Dementia: Do Family
426 Carers Know the Treatment Preferences of People with Early Dementia? *PloS one* 2016; 11:
427 e0159056. 2016/07/15. DOI: 10.1371/journal.pone.0159056.
- 428 8. Ingravallo F, Mignani V, Mariani E, et al. Discussing advance care planning: insights from older
429 people living in nursing homes and from family members. *International psychogeriatrics* 2017; 30: 1-
430 11. DOI: 10.1017/S1041610217001983.
- 431 9. Dael A, Bunn F, Lynch J, et al. Advance care planning for people living with dementia: An
432 umbrella review of effectiveness and experiences. *International journal of nursing studies* 2020; 107:
433 103576. DOI: 10.1016/j.ijnurstu.2020.103576.
- 434 10. Wils M, Verbakel J and Lisaerde J. Improving advance care planning in patients with
435 dementia: the effect of training nurses to engage in ACP-related conversations. *Journal of Clinical*
436 *Gerontology and Geriatrics* 2017; 8. DOI: 10.24816/jcgg.2017.v8i1.03.
- 437 11. Sævareid TJL, Lillemoen L, Thoresen L, et al. Implementing advance care planning in nursing
438 homes – study protocol of a cluster-randomized clinical trial. *BMC geriatrics* 2018; 18: 180. DOI:
439 10.1186/s12877-018-0869-1.
- 440 12. Hall A, Rowland C and Grande G. How should end-of-life advance care planning discussions
441 be conducted according to patients and informal carers? A qualitative review of reviews. *Journal of*
442 *pain and symptom management* 2019; 58. DOI: 10.1016/j.jpainsymman.2019.04.013.
- 443 13. Dixon J, Karagiannidou M and Knapp M. The Effectiveness of Advance Care Planning in
444 Improving End-of-Life Outcomes for People With Dementia and Their Carers: A Systematic Review
445 and Critical Discussion. *Journal of pain and symptom management* 2018; 55: 132-150.e131.
446 2017/08/23. DOI: 10.1016/j.jpainsymman.2017.04.009.
- 447 14. Dening KH, Jones L and Sampson EL. Advance care planning for people with dementia: a
448 review. *International psychogeriatrics* 2011; 23: 1535-1551. 2011/08/27. DOI:
449 10.1017/s1041610211001608.

- 450 15. Robinson L, Dickinson C, Rousseau N, et al. A systematic review of the effectiveness of
451 advance care planning interventions for people with cognitive impairment and dementia. *Age and*
452 *ageing* 2012; 41: 263-269. 2011/12/14. DOI: 10.1093/ageing/afr148.
- 453 16. Vandervoort, Houttekier, Stichele V, et al. Quality of dying in nursing home residents dying
454 with dementia: does advanced care planning matter? A nationwide postmortem study. *PloS one*
455 2014; 9: e91130. 2014/03/13. DOI: 10.1371/journal.pone.0091130.
- 456 17. Givens JL, Sudore RL, Marshall GA, et al. Advance Care Planning in Community-Dwelling
457 Patients With Dementia. *Journal of pain and symptom management* 2018; 55: 1105-1112.
458 2017/12/17. DOI: 10.1016/j.jpainsymman.2017.12.473.
- 459 18. Evans N, Pasman HR, Donker GA, et al. End-of-life care in general practice: A cross-sectional,
460 retrospective survey of 'cancer', 'organ failure' and 'old-age/dementia' patients. *Palliat Med* 2014;
461 28: 965-975. 2014/03/20. DOI: 10.1177/0269216314526271.
- 462 19. Houttekier D, Cohen J, Bilsen J, et al. Place of death of older persons with dementia. A study
463 in five European countries. *Journal of the American Geriatrics Society* 2010; 58: 751-756. 2010/04/20.
464 DOI: 10.1111/j.1532-5415.2010.02771.x.
- 465 20. Joling KJ, Janssen O, Francke AL, et al. Time from diagnosis to institutionalization and death in
466 people with dementia. *Alzheimer's & dementia : the journal of the Alzheimer's Association* 2020; 16:
467 662-671. 2020/02/20. DOI: 10.1002/alz.12063.
- 468 21. van der Steen JT, van Soest-Poortvliet MC, Hallie-Heierman M, et al. Factors associated with
469 initiation of advance care planning in dementia: a systematic review. *Journal of Alzheimer's disease : JAD* 2014;
470 40: 743-757. 2014/02/18. DOI: 10.3233/jad-131967.
- 471 22. Hendriks SA, Smalbrugge M, Deliëns L, et al. End-of-life treatment decisions in nursing home
472 residents dying with dementia in the Netherlands. *International journal of geriatric psychiatry* 2017;
473 32: e43-e49. 2016/12/30. DOI: 10.1002/gps.4650.
- 474 23. Pasman HR, Onwuteaka-Philipsen BD, Ooms ME, et al. Forgoing artificial nutrition and
475 hydration in nursing home patients with dementia: patients, decision making, and participants.
476 *Alzheimer disease and associated disorders* 2004; 18: 154-162. 2004/10/21. DOI:
477 10.1097/01.wad.0000137522.69111.56.
- 478 24. Pasman HR, The A-M, Onwuteaka-Philipsen B, et al. Participants in the decision-making on
479 artificial nutrition and hydration to demented nursing home patients: A qualitative study. *Journal of*
480 *aging studies* 2004. DOI: 10.1016/j.jaging.2004.03.003.
- 481 25. Lemos Dekker N and Bolt SR. Relating to the end of life through advance care planning:
482 Expectations and experiences of people with dementia and their family caregivers. *Dementia*
483 *(London, England)* 2022: 14713012211066370. 2022/01/04. DOI: 10.1177/14713012211066370.
- 484 26. Kuusisto A, Santavirta J, Saranto K, et al. Healthcare professionals' perceptions of advance
485 care planning in palliative care unit: a qualitative descriptive study. *Journal of clinical nursing* 2021;
486 30: 633-644. 2020/12/05. DOI: 10.1111/jocn.15578.
- 487 27. Kwak J, Jamal A, Jones B, et al. An Interprofessional Approach to Advance Care Planning. *The*
488 *American journal of hospice & palliative care* 2021: 10499091211019316. 2021/06/08. DOI:
489 10.1177/10499091211019316.
- 490 28. Nedjat-Haiem FR, Carrion IV, Gonzalez K, et al. Exploring Health Care Providers' Views About
491 Initiating End-of-Life Care Communication. *American Journal of Hospice and Palliative Medicine®*
492 2016; 34: 308-317. DOI: 10.1177/1049909115627773.
- 493 29. Martin DK, Emanuel LL and Singer PA. Planning for the end of life. *Lancet (London, England)*
494 2000; 356: 1672-1676. 2000/11/23. DOI: 10.1016/s0140-6736(00)03168-8.
- 495 30. Reinke LF, Shannon SE, Engelberg RA, et al. Supporting hope and prognostic information:
496 nurses' perspectives on their role when patients have life-limiting prognoses. *Journal of pain and*
497 *symptom management* 2010; 39: 982-992. DOI: 10.1016/j.jpainsymman.2009.11.315.
- 498 31. Ke LS, Huang X, O'Connor M, et al. Nurses' views regarding implementing advance care
499 planning for older people: a systematic review and synthesis of qualitative studies. *Journal of clinical*
500 *nursing* 2015; 24: 2057-2073. 2015/05/06. DOI: 10.1111/jocn.12853.

- 501 32. Shepherd J, Waller A, Sanson-Fisher R, et al. Knowledge of, and participation in, advance care
502 planning: A cross-sectional study of acute and critical care nurses' perceptions. *International journal*
503 *of nursing studies* 2018; 86: 74-81. 2018/07/04. DOI: 10.1016/j.ijnurstu.2018.06.005.
- 504 33. Seifart C, Koch M, Leppin N, et al. Collaborative advance care planning in advanced cancer
505 patients: col-ACP –study – study protocol of a randomised controlled trial. *BMC palliative care* 2020;
506 19: 134. DOI: 10.1186/s12904-020-00629-7.
- 507 34. Donnelly S, Begley E and O'Brien M. How are people with dementia involved in care-planning
508 and decision-making? An Irish social work perspective. *Dementia (London, England)* 2019; 18: 2985-
509 3003. 2018/03/17. DOI: 10.1177/1471301218763180.
- 510 35. Koper, Pasman, Schweitzer, et al. Spiritual care at the end of life in the primary care setting:
511 experiences from spiritual caregivers - a mixed methods study. *BMC palliative care* 2019; 18: 98.
512 2019/11/11. DOI: 10.1186/s12904-019-0484-8.
- 513 36. Poppe M, Burleigh S and Banerjee S. Qualitative evaluation of advanced care planning in
514 early dementia (ACP-ED). *PloS one* 2013; 8: e60412. 2013/05/01. DOI:
515 10.1371/journal.pone.0060412.
- 516 37. Ampe S, Sevenants A, Smets T, et al. Advance care planning for nursing home residents with
517 dementia: Influence of 'we DECide' on policy and practice. *Patient education and counseling* 2017;
518 100: 139-146. DOI: <https://doi.org/10.1016/j.pec.2016.08.010>.
- 519 38. Volandes A, Paasche-Orlow M, Barry M, et al. Video decision support tool for advance care
520 planning in dementia: Randomised controlled trial. *BMJ (Clinical research ed)* 2009; 338: b2159. DOI:
521 10.1136/bmj.b2159.
- 522 39. AWO Tiliaal-tc. DEDICATED: Desired Dementia Care towards End of Life
523 <https://awo.mumc.maastrichtuniversity.nl/dedicated-desired-dementia-care-towards-end-life> (2017,
524 2021).
- 525 40. Tong A, Sainsbury P and Craig J. Consolidated criteria for reporting qualitative research
526 (COREQ): a 32-item checklist for interviews and focus groups. *International Journal for Quality in*
527 *Health Care* 2007; 19: 349-357. DOI: 10.1093/intqhc/mzm042.
- 528 41. Crick D and Crick J. An appreciative inquiry into the first export order. *Qualitative Market*
529 *Research: An International Journal* 2016; 19: 84-100. DOI: 10.1108/QMR-01-2015-0001.
- 530 42. Birt L, Scott S, Cavers D, et al. Member Checking: A Tool to Enhance Trustworthiness or
531 Merely a Nod to Validation? *Qual Health Res* 2016; 26: 1802-1811. 2016/06/25. DOI:
532 10.1177/1049732316654870.
- 533 43. Taherdoost H. Sampling Methods in Research Methodology; How to Choose a Sampling
534 Technique for Research. In: 2016.
- 535 44. Falzon Aquilina F and Agius M. Palliative Care in Dementia. *Psychiatria Danubina* 2015; 27:
536 506-511.
- 537 45. Steen vd, Radbruch, Hertogh, et al. White paper defining optimal palliative care in older
538 people with dementia: a Delphi study and recommendations from the European Association for
539 Palliative Care. *Palliat Med* 2014; 28: 197-209. 2013/07/06. DOI: 10.1177/0269216313493685.
- 540 46. McCuen T and Pober E. Process and structure: Performance impacts on collaborative
541 interdisciplinary team experiences. 2016; 21: 177-187.
- 542 47. Engel M, Ark A, Tamerus R, et al. Quality of collaboration and information handovers in
543 palliative care: a survey study on the perspectives of nurses in the Southwest Region of the
544 Netherlands. *The European Journal of Public Health* 2020. DOI: 10.1093/eurpub/ckaa046.
- 545 48. McDonald C and McCallin A. IPC in palliative nursing: what is the patient-family role?
546 *International journal of palliative nursing* 2010; 16: 286-289. 2010/10/12. DOI:
547 10.12968/ijpn.2010.16.6.48832.
- 548 49. Beck CK, Cody M and Zhang M. A multidisciplinary team approach to managing Alzheimer's
549 disease. *Pharmacotherapy* 1998; 18: 33-42; discussion 79-82.
- 550 50. Dahlke S, Meherali S, Chambers T, et al. The Care of Older Adults Experiencing Cognitive
551 Challenges: How Interprofessional Teams Collaborate. *Canadian Journal on Aging / La Revue*
552 *canadienne du vieillissement* 2017; 36: 485-500. 2017/09/18. DOI: 10.1017/S0714980817000368.

- 553 51. Bronstein LR. A model for interdisciplinary collaboration. *Social work* 2003; 48: 297-306.
554 2003/08/06. DOI: 10.1093/sw/48.3.297.
- 555 52. Connor S, Egan K, Kwilosz D, et al. Interdisciplinary Approaches to Assisting with End-of-life
556 Care and Decision Making. *American Behavioral Scientist - AMER BEHAV SCI* 2002; 46: 340-356. DOI:
557 10.1177/000276402237768.
- 558 53. Doane G, Stajduhar K, Causton E, et al. End-of-life Care and Interprofessional
559 Communication: Not Simply a Matter of "More". *Health and Interprofessional Practice* 2012; 11:
560 eP1028. DOI: 10.7772/2159-1253.1028.
- 561 54. Goossens B, Sevenants A, Declercq A, et al. *Shared decision-making in advance care planning*
562 *for persons with dementia in nursing homes: a cross-sectional study*. 2019.
- 563 55. Mathew R, Davies N, Manthorpe J, et al. Making decisions at the end of life when caring for a
564 person with dementia: A literature review to explore the potential use of heuristics in difficult
565 decision-making. *BMJ open* 2016; 6. DOI: 10.1136/bmjopen-2015-010416.
- 566 56. Schroder C, Medves J, Paterson M, et al. Development and pilot testing of the collaborative
567 practice assessment tool. *J Interprof Care* 2011; 25: 189-195. 2010/12/25. DOI:
568 10.3109/13561820.2010.532620.
- 569 57. Vyt A. Development and validation of a questionnaire to self-assess the quality of
570 interprofessional team meetings in primary and community healthcare. *Journal of Interprofessional*
571 *Care* 2017; 31: 140-146. DOI: 10.1080/13561820.2016.1269058.
- 572 58. Erlingsson CL and Brysiewicz P. A hands-on guide to doing content analysis. *African Journal of*
573 *Emergency Medicine* 2017; 7: 93 - 99.
- 574 59. Carter N, Bryant-Lukosius D, DiCenso A, et al. The use of triangulation in qualitative research.
575 *Oncology nursing forum* 2014; 41: 545-547. 2014/08/28. DOI: 10.1188/14.Onf.545-547.
- 576 60. Robinson L, Dickinson C, Bamford C, et al. A qualitative study: Professionals' experiences of
577 advance care planning in dementia and palliative care, 'a good idea in theory but ...'. *Palliative*
578 *Medicine* 2012; 27: 401-408. DOI: 10.1177/0269216312465651.
- 579 61. Jones K, Birchley G, Huxtable R, et al. End of Life Care: A Scoping Review of Experiences of
580 Advance Care Planning for People with Dementia. *Dementia* 2016; 18: 825-845. DOI:
581 10.1177/1471301216676121.
- 582 62. Cotter VT, Spriggs, M., & Razzak, A. R. . Advance Care Planning in Early Stage Dementia. .
583 *Journal for Nurse Practitioners* 2018; 14: 142-147. . DOI:
584 <https://doi.org/10.1016/j.nurpra.2017.09.016>.
- 585 63. Pennbrant S, Hjorton C, Nilsson C, et al. "The challenge of joining all the pieces together" –
586 Nurses' experience of palliative care for older people with advanced dementia living in residential
587 aged care units. *Journal of Clinical Nursing (John Wiley & Sons, Inc)* 2020; 29: 3835-3846. DOI:
588 10.1111/jocn.15415.
- 589 64. Bolt SR, van der Steen JT, Schols J, et al. Nursing staff needs in providing palliative care for
590 people with dementia at home or in long-term care facilities: A scoping review. *International journal*
591 *of nursing studies* 2019; 96: 143-152. 2019/04/01. DOI: 10.1016/j.ijnurstu.2018.12.011.
- 592 65. Kim H, Cho J, Park WS, et al. Characteristics of Advance Care Planning Interventions Across
593 Dementia Stages: A Systematic Review. *Journal of nursing scholarship : an official publication of*
594 *Sigma Theta Tau International Honor Society of Nursing* 2021; 53: 180-188. DOI: 10.1111/jnu.12624.
- 595 66. Zwijsen S, Smalbrugge M, Eefsting J, et al. Grip on challenging behavior: Process evaluation of
596 the implementation of a care program. *Trials* 2014; 15: 302. DOI: 10.1186/1745-6215-15-302.
- 597 67. Lynn G. VISION AND ITS IMPACT ON TEAM SUCCESS. *Pressacademia* 2015; 4: 744-744. DOI:
598 10.17261/Pressacademia.2015414540.
- 599 68. Revilla E and Rodriguez-Prado B. Team Vision in Product Development: How Knowledge
600 Strategy Matters. *Technovation* 2011; 31: 118-127. DOI: 10.1016/j.technovation.2010.10.007.
- 601 69. Phenwan T, Sixsmith J, McSwiggan L, et al. A narrative review of facilitating and inhibiting
602 factors in advance care planning initiation in people with dementia. *European geriatric medicine*
603 2020; 11. DOI: 10.1007/s41999-020-00314-1.

- 604 70. Beck E, McIlpatrick S, Hasson F, et al. Health care professionals' perspectives of advance care
605 planning for people with dementia living in long-term care settings: A narrative review of the
606 literature. *Dementia (London, England)* 2015; 16. DOI: 10.1177/1471301215604997.
- 607 71. Phenwan T, Sixsmith J, McSwiggan L, et al. A narrative review of facilitating and inhibiting
608 factors in advance care planning initiation in people with dementia. *Eur Geriatr Med* 2020; 11: 353-
609 368. 2020/04/17. DOI: 10.1007/s41999-020-00314-1.
- 610 72. Rietze L and Stajduhar K. Registered nurses' involvement in advance care planning: An
611 integrative review. *International journal of palliative nursing* 2015; 21: 495-503. DOI:
612 10.12968/ijpn.2015.21.10.495.
- 613 73. Kastbom L, Milberg A and Karlsson M. 'We have no crystal ball' - advance care planning at
614 nursing homes from the perspective of nurses and physicians. *Scandinavian journal of primary health
615 care* 2019; 37: 191-199. DOI: 10.1080/02813432.2019.1608068.
- 616 74. van der Steen JT, Jongen EA, Lemos Dekker N, et al. Nurse-Physician Communication Around
617 Identifying Palliative Care Needs in Nursing Home Residents. *Journal of the American Medical
618 Directors Association* 2021 2021/10/28. DOI: 10.1016/j.jamda.2021.09.034.
- 619 75. Bryon E, Gastmans C and de Casterlé BD. Nurse-physician communication concerning
620 artificial nutrition or hydration (ANH) in patients with dementia: a qualitative study. *Journal of clinical
621 nursing* 2012; 21: 2975-2984. 2012/05/31. DOI: 10.1111/j.1365-2702.2011.04029.x.
- 622 76. Tjia J, Mazor KM, Field T, et al. Nurse-physician communication in the long-term care setting:
623 perceived barriers and impact on patient safety. *J Patient Saf* 2009; 5: 145-152. 2009/11/21. DOI:
624 10.1097/PTS.0b013e3181b53f9b.
- 625 77. Lindeke LL and Sieckert AM. Nurse-physician workplace collaboration. *Online journal of issues
626 in nursing* 2005; 10: 5. 2005/02/25.
- 627 78. San Martín-Rodríguez L, Beaulieu M-D, D'Amour D, et al. The determinants of successful
628 collaboration: a review of theoretical and empirical studies. *Journal of interprofessional care* 2005; 19
629 Suppl 1: 132-147. DOI: 10.1080/13561820500082677.
- 630 79. Beck E-R, McIlpatrick S, Hasson F, et al. Health care professionals' perspectives of advance
631 care planning for people with dementia living in long-term care settings: A narrative review of the
632 literature. *Dementia* 2015; 16: 486-512. DOI: 10.1177/1471301215604997.
- 633 80. Patton MQ and Fund RECM. *Qualitative Research & Evaluation Methods*. SAGE Publications,
634 2002.
- 635 81. Johnston E. Appreciative inquiry: Researching greatness. *Journal of Leadership Studies* 2008;
636 2: 76-79. DOI: 10.1002/jls.20075.
- 637 82. Schols JM, Crebolder HF and van Weel C. Nursing home and nursing home physician: the
638 Dutch experience. *Journal of the American Medical Directors Association* 2004; 5: 207-212.
639 2004/04/30. DOI: 10.1097/01.Jam.0000123031.43619.60.

640

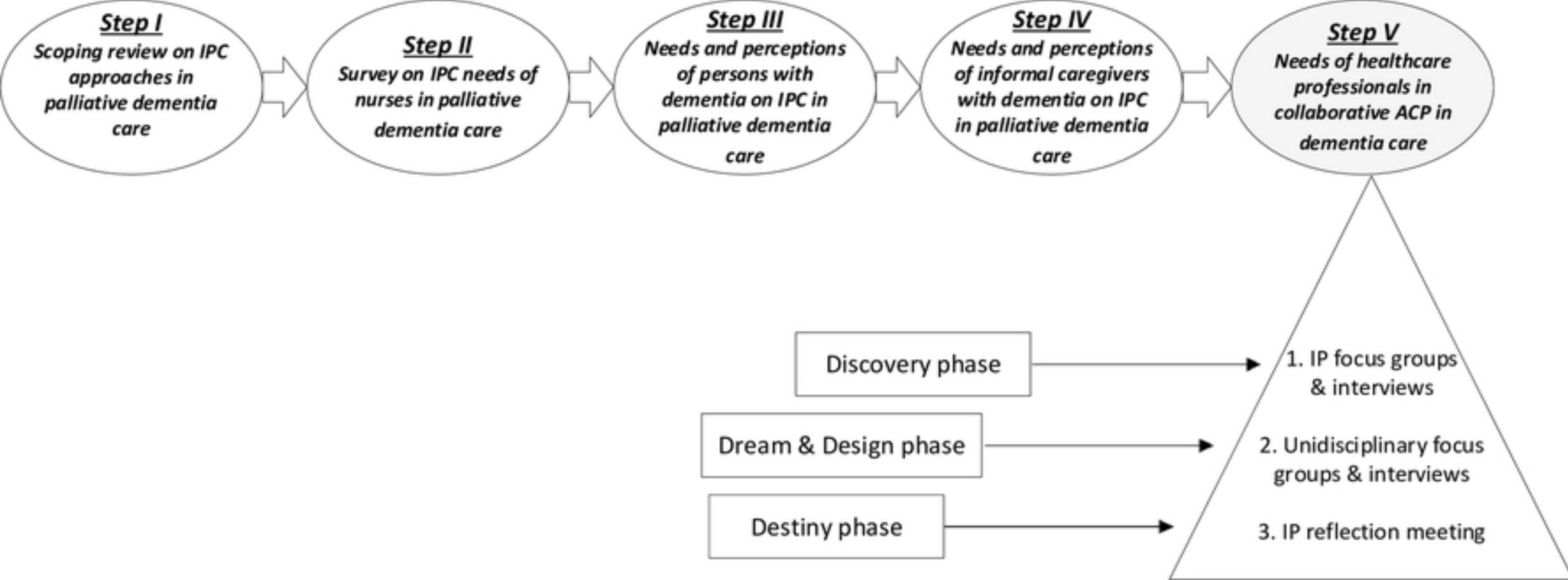


Figure 1

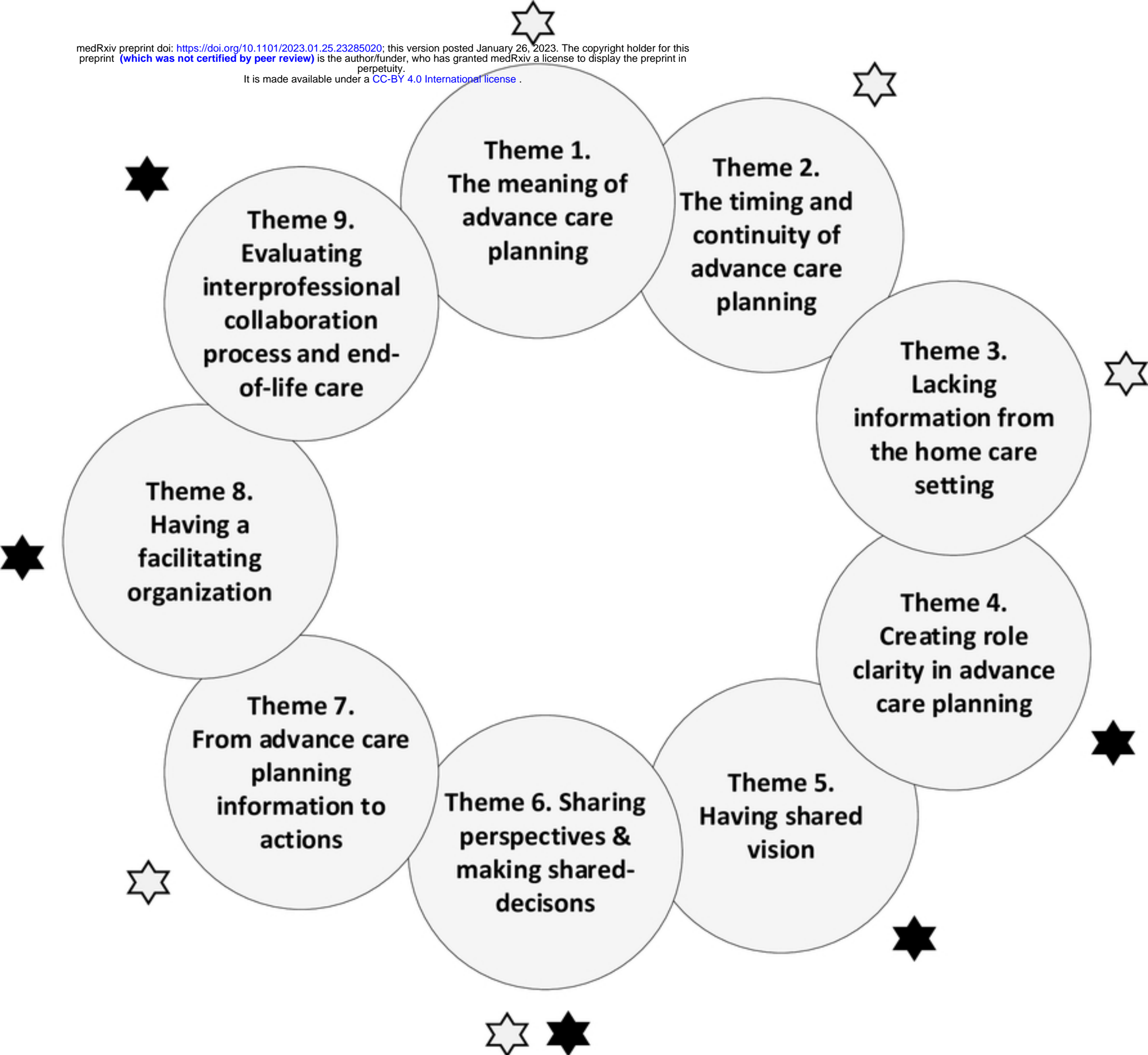


Figure 2

DEDICATED collaboration in advance care planning

Collaborating in advance care planning
for persons with dementia in the nursing home

Do I/ we know ...

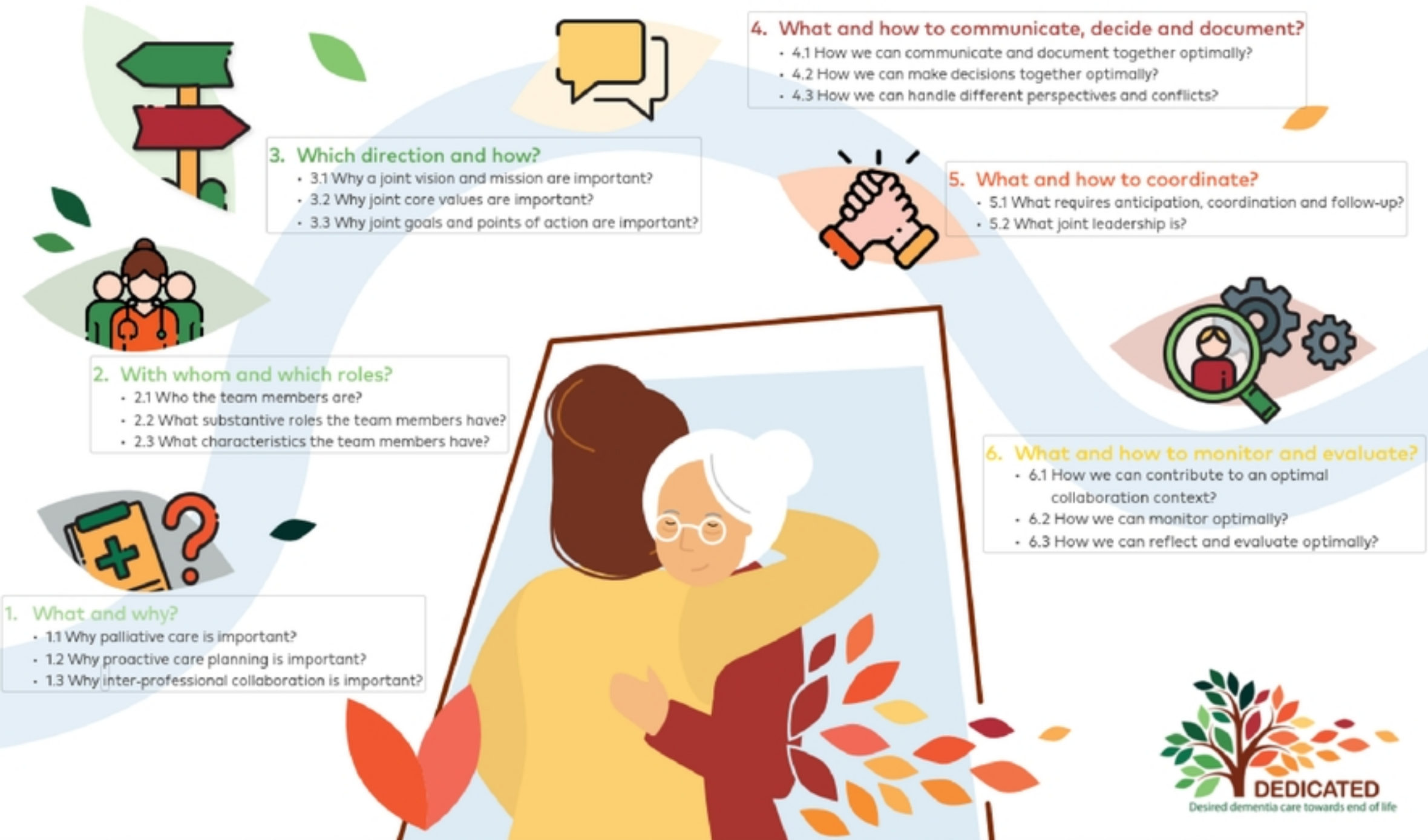


Figure 3