

1 **Vaccine-elicited B and T cell immunity to SARS-CoV-2 is impaired in chronic lung**  
2 **disease patients**

3  
4 **Authors:** Haolin Liu<sup>1</sup>, Katja Aviszus<sup>1</sup>, Pearlanne Zelarney<sup>2</sup>, Shu-Yi Liao<sup>3,4,5</sup>, Anthony  
5 N. Gerber<sup>1,3,5,6</sup>, Barry Make<sup>3,6</sup>, Michael E. Wechsler<sup>3,6</sup>, Philippa Marrack<sup>1,7</sup>, and R. Lee  
6 Reinhardt<sup>1,7</sup>

7  
8 **Affiliations:**

9 1 Department of Immunology and Genomic Medicine, National Jewish Health, Denver,  
10 CO, 80206, USA.

11 2 Research Informatics Services, National Jewish Health, Denver, CO, 80206, USA.

12 3 Department of Medicine, National Jewish Health, Denver, CO, 80206, USA.

13 4 Division of Environmental and Occupational Health Sciences, National Jewish Health,  
14 Denver CO, 80206, USA.

15 5 Department of Medicine, University of Colorado Anschutz Medical Campus, Aurora,  
16 CO, 80045, USA.

17 6 Division of Pulmonary, Critical Care and Sleep Medicine, National Jewish Health,  
18 Denver CO, 80206, USA.

19 7 Department of Immunology and Microbiology, University of Colorado Anschutz  
20 Medical Campus, Aurora, CO, 80045, USA.

21  
22 **Running Title:** SARS-CoV-2 vaccine response in chronic lung disease

23

24 **Key words:** COVID-19, vaccination, chronic obstructive pulmonary disease, interstitial

25 lung disease, asthma

26 **Abstract:**

27 The protection afforded by vaccination against severe acute respiratory syndrome  
28 coronavirus 2 (SARS-CoV-2) to individuals with chronic lung disease is not well  
29 established. To understand how chronic lung disease impacts SARS-CoV-2 vaccine-  
30 elicited immunity we performed deep immunophenotyping of the humoral and cell  
31 mediated SARS-CoV-2 vaccine response in an investigative cohort of vaccinated  
32 patients with diverse pulmonary conditions including asthma, chronic obstructive  
33 pulmonary disease (COPD), and interstitial lung disease (ILD). Compared to healthy  
34 controls, 48% of vaccinated patients with chronic lung diseases had reduced antibody  
35 titers to the SARS-CoV-2 vaccine antigen as early as 3-4 months after vaccination,  
36 correlating with decreased vaccine-specific memory B cells. Vaccine-specific CD4 and  
37 CD8 T cells were also significantly reduced in patients with asthma, COPD, and a  
38 subset of ILD patients compared to healthy controls. These findings reveal the complex  
39 nature of vaccine-elicited immunity in high-risk patients with chronic lung disease.

40

41 **Introduction**

42 Vaccination against severe acute respiratory syndrome coronavirus 2 (SARS-CoV-2)  
43 targeting the ancestral (Wuhan-Hu-1/2019) viral spike (S) protein has been broadly  
44 effective at limiting infection and severe coronavirus disease (COVID-19) (1-6). With  
45 respect to SARS-CoV-2 infection, both the humoral and cell mediated arms of the  
46 adaptive response are important for achieving optimal control of COVID-19 (7). As such,  
47 generating effective B cell and T cell immunity against SARS-CoV-2 remains the goal  
48 during vaccination. Much of the protection afforded by both the Pfizer/BioNTech

49 BNT162b2 and the Moderna mRNA-1273 mRNA vaccines is mediated by increased  
50 serum neutralizing antibodies to the viral spike protein (8). The efficacy of such  
51 neutralizing antibodies depends on their titer, avidity, and half-life (9-17). Indeed, the  
52 importance of maintained humoral immunity is evident since breakthrough cases of  
53 COVID-19 appear in otherwise healthy, vaccinated or previously infected individuals at  
54 the time of waning antibody titers (18-21). Variants such as Omicron BA.1 appear to  
55 cause less severe disease in vaccinated individuals due to cross-reactivity between the  
56 vaccine epitopes and those in the BA.1 variant, but this protection is not afforded  
57 against all Omicron variants including BA.4 and BA.5 (22-24). Whether new vaccine  
58 formulations or vaccination schemes are required to maintain lasting protection is  
59 currently an area of interest (25).

60 In infected individuals, the half-lives of IgG anti-spike and anti-RBD have been  
61 reported to be 103-126 and 83-116 days, respectively (26, 27). The half-life of  
62 antibodies in vaccinated individuals may be shorter, as titers are significantly decreased  
63 after 6 months (28-33). The difference in antibody half-life between infected and  
64 vaccinated individuals may depend on the half-lives of the plasma cells or differences in  
65 the memory B cells that produce them (34). Memory B cells don't participate in the  
66 immediate increase in antibody production after re-exposure to virus or vaccine, but  
67 within several days provide high levels of protective antibodies pursuant to their peri-  
68 infection conversion to plasma cells (35). The importance of memory B cells in lasting  
69 immunity to SARS-CoV-2 infection after vaccination is highlighted by findings showing  
70 that spike protein receptor binding domain (RBD) specific memory B cells survive even  
71 after anti-RBD antibodies are absent from serum (33, 36).

72 In addition to humoral immunity, SARS-CoV-2-specific T cells provide protection  
73 against the virus and may be particularly relevant in the case of SARS-CoV-2 variants  
74 of concern such as B.1.617.2 delta and B.1.1.529 omicron which display mutated spike  
75 proteins that can more effectively evade neutralizing antibodies (32, 37-41). The ability  
76 of the virus to escape antibody but not T cell immunity stems from the nature of the  
77 different antigenic targets on the spike protein recognized by B cells (proteins) and T  
78 cells (peptides) (7, 40, 42-45). Underlying their potential importance, the relative  
79 expansion of SARS-CoV-2 specific CD4+ and CD8+ T cells associates with COVID-19  
80 disease severity, and T cell memory appears more durable than serum antibody titers  
81 (26, 33, 43, 46, 47). Circulating CD4+ follicular T helper cells (cTfh) are also found in the  
82 memory T cell pool. While SARS-CoV-2-specific Tfh cell are less durable than other  
83 memory T cell subsets after vaccination and may not be required for the generation of  
84 antibodies against the virus, these cells are probably important in orchestrating a  
85 productive T and B cell response to SARS-CoV-2 infection (33, 42, 48-52).

86 Although we have gained significant understanding about natural immunity and  
87 response to SARS-CoV-2 infection and vaccination, informative data were not  
88 generated in chronic lung disease patients, who are at highest risk of mortality and  
89 morbidity due to COVID-19 (53). Patients with lung diseases may suffer more than  
90 healthy subjects from SARS-CoV-2 infections because of underlying pulmonary  
91 limitation and/or abnormal lung immune function. Immunosuppressant drugs taken by  
92 patients with chronic lung disease can also reduce their immune responses to the  
93 SARS-CoV-2 vaccine as reported in other disease contexts (54-58). Indeed, certain

94 conditions and treatments may significantly reduce the ability of the patient to produce  
95 anti-SARS-CoV-2 antibody (59-66).

96 Individuals with chronic lung disease that fail to mount an immune response to  
97 the vaccines may be unaware of their higher risk for potentially severe “breakthrough  
98 COVID” that results from new SARS-CoV-2 variants that evade antibody neutralization.  
99 This is of particular concern as masking and social distancing have been lifted in many  
100 localities. Therefore, it is critical to understand the vaccine response in high-risk chronic  
101 lung disease patients to help identify subsets of individuals who may be at greatest risk  
102 of poor outcomes. Although the greatest at-risk patients are likely those that fail to  
103 respond appropriately to the SARS-CoV-2 vaccination, simple measurement of  
104 antibodies against the RBD does not account for heterogeneity in protective immune  
105 responses to vaccination. Therefore, to reveal whether limitations in vaccine  
106 responsiveness exist within chronic lung disease patients and to better understand the  
107 heterogeneity of responses across different chronic lung diseases, we performed deep  
108 phenotyping of the humoral and cell mediated immune response to SARS-CoV-2  
109 vaccination in a select, investigative cohort of patients with interstitial lung disease  
110 (ILD), chronic obstructive pulmonary disease (COPD), and asthma, compared to  
111 healthy subjects.

112

## 113 **Results**

114 **A subset of patients with chronic lung disease exhibit reduced serum antibody**  
115 **titers after mRNA vaccination against SARS-CoV-2.**

116 Serum samples were used to assess SARS-CoV-2 Pfizer-BioNTech BNT162b2 and  
117 Moderna mRNA-1273 vaccine responsiveness in a cohort of 9 asthma, 8 COPD, and 15  
118 ILD patients and 31 healthy controls (Table 1). To investigate the humoral response,  
119 we performed an in-house quantitative ELISA for serum spike RBD-specific antibodies.  
120 Serum collected between 14-231 days after the last vaccination/boost was analyzed  
121 (Fig. 1A). Asthma ( $p<0.35$ ) and COPD ( $p<0.022$ ) patients showed significantly reduced  
122 antibody titers 3-4 months after vaccination compared to healthy controls. 40% (6/15) of  
123 ILD patients also exhibited reduced antibody titers compared to healthy subjects. To  
124 validate these findings, serum titers from the in-house anti-RBD assay and QuantiVac  
125 ELISA (semiquantitative Spike protein IgG) were compared. As expected, samples with  
126 the highest serum anti-RBD titers, including 100% of healthy controls, were most  
127 prominent in the highest anti-spike titer bin ( $>350$  binding antibody units (BAU)/mL)  
128 while those showing low anti-RBD titers were enriched in the lowest bin ( $<150$  BAU/mL)  
129 (Fig. 1B). Together, these investigative findings suggest that many patients with ILD,  
130 asthma, and COPD may not achieve or maintain the same level of humoral protection  
131 after vaccination as healthy subjects.

132

133 **Circulating spike-specific B cells are reduced in patients with chronic lung**  
134 **disease.**

135 To investigate vaccine-specific memory B cells, we enriched PBMC for B cells and  
136 identified RBD-specific B cells using double colored RBD-tetramers (Fig. 2A) (67). We  
137 minimized contamination of non-RBD-specific B cells by eliminating B cells that bound  
138 an “irrelevant” ovalbumin-FITC protein (68, 69). Individuals with ILD ( $p<0.012$ ) and

139 asthma ( $p < 0.032$ ) had significantly fewer circulating RBD-specific B cells than healthy  
140 controls (Fig. 2B). COPD patients on average had fewer RBD-specific B cells within the  
141 circulating B cell population than observed in healthy controls (Fig. 2B). When RBD-  
142 specific B cells from all patients were compared to their RBD-specific serum antibody  
143 titers, a significant correlation ( $r = 0.477$ ;  $p < 0.002$ ) was observed (Fig. 2C). While the  
144 strongest positive correlation was observed in healthy subjects ( $r = 0.572$ ), ILD patients  
145 ( $r = 0.588$ ;  $p < 0.021$ ) also correlated. Together, these data indicate that many individuals  
146 with chronic lung disease fail to generate a robust pool of circulating vaccine-specific B  
147 cells compared to healthy controls.

148

149 **T cell response to SARS-CoV-2 vaccination is impaired in patients with chronic**  
150 **lung disease.**

151 To investigate the RBD-specific CD8<sup>+</sup> and CD4<sup>+</sup> T cell responses in a way that was  
152 agnostic to a patient's HLA type, we used a modified approach previously described to  
153 efficiently detect spike-responsive T cells in the blood of patients with mild COVID-19  
154 (48). Using this approach, subsets of individuals with underlying lung conditions  
155 exhibited diminished RBD-specific T cell responses compared to healthy controls (Fig.  
156 3A, B). Specifically, CD8<sup>+</sup> ( $p < 0.004$ ) and CD4<sup>+</sup> ( $p < 0.023$ ) T cell responses in asthma  
157 patients were significantly reduced, as were CD8<sup>+</sup> ( $p < 0.008$ ) T cell responses in COPD  
158 patients. Of note, 21% of ILD patients showed limited CD8<sup>+</sup> T cell responses and 42%  
159 failed to evoke a robust CD4<sup>+</sup> T cell response after vaccination. Similarly, 33-37.5% of  
160 asthmatic and COPD patients had no observable CD4<sup>+</sup> and CD8<sup>+</sup> T cell responses to  
161 the vaccine antigen. While CD4<sup>+</sup> T cell responsiveness correlated strongly ( $r = 0.728$ ;



162 p<0.0001) with CD8+ T cell vaccine responses across disease cohorts, no correlation  
163 was observed between RBD-specific T cell responses and RBD-specific antibody titers  
164 (Fig. 3C-E). This suggests that an individual's humoral vaccine response can be  
165 independent of their vaccine-elicited T cell immunity and vice versa.

166

167 **Vaccine-specific T cells in patients with chronic lung conditions have impaired**  
168 **cytokine potential.**

169 To address T cell function, the cytokine potential in our patient cohorts was assayed by  
170 intracellular cytokine staining. While the percentages of bulk CD8+ T cells that were  
171 IFN- $\gamma$  competent were significantly ( $p<0.012$ ) elevated among vaccinated COPD  
172 patients compared to healthy controls, the percentage of such cells in asthmatic and  
173 ILD patients were not significantly different (Fig. 4A). On the other hand, the percentage  
174 of bulk CD8 T cells from asthmatic patients that could produce IL-2 were significantly  
175 ( $p<0.014$ ) reduced relative to healthy controls (Fig. 4A). While this suggests some  
176 heterogeneity exists in the cytokine profiles of patients with chronic lung disease, for the  
177 most part, bulk T cell function appears similar across disease groups. Even less  
178 heterogeneity was observed in the cytokine potential of CD4+ T cells across disease  
179 groups and healthy patients (Fig. 4B).

180 In contrast to bulk T cell populations, heterogeneity in cytokine potential was  
181 observed in vaccine-responsive T cell populations. In these experiments vaccine  
182 responsive T cells were defined by loss of CPD, indicative of cells that had divided in  
183 response to RBD antigen. In patients with chronic lung disease, the percentage of RBD  
184 responsive CD8+ T cells from asthma and COPD patients that could produce IFN- $\gamma$

185 and/or IL-2 was significantly reduced compared to similar T cells obtained from healthy  
186 subjects (Fig. 4C, D). A similar finding was observed in RBD responsive CD4+ T cells  
187 from asthma and COPD patients (Fig. 4E, F). Of note, while asthma and COPD patients  
188 showed more homogeneity in their T cell functionality, a subset of patients with ILD also  
189 exhibited decreased IFN-gamma and IL-2 within RBD-specific CD4+ and CD8+ T cells  
190 compared to healthy controls. This suggests that at least some patients within each  
191 disease cohort exhibit reduced T cell functionality to the vaccine.

192 When looking at total T cell responsiveness, patients mounting a productive  
193 CD4+ T cell response generally exhibited a productive CD8+ T cell response ( $r=0.703$ ;  
194  $p<0.0001$ ) (Fig. 4G). To understand if T cell function similarly tracked with humoral  
195 immunity after vaccination, we compared IFN-gamma+ RBD-specific T cells in each  
196 patient to their serum anti-RBD titers. In all patient groups, no significant correlation was  
197 observed (Fig. 4H, I). Together with serum antibody and memory B cell data, these  
198 findings indicate that the SARS-CoV-2 vaccine may differentially promote T cell and  
199 humoral immunity in some ILD, asthma, and COPD patients.

200

201 **SARS-CoV-2-specific Tfh cells exhibit decreased cytokine potential in patients**  
202 **with chronic lung conditions compared to healthy controls.**

203 Given Tfh cells are important in driving humoral vaccine responses, we next  
204 investigated the Tfh response in vaccinated patients with pulmonary disease. The  
205 percentage of circulating CXCR5+ CD4+ Tfh (cTfh) cells among the total CD4+ T cell  
206 pool was decreased across all disease cohorts reaching significance within asthma  
207 ( $p<0.011$ ) and COPD ( $p<0.006$ ) patients (Fig. 5A). While IL-2 production remained

208 comparable to healthy controls, the relative percentage of IFN- $\gamma$  expressing cTfh cells  
209 was increased across all chronic lung disease cohorts (Fig. 5B). Increased IFN- $\gamma$   
210 production was most evident in COPD ( $p < 0.027$ ) patients, however, at least some ILD  
211 and asthma patients also exhibited increased interferon expression within bulk cTfh  
212 cells relative to healthy controls. Despite the increased IFN- $\gamma$  production observed in  
213 bulk cTfh cells in patients with chronic lung disease, RBD-responsive (CPD-Io) cTfh on  
214 average exhibited decreased IFN- $\gamma$  production compared to vaccinated, healthy  
215 controls. In fact, 21% of ILD patients, 44% of asthma patients, and 25% of COPD  
216 patients in this investigative cohort lacked IFN- $\gamma$ -expressing RBD-responsive Tfh cells  
217 above background (Fig. 5C). This mirrors the decreased functionality of vaccine  
218 responsive T cells within non-Tfh cell populations.

219

## 220 **Discussion**

221 This study highlights the significant heterogeneity that exists in the vaccine response to  
222 SARS-CoV-2 in individuals with ILD, COPD and asthma compared to healthy controls.  
223 In our assessment of vaccine-induced antibody titers, memory B cell subsets, and T  
224 cells in patients with asthma, COPD, and ILD, we found that 48.3% of patients with  
225 chronic lung disease exhibited serum antibody titers to the vaccine antigen below the  
226 expected titers observed in healthy controls 3-4 months after the last vaccine  
227 administration. This correlated with decreased RBD-specific circulating memory B cells.  
228 In addition to impaired humoral hallmarks, most patients with asthma and COPD and a  
229 subset of patients with ILD had reduced circulating RBD-responsive CD4<sup>+</sup> T cells,  
230 CD8<sup>+</sup> T cells, and Tfh cells. These vaccine-specific T cell populations also exhibited

231 decreased cytokine potential compared to healthy controls. Of note, while some  
232 individuals lacking antibody and memory B cell production after vaccination also  
233 exhibited reduced T cell immunity, many patients had evidence of defects in only one  
234 arm of the adaptive response to SARS-CoV-2 vaccination. This highlights the  
235 considerable variability in vaccine responses among patients with chronic lung disease  
236 and illustrates the importance of deep immunophenotyping of high-risk patients to  
237 determine their overall immunity to SARS-CoV-2 after vaccination.

238 Most of the available data regarding the safety, efficacy, and durability of mRNA  
239 vaccines against SARS-CoV-2 has been generated from healthy vaccinated cohorts (5,  
240 20, 29, 33, 70-73). In these initial studies, nearly all healthy vaccine recipients  
241 developed binding and neutralizing antibodies. However, this level of vaccine  
242 responsiveness does not appear to always extend to individuals with chronic lung  
243 disease (59, 74). While not designed or powered to address safety, efficacy, or  
244 durability of the vaccine response in patients with chronic lung disease, the current data  
245 suggest that what we understand regarding vaccination in healthy subjects may not be  
246 directly applicable to patients with chronic lung disease. Further, the data also show that  
247 vaccine responses may differ depending on the type of underlying lung condition. For  
248 example, as a group, individuals with COPD and asthma were more likely to exhibit  
249 impaired antibody and T cell responses than ILD patients, who instead exhibited greater  
250 heterogeneity in their mRNA vaccine response. Factors that separate responders from  
251 non-responders within a particular disease group may reflect distinct disease-  
252 associated endotypes within COPD, asthma, and ILD, including the possibility that  
253 subsets of each of these lung diseases are associated with broadly abnormal immunity,

254 a concept that finds support in previous studies (75). Understanding how the intrinsic  
255 nature of each pulmonary disease impacts B cell and T cell immunity in patients with  
256 chronic lung disease is particularly important as such patients are more at risk for  
257 “breakthrough COVID-19” driven by emerging SARS-CoV-2 variants of concern.

258 One of the key caveats in the current study is the lack of a longitudinal  
259 assessment within these different disease cohorts. We know from healthy controls that  
260 each arm of the immune system varies over time after vaccination. For example, while  
261 anti-RBD antibody titers and cTfh numbers wane six months after vaccination, vaccine-  
262 specific T cell responses and memory B cell responses remain relatively stable over  
263 that same period in healthy subjects (33, 76). Whether similar kinetics occur in  
264 individuals with chronic lung disease remains unknown. The investigative data provided  
265 herein suggest that a large percentage of individuals with chronic lung disease fail to  
266 mount productive humoral and cell mediated immunity during the first and second  
267 dosing of the vaccine. What remains unclear is whether such non-responders remain  
268 impaired after subsequent vaccination attempts. While there is evidence that a third  
269 booster can be effective in providing some protection against SARS-CoV-2 in other  
270 high-risk populations (62, 77-79), some seronegative individuals who did not respond to  
271 the first two doses of vaccine also fail to respond to the third boost (80). How boosting  
272 can benefit non-responders becomes even more complicated as natural exposures to  
273 the virus and its variants become more frequent. Thus, the benefit of multiple boosts or  
274 more frequent boosting in subsets of patients with asthma, ILD, and COPD that show  
275 inadequate vaccine responsiveness should be explored.

276 In conclusion, vaccination against SARS-CoV-2 has had a significant impact on  
277 our ability to control the current COVID-19 pandemic. However, much of what we  
278 understand comes from data collected from clinical trials comprised of healthy  
279 individuals. Our study suggests that efficacy of the vaccine and vaccine-induced  
280 immunity in healthy individuals should not be uniformly extrapolated to individuals with  
281 chronic lung disease. This finding has clinical relevance, as these individuals are  
282 considered at high-risk for contracting severe COVID-19. Patients with COPD, for  
283 example, have increased odds of hospitalization, intensive care unit admission, and  
284 mortality compared to healthy controls if exposed to SARS-CoV-2 (53). Given the  
285 relatively high percentage of patients with chronic lung disease showing some form of  
286 impaired vaccine responsiveness and the high degree of heterogeneity in the responses  
287 observed across individuals with ILD, asthma, and COPD, chronic lung disease patients  
288 may benefit from personalized vaccination schemes and deeper assessment of immune  
289 responses to ensure optimal protection in this vulnerable population.

290

## 291 **Methods**

292 **Study participants:** Chronic lung disease and healthy control blood samples were  
293 collected as part of two institutional IRB-approved protocols under which subjects  
294 provided informed consent: 1) a prospective study of response to SARS-CoV-2  
295 vaccinations that recruited from NJH clinics and 2) the National Jewish Health BioBank  
296 that recruits patients undergoing normal clinical laboratory testing or from a healthy  
297 donor pool. The samples were stored and maintained as part of the National Jewish  
298 Health (NJH) Biobank. Patient information regarding vaccine status, medicine, and

299 infection status was collected at time of sample collection or as part of their normal  
300 medical record.

301

302 **Serum and peripheral blood mononuclear cell sample preparation:** Blood was  
303 collected from multiple 10 mL blood draws into EDTA tubes. Serum was processed after  
304 density gradient centrifugation and PBMC –post red blood cell lysis– were resuspended  
305 in 10% DMSO + 90% FBS in cryovials prior to storage in liquid nitrogen.

306

307 **SARS-CoV-2 receptor binding domain generation:** SARS-CoV-2 spike receptor  
308 binding domain (aa319 to aa541) with C-terminal 6\* histidine tag was expressed in  
309 293F cell as described previously (81). The RBD protein was purified with nickel column  
310 and the eluted protein was further purified by size-exclusion column to collect monomer  
311 sized RBD.

312

313 **RBD-tetramer generation:** SARS-CoV-2 spike receptor binding domain (aa319 to  
314 aa541) with C-terminal histidine tag and Avitag was expressed and purified in the same  
315 way above. The RBD was biotinylated by BirA enzyme. The biotinylated RBD was  
316 conjugated to the streptavidin labeled with different fluorescent dyes.

317

318 **Enzyme-linked immunosorbent assay (ELISA) for RBD serum antibody:** Twenty  
319  $\mu\text{g/ml}$  6\*-histidine tagged RBD was used for coating ELISA plate. After blocking, human  
320 serum at different dilutions was incubated on the plates. The bound IgG was detected

321 with goat anti-human IgG, Fcy fragment specific conjugated with alkaline phosphatase  
322 (Jackson ImmunoResearch #109-055-008). Bamlanivimab was used as standard for  
323 converting ELISA O.D. value to serum antibody amount (82).

324

325 **Staining of RBD specific B cell subsets by flow cytometry:** Human PBMC samples  
326 were obtained from Biobank at National Jewish Health. Cells were stained with 2 µg/ml  
327 double colored RBD tetramers (conjugated with BV421 and PE respectively), human Fc  
328 block and FITC-OVA first on ice for 30 minutes. CD19 APCcy7, IgD BV510, dump  
329 (CD4, CD8, CD14, CD16) PerCP antibodies were then added for staining. Cells were  
330 washed and stained with Ghost UV450 dye and fixed with 1% paraformaldehyde for  
331 flow cytometry analysis.

332

333 **PBMC cultures and antigen-specific T cell stimulation:** PBMCs were thawed and  
334 resuspended in complete RPMI-1640 (10% FBS, 10mM HEPES, 50uM 2-beta  
335 mercaptoethanol, 2mM L-glutamine, and 1% penicillin and streptomycin). After  
336 counting, PBMC were stained with 5uM cell proliferation dye eFluor 670 (CPD; #65-  
337 0840, Thermo Fisher). CPD labeled cells were plated at  $2 \times 10^5$  PBMC per well in cRPMI  
338 + 2ng/mL (10U/mL) of recombinant human IL-2 (Biolegend). For RBD stimulation, wells  
339 were incubated with 2.5ug/mL of RBD or media alone. For cytokine analysis, cultures  
340 were left unstimulated or were stimulated with 50ng/mL phorbol 12-myristate 13-acetate  
341 (PMA; Sigma) and 1ug/mL of ionomycin (Sigma-Aldrich) 4 hours before harvest. All  
342 wells were provided 10ug/mL of brefeldin A (Sigma-Aldrich) and 1x dilution of monensin  
343 (GolgiStop; #554724 Becton Dickinson) to prevent cytokine secretion.



344

345 **Staining of T cell subsets by flow cytometry:** PBMC were labeled with LIVE/DEAD  
346 fixable violet dye (L34955; Invitrogen), followed by surface antibody staining (CD4,  
347 Clone:RPA-T4; CD8, Clone:SK1; CD3, Clone:OKT3, CXCR5, clone:J252D4,  
348 Biologend). After surface staining, cells were fixed and permeabilized using  
349 FOXP3/Transcription factor staining buffer set (#00-5523-00, Invitrogen) per  
350 manufacturer's instructions. Fixed cells were stained for intracellular cytokines anti-IL-2  
351 (Clone:MQ1-17412, Biologend) and anti-interferon gamma (Clone:4S.B3, Biologend).  
352 Data were collected by flow cytometric analysis on a LSR II (BD Biosciences) cytometer  
353 and analyzed using FlowJo (BD Bioscience).

354

355 **Statistical Analysis:** All comparisons were made using paired and unpaired t tests with  
356 Prism 9 (GraphPad). Where possible p values and r correlations are provided directly in  
357 figures. P values in grouped graphs represent unpaired, two-tailed T test.

358

### 359 **References:**

- 360 1. Dispinseri S, Secchi M, Pirillo MF, Tolazzi M, Borghi M, Brigatti C, et al.  
361 Neutralizing antibody responses to SARS-CoV-2 in symptomatic COVID-19 is  
362 persistent and critical for survival. *Nat Commun.* 2021;12(1):2670.
- 363 2. Lau EHY, Tsang OTY, Hui DSC, Kwan MYW, Chan WH, Chiu SS, et al.  
364 Neutralizing antibody titres in SARS-CoV-2 infections. *Nat Commun.*  
365 2021;12(1):63.
- 366 3. Thomas SJ, Moreira ED, Jr., Kitchin N, Absalon J, Gurtman A, Lockhart S, et al.  
367 Safety and Efficacy of the BNT162b2 mRNA Covid-19 Vaccine through 6 Months.  
368 *N Engl J Med.* 2021;385(19):1761-73.
- 369 4. Polack FP, Thomas SJ, Kitchin N, Absalon J, Gurtman A, Lockhart S, et al. Safety  
370 and Efficacy of the BNT162b2 mRNA Covid-19 Vaccine. *N Engl J Med.*  
371 2020;383(27):2603-15.

- 372 5. El Sahly HM, Baden LR, Essink B, Doblecki-Lewis S, Martin JM, Anderson EJ, et  
373 al. Efficacy of the mRNA-1273 SARS-CoV-2 Vaccine at Completion of Blinded  
374 Phase. *N Engl J Med*. 2021;385(19):1774-85.
- 375 6. Baden LR, El Sahly HM, Essink B, Kotloff K, Frey S, Novak R, et al. Efficacy and  
376 Safety of the mRNA-1273 SARS-CoV-2 Vaccine. *N Engl J Med*. 2021;384(5):403-  
377 16.
- 378 7. Sette A, and Crotty S. Adaptive immunity to SARS-CoV-2 and COVID-19. *Cell*.  
379 2021;184(4):861-80.
- 380 8. Mumoli N, Vitale J, and Mazzone A. Clinical immunity in discharged medical  
381 patients with COVID-19. *Int J Infect Dis*. 2020;99:229-30.
- 382 9. Earle KA, Ambrosino DM, Fiore-Gartland A, Goldblatt D, Gilbert PB, Siber GR, et  
383 al. Evidence for antibody as a protective correlate for COVID-19 vaccines.  
384 *Vaccine*. 2021;39(32):4423-8.
- 385 10. Rogliani P, Chetta A, Cazzola M, and Calzetta L. SARS-CoV-2 Neutralizing  
386 Antibodies: A Network Meta-Analysis across Vaccines. *Vaccines (Basel)*.  
387 2021;9(3).
- 388 11. Terpos E, Trougakos IP, Karalis V, Ntanasis-Stathopoulos I, Sklirou AD, Bagratuni  
389 T, et al. Comparison of neutralizing antibody responses against SARS-CoV-2 in  
390 healthy volunteers who received the BNT162b2 mRNA or the AZD1222 vaccine:  
391 Should the second AZD1222 vaccine dose be given earlier? *Am J Hematol*.  
392 2021;96(9):E321-E4.
- 393 12. Bian L, Gao F, Zhang J, He Q, Mao Q, Xu M, et al. Effects of SARS-CoV-2 variants  
394 on vaccine efficacy and response strategies. *Expert Rev Vaccines*.  
395 2021;20(4):365-73.
- 396 13. Diamond M, Chen R, Xie X, Case J, Zhang X, VanBlargan L, et al. SARS-CoV-2  
397 variants show resistance to neutralization by many monoclonal and serum-derived  
398 polyclonal antibodies. *Res Sq*. 2021.
- 399 14. Jangra S, Ye C, Rathnasinghe R, Stadlbauer D, Personalized Virology Initiative  
400 study g, Krammer F, et al. SARS-CoV-2 spike E484K mutation reduces antibody  
401 neutralisation. *Lancet Microbe*. 2021;2(7):e283-e4.
- 402 15. Pegu A, O'Connell SE, Schmidt SD, O'Dell S, Talana CA, Lai L, et al. Durability of  
403 mRNA-1273 vaccine-induced antibodies against SARS-CoV-2 variants. *Science*.  
404 2021;373(6561):1372-7.
- 405 16. Planas D, Bruel T, Grzelak L, Guivel-Benhassine F, Staropoli I, Porrot F, et al.  
406 Sensitivity of infectious SARS-CoV-2 B.1.1.7 and B.1.351 variants to neutralizing  
407 antibodies. *Nat Med*. 2021;27(5):917-24.
- 408 17. Soriano V, and Fernandez-Montero JV. New SARS-CoV-2 Variants Challenge  
409 Vaccines Protection. *AIDS Rev*. 2021;23(1):57-8.
- 410 18. Tillett RL, Sevinsky JR, Hartley PD, Kerwin H, Crawford N, Gorzalski A, et al.  
411 Genomic evidence for reinfection with SARS-CoV-2: a case study. *Lancet Infect  
412 Dis*. 2021;21(1):52-8.
- 413 19. Lee JS, Kim SY, Kim TS, Hong KH, Ryoo NH, Lee J, et al. Evidence of Severe  
414 Acute Respiratory Syndrome Coronavirus 2 Reinfection After Recovery from Mild  
415 Coronavirus Disease 2019. *Clin Infect Dis*. 2021;73(9):e3002-e8.

- 416 20. Widge AT, Roupheal NG, Jackson LA, Anderson EJ, Roberts PC, Makhene M, et  
417 al. Durability of Responses after SARS-CoV-2 mRNA-1273 Vaccination. *N Engl J*  
418 *Med.* 2021;384(1):80-2.
- 419 21. Sabino EC, Buss LF, Carvalho MPS, Prete CA, Jr., Crispim MAE, Fraiji NA, et al.  
420 Resurgence of COVID-19 in Manaus, Brazil, despite high seroprevalence. *Lancet.*  
421 2021;397(10273):452-5.
- 422 22. Quandt J, Muik A, Salisch N, Lui BG, Lutz S, Kruger K, et al. Omicron BA.1  
423 breakthrough infection drives cross-variant neutralization and memory B cell  
424 formation against conserved epitopes. *Sci Immunol.* 2022;7(75):eabq2427.
- 425 23. Kaku CI, Bergeron AJ, Ahlm C, Normark J, Sakharkar M, Forsell MNE, et al. Recall  
426 of preexisting cross-reactive B cell memory after Omicron BA.1 breakthrough  
427 infection. *Sci Immunol.* 2022;7(73):eabq3511.
- 428 24. Muik A, Lui BG, Bacher M, Wallisch AK, Toker A, Finlayson A, et al. Omicron BA.2  
429 breakthrough infection enhances cross-neutralization of BA.2.12.1 and BA.4/BA.5.  
430 *Sci Immunol.* 2022:eade2283.
- 431 25. van Zelm MC. Immune memory to SARS-CoV-2 Omicron BA.1 breakthrough  
432 infections: To change the vaccine or not? *Sci Immunol.* 2022;7(74):eabq5901.
- 433 26. Dan JM, Mateus J, Kato Y, Hastie KM, Yu ED, Faliti CE, et al. Immunological  
434 memory to SARS-CoV-2 assessed for up to 8 months after infection. *Science.*  
435 2021;371(6529).
- 436 27. Cohen KW, Linderman SL, Moodie Z, Czartoski J, Lai L, Mantus G, et al.  
437 Longitudinal analysis shows durable and broad immune memory after SARS-CoV-  
438 2 infection with persisting antibody responses and memory B and T cells. *Cell Rep*  
439 *Med.* 2021;2(7):100354.
- 440 28. Doria-Rose N, Suthar MS, Makowski M, O'Connell S, McDermott AB, Flach B, et  
441 al. Antibody Persistence through 6 Months after the Second Dose of mRNA-1273  
442 Vaccine for Covid-19. *N Engl J Med.* 2021;384(23):2259-61.
- 443 29. Wei J, Pouwels KB, Stoesser N, Matthews PC, Diamond I, Studley R, et al.  
444 Antibody responses and correlates of protection in the general population after two  
445 doses of the ChAdOx1 or BNT162b2 vaccines. *Nat Med.* 2022.
- 446 30. Levin EG, Lustig Y, Cohen C, Fluss R, Indenbaum V, Amit S, et al. Waning Immune  
447 Humoral Response to BNT162b2 Covid-19 Vaccine over 6 Months. *N Engl J Med.*  
448 2021;385(24):e84.
- 449 31. Favresse J, Bayart JL, Mullier F, Elsen M, Eucher C, Van Eeckhoudt S, et al.  
450 Antibody titres decline 3-month post-vaccination with BNT162b2. *Emerg Microbes*  
451 *Infect.* 2021;10(1):1495-8.
- 452 32. Liu H, Wei P, Zhang Q, Aviszus K, Linderberger J, Yang J, et al. The Lambda  
453 variant of SARS-CoV-2 has a better chance than the Delta variant to escape  
454 vaccines. *bioRxiv.* 2021.
- 455 33. Goel RR, Painter MM, Apostolidis SA, Mathew D, Meng W, Rosenfeld AM, et al.  
456 mRNA vaccines induce durable immune memory to SARS-CoV-2 and variants of  
457 concern. *Science.* 2021;374(6572):abm0829.
- 458 34. Pape KA, Dileepan T, Kabage AJ, Kozysa D, Batres R, Evert C, et al. High-affinity  
459 memory B cells induced by SARS-CoV-2 infection produce more plasmablasts and  
460 atypical memory B cells than those primed by mRNA vaccines. *Cell Rep.*  
461 2021;37(2):109823.

- 462 35. Nutt SL, Hodgkin PD, Tarlinton DM, and Corcoran LM. The generation of antibody-  
463 secreting plasma cells. *Nat Rev Immunol*. 2015;15(3):160-71.
- 464 36. Winklmeier S, Eisenhut K, Taskin D, Rubsamen H, Gerhards R, Schneider C, et  
465 al. Persistence of functional memory B cells recognizing SARS-CoV-2 variants  
466 despite loss of specific IgG. *iScience*. 2022;25(1):103659.
- 467 37. Annavajhala MK, Mohri H, Wang P, Nair M, Zucker JE, Sheng Z, et al. Emergence  
468 and expansion of SARS-CoV-2 B.1.526 after identification in New York. *Nature*.  
469 2021;597(7878):703-8.
- 470 38. Viana R, Moyo S, Amoako DG, Tegally H, Scheepers C, Althaus CL, et al. Rapid  
471 epidemic expansion of the SARS-CoV-2 Omicron variant in southern Africa.  
472 *Nature*. 2022.
- 473 39. Tegally H, Wilkinson E, Giovanetti M, Iranzadeh A, Fonseca V, Giandhari J, et al.  
474 Detection of a SARS-CoV-2 variant of concern in South Africa. *Nature*.  
475 2021;592(7854):438-43.
- 476 40. Geers D, Shamier MC, Bogers S, den Hartog G, Gommers L, Nieuwkoop NN, et  
477 al. SARS-CoV-2 variants of concern partially escape humoral but not T-cell  
478 responses in COVID-19 convalescent donors and vaccinees. *Sci Immunol*.  
479 2021;6(59).
- 480 41. Tarke A, Coelho CH, Zhang Z, Dan JM, Yu ED, Methot N, et al. SARS-CoV-2  
481 vaccination induces immunological T cell memory able to cross-recognize variants  
482 from Alpha to Omicron. *Cell*. 2022;185(5):847-59 e11.
- 483 42. Rydzynski Moderbacher C, Ramirez SI, Dan JM, Grifoni A, Hastie KM, Weiskopf  
484 D, et al. Antigen-Specific Adaptive Immunity to SARS-CoV-2 in Acute COVID-19  
485 and Associations with Age and Disease Severity. *Cell*. 2020;183(4):996-1012 e19.
- 486 43. Tan AT, Linster M, Tan CW, Le Bert N, Chia WN, Kunasegaran K, et al. Early  
487 induction of functional SARS-CoV-2-specific T cells associates with rapid viral  
488 clearance and mild disease in COVID-19 patients. *Cell Rep*. 2021;34(6):108728.
- 489 44. Tarke A, Sidney J, Methot N, Yu ED, Zhang Y, Dan JM, et al. Impact of SARS-  
490 CoV-2 variants on the total CD4(+) and CD8(+) T cell reactivity in infected or  
491 vaccinated individuals. *Cell Rep Med*. 2021;2(7):100355.
- 492 45. Goel RR, Painter MM, Apostolidis SA, Mathew D, Meng W, Rosenfeld AM, et al.  
493 mRNA Vaccination Induces Durable Immune Memory to SARS-CoV-2 with  
494 Continued Evolution to Variants of Concern. *bioRxiv*. 2021.
- 495 46. Braun J, Loyal L, Frentsch M, Wendisch D, Georg P, Kurth F, et al. SARS-CoV-2-  
496 reactive T cells in healthy donors and patients with COVID-19. *Nature*.  
497 2020;587(7833):270-4.
- 498 47. Grifoni A, Weiskopf D, Ramirez SI, Mateus J, Dan JM, Moderbacher CR, et al.  
499 Targets of T Cell Responses to SARS-CoV-2 Coronavirus in Humans with COVID-  
500 19 Disease and Unexposed Individuals. *Cell*. 2020;181(7):1489-501 e15.
- 501 48. Rodda LB, Netland J, Shehata L, Pruner KB, Morawski PA, Thouvenel CD, et al.  
502 Functional SARS-CoV-2-Specific Immune Memory Persists after Mild COVID-19.  
503 *Cell*. 2021;184(1):169-83 e17.
- 504 49. Juno JA, Tan HX, Lee WS, Reynaldi A, Kelly HG, Wragg K, et al. Humoral and  
505 circulating follicular helper T cell responses in recovered patients with COVID-19.  
506 *Nat Med*. 2020;26(9):1428-34.

- 507 50. Lederer K, Castano D, Gomez Atria D, Oguin TH, 3rd, Wang S, Manzoni TB, et al.  
508 SARS-CoV-2 mRNA Vaccines Foster Potent Antigen-Specific Germinal Center  
509 Responses Associated with Neutralizing Antibody Generation. *Immunity*.  
510 2020;53(6):1281-95 e5.
- 511 51. Painter MM, Mathew D, Goel RR, Apostolidis SA, Pattekar A, Kuthuru O, et al.  
512 Rapid induction of antigen-specific CD4(+) T cells is associated with coordinated  
513 humoral and cellular immunity to SARS-CoV-2 mRNA vaccination. *Immunity*.  
514 2021;54(9):2133-42 e3.
- 515 52. Chen JS, Chow RD, Song E, Mao T, Israelow B, Kamath K, et al. High-affinity,  
516 neutralizing antibodies to SARS-CoV-2 can be made without T follicular helper  
517 cells. *Sci Immunol*. 2022;7(68):eabl5652.
- 518 53. Gerayeli FV, Milne S, Cheung C, Li X, Yang CWT, Tam A, et al. COPD and the  
519 risk of poor outcomes in COVID-19: A systematic review and meta-analysis.  
520 *EClinicalMedicine*. 2021;33:100789.
- 521 54. Friedman MA, and Winthrop KL. Second COVID-19 infection in a patient with  
522 granulomatosis with polyangiitis on rituximab. *Ann Rheum Dis*. 2021.
- 523 55. Grupper A, Rabinowich L, Schwartz D, Schwartz IF, Ben-Yehoyada M, Shashar  
524 M, et al. Reduced humoral response to mRNA SARS-CoV-2 BNT162b2 vaccine  
525 in kidney transplant recipients without prior exposure to the virus. *Am J Transplant*.  
526 2021;21(8):2719-26.
- 527 56. Grupper A, Katchman E, Ben-Yehoyada M, Rabinowich L, Schwartz D, Schwartz  
528 IF, et al. Kidney transplant recipients vaccinated before transplantation maintain  
529 superior humoral response to SARS-CoV-2 vaccine. *Clin Transplant*.  
530 2021;35(12):e14478.
- 531 57. Pitzalis M, Idda ML, Lodde V, Loizedda A, Lobina M, Zoledziwska M, et al. Effect  
532 of Different Disease-Modifying Therapies on Humoral Response to BNT162b2  
533 Vaccine in Sardinian Multiple Sclerosis Patients. *Front Immunol*. 2021;12:781843.
- 534 58. Achtnichts L, Jakopp B, Oberle M, Nedeltchev K, Fux CA, Sellner J, et al. Humoral  
535 Immune Response after the Third SARS-CoV-2 mRNA Vaccination in CD20  
536 Depleted People with Multiple Sclerosis. *Vaccines (Basel)*. 2021;9(12).
- 537 59. Liao SY, Gerber AN, Zelarney P, Make B, and Wechsler ME. Impaired SARS-CoV-  
538 2 mRNA Vaccine Antibody Response in Chronic Medical Conditions: A Real-World  
539 Analysis. *Chest*. 2022.
- 540 60. Benotmane I, Gautier-Vargas G, Cognard N, Olagne J, Heibel F, Braun-Parvez L,  
541 et al. Weak anti-SARS-CoV-2 antibody response after the first injection of an  
542 mRNA COVID-19 vaccine in kidney transplant recipients. *Kidney Int*.  
543 2021;99(6):1487-9.
- 544 61. Lopez Bernal J, Andrews N, Gower C, Robertson C, Stowe J, Tessier E, et al.  
545 Effectiveness of the Pfizer-BioNTech and Oxford-AstraZeneca vaccines on covid-  
546 19 related symptoms, hospital admissions, and mortality in older adults in England:  
547 test negative case-control study. *BMJ*. 2021;373:n1088.
- 548 62. Shroff RT, Chalasani P, Wei R, Pennington D, Quirk G, Schoenle MV, et al.  
549 Immune responses to two and three doses of the BNT162b2 mRNA vaccine in  
550 adults with solid tumors. *Nat Med*. 2021;27(11):2002-11.
- 551 63. Teo SP. Review of COVID-19 Vaccines and Their Evidence in Older Adults. *Ann*  
552 *Geriatr Med Res*. 2021;25(1):4-9.

- 553 64. Watanabe M, Balena A, Tuccinardi D, Tozzi R, Risi R, Masi D, et al. Central  
554 obesity, smoking habit, and hypertension are associated with lower antibody titres  
555 in response to COVID-19 mRNA vaccine. *Diabetes Metab Res Rev.*  
556 2022;38(1):e3465.
- 557 65. Galmiche S, Luong Nguyen LB, Tartour E, de Lamballerie X, Wittkop L, Loubet P,  
558 et al. Immunological and clinical efficacy of COVID-19 vaccines in  
559 immunocompromised populations: a systematic review. *Clin Microbiol Infect.*  
560 2022;28(2):163-77.
- 561 66. Yi SG, Knight RJ, Graviss EA, Moore LW, Nguyen DT, Ghobrial RM, et al. Kidney  
562 Transplant Recipients Rarely Show an Early Antibody Response Following the  
563 First COVID-19 Vaccine Administration. *Transplantation.* 2021;105(7):e72-e3.
- 564 67. Newman J, Rice JS, Wang C, Harris SL, and Diamond B. Identification of an  
565 antigen-specific B cell population. *J Immunol Methods.* 2003;272(1-2):177-87.
- 566 68. Ouisse LH, Gautreau-Rolland L, Devilder MC, Osborn M, Moyon M, Visentin J, et  
567 al. Antigen-specific single B cell sorting and expression-cloning from  
568 immunoglobulin humanized rats: a rapid and versatile method for the generation  
569 of high affinity and discriminative human monoclonal antibodies. *BMC Biotechnol.*  
570 2017;17(1):3.
- 571 69. Gaebler C, Wang Z, Lorenzi JCC, Muecksch F, Finkin S, Tokuyama M, et al.  
572 Evolution of antibody immunity to SARS-CoV-2. *Nature.* 2021;591(7851):639-44.
- 573 70. Anderson EJ, Rouphael NG, Widge AT, Jackson LA, Roberts PC, Makhene M, et  
574 al. Safety and Immunogenicity of SARS-CoV-2 mRNA-1273 Vaccine in Older  
575 Adults. *N Engl J Med.* 2020;383(25):2427-38.
- 576 71. Jackson LA, Roberts PC, and Graham BS. A SARS-CoV-2 mRNA Vaccine -  
577 Preliminary Report. Reply. *N Engl J Med.* 2020;383(12):1191-2.
- 578 72. Jackson LA, Anderson EJ, Rouphael NG, Roberts PC, Makhene M, Coler RN, et  
579 al. An mRNA Vaccine against SARS-CoV-2 - Preliminary Report. *N Engl J Med.*  
580 2020;383(20):1920-31.
- 581 73. Walsh EE, Frenck RW, Jr., Falsey AR, Kitchin N, Absalon J, Gurtman A, et al.  
582 Safety and Immunogenicity of Two RNA-Based Covid-19 Vaccine Candidates. *N*  
583 *Engl J Med.* 2020;383(25):2439-50.
- 584 74. Mitsunaga T, Ohtaki Y, Seki Y, Yoshioka M, Mori H, Suzuka M, et al. The  
585 evaluation of factors affecting antibody response after administration of the  
586 BNT162b2 vaccine: a prospective study in Japan. *PeerJ.* 2021;9:e12316.
- 587 75. Ritchie AI, Farne HA, Singanayagam A, Jackson DJ, Mallia P, and Johnston SL.  
588 Pathogenesis of Viral Infection in Exacerbations of Airway Disease. *Ann Am*  
589 *Thorac Soc.* 2015;12 Suppl 2:S115-32.
- 590 76. Guerrero G, Picozza M, D'Orso S, Placido R, Pirronello M, Verdiani A, et al.  
591 BNT162b2 vaccination induces durable SARS-CoV-2-specific T cells with a stem  
592 cell memory phenotype. *Sci Immunol.* 2021;6(66):eabl5344.
- 593 77. Charmetant X, Espi M, Benotmane I, Barateau V, Heibel F, Buron F, et al. Infection  
594 or a third dose of mRNA vaccine elicits neutralizing antibody responses against  
595 SARS-CoV-2 in kidney transplant recipients. *Sci Transl Med.*  
596 2022;14(636):eabl6141.

- 597 78. Lim SH, Stuart B, Joseph-Pietras D, Johnson M, Campbell N, Kelly A, et al.  
598 Immune responses against SARS-CoV-2 variants after two and three doses of  
599 vaccine in B-cell malignancies: UK PROSECO study. *Nat Cancer*. 2022.  
600 79. Hall VG, Ferreira VH, Ku T, Ierullo M, Majchrzak-Kita B, Chaparro C, et al.  
601 Randomized Trial of a Third Dose of mRNA-1273 Vaccine in Transplant  
602 Recipients. *N Engl J Med*. 2021;385(13):1244-6.  
603 80. Re D, Seitz-Polski B, Brglez V, Carles M, Graca D, Benzaken S, et al. Humoral  
604 and cellular responses after a third dose of SARS-CoV-2 BNT162b2 vaccine in  
605 patients with lymphoid malignancies. *Nat Commun*. 2022;13(1):864.  
606 81. Liu H, Zhang Q, Wei P, Chen Z, Aviszus K, Yang J, et al. The basis of a more  
607 contagious 501Y.V1 variant of SARS-CoV-2. *Cell Research*. 2021;31(6):720-2.  
608 82. Jones BE, Brown-Augsburger PL, Corbett KS, Westendorf K, Davies J, Cujec TP,  
609 et al. The neutralizing antibody, LY-CoV555, protects against SARS-CoV-2  
610 infection in nonhuman primates. *Sci Transl Med*. 2021;13(593).

611

612 **Acknowledgments:** We thank John Yang management and distribution of PBMC and  
613 serum samples from NJH Biobank and the Jin Hua foundation for their support.

614

615 **Author contributions:** Concept and design: all authors. Acquisition and interpretation  
616 of data: H.L., K.A., P.Z., S.-Y. L., P.M., R.L.R. Drafting of the manuscript: H.L., P.M.,  
617 R.L.R. Critical revision of the manuscript for important intellectual content: All authors.  
618 Statistical analysis: R.L.R., H.L., S.-Y.L., P.Z. All authors had full access to all the data  
619 in the study and take responsibility for the integrity of the data and accuracy of the data  
620 analysis.

621

622 **Competing interests:** Authors report no competing financial interests.

623

624 **Funding Statement:** This work was supported by the following funding: National  
625 Institutes of Health Grants: R.L.R. (AI156901), P.M. (AI18785), H.L. (GM135421) and

626 M.E.W. (NJH Dept. of Medicine MOOR microgrant award and the Jin Hua Foundation),  
 627 A.N.G. and H.L. (Funded by NJH Div. of Pulmonary, Critical Care and Sleep Medicine)

628  
 629 **Material and Correspondence:** Correspondence and material requests should be  
 630 directed to R. Lee Reinhardt, Haolin Liu, Michael Wechsler, and Phillipa Marrack.

631  
 632 **Tables:**

633 **Table 1: Investigative cohort of SARS-CoV-2 vaccinated patients with chronic**  
 634 **lung disease**

635

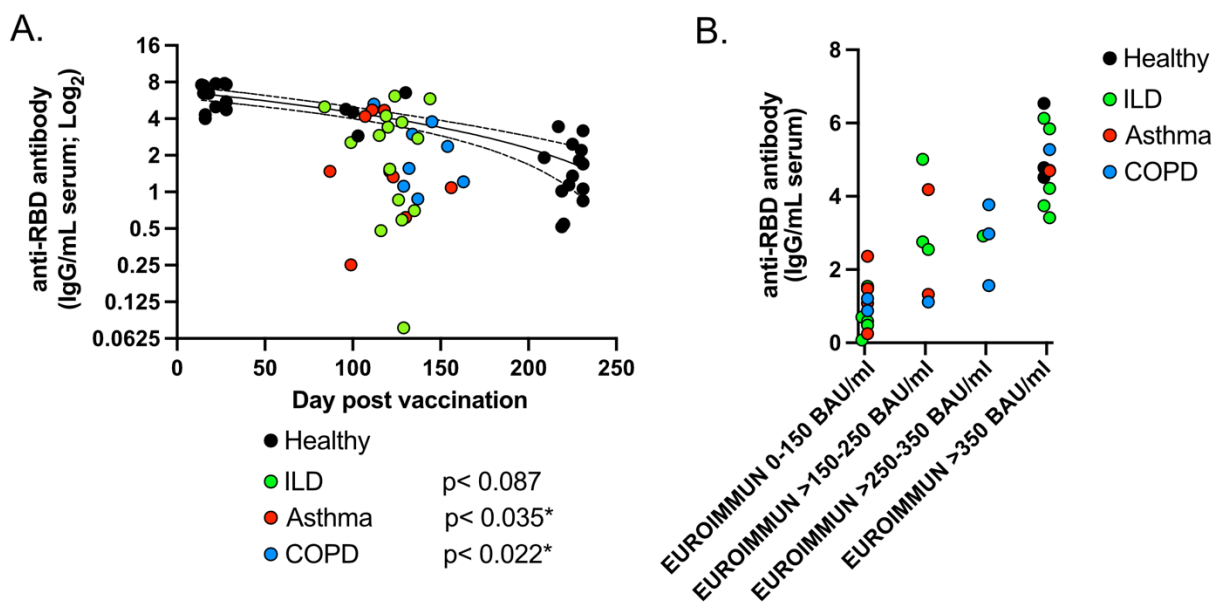
	<b>Asthma</b> 9 subjects	<b>COPD</b> 8 subjects	<b>ILD</b> 15 subjects	<b>Healthy Controls</b> 31 subjects	<b>Total</b> 63 subjects
<b>Age at Sample - average (range)</b>	58 (43-71)	64 (57-73)	62 (47-73)	50 (25-72)	56 (25-73)
<b>Female - number (%)</b>	5 (56%)	5 (62%)	9 (60%)	14 (45%)	33 (52%)
<b>Male - number (%)</b>	4 (44%)	3 (38%)	6 (40%)	17 (55%)	30 (48%)
<b>Days from last vaccination to sample - average (range)</b>	117 (87-156)	138 (112-163)	122 (84-144)	121 (14-231)	123 (14-231)
<b>Immunosuppressants (%)</b>	6 (66%)	4 (50%)	9 (60%)	0 (0%)	19 (30%)
<b>FEV-1 Pre-Bronch % Predicted</b>	76 (49-106) n=8	63 (27-98) n=7	77 (33-109) n=15	n/a	n/a
<b>FVC Pre-Bronch % Predicted</b>	78 (61-99) n=8	81 (55-111) n=7	75 (34-97) n=15	n/a	n/a
<b>FEV1/FVC Pre-Bronch % Predicted</b>	94 (78-109) n=8	75 (48-101) n=7	101 (88-115) n=15	n/a	n/a
<b>Meets GINA 4 criteria</b>	3				
<b>Meets GINA 5 criteria</b>	3				

636



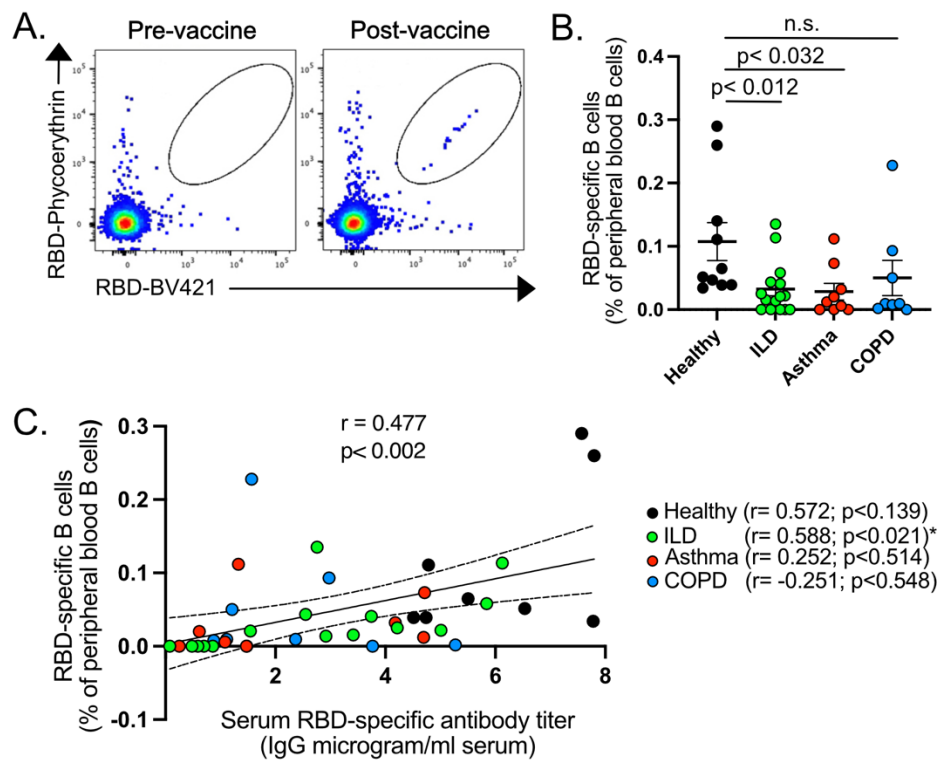
637 **Figures:**

638 **Figure 1**



639

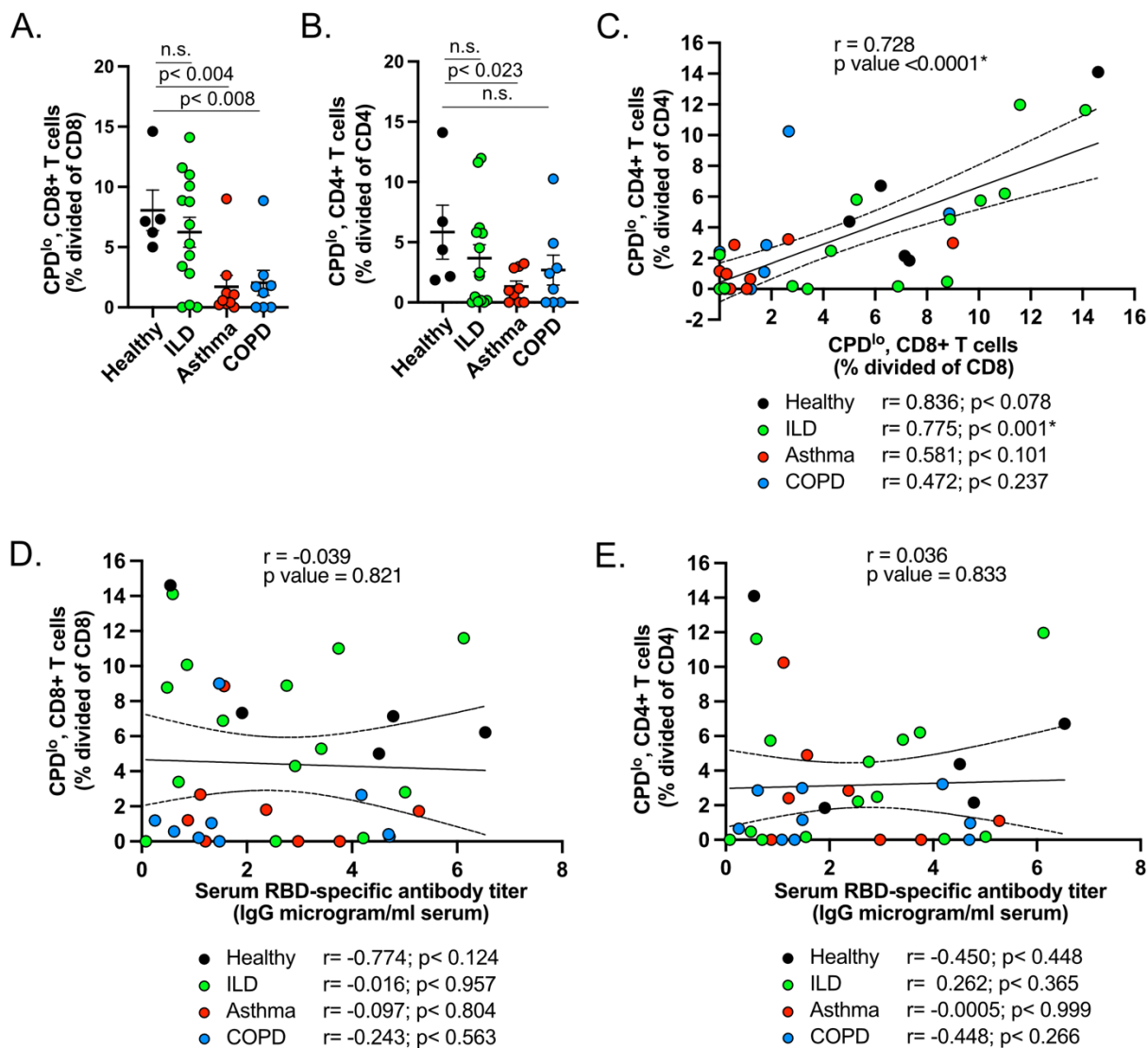
640 **Figure 2**



641

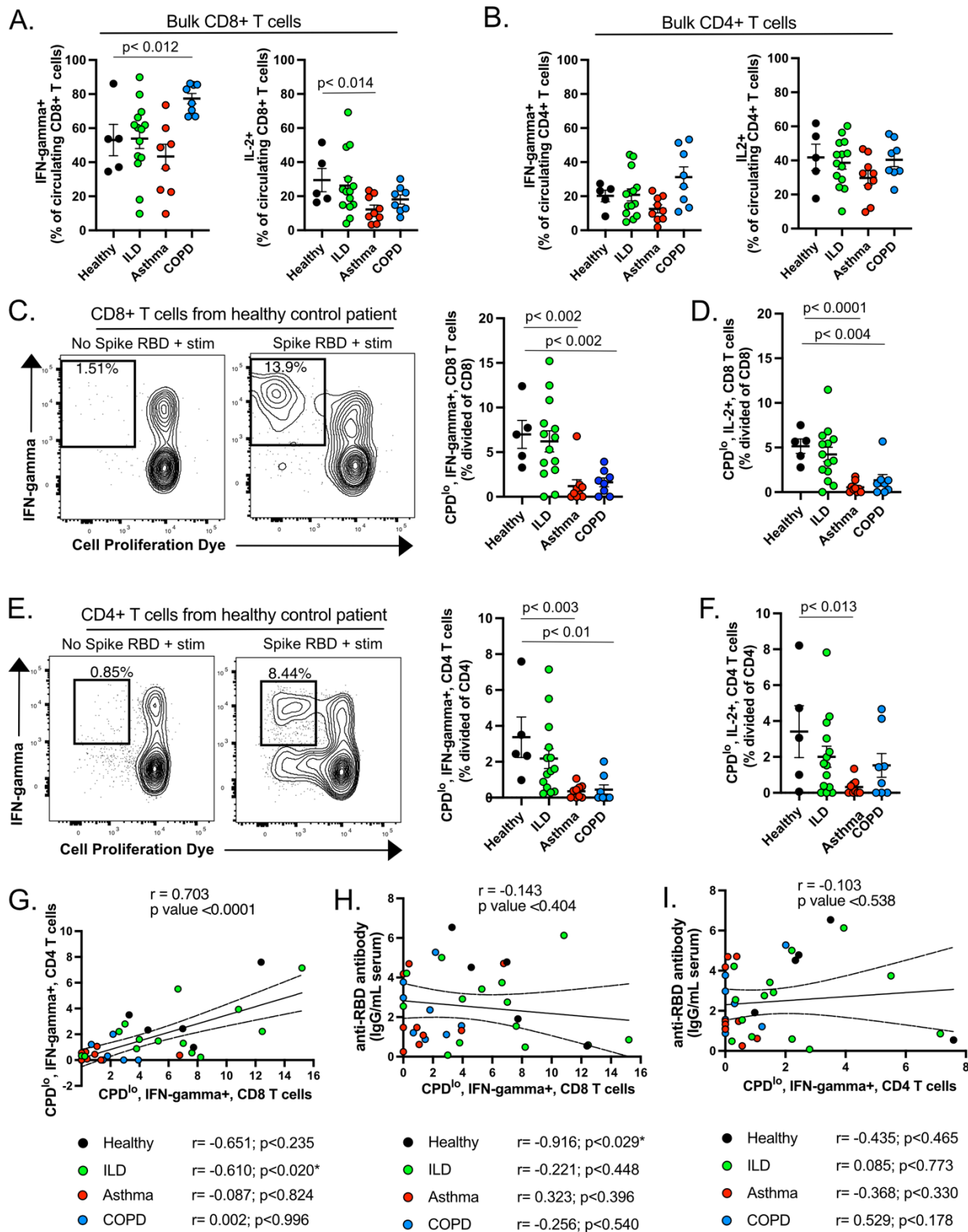
642

643 **Figure 3**



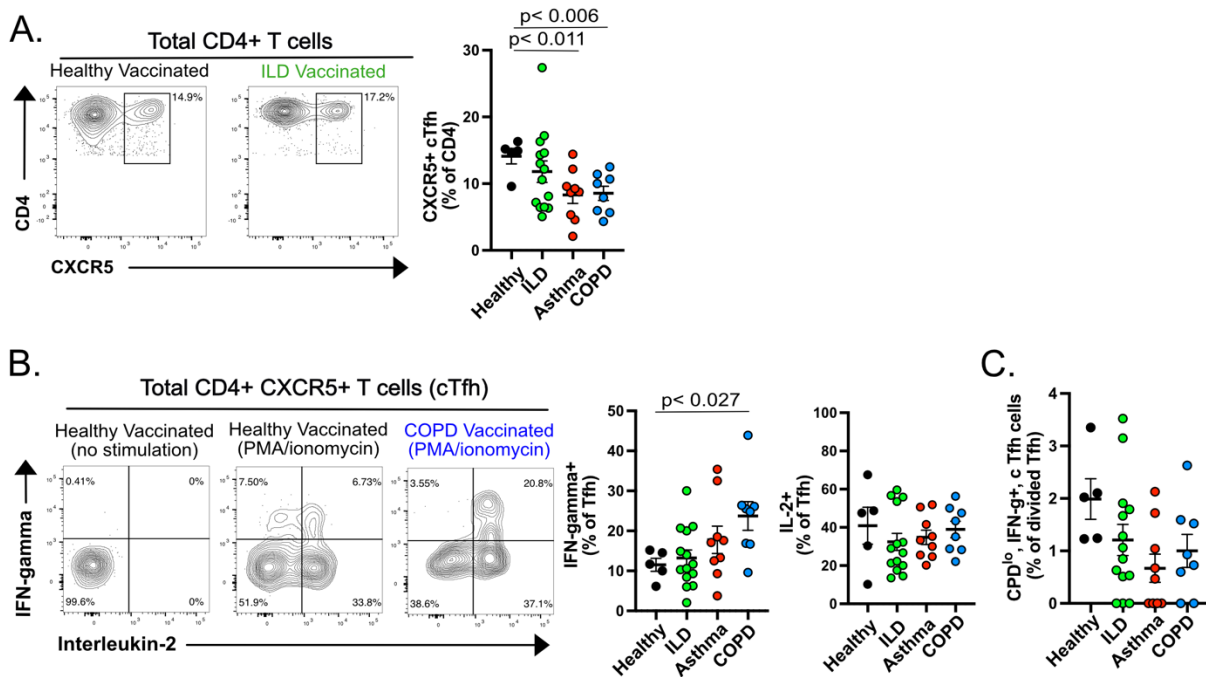
644

645 **Figure 4**



646

647 **Figure 5**



648

649 **Figure Legends:**

650 **Figure 1: Impaired serum antibody titers against SARS-CoV-2 spike RBD in a**  
651 **subset of patients with chronic lung disease after vaccination. (A)** ELISA for serum  
652 IgG binding to SARS-CoV-2 RBD in healthy (black), ILD (green), asthma (red), and  
653 COPD (blue) patients 14-231 days post SARS-CoV-2 mRNA vaccination. Line  
654 represents simple linear regression for healthy subjects flanked by 95% confidence  
655 intervals. **(B)** Serum anti-RBD antibodies detected 75-175 days after vaccination of  
656 healthy and chronic lung disease patients using the in-house ELISA were compared to  
657 antibody titers against the SARS-CoV-2 spike protein S1 domain using QuantiVac  
658 ELISA (EUROIMMUN) IgG binding antibody units (BAU). Statistical analysis: p values in  
659 (A) represent unpaired, T test comparing titers taken 75-175 days after last vaccination.

660

661 **Figure 2: Decreased circulating RBD-reactive memory B cells in patients with**  
662 **chronic lung disease after vaccination compared to healthy controls.** PBMC  
663 collected 14-175 days post vaccination. **(A)** Representative contour plots of circulating B  
664 cells from blood of patients pre- and post-SARS-CoV-2 vaccination. Gate represents  
665 dual RBD-tetramer binding B cells. **(B)** Graph represents the percentage of RBD+ B  
666 cells within the total circulating B cell pool of healthy (black), ILD (green), asthma (red)  
667 and COPD (blue) patients. **(C)** Correlation of serum anti-RBD antibody titers and  
668 circulating RBD-binding B cells detected in healthy and chronic lung disease patients  
669 after SARS-CoV-2 vaccination. Lines represents best-fit simple linear regression with  
670 flanking lines demarcating 95% confidence intervals. (n=8-14; error bars represent +/-  
671 S.E.M)

672

673 **Figure 3: Decreased circulating SARS-CoV-2 RBD-specific T cells in a subset of**  
674 **patients with chronic lung disease after vaccination.** PBMC collected 75-220 days  
675 post vaccination. **(A)** Graph represents the percentage of CPD-low (divided) RBD-  
676 specific CD8+ T cells within the total circulating CD8+ T cell populations after culture  
677 and stimulation with RBD-protein in healthy (black), ILD (green), asthma (red) and  
678 COPD (blue) patients. Numbers are normalized by subtracting CPD-low population in  
679 PBMC cultures that received no protein. **(B)** Graph represents the percentage of CPD-  
680 low (divided) CD4+ T cells within the total circulating CD4+ T cell populations after  
681 culture and stimulation with RBD-protein in healthy patients and patients with chronic  
682 lung disease. Numbers are normalized by subtracting CPD-low population in PBMC  
683 cultures that received no protein. **(C)** Correlation of CPD-low (divided) CD4+ and CD8+  
684 T cells in circulation in healthy (black), ILD (green), COPD (blue), and asthma (red)  
685 patients after SARS-CoV-2 vaccination. Central line represents best-fit simple linear  
686 regression; flanking lines demarcate 95% confidence intervals. **(D)** Correlation between  
687 CPD-low (divided) CD8+ T cells in circulation and serum antibody titers against RBD in  
688 healthy (black), ILD (green), COPD (blue), and asthma (red) patients after SARS-CoV-2  
689 vaccination. Central solid line represents best-fit simple linear regression; flanking lines  
690 demarcate 95% confidence intervals. **(E)** Correlation between CPD-low (divided) CD4+  
691 T cells in circulation and serum antibody titers against RBD in healthy (black), ILD  
692 (green), COPD (blue), and asthma (red) patients after SARS-CoV-2 vaccination. Central  
693 line represents best-fit simple linear regression; flanking lines demarcate 95%  
694 confidence intervals. (n=5-14; error bars represent +/- S.E.M)).

695

696 **Figure 4: Impaired cytokine potential among SARS-CoV-2 RBD-specific T cells**  
697 **after vaccination of patients with chronic lung disease.** PBMC collected 75-220  
698 days post vaccination. **(A)** Graph represents the percentage of IFN-gamma and IL-2  
699 expressing CD8+ T cells within the total circulating CD8+ T cell population after  
700 stimulation with RBD-protein in healthy patients and patients with chronic lung disease.  
701 **(B)** Graph represents the percentage of IFN-gamma and IL-2 expressing CD8+ T cells  
702 within the total circulating CD8+ T cell population after stimulation with RBD-protein in  
703 healthy patients and patients with chronic lung disease. **(C)** Contour plots and graph  
704 identifying the percentage of IFN-gamma+ CPD-low (divided) CD8+ T cells within the  
705 total CD8+ T cells pool. Gate in contour plot identifies circulating CPD-low (divided)  
706 CD8+ T cells that express IFN-gamma. Dividing cells above background are only found  
707 in cultures stimulated with RBD. **(D)** Graph identifying the percentage of IL-2+ CPD-low  
708 (divided) CD8+ T cells within the total CD8+ T cells pool. Numbers in graph are  
709 normalized by subtracting CPD-low (dividing) population in PBMC cultures that received  
710 no protein. **(E)** Contour plots and graph identifying the percentage of IFN-gamma+  
711 CPD-low (divided) CD4+ T cells within the total CD4+ T cells pool after vaccination.  
712 Gate in contour plot identifies circulating CPD-low (divided) CD4+ T cells that express  
713 IFN-gamma. Notable CPD<sup>low</sup> population that falls outside of gate represents RBD-  
714 responsive T cells that are not expressing IFN-gamma. Numbers in graph are  
715 normalized by subtracting CPD-low (dividing) population in PBMC cultures that received  
716 no protein. **(F)** Graph identifying the percentage of IL-2+ CPD-low (divided) CD4+ T  
717 cells within the total CD4+ T cells pool. Numbers in graph are normalized by subtracting



718 CPD-low (dividing) population in PBMC cultures that received no protein. **(G, H, I)**  
719 Correlation between IFN-gamma expressing CPD-low (divided) CD4+ and CD8+ T cells  
720 (G), IFN-gamma expressing CPD-low (divided) CD8+ T cells and serum RBD antibody  
721 titers (H) and IFN- $\gamma$  expressing CPD-low (divided) CD4+ T cells and serum RBD  
722 antibody titers (I) in healthy (black), ILD (green), asthma (red), and COPD (blue)  
723 patients after SARS-CoV-2 vaccination. Central solid line represents best-fit simple  
724 linear regression; flanking lines demarcate 95% confidence intervals. (n=5-14; error  
725 bars represent +/- S.E.M)).

726

727 **Figure 5: Patients with chronic lung disease have heterogeneous Tfh cell**  
728 **responses after SARS-CoV-2 vaccination compared to healthy controls.** PBMC  
729 collected 75-220 days post vaccination. **(A)** Contour plots from representative PBMC  
730 cultures from healthy and ILD vaccinated patients. Gate reveals the percentage of  
731 CXCR5+ Tfh cells among total circulating CD4+ T cells. **(B)** Representative contour plots  
732 of CXCR5+ Tfh cells from PBMC cultures of healthy and COPD vaccinated patients with  
733 or without stimulation with PMA/ionomycin. Gates reveal the percentage of CXCR5+ Tfh  
734 cells expressing one of or both IFN- $\gamma$  and IL-2 cytokines. Graphs show the percentage  
735 of cTfh in these distinct disease cohorts and healthy controls that express IFN- $\gamma$  or IL-2.  
736 **(C)** Graph shows the percentage of IFN- $\gamma$  expressing CPD-low (divided) CXCR5+ Tfh  
737 cells within the RBD-specific Tfh cell population in healthy patients and patients with  
738 chronic lung conditions. Numbers in graph are normalized by subtracting CPD-low  
739 (dividing) population in PBMC cultures that received no protein. (n=5-14; error bars  
740 represent +/- S.E.M).