

Title: Clinical manifestation and laboratory parameters associated with progression to severe dengue in children: a systematic review and meta-analysis

Running Title: Clinical and laboratory parameters for severe dengue in children

Author(s) : Indra Sandinirwan^{1,4}
Bani Muslim³
Henry Leo^{2,4}
Hasanah Hasanah³
Permata Putri Karina³

Affiliation(s)(each author):

¹Department of Pediatrics, Hermina Hospital Sukabumi, West Java, Indonesia

²Department of Pediatrics, Bintuni Public Hospital, West Papua, Indonesia

³Indonesian Medical Association (Ikatan Dokter Indonesia/IDI), Jakarta, Indonesia

⁴Indonesian Pediatric Society (Ikatan Dokter Anak Indonesia/IDAI), Jakarta, Indonesia

Corresponding Author Information:

Department of Pediatric

Hermina Hospital Sukabumi, Sukaraja Street Main Road, Sukaraja, Sukabumi Regency, West Java, 43192

Phone: +62813 1280 4499, Email: indra14006@mail.unpad.ac.id

ORCID iD: <https://orcid.org/0000-0001-6421-5789>

Author(s) Affiliation and Email:

¹Department of Pediatrics, Hermina Hospital, Sukabumi, West Java, Indonesia, indra14006@mail.unpad.ac.id

²Department of Pediatrics, Bintuni Public Hospital, West Papua, Papua, Indonesia, henry.leo86@gmail.com

³Indonesian Medical Association (Ikatan Dokter Indonesia/IDI), Jakarta, Indonesia, be.muslim.1@gmail.com, hasanah3711@gmail.com, pputrikarina@gmail.com

Abstract

Background: The ingenuity to predict the progression to severe dengue is crucial in managing dengue patients. The previous meta-analysis has been performed on adults, and none has been performed specifically on children. We conducted a systematic review and meta-analysis to determine the clinical manifestations and laboratory parameters associated with the progression to severe dengue according to WHO criteria.

Methods: We focused on searching six medical databases for studies published from Jan 1, 2000, to Dec 31, 2020. The meta-analysis used random-effects or fixed-effects models to estimate pooled effect sizes. We also assessed the heterogeneity and publication bias. This study was registered with PROSPERO, CRD42021224439.

Results: We included 49 of papers in the systematic review, and we encased the final selected 39 papers comprising 23 potential predictors in the meta-analyses. Among 23 factors studied, seven clinical manifestations demonstrated association with disease progression in children, including neurological signs, gastrointestinal bleeding, clinical fluid accumulation, hepatomegaly, vomiting, abdominal pain, and petechiae. Six laboratory parameters are associated during the early days of illness, including elevated hematocrit, elevated aspartate aminotransferase [AST], elevated alanine aminotransferase [ALT], low platelet count, low albumin levels, and elevated activated partial thromboplastin time. Dengue virus serotype 2 (DENV-2) and secondary infections were also associated with severe disease progression.

Conclusion: This finding supports the use of the warning signs described in the WHO 2009 guidelines. In addition, monitoring serum albumin, AST/ALT levels, identifying infecting dengue serotypes, and immunological status could improve the risk prediction of disease progression.

Keywords: children, dengue, risk prediction, severity, warning sign.

Introduction

Dengue is still a public health concern across the globe. The global incidence is estimated to be 390 million individuals infected each year, with mortality rates ranging from 10,000 to 20,000 per year.^{1,2} Dengue infection can affect all ages, including adults and children. Dengue mortality will increase as the disease progress to severe dengue conditions or dengue shock syndrome, especially in children with comorbid factors. Although most patients have mild symptoms, a small proportion will progress to severe dengue or dengue hemorrhagic fever, which can be life-threatening. This progression to the severe disease commonly occurs between days 4 and 6 of illness.³

During hospitalization, clinical and laboratory monitoring for these patients should always be carried out. Serial hematocrit and platelet examinations have become the standard examinations in various health care centers. To assist clinicians in the early detection of severe disease progression, World Health Organization (WHO) has issued guidelines for dengue, namely the 1997 and 2009 WHO Dengue Guidelines.^{3,4} Clinical symptoms such as persistent vomiting, abdominal pain, bleeding manifestations, and fluid accumulation are warning signs associated with the occurrence of severe dengue. Several laboratory parameters associated with dengue disease severity include hematocrit, platelets, aspartate aminotransferase, alanine aminotransferase, lactate dehydrogenase, and serum albumin.⁵

This systematic review aimed to identify whether specific clinical manifestations and laboratory parameters have a strong, moderate, or low association with severe dengue. In addition, the authors hoped that the results of this study could help early decision-making to optimize patient management and improve the quality of care for children.

Methods

Protocol and Registration

This systematic review was conducted based on the Preferred Reporting Items for Systematic Review and Meta-Analysis (PRISMA) Statement⁶ and a guide to systematic review and meta-analysis of prognostic factor studies.⁷ The protocol of this systematic review has been registered in The International Prospective Register of Systematic Reviews (PROSPERO) database (CRD42021224439).

Eligibility Criteria

We aimed to include observational studies of pediatric dengue patients who were clinically and serologically confirmed and were treated inpatient or outpatient in a hospital, health center, or teaching hospital. The dengue criteria used in this study were according to the 1997 or 2009 WHO dengue classification. Studies should show an association between clinical manifestations and laboratory parameters with severe dengue prevalence and the minimal study size of at least twenty patients. To be included in systematic reviews and meta-analyses, papers must provide a summary measure or effect measure for severe dengue in the form of

odds ratio (OR), risk ratio (RR), with p-values or confidence intervals (CI) or have to give crude data that allowed calculation of a measure. Severe dengue in our study was a confirmed dengue patient who was in a clinical shock state due to plasma leakage, severe bleeding, or severe organ involvement. Published articles in the last 20 years (2000 to 2020) were expected to provide novelty and updates on existing systematic reviews and meta-analyses. Only papers written in the English language were included. We excluded prognostic factors related to gene expression, cell receptors, virological studies, neutralizing antibodies, cytokines & plasma proteins. We eliminated conference abstracts/papers, supplementary issues, review articles, seroepidemiological studies, adult population studies, and brief reports.

Information sources, search strategy, and study selection

From December 2020 to February 2021, we conducted an article search from six electronic databases. The search strategy combines “dengue fever” and “children” with possible synonyms. The search terms and the study selection process are shown in [Table 1](#) and [Figure 1](#). We also searched for related studies through reference and citation checks. Bramer et al. suggest that to get optimal results in a systematic review, the author at least does a search on Embase, MEDLINE/PubMed, Web of Science, and Google Scholar to ensure adequate coverage.⁸ During the article search process, we found a small number of articles whose full text was not in English, we decided not to include them. We also did not include papers from gray literature and unpublished studies that have not gone through the peer-review process. We contacted the corresponding author by email regarding information that needs to be confirmed in the article obtained.

We used Zotero software to remove the article duplicates and exported the listed articles to the Rayyan app for systematic review.⁹ The titles and abstracts were independently reviewed by two authors (IS and BM) based on pre-determined eligibility criteria. After screening and removing irrelevant articles, we managed to list 98 articles. The same two authors conducted an overall text assessment after retrieving full-text papers from each publisher. Finally, the third reviewer (HL) resolved the differences between the two reviewers, and the final decision was determined by consensus.

Data items and data collection process

The primary information presented was the association between clinical manifestations and specific laboratory parameters with the severity of dengue infection. In addition, we extracted information about the health facilities and the place where the research was conducted, the time of the study, the name of the first author, the year of publication, study design and methods, study size, and population characteristics in each study. Data from the included studies were extracted using a standardized, pre-piloted form. The data from eligible studies were entered into Microsoft Excel, and the two authors independently carried out the extraction process (IS, BM). Disagreements were resolved by a third author (HL).

Risk of bias in individual studies

Two authors independently (IS and HL) examined the risk of bias using the Quality in Prognostic Studies (QUIPS) tools.¹⁰ Disagreements resolved by a third author (HH). The risk of bias assessment results was presented using Microsoft Excel.

Synthesis of results

All included studies were presented in a narrative and summary table. For each prognostic factor (clinical manifestation or laboratory parameter) evaluated in at least two studies, we summarized it in a forest plot and submitted it to the meta-analysis. Meta-analysis was performed using Comprehensive Meta-Analysis software version 3.0 (Biostat, USA) and MetaXL version 5.3 (EpiGear, Australia). Combining the classification of dengue based on the 1997 and 2009 WHO guidelines, we divided the progression of dengue into two: patients with severe disease (dengue hemorrhagic fever, dengue shock syndrome according to 1997 WHO guidelines or severe dengue according to WHO 2009 guidelines) and patients without the severe disease forms (dengue fever, non-severe dengue, and dengue with warning sign).

The pooled odds ratio indicates the strength of the association between certain prognostic factors and severe dengue. Dichotomous variables and continuous variables were analyzed to calculate the effect size (in the form of odds ratio or standardized mean difference) if there were DSS/DHF and DF groups (WHO 1997 criteria) or severe dengue and non-severe dengue/dengue with warning sign groups (WHO 2009 criteria). The SMD value was then converted into the OR based on the Borenstein method. The two variables (both dichotomous and continuous) were combined to obtain a pooled OR to increase the number of studies included in the analysis.¹¹⁻¹³

Current guidelines for prognostic studies recommend reporting both crude and adjusted association measures.¹⁴ The adjusted effect sizes can be obtained if a study uses a multivariate analysis approach. However, most of the eligible studies in our systematic review used univariate analysis, and only a small proportion used multivariate analysis. We decided to use only the crude measures of association in this meta-analysis. We performed a meta-analysis with fixed effects and random effects for the different predictors to generate pooled estimates. To further investigate the robustness of pooled estimates, sensitivity analysis was also performed by removing studies with extreme effect size and heterogeneity. We also did a subgroup analysis categorized by the study's country.

The heterogeneity assessment was conducted using the Cochran Q statistic and I^2 statistic. Studies were considered heterogeneous if the p-value for the Cochran Q was less than 0.1; the I^2 expressed the proportion of variation across studies that is due to heterogeneity. The level of heterogeneity was categorized as low (0-25%); low to moderate (25% to <50%); moderate to high (50% to <75%); and high ($\geq 75\%$).^{15,16} The agreement between reviewers in study selection was assessed with Cohen's kappa.

To detect any publication bias, we used Funnel plots and Doi plots. The symmetrical Doi Plot indicates the absence of publication bias, while the asymmetric plot indicates the presence of publication bias, considering the Luis Furuya-Kanamori (LFK) index. In the funnel plot, if Egger's test shows $p < 0.05$, it indicates publication bias.¹⁷ LFK index up to ± 1 indicates no asymmetry, values that exceed ± 1 but did not exceed ± 2 indicate minor asymmetry, and if the value exceeds ± 2 shows major asymmetry. Unlike the Funnel plots requiring a minimum of 10 studies, Doi plots can be used for fewer studies.^{16,18} To enhance the symmetry, we also used Duval and Tweedie's trim and fill method to assess the sensitivity of the crude estimates to publication bias.¹⁹ Factors that were only investigated in one study or for which raw data could not be combined, the association of these factors with disease progression was derived from the original research and presented narratively.

Results

Characteristics of the selected studies

Of the 2094 papers identified, 49 were included in the systematic review^{20–68} (Figure 1), with the agreement between the two reviewers at 93% (Cohen's kappa = 0.72). All included studies are observational studies [100%, (49/49)] and among the studies, [78%, (38/49)] were prospective cohort, [14%, (7/49)] were retrospective cohort, [4%, (2/49)] were case-control, and [4%, (2/49)] were cross-sectional study. Most of the included studies were conducted in Asia and Latin America, published between 2000 to 2020. The countries included in this study are India, Thailand, Indonesia, Vietnam, Sri Lanka, Paraguay, Nicaragua, Brazil, and the Philippines. Only one study took populations from seven dengue-endemic countries, namely a study conducted by Rosenberger et al.³⁶ Almost all of the studies comprised inpatient (hospitalized) populations, and only one study conducted by Tuan et al.⁵⁷ incorporated outpatient study populations.

The inclusion criteria for patients varied between studies but generally included pediatric patients with fever symptoms for 1–3 days (≤ 72 hours) as inclusions. About 57% (28 out of 49) of the studies defined severity using "1997 WHO classification", while the remaining studies [21% (21/49)] used "2009 WHO classification". The supplementary information shows the details and summary of included studies (S1 Table and S2 Table).

The total number of patients in the 49 studies included in this systematic review was 93628 patients, with a pooled prevalence of severe dengue was 0.30 (95%CI 0.25–0.34) (S1 Text). The management of dengue in pediatric patients follows the WHO guidelines, or at a more specific level, adjusted to the health service policy at the hospital where the study was conducted.

Risk of bias

We used the QUIPS tool to examine the risk of bias in the six domains (Figure 2). Most studies have a low risk of bias in study participation, study attrition, prognostic factor measurement, outcome measurement, and

statistical analysis and reporting. In the confounding study domain, we found a moderate risk of bias. Details of the risk of bias assessment are presented in the supplementary information (S3 Table).

The prognostic factor of severe dengue

Twenty-three potential prognostic factors (reported in 39 studies) were evaluated in at least three studies and were submitted to the meta-analysis. An overview of prognostic factors evaluated is presented in Table 2, and the summary of crude and adjusted ORs of significant prognostic factors can be found in Table 3. In addition, the individual forest plots, Doi plots, Funnel plots, sensitivity analyses, and subgroup analyses for each prognostic factor are given in supplementary information (S2 Text).

The age profile of pediatric patients with severe dengue was no different from those without severe dengue. Heterogeneity in pooled results is very high (91%), and after removing studies with extreme effect sizes in sensitivity analysis, the heterogeneity remains unchanged. The OR value for the age factor was 1.00 (95%CI 0.83 – 1.20), and no evidence of publication bias (Egger's test $p=0.86$). The association between gender and progression to severe disease was not significant. Moderate to high heterogeneity ($I^2=60%$) and publication bias was found in studies examining the male gender as a predictor of severe dengue (Egger's test $p=0.02$). The result of the pooled OR was 1.04 (95%CI 0.88 – 1.24).

Three studies reported an association between nutritional status and progression to severe dengue. The study conducted by Baiduri et al. showed a strong relationship between overweight-obesity and progression to severe dengue with an RR of 94 (95%CI 4.47 – 1989) through a multivariate analysis approach. While the study conducted by Tantracheewathorn et al. and Dewi et al., normal nutritional status did not show an association with progression to severe dengue. After including two studies in the meta-analysis, we obtained an OR of 1.02 (95%CI 0.60 – 1.75) with no heterogeneity ($I^2=0%$).

In terms of clinical manifestations, we found that neurologic sign factors are strongly associated with the progression of severe dengue. Neurological manifestations may include drowsiness, convulsions, decreased consciousness, or lethargy. The meta-analysis of nine studies yielded a high pooled OR of 6.33 (95%CI 2.34 – 17.13) with moderate to high heterogeneity ($I^2=68%$) and publication bias (Egger's test $p=0.04$).

Bleeding manifestation can be mild or severe. Almost all studies include petechiae as a predictive factor for disease progression and gastrointestinal bleeding, either as melena or hematemesis in its extreme form. Children having petechiae will have an increased risk of developing the severe disease with an OR value of 1.79 (95%CI 1.23 – 2.49), with low to moderate heterogeneity ($I^2=44%$), no evidence of publication bias (Egger's test $p=0.14$) but with major asymmetry (LFK=4.09). For children who presented with gastrointestinal bleeding, the risk of progression to severe dengue was increased with an OR of 5.34 (95%CI 1.67 – 17.01), low to moderate heterogeneity ($I^2=46%$), without evidence of publication bias (Egger's test $p=0.06$).

For clinical fluid accumulation, whether pleural effusion or ascites, 18 studies were included in the meta-analysis and gave an OR value of 4.66 (95%CI 2.08 – 10.45), with evidence of high heterogeneity ($I^2=95%$)

and publication bias (Egger's test $p=0.04$). The positive relationship between clinical fluid accumulation and progression to severe disease was also consistent in sensitivity analysis with an OR of 3.03 (95%CI 1.28 – 7.17). Thus, the evidence of high heterogeneity in this factor remains, but no asymmetry was found (LFK index 0.87).

Hepatomegaly was moderately associated with severe dengue after pooling 19 eligible studies. High heterogeneity was found ($I^2=88\%$) as well as publication bias (Egger's test $p=0.008$), with an OR of 2.64 (95%CI 1.76 – 3.94). We found that vomiting was associated with an increased risk of progression to severe dengue. The definition of vomiting is not clearly defined in most studies. A significant association between vomiting and disease progression was given with an OR of 2.01 (95%CI 1.54 – 2.63) with low to moderate heterogeneity ($I^2=48\%$) and no evidence of publication bias (Egger's test $p=0.52$). Abdominal pain was also associated with progression to severe disease with an OR of 1.91 (95%CI 1.26 – 2.88), with evidence of high heterogeneity ($I^2=82\%$) and no publication bias was found (Egger's test $p=0.23$).

Without evidence of publication bias, rash and positive tourniquet tests were not associated with progression to severe dengue. Heterogeneity was high in the positive tourniquet test and was moderate to high in the pooled results of positive rash signs. An elevated body temperature was not associated with progression to severe dengue with evidence of high heterogeneity ($I^2=81\%$) and publication bias (Egger's test $p=0.012$), given an OR of 1.73 (95%CI 0.43 – 1.22).

Hematological parameters, including hematocrit, platelet count, and white blood cell count, were included in the meta-analysis. Of those, hematocrit and platelet count were significantly associated with progression to severe dengue, while white blood cells were not. By pooling 23 studies related to low platelet count, we obtained an OR of 2.01 (95% CI 1.70 – 2.38) with evidence of high heterogeneity ($I^2=90\%$) and publication bias (Egger's test $p<0.001$).

Elevated hematocrit was identified as a positive association with severe dengue. By pooling 20 studies related to hematocrit, we obtained an OR of 1.76 (95%CI 1.50 – 2.07) with evidence of high heterogeneity ($I^2=89\%$) as well as publication bias (Egger's Test $p<0.001$).

Eleven studies were included in the meta-analysis of serum albumin. All studies have consistently reported that children with lower albumin levels have an increased risk of developing severe dengue. Low albumin levels gave an OR of 6.03 (95%CI 2.34 – 15.53) with evidence of high heterogeneity ($I^2=96\%$) and publication bias (Egger's test $p=0.002$). One study that was not submitted in the meta-analysis, conducted by Kularatnam et al.,³¹ showed that the reduction in serum albumin levels seen on the third and fourth days of illness were valid predictors of entering into the critical phase in dengue infection.

Fifteen studies were included in the meta-analysis related to aspartate aminotransferase and eleven studies related to alanine aminotransferase. This meta-analysis assessing the association between AST and ALT levels with disease progression showed that higher of these enzymes were associated with progression to severe disease. Evidence of heterogeneity in the two factors was high, with publication bias on the AST factor

(Egger's test $p=0.003$) but not on the ALT factor (Egger's test $p=0.21$). The pooled OR for the AST factor was 3.06 (95% CI 2.00 – 4.69), and the pooled OR for the ALT factor was 2.68 (95%CI 1.59 – 4.51) with evidence of moderate to high heterogeneity ($I^2=73\%$) without asymmetry (LFK index 0.24).

The association between activated partial thromboplastin time (aPTT) factor with disease progression showed a strong positive association. By including four studies, the pooled OR was 8.74 (95% CI 4.79 – 15.95) with evidence of high heterogeneity ($I^2=83\%$) but without publication bias (Egger's test 0.85). One study not submitted in the meta-analysis by Budastra et al.⁶⁰ found that aPTT values may be used as a predictor for bleeding manifestation in dengue hemorrhagic fever using a cox regression approach with an RR of 2.02 (95%CI 1.92 – 3.90, $p=0.02$).

Secondary infection with the dengue virus was significantly associated with progression to severe dengue. In five studies, the pooled OR was 2.02 (95% CI 1.64 – 2.49) with evidence of high heterogeneity ($I^2=89$) but no publication bias (Egger's test 0.14). Primary infection with dengue virus was inversely associated with progression to severe dengue in the meta-analysis. The pooled OR of this factor was 0.52 (95%CI 0.41 – 0.67) with high heterogeneity ($I^2=83\%$) and no publication bias (Egger's test $p=0.54$). A study conducted by Endy et al.⁴⁵ showed that cross-reactive memory humoral immune responses appear beneficial in symptomatic secondary DENV-3 infection but not in secondary DENV-2 or DENV-1 infection. Poeranto et al.⁶⁷ showed that only DENV-3 could cause severe clinical manifestations in primary infection. In addition, a secondary infection caused by DENV-1, which is considered to induce mild symptoms, involves the risk of severe manifestation, especially if DENV-2 was the cause of the primary infection.

Included studies in the meta-analysis have shown that the DENV-2 serotype was associated with severe disease progression. Pooling results from four studies gave an OR of 1.66 (95%CI 1.30 – 2.13) with evidence of low heterogeneity and no publication bias (Egger's test $p=0.54$). Consistent findings were also reported by Lovera et al.,³² whose study showed that the DENV serotype profoundly impacts the clinical manifestations and the dengue severity. In this article, the DENV-2 infections were more frequently associated with the requirement of fluid resuscitation, shock, and more prolonged hospital stay.

A study conducted by Sirikutt et al.⁴⁴ showed that serum lactate and lactate dehydrogenase (LDH) was found to be elevated in DHF and/or DSS patients. Lactate might be used as a predictor of DSS if the level was >2 U/L on day 0. Moreover, LDH can be used to predict severe dengue or DSS if the level propagated to approximately 1000 IU on day 0 of illness. A study by Yacoub et al.²⁸ has shown that initial venous lactates in dengue patients on the first day of admission to ICU were associated with severe outcomes of recurrent shock and respiratory distress. Lactate levels correlated with the total intravenous fluids received but did not correlate with other hemodynamic parameters.

A study conducted by Chaiyaratana et al.⁴⁹ showed that a serum ferritin level ≥ 1200 ng/mL has a high sensitivity but a relatively low specificity to predict the occurrence of severe dengue. Bongsebandhu et al.⁵⁰ showed that D-dimer was significantly associated with dengue severity. Early increasing D-dimer in the febrile

stage could predict the severity of dengue infection during the initial phase of the illness with a 68.4% positive predictive value. Suvarna et al.³⁷ found that lipid profile changes accompany dengue infection, some of which may indicate severity.

Regarding viremia, the study conducted by Tuan et al.⁵⁷ through a multivariate logistic model found that viremia magnitude was independently associated with severe dengue. Still, the viremia itself was not included in the final prognostic model of Early Severe Dengue Identifier (ESDI). The four factors included in the ESDI model were vomiting, platelet count, AST levels, and NS1 rapid test status. The study conducted by Singla et al.⁵⁶ showed that dengue viremia was not associated with disease severity. Dengue viremia was indistinguishable between patients with non-severe dengue or severe dengue either in primary or secondary infection. However, all the secondary infections with the recurrence bleeding had a significantly higher viremia than primary infections despite showing clinical improvement from severe dengue. Van Ta et al.⁶⁴ showed that DENV concentration/viremia within the first day of hospitalization (≤ 72 hours) could not be used as a prognostic factor of DSS. The DENV concentration was highest on day-2 of fever and higher in the secondary infection group, consistent with other studies.

Discussion

In this systematic review and meta-analysis, we found that age, gender, and normal nutritional status were not associated with the development of severe dengue. Meanwhile, neurological signs, gastrointestinal bleeding, clinical fluid accumulation, hepatomegaly, vomiting, abdominal pain, and petechiae were associated with severe dengue. In addition, low platelet count, elevated hematocrit, low albumin levels, elevated AST/ALT, elevated aPTT, DENV-2 serotype, and secondary infection were also associated with progression to severe disease.

Age was not associated with progression to severe dengue in our study, similar to the findings reported by Zhang et al.⁶⁹ In another meta-analysis,⁷⁰ the factor of young age in children was associated with disease severity, and the interpretation may be more convincing because of its dose-response meta-analysis.

Most studies did not categorize nutritional status as malnourished, normal nutrition, overweight, or obese. Several studies determine body weight as a variable and its value on a continuous scale. To more accurately determine the nutritional status of children, it is necessary to consider both their weight and height or even other indicators such as upper arm circumference or skinfold thickness.⁷¹ In other words, the association between nutritional status with progression to severe dengue from this meta-analysis should be interpreted cautiously. The meta-analysis conducted by Sangkaew et al.⁷⁰ in the adult population showed that nutritional status was not associated with severe dengue. Meanwhile, a study conducted by Trang et al.,⁷² showed that children with normal nutrition were inversely associated with DSS compared to DHF (OR: 0.87, 95 % CI: 0.77–0.99). Our review has not been able to find a sufficient number of articles related to obesity and dengue

severity. A study conducted by Zulkipli et al.⁷³ seems to have conclusive findings that obesity is a risk factor for severe dengue in children.

In most studies, some clinical symptoms that have a strong association include neurological signs, which are represented by symptoms of drowsiness, convulsion, alteration in sensorium, or lethargy. Gastrointestinal bleeding, described in the form of melena or hematemesis, is also strongly associated with severe forms of the disease. Milder forms of bleeding such as petechiae that appear early during illness are also prognostic signs of disease progression. Clinical fluid accumulation manifesting as ascites or pleural effusion are two clinical manifestations that can be particularly important considering the hallmark of plasma leakage in dengue pathophysiology. Thus, this prognostic sign will guide clinicians promptly for further patient management.

We also found that clinical manifestations of vomiting and abdominal pain were associated with disease progression. These two subjective symptoms that are frequently complained about by patients were also reported to be significant in other studies.^{5,69,70} The criteria for vomiting in most studies are not described clearly. However, according to the study conducted by Vuong et al.,⁷⁴ the criteria for persistent vomiting should be two times vomiting or more per day.

Numerous patients with severe dengue exhibited manifestation of severe plasma leakage only. In contrast, a small proportion of patients who develop severe bleeding or severe organ dysfunction, which occurred less frequently, often exhibited a higher degree of overlap with severe plasma leakage. In addition, patients with severe bleeding without leakage may be predisposed to bleeding disorders.³⁶ Hence, this potential confounder should be considered because the predisposition to bleeding disorders has not been explored further in the included studies.

The association between secondary infection and disease progression is well documented and represents an antibody-dependent enhancement mechanism. A modeling study conducted by Clapham et al.⁷⁵ showed that severe manifestations were found in 40% (95% CI 0.36–0.45) of secondary infections and 18% (95% CI 0.16–0.20) of primary infections. DENV-2 serotype was significantly associated with disease progression in children, and these findings were consistent with previous meta-analyses.^{5,70}

Hepatic manifestations in dengue patients result from direct viral toxicity or dysregulated immunologic injury. The spectrum of hepatic involvement can be mild or even severe transaminases elevation in the form of acute liver failure.⁷⁶ Our analysis showed that high AST or ALT levels in the early stages of illness were significantly associated with severe dengue. The studies included in our meta-analysis have varying cut-off values of AST/ALT concentrations, which might cause the high heterogeneity. However, based on most of the average AST and ALT reported in the included studies, we suggested that concentrations higher than three times the upper limit of normal value were associated with severe disease progression.

In our study, albumin levels in the first days of illness were significantly lower in patients with severe dengue than those with non-severe dengue. During plasma leakage, albumin was also extravasated. However, patients' nutritional status influenced their initial albumin levels, and albumin levels were generally lower in

undernourished children.⁷⁷ In most of the included studies, low albumin levels were described as less than 3.5 g/dL. Our meta-analysis is in line with the recommendations of the 2011 SEARO dengue guidelines, in which patients whose albumin levels are <3.5 g/dL or undergoing a decrease of 0.5 g/dL from baseline during the febrile phase are associated with disease progression.⁷⁸

This meta-analysis has some limitations. As we searched for studies reported in the English language, some of the studies published in non-English languages fortunately also have their English versions, making it possible for data extraction. However, some studies might be excluded due to language limitations. In addition, we did not search studies from gray literature. Both events may contribute to publication bias. The predisposing genetic factors were also not included in the meta-analysis because these have not been routinely analyzed along with the clinical outcomes. Analysis between clinical outcomes and predisposing genetic factors is quite challenging. Nevertheless, a study has evaluated multiple genetic variants that confer clinically prominent risk for disease progression, namely a study conducted by Pare et al.⁷⁹ More than one-third of the prognostic factors have high heterogeneity while others were moderate to high. However, in sensitivity analysis and subgroup analysis, the effect sizes are quite similar and give consistent results with evidence of lowered heterogeneity.

In our study, we found that neurological signs, gastrointestinal bleeding, clinical fluid accumulation, low albumin levels, elevated aPTT, hepatomegaly, elevated AST/ALT, vomiting, abdominal pain, petechiae, low platelet count, elevated hematocrit, secondary infection, and DENV- 2 serotypes were associated with disease progression. This finding supports the use of the warning signs (abdominal pain, persistent vomiting, clinical evidence of fluid accumulation, bleeding, lethargy and/or restlessness, liver enlargement, rise in hematocrit with rapid decrease in platelet count) described in the WHO 2009 guidelines. In addition, monitoring serum albumin, AST/ALT levels, identifying infecting dengue serotypes, and immunological status could improve the risk prediction of disease progression further.

Supporting information

S1 Table. *Details of the observational studies included. (DOCX)*

S2 Table. *Summary of the studies included. (DOCX)*

S3 Table. *Risk of bias assessment for 49 studies using the QUIPS tool. (XLSX)*

S1 Text. *The pooled prevalence of severe dengue in children. (DOCX)*

S2 Text. *Forest plot, Doi plot, Funnel plot, sensitivity analysis, and subgroup analysis (DOCX)*

S3 Text. *Preferred Reporting Items for Systematic Review and Meta-Analyses (PRISMA) Checklist (DOCX)*

Author Contribution

Idea and study design: IS; Data collection and analysis: IS, BM, HL; Article draft writing: IS, BM, HH; Draft revision: BM, PPK; Writing supervision: PPK. All authors have read the manuscript and have approved this submission.

Funding

None.

Declaration of competing interests

The authors declare no conflict of interest in this study.

Acknowledgments

Thanks to all of the participants in this article.

Tables and Figures

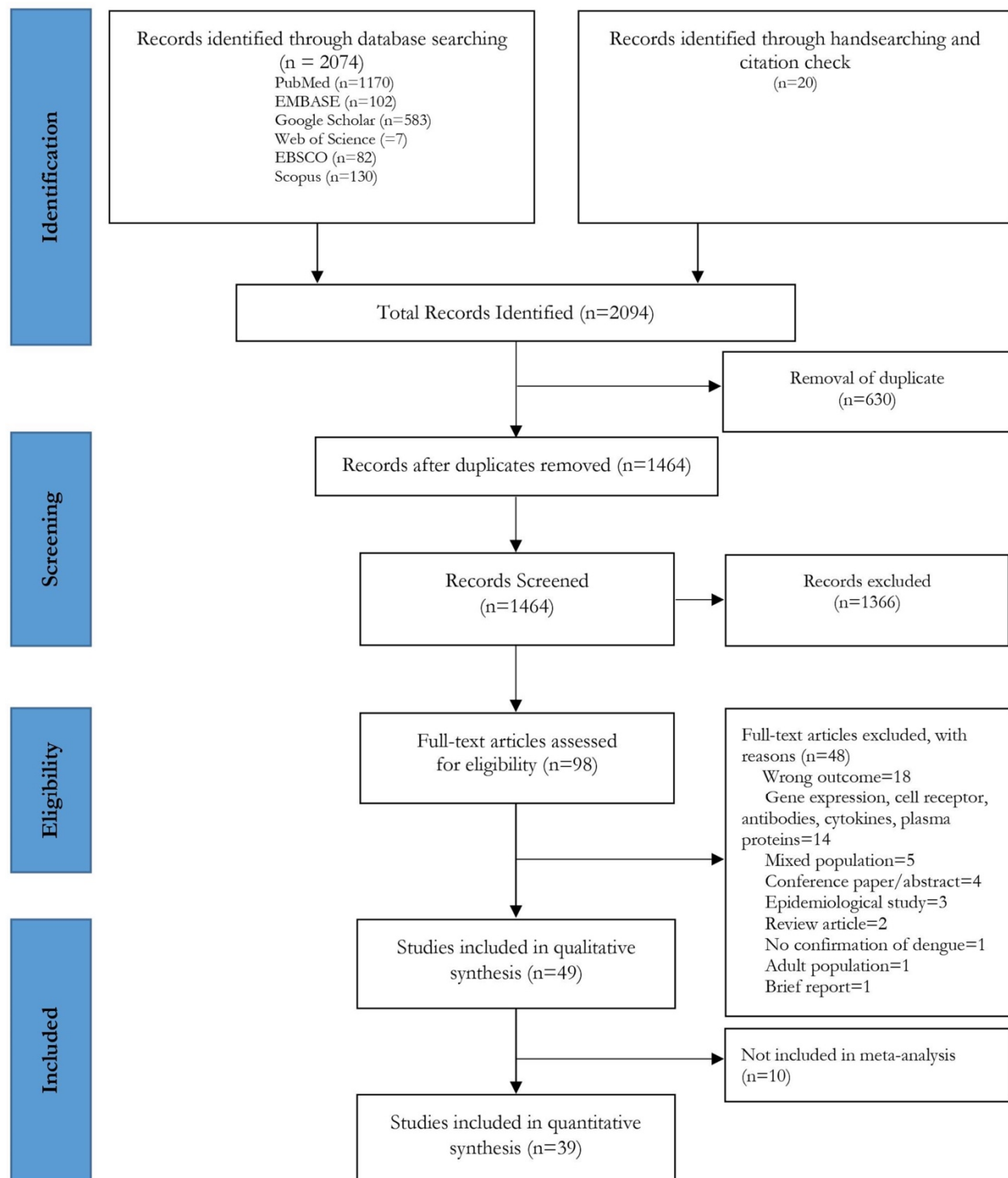


Figure 1. Flowchart for article selection

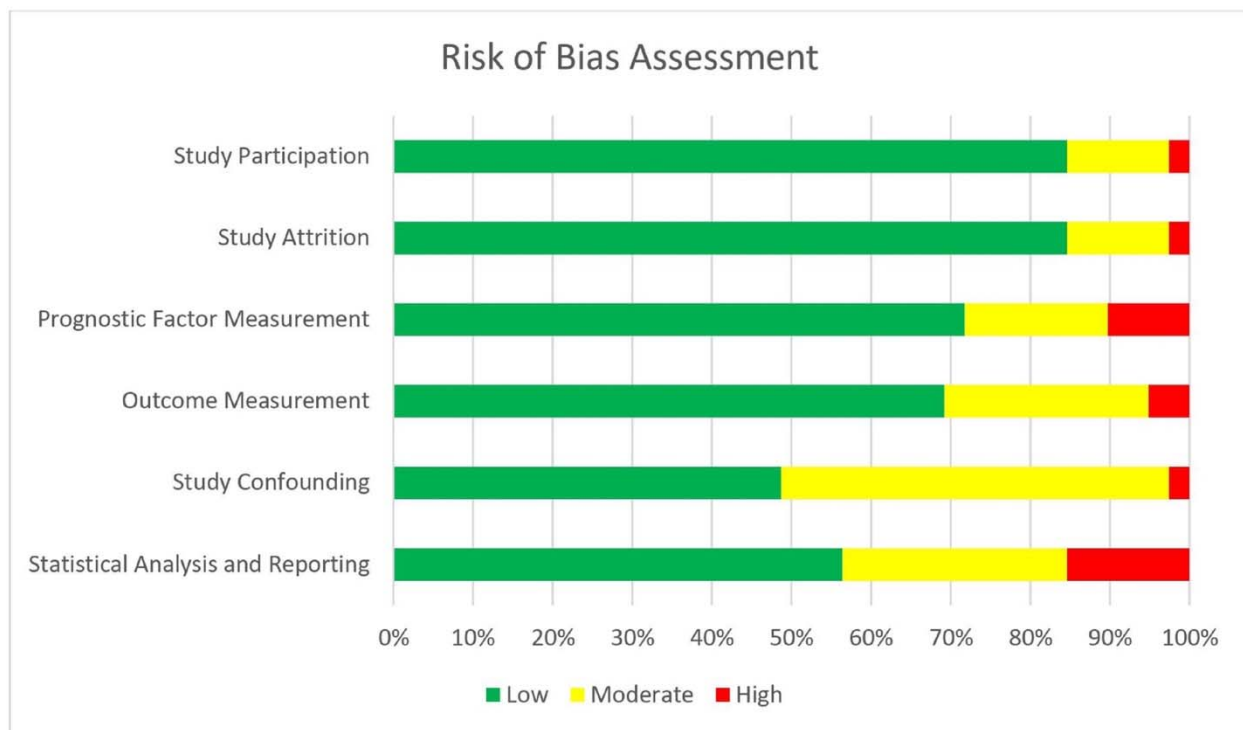


Figure 2. Risk of bias assessment according to the six domains of the Quality in Prognostic Studies (QUIPS) tool for 39 observational studies included in the meta-analysis

Table 1. Search queries of the systematic review

Databases	Search Query	Hits
PubMed	Dengue OR Severe dengue OR Complicated dengue OR Predictor OR Predictive OR Prognostic AND Pediatric NOT Adult Filters: Observational Study, Child: birth-18 years	1170
Embase	Dengue AND Children	102
Google Scholar	Dengue Prospective Cohort Children OR Pediatric OR Paediatric OR Pediatrics OR Paediatrics -Adult -Zika -Pneumonia -Vaccine -Economic -Chikungunya -Malaria -Sepsis	583
Web of Science	Dengue AND Children OR Pediatric OR Paediatric	7
EBSCO	Dengue fever OR dengue syndrome AND children OR adolescents OR youth OR child OR teenager OR teens OR young people OR kids OR paediatric OR pediatric	82
Scopus	Dengue AND Predictors AND Children	130

Table 2. Overview of prognostic factor evaluated

No	Factor	Number of Studies	Number Significant	Model	Association with Severe Dengue		Heterogeneity		Egger's 2-tailed bias p-value	LFK index	Adjusted OR (95% CI)
					Pooled OR (95% CI)	p-value	I ²	p-value			
1	Normal nutrition	2	0	Fixed	1.02 (0.60 – 1.75)	0.930	0	0.402	-	-	-
2	Male gender	16	4	Random	1.04 (0.88 – 1.24)	0.641	60	0.001	0.02	4.40	^a 0.89 (0.57 – 1.05) ^b 1.21 (1.05 – 1.39) I ² =0%
3	Age	18	6	Random	1.00 (0.83 – 1.20)	0.844	91	<0.001	0.86	1.23	^b 0.97 (0.81 – 1.17) I ² =91%
4	Neurological Sign	9	4	Random	6.33 (2.34 – 17.13)	<0.001	68	0.002	0.04	1.76	^a 4.11 (1.59 – 10.65) ^b 6.88 (2.91 – 16.25) I ² =36%
5	Gastrointestinal bleeding	7	2	Random	5.34 (1.67 – 17.01)	0.005	46	0.083	0.06	-3.30	^b 5.87 (2.03 – 16.98) I ² =0%
6	Clinical fluid accumulation	18	15	Random	4.66 (2.08 – 10.45)	<0.001	95	<0.001	0.04	2.43	^a 3.86 (1.77 – 8.40) ^b 3.03 (1.28 – 7.17) I ² =95%
7	Hepatomegaly	19	13	Random	2.64 (1.76 – 3.94)	<0.001	88	<0.001	0.008	3.78	^a 2.09 (1.41 – 3.10) ^b 2.28 (1.54 – 3.38) I ² =88%
8	Vomiting	14	8	Random	2.01 (1.54 – 2.64)	<0.001	48	0.021	0.52	0.47	-
9	Abdominal Pain	15	8	Random	1.91 (1.26 – 2.88)	0.002	82	<0.001	0.23	3.48	^b 1.58 (1.07 – 2.35) I ² =81%
10	Petechiae	7	4	Random	1.79 (1.29 – 2.49)	<0.001	44	0.097	0.14	4.09	^b 1.62 (1.31 – 2.02) I ² =12%
11	Positive Tourniquet Test	8	4	Random	0.97 (0.46 – 2.05)	0.306	89	<0.001	0.74	0.37	-
12	Rash	5	2	Fixed	1.09 (0.82 – 1.46)	0.536	74	0.004	0.13	-3.26	^b 0.71 (0.47 – 1.06) I ² =55%
13	Elevated Hematocrit	20	11	Random	1.76 (1.50 – 2.07)	<0.001	89	<0.001	<0.001	7.04	^a 1.17 (0.99 – 1.39) ^b 3.14 (2.03 – 4.85), I ² =81%
14	Low Platelet Count	23	13	Random	2.01 (1.70 – 2.38)	<0.001	90	<0.001	<0.001	8.94	^a 1.48 (1.25 – 1.75) ^b 1.76 (1.50 – 2.06) I ² =89%
15	Higher WBC	11	4	Random	1.01 (0.76 – 1.35)	0.940	66	0.001	0.68	-0.54	-
16	Low Albumin Levels	11	7	Random	6.03 (2.34 – 15.53)	<0.001	96	<0.001	0.002	8.51	^b 7.34 (3.29 – 16.38) I ² =88%
17	Elevated AST	15	10	Random	3.06 (2.00 – 4.69)	<0.001	91	<0.001	0.03	3.70	^a 3.63 (2.33 – 5.67) ^b 3.08 (2.18 – 4.36) I ² =68%

18	Elevated ALT	11	5	Random	2.68 (1.59 – 4.51)	0.001	81	<0.001	0.21	2.14	^b 1.98 (1.27 – 3.08) $I^2=73\%$
19	Temperature	8	3	Random	0.73 (0.43 – 1.22)	0.231	81	<0.001	0.012	-5.2	^a 1.08 (0.65 – 1.81) ^b 0.58 (0.39 – 0.88) $I^2=0\%$
20	DENV-2 Serotype	4	1	Fixed	1.66 (1.30 – 2.13)	<0.001	1	0.387	0.89	0.15	-
21	Activated Partial Thromboplastin Time	4	3	Fixed	8.74 (4.79 – 15.95)	<0.001	83	0.001	0.85	1.13	^b 4.59 (2.24 – 9.37) $I^2=70\%$
22	Secondary Infection	5	4	Fixed	2.02 (1.64 – 2.49)	<0.001	89	<0.001	0.14	4.56	^a 1.59 (1.31 – 1.93) ^b 8.66 (4.99 – 15.04) $I^2=56\%$
23	Primary Infection	4	2	Fixed	0.52 (0.41 – 0.67)	<0.001	83	<0.001	0.54	-2.56	^b 0.62 (0.48 – 0.81) $I^2=0\%$

- a) Adjusted odds ratio by enhancing the symmetry using the trim and fill method of Duval and Tweedie
 b) Adjusted odds ratio by sensitivity analysis

Table 3. Summary of crude and adjusted odds ratio of significant prognostic factors submitted to meta-analysis

Prognostic factor	Number of Studies	Pooled OR (95%CI)	I ² (%)	LFK index
Neurological sign				
All studies	9	6.33 (2.34 – 17.13)	68	1.76 (minor asymmetry)
Sensitivity analysis	7	6.88 (2.91 – 16.25)	36	0.07 (no asymmetry)
Gastrointestinal bleeding				
All studies	7	5.34 (1.67 – 17.01)	46	-3.30 (major asymmetry)
Sensitivity analysis	5	5.87 (2.03 – 16.98)	0	0.58 (no asymmetry)
Clinical fluid accumulation				
All studies	18	4.66 (2.08 – 10.45)	95	2.43 (major asymmetry)
Sensitivity analysis	14	3.03 (1.28 – 7.17)	95	0.87 (no asymmetry)
Hepatomegaly				
All studies	19	2.64 (1.76 – 3.94)	88	3.78 (major asymmetry)
Sensitivity analysis	16	2.28 (1.54 – 3.38)	88	*2.49 (major asymmetry)
Vomiting				
All studies	14	2.01 (1.54 – 2.64)	49	0.47 (no asymmetry)
Abdominal pain				
All studies	15	1.91 (1.26 – 2.88)	82	3.48 (major asymmetry)
Sensitivity analysis	12	1.58 (1.07 – 2.35)	81	*1.60 (minor asymmetry)
Petechiae				
All studies	7	1.79 (1.29 – 2.49)	44	4.09 (major asymmetry)
Sensitivity analysis	5	1.62 (1.31 – 2.02)	12	0.07 (no asymmetry)
Elevated hematocrit				
All studies	20	1.76 (1.50 – 2.07)	89	7.04 (major asymmetry)
Sensitivity analysis	16	3.14 (2.03 – 4.85)	81	*2.63 (major asymmetry)
Low platelet count				
All studies	23	2.01 (1.70 – 2.38)	90	8.94 (major asymmetry)
Sensitivity analysis	20	1.76 (1.50 – 2.06)	89	*7.77 (major asymmetry)
Low albumin levels				
All studies	11	6.03 (2.34 – 15.53)	96	8.51 (major asymmetry)
Sensitivity analysis	10	7.34 (3.29 – 16.38)	88	-0.27 (no asymmetry)
Elevated aspartate aminotransferase				
All studies	15	3.06 (2.00 – 4.69)	91	3.70 (major asymmetry)
Sensitivity analysis	10	3.08 (2.18 – 4.36)	68	0.00 (no asymmetry)
Elevated alanine aminotransferase				
All studies	11	2.68 (1.59 – 4.51)	81	2.14 (major asymmetry)
Sensitivity analysis	9	1.98 (1.27 – 3.08)	73	0.24 (no asymmetry)
Elevated activated partial thromboplastin time				
All studies	4	8.74 (4.79 – 15.95)	83	1.13 (minor asymmetry)
Sensitivity analysis	3	4.59 (2.24 – 9.37)	70	0.68 (no asymmetry)
DENV-2 serotype				
All studies	4	1.66 (1.30 – 2.13)	1	0.15 (no asymmetry)

Secondary infection				
All studies	5	2.02 (1.64 – 2.49)	89	4.56 (major asymmetry)
Sensitivity analysis	3	8.66 (4.99 – 15.04)	56	*-1.75 (minor asymmetry)

*No further LFK index approaching zero beyond this point to eliminate the asymmetry

Table 4. Summary of factors associated with progression to severe dengue

Association with progression	Factors
Very Strong	Neurological signs, gastrointestinal bleeding, clinical fluid accumulation (ascites or pleural effusion), low albumin levels, and elevated activated partial thromboplastin time.
Moderate to Strong	Hepatomegaly, elevated aspartate aminotransferase, elevated alanine aminotransferase.
Weak to Moderate	Vomiting, abdominal pain, petechiae, low platelet count, elevated hematocrit, secondary infection, DENV-2 serotype.
No Association	Normal nutritional status, male gender, age, temperature, positive tourniquet test, white blood cells, viremia.

References:

1. Bhatt S, Gething PW, Brady OJ, Messina JP, Farlow AW, Moyes CL, et al. The global distribution and burden of dengue. *Nature*. 2013 Apr;496(7446):504–7.
2. Stanaway JD, Shepard DS, Undurraga EA, Halasa YA, Coffeng LE, Brady OJ, et al. The global burden of dengue: an analysis from the Global Burden of Disease Study 2013. *Lancet Infect Dis*. 2016 Jun;16(6):712–23.
3. Special Programme for Research and Training in Tropical Diseases, World Health Organization, editors. *Dengue: guidelines for diagnosis, treatment, prevention, and control*. New ed. Geneva: TDR: World Health Organization; 2009. 147 p.
4. World Health Organization, editor. *Dengue haemorrhagic fever: diagnosis, treatment, prevention, and control*. 2nd ed. Geneva: World Health Organization; 1997. 84 p.
5. Huy NT, Van Giang T, Thuy DHD, Kikuchi M, Hien TT, Zamora J, et al. Factors Associated with Dengue Shock Syndrome: A Systematic Review and Meta-Analysis. Halstead SB, editor. *PLoS Negl Trop Dis*. 2013 Sep 26;7(9):e2412.
6. Liberati A, Altman DG, Tetzlaff J, Mulrow C, Gøtzsche PC, Ioannidis JPA, et al. The PRISMA Statement for Reporting Systematic Reviews and Meta-Analyses of Studies That Evaluate Health Care Interventions: Explanation and Elaboration. *PLoS Med*. 2009 Jul 21;6(7):e1000100.
7. Riley RD, Moons KGM, Snell KIE, Ensor J, Hooft L, Altman DG, et al. A guide to systematic review and meta-analysis of prognostic factor studies. *BMJ*. 2019 Jan 30;k4597.
8. Bramer WM, Rethlefsen ML, Kleijnen J, Franco OH. Optimal database combinations for literature searches in systematic reviews: a prospective exploratory study. *Syst Rev*. 2017 Dec;6(1):245.
9. Ouzzani M, Hammady H, Fedorowicz Z, Elmagarmid A. Rayyan—a web and mobile app for systematic reviews. *Syst Rev*. 2016 Dec;5(1):210.
10. Hayden JA, van der Windt DA, Cartwright JL, Côté P, Bombardier C. Assessing Bias in Studies of Prognostic Factors. *Ann Intern Med*. 2013 Feb 19;158(4):280.
11. Borenstein M, Hedges LV, Higgins JPT, Rothstein HR. Chapter 7: Converting Among Effect Sizes. In: *Introduction to Meta-Analysis*. Chichester, UK: John Wiley and Sons, Ltd; 2009.
12. Borenstein M, Hedges LV, Higgins JPT, Rothstein HR. *Comprehensive Meta Analysis Version 3*. NJ: Biostat; 2014.
13. Polanin JR, Snilstveit B. Converting between effect sizes. *Campbell Syst Rev*. 2016 Jan;12(1):1–13.
14. Peat G, Riley RD, Croft P, Morley KI, Kyzas PA, Moons KGM, et al. Improving the transparency of prognosis research: the role of reporting, data sharing, registration, and protocols. *PLoS Med*. 2014 Jul;11(7):e1001671.
15. Higgins JPT, Thompson SG, Deeks JJ, Altman DG. Measuring inconsistency in meta-analyses. *BMJ*. 2003 Sep 6;327(7414):557–60.

16. Higgins JPT, Cochrane Collaboration, editors. Cochrane handbook for systematic reviews of interventions. Second edition. Hoboken, NJ: Wiley-Blackwell; 2020. (Cochrane book series).
17. Egger M, Davey Smith G, Schneider M, Minder C. Bias in meta-analysis detected by a simple, graphical test. *BMJ*. 1997 Sep 13;315(7109):629–34.
18. Furuya-Kanamori L, Barendregt JJ, Doi SAR. A new improved graphical and quantitative method for detecting bias in meta-analysis. *Int J Evid Based Healthc*. 2018 Dec;16(4):195–203.
19. Duval S, Tweedie R. Trim and fill: A simple funnel-plot-based method of testing and adjusting for publication bias in meta-analysis. *Biometrics*. 2000 Jun;56(2):455–63.
20. Jain A, Alam S, Shalini A, Mazahir R. Paediatric Risk of Mortality III Score to Predict Outcome in Patients Admitted to PICU with Dengue Fever. 2018;
21. Sahana KS, Sujatha R. Clinical profile of dengue among children according to revised WHO classification: analysis of a 2012 outbreak from Southern India. *Indian J Pediatr*. 2015 Feb;82(2):109–13.
22. Lam PK, Tam DTH, Dung NM, Tien NTH, Kieu NTT, Simmons C, et al. A Prognostic Model for Development of Profound Shock among Children Presenting with Dengue Shock Syndrome. *PloS One*. 2015;10(5):e0126134.
23. Rampengan NH, Daud D, Warouw S, Ganda IJ. Albumin globulin ratio in children with dengue virus infection at Prof. Dr. R. D. Kandou Hospital, Manado Indonesia. *Bali Med J Vol 5 No 3 2016* Available Online 1 Dec 2016 [Internet]. 2016; Available from: <https://www.balimedicaljournal.org/index.php/bmj/article/view/569>
24. Lam PK, Ngoc TV, Thu Thuy TT, Hong Van NT, Nhu Thuy TT, Hoai Tam DT, et al. The value of daily platelet counts for predicting dengue shock syndrome: Results from a prospective observational study of 2301 Vietnamese children with dengue. *PLoS Negl Trop Dis*. 2017;11(4):e0005498.
25. Majumdar I, Mukherjee D, Kundu R, Niyogi P, Das J. Factors Affecting Outcome in Children with Dengue in Kolkata. *Indian Pediatr*. 2017 Sep 15;54(9):778–80.
26. Ramabhatta S, Palaniappan S, Hanumantharaya N, Begum SV. The Clinical and Serological Profile of Pediatric Dengue. *Indian J Pediatr*. 2017 Dec;84(12):897–901.
27. Shankar P, B. P. Biochemical parameters (lactate dehydrogenase, serum albumin) as early predictor of severe dengue. *Int J Contemp Pediatr*. 2017;4(2):464.
28. Yacoub S, Trung TH, Lam PK, Thien VHN, Hai DHT, Phan TQ, et al. Cardio-haemodynamic assessment and venous lactate in severe dengue: Relationship with recurrent shock and respiratory distress. *PLoS Negl Trop Dis*. 2017;11(7):e0005740.
29. Adam AS, Pasaribu S, Wijaya H, Pasaribu AP. Warning sign as a predictor of dengue infection severity in children. *Med J Indones* [Internet]. 2018;27(2). Available from: <https://mji.ui.ac.id/journal/index.php/mji/article/view/2200>
30. Ferreira RAX, Kubelka CF, Velarde LGC, Matos JPS de, Ferreira LC, Reid MM, et al. Predictive factors of dengue severity in hospitalized children and adolescents in Rio de Janeiro, Brazil. *Rev Soc Bras Med Trop*. 2018;51(6):753–60.

31. Kularatnam GAM, Jasinge E, Gunasena S, Samaranayake D, Senanayake MP, Wickramasinghe VP. Evaluation of biochemical and haematological changes in dengue fever and dengue hemorrhagic fever in Sri Lankan children: a prospective follow up study. *BMC Pediatr*. 2019;19(1):87.
32. Lovera D, Martínez-Cuellar C, Galeano F, Amarilla S, Vazquez C, Arbo A. Clinical manifestations of primary and secondary dengue in Paraguay and its relation to virus serotype. *J Infect Dev Ctries*. 2019;13(12):1127–34.
33. Baiduri S, Husada D, Puspitasari D, Kartina L, Basuki PS, Ismoedijanto I. Prognostic factors of severe dengue infections in children. *Indones J Trop Infect Dis*. 2020;8(1):44.
34. Prasad D, Bharguvanshi A. Clinical Profile, Liver Dysfunction and Outcome of Dengue Infection in Children: A Prospective Observational Study. *Pediatr Infect Dis J*. 2020;39(2):97–101.
35. Reddy DAC, Bhuvaneshwari DM. A prospective study of predictors and outcome of severe dengue illness in children. *IOSR J Dent Med Sci*. 2020;19(6):5.
36. Rosenberger KD, Alexander N, Martinez E, Lum LCS, Dempfle CE, Junghanss T, et al. Severe dengue categories as research endpoints-Results from a prospective observational study in hospitalised dengue patients. *PLoS Negl Trop Dis*. 2020;14(3):e0008076.
37. Suvarna JC, Rane PP. Serum lipid profile: a predictor of clinical outcome in dengue infection. *Trop Med Int Health*. 2009 May;14(5):576–85.
38. Voraphani N, Theamboonlers A, Khongphatthanayothin A, Srisai C, Poovorawan Y. Increased level of hepatocyte growth factor in children with dengue virus infection. *Ann Trop Paediatr*. 2010 Sep;30(3):213–8.
39. Nguyet NM, Hien TT, Simmons CP, Farrar J, Van Vinh Chau N, Wills B, et al. Epidemiological Factors Associated with Dengue Shock Syndrome and Mortality in Hospitalized Dengue Patients in Ho Chi Minh City, Vietnam. *Am J Trop Med Hyg*. 2011 Jan 5;84(1):127–34.
40. Mohan N, Goyal D, Karkra S, Perumal V. Profile of dengue hepatitis in children from India and its correlation with WHO dengue case classification. *Asian Pac J Trop Dis*. 2017;7(6):327–31.
41. Park S, Srikiatkachorn A, Kalayanarooj S, Macareo L, Green S, Friedman JF, et al. Use of structural equation models to predict dengue illness phenotype. *PLoS Negl Trop Dis*. 2018 Oct;12(10):e0006799.
42. Sreenivasan P, S G, K S. Development of a Prognostic Prediction Model to Determine Severe Dengue in Children. *Indian J Pediatr*. 2018 Jun;85(6):433–9.
43. Nandwani S, Bhakhri BK, Singh N, Rai R, Singh DK. Early hematological parameters as predictors for outcomes in children with dengue in northern India: A retrospective analysis. *Rev Soc Bras Med Trop*. 2021;54:e05192020.
44. Sirikutt P, Kalayanarooj S. Serum lactate and lactate dehydrogenase as parameters for the prediction of dengue severity. :1.

45. Endy TP, Nisalak A, Chunsuttitwat S, Vaughn DW, Green S, Ennis FA, et al. Relationship of preexisting dengue virus (DV) neutralizing antibody levels to viremia and severity of disease in a prospective cohort study of DV infection in Thailand. *J Infect Dis*. 2004 Mar 15;189(6):990–1000.
46. Oishi K. Dengue and other febrile illnesses among children in the Philippines. *Dengue Bull*. 2006;30:26–34.
47. Sosothikul D, Seksarn P, Pongsewalak S, Thisyakorn U, Lusher J. Activation of endothelial cells, coagulation and fibrinolysis in children with Dengue virus infection. *Thromb Haemost*. 2007 Apr;97(4):627–34.
48. Tantracheewathorn T, Tantracheewathorn S. Risk Factors of Dengue Shock Syndrome in Children. *J Med Assoc Thai*. 2007;90(2):6.
49. Chaiyaratana W, Chuansumrit A, Atamasirikul K, Tangnararatchakit K. Serum ferritin levels in children with dengue infection. *Southeast Asian J Trop Med Public Health*. 2008 Sep;39(5):832–6.
50. Bongsebandhu-Phubhakdi C, Hemungkorn M, Thisyakorn C. Risk factors influencing severity in pediatric dengue infection. 2010;
51. Chuansumrit A, Puripokai C, Butthep P, Wongtiraporn W, Sasanakul W, Tangnararatchakit K, et al. Laboratory predictors of dengue shock syndrome during the febrile stage. *Southeast Asian J Trop Med Public Health*. 2010 Mar;41(2):326–32.
52. Potts JA, Gibbons RV, Rothman AL, Srikiatkachorn A, Thomas SJ, Supradish P on, et al. Prediction of Dengue Disease Severity among Pediatric Thai Patients Using Early Clinical Laboratory Indicators. Halstead SB, editor. *PLoS Negl Trop Dis*. 2010 Aug 3;4(8):e769.
53. Sirivichayakul C, Limkittikul K, Chanthavanich P, Jiwariyavej V, Chokejindachai W, Pengsaa K, et al. Dengue Infection in Children in Ratchaburi, Thailand: A Cohort Study. II. Clinical Manifestations. *PLoS Negl Trop Dis*. 2012 Feb 28;6(2):e1520.
54. Biswas HH, Gordon A, Nuñez A, Perez MA, Balmaseda A, Harris E. Lower Low-Density Lipoprotein Cholesterol Levels Are Associated with Severe Dengue Outcome. *PLoS Negl Trop Dis*. 2015 Sep 3;9(9):e0003904–e0003904.
55. Kulasinghe S. Association of abnormal coagulation tests with Dengue virus infection and their significance as early predictors of fluid leakage and bleeding. *Sri Lanka J Child Health*. 2016;45(3):184–8.
56. Singla M, Kar M, Sethi T, Kabra SK, Lodha R, Chandele A, et al. Immune Response to Dengue Virus Infection in Pediatric Patients in New Delhi, India—Association of Viremia, Inflammatory Mediators and Monocytes with Disease Severity. *PLoS Negl Trop Dis*. 2016 Mar 16;10(3):e0004497.
57. Nguyen MT, Ho TN, Nguyen VVC, Nguyen TH, Ha MT, Ta VT, et al. An Evidence-Based Algorithm for Early Prognosis of Severe Dengue in the Outpatient Setting. *Clin Infect Dis Off Publ Infect Dis Soc Am*. 2017 Mar 1;64(5):656–63.
58. Balmaseda A, Hammond SN, Pérez L, Tellez Y, Saborío SI, Mercado JC, et al. Serotype-specific differences in clinical manifestations of dengue. *Am J Trop Med Hyg*. 2006;74(3):449–56.

59. Dewi R, Tumbelaka AR, Sjarif DR. Clinical features of dengue hemorrhagic fever and risk factors of shock event. *Paediatr Indones*. 2006;46(3):144–8.
60. Budastra I, Arhana B, Mudita I. Plasma prothrombin time and activated partial thromboplastin time as predictors of bleeding manifestations during dengue hemorrhagic fever. *Paediatr Indones*. 2009;49(2):69–74.
61. Gupta V, Yadav TP, Pandey RM, Singh A, Gupta M, Kanaujiya P, et al. Risk factors of dengue shock syndrome in children. *J Trop Pediatr*. 2011;57(6):451–6.
62. Karyanti MR. Clinical manifestations and hematological and serological findings in children with dengue infection. *Paediatr Indones*. 2011;51(3):157–62.
63. Van de Weg CA, van Gorp EC, Supriatna M, Soemantri A, Osterhaus AD, Martina BE. Evaluation of the 2009 WHO dengue case classification in an Indonesian pediatric cohort. *Am J Trop Med Hyg*. 2012;86(1):166–70.
64. Van Ta T, Tran HT, Ha QNT, Nguyen XT, Tran VK, Simmons C. The role of different serotypes and dengue virus concentration in the prognosis of dengue shock syndrome in children. *Int J Res Pharm Sci*. 2019;10(3):2552–7.
65. Lugo S, Pavlicich V. Early Indicators of Severe Dengue in Hospitalized Patients. *Pediatría Asunción*. 2014;41(2):113–20.
66. Ravishankar K, Vinoth PN, Venkatramanan P. Biochemical and radiological markers as predictors of dengue severity in children admitted in a tertiary care hospital. *Int J Contemp Pediatr*. 2015;2(4):311–6.
67. Poeranto S, Sutaryo S, Josef HK, Juffrie M. A relationship between dengue virus serotype and the clinical severity in paediatric patients from Gondokusuman region, Yogyakarta between 1995 and 1999. *Pediatr Med Rodz*. 2016;3(12):318–25.
68. Chatterjee AB, Matti M, Kulkarni V. Role of platelet parameters in dengue fever in children. *Pediatr Oncall J*. 2020;17(1).
69. Zhang H, Zhou YP, Peng HJ, Zhang XH, Zhou FY, Liu ZH, et al. Predictive Symptoms and Signs of Severe Dengue Disease for Patients with Dengue Fever: A Meta-Analysis. *BioMed Res Int*. 2014;2014:1–10.
70. Sangkaew S, Ming D, Boonyasiri A, Honeyford K, Kalayanarooj S, Yacoub S, et al. Risk predictors of progression to severe disease during the febrile phase of dengue: a systematic review and meta-analysis. *Lancet Infect Dis*. 2021 Jul;21(7):1014–26.
71. Klanjsek P, Pajnkihar M, Marcun Varda N, Povalej Brzan P. Screening and assessment tools for early detection of malnutrition in hospitalised children: a systematic review of validation studies. *BMJ Open*. 2019 May;9(5):e025444.
72. Trang NTH, Long NP, Hue TTM, Hung LP, Trung TD, Dinh DN, et al. Association between nutritional status and dengue infection: a systematic review and meta-analysis. *BMC Infect Dis*. 2016 Dec;16(1):172.

73. Zulkipli MS, Dahlui M, Jamil N, Peramalah D, Wai HVC, Bulgiba A, et al. The association between obesity and dengue severity among pediatric patients: A systematic review and meta-analysis. *PLoS Negl Trop Dis*. 2018 Feb;12(2):e0006263.
74. Vuong NL, Manh DH, Mai NT, Quan VD, Van Thuong N, Lan NTP, et al. Criteria of “persistent vomiting” in the WHO 2009 warning signs for dengue case classification. *Trop Med Health*. 2016;44(1):1–3.
75. Clapham HE, Cummings DAT, Johansson MA. Immune status alters the probability of apparent illness due to dengue virus infection: Evidence from a pooled analysis across multiple cohort and cluster studies. de Silva AM, editor. *PLoS Negl Trop Dis*. 2017 Sep 27;11(9):e0005926.
76. Samanta J. Dengue and its effects on liver. *World J Clin Cases*. 2015;3(2):125.
77. Coulthard MG. Oedema in kwashiorkor is caused by hypoalbuminaemia. *Paediatr Int Child Health*. 2015 May 13;35(2):83–9.
78. World Health Organization, editor. *Comprehensive guidelines for prevention and control of dengue and dengue haemorrhagic fever*. Rev. and expanded. ed. New Delhi, India: World Health Organization Regional Office for South-East Asia; 2011. 196 p. (SEARO Technical publication series).
79. Pare G, Neupane B, Eskandarian S, Harris E, Halstead S, Gresh L, et al. Genetic risk for dengue hemorrhagic fever and dengue fever in multiple ancestries. *EBioMedicine*. 2020;51:102584.