

## Impact of Perioperative Dexamethasone in the Context of Neurosurgical Brain Metastasis Resection

1 David Wasilewski, MD<sup>1, 6</sup>, Jan Bukatz<sup>1\*</sup>, Ricarda Peukert<sup>1\*</sup>, Zoe Shaked<sup>1\*</sup>, Paul Poeser<sup>1</sup>,  
2 Anna-Gila Karbe, MD<sup>1</sup>, Anna-Trelinska-Finger, MA<sup>6</sup>, Claudius Jelgersma, MD<sup>1</sup>, Anton  
3 Früh, MD<sup>1</sup>, Matthias Raspe<sup>2, 6</sup>, MD<sup>2</sup>, Helena Radbruch, MD<sup>4</sup>, David Capper MD<sup>4, 6</sup>, Max  
4 Schlaak, MD<sup>5, 6, 9</sup>, Peter Thuss-Patience, MD<sup>6, 7, 9</sup>, Philip Bischoff, MD<sup>6, 8, 10</sup>, David Horst,  
5 MD<sup>6, 8, 9, 10</sup>, Marcel Krenzke<sup>11</sup>, Ran Xu, MD<sup>1, 10</sup>, Felix Ehret, MD<sup>3, 6, 10</sup>, David Kaul, MD<sup>3, 6, 10</sup>,  
6 Martin Misch, MD<sup>1, 6</sup>, Lars Bullinger, MD<sup>6, 12</sup>, Nikolaj Frost, MD<sup>2, 6</sup>, Peter Vajkoczy, MD<sup>1</sup>,  
7 <sup>6</sup>, Julia Onken, MD<sup>1, 6, 9, 10</sup>

8 <sup>1</sup>Charité – Universitätsmedizin Berlin, Corporate Member of Freie Universität Berlin and Humboldt-Universität zu Berlin, Department of  
9 Neurosurgery, Berlin, Germany.

10 <sup>2</sup>Charité – Universitätsmedizin Berlin, Corporate Member of Freie Universität Berlin and Humboldt-Universität zu Berlin, Department of  
11 Infectious Diseases and Pulmonary Medicine, Berlin, Germany.

12 <sup>3</sup>Charité – Universitätsmedizin Berlin, Corporate Member of Freie Universität Berlin and Humboldt-Universität zu Berlin, Department of  
13 Radiation Oncology, Berlin, Germany

14 <sup>4</sup>Charité – Universitätsmedizin Berlin, Corporate Member of Freie Universität Berlin and Humboldt-Universität zu Berlin, Institute of  
15 Neuropathology, Berlin, Germany.

16 <sup>5</sup>Charité – Universitätsmedizin Berlin, Corporate Member of Freie Universität Berlin and Humboldt-Universität zu Berlin, Department of  
17 Dermatology, Venerology and Allergology, Berlin, Germany.

18 <sup>6</sup>Charité – Universitätsmedizin Berlin, Corporate Member of Freie Universität Berlin and Humboldt-Universität zu Berlin, Charité  
19 Comprehensive Cancer Center, Berlin, Germany.

20 <sup>7</sup>Charité – Universitätsmedizin Berlin, Corporate Member of Freie Universität Berlin and Humboldt-Universität zu Berlin, Department of  
21 Hematology, Oncology and Cancer Immunology, Berlin, Germany

22 <sup>8</sup>Charité – Universitätsmedizin Berlin, Corporate Member of Freie Universität Berlin and Humboldt-Universität zu Berlin, Institute of  
23 Pathology, Berlin, Germany

24 <sup>9</sup> Charité – Universitätsmedizin Berlin, Berlin, Germany; German Cancer Consortium (DKTK), partner site Berlin, and German Cancer  
25 Research Center (DKFZ), Heidelberg, Germany

26 <sup>10</sup>Berlin Institute of Health at Charité – Universitätsmedizin Berlin, Berlin, Germany

27 <sup>11</sup>Charité – Universitätsmedizin Berlin, Corporate Member of Freie Universität Berlin and Humboldt-Universität zu Berlin, Medizinisches  
28 Zentralarchiv, Berlin, Germany

29

30 <sup>12</sup>German Cancer Consortium (DKTK), Heidelberg, Germany; Charité-Universitätsmedizin Berlin, Corporate Member of Freie Universität  
31 Berlin, Humboldt-Universität zu Berlin, Department of Hematology, Oncology and Cancer Immunology, Berlin, Germany.

32

33 Corresponding Authors: [peter.vajkoczy@charite.de](mailto:peter.vajkoczy@charite.de) and [david.wasilewski@charite.de](mailto:david.wasilewski@charite.de), Charité Campus Mitte, Charitéplatz 1, 10117 Berlin,  
34 Germany

35 \*contributed equally

36 **manuscript word count: 3591**

37 **Keywords:** lung cancer, breast cancer, melanoma, renal cell cancer, esophageal cancer,  
38 brain metastasis resection, cumulative dexamethasone, overall survival

39

## 40 **Abstract**

41 **Background:** Patients with brain metastases that undergo brain metastasis resection  
42 regularly receive perioperative dexamethasone. We sought to evaluate whether perioperative  
43 dexamethasone in brain metastases is linked to survival.

44 **Methods:** Retrospective data on perioperative dexamethasone dosage in resected brain  
45 metastasis patients at three hospital sites of the Charité from 2010-2022 were collected. Cut-  
46 off values for cumulative perioperative dexamethasone dose as a continuous predictor  
47 variable for survival were determined using maximally selected rank statistics. Patients were  
48 dichotomized based on determined cut-offs of cumulative dexamethasone (pre-operative: <  
49 40 mg vs  $\geq$  40 mg; post-operative: < 180 mg vs  $\geq$  180 mg) and pre- and postoperative: < 281  
50 mg vs  $\geq$  281 mg). Medical records included baseline demographic, radiological,  
51 histopathological and treatment-related characteristics. Based on cut-off values for  
52 dexamethasone downstream statistical analyses included Kaplan-Meier, Cox proportional  
53 hazards regression for overall survival with adjustment for potential confounders including  
54 age, gender, Karnofsky performance status and presence of extracranial metastasis via  
55 propensity score matching.

56 **Results:** 539 patients were included. Median follow-up time was 58,97 months. After  
57 adjusting for age, gender, Karnofsky performance status and presence of extracranial  
58 metastasis patients with higher cumulative perioperative dexamethasone ( $\geq$ 281 mg) showed

59 shorter survival (HR: 1.47 (1.20-1.80,  $p < 0.001$ ) as compared to patients with lower cumulative  
60 doses (<281 mg). This effect remained significant after correction for patients that died within  
61 2 months after resection and for patients with KPS below 50% and, independently from this  
62 approach performing propensity score matched-based analysis of the total cohort of patients,  
63 respectively.

64 **Conclusion:** Cumulative perioperative dexamethasone is associated with decreased survival  
65 in the context of brain metastasis resection. Strict dosage, down taper or methods reducing  
66 corticosteroid dependency should be regularly evaluated in clinical practice in patients with  
67 brain metastases.

68 **(278 words)**

69

70

71

72

73

74

75

76

## 77 **BACKGROUND**

78 Up to 50% of cancer patients develop brain metastasis within the course of disease<sup>1,2</sup>. Brain  
79 metastases are in general associated with a bad prognosis, however a subset of these  
80 patients with good clinical performance or good Karnofsky performance status (KPS),  
81 surgically accessible and/or symptomatic brain metastases are regularly undergoing  
82 extensive treatment including neurosurgical brain metastasis resection followed by  
83 radiotherapy (RTx)<sup>3-5</sup>. Apart from advances in local therapy (e.g. stereotactic radiosurgery

84 (SRS)), systemic treatment approaches have experienced some major changes. Adjuvant  
85 therapies have shifted from post-operative RTx and chemotherapy (CTx) to post-operative  
86 RTx with targeted therapies including small molecule inhibitors or checkpoint inhibition (CPI)<sup>3-  
87 7</sup>. Similar to glioblastoma treatment, patients with symptomatic brain metastases that undergo  
88 neurosurgical treatment with craniotomy and microsurgical brain metastasectomy regularly  
89 receive pre- and postoperative dexamethasone to treat perifocal edema to alleviate  
90 neurological symptoms<sup>8,9</sup>. Yet, dexamethasone use may be associated with significant  
91 adverse effects and immunosuppression<sup>10,11</sup>. In addition, there is ample evidence from the  
92 field of glioblastoma to suggest that pre- and postoperative dexamethasone is associated  
93 with worse overall survival (OS) as recently shown in several retrospective studies<sup>12-14</sup>. No  
94 larger randomized-controlled prospective trials have been conducted on this matter up to  
95 now. This holds also true for patients with brain metastases. Importantly, systematic studies  
96 evaluating potential adverse effects of dexamethasone including its impact on OS, other  
97 complications such as negative impact of perioperative dexamethasone on post-operative  
98 treatments including CPI could provide important information and generate more evidence for  
99 decision-making with respect to dexamethasone dosage regimens. Given the paucity of data,  
100 we aimed to investigate whether perioperative dexamethasone (i.e. administered in the pre-  
101 operative period, post-operative period and in both periods) adversely affects clinical outcome  
102 in patients undergoing brain metastasectomy. Real-world data on perioperative  
103 dexamethasone dosage may aid in further evaluating dexamethasone dosage and initiating  
104 randomized-controlled studies to find an optimal dosage regimen for these patients. This  
105 retrospective, comparative effectiveness study describes detailed perioperative  
106 dexamethasone dosage in a large cohort of patients who underwent brain metastasectomy  
107 (n=539). Further the study provides descriptive information on demographics, radiological  
108 and histological features as well as treatment-related features after brain metastasis  
109 resection. To find optimal cut-off values or cut-points based on different settings or time  
110 windows for dexamethasone dosing in the context of metastasectomy, we used a well-known  
111 cut-off estimation model by Hothorn and Lausen called the maximally selected rank statistic.  
112 Using this model, we examined the association between cumulative preoperative,  
113 postoperative, and total dexamethasone dose and clinical outcome in conjunction with a  
114 downstream descriptive and inferential statistics with overall survival as the primary outcome  
115 <sup>15</sup>. **(422 words)**

116

## 117 METHODS

### 118 1.1 Patient cohort and study variables

119 For this retrospective study all patients with neurosurgically resected brain metastases  
120 treated at all three sites of Charité-Universitätsmedizin Berlin in the period from January  
121 2010 to December 2022 were included. Data censoring was 1<sup>st</sup> of December 2022. Patient  
122 data were identified as previously described using an institutional database (SAP, Walldorf,  
123 Germany) as well as the Charité Comprehensive Cancer Center (CCCC) Registry<sup>16</sup>.  
124 Patients with a histopathological confirmation of an intracerebral manifestation of non-small  
125 cell lung cancer (NSCLC), breast cancer, melanoma, renal cell carcinoma (RCC), colorectal  
126 cancer (CRC), esophageal cancer or gastric cancer or unknown primary tumor were  
127 included. This study is in accordance with the ethical standards outlined in the Declaration  
128 of Helsinki and was approved by the research ethic board at the Charité (EA1/399/20)<sup>16</sup>.  
129 Exclusion criteria are displayed in the consort diagram (**Figure 1**). Exposure to  
130 perioperative dexamethasone was defined as follows: pre-operative dexamethasone  
131 included cumulative dexamethasone dosage in mg from day thirteen before the day of  
132 operation (-13d) till the day of operation (d0), post-operative dexamethasone included  
133 cumulative dexamethasone dosage in mg from day one after the day of operation (1d) till  
134 day thirteen after day of operation (d13), and pre- and postoperative dexamethasone hence  
135 was defined as cumulative dexamethasone dosage in mg from day thirteen before the day  
136 of operation (-13d) till day thirteen after day of operation (d13) (**Figure 1**). OS represented  
137 the primary outcome of this study and was defined as time from brain metastasis resection  
138 until death from any cause. Baseline was defined as day first brain metastasis resection in  
139 each patient's history; baseline characteristics were selected according to previous  
140 retrospective studies<sup>6,7,15</sup>. KPS was assessed after first brain metastasis resection and  
141 dichotomized in good ( $\geq 70\%$ ) and bad ( $< 70\%$ ). Presence of underlying other diseases was  
142 defined as presence of cardiovascular diseases, chronic lung, renal or liver diseases and  
143 was dichotomized in either not present or present. Radiological baseline characteristics  
144 included anatomical localization of resected brain metastases, number of brain metastases  
145 at baseline, presence of extracranial metastases at baseline and were based on reports  
146 from board-certified radiologists (**eTable 1a-b, eTable 2 a-b in the online supplements**).  
147 Tumor volumes and associated edema volumes were quantified using a semi-automated  
148 3D rendering algorithm in iPlanet (Brainlab, Munich, Germany) using the SmartBrush tool

149 (T1-weighted images for tumor and FLAIR-images for edema measurements). Only the  
150 resected lesion was quantified; in case of multiple lesions no addition of tumor or edema  
151 volumes was performed. Treatment-related features included the total number of brain  
152 metastasis resections, resection of primary tumor mass, administered systemic treatment  
153 modalities before brain metastasis resection and adjuvant therapy after brain metastasis  
154 resection. Information on systemic treatment and radiotherapy before or after first brain  
155 metastasis resection at our institution was retrieved from our database and patient records  
156 similarly to our previous study<sup>16</sup> (**eTable 1a-d in the online supplements**). Follow-up data  
157 were retrieved from the registry from the Charité Comprehensive Cancer Center (CCCC)  
158 and obtained until December 1<sup>st</sup> 2022. In NSCLC driver mutational status or included driver  
159 mutational status of epidermal growth factor receptor (EGFR), anaplastic lymphoma kinase  
160 (ALK) or c-ros oncogene (ROS1) translocations were regularly assessed after 2015. In  
161 melanoma v-raf murine sarcoma viral oncogene homolog B1 (BRAF) from 2014 onwards  
162 and human epidermal growth factor receptor 2 (Her2) status in case of breast cancer;  
163 thyroid transcription factor-1 (TTF1) status was regularly documented, whereas  
164 progesterone receptor (PR) and estrogen receptor (ER) status were documented in case  
165 breast cancer brain metastasis was suspected. Further histopathological information  
166 retrieved from patient records included Ki67 index and programmed death ligand 1 (PD-L1)  
167 tumor proportion score (TPS) of resected brain metastasis tissue (**eTable 1a-d**). Institutional  
168 pathological review was mandatory, all resected specimens were reviewed by board-  
169 certified neuropathologists for diagnosis. Chi-square test of independence was used to  
170 analyze the frequency table for categorical variables. Non-parametric Wilcoxon rank sum  
171 test was used for comparing two means not normally distributed data of this dataset; when  
172 expected count was below 5 Fisher's exact test was used. **(656 words)**

## 173 **1.2 Statistical analysis**

174 We used R studio (Version 2021.09.2, R Foundation for Statistical Computing, Inc, Boston,  
175 USA) to compute descriptive and inferential statistics as in our previous study<sup>15</sup>. The  
176 *gtsummary* package was used to describe tabular data of our patient cohort, including  
177 categorical and numerical variables ([https://cran.r-](https://cran.r-project.org/web/packages/gtsummary/index.html)  
178 [project.org/web/packages/gtsummary/index.html](https://cran.r-project.org/web/packages/gtsummary/index.html)). Median OS was estimated by means of  
179 Kaplan-Meier analysis with confidence interval bands being displayed in the respective  
180 figures: Plotting was performed using the *survival* (<https://cran.r->

181 [project.org/web/packages/survival/index.html](https://cran.r-project.org/web/packages/survival/index.html)) and *survminer* package ([https://cran.r-](https://cran.r-project.org/web/packages/survminer/index.html)  
182 [project.org/web/packages/survminer/index.html](https://cran.r-project.org/web/packages/survminer/index.html)). The prognostic value of each variable was  
183 tested using the log-rank estimator. Univariable and multivariable Cox regression modeling  
184 served to assess the effect of one or the simultaneous effects of multiple clinical variables  
185 on OS and was done using the *survminer* package. Cut-off values for cumulative  
186 perioperative dexamethasone dose as a continuous predictor variable for survival were  
187 evaluated and determined via an algorithm using maximally selected rank statistics  
188 implemented in the *maxstat* package ([https://cran.r-](https://cran.r-project.org/web/packages/maxstat/index.html)  
189 [project.org/web/packages/maxstat/index.html](https://cran.r-project.org/web/packages/maxstat/index.html)). Patient that were included in this study  
190 includes the total cohort “all” (N=539), referred to as COHORT A and a subcohort after  
191 excluding patients with less than 2 months OS and patients with KPS less than 50% named  
192 “2months and KPS<50excl”, which was termed as COHORT B. The effect of perioperative  
193 Dexamethasone on survival was also reevaluated via 1:1 (nearest-neighbor) propensity  
194 score matching as described in our previous work<sup>15</sup>. Propensity score matching involved the  
195 following baseline covariates: age, gender, KPS (dichotomized into <70% or “bad” and ≥  
196 70% or “good”) and presence of extracranial metastases. The matched cohort is henceforth  
197 referred to as COHORT C. Kaplan-Meier analyses were performed after applying different  
198 cutpoints and dichotomizing patients into subgroups according to optimal cut-point value for  
199 pre-operative dexamethasone, postoperative dexamethasone and pre- and postoperative  
200 (total) dexamethasone. Further R packages used, included common analytical packages  
201 such as *dplyr*, *tidyverse*. We conducted univariable and multivariable analysis for both  
202 datasets (COHORT A, B and C) for OS as a main endpoint adjusting for potential  
203 confounders such as age, gender, (KPS) and presence of extracranial metastasis was  
204 performed. Data collection was done with Microsoft Excel (Version 14.3.9, Microsoft Inc.,  
205 Redmond, USA). Graphpad Prims (Version 9, Graphpad Software, Inc., San Diego, USA)  
206 was used for plotting Supplementary figure 2b. A p-value of < .05 was considered significant  
207 with p-values being two-sided. R code and raw data will be made available at github upon  
208 request. **(384 words)**

209

210

## 211 **2 RESULTS**



## 212 **2.1 Baseline characteristics**

213 Characteristics of patients with cancer brain metastases that met the inclusion criteria  
214 COHORT A (n=539) are shown in the supplementary material section (**Figure 1, eTable 1a-**  
215 **d in the online supplements**). There were 260 (48%) male and 279 (52%) female  
216 individuals in the total cohort of patients. Median age was 64 years (55-72, IQR). Most  
217 common symptoms associated with brain metastases were sensory-motor symptoms (21%),  
218 vertigo or dyscoordination (20%) and headache (12%). Sixty-two percent of patients had a  
219 good postoperative KPS ( $\geq 70\%$ ), whereas 38% of patients had a bad KPS ( $< 70\%$ ).  
220 Predominant histopathology included brain metastases due to NSCLC, 93 (17%) were due  
221 to breast cancer, 91 (17%) were due to melanoma and 33 (6,1%) were due to SCLC. Renal  
222 cell cancer accounted for 4,8%. Two hundred eighty-nine (45%) patients were pre-treated  
223 with systemic anti-tumor therapy before first brain metastasis resection (baseline), and 238  
224 patients (55%) were treatment naïve. Other radiological, histopathological, and treatment-  
225 related characteristics of this collective are summarized in supplementary materials (**eTable**  
226 **1a-d**). Median follow-up time (IQR) was 58.97 months (31.97-89.17 months). Cumulated  
227 median OS of the COHORT A (n=539) was 13.3 month (95% CI: 12.1 – 15.2) and 11.4 (95%  
228 CI: 10.2 – 13.2) ( $p=0.049$ ) for the COHORT B (**eFigure 1, eTable 2a-d in the online**  
229 **supplements**). (209 words)

230

## 231 **2.2 Dexamethasone dosage regimens and association of dexamethasone with overall** 232 **survival**

233 The median dexamethasone dose was 80 mg for the pre-operative period, 96 mg for the  
234 postoperative period and 190 mg for the total pre- and post-operative period for the COHORT  
235 A and 80 mg for the pre-operative period, 84 mg for the postoperative period and 187 mg for  
236 the total pre- and postoperative period for the COHORT B, respectively (**Table 1a, 1b**). The  
237 cumulative total dexamethasone dose prescribed during the pre-operative and post-operative  
238 period did not correlate with age, KPS or histopathological markers such as Ki67 or PD-L1  
239 TPS, tumor volume or edema volume in COHORT A (**eFigure 2a, b in the online**  
240 **supplements**). 38 patients did not receive dexamethasone at all. Interestingly, within  
241 COHORT A and COHORT B no difference in OS was observed between patients that did not  
242 receive perioperative dexamethasone (-DEXA) vs. those patients that did receive



243 perioperative dexamethasone (+DEXA) (**eFigure 3a, b in the online supplements**).  
244 Similarly, we did not observe any differences in OS within both cohorts when a cut-off of 8  
245 mg dexamethasone daily was used to dichotomize patients during the pre-operative and post-  
246 operative period (**eFigure 3c, d in the online supplements**) (188 words).

### 247 **2.3 Cutpoints for perioperative Dexamethasone dosage regimens and association** 248 **with overall survival**

249 Next, cutpoint for cumulative perioperative dexamethasone (i.e. pre-operative, post-operative  
250 as well as pre- and postoperative or total) were evaluated in terms of its association as a  
251 predictor variable for OS. Cutpoint values for COHORT A and B in the pre-, postoperative  
252 phase are given in table 1a-c. As for a cutpoint of cumulative dexamethasone in the pre-  
253 operative period for COHORT A (40 mg) and COHORT B (184 mg) there were significant  
254 differences in median OS between patients with  $< 40$  mg and  $\geq 40$  mg and  $< 184$  mg and  $\geq$   
255 184, respectively (**eFigure 3b in the online supplements**). In contrast, only the cutpoint for  
256 postoperative dexamethasone dosage for COHORT A (180 mg) showed a significant  
257 association with OS, whereas for COHORT B the established cutpoint (180 mg) did not result  
258 in a significant difference in OS when comparing two dichotomized patient groups (**eFigure**  
259 **3b in the online supplements**). As for the cumulative dexamethasone dose in the pre- and  
260 post-operative period patients of COHORT A were dichotomized into two groups each:  
261 patients with  $< 281$  mg showing a median OS of 12.9 months (95% CI: 11.0-15.2) vs. those  
262 patients with  $\geq 281$  mg cumulative dexamethasone in the pre- and postoperative period with  
263 an OS of 8.43 months (95% CI: 5.6-10.9) ( $p=0.0012$ ). For COHORT B optimal cutpoint for  
264 the dexamethasone dose in the pre- and postoperative period was 294 mg of post-operative  
265 dexamethasone: patients with  $< 294$  mg cumulative dexamethasone showed a median OS of  
266 14.7 months (95% CI: 12.90-18.2) vs. patients with  $\geq 294$  mg cumulative dexamethasone in  
267 the post-operative period with an OS of 10.6 months (95% CI: 8.43-13.6) ( $p=0.0086$ ) (**Figure**  
268 **2, 3**). Additionally, we performed a 1:1 propensity score matching (PSM) for covariate  
269 balancing for the total cohort of patients (COHORT A), which resulted in COHORT C with 131  
270 matched patients per group. Here, patients that received  $<281$  mg cumulative  
271 dexamethasone in the perioperative period had a significantly higher OS (13.5 months; 95%  
272 CI: 10.9-17.9) than those patients that received  $\geq 281$  mg perioperative dexamethasone that

273 showed an OS of 8.3 months (95% CI: 5.37-10.9) ( $p=0.0072$ ) (**eFigure 4, 5 in the online**  
274 **supplements**). (355 words)

#### 275 **2.4 Univariable and multivariable analysis to identify prognostic factors**

276 On univariable analysis there was a statistically significant association between the  
277 cumulative perioperative dexamethasone dose and median OS in both cohorts COHORT A  
278 ([HR] 1.52, 95% CI: 1.25-1.85,  $p<0.001$ ) and COHORT B ([HR] 1.38, 95% CI: 1.08-1.76,  
279  $p=0.009$ ). Multivariable Cox regression for perioperative dexamethasone and covariates  
280 which were considered as potential confounders (i.e. age, gender, KPS and presence of  
281 extracranial metastasis at baseline) showed that high perioperative (“total”) dexamethasone  
282 was interpedently associated with shorter OS in case of COHORT A ([HR] 1.47, 95% CI: 1.20-  
283 1.80,  $p<0.001$ ) as well as the subgroup COHORT B ([HR] 1.35, 95% CI: 1.09-1.68,  $p=0.007$ )  
284 (**Table 2a**). Other independent prognostic factors for both cohorts were age and KPS (**Table**  
285 **2b**). Importantly, also for the matched dataset of patients within the whole patient cohort  
286 (COHORT C) stratified into patients with  $< 281$  mg perioperative dexamethasone and patients  
287 with  $\geq 281$  mg cumulative dexamethasone in the pre- and postoperative period showed that  
288 dexamethasone was an independent prognostic factor associated with OS ([HR] 1.46, 95%  
289 CI: 1.11-1.92,  $p=0.012$ ) (**Table 2c**). Mean standard differences are displayed in **eFigure 3 in**  
290 **the supplements**. (179 words)

291

#### 292 **DISCUSSION/CONCLUSION**

293 Corticosteroids such as dexamethasone are a standard drug in the treatment of patients with  
294 brain metastases. They are used to control the mass effect of perifocal tumor edema and the  
295 resulting neurologic deficitsts<sup>12</sup>. Treatment recommendations in this context lack evidence  
296 and are primarily based on expert opinion and few retrospective data<sup>3, 4, 10</sup>. With advent of  
297 immunotherapy or CPI dexamethasone dosage and down-taper schemes will likely gain  
298 importance as for other entities or situations. However, one randomized study with patients  
299 with brain metastases receiving either 4 mg, 8 mg or 16 mg dexamethasone daily reported  
300 improvement of symptoms by means of KPS at day 7 and day 28, respectively<sup>18</sup>. Importantly,  
301 there is a marked variability between centers and treating physicians in terms of  
302 dexamethasone recommendations (e.g. initiation and down tapering)<sup>9, 12, 19</sup>. In this

303 retrospective, comparative effectiveness study we characterize the dosage of  
304 dexamethasone and its impact on survival in patients that underwent brain metastasis  
305 resection. Here, a cutpoint estimation method was used to evaluate optimal value selection  
306 for survival prediction of pre-operative, postoperative and total dexamethasone. Pre-operative  
307 dexamethasone, but not postoperative dexamethasone showed an association to OS in the  
308 whole cohort of patients with resected brain metastases. Maximally selected rank statistics  
309 were performed for pre-operative, postoperative and total (pre- and postoperative)  
310 dexamethasone dosage with the total dexamethasone displaying the strongest association  
311 with OS resulting in a cut-point of 281 mg. Patients receiving a high total cumulative  
312 dexamethasone dose (i.e., patients receiving  $\geq 281$  mg) showed significantly reduced OS-an  
313 effect that was confirmed in a subgroup analysis of patients after applying exclusion criteria  
314 (i.e., exclusion of patients with short-term survival  $< 2$  months or patients with postoperative  
315 KPS  $< 50\%$ ) (**Figure 2, 3**). These observations could be further confirmed by multivariable  
316 Cox regression analysis for unmatched data as well as for matched data after performing  
317 PSM where dexamethasone with a cut-point of 281 mg in the total cohort was significantly  
318 associated with an increased hazard for death (**Figure 2, 3**). In general, our observations are  
319 in line with previously published research in the context of perioperative dexamethasone in  
320 Glioblastoma patients. Here, the sum of cumulative dexamethasone doses in the pre-  
321 operative and post-operative period seems to have impact on OS as reported previously. For  
322 instance, Zhou et al. demonstrated in a single-center PSM study that postoperative day (POD)  
323 0 to 21 dexamethasone dosage correlated with overall survival<sup>17</sup>. Interestingly, Medikonda et  
324 al. recently showed that that pre-operative, but not post-operative or pre- and postoperative  
325 Dexamethasone dosage in Glioblastoma patients was linked to shorter OS and reported a  
326 hazard ratio of 3.0 (95% CI: 0.9-9.4). In contrast, the effect of combined pre- and post-  
327 operative dexamethasone on survival was less pronounced in our cohort [HR] 1.47, 95% CI:  
328 1.20-1.80,  $p < 0.001$ ). Additionally, upon stratification into subgroups of dexamethasone intake  
329 (cumulative pre-operative, postoperative and perioperative (total) dexamethasone intake), we  
330 only observed total dexamethasone to be associated with OS. Interestingly, there was no  
331 significant correlation between cumulative dexamethasone dose and tumor volume or edema  
332 volume (**eFigure 2a in the supplements**), which is in contrast to the observation from Zhou  
333 and colleagues for glioblastoma<sup>17</sup>. Limitations of this study include the retrospective nature of  
334 the data originating from a retrospective and prospective brain metastasis registry. In contrast  
335 to other studies, we mainly focused on inpatient records to assure data quality although

336 insufficient data capture and entry in patient files can lead to bias as those patients with  
337 insufficient documentation of dexamethasone doses were excluded (**Figure 1**). Although we  
338 performed a PSM for prognostic clinical covariates such as age, and KPS as well as  
339 extracranial disease burden, there are certainly other confounding factors we do not consider  
340 into the matching process in this study, which include tumor volume and edema volume.  
341 These however are of prognostic value and were not considered into the matching process.  
342 Additionally, larger patient cohorts from multicenter registries with standardized  
343 documentation of dexamethasone dosage would be necessary to further investigate the role  
344 of dexamethasone and its impact on patient outcome. This study consists only of surgical  
345 patients which tend to be clinically symptomatic. Therefore, patients that did not undergo  
346 surgery were excluded from this study. Our study has potential implications with respect to  
347 the efficacy of CPI in patients with brain metastases that may be candidates to receive CPIs  
348 after brain metastasis resection and RTx<sup>20-23</sup>. In this regard in patients with metastatic disease  
349 several retrospective studies indicated that timing of initiation of corticosteroids may influence  
350 therapy response to CPI; for example, Maslov and colleagues showed that patients treated  
351 with corticosteroids within 2 months of initiation with CPI showed significantly shorter OS than  
352 patients receiving corticosteroids after 2 months of initiation of treatment with CPIs<sup>22</sup>. Future  
353 prospective, randomized-controlled and interdisciplinary studies should systematically  
354 evaluate the benefit and complications or impact on OS but also on progression-free survival  
355 according to the Response Assessment in Neuro-Oncology Brain Metastasis (RANO-BM)  
356 criteria in different tumor entities. Additionally, exploratory endpoints, serum and tissue-based  
357 biomarker studies of resected brain metastases pre-exposed to dexamethasone should be  
358 initiated and could aid in gaining insights into the changes of the systemic and local tumor  
359 immune microenvironment in these patients<sup>24-26</sup>. This would also be informative for future  
360 clinical trials recruiting patients with brain metastases since patients with brain metastases  
361 are finally becoming more and more included in clinical trials independent of the tumor type.  
362 These studies could help in better understanding the role of perioperative dexamethasone or  
363 corticosteroids in terms of patient outcome, complications, or predicting the impact on post-  
364 operative “adjuvant” treatment including upcoming immunotherapy or CPIs. **(920 words)**

365

## 366 **Figures and Tables**

367 See below to see the main figures and tables and separate word file including supplementary  
368 figures „2. supplementary figures and material\_08.01.2022\_1334PM\_DW”.

369

370

## 371 **Literature**

- 372 1. Brain metastasis. Boire A, Brastianos PK, Garzia L, Valiente M. *Nat Rev Cancer*. 2020  
373 Jan;20(1):4-11. doi: 10.1038/s41568-019-0220-y. Epub 2019 Nov  
374 28. PMID: 31780784  
375
- 376 2. Advances in the management of breast cancer brain metastases. Sammons S, Van  
377 Swearingen AED, Chung C, Anders CK. *Neurooncol Adv*. 2021 Nov 27;3(Suppl 5):v63-  
378 v74. doi: 10.1093/noajnl/vdab119. eCollection 2021 Nov. PMID: 34859234  
379
- 380 3. Brain metastases: A Society for Neuro-Oncology (SNO) consensus review on current  
381 management and future directions. Aizer AA, Lamba N, Ahluwalia MS, Aldape K, Boire  
382 A, Brastianos PK, Brown PD, Camidge DR, Chiang VL, Davies MA, Hu LS, Huang RY,  
383 Kaufmann T, Kumthekar P, Lam K, Lee EQ, Lin NU, Mehta M, Parsons M, Reardon  
384 DA, Sheehan J, Soffiatti R, Tawbi H, Weller M, Wen PY. *Neuro Oncol*. 2022 Oct  
385 3;24(10):1613-1646. doi: 10.1093/neuonc/noac118. PMID: 35762249  
386
- 387 4. EANO-ESMO Clinical Practice Guidelines for diagnosis, treatment and follow-up of  
388 patients with brain metastasis from solid tumours. Le Rhun E, Guckenberger M, Smits  
389 M, Dummer R, Bachelot T, Sahm F, Galldiks N, de Azambuja E, Berghoff AS, Metellus  
390 P, Peters S, Hong YK, Winkler F, Schandendorf D, van den Bent M, Seoane J, Stahel  
391 R, Minniti G, Wesseling P, Weller M, Preusser M; EANO Executive Board and ESMO  
392 Guidelines Committee. *Ann Oncol*. 2021 Nov;32(11):1332-1347. doi:  
393 10.1016/j.annonc.2021.07.016. Epub 2021 Aug 6. PMID: 34364998  
394
- 395 5. Radiation Therapy for Brain Metastases: A Systematic Review. Garsa A, Jang JK,  
396 Baxi S, Chen C, Akinniranye O, Hall O, Larkin J, Motala A, Hempel S. *Pract Radiat  
397 Oncol*. 2021 Sep-Oct;11(5):354-365. doi: 10.1016/j.prro.2021.04.002. Epub 2021 Jun  
398 9. PMID: 34119447

399

400 6. Upfront Surgical Resection of Melanoma Brain Metastases Provides a Bridge Toward  
401 Immunotherapy-Mediated Systemic Control. Alvarez-Breckenridge C, Giobbie-Hurder  
402 A, Gill CM, Bertalan M, Stocking J, Kaplan A, Nayyar N, Lawrence DP, Flaherty KT,  
403 Shih HA, Oh K, Batchelor TT, Cahill DP, Sullivan R, Brastianos PK. *Oncologist*. 2019  
404 May;24(5):671-679. doi: 10.1634/theoncologist.2018-0306. Epub 2019 Feb  
405 22. PMID: 30796152

406

407 7. Melanoma brain metastasis presentation, treatment, and outcomes in the age of  
408 targeted and immunotherapies. Bander ED, Yuan M, Carnevale JA, Reiner AS,  
409 Panageas KS, Postow MA, Tabar V, Moss NS. *Cancer*. 2021 Jun 15;127(12):2062-  
410 2073. doi: 10.1002/cncr.33459. Epub 2021 Mar 2. PMID: 33651913

411

412 8. Corticosteroid use endpoints in neuro-oncology: Response Assessment in Neuro-  
413 Oncology Working Group. Arvold ND, Armstrong TS, Warren KE, Chang SM,  
414 DeAngelis LM, Blakeley J, Chamberlain MC, Dunbar E, Loong HH, Macdonald DR,  
415 Reardon DA, Vogelbaum MA, Yuan Y, Weller M, van den Bent M, Wen PY. *Neuro*  
416 *Oncol*. 2018 Jun 18;20(7):897-906. doi: 10.1093/neuonc/noy056. PMID: 29788429

417

418 9. Letter: When Less is More: Dexamethasone Dosing for Brain Tumors. Lim-Fat MJ, Bi  
419 WL, Lo J, Lee EQ, Ahluwalia MS, Batchelor TT, Chang SM, Chiocca EA, Chukwueke  
420 U, Cloughesy TF, Colman H, Deangelis LM, Galanis E, Gilbert MR, De Groot JF,  
421 Lassman AB, Liau LM, Mason W, McFaline-Figueroa JR, Mehta MP, Mellinghoff IK,  
422 Nabors LB, Nayak L, Reardon DA, Wen PY. *Neurosurgery*. 2019 Sep 1;85(3):E607-  
423 E608. doi: 10.1093/neuros/nyz186. PMID: 31215634

424

425 10. Corticosteroids in brain cancer patients: benefits and pitfalls. Dietrich J, Rao K,  
426 Pastorino S, Kesari S. *Expert Rev Clin Pharmacol*. 2011 Mar;4(2):233-42. doi:  
427 10.1586/ecp.11.1. PMID: 21666852

428

429 11. Dexamethasone-induced immunosuppression: mechanisms and implications for  
430 immunotherapy. Giles AJ, Hutchinson MND, Sonnemann HM, Jung J, Fecci PE,  
431 Ratnam NM, Zhang W, Song H, Bailey R, Davis D, Reid CM, Park DM, Gilbert MR. *J*



- 432 Immunother Cancer. 2018 Jun 11;6(1):51. doi: 10.1186/s40425-018-0371-  
433 5.PMID: 29891009  
434
- 435 12. The role of steroids in the management of brain metastases: a systematic review and  
436 evidence-based clinical practice guideline. Ryken TC, McDermott M, Robinson PD,  
437 Ammirati M, Andrews DW, Asher AL, Burri SH, Cobbs CS, Gaspar LE, Kondziolka D,  
438 Linskey ME, Loeffler JS, Mehta MP, Mikkelsen T, Olson JJ, Paleologos NA, Patchell  
439 RA, Kalkanis SN. *J Neurooncol*. 2010 Jan;96(1):103-14. doi: 10.1007/s11060-009-  
440 0057-4. Epub 2009 Dec 3.PMID: 19957014  
441
- 442 13. Steroids use and survival in patients with glioblastoma multiforme: a pooled analysis.  
443 Petrelli F, De Stefani A, Ghidini A, Bruschi L, Riboldi V, Dottorini L, Iaculli A,  
444 Zaniboni A, Trevisan F. *J Neurol*. 2021 Feb;268(2):440-447. doi: 10.1007/s00415-020-  
445 09731-5. Epub 2020 Jan 30.PMID: 32002651  
446
- 447 14. Corticosteroids compromise survival in glioblastoma. Pitter KL, Tamagno I, Alikhanyan  
448 K, Hosni-Ahmed A, Pattwell SS, Donnola S, Dai C, Ozawa T, Chang M, Chan TA,  
449 Beal K, Bishop AJ, Barker CA, Jones TS, Hentschel B, Gorlia T, Schlegel U, Stupp R,  
450 Weller M, Holland EC, Hambardzumyan D. *Brain*. 2016 May;139(Pt 5):1458-71. doi:  
451 10.1093/brain/aww046. Epub 2016 Mar 28.PMID: 27020328  
452
- 453 15. Lausen, B.; Hothorn, T.; Bretz, F.; Schumacher, M. Assessment of Optimal Selected  
454 Prognostic Factors. *Biometrical J*. 2004, 46, 364–374  
455
- 456 16. Effectiveness of Immune Checkpoint Inhibition vs Chemotherapy in Combination With  
457 Radiation Therapy Among Patients With Non-Small Cell Lung Cancer and Brain  
458 Metastasis Undergoing Neurosurgical Resection. Wasilewski D, Radke J, Xu R, Raspe  
459 M, Trelinska-Finger A, Rosenstock T, Poeser P, Schumann E, Lindner J, Heppner F,  
460 Kaul D, Suttorp N, Vajkoczy P, Frost N, Onken J. *JAMA Netw Open*. 2022 Apr  
461 1;5(4):e229553. doi: 10.1001/jamanetworkopen.2022.9553.PMID: 35486401  
462
- 463 17. Impact of postoperative dexamethasone on survival, steroid dependency, and  
464 infections in newly diagnosed glioblastoma patients. Mistry AM, Jonathan SV,

- 465 Monsour MA, Mobley BC, Clark SW, Moots PL. *Neurooncol Pract.* 2021 Jun  
466 23;8(5):589-600. doi: 10.1093/nop/npab039. eCollection 2021 Oct. PMID: 34594571  
467
- 468 18. Dose-effect relationship of dexamethasone on Karnofsky performance in metastatic  
469 brain tumors: a randomized study of doses of 4, 8, and 16 mg per day. Vecht CJ,  
470 Hovestadt A, Verbiest HB, van Vliet JJ, van Putten WL. *Neurology.* 1994  
471 Apr;44(4):675-80. doi: 10.1212/wnl.44.4.675. PMID: 8164824  
472
- 473 19. Practice Variation in Perioperative Steroid Dosing for Brain Tumor Patients: An  
474 International Survey. Jessurun CAC, Hulsbergen AFC, Lamba N, Nandoe Tewarie  
475 RDS, Smith TR, Broekman MLD. *World Neurosurg.* 2022 Mar;159:e431-e441. doi:  
476 10.1016/j.wneu.2021.12.067. Epub 2021 Dec 24. PMID: 34958992  
477
- 478 20. Dexamethasone-induced immunosuppression: mechanisms and implications  
479 for immunotherapy. Giles AJ, Hutchinson MND, Sonnemann HM, Jung J, Fecci PE,  
480 Ratnam NM, Zhang W, Song H, Bailey R, Davis D, Reid CM, Park DM, Gilbert MR. *J*  
481 *Immunother Cancer.* 2018 Jun 11;6(1):51. doi: 10.1186/s40425-018-0371-  
482 5. PMID: 29891009  
483
- 484 21. Determinants of activity and efficacy of anti-PD1/PD-L1 therapy in patients with  
485 advanced solid tumors recruited in a clinical trials unit: a longitudinal prospective  
486 biomarker-based study. Javier GC, Alberto I, Azucena GNE, Iván V, Débora M, David  
487 P, Laura A, Andrea MS, Esther S, Oleguer C, Paula B, Laura M, Nuria V, Miquel N,  
488 Patricia G, Barbara A, Neus B, Tamara S, Manel J, Aleix P, Francesco S. *Cancer*  
489 *Immunol Immunother.* 2023 Jan 10. doi: 10.1007/s00262-022-03360-9. Online ahead  
490 of print. PMID: 36625938  
491
- 492 22. Timing of steroid initiation and response rates to immune checkpoint inhibitors in  
493 metastatic cancer. Maslov DV, Tawagi K, Kc M, Simenson V, Yuan H, Parent C,  
494 Bamnolker A, Goel R, Blake Z, Matrana MR, Johnson DH. *J Immunother Cancer.* 2021  
495 Jul;9(7):e002261. doi: 10.1136/jitc-2020-002261. PMID: 34226279  
496

- 497 23. Use of First-Line Immune Checkpoint Inhibitors and Association With Overall Survival  
498 Among Patients With Metastatic Melanoma in the Anti-PD-1 Era. Lamba N, Ott PA,  
499 Iorgulescu JB. *JAMA Netw Open*. 2022 Aug 1;5(8):e2225459. doi:  
500 10.1001/jamanetworkopen.2022.25459. PMID: 36006646  
501
- 502 24. Brain metastasis PD-L1 and CD8 expression is dependent on primary tumor type and  
503 its PD-L1 and CD8 status. Camy F, Karpathiou G, Dumollard JM, Magne N, Perrot JL,  
504 Vassal F, Picot T, Mobarki M, Forest F, Casteillo F, Hathroubi S, Froudarakis M,  
505 Peoc'h M. *J Immunother Cancer*. 2020 Aug;8(2):e000597. doi: 10.1136/jitc-2020-  
506 000597. PMID: 32859740  
507
- 508 25. Distinct phenotypic states and spatial distribution of CD8<sup>+</sup> T cell clonotypes in human  
509 brain metastases. Sudmeier LJ, Hoang KB, Nduom EK, Wieland A, Neill SG,  
510 Schniederjan MJ, Ramalingam SS, Olson JJ, Ahmed R, Hudson WH. *Cell Rep Med*.  
511 2022 May 17;3(5):100620. doi: 10.1016/j.xcrm.2022.100620. Epub 2022 Apr  
512 27. PMID: 35584630  
513
- 514 26. Immunogenomic analysis of human brain metastases reveals diverse immune  
515 landscapes across genetically distinct tumors. Álvarez-Prado ÁF, Maas RR, Soukup K,  
516 Klemm F, Kornete M, Krebs FS, Zoete V, Berezowska S, Brouland JP, Hottinger AF,  
517 Daniel RT, Hegi ME, Joyce JA. *Cell Rep Med*. 2023 Jan 17;4(1):100900. doi:  
518 10.1016/j.xcrm.2022.100900. PMID: 36652909

519  
520  
521

## 522 **Conflict of Interest**

523 All authors declare that the research was conducted in the absence of any commercial or  
524 financial relationships that could be construed as a potential conflict of interest.

525

## 526 **Author Contributions**

527 D. W., N. F., P.V. and J. O. designed and prepared the manuscript. D. W., J. B., R. P., Z. S.,  
528 P. P., AG. K., C. J., A. T.-F., M. R., H. R., D. C., M. S., P. T., P. B., D. H., M. K., R. X., F. E.,  
529 D. K., M. M., L. B., N. F., P. V. and J. O. discussed and reviewed the manuscript. D. W., J.  
530 B., R. P., Z. S., P. P., AG. K., C. J., A. F., AG. K., A. T.-F., N. F. and J. O. have performed  
531 collection and organization of data. D. W. and A. T.-F. analyzed the data. R. K. provided  
532 patient records from the archive of the Charité. H. R., D. C., P. B. and D. H., provided  
533 information on histopathology. All authors read and approved the final version of the  
534 manuscript.

535

### 536 **Funding**

537 No funding disclosures.

538

### 539 **Acknowledgments**

540 We thank Dr. med. Susen Burock for data queries and patient data from the Berlin tumor  
541 registry (Berliner Krebsregister). D.W., N. F. and J.O. had full access to all the data in the  
542 study and take responsibility for the integrity of the data and accuracy of the data analysis.

543

### 544 **Supplementary Material**

545 See separate online content file including supplementary figures (eFigure 1-4) and tables  
546 (eTable 1a-d, eTable 2a-d).

547

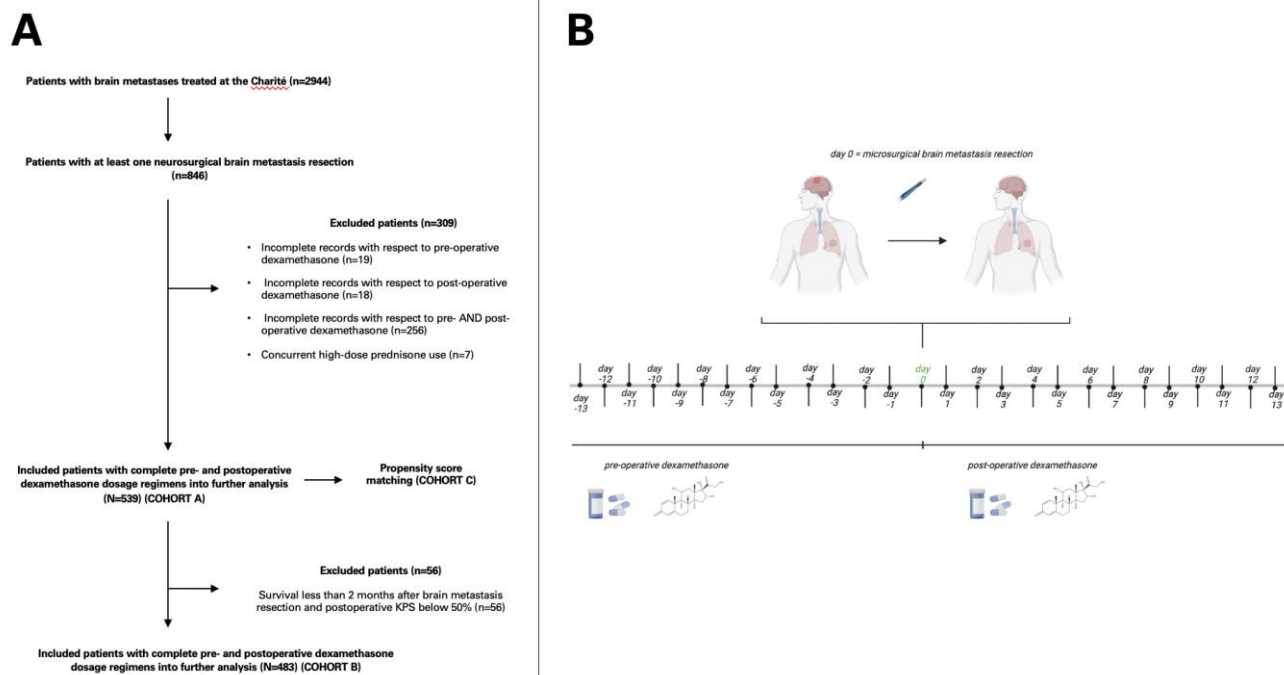
### 548 **Data availability statement**

549 The datasets and R code and the usage of the R packages supporting the conclusions of this  
550 study will be made available on Github by the authors and can be downloaded upon request.

551

### 552 **Main Figures and Tables**

553



554

555

556

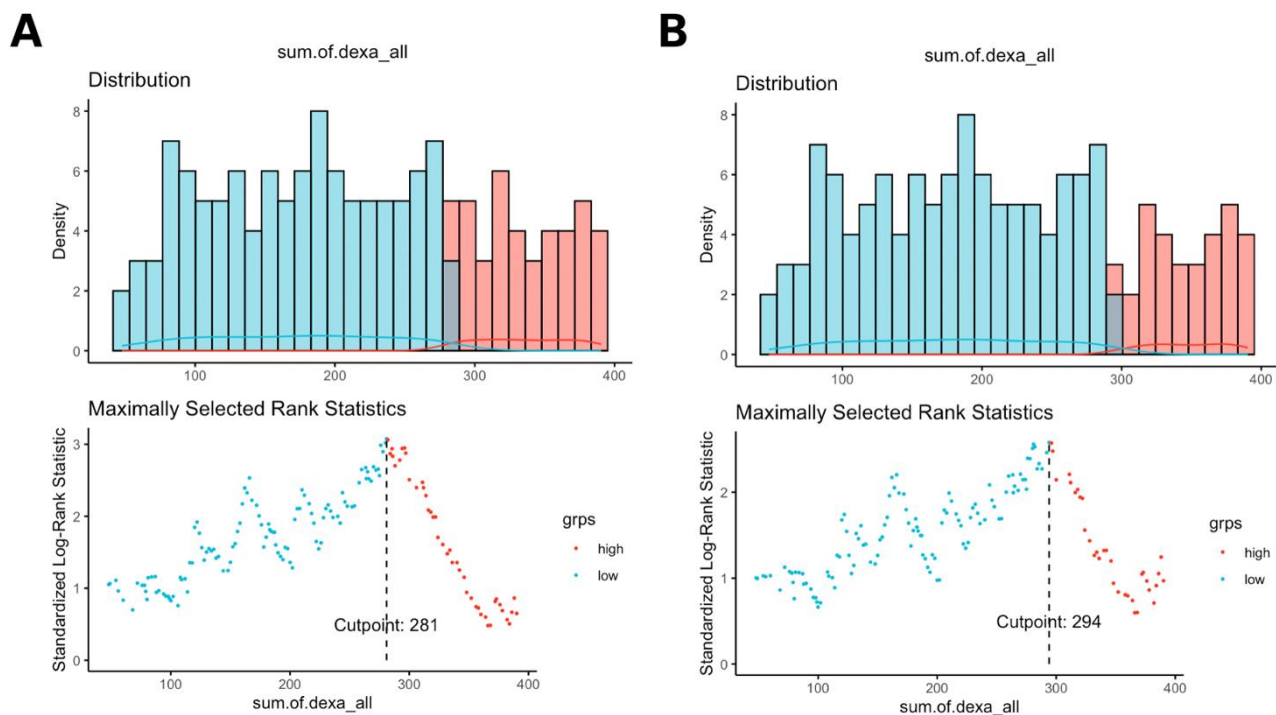
557

558

559

560

**Figure 1:** Flow-chart of exclusion and inclusion criteria and overview of the resulting groups of patients of patients with neurosurgically resected brain metastases in this study (COHORTS A, B and C) (A) graphical abstract of the study depicting pre- and postoperative dexamethasone dosing from day -13 to day +13 in relation to the date of operation (B).



561

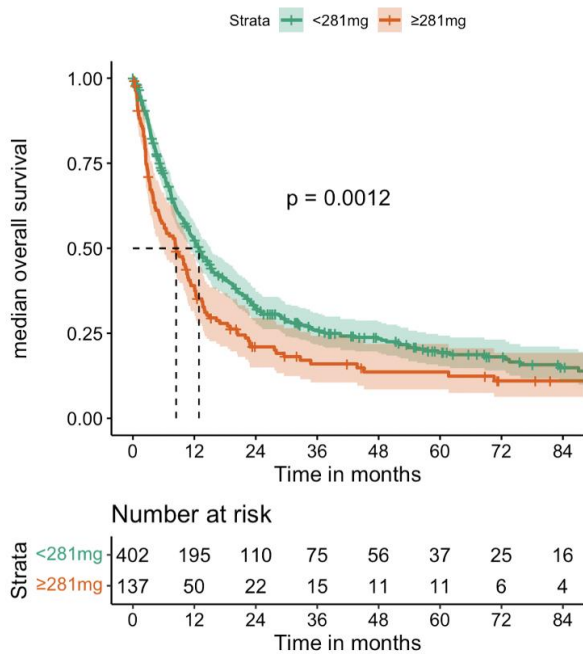
562

563 **Figure 2:** Cutpoint selection using maximally selected rank statistics in COHORT A  
564 displayed in **A**, with an optimal cutpoint for perioperative dexamethasone (pre-operative  
565 plus post-operative cumulative dexamethasone dosage) of 281 mg and for the subcohort  
566 COHORT B with an optimal cutpoint for total or perioperative dexamethasone dosage of  
567 294 mg (**B**).

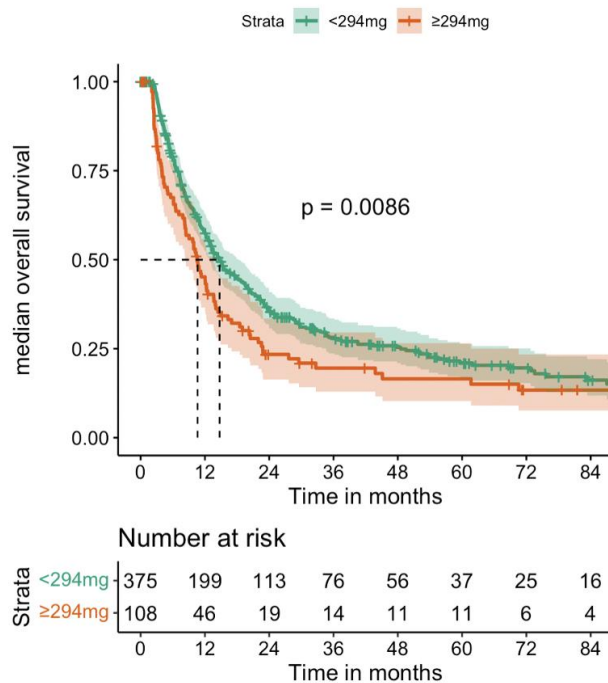
568



**A**



**B**



569

570

571 **Figure 3:** Kaplan-Meier curves and associated risk table displaying median overall survival  
 572 of the 2 cohorts of interest COHORT A (“all”) (A) and the COHORT B (“3months and  
 573 KPS<50excl”) (B).

574

575

576

577

578

579

580

581

582

583

584

585

586

587

Characteristic	Treatment			p-value <sup>2</sup>
	Overall, N = 539 <sup>1</sup>	<281 mg, N = 402	≥281 mg, N = 137	
<b>age (years), Median (IQR)</b>	64 (55 – 72)	64 (55 – 72)	65 (56 – 71)	0.74
<b>gender, n (%)</b>				0.99
female	279 (52)	208 (52)	71 (52)	
male	260 (48)	194 (48)	66 (48)	
<b>pre-operative dexamethasone (mg), Median (IQR)</b>	80 (26 – 144)	59 (24 – 115)	216 (144 – 336)	<0.001
<b>post-operative dexamethasone (mg), Median (IQR)</b>	96 (62 – 132)	84 (60 – 110)	156 (108 – 230)	<0.001
<b>peri-operative dexamethasone (mg), Median (IQR)</b>	190 (132 – 283)	160 (114 – 204)	373 (320 – 438)	<0.001
<b>KPS_group, n (%)</b>				0.43
≥70%	326 (62)	246 (63)	80 (59)	
<70%	199 (38)	144 (37)	55 (41)	
Unknown	14	12	2	
<b>number of brain metastases, n (%)</b>				0.062
1	149 (33)	120 (36)	29 (25)	
2	154 (34)	115 (34)	39 (34)	
>2	150 (33)	103 (30)	47 (41)	

Characteristic	Treatment			p-value <sup>2</sup>
	Overall, N = 539 <sup>1</sup>	<281 mg, N = 402	≥281 mg, N = 137	
Unknown	86	64	22	
<b>extracran.met, n (%)</b>				0.003
no extracranial metastases	288 (55)	230 (59)	58 (44)	
extracranial metastases	237 (45)	162 (41)	75 (56)	
Unknown	14	10	4	
<b>localization of brain metastases, n (%)</b>				0.57
supratentorial	332 (63)	244 (62)	88 (65)	
infratentorial	90 (17)	71 (18)	19 (14)	
supra- and infratentorial	107 (20)	79 (20)	28 (21)	
Unknown	10	8	2	
<b>entity, n (%)</b>				0.40
breast cancer	93 (17)	71 (18)	22 (16)	
colorectal carcinoma	8 (1.5)	4 (1.0)	4 (2.9)	
melanoma	91 (17)	62 (15)	29 (21)	
NSCLC	286 (53)	218 (54)	68 (50)	
oesophageal carcinoma	1 (0.2)	1 (0.2)	0 (0)	
renal cell cancer	26 (4.8)	18 (4.5)	8 (5.8)	

Characteristic	Treatment			p-value <sup>2</sup>
	Overall, N = 539 <sup>1</sup>	<281 mg, N = 402	≥281 mg, N = 137	
SCLC	33 (6.1)	27 (6.7)	6 (4.4)	
unknown primary	1 (0.2)	1 (0.2)	0 (0)	
<b>Ki67, n (%)</b>				0.93
< 30	267 (58)	199 (58)	68 (58)	
≥ 30	195 (42)	146 (42)	49 (42)	
Unknown	77	57	20	
<b>PDL1i_TPS, n (%)</b>				0.93
< 30	102 (64)	74 (64)	28 (64)	
≥ 30	57 (36)	41 (36)	16 (36)	
Unknown	380	287	93	
<b>tumor.volume, n (%)</b>				0.59
< 10	146 (43)	109 (43)	37 (40)	
≥ 10	197 (57)	142 (57)	55 (60)	
Unknown	196	151	45	
<b>edema.volume, n (%)</b>				0.091
< 50	151 (46)	118 (49)	33 (38)	
≥ 50	176 (54)	123 (51)	53 (62)	
Unknown	212	161	51	

588

589

590

591

592

593

Characteristic	Treatment			p-value <sup>2</sup>
	Overall, N = 539 <sup>1</sup>	<281 mg, N = 402	≥281 mg, N = 137	

<sup>1</sup> Median (IQR); n (%)  
<sup>2</sup> Wilcoxon rank sum test; Pearson's Chi-squared test; Fisher's exact test

**Table 1a:** Comparison of the two patient groups of interest before propensity score matching within the whole patient cohort (“all”) (N=539). The optimal cutpoint value of 281 mg for perioperative dexamethasone was used to dichotomize patients. <sup>2</sup>Interquartile range (IQR).

Characteristic	Treatment			p-value <sup>2</sup>
	Overall, N = 483 <sup>1</sup>	<294 mg, N = 375	≥294 mg, N = 108	
age (years), Median (IQR)	64 (54 – 71)	64 (54 – 71)	65 (55 – 70)	>0.99
gender, n (%)				0.70
female	256 (53)	197 (53)	59 (55)	
male	227 (47)	178 (47)	49 (45)	
pre-operative dexa (mg), Median (IQR)	80 (24 – 144)	60 (24 – 120)	240 (168 – 336)	<0.001
post-operative dexa (mg), Median (IQR)	94 (62 – 132)	84 (60 – 112)	150 (102 – 230)	<0.001
peri-operative dexa (mg), Median (IQR)	187 (132 – 276)	164 (114 – 207)	387 (336 – 452)	<0.001
KPS_group, n (%)				0.49
≥70%	306 (65)	240 (66)	66 (62)	
<70%	164 (35)	124 (34)	40 (38)	
Unknown	13	11	2	
number of brain metastases, n (%)				0.093

Characteristic	Treatment			p-value <sup>2</sup>
	Overall, N = 483 <sup>1</sup>	<294 mg, N = 375	≥294 mg, N = 108	
1	133 (33)	110 (35)	23 (26)	
2	138 (34)	109 (35)	29 (33)	
>2	131 (33)	94 (30)	37 (42)	
Unknown	81	62	19	
<b>extracran.met, n (%)</b>				<b>0.008</b>
no extracranial metastases	270 (57)	222 (61)	48 (46)	
extracranial metastases	200 (43)	144 (39)	56 (54)	
Unknown	13	9	4	
<b>localization of brain metastases, n (%)</b>				<b>0.25</b>
supratentorial	298 (63)	225 (61)	73 (69)	
infratentorial	76 (16)	64 (17)	12 (11)	
supra- and infratentorial	100 (21)	79 (21)	21 (20)	
Unknown	9	7	2	
<b>entity, n (%)</b>				<b>0.54</b>
breast cancer	88 (18)	69 (18)	19 (18)	
colorectal carcinoma	7 (1.4)	4 (1.1)	3 (2.8)	
melanoma	75 (16)	53 (14)	22 (20)	
NSCLC	261 (54)	207 (55)	54 (50)	
oesophageal carcinoma	1 (0.2)	1 (0.3)	0 (0)	
renal cell cancer	24 (5.0)	18 (4.8)	6 (5.6)	
SCLC	26 (5.4)	22 (5.9)	4 (3.7)	
unknown primary	1 (0.2)	1 (0.3)	0 (0)	
<b>Ki67, n (%)</b>				<b>0.49</b>
< 30	239 (58)	183 (57)	56 (61)	
≥ 30	175 (42)	139 (43)	36 (39)	



Characteristic	Treatment			p-value <sup>2</sup>
	Overall, N =	<294 mg, N =	≥294 mg, N =	
	483 <sup>1</sup>	375	108	
Unknown	69	53	16	
<b>PDL1i_TPS, n (%)</b>				0.63
< 30	96 (68)	76 (69)	20 (65)	
≥ 30	45 (32)	34 (31)	11 (35)	
Unknown	342	265	77	
<b>tumor.volume, n (%)</b>				0.87
< 10	130 (42)	99 (41)	31 (42)	
≥ 10	182 (58)	140 (59)	42 (58)	
Unknown	171	136	35	
<b>edema.volume, n (%)</b>				0.13
< 50	138 (46)	112 (49)	26 (38)	
≥ 50	160 (54)	118 (51)	42 (62)	
Unknown	185	145	40	

<sup>1</sup> Median (IQR); n (%)

<sup>2</sup> Wilcoxon rank sum test; Pearson's Chi-squared test; Fisher's exact test

594

595 **Table 1b:** Comparison of the two patient groups of interest before propensity score  
596 matching within the whole patient cohort ("3months and KPS<50excl") (N=483). The optimal  
597 cutpoint value of 281 mg for perioperative dexamethasone was used to dichotomize  
598 patients.

599

Characteristic	Treatment			p-value <sup>2</sup>
	Overall, N =	<281 mg, N =	≥281 mg, N =	
	262 <sup>1</sup>	131	131	
<b>survival, Median (IQR)</b>	10 (3 – 23)	11 (4 – 26)	8 (2 – 17)	0.007
<b>censoring, n (%)</b>	202 (77)	93 (71)	109 (83)	0.019

Characteristic	Treatment			p-value <sup>2</sup>
	Overall, N =	<281 mg, N =	≥281 mg, N =	
	262 <sup>1</sup>	131	131	
<b>age (years), n (%)</b>				>0.99
<60	90 (34)	45 (34)	45 (34)	
≥60	172 (66)	86 (66)	86 (66)	
<b>gender, n (%)</b>				>0.99
female	132 (50)	66 (50)	66 (50)	
male	130 (50)	65 (50)	65 (50)	
<b>KPS group, n (%)</b>				>0.99
<70%	106 (40)	53 (40)	53 (40)	
≥70%	156 (60)	78 (60)	78 (60)	
<b>extracranial metastases, n (%)</b>				>0.99
no extracranial metastases	116 (44)	58 (44)	58 (44)	
extracranial metastases	146 (56)	73 (56)	73 (56)	

<sup>1</sup> Median (IQR); n (%)

<sup>2</sup> Wilcoxon rank sum test; Pearson's Chi-squared test

600

601 **Table 1c:** Summary of balance for matched data after performing propensity score  
602 matching for COHORT A produced COHORT C. Comparison of covariates after PSM for  
603 the whole patient cohort (n=539) with patients dichotomized according to the optimal of 281  
604 mg (patients were grouped in those with <281 mg dexamethasone vs. ≥ 281 mg  
605 dexamethasone in the total perioperative phase (i.e. pre-operative and post-operative  
606 period). In total 216 number of observations were 1:1 matched; standard mean differences  
607 for unmatched data and matched data are plotted in **eFigure 4 in the supplements.**

608

609

Dependent: Surv(survival, censoring)		all	HR (CPH univar. analysis)	HR (CPH multivar.analysis)
--	--	-----	---------------------------	-------------------------------

age, Mean (SD)		63.0 (12.1)	1.02 (1.01-1.03, p<0.001)	<b>1.02 (1.01-1.03, p&lt;0.001)</b>
gender	female	279 (51.8)	-	-
	male	260 (48.2)	1.20 (0.99-1.46, p=0.061)	-
KPS, Mean (SD)		78.6 (14.4)	0.97-0.98, p<0.001	<b>0.97-0.99, p&lt;0.001</b>
extracran.met (extracranial metastasis)	Not present	288 (54.9)	-	-
	Present	237 (45.1)	1.43 (1.15-1.77, p=0.001)	<b>1.32 (1.05-1.64, p=0.016)</b>
cut_off_before_and _after_281 (total perioperative dexamethasone)	<281 mg	402 (74.6)	-	-
	≥ 281 mg	137 (25.4)	1.52 (1.25-1.85, p<0.001)	<b>1.47 (1.20-1.80, p&lt;0.001)</b>

610

611 **Table 2a: Univariable and multivariable Cox proportional regression in the whole**  
 612 **patient cohort**

613 Cox regression analysis of potential prognostic covariates and overall survival for the whole  
 614 patient cohort (“all”) (N=539).

615

616

617

Dependent: Surv(survival, censoring)		all	HR (CPH univar. analysis)	HR (CPH multivar.analysis)
age, Mean (SD)		62.6 (12.0)	1.02 (1.01-1.03, p<0.001)	<b>1.02 (1.01-1.03, p=0.001)</b>
gender	female	256 (53.0)	-	-
	male	227 (47.0)	1.15 (0.94-1.42, p=0.181)	-
KPS, Mean (SD)		79.8 (13.5)	0.98 (0.97-0.99, p<0.001)	<b>0.98 (0.97-0.99, p&lt;0.001)</b>
extracran.met (extracranial metastasis)	Not present	288 (54.9)	-	-
	Present	237 (45.1)	1.38 (1.08-1.76, p=0.009)	1.27 (0.99-1.63, p=0.062)
cut_off_before_and _after_281 (total perioperative dexamethasone)	<281 mg	402 (74.6)	-	-
	≥ 281 mg	137 (25.4)	1.39 (1.13-1.72, p=0.002)	<b>1.35 (1.09-1.68, p=0.007)</b>

618 **Table 2b: Univariable and multivariable Cox proportional regression in the subcohort**  
 619 **“3months and KPS<50excl”**

620 Cox regression analysis of potential prognostic covariates and overall survival for the  
 621 patient cohort “3months and KPS<50excl” cohort (n=483).

622

623

624

Dependent: Surv(survival, censoring)		all	HR (CPH univar. analysis)	HR (CPH multivar.analysis)
age, Mean (SD)	<60	90 (34.4)	-	-
	≥60	(65.6)	1.48 (1.10-2.00, p=0.009)	<b>1.58 (1.17-2.14, p=0.003)</b>
gender	female	f132 (50.4)	-	-
	male	130 (49.6)	0.95 (0.72-1.25, p=0.706)	-
KPS, Mean (SD)	<70%	106 (40.5)	-	-
	≥70%	156 (59.5)	0.67 (0.51-0.89, p=0.005)	<b>0.67 (0.51-0.89, p=0.005)</b>
extracran.met (extracranial metastasis)	Not present	116 (44.3)	-	-
	Present	146 (55.7)	1.45 (1.09-1.91, p=0.010)	<b>1.54 (1.16-2.05, p=0.003)</b>
cut_off_before_and _after_281 (total perioperative dexamethasone)	<281 mg	402 (74.6)	-	-
	≥ 281 mg	137 (25.4)	1.46 (1.11-1.92, p=0.007)	<b>1.43 (1.08-1.88, p=0.012)</b>

625

626 **Table 2c: Univariable and multivariable Cox proportional regression in the matched**  
 627 **patient cohort after propensity score matching**

628 Univariable and multivariable Cox proportional regression analysis for matched data  
 629 for the whole patient cohort (“all”) (N=539). See also **eFigure 3 and 4**.

630