

22 ^g O'Brien Institute for Public Health, University of Calgary, 3280 Hospital Dr NW, Calgary,
23 Alberta, T2N 4Z6, Canada

24 ^h Haskayne School of Business, University of Calgary, SH 250, 2500 University Drive NW,
25 Calgary, Alberta, T2N 1N4, Canada

26 ⁱ C.E.C. Analytics Ltd., Calgary, Canada

27 ^j Water Services, City of Calgary, 625 25 Ave SE, Calgary, Alberta, T2G 4k8, Canada

28 ^k Calgary Emergency Management Agency (CEMA), City of Calgary, 673 1 St NE, Calgary,
29 Alberta, T2E 6R2 Canada

30 ^l Department of Civil Engineering, University of Calgary, 3330 Hospital Drive NW, Calgary,
31 Alberta, T2N 4N1, Canada

32 ^m Department of Laboratory Medicine and Pathology, University of Alberta, 116 St. and 85 Ave,
33 Edmonton, Alberta, T6G 2R3, Canada

34 ⁿ Analytical and Environmental Toxicology, University of Alberta, 116 St. and 85 Ave,
35 Edmonton, Alberta, T6G 2R3, Canada

36 ^o Department of Pediatrics, University of Alberta, 116 St. and 85 Ave, Edmonton, Alberta, T6G
37 2R3, Canada

38 ^p Women & Children's Health Research Institute, 116 St. and 85 Ave, Edmonton, Alberta, T6G
39 2R3, Canada

40

41 ^q Li Ka Shing Institute of Virology, University of Alberta, 116 St. and 85 Ave, Edmonton,
42 Alberta, T6G 2R3, Canada

43 ^r Alberta Precision Laboratories, Public Health Laboratory, Alberta Health Services, 116 St. and
44 85 Ave, Edmonton, Alberta, T6G 2R3, Canada

45 ^s Advancing Canadian Water Assets, University of Calgary, 3131 210 Ave SE, Calgary, Alberta,
46 T0L 0X0, Canada

47 ^t Snyder Institute for Chronic Diseases, University of Calgary and Alberta Health Services, 3330
48 Hospital Drive NW, Calgary, Alberta, T2N 4N1, Canada

49 **Keywords:** Epidemiology, sewage, SARS-CoV-2, staffing, labour scheduling, prediction

50 **Abstract word count:** 300

51 **Manuscript word count:** 3719

52 **Figures:** 4

53 **Supplemental Tables:** 1

54 **Supplemental Figures:** 5

55

56 ***Corresponding author:**

57 Michael D. Parkins, Professor, Departments of Medicine and Microbiology, Immunology &
58 Infectious Diseases, Cumming School of Medicine, University of Calgary.

59 Section Chief, Infectious Diseases, Calgary Zone, Alberta Health Services

60 Postal address: 3330 Hospital Drive, NW, Calgary, Alberta, T2N 2V5. CANADA.

61 e-mail: mdparkin@ucalgary.ca

62 Phone: 403-220-5951, Fax: 403-270-2772.

63

64

65 **Highlights:**

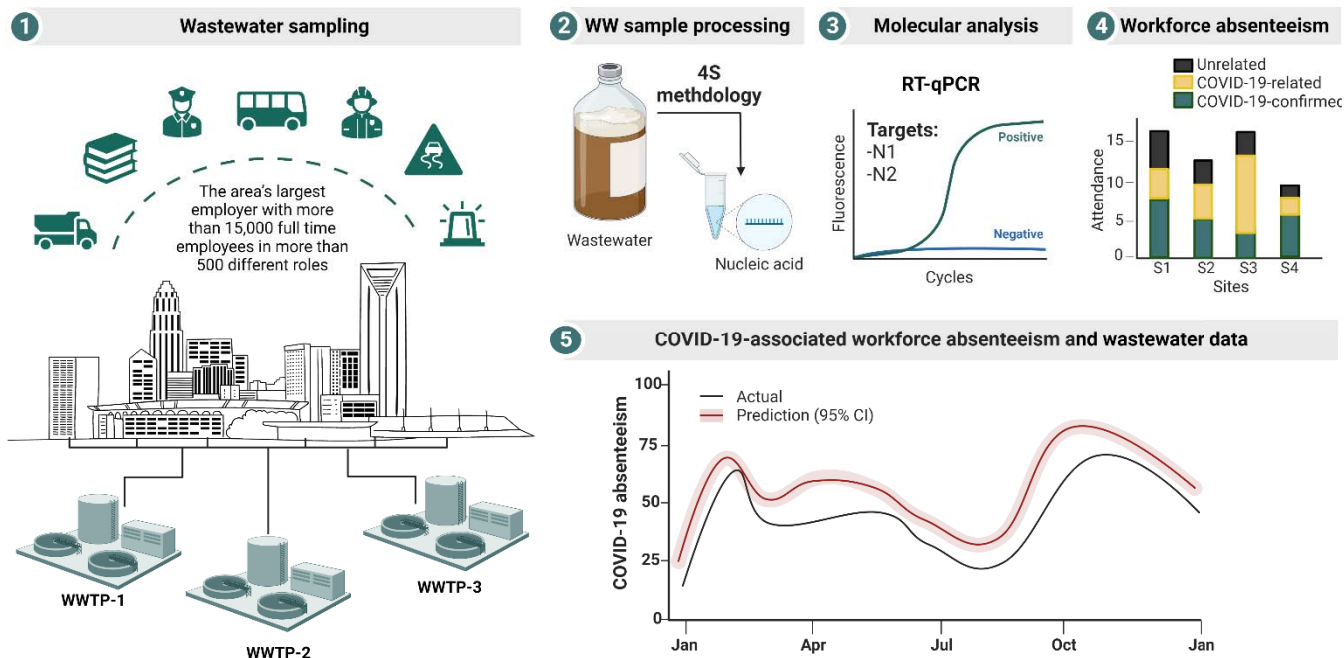
- 66 • WBS is a useful strategy for monitoring infectious diseases in workers
- 67 • SARS-CoV-2 RNA in wastewater correlated with workforce absenteeism
- 68 • Workplace absenteeism secondary to COVID-19 can be predicted using WBS
- 69 • WBS can be used by employers to anticipate and mitigate work force absenteeism

70 **Abstract**

71 Wastewater-based surveillance (WBS) is a powerful tool for understanding community COVID-
72 19 disease burden and informing public health policy. The potential of WBS for understanding
73 COVID-19's impact in non-healthcare settings has not been explored to the same degree. Here
74 we examined how SARS-CoV-2 measured from municipal wastewater treatment plants
75 (WWTPs) correlates with local workforce absenteeism. SARS-CoV-2 RNA N1 and N2 were
76 quantified three times per week by RT-qPCR in samples collected at three WWTPs servicing
77 Calgary and surrounding areas, Canada (1.3 million residents) between June 2020 and March
78 2022. Wastewater trends were compared to workforce absenteeism using data from the largest
79 employer in the city (>15,000 staff). Absences were classified as being COVID-19-related,
80 COVID-19-confirmed, and unrelated to COVID-19. Poisson regression was performed to
81 generate a prediction model for COVID-19 absenteeism based on wastewater data. SARS-CoV-2
82 RNA was detected in 95.5% (85/89) of weeks assessed. During this period 6592 COVID-19-
83 related absences (1896 confirmed) and 4,524 unrelated absences COVID-19 cases were
84 recorded. Employee absences significantly increased as wastewater signal increased through the
85 pandemic's waves. Strong correlations between COVID-19-confirmed absences and wastewater
86 SARS-CoV-2 signals (N1 gene: $r=0.824$, $p<0.0001$ and N2 gene: $r=0.826$, $p<0.0001$) were
87 observed. Linear regression with adjusted R^2 -value demonstrated a robust association (adjusted
88 $R^2=0.783$), when adjusted by 7 days, indicating wastewater provides a one-week leading signal.
89 A generalized linear regression using a Poisson distribution was performed to predict COVID-
90 19-confirmed absences out of the total number of absent employees using wastewater data as a
91 leading indicator ($P<0.0001$). We also assessed the variation of predictions when the regression
92 model was applied to new data, with the predicted values and corresponding confidence intervals

93 closely tracking actual absenteeism data. Wastewater-based surveillance has the potential to be
94 used by employers to anticipate workforce requirements and optimize human resource allocation
95 in response to trackable respiratory illnesses like COVID-19.

96 **Graphical abstract**



97

98

99 **1. INTRODUCTION**

100 Wastewater-based surveillance (WBS) has emerged as a useful strategy enabling real-time
101 monitoring of the incidence and prevalence of several infectious diseases at the population level
102 (Arora et al. 2022; Asghar et al. 2014; Hellmér et al. 2014). The strength of WBS relates to its
103 ability to provide longitudinal objective and inclusive information on the burden of disease in
104 monitored populations that is independent of clinical testing and other healthcare system
105 resources. Furthermore, WBS represents an intrinsically comprehensive and inclusive strategy
106 that captures all individuals served by the sewer system, irrespective of symptoms or capacity to
107 seek testing (Tang et al. 2020; Wu et al. 2020; Amirian 2020). With the emergence of the Severe
108 Acute Respiratory Syndrome Coronavirus 2 (SARS-CoV-2) pandemic and the recognition that
109 its genomic viral RNA is shed in the feces of infected individuals, WBS to monitor for COVID-
110 19-related disease burden became an intense research focus (Kitajima et al. 2020; Wölfel et al.
111 2020; Ling et al. 2020; Medema et al. 2020).

112 Researchers around the world have demonstrated WBS can provide a leading indicator of many
113 clinically relevant parameters, including; community diagnosed COVID-19 cases, COVID-19-
114 related hospitalizations and ICU admissions, and even deaths (Acosta et al. 2021; Acosta et al.
115 2022; Peccia et al. 2020; Randazzo et al. 2020; Miyani et al. 2021; Zhu et al. 2021; Xiao et al.
116 2021; Zhan et al. 2022; Galani et al. 2022; Hegazy et al. 2022). Recognizing the tremendous
117 potential of WBS to help shape and inform public health policy and actions including healthcare
118 resource allocation, WBS programs have developed all over the world (Naughton et al. 2021).
119 However, the utility of WBS-derived data to other areas of society beyond public health has not
120 been well explored. Given the profound influence workplace COVID-19 related absenteeism has
121 on the ability of private and public organizations to fulfill their mandate and deliver services, we

122 sought to explore its relationship with SARS-CoV-2 signals measured in municipal wastewater.
123 Our data demonstrate that workplace absenteeism at the largest employer in Canada's fourth
124 largest city correlated strongly with and can be predicted using wastewater data.

125 **2. MATERIAL AND METHODS**

126 **2.1 Wastewater collection and processing**

127 Wastewater was collected from all three wastewater treatment plants (WWTPs) servicing
128 Calgary and surrounding communities, Alberta, Canada. City of Calgary staff collected samples
129 from WWTP-1, WWTP-2 and WWTP-3 between June 29, 2020, and March 28, 2022.
130 Autosamplers were programmed to collect 24-hour composite samples at each WWTP (Acosta et
131 al. 2022), and delivered to the City of Calgary lab where a sub-sample was aliquoted from the
132 bulk sample. The sub-samples were immediately transported to the University of Calgary's
133 Advancing Canadian Water Assets (ACWA) laboratory for processing and nucleic acid
134 extraction as detailed elsewhere (Whitney et al. 2021; Acosta et al. 2021). All samples were
135 spiked with an external bovine coronavirus control (BCoV; Bovilis, Merck) to ensure
136 consistency in processing. Extracted nucleic acids were transported to the Health Sciences
137 Center at the University of Calgary on dry ice. This project was approved by the Conjoint
138 Regional Health Ethics Board (REB20-1252).

139 RT-qPCR was used to quantify the SARS-CoV2 RNA in wastewater using a QuantStudio-5
140 Real-Time PCR System (Applied Biosystems). SARS-CoV-2 RNA concentration was measured
141 utilizing nucleocapsid N1 and N2 targets (CDC 2020b; Acosta et al. 2021), with both genes
142 being analyzed for comparison. 2019-nCoV_N positive control plasmid (Integrated DNA
143 Technologies, Catalogue # 10006625) was used as an RT-PCR standard. The BCoV external

144 control was quantified following a previously described protocol (Acosta et al. 2021). Each
145 sample was measured in triplicate, and each RT-qPCR run included no-template controls
146 (NTCs). Samples were considered positive for the presence of SARS-CoV-2 RNA-target if
147 amplification passed a detection cycle threshold in <40 cycles (Acosta et al. 2021; Randazzo et
148 al. 2020). Gene abundances for both targets (i.e., N1 and N2) per volume of wastewater for each
149 WWTP were calculated and then combined as a single city-wide metric encompassing all three
150 WWTPs using a validated approach that combines flow rate at each WWTP (Acosta et al. 2022).
151 The flow rate of each WWTP was used to normalize the SARS-CoV-2 RNA concentration and
152 reported as viral gene abundance per day.

153 **2.2 Determining absenteeism rates among municipal employees**

154 Calgary is Canada's fourth largest city (1.3 million residents) and third most ethnically diverse.
155 The City of Calgary is Calgary's largest individual employer, with more than 15,000 full-time
156 employees in more than 500 different roles (i.e., Calgary Transit >3000 staff, Calgary Police
157 Services >2600 staff, etc.)(City-of-Calgary 2022). During the pandemic, data on employee
158 absenteeism was monitored by the Calgary Emergency Management Agency (CEMA) team and
159 was classified as COVID-19-related, COVID-19-confirmed or unrelated to COVID-19.
160 Unrelated cases were any cause for absenteeism that was not directly related to COVID-19 (i.e.,
161 injuries, etc.) (Figure 1 and Table 1S). Cases that were COVID-19-related included those
162 manifesting from potential exposure to a suspected/confirmed individual at home or work and
163 those employees with respiratory symptoms themselves, whether confirmed to be COVID-19 or
164 not, thereby excluding the employee from safely returning to the workplace. COVID-19-
165 confirmed were the subset of COVID-19-related cases that were ultimately verified with a
166 clinical diagnostic test. Clinical case confirmation came from the single provincial health

167 provider Alberta Health Services, using standard clinical testing protocols evaluating RT-qPCR
168 of nasopharyngeal/nasal swabs (Feb 2020-March 2022) and then supplemented with self-
169 collected home diagnostic tests (Dec 2021-March 2022). Anonymized weekly numbers of absent
170 employees due to COVID-19-related were collected over 89 weeks (June 2020 to March 2022).

171 Waves of COVID-19 in Calgary were defined by Alberta Health (AH) and AHS Public Health
172 surveillance teams based on active case counts. During the 89-week study period, six COVID-19
173 waves were reported in Alberta: wave-1 (March 8, 2020, to July 10, 2020), wave-2 (July 10,
174 2020, to February 25, 2021), wave-3 (February 25, 2021, to July 1, 2021), wave-4 (July 1, 2021,
175 to December 12, 2021), wave-5 (December 12, 2021, to March 6, 2022) and wave-6 (March 6,
176 2022, to June 26, 2022).

177 **2.3 Statistical analysis**

178 All data analyses were performed in GraphPad Prism-8 software (La Jolla, CA) and R (V4.0.4)
179 using the olsrr-package. The 7-day rolling average of the viral gene abundance per day was
180 established using aggregate city-wide SARS-CoV-2 burden in wastewater determined three
181 times each week at each WWTPs for both N1 and N2 gene targets used for quantifying SARS-
182 CoV-2 RNA. Spearman's rank correlation was used to evaluate the relationship between the
183 weekly averaged viral gene abundance per day in wastewater and absenteeism attributed to
184 confirmed COVID-19 among municipal employees. Cross-correlation function (CCF) analysis
185 was performed using SARS-CoV-2 RNA concentration (gene abundance/day) values as the
186 independent variable and COVID-19-confirmed absenteeism as the dependent variable. Linear
187 regression with R^2 was performed to evaluate how much the measured wastewater signal could
188 explain the variation of COVID-19-confirmed absences. Generalized Poisson regression model
189 was performed to predict the number of COVID-19-confirmed absences out of the total number

190 of absent employees using the wastewater signal using 1 lag (week) and the number of absent
191 employees . One week lag was chosen because COVID-19-confirmed absences had the strongest
192 positive correlation with SARS-CoV2 RNA concentration in wastewater collected 1 week prior –
193 and is the most clinically relevant. The Poisson regression model can be formulated as;

$$194 \quad \log(\mathbb{E}(Y|X)) = \log(\mathcal{O}) + \beta X,$$

195 where Y is the number of cases of COVID-19-confirmed absences out of the total number of
196 absent employees in the current week, X is the wastewater signal (e.g., N1 or N2) 1 week prior,
197 \mathcal{O} is the offset term and represents the number of absent employees in the current week, and
198 $\mathbb{E}(Y|X)$ is the expected COVID-19 absenteeism given wastewater signals. It can be assumed Y
199 follows a Poisson distribution because absenteeism data is a non-negative integer. When
200 performing predictions, standard errors of predictions can be calculated using the *predict.glm*
201 function in R (R Core Team, 2013). We then obtain the 95% confidence interval of one predicted
202 value $\hat{Y} \pm 1.96 \times SE$, where SE is the standard error of the predicted value. The predictive
203 model was built on 2020 data.

204 **3. RESULTS**

205 **3.1 COVID-19 absenteeism among municipal staff during the pandemic**

206 Between June 15, 2020 and March 28, 2022 there were 11,116 municipal staff absences. Of
207 those, 4,524 were unrelated to COVID-19, with the other 6,592 absences (59.3%) classified as
208 COVID-19-related (Figure 1). Among COVID-19-related absences, 1,896 were confirmed by
209 clinical testing, for a 20.2% weekly average positivity rate. There was an uneven distribution of
210 COVID-19-confirmed absences during the different pandemic waves: Wave-1, 3/120 (2.5 %);
211 wave-2, 248/2274 (10.9 %); wave-3: 317/1441 (21.9%); wave-4: 180/1077 (16.7%); wave-5:

212 1056/1573 (67.13%) and wave-6: 92/107 (85.9%). The maximum number of weekly COVID-19-
213 confirmed absences (i.e., 169) was observed during the first week of 2022, which corresponded
214 to wave-5 (Omicron/BA.1) in Calgary (Figure 1).

215 **3.2 Wastewater measured SARS-CoV-2 across the City**

216 Wastewater samples were analyzed up to three times per week from June 29, 2020, to March 28,
217 2022 (Supplementary Figure 1). A total of 524 wastewater samples were collected at Calgary's
218 wastewater treatment plants (WWTPs) (WWTP-1: 174, WWTP-2: 176, and WWTP-3: 174). Of
219 the total wastewater samples tested using the N1, and N2 assays, 517 (98.7%) samples were
220 positive for N1 and 496 (94.7%) were positive for N2. We combined wastewater-measured
221 SARS-CoV-2 RNA concentration into a single city-wide metric after the daily flow rate of each
222 WWTP was used to normalize the RNA concentration and reported as viral gene abundance per
223 day. The SARS-CoV-2 RNA combined signal measured with either N1 or N2 targets was used
224 for all analyses (Figures 2 and 3). SARS-CoV-2 RNA concentration was low (black lines) during
225 the summer to fall of 2020 (June to November 2020) and rapidly increased during Alberta's
226 second wave in December 2020.

227 **3.3 Correlating absenteeism among municipal service workers and wastewater measured** 228 **SARS-CoV-2 RNA**

229 The weekly number of COVID-19-related (Figure 2) and COVID-19-confirmed absences
230 (Figure 3) declined from mid-January to March 2021, accompanied by a decrease in the total
231 SARS-CoV-2 wastewater RNA concentration. The changing dynamics of employee absenteeism
232 during waves 3 to 6 were mirrored by the changes in SARS-CoV-2 wastewater RNA signal.
233 When weekly averaged N1, and N2 SARS-CoV-2 RNA concentration in wastewater were

234 compared with the total workforce absences (i.e., COVID-19-related, and unrelated), and
235 COVID-19-confirmed absences, we found a relationship between employee absenteeism and city
236 SARS-CoV-2 wastewater levels. Because city-wide wastewater levels were collected up to three
237 times per week (on Mondays, Wednesdays and Thursdays), weekly averaged signals were
238 established and paired with the weekly number of total absences. A moderate association
239 between total absences and the SARS-CoV-2 genomic RNA signal in wastewater (N1: Spearman
240 correlation $r=0.529$, 95% CI for correlation coefficient: 0.355 - 0.667, $P<0.0001$; N2: Spearman
241 correlation $r=0.495$, 95% CI for correlation coefficient: 0.314 - 0.641,) was found. When we
242 assessed the association between weekly COVID-19-related absence and wastewater measured
243 N1 or N2 signal, we observed a similar trend [(N1; Spearman correlation $r=0.518$, 95% CI for
244 correlation coefficient: 0.343 - 0.660, $P<0.0001$) (Figure 2A) and N2 (Spearman correlation
245 $r=0.479$, 95% CI for correlation coefficient: 0.295 - 0.629, $P<0.0001$)] (Figure 2B) signal.
246 Notably, N1 and N2 measured SARS-CoV-2 explained a smaller proportion of COVID-19-
247 related absenteeism at the beginning of the pandemic (waves 1 and 2) relative to later in the
248 monitoring period (waves 3 to 6). To evaluate the effect of the COVID-19 pandemic waves over
249 time, the weekly SARS-CoV-2 RNA concentration was paired with weekly COVID-19-related
250 absenteeism as a function of the waves, and the cross-correlation function was applied. Wave-1
251 and 6 were not included in the analysis because too few data points were available. The
252 correlation between absenteeism and SARS-CoV-2 concentration was the strongest when using -
253 1 week lag (correlation value at -1 lag for wave-2: 0.516, wave-3: 0.869, wave-4: 0.74; and
254 wave-5: 0.494) (Supplementary Figure 2). The number of spikes was smaller in later waves,
255 which could be explained by the fact that as the pandemic evolved there could be a higher rate of
256 vaccination and immunity among the employees.

257 When Spearman's rank correlation was performed to assess COVID-19-confirmed absenteeism
258 as a function of wastewater viral RNA levels, even stronger associations were observed (Figure
259 3). There was a strong correlation between weekly COVID-19-confirmed absenteeism and the
260 weekly average SARS-CoV-2 signal for both N1 (Spearman correlation $r=0.824$, 95% CI for
261 correlation coefficient: 0.741 - 0.883, $P<0.0001$) (Figure 3A) and N2 (Spearman correlation
262 $r=0.826$, 95% CI for correlation coefficient: 0.744 - 0.884, $P<0.0001$) (Figure 3B). Correlation
263 coefficients showed that SARS-CoV-2 RNA concentration in wastewater increased in
264 accordance with employee absenteeism rates. Overall, there was a linear association between
265 WBS data and COVID-19-confirmed absenteeism. To evaluate the temporal effect, the weekly
266 SARS-CoV-2 RNA concentration was paired with weekly COVID-19-confirmed absences, and
267 the cross-correlation function applied. We found a positive correlation between the SARS-CoV-2
268 concentrations, measured with either N1 (correlation value at -1:0.800, 0: 0.900 and 1:0.815 lag)
269 or N2 (correlation value at -1: 0.822, 0: 0.888 and 1: 0.843 lag) targets and absenteeism within a
270 difference of -1 and 1 lag (weeks) (Supplementary Figure 3).

271 **3.4 Predictive model for COVID-19-confirmed absenteeism**

272 Given the strongest correlation between COVID-19-confirmed absenteeism and wastewater
273 measured SARS-CoV-2 N1 and N2 (Figure 3), we proceeded with modelling using this
274 parameter alone. A linear regression model with adjusted R^2 was performed to investigate the
275 goodness of fit of a predictive model using a normal distribution. The model had a very strong
276 predictive capacity using either SARS-CoV-2 gene target in wastewater: N1 (adjusted $R^2 = 0.783$
277 (for linear regression model); P -value < 0.0001) and N2 (adjusted $R^2 = 0.756$ (for linear
278 regression model); P -value < 0.0001). Nearly 80% of the total variation in COVID-19-confirmed
279 absenteeism is explained by the wastewater signals measured by either target. Autocorrelation,

280 partial autocorrelation and normality (Quantile-quantile) plots of the residuals of the model
281 suggested that the correlation among residuals is reasonable small and there was not obvious
282 outlier in the data (Supplementary Figure 4). A generalized linear regression with a Poisson
283 distribution was performed to better understand what proportion of COVID-19-confirmed
284 absenteeism could be estimated by the wastewater signal. As the N1 wastewater signal gave a
285 better Adjusted R^2 coefficient and N1 and N2 correlated well (Supplementary Figure 5), we
286 proceeded only with this prediction model measuring the regression of COVID-confirmed
287 absenteeism (Y) on SARS-CoV-2 N1 measured in wastewater collected one week prior (1-week
288 leading signal). The predictive model was built on 2020 data, and then it was used to predict
289 COVID-19-confirmed absenteeism with associated 95% confidence intervals from January 2021
290 to March 2022 (Figure 3A). We found that the model can predict COVID-confirmed absenteeism
291 using SARS-CoV-2 N1 abundance in wastewater. The model predictions closely track the actual
292 absences (Figure 4). As shown in Figure 4, the interval width is relatively small compared to the
293 scale of predicted Y values, which suggests the predictions and estimated regression coefficients
294 have low variations and the predictions are reliable. The final model predictions track the overall
295 trend of actual COVID-19 absences very well.

296 **4. DISCUSSION**

297 To date, WBS studies have primarily focused on understanding the temporal changes in COVID-
298 19 in communities by measuring SARS-CoV-2 RNA concentration in wastewater derived from
299 WWTP (Pang et al. 2022; Acosta et al. 2022; Ahmed et al. 2020; de Sousa et al. 2022; Hasan et
300 al. 2021; Karthikeyan et al. 2021; Wartell et al. 2022; Tandukar et al. 2022; Acosta et al. 2021;
301 Gonçalves et al. 2021; Wang et al. 2020; Zhou et al. 2021; Gibas et al. 2021; Betancourt et al.
302 2021; Dai et al. 2022). These data have enabled evidence-informed decisions by public health

303 officials as well as members of the public. Few studies, however, have looked to harness
304 wastewater-based surveillance as a tool to influence business policy. There have been a modest
305 number of reports of wastewater from select high-risk facilities such as hospitals and university
306 dormitories being monitored for SARS-CoV-2 RNA enabling decisions on a more local level
307 (Tandukar et al. 2022; Acosta et al. 2021; Gonçalves et al. 2021; Wang et al. 2020; Zhou et al.
308 2021; Gibas et al. 2021; Betancourt et al. 2021; Dai et al. 2022). However, studies assessing
309 how WBS may be harnessed to affect other societal factors remain lacking. Absenteeism is one
310 such area relevant to all industries and employers. For example, the high and unpredictable rates
311 of workforce absenteeism associated with the COVID-19 pandemic have stifled job growth and
312 economic recovery (Faramarzi et al. 2021).

313 COVID-19 absenteeism has predominantly been explored based on its impact on the healthcare
314 workforce. Studies have invariably demonstrated a marked increase in absenteeism rates relative
315 to pre-pandemic periods (de Paiva, Dos Santos, and de Lima Dalmolin 2022; Grandi, Silva, and
316 Barbosa 2022; Challener et al. 2021). Indeed, these have been significant contributing factors
317 manifesting in record-high rates of fatigue, burnout and workers prematurely leaving the
318 workforce relative to pre-pandemic times (Maunder et al. 2021; Murthy 2022). However,
319 absenteeism in general populations have also had profound socioeconomic impacts. Some of the
320 best data tracking these trends come from the US Centres for Disease Control's National Institute
321 for Occupational Safety and Health (NIOSH), which monitors the prevalence of health-related
322 absenteeism among full-time workers. Higher absenteeism rates early in the pandemic relative
323 to prior flu seasons were confirmed (peaking in December 2021-January 2022 at 5.4% vs ~2.5%)
324 (CDC 2020a; Groenewold et al. 2020). Absenteeism was most significantly increased in
325 production, service provision and transportation industries. Critically, several categories of

326 “essential workers” (those whose jobs were considered critical to societal functioning and cannot
327 be performed remotely) (Government-of-Canada 2021) include those working for municipalities
328 (i.e., transportation, social services and policing) and have been disproportionately impacted with
329 COVID-19 based on serosurveys (Shah et al. 2022).

330 Here, we found a positive relationship between weekly SARS-CoV-2 RNA concentrations in
331 wastewater treatment plants servicing Calgary and confirmed absences reported in the week
332 following sampling collection, confirming that wastewater provides a leading signal for
333 workplace absenteeism. This relationship was not as strong at the beginning of the pandemic
334 (waves 1 and 2) compared to later waves. This may be in part relate to the lower incidence of
335 COVID-19 and greater uncertainty at the beginning of the pandemic as wastewater-based
336 surveillance has been shown to be sensitive to an incidence rate of $\sim 2/100,000$ populations (Li et
337 al. 2023; Acosta et al. 2022). In addition, the detection of SARS-CoV-2 RNA in wastewater
338 using either gene N1 or N2 showed a good correlation. Still, as the N1-signal gave a better
339 Adjusted R^2 coefficient, it was only included in the final prediction model. Previous studies
340 utilizing wastewater data had focused on models to describe, estimate, and interpret SARS-CoV-
341 2 RNA concentrations across general populations (de Sousa et al. 2022; Karthikeyan et al. 2021;
342 Krivoňáková et al. 2021; Vallejo et al. 2022; Ahmed et al. 2020; Hasan et al. 2021; Saththasivam
343 et al. 2021). Simulation of infection prevalence based on the viral RNA concentration in sewage
344 has been developed using different modeling approaches, including Monte Carlo simulations,
345 susceptible-exposed-infectious-recovered (SEIR) model, autoregressive integrated moving
346 average (ARIMA) models (de Sousa et al. 2022; McMahan et al. 2021; Karthikeyan et al. 2021;
347 Wu et al. 2022). Here, the estimation of the number of absent workers due to COVID-19
348 infections was performed via a Poisson regression model. Other studies also have shown the

349 trends and strong correlation of clinical data with the SARS-CoV-2 RNA abundance in
350 wastewater on a weekly basis (Wartell et al. 2022; Fahrenfeld et al. 2022; Halwatura et al. 2022;
351 Krivoňáková et al. 2021).

352 Strategies to mitigate the impact of absenteeism in the workforce generally involve worker
353 replacement, redistributing work among healthy workers (extra shifts and overtime), and new
354 recruitment and training (Aguilar et al. 2021). However, tools that independently forecast future
355 absenteeism rate changes based on objective and independent data, such as that delivered by
356 WBS still need to be improved. In addition to ensuring workplaces have the human resources to
357 fulfill their mandate, such a model can be used to optimize costs associated with a dynamic
358 workforce. Indeed, the indirect costs related to absenteeism along with the workforce during the
359 COVID-19 pandemic were estimated by the Integrated Benefits Institute to have cost US
360 employers almost \$1 billion each week (paid as a combination of excess overtime and other
361 employee benefits, or sick leave and disability) (Schiavo 2021). Another important aspect
362 related to absenteeism at the workplace is its impact on shift scheduling. Alongside wages, shift
363 scheduling unpredictability may have negative impact on health and economic insecurity from
364 the employee perspective (Harknett, Schneider, and Irwin 2021). Therefore, models that
365 establish thresholds in wastewater SARS-CoV-2 signal one week in advance could be used as
366 triggers for internal actions like absence recovery policies (i.e., holdover overtime, call-ins,
367 cross-training, and temporary workers) (Easton and Goodale 2005; Maass et al. 2017; Easton
368 2011; Harknett, Schneider, and Irwin 2021). The prediction models, such as the one we
369 developed, could be used to identify wastewater SARS-CoV-2 thresholds that can be used to
370 trigger internal compensatory actions.

371 This study has several notable limitations. First, the estimation of the true rate of COVID-19
372 absenteeism in our study population could be affected by different factors. Asymptomatic
373 infection in some workers or clinical testing hesitancy could result in wastewater signals without
374 corresponding absences from work. Second, owing to changes in testing availability and the
375 perception of COVID-19-associated risk among populations, the proportion of positive COVID-
376 19 cases out of the total absenteeism cases varied throughout the study (being especially low at
377 the start of the pandemic). However, by March 2020 (Wave-1), the Province of Alberta had the
378 highest per capita rate of COVID-19 clinical testing performed of all Canadian Provinces (1371
379 per 100,000 vs 791 per 100,000) (Fletcher 2022). While the workforce studied represented the
380 largest employer in the city, this prediction model may not be directly generalized to other
381 workplaces and policies may differ across different institutions. Furthermore, within the
382 workforce of this study, we could not distinguish the role individual affected workers fulfilled,
383 and this may be an important future aspect to study as the risks of COVID-19 acquisition is
384 heavily influenced by occupation (Shah et al. 2022).

385 **5. CONCLUSIONS**

386 These findings highlight the potential of WBS as a novel and objective approach that can
387 monitor and predict workforce absenteeism related to COVID-19 infections with a one-week
388 lead time. This model could be used to optimize workforce distribution to ensure efficiency and
389 cost-effectiveness. WBS is an objective, inclusive, independent and cost-effective tool which
390 can be leveraged to benefit society well beyond its currently focused healthcare-associated
391 applications.

392

394 **AUTHOR CONTRIBUTIONS**

395 **Nicole Acosta:** Formal analysis, Investigation, Methodology, Validation, Data Curation,
396 Visualization, Writing - Original Draft, Writing - Review & Editing. **Xiaotian Dai;**
397 Methodology, Formal analysis, Investigation, Writing - Review & Editing. **María A. Bautista:**
398 Methodology, Validation, Investigation. **Barbara J. Waddell;** Methodology, Validation,
399 Investigation. **Jangwoo Lee;** Investigation. **Kristine Du;** Investigation. **Janine McCalder.**
400 Investigation. **Puja Pradhan;** Investigation. **Chloe Papparis;** Investigation. **Xuewen Lu;**
401 Formal analysis. **Thierry Chekouo;** Formal analysis. **Alexander Krusina;** Investigation,
402 Writing - Review & Editing. **Danielle Southern;** Investigation, Writing - Review & Editing.
403 **Tyler Williamson;** Investigation, Writing - Review & Editing. **Rhonda G Clark;** Funding
404 Acquisition, Project Administration. **Raymond Patterson;** Writing - Review & Editing. **Paul**
405 **Westlund;** Writing - Review & Editing. **Jon Meddings;** Project administration, Writing -
406 Review & Editing. **Norma J. Ruecker;** Project administration, Funding acquisition,
407 Investigation, Writing - Review & Editing. **Christopher Lammiman;** Conceptualization,
408 Investigation, Data Curation, Writing - Review & Editing. **Coby Duerr;** Conceptualization,
409 Investigation, Data Curation, Writing - Review & Editing. **Gopal Achari:** Writing - Review &
410 Editing. **Steve E. Hrudey;** Funding Acquisition, Formal analysis, Writing - Review & Editing.
411 **Bonita E. Lee;** Funding Acquisition, Formal analysis, Writing - Review & Editing. **Xiaoli Pang;**
412 Funding Acquisition, Formal analysis, Writing - Review & Editing. **Kevin Frankowski:**
413 Conceptualization, Formal analysis, Writing - Review & Editing. **Casey RJ Hubert:**
414 Conceptualization, Formal analysis, Funding acquisition, Writing - Review & Editing. **Michael**
415 **D. Parkins:** Conceptualization, Formal analysis, Funding acquisition, Supervision, Writing -
416 Review & Editing.

417

418 **FUNDING**

419 This work was supported by grants from the Canadian Institutes of Health Research [448242 to
420 M.D.P.]; and from Alberta Health [M.D.P., K.F., C.R.J.H., X.P., B.L. and S.E.H.].

421 **DECLARATION OF COMPETING INTEREST**

422 The authors have declared no conflicts of interest.

423 **ACKNOWLEDGMENTS**

424 The investigators are grateful to the staff of the City of Calgary Water Services for their support
425 in providing wastewater samples for assessment. We would also like to also thank the Calgary
426 Emergency Management Agency (CEMA) team for collecting and sharing anonymous
427 absenteeism case data. The authors are grateful for the efforts of the sample collection and
428 preparation team including Alex Buchner Beaudet, Lawrence Man, Navid Sedaghat, Jennifer
429 Van Doorn, Kevin Xiang, Leslie Chan, Laura Vivas, Kashtin Low and Andra Bacanu. The team
430 would also like to acknowledge the efforts of Dr Jordan Hollman and Dr Jianwei Chen.

431

432 REFERENCES

- 433 Acosta, Nicole, María A. Bautista, Jordan Hollman, Janine McCalder, Alexander Buchner Beaudet,
434 Lawrence Man, Barbara J. Waddell, Jianwei Chen, Carmen Li, Darina Kuzma, Srijak Bhatnagar,
435 Jenine Leal, Jon Meddings, Jia Hu, Jason L. Cabaj, Norma J. Ruecker, Christopher Naugler, Dylan
436 R. Pillai, Gopal Achari, M. Cathryn Ryan, John M. Conly, Kevin Frankowski, Casey R. J. Hubert,
437 and Michael D. Parkins. 2021. 'A Multicenter Study Investigating SARS-CoV-2 in Tertiary-Care
438 Hospital Wastewater. Viral burden correlates with increasing hospitalized cases as well as
439 hospital-associated transmissions and outbreaks', *Water Research*: 117369.
- 440 Acosta, Nicole, María A. Bautista, Barbara J. Waddell, Janine McCalder, Alexander Buchner Beaudet,
441 Lawrence Man, Puja Pradhan, Navid Sedaghat, Chloe Papparis, Andra Bacanu, Jordan Hollman,
442 Alexander Krusina, Danielle A. Southern, Tyler Williamson, Carmen Li, Srijak Bhatnagar, Sean
443 Murphy, Jianwei Chen, Darina Kuzma, Rhonda Clark, Jon Meddings, Jia Hu, Jason L. Cabaj, John
444 M. Conly, Xiaotian Dai, Xuewen Lu, Thierry Chekouo, Norma J. Ruecker, Gopal Achari, M.
445 Cathryn Ryan, Kevin Frankowski, Casey R. J. Hubert, and Michael D. Parkins. 2022. 'Longitudinal
446 SARS-CoV-2 RNA wastewater monitoring across a range of scales correlates with total and
447 regional COVID-19 burden in a well-defined urban population', *Water Research*, 220: 118611.
- 448 Aguilar, Elliot, Nicholas J. Roberts, Ismail Uluturk, Patrick Kaminski, John W. Barlow, Andreas G. Zori,
449 Laurent Hébert-Dufresne, and Benjamin D. Zusman. 2021. 'Adaptive staffing can mitigate
450 essential worker disease and absenteeism in an emerging epidemic', *Proceedings of the National
451 Academy of Sciences*, 118: e2105337118.
- 452 Ahmed, W., N. Angel, J. Edson, K. Bibby, A. Bivins, J. W. O'Brien, P. M. Choi, M. Kitajima, S. L. Simpson, J.
453 Li, B. Tschärke, R. Verhagen, W. J. M. Smith, J. Zaugg, L. Dierens, P. Hugenholtz, K. V. Thomas,
454 and J. F. Mueller. 2020. 'First confirmed detection of SARS-CoV-2 in untreated wastewater in
455 Australia: A proof of concept for the wastewater surveillance of COVID-19 in the community', *Sci
456 Total Environ*, 728: 138764.
- 457 Amirian, E. Susan. 2020. 'Potential fecal transmission of SARS-CoV-2: Current evidence and implications
458 for public health', *International Journal of Infectious Diseases*, 95: 363-70.
- 459 Arora, Sudipti, Devanshi Sutaria, Ekta Meena, and Aditi Nag. 2022. 'Fundamentals of SARS-CoV-2
460 Detection in Wastewater for Early Epidemic Prediction and Key Learnings on Treatment
461 Processes for Removal of Viral Fragments.' in Sudipti Arora, Ashwani Kumar, Shinjiro Ogita and
462 Yuan Yeu Yau (eds.), *Biotechnological Innovations for Environmental Bioremediation* (Springer
463 Nature Singapore: Singapore).
- 464 Asghar, Humayun, Ousmane M Diop, Goitom Weldegebriel, Farzana Malik, Sushmitha Shetty, Laila El
465 Bassioni, Adefunke O Akande, Eman Al Maamoun, Sohail Zaidi, and Adekunle J Adeniji. 2014.
466 'Environmental surveillance for polioviruses in the Global Polio Eradication Initiative', *The
467 Journal of infectious diseases*, 210: S294-S303.
- 468 Betancourt, Walter Q., Bradley W. Schmitz, Gabriel K. Innes, Sarah M. Prasek, Kristen M. Pogreba Brown,
469 Erika R. Stark, Aidan R. Foster, Ryan S. Sprissler, David T. Harris, Samendra P. Sherchan, Charles
470 P. Gerba, and Ian L. Pepper. 2021. 'COVID-19 containment on a college campus via wastewater-
471 based epidemiology, targeted clinical testing and an intervention', *Science of The Total
472 Environment*, 779: 146408.
- 473 CDC. 2020a. 'Absenteeism in the Workplace', Accessed December 13.
474 <https://www.cdc.gov/niosh/topics/absences/default.html>.
- 475 ——. 2020b. 'Research use only 2019—novel coronavirus (2019-nCoV) real-time RT-PCR primers and
476 probes (2020)', Accessed January 11 2023. <https://stacks.cdc.gov/view/cdc/88834>.

- 477 Challener, D. W., L. E. Breeher, J. Frain, M. D. Swift, P. K. Tosh, and J. O'Horo. 2021. 'Healthcare
478 personnel absenteeism, presenteeism, and staffing challenges during epidemics', *Infect Control*
479 *Hosp Epidemiol*, 42: 388-91.
- 480 City-of-Calgary. 2022. 'Calgary', Accessed December 9. <https://www.calgary.ca/home.html>.
- 481 Dai, Xiaotian, David Champredon, Aamir Fazil, Chand S. Mangat, Shelley W. Peterson, Edgard M. Mejia,
482 Xuewen Lu, and Thierry Chekouo. 2022. 'Statistical framework to support the epidemiological
483 interpretation of SARS-CoV-2 concentration in municipal wastewater', *Scientific Reports*, 12:
484 13490.
- 485 de Paiva, Larissa Garcia, Wendel Mombaquer Dos Santos, and Grazielle de Lima Dalmolin. 2022. 'The
486 impact of the SARS-CoV-2 pandemic on sickness absenteeism among hospital workers', *Revista*
487 *Brasileira de Medicina do Trabalho*, 20: 65.
- 488 de Sousa, Adriano Roberto Vieira, Lívia do Carmo Silva, Juliana Santana de Curcio, Hugo Delleon da Silva,
489 Carlos Eduardo Anunciação, Silvia Maria Salem Izacc, Flavio Olimpio Sanches Neto, and
490 Elisângela de Paula Silveira Lacerda. 2022. "'pySewage": a hybrid approach to predict the
491 number of SARS-CoV-2-infected people from wastewater in Brazil', *Environmental Science and*
492 *Pollution Research*, 29: 67260-69.
- 493 Easton, Fred F. 2011. 'Cross-training performance in flexible labor scheduling environments', *IIE*
494 *Transactions*, 43: 589-603.
- 495 Easton, Fred F., and John C. Goodale. 2005. 'Schedule Recovery: Unplanned Absences in Service
496 Operations*', *Decision Sciences*, 36: 459-88.
- 497 Fahrenfeld, N. L., William R. Morales Medina, Stephanie D'Elia, Maureen Modica, Alejandro Ruiz, and
498 Mark McLane. 2022. 'Comparison of residential dormitory COVID-19 monitoring via weekly
499 saliva testing and sewage monitoring', *Science of The Total Environment*, 814: 151947.
- 500 Faramarzi, Ahmad, Javad Javan-Noughabi, Seyed Saeed Tabatabaee, Ali Asghar Najafpoor, and Aziz
501 Rezapour. 2021. 'The lost productivity cost of absenteeism due to COVID-19 in health care
502 workers in Iran: a case study in the hospitals of Mashhad University of Medical Sciences', *BMC*
503 *Health Services Research*, 21: 1169.
- 504 Fletcher, Robson. 2022. 'Alberta still leads all provinces in COVID-19 testing but limited supplies mean
505 tests are changing', *CBC News*, Accessed December 16.
506 [https://www.cbc.ca/news/canada/calgary/alberta-covid-19-tests-reagent-materials-limited-](https://www.cbc.ca/news/canada/calgary/alberta-covid-19-tests-reagent-materials-limited-1.5510946)
507 [1.5510946](https://www.cbc.ca/news/canada/calgary/alberta-covid-19-tests-reagent-materials-limited-1.5510946).
- 508 Galani, Aikaterini, Reza Aalizadeh, Marios Kostakis, Athina Markou, Nikiforos Alygizakis, Theodore Lytras,
509 Panagiotis G. Adamopoulos, Jordan Peccia, David C. Thompson, Aikaterini Kontou, Apostolos
510 Karagiannidis, Evi S. Lianidou, Margaritis Avgeris, Dimitrios Paraskevis, Sotirios Tsiodras, Andreas
511 Scorilas, Vasilis Vasiliou, Meletios-Athanasios Dimopoulos, and Nikolaos S. Thomaidis. 2022.
512 'SARS-CoV-2 wastewater surveillance data can predict hospitalizations and ICU admissions',
513 *Science of The Total Environment*, 804: 150151.
- 514 Gibas, Cynthia, Kevin Lambirth, Neha Mittal, Md Ariful Islam Juel, Visva Bharati Barua, Lauren Roppolo
515 Brazell, Keshawn Hinton, Jordan Lontai, Nicholas Stark, Isaiah Young, Cristine Quach, Morgan
516 Russ, Jacob Kauer, Bridgette Nicolosi, Don Chen, Srinivas Akella, Wenwu Tang, Jessica Schlueter,
517 and Mariya Munir. 2021. 'Implementing building-level SARS-CoV-2 wastewater surveillance on a
518 university campus', *Science of The Total Environment*, 782: 146749.
- 519 Gonçalves, José, Tom Koritnik, Verica Mioč, Marija Trkov, Maja Bolješič, Nataša Berginc, Katarina
520 Prosenč, Tadeja Kotar, and Metka Paragi. 2021. 'Detection of SARS-CoV-2 RNA in hospital
521 wastewater from a low COVID-19 disease prevalence area', *Science of The Total Environment*,
522 755: 143226.

- 523 Government-of-Canada. 2021. 'Guidance on Essential Services and Functions in Canada During the
524 COVID-19 Pandemic', Accessed January 9 2023. [https://www.publicsafety.gc.ca/cnt/ntnl-](https://www.publicsafety.gc.ca/cnt/ntnl-scr/crtcl-nfrstrctr/esf-sfe-en.aspx)
525 [scr/crtcl-nfrstrctr/esf-sfe-en.aspx](https://www.publicsafety.gc.ca/cnt/ntnl-scr/crtcl-nfrstrctr/esf-sfe-en.aspx).
- 526 Grandi, J. L., C. O. Silva, and D. A. Barbosa. 2022. 'Work absences among hospital cleaning staff during
527 the SARS-CoV-2 (COVID-19) pandemic', *Rev Bras Med Trab*, 20: 45-54.
- 528 Groenewold, M. R., S. L. Burrer, F. Ahmed, A. Uzicanin, H. Free, and S. E. Luckhaupt. 2020. 'Increases in
529 Health-Related Workplace Absenteeism Among Workers in Essential Critical Infrastructure
530 Occupations During the COVID-19 Pandemic - United States, March-April 2020', *MMWR Morb*
531 *Mortal Wkly Rep*, 69: 853-58.
- 532 Halwatura, Lahiruni M., Isabella S. McLerran, Daniel L. Weglarski, Zia U. Ahmed, Yinyin Ye, Ian M.
533 Bradley, and Diana S. Aga. 2022. 'Complementing RNA Detection with Pharmaceutical
534 Monitoring for Early Warning of Viral Outbreaks through Wastewater-Based Epidemiology',
535 *Environmental Science & Technology Letters*, 9: 567-74.
- 536 Harknett, Kristen, Daniel Schneider, and Véronique Irwin. 2021. 'Improving health and economic security
537 by reducing work schedule uncertainty', *Proceedings of the National Academy of Sciences*, 118:
538 e2107828118.
- 539 Hasan, Shadi W., Yazan Ibrahim, Marianne Daou, Hussein Kannout, Nila Jan, Alvaro Lopes, Habiba
540 Alsafar, and Ahmed F. Yousef. 2021. 'Detection and quantification of SARS-CoV-2 RNA in
541 wastewater and treated effluents: Surveillance of COVID-19 epidemic in the United Arab
542 Emirates', *Science of The Total Environment*, 764: 142929.
- 543 Hegazy, Nada, Aaron Cowan, Patrick M. D'Aoust, Élisabeth Mercier, Syeda Tasneem Towhid, Jian-Jun Jia,
544 Shen Wan, Zhihao Zhang, Md Pervez Kabir, Wanting Fang, Tyson E. Graber, Alex E. MacKenzie,
545 Stéphanie Guilherme, and Robert Delatolla. 2022. 'Understanding the dynamic relation between
546 wastewater SARS-CoV-2 signal and clinical metrics throughout the pandemic', *Science of The*
547 *Total Environment*, 853: 158458.
- 548 Hellmér, Maria, Nicklas Paxéus, Lars Magnus, Lucica Enache, Birgitta Arnholm, Annette Johansson,
549 Tomas Bergström, and Heléne Norder. 2014. 'Detection of pathogenic viruses in sewage
550 provided early warnings of hepatitis A virus and norovirus outbreaks', *Applied and*
551 *Environmental Microbiology*, 80: 6771-81.
- 552 Karthikeyan, Smruthi, Nancy Ronquillo, Pedro Belda-Ferre, Destiny Alvarado, Tara Javidi, Christopher A.
553 Longhurst, and Rob Knight. 2021. 'High-Throughput Wastewater SARS-CoV-2 Detection Enables
554 Forecasting of Community Infection Dynamics in San Diego County', *mSystems*, 6: e00045-21.
- 555 Kitajima, Masaaki, Warish Ahmed, Kyle Bibby, Annalaura Carducci, Charles P. Gerba, Kerry A. Hamilton,
556 Eiji Haramoto, and Joan B. Rose. 2020. 'SARS-CoV-2 in wastewater: State of the knowledge and
557 research needs', *Science of The Total Environment*, 739: 139076.
- 558 Krivoňáková, Naďa, Andrea Šoltýsová, Michal Tamáš, Zdenko Takáč, Ján Krahulec, Andrej Ficek, Miroslav
559 Gál, Marián Gall, Miroslav Fehér, Anna Krivjanská, Ivana Horáková, Noemi Belišová, Paula
560 Bímová, Andrea Butor Škulcová, and Tomáš Mackuľak. 2021. 'Mathematical modeling based on
561 RT-qPCR analysis of SARS-CoV-2 in wastewater as a tool for epidemiology', *Scientific Reports*, 11:
562 19456.
- 563 Li, Qiaozhi, Bonita E. Lee, Tiejun Gao, Yuanyuan Qiu, Erik Ellehoj, Jiaao Yu, Mathew Diggle, Graham
564 Tipples, Rasha Maal-Bared, Deena Hinshaw, Christopher Sikora, Nicholas J. Ashbolt, James
565 Talbot, Steve E. Hrudehy, and Xiaoli Pang. 2023. 'Number of COVID-19 cases required in a
566 population to detect SARS-CoV-2 RNA in wastewater in the province of Alberta, Canada:
567 Sensitivity assessment', *Journal of Environmental Sciences*, 125: 843-50.
- 568 Ling, Yun, Shui-Bao Xu, Yi-Xiao Lin, Di Tian, Zhao-Qin Zhu, Fa-Hui Dai, Fan Wu, Zhi-Gang Song, Wei
569 Huang, Jun Chen, Bi-Jie Hu, Sheng Wang, En-Qiang Mao, Lei Zhu, Wen-Hong Zhang, and Hong-

- 570 Zhou Lu. 2020. 'Persistence and clearance of viral RNA in 2019 novel coronavirus disease
571 rehabilitation patients', *Chinese Medical Journal*, 133.
- 572 Maass, Kayse Lee, Boying Liu, Mark S. Daskin, Mary Duck, Zhehui Wang, Rama Mwenesi, and Hannah
573 Schapiro. 2017. 'Incorporating nurse absenteeism into staffing with demand uncertainty', *Health
574 Care Management Science*, 20: 141-55.
- 575 Maunder, Robert G. , Natalie D. Heeney, Gillian Strudwick, Hwayeon Danielle Shin, Braden O'Neill,
576 Nancy Young, Lianne P. Jeffs, Kali Barrett, Nicolas S. Bodmer, Karen B. Born, Jessica Hopkins,
577 Peter Jüni, Anna Perkhun, David J. Price, Fahad Razak, Christopher J. Mushquash, and Linda
578 Mah. 2021. 'Burnout in hospital-based healthcare workers during COVID-19', Science Briefs of
579 the Ontario COVID-19 Science Advisory Table, Accessed December 13. [https://covid19-
580 sciencetable.ca/sciencebrief/burnout-in-hospital-based-healthcare-workers-during-covid-19/](https://covid19-sciencetable.ca/sciencebrief/burnout-in-hospital-based-healthcare-workers-during-covid-19/).
- 581 McMahan, Christopher S., Stella Self, Lior Rennert, Corey Kalbaugh, David Kriebel, Duane Graves,
582 Cameron Colby, Jessica A. Deaver, Sudeep C. Papat, Tanju Karanfil, and David L. Freedman.
583 2021. 'COVID-19 wastewater epidemiology: a model to estimate infected populations', *The
584 Lancet Planetary Health*, 5: e874-e81.
- 585 Medema, G., F. Been, L. Heijnen, and S. Petterson. 2020. 'Implementation of environmental surveillance
586 for SARS-CoV-2 virus to support public health decisions: Opportunities and challenges', *Current
587 opinion in environmental science & health*, 17: 49-71.
- 588 Miyani, Brijen, Liang Zhao, Maddie Spooner, Sejal Buch, Zachary Gentry, Anna Mehrotra, John Norton,
589 and Irene Xagorarakis. 2021. 'Early Warnings of COVID-19 Second Wave in Detroit', *Journal of
590 Environmental Engineering*, 147: 06021004.
- 591 Murthy, Vivek H. 2022. 'Confronting Health Worker Burnout and Well-Being', *New England Journal of
592 Medicine*, 387: 577-79.
- 593 Naughton, Colleen C., Fernando A. Roman, Ana Grace F. Alvarado, Arianna Q. Tariqi, Matthew A.
594 Deeming, Kyle Bibby, Aaron Bivins, Joan B. Rose, Gertjan Medema, Warish Ahmed, Panagis
595 Katsivelis, Vajra Allan, Ryan Sinclair, Yihan Zhang, and Maureen N. Kinyua. 2021. 'Show us the
596 Data: Global COVID-19 Wastewater Monitoring Efforts, Equity, and Gaps', *medRxiv*:
597 2021.03.14.21253564.
- 598 Pang, Xiaoli, Tiejun Gao, Erik Ellehoj, Qiaozhi Li, Yuanyuan Qiu, Rasha Maal-Bared, Christopher Sikora,
599 Graham Tipples, Mathew Diggle, Deena Hinshaw, Nicholas J. Ashbolt, James Talbot, Steve E.
600 Hruday, and Bonita E. Lee. 2022. 'Wastewater-Based Surveillance Is an Effective Tool for
601 Trending COVID-19 Prevalence in Communities: A Study of 10 Major Communities for 17
602 Months in Alberta', *ACS ES&T Water*.
- 603 Peccia, J., A. Zulli, D. E. Brackney, N. D. Grubaugh, E. H. Kaplan, A. Casanovas-Massana, A. I. Ko, A. A.
604 Malik, D. Wang, M. Wang, J. L. Warren, D. M. Weinberger, W. Arnold, and S. B. Omer. 2020.
605 'Measurement of SARS-CoV-2 RNA in wastewater tracks community infection dynamics', *Nat
606 Biotechnol*, 38: 1164-67.
- 607 Randazzo, Walter, Pilar Truchado, Enric Cuevas-Ferrando, Pedro Simón, Ana Allende, and Gloria
608 Sánchez. 2020. 'SARS-CoV-2 RNA in wastewater anticipated COVID-19 occurrence in a low
609 prevalence area', *Water Research*, 181: 115942-42.
- 610 Saththasivam, Jayaprakash, Shima S. El-Malah, Tricia A. Gomez, Khadeeja A. Jabbar, Reshma Remanan,
611 Arun K. Krishnankutty, Oluwaseun Ogunbiyi, Kashif Rasool, Sahel Ashhab, Sergey Rashkeev,
612 Meryem Bensaad, Ayeda A. Ahmed, Yasmin A. Mohamoud, Joel A. Malek, Laith J. Abu Raddad,
613 Andrew Jeremijenko, Hussein A. Abu Halaweh, Jenny Lawler, and Khaled A. Mahmoud. 2021.
614 'COVID-19 (SARS-CoV-2) outbreak monitoring using wastewater-based epidemiology in Qatar',
615 *Science of The Total Environment*, 774: 145608.
- 616 Schiavo, Amanda. 2021. 'COVID is costing employers nearly \$1 billion per week', Accessed December 11.
617 <https://www.benefitnews.com/news/covid-is-costing-employers-nearly-1-billion-per-week>.

- 618 Shah, Melisa M, Bryan R Spencer, Leora R Feldstein, James M Haynes, Tina J Benoit, Sharon H Saydah,
619 Matthew R Groenewold, Susan L Stramer, and Jefferson M Jones. 2022. 'Occupations Associated
620 with SARS-CoV-2 Infection and Vaccination, U.S. Blood Donors, July 2021–December 2021',
621 *Clinical Infectious Diseases*.
- 622 Tandukar, Sarmila, Niva Sthapit, Ocean Thakali, Bikash Malla, Samendra P. Sherchan, Bijay Man Shakya,
623 Laxman P. Shrestha, Jeevan B. Sherchand, Dev Raj Joshi, Bhupendra Lama, and Eiji Haramoto.
624 2022. 'Detection of SARS-CoV-2 RNA in wastewater, river water, and hospital wastewater of
625 Nepal', *Science of The Total Environment*, 824: 153816.
- 626 Tang, An, Zhen-Dong Tong, Hong-Ling Wang, Ya-Xin Dai, Ke-Feng Li, Jie-Nan Liu, Wen-Jie Wu, Chen Yuan,
627 Meng-Lu Yu, Peng Li, and Jian-Bo Yan. 2020. 'Detection of Novel Coronavirus by RT-PCR in Stool
628 Specimen from Asymptomatic Child, China', *Emerging infectious diseases*, 26: 1337-39.
- 629 Vallejo, Juan A., Noelia Trigo-Tasende, Soraya Rumbo-Feal, Kelly Conde-Pérez, Ángel López-Oriona, Inés
630 Barbeito, Manuel Vaamonde, Javier Tarrío-Saavedra, Rubén Reif, Susana Ladra, Bruno K. Rodiño-
631 Janeiro, Mohammed Nasser-Ali, Ángeles Cid, María Veiga, Antón Acevedo, Carlos Lamora,
632 Germán Bou, Ricardo Cao, and Margarita Poza. 2022. 'Modeling the number of people infected
633 with SARS-COV-2 from wastewater viral load in Northwest Spain', *Science of The Total
634 Environment*, 811: 152334.
- 635 Wang, Jie, Haiting Feng, Sheng Zhang, Zuwei Ni, Lingmei Ni, Yu Chen, Lixin Zhuo, Zifeng Zhong, and
636 Tingting Qu. 2020. 'SARS-CoV-2 RNA detection of hospital isolation wards hygiene monitoring
637 during the Coronavirus Disease 2019 outbreak in a Chinese hospital', *International Journal of
638 Infectious Diseases*, 94: 103-06.
- 639 Wartell, Brian A., Sudheer Ballare, Shahrzad Saffari Ghandehari, Patricia Dotingco Arcellana, Camila
640 Proano, Devrim Kaya, Debra Niemeier, and Birthe V. Kjellerup. 2022. 'Relationship between
641 SARS-CoV-2 in wastewater and clinical data from five wastewater sheds', *Journal of Hazardous
642 Materials Advances*, 8: 100159.
- 643 Whitney, Oscar N., Lauren C. Kennedy, Vinson B. Fan, Adrian Hinkle, Rose Kantor, Hannah Greenwald,
644 Alexander Crits-Christoph, Basem Al-Shayeb, Mira Chaplin, Anna C. Maurer, Robert Tjian, and
645 Kara L. Nelson. 2021. 'Sewage, Salt, Silica, and SARS-CoV-2 (4S): An Economical Kit-Free Method
646 for Direct Capture of SARS-CoV-2 RNA from Wastewater', *Environmental Science & Technology*,
647 55: 4880-88.
- 648 Wölfel, Roman, Victor M. Corman, Wolfgang Guggemos, Michael Seilmaier, Sabine Zange, Marcel A.
649 Müller, Daniela Niemeyer, Terry C. Jones, Patrick Vollmar, Camilla Rothe, Michael Hoelscher,
650 Tobias Bleicker, Sebastian Brünink, Julia Schneider, Rosina Ehmann, Katrin Zwirgmaier, Christian
651 Drosten, and Clemens Wendtner. 2020. 'Virological assessment of hospitalized patients with
652 COVID-2019', *Nature*, 581: 465-69.
- 653 Wu, Fuqing, Amy Xiao, Jianbo Zhang, Katya Moniz, Noriko Endo, Federica Armas, Richard Bonneau,
654 Megan A. Brown, Mary Bushman, Peter R. Chai, Claire Duvallet, Timothy B. Erickson, Katelyn
655 Foppe, Newsha Ghaeli, Xiaoqiong Gu, William P. Hanage, Katherine H. Huang, Wei Lin Lee,
656 Mariana Matus, Kyle A. McElroy, Jonathan Nagler, Steven F. Rhode, Mauricio Santillana, Joshua
657 A. Tucker, Stefan Wuertz, Shijie Zhao, Janelle Thompson, and Eric J. Alm. 2022. 'SARS-CoV-2 RNA
658 concentrations in wastewater foreshadow dynamics and clinical presentation of new COVID-19
659 cases', *Science of The Total Environment*, 805: 150121.
- 660 Wu, Yongjian, Cheng Guo, Lantian Tang, Zhongsi Hong, Jianhui Zhou, Xin Dong, Huan Yin, Qiang Xiao,
661 Yanping Tang, Xiujian Qu, Liangjian Kuang, Xiaomin Fang, Nischay Mishra, Jiahai Lu, Hong Shan,
662 Guanmin Jiang, and Xi Huang. 2020. 'Prolonged presence of SARS-CoV-2 viral RNA in faecal
663 samples', *The Lancet Gastroenterology & Hepatology*, 5: 434-35.
- 664 Xiao, A., F. Wu, M. Bushman, J. Zhang, M. Imakaev, P. R. Chai, C. Duvallet, N. Endo, T. B. Erickson, F.
665 Armas, B. Arnold, H. Chen, F. Chandra, N. Ghaeli, X. Gu, W. P. Hanage, W. L. Lee, M. Matus, K. A.

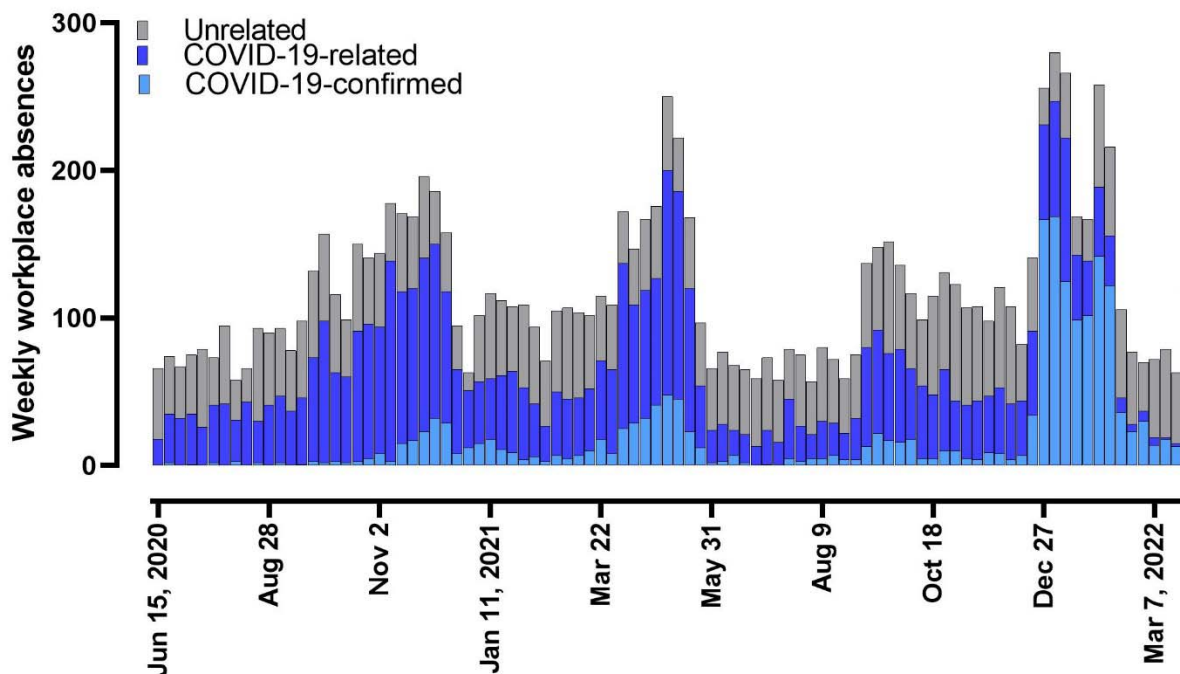
- 666 McElroy, K. Moniz, S. F. Rhode, J. Thompson, and E. J. Alm. 2021. 'Metrics to relate COVID-19
667 wastewater data to clinical testing dynamics', *medRxiv*.
- 668 Zhan, Qingyu, Kristina M. Babler, Mark E. Sharkey, Ayaaz Amirali, Cynthia C. Beaver, Melinda M. Boone,
669 Samuel Comerford, Daniel Cooper, Elena M. Cortizas, Benjamin B. Currall, Jonathan Foox,
670 George S. Grills, Erin Kobetz, Naresh Kumar, Jennifer Laine, Walter E. Lamar, Alejandro M. A.
671 Mantero, Christopher E. Mason, Brian D. Reding, Maria Robertson, Matthew A. Roca, Krista
672 Ryon, Stephan C. Schürer, Bhavarth S. Shukla, Natasha Schaefer Solle, Mario Stevenson, John J.
673 Tallon Jr, Collette Thomas, Tori Thomas, Dušica Vidović, Sion L. Williams, Xue Yin, and Helena M.
674 Solo-Gabriele. 2022. 'Relationships between SARS-CoV-2 in Wastewater and COVID-19 Clinical
675 Cases and Hospitalizations, with and without Normalization against Indicators of Human Waste',
676 *ACS ES&T Water*, 2: 1992-2003.
- 677 Zhou, Jun-Bo, Wen-Hua Kong, Sheng Wang, Yi-Bing Long, Lian-Hua Dong, Zhen-Yu He, and Man-Qing Liu.
678 2021. 'Detection of SARS-CoV-2 RNA in Medical Wastewater in Wuhan During the COVID-19
679 Outbreak', *Virologica Sinica*, 36: 1077-79.
- 680 Zhu, Yifan, Wakana Oishi, Chikako Maruo, Mayuko Saito, Rong Chen, Masaaki Kitajima, and Daisuke
681 Sano. 2021. 'Early warning of COVID-19 via wastewater-based epidemiology: potential and
682 bottlenecks', *Science of The Total Environment*, 767: 145124.

683

684

685 **FIGURES**

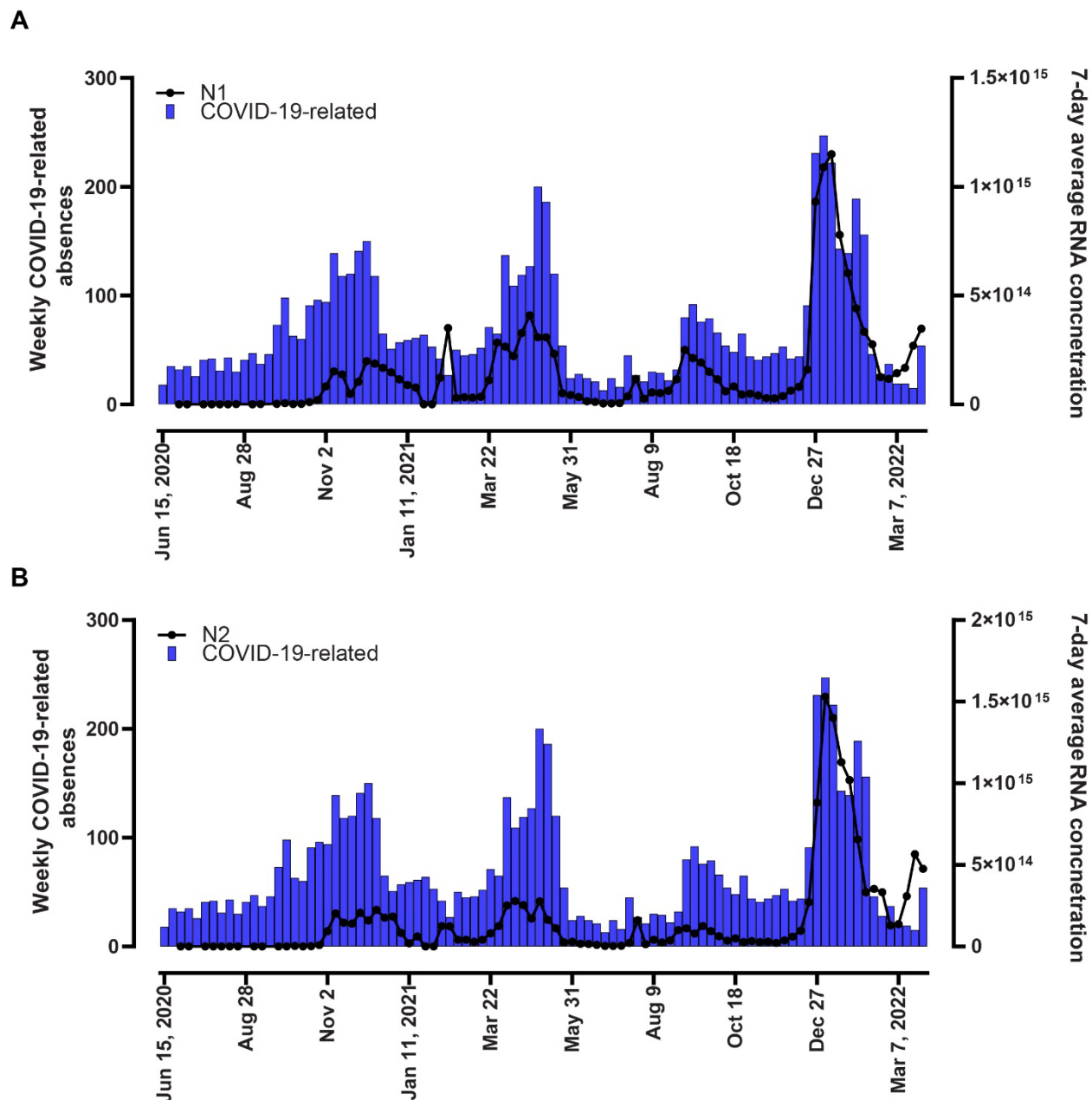
686



687

688 **Figure 1. Municipal workforce absenteeism from June 2020 to March 2022.** Employee
689 absences as measured weekly categorized as unrelated (grey bars), or COVID-19- related (blue
690 bars). COVID-19-related absences (dark blue bars) include those associated with known
691 exposure to an infected individual or symptoms. COVID-19-confirmed absences (light blue bars)
692 correspond to a clinical PCR test result.

693



694

695 **Figure 2. Comparing SARS-CoV-2 RNA concentration in wastewater to COVID-19-related**

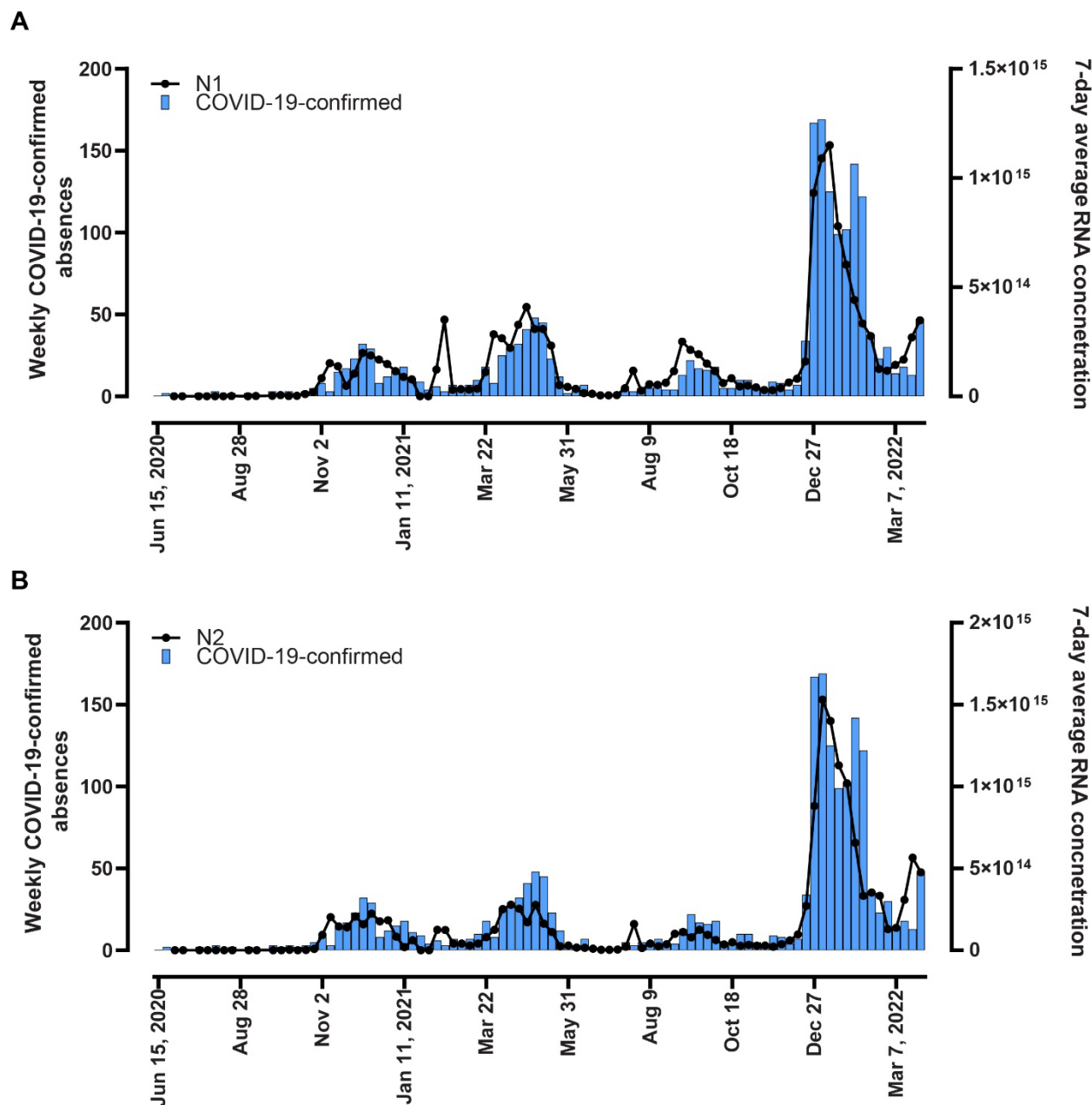
696 **municipal absenteeism.** The figure demonstrates the correlation between the weekly

697 wastewater averaged gene abundance per day and the weekly rate of employee absenteeism

698 attributed as COVID-19-related (dark blue bars). Flow-adjusted values for wastewater

699 concentrations of SARS-CoV-2 genes N1 (A) and N2 (B) over the study duration are shown as

700 black dotted lines.



701

702 **Figure 3. Comparison of SARS-CoV-2 RNA concentration in wastewater to municipal**

703 **absenteeism rates attributable to confirmed COVID-19.** The figure demonstrates the

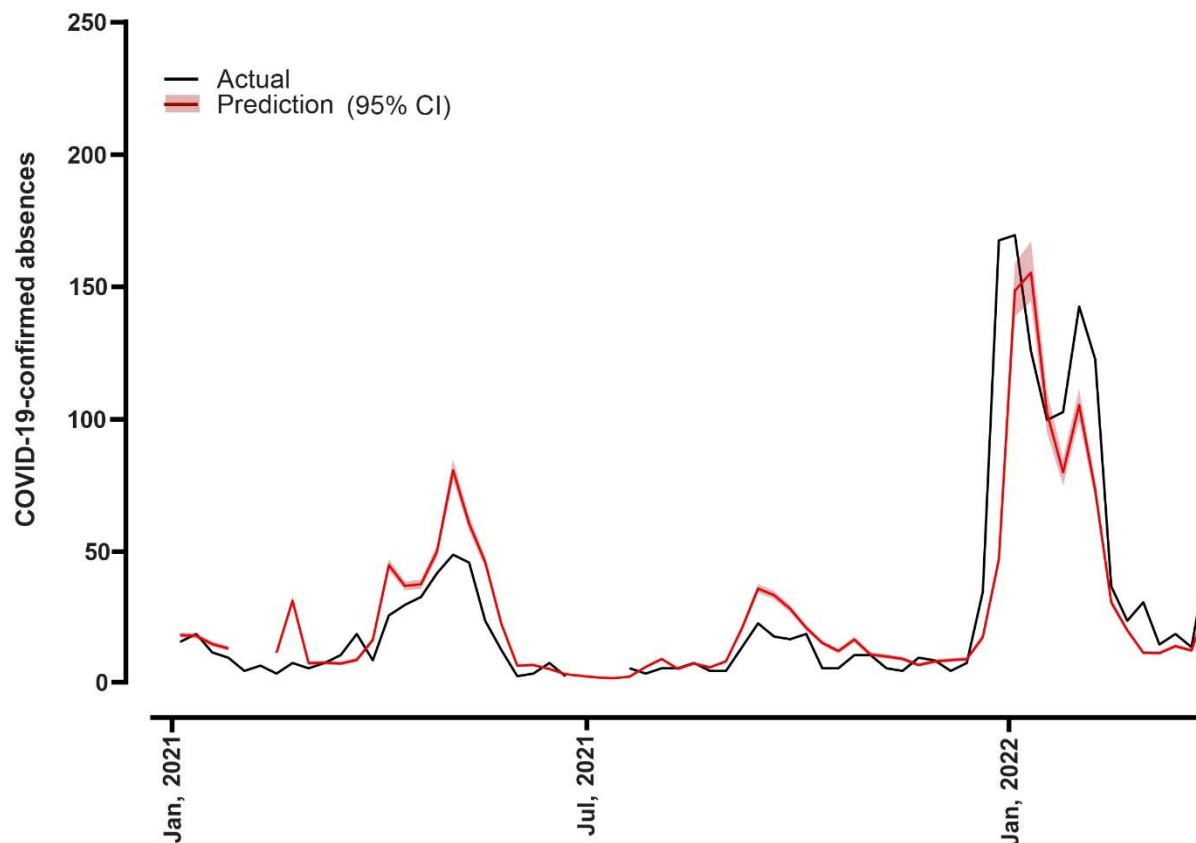
704 correlation between the weekly wastewater averaged gene abundance per day and the number of

705 new municipal employee absenteeism rates attributed to confirmed COVID-19 (light blue bars).

706 Flow-adjusted values for wastewater concentrations of SARS-CoV-2 genes N1 (A) and N2 (B)
707 over the study duration are shown as black dotted lines.

708

709



710

711 **Figure 4. Predictive model for COVID-19 absenteeism in the municipal workforce.** Plot of
712 Poisson regression model (95% confidence limits) for the prediction of COVID-19 absenteeism
713 amongst municipal workers as determined through city-wide SARS-CoV-2 N1 gene abundance
714 measured in the preceding week's wastewater. The model was built using the 2020 data and
715 verified using COVID-19-confirmed absenteeism data from January 2021 to March 2022

716