

Systematic Review
***Association between Endotype of Prematurity and Mortality:
A Systematic Review, Meta-analysis and Meta-regression***

Tamara M Hundscheid ^a, Eduardo Villamor-Martinez ^b, Eduardo Villamor ^a

^a Department of Pediatrics, Maastricht University Medical Center (MUMC+), School for Oncology and Reproduction (GROW), Maastricht, the Netherlands.

^b Statistics Netherlands, 6412HX Heerlen, the Netherlands.

Short Title: Association between Endotype of Prematurity and Mortality

Corresponding Author:

Eduardo Villamor

Department of Pediatrics

Maastricht University Medical Center (MUMC+)

Postbus 5800

6202 AZ Maastricht, the Netherlands

Tel: 003143-3877246

E-mail: e.villamor@mumc.nl

Number of Tables: 1

Number of Figures: 3

Word count: 3486

Keywords: preterm birth, chorioamnionitis, hypertensive disorders of pregnancy, growth restriction, mortality

NOTE: This preprint reports new research that has not been certified by peer review and should not be used to guide clinical practice.

1 **Abstract**

2 **Introduction** Preterm birth represents the leading cause of neonatal mortality.

3 Pathophysiological pathways, or endotypes, leading to prematurity can be clustered into
4 infection/inflammation and dysfunctional placentation. We aimed to perform a systematic
5 review and meta-analysis exploring the association between these endotypes and risk of
6 mortality during first hospital admission.

7 **Methods** PROSPERO ID: CRD42020184843. PubMed and Embase were searched for
8 observational studies examining infants with gestational age (GA) ≤ 34 weeks.
9 Chorioamnionitis represented the infectious-inflammatory endotype, while dysfunctional
10 placentation proxies were hypertensive disorders of pregnancy (HDP) and small for GA
11 (SGA)/intrauterine growth restriction (IUGR). A random-effects model was used to calculate
12 odds ratios (ORs) and 95% confidence intervals (CIs). Heterogeneity was studied using
13 random-effects meta-regression analysis.

14 **Results** Of 4322 potentially relevant studies, 150 (612,580 infants) were included. Meta-
15 analysis showed a positive mortality odds for chorioamnionitis (OR 1.43, 95% CI 1.25-1.62)
16 and SGA/IUGR (OR 1.68, 95% CI 1.38-2.04), but a negative mortality odds for HDP (OR 0.74,
17 95% CI 0.64-0.86). Chorioamnionitis was associated with a lower GA, while HDP and
18 SGA/IUGR were associated with a higher GA. Meta-regression showed a significant
19 correlation between these differences in GA and mortality odds.

20
21 **Discussion/Conclusion** Our data suggest that the infectious/inflammatory endotype of
22 prematurity has a greater overall impact on mortality risk as it is the most frequent
23 endotype in the lower GAs. However, when the endotype of placental dysfunction is severe
24 enough to induce growth restriction, it is strongly associated with higher mortality rates
25 even though newborns are more mature.

26

27 **Introduction**

28 Preterm birth is defined by the World Health Organization as delivery before 37 completed weeks of
29 gestational age (GA) and is further subdivided into extreme (less than 28 weeks), very (28 to less than
30 32 weeks) moderate (32 to less than 34 weeks), and late (34 to less than 37 weeks) preterm birth.

31 Although survival has increased substantially in the last few decades, preterm birth and its associated
32 complications represent the leading cause of both neonatal and childhood mortality worldwide (1-3).

33 Although GA is the main prognostic factor in prematurity, there is growing recognition that the
34 pathological conditions triggering preterm birth play a central role in the development of its
35 complications (4-8). McElrath et al. proposed two main pathways to extreme preterm birth: 1)
36 infection/inflammation and 2) dysfunctional placentation. The first group include chorioamnionitis,
37 pre-labor premature rupture of membranes, placental abruption, and cervical insufficiency (9). The
38 second group is characterized by the presence of histologic features of placental vascular dysfunction
39 and is associated with hypertensive disorders of pregnancy (HDP) and the entity identified as fetal
40 indication/intrauterine growth restriction (IUGR) (9). These two etiological pathways possess the
41 characteristics to be considered as the main endotypes of very and extreme preterm birth (4, 7).

42 The term endotype refers to “a subtype of a condition, which is defined by a distinct functional or
43 pathophysiological mechanism.”(10). Endotypes are thus a different form of classification from
44 clinical phenotypes and describe distinct disease entities with a defining etiology and/or a consistent
45 pathophysiological mechanism. In line with the approach of personalized medicine, endotyping will
46 facilitate the design of more targeted therapeutic and prognostic approaches (4, 11-14).

47 Despite the growing awareness about the role of the pathophysiologic mechanism, or endotype,
48 triggering prematurity in its outcome (4-7, 15-19), this variable is rarely taken into account in the
49 models predicting mortality in the preterm newborn (20-22). Furthermore, to the best of our
50 knowledge, the association between the endotype of prematurity and mortality during primary
51 hospital admission has not been systematically reviewed. The purpose of the present study was to
52 address this gap in the literature. Following the methodology described in our previous meta-
53 analyses (7, 23), the infectious-inflammatory endotype was represented by chorioamnionitis, while
54 the dysfunctional placentation endotype was represented by HDP and IUGR. Since many researchers
55 use small for gestational age (SGA) as a proxy for IUGR, and although the two conditions are not
56 necessarily synonymous (24-27), we also collected data on SGA. From now on, this group will be
57 referred to as SGA/IUGR. In addition, through the use of meta-regression, we aimed to unravel the

58 role of variables such as GA, infant sex, or use of antenatal corticosteroids in the association between
59 endotype of prematurity and mortality.

60 **Methods**

61 The study was conducted according to the PRISMA and MOOSE guidelines. Detailed information on
62 methods is provided as supplementary material. Review protocol was registered in PROSPERO
63 database (ID= CRD42020184843). The Population, Exposure, Comparison and Outcome (PECO)
64 question was: Do preterm infants (P) exposed to chorioamnionitis, HDP, or growth restriction during
65 pregnancy (E) have a higher risk of mortality (O) than preterm infants with no history of exposure
66 (C)?

67 *Sources and search strategy*

68 A comprehensive literature search was undertaken using the PubMed and EMBASE from their
69 inception up to March 2022. Search strategy is detailed in the supplementary material.

70 *Study selection*

71 Studies were included if they examined extreme to moderate preterm infants (GA \leq 34 weeks and/or
72 birth weight \leq 1500 gram) and reported primary data that could be used to measure the association
73 between exposure to CA, HDP or SGA/IUGR and mortality before hospital discharge.

74 *Data extraction, definitions, and quality assessment*

75 Two investigators (TH, EV-M) independently extracted data from relevant studies using a
76 predetermined data extraction form. Any definition of chorioamnionitis, HDP or SGA/IUGR was
77 accepted but we performed sub-group analysis based on the different definitions. Methodological
78 quality was assessed using the Newcastle-Ottawa Scale (NOS) for cohort or case-control studies (28).

79 *Statistical analysis*

80 Studies were combined and analyzed using COMPREHENSIVE META-ANALYSIS V3.0 software (Biostat Inc.,
81 Englewood, NJ, USA). Summary statistics were calculated with a random-effects model and subgroups
82 were combined with a mixed-effects model (29). For dichotomous outcomes, the odds ratio (OR) with
83 95% confidence interval (CI) was calculated. For continuous outcomes, the mean difference (MD) with
84 95% CI was calculated. Statistical heterogeneity was assessed by Cochran's Q statistic and by the I^2
85 statistic. Potential sources of heterogeneity were assessed through subgroup analysis and/or random
86 effects (method of moments), univariate meta-regression analysis (30). We used the Egger's

87 regression test and funnel plots to assess publication bias. A probability value of less than 0.05 (0.10
88 for heterogeneity) was considered statistically significant.

89 **Results**

90 The PRISMA flow diagram of the search process is shown in eFigure 1 in the Supplement. Of 4322
91 potentially relevant studies, 150 met the inclusion criteria. These studies included 612,580 infants.
92 Characteristics of the studies and quality assessment are summarized in eTable 1 in the Supplement.
93 All studies received a NOS score of at least six points, indicating a low to moderate risk of bias.

94

95 *Main meta-analyses*

96 Meta-analysis showed a significant association between chorioamnionitis and increased odds of
97 mortality (Fig. 1, eFig. 2 in the Supplement). Heterogeneity was moderate (Fig. 1). When subdividing
98 by chorioamnionitis definition, the association with mortality remained significant for both clinical and
99 histological chorioamnionitis. Meta-regression did not show significant differences depending on
100 choriomanionitis definition ($P=0.375$). When the meta-analysis was limited to the subgroup of infants
101 with $GA \leq 28$ weeks, no significant association between choriomanionitis and mortality was observed
102 (Fig. 2, eFig. 3 in the Supplement). Meta-regression showed significant differences ($P=0.021$) between
103 studies that only included infants with $GA \leq 28$ weeks and those that also included older infants (eTable
104 2 in the Supplement).

105 Meta-analysis showed a significant association between HDP and decreased odds of mortality (Fig. 1,
106 eFig. 4 in the Supplement). Heterogeneity was moderate (Fig. 1). When subdividing by HDP definition,
107 the association with mortality remained significant for any HDP and preeclampsia but not for
108 preeclampsia/HELLP. Meta-regression showed a significant difference ($P=0.013$) between the ORs for
109 any HDP and preeclampsia. When the meta-analysis was limited to the subgroup of infants with $GA \leq 28$
110 weeks, no significant association between HDP and mortality was observed (Fig. 2, eFig. 5 in the
111 Supplement). Meta-regression showed significant differences ($P < 0.001$) between studies that only
112 included infants with $GA \leq 28$ weeks and those that also included older infants (eTable 2 in the
113 Supplement).

114 Meta-analysis showed a significant association between SGA/IUGR and increased odds of mortality
115 (Fig. 1, eFig. 6 in the Supplement). Heterogeneity was high (Fig. 1). When subdividing by definition of
116 SGA/IUGR, the association with mortality remained significant for the three thresholds of birth weight
117 (BW $< P10$, $< P5$, and $< P3$), but not for IUGR (Fig. 1). Meta-regression analysis did not show significant
118 differences in the association between SGA/IUGR and mortality depending on the criteria used to

119 define SGA/IUGR ($P=0.783$). The association between SGA/IUGR and increased odds of mortality was
120 also observed when the meta-analysis was limited to the subgroup of infants with $GA \leq 28$ weeks (Fig.
121 2, eFig. 7 in the Supplement).

122 Neither visual inspection nor Egger's test suggested the presence of publication or selection bias for
123 the chorioamnionitis ($P=0.394$) and SGA/IUGR ($P=0.554$) meta-analyses (eFig. 8 in the Supplement). In
124 contrast, a slight publication bias was observed in the HDP meta-analysis ($P=0.016$).

125 *Additional meta-analyses, sensitivity analysis and meta-regression*

126 To investigate the potential sources of heterogeneity, we conducted additional meta-analyses
127 exploring the differences in baseline characteristics (GA, sex, and exposure to antenatal
128 corticosteroids) between the groups exposed and non-exposed to chorioamnionitis, HDP, or
129 SGA/IUGR. We also performed meta-regression and subgroup analysis.

130 Infants exposed to chorioamnionitis had a significantly lower GA than infants not exposed to the
131 condition, while infants exposed to HDP or belonging to the SGA/IUGR group had a higher GA than
132 their respective controls (Table 1). Meta-regression showed that these differences in GA significantly
133 correlated with the effect size of the association between mortality and chorioamnionitis, HDP, or
134 SGA/IUGR (Fig. 3, eTable 3 in the Supplement).

135 To further assess the effect of GA on the meta-analyses, we carried out a subgroup analysis of studies
136 where the difference in GA between infants exposed to the chorioamnionitis, HDP, or SGA/IUGR and
137 their respective controls was not statistically significant ($p > 0.05$). In these subgroups of studies, neither
138 chorioamnionitis nor HDP were significantly associated with mortality odds, but the association
139 between SGA/IUGR and higher odds of mortality was maintained (eTable 4 in the Supplement).

140 Chorioamnionitis, HDP and SGA/IUGR were all associated with a higher odds of exposure to
141 antenatal corticosteroids compared to their respective control groups (eTable 6 in the Supplement).
142 Exposure to HDP was negatively associated with male sex (Table 1). As expected, exposure to
143 chorioamnionitis was negatively associated with exposure to HDP or being SGA/IUGR and a strong
144 positive association was observed between HDP and SGA (Table 1).

145 We also analyzed the possible effect of study design, median year in which the study was conducted,
146 and geographical location (continent) on the results of the meta-analysis. Meta-regression showed
147 no significant differences when studies were grouped based on whether they were prospective or
148 retrospective (eTable 2 in the Supplement). When cohort and case-control studies were compared, a
149 significant difference was observed for the HDP meta-analysis ($P=0.030$), but not for the meta-

150 analyses on chorioamnionitis or SGA/IUGR (eTable 2 in the Supplement). Meta-regression did not
151 show a significant correlation between the median year in which the studies were conducted and the
152 effect size of the association between mortality and chorioamnionitis, HDP, or SGA/IUGR (eTable 3 in
153 the Supplement). In addition, meta-regression also showed no significant differences when studies
154 were grouped according to whether the inclusion of infants took place before or after the year 2000
155 (eTable 2 in the Supplement). Finally, meta-regression showed no significant differences when the
156 studies were grouped by continent (eTable 5 in the Supplement).

157 **Discussion/Conclusion**

158 This is the first systematic review and meta-analysis that comprehensively addresses the association
159 between endotype of prematurity and mortality during first hospital admission. Meta-analysis
160 showed an association between the inflammatory/infectious endotype, represented by
161 chorioamnionitis, and increased odds of mortality. In contrast, meta-analysis of the two proxies of
162 the placental dysfunction endotype showed diametrically opposite results; HDP were associated with
163 decreased odds while SGA/IUGR was associated with positive odds of mortality. Interestingly, when
164 analysis was restricted to extremely preterm infants, only the association between SGA/IUGR and
165 mortality remained significant. In addition, our results confirm that conditions triggering prematurity
166 differ in important characteristics that may play a relevant role in mortality risk. Chorioamnionitis
167 was associated with lower GA and higher exposure to antenatal corticosteroids, while HDP and
168 SGA/IUGR were associated with higher GA. Meta-regression demonstrated a significant correlation
169 between these differences in GA and the effect size of the association between mortality and
170 endotype. Meta-regression also showed that the association between endotype of prematurity and
171 mortality is relatively homogeneous across continents and has not changed significantly over the
172 years.

173 Since very and extremely preterm birth is by definition a pathological condition, there is no healthy
174 control group with which to compare infants exposed to a given prenatal insult (4, 5, 9, 31). Although
175 some placentas may combine lesions of infection/inflammation and vascular dysfunction (32),
176 fetuses exposed to chorioamnionitis will be less likely exposed to HDP and *vice versa* (4, 5, 9, 31). The
177 main originality of our meta-analysis lies in the comparison of the three pathological conditions most
178 frequently associated with preterm birth. However, both our identification of the two endotypes and
179 the validity of chorioamnionitis, HDP and SGA/IUGR as their proxies may be questionable. Moreover,
180 there is great heterogeneity in the potential clinical applicability of these three proxies. For example,

181 histological chorioamnionitis may be a good indicator of the presence of the infectious endotype, but
182 information about its presence may be not available at birth (8).

183 Regarding the endotype of placental dysfunction, the criteria for the diagnosis of HDP have been
184 changing over the years and even those on which there is greater consensus may be far from being
185 implemented worldwide (33). Finally, the most questionable assumption of our study may be the use
186 of SGA as proxy for placental dysfunction. SGA is a statistical definition based on BW, with the 10th
187 percentile as the most commonly used threshold (26, 34, 35). Therefore, SGA definition also
188 encompasses constitutionally small infants who do not suffer growth restriction. Conversely, growth
189 restricted infants who have a BW above the 10th percentile may be misclassified as normally grown
190 (26). It has been suggested that a cutoff value below the 5th or 3rd percentile may reflect a degree of
191 smallness that is more likely to be pathologic rather than constitutional (26, 36). However, even this
192 pathology may be of fetal origin as there are conditions in which restricted growth is not caused
193 primarily by placental insufficiency, but indirectly leads to it (37).

194
195 Regardless of its specificity as a marker of placental dysfunction, our data confirmed that SGA
196 preterm infants are at increased risk of death. The association between mortality and SGA was
197 observed even for the most conservative threshold (10th percentile). Preterm SGA infants add to their
198 immaturity the technical challenges of their small size that complicate procedures such as
199 endotracheal intubation or vascular access (38, 39). Of note, the meta-analysis could not
200 demonstrate a significant association between mortality and growth restriction based on fetal
201 assessment. However, this analysis was based on very few studies that showed a high degree of
202 heterogeneity. Damodaram et al. conducted a meta-analysis in which cohorts of growth-restricted
203 preterm infants were compared with cohorts of infants with normal growth and found a marked
204 increase in mortality across all GAs (19).

205 A common conundrum in perinatal medicine is the extent to which complications of pregnancy harm
206 preterm infants through triggering prematurity or through disturbances in fetal homeostasis and
207 development (4, 40). In the last few years, we conducted meta-analyses on the association between
208 chorioamnionitis and complications of prematurity such as bronchopulmonary dysplasia (23),
209 retinopathy of prematurity (41), intraventricular hemorrhage (42) , sepsis (43), or patent ductus
210 arteriosus (44). Similar to the present findings, meta-analyses showed an association between
211 chorioamnionitis and all these conditions (23, 41-44). In addition, meta-regression analysis showed a
212 correlation between the earlier GA of the chorioamnionitis-exposed infants and the risk of
213 developing the above-mentioned complications (23, 41-44). These data suggest that a significant

214 component of the pathologic effect of chorioamnionitis is related to lower GA of the infants rather
215 than to the inflammatory stress that generates in the fetus.

216 In contrast to what we observed for chorioamnionitis and for SGA/IUGR, exposure to HDP was
217 associated with lower odds of mortality in the newborn. Placental dysfunction is a multifactorial
218 condition, with fetuses becoming hypoxemic, undernourished, and hypercortisolemic, each of these
219 variables being capable of independently affecting fetal homeostasis and development (45). Our
220 results suggest that when placental dysfunction does not significantly affect birth weight, preterm
221 newborns may be in more favorable conditions to cope with extrauterine life. However, it cannot be
222 overlooked that HDP-exposed infants had a higher GA and were more often girls, which may have
223 contributed to the lower mortality (46).

224 Even among infants of comparable GA at delivery, the endotype of prematurity may be a
225 determining factor in the time and cause of death. Most deaths in extreme preterm infants occur in
226 the first days of life as a consequence of pulmonary immaturity (6, 47). It is noteworthy that the
227 intrauterine stresses associated with both the infectious/inflammatory endotype and the placental
228 dysfunction endotype have been considered as inducers of pulmonary maturity, leading to a lower
229 rate of respiratory distress at birth (48, 49). Although very limited by the clinical and statistical
230 heterogeneity, the results of our previous meta-analyses suggest that the lower incidence of
231 respiratory distress is observed only in the SGA/IUGR group (7, 23). Nevertheless, other conditions
232 such as pulmonary hemorrhage or pulmonary hypertension may contribute to increased early
233 respiratory mortality in SGA infants (6, 47).

234 Severe intraventricular hemorrhage (IVH) is another major cause of early mortality among extremely
235 preterm infants (6, 47, 50). As mentioned above, in a previous meta-analysis we observed an
236 association between chorioamnionitis and the risk of developing IVH (42). Interestingly, this
237 association was independent on the effect of chorioamnionitis on GA (42). It is therefore likely that a
238 part of the early mortality induced by chorioamnionitis is related to clinical instability that may
239 increase the chances of developing severe IVH. Conversely, and although to our knowledge this has
240 not been systematically reviewed, several cohort studies suggest that exposure to HDP or being SGA
241 may be associated with a lower risk of developing severe IVH (6, 47, 51, 52).

242 An important limitation of our study is the moderate to high heterogeneity that we found in most of
243 the meta-analyses. Through subgroup analysis and meta-regression, we aimed to investigate possible
244 sources of heterogeneity. Neither the association between chorioamnionitis and high odds of
245 mortality nor the association HDP and reduced odds of mortality were observed in the subgroup of

246 studies that exclusively included extremely preterm infants (GA \leq 28 weeks). In contrast, the
247 association between SGA/IUGR and high odds of mortality was maintained in the subgroup of
248 extremely preterm infants. Together, these data suggest that at lower GAs mortality is relatively
249 independent of the endotype of prematurity. However, infants who combine extreme prematurity
250 and being SGA would have the highest mortality risk.

251 Another limitation of our meta-analyses is that they are based on a ‘births-based’ instead of ‘fetuses-
252 at-risk’ formulation (53, 54). Fetuses who would be viable but die *in utero* are not considered when
253 assessing mortality from a births-based perspective (53, 54). Therefore, if we intend to analyze the
254 overall impact of an endotype of prematurity on perinatal health, we should also consider how many
255 children are not born prematurely because they die as a result of the severely adverse intrauterine
256 environment that is induced by their particular endotype.

257 Advances in perinatology over the past two decades, such as wide implementation of antenatal
258 steroids and surfactant, have changed care for extremely preterm infants and have been associated
259 with a decrease in mortality (55). However, neither meta-regression nor division of studies into two
260 subgroups (median year of the cohort before or after 2000) could demonstrate an effect of study
261 date on the association between endotype of prematurity and mortality. Finally, it is interesting to
262 note our finding that in the three groups analyzed (chorioamnionitis, HDP and SGA/IUGR) the odds of
263 receiving antenatal corticosteroids was higher than that of the respective controls. We speculate that
264 this finding may be related to the more heterogeneous nature of the control groups. Nevertheless,
265 our group is conducting a meta-analysis on the association between antenatal corticosteroids and
266 endotype of prematurity.

267 In summary, the present data suggest that the infectious/inflammatory endotype of prematurity has
268 a greater overall impact on mortality risk as it is the most frequent endotype in the lower and more
269 vulnerable gestational ages. However, when the endotype of placental dysfunction is severe enough
270 to induce growth restriction, it is strongly associated with higher mortality rates even though
271 newborns are more mature. Nevertheless, neither of the two endotypes is desirable and extremely
272 preterm birth should be prevented regardless of the etiopathogenic process that caused it. However,
273 delay in delivery may not benefit some infants if prematurity is triggered by a severe pathology and
274 postponement of delivery is not adequately addressing the underlying condition (15). Finally, since
275 some placental diagnoses may be critical for personalized clinical care of extremely preterm
276 newborns, efforts should be made to have information on placental pathology available in the first
277 days of life (8, 32).

278 **Statement of Ethics**

279 As this systematic review and meta-analysis did not involve animal subjects or personally identifiable
280 information on human subjects, ethics review board approval and patient consent were not
281 required.

282 **Conflict of Interest Statement**

283 The authors declare no conflict of interest. The views expressed in this paper are those of the authors
284 and do not necessarily reflect the policies of Statistics Netherlands.

285 **Funding Sources**

286 This research did not receive any specific grant from any funding agency in the public, commercial or
287 not-for-profit sectors.

288 **Author Contributions**

289 EV conceived and designed the study with input from the other authors. TH and EV-M designed and
290 executed the literature search, screened and reviewed the search results and abstracted the data. EV
291 checked data extraction for accuracy and completeness. TH and EV-M assessed the quality of the
292 included studies. TH conducted the analysis with input from EV. All authors contributed to the
293 interpretation of analysis. TH and EV made the figures and tables. TH and EV drafted the manuscript
294 with input from the other authors. All authors reviewed the manuscript and provided important
295 intellectual content. TH and EV take responsibility for the article as a whole.

296 **Data Availability Statement**

297 All data relevant to the study are included in the article or uploaded as supplementary information.
298 Additional data are available upon reasonable request.

299 **References**

1. Blencowe H, Cousens S, Chou D, Oestergaard M, Say L, Moller A-B, et al. Born Too Soon: The global epidemiology of 15 million preterm births. *Reproduc Health*. 2013;10(1):S2.
2. Harrison MS, Goldenberg RL. Global burden of prematurity. *Semin Fetal Neonatal Med*. 2016;21(2):74-9.
3. Raju TN, Buist AS, Blaisdell CJ, Moxey-Mims M, Saigal S. Adults born preterm: a review of general health and system-specific outcomes. *Acta Paediatr*. 2017;106(9):1409-37.
4. Pierro M, Van Mechelen K, van Westering-Kroon E, Villamor-Martínez E, Villamor E. Endotypes of Prematurity and Phenotypes of Bronchopulmonary Dysplasia: Toward Personalized Neonatology. *J Pers Med*. 2022;12(5):687.
5. Gagliardi L, Rusconi F, Da Frè M, Mello G, Carnielli V, Di Lallo D, et al. Pregnancy disorders leading to very preterm birth influence neonatal outcomes: results of the population-based ACTION cohort study. *Pediatr Res*. 2013;73(6):794-801.
6. Corchia C, Ferrante P, Da Frè M, Di Lallo D, Gagliardi L, Carnielli V, et al. Cause-specific mortality of very preterm infants and antenatal events. *J Pediatr*. 2013;162(6):1125-32. e4.
7. Pierro M, Villamor-Martinez E, van Westering-Kroon E, Alvarez-Fuente M, Abman SH, Villamor E. Association of the dysfunctional placentation endotype of prematurity with bronchopulmonary dysplasia: a systematic review, meta-analysis and meta-regression. *Thorax*. 2021.
8. Redline RW, Ravishankar S, Bagby CM, Saab ST, Zarei S. Four major patterns of placental injury: a stepwise guide for understanding and implementing the 2016 Amsterdam consensus. *Mod Pathol*. 2021;34(6):1074-92.
9. McElrath TF, Hecht JL, Dammann O, Boggess K, Onderdonk A, Markenson G, et al. Pregnancy disorders that lead to delivery before the 28th week of gestation: an epidemiologic approach to classification. *Am J Epidemiol*. 2008;168(9):980-9.
10. Lötvall J, Akdis CA, Bacharier LB, Bjermer L, Casale TB, Custovic A, et al. Asthma endotypes: a new approach to classification of disease entities within the asthma syndrome. *J Allergy Clin Immunol*. 2011;127(2):355-60.
11. Battaglia M, Ahmed S, Anderson MS, Atkinson MA, Becker D, Bingley PJ, et al. Introducing the endotype concept to address the challenge of disease heterogeneity in type 1 diabetes. *Diabetes Care*. 2020;43(1):5-12.
12. Malhotra A, Mesarwi O, Pepin J-L, Owens RL. Endotypes and phenotypes in obstructive sleep apnea. *Curr Opin Pulm Med*. 2020;26(6):609.

13. Cardell L-O, Stjärne P, Jonstam K, Bachert C. Endotypes of chronic rhinosinusitis: Impact on management. *J Allergy Clin Immunol.* 2020;145(3):752-6.
14. Wong HR, Sweeney TE, Lindsell CJ. Simplification of a septic shock endotyping strategy for clinical application. *Am J Respir Crit Care Med.* 2017;195(2):263-5.
15. Basso O, Wilcox A. Mortality risk among preterm babies: immaturity vs. underlying pathology. *Epidemiology.* 2010;21(4):521.
16. Garite TJ, Clark R, Thorp JA. Intrauterine growth restriction increases morbidity and mortality among premature neonates. *Am J Obstet Gynecol.* 2004;191(2):481-7.
17. Zaki D, Balayla J, Beltempo M, Gazil G, Nuyt AM, Boucoiran I. Interaction of chorioamnionitis at term with maternal, fetal and obstetrical factors as predictors of neonatal mortality: a population-based cohort study. *BMC Pregnancy Childbirth.* 2020;20(1):454.
18. Ferrazzani S, Luciano R, Garofalo S, D'Andrea V, De Carolis S, De Carolis MP, et al. Neonatal outcome in hypertensive disorders of pregnancy. *Early Hum Dev.* 2011;87(6):445-9.
19. Damodaram M, Story L, Kulinskaya E, Rutherford M, Kumar S. Early adverse perinatal complications in preterm growth-restricted fetuses. *Aust N Z J Obstet Gynaecol.* 2011;51(3):204-9.
20. McLeod JS, Menon A, Matusko N, Weiner GM, Gadepalli SK, Barks J, et al. Comparing mortality risk models in VLBW and preterm infants: systematic review and meta-analysis. *J Perinatol.* 2020;40(5):695-703.
21. van Beek PE, Andriessen P, Onland W, Schuit E. Prognostic Models Predicting Mortality in Preterm Infants: Systematic Review and Meta-analysis. *Pediatrics.* 2021;147(5).
22. Iriondo M, Thio M, Del Río R, Baucells BJ, Bosio M, Figueras-Aloy J. Prediction of mortality in very low birth weight neonates in Spain. *PLoS One.* 2020;15(7):e0235794.
23. Villamor-Martinez E, Álvarez-Fuente M, Ghazi AM, Degraeuwe P, Zimmermann LJ, Kramer BW, et al. Association of chorioamnionitis with bronchopulmonary dysplasia among preterm infants: a systematic review, meta-analysis, and meta-regression. *JAMA Netw Open.* 2019;2(11):e1914611-e.
24. Figueras F, Gardosi J. Intrauterine growth restriction: new concepts in antenatal surveillance, diagnosis, and management. *Am J Obstet Gynecol.* 2011;204(4):288-300.
25. Gordijn SJ, Beune IM, Thilaganathan B, Papageorgiou A, Baschat AA, Baker PN, et al. Consensus definition of fetal growth restriction: a Delphi procedure. *Ultrasound Obstet Gynecol.* 2016;48(3):333-9.
26. Beune IM, Bloomfield FH, Ganzevoort W, Embleton ND, Rozance PJ, van Wassenaer-Leemhuis AG, et al. Consensus Based Definition of Growth Restriction in the Newborn. *J Pediatr.* 2018;196:71-6. e1.

27. Monier I, Ancel PY, Ego A, Jarreau PH, Lebeaux C, Kaminski M, et al. Fetal and neonatal outcomes of preterm infants born before 32 weeks of gestation according to antenatal vs postnatal assessments of restricted growth. *Am J Obstet Gynecol.* 2017;216(5):516 e1- e10.
28. Wells G, Shea B, O'Connell D, Peterson J, Welch V, Losos M, et al. Newcastle-Ottawa quality assessment scale cohort studies. University of Ottawa. 2014.
29. Borenstein M, Higgins J. Meta-analysis and subgroups. *Prev Sci.* 2013;14(2):134-43.
30. Borenstein M, Hedges LV, Higgins JP, Rothstein HR. *Introduction to meta-analysis: John Wiley & Sons; 2021.*
31. Williams TC, Bach CC, Matthiesen NB, Henriksen TB, Gagliardi L. Directed acyclic graphs: a tool for causal studies in paediatrics. *Pediatr Res.* 2018;84(4):487-93.
32. Mir IN, Leon R, Chalak LF. Placental origins of neonatal diseases: toward a precision medicine approach. *Pediatr Res.* 2021;89(2):377-83.
33. Tranquilli A, Dekker G, Magee L, Roberts J, Sibai B, Steyn W, et al. The classification, diagnosis and management of the hypertensive disorders of pregnancy: A revised statement from the ISSHP. *Pregnancy Hypertens.* 2014;4(2):97-104.
34. Xu H, Simonet F, Luo ZC. Optimal birth weight percentile cut-offs in defining small-or large-for-gestational-age. *Acta Paediatr.* 2010;99(4):550-5.
35. Zeve D, Regelman MO, Holzman IR, Rapaport R. Small at birth, but how small? The definition of SGA revisited. *Horm Res Paediatr.* 2016;86(5):357-60.
36. Ray JG, Park AL, Fell DB. Mortality in infants affected by preterm birth and severe small-for-gestational age birth weight. *Pediatrics.* 2017;140(6).
37. Hendrix N, Berghella V. Non-placental causes of intrauterine growth restriction. *Semin Perinatol.* 2008;32(3):161-5.
38. Haile D, Suominen P. Technologies in pediatric vascular access: have we improved success rate in peripheral vein cannulation? *Acta Anaesthesiol Scand.* 2017;61(7):710-3.
39. Miller KE, Singh N. Association of multiple tracheal intubation attempts with clinical outcomes in extremely preterm infants: a retrospective single-center cohort study. *J Perinatol.* 2022:1-5.
40. Wilcox AJ, Weinberg CR, Basso O. On the pitfalls of adjusting for gestational age at birth. *Am J Epidemiol.* 2011;174(9):1062-8.
41. Villamor-Martinez E, Cavallaro G, Raffaelli G, Mohammed Rahim OM, Gulden S, Ghazi AM, et al. Chorioamnionitis as a risk factor for retinopathy of prematurity: An updated systematic review and meta-analysis. *PLoS One.* 2018;13(10):e0205838.

42. Villamor-Martinez E, Fumagalli M, Mohammed Rahim O, Passera S, Cavallaro G, Degraeuwe P, et al. Chorioamnionitis is a risk factor for intraventricular hemorrhage in preterm infants: a systematic review and meta-analysis. *Front Physiol.* 2018;9:1253.
43. Villamor-Martinez E, Lubach GA, Rahim OM, Degraeuwe P, Zimmermann LJ, Kramer BW, et al. Association of histological and clinical chorioamnionitis with neonatal sepsis among preterm infants: a systematic review, meta-analysis, and meta-regression. *Front Immunol.* 2020;11:972.
44. Behbodi E, Villamor-Martínez E, Degraeuwe PL, Villamor E. Chorioamnionitis appears not to be a risk factor for patent ductus arteriosus in preterm infants: a systematic review and meta-analysis. *Sci Rep.* 2016;6(1):1-10.
45. Orgeig S, Morrison JL, Daniels CB. Prenatal development of the pulmonary surfactant system and the influence of hypoxia. *Respir Physiol Neurobiol.* 2011;178(1):129-45.
46. van Westering-Kroon E, Huizing MJ, Villamor-Martínez E, Villamor E. Male disadvantage in oxidative stress-associated complications of prematurity: a systematic review, meta-analysis and meta-regression. *Antioxidants.* 2021;10(9):1490.
47. Härkin P, Marttila R, Pokka T, Saarela T, Hallman M. Survival analysis of a cohort of extremely preterm infants born in Finland during 2005–2013. *J Matern Fetal Neonatal Med.* 2021;34(15):2506-12.
48. Kramer BW, Kallapur S, Newnham J, Jobe AH. Prenatal inflammation and lung development. *Semin Fetal Neonatal Med.* 2009;14(1):2-7.
49. Taglauer E, Abman SH, Keller RL. Recent advances in antenatal factors predisposing to bronchopulmonary dysplasia. *Semin Perinatol.* 2018;42(7):413-24.
50. Inder TE, Perlman JM, Volpe JJ. Preterm intraventricular hemorrhage/posthemorrhagic hydrocephalus. *Volpe's Neurology of the Newborn: Elsevier; 2018.* p. 637-98. e21.
51. Gemmell L, Martin L, Murphy K, Modi N, Håkansson S, Reichman B, et al. Hypertensive disorders of pregnancy and outcomes of preterm infants of 24 to 28 weeks' gestation. *J Perinatol.* 2016;36(12):1067-72.
52. Regev RH, Arnon S, Litmanovitz I, Bauer-Rusek S, Boyko V, Lerner-Geva L, et al. Outcome of singleton preterm small for gestational age infants born to mothers with pregnancy-induced hypertension. A population-based study. *J Matern Fetal Neonatal Med.* 2015;28(6):666-73.
53. Joseph K. Towards a unified perinatal theory: Reconciling the births-based and fetus-at-risk models of perinatal mortality. *Paediatr Perinat Epidemiol.* 2019;33(2):101-12.
54. Joseph K, Kramer MS. The fetuses-at-risk approach: survival analysis from a fetal perspective. *Acta Obstet Gynecol Scand.* 2018;97(4):454-65.

55. Pierrat V, Ancel PY. Outcomes in extremely low-birthweight infants: What can we learn by comparing epidemiological studies over time? *Paediatr Perinat Epidemiol.* 2022;36(5):603.

Figure Legends

Fig. 1. Summary of meta-analyses on the association between endotype of prematurity and mortality in infants up to 34 weeks of gestational age.

BW: birth weight; CA: chorioamnionitis; CI: confidence interval; HDP: hypertensive disorders of pregnancy; HELLP: syndrome in pregnancy characterized by hemolysis, elevated liver enzymes and low platelet count; P3: 3rd percentile; P5: 5th percentile; P10: 10th percentile; IUGR: intra-uterine growth restriction defined on the basis of fetal growth assessment

Fig. 2. Summary of meta-analyses on the association between endotype of prematurity and mortality in infants up to 28 weeks of gestational age.

BW: birth weight; CA: chorioamnionitis; CI: confidence interval; HDP: hypertensive disorders of pregnancy; HELLP: syndrome in pregnancy characterized by hemolysis, elevated liver enzymes and low platelet count; P3: 3rd percentile; P5: 5th percentile; P10: 10th percentile

Fig. 3. Meta-regression plot showing the correlation between the effect size of the association endotype-mortality and the mean difference (MD) in gestational age (GA) between exposed and non-exposed groups.

(A) Univariate regression model correlating the difference in GA between chorioamnionitis- exposed and chorioamnionitis-unexposed infants. A total of 53 studies were included (coefficient -0.178; 95% CI -0.298 to -0.068; $p = 0.002$; R^2 analog 0.37). Each week that chorioamnionitis-exposed infants were born earlier than control infants resulted in an increase in mortality log OR of 0.178 (the equivalent of going from an OR of 1.00 to an OR of 1.19).

(B) Univariate regression model correlating the difference in GA between hypertensive disorders of pregnancy (HDP)-exposed and HDP-unexposed infants. A total of 32 studies were included (coefficient -0.249; 95% CI -0.403 to -0.094; $p = 0.002$; R^2 analog 0.17). (C) Univariate regression model correlating the difference in GA between small for GA (SGA)/intrauterine growth restriction (IUGR)-exposed and SGA/IUGR-unexposed infants. A total of 34 studies were included (coefficient -0.282; 95% CI -0.437 to -0.129; $p < 0.001$; R^2 analog 0.38).

Table 1. Meta-analyses of other covariates.

Exposure	Meta-analysis	K	Effect size	95% CI		P	Heterogeneity	
				Lower limit	Upper limit		I ² (%)	P
CA	GA (MD in weeks)	52	-0.696	-0.892	-0.499	<0.001	98.4	<0.001
	Male sex (OR)	41	0.969	0.889	1.056	0.474	52.8	<0.001
	HDP (OR)	21	0.110	0.076	0.160	<0.001	81.3	<0.001
	SGA/IUGR (OR)	19	0.351	0.244	0.506	<0.001	80.5	<0.001
HDP	GA (MD in weeks)	28	0.271	0.187	0.355	<0.001	97.9	<0.001
	Male sex (OR)	27	0.778	0.744	0.814	<0.001	47.2	0.004
	CA (OR)	12	0.132	0.080	0.219	<0.001	89.0	<0.001
	SGA/IUGR (OR)	24	4.695	3.572	6.172	<0.001	98.1	<0.001
SGA/IUGR	GA (MD in weeks)	30	0.185	0.023	0.348	0.025	97.3	<0.001
	Male sex (OR)	31	0.950	0.851	1.060	0.355	79.2	<0.001
	CA (OR)	5	0.226	0.140	0.364	<0.001	0.0	0.498
	HDP (OR)	17	4.623	2.620	8.159	<0.001	98.4	<0.001

CA: chorioamnionitis; CI: confidence interval; GA: gestational age; HDP: hypertensive disorders of pregnancy; IUGR: intra-uterine growth retardation defined on the basis of fetal growth assessment; K: number of studies; MD: mean difference (exposed minus unexposed); OR: odds ratio; SGA: small for gestational age as defined by birth weight percentile.

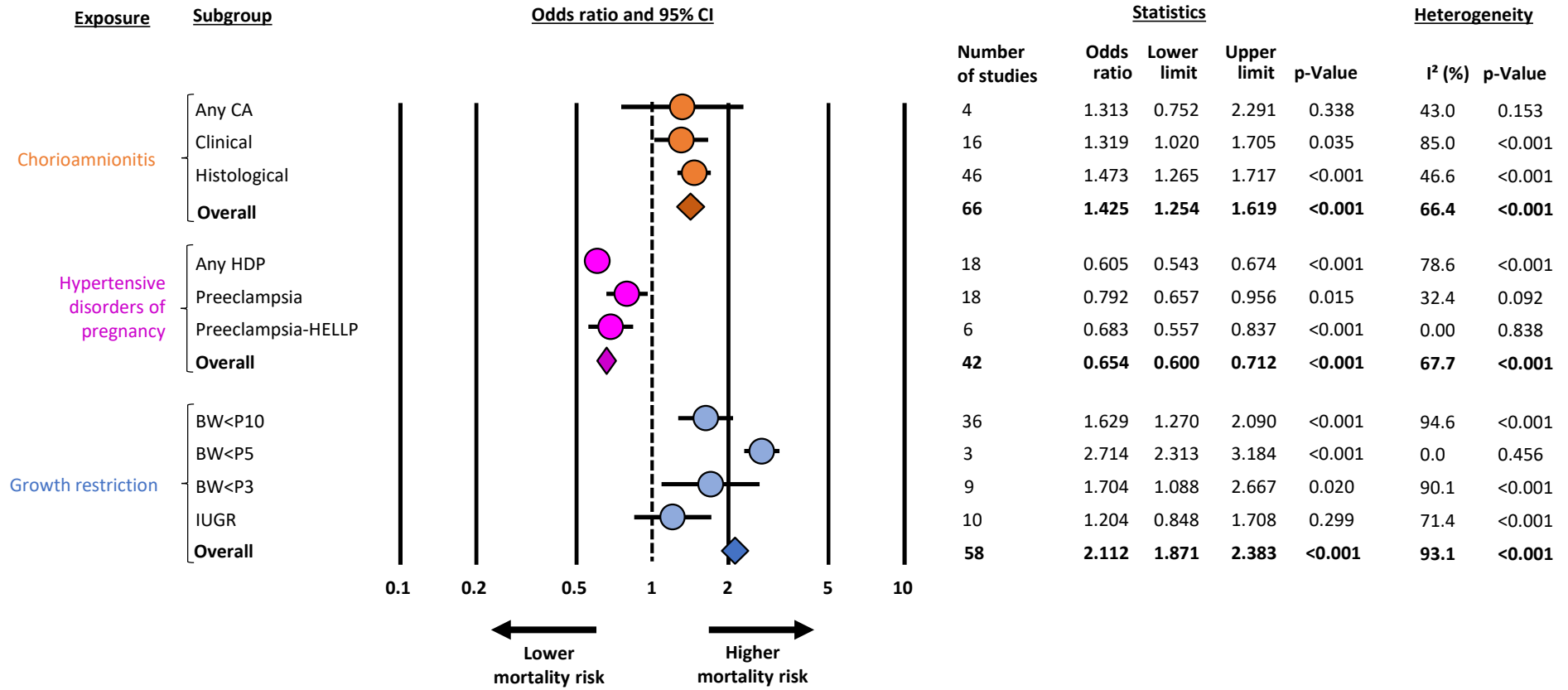


Figure 1

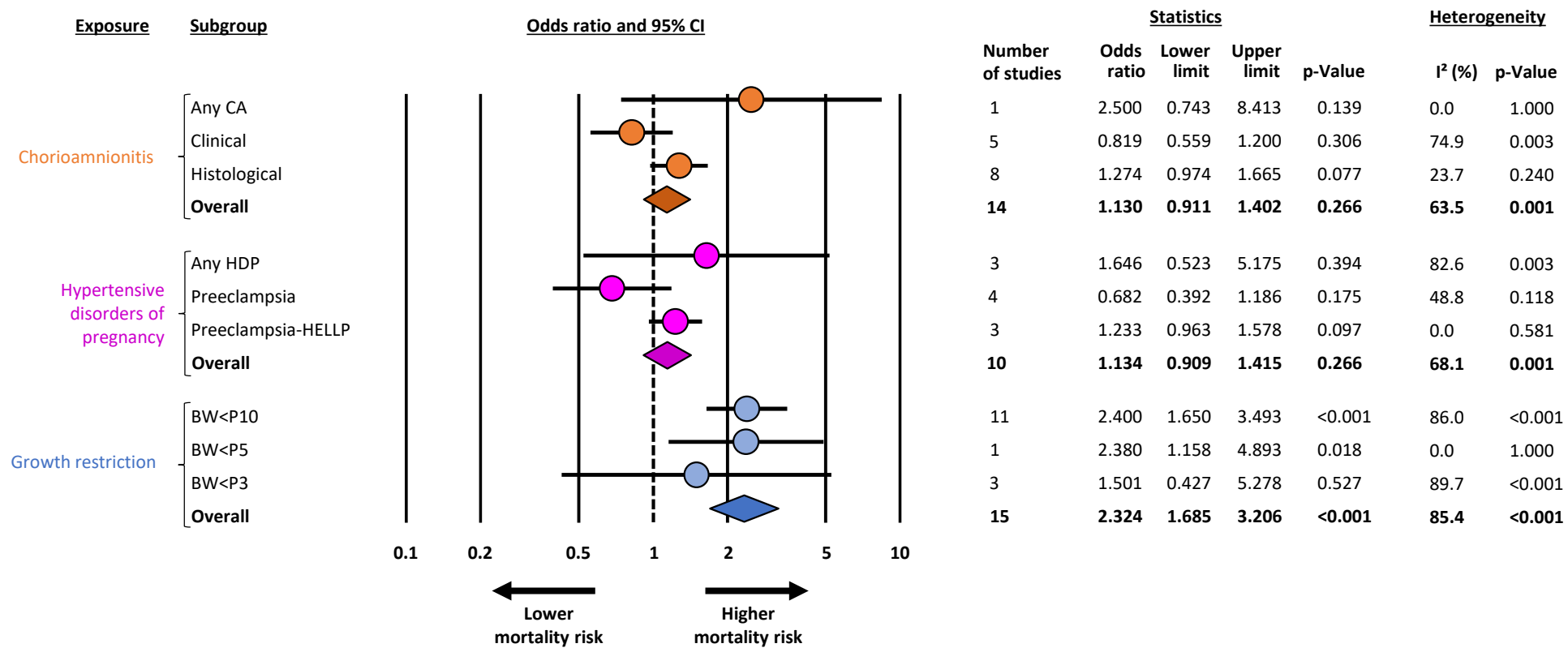
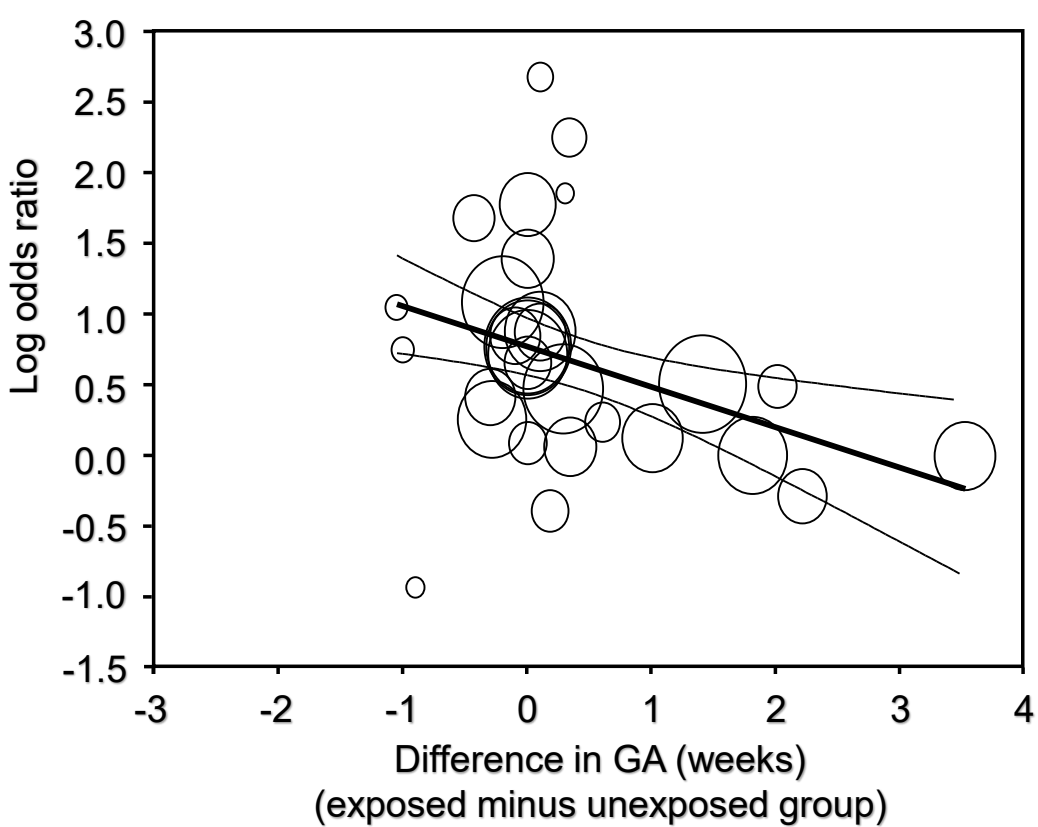
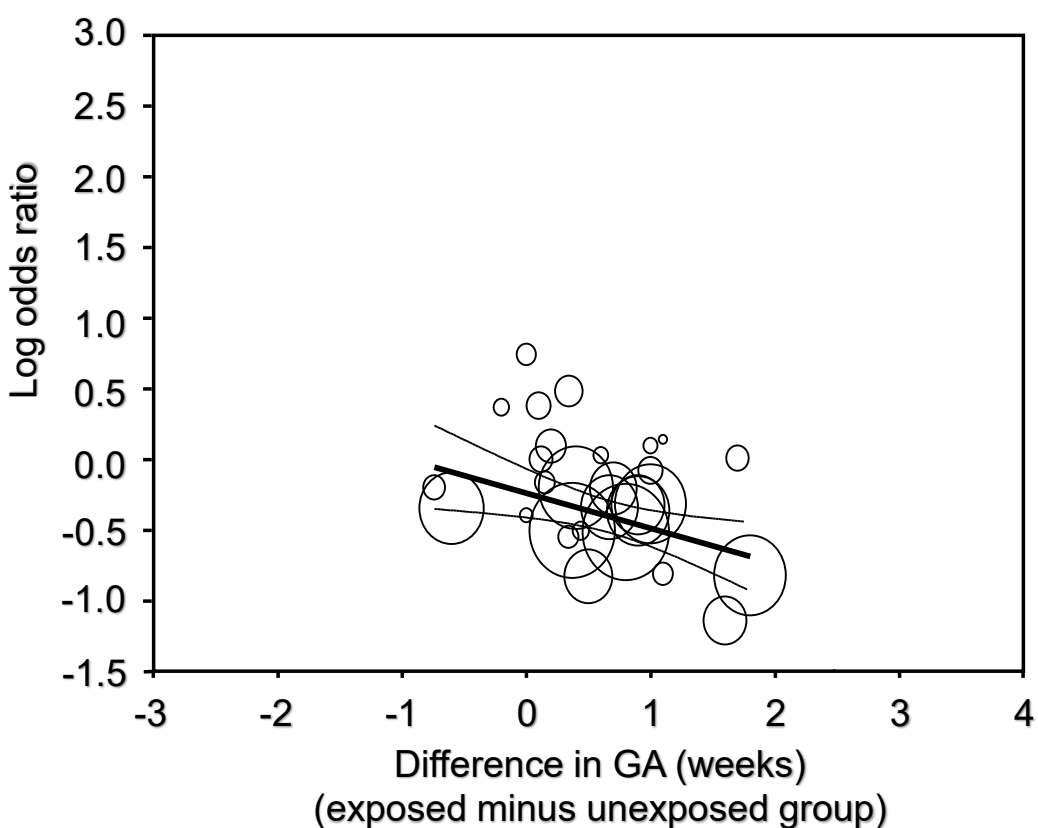
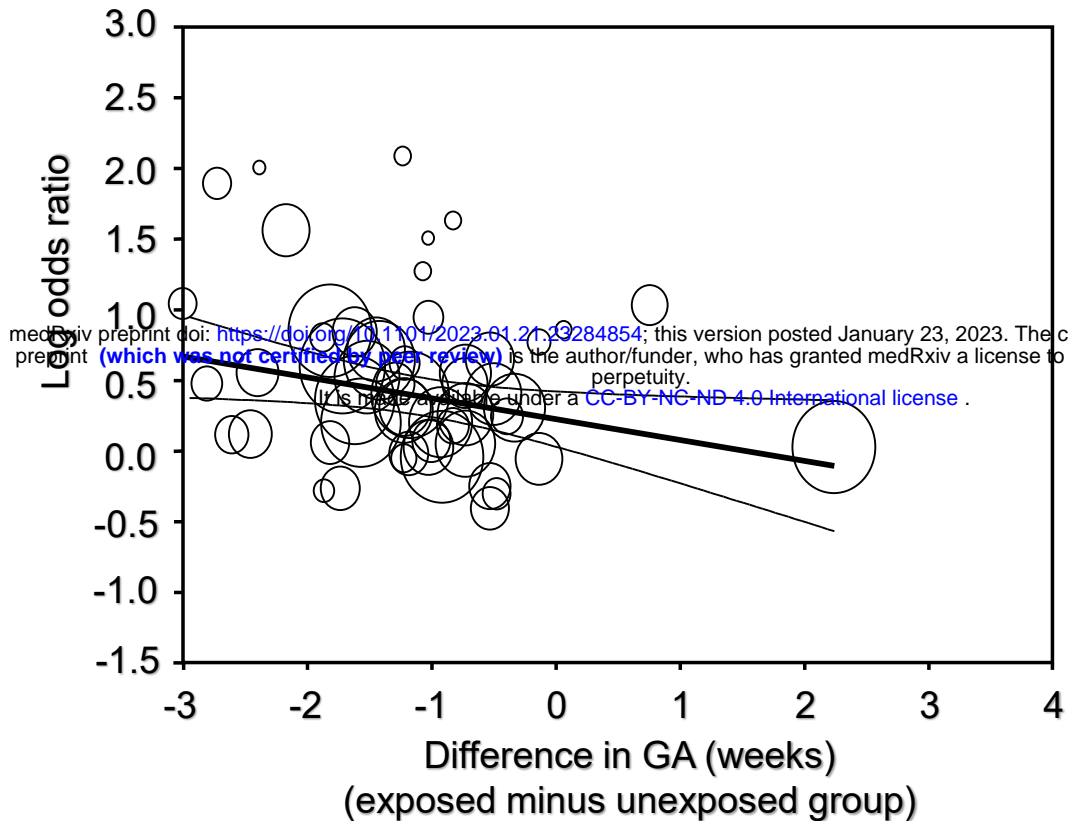


Figure 2

Figure 3



Supplementary Online Content

Tamara M Hundscheid, Eduardo Villamor-Martinez, Eduardo Villamor. Association between Endotype of Prematurity and Mortality: A Systematic Review, Meta-analysis and Meta-regression

1. Methods

1.1 Search strategy.

1.2 Supplementary information on methods.

2. Results

eFigure 1. PRISMA Diagram of the Systematic Search.

eFigure 2. Meta-analysis on association between chorioamnionitis and mortality in infants with gestational age up to 34 weeks.

eFigure 3. Meta-analysis on association between chorioamnionitis and mortality in infants with gestational age up to 28 weeks.

eFigure 4. Meta-analysis on association between hypertensive disorders of pregnancy and mortality in infants with gestational age up to 34 weeks

eFigure 5. Meta-analysis on association between hypertensive disorders of pregnancy and mortality in infants with gestational age up to 28 weeks.

eFigure 6. Meta-analysis on association between small for gestational age/intrauterine growth restriction and mortality in infants with gestational age up to 34 weeks.

eFigure 7. Meta-analysis on small for gestational age/intrauterine growth restriction and mortality in infants with gestational age up to 28 weeks

eFigure 8. Funnel plot for publication bias analysis for the studies included in meta-analysis.

eTable 1. Characteristics of included studies and Newcastle-Ottawa Scale.

eTable 2. Subgroup analysis based on characteristics of the studies.

eTable 3. Meta-regression on continuous variables.

eTable 4. Subgroup analysis on gestational age.

eTable 5. Subgroup analysis for continent.

eTable 6. Meta- analysis on antenatal corticosteroids.

1. Methods

1.1. Search strategy

PubMed

((Chorioamnionitis[Mesh] OR chorioamnionitis [TIAB] OR CA [TIAB] OR amnionitis [TIAB] OR funisitis [TIAB] OR fetal membranes, premature rupture [Mesh] OR placenta diseases [Mesh] OR placenta disease [TIAB] OR PPROM[TIAB] OR preterm premature rupture of membrane*[TIAB]))

AND (mortality[Mesh] OR mortality, premature [Mesh] OR perinatal mortality [Mesh] OR infant mortality [Mesh] OR mortality[TIAB] OR death[TIAB] mortality[Mesh] OR-mortality, premature [Mesh] OR perinatal mortality [Mesh] OR infant mortality [Mesh] OR mortality[TIAB] OR death[TIAB] OR short-term complication [TIAB] short term complication [TIAB] OR complication [TIAB])

AND (infant* [TIAB] OR Infants, Newborn[Mesh] OR Newborn*[TIAB] OR Neonate*[TIAB] OR neonatal[TIAB] OR Decreased gestational age [TIAB] OR premature gestation [TIAB] OR prematurity [TIAB] OR preterm [TIAB] OR premature [TIAB]))

OR

((Placental insufficiency [Mesh] OR placental insufficiency [TIAB] OR placental dysfunction [TIAB] OR Hypertension, pregnancy- induced [TIAB] OR pregnancy induced hypertension[TIAB] OR gestational hypertension[TIAB] OR pregnancy transient hypertension [TIAB] OR GHD [TIAB] OR pre-eclampsia [Mesh] OR pre-eclampsia [TIAB] OR preeclampsia [TIAB] OR HELLP syndrome [Mesh] OR HELLP syndrome [TIAB])

AND (mortality[Mesh] OR mortality, premature [Mesh] OR perinatal mortality [Mesh] OR infant mortality [Mesh] OR mortality[TIAB] OR death[TIAB] mortality[Mesh] OR-mortality, premature [Mesh] OR perinatal mortality [Mesh] OR infant mortality [Mesh] OR mortality[TIAB] OR death[TIAB] OR short-term complication [TIAB] short term complication [TIAB] OR complication [TIAB])

AND (infant* [TIAB] OR Infants, Newborn[Mesh] OR Newborn*[TIAB] OR Neonate*[TIAB] OR neonatal[TIAB] OR Decreased gestational age [TIAB] OR premature gestation [TIAB] OR prematurity [TIAB] OR preterm [TIAB] OR premature [TIAB]))

OR

((Fetal growth restriction [Mesh] OR fetal growth restriction [TIAB] OR IUGR OR intrauterine growth restriction[TIAB] OR intrauterine growth restriction [TIAB] OR infant, small for gestational age [TIAB] OR SGA OR small for gestational age [TIAB])

AND (mortality[Mesh] OR mortality, premature [Mesh] OR perinatal mortality [Mesh] OR infant mortality [Mesh] OR mortality[TIAB] OR death[TIAB] mortality[Mesh] OR-mortality, premature [Mesh] OR perinatal mortality [Mesh] OR infant mortality [Mesh] OR mortality[TIAB] OR death[TIAB] OR short-term complication [TIAB] short term complication [TIAB] OR complication [TIAB])

AND (infant* [TIAB] OR Infants, Newborn[Mesh] OR Newborn*[TIAB] OR Neonate*[TIAB] OR neonatal[TIAB] OR Decreased gestational age [TIAB] OR premature gestation [TIAB] OR prematurity [TIAB] OR preterm [TIAB] OR premature [TIAB]))

Embase

((exp chorioamnionitis/ OR chorioamnionitis.ti,ab. OR CA.ti,ab. OR amnionitis.ti,ab. OR funisitis.ti,ab. OR exp premature fetus membrane rupture/ OR exp placenta disorder/ OR placenta disease.ti,ab. OR PPROM.ti,ab. OR preterm premature rupture of membrane.ti,ab.) AND (exp mortality/ OR mortality.ti,ab. OR exp premature mortality/ OR premature mortality.ti,ab. OR exp perinatal mortality/ OR perinatal mortality.ti,ab. OR exp newborn mortality/ OR newborn mortality.ti,ab. OR exp infant mortality/ OR infant mortality.ti,ab. OR mortality.ti,ab. OR death.ti,ab. AND exp complication/ OR complication.ti,ab. OR short-term complication.ti,ab. OR short term complication.ti,ab.) AND (exp prematurity/ OR infant.ti,ab. OR preterm infant.ti,ab. OR newborn.ti,ab. OR neonate.ti,ab. OR neonatal.ti,ab. OR decreased gestational age.ti,ab. OR premature gestation.ti,ab. OR prematurity.ti,ab. OR preterm.ti,ab. OR premature.ti,ab.))

OR

((exp placental insufficiency/ OR placental insufficiency.ti,ab. OR placental dysfunction.ti,ab. OR exp maternal hypertension/ OR pregnancy induced hypertension.ti,ab. OR gestational hypertension.ti,ab. OR pregnancy transient hypertension.ti,ab. OR GHD.ti,ab. OR pre-eclampsia OR HELLP) AND (exp mortality/ OR mortality.ti,ab. OR exp premature mortality/ OR premature mortality.ti,ab. OR exp perinatal mortality/ OR perinatal mortality.ti,ab. OR exp newborn mortality/ OR newborn mortality.ti,ab. OR exp infant mortality/ OR infant mortality.ti,ab. OR mortality.ti,ab. OR death.ti,ab. AND exp complication/ OR complication.ti,ab. OR short-term complication.ti,ab. OR short term complication.ti,ab.) AND (exp prematurity/ OR infant.ti,ab. OR preterm infant.ti,ab. OR newborn.ti,ab. OR neonate.ti,ab. OR neonatal.ti,ab. OR decreased gestational age.ti,ab. OR premature gestation.ti,ab. OR prematurity.ti,ab. OR preterm.ti,ab. OR premature.ti,ab.))

OR

((exp intrauterine growth restriction/ OR fetal growth restriction.ti,ab. OR fetal growth restriction.ti,ab. OR IUGR.ti,ab. OR intrauterine growth restriction.ti,ab. OR intrauterine growth restriction.ti,ab. OR SGA.ti,ab. OR small for gestational age.ti,ab.) AND (exp mortality/ OR mortality.ti,ab. OR exp premature mortality/ OR premature mortality.ti,ab. OR exp perinatal mortality/ OR perinatal mortality.ti,ab. OR exp newborn mortality/ OR newborn mortality.ti,ab. OR exp infant mortality/ OR infant mortality.ti,ab. OR mortality.ti,ab. OR death.ti,ab. AND exp complication/ OR complication.ti,ab. OR short-term complication.ti,ab. OR short term complication.ti,ab.) AND (exp prematurity/ OR infant.ti,ab. OR preterm infant.ti,ab. OR newborn.ti,ab. OR neonate.ti,ab. OR neonatal.ti,ab. OR decreased gestational age.ti,ab. OR premature gestation.ti,ab. OR prematurity.ti,ab. OR preterm.ti,ab. OR premature.ti,ab.))

No language limits were set. Narrative reviews, systematic reviews, case reports, letters, editorials, and commentaries were excluded, but read to identify potential additional studies. Additional strategies to identify studies included manual review of reference lists from key articles that fulfilled our eligibility criteria, use of “related articles” feature in PubMed, and use of the “cited by” tool in Web of Science and Google scholar. Two reviewers independently screened the results of the searches, and included studies according to the inclusion criteria using EndNote (RRID:SCR_014001), using the methodology described by Bramer et al. (1)

1.2. Supplementary information on methods

Study selection

Studies were included if they examined preterm (GA <34 weeks) and/or very low birth weight (<1500g) infants and reported data that could be used to measure the association between exposure to chorioamnionitis, hypertensive disorders of pregnancy (HDP) or small for gestational age (SGA)/intrauterine growth restriction (IUGR) and mortality before hospital discharge. Therefore, we selected observational studies in which the exposure (chorioamnionitis, HDP or SGA/IUGR) was the independent variable and the outcome (mortality before hospital discharge) the dependent variable as well as studies in which the outcome was the independent variable and the exposure the dependent variable. Studies that exclusively included late preterm infants (GA ≥34 weeks) or that combined preterm and term infants were excluded. Due to the high number of included studies, no

additional efforts were made to clarify definitions or other data with the authors. Abstracts and unpublished studies were also excluded. To identify relevant studies, two reviewers (TH, EV-M) independently screened the results of the searches and applied inclusion criteria using a structured form. Discrepancies were resolved through discussion or consultation with a third reviewer (EV).

Data extraction and quality assessment

Data extracted from each study included citation information, language of publication, country of conducted research, time period of the study, study objectives, study design, inclusion/exclusion criteria, definition criteria for chorioamnionitis, HDP, IUGR, SGA and mortality, patient characteristics, and results (including raw numbers or summary statistics when raw numbers were not available). A study was categorized as a case-control when each case was matched with a control in a predetermined ratio (1:1, 1:2, 1:3, etc.). A study was considered a cohort study when it included, prospectively or retrospectively, a group of infants during a given period, regardless of the number of infants included. Therefore, small cohorts were also included.

Any definition of chorioamnionitis, HDP, IUGR, or SGA was accepted but we performed sub-group analysis based on the different definitions. When a study used more than one definition criteria for growth restriction, definitions based on assessment of fetal growth (i.e., IUGR) prevailed over definitions based on BW. When a study used different BW threshold percentiles to define SGA, data from the lowest percentile were included. When a study did not specify the threshold percentile used, it was grouped together with the studies that used the 10th percentile.

Methodological quality was assessed using the Newcastle-Ottawa Scale for cohort or case-control studies.(2) This scale uses a star rating system (range: 0–9 stars) scoring three aspects of the study: selection (0–4), comparability (0–2) and exposure/outcome (0–3). Two reviewers (TH, EV-M) independently assessed the methodological quality of each study. Discrepancies were resolved through discussion.

Statistical analysis

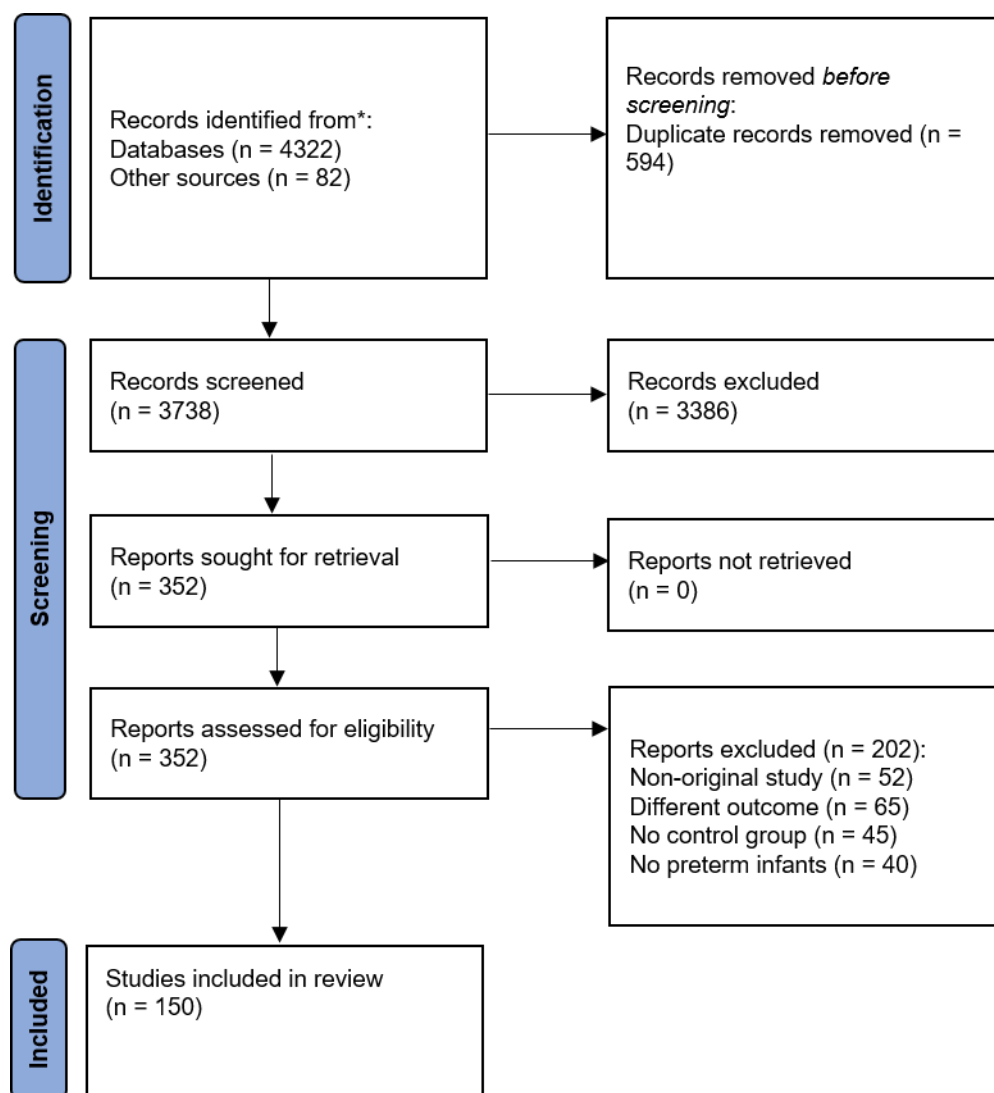
Studies were combined and analyzed using COMPREHENSIVE META-ANALYSIS V3.0 software (Biostat Inc., Englewood, NJ, USA). For dichotomous outcomes, the odds ratio (OR) with 95% confidence interval (CI) was calculated from the data provided in the studies. Reported ORs were included when studies reported them and did not include the numerical data for the calculation of the OR. For continuous outcomes, the mean difference with 95% CI was calculated. When studies reported continuous variables as median and range or interquartile range, we estimated the mean and standard deviation using the method of Wan et al. and the calculator they provided. (3)

Due to anticipated heterogeneity, summary statistics were calculated with a random-effects model. This model accounts for variability between studies as well as within studies. Subgroup analyses were conducted according to the mixed-effects model.(4) In this model, a random-effects model is used to combine studies within each subgroup, and a fixed-effect model is used to combine subgroups and yield the overall effect. The study-to-study variance (τ -squared) is not assumed to be the same for all subgroups. This value is computed within subgroups and not pooled across subgroups. Statistical heterogeneity was assessed by Cochran's Q statistic and by the I^2 statistic, which is derived from Q and describes the proportion of total variation that is due to heterogeneity beyond chance.(5) The I^2 statistic was interpreted as follows: low heterogeneity ($25\% \leq I^2 < 50\%$), moderate heterogeneity ($50\% \leq I^2 < 75\%$), and high heterogeneity ($I^2 \geq 75\%$). We used the Egger's regression test and funnel plots to assess publication bias. A probability value of less than 0.05 (0.10 for heterogeneity) was considered statistically significant.

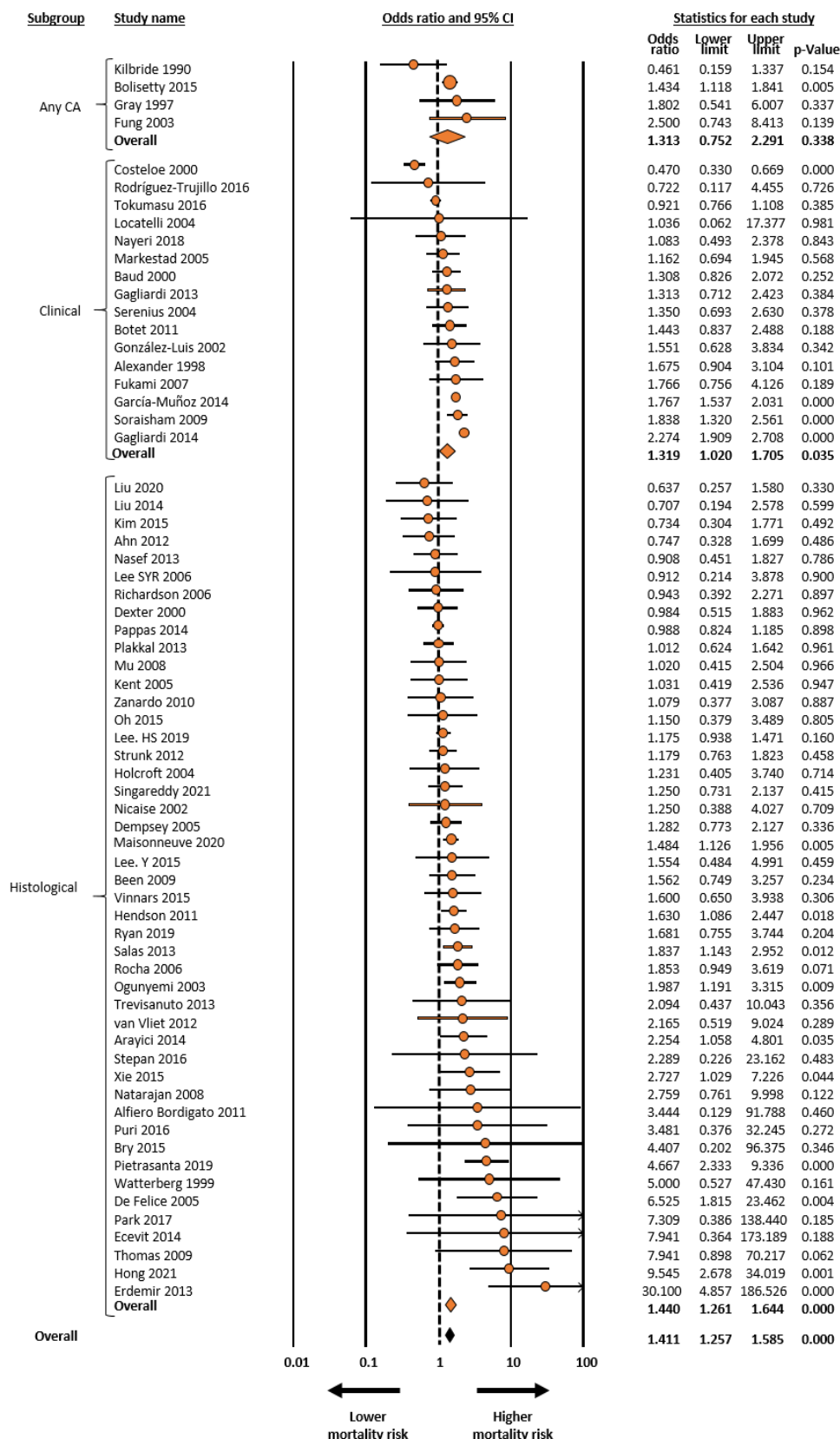
Potential sources of heterogeneity were assessed through subgroup analysis and/or random effects (method of moments) univariate meta-regression analysis.⁵ For continuous covariates (examples: difference in mean gestational age between infants exposed and unexposed to chorioamnionitis) we used meta-regression analyses to test whether there was a significant relationship between the covariate and effect size, as indicated by a Z -value and an associated p -value. Meta-regression coefficient indicates the change in the log of the OR of the association between mortality and the corresponding exposure for a unit change in the predictor covariate. Subgroups were compared using meta-regression for categorical covariates. For both categorical and continuous covariates, the R^2 analog, defined as the total between-study variance explained by the moderator, was calculated based on the meta-regression matrix.(6) Covariates defined a priori were: 1) Continuous: study time (median year of cohort inclusion), differences between exposed and unexposed infants on GA; 2) Categorical: chorioamnionitis type, HDP type, SGA/IUGR type, mean difference of GA between exposed and unexposed

infants statistically significant ($P < 0.05$, yes/no), geographical location (continent) of the study, prospective vs retrospective and cohort vs case-control study. The clinical covariates were selected based on their relevance on the outcome of mortality.

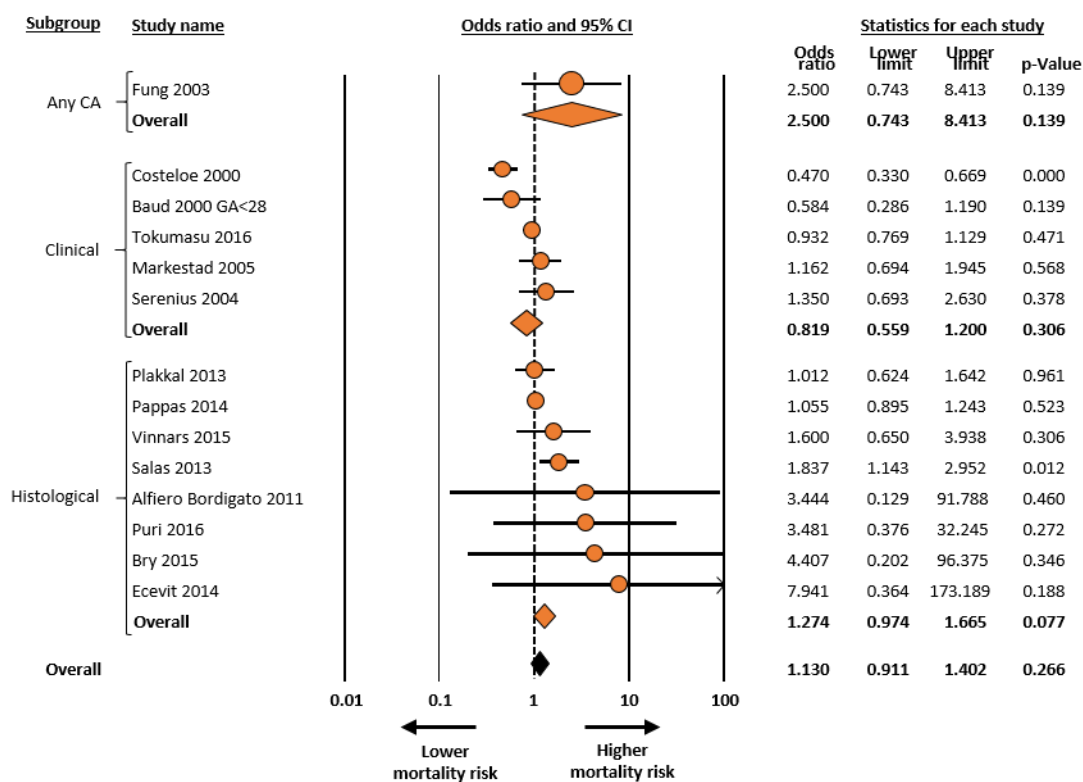
2. Results



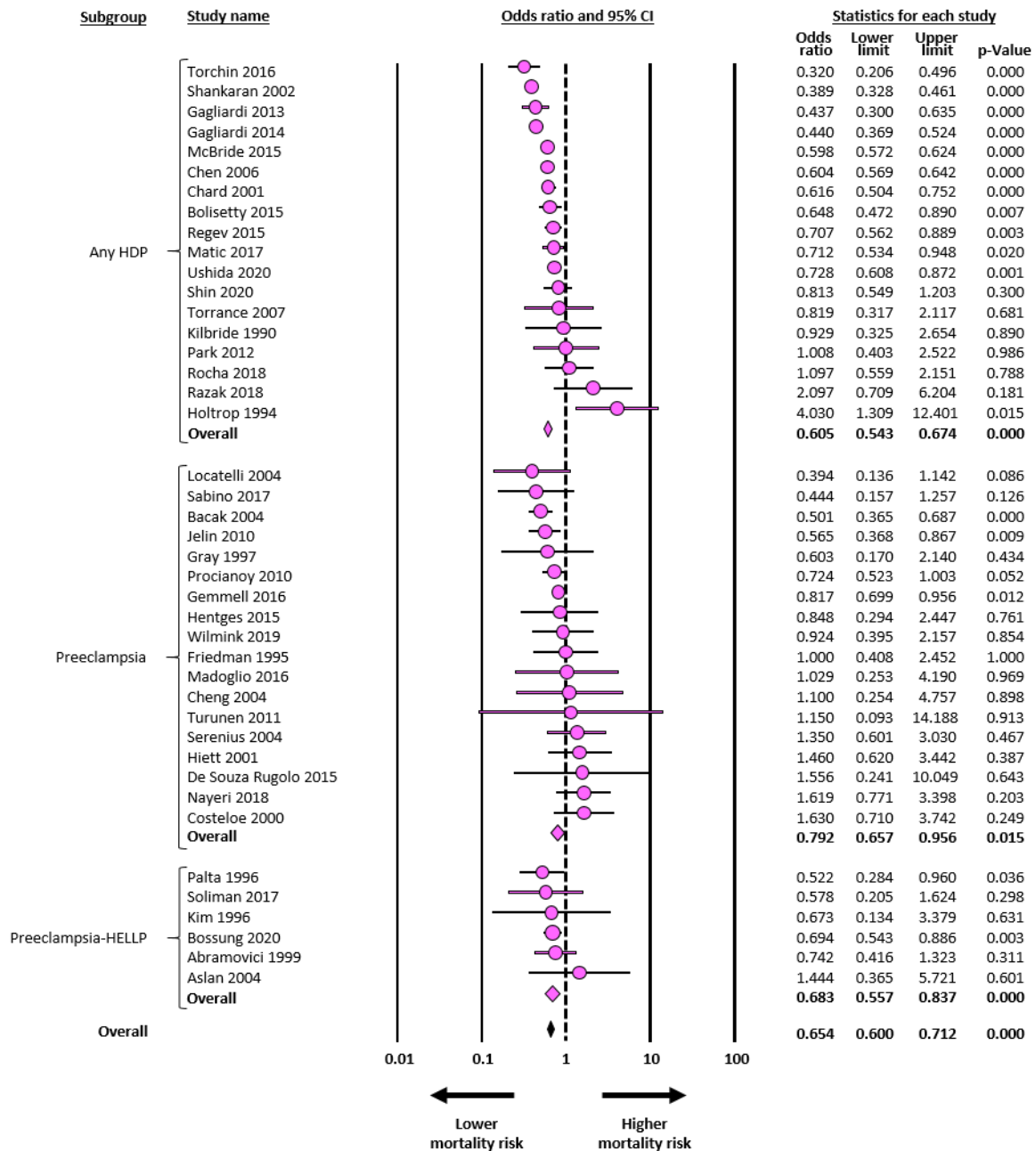
eFigure 1. PRISMA Diagram of the Systematic Search.



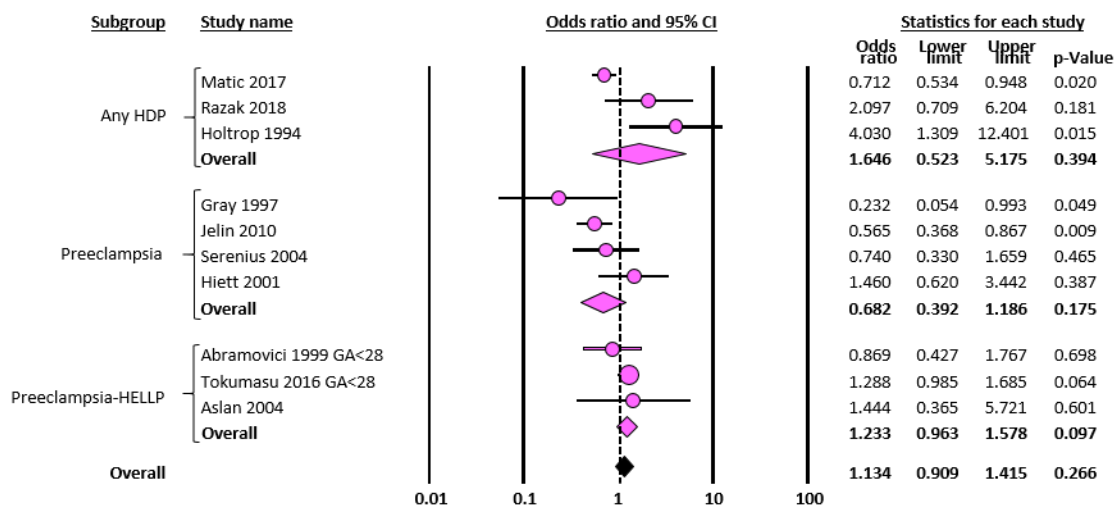
eFigure 2. Meta-analysis on association between chorioamnionitis and mortality in infants with gestational age up to 34 weeks. CA: chorioamnionitis, CI: confidence interval.



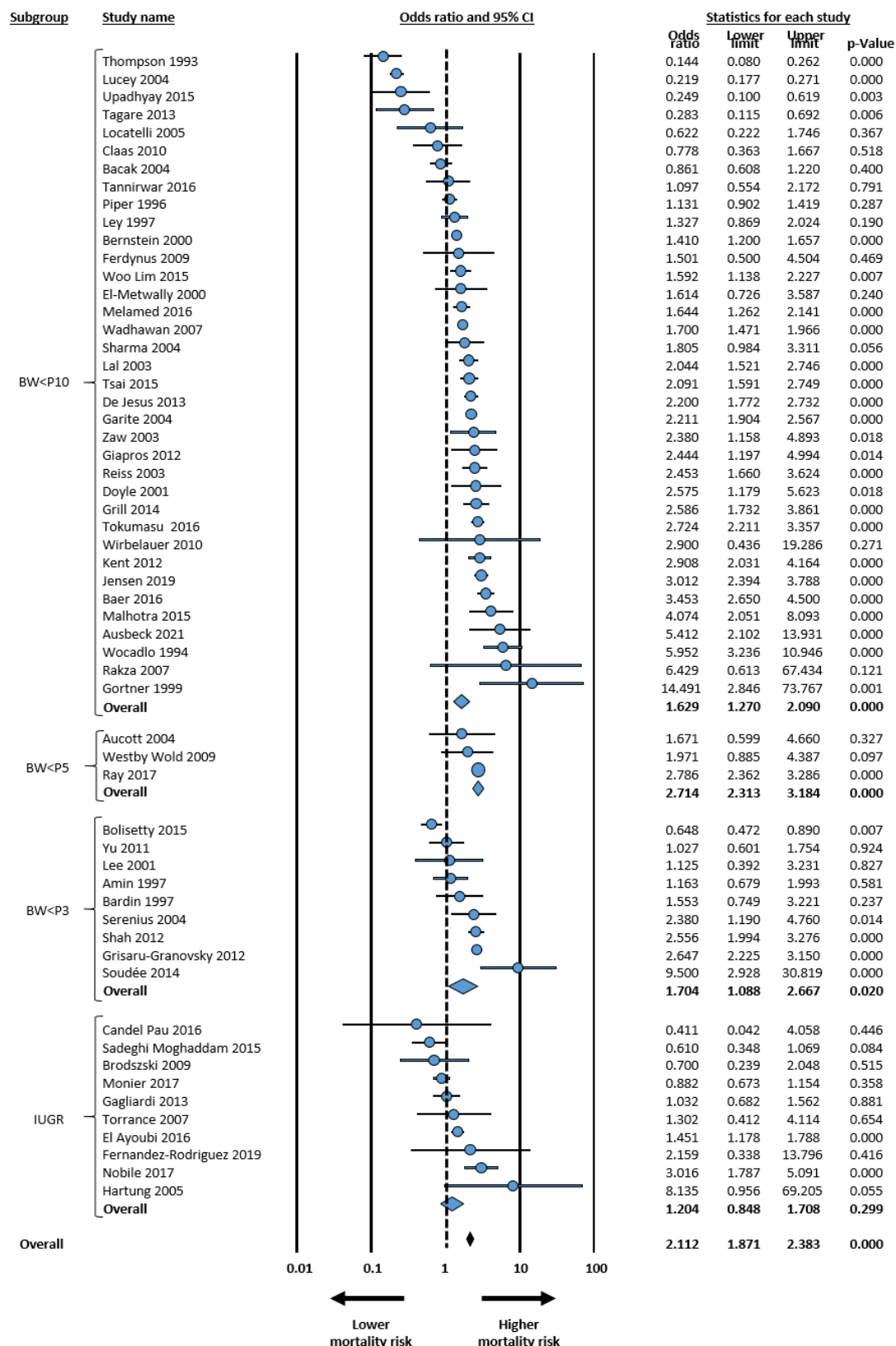
eFigure 3. Meta-analysis on association between chorioamnionitis and mortality in infants with gestational age up to 28 weeks. CA: chorioamnionitis, CI: confidence interval



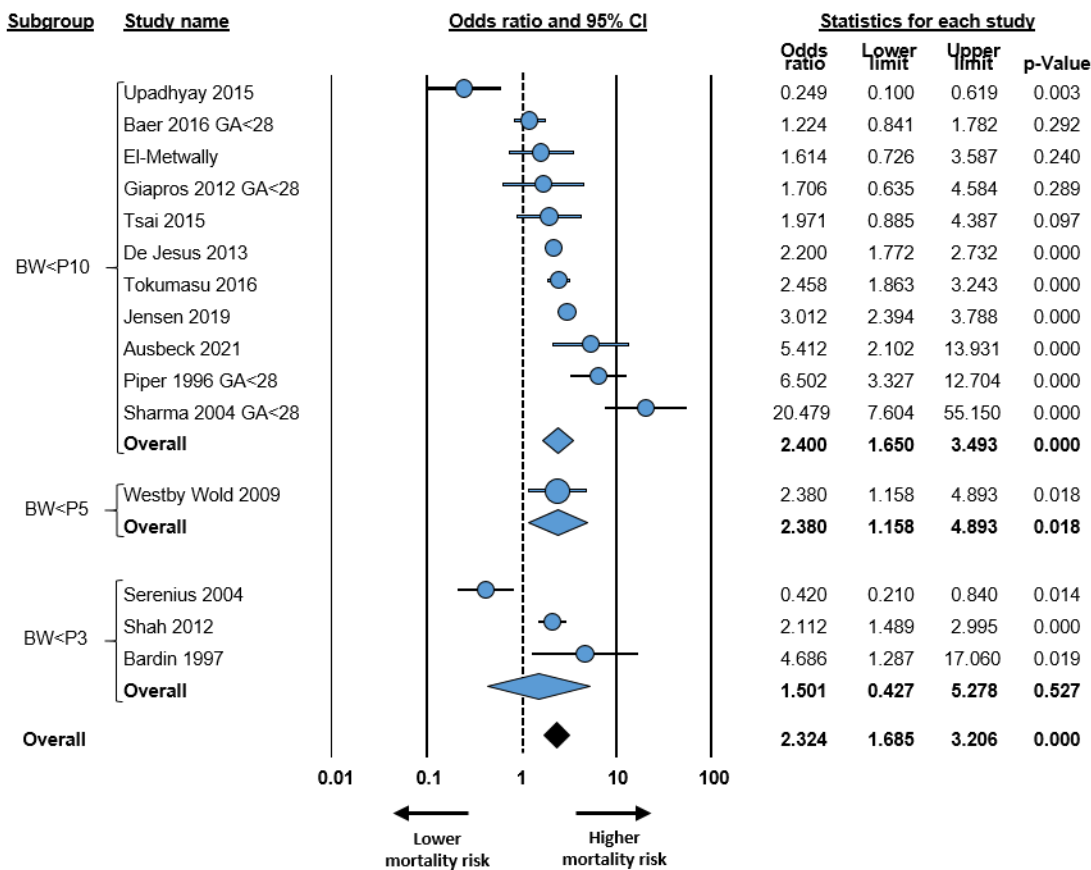
eFigure 4. Meta-analysis on association between hypertensive disorders of pregnancy and mortality in infants with gestational age up to 34 weeks. HDP: hypertensive disorders of pregnancy, HELLP: syndrome in pregnancy characterized by hemolysis, elevated liver enzymes and low platelet count, CI: confidence interval.



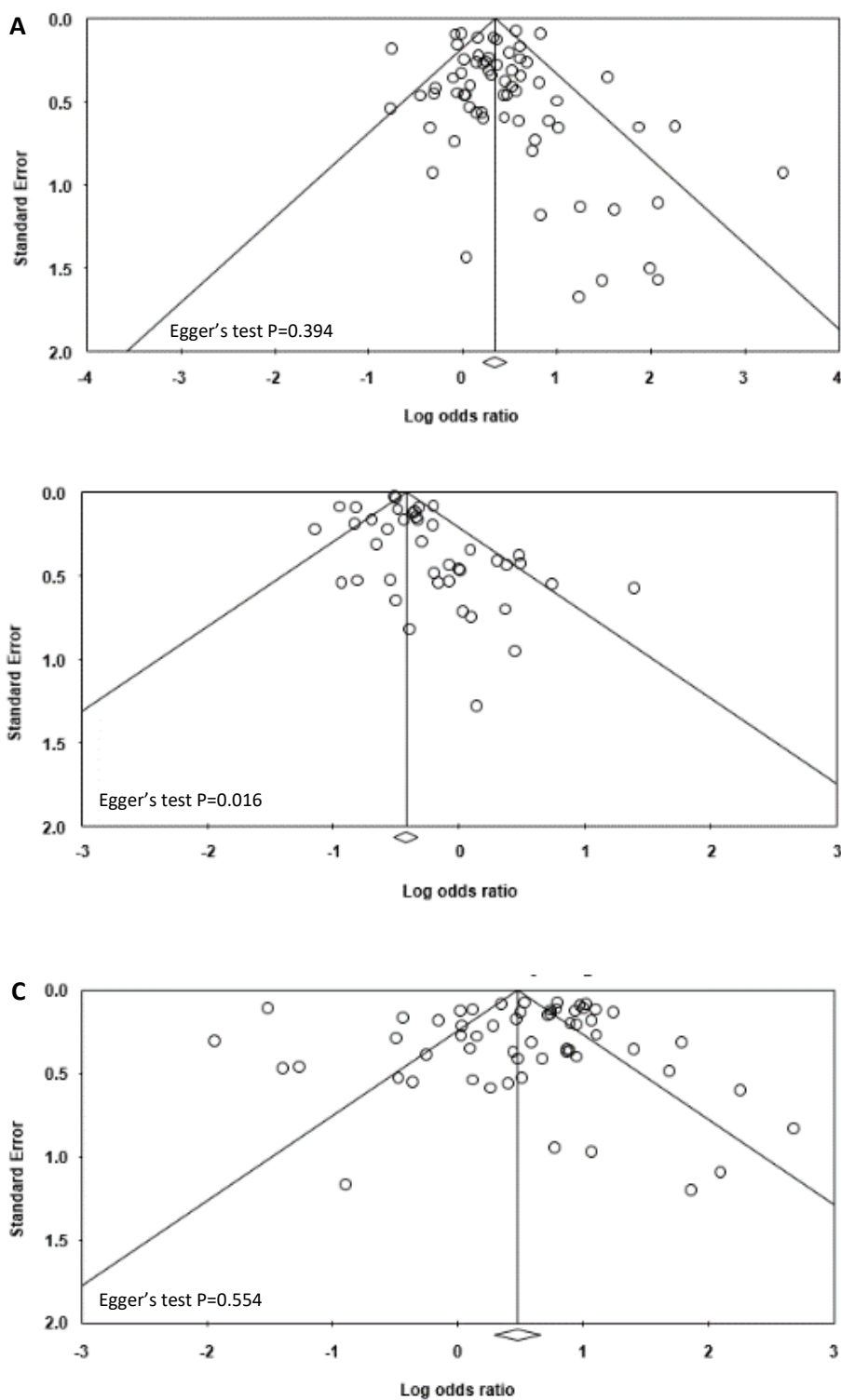
eFigure 5 Meta-analysis on association between hypertensive disorders of pregnancy and mortality in infants with gestational age up to 28 weeks HDP: hypertensive disorders of pregnancy, HELLP: syndrome in pregnancy characterized by hemolysis, elevated liver enzymes and low platelet count, CI: confidence interval.



eFigure 6. Meta-analysis on association between small for gestational age/intrauterine growth restriction and mortality in infants with gestational age up to 34 weeks. BW: birth weight, P10: 10th percentile, P5: 5th percentile, P3: 3rd percentile; IUGR: intrauterine growth restriction defined on the basis of fetal growth assessment, CI: confidence interval.



eFigure 7. Meta-analysis on association between small for gestational age/intrauterine growth restriction and mortality in infants with gestational age up to 28 weeks. BW: birth weight, P10: 10th percentile, P5: 5th percentile, P3: 3rd percentile, CI: confidence interval.



eFigure 8. Funnel plot for publication bias analysis for the studies included in meta-analysis

- A. Meta-analysis of chorioamnionitis and mortality
- B. Meta-analysis of hypertensive disorders of pregnancy (HDP) and mortality
- C. Meta-analysis of small for gestational age (SGA)/intrauterine growth restriction (IUGR) and mortality

Table 1. Characteristics of the included studies and Newcastle-Ottawa Scale

First author, year	Country	Design	Prospective?	Total infants	Centers	Mean GA cohort (weeks)	Independent variable	Exposure category	Selection	Comparability	Exposure	NOS Total
Abramovici, 1999(7)	USA	cohort	no	1279	1	N	HDP	HDP: HELLP	4	0	3	7
Ahn, 2012(8)	South Korea	cohort	yes	257	1	30.6	CA	CA: Histologic	4	1	3	8
Alexander, 1998(9)	USA	cohort	yes	1367	1	28.9	CA	CA: Clinical	4	2	3	9
Alfiero Bordigato, 2011(10)	Italy	cohort	yes	29	1	26.7	CA	CA: Histologic	4	1	3	8
Amin, 1997(11)	Canada	ca-co	no	503	1	28.3	SGA	SGA: BW<P3	4	0	3	7
Arayici, 2014(12)	Turkey	cohort	no	281	1	28.9	CA	CA: Histologic	4	1	3	8
Aslan, 2004(13)	Turkey	cohort	no	110	1	32.3	HDP	HDP: HELLP	4	1	3	8
Aucott, 2004(14)	USA	ca-co	no	113	1	28.9	SGA	SGA: BW<P5	4	2	3	9
Ausbeck, 2021(15)	International	cohort	no	180	9	25.8	SGA	SGA: BW<P10	4	2	3	9
Bacak, 2004(16)	USA	ca-co	no	1742	Network	25.4	Mortality	HDP: PE SGA: BW<P10	4	2	3	9
Baer, 2016(17)	USA	cohort	no	8640	Network	33.6	SGA	SGA: BW<P10	4	1	3	8
Bardin, 1997 (18)	Canada	cohort	yes	184	1	25.4	SGA	SGA: BW<P3	4	1	3	8
Baud, 2000(19)	France	cohort	yes	685	1	29.8	CA	CA: Clinical	4	1	3	8
Been, 2009(20)	Netherlands	cohort	yes	301	1	30.7	CA	CA: Histologic	4	2	3	9
Bernstein, 2000(21)	USA	cohort	no	19759	212	N	SGA	SGA: BW<P10	4	2	3	9

First author, year	Country	Design	Prospective?	Total infants	Centers	Mean GA cohort (weeks)	Independent variable	Exposure category	Selection	Comparability	Exposure	NOS Total
Bolisetty, 2015(22)	Australia	cohort	yes	4454	10	28.6	Mortality	CA: Any CA HDP: Any HDP SGA: BW<P3	4	0	3	7
Bossung, 2020(23)	Germany	cohort	no	16035	62	28.2	HDP	HDP: HELLP	4	2	3	9
Botet, 2011(24)	Spain	ca-co	yes	328	1	28.3	CA	CA: Clinical	4	1	3	8
Brodzski, 2009(25)	Sweden	Ca-co	no	417	1	27.1	SGA	SGA: IUGR	4	1	3	8
Bry, 2015(26)	Sweden	cohort	yes	24	1	25.9	CA	CA: Histologic	4	0	3	7
Candel Pau, 2016(27)	Spain	cohort	yes	129	1	29.6	SGA	SGA: BW<P3	4	0	3	7
Chard, 2001(28)	UK	cohort	no	6946	Network	28.7	HDP	HDP: Any HDP	4	0	3	7
Chen, 2006(29)	USA	cohort	no	237000	Network	28.7	HDP	HDP: Any HDP	4	2	3	9
Cheng, 2004(30)	Taiwan	ca-co	no	89	1	29.0	HDP	HDP: PE	4	2	3	9
Claas, 2010(31)	The Netherlands	cohort	no	146	1	30.0	SGA	SGA: BW<P10	4	0	3	7
Costeloe, 2000(32)	UK and Ireland	cohort	yes	811	276	24.1	Mortality	CA: Clinical HDP: PE	4	2	3	9
De Felice, 2005(33)	Italy	ca-co	yes	116	1	28.1	CA	CA; Histologic	4	2	3	9
De Jesus, 2013(34)	USA	cohort	no	2971	17	25.0	SGA	SGA: BW<P10	4	2	3	9
De Souza Rugolo, 2015(35)	Brazil	ca-co	yes	60	1	N	HDP	HDP: PE	4	0	3	7
Dempsey, 2005(36)	Canada	cohort	yes	330	1	27.0	CA	CA: Histologic	4	1	3	8
Dexter, 2000(37)	USA	cohort	yes	287	1	26.4	CA	CA: Histologic	4	2	2	8
Doyle, 2001(38)	Australia	cohort	no	335	6	25.3	Mortality	SGA: BW<P10	4	2	3	9

First author, year	Country	Design	Prospective?	Total infants	Centers	Mean GA cohort (weeks)	Independent variable	Exposure category	Selection	Comparability	Exposure	NOS Total
Ecevit, 2014(39)	Turkey	cohort	no	19	1	25.5	CA	CA: Histologic	4	2	3	9
El Ayoubi, 2016(40)	International (Europe)	cohort	yes	4585	10	28.6	SGA	SGA: IUGR	4	2	3	9
El-Metwally, 2000(41)	USA	cohort	no	211	1	23.7	Mortality	SGA: BW<P10	4	2	3	9
Erdemir, 2013(42)	Turkey	cohort	yes	57	1	30.8	Mortality	CA: Histologic	4	2	3	9
Ferdynus, 2009(43)	France	cohort	yes	572	18	30.5	SGA	SGA: BW<P10	4	2	3	9
Fernandez-Rodriguez, 2021(44)	Spain	cohort	no	94	1	31.4	SGA	SGA: BW<P10	4	2	3	9
Friedman, 1995(45)	USA	cohort	no	446	1	31.9	HDP	HDP: PE	4	2	3	9
Fukami, 2007(46)	Japan	cohort	yes	121	1	26.0	Mortality	CA: Clinical	4	2	3	9
Fung, 2003(47)	Hong Kong	cohort	no	72	1	26.2	CA	CA: Any CA	4	0	3	7
Gagliardi, 2013(48)	Italy	cohort	no	2085	51	27.3	CA HDP SGA	CA: Clinical HDP: Any HDP SGA: IUGR	4	2	3	9
Gagliardi, 2014(49)	Italy	cohort	yes	3606	82	28.2	CA HDP	CA: Clinical HDP: Any HDP	4	2	3	9
García-Muñoz, 2014 (50)	Spain	cohort	no	8330	1	28.5	CA	CA: Clinical	4	2	3	9
Garite, 2004(51)	USA	cohort	no	25734	124	31.0	SGA	SGA: BW<P10	4	2	3	9
Gemmell, 2016(52)	International	cohort	no	12477	6 networks	N	HDP	HDP: PE	4	2	3	9
Giapros, 2012(53)	Greece	cohort	no	210	1	28.5	SGA	SGA: BW<P10	4	2	3	9
González-Luis, 2002(54)	Spain	ca-co	yes	135	1	28.9	CA	CA: Clinical	4	0	3	7
Gortner, 1999(55)	Germany	cohort	yes	317	6	29.6	SGA	SGA: BW<P10	4	0	3	7

First author, year	Country	Design	Prospective?	Total infants	Centers	Mean GA cohort (weeks)	Independent variable	Exposure category	Selection	Comparability	Exposure	NOS Total
Gray, 1997(56)	Australia	cohort	yes	190	1	27.0	CA HDP	CA: Any CA HDP: PE	4	0	3	7
Grill, 2014(57)	Austria	cohort	no	1117	1	26.7	Mortality	SGA: BW<P10	4	0	3	7
Grisaru-Granovsky, 2012(58)	Israel	cohort	yes	9756	28	28.2	SGA	SGA: BW<P3	4	2	3	9
Hartung, 2005(59)	Germany	ca-co	no	88	1	N	SGA	SGA: IUGR	4	2	3	9
Hendson, 2011(60)	Canada	cohort	yes	628	1	26.9	CA	CA: Histologic	4	1	3	8
Hentges, 2015(61)	Brazil	cohort	yes	88	1	30.0	HDP	HDP: PE	4	2	3	9
Hiett, 2001(62)	USA	ca-co	no	116	2	27.1	HDP	HDP: PE	4	2	3	9
Holcroft, 2004(63)	USA	cohort	no	354	1	30.1	CA	CA: Histologic	4	2	3	9
Holtrop, 1994(64)	USA	cohort	no	82	1	24.0	Mortality	HDP: Any HDP	4	2	3	9
Hong, 2021(65)	South Korea	cohort	no	474	1	32.8	CA	CA: Histologic	4	2	3	9
Jelin, 2010(66)	USA	cohort	no	1709	1	N	HDP	HDP: PE	4	2	2	8
Jensen, 2019(67)	USA	cohort	no	6708	Network	28.7	SGA	SGA: BW<P10	4	1	3	8
Kent, 2005(68)	Australia	cohort	yes	220	1	27.7	CA	CA: Histologic	4	2	3	9
Kent, 2012(69)	Australia	cohort	no	2701	10	26.3	Mortality	SGA: BW<P10	4	2	3	9
Kilbride, 1990(70)	USA	cohort	yes	124	1	25.5	Mortality	CA: Any CA HDP: Any HDP	4	2	3	9
Kim, 1996(71)	USA	cohort	no	106	1	28.0	HDP	HDP: HELLP	4	1	3	8
Kim, 2015(72)	South Korea	cohort	no	258	1	29.0	Mortality	CA: Histologic	4	2	3	9

First author, year	Country	Design	Prospective?	Total infants	Centers	Mean GA cohort (weeks)	Independent variable	Exposure category	Selection	Comparability	Exposure	NOS Total
Lal, 2003(73)	UK	cohort	no	2834	16	28.7	SGA	SGA: BW<P10	4	2	3	9
Lee, 2001(74)	USA	cohort	no	110	1	30.0	SGA	SGA: BW<P3	4	2	3	9
Lee, 2006(75)	Hong Kong	cohort	no	105	1	28.7	CA	CA: Histologic	4	2	3	9
Lee, 2015(76)	South Korea	cohort	no	339	1	31.8	CA	CA: Histologic	4	2	3	9
Lee, 2019(77)	South Korea	cohort	yes	2900	60	28.4	CA	CA: Histologic	4	2	3	9
Ley, 1997(78)	Sweden	cohort	yes	830	1	N	SGA	SGA: BW<P10	4	2	3	9
Liu, 2014(79)	China	cohort	yes	216	1	29.7	CA	CA: Histologic	4	2	3	9
Liu, 2021(80)	Taiwan	cohort	no	129	1	27.1	CA	CA: Histologic	4	2	3	9
Locatelli, 2005(81)	Italy	cohort	no	59	1	26.4	Mortality	CA: Clinical HDP: PE SGA: BW<P10	4	2	3	9
Lucey, 2004(82)	International	cohort	yes	1943	346	23.3	Mortality	SGA: BW<P10	4	2	3	9
Madoglio, 2016(83)	Brazil	cohort	yes	73	1	28.7	HDP	HDP: PE	4	2	3	9
Maisonneuve, 2020(84)	France	Cohort	yes	1470	447	27.7	CA	CA: Histologic	4	2	3	9
Malhotra, 2015(85)	Australia	cohort	yes	459	1	28.2	SGA	SGA: BW<P10	4	2	3	9
Markestad, 2005(86)	Norway	cohort	yes	459	14	27.2	Mortality	CA: Clinical	4	2	3	9
Matić, 2017(87)	Australia	cohort	no	2549	10	26.1	HDP	HDP: Any HDP	4	2	3	9
McBride, 2015(88)	USA	cohort	no	88275	667	28.5	HDP	HDP: Any HDP	4	2	3	9
Melamed, 2016(89)	Canada	cohort	no	6567	24	29.7	SGA	SGA: BW<P10	4	2	3	9

First author, year	Country	Design	Prospective?	Total infants	Centers	Mean GA cohort (weeks)	Independent variable	Exposure category	Selection	Comparability	Exposure	NOS Total
Monier, 2017(90)	France	cohort	no	2919	447	27.7	SGA	SGA: IUGR	4	2	3	9
Mu, 2008(91)	Taiwan	cohort	yes	119	1	28.6	CA	CA: Histologic	4	2	2	8
Nasef, 2013(92)	Turkey	cohort	no	274	1	27.1	CA	CA: Histologic	4	1	3	8
Natarajan, 2008(93)	USA	cohort	yes	48	1	27.3	CA	CA: Histologic	4	1	3	8
Nayeri, 2018(94)	USA	cohort	yes	378	1	29.2	CA HDP	CA: Clinical HDP: PE	4	2	3	9
Nicaise, 2002(95)	France	cohort	yes	118	1	29.8	CA	CA: Histologic	4	2	3	9
Nobile, 2017(96)	Italy	cohort	no	515	1	28.8	SGA	SGA: BW<P10	4	2	3	9
Ogunyemi, 2003(97)	USA	cohort	no	774	1	29.4	CA	CA: Histologic	4	1	3	8
Oh, 2015(98)	South Korea	cohort	no	91	1	27.1	CA	CA: Histologic	4	1	3	8
Palta, 1996(99)	USA	cohort	no	749	7	29.2	HDP	HDP: HELLP	4	2	3	9
Pappas, 2014(100)	USA	cohort	no	2390	16	24.3	CA	CA: Histologic	4	1	3	8
Park, 2012(101)	South Korea	cohort	no	191	1	29.2	HDP	HDP: Any HDP	4	2	3	9
Park, 2017(102)	South Korea	cohort	no	138	1	31.0	CA	CA: Histologic	4	2	3	9
Pietrasanta, 2019(103)	Italy	cohort	yes	807	1	31.8	CA	CA: Histologic	4	2	3	9
Piper, 1996(104)	USA	cohort	no	4183	1	30.7	SGA	SGA: BW<P10	4	2	3	9
Plakkal, 2013(105)	Canada	cohort	no	449	1	26.0	CA	CA: Histologic	4	2	3	9
Procianoy, 2010(106)	Brazil	cohort	yes	911	6	30.2	HDP	HDP: PE	4	2	3	9
Puri, 2016(107)	USA	cohort	no	106	3	27.1	CA	CA: Histologic	4	2	3	9

First author, year	Country	Design	Prospective?	Total infants	Centers	Mean GA cohort (weeks)	Independent variable	Exposure category	Selection	Comparability	Exposure	NOS Total
Rakza, 2007(108)	France	cohort	yes	48	1	28.0	SGA	SGA: BW<P10	4	0	3	7
Ray, 2017(109)	Canada	cohort	yes	13426	1	28.8	SGA	SGA: BW<P5	4	1	3	8
Razak, 2020(110)	Canada	ca-co	no	237	1	29.2	HDP	HDP: Any HDP	4	2	3	9
Regev, 2015(111)	Israel	cohort	yes	2139	28	29.9	HDP	HDP: Any HDP	4	2	3	9
Reiss, 2003(112)	Germany	cohort	no	1365	1	30.0	SGA	SGA: BW<P10	4	0	3	7
Richardson, 2006(113)	Canada	cohort	yes	660	1	30.1	CA	CA: Histologic	4	1	3	8
Rocha, 2006(114)	Portugal	cohort	no	452	3	30.7	CA	CA: Histologic	4	1	3	8
Rocha, 2018(115)	Portugal	cohort	yes	494	11	27.2	HDP	HDP: Any HDP	4	1	3	8
Rodríguez-Trujillo, 2016(116)	Spain	cohort	yes	165	1	31.2	CA	CA: Clinical	4	2	3	9
Ryan, 2019(117)	Ireland	cohort	no	499	1	27.3	CA	CA: Histological	4	1	3	8
Sabino, 2017(118)	Italy	ca-co	no	93	1	30.2	HDP	HDP: PE	4	0	3	7
Sadeghi Moghaddam, 2015(119)	Iran	cohort	no	437	1	NA	Mortality	SGA: IUGR	4	0	3	7
Salas, 2013(120)	USA	cohort	no	343	1	25.9	CA	CA: Histologic	4	2	3	9
Serenius, 2004(121)	Sweden	cohort	no	224	2	24.2	Mortality	CA: Clinical HDP: PE SGA: BW<P3	4	2	3	9
Shah, 2012(122)	Canada	cohort	no	17148	24	29.6	SGA	SGA: BW<P3	4	0	3	7
Shankaran, 2002(123)	USA	cohort	yes	5986	12	25.0	Mortality	HDP: Any HDP	4	2	3	9
Sharma, 2004(124)	USA	cohort	no	1927	1	NA	SGA	SGA: BW<P10	4	1	3	8
Shin, 2020(125)	Korea	cohort	yes	2174	60	27.1	HDP	HDP: Any HDP	4	2	3	9

First author, year	Country	Design	Prospective?	Total infants	Centers	Mean GA cohort (weeks)	Independent variable	Exposure category	Selection	Comparability	Exposure	NOS Total
Singareddy, 2021(126)	USA	cohort	no	712	2	29.5	Mortality	CA: Histologic	4	0	3	7
Soliman, 2017(127)	Canada	cohort	yes	303	1	29.0	HDP	HDP: HELLP	4	2	3	9
Soraisham, 2009(128)	Canada	cohort	yes	3094	24	28.9	CA	CA: Clinical	4	2	3	9
Soudée, 2014(129)	France	cohort	no	148	1	28.3	SGA	SGA: BW<P3	4	2	3	9
Stepan, 2015(130)	Czech Republic	cohort	Yes	71	1	30.4	CA	CA: Histologic	4	1	3	8
Strunk, 2012(131)	Australia	cohort	no	838	1	26.9	CA	CA: Histologic	4	2	3	9
Tagere, 2013(132)	India	cohort	yes	87	1	28.5	Mortality	SGA: BW<P10	4	0	3	7
Tannirwar, 2016(133)	India	cohort	no	496	1	31.5	SGA	SGA: BW<P10	4	0	3	7
Thomas, 2009(134)	Poland	cohort	yes	42	1	27.3	CA	CA: Histologic	4	0	3	7
Thompson, 1993(135)	South Africa	cohort	yes	235	1	30.4	Mortality	SGA: BW<P10	4	2	3	9
Tokumasu, 2016(136)	Japan	cohort	no	4496	131	26.0	CA HDP SGA	CA: Clinical HDP: HELLP SGA: BW<P10	4	0	3	7
Torchin, 2016(137)	France	cohort	no	2262	447	29.7	HDP SGA	HDP: Any HDP	4	2	3	9
Torrance, 2007(138)	South Africa	cohort	no	187	1	30.4	SGA	SGA: BW<P10	4	2	3	9
Trevisanuto, 2013(139)	Italy	ca-co	yes	98	1	27.8	CA	CA: Histologic	4	2	3	9
Tsai, 2015(140)	Taiwan	ca-co	yes	1680	21	26.0	SGA	SGA: BW<P10	4	2	3	9
Turunen, 2011(141)	Finland	cohort	yes	36	1	26.6	HDP	HDP: PE	4	2	3	9
Upadhyay, 2015(142)	USA	cohort	no	212	1	24.0	Mortality	SGA: BW<P10	4	0	3	7

First author, year	Country	Design	Prospective?	Total infants	Centers	Mean GA cohort (weeks)	Independent variable	Exposure category	Selection	Comparability	Exposure	NOS Total
Ushida, 2020(143)	Japan	cohort	yes	21005	200	28.2	HDP	HDP: Any HDP	4	1	3	8
Van Vliet, 2012(144)	Netherlands	cohort	yes	72	1	29.0	CA	CA: Histologic	4	2	3	9
Vinnars, 2015(145)	Sweden	cohort	yes	167	7	24.5	CA	CA: Histologic	4	2	3	9
Wadhawan, 2007(146)	USA	cohort	no	9461	19	26.1	SGA	SGA: BW<P10	4	2	3	9
Watterberg, 1999(147)	USA	cohort	yes	40	1	25.4	CA	CA: Histologic	4	1	3	8
Westby Wold, 2009(148)	Norway	cohort	no	365	15	30.2	SGA	SGA: BW<P5	4	1	3	8
Wilmink, 2019(149)	Netherlands	cohort	no	273	1	29.3	HDP	HDP: PE	4	2	3	9
Wirbelauer, 2010(150)	Germany	cohort	no	49	1	28.5	SGA	SGA: BW<P10	4	0	3	7
Wocadlo, 1994(151)	Australia	cohort	no	438	1	N	Mortality	SGA: BW<P10	4	2	3	9
Woo Lim, 2015(152)	South Korea	cohort	no	1649	60	N	Mortality	SGA: BW<P10	4	2	3	9
Xie, 2015(153)	China	cohort	no	371	1	31.1	CA	CA: Histologic	4	2	3	9
Yu, 2011(154)	Korea	cohort	yes	415	1	28.9	SGA	SGA: BW<P3	4	2	3	9
Zanardo, 2010(155)	Italy	cohort	no	287	1	N	CA	CA: Histologic	4	2	3	9
Zaw, 2003(156)	Canada	cohort	no	999	1	24.8	SGA	SGA: BW<P10	4	2	3	9

GA: gestational age; USA: United States of America; HDP: gestational hypertensive disorders, PE: preeclampsia; HELLP: syndrome in pregnancy characterized by hemolysis, elevated liver enzymes and low platelet count; CA: chorioamnionitis; Ca-co: case-control study; SGA: small for gestational age as defined by birth weight percentile; BW: birth weight; P3: 3rd percentile; P5: 5th percentile P10: 10th percentile; IUGR: intra-uterine growth restriction defined on the basis of fetal growth assessment.

Table 2. Subgroup analysis based on characteristics of the studies.

Analysis	Criteria for subgrouping		K	OR	95% CI		P	Heterogeneity		Meta-regression	
					Lower limit	Upper limit		I ² (%)	P	P	R ² analog
CA	Study type	Case-control	5	2.059	1.181	3.589	0.011	26.5	0.245	0.181	0.00
		Cohort	61	1.394	1.222	1.591	<0.001	67.8	<0.001		
		Prospective	41	1.404	1.187	1.662	<0.001	55.3	<0.001	0.975	0.00
		Retrospective	25	1.450	1.182	1.778	<0.001	76.5	<0.001		
	Maximum GA	GA≤28	13	1.135	0.894	1.441	0.297	70.4	<0.001	0.017	0.33
		GA>28	53	1.522	1.340	1.730	<0.001	47.1	<0.001		
	Year of study start	≤2000	21	1.304	1.011	1.682	0.041	59.5	<0.001	0.300	0.01
>2000		45	1.485	1.278	1.725	<0.001	68.1	<0.001			
HDP	Study type	Case-control	6	1.156	0.703	1.901	0.567	0.00	0.441	0.030	0.06
		Cohort	36	0.644	0.588	0.705	<0.001	69.8	<0.001		
		Prospective	18	0.686	0.553	0.850	0.001	73.6	<0.001	0.700	0.00
		Retrospective	24	0.653	0.591	0.722	<0.001	63.2	<0.001		
	Maximum GA	GA≤28	11	1.106	0.806	1.518	0.532	62.9	0.003	<0.001	0.29
		GA>28	33	0.618	0.565	0.676	<0.001	66.1	<0.001		
	Year of study start	≤2000	20	0.669	0.571	0.784	<0.001	67.6	<0.001	0.606	0.00
>2000		23	0.716	0.617	0.832	<0.001	77.2	<0.001			
SGA/IUGR	Study type	Case-control	5	1.683	1.132	2.500	0.010	37.0	0.175	0.865	0.00
		Cohort	53	1.609	1.324	1.957	<0.001	93.6	<0.001		
		Prospective	19	1.476	0.906	2.404	0.118	96.9	<0.001	0.406	0.00
		Retrospective	39	1.723	1.480	2.006	<0.001	82.9	<0.001		
	Maximum GA	GA≤28	15	2.341	1.813	3.022	<0.001	81.6	<0.001	0.055	0.04
		GA>28	47	1.560	1.242	1.958	<0.001	93.7	<0.001		
	Year of study start	≤2000	32	1.462	1.100	1.942	0.009	94.4	<0.001	0.274	0.01
>2000		26	1.786	1.433	2.226	<0.001	88.8	<0.001			

CA: chorioamnionitis; HDP: hypertensive disorders of pregnancy. SGA: small for gestational age as defined by birth weight percentile; IUGR: intra-uterine growth restriction defined on the basis of fetal growth assessment; GA: gestational age; wks: weeks; K: number of studies; OR: odds ratio; CI: confidence interval; P: p-value; I²: percentage of variation across studies that is due to heterogeneity; R² analog: total between-study variance explained by the moderator.

Table 3. Meta-regression on continuous variables.

Association	Covariate	Covariate unit	K	Coefficient	95% CI		P	R ² analog
					Lower limit	Upper limit		
CA and mortality	MD in GA (exposed minus unexposed)	weeks	54	-0.178	-0.289	-0.068	0.002	0.37
	Median year of cohort	year	61	0.016	-0.003	0.035	0.090	0.12
HDP and mortality	MD in GA (exposed minus unexposed)	weeks	29	-0.249	-0.403	-0.094	0.002	0.17
	Median year of cohort	year	39	0.001	-0.011	0.013	0.884	0.00
SGA/IUGR and mortality	MD in GA (exposed minus unexposed)	weeks	30	-0.282	-0.437	-0.129	<0.001	0.38
	Median year of cohort	year	57	0.016	-0.007	0.038	0.167	0.00

CA: chorioamnionitis; HDP: hypertensive disorders of pregnancy. SGA: small for gestational age as defined by birth weight percentile; IUGR: intra-uterine growth restriction defined on the basis of fetal growth assessment; MD: mean difference; GA: gestational age; wks: weeks; OR: odds ratio; RD: risk difference; ACS: antenatal corticosteroids; K: number of studies; CI: confidence interval; P: p-value; R² analog: total between-study variance explained by the moderator.

Table 4. Subgroup analysis on gestational age.

Analysis	Subgrouping on gestational age (GA)	K	OR	95% CI		P	Heterogeneity		Meta-regression	
				Lower limit	Upper limit		I ² (%)	P	P	R ² analog
CA	GA significantly lower in CA group	41	1.471	1.281	1.689	<0.001	61.7	<0.001	0.432	0.11
	GA not significantly different	9	1.257	0.951	1.662	0.109	0.00	0.897		
HDP	GA significantly higher in HDP group	15	0.611	0.534	0.698	<0.001	62.7	0.001	0.014	0.00
	GA not significantly different	12	0.884	0.690	1.132	0.329	65.7	0.001		
SGA/IUGR	GA significantly higher in SGA/IUGR group	7	1.245	0.950	1.632	0.112	48.8	0.069	0.025	0.00
	GA not significantly different	19	2.383	1.965	2.889	<0.001	65.0	<0.001		

CA: chorioamnionitis; HDP: hypertensive disorders of pregnancy. SGA: small for gestational age as defined by birth weight percentile; IUGR: intra-uterine growth restriction defined on the basis of fetal growth assessment; GA: gestational age; wks: weeks; K: number of studies; OR: odds ratio; CI: confidence interval; P: p-value; I²: percentage of variation across studies that is due to heterogeneity; R² analog: total between-study variance explained by the moderator.

Table 5. Subgroup analysis for continent.

Analysis	Continent	K	OR	95% CI		P	Heterogeneity		Meta-regression	
				Lower limit	Upper limit		I ² (%)	P	P	R ² analog
CA	Asia	14	1.163	0.892	1.515	0.026	47.1	0.012	0.061	0.20
	Oceania	5	1.381	1.126	1.694	0.002	0.00	0.717	0.581	0.00
	Europe	31	1.601	1.294	1.981	<0.001	70.1	<0.001	Ref.	
	North America	16	1.368	1.127	1.660	0.002	47.0	0.020	0.356	0.03
HDP	Asia	4	0.753	0.641	0.884	0.001	0.00	0.820	0.123	0.04
	Oceania	2	0.645	0.474	0.878	0.005	0.00	0.913	0.818	0.00
	Europe	15	0.635	0.516	0.781	<0.001	66.8	<0.001	Ref.	
	America	19	0.633	0.555	0.721	<0.001	69.7	<0.001	0.608	0.00
SGA/IUGR	Asia	9	1.452	1.039	2.029	0.029	87.1	<0.001	0.330	0.00
	Oceania	5	2.204	1.065	4.561	0.033	93.6	<0.001	0.722	0.00
	Europe	23	1.867	1.479	2.357	<0.001	78.2	<0.001	Ref.	
	North America	19	1.473	1.025	2.117	0.036	96.3	<0.001	0.222	0.00

CA: chorioamnionitis; HDP: hypertensive disorders of pregnancy. SGA: small for gestational age as defined by birth weight percentile; IUGR: intra-uterine growth retardation defined on the basis of fetal growth assessment; GA: gestational age; wks: weeks; K: number of studies; OR: odds ratio; CI: confidence interval; P: p-value; I²: percentage of variation across studies that is due to heterogeneity. Ref.: reference; R² analog: total between-study variance explained by the moderator.

Table 6. Meta- analysis on antenatal corticosteroids

Analysis	Exposure to antenatal corticosteroids (ACS)	K	OR	95% CI		P	Heterogeneity	
				Lower limit	Upper limit		I ² (%)	P
CA	Undefined	27	1.282	1.091	1.505	0.005	68.3	<0.001
	Any	8	1.112	0.806	1.535	0.518	75.5	<0.001
	Complete course	7	1.042	0.795	1.366	0.764	45.4	0.089
HDP	Undefined	10	1.677	1.382	2.034	<0.001	69.0	0.001
	Any	10	1.238	0.761	2.017	0.390	98.7	<0.001
	Complete course	5	1.847	1.232	2.770	0.003	69.4	0.011
SGA/IUGR	Undefined	16	1.258	1.101	1.438	0.001	65.3	<0.001
	Any	4	1.148	0.960	1.372	0.131	47.3	0.128
	Complete course	9	1.381	0.993	1.920	0.055	88.5	<0.001

CA: chorioamnionitis; HDP: hypertensive disorders of pregnancy. SGA: small for gestational age as defined by birth weight percentile; IUGR: intra-uterine growth retardation defined on the basis of fetal growth assessment; wks: weeks; K: number of studies; OR: odds ratio; CI: confidence interval; P: p-value; I²: percentage of variation across studies that is due to heterogeneity.

References

1. Bramer WM, Milic J, Mast F. Reviewing retrieved references for inclusion in systematic reviews using EndNote. *J Med Libr Assoc.* 2017;105(1):84-7.
2. Wells GA, Shea B, O'Connell D, Peterson J, Welch V, Losos M, et al. The Newcastle-Ottawa Scale (NOS) for assessing the quality of nonrandomised studies in meta-analyses. 2000.
3. Wan X, Wang W, Liu J, Tong T. Estimating the sample mean and standard deviation from the sample size, median, range and/or interquartile range. *BMC Med Res Methodol.* 2014;14:135.
4. Borenstein M, Hedges LV, Higgins JP, Rothstein HR. Subgroup analyses. *Introduction to Meta-analysis.* 2009:149-86.
5. Borenstein M, Hedges LV, Higgins JP, Rothstein HR. Identifying and quantifying heterogeneity. *Introduction to Meta-analysis.* 2009:107-25.
6. Borenstein M, Hedges LV, Higgins JP, Rothstein HR. Meta-Regression. *Introduction to Meta-Analysis* 2009:187-203.
7. Abramovici D, Friedman SA, Mercer BM, Audibert F, Kao L, Sibai BM. Neonatal outcome in severe preeclampsia at 24 to 36 weeks' gestation: does the HELLP (hemolysis, elevated liver enzymes, and low platelet count) syndrome matter? *Am J Obstet Gynecol.* 1999;180(1):221-5.
8. Ahn HM, Park EA, Cho SJ, Kim Y-J, Park H-S. The association of histological chorioamnionitis and antenatal steroids on neonatal outcome in preterm infants born at less than thirty-four weeks' gestation. *Neonatology.* 2012;102(4):259-64.
9. Alexander JM, Gilstrap LC, Cox SM, Leveno KJ. Clinical chorioamnionitis and the prognosis for very low birth weight infants. *Obstet Gynecol.* 1998;91(5):725-9.
10. Alfiero Bordigato M, Piva D, Di Gangi IM, Giordano G, Chiandetti L, Filippone M. Asymmetric dimethylarginine in ELBW newborns exposed to chorioamnionitis. *Early Hum Dev.* 2011;87(2):143-5.
11. Amin H, Singhal N, Sauve RS. Impact of intrauterine growth restriction on neurodevelopmental and growth outcomes in very low birthweight infants. *Acta Paediatr.* 1997;86(3):306-14.
12. Arayici S, Kadioglu Simsek G, Oncel MY, Eras Z, Canpolat FE, Oguz SS, et al. The effect of histological chorioamnionitis on the short-term outcome of preterm infants ≤ 32 weeks: a single-center study. *J Matern Fetal Neonatal Med.* 2014;27(11):1129-33.
13. Aslan H, Gul A, Cebeci A. Neonatal outcome in pregnancies after preterm delivery for HELLP syndrome. *Gynecol Obstet Invest.* 2004;58(2):96-9.
14. Aucott SW, Donohue PK, Northington FJ. Increased morbidity in severe early intrauterine growth restriction. *J Perinatol.* 2004;24(7):435-40.
15. Ausbeck EB, Allman PH, Szychowski JM, Subramaniam A, Katheria A. Neonatal Outcomes at Extreme Prematurity by Gestational Age Versus Birth Weight in a Contemporary Cohort. *Am J Perinatol.* 2021.
16. Bacak SJ, Baptiste-Roberts K, Amon E, Ireland B, Leet T. Risk factors for neonatal mortality among extremely-low-birth-weight infants. *Am J Obstet Gynecol.* 2005;192(3):862-7.
17. Baer RJ, Rogers EE, Partridge JC, Anderson JG, Morris M, Kuppermann M, et al. Population-based risks of mortality and preterm morbidity by gestational age and birth weight. *J Perinatol.* 2016;36(11):1008-13.
18. Bardin C, Zekowitz P, Papageorgiou A. Outcome of small-for-gestational age and appropriate-for-gestational age infants born before 27 weeks of gestation. *Pediatrics.* 1997;100(2):E4.
19. Baud O, Zupan V, Lacaze-Masmonteil T, Audibert F, Shojaei T, Thebaud B, et al. The relationships between antenatal management, the cause of delivery and neonatal outcome in a large cohort of very preterm singleton infants. *BJOG.* 2000;107(7):877-84.
20. Been JV, Rours IG, Kornelisse RF, Lima Passos V, Kramer BW, Schneider TA, et al. Histologic chorioamnionitis, fetal involvement, and antenatal steroids: effects on neonatal outcome in preterm infants. *Am J Obstet Gynecol.* 2009;201(6):587.e1-8.
21. Bernstein IM, Horbar JD, Badger GJ, Ohlsson A, Golan A. Morbidity and mortality among very-low-birth-weight neonates with intrauterine growth restriction. The Vermont Oxford Network. *Am J Obstet Gynecol.* 2000;182(1 Pt 1):198-206.

22. Bolisetty S, Legge N, Bajuk B, Lui K. Preterm infant outcomes in New South Wales and the Australian Capital Territory. *J Paediatr Child Health*. 2015;51(7):713-21.
23. Bossung V, Fortmann MI, Fusch C, Rausch T, Herting E, Swoboda I, et al. Neonatal Outcome After Preeclampsia and HELLP Syndrome: A Population-Based Cohort Study in Germany. *Front Pediatr*. 2020;8:579293.
24. Botet F, Figueras J, Carbonell-Estrany X, Arca G, Group CS. Effect of maternal clinical chorioamnionitis on neonatal morbidity in very-low birthweight infants: a case-control study. *J Perinat Med*. 2010;38(3):269-73.
25. Brodzki J, Morsing E, Malcus P, Thuring A, Ley D, Marsál K. Early intervention in management of very preterm growth-restricted fetuses: 2-year outcome of infants delivered on fetal indication before 30 gestational weeks. *Ultrasound Obstet Gynecol*. 2009;34(3):288-96.
26. Bry K, Jacobsson B, Nilsson S, Bry K. Gastric fluid cytokines are associated with chorioamnionitis and white blood cell counts in preterm infants. *Acta Paediatr*. 2015;104(6):575-80.
27. Candel Pau J, Castillo Salinas F, Perapoch López J, Carrascosa Lezcano A, Sánchez García O, Llurba Olivé E. [Perinatal outcome and cardiac dysfunction in preterm growth-restricted neonates in relation to placental impairment severity]. *An Pediatr (Barc)*. 2016;85(4):170-80.
28. Chard T, Penney G, Chalmers J. The risk of neonatal death in relation to birth weight and maternal hypertensive disease in infants born at 24–32 weeks. *Eur J Obstet Gynecol Reprod Biol*. 2001;95(1):114-8.
29. Chen XK, Wen SW, Smith G, Yang Q, Walker M. Pregnancy-induced hypertension is associated with lower infant mortality in preterm singletons. *BJOG*. 2006;113(5):544-51.
30. Cheng S-W, Chou H-C, Tsou K-I, Fang L-J, Tsao P-N. Delivery before 32 weeks of gestation for maternal pre-eclampsia: neonatal outcome and 2-year developmental outcome. *Early Hum Dev*. 2004;76(1):39-46.
31. Claas MJ, Bruinse HW, van der Heide-Jalving M, Termote JU, de Vries LS. Changes in survival and neonatal morbidity in infants with a birth weight of 750 g or less. *Neonatology*. 2010;98(3):278-88.
32. Costeloe K, Hennessy E, Gibson AT, Marlow N, Wilkinson AR. The EPICure study: outcomes to discharge from hospital for infants born at the threshold of viability. *Pediatrics*. 2000;106(4):659-71.
33. De Felice C, Toti P, Parrini S, Del Vecchio A, Bagnoli F, Latini G, et al. Histologic chorioamnionitis and severity of illness in very low birth weight newborns. *Pediatr Crit Care Med*. 2005;6(3):298-302.
34. De Jesus LC, Pappas A, Shankaran S, Li L, Das A, Bell EF, et al. Outcomes of small for gestational age infants born at <27 weeks' gestation. *J Pediatr*. 2013;163(1):55-60.e1-3.
35. de Souza Rugolo LMS, de Sá MPA, Kurokawa CS, Madoglio RJ, Bentlin MR, Jr AR, et al. There is no difference in nitric oxide metabolites and neonatal outcome between premature infants born to pre-eclamptic and those born to normotensive women. *Paediatr Int Child Health*. 2015;35(1):47-52.
36. Dempsey E, Chen M-F, Kokottis T, Vallerand D, Usher R. Outcome of neonates less than 30 weeks gestation with histologic chorioamnionitis. *Obstet Gynecol Surv*. 2005;60(10):639-40.
37. Dexter SC, Pinar H, Malee MP, Hogan J, Carpenter MW, Vohr BR. Outcome of very low birth weight infants with histopathologic chorioamnionitis. *Obstet Gynecol*. 2000;96(2):172-7.
38. Doyle LW. Outcome at 5 years of age of children 23 to 27 weeks' gestation: refining the prognosis. *Pediatrics*. 2001;108(1):134-41.
39. Ecevit A, Anuk-İnce D, Yapakçı E, Kupana-Ayva Ş, Kurt A, Yanık FF, et al. Association of respiratory distress syndrome and perinatal hypoxia with histologic chorioamnionitis in preterm infants. *Turk J Pediatr*. 2014;56(1):56-61.
40. El Ayoubi M, Jarreau PH, Van Reempts P, Cuttini M, Kaminski M, Zeitlin J. Does the antenatal detection of fetal growth restriction (FGR) have a prognostic value for mortality and short-term morbidity for very preterm infants? Results from the MOSAIC cohort. *J Matern Fetal Neonatal Med*. 2016;29(4):596-601.
41. El-Metwally D, Vohr B, Tucker R. Survival and neonatal morbidity at the limits of viability in the mid 1990s: 22 to 25 weeks. *J Pediatr*. 2000;137(5):616-22.

42. Erdemir G, Kultursay N, Calkavur S, Zekioğlu O, Koroglu OA, Cakmak B, et al. Histological chorioamnionitis: effects on premature delivery and neonatal prognosis. *Pediatr Neonatol*. 2013;54(4):267-74.
43. Ferdynus C, Quantin C, Abrahamowicz M, Platt R, Burguet A, Sagot P, et al. Can birth weight standards based on healthy populations improve the identification of small-for-gestational-age newborns at risk of adverse neonatal outcomes? *Pediatrics*. 2009;123(2):723-30.
44. Fernandez-Rodriguez B, de Alba C, Villalain C, Pallás CR, Galindo A, Herraiz I. Obstetric and pediatric growth charts for the detection of fetal growth restriction and neonatal adverse outcomes in preterm newborns before 34 weeks of gestation. *J Matern Fetal Neonatal Med*. 2021;34(7):1112-9.
45. Friedman SA, Schiff E, Kao L, Sibai BM. Neonatal outcome after preterm delivery for preeclampsia. *Am J Obstet Gynecol*. 1995;172(6):1785-92.
46. Fukami T, Yoshizato T, Mori T, Yukitake K, Miyake Y, Kawarabayashi T. Obstetrical factors for death and brain injury among extremely-low-birth-weight infants. *J Perinat Med*. 2007;35(6):543-9.
47. Fung G, Bawden K, Chow P, Yu V. Long-term Outcome of Extremely Preterm Infants Following Chorioamnionitis. *HK J Paediatr*. 2003;8(2):87-92.
48. Gagliardi L, Rusconi F, Da Frè M, Mello G, Carnielli V, Di Lallo D, et al. Pregnancy disorders leading to very preterm birth influence neonatal outcomes: results of the population-based ACTION cohort study. *Pediatr Res*. 2013;73(6):794-801.
49. Gagliardi L, Rusconi F, Bellù R, Zanini R. Association of maternal hypertension and chorioamnionitis with preterm outcomes. *Pediatrics*. 2014;134(1):e154-61.
50. García-Muñoz Rodrigo F, Galán Henríquez G, Figueras Aloy J, García-Alix Pérez A. Outcomes of very-low-birth-weight infants exposed to maternal clinical chorioamnionitis: a multicentre study. *Neonatology*. 2014;106(3):229-34.
51. Garite TJ, Clark R, Thorp JA. Intrauterine growth restriction increases morbidity and mortality among premature neonates. *Am J Obstet Gynecol*. 2004;191(2):481-7.
52. Gemmell L, Martin L, Murphy K, Modi N, Håkansson S, Reichman B, et al. Hypertensive disorders of pregnancy and outcomes of preterm infants of 24 to 28 weeks' gestation. *J Perinatol*. 2016;36(12):1067-72.
53. Giapros V, Drougia A, Krallis N, Theocharis P, Andronikou S. Morbidity and mortality patterns in small-for-gestational age infants born preterm. *J Matern Fetal Neonatal Med*. 2012;25(2):153-7.
54. González-Luis G, García J, Rodríguez-Miguélez J. Neonatal morbidity and mortality in very low birth weight infants according to exposure to chorioamnionitis. *An Esp Pediatr*. 2002;56(6):551-5.
55. Gortner L, Wauer RR, Stock GJ, Reiter HL, Reiss I, Jorch G, et al. Neonatal outcome in small for gestational age infants: do they really better? *J Perinat Med*. 1999;27(6):484-9.
56. Gray PH, Hurley TM, Rogers YM, O'Callaghan MJ, Tudehope DI, Burns YR, et al. Survival and neonatal and neurodevelopmental outcome of 24–29 week gestation infants according to primary cause of preterm delivery. *Aust N Z J Obstet Gynaecol*. 1997;37(2):161-8.
57. Grill A, Olischar M, Weber M, Pollak A, Leitich H. Type of delivery onset has a significant impact on post-natal mortality in preterm infants of less than 30 weeks' gestation. *Acta Paediatr*. 2014;103(7):722-6.
58. Grisarú-Granovsky S, Reichman B, Lerner-Geva L, Boyko V, Hammerman C, Samueloff A, et al. Mortality and morbidity in preterm small-for-gestational-age infants: a population-based study. *Am J Obstet Gynecol*. 2012;206(2):150.e1-7.
59. Hartung J, Kalache KD, Heyna C, Heling KS, Kuhlig M, Wauer R, et al. Outcome of 60 neonates who had ARED flow prenatally compared with a matched control group of appropriate-for-gestational age preterm neonates. *Ultrasound Obstet Gynecol*. 2005;25(6):566-72.
60. Henderson L, Russell L, Robertson CM, Liang Y, Chen Y, Abdalla A, et al. Neonatal and neurodevelopmental outcomes of very low birth weight infants with histologic chorioamnionitis. *J Pediatr*. 2011;158(3):397-402.
61. Hentges CR, Silveira RC, Ferrelli RS, Procionoy RS. Influence of maternal pre-eclampsia on VEGF/PlGF heterodimer levels in preterm infants. *J Matern Fetal Neonatal Med*. 2015;28(18):2166-71.

62. Hielt A, Brown H, Britton K. Outcome of infants delivered between 24 and 28 weeks' gestation in women with severe pre-eclampsia. *J Matern Fetal Med.* 2001;10(5):301-4.
63. Holcroft CJ, Askin FB, Patra A, Allen MC, Blakemore KJ, Graham EM. Are histopathologic chorioamnionitis and funisitis associated with metabolic acidosis in the preterm fetus? *Am J Obstet Gynecol.* 2004;191(6):2010-5.
64. Holtrop PC, Ertzbischoff LM, Roberts CL, Batton DG, Lorenz RP. Survival and short-term outcome in newborns of 23 to 25 weeks' gestation. *Am J Obstet Gynecol.* 1994;170(5):1266-70.
65. Hong S, Jeong M, Oh S, Oh JW, Park CW, Park JS, et al. Funisitis as a Risk Factor for Adverse Neonatal Outcomes in Twin Neonates with Spontaneous Preterm Birth: A Retrospective Cohort Study. *Yonsei Med J.* 2021;62(9):822-8.
66. Jelin AC, Cheng YW, Shaffer BL, Kaimal AJ, Little SE, Caughey AB. Early-onset preeclampsia and neonatal outcomes. *J Matern Fetal Neonatal Med.* 2010;23(5):389-92.
67. Jensen EA, Foglia EE, Dysart KC, Simmons RA, Aghai ZH, Cook A, et al. Adverse effects of small for gestational age differ by gestational week among very preterm infants. *Arch Dis Child Fetal Neonatal Ed.* 2019;104(2):F192-f8.
68. Kent A, Lomas F, Hurrion E, Dahlstrom JE. Antenatal steroids may reduce adverse neurological outcome following chorioamnionitis: neurodevelopmental outcome and chorioamnionitis in premature infants. *J Paediatr Child Health.* 2005;41(4):186-90.
69. Kent AL, Wright IM, Abdel-Latif ME. Mortality and adverse neurologic outcomes are greater in preterm male infants. *Pediatrics.* 2012;129(1):124-31.
70. Kilbride HW, Daily DK, Claflin K, Hall RT, Maulik D, Grundy HO. Improved survival and neurodevelopmental outcome for infants less than 801 grams birthweight. *Am J Perinatol.* 1990;7(02):160-5.
71. Kim CR, Vohr BR, Oh W. Effects of maternal hypertension in very-low-birth-weight infants. *Arch Pediatr Adolesc Med.* 1996;150(7):686-91.
72. Kim SY, Choi CW, Jung E, Lee J, Lee JA, Kim H, et al. Neonatal morbidities associated with histologic chorioamnionitis defined based on the site and extent of inflammation in very low birth weight infants. *J Korean Med Sci.* 2015;30(10):1476.
73. Lal MK, Manktelow BN, Draper ES, Field DJ. Chronic lung disease of prematurity and intrauterine growth retardation: a population-based study. *Pediatrics.* 2003;111(3):483-7.
74. Lee MJ, Conner EL, Charafeddine L, Woods JR, Jr., Del Priore G. A critical birth weight and other determinants of survival for infants with severe intrauterine growth restriction. *Ann N Y Acad Sci.* 2001;943:326-39.
75. Lee SY, Ng DK, Fung GP, Chow CB, Shek CC, Tang PM, et al. Chorioamnionitis with or without funisitis increases the risk of hypotension in very low birthweight infants on the first postnatal day but not later. *Arch Dis Child Fetal Neonatal Ed.* 2006;91(5):F346-8.
76. Lee Y, Kim H-J, Choi S-J, Oh S-y, Kim J-S, Roh C-R, et al. Is there a stepwise increase in neonatal morbidities according to histological stage (or grade) of acute chorioamnionitis and funisitis?: effect of gestational age at delivery. *J Perinat Med.* 2015;43(2):259-67.
77. Lee H-S, Kim SY. Histological chorioamnionitis, antenatal steroids, and neonatal outcomes in very low birth weight infants: A nationwide study. *PLoS One.* 2019;14(10):e0224450.
78. Ley D, Wide-Swensson D, Lindroth M, Svenningsen N, Marsal K. Respiratory distress syndrome in infants with impaired intrauterine growth. *Acta Paediatr.* 1997;86(10):1090-6.
79. Liu Z, Tang Z, Li J, Yang Y. Effects of placental inflammation on neonatal outcome in preterm infants. *Pediatr Neonatol.* 2014;55(1):35-40.
80. Liu P-C, Hung Y-L, Shen C-M, Chen P-C, Hsieh W-S. Histological chorioamnionitis and its impact on respiratory outcome in very-low-birth-weight preterm infants. *Pediatr Neonatol.* 2021.
81. Locatelli A, Roncaglia N, Andreotti C, Doria V, Doni D, Pezzullo JC, et al. Factors affecting survival in infants weighing 750 g or less. *Eur J Obstet Gynecol Reprod Biol.* 2005;123(1):52-5.
82. Lucey JF, Rowan CA, Shiono P, Wilkinson AR, Kilpatrick S, Payne NR, et al. Fetal infants: the fate of 4172 infants with birth weights of 401 to 500 grams—the Vermont Oxford Network experience (1996–2000). *Pediatrics.* 2004;113(6):1559-66.
83. Madoglio R, Rugolo L, Kurokawa C, Sa M, Lyra J, Antunes L. Inflammatory and oxidative stress airway markers in premature newborns of hypertensive mothers. *Braz J Med Biol Res.* 2016;49(9).

84. Maisonneuve E, Lorthe E, Torchin H, Delorme P, Devisme L, L'Hélias LF, et al. Association of Chorioamnionitis with Cerebral Palsy at Two Years after Spontaneous Very Preterm Birth: The EPIPAGE-2 Cohort Study. *J Pediatr*. 2020;222:71-8.e6.
85. Malhotra A, Yahya Z, Sasi A, Jenkin G, Ditchfield M, Polglase GR, et al. Does fetal growth restriction lead to increased brain injury as detected by neonatal cranial ultrasound in premature infants? *J Paediatr Child Health*. 2015;51(11):1103-8.
86. Markestad T, Kaaresen PI, Rønnestad A, Reigstad H, Lossius K, Medbø S, et al. Early death, morbidity, and need of treatment among extremely premature infants. *Pediatrics*. 2005;115(5):1289-98.
87. Matic M, Inati V, Abdel-Latif ME, Kent AL, Network NAN. Maternal hypertensive disorders are associated with increased use of respiratory support but not chronic lung disease or poorer neurodevelopmental outcomes in preterm neonates at < 29 weeks of gestation. *J Paediatr Child Health*. 2017;53(4):391-8.
88. McBride CA, Bernstein IM, Badger GJ, Horbar JD, Soll RF. The effect of maternal hypertension on mortality in infants 22, 29weeks gestation. *Pregnancy Hypertens*. 2015;5(4):362-6.
89. Melamed N, Pittini A, Barrett J, Shah J, Yoon EW, Lemyre B, et al. Antenatal Corticosteroids and Outcomes of Small-for-Gestational-Age Neonates. *Obstet Gynecol*. 2016;128(5):1001-8.
90. Monier I, Ancel PY, Ego A, Jarreau PH, Lebeaux C, Kaminski M, et al. Fetal and neonatal outcomes of preterm infants born before 32 weeks of gestation according to antenatal vs postnatal assessments of restricted growth. *Am J Obstet Gynecol*. 2017;216(5):516.e1-.e10.
91. Mu S-C, Lin C-H, Chen Y-L, Ma H-J, Lee J-S, Lin M-I, et al. Impact on neonatal outcome and anthropometric growth in very low birth weight infants with histological chorioamnionitis. *J Formos Med Assoc*. 2008;107(4):304-10.
92. Nasef N, Shabaan AE, Schurr P, Iaboni D, Choudhury J, Church P, et al. Effect of clinical and histological chorioamnionitis on the outcome of preterm infants. *Am J Perinatol*. 2013;30(01):059-68.
93. Natarajan G, Glibetic M, Thomas RL, Aranda JV. Chorioamnionitis and ontogeny of circulating prostaglandin and thromboxane in preterm infants. *Am J Perinatol*. 2008;25(08):491-7.
94. Nayeri UA, Buhimschi CS, Zhao G, Buhimschi IA, Bhandari V. Components of the antepartum, intrapartum, and postpartum exposome impact on distinct short-term adverse neonatal outcomes of premature infants: A prospective cohort study. *PLoS One*. 2018;13(12):e0207298.
95. Nicaise C, Gire C, Fagianelli P, Debriere R, Thomachot L, d'Ercole C, et al. [Neonatal consequences of preterm premature rupture of membrane (PPROM) at 24-34 WG: 118 singleton pregnancies]. *J Gynecol Obstet Biol Reprod (Paris)*. 2002;31(8):747-54.
96. Nobile S, Marchionni P, Carnielli VP. Neonatal outcome of small for gestational age preterm infants. *Eur J Pediatr*. 2017;176(8):1083-8.
97. Ogunyemi D, Murillo M, Jackson U, Hunter N, Alperson B. The relationship between placental histopathology findings and perinatal outcome in preterm infants. *J Matern Fetal Neonatal Med*. 2003;13(2):102-9.
98. Oh S-H, Kim J-j, Do H-j, Lee BS, Kim K-S, Kim EA-R. Preliminary Study on Neurodevelopmental Outcome and Placental Pathology among Extremely Low Birth Weight Infants. *Korean J Perinatol*. 2015;26(1):67-77.
99. Palta M, Sadek M, Gabbert D, Brady W, Weinstein MR, McGuinness G, et al. The relation of maternal complications to outcomes in very low birthweight infants in an era of changing neonatal care. *Am J Perinatol*. 1996;13(02):109-14.
100. Pappas A, Kendrick DE, Shankaran S, Stoll BJ, Bell EF, Laptook AR, et al. Chorioamnionitis and early childhood outcomes among extremely low-gestational-age neonates. *JAMA pediatrics*. 2014;168(2):137-47.
101. Park YH, Lee GM, Yoon JM, Cheon EJ, Ko KO, Lee YH, et al. Effect of early postnatal neutropenia in very low birth weight infants born to mothers with pregnancy-induced hypertension. *Korean J Pediatr*. 2012;55(12):462.
102. Park JW, Park KH, Jung EY. Clinical significance of histologic chorioamnionitis with a negative amniotic fluid culture in patients with preterm labor and premature membrane rupture. *PLoS One*. 2017;12(3):e0173312.

103. Pietrasanta C, Pugni L, Merlo D, Acaia B, Consonni D, Ronchi A, et al. Impact of different stages of intrauterine inflammation on outcome of preterm neonates: Gestational age-dependent and-independent effect. *PLoS One*. 2019;14(2):e0211484.
104. Piper JM, Xenakis EM, McFarland M, Elliott BD, Berkus MD, Langer O. Do growth-retarded premature infants have different rates of perinatal morbidity and mortality than appropriately grown premature infants? *Obstet Gynecol*. 1996;87(2):169-74.
105. Plakkal N, Soraisham AS, Trevenen C, Freiheit E, Sauve R. Histological chorioamnionitis and bronchopulmonary dysplasia: a retrospective cohort study. *J Perinatol*. 2013;33(6):441-5.
106. Procianoy RS, Silveira RC, Mussi-Pinhata MM, Souza Rugolo LM, Leone CR, de Andrade Lopes JM, et al. Sepsis and neutropenia in very low birth weight infants delivered of mothers with preeclampsia. *J Pediatr*. 2010;157(3):434-8, 8.e1.
107. Puri K, Taft DH, Ambalavanan N, Schibler KR, Morrow AL, Kallapur SG. Association of Chorioamnionitis with Aberrant Neonatal Gut Colonization and Adverse Clinical Outcomes. *PLoS One*. 2016;11(9):e0162734.
108. Rakza T, Magnenant E, Klosowski S, Tournoux P, Bachiri A, Storme L. Early hemodynamic consequences of patent ductus arteriosus in preterm infants with intrauterine growth restriction. *J Pediatr*. 2007;151(6):624-8.
109. Ray JG, Park AL, Fell DB. Mortality in infants affected by preterm birth and severe small-for-gestational age birth weight. *Pediatrics*. 2017;140(6).
110. Razak A, Patel W, Durrani N, McDonald SD, Vanniyasingam T, Thabane L, et al. Neonatal respiratory outcomes in pregnancy induced hypertension: introducing a novel index. *J Matern Fetal Neonatal Med*. 2020;33(4):625-32.
111. Regev RH, Arnon S, Litmanovitz I, Bauer-Rusek S, Boyko V, Lerner-Geva L, et al. Outcome of singleton preterm small for gestational age infants born to mothers with pregnancy-induced hypertension. A population-based study. *J Matern Fetal Neonatal Med*. 2015;28(6):666-73.
112. Reiss I, Landmann E, Heckmann M, Misselwitz B, Gortner L. Increased risk of bronchopulmonary dysplasia and increased mortality in very preterm infants being small for gestational age. *Arch Gynecol Obstet*. 2003;269(1):40-4.
113. Richardson BS, Wakim E, Walton J. Preterm histologic chorioamnionitis: impact on cord gas and pH values and neonatal outcome. *Am J Obstet Gynecol*. 2006;195(5):1357-65.
114. Rocha G, Proença E, Quintas C, Rodrigues T, Guimarães H. Chorioamnionitis and neonatal morbidity. *Acta Med Port*. 2006;19(3):207-12.
115. Rocha G, de Lima FF, Machado AP, Guimaraes H. Preeclampsia predicts higher incidence of bronchopulmonary dysplasia. *J Perinatol*. 2018;38(9):1165-73.
116. Rodríguez-Trujillo A, Cobo T, Vives I, Bosch J, Kacerovsky M, Posadas DE, et al. Gestational age is more important for short-term neonatal outcome than microbial invasion of the amniotic cavity or intra-amniotic inflammation in preterm prelabor rupture of membranes. *Acta Obstet Gynecol Scand*. 2016;95(8):926-33.
117. Ryan E, Eves D, Menon PJ, Alnafisee S, Mooney EE, Downey P, et al. Histological chorioamnionitis is predicted by early infant C-reactive protein in preterm infants and correlates with neonatal outcomes. *Acta Paediatr*. 2020;109(4):720-7.
118. Sabino AT, Souza Ed, Goulart AL, Lima AMd, Sass N. High blood pressure during pregnancy is not a protective factor for preterm infants with very low birth weight. A case-control study. *Rev Bras Ginecol Obstet*. 2017;39(4):155-61.
119. Sadeghi Moghaddam P, Aghaali M. Survival of 798 low birth weight infants according to birth weight and gestational age. *Shiraz E Med J*. 2015;16(11-12).
120. Salas AA, Faye-Petersen OM, Sims B, Peralta-Carcelen M, Reilly SD, McGwin G, Jr., et al. Histological characteristics of the fetal inflammatory response associated with neurodevelopmental impairment and death in extremely preterm infants. *J Pediatr*. 2013;163(3):652-7.e1-2.
121. Serenius F, Ewald U, Farooqi A, Holmgren PA, Håkansson S, Sedin G. Short-term outcome after active perinatal management at 23-25 weeks of gestation. A study from two Swedish tertiary care centres. Part 2: infant survival. *Acta Paediatr*. 2004;93(8):1081-9.
122. Shah PS, Xiang YY, Synnes A, Rouvinez-Bouali N, Yee W, Lee SK. Prediction of survival without morbidity for infants born at under 33 weeks gestational age: a user-friendly graphical tool. *Arch Dis Child Fetal Neonatal Ed*. 2012;97(2):F110-F5.

123. Shankaran S, Fanaroff AA, Wright LL, Stevenson DK, Donovan EF, Ehrenkranz RA, et al. Risk factors for early death among extremely low-birth-weight infants. *Am J Obstet Gynecol.* 2002;186(4):796-802.
124. Sharma P, McKay K, Rosenkrantz TS, Hussain N. Comparisons of mortality and pre-discharge respiratory outcomes in small-for-gestational-age and appropriate-for-gestational-age premature infants. *BMC Pediatr.* 2004;4:9.
125. Shin SH, Shin SH, Kim SH, Kim Y-J, Cho H, Kim E-K, et al. The Association of Pregnancy-induced Hypertension with Bronchopulmonary Dysplasia—A Retrospective Study Based on the Korean Neonatal Network database. *Sci Rep.* 2020;10(1):1-6.
126. Singareddy A, Lee ASE, Sweeney PL, Finkle AE, Williams HL, Buchanan PM, et al. Elevated neutrophil-lymphocyte ratios in extremely preterm neonates with histologic chorioamnionitis. *J Perinatol.* 2021;41(6):1269-77.
127. Soliman N, Chaput K, Alshaikh B, Yusuf K. Preeclampsia and the Risk of Bronchopulmonary Dysplasia in Preterm Infants Less Than 32 Weeks' Gestation. *Am J Perinatol.* 2017;34(6):585-92.
128. Soraisham AS, Singhal N, McMillan DD, Sauve RS, Lee SK. A multicenter study on the clinical outcome of chorioamnionitis in preterm infants. *Am J Obstet Gynecol.* 2009;200(4):372.e1-6.
129. Soudée S, Vuillemin L, Alberti C, Mohamed D, Becquet O, Farnoux C, et al. Fetal growth restriction is worse than extreme prematurity for the developing lung. *Neonatology.* 2014;106(4):304-10.
130. Stepan M, Cobo T, Maly J, Navratilova M, Musilova I, Hornychova H, et al. Neonatal outcomes in subgroups of women with preterm prelabor rupture of membranes before 34 weeks. *J Matern Fetal Neonatal Med.* 2016;29(14):2373-7.
131. Strunk T, Doherty D, Jacques A, Simmer K, Richmond P, Kohan R, et al. Histologic chorioamnionitis is associated with reduced risk of late-onset sepsis in preterm infants. *Pediatrics.* 2012;129(1):e134-41.
132. Tagare A, Chaudhari S, Kadam S, Vaidya U, Pandit A, Sayyad MG. Mortality and morbidity in extremely low birth weight (ELBW) infants in a neonatal intensive care unit. *Indian J Pediatr.* 2013;80(1):16-20.
133. Tannirwar S, Kadam S, Pandit A, Vaidya U, Parikh T, Ankit S. Comparisons of mortality and pre-discharge respiratory morbidities in small for gestational age and appropriate-for gestational age premature infants—An Indian Experience. *Iran J Neonatol.* 2016;7(4):1-6.
134. Thomas W, Seidenspinner S, Kramer BW, Kawczyńska-Leda N, Chmielnicka-Kopaczyk M, Marx A, et al. Airway concentrations of angiotensin-1 and endostatin in ventilated extremely premature infants are decreased after funisitis and unbalanced with bronchopulmonary dysplasia/death. *Pediatr Res.* 2009;65(4):468-73.
135. Thompson CM, Buccimazza SS, Webster J, Malan AF, Molteni CD. Infants of less than 1250 grams birth weight at Groote Schuur Hospital: outcome at 1 and 2 years of age. *Pediatrics.* 1993;91(5):961-8.
136. Tokumasu H, Tokumasu S, Kawakami K. Impact of pre-eclampsia in extremely premature infants: Population-based study. *Pediatr Int.* 2016;58(7):578-83.
137. Torchin H, Ancel PY, Goffinet F, Hascoët JM, Truffert P, Tran D, et al. Placental Complications and Bronchopulmonary Dysplasia: EPIPAGE-2 Cohort Study. *Pediatrics.* 2016;137(3):e20152163.
138. Torrance HL, Mulder EJ, Brouwers HA, van Bel F, Visser GH. Respiratory outcome in preterm small for gestational age fetuses with or without abnormal umbilical artery Doppler and/or maternal hypertension. *J Matern Fetal Neonatal Med.* 2007;20(8):613-21.
139. Trevisanuto D, Peruzzetto C, Cavallin F, Vedovato S, Cosmi E, Visentin S, et al. Fetal placental inflammation is associated with poor neonatal growth of preterm infants: a case-control study. *J Matern Fetal Neonatal Med.* 2013;26(15):1484-90.
140. Tsai LY, Chen YL, Tsou KI, Mu SC. The impact of small-for-gestational-age on neonatal outcome among very-low-birth-weight infants. *Pediatr Neonatol.* 2015;56(2):101-7.
141. Turunen R, Andersson S, Laivuori H, Kajantie E, Siitonen S, Repo H, et al. Increased postnatal inflammation in mechanically ventilated preterm infants born to mothers with early-onset preeclampsia. *Neonatology.* 2011;100(3):241-7.

142. Upadhyay K, Pourcyrous M, Dhanireddy R, Talati A. Outcomes of neonates with birth weight \leq 500 g: a 20-year experience. *J Perinatol*. 2015;35(9):768-72.
143. Ushida T, Kotani T, Hayakawa M, Hirakawa A, Sadachi R, Nakamura N, et al. Antenatal corticosteroids and preterm offspring outcomes in hypertensive disorders of pregnancy: A Japanese cohort study. *Sci Rep*. 2020;10(1):1-10.
144. van Vliet EO, de Kieviet JF, van der Voorn JP, Been JV, Oosterlaan J, van Elburg RM. Placental pathology and long-term neurodevelopment of very preterm infants. *Am J Obstet Gynecol*. 2012;206(6):489.e1-7.
145. Vinnars MT, Papadogiannakis N, Nasiell J, Holmström G, Westgren M. Placental pathology in relation to stillbirth and neonatal outcome in an extremely preterm population: a prospective cohort study. *Acta Obstet Gynecol Scand*. 2015;94(6):584-90.
146. Wadhawan R, Oh W, Perritt R, Lupton AR, Poole K, Wright LL, et al. Association between early postnatal weight loss and death or BPD in small and appropriate for gestational age extremely low-birth-weight infants. *J Perinatol*. 2007;27(6):359-64.
147. Watterberg KL, Gerdes JS, Gifford KL, Lin HM. Prophylaxis against early adrenal insufficiency to prevent chronic lung disease in premature infants. *Pediatrics*. 1999;104(6):1258-63.
148. Westby Wold SH, Sommerfelt K, Reigstad H, Rønnestad A, Medbø S, Farstad T, et al. Neonatal mortality and morbidity in extremely preterm small for gestational age infants: a population based study. *Arch Dis Child Fetal Neonatal Ed*. 2009;94(5):F363-7.
149. Wilmlink FA, Reijnierse J, Reiss IKM, Steegers EAP, de Jonge RCJ. Preeclampsia and risk of developing bronchopulmonary dysplasia in very preterm neonates. *Pregnancy Hypertens*. 2019;15:57-63.
150. Wirbelauer J, Thomas W, Rieger L, Speer CP. Intrauterine growth retardation in preterm infants \leq 32 weeks of gestation is associated with low white blood cell counts. *Am J Perinatol*. 2010;27(10):819-24.
151. Wocadlo C, Rieger I. Developmental outcome at 12 months corrected age for infants born less than 30 weeks gestation: influence of reduced intrauterine and postnatal growth. *Early Hum Dev*. 1994;39(2):127-37.
152. Woo Lim J, Chung S-H, Kang DR, Kim C-R. Risk factors for cause-specific mortality of very-low-birth-weight infants in the Korean Neonatal Network. *J Korean Med Sci*. 2015;30(Suppl 1):S35-S44.
153. Xie A, Zhang W, Chen M, Wang Y, Wang Y, Zhou Q, et al. Related factors and adverse neonatal outcomes in women with preterm premature rupture of membranes complicated by histologic chorioamnionitis. *Med Sci Monit*. 2015;21:390-5.
154. Yu HJ, Kim ES, Kim JK, Yoo HS, Ahn SY, Chang YS, et al. Outcomes of small for gestational age micropremies depending on how young or how small they are. *Korean J Pediatr*. 2011;54(6):246-52.
155. Zanardo V, Vedovato S, Cosmi E, Litta P, Cavallin F, Trevisanuto D, et al. Preterm premature rupture of membranes, chorioamnion inflammatory scores and neonatal respiratory outcome. *BJOG*. 2010;117(1):94-8.
156. Zaw W, Gagnon R, da Silva O. The risks of adverse neonatal outcome among preterm small for gestational age infants according to neonatal versus fetal growth standards. *Pediatrics*. 2003;111(6 Pt 1):1273-7.

MOOSE Checklist for Meta-analyses of Observational Studies

Item No	Recommendation	Reported on Page No
Reporting of background should include		
1	Problem definition	3-4
2	Hypothesis statement	-
3	Description of study outcome(s)	4-5
4	Type of exposure or intervention used	4
5	Type of study designs used	4, Suppl (page 3-4)
6	Study population	4
Reporting of search strategy should include		
7	Qualifications of searchers (eg, librarians and investigators)	Title page, Suppl (page 3)
8	Search strategy, including time period included in the synthesis and key words	4, Suppl (pages 1-3)
9	Effort to include all available studies, including contact with authors	4, Suppl (page 4)
10	Databases and registries searched	4
11	Search software used, name and version, including special features used (eg, explosion)	Suppl (page3)
12	Use of hand searching (eg, reference lists of obtained articles)	Suppl (page 3)
13	List of citations located and those excluded, including justification	Suppl Table 1, Suppl Fig 1
14	Method of addressing articles published in languages other than English	Suppl (page3)
15	Method of handling abstracts and unpublished studies	Suppl (page3)
16	Description of any contact with authors	Suppl (page 4)
Reporting of methods should include		
17	Description of relevance or appropriateness of studies assembled for assessing the hypothesis to be tested	4
18	Rationale for the selection and coding of data (eg, sound clinical principles or convenience)	4
19	Documentation of how data were classified and coded (eg, multiple raters, blinding and interrater reliability)	4
20	Assessment of confounding (eg, comparability of cases and controls in studies where appropriate)	4
21	Assessment of study quality, including blinding of quality assessors, stratification or regression on possible predictors of study results	4
22	Assessment of heterogeneity	4-5
23	Description of statistical methods (eg, complete description of fixed or random effects models, justification of whether the chosen models account for predictors of study results, dose-response models, or cumulative meta-analysis) in sufficient detail to be replicated	4-5 Suppl (pages 3-4)
24	Provision of appropriate tables and graphics	Table 1 Suppl tables 1-6 Figs 1-3 Suppl Figs 1-8

Reporting of results should include		
25	Graphic summarizing individual study estimates and overall estimate	Figs 1-2 Suppl Figs 2-7
26	Table giving descriptive information for each study included	Suppl Table 1
27	Results of sensitivity testing (eg, subgroup analysis)	Fig 1-2, Suppl Figs 2-7 Suppl Tables 2, 4 and 5
28	Indication of statistical uncertainty of findings	Figs 1-2 Suppl Figs 2-7

Item No	Recommendation	Reported on Page No
Reporting of discussion should include		
29	Quantitative assessment of bias (eg, publication bias)	8, Suppl Fig 8
30	Justification for exclusion (eg, exclusion of non-English language citations)	Suppl (page 3)
31	Assessment of quality of included studies	Suppl Table 1
Reporting of conclusions should include		
32	Consideration of alternative explanations for observed results	7-10
33	Generalization of the conclusions (ie, appropriate for the data presented and within the domain of the literature review)	7-10
34	Guidelines for future research	7-10
35	Disclosure of funding source	11

From: Stroup DF, Berlin JA, Morton SC, et al, for the Meta-analysis Of Observational Studies in Epidemiology (MOOSE) Group. Meta-analysis of Observational Studies in Epidemiology. A Proposal for Reporting. *JAMA*. 2000;283(15):2008-2012. doi: 10.1001/jama.283.15.2008.