

1 Clinical Testing of Pediatric Mpox Specimens: Unique Features and Challenges in a Low Prevalence

2 Population

3

4 Angela Ma<sup>1,2</sup> and Benjamin T. Bradley<sup>1,2</sup> #

5

6 <sup>1</sup> Department of Pathology, University of Utah, Salt Lake City, UT

7 <sup>2</sup> ARUP Laboratories, Salt Lake City, UT

8

9 #Corresponding author

10 Benjamin T. Bradley, [ben.bradley@hsc.utah.edu](mailto:ben.bradley@hsc.utah.edu)

11 500 Chipeta Way, Salt Lake City, UT

12

13 Keywords: monkeypox virus, mpox, pediatric, pcr, false positive

14

15 **Abstract**

16 BACKGROUND: Pediatric mpox cases comprise less than 0.3% of the total cases reported in the United  
17 States during the global 2022 outbreak. As a result, relatively little is known about the epidemiology or  
18 performance characteristics of clinical testing in this group.

19 METHODS: We retrospectively extracted and analyzed results for pediatric mpox specimens tested at a  
20 national reference laboratory from July to December 2022.

21 RESULTS: During our study period 13.4% (2,063/15,385) of specimens were from individuals <18 years of  
22 age. The positivity rate of pediatric specimens was significantly lower than in adults (1.3% vs 22.3%). The  
23 pediatric cohort also consisted of a higher percentage of females (42.7% vs 31.0%) and lower  
24 percentage of specimens from genital sources (9.0% vs 19.7%) as compared to adults. In children,  
25 specimens were most frequently collected from 1-year-olds (10.1%) and least frequently from 11-year-  
26 olds (3.5%). Positivity rates were disproportionately elevated in the less than 1-year and 17-year-old age  
27 groups (7.8% and 6.4%, respectively). Ct values of positive cases were not statistically different between  
28 pediatric and adult cohorts (25.2 vs 22.2,  $p>0.05$ ). When all pediatric cases with an initial positive mpox  
29 result were examined, 5/26 were classified as inconclusive and 2/26 were determined to be false  
30 positives. Based on these results, the positive predictive value of monkeypox virus detection was 90.5%  
31 (95% CI: 70.4-97.4%) in children.

32 CONCLUSION: These results highlight important differences between pediatric and adult mpox  
33 populations and reinforce the need for clinical correlation when reporting positive results from a low  
34 prevalence population.

35

## 36 **Introduction**

37 Monkeypox virus (MPXV) is the etiologic agent of mpox (1). Historically, mpox has been  
38 observed in endemic regions of Africa with rare, sporadic outbreaks in non-endemic regions (2, 3).  
39 However, in the spring of 2022, several non-endemic countries began reporting sustained human-to-  
40 human transmission of MPXV (4). The resulting global outbreak has led to mpox being declared a Public  
41 Health Emergency of International Concern by the World Health Organization (5). Epidemiological  
42 reports of the 2022 mpox outbreak have differed from prior accounts of mpox in several important  
43 ways. Historically, children have been most commonly affected and present with lesions on the  
44 extremities (6). The current outbreak has predominately affected populations of men who have sex with  
45 men and has been associated with transmission during intimate contact (7). The Centers for Disease  
46 Control and Prevention estimate less than 0.3% of mpox cases occur in individuals less than 18 years of  
47 age (8).

48 Traditionally, children have comprised the largest group affected by mpox with the median age  
49 of infection being 4 and 5 years old for cases reported in the 1970s and 1980s; however, the median age  
50 has increased in recent decades (6). Childhood mpox has also been associated with a high mortality rate,  
51 up to 10% during the 1980s (9). However, in a recent meta-analysis of Clade II MPXV cases prior to 2022,  
52 22 pediatric cases were identified with only one documented death (10). During the current outbreak,  
53 reports from Spain and the United States found severe complications were rare in pediatric patients and  
54 no intensive care unit admissions or deaths were documented (8, 11). For cases of mpox in children less  
55 than 18 years old, two main transmission routes have been identified, each specific to certain age  
56 groups. For individuals less than 13 years of age, transmission from household contacts the most  
57 common source of infection. Whereas, in adolescents, sexual activity was the source for 97% of  
58 infections with a known transmission route (8).

59 Diagnosing infectious diseases in a low-risk population presents a challenge to clinical  
60 microbiology laboratories. The most concerning dilemma is the risk for reporting false positive results  
61 due to poor positive predictive value in a low prevalence setting. As demonstrated during the SARS-CoV-  
62 2 pandemic, the clinical value of a positive result was compromised when surveillance testing was  
63 performed in a low-risk population (12). Mpox testing in pediatric populations is also complicated by the  
64 presence of viral exantheams which may present with similar clinical features including varicella,  
65 molluscum contagiosum, and hand foot and mouth disease (13). False positive results may lead to  
66 inappropriate treatment, unnecessary prophylactic vaccination of close contacts, and unintended social  
67 stigma (14). To better understand how mpox testing differs from adult populations and examine  
68 relevant differences in positivity rates, we performed a retrospective review of all pediatric mpox testing  
69 performed at a national reference laboratory between July 25<sup>th</sup> and December 14<sup>th</sup>, 2022.

70

## 71 **Methods**

### 72 *Ethics Statement*

73 An IRB exemption was granted by the University of Utah IRB under ID#: 00158025.

### 74 *MPXV NAAT Testing*

75 Detection of MPXV DNA was performed as previously described (15). In brief, specimens were  
76 either extracted on the Chemagic MSMI instrument (PerkinElmer) followed by amplification on the  
77 QuantStudio 12K Flex (ThermoFisher) or extraction and amplification was performed on the cobas 6800  
78 platform (Roche Diagnostics). Both assays used lab-developed primers and probes which targeted a  
79 conserved region of the viral polymerase gene common to the Orthopoxvirus family (16).

### 80 *Data Analysis and Statistics*

81 Inhibited and invalid results, comprising 0.04% of results, were excluded from analysis.

82 Specimens were classified as derived from genital sites if they contained any of the following words:

83 “anal”, “buttock”, “gluteal”, “groin”, “inguinal”, “labia”, “penis”, “perineum”, “pubic”, “rectal”,  
84 “scrotum”, “vagina”, “vulva” or variations of such words. Deidentified data were analyzed in Prism  
85 Graphpad v. 9.4.1. Statistical tests included Chi-squared, Mann-Whitney, Fisher’s exact, and Welch’s t-  
86 test. The cutoff for statistical significance for all tests was established as 0.05.

87 Specimens were categorized as “detected”, “inconclusive”, or “not detected”. Specimens with  
88 no repeat testing were categorized as follows: detected if Ct<34, inconclusive if Ct=34-50, and not  
89 detected if CT >50. Specimens with repeat testing were categorized as follows: detected if Ct <50 for  
90 both replicates, inconclusive if one replicate with Ct<50 and the other Ct>50, and not detected if both  
91 replicates with Ct>50.

92 Patient cases were classified as “positive”, “inconclusive”, or “false positive”. A positive case was  
93 classified as any individual with at least one detected specimen. An inconclusive case was classified as  
94 any individual with at least one inconclusive specimen and no detected specimens. Cases were classified  
95 as false positive only in situations where the ordering provider provided a clinical history not consistent  
96 with mpox and repeat testing of the specimen was not detected.

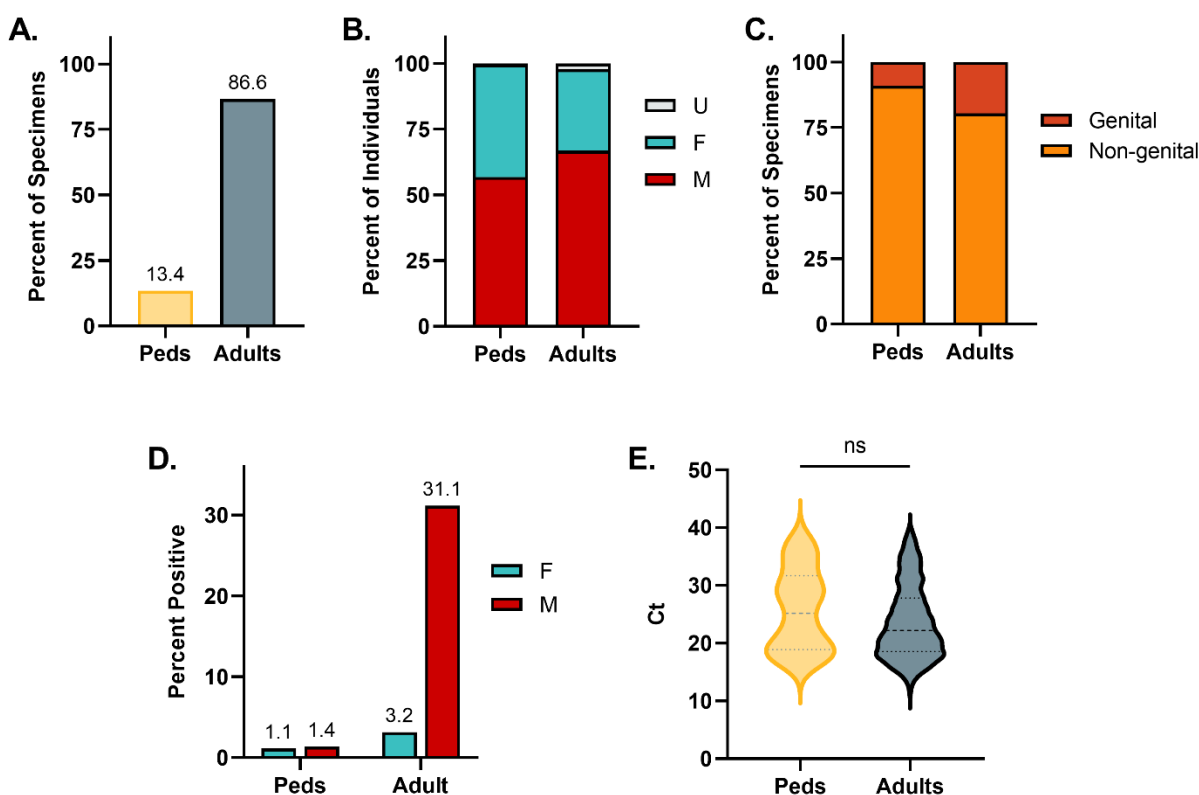
97

## 98 **Results**

### 99 *Pediatric mpox specimens have different demographics and positivity rates from adult specimens*

100 During the study period, pediatric specimens comprised 13.4% (2,063/15,385) of the total mpox  
101 testing volume (Fig 1A). The proportion of pediatric to adult individuals within the cohort was similar at  
102 13.6% (1,480/10,862). The pediatric cohort was comprised of 56.8% male, 42.7% female, and 0.5% of  
103 individuals with unknown sex, while the adult cohort contained 66.8% male, 31.0% female, and 2.2% of  
104 individuals with unknown sex (Fig 1B). The sex distribution was significantly different between the two  
105 age groups ( $p<0.001$ , chi-squared test, individuals with unknown sex excluded). 9.0% of specimens were  
106 collected from genital sources in the pediatric cohort while 19.6% of adult specimens were collected

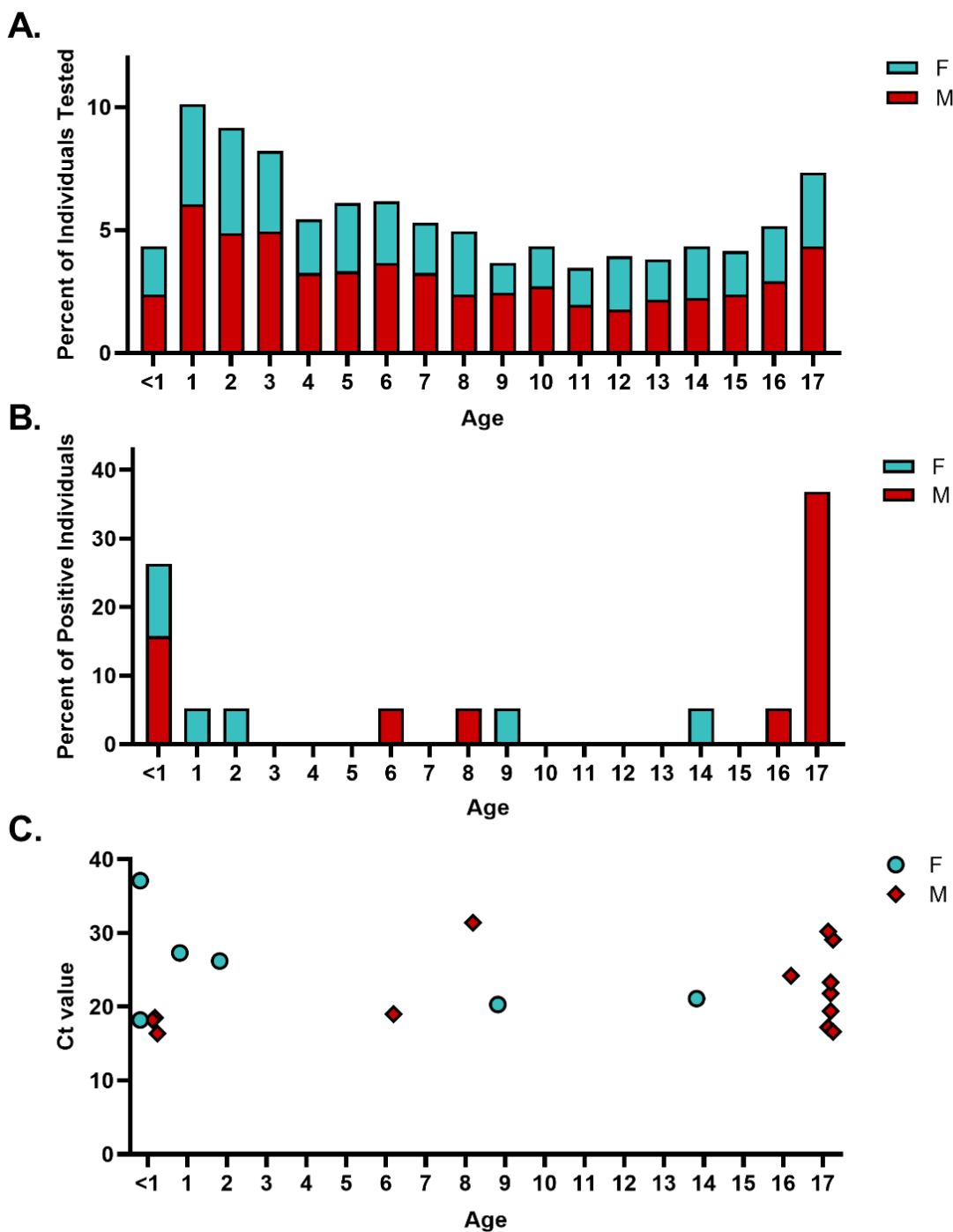
107 from genital sources ( $p < 0.001$ , chi-squared) (Fig 1C). The positivity rates of the pediatric and adult  
108 cohorts were 1.3% and 22.3%, respectively. When stratified by sex, the positivity rate of the female  
109 pediatric cohort was 1.1% and the male pediatric cohort was 1.4% ( $p = 0.565$ , Fisher's exact test). In the  
110 adult cohort, the positivity rate between females and males was 3.2% and 31.1% ( $p < 0.0001$ , chi-  
111 squared) (Fig 1D). The median Ct value of specimens from pediatric individuals positive for mpox was  
112 25.2 while the median Ct value for adult specimens was 22.2. The difference was not statistically  
113 significant ( $p = 0.146$ , Mann-Whitney test) (Fig 1E).



115 **Figure 1. Demographic and Clinical Data for Mpox Specimens from Pediatric and Adult Individuals. (A)**  
116 Percent of total specimen volume. (B) Percent of female, male, and unknown sex. (C) Percent of  
117 specimens obtained from genital or non-genital sources. (D) Positivity rate of pediatric and adult  
118 specimens stratified by sex. (E) Comparison of Ct values between pediatric and adult specimens positive  
119 for mpox  
120 for mpox

121 *Mpox positivity rates are highest at the extremes of the pediatric age group*

122           The median age and standard deviation of the pediatric cohort was  $6 \pm 5.4$  years. 1-year-olds  
123 were the most frequently tested group (10.1%), followed by 2-year-olds (9.2%), 3-year-olds (8.2%), and  
124 17-year-olds (7.3%). 11-year-olds were the least frequently tested group (3.5%) (Fig 2A). Age distribution  
125 of mpox cases demonstrated bimodal peaks with the highest number of positive cases in 17-year-olds  
126 (36.8%) followed by <1-year-olds (26.3%). Single positive cases were identified in 1, 2, 6, 8, 9, 14, and 16  
127 year-olds (Fig 2B). Mpox positivity rates by age were calculated as follows: <1 year of age – 7.8%, 1-year-  
128 olds – 0.9%, 2-year-olds – 0.7%, 6-year-olds – 1.1%, 8-year-olds - 1.4%, 9-year-olds – 1.9%, 14-year-olds  
129 – 1.6%, 16-year-olds – 1.3%, and 17-year-olds – 6.4%. The mean age for pediatric mpox diagnosis was  
130 significantly earlier for females (4.5 years) than males (11.6 years) ( $p=0.039$ , Welch's t test). Ct values for  
131 positive cases ranged from 18.2 to 37.1 based on the earliest Ct available per patient. Ct values were not  
132 statistically different between age groups or sex (Fig 2C).



133  
134 **Figure 2. Mpxv Results by Age and Sex in the Pediatric Cohort.** (A) Age distribution of total pediatric  
135 mpxv testing. (B) Age distribution of positive mpxv cases. (C) Earliest Ct value for individual positive  
136 cases of mpxv.



137

138 *A significant proportion of mpox detected in children result in inconclusive or false positives results*

139 Of the 26 individuals with MPXV amplified at least once from a specimen, 19 (73%) were  
140 determined to be positive for mpox, 5 (19%) inconclusive for mpox, and 2 (8%) false positive for mpox  
141 (Table 1). Excluding the inconclusive specimens, assay sensitivity and specificity was 100% (95% CI: 82.4-  
142 100%) and 99.9 (95% CI: 99.5-100.0), respectively. The positive predictive value was 90.5% (95% CI: 70.4-  
143 97.4%) and the negative predictive value was 100% (no known false negative cases).

144 Based on additional clinical information obtained following discussion with the ordering  
145 provider, two cases (Pt 8 and Pt 15) were determined to represent false positive results. Both of these  
146 cases demonstrated late Ct values of 35.2 and 39.1 that did not repeat following re-extraction and  
147 amplification. Additionally, one case was adjudicated as positive despite one of two specimens not  
148 repeating. This patient (Pt 23) initially had late Cts detected in both specimens (37.1 and 38.5). The 37.1  
149 specimen repeated at 37.6, however, the 38.5 specimen did not repeat.

150 When positive samples were repeated (n=16), the median Ct value shifted by 0.1 cycles (range: -  
151 1.7 to 0.6 cycles). For samples that failed to repeat, the earliest Ct value that did not yield a repeatable  
152 result was 33.3 (Pt. 17). Repeat testing of all positive pediatric results was instituted during the study  
153 period on September 17<sup>th</sup>, 2022. During that time 11/12 samples in which MPXV was initially detected  
154 repeated as positive. The specimen that did not repeat was from the previously described patient (Pt  
155 23).

156

**Table 1.** Pediatric specimens with mpox signal detected.

Patient	Sex	Specimen	Specimen source	Initial Ct	Repeat Ct	Specimen result	Patient result
1	F	1	Lesion	50	-	Not detected	Positive
		2	Lesion	50	-	Not detected	
		3	Lesion	21.1	-	Detected	
2	M	1	Lesion	21.8	-	Detected	Positive

3	M	1	Buttock	35.6	-	Inconclusive	Inconclusive
4	F	1	Abdomen	26.2	-	Detected	Positive
		2	Right hand	28.8	-	Detected	
5	F	1	Finger	20.3	-	Detected	Positive
6	M	1	Anal	31.6	-	Detected	Positive
		2	Arm	24.2	-	Detected	
7	F	1	Face, arm, abdomen	34.3	-	Detected	Inconclusive
		2	Face, arm, abdomen	50	-	Not detected	
8	M	1	Lesion	35.2	50	Inconclusive	False positive
9	M	1	Left hand	17.2	-	Detected	Positive
10	M	1	Lesion	23.3	-	Detected	Positive
11	M	1	Lesion	29.1	-	Detected	Positive
12	M	1	Right leg	37.9	-	Detected	Positive
		2	Left hand	19.4	-	Detected	
13	M	1	Left arm	50	-	Not detected	Inconclusive
	M	2	Right leg	35.4	50	Inconclusive	
14	M	1	Lesion	35.9	-	Inconclusive	Inconclusive
15	F	1	Neck	50	-	Not detected	False positive
		2	Left leg	39.1	50	Inconclusive	
16	M	1	Lesion	16.6	-	Detected	Positive
17	M	1	Not Provided	33.3	50	Inconclusive	Inconclusive
		2	Not Provided	50	-	Not detected	
18	M	1	Lesion	16.5	16.4	Detected	Positive
19	M	1	Left hand	19	-	Detected	Positive
20	M	1	Neck	31.4	32	Detected	Positive
21	F	1	Right hand	28.2	27.3	Detected	Positive
		2	Right foot	37.3	35.6	Detected	
		3	Left hand	35.4	35	Detected	
22	M	1	Skin	31.7	30.2	Detected	Positive
23	F	1	Neck	37.1	37.6	Detected	Positive
		2	Abdomen	38.5	50	Inconclusive	
24	M	1	Lesion	18.6	18.5	Detected	Positive

25	M	1	Not Provided	28.7	28.6	Detected	Positive
		2	Upper/lower extremity	18.2	18.3	Detected	
26	F	1	Lesion	18.2	18.1	Detected	Positive

157

## 158 Discussion

159 Recently, more clinical data is available describing the manifestations of mpox in the pediatric  
160 population (8, 11, 17–19). However, this information is mostly outside the context of laboratory testing.  
161 In this study we examined the demographics and results of pediatric mpox testing at a large reference  
162 laboratory. The results of our study reinforce clinical trends that have been identified and add further  
163 clarity on higher risk groups within the pediatric population.

164 The relative percent of pediatric specimens tested in our laboratory decreased from 14.1%  
165 when examined in September 2022 to 13.4% by December 2022 (15). Epidemiologic studies of mpox  
166 have found a higher relative percentage of female cases among children (20%-36%) than adults and  
167 noted an absence of genital lesions in those less than 13-years old (8, 11). This is reflected in the  
168 ordering practices for pediatric mpox specimens in our study. We found a higher number of female  
169 individuals (42.7% vs 31.0%) and non-genital specimens (91% vs 80.4%) in children versus adults.

170 When examining the distribution of age and gender for pediatric mpox specimens, several  
171 trends were observed. First in terms of overall testing volume, 1- to 3-year-olds were the most  
172 frequently tested groups with 11-year-olds the least frequently tested. It is interesting that those less  
173 than 1 year old were not tested at a higher volume, given over 25% of cases occurred in this age group.  
174 This may suggest other types of close contact outside of interactions with caregivers led to preferential  
175 testing in 1- to 3-year-olds. Potential exposures may include attendance of community events which was  
176 identified as a risk factor for childhood HSV-1 acquisition (20). Second, positivity rates were strongly  
177 polarized to the less than 1-year and 17-year-old age groups. The less than 1 age group was comprised  
178 of female and male cases while the 17-year-old group was exclusively male. These findings reflect the

179 different modes of transmission between age groups, with infants more likely infected by close skin-to-  
180 skin contact from caregivers and adolescents infected through sexual contact (8). Ct values between the  
181 less than 1- and 17-year-old age groups were similar, suggesting that route of infection does not play a  
182 significant role in viral replication. When the positivity rates of individual age groups were compared to  
183 adults, both the less than 1- and 17-year-old age groups demonstrated higher positive rates than adult  
184 females. Increased surveillance for mpox in these age groups may be warranted in future outbreaks.

185         There are at least two documented cases of false positive mpox results from pediatric  
186 specimens with late Ct values (14). To address this issue, the CDC recommended samples with a Ct of 34  
187 or greater undergo repeat testing (21). Following this recommendation, our institution began  
188 automatically repeating all positive samples from patients <18 years old. Prior to this, repeat testing was  
189 performed based on clinical request or medical director discretion. The majority of specimens which did  
190 not repeat (4 of 5) in our study were greater than 34 cycles. However, there was one specimen (Pt 17,  
191 specimen 1) with an earlier Ct value of 33.3 which did not repeat. The second sample from this patient  
192 was negative, and so the case was classified as inconclusive. If following the CDC guidelines, the first  
193 specimen would not have been sent for repeat testing and may have led to a false positive result.

194         Failure of a late Ct to repeat should not be used as the sole factor to report a specimen as  
195 positive or negative. True cases of mpox may also have samples that fail to repeat due to late Cts. For  
196 example, Pt 23 had two specimens with late Cts (37.1 and 38.5) with the second specimen failing to  
197 repeat. Given the similar presence of low MPXV in both specimens, we hypothesized these findings are  
198 more reflective of an individual late in the disease course. Failure to re-amplify the 38.5 Ct specimen was  
199 likely due to nucleic acid present below the limit of detection. Because Ct values of laboratory  
200 developed tests can be influenced by a myriad of factors (primer/probe design, cycling conditions, curve  
201 analysis), it is imperative that labs performing mpox testing have a robust understanding of their assay  
202 and criteria for repeating. When a patient has discordant results or a late Ct result, it is reasonable for

203 the laboratory to repeat extraction and amplification of the specimens. Additionally, consultation with  
204 the ordering provider may provide helpful context to the patient’s exposure risks. However, even when  
205 clinical information is available, epidemiological investigations may not provide a conclusive route of  
206 mpox exposure (18). In a series of 83 cases of pediatric mpox in the US, 34% (28/83) were from  
207 unknown routes of transmission (8).

208           Given the descriptive nature of our study and incomplete patient histories, our conclusions have  
209 several limitations. In our role as a reference laboratory, we lacked clinical information for the majority  
210 of pediatric cases where mpox was detected. As a result, we retrospectively classified cases as “positive”  
211 or “inconclusive” based on laboratory results and Bayesian reasoning. It is highly likely some of the  
212 inconclusive cases are false positives and would further lower the positive predictive value of mpox  
213 detection. Our guidelines for repeat testing of pediatric specimens changed over the course of the  
214 study, and there were 4 samples with late Cts that were not repeated.

215           In summary, the pediatric age group comprises a minority of those tested for mpox and the  
216 overall positivity rate is much lower than in adult males. Specimens from children are more frequently  
217 from females and collected from non-genital sources. The age groups at highest risk of mpox appear to  
218 be those less than 1 year of age and those 17 years of age. Inconclusive and false positive results  
219 comprise a significant number of cases in which mpox is initially detected. Careful clinical correlation  
220 and repeat testing of patient samples should be considered within this age group.

221

## 222 References

- 223 1. McCollum AM, Damon IK. 2014. Human monkeypox. *Clin Infect Dis* 58:260–267.
- 224 2. Parker S, Nuara A, Buller RML, Schultz DA. 2007. Human monkeypox: an emerging zoonotic  
225 disease. *Future Microbiol* 2:17–34.
- 226 3. Centers for Disease Control and Prevention (CDC). 2003. Update: multistate outbreak of  
227 monkeypox--Illinois, Indiana, Kansas, Missouri, Ohio, and Wisconsin, 2003. *MMWR Morb Mortal*  
228 *Wkly Rep* 52:642–646.
- 229 4. Thornhill JP, Barkati S, Walmsley S, Rockstroh J, Antinori A, Harrison LB, Palich R, Nori A, Reeves I,  
230 Habibi MS, Apea V, Boesecke C, Vandekerckhove L, Yakubovsky M, Sendagorta E, Blanco JL,  
231 Florence E, Moschese D, Maltez FM, Goorhuis A, Pourcher V, Migaud P, Noe S, Pintado C, Maggi F,  
232 Hansen A-BE, Hoffmann C, Lezama JI, Mussini C, Cattelan A, Makofane K, Tan D, Nozza S, Nemeth J,  
233 Klein MB, Orkin CM, SHARE-net Clinical Group. 2022. Monkeypox Virus Infection in Humans across  
234 16 Countries - April-June 2022. *N Engl J Med* 387:679–691.
- 235 5. WHO Director-General’s statement at the press conference following IHR Emergency Committee  
236 regarding the multi-country outbreak of monkeypox - 23 July 2022. [https://www.who.int/director-](https://www.who.int/director-general/speeches/detail/who-director-general-s-statement-on-the-press-conference-following-IHR-emergency-committee-regarding-the-multi-country-outbreak-of-monkeypox--23-july-2022)  
237 [general/speeches/detail/who-director-general-s-statement-on-the-press-conference-following-](https://www.who.int/director-general/speeches/detail/who-director-general-s-statement-on-the-press-conference-following-IHR-emergency-committee-regarding-the-multi-country-outbreak-of-monkeypox--23-july-2022)  
238 [IHR-emergency-committee-regarding-the-multi-country-outbreak-of-monkeypox--23-july-2022.](https://www.who.int/director-general/speeches/detail/who-director-general-s-statement-on-the-press-conference-following-IHR-emergency-committee-regarding-the-multi-country-outbreak-of-monkeypox--23-july-2022)  
239 Retrieved 22 August 2022.
- 240 6. Bunge EM, Hoet B, Chen L, Lienert F, Weidenthaler H, Baer LR, Steffen R. 2022. The changing  
241 epidemiology of human monkeypox—A potential threat? A systematic review. *PLOS Neglected*  
242 *Tropical Diseases* 16:e0010141.

- 243 7. Philpott D, Hughes CM, Alroy KA, Kerins JL, Pavlick J, Asbel L, Crawley A, Newman AP, Spencer H,  
244 Feldpausch A, Cogswell K, Davis KR, Chen J, Henderson T, Murphy K, Barnes M, Hopkins B, Fill M-  
245 MA, Mangla AT, Perella D, Barnes A, Hughes S, Griffith J, Berns AL, Milroy L, Blake H, Sievers MM,  
246 Marzan-Rodriguez M, Tori M, Black SR, Kopping E, Ruberto I, Maxted A, Sharma A, Tarter K, Jones  
247 SA, White B, Chatelain R, Russo M, Gillani S, Bornstein E, White SL, Johnson SA, Ortega E, Saathoff-  
248 Huber L, Syed A, Wills A, Anderson BJ, Oster AM, Christie A, McQuiston J, McCollum AM, Rao AK,  
249 Negrón ME, CDC Multinational Monkeypox Response Team. 2022. Epidemiologic and Clinical  
250 Characteristics of Monkeypox Cases - United States, May 17-July 22, 2022. MMWR Morb Mortal  
251 Wkly Rep 71:1018–1022.
- 252 8. Hennessee I, Shelus V, McArdle CE, Wolf M, Schatzman S, Carpenter A, Minhaj FS, Petras JK, Cash-  
253 Goldwasser S, Maloney M, Sosa L, Jones SA, Mangla AT, Harold RE, Beverley J, Saunders KE, Adams  
254 JN, Stanek DR, Feldpausch A, Pavlick J, Cahill M, O’Dell V, Kim M, Alarcón J, Finn LE, Goss M, Duwell  
255 M, Crum DA, Williams TW, Hansen K, Heddy M, Mallory K, McDermott D, Cuadera MKQ, Adler E,  
256 Lee EH, Shinall A, Thomas C, Ricketts EK, Koonce T, Rynk DB, Cogswell K, McLafferty M, Perella D,  
257 Stockdale C, Dell B, Roskosky M, White SL, Davis KR, Milleron RS, Mackey S, Barringer LA, Bruce H,  
258 Barrett D, D’Angeli M, Kocharian A, Klos R, Dawson P, Ellington SR, Mayer O, Godfred-Cato S,  
259 Labuda SM, McCormick DW, McCollum AM, Rao AK, Salzer JS, Kimball A, Gold JAW, California  
260 Department of Public Health Monkeypox Pediatric Working Group, CDC Monkeypox Pediatric  
261 Working Group, California Department of Public Health Monkeypox Pediatric Working Group,  
262 Berumen R, Cosentino G, Getabecha S, Glaser C, Grosgebauer K, Harriman K, Haw M, Kamali A,  
263 Kath C, Kim EH, Lewis LS, Sachdev D, Salas M, Stainken C, Wadford DA, Peters PJ, Vaidya A, CDC  
264 Monkeypox Pediatric Working Group, Hocevar Adkins S, Baird ; Nicolle, Barrios LC, Beeson A,  
265 Blackburn D, Borah BF, Click E, Davidson W, Galang RR, Hufstetler K, Hutchins HJ, Kourtis AP, Miller  
266 MJ, Bamrah Morris S, Olsen EO, Roth NM, Sims E, Chatham-Stephens K. 2022. Epidemiologic and

- 267 Clinical Features of Children and Adolescents Aged <18 Years with Monkeypox — United States,  
268 May 17–September 24, 2022. *MMWR Morb Mortal Wkly Rep* 71:1407–1411.
- 269 9. Ježek Z, Grab B, Szczeniowski M, Paluku KM, Mutombo M. 1988. Clinico-epidemiological features  
270 of monkeypox patients with an animal or human source of infection. *Bull World Health Organ*  
271 66:459–464.
- 272 10. Beeson AM, Haston J, McCormick DW, Reynolds M, Chatham-Stephens K, McCollum AM, Godfred-  
273 Cato S. 2022. Mpox in Children and Adolescents: Epidemiology, Clinical Features, Diagnosis, and  
274 Management. *Pediatrics* <https://doi.org/10.1542/peds.2022-060179>.
- 275 11. Aguilera-Alonso D, Alonso-Cadenas JA, Roguera-Sopena M, Lorusso N, Miguel LGS, Calvo C. 2022.  
276 Monkeypox virus infections in children in Spain during the first months of the 2022 outbreak. *The*  
277 *Lancet Child & Adolescent Health* 6:e22–e23.
- 278 12. Skittrall JP, Wilson M, Smielewska AA, Parmar S, Fortune MD, Sparkes D, Curran MD, Zhang H, Jalal  
279 H. 2021. Specificity and positive predictive value of SARS-CoV-2 nucleic acid amplification testing in  
280 a low-prevalence setting. *Clin Microbiol Infect* 27:469.e9-469.e15.
- 281 13. Zimmermann P, Curtis N. 2022. Monkeypox—What Pediatricians Need to Know. *The Pediatric*  
282 *Infectious Disease Journal* 41:1020.
- 283 14. Minhaj FS. 2022. Orthopoxvirus Testing Challenges for Persons in Populations at Low Risk or  
284 Without Known Epidemiologic Link to Monkeypox — United States, 2022. *MMWR Morb Mortal*  
285 *Wkly Rep* 71.



- 286 15. Lieberman NAP, Mathias PC, Bradley BT, Greninger AL. 2022. Clinical Performance and Trends  
287 during the First Two Months of Monkeypox Virus PCR Testing at Two United States Reference Labs.  
288 Journal of Clinical Microbiology 0:e01371-22.
- 289 16. Li Y, Olson VA, Laue T, Laker MT, Damon IK. 2006. Detection of monkeypox virus with real-time  
290 PCR assays. J Clin Virol 36:194–203.
- 291 17. Ramnarayan P, Mitting R, Whittaker E, Marcolin M, O’Regan C, Sinha R, Bennett A, Moustafa M,  
292 Tickner N, Gilchrist M, Kershaw A, Rampling T. 2022. Neonatal Monkeypox Virus Infection. New  
293 England Journal of Medicine 387:1618–1620.
- 294 18. Furth AMT van, Kuip M van der, Els AL van, Fievez LC, Rijckevorsel GG van, Ouden A van den,  
295 Jonges M, Welkers MR. 2022. Paediatric monkeypox patient with unknown source of infection, the  
296 Netherlands, June 2022. Eurosurveillance 27:2200552.
- 297 19. Saunders KE. 2022. Monkeypox in a Young Infant — Florida, 2022. MMWR Morb Mortal Wkly Rep  
298 71.
- 299 20. Becker TM, Magder L, Harrison HR, Stewart JA, Humphrey DD, Hauler J, Nahmias AJ. 1988. The  
300 epidemiology of infection with the human herpesviruses in Navajo children. Am J Epidemiol  
301 127:1071–1078.
- 302 21. 2022. Lab Advisory: Monkeypox Virus Testing Considerations to Prevent False Positive Test  
303 Results. [https://www.cdc.gov/locs/2022/08-23-2022-Lab-Advisory-](https://www.cdc.gov/locs/2022/08-23-2022-Lab-Advisory-Monkeypox_Virus_Testing_Considerations_Prevent_False_Positive_Test_Results.html)  
304 [Monkeypox\\_Virus\\_Testing\\_Considerations\\_Prevent\\_False\\_Positive\\_Test\\_Results.html](https://www.cdc.gov/locs/2022/08-23-2022-Lab-Advisory-Monkeypox_Virus_Testing_Considerations_Prevent_False_Positive_Test_Results.html). Retrieved  
305 16 January 2023.

306  
307