

1 **Effects of low versus high inspired oxygen fraction on**
2 **myocardial injury after transcatheter aortic valve**
3 **implantation: A randomized clinical trial**

4
5 Youn Joung Cho¹, Cheun Hyeon¹, Karam Nam¹, Seohee Lee¹, Jae-Woo Ju¹, Jeehoon Kang², Jung-
6 Kyu Han², Hyo-Soo Kim², Yunseok Jeon^{1*}

7
8 ¹ Department of Anesthesiology and Pain Medicine, Seoul National University Hospital, Seoul
9 National University College of Medicine, Seoul, South Korea

10 ² Department of Internal Medicine, Seoul National University Hospital, Seoul National University
11 College of Medicine, Seoul, South Korea

12
13 * Corresponding author

14 E-mail: jeonyunseok@gmail.com

15
16 **Short title:** oxygen fraction and myocardial injury in transcatheter aortic valve implantation
17
18

19 **Abstract**

20

21 **Background**

22 Oxygen therapy is used in various clinical situation, but its clinical outcomes are inconsistent.

23 The relationship between the fraction of inspired oxygen ($F_{I}O_2$) during transcatheter aortic
24 valve implantation (TAVI) and clinical outcomes has not been well studied. We investigated
25 the association of $F_{I}O_2$ (low vs. high) and myocardial injury in patients undergoing TAVI.

26 **Methods**

27 Adults undergoing transfemoral TAVI under general anesthesia were randomly assigned to
28 receive $F_{I}O_2$ 0.3 or 0.8 during procedure. The primary outcome was the area under the curve
29 (AUC) for high-sensitivity cardiac troponin I (hs-cTnI) during the first 72 h following TAVI.
30 Secondary outcomes included the AUC for postprocedural creatine kinase-myocardial band
31 (CK-MB), acute kidney injury and recovery, conduction abnormalities, pacemaker
32 implantation, stroke, myocardial infarction, and in-hospital mortality.

33 **Results**

34 Between October 2017 and April 2022, 72 patients were randomized and 62 were included in
35 the final analysis (n=31 per group). The median (IQR) AUC for hs-cTnI in the first 72 h was
36 42.66 (24.82–65.44) and 71.96 (35.38–116.34) h·ng/mL in the $F_{I}O_2$ 0.3 and 0.8 groups,
37 respectively (p=0.066). The AUC for CK-MB in the first 72 h was 257.6 (155.6–322.0) and
38 342.2 (195.4–485.2) h·ng/mL in the $F_{I}O_2$ 0.3 and 0.8 groups, respectively (p=0.132). Acute
39 kidney recovery, defined as an increase in the estimated glomerular filtration rate \geq 25% of
40 baseline in 48 h, was more common in the $F_{I}O_2$ 0.3 group (65% vs. 39%, p=0.042). Other
41 clinical outcomes were comparable between the groups.

42 **Conclusions**

43 The F₁O₂ level did not have a significant effect on periprocedural myocardial injury following
44 TAVI. However, considering the marginal results, a benefit of low F₁O₂ during TAVI could
45 not be ruled out.

46

47 **Keywords:** transcatheter aortic valve implantation; intraoperative oxygen; fraction of
48 inspired oxygen; oxygen therapy; myocardial injury

49

50

51 Introduction

52

53 Although a fraction of inspired oxygen ($F_{I}O_2$) higher than that of ambient air is generally
54 used during general anesthesia, there is continuing debate about the optimal $F_{I}O_2$. High
55 oxygen tension is beneficial for reducing surgical site infection and in 2016 World Health
56 Organization recommended that adults receive $F_{I}O_2$ 0.8 during mechanical ventilation under
57 general anesthesia [1]. However, a more recent systematic review found no difference in the
58 surgical site infection rate according to the intraoperative $F_{I}O_2$ amount, and suggested a
59 negative effect of high $F_{I}O_2$ on long-term outcomes [2]. Other investigators did not find any
60 difference in the degree of myocardial injury between perioperative $F_{I}O_2$ 0.3 and 0.8, and
61 suggested that $F_{I}O_2$ 0.8 is safe for major non-cardiac surgery [3].

62 High oxygen tension may cause oxidative stress, coronary vasoconstriction, and
63 altered microvascular perfusion, resulting in adverse systemic effects including myocardial
64 injury [4]. In a meta-analysis of acute myocardial infarction (MI), there was no evidence to
65 support the routine use of oxygen treatment and the authors could not rule out a harmful
66 effect of unnecessary oxygen therapy [5]. Constant and brief intermittent hyperoxia both
67 induced inflammatory responses and cytotoxicity in cardiomyocytes from adult humans [6].
68 Myocardial injury is common following transcatheter aortic valve implantation (TAVI) [7].
69 Moreover, abnormally increased cardiac biomarkers were associated with poor outcomes
70 including periprocedural kidney injury and 30-day and 1-year mortality following TAVI [8].

71 The relationship between the $F_{I}O_2$ level and myocardial injury has not been well
72 studied in patients undergoing TAVI. Therefore, this study investigated whether high (0.8)
73 and low (0.3) $F_{I}O_2$ during transfemoral TAVI under general anesthesia have different effects
74 on post-procedural myocardial injury, as indexed by serum cardiac troponin in the early post-
75 TAVI period.

76 **Methods**

77

78 **Ethics approval**

79 This randomized controlled trial was approved by the Institutional Review Board of Seoul
80 National University Hospital (#1707-109-871, on September 11, 2017) and registered at
81 clinicaltrials.gov (NCT03291210, on September 25, 2017) before patient enrollment. The
82 study was conducted according to the Good Clinical Practice guidelines and Declaration of
83 Helsinki. Written informed consent was obtained from all participants, who could withdraw
84 at any time.

85

86 **Study population and randomization**

87 Adults (aged 20–99 years) with aortic stenosis (AS), undergoing elective TAVI under general
88 anesthesia via the transfemoral approach in a single tertiary academic center (Seoul National
89 University Hospital, South Korea), were eligible for the study. Eligibility for TAVI was
90 based on the consensus of a local multidisciplinary heart team, including clinical
91 cardiologists, cardiac interventionists, cardiac surgeons, radiologists, and anesthesiologists.
92 The predicted operative mortality risk was calculated using the Society of Thoracic Surgeons
93 Predicted Risk of Mortality (STS-PROM) score, European System for Cardiac Operative
94 Risk Evaluation (EuroSCORE) II, and logistic EuroSCORE. The heart team determined the
95 anesthetic method (general anesthesia or conscious sedation) based on the patients’
96 comorbidities, preference, and ability to maintain a supine position without profound dyspnea
97 or restlessness during the procedure. The exclusion criteria were a non-transfemoral
98 approach, pre-procedural arterial partial pressure of oxygen (PaO₂) <65 mmHg or receiving
99 oxygen treatment, severe pre-procedural renal dysfunction (defined as an estimated

100 glomerular filtration rate [eGFR] <30 mL/min/1.73 m²), chronic pulmonary obstructive
101 disease or symptomatic asthma, tuberculosis-destroyed lung, history of lung cancer, acute
102 coronary syndrome within the past 6 months, documented pre-procedural cardiac troponin I
103 (cTnI) or creatine kinase-myocardial band (CK-MB) elevation, stroke or transient ischemic
104 attack within 6 months, pregnancy, and refusal to participate.

105 After enrollment and the informed consent process, the patients were randomized to
106 receive F_IO₂ 0.3 or 0.8 during TAVI (1:1 allocation ratio) (Fig 1). Block randomization
107 (blocks of four or six) was conducted using a computer-generated program by an independent
108 research nurse on the morning of the intervention. The group assignments were concealed in
109 an opaque envelop, and all investigators, patients, interventionists, and data analyzers were
110 blinded to the group allocations.

111

112 **Fig 1. CONSORT diagram.** CK-MB, creatine kinase-myocardial band; COPD, chronic
113 obstructive pulmonary disease; F_IO₂, fraction of inspired oxygen; PaO₂, arterial partial
114 pressure of oxygen.

115

116 **Study protocol**

117 The routine monitoring techniques of our institution for patients under general anesthesia
118 were applied, except F_IO₂ management. Without premedication, 12-lead electrocardiogram,
119 pulse oxygen saturation (SpO₂), invasive and noninvasive arterial blood pressure, cerebral
120 oxygen saturation (ScrbO₂), and bispectral index monitoring were performed. Left and right
121 ScrbO₂ were measured using near-infrared spectroscopy (Somanetics INVOS oximeter;
122 Covidien, Mansfield, MA, USA). Transesophageal or transthoracic echocardiography was
123 performed to evaluate the valve position and presence of paravalvular regurgitation, as
124 required by the interventionists.

125 Before inducing anesthesia, all participants were preoxygenated using an anesthesia
126 machine (Primus; Drägerwerk, Lubeck, Germany) with $F_{I}O_2$ 0.3 or 0.8 according to the
127 group allocation. After stabilization, general anesthesia was induced by a target-controlled
128 infusion of propofol (effect-site concentration $[Ce]$, 2.5–4.0 $\mu\text{g}/\text{mL}$) and remifentanyl (Ce,
129 1.0–4.0 ng/mL) using a commercial infusion pump (Orchestra, Fresenius Vial, Brézins,
130 France). Neuromuscular blockade was established by administering rocuronium (0.6 mg/kg).
131 Then the trachea was intubated and the lungs were ventilated in volume-controlled mode with
132 a tidal volume of 0.6–0.8 mL/kg and ventilatory rate of 9–12 /min. The alveolar recruitment
133 maneuver was performed at 25 cmH_2O for 10 s after tracheal intubation, and a positive end-
134 expiratory pressure of 5 cmH_2O was applied in all patients. According to the group
135 assignment, $F_{I}O_2$ was maintained at 0.3 or 0.8 until the end of the TAVI procedure, unless the
136 SpO_2 was $<93\%$. If desaturation occurred, $F_{I}O_2$ was increased by 0.05–0.1, and an additional
137 alveolar recruitment maneuver was performed as needed to maintain $\text{SpO}_2 \geq 93\%$ by the
138 attending anesthesiologists. On completing the procedure, 100% O_2 was provided to all
139 patients during anesthesia emergence. Patients were extubated in the intervention room,
140 monitored in the cardiovascular care unit for 1–2 days, and then transferred to a general ward.
141 Patients were discharged 5–7 days post-TAVI if they had no procedure-related complications.

142 The TAVI was conducted in accordance with the standard procedures in our
143 institution. Using a transfemoral approach, a balloon-expandable Sapien III valve (Edwards
144 Lifesciences, Irvine, CA, USA), self-expandable Evolut Pro or R valve (Medtronic,
145 Minneapolis, MN, USA), or Lotus valve (Boston Scientific, Natick, MA, USA) was
146 implanted at the diseased aortic valve. The valve was chosen by the heart team based on the
147 size and structure of the native valve and sinus, heights of the coronary artery openings, and
148 considerations regarding future coronary access, the risk of conduction disturbances, and
149 annular calcification. The iliofemoral arteries were accessed under fluoroscopic guidance and

150 closed percutaneously using Perclose ProGlide vascular suture-mediated closure devices
151 (Abbott Vascular Devices, Redwood City, CA, USA). Before the procedure, the patients
152 were given loading doses of dual antiplatelet agents: acetylsalicylic acid and clopidogrel
153 (both 300 mg). During the procedure, the patients were heparinized with unfractionated
154 heparin to achieve an activated clotting time >250 s. At completion of the valve implantation,
155 the effects of heparin were reversed by protamine infusion.

156 During the procedure, arterial blood gas analysis (ABGA) was performed at four
157 time points: baseline (before anesthesia induction, T1), after inducing general anesthesia
158 (T2), after valve implantation (T3), and at the end of the procedure (T4). ABGA was
159 performed using a GEM® Premier 3000 device (Model 5700; Instrumentation Laboratory,
160 Lexington, MA, USA).

161 Two serum cardiac biomarkers of myocardial injury, high-sensitivity cTnI (hs-cTnI)
162 and CK-MB, were measured at baseline (before the procedure) and 1, 4, 8, 24, 48, and 72 h
163 after TAVI. hs-cTnI was measured using an Abbott Architect Plus Analyzer (i2000SR; Flex,
164 San Jose, CA, USA), which has a limit of detection of 0.0011 µg/L and limit of blank of
165 0.0007–0.0013 µg/L. An hs-cTnI concentration $\geq 99^{\text{th}}$ percentile in the normal population
166 (0.028 µg/L) was deemed abnormal. Serum creatinine concentrations were calibrated using
167 isotope dilution mass spectrometry (IDMS). The eGFR was calculated using the modified
168 diet in renal disease (MDRD) equation [9].

169

170 IDMS MDRD eGFR = $175 \times (\text{serum creatinine})^{-1.154} \times \text{age}^{-0.203} \times (0.742 \text{ for women})$

171

172 Postprocedural acute kidney injury (AKI) was determined based on the serum
173 creatinine level and urine output according to the Kidney Disease: Improving Global
174 Outcomes Clinical Practice Guidelines criteria for AKI [10]. AKI was defined as an increase

175 in serum creatinine ≥ 1.5 times the baseline level or by ≥ 0.3 mg/dL (≥ 26.5 $\mu\text{mol/L}$)
176 [AKI_{creatinine}], or a urine output < 0.5 mL/kg/h for ≥ 6 h within 7 days [AKI_{urine output}]. AKI
177 occurring > 7 days after the procedure was excluded because it might have been unrelated to
178 the procedure. Acute kidney recovery (AKR) was defined as an increase in eGFR of $\geq 25\%$
179 relative to baseline at 48 h post-TAVI [11].

180 The postprocedural development of new conduction abnormalities and incidence of
181 permanent pacemaker insertion was assessed. Stroke was defined as an acute episode of a
182 focal or global neurological deficit as a result of hemorrhage or infarction, based on the Valve
183 Academic Research Consortium-2 (VARC-2) definition [12]. Periprocedural MI was defined
184 based on a combination of new ischemic symptoms or signs and elevated cardiac biomarkers
185 within 72 h following TAVI, according to the VARC-2 definition [12].

186

187 **Study endpoints and sample size calculation**

188 The primary study outcome was periprocedural myocardial injury, as reflected by the
189 geometric area under the curve (AUC) for periprocedural serum hs-cTnI in the first 72 h post-
190 TAVI, calculated according to the trapezoidal rule. Secondary outcomes were the AUC for
191 serum CK-MB in the first 72 h post-TAVI, and the peak serum hs-cTnI and CK-MB levels in
192 the same period. Post-procedural clinical outcomes were also evaluated, including AKI,
193 AKR, new conduction abnormalities, permanent pacemaker insertion, stroke, MI, and in-
194 hospital cardiovascular mortality.

195 To calculate the sample size, we conducted a pilot study of 10 patients undergoing
196 transfemoral TAVI under general anesthesia. The AUC for serum hs-cTnI in the first 72 h
197 after TAVI was 40.24 ± 28.16 ng/mL. Assuming that a 50% difference in hs-cTnI levels
198 between the two treatment groups in the first 72 h is clinically relevant, 32 patients were
199 required for each group at 80% power and an alpha error of 5%. Considering a 10% dropout

200 rate, we recruited 36 patients to each group (a total of 72 patients).

201

202 **Statistical analysis**

203 Data are presented as the mean \pm SD, median (interquartile range, IQR), or number (%) after
204 normality was tested using the Kolmogorov–Smirnov test. The primary endpoint, i.e., the
205 AUC for serum hs-cTnI in the first 72 h after TAVI, was analyzed using the Mann–Whitney
206 *U* test according to the data distribution. Other continuous variables were analyzed using the
207 independent *t*-test or Mann–Whitney *U* test after performing a normality test. Categorical
208 variables were analyzed using Pearson’s chi square test or Fisher’s exact test. For repeated
209 measures, a linear mixed model with Bonferroni correction was used to compare the groups.
210 In the mixed model, group, measurement time, and their interaction were fixed effects, while
211 subject was a random effect. Plots of residuals versus fitted values were checked in terms of
212 whether the error terms (residuals) had a mean of zero and constant variance. The normality
213 assumption for repeated measures was assessed using histograms and quantile–quantile plots
214 (for residuals). Multivariable logistic regression analysis was performed to identify
215 independent risks for F₁O₂ and postprocedural hs-cTnI. Odds ratios (ORs) were adjusted for
216 age, sex, STS-PROM score, C-reactive protein, left ventricular (LV) ejection fraction (EF),
217 procedural time, and new conduction abnormality, and 95% confidence intervals (CIs) were
218 presented. The analysis was done in an intention-to-treat manner. All analyses were
219 performed using IBM SPSS Statistics (ver. 21.0; IBM Corp., Armonk, NY, USA) or R
220 software (ver. 3.5.1; R Development Core Team, Vienna, Austria). A P value <0.05 was
221 considered statistically significant.

222

223 Results

224
225 Patients were screened for eligibility between October 18, 2017 and April 6, 2022. Of 189
226 patients, 117 were excluded based on the exclusion criteria (Fig 1). After 72 patients were
227 randomized to the F_IO₂ 0.3 or 0.8 groups (n=36 each), 10 patients were excluded due to pre-
228 procedural PaO₂ <65 mmHg (n=4), elevated pre-procedural cTnI (n=5), or procedure
229 cancellation (n=1). We noted violations of the exclusion criteria (pre-procedural PaO₂ <65
230 mmHg or elevated cardiac biomarkers) in nine patients and excluded them from the analysis.
231 Thus, a total of 62 patients (31 per group) were included in the final analysis. We performed
232 additional sub-analysis including five patients (n=2 in the F_IO₂ 0.3 group and n=3 in the F_IO₂
233 0.8 group) who had elevated cardiac biomarkers after randomization.

234 Tables 1 and 2 present the baseline characteristics of the included patients and
235 procedural variables. Baseline characteristics were well balanced between the groups. The
236 median (IQR) age of the included patients was 79 (77–83) years. The median (IQR)
237 procedural duration was 80 (70–95) min.

238

239 **Table 1. Baseline characteristics in patients undergoing transfemoral transcatheter**
240 **aortic valve implantation.**

	F _I O ₂ 0.3 (n=31)	F _I O ₂ 0.8 (n=31)	p value
Demographics			
Age, yr	79 (76–82 [range 64–90])	79 (77–84 [range 58–94])	0.783
Male	12 (39%)	12 (39%)	>0.999
Height, cm	156 ± 10.0	157 ± 10	0.776
Weight, kg	59.1 ± 10.7	60.0 ± 11.0	0.742

Body mass index, kg/m ²	24.29 ± 3.72	24.42 ± 3.69	0.892
Body surface area, m ²	1.58 ± 0.17	1.59 ± 0.18	0.740
Current smoker	1 (3%)	0 (0%)	0.313
NYHA functional class			0.496
I	8 (26%)	6 (19%)	
II	14 (45%)	18 (58%)	
III/IV	9 (29%)	7 (23%)	
Predicted risk calculation			
STS PROM, %	2.759 (1.936–3.724)	3.162 (2.370–4.060)	0.269
EuroSCORE II, %	2.72 (1.64–3.95)	3.54 (1.35–7.01)	0.356
Logistic EuroSCORE, %	4.52 (1.56–7.46)	4.83 (1.95–7.01)	0.564
Echocardiographic and CT data			
LV EF, %	63 (59–67)	66 (61–68)	0.441
AV area, cm ²	0.7 (0.6–0.8)	0.7 (0.6–0.9)	0.309
AV peak velocity, m/s	4.6 ± 0.4	4.6 ± 0.6	0.736
AV mean pressure gradient, mmHg	49 (44–60)	50 (43–66)	0.933
AV perimeter, mm	73.0 ± 6.4	72.0 ± 5.6	0.513
LVIDd, mm	46 (42–50)	46 (41–49)	0.534
LVIDs, mm	28 (25–32)	27 (24–31)	0.398
Stroke volume, mL	77 ± 22	81 ± 17	0.538
Height of LMCA os from annulus, mm	12.7 ± 2.4	12.2 ± 2.2	0.409
Height of RCA os from annulus, mm	14.7 ± 2.3	14.2 ± 2.5	0.410
Baseline laboratory findings			
Hematocrit, %	36.0 ± 4.3	34.8 ± 4.6	0.776
eGFR, ml/min/1.73 m ²	67.5 ± 16.9	66.5 ± 16.0	0.809
Creatinine, mg/dL	0.88 (0.81–1.05)	0.91 (0.76–1.13)	0.800

Albumin, g/dL	4.0 (3.9–4.3)	4.0 (3.7–4.3)	0.666
hs-cTnI, ng/mL	0.00 (0.00–0.00)	0.00 (0.00–0.00)	0.757
CK-MB, ng/mL	1.1 (1.1–1.4)	1.0 (0.8–1.2)	0.065
hs-CRP, mg/dL	0.07 (0.04–0.33)	0.07 (0.04–0.14)	0.750
Comorbidities			
Hypertension	26 (84%)	22 (71%)	0.224
Diabetes	7 (23%)	11 (36%)	0.263
Dyslipidemia	17 (55%)	21 (68%)	0.297
Coronary artery disease	6 (19%)	7 (23%)	0.755
Angina/previous MI	7 (23%)	6 (19%)	0.755
Medications			
Aspirin	13 (42%)	13 (42%)	>0.999
Anti-platelet agents	12 (39%)	16 (52%)	0.307
Non-vitamin K anticoagulants	3 (10%)	3 (10%)	>0.999
Beta-blockers	19 (61%)	16 (52%)	0.442
ARB/ACEi	20 (65%)	18 (58%)	0.602
Calcium channel blockers	11 (36%)	15 (48%)	0.303
Oral hypoglycemic agents	8 (26%)	9 (29%)	0.776
Diuretics	17 (55%)	14 (45%)	0.446
Nitrates	6 (19%)	4 (13%)	0.490
Statin	19 (61%)	22 (71%)	0.421

241 Values are median (interquartile range), n (%), or mean \pm SD.

242 ACEi, angiotensin converting enzyme inhibitor; ARB, angiotensin receptor blocker; AV,
 243 aortic valve; CK-MB, creatine kinase-myocardial band; COPD, chronic obstructive
 244 pulmonary disease; CT, computed tomography; EF, ejection fraction; eGFR, estimated
 245 glomerular filtration rate; EuroSCORE, European System for Cardiac Operative Risk
 246 Evaluation; F_IO₂, fraction of inspired oxygen; hs-CRP, high-sensitivity C-reactive protein;
 247 hs-cTnI, high-sensitivity cardiac troponin I; LMCA, left main coronary artery; LV, left

248 ventricular; LVIDd, left ventricular internal diameter end diastole; LVIDs, left ventricular
 249 internal diameter end systole; MI, myocardial infarction; NYHA, New York Heart
 250 Association; RCA, right coronary artery; STS PROM, Society of Thoracic Surgeons
 251 Predicted Risk of Mortality; TIA, transient ischemic attack.

252

253 **Table 2. Valve characteristics and procedural variables in patients undergoing**

254 **transfemoral transcatheter aortic valve implantation.**

	F _I O ₂ 0.3 (n=31)	F _I O ₂ 0.8 (n=31)	p value
Prosthetic valve type			0.647
Sapien III	13 (42%)	14 (45%)	
Evolut Pro or R	15 (48%)	12 (39%)	
Lotus valve	3 (10%)	5 (16%)	
Prosthetic valve size, mm			0.698
23	6 (19%)	9 (29%)	
25	1 (3%)	2 (7%)	
26	18 (58%)	14 (45%)	
29	6 (19%)	6 (19%)	
Paravalvular regurgitation			0.112
No	12 (39%)	13 (42%)	
Trivial	9 (29%)	15 (48%)	
Mild	9 (29%)	2 (7%)	
Moderate	1 (3%)	1 (3%)	
Procedure duration, min	80 (70–95)	80 (70–95)	0.860
Anesthesia duration, min	140 (120–155)	135 (120–160)	0.888
Amount of contrast media, mL	250 (200–288)	250 (210–326)	0.404

Transfusion of pRBC, unit	0 (0–1)	0 (0–1)	0.675
---------------------------	---------	---------	-------

255 Values are n (%) or median (interquartile range).

256 $F_{I}O_2$, fraction of inspired oxygen; pRBC, packed red blood cell.

257

258 During the procedure, PaO_2 , arterial oxygen saturation (SaO_2), and SpO_2 were higher
259 in the $F_{I}O_2$ 0.8 than $F_{I}O_2$ 0.3 group (Fig 2). Two patients in the $F_{I}O_2$ 0.3 group required
260 adjustment of $F_{I}O_2$ to 0.4 during the procedure because transient $SpO_2 < 93\%$ was observed.
261 The mean left and right cerebral oximetry values were higher in the $F_{I}O_2$ 0.8 than $F_{I}O_2$ 0.3
262 group (Fig 2). For serial measurements, interactions between measurement time and group
263 were significant for PaO_2 , SaO_2 , and the mean $ScrbO_2$ ($p < 0.001$, < 0.001 , and 0.032,
264 respectively), but not for SpO_2 ($p = 0.330$).

265

266 **Fig 2. Changes in arterial oxygenation, pulse oxygen saturation, and cerebral oximetry**
267 **in patients receiving a fraction of inspired oxygen of 0.3 or 0.8 during transcatheter**
268 **aortic valve implantation.** $F_{I}O_2$, fraction of inspired oxygen; PaO_2 , arterial partial pressure
269 of oxygen; SaO_2 , arterial oxygen saturation; SpO_2 , pulse oxygen saturation; $ScrbO_2$, cerebral
270 oxygen saturation. * $p < 0.001$ compared to the $F_{I}O_2$ 0.3 group. # $p = 0.003$ between the
271 groups (mixed model). § $p < 0.05$ compared to the $F_{I}O_2$ 0.3 group.

272

273 The primary outcome, the AUC for serum hs-cTnI in the first 72 h post-TAVI, was
274 higher in the $F_{I}O_2$ 0.8 than $F_{I}O_2$ 0.3 group (71.96 [35.38–116.34] vs. 42.66 [24.82–65.44]
275 h·ng/mL), but the difference was not statistically significant ($p = 0.066$) (Fig 3). The secondary
276 outcome (AUC for CK-MB in the first 72 h post-TAVI) was also higher in the $F_{I}O_2$ 0.8
277 group, but not significantly (342.2 [195.4–485.2] vs. 257.6 [155.6–322.0] h·ng/mL; $p = 0.132$)
278 (Fig 3). The peak hs-cTnI and CK-MB levels during the first 72 h post-TAVI were also non-

279 significantly higher in the F_IO₂ 0.8 group (1.79 [1.09–3.77] vs. 1.30 [1.00–1.58] ng/mL and
280 10.9 [5.7–15.6] vs. 7.5 [6.0–11.9] ng/mL; p=0.051 and 0.159, respectively). For
281 periprocedural serial measurements, the group differences in hs-cTnI and CK-MB did not
282 reach statistical significance (p=0.125 and 0.084, respectively; mixed model). The interaction
283 between measurement time and group was not significant (p=0.200 and 0.096 for hs-cTnI and
284 CK-MB, respectively). When including the five patients who completed the study protocol
285 and were excluded from the final analysis due to elevated baseline hs-cTnI after
286 randomization, there were no significant differences in the AUCs for hs-cTnI and CK-MB in
287 the first 72 h post-TAVI between the groups (S1 Fig). After adjustment for various risk
288 factors, there was no significant association between the F_IO₂ and AUC for hs-cTnI post-
289 TAVI (OR: 3.644, 95% CI: 0.864–15.371; p=0.078).

290

291 **Fig 3. Changes in cardiac biomarkers in the first 72 h in patients who received a**
292 **fraction of inspired oxygen of 0.3 or 0.8 during transcatheter aortic valve implantation.**

293 AUC, area under the curve; CK-MB, creatine kinase-myocardial band; hs-cTnI, high-
294 sensitivity cardiac troponin I; TAVI, transcatheter aortic valve implantation.

295

296 The postprocedural incidence of AKI did not differ between F_IO₂ 0.3 and 0.8 groups
297 (36% vs. 42%; p=0.602) (Table 3). However, AKR was more frequent in the F_IO₂ 0.3 than
298 F_IO₂ 0.8 group (65% vs. 39%; p=0.042). Other postprocedural clinical outcomes, such as
299 cardiovascular mortality or length of hospitalization, were comparable between the two
300 groups (Table 3).

301

302 **Table 3. Postprocedural variables in patients received fraction of inspired oxygen 0.3 or**
303 **0.8 during transfemoral transcatheter aortic valve implantation.**

	F _I O ₂ 0.3 (n=31)	F _I O ₂ 0.8 (n=31)	p value
Echocardiographic data (at discharge)			
LV EF, %	63 (60–67)	65 (62–69)	0.140
AV area, cm ²	1.8 (1.5–2.1)	1.6 (1.3–1.9)	0.126
AV peak velocity, m/s	2.2 ± 0.4	2.3 ± 0.5	0.350
AV mean pressure gradient, mmHg	10 (6–13)	11 (8–14)	0.386
LVIDd, mm	45 (42–48)	45 (43–47)	0.854
LVIDs, mm	27 (25–31)	27 (25–30)	0.685
Stroke volume, mL	74 ± 24	71 ± 17	0.538
Peak creatinine within 7 days, mg/dL	0.87 (0.77–0.99)	0.89 (0.74–1.16)	0.508
Peak hs-CRP within 72 h, mg/dL	3.71 ± 2.21 4.14 (1.56–5.22)	4.38 ± 3.23 4.25 (2.01–5.84)	0.393 0.694
AKI within 7 days	11 (36%)	13 (42%)	0.602
AKI _{creatinine}	0 (0%)	3 (10%)	0.238
AKI _{urine output}	11 (36%)	12 (39%)	0.793
AKR within 48 h	20 (65%)	12 (39%)	0.042
Both AKI and AKR	7 (23%)	3 (10%)	0.167
New conduction abnormality	15 (48%)	11 (36%)	0.303
PPM insertion	3 (10%)	4 (13%)	> 0.999
Stroke	1 (3%)	1 (3%)	> 0.999
Myocardial infarction	0	0	
In-hospital mortality	0	0	
Post-procedural hospital length of stay, days	6 (5–7)	5 (5–7)	0.403

304 Values are median (interquartile range), mean ± SD, or n (%). AKI was defined as an
305 increase in serum creatinine ≥ 1.5 times the baseline level or by ≥ 0.3 mg/dL (≥ 26.5 μmol/L)
306 for [AKI_{creatinine}], or urine output < 0.5 mL/kg/h for ≥ 6 h within 7 days for [AKI_{urine output}].
307 AKI, acute kidney injury; AKR, acute kidney recovery; AV, aortic valve; EF, ejection
308 fraction; F_IO₂, fraction of inspired oxygen; LV, left ventricular; LVIDd, left ventricular

309 internal diameter end diastole; LVIDs, left ventricular internal diameter end systole; PPM,

310 permanent pacemaker.

311

312 **Discussion**

313

314 Compared to the F₁O₂ 0.3 group, the F₁O₂ 0.8 group showed a greater postprocedural
315 elevation of cardiac biomarkers, albeit without statistical significance. Postprocedural AKR
316 was more frequent in the F₁O₂ 0.3 group. There was no difference in other periprocedural
317 outcomes between the groups.

318

319 **Myocardial injury after TAVI**

320 Even after successful TAVI, the cardiac biomarkers cTnI and CK-MB showed post-
321 procedure increases despite prompt relief of transvalvular pressure overload, and
322 periprocedural myocardial injury occurred along with transient deterioration in myocardial
323 function [13]. Significant deterioration in the myocardial performance index, which implies
324 both systolic and diastolic dysfunction, was observed immediately following TAVI [13].
325 New myocardial late enhancement with an ischemic pattern, indicating myocardial damage,
326 was detected on cardiac magnetic resonance images following both balloon-expandable and
327 self-expandable valve implantation [14].

328 Transient LV dysfunction and injury following TAVI seems to be partly influenced
329 by procedural aspects of transcatheter valve deployment [15]. Procedure-related mechanical
330 trauma during TAVI, including during balloon valvuloplasty, valve positioning, and
331 prosthesis delivery, also plays a substantial role in myocardial damage [16]. Rapid ventricular
332 pacing is used to temporarily reduce the LV output during pre-implantation balloon
333 valvuloplasty and balloon-expandable valve implantation, and for post-implantation
334 ballooning to reduce paravalvular leakage. Rapid ventricular pacing transiently reduces
335 microvascular tissue perfusion and the flow index in small- and medium-sized vessels, and

336 induces partial microcirculatory arrest and delayed recovery of microflow [17]. Subsequently,
337 ventricular stunning and subsequent dysfunction may occur [15].

338

339 **Hyperoxia and myocardial injury**

340 The role of oxidative stress in reperfusion injury is relatively well established. Abrupt
341 oxidative reactions following reperfusion produce reactive oxygen species (ROS) from
342 cardiomyocytes and endothelial cells, which amplifies local inflammatory responses and
343 leads to a vicious cycle of ROS production [18]. The biological mechanism underlying the
344 adverse effects of hyperoxia is related to the generation of ROS, specifically the superoxide
345 anion, which has a negative impact on coronary blood flow and LV distensibility [19].
346 Hyperoxia can exacerbate oxidative stress and thereby worsen coronary vasoconstriction and
347 myocardial injury. Interestingly, hyperoxic reperfusion limited myocardial necrosis in rodents
348 with cardiovascular risk factors more so than in a normoxemic reperfusion group, while the
349 reverse occurred in healthy rodents [18]. Similarly, in a preliminary canine MI model,
350 administering 100% oxygen had beneficial effects on the myocardium by reducing
351 myocardial infarct size and improving the EF after reperfusion compared to room-air
352 ventilation [20].

353 However, in the AVOID trial, patients presenting with acute MI were randomized to
354 receive oxygen 8 L/min via face mask or ambient air, and oxygen treatment increased
355 myocardial injury and infarct size in patients without hypoxia [21]. In patients admitted to the
356 intensive care unit (ICU), conservative use of oxygen, which aimed to maintain arterial
357 oxygen tension within the physiological range, reduced ICU mortality compared to
358 conventional use of oxygen [22]. In the large randomized DETO2X-AMI study, there was no
359 difference in 1-year mortality or the peak cardiac troponin level between patients with
360 suspected MI who received supplemental oxygen versus ambient air [23]. During general

361 anesthesia for major non-cardiac surgery, there was no difference in myocardial injury—
362 assessed using the AUC for high-sensitive troponin in the first 3 postoperative days—
363 between F_IO₂ 0.3 and 0.8 administered intraoperatively and for 2 h after surgery [3]. In the
364 ICU-ROX study, conservative use of F_IO₂ (≤ 0.21) during mechanical ventilation in adult ICU
365 patients resulted in no difference in the number of ventilator-free days compared to standard
366 administration of F_IO₂ [24]. In a more recent nationwide registry trial, high oxygen
367 supplementation (6–8 L/min by face mask) resulted in no significant difference in the 30-day
368 or 1-year mortality rate in patients with suspected acute coronary syndrome compared to low
369 oxygen treatment [25].

370

371 **Myocardial injury and clinical outcomes after TAVI**

372 Cardiac biomarkers elevation following surgery or intervention result from perioperative
373 hemodynamic stress, inflammation, or oxygen supply and demand imbalance [26].
374 Periprocedural myocardial injury following TAVI was associated with a significantly
375 increased risk of poor short- and long-term clinical outcomes, including 30-day and 1-year
376 mortality, neurological events, and postprocedural permanent pacemaker implantation [27].

377 In our study, high oxygen tension during TAVI tended to increase the release of
378 cardiac biomarkers in the first 72 h post-TAVI compared to the low oxygen tension group,
379 but the difference was not significant. There was no clinical impact of the level of
380 intraoperative oxygen tension during TAVI, except that recovery of kidney function was
381 more common in the low- compared to the high-F_IO₂ group.

382

383 **Acute kidney recovery**

384 Acute kidney recovery, which is a relatively recently described phenomenon, has been
385 observed more frequently than AKI after both TAVI and surgical aortic valve replacement

386 (SAVR) [28]. Following TAVI or SAVR, normalization of the aortic valve area, prompt
387 relief of the trans-aortic pressure gradient, and normalization of post-stenotic flow
388 abnormality occur. Regarding renal blood flow, a rapid increase in cardiac output and
389 reduced LV afterload may cause abrupt hemodynamic changes in the early postprocedural
390 period, such as renal congestion. In a recent prospective registry analysis, both AKI and AKR
391 early after TAVI were independent predictors of cardiovascular mortality [29]. In our study
392 cohort, 10 of the 62 (16%) patients met the criteria for both AKI and AKR during the study
393 period (Table 3). Rapid changes in renal hemodynamics could have occurred in these groups,
394 and both post-TAVI AKI and AKR may reflect a cardiorenal aspect of the extra-cardiac
395 damage characterizing severe AS. Further studies are required to assess the relationship
396 between renal circulatory changes and clinical outcomes in AS patients following TAVI.

397

398 **Study limitations**

399 This study has some limitations. First, it was a single-center trial with relatively few patients,
400 and was only powered for one surrogate cardiac biomarker, hs-cTnI. Although we observed a
401 trend toward reduced hs-cTnI release and better postprocedural kidney recovery, we cannot
402 definitely conclude that arterial oxygenation is beneficial for patients undergoing TAVI in
403 terms of periprocedural myocardial and renal protection. Second, we included patients
404 undergoing general anesthesia for transfemoral TAVI in this study. However, many patients
405 undergo TAVI under conscious sedation or even local anesthesia, unless they are at very high
406 periprocedural risk due to severely compromised cardiopulmonary function or the inability to
407 maintain a stable supine position, for example. Nevertheless, the included patients had
408 comparable characteristics regarding potential risk factors for postprocedural myocardial
409 injury between the two groups. Future investigators could compare the oxygenation strategies
410 of minimal supplemental oxygen and no supplemental oxygen, as in the treatment of acute

411 MI patients without hypoxia, in terms of the likelihood of avoiding unnecessary
412 periprocedural oxidative stress and protecting multiple organ systems, in patients undergoing
413 TAVI under conscious sedation or local anesthesia. Third, we included relatively low-risk
414 patients; we excluded those who were already hypoxemic or required supplemental oxygen,
415 and those with acute coronary syndrome or renal failure. In high-risk patients with severe LV
416 dysfunction or poor oxygenation, however, different supplemental oxygen strategies may
417 have a differential impact on myocardial injury and other clinical outcomes. Therefore,
418 further studies are required of high-risk patients, who may be more suitable candidates for
419 TAVI. Lastly, there is lack of control subjects undergoing SAVR in evaluating oxygenation
420 and periprocedural myocardial injury in this study. As it is beyond the primary aim of the
421 present study, future studies can be conducted regarding periprocedural oxygen content and
422 myocardial injury in patients undergoing TAVI vs. SAVR.

423

424 **Conclusions**

425 In conclusion, the $F_{I}O_2$ level did not have a significant effect on periprocedural myocardial
426 injury following TAVI with general anesthesia. However, considering the marginal results, a
427 benefit of low $F_{I}O_2$ during TAVI could not be ruled out.

428

429 **Acknowledgements**

430 The authors gratefully acknowledge Sun-Young Jung, a statistician, who is collaborating with
431 our institution, for her assistance in the statistical analysis and invaluable advice and
432 comments.

434 **References**

- 435 1. Allegranzi B, Zayed B, Bischoff P, Kubilay NZ, de Jonge S, de Vries F, et al. New
436 WHO recommendations on intraoperative and postoperative measures for surgical site
437 infection prevention: an evidence-based global perspective. *Lancet Infect Dis* 2016; 16:
438 e288–e303. doi: 10.1016/S1473-3099(16)30402-9.
- 439 2. Fasquel C, Huet O, Ozier Y, Quesnel C, Garnier M. Effects of intraoperative high
440 versus low inspiratory oxygen fraction (FiO₂) on patient's outcome: A systematic
441 review of evidence from the last 20 years. *Anaesth Crit Care Pain Med* 2020; 39: 847–
442 858. doi: 10.1016/j.accpm.2020.07.019.
- 443 3. Holse C, Aasvang EK, Vester-Andersen M, Rasmussen LS, Wetterslev J, Christensen
444 R, et al. Hyperoxia and Antioxidants for Myocardial Injury in Noncardiac Surgery: A 2
445 x 2 Factorial, Blinded, Randomized Clinical Trial. *Anesthesiology* 2022; 136: 408-419.
446 doi: 10.1097/ALN.0000000000004117.
- 447 4. Damiani E, Donati A, Girardis M. Oxygen in the critically ill: friend or foe? *Curr Opin*
448 *Anaesthesiol* 2018; 31: 129–135. doi: 10.1097/ACO.0000000000000559.
- 449 5. Cabello JB, Burls A, Emparanza JI, Bayliss SE, Quinn T. Oxygen therapy for acute
450 myocardial infarction. *Cochrane Database Syst Rev* 2016; 12: CD007160. doi:
451 10.1002/14651858.CD007160.pub4.
- 452 6. Hafner C, Wu J, Tiboldi A, Hess M, Mitulovic G, Kaun C, et al. Hyperoxia Induces

- 453 Inflammation and Cytotoxicity in Human Adult Cardiac Myocytes. *Shock* 2017; 47:
454 436–444. doi: 10.1097/SHK.0000000000000740.
- 455 7. Carrabba N, Valenti R, Migliorini A, Vergara R, Parodi G, Antonucci D. Prognostic
456 value of myocardial injury following transcatheter aortic valve implantation. *Am J*
457 *Cardiol* 2013; 111: 1475–1481. doi: 10.1016/j.amjcard.2013.01.301.
- 458 8. Barbash IM, Dvir D, Ben-Dor I, Badr S, Okubagzi P, Torguson R, et al. Prevalence and
459 effect of myocardial injury after transcatheter aortic valve replacement. *Am J Cardiol*
460 2013; 111: 1337–1343. doi: 10.1016/j.amjcard.2012.12.059.
- 461 9. Levey AS, Coresh J, Greene T, Stevens LA, Zhang YL, Hendriksen S, et al. Using
462 standardized serum creatinine values in the modification of diet in renal disease study
463 equation for estimating glomerular filtration rate. *Ann Intern Med* 2006; 145: 247–254.
464 doi: 10.7326/0003-4819-145-4-200608150-00004.
- 465 10. Khwaja A. KDIGO clinical practice guidelines for acute kidney injury. *Nephron Clin*
466 *Pract* 2012; 120: c179–184. doi: 10.1159/000339789.
- 467 11. Azarbal A, Malenka DJ, Huang YL, Ross CS, Solomon RJ, DeVries JT, et al. Recovery
468 of Kidney Dysfunction After Transcatheter Aortic Valve Implantation (from the
469 Northern New England Cardiovascular Disease Study Group). *Am J Cardiol* 2019; 123:
470 426–433. doi: 10.1016/j.amjcard.2018.10.042.
- 471 12. Kappetein AP, Head SJ, Genereux P, Piazza N, van Mieghem NM, Blackstone EH, et
472 al. Updated standardized endpoint definitions for transcatheter aortic valve
473 implantation: the Valve Academic Research Consortium-2 consensus document. *Eur*
474 *Heart J* 2012; 33: 2403–2418. doi: 10.1093/eurheartj/ehs255.
- 475 13. Dworakowski R, Wendler O, Bhan A, Smith L, Pearson P, Alcock E, et al. Successful
476 transcatheter aortic valve implantation (TAVI) is associated with transient left
477 ventricular dysfunction. *Heart* 2012; 98: 1641–1646. doi: 10.1136/heartjnl-2012-

- 478 302505.
- 479 14. Kim WK, Rolf A, Liebetrau C, Van Linden A, Blumenstein J, Kempfert J, et al.
480 Detection of myocardial injury by CMR after transcatheter aortic valve replacement. *J*
481 *Am Coll Cardiol* 2014; 64: 349–357. doi: 10.1016/j.jacc.2014.03.052.
- 482 15. Sarraf M, Burkhoff D, Brener MI. First-in-Man 4-Chamber Pressure-Volume Analysis
483 During Transcatheter Aortic Valve Replacement for Bicuspid Aortic Valve Disease.
484 *JACC Case Rep* 2021; 3: 77–81. doi: 10.1016/j.jaccas.2020.11.041.
- 485 16. Kim WK, Liebetrau C, van Linden A, Blumenstein J, Gaede L, Hamm CW, et al.
486 Myocardial injury associated with transcatheter aortic valve implantation (TAVI). *Clin*
487 *Res Cardiol* 2016; 105: 379–387. doi: 10.1007/s00392-015-0949-6.
- 488 17. Selle A, Figulla HR, Ferrari M, Rademacher W, Goebel B, Hamadanchi A, et al.
489 Impact of rapid ventricular pacing during TAVI on microvascular tissue perfusion. *Clin*
490 *Res Cardiol* 2014; 103: 902–911. doi: 10.1007/s00392-014-0728-9.
- 491 18. Acheampong A, Melot C, Benjelloun M, Cheval M, Reye F, Delporte C, et al. Effects
492 of hyperoxia and cardiovascular risk factors on myocardial ischaemia-reperfusion
493 injury: a randomized, sham-controlled parallel study. *Exp Physiol* 2021; 106: 1249–
494 1262. doi: 10.1113/EP089320.
- 495 19. Mak S, Azevedo ER, Liu PP, Newton GE. Effect of hyperoxia on left ventricular
496 function and filling pressures in patients with and without congestive heart failure.
497 *Chest* 2001; 120: 467–473. doi: 10.1378/chest.120.2.467.
- 498 20. Kelly RF, Hursey TL, Parrillo JE, Schaer GL. Effect of 100% oxygen administration on
499 infarct size and left ventricular function in a canine model of myocardial infarction and
500 reperfusion. *Am Heart J* 1995; 130: 957–965. doi: 10.1016/0002-8703(95)90194-9.
- 501 21. Stub D, Smith K, Bernard S, Nehme Z, Stephenson M, Bray JE, et al. Air Versus
502 Oxygen in ST-Segment-Elevation Myocardial Infarction. *Circulation* 2015; 131: 2143–

- 503 2150. doi: 10.1161/CIRCULATIONAHA.114.014494.
- 504 22. Girardis M, Busani S, Damiani E, Donati A, Rinaldi L, Marudi A, et al. Effect of
505 Conservative vs Conventional Oxygen Therapy on Mortality Among Patients in an
506 Intensive Care Unit: The Oxygen-ICU Randomized Clinical Trial. *JAMA* 2016; 316:
507 1583–1589. doi: 10.1001/jama.2016.11993.
- 508 23. Hofmann R, James SK, Jernberg T, Lindahl B, Erlinge D, Witt N, et al. Oxygen
509 Therapy in Suspected Acute Myocardial Infarction. *N Engl J Med* 2017; 377: 1240–
510 1249. doi: 10.1056/NEJMoa1706222.
- 511 24. ICU-ROX Investigators and the Australian and New Zealand Intensive Care Society
512 Clinical Trials Group, Mackle D, Bellomo R, Bailey M, Beasley R, Deane A, et al.
513 Conservative Oxygen Therapy during Mechanical Ventilation in the ICU. *N Engl J*
514 *Med* 2020; 382: 989–998. doi: 10.1056/NEJMoa1903297.
- 515 25. Stewart RAH, Jones P, Dicker B, Jiang Y, Smith T, Swain A, et al. High flow oxygen
516 and risk of mortality in patients with a suspected acute coronary syndrome: pragmatic,
517 cluster randomised, crossover trial. *BMJ* 2021; 372: n355. doi: 10.1136/bmj.n355.
- 518 26. Buse GL, Matot I. Pro-Con Debate: Cardiac Troponin Measurement as Part of Routine
519 Follow-up of Myocardial Damage Following Noncardiac Surgery. *Anesth Analg* 2022;
520 134: 257–265. doi: 10.1213/ANE.0000000000005714.
- 521 27. Michail M, Cameron JN, Nerlekar N, Ihdahid AR, McCormick LM, Gooley R, et al.
522 Periprocedural Myocardial Injury Predicts Short- and Long-Term Mortality in Patients
523 Undergoing Transcatheter Aortic Valve Replacement. *Circ Cardiovasc Interv* 2018; 11:
524 e007106. doi: 10.1161/CIRCINTERVENTIONS.118.007106.
- 525 28. Lahoud R, Butzel DW, Parsee A, Huang YL, Solomon RJ, DeVries JT, et al. Acute
526 Kidney Recovery in Patients Who Underwent Transcatheter Versus Surgical Aortic
527 Valve Replacement (from the Northern New England Cardiovascular Disease Study

528 Group). Am J Cardiol 2020; 125: 788–794. doi: 10.1016/j.amjcard.2019.11.024.
529 29. Peillex M, Marchandot B, Matsushita K, Prinz E, Hess S, Reydel A, et al. Acute kidney
530 injury and acute kidney recovery following Transcatheter Aortic Valve Replacement.
531 PLoS One 2021; 16: e0255806. doi: 10.1371/journal.pone.0255806.

532

533 **Supporting information**

534 **S1 Fig. Changes in cardiac biomarkers in the first 72 h in patients including five**
535 **patients who were excluded from the main analysis due to pre-procedural elevation of**
536 **cardiac biomarkers after randomization and received a fraction of inspired oxygen of**
537 **0.3 or 0.8 during transcatheter aortic valve implantation.** AUC, area under the curve; CK-
538 MB, creatine kinase-myocardial band; hs-cTnI, high sensitivity cardiac troponin I; TAVI,
539 transcatheter aortic valve implantation.

540 **S1 CONSORT Checklist.**

541

542 **Financial disclosure statement**

543 The authors received no specific funding for this work.

544

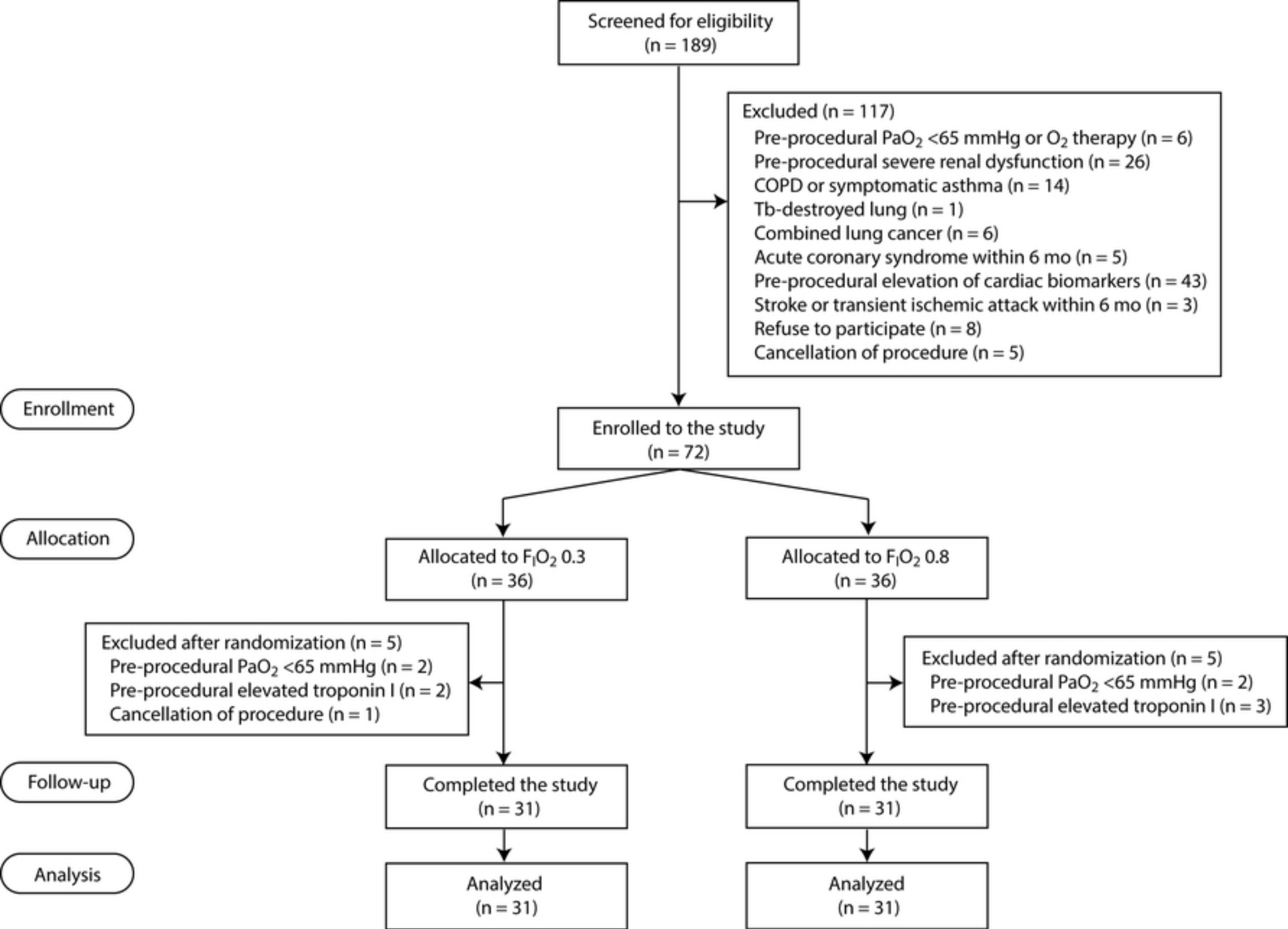


Figure 1

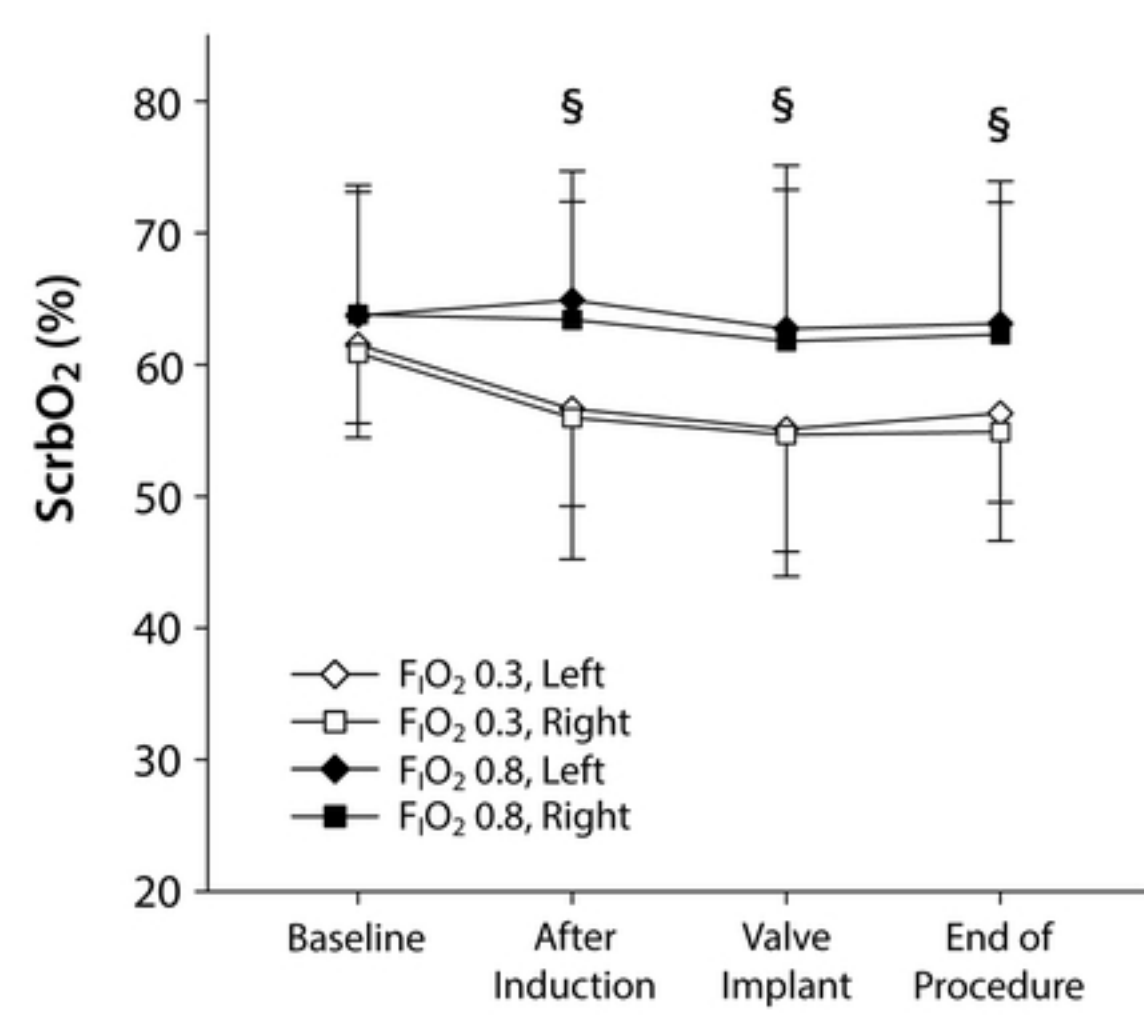
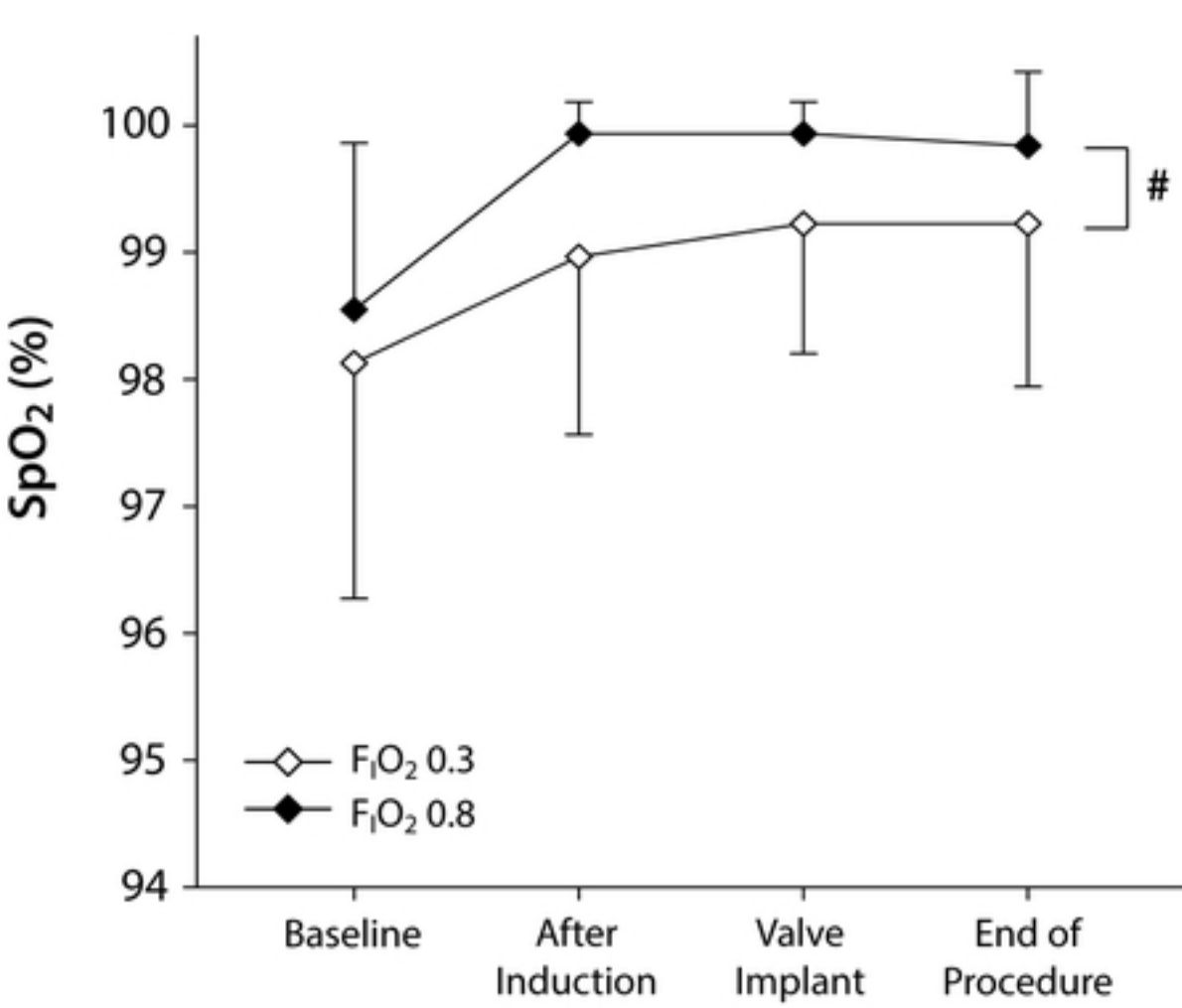
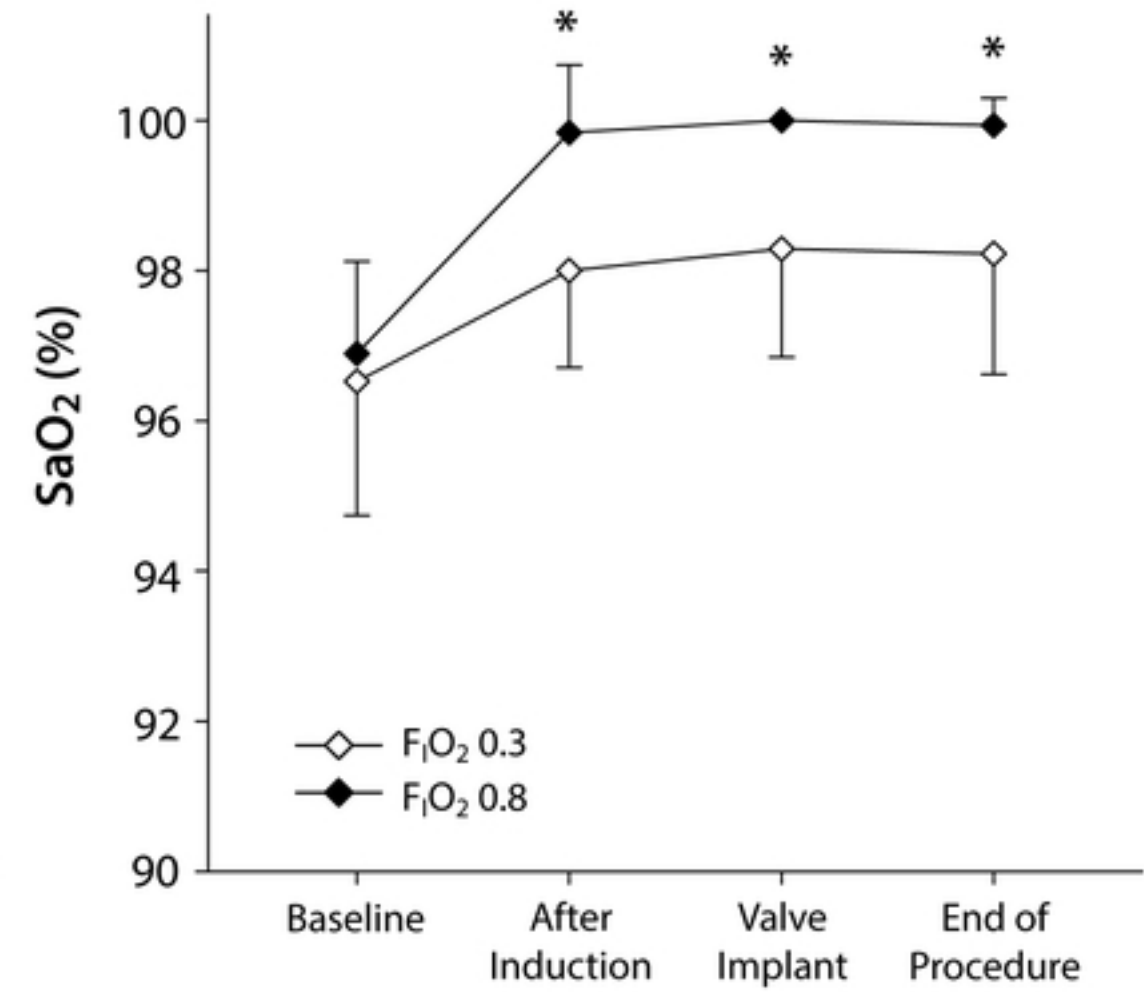
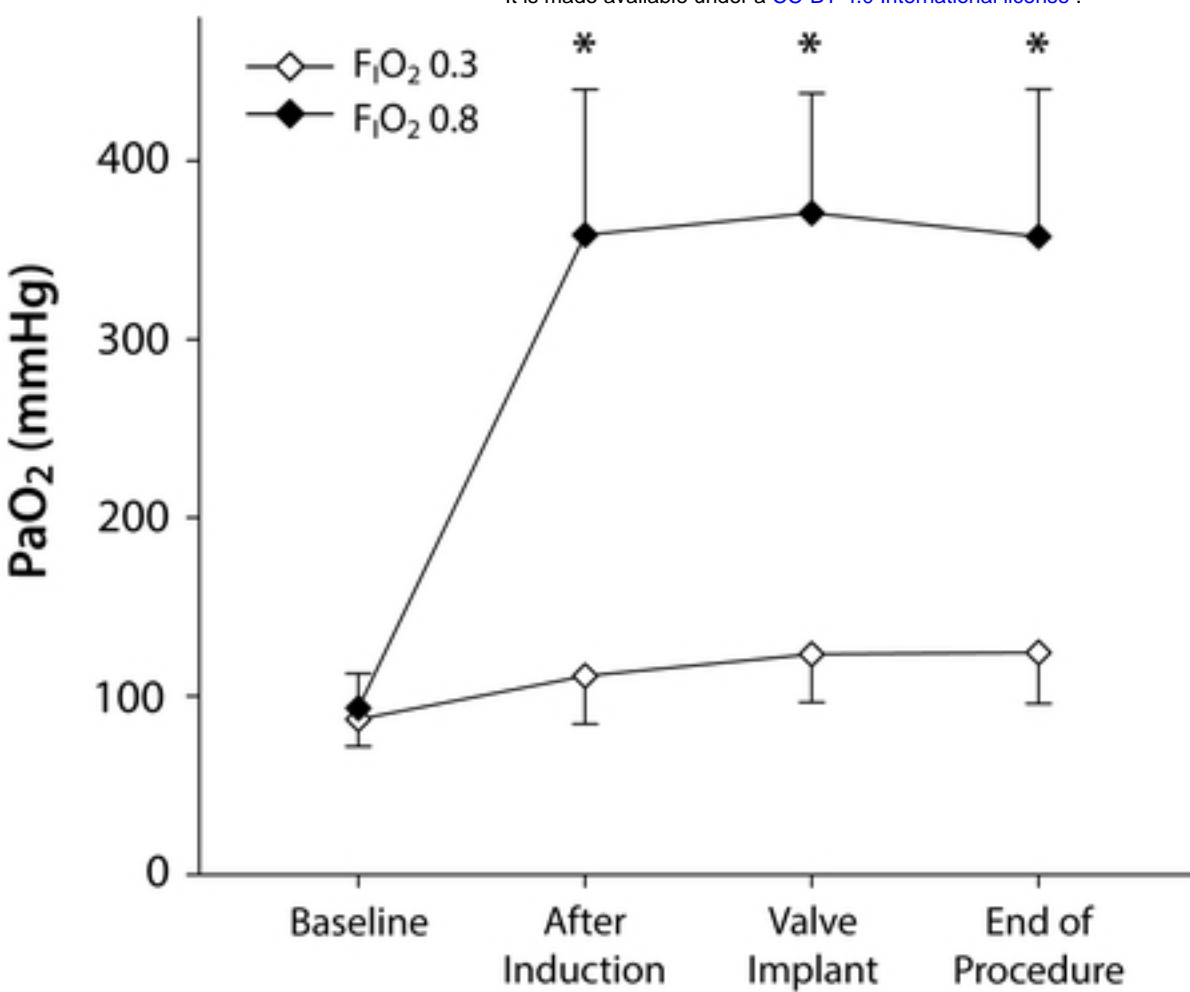


Figure 2

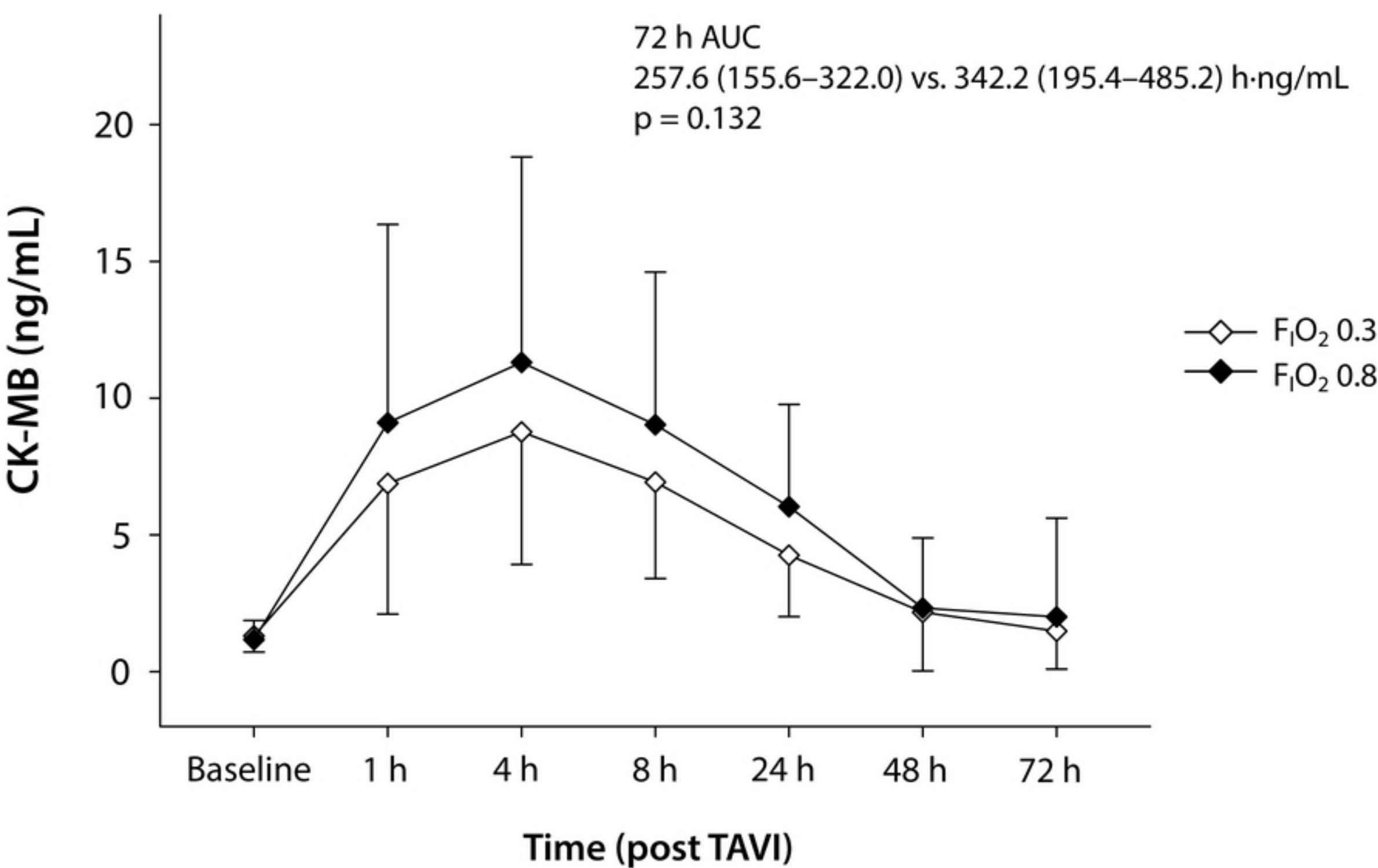
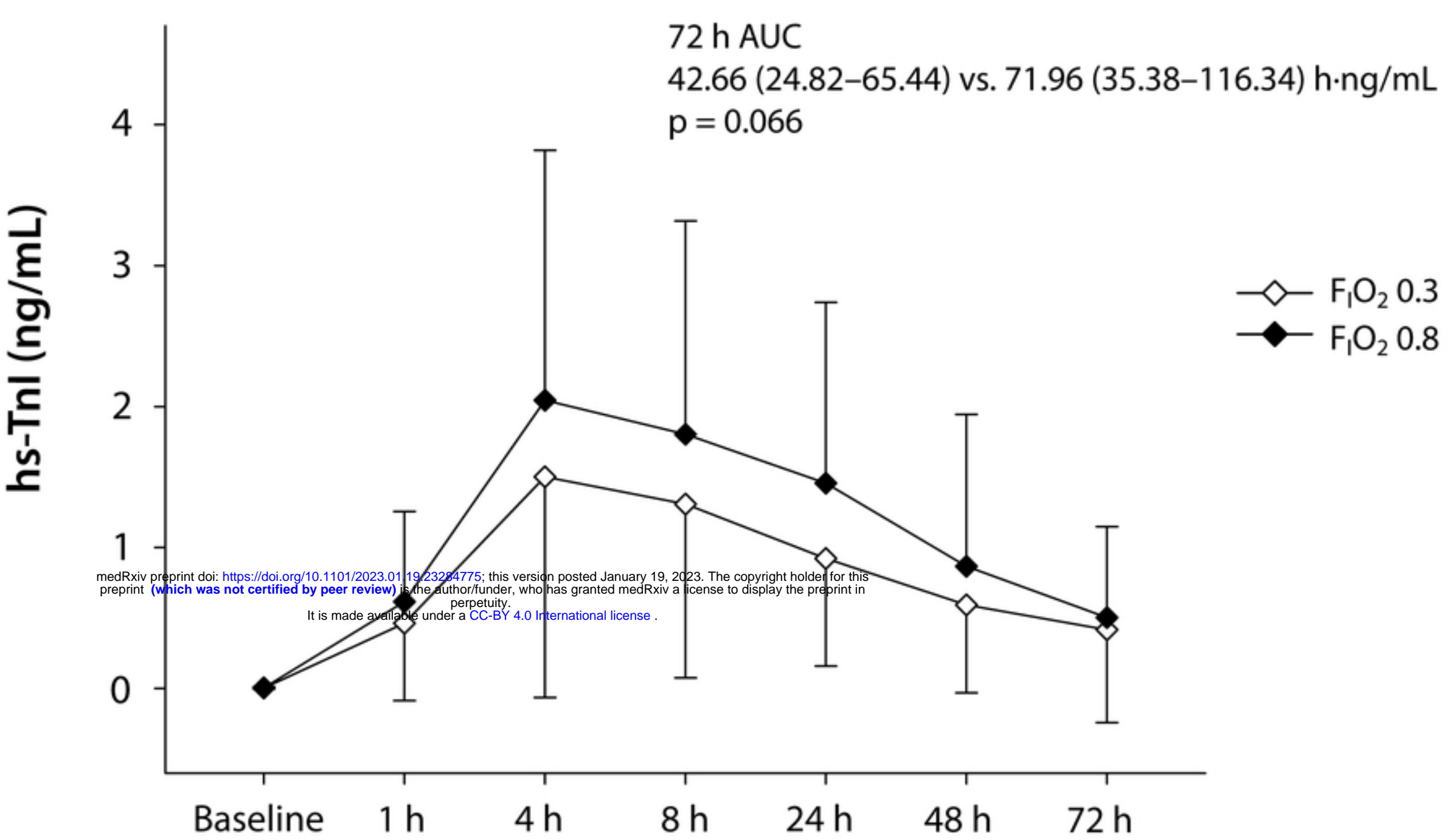


Figure3