

Estimating The Uncertain Effect of the COVID Pandemic on Drug Overdoses

Ali Moghtaderi, PhD, MBA¹, Mark S. Zocchi, MPH², Jesse M. Pines, MD³, Arvind Venkat, MD³, Bernard Black, JD, MA⁴

¹ Milken School of Public Health, George Washington University, Washington, DC

² Heller School for Social Policy and Management, Brandeis University, Waltham, MA

³ US Acute Care Solutions, Canton, OH and Department of Emergency Medicine, Allegheny Health Network, Pittsburgh, PA

⁴ Pritzker School of Law and Kellogg School of Management, Northwestern University, Evanston, IL

Ali Moghtaderi, PhD, MBA
Milken Institute School of Public Health
Department of Health Policy and Management
George Washington University
950 New Hampshire Ave NW
Washington, DC 20037
Telephone: 202-994-3573
Email: moghtaderi@gwu.edu

ABSTRACT

Objective

U.S. drug-related overdose deaths and Emergency Department (ED) visits rose in 2020 and again in 2021. Multiple studies and the news media attributed this rise primarily to increased drug use resulting from the societal disruptions related to the coronavirus (COVID-19) pandemic. A competing explanation is that higher overdose deaths and ED visits may instead have been a continuation of pre-pandemic trends in synthetic-opioid deaths. We assess the evidence on whether increases in overdose deaths and ED visits are likely to be causally related to the COVID-19 pandemic, increased synthetic-opioid use, or some of both.

Methods

We use national data from the Centers for Disease Control and Prevention (CDC) on rolling 12-month drug-related deaths (2015-2021); CDC data on monthly ED visits (2019-September 2020); and ED visit data across 21 states from a national ED group (January 2016-June 2022). We study drug overdose deaths per 100,000 persons during the pandemic period, and ED visits for drug overdoses, compared to predicted levels based on pre-pandemic trends.

Results

Mortality: National overdose mortality increased from 21/100,000 in 2019 to 26/100,000 in 2020 and 30/100,000 in 2021. The 2020 increase is well-predicted by models that extrapolate pre-pandemic trends for rolling 12-month mortality to the pandemic period, consistent with higher mortality reflecting continuation of those trends. Placebo analyses (which assume the pandemic started earlier or later than March 2020) do not provide evidence for a change in trend in or soon after March 2020. State-level analyses of actual-minus-predicted mortality, relative to pre-pandemic trends, show no consistent pattern. The state-level results support state

heterogeneity in overdose mortality trends, and do not support the pandemic being a major driver of overdose mortality.

ED visits: ED overdose visits rose during our sample period, reflecting a worsening opioid epidemic, but rose at similar rates during the pre-pandemic and pandemic periods.

Conclusion

The causes of rising overdose mortality in 2020 and 2021 cannot be definitely determined, but the observed increases can be largely explained by a continuation of pre-pandemic trends in synthetic-opioid deaths, principally fentanyl. In contrast to prior studies, we do not find support for the pandemic having been a principal driver of rising mortality. Policymakers need to directly address the synthetic opioid epidemic, and not expect a respite as the pandemic recedes.

Introduction

U.S. drug-related overdose deaths rose sharply from 71,000 in 2019 to 93,000 in 2020, and to 107,000 in 2021.¹ Multiple studies have linked the onset of the COVID-19 pandemic in March 2020 to rising overdose deaths,²⁻⁷ and rising drug-related emergency department (ED) visits.⁸⁻¹² While some of these studies cite greater access to synthetic opioids as a secondary contributor,^{5,6} they ascribe rising mortality and drug-related ED visits primarily to the pandemic and its related lockdowns, job loss, and social isolation.¹³ News stories presented a similar narrative.¹⁴⁻¹⁶ In contrast, in previous work, we found no increase in ED visits across 18 U.S. states for substance abuse during the early pandemic period from March-July, 2020.¹⁷

We revisit the issue of the drivers of rising overdose mortality during the pandemic period by studying a longer time period, explicitly modeling the counterfactual of what levels of overdose mortality and ED visits would have been expected based on pre-pandemic trends, and examining both national and state trends. We examine two competing hypotheses. The first is that presented in prior work: the pandemic may have been a principal driver of higher overdose deaths. This would predict a rise in both overdose deaths and overdose-related ED visits, beginning in March 2020 (onset of the pandemic). Second, the rise in mortality might be primarily due to greater availability of synthetic opioids. This would predict higher mortality, and related rise in ED visits beginning at a time not closely connected to the onset of the pandemic.

We assess the relative evidence for these hypotheses, recognizing that both could be partly true. Neither hypothesis can be proven or disproven from the available data. However, we draw together several strands of evidence which support continuation of pre-pandemic trends as a

principal driver, and undercut the conclusions from prior work that the pandemic was a principal driver.

Background and Literature Ascribing Rising Overdose Deaths to the COVID Pandemic

The opioid epidemic refers to overdose deaths involving opioids, including prescription and illicit opioids, which has grown rapidly since the 1990s. The opioid epidemic includes three distinct waves.¹⁸ The first wave began in the 1990s, with most overdose deaths due to prescription opioids. The second wave started around 2010, with heroin as the main driver. The third wave began in 2013 with rapid increases in overdose deaths involving synthetic opioids, principally fentanyl linked to a surge in the supply of illicitly manufactured fentanyl.^{19,20} High potency, lower-price fentanyl has been increasingly mixed with higher price heroin, and sometimes with stimulants such as cocaine or other drugs. Use of fentanyl dramatically increases the risk of respiratory depression and death.²¹

The onset of the third wave varied across states, with rising synthetic-opioid deaths initially concentrated in states east of the Mississippi River.^{22,23} However, synthetic-opioid deaths rose in selected western states beginning in 2019.¹⁹ The evolving nature of the forces that drive the opioid epidemic presents challenges in assessing the effect of the COVID-19 pandemic on overdose deaths.

Many studies have reported an association between COVID-19 pandemic and overdose deaths and have suggested that the pandemic was a principal driver of rising overdose deaths.²⁻⁷ Yet, these studies have major limitations. With one exception, they do not model the extent to which pre-pandemic trends predict pandemic-period outcomes. Only one study uses pre-pandemic data to predict counterfactual outcomes during the pandemic, and this study uses a model which produces unreasonable pandemic-period predictions.⁴ Moreover, most studies focus on limited geographic

areas and/or short time periods.^{2,3,5,7} These results can be misleading, given variation in when states are impacted by rising fentanyl use, at which times.

Appa et al. (2021)² compared overdose deaths, averaged over July 2019-mid-March 2020 to deaths from mid-March through November 2020 in San Francisco. They attribute the observed increase in overdose deaths to the pandemic, but do not model pre-pandemic trends. Yet their own data show rising mortality in the pre-pandemic period, from 241 in 2018 to 436 in 2019, including a rise from 174 in the first half of 2019 to 262 in the second half. (Supplemental Appendix Table-1). San Francisco was also among the cities that were impacted by a surge in supply of illicitly manufactured fentanyl that began in mid-2019.²⁵

Mason et al. (2021)³ studied trends in opioid-overdose deaths in Cook County, Illinois, from 2018 through mid-2020. They showed that the opioid-related mortality peaked during the time that a stay-at-home order was in place (March 21-June 5, 2020), and declined after the order was lifted. However, opioid overdose deaths in Cook County began rising in late 2019, and remained well above the late 2019 level after the stay-at-home order was lifted. The authors also report that the percent of fentanyl-related deaths increased steadily over their study period. These findings suggest that the pandemic was at most a partial explanation for higher overdose deaths in the early pandemic period.

Currie et al (2021)⁵ report trends in overdose deaths, divided into fentanyl-related, heroin, all other opioids, and other drugs, from 2018 to October 2020 in Ohio. They report a rise in fentanyl-related overdoses in April and May 2020, which recedes to roughly pre-pandemic levels by August 2020; but little change for other drugs. They do not explicitly model pre-pandemic trends but their Figure 1 shows evidence of a short-lived spike in fentanyl-related deaths early in the pandemic.

Kelley et al (2021)⁷ found higher opioid-related deaths in February-April 2020 versus the same months in 2019, in Los Angeles County, and ascribe higher 2020 deaths to the pandemic, even though their own data (their Figure 1) shows that the year-over year increase was larger in February than in March or April without consideration of pre-pandemic trends in increasing trajectory death before the COVID-19 pandemic.

Faust et al. (2021)⁴ study the period from March-August 2020. This is the only prior study that models counterfactual overdose mortality. They use an autoregressive model, which produces unreasonable predictions. Despite the increase in opioid overdose deaths that began in mid-2019, their model predicts overdose deaths that fall during their sample period, and are lower than observed deaths.

In short, none of the prior studies provides convincing evidence that the pandemic, as opposed to continuation of pre-pandemic trends, was a primary cause of the 2020 rise in overdose deaths. Four (all but Faust) report overdose deaths for February 2020 versus February 2019; of these three (all but Currie) find a sharp rise in overdose deaths in February 2020, prior to the pandemic. Currie et. al (2021) report evidence for a time-limited spike in fentanyl deaths, but only for a single state.

If rising overdose deaths during the pandemic reflect increased drug use, one would expect drug-related ED visits (mostly for nonfatal overdoses) to also rise. Several studies report rising opioid-related ED visits,⁸⁻¹² and ascribe the rise principally to the pandemic. However, these studies have limitations similar to the overdose-death studies. First, none models the counterfactual of ED visit rates that would be expected during the pandemic period based on pre-pandemic trends. Second, some measure overdose-related ED visits, in part, relative to total ED visits at the same point in time.⁸⁻¹¹ This ratio measure is confounded by pandemic-related trends in ED visits for other

causes, which fell sharply early in the pandemic and then slowly and partially rebounded.²⁶ Some studies also cover limited geographic areas, short time periods, or both.^{10–12}

Soares et. al (2021)⁸ studied opioid ED visits, both raw counts and as a fraction of all ED visits, among 6 health systems in 6 states. They compared ED counts and rates during 2018-2019 to counts and rates in 2020, and report higher overdose visit counts in 2020, and declining visits from other causes. The study simply compares 2020 to the 2018-2019 average. It reports 3,020 opioid-related ED visits in 2018, 3,285 in 2019 (9% increase over 2018), and 3,486 in 2020 (6% increase over 2019). We view these results as consistent with a general rise in overdose-related ED visits of their study period, with no evidence that trends accelerated during the pandemic period.

Holland et. al (2021)⁹ studied overdose-related ED visits over December 2018-October 10, 2020, relying on internal CDC data covering 3,500 EDs in 48 states. They compared counts and rates for overdose-related ED visits before and after the pandemic onset without a counterfactual. They report higher pandemic period ED visits, but their weekly counts (their Figure 1) show no change in trends at the pandemic onset.

Ochalek et. al (2020)¹⁰ compared average non-fatal opioid overdose visits to a single Virginia ED over March- June 2019 to a similar time period in 2020, and found substantially more visits in 2020. This study did not examine trends between the two periods, which might partially or fully explain higher 2020 ED visit counts.

Slavova et. al (2020)¹¹ report changes in daily emergency medical services (EMS) calls in Kentucky during a narrow period around the March declaration of a pandemic emergency (26 days before vs. 26 days after the emergency declaration). They do not assess pre-pandemic trends. This time period is too short to draw solid conclusions, especially since the pandemic could have affected the proportion of ED visits that involve EMS calls.

Rodda et. al (2020)¹² studied opioid-related deaths in San Francisco and opioid-related ED visits to two San Francisco EDs from January 1 through April 18, 2020, a total of 176 visits, without accounting for pre-existing trends. The short study period and small number of observations make it difficult to draw conclusions from this paper. Unlike Appa et. al (2021)² who studied San Francisco over a longer time period, they did not report a pandemic-period increase in opioid mortality.

Our own prior study¹⁷ covers January 2019 through July 2020, compares pandemic to pre-pandemic overdose visit rates, and finds generally higher visit rates in 2020, but similar 2020/2019 visit ratios during the pandemic period versus earlier in 2020.

In sum, the available evidence on overdose-related ED visit rates supports rising visit rates during both the pre-pandemic and pandemic periods but does not provide convincing evidence for a pandemic-related change in visit trends.

Methods

We conducted a retrospective study of Centers for Disease Control and Prevention (CDC) data on rolling 12-month overdose mortality from January 2015 to December 2021, CDC monthly data on non-fatal overdose ED visits from January 2019 to September 2020 (the only period with available data), and monthly data from a national emergency physician staffing group on overdose-related ED visits from January 2016 through June 2022. The Allegheny Health Network Institutional Review Board approved the study.

Drug Overdose Deaths:

We compared actual monthly rolling 12-month overdose deaths during the pandemic period with deaths predicted by a polynomial model that predicts counterfactual deaths with no pandemic by

extrapolating pre-pandemic data, at both the national and state levels. We studied separately overdose deaths involving synthetic opioids (sometimes together with other drugs) and all other overdose deaths.

We examined different polynomial orders and different starting pre-pandemic periods. We selected a fourth-order polynomial as the lowest-order polynomial that provided a reasonable fit for all overdose deaths and opioid-related deaths during the pre-pandemic period. A higher-order polynomial would only slightly improve the pre-pandemic fit but would increase the risk of overfitting and thus of generating implausible projections for the pandemic period. We report counterfactual estimates using pre-pandemic period starting either in 2015 or in 2017. We treated the pandemic as starting in March 2020, because the national emergency declaration and related lockdowns began in mid-March. These policies led to greater social isolation and could have led to higher substance use, with isolation also reducing access to prompt treatment when an overdose occurs. However, our results are not sensitive to whether we treat the pandemic effect on overdoses as beginning in March 2020 or somewhat later.

We view our estimates of possible counterfactual trends as rough and approximate, but best available, given the national onset of the pandemic and state and federal responses at similar times, and the absence of a control group. Given the lack of a control group, and the complex time and geographic dynamics of overdose deaths, any counterfactual model can only be approximate, and will be increasingly suspect the longer the estimation period. The difficulty in estimating counterfactual trends is compounded by the CDC practice of reporting only rolling 12-month mortality, instead of monthly totals; this makes it harder to identify trend changes in the data. We end the counterfactual estimation after the first pandemic year (after March 2021) due to the difficulty in extrapolating for longer periods.

Drug-related ED visits

We studied monthly ED visits (for the CDC data) over 2019-September 2020 and over 2016-June 2022 data (for the staffing company data) for drug overdoses, opioid overdoses, and all other overdoses, and compared visit rates to rates for the same causes in the same calendar month in an earlier period.

Data Sources

Data on overdose deaths comes from the CDC's National Vital Statistics System (NVSS).¹ Provisional trailing rolling 12-month counts are reported monthly for each state and the District of Columbia, but are initially incomplete. The preliminary data we rely on is released with an approximate 6-month lag to allow for more complete reporting. Final data are not usable for this study because this data is released with a substantial lag. However, changes from preliminary to final data are modest and should have minimal effects on the time trends we study.

National data on drug-related mortality, including how many deaths involve synthetic opioids were available from 2015. State data were also available from 2015, but with a reliable breakdown of mortality into synthetic-opioid-related versus other deaths only from 2017. Fentanyl is included within synthetic opioids and is understood to cause most synthetic opioid deaths.^{3,5,27}

For national ED visits, we used monthly data on non-fatal, overdose-related visits from 2019 through September 2020 from EDs in the 42 states that participate in the CDC's Drug Overdose Surveillance and Epidemiology (DOSE) system during this period.²⁸ Overdose visits are identified based on chief complaint and primary ICD-10 discharge diagnosis. Which EDs provide data can change over time, but we have no reason to expect these changes to bias our time trend results.

We also studied non-fatal overdose-related ED visits (measured using the primary discharge diagnosis) using monthly data from 126 EDs in 21 states staffed by a national emergency physician staffing group. This database includes fewer EDs but is available at the individual ED level and covers a longer period from January 2016 to -June 2022. We report results for all EDs in the text and results for a balanced panel of 37 EDs in the Appendix.

Outcomes

The main outcome for drug overdose mortality was the drug-related deaths per 100,000 population. We studied total, synthetic-opioid-related, and other drug-related deaths.

For ED visits for non-fatal drug-related overdoses, the main outcome was the ratio of pandemic-period visits to visits for the same calendar month a year earlier (for 2021 and 2022 we compare to 2019 rather than 2020 and 2021 respectively). Unlike prior studies,^{8,9} we did not study the ratio of overdose-related to all ED visits in the same month because the pandemic led to sharp swings in the denominator (ED visits for other causes), especially for lower-acuity conditions.^{17,29,30} For EDs staffed by the national emergency medicine group, we computed this ratio at the ED level and then average the ratios across EDs.

Statistical Analysis

Overdose deaths. We report time trends for synthetic-opioid-related, other, and total drug-overdose deaths over 2015- 2021. For the first pandemic year (through March 2021), we compare actual to predicted rolling-average deaths, at both the national and state levels, using a fourth-order polynomial model, which is adequate to fit the pre-pandemic data.

To assess whether there was a change in trend in the actual pandemic-onset month (March 2020), we compared actual-minus-predicted deaths assuming the pandemic began instead in a placebo

month, using placebo months both before and after March 2020. If the pandemic were a principal cause for the 2020 rise, we would expect actual-minus-predicted deaths to be positive in March 2020 and higher in March 2020 than for nearby placebo months.

We compared actual to predicted mortality at both the national and state levels. To illustrate heterogeneity across states, we report results for the 48 states with actual minus predicted mortality rates between -20 and +20 per 100,000 persons (Figure 3). Including the remaining would require a more compressed y-axis scale and would not qualitatively change the principal results from this analysis.

Drug overdose-related ED visits. For the national ED visit data, we compared ED visits in 2020 to visits in the same month in 2019 and computed the 2020/2019 ratio of ED visits for non-fatal drug overdoses (separately for all overdoses and opioid-related overdoses). We also compared pre-pandemic ratios in January-February 2020, to post pandemic ratios from March-September 2020. This approach controls for seasonal trends in overdose-related ED visits, which typically peak in the summer.

For the ED visit data from the national staffing group, we computed, within each ED, the ratio of monthly visits in the pandemic period (March 2020-June 2022) to visits in the same month in 2019. For pre-pandemic visits (through February 2020) we computed the ratio of monthly visits to the same month a year prior. We then averaged these ratios across EDs, weighted by ED size (based on 2019 visit volume). We graphed these monthly ratios for drug-related, opioid-related, and all other overdose ED visits, including 95% confidence intervals (CIs), using ED-size weights and standard errors clustered on ED.

Results

Drug Overdose Deaths

Table 1 provides summary statistics for all overdose deaths, and for those attributable to synthetic opioids versus other overdose deaths. Synthetic opioid deaths rose steadily over 2015-2019, offset for 2016-2019 by falling mortality from other drugs.

Table 1 also includes predicted values for the first pandemic year (through March 2021) values for all overdoses and synthetic-opioid overdoses, using the fourth-order polynomial model based on data starting in 2015 (2015 model) or in 2017 (2017 model). With both starting points, the model predicts a rise in synthetic-opioid deaths during the pandemic period. For 2020 as a whole, the model predictions bracket the observed rate of 25.5 per 100,000 population, with predictions of 26.3 for the 2015 model and 24.7 for the 2017 model.

Figure 1, Panel A, presents 12-month rolling average rates for all drug-related overdose deaths, synthetic-opioid-related deaths, and other overdose deaths, per 100,000 population, from 2015-2021. The rise during the pandemic period continues a trend that accelerated in mid-2019 of rising synthetic opioid deaths. Deaths from other drug overdoses were basically flat from mid-2019 on.

Figure 1, Panel B compares actual to modeled overdose deaths per 100,000 population. It presents three lines: actual total deaths, predicted deaths using the 2015 model, and predicted deaths using the 2017 model. The prediction line from the 2015 model was similar to the actual values in the first six pandemic months, but then became increasingly above the actual values. The line from the 2017 model was somewhat below actual values in 2020, but caught up to actual deaths in early 2021. The 2017 model predicts 97% of actual 2020 deaths, and 101% of 2021 deaths (through March).

Figure 1, Panel C compares actual to modeled synthetic-opioid deaths and also presents three lines for actual deaths and predicted deaths using the two models, each per 100,000 people. The prediction lines from the 2015 and 2017 models are similar to each other. The modeled deaths were somewhat below the actual values in the first six pandemic months, but caught up by the end of 2020 and exceeded actual values in early 2021. The 2017 model predicts 98% of actual 2020 synthetic-opioid deaths, and 113% of 2021 deaths (through March).

The increasing divergence of predicted from actual overdose deaths in 2021, for both total and synthetic-opioid deaths, is consistent with the difficulty of predicting the future course of the opioid epidemic over an extended period of time.

In Appendix Figure 1, we report results from a placebo analysis, in which we assume the pandemic began earlier or later than March 2020, and report actual-minus-predicted overdose mortality per 100,000 people, by placebo-onset month, over the placebo pandemic period (from the placebo-onset month through March 2021). Vertical bars indicate 95% CIs. The left-hand figures show results for all drug overdoses; the right-hand figures show results for synthetic-opioid-related overdoses. Panel A uses the 2015 model, while Panel B uses the 2017 model. Each point on the graph represents the average difference between actual and predicted values of overdose deaths during the placebo-pandemic period, with prediction based on data from the pre-placebo-pandemic period. With both the 2015 model and the 2017 model, and with both outcomes, the actual-minus-predicted values for all overdose deaths do not change around March 2020, and generally become negative after the pandemic onset (opposite from predicted). These patterns are consistent with pre-pandemic trends driving higher pandemic-period mortality. They do not provide evidence that pandemic onset played a large role in mortality trends.

Figure 2 shows the state-by-state analysis. There was substantial scatter, with some states having actual mortality close to predicted levels; some having significantly higher mortality than predicted, and others having significantly lower mortality. We did not find any simple patterns with regard to which states showed higher-than-predicted mortality, based on either geographic region or pre-pandemic overdose rates. The scatter in the state-level results confirms the difficulty in predicting overdose deaths based on past trends, and highlights the danger in studying the role of the pandemic in overdose deaths using data from one or a few states. The overall picture, with roughly as many positive as negative point estimates, does not support a large role for the pandemic in driving state-level overdose deaths.

In sum, at both the state and the national level, the evidence supports a large role for continuation of pre-pandemic trends in explaining rising overdose deaths during 2020 and 2021, and conversely does not provide evidence that the pandemic played a major role.

ED Visits

The left-hand columns of Table 2, provide summary statistics for national 2020/2019 ratios for ED visits for all causes and for all drug overdoses, divided into opioid-related and other drug overdoses. National data from the CDC is available only for January 2019 - September 2020. All-cause ED visits were higher in the pre-pandemic months of 2020 (January-February) than in the corresponding months in 2019 (ratio: 1.16) but dropped during the pandemic period (ratio: 0.80). All drug overdose visits, especially opioid-related overdose visits, were substantially higher in the pre-pandemic months and dropped somewhat in the early pandemic period but less sharply than visits for all causes. The 2020/2019 ratios for all drug overdose visits, opioid-related visits, and other overdose visits were higher in the pre-pandemic months (1.31, 1.46, and 1.16 respectively) than during the pandemic months (1.11, 1.28, and 0.79).

The right-hand columns of Table 2 report year-over-year ratios overdose-related ED visits for the national emergency physician staffing group for the pre-pandemic period from January 2017 through February 2020, and the pandemic period from March 2020 through June 2022. All cause ED visit ratios were slightly higher during the pre-pandemic period, versus a year earlier (ratio: 1.02), dropped sharply early in the pandemic, and then partly recovered. The ratios for all drug overdoses and opioid-related overdoses were above 1.00 during the pre-pandemic period (1.10 and 1.11 respectively). All drug overdose ED visits dropped somewhat early in the pandemic, but were somewhat above pre-pandemic ratios after 2021. Opioid overdose visit ratios were somewhat higher during the balance of 2020 than the average ratio over January 2017-February 2020; but showed little change relative to the immediate pre-pandemic months (January-February 2020; see Figure 3, Panel B). ED visits for all other overdoses dropped in the early pandemic months, but recovered, and by 2021 exceeded pre-pandemic levels. The year-over-year ratios, which are consistently above 1.00, but on the whole similar in the pre-pandemic and pandemic periods, signal a steadily worsening overdose epidemic. However, they do not send a strong signal that the pandemic affected overdose rates.

Figure 3 shows drug-related ED visit rate ratios using our two data sources. Panel A presents national data for January-September 2020. It shows monthly ratios of 2020 visits to the same month in 2019 for all ED visits, all drug-overdose visits, and opioid-related visits. Year-over-year ratios for all overdose visits and opioid-related visits were well above 1.00 in early 2020, dropped early in the pandemic period, and then partly rebounded, but remained below the January-February ratios. The smaller early-pandemic decline for drug-overdose visits than for all visits is consistent with overdose visits being relatively acute and thus not easily avoidable.

Panel B presents ED data from the national physician staffing group. It shows monthly ratios (current month versus same month in the previous year (except that we compared 2021 and 2022 to 2019)). The figure shows data for all visits regardless of cause (for comparison purposes), data for opioid-related overdose visits and all other drug overdose visits over 2017-June 2022. Appendix figure App-2 includes 95% CIs.

For opioid-related visits, the year-over-year ratios were well above 1.00 in 2017, fell over 2017 and 2018 to below 1.00, and then to well above 1.00 in the immediate pre-pandemic months of January-February 2020. Visits for other drug overdoses followed a broadly similar pattern. These large fluctuations underscore difficulties in assessing a pandemic effect with confidence, even if an effect exists.

During the pandemic and immediate pre-pandemic period, opioid-related visit ratios were well above 1.00 throughout, but not notably higher during the pandemic period. Non-opioid drug overdose visit ratios fell sharply in March-April 2020, followed by a rebound that reached pre-pandemic ratios by mid-2021.

Thus, in both the national data and the longer time series available from the national physician staffing group, there is evidence of a severe and worsening opioid epidemic, but the time patterns do not suggest that the COVID-19 pandemic had a major effect on the course of the opioid epidemic.

Discussion

Prior studies have linked higher overdose mortality and overdose-related ED visits in 2020 primarily to the COVID-19 pandemic.²⁻¹¹ This led to a narrative in public health, academic, and media circles that attributes much of the rise in overdose mortality in 2020 and 2021 to the

pandemic. If accepted, that narrative deflects public attention from a direct response to overdose deaths, particularly synthetic-opioid deaths.

It is conceptually plausible that the social and healthcare disruptions of the COVID-19 pandemic could have led to higher drug use, less substance abuse treatment (leading indirectly to higher use), or both. Attendance at substance abuse centers indeed fell substantially in 2020.³¹

But the role of the pandemic in contributing to overdose deaths and overdose-related ED visits is an empirical question. Prior studies of overdose deaths and overdose-related ED visits do not model the counterfactual of expected overdose deaths and ED visits during the pandemic period, based on pre-pandemic trends. Yet opioid-related overdose deaths and overdose-related ED visits were rising before the pandemic, especially beginning in the second half of 2019, with the fentanyl supply reaching new areas.

We investigated the extent to which pre-pandemic trends, extrapolated to the pandemic period, can explain higher pandemic-period drug-overdose deaths and ED visits. Given large pre-pandemic variation in overdose rates, both across time and across states, we limited the extrapolation to the first pandemic year. In our judgment, one cannot credibly predict the counterfactual for a longer period, given the many time-varying factors that could affect overdose mortality.

During the first pandemic year, the extrapolation models predicted overdose levels similar to observed levels. Our evidence taken as a whole, including the evidence on placebo pandemic-onset months, and the state-level evidence showing large variation in actual-minus-predicted overdose mortality, supports a continuation of pre-pandemic trends as a principal driver of rising mortality. We cannot rule out the pandemic as a contributing factor, but the magnitude of a pandemic effect seems likely to be limited. This conclusion applies if one posits an immediate onset of pandemic-related effects in or soon after March 2020. It would apply even more strongly

if one posits a delayed effect of the pandemic, because it would be still harder for a hypothesized pandemic effect to catch up to the pandemic-period rise that would be expected based on pre-pandemic trends.

Several pieces of evidence support this assessment. First, the rise in mortality in 2020 and 2021 comes entirely from synthetic opioids. Yet, if the pandemic and lockdowns were an important cause of drug use, we might expect mortality to rise for other drugs as well.

Second, we found evidence of generally rising ED visits for drug overdoses during both the pandemic and the immediate pre-pandemic period, relative to the same month a year earlier, but no change in ED visit ratios, versus the prior year, around the pandemic onset.

Our results differ from prior studies partly because our data are more comprehensive and cover a longer time period, but centrally because we model the counterfactual of overdose deaths and ED visits without the pandemic. A simple comparison of pandemic-period rates to pre-pandemic rates, without estimating the counterfactual, can be misleading. For example, we find that Illinois overdose deaths during the pandemic were *below* those predicted by a model using pre-pandemic data. This is contrary to the core result from the Mason et. al (2020) study of Cook County, Illinois, which simply compared pandemic-period to pre-pandemic averages.³ We also find that Ohio overdose deaths in the first pandemic year were lower than predicted, even though Currie et. al (2021) find a short-lived increase in synthetic-opioid deaths, early in the pandemic. No prior study adequately uses pre-pandemic data to model the extent to which pandemic-period outcomes can be predicted by pre-pandemic trends in overdose deaths. Only one prior study uses pre-pandemic data to model counterfactual outcomes during the pandemic,⁴ and this study uses an unrealistic model which predicts declining overdose deaths in 2020 despite rising deaths in the second half of 2019. Most studies focus on limited geographic areas and/or short time periods.^{2,3,5,7,10–12,24}

For ED visits, prior studies did not account for rising ED visit rates in the pre-pandemic period. If one compares visit rates to the same period a year earlier, visit rate ratios are generally above one, in both the pre-pandemic and pandemic periods. But we find no evidence that this ratio rises in the pandemic period. This finding – rising visit rates, but no change in trend – is consistent with the two prior multistate studies.^{8,9} The other studies cover limited geographic areas, short time periods, or both.¹⁰⁻¹²

Our models of counterfactual deaths, based on pre-pandemic trends, predict 24.7-26.3 drug-related deaths per 100,000 population in 2020, versus the actual 25.5. For the first three months of 2021, the 2017 Model predicts actual mortality fairly well, while the 2015 Model predicts higher mortality than was observed. Our analysis of placebo pandemic-onset months shows no evidence of a change in trend when the pandemic began in March 2020.

At the state-level, we find substantial heterogeneity in actual-minus-predicted mortality. This suggests that state-specific characteristics are important predictors of mortality trends. In some states actual opioid deaths during the pandemic exceed predicted deaths, but in a roughly equal number of states, actual deaths during the pandemic were less than predicted, using a model fitted to state-level pre-pandemic data.

Our results provide evidence that much and perhaps all of the increase in drug-related overdose deaths during the pandemic period can be explained by continuation of pre-pandemic trends in opioid mortality. If overdose mortality during the pandemic in fact largely reflects pre-pandemic trends, then policymakers, health care providers, and the public should not expect drug overdose deaths to decline as the pandemic recedes. Multi-modal strategies are needed to address the opioid epidemic, including addressing fentanyl supply and mixing heroin and other drugs with fentanyl. This includes: increased surveillance of illicit markets to monitor spread of fentanyl; deploying

pill-testing technology, which can allow users to test for fentanyl, which could give suppliers incentives not to add fentanyl to their products³²; and naloxone distribution programs to increase the likelihood of survival after an overdose.³³

Our claim is not that the pandemic had no effect on overdose mortality, but instead that (i) the magnitude and existence of any effect is unknown, and will likely remain so; (ii) we provide suggestive evidence that the pandemic effect could have been much smaller than suggested in other studies which do not carefully model the counterfactual; and (iii) results using data from one or a few states are suspect given the variation across states in how opioid mortality changed during the pandemic period. We do not believe that the data will support a more definitive message than that.

Limitations

Our model is not causal. Thus, we can neither rule out nor rule in a causal effect of fentanyl access or the pandemic on overdose deaths. A causal design requires a control group. However, the pandemic onset was basically national, at the same point in time (March 2020), with a wave of lockdowns and restrictions that were adopted in most states at similar times, and relaxed at similar times. There are some variations in the timing and extent of state-level restrictions, but we concluded that the variation was too limited, relative to the state-level heterogeneity, to make feasible a classic difference-in-differences design, relying on state-level variation in regulation extent or timing. We conclude, more mildly, that: (i) our evidence is consistent with a causal effect of fentanyl access; (ii) the evidence for a pandemic effect is weak; and (iii) a strong case likely cannot be made, given the challenges in estimating the counterfactual of overdose mortality without the pandemic.

Estimating the counterfactual is difficult. The difficulty is compounded because the CDC releases only rolling 12-month totals, instead of actual monthly mortality rates. In our judgment, our model of counterfactual trends can provide only rough estimates of counterfactual mortality, increasingly so as the extrapolation period gets longer. We therefore model only the first pandemic year, through March 2021. We rely on data for a limited pre-pandemic period but given the rapid evolution of the opioid epidemic, it is unclear whether a longer pre-period would meaningfully improve predictive accuracy. The fourth-order polynomial we used does a good job of capturing pre-pandemic trends over 2015-early 2020, but overfitting, leading to poor prediction during the pandemic period, remains an unavoidable concern. Using a higher-order polynomial to fit pre-pandemic data would increase overfitting risk, and would not change our main results.

Overdose mortality may be measured with error, and the preliminary counts we rely on may differ from final counts, but we see no reason why these factors should strongly affect mortality trends.

Our measure of overdose-related ED visits cannot capture all of the reasons why the pandemic may have affected ED visit rates. Our data does not capture the ED visits that did not happen because of ED avoidance, but ED-avoidance was likely limited primarily to the period immediately following pandemic onset.¹¹

Our datasets have limitations. CDC national and state mortality data is available only as a rolling 12-month total. The national ED-visit data addresses a limited time period, through September

2020. The ED-staffing-company data is limited to 126 EDs in 21 states and may not be nationally representative.

Conclusion

The opioid epidemic is a major and growing crisis. Its effect on life expectancy far exceeds the effect of the COVID-19 pandemic and will be with us after the pandemic recedes.^{34,35} Yet the opioid epidemic has been overshadowed by the COVID-19 pandemic, and may not be receiving the attention it deserves from either the public at large or from public health departments.

Prior work treats the pandemic as a major driver of rising overdose deaths, but has important data and methodology limitations. In contrast, we provide evidence that the effect of the COVID-19 pandemic on the opioid epidemic is uncertain, and could be small. The major drivers of rising overdose deaths likely lie elsewhere.

1. Products - Vital Statistics Rapid Release - Provisional Drug Overdose Data. Accessed June 17, 2021. <https://www.cdc.gov/nchs/nvss/vsrr/drug-overdose-data.htm>
2. Appa A, Rodda LN, Cawley C, et al. Drug Overdose Deaths before and after Shelter-in-Place Orders during the COVID-19 Pandemic in San Francisco. *JAMA Netw Open*. 2021;4(5). doi:10.1001/jamanetworkopen.2021.10452
3. Mason M, Arukumar P, Feinglass J. The Pandemic Stay-at-Home Order and Opioid-Involved Overdose Fatalities. *JAMA - J Am Med Assoc*. Published online 2021. doi:10.1001/jama.2021.6700
4. Faust JS, Du C, Mayes KD, et al. Mortality From Drug Overdoses, Homicides, Unintentional Injuries, Motor Vehicle Crashes, and Suicides During the Pandemic, March-August 2020. *JAMA*. Published online May 21, 2021. doi:10.1001/jama.2021.8012
5. Currie JM, Schnell MK, Schwandt H, Zhang J. Trends in Drug Overdose Mortality in Ohio During the First 7 Months of the COVID-19 Pandemic. *JAMA Netw Open*. 2021;4(4):e217112-e217112. doi:10.1001/JAMANETWORKOPEN.2021.7112
6. Overdose Deaths Accelerating During COVID-19 | CDC Online Newsroom | CDC. Accessed July 23, 2021. <https://www.cdc.gov/media/releases/2020/p1218-overdose-deaths-covid-19.html>
7. Kelley MA, Lucas J, Stewart E, Goldman D, Doctor JN. Opioid-related deaths before and after COVID-19 stay-at-home orders in Los Angeles County. *Drug Alcohol Depend*. 2021;228:109028. doi:10.1016/J.DRUGALCDEP.2021.109028
8. Soares WE, Melnick ER, Nath B, et al. Emergency Department Visits for Nonfatal Opioid

- Overdose During the COVID-19 Pandemic Across Six US Health Care Systems. *Ann Emerg Med*. Published online March 19, 2021. doi:10.1016/j.annemergmed.2021.03.013
9. Holland KM, Jones C, Vivolo-Kantor AM, et al. Trends in US Emergency Department Visits for Mental Health, Overdose, and Violence Outcomes Before and During the COVID-19 Pandemic Multimedia Supplemental content. *JAMA Psychiatry*. 2021;78(4):372-379. doi:10.1001/jamapsychiatry.2020.4402
 10. Ochalek TA, Cumpston KL, Wills BK, Gal TS, Moeller FG. Nonfatal Opioid Overdoses at an Urban Emergency Department During the COVID-19 Pandemic. *JAMA*. 2020;324(16):1673-1674. doi:10.1001/JAMA.2020.17477
 11. Slavova S, Rock P, Bush HM, Quesinberry D, Walsh SL. Signal of increased opioid overdose during COVID-19 from emergency medical services data. *Drug Alcohol Depend*. 2020;214:108176. doi:10.1016/J.DRUGALCDEP.2020.108176
 12. Rodda LN, West KL, LeSaint KT. Opioid Overdose–Related Emergency Department Visits and Accidental Deaths during the COVID-19 Pandemic. *J Urban Heal*. 2020;97(6):808-813. doi:10.1007/S11524-020-00486-Y/FIGURES/3
 13. Galea S, Merchant RM, Lurie N. The Mental Health Consequences of COVID-19 and Physical Distancing: The Need for Prevention and Early Intervention. *JAMA Intern Med*. 2020;180(6):817-818. doi:10.1001/jamainternmed.2020.1562
 14. Emergency visits for opioid overdose are up during pandemic | TheHill. Accessed August 3, 2021. <https://thehill.com/changing-america/well-being/prevention-cures/565681-emergency-visits-for-opioid-overdose-are-up>

15. U.S. Drug-Overdose Deaths Soared Nearly 30% in 2020, Driven by Synthetic Opioids - WSJ. Accessed August 3, 2021. <https://www.wsj.com/articles/u-s-drug-overdose-deaths-soared-nearly-30-in-2020-11626271200>
16. More than 93,000 drug overdoses in the U.S. in 2020, a record driven by fentanyl - The Washington Post. Accessed August 3, 2021. <https://www.washingtonpost.com/health/2021/07/14/drug-overdoses-pandemic-2020/>
17. Pines JM, Zocchi MS, Black BS, et al. How emergency department visits for substance use disorders have evolved during the early COVID-19 pandemic. *J Subst Abuse Treat.* 2021;129:108391. doi:10.1016/j.jsat.2021.108391
18. Understanding the Opioid Overdose Epidemic | Opioids | CDC. Accessed October 20, 2022. <https://www.cdc.gov/opioids/basics/epidemic.html>
19. Mattson CL, Tanz LJ, Quinn K, Kariisa M, Patel P, Davis NL. Trends and Geographic Patterns in Drug and Synthetic Opioid Overdose Deaths — United States, 2013–2019. *MMWR Morb Mortal Wkly Rep.* 2021;70(6):202-207. doi:10.15585/mmwr.mm7006a4
20. Cutler DM, Glaeser EL. When Innovation Goes Wrong: Technological Regress and the Opioid Epidemic. Published online May 31, 2021. doi:10.3386/W28873
21. Frank RG, Pollack HA. Addressing the Fentanyl Threat to Public Health. <https://doi.org/10.1056/NEJMp1615145>. 2017;376(7):605-607. doi:10.1056/NEJMP1615145
22. Gladden RM, Martinez P, Seth P. Fentanyl Law Enforcement Submissions and Increases in Synthetic Opioid–Involved Overdose Deaths — 27 States, 2013–2014. *MMWR Morb*

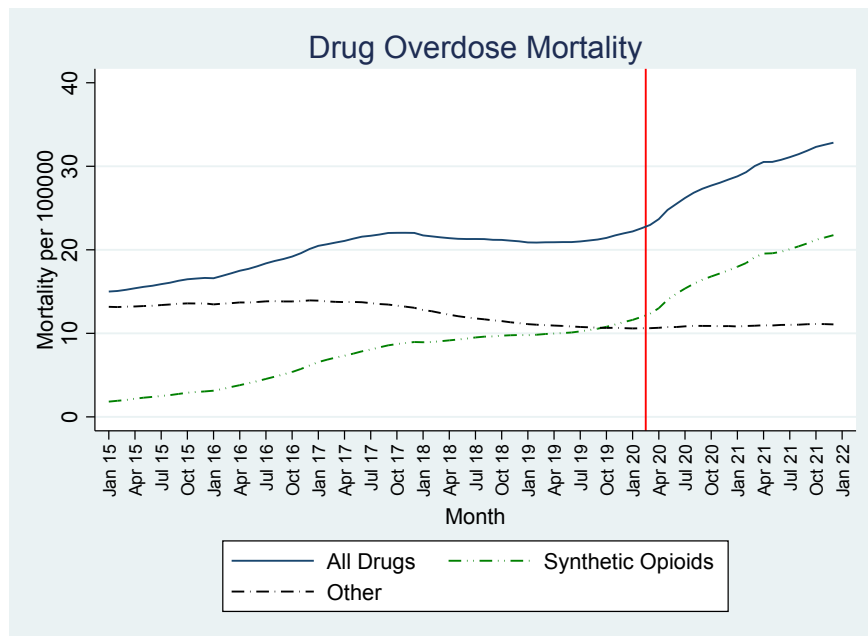
- Mortal Wkly Rep.* 2019;65(33):837-843. doi:10.15585/MMWR.MM6533A2
23. Abouk R, Helmchen L, Moghtaderi A, Pines J. The ACA Medicaid Expansions and Opioid Mortality: Is There a Link? *Med Care Res Rev.* Published online 2020. doi:10.1177/1077558720967227
 24. Root ED, Slavova S, LaRochelle M, et al. The impact of the National Stay-at-Home Order on Emergency Department Visits for Suspected Opioid Overdose During the First Wave of the COVID-19 Pandemic. *Drug Alcohol Depend.* Published online August 28, 2021:108977. doi:10.1016/J.DRUGALCDEP.2021.108977
 25. Fentanyl, heroin overdoses in San Francisco more than doubled in 2019. Accessed October 24, 2022. <https://www.sfchronicle.com/bayarea/article/Fentanyl-heroin-overdoses-in-San-Francisco-more-14993628.php>
 26. Pines JM, Zocchi MS, Black BS, et al. The Effect of the COVID-19 Pandemic on the Economics of United States Emergency Care. *Ann Emerg Med.* Published online April 27, 2021. doi:10.1016/J.ANNEMERGMED.2021.04.026
 27. Overdose Death Rates | National Institute on Drug Abuse (NIDA). Accessed July 26, 2021. <https://www.drugabuse.gov/drug-topics/trends-statistics/overdose-death-rates>
 28. Suspected Nonfatal Drug Overdoses during COVID-19 | Drug Overdose | CDC Injury Center. Accessed June 17, 2021. <https://www.cdc.gov/drugoverdose/data/nonfatal/states/covid-19.html>
 29. Pines JM, Zocchi MS, Black BS, et al. The effect of the COVID-19 pandemic on emergency department visits for serious cardiovascular conditions. *Am J Emerg Med.*

- 2021;47:42-51. doi:10.1016/j.ajem.2021.03.004
30. Pines JM, Zocchi MS, Black BS, et al. Characterizing pediatric emergency department visits during the COVID-19 pandemic. *Am J Emerg Med.* 2021;41:201-204.
doi:10.1016/j.ajem.2020.11.037
 31. Samhsa, CBHSQ. National Survey of Substance Abuse Treatment Services (N-SSATS): 2020 Data on Substance Abuse Treatment Facilities ii. Accessed February 11, 2022.
<https://www.samhsa.gov/data/>.
 32. Fentanyl Testing to Prevent Overdose Information for Healthcare Providers and People Who Use Drugs. Accessed August 17, 2021. <https://data.ct.gov/>
 33. Moustaqim-Barrette A, Dhillon D, Ng J, et al. Take-home naloxone programs for suspected opioid overdose in community settings: a scoping umbrella review. *BMC Public Health.* 2021;21(1). doi:10.1186/S12889-021-10497-2
 34. Goldstein JoR, Cassidy T, Wachter KW. Vaccinating the oldest against COVID-19 saves both the most lives and most years of life. *Proc Natl Acad Sci U S A.* 2021;118(11).
doi:10.1073/PNAS.2026322118
 35. Barreto Parra PN, Atanasov VA, Meurer J, et al. The COVID-19 Pandemic, Years of Life Lost, and Life Expectancy: Decomposition Using Individual-Level Mortality Data. *SSRN Electron J.* Published online January 7, 2022. doi:10.2139/SSRN.3795801

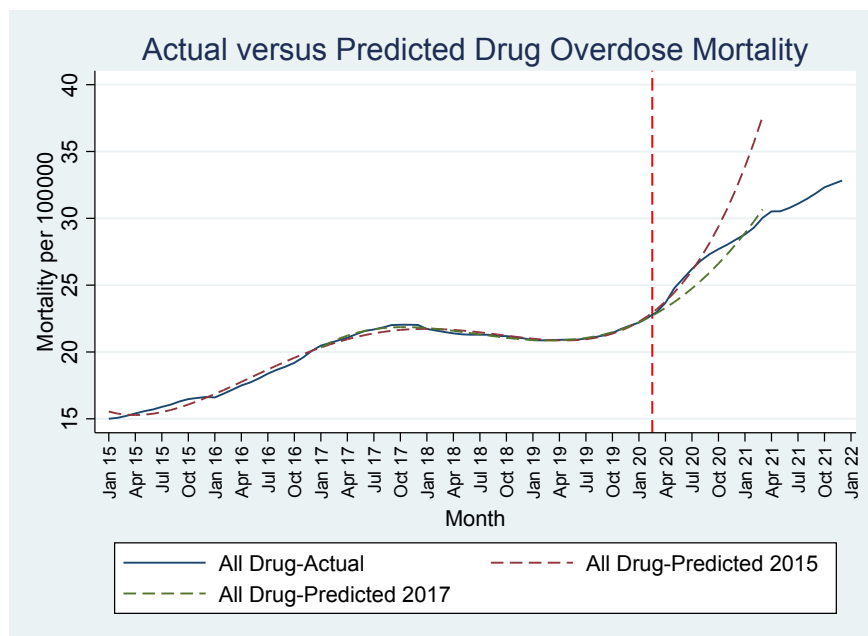
Figure 1- Drug Overdose-Related Deaths over 2015-2021

Panel A. Rolling 12-month totals for national drug overdose deaths (total, synthetic-opioid related, and other) per 100,000 persons between January 2015 and December 2021. **Panel B.** Actual versus predicted overdose deaths per 100,000 persons for the first pandemic year (through March 2021), with two prediction lines based on 4th order polynomials, fitted to monthly pre-pandemic data through February 2020. One prediction line is fitted using data starting in 2015 (2015 model), other line uses data starting in 2017 (2017 model). **Panel C.** Actual versus predicted synthetic opioids deaths, with prediction lines based on the 2015 and 2017 models. **All panels.** Vertical dashed line indicates March 15, 2020, as the approximate onset of pandemic-related lockdowns.

Panel A: Total, Synthetic-Opioid Related, and Other Drug Overdose Deaths



Panel B: Actual and Predicted Drug Overdose Mortality



Panel C: Actual and Predicted Synthetic Opioids Mortality

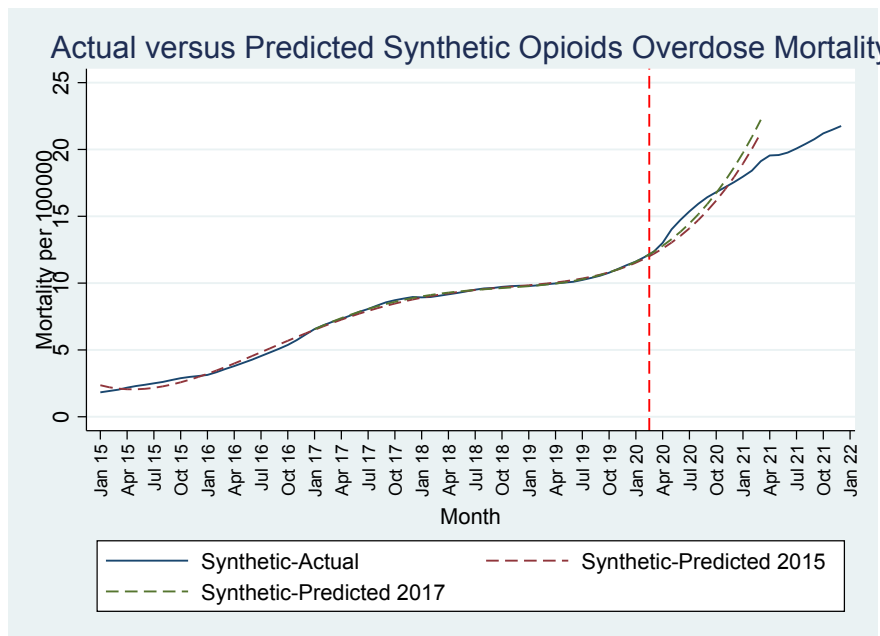


Figure 2- State-Level Estimates of Actual-minus-Predicted Drug Overdose Mortality per 100,000 Persons During Pandemic Period

Note: Outcome variable is actual-minus-predicted rolling 12-month drug overdose deaths per 100,000, using same model as in Figure 1, applied to state-level data from January 2015 through March 2021. Small vertical bars show 95% confidence intervals (CIs). 3 outlier states with $|\text{actual} - \text{predicted mortality}| > 20$ per 100,000 people omitted from graph. Omitted states are: District of Columbia, Ohio, and Pennsylvania.

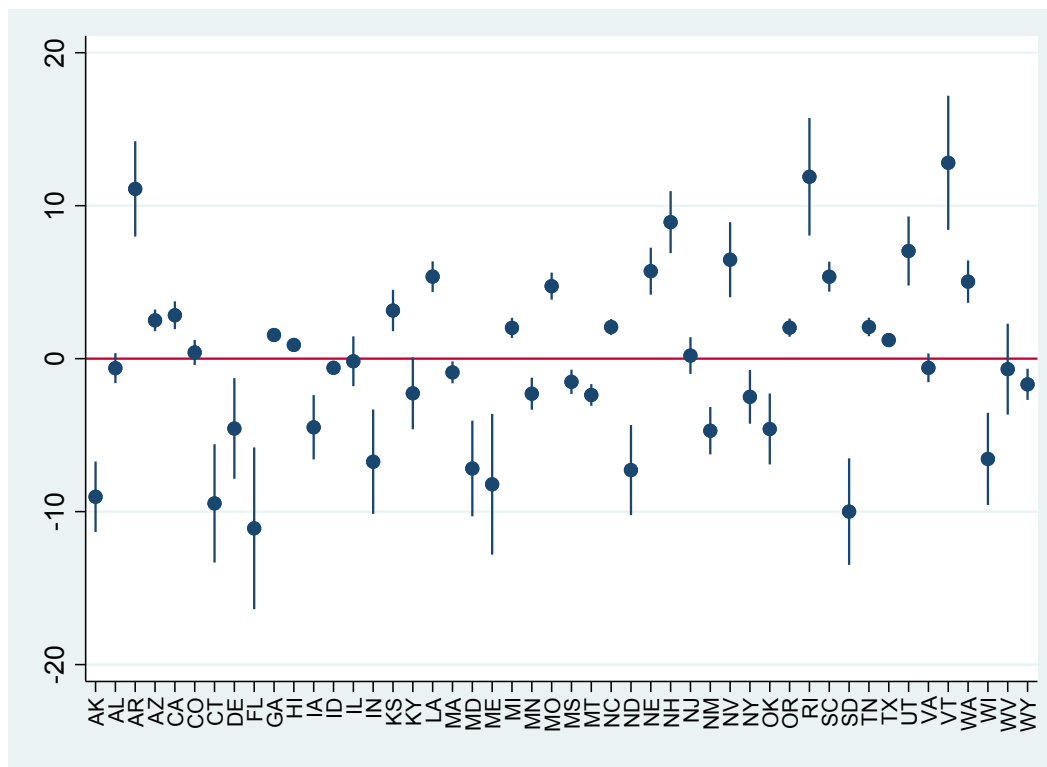
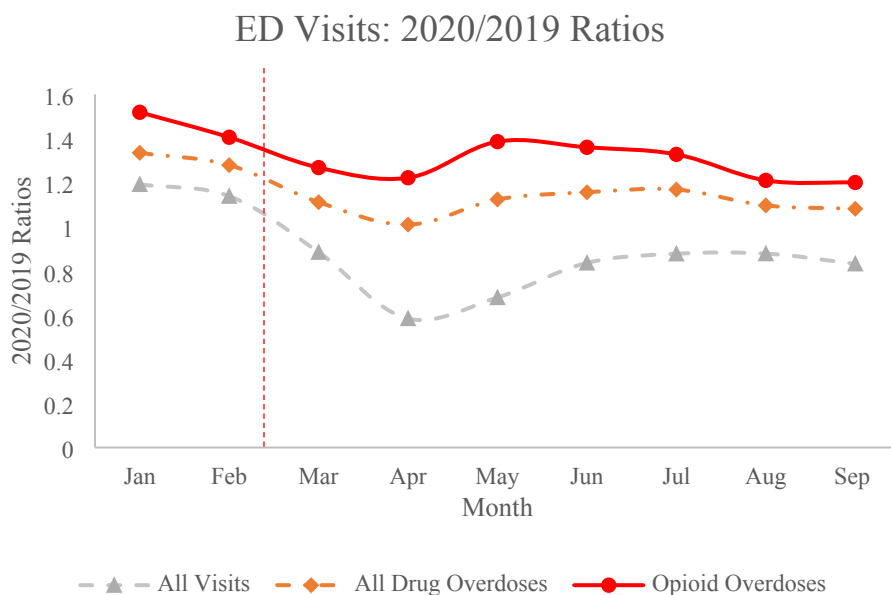


Figure 3- Monthly Ratios of ED Visits During the COVID-19 Pandemic

Panel A. National Data. shows Monthly Ratios of 2020 to 2019 emergency departments visits for January 2019 through September 2020 for all visits, all drug overdose visits, and opioid overdose visits using CDC data. **Panel B.** Ratios for all visits, opioid overdose visits, and all other overdose visits for January 2017 through October 2021 using data from 126 EDs in 21 states staffed by a national emergency department staffing company. Ratios for 2020-2021 are to same month in 2019.

Panel A. National ED visits for non-fatal overdoses



Panel B: Visits to EDs Staffed by National ED Staffing Company

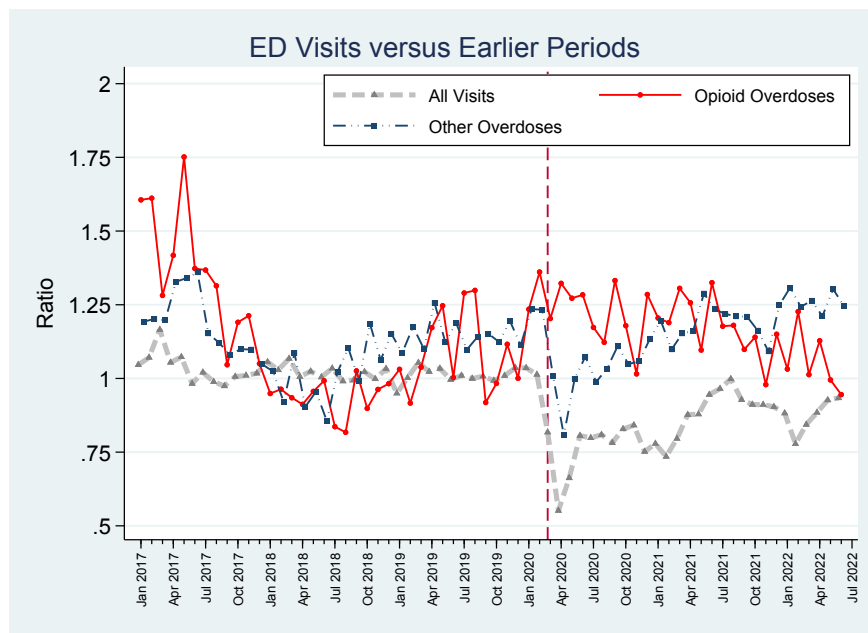


Table 1- Summary Statistics: National Overdose Mortality

Actual and predicted rolling 12-month drug-overdose deaths per 100,000 persons over 2015-December 2021, divided into those related to synthetic opioids and other, and predicted overdose deaths in 2020 and through March 2021 for all overdoses and synthetic opioids overdoses using fourth order polynomial fitted to pre-pandemic data starting from either 2015 (2015 model) or 2017 (2017 model) through Feb. 2020.

Year	All overdoses (actual)	All overdoses (predicted)	Synthetic opioid	Synthetic Opioids (Predicted)	Other
2015	15.82 [15.00, 22.52]	--	2.45 [1.83,3.05]		13.37 [13.14, 13.58]
2016	18.23 [16.60,20.10]	--	4.49 [3.13,6.15]		13.74 [13.46, 13.94]
2017	21.47 [20.48,22.04]	--	7.89 [6.56,8.96]		13.57 [13.06, 13.91]
2018	21.33 [21.02,21.72]	--	9.40 [8.93,9.80]		11.93 [11.21, 12.79]
2019	21.16 [20.87,21.97]	--	10.33 [9.78,11.35]		10.82 [10.62, 11.10]
2020	25.52 [22.20,28.42]	2015 Model: 26.27 [22.26, 32.22] 2017 Model: 24.74 [22.22, 28.09]	14.75 [11.61,17.55]	2015 Model: 14.17 [11.52, 17.94] 2017 Model: 14.53 [11.61, 18.65]	10.77 [10.60, 10.90]
2021 (thru March)	29.38 [28.80,30.04]	2015 Model: 35.71 [33.86, 37.62] 2017 Model: 29.77 [28.90, 30.67]	18.50 [17.97, 19.12]	2015 Model: 20.07 [18.94, 21.24] 2017 Model: 20.97 [19.74, 22.22]	10.87 [10.83, 10.91]
2021 (July thru December)	31.55 [30.51,32.83]	--	20.51 [19.55, 21.75]		11.04 [10.94, 11.12]

Table 2: Drug-Overdose Related ED Visits: Ratios of Pandemic to Pre-Pandemic Rates

Left hand columns: CDC data from 42 states for ratio of non-fatal drug-related ED visits in Jan.-Sept. 2020. Table shows ratio of visits during 2020 to visits during same month in 2019. *Right hand columns:* Data from ED staffing company on drug-related ED visits to 126 EDs in 21 states over January 2017-June 2022. Table shows average for indicated periods of monthly ratios of visits in January 2017-February 2020 to visits in the same months a year earlier and March-December 2020 and January 2021-June 2022 to visits in the same months in 2019.. Ratios are computed at the ED level and then averaged across EDs within each month. 95% confidence intervals are reported in brackets. Last row shows average ratio of opioid/related ED visits to all overdose visits for the months in the indicated period.

Period	National Data (CDC)		ED staffing company data			
	Jan-Feb, 2020	Mar.-Sept., 2020	Jan 2017- Feb 2020	Mar-Dec 2020	Jan 2021-June 2022	Jan 2022-June 2022
Base Period	Same month, year earlier		Same month, year earlier	Same month in 2019		
All Visits	1.16	0.80	1.02 [1.01, 1.03]	0.76 [0.75, 0.78]	0.89 [0.87,0.90]	0.87 [0.85,0.90]
All Drug Overdose Visits	1.31	1.11	1.10 [1.08, 1.13]	1.07 [1.01, 1.12]	1.16 [1.10, 1.23]	1.18 [1.11, 1.25]
Opioid-related Visits	1.46	1.28	1.11 [1.07, 1.15]	1.22 [1.11, 1.33]	1.18 [1.07, 1.28]	1.06 [0.95,1.16]
Other Drug Visits	1.16	0.79	1.12 [1.10, 1.14]	1.03 [0.98, 1.08]	1.19 [1.13, 1.25]	1.26 [1.18,1.34]
Opioid-related/all drug overdose visits	30.5%	34.1%	29%	29%	25%	21%

Supplementary Appendix for:

The Uncertain Effect of the COVID Pandemic on Drug Overdoses

Ali Moghtaderi, PhD, MBA¹, Mark S. Zocchi, MPH², Jesse M. Pines, MD³, Arvind Venkat, MD³, Bernard Black, JD, MA⁴

¹ Milken School of Public Health, George Washington University, Washington, DC

² Heller School for Social Policy and Management, Brandeis University, Waltham, MA

³ US Acute Care Solutions, Canton, OH and Department of Emergency Medicine, Allegheny Health Network, Pittsburgh, PA

⁴ Pritzker School of Law and Kellogg School of Management, Northwestern University, Evanston, IL

Appendix Table 1- Approximate Numbers of Drug Overdose Deaths in San Francisco Obtained from Appa et al. (2021) Paper

Note: Numbers are approximate numbers drawn from the figure in the Appa et al (2021) paper. The exact numbers were not reported in the manuscript

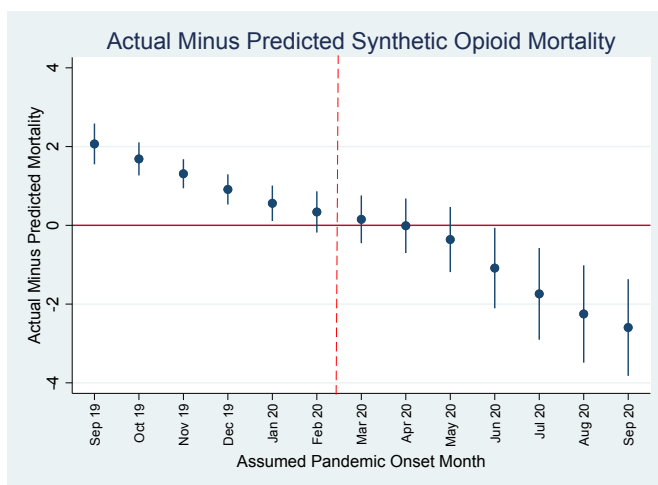
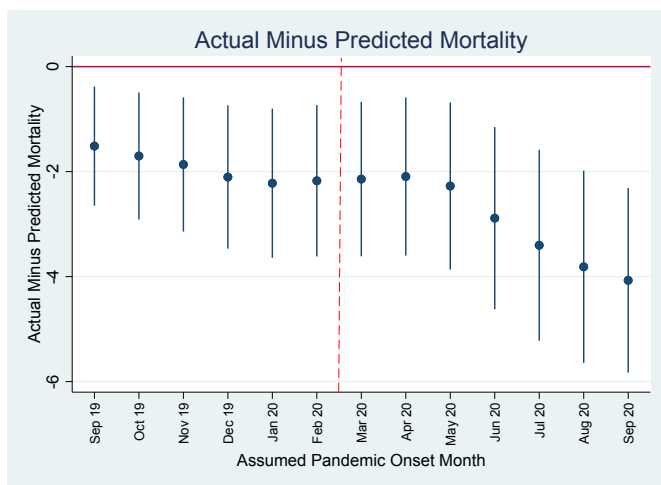
Year	2017	2018	2019	2020
January	17	17	30	39
February	18	22	39	42
March	20	18	24	50
April	18	10	22	48
May	19	12	20	68
June	18	20	39	70
July	18	22	39	70
August	21	18	50	70
September	20	30	45	57
October	20	20	38	60
November	18	30	49	60
December	15	22	41	
Total	222	241	436	634

Appendix Figure 1- Placebo Estimates of Actual-minus-Predicted Drug Overdose Mortality Assuming Pandemic Started at Different Times

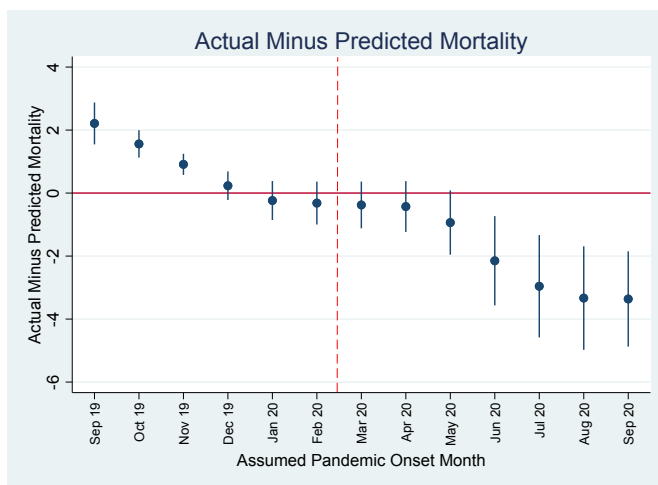
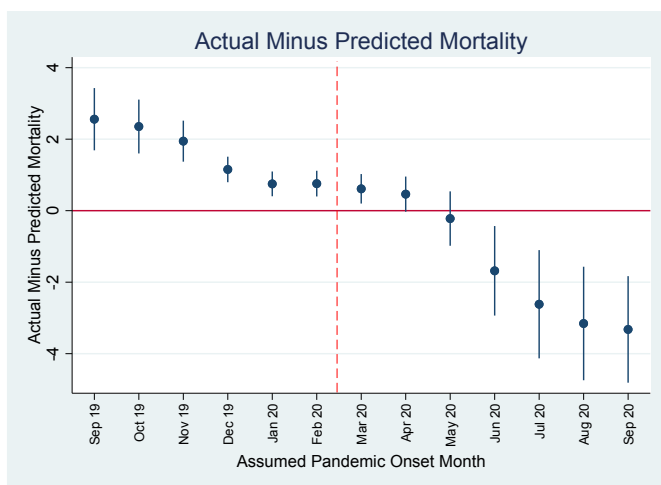
National actual versus predicted drug overdose deaths per 100,000 persons between placebo pandemic-onset month and March 2021, assuming pandemic began in indicated placebo month from September 2019 through September 2020. Predicted values use 4th order polynomial, applied to data from 2015 (Panel A) or 2017 (Panel B) through month prior to assumed pandemic onset month. In each panel, left-hand figure shows results for all overdose deaths, and right-hand figure shows results for synthetic-opioid-related deaths. Vertical dashed line between February and March 2020 indicates start of pandemic period. Small vertical bars show 95% confidence intervals (CIs).

Replacement figures:

Panel A: Year 2015 as Starting Point

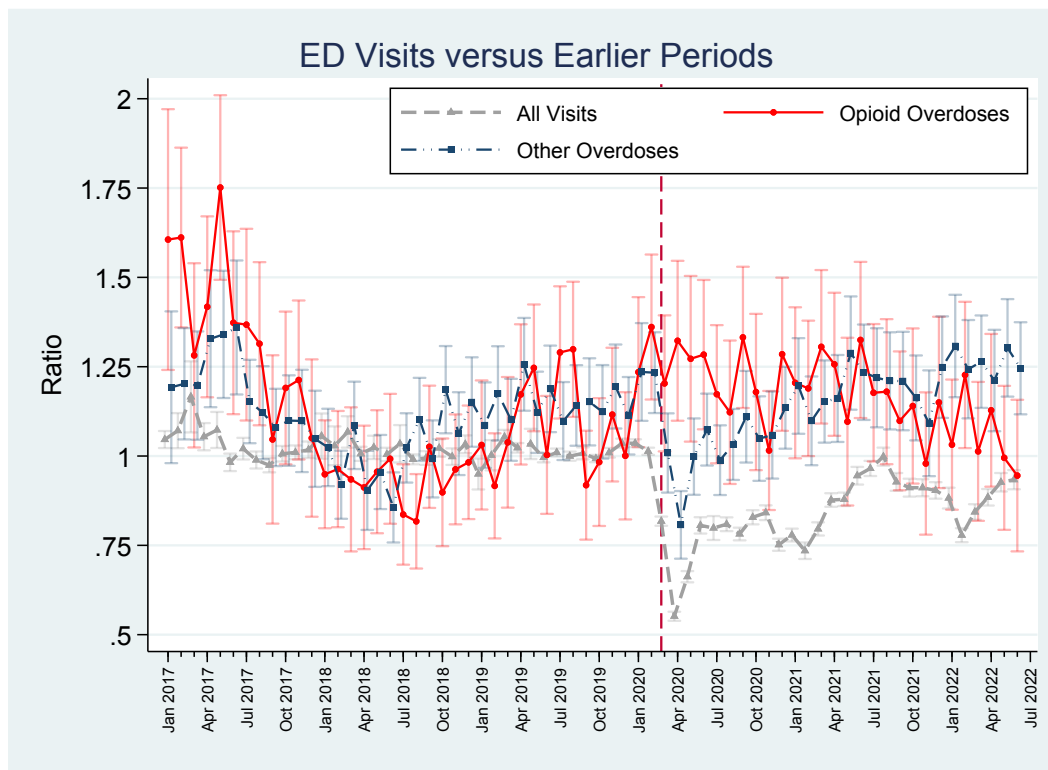


Panel B: Year 2017 as Starting Point



Appendix Figure 1- Monthly Ratios of ED Visits for National Staffing Company During the COVID-19 Pandemic with Confidence Intervals

Ratios for all visits, opioid overdose visits, and all other overdose visits for January 2017 through October 2021 using data from 126 EDs in 18 states staffed by a national emergency department staffing company. Ratios for 2020-2021 are to same month in 2019. We use standard errors clustered on ED and hospital weights based on 2019 volume to calculate 95% confidence intervals (CI).



Appendix Figure 2- Monthly Ratios of ED Visits for National Staffing Company During the COVID-19 Pandemic For Balanced Panel

Ratios for all visits, opioid overdose visits, and all other overdose visits for January 2017 through October 2021 using data from 37 Eds staffed by a national emergency department staffing company consistently from January 2016 through October 2021. Ratios for 2020-2021 are to same month in 2019. We use standard errors clustered on ED and hospital weights based on 2019 volume to calculate 95% confidence intervals (CI).

