

Context and health: a systematic review of natural experiments among migrant populations

Louise Biddle PhD ^{a,b}, Maren Hintermeier MSc ^{a,b}, Diogo Costa PhD ^a, Zahia Wasko MSc ^b, Kayvan Bozorgmehr Prof. ^{a,b,*}

^a Department of Population Medicine and Health Services Research, School of Public Health, Bielefeld University, Universitätsstraße 25, 33501 Bielefeld, Bielefeld, Germany

^b Section Health Equity Studies & Migration, Department of General Practice and Health Services Research, University Hospital Heidelberg, Im Neuenheimer Feld 130.3, 69120 Heidelberg, Germany

* Corresponding author

Correspondence to:
Prof. Dr. med. Kayvan Bozorgmehr (MSc)
Department of Population Medicine and Health Services Research
School of Public Health
Bielefeld University
Universitätsstraße 25
33501 Bielefeld
Germany
kayvan.bozorgmehr@uni-bielefeld.de

SUMMARY

Background: Studies on contextual effects on health often suffer from compositional bias and selective migration into contexts. Natural experiments among migrants may allow for the causal effect of contexts in generating health inequalities to be examined. We synthesised the evidence on and health from natural experiments among migrant populations.

Methods: Systematic literature review searching the databases PubMed/MEDLINE, The Cochrane Library, Web of Science, CINAHL and Google Scholar for literature published until October 2022. 5870 studies were screened independently in duplicate using pre-defined criteria for inclusion: quantitative natural experiment methodology, migrant study population, context factor as treatment variable and health or healthcare outcome variable. Synthesis without meta-analysis was performed following data extraction and quality appraisal.

Findings: The 46 included natural experiment studies provide causal evidence for the negative effects of neighbourhood disadvantage on physical health and mortality, while finding mixed effects on mental health. Studies comparing migrants with those that stayed behind demonstrate the detrimental effects of migration and adverse post-migratory contexts on physical health and mortality, while demonstrating favourable effects for mental health and child health. Natural experiments of policy contexts indicate the negative impacts of restrictive migration and social policies on healthcare utilization, mental health and mortality as well as the positive health effects when restrictions are lifted.

Interpretation: Natural experiments can serve as powerful tools in reducing bias through self-selection. With careful consideration of causal pathways, results from migration contexts can serve as a magnifying glass for the effects of context for other population groups. Studies demonstrate the negative impacts for health which lie at the nexus of context and health. At the same time, they uncover the potential of health and welfare programs to counteract the disadvantages created by othering processes and promote healthy (post-migratory) contexts.

Funding: German Science Foundation (FOR: 2928/ GZ: BO5233/1-1).

Keywords: natural experiments; systematic review; contextual effects; neighbourhood effects; migration

Panel 1: research in context

Evidence before this study

We searched PubMed/MEDLINE to identify pre-existing reviews on contextual effects on health with the following search terms: ((review[Title/Abstract]) AND (((context[Title]) OR (neighbourhood[Title])) OR (small-area[Title]))) AND (health[Title]). Eight reviews existed and pointed to consistent, but small effects of neighbourhood disadvantage on physical and mental health outcomes, as well as on child and adolescent health. However, these reviews also point to the methodological shortcomings of most studies, which are unable to disentangle compositional from contextual effects. In order to improve causal inference, natural experiments are needed. Natural experiments have previously delivered crucial evidence on the causal effects of public health interventions including suicide prevention, air pollution control, public smoking bans and alcohol taxation.

Added value of this study

This review uses natural experiments among migrants to contribute to the existing evidence base by synthesising insights on the causal mechanism of contextual effects. It uses migration as an example to assess how contextual factors, ranging from policy environments to neighbourhood characteristics, generate or exacerbate inequalities among societies. We thereby circumvent and avoid limitations of other reviews on these topics, by exploiting five main sources of variation of contextual exposures: residential dispersal, arbitrary eligibility cut-offs, on-/off-timing of events, regional variation, and place of birth. Based on these, we identify three main types of natural experiments among migrant populations: 1) Studies “using” migration as an example to analyse contextual health effects or neighbourhoods in the post-migration phase; 2) Studies examining interactions between changes in environmental factors following migration processes as compared to those staying behind; and 3) Studies using natural experiments to study policy effects. The synthesised evidence confirms and provides causal evidence for the negative effects of neighbourhood disadvantage on physical health and mortality, while effects on mental health are mixed. The body of literature demonstrates that migration processes can unfold detrimental effects on physical health and mortality through adverse post-migratory contexts, while also demonstrating favourable effects for mental health and child health depending on the respective context. Our synthesis further provides causal evidence for the negative impacts of restrictive migration and social policies on healthcare utilization, mental health and mortality as well as the positive health effects when restrictions are lifted.

Implications of all available evidence

The evidence presented here demonstrates the health disadvantages faced by migrants in the immediate post-settlement phase, which are exacerbated by restrictive health, social and visa policies. More broadly, however, the evidence points to neighbourhood disadvantage as a crucial and causal mechanism underlying health inequities at a societal level. At the same time, studies uncover the potential of health and welfare programs to counteract the disadvantages created by othering processes and instead promote healthy contexts. Such evidence is valid beyond migrant populations and allows inference of the positive effects of inclusive health and welfare programs for other marginalized groups and the population as a whole.

INTRODUCTION

A long research tradition in public health and social epidemiology has shown important effects of contextual factors of the place of residence on diverse health outcomes, including mortality, chronic diseases and mental health¹. Such research has examined the influence and impact on health of socio-demographic (e.g. area-level poverty, inequality or deprivation)²⁻⁴, physical (e.g. green space, noise pollution or housing quality)^{5,6}, or social attributes of neighbourhoods (e.g. social capital, safety and community participation)⁷⁻⁹. Furthermore, health and social policies also shape living contexts and thereby impact people's health status^{10,11}. Adverse contextual conditions have been found to disproportionately affect vulnerable subgroups¹²⁻¹⁴. However, studies on contextual effects are often limited in their ability to disentangle contextual from compositional effects. Because of self-selection of individuals into neighbourhoods, many studies suffer from compositional bias and are thus unable to draw causal inferences. Experiments allocating individuals to places of residence exist¹⁵ but are rare for ethical and practical reasons.

Natural experiments allow for the causal effect of contexts to be examined¹. They can be broadly defined as events where the allocation into exposed and unexposed groups are not under the control of the researcher and subject to a random (or quasi-random) process^{16,17}. The allocation may be the result of truly "natural" forces, such as extreme weather or geographical events, but also phenomena under human control, such as quasi-random policy introduction or administrative processes. Natural experiments minimise selection bias in the allocation process. This makes them particularly valuable for contextual health research, including the causal effects of public health policies^{16,18} or social and economic policies¹⁷.

Natural experiments are scarce, but when they intersect with human migration they offer powerful opportunities to study the effects of changing environments and contexts, including the consequences of migration-specific, but also broader health and social policies. Human migration is a large-scale, global phenomenon involving highly diverse groups of individuals and circumstances^{19,20}. It takes place in a contested political space in which substantial variation exists with respect to exclusionary or inclusionary forces²¹, which produce health inequalities through mechanisms linked to economic and social policies²². Migration thus serves a lens function to learn lessons for public health about the generation and (re)production of inequalities in the population. We hence aimed to systematically review and synthesise the evidence on contextual effects on health and healthcare outcomes from research using natural experiments among migrant populations.

METHODOLOGY

We conducted a systematic literature review in line with the Preferred Reporting for Systematic Reviews and Meta-Analyses (PRISMA) guidelines. A protocol of the review strategy was registered in the International Prospective Register of Systematic Reviews (PROSPERO) on 28 April 2020 (CRD42020169236).

We searched the scientific databases PubMed/MEDLINE, The Cochrane Library, Web of Science/Knowledge (WoS) and CINAHL using English search terms within the search blocks migrants, natural experiments or dispersal programs, health outcome, and contextual effects (see Appendix Table S1) without limitations to the start or end date of publication. Additionally, we used the search engine Google Scholar to find further academic literature published since 2000 that might not be available in other databases²³. Results in all databases were restricted to English and German language articles. Searches were conducted on 4 February 2020, and updated (in PubMed/MEDLINE, WoS and CINAHL) on 13 October 2022 to capture the most recent publications. A total of 7150 items were identified in the search, with 5870 remaining for screening after deduplication (Figure 1).

We conducted the screening process in two steps. In a first step, two members of the review team independently screened the title and abstract of each item, applying pre-defined inclusion/exclusion criteria (see Appendix Table S2). Studies were excluded if they did not cover a migrant population, did not use quantitative research methods, or did not report health outcomes and/or assess contextual factors. In a second step, we reviewed full-text articles using the same exclusion criteria and additionally excluded studies which did not exploit a natural experiment. We considered studies as natural experiments if they fulfilled the following criteria: allocation was not under the control of the research team, the source of the variation in exposure was (quasi-)random, participants were unable to self-select the exposure. Articles reporting a natural experiment design but not fulfilling these criteria were excluded (Appendix Table S3). Articles using other terminology (quasi-experiment, natural quasi-experiment, quasi natural-experiment) were included if fulfilling the above criteria. Each item was screened independently by two members of the review team, with discrepancies resolved through joint discussion. In cases where consent could not be reached, articles were discussed by all members of the research

team. References of the included studies were additionally screened for further relevant articles using a snowballing methodology.

Figure 1: PRISMA flow-chart

Data on the following were extracted for all studies: bibliographic information, study characteristics (incl. research objectives, context and period of study, theoretical foundation and sampling), research design, analysis strategy, study population, contextual exposures, and health or healthcare outcome variables used, confounders, as well as findings and limitations as reported. Data for all items were extracted in duplicate and consensus reached through joint discussion. Quality Appraisal of the included studies was carried out independently by pairs of two reviewers using an adapted version of the “Quality Assessment Tool for Quantitative Studies” developed by the Effective Public Health Practice Project (EPHPP)²⁴. We adapted the following items to suit the natural experiment methodology of included articles (Appendix Table S4). Discrepancies in scoring were discussed in the team to reach consensus.

Results were analysed using a synthesis without meta-analysis (SWiM) methodology²⁵. In a first synthesis step, two researchers inductively created several groupings of the included articles based on type of contextual exposure, health outcome and the source of variation in exposure underlying the natural experiment (Panel 2). These groupings were further refined in joint discussions of the review team. Studies were assigned to one of the following four groups based on the context factor assessed: contextual factors of the place of residence in receiving countries, migration-context interactions, policy contexts and cultural factors as context. Health outcomes were grouped into physical health (including non-communicable diseases, mortality and self-rated health), mental health (including symptoms of mental illness, psychiatric hospital admissions and substance abuse), child health (including self-reported mental and physical health, anthropometric measures and birth outcomes) and healthcare utilisation (including healthcare visit and cost data). Using the groups as a guide, study methodologies and results were discussed in six repeated rounds of synthesis meetings. The main synthesis was based on the groupings by health or healthcare outcomes. Due to the high heterogeneity of the included studies meta-analysis was not possible.

Role of the funding source

This study was funded the German Science Foundation (DFG) in the scope of the NEXUS project as part of the PH-LENS Research Unit (FOR 2928 / GZ: BO 5233/1-1). The funder had no influence on the design of the study, analysis or decision to publish.

Panel 2: Categorisation of the source of (random) variation in exposure underlying the natural experiments

Besides considering the events which give rise to the possibility of a natural experiment design, it proved helpful to consider the source of the variation in exposure in order to further understand the success of the (quasi-)random allocation. We divided the natural experiments into five groups. These differ with respect to the unit of allocation (individual/community), the temporality and the underlying assumptions made. We briefly describe each group below:

1. Residential dispersal

Studies using residential dispersal as the source of variation rely on some policy which disperses individuals into different geographical units based on, for example, administrative quota or a ballot. Here, allocation may occur on the individual or household level. The extent to which the process can be regarded as ‘random’ depends on the characteristics considered in the dispersal process. For example, Gibson et al. (2010) describe a migration ballot which is determined purely by chance, while some dispersal systems for refugees may be affected by family composition, health status and nationality and are thus only quasi-random (Wenner et al. 2020). These designs are strengthened by coexistent residential mobility restrictions, which reduce the possibility of selective secondary migration, e.g. in the case of many asylum processes where individuals are obliged to reside in the municipality or region where they first made their asylum claim for a given period of time. Residential dispersal allows for the use of contemporaneous comparison groups.

2. Arbitrary eligibility cut-offs

These studies make use of a policy or programme with eligibility criteria that have some cut-off which can be considered to be set arbitrarily. Thus, individuals at either side of the cut-off can be said to be

comparable in all aspects except for their treatment status. Our review includes studies which use eligibility for welfare benefits after an arbitrary length of time (e.g. Bozorgmehr & Razum 2015) or an arbitrary age cut-off (e.g. Hainmueller et al. 2017) as well as a study which uses the arbitrary water-level rise following dam construction (e.g. Hwang et al. 2011). Arbitrary eligibility cut-offs allocate the exposure at an individual or household level, and allow for contemporaneous comparison groups.

3. Timing of policy introduction/ event

Several studies make use of the timing of a policy introduction or an event as the source of variation in the exposure. They make before/ after comparisons and thus do not allow for the use of contemporaneous comparison groups. The rationale behind classifying these studies as natural experiments is that the timing can be considered to be to some extent arbitrary or unpredictable and the policy change usually applies to an entire country, thus minimising bias through self-selection into exposed and unexposed groups. The exposure is allocated at a community level. Examples of this variation in exposure include the introduction of a paternal leave policy (Honkaniemi et al. 2021), the restriction of healthcare access (Juanmarti Mestres et al. 2020) and the introduction of a repatriation policy (Fu & VanLandingham 2010). One study (Lopez et al. 2016) makes use of the unpredictable timing of an immigration raid as the source of variation in the exposure.

4. Regional variation

The studies making use of regional variation in the exposure utilise the uneven implementation of policies (e.g. Kaushal 2007, Ye & Rodriguez 2021) or the uneven effects of a natural disaster (Hori et al. 2021) as their source of exposure variation. Allocation necessarily occurs at the community level. Again, these are classified as natural experiments because of the arguably arbitrary pattern of policy introduction which can be considered to be unrelated to other characteristics of the region or its inhabitants or the outcome studies. These regional comparisons allow for the use of contemporaneous comparison groups, but bias through self-selection can often not be ruled out when utilising regional variation on its own.

5. Place of birth

Finally, some studies make use of the randomness of the place of birth as the source of variation in their exposure. The argument presented in these studies is that the comparison groups can be considered to be equal in all aspects except the context of birth, the effects of which they subsequently examine. This approach allows for contemporaneous comparison groups, with allocation at both individual and community levels possible. Black et al. (2015) analyse the proximity of the place of birth to a railroad in the Southern United States as an instrument for migration and examine its effect on mortality. Hajdu & Hajdu (2015) examine the effect of the overall subjective well-being in the country of birth on individual well-being after migration.

RESULTS

A total of 1003 items remained after abstract screening, with 37 items remaining after full-text screening (Figure 1). Nine items were identified by the snowballing method, resulting in a total of 46 studies included for analysis. Almost all were published after 2007, with only one included study from 1963. While studies assessing migrations/context interactions dominated in the 2010s, when assessing the so-called “healthy migrant effect” was a particular concern, studies looking at contextual factors of the place of residence and policy contexts have risen to prominence in more recent years (Figure 2a). 33 studies were conducted in countries receiving migrants (n=18), refugees (n=13) and resettlers (n=1). These were based in Europe (n=21)²⁶⁻⁴⁶ and the United States of America (USA) (n=12)⁴⁷⁻⁵⁸ (Table 1). Studies in China (n=3)⁵⁹⁻⁶¹ and the USA (n=2)^{62,63} focused on internal migrants. Eight studies conducted research in both the country of destination and the country of origin, covering a natural experiment in Vietnam and the USA (n=3)⁶⁴⁻⁶⁶ and one in Tonga and New Zealand (n=5)⁶⁷⁻⁷¹. 22 studies report only data on migrants^{28-32,34-36,38,42-48,50,51,56,57,60,61}, while the others include migrants as a subsample of a broader population, with migrants making up between 5-83% of the total sample (Appendix Table S6). Median of the total sample size is 10 347 (254 – 5 009 832), excluding two ecological studies which reported sample size in person-years²⁸ and person-quarters⁴⁵. A large majority of studies use a cohort analytic design (n=31), with others being cohort studies (n=1), cross-sectional studies (n=7), repeated cross-sectional studies (n=2), ecological studies (n=3) or combining both cross-sectional and cohort-analytic study designs (n=2) (Table 1).

With respect to the source of variation in exposure underlying the natural experiments (see Panel 2), 17 studies make use of residential dispersal^{27,29–31,34,36,40–43,46,61,67–71}, 10 use regional variation in a policy implementation or natural event^{32,33,47–49,52,54,58,60,63}, seven studies make use of the timing of a policy or event^{26,37,39,53,55,56,64} and two studies use the place of birth^{35,62} (Table 1). Nine studies combine two or more of these mechanisms in order to further strengthen the natural experiment design. For example, some studies^{38,44,45} use a regional variation in exposure in combination with residential allocation mechanisms (e.g. in the context of a dispersed refugee population) in order to avoid bias through self-selection. Other studies^{28,51,57} utilise quasi-random timing of policy implementation and an arbitrary eligibility cut-off to generate both contemporaneous and before/after comparison groups.

We found four types of contextual effects which were examined across studies: contextual factors of the place of residence in receiving countries (n=15)^{27,29–32,34,36,40–43,46,49,60,61}, migration-context interactions (n=10)^{59,62,63,65–71}, policy contexts (n=20)^{26,28,33,37–39,44,45,47,48,50–58,64}, as well as cultural factors as context (n=1)³⁵, the latter being an outlier in this set. Studies related to “contextual factors of the place of residence” examined specific regional characteristics such as regional deprivation, income inequality, neighbourhood disadvantage or migrant density among migrants in the resettlement phase. Studies focusing on “migration-context interactions” set out to examine the effect of migration on different health outcomes, but not by considering the process of migration itself, but rather by comparing outcomes among those who moved in comparison with a comparable group which did not migrate thus examining contextual characteristics of the new vs. old place of living. Finally, studies on policy contexts utilise a quasi-random uneven implementation of a policy, across time and/or space, to assess the effect of a given policy on health outcomes.

Just under half of studies (n=22)^{28,30–36,38,40–44,46,49,53,55,63–66} use regression adjustment as their statistical analysis approach (Appendix Table S6). Other popular approaches include difference-in-difference analyses (n=10)^{39,47,48,51,52,54,56–59}, instrumental variables (n=8)^{27,60,62,67–71} and regression discontinuity (n=3)^{26,37,50}. 17 studies^{27,28,30,31,33,37–39,45,47,48,50–52,54,57,62} use the natural experiment as “intention to treat”, e.g. by program eligibility, rather than measuring actual treatment assignment. Given the potential of natural experiments to elucidate causal effects, all studies offer potential theoretical mechanisms through which this effect could occur. Less than half of studies (n=17) empirically assess such potential mediating pathways (Appendix Table S6).

Figure 2: Overview of included studies by year of publication, main context factor groups and health outcome assessed

2a: Included studies by year of publication and main context factor group

2b: Included studies by main context factor group and health outcome assessed (totals surpass the total number of included studies as some studies assess multiple health outcomes)

Table 1: List of included studies and main study characteristics

Natural experiments on *physical health* provide strong evidence of a negative effect of contextual factors such as regional deprivation and neighbourhood disadvantage on diabetes^{36,46}, heart disease³⁶ and mortality⁴². An exception is the study by Grönqvist et al. (2012), which finds no effect of income inequality on mortality, days of sick leave or hospitalisation³⁴. Living in an urban environment²⁹ and increased social integration⁶⁰ have positive effects on self-reported health (weak evidence). Studies examining policy contexts showed no effects or mixed effects on adult physical health, including studies on healthcare entitlements³⁸ and visa access⁵⁷ on self-rated health, as well as social benefits programmes on self-rated health and obesity^{48,52}. One notable exception is the study by Juanmarti Mestres et al. (2020), which provides strong evidence for increased mortality due to restricting healthcare access policy³⁹. Several natural experiments considering the effect of inclusionary policies on birth outcomes show consistent and strong positive effects; these include the effect of increased healthcare entitlements⁵⁴ and increased visa access^{51,56}. Natural experiments comparing migrants to non-migrants provide moderate evidence of the physical health disadvantages faced in post-migratory contexts, including effects on self-rated health, heart disease, obesity and mortality, considering a broad range of population groups: Tongan migrants to New Zealand⁶⁸ Vietnamese refugees in the US⁶⁵, internal migrants in the US⁶² and displaced persons in China⁵⁹. Studies comparing Tongan children migrating to New Zealand compared to those that stayed behind show improvements in height-for age⁶⁷ and stunting⁶⁹.

With respect to *mental health*, the evidence on the effects of contextual factors of the place of residence is mixed (Figure 2). While some studies provide strong evidence of negative effects of regional deprivation²⁷ and socioeconomic disadvantage³¹ on mental health, other high-quality studies find no such relationship^{34,41}. Further studies find moderate evidence of the effect of the benefits of high migrant density⁴⁰ and weak evidence of the negative effects of terrorist attacks³² on the mental health of migrants. Studies considering contextual factors of

the place of residence on child health are also mixed, but one strong study demonstrates the negative effect of neighbourhood socioeconomic disadvantage on child mental health³⁰. Another strong natural experiment looking at the composition of school classes shows a positive effect of increased proportions of foreign-born co-students on migrant mental health and health-risk behaviour, although this effect does not last into adulthood⁴⁹. Studies assessing the effect of policy contexts on adult and child mental health find moderate but consistent evidence of the positive impacts of inclusionary migration, health and social policies^{37,38,47,50,57}. The evidence on the mental health impacts of restrictive policies such as strengthened migration enforcement⁵³, repatriation⁶⁴ or reduced unemployment benefits²⁶ is mixed. Natural experiments comparing migrants with individuals in the country of origin who did not migrate also provide mixed results with respect to mental health. While evidence from Tongan migrants in New Zealand^{70,71} and Vietnamese refugees in the US⁶⁶ show positive or mixed results, natural experiments looking at the effects of displacement due to infrastructure projects⁵⁹ or natural disasters⁶³ show negative effects on mental health. One weak quality study found a positive effect of the life satisfaction in the country of origin on migrants life satisfaction after migration³⁵.

Turning to *healthcare utilisation*, there is weak to moderate evidence for improvements when healthcare entitlements^{44,45,54,58} and access to social benefits are increased⁴⁸. At the same time, there is evidence for decreases in timely utilisation when healthcare entitlements are restricted²⁸ and migration enforcement is strengthened⁵⁵. One moderate quality study found no effect of health sector characteristics on refugee healthcare expenditures⁴³, while another weak quality study had mixed results regarding the healthcare accessibility of persons displaced by Hurricanes Katrina and Rita⁶³.

Migrant groups can act as a lens for the effects of context and health. All studies presented here include migrant groups as part of their analysis, but not all are migrant-specific. Based on their analytical perspective of migrants as a study population, we identified three groups of studies: 1) those that address a migrant-specific research question, 2) those who use natural experiments among migrants to address broader research questions on health and social environments, and 3) those who use migrants as a subgroup of a broader study population to test effect moderation of a given exposure among a marginalised group. Studies addressing migrant-specific research questions (n=29)^{28,30,31,38,39,43–45,49–51,53–57,59–71} can be found among the migration/context interaction and policy contexts papers (Appendix Table S6). They address issues which are unique to the migration experience, such as the health effect of being removed from a known social and economic context into an unknown one (migration/ context interactions), or evaluate the health implications of migration and healthcare entitlement policies (policy contexts). As some of the studies point out, however, results are salient for other populations which are subject to similar restrictions on entitlements or benefits. 12 studies, nine of which consider contextual factors of the place of residence^{29,32,34–36,40–42,46} and three of which consider social policies^{47,48,52}, use the (quasi-)random dispersal of migrants as an opportunity to answer broader questions of societal relevance on context and health, thereby extrapolating results beyond the migrant population. Finally, five studies^{26,27,33,37,58} use migrant subgroups to examine the moderation of context effects among a well-defined, marginalised population group.

Figure 3: Evidence map illustrating results and quality of studies in the “contextual factors of the place of residence” and “migration/context interactions” groups

Figure 4: Evidence map illustrating results and quality of studies in the “policy contexts” and “culture as context” groups

DISCUSSION

The evidence from the natural experiments included in this review confirms the negative effects of contextual factors such as socio-economic deprivation and neighbourhood disadvantage on physical health and mortality¹, while finding mixed effects of these neighbourhood attributes on mental health outcomes, suggesting that associations observed in the existing literature may be due to selection effects. Natural experiments comparing migrants with those that stayed behind are able to circumvent selective “healthy migrant effects”, and demonstrate the often detrimental effects of migration and post-migratory contexts on physical health and mortality. However, these studies also show that migrating to new social and economic contexts can be favourable for mental health and child health. Analyses of policy contexts indicate the negative impacts of restrictive migration and social policies on healthcare utilization, mental health and mortality as well as the positive effects when restrictions are lifted. These add to the emerging evidence base surrounding the effects of non-health targeted policies on migrant health¹⁰ and the conflicting goals of migration and health policies²¹.

Due to the nature of our research question and our search process, many of the included studies had migrant issues at the centre of their research objectives. They offered important insights into the detrimental effects of

migration policies currently being broadly discussed and implemented, such the restriction of benefits for migrants and refugees^{28,38,39}, the restriction of visa programmes^{50,57} and the increased enforcement of migration policies^{53,55,64}. Such policies emerge against the backdrop of wider social, political and economic developments which may be broadly described as “othering” processes. “Othering” refers to a discursive practice, in which an out-group is created which is marked as being different to reinforce and normalise the privileges of the antithetical “normal” in-group, disempowering and marginalising those considered to be on the “outside” in the process⁷². Othering affects not just migrants, but also other marginalised populations, and may be conceptualised as the root of many pervasive health inequities. The benefit of specifically studying the effects of policies on migration is that they often make these underlying processes visible. However, the detrimental effects of benefit restrictions, tightened police control and accessibility hurdles described by the studies examined here can be applied to other marginalised populations for which these processes are less visible. While the research questions of these studies and the policies examined are migration-specific, policy developments such as benefit restrictions and immigration raids emerge against a particular social and political backdrop which is not exclusive to migrants.

Some studies also specifically use natural experiments among migrants to answer questions about the effect of contexts on the population more broadly. Given the diversity of refugee populations, and, increasingly, of so-called “host” populations in an era of super-diversity²⁰, there is no good reason to believe that the effects of context would operate any differently on migrant and non-migrant groups give careful consideration of causal models and mechanisms. We may, therefore, be able to use these studies as a lens and state that the identified negative effects of neighbourhood disadvantage and deprivation on physical health, mortality and child health^{27,30,31,36,41,42,46} as well as the absence of effects of income inequality³⁴ apply to other human beings exposed to these contextual effects. This applies equally to other studies using natural experiments among migrants to study the effects of policy changes such as food stamp restrictions^{47,48,52}.

As described above, natural experiments among migrants can be powerful tools to yield insights on questions of contextual effects on health. The studies included in this review make use of a widely varying set of natural experiments, but this list is by no means exhaustive. Future research should continue to utilise the opportunities presented by natural experiments among migrants. This is sensible not just from a methodological standpoint, but also keeping the ethical use of research resources in mind. However, the included studies were highly heterogeneous in terms of not only the context factors and health outcomes considered, but also the methodological quality and detail of reporting. Given the “real life” complexity involved in the allocation to exposure, a highly detailed account of the nature of the natural experiments and the potential sources of bias is required¹⁸, but was only provided by some studies. This also requires a more in-depth consideration of the sources of variation in exposure (see Panel 2) and to what extent these can be considered “successful” in terms of achieving random or quasi-random allocation. Of the mechanisms utilised in the studies included in this review, residential dispersal can be considered a particularly strong natural experiment because mechanisms of the dispersal are usually explicit and the true “randomness” of the allocation can be easily assessed. For all other sources of variation in exposure, the random nature of the allocation may be more implicit and requires the examination of a number of assumptions of the event or policy giving rise to the natural experiment. This requires in-depth knowledge of the political and institutional contexts in which the study takes place. Sources of variation in exposure which utilise allocation at a community level are further limited by the fact that these are often “intention to treat” studies. While the policy may apply at a community level, it is frequently not known whether individuals utilise/ are affected by the policy in question. Future research utilising natural experiment approaches should be more explicit in the mechanisms underlying the experiment, and may benefit from using our classification of the sources of variation in exposure (Panel 2).

Another methodological challenge is the consistent use of causal models to link exposure and outcome, as well as the deliberate use of mediation analyses to explore potential causal pathways. Very few studies provided details on potential causal mechanisms underlying the observed effects, so that these remain a black box. While many studies included covariates both at the individual and group/contextual level, the use of covariates was rarely justified and there was little recognition for the potential problems of introducing individual and group-level covariates in the same model. The use of directed acyclic graphs⁷³ and multi-level modelling approaches⁷⁴ should be considered to strengthen the quality of natural experiment approaches. Overall, methodological guidelines for natural experiments exist¹⁶, but their application is not yet common practice. As research using natural experiments becomes increasingly popular, the use of such guidelines should be adopted by researchers and encouraged by funders and publishers. The scope and applicability of these guidelines may need to be revised for a more diverse set of research objectives, including research on contextual effects.

This study benefitted from a systematic review process, a search without a time limit in multiple databases, an additional snowballing search and an extensive data extraction process. The criterion of the natural experiment was applied at the full-text stage, meaning that we were able to select studies based on the full description of the methodology rather than relying on abstracts. The review was further enriched by the application of a rigorous quality appraisal tool which was adapted for use with natural experiments. A limitation was the use of “natural/quasi experiment” as an explicit search term, which may have excluded studies which used a natural experiment methodology but did not describe these as such. Finally, the review included a number of studies which applied econometric methodological approaches, but we did not have a researcher with an economic background as part of the research team.

Natural experiments can serve as powerful tools in disentangling the effect of context on health and reduce bias through self-selection. Results demonstrate the negative impacts for health brought about by neighbourhood disadvantage and restrictive policies. At the same time, studies uncover the potential of health and welfare programs to counteract the disadvantages created by othering processes and instead promote healthy (post-migratory) contexts. With careful consideration of causal pathways, results from migration contexts can serve as a useful magnifying glass for the effects of context for other population groups.

Contributors

LB: Conceptualization, Methodology, Investigation, Formal analysis, Writing – Original Draft, Visualization, Project administration

MH: Methodology, Investigation, Formal analysis, Data curation, Writing – Review & Editing, Visualization, Project administration

DC: Investigation, Formal analysis

ZW: Investigation, Formal analysis

KB: Conceived the study, Conceptualization, Methodology, Formal analysis, Writing – Review & Editing, Supervision, Funding acquisition

All authors had full access to all data in the study and had final responsibility for the decision to submit for publication.

Declarations of interest

We declare no competing interests

Data sharing

A full list of studies identified in the search as well as the full data extracted from included studies are available for academic research projects by request to the corresponding author: Kayvan.bozorgmehr@uni-bielefeld.de

Acknowledgments

This study was funded the German Science Foundation (DFG) in the scope of the NEXUS project, a part of the PH-LENS research consortium (FOR 2928 / GZ: BO 5233/1-1). We thank Judith Wenner for her support in the early stages of the screening process.

REFERENCES

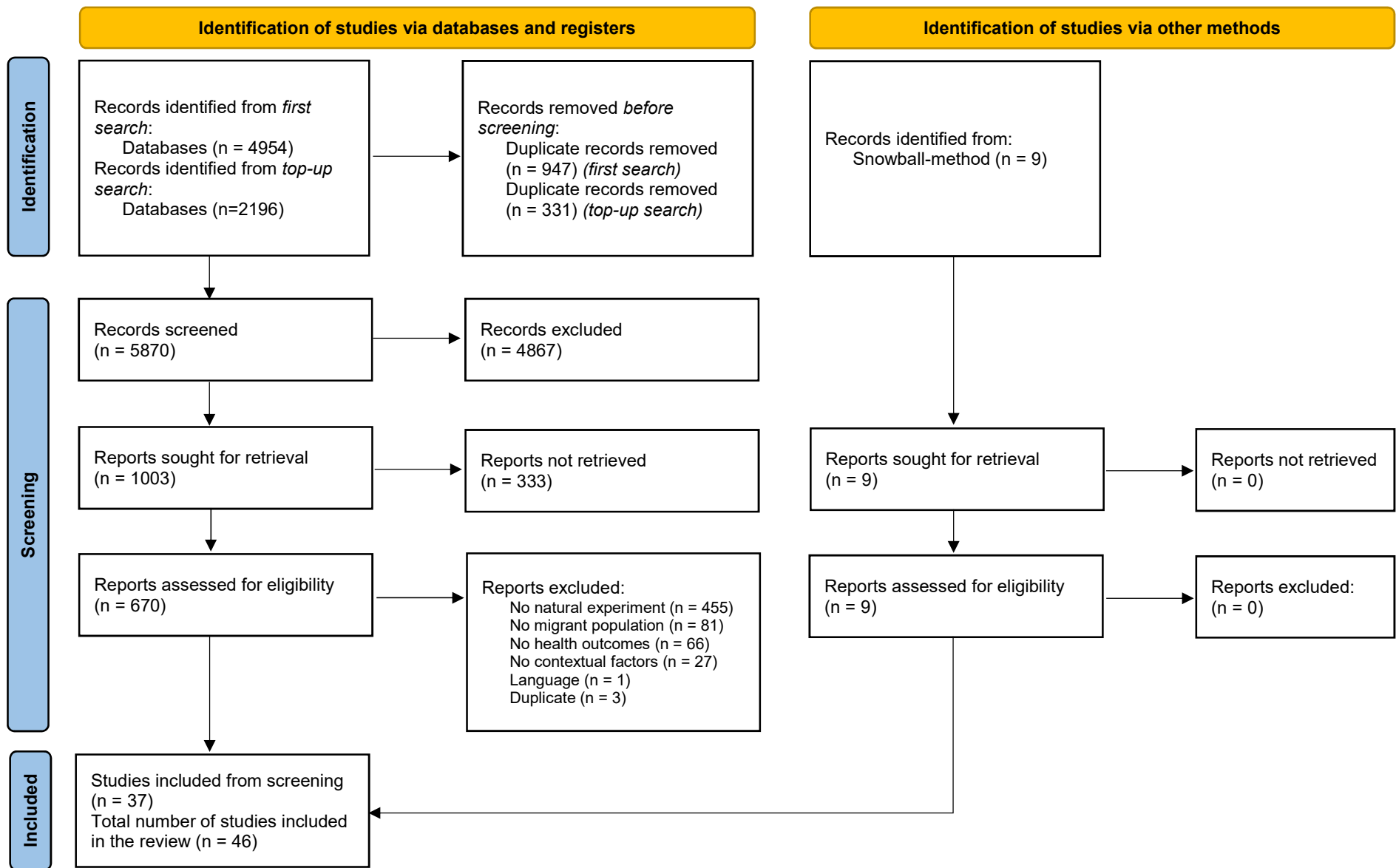
- 1 Diez Roux AV, Mair C. Neighborhoods and health. *Ann N Y Acad Sci* 2010; **1186**: 125–45. <https://doi.org/10.1111/j.1749-6632.2009.05333.x>.
- 2 Pickett KE, Pearl M. Multilevel analyses of neighbourhood socioeconomic context and health outcomes: a critical review. *Journal of Epidemiology & Community Health* 2001; **55**: 111–22. <https://doi.org/10.1136/jech.55.2.111>.
- 3 Sellström E, Bremberg S. The significance of neighbourhood context to child and adolescent health and well-being: a systematic review of multilevel studies. *Scandinavian Journal of Public Health* 2006; **34**: 544–54. <https://doi.org/10.1080/14034940600551251>.
- 4 Visser K, Bolt G, Finkenauer C, Jonker M, Weinberg D, Stevens GWJM. Neighbourhood deprivation effects on young people's mental health and well-being: A systematic review of the literature. *Soc Sci Med* 2021; **270**: 113542. <https://doi.org/10.1016/j.socscimed.2020.113542>.
- 5 Stansfeld SA. Noise Effects on Health in the Context of Air Pollution Exposure. *International journal of environmental research and public health* 2015; **12**: 12735–60. <https://doi.org/10.3390/ijerph121012735>.

- 6 Schüle SA, Bolte G. Interactive and independent associations between the socioeconomic and objective built environment on the neighbourhood level and individual health: a systematic review of multilevel studies. *PLoS One* 2015; **10**: e0123456. <https://doi.org/10.1371/journal.pone.0123456>.
- 7 Pérez E, Braën C, Boyer G, et al. Neighbourhood community life and health: A systematic review of reviews. *Health & Place* 2020; **61**: 102238. <https://doi.org/10.1016/j.healthplace.2019.102238>.
- 8 Baranyi G, Di Marco MH, Russ TC, Dibben C, Pearce J. The impact of neighbourhood crime on mental health: A systematic review and meta-analysis. *Soc Sci Med* 2021; **282**: 114106. <https://doi.org/10.1016/j.socscimed.2021.114106>.
- 9 Vyncke V, Clercq B de, Stevens V, et al. Does neighbourhood social capital aid in levelling the social gradient in the health and well-being of children and adolescents? A literature review. *BMC Public Health* 2013; **13**: 65. <https://doi.org/10.1186/1471-2458-13-65>.
- 10 Juárez SP, Honkaniemi H, Dunlavy AC, et al. Effects of non-health-targeted policies on migrant health: a systematic review and meta-analysis. *The Lancet Global Health* 2019; **7**: e420-e435. [https://doi.org/10.1016/S2214-109X\(18\)30560-6](https://doi.org/10.1016/S2214-109X(18)30560-6).
- 11 Courtin E, Kim S, Song S, Yu W, Muennig P. Can Social Policies Improve Health? A Systematic Review and Meta-Analysis of 38 Randomized Trials. *The Milbank quarterly* 2020; **98**: 297–371. <https://doi.org/10.1111/1468-0009.12451>.
- 12 Jones K, Duncan C. Individuals and their ecologies: analysing the geography of chronic illness within a multilevel modelling framework. *Health & Place* 1995; **1**: 27–40. [https://doi.org/10.1016/1353-8292\(95\)00004-6](https://doi.org/10.1016/1353-8292(95)00004-6).
- 13 Green MA, Subramanian SV, Strong M, Cooper CL, Loban A, Bissell P. 'Fish out of water': a cross-sectional study on the interaction between social and neighbourhood effects on weight management behaviours. *International journal of obesity (2005)* 2015; **39**: 535–41. <https://doi.org/10.1038/ijo.2014.152>.
- 14 Bozorgmehr K, Razum O, Szecsenyi J, Maier W, Stock C. Regional deprivation is associated with the distribution of vulnerable asylum seekers: a nationwide small area analysis in Germany. *J Epidemiol Community Health* 2017; **71**: 857–62. <https://doi.org/10.1136/jech-2016-208506>.
- 15 Leventhal T, Brooks-Gunn J. Moving to opportunity: an experimental study of neighborhood effects on mental health. *American Journal of Public Health* 2003; **93**: 1576–82. <https://doi.org/10.2105/ajph.93.9.1576>.
- 16 Craig P, Cooper C, Gunnell D, et al. Using natural experiments to evaluate population health interventions: new Medical Research Council guidance. *J Epidemiol Community Health* 2012; **66**: 1182–86. <https://doi.org/10.1136/jech-2011-200375>.
- 17 Meyer BD. Natural and Quasi-Experiments in Economics. *Journal of Business & Economic Statistics* 1995; **13**: 151. <https://doi.org/10.2307/1392369>.
- 18 Craig P, Katikireddi SV, Leyland A, Popham F. Natural Experiments: An Overview of Methods, Approaches, and Contributions to Public Health Intervention Research. *Annual review of public health* 2017; **38**: 39–56. <https://doi.org/10.1146/annurev-publhealth-031816-044327>.
- 19 Abubakar I, Aldridge RW, Devakumar D, et al. The UCL-Lancet Commission on Migration and Health: the health of a world on the move. *The Lancet* 2018; **392**: 2606–54. [https://doi.org/10.1016/S0140-6736\(18\)32114-7](https://doi.org/10.1016/S0140-6736(18)32114-7).
- 20 Meissner F, Vertovec S. Comparing super-diversity. *Ethnic and Racial Studies* 2015; **38**: 541–55. <https://doi.org/10.1080/01419870.2015.980295>.
- 21 Bozorgmehr K, Jahn R. Adverse health effects of restrictive migration policies: building the evidence base to change practice. *The Lancet Global Health* 2019; **7**: e386-e387. [https://doi.org/10.1016/S2214-109X\(19\)30042-7](https://doi.org/10.1016/S2214-109X(19)30042-7).
- 22 WHO Commission on Social Determinants of Health.
- 23 Haddaway NR, Collins AM, Coughlin D, Kirk S. The Role of Google Scholar in Evidence Reviews and Its Applicability to Grey Literature Searching. *PLoS ONE* 2015; **10**: e0138237. <https://doi.org/10.1371/journal.pone.0138237>.
- 24 Effective Public Health Practice Project. Quality Assessment Tool for Quantitative Studies.
- 25 Campbell M, McKenzie JE, Sowden A, et al. Synthesis without meta-analysis (SWiM) in systematic reviews: reporting guideline. *BMJ* 2020; **368**: l6890. <https://doi.org/10.1136/bmj.l6890>.
- 26 Almquist YB, Miething A. The impact of an unemployment insurance reform on incidence rates of hospitalisation due to alcohol-related disorders: a quasi-experimental study of heterogeneous effects across ethnic background, educational level, employment status, and sex in Sweden. *BMC Public Health* 2022; **22**: 1847. <https://doi.org/10.1186/s12889-022-14209-2>.
- 27 Boje-Kovacs B, Greve J, Weatherall CD. Neighborhoods and mental health—evidence from a natural experiment in the public social housing sector. *J Popul Econ* 2022: 1–24. <https://doi.org/10.1007/s00148-022-00922-0>.

- 28 Bozorgmehr K, Razum O. Effect of Restricting Access to Health Care on Health Expenditures among Asylum-Seekers and Refugees: A Quasi-Experimental Study in Germany, 1994-2013. *PLoS One* 2015; **10**: e0131483. <https://doi.org/10.1371/journal.pone.0131483>.
- 29 Erdmann S, Biddle L, Kieser M, Bozorgmehr K. Using independent cross-sectional survey data to predict post-migration health trajectories among refugees by estimating transition probabilities and their variances. *Biometrical Journal* 2022; **64**: 964–83. <https://doi.org/10.1002/bimj.202100045>.
- 30 Foverskov E, White JS, Frøslev T, Sørensen HT, Hamad R. Risk of Psychiatric Disorders Among Refugee Children and Adolescents Living in Disadvantaged Neighborhoods. *JAMA pediatrics* 2022; **176**: 1107–14. <https://doi.org/10.1001/jamapediatrics.2022.3235>.
- 31 Foverskov E, White JS, Norredam M, et al. Neighbourhood socioeconomic disadvantage and psychiatric disorders among refugees: a population-based, quasi-experimental study in Denmark. *Social psychiatry and psychiatric epidemiology* 2022. <https://doi.org/10.1007/s00127-022-02300-3>.
- 32 Frey A. Getting under the Skin: The Impact of Terrorist Attacks on Native and Immigrant Sentiment. *Soc Forces* 2021; **101**: 943–73. <https://doi.org/10.1093/sf/soab135>.
- 33 Giacco D, Bird VJ, Ahmad T, et al. The same or different psychiatrists for in- and out-patient treatment? A multi-country natural experiment. *Epidemiol Psychiatr Sci* 2018; **29**: e10. <https://doi.org/10.1017/S2045796018000732>.
- 34 Grönqvist H, Johansson P, Niknami S. Income inequality and health: lessons from a refugee residential assignment program. *J Health Econ* 2012; **31**: 617–29. <https://doi.org/10.1016/j.jhealeco.2012.05.003>.
- 35 Hajdu G, Hajdu T. The Impact of Culture on Well-Being: Evidence from a Natural Experiment. *J Happiness Stud* 2016; **17**: 1089–110. <https://doi.org/10.1007/s10902-015-9633-9>.
- 36 Hamad R, Öztürk B, Foverskov E, et al. Association of Neighborhood Disadvantage With Cardiovascular Risk Factors and Events Among Refugees in Denmark. *JAMA Netw Open* 2020; **3**: e2014196. <https://doi.org/10.1001/jamanetworkopen.2020.14196>.
- 37 Honkaniemi H, Katikireddi SV, Rostila M, Juárez SP. Psychiatric consequences of a father's leave policy by nativity: a quasi-experimental study in Sweden. *J Epidemiol Community Health* 2022; **76**: 367–73. <https://doi.org/10.1136/jech-2021-217980>.
- 38 Jaschke P, Kosyakova Y. Does Facilitated and Early Access to the Healthcare System Improve Refugees' Health Outcomes? Evidence from a Natural Experiment in Germany. *International Migration Review* 2021; **55**: 812–42. <https://doi.org/10.1177/0197918320980413>.
- 39 Juanmarti Mestres A, López Casasnovas G, Vall Castelló J. The deadly effects of losing health insurance. *European Economic Review* 2021; **131**: 103608. <https://doi.org/10.1016/j.eurocorev.2020.103608>.
- 40 Mezuk B, Ohlsson H, Cederin K, Sundquist J, Kendler KS, Sundquist K. Immigrant enclaves and risk of drug involvement among asylum-seeking immigrants in Sweden: A quasi-experimental study. *Drug Alcohol Depend* 2019; **205**: 107666. <https://doi.org/10.1016/j.drugalcdep.2019.107666>.
- 41 Raphael E, White JS, Li X, et al. Neighborhood Deprivation and Mental Health Among Immigrants to Sweden. *Epidemiology (Cambridge, Mass.)* 2020; **31**: e25-e27. <https://doi.org/10.1097/EDE.0000000000001160>.
- 42 Reiss K, Berger U, Winkler V, Voigtländer S, Becher H, Razum O. Assessing the effect of regional deprivation on mortality avoiding compositional bias: a natural experiment. *J Epidemiol Community Health* 2013; **67**: 213–18. <https://doi.org/10.1136/jech-2012-201336>.
- 43 Schober T, Zocher K. Health-Care Utilization of Refugees: Evidence from Austria. *International Migration Review* 2022; **56**: 810–42. <https://doi.org/10.1177/01979183211061091>.
- 44 Wenner J, Biddle L, Gottlieb N, Bozorgmehr K. Inequalities in access to healthcare by local policy model among newly arrived refugees: evidence from population-based studies in two German states. *Int J Equity Health* 2022; **21**: 11. <https://doi.org/10.1186/s12939-021-01607-y>.
- 45 Wenner J, Bozorgmehr K, Duwendag S, Rolke K, Razum O. Differences in realized access to healthcare among newly arrived refugees in Germany: results from a natural quasi-experiment. *BMC Public Health* 2020; **20**: 846. <https://doi.org/10.1186/s12889-020-08981-2>.
- 46 White JS, Hamad R, Li X, et al. Long-term effects of neighbourhood deprivation on diabetes risk: quasi-experimental evidence from a refugee dispersal policy in Sweden. *The Lancet Diabetes & Endocrinology* 2016; **4**: 517–24. [https://doi.org/10.1016/S2213-8587\(16\)30009-2](https://doi.org/10.1016/S2213-8587(16)30009-2).
- 47 East CN. The effect of food stamps on children's health evidence from immigrants' changing eligibility. *Journal of Human Resources* 2020; **55**: 387–427.
- 48 East CN, Friedson AI. An Apple A Day? *American Journal of Health Economics* 2020; **6**: 289–323. <https://doi.org/10.1086/709368>.
- 49 Fletcher J, Kim J, Nobles J, Ross S, Shaorshadze I. The Effects of Foreign-Born Peers in US High Schools and Middle Schools. *Journal of Human Capital* 2021; **15**: 432–68. <https://doi.org/10.1086/715019>.
- 50 Hainmueller J, Lawrence D, Martén L, et al. Protecting unauthorized immigrant mothers improves their children's mental health. *Science* 2017; **357**: 1041–44. <https://doi.org/10.1126/science.aan5893>.

- 51 Hamilton ER, Langer PD, Patler C. DACA's Association With Birth Outcomes Among Mexican-Origin Mothers in the United States. *Demography* 2021; **58**: 975–85. <https://doi.org/10.1215/00703370-9099310>.
- 52 Kaushal N. Do food stamps cause obesity?: Evidence from immigrant experience. *J Health Econ* 2007; **26**: 968–91.
- 53 Lopez WD, Kruger DJ, Delva J, et al. Health Implications of an Immigration Raid: Findings from a Latino Community in the Midwestern United States. *J Immigr Minor Health* 2017; **19**: 702–08. <https://doi.org/10.1007/s10903-016-0390-6>.
- 54 Swartz JJ, Hainmueller J, Lawrence D, Rodriguez MI. Expanding Prenatal Care to Unauthorized Immigrant Women and the Effects on Infant Health. *Obstetrics and gynecology* 2017; **130**: 938–45. <https://doi.org/10.1097/AOG.0000000000002275>.
- 55 Toomey RB, Umaña-Taylor AJ, Williams DR, Harvey-Mendoza E, Jahromi LB, Updegraff KA. Impact of Arizona's SB 1070 immigration law on utilization of health care and public assistance among Mexican-origin adolescent mothers and their mother figures. *American Journal of Public Health* 2014; **104 Suppl 1**: S28–34. <https://doi.org/10.2105/AJPH.2013.301655>.
- 56 Torres JM, Alcala E, Shaver A, et al. The Deferred Action for Childhood Arrivals program and birth outcomes in California: a quasi-experimental study. *BMC Public Health* 2022; **22**: 1449. <https://doi.org/10.1186/s12889-022-13846-x>.
- 57 Venkataramani AS, Shah SJ, O'Brien R, Kawachi I, Tsai AC. Health consequences of the US Deferred Action for Childhood Arrivals (DACA) immigration programme: a quasi-experimental study. *The Lancet Public Health* 2017; **2**: e175–e181. [https://doi.org/10.1016/S2468-2667\(17\)30047-6](https://doi.org/10.1016/S2468-2667(17)30047-6).
- 58 Ye W, Rodriguez JM. Highly vulnerable communities and the Affordable Care Act: Health insurance coverage effects, 2010–2018. *Soc Sci Med* 2021; **270**: 113670. <https://doi.org/10.1016/j.socscimed.2021.113670>.
- 59 Hwang S-S, Cao Y, Xi J. The Short-Term Impact of Involuntary Migration in China's Three Gorges: A Prospective Study. *Soc Indic Res* 2011; **101**: 73–92. <https://doi.org/10.1007/s11205-010-9636-1>.
- 60 Lu H, Kandilov IT, Nie P. Heterogeneous Impact of Social Integration on the Health of Rural-to-Urban Migrants in China. *International journal of environmental research and public health* 2022; **19**. <https://doi.org/10.3390/ijerph19169999>.
- 61 WORTH RM. URBANIZATION AND SQUATTER RESETTLEMENT AS RELATED TO CHILD HEALTH IN HONG KONG. *Am J Hyg* 1963; **78**: 338–48. <https://doi.org/10.1093/oxfordjournals.aje.a120353>.
- 62 Black DA, Sanders SG, Taylor EJ, Taylor LJ. The Impact of the Great Migration on Mortality of African Americans: Evidence from the Deep South. *American Economic Review* 2015; **105**: 477–503. <https://doi.org/10.1257/aer.20120642>.
- 63 Hori M, Schafer MJ. Social costs of displacement in Louisiana after Hurricanes Katrina and Rita. *Popul Environ* 2010; **31**: 64–86. <https://doi.org/10.1007/s11111-009-0094-0>.
- 64 Fu H, Vanlandingham MJ. Mental and Physical Health Consequences of Repatriation for Vietnamese Returnees: A Natural Experiment Approach. *Journal of Refugee Studies* 2010; **23**: 160–82. <https://doi.org/10.1093/jrs/feq012>.
- 65 Fu H, VanLandingham MJ. Disentangling the effects of migration, selection and acculturation on weight and body fat distribution: results from a natural experiment involving Vietnamese Americans, returnees, and never-leavers. *J Immigr Minor Health* 2012; **14**: 786–96. <https://doi.org/10.1007/s10903-012-9595-5>.
- 66 Fu H, VanLandingham MJ. Mental health consequences of international migration for Vietnamese Americans and the mediating effects of physical health and social networks: results from a natural experiment approach. *Demography* 2012; **49**: 393–424. <https://doi.org/10.1007/s13524-011-0088-2>.
- 67 Gibson J, McKenzie D, Stillman S. What happens to diet and child health when migration splits households? Evidence from a migration lottery program. *Food Policy* 2011; **36**: 7–15. <https://doi.org/10.1016/j.foodpol.2010.08.003>.
- 68 Gibson J, Stillman S, McKenzie D, Rohorua H. Natural experiment evidence on the effect of migration on blood pressure and hypertension. *Health Econ* 2013; **22**: 655–72. <https://doi.org/10.1002/hec.2834>.
- 69 Stillman S, Gibson J, McKenzie D. The impact of immigration on child health: experimental evidence from a migration lottery program. *Econ Inq* 2012; **50**: 62–81. <https://doi.org/10.1111/j.1465-7295.2009.00284.x>.
- 70 Stillman S, Gibson J, McKenzie D, Rohorua H. Miserable Migrants? Natural Experiment Evidence on International Migration and Objective and Subjective Well-Being. *World Development* 2015; **65**: 79–93. <https://doi.org/10.1016/j.worlddev.2013.07.003>.
- 71 Stillman S, McKenzie D, Gibson J. Migration and mental health: Evidence from a natural experiment. *J Health Econ* 2009; **28**: 677–87. <https://doi.org/10.1016/j.jhealeco.2009.02.007>.
- 72 Grove NJ, Zwi AB. Our health and theirs: forced migration, othering, and public health. *Social Science & Medicine* 2006; **62**: 1931–42. <https://doi.org/10.1016/j.socscimed.2005.08.061>.

- 73 Hernán MA, Hernández-Díaz S, Robins JM. A structural approach to selection bias. *Epidemiology (Cambridge, Mass.)* 2004; **15**: 615–25. <https://doi.org/10.1097/01.ede.0000135174.63482.43>.
- 74 Merlo J, Chaix B, Yang M, Lynch J, Råstam L. A brief conceptual tutorial of multilevel analysis in social epidemiology: linking the statistical concept of clustering to the idea of contextual phenomenon. *Journal of Epidemiology & Community Health* 2005; **59**: 443–49. <https://doi.org/10.1136/jech.2004.023473>.



From: Page MJ, McKenzie JE, Bossuyt PM, Boutron I, Hoffmann TC, Mulrow CD, et al. The PRISMA 2020 statement: an updated guideline for reporting systematic reviews. *BMJ* 2021;372:n71. doi: 10.1136/bmj.n71.

Figure 2a

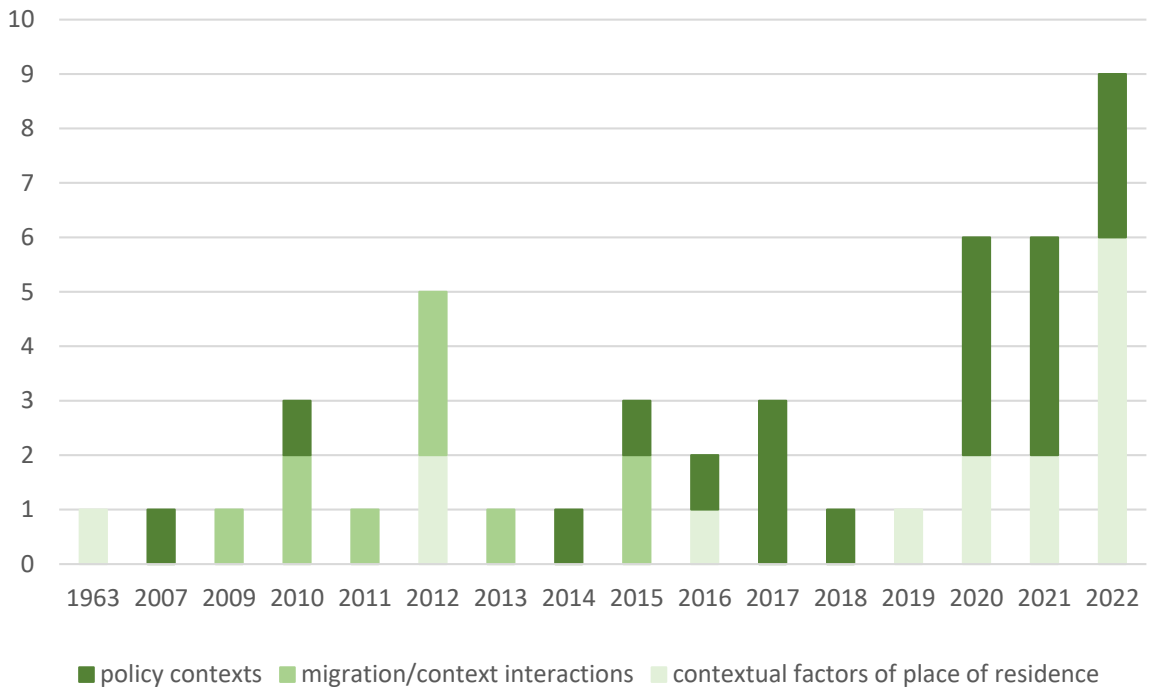
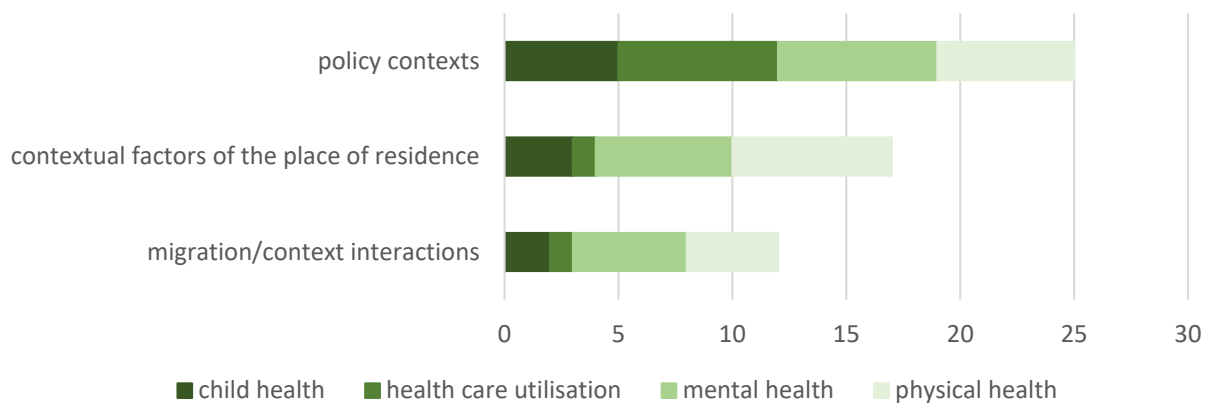


Figure 2b



	PHYSICAL HEALTH			MENTAL HEALTH			CHILD HEALTH			HEALTHCARE UTILIZATION		
	<i>context factor</i>	<i>effect</i>	<i>QA</i>	<i>context factor</i>	<i>effect</i>	<i>QA</i>	<i>context factor</i>	<i>effect</i>	<i>QA</i>	<i>context factor</i>	<i>effect</i>	<i>QA</i>
contextual factors of the place of residence	increased income inequality <i>Grönqvist et al. 2012</i>	→	strong	increased income inequality <i>Grönqvist et al. 2012</i>	→	strong						
	increased neighborhood disadvantage <i>Hamad et al. 2020</i>	↘	strong	increased regional deprivation <i>Apphail et al. 2020</i>	→	strong	neighbourhood type <i>Worsh 1963</i>	mixed	weak			
	increased regional deprivation <i>Renss et al. 2012</i>	↘	moderate	increased regional deprivation <i>Boje Kovacs et al. 2022</i>	↘	strong	socioeconomic disadvantage <i>Foverskov 2022b</i>	↘	moderate			
	increased regional deprivation <i>White et al. 2016</i>	↘	moderate	socioeconomic disadvantage <i>Foverskov 2022a</i>	↘	moderate						
	urban vs. rural environment <i>Erdmann et al. 2021</i>	↗	weak									
	Social integration <i>Lu et al. 2022</i>	↗	weak	high migrant density <i>Mezuk et al. 2019</i>	↗	weak	proportion of foreign-born school peers <i>Fletcher et al. 2021</i>	↗	strong			
				Terrorist attacks <i>Frey 2022</i>	↘	weak						
										Health sector characteristics <i>Schaber et al. 2022</i>	→	moderate
migration/ context interactions	moving to NZ vs. staying behind <i>Gibson et al. 2013</i>	↘	moderate	moving to NZ vs. staying behind <i>Stillman et al. 2009</i>	↗	moderate	moving to NZ vs. staying behind <i>Stillman et al. 2012</i>	↗	moderate			
				moving to NZ vs. staying behind <i>Stillman et al. 2015</i>	mixed	strong	moving to NZ vs. staying behind <i>Gibson et al. 2010</i>	mixed	moderate			
	living in USA vs. Vietnam <i>Fu et al. 2012a</i>	↘	moderate	living in USA vs. Vietnam <i>Fu et al. 2012b</i>	mixed	moderate						
	being displaced vs. not being displaced <i>Hwang et al. 2011</i>	↘	moderate	being displaced vs. not being displaced <i>Hwang et al. 2011</i>	↘	moderate				being displaced vs not being displaced <i>Hori et al. 2010</i>	mixed	weak
	proximity of birthplace to railroads <i>Black et al. 2015</i>	↘	weak	being displaced vs not being displaced <i>Hori et al. 2010</i>	↘	weak						

↗	positive effect
↘	negative effect
→	no effect

Abbreviations: NZ: New Zealand, QA: Quality Appraisal, USA: Unites States of America, vs.: versus

	PHYSICAL HEALTH			MENTAL HEALTH			CHILD HEALTH			HEALTHCARE UTILIZATION		
	<i>context factor</i>	<i>effect</i>	<i>QA</i>	<i>context factor</i>	<i>effect</i>	<i>QA</i>	<i>context factor</i>	<i>effect</i>	<i>QA</i>	<i>context factor</i>	<i>effect</i>	<i>QA</i>
policy contexts	increased healthcare access <i>Jaschke et al. 2021</i>	→	moderate	increased healthcare access <i>Jaschke et al. 2021</i>	↗	moderate	increased healthcare access <i>Swartz et al. 2017</i>	↗	moderate	increased healthcare access <i>Swartz et al. 2017</i>	↗	moderate
										increased healthcare access <i>Wenner et al. 2020</i>	mixed	moderate
										increased healthcare access <i>Ye & Rodriguez 2021</i>	↗	weak
										increased healthcare access <i>Wenner et al. 2022</i>	mixed	weak
	restriction of health care access <i>Juanmarti Mestres et al. 2020</i>	↘	strong							restriction of healthcare access <i>Bazargmehr & Razum 2015</i>	↘	moderate
	increased visa access <i>Venkataramani et al. 2017</i>	→	moderate	increased visa access <i>Venkataramani et al. 2017</i>	↗	moderate	increased visa access <i>Torres et al. 2022</i>	↗	strong	strengthened migration enforcement <i>Toomey et al. 2014</i>	↘	weak
	repatriation <i>Fu et al. 2012</i>	mixed	moderate	repatriation <i>Fu et al. 2010</i>	mixed	moderate	increased visa access <i>Hamilton et al. 2021</i>	↗	moderate			
				strengthened migration enforcement <i>Lopez et al. 2016</i>	↘	weak	increased visa access <i>Hainmueller et al. 2017</i>	↗	strong			
	increased access to food stamps <i>Kaushal et al. 2007</i>	→	moderate				increased access to food stamps <i>East 2020b</i>	↗	moderate	increased access to food stamps <i>East et al. 2020a</i>	↗	moderate
	increased access to food stamps <i>East et al. 2020a</i>	→	moderate									
			increased parental leave <i>Honkanieni et al. 2021</i>	↗	moderate							
			restriction of unemployment benefits <i>Almqvist et al. 2022</i>	→	moderate							
			personal continuity vs. Specialised healthcare model <i>Giacco et al. 2018</i>	→	moderate							
Culture as context			life satisfaction in country of origin <i>Hajdu et al. 2015</i>	↗	weak							

↗	positive effect
↘	negative effect
→	no effect

Abbreviations: NZ: New Zealand, QA: Quality Appraisal, USA: Unites States of America, vs.: versus

Author & Year of publication	Title	Country of study	total sample size	Type of study	Data source	Migrant category*	contextual exposure	Source of variation in exposure (unit of allocation)**	health outcome	Results (indicator-level)	Main results
Almquist & Miething 2022	The impact of an unemployment insurance reform on incidence rates of hospitalisation due to alcohol-related disorders: a quasi-experimental study of heterogeneous effects across ethnic background, educational level, employment status, and sex in Sweden	Sweden	5009832	repeated cross-sectional	secondary (population registers, medical registries)	international migrants	policy (unemployment insurance reform)	timing of implementation (community)	mental health	<u>Regression discontinuity (coef. pre- vs. post-reform, total population):</u> hospitalisation due to alcohol related disorders: -0.49 (p<0.001) <u>Regression discontinuity (coef. pre- vs. post-reform, Non-European foreignborn):</u> hospitalisation due to alcohol related disorders: -0.62 (p<0.001) <u>Regression discontinuity (coef. pre- vs. post-reform, European foreignborn):</u> hospitalisation due to alcohol related disorders: -2.39 (p<0.001) <u>Regression discontinuity (coef. pre- vs. post-reform, Swedish-born with foreign-born parents):</u> hospitalisation due to alcohol related disorders: 1.41 (p<0.001)	No adverse effect of the reform in the total study population, but clear indication of rising incidence of alcohol use for unemployed individuals around the time of the reform, especially for those who were Swedish-born.
Black et al. 2015	The Impact of the Great Migration on Mortality of African Americans: Evidence from the Deep South	USA	828179	cohort analytic	Secondary (Administrative data from the Medicare Part B program, US Vital Statistics registry)	Internal migrants	migration/context interactions (proximity of birthplace to railroads)	place of birth (individual)	physical health	<u>Linear regression, LATE (born close to railroads vs. not born close to railroads)</u> survival to age 70: -0.058 (SE: 0.017) survival to age 75: -0.102 (SE: 0.026)	Migration out of the Deep South decreased life expectancy for African Americans, with results somewhat attenuated for women.
Boje-Kovacs et al. 2022	Neighborhoods and mental health—evidence from a natural experiment in the public social housing sector	Denmark	8175	cohort analytic	secondary (PSH system, administrative registries)	international migrants	contextual factors of place of residence (regional deprivation)	residential dispersal (individual)	mental health	<u>Ordinary least squares regression (coef., deprived vs. non-deprived neighborhood, Non-Western immigrants):</u> treated with psychiatric medication: 0.046 (SE: 0.025; p<0.10) <u>Two stage least squares regression (coef., deprived vs. non-deprived neighborhood)</u> treated with psychiatric medication: 0.052 (SE: 0.026; p<0.05)	Exposure to the most deprived neighbourhoods significantly increases the use of psychiatric medication among the whole population, effect larger for foreign-born and men.
Bozorgmehr & Razum 2015	Effect of Restricting Access to Health Care on Health Expenditures among Asylum-Seekers and Refugees: A Quasi-Experimental Study in Germany, 1994–2013	Germany	5688823 person-years	ecological cross-sectional study; ecological cohort analytic	secondary (census data and expenditures at federal level)	refugees	policy (healthcare access policy)	residential dispersal, timing of policy introduction/event, arbitrary eligibility cut-offs (community)	healthcare utilisation	<u>Incidence rate difference (restricted vs. regular access)</u> Incident health expenditure: 375.80 Euros (95%CI: 375.77; 375.89) <u>Incidence rate ratio (restricted vs. regular access)</u> Incident health expenditure: 1.39 (95%CI: 1.3902; 1.3904)	Restricting access to healthcare services increases incident health expenditures compared with granting regular access.
East & Friedson 2020	An Apple a Day? Adult food stamp eligibility and health care utilization among immigrants	USA	11674	cohort analytic	secondary (National Health Interview Survey, March Current Population Survey)	international migrants	policy (social policy)	regional variation (community)	mental health physical health healthcare utilisation	<u>Linear regression, coefficient (effect of full year of food stamp eligibility):</u> Any Office Visits: -0.022 (SE: 0.058) 2+ Office Visits: -0.144 (SE: 0.051) 4+ Office Visits: -0.048 (SE: 0.057) Any Overnight Hospitalization: -0.015 (SE: 0.017) Any ED visits: -0.065 (SE: 0.039) Overall Health: 0.064 (SE: 0.066) Excellent/ Very Good Health: -0.026 (SE: 0.033) Overweight/ Obese: -0.081 (SE: 0.051) Mental Health Index: 0.020 (SE: 0.060)	One year of Food Stamp eligibility decreases the likelihood of multiple physician office visits within a year among low-educated immigrants. Suggestive negative effects on other measures of healthcare utilization—emergency

											department (ED) visits and hospitalizations. No impact on physical and mental health outcome measures.
East 2020	The Effect of Food Stamps on Children's Health - Evidence from Immigrants' Changing Eligibility	USA	5949	cohort analytic	secondary (National Health Interview Survey, March Current Population Survey)	international migrants	policy (social policy)	regional variation (community)	child health	<u>Linear regression, coefficient (additional year of parental food stamp access):</u> Overall health: -0.036 [95%CI: -0.060, -0.013], p=0.00 Poor/Fair/Good Health: -0.017 [95%CI: -0.027, -0.007], p=0.00 Physical Health Index: -0.003 [95%CI: -0.034, 0.029], p=0.83 Developmental Health Index: -0.076 [95%CI: -0.123, -0.029], p=0.00 Mental Health Index: -0.013 [95%CI: -0.050, 0.024], p=0.52 Overnight hospitalizations: -0.002 [95%CI: -0.006, 0.002], p=0.39 Number of school days missed: -0.032 [95%CI: -0.204, 0.140], p=0.71 Number of doctor visits in past 12 months: 0.003 [95%CI: -0.020, 0.027], p=0.95	An additional year of parental eligibility, between the time children are in utero to age 4, leads to improvements in health outcomes at ages 6-16.
Erdmann et al. 2021	Using independent cross-sectional survey data to predict post-migration health trajectories among refugees by estimating transition probabilities and their variances	Germany	560	repeated cross-sectional	primary	refugees	contextual factors of place of residence (urban/rural)	residential dispersal (individual)	physical health	<u>Transition probabilities, propensity-score matching approach (urban-urban):</u> Healthy-healthy: 0.61 Healthy-sick: 0.16 Sick-healthy: 0.55 Sick-sick: 0.18 <u>Transition probabilities, propensity-score matching approach (rural-rural):</u> Healthy-healthy: 0.19 Healthy-sick: 0.03 Sick-healthy: 0.17 Sick-sick: 0.04	Results suggest that refugees in the immediate post-resettlement period tend to fare better in urban environments.
Fletcher	The Effects of Foreign-Born Peers in US High Schools and Middle Schools	USA	78546	cross-sectional study, cohort analytic	secondary (National Longitudinal Study of Adolescent Health)	international migrants	contextual factors of place of residence (% foreign-born in school cohort)	regional variation (specific case: intra-cohort variation within schools)	child health	<u>Linear regression model (coef., effect of % of peers foreign born)</u> Mental health (short-term): -0.206 (SE: 0.167) Mental health (long-term): 0.183 (SE: 0.379) Health risk behaviour (short-term): 0.134 (SE: 0.261) Health risk behaviour (long-term): 0.050 (SE: 0.335) <u>Linear regression model (coef., effect of % of peers foreign born [interacted with] student foreign-born)</u> Mental health (short-term): 0.236 (SE: 0.086, p<0.01) Mental health (long-term): 0.058 (SE: 0.127) Health risk behaviour (short-term): -0.533 (SE: 0.215, p<0.05) Health risk behaviour (long-term): -0.185 (SE: 0.099, p<0.1)	Higher proportions of foreign-born has no impact on mental health and health risk behaviours for US-born pupils but has positive effect on short-term mental health and health risk behaviours for foreign-born pupils. These effects do not persist over time.
Foverskov et al. 2022a	Neighbourhood socioeconomic disadvantage and psychiatric disorders among refugees: a population-based,	Denmark	42067	cohort analytic	secondary (population registers, medical registries)	refugees	contextual factors of place of residence (socioeconomic disadvantage)	residential dispersal (individual)	mental health	<u>Cox proportional hazards models (Hazard ratio: low vs. high disadvantage neighbourhood)</u> Any psychiatric diagnosis: HR: 1.13 (95%CI: 1.04-1.25; p<0.01) Any psychiatric medication: HR: 1.05 (95%CI: 1.00-1.11; p<0.05) <u>OLS models (coef.: low vs. high disadvantage)</u>	Resettling in a socioeconomically disadvantaged neighbourhood was associated with an increased long-term risk of being diagnosed with

	quasi-experimental study in Denmark									neighbourhood) Any psychiatric diagnosis: 1.82 (95% CI: 0.61-3.03; p<0.01) Any psychiatric medication: 2.18 (95% CI: 0.52-3.84; p<0.05)	a psychiatric disorder or being prescribed psychiatric medication among refugees.
Foverskov et al. 2022b	Risk of Psychiatric Disorders Among Refugee Children and Adolescents Living in Disadvantaged Neighborhoods	Denmark	18709	cohort analytic	secondary (population registers, medical registries)	refugees	contextual factors of place of residence (socioeconomic disadvantage)	residential dispersal (individual)	child health	Cox proportional hazard models (Hazard ratio: continuous neighbourhood disadvantage index) Psychiatric Disorders: 1.11 (95% CI: 1.03-1.21)	Quasi-random assignment to a disadvantaged neighborhood was associated with increased risk of psychiatric disorders (per 1 SD, increase of 11% risk increase).
Frey	Getting under the Skin: The Impact of Terrorist Attacks on Native and Immigrant Sentiment	Germany	1033	cross-sectional study	secondary (IAB-SOEP-BAMF Panel)	refugees	contextual factors of place of residence (terrorist attacks)	regional variation (community)	mental health	Linear regression model (coef., effect of experiencing terrorist attack) Mental distress (PHQ4): 0.04 (SE: 0.03) Mental health (SF12): -0.05 (SE: 0.03, p<0.1)	Terrorist attacks have a severe but only temporary effect on mental health.
Fu & VanLandingham 2012a	Mental Health Consequences of International Migration for Vietnamese Americans and the Mediating Effects of Physical Health and Social Networks: Results From a Natural Experiment Approach	Vietnam / USA	703	cohort analytic	primary	refugees	migration/context interactions (living in USA vs. Vietnam)	residential dispersal, timing of policy introduction (individual)	physical health	Logistic regression, odds ratio (migrants vs. never-leavers): proportion overweight: 2.16 (95% CI: 1.34-3.47) proportion with high Waist-Hip Ratio: 5.09 (95% CI: 3.09-8.40) Logistic regression, odds ratio (migrants vs. returnees): proportion overweight: 2.50 (95% CI: 1.38-4.54) proportion with high Waist-Hip Ratio: 5.96 (95% CI: 3.35-10.59)	Disadvantages in body fat and weight distribution for migrants compared to never-leavers and returnees. High acculturation and disengagement from host society both associated with poorer outcomes.
Fu & VanLandingham 2012b	Disentangling the Effects of Migration, Selection and Acculturation on Weight and Body Fat Distribution: Results from a Natural Experiment involving Vietnamese Americans, Returnees, and Never-leavers	Vietnam / USA	709	cohort analytic	primary	refugees	migration/context interaction (living in USA vs. Vietnam)	residential dispersal, timing of policy introduction/event (individual)	mental health physical health	Linear regression, coefficient (migrants vs. never-leavers) Vitality, Energy & Fatigue: -3.55 (SE 1.73) Social functioning: -6.52 (SE 2.06) General mental health: -3.21 (SE 1.56) Waist-Hip Ratio: 0.051 (SE 0.007) Linear regression, coefficient (migrants vs. returnees): Vitality, Energy & Fatigue: -4.30 (SE 2.04) Social functioning: -1.13 (SE 2.43) General mental health: -1.36 (SE 1.85) Waist-Hip Ratio: 0.054 (SE 0.008)	Migrants show worse vitality, energy and fatigue compared to never-leavers and returnees. Better social networks and physical health reduced the negative direct effect of migration on mental health.
Fu & VanLandingham 2010	Mental and Physical Health Consequences of Repatriation for Vietnamese Returnees: A Natural Experiment Approach	Vietnam / USA	709	cohort analytic	primary	refugees	policy (repatriation)	timing of policy introduction/event (individual)	mental health physical health	Multivariate regression, coefficient (migrants vs. never-leavers) SF-36 General health: 13.76 (p<0.001) Vietnamese depression scale: -0.42 Positive affect: 0.66 (p<0.001) Blood pressure: -3.87 (p<0.01) Multivariate regression, coefficient (returnees vs. migrants): SF-36 General health: -13.76 (p<0.001) Vietnamese depression scale: 1.29 (p<0.5) Positive affect: -1.33 (p<0.001) Blood pressure: 6.66 (p<0.001)	Disadvantages for repatriated refugees compared to both migrants and never-leavers in general health, depression, positive affect and blood pressure.

Giacco et al. 2018	The same or different psychiatrists for in- and out-patient treatment? A multi-country natural experiment	Belgium, England, Germany, Italy and Poland	6369	cohort analytic	primary & secondary (medical records)	international migrants	policy (healthcare organisation)	regional variation (organisation)	healthcare utilisation	<u>Logistic regression model, OR (personal continuity vs. specialisation), migrant subgroup only</u> readmission to hospital within 1 year: 1.29 (95% CI 0.94; 1.78)	No difference between patients treated the same or different psychiatrists across in- and outpatient treatment.
Gibson et al. 2010	What happens to diet and child health when migration splits households? Evidence from a migration lottery program	New Zealand, Tonga	669	cohort analytic	primary & secondary (PAC ballot register)	International migrants	migration/context interactions (moving to New Zealand vs. staying behind)	residential dispersal (individual)	child health	<u>Linear IV regression, coefficient (Successful PAC applicants vs. Unsuccessful PAC applicants):</u> BMI for age: 0.156 (SE: 0.200) Height for age: 0.118 (SE: 0.205) Weight for age: 0.311 (SE: 0.215)	Impact of migration on child health mixed, but improvements in height-for-age owing to improved diet definite health improvement.
Gibson et al. 2013	Natural Experiment evidence on the effect of Migration on blood pressure and Hypertension	New Zealand, Tonga	638	cohort analytic	primary & secondary (PAC ballot register)	International migrants	migration/context interactions (moving to New Zealand vs. staying behind)	residential dispersal (individual)	physical health	<u>Simple experimental estimator of the effect of the treatment on the treated (migrants vs. unsuccessful ballots):</u> Systolic blood pressure: 4.105 (SE: 2.36) Diastolic blood pressure: 2.229 (SE: 1.49) Measured hypertension: 0.077 (SE: 1.36) Self-reported hypertension: 0.030 (SE: 1.84)	Migration increases blood pressure and incidence of hypertension, with a predicted reduction in healthy life expectancy by 4 months.
Grönqvist et al. 2012	Income inequality and health: Lessons from a refugee residential assignment program	Sweden	65595	cohort analytic	secondary (population registers, hospital records)	refugees	contextual factors of place of residence (income inequality)	residential dispersal (individual)	mental health physical health	<u>Linear regression coefficient (Gini-Index):</u> Probability of being hospitalised 5 years after arrival: 0.221 (SE: 0.245) Probability of dying 5 years after arrival: -0.009 (SE: 0.048) Probability of taking long-term sick leave 5 years after arrival: 0.060 (SE: 0.153) Average number of days hospitalised: -16.53 (22.71)	No overall effects of income inequality on health found. Small adverse effect for older individuals is not sensitive to measure of health used.
Hainmueller et al. 2017	Protecting unauthorized immigrant mothers improves their children's mental health	USA	5653	cohort analytic	secondary (Medicaid claims data)	international migrants (undocumented migrants)	policy (visa programme)	arbitrary eligibility cut-offs (individual)	child health	Linear regression model (coef., DACA eligible vs. DACA ineligible mothers post-DACA period) Adjustment and anxiety disorders: -4.3 (SE: 1.87) (p=0.023) Adjustment disorders: -4.4 (SE: 1.75) (p=0.013) Anxiety disorders: -1.7 (SE: 1.22) (p=0.153)	Protecting unauthorized immigrants from deportation led to immediate and sizable improvements in the mental health of their U.S. citizen children.
Hajdu & Hajdu 2015	The Impact of Culture on Well-Being: Evidence from a Natural Experiment	34 European countries	12085	cross-sectional study	secondary (2002-2010 European Social Survey)	international migrants	culture	place of birth (individual)	mental health	<u>OLS models, coefficient (migrants from countries with higher life satisfaction vs. migrants from countries with lower levels of life satisfaction):</u> satisfaction in the birth country (without post-communist birth countries): 0.357 (SE: 0.069; p: <0.01)	Migrants from countries of origin with a high average life satisfaction report a higher life satisfaction in their destination country than migrants from countries with low average life satisfaction.
Hamad et al. 2020	Association of Neighborhood Disadvantage With Cardiovascular Risk Factors and Events Among Refugees in Denmark	Denmark	49305	cohort analytic	secondary (Danish national registers)	refugees	contextual factors of place of residence (neighborhood disadvantage)	residential dispersal (individual)	physical health	<u>Linear regression model, coefficients (people living in low-disadvantage neighborhood vs. high-disadvantage neighborhood):</u> Hypertension: 0.71 (95% CI: 0.30; 1.13) Hyperlipidemia: 0.44 (95% CI: 0.06; 0.83) Diabetes: 0.45 (95% CI: 0.09; 0.81) MI: 0.14 (95% CI: 0.03; 0.25) Stroke: 0.01 (95% CI: -0.16; 0.17)	Refugees assigned to more disadvantaged neighborhoods more likely to develop hypertension, hyperlipidemia, diabetes, and MI in subsequent decades. No association with risk of stroke.

Hamilton et al. 2021	DACA's Association With Birth Outcomes Among Mexican-Origin Mothers in the United States	USA	72613	cohort analytic	secondary (vital statistics)	international migrants (undocumented migrants)	policy (visa programme)	timing of policy introduction/event, arbitrary eligibility cut-offs (individual)	child health	<u>Linear regression model (coef., DACA eligible vs. DACA ineligible high-school educated mexican-origin mothers)</u> Low birthweight: -0.008 (SE: 0.002) ** (p<0.01) Very low birthweight: -0.002 (SE:0.001) Birthweight in grams: 7.2 (SE: 5.7) Preterm: -0.009 (SE:0.003)** (p<0.01) Weeks gestation: 0.11 (SE:0.02) *** (p<0.001) Small for gestational age: -0.003 (0.003)	DACA was not associated with birth outcomes for births in utero at time of the policy announcement, but was associated with improvements to some outcomes for births conceived after DACA was announced.
Honkaniemi et al. 2021	Psychiatric consequences of a father's leave policy by nativity: a quasi-experimental study in Sweden	Sweden	198589	cohort analytic	secondary (population and patient registers)	international migrants	policy (parental leave policy)	timing of policy introduction/event (community)	mental health	<u>Segmented negative binomial regression model, incidence rate ratio (Swedish fathers pre-reform vs. Swedish fathers post-reform)</u> Psychiatric hospitalisation rates: 0.85 (95% CI: 0.59;1.24) <u>Segmented negative binomial regression model, incidence rate ratio (migrant fathers pre-reform vs. migrant fathers post-reform)</u> Psychiatric hospitalisation rates: 0.64 (95% CI: 0.47;0.86)	Decreased psychiatric hospitalisation rates among migrant but not native fathers from before to after the 1995 Father's quota.
Hori & Schafer 2010	Social costs of displacement in Louisiana after Hurricanes Katrina and Rita	USA	10347	cross-sectional study	secondary (2006 Louisiana Health and Population Survey)	Internal migrants	migration/context interactions (being displaced vs not being displaced)	regional variation (community)	mental health healthcare utilisation	<u>Logistic regression, log odds (displaced vs. Non-displaced):</u> Access to primary care: 0.243 (p<0.01) Uninsured: 0.908 (NS) Serious mental illness: 2.240 (p<0.1)	Positive association of displacement with severe mental illness.
Hwang et al. 2011	The Short-Term Impact of Involuntary Migration in China's Three Gorges: A Prospective Study	China	770	cohort analytic	primary	Internal migrants	migration/context interactions (being displaced vs. not being displaced)	residential dispersal, arbitrary eligibility cut-off (individual)	mental health physical health	<u>Linear regression model, coefficient (displaced vs. non-displaced):</u> CES-D (depression): 3.39 (p=0.001) Subjective health status: -0.22 (p=0.01) Saw doctor last week: 5.59 (NS) Took medicine last week: 2.15 (NS) Injury or serious illness last year: 4.29 (NS)	Displaced show increase in depression and decline in self-rated health compared to those not displaced.
Jaschke & Kosyakova 2021	Does facilitated and Early Access to the Healthcare System Improve Refugees' Health Outcomes? Evidence from a Natural Experiment in Germany	Germany	5922	cross-sectional study; cohort analytic	secondary (IAB-SOEP-BAMF Panel)	refugees	policy (healthcare access policy)	regional variation (community)	mental health physical health	<u>Linear regression model, coefficient (not eligible for EHC vs. EHC via policy change):</u> Depression and anxiety: -0.036 (SE: 0.040) Mental well-being: -0.041 (SE: 0.020; p: <0.05) Physical well-being: 0.001 (SE 0.015) Health satisfaction: -0.250 (SE: 0.165) Self-rated health: -0.107 (SE: 0.070)	Granting immediate and unbureaucratic access to health care for refugees through an electronic health card improved mental health but had no impact on physical health.
Juanmarte Mestres et al. 2020	The deadly effects of losing health insurance	Spain	not reported	ecological cohort analytic	secondary (death registers)	international migrants (undocumented migrants)	policy (restriction of healthcare access)	timing of policy introduction/event (community)	Physical health	<u>Linear regression, coefficient (nationalities with undocumented migrants vs. Nationalities without undocumented migrants):</u> Difference in mortality pre & post reform: 0.018 (SE:0.008) Difference in amenable mortality pre & post reform: 0.0226 (SE:0.00656) Difference in non-amenable mortality pre & post reform: 0.00348 (SE:0.00390)	Healthcare restrictions increased the monthly mortality rate of undocumented immigrants by 0.31 deaths per 100,000 persons during its first four years of implementation. Effects higher for deaths amenable to healthcare.
Kaushal 2007	Do food stamps cause obesity? Evidence from	USA	489266	cohort analytic	secondary (National Health Interview	international migrants	policy (food stamp access policy)	regional variation (community)	physical health	<u>Difference-in-difference estimates (migrant women vs. native women):</u> log(BMI): -0.004 (SE: 0.008)	Participation in food stamps programme unrelated to changes in

	immigrant experience				Survey, March Current Population Survey)					Difference-in-difference estimates (migrant unmarried mothers vs. native unmarried mothers): log(BMI): 0.0003 (SE: 0.016)	BMI among foreign-born low-educated women.
Lopez et al. 2016	Health Implications of an Immigration Raid: Findings from a Latino Community in the Midwestern United States	USA	487	cross-sectional study	primary	international migrants	policy (migration enforcement)	timing of policy introduction/event (community)	mental health physical health	Linear regression model, coefficient (before raid vs. After raid): intensity of immigration enforcement stress: 0.29 (SE:0.09; p:<0.01) self-rated health: -0.41 (SE: 0.10; p:<0.001)	Members of the Latino community reported higher levels of immigration enforcement stress and lower self-rated health after an immigration raid.
Lu et al. 2022	Heterogeneous Impact of Social Integration on the Health of Rural-to-Urban Migrants in China	China	117446	cross-sectional study	secondary (China Migrants Dynamic Survey)	Internal migrants	contextual factors of place of residence (social integration)	regional variation (community)	physical health	Linear regression model conditional on IV dialectical variation (coef., social integration scale) Self-rated health: 0.038 (SE: 0.018) ** (p<0.05) Morbidity last year: -0.130 (SE: 0.022) *** (p<0.01) Fever: -0.070 (SE:0.013) *** (p<0.01) Diarrhea: -0.029 (SE:0.013) *** (p<0.01) Heavy Cold: -0.142 (SE:0.023) *** (p<0.01)	Social integration has a significant, positive impact on the health of rural-to-urban migrants in China.
Mezuk et al. 2019	Immigrant enclaves and risk of drug involvement among asylum-seeking immigrants in Sweden: A quasi-experimental study	Sweden	1091328	cohort analytic	secondary (population registers, hospital records, criminal registers)	refugees	contextual factors of place of residence (migrant density)	residential dispersal (individual)	Mental health	Cox proportional hazard model, hazard ratio (enclave vs. no enclave) Officially registered drug involvement: 0.86 (95% CI: 0.77; 0.96)	Lower risk of drug involvement for refugees living in area of high migrant density. Higher risk of drug involvement for native-born Swedes living in areas of high migrant density.
Raphael et al. 2020	Neighborhood Deprivation and Mental Health Among Immigrants to Sweden	Sweden	145310	cohort analytic	secondary (registry data)	refugees	contextual factors of place of residence (neighbourhood deprivation)	residential dispersal (individual)	mental health	Cox regression models (hazard ratio, high vs. low deprivation on arrival; nonrefugee immigrants): Anxiety/depression diagnosis: 1.04 (95% CI: 0.99;1.08) Cox regression models (hazard ratio, high vs. low deprivation after 10 years; nonrefugee immigrants): Anxiety/depression diagnosis: 1.12 (95% CI: 1.07;1.17) Cox regression models (hazard ratio, high vs. low deprivation on arrival; refugee immigrants): Anxiety/depression diagnosis: 0.98 (95% CI: 0.94;1.02) Cox regression models (hazard ratio, high vs. low deprivation after 10 years; refugee immigrants): Anxiety/depression diagnosis: 1.03 (95% CI: 0.98;1.08)	Among nonrefugee immigrants, deprivation was associated with depression and/or anxiety. For refugees quasi-randomly assigned to neighborhoods, deprivation on arrival was associated with lower depression/anxiety, although effect estimates were close to the null. 10 years after arrival, estimates for refugees started to resemble those of nonrefugee immigrants.
Reiss et al. 2012	Assessing the effect of regional deprivation on mortality avoiding compositional bias: a natural experiment	Germany	32661	cohort analytic	secondary (migration statistics, vital statistics)	resettlers	contextual factors of place of residence (regional deprivation)	residential dispersal (individual)	Physical health	Cox proportional hazard model, risk ratio (reference group: "poverty poles" cluster) Tertiary sector cities with few families: 0.90 (95% CI: 0.70; 1.16) Heterogeneous cities: 0.88 (95% CI: 0.77; 1.01) Family Zone: 0.87 (95% CI: 0.77; 0.99) Prospering regions and suburban counties: 0.82 (95% CI: 0.68; 0.98) Heterogeneous counties: 0.77 (95% CI: 0.66; 0.92)	Mortality highest in cluster with highest level of deprivation.

Schober & Zocher 2022	Health-Care Utilization of Refugees: Evidence from Austria	Austria	9771	cohort analytic	secondary (Austrian Social Security Database, Regional Health Insurance Fund)	refugees	contextual factors of place of residence (hospital sector characteristics)	residential dispersal (individual)	healthcare utilisation	Linear regression model (coef., total healthcare expenditures) Hospital accessibility: -125,200 (SE: 156,893) Specialist density: 75,271 (SE:58,825) GP density: 38,776 (SE: 73,063) Refugee health expenditures in municipality: 0.188 (SE:0.80)**(p<0.01) Migrant health expenditures in municipality: 0.124 (SE:0.085) Native health expenditures in municipality: 0.547 (0.241)**(p<0.01)	The local health sector's characteristics did not have a significant effect on refugees' healthcare expenditures, but peer effects can explain some of the expenditure levels among refugees.
Stillman et al. 2015	Miserable Migrants? Natural Experiment Evidence on International Migration and Subjective Well-Being	New Zealand, Tonga	254	cohort analytic	primary & secondary (PAC ballot register)	international migrants	migration/context interactions (moving to New Zealand vs. staying behind)	residential dispersal (individual)	mental health	Linear regression model, LATE (ballot winners vs. ballot losers), Wave 1: happiness -0.152 (SE: 0.105) other mental health components 1.769 (SE: 0.294) Linear regression model, LATE (ballot winners vs. ballot losers), Wave 2: happiness -0.778 (SE: 0.125) other mental health components 2.961 (SE: 0.5)	Complex effects of migration on subjective well-being, with improvements in mental health and subjective income adequacy, but declines in self-rated social respect and happiness.
Stillman et al. 2009	Migration and mental health: Evidence from a natural experiment	New Zealand, Tonga	497	cohort analytic	primary & secondary (PAC ballot register)	International migrants	migration/context interactions (moving to New Zealand vs. staying behind)	residential dispersal (individual)	mental health	Linear regression model, LATE (ballot winners vs. ballot losers) MHI-5 Score: 1.94 (SE: 0.262)	Migration improves mental health, especially for those with particularly low mental health scores.
Stillman et al. 2012	The impact of immigration on child health: experimental evidence from a migration lottery program	New Zealand, Tonga	779	cohort analytic	primary & secondary (PAC ballot register)	International migrants	migration/context interactions (moving to New Zealand vs. staying behind)	residential dispersal (individual)	child health physical health	IV Estimates regression model, Linear IV (control variables) (ballot winners vs. ballot losers) <i>Children 0-2 yr old</i> Very Good Parent-rated Health: 0.011 (SE: 1.181) Standardized Hight for Age: 1.855 (SE: 0.787, p<0.01) Stunted Height for Age <= 5 th percentile: -0.424 (SE: 0.147; p<0.001) <i>Children 3-5 yr old</i> Very Good Parent-rated Health: 0.069 (SE: 0.117) Standardized Hight for Age: -0.052 (SE: 0.453) Stunted Height for Age <= 5 th percentile: 0.077 (SE: 0.089) <i>Children 6-12 yr old</i> Very Good Parent-rated Health: 0.275 (SE: 0.098, p<0.001) Standardized Hight for Age: 0.666 (SE: 0.388, p<0.05) Stunted Height for Age <= 5 th percentile: -0.046 (SE: 0.083) <i>Children 13-18 yr old</i> Very Good Parent-rated Health: 0.330 (SE: 0.089, p<0.001) Standardized Hight for Age: 0.186 (SE: 0.285) Stunted Height for Age <= 5 th percentile: -0.090 (SE: 0.089)	Improved child health due to increased food intake following migration: infants and toddlers show less stunting, 3- to 5-year olds gain weight and older children have better parent-reported health.
Swartz et al. 2017	Expanding Prenatal Care to Unauthorized Immigrant Women and the Effects on	USA	213746	cohort analytic	secondary (Medicaid claims data)	international migrants (undocumented migrants)	policy (healthcare access policy)	regional variation (community)	healthcare utilisation	Linear regression triple differences model (coef. Emergency Medicaid Plus vs. Emergency Medicaid vs. Medicaid) No. Of supervision visits (count): 8.02 (95% CI: 7.01-	Expanding access to prenatal care considerably increased both utilization of and

	Infant Health								child health	<p>9-03)</p> <p>No. Of outpatient visits (count): 9-33 (95%CI: 8-63-10-02)</p> <p>Early visit (0/1): 0-35 (95%CI: 0-31-0-39)</p> <p>Early visit and 9 or more visits (0/1): 0-29 (95%CI: 0-24-0-34)</p> <p>Rh immunization (per 1000): -2-27 (95%CI: -9-89-5-34)</p> <p>Tdap vaccination (0/1): 0-09 (95%CI: 0-00-0-18)</p> <p>Glucose testing (0/1): 0-71 (95%CI: 0-67-0-74)</p> <p>Fetal ultrasonography (0/1): 0-78 (95%CI: 0-75-0-80)</p> <p>Well child check (0/1): 0-01 (95%CI: 0-01-0-01)</p> <p>No. Of well child checks (count): 0-29 (95%CI: 0-14-0-44)</p> <p>No. Of outpatient visits (count): 0-74 (95%CI: 0-36-1-11)</p> <p>No. Of emergency department visits (count): 0-05 (95%CI: -0-03-0-13)</p> <p>Screenings and vaccinations (0/1): 0-05 (95%CI: 0-02-0-07)</p> <p>Low birth weight (per 1000): 4-80 (95%CI: 0-30-9-30)</p> <p>Very low birth weight (per 1000): -0-66 (95%CI: -1-80-0-48)</p> <p>Extremely low birth weight (per 1000): -1-28 (95%CI: -2-08 to -0-49)</p> <p>Preterm birth (per 1000): 10-12 (95%CI: 3-15-17-09)</p> <p>Death in first 365d (per 1000): -1-40 (95%CI: -1-99 to -0-82)</p>	quality of prenatal care and women were much more likely to receive adequate care and recommended preventive health services. Significant increase in infants receiving recommended preventive health services and improved health outcomes after expansion of prenatal care.
Toomey et al. 2014	Impact of Arizona's SB 1070 Immigration Law on Utilization of Health Care and Public Assistance Among Mexican-Origin Adolescent Mothers and Their Mother Figures	USA	279	cohort study	primary	international migrants	policy (migration enforcement)	timing of policy introduction/event (community)	healthcare utilization	<p><u>general estimating equations, coefficient (before vs. after enactment of SB1070):</u></p> <p>Received Public Assistance (Adolescents): 0-11 (SE: 0-48)</p> <p>Received Public Assistance (Mother figures): -1-22 (SE: 0-59; p: <0-05)</p> <p>utilized medical care for Self (Adolescents): -0-16 (SE: 0-46)</p> <p>utilized medical care for Child (Adolescents): 0-05 (SE: 1-10)</p>	Enactment of strengthened immigration enforcement was associated with decreases in the utilisation of routine medical care.
Torres et al. 2022	The Deferred Action for Childhood Arrivals program and birth outcomes in California: a quasi-experimental study	USA	57476	cohort analytic	secondary (birth record data)	international migrants (undocumented migrants)	policy (visa programme)	timing of policy introduction (community)	Child health	<p><u>Difference-in-differences linear regression model (coef.: DACA-eligible vs. DACA-ineligible mexican-born mothers with Medicaid)</u></p> <p>Pre-term-births: 0-000 (-0-016;0-017)</p> <p>low-birth-weight: 0-001 (-0-015;0-013)</p> <p>small-for-gestational-age: -0-018 (-0-035;-0-002) p<0-05</p> <p>birth weight: 45-77 (11-87;79-68) p<0-01</p> <p>Term birth weight: 44-32 (15-20;73-45) p<0-01</p>	DACA was associated with weak to modest improvements in birthweight outcomes among births to Mexican born individuals whose births were billed to Medicaid. Estimates were consistent but of smaller magnitude for other subgroups.
Venkataramani et al. 2017	Health consequences of the US Deferred Action for Childhood Arrivals (DACA) immigration programme: a quasi-experimental study	USA	14973	cohort analytic	secondary (US National Health Interview Survey)	international migrants (undocumented migrants)	policy (visa programme)	timing of policy introduction/event, arbitrary eligibility cut-offs (individual)	mental health self-reported overall health	<p><u>Least squares regression, coefficient (DACA eligible vs. DACA ineligible):</u></p> <p>Self-reported health: 0-056 (95%CI: -0-024;0-14)</p> <p>Logistic regression, adjusted odds ratio (DACA eligible vs. DACA ineligible):</p> <p>Poor or fair health: 0-98 (95%CI: 0-66;1-44)</p> <p>Moderate or worse psychological distress (K6): 0-62 (95%CI: 0-41;0-93)</p>	Exposure to DACA programme led to reduction in symptoms of psychological distress but no improvements in self-reported overall health.

										Poisson regression, adjusted incidence rate ratio (DACA eligible vs. DACA ineligible): K6 score: 0.78 (95%CI: 0.56;0.95)	
Wenner et al. 2020	Differences in realized access to healthcare among newly arrived refugees in Germany: results from a natural quasi-experiment	Germany	55452 person-quarters	ecological cohort analytic	secondary (claims data, national health surveys (DEGS, KIGGS), SHI health reports, population statistics)	refugees	policy (healthcare access policy)	regional variation, residential dispersal (individual)	healthcare utilisation	<u>Standardised incidence ratios (eHC vs. standard population):</u> Specialist use Q1: 0.89 (95%CI: 0.85-0.92) Specialist use Q4: 1.19 (95%CI: 1.13-1.25) Specialist use Q7: 1.09 (95%CI: 0.98-1.20) Emergency care use Q1: 1.40 (95%CI: 1.29-1.84) Emergency care use Q4: 1.46 (95%CI: 1.31-1.62) Emergency care use Q7: 1.38 (95%CI: 1.10-1.71) <u>Standardised incidence ratios (HeV vs. standard population):</u> Specialist use Q1: 0.96 (95%CI: 0.92-1.00) Specialist use Q4: 1.20 (95%CI: 1.14-1.27) Specialist use Q7: 1.89 (95%CI: 1.72-2.06) Emergency care use Q1: 1.68 (95%CI: 1.55-1.81) Emergency care use Q4: 1.67 (95%CI: 1.50-1.85) Emergency care use Q7: 2.63 (95%CI: 2.17-3.15)	In municipalities with HeV, utilisation of specialist and emergency services were significantly higher than expected rates of the standard population. In municipalities with eHC, SIRs for these two outcomes converged with the expected rates.
Wenner et al. 2022	Inequalities in access to healthcare by local policy model among newly arrived refugees: evidence from population-based studies in two German states	Germany	863	cross-sectional study	primary	refugees	policy (healthcare access policy)	regional variation, residential dispersal, arbitrary eligibility cut-offs (individual)	healthcare utilisation	<u>Logistic regression model, odds ratio (HV vs. regular access):</u> Specialist use: 0.405 (SE: 0.0972; p: <0.01) GP use: 0.614 (SE: 0.192) Specialist unmet needs: 0.937 (SE: 0.243) GP unmet needs: 0.953 (SE: 0.258) Emergency dept. use: 0.736 (SE: 0.158) Avoidable hospitalization: 0.952 (SE: 0.291) <u>Logistic regression model, odds ratio (EHC vs. HV):</u> Specialist use: 2.387 (SE: 0.992; p: <0.05) GP use: 2.175 (SE: 1.077) Specialist unmet needs: 2.014 (SE: 0.730; p: <0.1) GP unmet needs: 0.913 (SE: 0.372) Emergency dept. use: 1.346 (SE: 0.479) Avoidable hospitalization: 1.774 (SE: 0.729)	Lower needs-adjusted utilization of specialist services for patients with vouchers compared to persons using the electronic health card and to persons with regular access. No difference for other outcomes.
White et al. 2016	Long-term Effects of Neighbourhood Deprivation on Diabetes Risk: Quasi-Experimental Evidence from a Refugee Dispersal Policy in Sweden	Sweden	61386	cohort analytic	secondary (population register, hospital registers)	refugees	contextual factors of place of residence (regional deprivation)	residential dispersal (individual)	physical health	<u>Logistic regression, odds ratio (medium deprivation vs. low deprivation)</u> Diabetes: 1.15 (95%CI: 1.01; 1.31) <u>Logistic regression, odds ratio (high deprivation vs. low deprivation):</u> Diabetes: 1.22 (95%CI: 1.07; 1.38)	Increased risk of type 2 diabetes for refugees assigned to highly deprived neighborhoods.
Worth 1963	Urbanization and squatter resettlement as related to child health in Hong Kong	China	405	cross-sectional study	primary	Internal migrants	contextual factors of the place of residence (neighborhood type)	residential dispersal (individual)	child health	<u>Z- Test, Z-value (Squatter huts vs. Resettlement estate)</u> Transmission of disease by fecal-oral route: 3.6 (p<0.01) Transmission of disease by respiratory route: % with mumps HAI titer of 1 in 8 or more: <1 (difference not significant at p<0.01) % with positive tuberculin test: 1.1 (difference not significant at p<0.01) <u>Chi² Test, x² (Farming village vs. Squatter huts)</u> Transmission of disease via extra-human cycle: >3.8 (p<0.05) <u>Chi² Test, x² (Squatter huts vs. Resettlement estate)</u> Transmission of disease via extra-human cycle: <2 (difference not significant at p<0.01)	Move from village to city squatter hut associated with higher respiratory infections but lower infections via the oral-fecal route or extra human cycle. Move from squatter hut to government resettlement building associated with no further rise in respiratory infections but further decreases in

											transmissions via oral-fecal route.
Ye & Rodriguez 2021	Highly vulnerable communities and the Affordable Care Act: Health insurance coverage effects, 2010–2018	USA	2927402	cohort analytic	secondary (American Community Survey)	international migrants	policy (healthcare access policy)	regional variation (community)	healthcare utilisation	<u>Difference-in-Difference parameter estimates, odds ratio (expansion vs. non-expansion states):</u> insurance coverage: 1.59 (SE: 0.11; 95%CI: 1.39-1.82; p: <0.01)	Differential increase in insurance coverage of 59% (7.84 pp) in states with ACA Medicaid expansions.

Abbreviations: ACA: Affordable Care Act; BMI: Body Mass Index; CES-D: Center for Epidemiological Studies Depression Scale; CI: Confidence Interval; DACA: Deferred Action for Childhood Arrivals; DEGS: German health interview and examination survey for adults; ED: Emergency department; eHc: Electronic Health Card; GP: General practitioner; HcV/HV: healthcare voucher; KIGGS: German Health Interview and Examination Survey for Children and Adolescents; LATE: local average treatment effect; log: logarithm; MHI-5: Mental Health Inventory-5; MI: Myocardial Infarction; NS: not significant; OLS: ordinary least squares; PAC: Pacific Access Category; pp: percentage points; SE: standard error; SF-36: 36-item short form survey to measure health-related quality of life; SHI: statutory health insurance; USA: United States of America; vs.: versus; WHR: Waist-Hip ratio.

*The category “refugees” includes those who have applied for a refugee status (frequently referred to as “asylum seekers”, those with a successful application outcome, as well as those resettled under a humanitarian resettlement scheme (e.g. UNHCR refugees)

**For a definition of categories used, please refer to Panel 2

