

1 The role of rare genetic variants enrichment in epilepsies of presumed genetic
2 etiology

3 Linnaeus Bundalian,¹ Yin-Yuan Su,² Siwei Chen,^{3,4} Akhil Velluva,^{5,6} Anna Sophia Kirstein,⁷
4 Antje Garten,⁷ Saskia Biskup,^{8,9} Florian Battke,⁸ Dennis Lal,^{3,10} Henrike O. Heyne,^{4,12,13,14}
5 Konrad Platzter,¹ Chen-Ching Lin,² Johannes R. Lemke,^{1,11} Diana Le Duc,^{1,6} Epi25
6 Collaborative

7 ¹ Institute of Human Genetics, University of Leipzig Medical Center, 4103 Leipzig, Germany

8 ² Institute of Biomedical Informatics, National Yang Ming Chiao Tung University, Taipei, Taiwan

9 ³ Analytic and Translational Genetics Unit, Department of Medicine, Massachusetts

10 General Hospital, Boston, MA 02114, USA

11 ⁴ Program in Medical and Population Genetics, Broad Institute of MIT and Harvard, Cambridge, MA, USA

12 ⁵ Division of General Biochemistry, Rudolf Schönheimer Institute of Biochemistry, Medical Faculty, Leipzig University,
13 04103, Leipzig, Germany

14 ⁶ Department of Evolutionary Genetics, Max Planck Institute for Evolutionary Anthropology, 04103, Leipzig, Germany

15 ⁷ Pediatric Research Center, University Hospital for Children and Adolescents, Leipzig University, 04103, Leipzig, Germany

16 ⁸ CeGaT GmbH, 72076, Tuebingen, Germany

17 ⁹ Hertie-Institute for Clinical Brain Research, 72070, Tübingen, Germany

18 ¹⁰ Cologne Center for Genomics, University of Cologne, 50937 Cologne, Germany

19 ¹¹ Center for Rare Diseases, University of Leipzig Medical Center, 4103 Leipzig, Germany

20 ¹² Hasso-Plattner-Institut for Digital Engineering, University of Potsdam, Potsdam, Germany

21 ¹³ Hasso Plattner Institute at Mount Sinai, Mount Sinai School of Medicine, NY, US

22 ¹⁴ Institute for Molecular Medicine Finland: FIMM, University of Helsinki, Helsinki, Finland

23

24

NOTE: This preprint reports new research that has not been certified by peer review and should not be used to guide clinical practice.

25 **1. Abstract**

26 Previous studies suggested that severe epilepsies e.g., developmental and epileptic
27 encephalopathies (DEE) are mainly caused by ultra-rare *de novo* genetic variants. For milder
28 phenotypes, rare genetic variants could contribute to the phenotype. To determine the
29 importance of rare variants for different epilepsy types, we analyzed a whole-exome sequencing
30 cohort of 9,170 epilepsy-affected individuals and 8,436 controls. Here, we separately analyzed
31 three different groups of epilepsies : severe DEEs, genetic generalized epilepsy (GGE), and
32 non-acquired focal epilepsy (NAFE). We required qualifying rare variants (QRVs) to occur in
33 controls at a minor allele frequency $\leq 1:1,000$, to be predicted as deleterious ($CADD \geq 20$), and
34 to have an odds ratio in epilepsy cases ≥ 2 . We identified genes enriched with QRVs in DEE
35 ($n=21$), NAFE ($n=72$), and GGE ($n=32$) - the number of enriched genes are found greatest in
36 NAFE and least in DEE. This suggests that rare variants may play a more important role for
37 causality of NAFE than in DEE. Moreover, we found that QRV-carrying genes e.g., *HSGP2*,
38 *FLNA* or *TNC* are involved in structuring the brain extracellular matrix. The present study
39 confirms an involvement of rare variants for NAFE, while in DEE and GGE, the contribution
40 of such variants appears more limited.

41 **2. Introduction**

42 Epilepsy is one of the most common neurological diseases worldwide, affecting almost
43 1% of the population in the United States ¹. Early pedigree studies showed a high genetic
44 component and a heritability of up to 70% ^{2,3}. With the help of next generation sequencing there
45 was a significant advance in gene discovery. Currently, hundreds of genes are established as
46 monogenic causes for epilepsy ⁴, while recent studies have associated a few to polygenic causes
47 ⁵. Yet, the biggest leap in diagnostic yield happened mainly for the most severe type of
48 epilepsies, developmental and epileptic encephalopathy (DEE) ⁶. For this type of epilepsy, the

49 heritability or susceptibility are very low, since such diseases are often caused by deleterious
50 *de novo* variants as the severely affected individuals usually do not reproduce.

51 The role of common⁷⁻⁹ and ultra-rare *de novo* genetic variants^{10,11} for epilepsy has been
52 extensively researched. Epidemiological studies accounting for the similar prevalence across
53 populations and the increased risk of individuals in more densely affected families, suggested
54 that polygenic predisposition should have a predominant role over the monogenic etiology¹².
55 This has been addressed by genome wide association studies and polygenic risk scores⁷⁻⁹ which
56 identified mostly non-coding variants with individually small effects – median odds ratio (OR)
57 generally lower than 1.3, but with a high aggregate effect explaining in part the missing
58 heritability. Conversely, the ultra-rare *de novo* genetic variants have much larger effects on
59 individual risk, but they make only a small contribution to the overall heritability in the
60 population owing to their rarity^{13,14}.

61 Our understanding of the underlying genetic architecture leading to increased
62 susceptibility to epilepsy due to a middle tier of variants that are rare (neither ultra-rare *de novo*,
63 nor common, i.e. allele frequency of > 1%) is still very limited. Based on evolutionary theory,
64 forces of negative natural selection will keep large-effect risk variants at much lower
65 frequencies in the population, especially for a disorder like epilepsy which results in reduced
66 fitness, i.e., reproduction. Analysis of rare variants' contribution to the disease could be a useful
67 tool for a better understanding of the heritability and disease pathomechanism¹⁵ as it was shown
68 in some other conditions e.g., autism.¹⁶

69 In this study, focused only on rare variants (minor allele frequency $\leq 1:1,000$) predicted
70 to be deleterious and with an excess in cases (OR ≥ 2), which best reflects the effect size¹⁵.
71 Finally, to understand the underlying pathomechanism we performed a combined analysis of
72 the identified genes and their interacting partners aimed at identifying molecular pathways,
73 which are potentially disrupted.

74 **3. Materials and Methods**

75 **3.1 Cohort and data description**

76 Genetic and phenotype information were obtained from the Epi25 collaborative ¹¹
77 (<http://epi-25.org/>). Phenotyping procedures, case definitions, and ancestry of the participating
78 individuals are reported in a previous Epi25 collaborative study ¹¹. To account for differences
79 in ancestry and exome capture technologies among individuals the data has undergone
80 previously described thorough quality check procedures and only individuals of European
81 descent were analyzed ¹¹. Briefly, variant calling was performed with GATK ¹⁷ and only
82 variants with a genotype quality > 20 were kept. Variants called heterozygous were required to
83 have an allele frequency of 0.2–0.8. To control for kit enrichment artefacts, only variants where
84 80% of both Agilent and Illumina-sequenced samples show at least 10- \times coverage were
85 retained. Ancestry stratification had previously been ruled out using principal-component
86 analyses to identify ancestral backgrounds and only individuals of European ancestry classified
87 by Random Forest with 1,000 Genomes data were further analyzed. Annotation of variants was
88 performed with Ensembl's Variant Effect Predictor ¹⁸ for human genome assembly GRCh37.

89 To understand differences in genetic susceptibility across different types of epilepsy,
90 we analyzed 1, 021 individuals with developmental and epileptic encephalopathy (DEE), 3, 108
91 individuals with genetic generalized epilepsy (GGE), and 3, 597 individuals with non-acquired
92 focal epilepsy (NAFE). Each cohort was compared to 8, 436 matched-ancestry, unrelated
93 controls.¹¹

94 **3.2 Qualifying rare variants and variant set enrichment analysis**

95 We defined a variant as a qualifying rare variant (QRV) if it met following criteria:

- 96 • The variant is present in controls i.e. $AC_CTRL \geq 1$;
- 97 • The minor allele frequency $\leq 1:1,000$;

- 98 ● The variant is predicted to be deleterious – CADD score ≥ 20 ¹⁹;
- 99 ● OR ≥ 2 , p -value ≤ 0.05 in epilepsy cases.

100 To account for gene length and different mutation rate across genes, we counted the
101 total number of observed variants per gene and the number of variants with AF ≤ 0.001 . Using
102 these two parameters, we modeled a simple linear regression to characterize the relationship of
103 the number of rare variants and total variants per gene. Based on the linear regression, we
104 estimated the expected number of rare variants with OR ≥ 2 for each gene and compared to the
105 observed. Only genes with an excess of rare variants were considered in the QRV filtering
106 (Supplemental Fig. 1).

107 The susceptibility and risk burden for each gene were estimated by testing for
108 enrichment of QRVs. To this end, we assigned an empirical enrichment score (ES) to each gene.
109 The generation of the ES was inspired by the Significance and Functional Enrichment (SAFE)
110 framework²⁰ and Gene Set Enrichment Analysis (GSEA) hence termed as Variant Set
111 Enrichment Analysis (VSEA).

112 VSEA allows us to score the genes based on the number of QRVs they have across the
113 general population and epilepsy patients. We defined following lists of variants:

- 114 ● ranked variant list (L) – list of QRVs per epilepsy type ordered (descending) by
115 their corresponding OR;
- 116 ● background set (S) – list of variants grouped into synonymous or
117 nonsynonymous variants per epilepsy type.

118 The enrichment analysis is designed to check if variants in S are randomly distributed
119 throughout L, or skewed to a side where OR is higher or lower. With this method, we can also
120 identify the variants in each gene which contribute most to the enrichment – referred to as
121 leading edge.

122 The enrichment score (ES) assigned to the genes is calculated using the maximum
123 deviation observed among cumulative ranked sum²⁰ of both *hits* and *miss* across the variants
124 (Supplemental Fig. 2) normalized by the number of observed *hits and miss*. The vector of
125 either *hits* or *miss* can be represented by vector y and ES as the maximum difference between
126 the two vectors, defined as follow:

$$127 \quad y = \{y_1 \dots y_n\} \text{ where } y[i] = \sum_{k=1}^i x[k] \text{ for } i \in \{1, \dots, n\}$$

$$128 \quad ES = \max \left\{ \frac{y_{hits}}{\# \text{ of hits}} - \frac{y_{miss}}{\# \text{ of misses}} \right\}$$

129 A high ES of a gene indicates an enrichment of variants having higher OR in comparison
130 to the variants found in the lower rank. After calculating the ES, to determine the significance
131 we performed $n = 1,000$ permutations where a set of variants having the length $n(L)$ were
132 randomly selected from set S . This was used to calculate an empirical distribution of ES. The
133 number of times the empirical ES exceeds the observed ES was counted and divided by the
134 number of permutations (n) to calculate the p -values ($pval$).

$$135 \quad pval = \frac{1}{n} \sum_{p=1}^n \{ES_{perm} \geq ES_{obs}\}$$

136 For multiple testing correction, we determined FDR using the ratio of the Normalized
137 Enrichment Score (NES) – observed and permuted ES. NES is the ES divided by the expected
138 ES i.e., average ES from the permuted values.

$$139 \quad NES_{obs} = \left\{ \frac{ES_{obs}}{\frac{\sum_{p=1}^n ES_{perm}}{n}} \right\}; NES_{perm} = \left\{ \frac{ES_{perm}}{\frac{\sum_{p=1}^n ES_{perm}}{n}} \right\}$$

$$140 \quad FDR = \frac{NES_{obs}}{NES_{perm}}$$

141

142 **3.3 Functional module analysis and protein-protein interactions**

143 To test in which functional pathway the genes identified that bear an excess of QRVs
144 play a role, we performed enrichment analysis across multiple gene sets including but not
145 limited to Gene Ontology (GO), Allen Brain Atlas, Reactome, KEGG pathways.

146 **3.3.1 Allen Brain Atlas Enrichment**

147 To identify gene sets that are specific to certain brain areas and/or developmental stages
148 we used the Allen Human Brain Atlas. This resource delivers information about gene
149 expression levels in various parts of the human brain during the course of brain development
150 ^{21,22}. We used the R package *ABAEEnrichment* to test whether genes with excess QRVs show
151 significant enrichment in specific brain regions or brain developmental stages ²³. The package
152 integrates human brain expression datasets provided by the Allen Brain Atlas in both the
153 prenatal and adult stage. The expression data is analyzed over 47 brain regions and 20 age time
154 points. The gene expression is evaluated during development from prenatal stage to adult. If
155 the change is high in a specific region, the gene is annotated to that region and the score mirrors
156 the deviation from prenatal to adult stage ²³.

157 **3.3.2 Overrepresentation Analysis (ORA)**

158 The gene lists were also subjected to functional class analysis using ORA with MsigDb
159 Reactome database for gene set collections C2 (Reactome) and C5 (Gene Ontology) ^{24,25} and
160 GOFuncR ²⁶. The method uses a hypergeometric test ²⁷ to assess the probability of observing
161 at least k genes from the list across the pathway database ^{24,28}.

$$162 \quad P(X \geq k | n; N; K) = \sum_{i=k}^n \frac{\binom{K}{i} \binom{N-K}{n-i}}{\binom{N}{n}}$$

163 For the customized gene set ORA, we used the datasets from MSigDB – C5 for sets
164 associated with ion channels, neurotransmitter, glutamatergic and GABAergic signaling,

165 nervous system development, and synaptic functions^{24,25}. For GoFuncR overrepresentation, we
166 used C5 (Gene Ontology) of MSigDB for restricting the background genes to those which are
167 found expressed in the brain²⁹.

168 **3.3.3 Analysis of distance in the human protein interacting network (PIN)**

169 To elucidate the putative roles of the genes significantly enriched with QRVs in
170 epilepsy, we investigated the distance between them and the known epilepsy-related genes in
171 the human PIN. The source of the human PIN data is InBio Map³⁰ and epilepsy-related genes
172 were acquired from the consolidated list of epi-25.org. The distance is defined as the shortest
173 path length between gene u and v in the human PIN. All paired shortest path lengths between
174 genes are calculated by the Dijkstra algorithm. We identified which genes with QRVs are
175 significantly closer located to the known epilepsy-related genes within the PIN, compared to
176 the distance of all other genes.

177 **4. Results**

178 **4.1 Enrichment of QRVs in three types of epilepsies**

179 We tested the burden of QRVs per gene in each epilepsy group: DEE, NAFE, and GGE.
180 The only significant gene which was present across all types of epilepsies was *HSPG2* (p -value
181 = 0.0001, from 10,000 random samplings). *HSPG2* (Heparan Sulfate Proteoglycan 2) encodes
182 the perlecan protein that belongs to the glycosaminoglycans family, which are major
183 components of the brain extracellular matrix (ECM). Although the gene was common to all
184 epilepsy groups, there were different variants in this gene, which contributed to the increased
185 enrichment score of the gene for each group (Supplementary Table 1).

186 Further, consistent with the presumed *de novo* pathogenic variants occurrence and a
187 highly penetrant phenotype, DEE showed the lowest number of genes enriched with QRVs
188 (Fig. 1A); this supports DEE's mainly monogenic origin. In other words, for DEE, the most

189 severe of the epilepsy phenotypes, it is less likely that variants present in controls contribute as
190 causal risk factors. The largest number of genes with a significantly high enrichment score was
191 retrieved for NAFE (Fig. 1A, Supplemental Table 1). This result contrasts the previous findings
192 on ultra-rare *de novo* genetic variants, which show mainly no significant burden in the NAFE
193 individuals¹¹ and may suggest that rare variants also present in controls could contribute more
194 to the NAFE pathophysiology compared to highly damaging *de novo* variation.

195 To gain insight into the functionality of the genes, we classified them into 6 categories,
196 which are considered to play a role in the epileptic pathomechanism: modulators of synaptic
197 functions, neurotransmitter regulators, nervous system development, ion channels and their
198 interacting partners, modulators of glutamatergic signaling, and genes with high expression in
199 brain (Fig. 1 B, C, Table 1). Our results showed for DEE (FDR = 0.03) and NAFE (FDR =
200 0.004) a significant enrichment especially for genes highly expressed in brain. GGE showed an
201 enrichment for genes annotated to nervous system development (FDR = 0.026). In NAFE we
202 identified genes enriched for ion channels and their interactors (FDR = 0.004) (Fig. 1B). We
203 showed that variants in these genes generally had median ORs > 5 (Fig. 1C), suggesting they
204 may have a large effect size and could contribute to the underlying pathomechanism.

205 **Table 1. Overrepresented genes across gene sets annotated to brain processes and**
206 **molecular functions.** The table contains the QRVs-enriched genes, which are found to be
207 enriched in gene sets derived from molecular functions in GO database and brain gene
208 expression level from Protein Atlas and GTEx. For each gene set, we selected processes
209 associated with ion channels, GABAergic and glutamatergic related pathways, synaptic
210 functions, neurotransmission, nervous system development and genes with nTPM ≥ 1 in brain.

211 ²⁹

212

213

GENE SET	DEE	NAFE	GGE
ION CHANNEL AND INTERACTORS	<i>HEPHLI</i>	<i>ADD1, AHNAK, ANO5, ATM, ATP10A, ATP12A, ATP2C2, ATP8B2, CACNA1S, CNGB3, FLNA, HEPHLI, RIMS1, SCN10A, SLC12A3, SLC25A23</i>	<i>AHNAK, SLC6A13, TMTC2</i>
NEUROTRANSMITTER REGULATORS		<i>RIMS1</i>	<i>SLC6A13</i>
NERVOUS SYSTEM DEVELOPMENT	<i>FAT4, HSPG2, IFT172</i>	<i>ACAN, ATM, HSPG2, LAMC3, MCPHI, PLEC, TYRO3</i>	<i>CDK5RAP2, CELSR2, HSPG2, PLEC, ROR2, SZT2</i>
SYNAPTIC FUNCTION MODULATORS		<i>FLNA, RIMS1</i>	<i>ROR2</i>
GLUTAMATERGIC SIGNALING MODULATORS		<i>HAL</i>	<i>ROR2</i>
BRAIN EXPRESSED	<i>ADAMTSLA, CUBN, FASN, FAT4, HMCN1, HSPG2, IFT172, LRP5, LYST, MASP1, NAV1, OBSCN, PCK2, PDZD2, PPL, SBF1, TNC</i>	<i>A2ML1, ACAN, ADD1, AGL, AHDC1, AHNAK, AHNAK2, ALPK3, ANO5, ATM, ATP10A, ATP8B2, BCAT2, CHD1L, COL6A3, CSMD2, CUL9, DGCR2, DGKG, DST, FANCI, FLNA, FOCAD, HEATR1, HMCN1, HPSS, HSPG2, KIAA1755, KMT2D, LAMA1, LAMA3, LAMC3, LYST, MADD, MCPHI, MDN1, MYH11, NUMA1, OBSCN, PDE4DIP, PDZD2, PEG3, PHRF1, PIGQ, PLEC, PLK3, PTK7, RARS2, RIMS1, SLC25A23, STAB1, SULF1, TYRO3, USP36</i>	<i>AHNAK, AHNAK2, ANK1, BCLAF1, CDK5RAP2, CELSR2, FRAS1, FYCO1, HSPG2, MED13, MMP14, MSH6, PHKB, PLCD1, PLEC, RIF1, SLC6A13, SZT2, TMTC2, TNC, TNS1</i>

215 **4.2 QRVs collapsing captures genes encoding for ion channels or their interactors** 216 **in NAFE**

217 Ion channels play a major role in genetic epilepsies^{31,32}. Although, since the beginning
218 of the epilepsy-related gene discoveries, many other gene classes and biological pathways have
219 been revealed to play a role, it is still a significant proportion (~ 25 %) of the epilepsy genes
220 known to date that encode for ion channels³¹. Since we identified the ion channel-related
221 molecular function pathway to be enriched in NAFE (Fig. 1B), we performed ORA based on
222 KEGG and Reactome³³. For KEGG, the ion channel pathway is annotated only with respect to
223 drug development, and thus, we could not identify an over-representation based on the QRVs-
224 enriched genes in NAFE. Using the Reactome annotation we identified the ion channel
225 transport category to be significantly enriched. NAFE-related genes annotated to the Reactome
226 category are: *ATP2C2*, *ATP12A*, *ATP8B2*, *ATP10A*, and *ANO5*. While, the first four genes
227 encode for ATPases involved in ions transport, like Ca^{2+} or H^+/K^+ , *ANO5* encodes for an
228 anoctamin, which belongs to a protein family of Ca^{2+} activated chlorine channels and
229 phospholipid scramblases³⁴. A founder mutation in *ANO5* has been implicated in muscular
230 dystrophy³⁴. Despite the high expression in brain and the controversial muscle phenotype in
231 the mouse knockout models^{35,36}, its function in the brain remains unknown.

232 Using the gene ontology annotation, we identified a few ion channel genes and multiple
233 genes interacting with ion channels, which showed QRVs enrichment in NAFE (Table 1), e.g.
234 *CACNA1S* and *SCN10A*. Another identified gene is *ADD1* coding for adducin. Although
235 adducin is primarily responsible for the assembly of spectrin-actin that provides functional
236 support to the cytoskeleton, the gene ontology also annotates the gene to ion transport and
237 synaptic functions. Variants in *ADD1* have also been recently identified in intellectual
238 disability, corpus callosum dysgenesis, and ventriculomegaly in humans³⁷. Similarly, *ATM*,

239 another gene with QRVs for NAFE, has been recently shown to be involved in hippocampal
240 and cortical development, as well as synaptic functions ³⁸.

241 Based on our analysis, we did not retrieve genes encoding for ion channels that have
242 already been associated with monogenic epilepsy. Those genes generally bear ultra-rare
243 variants that do not occur in controls, which does not comply with our definition of QRVs.
244 Some of the genes we identified to be significantly enriched in NAFE have already been
245 associated with mendelian disorders e.g., *HSPG2* and *FLNA*, yet their phenotype does not
246 appear to be severe or highly penetrant which meets our hypothesis that variants in these genes
247 could confer an increased risk for epilepsy.

248 **4.3 Involvement in brain development**

249 We asked whether the genes with QRVs are involved in brain development and in which
250 brain regions they are most relevant. Patterns of gene expression can be very informative in
251 respect to the importance of a gene during development. Using the ABAEnrichment package
252 ²³, we tested whether the genes identified in the different types of epilepsy play a role during
253 development in any brain regions. From the results, we identified genes from DEE to show the
254 highest involvement during development with significant enrichment over 13 brain regions
255 (Fig. 2). For GGE only the cerebellar cortex showed a signal (family wise error rate, FWER =
256 0.045), while for NAFE we identified a signal in this region and two additional ones in the
257 striatum and inferolateral temporal cortex. When we inquired the developmental scores
258 assigned based on expression changes between prenatal and adult stage, we identified genes
259 encoding for ECM proteins (*LAMA1*, *FBN2*, *COL6A3*) to contribute to the enrichment in the
260 different brain regions for NAFE (Fig. 3). Similarly, *TNC*, which encodes for the ECM protein
261 tenascin C showed a high developmental score contributing to the brain regions enrichment in
262 both DEE and GGE. For DEE, *FAT4*, a gene encoding for a protocadherin, a calcium-dependent
263 cell adhesion protein, showed the highest developmental score (Fig. 3). *FAT4*, which was

264 previously related to epilepsy³⁹, plays a role in the maintenance of planar cell polarity as well
265 as in neuroprogenitor proliferation⁴⁰. For GGE, *ROR2* is the leading gene in respect to the
266 developmental score. *ROR2* encodes a tyrosine-protein kinase transmembrane receptor also
267 known as the neurotrophic tyrosine kinase, receptor-related 2, which also appears to play a role
268 in the maintenance of neuroprogenitor cells in the developing neocortex⁴¹. Based on the
269 observed functions for the genes with the highest developmental scores, we were further
270 prompted to perform pathway analyses and understand in which molecular processes genes
271 with QRVs are involved.

272 **4.4 Pathway and network analyses**

273 We performed pathway enrichment analyses to determine whether the identified genes
274 cluster within specific functions. For DEE we could not identify any significant categories after
275 multiple testing correction. NAFE showed enrichment of many GO categories, that clustered
276 mainly within the extracellular matrix (ECM) or cell adhesion (Fig. 4A). For GGE, there were
277 only 3 significant categories, all related to cellular junctions or adhesion (Supplemental Table
278 2).

279 To further test how the identified genes with QRVs are connected to already known
280 epilepsy genes, we determined the distance between the identified gene and the epilepsy genes
281 from Epi25 (<http://epi-25.org/>). To this end, we assessed within the PPI network how many
282 nodes represented by protein interacting partners lie between the identified gene and any known
283 epilepsy gene. While for NAFE, the mean distance between QRV genes and epilepsy genes
284 was at 2.57, significantly smaller than the mean distance of between the non-QRV genes and
285 epilepsy genes (2.66, p -value < 0.001), the effect size is too small to conclude that overall, the
286 identified genes with QRVs are closer to known epilepsy genes. We thus, further determined
287 the genes with a shorter distance to known epilepsy genes within the PIN (Fig. 4B). For GGE
288 and DEE the overall mean distance did not reach significance and only 3 and 2 genes,
289 respectively, showed a significantly closer distance to epilepsy genes.

290 **5. Discussion**

291 Unlike common and *de novo* ultra-rare variants, rare variants in epilepsy have not been
292 researched extensively. Based on the ‘Common Disease, Rare Variant’ hypothesis multiple rare
293 sequence variants, with relatively high penetrance, confer an increased genetic susceptibility to
294 a common disease⁴². While the identification of such variants is paramount for understanding
295 their role, their detection is statistically more challenging because they are present at low

296 frequencies in the general population. To understand how rare variants contribute to the
297 etiology and pathomechanism of epilepsy, we applied a method to estimate the risk burden of
298 a gene based on the enrichment of rare variants posing a relatively high risk in the Epi25 cohort
299 i.e., $OR \geq 2$. Using the proportion of QRVs in cases and controls, we calculated a score for each
300 gene. A high score of a gene implies a higher disease probability due to the presence of the rare
301 variants with higher ORs in cases. By this approach we identified sets of QRV enriched genes
302 – DEE (n = 21), NAFE (n = 72), and GGE (n = 32) (Fig. 1). In a previous study that analyzed
303 the same patient cohort in respect to the enrichment of deleterious ultra-rare variants, DEE and
304 GGE individuals had significantly more such variants compared to those diagnosed with NAFE
305 ¹¹. While for our study on the enrichment of rare variants, we identified the lowest number of
306 genes for DEE and the highest for NAFE. Our results and the results of the previous study ¹¹
307 could suggest that, while for DEE the pathomechanism relies on highly deleterious and
308 penetrant variants, NAFE may result from an enrichment of more frequent and less penetrant
309 rare variants, identified also in controls, albeit at lower frequency than in cases.

310 To further analyze the gene set and its relevance to specific molecular pathways, we
311 performed a GO enrichment analysis. This revealed a significant overrepresentation of the
312 NAFE genes across ECM and structural related pathways (Fig. 4A). The ECM is known to play
313 a role in epileptogenesis since it is involved in the establishment of neural plasticity, i.e. cell-
314 cell connections and signaling ⁴³. Moreover, changes in ECM have been directly implicated in
315 the pathophysiology of temporal lobe epilepsy ^{44,45}, the most common form of focal
316 epilepsies/NAFE. Interestingly, *HSPG2*, the only gene found to be enriched across all types of
317 epilepsy in the study, encodes for perlecan, an important member of brain ECM. Little is known
318 about *HSPG2* and its association to epilepsy, but some studies have revealed its role in
319 acetylcholinesterase clustering at the synapse, which has the capability to interfere in synaptic
320 transmission ⁴⁶. Perlecan is, however, ubiquitously expressed and pathogenic variants have

321 been implicated in the Schwartz–Jampel syndrome type I, a rare autosomal recessive disease
322 with cardinal symptoms consisting of skeletal dysplasia and neuromuscular hyperactivity ⁴⁷.
323 Some of the affected individuals also show impaired neurologic development, consistent with
324 perlecan’s neuroprotective effect and its involvement in neurogenesis and normalization of
325 neocortical excitability after insult events ⁴⁸. In further support of our finding, previous studies
326 have also considered *HSPG2* to be an epilepsy-associated gene, although the underlying
327 mechanism is still not clear ³⁹.

328 While among the identified genes, there was an enrichment of genes with high brain
329 expression, both in the DEE and NAFE groups, for NAFE we additionally identified variants
330 in ion channels and their interactors to play a role (Fig. 1 B, C). *CACNA1S* is one of the genes
331 with an excess of QRVs in NAFE individuals. The gene is lowly expressed in the brain and
332 highly expressed in the muscles being implicated in the hypokalemic periodic paralysis.
333 However, we observed outliers in respect to brain expression (Supplemental Fig. 3) ⁴⁹,
334 suggesting that *Ca_v1.1*, the L-type voltage gated calcium channel encoded by *CACNA1S*, could
335 play a role in the calcium influx in response to large depolarizing shifts in membrane potential
336 for some individuals. In support of the variability of the *CACNA1S*’ brain involvement, rare
337 variants in this gene have been associated with schizophrenia ⁵⁰. Similarly, *SCN10A* is lowly
338 expressed in the brain, but shows an enrichment signal in our dataset. Biallelic variants in this
339 gene have been potentially linked to epilepsy-related phenotypes ⁵¹.

340 In an additional analysis, to understand whether the genes we identified are closer in the
341 PIN to already known epilepsy genes, we calculated the PPI distance (Fig. 4B). Most of the
342 genes with significantly shorter PPI paths connect them to epilepsy genes for NAFE. A gene
343 with significantly shorter distance to known epilepsy genes is *PDZD2*, enriched for both NAFE
344 (FDR = 0.005) and DEE (FDR = 0.006). This gene can be found expressed mainly in the basal
345 ganglia and cerebral cortex with high specificity among oligodendrocytes precursor cells, and

346 excitatory neurons^{28,51}. *PDZD2* also contributes to the functional expression of Nav1.8 ion
347 channel, which is encoded by *SCN10A*, a QRV enriched gene in NAFE⁵². Another gene with
348 shorter distance to known epilepsy genes, *FLNA*, has itself been associated with epilepsy and
349 seizure disorders⁵. *FLNA* is also known to interact with *HCN1* channels during neuronal
350 excitability modulation in the mature brain⁵³. Additionally, *FLNA* also controls ECM
351 remodeling by regulating metalloproteinase activity and hence ECM degradation⁵⁴. Based on
352 the enrichment of ECM genes, we suggest that especially for NAFE, genetic variants which
353 may impact ECM morphology could lead to imbalance in excitatory and inhibitory signals⁵⁵
354 and hence underlie epileptogenesis.

355 Consistent with the assumed pathomechanisms, we identify a significant enrichment of
356 QRVs in genes related to brain development only in DEE (Fig. 2) and GGE (Fig. 1).
357 Interestingly, most genes with high developmental scores are assigned to DEE (Fig. 3),
358 suggesting that rare variants in these genes may contribute to the disease development. *TNC*,
359 which encodes an ECM protein, was identified in both DEE and GGE (Fig. 1). It controls
360 neurite growth and axon guidance⁵⁶ and it is highly active during early brain development,
361 which is mirrored by a high developmental score (Fig. 3). Intriguingly, *TNC* is higher expressed
362 by both neurons and glia after seizures, which can lead to ECM remodeling and induce
363 additional epileptic events^{56,57}. For NAFE, genes with high developmental score cluster in the
364 inferolateral temporal cortex (Fig. 2), a signal that may be triggered by a high number of
365 temporal lobe epilepsy cases within the NAFE cohort.

366 Aside from the established list of epilepsy associated genes from the Epi25 cohort, there
367 are a number of curated lists for epilepsy genes, for instance the SAGAS database, containing
368 candidate genes with possible polygenic and monogenic causal tendencies⁵ and
369 Genes4Epilepsy (<https://github.com/bahlolab/Genes4Epilepsy>). We identified a significant
370 overlap of the QRVs genes from our study with both SAGAS (DEE: pval = 0.001, NAFE: pval

371 = 1.30e-8, GGE: pval = 0.02) and Genes4Epilepsy (NAFE: pval = 0.001), which lends
372 additional support to our findings.

373 A previous study of the Epi25 Collaborative suggested that clinical presentations of
374 GGE and NAFE are influenced by common and rare variants, as opposed to DEE which is
375 mainly caused by *de novo* ultra-rare highly deleterious variants¹¹. Here, we focused on rare
376 variants, present in controls, but at higher OR in epilepsy patients. Our results support the
377 hypothesis that rare variants could be important in NAFE pathomechanism. Moreover, ECM
378 appears to play a central role in NAFE. For DEE we retrieve genes that have high expression
379 during development, which meets the expected pathomechanism; however, the number of
380 identified genes is rather low. Based on the genes identified for GGE we cannot infer which
381 pathways play an important role in the pathomechanism. It is possible that either enlarged
382 patient cohorts or a focus on common variants will shed more light on GGE⁵⁸ pathophysiology.

383 6. Bibliography

384

- 385 1. Zack, M. M. & Kobau, R. National and State Estimates of the Numbers of Adults and
386 Children with Active Epilepsy — United States, 2015. *MMWR Morb Mortal Wkly Rep*
387 **66**, 821–825 (2017).
- 388 2. Chen, T., Giri, M., Xia, Z., Subedi, Y. N. & Li, Y. Genetic and epigenetic mechanisms
389 of epilepsy: A review. *Neuropsychiatric Disease and Treatment* vol. 13 1841–1859
390 Preprint at <https://doi.org/10.2147/NDT.S142032> (2017).
- 391 3. Annegers, J. F., Hauser, W. A., Anderson, V. E. & Kurland, L. T. The risks of seizure
392 disorders among relatives of patients with childhood onset epilepsy. *Neurology* **32**, 174–
393 179 (1982).
- 394 4. Perucca, P., Bahlo, M. & Berkovic, S. F. The Genetics of Epilepsy. *Annual Review of*
395 *Genomics and Human Genetics* vol. 21 205–230 Preprint at
396 <https://doi.org/10.1146/annurev-genom-120219-074937> (2020).
- 397 5. Gracie, L. *et al.* The Seizure-Associated Genes Across Species (SAGAS) database offers
398 insights into epilepsy genes, pathways and treatments. *Epilepsia* **63**, 2403–2412 (2022).

- 399 6. Guerrini, R., Balestrini, S., Wirrell, E. C. & Walker, M. C. Monogenic Epilepsies:
400 Disease Mechanisms, Clinical Phenotypes, and Targeted Therapies. *Neurology* vol. 97
401 817–831 Preprint at <https://doi.org/10.1212/WNL.0000000000012744> (2021).
- 402 7. Campbell, C. *et al.* The role of common genetic variation in presumed monogenic
403 epilepsies. *EBioMedicine* **81**, 104098 (2022).
- 404 8. Leu, C. *et al.* Polygenic burden in focal and generalized epilepsies. *Brain* **142**, 3473–
405 3481 (2019).
- 406 9. Abou-Khalil, B. *et al.* Genome-wide mega-analysis identifies 16 loci and highlights
407 diverse biological mechanisms in the common epilepsies. *Nat Commun* **9**, (2018).
- 408 10. Allen, A. S. *et al.* Ultra-rare genetic variation in common epilepsies: a case-control
409 sequencing study. *Lancet Neurol* **16**, 135–143 (2017).
- 410 11. Feng, Y. C. A. *et al.* Ultra-Rare Genetic Variation in the Epilepsies: A Whole-Exome
411 Sequencing Study of 17,606 Individuals. *Am J Hum Genet* **105**, 267–282 (2019).
- 412 12. Peljto, A. L. *et al.* Familial risk of epilepsy: A population-based study. *Brain* **137**, 795–
413 805 (2014).
- 414 13. Hernandez, R. D. *et al.* Ultrarare variants drive substantial cis heritability of human gene
415 expression. *Nat Genet* **51**, 1349–1355 (2019).
- 416 14. Manolio, T. A. *et al.* Finding the missing heritability of complex diseases. *Nature* vol.
417 461 747–753 Preprint at <https://doi.org/10.1038/nature08494> (2009).
- 418 15. Zuk, O. *et al.* Searching for missing heritability: Designing rare variant association
419 studies. *Proc Natl Acad Sci U S A* **111**, E455–E464 (2014).
- 420 16. Fu, J. M. *et al.* Rare coding variation provides insight into the genetic architecture and
421 phenotypic context of autism. *Nat Genet* **54**, 1320–1331 (2022).
- 422 17. Van der Auwera, G. A. & O’Connor, B. D. *Genomics in the cloud: using Docker, GATK,*
423 *and WDL in Terra.* (O’Reilly Media, 2020).
- 424 18. McLaren, W. *et al.* The Ensembl Variant Effect Predictor. *Genome Biol* **17**, (2016).
- 425 19. Kircher, M. *et al.* A general framework for estimating the relative pathogenicity of
426 human genetic variants. *Nat Genet* **46**, 310–315 (2014).
- 427 20. Barry, W. T., Nobel, A. B. & Wright, F. A. Significance analysis of functional categories
428 in gene expression studies: A structured permutation approach. *Bioinformatics* **21**, 1943–
429 1949 (2005).
- 430 21. Miller, J. A. *et al.* Transcriptional landscape of the prenatal human brain. *Nature* **508**,
431 199–206 (2014).

- 432 22. Hawrylycz, M. J. *et al.* An anatomically comprehensive atlas of the adult human brain
433 transcriptome. *Nature* **489**, 391–399 (2012).
- 434 23. Grote, S., Prüfer, K., Kelso, J. & Dannemann, M. ABAEnrichment: An R package to test
435 for gene set expression enrichment in the adult and developing human brain.
436 *Bioinformatics* **32**, 3201–3203 (2016).
- 437 24. Liberzon, A. *et al.* Molecular signatures database (MSigDB) 3.0. *Bioinformatics* **27**,
438 1739–1740 (2011).
- 439 25. Subramanian, A. *et al.* Gene set enrichment analysis: A knowledge-based approach for
440 interpreting genome-wide expression profiles. *Proc Natl Acad Sci U S A* **102**, 15545–
441 15550 (2005).
- 442 26. Grote, S. Title Gene ontology enrichment using FUNC. *R package version 1.18.0 R*
443 **package**, v1.18.0 (2022).
- 444 27. Draghici, S. *et al.* A systems biology approach for pathway level analysis. *Genome Res*
445 **17**, 1537–1545 (2007).
- 446 28. Wieder, C. *et al.* Pathway analysis in metabolomics: Recommendations for the use of
447 over-representation analysis. *PLoS Comput Biol* **17**, (2021).
- 448 29. Sjöstedt, E. *et al.* An atlas of the protein-coding genes in the human, pig, and mouse
449 brain. *Science* **367**, (2020).
- 450 30. Li, T. *et al.* A scored human protein-protein interaction network to catalyze genomic
451 interpretation. *Nat Methods* **14**, 61–64 (2016).
- 452 31. Oyrer, J. *et al.* Ion channels in genetic epilepsy: From genes and mechanisms to disease-
453 targeted therapies. *Pharmacol Rev* **70**, 142–173 (2018).
- 454 32. Reid, C. A., Berkovic, S. F. & Petrou, S. Mechanisms of human inherited epilepsies.
455 *Progress in Neurobiology* vol. 87 41–57 Preprint at
456 <https://doi.org/10.1016/j.pneurobio.2008.09.016> (2009).
- 457 33. Ge, S. X., Jung, D., Jung, D. & Yao, R. ShinyGO: A graphical gene-set enrichment tool
458 for animals and plants. *Bioinformatics* **36**, 2628–2629 (2020).
- 459 34. Penttilä, S., Palmio, J. & Udd, B. *ANO5-Related Muscle Diseases*. *GeneReviews®*
460 (University of Washington, Seattle, 1993).
- 461 35. Xu, J. *et al.* Genetic disruption of *Ano5* in mice does not recapitulate human *ANO5*-
462 deficient muscular dystrophy. *Skelet Muscle* **5**, 1–14 (2015).
- 463 36. Thiruvengadam, G. *et al.* Anoctamin 5 Knockout Mouse Model Recapitulates LGMD2L
464 Muscle Pathology and Offers Insight Into in vivo Functional Deficits. *J Neuromuscul*
465 *Dis* **8**, S243–S255 (2021).

- 466 37. Qi, C. *et al.* Variants in ADD1 cause intellectual disability, corpus callosum dysgenesis,
467 and ventriculomegaly in humans. *Genetics in Medicine* **24**, 319–331 (2022).
- 468 38. Focchi, E. *et al.* ATM rules neurodevelopment and glutamatergic transmission in the
469 hippocampus but not in the cortex. *Cell Death Dis* **13**, 1–13 (2022).
- 470 39. Wang, J. *et al.* Epilepsy-associated genes. *Seizure* vol. 44 11–20 Preprint at
471 <https://doi.org/10.1016/j.seizure.2016.11.030> (2017).
- 472 40. Badouel, C. *et al.* Fat1 interacts with Fat4 to regulate neural tube closure, neural
473 progenitor proliferation and apical constriction during mouse brain development.
474 *Development (Cambridge)* **142**, 2781–2791 (2015).
- 475 41. Endo, M., Doi, R., Nishita, M. & Minami, Y. Ror family receptor tyrosine kinases
476 regulate the maintenance of neural progenitor cells in the developing neocortex. *J Cell*
477 *Sci* **125**, 2017–2029 (2012).
- 478 42. Iyengar, S. K. & Elston, R. C. The Genetic Basis of Complex Traits. in *Methods in*
479 *molecular biology (Clifton, N.J.)* vol. 376 71–84 (Methods Mol Biol, 2007).
- 480 43. Pitkänen, A. *et al.* Neural ECM and epilepsy. in *Progress in Brain Research* vol. 214
481 229–262 (Prog Brain Res, 2014).
- 482 44. Devinsky, O. *et al.* Epilepsy. *Nature Reviews Disease Primers* vol. 4 1–24 Preprint at
483 <https://doi.org/10.1038/nrdp.2018.24> (2018).
- 484 45. Heck, N., Garwood, J., Loeffler, J. P., Larmet, Y. & Faissner, A. Differential
485 upregulation of extracellular matrix molecules associated with the appearance of granule
486 cell dispersion and mossy fiber sprouting during epileptogenesis in a murine model of
487 temporal lobe epilepsy. *Neuroscience* **129**, 309–324 (2004).
- 488 46. Zai, C. C. *et al.* Investigation of the HSPG2 Gene in tardive dyskinesia-new data and
489 meta-analysis. *Front Pharmacol* **9**, (2018).
- 490 47. Lin, P. Y., Hung, J. H., Hsu, C. K., Chang, Y. T. & Sun, Y. T. A Novel Pathogenic
491 HSPG2 Mutation in Schwartz–Jampel Syndrome. *Front Neurol* **12**, 632336 (2021).
- 492 48. Trout, A. L. *et al.* Perlecan Domain-V Enhances Neurogenic Brain Repair After Stroke
493 in Mice. *Transl Stroke Res* **12**, 72–86 (2021).
- 494 49. Velluva, A. *et al.* Phenotype-tissue expression and exploration (PTEE) resource
495 facilitates the choice of tissue for RNA-seq-based clinical genetics studies. *BMC*
496 *Genomics* **22**, 802 (2021).
- 497 50. Heyes, S. *et al.* Genetic disruption of voltage-gated calcium channels in psychiatric and
498 neurological disorders. *Prog Neurobiol* **134**, 36–54 (2015).
- 499 51. Kambouris, M. *et al.* Biallelic SCN10A mutations in neuromuscular disease and
500 epileptic encephalopathy. *Ann Clin Transl Neurol* **4**, 26–35 (2017).

- 501 52. Shao, D. *et al.* A multi PDZ-domain protein Pdzd2 contributes to functional expression
502 of sensory neuron-specific sodium channel NaV1.8. *Molecular and Cellular*
503 *Neuroscience* **42**, 219–225 (2009).
- 504 53. Hiromoto, Y. *et al.* Hemizygous FLNA variant in West syndrome without periventricular
505 nodular heterotopia. *Hum Genome Var* **7**, 1–5 (2020).
- 506 54. Baldassarre, M., Razinia, Z., Brahme, N. N., Buccione, R. & Calderwood, D. A. Filamin
507 A controls matrix metalloproteinase activity and regulates cell invasion in human
508 fibrosarcoma cells. *J Cell Sci* **125**, 3858–3869 (2012).
- 509 55. Dityatev, A. & Fellin, T. Extracellular matrix in plasticity and epileptogenesis. *Neuron*
510 *Glia Biology* vol. 4 235–247 Preprint at <https://doi.org/10.1017/S1740925X09000118>
511 (2008).
- 512 56. Chelyshev, Y. A., Kabdesh, I. M. & Mukhamedshina, Y. O. Extracellular Matrix in
513 Neural Plasticity and Regeneration. *Cellular and Molecular Neurobiology* vol. 42 647–
514 664 Preprint at <https://doi.org/10.1007/s10571-020-00986-0> (2022).
- 515 57. Ferhat, L., Chevassus-Au-Louis, N., Khrestchatisky, M., Ben-Ari, Y. & Represa, A.
516 Seizures induce tenascin-C mRNA expression in neurons. *J Neurocytol* **25**, 535–546
517 (1996).
- 518 58. International League Against Epilepsy Consortium on Complex Epilepsies. Electronic
519 address: epilepsy-austin@unimelb.edu.au. Genetic determinants of common epilepsies:
520 a meta-analysis of genome-wide association studies. *Lancet Neurol* **13**, 893–903 (2014).

521

522 **7. Data Availability**

523 The data that supports this study are available in
524 <https://epi25.broadinstitute.org/downloads>. The code used in the analysis is deposited under
525 https://github.com/lbundalian/EPI25_VSEA.

526 **8. Acknowledgement**

527 Open Access funding was enabled and organized by Projekt DEAL. This study is funded
528 by the Else Kröner-Fresenius-Stiftung 2020_EKEA.42 to D.L.D. and the German Research
529 Foundation SFB 1052 project B10 to D.L.D. and A.G., D.L.D. is funded through the “Clinician
530 Scientist Programm, Medizinische Fakultät der Universität Leipzig”. We thank the Epi25

531 principal investigators, local staff from individual cohorts, and all of the patients with epilepsy
532 who participated in the study for making possible this global collaboration and resource to
533 advance epilepsy genetics research. This work is part of the Centers for Common Disease
534 Genomics (CCDG) program, funded by the National Human Genome Research Institute
535 (NHGRI) and the National Heart, Lung, and Blood Institute (NHLBI). CCDG-funded Epi25
536 research activities at the Broad Institute, including genomic data generation in the Broad
537 Genomics Platform, are supported by NHGRI grant UM1 HG008895 (PIs: Eric Lander, Stacey
538 Gabriel, Mark Daly, Sekar Kathiresan). The Genome Sequencing Program efforts were also
539 supported by NHGRI grant 5U01HG009088-02. The content is solely the responsibility of the
540 authors and does not necessarily represent the official views of the National Institutes of Health.
541 We thank the Stanley Center for Psychiatric Research at the Broad Institute for supporting the
542 genomic data generation efforts.

543 **9. Author Contribution**

544 **L.B.** Conceptualization; writing – original draft; formal analysis; investigation;
545 methodology. **D.L.D.** Investigation; methodology. **S.C., A.V., F.B., D.L., H.O.H**
546 Methodology; validation; writing – original draft. **Y-Y.S.** and **C-C.L.** Methodology; formal
547 analysis; writing – original draft. **A-S. K** and **A.G** Conceptualization; writing – original draft.
548 **J.R.L.** and **D.L.D.** Conceptualization; writing – original draft; supervision; funding acquisition.

549 **10. Ethical declaration**

550 This study was approved by the ethics committee of the University of Leipzig, Germany
551 (224/16-ek and 402/16-ek) and by the Epi25 Strategy Committee (approval from 16.10.2019).
552 The availability of informed consent from the tested individuals was checked as part of Epi25
553 sample inclusion criteria. Since data analysis was performed across multiple centers, we used
554 only aggregated data to assure patient anonymity.

555 **11. Conflict of Interest**

556 The authors declare no competing interests.

557

Supplemental Figures

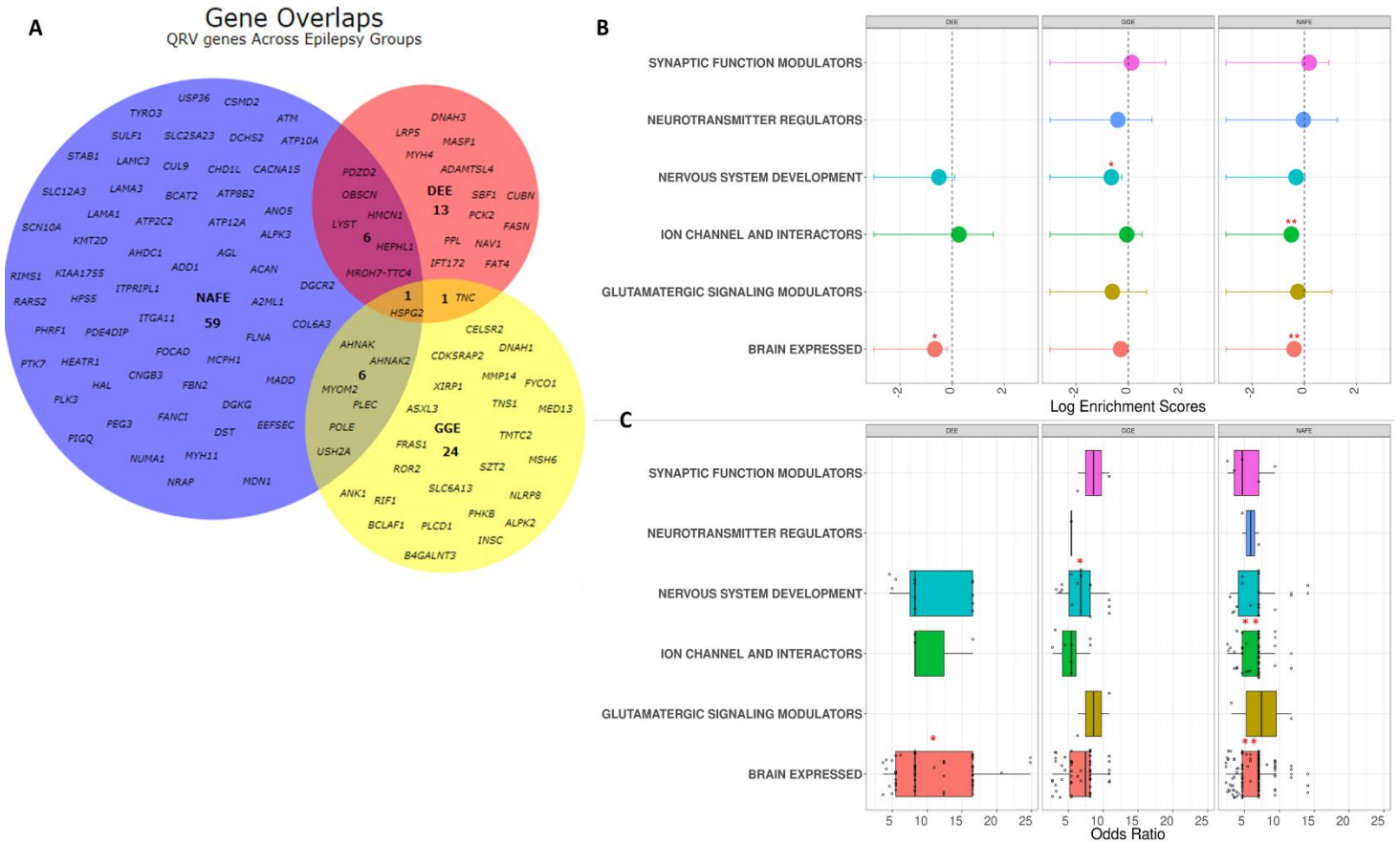


Fig. 1. A. QRV enriched genes across different epilepsy groups. For each epilepsy group, a set of genes were identified to be enriched with QRVs ($FDR \leq 0.05$, $Z \text{ score} \geq 2$). The number of genes found for NAFE are seemingly greater than the two other groups implying that rare variants in this particular group could have a larger contribution to the etiology compared to DEE and GGE.

B. Overrepresentation of QRV enriched genes. The graph shows the log enrichment scores and intervals with confidence interval = 0.95 for the overrepresentation of the QRV enriched genes. The genes enriched with QRVs were found to be overrepresented across highly expressed genes in the brain (DEE, NAFE), nervous system development (GGE), and ion channel and interactors

(NAFE) – suggesting a role in the brain and brain-related processes. C. Odds ratio distribution of QRV enriched genes across different gene sets. The graph shows the odds ratio distribution of the variants per genes across different gene sets. (* FDR \leq 0.05, ** FDR \leq 0.01)

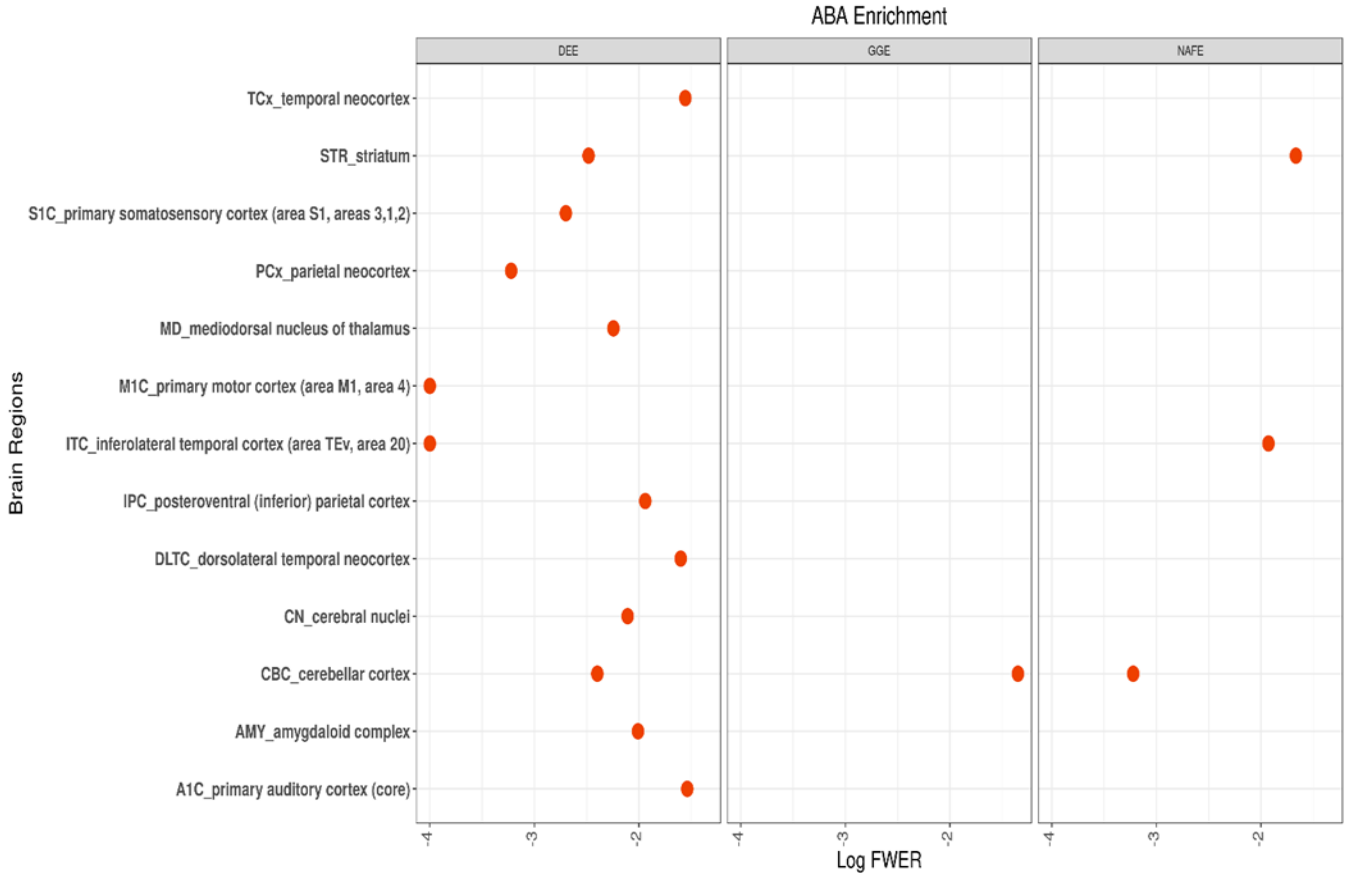


Fig. 2. A. ABA Enrichment of QRV enriched genes across all epilepsy types. The graph shows brain regions with enriched QRVs genes with respect to their developmental score and the log transformed FWER (Family wise error rate) associated with the significance of the enrichment.

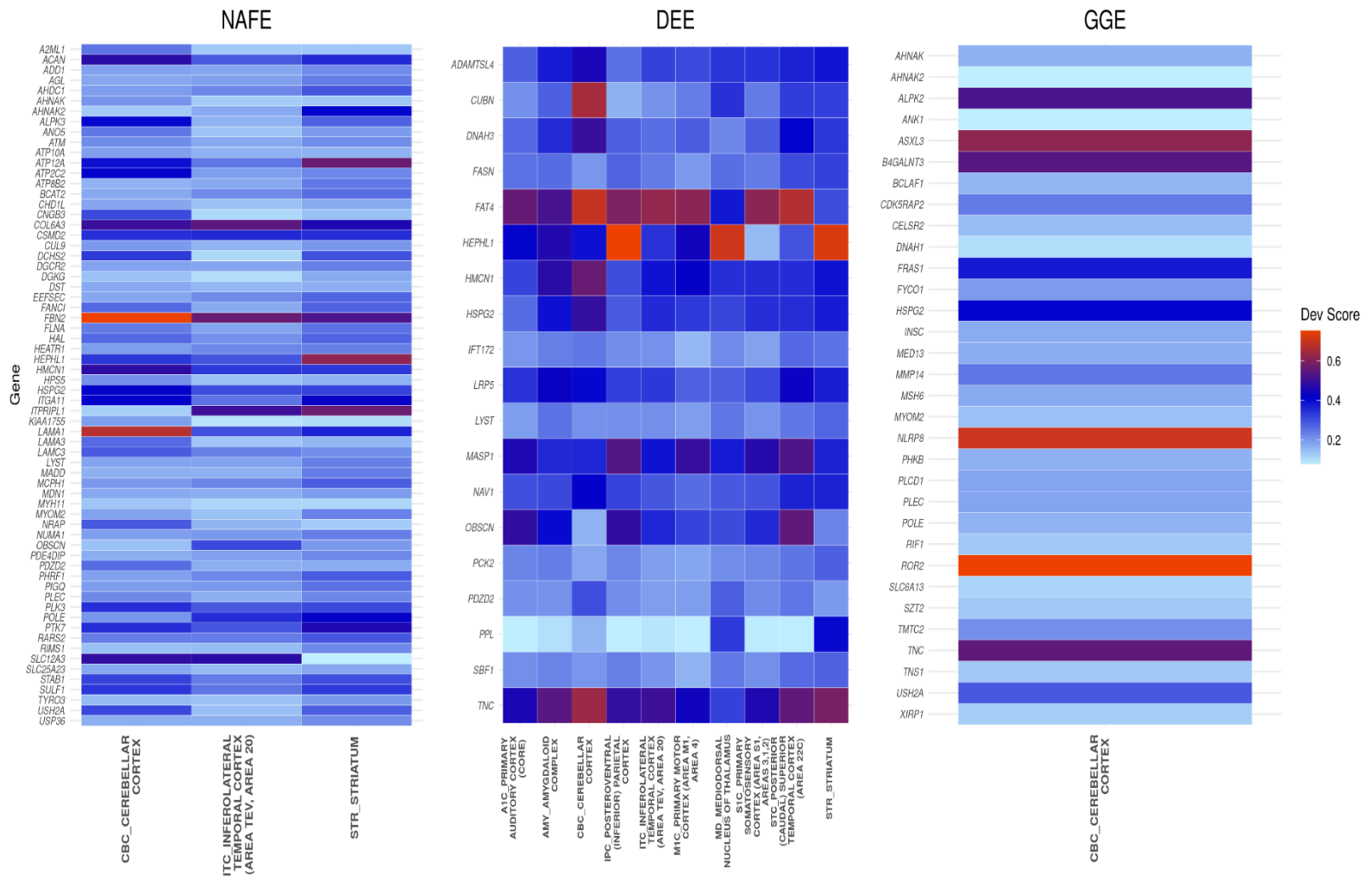


Fig. 3. ABA Developmental score of QRV enriched genes. Heatmap with developmental scores of QRV genes significantly associated with the different brain regions during development. The listed regions were identified to be overrepresented with QRV enriched genes.

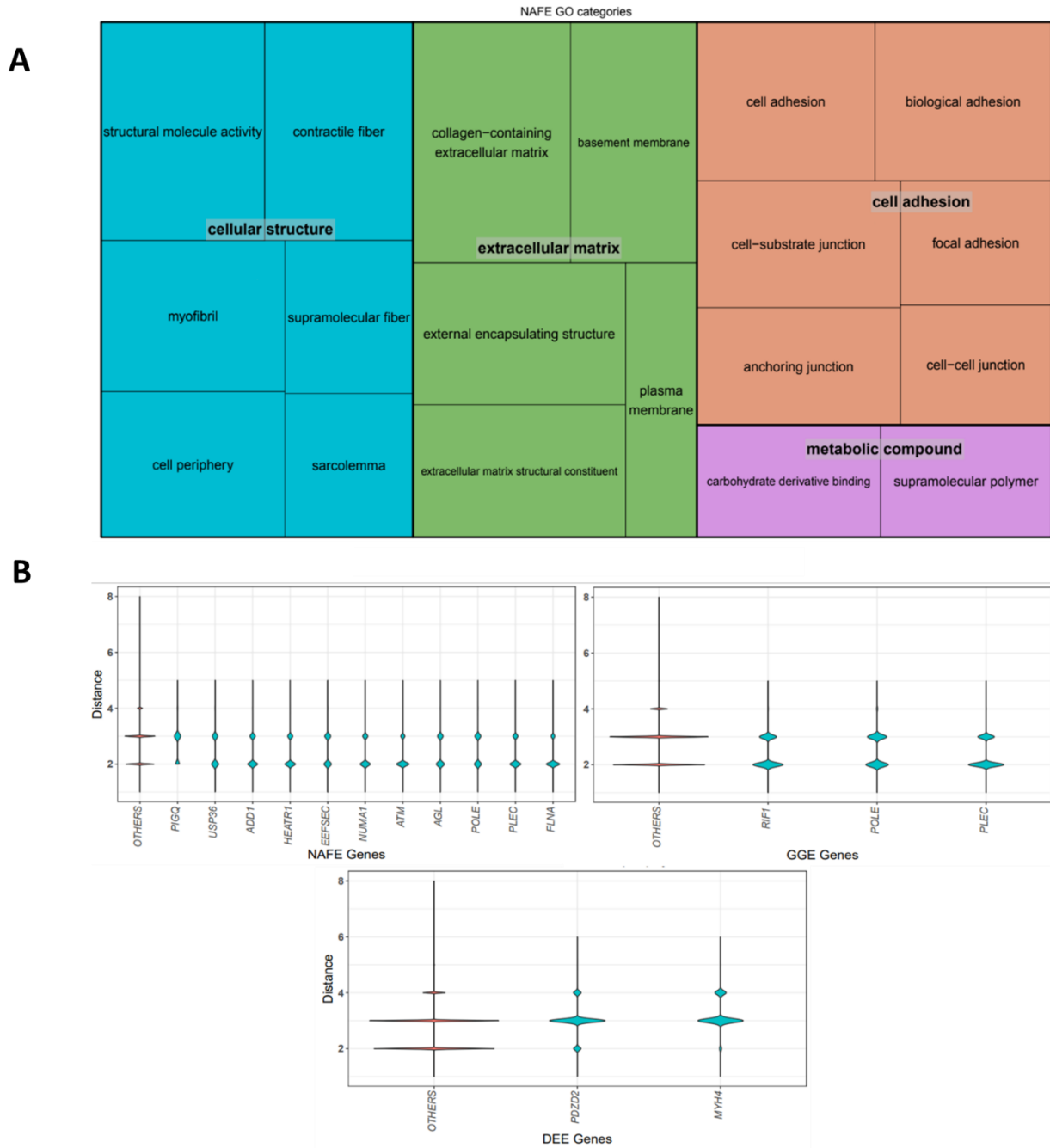


Fig. 4. A. Overrepresentation of QRV genes from NAFE. The GO terms overrepresented by the genes found to be enriched in NAFE cluster into a more general category to represent their functional class. The overrepresentation analysis was done using GoFuncR with a gene expressed in brain as background. **B. Genes and their distance to known epilepsy genes.** The distance (y-

axis) of the QRV genes (x-axis) to known epilepsy genes was determined by counting the nodes within the protein-protein interaction network. We show genes with significantly shorter distance to known epilepsy genes compared to the distance of randomly selected genes. A larger distribution assigned to the lower distance in the violin plot implies a higher number of genes with short distance to known epilepsy genes in the PIN. The short distance to the epilepsy genes could suggest a contribution to epilepsy pathomechanism.

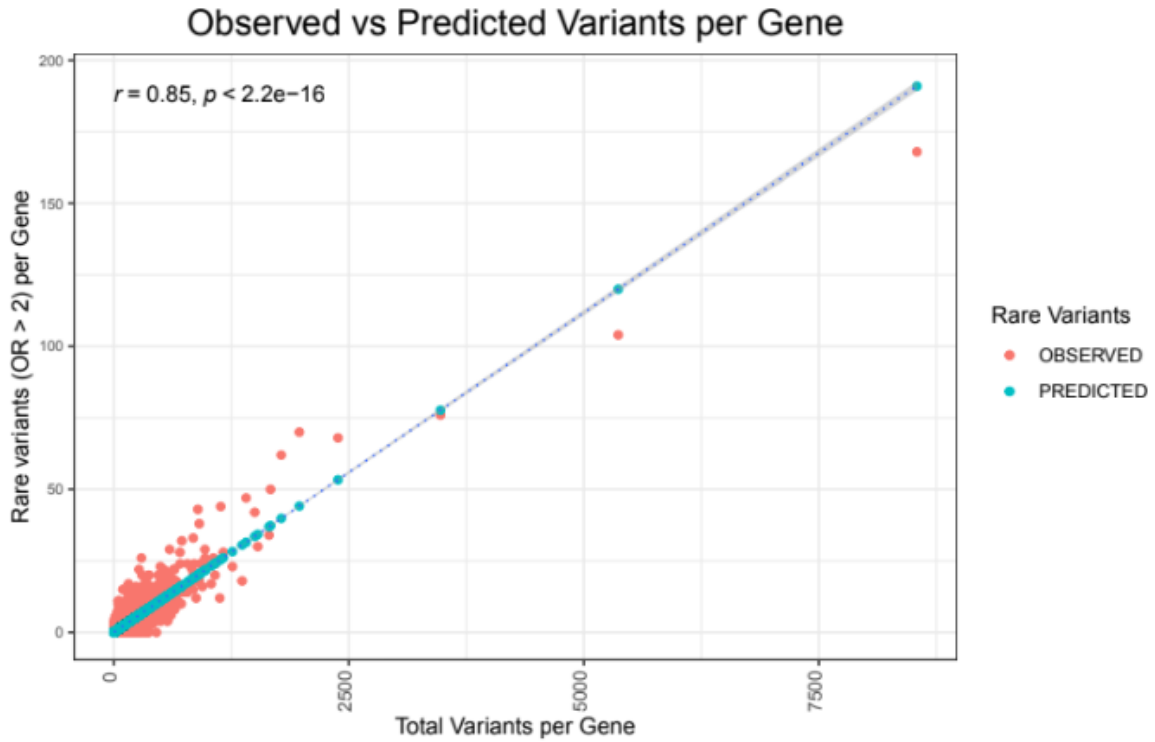


Figure S1. Relationship of the number of rare variants and total number of variants in a gene. The linear regression model ($r = 0.85$) established that for a given number of variants per gene (total variants), we can estimate the expected number of rare variants. Only those genes which had an excess of expected number variants (i.e. above the dotted slope) were considered for the VSEA.

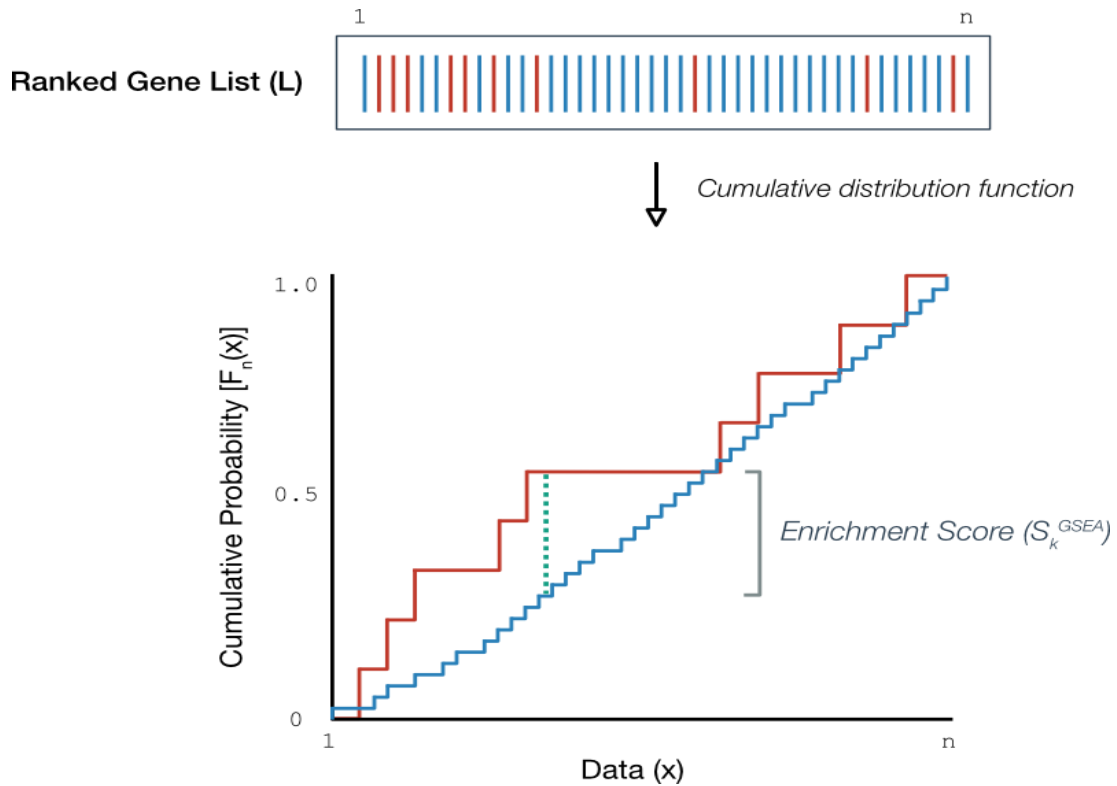


Figure S2. Cumulative ranked sum for hits and miss of QRVs. For every QRVs found in the list of variants having a higher frequency in patients – Data(x), the cumulative HIT score (red) will increment by one otherwise the cumulative MISS score (blue) will be incremented. The normalized difference between the MISS and HIT score yields the ENRICHMENT SCORE. (https://www.pathwaycommons.org/guide/primers/data_analysis/gsea/#safe)

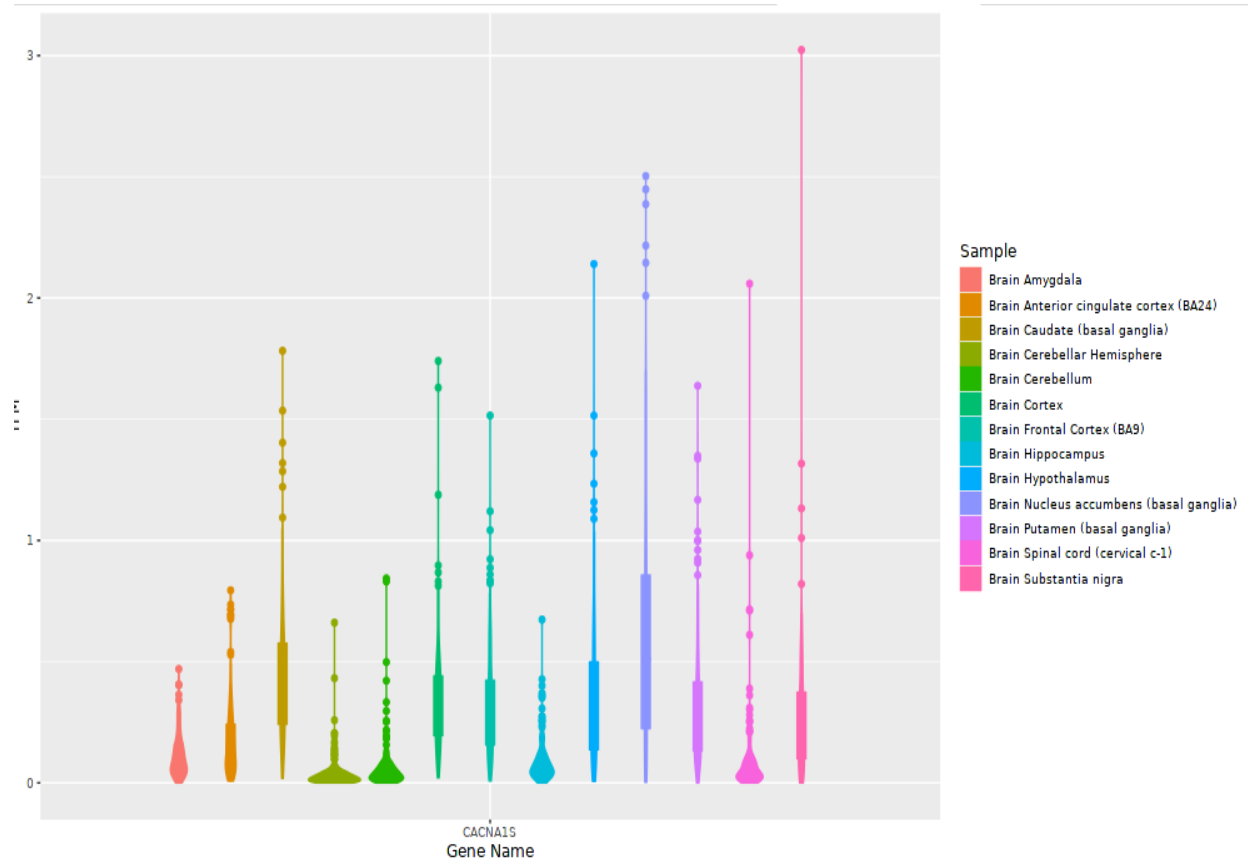


Figure S4. Expression of *CACNA1S* from Single Gene Analysis. *CACNA1S* is not that highly expressed in brain. However, using the *Single Gene Analysis* feature of PTEE (<https://bioinf.eva.mpg.de/PTEE>), we can observe the outliers in across different brain-related tissues. A previous study suggested that the voltage-gated calcium channel encoded by *CACNA1S* could play a role in mediating calcium influx and neuronal excitability (Cain, S. M., & Snutch, T. P. (2012). *Voltage-Gated Calcium Channels in Epilepsy*. In J. L. Noebels (Eds.) et. al., *Jasper's Basic Mechanisms of the Epilepsies*. (4th ed.). National Center for Biotechnology Information (US))