

1           Acute Kidney Injury, the Present on Admission indicator  
2           (POA) and sex disparities: Observational study of  
3           inpatient real world data in a Swiss tertiary health care  
4           system.

5           Hospital acquired Acute Kidney Injury: Sex disparity of the Present on Admission indicator

6

7           Karen Triep<sup>1\*</sup>, Sarah Musy<sup>2</sup>, Michael Simon<sup>2</sup>, Olga Endrich<sup>1,3</sup>

8

9           <sup>1</sup> Medical Directorate, Inselspital, University Hospital of Bern, Berne, Switzerland

10          <sup>2</sup> Institute of Nursing Science, Department Public Health, Faculty of Medicine, University of  
11          Basel, Basel, Switzerland

12          <sup>3</sup> Center for Laboratory Medicine (ZLM)/University Institute of Clinical Chemistry, Inselspital,  
13          University Hospital, University of Bern, Berne, Switzerland

14

15          \*Corresponding author:

16          Karen Triep, MD, Medical Directorate, Medizincontrolling, Inselspital, University Hospital Bern,  
17          Berne, Switzerland, Effingerstr 55, CH 3010 Bern, E-mail: karen.triep@insel.ch

18

19

## 20 **Abstract**

### 21 **Background**

22 Regarding kidney disease, sex differences in epidemiology and clinical relevance have been  
23 reported. Related to absolute and relative changes of baseline creatinine, different criteria for  
24 staging may induce under- or over-diagnosis related to sex. At the largest Swiss provider of  
25 inpatient acute health care, a clinic decision support algorithm ensures exact staging of kidney  
26 disease (2012 KDIGO Clinical Practice Guideline). Coding of the indicator “Present On  
27 Admission” was introduced at this institution in 2018 to flag post-admission conditions.

### 28 **Objective**

29 We hypothesized sex differences in health care associated acute kidney injury. Defined  
30 indicators and the distribution of stages in acute kidney injury were analysed using the POA  
31 flag. Sex differences were reported.

### 32 **Methods**

33 Retrospective observational study. Routinely collected health data, Insel Group, Berne,  
34 Switzerland, 2019 and 2020 (121'757 cases) on the patient history and intensive care  
35 treatment duration, comorbidity levels, coded diagnoses, age and sex.  
36 Software and statistic: program R, version 4.1.1, standard deviation; median, interquartile  
37 range; prop.test; standardized mean difference.

### 38 **Results**

39 The reporting of post-admission diagnoses was associated with more interhospital transfers,  
40 intensive care stays, scores of severity and treatment intensity, mechanical ventilation, age,  
41 number of diagnoses, complexity level of the related cases and mortality. A weaker association  
42 could be observed for the female population. However, mortality was higher (stage III acute  
43 kidney injury 41.6%).

## 44 **Conclusion**

45 Using the POA-flag the results reflect the clinical situation of complications and comorbidities  
46 evolving unexpectedly. As our results show sex differences, i.e. a lower morbidity of female  
47 patients for each stage, but a higher mortality, a deeper evaluation of the implied sex  
48 differences in staging of kidney disease should follow.

49 The general results confirm the necessity of a diagnosis-onset reporting in health statistic.

## 50 Introduction

51 In many studies, it is assumed that data obtained from research involving male participants  
52 could be extrapolated to females (1–5). However, the epidemiology and outcome of many  
53 diagnoses are related to biological sex (6). Sex has shown to influence medical diagnoses (7,8).  
54 Not only the biological but also other different determinants from social and economic to  
55 individual behaviours of patients and providers possibly contribute to the reported differences  
56 (9). The sex bias which is still present in the majority of research disciplines prefers male  
57 subjects despite research policies, e.g. the European research programme Horizon 2020  
58 (7)(10).

59 Kidney disease (KD) is a particularly relevant population with sex differences. There are more  
60 women with chronic kidney disease (CKD), yet only 40% of patients receiving kidney  
61 replacement therapy are female (11–14). Disparities in access to care are described for  
62 Intensive Care Unit (ICU) admission, less aggressive medical care and later initiation of renal  
63 replacement therapy (15–17). Even in high income countries, the access to kidney  
64 transplantation seems to be limited for women and they receive less and donate more organs  
65 (11,16). The lacking treatment corresponds to outcomes of CKD as well as of acute kidney  
66 injury (AKI) by increasing the acuity, incidence and severity (6,13,14,16,18). Relevant  
67 underrepresentation of female participants could be made transparent by a recent study  
68 focussing on HIV/AIDS, CKD, and cardiovascular diseases among others (10). The  
69 underrepresentation of female sex applies not only for study populations involving disease  
70 diagnosis but also several scoring systems, like severity and nursing scores for intensive care  
71 treatment (ICU; TISS-28, SAPS, NEMS) (19–21).

72 Biological sex is increasingly recognized as modulator of the pathophysiology, course and  
73 progression of disease and management of CKD. This also has been examined in hospital  
74 acquired AKI (HA-AKI) (13,22–24). The introduction of the KDIGO guidelines (2012 KDIGO  
75 Clinical Practice Guideline for AKI and the Clinical Practice Guideline for the Evaluation and

76 Management of CKD (25,26)) to assess AKI and CKD raised questions concerning sex  
77 differences due to definition criteria (23,24,27). Studies with unadjusted risk stratification  
78 found that independently from diagnosis criteria used males were significantly more likely to  
79 develop HA-AKI than females (27). Whatever the concluding discussion will convey in the  
80 future there is no doubt that for both sex the prevalences are high for both AKI and CKD, with  
81 AKI ranging from 10.7% to 31.3% (12,28,29), that sex differences in epidemiology and in the  
82 transition from AKI to CKD can be observed (22,30) and that HA-AKI is associated with  
83 increased mortality and resource consumption (31–35). Moreover, for both sex AKI, CKD, and  
84 acute-on-chronic KD are very relevant as a comorbidity, intercurrent disease, or complication  
85 (28,36,37).

86 Indexing clinical information to sex and diagnosis-timing, i.e. using a present on admission flag  
87 for hospital admission is important in order to monitor complications, intercurrent diseases  
88 and disease progression in CKD and AKI. The use of routinely collected health data of inpatient  
89 care for understanding patterns of different outcomes has been limited in Switzerland by the  
90 fact that pre-existing and post-admission conditions have been indistinguishable.

91 In Switzerland, encoded data of inpatient stays are submitted to the Federal Office of Statistics  
92 (BFS) for publication of epidemiological and economic health care statistics (38). Furthermore,  
93 they are used for pricing and reimbursement according to Swiss Diagnosis Related Groups  
94 (Swiss DRG) (39). The Swiss national medical statistics does not provide information on the  
95 timing of the diagnosis. The use of a “Present on Admission Indicator” (POA) allows to  
96 differentiate diagnoses which arise during from those arising before an inpatient stay and  
97 therefore provide an important perspective on the quality of healthcare provided. The POA  
98 flag can serve as an important information when elaborating sex differences in outcome for  
99 KD.

100 The POA indicator is dependent on the prevalence of the underlying conditions and diagnoses  
101 and the associated coding guidelines to a certain ICD code (40). Therefore, we relied on a data-

102 driven approach to assign diagnoses of AKI, CKD and acute-on-chronic KD with the help of a  
103 complex rule engine implementing the KDIGO criteria for diagnosis and staging (25,26).  
104 Since 2017, based on the official coding rules, AKI and CKD have been coded according to the  
105 KDIGO guidelines in Switzerland (40), but documentation of the exact KDIGO staging is often  
106 missing in the electronic health records (EHR) and coding and documentation quality remains  
107 to be an issue (41).

108 The aim of this retrospective observational study is to analyse sex differences in pre-existent  
109 and hospital acquired AKI with regard to administrative and clinical indicators using the POA  
110 flag.

## 111 **Materials and Methods**

### 112 **Design**

113 Routinely collected health data of inpatients in acute care was used in this retrospective  
114 observational study. The coding was conducted centralized. The coding of AKI was supported  
115 by a highly automated exact and validated calculation of AKI stages.

### 116 **Setting**

117 In Switzerland, the Insel Group's two facilities provide all levels of both in- and outpatient care  
118 and contains a tertiary care at the University Hospital Bern (one of the five University Hospital  
119 in Switzerland) and four sites with primary and secondary care including specialized care in  
120 certain disciplines. Patients show a high level of complexity and many are transferred from  
121 other hospitals with complications at admission.

### 122 **Study population**

123 The study population included all inpatients of acute care at the Insel Group's sites from  
124 01.01.2019 to 31.12.2020. Patients at admission being 16 years of age or older were included.  
125 No further exclusion criteria were applied.

## 126 Data sources

127 The following datasets were used: i) Cost data containing information on discharge unit and  
128 readmission; ii) Patient Clinical Complexity Level (PCCL) data containing severity scores per  
129 case and per diagnosis; iii) POA data containing POA values for selected ICD-10 GM codes per  
130 case; iv) Movement data containing the case related movements within the hospital during  
131 inpatient stay; v) Medical statistic datasets containing demographics, diagnosis, admission and  
132 discharge information per case. All the datasets were merged by using the inpatient case  
133 number serving as unique identification (caseID). Cases without POA values and cases missing  
134 in cost or movement datasets were deleted. Cases without PCCL values were kept, since the  
135 individual diagnosis related CCL values were used to calculate the PCCL. The approach used  
136 was (39):

137 i) Order CCL scores from biggest to smallest for each case; ii) Add a column for row number  
138 starting to 1; iii) Calculate  $CCL * e^{-(row-1)*0.4}$  for each row; iv) Sum all the above values per case;

139 v) Calculate  $\frac{\log(sum + 1)}{\log(\frac{3}{0.4})}$ ; and vi) Round result to get 0, 1, 2, 3, or 4 (values higher than 4 are  
140 forced to 4). The data were de-identified from the start and any sensitive information (such as  
141 patients' names or date of birth) were deleted.

## 142 Variables

### 143 Overview

144 Several variables were used for the current analysis. Details on each variable are presented in  
145 the next section. A short overview is provided in Table 1.

146 **Table 1. Overview variables.**

Source	Variable	Values
PCCL data	PCCL	Severity score with possible options: 0, 1, 2, 3, or 4
POA data	POA (for each diagnosis)	- Yes - No

	CCL sum	Sum of all CCL (one value per diagnosis) per case (integer value)
Medical statistics data	Sex	- Male - Female
	Age	Numeric value in years
	ICD-10-GM	All diagnosis
	ICU stay (days)	Number of days a case stayed in ICU
	ICU stay	- Yes - No
	IMC stay	- Yes - No
	Number of additional diagnosis	Count the number of additional diagnosis per case (integer value)
	Place before admission	- Home - Interhospital transfer - Otherwise specified
	Stay after discharge	- Home - Rehabilitation ext - Interhospital transfer - Death - Otherwise specified
	Type of admission	- Planned - Emergency treatment - Interhospital transfer - Otherwise specified
	Care after discharge	- Ambulatory care - Inpatient care - Rehab - Death - Otherwise specified
	Admission decision	- Initiative of the physician - Ambulance services - Patient - Otherwise specified
Discharge decision	- Initiative of the physician - Death - Otherwise specified	

147

148 **POA indicator**

149 POA reporting was introduced into the standard coding process in 2018. The inclusion list of

150 diagnoses to be reported was specifically designed by the coding department at the Insel

151 Group. It is based on the Hospital Acquired Complications list published by The Australian



152 Commission on Safety and Quality in Health Care (42). The technical implementation into the  
153 coding workplace (ID Diacos and SAP-ISH (43,44)) took place in 2017.

154 The POA coding adhered to the CDA's ICD-10-CM Official Guidelines for Coding and Reporting,  
155 fiscal year 2017, Appendix I (45). Captured values were: 1) Yes = Diagnosis was present at time  
156 of inpatient admission; 2) No = Diagnosis was not present at time of inpatient admission; 3) U  
157 (unknown) = Documentation insufficient to determine if the condition was present at the time  
158 of inpatient admission; 4) W (clinically undetermined ) = Provider unable to clinically  
159 determine whether the condition was present at the time of inpatient admission; and 5) NA  
160 (not assigned) = blank.

161 For this study, we collapsed the different POA categories into two: 1) "POA no" referring to  
162 health care associated conditions and "POA yes" (including yes, W, NA, and U) referring to  
163 conditions present at admission(45).

## 164 **Sex**

165 In alignment with the WHO and the reported data in the hospitals' administrative system, we  
166 defined the variable sex as the "biological category based on reproductive, anatomical, and  
167 genetic characteristics, generally defined as male, female, and intersex" (46). The definition of  
168 the term "gender" as given by the WHO does not apply to this study. For the current study,  
169 only the answer options "male" and "female" were available, values for biological intersex  
170 were not captured.

## 171 **ICD codes**

172 The International Statistical Classification Of Diseases And Related Health Problems, 10th  
173 revision, German Modification (ICD-10-GM)(47) is the official classification for encoding  
174 diagnoses in inpatient care in Switzerland(48).

175 In this study, the ICD-10 GM coding of category N17 (AKI and stages) relies on a data-driven  
176 approach using a complex rule engine (49). Real-time and retrospective data from the  
177 hospital's clinical data warehouse based on a SQL algorithm was used to apply the specific AKI

178 codes to inpatient stays. They were used in this study to define the AKI groups 1-3 and 9  
179 (stages I – III and not classified), see S1 Table for the selection of ICD-10 GM codes used for  
180 grouping cases according to the AKI stages.

### 181 **Severity indicators CCL and PCCL**

182 In order to outline the possible effects of secondary diagnoses on resource consumption, the  
183 ICD-10 GM codes are assessed as a complication or comorbidity for the DRG system. The  
184 severity value Complication and Comorbidity Level (CCL) is assigned. A complex algorithm of  
185 the SwissDRG system calculates the inpatient case’s specific Patient Clinical Complexity Level  
186 (PCCL) from the CCLs (cumulative effect)(39). Neither in the SwissDRG tariff system nor in this  
187 study does the calculation of the PCCL and of the CCL level per diagnosis consider whether a  
188 condition arose during the episode of care or not. The PCCL values as well as the CCL values  
189 summed per case were used in this this study (39).

### 190 **Morbidity indicators**

191 Outcome related variables like ICU and IMC stay, inter-hospital transfer and morbidity were  
192 selected, see S2 Table. Variables representing morbidity like duration of mechanical  
193 ventilation, scores used to quantify, evaluate and allocate nursing workload at intensive care  
194 unit level “Nine equivalents of nursing manpower use score” (NEMS) (19) and the severity  
195 score “Simplified Acute Physiology Score” (SAPS) (20) were chosen (S2 Table).

### 196 **Further variables**

197 Age at admission was also included. Information about admission and discharge was used and  
198 when resulting in answer options below 1% were grouped under “otherwise specified”. The  
199 variables place before admission, stay after discharge, type of admission, care after discharge,  
200 admission decision, discharge decision were included.

### 201 **Data analysis**

202 The statistical program R, version 4.2.1 for Linux was used with the following packages: dplyr,  
203 reshape2, tidyr, and janitor for data manipulation and tables; stringr for text manipulation  
204 ggplot2 and ggpubr for creating and arranging plots, see S3 Table.

205 In order to describe relevant indicators of morbidity and outcomes a stepwise descriptive  
206 analysis of the characteristics was conducted for the study population as a whole and for  
207 specific subpopulations (i.e. ICD-10 GM codes). The distribution of the POA values was  
208 subsequently stratified for the variable sex. The diagnoses were analysed referring to the  
209 hierarchical levels of the ICD-10 GM. The AKI stages required an accumulation of certain 5 digit  
210 ICD-10 GM codes (50) per group. The significance of differences in the incidence of health  
211 associated diagnosis coding with regard to sex was calculated for all AKI stages. Furthermore, a  
212 descriptive analysis of several indicators specified for AKI stage, sex and POA coding was  
213 carried out. For reason of small numbers, the coding of acute-on-chronic KD was analysed  
214 separately.

215 Mean with standard deviation and median with interquartile range were computed for  
216 numerical variables and percentages for categorical variables. An overview of the population  
217 characteristics was conducted. Stratifications for sex and for AKI stages were also conducted.  
218 Bar charts were created for stratifications of POA, sex, CKD and/or AKI stages with or without  
219 additional variables. Finally, boxplots stratified by AKI staging for numerical variables were  
220 performed.

## 221 **Ethics**

222 The Ethics Committee of the Canton Bern approved our study KEK-Nr. Req-2018-00328 for the  
223 further use of coded, health-related personal data.

## 224 **Results**

### 225 **Final data set**

226 The final datasets included 105'673 inpatient cases and 947'500 diagnoses. Overall, 3865 cases  
 227 were excluded because of missing PCCL data. An overview of the merging process is shown in  
 228 Fig 1.

229 **Fig 1. Flowchart data merging.**

230 An overview of the distribution of overview of the population characteristics is given in S4 Fig.

231 **Stratification by sex**

232 **Overview**

233 Comparing the proportion of POA values associated to indicators of patient history several sex  
 234 differences can be demonstrated (S5 Fig), e.g. health care associated diagnoses of the male  
 235 subpopulation show a higher proportion of related cases with interhospital transfer or ICU stay  
 236 than of the female subpopulation (S6 Table).

237 **ICD hierarchy**

238 Comparing the ICD blocks, categories and subcategories of ICD-10 GM codes defined for KD  
 239 the proportion of health care associated diagnoses of all diagnoses of that group is higher in  
 240 male than in female patients (S7 Table).

241 Table 2 highlights significant sex differences of health care associated diagnoses for all ICD  
 242 diagnoses, but not for AKI.

243 **Table 2. ICD present on admission (POA yes) and health care associated (POA no) all**  
 244 **diagnoses and AKI by sex.**

	POA no	All diagnoses POA yes	All	POA no	AKI POA yes	All
Female	25,747 (5.5%)	442,364 (94.5%)	468,111	448 (13.6%)	2,846 (86.4%)	3,294
Male	34,090 (5.9%)	535,711 (94%)	569,801	729 (14.6%)	4,269 (85.4%)	4,998
	$\chi^2 = 810860$ , df = 1, p-value < 2.2e-16			$\chi^2 = 1.50$ , df = 1, p-value = 0.2202		

245

246 Analysing exclusively the clinical indicators for the ICD-10 GM chapter N and for block N1 cases  
247 related to health care associated diagnoses of male patients show higher values compared to  
248 female patients (n diagnoses, SAPS, NEMS, CCL\_sum) (S8 and S9 Table).

### 249 **ICD 17 AKI stages**

250 8289 ICD diagnoses with POA reporting are grouped into 4024 diagnoses for AKI I, 1340 AKI II  
251 and 1412 AKI III. 1345 AKI ICD diagnoses are not classified by AKI stage. The absolute numbers  
252 of ICD codes associated to males is higher in all subgroups. The same accounts for the group of  
253 acute-on-chronic KD (ICD codes N17 and N18 combined).

254 Nevertheless, only slight differences can be observed in both female and male patients of all  
255 AKI and acute-on-chronic diagnoses of the specific subgroups (Fig 2 and S10 and S11 Table).

### 256 **Fig 2. ICD 17 Health care associated AKI and acute-on-chronic staging distribution (POA no)** 257 **by sex.**

258 Moreover, no significant difference in distribution of health associated diagnoses between  
259 female and male cases can be observed in any specific AKI stage.

260 The distribution of AKI and CKD stages for ICD coding of health care associated acute-on-  
261 chronic KD (ICD-10 GM N17 and N18) is displayed in Fig 3 and S12 Table.

### 262 **Fig 3. AKI and CKD staging of health care associated acute on chronic KD (POA no) by sex.**

263 With 238 health care associated ICD diagnoses of females and 356 of males respectively the  
264 biggest differences between both sex in absolute numbers can be shown for groups AKI I CKD  
265 2 and AKI III CKD 2 and 3. As most of the groups are of small number, we did not execute  
266 further analyses.

267 Figure 4 highlights the proportion of health care associated diagnoses related to the patient  
268 history for female and male patients for AKI stages I-III (Fig 4 and S13 Table).

### 269 **Fig 4. ICD N17 stages of health care associated AKI (POA no) patient history by sex.**

270 The proportion of health care associated diagnoses of females is higher for all AKI stages with  
271 regard to “admission – interhospital transfer” and for AKI II and III with regard to “discharge –

272 interhospital transfer” than of males. However, for all AKI stages the proportion of “intensive  
273 care” stays is lower.

274 Compared to males the following differences of the morbidity indicators of females for health  
275 care associated AKI can be highlighted:

276 Significant differences of median values can be demonstrated in AKI I for a shorter duration of  
277 ICU stay, in AKI II for a higher age, lower SAPS score and less CCL sum, in AKI III for a higher age  
278 and fewer ICD coded diagnoses (Fig 5 and S13).

279 **Fig 5. ICD N17 present on admission (POA yes) and health care associated (POA no) AKI**  
280 **morbidity indicators by sex.**

## 281 **Mortality**

282 The mortality related to health care associated diagnoses of AKI is higher for female patients  
283 (all AKI diagnoses 19.3 %, AKI stage II 26.1 %, III 41.6% and acute-on-chronic KD 14.3%, male  
284 patients 16.4%, 15.9%, 33.8% and 11.8% respectively) (Fig 6 and S14 Table).

285 **Fig 6. Mortality ICD hierarchy health care associated AKI (POA no) by sex.**

## 286 **Discussion**

### 287 **General remarks**

288 The objective of the study was to explore sex differences in the distribution of POA status, of  
289 associated patient history and clinical indicators. When analysing subgroups of the final  
290 dataset we focused on ICD chapter N “Diseases of the genitourinary system” containing  
291 clinically highly relevant diagnoses for both sex and showing significant differences in POA  
292 reporting. In this study we could make differences between female and male patients  
293 apparent which might induce a deeper analysis of larger populations in future. We could relate  
294 the defined outcome indicators to health care associated AKI by making use of the POA  
295 reporting and highlight sex differences. The diagnosis-onset reporting using the present on

296 admission indicator was essential to uncover sex differences in health care associated acute  
297 kidney injury.

## 298 **Main findings**

299 The reporting of health care associated diagnoses corresponds to the defined indicators of  
300 patient history and morbidity.

301 For ICD chapter N “Diseases of the genitourinary system” we found a significant sex difference  
302 in the distribution of health care associated diagnoses (females 5.9%, males 5.2%).

303 The acuity of AKI when health care associated corresponds to patient history e.g. a higher  
304 proportion of ICU stays and interhospital transfers. The female population shows a lower  
305 proportion of received ICU treatment but higher rates of interhospital transfers. The selected  
306 variables of patient history and morbidity were inconsistently linked to the severity of the AKI  
307 stages and did not correspond to mortality.

308 Significant sex differences can be demonstrated for a higher age in health care associated AKI II  
309 and III, a shorter duration of ICU stay in AKI I, lower SAPS score in AKI II and III, less CCL sum in  
310 AKI I and fewer ICD coded diagnoses in AKI III.

311 The mortality during hospitalization related to the health care associated diagnoses of all  
312 analysed ICD blocks, categories, AKI stages and acute-on-chronic KD stages was higher than of  
313 diagnoses of these groups reported not to be health care associated. The mortality was highest  
314 for the subgroups of diagnoses AKI II and III and acute-on-chronic KD of female patients  
315 (26.1%, 41.6% and 14.3% of health care associated diagnoses related to cases of female  
316 patients).

## 317 **Discussion of the findings**

318 In this study, we demonstrated the usability of diagnosis-onset reporting and identified the  
319 association of post-admission diagnoses with patient history, morbidity, mortality, and sex.

320 However, not all the analyzed groups showed statistically significant differences.

321 The diagnoses reported to be health care associated relate to a higher proportion of  
322 interhospital transfer at admission and discharge, ICU and IMC stays, elevated SAPS and NEMS  
323 scores and mechanical ventilation hours, higher age, more diagnoses, a higher CCL sum and a  
324 higher PCCL. These findings reflect the clinical situation of complications and comorbidities  
325 evolving after admission in inpatient care. Except for older age, the results of the reported  
326 health care-associated diagnoses displayed a higher morbidity and more complex patient  
327 history related to a higher degree to males than to females. We demonstrated this for all  
328 examined diagnoses (AKI and stages, acute-on-chronic KD) and found statistically significant  
329 differences in some subgroups between the POA values and sex. In our population the  
330 proportion of the diagnoses related to female patients was lower than related to male  
331 patients. In general, a low detection rate of diagnoses and stages may cause a lower admission  
332 rate to the ICU (15,17,51) and underestimated morbidity and conservative treatment could  
333 lead to worse outcome (52,53). A lower detection rate can be discussed but does not apply for  
334 AKI, CKD and acute-on-chronic KD at our institution as by automated detection (CDSS) all  
335 diagnoses and stages are captured during inpatient stay. However, the CDSS is currently not  
336 implemented for clinical use into the information system. Therefore, the calculated diagnoses  
337 and stages do not have an immediate effect on the patients' treatment if not recognized  
338 otherwise during inpatient stay. Nevertheless, the diagnoses we analysed in this study were  
339 approved by the clinician before effectively coded. We could prove in a former study that this  
340 method supports the process and reliability of diagnosis (49).

341 Our results of the analysis of the AKI stages showed lower values for indicators related to  
342 morbidity in the group of diagnoses associated to females, but a higher mortality. Therefore, a  
343 deeper evaluation of the implied sex differences in staging of KD should follow.

344 In past studies it could be shown that the incidence of HA-AKI was greater in males than  
345 females when KDIGO criteria were used but differences disappeared when staging was  
346 conducted according to the RIFLE criteria (27). On the other hand we assume that care seeking



347 behaviour and the offered intensity of care might be influenced by the patient's age alone  
348 independently from comorbidities (7,53,54). Both could explain the higher mortality we  
349 observed in the female patients.

350 As AKI is not an independent diagnosis but expression of a heterogeneous set of disorders  
351 characterized by an acute organ dysfunction, the diagnosis-onset reporting and sex differences  
352 need further investigation with regard to risk adjustment. Observational studies have shown a  
353 variety of risk factors like pre-existing susceptibilities of individual patients related to the  
354 severity of AKI (55). Concerning risk adjustment and definition of outcome indicators used in  
355 this and in other studies it should be mentioned that the underlying data might not  
356 appropriately represent females. For instance, neither the validation of the NEMS nor of the  
357 SAPS scores (and as preliminary work of the Therapeutic Intervention Scoring System - TISS-28)  
358 was based on equally distributed datasets of female and male ICU patients (19–21). Therefore,  
359 it can be questioned, if they are as appropriate to assess morbidity / severity and nursing  
360 workload for female patients as they are for male. Furthermore, risk adjustment for  
361 hypertension, diabetes mellitus, cardiological complications and liver cirrhosis which often  
362 accompany AKI, should consider that these conditions are not distributed equally and related  
363 research is impacted by lacking sex stratification (10,56).

364 As mortality in our study was highest for the subgroups of health care associated diagnoses AKI  
365 II and III and acute-on-chronic KD of female patients we should expect matching results with  
366 regard to indicators for patient history and morbidity, which we did only partially. As the only  
367 unambiguous measure was mortality, this may question the appropriateness of the other  
368 chosen indicators. The mortality rate related to the diagnoses may even be higher than  
369 demonstrated here because we only considered in-hospital mortality. To improve the future  
370 work at our institution the integration of e.g. the Charlson Comorbidity Index (57) into the  
371 health record would facilitate risk adjustment. However, it could be demonstrated in a thesis

372 (ICD-10 GM codes; German dataset) that the the rather simple approach of counting the  
373 number of coded ICD codes (58), which we applied in our study, is a usable severity indicator.  
374 Due to the small numbers, we reported only a few results for acute-on-chronic KD. Essentially  
375 they agree in interpretation with the results of AKI and staging, as we observed a higher  
376 mortality. Also, patient history and morbidity show higher values and proportions for the  
377 health care associated conditions and for mortality in the group of diagnoses associated to  
378 female patients. Nevertheless, the staging of AKI and CKD in acute-on-chronic KD should be  
379 analysed further, as until now it is often underreported at discharge and administrative data is  
380 not available to the extent of AKI and CKD at our institution and elsewhere (36)(59). Therefore,  
381 not only the diagnosis-timing of the highest stage should be analysed, but the disease  
382 progression during hospitalization measured by encoding all stages. For this purpose, instead  
383 of a simple POA flag a time stamp for the ICD codes would be suitable. As the CDSS is also  
384 designed to monitor AKI progression, it encourages analyses of the course of KD in future.  
385 Our analysis shows that by implementing the POA indicator in health care systems worldwide  
386 the utility of routinely collected health data could be improved, especially for risk adjustment.  
387 National stakeholders show a high interest in quality monitoring and benchmarking by further  
388 developed administrative datasets (60) and in improved risk models. A proposal for extension  
389 of the national data set for diagnosis timing was put forward by the authors of this study to the  
390 Swiss Federal Statistic Office in 2018 and was rejected (61). Only on regional level the Canton  
391 Zurich will introduce POA reporting in 2023 (62).  
392 Based on the findings we suggest that the POA indicators should be considered for medical  
393 statistics and quality management (63,64).

## 394 **Clinical significance**

395 The results show that POA reporting is an important contribution to make patient groups with  
396 high risk for worse outcomes transparent (mortality as a hard indicator). To improve risk  
397 adjusted analyses, monitoring, and treatment the POA reporting delivers important

398 information. Moreover, in the specific context of AKI the results show the need to monitor  
399 progression of disease closely and to stratify patient groups for differentiation.

## 400 **Strength**

401 To our knowledge, this is the first study to analyse the association of the POA indicator and sex  
402 differences to outcome and morbidity data using a highly reliable and precise dataset of ICD  
403 coding of AKI with an exact staging and of acute-on-chronic KD (according to KDIGO). A data-  
404 driven automatic approach including pre-hospitalization laboratory values ensures the reliable  
405 diagnoses, staging and subsequent ICD coding (49). Therefore, in this study data is not  
406 impacted by a low ICD coding and / or documentation quality of the diagnoses themselves.  
407 Available data of ICD coding of acute-on-chronic disease based on routinely collected health  
408 data is a strength as until now the diagnosis acute-on-chronic KD is poorly understood and very  
409 often underreported in documentation, ICD coding and POA reporting (36,41).

## 410 **Limitations**

411 As we started POA reporting at our hospitals only in 2018, data of 2 fiscal years is available until  
412 now, which limits the population size of the current analyses. Due to small numbers it was not  
413 possible to interpret sufficiently significance levels of some of the subgroups. Moreover, with  
414 regard to mortality we were limited to in-hospital mortality and did not consider mortality  
415 after hospitalization, although it is known to be elevated in association with KD (65). Another  
416 drawback of this retrospective observational study is the lacking risk adjustment, especially for  
417 relevant comorbidities and age, which might contribute to sex differences. This study does not  
418 cover overall incidence and prevalence of KD. Due to Swiss national and cantonal legislation,  
419 sex is captured with the values either “female” or “male” in administrative systems (66) and  
420 the medical statistic dataset of the FSO (variable 1.1.V01: 1- Mann, 2- Frau)(38). Therefore, the  
421 data lacks further differentiation in this study.

## 422 **Conclusions**

423 The POA indicator proved to be a valuable variable to flag diagnoses arising during the  
424 episode of care for analysis of administrative data. Diagnoses of AKI and acute-on-chronic KD  
425 could be successfully indexed and associated to patient history, morbidity, mortality and sex.  
426 Sex differences of health care associated AKI and stages could be made transparent. The  
427 higher mortality of female patients with health care associated diagnoses could not be  
428 associated to a higher morbidity of that group as defined in this study. Ruling out the  
429 possibility of sex related underdiagnosis of AKI staging, we recommended the implementation of  
430 the automated algorithm to assign the diagnoses of CKD and AKI as a CDSS into production for  
431 clinical use. Moreover, a deeper evaluation of the implied sex differences in staging of KD  
432 according to different criteria is needed.

433 In order to obtain a larger study population especially for the diagnosis acute-on-chronic  
434 disease the necessity of a diagnosis-onset reporting in national health statistic can be  
435 confirmed. Awareness of biases and disparities by transparency is a sensible step in improving  
436 clinical decision-making.

## 437 **Acknowledgments**

438 We would like to thank Agnes Schöpfer for ICD code mapping and our colleagues from the  
439 Insel Gruppe Medizincontrolling Coding Team for their tireless efforts in tracking down all the  
440 individual codes. ID Diacos and SAP-ISH for technical support.

## 441 **References**

- 442 1. Merkatz RB. Inclusion of Women in Clinical Trials: A Historical Overview of Scientific Ethical  
443 and Legal Issues. J Obstet Gynecol Neonatal Nurs [Internet]. 1998;27(1):78–84. Available  
444 from: <https://www.sciencedirect.com/science/article/pii/S0884217515335267>
- 445 2. Fullerton JT, Sadler GR. Ethical considerations related to the inclusion of women in clinical  
446 trials. J Midwifery Womens Health [Internet]. 2004;49(3):194–202. Available from:  
447 <https://www.sciencedirect.com/science/article/pii/S152695230300429X>

- 448 3. Polit DF, Beck CT. Generalization in quantitative and qualitative research: Myths and  
449 strategies. *Int J Nurs Stud* [Internet]. 2010;47(11):1451–8. Available from:  
450 <https://www.sciencedirect.com/science/article/pii/S0020748910002063>
- 451 4. Franconi F, Campesi I, Colombo D, Antonini P. Sex-Gender Variable: Methodological  
452 Recommendations for Increasing Scientific Value of Clinical Studies. *Cells*. 2019 May;8(5).
- 453 5. U.S. Department of Health and Human Services National Institutes of Health. NIH Policy and  
454 Guidelines on The Inclusion of Women and Minorities as Subjects in Clinical Research  
455 [Internet]. 2017. Available from: [https://grants.nih.gov/policy/inclusion/women-and-](https://grants.nih.gov/policy/inclusion/women-and-minorities.htm)  
456 [minorities.htm](https://grants.nih.gov/policy/inclusion/women-and-minorities.htm)
- 457 6. Roth GA, Abate D, Abate KH, Abay SM, Abbafati C, Abbasi N, et al. Global, regional, and  
458 national age-sex-specific mortality for 282 causes of death in 195 countries and territories,  
459 1980–2017: a systematic analysis for the Global Burden of Disease Study 2017. *Lancet*  
460 [Internet]. 2018;392(10159):1736–88. Available from:  
461 <https://www.sciencedirect.com/science/article/pii/S0140673618322037>
- 462 7. Spector ND, Overholser B. Examining Gender Disparity in Medicine and Setting a Course  
463 Forward. *JAMA Netw Open* [Internet]. 2019 Jun 28;2(6):e196484–e196484. Available from:  
464 <https://doi.org/10.1001/jamanetworkopen.2019.6484>
- 465 8. Verdonk P, Benschop YWM, de Haes HCJM, Lagro-Janssen TLM. From gender bias to gender  
466 awareness in medical education. *Adv Heal Sci Educ* [Internet]. 2009;14(1):135–52. Available  
467 from: <https://doi.org/10.1007/s10459-008-9100-z>
- 468 9. Thompson AE, Anisimowicz Y, Miedema B, Hogg W, Wodchis WP, Aubrey-Bassler K. The  
469 influence of gender and other patient characteristics on health care-seeking behaviour: a  
470 QUALICOPC study. *BMC Fam Pract* [Internet]. 2016;17(1):38. Available from:  
471 <https://doi.org/10.1186/s12875-016-0440-0>
- 472 10. Feldman S, Ammar W, Lo K, Trepman E, van Zuylen M, Etzioni O. Quantifying Sex Bias in  
473 Clinical Studies at Scale With Automated Data Extraction. *JAMA Netw Open* [Internet]. 2019

- 474 Jul 3;2(7):e196700–e196700. Available from:  
475 <https://doi.org/10.1001/jamanetworkopen.2019.6700>
- 476 11. Thurlow JS, Joshi M, Yan G, Norris KC, Agodoa LY, Yuan CM, et al. Global Epidemiology of End-  
477 Stage Kidney Disease and Disparities in Kidney Replacement Therapy. *Am J Nephrol*.  
478 2021;52(2):98–107.
- 479 12. Elgohary M, Saady A. Global Prevalence of Chronic Kidney Disease. 21st Int Conf Struct Mech  
480 React Technol (SMiRT 21). 2011;1–18.
- 481 13. Bikbov B, Perico N, Remuzzi G. Disparities in Chronic Kidney Disease Prevalence among Males  
482 and Females in 195 Countries: Analysis of the Global Burden of Disease 2016 Study. *Nephron*  
483 [Internet]. 2018;313–8. Available from: <https://www.karger.com/DOI/10.1159/000489897>
- 484 14. Carrero JJ, Hecking M, Chesnaye NC, Jager KJ. Sex and gender disparities in the epidemiology  
485 and outcomes of chronic kidney disease. *Nat Rev Nephrol* [Internet]. 2018;14(3):151–64.  
486 Available from: <https://doi.org/10.1038/nrneph.2017.181>
- 487 15. Valentin A, Jordan B, Lang T, Hiesmayr M, Metnitz PGH. Gender-related differences in  
488 intensive care: A multiple-center cohort study of therapeutic interventions and outcome in  
489 critically ill patients\*. *Crit Care Med* [Internet]. 2003;31(7). Available from:  
490 [https://journals.lww.com/ccmjournal/Fulltext/2003/07000/Gender\\_related\\_differences\\_in\\_i](https://journals.lww.com/ccmjournal/Fulltext/2003/07000/Gender_related_differences_in_intensive_care__A.2.aspx)  
491 [ntensive\\_care\\_\\_A.2.aspx](https://journals.lww.com/ccmjournal/Fulltext/2003/07000/Gender_related_differences_in_intensive_care__A.2.aspx)
- 492 16. Carrero J-J, Hecking M, Ulasi I, Sola L, Thomas B. Chronic Kidney Disease, Gender, and Access  
493 to Care: A Global Perspective. *Semin Nephrol* [Internet]. 2017;37(3):296–308. Available from:  
494 <https://www.sciencedirect.com/science/article/pii/S0270929517300098>
- 495 17. Hill A, Ramsey C, Dodek P, Kozek J, Fransoo R, Fowler R, et al. Examining mechanisms for  
496 gender differences in admission to intensive care units. *Health Serv Res* [Internet].  
497 2020;55(1):35–43. Available from: [https://onlinelibrary.wiley.com/doi/abs/10.1111/1475-](https://onlinelibrary.wiley.com/doi/abs/10.1111/1475-6773.13215)  
498 [6773.13215](https://onlinelibrary.wiley.com/doi/abs/10.1111/1475-6773.13215)
- 499 18. Portoles JM, Lopez P, De Valdenebro Recio M, Sanchez Briales P, Luisa Serrano Salazar M,

- 500 Ramos-Vegue A, et al. MO331: Acute Kidney Failure as a Risk Factor for Longer Hospital Stay,  
501 Renal Replacement Therapy and Mortality: A Public Health System Analysis. *Nephrol Dial*  
502 *Transplant* [Internet]. 2022 May 1;37(Supplement\_3):gfac068.041. Available from:  
503 <https://doi.org/10.1093/ndt/gfac068.041>
- 504 19. Miranda DR, Moreno R, Iapichino G. Nine equivalents of nursing manpower use score  
505 (NEMS). *Intensive Care Med* [Internet]. 1997;23(7):760–5. Available from:  
506 <https://doi.org/10.1007/s001340050406>
- 507 20. Le Gall J-R, Lemeshow S, Saulnier F. A New Simplified Acute Physiology Score (SAPS II) Based  
508 on a European/North American Multicenter Study. *JAMA* [Internet]. 1993 Dec  
509 22;270(24):2957–63. Available from: <https://doi.org/10.1001/jama.1993.03510240069035>
- 510 21. Reis Miranda D, de Rijk A, Schaufeli W. Simplified Therapeutic Intervention Scoring System:  
511 The TISS-28 items--Results from a multicenter study. *Crit Care Med* [Internet]. 1996;24(1).  
512 Available from:  
513 [https://journals.lww.com/ccmjournal/Fulltext/1996/01000/Simplified\\_Therapeutic\\_Interventi](https://journals.lww.com/ccmjournal/Fulltext/1996/01000/Simplified_Therapeutic_Interventi)  
514 [on\\_Scoring.12.aspx](https://journals.lww.com/ccmjournal/Fulltext/1996/01000/Simplified_Therapeutic_Interventi)
- 515 22. Cobo G, Hecking M, Port FK, Exner I, Lindholm B, Stenvinkel P, et al. Sex and gender  
516 differences in chronic kidney disease: progression to end-stage renal disease and  
517 haemodialysis. *Clin Sci* [Internet]. 2016 Jun 1;130(14):1147–63. Available from:  
518 <https://doi.org/10.1042/CS20160047>
- 519 23. O’Leary JG, Wong F, Reddy KR, Garcia-Tsao G, Kamath PS, Biggins SW, et al. Gender-Specific  
520 Differences in Baseline, Peak, and Delta Serum Creatinine: The NACSELD Experience. *Dig Dis*  
521 *Sci* [Internet]. 2017;62(3):768–76. Available from: [https://doi.org/10.1007/s10620-016-4416-](https://doi.org/10.1007/s10620-016-4416-7)  
522 [7](https://doi.org/10.1007/s10620-016-4416-7)
- 523 24. Neugarten J, Golestaneh L. Sex Differences in Acute Kidney Injury. *Semin Nephrol* [Internet].  
524 2022;42(2):208–18. Available from:  
525 <https://www.sciencedirect.com/science/article/pii/S0270929522000183>

- 526 25. Eknoyan G LN. KDIGO 2012 Clinical Practice Guideline for the Evaluation and Management of  
527 Chronic Kidney Disease [Internet]. KDIGO 2012 clinical practice guideline for the evaluation  
528 and management of chronic kidney disease. 2012. Available from:  
529 <https://kdigo.org/guidelines/ckd-evaluation-and-management/>
- 530 26. Kellum JA, Lameire N, Aspelin P, Barsoum RS, Burdmann EA GS et al. KDIGO Clinical Practice  
531 Guideline for Acute Kidney Injury [Internet]. Improving global outcomes (KDIGO) acute kidney  
532 injury work group. KDIGO clinical practice guideline for acute kidney injury. 2012. Available  
533 from: <https://kdigo.org/guidelines/acute-kidney-injury/>
- 534 27. Srisawat N, Sileanu FE, Murugan R, Bellomo R, Calzavacca P, Cartin-Ceba R, et al. Variation in  
535 Risk and Mortality of Acute Kidney Injury in Critically Ill Patients: A Multicenter Study. *Am J*  
536 *Nephrol* [Internet]. 2015;41(1):81–8. Available from:  
537 <https://www.karger.com/DOI/10.1159/000371748>
- 538 28. Lewington AJP, Cerdá J, Mehta RL. Raising awareness of acute kidney injury: a global  
539 perspective of a silent killer. *Kidney Int* [Internet]. 2013;84(3):457–67. Available from:  
540 <https://www.sciencedirect.com/science/article/pii/S0085253815559917>
- 541 29. Gaudry S, Hajage D, Benichou N, Chaïbi K, Barbar S, Zarbock A, et al. Delayed versus early  
542 initiation of renal replacement therapy for severe acute kidney injury: a systematic review and  
543 individual patient data meta-analysis of randomised clinical trials. *Lancet* [Internet]. 2020 Apr  
544 [cited 2020 Apr 24];0(0). Available from:  
545 <https://linkinghub.elsevier.com/retrieve/pii/S0140673620305316>
- 546 30. Lima-Posada I, Portas-Cortés C, Pérez-Villalva R, Fontana F, Rodríguez-Romo R, Prieto R, et al.  
547 Gender Differences in the Acute Kidney Injury to Chronic Kidney Disease Transition. *Sci Rep*  
548 [Internet]. 2017;7(1):12270. Available from: <https://doi.org/10.1038/s41598-017-09630-2>
- 549 31. Couser WG, Remuzzi G, Mendis S, Tonelli M. The contribution of chronic kidney disease to the  
550 global burden of major noncommunicable diseases. *Kidney Int* [Internet]. 2011 Dec 2 [cited  
551 2019 Aug 9];80(12):1258–70. Available from:



- 552 <https://www.sciencedirect.com/science/article/pii/S0085253815550047?via%3Dihub>
- 553 32. Jurawan N, Pankhurst T, Ferro C, Nightingale P, Coleman J, Rosser D, et al. Hospital acquired  
554 Acute Kidney Injury is associated with increased mortality but not increased readmission rates  
555 in a UK acute hospital. *BMC Nephrol* [Internet]. 2017;18(1):317. Available from:  
556 <https://doi.org/10.1186/s12882-017-0729-9>
- 557 33. Wang HE, Muntner P, Chertow GM, Warnock DG. Acute Kidney Injury and Mortality in  
558 Hospitalized Patients. *Am J Nephrol* [Internet]. 2012;35(4):349–55. Available from:  
559 <https://www.karger.com/DOI/10.1159/000337487>
- 560 34. Huang L, Xue C, Kuai J, Ruan M, Yang B, Chen X, et al. Clinical Characteristics and Outcomes of  
561 Community-Acquired versus Hospital-Acquired Acute Kidney Injury: A Meta-Analysis. *Kidney  
562 Blood Press Res* [Internet]. 2019;44(5):879–96. Available from:  
563 <https://www.karger.com/DOI/10.1159/000502546>
- 564 35. Wonnacott A, Meran S, Amphlett B, Talabani B, Phillips A. Epidemiology and Outcomes in  
565 Community-Acquired Versus Hospital-Acquired AKI. *Clin J Am Soc Nephrol* [Internet]. 2014 Jun  
566 6;9(6):1007 LP – 1014. Available from:  
567 <http://cjasn.asnjournals.org/content/9/6/1007.abstract>
- 568 36. Hamroun A, Frimat L, Laville M, Metzger M, Combe C, Fouque D, et al. New insights into  
569 acute-on-chronic kidney disease in nephrology patients: the CKD-REIN study. *Nephrol Dial  
570 Transplant* [Internet]. 2022 Sep 1;37(9):1700–9. Available from:  
571 <https://doi.org/10.1093/ndt/gfab249>
- 572 37. Shlipak MG, Tummalapalli SL, Boulware LE, Grams ME, Ix JH, Jha V, et al. The case for early  
573 identification and intervention of chronic kidney disease: conclusions from a Kidney Disease:  
574 Improving Global Outcomes (KDIGO) Controversies Conference. *Kidney Int* [Internet]. 2021  
575 Jan 1 [cited 2022 Apr 13];99(1):34–47. Available from:  
576 <https://pubmed.ncbi.nlm.nih.gov/33127436/>
- 577 38. Bundesamt für Statistik (BFS). Medizinische Statistik der Krankenhäuser [Internet].

- 578 Medizinische Statistik der Krankenhäuser - Variablen der Medizinischen Statistik.  
579 Spezifikationen gültig ab 1.1.2019. 2019 [cited 2019 Jun 12]. Available from:  
580 <https://www.bfs.admin.ch/bfs/de/home/statistiken/gesundheit/erhebungen/ms.html>
- 581 39. SwissDRG. SwissDRG System 9.0/2020 [Internet]. 2019 [cited 2022 Jul 15]. Available from:  
582 <https://www.swissdrg.org/de/akutsomatik/archiv-swissdrg-system/swissdrg-system-902020>
- 583 40. Bundesamt für Statistik. Kodierungshandbuch. Instrumente zur medizinischen Kodierung.  
584 2020.
- 585 41. Vlasschaert MEO, Bejaimal SAD, Hackam DG, Quinn R, Cuerden MS, Oliver MJ, et al. Validity of  
586 Administrative Database Coding for Kidney Disease: A Systematic Review. Am J Kidney Dis  
587 [Internet]. 2011;57(1):29–43. Available from:  
588 <https://www.sciencedirect.com/science/article/pii/S0272638610013983>
- 589 42. Australian Commission on Safety and Quality in Health Care. Hospital-Acquired Complications  
590 (HACs) List - Specifications - Version 3.1 (12th edn) [Internet]. 2019 [cited 2022 Jul 15].  
591 Available from: [https://www.safetyandquality.gov.au/publications-and-resources/resource-](https://www.safetyandquality.gov.au/publications-and-resources/resource-library/hospital-acquired-complications-hacs-list-specifications-version-31-12th-edn)  
592 [library/hospital-acquired-complications-hacs-list-specifications-version-31-12th-edn](https://www.safetyandquality.gov.au/publications-and-resources/resource-library/hospital-acquired-complications-hacs-list-specifications-version-31-12th-edn)
- 593 43. SAP. SAP (Schweiz) AG „Systemanalyse Programmentwicklung“ [Internet]. Impressum. 2022.  
594 Available from: <https://www.sap.com/swiss/about/legal/impressum.html>
- 595 44. ID. ID Suisse AG “Information und Dokumentation im Gesundheitswesen” [Internet].  
596 Impressum. 2022. Available from: <https://www.id-suisse-ag.ch/impressum/>
- 597 45. Health C for M and MS (CMS) and the NC for, (NCHS) S. ICD-10-CM Official Guidelines for  
598 Coding and Reporting [Internet]. 2017. 109–114 p. Available from:  
599 <https://www.cms.gov/medicare/coding/icd10/downloads/2017-icd-10-cm-guidelines.pdf>
- 600 46. World Health Organization. Sexual health [Internet]. Sexual Health definitions. 2022. Available  
601 from: [https://www.who.int/health-topics/sexual-health#tab=tab\\_2](https://www.who.int/health-topics/sexual-health#tab=tab_2)
- 602 47. Deutsches Institut für Medizinische Dokumentation und Information. ICD-10-GM [Internet].  
603 ICD-10\_GM. 2016 [cited 2019 Sep 23]. Available from:

- 604 <https://www.dimdi.de/dynamic/de/klassifikationen/icd/icd-10-gm/>
- 605 48. Bundesamt für Statistik. Instrumente zur medizinischen Kodierung [Internet]. Gültige  
606 Instrumente zur medizinischen Kodierung je Jahr. [cited 2020 Nov 25]. Available from:  
607 [https://www.bfs.admin.ch/bfs/de/home/statistiken/gesundheit/nomenklaturen/medkk/instr](https://www.bfs.admin.ch/bfs/de/home/statistiken/gesundheit/nomenklaturen/medkk/instrumente-medizinische-kodierung.html)  
608 [umente-medizinische-kodierung.html](https://www.bfs.admin.ch/bfs/de/home/statistiken/gesundheit/nomenklaturen/medkk/instrumente-medizinische-kodierung.html)
- 609 49. Triep K, Leichtle AB, Meister M, Fiedler GM, Endrich O. Real-world Health Data and Precision  
610 for the Diagnosis of Acute Kidney Injury, Acute-on-Chronic Kidney Disease, and Chronic Kidney  
611 Disease: Observational Study. *JMIR Med Inf* 2022;10(1)e31356  
612 <https://medinform.jmir.org/2022/1/e31356> [Internet]. 2022 Jan 25 [cited 2022 Apr  
613 14];10(1):e31356. Available from: <https://medinform.jmir.org/2022/1/e31356>
- 614 50. Federal Institute for Drugs and Medical Devices Germany. Tabular List of ICD-10-GM  
615 [Internet]. Classifications. 2022. Available from: [https://www.bfarm.de/EN/Code-](https://www.bfarm.de/EN/Code-systems/Classifications/ICD/ICD-10-GM/Tabular-list/_node.html)  
616 [systems/Classifications/ICD/ICD-10-GM/Tabular-list/\\_node.html](https://www.bfarm.de/EN/Code-systems/Classifications/ICD/ICD-10-GM/Tabular-list/_node.html)
- 617 51. Ancochea J, Izquierdo JL, Group SC-19 R, Soriano JB. Evidence of gender bias in the diagnosis  
618 and management of COVID-19 patients: A Big Data analysis of Electronic Health Records.  
619 medRxiv [Internet]. 2020 Jan 1;2020.07.20.20157735. Available from:  
620 <http://medrxiv.org/content/early/2020/07/26/2020.07.20.20157735.abstract>
- 621 52. Kister TS, Remmler J, Schmidt M, Federbusch M, Eckelt F, Isermann B, et al. Acute kidney  
622 injury and its progression in hospitalized patients-Results from a retrospective multicentre  
623 cohort study with a digital decision support system. *PLoS One* [Internet]. 2021 Jul 1 [cited  
624 2022 Apr 25];16(7). Available from: <https://pubmed.ncbi.nlm.nih.gov/34252151/>
- 625 53. Hansen K. Gender Bias. In: Raz Mandaand Pouryahya P, editor. *Decision Making in Emergency*  
626 *Medicine: Biases, Errors and Solutions* [Internet]. Singapore: Springer Singapore; 2021. p.  
627 167–72. Available from: [https://doi.org/10.1007/978-981-16-0143-9\\_27](https://doi.org/10.1007/978-981-16-0143-9_27)
- 628 54. Tong A, Evangelidis N, Kurnikowski A, Lewandowski M, Bretschneider P, Oberbauer R, et al.  
629 Nephrologists' Perspectives on Gender Disparities in CKD and Dialysis. *Kidney Int Reports*

- 630 [Internet]. 2022;7(3):424–35. Available from:
- 631 <https://www.sciencedirect.com/science/article/pii/S2468024921015059>
- 632 55. Schiff H. Gender differences in the susceptibility of hospital-acquired acute kidney injury:  
633 more questions than answers. *Int Urol Nephrol* [Internet]. 2020;52(10):1911–4. Available  
634 from: <https://doi.org/10.1007/s11255-020-02526-7>
- 635 56. Weber AM, Gupta R, Abdalla S, Cislighi B, Meausoone V, Darmstadt GL. Gender-related data  
636 missingness, imbalance and bias in global health surveys. *BMJ Glob Heal* [Internet]. 2021 Nov  
637 1;6(11):e007405. Available from: <http://gh.bmj.com/content/6/11/e007405.abstract>
- 638 57. Charlson ME, Pompei P, Ales KL, MacKenzie CR. A new method of classifying prognostic  
639 comorbidity in longitudinal studies: Development and validation. *J Chronic Dis*.  
640 1987;40(5):373–83.
- 641 58. Hagn S. Vergleich verschiedener Komorbiditäts-Scores in Routinedaten der stationären  
642 Versorgung [Internet]. Ludwig-Maximilians-Universität München; 2014. Available from:  
643 [https://edoc.ub.uni-muenchen.de/17118/1/Hagn\\_Stefan.pdf](https://edoc.ub.uni-muenchen.de/17118/1/Hagn_Stefan.pdf)
- 644 59. Siew ED, Basu RK, Wunsch H, Shaw AD, Goldstein SL, Ronco C, et al. Optimizing Administrative  
645 Datasets to Examine Acute Kidney Injury in the Era of Big Data: Workgroup Statement from  
646 the 15th ADQI Consensus Conference. *Can J Kidney Heal Dis* [Internet]. 2016 Jan 1;3:98.  
647 Available from: <https://doi.org/10.1186/s40697-016-0098-5>
- 648 60. Triep K, Beck T, Donzé J, Endrich O. Diagnostic value and reliability of the present-on-  
649 admission indicator in different diagnosis groups: pilot study at a Swiss tertiary care center.  
650 *BMC Health Serv Res* [Internet]. 2019 Dec 9 [cited 2019 Nov 17];19(1):23. Available from:  
651 <https://bmchealthservres.biomedcentral.com/articles/10.1186/s12913-018-3858-3>
- 652 61. Bundesamt für Statistik. Prozess zum Antragsverfahren [Internet]. Medizinische Statistik der  
653 Krankenhäuser. 2022 [cited 2022 Nov 6]. Available from:  
654 <https://www.bfs.admin.ch/bfs/de/home/statistiken/gesundheit/nomenklaturen/medkk/antragsverfahren.assetdetail.22604906.html>  
655

- 656 62. Gesundheit ZGA für. Abgabetermine Daten 2022, Information zu SDEP und KS. 2022;1–10.  
657 Available from: [https://www.zh.ch/content/dam/zhweb/bilder-](https://www.zh.ch/content/dam/zhweb/bilder-dokumente/themen/gesundheit/gesundheitsversorgung/spitaeler_kliniken/daten_und_statistik_der_listenspitaeler/datenerhebung/datenerhebung-2022/julibrief_2022.pdf)  
658 [dokumente/themen/gesundheit/gesundheitsversorgung/spitaeler\\_kliniken/daten\\_und\\_statistik\\_der\\_listenspitaeler/datenerhebung/datenerhebung-2022/julibrief\\_2022.pdf](https://www.zh.ch/content/dam/zhweb/bilder-dokumente/themen/gesundheit/gesundheitsversorgung/spitaeler_kliniken/daten_und_statistik_der_listenspitaeler/datenerhebung/datenerhebung-2022/julibrief_2022.pdf)  
659
- 660 63. GQMG. Empfehlungen der GQMG zur Einführung eines Present-On-Admission-Kennzeichens  
661 (POA) für administrative Routinedaten in Krankenhäusern. Z Evid Fortbild Qual Gesundhwes  
662 [Internet]. 2012;106(3):231–2. Available from:  
663 <https://www.sciencedirect.com/science/article/pii/S1865921712000797>
- 664 64. Dalton JE, Glance LG, Mascha EJ, Ehrlinger J, Chamoun N, Sessler DI. Impact of Present-on-  
665 admission Indicators on Risk-adjusted Hospital Mortality Measurement. Anesthesiology  
666 [Internet]. 2013 Jun 1;118(6):1298–306. Available from:  
667 <https://doi.org/10.1097/ALN.0b013e31828e12b3>
- 668 65. Gameiro J, Marques F, Lopes JA. Long-term consequences of acute kidney injury: a narrative  
669 review. Clin Kidney J [Internet]. 2020 Nov 19;14(3):789–804. Available from:  
670 <https://pubmed.ncbi.nlm.nih.gov/33777362>
- 671 66. Eidgenossenschaft DBS. Geschlecht und Vornamen im Personenstandsregister unbürokratisch  
672 ändern [Internet]. Medienmitteilung. 2019. Available from:  
673 <https://www.ejpd.admin.ch/ejpd/de/home/aktuell/news/2019/2019-12-063.html>

## 674 **Supporting information captions**

- 675 S1 Table. Groups AKI ICD 17 5 digit.
- 676 S2 Table. Variables morbidity indicators and patient history.
- 677 S3 Table. Software packages.
- 678 S4 Fig. Overview of the population characteristics.
- 679 S5 Fig. Patient history female male overview.
- 680 S6 Table. Patient history female male overview.
- 681 S7 Table. ICD chapter N health care associated (POA no) distribution by sex.

- 682 S8 Table. ICD all 2 digit level health care associated (POA no) morbidity indicators by sex.
- 683 S9 Table. ICD N 1 and 2 digit level health care associated (POA no) morbidity indicators by sex.
- 684 S10 Table. ICD 17 AKI staging significance health care associated (POA no) no by sex.
- 685 S11 Table. AKI and CKD staging of health care associated acute on chronic KD (POA no) by sex.
- 686 S12 Table. ICD N17 AKI 5 digit level health care associated (POA no) patient history by sex.
- 687 S13 Table. ICD N17 AKI health care associated (POA no) morbidity indicators by sex.
- 688 S14 Table. Mortality ICD hierarchy health care associated (POA no) by sex.

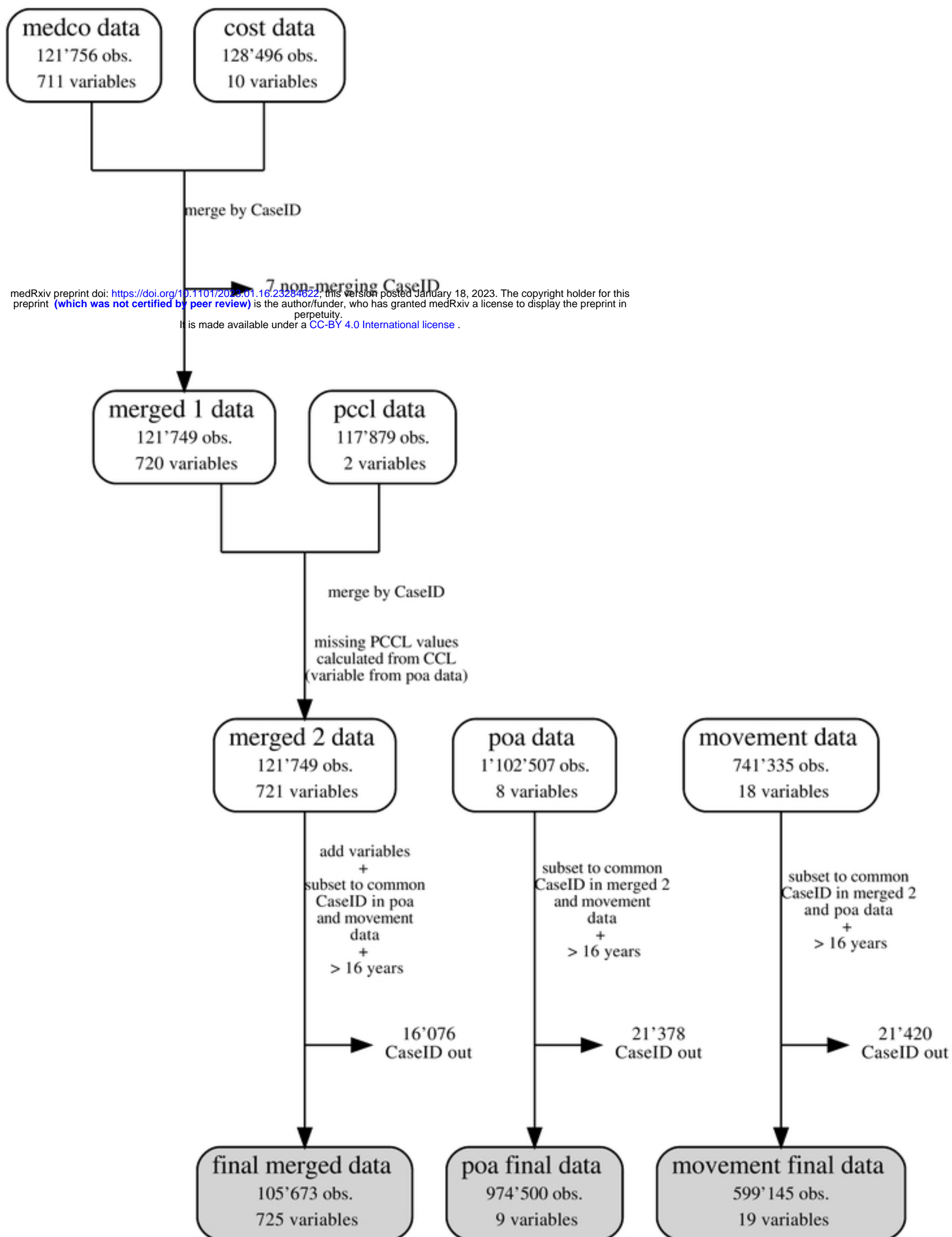
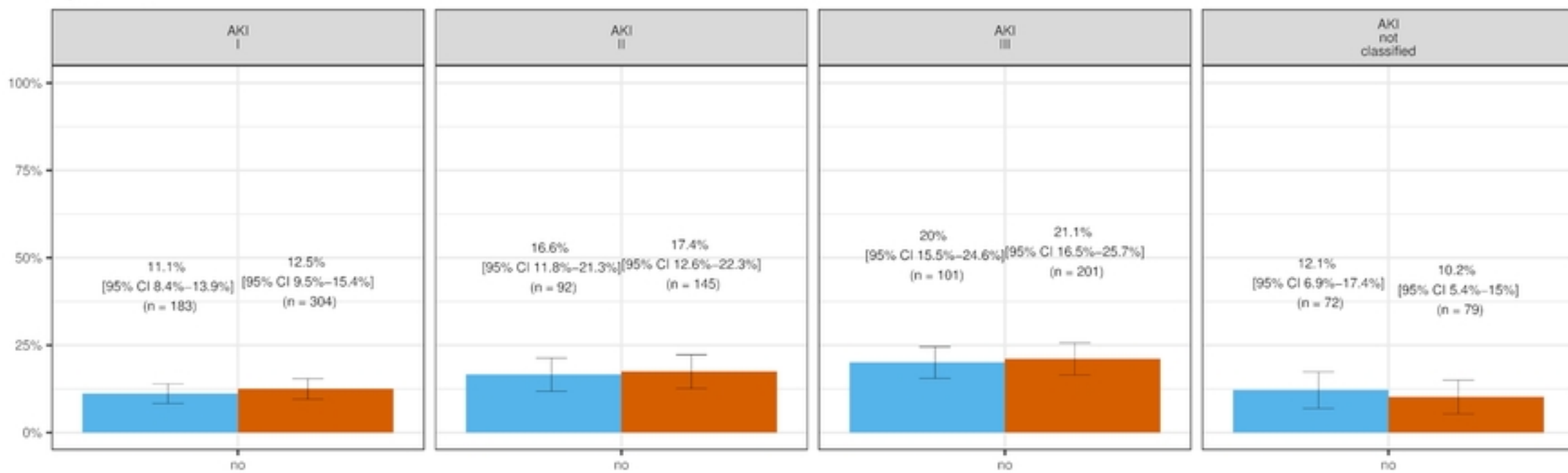


Fig 1

### A) AKI all



### B) Acute on chronic

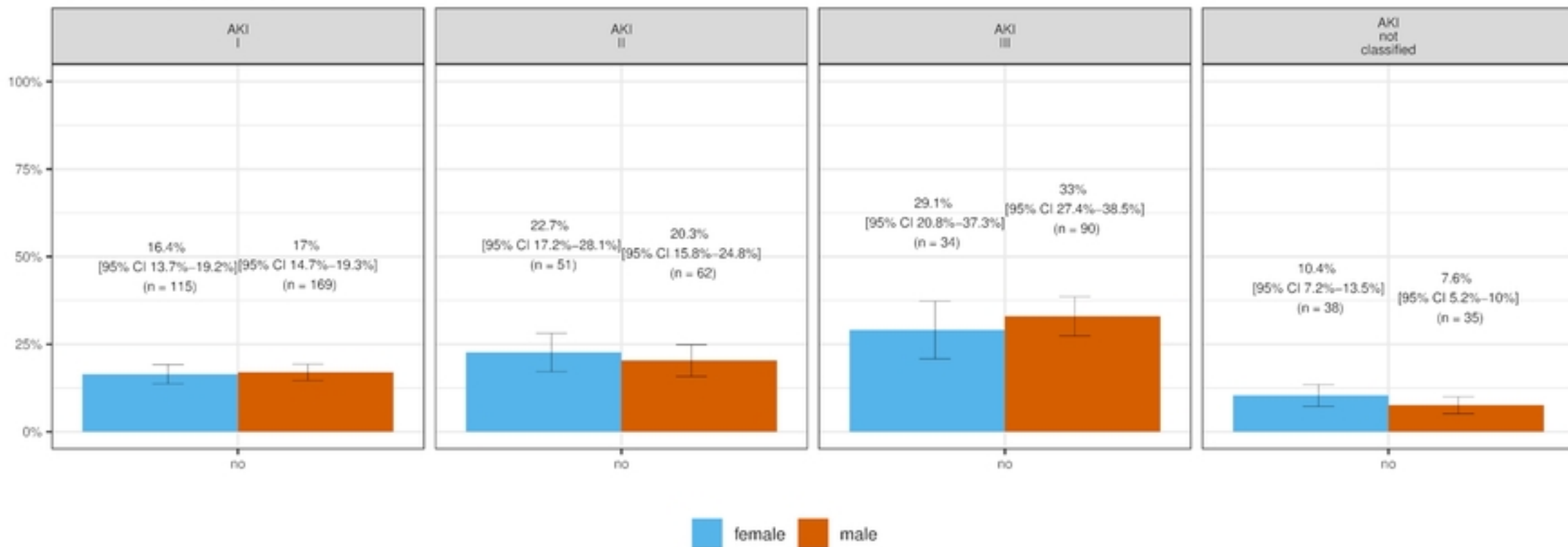


Fig 2



# Acute-on-chronic AKI and CKD stages

medRxiv preprint doi: <https://doi.org/10.1101/2023.01.16.23284622>; this version posted January 18, 2023. The copyright holder for this preprint (which was not certified by peer review) is the author/funder, who has granted medRxiv a license to display the preprint in perpetuity. It is made available under a [CC-BY 4.0 International license](https://creativecommons.org/licenses/by/4.0/).

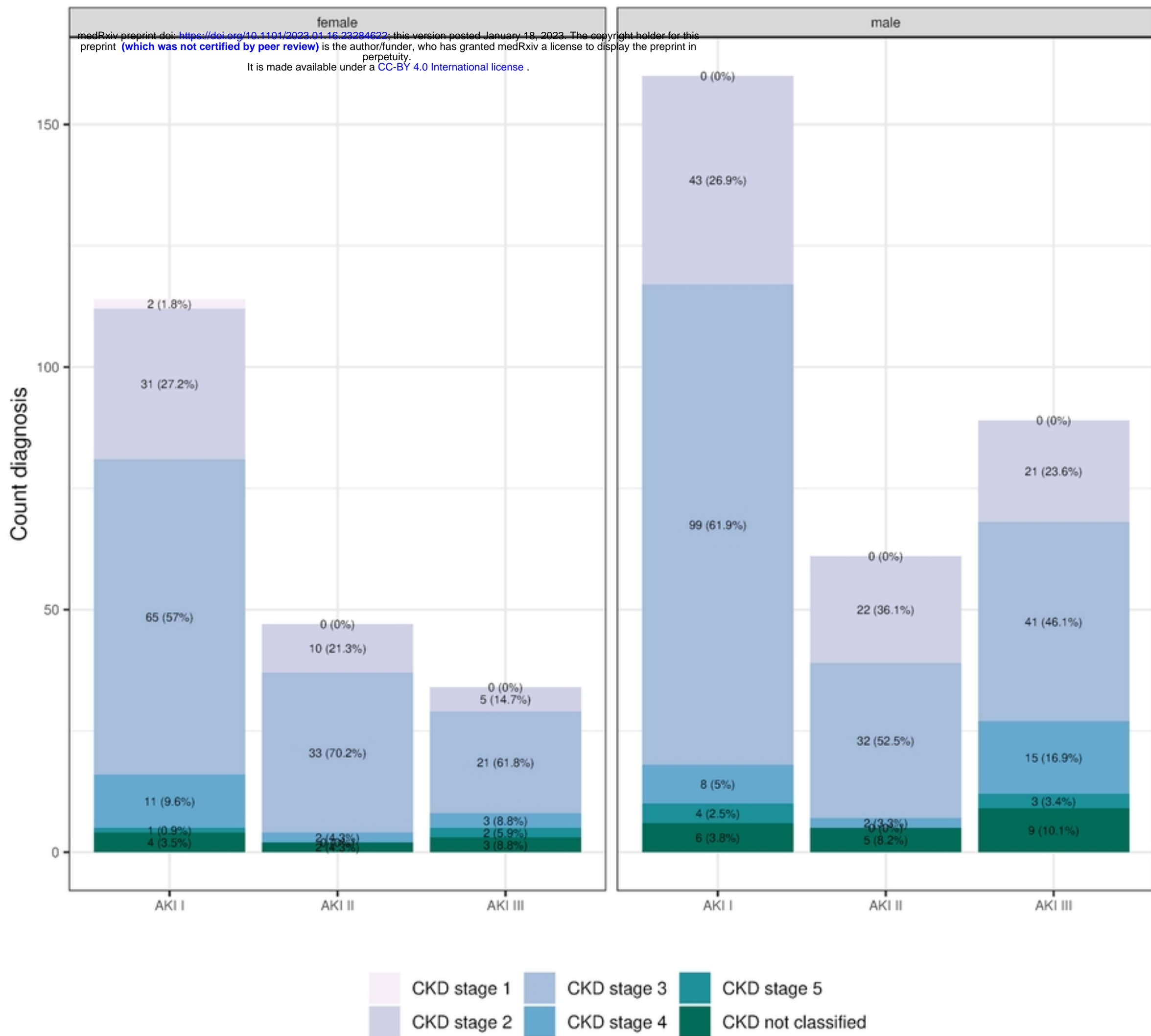


Fig 3

# Patient history, POA and Sex

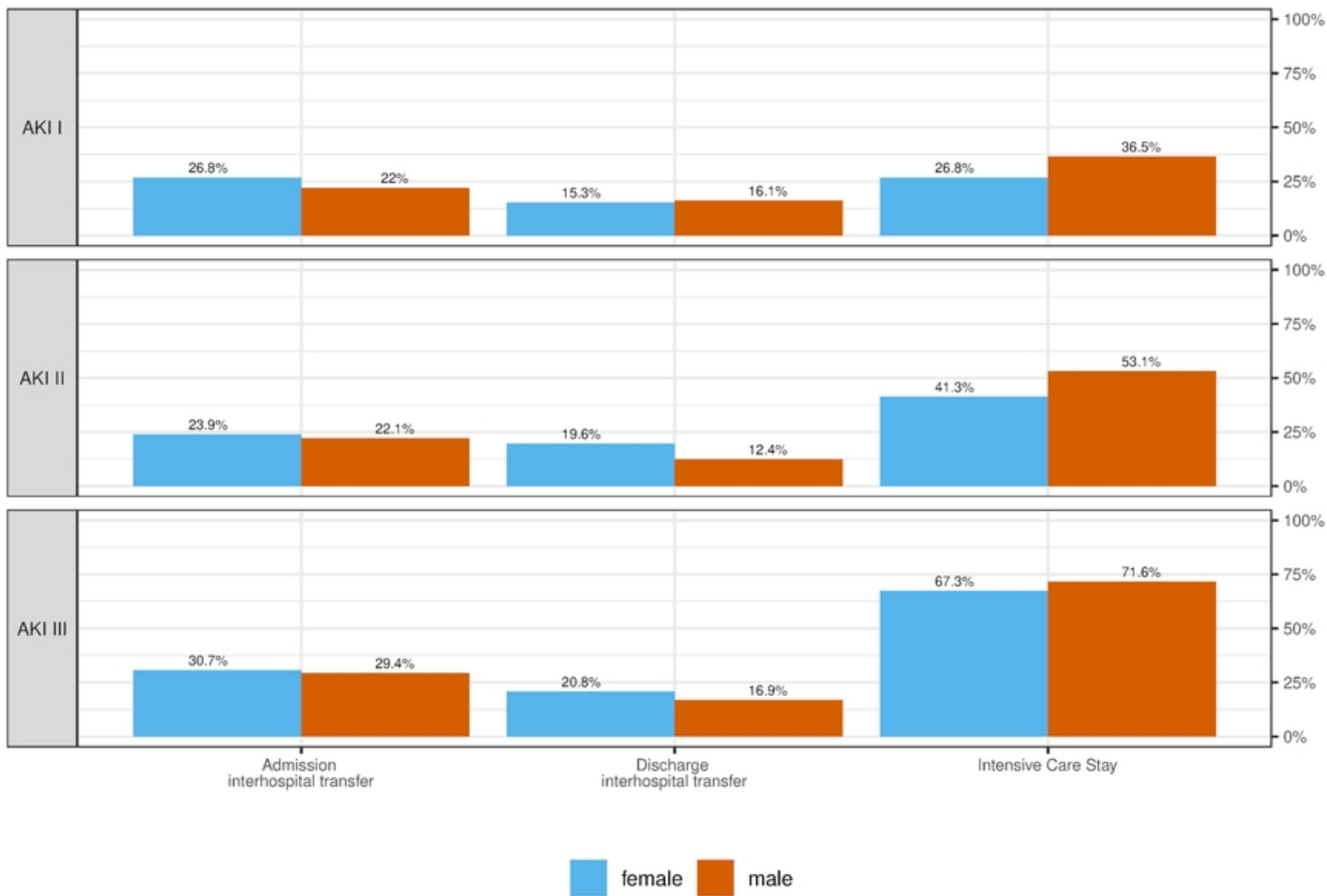


Fig 4

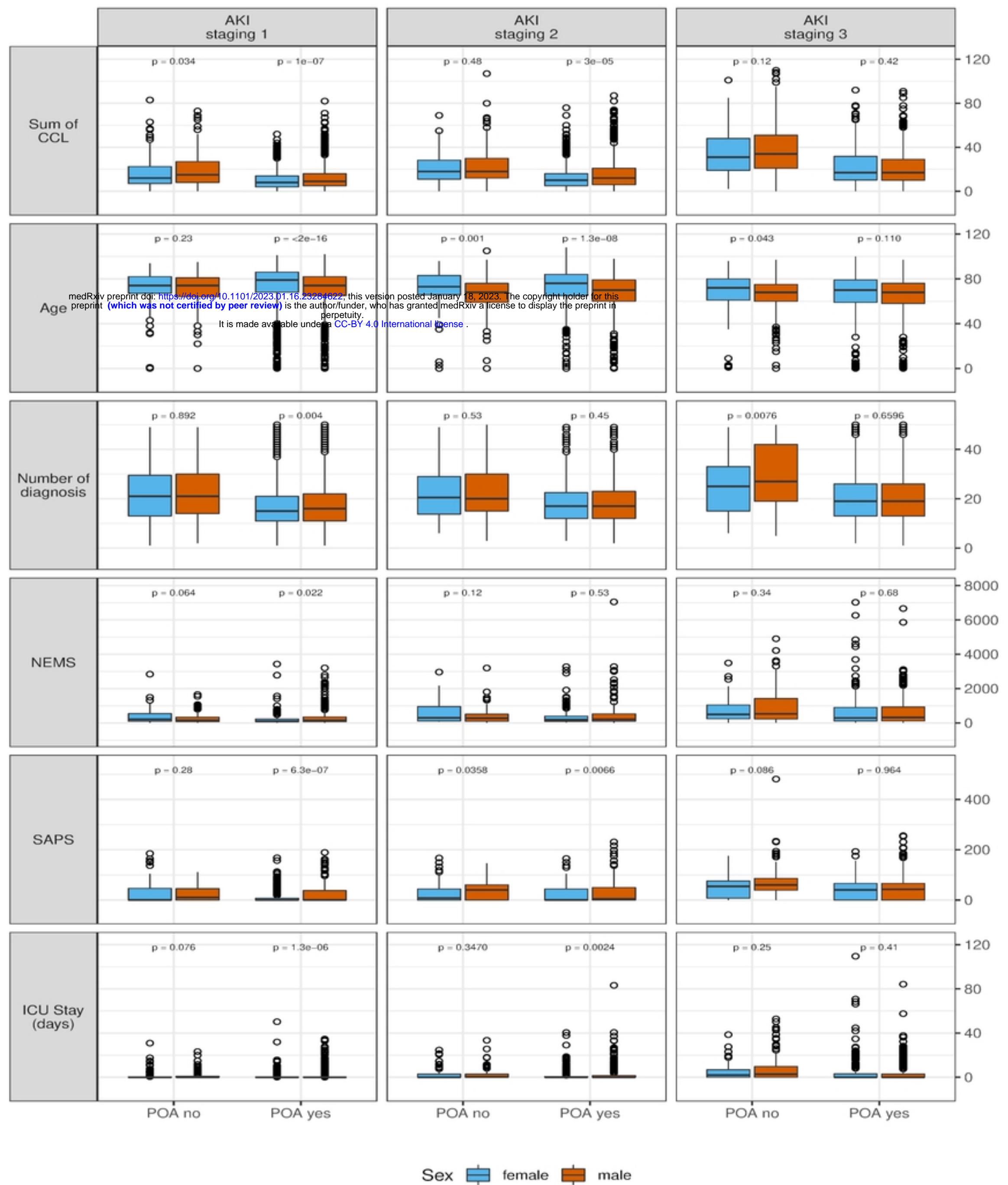


Fig 5

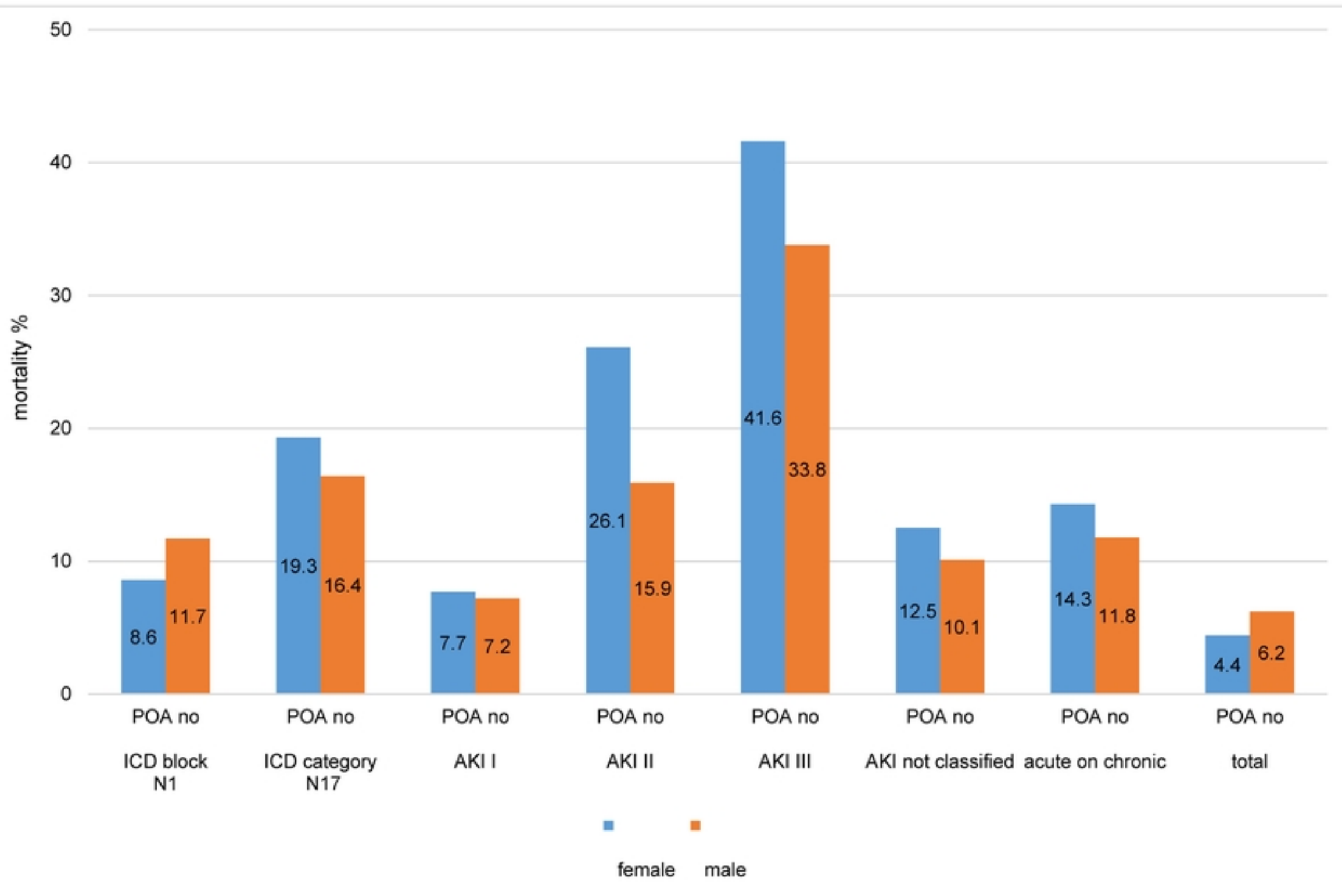


Fig 6