

1 **COVID-19 INDUCES SENESCENCE AND EXHAUSTION OF T CELLS IN**
2 **PATIENTS WITH MILD/MODERATE AND SEVERE DISEASE DURING A**
3 **SEVEN-DAY INTERVAL**

4 RODRIGO BALSINHA PEDROSO¹, LUCAS HANIEL ARAÚJO VENTURA²,
5 LÍCIA TORRES², GIOVANNA CALIMAN CAMATTA², FELIPE CAIXETA²,
6 LEANDRO SOUZA NASCIMENTO², CATARINA MOTA¹, ANA CATARINA
7 MENDES¹, FILIPA RIBEIRO¹, HENRIQUE CERQUEIRA GUIMARÃES⁴, RAFAEL
8 CALVÃO BARBUTO⁴, GABRIELA SILVEIRA-NUNES³, ANDREA TEIXEIRA-
9 CARVALHO⁵, LUIS GRAÇA^{1*}, ANA MARIA CAETANO FARIA^{2*}.

10

11 ¹ Instituto de Medicina Molecular, Faculdade de Medicina (IMM), Universidade de
12 Lisboa, Lisboa, Portugal.

13 ² Departamento de Bioquímica e Imunologia, Instituto de Ciências Biológicas (ICB),
14 Universidade Federal de Minas Gerais (UFMG), Belo Horizonte, MG, Brazil.

15 ³ Departamento de Medicina, Universidade Federal de Juiz de Fora, Campus Governador
16 Valadares (UFJF-GV), MG, Brazil.

17 ⁴ Hospital Risoleta Tolentino Neves, Belo Horizonte, MG, Brazil

18 ⁵ Instituto de Pesquisa René Rachou, Fundação Oswaldo Cruz (FIOCRUZ-MG), Belo
19 Horizonte, MG, Brazil.

20

21 * Joint senior authors.

22 Corresponding authors: Luis Graca (lgraca@medicina.ulisboa.pt) and Ana M.C. Faria
23 (anacaetanofaria@gmail.com)

24

25 **Abstract**

26 Risk factors for the development of severe COVID-19 include several comorbidities,
27 but age was the most striking one since elderly people were disproportionately affected
28 by SARS-Cov-2. Major drivers that can explain this markedly unfavourable response in
29 the elderly are inflammaging and immunosenescence. Recent reports have shown that
30 the relationship between immunosenescence and COVID-19 can be bidirectional, since
31 hospitalized patients with severe COVID-19 have an accumulation of senescent T cells
32 suggesting that immunosenescence can be also exacerbated by SARS-CoV-2 infection.
33 Therefore, the present work was designed to examine the emergence of
34 immunosenescence in a longitudinal study in two distinct cohorts of COVID-19

35 patients, and to determine whether the senescence alterations were restricted to severe
36 cases of the disease. Our data, with patients from Portugal and Brazil, identified their
37 distinctive inflammatory profile and provided evidence of increased frequencies of
38 senescent and exhausted T cells within a seven-day period in patients with mild to
39 severe COVID-19. These results support the view that SARS-CoV2 infection can
40 accelerate immunosenescence in both CD4 and CD8 T cell compartments in a short
41 period of time.

42

43 **Key words:** COVID-19, immunosenescence, T cell exhaustion, T cell senescence,
44 inflammatory cytokines, inflammaging

45

46 **Running Title:** COVID-19 induces rapid T cell senescence.

47

48 **Introduction**

49 Since 2019 when it first started in China, the Corona Virus Disease-2019 (COVID-19)
50 pandemic caused by the severe acute respiratory syndrome coronavirus 2 (SARS-Cov-
51 2) has been responsible for the death of more than 6 million people worldwide (WHO,
52 2020a). Clinical manifestations of COVID-19 range from asymptomatic to severe
53 pneumonia associated with extensive immune-inflammatory response, a clinical
54 condition that can lead to multiorgan failure and prolonged complications (Osuchowski
55 et al, 2021).

56 Risk factors for the development of severe COVID-19 include obesity, diabetes, high
57 blood pressure, male sex, and age, with the latter being the most striking, since elderly
58 people were disproportionately affected by SARS-Cov-2 (Li et al, 2020; Guo et al,
59 2020; Rahman & Sathi, 2020; Xu & Chen, 2020; Wu et al, 2020; Zhou et al, 2020).
60 Among the reasons for this markedly unfavourable response in the elderly,
61 immunosenescence and *inflammaging* are major drivers of this outcome (Mueller,
62 McNamara, Sinclair, 2020; Camell et al, 2021). Immunosenescence is the aging of the
63 immune system and is mainly characterized by a decrease in naïve T cell numbers
64 together with an accumulation of CD4⁺ and CD8⁺ memory and terminal effector T cells,
65 resulting in increased vulnerability to infections and impaired response to vaccination
66 (Hassoueneh et al, 2016; Fulop et al, 2018; Aiello et al, 2019). Moreover, aging T
67 lymphocytes like other senescent cells tend to develop a secretory-associated senescent
68 phenotype (SASP), characterized by the production and secretion of IL-6, IL-1, IL-8,

69 IL-18, and TNF along with other inflammatory mediators. Senescent cell accumulation
70 as well as other aging-related disturbances (mitochondrial dysfunction, dysbiosis of
71 microbiota, innate immune responses) lead to a chronic low grade inflammatory state
72 known as *inflammaging* (Fulop et al, 2018; Batista et al, 2020; Heath and Grant, 2020).
73 Continuous immune dysregulation induced by prolonged exposure to infectious and
74 non-infectious antigens can also drive immune cell aging, since the accumulation of
75 inflammatory mediators secreted in response to consecutive infections further
76 contributes for the impairment of the adaptive immune response, boosting
77 immunosenescence and *inflammaging* (Fulop et al, 2018; Goronzy & Weyand, 2019;
78 Elyahu & Monsonogo, 2021). Chronic infections, including those caused by the human
79 cytomegalovirus (CMV), HIV, hepatitis B virus (HBV) and human papillomavirus
80 (HPV), are sources of constant stimulation to the immune system, resulting in the
81 accumulation of terminally differentiated senescent T cell populations and,
82 consequently, immunosenescence (Solana et al, 2012; Fulop, Larbi, Pawelec, 2013).
83 Similarly, although it is not a persistent infection, SARS-Cov-2 can also trigger the
84 accumulation of exhausted and senescent T cell phenotypes due to its extensive
85 activation and clonal expansion (Diao et al, 2020; Zheng et al, 2020b). Recent
86 publications have shown that severe COVID-19 patients presented an increased
87 frequency of terminally differentiated CD4 and CD8 T cells when compared to controls
88 matched for sex and age (Zheng et al, 2020a; Arcanjo et al, 2021). However, there is no
89 longitudinal study clearly demonstrating that SARS-CoV-2 infection leads to
90 accelerated immunosenescence in distinct populations and in different forms of
91 COVID-19.

92 In this study, we investigated the evolution of the inflammatory response and
93 immunosenescence of COVID-19 patients from Belo Horizonte, Brazil, and Lisbon,
94 Portugal. Blood samples were collected during ambulatory care or hospitalization, and
95 one week later, allowing the evaluation of the impact of the disease over a period of
96 seven days. Our results showed that SARS-CoV-2 infection induces T cell senescence
97 in both populations in a short period of time, in both moderate and severe cases, with
98 this effect being more prominent in the latter.

99

100 **Materials and Methods**

101 *Ethics statement*

102 The research protocol was approved by the National Research Ethics Commission
103 (CONEP # 5.190.260) of Brazil and by the Lisbon Academic Medical Center Ethics
104 Committee (ref. no. 306/20). The study was conducted in accordance with the Helsinki
105 Declaration for research involving humans. All participants, including healthy controls,
106 agreed to participate voluntarily in this study without financial support and signed an
107 informed consent.

108

109 *Study design*

110 This longitudinal study was performed at two healthcare centres: Centro Hospitalar
111 Universitário Lisboa Norte (CHULN) in Lisbon, Portugal, and Hospital Risoleta
112 Tolentino Neves in Belo Horizonte, Brazil. Non-vaccinated patients were recruited
113 within the first three days of hospitalization or while in ambulatory care, after
114 presenting a positive nasopharyngeal swab test for SARS-CoV-2 by real-time reverse
115 transcriptase-polymerase chain reaction (RT-PCR) performed upon admission at the
116 health care units. A total of 20 infected patients from Lisbon and 10 from Belo
117 Horizonte agreed to participate in this study. For the longitudinal follow-up, blood
118 samples were collected at the time of enrolment (T0) and seven days later (T7). Each
119 city had a control group formed according to the following criteria: testing negative for
120 COVID-19 in the RT-PCR test and not having presented any symptom the week before
121 blood sample collection. Individuals with prior inflammatory diseases, such as cancer
122 and renal failure were excluded. Data collection was carried out between August and
123 October 2020 in Lisbon and June and August in Belo Horizonte.

124 Disease severity classification was based on the WHO criteria (WHO, 2020b). Mild
125 cases were considered asymptomatic or those treated in an outpatient clinic. Moderate
126 cases included hospitalized patients without oxygen support or using a low to moderate
127 flow oxygen by mask or nasal prongs. Severe cases were characterized as the need for
128 high flow oxygen, mechanical ventilation, vasopressors, dialysis, or extracorporeal
129 membrane oxygenation (ECMO) (WHO, 2020b).

130

131 *Blood collection and isolation of PBMCs*

132 Peripheral blood mononuclear cells (PBMCs) were obtained by blood collection from
133 COVID-19 patients and healthy controls using heparinized vacuette tubes. The
134 purification was attained by Ficoll gradient (Histopaque-1077; Sigma, cat #10771)
135 centrifugation at room temperature, in a 1:2 ratio, for 40 minutes, at 600xg and without

136 brake-induced end-centrifugation deceleration phase. After that, the PBMCs were
137 collected and washed with Roswell Park Memorial Institute (RPMI) 1640 basal
138 medium. Red blood cells were lysed using a lysis buffer. Cells were counted and stored
139 in fetal bovine serum supplemented with 10% dimethyl sulfoxide at -80 °C until further
140 use. Blood serum was also obtained by centrifuging whole blood collected in sera tubes
141 for 10 minutes at 500xg.

142

143 *Immunophenotype by polychromatic flow cytometry*

144 PBMCs (1×10^6) were first stained with LIVE/DEAD fixable aqua dead cell stain
145 (ThermoFisher Scientific, cat #L34957) and antibodies fluorophore-conjugated human to
146 surface markers. anti-CD8 (RPA-T8, cat# 562282), -CD4 (SK3, cat# 557852), -CD25
147 (M-A251, cat# 555432), -CD278 (ICOS; DX29, cat# 562833), -CD57 (NK-1, cat#
148 563896), -CD279 (PD-1; EH12.1, cat# 563245), -TIGIT (741182, cat# 747840), -CD28
149 (CD28.2, cat# 561368), -CD45RO (cat# 304234), -CD3 (cat# 317340), -CCR7 (cat#
150 353216) and -KLRG1 (cat# 138427).

151 After the surface staining, cells were fixed and permeabilized using the
152 Foxp3/Transcription Factor Staining Buffer Set from eBioscience (cat #00-5523-00)
153 and stained for -Foxp3 from ImmunoTools (3G3, cat# 21276106). Single colors for
154 fluorescence compensation were prepared with antibody capture compensation beads
155 (BD Biosciences). Cell samples were acquired in a BD LSRFortessa cell analyzer (BD
156 Biosciences) coupled to computers with DIVA and FlowJo-10 *software* (Tree Star).

157

158 *Luminex-Multiplex measurement of serum cytokines, chemokines, and growth factors*

159 A Bio-Rad Laboratories kit (Bio-Plex Pro Human Cytokine Standard) was used to
160 analyse multiple serum mediators simultaneously with the Bio-Plex 200 system from
161 Bio-Rad, following storage and processing protocols standardized by the Laboratory of
162 Biomarkers (IRR-FIOCRUZ/MG). Samples were transported and stored at a
163 temperature of -80°C. Analyzes were performed using Bioplex™ xPONENT version
164 3.1 software (Bio-Rad) and included the following panel of analytes: IL-1 β , IL-1ra, IL-
165 2, IL-4, IL-5, IL-6, CXCL-8 (IL-8), IL-10, IL-12p70, IL-13, GM-CSF, IFN- γ , CCL-2
166 (MCP-1) and TNF- α . The panel of biomarkers included in the kit and their standard
167 settings is presented in Supplementary Table 1.

168

169 *Statistical analysis*

170 Statistical analyses were performed using GraphPad Prism 8.0 *software* (GraphPad
171 Software, San Diego, CA, USA). All data acquired from Luminex-Multiplex were
172 converted to logarithmic scale to normalize the data, and a lognormality test was
173 performed to confirm data normality. Wilcoxon test was applied in non-parametric data
174 to compare samples of the same patient at T0 and T7. Student's t-test was used for
175 analysing parametric data.

176 Radar plots highlight the contribution of different cytokines to immunological profile.
177 This analysis allows to convert quantitative cytokine measurements into a categorical
178 variable of low and high cytokine producers as previously proposed by Luiza-Silva et
179 al. (2011). Briefly, this approach categorizes each subject as “Low” or “High” cytokine
180 producer, taking the global median value as a specific cut-off edge for each cytokine.
181 For the calculation of the global median the whole universe of data obtained for the
182 groups was considered. Following data categorization, the frequency of “High Cytokine
183 Producers” was calculated for each group. On radar charts, each axis represents the
184 percentage (%) of volunteers categorized as “High Cytokine Producers” in each group.
185 Then, connecting the values of each axis forms a central polygonal area that represents
186 the immunological profile. Relevant productions were considered when the percentage
187 of “High Cytokine Producers” of a given cytokine was greater than 50%.

188 The correlation matrix was built using the `cor()` function of the statistical analysis
189 package `stats v3.6.2` available in the R v4.0 environment. Spearman's correlation was
190 used considering the non-parametric nature of the data, considering only correlations
191 with $p < 0.05$.

192 Statistical analysis of data on frequencies of T cell subsets obtained by flow cytometry
193 was performed using the nonparametric Wilcoxon rank-sum. $P < 0.05$

194

195 **Results**

196 The study included 20 individuals with severe cases of COVID-19 from Lisbon, and 8
197 individuals with mild to severe cases from Belo Horizonte. The median age of
198 individuals in the infected groups was 69 (IQR 60.0 – 84.3 years) and 42.5 years old
199 (IQR 35.8 – 54.5 years) in Lisbon and Belo Horizonte, respectively. The number of
200 female participants was higher in both control groups when compared to infected
201 patients. The prevalence of comorbidities was higher in the Portuguese population, and
202 hypertension was the most prevalent among infected patients in both cities. Deaths and
203 missing samples were only registered in Lisbon (Table 1).

204

205 *The inflammatory profiles of COVID-19 patients were distinct in the two cohorts*

206 Severe COVID-19 has been reported to be associated with accelerated senescence (Diao
207 et al, 2020; Zheng et al, 2020). In order to understand the immunological profile
208 expressed by the cohorts, we first compared the global production of inflammatory
209 mediators between controls and infected patients in time zero (T0) and time seven (T7).
210 As presented in radar charts (Fig. 1A), there was an overall increase in the frequency of
211 high producers of serum mediators in the infected group from Portugal in T0 when
212 compared to the control group, confirming the ongoing response to the infection.
213 Notably there was an increase in the frequency of high producers of mediators involved
214 in inflammatory response, such as IL-4, IL-6, IFN- γ , TNF, CXCL-5. Seven days after
215 hospitalization, the immune response was still more prominent than in non-infected
216 individuals, despite the reduction in the frequency of high producers of IL-4, CCL-2,
217 IFN- γ and TNF, possibly indicating a tendency towards resolution of the inflammatory
218 response. Corroborating this result, a significant reduction in the production of CCL-2,
219 IFN- γ , IL-6 and IL-10 was also observed (Fig. 1B).

220 Similar to the analysis conducted for Lisbon patients, to assess whether a population
221 composed of younger individuals from Brazil, who developed moderate to severe
222 clinical conditions, presented a similar pattern of longitudinal immunological response,
223 we compared the overall inflammatory profile of control and infected patients (Fig. 1C).
224 As expected, the control group presented a very discreet production of mediators, while
225 infected individuals showed a burst in inflammation throughout the study. When
226 comparing T0 and T7, there was a rise in the frequency of high producers of many
227 cytokines, including CXCL-8, IL-10, IL-2, GM-CSF, IL-4, IFN- γ , and IL-12p70,
228 indicating intensification in the inflammatory response. Meanwhile, IL-13 presented a
229 reduction in its frequency (Fig 1C). No significant change in the levels of these
230 mediators was observed within seven days.

231 Longitudinal correlation analysis of immunological mediators allowed us to gain
232 insights into cytokines, chemokines, and growth factors production during
233 hospitalization (Fig. 2A). In the Lisbon cohort, although we observed a reduction in the
234 number and intensity of correlations, there was a remarkable switch from positive to
235 negative interactions between mediators, notably in CXCL-2, CCL-2, IL-6, IL-12p70,
236 INF- γ , and IL-4. Some mediators, such as IL-2, GM-CSF and IL-13 gained interactions
237 in T7 (Fig. 2A).

238 The correlation matrix graphic representation from Brazil showed a decline in some
239 interactions within seven days. There is an evident loss of positive correlations for IL-6,
240 IL-10, TNF, and IL-12p70, with the latter having also gained negative correlations,
241 notably with CXCL-8, IL- β , IL-1ra, and INF- γ (Fig. 2C). On the other hand, CCL-2,
242 IFN- γ , and GM-CSF gained intensity and significance in numerous interactions (Fig.
243 2C). Interestingly, we see an increase in the total number of significant correlations
244 between age and cytokines, mostly negative ones, which could indicate a reduction in
245 the interactions with aging.

246

247 *Exhausted and immunosenescent T cells accumulate in COVID-19 patients of both*
248 *cohorts regardless of disease severity*

249 Since inflammatory response during COVID-19 infection is already associated with T
250 cell exhaustion (Arcanjo et al, 2021; Lee et al, 2021), we used flow cytometry
251 immunophenotyping to evaluate alterations in immune responses throughout the course
252 of infection. We investigated the evolution of the relative abundance of CD4⁺ and CD8⁺
253 T cells using manual gating as described in Supplementary Figure 1. T cell markers
254 related to differentiation (CD28, CCR7, CD45RO) and senescence/exhaustion (CD57,
255 KLRG1, PD-1) allowed us to identify these phenotypes in distinct cell compartments
256 including naïve (CD28⁺CCR7⁺CD45RO⁻) and effector memory (CD28⁻CCR7⁻
257 CD45RO⁺) T cells.

258 Results from Lisbon patients showed an increase in the frequency of differentiated T
259 CD4⁺ cells (CD28⁻) expressing both markers of senescence/exhaustion
260 (CD57⁺KLRG1⁺) as well as effect memory cells (EM) (CD45RO⁺ CCR7⁻ CD28⁻) (Fig.
261 3 C and E). In the CD28-CD8⁺ T cell compartment, frequency CD57⁺KLRG1⁺ cells
262 increased while there was no difference in EM subset (Fig. 3 D and F).

263 Contrary to what was observed in severe cases from Lisbon, frequencies of naïve CD4⁺
264 and CD8⁺ T cells from patients in Brazil reduced during hospitalization (Fig 3 G and
265 H). This change was accompanied by an increase in T CD4⁺CD28⁻ and EM cells
266 double-positive for CD57⁺KLRG1⁺ during seven days (Fig. 3 I and K). It was also
267 observed a reduction in the frequency of FOXP3⁺ CD4⁺ T cells in the individuals from
268 the Brazilian cohort whereas no difference was observed in the frequency of PD-1-
269 expressing (exhausted) FOXP3⁺ CD4⁺ T (Fig S2).

270 Altogether our results show an emergence of an increased senescent/exhausted T cell
271 phenotype in patients with COVID-19 during 7 days of infection regardless of disease
272 severity.

273

274 **Discussion**

275 Inflammation induced by viral infections plays an important role in the differentiation
276 and development of T cells, as they induce extensive cell proliferation, however it can
277 ultimately lead to cell exhaustion and senescence (Wherry, 2011; Moro-Garcia et al,
278 2018; Heath & Grant, 2020). Although this phenomenon is mainly related to chronic
279 infections such as CMV, HIV, HBV and HPV (Fulop, Larbic, Pawelec, 2013; Wherry,
280 2011), it has also been identified in patients with acute SARS-Cov-2 infection (De
281 Biase et al, 2020; Arcanjo et al, 2021). Considering these findings and the highly
282 heterogeneous immunological responses observed in COVID-19 (Lucas et al, 2020), we
283 studied the evolution of the inflammatory response and exhaustion/senescence T cell
284 profile in a seven-day interval in two different cohorts of infected individuals (one from
285 Belo Horizonte, Brazil and another one from Lisbon, Portugal).

286 Our longitudinal analysis revealed different inflammatory profiles between cohorts,
287 although both presented a hyperactivation of the immune system in response to the
288 infection. At admission, the severe patients from Portugal exhibited high levels of
289 biomarkers associated with a core response signature in moderate to severe conditions
290 in COVID-19, such as IFN- γ , TNF, IL-6, and IL-10 (Liu et al, 2020; Lucas et al, 2020).
291 Meanwhile, over the seven-day period, there was a trend towards the reduction of the
292 inflammatory profile, as observed by the decrease in all cytokine levels (Fig. 1A). This
293 data is supported by the significant reduction of IL-2, IFN- γ , and IL-6 (Fig. 1B), which
294 are biomarkers related to hyperactivation of T cells and recruitment of macrophages to
295 the site of infection (Arcanjo et al, 2021; Coperchini et al, 2021). Decrease in the anti-
296 inflammatory cytokine IL-10 accompanies the general decline in inflammatory immune
297 response. The emergence of negative correlations in the correlation matrix also suggests
298 the downregulation of the immune response during the course of the disease (Fig. 2B),
299 indicating a tendency to resolution of the inflammatory response.

300 Patients from Brazil with mild to severe disease had a trend towards a global rise in
301 serum cytokine production (Fig. 1C). For instance, the frequency of high producers of
302 CXCL-8, a chemokine involved in the recruitment of neutrophils to the site of infection
303 and commonly elevated in patients with COVID-19 (Coperchini et al, 2020; Sallenne

304 & Guillot, 2020; Hazeldine & Lord, 2021), suggests an enhancement of the
305 inflammatory response in the course of seven days (Fig 1C). Also, the correlation
306 matrix evidenced higher correlations between CCL-2, IFN- γ , and GM-CSF levels in T7.
307 These mediators are implicated in T lymphocyte response to SARS-CoV-2, such as cell
308 trafficking, cytokine production and cell replication (Coperchini et al, 2020; Arcanjo et
309 al, 2021). Considering that disease is associated with the loss of complexity and
310 dynamics of physiological processes (Lipsitz, 2004), the reduction in some correlations
311 after a week indicates a putative imbalance in the immune network complexity
312 developed during this short period of infection (Fig 2A).

313 As a complement to the inflammatory profile found in COVID-19 patients from Brazil,
314 we also observed a reduction in the frequency of Foxp3⁺CD4⁺ T cells which have been
315 widely described as regulatory cells mediating anti-inflammatory effects. Of note,
316 frequency of Foxp3⁺CD4⁺ T cells expressing the exhaustion marker PD-1 did not
317 change suggesting that only functionally active regulatory T cells were affected by the
318 infection. These data are in accordance with previous reports showing a reduction in the
319 frequency of these T cell subset in patients with COVID-19 namely in patients with a
320 severe form of the disease (Lucas et al, 2020).

321 It is possible that the two cohorts, in Brazil and Lisbon, were not exactly synchronized.
322 In fact, we observed a more marked reduction of pro-inflammatory cytokines between
323 day 0 and 7 in the Lisbon cohort. However, although this heterogeneity may sound as a
324 negative feature of our sample, the similar results yielded by the two distinct cohorts
325 regarding the immunosenescence profile of the T cell compartment helped to reveal a
326 common phenomenon associated with SARS-CoV2 infection.

327 Studies on individuals with severe COVID-19 revealed an increase in T cells expressing
328 markers of exhaustion/senescence such as PD-1, TIGIT, and CD57, especially in the
329 CD8 compartment, when compared to healthy individuals (Zheng et al., 2020a; Zheng
330 et al, 2020b; De Biasi, 2020; Arcanjo et al, 2021). In the present work, our aim was to
331 examine the emergence of these alterations in a longitudinal study and to determine
332 whether these immunosenescence alterations were restricted to severe cases of the
333 disease in two distinct cohorts. Our data show that patients with mild and severe cases
334 of COVID-19 in Brazil had an increase in CD4⁺CD28⁻ T cells expressing both CD57
335 and KLRG1, whereas patients from Lisbon with severe disease showed this increase in
336 both CD4⁺CD28⁻ and CD8⁺CD28⁻ T cell compartments (Fig 3 C, D, I). Expression of
337 CD57 and KLRG1, and the loss of the CD28 molecule are considered indicators of

338 terminal differentiation and are associated with the senescence profile of T lymphocytes
339 (Akbar & Henson, 2011; Pangrazzi & Weinberger, 2020). Although the KLRG1
340 molecule also emerges on the cell surface after differentiation, the signalling generated
341 by this molecule regulates a pathway related to exhaustion, making it a marker of
342 cellular senescence and exhaustion (Akbar & Henson, 2011; Wherry & Kurachi, 2015;
343 Pinti et al, 2016; Cunha et al, 2020; Pangrazzi & Weinberger, 2020). Therefore, absence
344 of CD28 and the high expression of CD57 as well as KLRG1 provide what could be
345 considered the best description of a senescent state (Rodriguez et al, 2021).

346 Interestingly, our results identified the emergence of a senescence profile of T
347 lymphocytes in individuals with COVID-19, both in mild/moderate and severe
348 conditions, being more pronounced the more intense the inflammatory response to the
349 disease was. Although there is no data in the literature relating inflammation and
350 immunosenescence in COVID-19, the hyperactivation of the inflammatory response to
351 SARS-CoV-2 infection has been associated with more severe disease (Lucas et al,
352 2020), which could possibly justify the increase in the frequency of terminally
353 differentiated cells in this group of patients.

354 It is also important to highlight that the cohort of critically ill patients from Portugal is
355 mainly composed of elderly individuals. Thus, this may explain the difference between
356 health conditions between Brazilian and Portuguese cohort samples. As predicted by
357 our group and by others, immunosenescence and inflammaging may be aggravated by,
358 but also may aggravate SARS-CoV-2 infection (Batista et al, 2020; Witkowski, Fulop,
359 Bryl, 2022). The primary setting and one of the hallmarks of immunosenescence is
360 thymic involution, which is followed by the reduction in the naïve cell output (Thomas,
361 Wang, Su, 2020; Elyahu & Monsonego, 2021), a phenomenon that should have been
362 affecting these patients even before the onset of the infection. This could be the reason
363 why no difference was observed in the naïve T cell subset in this severely diseased elder
364 group.

365 The differences seen in inflammatory biomarkers between patients of Brazil and
366 Portugal may be related to the time of the onset of symptoms, as the recruitment was
367 carried out based on the moment patients sought medical assistance at the hospital,
368 rather than on the initiation of symptoms. Notably, accumulation of exhausted/senescent
369 cells seems to occur at distinct time points of disease development, indicating a process
370 that could start early in infection and develop further than the 7-day period examined,

371 particularly in Brazil where the patients were recruited sooner regarding the course of
372 the disease.

373 There were limitations in this study, mainly the small sample size in both cohorts. This
374 may have hindered the identification of significant differences in inflammatory
375 mediators and other T-cell subsets that would be possible using a larger number of
376 individuals. Moreover, this feature precluded formal statistical analysis regarding the
377 associations between laboratory findings and disease severity. There were also
378 methodological differences in the study of the two cohorts that could have impacted on
379 the results. We did not investigate the SARS-CoV-2 variant infecting the individuals
380 and this could also partially explain differences in their immunological responses,
381 considering the distinct scenarios of the pandemic in Brazil and Portugal during which
382 patients were recruited.

383 Our longitudinal study provided evidence of accelerated immunosenescence in the T
384 cell compartment during COVID-19 showing that senescent and exhausted T cells
385 significantly increased within a seven-day period. Interestingly, even though our
386 samples were composed by two different populations, who presented distinct
387 inflammatory profiles and were possibly affected by different variants of the virus, a
388 similar profile of immunosenescence and exhaustion was identified during this short
389 period of infection by SARS-CoV-2. Furthermore, this change in immunological
390 profile was shown to be independent of disease severity even though the magnitude was
391 greater in patients with severe disease. This suggests that accelerated
392 immunosenescence of the T cell compartment may be described as a general feature of
393 COVID-19.

394

395 **Acknowledgments:** This study was financially supported by grants from Fundação para
396 a Ciência e a Tecnologia (FCT, Portugal, Research4covid_369), Merck Sharp & Dohme
397 (MISP 42521) and Conselho Nacional de Desenvolvimento Científico e Tecnológico
398 (CNPq, Brazil, APQ 407363/2021-1). RB Pedroso is funded by FCT
399 (SFRH/BD/144372/2019). Samples in Lisbon were collected, stored and provided by
400 Biobanco-iMM (Lisbon Academic Medical Center, Lisbon, Portugal) in coordination
401 with a taskforce created at iMM for the collection of COVID-19 Research Samples.
402 Flow cytometry in Lisbon was performed at the Flow Cytometry Facility of iMM.

403

404 **Conflict of interest:** The authors have no conflict of interest.

405

406 **References**

- 407 1. Aiello A, Farzaneh F, Candore G, Caruso C, Davinelli S, Gambino CM, Ligotti
408 ME, Zareian N, Accardi G. Immunosenescence and Its Hallmarks: How to
409 Oppose Aging Strategically? A Review of Potential Options for Therapeutic
410 Intervention. *Front Immunol.* 2019, 10: 2247. doi: 10.3389/fimmu.2019.02247.
411 PMID: 31608061; PMCID: PMC6773825.
- 412 2. Akbar AN, Henson SM. Are senescence and exhaustion intertwined or unrelated
413 processes that compromise immunity? *Nat Rev Immunol.* 2011, 11(4):289-95.
414 doi: 10.1038/nri2959. PMID: 21436838.
- 415 3. Arcanjo A, Pinto KG, Logullo J, Leite PEC, Menezes CCB, Freire-de-Lima L,
416 Diniz-Lima I, Decoté-Ricardo D, Rodrigues-da-Silva RN, Freire-de-Lima CG,
417 Filardy AA, Lima-Junior JDC, Bertho AL, De Luca PM, Granjeiro JM, Barroso
418 SPC, Conceição-Silva F, Savino W, Morrot A. Critically ill COVID-19 patients
419 exhibit hyperactive cytokine responses associated with effector exhausted
420 senescent T cells in acute infection. *J Infect Dis.* 2021: jiab425. doi:
421 10.1093/infdis/jiab425. PMID: 34427670; PMCID: PMC8513399.
- 422 4. Batista MA, Calvo-Fortes F, Silveira-Nunes G, et al. Inflammaging in Endemic
423 Areas for Infectious Diseases. *Front Immunol.* 2020, 11: 579972.
424 doi:10.3389/fimmu.2020.579972.
- 425 5. Burki T. COVID-19 in Latin America. *Lancet Infect Dis.* 2020, 20(5):547-548.
426 doi:10.1016/S1473-3099(20)30303-0.
- 427 6. Camell CD, Yousefzadeh MJ, Zhu Y, Prata LGPL, Huggins MA, Pierson M,
428 Zhang L, O'Kelly RD, Pirtskhalava T, Xun P, Ejima K, Xue A, Tripathi U,
429 Espindola-Netto JM, Giorgadze N, Atkinson EJ, Inman CL, Johnson KO,
430 Cholensky SH, Carlson TW, LeBrasseur NK, Khosla S, O'Sullivan MG, Allison
431 DB, Jameson SC, Meves A, Li M, Prakash YS, Chiarella SE, Hamilton SE,
432 Tchkonja T, Niedernhofer LJ, Kirkland JL, Robbins PD. Senolytics reduce
433 coronavirus-related mortality in old mice. *Science.* 2021, 373(6552): eabe4832.
434 doi: 10.1126/science.abe4832. PMID: 34103349; PMCID: PMC8607935.
- 435 7. Chen YM, Zheng Y, Yu Y, Wang Y, Huang Q, Qian F, Sun L, Song ZG, Chen
436 Z, Feng J, An Y, Yang J, Su Z, Sun S, Dai F, Chen Q, Lu Q, Li P, Ling Y, Yang
437 Z, Tang H, Shi L, Jin L, Holmes EC, Ding C, Zhu TY, Zhang YZ. Blood
438 molecular markers associated with COVID-19 immunopathology and multi-

- 439 organ damage. *EMBO J.* 2020, 39(24): e105896. doi:
440 10.15252/embj.2020105896. PMID: 33140861; PMCID: PMC7737620.
- 441 8. Cifuentes-Faura J. COVID-19 Mortality Rate and Its Incidence in Latin
442 America: Dependence on Demographic and Economic Variables. *Int J Environ*
443 *Res Public Health.* 2021, 18(13):6900. doi:10.3390/ijerph18136900.
- 444 9. Coperchini F, Chiovato L, Ricci G, Croce L, Magri F, Rotondi M. The cytokine
445 storm in COVID-19: Further advances in our understanding the role of specific
446 chemokines involved. *Cytokine Growth Factor Rev.* 2021, 58: 82-91.
447 doi:10.1016/j.cytogfr.2020.12.005.
- 448 10. Cunha LL, Perazzio SF, Azzi J, Cravedi P, Riella LV. Remodeling of the
449 Immune Response with Aging: Immunosenescence and Its Potential Impact on
450 COVID-19 Immune Response. *Front Immunol.* 2020, 11: 1748. doi:
451 10.3389/fimmu.2020.01748. PMID: 32849623; PMCID: PMC7427491.
- 452 11. De Biasi S, Meschiari M, Gibellini L, Bellinazzi C, Borella R, Fidanza L, Gozzi
453 L, Iannone A, Lo Tartaro D, Mattioli M, Paolini A, Menozzi M, Milić J,
454 Franceschi G, Fantini R, Tonelli R, Sita M, Sarti M, Trenti T, Brugioni L,
455 Cicchetti L, Facchinetti F, Pietrangelo A, Clini E, Girardis M, Guaraldi G,
456 Mussini C, Cossarizza A. Marked T cell activation, senescence, exhaustion and
457 skewing towards TH17 in patients with COVID-19 pneumonia. *Nat Commun.*
458 2020, 11(1): 3434. doi: 10.1038/s41467-020-17292-4. PMID: 32632085;
459 PMCID: PMC7338513.
- 460 12. Diao B, Wang C, Tan Y, Chen X, Liu Y, Ning L, Chen L, Li M, Liu Y, Wang
461 G, Yuan Z, Feng Z, Zhang Y, Wu Y, Chen Y. Reduction and Functional
462 Exhaustion of T Cells in Patients with Coronavirus Disease 2019 (COVID-19).
463 *Front Immunol.* 2020, 11: 827. doi: 10.3389/fimmu.2020.00827. PMID:
464 32425950; PMCID: PMC7205903.
- 465 13. Elyahu Y, Monsonogo A. Thymus involution sets the clock of the aging T-cell
466 landscape: Implications for declined immunity and tissue repair. *Ageing Res*
467 *Rev.* 2021, 65: 101231. doi: 10.1016/j.arr.2020.101231. PMID: 33248315.
- 468 14. Fülöp T, Larbi A, Dupuis G, Le Page A, Frost EH, Cohen AA, Witkowski JM,
469 Franceschi C. Immunosenescence and Inflamm-Aging as Two Sides of the Same
470 Coin: Friends or Foes? *Front Immunol.* 2018, 8:1960. doi:
471 10.3389/fimmu.2017.01960. PMID: 29375577; PMCID: PMC5767595.

- 472 15. Fülöp T, Larbi A, Pawelec G. Human T cell aging and the impact of persistent
473 viral infections. *Front Immunol.* 2013; 4:271. doi:10.3389/fimmu.2013.00271.
- 474 16. Goronzy JJ, Weyand CM. Mechanisms underlying T cell ageing. *Nat Rev*
475 *Immunol.* 2019, 19(9): 573-583. doi: 10.1038/s41577-019-0180-1. PMID:
476 31186548; PMCID: PMC7584388.
- 477 17. Guo W, Li M, Dong Y, et al. Diabetes is a risk factor for the progression and
478 prognosis of COVID-19. *Diabetes/Metabolism Research and*
479 *Reviews.* 2020; 36: e3319. <https://doi.org/10.1002/dmrr.3319>.
- 480 18. Hassouneh F, Campos C, López-Sejas N, Alonso C, Tarazona R, Solana R, Pera
481 A. Effect of age and latent CMV infection on CD8+ \square CD56+ T cells (NKT-like)
482 frequency and functionality. *Mech Ageing Dev.* 2016, 158: 38-45. doi:
483 10.1016/j.mad.2015.12.003. PMID: 26751040.
- 484 19. Hazeldine J, Lord JM. Neutrophils and COVID-19: Active Participants and
485 Rational Therapeutic Targets. *Front Immunol.* 2021, 12: 680134. doi:
486 10.3389/fimmu.2021.680134. PMID: 34149717; PMCID: PMC8206563.
- 487 20. Heath J J, Grant D M. The Immune Response Against Human Cytomegalovirus
488 Links Cellular to Systemic Senescence. *Cells.* 2020, 9(3): 766. doi:
489 10.3390/cells9030766. PMID: 32245117; PMCID: PMC7140628.
- 490 21. Lee S, Yu Y, Trimpert J, Benthani F, Mairhofer M, Richter-Pechanska P, Wyler
491 E, Belenki D, Kaltenbrunner S, Pammer M, Kausche L, Firsching TC, Dietert K,
492 Schotsaert M, Martínez-Romero C, Singh G, Kunz S, Niemeyer D, Ghanem R,
493 Salzer HJF, Paar C, Mülleder M, Uccellini M, Michaelis EG, Khan A, Lau A,
494 Schönlein M, Habringer A, Tomasits J, Adler JM, Kimeswenger S, Gruber AD,
495 Hoetzenecker W, Steinkellner H, Purfürst B, Motz R, Di Pierro F, Lamprecht B,
496 Osterrieder N, Landthaler M, Drostén C, García-Sastre A, Langer R, Ralser M,
497 Eils R, Reimann M, Fan DNY, Schmitt CA. Virus-induced senescence is a
498 driver and therapeutic target in COVID-19. *Nature.* 2021, 599(7884):283-289.
499 doi: 10.1038/s41586-021-03995-1. PMID: 34517409.
- 500 22. Li B, Yang J, Zhao F, et al. Prevalence and impact of cardiovascular metabolic
501 diseases on COVID-19 in China. *Clin Res Cardiol.* 2020; 1–
502 8. <https://doi.org/10.1007/s00392-020-01626-9>.

- 503 23. Lipsitz L. A. (2004). Physiological complexity, aging, and the path to frailty.
504 Science of aging knowledge environment: *SAGE KE*, 2004 (16),
505 pe16. <https://doi.org/10.1126/sageke.2004.16.pe16>.
- 506 24. Liu J, Li S, Liu J, Liang B, Wang X, Wang H, Li W, Tong Q, Yi J, Zhao L,
507 Xiong L, Guo C, Tian J, Luo J, Yao J, Pang R, Shen H, Peng C, Liu T, Zhang Q,
508 Wu J, Xu L, Lu S, Wang B, Weng Z, Han C, Zhu H, Zhou R, Zhou H, Chen X,
509 Ye P, Zhu B, Wang L, Zhou W, He S, He Y, Jie S, Wei P, Zhang J, Lu Y, Wang
510 W, Zhang L, Li L, Zhou F, Wang J, Dittmer U, Lu M, Hu Y, Yang D, Zheng X.
511 Longitudinal characteristics of lymphocyte responses and cytokine profiles in
512 the peripheral blood of SARS-CoV-2 infected patients. *EBioMedicine* 2020, 55:
513 102763. doi: 10.1016/j.ebiom.2020.102763. PMID: 32361250; PMCID:
514 PMC7165294.
- 515 25. Lucas, C., Wong, P., Klein, J., Castro, T. B. R., Silva, J., Sundaram, M.,
516 Ellingson, M. K., Mao, T., Oh, J. E., Israelow, B., Takahashi, T., Tokuyama, M.,
517 Lu, P., Venkataraman, A., Park, A., Mohanty, S., Wang, H., Wyllie, A. L.,
518 Vogels, C. B. F., Iwasaki, A. Longitudinal analyses reveal immunological
519 misfiring in severe COVID-19. *Nature*, 2020, 584, 463.
520 <https://doi.org/10.1038/s41586-020-2588-y>
- 521 26. Luiza-Silva, M., Campi-Azevedo, A. C., Batista, M. A., Martins, M. A., Avelar,
522 R. S., da Silveira Lemos, D., et al. Cytokine signatures of innate and adaptive
523 immunity in 17DD yellow fever vaccinated children and its association with the
524 level of neutralizing antibody. *J. Infect. Dis.* 2011, 204, 873–883. doi:
525 10.1093/infdis/jir439
- 526 27. Moro-García MA, Mayo JC, Sainz RM, Alonso-Arias R. Influence of
527 Inflammation in the Process of T Lymphocyte Differentiation: Proliferative,
528 Metabolic, and Oxidative Changes. *Front Immunol.* 2018, 9:339. doi:
529 10.3389/fimmu.2018.00339. PMID: 29545794; PMCID: PMC5839096.
- 530 28. Mulchandani R, Lyngdoh T, Kakkar AK. Deciphering the COVID-19 cytokine
531 storm: Systematic review and meta-analysis. *Eur J Clin Invest.* 2021, 51(1):
532 e13429. doi:10.1111/eci.13429.
- 533 29. Mueller AL, McNamara MS, Sinclair DA. Why does COVID-19
534 disproportionately affect older people? *Aging* 2020, 12:9959-9981.
535 <https://doi.org/10.18632/aging.103344>.

- 536 30. Osuchowski MF, Winkler MS, Skirecki T, Cajander S, Shankar-Hari M,
537 Lachmann G, Monneret G, Venet F, Bauer M, Brunkhorst FM, Weis S, Garcia-
538 Salido A, Kox M, Cavaillon JM, Uhle F, Weigand MA, Flohé SB, Wiersinga
539 WJ, Almansa R, de la Fuente A, Martin-Loeches I, Meisel C, Spinetti T,
540 Schefold JC, Cilloniz C, Torres A, Giamarellos-Bourboulis EJ, Ferrer R,
541 Girardis M, Cossarizza A, Netea MG, van der Poll T, Bermejo-Martín JF, Rubio
542 I. The COVID-19 puzzle: deciphering pathophysiology and phenotypes of a new
543 disease entity. *Lancet Respir Med*. 2021, 9(6): 622-642. doi: 10.1016/S2213-
544 2600(21)00218-6. PMID: 33965003; PMCID: PMC8102044.
- 545 31. Pangrazzi L, Weinberger B. T cells, aging and senescence. *Exp Gerontol*. 2020,
546 134:110887. doi: 10.1016/j.exger.2020.110887. PMID: 32092501.
- 547 32. Pinti M, Appay V, Campisi J, Frasca D, Fülöp T, Sauce D, Larbi A, Weinberger
548 B, Cossarizza A. Aging of the immune system: Focus on inflammation and
549 vaccination. *Eur J Immunol*, 2016, 46(10): 2286-2301. doi:
550 10.1002/eji.201546178. PMID: 27595500; PMCID: PMC5156481.
- 551 33. Rahman A, Sathi NJ. Risk factors of the severity of COVID-19: A meta-
552 analysis. *Int J Clin Pract*. 2021, 75(7): e13916. doi: 10.1111/ijcp.13916. Epub
553 2020 Dec 20. PMID: 33372407.
- 554 34. Rodriguez IJ, Lalande Ruiz N, Llano León M, et al. Immunosenescence Study of
555 T Cells: A Systematic Review. *Front Immunol*. 2021, 11:604591. Published
556 2021 Jan 15. doi:10.3389/fimmu.2020.604591.
- 557 35. Sallenave JM, Guillot L. Innate Immune Signaling and Proteolytic Pathways in
558 the Resolution or Exacerbation of SARS-CoV-2 in Covid-19: Key Therapeutic
559 Targets? *Front Immunol*. 2020, 11:1229. doi: 10.3389/fimmu.2020.01229.
560 PMID: 32574272; PMCID: PMC7270404.
- 561 36. Solana R, Tarazona R, Aiello AE, Akbar AN, Appay V, Beswick M, Bosch JA,
562 Campos C, Cantisán S, Cicin-Sain L, Derhovanessian E, Ferrando-Martínez S,
563 Frasca D, Fulöp T, Govind S, Grubeck-Loebenstein B, Hill A, Hurme M, Kern
564 F, Larbi A, López-Botet M, Maier AB, McElhaney JE, Moss P, Naumova E,
565 Nikolich-Zugich J, Pera A, Rector JL, Riddell N, Sanchez-Correa B, Sansoni P,
566 Sauce D, van Lier R, Wang GC, Wills MR, Zieliński M, Pawelec G. CMV and
567 Immunosenescence: from basics to clinics. *Immun Ageing* 2012, 9(1): 23. doi:
568 10.1186/1742-4933-9-23. PMID: 23114110; PMCID: PMC3585851.

- 569 37. Thakur, B., Dubey, P., Benitez, J. *et al.* A systematic review and meta-analysis
570 of geographic differences in comorbidities and associated severity and mortality
571 among individuals with COVID-19. *Sci. Rep* 2021, 11, 8562.
572 <https://doi.org/10.1038/s41598-021-88130-w>.
- 573 38. Thomas R, Wang W, Su DM. Contributions of Age-Related Thymic Involution
574 to Immunosenescence and Inflammaging. *Immun Ageing* 2020, 17:2. doi:
575 10.1186/s12979-020-0173-8. PMID: 31988649; PMCID: PMC6971920.
- 576 39. (a) WHO COVID-19 Dashboard. Geneva: World Health Organization, 2020.
577 Available online: <https://covid19.who.int/> (Access: April 4th 2022).
- 578 40. (b) WHO Working Group on the Clinical Characterisation and Management of
579 COVID-19 infection. A minimal common outcome measure set for COVID-19
580 clinical research. *Lancet Infect Dis.* 2020 Aug;20(8):e192-e197. doi:
581 10.1016/S1473-3099(20)30483-7. Epub 2020 Jun 12. Erratum in: *Lancet Infect*
582 *Dis.* 2020, 20(10): e250. PMID: 32539990; PMCID: PMC7292605.
- 583 41. Witkowski JM, Fulop T, Bryl E. Immunosenescence and COVID-19. *Mech*
584 *Ageing Dev.* 2022, 204:111672. doi: 10.1016/j.mad.2022.111672.. PMID:
585 35378106
- 586 42. Wu C, Chen X, Cai Y, Xia J, Zhou X, Xu S, Huang H, Zhang L, Zhou X, Du C,
587 Zhang Y, Song J, Wang S, Chao Y, Yang Z, Xu J, Zhou X, Chen D, Xiong W,
588 Xu L, Zhou F, Jiang J, Bai C, Zheng J, Song Y. Risk Factors Associated With
589 Acute Respiratory Distress Syndrome and Death in Patients With Coronavirus
590 Disease 2019 Pneumonia in Wuhan, China. *JAMA Intern Med.* 2020 Jul
591 1;180(7):934-943. doi: 10.1001/jamainternmed.2020.0994. Erratum in: *JAMA*
592 *Intern Med.* 2020 Jul 1;180(7):1031. PMID: 32167524; PMCID: PMC7070509.
- 593 43. Wherry EJ. T cell exhaustion. *Nat Immunol* 2011, 12(6): 492-9. doi:
594 10.1038/ni.2035. PMID: 21739672.
- 595 44. Wherry EJ, Kurachi M. Molecular and cellular insights into T cell
596 exhaustion. *Nat Rev Immunol.* 2015, 15(8): 486-499. doi:10.1038/nri3862.
- 597 45. Xu L, Chen G. Risk factors for severe corona virus disease 2019 (COVID-19)
598 patients: a systematic review and meta
599 analysis. *medRxiv.* 2020. <https://doi.org/10.1101/2020.03.30.20047415>.

- 600 46. (a) Zheng M, Gao Y, Wang G, et al. Functional exhaustion of antiviral
601 lymphocytes in COVID-19 patients. *Cell Mol Immunol.* 2020, 17(5): 533-535.
602 doi:10.1038/s41423-020-0402-2.
- 603 47. (b) Zheng, HY., Zhang, M., Yang, CX. et al. Elevated exhaustion levels and
604 reduced functional diversity of T cells in peripheral blood may predict severe
605 progression in COVID-19 patients. *Cell Mol Immunol* 2020, 17, 541–543
606 (2020). <https://doi.org/10.1038/s41423-020-0401-3>.
- 607 48. Zhou F, Yu T, Du R, et al. Clinical course and risk factors for mortality of adult
608 inpatients with COVID-19 in Wuhan, China: a retrospective cohort study. *The*
609 *Lancet* 2020, 395(10229): 1054 – 1062.

610

611 **Figure Legends:**

612

613 **Figure 1 – Longitudinal study of inflammatory profiles of COVID-19 patients** 614 **from Portugal and Brazil during a seven-day period of disease development.**

615 (A) Radar chart of serum mediators of control group (baseline) and patients with
616 COVID-19 at hospitalization (T0) and seven days later (T7) in the Portuguese
617 cohort. (B) Comparison of serum levels of CCL-2, IFN- γ , IL-6 and IL-10 at hospital
618 admission (T0) and seven days later (T7). Wilcoxon test was applied to compare
619 samples of the same patient at T0 and T7. $P < 0.05$. (C) Radar chart representing the
620 balance in frequencies of inflammatory and anti-inflammatory
621 cytokines/chemokines in the innate and adaptive immunity compartments from
622 individuals between the time of recruitment (T0) at the hospital/ambulatory and
623 seven days later (T7) in the Brazilian cohort.

624

625 **Figure 2 - Spearman's correlation correlogram of the inflammatory profile of** 626 **COVID-19 patients at day 0 and 7 of disease development.** (A) Correlation

627 matrices across all cytokines/chemokines from patients' sera, comparing COVID-19
628 at time zero (T0) of infection and 7 days later (T7) in Lisbon, Portugal, and (B) Belo
629 Horizonte, Brazil. Positive cytokine correlations are lost, and negative correlations
630 appear going from T0 to T7. The strength of the correlation between two variables is
631 represented by the color of the circle at the intersection of those variables. Colors
632 range from dark blue (strong positive correlation, i.e. $r_2 = 1.0$) to dark red (strong

633 negative correlation; i.e. $r^2 = -1.0$). Results were not displayed if not significant ($P <$
634 0.05) according to Spearman Correlation Test.

635

636 **Figure 3 –Frequencies of exhausted/senescent T cells in patients with mild to**
637 **severe COVID-19 from Portugal and Brazil during a seven-day period.**

638 Representative flow cytometry plots of gated cell subsets and frequency analysis at
639 time 0 and 7. (A and B) Frequencies of naïve CD4 and CD8 T cell in individuals
640 from Lisbon. (C, D, E and F) Differentiated CD4+ and CD8+ T cells presenting
641 senescence/exhaustion markers CD57 and KLRG1 obtained by manual gating in
642 Portuguese patients. (G-L) Percentage of CD4+ and CD8+CD28-CD45RO+CCR7-
643 (effector memory) expressing senescence/exhaustion markers in Brazilian patients.
644 Statistical analysis was performed using the nonparametric Wilcoxon rank-sum. $P <$
645 0.05 .

646

647 **Figure S1 – Gating strategy used to identify the profile of exhausted and**

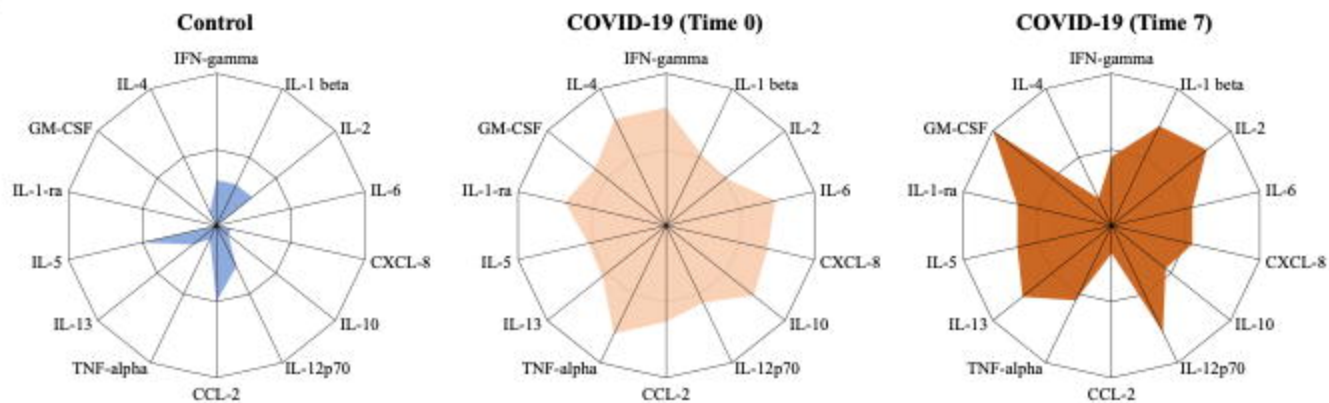
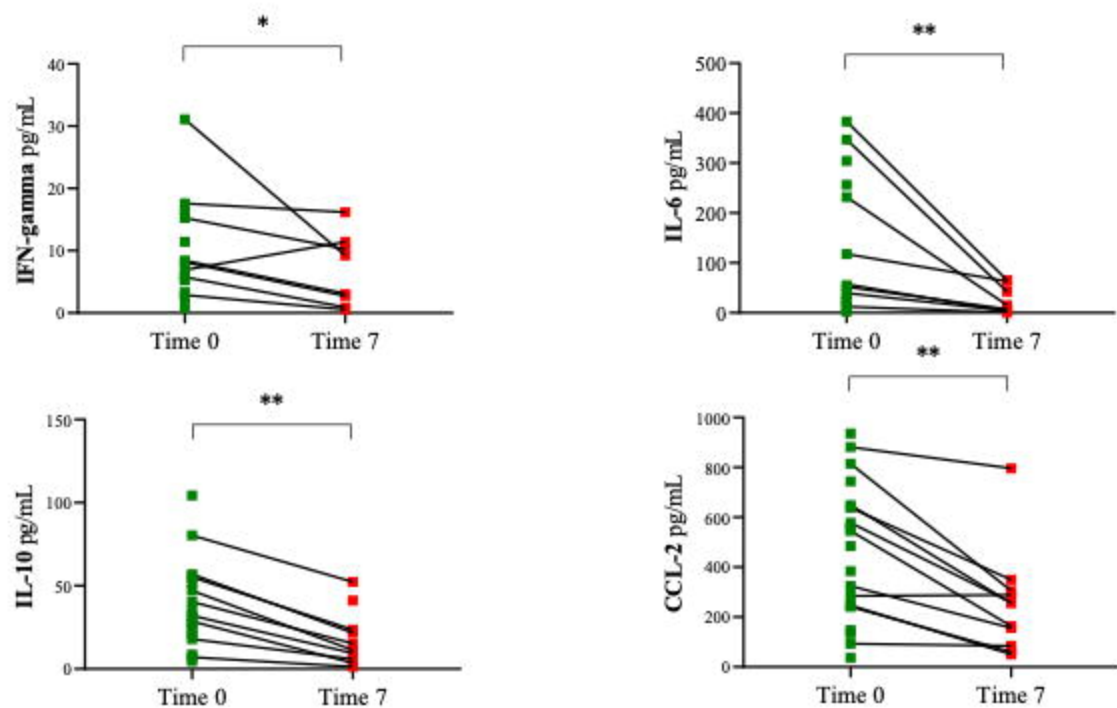
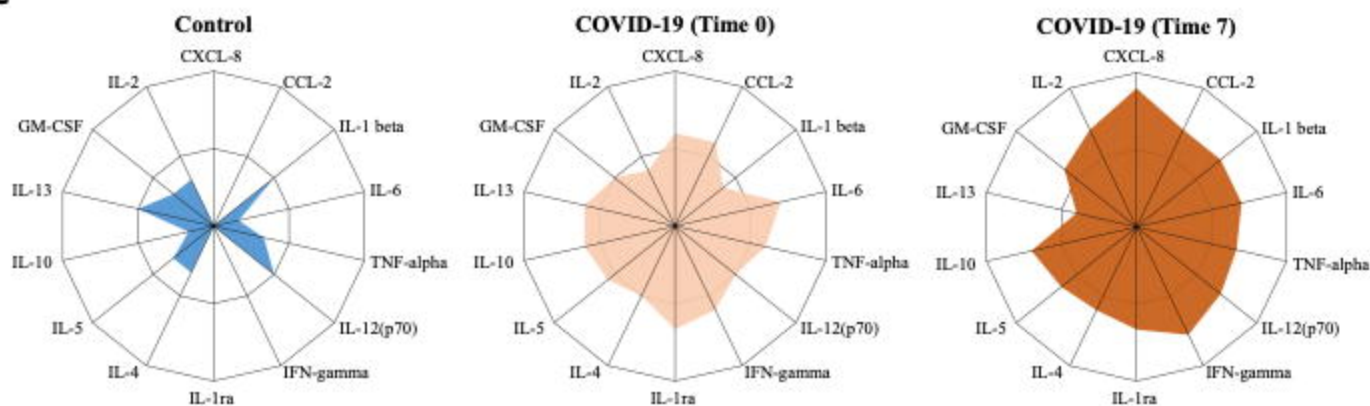
648 **senescent CD8+ and CD4+ T cells.** (A) T cells were characterized based on their
649 CD3 and CD4 expression, and then categorized by CD45RO, CCR7, CD28, CD57
650 and KLRG1 expression. Regulatory T cells expressing FOXP3 were assessed in
651 Brazilian population for their PD-1 expression. (B) CD8 Gate strategy for analysis
652 of CD8+ T cells was similar to the one used for CD4+ T cells.

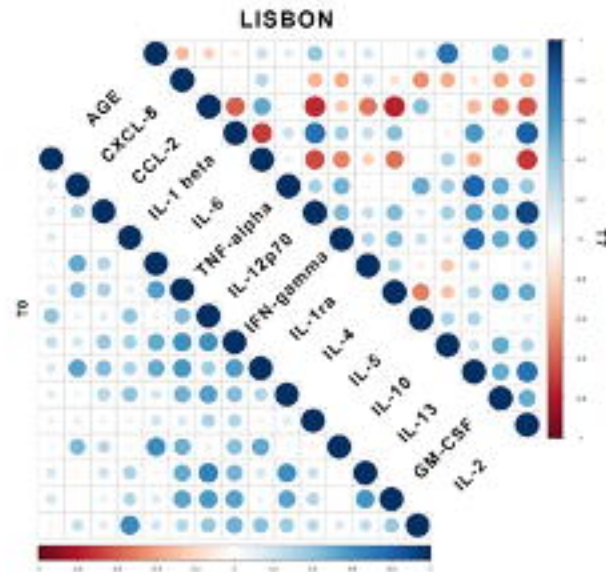
653

654 **Figure S2 - SARS-CoV-2 infection decreases the frequency of FOXP3+CD4+ T**
655 **cells in Brazilian patients with mild to severe COVID-19 in a seven-day period.**

656 Percentage of T CD4+CD25+FOXP3+ cells obtained by manual gating. Frequency
657 of cells expressing exhaustion marker PD-1. Statistical analysis was performed
658 using the nonparametric Wilcoxon rank-sum. $P < 0.05$

659

A**B****C****Figure 1**

A**B****Figure 2**

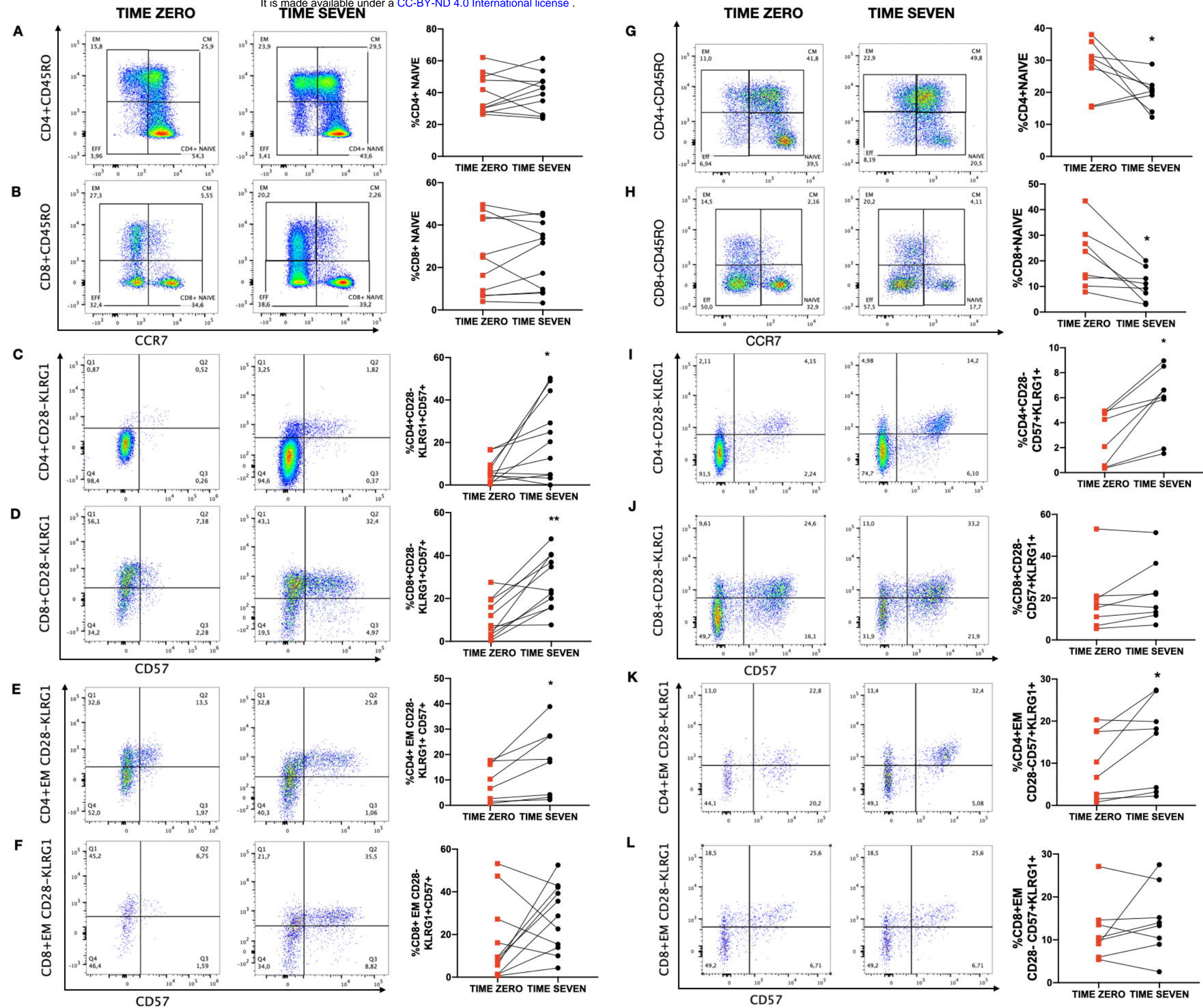


Figure 3

Table 1 - Clinical characteristics of Lisbon and Belo Horizonte populations.

| | Lisbon | | Belo Horizonte | |
|---------------------------------------|----------------------------|--------------------|---------------------------|--------------------|
| | Healthy controls (n=10) | COVID-19 (n=20) | Healthy controls (n=5) | COVID-19 (n=8) |
| Age, median (IQR) (years) | 66.0 (57.8 – 74.5) | 69.0 (60.0 – 84.3) | 25.0 (22.0 – 29.0) | 42.5 (35.8 – 54.5) |
| Female sex (%) | 9 (90%) | 6 (30%) | 4 (80%) | 4 (50%) |
| Comorbidities, n (%) | | | | |
| Cancer | 0 | 0 | 0 | 1 (12.5%) |
| Cardiovascular disease | 0 | 5 (25%) | 0 | 0 |
| Diabetes | 0 | 6 (30%) | 0 | 0 |
| High cholesterol | 0 | 3 (15%) | 0 | 0 |
| Hypertension | 0 | 12 (60%) | 0 | 1 (12.5%) |
| Disease severity, n (%) | | | | |
| Mild | NA | 0 | NA | 3 (37.5%) |
| Moderate | NA | 0 | NA | 3 (37.5%) |
| Severe | NA | 20 (100%) | NA | 2 (25%) |
| Death during hospitalization, n (%) | NA | 3 (7.5%) | NA | 0 |
| Samples lost between T0 and T7, n (%) | NA | 6 (15%) | NA | 0 |

IQR: interquartile range. NA: not applicable.