



## 21 **Abstract**

22 Accumulation of  $\beta$ -amyloid ( $A\beta$ ) in the brain occurs in the early phase of  
23 Alzheimer's disease (AD), without symptoms of cognitive decline. Therefore, early  
24 detection of the accumulation phase is essential to prevent or delay AD. In this study,  
25 we investigated the effects of age, sex, apoprotein-E (ApoE) genotype and cognitive  
26 dysfunction on the ratio of  $A\beta_{1-42}$ ,  $A\beta_{1-40}$ , and amyloid  $\beta$  precursor protein (APP)<sub>669-711</sub>  
27 (composite biomarker: CM) in plasma using a sensitive Time of flight mass  
28 spectrometry (TOF-MS). In healthy subjects, the average CM value of males aged 30–  
29 59 years was significantly higher than that of females, but no difference was observed  
30 between those aged 60 and 79 years. CM values increased considerably after 50 years of  
31 age, especially in females. The effect of the ApoE4 genotype on CM was greater in  
32 females than in males. The CM value of patients with AD was higher than that of  
33 healthy subjects and that of patients with Parkinson's disease (PD). The CM value of  
34 patients with PD complicated by AD was higher than that of patients with PD. These  
35 results suggest that the CM value is influenced by age, sex, ApoE4 genotype, and  
36 central nervous system disorder. In addition, the CM value could be a reliable  
37 biomarker to distinguish not only patients with AD and healthy subjects but also AD

38 and patients with PD. Since the measurement of CM is less invasive to the subjects, the  
39 method is helpful for the early detection of accumulation of A $\beta$  before the appearance  
40 of AD symptoms. Moreover, this practical method can be used for differential diagnosis  
41 among a variety of patients with dementia.

## 42 **Introduction**

43 The World Health Organization (WHO) reports that dementia affects more than 55  
44 million people worldwide, and 60–70% of these people have Alzheimer’s disease (AD).  
45 In addition, treatment for AD is crucial because AD can also occur in other central  
46 nervous system disorders [1-3]. In the brain, an early symptom of AD is the  
47 accumulation of amyloid  $\beta$  ( $A\beta$ ), produced by mutations in  $\beta$ - and  $\delta$ -secretase [2,4,5].  
48  $A\beta$  accumulation triggers pathological findings in AD, including amyloid plaques and  
49 neurofibrillary tangles (NFTs). NFTs interact abnormally with cellular proteins and  
50 inhibit neuronal function. The hyperphosphorylation of tau occurs downstream of  $A\beta$   
51 accumulation and activates  $A\beta$  synthesis. In the late phase of the neurodegenerative  
52 cascade in the AD brain, cholinergic deficits occur due to choline acetyltransferase  
53 deficiency. In addition, excitotoxicity, defined as an overexposure to glutamate or  
54 overstimulation of the N-methyl-D-aspartate (NMDA) receptor, plays an essential role  
55 in progressive neuronal loss in AD[2]. In this way, AD causes the accumulation of  $A\beta$   
56 in the early stages, which leads to a cognitive decline in the brain.

57 Various factors influence AD development, including sex differences and genotypes  
58 of the ApoE gene [5,6]. Sex differences are one of the factors that affect the

59 development of AD, and their effects are broad and include brain structure, stress  
60 response, and sex hormones. Serum and brain concentrations of the male hormone  
61 testosterone were significantly lower in patients compared to healthy individuals. In  
62 addition, endogenous testosterone deficiency caused by orchiectomy causes an increase  
63 in soluble A $\beta$  concentrations in rat brains, and androgen administration reduces A $\beta$   
64 concentrations [5,7]. The female hormone, estrogen, is also involved in the risk of  
65 developing AD. Decreased estrogen levels in adulthood increase the risk of developing  
66 AD. In addition, ovariectomized mice show elevated levels of soluble A $\beta$  in the brain,  
67 followed by an accelerated accumulation of A $\beta$  with rapid worsening of cognitive  
68 behavior.[5,7].

69 With regard to the ApoE gene, people with one copy of E4-allyl in the ApoE gene  
70 have a nearly three-fold higher risk of developing AD, and those with two copies have  
71 an 8-12 times higher risk than those without the copy [5]. Furthermore, with regard to  
72 sex differences, females with E4-allyl have faster cognitive decline than males [5,8].

73 Although there are many patients with AD worldwide, effective treatments and  
74 therapeutic drugs are unavailable. During the discovery of therapeutic drugs, drugs for  
75 patients with early signs of cognitive declines, such as minor cognitive decline, have  
76 been anticipated. However, to date, only a few effective drugs are available. Therefore,

77 the development of therapeutic drugs to be used before cognitive decline (preclinical  
78 phase) is currently in progress[2]. The accumulation of A $\beta$  and formation of NFTs in  
79 the brain occur before signs of cognitive decline. In this context, measuring the  
80 accumulation of A $\beta$  in the brain using central spinal fluid (CSF) or positron emission  
81 tomography (PET) is critical. However, these specialized techniques are unfavorable  
82 because of their high cost, invasiveness, and limited availability in routine clinical  
83 practice.

84 In 2018, Nakamura et al. measured A $\beta$  concentration in plasma using mass  
85 spectrometry and showed 90% diagnostic accuracy for AD [9]. They demonstrated that  
86 A $\beta_{1-42}$  concentrations decreased in the plasma of patients with AD, while A $\beta_{1-40}$  and  
87 APP<sub>669-711</sub> concentrations remained unchanged. Furthermore, the ratio of (A $\beta_{1-40}$ / A $\beta_{1-42}$ )  
88 to (APP<sub>669-711</sub> / A $\beta_{1-42}$ ) (composite biomarker value: CM value) correlated with the  
89 accumulation of A $\beta$  in the brain. By measuring A $\beta$  in plasma, it has become possible to  
90 manage many samples in a limited period without invasiveness.

91 In this study, we measured the CM of patients (n = 112) with central nervous system  
92 disorders and healthy individuals (n=603). In addition, we investigated the change in  
93 CM value with age, sex, ApoE, and between patients with AD and healthy subjects.  
94 Here, we show that CM is a valuable biomarker for the definition of AD in healthy

95 individuals and patients with AD and Parkinson’s disease (PD) patients.

96

## 97 **Materials and Methods**

### 98 **Subjects**

99 The subjects were essentially healthy registered volunteers managed by the Health  
100 Information Research Center at Hokkaido Information University. They thoroughly  
101 understood the significance, contents, and purposes of this study, “Accumulation and  
102 analysis of biomarkers involved in the prevention and improvement of dementia in  
103 healthy subjects,” and provided written consent. Healthy Japanese adult males and  
104 females between 30 and 79 years (n = 603) participated in the study. The data included  
105 age, sex, family history of dementia, blood chemistry results, and other clinical data. On  
106 the other hand, Japanese patients with central nervous system disorders between the  
107 ages of 50 and 91 (n = 112) joined the study after consultations with registered  
108 neurologists at the Hokkaido Neurosurgical Memorial Hospital (Sapporo, Japan).  
109 Written consent was obtained from patients or family members to participate in further  
110 studies.

111

## 112 **Laboratory tests**

113 Blood samples were collected from healthy subjects and patients and sent to the  
114 Sapporo Clinical Laboratory, Inc. (Sapporo, Hokkaido, Japan). Complete blood count,  
115 liver function (aspartate aminotransferase, alanine aminotransferase, gamma-glutamyl  
116 transpeptidase, alkaline phosphatase, and lactate dehydrogenase), kidney function  
117 (blood urea nitrogen, creatinine, and uric acid), lipid metabolism (total cholesterol, low-  
118 density lipoprotein, high-density lipoprotein, and triglyceride), and glucose metabolism  
119 (blood glucose and hemoglobin A1c) was performed. We also measured the fatty acids  
120 (dihomo- $\gamma$ -linoleic acid (DHLA), arachidonic acid (AA), eicosapentaenoic acid (EPA),  
121 docosahexaenoic acid (DHA), Zn, and 25-OH vitamin D.

122

## 123 **A $\beta$ measurement**

124 Peripheral blood A $\beta$  levels were measured according to the method of Nakamura et  
125 al. [9]. Whole blood was collected in 7 mL EDTA-2Na tubes (Venoject II, TERUMO,  
126 Shibuya, Tokyo, Japan) and centrifuged at 2400 g for 5 min at room temperature within  
127 60 min after blood collection. Plasma (500  $\mu$ L) was transferred to storage tubes (96  
128 Jacket Tubes 0.7 mL, FCR&Bio, Kobe, Hyogo, Japan) and frozen in a -80°C freezer.  
129 After they were isolated and enriched from abundant plasma proteins by



130 immunoprecipitation, the specific affinity of the antibody plasma A $\beta$  levels was  
131 measured using IP–MS (immunoprecipitation-mass spectrometry, Shimadzu  
132 Corporation, Kyoto, Kyoto, Japan). They used an analytical technique to quantify A $\beta$ -  
133 related peptides of different masses using MALDI-TOF mass spectrometry (matrix  
134 assisted laser desorption/ionization-time of flight mass spectrometry, Shimadzu  
135 Corporation, Kyoto, Kyoto, Japan). Shimadzu Corporation blindly performed IP–MS  
136 analysis.

137

## 138 **Genotyping of ApoE gene**

139 Whole blood was collected in a 4 mL EDTA-2K tube (Venoject II, TERUMO), and  
140 DNA was isolated from 400 uL whole blood using a QIAamp DNA Blood Minikit  
141 (QIAGEN, Hulsterweg, Venlo, Netherlands). We quantified the DNA content in the  
142 concentrated solution using Nano-Drop (Thermo Fisher, MA, USA). The genotype of  
143 the ApoE gene was analyzed by the Probe PCR method using two TaqMan probe sets  
144 (C\_60538594A\_10, C\_60538594 B \_20, Thermo Fisher, MA, USA). The reaction  
145 solution was mixed with 1ng/uL DNA solution. ApoE was analyzed using predesigned  
146 TaqMan genotyping assays (Applied Biosystems, CA, USA). Approximately 1 ng of  
147 genomic DNA was amplified in a 5  $\mu$ L reaction mixture in a 96-well plate containing 1

148 × Probe PCR ExTaq master mix (Takara Bio, Shiga, Japan) and 1 × Taqman probe mix  
149 containing the respective primers and probes. QuantStudio 3 was used with a standard  
150 endpoint genotyping program (Thermo Fisher Scientific, MA, USA). According to the  
151 manufacturer's protocol, PCR was performed with an initial denaturation at 94°C for 5  
152 min, followed by 40 two-step cycles (denaturation for 30 s at 94°C, primer annealing,  
153 and extension for 60 s at 60°C).

154

## 155 **Statistical analysis**

156 All statistical analyses were performed using the Statistical Package for Social  
157 Science (SPSS® Statistics version 25, IBM Corp, NY, USA) . Statistical significance  
158 was set at  $p < 0.05$ . The age, sex, and ApoE genotype of healthy subjects were  
159 randomly divided into several groups. We used the Mann–Whitney U test or Kruskal–  
160 Wallis H test to compare two or more multiple groups.

161

## 162 **Ethics**

163 This study was conducted in accordance with the guidelines of the Declaration of  
164 Helsinki [10]. The ethics committee approved all procedures involving human subjects  
165 at Hokkaido Information University (for healthy people, approved on November 26,

166 2019; approval number: 2019-31; for patients, approved on July 31, 2020; approval  
167 number: 2020-19). Therefore, this study complied with the ethical guidelines for human  
168 medical research as per the Ministry of Education, Culture, Sports, Science, and  
169 Technology and the Ministry of Health, Labour, and Welfare.

170

## 171 **Results**

### 172 **Effects of age and sex on composite biomarker values in**

### 173 **healthy subjects**

174 We investigated the CM values of healthy subjects between the ages of 30 and 79  
175 years. The male-to-female ratio was approximately 2:5 (181 males, 422 females). The  
176 highest ratio was approximately 1:1 (male = 26, female = 29) between 70 and 79 years,  
177 and the lowest ratio was approximately 1:4 (male = 35, female = 135) between 50–59  
178 years. Most subjects were aged between 50 and 59 years, and the smallest group was  
179 aged between 70 and 79 years (Table 1). Healthy subjects were divided into two groups,  
180 male and female, to analyze the effects of age and sex on the CM values. We subdivided  
181 these two groups into five age groups (30–39 years, 40–49 years, 50–59 years, 60–69  
182 years, and 70–79 years of age) (10 groups in total) and then calculated the average CM

183 of each group. For the group-to-group comparison, we used the Mann–Whitney U test  
184 (Table 1, Fig 1). Under 59 years of age, the CM value of males was higher than that of  
185 females (30–39 years:  $p = 0.038$ , 40–49 years:  $p = 0.013$ , 50–59 years:  $p = 0.007$ ).  
186 However, the CM value of males over 60 years of age was similar to that of females  
187 (Table 1). The CM value increased with age, especially after 50 years of age (males:  $p =$   
188  $0.038$ , comparison between 40–49 and 50–59, females:  $p = 0.006$  and  $0.018$   
189 comparisons between 40–49 and 50–59, between 50–59 and 60–69, Fig 1). The results  
190 showed that the standard deviation of the CM values increased for both males and  
191 females aged 60 years and older, especially in females (Table 1).

192

193 **Table 1. The effect of CM value on sex and age**

194

Age	Sex	No. of Subjects	Ave. of CM	Std
30-39	male	20	-0.547	0.349
	female	53	-0.741	0.391
40-49	male	37	-0.509	0.341
	female	102	-0.694	0.333

50-59	male	35	-0.357	0.382
	female	135	-0.535	0.429
60-69	male	63	-0.276	0.474
	female	103	-0.335	0.623
70-79	male	26	-0.076	0.644
	female	29	-0.097	0.718

195

196

197 **Fig 1. The relationship of CM value on sex and age.** The bar plot showed the  
198 distribution of the CM values of the healthy subjects. The number of subjects is listed in  
199 Table 1. The difference in the distribution of CM values between males (blue) and  
200 females (red) was examined using the U-test (+:  $p \leq 0.05$ , ++:  $p \leq 0.01$ ). The difference  
201 in the CM value distribution between ages of the same sexgender was also examined  
202 using the U-test (\*:  $p \leq 0.05$ , \*\*:  $p \leq 0.01$ ). X-axis: age. Y-axis: CM value.

203

204 We surveyed subjects between 60 and 79 years of age to determine the relationship  
205 between the CM value and the subjects' ages in males and females (Fig 2). The

206 frequency of subjects with  $CM \geq 0$  was similar between male and female (male = 26/89  
207 (29.2%), female = 32/132 (24.2%)). However, in subjects with  $CM \geq 0$ , the frequency  
208 of subjects with  $CM > 0.5$  was significantly higher in females than in males (male =  
209 9/26 (34.6%), female = 20/32 (62.5%),  $p = 0.035$ ,  $\chi^2$ test). This result suggests that the  
210 females are more dominant aged people with higher CM values.

211

212 **Fig 2. The distribution of CM value of subjects ages 60 to 79 years.** It shows the  
213 distribution of CM values among healthy subjects aged 60 to 79 years. a: Male (n =  
214 89);, b: Female (n = 132). Green: CM value  $< 0$ ; yellow:  $0 \leq CM \text{ value} \leq 0.5$ ; red: CM  
215 value  $> 0.5$ . X-axis: age; Y-axis: CM value.

216

## 217 **Influence of genotypes on composite biomarker values in** 218 **healthy subjects**

219 We investigated the relationship between ApoE4 genotypes and CM values of  
220 healthy subjects. Healthy male subjects tended to have higher CM values in the  
221 population with ApoE4; however, there was no significant difference between subjects  
222 with ApoE4 and those without ApoE4 (Fig 3). Among healthy female subjects, CM  
223 values were higher in the ApoE4 group ( $p = 0.078$ , U-test) from 50–59 years of age.

224 There was a significant difference between the group with ApoE4 and those aged 60  
225 years or older without ApoE4 ( $p = 0.026$ , U-test) (Fig 3).

226

227 **Fig 3. The relationship between CM value and ApoE genotype.** The bar plot  
228 shows the distribution of the CM values of the healthy subjects. In addition, the  
229 difference in the distribution of CM values between subjects with E4 allyl (red) and  
230 those without E4 allyl (blue) was analyzed using the U-test. a) The number of male  
231 subjects was 52 for those aged 30–49 years (E4 allyl: 15, no E4 allyl: 37), 35 for those  
232 aged 50–59 years (E4 allyl: 8, no E4 allyl: 27), and 87 for those aged 60–79 years (E4  
233 allyl: 23, no E4 allyl: 64). b) The number of female subjects was 151 for those aged 30–  
234 49 years (E4 allyl: 31, no E4 allyl: 120), 133 for those aged 50–59 years (E4 allyl: 25,  
235 no E4 allyl: 108), and 128 for those aged 60–79 years (E4 allyl: 21, no E4 allyl: 107). +:  
236  $p < 0.05$ . X-axis: 30–49: 30–49 years old, 50–59: 50–59 years old, 60–79: 60–79 years  
237 old. Y-axis: CM value.

238

### 239 **Comparison of CM values between healthy subjects and** 240 **patients with central nervous system disorder**

241 We compared the CM values of healthy subjects aged 60–79 years ( $n = 221$ , male =

242 89, female = 132, average age = 66.4) and patients with central nervous system  
243 disorders (n = 112, male = 49, female = 63, average age = 77.9), including AD,  
244 argyrophilic grain dementia, corticobasal degeneration, dementia with Lewy bodies,  
245 mild cognitive impairment, multiple system atrophy, normal pressure hydrocephalus,  
246 Parkinson's disease (PD), Parkinson disease with dementia (PDD), progressive  
247 supranuclear palsy, senile dementia, vascular dementia, and other diseases with  
248 dementia (Table 2) . In the ages of 60 to 79 years, the CM value of patients was higher  
249 than that of healthy subjects (patients: CM = 0.501, healthy: CM = -0.257, p = 0.000).  
250 Furthermore, from the distribution of CM values, 75% or more of healthy subjects  
251 between the ages of 60 and 79 years had a CM value of less than 0, whereas more than  
252 half of the patients had a CM value of 0 or more (Fig 4).

253

254 **Table 2. The number of healthy subjects and patients with central nervous**  
255 **system disorders.**

	Total	male	female
Healthy	221	89	132
Patients	112	49	63



AD	13	2	11
PD	33	14	19
PDD	23	12	11
PD+AD	18	7	11
others	25	14	11

256

257 AD: Alzheimer's disease, PD: Perkinson's disease, PDD: PD with dementia,

258 PD+AD: PD with AD.

259

260

261 **Fig 4. The distribution of CM value in healthy subjects and patients with**

262 **dementia.** The distribution of CM values of healthy subjects (50-79: gray) and patients

263 with central nervous system disorders (red). The large red circles indicate the CM

264 values of patients with AD. X-axis: age; Y-axis: CM value.

265

266 We compared the CM values among healthy subjects, patients with AD (n = 13, male

267 = 2, female = 11), patients with PD (n = 33, male = 14, female = 19), patients with PDD

268 (n = 23, male = 12, female = 11), and patients with PD+AD (n = 18, male = 7, female =  
269 11) using the Kruskal Wallis H test and Mann-Whitney U test (Table2). The CM values  
270 among the healthy, AD, and PD groups differed significantly (p = 0.000). The average  
271 CM value in healthy subjects was -0.257, and those in patients with AD, PD, PDD, and  
272 PD+AD were 1.281, 0.406, 0.512, and 0.720, respectively (Fig 5). The CM value in AD  
273 patients was significantly highest, and the value in healthy subjects was significantly  
274 lowest. The CM values with PDD patients were similar to those in PD patients (p =  
275 0.344), but those with PD+AD patients were significantly higher than those in PD  
276 patients (p = 0.043).

277

278 **Fig 5. The distribution of CM value in each disease group.** The bar plot shows the  
279 distribution of CM values of healthy subjects (n = 221), patients with AD (n = 13), PD  
280 (n = 33), PD with dementia (PDD, n = 23), and PD+AD (n=18). The number of  
281 participants is shown in Table 2. The U-test calculated the difference in the CM values  
282 between each other. \*: p < 0.05, \*\*: p < 0.01, \*\*\*: p < 0.001. Y-axis: CM value.

283

## 284 **Discussions**

285 In 2019, Nakamura et al. measured APP<sub>669-711</sub>, A $\beta$ <sub>1-40</sub>, and A $\beta$ <sub>1-42</sub> in peripheral blood  
286 and calculated the CM value from the ratio of their concentrations. Since the CM value  
287 is 0.376 or higher and contains approximately 90% of patients with AD [9], detecting  
288 the accumulation of A $\beta$  in the brain with high sensitivity has become possible.  
289 Furthermore, this method uses plasma from available blood collection, with a minimal  
290 burden on the patient [9]. In this study, we carried out CM measurements for a large  
291 number of people, including not only patients with dementia but also healthy subjects,  
292 and the correlation between CM value and age, sex, and central nervous system  
293 disorders (especially AD and PD) was analyzed.

294

## 295 **The influence of age, sex, and genotype on CM value**

296 In this study, we first measured the CM values of healthy subjects. The CM levels  
297 tended to increase with age. In subjects younger than 60 years, the male group had  
298 significantly higher CM values than the female group; however, there was no difference  
299 in CM values between males and females over 60 years (Fig 1). In males, the CM value  
300 increased consistently with age; however, in females, the CM value increased after 50  
301 years of age. These results suggest that after the age of 50 years, changes in blood A $\beta$   
302 levels differ between males and females.

303 One of the factors contributing to these sex differences may be sex hormone levels. In  
304 males, blood testosterone concentration and the risk of developing AD have been  
305 correlated, based on a report that male patients with AD have lower serum testosterone  
306 levels [11,12]. In addition, an inverse correlation exists between testosterone and A $\beta$   
307 concentrations in the brain [13]. These findings suggest that a decrease in testosterone  
308 levels promotes the accumulation of A $\beta$  in the brain [6,7,11-13]. In addition,  
309 testosterone levels decrease linearly with the age of 20 in males [14,15]. These findings  
310 imply that the accumulation of A $\beta$  in the brain increases consistently with age, and the  
311 consistent increase in the brain is similar to the change in the CM value of males. In  
312 females, reduced estrogen levels appear to be associated with an increased risk of AD  
313 [6,16]. Estrogen levels decrease sharply during menopause [14]. These facts indicate  
314 that the accumulation of A $\beta$  in the brain increases sharply after 50 years of age, which is  
315 similar to the change in the CM value of females. Moreover, at the age of 60-79, the  
316 proportion of male subjects with high CM values was higher than that of female  
317 subjects (Fig 2). The standard distribution of CM values in females was greater than that  
318 in males (Table 1). These facts suggest that the CM value in female subjects may be  
319 influenced by sex hormones, as well as other factors.

320 In this study, we found a significant increase in the CM value due to the ApoE4 gene

321 in females aged 60-79 (Fig 3). This suggests that the effect of ApoE4 on the CM value  
322 was different between males and females. Individuals with the ApoE4 gene have an  
323 increased risk of developing AD [5], and the influence of the ApoE4 gene is present in  
324 both males and females. However, the effect of ApoE4 on the onset of AD may differ  
325 between males and females [5]. In addition, the effects of ApoE4 were more  
326 pronounced after menopause in females. This suggests that the interaction of estrogen  
327 with ApoE4 increases the risk of developing AD [5]. These reports imply that the  
328 accumulation of A $\beta$  in the brain is more pronounced in females carrying the ApoE4  
329 gene. This enhancement of A $\beta$  accumulation in women by the ApoE4 gene is similar to  
330 the increase in CM values in females with the ApoE4 gene. This similarity between the  
331 change in CM value in blood and the accumulation of A $\beta$  in the brain indicates that, in  
332 healthy people, the CM value in the blood reflects the accumulation of A $\beta$  in the brain.

333

### 334 **The difference in CM value between healthy subjects and** 335 **patients with central nervous system disorder.**

336 We measured the CM values in 112 patients with central nervous system disorders.  
337 Certified neurologists diagnosed patients with central nervous system disorders (Table  
338 2). The CM values of healthy subjects were lower than those of patients with central

339 nervous system disorders. Therefore, we can distinguish CM values between healthy  
340 individuals and patients with central nervous system disorders. Moreover, the average  
341 CM value in patients with AD (1.282) was significantly higher not only in healthy  
342 subjects (-0.257) but also in patients with PD (0.406). Notably, the CM value in patients  
343 with PD was higher than that in healthy subjects. This result implies that the CM value  
344 can be distinguished between healthy individuals, patients with central nervous system  
345 disorders, and patients with either AD or PD (Fig. 5). In addition, this result implies that  
346 patients with a central nervous system disorder, regardless of the type of disease, may  
347 have a more accumulation of A $\beta$  in the brain than healthy individuals. PD and dementia  
348 with Lewy bodies are categorized into a group of diseases called  $\alpha$ -synucleinopathy, in  
349 which toxic oligomeric  $\alpha$ -synuclein accumulates in nerve cells. In patients with PD, the  
350 concentration of  $\alpha$ -synuclein in the CSF is lower than that in healthy individuals [17]. It  
351 is positively correlated with the concentration of A $\beta_{1-42}$  in the CSF [18]. These reports  
352 imply that the concentration of A $\beta_{1-42}$  in the blood is lower in patients with PD than in  
353 healthy individuals. Therefore, patients with PD may have higher CM values than  
354 healthy individuals. We also found that the CM value in patients with PD complicated  
355 by AD (0.720) was significantly higher than in patients with PD (Fig 5). This result  
356 suggests that the CM value measured by this method can be used for early detection of

357 AD in healthy subjects and differential diagnosis of patients complicated with other  
358 central nervous system disorders. Thus, the CM value is a valuable biomarker for  
359 detecting AD and other central nervous system disorders, with a decrease of  $A\beta_{1-42}$  in  
360 CSF.

361

## 362 **Conclusion**

363 We demonstrated that the CM value calculated from  $A\beta$  concentration in the blood is  
364 an index for distinguishing between patients with central nervous system disorders and  
365 healthy individuals. Moreover, the CM value differentiates patients with AD from  
366 patients with PD and healthy people. As the measurement of  $A\beta$  in the peripheral blood  
367 used in this study has a significant advantage with little burden on subjects, it is possible  
368 to measure patients with AD and healthy people. Furthermore, measurements over time  
369 can be used to investigate changes in the speed of  $A\beta$  accumulation, which helps  
370 determine the preclinical phase.

371

## 372 **Acknowledgments**

373 We thank members of Hokkaido Information University, Center of Health  
374 Information Science, and Hokkaido Neurosurgical Memorial Hospital for their technical  
375 assistance with the clinical trial and data treatment. This study was supported by the  
376 cross-ministerial Strategic Innovation Promotion Program (SIP), “Technologies for  
377 Smart Bio-industry and Agriculture” and Public/Private R&D Investment Strategic  
378 Expansion Program (PRISM).

379

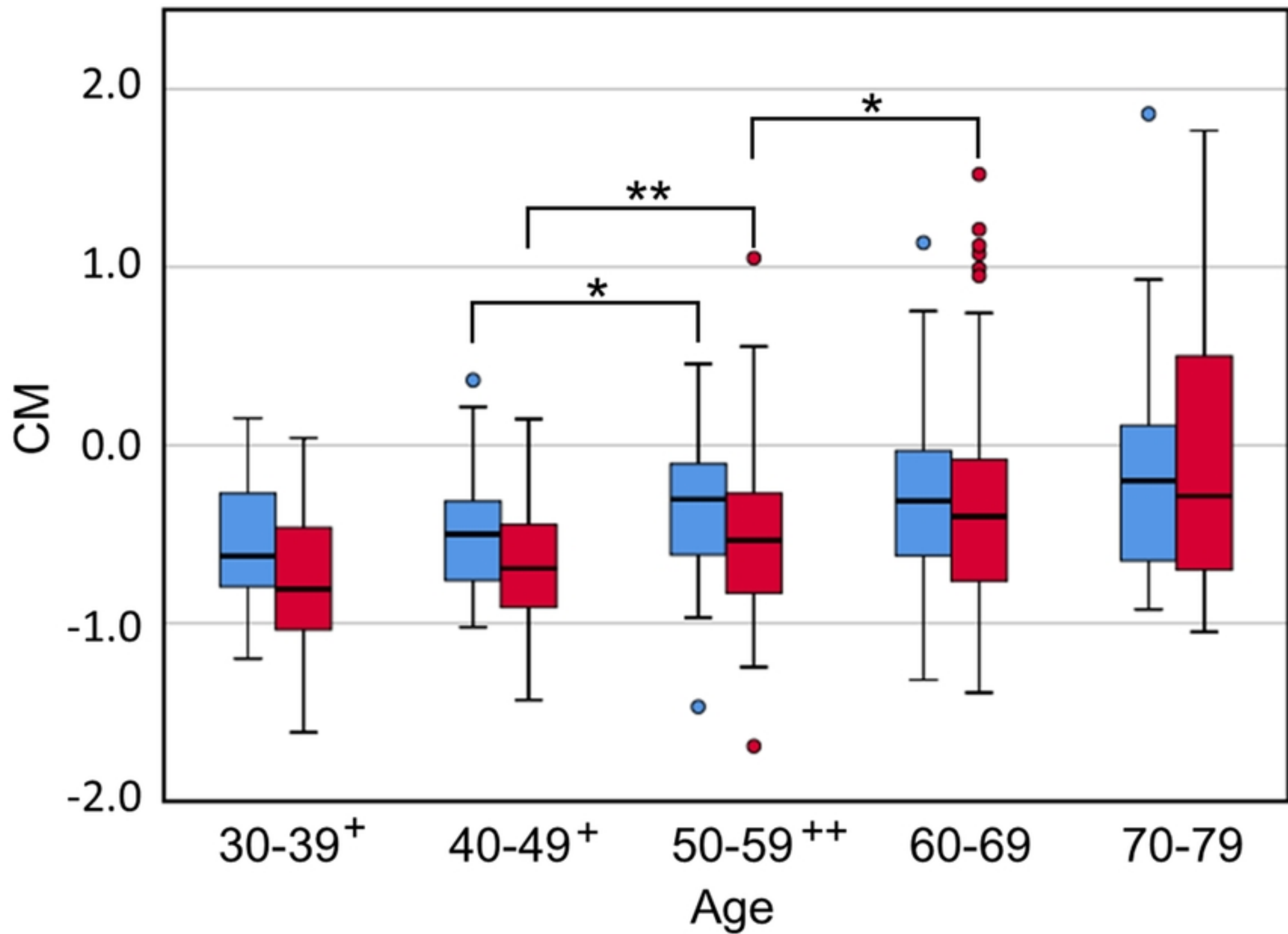
## 380 **References**

- 381 1. World Health Organization. Dementia [Internet]. 2022.  
382 <https://www.who.int/news-room/fact-sheets/detail/dementia>
- 383 2. Briggs R, Kennelly SP, O'Neill D. Drug treatments in Alzheimer's disease. Clin  
384 Med (Lond). 2016;16: 247-253.
- 385 3. Venkat P, Chopp M, Chen J. Models and mechanisms of vascular dementia. Exp  
386 Neurol. 2015;272: 97-108.
- 387 4. Avila J, Perry G. A Multilevel View of the Development of Alzheimer's Disease.  
388 Neuroscience. 2021;457: 283-293.
- 389 5. Zhu D, Montagne A, Zhao Z. Alzheimer's pathogenic mechanisms and  
390 underlying sex difference. Cell Mol Life Sci. 2021;78: 4907-4920.
- 391 6. Mielke MM. Sex and Gender Differences in Alzheimer's Disease Dementia.  
392 Psychiatr Times. 2018;35: 14-17.
- 393 7. Bianchi VE. Impact of Testosterone on Alzheimer's Disease. World J Mens  
394 Health. 2022;40: 243-256.
- 395 8. Rocca WA, Mielke MM, Vemuri P, Miller VM. Sex and gender differences in  
396 the causes of dementia: a narrative review. Maturitas. 2014;79: 196-201.
- 397 9. Nakamura A, Kaneko N, Villemagne VL, Kato T, Doecke J, Doré V, et al. High



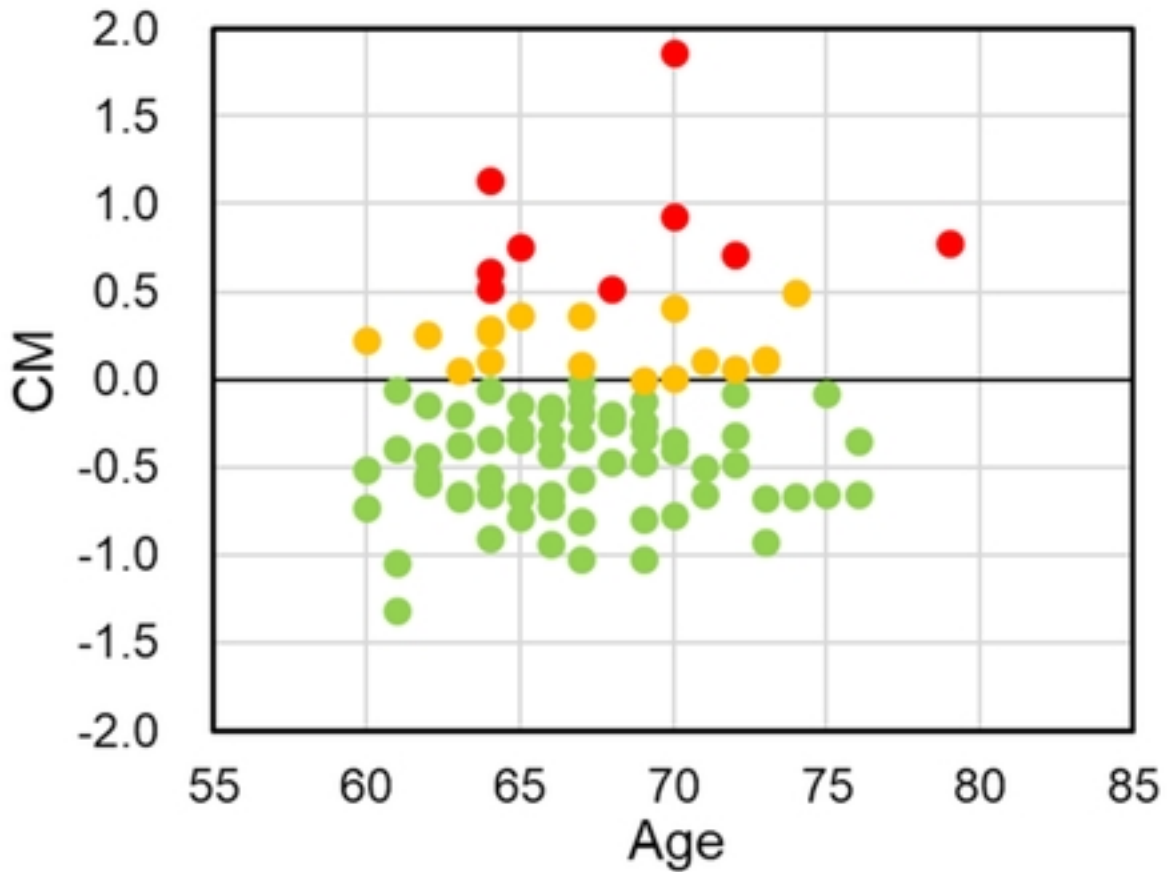
- 398 performance plasma amyloid- $\beta$  biomarkers for Alzheimer's disease. *Nature*.  
399 2018;554: 249-254.
- 400 10. World Medical Association. WMA Declaration of Helsinki - Ethical Principles  
401 for Medical Research Involving Human Subjects. [Internet]. 2013.  
402 [https://www.wma.net/policies-post/wma-declaration-of-helsinki-ethical-](https://www.wma.net/policies-post/wma-declaration-of-helsinki-ethical-principles-for-medical-research-involving-human-subjects/)  
403 [principles-for-medical-research-involving-human-subjects/](https://www.wma.net/policies-post/wma-declaration-of-helsinki-ethical-principles-for-medical-research-involving-human-subjects/)
- 404 11. Moffat SD, Zonderman AB, Metter EJ, Kawas C, Blackman MR, Harman SM, et  
405 al. Free testosterone and risk for Alzheimer disease in older men. *Neurology*.  
406 2004;62: 188-193.
- 407 12. Paoletti AM, Congia S, Lello S, Tedde D, Orrù M, Pistis M, et al. Low  
408 androgenization index in elderly women and elderly men with Alzheimer's  
409 disease. *Neurology*. 2004;62: 301-303.
- 410 13. Rosario ER, Chang L, Head EH, Stanczyk FZ, Pike CJ. Brain levels of sex  
411 steroid hormones in men and women during normal aging and in Alzheimer's  
412 disease. *Neurobiol Aging*. 2011;32: 604-613.
- 413 14. Lamberts SW, van den Beld AW, van der Lely AJ. The endocrinology of aging.  
414 *Science*. 1997;278: 419-424.
- 415 15. Iwamoto T, Yanase T, Koj E, Norie H, Baba K, Namiki M, et al. Reference  
416 ranges of serum total and free testosterone in Japanese male adults. *Nihon*  
417 *Hinyokika Gakkai Zasshi*. 2004;95: 751-760. (In Japanese)
- 418 16. Jayaraman A, Carroll JC, Morgan TE, Lin S, Zhao L, Arimoto JM, et al. 17 $\beta$ -  
419 estradiol and progesterone regulate expression of  $\beta$ -amyloid clearance factors in  
420 primary neuron cultures and female rat brain. *Endocrinology*. 2012;153: 5467-  
421 5479.
- 422 17. Tokuda T, Salem SA, Allsop D, Mizuno T, Nakagawa M, Qureshi MM, et al.  
423 Decreased alpha-synuclein in cerebrospinal fluid of aged individuals and subjects  
424 with Parkinson's disease. *Biochem Biophys Res Commun*. 2006;349:162-166.
- 425 18. Murakami H, Tokuda T, El-Agnaf OMA, Ohmichi T, Miki A, Ohashi H, et al.  
426 Correlated levels of cerebrospinal fluid pathogenic proteins in drug-naïve  
427 Parkinson's disease. *BMC Neurol*. 2019;19: 113.

428

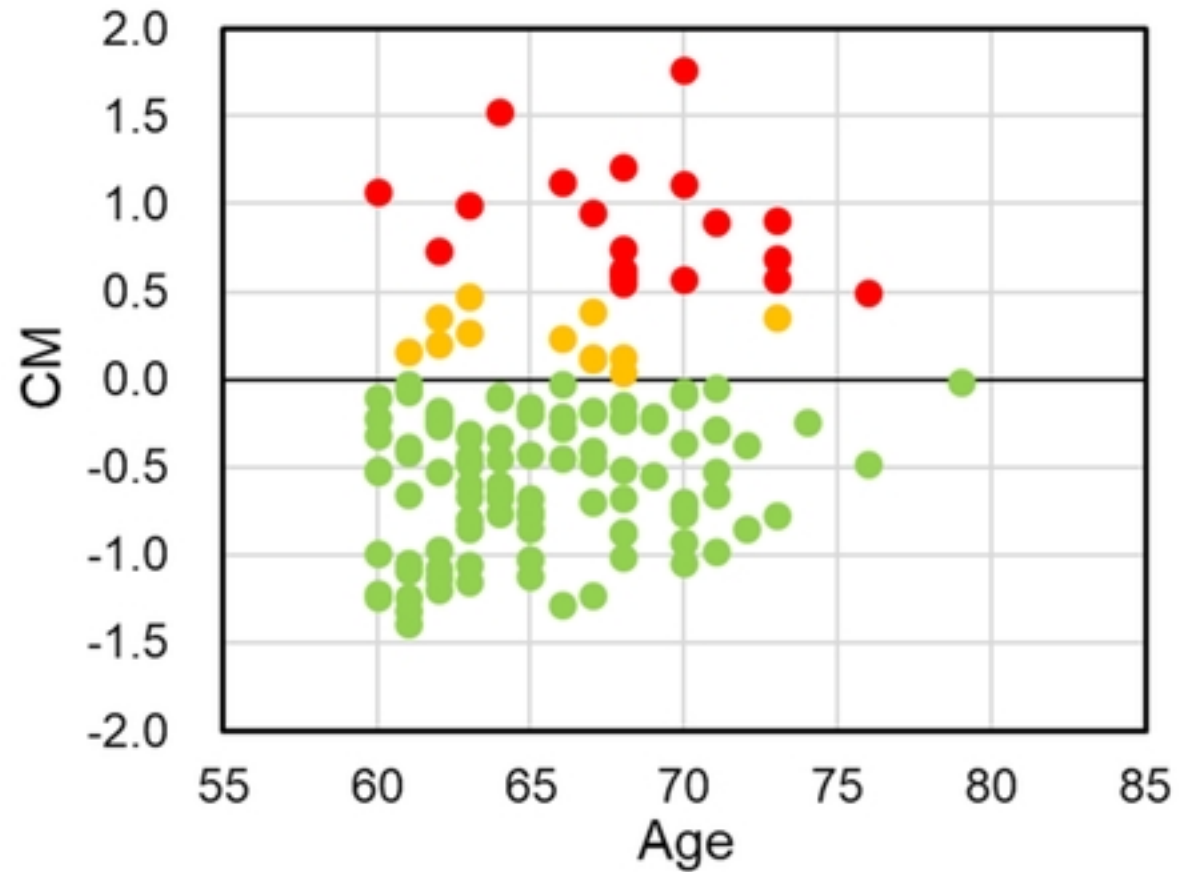


Figure

a) male

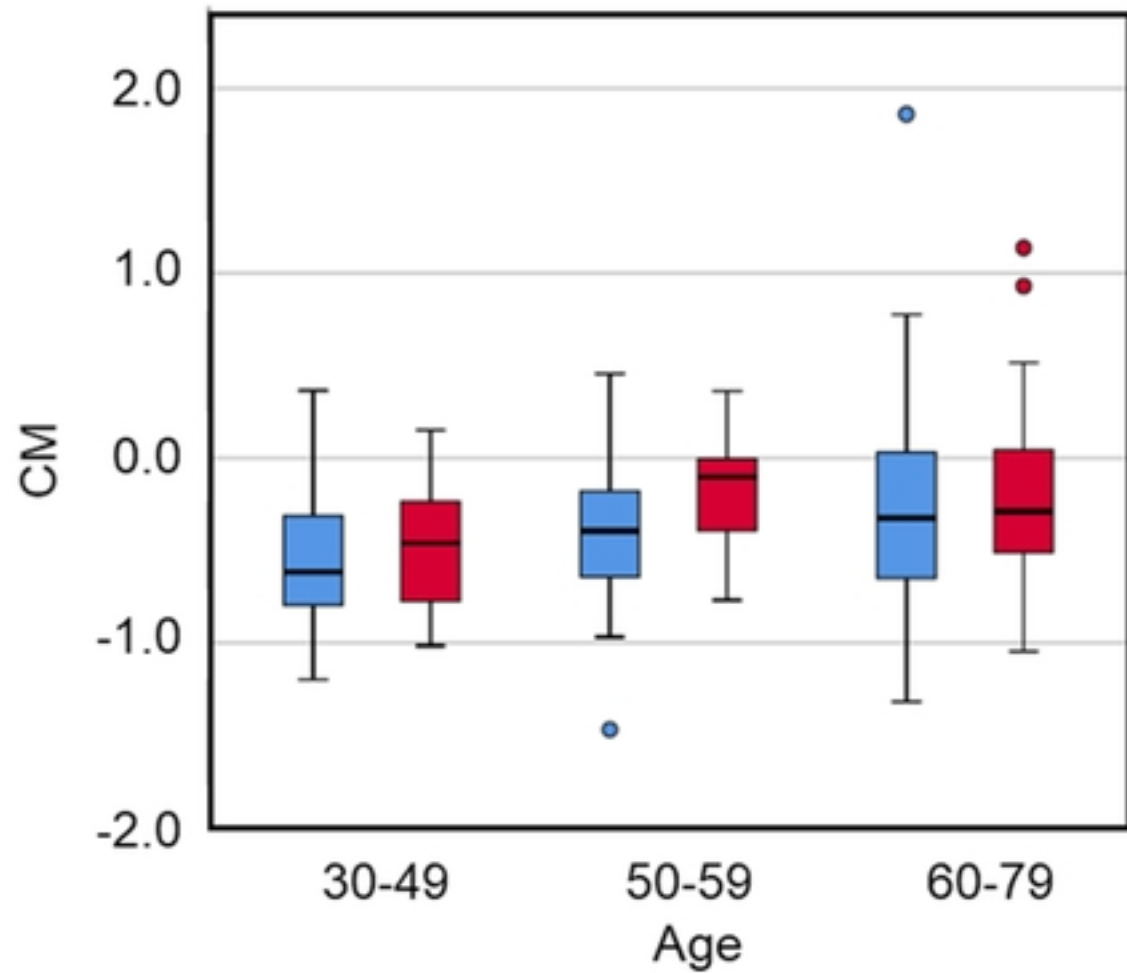


b) female

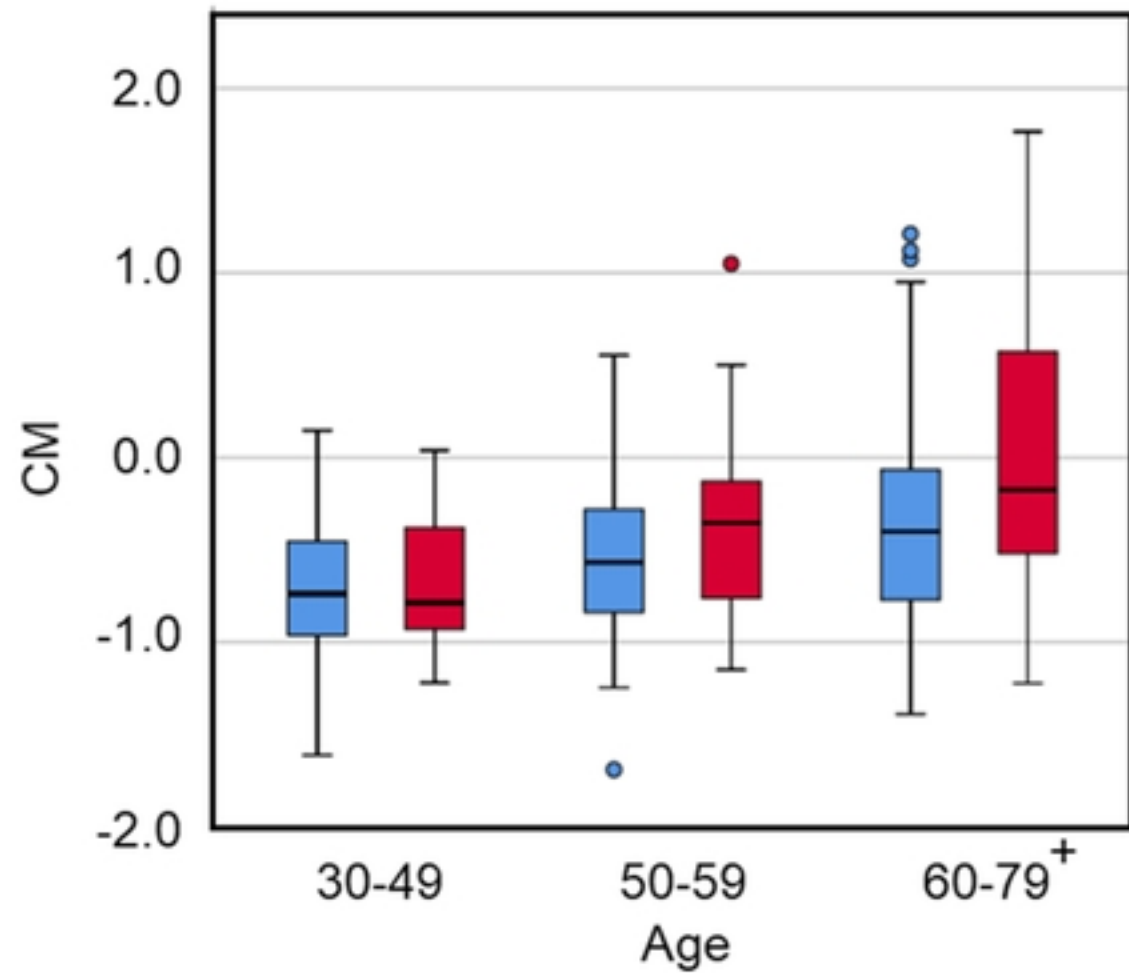


Figure

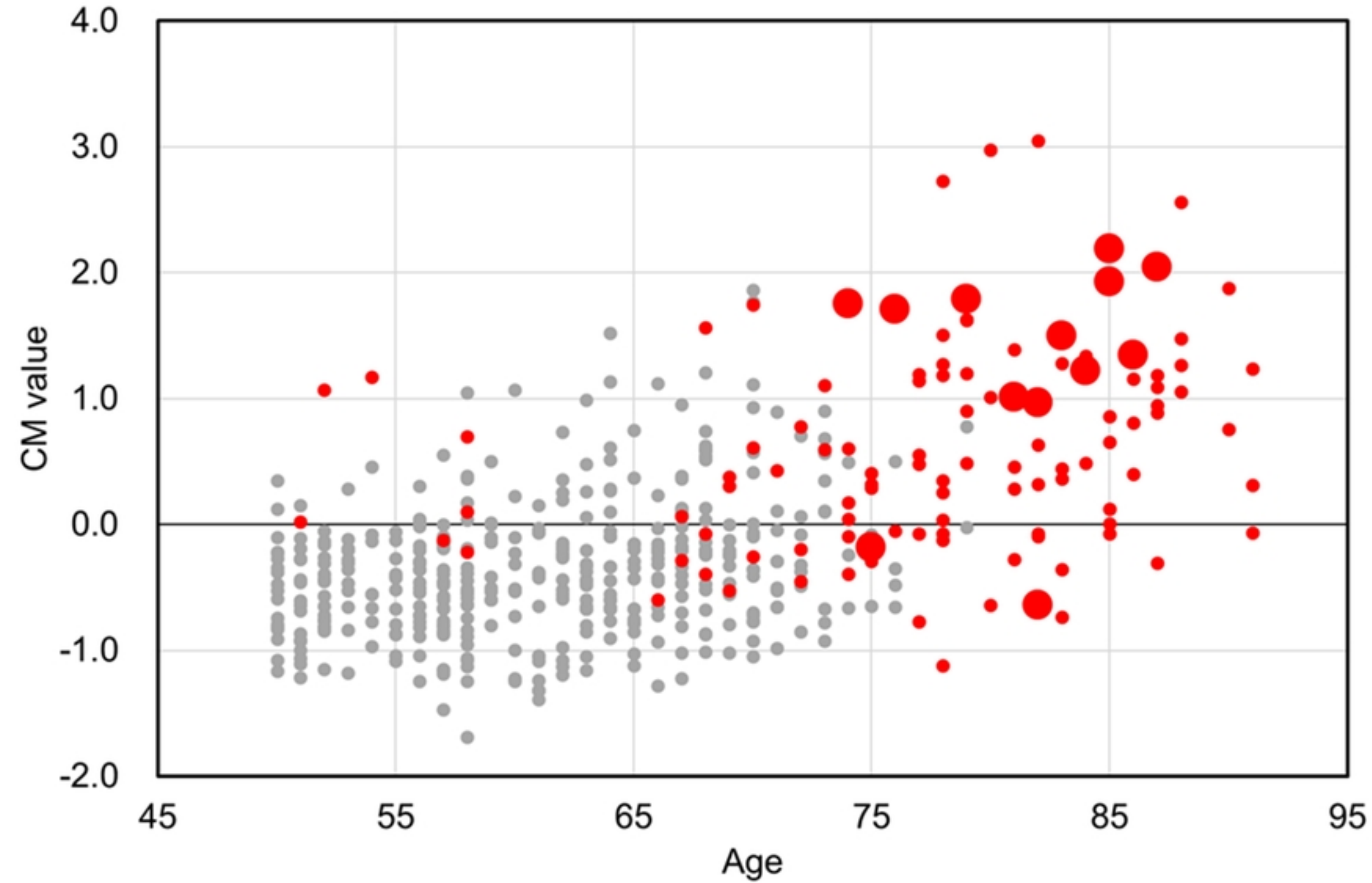
a) male



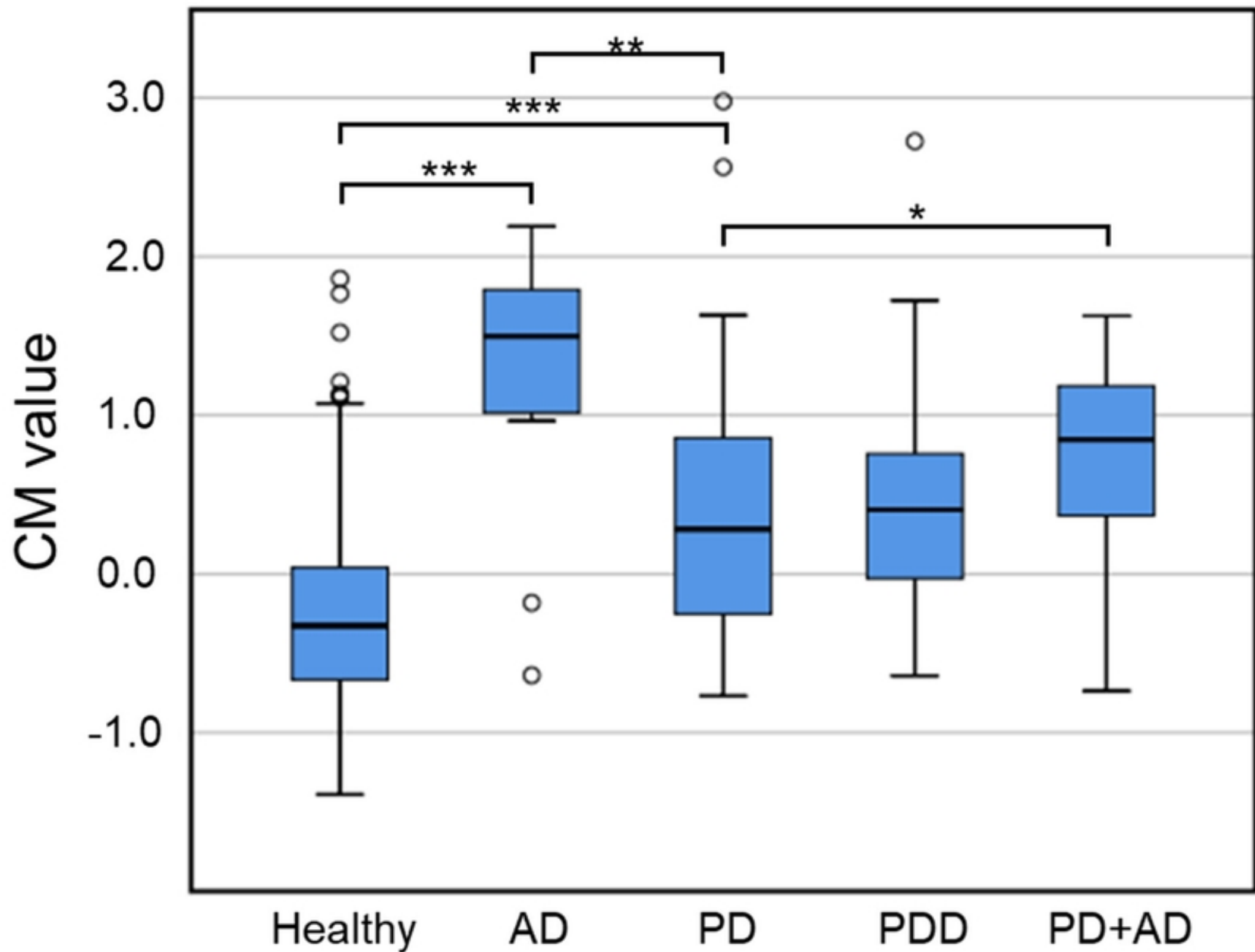
b) female



Figure



Figure



Figure