

# Pre-analytical variables influence zinc measurement in blood samples

David W. Killilea<sup>1\*</sup> and Kathleen Schultz<sup>1</sup>

<sup>1</sup> Office of Research, University of California San Francisco, San Francisco, California, United States of America

\* Corresponding author

E-mail: [david.killilea@ucsf.edu](mailto:david.killilea@ucsf.edu) (DWK)

## 1 **Abstract**

2 Zinc deficiency continues to be a major concern for global public health. The zinc status of a target population is typically  
3 estimated by measuring circulating zinc levels, but the sampling procedures are not standardized and thus may result in  
4 analytical discrepancies. To examine this, we designed a study that controlled most of the technical parameters in order  
5 to focus on five pre-analytical variables reported to influence the measurement of zinc in blood samples, including (1)  
6 blood draw site (capillary or venous), (2) blood sample matrix (plasma or serum), (3) blood collection tube manufacturer  
7 (Becton, Dickinson and Company or Sarstedt AG & Co), (4) blood processing time (0, 4, or 24 hours), and (5) blood  
8 holding temperatures (4°C, 20°C, or 37°C). A diverse cohort of 60 healthy adults were recruited to provide sequential  
9 capillary and venous blood samples, which were carefully processed under a single chain of custody and measured for  
10 zinc content using inductively coupled plasma optical emission spectrometry. When comparing blood draw sites, the  
11 mean zinc content of capillary samples was 0.051 mg/L (8%) higher than venous blood from the same donors. When  
12 comparing blood sample matrices, the mean zinc content of serum samples was 0.034 mg/L (5%) higher than plasma  
13 samples from the same donors. When comparing blood collection tube manufacturer, the mean zinc content from  
14 venous blood samples did not differ between vendors, but the mean zinc content from BD capillary plasma was 0.036  
15 mg/L (6%) higher than Sarstedt capillary plasma from the same donors. When comparing processing times, the mean  
16 zinc content of plasma and serum samples was 5-12% higher in samples processed 4-24 hour after collection. When  
17 comparing holding temperatures, the mean zinc content of plasma and serum samples was 0.5-7% higher in samples  
18 temporarily held at 20°C or 37°C after collection. Thus even with the same donors and blood draws, significant  
19 differences in zinc content were observed with different draw sites, tube types, and processing procedures,  
20 demonstrating that key pre-analytic variables can have an impact on zinc measurement, and subsequent classification of  
21 zinc status. Minimizing these pre-analytical variables is important for generating best practice guidelines for assessment  
22 of zinc status.

## 23 Introduction

24 With a likely global prevalence over 1 billion, zinc deficiency ranks as one of the top nutrition challenges worldwide,  
25 especially in low and middle-income countries [Fischer 2009, Wessells 2012, Stevens 2022]. Inadequate zinc intake can  
26 result in increased susceptibility to infectious disease, impaired child growth, and other serious morbidities [Brown  
27 2004, Black 2008, King 2016]. To address zinc deficiency, several international programs monitor and, when necessary,  
28 implement nutrition interventions to improve zinc nutrition in populations of concern [de Benoist 2007, Hess 2007, King  
29 2016]. Zinc status is usually determined by sampling the circulating zinc levels, yet there are important technical  
30 challenges that should be considered when attempting to measure zinc within blood [Hess 2007, IZiNCG 2007, King  
31 2016]. First, zinc is a common environmental and industrial contaminant, so all supplies that could have contact with the  
32 blood should be certified for use with trace metal analysis, or at least tested beforehand for background zinc levels  
33 [Reimold 1978, Keyzer 1983, Brown 2004, IZiNCG 2007, Petersen 2017]. This includes phlebotomy supplies, laboratory  
34 plasticware, and reagents used in the preparation of the plasma or serum samples within the laboratory. Second, the  
35 blood samples must be handled carefully and processed quickly in order to minimize hemolysis, thought to be the most  
36 common error in the clinical lab [Gimenez-Marin 2014]. The concentration of zinc in the erythrocytes is more than 10  
37 times greater than the concentration of zinc in plasma or serum levels, so even a small degree of hemolysis can  
38 significantly increase the zinc levels in a blood sample [Iyengar 1978; Taylor 1997, Killilea 2017]. The risk of zinc  
39 contamination from internal or external sources is further complicated by the fact that circulating zinc levels are tightly  
40 maintained within a narrow homeostatic range under physiological conditions [Johnson 1993, King 2016, Hennigar  
41 2018]. Thus, even small differences in zinc measurements can have important effects on determination of zinc status for  
42 a population, or evaluation of a nutrition intervention program. The choices that researchers make for supplies and  
43 procedure, i.e. pre-analytic variables, are crucial to success for measuring zinc [Plebani 2006, Yin 2015]. Many of these  
44 key variables are discussed on the International Zinc Nutrition Consultative Group (IZiNCG) website  
45 (<https://www.izincg.org>).

46 Pre-analytic variables that affect the way blood is collected include the site of blood draw, use of plasma or  
47 serum matrix, and type of blood collection tube (BCT). For blood draw site, the conventional approach for assessing zinc  
48 uses venous blood obtained by standard phlebotomy [Hess 2007]. Phlebotomy is a well-established procedure that can  
49 produce substantial blood volume from the veins, but requires trained technicians and specific sterile supplies, leading  
50 to expense and logistics challenges for larger studies. The most common alternative to phlebotomy is the use of a  
51 fingerstick, which is a simple procedure requiring low-cost supplies and minimal training, but typically yields just a few  
52 drops of blood. Historically, this low volume of blood prevented the widespread use of fingerstick sampling for zinc  
53 analysis, but technological improvements have reduced the amount of blood volume needed for measurement so that  
54 fingerstick samples are now more feasible for zinc assessment [Petersen 2017, Kyvsgaard 2019]. However, fingerstick  
55 sampling provides blood from the capillary circulation, which is not the same as venous blood. At present, there are few  
56 reports comparing capillary to venous samples for zinc assessment. For blood matrix, the choices are almost always

57 plasma or serum. Plasma includes all constituents of the blood except cells, but plasma also requires anticoagulant  
58 additives that could potentially interact with zinc [Bowen 2014]. Serum is similar to plasma but with the clotting factors  
59 removed so that anticoagulation is not necessary, but serum requires time for clotting and results in loss of plasma  
60 proteins which may affect zinc homeostasis. While there have been several studies comparing zinc levels in plasma and  
61 serum, there is no consensus as to which matrix type is best for mineral assessment, with some favoring plasma  
62 [Kasperek 1981, Banfi 2007] and others favoring serum [Yu 2011, Barroso 2018]. A third format variable relates to  
63 manufacturer of the selected BCT(s). Becton, Dickinson and Company (BD) has a major market share for BCTs in the US,  
64 whereas Sarstedt AG & Co (Sarstedt) is more common in some European countries. To our knowledge, comparisons of  
65 different BCT manufacturers for zinc assessment has not received attention previously.

66 Pre-analytic variables that affect the way blood is prepared for analysis include processing time and holding  
67 temperature for collected samples. It is considered best practice that whole blood samples should be processed  
68 immediately to plasma or serum for the best chance of high-quality data [IZiNCG 2007]. However, immediate processing  
69 is not always possible, particularly in studies in which the laboratory is a substantial distance from the phlebotomy site  
70 or when many participants are managed at the same time. Some reports have investigated the impact of processing  
71 time on zinc values, but there is no consensus as to which timepoint(s) should be used as a limit for zinc assessment  
72 [English 1988, Tamura 1994, Kraus 2016, Chovelon 2018, Leger 2020]. Similarly, it is considered best practice to store  
73 whole blood samples in a refrigerated area prior for later processing [IZiNCG 2007]. Again, this may not always be  
74 possible, particularly in field studies where access to a cold chain is limited. Some reports have investigated the impact  
75 of holding temperature on zinc values, but there is no consensus as to what temperature protocols should be in place  
76 for zinc assessment. Moreover, delays in processing and storage at higher temperatures are likely to co-occur in larger  
77 studies and in areas with limited infrastructure, so interactions between the two variables should also be examined.

78 The methods for blood collection and processing can influence the quality of zinc measurements, but it is difficult to  
79 isolate the impact that specific pre-analytic variables have on this assessment. Logistical issues, including supply chain  
80 choices or procedural steps, are often co-variables that make it challenging to determine which parameters are most  
81 consequential for zinc measurements. We sought a more straightforward design that focused on the impact of specific  
82 pre-analytic variables on zinc measurement while minimizing the complications from most other technical parameters.  
83 Our goal was to determine how blood draw site, blood matrix, tube type, processing time, and holding temperature  
84 impact the assessment of circulating zinc levels.

## 85 **Methods**

### 86 **Study Overview**

87 This study on zinc assessment was conducted in parallel with a previously reported study on hemoglobin assessment,  
88 with much of the methodology being the same for both reports [Killilea 2022]. Participants completed a demographic  
89 questionnaire, underwent anthropometric measurement, and provided sequential blood draws by fingerstick (capillary  
90 blood) and then conventional phlebotomy (venous blood). All blood samples were collected at our clinical site and  
91 transported to our laboratory under the custody of the study coordinator. Most variables associated with the blood  
92 draws and processing were minimized, including the use of the same clinical site, phlebotomist, blood draw procedures,  
93 and sample handling procedures (**Table 1**). The CHORI Institutional Review Board approved this study (2019-055), and  
94 recruitment was conducted over 7 months.

### 96 **Study Participants**

97 A diverse cohort of 60 adults self-described as healthy were recruited from the local community through flyers and  
98 word-of-mouth advertising. Inclusion criteria included being 18 years or older, generally healthy with no specified  
99 chronic illness or blood disorders. Exclusion criteria included not meeting inclusion criteria or being pregnant or lactating  
00 due to known physiological differences in nutrient homeostasis. Participants were asked to avoid consuming vitamin,  
01 mineral, and other supplements for 24 hours before their blood draw. Participants were also given a questionnaire  
02 asking for self-report of age, gender, and race/ethnicity for use as markers of diversity. Race/ethnicity options were  
03 merged to a single choice and used qualitatively since race is a social construct with little scientific value. The cohort  
04 recruited for this study were diverse in terms of age, gender, race/ethnicity, and other factors (**S1 Fig and S1 Table**).

### 06 **Clinical Procedures**

07 This study was conducted entirely on the campus of Children’s Hospital Oakland Research Institute (CHORI), now part of  
08 the University of California San Francisco. All clinical visits were scheduled within the same 2-hour window of the day  
09 (10:00AM–12:00PM), as time of day is known to have a strong influence on circulating zinc levels [Hambidge 1989, King  
10 2016]. The clinical procedures began with each participant reviewing and signing the consent form and completing a  
11 demographic questionnaire. Height and weight were measured using a Harpenden 602VR stadiometer and Scaletronic  
12 ST scale, respectively; these values were used to calculate body mass index (BMI) as mass (kg)/height (m)<sup>2</sup>. The  
13 participants then provided non-fasting blood samples beginning with fingerstick(s) then immediately followed by  
14 phlebotomy (**S2 Table**). The timing for the blood draws and approximate blood volumes in the BCTs were recorded by  
15 the study coordinator. After blood collection, participants were provided juice and snack food while they were observed  
16 for recovery. Participants received a gift card after completing the study protocol.

17 A set of 26 BCTs were prepared and pre-labeled for each participant, including 8 BD plasma tubes (6 ml-size  
18 Vacutainer containing dipotassium ethylenediaminetetraacetic acid (K<sub>2</sub>EDTA), product number 368381, lot number  
19 8099632), 8 BD serum tubes (6 ml-size Vacutainer containing clot activator additive, product number 368380, lot  
20 number 8099631), 1 Sarstedt plasma tubes (7.5 ml-size Monovette containing K<sub>2</sub>EDTA, product number 01.1605.100, lot  
21 number 8031811), 1 Sarstedt serum tube (7.5 ml-size Monovette containing clot activator additive, product number  
22 01.1601.100, lot number 8033711), 4 BD capillary tubes (0.5 ml-size Microtainers containing K<sub>2</sub>EDTA, product number  
23 365974, lot number 8311522), and 4 Sarstedt capillary tubes (0.5 ml-size Microvette containing tripotassium  
24 ethylenediaminetetraacetic acid (K<sub>3</sub>EDTA), product number 20.1341.102, lot number 9482211). These BCTs were  
25 selected for the goal of comparing zinc levels in blood samples for each participant. For venous blood samples, BD  
26 Vacutainer products 368381 and 368380 were used because they are certified for trace metal analysis, rated at a limit of  
27 0.04 mg/L zinc according to manufacturer's instructions. Sarstedt also had venous BCTs designed for trace metal  
28 analysis, but only with lithium heparin as the anticoagulant. Since we wished to directly compare BCTs with the same  
29 additives, the Sarstedt Monovette products 01.1605.100 and 01.1601.100 were chosen instead even though they were  
30 not certified for trace metal analysis. We tested samples from the same lot number of the Sarstedt BCTs and found them  
31 to be below detection for zinc content. For capillary blood samples, there are currently no BD products certified for zinc  
32 analysis, but the BD Microtainer product 365974 is certified for measuring lead according to manufacturer product  
33 information, which may indicate low levels of environmental contaminants. Thus we used the BD 365974 product for  
34 capillary blood collection but tested samples from the same lot number and found them to be below detection for zinc  
35 content. Similarly, there are currently no Sarstedt products certified for zinc analysis, but the Sarstedt Microvette  
36 product 20.1341.102 uses a similar anticoagulant and is also certified for measuring lead according to manufacturer  
37 product information. Thus we used the Sarstedt 20.1341.102 product for capillary blood collection but tested samples  
38 from the same lot number and found them to be below detection for zinc content.

## 40 **Capillary blood collection**

41 To begin the blood collection protocol, each participant was asked to stand to maximize the effects of gravity on blood  
42 release from the fingerstick while leaning against a bench for comfort. The participants' hands were first warmed in a  
43 waterbath for 10-20 minutes, dried, and then disinfected using alcohol wipes. Capillary blood was then collected by  
44 fingerstick using a high flow lancet (BD product number 366594, lot number V3V51E9) while the participant remained  
45 standing. A fingerstick was first applied to the non-dominant hand thumb and then middle (3<sup>rd</sup>) or ring (4<sup>th</sup>) finger if  
46 blood volume from the thumb was insufficient. Explanation for the use of the thumb for capillary blood sampling can be  
47 found in a previous report [Killilea 2022]. The phlebotomist gently pressed on the base of the hand to start blood flow,  
48 but avoided any massaging, squeezing, or milking the thumb or finger [WHO 2010]. The first drop of capillary blood was  
49 discarded, then the remaining drops were pooled into a BD Microtainer plasma BCT followed by a Sarstedt Microvette  
50 plasma BCT as volume allowed. Capillary blood volume target was 0.5 ml or greater but was stopped short of target  
51 volume if the pooled blood from both thumb and finger failed to reach 0.5ml or if the participant requested to end the

52 procedure. If more than 0.5ml was collected, multiple capillary BCTs would be used up to 2ml total volume. Using this  
53 fingerstick protocol, 1-2 ml of capillary blood was collected from most participants [Killilea 2022]. Once the capillary  
54 blood was collected in all BCTs, tubes were inverted 4-6 times according to manufacturer's instructions and placed on  
55 ice while venous blood collection was completed.

## 56 57 **Venous blood collection**

58 After capillary collection, each participant was moved to a blood collection chair and seated position for phlebotomy  
59 [WHO 2010]. Venous blood was then collected by venipuncture in the arm of non-dominant hand, typically at the  
60 antecubital vein using a Sarstedt Safety Multifly Needle 21Gx3/4"-size with Multi-Adaptor (product number  
61 85.1638.200, lot number 9050111), as this blood draw system accommodated both BD and Sarstedt BCT types. Venous  
62 blood was collected in the following order: Sarstedt Monovette serum BCT, Sarstedt Monovette plasma BCT, BD  
63 Vacutainer serum BCTs, and then BD Vacutainer plasma BCTs. Between the BD and Sarstedt BCTs, a discard BCT with no  
64 additive was connected to push through a few drops of blood to prevent any contamination when moving to the  
65 different BCT manufacturers. Once the venous blood was collected in all BCTs, the tubes were inverted 8-10 times  
66 without shaking according to manufacturer's instructions and held on ice until all samples were taken to the laboratory.  
67 Blood samples were transported directly from the clinical site to the laboratory within 10-20 minutes on average and 60  
68 minutes at maximum.

## 69 70 **Laboratory Procedures**

### 71 **Processing**

72 Once the samples arrived at the laboratory, the BCTs were quickly sorted and processed. First, 6 of the BD Vacutainers  
73 for both plasma and serum were randomly selected for use in the delayed processing experiments, with 2 placed at 4°C,  
74 2 placed at 20°C, and 2 placed at 37°C. After 1 hour, all BCTs at 20°C and 37°C samples were moved to 4°C storage. After  
75 4 hours, 1 BD plasma and 1 BD serum BCT from each of the incubation temperatures (total of 6 BCTs) were randomly  
76 selected and processed as described as for 'time 0' samples. After 24 hours, the remaining BD plasma and BD serum BCT  
77 from each incubation temperature (total of 6 BCTs) were selected and processed as described as for 'time 0' samples.

78 All remaining BCTs were processed immediately as 'time 0' samples. For plasma BCTs, the whole blood samples  
79 were centrifuged at 800xg for 15 minutes at 5°C with no brake to gently separate the plasma from the cellular  
80 constituents. For serum BCTs, the whole blood samples were first allowed to clot for 30-60 minutes according to  
81 manufacturer product information, before centrifugation at 800xg for 15 minutes at 5°C with no brake to gently  
82 separate the serum from the cellular constituents. The plasma or serum phases were then transferred to new pre-  
83 labeled polypropylene tubes (Perfactor Scientific product number 4860, lot number 273381) on ice. The plasma and  
84 serum samples were then centrifuged at 4000xg for 5 minutes at 5°C with brake to remove any contaminating platelets  
85 or erythrocytes. The clarified plasma and serum phases were then aliquoted into multiple pre-labeled polypropylene

86 tubes (Perfactor Scientific product number 2840, lot number 292721) for zinc analysis or other uses. All aliquoted  
87 samples were stored at -70°C until analysis. Samples from the lot numbers of all plasticware utilized in this study was  
88 tested and found them to be below detection for zinc content.

## 90 **Analysis of Hemolyzed Samples**

91 The degree of hemolysis in each blood sample was quantified by measuring the amount of hemoglobin released into the  
92 plasma or serum [Drabkins 1935]. Hemoglobin content was determined by modified Drabkin's assay kit (Sigma-Aldrich  
93 product D5941) according to previously published protocol [Killilea 2017]. Each plasma or serum sample was measured  
94 in triplicate.

## 96 **Analysis of Zinc Content**

97 Zinc content was determined by inductively coupled plasma optical emission spectrometry (ICP-OES). For measuring zinc  
98 in plasma and serum samples, 100 µL volumes were transferred to trace metal tested 15 ml conical tubes (Perfactor  
99 Scientific, product number 2605), digested in 70% OmniTrace nitric acid (VWR) for 12-16 hours, and then diluted to 5%  
00 nitric acid with OmniTrace water (VWR). For testing zinc background in BCTs and plasticware, 3ml of 5% nitric acid was  
01 rinsed into the devices and then transferred to trace metal tested 15ml conical tubes. All samples were vortexed 10-30  
02 sec, centrifuged at 4,000xg for 10 minutes, and analyzed on a 5100 Synchronous Vertical Dual View ICP-OES (Agilent  
03 Technologies). The ICP-OES conditions were set at an RF power of 1.2 kW, plasma flow rate of 12 L/min, nebulizer flow  
04 rate of 0.7 L/min, auxiliary flow rate of 1.0 L/min, and pump speed of 12 rpm which delivered sample volume into a  
05 Seaspray concentric glass nebulizer and a double-pass glass cyclonic spray chamber. Yttrium (5 mg/L) was added as an  
06 internal standard in-line with all samples. Zinc was measured at wavelength 202.548 nm, read time was 10 sec, and the  
07 detection range was 0.005–5.000 mg/L. The ICP-OES was calibrated using National Institute of Standards and Technology  
08 (NIST) traceable elemental standards (Sigma-Aldrich) and validated using Seronorm Trace Element Levels 1 and 2  
09 standard reference materials (Sero AS); every ICP-OES run with samples from this study passed the Seronorm target  
10 range for zinc at the start of each run day. Interassay precision for zinc was determined by taking a pooled plasma  
11 sample and a pooled serum sample generated from excess blood from this study and analyzing 30 samples of each for  
12 zinc content. The %CV was found to be 2.6% for plasma samples and 4.9% for serum samples, which met the optimal  
13 quality specifications for zinc measurement in human plasma or serum [Arnaud 2008]. Additionally, an independent  
14 research team tested our laboratory for assessment of zinc concentration in numerous samples including human plasma  
15 and serum, and they reported that our facility had excellent precision and accuracy [Hall 2021].

## 17 **Data Analysis**



18 Sample size was based on a power calculation to detect significant changes between capillary and venous plasma zinc  
19 concentration using data from an unpublished previous pilot study. A minimum enrollment of 50 participants was  
20 needed to determine an 8% difference in plasma zinc within subjects between capillary and venous values with alpha =  
21 0.05 and beta = 0.19. The potential for sample attrition due to factors including poor capillary volume production,  
22 elevated hemolysis, and abnormal zinc values was estimated to be approximately 15%. Therefore, the targeted  
23 enrollment was increased to 60 to increase the chances of having 50 or more blood sample in the final cohort.

24 All graphing and statistical testing were conducted using Prism 9 (GraphPad Software, Inc). Outlier analysis was  
25 conducted using the GraphPad ROUT algorithm with Q=0.1% [Motulsky 2006]. Data normality was assessed with the  
26 D'Agostino-Pearson omnibus K2 normality test. For comparisons involving blood draw site, matrix, or BCT type, a  
27 Pearson correlation matrix, Bland-Altman analysis, and two-tailed paired t test were used. For comparisons involving  
28 processing time and holding temperature for collected blood samples, a two-way ANOVA with Tukey multiple  
29 comparison test was used. For all analyses, statistical significance was assigned at  $p < 0.05$ .

## Results

### Collection of blood samples

Sixty diverse, healthy adults were recruited from Oakland, California to provide blood samples for the comparison of 5 pre-analytic variables (blood draw site, blood matrix, tube type, processing time, and holding temperature) that may influence the measurement of zinc content. Most other technical variables were controlled, including use of the same phlebotomist, blood draw procedures, and processing parameters that commonly vary in larger or field studies (**Table 1**). Each participant provided a capillary blood sample by fingerstick followed immediately by a venous blood sample by venipuncture. Procedural details, including venipuncture location and estimated volume, were recorded for each participant, [Killilea 2022]. The collected blood samples were first tested for elevated hemolysis. Plasma or serum samples with a value of 100 mg/dL hemoglobin or higher were rejected due to the likelihood of zinc contamination from erythrocytes as previously reported [Killilea 2017]. Two samples were identified with hemoglobin levels over the threshold, so those data were excluded from future analysis (**S3 Table**).

#### **Table 1. Analytical variables controlled in this study**

- Same geographical and clinical location was used for all participants to reduce external influences.
- Same time period of each clinical day was scheduled for all participants to reduce prandial differences.
- Same phlebotomist was used for all participants to reduce procedural differences.
- Same lot of blood collection tubes and other clinical supplies were used to reduce supply differences.
- Same high flow lancet type was used for all capillary blood collections for high blood flow and low hemolysis.
- Same large gauge needle type was used for all venous blood collections for high blood flow and low hemolysis.
- Same blood draw protocol and postural positioning was used to reduce technical differences.
- Same technicians processed the blood for all blood samples to reduce technical differences.
- Same laboratory protocols were used for all blood processing to reduce technical differences.
- Same lots of plasticware and other supplies were used for all blood processing to reduce supply differences.
- Same ICP-OES instrument and method was used for all blood samples to reduce procedural differences.
- Same technician operated the ICP-OES for all blood samples to reduce technical differences.
- Same single chain of custody for all blood samples to reduce external influences.

### Assessment of zinc status

Plasma zinc was first analyzed from venous blood collected in BD BCTs. Measurements of zinc levels in venous plasma were obtained from all 60 participants, with two separate single values removed from triplicate data after outlier analysis (**S4 Table**). Individual averages of zinc content were normally distributed, ranged between 0.460-0.848 mg/L, and had a mean of 0.647 mg/L (n=60) with a CV of 12.8%. The mean plasma zinc content of the participants was close to the suggested cutoff to define low plasma or serum concentration for morning, non-fasting zinc concentration of 0.65 mg/L as defined by IZiNCG [Brown 2004]. In fact, 32 of the 60 participants would be classified as zinc deficiency with these criteria, so this study had a representation of circulating zinc values from normal to low levels. When separated by sex of participants, the mean zinc content was  $0.633 \pm 0.070$  mg/L for female participants and  $0.664 \pm 0.095$  mg/L for male participants, but this was not significantly different by two-tailed unpaired t test ( $p=0.156$ ). Differences in mean

zinc content based on other demographic data including age, race/ethnicity, and BMI were not determined due to small group numbers.

## Comparison of blood draw site on zinc measurement

A comparison of zinc concentrations in capillary and venous blood samples was conducted from study participants collected in BD BCTs (Table 2 and Fig 1 A-B). For capillary plasma measurements, one sample did not have enough volume, one sample was found to have excessive hemolysis, and one sample was identified as outlier, resulting in a total of 57 available plasma samples. For venous plasma measurements, data for 60 plasma samples were available with none found to have insufficient volume, excessive hemolysis, or identified as outliers; however, only venous samples with matching capillary values were compared, resulting in a total of 57 datapoints. Both datasets passed normality testing, so parametric statistics were used. The mean zinc concentration was  $0.700 \pm 0.094$  mg/L for capillary and  $0.646 \pm 0.084$  g/dL for venous, indicating that capillary values were elevated by 0.054 mg/L (8%) in comparison to venous blood values with a sequential blood draw from the same participants. This difference was statistically significant ( $p < 0.0001$ ) using a two-tailed paired t-test. Bland-Altman analysis revealed a similar bias of 0.063 mg/L for capillary zinc values compared to venous zinc values.

**Table 2. Zinc concentrations differ by three pre-analytic variables.**

Comparisons	mean $\pm$ SD (g/dL)	N	difference (g/dL)	p-value
<b>Blood draw site (all plasma)</b>				
venous	$0.646 \pm 0.084$	57		
capillary	$0.700 \pm 0.094$	57	+0.054 capillary	$<0.0001$
<b>Blood matrix (all venous)</b>				
plasma	$0.649 \pm 0.083$	58		
serum	$0.679 \pm 0.092$	58	+0.029 serum	$<0.0001$
<b>Blood collection tube (all venous/plasma)</b>				
BD	$0.647 \pm 0.083$	60		
Sarstedt	$0.644 \pm 0.083$	60	+0.003 BD	ns
<b>Blood collection tube (all venous/serum)</b>				
BD	$0.679 \pm 0.092$	58		
Sarstedt	$0.670 \pm 0.089$	58	+0.009 BD	ns
<b>Blood collection tube (all capillary/plasma)</b>				
BD	$0.688 \pm 0.072$	20		
Sarstedt	$0.652 \pm 0.084$	20	+0.036 BD	$p < 0.0001$

Mean zinc content is shown for specific pre-analytical variables. Each comparison lists the number of samples measured (N), difference in measured zinc content, and p-value if significant. Comparisons that are not statistically different are identified with 'ns.'

## Comparison of blood draw matrix on zinc measurement

A comparison of zinc concentrations in plasma or serum was conducted in venous blood from study participants collected in BD BCTs (Table 2 and Fig 1 C-D). For venous serum measurements, one sample did not have enough volume and one sample was found to have excessive hemolysis, resulting in 58 available serum samples. For venous plasma measurements, data for 60 plasma samples were available with none found to have insufficient volume, excessive hemolysis, or identified as outliers; however, only plasma samples with matching serum values were compared,

11 resulting in a total of 58 datapoints. Both datasets passed normality testing, so parametric statistics were used. The  
12 mean zinc concentration was  $0.679 \pm 0.092$  mg/L for serum and  $0.649 \pm 0.083$  g/dL for plasma, indicating that serum  
13 values were elevated by 0.029 mg/L (5%) in a sequential blood draw from the same participants. This difference was  
14 statistically significant ( $p < 0.0001$ ) using a two-tailed paired t-test. Bland-Altman analysis indicating a similar bias of 0.029  
15 mg/L for serum zinc values compared to plasma zinc values.

## 17 Comparison of BCT manufacturer on zinc measurement

18 A comparison of zinc concentrations in BCTs produced by BD or Sarstedt was conducted with venous blood plasma from  
19 study participants (**Table 2 and S2 Fig**). For both BD and Sarstedt measurements, data for 60 plasma samples were  
20 available with none found to have insufficient volume, excessive hemolysis, or identified as outliers. Both datasets  
21 passed normality testing, so parametric statistics were used. The mean zinc concentration was  $0.647 \pm 0.083$  mg/L for  
22 BD and  $0.644 \pm 0.083$  g/dL for Sarstedt. This difference was not statistically significant ( $p = 0.4694$ ) using a two-tailed  
23 paired t-test.

24 A comparison of zinc concentrations in BCTs from BD or Sarstedt was conducted with venous blood serum from  
25 study participants (**Table 2 and S2 Fig**). For BD serum measurements, one sample did not have enough volume and one  
26 sample was found to have excessive hemolysis, resulting in 58 available BD serum samples. For Sarstedt serum  
27 measurements, data for 60 plasma samples were available with none found to have insufficient volume, excessive  
28 hemolysis, or identified as outliers; however, only samples with matching BD serum values were compared, resulting in  
29 a total of 58 datapoints. Both datasets passed normality testing, so parametric statistics were used. The mean zinc  
30 concentration was  $0.679 \pm 0.092$  mg/L for BD and  $0.670 \pm 0.089$  g/dL for Sarstedt. This difference was not statistically  
31 significant ( $p = 0.0846$ ) using a two-tailed paired t-test.

32 A comparison of zinc concentrations in BCTs from BD or Sarstedt was conducted with capillary blood plasma  
33 from study participants (**Table 2 and Fig 1 E-F**). For Sarstedt capillary measurements, 40 samples did not have enough  
34 volume resulting in 20 available Sarstedt capillary plasma samples. For BD capillary measurements, one sample did not  
35 have enough volume, one sample was found to have excessive hemolysis, and one sample was identified as outlier,  
36 resulting in 57 available BD plasma samples; however, only samples with matching Sarstedt values were compared  
37 resulting in a total of 20 datapoints. Both datasets passed normality testing, so parametric statistics were used. The  
38 mean zinc concentration was  $0.688 \pm 0.072$  mg/L for BD and  $0.652 \pm 0.084$  g/dL for Sarstedt, indicating that BD capillary  
39 plasma zinc values were elevated by 0.036 mg/L (6%) in a sequential blood draw compared to Sarstedt capillary plasma  
40 from the same participants. This difference was statistically significant ( $p < 0.0001$ ) using a two-tailed paired t-test. Bland-  
41 Altman analysis revealed a similar bias of 0.036 mg/L for BD capillary plasma zinc values compared to Sarstedt capillary  
42 plasma zinc values.

## 44 Comparison of processing time and holding temperature on zinc measurement

45 The effects of delay time and holding temperature on zinc measurements were tested in venous plasma from study  
46 participants collected in BD BCTs (**Fig 2 A-B**). Whole blood samples were processed immediately or after a delay of 4 or  
47 24 hours while held at 4°C, 20°C, or 37°C for 1 hour. For plasma samples at time 0-hour, data for 60 plasma samples  
48 were available with none found to have insufficient volume, excessive hemolysis, or identified as outliers. For plasma  
49 samples at time 4-hour at all temperature settings, three samples were found to have insufficient volume, none had  
50 excessive hemolysis, and none were identified as outliers, resulting in 57 available plasma samples. For plasma samples  
51 at time 24-hour at all temperature settings, four samples were found to have insufficient volume, none had excessive  
52 hemolysis, and none were identified as outliers, resulting in 56 available plasma samples. Only samples with matching  
53 values at all temperatures were compared resulting in a total of 56 datapoints. Zinc concentrations for the 4-hour and  
54 24-hour timepoints were all greater than the time 0-hour zinc concentration, ranging from 5-12% higher. Two-way  
55 ANOVA of this data indicated that both temperature ( $p=0.0007$ ) and processing delay ( $p<0.0001$ ) were a significant  
56 variation, but without significant interaction ( $p=0.1007$ ).

57 The effects of delay time and holding temperature on zinc measurements were also tested in venous serum  
58 from study participants collected in BD BCTs (**Fig 2 C-D**). Whole blood samples were processed immediately or after a  
59 delay of 4 or 24 hours while held at 4°C, 20°C, or 37°C for 1 hour. For serum samples at time 0-hour, one sample did not  
60 have enough volume, one sample was found to have excessive hemolysis, and none were identified as outliers, resulting  
61 in 58 available plasma samples. For serum samples at time 4-hour at all temperature settings, no samples were found to  
62 have insufficient volume, none had excessive hemolysis, and none were identified as outliers. For serum samples at time  
63 24-hour at all temperature settings, no samples were found to have insufficient volume, none had excessive hemolysis,  
64 and none were identified as outliers. Only samples with matching values at all temperatures were compared, resulting in  
65 a total of 58 datapoints. Zinc concentrations for the 4-hour and 24-hour timepoints were all greater than the time 0-  
66 hour zinc concentration, ranging from 0.5-7% higher. Two-way ANOVA of this data indicated that both temperature  
67 ( $p=0.0061$ ) and processing delay ( $p<0.0001$ ) were a significant variation, but without significant interaction ( $p=0.1967$ ).

## 68 Discussion

69 After two decades of measuring zinc levels in plasma and serum samples for a wide variety of programs, our laboratory  
70 has received numerous inquiries about best practices in zinc assessment, most often about blood draw procedures, tube  
71 types, or processing concerns. While some of these topics are addressed within the literature on zinc assessment, the  
72 available reports are often limited in scope and sometimes conflicting in results. One reason for the lack of consensus  
73 may be due to uncontrolled technical parameters that make it difficult to isolate specific pre-analytical variables. The  
74 impetus for this study was to focus on specific pre-analytical variables that may impact zinc measurement in order to  
75 support best practice guidelines for future assessment of zinc status.

76 Blood samples from a diverse group of healthy adults were collected and processed under a single chain of  
77 custody and highly controlled conditions to test 5 key pre-analytical variables. The mean zinc concentration for venous  
78 plasma collected in BD BCTs was 0.647 mg/L, which is near the recommended cutoff of 0.65 mg/L for adequate zinc  
79 concentration in adults using morning, non-fasting blood samples [IZINCG 2007]. Based on this cutoff, a sizeable number  
80 of participants in this study would be categorized as mildly zinc deficient despite identifying as healthy. We did not  
81 attempt to examine the reasons for the mild zinc deficiency because the primary purpose of this study was only to  
82 compare the zinc levels within the same participants and blood draw. In fact, it was helpful to have both zinc sufficient  
83 and zinc deficient individuals, as it added to our evaluation of how pre-analytical variables could affect zinc values over a  
84 range of circulating zinc concentrations.

85 The first pre-analytical variable tested was different blood draw sites, specifically the differences in zinc  
86 concentration between capillary and venous blood. It is known that capillary and venous blood have different  
87 compositions, but the blood matrices are considered similar enough that they have the same reference ranges for zinc  
88 for both plasma and serum [Wei-jie 1986, Wu 2006]. Comparative studies on nutrient levels in capillary and venous  
89 blood have mainly addressed macronutrients like glucose and protein, both of which are 3-10% lower in the venous  
90 compared to capillary circulation. Only a few reports have addressed micronutrient levels from different blood draw  
91 sites. For example, Kaplan and colleagues measured circulating calcium, potassium, and sodium, but found no statistical  
92 difference in capillary versus venous levels [Kaplan et al 1959]. In contrast, Kupke and colleagues found circulating  
93 calcium and sodium levels to be lower in capillary blood, but potassium was not different [Kupke et al 1981]. Falch and  
94 colleagues also reported circulating calcium and sodium levels to be lower in capillary blood but found potassium to be  
95 higher in capillary blood [Falch et al 1981]. Despite these reports, these differences are thought to be of minor clinical  
96 importance [Falch et al 1981]. We have found no modern reports that follow up on these studies, which might benefit  
97 from the use of more precise methods and technology. Moreover, zinc was not reported in any of these previous  
98 studies, so the impact of blood draw site on zinc assessment is not resolved. In this study, we found that capillary blood  
99 plasma had an 8% higher mean zinc concentration than venous blood plasma from the same donors in this cohort. This  
00 difference is small but shows that different blood draw sites can influence values derived from zinc assessment.

01 The second pre-analytical variable tested was different blood matrices, specifically plasma and serum formats.  
02 Several studies have examined how zinc levels vary between the two matrices but found no difference in zinc content  
03 between plasma and serum samples [Kosman 1979, Kiilerich 1981, Keyzer 1983, Chen 1986, Smith 1987, Barroso 2018].  
04 However, other reports did show modest differences in zinc content between plasma and serum samples, with zinc  
05 generally higher in serum compared to plasma samples taken from the same individuals [Foley 1968, Kasperek 1981,  
06 English 1988], though at least one report found higher zinc in plasma samples [Kraus 2018]. English and Hambidge  
07 suggested that the differences in the zinc content of the matrices may be due to the required processing delay to  
08 generate serum from whole blood, which could allow more time for zinc to diffuse from cellular sources [English 1988].  
09 Later, more comprehensive analyses of the blood matrix revealed that many nutrients and metabolites were in fact at  
10 higher concentration in the serum compared to plasma [Kronenberg 1998, Yu 2011]. These authors proposed that the  
11 influence of a volume displacement effect caused by the loss of coagulation proteins led to an increase in the fractional  
12 distribution of other metabolites. However, zinc was not measured in those studies, and follow up work to confirm the  
13 impact of volume displacement on zinc concentration have yet to be reported. Thus the potential difference in zinc  
14 content between plasma or serum remains unresolved, so individual laboratories tend to choose the matrix from their  
15 own historical preference, constraints from other co-analytes, or logistical aspects of study design. In fact, much of the  
16 commonly cited literature for zinc assessment treat plasma and serum zinc concentrations as equivalent [IZiNCG 2007,  
17 Hess 2008, King 2016]. In this study, we found that venous blood serum had a 5% greater mean zinc concentration than  
18 venous blood plasma from the same donors in this cohort. This difference is small but shows that different blood  
19 matrices can influence values derived from zinc assessment.

20 The third pre-analytical variable tested was different BCT manufacturers, specifically testing similar BCT types  
21 from BD and Sarstedt. We are unaware of any previous study reporting zinc values from different manufacturers, but  
22 this should be an important issue since the market share of these two companies differs internationally. The closest  
23 matched BCT types had slightly different anticoagulant additives, with BD using K<sub>2</sub>EDTA and Sarstedt using K<sub>3</sub>EDTA. Our  
24 goal was to compare manufacturers with similar BCT types, and these products were the closest between the two  
25 companies. Publication comparing BCTs with K<sub>2</sub>EDTA and K<sub>3</sub>EDTA for several analytical targets showed minimal  
26 differences between the anticoagulants, though zinc was not specifically measured [Brunson 1995, Van Cott 2003]. In  
27 this study, the mean zinc concentration for venous blood plasma or serum collected in BD BCTs was not different  
28 between the two manufacturers. However, the mean zinc concentration for capillary blood plasma collected in BD BCTs  
29 was 6% higher than capillary blood plasma collected in Sarstedt BCTs from the same donors. One explanation for this  
30 could be that the BD capillary BCTs had a higher zinc background than the Sarstedt capillary BCTs. Neither BD nor  
31 Sarstedt capillary BCTs were certified for use with zinc assessment, but a random sampling of empty tubes from the  
32 study lot numbers did not indicate any significant contamination of zinc from either manufacturer. It is important to  
33 note that only a single lot number from each manufacturer was used in this study, so it is not possible to state that one  
34 manufacturer was superior to another. However, the implication is that even the type of BCTs used can affect zinc  
35 assessment, so testing before use and avoiding tube type mixing is highly recommended.

36 The fourth and fifth pre-analytical variables were time until processing and holding temperature for blood  
37 samples, respectively. These parameters are often examined together given their interrelationship. Several studies have  
38 described changes in nutrient levels as a function of processing time and temperature [Hankinson 1989, Key 1996,  
39 Drammeh 2008, Cray 2009, Cuhadar 2013], but few of these included zinc as an analyte. One of the first reports on zinc  
40 was by English and Hambidge who found that both plasma and serum zinc increased by 5% when whole blood  
41 processing was delayed by 2 hours, though the samples were kept at 'room temperature' [English 1988]. Later studies  
42 corroborated these findings by showing significant increases in plasma zinc when samples were held at 'room  
43 temperature' for 2-4 hours [Kraus 2016, Chovelon 2018, Leger 2020]. An early comparison of both processing time and  
44 temperature by Tamura and colleagues found that plasma and serum zinc were significantly increased between 1-5  
45 hours when whole blood samples were kept at 23°C, but replicate samples kept at 7°C were not significantly increased  
46 until 24 hours [Tamura 1994]. An important caveat is that all previously cited studies used heparin as the anticoagulant  
47 for plasma samples unlike the current study that used EDTA, though at least one report showed no difference between  
48 EDTA and heparin for determining zinc levels in plasma [Bao 2021]. However, we are not aware of any reports that  
49 directly compare zinc from serum samples with plasma samples using EDTA. We also could not find reports in which zinc  
50 was measured from blood kept at warmer temperatures, like what might occur in an equatorial country without  
51 immediate access to a cold chain. Studies looking at other metabolites did show significant changes when plasma was  
52 kept at 37°C for even 1 hour [Yin 2015]. In this study, the mean zinc concentration for venous blood plasma and serum  
53 ranged from 5-12% when processing was delayed 4 or 24 hours after collection. Additionally, the mean zinc  
54 concentration for venous blood plasma and serum ranged from 0.5-7% when incubated at 20°C or 37°C after collection.  
55 These results are consistent with previous work showing that both time until processing and holding temperature can  
56 have a significant influence on zinc assessment.

57 A strength of this study is that important pre-analytical variables were evaluated under a single chain of custody  
58 with tight control over most of the other environmental and technical parameters that could add to zinc measurement  
59 variance. These results help fill in literature gaps on the impact of blood draw site, tube types, and holding procedures  
60 during zinc assessment. Yet the highly controlled structure of this study is also a limitation, as the control obtained with  
61 the clinical laboratory does not reflect the practical challenges of conducting a large cohort or field assessment of zinc  
62 status. However, it seems important to understand the baseline variability within these pre-analytic variables in order to  
63 properly calculate how study factors will affect the dispersion of zinc measurements. Another limitation of this study is  
64 that the plasma and serum samples held for 4 or 24 hours for later processing were frozen and analyzed on a different  
65 day from the time 0-hour samples due to logistical reasons. The ICP was calibrated with the same standards and  
66 validated with the same quality control samples on each run day, but we cannot rule out that the freeze/thaw process or  
67 instrument performance differences could have influenced zinc measurements. An additional limitation is that not all  
68 BCTs or other clinical supplies used in this study were available as trace metal-certified products. We sampled all of the  
69 BCTs and other supply lots for zinc contamination before use but cannot guarantee every consumable was zinc free. The



70 difficulties in matching the preferred BCT to the study design illustrates the need for more trace metal-certified options  
71 for clinical assessments of circulating zinc.

72         This study attempted to quantify the importance of specific pre-analytical variables on the measurement of  
73 circulating zinc concentrations, which is key to determining the public health burden of zinc deficiency in target  
74 populations. Blood draw site, blood matrix, blood collection tube type, blood processing delay, and blood holding  
75 temperature all had small but significant impacts on the assessment of circulating zinc levels. Thus, caution is warranted  
76 when comparing studies that use different procedural methods to measure zinc concentration in plasma or serum.  
77 Furthermore, future studies should endeavor to control these pre-analytical variables in order to return the highest  
78 quality data for zinc assessment.

---

## 79 **Acknowledgements**

80 The authors thank Nyla Sepulveda for expert phlebotomy service during this study. The authors also thank Bonny  
81 Alvarenga for laboratory assistance, Dr. Ellen Fung for providing clinical space, Maria Cruz for assistance with supplies,  
82 and Sarstedt, Inc. for donating blood collection tubes. Additionally, the authors thank Dr. Christine McDonald, Dr. Mari  
83 Manger, and the IZiNCG Steering Committee for helpful feedback.

## 84 References

- 85 1. Arnaud J, Weber JP, Weykamp CW, Parsons PJ, Angerer J, Mairiaux E, et al. Quality specifications for the  
86 determination of copper, zinc, and selenium in human serum or plasma: evaluation of an approach based on  
87 biological and analytical variation. *Clin Chem* 2008;54:1892–9.
- 88 2. Banfi G, Salvagno GL, Lippi G. The role of ethylenediamine tetraacetic acid (EDTA) as in vitro anticoagulant for  
89 diagnostic purposes. *Clin Chem Lab Med*. 2007;45(5):565-76.
- 90 3. Bao Y, Ge X, Li L, He J, Huang S, Luo X, et al. The impacts of different anticoagulants and long-term frozen storage  
91 on multiple metal concentrations in peripheral blood: a comparative study. *Biometals*. 2021 Oct;34(5):1191-  
92 1205.
- 93 4. Barroso I, Farinha R, Guimarães JT. Proper zinc evaluation in clinical practice: Effect of sample type and its  
94 stability. *Clin Biochem*. 2018 Sep;59:93-95.
- 95 5. Black RE, Allen LH, Bhutta ZA, Caulfield LE, de Onis M, Ezzati M, et al. Maternal and child undernutrition: global  
96 and regional exposures and health consequences. *Lancet*. 2008 Jan 19;371(9608):243-60.
- 97 6. Bowen RA, Remaley AT. Interferences from blood collection tube components on clinical chemistry assays.  
98 *Biochem Med (Zagreb)*. 2014 Feb 15;24(1):31-44.
- 99 7. Brown KH, Rivera JA, Bhutta Z, Gibson RS, King JC, Lonnerdal B, et al. International Zinc Nutrition Consultative  
00 Group (IZiNCG) technical document #1. Assessment of the risk of zinc deficiency in populations and options for  
01 its control. *Food Nutr Bull*. 2004;25:S99–203.
- 02 8. Brunson D, Smith D, Bak A, Przyk E, Sheridan B, Muncer DL. Comparing Hematology Anticoagulants; K2EDTA vs  
03 K3EDTA. *Lab Hematology* 1995; 1:112-119.
- 04 9. Chen WJ, Zhao CY, Zheng TL. Comparison of zinc contents in human serum and plasma. *Clin Chim Acta*. 1986  
05 Mar 16;155(2):185-7.
- 06 10. Chovelon B, Arnaud J. Influence of delayed separation of plasma from whole blood on Cu, I, Mn, Se, and Zn  
07 plasma concentrations. *Clin Chem Lab Med*. 2018 Feb 23;56(3):e69-e71.
- 08 11. Cray C, Rodriguez M, Zaias J, Altman NH. Effects of storage temperature and time on clinical biochemical  
09 parameters from rat serum. *J Am Assoc Lab Anim Sci*. 2009 Mar;48(2):202-4.
- 10 12. Cuhadar S, Koseoglu M, Atay A, Dirican A. The effect of storage time and freeze-thaw cycles on the stability of  
11 serum samples. *Biochem Med (Zagreb)*. 2013;23(1):70-7.
- 12 13. de Benoist B, Darnton-Hill I, Davidsson L, Fontaine O, Hotz C. Conclusions of the Joint WHO/UNICEF/IAEA/IZiNCG  
13 Interagency Meeting on Zinc Status Indicators. *Food Nutr Bull*. 2007 Sep;28(3 Suppl):S480-4.
- 14 14. Drabkin D, Austin J. Spectrophotometric studies. II. Preparations from washed blood cells; nitric oxide  
15 hemoglobin and sulfhemoglobin. *J Biol Chem* 1935;112:51–65.
- 16 15. Drammeh BS, Schleicher RL, Pfeiffer CM, Jain RB, Zhang M, Nguyen PH. Effects of delayed sample processing and  
17 freezing on serum concentrations of selected nutritional indicators. *Clin Chem*. 2008 Nov;54(11):1883-91.

- 18 16. English JL, Hambidge KM. Plasma and serum zinc concentrations: effect of time between collection and  
19 separation. *Clin Chim Acta* 1988;175:211–5.
- 20 17. Falch DK. Clinical chemical analyses of serum obtained from capillary versus venous blood, using Microtainers  
21 and Vacutainers. *Scand J Clin Lab Invest.* 1981 Feb;41(1):59-62.
- 22 18. Fischer Walker CL, Ezzati M, Black RE. Global and regional child mortality and burden of disease attributable to  
23 zinc deficiency. *Eur J Clin Nutr.* 2009 May;63(5):591-7.
- 24 19. Foley B, Johnson SA, Hackley B, Smith JC Jr, Halsted JA. Zinc content of human platelets. *Proc Soc Exp Biol Med.*  
25 1968 May;128(1):265-9.
- 26 20. Giménez-Marín A, Rivas-Ruiz F, Pérez-Hidalgo Mdel M, Molina-Mendoza P. Pre-analytical errors management in  
27 the clinical laboratory: a five-year study. *Biochem Med (Zagreb).* 2014;24(2):248-57.
- 28 21. Hall AG, King JC, McDonald CM. Comparison of Serum, Plasma, and Liver Zinc Measurements by AAS, ICP-OES,  
29 and ICP-MS in Diverse Laboratory Settings. *Biol Trace Elem Res.* 2022 Jun;200(6):2606-2613.
- 30 22. Hambidge KM, Goodall MJ, Stall C, Pritts J. Post-prandial and daily changes in plasma zinc. *J Trace Elem*  
31 *Electrolytes Health Dis.* 1989 Mar;3(1):55-7.
- 32 23. Hankinson SE, London SJ, Chute CG, Barbieri RL, Jones L, Kaplan LA, et al. Effect of transport conditions on the  
33 stability of biochemical markers in blood. *Clin Chem.* 1989 Dec;35(12):2313-6.
- 34 24. Hennigar SR, Lieberman HR, Fulgoni VL 3rd, McClung JP. Serum Zinc Concentrations in the US Population Are  
35 Related to Sex, Age, and Time of Blood Draw but Not Dietary or Supplemental Zinc. *J Nutr.* 2018 Aug  
36 1;148(8):1341-1351.
- 37 25. Hess SY, Peerson JM, King JC, Brown KH. Use of serum zinc concentration as an indicator of population zinc  
38 status. *Food Nutr Bull.* 2007 Sep;28(3 Suppl):S403-29.
- 39 26. International Zinc Nutrition Consultative Group (IZiNCG). Assessment of the risk of zinc deficiency in populations  
40 and options for its control. Hotz C, Brown KH, ed. *Food Nutr Bull.* 2004;25(suppl 2):S94–S203.
- 41 27. International Zinc Nutrition Consultative Group (IZiNCG). Assessing population zinc status with serum zinc  
42 concentration. IZiNCG Technical Brief No. 2. 2007.
- 43 28. International Zinc Nutrition Consultative Group (IZiNCG). Assessment of the risk of zinc deficiency in populations  
44 and options for its control. Hotz C, Brown KH, ed. *Food Nutr Bull.* 2004;25(suppl 2):S94–S203.
- 45 29. Iyengar GV, Kollmer WE, Bowen HJM, Bowen HJM. The elemental composition of human tissues and body fluids:  
46 a compilation of values for adults. (Verlag Chemie, 1978).
- 47 30. Johnson PE, Hunt CD, Milne DB, Mullen LK. Homeostatic control of zinc metabolism in men: zinc excretion and  
48 balance in men fed diets low in zinc. *Am J Clin Nutr.* 1993 Apr;57(4):557-65.
- 49 31. Kaplan SA, Yuceoglu AM, Strauss J. Chemical microanalysis: analysis of capillary and venous blood. *Pediatrics.*  
50 1959 Aug;24(2):270-4.

- 51 32. Kasperek K, Kiem J, Iyengar GV, Feinendegen LE. Concentration differences between serum and plasma of the  
52 elements cobalt, iron, mercury, rubidium, selenium and zinc determined by neutron activation analysis. *Sci Total*  
53 *Environ* 1981;17:133–43.
- 54 33. Key T, Oakes S, Davey G, Moore J, Edmond LM, McLoone UJ, et al. Stability of vitamins A, C, and E, carotenoids,  
55 lipids, and testosterone in whole blood stored at 4 degrees C for 6 and 24 hours before separation of serum and  
56 plasma. *Cancer Epidemiol Biomarkers Prev.* 1996 Oct;5(10):811-4.
- 57 34. Keyzer JJ, Oosting E, Wolthers BG, Muskiet FA, Hindriks FR, Van der Slik W. Zinc in plasma and serum: influence  
58 of contamination due to the collection tubes. *Pharm Weekbl Sci.* 1983 Oct 21;5(5):248-51.
- 59 35. Kiilerich S, Christensen MS, Naestoft J, Christiansen C. Serum and plasma zinc concentrations with special  
60 reference to standardized sampling procedure and protein status. *Clin Chim Acta* 1981;114:117-121.
- 61 36. Killilea DW, Rohner F, Ghosh S, Otoo GE, Smith L, Siekmann JH, et al. Identification of a Hemolysis Threshold  
62 That Increases Plasma and Serum Zinc Concentration. *J Nutr.* 2017 Jun;147(6):1218-1225.
- 63 37. Killilea DW, Kuypers FA, Larkin SK, Schultz K. Blood draw site and analytic device influence hemoglobin  
64 measurements. *PLoS One.* 2022 Nov 30;17(11):e0278350.
- 65 38. King JC, Brown KH, Gibson RS, Krebs NF, Lowe NM, Siekmann JH, et al. Biomarkers of Nutrition for Development  
66 (BOND)- Zinc Review. *J Nutr.* 2016 Mar 9.
- 67 39. Kosman DJ, Henkin RI. Plasma and serum zinc concentrations. *Lancet.* 1979 Jun 30;1(8131):1410.
- 68 40. Kraus FB, Ludwig-Kraus B. Measuring zinc on the Roche cobas c502 analyzer-Validation, comparison, and pre-  
69 analytic aspects. *J Clin Lab Anal.* 2018 Jan;32(1):e22169.
- 70 41. Kronenberg F, Trenkwalder E, Kronenberg MF, Konig P, Utermann G, et al. (1998) Influence of hematocrit on the  
71 measurement of lipoproteins demonstrated by the example of lipoprotein (a). *Kidney International* 54: 1385–  
72 1389.
- 73 42. Krleza JL, Dorotic A, Grzunov A, Maradin M; Croatian Society of Medical Biochemistry and Laboratory Medicine.  
74 Capillary blood sampling: national recommendations on behalf of the Croatian Society of Medical Biochemistry  
75 and Laboratory Medicine. *Biochem Med (Zagreb).* 2015 Oct 15;25(3):335-58.
- 76 43. Kupke IR, Kather B, Zeugner S. On the composition of capillary and venous blood serum. *Clin Chim Acta.* 1981  
77 May 5;112(2):177-85.
- 78 44. Kyvsgaard JN, Ellervik C, Lindkvist EB, Pipper CB, Pociot F, Svensson J, et al. Perinatal Whole Blood Zinc Status  
79 and Cytokines, Adipokines, and Other Immune Response Proteins. *Nutrients.* 2019 Aug 22;11(9):1980.
- 80 45. Motulsky HJ, Brown RE. Detecting outliers when fitting data with nonlinear regression - a new method based on  
81 robust nonlinear regression and the false discovery rate. *BMC Bioinformatics.* 2006;7:123.
- 82 46. Petersen ERB, Mortensen S, Nybo M. Elevated zinc concentrations in a 5 months old infant: A case report.  
83 *Biochem Med (Zagreb).* 2018 Feb 15;28(1):011001.
- 84 47. Plebani M. Errors in clinical laboratories or errors in laboratory medicine? *Clin Chem Lab Med.* 2006;44(6):750-9.

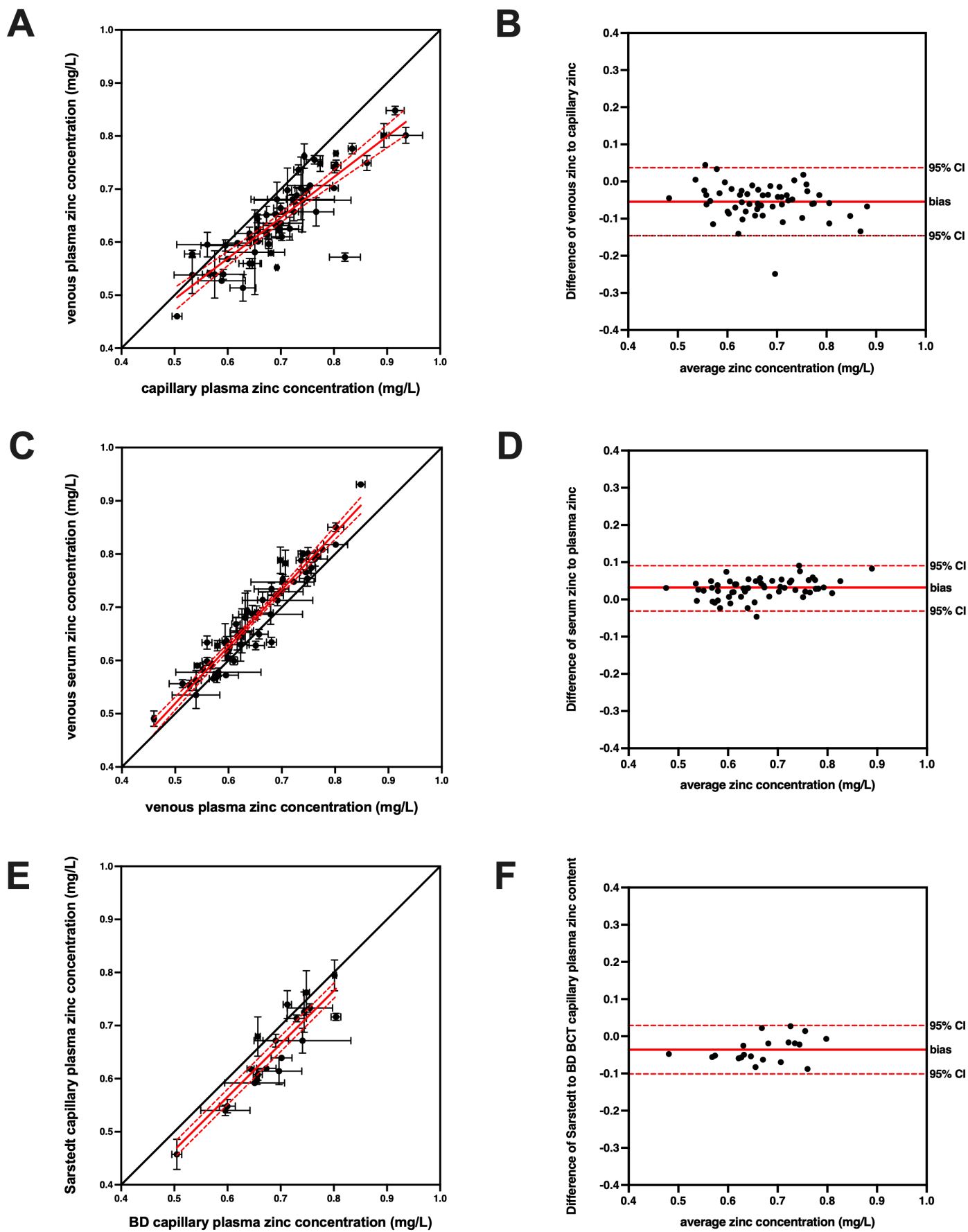
- 85 48. Reimold EW, Besch DJ. Detection and elimination of contaminations interfering with the determination of zinc in  
86 plasma. Clin Chem. 1978 Apr;24(4):675-80.
- 87 49. Smith JC Jr, Lewis S, Holbrook J, Seidel K, Rose A. Effect of heparin and citrate on measured concentrations of  
88 various analytes in plasma. Clin Chem. 1987 Jun;33(6):814-6.
- 89 50. Stevens GA, Beal T, Mbuya MNN, Luo H, Neufeld LM; Global Micronutrient Deficiencies Research Group.  
90 Micronutrient deficiencies among preschool-aged children and women of reproductive age worldwide: a pooled  
91 analysis of individual-level data from population-representative surveys. Lancet Glob Health. 2022  
92 Nov;10(11):e1590-e1599.
- 93 51. Tamura T, Johnston KE, Freeberg LE, Perkins LL, Goldenberg RL. Refrigeration of blood samples prior to  
94 separation is essential for accurate determination of plasma or serum zinc concentrations. Biol Trace Elem Res.  
95 1994 Apr-May;41(1-2):165-73.
- 96 52. Taylor A. Measurement of zinc in clinical samples. Ann Clin Biochem. 1997 Mar;34 ( Pt 2):142-50.
- 97 53. Van Cott EM, Lewandrowski KB, Patel S, Grzybek DY, Patel HS, Fletcher SR, et al. Comparison of glass K3EDTA  
98 versus plastic K2EDTA blood-drawing tubes for complete blood counts, reticulocyte counts, and white blood cell  
99 differentials. Lab Hematol. 2003;9(1):10-4.
- 00 54. Wessells KR, Brown KH. Estimating the global prevalence of zinc deficiency: results based on zinc availability in  
01 national food supplies and the prevalence of stunting. PLoS One. 2012;7(11):e50568.
- 02 55. World Health Organization (WHO). WHO guidelines on drawing blood: best practices in phlebotomy. WHO  
03 Document Production Services, Geneva, Switzerland, 2010.
- 04 56. Wu, Alan H. B. *Tietz Clinical Guide to Laboratory Tests*. 4th ed. / [edited by] Alan H.B. Wu. St. Louis, Mo:  
05 Saunders/Elsevier, 2006.
- 06 57. Yin P, Lehmann R, Xu G. Effects of pre-analytical processes on blood samples used in metabolomics studies. Anal  
07 Bioanal Chem. 2015 Jul;407(17):4879-92.
- 08 58. Yu Z, Kastenmüller G, He Y, Belcredi P, Möller G, Prehn C, et al. Differences between human plasma and serum  
09 metabolite profiles. PLoS One. 2011;6(7):e21230.
- 10

11 **FIGURE LEGENDS**

12  
13 **Figure 1. Zinc concentrations differ depending on blood draw site, blood matrix type, and blood collection tube (BCT) manufacturer.** Correlation plots comparing circulating zinc values from **(A)** capillary plasma and venous plasma (using only BD BCTs), **(C)** venous plasma and venous serum (using only BD BCTs), and **(E)** capillary plasma from BD and Sarstedt BCTs are shown. Each circle represents the zinc level (mean  $\pm$  SD,  $n=1-3$ ) for an individual participant, with linear regression and 95% confidence interval indicated by a solid red and dotted red line, respectively. The line of concordance is shown as a solid black line for comparison. Bland-Altman plots of these same data revealed a bias of **(B)**  $0.054 \pm 0.047$  mg/L for capillary over venous plasma samples, **(D)**  $0.029 \pm 0.025$  mg/L for serum over plasma venous samples, and **(F)**  $0.036 \pm 0.033$  mg/L for BD over Sarstedt BCTs for capillary plasma. Each circle represents the zinc level for an individual participant, with average distance and 95% confidence interval indicated by a solid red and dotted red line, respectively.

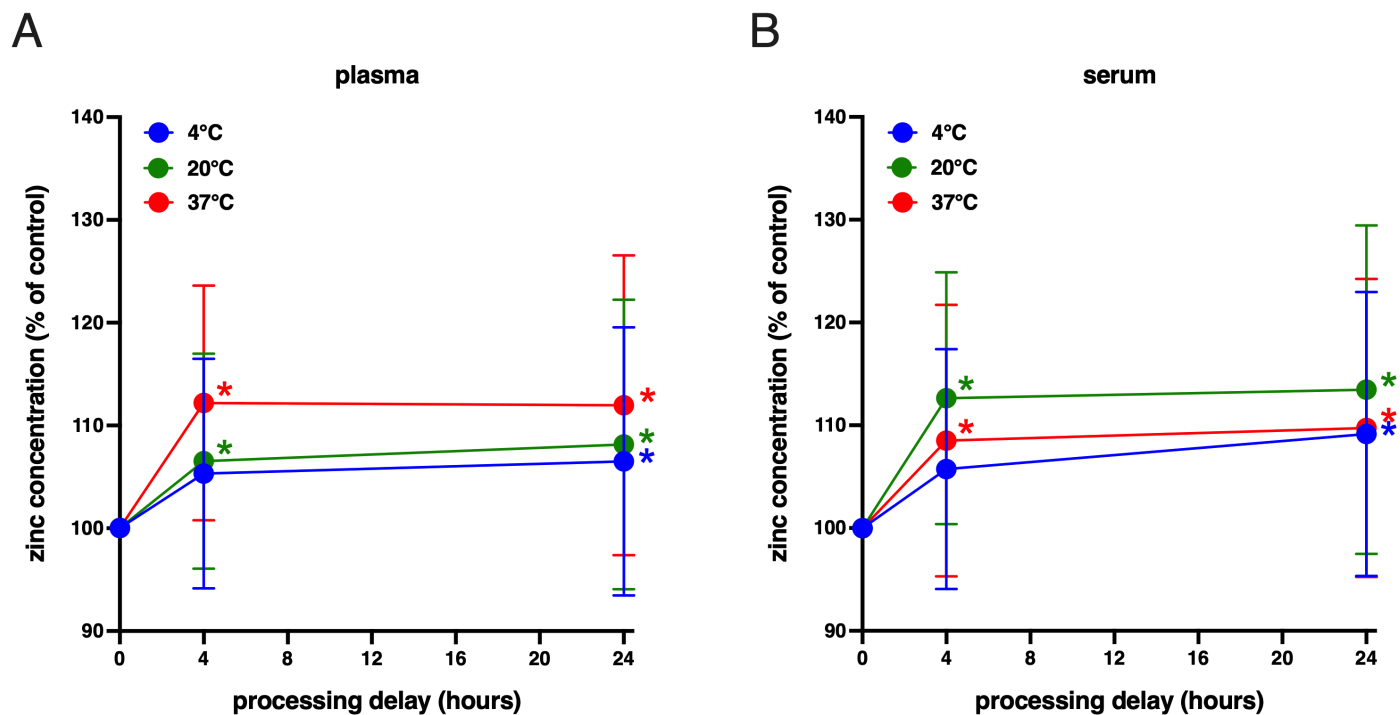
23  
24 **Figure 2. Zinc concentrations differ depending on blood processing time and holding temperature.** Timecourse of mean circulating zinc values from blood samples held at 4°C (blue circles), 20°C (green circles), or 37°C (red circles) for up to 24 hours in **(A)** venous plasma and **(B)** venous serum (using BD only BCTs) are shown. Each circle represents the average zinc level (mean  $\pm$  SD,  $n=55-58$ ) normalized to the 'time 0' value for each group of time and temperature condition fit to a point-to-point function. Statistical significance compared to 'time 0' of each group is indicated by asterisk of same group color.

30 **Figure 1:**





32 Figure 2:



33

34 **S1 Table. Demographic data from study participants.** Self-identified demographic data are shown for participants in this  
 35 study. For demographic data, all participants selected a female or male identifier; no participant selected nonbinary or  
 36 other choice. Body-mass index values are indicated in ‘BMI’ column. The categorical abbreviations include “AA” for  
 37 African American, “Latinx” for a gender-neutral indication of Latin American origin, and “Multiple” for multiple  
 38 race/ethnicity identity.

39

participant #	age range	gender	race/ethnicity	supplement use	BMI
1	40-49	female	White	occasional	19.0
2	40-49	male	White	never	41.0
3	50-59	female	White	frequently	19.6
4	50-59	female	White	frequently	33.6
5	30-39	female	White	daily	30.6
6	18-29	female	Asian	rarely	27.4
7	60-69	male	White	occasional	31.5
8	18-29	female	Latinx	occasional	20.0
9	50-59	male	AA/Black	daily	32.7
10	50-59	female	AA/Black	frequently	19.3
11	30-39	female	White	never	21.2
12	40-49	male	Latinx	rarely	21.4
13	60-69	female	White	occasionally	23.7
14	18-29	male	AA/Black	never	31.1
15	30-39	male	Asian	never	22.5
16	40-49	female	White	rarely	29.1
17	50-59	male	White	occasionally	23.5
18	18-29	female	Multiple	never	24.4
19	30-39	male	Asian	never	22.0
20	18-29	male	Latinx	daily	29.3
21	18-29	female	White	never	27.3
22	60-69	male	White	occasionally	24.8
23	40-49	female	Latinx	never	26.1
24	30-39	male	White	never	20.9
25	50-59	female	AA/Black	rarely	24.1
26	50-59	female	Asian	daily	22.2
27	18-29	male	Multiple	frequently	39.5
28	50-59	male	Asian	occasionally	25.1
29	40-49	male	White	rarely	25.3
30	30-39	female	Asian	rarely	29.3
31	30-39	female	Asian	rarely	21.6
32	60-69	female	Multiple	daily	44.4
33	50-59	male	Asian	never	30.4
34	60-69	male	White	daily	23.6
35	40-49	female	Multiple	occasionally	26.1
36	18-29	male	Latinx	frequently	25.8
37	30-39	male	AA/Black	never	26.9
38	18-29	female	Multiple	daily	21.5
39	18-29	male	Asian	never	21.8
40	60-69	male	White	occasionally	25.0
41	18-29	female	Asian	rarely	33.1
42	18-29	male	Multiple	rarely	31.8
43	18-29	female	White	never	20.7
44	18-29	female	Asian	daily	17.1
45	18-29	male	Latinx	occasionally	22.1
46	18-29	female	Latinx	rarely	32.7

47	30-39	male	Asian	never	25.4
48	60-69	female	White	occasionally	34.3
49	18-29	female	White	never	21.0
50	30-39	female	Asian	occasionally	19.4
51	18-29	male	White	occasionally	25.3
52	40-49	female	AA/Black	never	23.4
53	40-49	female	White	frequently	27.4
54	40-49	female	Middle Eastern	daily	20.7
55	30-39	male	Asian	occasionally	25.5
56	18-29	female	Asian	occasionally	22.0
57	60-69	male	White	daily	34.3
58	18-29	female	Asian	rarely	22.1
59	60-69	male	White	daily	27.1
60	40-49	female	White	daily	29.2

40

41 **S2 Table.** The procedure for sequential collection of venous and capillary blood samples for this study are listed. “BCT”  
42 indicates blood collection tubes.

43

44 *Finger-prick procedures:*

- 45 1. Identify the non-dominant hand of participant for fingerstick.
- 46 2. Warm selected hand in warm water for 5-10 minutes.
- 47 3. Organize the blood collection tubes, lancets, and other supplies.
- 48 4. Have participants stand leaning against a bench for support and let arms fall naturally.
- 49 5. Clean thumb with alcohol disinfectant wipe and allow to air dry.
- 50 6. Place lancet on side of distal phalanx of thumb and press the trigger.
- 51 7. Wipe away first drop of blood with clean sterile pad.
- 52 8. Place an open capillary BCT to thumb and allow blood to drop and collect into BCT.
- 53 9. Do not squeeze or milk finger to avoid hemolysis and addition of interstitial fluid.
- 54 10. Once blood volume in BCT approaches 500 $\mu$ l, close BCT and invert 4-6 times.
- 55 11. If thumb continues to provide blood, use new capillary BCT to collect, up to total of 4.
- 56 12. If first capillary volume was <1ml, repeats steps 5-12 with 4th finger.
- 57 13. Hold BCTs at room temp and transfer to laboratory for 30-60 min.

58

59 *Venipuncture procedures:* Participants told to hydrate 1 hour before clinical visit.

- 60 1. Identify the non-dominant arm of participant for venipuncture.
- 61 2. Organize the blood collection tubes, syringe, and other supplies.
- 62 3. Have participants sit in blood draw chair and place arm on phlebotomy platform.
- 63 4. Identify optimal site for venipuncture, usually the antecubital vein.
- 64 5. Clean site with alcohol disinfectant wipe and allow to air dry.
- 65 6. Proceed with phlebotomy using standard protocols using conventional tube order procedures.
- 66 7. Once blood volume in BCT reaches 6ml (BD) or 7.5ml (Sarstedt), withdraw syringe and invert 4-6 times.
- 67 8. Continue to collect venous blood until desired number of BCTs is complete.
- 68 9. Hold BCTs at room temp and transfer to laboratory for 30-60 min.

69 **S3 Table. Hemolysis levels in all study participant samples.** Hemolysis is indicated by hemoglobin content (mean in  
 70 mg/dL,  $n=1-3$ ) for all plasma or serum samples at all blood draw sites, blood matrices, blood collection tubes  
 71 manufacturers, processing delay, and holding temperatures are shown. Samples processed immediately are marked  $t=0$   
 72 and  $temp=NA$ . Processing delay is indicated for 4 hour ( $t=4$ ) or 24 hours ( $t=24$ ). Holding temperature is indicated for 4°C  
 73 ( $temp=4C$ ), 20°C ( $temp=20C$ ), or 37°C ( $temp=37C$ ). Missing values due to lack of blood volume are identified with an  
 74 'NA'. Hemoglobin values greater than 100 mg/dL (elevated hemolysis) are identified with red font.

75

participant #	capillary	venous	venous	capillary	venous	venous	venous	venous	venous	venous	venous	venous	venous	venous	venous	venous	venous	venous
	BD	BD	BD	Sarstedt	Sarstedt	Sarstedt	BD	BD	BD	BD	BD	BD	BD	BD	BD	BD	BD	BD
	plasma	plasma	serum	plasma	plasma	serum	plasma	plasma	plasma	serum	serum	serum	plasma	plasma	plasma	serum	serum	serum
	t=0	t=0	t=0	t=0	t=0	t=0	t=4	t=4	t=4	t=4	t=4	t=4	t=4	t=24	t=24	t=24	t=24	t=24
	temp=NA	temp=NA	temp=NA	temp=NA	temp=NA	temp=NA	temp=4C	temp=22C	temp=37C	temp=4C	temp=22C	temp=37C	temp=4C	temp=22C	temp=37C	temp=4C	temp=22C	temp=37C
1	NA	7.3	0.4	NA	0.0	0.0	4.1	15.0	14.6	0.0	30.6	0.0	0.0	0.0	0.0	NA	NA	25.0
2	NA	13.2	9.9	NA	1.0	0.0	11.5	NA	39.4	NA	18.6	37.0	42.2	23.3	42.1	NA	NA	30.9
3	NA	0.3	8.5	NA	0.0	0.0	0.0	4.0	11.8	9.6	0.0	6.7	NA	0.0	14.2	0.0	0.0	0.0
4	14.7	16.4	21.2	NA	5.7	0.0	19.9	13.6	30.9	0.9	0.4	24.6	30.0	19.8	26.7	NA	0.4	5.3
5	NA	8.8	4.0	NA	0.0	0.0	9.1	58.4	8.0	0.0	NA	2.0	17.0	13.5	21.5	1.7	0.0	0.0
6	NA	0.0	0.0	NA	0.0	0.0	NA	NA	NA	0.0	0.0	0.0	NA	NA	NA	0.0	0.0	0.0
7	NA	0.0	21.1	NA	3.4	45.0	0.0	NA	2.9	0.0	0.0	0.0	12.4	22.7	19.6	0.0	0.0	0.0
8	NA	0.0	0.0	NA	0.0	0.0	0.0	0.0	8.5	0.0	0.0	0.0	0.0	0.0	0.0	1.3	0.0	0.0
9	54.4	11.7	11.5	NA	5.3	0.0	30.0	22.3	32.4	2.9	8.5	14.3	33.2	21.2	25.6	4.0	3.1	5.3
10	NA	0.0	0.0	NA	0.0	0.0	0.0	0.0	4.7	0.0	0.0	2.3	2.1	0.0	0.0	0.0	0.0	0.0
11	0.0	7.0	6.8	NA	0.0	0.0	1.3	9.7	16.8	0.0	0.0	0.0	15.6	8.0	12.8	0.0	0.0	1.0
12	NA	49.8	46.9	NA	32.2	10.0	30.3	41.7	62.0	16.1	NA	37.2	54.4	63.9	NA	NA	NA	NA
13	2.2	2.2	0.0	NA	0.0	0.0	5.2	6.2	12.9	0.0	0.0	0.7	9.5	12.6	20.3	0.0	0.0	0.0
14	NA	0.0	0.0	NA	0.0	0.0	2.9	0.0	4.3	NA	NA	2.9	9.8	13.8	14.0	NA	NA	NA
15	0.0	10.8	0.0	NA	0.0	0.0	1.8	0.0	12.8	0.0	0.0	0.8	8.1	13.9	33.6	15.1	0.0	0.0
16	0.0	5.5	11.4	NA	0.0	0.0	1.5	3.7	14.3	0.0	0.0	0.0	6.1	0.0	7.6	21.9	17.7	11.2
17	26.8	24.2	30.7	NA	16.6	6.2	19.3	27.7	41.2	6.7	13.6	30.1	27.7	NA	27.0	50.4	40.1	39.3
18	NA	6.8	19.4	NA	0.0	0.0	5.2	8.3	18.8	0.0	0.0	18.8	21.3	19.1	49.3	0.0	0.0	0.0
19	15.0	0.0	29.4	NA	4.4	0.0	0.0	2.0	12.3	0.0	0.0	1.5	9.7	8.2	19.7	0.0	0.0	4.5
20	40.9	0.0	3.7	NA	0.0	9.4	28.4	31.0	39.4	1.0	NA	25.7	54.7	50.8	58.0	24.8	3.7	33.9
21	16.1	39.5	17.7	NA	0.0	0.0	4.2	1.1	13.5	0.0	0.0	14.7	13.5	8.7	15.6	0.0	0.6	13.9
22	NA	7.5	115.3	NA	0.0	0.0	2.7	9.7	28.5	0.0	0.0	12.1	15.4	24.3	34.1	NA	NA	NA
23	10.4	4.7	30.1	NA	0.0	0.0	9.6	13.2	21.3	0.0	0.0	11.6	16.1	15.0	28.5	11.3	9.6	9.2
24	15.3	11.1	24.4	NA	4.1	0.0	9.6	14.1	31.0	0.0	0.0	10.9	32.9	21.9	39.2	8.4	8.6	21.3
25	NA	0.0	NA	NA	NA	0.0	0.0	0.0	7.9	0.0	0.0	0.0	9.5	7.3	3.2	0.0	0.0	0.0
26	34.3	19.1	20.7	NA	10.0	0.0	17.4	18.5	24.3	2.4	3.8	14.1	27.9	25.5	23.9	15.8	5.1	19.2
27	NA	0.0	14.6	0.0	0.0	0.0	1.6	1.0	12.7	0.0	NA	8.6	12.0	25.0	15.3	3.9	0.0	9.2
28	NA	1.8	15.9	NA	0.0	0.0	NA	NA	5.7	0.0	NA	3.4	19.1	9.5	21.0	0.0	0.0	1.4
29	0.0	0.0	0.0	NA	0.0	0.0	0.0	0.0	0.0	0.0	0.0	0.0	6.2	0.0	NA	NA	0.0	6.1

30	3.4	0.0	0.3	NA	NA	0.0	0.0	3.9	4.1	0.0	0.0	0.0	9.1	7.6	16.7	0.2	0.0	1.7
31	8.3	9.3	17.6	NA	2.1	0.0	14.7	12.8	27.1	0.0	5.0	12.9	24.8	15.6	22.8	5.8	13.3	22.9
32	0.0	0.0	0.0	NA	0.0	0.0	0.0	0.0	0.0	0.0	0.0	0.0	0.0	0.0	0.0	0.0	0.0	0.0
33	NA	27.2	45.1	NA	27.5	11.4	27.2	45.1	27.5	11.4	27.2	45.1	27.5	11.4	27.2	NA	NA	NA
34	0.0	0.0	55.5	NA	32.3	6.1	26.3	40.8	63.4	0.0	13.4	53.1	23.8	18.5	24.6	0.0	NA	NA
35	NA	16.2	25.2	NA	2.0	0.0	8.3	10.2	16.4	0.0	0.4	12.2	18.4	18.2	26.5	15.8	5.6	13.7
36	0.6	15.7	19.0	NA	0.0	0.0	NA	2.8	20.4	0.0	0.0	2.3	17.1	18.6	33.2	7.8	0.0	3.4
37	NA	15.4	38.0	NA	0.0	0.0	21.2	11.8	11.0	6.9	0.0	0.0	45.3	9.6	33.1	0.0	NA	17.6
38	0.0	0.0	16.5	NA	0.0	0.0	0.0	0.0	3.4	0.0	0.0	0.0	0.6	8.0	11.9	0.0	NA	NA
39	NA	0.0	4.0	NA	0.0	0.0	0.0	0.0	0.0	0.0	0.0	0.0	4.1	23.0	34.1	0.0	NA	0.4
40	NA	0.0	0.0	NA	0.0	0.0	0.0	0.0	0.0	0.0	0.0	0.0	7.0	10.0	19.9	0.0	0.0	0.0
41	NA	0.0	0.0	15.1	0.0	0.0	NA	NA	NA	0.0	0.0	0.0	NA	NA	NA	0.0	0.0	0.0
42	0.0	0.0	1.0	NA	0.0	0.0	0.0	0.0	0.1	0.0	0.0	0.0	0.0	0.0	0.0	0.0	0.0	0.0
43	230.1	0.0	3.4	NA	0.0	0.0	2.0	0.0	0.0	0.0	0.0	0.0	9.7	1.1	0.0	0.0	NA	0.0
44	27.6	0.0	31.5	0.0	0.0	0.0	1.1	1.3	13.2	0.0	NA	0.0	NA	9.3	NA	0.0	0.0	0.0
45	NA	0.0	4.7	NA	0.0	0.0	0.0	0.0	0.0	0.0	9.8	0.0	0.0	0.0	3.1	0.0	0.0	0.0
46	NA	12.5	0.0	NA	16.8	0.0	0.0	0.0	1.8	0.0	0.0	0.0	0.0	0.0	0.0	0.0	0.1	0.0
47	NA	0.0	0.0	NA	9.0	0.0	2.6	0.0	0.0	0.0	0.0	0.0	NA	NA	NA	4.0	0.0	0.0
48	NA	NA	0.0	NA	24.3	0.0	7.3	12.3	13.2	0.0	0.0	0.6	11.5	20.1	13.7	5.0	0.0	2.2
49	6.1	0.0	0.0	NA	11.7	0.0	4.9	0.0	3.2	0.0	0.0	1.1	14.9	19.9	19.7	7.6	0.0	8.7
50	21.1	18.4	13.4	NA	41.7	9.0	38.4	29.7	34.1	20.5	21.3	31.4	29.4	31.3	36.5	28.0	14.4	27.3
51	0.0	6.7	0.0	45.4	24.8	0.0	15.1	11.1	11.8	0.0	0.0	9.7	19.5	16.8	22.8	17.2	9.6	21.1
52	16.6	19.2	17.7	48.1	40.2	5.6	22.3	23.0	29.9	10.6	20.3	27.0	16.9	10.1	16.1	0.0	0.0	4.0
53	0.0	27.1	0.0	NA	5.9	0.0	NA	NA	NA	0.0	0.0	5.9	NA	NA	NA	8.4	0.0	17.2
54	12.9	12.5	1.9	19.5	34.2	0.0	12.7	26.5	23.3	3.8	5.5	12.0	19.7	6.6	11.7	16.8	16.8	23.9
55	NA	4.5	23.1	NA	6.7	0.0	5.3	10.5	15.8	0.0	0.0	5.9	20.7	11.5	16.1	6.8	0.0	14.5
56	8.3	0.0	0.0	NA	9.7	0.0	0.0	0.0	6.1	0.0	0.0	0.0	4.0	5.3	13.6	1.8	0.0	8.3
57	4.0	8.2	0.0	NA	6.9	0.0	0.0	0.0	4.6	6.0	3.9	4.7	12.1	8.0	15.9	6.7	0.0	2.2
58	NA	0.0	0.0	NA	0.0	0.0	0.0	0.0	0.0	0.0	0.0	0.0	0.0	0.0	0.7	0.0	0.0	0.0
59	0.5	0.5	0.4	NA	0.6	0.4	0.5	0.5	0.5	0.4	0.4	0.5	0.5	0.5	0.5	0.5	0.5	0.5
60	25.5	7.0	0.0	NA	33.5	0.0	0.5	0.5	0.5	0.4	0.4	0.5	0.5	0.5	0.6	0.5	0.5	0.5

**S4 Table. Zinc values in all study participant samples.** The zinc measurements for participants for all blood draw sites, blood matrices, blood collection tubes manufacturers, processing delay, and holding temperatures are shown. Triplicate values (in mg/L) are shown for all plasma or serum samples. Samples processed immediately are marked t=0 and temp=NA. Processing delay is indicated for 4 hour (t=4) or 24 hours (t=24). Holding temperature is indicated for 4°C (temp=4C), 20°C (temp=20C), or 37°C (temp=37C). Missing values due to lack of blood volume are identified with an 'NA'.

participant #	capillary	venous	venous	capillary	venous	venous	venous	venous	venous	venous	venous	venous	venous	venous	venous	venous	venous	venous
	BD	BD	BD	Sarstedt	Sarstedt	Sarstedt	BD	BD	BD	BD	BD	BD	BD	BD	BD	BD	BD	BD
	plasma	plasma	serum	plasma	plasma	serum	plasma	plasma	plasma	serum	serum	serum	plasma	plasma	plasma	serum	serum	serum
	t=0	t=0	t=0	t=0	t=0	t=0	t=4	t=4	t=4	t=4	t=4	t=4	t=4	t=24	t=24	t=24	t=24	t=24
	temp=NA	temp=NA	temp=NA	temp=NA	temp=NA	temp=NA	temp=4C	temp=20C	temp=37C	temp=4C	temp=20C	temp=37C	temp=4C	temp=20C	temp=37C	temp=4C	temp=20C	temp=37C
1	0.968	0.802	0.856	NA	0.876	0.821	0.813	0.803	0.868	0.851	0.880	0.920	0.562	0.552	0.558	0.594	0.617	0.670
	0.933	0.786	0.854	NA	0.784	0.810	0.822	0.840	0.862	0.840	0.887	0.918	0.544	0.553	0.556	0.602	0.617	0.644
	0.905	0.816	0.841	NA	0.789	0.814	0.804	0.823	0.852	0.872	0.903	0.932	0.553	0.572	0.579	0.604	0.613	0.630
2	0.694	0.552	0.570	NA	0.531	0.665	0.511	0.534	0.585	0.568	0.607	0.578	0.810	0.819	0.845	0.858	0.905	0.904
	0.691	0.553	0.594	NA	0.532	0.547	0.541	0.538	0.604	0.595	0.621	0.573	0.823	0.828	0.835	0.860	0.892	1.083
	NA	0.551	0.586	NA	0.520	0.584	0.528	0.527	0.575	0.570	0.611	0.585	0.807	0.808	0.852	0.853	0.921	0.884
3	0.621	0.542	0.559	NA	0.531	0.667	0.500	0.490	0.563	0.554	0.599	0.567	0.500	0.657	0.500	0.589	0.581	0.597
	0.609	0.504	0.562	NA	0.525	0.545	0.503	0.519	0.540	0.564	0.595	0.569	0.508	0.506	0.502	0.593	0.503	0.598
	0.656	0.495	0.548	NA	0.536	0.539	0.503	0.504	0.541	0.586	0.590	0.578	0.509	0.485	0.596	0.601	0.601	0.575
4	0.677	0.610	0.683	NA	0.575	0.655	0.622	0.613	0.681	0.668	0.735	0.716	0.603	0.612	0.657	0.662	0.667	0.670
	0.676	0.623	0.658	NA	0.603	0.663	0.622	0.611	0.682	0.665	0.703	0.717	0.599	0.603	0.639	0.770	0.689	0.763
	0.671	0.609	0.664	NA	0.608	0.662	0.618	0.629	0.675	0.664	0.716	0.715	0.612	0.619	0.646	0.673	0.671	0.684
5	0.637	0.599	0.610	NA	0.557	0.602	0.580	0.618	0.609	0.638	0.685	0.657	0.582	0.607	0.602	0.636	0.628	0.646
	0.600	0.600	0.600	NA	0.558	0.382	0.578	0.608	0.616	0.645	0.668	0.659	0.588	0.582	0.653	0.679	0.629	0.646
	NA	0.596	0.606	NA	0.572	0.598	0.576	0.604	0.612	0.621	0.668	0.670	0.571	0.581	0.590	0.650	0.638	0.644
6	0.678	0.585	0.638	NA	0.789	0.591	NA	NA	NA	0.593	0.652	0.624	NA	NA	NA	0.604	0.657	0.618
	0.685	0.576	0.619	NA	0.578	0.598	NA	NA	NA	0.620	0.651	0.622	NA	NA	NA	0.602	0.637	0.673
	NA	0.577	0.626	NA	0.557	0.601	NA	NA	NA	0.610	0.657	0.606	NA	NA	NA	0.633	0.634	0.609
7	0.790	0.641	0.690	NA	0.604	0.655	0.577	0.591	0.630	0.619	0.670	NA	0.654	0.600	0.617	0.656	0.650	0.609
	0.743	0.642	0.691	NA	0.648	0.640	0.578	0.601	0.648	0.611	0.668	0.637	0.596	0.686	0.642	0.642	0.647	0.607
	NA	0.688	0.687	NA	0.622	0.641	0.578	0.598	0.649	0.618	0.680	0.629	0.585	0.594	0.611	0.656	0.641	0.616
8	0.662	0.634	0.721	NA	0.625	0.677	0.560	0.679	0.622	0.605	0.644	0.630	0.670	0.624	0.606	0.632	0.619	0.755
	0.695	0.635	0.650	NA	0.624	0.648	0.588	0.672	0.627	0.607	0.677	0.633	0.603	0.583	0.581	0.630	0.616	0.614
	0.744	0.638	0.708	NA	0.632	0.749	0.580	0.663	0.627	0.589	0.640	0.635	0.586	0.565	0.587	0.631	0.690	0.602
9	0.726	0.736	0.794	NA	0.735	0.739	0.686	0.661	0.696	0.695	0.731	0.679	0.708	0.696	0.679	0.700	0.707	0.669
	0.743	0.746	0.768	NA	0.727	0.741	0.667	0.673	0.705	0.703	0.797	0.679	0.681	0.689	0.686	0.709	0.709	0.673
	0.731	0.727	0.802	NA	0.719	0.742	0.664	0.661	0.700	0.710	0.731	0.673	0.685	0.688	0.676	0.696	0.706	0.673
10	0.550	0.570	0.559	NA	0.591	0.584	0.549	0.547	0.571	0.561	0.582	0.575	0.526	0.518	0.549	0.592	0.576	0.593
	0.523	0.584	0.568	NA	0.573	0.577	0.574	0.556	0.565	0.563	0.581	0.597	0.539	0.547	0.555	0.628	0.583	0.582

	0.527	0.579	0.580	NA	0.590	0.596	0.524	0.540	0.571	0.564	0.578	0.582	0.540	0.553	0.567	0.594	0.605	0.618
11	0.681	0.665	0.738	NA	0.717	0.782	0.632	0.642	0.723	0.700	0.741	0.710	0.689	0.661	0.802	0.736	0.751	0.743
	0.713	0.659	0.722	NA	0.729	0.757	0.642	0.653	0.689	0.712	0.741	0.692	0.685	0.652	0.691	0.744	0.748	0.721
	0.684	0.718	0.743	NA	0.733	0.745	0.612	0.653	0.688	0.705	0.722	0.693	0.656	0.656	0.691	0.773	0.730	0.727
12	0.898	0.814	0.818	NA	0.779	0.818	0.766	0.782	0.796	0.798	0.843	0.763	0.756	0.762	0.763	0.853	0.854	0.799
	0.888	0.814	0.814	NA	0.777	0.802	0.774	0.778	0.792	0.808	0.837	0.784	0.871	0.741	0.770	0.821	0.891	0.856
	0.896	0.775	0.821	NA	0.821	0.814	0.768	0.747	0.810	0.802	0.836	0.783	0.760	NA	0.777	0.816	0.836	0.821
13	0.671	0.607	0.645	NA	0.656	0.809	0.579	0.618	0.616	0.592	0.651	0.600	0.602	0.612	0.627	0.619	0.644	0.671
	0.635	0.630	0.620	NA	0.625	0.634	0.584	0.601	0.613	0.576	0.634	0.647	0.588	0.608	0.659	0.625	0.633	0.662
	0.617	0.612	0.672	NA	0.653	0.686	0.609	0.603	0.642	0.583	0.638	0.683	0.595	0.599	0.620	0.611	0.644	0.602
14	0.706	0.609	0.702	NA	0.613	0.707	0.631	0.659	0.704	0.713	0.769	0.684	0.656	0.657	0.730	0.748	0.745	0.696
	0.736	0.617	0.643	NA	0.616	0.697	0.682	0.687	0.792	0.718	0.775	0.682	0.645	0.657	0.984	0.717	0.751	0.691
	0.709	0.650	0.622	NA	0.623	0.699	0.651	0.656	0.703	0.704	0.778	0.686	0.751	0.658	0.736	NA	0.754	0.712
15	0.750	0.734	0.763	NA	0.686	0.706	0.778	0.739	0.765	0.752	0.773	0.726	0.707	0.716	0.749	0.793	0.786	0.740
	0.727	0.737	0.734	NA	0.698	0.709	0.746	0.724	0.774	0.736	0.785	0.725	0.688	0.719	0.760	0.803	0.775	0.728
	0.737	0.633	0.745	NA	0.678	0.712	0.724	0.729	0.790	0.750	0.786	0.743	0.689	0.728	0.774	0.784	0.768	0.778
16	0.637	0.549	0.551	NA	0.539	0.567	0.513	0.528	0.548	0.584	0.647	0.570	0.567	0.595	0.588	0.518	0.540	0.581
	0.567	0.539	0.553	NA	0.531	0.552	0.511	0.533	0.583	0.591	0.632	0.577	0.575	0.599	0.581	0.523	0.534	0.639
	0.571	0.530	0.584	NA	0.523	0.541	0.523	0.517	0.852	0.573	0.627	0.569	0.585	0.617	0.605	0.534	0.528	0.587
17	0.914	0.850	0.928	NA	0.898	1.005	0.938	0.911	0.964	0.938	1.019	0.982	0.958	0.994	0.927	0.998	0.925	NA
	0.933	0.855	0.933	NA	0.893	0.936	0.928	0.889	0.951	0.936	1.019	0.937	0.976	1.004	0.944	0.913	0.935	1.016
	0.899	0.839	0.931	NA	0.899	0.956	0.867	0.922	0.960	0.930	1.013	1.135	0.975	1.012	0.988	0.936	0.924	1.035
18	0.787	0.578	0.565	NA	0.566	0.591	0.546	0.574	0.602	0.641	0.719	0.808	0.546	0.562	0.668	0.679	0.682	0.676
	0.836	0.563	0.568	NA	0.570	0.591	0.538	0.592	0.601	0.619	0.705	0.683	0.534	0.573	0.622	0.680	0.688	0.654
	0.839	0.574	0.565	NA	0.572	0.600	0.562	0.567	0.590	0.617	0.692	0.677	0.536	0.562	0.628	0.665	0.690	0.659
19	0.568	0.521	0.561	NA	0.540	0.536	0.579	0.610	0.604	0.644	0.672	0.626	0.585	0.616	0.691	0.657	0.726	0.629
	NA	0.590	0.534	NA	0.544	0.564	0.611	0.609	0.612	0.638	0.688	0.619	0.603	0.600	0.704	0.663	0.658	0.805
	0.583	0.506	0.510	NA	0.522	0.530	0.588	0.701	0.625	0.642	0.683	0.637	0.597	0.601	0.668	0.632	0.668	0.646
20	0.866	0.763	0.814	NA	0.726	0.771	0.821	0.852	0.846	0.856	0.910	0.893	0.814	0.817	0.902	0.919	0.993	0.986
	0.853	0.735	0.796	NA	0.728	0.769	0.837	0.818	0.854	0.854	0.926	0.997	0.809	0.805	0.875	0.912	0.999	0.985
	0.867	0.749	0.794	NA	0.732	0.880	0.810	0.831	0.858	0.858	0.912	0.891	0.820	0.813	1.105	0.967	1.016	0.891
21	0.712	0.640	0.655	NA	0.623	0.660	0.821	0.690	0.733	0.709	0.740	0.700	0.719	0.712	0.759	0.746	0.787	0.749
	0.744	0.658	0.654	NA	0.686	0.648	0.700	0.721	0.735	0.717	0.751	0.695	0.706	0.698	0.754	0.787	0.781	0.726
	0.718	0.674	0.639	NA	0.623	0.664	0.788	0.704	0.726	0.718	0.746	0.726	0.706	0.701	0.753	0.733	0.773	0.729
22	0.549	0.571	NA	NA	0.500	0.504	0.555	0.556	0.638	0.597	0.586	0.578	0.572	0.578	0.622	0.658	0.655	0.600
	0.494	0.501	NA	NA	0.872	0.524	0.565	0.555	0.642	0.608	0.570	0.570	0.577	0.601	0.603	0.599	0.630	0.617
	0.557	0.542	NA	NA	0.488	0.503	0.555	0.556	0.624	0.612	0.576	0.574	0.572	0.586	0.603	0.611	0.630	0.612
23	0.628	0.589	0.577	NA	0.605	0.579	0.625	0.668	0.673	0.655	0.752	0.723	0.645	0.649	0.668	0.690	0.735	0.670
	0.532	0.576	0.568	NA	0.586	0.693	0.628	0.662	0.644	0.651	0.711	0.706	0.625	0.641	0.659	0.697	0.750	0.665
	0.525	0.621	0.572	NA	0.592	0.613	0.618	0.667	0.646	0.651	0.716	0.680	0.622	0.647	0.659	0.729	0.727	0.661
24	0.813	0.691	0.645	NA	0.646	0.651	0.738	0.726	0.753	0.765	0.812	0.699	0.703	0.711	0.731	0.774	0.787	0.752
	0.676	0.678	0.629	NA	0.636	0.647	0.746	0.706	0.793	0.722	0.769	0.702	0.714	0.741	0.734	0.744	0.765	0.741
	0.678	0.673	0.629	NA	0.647	0.648	0.725	0.702	0.781	0.747	0.773	0.725	0.712	0.715	0.760	0.745	0.786	0.743

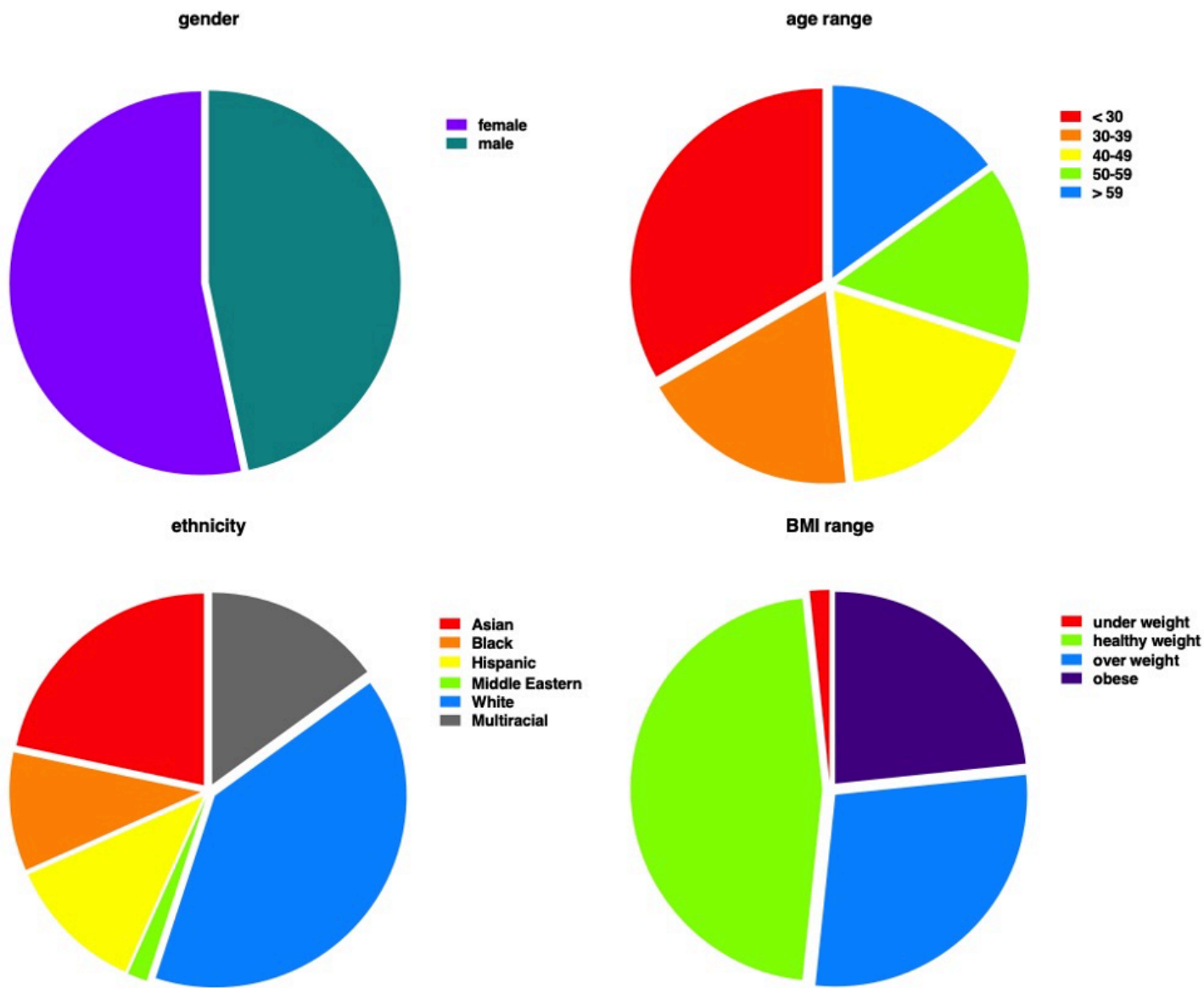


25	0.756	0.747	0.786	NA	0.711	0.755	0.867	0.739	0.812	0.795	0.878	0.829	0.737	0.868	0.824	0.752	0.798	0.800
	0.753	0.763	0.766	NA	0.706	1.019	0.758	0.764	0.801	0.863	0.859	0.827	0.809	0.766	0.782	0.807	0.869	0.819
	0.781	0.756	0.770	NA	0.727	0.741	0.762	0.766	0.800	0.796	0.854	0.821	0.782	0.752	0.774	0.799	0.853	0.825
26	0.677	0.629	0.639	0.632	0.603	0.628	0.629	0.648	0.671	0.761	0.743	0.697	0.642	0.638	0.680	0.693	0.720	0.677
	0.746	0.623	0.658	0.596	0.590	0.616	0.613	0.664	0.703	0.677	0.732	0.673	0.632	0.649	0.650	0.723	0.716	0.689
	0.668	0.619	0.637	NA	0.617	0.615	0.665	0.635	0.682	0.668	0.728	0.685	0.641	0.650	0.659	0.693	0.720	0.681
27	0.801	0.752	0.802	0.815	0.741	0.756	0.748	0.778	0.843	0.793	0.858	0.779	0.762	0.823	0.833	0.831	0.862	0.776
	0.798	0.737	0.799	0.774	0.759	0.768	0.750	0.768	0.857	0.794	0.861	0.801	0.761	0.815	0.976	0.814	0.879	0.804
	0.805	0.733	0.799	NA	0.769	0.740	0.771	0.791	0.821	0.805	0.850	0.767	0.764	0.806	0.805	0.828	0.862	0.795
28	0.717	0.704	0.721	0.709	0.674	0.725	0.713	0.710	0.789	0.818	0.828	0.721	0.716	0.724	0.778	0.778	0.828	0.754
	0.743	0.686	0.722	0.718	0.670	0.710	0.708	0.720	0.809	0.757	0.808	0.747	0.724	0.732	0.797	0.770	0.834	0.746
	NA	0.675	0.723	NA	0.681	0.703	0.712	0.716	0.917	0.751	0.815	0.717	0.714	0.743	0.769	0.786	0.823	0.767
29	0.697	0.674	0.698	NA	0.672	0.679	0.713	0.733	0.799	0.707	0.790	0.759	0.732	0.730	0.760	0.759	0.812	0.758
	0.714	0.663	0.727	NA	NA	0.676	0.724	0.801	0.800	0.744	0.784	0.751	0.724	0.738	0.768	0.755	0.814	0.776
	0.688	0.655	0.716	NA	0.739	0.689	0.711	0.730	0.769	0.723	0.785	0.755	0.726	0.733	0.769	0.758	0.795	0.769
30	0.649	0.607	NA	0.615	0.600	0.601	0.619	0.631	0.699	0.653	0.700	0.626	0.605	0.623	0.642	0.643	0.662	0.635
	0.636	0.608	NA	0.625	0.591	0.608	0.617	0.636	0.709	0.667	0.700	0.615	0.588	0.619	0.623	0.633	0.675	0.625
	0.645	0.607	NA	0.615	0.603	0.619	0.621	0.628	0.712	0.674	0.699	0.621	0.592	0.610	0.627	0.655	0.656	0.629
31	0.564	0.605	0.620	0.533	0.546	0.577	0.574	0.549	0.588	0.624	0.680	0.656	0.580	0.583	0.611	0.663	0.790	0.676
	0.575	0.584	0.674	0.547	0.553	0.587	0.569	0.551	0.590	0.614	0.675	0.633	0.582	0.561	0.614	0.663	0.711	0.692
	0.649	0.592	0.609	NA	0.560	0.574	0.577	0.554	0.595	0.637	0.695	0.652	0.578	0.578	0.619	0.660	0.753	0.664
32	0.796	0.744	0.761	0.712	0.701	0.711	0.803	0.790	0.766	0.762	0.796	0.843	0.749	0.761	0.782	0.775	0.847	0.791
	0.802	0.755	0.770	0.724	0.868	0.714	0.787	0.739	0.777	0.759	0.792	0.789	0.751	0.769	0.760	0.761	0.800	0.787
	0.814	0.735	0.767	0.713	0.697	0.711	0.745	0.744	0.781	0.751	0.790	0.788	0.756	0.747	0.765	0.780	0.812	0.833
33	0.652	0.549	0.594	NA	0.526	0.557	0.596	0.617	0.632	0.637	0.669	0.629	0.607	0.638	0.616	0.686	0.680	0.644
	0.618	0.563	0.594	NA	0.531	0.560	0.608	0.624	0.648	0.631	0.673	0.618	0.593	0.600	0.638	0.652	0.708	0.623
	0.653	0.567	0.607	NA	0.535	0.617	0.621	0.620	0.643	0.648	0.694	0.624	0.580	0.597	0.637	0.692	0.671	0.634
34	NA	0.602	0.629	NA	0.578	0.564	0.648	0.649	0.691	0.661	0.703	0.711	0.679	0.653	0.674	0.676	0.705	0.689
	NA	0.601	0.614	NA	0.578	0.564	0.665	0.667	0.673	0.641	0.682	0.685	0.658	0.644	0.681	0.663	0.690	0.674
	NA	0.593	0.611	NA	0.570	0.587	0.626	0.649	0.668	0.657	0.678	0.676	0.697	0.650	0.689	0.685	0.720	0.702
35	0.743	0.750	0.785	0.707	0.699	0.730	0.777	0.755	0.806	0.851	0.911	0.877	0.803	0.810	0.800	0.953	0.919	0.866
	0.746	0.748	0.806	0.700	0.691	0.733	0.787	0.799	0.784	0.854	0.905	0.884	0.774	0.797	0.815	0.881	0.952	0.859
	0.743	0.789	0.781	0.769	0.696	0.735	0.747	0.756	0.799	0.864	0.920	0.879	0.827	0.800	0.802	0.889	0.914	0.857
36	0.808	0.774	0.792	NA	0.731	0.765	0.773	0.780	0.807	0.819	0.965	0.888	0.827	0.818	0.876	0.847	0.901	0.873
	0.801	0.765	0.797	NA	0.720	0.754	0.762	0.786	0.813	0.839	0.885	0.862	0.798	0.820	0.843	0.861	0.904	0.879
	0.802	0.763	0.799	NA	0.734	0.783	0.790	0.796	0.806	0.834	0.894	0.866	0.798	0.879	0.842	0.897	0.902	0.866
37	0.680	0.591	0.646	NA	0.570	0.595	0.715	0.655	0.726	0.651	0.776	0.704	0.617	0.688	0.835	0.747	0.796	0.738
	0.670	0.592	0.631	NA	0.562	0.579	0.630	0.652	0.713	0.660	0.775	0.700	0.692	0.686	0.722	0.751	0.789	0.745
	0.682	0.606	0.633	NA	0.560	0.590	0.698	0.664	0.739	0.655	0.752	0.694	0.623	0.725	0.723	0.749	0.884	0.742
38	0.651	0.654	0.674	0.601	0.609	0.651	0.698	0.675	0.726	0.686	0.753	0.777	0.687	0.694	0.724	0.772	0.787	0.756
	0.656	0.639	0.705	0.606	0.621	0.633	0.683	0.683	0.717	NA	0.755	0.741	0.686	0.691	0.774	0.753	0.783	0.747
	0.659	0.641	0.685	0.588	0.600	0.662	0.667	0.673	1.011	0.691	0.744	0.734	0.686	0.760	NA	0.752	0.858	0.756
39	0.837	0.787	0.804	NA	0.732	0.756	0.813	0.822	0.887	0.840	0.902	0.817	0.811	0.814	0.902	0.897	0.914	0.817

	0.826	0.775	0.806	NA	0.729	0.768	0.783	0.810	0.896	0.866	0.909	0.821	0.808	0.811	0.883	0.877	0.926	0.814
	0.840	0.767	0.815	NA	0.745	0.752	0.895	0.799	0.874	0.845	0.909	0.810	0.812	0.975	0.868	0.893	0.923	0.898
40	0.793	0.704	0.761	NA	0.673	0.706	0.747	0.758	0.809	0.778	0.811	0.768	0.752	0.754	0.823	0.812	0.834	0.800
	0.809	0.702	0.743	NA	0.678	0.697	0.756	0.780	0.793	0.810	0.867	0.783	0.740	0.745	0.828	0.811	0.836	0.802
	0.798	0.700	0.754	NA	0.690	0.680	0.775	0.751	0.791	0.790	0.821	0.773	0.799	0.761	0.820	0.813	0.828	0.812
41	0.694	0.610	0.594	NA	0.614	0.622	NA	NA	NA	0.780	0.727	0.707	NA	NA	NA	0.708	0.736	0.756
	0.695	0.641	0.645	NA	0.614	0.636	NA	NA	NA	0.711	0.722	0.693	NA	NA	NA	0.705	0.745	0.739
	0.703	0.617	0.650	NA	0.619	0.630	NA	NA	NA	0.704	0.737	0.718	NA	NA	NA	0.706	0.717	0.723
42	0.773	0.737	0.761	NA	0.715	0.760	0.782	0.821	0.821	0.854	0.851	0.825	0.774	0.794	0.840	0.838	0.882	0.812
	0.770	0.765	0.737	NA	0.715	0.751	0.799	0.824	0.830	0.849	0.848	0.822	0.783	0.792	0.818	0.838	0.884	0.834
	0.779	0.742	0.764	NA	0.716	0.729	0.799	0.854	0.816	0.859	0.906	0.831	0.827	0.793	0.817	0.830	0.886	0.827
43	NA	0.714	0.744	NA	0.753	0.726	0.775	0.783	0.838	0.835	0.860	0.844	0.767	0.800	0.787	0.856	0.870	0.821
	NA	0.709	0.752	NA	0.713	0.711	0.901	0.791	0.849	0.830	0.863	0.827	0.932	0.765	0.801	0.845	0.870	0.813
	NA	0.745	NA	NA	0.716	0.718	0.953	0.795	0.835	0.850	0.863	0.843	0.781	0.786	0.791	0.873	0.855	1.011
44	0.569	0.535	0.585	NA	0.551	0.569	0.610	0.623	0.620	0.624	0.687	0.650	0.612	0.587	NA	0.668	0.665	0.648
	0.562	0.543	0.591	NA	0.546	0.577	0.593	0.615	0.635	0.628	0.686	0.648	0.594	0.588	NA	0.660	0.667	0.643
	0.565	0.546	0.595	NA	0.581	0.566	0.589	0.600	0.631	0.630	0.669	0.650	0.631	0.614	NA	0.658	0.662	0.668
45	0.565	NA	0.546	NA	0.606	0.547	0.605	0.628	0.654	0.612	0.677	0.641	0.596	0.628	0.626	0.632	0.693	0.648
	0.561	0.525	NA	NA	0.533	0.553	NA	0.613	0.654	0.621	0.662	0.791	0.580	0.632	0.626	0.634	0.679	0.655
	0.640	0.529	0.560	NA	0.540	0.549	0.651	0.647	0.645	0.607	0.711	0.604	0.622	0.613	0.639	0.622	0.679	0.668
46	0.804	0.712	0.769	0.729	0.746	0.746	0.775	0.787	0.839	0.814	0.862	0.823	0.856	0.811	0.823	0.861	0.973	0.837
	0.725	0.706	0.768	0.728	0.799	0.734	0.769	0.782	0.851	0.815	0.864	0.802	0.810	0.817	0.805	0.839	0.885	0.828
	0.736	0.702	0.811	0.742	0.736	0.737	0.772	0.833	0.843	0.832	0.859	0.809	0.795	NA	0.809	0.856	0.886	NA
47	0.676	0.656	0.704	NA	0.650	0.689	0.747	0.732	0.831	0.779	0.832	0.785	NA	NA	NA	0.823	1.041	0.796
	0.704	0.653	0.679	NA	0.684	0.683	0.755	0.749	0.856	0.777	0.830	0.786	NA	NA	NA	0.806	0.846	0.830
	NA	0.649	0.687	NA	0.683	0.677	0.751	0.940	0.851	NA	0.826	0.794	NA	NA	NA	0.794	0.853	0.795
48	0.746	0.703	0.817	0.809	0.761	0.757	0.802	0.807	0.829	0.880	0.951	0.922	0.828	0.844	0.852	0.993	0.968	0.896
	0.744	0.696	0.775	0.746	0.684	0.759	0.794	0.816	0.838	1.045	0.968	0.934	0.830	0.840	0.892	0.941	0.946	0.962
	0.755	0.693	0.773	0.732	0.694	0.761	0.793	0.817	0.826	0.927	0.959	0.947	0.832	0.865	0.855	0.967	0.993	0.920
49	0.679	0.615	0.608	0.639	0.637	0.625	0.775	0.760	0.808	0.797	0.777	0.815	0.776	0.756	0.793	0.799	0.865	0.835
	0.714	0.613	0.595	NA	0.643	0.639	0.732	0.761	0.773	0.780	NA	0.814	0.765	1.022	0.829	0.836	0.904	0.829
	0.712	0.602	0.595	NA	0.640	0.347	0.791	0.769	0.775	0.767	0.833	0.900	0.785	0.787	0.813	0.794	0.908	0.836
50	0.638	0.552	0.627	NA	0.556	0.751	0.737	0.737	0.808	0.807	0.888	0.892	0.747	0.761	0.790	0.827	0.903	0.866
	0.635	0.557	0.648	NA	0.546	0.742	0.729	0.752	0.759	0.791	0.882	0.877	0.711	0.738	0.797	0.855	0.909	0.845
	0.666	0.570	0.626	NA	0.582	0.655	0.754	0.724	0.757	0.800	0.912	0.855	0.733	0.741	0.802	0.844	0.942	0.849
51	0.717	0.622	0.655	0.680	0.629	0.678	0.730	0.714	0.774	0.800	0.841	0.784	0.886	0.773	0.729	0.928	0.879	0.774
	0.685	0.614	0.652	0.663	0.628	0.654	0.717	0.714	0.778	0.780	0.837	0.829	0.764	0.813	0.783	0.783	0.993	0.786
	0.670	0.658	0.734	NA	0.633	0.649	0.718	0.761	0.800	0.795	0.831	0.847	0.709	0.739	0.728	0.776	0.784	0.758
52	0.614	0.567	0.595	0.557	0.597	0.614	0.665	0.711	0.709	0.696	0.735	0.669	0.678	0.667	0.659	0.692	0.740	0.706
	0.584	0.567	0.583	0.539	0.593	0.622	0.674	0.670	0.784	0.700	0.737	0.672	0.683	0.666	0.684	0.682	0.698	0.699
	0.601	0.571	0.595	NA	0.610	0.626	0.651	0.738	0.745	0.677	0.695	0.704	0.665	0.667	0.660	0.766	0.707	0.704
53	0.665	0.641	0.637	0.618	0.619	0.647	NA	NA	NA	0.732	0.798	0.777	NA	NA	NA	0.700	0.761	0.739
	0.694	0.670	0.626	0.623	0.609	0.699	NA	NA	NA	0.728	0.800	0.961	NA	NA	NA	0.710	0.789	0.745

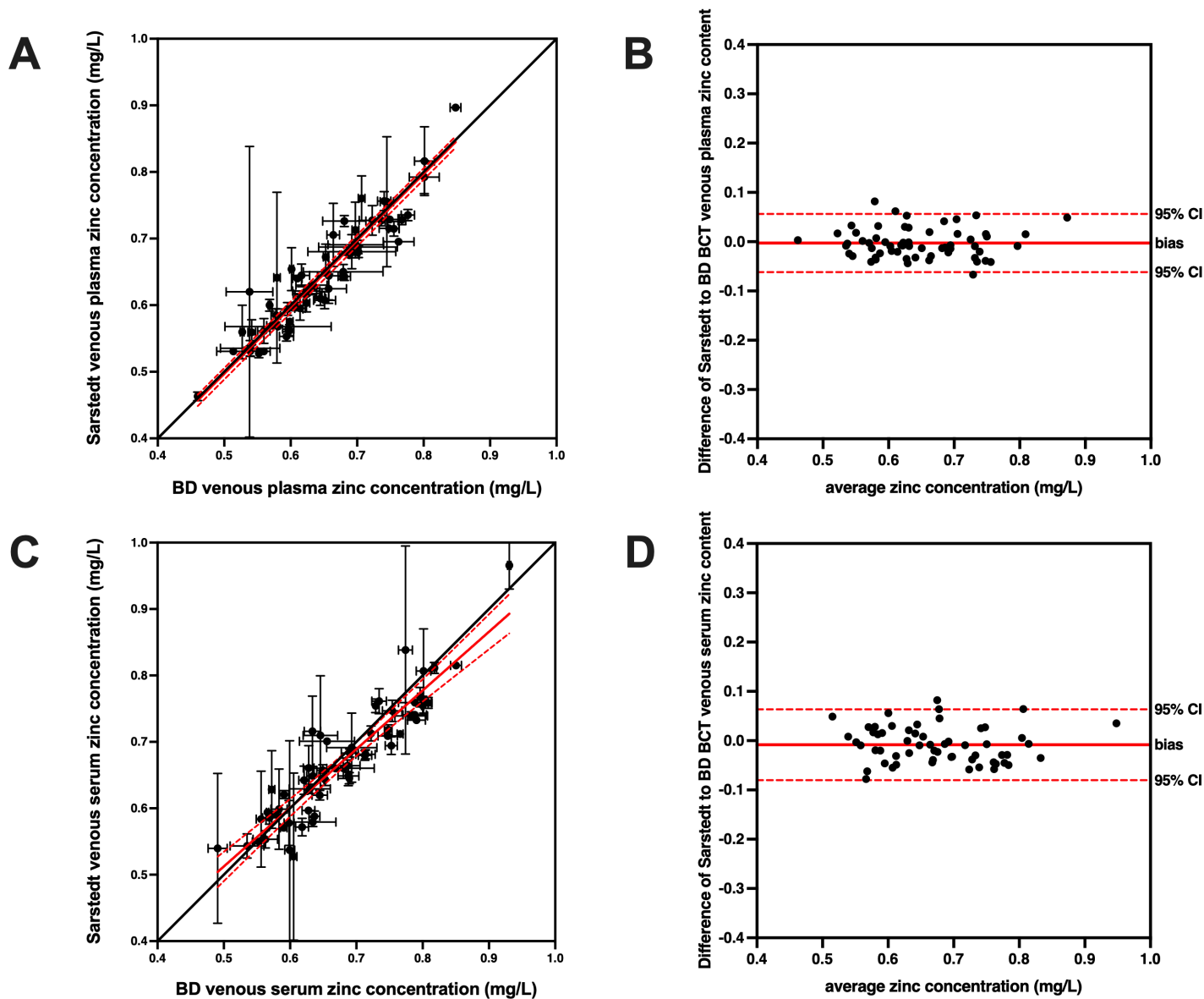
	0.660	0.642	0.621	0.617	0.594	0.636	NA	NA	NA	NA	0.790	0.780	NA	NA	NA	0.703	0.816	0.732
54	0.616	0.541	0.569	0.592	0.571	0.589	0.631	0.645	0.687	0.665	0.768	0.745	0.691	0.754	0.695	0.629	0.640	0.698
	0.716	0.673	0.582	0.592	0.562	0.592	0.617	0.657	0.680	0.649	0.745	0.867	0.706	0.723	0.710	0.627	0.649	0.681
	0.621	0.529	0.583	NA	0.571	0.591	0.601	0.689	0.675	0.695	0.762	0.712	0.693	0.733	0.704	0.618	0.639	0.669
55	0.707	0.744	0.729	0.758	0.694	0.750	0.747	0.747	0.788	0.834	0.861	0.857	0.738	0.749	0.747	0.842	0.879	0.827
	0.718	0.662	NA	0.721	0.696	0.747	0.742	0.735	0.762	0.843	0.862	0.900	0.750	0.758	0.765	0.835	0.873	0.849
	NA	0.688	NA	NA	0.682	0.766	0.735	0.738	0.774	0.819	0.843	0.807	0.733	0.736	0.766	0.849	0.886	0.844
56	0.666	0.604	0.627	0.600	0.640	0.666	0.668	0.688	0.702	0.679	0.748	0.714	0.674	0.718	0.711	0.733	0.781	0.740
	0.649	0.602	0.612	0.615	0.691	0.625	0.683	0.679	0.698	0.690	0.745	0.706	0.683	0.722	0.725	0.730	0.757	0.747
	0.656	0.598	0.624	NA	0.631	0.636	0.664	0.671	0.692	0.699	0.775	0.715	0.678	0.670	0.716	0.737	0.764	0.737
57	0.683	0.642	0.708	0.655	0.648	0.654	0.885	0.764	0.752	0.778	0.790	0.755	0.727	0.741	0.771	0.763	0.808	0.774
	0.846	0.748	0.680	0.688	0.662	0.668	0.761	0.748	0.773	0.764	0.784	0.771	0.737	0.762	0.773	0.787	0.786	0.738
	0.694	0.647	0.672	NA	0.640	0.670	0.719	0.747	0.828	0.758	0.802	0.756	0.735	0.726	NA	0.764	0.785	0.799
58	0.661	0.647	0.654	0.644	0.614	0.653	0.658	0.687	0.708	0.714	0.765	0.744	0.658	0.676	0.674	0.750	0.773	0.747
	0.658	0.611	0.651	0.676	0.625	0.635	0.676	0.658	0.699	0.712	0.742	0.746	0.659	0.696	0.703	0.709	0.775	0.736
	0.652	0.612	0.653	0.718	0.625	0.642	0.783	0.665	0.705	0.709	0.761	0.739	0.661	0.656	0.797	0.729	0.770	0.752
59	0.509	0.462	0.480	0.425	0.470	0.477	0.544	0.507	0.560	0.529	0.591	0.532	0.529	0.535	0.558	0.547	0.598	0.549
	0.511	0.458	0.485	0.478	0.457	0.472	0.487	0.643	0.551	0.517	0.600	0.552	0.496	0.518	0.564	0.560	0.601	0.568
	0.494	NA	0.507	0.469	0.462	0.670	0.485	0.501	0.554	0.531	0.618	0.523	0.503	0.509	0.559	0.550	0.611	0.545
60	NA	0.659	0.704	NA	0.678	0.677	0.708	0.812	0.728	0.743	0.786	0.880	0.734	0.753	0.724	0.774	0.809	0.875
	NA	0.768	0.711	NA	0.656	0.688	0.716	0.766	0.777	0.768	0.783	0.818	0.714	0.694	0.790	0.767	0.806	0.802
	NA	0.649	0.724	NA	0.707	0.674	0.696	0.694	0.737	0.786	0.794	0.745	0.920	0.716	0.799	0.797	0.788	0.791

85 **S1 Fig: Summary of demographic information on study participants.** Charts show gender, age-range, race/ethnicity, and  
86 body mass index (BMI) for participants. Gender, age, and ethnicity were provided directly by participants. BMI was  
87 calculated from height and weight measured on each participant.



88

89 **S2 Fig. Zinc concentrations in venous samples do not differ by blood collection tube (BCT) manufacturer.** Correlation  
90 plots comparing circulating zinc values from **(A)** venous plasma from BD and Sarstedt BCTs and **(C)** venous serum from  
91 BD and Sarstedt BCTs are shown. Each circle represents the zinc level (mean  $\pm$  SD,  $n=1-3$ ) for an individual participant,  
92 with linear regression and 95% confidence interval indicated by a solid red and dotted red line, respectively. The line of  
93 concordance is shown as a solid black line for comparison. Since there was no significant difference in the mean zinc  
94 concentrations for either matrix, Bland-Altman plots are only shown for illustrative purposes for **(B)** venous plasma and  
95 **(D)** venous serum samples. No significant bias was measured. Each circle represents the zinc level for an individual  
96 participant, with average distance and 95% confidence interval indicated by a solid red and dotted red line, respectively.  
97



98