

18 **Abstract**

19 **Background:** Most oral diseases are caused by poor oral hygiene, and with adequate oral hygiene
20 measures, they are easily preventable. The use of folk songs to deliver oral health education may
21 likely hold a huge potential for success and an increased likelihood of acceptability and
22 sustainability among school children. Therefore, an investigation into the effectiveness of methods
23 that would be culturally appropriate and sustainable, such as folk songs, is essential.

24 **Aim:** To determine the effect of traditional rhyme (folk song) as a tool for oral hygiene education
25 among children in rural communities in Nigeria.

26 **Materials and methods:** This is a school-based, assessor-blinded, two-arm cluster-randomised
27 controlled trial that will assess the effectiveness of oral hygiene messages delivered through
28 traditional rhyme (folk song) on children's oral hygiene knowledge, attitude, practices, and oral
29 hygiene status in two rural communities (Igboora and Idere) in Nigeria. The study will involve a
30 minimum of 424 participants (aged 7-9 years) selected from eight primary schools using the cluster
31 sampling technique. Four schools will be randomised into the test group to receive oral hygiene
32 messages through folk songs, and the participants will sing the song for two weeks. The other four
33 schools will be assigned to the control group, and the participants will receive the usual oral health
34 talk on oral hygiene practices by a dentist.

35 The participants' oral hygiene knowledge, attitude, practice and status will be assessed at baseline,
36 immediate, six, and twelve-month post-intervention. A modified World Health Organization
37 (WHO) Children's oral health survey questionnaire will be utilised for data collection. Oral
38 examinations will be conducted to assess the participants' dental caries experience and oral
39 hygiene status using the dmft/DMFT and simplified oral hygiene indices, respectively.

40 **Discussion:** Folk songs are popular means of conveying messages in Nigeria, and using them to
41 deliver oral health messages may be an effective, acceptable, and sustainable method among

42 children. This study will provide empirical information about this innovative intervention to guide
43 policy development, dental public health practice, and future studies.

44 **Trial registration:** Pan African Clinical Trial Registry-PACTR202010863892797 (October 2020)

45 **Keywords:** Oral health education, Dental caries, Gum diseases, Behaviour change, Randomised
46 controlled trial, Child dental health

47 **Introduction**

48 Oral diseases remain major public health problems with a substantial personal, social and economic
49 burden.[1] Worldwide, the prevalence of oral diseases like dental caries and periodontal diseases
50 is high as they affect most people in high- middle- and low-income countries (HICs and
51 LMICs).[1] It is estimated that 2.4 billion people suffer from dental caries of permanent teeth, and
52 486 million children suffer from dental caries of primary teeth.[2] The global increase in the
53 prevalence of dental caries[3,4] highlights the need for primary prevention programmes, especially
54 in LMICs, including sub-Saharan Africa, which has the highest burden of untreated dental
55 caries.[1,5] Dental caries are painful, negatively impact the quality of life, and may result in tooth
56 loss and systemic infection that can lead to death in its advanced stage.[6] The treatment options
57 for dental caries are costly, averaging 5% of the total health expenditure and 20% of out-of-pocket
58 expenditure in developed countries.[7] In most developing countries, investment in oral health is
59 low, and if treatment were available, the costs of dental caries in children alone would exceed the
60 total health care budget.[8] Similarly, periodontal diseases contribute significantly to the global
61 burden of oral disease, leading to pain, bleeding, bad breath, tooth loss and adverse systemic
62 illnesses.[9] Most epidemiological studies have observed significant relationships between socio-
63 economic status and periodontal disease.[10–13] Low income and low education contribute to poor
64 periodontal disease status.[10–12] There is an unequal burden of oral diseases affecting those in
65 the rural areas more than those in the urban communities,[13] and more among those living in
66 slums than non-slum areas.[12]

67 Most oral diseases like dental caries and periodontal problems are preventable.[9] Dental caries is
68 one of the most common oral diseases that negatively impact the oral health-related quality of life
69 of those affected.[14] And while it can affect people over their life course,[15] the risk is higher
70 among children.[15] Given the cost of treatment and devastating effect on the quality of life,

71 prevention of dental and other oral problems must be prioritised. The common preventive measures
72 include maintaining good oral hygiene, eating a balanced diet with low refined-carbohydrate
73 content, and regularly visiting the dental office for early detection and treatment of emerging oral
74 problems.[16,17] It is advocated that oral health education programs are instituted among the
75 populace, including those in the rural and underserved communities, to instil good hygiene
76 practices among them.[13] It is even more helpful for these activities to be carried out among
77 children who are just forming behaviours that affect their health.[18] Helping children develop the
78 habit of brushing twice daily and maintaining good oral hygiene is key to a lifetime of healthy
79 smiles. Thus, exploring the roles of innovative methods such as oral hygiene songs, particularly
80 folk songs with an inherent cultural motif at developing and probably sustaining good oral hygiene
81 habits among children becomes pertinent.

82 Oral hygiene songs are a great way to have children learn about and remember how to practice
83 adequate oral health. Children and adolescents have fun while setting healthy lifetime habits when
84 they learn through music. Tooth brushing songs set to familiar tunes make learning about oral
85 health fun and easy. Melodies of traditional songs can be combined with words specifically adapted
86 to make the song connect to a teachable concept. Parents, guardians and schoolteachers can use
87 songs as a fun way to teach brushing and good oral hygiene. Using songs as a reminder that it is
88 time for toothbrushing is something parents/guardians and their children/wards can do together
89 daily. Although using folk songs to deliver oral health messages holds much promise, there is a
90 lack of empirical information about its use among children in Nigeria. Hence, this study aims to
91 determine the effect of traditional rhyme (folk song) as a tool for oral hygiene education among
92 children in rural communities in Nigeria.

93 **Materials and methods**

94 **Study design**

95 The research is designed to be a cluster-randomised, assessor-blinded, controlled trial with two
96 study groups – intervention and control. The randomised control design was adopted to provide a
97 high level of evidence for the study.

98 **Study location and site**

99 The planned study sites are Igboora and Idere, two rural communities in Oyo State, Southwestern
100 Nigeria, about 7 kilometres apart. Farming and petty trading are common in the two communities,
101 and Yoruba is the predominant tribe and language. The two communities have several primary
102 schools. Most primary schools have classes from Primary one (Pry 1) to Primary six (Pry 6), while
103 some end at Pry 5. Generally, most classes have five arms (A–E), and preliminary investigation
104 shows that each class arm has an average of 25 pupils. The usual age of entry into primary school
105 ranges between four to six years, and those in Pry 4 are usually between 7 – 9 years old.[19]

106 **Study population**

107 The study participants would comprise Pry 4 pupils from primary schools located in the two rural
108 communities (Igboora and Idere) in Oyo State, Nigeria. The choice of the Primary 4 class pupils
109 is for the following reasons: the pupils' ages range from seven to nine years, and they usually
110 would have started supervised but unassisted oral hygiene practices like tooth brushing.[20,21]
111 The age group (7-9 years) also has a higher likelihood of providing better responses during the
112 interviews than younger people from the lower classes.[22] Moreover, pupils in the Pry 4 class are
113 more likely to remain in their various schools through the proposed study period, unlike those in
114 higher classes (Pry 5 and Pry 6) who may be nursing the idea of writing the secondary school
115 qualifying examinations (common entrance examinations) and leaving their various schools while
116 this study is still ongoing.

117 **Eligibility criteria**

118 **Inclusion criteria:**

119 Healthy children with parental consent will be included in the study.

120 **Exclusion Criteria:**

121 Primary schools not registered with the Oyo State Government will be excluded from the study.

122 Pupils who intend to leave the school before completing the study and those who do not understand
123 the Yoruba language will also be excluded.

124 **Sample size determination**

125 The sample size for this study was determined using the formula for comparing two
126 proportions.[23] The primary outcome is oral hygiene status. The prevalence ($P_1 = 38.4\%$) of
127 children who had good oral hygiene from a previous study in Nigeria,[24] was used for sample
128 size calculation. An estimated 50% increase in the proportion of participants with good oral
129 hygiene following the intervention ($P_2 = 57.6\%$) was used in calculating the minimum sample size.
130 Other considerations were statistical power of 80%, a significance level of 5%, a non-response rate
131 of 10%, an attrition rate of 20%, and an estimated design effect of 1.5. A minimum of 212
132 participants will be recruited per study group, making 424 for the two groups.

133 **Sampling technique, recruitment, and randomisation**

134 A two-stage cluster sampling technique will be employed for this study.

135 In the first stage, four schools from each of the two communities will be selected from the list of
136 schools that would be obtained from the Ministry of Education, Oyo State, using the simple random
137 sampling technique, making eight schools in total. In the second stage, an average of 55
138 participants will be selected from each selected school's P4 class arm using a proportionate
139 sampling technique.

140 The schools will be the randomisation unit. The selected schools in the two communities (Igboora
141 and Idere) will be randomised into either the test or the control group using the block randomisation
142 method, aided by computer-generated numbers.[25] A community dentist, is unaware of the study
143 details and the objectives, will allocate the schools and participants into the study groups.

144 **Baseline data collection**

145 Interviewer-administered semi-structured questionnaire (S1 File) will be used for data collection.
146 The questionnaire will be developed from the review of related local literature,[12,24,26] and the
147 oral examination will be based on the WHO Oral Health Surveys: Basic methods, 5th Edition.[27].
148 Five trained and calibrated dentists will conduct the interview and oral examinations. The dentists
149 will be trained by an expert in oral epidemiology using the WHO guideline.[27] The questionnaire
150 will be used to collect information on the participants' sociodemographic characteristics, oral
151 hygiene knowledge, attitude and practices. The oral examination will assess the participants' oral
152 hygiene status (simplified oral hygiene index[28]) and their lifetime caries experience [sum of
153 decayed, missing, and filled teeth (dmft/DMFT)[27,29]]. The oral examination will be done using
154 a sterile wooden mouth spatula, probes, and dental mirrors. The oral examination will be conducted
155 near the windows in the school halls, with the participants seated upright facing the window such
156 that the examination is aided by good illumination from natural light. Baseline data collection will
157 be conducted in both study groups (test and control) one week before delivering the interventions.

158 **Intervention and control groups**

159 The intervention will involve teaching the participants in the test group traditional rhyme (folk
160 songs) on adequate oral hygiene measures and practices. The song was developed in English and
161 Yoruba, the two major Nigerian languages in the two communities. While Yoruba is the primary
162 language of the pupils, they are taught in English. The songs convey health messages, including
163 the importance of twice-daily tooth brushing with pea-size fluoride-containing toothpaste, the need

164 to brush the tongue, and simple tooth brushing techniques using toothbrushes with soft/medium-
165 bristles. The song was co-developed and validated among selected schoolchildren, teachers, and
166 parents/legal guardians.[30]

167 There will be three intervention sessions lasting for one month. During the first session, one of the
168 researchers (OO) will teach selected participants in the test group the two songs (English and
169 Yoruba). Some participants will be asked to sing the songs to confirm if the pupils have learned
170 them. Subsequently, all the participants will be asked to sing the songs several times. The first
171 session of the intervention is estimated to last for 40 minutes. The participants will be asked to
172 continue singing the songs every morning in the school for one month, under the supervision of a
173 teacher. This will be monitored by calling the designated teachers daily to confirm it was done.
174 The second session will take place two weeks after the first, and the researcher will ask the
175 participants to sing the songs as a group several times. Similarly, the third session will take place
176 two weeks after the second session (one month after the first session) and the students will also
177 sing the songs in the presence of the researcher (OO). The second and third sessions are estimated
178 to last for 20 minutes.

179 The participants in the control group will be exposed to conventional health education on adequate
180 oral hygiene practices conducted by the dentist.[31] Similar to the test group, there will be three
181 intervention sessions. The first session will last for 40 minutes and will involve expert-led health
182 talks and question and answer with the participants. The second and third sessions will also take
183 place after two and four weeks, respectively. The follow-up sessions will involve revising the oral
184 health messages with the participants, lasting for about 20 minutes each. None of the participants
185 (control and test groups) will be denied access to oral health talks that they may be exposed to
186 away from school.

187 **Post-intervention data collection**

188 There will be three sessions of post-intervention assessments – Immediate, six and 12 months. The
189 immediate post-intervention assessment will collect information on the participants’ oral hygiene
190 knowledge and attitude immediately after the second session of the intervention is completed. The
191 6-month post-intervention assessment will be conducted six months after the immediate post-
192 intervention assessment. Information on the participants’ oral hygiene knowledge, attitude, and
193 practices will be collected. The 12-month post-intervention assessment will be conducted 12
194 months after the immediate post-intervention assessment. It will involve oral health examinations
195 to check the participants’ oral hygiene status and dental caries experience (dmft/DMFT), along
196 with assessing the participants’ oral hygiene knowledge, attitude, and practices. The same
197 questionnaire for the pre-intervention assessment will also be used for the post-intervention
198 assessments. However, the immediate and 6-month assessments will not include oral examinations.
199 Figures 1 and 2 show the SPIRIT schedule and Flow diagram for the study.

200 **Fig 1: The SPIRIT schedule for the study**

201 **Fig 2: Flow diagram for the study**

202

203 **Variables**

204 **Primary outcome variables:**

205 The participants’ oral health status will be the primary outcome variable. There would be two
206 measures, including the caries experience, which would be based on the oral examination of the
207 dmft/DMFT scores[29] (continuous variable) and the oral hygiene status, which would be assessed
208 as “poor”, “fair”, and “good” (categorical variable) using the Oral Hygiene Index (Simplified)
209 OHI-S described by Greene and Vermillion.[28]

210 **Secondary outcome variables:**

211 The secondary outcome variables include participants’ oral hygiene knowledge, attitude, and
212 practices. There will be six questions assessing the participants’ knowledge. Each correct answer

213 will be awarded a score of “1” and the wrong option “0”. Each participant’s knowledge score will
214 be compiled over six. Similarly, there will be five questions to assess their attitude. The options
215 will be a Likert scale (strongly disagree to strongly agree). The best response, which indicates the
216 most positive attitude to the statement on oral hygiene, will be given the highest score of “5” while
217 the most negative response will be scored “1”. The total attitude score for all the participants will
218 be computed with the maximum being “25” and the minimum being “5”. The participants’ oral
219 hygiene practices that would be assessed include twice daily brushing, the presence of fluoride and
220 the size of dispensed toothpaste for brushing. Others are their technique of tooth brushing and how
221 long before they changed their toothbrush.

222 **Independent variables:**

223 The independent variables would include the participants’ study group, sociodemographic
224 characteristics (age, gender, neighbourhood), and school-related characteristics (school-type,
225 class-level).

226 **Validity and reliability of the questionnaire**

227 The questionnaire (Appendix I) contains mainly structured questions, with a few carefully selected
228 open-ended questions to ensure valid responses. The questionnaire contained questions that will
229 be easy to administer, and the importance of giving steady answers by the respondents will be
230 emphasised. The questionnaire was face- and content-validated by dental public health experts,
231 and they considered the questions adequate to answer the research questions and appropriate for
232 the intended age group. The data collectors will be trained on the mode of administering the
233 questionnaires to avoid interviewer bias. The questionnaires will be pretested among a minimum
234 of 20 pupils in communities outside Igboora and Idere with similar relevant characteristics to the
235 study population. The students will be asked to give feedback on the clarity of the questions and
236 other useful information will be used to improve the questionnaire. The pretest will be done to
237 assess the reliability of the questions, including the knowledge and attitude scales and their

238 responses will be analysed using the test statistics of Cronbach's reliability test. The five examiners
239 will also individually provide oral examinations for all the 20 pupils. The examiners' agreement
240 on the recorded scores for the simplified oral hygiene index and dmft/DMFT will be evaluated
241 using the Cohen Kappa statistics.

242 **Data management plan**

243 **Data handling plan:**

244 The questionnaires will be checked for errors daily, and necessary corrections will be made as soon
245 as they are discovered. Each response on the questionnaire will then be coded and recoded on a
246 coding sheet. The codes for each response on the questionnaire will then be entered into Statistical
247 Package for Social Science (SPSS) Version 25, after which the coded data will be checked for
248 errors by cross-checking 10% of the data.

249 **Data analysis plan:**

250 Baseline data would be compared among the two study groups based on their sociodemographic
251 characteristics and the baseline value of the outcome variables (oral hygiene status, knowledge,
252 attitude, and practice). Subsequently, the intervention effects on the outcome variables will be
253 assessed over the study period (baseline, immediate, 6 months and 12 months assessments). The
254 effectiveness would also be compared between groups (test vs control) over the 12 months
255 (baseline, 6 months, and 12-month assessment). An intention-to-treat analysis will be employed
256 for this study.[32] A participant will remain in the originally assigned group, notwithstanding what
257 happens during the study, such as deviation from the study protocol or loss to follow-up. The record
258 of the last assessment will be recorded for those lost to follow-up in the subsequent assessments.
259 The level of statistical significance for all tests will be set at $p < 0.05$.

260 **Ethical considerations**

261 The study has been registered with the Pan African Clinical Trial Registry
262 (PACTR202010863892797). Ethical approval was obtained from the University of
263 Ibadan/University College Hospital Ethical Review Committee (Registration number:
264 NHREC/05/01/2008a). The permission to carry out the study was also received from the Ministry
265 of Education, Oyo State. The following ethical issues will be considered:

266 **Written informed consent**

267 A letter to the parents or legal guardians will request their consent for their children or ward to
268 participate in the study. An information sheet stating the details of the study will be given to them
269 to read, after which they will be asked if they understood what the study is about and what is
270 expected of their children/wards. Parents/legal guardians who agree to allow their children/wards
271 to participate in the study will be asked to sign a written Informed Consent form, and their children
272 will subsequently sign the assent form. (Appendix 2)

273 **Confidentiality of data**

274 All information collected from respondents during this research will be kept confidential. All
275 identifiable details of the participants will be separated from the coded details and collected data.
276 The identifiable details and data entered on the computer will be password-protected and only
277 accessible to the researchers and data entry clerks.

278 **Right to withdraw from the study**

279 Study participants who wish to withdraw from the study will be allowed to do so freely at any
280 point in time and without any negative repercussions.

281 **Beneficence/Non-maleficence**

282 The study participants will benefit from the educational intervention during or immediately after
283 the study, and the study does not pose any harm to the participants.

284 **Dissemination**

285 Findings from the study will be presented at both local and international conferences and published
286 in peer-reviewed journals.

287

288 **Discussion**

289 A multi-disciplinary team comprising community dentists, paediatric dentists, restorative dentists
290 and music experts was established to develop a traditional rhyme (Folk Song) to be used as a tool
291 for oral hygiene promotion among children in two rural communities in Nigeria. The team, together
292 with children, teachers, and parents, co-developed a simple, memorable and age-appropriate
293 traditional song[30] as the platform for delivering oral hygiene behavioural change to children to
294 enhance their self-efficacy with twice-daily tooth brushing.

295 To the best of our knowledge, this is one of the few studies to assess the effectiveness of traditional
296 folk songs in improving children's oral hygiene knowledge, attitude, and practices. Folk songs are
297 very popular in Nigeria, and it is not just for entertainment but also to convey historical events and
298 heritage and teach children about important virtues.[33,34] This study aims to use folk songs to
299 deliver oral health education to children in two rural communities – Igboora and Idere, Oyo State,
300 Nigeria. The burden of oral health problems is high in Nigeria, like other African countries, and
301 those in rural areas are more affected.[13] This is one of the reasons these communities were
302 selected for the intervention. Like other rural communities in Nigeria, access to oral health services
303 is also limited in these communities. However, the Department of Periodontology and Community
304 Dentistry, University College Hospital/University of Ibadan, provides basic oral health care
305 services to these communities through the Primary Oral Health Care clinics, and some of the
306 investigators of this research are in charge of the clinics. This relationship would facilitate a quick

307 uptake of outcomes of this research in the subsequent planning of intervention programmes from
308 the dental clinics in responding to oral health challenges in the study sites.

309 Pupils in primary schools have been targeted for this intervention because the school provides an
310 organised setting where the participants can be taught without distractions. It also gives the best
311 opportunity for the participants to be followed up with a lesser risk of attrition. The intervention
312 can also be easily sustained by incorporating it into their activities during the daily morning
313 assembly.

314 A school/cluster-level randomisation will be employed to avoid having participants in the
315 intervention and control groups in the same school, which may increase the risk of spillover.[35]

316 There is no way some participants in a school would be taught these songs, and others in the control
317 group would not be aware if they were in the same school. In the same vein, the distance of schools
318 will be considered when selecting the schools for the study and schools close to each other would
319 not be allowed to be in different study groups.

320 This study will consider several outcomes, including knowledge, attitude, practice, and oral health
321 status (caries and oral hygiene). This would generate empirical information on the effectiveness of
322 folk songs on each of these outcomes separately. A possible limitation in the outcome measurement
323 is the dmft/DMFT.

324 The dmft/DMFT is a non-reversible index;[29] thus, the score at baseline would not reduce at the
325 study completion even if the participant has treated carious teeth. To address this, the condition of
326 the teeth (decayed, missing, and filled) would be noted at baseline. Hence, if a participant visited
327 the dental clinic to fill a decayed tooth, such would be noted as an improvement in the caries
328 experience during the final assessment 12 months post-intervention.

329

330 **Trial status**

331 The trial is yet to start the recruitment of study participants.

332 **Competing interests**

333 The authors declare that there are no competing interests.

334 **Acknowledgements**

335 The authors wish to thank FDI World Dental Federation for the funding.

336 References

- 337 1. Bernabe E, Marcenes W, Hernandez CR, Bailey J, Abreu LG, Alipour V, et al. Global,
338 Regional, and National Levels and Trends in Burden of Oral Conditions from 1990 to 2017: A
339 Systematic Analysis for the Global Burden of Disease 2017 Study. *J Dent Res*.
340 2020;99(4):362–73.
- 341 2. Vos T, Abajobir AA, Abbafati C, Abbas KM, Abate KH, Abd-Allah F, et al. Global, regional,
342 and national incidence, prevalence, and years lived with disability for 328 diseases and
343 injuries for 195 countries, 1990–2016: A systematic analysis for the Global Burden of Disease
344 Study 2016. *Lancet*. 2017 Sep 16;390(10100):1211–59.
- 345 3. Bagramian RA, Garcia-Godoy F, Volpe AR. The global increase in dental caries. A pending
346 public health crisis. *Am J dent*. 2009;22(1):3–8.
- 347 4. Wen PYF, Chen MX, Zhong YJ, Dong QQ, Wong HM. Global Burden and Inequality of
348 Dental Caries, 1990 to 2019. *J Dent Res*. 2022 Apr 1;101(4):392–9.
- 349 5. Abid A, Maatouk F, Berrezouga L, Azodo C, Uti O, El-Shamy H, et al. Prevalence and
350 Severity of Oral Diseases in the Africa and Middle East Region. *Adv Dent Res*. 2015 Jul
351 1;27(1):10–7.
- 352 6. Petersen PE, Bourgeois D, Ogawa H, Estupinan-Day S, Ndiaye C. The global burden of oral
353 diseases and risks to oral health. *Bull World Health Organ*. 2005 Sep;83(9):661–9.
- 354 7. OECD. Health at a Glance 2017: OECD Indicators [Internet]. Paris: OECD Publishing; 2017
355 [cited 2022 Mar 14]. 1–44 p. (Health at a Glance). Available from:
356 http://dx.doi.org/10.1787/health_glance-2017-en
- 357 8. Yee R, Sheiham A. The burden of restorative dental treatment for children in Third World
358 countries. *Int Dent J*. 2002 Feb;52(1):1–9.
- 359 9. Nazir MA. Prevalence of periodontal disease, its association with systemic diseases and
360 prevention. *Int J Health Sci (Qassim)* [Internet]. 2017 [cited 2022 Mar 14];11(2):72. Available
361 from: /pmc/articles/PMC5426403/
- 362 10. Albandar JM, Tinoco EMB. Global epidemiology of periodontal diseases in children and
363 young persons. *Periodontol 2000*. 2002;29(1):153–76.
- 364 11. Borrell LN, Burt BA, Neighbors HW, Taylor GW. Social factors and periodontitis in an older
365 population. *Am J Public Health*. 2004;94(5):748–54.
- 366 12. Osuh ME, Oke GA, Lilford RJ, Owoaje E, Harris B, Taiwo OJ, et al. Prevalence and
367 determinants of oral health conditions and treatment needs among slum and non-slum urban
368 residents: Evidence from Nigeria. *PLOS Glob Public Heal* [Internet]. 2022 Apr 22 [cited 2022
369 Jun 12];2(4):e0000297. Available from:
370 <https://journals.plos.org/globalpublichealth/article?id=10.1371/journal.pgph.0000297>
- 371 13. Ogunbodede EO, Kida IA, Madjapa HS, Amedari M, Ehizele A, Mutave R, et al. Oral Health
372 Inequalities between Rural and Urban Populations of the African and Middle East Region.
373 *Adv Dent Res*. 2015 Jul 1;27(1):18–25.
- 374 14. Lawal FB, Bankole OO. Impact of Untreated Dental Caries on Daily Performances of
375 Children From Low Social Class in an Urban African Population: The Importance of Pain.
376 *Pesqui Bras Odontopediatria Clin Integr* [Internet]. 2019 Oct 31 [cited 2021 Sep
377 29];19(1):4771. Available from: doi:10.4034/PBOCI.2019.191.82
- 378 15. Broadbent JM, Foster Page LA, Thomson WM, Poulton R. Permanent dentition caries through
379 the first half of life. *Br Dent J* [Internet]. 2013 Oct 11 [cited 2022 Jan 23];215(7):E12.
380 Available from: <https://www.nature.com/articles/sj.bdj.2013.991>
- 381 16. Walsh T, Worthington H V., Glenny AM, Marinho VCC, Jeroncio A. Fluoride toothpastes of
382 different concentrations for preventing dental caries. *Cochrane Database Syst Rev* [Internet].
383 2019 Mar 4 [cited 2022 Jun 11];2019(3). Available from:
384 <https://pubmed.ncbi.nlm.nih.gov/30829399/>
- 385 17. WHO. Oral health [Internet]. Fact sheets. 2020 [cited 2020 Jun 19]. Available from:

- 386 <https://www.who.int/news-room/fact-sheets/detail/oral-health>
387 18. Pawlaczyk-Kamienska T, Torlinska-Walkowiak N, Borysewicz-Lewicka M. The relationship
388 between oral hygiene level and gingivitis in children. *Adv Clin Exp Med*. 2018 Oct
389 1;27(10):1397–401.
390 19. Ejieh MUC. Pre-Primary Education in Nigeria: Policy Implementation and Problems. *Elem*
391 *Educ Online*. 2006;5(1):58–64.
392 20. Sandström A, Cressey J, Stecksén-Blicks C. Tooth-brushing behaviour in 6–12 year olds. *Int J*
393 *Paediatr Dent*. 2011 Jan 1;21(1):43–9.
394 21. Chua DR, Hu S, Sim YF, Lim W, Lai BWP, Hong CHL. At what age do children have the
395 motor development to adequately brush their teeth? *Int J Paediatr Dent*. 2022 Jul 1;32(4):598–
396 606.
397 22. de Leeuw E, Borgers N, Smits A. Pretesting Questionnaires for Children and Adolescents. In:
398 Presser S, Rothgeb JM, Couper MP, Lessler JT, Martin E, Martin J, et al., editors. *Methods for*
399 *Testing and Evaluating Survey Questionnaires*. New Jersey: John Wiley & Sons, Ltd; 2004. p.
400 409–29.
401 23. Kirkwood BR, Sterne JAC. Measurement error: assessment and implications. In: Goodgame
402 F, Pinder V, Moore K, editors. *Essential Medical Statistics*. Second. Massachusetts: Blackwell
403 Publishing Ltd; 2006. p. 429–46.
404 24. Folayan MO, Kolawole KA, Onyejaka NK, Agbaje HO, Chukwumah NM, Oyedele TA.
405 General anxiety, dental anxiety, digit sucking, caries and oral hygiene status of children
406 resident in a semi-urban population in Nigeria. *BMC Oral Health* [Internet]. 2018 Apr 20
407 [cited 2022 Mar 14];18:66. Available from:
408 <https://bmcoralhealth.biomedcentral.com/articles/10.1186/s12903-018-0529-z>
409 25. Kang M, Ragan BG, Park JH. Issues in Outcomes Research: An Overview of Randomization
410 Techniques for Clinical Trials. *J Athl Train* [Internet]. 2008 [cited 2022 Mar 26];43(2):215.
411 Available from: [/pmc/articles/PMC2267325/](https://pubmed.ncbi.nlm.nih.gov/191267325/)
412 26. Lawal FB, Oke GA. Clinical and sociodemographic factors associated with oral health
413 knowledge, attitude, and practices of adolescents in Nigeria. *SAGE Open Med* [Internet]. 2020
414 Jul 24;8:1–8. Available from: <https://doi.org/10.1177/2050312120951066>
415 27. World Health Organization. *Oral Health Surveys: Basic Methods*. 5th ed. Peterson PE, Baez
416 RJ, editors. World Health Organization. Geneva, Switzerland: World Health Organization;
417 2013. 1–137 p.
418 28. Greene JC, Vermillion JR. The Simplified Oral Hygiene Index. *J Am Dent Assoc*. 1964
419 Jan;68(1):7–13.
420 29. Namal N, Vehid S, Sheiham A. Ranking countries by dental status using the DMFT and FS-T
421 indices. *Int Dent J*. 2005 Dec 1;55(6):373–6.
422 30. Ibiyemi O, Lawal F, Osuh M, Owoaje T, Idiga E, Fagbule O, et al. Developing an Oral
423 Hygiene Education Song for Children and Teenagers in Nigeria. *Int Dent J* [Internet]. 2022 Jul
424 30; Available from: <https://doi.org/10.1016/j.identj.2022.06.008>
425 31. Lawal F, Taiwo J. An audit of school oral health education program in a developing country. *J*
426 *Int Soc Prev Community Dent* [Internet]. 2014 Nov 1;4(4):S49–55. Available from:
427 [doi:10.4103/2231-0762.144600](https://doi.org/10.4103/2231-0762.144600)
428 32. White IR, Horton NJ, Carpenter J, Pocock SJ. Strategy for intention to treat analysis in
429 randomised trials with missing outcome data. *BMJ*. 2011 Feb 7;342(7803):910–2.
430 33. Nzewi M. Folk music in Nigeria: a communion. *African Music*. 1980 Jul 1;6(1):6–21.
431 34. Ojukwu E, Obielozie E, Esimone C. Nigerian values and contemporary popular music: a new
432 look. *OGIRISI a New J African Stud*. 2016 Jul 21;12(0):114–29.
433 35. Benjamin-Chung J, Arnold BF, Berger D, Luby SP, Miguel E, Colford JM, et al. Spillover
434 effects in epidemiology: Parameters, study designs and methodological considerations. *Int J*
435 *Epidemiol*. 2018 Feb 1;47(1):332–47.
436

437 **Supporting information**

438 **S1 File: Questionnaire**

439 **S2 File: Parental consent and participant's assent forms**

TIMEPOINT	STUDY PERIOD						
	Enrolment	Allocation		Post-allocation			Close-out
	$-t_1$	0	t_1	t_2	t_3	t_4	t_5
ENROLMENT:							
Eligibility screen	X						
Parental informed consent and participants' assent	X						
Allocation into the study groups		X					
INTERVENTIONS:							
<i>Intervention group</i>				⇔			
<i>Control group</i>				⇔			
ASSESSMENTS:							
<i>Baseline</i>			X				
<i>Immediate post-intervention</i>					X		
<i>Six months post-intervention</i>						X	
<i>12 months post-intervention</i>							X

Figure 1: The schedule of enrolment, interventions, and assessments for the study

Fig 1 - SPIRIT schedule

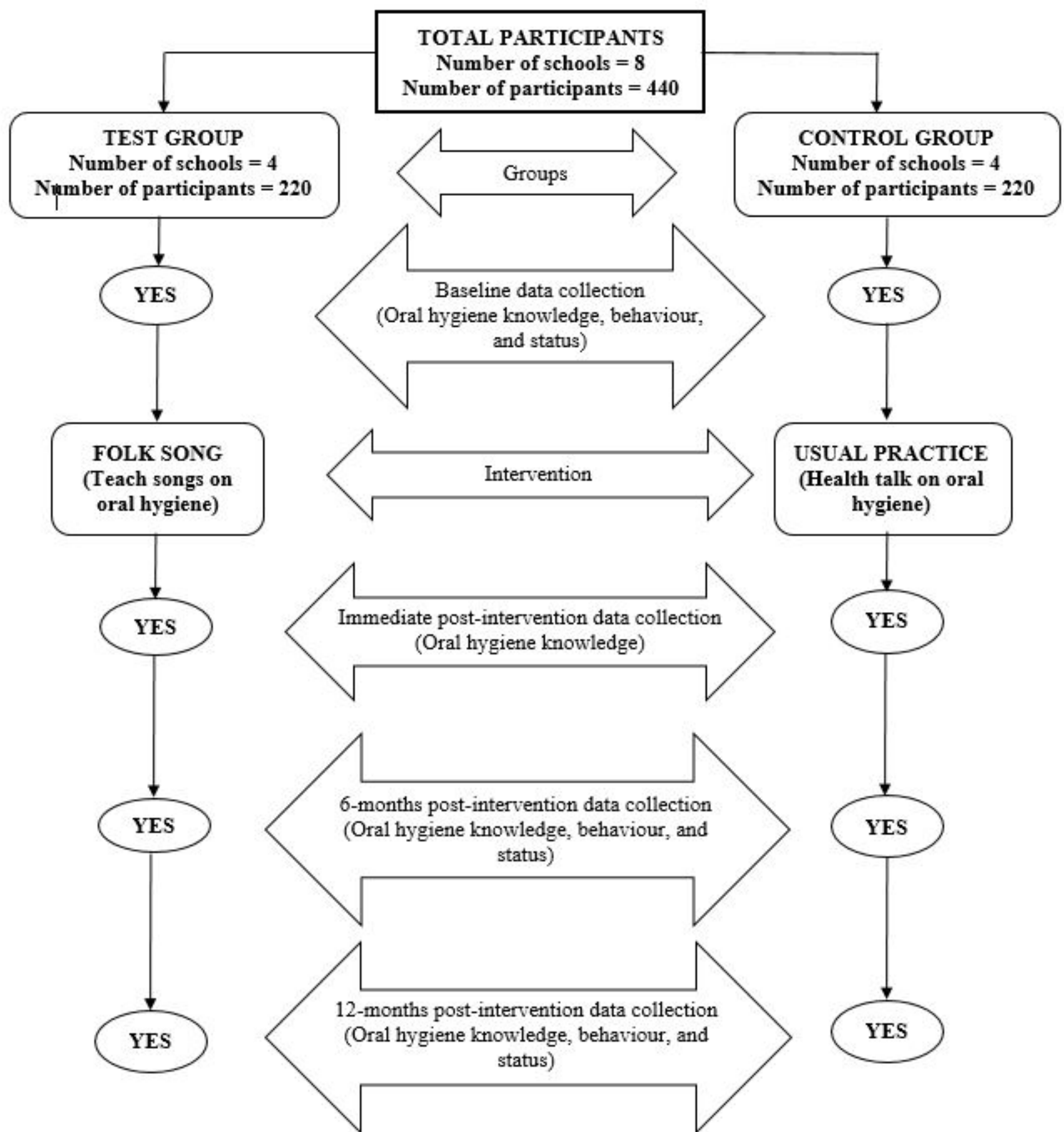


Fig 2 - Flow chart for the study