

Research Article

Evaluating eating behaviour, energy homeostasis and obesity in childhood onset craniopharyngioma: A feasibility study

Elanor C. Hinton^a, Fiona E. Lithander^{c, d, e}, Rebecca L. Elsworth^a, Katherine Hawton^b, Kruthika Narayan^b, Sophie Szymkowiak^a, Holly L. Bedford^a, Nimra Naeem^c, Ruth Elson^b, Tashunka Taylor-Miller^b, Julian P. Hamilton-Shield^a, Elizabeth C. Crowne^b

^a NIHR Bristol Biomedical Research Centre, University of Bristol, Bristol, U.K.

^b Department of Paediatric Endocrinology & Diabetes, Bristol Royal Hospital for Children, University Hospitals Bristol NHS Foundation Trust, Bristol, UK.

^c Bristol Medical School, University of Bristol, Bristol, U.K.

^d Liggins Institute, University of Auckland, New Zealand

^e Department of Nutrition and Dietetics, University of Auckland, New Zealand

Short Title: Eating behaviour, energy homeostasis and obesity in childhood craniopharyngioma

Corresponding Author:

Dr Elanor Hinton

NIHR Bristol Biomedical Research Centre Nutrition Theme, University of Bristol, Education and Learning Centre, Upper Maudlin Street, Bristol, BS2 8AE. U.K.

Tel: +44 117 455 4558

E-mail: Elanor.hinton@bristol.ac.uk

Number of Tables: 6

Number of Figures: 2

Word count: 4945

Keywords: Craniopharyngioma, obesity, eating behaviour, hyperphagia, energy

1 **Abstract**

2 Introduction: Craniopharyngiomas are rare brain tumours (incidence 1.1-1.7 cases/million/year).
3 Although benign, craniopharyngioma causes major endocrine and visual morbidities including
4 hypothalamic obesity, yet mechanisms leading to obesity are poorly understood. This study
5 investigated the feasibility and acceptability of eating behaviour measures in patients with
6 craniopharyngioma, to inform the design of future trials.

7
8 Methods: Patients with childhood-onset craniopharyngioma and controls matched for sex, pubertal
9 stage and age were recruited. After an overnight fast, participants received the following measures:
10 body composition, resting metabolic rate, oral-glucose-tolerance-test including MRI (patients only),
11 appetite ratings, eating behaviour and quality of life questionnaires, ad libitum lunch, and an
12 acceptability questionnaire. Data are reported as median \pm IQR, with effect size measure (Cliff's
13 delta) and Kendall's Tau for correlations, due to the small sample size.

14
15 Results: Eleven patients (median age=14yrs; 5F/6M) and matched controls (median age=12yrs;
16 5F/6M) were recruited. All patients had received surgery and 9/11 also received radiotherapy.
17 Hypothalamic damage post-surgery was graded (Paris grading): grade 2 n=6; grade 1 n=1; grade 0
18 n=2. The included measures were deemed highly tolerable by participants and their parent/carers.
19 Preliminary data suggests a difference in hyperphagia between patients and controls ($d=0.5$), and a
20 relationship between hyperphagia with body mass index (BMISDS) in patients ($\tau=0.46$).

21
22 Discussion: These findings demonstrate that eating behaviour research is feasible and acceptable to
23 craniopharyngioma patients and there is an association between BMISDS and hyperphagia in
24 patients. Thus, food approach and avoidance behaviours may be useful targets for interventions to
25 manage obesity in this patient group.

26

27

28

29 Introduction

30 Craniopharyngiomas are embryological, histologically benign brain tumours, located in the sellar and
31 parasellar regions (1). The incidence is 0.5-2 new cases per million persons per year (2), of which 30-
32 50% occur in children and adolescents (3). Survival is high, at over 98% (4), but with significant levels
33 of morbidity. Craniopharyngioma and its treatments, including gross total resection, limited
34 resection and/or irradiation (5), commonly lead to endocrine deficiencies, visual impairment and
35 obesity (6).

36
37 Obesity is a common feature of childhood craniopharyngioma (50%), which may develop several
38 years before diagnosis (7), though there is a marked increase in prevalence (22-62%) following
39 surgery (8, 9). Obesity in childhood craniopharyngioma is associated with a high risk of multisystem
40 morbidity (10, 11), metabolic syndrome (12), cardiovascular disease (13) and mortality (14). Yet,
41 there is limited evidence for effective weight loss interventions (15) and pharmacological treatments
42 (16, 17) in this population.

43
44 Mechanisms leading to obesity and altered energy homeostasis in craniopharngioma are complex,
45 yet understudied. Hypothalamic involvement of the tumour or damage to the hypothalamus
46 following treatment is associated with severe obesity (7) and the degree of obesity is positively
47 correlated with extent of hypothalamic damage (18, 19). Evidence to date, suggests an association
48 between overweight and obesity with hyperphagia (20-22), contrasting with other evidence that
49 presents lower energy and fat intake compared to body mass index (BMI) matched controls (23). The
50 extent of hypothalamic damage across patient groups (24) or methodological limitations could
51 explain the discrepancy between these findings, including the number of patients willing and able to
52 accurately complete self-reported dietary intake diaries (21). Alternative measures that could be
53 employed to assess eating behaviour are the ad libitum meal, which has only been used by one
54 research group with craniopharyngioma patients to date (17, 25), and validated psychological
55 questionnaires that have been specifically designed to measure different eating behaviour traits (e.g.
56 Hyperphagia (26); Child Eating Behaviour Questionnaire (27)). A scoping review exploring the current
57 literature addressing eating behaviour and psychological mechanisms associated with obesity in
58 patients with craniopharyngioma is currently in progress (28).

59
60 Beyond eating behaviour per se, evidence thus far suggests a reduction in energy expenditure
61 following craniopharyngioma or its treatment (29-31), which may be mediated by damage to

62 efferent sympathetic nervous system pathways in the hypothalamus (32). A preliminary study using
63 functional neuroimaging suggested patients with craniopharyngioma may have altered food cue
64 reactivity (25). Moreover, there is mixed evidence for differences in peripherally secreted hormones,
65 such as leptin, GLP-1, insulin, PYY and ghrelin (19, 33-35). Inconsistencies in findings could be due to
66 the differing extent of hypothalamic damage or levels of BMI-SDS in patient groups across studies.

67
68 Obesity in children and young people with craniopharyngioma causes substantial personal and
69 parental worry (36). Quality of life (QoL) is negatively affected overall by craniopharyngioma (37),
70 and obesity has been found to be a significant predictor of long-term QoL in paediatric patients (38).
71 QoL as rated by the parents has been found to be more impaired compared to their child's rating
72 (36, 39). Therefore, investigating what factors may be associated with poor QoL in
73 craniopharyngioma is an important focus of research to inform future interventions.

74
75 This feasibility study was designed to address four objectives to assess: (i) accessibility to medical
76 records to fully characterise the patients' eating behaviour and obesity to date, (ii) recruitment to
77 research in this young patient group, and (iii) their tolerability and acceptability of a range of
78 measures. By analysing the preliminary data from this study, including data from a control group
79 matched on age, sex and pubertal stage, we also addressed the final objective (iv) to assess which
80 measures might be the 'most informative' to characterise the eating behaviours of patients with
81 childhood-onset craniopharyngioma to take forward into a future, multicentre trial. By 'most
82 informative', we mean whether preliminary evidence was seen for a difference between those with
83 and without craniopharyngioma, and/or a relationship with BMI SDS. This paper focuses on
84 feasibility and acceptability of all the included measures, and preliminary data from the energy
85 intake and expenditure measures. The larger dataset including neuroimaging and measures of
86 peripheral entero-endocrine hormones results will be presented elsewhere. This study was
87 registered on ISRCTN database (<https://doi.org/10.1186/ISRCTN86005167>).

88

89 **Materials and Methods**

90 The study was conducted between January 2019 and October 2021. The protocol and associated
91 documentation were approved by South West - Frenchay Research Ethics Committee (approval
92 number 18/SW/0235; Nov 2018). When seeking informed consent, an age-appropriate patient
93 information sheet was sent out to participants and parents/carers at least two weeks in advance of
94 their next appointment, to allow time to consider participation. Potential participants and their

95 parents were given the opportunity to ask any questions and the study was explained in a way the
96 potential participant could understand. If participants aged 16 or over agreed to take part, they gave
97 written informed consent on the form provided. Parents/carers of participants aged 16 or over were
98 also informed about the study if the participants were happy for their parents/carers to be
99 informed. If parents/carers were present at the appointment, they were also asked to give their
100 consent (which was the case for the only 16+ participants in the study). Parents/carers were invited
101 to provide written informed consent for those participants aged 15 or under, who provided assent to
102 participate. Participants were free to withdraw at any time during the study without any impact on
103 their medical care.

104

105 **Participants**

106 Inclusion criteria: Craniopharyngioma diagnosed under 18 years of age, now currently aged 7-25
107 years. Exclusion criteria: clinically unwell requiring hospital or intensive treatment; unwilling to fast;
108 significant visual impairment so unable to undertake food cue reactivity tasks; patients for whom it
109 would be unsafe to have an MRI including those with metal implants, tattoos with metallic ink, or
110 metal body piercings which cannot be removed; pregnancy to avoid harm to the fetus;
111 claustrophobia in the closed MRI environment or unable to tolerate the MRI scanner; weight above
112 152kg and/or girth greater than 210cm due to size limitations of MRI scanner.

113

114 Following recruitment of the patient group, control participants were recruited matched on (i) sex
115 (male/female at birth), (ii) pubertal stage (pre-pubertal, pubertal, post-pubertal), and (iii) age (within
116 12 months, where possible following ii). Based on the same exclusion criteria, the control group
117 were recruited from online adverts on University of Bristol websites and on social media.

118

119 **Measures**

120 *Body composition*: Height (to nearest 1mm) and weight (to nearest 1g) were measured using a
121 stadiometer and calibrated weighing scales. The LMS Growth method was used to calculate body
122 mass index standard deviation score (BMISDS; (40)). In addition, body composition was measured
123 using multifrequency bioelectrical impedance (Tanita MC-780).

124

125 *Resting metabolic rate (RMR)*: RMR was measured using indirect calorimetry (Cosmed K4b2). The
126 equipment was calibrated prior to each data collection to ensure accuracy. Once the appropriate-
127 sized mask had been fitted, participants lay supine to relax and asked to stay quiet and still for the
128 duration of the measurement (20 minutes). The flattest portion (10 minutes) of the collected data,

129 as depicted graphically in the K4b2 software, was selected for the calculation of RMR in the Cosmed
130 software.

131
132 *Oral glucose tolerance test (OGTT) & Magnetic Resonance Imaging (MRI):* All participants consumed
133 a glucose drink (oral glucose solution 1.75g/kg up to maximum of 75g). Computerised, subjective
134 measures of hunger, fullness, thirst, and nausea were taken at baseline, 30-, 60-, 90- and 120-
135 minutes post glucose consumption using visual analogue scales (100mm line with endpoints of ‘Not
136 at all’ and ‘Extremely’). Blood samples were collected from patients only, via an intravenous cannula
137 at baseline, 30-, 60-, 90- and 120-minutes post glucose consumption to measure glucose, insulin,
138 ghrelin, GLP1 and PYY. Leptin, full blood count (FBC) and electrolytes (U&Es) were also measured at
139 baseline.

140 Patients underwent two MRI scans in 30-minute scan blocks: at baseline prior to the glucose drink,
141 and 60 minutes post glucose consumption, and compared with historical control data from a
142 previous study with identical methodology (41). This research scan included a food cue reactivity
143 task, which was given to the control participants outside of the MRI scanner. Note that the OGTT
144 and associated methodology are reported here for transparency of the full study procedure; data
145 will be presented elsewhere.

146
147 *Hyperphagia questionnaire:* The Hyperphagia Questionnaire (26) was used to measure hyperphagic
148 eating behaviour across three subscales (drive, behaviour, and severity). Higher scores reflect a
149 greater frequency and severity of food-related preoccupations and hyperphagic associated
150 problems. To calculate a total hyperphagia score, the three subscales were summed. A modified,
151 self-report version of the Hyperphagia Questionnaire was created for patients over 18 years old for
152 this study.

153
154 *Eating Behaviour questionnaire:* The Child Eating Behaviour Questionnaire (CEBQ)(27) was used to
155 measure appetitive traits associated with obesity risk in childhood. Participants over 18 years old
156 completed the corresponding Adult Eating Behaviour Questionnaire (AEBQ) (42). This study also took
157 an average of the three food approach traits and the four food avoidance traits to create a
158 composite food approach score and a composite food avoidance score.

159
160 *Quality of Life (QoL):* QoL was assessed using the Minneapolis-Manchester Quality of Life Survey of
161 Health for Children and Young people (MMQL)(43). A parent of patients under 18 years completed
162 the parallel parent version of the MMQL (44).

163

164 *Ad libitum meal:* The ad libitum lunch consisted of 14 vegetarian, hot and cold foods and two
165 beverages served in excess and laid out in a standardised fashion. The total energy in the meal was
166 30,049KJ (37, 49, 11% of energy from fat, carbohydrate, and protein, respectively (Table 1). Each
167 item was covertly weighed to the nearest gram by the investigator before and after the lunch.
168 Patients remained in a room alone for 30 minutes and were asked to eat to appetite.

169

170 *Acceptability questionnaire(s):* Age-appropriate questionnaires (10 years old and under, 11-15 years
171 old or 16 years and over) were designed specifically for this study to assess patient tolerability of the
172 number and nature of study measures. Questions were worded to suit the participant's age group
173 and therefore not all questions were asked of all participants. Additionally, a parent/carer of the
174 patient completed the parent/carer acceptability questionnaire. Questions were presented on a five-
175 point rating scale; for patients ≤ 10 years and for those 11-15 years old, the five-point rating scale
176 included different faces from a red sad face to a green happy face. The five-point rating scale for
177 patients ≥ 16 years and parents ranged from 1 = not at all to 5 = extremely. Some questions required
178 a yes or no response and included sections where the individual could comment freely.

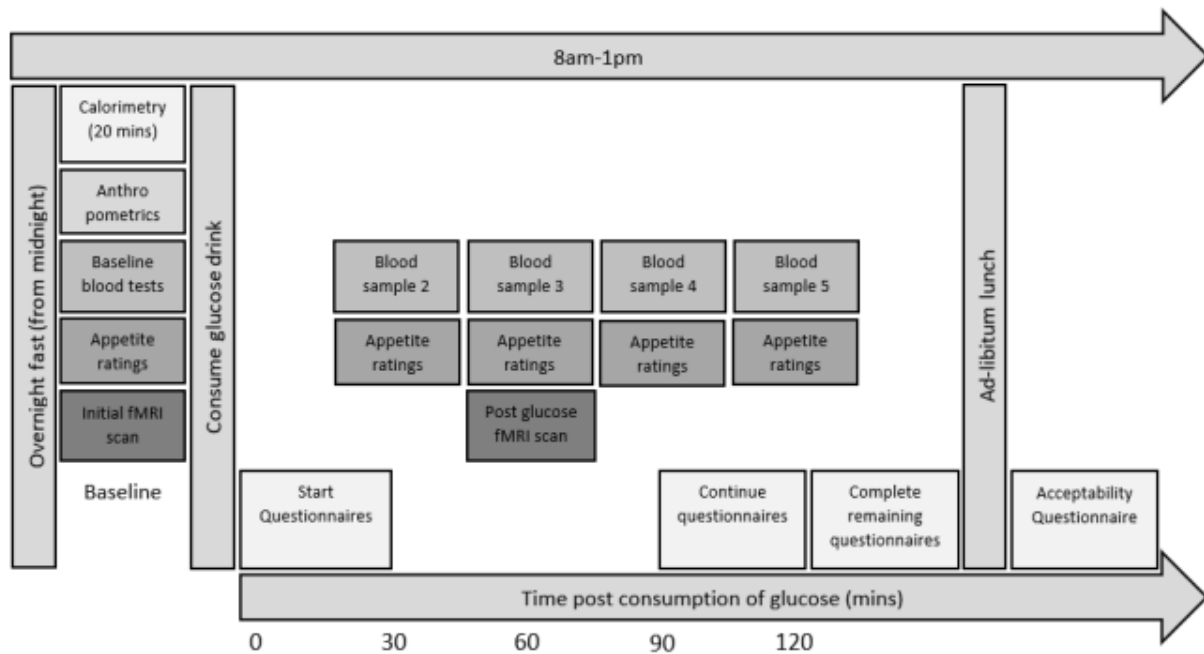
179

180 **Procedure**

181 Each participant was tested individually over the course of one morning at the Clinical Research
182 Facility. The procedure, shown in Figure 1, for the control group was identical to that for patients
183 with craniopharyngioma, except that the control group did not have an MRI scan or blood tests.

184

185 After an overnight fast of at least eight hours, participants received the above measures in the
186 following order: body composition, resting metabolic rate, OGTT including MRI, appetite ratings and
187 blood sampling), eating behaviour and QoL questionnaires, ad libitum lunch, and acceptability
188 questionnaire. Participants were given a shopping voucher to thank them for their time and effort.



189
190 Figure 1

191

192

193 **Data processing and statistical analysis**

194 The feasibility outcomes of the study were operationalised as follows: (i) patient data on key
195 measures, including Paris grading of tumour, and pre- and post-op BMI; (ii) recruitment (no. of
196 participants recruited and % of target sample); (iii) acceptability of the measures (scores of between
197 1 to 5 and comments) by participants and their parent/carer, and tolerance of the protocol (no. of
198 participants who completed the full data set); (iv) preliminary data on the eating behaviour
199 measures described above were summarized using medians (IQR) and frequencies where
200 appropriate.

201

202 A priori, we decided to report effect sizes, due to concerns about null-hypothesis significance testing
203 in small sample sizes and because p values do not indicate the magnitude of any reported effects
204 [31–33]. Cliff’s delta was chosen as it has no assumptions on the underlying distribution and
205 performs well for small sample sizes ($n > 10$; (45)). Cliff’s delta and associated 95% confidence
206 intervals were calculated using an available Excel macro (45). The macro notes that for the variables
207 with a sample size of less than 10, the accurate estimation of the 95% confidence intervals is
208 compromised. Descriptors of magnitude of effect size were 0.11 for small effect size, 0.28 for
209 medium effect size and 0.43 for large effect size (45). For correlations, Kendall’s tau was used, and

210 the following descriptors were applied for the magnitude of the correlation coefficient with $r = 0.10$
211 for small effect size, $r = 0.30$ for medium effect size and $r = 0.50$ for large effect size. Data was
212 analyzed using SPSS version 24.

213

214 **Results**

215 *Participant characteristics (objective 1)*

216 Comprehensive searching of medical records, including the archives, allowed the full clinical
217 characterisation of the 11 patients with craniopharyngioma to be presented in Table 2. Age at
218 diagnosis ranged from 5 to 15 years, with surgical techniques used to treat the craniopharyngioma
219 ranging from debulking, cyst aspiration and transsphenoidal resection. 9/11 patients had also
220 received radiotherapy. Post-operatively, all patients had adrenocorticotropin hormone (ACTH) and
221 growth hormone deficiencies, 10/11 had thyroid dysfunction and 6/11 had diabetes insipidus. There
222 was wide variation in BMI SDS at 12 months post-op from underweight to obese categorisations, and
223 the extent of hypothalamic damage varied across the Paris grading (Table 2).

224

225 *Recruitment (objective 2)*

226 Eleven patients with craniopharyngioma were recruited over the period of two years from January
227 2019 until December 2020 (Figure 2). This time period included the first COVID-19 lockdown.
228 Healthy-weight, matched control participants were recruited from October 2020 to October 2021. A
229 target of 20 patients with craniopharyngioma was set and 55% of this target was reached during the
230 study period with a marked reduction in the second year due to COVID-19 lockdown. 58% of those
231 invited to take part did go on to participate (Figure 2). Reasons for not participating included patient
232 illness, family health problems, and unwillingness to travel.

233

234

235

236

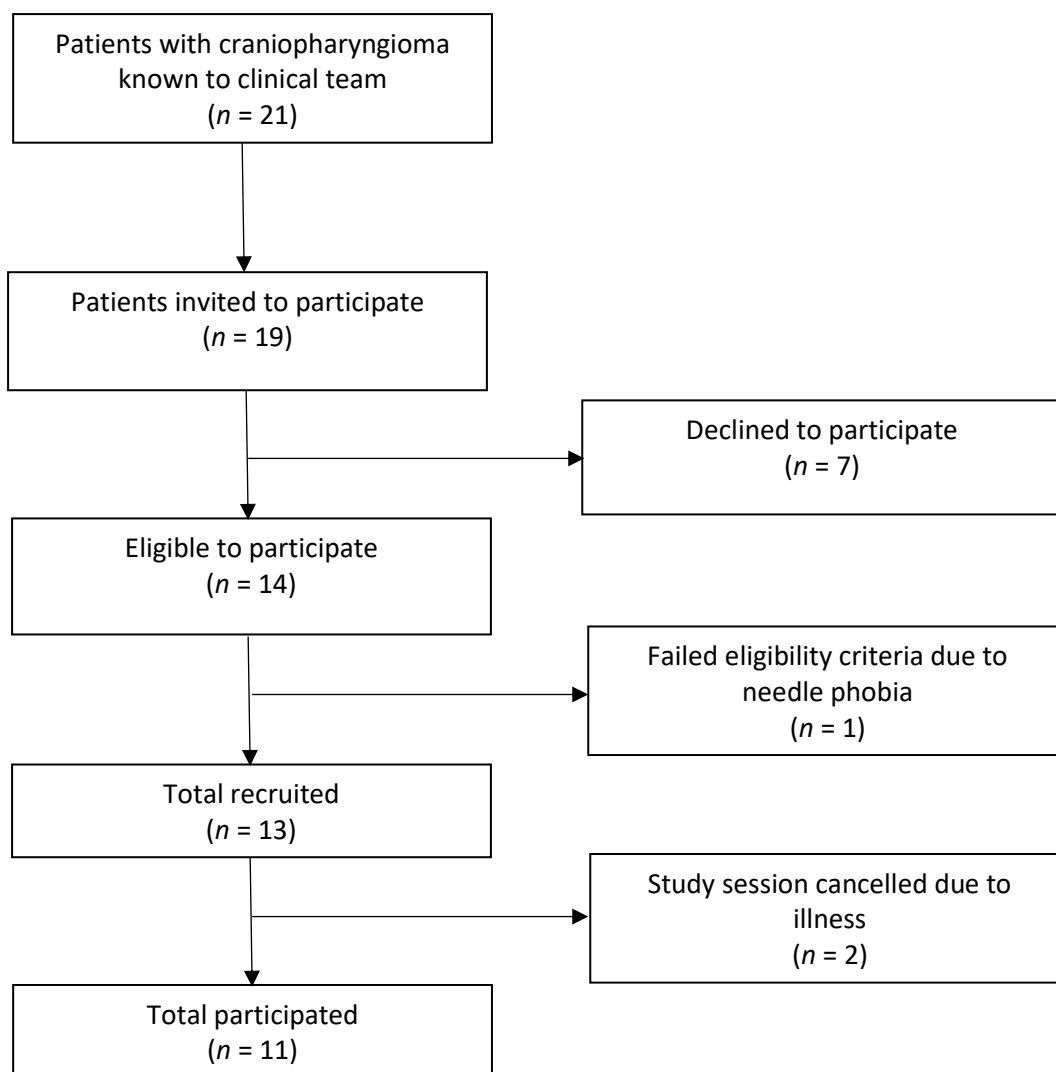
237

238

239

240

241
242
243
244
245
246
247
248
249
250
251
252
253
254
255
256
257



258 Figure 2

259

260 *Acceptability and tolerability of the measures (objective 3)*

261 All patients (n = 11) and the matched controls (n = 11) completed the acceptability questionnaire
262 suitable for their age (10 years and under n = 4, 11-15 years old n = 10, 16 years plus n = 8). A total of
263 5 parents (2 from patients and 3 from matched controls) of those tested over the age of 16 years
264 were unavailable to complete the acceptability questionnaires. This resulted in a total of 17 parents
265 (9 parents of patients and 8 parents of the matched controls) who completed the acceptability
266 questionnaires.

267

268 Overall, participants found the various aspects of the study highly acceptable and well tolerated.

269 Table 3 reports missing data, acceptability, and tolerability of each measure. The number of patients
270 and controls who completed each of the measures (between 80-100%) is reported in Table 4.

271

272 *Preliminary data with matched controls (objective 4)*

273 As intended, the groups were well-matched on sex, pubertal stage, and age (Table 4).

274 *Body composition, energy intake and energy expenditure:* Patients had a higher BMI SDS, and
275 absolute and percentage fat mass compared to controls with a large effect size for each measure. No
276 difference was found between groups in RMR (Table 4). Total energy intake at the *ad libitum test*
277 meal did not differ between groups. When macronutrient intake was expressed as a percentage of
278 total energy, patients consumed more carbohydrate and fat, and less protein than controls.

279

280 *Eating behaviour questionnaires:* There was greater hyperphagia in the patients compared to
281 controls, with the largest effect size for the hyperphagia severity subscale ($d=0.7$; Table 4). More
282 time spent talking or engaging with food and a greater extent to which food interfered with daily
283 functioning was reported in patients. Results from the A/CEBQ showed greater food approach
284 behaviours (such as enjoyment and responsiveness to food and emotional overeating) in patients
285 with a medium to large effect size (Table 4). By contrast, greater food avoidance behaviours, such as
286 slowness in eating, satiety responsiveness and food fussiness, were reported for controls, with
287 medium to large effect sizes (Table 4).

288

289 *Quality of life (QoL):* QoL of participants overall was lower in patients than controls, both as reported
290 by the young people with a medium effect size, and by their parent/carer with a large effect size
291 (Table 4). Lower QoL was reported by parents of patients compared to their children ($d = 0.26$),
292 whereas young people in the control group rated their QoL lower than their parents ($d = -0.22$).
293 Patients reported that their health restricted their activities ('physical functioning' subscale) to a
294 greater extent than controls, whereas the largest differences in parents/carer ratings between
295 groups were found for the physical and social functioning (having close friends with similar interests)

296 and functioning at school (concentration and difficulty with schoolwork) subscales, with lower QoL
297 on these subscales for the patients.

298

299 *Relationship between eating behaviour measures and BMI-SDS*

300 A positive correlation between food approach behaviours and BMISDS was found with a large effect
301 size in patients but not matched controls (Table 5). A positive correlation was found between
302 hyperphagia total score and BMISDS in patients, with a much weaker relationship in controls.
303 Conversely, a negative correlation of medium effect size was seen between food avoidance
304 behaviours and BMISDS in patients, with only a weak relationship in controls.

305

306 *Relationship between QoL, eating behaviour and BMISDS*

307 Only weak evidence was found for negative correlations between participant-reported QoL total
308 score and BMISDS (patients = -0.20; controls = 0.13, small effect sizes) and parent-reported QoL total
309 score and participants BMISDS (patients = -0.25, medium effect size; controls = -0.18, small effect
310 size). In patients, there was little evidence for a relationship between their self-reported QoL scores
311 and energy intake or expenditure or eating behaviour measures (small effect sizes only) (Table 6).
312 For parent/carer QoL measure, relationships of medium effect size were found with food avoidance
313 and hyperphagia scores, whereby greater food avoidance behaviours were positively correlated, and
314 hyperphagia scores negatively correlated, with QoL.

315

316 **Discussion**

317 This study has demonstrated it is feasible and acceptable to conduct multi-component, eating
318 behaviour research in young people with craniopharyngioma. While recruitment of adequate patient
319 numbers from two sites was challenging, 58% of those invited participated. Overall, the included
320 measures were deemed highly tolerable by participants and their parents and have provided
321 preliminary data to begin to investigate in one cohort, the consequences of hypothalamic damage
322 on energy intake, energy expenditure and eating behaviour, and the impact these may have on
323 quality of life.

324

325 *Feasibility of research into eating behaviour and obesity in young people with craniopharyngioma*

326 Previous research has indicated that recruitment can be challenging in studies of craniopharyngioma
327 due to the complexity of the condition (46). Indeed, considering the heterogeneity of disease and
328 treatment complications following craniopharyngioma (47), it is unsurprising that 10 of the 21
329 patients initially identified did not align with the study criteria. This included those with severe visual
330 problems who could not be included due to the requirements of completing the task in the MRI
331 scanner. Other reasons for not participating were given by invited families, such as difficulty of
332 scheduling clinical sessions at the same time as the research session, and anxiety surrounding having
333 blood taken were noted. Moreover, the COVID-19 pandemic suspended testing from March-October
334 2020. Future studies should recruit from several specialist centres to obtain sufficient patient
335 numbers and should allow access to participate in different aspects of the study if not all criteria are
336 met.

337

338 Participants broadly found the protocol both tolerable and acceptable. Aspects of the OGTT,
339 including the glucose drink, blood tests, and missing breakfast to be fasted were the least tolerable
340 components of the protocol. The meal elicited the most comments with several participants
341 reporting they enjoyed it, others asking for more choice, with another commenting that the
342 environment felt artificial. The experience of taking part was valued by young people and their
343 parents alike, with many commenting on the importance, yet lack of understanding, of eating
344 behaviour for those with craniopharyngioma. Several parents reported changes and difficulties with
345 their child's eating and could also see the wider benefits of taking part.

346

347 *Preliminary data comparing those with and without craniopharyngioma*

348 Analysis of the preliminary data was conducted to inform a larger, multi-centre trial to assess
349 interventions designed to improve eating behaviour in young people with hypothalamic obesity. To
350 the authors' knowledge, only one study has conducted an *ad libitum* meal to measure dietary intake
351 in craniopharyngioma patients (17). However, in the current small, feasibility study, only a weak
352 relationship between total energy intake and BMISDS was found in patients with
353 craniopharyngioma, suggesting that it is difficult to assess whether the amount of food consumed is
354 a primary driver of obesity for these patients using an acute measure from a standard meal alone.

355

356 By contrast, questionnaire measures of eating behaviour consider habitual eating traits over a longer
357 period (27, 42). Preliminary evidence was found for greater food approach behaviours, including

358 hyperphagic behaviours of greater severity (26), in patients with craniopharyngioma compared to
359 sex, pubertal stage and age matched controls. Shoemaker and colleagues (17) also found similar
360 levels of hyperphagia and variability in scores across patients using the Hyperphagia questionnaire,
361 with high levels of enjoyment of food, like the current study. Together, these findings suggests that
362 young people with craniopharyngioma experience enjoyment from their food, but in some cases,
363 this heightened food responsivity could lead to problematic behaviours, such as stealing food or
364 anger outbursts if access to food is removed. Moreover, both food approach and hyperphagia were
365 positively correlated with BMISDS with a medium to strong effect size, suggesting that the greater
366 drive patients with craniopharyngioma have to engage in food approach and consumption
367 behaviours, the higher level of BMISDS. Moderating hyperphagia scores, therefore, could be an
368 informative primary outcome for a future trial. A power calculation (using G*Power, assuming 80%
369 power to detect a difference between groups) based on the effect size from this study ($d=1.0$)
370 suggests that a minimum of 27 participants would be required in each group. These numbers,
371 together with the high patient acceptability of the questionnaire measures, suggests hyperphagia
372 score change (26), could be a feasible outcome for a future trial which would allow the exploration
373 of other confounding factors, such as hypothalamic damage and history of surgery and radiotherapy.

374

375 For there to be a clear patient benefit, it is also important to assess the impact on QoL. Interestingly,
376 QoL as rated by the parents of young people in this study was found to be related to these same
377 hyperphagic eating behaviours with a medium effect size; that is, QoL was rated as lower for those
378 young people with greater hyperphagic and food approach tendencies. Moreover, QoL was rated
379 higher by parents of those who engaged in more food avoidance behaviours. Yet, this was not the
380 case for QoL as rated by the young people themselves. One could speculate, that as they experience
381 enjoyment from food, they do not always make the link between their eating and QoL, especially as
382 in this sample, there was only a weak relationship between BMISDS and QoL. This is an interesting
383 concept to explore further in future research.

384

385 When considering which other measures to include in a future trial, the findings from this study
386 suggest that the body composition measures show clear, informative differences between patients
387 and controls and were broadly feasible and acceptable to participants. Measurement of energy
388 expenditure was more challenging in this young patient group. While no difference in resting
389 metabolic rate was found between groups, contrary to previous studies (29-31), discrepancies
390 between our findings and the previous work could be due to differing levels of BMISDS or

391 hypothalamic damage and a smaller sample size in our feasibility study or the characteristics of the
392 comparison groups (healthy weight or obese). This point highlights the inconsistencies of research
393 into eating behaviour and the development of obesity within this patient group, both in terms of
394 study design and findings to date, and provides the impetus to design larger, multi-centre trials with
395 appropriate control groups within international networks of collaborators to further this field. The
396 MRI and OGTT measures were also well tolerated, and while challenging to collect complete
397 datasets, should be considered for future research designed to investigate the neural and
398 physiological mechanisms underlying the development of obesity, and could be applied to further
399 understand mechanisms of action of new drug therapies, such as GLP1 agonists, in this patient group
400 (17). Full characterization of the patients is important in any future trial to ascertain whether
401 behavioural and pharmacological interventions are differentially effective based on key factors, such
402 as hypothalamic damage, development of obesity post-surgery and endocrine abnormalities.

403

404 *Limitations*

405 There are missing data from several of the included measures; specifically, there were some user-
406 related problems with the energy expenditure and body composition equipment, and difficulties in
407 the cannulation of one of the young patients with obesity. However, this feasibility study has
408 allowed the identification and response to potential difficulties of conducting this type of in-depth
409 clinical study to take forward. It is important to note when considering the above findings that the
410 control group reported in this paper was purposefully not matched on BMISDS for this study. This
411 design choice has precedence in the literature (e.g. 30). The original design of the study was to
412 recruit two control participants for each patient, one of healthy weight and one in the obese
413 category; however, it proved very challenging to recruit young people with obesity to take part
414 during the period of this research project, which coincided with the COVID-19 pandemic. All those
415 who volunteered and matched a patient on sex, pubertal stage, and age, were of a healthy weight.
416 However, the larger study, including MRI and OGTT measures, has a historical control group,
417 comprising young people living with and without obesity, who took part in a previous MRI study
418 investigating food-cue reactivity around a OGTT (41). The overlapping measures from these datasets,
419 including OGTT results and food-cue reactivity during functional neuroimaging, will be presented in a
420 future paper.

421

422 *Conclusion*

423 The findings from this study suggest that the food approach behaviours, including food
424 responsiveness and enjoyment of food, and for some patients, more severe instances of hyperphagic
425 behaviours, show the strongest link with BMISDS. Future research should investigate how these
426 specific behaviours may change over time, from pre to post surgery, depending on factors such as
427 hypothalamic damage. Food approach behaviours may be useful targets for interventions to help
428 patients with their eating; food-related, response inhibition training for example, has been shown to
429 reduce consumption of high energy dense foods in adults and children (48, 49). Conversely,
430 encouraging food avoidance behaviours, such as slowness in eating or responsiveness to satiety,
431 may also serve to reduce food intake and improve health-related quality of life. It is important for
432 future research, therefore, to ensure that the design of the study does allow the key questions to be
433 addressed and does not exclude the participants with relevant symptoms. A key strength of this
434 work is including the patient's and their parent's voice early in the research pathway; this area of
435 research is important to patient and their families, and they are strongly motivated to support
436 research which aligns closely with their key concerns.

437

438 **Statements**

439 **Acknowledgement**

440 We thank the young people and parents for participating in this study. We also thank Aileen Wilson
441 and the staff at CRICBristol/Clinical Research Facility.

442 **Statement of Ethics**

443 Study approval statement: This study protocol was reviewed and approved by the South West -
444 Frenchay Research Ethics Committee, approval number 18/SW/0235 (Nov 2018).

445 Consent to participate statement: In accordance with HRA and General Medical Council guidance,
446 written informed consent was obtained from participants if aged 16 years or over, or by their parent
447 if 15 years or younger. Participants 15 years or younger provided assent to participate. This consent
448 process is detailed in the methods section and was approved by the above Research Ethics
449 Committee.

450 **Conflict of Interest Statement**

451 The authors have no conflicts of interest to declare.

452 **Funding Sources**

453 This study was funded through the University Hospitals Bristol and Weston NHS Trust Research
454 Capability Funding scheme, and supported by the NIHR Biomedical Research Centre, Nutrition
455 theme. The views expressed in this publication are those of the authors and not necessarily those of
456 the NHS, the National Institute for Health Research or the Department of Health and Social Care.

457 **Author Contributions**

458 EH, FL, LC, KN, and JHS designed the study; EH, KN, FL, RLE, KH, SS, HB, NN, RE, TTM collected the
459 data; EH, FL, RLE, SS, HB, NN analysed the data; EH wrote the first draft of the paper; all authors
460 commented and contributed to the final manuscript.

461 **Data Availability Statement**

462 All data generated or analyzed during this study are included in this article. Further enquiries can be
463 directed to the corresponding author.

464

465

466

467

Figure Legends

Fig. 1. Study procedure

Fig. 2. Participant flow chart

468

References

- 469 1. Muller HL. Craniopharyngioma. *Endocr Rev.* 2014;35(3):513-43.
- 470 2. Bunin GR, Surawicz TS, Witman PA, Preston-Martin S, Davis F, Bruner JM. The descriptive
471 epidemiology of craniopharyngioma. *Journal of neurosurgery.* 1998;84(4):547-51.
- 472 3. Dolecek TA, Propp JM, Stroup NE, Kruchko C. CBTRUS statistical report: primary brain and
473 central nervous system tumors diagnosed in the United States in 2005-2009. *Neuro Oncol.* 2012;14
474 Suppl 5:v1-49.
- 475 4. Muller HL. Consequences of craniopharyngioma surgery in children. *J Clin Endocrinol Metab.*
476 2011;96(7):1981-91.
- 477 5. Muller HL. Risk-adapted, long-term management in childhood-onset craniopharyngioma.
478 *Pituitary.* 2017;20(2):267-81.
- 479 6. Wijnen M, Olsson DS, van den Heuvel-Eibrink MM, Wallenius V, Janssen JA, Delhanty PJ, et
480 al. Efficacy and safety of bariatric surgery for craniopharyngioma-related hypothalamic obesity: a
481 matched case-control study with 2 years of follow-up. *Int J Obes (Lond).* 2017;41(2):210-6.
- 482 7. Roth CL. Hypothalamic Obesity in Craniopharyngioma Patients: Disturbed Energy
483 Homeostasis Related to Extent of Hypothalamic Damage and Its Implication for Obesity Intervention.
484 *J.* 2015;4(9):1774-97.
- 485 8. Sorva R. Children with craniopharyngioma. Early growth failure and rapid postoperative
486 weight gain. *Acta Paediatr Scand.* 1988;77(4):587-92.
- 487 9. Muller HL. Childhood craniopharyngioma. Recent advances in diagnosis, treatment and
488 follow-up. *Horm Res.* 2008;69(4):193-202.
- 489 10. Pereira AM, Schmid EM, Schutte PJ, Voormolen JHC, Biermasz NR, Van Thiel SW, et al. High
490 prevalence of long-term cardiovascular, neurological and psychosocial morbidity after treatment for
491 craniopharyngioma. *Clin Endocrinol (Oxf).* 2005;62(2):197-204.
- 492 11. Olsson DS, Andersson E, Bryngelsson IL, Nilsson AG, Johannsson G. Excess mortality and
493 morbidity in patients with craniopharyngioma, especially in patients with childhood onset: a
494 population-based study in Sweden. *J Clin Endocrinol Metab.* 2015;100(2):467-74.
- 495 12. Srinivasan S, Ogle GD, Garnett SP, Briody JN, Lee JW, Cowell CT. Features of the metabolic
496 syndrome after childhood craniopharyngioma. *J Clin Endocrinol Metab.* 2004;89(1):81-6.
- 497 13. Holmer H, Ekman B, Bjork J, Nordstom CH, Popovic V, Siverson A, et al. Hypothalamic
498 involvement predicts cardiovascular risk in adults with childhood onset craniopharyngioma on long-
499 term GH therapy. *Eur.* 2009;161(5):671-9.
- 500 14. Erfurth EM. Endocrine aspects and sequel in patients with craniopharyngioma. *Journal of*
501 *Pediatric Endocrinology and Metabolism.* 2015;28(1-2):19-26.
- 502 15. Shah E, Lodh R, Siddell P, Morrall MC. Interventions for managing weight change following
503 paediatric acquired brain injury: a systematic review. *Dev Med Child Neurol.* 2016;58(10):1004-8.
- 504 16. Hamilton JK, Conwell LS, Syme C, Ahmet A, Jeffery A, Daneman D. Hypothalamic Obesity
505 following Craniopharyngioma Surgery: Results of a Pilot Trial of Combined Diazoxide and Metformin
506 Therapy. *Int J Pediatr Endocrinol.* 2011;2011:417949.
- 507 17. Shoemaker AH, Silver HJ, Buchowski M, Slaughter JC, Yanovski JA, Elfers C, et al. Energy
508 balance in hypothalamic obesity in response to treatment with a once-weekly GLP-1 receptor
509 agonist. *Int J Obes (Lond).* 2022;46(3):623-9.
- 510 18. Roth CL, Eslamy H, Werny D, Elfers C, Shaffer ML, Pihoker C, et al. Semiquantitative analysis
511 of hypothalamic damage on MRI predicts risk for hypothalamic obesity. *Obesity (Silver Spring).*
512 2015;23(6):1226-33.

- 513 19. Nogueira MC, Berbel Junior AS, Koenigkam-Santos M, Moreira AC, Nonino CB, de Castro M.
514 Nutritional and endocrinologic evaluation of patients with craniopharyngioma. *Clin Nutr ESPEN*.
515 2015;10(6):e213-e8.
- 516 20. Hsu EA, Miller JL, Perez FA, Roth CL. Oxytocin and Naltrexone Successfully Treat
517 Hypothalamic Obesity in a Boy Post-Craniopharyngioma Resection. *J Clin Endocrinol Metab*.
518 2018;103(2):370-5.
- 519 21. Pierre-Kahn A, Recassens C, Pinto G, Thalassinos C, Chokron S, Soubervielle JC, et al. Social
520 and psycho-intellectual outcome following radical removal of craniopharyngiomas in childhood. A
521 prospective series. *Childs Nerv Syst*. 2005;21(8-9):817-24.
- 522 22. Skorzewska A, Lal S, Wasserman J, Guyda H. Abnormal food-seeking behavior after surgery
523 for craniopharyngioma. *Neuropsychobiology*. 1989;21(1):17-20.
- 524 23. Harz KJ, Muller HL, Waldeck E, Pudiel V, Roth C. Obesity in patients with craniopharyngioma:
525 assessment of food intake and movement counts indicating physical activity. *J Clin Endocrinol*
526 *Metab*. 2003;88(11):5227-31.
- 527 24. Daubenbuchel AM, Ozyurt J, Boekhoff S, Warmuth-Metz M, Eveslage M, Muller HL. Eating
528 behaviour and oxytocin in patients with childhood-onset craniopharyngioma and different grades of
529 hypothalamic involvement. *Pediatr Obes*. 2019;14(9):e12527.
- 530 25. Roth CL, Aylward E, Liang O, Kleinhans NM, Pauley G, Schur EA. Functional neuroimaging in
531 craniopharyngioma: a useful tool to better understand hypothalamic obesity? *Obes Facts*.
532 2012;5(2):243-53.
- 533 26. Dykens EM, Maxwell MA, Pantino E, Kossler R, Roof E. Assessment of hyperphagia in Prader-
534 Willi syndrome. *Obesity (Silver Spring)*. 2007;15(7):1816-26.
- 535 27. Wardle J, Guthrie CA, Sanderson S, Rapoport L. Development of the Children's Eating
536 Behaviour Questionnaire. *J Child Psychol Psychiatry*. 2001;42(7):963-70.
- 537 28. Hinton EC, Elsworth RL, Naeem N, Szymkowiak SB, Perry R, Candler TP, et al. Exploring eating
538 behavior and psychological mechanisms associated with obesity in patients with craniopharyngioma:
539 a scoping review protocol. *JBI Evid Synth*. 2022;20(1):284-96.
- 540 29. Bomer I, Saure C, Caminiti C, Ramos JG, Zuccaro G, Brea M, et al. Comparison of energy
541 expenditure, body composition, metabolic disorders, and energy intake between obese children
542 with a history of craniopharyngioma and children with multifactorial obesity. *J Pediatr Endocrinol*
543 *Metab*. 2015;28(11-12):1305-12.
- 544 30. Holmer H, Pozarek G, Wirfalt E, Popovic V, Ekman B, Bjork J, et al. Reduced energy
545 expenditure and impaired feeding-related signals but not high energy intake reinforces
546 hypothalamic obesity in adults with childhood onset craniopharyngioma. *J Clin Endocrinol Metab*.
547 2010;95(12):5395-402.
- 548 31. Kim RJ, Shah R, Tershakovec AM, Zemel BS, Sutton LN, Grimberg A, et al. Energy expenditure
549 in obesity associated with craniopharyngioma. *Childs Nerv Syst*. 2010;26(7):913-7.
- 550 32. van Iersel L, Brokke KE, Adan RAH, Bulthuis LCM, van den Akker ELT, van Santen HM.
551 Pathophysiology and Individualized Treatment of Hypothalamic Obesity Following
552 Craniopharyngioma and Other Suprasellar Tumors: A Systematic Review. *Endocr Rev*.
553 2019;40(1):193-235.
- 554 33. Pinto G, Bussieres L, Recasens C, Souberbielle JC, Zerah M, Brauner R. Hormonal factors
555 influencing weight and growth pattern in craniopharyngioma. *Horm Res*. 2000;53(4):163-9.
- 556 34. Goldstone AP, Patterson M, Kalingag N, Ghatei MA, Brynes AE, Bloom SR, et al. Fasting and
557 postprandial hyperghrelinemia in Prader-Willi syndrome is partially explained by hypoinsulinemia,
558 and is not due to peptide YY3-36 deficiency or seen in hypothalamic obesity due to
559 craniopharyngioma. *J Clin Endocrinol Metab*. 2005;90(5):2681-90.
- 560 35. Roth CL, Gebhardt U, Muller HL. Appetite-regulating hormone changes in patients with
561 craniopharyngioma. *Obesity (Silver Spring)*. 2011;19(1):36-42.

- 562 36. Heinks K, Boekhoff S, Hoffmann A, Warmuth-Metz M, Eveslage M, Peng J, et al. Quality of
563 life and growth after childhood craniopharyngioma: results of the multinational trial
564 KRANIOPHARYNGEOM 2007. *Endocrine*. 2018;59(2):364-72.
- 565 37. Kendall-Taylor P, Jonsson PJ, Abs R, Erfurth EM, Koltowska-Haggstrom M, Price DA, et al. The
566 clinical, metabolic and endocrine features and the quality of life in adults with childhood-onset
567 craniopharyngioma compared with adult-onset craniopharyngioma. *Eur J Endocrinol*. 2005;152(4):557-67.
- 568 38. Yano S, Kudo M, Hide T, Shinojima N, Makino K, Nakamura H, et al. Quality of Life and
569 Clinical Features of Long-Term Survivors Surgically Treated for Pediatric Craniopharyngioma. *World
570 Neurosurg*. 2016;85:153-62.
- 571 39. Poretti A, Grotzer MA, Ribl K, Schonle E, Boltshauser E. Outcome of craniopharyngioma in
572 children: Long-term complications and quality of life. *Developmental Medicine and Child Neurology*.
573 2004;46(4):220-9.
- 574 40. Cole TJ, Green PJ. Smoothing reference centile curves: The LMS method and penalized
575 likelihood. *Statistics in Medicine*. 1992;11:1305-19.
- 576 41. Hinton EC, Birch LA, Barton J, Holly JMP, Biernacka KM, Leary SD, et al. Using neuroimaging
577 to investigate the impact of Mandolean(R) training in young people with obesity: a pilot randomised
578 controlled trial. *BMC Pediatr*. 2018;18(1):366.
- 579 42. Hunot C, Fildes A, Croker H, Llewellyn CH, Wardle J, Beeken RJ. Appetitive traits and
580 relationships with BMI in adults: Development of the Adult Eating Behaviour Questionnaire.
581 *Appetite*. 2016;105:356-63.
- 582 43. Hutchings HA, Upton P, Cheung WY, Maddocks A, Eiser C, Williams JG, et al. Adaptation of
583 the Manchester-Minneapolis Quality of Life instrument for use in the UK population. *Arch Dis Child*.
584 2007;92(10):855-60.
- 585 44. Hutchings HA, Upton P, Cheung WY, Maddocks A, Eiser C, Williams JG, et al. Development of
586 a parent version of the Manchester-Minneapolis quality of life survey for use by parents and carers
587 of UK children: MMQL-UK (PF). *Health Qual Life Outcomes*. 2008;6:19.
- 588 45. Goedhart J. Calculation of a distribution free estimate of effect size and confidence intervals
589 using VBA/excel. *bioRxiv*. 2016.
- 590 46. Pedreira CC, Stargatt R, Maroulis H, Rosenfeld J, Maixner W, Warne GL, et al. Health related
591 quality of life and psychological outcome in patients treated for craniopharyngioma in childhood. *J
592 Pediatr Endocrinol Metab*. 2006;19(1):15-24.
- 593 47. Lo AC, Howard AF, Nichol A, Sidhu K, Abdulsatar F, Hasan H, et al. Long-term outcomes and
594 complications in patients with craniopharyngioma: the British Columbia Cancer Agency experience.
595 *Int J Radiat Oncol Biol Phys*. 2014;88(5):1011-8.
- 596 48. Lawrence NS, O'Sullivan J, Parslow D, Javaid M, Adams RC, Chambers CD, et al. Training
597 response inhibition to food is associated with weight loss and reduced energy intake. *Appetite*.
598 2015;95:17-28.
- 599 49. Porter L, Gillison FB, Wright KA, Verbruggen F, Lawrence NS. Exploring Strategies to Optimise
600 the Impact of Food-Specific Inhibition Training on Children's Food Choices. *Front Psychol*.
601 2021;12:653610.

602 **Table 1 - Energy content and macronutrient composition of the ad libitum meal**

Item	Amount (g)	Energy KJ	Fat	CHO	Protein
Macaroni cheese	400	2733	29	66	30
Wholemeal bread	241	2388	8	87	17
White bread	208	2107	5	95	17
Flora	70	1170	32	0	0
Cheese	240	4140	84	1	61
Humus	115	1323	25	12	8
red capsicum	68	61	0	3	1
Tomato	127	77	0	4	1
Fruit loaf	500	6355	15	291	41
OJ	1000	1760	5	86	6
Mandarin	560	969	1	54	4
Mayo	38	1127	30	0	0
Choc Chip cookies	230	4743	55	143	13
Walkers crisps	50	1097	16	26	3
	Total	30049	304	868	201
	%E		37.4	49.1	11.4

603

604 **Table 2 - Clinical characterisation of the patients with craniopharyngioma**

Participant no.	Sex	Age range at diagnosis (years)	Surgery	Radiotherapy received (yes/no)	Paris grading		BMI SDS		Diabetes insipidus		Thyroid dysfunction		ACTH deficiency		GH deficiency	
					Pre-op	Post-op	Pre-op	12m	Pre-op	12m	Pre-op	12m	Pre-op	12m	Pre-op	12m
1	F	6-10	Debulking	Yes	2	1	3.20	3.4	x	y	y	y	y	y	x	y
2	M	6-10	Debulking	Yes	2	2	2.93	2.99	x	x	x	y	x	y	x	y
3	M	6-10	VAD	No	1	1	-0.28	-0.79	x	x	y	y	y	y	y	y
4	M	11-15	Aspiration of cyst, VAD	Yes	2	2	-0.38	-1.08	x	x	x	y	y	y	x	y
5	F	0-5	Debulking	Yes	2	2	1.43	3.43	x	y	x	y	x	y	x	y
6	F	6-10	TSR	Yes		0	0.09	0.94	x	y	y	y	y	y	x	y
7	F	11-15	TSR	Yes	0	0	0.17	0.72	x	y	y	y	y	y	x	y
8	M	11-15	Aspiration of cyst,	Yes	2	2	1.60	0.10	x	x	x	x	x	y	x	y
9	M	16-20	TSR	No	0	0	-2.42	-0.76	y	y	y	y	y	y	y	y
10	F	11-15	Debulking, VAD	Yes	1	2	-0.84	0.61	x	x	y	y	y	y	x	y

11	M	6-10	Aspiration of cyst	Yes	2	2	0.18	1.34	x	y	x	y	x	y	x	y
Overall (n=11)	F: 5/11 M: 6/11		Debulking: 4/11 Cyst aspiration: 4/11 TSR: 3/11						1 /11	6 /11	6 /11	10 /11	7 /11	11 /11	2 /11	11 /11
Mean (S.D)		10.8 (3.49)					0.52 (1.65)	0.99 (1.66)								

605 S.D = standard deviation; F=female; M = male; VAD = ventricular access device; TSR = transphenoidal resection; Pre-op = Pre-operatively; Post-op = post-
606 operatively; 12m = 12 months post-operatively; BMI SDS = body mass index standard deviation score; ACTH = adrenocorticotropin hormone; GH = growth
607 hormone; y = yes, present.

608

609

610 **Table 3 – Feasibility and acceptability of included measures**

Measure	Data issues	Acceptability rating (median, 95% C.I.)	Patient or Parent comments / notes (age range in brackets)
Body composition	n=4 missing for the trunk measurement due to data recording issues.	Patient = 5, 95% CI: 4-5; Control = 5, 95% CI: 4-5	<i>"I also found it interesting to learn about the children's muscle mass"</i> (parent of 11-15y, M)
Resting metabolic rate	n=3 not possible to collect data due to technical issues with the equipment. Some found lying still for 20 minutes to collect the data difficult.	Patient = 5, 95% CI: 4-5; Control = 4.5, 95% CI: 3-5	<i>"it was wierd but it was fine"</i> (11-15yr, F)
Oral glucose tolerance test	n=1 not possible to cannulate	Glucose drink: Patient = 3, 95% CI: 2-5; Control = 4, 95% CI: 2-4 Bloods: Patient = 4, 95% CI: 4-5	<i>"it was gloopy, too sweet and not nice"</i> (11-15yr, F) <i>"Didn't taste very nice"</i> (11-15yr, M) <i>"obviously I didn't want to do it, but it didn't hurt so it was fine"</i> (11-15yr, F) <i>"it will hopefully negate the need for my next blood test which is a bonus!"</i> (21-25yr, F)
MRI	n=2 data not collected due to bioplate and suspected surgical clips	Bloods: Patient = 4, 95% CI: 3-5	<i>"the first one was uncomfy but the other one was fine"</i> (11-15yr, F)
Questionnaires	No issues	Patient = 5, 95% CI: 4-5; Control = 4, 95% CI: 4-5	If the participant was 18 years or older, they were not required to have a parent or carer present in order to complete the acceptability or QoL parent/carers data
Ad libitum lunch	n=1 control participant reported food allergies after testing had started so their data were excluded as it was incomplete	Patient = 5, 95% CI: 4-5; Control = 5, 95% CI: 4-5	<i>"more choice"</i> (11-15yr, M) <i>"There was a wide range however the eating environment felt artificial to me"</i> (21-25yr, M) <i>"I really liked the oranges"</i> (11-15yr, M)

			<i>"Great food" (11-15yr, M)</i>
How interesting did you find the project overall?	No issues	Patient = 4, 95% CI: 3-5; Control = 4, 95% CI: 4-5	<i>"I have always been intrigued around my eating habits since my op so it has really interested me being asked to do this research project" (16-20yr, F)</i>
Fasting overnight	No issues	Patient = 4, 95% CI: 3-5; Control = 4, 95% CI: 3-5	<i>"I got very hungry and it was hard to have a different routine" (11-15yr, F)</i> <i>"anticipation worse than actually missing it*" (11-154yr, M) *breakfast</i>
Travelling and staying overnight	No issues	Patient = 3, 95% CI: 3-5; patients only.	
How important do you think it is to investigate how eating behaviour in childhood craniopharyngioma?	No issues	Free text comments only	<i>"it is easy to focus on the endocrine/surgical side of things without investigating how QoL can be improved. Eating behaviour is something which can have a wide impact, not only on someone's health but also on their mental and social wellbeing hence the need for such studies" (21-25yr, F)</i> <i>"Very important. We're struggling with participant's diet and appetite." (parent of 6-10yr, F)</i> <i>"It is clearly very important, there is a link between craniopharyngioma and obesity, yet it appears no real explanation as to why this is." (parent of 6-10yr, M)</i>
Reported changes in eating	No issues	Free text comments only	<i>"... eating habits have definitely changed since his diagnosis. He clearly talks more about food and always wants to know what's for tea!" (parent of 6-10yr, M)</i>
Benefits of taking part	No issues	Free text comments only	<i>"the care ... has received throughout her childhood and adult life will have benefitted from research projects in the past. To be involved in further research will hopefully help future</i>

			<i>sufferers of craniopharyngioma.”</i> (parent of 21-25yr, F).
--	--	--	--

611

612 **Table 4 – Comparison of the craniopharyngioma patient and control groups.**

Measure	Patients with craniopharyngioma		Matched-control participants		Effect size
	Median (IQR) or frequency	N	median/IQR or frequency	N	Cliff’s delta (95% C.I.s)
Demographic data					
Sex (M/F)	6/5	11	6/5	11	na
Age (years)	14.0 (9.0)	11	12.0 (10.0)	11	0.1 (0.5, -0.4)
Pubertal stage (pre/ during/post)	5 / 2 / 4	11	5 / 2 / 4	11	na
Ethnicity	1 Pakistani; 10 British	11	1 Pakistani; 1 Asian, 9 British	11	na
Body composition					
Height SDS	0.53 (3.1)	11	0.2 (1.8)	11	0.8 (0.5, -0.4)
Weight SDS	1.9 (3.0)	11	-0.2 (1.2)	11	0.5 (0.8, -0.1)
BMI SDS	1.4 (3.0)	11	-0.5 (1.3)	11	0.6 (0.8, 0.0)
Fat mass (%)	29.9 (23.6)	10	18.2 (7.2)	11	0.5 (0.8, -0.1)
Fat mass (kg)	16.0 (21.1)	10	6.7 (1.3)	11	0.5 (0.8, 0.0)
Energy expenditure					
Resting metabolic rate (RMR)	1874.0 (839.0)	10	1791.0 (382.0)	9	0.1 (0.6,-0.4)
Energy intake (ad libitum meal)					
Energy (kJ)	4886.0 (3426.0)	11	4783.0 (2193.0)	10	0.0 (0.5, -0.5)
Fat (g)	50.0 (30.0)	11	50.0 (21.8)	10	0.0 (0.4, -0.5)
Fat (% energy)	40.0 (11.0)	11	38.0 (9.5)	10	0.0 (0.5, -0.5)
CHO (g)	148.0 (79.0)	11	129.5 (71.5)	10	0.1 (0.5, -0.4)
CHO (% energy)	50.0 (8.0)	11	45.5 (10.5)	10	0.2 (0.6, -0.3)
Protein (g)	28.0 (27.0)	11	37.0 (13.5)	10	-0.2 (0.3, -0.6)

Protein (% energy)	9.0 (4.0)	11	11.5 (3.8)	10	-0.3 (0.2, -0.7)
Hyperphagia questionnaire					
Hyperphagia: Total	23.0 (15.0)	11	16.0 (8.0)	11	0.5 (0.8, 0.0)
Hyperphagia: behaviour	10.0 (9.0)	11	6.0 (3.0)	11	0.5 (0.8, 0.0)
Hyperphagia: drive	9.0 (6.0)	11	7.0 (4.0)	11	0.4 (0.8, -0.1)
Hyperphagia: severity	4.0 (2.0)	11	2.0 (1.0)	11	0.7 (0.9, 0.2)
Adult/Child Eating Behaviour Questionnaire					
Enjoyment of Food	4.7 (1.3)	11	4.0 (1.8)	11	0.3 (0.7, -0.2)
Emotional overeating	2.3 (1.5)	11	2.0 (0.9)	11	0.3 (0.7, -0.2)
Food responsiveness	3.5 (2.0)	11	2.5 (0.7)	11	0.3 (0.7, -0.3)
Slowness in eating	2.5 (2.5)	11	2.8 (1.8)	11	-0.2 (0.3, -0.6)
Food approach	3.4 (1.6)	11	2.7 (0.9)	11	0.4 (0.7, -0.1)
Satiety responsiveness	2.5 (1.4)	11	3.3 (1.6)	11	-0.4 (0.1, -0.8)
Emotional undereating	2.5 (2.1)	11	3.0 (1.1)	11	-0.1 (0.4, -0.5)
Food fussiness	2.7 (2.3)	11	2.8 (1.7)	11	-0.2 (0.3, -0.6)
Food avoidance	2.7 (0.8)	11	3.0 (0.5)	11	-0.4 (0.1, -0.7)
Quality of Life (MMQL)					
Participant total	65.5 (28.5)	11	78.5 (20.7)	11	-0.3 (0.2, -0.7)
Participant physical	80.0 (35.0)	11	95.0 (25.0)	11	-0.5 (0.0, -0.8)
Participant emotional	60.7 (32.1)	11	71.4 (10.7)	11	-0.2 (0.3, -0.6)
Participant social	91.7 (20.8)	11	83.3 (12.5)	11	0.1 (0.6, -0.4)
Participant school	57.1 (39.3)	11	75.0 (35.7)	11	-0.3 (0.2, -0.7)
Participant physical appearance	50.0 (50.0)	11	81.3 (56.3)	11	-0.2 (0.3, -0.6)
Parent total	59.5 (13.8)	9	83.6 (18.9)	8	-0.9 (-0.5, -1.0)
Parent physical	45.0 (28.0)	9	92.5 (20.0)	8	-0.8 (-0.2, -1.0)
Parent emotional	64.3 (28.6)	9	64.3 (8.9)	8	-0.1 (0.5, -0.6)
Parent social	79.2 (35.4)	9	91.7 (14.6)	8	-0.5 (0.0, -0.8)

Parent school	46.4 (57.2)	9	92.9 (18.8)	8	-0.8 (-0.2, -0.9)
Parent physical appearance	37.5 (59.4)	9	75.0 (34.4)	8	-0.3 (0.3, -0.7)

613

614 **Table 5 – Relationship (Kendalls tau) between eating behaviour measures and BMI-SDS**

	COSMED full dataset RMR (kcal/day)	Energy intake (kJ)	Food Approach	Food Avoidance	Hyperphagia total score
Craniopharyngioma group	-0.02	0.27	.55	-0.38	0.43
Matched controls	0.25	0.41	0.04	0.11	0.23

615

616 **Table 6 – Relationship (Kendalls tau) between eating behaviour measures and QoL**

		COSMED full dataset RMR (kcal/day)	Energy intake (kJ)	Food Approach	Food Avoidance	Hyperphagia total score
Patient group	Participant reported QoL (n=11)	-.18 (n=10)	0.09	-0.08	0.17	-0.11
	Parent/carer reported QoL (n=9)	-0.07 (n=8)	-0.09	-0.09	0.42	-0.40
Matched controls	Participant reported QoL (n=11)	0.37 (n=9)	0.00 (n=10)	-0.34	0.15	-0.39
	Parent/carer reported QoL (n=8)	-0.20 (n=6)	-0.26	-0.26	0.04	-0.39

617

618

619