

1 **Full title: The community as an active part in the implementation of interventions for the**  
2 **prevention and control of tuberculosis: a scoping review**

3

4 **Short title: Engaging community for tuberculosis prevention and control: a scoping review**

5

6 **Authors**

7 Lesly Chavez-Rimache<sup>1</sup>, César Ugarte-Gil<sup>1,2</sup>, Maria J Brunette<sup>2,3</sup>.

8 **Affiliations**

9 <sup>1</sup> Instituto de Medicina Tropical Alexander von Humboldt, Universidad Peruana Cayetano  
10 Heredia, Perú

11 <sup>2</sup> School of Medicine, Universidad Peruana Cayetano Heredia, Perú

12 <sup>3</sup> School of Health & Rehabilitation Sciences, College of Medicine. The Ohio State University,  
13 United States of America.

14

15 **Corresponding author:**

16 E-mail: [cesar.ugarte@upch.pe](mailto:cesar.ugarte@upch.pe) (CUG)

17

18 **Author Contributions:**

19 **Conceptualization:** Maria J Brunette.

20 **Formal Analysis:** Lesly Chavez-Rimache, César Ugarte-Gil, Maria J Brunette.

21 **Funding Acquisition:** Maria J Brunette.

22 **Investigation:** Lesly Chavez-Rimache, Maria J Brunette.

23 **Methodology:** Maria J Brunette, Lesly Chavez-Rimache.

24 **Resources:** Lesly Chavez-Rimache, Maria J Brunette.

25 **Supervision:** Maria J Brunette.

26 **Visualization:** Lesly Chavez-Rimache.

27 **Writing – Original Draft Preparation:** Lesly Chavez-Rimache, Maria J Brunette, César Ugarte-  
28 Gil.

29 **Writing – Review & Editing:** César Ugarte-Gil, Maria J Brunette.

30

31 **Funding:** This work was supported by National Institute of Health (NIH grant #5R01EB021900-  
32 03 to MJB). The funders had no role in study design, data collection and analysis, decision to  
33 publish, or preparation of manuscript.

34

35 **Competing interests:** CUG is member of the Editorial Board at PLOS Global Public Health.  
36 None of the other authors have competing interests to disclose.

37

38

39

40

41

42

43

44

45 **Abstract**

46

47 Interventions involving direct community stakeholders include a variety of approaches in  
48 which members take an active role in improving their health. We evaluated studies in which  
49 the community has actively participated to strengthen tuberculosis prevention and control  
50 programs. A literature search was performed in Pubmed, Scopus, ERIC, Global Index Medicus,  
51 Scielo, Cochrane Library, LILACS, Google Scholar, speciality journals, and other bibliographic  
52 references. The primary question for this review was: what is known about tuberculosis  
53 control interventions and programs in which the community has been an active part?.

54 Two reviewers performed the search, screening and selection of studies independently. In  
55 cases of discrepancies over the eligibility of an article, it was resolved by consensus. 130  
56 studies were selected, of which 68.47% (n=89/130) were published after 2010. The studies  
57 were conducted in Africa (44.62%), the Americas (22.31%) and Southeast Asia (19.23%). It was  
58 found that 20% (n=26/130) of the studies evaluated the participation of the community in the  
59 detection/active search of cases, 20.77% (n=27/130) in the promotion/prevention of  
60 tuberculosis; 23.07% (n=30/130) in identifying barriers to treatment, 46.15% (n=60/130) in  
61 supervision during treatment and 3.08% (n=4/130) in social support for patient. Community  
62 participation not only strengthens the capacities of health systems for the prevention and  
63 control of tuberculosis, but also allows a better understanding of the disease from the  
64 perspective of the patient and the affected community by identifying barriers and difficulties  
65 through of the tuberculosis care cascade. Engaging key community stakeholders in co-creating  
66 solutions offers a critical pathway for local governments to eradicate TB.

67

68

69 **Keywords:** Community Stakeholders; Community-Based Participatory Research (CBPR);  
70 Tuberculosis.

71

72

73

74

75

76

77

78

79

80

81

82

83

84

85 **Introduction**

86

87 Tuberculosis(TB) is an infectious disease that, despite being a preventable and curable disease,  
88 continues to be a problem for global public health, with a estimation of 1.6 million people died  
89 from this disease in 2021(1). In addition, tuberculosis control has become a greater challenge  
90 as it is related to other diseases such as the human immunodeficiency virus (HIV). In  
91 tuberculosis epidemiology, the social determinants of health in a community such as poverty,  
92 overcrowding, inadequate housing conditions, malnutrition, etc. they exert a clear influence  
93 on all stages of tuberculosis pathogenesis (risk of exposure, time to diagnosis, treatment,  
94 susceptibility to disease progression, and retention in care). Therefore, tuberculosis is a social  
95 disease that requires the involvement of the community to propose joint solutions with the  
96 local government(2-4).

97

98 To control TB, one of the strategies used is Directly Observed Therapy, Short Course (DOTS)  
99 (5). This strategy has been administered under the guided supervision initially by health  
100 workers, but over the years it has also included community volunteers and members of  
101 patients' families. This has led to gradually include the community in the tuberculosis  
102 prevention and control activities. This community participation has been escalating to other  
103 levels such as the detection and active search of suspected cases, and this participation helps  
104 to generate greater linkage of patients with TB care centers and to increase the retention in  
105 care of detected cases(6).

106

107 The World Health Organization (WHO) approach called “ENGAGE-TB” mentions that  
108 community participation is fundamental to improve the scope and sustainability of  
109 tuberculosis services for the community. This approach allows the implementation of  
110 integrated community TB activities within health programs, and WHO provides technical  
111 guidance, community training, and encourages the creation and development of alliances  
112 between tuberculosis control programs and civil societies(7). Moreover, community  
113 involvement in research is encouraged, thus contributing to the strengthening of tuberculosis  
114 prevention and control programs. An example of this effort is the TB Alliance, which is an  
115 association that works with people affected by tuberculosis, who train and empower them to  
116 improve their knowledge and skills to participate in tuberculosis drug research by creating an  
117 extensive network of Community Advisory Boards (CABs). This community outreach initiative  
118 makes it possible to create links between clinical trial participants, community members and  
119 academic researchers to achieve mutual feedback based on open and consensual dialogue(8).

120

121 Community-based participatory research (CBPR) is an approach in which the community is  
122 involved in all stages of research from conception, design, execution, implementation and  
123 follow-up of research(9). CBPR allows for the creation of collaborative, equal partnerships  
124 between community members and academic researchers. Furthermore, this research  
125 approach was raised with the need to reduce communication and operational gaps that  
126 frequently imply failure for traditional research that often omits the complex cultural, social  
127 and economic interrelations and their impact on the effective implementation of  
128 interventions(9-12). CBPR can be used for all study designs, from qualitative studies to  
129 randomized clinical trials(9). To our knowledge, there are only two reviews by Arshad et al.(6)

130 and Musa et al.(13), who evaluated the effect of community-based interventions for  
131 tuberculosis prevention and control and have reported potential benefits to include the  
132 community in TB research studies. However, it is currently unknown to what extent  
133 community involvement can generate benefits for health programs focused on tuberculosis  
134 control considering the principles of CBPR (recognize the community as a unit of identity, draw  
135 on the strengths and resources of the community, facilitate collaborative partnerships,  
136 integrate knowledge and action for the mutual benefit of all, promote a process of co-learning  
137 and community empowerment, engage a cyclical and iterative process, addressing health from  
138 a comprehensive and ecological approach, and disseminating the findings and knowledge  
139 acquired to all partners). Also, it is unknown what have been the mechanisms that have been  
140 used to strengthen communities in their participation and what has been the impact of the  
141 inclusion of the community for tuberculosis control. Based on this, our review aims to assess  
142 the characteristics of interventions in which the community has genuinely taken an active part  
143 in the development and implementation of research studies to strengthen tuberculosis  
144 prevention and control programs.

145

## 146 **Methods**

147

### 148 **Study design**

149 We carried out a scope review following the guidelines of the Preferred Reporting Items for  
150 Systematic reviews and Meta-Analyses extension for Revisión de alcances (PRISMA-ScR)(14)  
151 (Supplementary File 1) and a protocol that was carried out priori, based on the following  
152 research questions:

153 *Primary question:* What is known about tuberculosis control interventions and programs in  
154 which the community has been an active part in the development and implementation of the  
155 study?

156 *Secondary questions:* a) What strategies are being used to strengthen the participation of  
157 communities in interventions and programs for tuberculosis control? and b) What  
158 opportunities, lessons learned, and challenges impact the sustainability of community-driven  
159 interventions and programs?

160

161 The protocol is available upon request from the corresponding author. This scoping review  
162 followed the five-stage methodological framework that was developed by Arksey and O'Malley  
163 (15) and an additional sixth stage developed by Levac et al.(16), these stages are as follows: 1)  
164 identify the question research, 2) identify relevant studies, 3) select studies, 4) record data, 5)  
165 collate, summarize and report results, and 6) consult with relevant stakeholders.

166

### 167 **Data sources and search**

168 To identify the studies, we systematically searched Medline (through Pubmed), Scopus, ERIC  
169 (Education Resources Information Center), Global Index Medicus, Scielo, Cochrane Library and  
170 LILACS (Latin American and Caribbean Literature in Health Sciences). A search of the gray  
171 literature was performed through Google Scholar and MedRxiv. In addition, we performed a  
172 manual search identifying the journals of internationally recognized organizations in  
173 tuberculosis (Supplementary File 2) and by reviewing the bibliographic references of the review  
174 articles and included studies. Search terms such as “Community-Based related”, “Community-

175 based interventions”, “participatory action research”, “participatory engagement”,  
176 “Community Participation” and “tuberculosis” were used (the complete list of search terms  
177 can be found in the Supplementary File 3). The choice of terms and search strategies were  
178 developed and refined through a discussion with the research team (Supplementary File 3). For  
179 the importation of articles and the elimination of duplicates, the reference manager used was  
180 Endnote X9 (Clarivate).

181

### 182 **Selection criteria**

183 This scoping review included studies that describe or analyze the role of direct involvement of  
184 key community members in the development and implementation of tuberculosis prevention  
185 and control programs. Studies such as randomized clinical trials, non-randomized trials, and  
186 observational studies were included. Letters to the editor, expert opinions, review articles,  
187 book reviews, or conference abstracts were excluded. In Figure 1 includes the processes of  
188 identification and selection of studies according to the eligibility criteria.

189

### 190 **Screening, collection and processing of data**

191 One reviewer (LCR) performed initial title identification and duplicate removal using an  
192 Endnote X9 (Clarivate) reference manager. Before starting the study selection process, a  
193 calibration process was carried out between two reviewers (LCR and MJB) with 10 randomly  
194 selected studies to select the studies according to the eligibility criteria. Subsequently, in a first  
195 phase, a selection of the studies was made based on the titles and abstracts; and in a next  
196 phase, a full-text evaluation was carried out according to the eligibility criteria. All these  
197 processes were closely supervised by a researcher (MJB).

198

199 For data extraction, the "descriptive-analytic" method was used, which consists of applying a  
200 common analytical framework to all included studies and collecting standard information from  
201 each study(15). In addition, to carry out the coding of the information, a full-text evaluation of  
202 the included articles was carried out based on the research questions. The "inclusion of the  
203 community in research" and the "strengths of community participation" will be extracted from  
204 the methods section of the scientific articles and the evaluation of the "sustainability of the  
205 interventions" from the discussion section of the primary studies.

206

207 The results were presented through diagram tables that summarize the different modalities of  
208 the participation of community members in the different aspects evaluated, such as in the  
209 promotion and prevention of tuberculosis (health education, BCG vaccination and/or  
210 administration of chemoprophylaxis), detection and active search for cases, results and  
211 adherence to tuberculosis treatment (identification of barriers and difficulties for tuberculosis  
212 treatment/supervision and surveillance during tuberculosis treatment), implementation of  
213 interventions for tuberculosis control and social support and support programs for patients  
214 affected by tuberculosis. Also, the evidence was synthesized on how the community has been  
215 strengthened in its participation and finally on the challenges in the implementation of these  
216 interventions (sustainability).

217

218

219

220 **Results**

221

222 **Literature search**

223 Our scoping review initially identified 1909 titles and abstracts. Of these studies, 1707 studies  
224 were excluded based on our eligibility criteria. 389 full-text studies were evaluated, of which  
225 130 studies finally met the pre-established inclusion criteria. The study selection flowchart is  
226 presented in Figure 1.

227

228

229

230

231

232

233

234

235

236

237

238

239

240

241

242

243

244

245

246

247

248

249

250

251

252

253

254

255

256

257

258

259

260

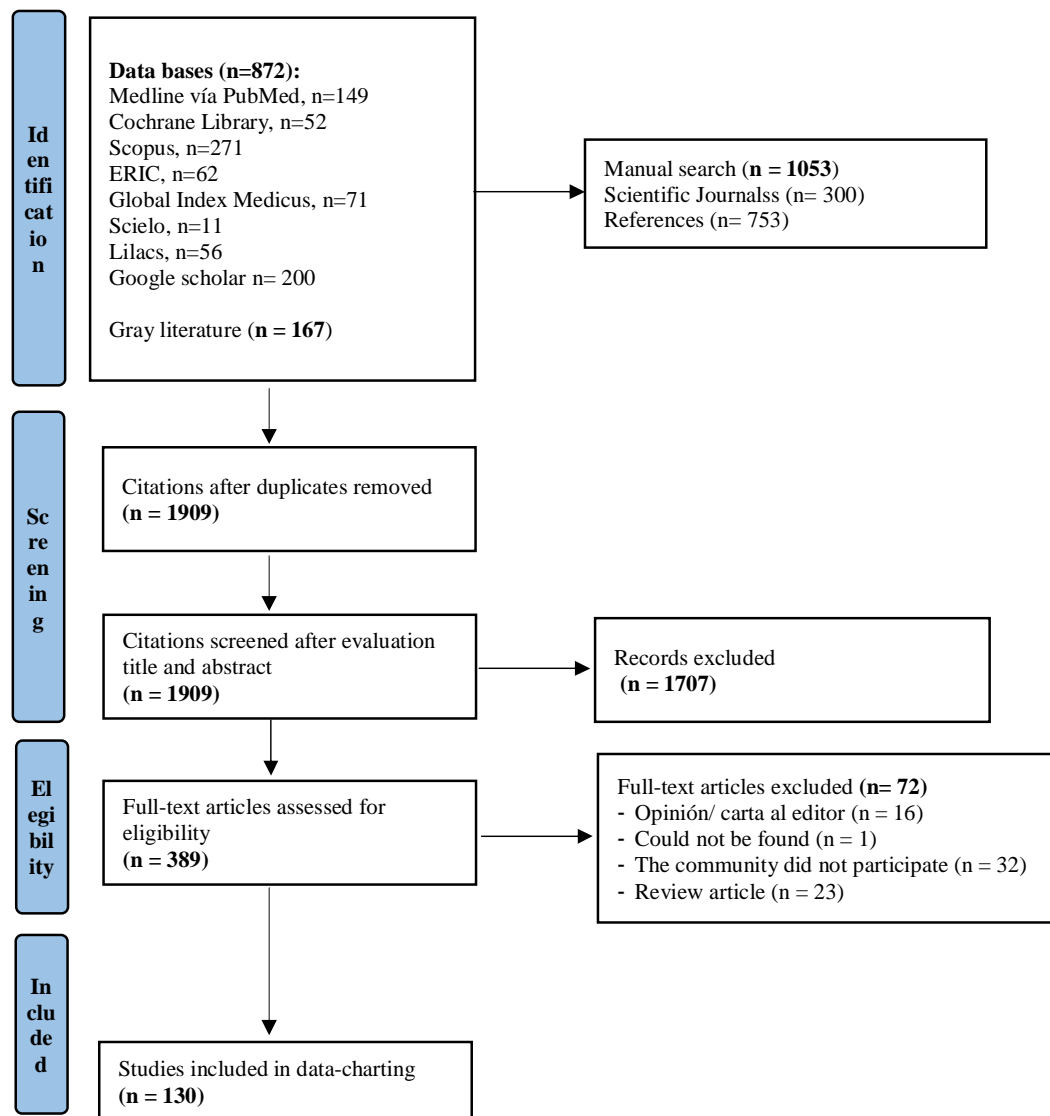
261

262

263 **Fig 1. Study selection flowchart.**

264

265 **Characteristics of the articles included**



266 Of the included studies, over the years, there has been a gradual increase in the amount of  
267 research in which the community has been actively involved in tuberculosis control. The  
268 studies identified in our review were conducted in all WHO regions, mainly in the African  
269 region (44.62%, n=58/130), the Americas (22.31%, n=29/130), and in Southeast Asia ( 19.23%,  
270 n=25/130). In relation to the types of articles, the most frequent were the quantitative ones  
271 (46.92%, n=61/130) followed by the qualitative ones (32.31%, n=42/130) and finally the mixed  
272 methods (13.85%, n=18 /130). These characteristics are presented in Table 1.

273  
274

**Table 1. Characteristics of the studies included in the scoping review. (n=130)**

Characteristics of the studies	Number (%)
<b>Publication year</b>	
1990-1999	7/130 (5.38)
2000-2009	34/130 (26.15)
2010-2021	89/130 (68.47)
<b>Region</b>	
Africa	58/130 (44.62)
Americas	29/130 (22.31)
Southeast Asia	25/130 (19.23)
Europa	2/130 (1.54)
Eastern Mediterranean	5/130 (3.85)
Western Pacific	10/130 (7.69)
Arctic	1/130 (0.76)
<b>Study Design</b>	
Cross-sectional	7/130 (5.38)
Case study	2/130 (1.54)
Qualitative	42/130 (32.31)
Mixed methods	18/130 (13.85)
Quantitative studies	61/130 (46.92)
<b>Language</b>	
English	127/130 (97.69)
Spanish	3/130 (2.31)

275

276

### 277 **Inclusion of community participation in research**

278 The participation of communities in research studies on tuberculosis has been evaluated and  
279 categorized considering the classification of the study by Asha et al.(17), who evaluated the  
280 degree of community participation in research on interventions in health systems in low- and  
281 middle-income countries through five different elements: (1) identification of the problems  
282 addressed; (2) identification and definition of interventions; (3) implementation of the  
283 interventions; (4) management of resources for interventions and (5) monitoring and  
284 evaluation of interventions. Only 4/130 (3.08%) studies engaged the community through these  
285 five elements. Details of the nature of participation through these five elements are presented  
286 in Table 2.

287

288 **Table 2. Nature of community participation in the included studies.**

<b>Nature of Community Participation (CP)</b>	<b>Articles with ACP (n=130) Number (%)</b>
Identification of needs, risk factors and/or definition of problems	79/130 (60.77)
Identification and definition of interventions	55/130 (42.31)
Implementation of interventions	74/130 (50.92)
Resource management for intervention	38/130 (29.23)
Monitoring, evaluation of interventions	39/130 (30)

289 ACP: Active community participation.

290

291 In the included studies, community participation in the development of research studies or as  
 292 part of a program for the prevention and control of tuberculosis was identified in the following  
 293 scenarios: 20.77% (n=27/130) of the studies included the community on activities related to  
 294 the promotion and prevention of tuberculosis. 20.00% (n=26/130) of the studies involved the  
 295 community in the detection and active search for tuberculosis cases. The 21.54% (n=28/130) of  
 296 the studies in the identification of barriers and difficulties for the antituberculosis treatment.  
 297 46.15% (n=60/130) of the studies on supervision and surveillance for tuberculosis treatment  
 298 and 3.08% (n=4/130) of the studies evaluated the participation of the community in social  
 299 support and support for the affected patient for tuberculosis. Finally, it was identified that  
 300 12.31% (n=16/130) of the studies evaluated the participation of the community in other  
 301 related aspects such as greater understanding of the disease, identification of factors related  
 302 to the search and quality of care for patients affected by tuberculosis and studies that  
 303 explored the experience of community health workers in tuberculosis control (Table 3).

304

305

306 **Table 3. Interventions in which the community has been an active part for the**  
 307 **implementation of the included studies.**

308

	<b>Articles with ACP (n=130) Number (%)</b>
<b>TB prevention</b>	27/130 (20.77)
<b>Detection and active search for cases</b>	26/130 (20)
<b>Identification of barriers to tuberculosis treatment</b>	30/130 (23.07)
<b>Supervision and surveillance for tuberculosis treatment</b>	60/130 (46.15)
<b>Social support and patient support</b>	4/130 (3.08)
<b>Others*</b>	16/130 (12.31)

309 ACP: Active community participation.

310 \*Studies in which the community has participated to understand the disease, factors  
 311 associated with seeking care, and experiences of community participation.

312

313 **Strengthening of community participation**

314 6.15% (n=8/130) of the studies included in our review used the community-based participatory  
 315 research approach. However, only half (n=4/130) of these studies complied with the CBPR  
 316 principles. On the other hand, 37.69% (n=49/130) of the studies carried out some type of



317 education or training for community workers to carry out their functions in tuberculosis  
318 research studies.

319

### 320 **Sustainability of the studies**

321 4.62% (n=6/130) of the studies evaluated the sustainability of the interventions in which the  
322 community had participated. In addition, 2.31% (n=3/130) of the included studies evaluated  
323 the cost-effectiveness of community participation in tuberculosis care(18-20). Khan et al.(18)  
324 reported that self-administered DOTS was the most cost-effective (\$164 per patient cured).  
325 However, they had a 62% cure rate as opposed to DOTS administered by community health  
326 workers (CHW) (\$172 per case cured), which had a 67% cure rate. DOTS supervised by a family  
327 member (\$185 per patient cured) had a cure rate of 55% and finally DOTS administered in a  
328 health center (\$310 per patient cured) had a cure rate of 58%. Sinanovic et al.(19) reported  
329 that for new patients community-based DOTS was more cost-effective (\$726 per successfully  
330 treated patient) than no directly observed treatment (\$1201 per successfully treated patient).  
331 Similarly, for retreatment patients, community-based DOTS was more cost-effective (\$1,419  
332 per successfully treated patient) than no directly observed treatment (\$2,058 per successfully  
333 treated patient). Finally, Prado et al.(20) reported that the cost per patient treated with DOTS  
334 supervised by tutors was \$398 and for DOTS supervised by CHW it was \$548.

335

### 336 **Discussion**

337 In our scoping review, we identified 130 studies that reported genuine involvement of  
338 community members. Most of these studies were conducted in Africa (44.62%), the Americas  
339 region (22.31%), and Asia (19.23%). According to the 2021 Global Tuberculosis Report, the  
340 highest burden of tuberculosis disease occurs in the Asian and African regions (69%)(1). This  
341 could explain the reason for the higher frequency of studies found in these continents. This  
342 scenario is different for the region of the Americas, in which its global burden of tuberculosis is  
343 2.9%, but it is the region with the second most studies that attempt to involve the community  
344 as part of their strategies to end tuberculosis. However, most of these studies are carried out  
345 in populations with a high burden of tuberculosis, such as in Latin American and Caribbean  
346 countries(21).

347

348 The results of our scoping review suggest that active community participation contributes to  
349 strengthening tuberculosis prevention and control programs. This makes visible the need to  
350 dissociate ourselves from the traditional scenario of scientific research, directed only by  
351 academic researchers, and think about addressing this disease more from a comprehensive  
352 and ecological approach that also considers the community and other social actors as keys to  
353 allow the identification of problems, and in consequence, create joint solutions that reduce  
354 the social and economic gaps that increase the burden of tuberculosis. This is similar to what  
355 was mentioned by Arshad et al.(6), who reported that community-based interventions  
356 increased the probability of tuberculosis case detection (RR: 3.1; 95% CI: 2.92 to 3.28) and  
357 success rates of treatment (RR: 1.09; 95% CI: 1.07 to 1.11). Also, they reported that the CHW,  
358 by delivering the treatment, not only increased and improved the conditions for access to care  
359 for patients affected by tuberculosis, but also improved the registration and notification  
360 systems for tuberculosis cases. Yassin et al.(22) implemented a community-based TB  
361 intervention package to bring diagnostic and treatment services closer to vulnerable

362 communities. They reported that community participation doubled tuberculosis case  
363 notification rates and improved treatment outcomes. Similarly, other studies have reported  
364 that active case finding in countries or places with a high TB burden by CHW, community  
365 volunteers, and trained family members could strengthen notification systems and reduce  
366 gaps in access to information. health care in the community. Active case finding of smear-  
367 positive cases made an important contribution to the success on diagnosis and control of  
368 tuberculosis. This is significant because tuberculosis patients frequently present to health  
369 facilities when their disease has worsened and this is a major limitation in global efforts to  
370 control tuberculosis(23-33).

371

372 With respect to TB treatment outcomes, better results have been reported when DOTS has  
373 been delivered by CHWs, allowing for higher treatment success rates. In addition, CHWs have  
374 contributed to the supervision and follow-up for cases of drug resistance and support to  
375 patients throughout the treatment phase. Regarding the cost-effectiveness studies of DOTS  
376 provided by CHWs, Khan et al.(18) and Sinanovic et al.(19) reported that DOTS provided by  
377 CHWs was the most cost-effective for new patients. DOTS provided by the health center was  
378 found to be the least cost-effective, which is interesting as it is the WHO recommended model  
379 of practice within the current DOTS package. Khan et al.(18), reported that although self-  
380 administered treatment is the most cost-effective, it had lower cure rates compared to DOTS  
381 delivered by CHWs. On the other hand, Prado et al.(20) reported that although the DOTS  
382 performed by the tutors was the most cost effective compared to the DOTS provided by the  
383 CHWs. The DOTS carried out by the CHWs included not only providing treatment but also  
384 providing primary health education, vaccination, monitoring of risk groups and other social  
385 services in benefit of persons with TB and their families. Therefore, DOTS provided by the  
386 community demonstrates that it is an alternative that can be used by tuberculosis control  
387 programs.

388

389 In relation to the training that the CHWs received, this was very varied, but it was mainly  
390 focused on the implementation of the interventions. Only 37.7% of the studies conducted  
391 training for CHWs so that they can perform their functions. However, most of these studies  
392 only limited themselves to instructing them to perform a specific function within the research  
393 study. Reyes et al.(34) was the only included study that carried out a training program for  
394 community promoters for the prevention and control of tuberculosis in Mexico. This study  
395 empowered its promoters through educational and participatory workshops to improve  
396 understanding of the disease and about the prevention and treatment of the disease.

397

398 In our review we identified 8 studies that mentioned using the community-based participatory  
399 research (CBPR) approach. However, only 4 of these studies involved the community in all  
400 phases of the research and allowed to establish a closer link between the community and  
401 academic researchers(10, 35-37). Research with CBPR methodology is based on the principles  
402 of participatory and equitable community participation in all research processes and shared  
403 ownership of problem identification, development, and research products(12, 38-40). The  
404 fundamental principles of the CBPR approach are as follows : recognition of the community as  
405 a unique identity, builds on the strengths and resources of the community itself, promotes  
406 collaborative/equitable teamwork, facilitates mutual learning and capacity building through a

407 process of continuous empowerment , integrates and establishes a balance between the  
408 generation of knowledge and action, a cyclical and iterative process is used, it allows  
409 evaluation by addressing health problems in the community with a comprehensive and  
410 ecological approach, it disseminates results to everyone: the academia, local governments,  
411 NGOs and community members.

412

413 These principles are adapted to the sociocultural context of the communities(9, 10). In  
414 studies with a CBPR approach, academic researchers often establish a community advisory  
415 board (or CAB), which is made up of community members who represent the voices of the  
416 community regarding their perceptions, preferences, talents, etc. and priorities. These  
417 community partners can be community health centers, public health departments, schools,  
418 prisons, and civil society organizations such as neighborhood organizations(9, 41, 42). A case  
419 of collaborative partnership with a CBPR approach is a study we conducted in the population  
420 affected by TB in Peru. We carried out a collaborative community intervention between the  
421 Universidad Peruana Cayetano Heredia, Ohio State University and the Association of  
422 Tuberculosis Patients of Comas [ASET] (Comas, district of Peru with a high rate of  
423 tuberculosis)(43). In the first phase, we carried out an empowerment program for ASET  
424 through research training for CHW in key aspects such as research methodology, research  
425 ethics, principles of the CBPR approach and on the technique and implementation of a study  
426 with the use of photovoice. In the second phase, an intervention directed by the CHW was  
427 implemented in the population affected by tuberculosis in their community through the use of  
428 the photovoice technique with the objective of evaluating the impact of the social  
429 determinants of health on tuberculosis in their community.

430

431 The inclusion of strategic research partnerships that allow the establishment of an equal  
432 relationship between the community and academic researchers requires time and financial  
433 resources(44). In low- and middle-income countries, CHWs are a key component of the health  
434 workforce to achieve the Millennium Development Goals(45). However, CHWs face many  
435 challenges such as high turnover in their functions, low motivation, inadequate supervision,  
436 lack of resources available so that they can carry out their functions, insufficient compensation  
437 or incentives, and little recognition and involvement on the part of health care providers. All of  
438 this limits their ability to contribute effectively to primary health care(46).

439

440 Among the reported functions of CHWs is providing health education (increasing awareness  
441 and knowledge about tuberculosis), detection and active search for cases, and patient follow-  
442 up(47). However, CHWs have not only been involved in the aforementioned functions, but  
443 have often solved problems that are ignored by TB programs, such as providing personalized  
444 moral comfort, nutritional support, and stigma reduction for patients affected by  
445 tuberculosis(48). Among the motivating factors for CHW are satisfaction for helping people  
446 affected by tuberculosis (feeling of prestige related to helping the neighbor), having a good  
447 relationship with health workers, respect for the community and the personal benefit they find  
448 by learning new information about tuberculosis and general health. The latter was the main  
449 motivating factor for CHWs as it empowered both them and the patients about their health  
450 and that of their community(47). In addition, CHWs can decrease the stigma of tuberculosis

451 disease because it by drawing on their own personal experiences about the disease they can  
452 increase openness and decrease stigma among people(4, 34, 49).

453

454 The sustainability of interventions are those programs that continue to be implemented after a  
455 defined period of time while they are adapted and adapted to continue producing benefits for  
456 people(50, 51). Sustainability is an important component for the implementation and  
457 dissemination of interventions. health interventions and for the evaluation of their effects in  
458 the medium and long term. However, it is frequently poorly documented(38, 52). Lwilla et  
459 al.(53) mentioned that the DOT provided by CHWs was practical and sustainable because it  
460 allowed optimizing the time of some health workers for other duties, especially in an  
461 environment with a large increase in notification of tuberculosis cases. Dudley et al.(54)  
462 reported that at 6 years, community-based tuberculosis care was maintained despite the  
463 increasing number of patients requiring care. In addition, through this time the number of  
464 CHWs increased. However, the replicability of this model varies across community settings. In  
465 more complex urbanized settings, a barrier encountered is that health services are managed  
466 without the support of community organizations. Therefore, interventions with active  
467 community participation depend on the availability of organized community-based structures  
468 that can provide their resources and support health systems. Similarly, Wieland et al.(38)  
469 conducted a case study reporting the sustainability of a tuberculosis prevention and control  
470 program (case detection) at the adult education center of the Rochester Public Schools district.  
471 . They report that this intervention has been sustained for 8 years due to the collaborative  
472 work of the education center, public health department, and the Rochester Healthy  
473 Community Association, whose mission is to promote health through a CBPR approach. On the  
474 other hand, Han et al.(55) conducted a descriptive study in which they mention that a  
475 community-based tuberculosis prevention program has greater potential for sustainability by  
476 training CHW to form social mobilization working groups that they can train more volunteers  
477 and allow the program to be maintained through the years. Therefore, community  
478 participation has been shown to lead to significant changes in tuberculosis control. The  
479 community's confidence and empowerment in their own resources and capacities allows them  
480 to work differently to address complex problems such as tuberculosis.

481

482 TB programs that consider the community as an important part of their activities need to  
483 establish sustained communication (system for contacting volunteers) and frequent contact  
484 with the community organization. In addition, the CHWs must receive feedback on the  
485 progress of the program, as well as be involved in any changes or new initiatives. In addition,  
486 the empowerment of CHWs allows them to train new volunteers to carry out the activities(6).

487

#### 488 **Strengths and limitations**

489 This scoping review has some limitations. We made an identification of studies published in  
490 English (97.69%) and Spanish (2.31%) because the largest source of evidence is presented in  
491 those languages. We do not rule out the possibility of having studies that meet our eligibility  
492 criteria and that have been published in other languages. However, a comprehensive search  
493 was performed in recognized health databases, a gray literature search was performed, and  
494 studies were collected through the literature search and contacting authors for more  
495 information. In addition, a critical evaluation of the design of the included studies was not

496 carried out, which limits the evaluation and characterization of the quality and certainty of the  
497 evidence that makes it possible to visualize the methodological bases of the current evidence  
498 on this topic. It would be important that this be evaluated in future systematic reviews.  
499 However, we believe that our study, by synthesizing current evidence on interventions or  
500 studies in which the community has taken an active part in their development and/or  
501 implementation, adds additional value for local and local tuberculosis prevention and control  
502 programs. global organizations consider the community as a fundamental part of the strategies  
503 to achieve their goals of eradicating tuberculosis(56).

504

#### 505 **Future research**

506 Based on our scoping review, we have identified that there is a paucity of information from  
507 studies that comply with the basic principles of CBPR in the population affected by  
508 tuberculosis. In addition, more studies are required to evaluate the cost effectiveness and  
509 sustainability of community participation interventions in tuberculosis control in the long term.  
510 Strategic CBPR research partnerships can mobilize and organize larger-scale community efforts  
511 to establish policies that enable social and economic policy change needed to achieve health  
512 equity(9, 57, 58).

513

#### 514 **Conclusions**

515 Direct community involvement in tuberculosis prevention and control in research with a  
516 community-based participatory research (CBPR) approach has not been consistently reported.  
517 However, according to our analysis, the studies found show that the active participation of the  
518 community presents a positive tendency towards the strengthening of programs for the  
519 prevention and control of tuberculosis. In addition, the participation of key members of the  
520 community not only strengthens the capacities of the health systems to generate strategies  
521 and action plans for the prevention and control of tuberculosis, but also allows a better  
522 understanding of the disease from the perspective of the patient by identifying barriers and  
523 opportunities along the cascade of care for patients affected by tuberculosis in the 'Global  
524 South'. This scoping review also makes it possible to show that there is a need to carry out  
525 studies with the CBPR approach in the population affected by tuberculosis due to the large  
526 social component, such as the social determinants of health, that impacts this disease. This  
527 seems to indicate that studies are required that restructure the focus of a traditional  
528 investigation to one with a CBPR approach, where the population is considered as an end for  
529 the objectives of the study. The active participation of communities in co-creating solutions  
530 goes beyond the biomedical sphere and offers a critical path for regional and local  
531 governments in the fight to eradicate tuberculosis.

532

533 **Acknowledgments:** The authors gratefully acknowledge all the support provided by Dr. Anna  
534 Biszaha who provided training to develop this study.

535

536

#### 537 **Supplementary material**

538 S1 file. PRISMA – ScR checklist

539 S2 file. List of scientific journals

540 S3 file. Search terms and keywords

541 S4 file. Search strategies in each database and information repository.

542

543

## 544 References

- 545 1. World Health Organization. Global tuberculosis report 2020. Available  
546 <https://apps.who.int/iris/bitstream/handle/10665/336069/9789240013131-eng.pdf>.
- 547 2. Pedrazzoli D, Boccia D, Dodd PJ, Lönnroth K, Dowdy DW, Siroka A, Kimerling ME, White  
548 RG, Houben RMGJ. Modelling the social and structural determinants of tuberculosis:  
549 opportunities and challenges. *Int J Tuberc Lung Dis*. 2017 Sep 1;21(9):957-964. doi:  
550 10.5588/ijtld.16.0906. PMID: 28826444; PMCID: PMC5566999.
- 551 3. Duarte R, Lönnroth K, Carvalho C, Lima F, Carvalho ACC, Muñoz-Torrico M, Centis R.  
552 Tuberculosis, social determinants and co-morbidities (including HIV). *Pulmonology*. 2018 Mar-  
553 Apr;24(2):115-119. doi: 10.1016/j.rppnen.2017.11.003. Epub 2017 Dec 21. PMID: 29275968.
- 554 4. Balogun M, Sekoni A, Meloni ST, Odukoya O, Onajole A, Longe-Peters O, et al. Trained  
555 community volunteers improve tuberculosis knowledge and attitudes among adults in a  
556 periurban community in southwest Nigeria. *The American journal of tropical medicine and*  
557 *hygiene*. 2015;92(3):625-32.
- 558 5. WHO: Community contribution to TB care: practice and policy. In WHO. Geneva: World  
559 Health Organization; 2003.
- 560 6. Arshad A, Salam RA, Lassi ZS, Das JK, Naqvi I, Bhutta ZA. Community based  
561 interventions for the prevention and control of tuberculosis. *Infectious diseases of poverty*.  
562 2014;3(1).
- 563 7. Organización Mundial de la S. Engage-TB: integración de las actividades comunitarias  
564 de lucha contra la tuberculosis en el trabajo de las organizaciones no gubernamentales y otras  
565 organizaciones de la sociedad civil: manual de aplicación. Ginebra: Organización Mundial de la  
566 Salud; 2014 2014.
- 567 8. TB Alliance. [cited October 16, 2022]. Available in:  
568 <https://www.tballiance.org/about/mission>.
- 569 9. Harris DA, Pensa MA, Redlich CA, Pisani MA, Rosenthal MS. Community-based  
570 Participatory Research Is Needed to Address Pulmonary Health Disparities. *Ann Am Thorac*  
571 *Soc*. 2016 Aug;13(8):1231-8. doi: 10.1513/AnnalsATS.201601-054PS. PMID: 27249657.
- 572 10. Brunette MJ, Curioso WH. Sistemas de salud móvil integrados: Rol de los factores  
573 socioculturales y el enfoque de sistemas sociotécnico. *Rev Peru Med Exp Salud Publica*.  
574 2017;34(3):544-50.
- 575 11. Israel BA, Schulz AJ, Parker EA, Becker AB. Review of community-based research:  
576 assessing partnership approaches to improve public health. *Annu Rev Public Health*.  
577 1998;19:173-202. doi: 10.1146/annurev.publhealth.19.1.173. PMID: 9611617.
- 578 12. Salimi Y, Shahandeh K, Malekafzali H, Loori N, Kheiltash A, Jamshidi E, Frouzan AS,  
579 Majdzadeh R. Is Community-based Participatory Research (CBPR) Useful? A Systematic Review  
580 on Papers in a Decade. *Int J Prev Med*. 2012 Jun;3(6):386-93. PMID: 22783464; PMCID:  
581 PMC3389435.
- 582 13. Musa BM, Iliyasu Z, Yusuf SM, Uloko AE. Systematic review and metanalysis on  
583 community based interventions in tuberculosis care in developing countries. *Nigerian journal*  
584 *of medicine : journal of the National Association of Resident Doctors of Nigeria*.  
585 2014;23(2):103-17.
- 586 14. Tricco AC, Lillie E, Zarin W, O'Brien KK, Colquhoun H, Levac D, Moher D, Peters MDJ,  
587 Horsley T, Weeks L, Hempel S, Akl EA, Chang C, McGowan J, Stewart L, Hartling L, Aldcroft A,  
588 Wilson MG, Garritty C, Lewin S, Godfrey CM, Macdonald MT, Langlois EV, Soares-Weiser K,  
589 Moriarty J, Clifford T, Tunçalp Ö, Straus SE. PRISMA Extension for Scoping Reviews (PRISMA-  
590 ScR): Checklist and Explanation. *Ann Intern Med*. 2018 Oct 2;169(7):467-473. doi:  
591 10.7326/M18-0850. Epub 2018 Sep 4. PMID: 30178033.
- 592 15. Arksey H, O'Malley L. Scoping studies: Towards a Methodological Framework. *Int J Soc*  
593 *Res Methodol*. 2005;8:19–32. doi: 10.1080/1364557032000119616. .

- 594 16. Levac D, Colquhoun H, O'Brien KK. Scoping studies: advancing the methodology.  
595 *Implement Sci.* 2010 Sep 20;5:69. doi: 10.1186/1748-5908-5-69. PMID: 20854677; PMCID:  
596 PMC2954944.
- 597 17. George AS, Mehra V, Scott K, Sriram V. Community Participation in Health Systems  
598 Research: A Systematic Review Assessing the State of Research, the Nature of Interventions  
599 Involved and the Features of Engagement with Communities. *PLoS One.* 2015 Oct  
600 23;10(10):e0141091. doi: 10.1371/journal.pone.0141091. PMID: 26496124; PMCID:  
601 PMC4619861.
- 602 18. Khan MA, Walley JD, Witter SN, Imran A, Safdar N. Costs and cost-effectiveness of  
603 different DOT strategies for the treatment of tuberculosis in Pakistan. *Directly Observed  
604 Treatment. Health Policy Plan.* 2002 Jun;17(2):178-86. doi: 10.1093/heapol/17.2.178. PMID:  
605 12000778.
- 606 19. Sinanovic E, Floyd K, Dudley L, Azevedo V, Grant R, Maher D. Cost and cost-  
607 effectiveness of community-based care for tuberculosis in Cape Town, South Africa. *The  
608 international journal of tuberculosis and lung disease : the official journal of the International  
609 Union against Tuberculosis and Lung Disease.* 2003;7(9 Suppl 1):S56-62.
- 610 20. Prado TN do, Wada N, Guidoni LM, Golub JE, Dietze R, Maciel ELN. Cost-effectiveness  
611 of community health worker versus home-based guardians for directly observed treatment of  
612 tuberculosis in Vitória, Espírito Santo State, Brazil. *Cad Saúde Pública.* mayo de 2011;27:944-  
613 52.
- 614 21. Tuberculosis en las Américas. Informe regional 2020. Washington, D.C.: Organización  
615 Panamericana de la Salud; 2021. Licencia: CC BY-NC-SA 3.0 IGO.  
616 <https://doi.org/10.37774/9789275324479>.
- 617 22. Yassin MA, Datiko DG, Tulloch O, Markos P, Aschalew M, Shargie EB, et al. Innovative  
618 community-based approaches doubled tuberculosis case notification and improve treatment  
619 outcome in Southern Ethiopia. *PloS one.* 2013;8(5):e63174.
- 620 23. Banerjee A, Sharma BV, Ray A, Kannuri NK, Venkateswarlu TV. Acceptability of  
621 traditional healers as directly observed treatment providers in tuberculosis control in a tribal  
622 area of Andhra Pradesh, India. *Int J Tuberc Lung Dis.* 2004;8(10):1260-5.
- 623 24. Dewi C, Barclay L, Wilson S, Passey M. An asset-based intervention with tuberculosis  
624 groups in rural Indonesian villages: Overview and lessons learned. *Community Dev J.*  
625 2018;53(2):340-57.
- 626 25. Oshi DC, Omeje JC, Oshi SN, Alobu IN, Chukwu NE, Nwokocha C, Emelumadu OF,  
627 Ogbudebe CL, Meka AO, Ukwaja KN. An evaluation of innovative community-based approaches  
628 and systematic tuberculosis screening to improve tuberculosis case detection in Ebonyi State,  
629 Nigeria. *Int J Mycobacteriol.* 2017 Jul-Sep;6(3):246-252. doi: 10.4103/ijmy.ijmy\_91\_17. PMID:  
630 28776522.
- 631 26. Fox GJ, Loan le P, Nhung NV, Loi NT, Sy DN, Britton WJ, et al. Barriers to adherence  
632 with tuberculosis contact investigation in six provinces of Vietnam: a nested case-control  
633 study. *BMC infectious diseases.* 2015;15:103.
- 634 27. Morishita F, Garfin AM, Lew W, Oh KH, Yadav RP, Reston JC, Infante LL, Acala MR,  
635 Palanca DL, Kim HJ, Nishikiori N. Bringing state-of-the-art diagnostics to vulnerable  
636 populations: The use of a mobile screening unit in active case finding for tuberculosis in  
637 Palawan, the Philippines. *PLoS One.* 2017 Feb 2;12(2):e0171310. doi:  
638 10.1371/journal.pone.0171310. PMID: 28152082; PMCID: PMC5289556.
- 639 28. Lorent N, Choun K, Thai S, Kim T, Huy S, Pe R, van Griensven J, Buyze J, Colebunders R,  
640 Rigouts L, Lynen L. Community-based active tuberculosis case finding in poor urban  
641 settlements of Phnom Penh, Cambodia: a feasible and effective strategy. *PLoS One.* 2014 Mar  
642 27;9(3):e92754. doi: 10.1371/journal.pone.0092754. PMID: 24675985; PMCID: PMC3968028.
- 643 29. Corbett EL, Bandason T, Duong T, Dauya E, Makamure B, Churchyard GJ, Williams BG,  
644 Munyati SS, Butterworth AE, Mason PR, Mungofa S, Hayes RJ. Comparison of two active case-  
645 finding strategies for community-based diagnosis of symptomatic smear-positive tuberculosis



- 646 and control of infectious tuberculosis in Harare, Zimbabwe (DETECTB): a cluster-randomised  
647 trial. *Lancet*. 2010 Oct 9;376(9748):1244-53. doi: 10.1016/S0140-6736(10)61425-0. PMID:  
648 20923715; PMCID: PMC2956882.
- 649 30. Oshi DC, Chukwu JN, Nwafor CC, Meka AO, Madichie NO, Ogbudebe CL, et al. Does  
650 intensified case finding increase tuberculosis case notification among children in resource-poor  
651 settings? A report from Nigeria. *Int J Mycobacteriology*. 2016;5(1):44-50.
- 652 31. Colvin C, Mugyabuso J, Munuo G, Lyimo J, Oren E, Mkomwa Z, et al. Evaluation of  
653 community-based interventions to improve TB case detection in a rural district of Tanzania.  
654 *Global health, science and practice*. 2014;2(2):219-25.
- 655 32. Datiko DG, Yassin MA, Tulloch O, Asnake G, Tesema T, Jamal H, et al. Exploring  
656 providers' perspectives of a community based TB approach in Southern Ethiopia: Implication  
657 for community based approaches. *BMC health services research*. 2015;15(1).
- 658 33. Becx-Bleumink M, Wibowo H, Apriani W, Vrakking H. High tuberculosis notification and  
659 treatment success rates through community participation in central Sulawesi, Republic of  
660 Indonesia. *Int J Tuberc Lung Dis*. 2001 Oct;5(10):920-5. PMID: 11605885.
- 661 34. Reyes González MP, Álvarez Gordillo GdC. Formación de promotores para la  
662 prevención y control de la tuberculosis en la región fronteriza de Chiapas, México.
- 663 35. Boffa J, Mayan M, Ndlovu S, Mhlaba T, Williamson T, Sauve R, et al. The role of agency  
664 in the implementation of Isoniazid Preventive Therapy (IPT): Lessons from oMakoti in  
665 uMgungundlovu District, South Africa. *PloS one*. 2018;13(3):e0193571.
- 666 36. Wieland ML, Weis JA, Yawn BP, Sullivan SM, Millington KL, Smith CM, et al. Perceptions  
667 of tuberculosis among immigrants and refugees at an adult education center: a community-  
668 based participatory research approach. *Journal of immigrant and minority health*.  
669 2012;14(1):14-22.
- 670 37. Wieland ML, Nelson J, Palmer T, O'Hara C, Weis JA, Nigon JA, et al. Evaluation of a  
671 tuberculosis education video among immigrants and refugees at an adult education center: A  
672 community-based participatory approach. *J Health Commun*. 2013;18(3):343-53.
- 673 38. Wieland ML, Nigon JA, Weis JA, Espinda-Brandt L, Beck D, Sia IG. Sustainability of a  
674 Tuberculosis Screening Program at an Adult Education Center Through Community-Based  
675 Participatory Research. *Journal of public health management and practice : JPHMP*.  
676 2019;25(6):602-5.
- 677 39. Turusbekova N, Popa C, Dragos M, van der Werf MJ, Dinca I. Strengthening TB  
678 infection control in specialized health facilities in Romania - using a participatory approach.  
679 *Public health*. 2016;131:75-81.
- 680 40. Wieland ML, Weis JA, Olney MW, Alemán M, Sullivan S, Millington K, et al. Screening  
681 for tuberculosis at an adult education center: results of a community-based participatory  
682 process. *American journal of public health*. 2011;101(7):1264-7.
- 683 41. Chen E, Leos C, Kowitt SD, Moracco KE. Enhancing Community-Based Participatory  
684 Research Through Human-Centered Design Strategies. *Health Promot Pract*. 2020 Jan;21(1):37-  
685 48. doi: 10.1177/1524839919850557. Epub 2019 May 25. PMID: 31131633.
- 686 42. Ward M, Schulz AJ, Israel BA, Rice K, Martenies SE, Markarian E. A conceptual  
687 framework for evaluating health equity promotion within community-based participatory  
688 research partnerships. *Eval Program Plann*. 2018 Oct;70:25-34. doi:  
689 10.1016/j.evalprogplan.2018.04.014. Epub 2018 Apr 30. PMID: 29894902; PMCID:  
690 PMC6077092.
- 691 43. Chávez-Rimache L, Ugarte-Gil, C., Brunette, M. (2022). Empowering community health  
692 workers via health equity research training in TB prevention and control. *The Union World  
693 Conference on Lung Health*.
- 694 44. Brunette M. Moving the needle on global health equity: a look back from 2030. *Arch  
695 Environ Occup Health*. 2021;76(3):121-122. doi: 10.1080/19338244.2021.1892922. PMID:  
696 33908319.

- 697 45. Global Health Workforce Alliance (2010) Integrating Community Health Workers in  
698 National Health Workforce Plans. Geneva: WHO.
- 699 46. Zulu JM, Kinsman J, Michelo C, Hurtig AK. Developing the national community health  
700 assistant strategy in Zambia: A policy analysis. *Health Res Policy Syst.* 2013;11(1).
- 701 47. Thomas C, Newell JN, Baral SC, Byanjankar L. The contribution of volunteers to a  
702 successful community-orientated tuberculosis treatment centre in an urban setting in Nepal: a  
703 qualitative assessment of volunteers' roles and motivations. *Journal of health organization and  
704 management.* 2007;21(6):554-72.
- 705 48. Drabo M, Zerbo R, Berthe A, Ouedrago L, Konfe S, Mugishe E, et al. [Community  
706 involvement in tuberculosis care in three rural health districts of Burkina Faso]. *Sante publique  
707 (Vandoeuvre-les-Nancy, France).* 2009;21(5):485-97.
- 708 49. Seutloali T, Napoles L, Bam N. Community health workers in Lesotho: Experiences of  
709 health promotion activities.
- 710 50. Moore JE, Mascarenhas A, Bain J, Straus SE. Developing a comprehensive definition of  
711 sustainability. *Implement Sci.* 2017 Sep 2;12(1):110. doi: 10.1186/s13012-017-0637-1. PMID:  
712 28865479; PMCID: PMC5581411.
- 713 51. Neta G, Glasgow RE, Carpenter CR, Grimshaw JM, Rabin BA, Fernandez ME, Brownson  
714 RC. A Framework for Enhancing the Value of Research for Dissemination and Implementation.  
715 *Am J Public Health.* 2015 Jan;105(1):49-57. doi: 10.2105/AJPH.2014.302206. PMID: 25393182;  
716 PMCID: PMC4265905.
- 717 52. Wiltsey Stirman S, Kimberly J, Cook N, Calloway A, Castro F, Charns M. The  
718 sustainability of new programs and innovations: a review of the empirical literature and  
719 recommendations for future research. *Implement Sci.* 2012 Mar 14;7:17. doi: 10.1186/1748-  
720 5908-7-17. PMID: 22417162; PMCID: PMC3317864.
- 721 53. Lwilla F, Schellenberg D, Masanja H, Acosta C, Galindo C, Aponte J, Egwaga S, Njako B,  
722 Ascaso C, Tanner M, Alonso P. Evaluation of efficacy of community-based vs. institutional-  
723 based direct observed short-course treatment for the control of tuberculosis in Kilombero  
724 district, Tanzania. *Trop Med Int Health.* 2003 Mar;8(3):204-10. doi: 10.1046/j.1365-  
725 3156.2003.00999.x. PMID: 12631309.
- 726 54. Dudley L, Azevedo V, Grant R, Schoeman JH, Dikweni L, Maher D. Evaluation of  
727 community contribution to tuberculosis control in Cape Town, South Africa. *Int J Tuberc Lung  
728 Dis.* 2003 Sep;7(9 Suppl 1):S48-55. PMID: 12971654.
- 729 55. Han WW, Saw S, Isaakidis P, Khogali M, Reid A, Hoa N, Zaw KK, Aung ST. Different  
730 challenges, different approaches and related expenditures of community-based tuberculosis  
731 activities by international non-governmental organizations in Myanmar. *Infect Dis Poverty.*  
732 2017 Mar 24;6(1):59. doi: 10.1186/s40249-017-0263-9. PMID: 28335801; PMCID:  
733 PMC5364660.
- 734 56. Pan American Health Organization. Sustainable development goals (SDG) 3 - Target 3.3  
735 End the transmission of communicable diseases such as HIV, malaria, Tb and neglected  
736 diseases - PAHO/WHO | Pan American Health Organization [Internet]. [citado 1 de noviembre  
737 de 2022]. Disponible en: <https://www.paho.org/en/sdg-3-target-3-3?topic=All&d%5Bmin%5D=&d%5Bmax%5D=&page=1>.
- 738
- 739 57. Izumi BT, Schulz AJ, Israel BA, Reyes AG, Martin J, Lichtenstein RL, Wilson C, Sand SL.  
740 The one-pager: a practical policy advocacy tool for translating community-based participatory  
741 research into action. *Prog Community Health Partnersh* 2010;4:141–147.
- 742 58. Israel BA, Coombe CM, Cheezum RR, Schulz AJ, McGranaghan RJ, Lichtenstein R, Reyes  
743 AG, Clement J, Burris A. Community-based participatory research: a capacity-building approach  
744 for policy advocacy aimed at eliminating health disparities. *Am J Public Health* 2010;100:2094–  
745 2102.

746