

1 **Longitudinal phase 2 clinical trials of live, attenuated tularemia vaccine in otherwise**  
2 **healthy research laboratory workers operating in containment laboratories**

3  
4 David L. Saunders<sup>1,2,§</sup>, Benjamin C. Pierson<sup>1</sup>, Jeannine Haller<sup>1</sup>, Sarah Norris<sup>1</sup>, Anthony P. Cardile<sup>1,3</sup>,  
5 Ronald B. Reisler<sup>1,4</sup>, Arthur C. Okwesili<sup>1,5</sup>, Ellen Boudreau<sup>1</sup>, Janice Rusnak<sup>1</sup>, Denise K. Danner<sup>1</sup>, Bret K.  
6 Purcell<sup>1,6</sup>, James F. Barth<sup>1</sup>, Erin L. Tompkins<sup>1</sup>, Isaac L. Downs<sup>1</sup>, Dani Liggett<sup>1</sup>, Patricia Pettit\*, Tami  
7 Pratt<sup>7</sup>, Mark Goldberg<sup>1</sup>, Mark G. Kortepeter<sup>1,2</sup>, Fernando B. Guereña<sup>1</sup>, John W. Aldis<sup>1</sup>, Maryam  
8 Keshtkar<sup>1,8</sup>, and Phillip R. Pittman<sup>1</sup>

9  
10 <sup>1</sup> US Army Medical Research Institute of Infectious Diseases, Fort Detrick, MD, United States of America

11 <sup>2</sup> Uniformed Services University School of Medicine, Bethesda, MD, USA

12 <sup>3</sup> Joint Program Executive Office for Chemical, Biological, Radiological and Nuclear Defense, Frederick, MD, USA

13 <sup>4</sup> Davis Defense Group, Stafford, VA, USA

14 <sup>5</sup> San Antonio Military Medical Center, San Antonio, TX, USA

15 <sup>6</sup> University of Florida Research and Academic Center, Orlando, FL

16 <sup>7</sup> US Army Medical Materiel Development Activity, Fort Detrick, MD, USA

17 <sup>8</sup> Johns Hopkins University School of Medicine, Baltimore, MD

18  
19 \* - deceased

20 § – Corresponding author:

21 E-mail: david.saunders@usuhs.edu

22  
23 **Short Title:** Phase 2 open label live attenuated tularemia vaccine

## 24 Abstract

25 **Background:** Tularemia is a bacterial disease caused by the intracellular bacterium *Francisella*  
26 *tularensis* (*F. tularensis* or *Ft*). It has been weaponized historically by multiple state actors due  
27 to its low infectious aerosol dose, high morbidity and high mortality rate of the pneumonic form.  
28 The US Army developed the attenuated Live Vaccine Strain (LVS) from stocks provided by the  
29 former Soviet Union in the 1950s. The vaccine has proven to be safe and immunogenic over the  
30 ensuing decades in numerous clinical trials and animal as well as human challenge studies.  
31 Despite the threat, there are no FDA-approved vaccines nor clinical stage candidates against  
32 tularemia. LVS remains unlicensed due to instability in culture and the potential for reversion to  
33 the wild-type pathogen. We report here two sequential LVS trials in at-risk laboratory personnel  
34 working on tularemia in bio-containment.

35  
36 **Methods:** Volunteers received a single dose of the Live Vaccine Strain (LVS) live, attenuated  
37 tularemia vaccine by scarification under 2 FDA-regulated non-randomized, single-arm protocols  
38 (IND 157). Positive immunization was based on local scarification site 'take reaction', and  
39 either a  $\geq 1:20$  tularemia antigen microagglutination (MA) titer (protocol FY03-24; 2004-8) or  
40 greater than 4-fold rise in MA titer (protocol FY07-15; 2009-2017). Those still negative by  
41 week 4 were offered a second dose.

42  
43 **Results:** The LVS vaccine was safe, well tolerated and highly immunogenic. Between the two  
44 studies, all recipients (100%) had positive 'take reactions', with 95.5% of those in study FY03-  
45 24 having a positive response following initial vaccination. All but 3 subjects (98%) in protocol  
46 FY03-24 had positive MA titer results defined as  $\geq 1:20$ , most within 28-35 days. In protocol  
47 FY07-15, 95% of subjects had a 4-fold or greater rise in MA titer, the primary immunogenicity  
48 endpoint for that study.

49  
50 **Conclusions:** LVS vaccine administered to laboratory workers at risk for tularemia exposure  
51 over a 12 year period was safe and highly immunogenic. Findings were in line with more than 4  
52 decades of prior similar results. Response rates remained robust despite the vaccine lots  
53 employed having been manufactured 2-3 decades prior to the present studies. In the absence of a  
54 commercial development effort, or another tularemia vaccine in clinical development, a vaccine  
55 protocol under investigational new drug (IND) application could be considered based on the  
56 large body of favorable data for this vaccine. The results as well as historical comparator data  
57 presented here should serve as a benchmark for future studies.

58  
59

## 60 Introduction

61  
62 *Francisella tularensis* infects vertebrate and invertebrate animal hosts causing the disease  
63 tularemia (1). Transmission to mammals in nature occurs largely through multiple vectors including  
64 ticks, mosquitos and biting flies, and contact with remains of infected animals. Clinical presentations  
65 vary with skin, eye, lymphatic, gastrointestinal and pharyngeal involvement common following a 3-5 day  
66 incubation period (2, 3). While less commonly fatal, even naturally transmitted disease can last several  
67 weeks followed in some cases by months of chronic fatigue (4). An extremely low infectious dose (10-50  
68 organisms via aerosol), ease of aerosolization, and greater virulence when inhaled make it an ideal  
69 bioweapon (5) capable of incapacitating and killing large enemy formations. Aerosolized tularemia may  
70 be fatal in 60% of untreated individuals (6). Tularemia has been classified on the U.S. Federal Select  
71 Agents and Toxins List as a Tier 1 , CDC Category A biological agent, and Risk Group 3 pathogen  
72 capable of causing serious disease (7).

73  
74 Tularemia can cause infection by multiple routes, causing various cutaneous, glandular and ocular  
75 syndromes. The more serious pneumonic form of the disease occurs commonly in laboratory workers  
76 exposed by the aerosol or oral routes. Laboratory-acquired infection with *F. tularensis* is a well-  
77 recognized hazard of *Ft* biomedical research, with >200 cases described in the American medical  
78 literature (8, 9). Pneumonic disease is the syndrome most likely to be encountered in a deliberate attack.  
79 It is characterized by fever, malaise, pneumonic infiltrates on x-ray, severe prostration, and diarrhea  
80 lasting 3- 6 weeks. Survivors may suffer chronic fatigue for months. Individuals suffering pneumonia or  
81 pleuritic infection face a poor prognosis. Death is most common with the pneumonic form. Tularemia  
82 contracted from zoonotic sources can be treated with antibiotics including streptomycin, gentamicin,  
83 doxycycline, and ciprofloxacin. Recommended treatment duration is 10-21 days depending on the stage  
84 of illness and medication used, though it is unclear how well conventional antibiotics would perform in a  
85 deliberate aerosol attack. Substantial insights on its potential for weaponization were gained in part by 40

86 challenge experiments on healthy volunteers, participants in ‘Operation White Coat’, exposed to various  
87 doses over 10 years starting in 1958 (10). There is a clear infectious dose-response relationship with  
88 reduced time of onset and more severe disease occurring at higher exposures. Aerosolized tularemia may  
89 relapse if not treated with 10-14 days of sufficient antibiotic therapy equivalent to  $\geq 2$  grams per day  
90 tetracycline (10). Though tetracycline itself is no longer recommended, doxycycline continues to be a  
91 treatment option as well as fluoroquinolones and aminoglycosides (11).

92  
93 While there are no approved vaccines in the US, the attenuated ‘live vaccine strain’ (LVS) for  
94 tularemia has been used experimentally in the US since the 1950s (12). By further attenuating original  
95 tularemia vaccine stocks provided by the N. F. Gamaleya Federal Research Center for Epidemiology &  
96 Microbiology (13, 14), the US Army Medical Research Institute of Infectious Disease (USAMRIID)  
97 subsequently derived the LVS vaccine. The vaccine is derived from a milder subspecies of *F. tularensis*  
98 known as *Ft. holarctica* or type B, found in the Northern hemisphere and the only naturally occurring  
99 European subspecies. The vaccine has been used in nearly 4,000 volunteers since the late 1950s [See  
100 Table 1]. Both cellular and humoral immunity play a role in the vaccine’s effectiveness. It is  
101 administered by scarification, similar to the smallpox vaccine. The most reliable sign of successful  
102 immunization remains a ‘take’ reaction at the scarification site. This has been attributed to a delayed  
103 hypersensitivity T-cell response to the tularin protein (15). While the extent of clinical protective efficacy  
104 has been explored perhaps more than any other biodefense vaccine produced to date including human  
105 challenge trials, specific immune correlates of protection in humans remain elusive.

106  
107 Although studied under IND for decades, LVS has never received marketing approval by a  
108 stringent regulatory authority. Pursuit of full licensure has been hampered by concerns regarding vaccine  
109 strain reversion to wild type (though this has not been documented in clinical studies), purported  
110 challenges for vaccine manufacture at commercial scale, and lack of a commercial partner. In the absence

111 of an alternative candidate in clinical development, USAMRIID has continued to vaccinate laboratory  
112 workers at risk for occupational tularemia exposure under the Special Immunizations Program (SIP) (16).  
113 The SIP was maintained for several decades at USAMRIID and vaccinated workers from numerous bio-  
114 containment laboratories in the US working on tularemia and other select agents. The work has continued  
115 under IND in the hopes of adding to the clinical database, providing critical comparative data for  
116 emerging alternatives. The vaccine is also thought to impart volunteer laboratory workers a potential  
117 added layer of protection against *Ft* infection beyond standard biosafety laboratory practices. We report  
118 here data from two longitudinal protocols of LVS administered open label to at-risk personnel. The first  
119 study (FY03-24) began in 2004 and the second (FY07-15) concluded in 2017. At present no further  
120 studies of LVS are planned and these may represent the last clinical trial data of the LVS vaccine.

121

## 122 **Methods**

123

### 124 *Study Design*

125

126 Two consecutive longitudinal uncontrolled open-label, Phase 2 safety and immunogenicity  
127 studies of the LVS vaccine were conducted at USAMRIID under separate but similar protocols between  
128 2004 and 2017 under IND 157 (US FDA). Individuals who entered containment laboratory suites where  
129 tularemia might be aerosolized, those with possible contact with contaminated equipment or materials,  
130 and in some cases those travelling to endemic countries were vaccinated. Placebo and/or other controls  
131 were not used as the volunteers were all at -risk of occupational laboratory-acquired tularemia infection.

### 132 *Ethics Statement*

133

134 All human subjects research studies described were approved by the Institutional Review Board  
135 of the U.S. Army Medical Research and Development Command (formerly Medical Research and  
136 Materiel Command) prior to commencement. Protocol FY03-24 was conducted from 1 October 2004 to  
137 6 October 2009, while protocol FY07-15 ran from 28 August 2009 to 4 December 2017. The studies  
138 were registered at ClinicalTrials.gov as NCT00584844 (trial FY03-24) and NCT00787826 (trial FY07-

139 15). An additional protocol FY15-14 was registered as NCT03867162 but never enrolled subjects.  
140 Written informed consent was obtained from all subjects prior to enrollment.

141  
142

## 143 ***Vaccine***

144  
145

146 The vaccine used for both studies was *F. tularensis* Vaccine, Live, NDBR 101, Lot 4  
147 manufactured by the National Drug Company in 1962 under Investigational New Drug Application 157.  
148 The vaccine consists of live, attenuated *F. tularensis*, in a modified casein partial hydrolysate medium  
149 manufactured on 28 May 1962. Vaccine was stabilized with a solution of glucose cysteine hemin agar  
150 and sucrose gelatin agar stabilizer solution without preservative and stored between  $-10^{\circ}$  and  $-30^{\circ}$  C.  
151 Potency testing in guinea pigs under Good Laboratory Practices (GLP) was performed on an annual basis  
152 by Southern Research Institute and/or USAMRIID and reported to FDA. Vaccine use was continued  
153 annually based on demonstrated protection of guinea pigs against challenge with virulent *F. tularensis*  
154 under FDA Good Laboratory Practices.

154

155 Vaccine vial vacuum seal integrity was confirmed using a high frequency generator (the SPARK  
156 test). Vials with an intact seal were reconstituted in 2.0 mL sterile water for injection, USP at  
157 concentration of approximately  $1.0 \times 10^9$  organisms/mL. Vaccine could be stored once reconstituted for  
158 up to 8 hours at 2-8° C. Roughly 0.06 mL of vaccine was administered to the volar forearm with 15  
159 superficial punctures in protocol FY07-15, compared to 0.0025mL in protocol FY03-24. Excess vaccine  
160 was gently dabbed with sterile gauze and allowed to air dry for 30 minutes.

161

## 162 ***Study Subjects***

163 Volunteers at risk for infection with tularemia from various BSL-3 laboratories in the US were  
164 enrolled under USAMRIID IND protocols FY07-15 and FY03-24. Volunteers had to be at least 18-65

165 years old with known risk for *F. tularensis* exposure and willing to participate in the protocol for the  
166 duration of the study, approximately 6 months. They had to be medically cleared to participate by an  
167 investigator based on history, physical exam and laboratory testing. They could not have had a  
168 documented tularemia infection, been vaccinated against tularemia in the preceding 10 years for  
169 enrollment in FY07-15. For study FY03-24, volunteers could not have ever received a tularemia  
170 vaccination. Subjects could not have received antibiotics within the prior 7 days or vaccination with  
171 another vaccine within 4 weeks, be immunodeficient, have confirmed HIV or use immunosuppressing  
172 medications. Volunteers were also excluded if pregnant or lactating, allergic to vaccine components, or  
173 had clinically significant abnormal laboratory results within 60 days prior to vaccination.

174

## 175 ***Experimental Methods***

176 Following informed consent, volunteers were screened for inclusion in the study by  
177 medical history, physical examination, chest X-ray, electrocardiogram (EKG), CBC, chemistry,  
178 urinalysis, liver function tests, hepatitis and HIV antibodies. A baseline microagglutination titer  
179 was obtained and volunteers were excluded if positive. Females had a urine or serum pregnancy  
180 test. Those eligible were administered vaccine on study day 0, with follow-up for take reaction  
181 on days 1, 2 and between day 5 and 9. Volunteers returned between days 12-16 and 28-35 for  
182 adverse event assessment, with microagglutination titers (MA) obtained between days 28-35. A  
183 close-out interview, and final scarification site assessment were completed at 6 months for  
184 protocol 07-15 and at one year for 03-24. Second doses of vaccine were not routinely  
185 administered unless a subject did not have an initial take reaction. Subjects with insufficient  
186 initial responses to vaccine at 28-35 days had MA titers recorded. In protocol 07-15, subjects  
187 returned for follow-up examination on days 1 and 2, between days 5-9, 12-16, and 28-35, and at  
188 6 months ( $\pm 14$  days) after vaccination or revaccination for clinical evaluation of AEs and to

189 document responses to vaccine. Additionally, subjects were in some cases asked to return on  
190 days 56-84 for laboratory tests.

191

## 192 ***Immunogenicity and Serology***

193 Vaccination effectiveness was assessed based on formation of an erythematous papule,  
194 vesicle, and/or eschar with or without underlying induration, known as a ‘take reaction’ between  
195 5 and 9 days after vaccination. Microagglutination titers (MA) were performed by the  
196 USAMRIID Research Serology lab using previously described methods (17, 18). Briefly,  
197 patient serum collected at the indicated time points below was incubated with a standardized 1:5  
198 dilution *Ft* antigen for 24+/- 4 hours at serial dilutions from 1:10 to 1:20,480. The highest serum  
199 dilution observed with an even lattice of agglutination and only a small transparent button of  
200 stained cells at the bottom of the microtube well was considered the endpoint titer. Rabbit  
201 antiserum was used as a positive control, and pre-tested human serum as a negative control. An  
202 MA titer  $\geq 1:20$  was considered a positive response in protocol FY03-24 while a 4-fold rise in  
203 titer from baseline were considered a positive antibody response for protocol FY07-15. The  
204 change in protocol FY07-15 was made at least partly in response to a participant who had a high  
205 background titer of 1:40. The participant was not vaccinated and subsequently developed  
206 tularemia due to a laboratory exposure(19). MA titer was repeated at day 56-84 if the day 28-35  
207 MA titer increased less than 4-fold. If there was no positive take reaction following the initial  
208 vaccination, a second dose was recommended and offered at least 28 days after the previous  
209 vaccination. If there was no positive take reaction 28-35 days after the second dose, or MA titer  
210 increased less than 4-fold, a third dose was considered.

211



## 212 *Safety*

213 Participants were monitored continuously for adverse events throughout the study.  
214 Adverse events were described using contemporary versions of the National Cancer Institute  
215 Common Terminology Criteria for Adverse Events (CTCAE). Adverse events and subject safety  
216 concerns were reviewed by the Investigator as well as the Sponsor's clinical research and  
217 medical monitors. Subjects were monitored for 30 minutes following vaccination. Subjects were  
218 seen in clinic for follow-up on Days 1, 2, 7, 14 and 28. Study staff contacted subjects at week 3  
219 by phone or email to ensure attendance at the week 4-5 safety and immunogenicity assessment.

220

## 221 *Statistical Analysis*

222 At the conclusion of the study, data were transformed to SAS® data format using  
223 DBMS/COPY™ or system-specific data transfer programs. Descriptive tables of demographics,  
224 compliance, frequency and rate of each reaction, responder and non-responder rates, study  
225 deviations, concomitant medications, any local injection measurements or vitals taken, and out-  
226 of-reference range laboratory values were compiled.

227 Endpoint measurements were evaluated for all intent-to-treat subjects regardless of  
228 compliance with titer schedule. However, titers obtained on samples collected outside the  
229 protocol prescribed window were excluded from further analysis. Data from the final statistical  
230 analysis report from each study was reviewed. Key immunogenicity outcome measures included  
231 'take reaction' and MA titers. MA titer criteria differed by study with a >1:20 considered  
232 positive in the FY03-24 study compared to a 4-fold rise for the FY07-15 study. Safety endpoints  
233 included vaccine relatedness of adverse events as well as frequency and severity.

234 For the purposes of this analysis comparisons of titer response and take reaction by  
235 categorical variables (i.e. sex) were conducted using t-test and Pearson's chi-squared analysis  
236 respectively. Comparisons of titer response and take reaction by continuous variables (i.e. age)  
237 were conducted using simple linear regression and simple logistic regression analysis  
238 respectively. Statistical significance was defined at the two-tailed 95% confidence level. All  
239 analysis was performed using GraphPad Prism version 8.0.0 for Windows (GraphPad Software,  
240 San Diego, California USA, [www.graphpad.com](http://www.graphpad.com)).

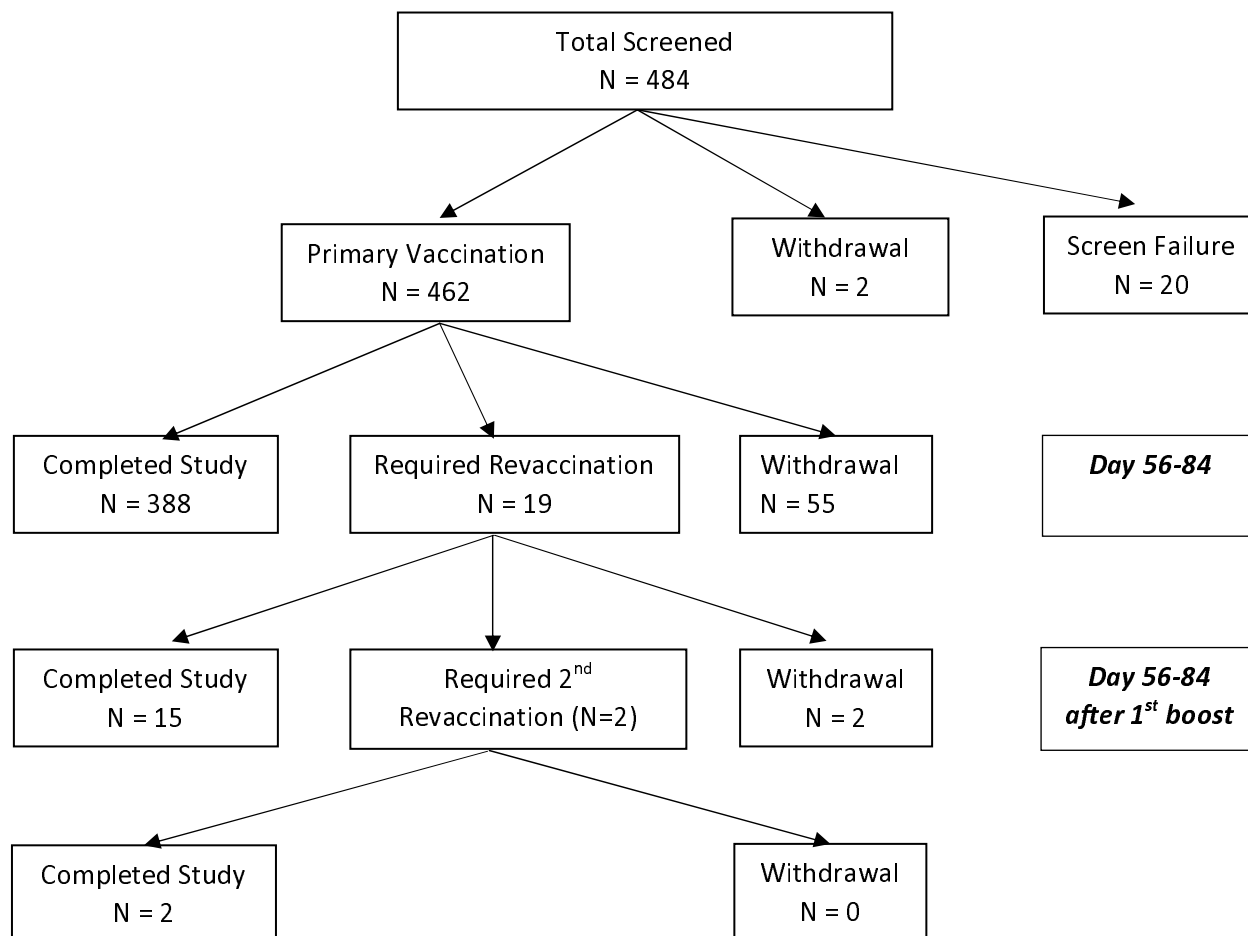
241

## 242 **Results**

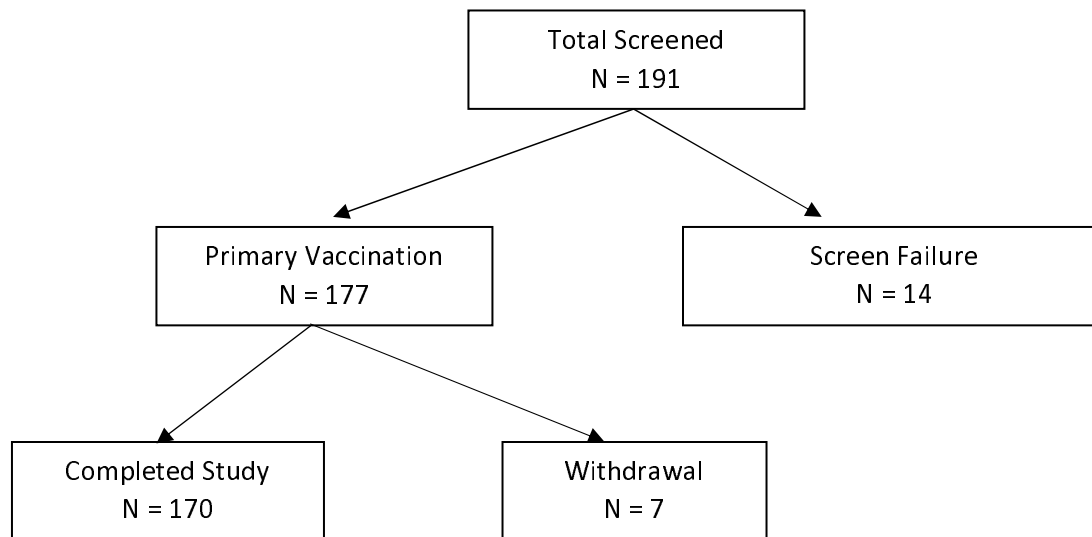
243

244 There were 484 subjects screened for study FY03-24 which ran between October 2004 and  
245 September 2008. Of the 462 vaccinated, 405 completed the final study visit at 6 months. To enroll in the  
246 study, subjects had to have a titer <1:20, no previous vaccination, and no documented tularemia infection.  
247 A small number (21) were revaccinated with the same initial dose of vaccine, based on inadequate  
248 response to the initial vaccination (titer <1:20) and two required a second revaccination (3<sup>rd</sup> dose) (**Figure**  
249 **1a**). There were 191 subjects screened and 177 vaccinated for study FY07-15 which ran between August  
250 2009 and May 2017. In contrast to FY03-24, subjects could not have had a prior tularemia vaccination  
251 within the past 10 years. In FY07-15 subjects with inadequate titers were not revaccinated. Adequate  
252 titers were also defined differently as greater than 4-fold rise over baseline. There were 170 completing  
253 FY07-15 with 7 withdrawals before the final study visit at 6 months.

254 **Figure 1a: CONSORT diagram.** Disposition of subjects enrolled to LVS tularemia vaccine study  
 255 FY03-24 (enrollment from 10/01/2004 to 09/15/2008). Reasons for screening failures included having  
 256 previously received the vaccine or having a positive titer (n=10), previous exposure (1), medical reason  
 257 (1), not able to travel to USAMRIID to receive the vaccine (1), or no longer at risk (7).  
 258  
 259



260 **Figure 1b: CONSORT diagram.** Disposition of Subjects enrolled to LVS tularemia vaccine FY 07-15  
261 (enrollment from 08/28/2009 to 05/05/2017). To enroll in the study, subjects could not have had a prior  
262 tularemia vaccination within the past 10 years. Reasons for screening failure included medical (5),  
263 relocation prior to vaccination (3), and no longer at occupational risk (6). Subjects were considered to be  
264 fully vaccinated if they had a 4-fold rise from baseline, and a positive ‘take reaction’.



265  
266

267 Demographic characteristics of participants in both studies are shown in Table 1. More  
268 than 10% of subjects entering FY03-24, and 25% of those in FY07-15 had baseline  
269 microagglutination titers against tularemia >1:20. It should be noted that having a titer >1:20  
270 was not exclusionary in FY07-15. More than 60% of subjects in both studies were 20-40 years  
271 old, >60% male, and >85% Caucasian.

272 **Table 1: Participant Demographics.** Characteristics of participants screened for the two studies - FY  
 273 03-24 (2004-2008) and FY 07-15 (2009-2017).

Study	FY 03-24 (N=484)		FY 07-15 (N=191)		Total	
Characteristic	N	%	N	%	N	%
<b>Sex</b>						
Male	310	64.0	112	58.6	422	62.5
Female	174	36.0	79	41.4	253	37.5
<b>Race</b>						
White	421	87.0	162	84.8	583	86.4
African American	26	5.4	10	5.2	36	5.3
American Native	2	0.4	1	0.5	3	0.4
Asian	14	2.9	13	6.8	27	4.0
Pacific Islander	2	0.4	0	0	2	0.3
Other	19	3.9	5	2.6	24	3.6
<b>Age</b>						
< 20	2	0.4	0	0	2	0.3
20 - 29	128	26.4	53	27.7	181	26.8
30 - 39	152	31.4	77	40.3	229	33.9
40 - 49	124	25.6	46	24.1	170	25.2
50 - 59	66	13.6	14	7.3	80	11.9
60 - 69	12	2.5	1	0.5	13	1.9
<b>Baseline Titer</b>						
≥ 1:20	49	10.1	54	28.3	103	15.3
< 1:20	435	89.9	137	71.7	572	84.7

274  
 275  
 276 **Immunogenicity**  
 277  
 278 Overall, the Live *F. tularensis* Vaccine (NDBR-101, Lot 4) had comparable rates of  
 279 immunogenicity to those seen in prior studies based on the two principle measures – microagglutination  
 280 antibody titers and take reaction (**Table 3**). Immunogenicity response rates were uniformly high. In both  
 281 studies, all protocol-compliant subjects had a measurable immune response (titer ≥ 1:20 and ‘take  
 282 reaction’). A positive ‘take reaction’ was defined as development of one of the following: erythematous  
 283 papule, vesicle, and/or eschar formation. All 177 subjects vaccinated (100%) in FY07-15 had a positive  
 284 ‘take reaction’ within 9 days of vaccination, suggesting a robust qualitative cellular immunity response  
 285 within 14 days. In FY03-24, 95.5% of subjects (n=441; SEM=0.010) had a positive take reaction at first  
 286 vaccination. Subjects in FY03-24 without adequate initial responses were revaccinated. Positive take  
 287 reactions were seen in 89.5% (n=17; SEM 0.007) of those receiving a first revaccination, and 100%

288 receiving a 2nd revaccination. No statistically significant differences in ‘take reaction’ rates for any  
289 vaccination event were observed when analyzed by sex (via Pearson’s chi-square) or age (simple logistic  
290 regression).

291  
292 In protocol FY03-24, of 454 protocol-compliant post-vaccination titers collected at day 28-35,  
293 442 (98.6%) were  $\geq 1:20$ . LVS was also highly immunogenic in the FY07-15 study where  
294 immunogenicity was defined as  $\geq 4$ -fold rise in MA antibody titer following vaccination. This  
295 immunogenicity endpoint definition differed from prior studies, including FY03-24 where a 1:20 titer  
296 value was considered immunogenic. All but 9 subjects vaccinated in FY07-15 had a  $\geq 4$ -fold rise in titer  
297 by day 28-35 and were not evaluated again. There were 9 subjects (5%) who had titers repeated at day  
298 56-84, and of these 6 of 9 (67%) had a  $\geq 4$ -fold rise in titer while 3 remained non-responders (33.3%).  
299 However, all 3 of the latter individuals had ‘take reactions’. One of the 3 non-responders developed an  
300 upper respiratory infection and was treated with antibiotics within the 1st week after vaccination,  
301 providing a likely cause for non-response. The study duration of individual subjects in the FY07-15  
302 protocol was limited to 6 months.

303  
304 Microagglutination titers over time are shown in **Figure 2A**. For study FY07-15 titers were  
305 obtained in 191 subjects at baseline (mean ( $\bar{x}$ )=15.4, SEM=3.7), and 177 subjects at day 28-35 ( $\bar{x}$ =535,  
306 SEM=51.2). A small number (n=14) had follow-up titers at 6 months ( $\mu$ =262, SEM=97.0). Titers for  
307 subjects from FY03-24 are shown at baseline ( $\bar{x}$ =9.3, SEM=0.4; n=484), day 28-35 ( $\bar{x}$ =379.7,  
308 SEM=27.3; n=459) and 12 months ( $\bar{x}$ =194.3, SEM=11.3; n = 407) after first vaccination. Responses  
309 were modest but nearly all  $\geq 1:20$  for the 19 subjects receiving a 1<sup>st</sup> revaccination ( $\bar{x}$ =55.16, SEM=17.06),  
310 and 2 receiving a 2<sup>nd</sup> revaccination ( $\bar{x}$ =30.0, SEM=10). Geometric mean titers are shown in Figure 2B  
311 with baseline values for FY03-24 of 7.98 (95% confidence interval (95% CI) =7.69-8.28), and 9.56  
312 (95% CI=8.67-10.54) for FY07-15. Peak geomean titers at vaccination day 28-35 were 181 for FY03-24  
313 (95% CI=161–204) but significantly higher at 269 for FY07-15 (95% CI=223–323; p=0.0006 for t-test of

314 log-transformed data). Month 12 geomean titers were 117 (95%CI=105–130) in FY03-24 while month 6  
315 geomean titers where available for FY07-15 were 101.7 (95%CI=24.6–421).

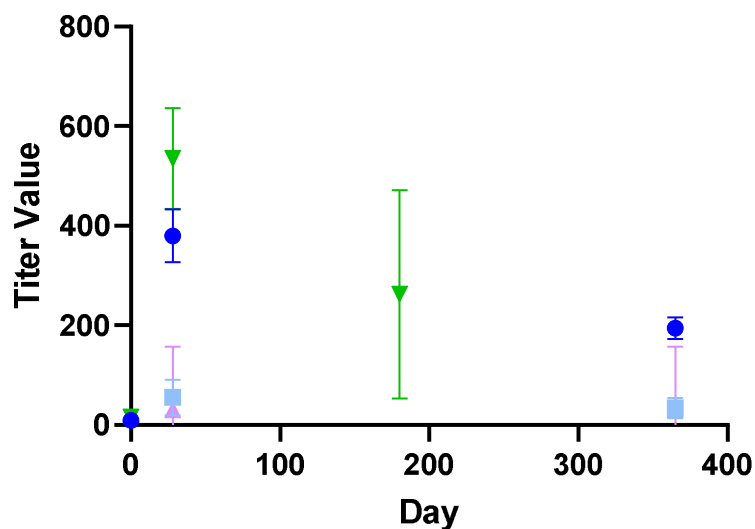
316  
317           There were very few follow-up titers at the 6 month time point for FY 07-15 (n=14 of the original  
318 191 vaccinated) as these were only performed if the day 28-35 response was inadequate. Substantially  
319 more had 12 month follow-up titers in FY 03-24 (n=407 of the 459 vaccinated). Where available, titer  
320 levels were largely sustained at month 12 for the small number revaccinated with mean values of 33.9  
321 (SEM=9.7; n=18) for first revaccination and 30.0 (SEM=10) for the 2 undergoing a 2<sup>nd</sup> revaccination. It  
322 is noteworthy that the same lot of vaccine was used for both studies, though titer responses were higher  
323 following initial vaccination in study FY07-15 (535 vs 380; p= 0.004).

324  
325           There were no significant difference in mean titer values for either study by sex (**Figure 3A**).  
326 There was not a statistically significant difference between males and females for month 12 titer in FY03-  
327 24 (185.2 vs 209.8; p = 0.296). There was not a statistically significant difference by age for month 12  
328 titer, though the observed modest decrease in titer with age did approach statistical significance ( $y=-$   
329  $2.081x+273.2$ ; p = 0.0585). Simple linear regression of titer values by age revealed modest statistically  
330 significant declines with increasing age (**Figure 3B**) for study FY03-24 where there were more than twice  
331 as many subjects enrolled but not FY07-15.

332  
333

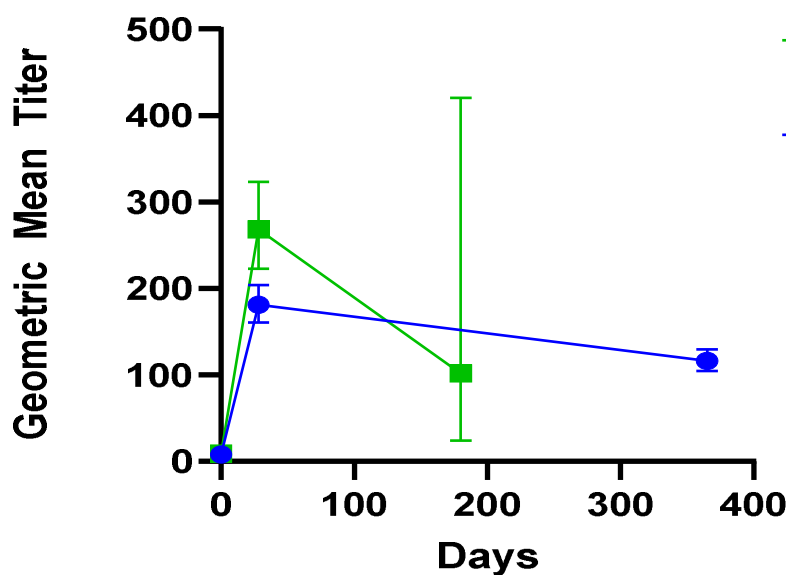
334 **Figure 2. Microagglutination titers over time by study.** A. Mean and standard error of the mean  
335 (SEM) bars for titer values are shown for the two studies. Titers were obtained at baseline, day 28-35,  
336 and 6 months for study FY07-15 (green triangles). All 177 subjects vaccinated (100%) in FY07-15 had a  
337 positive ‘take reaction’ within 14 days. Titers for subjects from FY03-24 are shown at baseline, and days  
338 28-35 after first vaccination, and 12 months (blue circles). Mean and standard error bars are also shown  
339 for the 21 subjects receiving a 1<sup>st</sup> revaccination (light blue squares), and 2 receiving a 2<sup>nd</sup> revaccination  
340 (pink triangles). In FY03-24, 95.5% of subjects had a positive take reaction at first vaccination. 89.5% of  
341 those receiving a first revaccination, and 100% receiving 2<sup>nd</sup> revaccination had a positive ‘take reaction’.  
342 **B.** Geometric mean titers with 95% confidence intervals for each time point are shown with green squares  
343 representing FY07-15 titers following initial vaccinations only, and blue circles representing FY03-24.

344 A.



345

346 B.

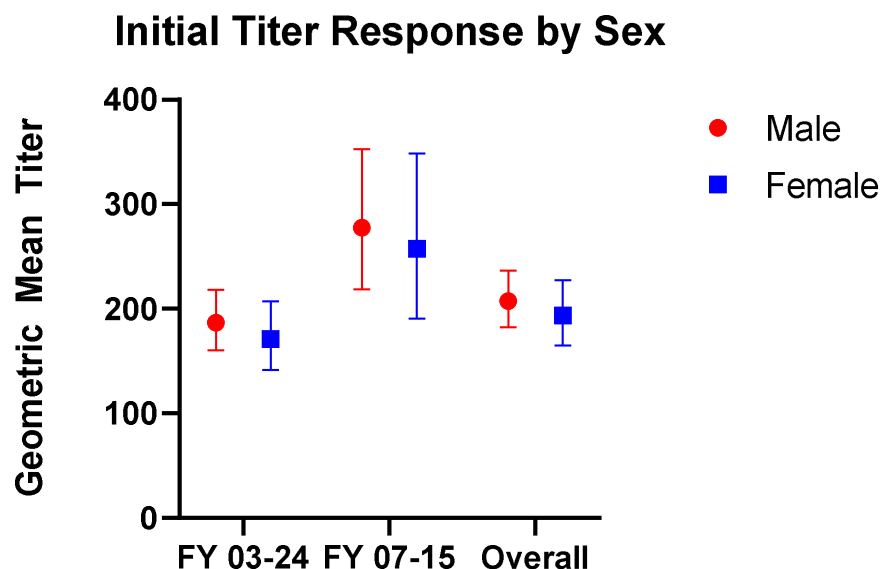


347



348 **Figure 3. Microagglutination Titer Values by Age and Sex at day 28-35.** A. Geometric mean  
349 microagglutination titer values are shown for male (red circle) and female (blue squares) subjects from  
350 Study FY07-15 and FY03-24 as well as for the two studies combined following first vaccination. There  
351 were no significant differences in either study by sex. Geometric mean titers (with 95% confidence  
352 intervals) in FY03-24 were 186.9 (160.2–218.1) for males and 171.2 (141.6 – 207.1) for females  
353 (unpaired t-test  $p = 0.488$ ). Geometric mean FY07-15 titers were 277.6 (218.4–352.7) for males and 257.6  
354 (190.5–348.5) for females (unpaired t-test  $p = 0.699$ ). Overall geometric mean titers were 207.6 (182.2–  
355 236.5) for males and 193.6 (164.7 – 227.5) for females (t-test  $p=0.5110$ ). **B.** Simple linear regression of  
356 log-transformed titer values by age is shown for FY03-24 (blue lines/dots), FY07-15 (green lines/dots),  
357 and the two studies combined (orange lines). While there was a statistically significant decline by age in  
358 FY 03-24 ( $y=-0.00857x+2.510$ ;  $p = 0.0016$ ) and overall ( $Y = -0.00799 + 2.550$ ;  $p = 0.0008$ ), decline was  
359 not significant in FY07-15 alone ( $Y = -0.00392 + 2.571$ ;  $p = 0.4088$ ).

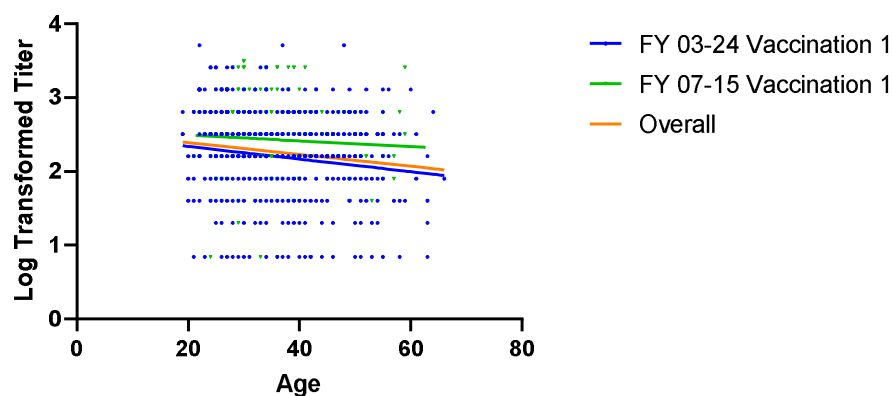
360 **A.**



361

362 **B.**

**Regression of Log Transformed Titer by Age**



363

364  
365 Adverse events are shown in **Table 2**. In study FY03-24, 401 of 462 vaccinated subjects (86.6%)  
366 had at least one adverse event during the course of the study. In FY07-15, 170 of 177 (96.1%) reported at  
367 least one AE. Local AEs were most common, reported in 84.1% in FY03-24, and 81.4% in FY07-15 with  
368 only 1 local event graded as severe in the former study. Scarification site lesions and pain were the most  
369 prominent overall, accounting for nearly 2/3 of local reactions. Systemic adverse events occurred in  
370 fewer than 17% of those vaccinated with leading causes including fatigue (4.8%), headache (3.9%),  
371 myalgia (2.9%) or fever/chills (1.5%). Pharyngitis, often unilateral and with a tonsillar exudate was seen  
372 in less than 1% of subjects. Most AE rates were consistent across the two studies, with the exception of  
373 lymphadenopathy which was noticeably higher in FY03-24 (18.2% vs 2.8%). Anatomic sites of observed  
374 lymphadenopathy in study FY03-24 included 65 axillary, 15 epitrochlear, 2 cervical, and 143 unspecified  
375 with 17 reported as epitrochlear in FY07-15 (and the remainder unspecified). Scarification site pain was  
376 more commonly reported in FY07-15 (43.5% vs 16.6%).

377  
378 All adverse events, including serious adverse events, had onset dates up to 37 days post-  
379 vaccination. Duration of adverse events, including serious adverse events, ranged from 1 to 367 days.  
380 Two serious adverse events (SAEs) were reported. Both required hospitalization. One - a case of acute  
381 appendicitis 23 days after vaccination - resolved within 2 days. The second was a coronary artery disease  
382 event occurring 24 days after vaccine administration, which resolved in 21 days. Neither was determined  
383 to be related to the vaccine, nor deemed to be life threatening. **Figure 4** shows representative take  
384 reactions in 3 individuals from the FY03-24 study to illustrate typical appearance on the volar forearm.

385

386 **Table 2: Adverse events reported following LVS vaccination.** Adverse events reported at any time  
 387 during the study period are shown. Only AEs determined by an investigator to be probably or definitely  
 388 related to vaccination are included.

Adverse Event	FY03-24 (N=462)		FY07-15 (N=177)		Totals (N=639)	
	n	%	n	%	n	%
<b>Total Events Reported</b>	<b>1236</b>	<b>100</b>	<b>614</b>	<b>100</b>	<b>1850</b>	<b>100</b>
<b>Participants reporting any AE</b>	<b>401</b>	<b>86.8</b>	<b>170</b>	<b>96.1</b>	<b>571</b>	<b>89.4</b>
<b>Local</b>	<b>1040</b>	<b>84.1</b>	<b>500</b>	<b>81.4</b>	<b>1540</b>	<b>83.2</b>
Mild	1013	81.7	473	77	1486	80.3
Moderate	26	2.1	27	4.4	53	2.9
Severe	1	0.1	0	0	1	0.1
<b>By Specific Term</b>						
Scarification site Lesions	509	41.2	212	34.5	721	39.0
Lymphadenopathy	225	18.2	17	2.8	242	13.1
Scarification site Pain/Pruritis	205	16.6	267	43.5	472	25.5
Injection Arm Pain	73	5.9	4	0.7	77	4.2
Injection Arm Edema	14	1.1			14	0.8
Shoulder / Neck Pain	14	1.1			14	0.8
<b>Systemic</b>	<b>196</b>	<b>15.9</b>	<b>114</b>	<b>18.6</b>	<b>310</b>	<b>16.8</b>
Mild	162	13.1	96	15.6	258	13.9
Moderate	31	2.5	16	2.6	47	2.5
Severe	3	0.2	2	0.3	5	0.3
<b>By Specific Term</b>						
Fatigue / Malaise	50	4	38	6.2	88	4.8
Headache	45	3.6	28	4.6	73	3.9
Generalized musculoskeletal pain/stiffness	40	3.2	14	2.3	54	2.9
Fever / Chills / Night Sweats	15	1.2	13	2.1	28	1.5
Pharyngitis	13	1.1	2	0.3	15	0.8
Rhinitis	13	1.1	4	0.7	17	0.9

389

390 **Figure 4. LVS live, attenuated tularemia vaccine “take reactions” in three representative individuals.** A single dose of 0.06 ml of LVS  
 391 vaccine at a concentration of  $1.0 \times 10^9$  organisms/mL was inoculated into the volar forearm of each volunteer using the scarification method.  
 392 Although the three individuals depicted were immunized using the same technique, these pictures show a range of possible reactions. The three  
 393 individuals had day 28-35 MA titers of 160, 80, and 640 respectively. As shown in the photographs, in all three cases there is appreciable healing  
 394 of the site by day 14 following vaccination. By day 28 only a small hyper-pigmented macule remained at each vaccination site (not shown).

395



396

## 397 Discussion

398  
399 The results seen from the most recent LVS protocols at USAMRIID parallel those from a large  
400 body of clinical trials conducted from the mid-1950s to the present in late 2017. The data presented here  
401 from 2004 - 2017 may represent the final LVS doses provided to volunteers under an IND clinical study.  
402 The clinical experience with the *F. tularensis* Vaccine, Live, NDBR 101 and related LVS vaccine lots is  
403 summarized in **Table 4** below. Lot 4, NDBR 101 manufactured in 1962 has been in at least 1,998  
404 volunteers under IND 157. Combined with literature reports using other vaccine lots, LVS has been  
405 administered to roughly 4,279 volunteers. Overall, the vaccine has been shown to be safe. Common side  
406 effects include local lymphadenitis and scarification site pain in up to 80% within a few days of  
407 inoculation. Short-lived mild to moderate systemic symptoms (fever, malaise, myalgia) are also common  
408 in 15-20% within a few days to one week of inoculation. There have been only a handful of serious  
409 adverse events reported over this long period of use, none of which have so far been attributed to the  
410 vaccine. Particularly remarkable is that vaccine lots used in the present were up to 55 years old, retaining  
411 remarkable potency under controlled storage conditions. Immunogenicity as measured by the ‘take  
412 reaction’ has been consistently high with 95-100% of volunteers reacting after the first vaccination.  
413 Nearly all respond after a booster, even many years after lot manufacture. Likewise, immune reactions as  
414 measured by micro-agglutination titers greater than 1:20 are typically seen in 90% of recipients by 4  
415 weeks and approaching 100% by 8 weeks. These simple, well-established findings should serve as  
416 benchmarks for future tularemia vaccine candidates.

417  
418 As a result of years of diligent effort, a tremendous amount is known about the clinical  
419 characteristics of live, attenuated self-replicating tularemia vaccines. While there has not been an  
420 opportunity to demonstrate vaccine efficacy against a deliberate biological attack, carefully conducted  
421 human challenge studies under Operation White Coat using the SCHU-S4 strain reveal important insights  
422 into vaccine performance parameters (10). Antibody levels  $\geq$  1:20 by microagglutination assay (thought

423 to be protective) were reached in the vast majority of volunteers following a single LVS dose (**Table 3**).  
424 **Table 4** summarizes published challenge study reports. LVS was protective in most cases against low-  
425 concentration SCHU-S4 challenge (2,500 organisms), though vaccine efficacy could be overcome at  
426 higher challenge concentrations (25,000 organisms) - 100-1,000-fold times greater than the minimum  
427 human infectious doses (3, 20, 21). Protection was afforded against both aerosol and intradermal  
428 challenge, though greater against the latter; see **Table 4**. While it is unlikely such studies could be  
429 approved today on ethical grounds, it should be noted that it was rare even for unvaccinated subjects  
430 challenged with low concentrations of tularemia to require antibiotic therapy. Many vaccinated subjects  
431 did not require antibiotic therapy at higher challenge concentrations, though unvaccinated subjects did so  
432 universally (22). In addition to direct evidence from challenge, indirect evidence comes from  
433 demonstrated reductions in occupational exposure infections among at-risk laboratory workers after  
434 introduction of LVS (23). The role of vaccination in an individual with an active infection or after  
435 virulent tularemia exposure is unclear, and should be evaluated in the future.

436  
437 Microagglutination titers remained remarkably stable in the present study spanning 13 years of  
438 vaccination with the same product lot manufactured in 1962. The resiliency of present vaccine lot  
439 immunogenicity observed is consistent with a recent active comparator study. No differences were found  
440 in take reaction or seroconversion by microagglutination between the USAMRIID LVS vaccine and a  
441 newer vaccine lot manufactured for which NDBR 101, lot 4 served as seed material (24). Surprisingly,  
442 mean titers were modestly higher among subjects in the later study (FY07-15) despite the continued aging  
443 of lot 4. While there is no immediate explanation for this, titers were only modestly elevated (535)  
444 compared to averages in FY03-24 (mean=380). Despite this long term stability and the aforementioned  
445 protective efficacy, specific immune correlates of protection remain elusive. The role of humoral  
446 immunity in clinical protection from tularemia remains controversial and poorly understood.  
447 Conventional wisdom would indicate that an intracellular bacterium might require a cellular immune  
448 response (25), though an extracellular form of the organism has been identified (26). In humans,

449 circulating antibodies to *F. tularensis* were initially measured with agglutination assays and enzyme-  
450 linked immunosorbent assays (ELISA) (27-29). In clinical research, a  $\geq 1:20$  microagglutination titer has  
451 been used to indicate an adequate vaccine response. LVS administered to subjects by scarification has  
452 reliably exceeded this benchmark over more than 6 decades (see **Table 3**). Bacterial agglutinins have  
453 been shown to increase and persist for at least 3 years (12). Limited evidence in mice indicates that  
454 antibody response is targeted to the lipopolysaccharide (*Ft* LPS) in both mice and humans. At least  
455 partial immunity is provided in passive antibody transfer studies from both murine and human donors  
456 with prior LVS vaccination (30, 31) as well as levofloxacin-treated mice who survived SCHU-S4  
457 challenge (32). This appears to be mediated by the Fc- $\gamma$  receptor (Fc $\gamma$ R) (33). Currently available  
458 serologic markers of infection are not helpful for real-time diagnosis given a typical delayed rise in IgM,  
459 concurrent with IgG 2-3 weeks after symptom onset. Nor do they indicate successful treatment as IgG can  
460 remain elevated for several years (34). Recently, an outbred rabbit (Rb) model, coupled with a series of  
461 live attenuated S4-based vaccines (S4 $\Delta$ aroD, S4 $\Delta$ guaBA, and S4 $\Delta$ clpB) and wild type Schu S4 aerosol  
462 challenge (~2,000 CFU) were used to identify clinically measurable correlates of protection (COP).  
463 Analysis of individual rabbits (Rb) enabled retrospective identification of Rb COP that predicted S4  
464 challenge outcome. In pilot studies, the group found several “Antigenic” COP in plasma of 80% of LVS-  
465 vaccinated humans (35).

466  
467 It is thought that cellular immunity may play a dominant role in protection from tularemia given  
468 intracellular replication, predominantly in macrophages (36). The ‘take reaction’ following LVS  
469 vaccination is the most reliable indicator of cellular immunity, occurring in 90% or more of vaccinations  
470 (**Table 4**). However, take reaction assessment has been implicated in divergence between take and MA  
471 titer results, highlighting the importance of experienced readers. Immunogenicity in the present study  
472 differed from a recent study comparing USAMRIID LVS to a more recently manufactured batch by  
473 Dynport Vaccine Company (DVC-LVS) where there was greater discordance between MA and take  
474 reaction results (24). Following immunization or exposure to disease, a rarely used skin test (the Foshay

475 test) has been shown to remain positive for up to 10 years (15, 37). Cellular immunity in humans is also  
476 measurable by a lymphocyte transformation test (38). While CD4 and CD8+ T-cells have been thought to  
477 be predominantly responsible, roles of dendritic cells, macrophages, neutrophils and natural killer cells  
478 have also been described (36). Cellular responses appear 2 weeks after vaccination as well as tularemia  
479 disease (38, 39), in comparison to serology which typically becomes positive in 2-4 weeks (40).  
480 However, evidence for the precise immune components involved in cell-mediated immunity remains  
481 incomplete. It appears likely both humoral and cellular immunity play a role. Passive transfer of spleen  
482 cells from vaccinated mice were protective against challenge with doses of LVS normally lethal to mice  
483 (but not humans) (41). Transfer of thoracic duct lymphocytes from immunized rats reduced the burden of  
484 infection following a low dose challenge with Ft LVS organisms in naïve rats, while rats given serum  
485 from immunized rats were not protected against Ft challenge (42). Rats vaccinated with aerosolized LVS  
486 survived subsequent lethal aerosol challenge with SCHU S4 without systemic infection. Tularemia  
487 replication in the lungs and characteristic pulmonary granulomatous lesions were reduced substantially  
488 though not eliminated (43), suggesting cellular protection. However, the translation of animal model  
489 findings to humans has remained elusive. At least some recent progress has been made at elucidating  
490 correlates in a rat co-culture model (44). In the model, T-cells from vaccinated rats are incubated *ex vivo*  
491 with tularemia-infected rat macrophages. It is thought that the same approach might be applied to human  
492 vaccine studies better elucidate cellular correlates of protection. A human model has been developed but  
493 has yet to be validated or submitted to a stringent regulatory authority for approval as a surrogate  
494 endpoint (45).

495  
496       There may also be a role for mucosal immunity, given that both aerosolized LVS and aerosolized  
497 tularemia itself lead to development of immunity, the former more rapidly though of the same peak  
498 magnitude by 4 weeks as the intradermal route (22). When comparing cutaneous to aerosol vaccination  
499 in non-human primates, vaccine organisms were recoverable from the site of inoculation initially. Within  
500 28 days they could be isolated from lymph nodes, liver and spleen but were cleared from the body by 90



501 days (12). IgA deficient mice were not protected against aerosol challenge following vaccination (46,  
502 47). Immunity following aerosol challenge has been demonstrated in non-human primates (*Macaca*  
503 *mulatta*) with a clear dose-response enhancing survival in animals given higher LVS doses ( $10^7$   
504 organisms) (22). In addition to dermal inoculation, LVS has proven to be protective as an aerosolized  
505 vaccine in humans, though side effects following higher doses required for protection may limit the  
506 practicality of this approach. In comparison, one study indicates that side effects at higher doses of  
507 inhaled SCHU S4 strain organisms ( $10^6 - 10^8$ ) included fever and flu-like symptoms lasting 2-3 days (6).  
508 Syrjala *et al.* demonstrated that all of the 6 of 16 individuals protected against challenge with the virulent  
509 SCHU S4 *Ft.* strain by previous aerosol exposure to LVS had measurable circulating antibody while only  
510 one the 10 individuals not protected did (48). Of note, the individuals in this study had active tularemia  
511 infections, confirmed with serology, rather than vaccinated individuals. Whether LVS would be effective  
512 and marketable via trans-mucosal delivery route remains to be seen but may be worth investigating  
513 among vaccine candidates.

514  
515 There is no identified replacement or competitor to LVS in clinical stage development at the time  
516 of writing. Key characteristics of an optimal tularemia vaccine could include lack of potential for  
517 reversion to wildtype tularemia in the case of live vaccines, a safety profile in humans equivalent or better  
518 than LVS, ease and low cost of manufacture, and efficacy against *Ft*-type A challenge in well-controlled  
519 large animal models. Comparable human immune correlates would need to be demonstrated in healthy  
520 volunteers, promising approaches demonstrated in murine (49) and human *ex vivo* co-culture model (45).  
521 A large slate of candidates have been produced over the years, and there is an excellent review on the  
522 subject published elsewhere (50). Approaches have focused on live, attenuated and inactivated tularemia  
523 vaccines employing various *Francisella* strains, particularly *F. holoarctica* and *F. novacida* (51).  
524 Inactivated vaccines may provide a safety advantage over live attenuated vaccines, but have yet to  
525 demonstrate comparable protection in animal models (46). Protein subunit vaccines would have a  
526 decided safety advantage, and also eliminate concerns for pathogenic strain reversion. However, this

527 approach has yet to yield an effective candidate in animal models. DNA and vectored vaccine approaches  
528 using attenuated virus or bacteria for the purpose of introducing tularemia antigens have similarly resulted  
529 in suboptimal levels of animal protection (50, 52). Vaccines targeting the Fc-gamma receptor (Fc $\gamma$ R)  
530 have been developed, given Fc $\gamma$ R's role in cellular phagocytosis and antigen presentation with mixed  
531 success (53).

532  
533 In summary, the LVS vaccine was well tolerated and proved once again to deliver high levels of  
534 positive take reactions and microagglutination titers in at-risk laboratory workers over a 13 year period.  
535 Of particular interest is the resilience of the vaccine in long-term storage at USAMRIID. Despite  
536 manufacture 42-55 years prior to the studies, sustained high response levels continued to be observed. An  
537 incompletely understood mechanism of attenuation, hypothetical concerns for potential reversion to  
538 wildtype and instability in culture remain challenges for licensure and (54). A successful effort to  
539 remanufacture and test the vaccine in 2006 demonstrated that LVS could be manufactured using modern  
540 methods (24). LVS attenuation mechanisms have also been partially elucidated with mutations in a Type  
541 IV pilin gene (pilA) and an outer membrane protein (FTT0918) implicated in murine model virulence  
542 (55). Despite use for more than 70 years and a large safety database, there is currently no plan to pursue  
543 full licensure of LVS. As potentially the last laboratory worker was vaccinated under a clinical trial in  
544 2017, the present work serves as a benchmark for safety, immunogenicity and long term potency against  
545 which to compare future alternative vaccine candidates. The long term potency of LVS would lend itself  
546 to a new vaccine protocol under IND for at risk personnel. These would reasonably include laboratory  
547 workers, military personnel and/or limited disaster preparedness stockpiles intended to deter deliberate  
548 biowarfare use. Given the US has no licensed measure for immunoprophylaxis against tularemia, a  
549 critical biodefense gap against a category A agent remains. Significant ongoing investment is needed.

**Table 3. Summary of LVS vaccine studies conducted at USAMRIID and partnered facilities.** Between the mid-1950s and 2017, the LVS tularemia vaccine was tested in numerous clinical trials to include 1) Healthy volunteer studies for safety and immunogenicity 2) Human challenge studies with tularemia via the cutaneous and aerosol routes with and 3) without vaccination, in the latter case to better understand the natural history of human challenge with the Schu-S4 tularemia strain 4) studies in otherwise healthy laboratory workers potentially exposed to tularemia. Data is included from both the published literature and that collected in studies conducted under IND #157 for *Tularemia Vaccine, Live, Attenuated*.

Years	Study Title	N	Immunogenicity	Safety
<b>1) Safety and Immunogenicity Studies; N = 181 from IND; N = 2009 from literature</b>				
1991-1993	Evaluation of the Safety and Immunogenicity of a Live Bacterial Tularemia Vaccine in Normal Adult Subjects (Protocol 91-9, Johns Hopkins University)	94	# (%) MA titer $\geq 1:20$ / Take reaction Lot 2R-85: 43 (91.5) / 47 (100) Lot 3-85: 46 (97.9) / 44 (93.6)	SAEs: none AEs: 273 total AE reported (Lot 2R-85 – 144; Lot 3-85 - 129)
1987-1991	Evaluation of New Lots of a Tularemia Vaccine, Protocol A: Initial Assessment of the Safety of <i>F. tularensis</i> Vaccine, Live, TSI-GSD-213, Lot 1R-85 (Protocol 87-4, Log A-4706) <sup>a</sup>	69 <sup>a</sup>	% take reaction: not reported # (%) MA titer $>1:20$ : Vaccine 33 (97) Placebo 3 (9)	SAEs: 1 (Hodgkin’s lymphoma, preexisting); 7 graded severe (4 vaccine / 3 placebo) # (%) AEs: 34 (100) treated 32 (91.4) untreated
1975	Evaluation in Volunteers of the Active-Rosette-Forming Lymphocyte Test as an Assay for Previous Immunization to Tularemia (Protocol 75-2)	11	Test of Foshay skin test – 6/6 with prior vaccination positive; 5/5 vaccine naïve negative	SAEs: none % AEs: none
1965	Metzger et al, 1965 (20); Bartelloni-1969 (3) <sup>b</sup>	185	# (%) take reaction: 181 (98) Partial protection from aerosol challenge; greater at lower dose	SAEs: none AEs: 30% lymphadenitis; systemic AEs not reported
1964	Evaluation of Attenuated Tularemia Vaccine (LVS) from National Drug Company (Protocol 65-4)	7	% take reaction: 100 % MA titer $>1:20$ : 100	SAEs: none % AEs: 5/7 lymphadenopathy
1958	Hornick et al, 1958 (22) <sup>c</sup>	24	% take reaction: 100 (24/24)	% AEs: not reported
1958	Hornick et al, 1958 (6) <sup>c</sup>	~1800	% take reaction: not reported % MA titer $>1:20$ : not reported	data in 308 subjects indicated local reaction; 25% axillary adenitis; fever $<10\%$ ; headache 6.5%; myalgia 5%; flu-like symptoms 14%
<b>Challenge Studies; N = 130 from IND; 282 from literature</b>				
1967	Evaluation of Storage Stability of Tularemia Vaccine, Live, Attenuated NDBR 101, Lot 4 (Protocol 68-4/68-	20	% take reaction: 100 # (%) MA titer $\geq 1:20$ : 20 (100)	SAE: none post-vaccine Systemic AE: 13 post-vaccine

	4A) [Inpatient 5yr storage stability human challenge study] <sup>e</sup>			
1966	Aerosolized LVS vaccine followed by challenge; Hornick and Eigelsbach, 1966 (22) <sup>d</sup>	253	# (%) MA titer $\geq$ 1:20: 97% by 3 weeks; cutaneous inoculation same rate but slower	AEs: At low dose (10 <sup>4</sup> org) 30% had mild systemic AEs; High dose (10 <sup>8</sup> ) - 90% systemic AEs
1964 - 1965	Evaluation of Attenuated Tularemia Vaccine (LVS) from National Drug Company (Protocol 65-8)  Evaluation of Storage Stability of Living Vaccine Strain (LVS) of <i>Pasteurella tularensis</i> (Protocol 65-13) and Evaluation of Metabolic Changes in Immunized Subjects Exposed to Infectious Doses of <i>P. tularensis</i> (65-13A)	20	% take reaction: 100 % MA titer > 1:20: 100% by week 4 for both lots  Subject requiring antibiotics low-dose (2.5k cfu) - 1 of 4 high dose (25k cfu) - 4 of 4 unvaccinated controls - 6 of 6	SAEs: none after vaccination (65-8) or challenge % AEs post-vaccine: 70% lymphadenopathy, no other conditions mentioned  AEs more common in high-dose challenge group
1964	Evaluation of Attenuated Tularemia Vaccine (LVS) from National Drug [Biologic Research] Company (Protocol 65-7)	12	% take reaction: 100 % MA titer > 1:20: 83% (10/12) by week 4	SAEs: none % AEs: 8% fever; 75% lymphadenopathy
1962	NDBR 101 (from Lots 1, 2, 3, 4, or 6) using the scarification technique <sup>f</sup>	78	# (%) take reaction: 77 (99) % MA titer >1:20: 68/71 (96)	% AEs: 36% (28/78) lymphadenitis; no systemic AEs
1961	Saslaw et al-1961 (56) <sup>g</sup> Saslaw and Carhart-1961 (57) <sup>g</sup>	29	MA titers peaked at 4-8 weeks	% AEs: 50% lymphadenopathy
<b>3) Challenge Only Studies; N = 10</b>				
1966	Respiratory <i>Pasteurella (Francisella) tularensis</i> in Man (Protocol 67-1)	10	% take reaction: N/A % MA titer > 1:20: 100% by week 4	SAEs: none recorded % AEs: 100% fever, HA, malaise; 9 AEs graded severe
<b>4) Clinical Studies (Single Arm Phase 2 in Laboratory Workers); N= 1,667</b>				
2009-2017	A Longitudinal Phase 2 Study for the Continued Evaluation of the Safety and Immunogenicity of a Live Francisella tularensis Vaccine, NDBR 101, Lot 4 in Healthy Adults At-Risk for Exposure to Francisella tularensis (Protocol FY07-15)	177	# (%) take reaction: 177 (100)  # (%) MA >1:20: 165 (93.2) by d28; 171 (97.1) by d84	# (%) SAE <sup>h</sup> : 2 # (%) local AE: 173 (97.7) # (%) systemic AE: Transaminase elevations:
2004-2009	A Longitudinal Phase 2 Study for the Continued Evaluation of the Safety and Immunogenicity of a Live Francisella tularensis Vaccine, NDBR 101, Lot 4 (Protocol FY03-24) <sup>i</sup>	484	# (%) take reaction: 441/462 (95.5) after primary dose # (%) MA titer > 1:20: Primary - 442/454 (97.4) Boost - 14/19 (73.7)	SAEs: none  # (%) related AE: 399 (86.4) # (%) systemic AE: 264 (57.1)
	No protocols conducted between 1999-2004			

1987-1999	Evaluation of New Lots of Tularemia Vaccine, Protocol B: Comparative Assessment of <i>F tularensis</i> Vaccine, Live, TSI-GSD-213 Lot 1R, and <i>F tularensis</i> Vaccine, Live, NDBR 101 Lot 11 (Protocol 87-9, conducted at USAMRIID and 18 extramural sites) <sup>j</sup>	284	Take reaction: not reported #(%) MA >1:20: 152/224 (68.3) at 1 month; 208/224 (92.9) by 12 months	SAEs: none, 2 graded severe  AE data not recorded for 128 of 297 doses administered
1965-1988	Evaluation of Stability and Protective Efficacy of Tularemia Vaccine, Live, Attenuated, among At-Risk Personnel (Protocol AB-104) <sup>k</sup>	722	% take reaction: 100 # (%) MA titer $\geq$ 1:20: 298 of 312 negative at baseline (99%) seroconverted	SAEs: none % AEs: 87% had at least 1 AE; 90 AEs out of 722 subjects were considered related to vaccine

Footnotes:

- a. Protocol 87-4 – Double-blind Phase 1 study at USAMRIID from 1987-1991; screened 100; randomized 69 to vaccine (N = 34) or placebo (N = 35). Null hypothesis was a rate of SAEs for vaccinated subjects  $\leq$  5% with an 80% confidence interval.
- b. Metzger J. Tularemia vaccine, live, attenuated. Att. IND 157. Folder 2, Medicine Division Archives, USAMRIID. File. 1965. 70IN.; Bartelloni PJ. Clinical studies of attenuated tularemia vaccine. Commission on Epidemiological Survey. Annual Report to the Armed Forces Epidemiological Board. Fiscal Year 1969:179-185.
- c. Hornick RB et al. Studies on Pasteurella tularensis: Evaluation of a living vaccine for tularemia. The United States Army Medical unit. Fort Detrick, MD. 1958 Annual Report. Section II: 1-5.
- d. Aerogenic Immunization of Man with Live Tularemia Vaccine; Hornick and Eigelsbach-1966; Aerosol dose ranged from  $10^4$ - $10^8$  organisms in 253 healthy subjects in 5 treatment groups.
- e. Each study group in Part II of the study - low-dose challenge (1,950 – 3,252 organisms) and high-dose challenge (21,751 – 35,100 organisms) included 8 vaccinated and 2 unvaccinated control subjects. Vaccination was protective in both groups – though a significantly greater number in the high-dose challenge developed clinical illness in the high dose group, only 1 of 8 needed antibiotics post challenge in the high dose challenge group, and none in the low-dose challenge group compared to 4 of 4 unvaccinated individuals.
- f. In this trial of subjects vaccinated with LVS, 11/ 68 serological responders were aerosol challenged with the SCHU S4 strain *Ft* 14 days post vaccination. 3/5 undergoing low dose challenge (2,200 organisms) were protected with 1/2 of those ill requiring antibiotics. Only 1/6 were protected following high dose challenge (24,250 organisms or 1,000x human infectious dose) though 3/5 who developed symptoms did not require antibiotics. All unvaccinated subjects challenged at low (4 subjects) and high (2 subjects) doses became ill and required antibiotics.
- g. Saslaw S, Carhart S. Studies with tularemia vaccines in subjects. III. Serologic aspects following intra-cutaneous or respiratory challenge in both vaccinated and unvaccinated subjects. Am J Med Sci 1961;241:689-99; Saslaw S, Eigelsbach HT, Wilson HE, et al. Tularemia vaccine study. I. Intra-cutaneous challenge. Arch Intern Med. 1961;107:689.
- h. Two serious adverse events (SAEs) were reported, both requiring hospitalization. 1<sup>st</sup> was acute appendicitis 23 days after vaccination resolving in 2 days. 2<sup>nd</sup> was an acute coronary artery disease event occurring 24 days after vaccine administration, and resolving in 21 days. Neither related to vaccine, nor life threatening.
- i. Protocol allowed for a primary vaccination (442/454 – 97.4% response) and a booster dose (14/19 – 73.7% response). Response was defined as in other protocols to be microagglutination titer > 1:20. After primary immunization, 441 of 462 subjects (95.5%) had a measurable take reaction, 17 of 19 subjects (89.5%) after the first boost, and 2 of 2 (100%) after the second boost.
- j. Phase 2 study conducted at USAMRIID and 18 extramural sites. Due to perceived safety concerns with TSI GSD 213 Lot 1R, the original protocol was amended to evaluate titer response and collect AE data from approximately 250 male and female subjects vaccinated with NDBR 101 Lot 11 only.
- k. Subjects enrolling in Protocol AB-104 may have received prior tularemia vaccination, including the Foshay inactivated vaccine. In study immune status was assessed in 95% of subjects (692/722); 45% of assessed subjects (312/692) had negative (< 1:20) and 33% (235/692) had positive ( $\geq$  1:20) titers in the 4 months prior to vaccination while 145 subjects (21%) had no baseline titer recorded and were classified as “unknown”.

**Table 4. Protective effects of live attenuated tularemia vaccine (LVS) or prior tularemia exposure against subsequent tularemia challenge.** Summary of historical literature where subjects underwent tularemia challenge after prior exposure or being randomized to vaccination with LVS or unvaccinated control groups. In A. subjects were vaccinated with LVS and then challenged by aerosol, while in B. they had been challenged previously without intervention, thus developing immunity to the disease. Subjects in C. were vaccinated with LVS, then challenged intradermally. In each experiment, subjects underwent subsequent challenge with the virulent SCHU-S4 strain at the doses and route indicated.

<b>A. LVS with aerosol challenge</b>					
	<b># Ill vs. # Challenged</b>		<b># Ill Requiring Treatment</b>		<b>Reference</b>
<b>Challenge Dose (No. of Organisms)</b>	<b>Vaccinated</b>	<b>Control</b>	<b>Vaccinated</b>	<b>Control</b>	
10 - 50	3/18	8/10	--	--	<a href="#">Van Metre-1959</a>
250	1/6	2/2	0	2	<a href="#">Falbich-1946</a>
2,500	2/5	2/2	0	2	<a href="#">Falbich-1946</a>
25,000	28/31	12/14	18	12	<a href="#">Falbich-1946</a>
<b>Total</b>	<b>34/60</b>	<b>24/28</b>	<b>18</b>	<b>16</b>	<a href="#">Paviovskiy-1953</a>

<b>B. Prior challenge with aerosol challenge</b>					
	<b># Ill vs. # Challenged</b>		<b># Ill Requiring Treatment</b>		
<b>Challenge Dose (No. of Organisms)</b>	<b>Infected</b>	<b>Control</b>	<b>Infected</b>	<b>Control</b>	
2,500	3/8	2/2	2/3	2/2	<a href="#">McCrumb-1962</a>
25,000	6/10	2/2	4/6	2/2	
<b>Total</b>	<b>9/18</b>	<b>4/4</b>	<b>6/9</b>	<b>4/4</b>	

<b>C. LVS with intra-dermal challenge</b>					
	<b># Ill vs. # Challenged</b>		<b># Ill Requiring Treatment</b>		
<b>Challenge Dose (No. of Organisms)</b>	<b>Vaccinated</b>	<b>Control</b>			
2,500	1/10	11/11	Not reported		<a href="#">Sawyer -1962</a>
8,200	1/8	-			
100,000	1/3	-			
<b>Total</b>	<b>3/21</b>	<b>11/11</b>			

**Acknowledgements:** The authors would like to acknowledge the hard work and dedication of all of the members of the investigative and regulatory teams who supported tularemia protocols over the years at USAMRIID, particularly Mark Goldberg, Robert Rivard, Craig Koca, Jason Regules, Mark Paxton, Dixon Rwakasyaguri, Sandi Parriott, Lisa Borek, Paileen Mongeli, Latricia Dye, Cynthia Donovan, Denise Clizbe, Kimberly Pozzouli, Arthur Freedlander, Lawrence Korman, Vincent Fulton, Joel Bozue, and Beverly Foghtman. Most importantly we would like to acknowledge the volunteers who did the hard work to advance knowledge on countering tularemia and other biothreats by virtue of their professions and their selfless service.

## References

1. Francis E. Deer-fly fever, or Pahvant Valley Plague. A disease of man of hitherto unknown etiology. *Public Health Reports*. 1919;34:2061-2.
2. Sanders C, Haun R. Analysis of 106 cases of tularemia. *J Louisiana State Med Soc*. 1968;120:391-3.
3. Bartelloni PJ. Clinical studies of attenuated tularemia vaccine. Commission on Epidemiological Survey. Annual Report to the Armed Forces Epidemiological Board Fiscal Year 1969.; 1969.
4. Jacobs RF. Tularemia. In: Fauci AS BE, Isselbacher KJ et al., editor. *Harrison's Principles of Internal Medicine*. 1. 14th ed1998. p. 971.
5. Dennis DT, Inglesby TV, Henderson DA, Bartlett JG, Ascher MS, Eitzen E, et al. Tularemia as a biological weapon: medical and public health management. *JAMA*. 2001;285(21):2763-73.
6. Hornick R. Studies on *Pasteurella tularensis*: Evaluation of a living vaccine for tularemia. 1958 Annual Report. Section II. Fort Detrick, MD: The United States Army Medical Unit.
7. Control) CUCfD. Key Facts About Tularemia. *Can Tularemia Be Used As a Weapon?* 2020 [
8. Van Metre TE, Jr., Kadull PJ. Laboratory-acquired tularemia in vaccinated individuals: a report of 62 cases. *Ann Intern Med*. 1959;50(3):621-32.
9. Overholt EL, Tigertt WD, Kadull PJ, Ward MK, Charkes ND, Rene RM, et al. An analysis of forty-two cases of laboratory-acquired tularemia. Treatment with broad spectrum antibiotics. *Am J Med*. 1961;30:785-806.
10. Williams MS, Baker MR, Guina T, Hewitt JA, Lanning L, Hill H, et al. Retrospective Analysis of Pneumonic Tularemia in Operation Whitecoat Human Subjects: Disease Progression and Tetracycline Efficacy. *Front Med (Lausanne)*. 2019;6:229.
11. Yeni DK, Buyuk F, Ashraf A, Shah M. Tularemia: a re-emerging tick-borne infectious disease. *Folia Microbiol (Praha)*. 2021;66(1):1-14.
12. Eigelsbach HT, Tulis JJ, McGavran MH, White JD. LIVE TULAREMIA VACCINE I. : Host-Parasite Relationship in Monkeys Vaccinated Intracutaneously or Aerogenically. *J Bacteriol*. 1962;84(5):1020-7.
13. Falbich MM. Dry living vaccine of NIIEG of the Red Army. Report I. *ZhMEI (USSR)* 1946;7:59-63.

14. Eigelsbach HT, Downs CM. Prophylactic effectiveness of live and killed tularemia vaccines. I. Production of vaccine and evaluation in the white mouse and guinea pig. *J Immunol.* 1961;87:415-25.
15. Koskela P, Herva E. Cell-mediated and humoral immunity induced by a live *Francisella tularensis* vaccine. *Infect Immun.* 1982;36(3):983-9.
16. Pittman PR, Plotkin S. Biodefense and special pathogen vaccines. In: Plotkin S, editor. *Plotkin's Vaccines 2018.* p. 149.
17. Sato T, Fujita H, Ohara Y, Homma M. Microagglutination test for early and specific serodiagnosis of tularemia. *J Clin Microbiol.* 1990;28(10):2372-4.
18. Massey ED, Mangiafico JA. Microagglutination test for detecting and measuring serum agglutinins of *Francisella tularensis*. *Appl Microbiol.* 1974;27(1):25-7.
19. Lam ST, Sammons-Jackson W, Sherwood J, Ressler R. Laboratory-acquired tularemia successfully treated with ciprofloxacin: a case report. *Infectious Diseases in Clinical Practice.* 2012;20(3):204-7.
20. Metzger J. Tularemia vaccine, live, attenuated. Att. IND 157. Folder 2, Med Div Archives, USAMRIID. File 70IN. 1965.
21. Sawyer W, Tigertt W, Crozier D. Annual Progress Report – United States Army Medical Unit FY1962:153.
22. Hornick RB, Eigelsbach HT. Aerogenic immunization of man with live tularemia vaccine. *Bacteriological reviews.* 1966;30(3):532-8.
23. Burke DS. Immunization against tularemia: analysis of the effectiveness of live *Francisella tularensis* vaccine in prevention of laboratory-acquired tularemia. *Journal of Infectious Diseases.* 1977;135(1):55-60.
24. Mulligan MJ, Stapleton JT, Keitel WA, Frey SE, Chen WH, Roupheal N, et al. Tularemia vaccine: Safety, reactogenicity, “Take” skin reactions, and antibody responses following vaccination with a new lot of the *Francisella tularensis* live vaccine strain—A phase 2 randomized clinical Trial. *Vaccine.* 2017;35(36):4730-7.
25. Kirimanjeswara GS, Olmos S, Bakshi CS, Metzger DW. Humoral and cell-mediated immunity to the intracellular pathogen *Francisella tularensis*. *Immunol Rev.* 2008;225:244-55.
26. Forestal CA, Malik M, Catlett SV, Savitt AG, Benach JL, Sellati TJ, et al. *Francisella tularensis* has a significant extracellular phase in infected mice. *J Infect Dis.* 2007;196(1):134-7.
27. Rusnak JM, Kortepeter MG, Hawley RJ, Anderson AO, Boudreau E, Eitzen E. Risk of occupationally acquired illnesses from biological threat agents in unvaccinated laboratory workers. *Biosecurity and bioterrorism: biodefense strategy, practice, and science.* 2004;2(4):281-93.
28. Viljanen MK, Nurmi T, Salminen A. Enzyme-linked immunosorbent assay (ELISA) with bacterial sonicate antigen for IgM, IgA, and IgG antibodies to *Francisella tularensis*: comparison with bacterial agglutination test and ELISA with lipopolysaccharide antigen. *Journal of infectious diseases.* 1983;148(4):715-20.
29. Carlsson HE, Lindberg AA, Lindberg G, Hederstedt B, Karlsson K-A, Agell BO. Enzyme-linked immunosorbent assay for immunological diagnosis of human tularemia. *Journal of clinical microbiology.* 1979;10(5):615-21.
30. Rhinehart-Jones TR, Fortier AH, Elkins KL. Transfer of immunity against lethal murine *Francisella* infection by specific antibody depends on host gamma interferon and T cells. *Infect Immun.* 1994;62(8):3129-37.
31. Drabick JJ, Narayanan RB, Williams JC, Leduc JW, Nacy CA. Passive protection of mice against lethal *Francisella tularensis* (live tularemia vaccine strain) infection by the sera of human recipients of the live tularemia vaccine. *Am J Med Sci.* 1994;308(2):83-7.



32. Klimpel GR, Eaves-Pyles T, Moen ST, Taormina J, Peterson JW, Chopra AK, et al. Levofloxacin rescues mice from lethal intra-nasal infections with virulent *Francisella tularensis* and induces immunity and production of protective antibody. *Vaccine*. 2008;26(52):6874-82.
33. Kirimanjeswara GS, Golden JM, Bakshi CS, Metzger DW. Prophylactic and therapeutic use of antibodies for protection against respiratory infection with *Francisella tularensis*. *J Immunol*. 2007;179(1):532-9.
34. Tularemia. In: Stanek SM, Saunders DL, editors. *USAMRIID's medical management of biological casualties handbook*, 9th Edition: US Government Printing Office; 2020.
35. Shoudy LE, Namjoshi P, Giordano G, Kumar S, Bowling JD, Gelhaus C, et al. The O-Ag Antibody Response to *Francisella* Is Distinct in Rodents and Higher Animals and Can Serve as a Correlate of Protection. *Pathogens*. 2021;10(12):1646.
36. Steiner DJ, Furuya Y, Metzger DW. Host-pathogen interactions and immune evasion strategies in *Francisella tularensis* pathogenicity. *Infection and drug resistance*. 2014;7:239.
37. Foshay L. Tularemia: Accurate and earlier diagnosis by means of the intradermal reaction. *The Journal of Infectious Diseases*. 1932:286-91.
38. Tärnvik A, Löfgren M, Löfgren S, Sandström G, Wolf-Watz H. Long-lasting cell-mediated immunity induced by a live *Francisella tularensis* vaccine. *Journal of Clinical Microbiology*. 1985;22(4):527-30.
39. Syrjälä H, Herva E, Ilonen J, Saukkonen K, Salminen A. A whole-blood lymphocyte stimulation test for the diagnosis of human tularemia. *Journal of Infectious Diseases*. 1984;150(6):912-5.
40. Chernecky CC BB. Tularemia agglutinins - serum. In: Chernecky CC BB, editor. *Laboratory Tests and Diagnostic Procedures*. 6th ed. Saint Louis, MO: Elsevier Saunders; 2013. p. 1052-135.
41. Fortier AH, Slayter M, Ziemba R, Meltzer M, Nacy C. Live vaccine strain of *Francisella tularensis*: infection and immunity in mice. *Infection and immunity*. 1991;59(9):2922-8.
42. Kostiala A, McGregor D, Logie PS. Tularaemia in the rat. I. The cellular basis on host resistance to infection. *Immunology*. 1975;28(5):855.
43. Jemski JV. Respiratory tularemia: comparison of selected routes of vaccination in Fischer 344 rats. *Infection and Immunity*. 1981;34(3):766-72.
44. Lindgren H, Eneslätt K, Golovliov I, Gelhaus C, Rydén P, Wu T, et al. Vaccine-mediated mechanisms controlling *Francisella tularensis* SCHU S4 growth in a rat co-culture system. *Pathogens*. 2020;9(5):338.
45. Eneslätt K, Golovliov I, Rydén P, Sjöstedt A. Vaccine-mediated mechanisms controlling replication of *Francisella tularensis* in human peripheral blood mononuclear cells using a co-culture system. *Frontiers in cellular and infection microbiology*. 2018;8:27.
46. Baron SD, Singh R, Metzger DW. Inactivated *Francisella tularensis* live vaccine strain protects against respiratory tularemia by intranasal vaccination in an immunoglobulin A-dependent fashion. *Infect Immun*. 2007;75(5):2152-62.
47. Rawool DB, Bitsaktis C, Li Y, Gosselin DR, Lin Y, Kurkure NV, et al. Utilization of Fc receptors as a mucosal vaccine strategy against an intracellular bacterium, *Francisella tularensis*. *J Immunol*. 2008;180(8):5548-57.
48. Syrjälä H, Koskela P, Ripatti T, Salminen A, Herva E. Agglutination and ELISA methods in the diagnosis of tularemia in different clinical forms and severities of the disease. *The Journal of infectious diseases*. 1986;153(1):142-5.
49. De Pascalis R, Chou AY, Bosio CM, Huang C-Y, Follmann DA, Elkins KL. Development of functional and molecular correlates of vaccine-induced protection for a model intracellular pathogen, *F. tularensis* LVS. *PLoS pathogens*. 2012;8(1):e1002494.
50. Sunagar R, Kumar S, Franz BJ, Gosselin EJ. Tularemia vaccine development: paralysis or progress? *Vaccine: development and therapy*. 2016;6:9.

51. Golovliov I, Twine SM, Shen H, Sjøstedt A, Conlan W. A  $\Delta$ clpB mutant of *Francisella tularensis* subspecies holarctica strain, FSC200, is a more effective live vaccine than *F. tularensis* LVS in a mouse respiratory challenge model of tularemia. *PLoS One*. 2013;8(11):e78671.
52. Rotem S, Cohen O, Bar-Haim E, Bar-On L, Ehrlich S, Shafferman A. Protective immunity against lethal *F. tularensis* holarctica LVS provided by vaccination with selected novel CD8+ T cell epitopes. *PLoS One*. 2014;9(1):e85215.
53. Franz BJ, Li Y, Bitsaktsis C, Iglesias BV, Pham G, Sunagar R, et al. Downmodulation of vaccine-induced immunity and protection against the intracellular bacterium *Francisella tularensis* by the inhibitory receptor Fc $\gamma$ RIIB. *J Immunol Res*. 2015;2015:840842.
54. Hartley G, Taylor R, Prior J, Newstead S, Hitchen PG, Morris HR, et al. Grey variants of the live vaccine strain of *Francisella tularensis* lack lipopolysaccharide O-antigen, show reduced ability to survive in macrophages and do not induce protective immunity in mice. *Vaccine*. 2006;24(7):989-96.
55. Salomonsson E, Kuoppa K, Forslund A-L, Zingmark C, Golovliov I, Sjøstedt A, et al. Reintroduction of two deleted virulence loci restores full virulence to the live vaccine strain of *Francisella tularensis*. *Infection and immunity*. 2009;77(8):3424-31.
56. SASLAW S, EIGELSBACH HT, PRIOR JA, WILSON HE, CARHART S. Tularemia vaccine study: II. Respiratory challenge. *Archives of internal medicine*. 1961;107(5):702-14.
57. Saslaw S, Carhart S. Studies with tularemia vaccines in volunteers. III. Serologic aspects following intracutaneous or respiratory challenge in both vaccinated and nonvaccinated volunteers. *The American journal of the medical sciences*. 1961;241:689-99.