

1 **SARS-CoV-2 molecular testing and whole genome sequencing following RNA recovery**
2 **from used BinaxNOW COVID-19 Antigen Self Tests**

3
4 Phuong-Vi Nguyen,^{a,b,*} and Ludy Registre Carmola,^{c*} Ethan Wang,^{b,c} Leda Bassit,^{c,d} Anuradha
5 Rao,^{b,e} Morgan Greenleaf,^b Julie A. Sullivan,^b Greg S. Martin,^{a,b} Wilbur A. Lam,^{b,e,f} Jesse J.
6 Waggoner^{a,b,†,**} and Anne Piantadosi^{a,b,c,†}

7
8 ^a Emory University Department of Medicine, Atlanta, GA, USA

9 ^b Atlanta Center for Microsystems-Engineered Point-of-Care Technologies, Atlanta, GA, USA

10 ^c Emory University Department of Pathology and Laboratory Medicine, Atlanta, GA, USA

11 ^d Laboratory of Biochemical Pharmacology, Emory University, Atlanta, GA, USA

12 ^e Emory University Department of Pediatrics, Atlanta, GA, USA

13 ^f Wallace H. Coulter Department of Biomedical Engineering, Georgia Institute of Technology
14 and Emory University, Atlanta, GA, USA

15
16 * These first authors contributed equally.

17 † These last authors contributed equally. Author order was agreed upon by these authors on the
18 basis of early study conceptualization and involvement.

19 ** Corresponding author: Jesse J. Waggoner, 1760 Haygood Drive NE, Room E-132, Atlanta,
20 GA, USA 30322. Email: jjwaggo@emory.edu

21

22 Word count: Abstract, 94; Manuscript, 1923

23 Inserts: Figures, 2; Supplemental Figures, 5; Supplemental Tables, 6

24 **Abstract**

25 Widespread use of over-the-counter rapid diagnostic tests for SARS-CoV-2 has led to a decrease
26 in availability of clinical samples for viral genomic surveillance. As an alternative sample
27 source, we evaluated RNA isolated from BinaxNOW swabs stored at ambient temperature for
28 SARS-CoV-2 rRT-PCR and full viral genome sequencing. 81 of 103 samples (78.6%) yielded
29 detectable RNA, and 46 of 57 samples (80.7 %) yielded complete genome sequences. Our results
30 illustrate that SARS-CoV-2 RNA extracted from used Binax test swabs provides an important
31 opportunity for improving SARS-CoV-2 genomic surveillance, evaluating transmission clusters,
32 and monitoring within-patient evolution.

33

34 **Keywords:** SARS-CoV-2, sequencing, COVID-19, rapid test, RT-PCR

35

36 **Introduction**

37 Throughout the COVID-19 pandemic, phylogenetic studies of severe acute respiratory syndrome
38 coronavirus 2 (SARS-CoV-2) have been instrumental in monitoring the emergence and spread of
39 new variants, confirming diagnostic test performance, and estimating vaccine and anti-viral
40 treatment efficacy (1-4). Monitoring is typically achieved by whole genome sequencing, but real-
41 time reverse transcription PCRs (rRT-PCRs) have also been employed to provide rapid
42 genotyping and assist with sample selection for sequencing workflows (5-8). Current SARS-
43 CoV-2 genomic surveillance approaches rely upon residual clinical samples from multiple
44 sources affiliated with the medical establishment, such as clinics, drive-through testing sites, and
45 hospitals.

46

47 Corresponding with the rise in omicron variant transmission in the United States from December
48 2021 to early 2022, there was a significant increase in at-home testing for SARS-CoV-2 (9).
49 Over-the-counter tests provide rapid and convenient testing. However, results are rarely reported
50 to public health authorities, and samples are lost to current genomic surveillance approaches (9,
51 10). The BinaxNOW COVID-19 Antigen Self Test (hereinafter referred to as the Binax test;
52 Abbott, Chicago, IL) is a common over-the-counter method that provides qualitative detection of
53 SARS-CoV-2 nucleocapsid antigen in 15 minutes (2). Individuals self-collect a nasal swab, place
54 this in the buffer reservoir of the test cassette, close and seal the cassette, and read the results on
55 a lateral flow strip.

56
57 The objective of this study was to store used Binax tests at ambient temperature with materials
58 commonly found in the home and evaluate the performance of SARS-CoV-2 rRT-PCR and viral
59 genome sequencing following RNA extraction from the test cassettes.

61 **Materials and Methods**

62 **Ethics statement.** The study protocol was reviewed and approved by the Emory Institutional
63 Review Board. Participants provided informed consent to collect samples and data specifically
64 for this study, except for three individuals from whom residual, de-identified home Binax tests
65 were obtained in the clinic. Demographic and clinical data were not available from these
66 individuals.

67
68 **Analytical evaluation.** Eight samples (6 self-collected samples and 2 contrived samples) were
69 used to evaluate the quantity of SARS-CoV-2 RNA extracted from different parts of the Binax

70 test. Used Binax cassettes were disassembled, the swab was removed, and the pad that contacts
71 the swab was separated from the cassette. The swab and pad were each placed into 200 μ L of
72 MagMAX Viral/Pathogen Binding Solution (Thermo Fisher Scientific, Waltham, MA).

73
74 After observing better RNA recovery from swabs, dilution series of pooled samples containing
75 SARS-CoV-2 delta (n=11 dilutions) and omicron variant (sublineage BA.1, n=12 dilutions) were
76 used to evaluate the analytical performance of the extraction protocol. 50 μ L of each dilution was
77 spiked onto swabs provided with the Binax test in duplicate. The tests were completed according
78 to manufacturer instructions. For one concentration of delta and omicron, swabs were retrieved
79 immediately after test completion (day 0) or stored at room temperature in the Binax cassette for
80 2 and 7 days. For the remaining dilutions, swabs were retrieved on day 0.

81
82 **Clinical samples.** From May to October 2022, self-administered Binax tests were obtained from
83 31 participants. Demographic and clinical data were recorded. Following test completion, Binax
84 cassettes were stored at room temperature in zipper-locked bags with the desiccant packet
85 provided within each Binax kit until nucleic acid extraction could be performed (Figure S1).

86
87 **Nucleic acid extraction and rRT-PCR.** Binax swabs were swirled in the tube containing
88 Binding Solution 10 times and removed while squeezing out buffer against the side of the tube.
89 Sample pads were incubated for 10 minutes. For all samples, the entire volume of Binding
90 Solution was used as the starting material for extraction in the MagMAX Viral/Pathogen Nucleic
91 Acid Isolation Kit with elution into 50 μ L of Tris-HCl, performed on a KingFisher Apex
92 instrument (Thermo Fisher Scientific) according to manufacturer recommendations. After

93 extraction, eluates were tested with three rRT-PCRs: 1) a multiplex reaction for Flu A, Flu B, the
94 N2 target and RNase P (Flu-SC2) (11); 2) Spike SNP with 5 probes for K417, L452R, T478K,
95 E484K, N501Y (5, 6); and 3) a triplex assay for *spike* Δ 69/70 and ORF1a Δ 3675-3677 (7).

96 Assays were performed as previously described except for Flu-SC2, modified as shown in Table
97 S1.

98
99 **Sequencing.** Extracted RNA was used to synthesize cDNA using SuperScript IV (Invitrogen),
100 and libraries were constructed using the xGen SARS-CoV-2 Amplicon panel (IDT) following the
101 manufacturer's protocol. Libraries were quantified using KAPA universal complete kit (Roche),
102 pooled to 4nM and sequenced on an Illumina Miseq with paired-end 150-bp reads. Consensus
103 viral genome sequences were assembled using viralrecon v2.4.4 (12). Pangolin v1.16 was used
104 for lineage assignment (13).

105
106 **Phylogenetic analysis.** Forty-five sequences obtained from 19 participants were aligned with
107 reference sequences Wuhan/Hu-1/2019 and Wuhan/WHO/2019, as well as 266 SARS-CoV-2
108 sequences collected in Georgia between 20 May and 06 October 2022 (14). One sequence from
109 participant 7, a traveler returning from Kenya, was aligned with 2,796 BA.5.2.1 sequences
110 collected between 29 May and 06 June 2022. Reference sequences were downloaded from the
111 Global Initiative on Sharing Avian Influenza Data (GISAID) (14). Alignments were performed
112 using Nextalign within the Nextstrain v3.2.4 pipeline (15). For ease of visualization, the Georgia
113 dataset was downsampled to 100 sequences using Nextstrain subsampling scheme "all". The
114 BA.5.2.1 dataset was downsampled to 50 sequences using a custom scheme, in which crowd
115 penalty was set to 0.0 and proximity filter was set to the traveler sequence to select the most

116 genetically related sequences. Maximum likelihood phylogenetic trees were constructed using
117 default settings of the Nextstrain SARS-CoV-2 Workflow with TreeTime v0.8.6 8. Trees were
118 visualized using Auspice v2.37.3.

119
120 **Statistical analysis.** Calculation of means and standard deviations were done in Excel software
121 (IBM). ANOVA and two-sided t-tests were performed in GraphPad Prism, version 9.3.1
122 (GraphPad Software).

123

124 **Results**

125 **Analytical evaluation.** For eight samples, RNA was extracted from both the swab and specimen
126 pad in the Binax cassette. Ct values were significantly lower (higher RNA concentration) from
127 the swabs (Figure S2), which were then used in all subsequent evaluations. Compared to the
128 original Cts for delta and omicron dilutions, Cts for RNA extracted from Binax swabs on day 0
129 were a mean of 7.4 (standard deviation, 1.9) and 7.3 (1.1) cycles later, respectively (Table S2).
130 All samples with a detectable test line on the Binax card were positive in the Flu-SC2 (Figure
131 S3). In addition, the two omicron dilutions with no visible test line had detectable SARS-CoV-2
132 RNA. SARS-CoV-2 RNA remained detectable for at least 7 days of storage on the swab at room
133 temperature, though Ct values increased with time (Figure S2B).

134

135 **Clinical Evaluation.** 103 Binax samples were obtained from 31 participants. Demographic and
136 sample data are shown in Table S3. Binax test results were positive for 89/103 samples (86.4%).
137 Following extraction from the used swab, 81/103 samples (78.6%) yielded detectable SARS-
138 CoV-2 RNA in the Flu-SC2 assay (Table S4). SARS-CoV-2 RNA was detectable in six swabs

139 despite negative Binax results, including two individuals with longitudinal sampling, who were
140 symptomatic and RNA positive prior to Binax antigen detection. All samples were positive for
141 RNase P detection, demonstrating successful nucleic acid extraction and absence of PCR
142 inhibitors. Mean duration of Binax swab storage was 4.6 days (SD 3.2), and SARS-CoV-2 RNA
143 remained detectable following swab storage for up to 16 days prior to extraction. The duration of
144 storage was not significantly different for samples that tested positive in the Flu-SC2 assay
145 versus negative (Figure S4). In rRT-PCRs to detect specific SARS-CoV-2 mutations, 66/81 Flu-
146 SC2-positive samples (81.5%) tested positive in the Spike SNP assay and 74/81 samples (91.4
147 %) tested positive in the triplex assay for *spike* Δ 69/70 and ORF1a 3675-3677. Results from
148 Spike SNP and triplex testing were all consistent with omicron sublineage BA.2, BA.4, or BA.5.

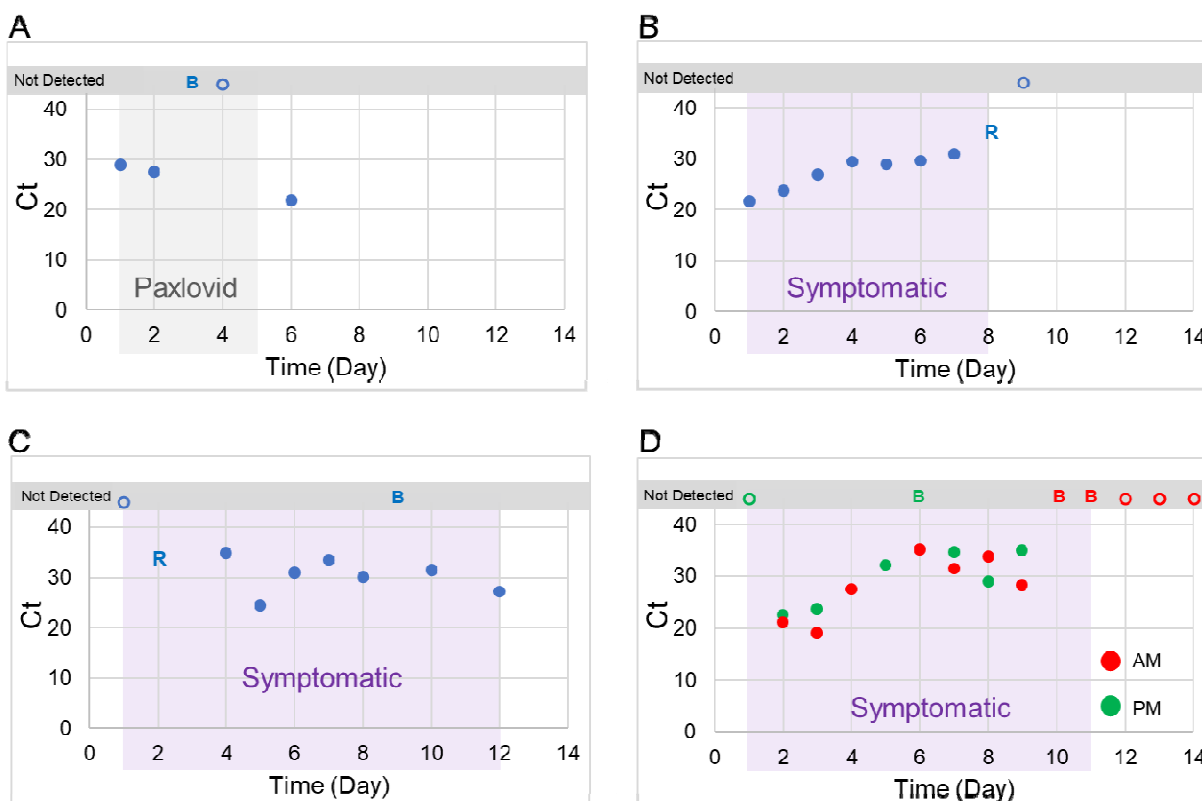
149
150 **Sequencing.** Full viral genome sequencing was attempted from 57 samples with Ct values less
151 than 32: 46 samples from 23 participants yielded complete, high-quality sequences (Table S5).
152 Cts of unsuccessful samples were high (range 29.0-34.3, mean-32.0) compared to successfully
153 sequenced samples (range 15.6-33.7, mean-26.2). Pangolin lineage assignments confirmed Spike
154 SNP and triplex assay results (Table S5).

155

156 **Specific applications of SARS-CoV-2 sequencing from Binax swabs**

157 *Longitudinal sampling.* Time courses from eight participants who provided sequential samples
158 during their illness demonstrated consistent and concordant SARS-CoV-2 detection by the Binax
159 test and rRT-PCR from the swab throughout most of the symptomatic period (Figure 1 and
160 Figure S5). However, this was flanked by periods of inconsistent test results during the first 1-2
161 days of symptoms and again as symptoms waned. Interestingly, in several individuals, rRT-PCR

162 turned positive prior to Binax antigen results (Figures 1 and S5). One individual self-tested
163 twice-a-day; no consistent difference in Flu-SC2 Ct value was observed between morning and
164 evening (Figure 1D).



165 **Figure 1. A-D)** Time course of Binax results and SARS-CoV-2 rRT-PCR Ct values using RNA
166 extracted from Binax cassettes versus days post-symptom onset for four participants in the
167 clinical evaluation. A) Gray shaded area indicates time on treatment with Paxlovid. B-D) Purple
168 shaded areas indicate the symptomatic period. The participant for time course D collected AM
169 and PM samples for 8 days. Symbols show the following Binax and rRT-PCR (Flu-SC2) results
170 for individual samples: closed circles, both positive; B, Binax positive only; R, rRT-PCR
171 positive only; open circle, both negative.

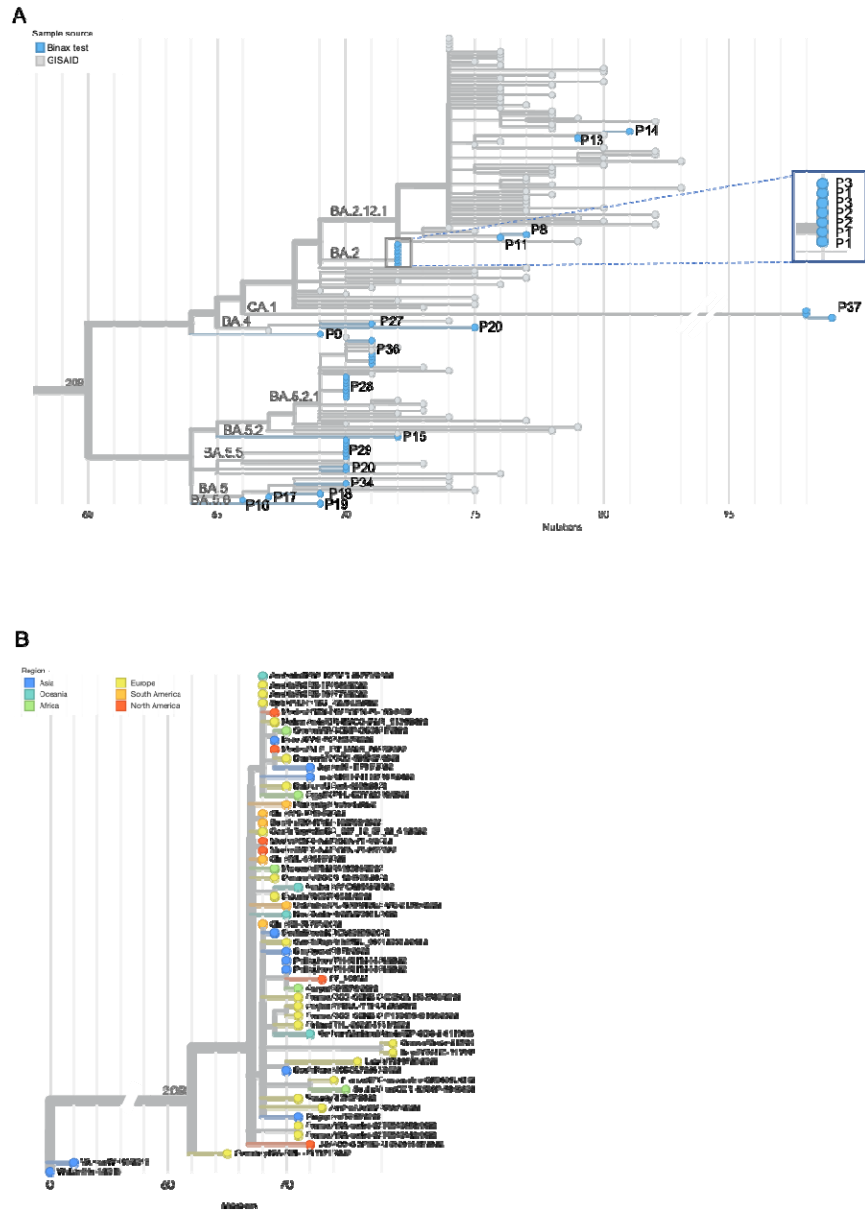
172

173 Phylogenetic analysis revealed that sequential samples from seven participants clustered by
174 participant (Figure 2A). Within each participant, sequences were either identical or contained 1-2
175 SNPs relative to the earliest sequence. Sequences from three participants (1, 2, and 3), who were
176 known close contacts, were all identical (Figure 2A).

177
178 *Antiviral treatment.* One participant (20) with longitudinal sampling received Paxlovid, and
179 Binax results and SARS-CoV-2 RNA converted from positive to negative on day 3 of antiviral
180 treatment (Figure 1A). However, the day following discontinuation, the participant experienced a
181 return of symptoms and a rebound in both Binax and RNA positivity. The sequence from this
182 last sample did not cluster with the others and was a different lineage, indicating possible
183 reinfection (Figure 2A).

184
185 *Returned traveler.* Participant 7 developed COVID-19 following travel to Kenya. Sequencing
186 identified omicron sublineage BA.5.2.1, and phylogenetic analysis revealed that the sequence
187 was closely related to a sequence from Kenya, supporting a travel related infection (Figure 2B).

188



189
 190 **Figure 2. A-B)** SARS-CoV-2 phylogenetic analysis of RNA extracted from used Binax tests. A)
 191 Phylogenetic tree contains SARS-CoV-2 sequences from 20 participants and illustrates:
 192 clustering of sequences from participants P1-P3, who had known epidemiologic linkage;
 193 clustering of longitudinal sequences in participants P28, P29, P36, and P37; and potential
 194 reinfection in participant P20. B) Phylogenetic tree illustrates clustering of sequence from
 195 participant P7, a returning traveler, with international sequences.

196 **Discussion**

197 This study demonstrates that SARS-CoV-2 RNA, extracted from used Binax test swabs, is of
198 sufficient quality for genotyping by rRT-PCR and whole genome sequencing for phylogenetic
199 studies. With a storage protocol that was purposefully kept simple to improve acceptability and
200 feasibility, SARS-CoV-2 RNA remained detectable for up to 16 days. These data add to the
201 scant literature on viral RNA recovery from rapid diagnostic tests (16-18), including for SARS-
202 CoV-2 (19, 20), and importantly extend available information to include the Binax test, which is
203 a common self-test sold directly to consumers in the United States (2). Wide implementation of
204 SARS-CoV-2 sequencing from home tests could substantially enhance population-level
205 surveillance of emerging variants, including from populations who may be otherwise under-
206 represented among current surveillance approaches (9, 10, 21).

207
208 Furthermore, this study describes a set of use cases for the protocol beyond surveillance. Time
209 courses demonstrate that sequential samples can be conveniently collected for the study of viral
210 dynamics and monitoring within-host virus evolution. This may be particularly useful for
211 identifying mutations in immunocompromised patients or following antiviral treatment (22).
212 Notably, we identified a rebound in SARS-CoV-2 viremia following Paxlovid that may have
213 resulted from re-infection. Additionally, phylogenetic clustering of sequences from known
214 contacts demonstrates the use of this method to evaluate potential transmission events. Finally,
215 we demonstrate the feasibility of using this method to detect potential SARS-CoV-2
216 introductions following international travel.

217

218 A limitation of this study was the lack of concurrent standard-of-care molecular testing.

219 However, this would not have been feasible for all participants across all time points. Ct results

220 may have improved with a shorter, defined duration of Binax storage, but this would have

221 impacted convenience for participants and feasibility for laboratory testing.

222

223 In conclusion, SARS-CoV-2 RNA extraction from used Binax swabs stored at ambient

224 temperature combines the convenience of rapid diagnostic results with the potential for genomic

225 surveillance from home. This approach greatly facilitates investigation into viral dynamics,

226 transmission clusters, and intra-host viral evolution.

227 **Acknowledgements**

228 We gratefully acknowledge all data contributors, i.e., the Authors and their Originating
229 laboratories responsible for obtaining the specimens, and their Submitting laboratories for
230 generating the genetic sequence and metadata and sharing via the GISAID Initiative, on which
231 this research is based.

232

233 **Conflicts of Interest**

234 None

235

236 **Funding Statement**

237 This work was supported by the National Institute of Biomedical Imaging and Bioengineering at
238 the National Institutes of Health under award U54 EB027690 and the National Center for
239 Advancing Translational Sciences of the National Institutes of Health under Award Number
240 UL1TR002378. The content is solely the responsibility of the authors and does not necessarily
241 represent the official views of the National Institutes of Health.

242

243 **Author Contributions**

244 Conceptualization, P-V. N., L.R.C., J.J.W., A.P.; Methodology, P-V. N., L.R.C., L.B., A.R.,
245 J.J.W., A.P.; Software, P-V. N., L.R.C., J.J.W., A.P.; Validation, P-V. N., L.R.C., L.B., A.R.,
246 J.J.W., A.P.; Formal Analysis, P-V. N., L.R.C., J.J.W., A.P.; Investigation, P-V.N., L.R.C.,
247 E.W., L.B., A.R., J.J.W., A.P.; Resources, P-V.N., L.R.C., L.B., A.R., M.G., J.A.S., G.S.M.,
248 W.A.L, J.J.W., A.P.; Data Curation, P-V. N., L.R.C., J.J.W., A.P.; Writing – Original Draft
249 Preparation, P-V.N., L.R.C., J.J.W., A.P.; Writing – Review & Editing, P-V.N., L.R.C., E.W.,

250 L.B., A.R., M.G., J.A.S., G.S.M., W.A.L, J.J.W., A.P.; Visualization, P-V. N., L.R.C., M.G.,
251 W.A.L., J.J.W., A.P.; Supervision, J.J.W., A.P.; Project Administration, M.G., J.A.S., J.J.W.,
252 A.P.; Funding Acquisition, J.A.S, G.S.M, W.A.L.

253

254 **Institutional Review Board Statement**

255 The study protocol was reviewed and approved by the Emory Institutional Review Board.

256

257 **Informed Consent Statement**

258 Participants provided informed consent to collect samples and data specifically for this study,
259 except for three individuals from whom residual, de-identified home Binax tests were obtained in
260 the clinic. Demographic and clinical data were not available from these individuals.

261

262 **Data Availability**

263 All sequences newly generated in this study were deposited in NCBI under BioProject
264 PRJNA634356 and GISAID under accession numbers EPI_ISL_15938303-331. Data availability
265 of sequences downloaded from GISAID is listed in Table S6.

266 References

- 267 1. Babiker A, Martin MA, Marvil C, Bellman S, Petit Iii RA, Bradley HL, Stittleburg VD, Ingersoll J, Kraft
268 CS, Li Y, Zhang J, Paden CR, Read TD, Waggoner JJ, Koelle K, Piantadosi A. 2022. Unrecognized
269 introductions of SARS-CoV-2 into the US state of Georgia shaped the early epidemic. *Virus Evol*
270 8:veac011.
- 271 2. Frediani JK, Levy JM, Rao A, Bassit L, Figueroa J, Vos MB, Wood A, Jerris R, Van L-P, Gonzalez MD,
272 Rogers BB, Mavigner M, Schinazi RF, Schoof N, Waggoner JJ, Kempker RR, Rebolledo PA, O'Neal JW,
273 Stone C, Chahroudi A, Morris CR, Suessmith A, Sullivan J, Farmer S, Foster A, Roback JD, Ramachandra
274 T, Washington C, Le K, Cordero MC, Esper A, Nehl EJ, Wang YF, Tyburski EA, Martin GS, Lam WA.
275 2021. Multidisciplinary assessment of the Abbott BinaxNOW SARS-CoV-2 point-of-care antigen test in
276 the context of emerging viral variants and self-administration. *Sci Rep* 11:14604.
- 277 3. Sexton ME, Waggoner JJ, Carmola LR, Nguyen PV, Wang E, Khosravi D, Taz A, Arthur R, Patel M,
278 Edara VV, Foster SL, Moore KM, Gagne M, Roberts-Torres J, Henry AR, Godbole S, Douek DC,
279 Rouphael N, Suthar MS, Piantadosi A. 2022. Rapid detection and characterization of SARS-CoV-2
280 omicron variant in a returning traveler. *Clin Infect Dis* doi:10.1093/cid/ciac032.
- 281 4. Bruel T, Hadjadj J, Maes P, Planas D, Seve A, Staropoli I, Guivel-Benhassine F, Porrot F, Bolland WH,
282 Nguyen Y, Casadevall M, Charre C, Pere H, Veyer D, Prot M, Baidaliuk A, Cuypers L, Planchais C,
283 Mouquet H, Baele G, Mouthon L, Hocqueloux L, Simon-Loriere E, Andre E, Terrier B, Prazuck T,
284 Schwartz O. 2022. Serum neutralization of SARS-CoV-2 Omicron sublineages BA.1 and BA.2 in patients
285 receiving monoclonal antibodies. *Nat Med* 28:1297-1302.
- 286 5. Babiker A, Immergluck K, Stampfer SD, Rao A, Bassit L, Su M, Nguyen V, Stittleburg V, Ingersoll JM,
287 Bradley HL, Mavigner M, Schoof N, Kraft CS, Chahroudi A, Schinazi RF, Martin GS, Piantadosi A, Lam
288 WA, Waggoner JJ. 2021. Single-Amplicon Multiplex Real-Time Reverse Transcription-PCR with Tiled
289 Probes To Detect SARS-CoV-2 spike Mutations Associated with Variants of Concern. *J Clin Microbiol*
290 59:e0144621.
- 291 6. Martinez M, Nguyen P-V, Su M, Cardozo F, Valenzuela A, Franco L, Galeano ME, Rojas LE, Díaz Acosta
292 CC, Fernández J, Ortiz J, Puerto Fd, Mendoza L, Nara E, Rojas A, Waggoner JJ. 2022. SARS-CoV-2
293 variants in Paraguay: Detection and surveillance with an economical and scalable molecular protocol.
294 *Viruses* 14:873.
- 295 7. Vogels CBF, Breban MI, Ott IM, Alpert T, Petrone ME, Watkins AE, Kalinich CC, Earnest R, Rothman
296 JE, Goes de Jesus J, Morales Claro I, Magalhaes Ferreira G, Crispim MAE, Brazil UKCGN, Singh L,
297 Tegally H, Anyaneji UJ, Network for Genomic Surveillance in South A, Hodcroft EB, Mason CE, Khullar
298 G, Metti J, Dudley JT, MacKay MJ, Nash M, Wang J, Liu C, Hui P, Murphy S, Neal C, Laszlo E, Landry
299 ML, Muyombwe A, Downing R, Razeq J, de Oliveira T, Faria NR, Sabino EC, Neher RA, Fauver JR,
300 Grubaugh ND. 2021. Multiplex qPCR discriminates variants of concern to enhance global surveillance of
301 SARS-CoV-2. *PLoS Biol* 19:e3001236.
- 302 8. Wang H, Miller JA, Verghese M, Sibai M, Solis D, Mfuh KO, Jiang B, Iwai N, Mar M, Huang C,
303 Yamamoto F, Sahoo MK, Zehnder J, Pinsky BA. 2021. Multiplex SARS-CoV-2 Genotyping Reverse
304 Transcriptase PCR for Population-Level Variant Screening and Epidemiologic Surveillance. *J Clin*
305 *Microbiol* 59:e0085921.
- 306 9. Rader B, Gertz A, Iuliano AD, Gilmer M, Wronski L, Astley CM, Sewalk K, Varrelman TJ, Cohen J,
307 Parikh R, Reese HE, Reed C, Brownstein JS. 2022. Use of At-Home COVID-19 Tests - United States,
308 August 23, 2021-March 12, 2022. *MMWR Morb Mortal Wkly Rep* 71:489-494.

- 309 10. Ritchey MD, Rosenblum HG, Del Guercio K, Humbard M, Santos S, Hall J, Chaitram J, Salerno RM.
310 2022. COVID-19 Self-Test Data: Challenges and Opportunities - United States, October 31, 2021-June 11,
311 2022. *MMWR Morb Mortal Wkly Rep* 71:1005-1010.
- 312 11. Centers for Disease Control and Prevention. 2021. Research Use Only CDC Influenza SARS-CoV-2 (Flu
313 SC2) Multiplex Assay Primers and Probes. [https://www.cdc.gov/coronavirus/2019-ncov/lab/multiplex-](https://www.cdc.gov/coronavirus/2019-ncov/lab/multiplex-primer-probes.html)
314 [primer-probes.html](https://www.cdc.gov/coronavirus/2019-ncov/lab/multiplex-primer-probes.html). Accessed
- 315 12. Patel H, Varona S, Monzón S, Espinosa-Carrasco J, Heuer ML, Gabernet G, Ewels P, Miguel J, Kelly S,
316 Sameith K, Garcia MU, Menden K. 2021. nf-core/viralrecon: nf-core/viralrecon v2.2 - Tin Turtle.
- 317 13. Rambaut A, Holmes EC, O'Toole A, Hill V, McCrone JT, Ruis C, du Plessis L, Pybus OG. 2020. A
318 dynamic nomenclature proposal for SARS-CoV-2 lineages to assist genomic epidemiology. *Nat Microbiol*
319 5:1403-1407.
- 320 14. Shu Y, McCauley J. 2017. GISAID: Global initiative on sharing all influenza data - from vision to reality.
321 *Euro Surveill* 22.
- 322 15. Hadfield J, Megill C, Bell SM, Huddleston J, Potter B, Callender C, Sagulenko P, Bedford T, Neher RA.
323 2018. Nextstrain: real-time tracking of pathogen evolution. *Bioinformatics* 34:4121-4123.
- 324 16. Cassidy-Seyoum S, Vongsouvath M, Sengvilaipaseuth O, Seephonelee M, Bharucha T, de Lamballerie X,
325 Newton PN, Dubot-Peres A. 2019. Rapid Diagnostic Tests as a Source of Dengue Virus RNA for Envelope
326 Gene Amplification: A Proof of Concept. *Am J Trop Med Hyg* 101:451-455.
- 327 17. Vongsouvath M, Bharucha T, Seephonelee M, de Lamballerie X, Newton PN, Dubot-Peres A. 2020.
328 Harnessing Dengue Rapid Diagnostic Tests for the Combined Surveillance of Dengue, Zika, and
329 Chikungunya Viruses in Laos. *Am J Trop Med Hyg* 102:1244-1248.
- 330 18. Vongsouvath M, Phommasone K, Sengvilaipaseuth O, Kosoltanapiwat N, Chantratita N, Blacksell SD, Lee
331 SJ, de Lamballerie X, Mayxay M, Keomany S, Newton PN, Dubot-Peres A. 2016. Using Rapid Diagnostic
332 Tests as a Source of Viral RNA for Dengue Serotyping by RT-PCR - A Novel Epidemiological Tool. *PLoS*
333 *Negl Trop Dis* 10:e0004704.
- 334 19. Macori G, Russell T, Barry G, McCarthy SC, Koolman L, Wall P, Sammin D, Mulcahy G, Fanning S.
335 2022. Inactivation and Recovery of High Quality RNA From Positive SARS-CoV-2 Rapid Antigen Tests
336 Suitable for Whole Virus Genome Sequencing. *Front Public Health* 10:863862.
- 337 20. Martin GE, Taiaroa G, Taouk ML, Savic I, O'Keefe J, Quach R, Prestedge J, Krysiak M, Caly L,
338 Williamson DA. 2022. Maintaining genomic surveillance using whole-genome sequencing of SARS-CoV-
339 2 from rapid antigen test devices. *Lancet Infect Dis* 22:1417-1418.
- 340 21. Reese H, Iuliano AD, Patel NN, Garg S, Kim L, Silk BJ, Hall AJ, Fry A, Reed C. 2021. Estimated
341 Incidence of Coronavirus Disease 2019 (COVID-19) Illness and Hospitalization-United States, February-
342 September 2020. *Clin Infect Dis* 72:e1010-e1017.
- 343 22. Scherer EM, Babiker A, Adelman MW, Allman B, Key A, Kleinhenz JM, Langsjoen RM, Nguyen PV,
344 Onyechi I, Sherman JD, Simon TW, Soloff H, Tarabay J, Varkey J, Webster AS, Weiskopf D, Weissman
345 DB, Xu Y, Waggoner JJ, Koelle K, Roupheal N, Pouch SM, Piantadosi A. 2022. SARS-CoV-2 Evolution
346 and Immune Escape in Immunocompromised Patients. *N Engl J Med* 386:2436-2438.
- 347