

Household antibiotic use in Malawi: a cross-sectional survey from urban and peri-urban Blantyre

Eleanor E MacPherson^{1,2}, John Mankhomwa¹, Justin Dixon³, Raymond Pongolani¹, Mackwellings Phiri¹, Nicholas Feasey^{1,2}, Thomasena O'Byrne^{1,2}, Rachel Tolhurst², Peter MacPherson^{1,2,3,4}

Affiliations

1. Malawi-Liverpool-Wellcome Programme, Malawi
2. Liverpool School of Tropical Medicine, UK
3. London School of Hygiene & Tropical Medicine, UK
4. University of Glasgow UK

NOTE: This preprint reports new research that has not been certified by peer review and should not be used to guide clinical practice.

1 Abstract

2 Background

3 Antimicrobial resistance (AMR) is a significant threat to public health. Use of antibiotics,
4 particularly in contexts where weaker regulatory frameworks make informal access easier,
5 has been identified as an important driver of AMR. However, knowledge is limited about the
6 ways antibiotics are used in communities in sub-Saharan Africa.

7 Methods

8 Between April and July 2021, we undertook a cross-sectional survey of community antibiotic
9 use practices in Blantyre, Malawi. We selected two densely-populated neighbourhoods
10 (Chilomoni and Ndirande) and one peri-urban neighbourhood (Chileka) and undertook
11 detailed interviews to assess current and recent antibiotic use, supported by the innovative
12 “drug bag” methodology. Regression modelling investigated associations with patterns of
13 antibiotic recognition.

14 Results

15 We interviewed 217 households with a total of 1051 household members. The number of
16 antibiotics recognised was significantly lower among people with poorer formal health care
17 access (people with unknown HIV status vs. HIV-negative, adjusted odds ratio [aOR]: 0.76,
18 95% CI: 0.77-.099) and amongst men (aOR: 0.83, 95% CI: 0.69-0.99), who are less likely to
19 support healthcare-seeking for family members. Reported antibiotic use was mostly limited
20 to a small number of antibiotics (amoxicillin, erythromycin and cotrimoxazole), with current
21 antibiotic use reported by 67/1051 (6.4%) and recent use (last 6 months) by 440/1051
22 (41.9%).

23 Conclusions

24 Our findings support the need for improved access to quality healthcare in urban and peri-
25 urban African settings to promote appropriate antibiotic use and limit the development and
26 spread of AMR.

27

28 Introduction

29 Drug resistant infections are increasing worldwide and there is global consensus on the
30 need for urgent action to address antimicrobial resistance (AMR).¹ Optimising the use of
31 antibiotics is one of the central pillars of the WHO global action plan to address AMR.² The
32 ramifications of AMR are being more acutely felt in low-and-middle-income countries
33 (LMICs), where there is a higher burden of infectious diseases and health systems are
34 weaker.³ In low-income contexts where routine diagnostic microbiology facilities are scarce,
35 data on the epidemiology and burden of AMR is limited.⁴⁻⁶

36

37 In the past two decades, academic and policy research has shown a substantially increased
38 use of antibiotics in LMICs.^{7,8} Due to contextual factors including weaker regulatory
39 frameworks and more fragile health systems, antibiotics are often bought over-the-counter,
40 or obtained through informal networks.⁹⁻¹¹ However, research conducted in LMICs has
41 demonstrated that antibiotic use practices, including self-medication, are heterogeneous.¹²⁻
42 ¹⁴ Do and colleagues (2021) undertook a survey in six countries in Asia and Africa, and found
43 substantial differences in self-medication of antibiotics, with rates lower in Mozambique
44 (8.0%) and South Africa (1.2%) than in Bangladesh (45.7%) and Ghana (36.1%).¹⁴ Torres and
45 colleagues (2020) did a systematic scoping review of self-medication with antibiotics in 10
46 low- and middle-income countries, and found a prevalence of self-medication in the
47 preceding year that ranged from 8.1% to 93% across countries.¹³ Both these studies found
48 that factors shaping self-medication were complex and included access to, and cost and
49 quality of care at health care facilities.^{13,14} The diversity in the prevalence of self-medication
50 of antibiotics in different countries underscores the need for accurate national data to guide
51 antibiotic use and AMR policy and practice.

52

53 Global antibiotic consumption assessments have primarily relied on pharmaceutical sales
54 records, but this data is frequently unavailable or unreliable, especially in the African
55 region.^{15–17} In LMICs, most academic research has been conducted in secondary or tertiary
56 care facilities. While researchers are increasingly investigating antibiotic use in primary
57 health care and community contexts,^{12,16,18} there remain significant gaps in knowledge on
58 antibiotic use practices in community settings, with knowledge particularly limited in
59 countries in Southern and Eastern Africa.^{13,14} Given the role reduction in antibiotic use (ABU)
60 is expected to play in reducing AMR, generating robust ABU surveillance data is a necessary
61 first step to inform context-specific interventions.¹⁹ This paper aimed to generate data on
62 current antibiotic use in three residential areas in Blantyre, Malawi.

63 **Materials and Methods**

64 *Ethics statement*

65 Ethical approval was obtained from the College of Medicine Research Ethics Committee,
66 Malawi (approval number: P06/182429) and London School of Hygiene and Tropical
67 Medicine Research Ethics Committee (approval number: 14617). Permission to work in the
68 study communities was granted by the Blantyre District Health Officer. All participants
69 provided written informed consent to participate.

70 71 *Study Design and Population*

72
73 Data were collected between April and July 2021. We undertook a cross-sectional survey in
74 two densely-populated neighbourhoods (Chilomoni and Ndirande) and one peri-urban
75 neighbourhood (Chileka) in Blantyre, Malawi. Blantyre is a major commercial centre located
76 in the Southern Region of Malawi. The total population of Blantyre District was estimated to
77 be approximately 1 million people in the 2018 Malawi National Census²⁰, and adult HIV
78 prevalence is estimated to be 18%²¹. Chilomoni and Ndirande are well-established urban
79 neighbourhoods, with poor access to municipal services, and high rates of household
80 poverty. Chileka is located on the periphery of Blantyre and is characterised by a mixture of
81 recently established peri-urban households and households engaged in subsistence farming.

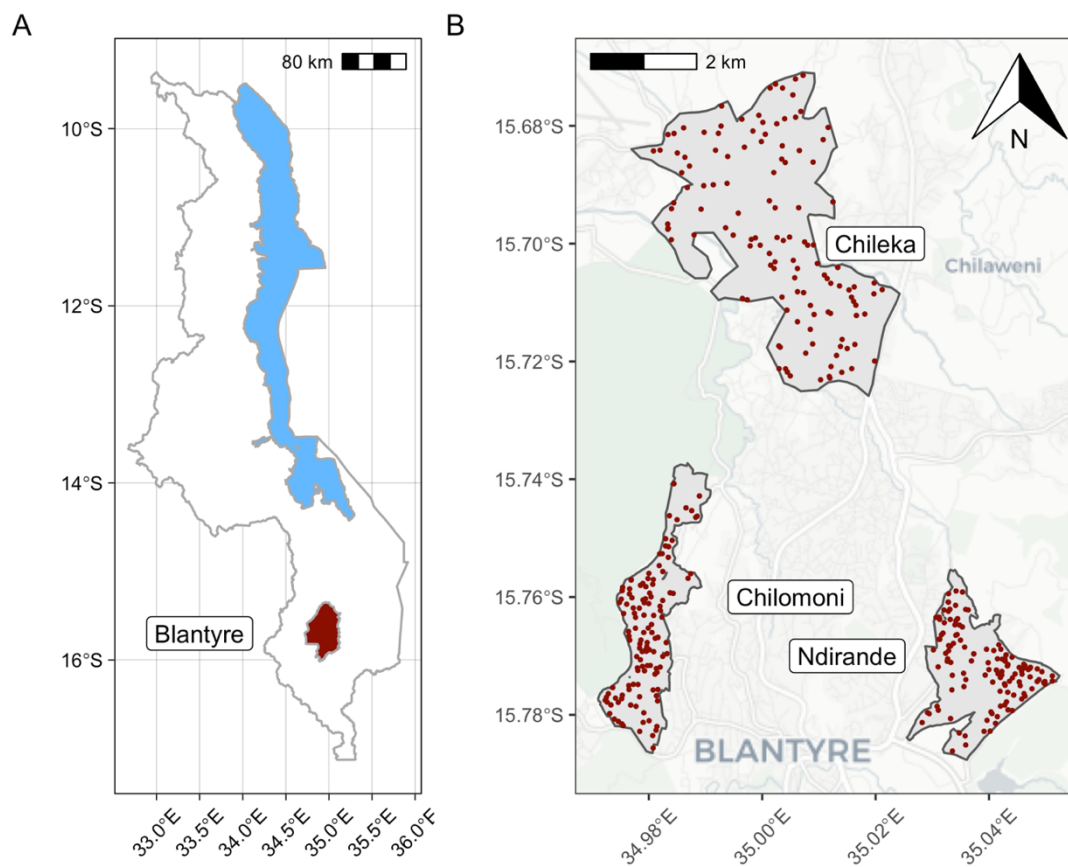
82
83 Participants eligible to take part in the survey were adults (aged 18 years or older) resident
84 in households in either Chilomoni, Chileka, or Ndirande. We excluded households where
85 there was no adult available to complete questionnaires, or where the household head
86 declined consent to participate.

87

88 The unit of sampling was the household. To establish a household sampling frame for
89 Chilomoni and Ndirande, we obtained neighbourhood boundaries and used georeferenced
90 household data from a previous population census of these neighbourhoods conducted as
91 part of a cluster-randomised trial of TB and HIV interventions in 2015 (Figure 1). Households
92 were randomly selected within each neighbourhood, with a replacement list for when
93 households declined participation or were not identified. As Chileka was not part of the
94 2015 trial census, we selected random sets of GPS coordinates from within the
95 neighbourhood boundaries.

96

97 **Figure 1: Location of households sampled for interview**



98

99 **Procedures**

100 Using GPS coordinates of randomly-selected households in Chilomoni and Ndirande, study
101 fieldworkers navigated to selected households; in Chileka, they navigated to selected
102 locations using GPS coordinates, and identified the nearest household to this point. After
103 identifying the household head and obtaining informed written consent, the fieldworker
104 administered a questionnaire to record demographic and socio-economic characteristics of
105 the household and household head. Data were collected using ODK Collect running on study
106 tablets and uploaded securely in real-time to the Data Server at the London School of
107 Hygiene and Tropical Medicine.

108

109 To evaluate household heads' understanding and use of antibiotics, the fieldworker used
110 the "drug bag" method, which comprised of a bag of antibiotics packages and tablets
111 assembled by the team through visiting formal and informal access points for medicines.²²
112 We adapted this method from anthropological studies we have undertaken exploring
113 medicine use practices in Southern and Eastern Africa.²² The drug bag was used to facilitate
114 questions to the household head on which antibiotics they recognised (i.e. had ever seen or
115 heard about before), whether antibiotics were currently being used in the household, and
116 more generally about antibiotic use practices in the household (see Supplementary
117 Material). The drug bag helped to overcome linguistic barriers, as 'antibiotic' is a category of
118 medicines that is not readily understood in Malawi.

119

120

121

122

123 **Statistical Methods**

124 We initially set out to survey 75 households in each of two of the study neighbourhoods
125 (Chilomoni and Ndirande), and subsequently added the third neighbourhood (Chileka) to
126 allow comparison with this peri-urban neighbourhood.

127

128 We summarised household, and household head characteristics by study neighbourhood
129 using counts and percentages, and means and standard deviations, and compared between
130 groups using Chi-square tests and Fisher's exact tests for categorical data, and Student's T
131 test for continuous data. We used a p-value threshold of <0.05 to define a statistically-
132 significant difference between neighbourhoods. Our main study outcomes were antibiotic
133 use and recognition patterns. To investigate this, we summarised the number of household
134 members who reported currently using, or having recently used (within the last 6-months)
135 each antibiotic, and the number of antibiotics recognised by household respondents. To
136 estimate the percentage of the total study population who used and recognised each
137 antibiotic, we divided antibiotics within each category by the total numbers of household
138 members, calculated binomial exact confidence intervals, and compared between study
139 sites. We constructed a multivariable Poisson regression model to investigate associations
140 with the number of antibiotics recognised by household respondents. Analysis was
141 conducted using R v4.1.1 (R Foundation for Statistical Computing, Vienna).

142

143 Data and code to reproduce analysis are available at DOI10.17605/OSF.IO/58EKN

144

145

146 **Results**

147

148 In total, 217 households were interviewed and included in this analysis (Table 1). A total of

149 1051 household members were identified by respondents. Numbers of household residents

150 ranged between 1 and 13, with a median of 5 (interquartile range: 3-6). Numbers of

151 household residents were similar between the three study sites ($p=0.771$).

152

153 **Table 1: Characteristics of households and household respondents, by study site**

154

	Chileka (N=74)	Chilomoni (N=67)	Ndirande (N=76)	Total (N=217)	P-value
Household residents total (median per household, IQR)	355 (4, 3-6)	321 (5, 4-6)	375 (5, 3-6)	1051	0.771
Duration residing in site					0.213
Less than one year	2 (2.7%)	6 (9.0%)	7 (9.2%)	15 (6.9%)	
More than one year	72 (97.3%)	61 (91.0%)	69 (90.8%)	202 (93.1%)	
Household respondent male	16 (21.6%)	17 (25.4%)	10 (13.2%)	43 (19.8%)	0.167
Household respondent age, Mean (SD)	38 (16)	38 (12)	37 (13)	38 (14)	0.657
Household respondent occupation					< 0.001
Paid domestic worker	0 (0.0%)	3 (4.5%)	4 (5.3%)	7 (3.2%)	
Paid employee	5 (6.8%)	4 (6.0%)	4 (5.3%)	13 (6.0%)	
Self employed	21 (28.4%)	27 (40.3%)	30 (39.5%)	78 (35.9%)	
Student	1 (1.4%)	1 (1.5%)	1 (1.3%)	3 (1.4%)	
Unemployed	32 (43.2%)	31 (46.3%)	37 (48.7%)	100 (46.1%)	
Other	15 (20.3%)	1 (1.5%)	0 (0.0%)	16 (7.4%)	
Electricity in dwelling	6 (8.1%)	50 (74.6%)	58 (76.3%)	114 (52.5%)	< 0.001
Food sufficient to meet needs	38 (51.4%)	38 (56.7%)	43 (56.6%)	119 (54.8%)	0.759
Self-rated household poverty					< 0.001
1 = poorest in neighbourhood	8 (10.8%)	5 (7.5%)	1 (1.3%)	14 (6.5%)	
2	36 (48.6%)	19 (28.4%)	24 (31.6%)	79 (36.4%)	
3	27 (36.5%)	29 (43.3%)	45 (59.2%)	101 (46.5%)	
4	3 (4.1%)	14 (20.9%)	6 (7.9%)	23 (10.6%)	
5	0 (0%)	0 (0%)	0 (0%)	0 (0%)	
6 = richest in neighbourhood	0 (0%)	0 (0%)	0 (0%)	0 (0%)	
Household respondent highest education level completed					0.044
Missing	1	0	0	1	
Never been to school	5 (6.8%)	3 (4.5%)	3 (3.9%)	11 (5.1%)	
Primary	43 (58.9%)	22 (32.8%)	29 (38.2%)	94 (43.5%)	
Secondary completed MSCE	2 (2.7%)	7 (10.4%)	8 (10.5%)	17 (7.9%)	
Secondary no MSCE	22 (30.1%)	32 (47.8%)	35 (46.1%)	89 (41.2%)	
Higher	1 (1.4%)	3 (4.5%)	1 (1.3%)	5 (2.3%)	
Household respondent literate	58 (78.4%)	61 (91.0%)	63 (82.9%)	182 (83.9%)	0.119

	Chileka (N=74)	Chilomoni (N=67)	Ndirande (N=76)	Total (N=217)	P-value
Household respondent self-rated general health					0.538
Missing	1	0	2	3	
Very poor	2 (2.7%)	0 (0.0%)	0 (0.0%)	2 (0.9%)	
Poor	7 (9.6%)	5 (7.5%)	5 (6.8%)	17 (7.9%)	
Fair	20 (27.4%)	19 (28.4%)	23 (31.1%)	62 (29.0%)	
Good	31 (42.5%)	27 (40.3%)	25 (33.8%)	83 (38.8%)	
Very good	13 (17.8%)	16 (23.9%)	21 (28.4%)	50 (23.4%)	
Household respondent marital status					0.307
Divorced	4 (5.4%)	3 (4.5%)	6 (7.9%)	13 (6.0%)	
Living together as if married	0 (0.0%)	1 (1.5%)	0 (0.0%)	1 (0.5%)	
Married	50 (67.6%)	49 (73.1%)	59 (77.6%)	158 (72.8%)	
Married but not living together	2 (2.7%)	0 (0.0%)	0 (0.0%)	2 (0.9%)	
Never married	7 (9.5%)	3 (4.5%)	3 (3.9%)	13 (6.0%)	
Polygamous marriage	0 (0.0%)	0 (0.0%)	2 (2.6%)	2 (0.9%)	
Separated	3 (4.1%)	2 (3.0%)	1 (1.3%)	6 (2.8%)	
Widowed	8 (10.8%)	9 (13.4%)	5 (6.6%)	22 (10.1%)	
Household respondent previously lost spouse to death					0.704
Missing	1	1	0	2	
Yes	12 (16.4%)	12 (18.2%)	10 (13.2%)	34 (15.8%)	
Household respondent ever tested for HIV previously	68 (91.9%)	64 (95.5%)	70 (92.1%)	202 (93.1%)	0.639
Household respondent HIV status					0.131
HIV-negative	62 (83.8%)	57 (85.1%)	58 (76.3%)	177 (81.6%)	
HIV-positive	4 (5.4%)	7 (10.4%)	13 (17.1%)	24 (11.1%)	
Unknown	8 (10.8%)	3 (4.5%)	5 (6.6%)	16 (7.4%)	
Household respondent taking ART (if HIV-positive)	4 (100%)	7 (100%)	13 (100%)	24 (100%)	1.000

155

156 The majority of household respondents were female (80.2%), and the mean respondent age

157 was 38 years. Household and household respondent characteristics were similar in

158 Chilomoni and Ndirande, but there were substantial differences between these

159 neighbourhoods and Chileka. Whereas in Ndirande (76.3%) and Chilomoni (74.6%) most

160 households had electricity supplied to the dwelling, in Chileka only 8.1% had electricity

161 (p<0.001). 78.4% of household respondents in Chileka reported that they were literate,

162 compared to 91.0% in Chilomoni and 82.9% in Ndirande (p=0.119). Reported coverage of

163 HIV testing was very high and similar across neighbourhoods, with 93.1% of household

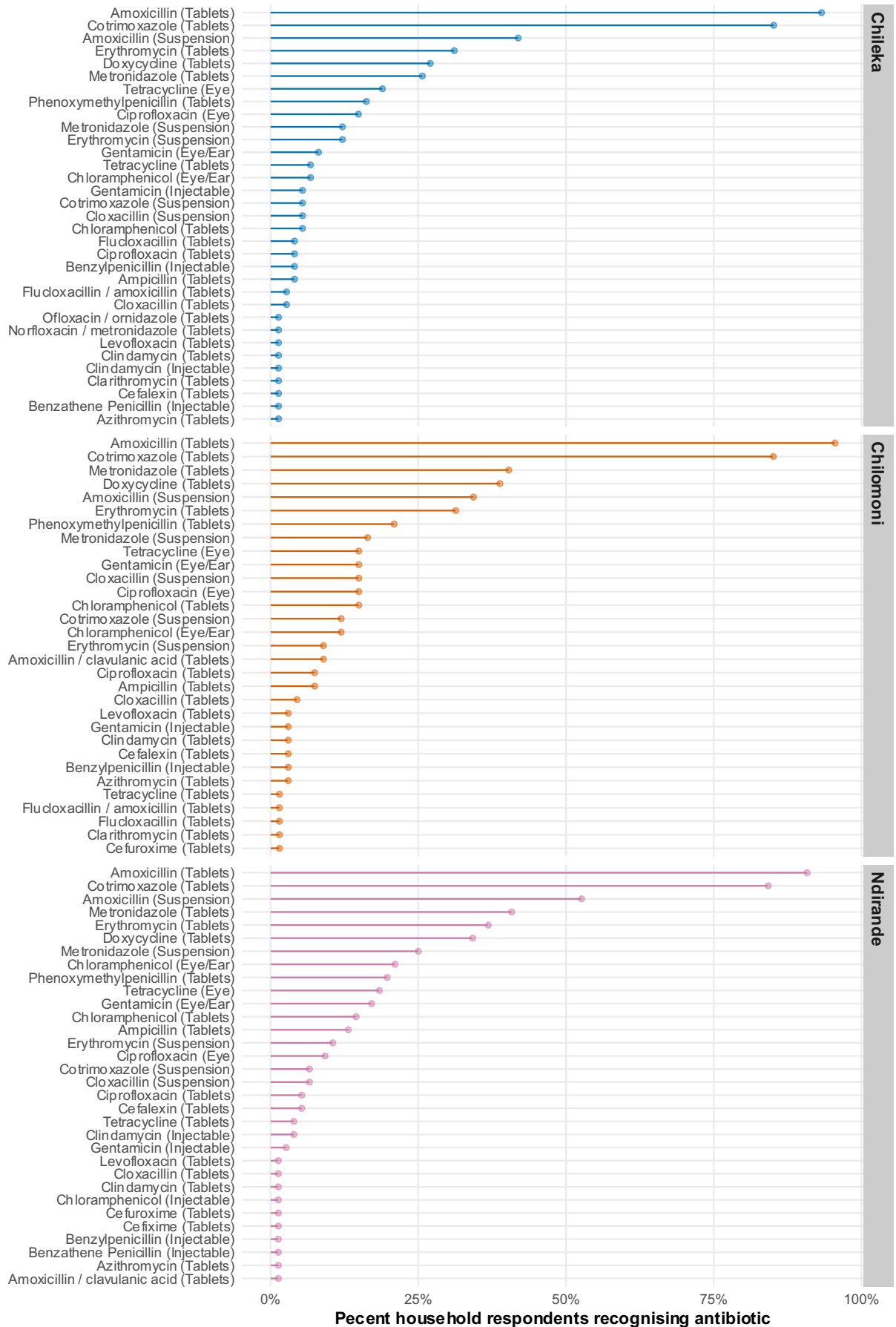
164 respondents reporting having ever previously tested for HIV ($p=0.639$ for comparison
165 between sites). Self-reported HIV-positive status was 11.1% overall, and was substantially
166 (but not statistically significantly) lower in Chileka (5.4%) compared to Chilomoni (10.4%)
167 and Ndirande (17.1%), $p=0.131$. Antiretroviral therapy coverage was 100% among HIV-
168 positive respondents across all three sites.

169

170 **Antibiotic recognition**

171 Using the drug bag method, household respondents recognised a median of five antibiotics
172 (IQR: 3-6). The median number of antibiotics recognised in Chileka (4, IQR: 3-6) was slightly
173 lower than in Chilomoni (5, IQR:3-6) or Ndirande (5, IQR: 4-6.25), but this was not
174 statistically significant ($p=0.1176$). The most common antibiotics recognised overall by
175 household respondents were: amoxicillin tablets (202/217, 93.1%, 95% CI: 88.9-96.1%);
176 cotrimoxazole tablets (184/217, 84.8%, 95% CI: 79.3-89.3%); and amoxicillin suspension
177 (94/217, 43.3%, 95% CI: 36.6-50.2%). Patterns of antibiotic recognition were broadly similar
178 between the three study sites (Figure 2).

179 **Figure 2: Household respondent antibiotic recognition, by study site**



181

182 **Associations with recognition of antibiotics**

183 In univariable regression analysis, household respondents from Ndirande (relative risk [RR]:
184 1.18, 95% CI: 1.02-1.36, compared to Chileka), and from larger households (RR: 1.03, 95% CI:
185 1.00-1.06 per person increase in household size) recognised a significantly greater number
186 of antibiotics (Table 2). Respondents with unknown HIV status (RR: 0.76, 95% CI: 0.58-0.98)
187 and male household respondents recognised significantly fewer antibiotics than women
188 (0.88, 95% CI: 0.75-1.03) although this was not statistically significant. In multivariable
189 regression, male sex (RR: 0.83, 95% CI: 0.69-0.99) and having unknown HIV status (RR: 0.76,
190 95% CI: 0.57-0.99) were significantly associated with recognition of fewer antibiotics.

191

192 **Table 2: Associations with number of antibiotics recognised by household respondent**

193

Variable	Univariate relative risk	95% confidence interval	Multivariable relative risk	95% confidence interval
Site				
Chileka	Ref		Ref	
Chilomoni	1.15	0.99-1.34	1.10	0.94-1.28
Ndirande	1.18	1.02-1.36	1.09	0.94-1.27
Respondent sex				
Female	Ref		Ref	
Male	0.88	0.75-1.03	0.83	0.69-0.99
Respondent age (per year)	1.00	1.00-1.01	1.00	1.00-1.01
Household self-rated poverty status				
Very poor	Ref		Ref	
Poor	0.97	0.75-1.28	0.99	0.76-1.31
Somewhat poor	1.22	0.95-1.59	1.22	0.94-1.61
Somewhat rich	1.12	0.83-1.53	1.17	0.85-1.62
Respondent HIV status				
HIV-negative	Ref		Ref	
HIV-positive	1.11	0.92-1.32	1.03	0.85-1.25
HIV status unknown	0.76	0.58-0.98	0.76	0.57-0.99
Number of household members	1.03	1.00-1.06	1.02	0.99-1.05
Respondent literacy				
Respondent illiterate	Ref		Ref	
Respondent literate	1.10	0.93-1.30	1.01	0.85-1.22

194

195

196

197 **Antibiotic use**

198 Of the 1051 household members, a total of 67 (6.4%, 95% CI: 5.0-8.0%) were reportedly
199 currently taking one of the antibiotics identified within the drug bag (Table 3). The bag
200 included multiple versions of the same antibiotics (active ingredients) to facilitate
201 recognition. Estimates of household members' current antibiotic use were similar between
202 Chileka (22/355, 6.2%, 95% CI: 3.9-9.2%), Chilomoni (20/321, 6.3%, 95% CI: 3.8-9.5%), and
203 Ndirande (25/375, 6.7%, 4.4-9.7%). Only five antibiotics (counted by active ingredient) were
204 identified as being currently taken by household members (Table 2). The antibiotic
205 formulation most commonly reported as currently used was cotrimoxazole tablets
206 (39/1051, 3.7%, 95% CI: 2.7-5.0%), followed by amoxicillin tablets (13/1051, 1.2%, 95% CI:
207 0.7-2.1%), erythromycin tablets (5/1051, 0.5%, 95% CI: 0.2-1.1%) and amoxicillin suspension
208 (5/1051, 0.5%, 95% CI: 0.2-1.1%).

209 **Table 3: Antibiotic use by household members**

210

Antibiotic	Chileka (N=355) n (% , 95%CI)	Chilomoni (N=321) n (% , 95%CI)	Ndirande (N=375) n (% , 95%CI)
Current use			
Amoxicillin (Suspension)	1 (0.3%, 0.0%-1.6%)	1 (0.3%, 0.0%-1.7%)	3 (0.8%, 0.2%-2.3%)
Amoxicillin (Tablets)	4 (1.1%, 0.3%-2.9%)	5 (1.6%, 0.5%-3.6%)	4 (1.1%, 0.3%-2.7%)
Chloramphenicol (Tablets)		1 (0.3%, 0.0%-1.7%)	
Cotrimoxazole (Tablets)	13 (3.7%, 2.0%-6.2%)	10 (3.1%, 1.5%-5.7%)	16 (4.3%, 2.5%-6.8%)
Doxycycline (Tablets)	1 (0.3%, 0.0%-1.6%)	1 (0.3%, 0.0%-1.7%)	
Erythromycin (Suspension)			2 (0.5%, 0.1%-1.9%)
Erythromycin (Tablets)	3 (0.8%, 0.2%-2.4%)	2 (0.6%, 0.1%-2.2%)	
Used last 6 months			
Amoxicillin (Suspension)	11 (3.1%, 1.6%-5.5%)	7 (2.2%, 0.9%-4.4%)	20 (5.3%, 3.3%-8.1%)
Amoxicillin (Tablets)	44 (12.4%, 9.2%-16.3%)	39 (12.1%, 8.8%-16.2%)	43 (11.5%, 8.4%-15.1%)
Amoxicillin/clavulanic acid (Tablets)		2 (0.6%, 0.1%-2.2%)	
Ampicillin (Tablets)			2 (0.5%, 0.1%-1.9%)
Benzathine Penicillin (Injectable)	1 (0.3%, 0.0%-1.6%)		
Benzylpenicillin (Injectable)		1 (0.3%, 0.0%-1.7%)	1 (0.3%, 0.0%-1.5%)
Cefalexin (Tablets)		1 (0.3%, 0.0%-1.7%)	1 (0.3%, 0.0%-1.5%)
Chloramphenicol (Eye/Ear)	1 (0.3%, 0.0%-1.6%)	2 (0.6%, 0.1%-2.2%)	4 (1.1%, 0.3%-2.7%)
Chloramphenicol (Tablets)		2 (0.6%, 0.1%-2.2%)	2 (0.5%, 0.1%-1.9%)
Ciprofloxacin (Eye)	2 (0.6%, 0.1%-2.0%)	3 (0.9%, 0.2%-2.7%)	1 (0.3%, 0.0%-1.5%)
Ciprofloxacin (Tablets)	2 (0.6%, 0.1%-2.0%)	1 (0.3%, 0.0%-1.7%)	1 (0.3%, 0.0%-1.5%)
Clindamycin (Injectable)			1 (0.3%, 0.0%-1.5%)
Cloxacillin (Suspension)	1 (0.3%, 0.0%-1.6%)		
Cloxacillin (Tablets)	1 (0.3%, 0.0%-1.6%)		
Cotrimoxazole (Suspension)	1 (0.3%, 0.0%-1.6%)	1 (0.3%, 0.0%-1.7%)	1 (0.3%, 0.0%-1.5%)
Cotrimoxazole (Tablets)	47 (13.2%, 9.9%-17.2%)	30 (9.3%, 6.4%-13.1%)	39 (10.4%, 7.5%-13.9%)
Doxycycline (Tablets)	6 (1.7%, 0.6%-3.6%)	7 (2.2%, 0.9%-4.4%)	12 (3.2%, 1.7%-5.5%)
Erythromycin (Suspension)	3 (0.8%, 0.2%-2.4%)		1 (0.3%, 0.0%-1.5%)
Erythromycin (Tablets)	9 (2.5%, 1.2%-4.8%)	11 (3.4%, 1.7%-6.0%)	8 (2.1%, 0.9%-4.2%)
Gentamicin (Injectable)		1 (0.3%, 0.0%-1.7%)	
Gentamicin (Eye/Ear)	1 (0.3%, 0.0%-1.6%)	3 (0.9%, 0.2%-2.7%)	4 (1.1%, 0.3%-2.7%)
Levofloxacin (Tablets)		1 (0.3%, 0.0%-1.7%)	
Metronidazole (Suspension)	4 (1.1%, 0.3%-2.9%)	3 (0.9%, 0.2%-2.7%)	7 (1.9%, 0.8%-3.8%)
Metronidazole (Tablets)	9 (2.5%, 1.2%-4.8%)	9 (2.8%, 1.3%-5.3%)	13 (3.5%, 1.9%-5.9%)
Phenoxymethylpenicillin (Tablets)	1 (0.3%, 0.0%-1.6%)	1 (0.3%, 0.0%-1.7%)	3 (0.8%, 0.2%-2.3%)
Tetracycline (Eye)	1 (0.3%, 0.0%-1.6%)	2 (0.6%, 0.1%-2.2%)	4 (1.1%, 0.3%-2.7%)

211

Denominators are all reported household members, by site. Binomial exact 95% confidence intervals.

212

Where cells are blank, household heads reported no use/use in last 6-months of this antibiotic by household members.

213

214 Household respondents reported that 440 of the 1051 household members (41.9%) had

215 taken an antibiotic in the last 6-months. The antibiotic formulations that had been

216 reportedly most frequently taken in the preceding 6-months were: amoxicillin tablets

217 (126/1051, 12.0%, 95% CI: 10.1%-14.1%); cotrimoxazole tablets (116/1051, 11.0%, 95%CI:

218 9.2-13.1%); and amoxicillin suspension (38/1051, 3.6%, 95% CI: 2.6-4.9%). Patterns of

219 reported antibiotic use in the preceding 6-months were broadly similar between the three

220 study sites.

221 Discussion

222
223 The main findings of this detailed cross-sectional survey of community antibiotic use
224 practices in Blantyre Malawi were that current antibiotic use was (67/1051, 6.4%) and
225 recent use (last 6 months) was (440/1051, 41.9%). Both current and recent antibiotic use
226 were limited to a small number of antibiotic formulations, with amoxicillin and
227 cotrimoxazole being the most frequently recognised and used. Both antibiotics are classified
228 as “access” on the WHO’s Access, Watch, Reserve (AWaRe) list, meaning they are commonly
229 used to treat infections and should be clinically available at all times²³. In contexts such as
230 Malawi, cotrimoxazole is commonly used for chemoprophylaxis for people living with HIV,
231 and with HIV prevalence in the study populations being high, it is not surprising that this was
232 one of the most commonly used and recognised antibiotic. In contrast, the number of
233 antibiotics recognised was significantly lower among people less likely to access formal
234 health services (such as people with unknown HIV status, a strong indicator of delayed
235 healthcare seeking and poor access where testing is widely available), and men, who
236 frequently do not participate in care-seeking activities for families.

237
238 Taken together, these findings suggest that, contrary to popular narratives, use of a wide
239 range of antibiotics and antibiotics on the watch or reserve lists was not widespread in
240 these urban and periurban African settings; rather access to a wide range of antibiotics is
241 likely to be limited for the majority of the population, and potentially not a major
242 contributor to so-called “antibiotic overuse”. Nevertheless, antibiotics such as
243 cotrimoxazole, amoxicillin, and erythromycin have broad spectrum action, and dependence
244 on these antibiotics for community management of illness is associated with generation of
245 resistance. Therefore, ABU and AMR guidance must recognise the healthcare and

246 sociological context within which recommendations are made; improvements in universal
247 healthcare access (including treatment of infection) should be accompanied by high quality
248 surveillance and antibiotic use data, supported by interrogation of social narratives around
249 the determinants of antibiotic use.

250

251 In Malawi and similar settings in Southern and Eastern African countries, primary health
252 care facilities are an important source of community care, with services provided free,²⁴ but
253 delivered under severe resource constraints with high rates of stockouts of many essential
254 medicines.^{25,26} International donor programmes play a significant role in funding services,
255 and infectious diseases have received comparably more resources.²⁷ The provision of
256 cotrimoxazole by the HIV programme at primary care clinics may explain why it is well
257 recognised and used within households.²⁵ A multi-site study exploring household antibiotic
258 use in Zimbabwe, Malawi and Uganda identified differences in the profile of ABU, with
259 cotrimoxazole being the most frequently used in rural Malawi, amoxicillin in Harare,
260 Zimbabwe, and metronidazole within informal settlements in Uganda.²⁸ Most differences in
261 use reflected differences in the configuration of the health system and antibiotic supplies.

262

263 In Malawi, gender power relations shape household care seeking practices, with men often
264 presenting at health care facilities critically ill, and having delayed diagnosis of diseases of
265 major public health importance, particularly HIV and tuberculosis.²⁹ Women spend
266 considerably more time than men seeking care and supporting household members to seek
267 care.³⁰ These factors are likely to explain why women had better recognition and use of
268 antibiotics. While government health care facilities provide care without user fees, care
269 seeking incurs costs for transportation and loss of time from other livelihood activities.³¹

270 Improving access and removing economic barriers to care seeking, are likely to be important
271 interventions to improve the community management of febrile illness, both to improve
272 recognition of severe illness requiring antibiotics with referral to hospital where required,
273 and to restrict unnecessary ABU.

274

275 Global public engagement campaigns to improve awareness of antimicrobial resistance have
276 focused predominantly on communicating the need to stop people from indiscriminately
277 using antibiotics with insufficient attention paid to the issues of access.³² Our findings
278 demonstrate frequent use of a very limited number of antibiotic formulations in the
279 preceding six months, however in a context where febrile illness is common and
280 presentation to health care facilities is late, and diagnostics are few, this may represent
281 appropriate prescribing. Indeed, this may instead speak to the need to improve access to
282 and quality of health care services, not limit access, particularly for the most economically
283 disadvantaged groups.

284

285 The limitations of this study include the potential for social desirability bias, whereby
286 household respondents may state that they recognised or used antibiotics to meet
287 interviewer’s expectations. We mitigated against this by using our innovative and previously
288 validated “drug bag” methodology and experienced field interviewers. The drug bag uses a
289 wide range of antibiotics available in the community; however it is possible that we did not
290 include some important formulations, or that packaging designs have changed, limiting
291 recognition. The concept of an “antibiotic” is not well understood in Malawi and has no
292 specific Chichewa word, potentially hindering accurate recall of use and recognition. We
293 randomly sampled households from a community sampling frame to minimise sampling

294 bias; nevertheless, women were over-represented, perhaps because men may not have
295 been available for interview, or at work. We may therefore have underestimated antibiotic
296 use and recognition.

297

298 In conclusion, we found patterns of current and recent antibiotic use and recognition among
299 randomly-sampled household members in Blantyre, Malawi to be limited to a small number
300 of broad-spectrum antibiotic formulations. People known to have poorer access to
301 healthcare reported recognising fewer antibiotics. So-called “antibiotic overuse” –
302 specifically of antibiotics on the watch list – is unlikely to be a major driver of antimicrobial
303 resistance and drug resistance infections in this and similar settings. Rapidly reducing
304 generation of antibiotic resistance and drug resistant infection in low-income settings in
305 Africa will require a shift of focus, away from narratives that blame people in precarious
306 living conditions for “antibiotic overuse” and instead towards holistic approaches that
307 address the underlying systemic drivers of AMR, whilst recognising and supporting antibiotic
308 access within well-functioning health systems.

309

310

311 **Acknowledgements**

312 We are grateful to all study participants who took part in this study and to the DRUM
313 Consortium.

314

315 **Funding**

316 This study was funded by AMR Cross-Council Initiative through a grant from the Medical
317 Research Council MR/S004793/1. MLW is funded by Wellcome Asia and Africa Programme
318 Grant 206545/Z/17/Z. PM is funded by Wellcome (206575/Z/17/Z). For the purpose of open
319 access, the author has applied a CC BY public copyright licence to any Author Accepted
320 Manuscript version arising from this submission.

321

322 References

323

- 324 1. WHO,. New report calls for urgent action to avert antimicrobial resistance crisis. World
325 Health Organization. Published 2019. Accessed July 27, 2021.
326 [https://www.who.int/news/item/29-04-2019-new-report-calls-for-urgent-action-to-](https://www.who.int/news/item/29-04-2019-new-report-calls-for-urgent-action-to-avert-antimicrobial-resistance-crisis)
327 [avert-antimicrobial-resistance-crisis](https://www.who.int/news/item/29-04-2019-new-report-calls-for-urgent-action-to-avert-antimicrobial-resistance-crisis)

- 328 2. WHO,. *WHO: Global Action Plan on Antimicrobial Resistance*. World Health
329 Organization; 2015. Accessed August 11, 2020. [http://www.who.int/antimicrobial-](http://www.who.int/antimicrobial-resistance/publications/global-action-plan/en/)
330 [resistance/publications/global-action-plan/en/](http://www.who.int/antimicrobial-resistance/publications/global-action-plan/en/)

- 331 3. Cox JA, Vlieghe E, Mendelson M, Wertheim H, Ndegwa L, Villegas MV, Gould I, Levy Hara
332 G. Antibiotic stewardship in low- and middle-income countries: the same but different?
333 *Clinical Microbiology and Infection*. 2017;23(11):812-818. doi:10.1016/j.cmi.2017.07.010

- 334 4. Jasovský D, Littmann J, Zorzet A, Cars O. Antimicrobial resistance—a threat to the
335 world’s sustainable development. *Upsala Journal of Medical Sciences*. 2016;121(3):159-
336 164. doi:10.1080/03009734.2016.1195900

- 337 5. Laxminarayan R, Duse A, Wattal C, Zaidi AKM, Wertheim HFL, Sumpradit N, Vlieghe E,
338 Hara GL, Gould IM, Goossens H, Greko C, So AD, Bigdeli M, Tomson G, Woodhouse W,
339 Ombaka E, Peralta AQ, Qamar FN, Mir F, Kariuki S, Bhutta ZA, Coates A, Bergstrom R,
340 Wright GD, Brown ED, Cars O. Antibiotic resistance—the need for global solutions. *Lancet*
341 *Infect Dis*. 2013;13(12):1057-1098. doi:10.1016/S1473-3099(13)70318-9

- 342 6. Iskandar K, Molinier L, Hallit S, Sartelli M, Hardcastle TC, Haque M, Lugova H, Dhingra S,
343 Sharma P, Islam S. Surveillance of antimicrobial resistance in low-and middle-income
344 countries: a scattered picture. *Antimicrobial Resistance & Infection Control*.
345 2021;10(1):1-19.

- 346 7. Klein EY, Van Boeckel TP, Martinez EM, Pant S, Gandra S, Levin SA, Goossens H,
347 Laxminarayan R. Global increase and geographic convergence in antibiotic consumption
348 between 2000 and 2015. *Proceedings of the National Academy of Sciences*.
349 2018;115(15):E3463-E3470.

- 350 8. Van Boeckel TP, Gandra S, Ashok A, Caudron Q, Grenfell BT, Levin SA, Laxminarayan R.
351 Global antibiotic consumption 2000 to 2010: an analysis of national pharmaceutical
352 sales data. *The Lancet infectious diseases*. 2014;14(8):742-750.

- 353 9. WHO,. Antibiotic resistance: Key facts. World Health Organization. Published 2020.
354 Accessed June 24, 2020. [https://www.who.int/news-room/fact-sheets/detail/antibiotic-](https://www.who.int/news-room/fact-sheets/detail/antibiotic-resistance)
355 [resistance](https://www.who.int/news-room/fact-sheets/detail/antibiotic-resistance)

- 356 10. Sartelli M, C Hardcastle T, Catena F, Chichom-Mefire A, Coccolini F, Dhingra S, Haque M,
357 Hodonou A, Iskandar K, Labricciosa FM. Antibiotic use in low and middle-income
358 countries and the challenges of antimicrobial resistance in surgery. *Antibiotics*.
359 2020;9(8):497.

- 360 11. Wilkinson A, Ebata A, MacGregor H. Interventions to Reduce Antibiotic Prescribing in
361 LMICs: A Scoping Review of Evidence from Human and Animal Health Systems.
362 *Antibiotics*. 2018;8(1):2. doi:10.3390/antibiotics8010002
- 363 12. Yeika EV, Ingelbeen B, Kemah B, Wirsiy FS, Fomengia JN, Van der Sande MA.
364 Comparative assessment of the prevalence, practices and factors associated with self-
365 medication with antibiotics in Africa. *Tropical Medicine & International Health*.
366 2021;26(8):862-881.
- 367 13. Torres N, Chibi B, Middleton L, Solomon V, Mashamba-Thompson T. Evidence of factors
368 influencing self-medication with antibiotics in low and middle-income countries: a
369 systematic scoping review. *Public health*. 2019;168:92-101.
- 370 14. Do NT, Vu HT, Nguyen CT, Punpuing S, Khan WA, Gyapong M, Asante KP, Munguambe K,
371 Gómez-Olivé FX, John-Langba J. Community-based antibiotic access and use in six low-
372 income and middle-income countries: a mixed-method approach. *The Lancet Global
373 Health*. 2021;9(5):e610-e619.
- 374 15. Hamers RL, van Doorn HR. Antibiotic consumption in low-income and middle-income
375 countries. *The Lancet Global Health*. 2018;6(7):e732.
- 376 16. Sulis G, Adam P, Nafade V, Gore G, Daniels B, Daftary A, Das J, Gandra S, Pai M.
377 Antibiotic prescription practices in primary care in low- and middle-income countries: A
378 systematic review and meta-analysis. Kruk ME, ed. *PLoS Med*. 2020;17(6):e1003139.
379 doi:10.1371/journal.pmed.1003139
- 380 17. Allwell-Brown G, Hussain-Alkhateeb L, Sewe MO, Kitutu FE, Strömdahl S, Mårtensson A,
381 Johansson EW. Determinants of trends in reported antibiotic use among sick children
382 under five years of age across low-income and middle-income countries in 2005-17: a
383 systematic analysis of user characteristics based on 132 national surveys from 73
384 countries. *International Journal of Infectious Diseases*. Published online 2021.
- 385 18. Frost I, Kapoor G, Craig J, Liu D, Laxminarayan R. Status, challenges and gaps in
386 antimicrobial resistance surveillance around the world. *Journal of Global Antimicrobial
387 Resistance*. Published online 2021.
- 388 19. Kirchhelle C, Atkinson P, Broom A, Chuengsatiansup K, Ferreira JP, Fortané N, Frost I,
389 Gradmann C, Hinchliffe S, Hoffman SJ, Lezaun J, Nayiga S, Outtersson K, Podolsky SH,
390 Raymond S, Roberts AP, Singer AC, So AD, Sringernyuan L, Tayler E, Rogers Van Katwyk
391 S, Chandler CIR. Setting the standard: multidisciplinary hallmarks for structural,
392 equitable and tracked antibiotic policy. *BMJ Glob Health*. 2020;5(9):e003091.
393 doi:10.1136/bmjgh-2020-003091
- 394 20. National Statistics Office. 2018 Malawi Population and Housing Census. Accessed
395 September 22, 2021.
396 http://www.nsomalawi.mw/index.php%3Foption%3Dcom_content%26view%3Darticle%26id%3D226:2018-malawi-population-and-housing-census%26catid%2E%80%89%3D%2E%80%898:reports%26Itemid%2E%80%89%3D%2E%80%896

- 400 21. Ministry of Health of Malawi. Malawi Population-based HIV Impact Assessment 2015-
401 2016. Published online 2018.
- 402 22. Dixon J, MacPherson E, Manyau S, Nayiga S, Khine Zaw Y, Kayendeke M, Nabirye C,
403 Denyer Willis L, de Lima Hutchison C, Chandler CI. The 'Drug Bag' method: lessons from
404 anthropological studies of antibiotic use in Africa and South-East Asia. *Global health*
405 *action*. 2019;12(sup1):1639388.
- 406 23. WHO,. WHO | WHO releases the 2019 AWaRe Classification Antibiotics. WHO. Published
407 2019. Accessed November 19, 2020.
408 [http://www.who.int/medicines/news/2019/WHO_releases2019AWaRe_classification_a](http://www.who.int/medicines/news/2019/WHO_releases2019AWaRe_classification_antibiotics/en/)
409 [ntibiotics/en/](http://www.who.int/medicines/news/2019/WHO_releases2019AWaRe_classification_antibiotics/en/)
- 410 24. Makwero MT. Delivery of primary health care in Malawi. *Afr j prim health care fam med*.
411 2018;10(1). doi:10.4102/phcfm.v10i1.1799
- 412 25. MacPherson EE, Reynolds J, Sanudi E, Nkaombe A, Phiri C, Mankhomwa J, Dixon J,
413 Chandler CIR. Understanding antimicrobial resistance through the lens of antibiotic
414 vulnerabilities in primary health care in rural Malawi. *Global Public Health*. Published
415 online December 21, 2021:1-17. doi:10.1080/17441692.2021.2015615
- 416 26. Wild L, Cammack D. The supply and distribution of essential medicines in Malawi.
417 Published online 2013.
- 418 27. Page S. The Development Aid Situation in Malawi. In: *Development, Sexual Cultural*
419 *Practices and HIV/AIDS in Africa*. Springer; 2019:43-60.
- 420 28. Dixon J, MacPherson EE, Nayiga, S, Manyau S, Nabirye C, Kayendeke M, Sanudi E,
421 Nkoambe, A, Mareke, P, Sithole, K, de Lima Hutchison C, Bradley, J, Yeung S, Ferrand R,
422 Lal S, Roberts C, Green, E, Denyer Willis, Laurie, Staedke, S, Chandler CIR. A Mixed-
423 Methods, Multi-Country Analysis of Household Antibiotic use in Malawi, Uganda and
424 Zimbabwe. *BMJ Global Health*. 2021;6(e006920).
- 425 29. Chikovore J, Hart G, Kumwenda M, Chipungu GA, Corbett L. 'For a mere cough, men
426 must just chew Conjex, gain strength, and continue working': the provider construction
427 and tuberculosis care-seeking implications in Blantyre, Malawi. *Global Health Action*.
428 2015;8(1):26292. doi:10.3402/gha.v8.26292
- 429 30. Yeatman S, Chamberlin S, Dovel K. Women's (health) work: a population-based, cross-
430 sectional study of gender differences in time spent seeking health care in Malawi. *PLoS*
431 *One*. 2018;13(12):e0209586.
- 432 31. Abihiro GA, Grace, MB, De Allegri M. Gaps in universal health coverage in Malawi: A
433 qualitative study in rural communities. *BMC Health Serv Res*. 2014;14(1):234.
434 doi:10.1186/1472-6963-14-234
- 435 32. Glover R, Chandler C, Manton J. The benefits and risks of public awareness campaigns:
436 World Antibiotic Awareness Week in context. *The BMJ Opinion*. Published online 2019.

