

1 **Title:** Direct Economic Burden of Mental Health Disorders Associated with Polycystic Ovary  
2 Syndrome: Systematic Review and Meta-analysis

3  
4 **Authors:** <sup>1</sup>Surabhi Yadav, <sup>1</sup>Olivia Delau, <sup>2</sup>Adam Bonner, <sup>3</sup>Daniela Markovic, <sup>4</sup>William Patterson,  
5 <sup>4</sup>Sasha Ottey, <sup>5</sup> Richard P. Buyalos, <sup>2,6,7,8</sup>Ricardo Azziz

6  
7 **Affiliations:**

8 <sup>1</sup>School of Global Public Health, New York University, New York, NY 10003, USA

9 <sup>2</sup>Department of Obstetrics & Gynecology, Heersink School of Medicine, University of Alabama  
10 at Birmingham, Birmingham, AL 35294, USA

11 <sup>3</sup>Division of General Internal Medicine and Health Services Research, UCLA, Los Angeles, CA  
12 90095, USA

13 <sup>4</sup>PCOS Challenge: The National Polycystic Ovary Syndrome, Atlanta, GA 30308, USA

14 <sup>5</sup>Department of Obstetrics and Gynecology, UCLA, Los Angeles, CA 90095, USA

15 <sup>6</sup>Department of Medicine, Heersink School of Medicine, University of Alabama at Birmingham,  
16 Birmingham, AL 35294, USA

17 <sup>7</sup>Department of Health Policy, Management and Behavior, School of Public Health, University at  
18 Albany, SUNY, Rensselaer, NY 12144, USA

19 <sup>8</sup>Department of Healthcare Organization and Policy, School of Public Health, University of  
20 Alabama at Birmingham, Birmingham, AL 35294, USA

21  
22 **Support:** The study was supported, in part, by PCOS Challenge: The National Polycystic Ovary  
23 Syndrome Association and the Foundation for Research and Education Excellence

24  
25 **Short Title:** Direct Costs of Mental Health Disorders in PCOS

26

27 **Correspondence:** Ricardo Azziz, MD, UAB Women and Infants Center, 1700 6th Avenue  
28 South, Birmingham, AL 35233, USA. Email: [razziz@uabmc.edu](mailto:razziz@uabmc.edu); ORCID: 0000-0002-3917-0483  
29

30 **Data Availability Statement:** The data is available at: Azziz, Ricardo. (2022). Economic  
31 Burden of Mental Health Disorders in PCOS-Supplementary Data [Data set]. Zenodo.  
32 <https://doi.org/10.5281/zenodo.7478354>  
33

34 **Disclosure Summary:** Surabhi Yadav, Olivia Delau, Adam Bonner, Daniela Markovic, and  
35 Richard P. Buyalos, have no competing interests to declare. Sasha Ottey received honoraria from  
36 Institute for Family Centeredness; has received travel support for attendance at Women's Health  
37 Innovation Summit; and is Executive Director for PCOS Challenge: The National Polycystic Ovary  
38 Executive Director Syndrome Association. The author has no other competing interests to  
39 declare. William Patterson is a Director of Public Affairs, Study Recruitment and Patient Registry  
40 Manager, and Intern Preceptor for PCOS Challenge: The National Polycystic Ovary Syndrome  
41 Association. The author has no other competing interests to declare. Ricardo Azziz received a  
42 grant from Ferring Pharmaceuticals; has received royalties from Wolters Kluwer Health, Johns  
43 Hopkins University Press, Springer, and McGraw Hill; has received honoraria from Davidson-  
44 Mestman course; has participated on a data safety monitoring board for University of Michigan  
45 and Guangzhou Medical University; has held a leadership or fiduciary role at American Society for  
46 Reproductive Medicine; holds stock at Martin Imaging and Arora Forge; has received consulting  
47 fees from Spruce Biosciences, Fortress Biotech, Rani Therapeutics, Core Access Surgical for  
48 PCOS, female reproduction and gynecologic surgery; and serves as Senior Editor at eLife.  
49 The author has no other competing interests to declare.  
50

51 **ABSTRACT**

52 **BACKGROUND:** Polycystic ovary syndrome (PCOS) is the most common hormone disorder  
53 affecting about one in seven reproductive-aged women worldwide and approximately 6 million  
54 women in the United States (U.S.). PCOS can be a significant burden to those affected and is  
55 associated with an increased prevalence of mental health (MH) disorders such as depression,  
56 anxiety, eating disorders, and postpartum depression. We undertook this study to determine the  
57 excess economic burden associated with MH disorders in women with PCOS, in order to allow  
58 for a more accurate prioritization of the disorder as a public health priority.

59 **METHODS:** Followed PRISMA reporting guidelines for systematic review, we searched  
60 PubMed, Web of Science, EBSCO, Medline, Scopus, and PsycINFO through July 16, 2021, for  
61 studies on MH disorders in PCOS. Excluded were studies not in humans, without controls,  
62 without original data, or not peer reviewed. As anxiety, depression, eating disorders, and  
63 postpartum depression were by far the most common MH disorders assessed by the studies,  
64 we performed our meta-analysis on these disorders. Meta-analyses were performed using the  
65 DerSimonian-Laird random-effects model to compute pooled estimates of prevalence ratios  
66 (PR) for the associations between PCOS and these MH disorders, and then calculated the  
67 excess direct costs of related to these disorders in U.S. dollars (USD) for women suffering from  
68 PCOS in the U.S. alone. The quality of selected studies was assessed using the Newcastle-  
69 Ottawa Scale.

70 **RESULTS:** We screened 78 articles by title/abstract, assessed 43 articles in full-text, and  
71 included 25 articles. Pooled PRs were 1.42 (95% CI: 1.32-1.52) for anxiety, 1.65 (95% CI: 1.44-  
72 1.89;) for depression, 1.48 (95% CI: PR: 1.06-2.05) for eating disorders, and 1.20 (95% CI:  
73 0.96-1.50) for postpartum depression, for PCOS relative to controls. In the U.S, the additional  
74 direct healthcare costs associated with anxiety, depression and eating disorders in PCOS were  
75 estimated to be \$1.939 billion/yr., 1.678 billion/yr., and \$0.644 billion/yr. in 2021 USD,  
76 respectively. Postpartum depression was excluded from the cost analyses due to the non-

77 significant meta-analysis result. Taken together, the additional direct healthcare costs  
78 associated with anxiety, depression and eating disorders in PCOS was estimated to be \$4.261  
79 billion/yr. in 2021 USD.

80 **CONCLUSIONS:** Overall, the direct healthcare annual costs for the most common MH  
81 disorders in PCOS, namely anxiety, depression, and eating disorders exceeds \$4 billion in 2021  
82 USD for the U.S. population alone. Taken together with our prior work, these data suggest that  
83 the healthcare-related economic burden of PCOS exceeds \$15 billion yearly, considering the  
84 costs of PCOS diagnosis, and cost related to PCOS-associated MH, reproductive, vascular, and  
85 metabolic disorders. As PCOS has much the same prevalence across the world, the excess  
86 economic burden attributable to PCOS globally is enormous, mandating that the scientific and  
87 policy community increase its focus on this important disorder.

88 **FUNDING:** The study was supported, in part, by PCOS Challenge: The National Polycystic  
89 Ovary Syndrome Association and by the Foundation for Research and Education Excellence

90 **CLINICAL TRIAL NUMBER:** N/A

91

92 **Key Words:** polycystic ovarian syndrome, economic burden, mental health disorders, anxiety,  
93 depression, eating disorder, postpartum depression

94

95 **INTRODUCTION**

96  
97 Polycystic ovary syndrome (PCOS) is a highly prevalent disorder, highly inherited complex  
98 polygenic, multifactorial disorder (1). PCOS single most common endocrine-metabolic disorder  
99 in reproductive-aged women today, affecting 5-15% of unselected reproductive-aged women  
100 (1990 National Institutes of Health criteria), and potentially represents a significant financial  
101 burden to our health care (2,3). Pathophysiological abnormalities in gonadotropin secretion or  
102 action, ovarian folliculogenesis, steroidogenesis, insulin secretion or action, and adipose tissue  
103 function, among others, have been described in PCOS. Women with PCOS are at increased  
104 risk for glucose intolerance and type 2 diabetes mellitus (T2DM), hepatic steatosis and  
105 metabolic syndrome, hypertension, dyslipidemia, vascular thrombosis, cerebrovascular  
106 accidents, possibly cardiovascular events, subfertility and obstetric complications, endometrial  
107 carcinoma, and mood and psychosexual disorders (1).

108  
109 Although the physical symptoms of PCOS are increasingly recognized by practicing clinicians,  
110 little attention has focused on the psychological correlates of this frequent endocrine disorder  
111 (4,5). A significant amount of research has been conducted showing the direct causal  
112 relationship between PCOS diagnosis and mental health (MH) disorders. PCOS is associated  
113 with an increased risk of a diagnosis of depression, anxiety, bipolar disorder, and obsessive-  
114 compulsive disorder (OCD), and is associated with worse symptoms of depression, anxiety,  
115 OCD, and somatization (4,5). Screening for these disorders to allow early intervention may be  
116 warranted.

117  
118 In order to allow for a more accurate prioritization of the disorder as a public health priority, we  
119 have pursued a comprehensive estimation of the economic burden of PCOS. In previous  
120 studies conducted by our team, we estimated the mean annual cost of the initial evaluation of  
121 PCOS to be \$93 million, that of hormonally treating menstrual dysfunction/abnormal uterine  
122 bleeding to be \$1.35 billion, that of providing infertility care to be \$533 million, and that of

123 treating hirsutism to be \$622 million in 2014 USD (2). In a more recent study, we estimated the  
124 costs of PCOS-associated T2DM and associated stroke to be \$1.5 billion and \$2.4 billion in  
125 2020 USD, respectively (3). The present study aims to assess the direct healthcare-related  
126 economic burden of PCOS-related MH disorders. To do so, we conducted a systematic review  
127 and meta-analysis of published studies with human subjects and controls that analyzed the  
128 relationship between MH disorders and previous diagnosis of PCOS, and then calculated the  
129 related direct economic burden.

130

## 131 **MATERIALS & METHODS**

### 132 **Systematic Review**

133 A systematic review was performed, adhering to the Preferred Reporting Items for Systematic  
134 Reviews and Meta-analyses (PRISMA) Statement and Checklist ([https://www.prisma-](https://www.prisma-statement.org/)  
135 [statement.org/](https://www.prisma-statement.org/)), for reports examining the relationship of MH disorders and PCOS through July  
136 16, 2021. The systematic review was conducted on the six English databases (i.e., PubMed,  
137 Web of Science, EBSCO, Medline, Scopus, and PsycINFO). The following keywords were used  
138 (mental health OR mental illness OR mental disorder OR psych\* OR anxiety OR depression OR  
139 quality of life OR eating disorder OR bulimia OR postpartum depression) AND ('cost\* OR  
140 'economic burden' OR 'cost-of-illness OR 'burden of illness'), "Depressive  
141 Disorder/economics"[MAJR], "PCOS" AND "economic burden" OR "costs" OR "cost-of-illness"  
142 OR "burden of illness", "PCOS" AND "economic burden" AND "mental health", 'polycystic ovary  
143 syndrome' AND 'anxiety, "Polycystic Ovary Syndrome/psychology"[MAJR] (**Supplemental table**  
144 **1**) (6).

145

### 146 **Study eligibility criteria**

147 Studies were eligible for inclusion if they: (a) were original peer-reviewed academic articles;  
148 AND (b) were observational studies that presented accurate and precise data regarding the risk,

149 including reporting relative risks, odds ratios, hazard ratios, or prevalence or incidence rates, of  
150 MH disorders in women with PCOS compared with a control group. MH disorders included  
151 depressive disorders, such as major depression disorder, dysthymia, minor depression or  
152 subclinical/subthreshold depression, or affective disorders containing depressive disorders,  
153 emotional distress, eating disorders, or mood and anxiety disorders. In the case of repeatedly  
154 published and studied literature based on the same batch of data or sample population the most  
155 recent studies with the complete data set were included. Studies were excluded if they: (a) were  
156 based on non-human species; (b) did not have full text available; (c) did not include a control  
157 group; (d) reported solely on diseases other than PCOS; or (e) were reviews, letters, or  
158 commentaries.

159

#### 160 **Study selection and data extraction**

161 Search strategy and study identification was performed by one investigator (S.Y.) using a  
162 standardized approach. Articles selected for inclusion were then screened by four authors  
163 (O.D., A.B., S.Y., D.M.). Further, four investigators worked to independently extract data on  
164 study characteristics and outcomes (A.B., S.Y., O.D., D.M.). Disagreements were discussed  
165 until consensus was reached.

166

#### 167 **Quality assessment**

168 Four investigators worked in duplicate to independently assess the quality of eligible studies  
169 using the Newcastle-Ottawa scale (S.Y., O.D., A.B., R.A.)  
170 ([https://www.ohri.ca/programs/clinical\\_epidemiology/oxford.asp](https://www.ohri.ca/programs/clinical_epidemiology/oxford.asp)).

171

#### 172 **Statistical analysis**

173 Following the systematic search, the data were submitted to a meta-analysis to estimate the  
174 degree of relationship between PCOS and four dichotomous outcomes including anxiety,

175 depression, eating disorders and postpartum depression. The meta-analysis was performed  
176 using the DerSimonian-Laird random effects model (7) and the results of the analyses were  
177 summarized using the pooled PR and its 95% confidence intervals for each of the above  
178 outcomes.

179  
180 We should note that when estimating risk, in general we can assume that the odds ratio (OR)  
181 approximates the risk ratio when the prevalence in both groups is low (~ <10%). However,  
182 when the prevalence of the outcome is higher the OR is likely to over-estimate of risk  
183 ratio. Outcomes for this study were generally higher so we chose to use prevalence ratios  
184 (PRs) instead of odds ratios (ORs) for the economic burden calculations. The limitation of using  
185 PRs is that these effects were not adjusted for the full set of covariates as for the OR  
186 analysis. However, most studies used groups that were matched by age and/or BMI by design.

187  
188 Study specific and overall effect estimates were visually presented using Forest plots.  
189 Between-study heterogeneity was evaluated using the I<sup>2</sup> statistic. In case of significant  
190 heterogeneity (I<sup>2</sup> > 70%) sensitivity analyses were performed by excluding any outliers from the  
191 analysis. We defined an outlier as any study whose confidence intervals did not overlap the  
192 confidence interval of the pooled estimate for the purpose of the sensitivity analysis. Publication  
193 bias was assessed using funnel plots. Additionally, to adjust for possible publication bias, we  
194 recalculated the results using the ‘trim and fill’ method (8). Analyses were performed using R  
195 version 4.1.3.

196  
197 As previously (2,3), we defined the prevalence of PCOS based on the NIH criteria (phenotypes  
198 A and B of the Rotterdam criteria) or what is considered the ‘classic’ PCOS phenotypes), which  
199 we have conservatively estimated to be 6.6%. Annual cost data for medical treatment of  
200 depression for individuals 18-49 years of age was obtained from a 2021 study (9), for anxiety for



201 ages 15-54 was obtained from a 1999 study (10), and for eating disorders for individuals 20-49  
202 years of age was obtained from a 2021 study (11). We adjusted for inflation using the medical  
203 care inflation calculator (<https://www.officialdata.org/Medical-care/price-inflation/>).

204 **RESULTS**

205 A total of 2018 studies were identified during the initial literature review, of which 78 were  
206 screened by title and abstract (**Fig. 1**). Forty-three potentially eligible studies were reviewed in  
207 detail, of which 18 were excluded due to insufficient information. For example, some studies did  
208 not include information on a control group, did not include measures of association, used a  
209 continuous outcome instead of dichotomous outcome, or did not provide information about  
210 risk/prevalence that was needed to compute the prevalence ratios. The general characteristics  
211 of the 25 included studies (12-36) are detailed in **Supplemental Tables 2-5**.

212

213 **Excess Prevalence of Anxiety in Women with PCOS**

214 Twelve studies, all assessed as 'high quality' (**Supplemental Table 6**), were initially identified  
215 measuring as association between anxiety and PCOS (12-23). However, only ten studies were  
216 included in the meta-analysis, as two studies were excluded due to the lack of prevalence data  
217 (21,22). Compared to age matched women without PCOS, those with PCOS had a higher  
218 prevalence of anxiety in the meta-analysis (random effects PR: 1.42; 95% CI: 1.32, 1.52; I<sup>2</sup>  
219 43.82%; **Fig. 2A**). For our economic burden calculations, we considered PCOS patients as  
220 having a 1.42-fold greater risk of anxiety compared to those without PCOS.

221

222 Considering that comparably aged women of the general population have a prevalence of  
223 anxiety of 9.15%, the overall prevalence of anxiety in women with PCOS can be estimated to be  
224  $1.42 \times 9.15\% = 12.99\%$ . The excess prevalence of anxiety due to PCOS is therefore  $12.99\% -$   
225  $9.15\% = 3.84\%$ ; the excess number of anxiety cases due to PCOS is  $5,631,459 \times 3.84\% =$   
226  $216,248$  individuals.

227

228

## 229 **Excess Prevalence of Depression in Women with PCOS**

230 While fifteen studies were initially identified (12-20, 23-27), we used only the ten studies  
231 assessed as being of 'high quality' (**Supplemental Table 6**) for the meta-analysis. Compared to  
232 age matched women without PCOS, those with PCOS had a higher prevalence of depression in  
233 the meta-analysis (random effects PR: 1.65; 95% CI: 1.44, 1.89; I<sup>2</sup> 63.0%; **Fig. 2B**). For our  
234 economic burden calculations, we considered PCOS patients as having a 1.65-fold greater risk  
235 of depression compared to those without PCOS.

236  
237 Considering that comparably aged women of the general population have a prevalence of  
238 depression of 8.9%, the overall prevalence of depression in women with PCOS can be  
239 estimated to be  $1.65 \times 8.9\% = 14.69\%$ . The excess prevalence of depression due to PCOS is  
240 therefore  $14.69\% - 8.9\% = 5.79\%$ ; the excess number of depression cases due to PCOS is  
241  $4,528,088 \times 5.79\% = 262,176$  individuals.

## 242 243 **Excess Prevalence of Eating Disorders in Women with PCOS**

244 Six studies, all assessed as 'high quality' (**Supplemental Table 6**), were included for an  
245 association between eating disorders and PCOS (14,15,19,23,27,28). Compared to age  
246 matched women without PCOS, those with PCOS had a higher prevalence of eating disorders  
247 in the meta-analysis (random effects PR: 1.48; 95% CI: 1.06, 2.05; I<sup>2</sup> 74.41%; **Fig. 2C**).

248  
249 Considering that comparably aged women of the general population have a prevalence of  
250 eating disorders of 2.4%, the overall prevalence of eating disorders in women with PCOS can  
251 be estimated to be  $1.48 \times 2.4\% = 3.55\%$ . The excess prevalence of depression due to PCOS is  
252 therefore  $3.55\% - 2.4\% = 1.15\%$ . Therefore, the excess number of anxiety due to PCOS is  
253  $4,240,306 \times 1.15\% = 48,764$  individuals.

254

255 **Excess Prevalence of Postpartum Depression in Women with PCOS**

256 Six studies, all of high quality (**Supplemental Table 6**), were included examining the  
257 association between postpartum depression and PCOS (30-36). Compared to age-matched  
258 women without PCOS, those with PCOS had a higher prevalence of postpartum depression in  
259 the meta-analysis, however this association did not reach statistical significance (random effects  
260 PR: 1.20; 95% CI: 0.96, 1.50; **Fig. 2D**). Because the association between PCOS and  
261 postpartum depression was not found to be statistically significant in this meta-analysis,  
262 postpartum depression was excluded from our calculations of economic burden.

263

264 **Economic Burden of Anxiety in Women with PCOS**

265 The cost of anxiety-related care per individual in need was estimated to be \$2,694 in 1990,  
266 which converts to \$8,966 in 2021 USD. Therefore, the excess cost of anxiety related care in  
267 PCOS is  $216,248 \times \$8,966 = \$1,938,879,568$  USD in 2021 (**Table 1**).

268

269 **Economic Burden of Depression in Women with PCOS**

270 The cost of depression-related care per individual in need was estimated to be \$5,726 in 2018,  
271 which converts to \$6,401 in 2021 USD. Therefore, the excess cost of depression related care in  
272 PCOS is  $262,176 \times \$6,401 = \$1,678,188,576$  USD in 2021 (**Table 1**).

273

274 **Economic Burden of Eating Disorders in Women with PCOS**

275 The cost of eating disorder-related care per individual in need was estimated to be \$11,808 in  
276 2018, which converts to \$13,200 in 2021 USD. Therefore, the excess cost of eating disorder-  
277 related care in PCOS is  $48,764 \times \$13,200 = \$643,684,800$  USD in 2021 (**Table 1**).

278

279

## 280 Analyzing for Potential Publication Bias

281 To assess for possible publication bias, we recalculated the results using the ‘trim and fill’  
282 method. In the "trim and fill" analysis for PCOS-related anxiety the estimated number of missing  
283 studies was 4 and the corresponding pooled random effects PR estimate was 1.40 (95% CI:  
284 1.31, 1.50,  $p < 0.001$ ) (**Supplemental Fig. 1A**). In the "trim and fill" analysis for PCOS-related  
285 depression the estimated number of missing studies was 4 and the corresponding pooled  
286 random effects PR estimate was 1.50 (95% CI: 1.28, 1.76,  $p < 0.0001$ ) (**Supplemental Fig. 1B**).  
287 In the "trim and fill" analysis for PCOS-related eating disorders the estimated number of missing  
288 studies was 2 and the corresponding pooled random effects PR estimate was 1.30 (95% CI:  
289 0.92, 1.85;  $p = 0.1371$ ) (**Supplemental Fig. 1C**). We did not analyze the data for PCOS-related  
290 postpartum depression using the ‘trim and fill’ approach as these results were already not  
291 significant.

292  
293 That the results for PCOS-related eating disorders are no longer significant after applying the  
294 ‘trim and fill’ adjustment means that these results were sensitive to one type of selection bias  
295 that is due “small study” effects, i.e., the tendency of small studies to suppress publication of  
296 results that are negative. However, we should note that the ‘trim and fill’ method cannot be used  
297 as formal proof for the presence of publication bias due to “small study” effects, as it is possible  
298 that there are other explanations for the lack of symmetry on the funnel plots, including  
299 heterogeneity of study populations, covariates, or outcome definitions that may give rise to a  
300 lack of symmetry. However, based on this analysis it appears that the results for this outcome  
301 are not as robust as for the other outcomes.

302

303

304

305

## 306 DISCUSSION

307 In the U.S, the additional direct healthcare costs associated with MH disorders in PCOS were  
308 estimated to be \$1.939 billion/yr, \$1.678 billion/yr., and \$0.644 in 2021 USD for anxiety,  
309 depression, and eating disorders, respectively. The combined additional direct healthcare costs  
310 associated with depression and anxiety in PCOS was estimated to be \$4.261 billion/year in  
311 2021 USD, of which 45% can be attributable to anxiety, 40% to depression, and the remainder  
312 to eating disorders. While the prevalence of postpartum depression appeared to be increased in  
313 PCOS, the difference did not reach significance on meta-analysis and this outcome was not  
314 included in our economic burden calculations.

315  
316 Taken together, including our prior economic burden assessments (2,3), the total excess  
317 economic burden estimated for PCOS exceeds \$15 billion annually in 2021 USD (**Table 2**). Of  
318 this cost, approximately 28% will be accounted for the cost of treating PCOS-related MH  
319 disorders, including anxiety, depression and eating disorders; 29.5% will be accounted for the  
320 cost of treating reproductive endocrine morbidities (menstrual dysfunction/abnormal uterine  
321 bleeding, hirsutism, and infertility); 15.1% is attributable to obstetrical and pregnancy related  
322 disorders; and 10.1% and 16.1% is attributable to T2DM and strokes, respectively. The cost of  
323 the initial diagnostic evaluation of PCOS is very low (\$166 million annually in 2021 USD; **Table**  
324 **2**), accounting for only 1.1% of the total economic burden attributable to direct healthcare costs  
325 of the disorder estimated so far. These data strongly suggest that ensuring quality diagnosis  
326 and evaluation for all patients with PCOS is a cost-effective approach to ameliorating the  
327 complications and costs associated with the disorder.

328  
329 For perspective, the estimated direct healthcare costs attributable to ovarian cancer, lung  
330 cancer, prostate cancer, and breast cancer, in the U.S. are \$7.8, \$16.8, \$26.7, and \$20.5 billion  
331 in 2021 USD, respectively (37), compared to \$15.2 billion for PCOS so far. Furthermore, the

332 included costs are only for those morbidities that to date have been confirmed as increased in  
333 PCOS relative to controls after careful meta-analyses considering the quality of the studies. As  
334 further studies are undertaken it is likely that the economic burden of PCOS related to direct  
335 healthcare costs will continue to rise.

336

337 Liu and colleagues assessed the current burden of PCOS at the global, regional, and country-  
338 specific levels in 194 countries and territories according to age and socio-demographic index  
339 (SDI) (38). The investigators used data from the Global Burden of Diseases, Injuries and Risk  
340 Factors Study (GBD) 2017 to estimate the total and age-standard PCOS incidence rates and  
341 the associated disability-adjusted life-years (DALYs) rates among women of reproductive age in  
342 both 2007 and 2017, and the trends in these parameters from 2007 to 2017. The data sources  
343 used in GBD take many forms, including census data, vital registrations, disease registries,  
344 survey data, and published and unpublished scientific literature, among other sources  
345 (<https://www.healthdata.org/acting-data/what-data-sources-go-gbd>). These investigators  
346 concluded that PCOS accounted for 0.43 million associated DALYs. They also noted slight  
347 increases in the age-standardized incidence of PCOS and DALYs among women of  
348 reproductive age (15–49 years) from 2007 to 2017 at the global level, and in most regions and  
349 countries. Safiri and colleagues also used the GDB Study 2017 database to determine the  
350 global, regional, and national burden of PCOS, by age and sociodemographic index (SDI), over  
351 the period 1990–2019 (39). These investigators reported that in 2019 the global age-  
352 standardized point prevalence and annual incidence rates for PCOS were 1677 (1.7%) and 59  
353 (0.06%) per 100,000, respectively.

354

355 Neither one of these studies estimated the economic cost of the burden observed. Furthermore,  
356 we should note that Liu et al. (38) reported only on global age-standardized PCOS incidence  
357 rates (i.e., the occurrence of new cases of PCOS over a specified period of time), not

358 prevalence rates (i.e., the total proportion of persons in the population who have PCOS at a  
359 specified point in time or over a specified period of time), among women of reproductive age.  
360 While Safiri and colleagues (39) present an estimate of prevalence, we should note that the  
361 estimate is significantly lower than that reported when populations are assessed directly for the  
362 prevalence of PCOS (1.7% vs. 6.6% or greater), likely reflecting the chronic underdiagnosis of  
363 PCOS.

364  
365 Ding and colleagues estimated the burden of disease attributable to Type 2 DM in women with  
366 PCOS using individual patient data from a UK primary care database between 2004 and 2014  
367 and aggregate data from the literature to obtain conversion rates through disease progression  
368 (40). A simulation approach was applied to model the population dynamics of PCOS over a  
369 follow-up period of 25 years in using Bayesian modeling. The investigators estimated that the  
370 associated annual healthcare burden of T2DM in PCOS was at least £237 million in 2014  
371 pounds in the UK. Taking into account the relative populations of reproductive aged women (15-  
372 49 years) of the UK and the U.S. (14.7 million vs. 76.5 million) (41), the healthcare inflation rate  
373 since 2014 (19.2%), and the conversion rate of pounds to dollars in mid-2021 (0.72 USD to 1  
374 pound), the economic burden for PCOS-associated T2DM estimated by Ding et al is equivalent  
375 to \$2.04 billion 2021 USD, somewhat higher than the \$1.527 2021 USD that we previously  
376 estimated (**Table 2**) (3).

377  
378 Inclusion of only peer-reviewed and controlled studies is a strength of this study. Alternatively,  
379 our analysis was limited by the number of studies that met inclusion criteria. This could be due  
380 to the fact that PCOS diagnosis creates an umbrella effect that encompasses physical as well  
381 as mental disease which creates a false belief in patients that they cannot be treated or  
382 diagnosed with a disease other than PCOS due to the misconception that their symptoms stem  
383 solely from the PCOS diagnosis. Other limitations of this study include the fact that while the



384 cost estimates were conducted with for the U.S., the meta-analysis used some studies from  
385 other countries. Finally, while other MH disorders have been shown to be associated with  
386 PCOS, such as bipolar disorder and obsessive-compulsive disorder, we focused our study on  
387 the four most common disorders found in the literature (4,5).

388  
389 Overall, our current study suggests that the additional direct healthcare costs due to PCOS-  
390 related anxiety, depression and eating disorders exceeds \$4 billion annually in 2021 USD in the  
391 United States. So far, the total direct economic burden of PCOS exceeds \$15 billion annually in  
392 2021 USD, and MH disorders account for almost one-third of these costs. Notably, these  
393 estimates are solely for the United States and PCOS is a global disease. As PCOS is clinically  
394 most apparent during the reproductive age, we should note that the number of women between  
395 the ages of 15 and 49 worldwide is estimated to be about 1.9 billion (41). Taking into account  
396 that most studies assessing the prevalence of PCOS report a minimum rate similar to what was  
397 used on the present study (i.e., 6.6% based on the NIH criteria) (42), we can estimate that there  
398 are at least 125.4 million women affected with PCOS worldwide. Consequently, the world-wide  
399 economic burden for PCOS can be assumed to be enormous.

400  
401 While we have examined the direct economic burden related to the medical or health-related  
402 costs of the disorder, we should note that a complete understanding of the economic burden of  
403 the disorder requires that we also assess the indirect (those attributable to loss of work  
404 productivity) and intangible (those related to the pain and sufferings of patients because of a  
405 disorder, usually measured by using the reduction in quality of life) costs of the disorder. In  
406 conclusion, these data suggest that improved detection of PCOS and more significant clinical  
407 awareness and interventions for PCOS and its associated disorders is a cost-effective approach  
408 to ameliorating the economic, health, and quality of life impact of PCOS. Finally, our findings

409 further highlight the need to increase investment in PCOS research, which is currently severely  
410 underfunded relative to the economic burden of the disorder (43).

411

## 412 REFERENCES

- 413 1. Azziz R, Carmina E, Chen Z, Dunaif A, Laven JS, Legro RS, Lizneva D, Natterson-  
414 Horowitz B, Teede HJ, Yildiz BO. Polycystic ovary syndrome. *Nat Rev Dis Primers*.  
415 2016;2:16057.
- 416 2. Azziz R, Marin C, Hoq L, Badamgarav E, Song P. Health care-related economic burden  
417 of the polycystic ovary syndrome during the reproductive life span. *J Clin Endocrinol*  
418 *Metab*. 2005;90:4650-8.
- 419 3. Riestenberg C, Jagasia A, Markovic D, Buyalos RP, Azziz R. Health care-related  
420 economic burden of polycystic ovary syndrome in the United States: Pregnancy-related  
421 and long-term health consequences. *J Clin Endocrinol Metab*. 2022;107:575-585.
- 422 4. Himelein MJ, Thatcher SS. Polycystic ovary syndrome and mental health: A review.  
423 *Obstet Gynecol Surv*. 2006;61:723-32.
- 424 5. Brutocao C, Zaiem F, Alsawas M, Morrow AS, Murad MH, Javed A. Psychiatric  
425 disorders in women with polycystic ovary syndrome: a systematic review and meta-  
426 analysis. *Endocrine*. 2018;62:318-325.
- 427 6. Azziz R. Economic Burden of Mental Health Disorders in PCOS-Supplementary Data  
428 [Data set]. Zenodo. 2022; <https://doi.org/10.5281/zenodo.7478354>.
- 429 7. DerSimonian R, Laird N. Meta-analysis in clinical trials. *Control Clin Trials*. 1986;7:177-  
430 88.
- 431 8. Shi L, Lin L. The trim-and-fill method for publication bias: practical guidelines and  
432 recommendations based on a large database of meta-analyses. *Medicine (Baltimore)*.  
433 2019;98:e15987.

- 434 9. Greenberg PE, Fournier AA, Sisitsky T, Simes M, Berman R, Koenigsberg SH, Kessler  
435 RC. The Economic burden of adults with major depressive disorder in the United States  
436 (2010 and 2018). *Pharmacoeconomics*. 2021;39:653-665.
- 437 10. Greenberg PE, Sisitsky T, Kessler RC, Finkelstein SN, Berndt ER, Davidson JR,  
438 Ballenger JC, Fyer AJ. The economic burden of anxiety disorders in the 1990s. *J Clin*  
439 *Psychiatry*. 1999;60:427-35.
- 440 11. Streatfeild J, Hickson J, Austin SB, Hutcheson R, Kandel JS, Lampert JG, Myers EM,  
441 Richmond TK, Samnaliev M, Velasquez K, Weissman RS, Pezzullo L. Social and  
442 economic cost of eating disorders in the United States: Evidence to inform policy action.  
443 *Int J Eat Disord*. 2021;54:851-868.
- 444 12. Alur-Gupta S, Chemerinski A, Liu C, Lipson J, Allison K, Sammel MD, Dokras A. Body-  
445 image distress is increased in women with polycystic ovary syndrome and mediates  
446 depression and anxiety. *Fertil Steril*. 2019;112:930-938.e1.
- 447 13. Tan J, Wang QY, Feng GM, Li XY, Huang W. Increased risk of psychiatric disorders in  
448 women with polycystic ovary syndrome in southwest China. *Chin Med J (Engl)*.  
449 2017;130:262-266.
- 450 14. Karjula S, Morin-Papunen L, Auvinen J, et al. Psychological distress is more prevalent in  
451 fertile age and premenopausal women with PCOS symptoms: 15-year follow-up. *J Clin*  
452 *Endocrinol Metab*. 2017;102:1861-1869.
- 453 15. Tay CT, Teede HJ, Loxton D, Kulkarni J, Joham AE. Psychiatric comorbidities and  
454 adverse childhood experiences in women with self-reported polycystic ovary syndrome:  
455 An Australian population-based study. *Psychoneuroendocrinology*. 2020;116:104678.
- 456 16. Kaur SP, Sharma S, Lata G et.al. Prevalence of anxiety, depression and eating  
457 disorders in women with polycystic ovarian syndrome in North Indian Population of  
458 Haryana. *Galore International Journal of Health Sciences & Research*. 2019;4:61-67.

- 459 17. Asik M, Altinbas K, Eroglu M, et al. Evaluation of affective temperament and anxiety-  
460 depression levels of patients with polycystic ovary syndrome. *J Affect Disord.*  
461 2015;185:214-218.
- 462 18. Cesta CE, Månsson M, Palm C, Lichtenstein P, Iliadou AN, Landén M. Polycystic ovary  
463 syndrome and psychiatric disorders: Co-morbidity and heritability in a nationwide  
464 Swedish cohort. *Psychoneuroendocrinology.* 2016;73:196-203.
- 465 19. Hussain A, Chandel RK, Ganie MA, et al. Prevalence of psychiatric disorders in patients  
466 with a diagnosis of polycystic ovary syndrome in Kashmir. *Indian J Psychol Med.*  
467 2015;37:66-70.
- 468 20. Månsson M, Holte J, Landin-Wilhelmsen K, Dahlgren E, Johansson A, Landén M.  
469 Women with polycystic ovary syndrome are often depressed or anxious--a case control  
470 study. *Psychoneuroendocrinology.* 2008;33:1132-1138.
- 471 21. Jedel E, Waern M, Gustafson D, et al. Anxiety and depression symptoms in women with  
472 polycystic ovary syndrome compared with controls matched for body mass index. *Hum*  
473 *Reprod.* 2010;25:450-456.
- 474 22. Li SJ, Zhou DN, Li W, Yang J. Mental health status assessment in polycystic ovarian  
475 syndrome infertility patients: A pilot study. *J Huazhong Univ Sci Technolog Med Sci.*  
476 2017;37:750-754.
- 477 23. Damone AL, Joham AE, Loxton D, Earnest A, Teede HJ, Moran LJ. Depression, anxiety  
478 and perceived stress in women with and without PCOS: a community-based study.  
479 *Psychological Medicine.* 2019;49:1510-1520.
- 480 24. Hollinrake E, Abreu A, Maifeld M, Van Voorhis BJ, Dokras A. Increased risk of  
481 depressive disorders in women with polycystic ovary syndrome. *Fertil Steril.*  
482 2007;87:1369-1376.

- 483 25. Pastore LM, Patrie JT, Morris WL, Dalal P, Bray MJ. Depression symptoms and body  
484 dissatisfaction association among polycystic ovary syndrome women. *J Psychosom Res.*  
485 2011;71:270-276.
- 486 26. Cinar N, Kizilarslanoglu MC, Harmanci A, et al. Depression, anxiety and cardiometabolic  
487 risk in polycystic ovary syndrome. *Hum Reprod.* 2011;26:3339-3345.
- 488 27. Adali E, Yildizhan R, Kurdoglu M, et al. The relationship between clinico-biochemical  
489 characteristics and psychiatric distress in young women with polycystic ovary syndrome.  
490 *J Int Med Res.* 2008;36:1188-1196.
- 491 28. Lee I, Cooney LG, Saini S, et al. Increased risk of disordered eating in polycystic ovary  
492 syndrome. *Fertil Steril.* 2017;107:796-802.
- 493 29. Pirotta S, Barillaro M, Brennan L, et al. Disordered Eating Behaviours and Eating  
494 Disorders in Women in Australia with and without Polycystic Ovary Syndrome: A Cross-  
495 Sectional Study. *J Clin Med.* 2019;8:1682.
- 496 30. Koric A, Singh B, VanDerslice JA, et al. Polycystic ovary syndrome and postpartum  
497 depression symptoms: a population-based cohort study. *Am J Obstet Gynecol.*  
498 2021;224:591.e1-591.e12.
- 499 31. Joham AE, Nanayakkara N, Ranasinha S, et al. Obesity, polycystic ovary syndrome and  
500 breastfeeding: an observational study. *Acta Obstet Gynecol Scand.* 2016;95:458-466.
- 501 32. Muchanga SMJ, Yasumitsu-Lovell K, Eitoku M, et al. Preconception gynecological risk  
502 factors of postpartum depression among Japanese women: The Japan Environment and  
503 Children's Study (JECS). *J Affect Disord.* 2017;217:34-41.
- 504 33. March WA, Whitrow MJ, Davies MJ, Fernandez RC, Moore VM. Postnatal depression in  
505 a community-based study of women with polycystic ovary syndrome. *Acta Obstet*  
506 *Gynecol Scand.* 2018;97:838-844.

- 507 34. Tay CT, Teede HJ, Boyle JA, Kulkarni J, Loxton D, Joham AE. Perinatal mental health in  
508 women with polycystic ovary syndrome: A cross-sectional analysis of an Australian  
509 population-based cohort. *J Clin Med*. 2019;8:2070.
- 510 35. Alur-Gupta S, Boland MR, Barnhart KT, Sammel MD, Dokras A. Postpartum  
511 complications increased in women with polycystic ovary syndrome. *Am J Obstet*  
512 *Gynecol*. 2021;224:280.e1-280.e13.
- 513 36. Fugal AD, Stanford JB, Johnstone EB, Kah K, Schliep KC. Polycystic ovary syndrome  
514 and postpartum depression among Hispanics and non-Hispanics: A population-based  
515 study. *AJOG Glob Rep*. 2022;2:100070.
- 516 37. Waters H, Graf M. The costs of chronic disease in the U.S., August 2018, Milken  
517 Institute: Santa Monica, CA ([https://milkeninstitute.org/sites/default/files/reports-](https://milkeninstitute.org/sites/default/files/reports-pdf/ChronicDiseases-HighRes-FINAL_2.pdf)  
518 [pdf/ChronicDiseases-HighRes-FINAL\\_2.pdf](https://milkeninstitute.org/sites/default/files/reports-pdf/ChronicDiseases-HighRes-FINAL_2.pdf)).
- 519 38. Liu J, Wu Q, Hao Y, Jiao M, Wang X, Jiang S, Han L. Measuring the global disease  
520 burden of polycystic ovary syndrome in 194 countries: Global Burden of Disease Study  
521 2017. *Hum Reprod*. 2021;36:1108-1119.
- 522 39. Safiri S, Noori M, Nejadghaderi SA, Karamzad N, Carson-Chahhoud K, Sullman MJM,  
523 Collins GS, Kolahi AA, Avery J. Prevalence, incidence and years lived with disability due  
524 to polycystic ovary syndrome in 204 countries and territories, 1990-2019. *Hum Reprod*.  
525 2022;37:1919-1931.
- 526 40. Ding T, Hardiman PJ, Petersen I, Baio G. Incidence and prevalence of diabetes and cost  
527 of illness analysis of polycystic ovary syndrome: a Bayesian modelling study. *Hum*  
528 *Reprod*. 2018;33:1299-1306.
- 529 41. United Nations, Department of Economic and Social Affairs, Population Division (2022).  
530 World Population Prospects 2022, Online Edition  
531 ([https://population.un.org/wpp/Download/Files/1\\_Indicators%20\(Standard\)/EXCEL\\_FILE](https://population.un.org/wpp/Download/Files/1_Indicators%20(Standard)/EXCEL_FILE)

532 [S/2 Population/WPP2022 POP F03 3 POPULATION SELECT AGE GROUPS FE](#)

533 [MALE.xlsx](#)).

534 42. Bozdag G, Mumusoglu S, Zengin D, Karabulut E, Yildiz BO. The prevalence and  
535 phenotypic features of polycystic ovary syndrome: a systematic review and meta-  
536 analysis. Hum Reprod. 2016;31:2841-2855.

537 43. Brakta S, Lizneva D, Mykhalchenko K, Imam A, Walker W, Diamond MP, Azziz R.  
538 Perspectives on polycystic ovary syndrome: Is polycystic ovary syndrome research  
539 underfunded? J Clin Endocrinol Metab. 2017;102:4421-4427.

540

**Table 1. ESTIMATES OF THE EXCESS PREVALENCE AND ECONOMIC BURDEN ASSOCIATED WITH MENTAL HEALTH (MH) MORBIDITIES OF PCOS AS OF 2021 IN THE UNITED STATES**

<b>MH Morbidities</b>	<b>Excess Prevalence of Morbidity in PCOS (%)</b>	<b>Annual costs in billions in 2021 USD (% of total costs in category)</b>
Anxiety	3.84%	\$1.939 (45.5%)
Depression	5.79%	\$1.678 (39.4%)
Eating disorders	1.15%	\$0.644 (15.1%)
<b>Total excess cost of MH disorders in PCOS</b>		4.261 (100%)

541

542



**Table 2. DIRECT HEALTHCARE-RELATED ECONOMIC BURDEN IN PCOS AS OF 2021 IN THE UNITED STATES**

<b>Process/Disorder</b>	<b>Original year economic burden published (reference)</b>	<b>Economic burden year of publication (in billions)*</b>	<b>Economic burden in 2021 USD (in billions)</b>	<b>% of total economic burden</b>
Initial evaluation	2004 (2)	\$0.093	0.166	1.09%
Menstrual dysfunction/AUB	2004 (2)	\$1.350	2.408	15.88%
Infertility care	2004 (2)	\$0.533	0.951	6.27%
Hirsutism	2004 (2)	\$0.622	1.109	7.31%
GDM**	2020 (3)	\$0.672**	0.684	4.51%
gHTN**	2021 (3)	\$0.208**	0.212	1.40%
Preeclampsia**	2022 (3)	\$0.137**	1.400	9.23%
T2DM	2023 (3)	\$1.500	1.527	10.07%
Stroke	2024 (3)	\$2.400	2.445	16.12%
Anxiety	2021	Present study	1.939	12.79%
Depression	2021	Present study	1.678	11.07%
Eating Disorders	2021	Present study	0.644	4.25%
<b>Total</b>			<b>15.163</b>	<b>100.00%</b>

**Abbreviations:** AUB is abnormal uterine bleeding, GDM is gestational diabetes, gHTN is gestational hypertension, and T2DM is type 2 diabetes mellitus.

\* Updated for inflation using medical CPI (<https://www.in2013dollars.com/Medical-care-services/price-inflation>).

\*\* Estimates of economic burden in prior publication updated for inflation using medical CPI (<https://www.in2013dollars.com/Medical-care-services/price-inflation>).

543

544

## FIGURE LEGENDS

545

546 **Fig 1.** Flow diagram of the literature search and study selection process.

547

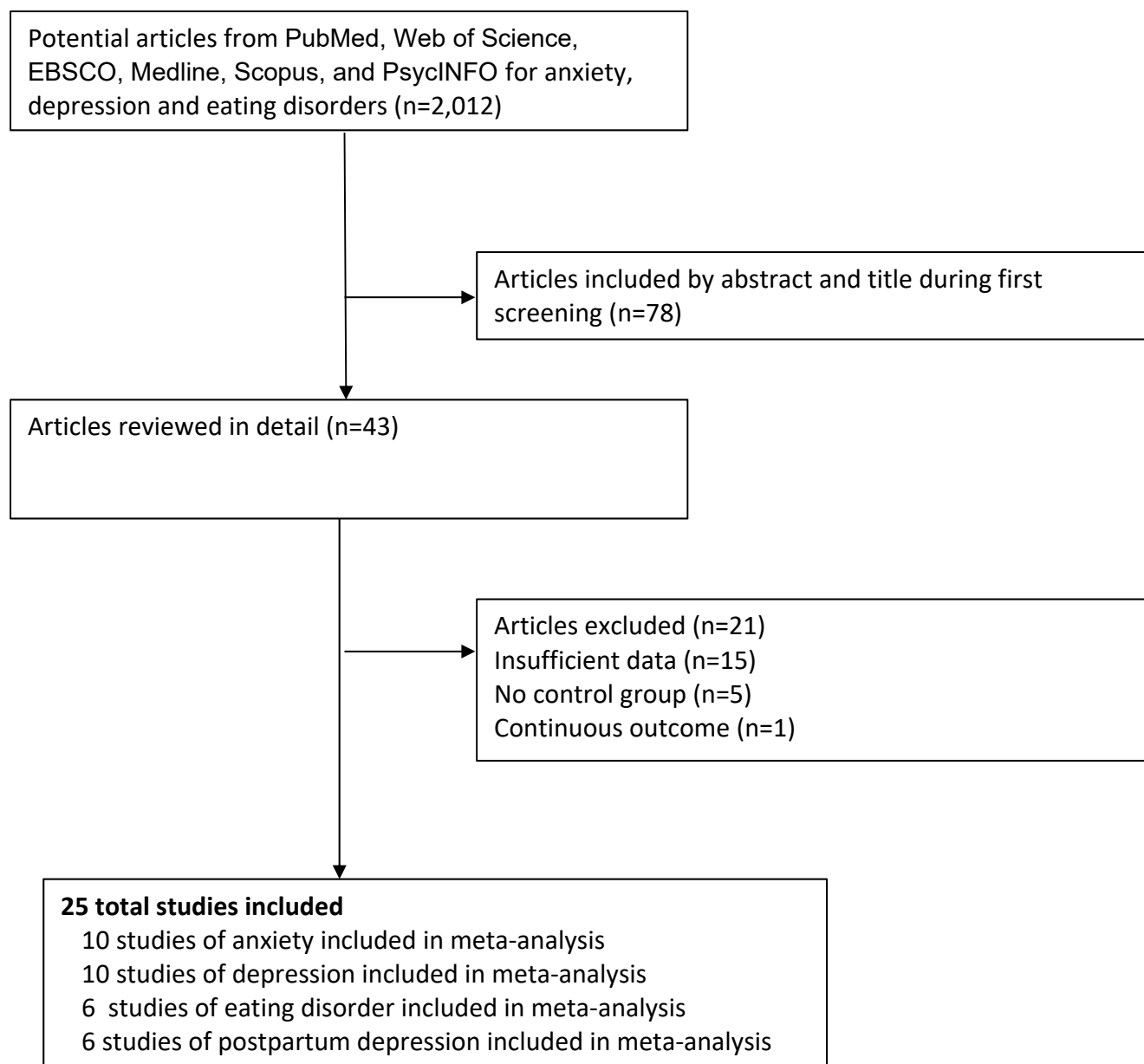
548 **Fig. 2.** Meta-analyses of the prevalence of mental health disorders in women with PCOS. Forest  
549 plots (random effects model) of risk of mental health disorders in women with PCOS, including  
550 anxiety (Fig. 2A), depression (Fig. 2B), eating disorders (Fig. 2C), and postpartum depression  
551 (Fig. 2D.). See text for abbreviations.

552

553 **Fig. 1**

554  
555  
556

557

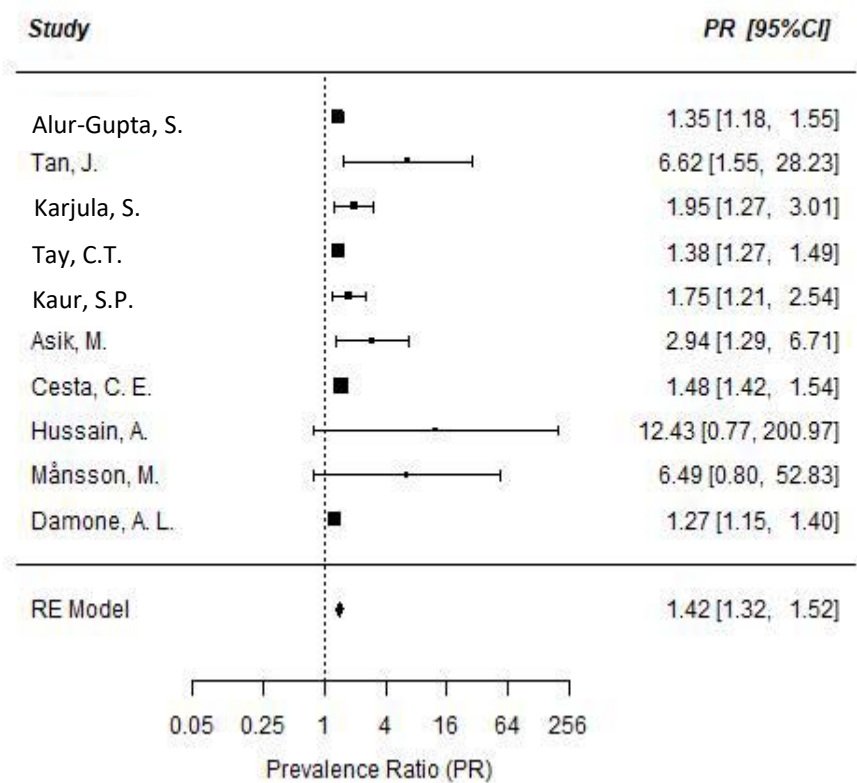


558

559 **Fig. 2A**

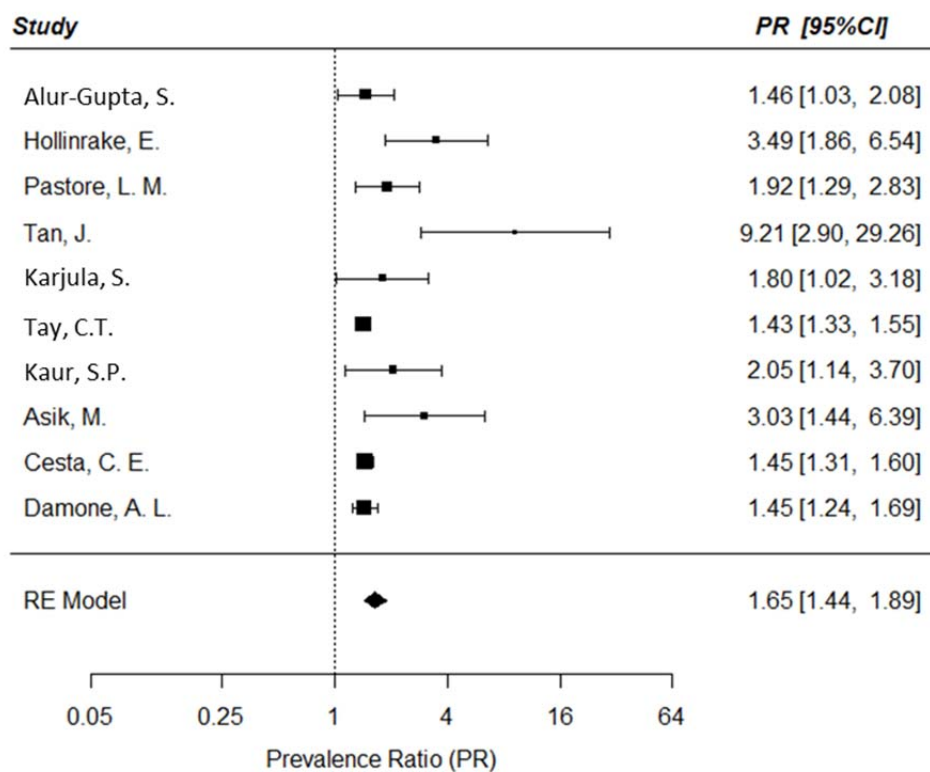
560

561



**Note:** Studies by Jedel et al. (20) and Li et al. (21) were excluded from the meta-analysis due to the lack of prevalence data.

562 **Fig. 2B**



563

564

565

566

567

568

569

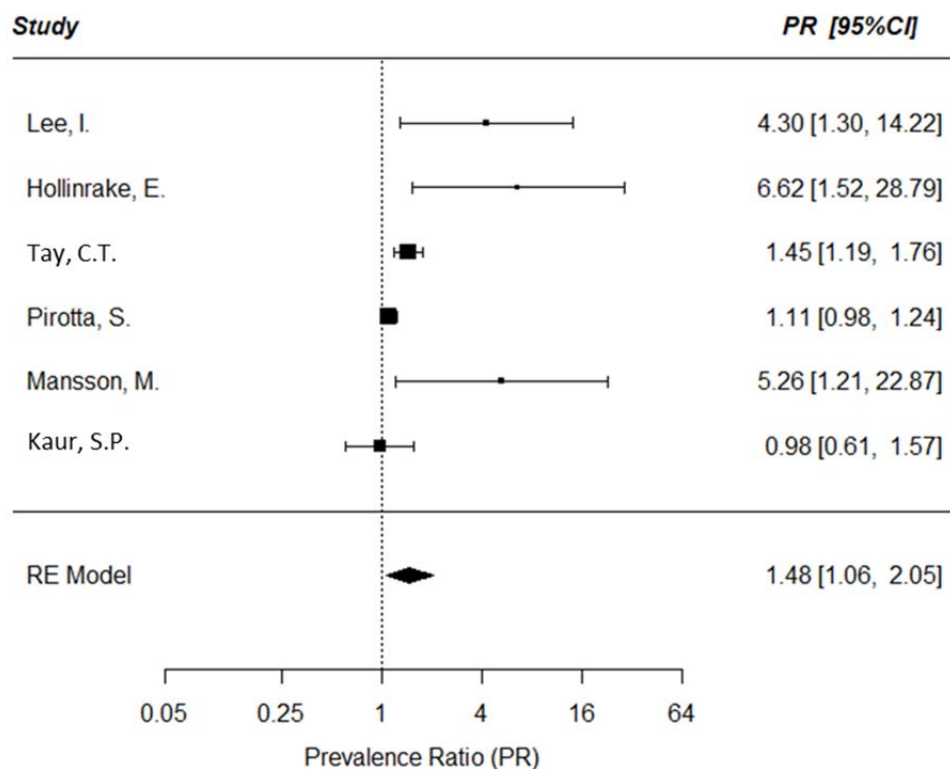
570

571

572

573

574 **Fig 2C.**



575

576

577

578

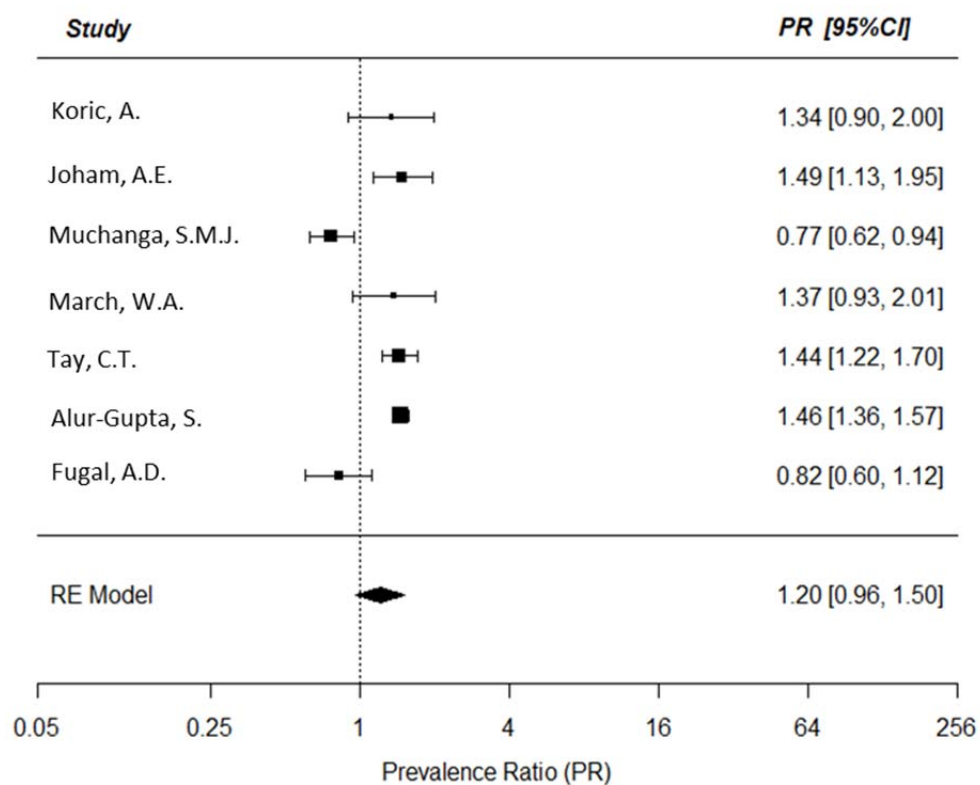
579

580

581

582

583 **Fig 2D.**



584

585

586

587

588

589

590

591

592

593



594 **Supplementary Table 1. Search terms used for systematic review**

Topic	Keywords
Mental Disorders in PCOS	"Polycystic Ovary Syndrome/psychology"[MAJR]"
	'polycystic ovary syndrome' AND 'mental disorder' OR 'depression' OR 'anxiety'
	'polycystic ovary syndrome' AND 'mental illness'
	("polycystic ovary syndrome" AND "mental disorder") AND (LIMIT-TO (LANGUAGE, "English"))
Direct costs for Mental Disorders in PCOS	"PCOS" AND "economic burden" OR "costs" OR "cost-of-illness" OR "burden of illness" AND "mental health"
	"PCOS" AND "economic burden" AND "mental health"
Economic burden of Mental Disorders	(mental health OR mental illness OR mental disorder OR psych* OR anxiety OR depression OR quality of life OR bulimia OR bipolar disorder) AND ('cost*' OR 'economic burden' OR 'cost-of-illness' OR 'burden of illness')
	"Depressive Disorder/economics"[MAJR]
	"Depressive Disorder/economics"[MAJR]

595

596

**Supplementary Table 2. Characteristics of Included Studies Categorized by Anxiety**

Study	Year of Publication	Country	Study Design	Total Sample Size per Group	PCOS Definition
Alur-Gupta et al. <sup>11</sup>	2019	US	Case-Control	PCOS= 189 Controls= 225	Rotterdam Criteria
Tan et al. <sup>12</sup>	2017	China	Case-Control	PCOS= 120 Controls= 100	Rotterdam Criteria
Karjula et al. <sup>13</sup>	2017	Finland	Population-based Cohort Study	PCOS= 125 Controls= 2188	Self-reported PCOS
Tay et al. <sup>14</sup>	2020	Australia	Cross-Sectional	PCOS=760 Controls= 7910	Self-reported PCOS
Kaur et al. <sup>15</sup>	2019	India	Cross-Sectional	PCOS= 73 Controls= 78	Rotterdam Criteria
Asik et al. <sup>16</sup>	2015	Germany	Cross-sectional	PCOS=71 Controls= 50	Rotterdam Criteria
Cesta et al. <sup>17</sup>	2016	Sweden	Matched Cohort Design	PCOS= 24385 Controls= 243850	ICD-8, ICD-9, ICD-10 codes
Hussain et al. <sup>18</sup>	2015	India	Case-Control	PCOS=110 Controls=40	Diagnosis of PCOS was confirmed according to the National Institute of Health/National Institute of Child Health and Human Development, 1990 consensus conference criteria
Mansson et al. <sup>19</sup>	2008	Sweden	Case-Control	PCOS= 49 Controls= 49	Rotterdam Criteria
Jedel et al. <sup>20</sup>	2009	Sweden	Case-Control	PCOS=30 Controls=30	12 or more 2–9 mm ovarian follicles and/or ovarian volume exceeding 10 ml in one or two ovaries; clinical signs of hyperandrogenism and/or oligo/amenorrhea.
Li et al. <sup>21</sup>	2017	China	observational	PCOS= 103 Controls=110	Rotterdam Criteria
Damone et al. <sup>22</sup>	2018	Australia	cross sectional analysis	PCOS=478 Controls=8134	Self-reported PCOS

601

<b>Study</b>	<b>Year</b>	<b>Country</b>	<b>Study Design</b>	<b>Total Sample Size per Group</b>	<b>PCOS Definition</b>
Alur-Gupta et al. <sup>11</sup>	2019	US	Cross-sectional	PCOS= 189 Controls= 225	Rotterdam criteria
Hollinrake et al. <sup>23</sup>	2006	US	Prospective longitudinal study	PCOS= 103 Controls= 103	Rotterdam criteria
Pastore et al. <sup>24</sup>	2004	US	Cross-sectional	PCOS= 94 Controls= 96	Diagnosis of PCOS, as confirmed through the study using the NICHD criteria of oligomenorrheic and non-diabetic, with self-reported hirsutism and/or acne and/or elevated free testosterone (>6.8 pg/ml)
Tan et al. <sup>12</sup>	2017	China	Case-control	PCOS= 120 Controls= 100	Rotterdam criteria
Karjula et al. <sup>13</sup>	2017	Finland	Population-based follow-up	PCOS= 125 Controls= 2188	Self-reported PCOS
Tay et al. <sup>14</sup>	2020	Australia	Cross sectional study	PCOS=760 Controls= 7910	Self-reported PCOS
Kaur et al. <sup>15</sup>	2019	India	Cross sectional case control study	PCOS= 73 Controls= 78	Rotterdam criteria
Asik et al. <sup>16</sup>	2015	Germany	Cross-sectional	PCOS=71 Controls=50	Rotterdam criteria
Cesta et al. <sup>17</sup>	2016	Sweden	Matched cohort design	PCOS= 24385 Controls= 243850	ICD-8, ICD-9, ICD-10 codes
Cinar et al. <sup>25</sup>	2011	Turkey	Case control	PCOS= 226 Controls=85	Rotterdam criteria
Hussain et al. <sup>18</sup>	2015	India	Case control	PCOS=110	Diagnosis of PCOS was confirmed

				Controls=40	according to the National Institute of Health/National Institute of Child Health and Human Development, 1990 consensus conference criteria
Mansson et al. <sup>19</sup>	2008	Sweden	Case-control study	PCOS= 49 Controls= 49	Rotterdam criteria
Adali et al. <sup>26</sup>	2008	Turkey	Case control study	PCOS=42 Controls=42	Positive diagnosis is based on the patient presenting any two of the following three features: oligo- or anovulation, clinical and/or biochemical signs of hyperandrogenism, and polycystic ovaries on ultrasound examination
Damone et al. <sup>22</sup>	2018	Australia	Cross-sectional	PCOS=478 Controls=8134	Self-reported PCOS
Jedel et al. <sup>20</sup>	2010	Sweden	Case control	PCOS=30 Controls=30	12 or more 2–9 mm ovarian follicles and/or ovarian volume exceeding 10 ml in one or two ovaries; clinical signs of hyperandrogenism and/or oligo/amenorrhea.

602

603

604 **Supplementary Table 4. Characteristics of Included Studies Categorized by Eating Disorders**

605

<b>Study</b>	<b>Year</b>	<b>Country</b>	<b>Study Design</b>	<b>Total Sample Size per Group</b>	<b>PCOS Definition</b>
Lee et al. <sup>27</sup>	2015-16	US	Cross-sectional study	PCOS = 148 Controls = 106	Rotterdam criteria
Hollinrake et al. <sup>23</sup>	2006	US	Prospective Cohort Study	PCOS= 103 Controls= 103	Rotterdam Criteria
Tay et al. <sup>14</sup>	2020	Australia	Cross-Sectional	PCOS= 875 Controls= 7592	Self-reported PCOS
Pirotta et al. <sup>28</sup>	2019	Australia	Cross-Sectional	PCOS= 501 Controls= 398	Self-reported PCOS
Kaur et al. <sup>15</sup>	2019	India	Cross-Sectional	PCOS= 73 Controls= 78	Rotterdam Criteria
Mansson et al. <sup>19</sup>	2008	Sweden	Case-control	PCOS= 49 Controls= 49	Rotterdam Criteria

606

607

608

**Supplementary Table 5. Characteristics of Included Studies Categorized by Postpartum Depression**

Study	Year	Country	Study Design	Total Sample Size per Group	PCOS Definition
Koric et al. <sup>29</sup>	2021	US	Cases= 320 Controls= 3586	PCOS= 320 Controls= 3586	“Have you ever been told that you have Polycystic Ovarian Syndrome or PCOS by a doctor, nurse, or other healthcare worker?”  PCOS symptomatology was defined in possible alternate ways as having (1) irregular periods and acne, (2) irregular periods and hirsutism, or (3) irregular periods, acne, and hirsutism.
Joham et al. <sup>30</sup>	2016	Australia	Cross-Sectional	PCOS= 320 Controls= 4578	Self-reported PCOS
Muchanga et al. <sup>31</sup>	2017	Japan	Population-based Prospective Birth Cohort Study	Cases with postpartum depression= 11,341 Controls without postpartum depression= 71,148	Self-reported PCOS
March et al. <sup>32</sup>	2018	Australia	Cross-Sectional	PCOS= 52 Controls= 514	Rotterdam Criteria
Tay et al. <sup>33</sup>	2019	Australia	Cross-Sectional	PCOS= 436 Controls= 4803	Self-reported PCOS
Alur-Gupta et al. <sup>34</sup>	2021	US	Retrospective Cohort Study	PCOS= 42,391 Controls= 795,480	ICD-9, ICD-10
Fugal et al. <sup>35</sup>	2022	US	Population-based Study	PCOS= 3,280 Controls= 48,348	Rotterdam Criteria

**Supplementary Table 6. Quality scores of studies using Newcastle-Ottawa Scale**

Study	Selection				Comparability	Outcome			NOS
	Representative-ness of the exposed cohort	Adequate control selection	Adequate end-point definition	Demonstration that outcomes was not present at start of study	Comparability on the basis of the design or analysis	Assessment of outcome	Adequate follow-up duration	Adequate follow-up rate	Overall score
<b>Anxiety</b>									
Alur-Gupta et al. <sup>11</sup>	1	1	1	1	1	1	1	1	8
Tan et al. <sup>12</sup>	1	1	1	1	0	1	1	1	7
Karjula et al. <sup>13</sup>	0	1	1	1	1	1	1	1	7
Tay et al. <sup>14</sup>	1	1	1	1	1	1	1	1	8
Kaur et al. <sup>15</sup>	1	1	1	1	0	1	1	1	7
Asik et al. <sup>16</sup>	0	1	1	1	1	1	1	1	7
Cesta et al. <sup>17</sup>	1	1	1	1	2	1	0	0	7
Hussain et al. <sup>18</sup>	0	1	1	1	1	1	1	1	7
Mansson et al. <sup>19</sup>	0	1	1	1	1	1	1	1	7
Jedel et al. <sup>20</sup>	1	1	1	1	0	1	1	1	7
Li et al. <sup>21</sup>	1	1	1	1	1	1	1	1	8
Damone et al. <sup>22</sup>	1	1	1	1	1	1	1	0	7
<b>Mean NOS overall score for Anxiety</b>									7.25
<b>Depression</b>									
Alur-Gupta et al. <sup>11</sup>	1	1	1	1	1	1	1	1	8

Hollinrake et al. <sup>23</sup>	1	1	1	1	1	1	1	1	8
Pastore et al. <sup>24</sup>	0	1	1	1	2	1	1	1	8
Tan et al. <sup>12</sup>	1	1	1	1	0	1	1	1	7
Karjula et al. <sup>13</sup>	0	1	1	1	1	1	1	1	7
Tay et al. <sup>14</sup>	1	1	1	1	1	1	1	1	8
Kaur et al. <sup>15</sup>	1	1	1	1	0	1	1	1	7
Asik et al. <sup>16</sup>	0	1	1	1	1	1	1	1	7
Cesta et al. <sup>17</sup>	1	1	1	1	2	1	0	0	7
Cinar et al. <sup>25</sup>	0	0	1	0	0	1	1	1	4
Hussain et al. <sup>18</sup>	0	1	1	0	0	0	0	0	2
Mansson et al. <sup>19</sup>	0	1	1	0	0	1	0	0	3
Adali et al. <sup>26</sup>	0	0	1	1	0	1	1	0	4
Damone et al. <sup>22</sup>	1	1	1	1	1	1	1	0	7
Jedel et al. <sup>20</sup>	0	1	1	0	0	1	1	1	5
<b>Mean NOS overall score for depression</b>									6.13
<b>Eating Disorder</b>									
Lee et al. <sup>27</sup>	1	1	1	1	1	1	1	1	8
Hollinrake et al. <sup>23</sup>	1	1	1	1	1	1	1	1	8
Tay et al. <sup>14</sup>	1	1	1	1	1	1	1	1	8
Pirota et al. <sup>28</sup>	1	1	1	1	1	1	1	1	8



Kaur et al. <sup>15</sup>	1	1	1	1	0	1	1	1	7
Mansson et al. <sup>19</sup>	0	1	1	1	1	1	1	1	7
<b>Mean NOS overall score for eating disorders</b>									7.67
<b>Postpartum Depression</b>									
Koric et al. <sup>29</sup>	1	1	1	1	1	1	1	1	8
Joham et al. <sup>30</sup>	1	1	1	1	1	1	1	1	8
Muchanga et al. <sup>31</sup>	1	1	1	1	1	1	1	1	8
March et al. <sup>32</sup>	0	1	1	1	1	1	1	1	7
Tay et al. <sup>33</sup>	1	1	1	1	1	1	1	1	8
Alur-Gupta et al. <sup>34</sup>	1	1	1	1	1	1	1	1	8
Fugal et al. <sup>35</sup>	0	1	1	1	1	1	1	1	7
<b>Mean NOS overall score for postpartum depression</b>									7.71

609  
610  
611  
612  
613

614 **Supplemental Figure 1. Trim and Fill Funnel Plots for the meta-analyses of anxiety, depression, and eating disorders.**

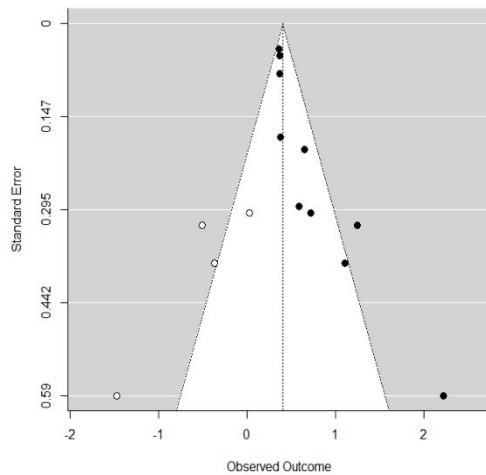
615

616 Trim and fill funnel plots (X axis is the log prevalence ratio/risk ratio; Y axis is the standard error of the log prevalence ratio/risk ratio)  
617 include 10 high quality studies for anxiety (**Supplemental Fig. 1A**), 10 high quality studies for depression (**Supplemental Fig. 1B**),  
618 and 6 high quality studies for eating disorders (**Supplemental Fig. 1C**). Observed studies are indicated by solid circles, and "filled"  
619 studies are indicated by open circles.

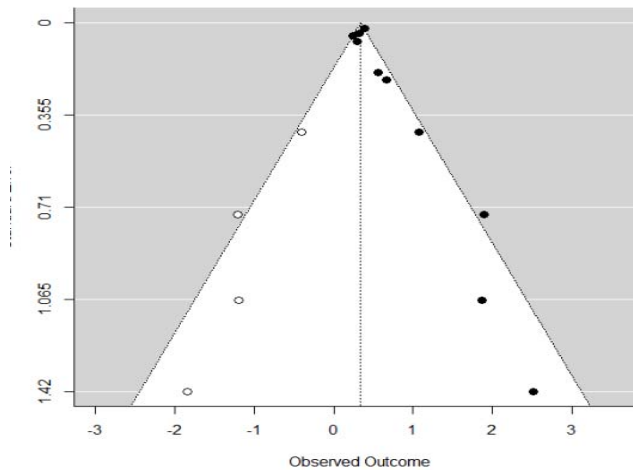
620

621 The results of the trim and fill analysis indicated that the pooled estimate for anxiety was robust to "small study" effects. The pooled  
622 estimate for depression may be slightly overestimated due to the suppression of more negative results on the left side of the funnel  
623 plot for smaller studies. It is likely that the over-estimation in the results for depression and eating disorders is caused by publication  
624 bias, but this cannot be formally proven. Alternative explanations of funnel plot asymmetry are possible. For example, funnel plot  
625 asymmetry can be caused by between study heterogeneity. Different studies may estimate different effects due to differences in  
626 study design, characteristics of the study sample, outcome definitions or geographic location. For depression, the removal of one  
627 outlier (study by Tan et al [12]) from the meta-analysis eliminated about 30% of the between-study heterogeneity.  
628

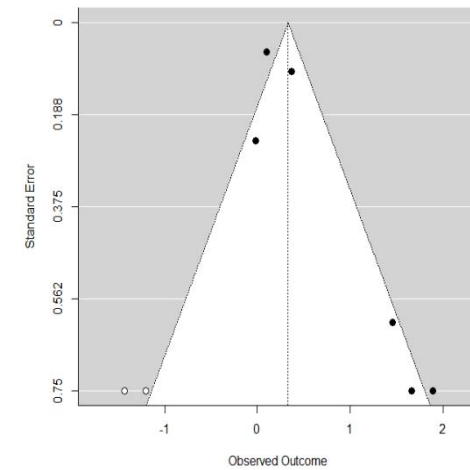
629



Supplemental Fig. 1A



Supplemental Fig. 1B



Supplemental Fig. 1C