

**Title:** Clinical Characteristics and Outcomes of Laboratory-Confirmed SARS-CoV-2 Cases Infected with Omicron subvariants and XBB recombinant variant

**Authors:** Rajesh Karyakarte<sup>1</sup>, Rashmita Das<sup>1</sup>, Sonali Dudhate<sup>1</sup>, Jeanne Agarasen<sup>1</sup>, Praveena Pillai<sup>1</sup>, Priyanka Chandankhede<sup>1</sup>, Rutika Labshetwar<sup>1</sup>, Yogita Gadiyal<sup>1</sup>, Mansi Rajmane<sup>1</sup>, Preeti Kulkarni<sup>1</sup>, Safanah Nizarudeen<sup>1</sup>, Suvarna Joshi<sup>1</sup>, Varsha Potdar<sup>2</sup>, Krishanpal Karmodiya<sup>3</sup>

<sup>1</sup> Department of Microbiology, Byramjee Jeejeebhoy Government Medical College, Pune, Maharashtra, India

<sup>2</sup> ICMR-National Institute of Virology, Pune, Maharashtra, India

<sup>3</sup> Department of Biology, Indian Institute of Science Education and Research, Dr Homi Bhabha Road, Pashan, Pune, Maharashtra, India

**Corresponding Author:** Dr Rajesh Karyakarte

## ABSTRACT

**Background:** The SARS-CoV-2 has evolved to produce new variants causing successive waves of infection. Currently, six variants are being monitored by the World Health Organization that are replacing BA.5. These include BQ.1\*, BA.5 with one or several of five mutations (R346X, K444X, V445X, N450D, N460X), BA.2.75\*, XBB\*, BA.4.6\*, and BA.2.30.2\*. BQ.1 and XBB variants are more immune evasive and have spread quickly throughout the world. With the concern of the potential severity of infections caused by these variants, the present study describes the clinical characteristics and outcomes of these major variants in Maharashtra.

**Material and Methods:** A total of 1039 Reverse Transcriptase-Polymerase Chain Reaction (RT-PCR) positive SARS-CoV-2 samples, with a cycle threshold value (Ct) less than 25, were processed for SARS-CoV-2 whole genome sequencing between 10th July 2022 and 10th December 2022. All corresponding demographic and clinical data were recorded and analyzed using Microsoft® Excel and Epi Info™. **Results:** Out of 1039 samples sequenced, 829 (79.79%) were assigned Pango lineages, of which BA.2.75 (67.31%) was the predominant Omicron variant, followed by the XBB\* (17.13%), BA.2.38\* (5.43%), BA.2.10\* (3.62%) and BA.5\* (3.50%). A total of 494 cases were contacted telephonically, of which 455 (92.11%) were symptomatic with mild symptoms. Fever (78.46%) was the most common symptom, followed by rhinorrhoea (46.37%), cough (42.20%), myalgia (19.56%) and fatigue (18.24%). Of the 494 cases, 379 (76.72%) cases recovered at home, and 115 (23.28%) were institutionally quarantined/ hospitalized. Among the home-isolated and hospitalized cases, 378 (99.74%) and 101 (87.83%) recovered with symptomatic treatment, whereas 01 (0.26%) and 14 (12.17%) succumbed to the disease, respectively. Of the 494 cases, 449 (90.89%) were vaccinated with at least one dose of the COVID-19 vaccine, 40 (8.10%) were unvaccinated, and for 05 (1.01%) cases, vaccine data was not available. **Conclusion:** The current study indicates that the XBB\* variant is causing mild disease in India. However, as XBB\* possess both immune-escape and infectivity-enhancing mutations, it has the potential to spread to other parts of the world rapidly.

**KEYWORDS:** SARS-CoV-2, BA.2.10\*, BA.2.38\*, BA.2.75\*, BA.5\*, BQ.1\*, XBB\*

NOTE: This preprint reports new research that has not been certified by peer review and should not be used to guide clinical practice.

## ARTICLE

### 1. INTRODUCTION

The Severe Acute Respiratory Syndrome Coronavirus 2 (SARS-CoV-2) has evolved continuously to give rise to new variants driving successive waves of infection. (1) Since its first emergence in November 2021, the Omicron variant of concern (VOC) has become the most widespread and dominant variant globally. Currently, BA.5 and its descendant lineages are the dominant variants, followed by BA.2.75 and its subvariants (as of 4<sup>th</sup> December 2022). (2) With a swarm of variants emerging and competing in the "variant soup" (3), there are six variants which are replacing the BA.5 descendent lineages and are under monitoring by the World Health Organization. (2) These include BQ.1\*, BA.5 with one or several of five mutations in the spike protein (R346X, K444X, V445X, N450D, N460X), BA.2.75\*, XBB\*, BA.4.6\*, and BA.2.30.2\* accounting for a global prevalence of 72.9% (as of 4<sup>th</sup> December 2022) (\* indicates the lineage and its sub-lineages). (2) BQ.1, a sub-lineage of BA.5, was first identified in Nigeria in early July 2022. There are 63 Pango lineages associated with the BQ.1\* variant, which have spread dramatically to Europe, South America, North America, and Africa. (4,5) XBB is a recombinant of BA.2.10.1 and BA.2.75 sub-lineages, i.e., BJ.1 and BM.1.1.1, with a breakpoint in S1. It was first identified in mid-August 2022 and is suggested to have emerged around the Indian subcontinent. (5) XBB and its sub-lineages have spread quickly and have become dominant in India, Bangladesh, Malaysia, Singapore, and other parts of Asia. (5,6) As these variants continue to evolve and diversify, they are of particular interest, as they are more immune evasive and expand rapidly, due to additional mutations in their spike protein. There is evidence that these SARS-CoV-2 variants may further reduce the effectiveness of current COVID-19 vaccines and monoclonal antibody treatments. (5)

For effective pandemic response, it is essential to understand the range of illnesses associated with these new strains. There are concerns about the potential severity of infections caused by these variants due to multiple mutations in their spike protein, which may affect their ability to enter cells and escape the immune system. (7) Therefore, the present study describes the clinical characteristics and outcomes of the major variants identified during the community surveillance of SARS-CoV-2 in Maharashtra.

## **2. MATERIAL AND METHODS**

The present study was conducted as part of the Indian SARS-CoV-2 Genomics Consortium (INSACOG) sequencing activity in Maharashtra to monitor genomic variations in the virus and to study its epidemiological trends. The study protocol for SARS-CoV-2 whole genome sequencing was reviewed and approved by the Institutional Ethics Committee at Byramjee Jeejeebhoy Government Medical College (BJGMC), Pune, Indian Council of Medical Research- National Institute of Virology (ICMR-NIV), Pune and Indian Institute of Science, Education and Research (IISER), Pune.

### **2.1 Sample Acquisition**

Samples from several RT-PCR swab collection and testing centres in various districts of Maharashtra and its neighbouring states were sent to BJGMC, ICMR-NIV and IISER, Pune, for whole genome sequencing.

Respiratory specimens, including nasopharyngeal and oropharyngeal swabs, positive for SARS-CoV-2 infection, were collected in Viral Transport Medium (VTM). These samples were transported to the sequencing laboratory in triple packaging, maintaining the cold chain, and stored at -80°C. According to government instructions and INSACOG, 5% of the samples from positive cases with a Ct value less than 25, including clusters, vaccine breakthrough infections, cases with mild and moderate symptoms, and hospitalized and deceased cases, were processed.

### **2.2 RNA Extraction, Library Preparation, Next Generation Sequencing, and Lineage Analysis**

Total RNA was extracted from respiratory specimens using the MagMax™ Viral/Pathogen nucleic acid extraction kit (ThermoFisher Scientific, Waltham, MA, USA) on an automated extraction system, KingFisher Flex (ThermoFisher, Waltham, MA, USA), following the manufacturer's instructions. Nucleic acid was eluted in 50 µL of elution buffer, and the RNA was quantified with the Qubit RNA High Sensitivity Kit using the Qubit® 2.0 Fluorometer (ThermoFisher Scientific, Waltham, MA, USA). This RNA was used for library preparation for sequencing.

Libraries for SARS-CoV-2 sequencing were prepared using the Rapid Barcoding Kit (RBK110.96) and Midnight RT-PCR Expansion Kits (EXP001) (BJGMC, Pune), Ion 540™ chip and the Ion Total RNA-Seq kit v2.0 (ThermoFisher Scientific, Waltham, MA, USA) (ICMR-NIV,

Pune) and Illumina COVIDSeq RUO test kits (Illumina Inc, USA) (IISER, Pune). Sequencing was performed using GridION (ONT, Littlemore, United Kingdom), Ion S5 (ThermoFisher Scientific, Waltham, MA, USA) and the NextSeq 550 sequencing platform, respectively. Reads were aligned to the reference genome using MinKNOW software, Iterative Refinement Meta-Assembler (IRMA) and DRAGEN COVID Lineage application, respectively. Lineage analysis was done using Phylogenetic Assignment of Named Global Outbreak Lineages (PangoLIN) COVID-19 lineage assigner, version v4.1.3, pangolin-data version v1.17, and clade was analyzed using Nextclade software, version v2.9.1.

### **2.3 Demographic and Clinical Data Collection**

A set of demographic data, including the patient's age, gender, area of residence, contact number, and date of specimen collection and testing, were collected from the centralized data entry portal for COVID-19 testing in India, the ICMR COVID-19 Data Portal using the unique identification number (ICMR ID). In order to gather additional information, telephonic interviews were conducted, and patients were interviewed individually. During the interview, the demographic details available on the portal were validated, and information on the presence of any symptoms at the time of testing, comorbidities, vaccination details, history of the previous infection, hospitalization, oxygen requirement and treatment were collected. Patients unwilling to share their history during the interview were excluded from the study.

### **2.4 Statistical Analysis**

All demographic and clinical data were recorded using Microsoft® Excel, and analysis was performed using Microsoft® Excel and Epi Info™, version 7.2.4.0. The continuous variables were presented as the median and interquartile range (IQR). The Kruskal-Wallis test was performed to compare the median values between the variants. The categorical variables were presented as numbers and percentages. The Chi-square test was used to compare categorical variables between the variants. Fisher's exact test compared the categorical values with limited data. A  $p$ -value  $< 0.05$  was considered statistically significant.

## **3. RESULTS**

### **3.1 Demographic Characteristics of the Study Population**

Between 10th July 2022 and 10th December 2022, 1039 RT-PCR-positive SARS-CoV-2 samples were collected and included in the study. **Table 1** describes the geographical

distribution of the samples collected. The study population included cases from all age groups with a median age of 37 years (IQR: 28-57) (**Table 2**). The male-to-female ratio was 1.22:1 (**Table 3**).




**Table 1: Geographical distribution of 1039 RT-PCR-positive SARS-CoV-2 samples**

Area of Residence		Frequency	Percentage	95% LCI	95% UCI	
Maharashtra	Ahmednagar	7	0.67%	0.33%	1.38%	
	Akola	4	0.38%	0.15%	0.99%	
	Alibag	16	1.54%	0.95%	2.49%	
	Amravati	3	0.29%	0.10%	0.85%	
	Aurangabad	4	0.38%	0.15%	0.99%	
	Baramati	6	0.58%	0.26%	1.25%	
	Beed	11	1.06%	0.59%	1.89%	
	Buldhana	2	0.19%	0.05%	0.70%	
	Jalna	7	0.67%	0.33%	1.38%	
	Kolhapur	94	9.05%	7.45%	10.95%	
	Mumbai	8	0.77%	0.39%	1.51%	
	Nagpur	1	0.10%	0.02%	0.54%	
	Nashik	2	0.19%	0.05%	0.70%	
	Pune	768	73.92%	71.16%	76.50%	
	Sangli	1	0.10%	0.02%	0.54%	
	Satara	13	1.25%	0.73%	2.13%	
	Solapur	1	0.10%	0.02%	0.54%	
	Thane	73	7.03%	5.62%	8.74%	
Washim	1	0.10%	0.02%	0.54%		
Outside Maharashtra	Silvasa	2	0.19%	0.05%	0.70%	
	Goa	15	1.44%	0.88%	2.37%	
<b>TOTAL</b>		<b>1039</b>	<b>100%</b>			

**Table 2: Age-wise distribution of 1039 RT-PCR-positive SARS-CoV-2 samples**

Age Groups (in years)	Frequency	Percentage	95% LCI	95% UCI	
0 - <10	22	2.12%	1.40%	3.19%	
10 - <20	49	4.72%	3.59%	6.18%	
20 - <30	232	22.33%	19.90%	24.96%	
30 - <40	259	24.93%	22.39%	27.65%	
40 - <50	108	10.39%	8.68%	12.40%	
50 - <60	131	12.61%	10.73%	14.77%	
60 - <70	116	11.16%	9.39%	13.22%	
70 - <80	86	8.28%	6.75%	10.11%	
80 - <90	36	3.46%	2.51%	4.76%	
<b>TOTAL</b>	<b>1039</b>	<b>100%</b>			

**Table 3: Gender-wise distribution of 1039 RT-PCR-positive SARS-CoV-2 samples**

Gender	Frequency	Percentage	95% LCI	95% UCI	
Female	469	45.14%	42.14%	48.18%	
Male	570	54.86%	51.82%	57.86%	
<b>TOTAL</b>	<b>1039</b>	<b>100%</b>			

### 3.2 SARS-CoV-2 Lineage Distribution in Sequenced Samples

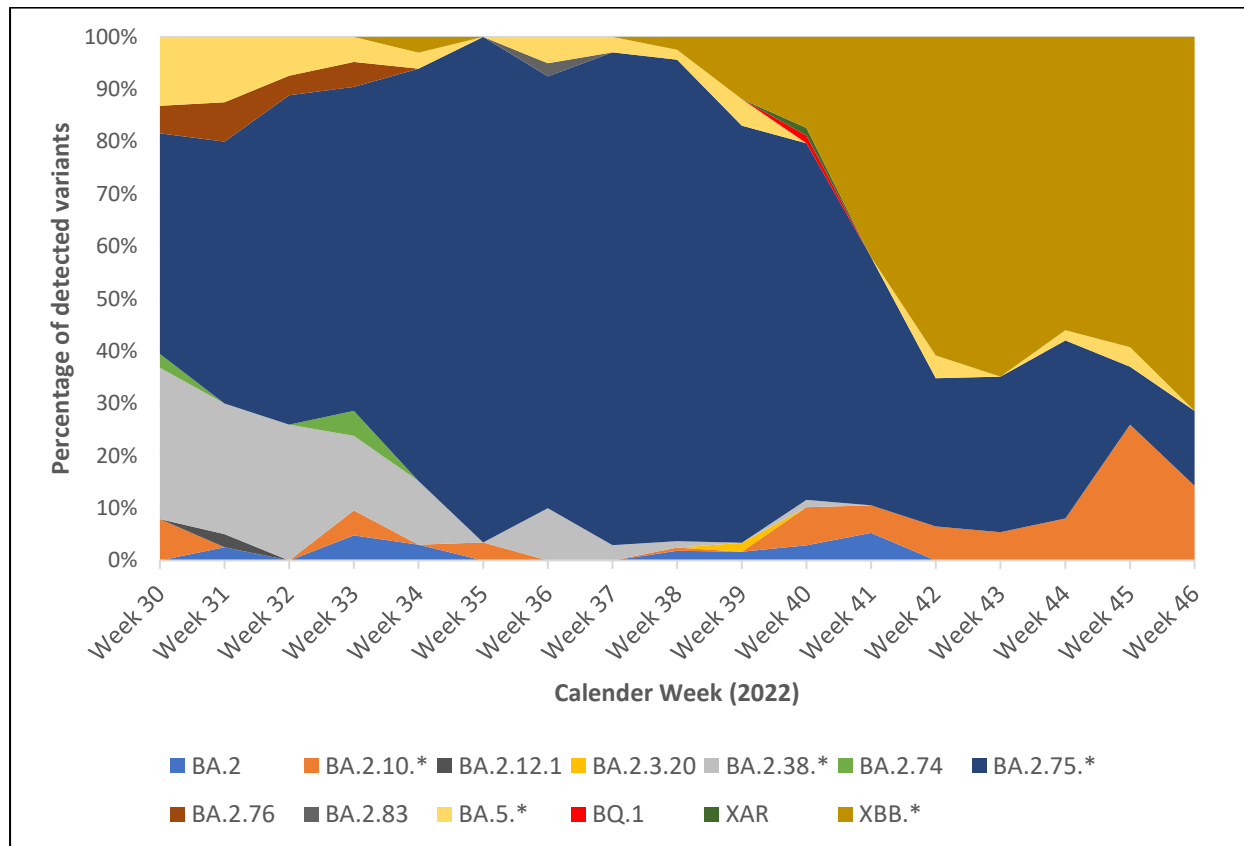
Of the 1039 samples sequenced, 829 (79.79%) were assigned Pango lineages, of which the BA.2.75\* (67.31%) was the predominant Omicron variant followed by the XBB\* (17.13%), BA.2.38\* (5.43%), BA.2.10\* (3.62%) and BA.5\* (3.50%) (**Table 4**). **Figure 1** describes the temporal distribution of SARS-CoV-2 variants detected during the study period. The x-axis represents the calendar weeks, and the y-axis represents the percentage of each lineage from the sequenced samples.

**Table 4:** Variant distribution among the 1039 SARS-CoV-2 samples sequenced

Nextclade Clade	Pangolin Lineages		Numbers (%)	
21L	BA.2		11 (1.06%)	
21L	BA.2.10	BA.2.10*	01 (0.10%)	30 (2.89%)
	BA.2.10.1		24 (2.31%)	
	BA.2.10.4		04 (0.38%)	
	BJ.1		01 (0.10%)	
22C	BA.2.12.1		01 (0.10%)	
	BA.2.3.20		01 (0.10%)	
21L	BA.2.38	BA.2.38*	03 (0.29%)	45 (4.33%)
	BA.2.38.1		02 (0.19%)	
	BA.2.38.2		03 (0.29%)	
	BA.2.38.3		01 (0.10%)	
	BH.1		36 (3.46%)	
21L	BA.2.74		02 (0.19%)	
22D	BA.2.75	BA.2.75*	88 (8.47%)	558 (53.71%)
	BA.2.75.1		69 (6.64%)	
	BA.2.75.2		109 (10.49%)	
	BA.2.75.3		07 (0.67%)	
	BA.2.75.5		05 (0.48%)	
	BA.2.75.6		14 (1.35%)	
	BA.2.75.7		17 (1.64%)	
	BA.2.75.9		01 (0.10%)	
	BL.1		36 (3.46%)	
	BL.2		13 (1.25%)	
	BL.3		02 (0.19%)	
	BM.1		13 (1.25%)	

	BM.1.1		63 (6.06%)	
	BM.1.1.1		02 (0.19%)	
	BM.1.1.3		09 (0.87%)	
	BM.4.1		06 (0.58%)	
	BM.4.1.1		17 (1.64%)	
	BN.1		27 (2.60%)	
	BN.1.1		01 (0.10%)	
	BN.1.4		08 (0.77%)	
	BY.1		44 (4.23%)	
	CA.2		01 (0.10%)	
	CA.3		02 (0.19%)	
	CH.1		01 (0.10%)	
	CH.1.1		03 (0.29%)	
21L	BA.2.76		07 (0.67%)	
21L	BA.2.83		01 (0.10%)	
22B	BA.5	BA.5*	02 (0.19%)	29 (2.79%)
	BA.5.2		10 (0.96%)	
	BA.5.2.1		06 (0.58%)	
	BA.5.6		01 (0.10%)	
	BA.5.9		01 (0.10%)	
	BE.1.1		01 (0.10%)	
	BF.14		01 (0.10%)	
	BF.26		02 (0.19%)	
	BF.27		01 (0.10%)	
	BF.3		03 (0.29%)	
	BF.33		01 (0.10%)	
22E	BQ.1		01 (0.10%)	
22F	XAR		01 (0.10%)	
	XBB	XBB*	65 (6.26%)	142 (13.67%)
	XBB.1		33 (3.18%)	
	XBB.2		22 (2.12%)	
	XBB.3		21 (2.02%)	
XBB.5	01 (0.10%)			
	QC Failure		210 (20.21%)	
<b>Grand Total</b>			<b>1039 (100%)</b>	

**Figure 1: Temporal distribution of SARS-CoV-2 variants during the study period (From 10<sup>th</sup> July 2022 to 20<sup>th</sup> November 2022)\***



\*Weeks 47 and 49 were omitted, as there was only 01 sample sequenced in each of the weeks.

### 3.3 Demographic and clinical characteristics of major SARS-CoV-2 variants detected during the study

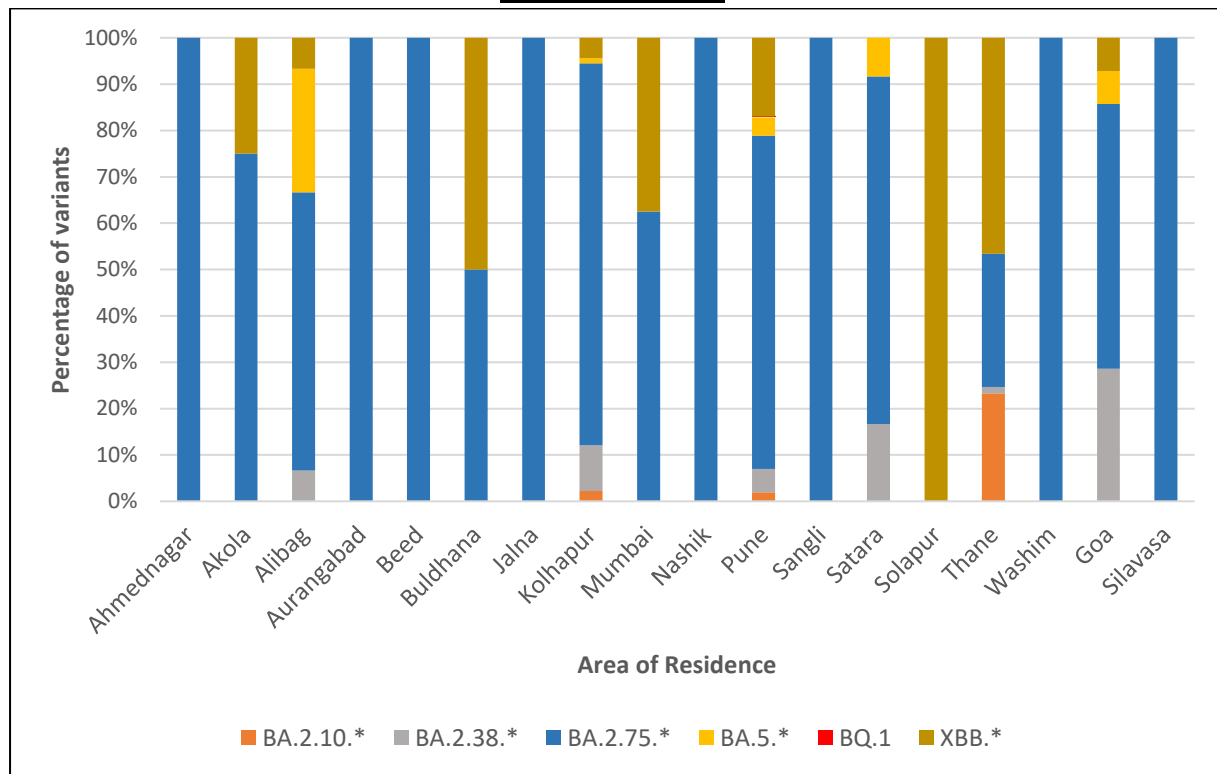
**Table 5** describes the demographic characteristics of the major SARS-CoV-2 variants detected in the study. Out of 805 cases, there were 435 (54%) males and 370 (46%) females. The median age of cases infected with BA.2.10\* was 29.5 years (IQR: 19 – 44) and 38 years for BA.2.38\*, BA.2.75\*, BA.5\* and XBB variants. However, there was no statistical difference in gender distribution ( $p$ -value= 0.130) and the median age ( $H(4) = 5.617$ ,  $p$ -value = 0.229) for different variants. **Figure 2** depicts the distribution of major variants and the area of residence of cases. BQ.1 variant detected was a case with a history of international travel who tested positive after his return.



**Table 5: Demographic characteristics of major SARS-CoV-2 variants detected during the study period (n=805)**

	BA.2.10*	BA.2.38*	BA.2.75*	BA.5*	BQ.1	XBB*	Grand Total
<b>1. Gender-wise distribution</b>							<b>p - value = 0.130</b>
<b>Male</b>	20 (66.67%)	19 (42.22%)	301 (53.94%)	12 (41.38%)	01 (100%)	82 (57.75%)	435 (54.04%)
<b>Female</b>	10 (33.33%)	26 (57.78%)	257 (46.06%)	17 (58.62%)	00 (00%)	60 (42.25%)	370 (45.96%)
<b>2. Median Age</b>							<b>H (4) = 5.617, p-value = 0.229</b>
	29.5 (IQR: 19.0 – 44.0)	38.0 (IQR: 29.0 – 58.0)	38.0 (IQR: 28.0 – 57.0)	38.0 (IQR: 31.0 – 59.0)	41.0 (IQR: 41.0 – 41.0)	38.0 (IQR: 27.0 – 60.0)	
<b>3. Age-wise distribution</b>							
<b>0 - &lt;10</b>	01 (3.33%)	00 (00%)	11 (1.97%)	01 (3.45%)	00 (00%)	03 (2.11%)	16 (1.99%)
<b>10 - &lt;20</b>	07 (23.33%)	04 (8.89%)	25 (4.48%)	00 (00%)	00 (00%)	11 (7.75%)	47 (5.84%)
<b>20 - &lt;30</b>	07 (23.33%)	08 (17.78%)	129 (23.12%)	05 (17.24%)	00 (00%)	28 (19.72%)	177 (21.99%)
<b>30 - &lt;40</b>	03 (10%)	11 (24.44%)	134 (24.01%)	10 (34.48%)	00 (00%)	32 (22.53%)	190 (23.60%)
<b>40 - &lt;50</b>	05 (16.67%)	06 (13.33%)	51 (9.14%)	02 (6.90%)	01 (100%)	14 (9.86%)	79 (9.81%)
<b>50 - &lt;60</b>	01 (3.33%)	05 (11.11%)	81 (14.52%)	05 (17.24%)	00 (00%)	18 (12.68%)	110 (13.66%)
<b>60 - &lt;70</b>	05 (16.67%)	04 (8.89%)	61 (10.93%)	04 (13.79%)	00 (00%)	14 (9.86%)	88 (10.93%)
<b>70 - &lt;80</b>	01 (3.33%)	06 (13.33%)	45 (8.07%)	02 (6.90%)	00 (00%)	17 (11.97%)	71 (8.82%)
<b>80 - &lt;90</b>	00 (00%)	01 (2.22%)	21 (3.76%)	00 (00%)	00 (00%)	05 (3.52%)	27 (3.35%)

**Figure 2:** Distribution of major SARS-CoV-2 variants detected during the study versus the area of residence



Of the 805 cases, 494 (61.37%) could be telephonically contacted to obtain information regarding their symptoms, hospitalization, treatment and vaccination status. **Table 6** summarizes the clinical characteristics, vaccination status and outcome of 494 cases. Most cases were symptomatic (92.11%) with mild symptoms. Fever (72.27%) was the most common symptom across all variants, followed by cold (41.90%), cough (38.87%), myalgia (18.02%) and fatigue (16.80%). Of the 494 cases, 436 (88.26%) cases confirmed the presence of no comorbidity. Among those with one or more comorbid conditions, diabetes mellitus was the most common condition reported (63.79%), followed by hypertension (62.07%), carcinoma (10.34%), liver/kidney disease (6.90%), tuberculosis and asthma (3.45% each). There were 379 (76.72%) cases which required home isolation and 115 (23.28%) cases who were institutionally quarantined/ hospitalized. Of the 494 cases, 3.04% recovered without any treatment, 88.26% recovered with supportive treatment, 6.48% required oxygen therapy and 2.22% were given antiviral treatment. There were 15 (3.04%) cases who succumbed to the disease, and the rest (96.96%) survived.

**Table 6:** Clinical Characteristics and outcome of 494 patients infected with major variants  
(n=494)\*

	BA.2.10*	BA.2.38*	BA.2.75*	BA.5*	BQ.1	XBB*	Grand Total
<b>Total number of cases with history available</b>							
	17 (56.67%)	21 (46.67%)	356 (63.80%)	14 (48.28%)	01 (100%)	85 (59.86%)	494 (61.37%)
<b>History of previous COVID-19 infection</b>							
	01 (5.88%)	03 (14.29%)	47 (13.20%)	00 (00%)	00 (00%)	12 (14.12%)	63 (12.75%)
<b>Symptom status at the time of sample collection</b> <span style="float: right;"><b>p - value = 0.213</b></span>							
Asymptomatic	03 (17.65%)	01 (4.76%)	25 (7.02%)	00 (00%)	00 (00%)	10 (11.76%)	39 (7.89%)
Symptomatic	14 (82.35%)	20 (95.24%)	331 (92.98%)	14 (100%)	01 (100%)	75 (88.24%)	455 (92.11%)
<b>Presence of comorbidity</b> <span style="float: right;"><b>p - value = 0.224</b></span>							
No comorbidity	17 (100%)	15 (71.43%)	318 (89.33%)	13 (92.86%)	01 (100%)	72 (84.71%)	436 (88.26%)
Presence of one condition	00 (00%)	05 (23.81%)	26 (7.30%)	01 (7.14%)	00 (00%)	10 (11.76%)	42 (8.50%)
Presence of two or more conditions	00 (00%)	01 (4.76%)	12 (3.37%)	00 (00%)	00 (00%)	03 (3.53%)	16 (3.24%)
<b>Initial presenting symptoms</b>							
Fever	08 (57.14%)	16 (80%)	266 (80.36%)	10 (71.43%)	01 (100%)	56 (74.67%)	357 (78.46%)
Cough	05 (35.71%)	13 (65%)	139 (41.99%)	04 (28.57%)	00 (00%)	31 (41.33%)	192 (42.20%)
Fatigue/ Weakness	00 (00%)	02 (10%)	70 (21.15%)	02 (14.29%)	00 (00%)	09 (12%)	83 (18.24%)
Myalgia	03 (21.43%)	00 (00%)	74 (22.36%)	01 (7.14%)	00 (00%)	11 (14.67%)	89 (19.56%)

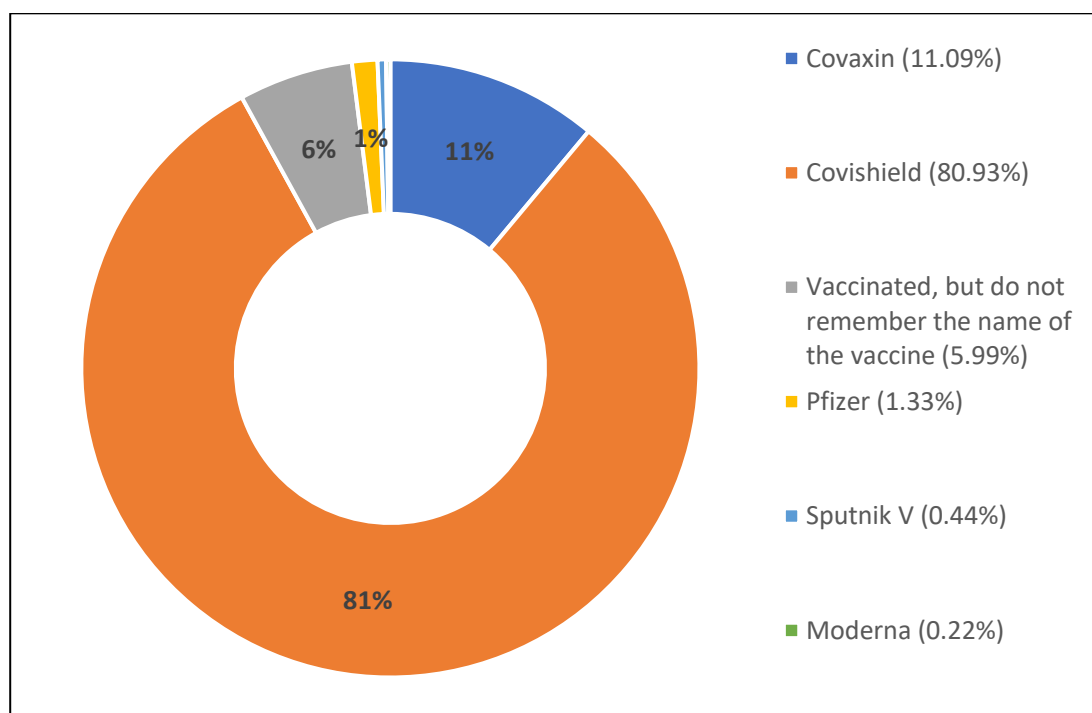
Rhinorrhoea (Running nose)	07 (50%)	06 (30%)	155 (46.83%)	07 (50.00%)	00 (00%)	36 (48%)	211 (46.37%)
Headache	00 (00%)	02 (10%)	23 (6.95%)	00 (00%)	00 (00%)	07 (9.33%)	32 (7.03%)
Diarrhoea	00 (00%)	00 (00%)	05 (1.51%)	02 (14.29%)	00 (00%)	03 (4%)	10 (2.20%)
Breathlessness	00 (00%)	02 (10%)	19 (5.74%)	00 (00%)	00 (00%)	05 (6.67%)	26 (5.71%)
Vomiting	00 (00%)	00 (00%)	09 (2.72%)	00 (00%)	00 (00%)	02 (2.67%)	11 (2.42%)
Sore throat	01 (7.14%)	01 (5%)	14 (4.23%)	00 (00%)	00 (00%)	12 (16%)	28 (6.15%)
Skin rash	00 (00%)	00 (00%)	03 (0.91%)	00 (00%)	00 (00%)	00 (00%)	03 (0.66%)
Chest pain	00 (00%)	00 (00%)	01 (0.30%)	00 (00%)	00 (00%)	00 (00%)	01 (0.22%)
Loss of taste	00 (00%)	00 (00%)	02 (0.60%)	00 (00%)	00 (00%)	02 (2.67%)	04 (0.88%)
Loss of smell	00 (00%)	00 (00%)	02 (0.60%)	00 (00%)	00 (00%)	01 (1.33%)	03 (0.66%)
<b>Type of Quarantine</b>							<b>p - value = 0.27</b>
Home quarantine	16 (94.12%)	14 (66.67%)	269 (75.56%)	12 (85.71%)	01 (100%)	67 (78.82%)	379 (76.72%)
Institutional quarantine/ required hospitalization	01 (5.88%)	07 (33.33%)	87 (24.44%)	02 (14.29%)	00 (00%)	18 (21.18%)	115 (23.28%)
<b>Treatment</b>							<b>p - value = 0.02</b>
No treatment taken	03 (17.65%)	00 (00%)	10 (2.81%)	00 (00%)	00 (00%)	02 (2.35%)	15 (3.04%)

Need for conservative treatment	13 (76.47%)	17 (80.95%)	316 (88.76%)	14 (100%)	01 (100%)	75 (88.23%)	436 (88.26%)
Need for supplemental oxygen	01 (5.88%)	04 (19.05%)	23 (6.46%)	00 (00%)	00 (00%)	04 (4.71%)	32 (6.48%)
a. Low flow oxygen	01 (100%)	03 (75%)	17 (73.91%)	00 (00%)	00 (00%)	04 (100%)	25 (78.13%)
b. Intubation	00 (00%)	01 (25%)	06 (26.09%)	00 (00%)	00 (00%)	00 (00%)	07 (21.87%)
Need for antiviral agents/ steroid or immunomodulatory drugs	00 (00%)	00 (00%)	07 (1.97%)	00 (00%)	00 (00%)	04 (4.71%)	11 (2.22%)
<b>Outcome of disease</b> <span style="float: right;"><b>p - value = 0.77</b></span>							
Survived	17 (100%)	21 (100%)	344 (96.63%)	14 (100%)	01 (100%)	82 (96.47%)	479 (96.96%)
Dead	00 (00%)	00 (00%)	12 (3.37%)	00 (00%)	00 (00%)	03 (3.53%)	15 (3.04%)
<b>Vaccination Status</b> <span style="float: right;"><b>p - value = 0.105</b></span>							
Vaccinated with atleast one dose	13 (76.47%)	18 (85.71%)	325 (91.29%)	13 (92.86%)	01 (100%)	79 (92.94%)	449 (90.89%)
a. Single Dose	00 (00%)	00 (00%)	14 (4.31%)	00 (00%)	00 (00%)	02 (2.53%)	16 (3.56%)
b. Two doses	11 (84.62%)	16 (88.89%)	230 (70.77%)	11 (84.62%)	01 (100%)	60 (75.95%)	329 (73.27%)
c. Booster Dose	02 (15.38%)	02 (11.11%)	81 (24.92%)	02 (15.38%)	00 (00%)	17 (21.52%)	104 (23.16%)
Not vaccinated	04 (23.53%)	03 (14.29%)	28 (7.87%)	01 (7.14%)	00 (00%)	04 (4.71%)	40 (8.10%)
Data not available	00 (0.00%)	00 (00%)	03 (0.84%)	00 (00%)	00 (00%)	02 (2.35%)	05 (1.01%)

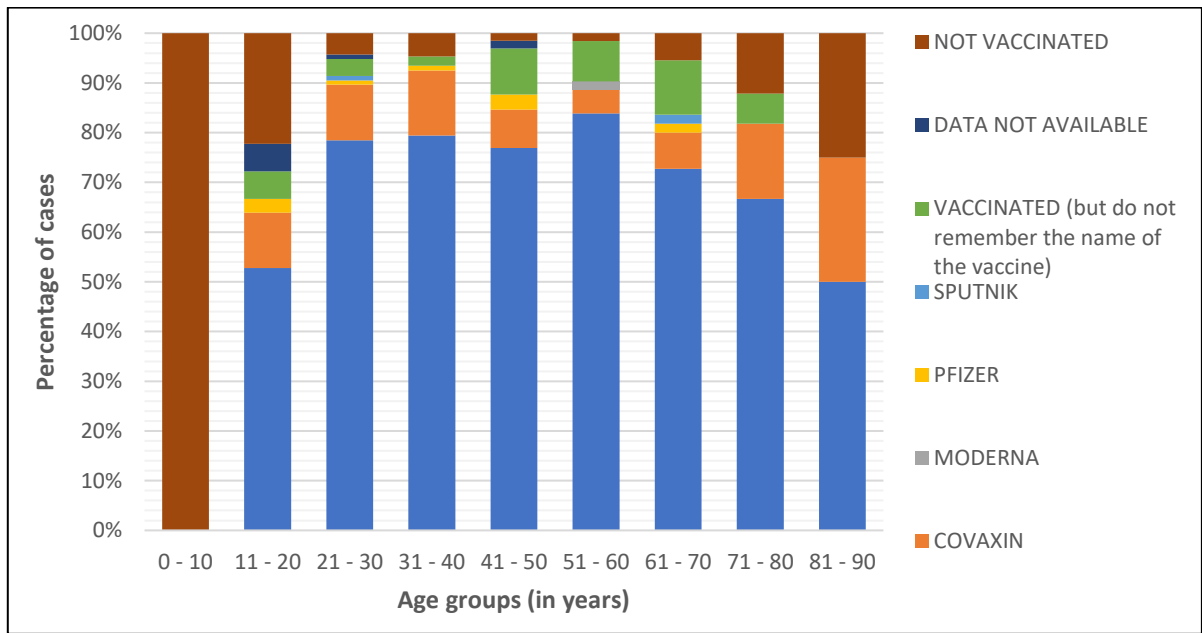
\* Data from BQ.1 was not considered for statistical analysis as there was only single sample positive for this variant.

Among the 494 cases, 449 (90.89%) were vaccinated with at least a single dose of the COVID-19 vaccine, 40 (8.10%) were unvaccinated, and for 05 (1.01%) cases, vaccine data was not available. **Figure 3** enumerates the type of vaccine administered to the study population, with Covishield (ChAdOx1 nCoV-19 Corona Virus Vaccine) (80.93%) being the most common vaccine, followed by Covaxin (BBV152A- a whole inactivated virus-based COVID-19 vaccine) (11.09%). **Figure 4** describes the vaccination status of the study population for the age groups. Most unvaccinated individuals fall in the age group of 0 to 10 years (29.27%) who were not offered vaccination as a part of the vaccination policy in the country. **Figure 5** shows the impact of vaccination on the survival of cases. Out of 488 cases with available vaccination data (excluding BQ.1 data), 97.54% of the cases, vaccinated with at least one dose of the vaccine, survived (either with or without hospitalization), whereas only 2.46% of cases died. ( $p$ -value= 0.001). Similarly, among those who were vaccinated, 90% survived, and 10% died. The difference in the outcome due to vaccination was significant, with a  $p$ -value = 0.03.

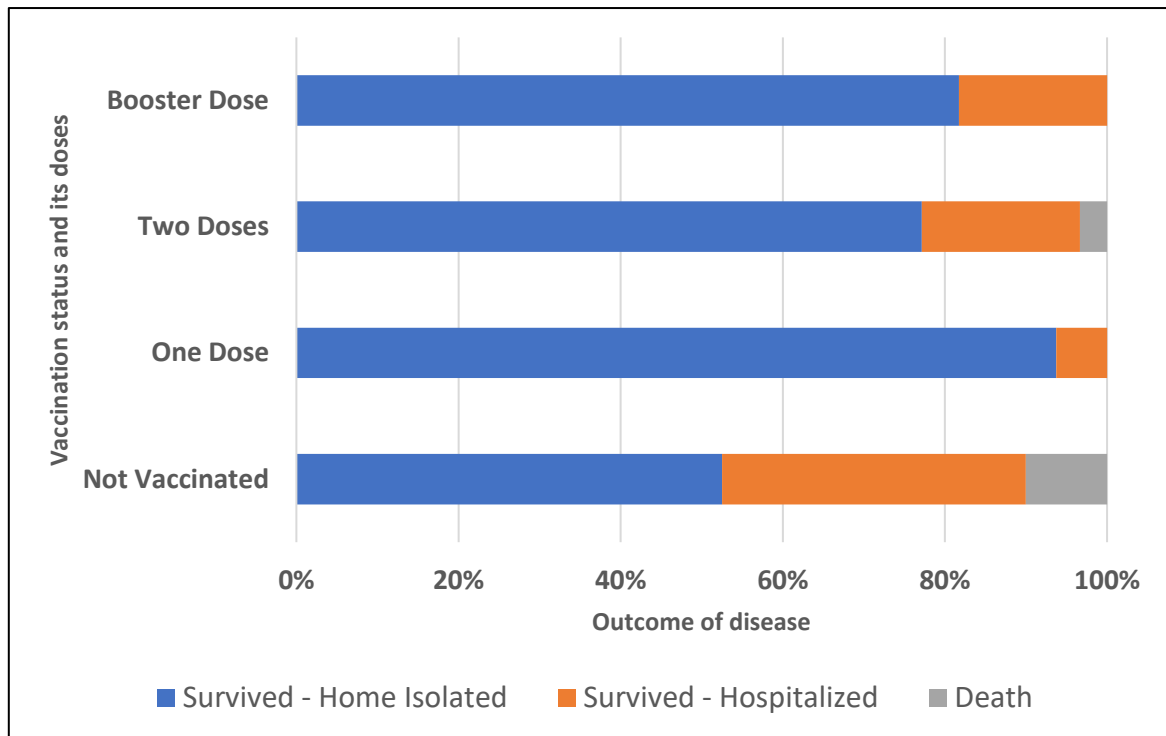
**Figure 3: Type of vaccine administered to the study population**



**Figure 4: Vaccination status by age group**



**Figure 5: Impact of vaccination on the survival of cases**



#### 4. DISCUSSION

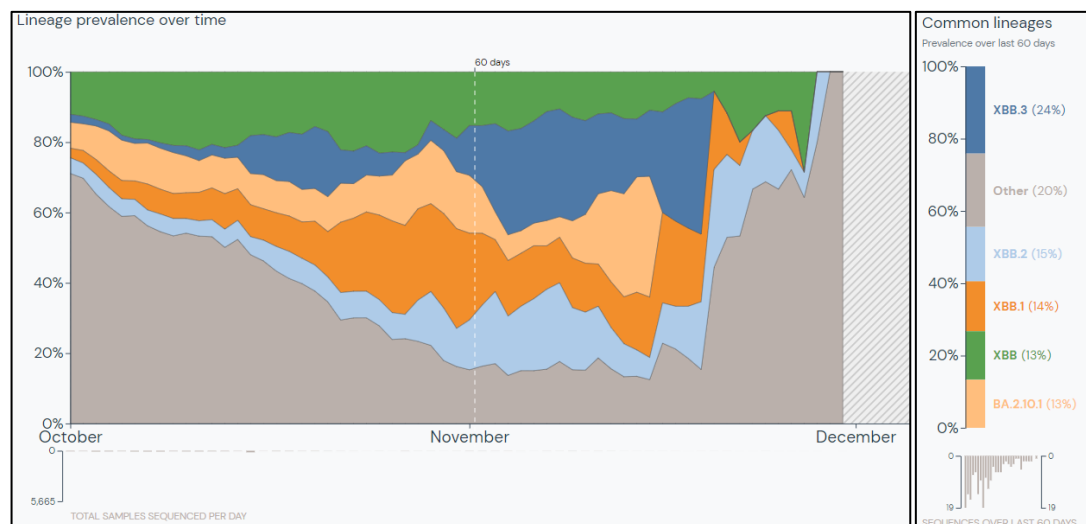
The SARS-CoV-2 virus is known for its unique evolutionary characteristic compared to other respiratory viruses (**Figure 6**). In 2022, saltation or 'variant' evolution has given rise to "second generation variants" evolving from a BA.2 lineage background that have numerous non-synonymous mutations, concentrated in the N-terminal domain (NTD) and the receptor binding domain (RBD) of the Spike protein. A few examples include BA.2.75, BA.2.10.4, BJ.1, BS.1, BA.2.3.20, BA.2.83, BP.1, and DD.1, of which BA.2.75 is the most widespread second-generation BA.2 variant. (8) Unlike previous dominant lineages, BA.5 accumulated potent antigenic mutations in a step-wise manner as a result of antigenic drift. The most rapidly growing sub-lineage of BA.5 is BQ.1, of which BQ.1.1 is the largest containing three further antigenic mutations. (8) SARS-CoV-2 virus, being a coronavirus, is prone to inter-lineage recombination. It generally occurs when a wave declines and a new variant emerges. (9) The resultant recombinant variant possesses unique advantageous properties from both parents. (10) There are 62 recombinant lineages designated by Pangolin (as of December 2022) (11), denoted by a prefix X, of which XBB is the most widespread inter-lineage recombinant to date. (8) XBB is a recombination of BJ.1 (5' part of XBB genome) and BM.1.1.1 (3' part of XBB genome) with breakpoint between 22,897 and 22941 positions in the RBD of the spike protein (corresponding to amino acid positions 445-460). (8, 5) **Figure 7** depicts the mutation prevalence across lineages BJ.1 and BM.1.1.1 and XBB\* variant. (12) It is shown to have substantially higher viral fitness ( $R_e$ ) than its parental lineages, making it the first documented example of a SARS-CoV-2 variant with increased fitness through recombination. (13)





93% in last 60 days as on 31<sup>st</sup> December 2022. (6) On the contrary, BA.5 and its descendant lineages dominate globally, with about 68.4% of sequences submitted to GISAID as of 4<sup>th</sup> December 2022. (2) However, the prevalence of BA.5 is decreasing globally with a rise in BA.2 descendant lineages, particularly BA.2.75\*. The global prevalence of BQ.1\*, newer BA.5 variants with mutations like R346X, K444X, V445X, N450D, N460X, BA.2.75\* and XBB\* is 42.5%, 13.4%, 9.8% and 6.1%, respectively (as of 4<sup>th</sup> December 2022. (2) The regional difference in the prevalence of XBB and BQ.1 lineages, XBB being more dominant in the eastern hemisphere and BQ.1 in the western hemisphere, may be due to the proximity of these regions to places where these lineages originated. (13)

**Figure 8: Prevalence of common lineages in India over the last 60 days (as of 31<sup>st</sup> December 2022) (19)**



The present study suggests that the pathogenicity of XBB is comparable to that of other Omicron variants. These findings are consistent with an in-vivo study in hamsters where the XBB variant was less pathogenic than the Delta variant and had a comparable pulmonary function and viral RNA load to BA.2.75 infected hamsters. The intrinsic pathogenicity of the XBB variant and its efficiency of infecting lungs was comparable to or even lower than the BA.2.75. (13) However, it remains unclear whether the intrinsic pathogenicity of the virus or the immunity from vaccination and previous infection is responsible for mild cases in India. More clinical data from other clinical settings with different levels of immunity will help understand the behaviour of the XBB\* variant.

The most remarkable feature of XBB is its profound resistance to humoral immunity induced by infections with prior Omicron variants. In-vitro studies have shown that XBB

exhibited 30-fold and 13-fold resistance to BA.2 and BA.5 infection sera. (13) Similar findings were reported by Wang Q et al., where XBB was ~63-fold and ~49-fold more resistant to neutralization than BA.2 and BA.4/5, respectively. (5) Several NTD and RBD spike mutations like V83A, Y144del, Q183E, R346T, L368I, V445P, F486S and F490S cooperatively contribute to resistance against humoral immunity induced by BA.2 infections. Similarly, two mutations, Y144del and G446S, were suggested to contribute to resistance against humoral immunity induced by BA.5 infections. Spike mutations in the RBD (R346T, L368I and N460K) and NTD (V83A), are also responsible for increased ACE2 binding affinity, viral infectivity and fusogenicity of XBB compared to BA.2, BA.5 and BA.2.75 Omicron variants. XBB-infected hamster sera showed a remarkable antiviral effect against XBB only, suggesting XBB is antigenically distinct from other Omicron subvariants. (13) Several clinically authorized therapeutic monoclonal antibodies (mAbs) like bamlanivimab, etesevimab, imdevimab, casirivimab, tixagevimab, cilgavimab, and sotrovimab have been rendered ineffective by previous SARS-CoV-2 variants, leaving bebtelovimab as the only monoclonal antibody active against the circulating strains. However, due to mutations like N460K, F486S, R346T, V455P, G446S and F490S, XBB and its descendant XBB.1 are pan-resistant to RBD class I, II and III antibodies. Also, bebtelovimab (LY-CoV1404) and Evusheld (combination of COV2-2196) and COV2-2130) were found to be inactive against XBB/XBB.1. (5) Therefore, due to the presence of both immune-escape associated and infectivity-enhancing mutations, the XBB variant has the potential to spread to the entire world eventually. (13)

## **5. CONCLUSION**

To conclude, while it is encouraging that the infection caused by SARS-CoV-2 XBB recombinant variant tends to be less severe and similar to that of other Omicron subvariants, the fact that this variant is more transmissible and immune-evasive is a cause of concern. In addition to the ongoing surveillance efforts to track the spread of new variants, our findings emphasize the importance and the need to monitor the clinical severity of infections caused by new variants. Such findings are essential for making decisions about deploying interventions and preparing healthcare systems to respond to outbreaks.

## **ACKNOWLEDGEMENT**

We acknowledge and thank Mrs Poonam Pacharne, Mr Vishal Rajput and Mrs Reena Katke from Byramjee Jeejeebhoy Government Medical College and Sassoon General Hospitals; Ms

Aditi and Ms Pratiksha from ICMR-National Institute of Virology for their technical help during the study.

#### **COMPETING INTEREST STATEMENT**

The authors have declared no competing interest.

#### **FUNDING STATEMENT**

This study did not receive any funding.

## REFERENCES

1. Kurhade C, Zou J, Xia H, Liu M, Chang HC, Ren P, et al. Low neutralization of SARS-COV-2 omicron BA.2.75.2, BQ.1.1, and XBB.1 by 4 doses of parental mrna vaccine or a BA.5-bivalent booster. *Nature Medicine*. 2022;3–18. Available from: <https://doi.org/10.1038/s41591-022-02162-x>
2. World Health Organization. COVID-19 Weekly Epidemiological Update. 21st December 2022;1-13. Available from: <https://www.who.int/publications/m/item/covid-19-weekly-epidemiological-update---21-december-2022>
3. Callaway E. COVID ‘Variant Soup’ is making winter surges hard to predict. *Nature*. 2022;611:213-214. Available from: <https://www.nature.com/articles/d41586-022-03445-6#:~:text=Descendants%20of%20Omicron%20are%20proliferating,coming%20up%20again%20and%20again.&text=Some%20call%20it%20a%20swarm,to%20it%20as%20variant%20soup>.
4. Gangavarapu K, Latif AA, Mullen J, Alkuzweny M, Hufbauer E, Tsueng G, et al. BQ.1\* Omicron (BQ.1.X) Variant Report [Internet]. outbreak.info; [Accessed on 30th December 2022]. Available from: [https://outbreak.info/situation-reports/BQ.1\\*%20%5BOmicron%20\(BQ.1.X\)%5D?selected=NGA&amp;loc=NGA&amp;overlay=false](https://outbreak.info/situation-reports/BQ.1*%20%5BOmicron%20(BQ.1.X)%5D?selected=NGA&amp;loc=NGA&amp;overlay=false)
5. Wang Q, Iketani S, Li Z, Liu L, Guo Y, Huang Y, et al. Alarming antibody evasion properties of rising SARS-COV-2 BQ and XBB subvariants. *Cell*. 2022;1–18. Available from: <https://doi.org/10.1016/j.cell.2022.12.018>
6. Gangavarapu K, Latif AA, Mullen J, Alkuzweny M, Hufbauer E, Tsueng G, et al. XBB.1 Lineage Report [Internet]. outbreak.info; [Accessed on 31<sup>st</sup> December 2022]. Available from: <https://outbreak.info/situation-reports?pango=XBB.1>
7. Lewnard JA, Hong VX, Patel MM, Kahn R, Lipsitch M, Tartof SY. Clinical outcomes associated with Omicron (B.1.1.529) variant and BA.1/BA.1.1 or BA.2 subvariant infection in Southern California. *Nature Medicine*. 2022;28:1933–43. Available from: <https://doi.org/10.1038/s41591-022-01887-z>
8. Roemer C, Hisner R, Frohberg N, Sakaguchi H, Gueli F, Peacock TP. SARS-CoV-2 evolution, post-Omicron [Internet]. *Virological*. 2022 [Accessed on 30<sup>th</sup> December

- 2022]. Available from: <https://virological.org/t/sars-cov-2-evolution-post-omicron/911>
9. Jackson B, Boni MF, Bull MJ, Collieran A, Colquhoun RM, Darby AC, et al. Generation and transmission of interlineage recombinants in the SARS-CoV-2 pandemic. *Cell*. 2021;184(20):5179-5188.
  10. Simon-Lorriere E, Montagutelli X, Lemoine F, Donati F, Touret F, Bourret J, et al. Rapid characterization of a Delta-Omicron SARS-CoV-2 recombinant detected in Europe. *Research Square* (preprint). 2022. Available from: <https://doi.org/10.21203/rs.3.rs-1502293/v1>
  11. Release pango designations V1.17 · COV-lineages/pango-designation [Internet]. GitHub. [Accessed on 02<sup>nd</sup> January 2023]. Available from: <https://github.com/cov-lineages/pango-designation/releases/tag/v1.17>
  12. Gangavarapu K, Latif AA, Mullen J, Alkuzweny M, Hufbauer E, Tsueng G, et al. Lineage Comparison [Internet]. outbreak.info; [Accessed on 2nd January 2023]. Available from: <https://outbreak.info/compare-lineages?pango=BJ.1&pango=BM.1.1.1&pango=XBB&pango=XBB.1&pango=XBB.1.1&pango=XBB.1.3&pango=XBB.2&pango=XBB.3&pango=XBB.3.1&pango=XBB.4&pango=XBB.5&gene=S&threshold=75&nthresh=1&sub=false&dark=false>
  13. Tamura T, Ito J, Uriu K, Zahradnik J, Kida I, Nasser H, et al. Virological characteristics of the SARS-COV-2 XBB variant derived from recombination of two omicron subvariants. *bioRxiv*. 2022;1–47. Available from: <https://doi.org/10.1101/2022.12.27.521986>
  14. Gangavarapu K, Latif AA, Mullen J, Alkuzweny M, Hufbauer E, Tsueng G, et al. BA.2.75\* [Omicron (BA.2.75.X)] Variant Report [Internet]. outbreak.info; [Accessed on 31<sup>st</sup> December 2022]. Available from: [https://outbreak.info/situation-reports/BA.2.75\\*%20%5BOmicron%20\(BA.2.75.X\)%5D?xmin=2022-07-02&xmax=2023-01-02&loc=USA&loc=USA\\_US-CA&loc=IND&loc=Worldwide&loc=Worldwide&selected=Worldwide](https://outbreak.info/situation-reports/BA.2.75*%20%5BOmicron%20(BA.2.75.X)%5D?xmin=2022-07-02&xmax=2023-01-02&loc=USA&loc=USA_US-CA&loc=IND&loc=Worldwide&loc=Worldwide&selected=Worldwide)
  15. XBB\* (Nextclade)-India [Internet]. covSPECTRUM; [Accessed on 2nd January 2023]. Available from: [https://cov-spectrum.org/explore/India/AllSamples/Past6M/variants?nextcladePangoLineage=XBB\\*&](https://cov-spectrum.org/explore/India/AllSamples/Past6M/variants?nextcladePangoLineage=XBB*&)

16. Gangavarapu K, Latif AA, Mullen J, Alkuzweny M, Hufbauer E, Tsueng G, et al. BA.2.38 Lineage Report [Internet]. outbreak.info; [Accessed on 31<sup>st</sup> December 2022]. Available from: [https://outbreak.info/situation-reports?xmin=2022-07-02&xmax=2023-01-02&loc=USA&loc=USA\\_US-CA&loc=IND&loc=Worldwide&loc=Worldwide&loc=Worldwide&loc=Worldwide&pango=BA.2.38&selected=Worldwide](https://outbreak.info/situation-reports?xmin=2022-07-02&xmax=2023-01-02&loc=USA&loc=USA_US-CA&loc=IND&loc=Worldwide&loc=Worldwide&loc=Worldwide&loc=Worldwide&pango=BA.2.38&selected=Worldwide)
17. Gangavarapu K, Latif AA, Mullen J, Alkuzweny M, Hufbauer E, Tsueng G, et al. BA.2.10 Lineage Report [Internet]. outbreak.info; [Accessed on 31<sup>st</sup> December 2022]. Available from: [https://outbreak.info/situation-reports?pango=BA.2.10&loc=USA&loc=USA\\_US-CA&loc=IND&loc=Worldwide&loc=Worldwide&loc=Worldwide&loc=Worldwide&loc=Worldwide&selected=Worldwide](https://outbreak.info/situation-reports?pango=BA.2.10&loc=USA&loc=USA_US-CA&loc=IND&loc=Worldwide&loc=Worldwide&loc=Worldwide&loc=Worldwide&loc=Worldwide&selected=Worldwide)
18. Gangavarapu K, Latif AA, Mullen J, Alkuzweny M, Hufbauer E, Tsueng G, et al. BA.5\* [Omicron (BA.5.X)] Variant Report [Internet]. outbreak.info; [Accessed on 31<sup>st</sup> December 2022]. Available from: [https://outbreak.info/situation-reports/BA.5\\*%20%5BOmicron%20\(BA.5.X\)%5D?xmin=2022-06-30&xmax=2022-12-30&loc=USA&loc=USA\\_US-CA&loc=IND&loc=Worldwide&selected=IND](https://outbreak.info/situation-reports/BA.5*%20%5BOmicron%20(BA.5.X)%5D?xmin=2022-06-30&xmax=2022-12-30&loc=USA&loc=USA_US-CA&loc=IND&loc=Worldwide&selected=IND)
19. Gangavarapu K, Latif AA, Mullen J, Alkuzweny M, Hufbauer E, Tsueng G, et al. India Variant Report [Internet]. outbreak.info; [Accessed on 31<sup>st</sup> December 2022]. Available from: <https://outbreak.info/location-reports?xmin=2022-10-01&xmax=2022-12-31&loc=IND>