

1 **Title**

2 Diagnosis of protozoa diarrhoea in *Campylobacter* patients increases markedly with molecular  
3 techniques

4 **Short title**

5 Underdiagnosis of protozoa diarrhoea

6

7 **Authors**

8 David T S Hayman<sup>\*,1</sup>, Juan Carlos Garcia-Ramirez<sup>1</sup>, Anthony Pita<sup>1</sup>, Niluka Velathanthiri<sup>1</sup>, Matthew A  
9 Knox<sup>1</sup>, Paul Ogbuigwe<sup>2</sup>, Michael G Baker<sup>3</sup>, Kamran Rostami<sup>4</sup>, Jan Deroles-Main<sup>5</sup>, Brent J. Gilpin<sup>6</sup>

10

11 **Author Affiliations**

12 <sup>1</sup>Massey University, Palmerston North, New Zealand

13 <sup>2</sup>Waikato District Health Board, Hamilton, New Zealand

14 <sup>3</sup>University of Otago, Wellington, New Zealand

15 <sup>4</sup>MidCentral District Health Board, Palmerston North, New Zealand

16 <sup>5</sup>Medlab Central Ltd, Palmerston North, New Zealand

17 <sup>6</sup>Institute of Environmental Science and Research Ltd. (ESR), Christchurch, New Zealand

18

19 **\*Corresponding author:** d.t.s.hayman@massey.ac.nz

20

21 **NOTE:** This preprint reports new research that has not been certified by peer review and should not be used to guide clinical practice.

## 22 Abstract

### 23 Background

24 *Cryptosporidium* and *Giardia* are major food and water-borne causes of diarrhoea globally, and two  
25 of the most notified infectious diseases in New Zealand. Diagnosis requires laboratory confirmation  
26 carried out mostly via antigen or microscopy-based techniques. However, these methods are  
27 increasingly being superseded by molecular techniques for diagnostics. Here we investigate the level  
28 of protozoa coinfection identified by molecular methods in *Campylobacter* positive samples missed  
29 through use of antigen-based assays and then investigated different molecular testing protocols.

### 30 Methods

31 We report the findings of two observational studies; the first among 111 people with diarrhoea  
32 during a large *Campylobacter* outbreak in Havelock North, and the second a study during normal  
33 surveillance activities among 158 people presenting with diarrhoea and a positive *Campylobacter*  
34 test, but negative *Cryptosporidium* and/or *Giardia* antigen-based diagnostic test result. The  
35 molecular methods used for comparison with the antigen-based tests were in-house end-point PCR  
36 tests targeting the *gp60* gene for *Cryptosporidium* and *gdh* gene for *Giardia*. DNA extraction was  
37 performed with and without bead-beating and comparisons with commercial real-time quantitative  
38 (qPCR) were made using clinical samples diluted down to  $10^{-5}$  for *Cryptosporidium* positive samples.

### 39 Results

40 The coinfection prevalence was 9% (n= 10, 3–15% 95%CI) for *Cryptosporidium* and 21% (n=23, 12–  
41 29% 95%CI) for *Giardia* in the 111 *Campylobacter* patients of the Havelock North outbreak. The  
42 coinfection prevalence was 40% (n=62, 32-48% 95%CI) for *Cryptosporidium* and 1.3% (n=2, 0.2-4.5%  
43 95%CI) for *Giardia* in the 158 routine surveillance samples. Sequencing identified *Cryptosporidium*  
44 *hominis*, *C. parvum*, and *Giardia intestinalis* assemblages A and B among patients. We found no  
45 statistical difference in positive test results between samples using end-point PCR with or without

46 bead-beating prior to DNA extraction, or between the in-house end-point PCR and qPCR. The qPCR  
47 Ct value was 36 (35-37 95%CI) for 1 oocyst, suggesting a high limit of detection.

#### 48 Discussion

49 In surveillance and outbreak situations we found diagnostic serology testing substantially  
50 underdiagnoses *Cryptosporidium* and *Giardia* coinfections in *Campylobacter* patients. These findings  
51 suggest that the impact of protozoa infections may be underestimated, through underdiagnosis, but  
52 molecular techniques likely improve detection capabilities. Laboratories need to understand clinical,  
53 rather than analytical, test sensitivity, to allow clinicians to better understand the disease aetiologies  
54 of patients that enable better health advice.

55

56

57

58

59 **Main text**

60 **Introduction**

61 Millions of cases of diarrhoea each year are caused by protozoan parasites *Cryptosporidium* and  
62 *Giardia* (1-5). Cryptosporidiosis is often associated with diarrhoea, nausea, vomiting, abdominal  
63 cramps, low-grade fever, headache, and fatigue, and is a leading cause of infant mortality in Low to  
64 Middle-Income Countries (LMIC) (2, 3, 6, 7). *Cryptosporidium* infections in LMICs increase with poor  
65 hygiene and sanitation (8). In wealthy nations, risk factors include contact with diarrheal  
66 person/animals, as well as infected food and water (5, 9, 10). *Giardia* is a leading but neglected  
67 cause of infectious gastroenteritis worldwide. The symptoms of giardiasis can resemble irritable  
68 bowel syndrome (IBS) (11). The diarrhoea can be watery and voluminous, usually resolving within 1  
69 to 2 weeks without treatment, but if diagnosed it is treatable and treatment reduces illness and  
70 transmission. Food and water-borne infections with these parasites result in missed school and work  
71 and impacts people's well-being and economies (12).

72 These diseases are two of the four most notified diseases in New Zealand (13), showing a high  
73 annual incidence with relatively little change over the period preceding and including our study  
74 (2013-2018), which suggests lack of effective disease prevention and control (Fig 1). Diarrhoea case  
75 definition in New Zealand follows the WHO of  $\geq 3$  abnormally loose stools in 24 hrs (14).

76 The clinical description of cryptosporidiosis is an acute illness that includes symptoms of diarrhoea  
77 (may be profuse and watery) and abdominal pain. The infection may be asymptomatic but to meet  
78 the case definition the individual must have compatible symptoms (15). Infection must be confirmed  
79 by detection of *Cryptosporidium* oocysts in a faecal specimen using at least one of the following  
80 methods: *Cryptosporidium* antigen detection based on direct fluorescence using monoclonal  
81 antibodies, a rapid antigen test, or enzyme immunoassay, or the detection of *Cryptosporidium*  
82 nucleic acid or visualisation by direct microscopy detection of *Cryptosporidium* oocysts (15).

83 The clinical description of giardiasis is an illness characterised by diarrhoea, abdominal cramps,  
84 bloating, flatulence, nausea, weight loss and malabsorption. The infection may be asymptomatic.  
85 Given the remitting/relapsing and variable nature of symptoms, the individual does not need to have  
86 compatible symptoms at the time of presentation but must have had a clinically consistent illness to  
87 meet the case definition (15). Giardiasis in New Zealand is confirmed by the same methods as  
88 *Cryptosporidium*, but for *Giardia* antigen/DNA, and visualisation of *Giardia* cysts or trophozoites (16).  
89 For both diseases, cases are classified as: Under investigation (a case that has been notified, but the  
90 information is not yet available to be classified it as probable or confirmed); Probable (a clinically  
91 compatible illness that either is a contact of a confirmed case of the same disease or has had contact  
92 with the same common source – that is, is part of a common-source outbreak); Confirmed (a  
93 clinically compatible illness accompanied by laboratory definitive evidence) or Not a case (a case that  
94 has been investigated and subsequently found not to meet the case definition) (15, 16).

95 Figure 1. Notified *Cryptosporidium* and *Giardia* prevalence in New Zealand, 2013-2018, covering the  
96 study period. Ninety-five percent confidence intervals are shown.

97 Our Protozoa Research Unit (PRU; <http://protozoa.org/>) at the Molecular Epidemiology & Public  
98 Health team at Massey University performs surveillance work on human faeces and water samples  
99 for the New Zealand Ministry of Health (17, 18). Molecular genotyping is performed on human faecal  
100 samples that have already tested positive through International Accreditation New Zealand (IANZ)  
101 diagnostic laboratories (see methods). This work assists public health officers with investigations of  
102 outbreaks caused by these and other notifiable diseases, such as a massive outbreak of  
103 *Campylobacter* (6260-8320 cases) caused by contaminated water in Havelock North, New Zealand in  
104 August 2016 (19).

105 The Havelock North outbreak provided laboratory evidence of false-negative diagnostic tests for  
106 protozoa. To determine if coinfection of *Campylobacter* positive samples were missed due to the  
107 test methods under normal surveillance conditions, in 2017 we obtained ethical approval to assess

108 samples from accredited laboratory *Campylobacter* positive, protozoa antigen-assay negative faeces  
109 (like the Havelock North outbreak). Therefore, we report the findings of two observational studies.  
110 The first study was conducted among people with diarrhoea during the large *Campylobacter*  
111 outbreak in Havelock North, which found evidence of coinfection with both protozoa using  
112 molecular methods, but not antigen-based methods and the second study as part of normal  
113 surveillance activities among people presenting with diarrhoea and a positive *Campylobacter* test,  
114 but a negative diagnostic test result for *Cryptosporidium* and/or *Giardia*, replicating the Havelock  
115 North test scenarios to determine if this was a common problem. We then report a laboratory study  
116 of the impact of DNA extraction technique on our in-house end-point PCR tests and compare a  
117 commercial real-time PCR with our in-house PCR.

## 118 **Methods**

### 119 *Ethics*

120 The Havelock North outbreak samples were collected and analysed through routine public health  
121 investigation activities. The 2006 guidelines from the National Ethics Advisory Committee, Ministry  
122 of Health, Wellington, New Zealand, state that these activities do not require ethics committee  
123 review. The second study was approved by Massey University Human Ethics Committee number SOA  
124 17/09. All samples were anonymised clinical samples and patient consent not sought.

### 125 *Study location*

126 We present two main study locations. The first is the town of Havelock North, New Zealand. In  
127 August 2016 Havelock North had an unchlorinated reticulated water system that supplied water for  
128 14,118 residents, and some residents within approximately 50 km of the neighbouring cities of  
129 Hastings (population ~64,000) and Napier (population ~61,100). All towns together with other small  
130 rural communities (totalling another ~15,000) comprise the Hawke's Bay District Health Board  
131 (HBDHB) catchment area. The second location is the MidCentral District Health Board (MCDHB)

132 region, including Palmerston North (population ~85,000), and Tairāwhiti and Whanganui DHBs,  
133 served by the Medlab Central (total population approximately 280,000).

#### 134 *Laboratory methods*

##### 135 *Diagnostic tests*

136 Diagnostic services were supplied by service providers to HBDHB during the Havelock North  
137 outbreak and Medlab Central to MCDHB for the routine surveillance study. For the laboratory work,  
138 all case samples were processed as normal for enteric pathogens (including *Campylobacter*,  
139 *Salmonella*) based on the clinician's assessment and test requests (19). Medlab Central Ltd is an IANZ  
140 accredited laboratory that used an antigen detection method ([Immunocard STAT!® Crypto/Giardia](#)  
141 [Rapid Assay Kit, Meridian](#)) for protozoa at the time of the studies in 2016 and 2017 respectively.

##### 142 *Molecular tests*

143 We (PRU at Massey University) received anonymized faecal samples from patients. Samples were  
144 stored at 4 °C until processing. We used a bead beater at 30 Hz for 5 min for disruption of cysts  
145 (*Giardia*) or oocysts (*Cryptosporidium*) prior to DNA extraction using a Quick-DNA Faecal/Soil  
146 Microbe Kit (Zymo Research, Irvine, California, United States). PCR amplification was performed  
147 using an in-house nested-PCR assay for *Cryptosporidium* gp60 (60 kDa glycoprotein) and *Giardia* GDH  
148 (glutamate dehydrogenase) genes (17, 18), which we used for routine genetic surveillance under the  
149 Ministry of Health contract, following diagnosis through IANZ accredited laboratories.

150 We hypothesized that the DNA extraction method, and in particular the bead-beating to extract  
151 DNA, and our in-house test nested PCR led to greater sensitivity for the research laboratory PCR test  
152 than immunoassays. To test this, we serially diluted known *Cryptosporidium* DNA positive faecal  
153 samples ten-fold from neat to 10<sup>-5</sup>, though only 10<sup>-3</sup> are reported. We took 5 positive samples and 3  
154 replicates for each. We then extracted genomic DNA using a Quick-DNA Faecal/Soil Microbe Kit  
155 (Zymo Research, Irvine, California, United States) with and without the use of a bead-beater (Tissue

156 Lyser II, Qiagen) at 30 Hz for 5 min to disrupt the oocysts. The purified DNA was stored at – 20 °C  
157 prior to further processing. PCR was with the same gp60 nested PCR.

158 We further hypothesised that newer commercially available multiplexed real-time PCRs (qPCR)  
159 would be more sensitive than antigen-based assays and a subset (n=19) of the above dilutions were  
160 sent to Medlab Central for processing using their new diagnostic Tandem-Plex® Faecal Bacteria and  
161 Parasites 12-well (Ref 25041) commercial multiplexed (MT) qPCR. This MT-PCR detects *Salmonella*  
162 spp., *Shigella* spp., *Campylobacter*, *E.coli* O157, *Clostridium difficile* toxin A, *Clostridium difficile* toxin  
163 B, *Yersinia enterocolitica*, *Yersinia pseudotuberculosis*, Shiga toxin 1, Shiga toxin 2, *Giardia*,  
164 *Cryptosporidium*, and *Entamoeba histolytica*.

#### 165 *Sequence analyses*

166 Both strands of the PCR amplification products were sequenced using Big Dye Terminator version 3.1  
167 reagents and an ABI 3730XL automated DNA sequencer (Applied Biosystems, Foster City, California,  
168 USA). Consensus sequences were assembled from forward and reverse reads and edited manually  
169 using Geneious v.10.1.3 (20). The sequences derived were used to identify species and genotypes by  
170 aligning to sequence entries in nucleotide databases using the program BLAST  
171 (<http://www.ncbi.nlm.nih.gov/blast/>) and checked by their corresponding genotype (e.g. (21)). All  
172 sequences have been previously reported with accession numbers KY123918–KY124121 and  
173 MT265681-MT265802 (17, 18).

#### 174 *Microscopy*

175 Direct microscopy using BX 60 fluorescence microscope (Olympus; Tokyo, Japan) and Immuno-  
176 fluorescent antibody staining using EasyStain (BioPoint Pty Ltd; Sydney, Australia) was carried out in  
177 our lab for a subset of samples. Microscopy was also used to quantify the *Cryptosporidium* oocyst  
178 counts for the qPCR limit of detection study.

#### 179 *Statistics*



180 Simple binomial confidence intervals were calculated for all prevalence estimates in R (22) and  
181 geometric means and their confidence intervals using the DescTools package (23). A linear model  
182 was used to calculate the Ct value cut off in the qPCR test. Further data presentation was done using  
183 ggplot2 in R (24).

## 184 Results

### 185 *Havelock North outbreak*

186 We (PRU) received 111 samples for testing. All our PCR positive and negative controls were positive  
187 and negative respectively, indicating the PCR reactions worked. Ten samples tested positive for  
188 *Cryptosporidium* and 23 for *Giardia*, leading to an overall prevalence of 9% (3–15% 95%CI) for  
189 *Cryptosporidium* and 21% (12–29% 95%CI) for *Giardia*. We extracted DNA from 15 *Giardia* positive  
190 samples for confirmatory genetic sequence analysis (Fig 2A) which indicated the *Giardia* were from  
191 assemblages A and B (Fig 2A). These samples were negative by the antigen-based assay used by the  
192 IANZ accredited laboratory serving HBDHB. It was not known if these *Cryptosporidium* and *Giardia*  
193 results were related to disease in any cases, as all the samples were positive for *Campylobacter* (25).

194 Figure 2. A. Fifteen *Giardia* DNA sequences (GDH gene) from a subset of 23 positive human faecal  
195 samples from the Havelock North *Campylobacter* study. *Giardia* from assemblages A (grey node and  
196 box) and B (green node and box) were present (25). B. Two of 158 samples from the surveillance  
197 study had *Giardia* DNA GDH gene sequences from assemblages A (green node and box). Other  
198 reference sequences were obtained from GenBank and accession numbers and assemblages shown.

### 199 *Surveillance study*

200 We tested 158 *Campylobacter* positive, protozoa negative faecal samples, to approximately replicate  
201 the Havelock North scenario. We detected *Cryptosporidium* DNA from 63 samples (40%, 32-48%  
202 95%CI) and *Giardia* DNA from 2 samples (1.3%, 0.2-4.5% 95%CI). Using sequencing, *Cryptosporidium*  
203 *hominis* was detected in 60 samples (38%, 30–46% 95%CI) with two subtypes (Ib and Ig, Fig 3A) and

204 *C. parvum* with two subtypes (IIa and IIc, Fig 3B) (2%, <1%-2% 95%CI). *Giardia* samples all belonged  
205 to assemblage B (Fig 2B). Again, all negative controls were negative and positive controls positive.

206 To further confirm the results, we randomly chose 10 positive samples and confirmed the presence  
207 of *Cryptosporidium* oocyst by light microscopy and immuno-fluorescent antibody staining (Fig 3C &  
208 3D).

209 Overall, from 269 samples that were protozoa antigen-assay negative, *Campylobacter* positive, we  
210 detected 86 *Cryptosporidium* (32%, 95%CI = 26–38%) and 12 *Giardia* (4%, 2–8% 95%CI) positive  
211 samples. The expected change in notifications nationally if our lab tests were applied to national  
212 *Campylobacter* data would make cryptosporidiosis the second most notified infectious disease in  
213 New Zealand (Table S1).

214 Figure 3. A. Molecular evidence and genetic relationships of the *Cryptosporidium hominis* (n = 60)  
215 with two subtypes; Ib (blue node and box) and Ig (pink node and box), and in B. *C. parvum* (n = 3)  
216 with 2 subtypes (IIa; yellow node and box, and IIc; purple node and box). Other reference sequences  
217 were obtained from GenBank and accession numbers and species and genotype (e.g. Ib) are shown.

218 C. Microscopic (see in blue circles) and D. immunofluorescent antibody staining (bright dots)  
219 detection of *Cryptosporidium* oocysts in human stool samples.

#### 220 *DNA extraction and detection limit comparisons*

221 Contrary to our hypothesis we found no significant difference between our ability to detect  
222 *Cryptosporidium* DNA whether we used bead-beating or not ( $\chi^2 = 0.75$ , p-value = 0.39, Fig 4A) with  
223 36% of the dilution series samples positive (27-46% 95%CI) using bead-beating and 43% (34-53%  
224 95%CI) not. Using a small subset of 19 samples we compared the in-house gp60 gene PCR results to  
225 the commercial qPCR and found no significant difference ( $\chi^2=1.2$ , p-value = 0.27), with 84% (62-94%  
226 95%CI) positive by qPCR and 63% (41-81% 95%CI) by end-point PCR (Fig 4B)

227 Figure 4. *Cryptosporidium* detection using different molecular methods. A. DNA extracted with  
228 (bead, n = 18) and without (no bead, n = 18) bead-beating to damage cells before DNA extraction  
229 and an endpoint nested in-house gp60 gene PCR were used. The percent of all *Cryptosporidium*  
230 positive faecal samples in ten-fold dilutions to 10<sup>-3</sup> which detected *Cryptosporidium* is shown with  
231 95% confidence intervals B. Comparison of this in-house end-point gp60 PCR and a commercial qPCR  
232 (n=19). C. The correlation between Log10 oocyst concentration and commercial qPCR Ct value from  
233 serial dilutions of two positive samples.

234 The detection limits by endpoint PCR were never greater than 10<sup>-3</sup> dilutions of faeces in our test. The  
235 qPCR Ct values scaled linearly with the log oocyst concentration (Fig 4C), with an estimated Ct value  
236 for 1 oocyst of 36.9 (35.9-37.8 95%CI) for one sample (19518), 35.0 (33.0-37.1 95%CI) for another  
237 (18389) and 36.2 (35.1-37.2 95%CI) for both.

## 238 Discussion

239 We identified a large number of protozoa positive samples among 269 *Campylobacter* positive  
240 patient faecal samples that tested negative in diagnostic laboratories using antigen-based assays.  
241 The prevalence ranged from 1 to 40%, depending on the scenario and pathogen. Our findings  
242 indicate that background *Giardia* and *Cryptosporidium* infection incidence is higher than detected  
243 and reported, and coinfections are common. Accredited antigen-based tests appeared to be less  
244 sensitive than the molecular methods used in the research laboratory during outbreak and  
245 surveillance scenarios. The impact of these false negatives in New Zealand is unknown. However,  
246 misdiagnosis among diagnostic laboratories globally is likely to be similar and, therefore, the impact  
247 and burden of both protozoa potentially greatly underestimated. These findings are likely to have  
248 global relevance for both the clinical management of cases which are underdiagnosed, and for public  
249 health management of these diseases which is systematically under-estimating their impact.

250 We (Massey) still use this endpoint PCR for sequencing the gp60 for *Cryptosporidium* and gdh gene  
251 for *Giardia* for characterisation, but this is not a diagnostic PCR and is more labour intensive. Other

252 studies have demonstrated microscopy to be less reliable than PCR with 83.7% sensitivity and 98.9%  
253 specificity compared to PCR (26) and diagnostic sensitivities of three *Cryptosporidium* and *Giardia*  
254 combination enzyme immunoassays (EIA) to be 91.4–93.4%, with the sensitivity of auramine phenol  
255 microscopy as 92.1% and immunofluorescence microscopy (IFM) 97.4%, but with no significant  
256 difference between them (27). However, we showed in our studies that antigen-based tests were  
257 missing samples with levels of oocyst presence easily detectable by microscopy (Fig 3C & 3D).

258 Our hypothesis that bead-beating impacted the test sensitivity and limit of detection was not  
259 supported. We perform bead-beating to break the (oo)cyst walls, however different *Cryptosporidium*  
260 and *Giardia* life stages are less resilient and may be present in faeces in addition to (oo)cysts and/or  
261 vortexing maybe be sufficient to expose the DNA, explaining this finding. Diagnostic laboratories in  
262 New Zealand have switched to multiplexed qPCR since our study, which meant we were not able to  
263 directly test our results using the dilution series. However, encouragingly, the multiplexed qPCR used  
264 by Medlab Central compared well to our endpoint PCR. We showed that the qPCR Ct value  
265 correlates well with the log<sub>10</sub> concentration of oocysts and can detect as few as 1 oocyst in a diluted  
266 sample.

267 All three pathogens, *Campylobacter* and the two protozoa, can have ruminant hosts (25, 28). In our  
268 two ecological studies there were different findings; first in the Havelock North outbreak we found  
269 more *Giardia* than *Cryptosporidium*, whereas in the surveillance study this pattern was reversed.  
270 This finding may reflect different prevalence of the infections in different populations or that the  
271 outbreak was associated with a contaminated water point source which might have also been  
272 contaminated with *Giardia* from the same source, compared to the surveillance that was more a  
273 reflection of the normal background infection. Given the highly seasonal nature of both infections  
274 either scenario may be possible.

275 In our study all the *Campylobacter* patients had diarrhoea. In the UK, for each *Giardia* case reported  
276 to national surveillance there are 14 cases in the community (29). In New Zealand, notified cases are

277 likely extremely low compared to the burden of disease. The 2006-2007 New Zealand Acute  
278 Gastrointestinal Illness (AGI) Community Study (12), a representative cross-sectional telephone  
279 survey of 3655 participants, reported an incidence of 1.11 AGI episodes per person per year.  
280 Prevalence was highest in children aged <5 years, with the most common symptoms being diarrhoea  
281 (83%) of 2.5 days. Adjusted estimates mean there were about 4.66 million AGI episodes per year in  
282 New Zealand, with nearly 1 million visits to the general medical practitioner with “in excess of 300  
283 000 courses of antibiotics being dispensed and more than 4.5 million days of paid work lost due to  
284 AGI” (12). This represents a significant burden of AGI disease for New Zealand and our analyses  
285 suggest the role of protozoa may have been underestimated.

286 Both children and adults with cryptosporidiosis reportedly often have diarrhoea in wealthy countries  
287 (5, 6). However, in LMIC diarrhoea or other symptoms are only reported in ~1/3 of *Cryptosporidium*-  
288 infected children (30), though subclinical cryptosporidiosis can have significant adverse effects on  
289 children (31-34). Asymptomatic carriage of *Giardia* is common in contacts of cases. In both  
290 *Cryptosporidium* and *Giardia*, however, there is a correlation between the type of infection (species,  
291 assemblage, genotype) and the presence of symptoms (35). For example, in Saudi Arabia children  
292 infected with *G. intestinalis* B assemblages were symptomatic, while asymptomatic children had only  
293 assemblage A (36). We discovered both in patients. Similarly, co-infection, including with other  
294 *Cryptosporidium*, was more likely to lead to disease (2, 3). We have demonstrated that coinfection  
295 with *Campylobacter* was common in our Havelock North and surveillance data. In recent work, we  
296 have developed a “metabarcoding” method and discovered coinfection by multiple *Cryptosporidium*  
297 species and genotypes (unpublished) and *Giardia* assemblages (37). This observation poses the  
298 question; does carriage lead to an increased risk of disease when a secondary infection or  
299 coinfection occurs?

300 It is not clear if treatment of asymptomatic protozoa carriage is effective in limiting transmission  
301 (38), but findings have raised the public health question of whether asymptomatic household

302 contacts should be treated to prevent infection (29). *Giardia* infections have been discovered in 19-  
303 30% of households with cases with the presence of gastrointestinal illness in the household before  
304 the onset of the index case a risk (e.g. odds ratio 9; 95% confidence intervals 1.5–48) (36). We also  
305 expect contact with *Cryptosporidium*-positive patients to lead to secondary transmission in  
306 households (39, 40). Case-control studies of *Cryptosporidium*-infected people in Asia and Africa have  
307 found the secondary infection rates from 8 to 36% (40, 41), with the differences perhaps  
308 attributable to the dominant *Cryptosporidium* species or subtype present. Furthermore, at least in  
309 LMICs, children can experience multiple episodes of cryptosporidiosis (5, 42), with some reports of  
310 up to four episodes before the age of two years, with no decreases in parasite burden during repeat  
311 infections (30). This evidence suggests that even if not related to clinical disease, missing protozoa  
312 on tests may contribute to ongoing transmission and health issues.

313 There are key questions in *Giardia* research that are also relevant to our findings (43): Do different  
314 *Giardia intestinalis* genetic assemblages differ in transmission and clinical outcome of disease? Is  
315 previous exposure to *Giardia* protective against re-infection? What is the relationship between  
316 *Giardia* and IBS or other post-infectious gastrointestinal disorders? Is the treatment of asymptomatic  
317 cases necessary to reduce transmission? Similar questions exist for *Cryptosporidium*. It would also be  
318 useful to repeat this testing using diarrheal specimens where pathogens other than *Campylobacter*  
319 were detected, and also where no pathogens were found, to improve our estimate of the  
320 contribution of these protozoan pathogens to enteric disease more generally. False-negative results  
321 will limit the ability of researchers and clinicians to address these questions. More sensitive  
322 molecular methods with parasitology panels are increasingly used by diagnostic laboratories, with  
323 some evidence of improved detection (44, 45). Thus, our work, suggests improving laboratory  
324 methods and case definitions may enhance case diagnosis, resulting in better clinical and public  
325 health management of these diseases.

326 Molecular methods are still not universally available in New Zealand, nor are protozoa tests always  
327 requested by clinicians. But these will be even less available in resource poor countries. Our results  
328 will help laboratories understand the test's clinical sensitivity (i.e., case detection), rather than  
329 analytical sensitivity (i.e., dilution measurement). Our results suggest clinicians must determine the  
330 extent to which tests results can be relied on. Diagnosis might mean more than one test is required  
331 if clinical symptoms persist and test results are negative, including as diagnostic laboratories make  
332 the transition to molecular testing (43-45). For example, Medlab Central has just converted to PCR  
333 and the impact of the transition is to be seen. However, the strict Covid-19 restrictions has reduced  
334 the circulation of *C. hominis* in New Zealand, whereas *C. parvum* has continued to cause disease (28).  
335 Therefore, it will be some time before the impact of changes to the laboratory testing can be seen in  
336 New Zealand.

337 Asymptomatic *Giardia* infection is generally not treated, but treatment may be rational if  
338 asymptomatic cases lead to onward transmission. The wider availability of sensitive PCR diagnostic  
339 tests may allow a more targeted approach to contact treatment in future. In secondary care when  
340 giardiasis is highly suspected but stool results are negative, diagnosis can be made through duodenal  
341 aspiration and biopsy, which have been shown to detect infection in the absence of cysts on stool  
342 microscopy (43, 46, 47); improvements in test sensitivity may reduce this need. The symptoms of  
343 giardiasis can resemble IBS (11), a condition affecting 1 in 7 people in New Zealand, and IBS or  
344 dyspepsia patients may have *Giardia* (e.g. 6.5% of patients (48), but see (46)). The UK National  
345 Institute for Health and Care Excellence recommends that faecal testing for parasites is not routine  
346 when confirming IBS in people who meet the diagnostic criteria (43), but that clinicians should be  
347 aware of both diagnoses. Improved diagnostics will help clinicians in New Zealand determine when a  
348 parasitological examination of a stool sample is required (43).

349 Advice on protozoa for patients and carers will be incorrect with false-negative tests, so our work  
350 will help the Ministry of Health, clinicians and community workers reinforce simple health advice,

351 such as handwashing, along with other measures, e.g. for those with *Cryptosporidium*, for which  
352 there is no treatment, not use public swimming pools until 2 weeks after symptoms have resolved,  
353 rather than the standard 48 hr AGI recommendation, nor should they work with  
354 immunocompromised people during this period, including elderly and young (43).

355 Overall, our results suggest that protozoan diarrhoea is likely significantly underdiagnosed. The  
356 switch to sensitive qPCR in diagnostic laboratories is likely to improve diagnosis and help reduce  
357 false negatives. However, there is still work to be done to improve test sensitivity and understand  
358 the impacts of false negative results on transmission and disease.

### 359 **Acknowledgements**

360 The authors would like to thank Drs Chris Hewison, Nicholas Jones, and Tom Kiedrzyński for their  
361 work on the Havelock North outbreak and Tom for comments on this work.

### 362 **Funding**

363 This work was supported by Massey University, Royal Society Te Aparangi Grant RDF-MAU170, New  
364 Zealand Ministry of Health Contract Number 355766-02, and The Percival Carmine Chair in  
365 Epidemiology and Public Health.

366

### 367 **References**

- 368 1. Efstratiou A, Ongerth JE, Karanis P. Waterborne transmission of protozoan parasites: Review  
369 of worldwide outbreaks - An update 2011-2016. *Water Res.* 2017;114:14-22.
- 370 2. Kotloff KL, Nataro JP, Blackwelder WC, Nasrin D, Farag TH, Panchalingam S, et al. Burden and  
371 aetiology of diarrhoeal disease in infants and young children in developing countries (the Global  
372 Enteric Multicenter Study, GEMS): a prospective, case-control study. *Lancet.* 2013;382(9888):209-22.



- 373 3. Liu J, Platts-Mills JA, Juma J, Kabir F, Nkeze J, Okoi C, et al. Use of quantitative molecular  
374 diagnostic methods to identify causes of diarrhoea in children: a reanalysis of the GEMS case-control  
375 study. *Lancet*. 2016;388(10051):1291-301.
- 376 4. Lozano R, Naghavi M, Foreman K, Lim S, Shibuya K, Aboyans V, et al. Global and regional  
377 mortality from 235 causes of death for 20 age groups in 1990 and 2010: a systematic analysis for the  
378 Global Burden of Disease Study 2010. *Lancet*. 2012;380(9859):2095-128.
- 379 5. Xiao L, Cama VA. *Cryptosporidium* and cryptosporidiosis. In: Ortega YR, Sterling CR, editors.  
380 *Foodborne Parasites*: Springer; 2018. p. 73-117.
- 381 6. Chalmers RM, Davies AP, Tyler K. *Cryptosporidium*. *Microbiology (Reading)*.  
382 2019;165(5):500-2.
- 383 7. Squire SA, Ryan U. *Cryptosporidium* and *Giardia* in Africa: current and future challenges.  
384 *Parasites & vectors*. 2017;10(1):195.
- 385 8. Bouzid M, Kintz E, Hunter PR. Risk factors for *Cryptosporidium* infection in low and middle  
386 income countries: A systematic review and meta-analysis. *PLoS Negl Trop Dis*. 2018;12(6):e0006553.
- 387 9. Gharpure R, Perez A, Miller AD, Wikswo ME, Silver R, Hlavsa MC. *Cryptosporidiosis*  
388 *Outbreaks - United States, 2009-2017*. *MMWR Morb Mortal Wkly Rep*. 2019;68(25):568-72.
- 389 10. Cacciò SM, Chalmers RM. Human cryptosporidiosis in Europe. *Clin Microbiol Infect*.  
390 2016;22(6):471-80.
- 391 11. Stark D, van Hal S, Marriott D, Ellis J, Harkness J. Irritable bowel syndrome: a review on the  
392 role of intestinal protozoa and the importance of their detection and diagnosis. *Int J Parasitol*.  
393 2007;37(1):11-20.
- 394 12. Adlam SB, Perera S, Lake RJ, Campbell DM, Williman JA, Baker MG. Acute gastrointestinal  
395 illness in New Zealand: a community study. *Epidemiol Infect*. 2011;139(2):302-8.
- 396 13. ESR. Notifiable Diseases Intelligence Dashboard 2020 [Available from:  
397 <https://www.esr.cri.nz/our-services/consultancy/public-health/notifiable-diseases-intelligence->  
398 [dashboard/](#)].

- 399 14. World Health Organization. The treatment of diarrhoea : a manual for physicians and other  
400 senior health workers. 4th rev ed. Geneva: World Health Organization; 2005.
- 401 15. Ministry of Health New Zealand. Cryptosporidiosis Wellington2021 [Available from:  
402 [https://www.health.govt.nz/our-work/diseases-and-conditions/communicable-disease-control-](https://www.health.govt.nz/our-work/diseases-and-conditions/communicable-disease-control-manual/cryptosporidiosis)  
403 [manual/cryptosporidiosis](https://www.health.govt.nz/our-work/diseases-and-conditions/communicable-disease-control-manual/cryptosporidiosis).
- 404 16. Ministry of Health New Zealand. Giardiasis Wellington2021 [Available from:  
405 [https://www.health.govt.nz/our-work/diseases-and-conditions/communicable-disease-control-](https://www.health.govt.nz/our-work/diseases-and-conditions/communicable-disease-control-manual/giardiasis)  
406 [manual/giardiasis](https://www.health.govt.nz/our-work/diseases-and-conditions/communicable-disease-control-manual/giardiasis).
- 407 17. Garcia-R JC, French N, Pita A, Velathanthiri N, Shrestha R, Hayman D. Local and global  
408 genetic diversity of protozoan parasites: Spatial distribution of Cryptosporidium and Giardia  
409 genotypes. PLoS Negl Trop Dis. 2017;11(7):e0005736.
- 410 18. Garcia-R JC, Pita AB, Velathanthiri N, French NP, Hayman DTS. Species and genotypes  
411 causing human cryptosporidiosis in New Zealand. Parasitol Res. 2020;119(7):2317-26.
- 412 19. Gilpin BJ, Walker T, Paine S, Sherwood J, Mackereth G, Wood T, et al. A large scale  
413 waterborne Campylobacteriosis outbreak, Havelock North, New Zealand. J Infect. 2020;81(3):390-5.
- 414 20. Kearse M, Moir R, Wilson A, Stones-Havas S, Cheung M, Sturrock S. Geneious Basic: an  
415 integrated and extendable desktop software platform for the organization and analysis of sequence  
416 data. Bioinformatics. 2012;28(12):1647-9.
- 417 21. Xiao L. Molecular epidemiology of cryptosporidiosis: An update. Experimental Parasitology.  
418 2010;124(1):80-9.
- 419 22. R Core Team. R: A language and environment for statistical computing. 2022.
- 420 23. Signorell A, Aho K, Alfons A, Anderegg N, Aragon T, Arppe A, et al. DescTools: Tools for  
421 descriptive statistics. R package version 099. 2019;28:17.
- 422 24. Wickham H. Data analysis. ggplot2: Springer; 2016. p. 189-201.

- 423 25. Gilpin BJ, Walker T, Paine S, Sherwood J, Mackereth G, Wood T, et al. A large scale  
424 waterborne campylobacteriosis outbreak, Havelock North, New Zealand. *Journal of Infection*.  
425 2020;81(3):390-5.
- 426 26. Morgan fU, Pallant L, Dwyer B, Forbes D, Rich G, Thompson R. Comparison of PCR and  
427 microscopy for detection of *Cryptosporidium parvum* in human fecal specimens: clinical trial. *Journal*  
428 *of Clinical Microbiology*. 1998;36(4):995-8.
- 429 27. Chalmers RM, Campbell BM, Crouch N, Charlett A, Davies AP. Comparison of diagnostic  
430 sensitivity and specificity of seven *Cryptosporidium* assays used in the UK. *Journal of Medical*  
431 *Microbiology*. 2011;60(11):1598-604.
- 432 28. Knox M, Garcia-R J, Ogbuigwe P, Pita A, Velathanthiri N, Hayman D. Absence of  
433 *Cryptosporidium hominis* and dominance of zoonotic *Cryptosporidium* species in patients after  
434 Covid-19 restrictions in Auckland, New Zealand. *Parasitology*. 2021:1-18.
- 435 29. Waldram A, Vivancos R, Hartley C, Lamden K. Prevalence of *Giardia* infection in households  
436 of *Giardia* cases and risk factors for household transmission. *BMC Infect Dis*. 2017;17(1):486.
- 437 30. Kattula D, Jeyavelu N, Prabhakaran AD, Premkumar PS, Velusamy V, Venugopal S, et al.  
438 Natural History of *Cryptosporidiosis* in a Birth Cohort in Southern India. *Clin Infect Dis*.  
439 2017;64(3):347-54.
- 440 31. Khalil IA, Troeger C, Rao PC, Blacker BF, Brown A, Brewer TG, et al. Morbidity, mortality, and  
441 long-term consequences associated with diarrhoea from *Cryptosporidium* infection in children  
442 younger than 5 years: a meta-analyses study. *Lancet Glob Health*. 2018;6(7):e758-e68.
- 443 32. Rogawski ET, Liu J, Platts-Mills JA, Kabir F, Lertsethtakarn P, Sigvas M, et al. Use of  
444 quantitative molecular diagnostic methods to investigate the effect of enteropathogen infections on  
445 linear growth in children in low-resource settings: longitudinal analysis of results from the MAL-ED  
446 cohort study. *Lancet Glob Health*. 2018;6(12):e1319-e28.

- 447 33. Schnee AE, Haque R, Taniuchi M, Uddin MJ, Alam MM, Liu J, et al. Identification of Etiology-  
448 Specific Diarrhea Associated With Linear Growth Faltering in Bangladeshi Infants. *Am J Epidemiol*.  
449 2018;187(10):2210-8.
- 450 34. Steiner KL, Ahmed S, Gilchrist CA, Burkey C, Cook H, Ma JZ, et al. Species of Cryptosporidia  
451 Causing Subclinical Infection Associated With Growth Faltering in Rural and Urban Bangladesh: A  
452 Birth Cohort Study. *Clin Infect Dis*. 2018;67(9):1347-55.
- 453 35. Sahagún J, Clavel A, Goñi P, Seral C, Llorente MT, Castillo FJ, et al. Correlation between the  
454 presence of symptoms and the *Giardia duodenalis* genotype. *Eur J Clin Microbiol Infect Dis*.  
455 2008;27(1):81-3.
- 456 36. Al-Mohammed HI. Genotypes of *Giardia intestinalis* clinical isolates of gastrointestinal  
457 symptomatic and asymptomatic Saudi children. *Parasitology research*. 2011;108(6):1375-81.
- 458 37. Garcia-R JC, Ogbuigwe P, Pita AB, Velathanthiri N, Knox MA, Biggs PJ, et al. First report of  
459 novel assemblages and mixed infections of *Giardia duodenalis* in human isolates from New Zealand.  
460 *Acta Tropica*. 2021:105969.
- 461 38. Gardner TB, Hill DR. Treatment of giardiasis. *Clin Microbiol Rev*. 2001;14(1):114-28.
- 462 39. Johansen Ø H, Hanevik K, Thrana F, Carlson A, Stachurska-Hagen T, Skaare D, et al.  
463 Symptomatic and asymptomatic secondary transmission of *Cryptosporidium parvum* following two  
464 related outbreaks in schoolchildren. *Epidemiol Infect*. 2015;143(8):1702-9.
- 465 40. Krumkamp R, Aldrich C, Maiga-Ascofare O, Mbwana J, Rakotozandrindrainy N, Borrmann S,  
466 et al. Transmission of *Cryptosporidium* Species Among Human and Animal Local Contact Networks in  
467 Sub-Saharan Africa: A Multicountry Study. *Clin Infect Dis*. 2021;72(8):1358-66.
- 468 41. Korpe PS, Gilchrist C, Burkey C, Taniuchi M, Ahmed E, Madan V, et al. Case-Control Study of  
469 *Cryptosporidium* Transmission in Bangladeshi Households. *Clin Infect Dis*. 2019;68(7):1073-9.
- 470 42. Rogawski McQuade ET, Liu J, Kang G, Kosek MN, Lima AAM, Bessong PO, et al. Protection  
471 From Natural Immunity Against Enteric Infections and Etiology-Specific Diarrhea in a Longitudinal  
472 Birth Cohort. *J Infect Dis*. 2020;222(11):1858-68.

- 473 43. Minetti C, Chalmers RM, Beeching NJ, Probert C, Lamden K. Giardiasis. *BMJ*. 2016;355:i5369.
- 474 44. Llewellyn S, Inpankaew T, Nery SV, Gray DJ, Verweij JJ, Clements AC, et al. Application of a  
475 Multiplex Quantitative PCR to Assess Prevalence and Intensity Of Intestinal Parasite Infections in a  
476 Controlled Clinical Trial. *PLoS Negl Trop Dis*. 2016;10(1):e0004380.
- 477 45. ten Hove RJ, van Esbroeck M, Vervoort T, van den Ende J, van Lieshout L, Verweij JJ.  
478 Molecular diagnostics of intestinal parasites in returning travellers. *Eur J Clin Microbiol Infect Dis*.  
479 2009;28(9):1045-53.
- 480 46. Chew TS, Hopper AD, Sanders DS. Is there a role for routine duodenal biopsy in diagnosing  
481 giardiasis in a European population? *Scand J Gastroenterol*. 2008;43(10):1219-23.
- 482 47. Rosenthal P, Liebman WM. Comparative study of stool examinations, duodenal aspiration,  
483 and pediatric Entero-Test for giardiasis in children. *J Pediatr*. 1980;96(2):278-9.
- 484 48. Grazioli B, Matera G, Laratta C, Schipani G, Guarnieri G, Spiniello E, et al. *Giardia lamblia*  
485 infection in patients with irritable bowel syndrome and dyspepsia: a prospective study. *World J*  
486 *Gastroenterol*. 2006;12(12):1941-4.
- 487
- 488

489 **Supporting information**

490 Table S1: The actual (left) and adjusted (right) case notifications of the most notified infectious  
491 diseases in New Zealand in 2016. Adjusted data are based only on the differences between our  
492 research laboratory and the accredited diagnostic laboratories diagnostic results for *Campylobacter*  
493 positive but protozoa negative test results.

494

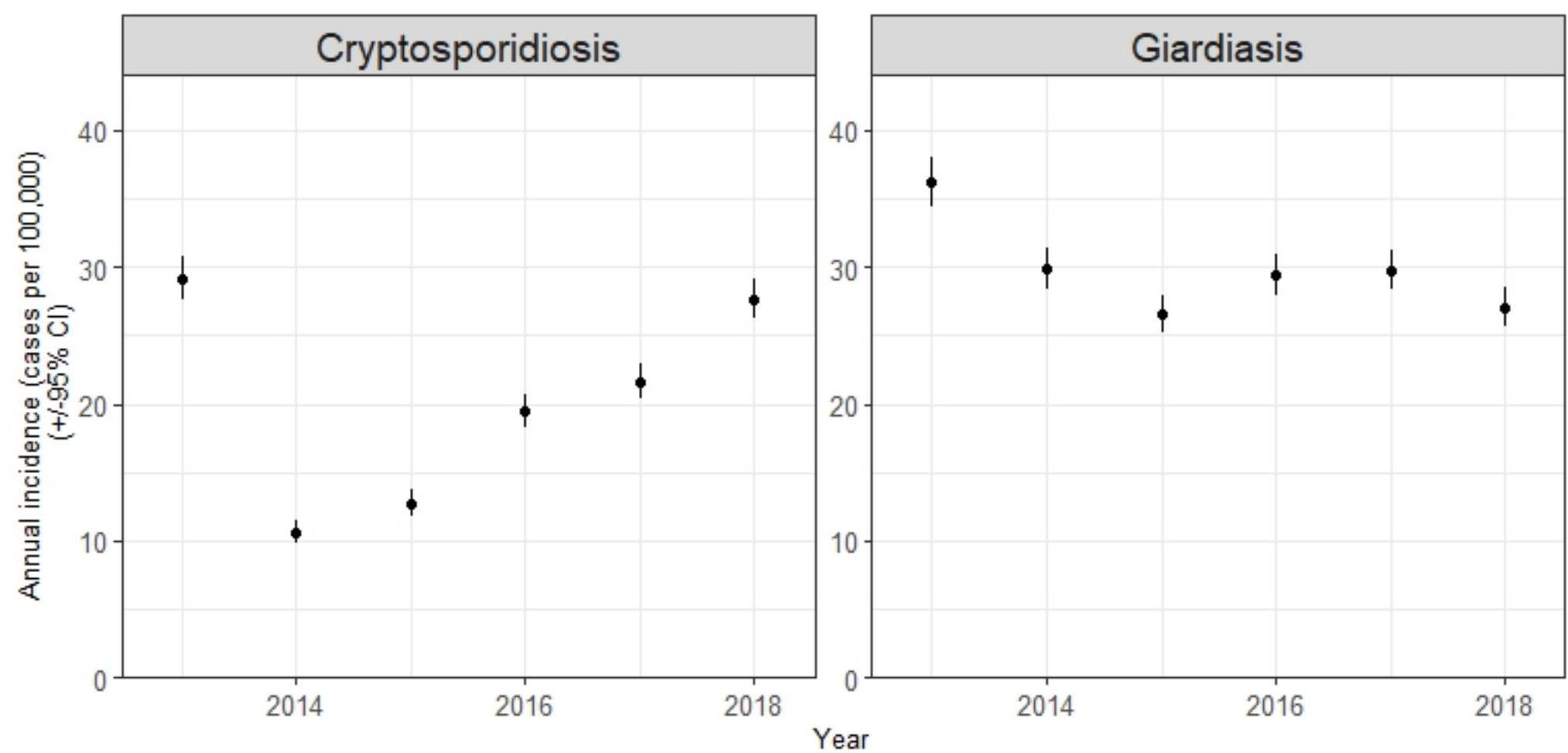
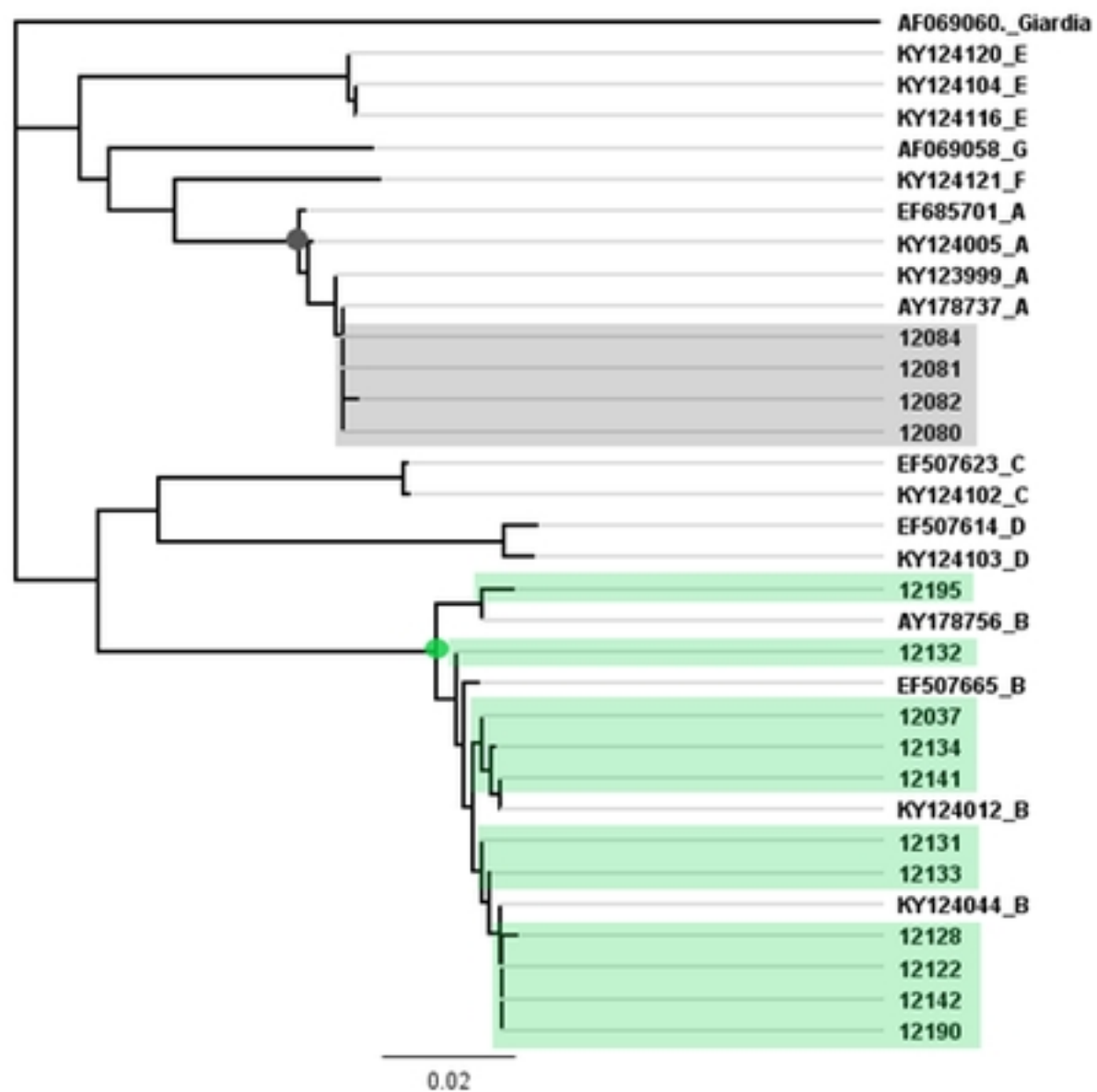


Figure 1

A



B

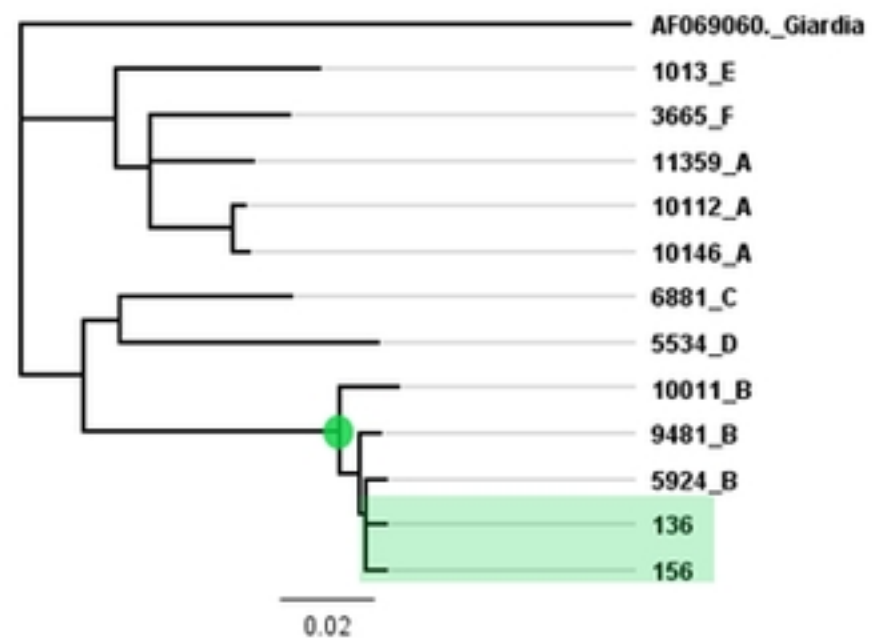


Figure 2



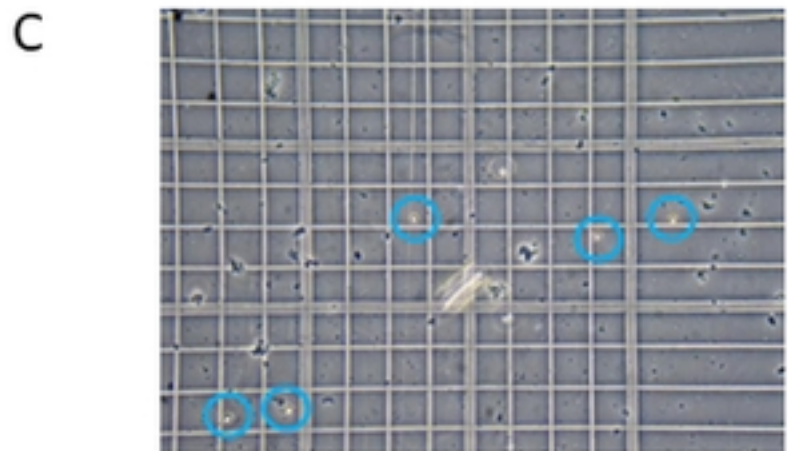
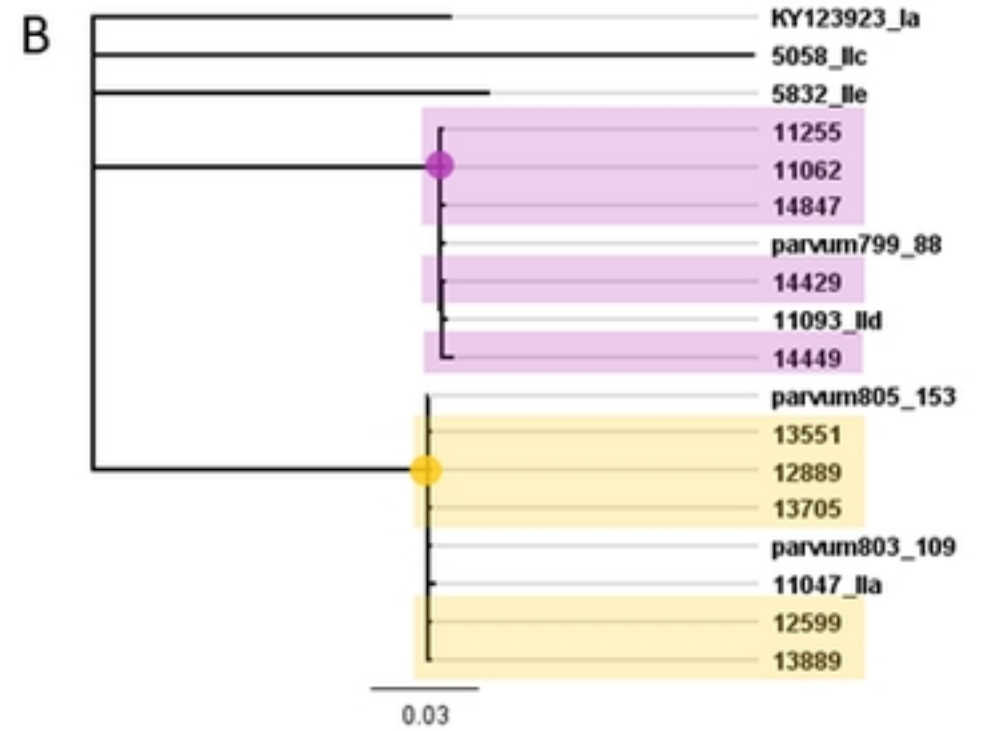
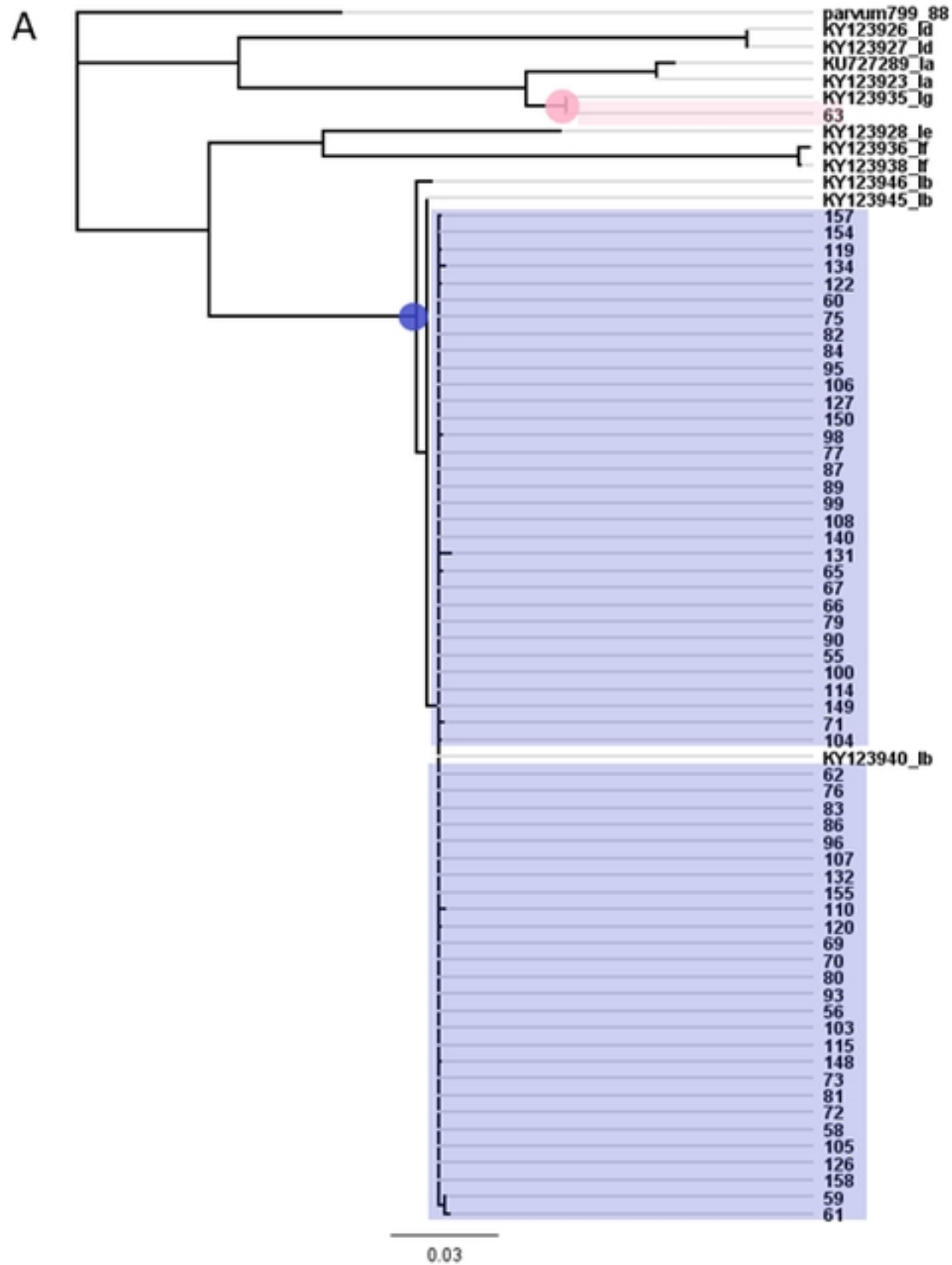


Figure 3

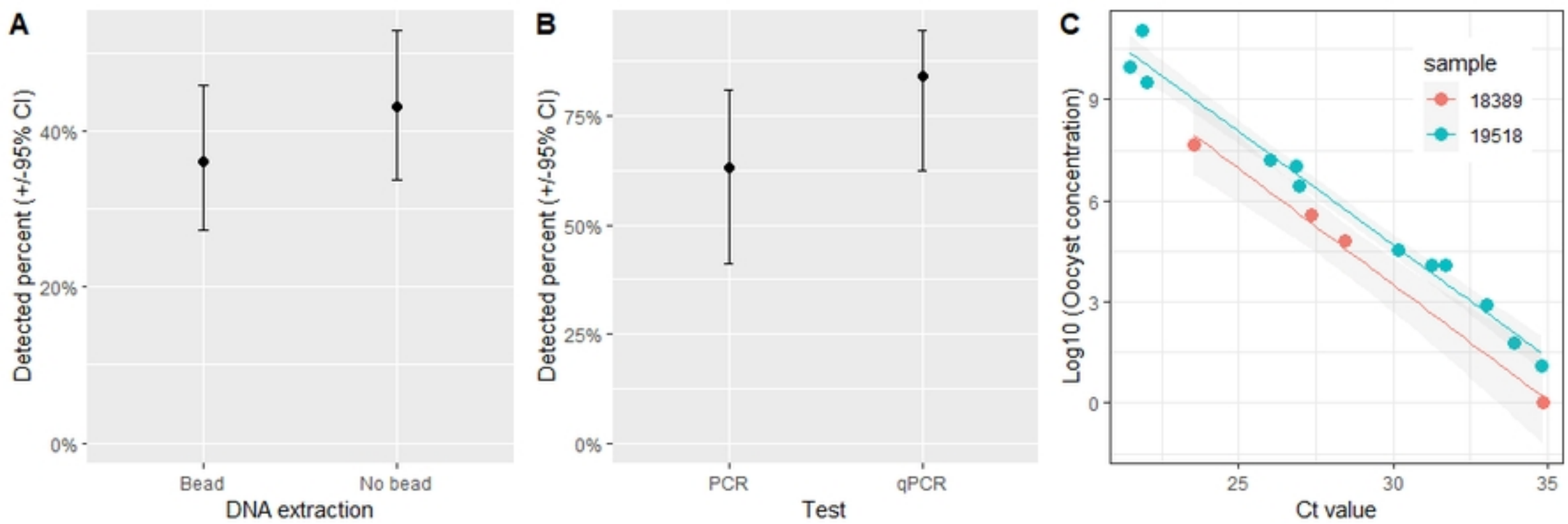


Figure 4