

1 **Oxytocin administration enhances pleasantness and neural**
2 **responses to gentle stroking but not moderate pressure**
3 **social touch by increasing peripheral concentrations**

4 Yuanshu Chen¹, Haochen Zou¹, Xin Hou², Chunmei Lan¹, Jing Wang³, Yanan Qing¹,
5 Wangjun Chen¹, Shuxia Yao^{1*} and Keith M Kendrick^{1*}

6 ¹The Clinical Hospital of Chengdu Brain Science Institute, MOE Key Laboratory for
7 NeuroInformation, Center for Information in Medicine, University of Electronic
8 Science and Technology of China, Chengdu, Sichuan 611731

9 ² School of Educational Sciences, Chongqing Normal University, Chongqing, China
10 401331

11 ³ West China School of Pharmacy, Sichuan University, Chengdu, Sichuan 610041

12
13 ***Correspondence:**

14 Keith M. Kendrick (k.kendrick.uestc@gmail.com) and Shuxia Yao
15 (yaoshuxia@uestc.edu.cn)

16 No. 2006, Xiyuan Ave, West Hi-Tech Zone, Chengdu, Sichuan 611731, China.

17 Phone: +86-28-61830811; Fax: +86-28-61830811

18 **Clinical Trials registration:**

19 The Effects of Oxytocin Treatment on Social Touch; registration ID: NCT05265806;

20 URL: <https://clinicaltrials.gov/ct2/show/NCT05265806>

21 **Abstract**

22 **Background:** Social touch constitutes a key component of human social relationships although in
23 some conditions with social dysfunction, such as autism, it can be perceived as unpleasant. We
24 have previously shown that intranasal administration of oxytocin facilitates the pleasantness of
25 social touch and activation of brain reward and social processing regions, although it is unclear if
26 it influences responses to gentle stroking touch mediated by cutaneous C-touch fibers or pressure
27 touch mediated by other types of fibers. Additionally, it is unclear whether endogenous oxytocin
28 acts via direct entry into the brain or by increased peripheral blood concentrations.

29 **Methods:** In a randomized controlled design, we compared effects of intranasal (direct entry into
30 the brain and increased peripheral concentrations) and oral (only peripheral increases) oxytocin on
31 behavioral and neural responses to social touch targeting C-touch (gentle-stroking) or other
32 (medium pressure without stroking) cutaneous receptors.

33 **Results:** Although both types of touch were perceived as pleasant, intranasal and oral oxytocin
34 equivalently enhanced pleasantness ratings and responses of reward, orbitofrontal cortex, and
35 social processing, superior temporal sulcus, regions only to gentle-stroking not medium pressure
36 touch. Furthermore, increased blood oxytocin concentrations predicted the pleasantness of gentle
37 stroking touch. The specificity of neural effects of oxytocin on C-touch targeted gentle stroking
38 touch were confirmed by time-course extraction and classification analysis.

39 **Conclusions:** Increased peripheral concentrations of oxytocin primarily modulate its behavioral
40 and neural responses to gentle social touch mediated by C-touch fibers. Findings have potential
41 implications for using oxytocin therapeutically in conditions where social touch is unpleasant.

42 **Funding:** Key Technological Projects of Guangdong Province grant 2018B030335001.

43 **Clinical trial number:** NCT05265806

44 **Keywords:** Intranasal oxytocin; Oral oxytocin; Social touch; CT fibers; Orbitofrontal cortex;

45 Superior temporal sulcus

46 **Introduction**

47 Social touch, is of great importance for social interactions and individual development and can
48 promote interpersonal communication (Cascio et al., 2019; Jones et al., 2014). In conditions where
49 social dysfunction occurs, such as autism, social touch is often perceived as unpleasant (Baranek
50 et al., 2006; Ujiie and Takahashi, 2022). Touch perception is determined by the stimulation of low-
51 threshold afferent fibers in the skin that innervate distinct classes of mechanoreceptors. While
52 large myelinated A β fibers are densely packed in the fingertips and lips and subserve
53 discriminative touch, unmyelinated C-touch (CT) fibers exist in hairy skin and only respond to
54 low force/velocity (caress-like stroking) touch (Croy et al., 2016; McGlone et al. 2014). The latter
55 fibers are specialized for the affective domain of touch and have evolved to signal the rewarding
56 value of physical contact (Liljencrantz and Olausson, 2014; Walker et al., 2017). Stimulation of
57 the CT system primarily engages the insula via the spinothalamic tract and brain circuits involved
58 in reward and social-emotional information processing such as the orbitofrontal cortex (OFC) and
59 posterior superior temporal sulcus (pSTS) (Björnsdotter et al., 2014; Davidovic et al., 2016;
60 Gordon et al., 2013; Morrison, 2016; Olausson et al., 2002, 2010). Medium pressure touch in the
61 form of hugging or massage can also be perceived as pleasant but mainly influences pressure
62 receptors of non-CT fibers (Case et al., 2021; Field, 2010) and primarily targets the somatosensory
63 cortex via the spinothalamic tract (McGlone et al., 2014). While neural substrates of pleasurable
64 gentle stroking and medium pressure touch overlap to some extent they may also involve different
65 parts of the somatosensory cortex and insula (Case et al., 2021).

66 The neuropeptide oxytocin (OT) plays a key role in the regulation of social cognition and the
67 rewarding aspects of social stimuli, including social affective touch (Bartz et al., 2011; Kendrick

68 et al., 2017; Rae et al., 2021; Wigton et al., 2015). There is a close association between OT and
69 CT-targeted social touch (Uvnäs-Moberg et al., 2015, 2020; Walker et al., 2017) and studies have
70 shown that social touch, particularly administered as gentle stroking touch or medium pressure
71 massage, can activate parvocellular oxytocinergic neurons (Okabe et al., 2015; Tang et al., 2020)
72 and facilitate endogenous OT release in the saliva, blood or urine across species (Crockford et al.,
73 2013; Holt-Lunstad et al., 2008; Li et al., 2019; Portnova et al., 2020; Vittner et al., 2018).
74 Additionally, intranasal administration of OT in humans can modulate processing of social touch
75 at both behavioral and neural levels. More specifically, intranasal OT enhances the perceived
76 pleasantness and activity of the reward system and salience network in response to gentle social
77 touch by a female in men (Scheele et al., 2014), by their partners rather than by an unfamiliar
78 female (Kreuder et al., 2017), or during foot massage administered by a human but not by a
79 machine (Chen et al., 2020b). Intranasal OT also enhances the pleasantness of gentle stroking
80 touch administered indirectly via different materials independent of valence (Chen et al., 2020a).
81 These findings consistently suggest that intranasal OT can enhance the hedonic properties of
82 social touch. While previous studies have interpreted findings in terms of OT potentiating the
83 rewarding effect of CT-targeted social touch, it is less clear whether it does the same for pleasant
84 stimulation of non-CT fiber mechanoreceptors which can also be stimulated by social behaviors
85 such as hugging and during medium pressure massage. Foot massage, for example, incorporates
86 both gentle stroking and medium pressure massage and thus the observed release of OT (Li et al.,
87 2019) and facilitatory effects of intranasal OT (Chen et al., 2020b) may be contributed by CT and
88 non-CT fibers. There is some evidence that receiving frequent hugs can increase OT
89 concentrations (Grewen et al., 2005; Light et al., 2005) although hugging is often accompanied by

90 gentle stroking of the back or neck and so once again both CT and non-CT fibers may be involved.

91 It therefore remains unclear which types of cutaneous afferent fibers are primarily involved in the
92 functional effects of OT on social touch processing.

93 The mechanism(s) whereby intranasal OT produces its functional effects are currently a
94 matter of debate (see Leng and Ludwig, 2016; Yao and Kendrick, 2022). A number of studies
95 have established that intranasally administered OT can directly enter the brain via the olfactory
96 and trigeminal nerves (see Lee et al., 2020; Quintana et al., 2021) and it has been widely assumed
97 to be the main route whereby intranasal OT produces effects on brain and behavior. However,
98 intranasally administered OT also enters the peripheral circulation after absorption by nasal and
99 oral blood vessels and may produce functional effects by entering the brain after binding to the
100 receptor for advanced glycation end products (RAGE) and crossing the blood brain barrier (BBB)
101 (Yamamoto and Higashida, 2020), or by vagal stimulation following stimulation of its receptors in
102 the heart and gastrointestinal system (see Carter, 2014; Carter et al., 2020; Yao and Kendrick,
103 2022) or following stimulation of receptors in other organs. Indeed, in a recent study we have
104 shown that reducing the entry of oxytocin into the peripheral circulation following intranasal
105 administration using a vasoconstrictor prevents its effects on resting state electroencephalographic
106 changes involving cross-frequency coupling (Yao et al., 2023). In the specific context of responses
107 to tactile stimulation peripheral OT could influence OT receptors in keratinocytes in the skin
108 which may act to modulate activity of responses of cutaneous sensory fibers (Baumbauer et al.,
109 2015; Deing et al., 2013; Talagas and Misery, 2019) or in spinal dorsal root ganglion neurons
110 which receive inputs from cutaneous sensory fibers and project to the brain via the spinothalamic
111 tract (González-Hernández et al., 2017; Noguri et al., 2022).

112 Support for peripherally-mediated routes have been found in animal model studies reporting
113 functional effects of OT administered subcutaneously or intraperitoneally (see Yao and Kendrick,
114 2022) and in a previous study we have shown similar effects of intranasal and oral (lingual) OT on
115 visual attention and state anxiety (Zhuang et al., 2022). There may however also be some
116 administration route-dependent functional effects of OT. For example, in monkeys intranasal and
117 intravenous administration of OT have been reported to produce different patterns of regional
118 perfusion (Lee et al., 2018), although in humans they produced similar neural effects (Martins et
119 al., 2020b). Another recent study in humans has shown that intranasal and oral (lingual) OT have
120 different effects on amygdala and putamen responses to emotional faces and on associated arousal
121 (Kou et al., 2021). Thus, it is unclear whether the reported effects of exogenously administered OT
122 on responses to social touch are mediated via direct entry into the brain or indirectly via increased
123 concentrations in the peripheral circulation which subsequently influence the brain either by
124 crossing the BBB or by acting on receptors in peripheral organs or nerves.

125 Against this background, the present study investigated firstly whether intranasal OT
126 primarily enhanced the pleasantness and associated brain reward responses to touch exclusively
127 targeting CT fibers (using gentle stroking touch) or primarily targeting non-CT fiber pressure
128 mechanoreceptors (medium pressure massage without stroking). Secondly, the effects of intranasal
129 OT were contrasted with those of oral (lingual) OT using the same dose of 24IU to help establish
130 whether OT was mainly acting via peripherally-mediated routes (see **Figure 1A** for a complete
131 study procedure). While intranasally administered OT can produce functional effects by either
132 directly entering the brain or by increasing peripheral vascular system concentrations, oral OT
133 administration can only do so by the latter. We therefore postulated that if equivalent effects of the

134 two routes of administration are observed then the functional effects of OT are likely to be due to
135 peripheral vascular increases. Behavioral responses to different types of touch were recorded using
136 rating scales and neural responses were acquired using functional near-infrared spectroscopy
137 (fNIRS) measures of oxygenated-hemoglobin chromophore concentration changes in cortical
138 brain regions involved in reward (OFC), social cognition (STS) and somatosensory processing
139 (somatosensory cortex - S1) (**Figure 1B-C**). fNIRS is now widely used in neuroimaging (Pinti et
140 al., 2020) and has the advantage that subjects are more comfortable and can move more than in an
141 MRI scanner and can more easily be catheterized for taking blood samples during recordings.
142 Although, fNIRS only measures activity changes in the superficial cortex it allows recordings to
143 be made from three of the main touch processing regions, the OFC, STS and somatosensory cortex
144 and has therefore often been used in studies investigating touch processing (Bennett et al., 2014;
145 Cruciani et al., 2021; Li et al., 2019). Additionally, physiological measures of autonomic nervous
146 system changes were recorded (skin conductance response - SCR and the electrocardiogram -
147 ECG) and blood samples were taken for measurement of OT concentration changes. We
148 hypothesized firstly that while subjects would find both the gentle stroking touch and medium
149 pressure massage pleasurable, intranasal OT would particularly enhance behavioral and brain
150 reward (OFC) and social processing (STS) region responses to gentle stroking touch targeting the
151 CT fiber system in line with our previous studies (Chen et al., 2020a; Scheele et al., 2014) and not
152 in response to the medium pressure massage targeting non-CT fibers. Secondly, based on recent
153 studies comparing effects of intranasal and oral OT (Xu et al., 2022; Zhuang et al., 2022), we
154 hypothesized that oral OT would have a similar effect to intranasal OT, thereby indicating that its
155 effects were mediated by increased concentrations in the peripheral vasculature rather than by

156 direct entry into the brain. Thirdly, we hypothesized that behavioral and neural effects of OT on
157 social touch would be associated with treatment effects on peripheral plasma concentrations of the
158 peptide, in line with observations in some previous studies (Martins et al., 2020b; Kou et al.,
159 2021).

160 **Methods**

161 **Participants**

162 An a priori sample size calculation using G^* power indicated that 159 participants (number of
163 groups: 3, and 53 subjects per group) should be sufficient to reliably detect a medium effect size
164 ($\alpha = 0.05$, $f = 0.25$, 80% power). A total of 180 healthy Chinese subjects (90 males, 21.22 ± 2.77
165 years) participated in the present study. Exclusion criteria consisted of any self-reported
166 psychiatric/physical illness, alcohol/substance abuse, or other major health concern. Self-reported
167 menstruating information and the luteinizing hormone test were conducted for all female
168 participants. They were asked to participate in the experiment avoiding the menstruation periods.
169 All subjects gave written informed consent prior to any study procedures. All experimental
170 procedures were in accordance with the latest revision of the declaration of Helsinki and approved
171 by the local ethics committee of the University of Electronic Science and Technology of China
172 and registered as a clinical trial (NCT05265806). 5 subjects were excluded due to failure to
173 complete the procedures and 4 subjects were dropped because of technical problems during data
174 acquisition (details see **Figure 1-figure supplement 1**). Thus data from a final sample of 171
175 subjects (87 females, 21.58 ± 1.94 years) were analyzed (intranasal OT: $N = 56$; oral OT: $N = 57$;
176 PLC: $N = 58$) (see **Table 1**).

177 **Blood samples and OT assay**

178 To measure plasma OT concentrations, before and 30 min after intranasal and oral (lingual)
179 treatments, as well as immediately after each session of social touch/massage condition (see
180 **Figure 1A** for sampling protocol), 4 blood samples in total (6 ml for each) were collected into
181 EDTA tubes from all subjects by an indwelling venous catheter and were stored after
182 centrifugation at -80 deg C until assays were performed. Oxytocin concentrations were measured
183 using a commercial ELISA (ENZO, USA, kit no: ADI-901-153). Blood samples were analyzed in
184 duplicate and a standard prior extraction step was performed following the recommended protocol
185 from the manufacturers. Spiked samples (with 100 pg/ml OT added) were included with every
186 assay to calculate extraction efficiency which was 96%. The extraction step incorporated a 4-fold
187 concentration of samples using a vacuum concentrator (Concentrator plus, Eppendorf, Germany)
188 resulting in a detection sensitivity of 2 pg/ml. All samples had detectable concentrations. The
189 inter- and intra-assay coefficients of variation were 14 and 11% respectively. The manufacturer's
190 reported cross-reactivity of the antibody for other neuropeptides, such as vasopressin and
191 vasotocin, is < 0.01% (for detailed OT assay methods, see Li et al., 2019).

192 **Experimental procedure**

193 Participants were first asked to complete Chinese versions of validated questionnaires on
194 personality, traits, mood, attitude towards interpersonal touch and sensitivity to reward to control
195 for possible group differences in potential confounders. Personality trait measures included the
196 Autism Spectrum Quotient (ASQ) (Baron-Cohen et al., 2001), the Beck Depression Inventory II
197 (BDI) (Beck et al., 1996), the State-Trait Anxiety Inventory (STAI) (Spielberger et al., 1983), the
198 Cheek and Buss Shyness Scale (CBSS) (Cheek and Buss, 1981), the Interpersonal Reactivity

199 Index (C-IRI) (Siu and Shek, 2005), the Childhood Trauma Questionnaire (CTQ) (Bernstein et al.,
200 2003), and the Adult Attachment Scale (AAS) (Collins and Read, 1990). Individual attitudes and
201 sensitivity to touch and reward were assessed using the Social Touch Questionnaire (STQ)
202 (Wilhelm et al., 2001), the Sensitivity to Punishment and Sensitivity to Reward Questionnaire
203 (SPSRQ) (Torrubia et al., 2001), and individual levels of sensory over-responsivity (also referred
204 to as defensive responses) towards tactile stimuli were measured by the Sensory Over-
205 Responsivity (SensOR) Scales (Schoen et al., 2008). Additionally, to control for potential
206 confounding effects of treatment on mood, participants completed the Positive and Negative
207 Affect Schedule (PANAS) (Watson et al., 1988) immediately before and 30 min after the treatment
208 and after each touch session (details see **Figure 1A**).

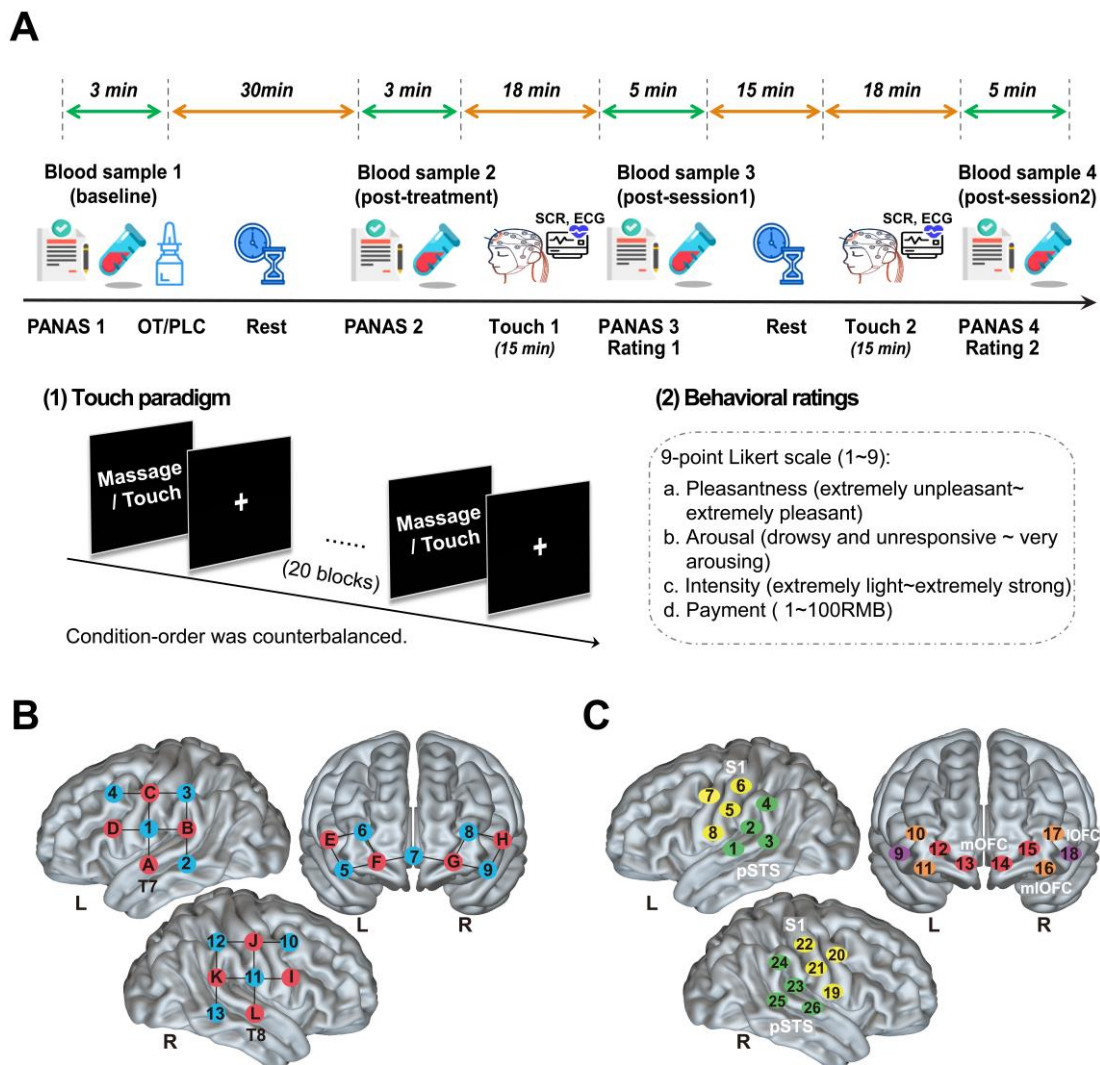
209 Following completion of the questionnaire assessments, participants were randomly assigned
210 to receive the oral (lingual) or intranasal administration of OT spray (24 IU; Oxytocin Spray,
211 Sichuan Defeng Pharmaceutical Co. Ltd, China) or their corresponding placebo (PLC) spray (half
212 received the PLC intranasally and half orally; identical ingredients except the peptide - i.e.
213 glycerine and sodium chloride) in a randomized double-blind placebo-controlled between-subject
214 design. Intranasal and oral spray bottles and OT concentrations per 0.1 ml puff were identical (i.e.
215 4IU). For intranasal administration 3 puffs were applied to each nostril alternating between them
216 and with 30 s between each puff, for oral administration 6 puffs were sprayed onto the tongue (i.e.
217 lingual) with 30s between each puff and the subjects required not to swallow until just before the
218 next puff was applied to allow time for absorption by oral blood vessels (as in Kou et al., 2021).
219 Subjects and experimenters were blind concerning whether PLC or OT was administered.
220 Blinding for the two different routes of administration was not possible although subjects were not

221 informed until they arrived to sign the consent form and take part in the experiment whether they
222 would receive intranasal or oral treatment. In line with our previous findings that oral and
223 intranasal PLC administration do not produce different functional effects either at neural or
224 behavioral levels (Kou et al., 2021; Zhuang et al., 2022), there were also no significant differences
225 in pleasantness ratings of the gentle stroking touch and medium pressure massage between the
226 intranasal and oral PLC groups ($ps > 0.110$) confirming that knowledge of the route of
227 administration had no effects. We therefore combined them into a single PLC group. Participants
228 were unable to guess better than chance whether they had received OT or PLC ($\chi^2 = 0.43, p =$
229 0.512). As a further control for the lack of blinding in the groups receiving different routes of
230 administration initial analyses of blood samples, behavioral and neural data were performed blind
231 by experimenters.

232 In line with previous studies (Paloyelis et al., 2016; Spengler et al., 2017), the task started
233 approximately 35-40 min after the treatment administration. Neural and physiological responses to
234 social touch stimulation were measured via simultaneously acquired fNIRS together with SCR and
235 ECG recording. A professional masseur blinded to the research aim was trained by the
236 experimenter to administer the different social touch stimuli to the calf of each leg as consistently
237 as possible. For gentle touch the masseur applied only a light stroking touch at the optimum
238 velocity for activating CT fibers (5 cms/s) and at which subjects perceive this form of touch as
239 most pleasant (Löken et al., 2009). For the massage stimulation condition the masseur applied a
240 medium pressure massage moving discretely up and down the leg at the same velocity but without
241 stroking the skin, designed to primarily target non-CT fibers (Field, 2010). The gentle touch and
242 medium pressure massage were delivered on both legs simultaneously to control for possible

243 preferences for left or right and more importantly to avoid unilateral brain activation. During the
244 experiment, the masseur could simultaneously see a visual cue indicating the type of stimulation
245 on a personal monitor and was instructed to vary the exact start and end point of each stimulation
246 on the calf randomly by a few millimeters in order to minimize receptor fatigue (cf. Cascio et al.,
247 2012). To reduce the possibility that subjects might be uncomfortable with receiving gentle
248 stroking touch from a stranger, subjects were informed that both types of touch stimulation they
249 would receive were forms of professional massage using different amounts of pressure and that
250 they just needed to be relaxed and concentrate on how the administered ‘massage’ made them feel.
251 They were further informed that either a masseur or a masseuse would be randomly assigned by
252 the experimenter to deliver the ‘massage’, although in fact, they were always given by a same
253 masseur. The paradigm consisted of two sessions and each session comprised 20 blocks of gentle
254 stroking touch or medium pressure massage. Condition-order was counterbalanced across
255 participants. Each block lasted for 30 s alternated with a rest interval of 15 s and each session
256 lasted for 15 min with a 15 min rest interval between each (**Figure 1A**).

257 Immediately after each session, subjects completed the PANAS and then answered the
258 following four questions: (1) How pleasant did you feel the massage? (1 = extremely unpleasant, 9
259 = extremely pleasant). (2) How much did the massage arouse you? (1 = drowsy and unresponsive,
260 9 = very arousing). (3) How intense was the massage? (1 = extremely light, 9 = extremely strong)
261 and (4) How much would you be willing to pay if you had to pay for the applied massage? Please
262 choose from 1-100 (1 = 1 RMB, 9 = 100 RMB). After the experiment, participants were asked to
263 guess the gender of the massager to control for possible sex-dependent effects.



264

265 **Figure 1.** The study procedure and layout of fNIRS optodes and channels. **(A)** The study protocol
 266 and sequences of the experimental task. A total of 4 blood samples (6 ml for each) were collected
 267 for each subject before and after the treatment and after each session to measure OT concentration
 268 changes. Subjects completed the positive and negative affective schedule (PANAS) before and
 269 after the intranasal/oral OT or PLC treatment. During each touch session, neural responses were
 270 acquired using functional near-infrared spectroscopy (fNIRS) measures and physiological
 271 measures of autonomic nervous system changes including the skin conductance response - SCR
 272 and the electrocardiogram - ECG were recorded as well. Subjects were subsequently asked to rate
 273 their mood (PANAS) and subjective experience of the massage/touch including the perceived
 274 pleasantness, arousal, intensity, and willingness to payment after each session. **(B)** The array
 275 design displayed the locations of the sources (red) and detectors (blue). **(C)** Channels according to
 276 the international 10-20 placement system. A 26-channel array consisting of 12 sources and 13
 277 detectors were used to record hemodynamic activity of the bilateral lateral orbitofrontal cortex
 278 (IOFC: channels 9, 18), medial orbitofrontal cortex (mOFC: channels 12 to 15) and mediolateral
 279 orbitofrontal cortex (mlOFC: channels 10, 11, 16, 17), posterior superior temporal sulcus (pSTS:
 280 channels 1 to 4, 23 to 26) and the somatosensory area (S1: channels 5 to 8, 19 to 22).

281 **Figure supplement 1.** CONSORT flow diagram.

282 **Physiological data acquisition and analyses**

283 Physiological measures were collected at a sampling rate of 1000 Hz using a Biopac MP150
284 system (Biopac Systems, Inc.) and recorded using AcqKnowledge (Version 4.4, Biopac Systems
285 Inc., CA, USA). SCR was recorded using a GSR100C module with two electrodes being placed on
286 the tips of participant's left index and middle fingers. ECG was recorded using an ECG100C
287 module with three electrodes (including the ground electrode) placed relatively close to each other
288 in parallel on the left side of the upper torso (see Niendorf et al., 2012).

289 Physiological data were analyzed using the AcqKnowledge 4.4 software following the
290 manual. To determine different SCR amplitudes in response to the medium pressure massage and
291 the gentle stroking touch, we computed the mean base-to-peak difference within a 15-s time
292 window after the stimulation and rest onset. SCR differences were compared across the three
293 treatment groups for each stimulation condition and rest as well as between the medium pressure
294 massage and the gentle stroking touch. The raw ECG data was band-pass filtered (range: 0.5-35
295 Hz; 8000 coefficients) to remove baseline drift and high frequency noise. A template correlation
296 function was used to transform noisy data manually. Next, we extracted R-R intervals from the
297 clean ECG which were next imported into Kubios software (<http://kubios.uku.fi>) for heart rate (as
298 a sympathetic nervous system measure of arousal) and HRV (indexed by the high-frequency
299 component — HF and the detrended fluctuation scaling exponent — $DFA\alpha1$, assumed to reflect
300 parasympathetic influence) analyses (Kemp et al., 2012; Martins et al., 2020a; Zahn et al., 2016).

301 **fNIRS data acquisition and analyses**

302 Hemodynamic response signals were acquired using the NIRSport2 System (NIRx Medical
303 technologies LLC, Berlin, Germany) operating at two wavelengths (760 and 850 nm) with a

304 sampling frequency of 6.78 Hz. In line with previous studies (Li et al., 2019; Long et al., 2021
305 Tsuzuki and Dan, 2014), each optode was placed on the surface of skull according to reference
306 points on the head (the nasion, inion, left and right ears, top and back of the head) adjusting for
307 different head size and shapes of different participants. The probe set contains 12 sources and 13
308 detectors with 3-cm source-detector separation to cover brain regions of interest (ROIs) and allows
309 for 26 different channels to measure the oxyhemoglobin and deoxyhemoglobin concentration
310 changes. The current study focused on the oxyhemoglobin (oxy-Hb) concentration changes
311 because of the higher sensitivity to cerebral blood flow changes and better signal-to-noise ratio.
312 Based on previous studies (e.g., Li et al., 2019; Bennett et al., 2014), 5 regions engaged in touch
313 processing were selected as a priori ROIs, including the bilateral lateral OFC (lOFC), medial OFC
314 (mOFC), mediolateral OFC (mlOFC), posterior STS (pSTS) and primary somatosensory cortex
315 (medial S1). The optodes were placed in accordance with the international 10–20 system and the
316 lowest lines of the probes were placed at T7 and T8 corresponding to positions of channels 1 and
317 25, respectively (see **Figure 1B-C**).

318 The fNIRS raw data were analyzed using the NIRS-KIT software which can be used for both
319 resting-state and task-based fNIRS data analyses (Hou et al., 2021). During preprocessing, raw
320 optical intensity data were firstly converted to concentration changes of oxy-Hb based on the
321 modified Beer-Lambert law. A polynomial regression model was then applied to remove linear
322 detrends from the raw time course. Motion-related artifacts and baseline shifts were removed
323 using the temporal derivative distribution repair (TDDR) method and an infinite impulse response
324 (IIR) Butterworth bandpass filter (0.01 to 0.08Hz) was additionally employed to correct for
325 machinery and physiological noise. On the first level, a generalized linear model (GLM) approach

326 was applied to model the task-related hemodynamic response with 4 regressors (the medium
327 pressure massage, the gentle stroking touch, the rest after the massage and the rest after the touch)
328 in the design matrix. Contrast images for each stimulation condition minus the rest were created
329 for each participant receiving intranasal/oral OT or PLC treatments. On the second level, beta
330 estimates obtained from each channel of each participant were extracted and analyzed using SPSS
331 26 (IBM, Inc).

332 We also employed the representational similarity analysis (RSA) technique to investigate
333 whether the received treatment of one participant (test subject, leave-one-out method) could be
334 correctly classified based on their similarity of activation patterns to the mean pattern of subjects
335 receiving the same treatment (group models except for the test subject each time) (Emberson et al.,
336 2017; Hernandez et al., 2018). Mean time course of the mOFC, mIOFC and pSTS within the time
337 window at 5-35 s following the gentle touch stimulation onset was extracted from each participant
338 as input features. The number of correctly labeled subjects were averaged to compute the actual
339 accuracy for discrimination between the two treatments (intranasal OT vs. PLC, oral OT vs. PLC,
340 intranasal OT vs. oral OT) (scripts adapted from Emberson et al., 2017; details see **Figure 5-**
341 **figure supplement 1**). Permutation-based significance tests via creating a null distribution of
342 treatment labels (permutations = 10000) were conducted to investigate whether the actual
343 accuracies based on correct treatment labels significantly differed from those computed from
344 randomly assigned treatment labels. *P* values for the actual classification accuracies were
345 computed by measuring what proportion of observed accuracies on the null distribution are equal
346 to or greater than the actual classification accuracy. Decoding accuracy was also computed for
347 discrimination between the two stimulation conditions (see **Figure 5-figure supplement 1**).

348 **Statistical analyses**

349 For plasma OT concentration analyses, firstly one-way ANOVA for mean basal concentrations of
350 plasma OT was conducted to compare group differences. Secondly, one-way ANOVA was applied
351 for post-treatment OT concentration changes (minus the basal OT concentrations) to investigate
352 whether OT administration significantly increased plasma OT concentrations compared with PLC.
353 Finally, treatment effects on changes of plasma OT concentrations after the gentle stroking touch
354 versus the medium pressure massage were examined by a repeated-measures ANOVA with
355 treatment (intranasal OT vs. oral OT vs. PLC) as between-subject factor and stimulation condition
356 (medium pressure massage vs. gentle stroking touch) as within-subject factor. Effects on behavioral
357 rating scores for pleasantness, arousal, intensity and payment willingness and physiological indices
358 (HRV and SCR amplitudes) were respectively examined using repeated-measures ANOVAs with
359 treatment as between-subject factor and stimulation condition as within-subject factor. A repeated-
360 measures ANOVA was employed to examine OT's effects on massage and touch with treatment as
361 between-subject factor and stimulation condition and brain region (IOFC vs. mOFC vs. mlOFC vs.
362 pSTS vs. S1) as within-subject factors. We also performed channel-by-channel repeated-measures
363 ANOVAs to confirm the ROI-based analysis results (see **Figure 3-figure supplement 1**). All post-
364 hoc analyses were applied with Bonferroni correction to disentangle significant main effects and
365 interactions. Effect size was calculated using the partial eta-squared and two tailed *p* values were
366 reported. Correlations between OT-induced behavioral/neural effects and blood OT concentration
367 changes were calculated using Spearman correlation coefficients. All statistical analyses were
368 performed using SPSS version 22.

369 **Results**

370 **Demographics and questionnaire scores**

371 Repeated-measures analyses of variance (ANOVAs) with treatment as between-subject factor

372 revealed no significant differences between treatment groups ($ps > 0.130$) with respect to

373 demographics and questionnaire scores measuring personality traits and mood (**Table 1** and

374 **Supplementary file 1, Table 1A**).

375 **Table 1.** Demographic, physiological, and psychometric assessments in the three groups ($M \pm SD$)

	Intranasal OT	Oral OT	PLC	value	p
Number (males)	n = 56(26)	n = 57(27)	n = 58(31)	$\chi^2 = 0.67$.721
Age	21.79 ± 1.96	21.46 ± 2.05	21.50 ± 1.84	F = 0.48	.618
ASQ	21.43 ± 5.48	20.09 ± 5.05	21.66 ± 5.84	F = 1.37	.256
STQ	40.36 ± 8.51	41.32 ± 9.60	40.79 ± 7.67	F = 0.18	.840
SP	13.16 ± 5.28	12.86 ± 5.50	13.38 ± 5.48	F = 1.13	.876
SR	13.20 ± 4.07	14.26 ± 4.22	14.16 ± 3.60	F = 1.24	.293
SOR	22.66 ± 9.43	20.88 ± 10.23	23.17 ± 9.64	F = 0.87	.421
BDI	9.21 ± 9.11	8.39 ± 7.36	9.79 ± 8.39	F = 0.42	.660
TAI	42.96 ± 9.32	43.47 ± 9.10	43.21 ± 9.77	F = 0.04	.959
SAI	38.59 ± 9.61	38.51 ± 8.37	39.02 ± 10.33	F = 0.05	.953
CBSS	39.46 ± 9.56	36.21 ± 9.38	38.28 ± 8.98	F = 1.77	.173
CTQ	38.50 ± 8.57	36.51 ± 9.03	37.97 ± 9.10	F = 0.76	.469
IRI	48.89 ± 10.99	48.95 ± 10.26	50.36 ± 11.09	F = 0.34	.710
AAS	57.84 ± 6.23	58.11 ± 6.04	57.26 ± 6.02	F = 0.29	.748
PANAS					
Positive affect	18.71 ± 0.80	19.63 ± 0.78	17.42 ± 0.78	F = 2.04	.132
Negative affect	11.00 ± 0.37	11.31 ± 0.36	11.15 ± 0.36	F = 0.17	.840
HF					
Gentle stroking touch	47.24 ± 16.62	49.32 ± 17.29	49.48 ± 16.47	F ^a = 0.40	.878
Medium pressure massage	51.89 ± 17.18	53.68 ± 16.20	52.89 ± 15.74		
DFA α 1					
Gentle stroking touch	0.92 ± 0.25	0.89 ± 0.24	0.88 ± 0.23	F ^a = 0.33	.922
Medium pressure massage	0.99 ± 0.25	0.94 ± 0.27	0.95 ± 0.25		
Heart rate					
Gentle stroking touch	72.78 ± 8.25	74.47 ± 10.45	72.47 ± 9.96	F ^a = 0.70	.653
Medium pressure massage	71.73 ± 9.56	72.09 ± 8.09	70.67 ± 9.48		

SCR

Gentle stroking touch	1.45 ± 1.81	1.20 ± 1.47	1.09 ± 1.52	F ^a = 0.43	.862
Medium pressure massage	2.48 ± 2.15	2.58 ± 2.39	2.49 ± 187		
Basal OT concentrations	8.12 ± 0.54	8.49 ± 0.60	9.71 ± 0.48	F = 2.39	.105

376 a: F values of the group × condition interaction analyses.

377 **The effects of OT and social touch on plasma OT concentration changes**

378 A one-way ANOVA showed no between-group difference in basal plasma OT concentrations taken
379 prior to the treatment ($F(2, 168) = 2.39, p = 0.105$) (**Table 1**). A one-way ANOVA on increases in
380 plasma concentrations relative to basal levels revealed a significant main effect of treatment ($F(2,$
381 $168) = 29.46, p < 0.001$) with higher plasma OT concentration changes at 30 min (before the task)
382 following intranasal (mean increase = 6.26 ± 0.93 pg/ml, $p < 0.001$) and oral OT treatment (mean
383 increase = 2.10 ± 0.42 pg/ml, $p = 0.016$) compared with PLC (mean increase = -0.31 ± 0.35
384 pg/ml). Plasma OT concentrations following intranasal treatment were also significantly higher
385 than following oral treatment ($p < 0.001$, **Figure 2A** and **Supplementary file 1, Table 1B**).

386 To investigate changes of plasma OT concentrations after the gentle stroking touch relative to
387 the medium pressure massage, a repeated-measures ANOVA on plasma OT concentrations
388 measured after each touch stimulation session with treatment as between-subject factor and
389 condition as within-subject factor revealed a significant main effect of treatment ($F(2, 166) =$
390 $14.20, p < 0.001, \eta_p^2 = 0.15$) indicating that plasma OT concentrations in the intranasal ($p < 0.001$)
391 and oral OT groups ($p = 0.003$) following the gentle stroking touch and medium pressure massage
392 were both significantly higher than in the PLC group, whereas no difference was found between
393 intranasal and oral OT treatment groups ($p = 0.162$). There was also a marginal main effect of
394 condition ($F(1, 166) = 3.39, p = 0.067, \eta_p^2 = 0.02$), with plasma OT concentrations being higher
395 following the gentle stroking touch (mean increase: 2.18 ± 0.36 pg/ml) than medium pressure

396 massage (mean increase: 1.67 ± 0.30 pg/ml). The interaction between treatment and stimulation
397 condition was not significant ($F(2, 166) = 1.89, p = 0.154$) (**Figure 2B**). Overall therefore, both
398 intranasal and oral OT increased plasma OT concentration changes (relative to basal levels)
399 relative to PLC, 30 min after treatment administration and after the two touch sessions, with some
400 indication of levels being higher after gentle stroking touch relative to medium pressure massage.

401 **The effects of OT on behavioral rating scores and physiological indices**

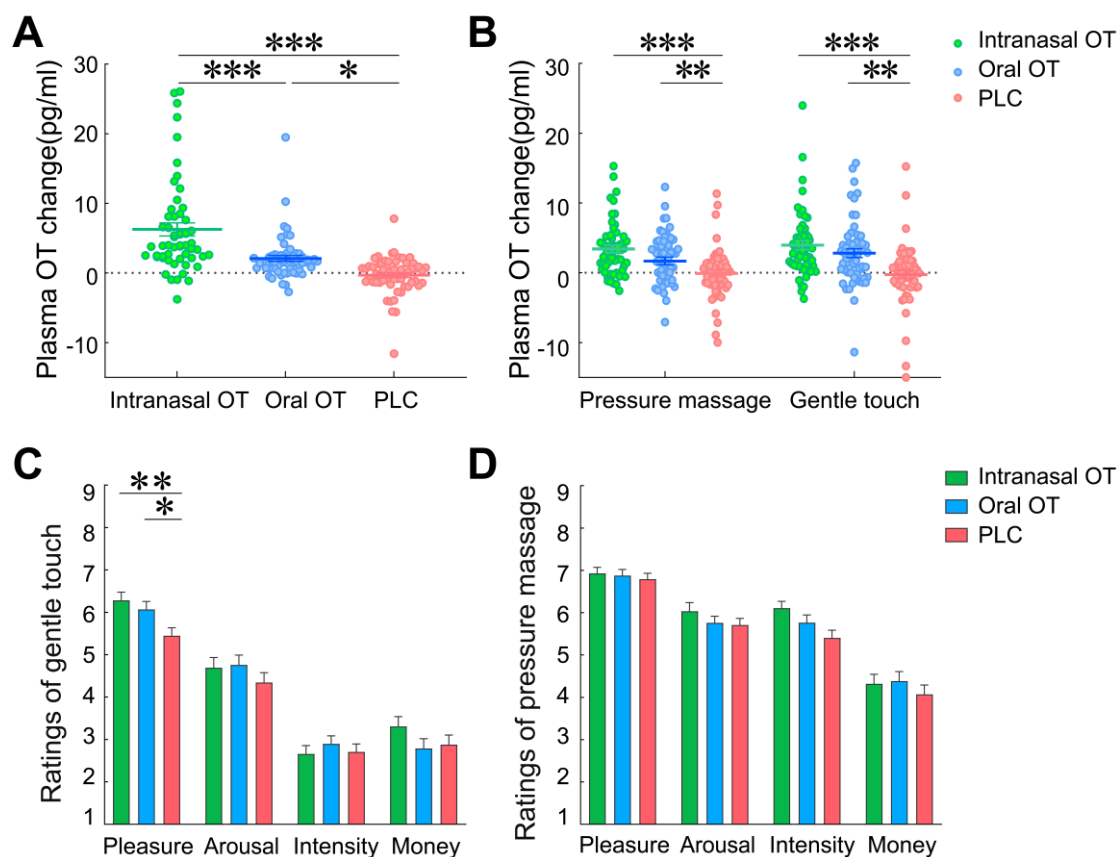
402 A repeated-measures ANOVA on pleasantness rating scores revealed a significant main effect of
403 treatment ($F(2, 168) = 3.76, p = 0.025, \eta_p^2 = 0.04$) due to subjects in the OT groups rating both
404 types of social touch stimulation more pleasant than the PLC group. The main effect of stimulation
405 condition was also significant ($F(1, 168) = 58.42, p < 0.001, \eta_p^2 = 0.26$), with subjects rating the
406 medium pressure massage (6.87 ± 0.08) more pleasant than the gentle stroking touch ($5.95 \pm$
407 0.11). Importantly, there was also a significant treatment \times condition interaction ($F(2, 168) = 3.23,$
408 $p = 0.042, \eta_p^2 = 0.04$). Post-hoc Bonferroni corrected tests showed that both intranasal OT ($p =$
409 0.006) and oral OT ($p = 0.044$) significantly increased pleasantness ratings of the gentle stroking
410 touch compared with PLC group (**Figure 2C**), but not for the medium pressure massage ($ps >$
411 0.960) (**Figure 2D**).

412 Analyses of other ratings revealed a significant effect of stimulation condition with subjects
413 perceiving the medium pressure massage more arousing ($F(1, 168) = 44.62, p < 0.001, \eta_p^2 = 0.21$),
414 and intense ($F(1, 168) = 634.83, p < 0.001, \eta_p^2 = 0.79$) and being willing to pay more for it ($F(1,$
415 $168) = 91.38, p < 0.001, \eta_p^2 = 0.35$) than the gentle stroking touch. There were no significant main
416 effects of treatment or interactions for arousal ($ps > 0.138$) or intensity ($ps > 0.107$) ratings, or
417 ratings of willingness to pay ($ps > 0.354$). Additional analyses of possible gender and menstrual

418 cycle-dependent effects revealed no significant effects on pleasantness ratings (gender: $ps > 0.316$,
419 menstrual cycle: $ps > 0.110$). Thus, these factors may not confound treatment effects on
420 pleasantness perception of social touch. Moreover, the perceived gender of the masseur did not
421 significantly influence the pleasantness ratings in either of the stimulation condition ($ps > 0.441$)
422 or on the effects of OT on increasing pleasantness ratings of gentle stroking touch ($ps > 0.364$; see
423 **Supplementary file 1, Table 1C**). Thus, both intranasal and oral OT only significantly increased
424 individual perceived pleasantness (not ratings of arousal, intensity and payment) of the gentle
425 stroking touch, but not for the medium pressure massage and this behavioral effect remained
426 stable after controlling for possible confounding effects.

427 Analyses of SCR data showed a significant main effect of condition ($ps < 0.001$) with greater
428 increases in SCR amplitude following both touch conditions compared with rest as well as
429 following medium pressure massage relative to gentle stroking touch (see **Table 1** and
430 **Supplementary file 1, Table 1D**). However, there were no significant treatment effects ($ps >$
431 0.380) providing additional evidence that OT did not influence levels of arousal in response to
432 either type of touch. Both heart rate and all measures of heart rate variability (HRV) also showed
433 main effects of condition ($ps < 0.001$) with higher HRV during both touch conditions compared
434 with rest and during medium pressure massage relative to gentle stroking touch, and higher heart
435 rate induced by gentle stroking relative to medium pressure massage (see **Table 1** and
436 **Supplementary file 1, Table 1D**). However, once again there were no effects related to treatment
437 ($ps > 0.490$). Thus, both types of touch influenced sympathetic nervous system measures of
438 arousal (increased SCR and heart rate) and parasympathetic measures of vagal tone (increased
439 HRV) although medium pressure was more potent than gentle stroking touch with the exception of

440 heart rate. However, OT treatment did not influence either sympathetic or parasympathetic
 441 responses to touch.

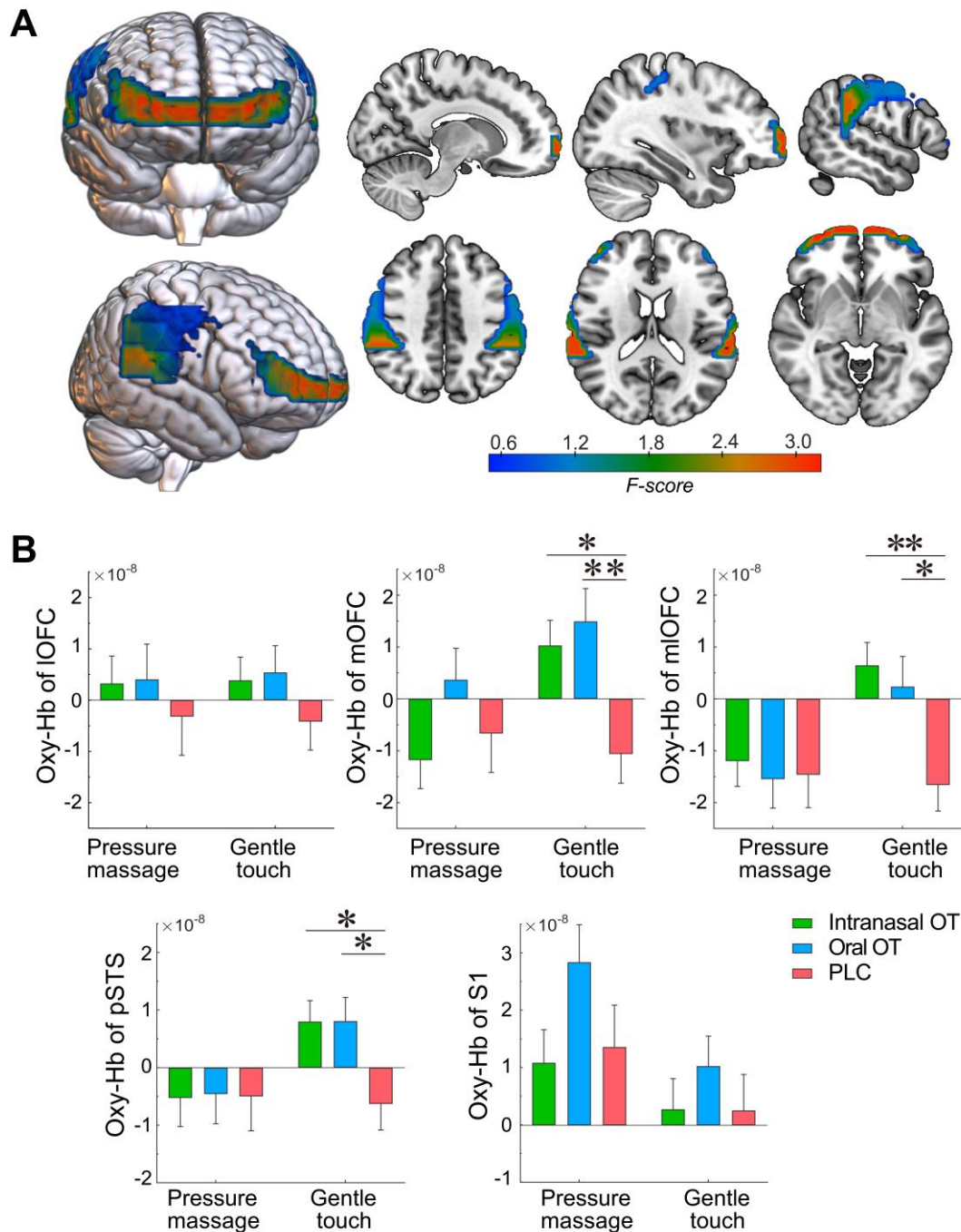


442
 443 **Figure 2.** Effects of oxytocin (OT) on plasma concentration changes and behavioral rating scores.
 444 (A) Post-treatment changes of plasma OT concentrations (compared with pre-treatment baseline).
 445 (B) Plasma OT concentration changes (compared with pre-treatment baseline) after gentle stroking
 446 touch and medium pressure massage following the OT and PLC treatments. Behavioral rating
 447 scores of pleasantness, arousal, intensity, and payment willingness following intranasal OT, oral
 448 OT and PLC treatments in response to (C) gentle stroking touch and (D) medium pressure
 449 massage. * $p < 0.05$, ** $p < 0.01$, *** $p < 0.001$ between group comparisons.

450 The effects of OT on neural responses

451 To determine effects of OT on neural responses to gentle stroking touch and medium pressure
 452 massage in the a priori ROIs, a repeated-measures ANOVA for oxy-Hb concentration changes was
 453 employed and showed a significant main effect of brain region ($F(4, 672) = 18.70, p < 0.001, \eta_p^2 =$

454 0.10) and significant region \times treatment ($F(8, 672) = 1.92, p = 0.051, \eta_p^2 = 0.02$) and region \times
455 condition interactions ($F(4, 672) = 14.41, p < 0.001, \eta_p^2 = 0.08$). Post hoc comparisons showed a
456 significant oxy-Hb increase in the mOFC following oral OT ($p = 0.020$) and gentle stroking touch
457 induced greater oxy-Hb concentration changes in the mOFC, mlOFC, and pSTS than the medium
458 pressure massage ($ps < 0.05$) whereas in the medial S1 greater changes were induced by the
459 medium pressure massage ($p = 0.002$). Importantly, the three-way condition \times region \times treatment
460 interaction was also significant ($F(8, 672) = 2.11, p = 0.033, \eta_p^2 = 0.03$). Post-hoc Bonferroni
461 corrected pair-wise comparisons for each ROI revealed that both intranasal and oral OT
462 significantly enhanced the activity in the bilateral mOFC (intranasal OT: $p_1 = 0.029$, oral OT: $p_2 =$
463 0.005), mlOFC (intranasal OT: $p_1 = 0.005$, oral OT: $p_2 = 0.030$) and pSTS (intranasal OT: $p_1 =$
464 0.043, oral OT: $p_2 = 0.040$) compared with the PLC only in response to gentle stroking touch.
465 There were no significant treatment effects on neural responses in the lOFC ($ps > 0.559$) and S1
466 ($ps > 0.993$). For the medium pressure massage, no significant treatment effects were found ($ps >$
467 0.237) (**Figure 3**).

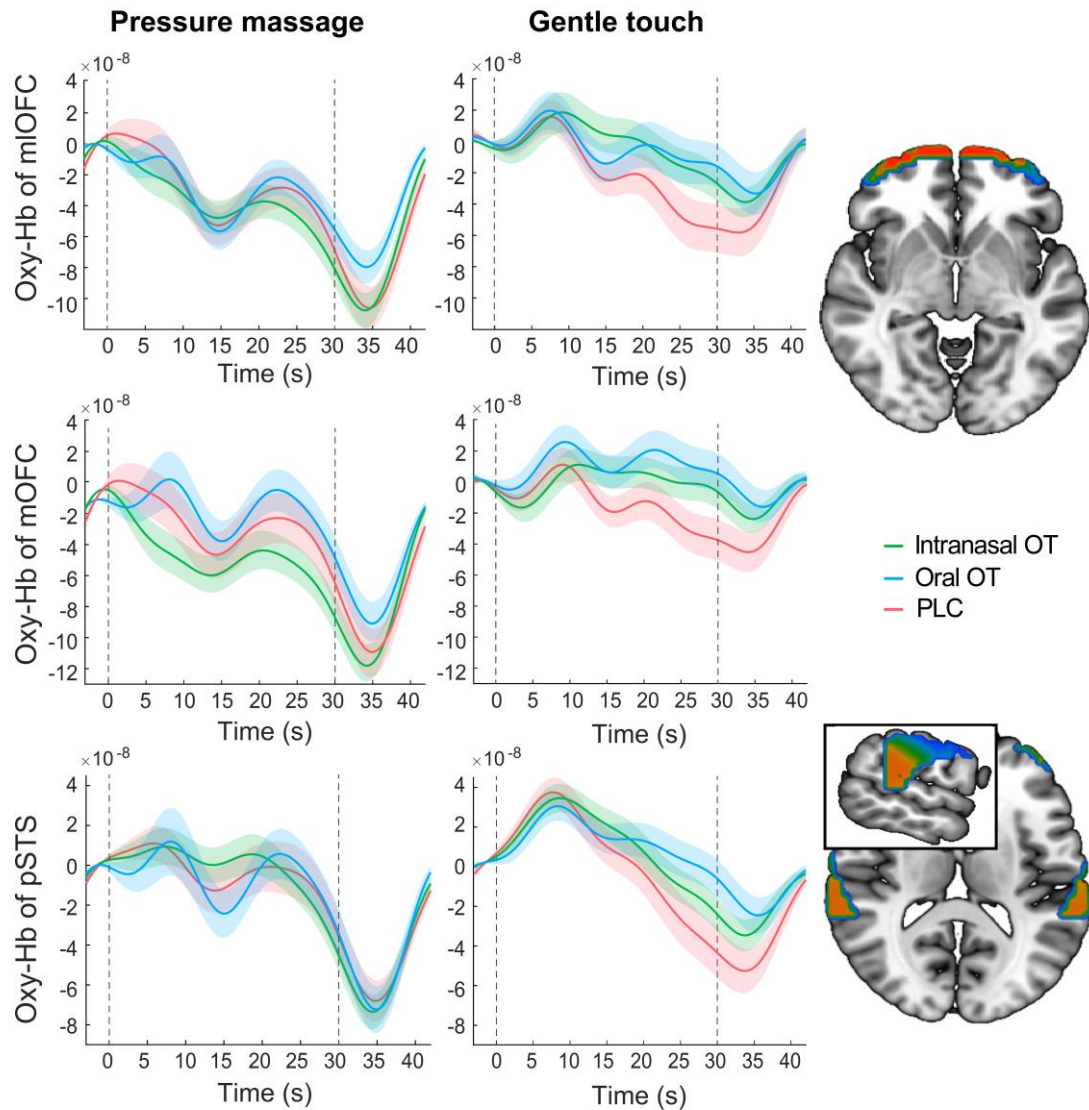


468

469 **Figure 3.** Effects of intranasal and oral OT on neural responses to gentle stroking touch. (A) Heat
 470 brain maps show treatment \times condition interaction effects (F values) on neural activations in each
 471 ROI using repeated-measures ANOVAs. (B) Averaged oxy-Hb concentration changes in the
 472 bilateral IOFC, mOFC, mIOFC, pSTS and S1 (mean \pm SEM) in response to the gentle stroking
 473 touch and medium pressure massage in intranasal OT, oral OT and PLC groups. * $p < 0.05$, ** $p <$
 474 0.01.

475 **Figure supplement 1.** Activation maps of the channel-by-channel analysis.

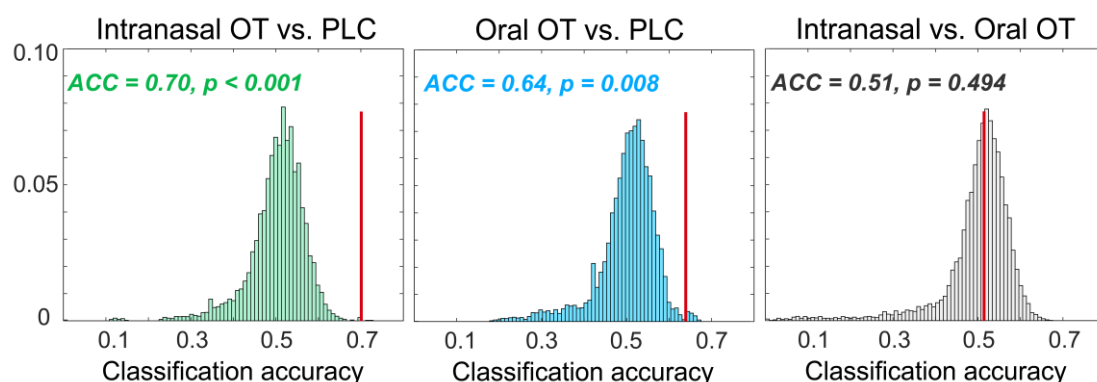
476



477
478 **Figure 4.** Time courses of oxy-Hb concentration changes in response to medium pressure massage
479 and gentle stroking touch in the bilateral mIOFC, mOFC and pSTS for intranasal OT, oral OT and
480 PLC groups respectively. The dotted gray lines indicate the onset and offset of the stimulation and
481 the shaded areas represent \pm SEM.
482

483 Extraction of time courses of oxy-Hb concentration changes showed distinct hemodynamic
484 patterns in response to medium pressure massage and gentle stroking touch. In comparison with
485 oxy-Hb concentration showing a convergent tendency across intranasal OT, oral OT and PLC
486 groups after offset of the massage stimulation, both intranasal and oral OT prolonged the response
487 in the bilateral mIOFC, mOFC and pSTS to gentle stroking touch (**Figure 4**). We therefore

488 conducted a classification analysis to determine whether time courses of oxy-Hb concentration
489 changes can discriminate different groups. Results showed that time courses of the mOFC, mIOFC
490 and pSTS could achieve a modest level to discriminate between intranasal OT and PLC (mean
491 accuracy = 70.1%, permutation test $p < 0.001$) and between oral OT and PLC groups (mean
492 accuracy = 64.3%, permutation test $p = 0.008$). However, the classification accuracy for
493 discriminating between intranasal and oral OT groups was not significantly higher than the
494 classification accuracy on the null distribution (mean accuracy = 51.3%, permutation test $p =$
495 0.494) (see **Figure 5**). Taken together, results suggest that both intranasally and orally
496 administered OT produced similar functional effects on neural activations in the mOFC, mIOFC
497 and pSTS during CT fiber mediated social touch.



498
499 **Figure 5.** Null distribution for classification accuracies for discriminating intranasal OT versus
500 PLC, oral OT versus PLC, and intranasal versus oral OT groups respectively. Histograms show
501 the distribution of accuracies from permutation tests (permutations = 10000). The red lines
502 indicate the actual accuracy and p values for the actual classification accuracies.

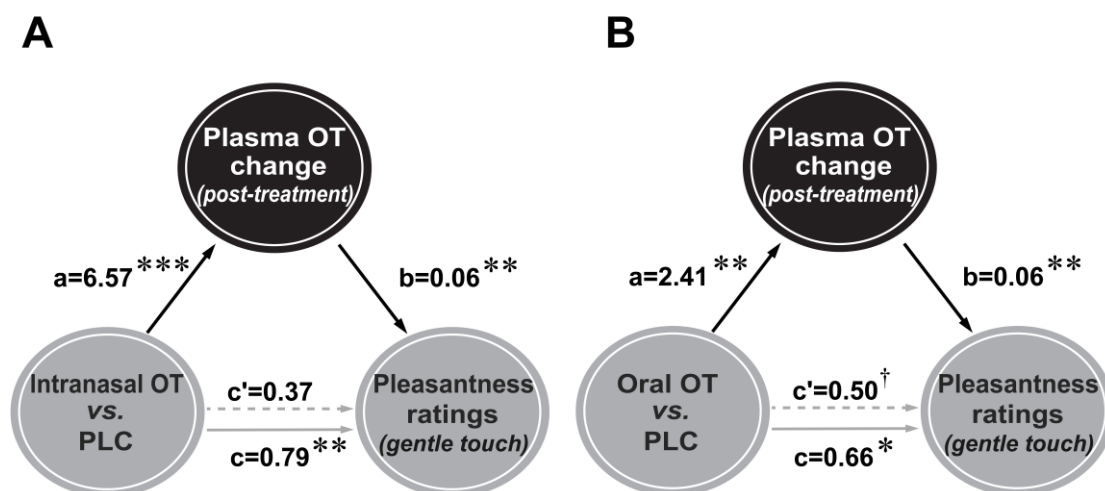
503 **Figure supplement 1.** Illustration of the multivariate analysis method.

504 **Associations between different outcome measures and mediation analyses**

505 Post-treatment OT concentration changes (30 min post-treatment and before task) were found to
506 be positively correlated with pleasantness rating scores (Spearman's rho = 0.18, $p = 0.017$) and

507 oxy-Hb concentration changes in the mIOFC (Spearman's $\rho = 0.16$, $p = 0.044$) in response to the
508 gentle stroking touch.

509 Mediation analyses showed that intranasal and oral OT both increased post-treatment plasma
510 OT concentrations (intranasal OT: path $a = 6.57$, $p < 0.001$; oral OT: path $a = 2.41$, $p = 0.005$) and
511 pleasantness rating scores for gentle stroking touch (intranasal OT: path $c = 0.79$, $p = 0.004$; oral
512 OT: path $c = 0.66$, $p = 0.015$). The plasma OT concentration changes were found to be positively
513 associated with perceived pleasantness of the gentle stroking touch (intranasal OT: path $b = 0.06$,
514 $p = 0.008$; oral OT: path $b = 0.06$, $p = 0.008$) and when included as a mediator in the model,
515 results although showed no significant direct effects of intranasal and oral OT on the perceived
516 pleasantness (intranasal OT: path $c' = 0.37$, $p = 0.228$; oral OT: path $c' = 0.50$, $p = 0.062$). By
517 contrast, the results showed that post-treatment plasma OT concentration changes totally mediated
518 the enhancement effects of intranasal (indirect effect = 0.42, SE = 0.166, 95% CI = [0.101, 0.768],
519 bootstrap = 5000, **Figure 6A**) and oral OT (indirect effect = 0.15, SE = 0.071, 95% CI = [0.037,
520 0.310], bootstrap = 5000, **Figure 6B**) on pleasantness ratings. Similar mediation analyses of post-
521 treatment plasma OT concentration changes and the OFC/pSTS activity in response to gentle
522 stroking touch revealed no significant results ($ps > 0.103$). Results from the model suggest that
523 behavioral effects of both intranasally and orally administered OT were primarily mediated by
524 peripheral changes in plasma OT concentrations following treatments.



525

526 **Figure 6.** Mediation analyses for intranasal (**A**) and oral (**B**) oxytocin (OT) effects on pleasantness
527 ratings via plasma OT concentrations. Enhanced pleasantness ratings in response to gentle
528 stroking touch following oral and intranasal OT administration were significantly mediated by
529 post-treatment plasma OT concentration changes. $\dagger p = 0.06$, $*p < 0.05$, $**p < 0.01$, $***p < 0.001$.
530

531 Discussion

532 The current study aimed firstly to establish whether effects of OT treatment on enhancing the
533 perceived pleasantness of social touch were primarily in response to CT fiber stimulation or that of
534 non-CT fibers. Our findings that OT only facilitated behavioral and neural responses to gentle
535 stroking touch support the view that it is primarily influencing CT fiber mediated touch. The
536 second aim of the study was to establish whether the route of exogenous OT administration is
537 important. Here findings that similar functional effects of OT were produced after intranasal and
538 oral administration, and that post-treatment changes in plasma OT concentrations significantly
539 mediated behavioral effects, support the conclusion that the observed effects were primarily
540 mediated by peripheral changes.

541 Gentle stroking touch and medium pressure massage were both perceived as pleasant
542 although the medium pressure massage was rated more pleasant, stronger and more arousing and
543 subjects were more willing to pay for it, possibly because the latter is closer to the familiar
544 experience of normal massage. Medium pressure massage also produced greater increases in
545 autonomic measures of arousal (SCR) and vagal tone (HRV), although gentle stroking touch
546 increased heart rate slightly more. Additionally, the medium pressure massage produced greater
547 oxy-Hb concentration changes in the S1 region, in line with the greater perceived stimulation
548 intensity. However, both intranasal and oral OT selectively increased pleasantness ratings for the
549 gentle stroking touch but not medium pressure massage. Consistent with our previous study (Chen
550 et al., 2020b), there were no effects of OT on ratings of intensity, arousal, or willingness to pay,
551 suggesting a specific modulation of hedonic pleasantness, and subjects were unable to guess if the
552 touch/massage was administered by a male or female. Thus, in support of previous suggestions
553 (Walker et al., 2017) OT may be selectively increasing the hedonic pleasure of touch primarily
554 stimulating CT fibers rather than non-CT fiber pressure mechanoreceptors. Furthermore, the
555 effects of both intranasal and oral OT on pleasantness ratings following the gentle stroking touch
556 were correlated with, and mediated by, post-treatment increases in plasma OT concentrations.

557 Consistent with previous studies showing enhanced brain reward effects of intranasal OT
558 during tactile stimulation (e.g. Chen et al., 2020a, 2020b; Scheele et al., 2014), the present study
559 found that both intranasal and oral administration of OT enhanced responses in the bilateral
560 mOFC during gentle stroking touch. Although subjects rated medium pressure massage as more
561 pleasant it is possible that the greater responses to gentle stroking touch in the mOFC and mOFC
562 may reflect not only reward but also interactions with brain regions such as the cingulate cortex

563 and insula which process social salience (see Rolls et al., 2020). Furthermore, both routes of OT
564 administration enhanced pSTS responses to gentle stroking touch. This region is important for
565 both touch and social cognition processing and pSTS responses are predictive of the perceived
566 pleasantness of caress-like skin stroking (Davidovic et al., 2016). The specificity of pSTS
567 responses to social touch is supported by previous observations that tactile stimuli using materials
568 or by some kind of mechanical device did not report activations in this region (Boehme et al.,
569 2019; Chen et al., 2020a, 2020b; Li et al., 2019; Perini and Olausson, 2015). The facilitation of
570 pSTS activity may thus reflect encoding of social components of the CT-targeted gentle stroking
571 touch in line with the reported effects of intranasal and oral OT on social cognition and attention
572 (Le et al., 2020, 2021; Yao et al., 2018; Zhuang et al., 2021, 2022). Interestingly, individuals with
573 autism or higher autistic traits tend to find light social touch as the most aversive (Ujiie and
574 Takahashi, 2022) and this corresponds to reduced responses in both the OFC and STS (Kaiser et
575 al., 2016; Voos et al., 2013).

576 Plotting the time-course of responses in the mOFC and pSTS during gentle-stroking touch
577 following OT treatment revealed that the main treatment effect was to prolong the neural response
578 to the touch rather than the magnitude of the initial response. This may suggest that OT is acting to
579 prolong the duration of the impact of the touch stimulation and possibly therefore facilitatory
580 effects may have been even more pronounced for longer periods of touch. A classification analysis
581 based on time courses revealed that responses in the three regions exhibiting significant changes
582 during gentle-stroking touch (mOFC, lOFC, STS) could significantly discriminate between both
583 the intranasal and oral OT treatment groups and the PLC group (64-70% accuracy). Importantly
584 however, the classification analysis did not find that activation in these three regions could

585 discriminate between the intranasal and oral OT groups, further supporting the conclusion that the
586 two routes of administration produced similar effects.

587 The finding in the current study that intranasal and oral administration of OT produced
588 similar facilitation of behavioral and neural responses to gentle stroking touch provides further
589 support for observations that some effects of exogenous treatment result from increased
590 concentrations in the peripheral vascular system rather than following direct entry into the brain
591 (Yao et al., 2023). One of the major considerations for studies choosing intranasal administration
592 of OT has been from evidence that when administered by this route the peptide can gain direct
593 access to the brain via the olfactory and trigeminal nerves (see Quintana et al., 2021; Yao and
594 Kendrick, 2022). However, intranasal OT also increases concentrations of the peptide in
595 peripheral blood, and accumulating evidence from both animal model and human studies support
596 it having functional effects following administration via routes which only increase peripheral
597 blood concentrations but do not permit direct entry into the brain (i.e. intravenous, intraperitoneal,
598 subcutaneous and oral). Although, the intranasal administration route for OT produced
599 significantly greater initial increases in plasma OT concentrations compared to an oral route in
600 both the present study, and in two previous ones (Kou et al., 2021; Xu et al., 2022), this did not
601 result in significant route-dependent differences, possibly due to the high doses involved. The
602 broadly similar functional effects of intranasal and oral OT in the context of behavioral and neural
603 responses to gentle stroking touch are also consistent with our previous findings for visual
604 attention towards social and non-social stimuli (Zhuang et al., 2022; Xu et al., 2022), although
605 there is also evidence for route-dependent effects of OT on neural and behavioral effects on
606 responses to emotional faces (Kou et al., 2021).

607 The current study does not directly address the precise mechanism(s) whereby peripheral
608 increases in OT concentrations facilitate neural and behavioral responses to gentle stroking touch
609 via activation of CT fibers. However, despite original findings that only very small amounts of
610 intravenously administered OT cross the BBB (Mens et al., 1983; Kendrick et al., 1986), the
611 discovery that it can cross the BBB by binding to RAGE, and that RAGE knock out mice do not
612 show brain and behavioral effects in response to peripherally administered OT (Higashida et al.,
613 2019), has opened up a reconsideration of this route. Thus, observed neural and behavioral effects
614 of OT could be via it entering the brain by crossing the BBB and acting on its receptors in the
615 OFC and pSTS as well as in other associated regions (Quintana et al., 2021). However, it is also
616 possible that the effects of OT on neural and behavioral responses are mediated via stimulation of
617 vagal afferents to the brain via receptors in the heart and gastrointestinal system (Carter, 2014;
618 Carter et al., 2020). In agreement with a previous study (Triscoli et al., 2017) we found that CT-
619 targeted touch increased HRV (reflecting vagal activity) compared with rest. Vagal stimulation
620 can also produce extensive activation in the brain, including in the frontal cortex and STS (Chae et
621 al., 2003; Iseger et al., 2020). Studies have reported that OT can influence both parasympathetic
622 and sympathetic nervous system activity (Kemp et al., 2012; de Oliveira et al., 2012), although in
623 line with some other studies (Martins et al., 2020a; Yao et al., 2023) we did not observe any
624 effects of intranasal or oral OT on SCR, heart rate or HRV during touch stimulation in the present
625 study. Another possibility is that OT might be directly acting of CT fibers in the skin to increase
626 their sensitivity to touch. In rats, OT has been found to exert analgesic effects by influencing OT
627 receptors in cutaneous nociceptive fibers in the dorsal route ganglion (C- and A- δ but not A- β
628 fibers) (González-Hernández et al., 2017). Keratinocytes in the skin also express OT receptors

629 (Baumbauer et al., 2015; Deing et al., 2013) and can modulate responses of sensory neurons to
630 touch (Talagas and Misery, 2019; Noguri et al., 2022). However, in our current study we did not
631 observe any indication that OT increased the sensitivity of CT fibers to touch given that only
632 ratings of pleasantness were affected and not those of intensity. Behavioral and physiological
633 indices of arousal in response to touch were also unaffected. Clearly, further experiments will be
634 needed to help disentangle these different potential routes whereby OT is influencing CT fiber
635 mediated social touch processing.

636 The question of why OT only influences the pleasure of CT fiber and not non-CT fiber
637 mediated touch can also not be resolved in the current study. The touch stimulation protocols used
638 specifically aimed to differentially influence the cutaneous fiber types and subjects were informed
639 that they would receive two types of massage from a professional which varied only in terms of
640 pressure in order to minimize any possible differences in psychological or emotional responses.
641 Indeed, both types of touch were perceived as pleasant and other potential psychological factors
642 such as the perceived gender of the person giving the massage had no influence on the effects of
643 OT. Since, CT fiber and non-CT fiber projections both to and within the brain are dissociable to
644 some extent (Case et al., 2021; Marshall et al., 2019; McGlone et al., 2014) it is possible that the
645 CT fiber projection system has more OT receptors. However, at this point we cannot entirely rule
646 out additional influences of OT on brain regions involved in processing other psychological or
647 emotional responses associated with the experience of social touch.

648 The current study still has some limitations. Firstly, although using the well-established
649 fNIRS technique made it easier to administer touch stimulation and take blood samples during
650 brain activity recording it has inherent limitations in terms of being restricted to measurement of

651 changes in the superficial layers of the cortex and being unable to measure activity in deeper key
652 touch, salience and reward processing regions (McGlone et al., 2012; Pinti et al., 2020). Secondly,
653 applying the gentle stroking touch and medium pressure massage onto subjects' legs for 15 min
654 while they were sitting on a chair in a controlled manner is not as natural as in normal social
655 interactions. Thirdly, we were unable to directly measure the actual pressure applied during the
656 massage although intensity ratings were relatively similar across subjects and a professional
657 masseur was used. Finally, it is possible that more frequent sampling of blood OT concentrations
658 would have revealed increases during the touch and massage conditions.

659 In summary, our findings demonstrate that OT administered either intranasally or orally
660 equivalently enhanced both pleasantness and medial OFC and pSTS responses to gentle stroking
661 touch targeting CT fibers but not to medium pressure massage targeting non-CT fibers. Moreover,
662 the facilitatory effects of OT on pleasantness ratings were significantly mediated by post-treatment
663 changes in plasma OT concentrations. These findings support the conclusion that exogenously
664 administered OT selectively facilitates neural and behavioral responses to stimulation of CT fibers
665 during social touch via peripheral-mediated routes rather than by direct entry into the brain. Touch
666 and massage interventions are increasingly demonstrated to have beneficial effects on brain
667 development and function and it is likely that their effects on OT release and signaling play a
668 major role in this (Li et al., 2022). Our findings demonstrating that OT treatment can facilitate
669 behavioral and brain responses to gentle social touch/massage therefore may have important
670 translational therapeutic implications for using OT-based interventions in individuals with aberrant
671 responses to social touch such as in autism.

672

673 **Acknowledgements**

674 This work was supported by the Key Technological Projects of Guangdong Province (grant
675 number: 2018B030335001). We would like to thank Weihua Zhao, Keshuang Li, and Xi Yang for
676 their technical support.

677 **Declaration of Interests**

678 The authors declare no conflicts of interest.

679 **Data availability**

680 The source data for the Figure 2-6 of this study is publicly available on Open Science Framework
681 (<https://osf.io/cykru/>). The code for the condition decoding analysis (Figure 5 and Figure 5-figure
682 supplement 1) was initially from Emberson et al (2017)
683 (<https://teammcpa.github.io/EmbersonZinszerMCPA/>) and revised for group classification
684 analysis.

685 **Supplementary files**

686 Supplementary File 1: Supplementary Tables 1A through 1D. Table 1A. Treatment effects on
687 mood. Table 1B. Treatment effects on post-treatment plasma OT change (pg/ml). Table 1C.
688 Confounding effects of individual perceived gender on behavioral pleasantness rating scores.
689 Table 1D. Treatment effects on physiological indices.
690

691 **Figure legends**

692 **Figure 1.** The study procedure and layout of fNIRS optodes and channels. **(A)** The study protocol
693 and sequences of the experimental task. A total of 4 blood samples (6 ml for each) were collected
694 for each subject before and after the treatment and after each session to measure OT concentration
695 changes. Subjects completed the positive and negative affective schedule (PANAS) before and
696 after the intranasal/oral OT or PLC treatment. During each touch session, neural responses were
697 acquired using functional near-infrared spectroscopy (fNIRS) measures and physiological
698 measures of autonomic nervous system changes including the skin conductance response - SCR
699 and the electrocardiogram - ECG were recorded as well. Subjects were subsequently asked to rate
700 their mood (PANAS) and subjective experience of the massage/touch including the perceived
701 pleasantness, arousal, intensity, and willingness to payment after each session. **(B)** The array
702 design displayed the locations of the sources (red) and detectors (blue). **(C)** Channels according to
703 the international 10-20 placement system. A 26-channel array consisting of 12 sources and 13
704 detectors were used to record hemodynamic activity of the bilateral lateral orbitofrontal cortex
705 (IOFC: channels 9, 18), medial orbitofrontal cortex (mOFC: channels 12 to 15) and mediolateral
706 orbitofrontal cortex (mIOFC: channels 10, 11, 16, 17), posterior superior temporal sulcus (pSTS:
707 channels 1 to 4, 23 to 26) and the somatosensory area (S1: channels 5 to 8, 19 to 22).

708 **Figure supplement 1.** CONSORT flow diagram.

709 **Figure 2.** Effects of oxytocin on plasma OT concentration changes and behavioral rating scores.

710 **(A)** Post-treatment changes of plasma OT concentrations (compared with pre-treatment baseline).

711 **(B)** Plasma OT concentration changes (compared with pre-treatment baseline) after gentle stroking

712 touch and medium pressure massage following the OT and PLC treatments. Behavioral rating

713 scores of pleasantness, arousal, intensity, and payment willingness following intranasal OT, oral
714 OT and PLC treatments in response to **(C)** gentle stroking touch and **(D)** medium pressure
715 massage. * $p < 0.05$, ** $p < 0.01$, *** $p < 0.001$ between group comparisons.

716 **Figure 3.** Effects of intranasal and oral OT on neural responses to gentle stroking touch. **(A)** Heat
717 brain maps show treatment \times condition interaction effects (F values) on neural activations in each
718 ROI using repeated-measures ANOVAs. **(B)** Averaged oxy-Hb concentration changes in the
719 bilateral IOFC, mOFC, mlOFC, pSTS and S1 (mean \pm SEM) in response to the gentle stroking
720 touch and medium pressure massage in intranasal OT, oral OT and PLC groups. * $p < 0.05$, ** $p <$
721 0.01.

722 **Figure supplement 1.** Activation maps of the channel-by-channel analysis.

723 **Figure 4.** Time courses of oxy-Hb concentration changes in response to medium pressure massage
724 and gentle stroking touch in the bilateral mlOFC, mOFC and pSTS for intranasal OT, oral OT and
725 PLC groups respectively. The dotted gray lines indicate the onset and offset of the stimulation and
726 the shaded areas represent \pm SEM.

727 **Figure 5.** Null distribution for classification accuracies for discriminating intranasal OT versus
728 PLC, oral OT versus PLC, and intranasal versus oral OT groups respectively. Histograms show
729 the distribution of accuracies from permutation tests (permutations = 10000). The red lines
730 indicate the actual accuracy and p values for the actual classification accuracies.

731 **Figure supplement 1.** Illustration of the multivariate analysis method.

732 **Figure 6.** Mediation analyses for intranasal **(A)** and oral **(B)** oxytocin (OT) effects on pleasantness
733 ratings via plasma OT concentrations. Enhanced pleasantness ratings in response to gentle
734 stroking touch following oral and intranasal OT administration were significantly mediated by

735 post-treatment plasma OT concentration changes. † $p = 0.05$, * $p < 0.05$, ** $p < 0.01$, *** $p < 0.001$.

736 **References**

- 737 Baron-Cohen, S., Wheelwright, S., Skinner, R., Martin, J., & Clubley, E. (2001). The Autism-
738 Spectrum Quotient (AQ): Evidence from Asperger Syndrome/High-Functioning Autism,
739 Males and Females, Scientists and Mathematicians. *J. Autism Dev. Disord.* 31(1), 5-17.
- 740 Baranek, G. T., David, F. J., Poe, M. D., Stone, W. L., & Watson, L. R. (2006). Sensory
741 experiences questionnaire: Discriminating sensory features in young children with autism,
742 developmental delays, and typical development. *Journal of Child Psychology and Psychiatry,*
743 47(6), 591-601.
- 744 Baumbauer, K.M., DeBerry, J.J., Adelman, P.C., Miller, R.H., Hachisuka, J., Lee, K.H., Ross, S.E.,
745 Koerber, H.R., Davis, B.M., & Albers, K.M. (2015). Keratinocytes can modulate and directly
746 initiate nociceptive responses. *Elife.* 4, e09674. <https://doi.org/10.7554/eLife.09674>.
- 747 Bartz, J. A., Zaki, J., Bolger, N., & Ochsner, K. N. (2011). Social effects of oxytocin in humans:
748 Context and person matter. *Trends in Cognitive Sciences*, S1364661311000830.
749 <https://doi.org/10.1016/j.tics.2011.05.002>
- 750 Beck, A.T., Steer, R.A., & Brown, G.K., (1996). *Manual for the Beck depression inventory-II.* San
751 Antonio, TX Psychol. Corp.
- 752 Baumbauer, K. M., DeBerry, J. J., Adelman, P. C., Miller, R. H., Hachisuka, J., Lee, K. H., ... &
753 Albers, K. M. (2015). Keratinocytes can modulate and directly initiate nociceptive responses.
754 *Elife*, 4, e09674.
- 755 Bennett, R. H., Bolling, D. Z., Anderson, L. C., Pelphey, K. A., & Kaiser, M. D. (2014). fNIRS
756 detects temporal lobe response to affective touch. *Social Cognitive and Affective*
757 *Neuroscience*, 9(4), 470–476. <https://doi.org/10.1093/scan/nst008>

- 758 Bernstein, D.P., Stein, J.A., Newcomb, M.D., Walker, E., Pogge, D., Ahluvalia, T., Stokes, J.,
759 Handelsman, L., Medrano, M., Desmond, D., & Zule, W., (2003). Development and
760 validation of a brief screening version of the Childhood Trauma Questionnaire. *Child Abuse*
761 *Negl.* 27, 169–190. [https://doi.org/10.1016/s0145-2134\(02\)00541-0](https://doi.org/10.1016/s0145-2134(02)00541-0)
- 762 Björnsdotter, M., Gordon, I., Pelphrey, K. A., Olausson, H., & Kaiser, M. D. (2014). Development
763 of brain mechanisms for processing affective touch. *Frontiers in Behavioral Neuroscience*, 8.
764 <https://doi.org/10.3389/fnbeh.2014.00024>
- 765 Boehme, R., Hauser, S., Gerling, G. J., Heilig, M., & Olausson, H. (2019). Distinction of self-
766 produced touch and social touch at cortical and spinal cord levels. *Proceedings of the*
767 *National Academy of Sciences of the United States of America*, 116(6), 2290–2299.
768 <https://doi.org/10.1073/pnas.1816278116>
- 769 Carter, C. S. (2014). Oxytocin pathways and the evolution of human behavior. *Annual Review of*
770 *Psychology*, 65, 17–39. <https://doi.org/10.1146/annurev-psych-010213-115110>
- 771 Carter, C. S., Kenkel, W. M., MacLean, E. L., Wilson, S. R., Perkeybile, A. M., Yee, J. R., Ferris,
772 C. F., Nazarloo, H. P., Porges, S. W., Davis, J. M., Connelly, J. J., & Kingsbury, M. A. (2020).
773 Is Oxytocin “Nature's Medicine”? *Pharmacological Reviews*, 72(4), 829–861.
774 <https://doi.org/10.1124/pr.120.019398>
- 775 Cascio, C. J., Moana-Filho, E. J., & Guest, S., et al. (2012). Perceptual and neural response to
776 affective tactile texture stimulation in adults with autism spectrum disorders. *Autism*
777 *Research*, 5(4), 231-244.
- 778 Cascio, C. J., Moore, D., & McGlone, F. (2019). Social touch and human development.
779 *Developmental Cognitive Neuroscience*, 35, 5–11. <https://doi.org/10.1016/j.dcn.2018.04.009>

- 780 Case, L. K., Liljencrantz, J., McCall, M. V., Bradson, M., Necaie, A., Tubbs, J., ... & Bushnell, M.
781 C. (2021). Pleasant deep pressure: expanding the social touch hypothesis. *Neuroscience*, 464,
782 3-11.
- 783 Chae, J.-H., Nahas, Z., Lomarev, M., Denslow, S., Lorberbaum, J. P., Bohning, D. E., & George,
784 M. S. (2003). A review of functional neuroimaging studies of vagus nerve stimulation (VNS).
785 *Journal of Psychiatric Research*, 37(6), 443–455. [https://doi.org/10.1016/s0022-](https://doi.org/10.1016/s0022-3956(03)00074-8)
786 3956(03)00074-8
- 787 Cheek, J. M., & Buss, A. H. (1981). Shyness and sociability. *Journal of personality and social*
788 *psychology*, 41(2), 330
- 789 Chen, Y., Becker, B., Zhang, Y., Cui, H., Du, J., Wernicke, J., Montag, C., Kendrick, K. M., &
790 Yao, S. (2020a). Oxytocin increases the pleasantness of affective touch and orbitofrontal
791 cortex activity independent of valence. *European Neuropsychopharmacology: The Journal of*
792 *the European College of Neuropsychopharmacology*, 39, 99–110.
793 <https://doi.org/10.1016/j.euroneuro.2020.08.003>
- 794 Chen, Y., Li, Q., Zhang, Q., Kou, J., Zhang, Y., Cui, H., Wernicke, J., Montag, C., Becker, B.,
795 Kendrick, K. M., & Yao, S. (2020b). The Effects of Intranasal Oxytocin on Neural and
796 Behavioral Responses to Social Touch in the Form of Massage. *Frontiers in Neuroscience*,
797 14, 589878. <https://doi.org/10.3389/fnins.2020.589878>
- 798 Collins, N. L., & Read, S. J. (1990). Adult attachment, working models, and relationship quality in
799 dating couples. *Journal of personality and social psychology*, 58(4), 644.
- 800 Crockford, C., Wittig, R. M., Langergraber, K., Ziegler, T. E., Zuberbühler, K., & Deschner, T.
801 (2013). Urinary oxytocin and social bonding in related and unrelated wild chimpanzees.

- 802 Proceedings. Biological Sciences, 280(1755), 20122765.
- 803 <https://doi.org/10.1098/rspb.2012.2765>
- 804 Croy, I., Luong, A., Triscoli, C., Hofmann, E., Olausson, H., & Sailer, U. (2016). Interpersonal
805 stroking touch is targeted to C tactile afferent activation. Behavioural Brain Research, 297,
806 37–40. <https://doi.org/10.1016/j.bbr.2015.09.038>
- 807 Cruciani, G., Zanini, L., Russo, V., Mirabella, M., Palamoutsi, E.M., & Spitoni, G.F. (2021).
808 Strengths and weaknesses of affective touch studies over the lifetime: A systematic review.
809 Neuroscience and Biobehavioral Reviews, 127, 1-24.
810 <https://doi.org/10.1016/j.neubiorev.2021.04.012>
- 811 Davidovic, M., Jönsson, E. H., Olausson, H., & Björnsdotter, M. (2016). Posterior Superior
812 Temporal Sulcus Responses Predict Perceived Pleasantness of Skin Stroking. Frontiers in
813 Human Neuroscience, 10, 432. <https://doi.org/10.3389/fnhum.2016.00432>
- 814 Deing, V., Roggenkamp, D., Kühnl, J., Gruschka, A., Stäb, F., Wenck, H., ... & Neufang, G.
815 (2013). Oxytocin modulates proliferation and stress responses of human skin cells:
816 implications for atopic dermatitis. Experimental dermatology, 22(6), 399-405.
- 817 de Oliveira, D. C. G., Zuardi, A. W., Graeff, F. G., Queiroz, R. H. C., & Crippa, J. A. S. (2012).
818 Anxiolytic-like effect of oxytocin in the simulated public speaking test. Journal of
819 Psychopharmacology, 26(4), 497–504. <https://doi.org/10.1177/0269881111400642>
- 820 Emberson, L. L., Zinszer, B. D., Raizada, R. D. S., & Aslin, R. N. (2017). Decoding the infant
821 mind: Multivariate pattern analysis (MVPA) using fNIRS. PloS One, 12(4), e0172500.
822 <https://doi.org/10.1371/journal.pone.0172500>
- 823 Field, T. (2010). Touch for socioemotional and physical well-being: A review. Developmental

- 824 Review, 30(4), 367–383. <https://doi.org/10.1016/j.dr.2011.01.001>
- 825 Gaebler, M., Daniels, J. K., Lamke, J.-P., Fydrich, T., & Walter, H. (2013). Heart rate variability
826 and its neural correlates during emotional face processing in social anxiety disorder.
827 *Biological Psychology*, 94(2), 319–330. <https://doi.org/10.1016/j.biopsycho.2013.06.009>
- 828 González-Hernández, A., Manzano-García, A., Martínez-Lorenzana, G., Tello-García, I. A.,
829 Carranza, M., Arámburo, C., & Condés-Lara, M. (2017). Peripheral oxytocin receptors
830 inhibit the nociceptive input signal to spinal dorsal horn wide-dynamic-range neurons. *Pain*,
831 *158*(11), 2117–2128. <https://doi.org/10.1097/j.pain.0000000000001024>
- 832 Gordon, I., Voos, A. C., Bennett, R. H., Bolling, D. Z., Pelphey, K. A., & Kaiser, M. D. (2013).
833 Brain mechanisms for processing affective touch. *Human Brain Mapping*, 34(4), 914–922.
834 <https://doi.org/10.1002/hbm.21480>
- 835 Grewen, K.M., Girdler, S.S., Amico, J., Light, K.C. (2005). Effects of partner support on resting
836 oxytocin, cortisol, norepinephrine, and blood pressure before and after warm partner contact.
837 *Psychosomatic Medicine*. 67(4), 531-8. <https://doi.org/10.1097/01.psy.0000170341.88395.47>
- 838 Hernandez, F. G., Pinti, P., & Tachtsidis, I. (2018). Investigation of typical and atypical functional
839 activation patterns in autism spectrum disorder.
- 840 Higashida, H., Hashii, M., Tanaka, Y., Matsukawa, S., Higuchi, Y., Gabata, R., Tsubomoto, M.,
841 Seishima, N., Teramachi, M., Kamijima, T., Hattori, T., Hori, O., Tsuji, C., Cherepanov, S.
842 M., Shabalova, A. A., Gerasimenko, M., Minami, K., Yokoyama, S., Munesue, S.-I., ...
843 Lopatina, O. (2019). CD38, CD157, and RAGE as Molecular Determinants for Social
844 Behavior. *Cells*, 9(1), 62. <https://doi.org/10.3390/cells9010062>
- 845 Holt-Lunstad, J., Birmingham, W. A., & Light, K. C. (2008). Influence of a "warm touch" support

- 846 enhancement intervention among married couples on ambulatory blood pressure, oxytocin,
847 alpha amylase, and cortisol. *Psychosomatic Medicine*, 70(9), 976–985.
848 <https://doi.org/10.1097/PSY.0b013e318187aef7>
- 849 Hou, X., Zhang, Z., Zhao, C., Duan, L., Gong, Y., Li, Z., & Zhu, C. (2021). NIRS-KIT: A
850 MATLAB toolbox for both resting-state and task fNIRS data analysis. *Neurophotonics*, 8(1),
851 010802. <https://doi.org/10.1117/1.NPh.8.1.010802>
- 852 Iseger, T. A., van Bueren, N. E. R., Kenemans, J. L., Gevirtz, R., & Arns, M. (2020). A frontal-
853 vagal network theory for Major Depressive Disorder: Implications for optimizing
854 neuromodulation techniques. *Brain Stimulation*, 13(1), 1–9.
855 <https://doi.org/10.1016/j.brs.2019.10.006>
- 856 Jones, T., & Glover, L. (2014). Exploring the Psychological Processes Underlying Touch: Lessons
857 from the Alexander Technique: Exploring the Psychological Processes Underlying Touch.
858 *Clinical Psychology & Psychotherapy*, 21(2), 140–153. <https://doi.org/10.1002/cpp.1824>
- 859 Kaiser, M. D., Yang, D. Y.-J., Voos, A. C., Bennett, R. H., Gordon, I., Pretzsch, C., Beam, D.,
860 Keifer, C., Eilbott, J., McGlone, F., & Pelphrey, K. A. (2016). Brain Mechanisms for
861 Processing Affective (and Nonaffective) Touch Are Atypical in Autism. *Cerebral Cortex*
862 (New York, N.Y.: 1991), 26(6), 2705–2714. <https://doi.org/10.1093/cercor/bhv125>
- 863 Kemp, A. H., Quintana, D. S., Kuhnert, R.-L., Griffiths, K., Hickie, I. B., & Guastella, A. J.
864 (2012). Oxytocin increases heart rate variability in humans at rest: Implications for social
865 approach-related motivation and capacity for social engagement. *PloS One*, 7(8), e44014.
866 <https://doi.org/10.1371/journal.pone.0044014>
- 867 Kendrick, K. M., Guastella, A. J., & Becker, B. (2017). Overview of Human Oxytocin Research.

- 868 Current Topics in Behavioral Neurosciences, 35, 321–348.
- 869 https://doi.org/10.1007/7854_2017_19
- 870 Kendrick, K. M., Keverne, E. B., Baldwin, B. A., & Sharman, D. F. (1986). Cerebrospinal fluid
871 levels of acetylcholinesterase, monoamines and oxytocin during labour, parturition,
872 vaginocervical stimulation, lamb separation and suckling in sheep. *Neuroendocrinology*,
873 44(2), 149–156. <https://doi.org/10.1159/000124638>
- 874 Kou, J., Lan, C., Zhang, Y., Wang, Q., Zhou, F., Zhao, Z., Montag, C., Yao, S., Becker, B., &
875 Kendrick, K. M. (2021). In the nose or on the tongue? Contrasting motivational effects of
876 oral and intranasal oxytocin on arousal and reward during social processing. *Translational
877 Psychiatry*, 11(1), 94. <https://doi.org/10.1038/s41398-021-01241-w>
- 878 Kreuder, A.-K., Scheele, D., Wassermann, L., Wollseifer, M., Stoffel-Wagner, B., Lee, M. R.,
879 Hennig, J., Maier, W., & Hurlmann, R. (2017). How the brain codes intimacy: The
880 neurobiological substrates of romantic touch. *Human Brain Mapping*, 38(9), 4525–4534.
881 <https://doi.org/10.1002/hbm.23679>
- 882 Le, J., Kou, J., Zhao, W., Fu, M., Zhang, Y., Becker, B., & Kendrick, K. M. (2020). Oxytocin
883 biases eye-gaze to dynamic and static social images and the eyes of fearful faces:
884 Associations with trait autism. *Translational Psychiatry*, 10(1), 142.
885 <https://doi.org/10.1038/s41398-020-0830-x>
- 886 Le, J., Zhao, W., Kou, J., Fu, M., Zhang, Y., Becker, B., & Kendrick, K. M. (2021). Oxytocin
887 facilitates socially directed attention. *Psychophysiology*, 58(9), e13852.
888 <https://doi.org/10.1111/psyp.13852>
- 889 Lee, M. R., Scheidweiler, K. B., Diao, X. X., Akhlaghi, F., Cummins, A., Huestis, M. A., Leggio,

- 890 L., & Averbeck, B. B. (2018). Oxytocin by intranasal and intravenous routes reaches the
891 cerebrospinal fluid in rhesus macaques: Determination using a novel oxytocin assay.
892 *Molecular Psychiatry*, 23(1), 115–122. <https://doi.org/10.1038/mp.2017.27>
- 893 Lee, M. R., Shnitko, T. A., Blue, S. W., Kaucher, A. V., Winchell, A. J., Erikson, D. W., Grant, K.
894 A., & Leggio, L. (2020). Labeled oxytocin administered via the intranasal route reaches the
895 brain in rhesus macaques. *Nature Communications*, 11(1), 2783.
896 <https://doi.org/10.1038/s41467-020-15942-1>
- 897 Leng, G., & Ludwig, M. (2016). Intranasal Oxytocin: Myths and Delusions. *Biological Psychiatry*,
898 79(3), 243–250. <https://doi.org/10.1016/j.biopsych.2015.05.003>
- 899 Li, Q., Becker, B., Wernicke, J., Chen, Y., Zhang, Y., Li, R., Le, J., Kou, J., Zhao, W., & Kendrick,
900 K. M. (2019). Foot massage evokes oxytocin release and activation of orbitofrontal cortex
901 and superior temporal sulcus. *Psychoneuroendocrinology*, 101, 193–203.
902 <https://doi.org/10.1016/j.psyneuen.2018.11.016>
- 903 Li, Q., Zhao, W., & Kendrick, K.M. (2022) Affective touch in the context of development,
904 oxytocin signaling, and autism. *Frontiers in Psychology*, 13, 967791.
905 <https://doi.org/10.3389/fpsyg.2022.967791>
- 906 Light, K. C., Grewen, K. M., & Amico, J. A. (2005). More frequent partner hugs and higher
907 oxytocin levels are linked to lower blood pressure and heart rate in premenopausal women.
908 *Biological psychology*, 69(1), 5-21.
- 909 Liljencrantz, J., & Olausson, H. (2014). Tactile C fibers and their contributions to pleasant
910 sensations and to tactile allodynia. *Frontiers in Behavioral Neuroscience*, 8, 37.
911 <https://doi.org/10.3389/fnbeh.2014.00037>

- 912 Löken, L. S., Wessberg, J., Morrison, I., McGlone, F., & Olausson, H. (2009). Coding of pleasant
913 touch by unmyelinated afferents in humans. *Nature Neuroscience*, 12(5), 547–548.
914 <https://doi.org/10.1038/nn.2312>
- 915 Long, Y., Zheng, L., Zhao, H., Zhou, S., Zhai, Y., & Lu, C. (2021). Interpersonal Neural
916 Synchronization during Interpersonal Touch Underlies Affiliative Pair Bonding between
917 Romantic Couples. *Cerebral Cortex (New York, N.Y.: 1991)*, 31(3), 1647–1659.
918 <https://doi.org/10.1093/cercor/bhaa316>
- 919 Marshall, A.G., Sharma, M.L., Marley, K., Olausson, H., & McGlone, F.P. (2019). Spinal
920 signalling of C-fiber mediated pleasant touch in humans. *Elife*. 8:e51642.
921 <https://doi.org/10.7554/eLife.51642>.
- 922 Martins, D., Davies, C., De Micheli, A., Oliver, D., Krawczun-Rygmaczewska, A., Fusar-Poli, P.,
923 & Paloyelis, Y. (2020a). Intranasal oxytocin increases heart-rate variability in men at clinical
924 high risk for psychosis: a proof-of-concept study. *Translational Psychiatry*, 10(1), 227.
- 925 Martins, D. A., Mazibuko, N., Zelaya, F., Vasilakopoulou, S., Loveridge, J., Oates, A., Maltezos,
926 S., Mehta, M., Wastling, S., Howard, M., McAlonan, G., Murphy, D., Williams, S. C. R.,
927 Fotopoulou, A., Schuschnig, U., & Paloyelis, Y. (2020b). Effects of route of administration
928 on oxytocin-induced changes in regional cerebral blood flow in humans. *Nature*
929 *Communications*, 11(1), 1160. <https://doi.org/10.1038/s41467-020-14845-5>
- 930 McGlone, F., Olausson, H., Boyle, J. A., Jones-Gotman, M., Dancer, C., Guest, S., & Essick, G.
931 (2012). Touching and feeling: Differences in pleasant touch processing between glabrous and
932 hairy skin in humans. *The European Journal of Neuroscience*, 35(11), 1782–1788.
933 <https://doi.org/10.1111/j.1460-9568.2012.08092.x>

- 934 McGlone, F., Wessberg, J., & Olausson, H. (2014). Discriminative and affective touch: Sensing
935 and feeling. *Neuron*, 82(4), 737–755. <https://doi.org/10.1016/j.neuron.2014.05.001>
- 936 Mens, W. B., Laczi, F., Tonnaer, J. A., de Kloet, E. R., & van Wimersma Greidanus, T. B. (1983).
937 Vasopressin and oxytocin content in cerebrospinal fluid and in various brain areas after
938 administration of histamine and pentylenetetrazol. *Pharmacology, Biochemistry, and*
939 *Behavior*, 19(4), 587–591. [https://doi.org/10.1016/0091-3057\(83\)90332-5](https://doi.org/10.1016/0091-3057(83)90332-5)
- 940 Morhenn, V., Beavin, L. E., & Zak, P. J. (2012). Massage increases oxytocin and reduces
941 adrenocorticotropin hormone in humans. *Alternative Therapies in Health and Medicine*,
942 18(6), 11–18.
- 943 Morrison, I. (2016). ALE meta-analysis reveals dissociable networks for affective and
944 discriminative aspects of touch. *Human Brain Mapping*, 37(4), 1308–1320.
945 <https://doi.org/10.1002/hbm.23103>
- 946 Niendorf, T., Winter, L., & Frauenrath, T. (2012). Electrocardiogram in an MRI environment:
947 clinical needs, practical considerations, safety implications, technical solutions and future
948 directions. *Advances in electrocardiograms—methods and analysis*, 309-324.
- 949 Noguri, T., Hatakeyama, D., Kitahashi, T., Oka, K., & Ito, E. (2022). Profile of dorsal root
950 ganglion neurons: Study of oxytocin expression. *Molecular Brain*, 15(1), 44.
- 951 Okabe, S., Yoshida, M., Takayanagi, Y., & Onaka, T. (2015). Activation of hypothalamic oxytocin
952 neurons following tactile stimuli in rats. *Neuroscience Letters*, 600, 22–27.
953 <https://doi.org/10.1016/j.neulet.2015.05.055>
- 954 Olausson, H., Lamarre, Y., Backlund, H., Morin, C., Wallin, B. G., Starck, G., Ekholm, S., Strigo,
955 I., Worsley, K., Vallbo, A. B., & Bushnell, M. C. (2002). Unmyelinated tactile afferents signal

- 956 touch and project to insular cortex. *Nature Neuroscience*, 5(9), 900–904.
- 957 <https://doi.org/10.1038/nn896>
- 958 Olausson, H., Wessberg, J., Morrison, I., McGlone, F., & Vallbo, A. (2010). The neurophysiology
959 of unmyelinated tactile afferents. *Neuroscience & Biobehavioral Reviews*, 34(2), 185–191.
- 960 <https://doi.org/10.1016/j.neubiorev.2008.09.011>
- 961 Paloyelis, Y., Doyle, O. M., Zelaya, F. O., Maltezos, S., Williams, S. C., Fotopoulou, A., &
962 Howard, M. A. (2016). A Spatiotemporal Profile of In Vivo Cerebral Blood Flow Changes
963 Following Intranasal Oxytocin in Humans. *Biological Psychiatry*, 79(8), 693–705.
- 964 <https://doi.org/10.1016/j.biopsych.2014.10.005>
- 965 Pawling, R., Cannon, P. R., McGlone, F. P., & Walker, S. C. (2017). C-tactile afferent stimulating
966 touch carries a positive affective value. *PloS One*, 12(3), e0173457.
- 967 <https://doi.org/10.1371/journal.pone.0173457>
- 968 Perini, I., Olausson, H., & Morrison, I. (2015). Seeking pleasant touch: Neural correlates of
969 behavioral preferences for skin stroking. *Frontiers in Behavioral Neuroscience*, 9, 8.
- 970 <https://doi.org/10.3389/fnbeh.2015.00008>
- 971 Pinti, P., Tachtsidis, I., Hamilton, A., Hirsch, J., Aichelburg, C., Gilbert, S., & Burgess, P. W.
972 (2020). The present and future use of functional near-infrared spectroscopy (fNIRS) for
973 cognitive neuroscience. *Annals of the New York Academy of Sciences*, 1464(1), 5–29.
- 974 <https://doi.org/10.1111/nyas.13948>
- 975 Portnova, G. V., Proskurnina, E. V., Sokolova, S. V., Skorokhodov, I. V., & Varlamov, A. A.
976 (2020). Perceived pleasantness of gentle touch in healthy individuals is related to salivary
977 oxytocin response and EEG markers of arousal. *Experimental Brain Research*, 238(10),

- 978 2257–2268. <https://doi.org/10.1007/s00221-020-05891-y>
- 979 Quintana, D. S., Lischke, A., Grace, S., Scheele, D., Ma, Y., & Becker, B. (2021). Advances in the
980 field of intranasal oxytocin research: Lessons learned and future directions for clinical
981 research. *Molecular Psychiatry*, 26(1), 80–91. <https://doi.org/10.1038/s41380-020-00864-7>
- 982 Quintana, D. S., Rokicki, J., van der Meer, D., Alnæs, D., Kaufmann, T., Córdova-Palomera, A.,
983 Dieset, I., Andreassen, O. A., & Westlye, L. T. (2019). Oxytocin pathway gene networks in
984 the human brain. *Nature Communications*, 10(1), 668. [https://doi.org/10.1038/s41467-019-](https://doi.org/10.1038/s41467-019-08503-8)
985 08503-8
- 986 Quintana, D. S., Westlye, L. T., Alnæs, D., Rustan, Ø. G., Kaufmann, T., Smerud, K. T.,
987 Mahmoud, R. A., Djupesland, P. G., & Andreassen, O. A. (2016). Low dose intranasal
988 oxytocin delivered with Breath Powered device dampens amygdala response to emotional
989 stimuli: A peripheral effect-controlled within-subjects randomized dose-response fMRI trial.
990 *Psychoneuroendocrinology*, 69, 180–188. <https://doi.org/10.1016/j.psyneuen.2016.04.010>
- 991 Rae, M., Lemos Duarte, M., Gomes, I., Camarini, R., & Devi, L. A. (2022). Oxytocin and
992 vasopressin: Signalling, behavioural modulation and potential therapeutic effects. *British*
993 *Journal of Pharmacology*, 179(8), 1544–1564. <https://doi.org/10.1111/bph.15481>
- 994 Rolls, E. T., Cheng, W., & Feng, J. (2020). The orbitofrontal cortex: Reward, emotion and
995 depression. *Brain Communications*, 2(2), fcaa196.
996 <https://doi.org/10.1093/braincomms/fcaa196>
- 997 Scheele, D., Kendrick, K. M., Khouri, C., Kretzer, E., Schläpfer, T. E., Stoffel-Wagner, B.,
998 Güntürkün, O., Maier, W., & Hurlmann, R. (2014). An oxytocin-induced facilitation of
999 neural and emotional responses to social touch correlates inversely with autism traits.

- 1000 Neuropsychopharmacology, 39(9), 2078–2085. <https://doi.org/10.1038/npp.2014.78>
- 1001 Schoen, S.A., Miller, L.J., & Green, K.E. (2008). Pilot study of the sensory over-responsivity
1002 scales: Assessment and inventory. *Am J Occup Ther.* 62(4), 393-406.
1003 <https://doi.org/10.5014/ajot.62.4.393>
- 1004 Siu, A. M., & Shek, D. T. (2005). Validation of the interpersonal reactivity index in a Chinese
1005 context. *Research on Social Work Practice*, 15(2), 118-126.
- 1006 Spengler, F. B., Schultz, J., Scheele, D., Essel, M., Maier, W., Heinrichs, M., & Hurlemann, R.
1007 (2017). Kinetics and Dose Dependency of Intranasal Oxytocin Effects on Amygdala
1008 Reactivity. *Biological Psychiatry*, 82(12), 885–894.
1009 <https://doi.org/10.1016/j.biopsych.2017.04.015>
- 1010 Spielberger, C. D., Gorsuch, R. L., Lushene, R., Vagg, P. R., & Jacobs, G. A. (1983). Manual for
1011 the State-Trait Anxiety Inventory. Consulting Psychologists Press, Palo Alto (CA).
- 1012 Talagas, M., & Misery, L. (2019). Role of Keratinocytes in Sensitive Skin. *Frontiers in Medicine*.
1013 6, 108. <https://doi.org/10.3389/fmed.2019.00108>
- 1014 Tang, Y., Benusiglio, D., Lefevre, A., Hilfiger, L., Althammer, F., Bludau, A., Hagiwara, D.,
1015 Baudon, A., Darbon, P., Schimmer, J., Kirchner, M. K., Roy, R. K., Wang, S., Eliava, M.,
1016 Wagner, S., Oberhuber, M., Conzelmann, K. K., Schwarz, M., Stern, J. E., ... Grinevich, V.
1017 (2020). Social touch promotes interfemale communication via activation of parvocellular
1018 oxytocin neurons. *Nature Neuroscience*, 23(9), 1125–1137. [https://doi.org/10.1038/s41593-](https://doi.org/10.1038/s41593-020-0674-y)
1019 [020-0674-y](https://doi.org/10.1038/s41593-020-0674-y)
- 1020 Torrubia, R., Avila, C., Moltó, J., & Caseras, X. (2001). The Sensitivity to Punishment and
1021 Sensitivity to Reward Questionnaire (SPSRQ) as a measure of Gray's anxiety and impulsivity

- 1022 dimensions. *Pers. Individ. Differ.* 31(6), 837-862. doi: 10.1016/S0191-8869(00)00183-5
- 1023 Tricoli, C., Croy, I., Steudte-Schmiedgen, S., Olausson, H., & Sailer, U. (2017). Heart rate
1024 variability is enhanced by long-lasting pleasant touch at CT-optimized velocity. *Biological*
1025 *Psychology*, 128, 71–81. <https://doi.org/10.1016/j.biopsycho.2017.07.007>
- 1026 Tsuzuki, D., & Dan, I. (2014). Spatial registration for functional near-infrared spectroscopy: From
1027 channel position on the scalp to cortical location in individual and group analyses.
1028 *NeuroImage*, 85, 92–103. <https://doi.org/10.1016/j.neuroimage.2013.07.025>
- 1029 Ujiie, Y., & Takahashi, K. (2022). Associations between self-reported social touch avoidance,
1030 hypersensitivity, and autistic traits: Results from questionnaire research among typically
1031 developing adults. *Personality and Individual Differences*, 86, 1841111.
1032 <https://doi.org/10.1016/j.paid.2021.111186>
- 1033 Uvnäs-Moberg, K., Handlin, L., & Petersson, M. (2020). Neuroendocrine mechanisms involved in
1034 the physiological effects caused by skin-to-skin contact—With a particular focus on the
1035 oxytocinergic system. *Infant Behavior & Development*, 61, 101482.
1036 <https://doi.org/10.1016/j.infbeh.2020.101482>
- 1037 Uvnäs-Moberg, K., Handlin, L., & Petersson, M. (2015). Self-soothing behaviors with particular
1038 reference to oxytocin release induced by non-noxious sensory stimulation. *Frontiers in*
1039 *Psychology*, 5, 1529. <https://doi.org/10.3389/fpsyg.2014.01529>
- 1040 Vittner, D., McGrath, J., Robinson, J., Lawhon, G., Cusson, R., Eisenfeld, L., Walsh, S., Young,
1041 E., & Cong, X. (2018). Increase in Oxytocin from Skin-to-Skin Contact Enhances
1042 Development of Parent-Infant Relationship. *Biological Research for Nursing*, 20(1), 54–62.
1043 <https://doi.org/10.1177/1099800417735633>

- 1044 Voos, A.C., Pelphrey, K.A., & Kaiser, M.D. (2013) Autistic traits are associated with diminished
1045 neural response to affective touch. *Social Cognitive and Affective Neuroscience*, 8(4), 378-
1046 86. <https://doi.org/10.1093/scan/nss009>.
- 1047 Walker, S. C., Trotter, P. D., Swaney, W. T., Marshall, A., & Mcglone, F. P. (2017). C-tactile
1048 afferents: Cutaneous mediators of oxytocin release during affiliative tactile interactions?
1049 *Neuropeptides*, 64, 27–38. <https://doi.org/10.1016/j.npep.2017.01.001>
- 1050 Watson, D., Clark, L.A., & Tellegen, A. (1988). Development and validation of brief measures of
1051 positive and negative affect: the PANAS scales. *J. Pers. Soc. Psychol.* 54, 1063-1070.
- 1052 Wigton, R., Radua, J., Allen, P., Averbeck, B., Meyer-Lindenberg, A., McGuire, P., Shergill, S. S.,
1053 & Fusar-Poli, P. (2015). Neurophysiological effects of acute oxytocin administration:
1054 Systematic review and meta-analysis of placebo-controlled imaging studies. *Journal of*
1055 *Psychiatry & Neuroscience: JPN*, 40(1), E1-22. <https://doi.org/10.1503/jpn.130289>
- 1056 Wilhelm, F.H., Kochar, A.S., Roth, W.T., & Gross, J.J. (2001). Social anxiety and response to
1057 touch: incongruence between self-evaluative and physiological reactions. *Biol. Psychol.* 58,
1058 181-202.
- 1059 Xu, D., Li, Q., Zhuang, Q., Zhang, Y., Yao, S., Zhao, W., & Kendrick, K. M. (2022). Oro-mucosal
1060 administration of oxytocin using medicated lollipops alters social attention, similar to
1061 intranasal and lingual routes: Implications for therapeutic use. *Frontiers in Neuroscience*, 16,
1062 1022101. <https://doi.org/10.3389/fnins.2022.1022101>
- 1063 Yamamoto, Y., & Higashida, H. (2020). RAGE regulates oxytocin transport into the brain.
1064 *Communications Biology*, 3(1), 70. <https://doi.org/10.1038/s42003-020-0799-2>
- 1065 Yao, S., Becker, B., Zhao, W., Zhao, Z., Kou, J., Ma, X., Geng, Y., Ren, P., & Kendrick, K. M.

- 1066 (2018). Oxytocin Modulates Attention Switching Between Interoceptive Signals and External
1067 Social Cues. *Neuropsychopharmacology*, 43(2), 294–301.
1068 <https://doi.org/10.1038/npp.2017.189>
- 1069 Yao, S., Chen, Y., Zhuang, Q., Zhang, Y., Lan, C., Zhu, S., & Kendrick, K.M. (2023). Molecular
1070 Psychiatry, <https://doi.org/1038/s41380-023-020-02075-2>
- 1071 Yao, S., & Kendrick, K. M. (2022). Effects of Intranasal Administration of Oxytocin and
1072 Vasopressin on Social Cognition and Potential Routes and Mechanisms of Action.
1073 *Pharmaceutics*, 14(2), 323. <https://doi.org/10.3390/pharmaceutics14020323>
- 1074 Zhuang, Q., Zheng, X., Becker, B., Lei, W., Xu, X., & Kendrick, K. M. (2021). Intranasal
1075 vasopressin like oxytocin increases social attention by influencing top-down control, but
1076 additionally enhances bottom-up control. *Psychoneuroendocrinology*, 133, 105412.
1077 <https://doi.org/10.1016/j.psyneuen.2021.105412>
- 1078 Zhuang, Q., Zheng, X., Yao, S., Zhao, W., Becker, B., Xu, X., & Kendrick, K. M. (2022). Oral
1079 Administration of Oxytocin, Like Intranasal Administration, Decreases Top-Down Social
1080 Attention. *The International Journal of Neuropsychopharmacology*, 25(11), 912–923.
1081 <https://doi.org/10.1093/ijnp/pyac059>