

1 **Oxytocin enhances pleasantness and neural responses to CT-**  
2 **fiber-mediated social touch via increased peripheral**  
3 **concentrations**

4  
5 Yuanshu Chen<sup>1</sup>, Haochen Zou<sup>1</sup>, Xin Hou<sup>2</sup>, Chunmei Lan<sup>1</sup>, Jing Wang<sup>3</sup>, Yanan Qing<sup>1</sup>,  
6 Wangjun Chen<sup>1</sup>, Shuxia Yao<sup>1\*</sup> and Keith M Kendrick<sup>1\*</sup>

7  
8  
9 <sup>1</sup>The Clinical Hospital of Chengdu Brain Science Institute, MOE Key Laboratory for  
10 NeuroInformation, Center for Information in Medicine, University of Electronic  
11 Science and Technology of China, Chengdu, Sichuan 611731

12 <sup>2</sup>School of Educational Sciences, Chongqing Normal University, Chongqing, China  
13 401331

14 <sup>3</sup>West China School of Pharmacy, Sichuan University, Chengdu, Sichuan 610041  
15

16 **\*Correspondence:**

17 Keith M. Kendrick (k.kendrick.uestc@gmail.com) and Shuxia Yao  
18 (yaoshuxia@uestc.edu.cn)

19 No. 2006, Xiyuan Ave, West Hi-Tech Zone, Chengdu, Sichuan 611731, China.

20 Phone: +86-28-61830811; Fax: +86-28-61830811

21 **Clinical Trials registration:**

22 The Effects of Oxytocin Treatment on Social Touch; registration ID: NCT05265806;

23 URL: <https://clinicaltrials.gov/ct2/show/NCT05265806>

24 **Abstract**

25 Social touch is pleasurable and thus constitutes a key component of human social relationships.  
26 Intranasal administration of the neuropeptide oxytocin can facilitate the pleasantness of social  
27 touch although it is unclear whether it acts specifically on responses to C-touch or other types of  
28 cutaneous afferent fibers. Additionally, it is unclear whether effects of intranasal oxytocin are  
29 mediated via its direct entry into the brain or indirectly by increased peripheral concentrations. In  
30 a randomized controlled design, we therefore investigated effects of intranasally and orally (only  
31 increases peripheral concentrations) administered oxytocin on behavioral and neural responses to  
32 social touch targeting either C-touch (gentle-stroking touch) or other- (medium pressure massage)  
33 types of cutaneous receptors. Although both types of touch were perceived as pleasant, intranasal  
34 and oral oxytocin only, and equivalently, enhanced pleasantness ratings and neural responses in  
35 reward and touch processing regions to gentle-stroking touch. Plasma oxytocin concentrations also  
36 significantly predicted pleasantness ratings and were associated with brain reward responses.  
37 Together, our findings provide evidence that exogenously administered oxytocin primarily  
38 modulates behavioral and neural responses to C-touch fiber mediated social touch and suggest that  
39 it acts via peripheral-mediated routes.

40

41 **Keywords:** Intranasal oxytocin; Oral oxytocin; Social touch; CT fibers; Orbitofrontal cortex;  
42 Superior temporal sulcus

43

## 44 **Introduction**

45 Social touch, is of great importance for social interactions and individual development and can  
46 promote interpersonal communication (Cascio et al., 2019; Jones et al., 2014). Touch perception is  
47 determined by the stimulation of low-threshold afferent fibers in the skin that innervate distinct  
48 classes of mechanoreceptors. While large myelinated A $\beta$  fibers are densely packed in the  
49 fingertips and lips and subserve discriminative touch, unmyelinated C-touch (CT) fibers exist in  
50 hairy skin and only respond to low force/velocity (caress-like stroking) touch (Croy et al., 2016;  
51 McGlone et al. 2014). The latter fibers are specialized for the affective domain of touch and have  
52 evolved to signal the rewarding value of physical contact (Liljencrantz and Olausson, 2014;  
53 Walker et al., 2017). Stimulation of the CT system selectively engages the insula and brain circuits  
54 involved in reward and social-emotional information processing such as the orbitofrontal cortex  
55 (OFC) and posterior superior temporal sulcus (pSTS) (Björnsdotter et al., 2014; Davidovic et al.,  
56 2016; Gordon et al., 2013; Morrison, 2016; Olausson et al., 2002, 2010). In contrast, medium  
57 pressure massage, which is also perceived as a pleasant form of social touch, activates CT fibers to  
58 some extent but mainly pressure receptors of non-CT fibers (Field, 2010, 2019).

59 The neuropeptide oxytocin (OT) plays a key role in the regulation of social cognition and the  
60 rewarding aspects of social stimuli, including social affective touch (Bartz et al., 2011; Kendrick  
61 et al., 2017; Rae et al., 2021; Wigton et al., 2015). There is a close association between OT and  
62 CT-targeted social touch (Uvnäs-Moberg et al., 2015, 2020; Walker et al., 2017) and studies have  
63 shown that social touch, particularly administered as gentle stroking touch or medium pressure  
64 massage, can activate parvocellular oxytocinergic neurons (Okabe et al., 2015; Tang et al., 2020)  
65 and facilitate endogenous OT release in the saliva, blood or urine across species (Crockford et al.,  
66 2013; Holt-Lunstad et al., 2008; Li et al., 2019; Portnova et al., 2020; Vittner et al., 2018).  
67 Additionally, intranasal administration of OT in humans can modulate processing of social touch  
68 at both behavioral and neural levels. More specifically, intranasal OT enhances the perceived  
69 pleasantness and activity of the reward system and salience network in response to gentle social  
70 touch by a female in men (Scheele et al., 2014), by their partners rather than by an unfamiliar  
71 female (Kreuder et al., 2017), or during foot massage (Chen et al., 2020b). Intranasal OT also  
72 enhances the pleasantness of gentle stroking touch administered indirectly via different materials

73 independent of valence (Chen et al., 2020a). These findings consistently suggest that intranasal  
74 OT can enhance the hedonic properties of social touch. While previous studies have interpreted  
75 findings in terms of OT potentiating the rewarding effect of CT-targeted social touch, it is less  
76 clear whether it does the same for pleasant stimulation of non-CT fiber mechanoreceptors during  
77 medium pressure massage. Foot massage, for example, incorporates both gentle stroking and  
78 medium pressure massage and thus the observed release of OT (Li et al., 2019) and facilitatory  
79 effects of intranasal OT (Chen et al., 2020b) may be contributed by either CT- or non-CT fibers. It  
80 therefore remains unclear which types of cutaneous afferent fibers are primarily involved in the  
81 functional effects of OT on social touch processing.

82 The mechanism(s) whereby intranasal OT produces its functional effects are currently a  
83 matter of debate (see Leng and Ludwig, 2016; Yao and Kendrick, 2022). A number of studies  
84 have established that intranasally administered OT can directly enter the brain via the olfactory  
85 and trigeminal nerves (see Lee et al., 2020; Quintana et al., 2021) and it has been widely assumed  
86 to be the main route whereby OT produces effects on brain and behavior. However, intranasally  
87 administered OT also enters the peripheral circulation after absorption by nasal and oral blood  
88 vessels and may produce functional effects by entering the brain after binding to the receptor for  
89 advanced glycation end products (RAGE) and crossing the blood brain barrier (BBB) (Yamamoto  
90 and Higashida, 2020), or by vagal stimulation following stimulation of its receptors in the heart  
91 and gastrointestinal system (see Carter, 2014; Carter et al., 2020; Yao and Kendrick, 2022).  
92 Support for peripherally-mediated routes have been found in animal model studies reporting  
93 functional effects of OT administered subcutaneously or intraperitoneally (see Yao and Kendrick,  
94 2022) and in a previous study we have shown similar effects of intranasal and oral (lingual) OT on  
95 visual attention and state anxiety (Zhuang et al., 2022). There may however also be some  
96 administration route-dependent functional effects of OT. For example, in monkeys intranasal and  
97 intravenous administration of OT have been reported to produce different patterns of regional  
98 perfusion (Lee et al., 2018), although in humans they produced similar neural effects (Martins et  
99 al., 2020). Another recent study in humans has shown that intranasal and oral (lingual) OT have  
100 different effects on amygdala and putamen responses to emotional faces and on associated arousal  
101 (Kou et al., 2021). Thus, it is unclear whether the reported effects of exogenously administered OT

102 on responses to social touch are mediated via direct entry into the brain or indirectly via increased  
103 concentrations in the peripheral circulation.

104 Against this background, the present study investigated firstly whether intranasal OT  
105 primarily enhanced the pleasantness and associated brain reward responses to touch exclusively  
106 targeting CT-fibers (using gentle stroking touch) or primarily targeting non-CT fiber pressure  
107 mechanoreceptors (medium pressure massage). Secondly, the effects of intranasal OT were  
108 contrasted with those of oral (lingual) OT using the same dose of 24IU to help establish whether  
109 OT was mainly acting via peripherally-mediated routes (see **Figure 1A** for a complete study  
110 procedure). Behavioral responses to different types of touch were recorded using rating scales and  
111 neural responses were acquired using functional near-infrared spectroscopy (fNIRS) measures of  
112 oxygenated-hemoglobin chromophore concentration changes in cortical brain regions involved in  
113 reward (OFC), social cognition (STS) and somatosensory processing (somatosensory cortex - S1)  
114 (**Figure 1B-C**). Additionally, physiological measures of arousal were recorded (skin conductance  
115 response - SCR and the electrocardiogram - ECG) and blood samples were taken for measurement  
116 of OT concentration changes. We hypothesized firstly that intranasal OT would particularly  
117 enhance behavioral and brain reward (OFC) responses to gentle stroking touch targeting the CT-  
118 fiber system in line with previous studies (Chen et al., 2020a; Scheele et al., 2014). Secondly,  
119 based on recent studies comparing effects of intranasal and oral OT (Xu et al., 2022; Zhuang et al.,  
120 2022), we hypothesized that oral OT would have a similar effect to intranasal OT. Thirdly, we  
121 hypothesized that behavioral and neural effects of OT on social touch would be associated with  
122 treatment effects on peripheral plasma concentrations of the peptide, in line with observations in  
123 some previous studies (Martins et al., 2020; Kou et al., 2021).

## 124 **Materials and Methods**

### 125 **Participants**

126 An a priori sample size calculation using  $G^*$  power indicated that 159 participants (number of  
127 groups: 3, and 53 subjects per group) should be sufficient to reliably detect a medium effect size  
128 ( $\alpha = 0.05$ ,  $f = 0.25$ , 80% power). A total of 180 healthy Chinese subjects (90 males,  $21.22 \pm 2.77$   
129 years) participated in the present study. Exclusion criteria consisted of any self-reported

130 psychiatric/physical illness, alcohol/substance abuse, or other major health concern. Self-reported  
131 menstruating information and the luteinizing hormone test were conducted for all female  
132 participants. They were asked to participate in the experiment avoiding the menstruation periods.  
133 All subjects gave written informed consent prior to any study procedures. All experimental  
134 procedures were in accordance with the latest revision of the declaration of Helsinki and approved  
135 by the local ethics committee of the University of Electronic Science and Technology of China  
136 and registered as a clinical trial (NCT05265806). 5 subjects were excluded due to failure to  
137 complete the procedures and 4 subjects were dropped because of technical problems during data  
138 acquisition. Thus data from a final sample of 171 subjects (87 females,  $21.58 \pm 1.94$  years) were  
139 analyzed (intranasal OT: N = 56; oral OT: N = 57; PLC: N = 58) (see **Table 1**).

#### 140 **Blood samples and OT assay**

141 To measure plasma OT concentrations, before and 30 min after intranasal and oral (lingual)  
142 treatments, as well as immediately before/after each session of social touch/massage condition  
143 (see **Figure 1A** for sampling protocol), blood samples (6 ml) were collected into EDTA tubes  
144 from all subjects by venipuncture and were stored after centrifugation at -80 deg C until assays  
145 were performed. Oxytocin concentrations were measured using a commercial ELISA (ENZO,  
146 USA, kit no: ADI-901-153) (see **Supplementary materials**).

#### 147 **Experimental procedure**

148 Participants were first asked to complete Chinese versions of validated questionnaires on  
149 personality, traits, mood, attitude towards interpersonal touch and sensitivity to reward to control  
150 for possible group differences in potential confounders (see **Supplementary materials**).

151 Following completion of the questionnaire assessments, participants were randomly assigned  
152 to receive the oral (lingual) or intranasal administration of OT spray (24 IU; Oxytocin Spray,  
153 Sichuan Defeng Pharmaceutical Co. Ltd, China) or their corresponding placebo (PLC) spray (half  
154 received the PLC intranasally and half orally; identical ingredients except the peptide - i.e.  
155 glycerine and sodium chloride) in a randomized double-blind placebo-controlled between-subject  
156 design. In line with our previous findings that oral and intranasal PLC administration do not  
157 produce different functional effects either at neural or behavioral levels (Kou et al., 2021; Zhuang

158 et al., 2022), there were also no significant differences in pleasantness ratings of the gentle  
159 stroking touch and medium pressure massage between the intranasal and oral PLC groups ( $p >$   
160 0.110). We therefore combined them into a single PLC group. Participants were unable to guess  
161 better than chance whether they had received OT or PLC ( $\chi^2 = 0.43, p = 0.512$ ).

162 In line with previous studies (Paloyelis et al., 2016; Spengler et al., 2017), the task started  
163 approximately 35-40 min after the treatment administration. Neural and physiological responses to  
164 social touch stimulation were measured via simultaneously acquired fNIRS together with SCR and  
165 ECG recording. A professional masseur blinded to the research aim was trained by the  
166 experimenter to administer the different social touch stimuli to the calf of each leg as consistently  
167 as possible. For gentle touch the masseur applied only a light stroking touch at the optimum  
168 velocity for activating CT-fibers (5 cms/s) (Löken et al., 2009). For the massage stimulation  
169 condition the masseur applied a medium pressure massage at the same velocity designed to  
170 primarily target non-CT fibers (Field, 2010, 2019) (see **Supplementary materials**). To reduce the  
171 possibility that subjects might be uncomfortable with receiving gentle stroking touch from a  
172 stranger, subjects were informed that both types of touch stimulation they would receive were  
173 forms of professional massage using different amounts of pressure and that they just needed to be  
174 relaxed and concentrate on how the administered ‘massage’ made them feel. They were further  
175 informed that either a masseur or a masseuse would be randomly assigned by the experimenter to  
176 deliver the ‘massage’, although in fact, they were always given by a same masseur. The paradigm  
177 consisted of two sessions and each session comprised 20 blocks of gentle stroking touch or  
178 medium pressure massage (**Figure 1A**). Each block lasted for 30 s alternated with a rest interval of  
179 15 s. Each session lasted for 15 min with a 15 min rest interval between each.

180 Immediately after each session, subjects completed the PANAS and then answered the  
181 following four questions: (1) How pleasant did you feel the massage? (1 = extremely unpleasant, 9  
182 = extremely pleasant). (2) How much did the massage arouse you? (1 = drowsy and unresponsive,  
183 9 = very arousing). (3) How intense was the massage? (1 = extremely light, 9 = extremely strong)  
184 and (4) How much would you be willing to pay if you had to pay for the applied massage? Please  
185 choose from 1-100 (1 = 1 RMB, 9 = 100 RMB). After the experiment, participants were asked to  
186 guess the gender of the massager to control for possible sex-dependent effects.

## 187 **Physiological data acquisition and analyses**

188 Physiological measures were collected at a sampling rate of 1000 Hz using a Biopac MP150  
189 system (Biopac Systems, Inc.) and recorded using AcqKnowledge (Version 4.4, Biopac Systems  
190 Inc., CA, USA). SCR was recorded using a GSR100C module with two electrodes being placed on  
191 the tips of participant's left index and middle fingers. ECG was recorded using an ECG100C  
192 module with three electrodes (including the ground electrode) placed relatively close to each other  
193 in parallel on the left side of the upper torso (see Niendorf et al., 2012).

194 Physiological data were analyzed using the AcqKnowledge4.4 software following the  
195 manual. To determine different SCR amplitudes in response to the medium pressure massage and  
196 the gentle stroking touch, we computed the mean base-to-peak difference within a 15-s time  
197 window after the stimulation and rest onset. SCR differences were compared across the three  
198 treatment groups for each stimulation condition and rest as well as between the medium pressure  
199 massage and the gentle stroking touch. The raw ECG data was band-pass filtered (range: 0.5-35  
200 Hz; 8000 coefficients) to remove baseline drift and high frequency noise. A template correlation  
201 function was used to transform noisy data manually. Next, we extracted R-R intervals from the  
202 clean ECG which were next imported into Kubios software (<http://kubios.uku.fi>) for HRV  
203 analyses. Based on the reported enhancement effect of acute OT administration on the non-linear  
204 measure of HRV (the detrended fluctuation scaling exponent, DFA $\alpha$ 1) (Kemp et al., 2012), the  
205 DFA $\alpha$ 1 was selected as the index examining OT effects on the autonomic nervous system during  
206 social touch.

## 207 **fNIRS data acquisition and analyses**

208 Hemodynamic response signals were acquired using the NIRSport2 System (NIRx Medical  
209 technologies LLC, Berlin, Germany) operating at two wavelengths (760 and 850 nm) with a  
210 sampling frequency of 6.78 Hz. In line with previous studies (Li et al., 2019; Long et al., 2021  
211 Tsuzuki and Dan, 2014), each optode was placed on the surface of skull according to reference  
212 points on the head (the nasion, inion, left and right ears, top and back of the head) adjusting for  
213 different head size and shapes of different participants. The probe set contains 12 sources and 13  
214 detectors with 3-cm source-detector separation to cover brain regions of interest (ROIs) and allows



215 for 26 different channels to measure the oxyhemoglobin and deoxyhemoglobin concentration  
216 changes. The current study focused on the oxyhemoglobin (oxy-Hb) concentration changes  
217 because of the higher sensitivity to cerebral blood flow changes and better signal-to-noise ratio.  
218 Based on previous studies (e.g., Li et al., 2019; Bennett et al., 2014), 5 regions engaged in touch  
219 processing were selected as a priori ROIs, including the bilateral lateral OFC (lOFC), medial OFC  
220 (mOFC), mediolateral OFC (mLOFC), posterior STS (pSTS) and primary somatosensory cortex  
221 (medial S1). The optodes were placed in accordance with the international 10–20 system and the  
222 lowest lines of the probes were placed at T7 and T8 corresponding to positions of channels 1 and  
223 25, respectively (see **Figure 1B-C**).

224 The fNIRS raw data were analyzed using the NIRS-KIT software which can be used for both  
225 resting-state and task-based fNIRS data analyses (Hou et al., 2021). During preprocessing, raw  
226 optical intensity data were firstly converted to concentration changes of oxy-Hb based on the  
227 modified Beer-Lambert law. A polynomial regression model was then applied to remove linear  
228 detrends from the raw time course. Motion-related artifacts and baseline shifts were removed  
229 using the temporal derivative distribution repair (TDDR) method and an infinite impulse response  
230 (IIR) Butterworth bandpass filter (0.01 to 0.08Hz) was additionally employed to correct for  
231 machinery and physiological noise. On the first level, a generalized linear model (GLM) approach  
232 was applied to model the task-related hemodynamic response with 4 regressors (the medium  
233 pressure massage, the gentle stroking touch, the rest after the massage and the rest after the touch)  
234 in the design matrix. Contrast images for each stimulation condition minus the rest were created  
235 for each participant receiving intranasal/oral OT or PLC treatments. On the second level, beta  
236 estimates obtained from each channel of each participant were extracted and analyzed using SPSS  
237 26 (IBM, Inc).

238 We also employed the representational similarity analysis (RSA) technique to investigate  
239 whether the received treatment of one participant (test subject, leave-one-out method) could be  
240 correctly classified based on their similarity of activation patterns to the mean pattern of subjects  
241 receiving the same treatment (group models except for the test subject each time) (Emberson et al.,  
242 2017; Hernandez et al., 2018). Mean time course of the mOFC, mLOFC and pSTS within the time  
243 window at 5-35 s following the gentle touch stimulation onset was extracted from each participant

244 as input features. The number of correctly labeled subjects were averaged to compute the actual  
245 accuracy for discrimination between the two treatments (intranasal OT vs. PLC, oral OT vs. PLC,  
246 intranasal OT vs. oral OT) (scripts adapted from Emberson et al., 2017; details see Supplementary  
247 **Figure S1**). Permutation-based significance tests via creating a null distribution of treatment labels  
248 (permutations = 10000) were conducted to investigate whether the actual accuracies based on  
249 correct treatment labels significantly differed from those computed from randomly assigned  
250 treatment labels. *P* values for the actual classification accuracies were computed by measuring  
251 what proportion of observed accuracies on the null distribution are equal to or greater than the  
252 actual classification accuracy. Decoding accuracy was also computed for discrimination between  
253 the two stimulation conditions (see **Supplementary materials**).

#### 254 **Statistical analyses**

255 For plasma OT concentration analyses, firstly one-way ANOVA for mean basal concentrations of  
256 plasma OT was conducted to compare group differences. Secondly, one-way ANOVA was  
257 applied for post-treatment OT concentration changes (minus the basal OT concentrations) to  
258 investigate whether OT administration significantly increased plasma OT concentrations  
259 compared with PLC. Finally, treatment effects on changes of plasma OT concentrations after the  
260 gentle stroking touch versus the medium pressure massage were examined by a repeated-measures  
261 ANOVA with treatment (intranasal OT vs. oral OT vs. PLC) as between-subject factor and  
262 stimulation condition (medium pressure massage vs. gentle stroking touch) as within-subject  
263 factor. Effects on behavioral rating scores for pleasantness, arousal, intensity and payment  
264 willingness and physiological indices (HRV and SCR amplitudes) were respectively examined  
265 using repeated-measures ANOVAs with treatment as between-subject factor and stimulation  
266 condition as within-subject factor. All post-hoc analyses were applied with Bonferroni correction  
267 to disentangle significant main effects and interactions. Effect size was calculated using the partial  
268 eta-squared and two tailed *p* values were reported. A repeated-measures ANOVA was employed  
269 to examine OT's effects on massage and touch with treatment as between-subject factor and  
270 stimulation condition and brain region (IOFC vs. mOFC vs. mLOFC vs. pSTS vs. S1) as within-  
271 subject factors. We also performed channel-by-channel repeated-measures ANOVAs to confirm  
272 the ROI-based analysis results (see **Figure S2**). Correlations between OT-induced

273 behavioral/neural effects and blood OT concentration changes were calculated using Spearman  
274 correlation coefficients.

## 275 **Results**

### 276 **Demographics, questionnaire scores and physiological indices**

277 Repeated-measures analyses of variance (ANOVAs) with treatment as between-subject factor  
278 revealed no significant differences between treatment groups ( $p > 0.130$ ) with respect to  
279 demographics and questionnaire scores measuring personality traits and mood (**Table 1** and  
280 **Supplementary materials**). Analyses of ECG and SCR data showed significant main effects of  
281 condition ( $p < 0.001$ ) with increased heart rate variability (HRV), as indexed by the DFA $\alpha$ 1,  
282 induced by the gentle stroking touch compared with the medium pressure massage and higher  
283 SCR amplitude following the medium pressure massage than the gentle touch (see **Table 1** and  
284 **Supplementary materials**). However, there were no effects related to treatment ( $p > 0.380$ ),  
285 suggesting an absence of OT effects on these peripheral physiological responses to social touch.

### 286 **The effects of OT on plasma OT concentration changes**

287 A one-way ANOVA showed no between-group difference in basal plasma OT concentrations taken  
288 prior to the treatment ( $F(2, 168) = 2.39, p = 0.105$ ) (**Table 1**). A one-way ANOVA on increases in  
289 plasma concentrations relative to basal levels revealed a significant main effect of treatment ( $F(2,$   
290  $168) = 26.66, p < 0.001$ ) with higher plasma OT concentration changes at 30 min (before the task)  
291 following intranasal (mean increase =  $6.26 \pm 0.93$  pg/ml,  $p < 0.001$ ) and oral OT treatment (mean  
292 increase =  $2.24 \pm 0.53$  pg/ml,  $p = 0.015$ ) compared with PLC (mean increase =  $-0.31 \pm 0.35$   
293 pg/ml). Plasma OT concentrations following intranasal treatment were also significantly higher  
294 than following oral treatment ( $p < 0.001$ , **Figure 2A**).

295 To investigate changes of plasma OT concentrations after the gentle stroking touch relative to  
296 the medium pressure massage, a repeated-measures ANOVA on plasma OT concentrations  
297 measured after the gentle stroking touch/massage session with treatment as between-subject factor  
298 and condition as within-subject factor revealed a significant main effect of treatment ( $F(2, 168) =$   
299  $14.10, p < 0.001, \eta_p^2 = 0.15$ ) that plasma OT concentrations in the intranasal ( $p < 0.001$ ) and oral

300 OT groups ( $p = 0.004$ ) following the gentle stroking touch and medium pressure massage were  
301 both significantly higher than in the PLC group, whereas no difference was found between  
302 intranasal and oral OT treatment groups ( $p = 0.146$ ). There was also a marginal main effect of  
303 condition ( $F(1, 168) = 3.53, p = 0.062, \eta_p^2 = 0.02$ ), with plasma OT concentrations being higher  
304 following the gentle stroking touch (mean increase:  $2.22 \pm 0.37$  pg/ml) than medium pressure  
305 massage (mean increase:  $1.67 \pm 0.30$  pg/ml). The interaction between treatment and stimulation  
306 condition was not significant ( $F(2, 168) = 1.75, p = 0.178$ ) (**Figure 2B**).

### 307 **The effects of OT on behavioral rating scores**

308 A repeated-measures ANOVA on pleasantness rating scores revealed a significant main effect of  
309 treatment ( $F(2, 168) = 3.76, p = 0.025, \eta_p^2 = 0.04$ ) due to subjects in the OT groups rating both  
310 types of social touch stimulation more pleasant than the PLC group. The main effect of stimulation  
311 condition was also significant ( $F(1, 168) = 58.42, p < 0.001, \eta_p^2 = 0.26$ ), with subjects rating the  
312 medium pressure massage ( $6.87 \pm 0.08$ ) more pleasant than the gentle stroking touch ( $5.95 \pm$   
313  $0.11$ ). Importantly, there was also a significant treatment  $\times$  condition interaction ( $F(2, 168) = 3.23,$   
314  $p = 0.042, \eta_p^2 = 0.04$ ). Post-hoc Bonferroni corrected tests showed that both intranasal OT ( $p =$   
315  $0.006$ ) and oral OT ( $p = 0.044$ ) significantly increased pleasantness ratings of the gentle stroking  
316 touch compared with PLC group (**Figure 2C**), but not for the medium pressure massage ( $ps >$   
317  $0.960$ ) (**Figure 2D**).

318 Analyses of other ratings revealed a significant effect of stimulation condition with subjects  
319 perceiving the medium pressure massage more arousing ( $F(1, 168) = 44.62, p < 0.001, \eta_p^2 = 0.21$ ),  
320 and intense ( $F(1, 168) = 634.83, p < 0.001, \eta_p^2 = 0.79$ ) and being willing to pay more for it ( $F(1,$   
321  $168) = 91.38, p < 0.001, \eta_p^2 = 0.35$ ) than the gentle stroking touch. There were no significant main  
322 effects of treatment or interactions for arousal ( $ps > 0.138$ ) or intensity ( $ps > 0.107$ ) ratings, or  
323 ratings of willingness to pay ( $ps > 0.354$ ). Additional analyses of possible gender and menstrual  
324 cycle-dependent effects revealed no significant effects on pleasantness ratings (gender:  $ps > 0.316,$   
325 menstrual cycle:  $ps > 0.110$ ). Thus, these factors may not confound treatment effects on  
326 pleasantness perception of social touch. Moreover, the perceived gender of the masseur did not  
327 significantly influence the pleasantness ratings in either of the stimulation condition ( $ps > 0.441$ )  
328 or on the effects of OT on increasing pleasantness ratings of gentle stroking touch ( $ps > 0.364$ ; see

329 **Supplementary materials).**

### 330 **The effects of OT on neural responses**

331 To determine effects of OT on neural responses to gentle stroking touch and medium pressure  
332 massage in the a priori ROIs, a repeated-measures ANOVA for oxy-Hb concentration changes was  
333 employed and showed a significant main effect of brain region ( $F(4, 672) = 20.38, p < 0.001, \eta_p^2 =$   
334  $0.11$ ) and significant region  $\times$  treatment ( $F(8, 672) = 2.14, p = 0.031, \eta_p^2 = 0.03$ ) and region  $\times$   
335 condition interactions ( $F(4, 672) = 11.06, p < 0.001, \eta_p^2 = 0.07$ ). Post hoc comparisons showed a  
336 significant oxy-Hb increase in the mOFC following oral OT ( $p = 0.026$ ) and gentle stroking touch  
337 induced greater oxy-Hb concentration changes in the mOFC, mIOFC, and pSTS than the medium  
338 pressure massage ( $ps < 0.05$ ) whereas in the medial S1 greater changes were induced by the  
339 medium pressure massage ( $p = 0.039$ ). Importantly, the three-way condition  $\times$  region  $\times$  treatment  
340 interaction was also significant ( $F(8, 672) = 2.17, p = 0.038, \eta_p^2 = 0.03$ ). Post-hoc Bonferroni  
341 corrected pair-wise comparisons for each ROI revealed that both intranasal and oral OT  
342 significantly enhanced the activity in the bilateral mOFC (intranasal OT:  $p_1 = 0.027$ , oral OT:  $p_2 =$   
343  $0.003$ ), mIOFC (intranasal OT:  $p_1 = 0.005$ , oral OT:  $p_2 = 0.022$ ) and pSTS (intranasal OT:  $p_1 =$   
344  $0.045$ , oral OT:  $p_2 = 0.042$ ) compared with the PLC only in response to gentle stroking touch.  
345 There were no significant treatment effects on neural responses in the IOFC ( $ps > 0.135$ ) and S1  
346 ( $ps > 0.949$ ). For the medium pressure massage, no significant treatment effects were found ( $ps >$   
347  $0.175$ ) (**Figure 3**).

348 Extraction of time courses of oxy-Hb concentration changes showed distinct hemodynamic  
349 patterns in response to medium pressure massage and gentle stroking touch. In comparison with  
350 oxy-Hb concentration showing a convergent tendency across intranasal OT, oral OT and PLC  
351 groups after offset of the massage stimulation, both intranasal and oral OT prolonged the response  
352 in the bilateral mIOFC, mOFC and pSTS to gentle stroking touch (**Figure 4**). We therefore  
353 conducted a classification analysis to determine whether time courses of oxy-Hb concentration  
354 changes can discriminate different groups. Results showed that time courses of the mOFC, mIOFC  
355 and pSTS could achieve a modest level to discriminate between intranasal OT and PLC (mean  
356 accuracy = 70.1%, permutation test  $p < 0.001$ ) and between oral OT and PLC groups (mean  
357 accuracy = 64.3%, permutation test  $p = 0.008$ ). However, the classification accuracy for

358 discriminating between intranasal and oral OT groups was not significantly higher than the  
359 classification accuracy on the null distribution (mean accuracy = 51.3%, permutation test  $p =$   
360 0.494) (see **Figure 5**).

### 361 **Associations between different outcome measures and mediation analyses**

362 Post-treatment OT concentration changes (30 min post-treatment and before task) were found to  
363 be positively correlated with pleasantness rating scores (Spearman's  $\rho = 0.18, p = 0.017$ ) and  
364 oxy-Hb concentration changes in the mIOFC (Spearman's  $\rho = 0.16, p = 0.042$ ) in response to the  
365 gentle stroking touch.

366 Mediation analyses showed that intranasal and oral OT both increased post-treatment plasma  
367 OT concentrations (intranasal OT: path  $a = 6.57, p < 0.001$ ; oral OT: path  $a = 2.55, p = 0.005$ ) and  
368 pleasantness rating scores for gentle stroking touch (intranasal OT: path  $c = 0.79, p = 0.004$ ; oral  
369 OT: path  $c = 0.66, p = 0.015$ ). The plasma OT concentration changes were found to be positively  
370 associated with perceived pleasantness of the gentle stroking touch (intranasal OT: path  $b = 0.06,$   
371  $p = 0.007$ ; oral OT: path  $b = 0.06, p = 0.007$ ) and when included as a mediator in the model,  
372 results although showed no significant direct effects of intranasal and oral OT on the perceived  
373 pleasantness (intranasal OT: path  $c' = 0.39, p = 0.208$ ; oral OT: path  $c' = 0.50, p = 0.054$ ). By  
374 contrast, the results showed that post-treatment plasma OT concentration changes totally mediated  
375 the enhancement effects of intranasal (indirect effect = 0.41, SE = 0.16, 95% CI = [0.10, 0.72],  
376 bootstrap = 5000, **Figure 6A**) and oral OT (indirect effect = 0.16, SE = 0.07, 95% CI = [0.03,  
377 0.31], bootstrap = 5000, **Figure 6B**) on pleasantness ratings. Similar mediation analyses of post-  
378 treatment plasma OT concentration changes and the OFC/pSTS activity in response to gentle  
379 stroking touch revealed no significant results ( $ps > 0.103$ ). Results from the model suggest that  
380 behavioral effects of both intranasally and orally administered OT were primarily mediated by  
381 peripheral changes in plasma OT concentrations following treatments.

### 382 **Discussion**

383 The current study aimed firstly to establish whether effects of OT treatment on enhancing the  
384 perceived pleasantness of social touch were primarily in response to CT-fiber stimulation or that  
385 of non-CT fibers. Our findings that OT only facilitated behavioral and neural responses to gentle

386 stroking touch support the view that it is primarily influencing CT-fiber mediated touch. The  
387 second aim of the study was to establish whether the route of exogenous OT administration is  
388 important. Here findings that similar functional effects of OT were produced after intranasal and  
389 oral administration, and that post-treatment changes in plasma OT concentrations significantly  
390 mediated behavioral effects, support the conclusion that the observed effects were primarily  
391 mediated by peripheral changes.

392 Gentle stroking touch and medium pressure massage were both perceived as pleasant  
393 although the medium pressure massage was rated more pleasant, stronger and more arousing and  
394 subjects were more willing to pay for it, possibly because the latter is closer to the familiar  
395 experience of normal massage. Additionally, the medium pressure massage produced greater oxy-  
396 Hb concentration changes in the S1 region, in line with the greater perceived stimulation intensity.  
397 Both intranasal and oral OT selectively increased pleasantness ratings for the gentle stroking touch  
398 but not medium pressure massage. Consistent with our previous study (Chen et al., 2020b), there  
399 were no effects of OT on ratings of intensity, arousal, or willingness to pay, suggesting a specific  
400 modulation of hedonic pleasantness, and subjects were unable to guess if the touch/massage was  
401 administered by a male or female. Thus, in support of previous suggestions (Walker et al., 2017)  
402 OT may be selectively increasing the hedonic pleasure of touch primarily stimulating CT-fibers  
403 rather than non-CT fiber pressure mechanoreceptors. Furthermore, the effects of both intranasal  
404 and oral OT on pleasantness ratings following the gentle stroking touch were correlated with, and  
405 mediated by, post-treatment increases in plasma OT concentrations.

406 Consistent with previous studies showing enhanced brain reward effects of intranasal OT  
407 during tactile stimulation (e.g. Chen et al., 2020a, 2020b; Scheele et al., 2014), the present study  
408 found that both intranasal and oral administration of OT enhanced responses in the bilateral  
409 mOFC during gentle stroking touch. Although subjects rated medium pressure massage as more  
410 pleasant it is possible that the greater responses to gentle stroking touch in the mOFC and mOFC  
411 may reflect not only reward but also interactions with brain regions such as the cingulate cortex  
412 and insula which process social salience (see Rolls et al., 2020). Furthermore, both routes of OT  
413 administration enhanced pSTS responses to gentle stroking touch. This region is important for  
414 both touch and social cognition processing and pSTS responses are predictive of the perceived



415 pleasantness of caress-like skin stroking (Davidovic et al., 2016). The specificity of pSTS  
416 responses to social touch is supported by previous observations that tactile stimuli using materials  
417 or by some kind of mechanical device did not report activations in this region (Boehme et al.,  
418 2019; Chen et al., 2020a, 2020b; Li et al., 2019; Perini and Olausson, 2015). Their facilitation of  
419 pSTS activity thus may reflect encoding of social components of the CT-targeted gentle stroking  
420 touch and also in line with the reported effects of intranasal and oral OT on social cognition and  
421 attention (Le et al., 2020, 2021; Yao et al., 2018; Zhuang et al., 2021, 2022).

422 Plotting the time-course of responses in the mOFC and pSTS during gentle-stroking touch  
423 following OT treatment revealed that the main treatment effect was to prolong the neural response  
424 to the touch rather than the magnitude of the initial response. This may suggest that OT is acting to  
425 prolong the duration of the impact of the touch stimulation and possibly therefore facilitatory  
426 effects may have been even more pronounced for longer periods of touch. A classification analysis  
427 based on time courses revealed that responses in the three regions exhibiting significant changes  
428 during gentle-stroking touch (mOFC, mlOFC, STS) could significantly discriminate between both  
429 the intranasal and oral OT treatment groups and the PLC group (64-70% accuracy). Importantly,  
430 however the classification analysis did not find that activation in these three regions could  
431 discriminate between the intranasal and oral OT groups, further supporting the conclusion that the  
432 two routes of administration produced similar effects.

433 The finding in the current study that intranasal and oral administration of OT produced  
434 similar facilitation of behavioral and neural responses to gentle stroking touch provides further  
435 support for some effects of exogenous treatment being the result of increased concentrations in the  
436 peripheral vascular system rather than following direct entry into the brain. One of the major  
437 considerations for studies choosing intranasal administration of OT has been from evidence that  
438 the peptide can gain direct access to the brain via the olfactory and trigeminal nerves (see  
439 Quintana et al., 2021; Yao and Kendrick, 2022). However, intranasal OT also increases  
440 concentrations of the peptide in peripheral blood, and accumulating evidence from both animal  
441 model and human studies support it having functional effects following administration via routes  
442 which only increase peripheral blood concentrations but do not permit direct entry into the brain  
443 (i.e. intravenous, intraperitoneal, subcutaneous and oral). Although, the intranasal administration



444 route for OT produced significantly greater initial increases in plasma OT concentrations  
445 compared to an oral route in both the present study, and in two previous ones (Kou et al., 2021;  
446 Xu et al., 2022), this did not result in significant route-dependent differences, possibly due to the  
447 high doses involved. The broadly similar functional effects of intranasal and oral OT in the  
448 context of behavioral and neural responses to gentle stroking touch are also consistent with our  
449 previous findings for visual attention towards social and non-social stimuli (Zhuang et al., 2022;  
450 Xu et al., 2022), although there is also evidence for route-dependent effects of OT on neural and  
451 behavioral effects on responses to emotional faces (Kou et al., 2021).

452 The current study does not directly address the precise mechanism(s) whereby peripheral  
453 increases in OT concentrations facilitate neural and behavioral responses to gentle stroking touch  
454 via activation of CT-fibers. However, despite original findings that only very small amounts of  
455 intravenously administered OT cross the BBB (Mens et al., 1983; Kendrick et al., 1986), the  
456 discovery that it can cross the BBB by binding to RAGE, and that RAGE knock out mice do not  
457 show brain and behavioral effects in response to peripherally administered OT (Higashida et al.,  
458 2019), has opened up a reconsideration of this route. Thus, observed neural and behavioral effects  
459 of OT could be via it entering the brain by crossing the BBB and acting on its receptors in the  
460 OFC and pSTS as well as in other associated regions (Quintana et al., 2021). However, it is also  
461 possible that the effects of OT on neural and behavioral responses are mediated via it stimulating  
462 vagal afferents to the brain via receptors in the heart and gastrointestinal system (Carter, 2014;  
463 Carter et al., 2020). For example, CT-targeted touch can produce heart rate deceleration and  
464 increased HRV (reflecting the vagal activity) and these changes positively correlate with  
465 pleasantness ratings (Field et al., 2019; Tricoli et al., 2017). Vagal stimulation can also produce  
466 extensive activation in the brain, including in the frontal cortex and STS (Chae et al., 2003; Iseger  
467 et al., 2020). Studies have reported that OT can influence both parasympathetic and sympathetic  
468 nervous system activity (Kemp et al., 2012; de Oliveira et al., 2012), although we did not observe  
469 any effects of intranasal or oral OT on HRV in the present study. Another possibility is that OT  
470 might be directly acting of CT-fibers in the skin to increase their sensitivity to touch. In rats, OT  
471 has been found to exert analgesic effects by influencing OT receptors in cutaneous nociceptive  
472 fibers (C- and A- $\delta$  but not A- $\beta$  fibers) (González-Hernández et al., 2017). However, in our current

473 study we did not observe any indication that OT increased the sensitivity of CT-fibers given that  
474 only ratings of pleasantness were affected and not those of intensity or arousal. Clearly, further  
475 experiments will be needed to help disentangle these different potential routes whereby OT is  
476 influencing CT-fiber mediated social touch processing.

477 The current study still has some limitations. Firstly, although using the well-established  
478 fNIRS technique made it easier to administer touch stimulation and take blood samples during  
479 brain activity recording it has inherent limitations in terms of being restricted to measurement of  
480 changes in the superficial layers of the cortex and being unable to measure activity in deeper key  
481 touch, salience and reward processing regions (McGlone et al., 2012; Pinti et al., 2020). Secondly,  
482 applying the gentle stroking touch and medium pressure massage onto subjects' legs for 15 min  
483 while they were sitting on a chair in a controlled manner is not as natural as in normal  
484 circumstances. Thirdly, we were unable to directly measure the actual pressure applied during the  
485 massage although intensity ratings were relatively similar across subjects and a professional  
486 masseur was used. Finally, it is possible that more frequent sampling of blood OT concentrations  
487 would have revealed increases during the touch and massage conditions.

488 In summary, our findings demonstrate that OT administered either intranasally or orally  
489 equivalently enhanced both pleasantness and medial OFC and pSTS responses to gentle stroking  
490 touch targeting CT-fibers but not to medium pressure massage targeting non-CT fibers. Moreover,  
491 the facilitatory effects of OT on pleasantness ratings were significantly mediated by post-treatment  
492 changes in plasma OT concentrations. These findings support the conclusion that exogenously  
493 administered OT can selectively facilitates neural and behavioral responses to stimulation of CT-  
494 fibers during social touch via peripheral-mediated routes. Our findings have important  
495 translational therapeutic implications for OT-based interventions in individuals with aberrant  
496 responses to social touch such as in autism.

497

498 **Acknowledgements**

499 We would like to thank Weihua Zhao, Keshuang Li, and Xi Yang for their technical support. This  
500 work was supported by the Key Technological Projects of Guangdong Province (grant number:  
501 2018B030335001).

502

503

504 **Author contributions**

505 YC, SY, and KK designed the study. YC, CZ, and JC conducted the experiment. YC, JW, CL, and  
506 YQ performed the plasma OT concentration analyses. YC, XH, and SY analyzed the data. YC  
507 wrote the original draft. YC, SY, and KK critically revised the draft.

508

509

510 **Declaration of Interests**

511 The authors declare no conflicts of interest.

512

513 **Figure legends**

514 **Figure 1.** The study procedure and layout of fNIRS optodes and channels. **(A)** The study protocol  
515 and sequences of the experimental task. Subjects completed the positive and negative affective  
516 schedule (PANAS) before and after the intranasal/oral OT or PLC treatment and additionally after  
517 each session. Blood samples (6 ml) were collected for each subject before and after the treatment  
518 and after each session. Subjects were asked to rate their subjective experience of the  
519 massage/touch including the perceived pleasantness, arousal, intensity, and willingness to payment  
520 after each session. **(B)** The array design displayed the locations of the sources (red) and detectors  
521 (blue). **(C)** Channels according to the international 10-20 placement system. A 26-channel array  
522 consisting of 12 sources and 13 detectors were used to record hemodynamic activity of the  
523 bilateral lateral orbitofrontal cortex (lOFC: channels 9, 18), medial orbitofrontal cortex (mOFC:  
524 channels 12 to 15) and mediolateral orbitofrontal cortex (mlOFC: channels 10, 11, 16, 17),  
525 posterior superior temporal sulcus (pSTS: channels 1 to 4, 23 to 26) and the somatosensory area  
526 (S1: channels 5 to 8, 19 to 22).

527 **Figure 2.** Effects of oxytocin on plasma OT concentration changes and behavioral rating scores.  
528 **(A)** Post-treatment changes of plasma OT concentrations (compared with pre-treatment baseline).  
529 **(B)** Plasma OT concentration changes (compared with pre-treatment baseline) after gentle stroking  
530 touch and medium pressure massage following the OT and PLC treatments. Behavioral rating  
531 scores of pleasantness, arousal, intensity, and payment willingness following intranasal OT, oral  
532 OT and PLC treatments in response to **(C)** gentle stroking touch and **(D)** medium pressure  
533 massage. \* $p < 0.05$ , \*\* $p < 0.01$ , \*\*\* $p < 0.001$  between group comparisons.

534 **Figure 3.** Effects of intranasal and oral OT on neural responses to gentle stroking touch. **(A)** Heat  
535 brain maps show treatment  $\times$  condition interaction effects (F values) on neural activations in each  
536 ROI using repeated-measures ANOVAs. **(B)** Averaged oxy-Hb concentration changes in the  
537 bilateral lOFC, mOFC, mlOFC, pSTS and S1 (mean  $\pm$  SEM) in response to the gentle stroking  
538 touch and medium pressure massage in intranasal OT, oral OT and PLC groups. \* $p < 0.05$ , \*\* $p <$   
539 0.01.

540 **Figure 4.** Time courses of oxy-Hb concentration changes in response to medium pressure massage  
541 and gentle stroking touch in the bilateral mlOFC, mOFC and pSTS for intranasal OT, oral OT and

542 PLC groups respectively. The dotted gray lines indicate the onset and offset of the stimulation and  
543 the shaded areas represent  $\pm$  SEM.

544 **Figure 5.** Null distribution for classification accuracies for discriminating intranasal OT versus  
545 PLC, oral OT versus PLC, and intranasal versus oral OT groups respectively. Histograms show  
546 the distribution of accuracies from permutation tests (permutations = 10000). The red lines  
547 indicate the actual accuracy and  $p$  values for the actual classification accuracies.

548 **Figure 6.** Mediation analyses for intranasal (**A**) and oral (**B**) oxytocin (OT) effects on pleasantness  
549 ratings via plasma OT concentrations. Enhanced pleasantness ratings in response to gentle  
550 stroking touch following oral and intranasal OT administration were significantly mediated by  
551 post-treatment plasma OT concentration changes.  $\dagger p = 0.05$ ,  $*p < 0.05$ ,  $**p < 0.01$ ,  $***p < 0.001$ .  
552

553 **References**

- 554 Bartz, J. A., Zaki, J., Bolger, N., & Ochsner, K. N. (2011). Social effects of oxytocin in humans:  
555 Context and person matter. *Trends in Cognitive Sciences*, S1364661311000830.  
556 <https://doi.org/10.1016/j.tics.2011.05.002>
- 557 Bennett, R. H., Bolling, D. Z., Anderson, L. C., Pelphrey, K. A., & Kaiser, M. D. (2014). fNIRS  
558 detects temporal lobe response to affective touch. *Social Cognitive and Affective*  
559 *Neuroscience*, 9(4), 470–476. <https://doi.org/10.1093/scan/nst008>
- 560 Björnsdotter, M., Gordon, I., Pelphrey, K. A., Olausson, H., & Kaiser, M. D. (2014). Development  
561 of brain mechanisms for processing affective touch. *Frontiers in Behavioral Neuroscience*, 8.  
562 <https://doi.org/10.3389/fnbeh.2014.00024>
- 563 Boehme, R., Hauser, S., Gerling, G. J., Heilig, M., & Olausson, H. (2019). Distinction of self-  
564 produced touch and social touch at cortical and spinal cord levels. *Proceedings of the*  
565 *National Academy of Sciences of the United States of America*, 116(6), 2290–2299.  
566 <https://doi.org/10.1073/pnas.1816278116>
- 567 Carter, C. S. (2014). Oxytocin pathways and the evolution of human behavior. *Annual Review of*  
568 *Psychology*, 65, 17–39. <https://doi.org/10.1146/annurev-psych-010213-115110>
- 569 Carter, C. S., Kenkel, W. M., MacLean, E. L., Wilson, S. R., Perkeybile, A. M., Yee, J. R., Ferris,  
570 C. F., Nazarloo, H. P., Porges, S. W., Davis, J. M., Connelly, J. J., & Kingsbury, M. A. (2020).  
571 Is Oxytocin “Nature’s Medicine”? *Pharmacological Reviews*, 72(4), 829–861.  
572 <https://doi.org/10.1124/pr.120.019398>
- 573 Cascio, C. J., Moore, D., & McGlone, F. (2019). Social touch and human development.  
574 *Developmental Cognitive Neuroscience*, 35, 5–11. <https://doi.org/10.1016/j.dcn.2018.04.009>
- 575 Chae, J.-H., Nahas, Z., Lomarev, M., Denslow, S., Lorberbaum, J. P., Bohning, D. E., & George,  
576 M. S. (2003). A review of functional neuroimaging studies of vagus nerve stimulation (VNS).  
577 *Journal of Psychiatric Research*, 37(6), 443–455. [https://doi.org/10.1016/s0022-](https://doi.org/10.1016/s0022-3956(03)00074-8)  
578 [3956\(03\)00074-8](https://doi.org/10.1016/s0022-3956(03)00074-8)
- 579 Chen, Y., Becker, B., Zhang, Y., Cui, H., Du, J., Wernicke, J., Montag, C., Kendrick, K. M., &  
580 Yao, S. (2020a). Oxytocin increases the pleasantness of affective touch and orbitofrontal  
581 cortex activity independent of valence. *European Neuropsychopharmacology: The Journal*

582 of the European College of Neuropsychopharmacology, 39, 99–110.  
583 <https://doi.org/10.1016/j.euroneuro.2020.08.003>  
584 Chen, Y., Li, Q., Zhang, Q., Kou, J., Zhang, Y., Cui, H., Wernicke, J., Montag, C., Becker, B.,  
585 Kendrick, K. M., & Yao, S. (2020b). The Effects of Intranasal Oxytocin on Neural and  
586 Behavioral Responses to Social Touch in the Form of Massage. *Frontiers in Neuroscience*,  
587 14, 589878. <https://doi.org/10.3389/fnins.2020.589878>  
588 Crockford, C., Wittig, R. M., Langergraber, K., Ziegler, T. E., Zuberbühler, K., & Deschner, T.  
589 (2013). Urinary oxytocin and social bonding in related and unrelated wild chimpanzees.  
590 *Proceedings. Biological Sciences*, 280(1755), 20122765.  
591 <https://doi.org/10.1098/rspb.2012.2765>  
592 Croy, I., Luong, A., Tricoli, C., Hofmann, E., Olausson, H., & Sailer, U. (2016). Interpersonal  
593 stroking touch is targeted to C tactile afferent activation. *Behavioural Brain Research*, 297,  
594 37–40. <https://doi.org/10.1016/j.bbr.2015.09.038>  
595 Davidovic, M., Jönsson, E. H., Olausson, H., & Björnsdotter, M. (2016). Posterior Superior  
596 Temporal Sulcus Responses Predict Perceived Pleasantness of Skin Stroking. *Frontiers in*  
597 *Human Neuroscience*, 10, 432. <https://doi.org/10.3389/fnhum.2016.00432>  
598 de Oliveira, D. C. G., Zuardi, A. W., Graeff, F. G., Queiroz, R. H. C., & Crippa, J. A. S. (2012).  
599 Anxiolytic-like effect of oxytocin in the simulated public speaking test. *Journal of*  
600 *Psychopharmacology (Oxford, England)*, 26(4), 497–504.  
601 <https://doi.org/10.1177/0269881111400642>  
602 Emberson, L. L., Zinszer, B. D., Raizada, R. D. S., & Aslin, R. N. (2017). Decoding the infant  
603 mind: Multivariate pattern analysis (MVPA) using fNIRS. *PloS One*, 12(4), e0172500.  
604 <https://doi.org/10.1371/journal.pone.0172500>  
605 Field, T. (2010). Touch for socioemotional and physical well-being: A review. *Developmental*  
606 *Review*, 30(4), 367–383. <https://doi.org/10.1016/j.dr.2011.01.001>  
607 Field, T. (2019). Pediatric Massage Therapy Research: A Narrative Review. *Children (Basel,*  
608 *Switzerland)*, 6(6), 78. <https://doi.org/10.3390/children6060078>  
609 Gaebler, M., Daniels, J. K., Lamke, J.-P., Fydrich, T., & Walter, H. (2013). Heart rate variability  
610 and its neural correlates during emotional face processing in social anxiety disorder.

- 611 Biological Psychology, 94(2), 319–330. <https://doi.org/10.1016/j.biopsycho.2013.06.009>
- 612 González-Hernández, A., Manzano-García, A., Martínez-Lorenzana, G., Tello-García, I. A.,  
613 Carranza, M., Arámburo, C., & Condés-Lara, M. (2017). Peripheral oxytocin receptors  
614 inhibit the nociceptive input signal to spinal dorsal horn wide-dynamic-range neurons. *Pain*,  
615 158(11), 2117–2128. <https://doi.org/10.1097/j.pain.0000000000001024>
- 616 Gordon, I., Voos, A. C., Bennett, R. H., Bolling, D. Z., Pelphrey, K. A., & Kaiser, M. D. (2013).  
617 Brain mechanisms for processing affective touch. *Human Brain Mapping*, 34(4), 914–922.  
618 <https://doi.org/10.1002/hbm.21480>
- 619 Hernandez, F. G., Pinti, P., & Tachtsidis, I. (2018). Investigation of typical and atypical functional  
620 activation patterns in autism spectrum disorder.
- 621 Higashida, H., Hashii, M., Tanaka, Y., Matsukawa, S., Higuchi, Y., Gabata, R., Tsubomoto, M.,  
622 Seishima, N., Teramachi, M., Kamijima, T., Hattori, T., Hori, O., Tsuji, C., Cherepanov, S.  
623 M., Shabalova, A. A., Gerasimenko, M., Minami, K., Yokoyama, S., Munesue, S.-I., ...  
624 Lopatina, O. (2019). CD38, CD157, and RAGE as Molecular Determinants for Social  
625 Behavior. *Cells*, 9(1), 62. <https://doi.org/10.3390/cells9010062>
- 626 Holt-Lunstad, J., Birmingham, W. A., & Light, K. C. (2008). Influence of a "warm touch" support  
627 enhancement intervention among married couples on ambulatory blood pressure, oxytocin,  
628 alpha amylase, and cortisol. *Psychosomatic Medicine*, 70(9), 976–985.  
629 <https://doi.org/10.1097/PSY.0b013e318187aef7>
- 630 Hou, X., Zhang, Z., Zhao, C., Duan, L., Gong, Y., Li, Z., & Zhu, C. (2021). NIRS-KIT: A  
631 MATLAB toolbox for both resting-state and task fNIRS data analysis. *Neurophotonics*, 8(1),  
632 010802. <https://doi.org/10.1117/1.NPh.8.1.010802>
- 633 Iseger, T. A., van Bueren, N. E. R., Kenemans, J. L., Gevirtz, R., & Arns, M. (2020). A frontal-  
634 vagal network theory for Major Depressive Disorder: Implications for optimizing  
635 neuromodulation techniques. *Brain Stimulation*, 13(1), 1–9.  
636 <https://doi.org/10.1016/j.brs.2019.10.006>
- 637 Jones, T., & Glover, L. (2014). Exploring the Psychological Processes Underlying Touch: Lessons  
638 from the Alexander Technique: Exploring the Psychological Processes Underlying Touch.  
639 *Clinical Psychology & Psychotherapy*, 21(2), 140–153. <https://doi.org/10.1002/cpp.1824>



- 640 Kaiser, M. D., Yang, D. Y.-J., Voos, A. C., Bennett, R. H., Gordon, I., Pretzsch, C., Beam, D.,  
641 Keifer, C., Eilbott, J., McGlone, F., & Pelphrey, K. A. (2016). Brain Mechanisms for  
642 Processing Affective (and Nonaffective) Touch Are Atypical in Autism. *Cerebral Cortex*  
643 (New York, N.Y.: 1991), 26(6), 2705–2714. <https://doi.org/10.1093/cercor/bhv125>
- 644 Kemp, A. H., Quintana, D. S., Kuhnert, R.-L., Griffiths, K., Hickie, I. B., & Guastella, A. J.  
645 (2012). Oxytocin increases heart rate variability in humans at rest: Implications for social  
646 approach-related motivation and capacity for social engagement. *PloS One*, 7(8), e44014.  
647 <https://doi.org/10.1371/journal.pone.0044014>
- 648 Kendrick, K. M., Guastella, A. J., & Becker, B. (2017). Overview of Human Oxytocin Research.  
649 *Current Topics in Behavioral Neurosciences*, 35, 321–348.  
650 [https://doi.org/10.1007/7854\\_2017\\_19](https://doi.org/10.1007/7854_2017_19)
- 651 Kendrick, K. M., Keverne, E. B., Baldwin, B. A., & Sharman, D. F. (1986). Cerebrospinal fluid  
652 levels of acetylcholinesterase, monoamines and oxytocin during labour, parturition,  
653 vaginocervical stimulation, lamb separation and suckling in sheep. *Neuroendocrinology*,  
654 44(2), 149–156. <https://doi.org/10.1159/000124638>
- 655 Kou, J., Lan, C., Zhang, Y., Wang, Q., Zhou, F., Zhao, Z., Montag, C., Yao, S., Becker, B., &  
656 Kendrick, K. M. (2021). In the nose or on the tongue? Contrasting motivational effects of  
657 oral and intranasal oxytocin on arousal and reward during social processing. *Translational*  
658 *Psychiatry*, 11(1), 94. <https://doi.org/10.1038/s41398-021-01241-w>
- 659 Kreuder, A.-K., Scheele, D., Wassermann, L., Wollseifer, M., Stoffel-Wagner, B., Lee, M. R.,  
660 Hennig, J., Maier, W., & Hurlmann, R. (2017). How the brain codes intimacy: The  
661 neurobiological substrates of romantic touch. *Human Brain Mapping*, 38(9), 4525–4534.  
662 <https://doi.org/10.1002/hbm.23679>
- 663 Le, J., Kou, J., Zhao, W., Fu, M., Zhang, Y., Becker, B., & Kendrick, K. M. (2020). Oxytocin  
664 biases eye-gaze to dynamic and static social images and the eyes of fearful faces:  
665 Associations with trait autism. *Translational Psychiatry*, 10(1), 142.  
666 <https://doi.org/10.1038/s41398-020-0830-x>
- 667 Le, J., Zhao, W., Kou, J., Fu, M., Zhang, Y., Becker, B., & Kendrick, K. M. (2021). Oxytocin  
668 facilitates socially directed attention. *Psychophysiology*, 58(9), e13852.

- 669 <https://doi.org/10.1111/psyp.13852>
- 670 Lee, M. R., Scheidweiler, K. B., Diao, X. X., Akhlaghi, F., Cummins, A., Huestis, M. A., Leggio,  
671 L., & Aeverbeck, B. B. (2018). Oxytocin by intranasal and intravenous routes reaches the  
672 cerebrospinal fluid in rhesus macaques: Determination using a novel oxytocin assay.  
673 *Molecular Psychiatry*, 23(1), 115–122. <https://doi.org/10.1038/mp.2017.27>
- 674 Lee, M. R., Shnitko, T. A., Blue, S. W., Kaucher, A. V., Winchell, A. J., Erikson, D. W., Grant, K.  
675 A., & Leggio, L. (2020). Labeled oxytocin administered via the intranasal route reaches the  
676 brain in rhesus macaques. *Nature Communications*, 11(1), 2783.  
677 <https://doi.org/10.1038/s41467-020-15942-1>
- 678 Leng, G., & Ludwig, M. (2016). Intranasal Oxytocin: Myths and Delusions. *Biological Psychiatry*,  
679 79(3), 243–250. <https://doi.org/10.1016/j.biopsych.2015.05.003>
- 680 Li, Q., Becker, B., Wernicke, J., Chen, Y., Zhang, Y., Li, R., Le, J., Kou, J., Zhao, W., & Kendrick,  
681 K. M. (2019). Foot massage evokes oxytocin release and activation of orbitofrontal cortex  
682 and superior temporal sulcus. *Psychoneuroendocrinology*, 101, 193–203.  
683 <https://doi.org/10.1016/j.psyneuen.2018.11.016>
- 684 Liljencrantz, J., & Olausson, H. (2014). Tactile C fibers and their contributions to pleasant  
685 sensations and to tactile allodynia. *Frontiers in Behavioral Neuroscience*, 8, 37.  
686 <https://doi.org/10.3389/fnbeh.2014.00037>
- 687 Löken, L. S., Wessberg, J., Morrison, I., McGlone, F., & Olausson, H. (2009). Coding of pleasant  
688 touch by unmyelinated afferents in humans. *Nature Neuroscience*, 12(5), 547–548.  
689 <https://doi.org/10.1038/nn.2312>
- 690 Long, Y., Zheng, L., Zhao, H., Zhou, S., Zhai, Y., & Lu, C. (2021). Interpersonal Neural  
691 Synchronization during Interpersonal Touch Underlies Affiliative Pair Bonding between  
692 Romantic Couples. *Cerebral Cortex (New York, N.Y.: 1991)*, 31(3), 1647–1659.  
693 <https://doi.org/10.1093/cercor/bhaa316>
- 694 Martins, D. A., Mazibuko, N., Zelaya, F., Vasilakopoulou, S., Loveridge, J., Oates, A., Maltezos,  
695 S., Mehta, M., Wastling, S., Howard, M., McAlonan, G., Murphy, D., Williams, S. C. R.,  
696 Fotopoulou, A., Schuschnig, U., & Paloyelis, Y. (2020). Effects of route of administration on  
697 oxytocin-induced changes in regional cerebral blood flow in humans. *Nature*

- 698 Communications, 11(1), 1160. <https://doi.org/10.1038/s41467-020-14845-5>
- 699 McGlone, F., Olausson, H., Boyle, J. A., Jones-Gotman, M., Dancer, C., Guest, S., & Essick, G.  
700 (2012). Touching and feeling: Differences in pleasant touch processing between glabrous and  
701 hairy skin in humans. *The European Journal of Neuroscience*, 35(11), 1782–1788.  
702 <https://doi.org/10.1111/j.1460-9568.2012.08092.x>
- 703 McGlone, F., Wessberg, J., & Olausson, H. (2014). Discriminative and affective touch: Sensing  
704 and feeling. *Neuron*, 82(4), 737–755. <https://doi.org/10.1016/j.neuron.2014.05.001>
- 705 Mens, W. B., Laczi, F., Tonnaer, J. A., de Kloet, E. R., & van Wimersma Greidanus, T. B. (1983).  
706 Vasopressin and oxytocin content in cerebrospinal fluid and in various brain areas after  
707 administration of histamine and pentylentetrazol. *Pharmacology, Biochemistry, and*  
708 *Behavior*, 19(4), 587–591. [https://doi.org/10.1016/0091-3057\(83\)90332-5](https://doi.org/10.1016/0091-3057(83)90332-5)
- 709 Morhenn, V., Beavin, L. E., & Zak, P. J. (2012). Massage increases oxytocin and reduces  
710 adrenocorticotropin hormone in humans. *Alternative Therapies in Health and Medicine*,  
711 18(6), 11–18.
- 712 Morrison, I. (2016). ALE meta-analysis reveals dissociable networks for affective and  
713 discriminative aspects of touch. *Human Brain Mapping*, 37(4), 1308–1320.  
714 <https://doi.org/10.1002/hbm.23103>
- 715 Niendorf, T., Winter, L., & Frauenrath, T. (2012). Electrocardiogram in an MRI environment:  
716 clinical needs, practical considerations, safety implications, technical solutions and future  
717 directions. *Advances in electrocardiograms—methods and analysis*, 309-324.
- 718 Okabe, S., Yoshida, M., Takayanagi, Y., & Onaka, T. (2015). Activation of hypothalamic oxytocin  
719 neurons following tactile stimuli in rats. *Neuroscience Letters*, 600, 22–27.  
720 <https://doi.org/10.1016/j.neulet.2015.05.055>
- 721 Olausson, H., Lamarre, Y., Backlund, H., Morin, C., Wallin, B. G., Starck, G., Ekholm, S., Strigo,  
722 I., Worsley, K., Vallbo, A. B., & Bushnell, M. C. (2002). Unmyelinated tactile afferents signal  
723 touch and project to insular cortex. *Nature Neuroscience*, 5(9), 900–904.  
724 <https://doi.org/10.1038/nn896>
- 725 Olausson, H., Wessberg, J., Morrison, I., McGlone, F., & Vallbo, A. (2010). The neurophysiology  
726 of unmyelinated tactile afferents. *Neuroscience & Biobehavioral Reviews*, 34(2), 185–191.

- 727 <https://doi.org/10.1016/j.neubiorev.2008.09.011>
- 728 Paloyelis, Y., Doyle, O. M., Zelaya, F. O., Maltezos, S., Williams, S. C., Fotopoulou, A., &  
729 Howard, M. A. (2016). A Spatiotemporal Profile of In Vivo Cerebral Blood Flow Changes  
730 Following Intranasal Oxytocin in Humans. *Biological Psychiatry*, 79(8), 693–705.  
731 <https://doi.org/10.1016/j.biopsych.2014.10.005>
- 732 Pawling, R., Cannon, P. R., McGlone, F. P., & Walker, S. C. (2017). C-tactile afferent stimulating  
733 touch carries a positive affective value. *PloS One*, 12(3), e0173457.  
734 <https://doi.org/10.1371/journal.pone.0173457>
- 735 Perini, I., Olausson, H., & Morrison, I. (2015). Seeking pleasant touch: Neural correlates of  
736 behavioral preferences for skin stroking. *Frontiers in Behavioral Neuroscience*, 9, 8.  
737 <https://doi.org/10.3389/fnbeh.2015.00008>
- 738 Pinti, P., Tachtsidis, I., Hamilton, A., Hirsch, J., Aichelburg, C., Gilbert, S., & Burgess, P. W.  
739 (2020). The present and future use of functional near-infrared spectroscopy (fNIRS) for  
740 cognitive neuroscience. *Annals of the New York Academy of Sciences*, 1464(1), 5–29.  
741 <https://doi.org/10.1111/nyas.13948>
- 742 Portnova, G. V., Proskurnina, E. V., Sokolova, S. V., Skorokhodov, I. V., & Varlamov, A. A.  
743 (2020). Perceived pleasantness of gentle touch in healthy individuals is related to salivary  
744 oxytocin response and EEG markers of arousal. *Experimental Brain Research*, 238(10),  
745 2257–2268. <https://doi.org/10.1007/s00221-020-05891-y>
- 746 Quintana, D. S., Lischke, A., Grace, S., Scheele, D., Ma, Y., & Becker, B. (2021). Advances in the  
747 field of intranasal oxytocin research: Lessons learned and future directions for clinical  
748 research. *Molecular Psychiatry*, 26(1), 80–91. <https://doi.org/10.1038/s41380-020-00864-7>
- 749 Quintana, D. S., Rokicki, J., van der Meer, D., Alnæs, D., Kaufmann, T., Córdova-Palomera, A.,  
750 Dieset, I., Andreassen, O. A., & Westlye, L. T. (2019). Oxytocin pathway gene networks in  
751 the human brain. *Nature Communications*, 10(1), 668. <https://doi.org/10.1038/s41467-019-08503-8>
- 752 08503-8
- 753 Quintana, D. S., Westlye, L. T., Alnæs, D., Rustan, Ø. G., Kaufmann, T., Smerud, K. T.,  
754 Mahmoud, R. A., Djupesland, P. G., & Andreassen, O. A. (2016). Low dose intranasal  
755 oxytocin delivered with Breath Powered device dampens amygdala response to emotional

- 756 stimuli: A peripheral effect-controlled within-subjects randomized dose-response fMRI trial.  
757 *Psychoneuroendocrinology*, 69, 180–188. <https://doi.org/10.1016/j.psyneuen.2016.04.010>
- 758 Rae, M., Lemos Duarte, M., Gomes, I., Camarini, R., & Devi, L. A. (2022). Oxytocin and  
759 vasopressin: Signalling, behavioural modulation and potential therapeutic effects. *British*  
760 *Journal of Pharmacology*, 179(8), 1544–1564. <https://doi.org/10.1111/bph.15481>
- 761 Rolls, E. T., Cheng, W., & Feng, J. (2020). The orbitofrontal cortex: Reward, emotion and  
762 depression. *Brain Communications*, 2(2), fcaa196.  
763 <https://doi.org/10.1093/braincomms/fcaa196>
- 764 Scheele, D., Kendrick, K. M., Khouri, C., Kretzer, E., Schläpfer, T. E., Stoffel-Wagner, B.,  
765 Güntürkün, O., Maier, W., & Hurlemann, R. (2014). An oxytocin-induced facilitation of  
766 neural and emotional responses to social touch correlates inversely with autism traits.  
767 *Neuropsychopharmacology: Official Publication of the American College of*  
768 *Neuropsychopharmacology*, 39(9), 2078–2085. <https://doi.org/10.1038/npp.2014.78>
- 769 Spengler, F. B., Schultz, J., Scheele, D., Essel, M., Maier, W., Heinrichs, M., & Hurlemann, R.  
770 (2017). Kinetics and Dose Dependency of Intranasal Oxytocin Effects on Amygdala  
771 Reactivity. *Biological Psychiatry*, 82(12), 885–894.  
772 <https://doi.org/10.1016/j.biopsych.2017.04.015>
- 773 Tang, Y., Benusiglio, D., Lefevre, A., Hilfiger, L., Althammer, F., Bludau, A., Hagiwara, D.,  
774 Baudon, A., Darbon, P., Schimmer, J., Kirchner, M. K., Roy, R. K., Wang, S., Eliava, M.,  
775 Wagner, S., Oberhuber, M., Conzelmann, K. K., Schwarz, M., Stern, J. E., ... Grinevich, V.  
776 (2020). Social touch promotes interfemale communication via activation of parvocellular  
777 oxytocin neurons. *Nature Neuroscience*, 23(9), 1125–1137. [https://doi.org/10.1038/s41593-](https://doi.org/10.1038/s41593-020-0674-y)  
778 [020-0674-y](https://doi.org/10.1038/s41593-020-0674-y)
- 779 Tricoli, C., Croy, I., Steudte-Schmiedgen, S., Olausson, H., & Sailer, U. (2017). Heart rate  
780 variability is enhanced by long-lasting pleasant touch at CT-optimized velocity. *Biological*  
781 *Psychology*, 128, 71–81. <https://doi.org/10.1016/j.biopsycho.2017.07.007>
- 782 Tsuzuki, D., & Dan, I. (2014). Spatial registration for functional near-infrared spectroscopy: From  
783 channel position on the scalp to cortical location in individual and group analyses.  
784 *NeuroImage*, 85, 92–103. <https://doi.org/10.1016/j.neuroimage.2013.07.025>

- 785 Uvnäs-Moberg, K., Handlin, L., & Petersson, M. (2020). Neuroendocrine mechanisms involved in  
786 the physiological effects caused by skin-to-skin contact—With a particular focus on the  
787 oxytocinergic system. *Infant Behavior & Development*, 61, 101482.  
788 <https://doi.org/10.1016/j.infbeh.2020.101482>
- 789 Uvnäs-Moberg, K., Handlin, L., & Petersson, M. (2015). Self-soothing behaviors with particular  
790 reference to oxytocin release induced by non-noxious sensory stimulation. *Frontiers in*  
791 *Psychology*, 5, 1529. <https://doi.org/10.3389/fpsyg.2014.01529>
- 792 Vittner, D., McGrath, J., Robinson, J., Lawhon, G., Cusson, R., Eisenfeld, L., Walsh, S., Young,  
793 E., & Cong, X. (2018). Increase in Oxytocin from Skin-to-Skin Contact Enhances  
794 Development of Parent-Infant Relationship. *Biological Research for Nursing*, 20(1), 54–62.  
795 <https://doi.org/10.1177/1099800417735633>
- 796 Walker, S. C., Trotter, P. D., Swaney, W. T., Marshall, A., & Mcglone, F. P. (2017). C-tactile  
797 afferents: Cutaneous mediators of oxytocin release during affiliative tactile interactions?  
798 *Neuropeptides*, 64, 27–38. <https://doi.org/10.1016/j.npep.2017.01.001>
- 799 Wigton, R., Radua, J., Allen, P., Averbeck, B., Meyer-Lindenberg, A., McGuire, P., Shergill, S. S.,  
800 & Fusar-Poli, P. (2015). Neurophysiological effects of acute oxytocin administration:  
801 Systematic review and meta-analysis of placebo-controlled imaging studies. *Journal of*  
802 *Psychiatry & Neuroscience: JPN*, 40(1), E1-22. <https://doi.org/10.1503/jpn.130289>
- 803 Xu, D., Li, Q., Zhuang, Q., Zhang, Y., Yao, S., Zhao, W., & Kendrick, K. M. (2022). Oro-mucosal  
804 administration of oxytocin using medicated lollipops alters social attention, similar to  
805 intranasal and lingual routes: Implications for therapeutic use. *Frontiers in Neuroscience*, 16,  
806 1022101. <https://doi.org/10.3389/fnins.2022.1022101>
- 807 Yamamoto, Y., & Higashida, H. (2020). RAGE regulates oxytocin transport into the brain.  
808 *Communications Biology*, 3(1), 70. <https://doi.org/10.1038/s42003-020-0799-2>
- 809 Yao, S., Becker, B., Zhao, W., Zhao, Z., Kou, J., Ma, X., Geng, Y., Ren, P., & Kendrick, K. M.  
810 (2018). Oxytocin Modulates Attention Switching Between Interoceptive Signals and External  
811 Social Cues. *Neuropsychopharmacology: Official Publication of the American College of*  
812 *Neuropsychopharmacology*, 43(2), 294–301. <https://doi.org/10.1038/npp.2017.189>
- 813 Yao, S., & Kendrick, K. M. (2022). Effects of Intranasal Administration of Oxytocin and

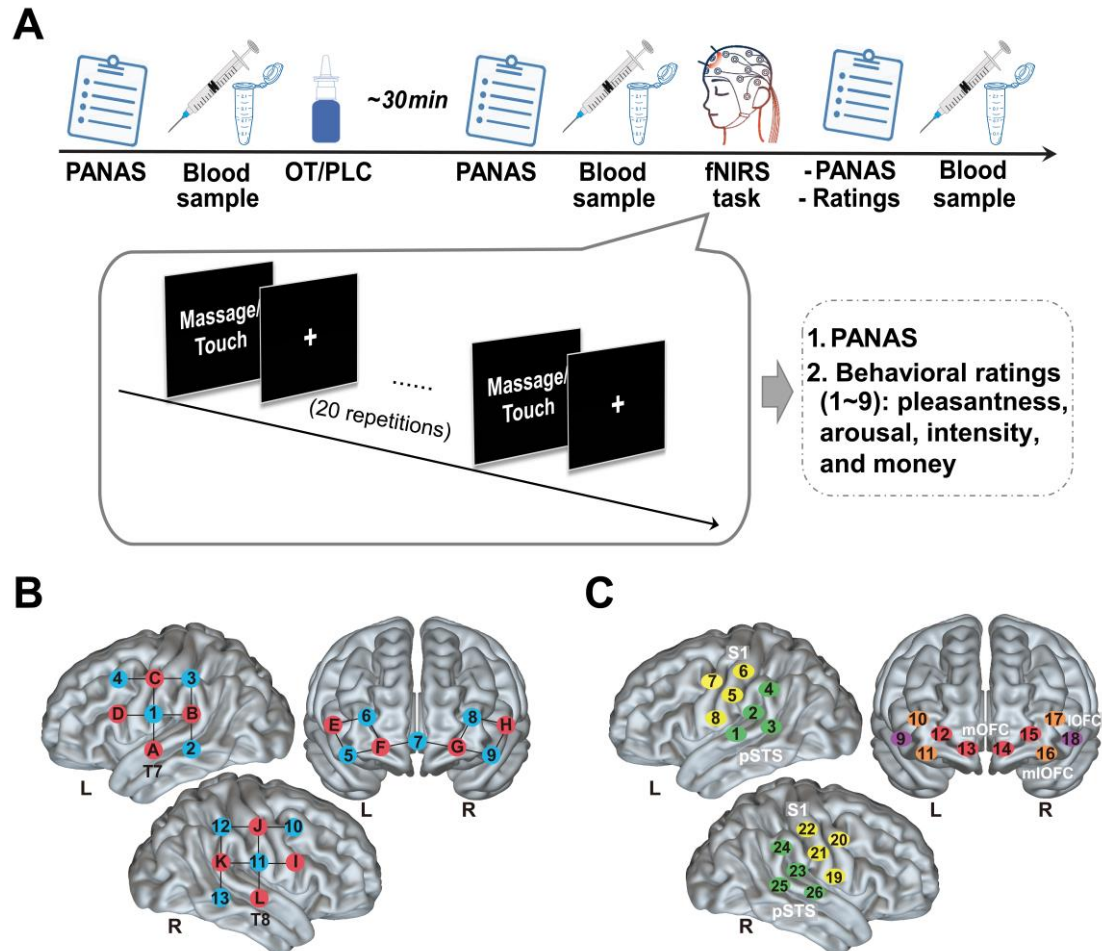
814 Vasopressin on Social Cognition and Potential Routes and Mechanisms of Action.  
815 *Pharmaceutics*, 14(2), 323. <https://doi.org/10.3390/pharmaceutics14020323>  
816 Zhuang, Q., Zheng, X., Becker, B., Lei, W., Xu, X., & Kendrick, K. M. (2021). Intranasal  
817 vasopressin like oxytocin increases social attention by influencing top-down control, but  
818 additionally enhances bottom-up control. *Psychoneuroendocrinology*, 133, 105412.  
819 <https://doi.org/10.1016/j.psyneuen.2021.105412>  
820 Zhuang, Q., Zheng, X., Yao, S., Zhao, W., Becker, B., Xu, X., & Kendrick, K. M. (2022). Oral  
821 Administration of Oxytocin, Like Intranasal Administration, Decreases Top-Down Social  
822 Attention. *The International Journal of Neuropsychopharmacology*, 25(11), 912–923.  
823 <https://doi.org/10.1093/ijnp/pyac059>  
824

825 **Table 1.** Demographic, physiological, and psychometric assessments in the three groups (M ± SD)

	<b>Intranasal OT</b>	<b>Oral OT</b>	<b>PLC</b>	<b>value</b>	<b>p</b>
Number (males)	n = 56(26)	n = 57(27)	n = 58(31)	$\chi^2 = 0.67$	.721
Age	21.79 ± 1.96	21.46 ± 2.05	21.50 ± 1.84	F = 0.48	.618
ASQ	21.43 ± 5.48	20.09 ± 5.05	21.66 ± 5.84	F = 1.37	.256
STQ	40.36 ± 8.51	41.32 ± 9.60	40.79 ± 7.67	F = 0.18	.840
SP	13.16 ± 5.28	12.86 ± 5.50	13.38 ± 5.48	F = 1.13	.876
SR	13.20 ± 4.07	14.26 ± 4.22	14.16 ± 3.60	F = 1.24	.293
SOR	22.66 ± 9.43	20.88 ± 10.23	23.17 ± 9.64	F = 0.87	.421
BDI	9.21 ± 9.11	8.39 ± 7.36	9.79 ± 8.39	F = 0.42	.660
TAI	42.96 ± 9.32	43.47 ± 9.10	43.21 ± 9.77	F = 0.04	.959
SAI	38.59 ± 9.61	38.51 ± 8.37	39.02 ± 10.33	F = 0.05	.953
CBSS	39.46 ± 9.56	36.21 ± 9.38	38.28 ± 8.98	F = 1.77	.173
CTQ	38.50 ± 8.57	36.51 ± 9.03	37.97 ± 9.10	F = 0.76	.469
IRI	48.89 ± 10.99	48.95 ± 10.26	50.36 ± 11.09	F = 0.34	.710
AAS	57.84 ± 6.23	58.11 ± 6.04	57.26 ± 6.02	F = 0.29	.748
<b>PANAS</b>					
Positive affect	18.71 ± 0.80	19.63 ± 0.78	17.42 ± 0.78	F = 2.04	.132
Negative affect	11.00 ± 0.37	11.31 ± 0.36	11.15 ± 0.36	F = 0.17	.840
<b>DFA<math>\alpha</math>1</b>					
Gentle stroking touch	0.98 ± 0.28	0.97 ± 0.27	0.95 ± 0.28	F <sup>a</sup> = 0.11	.887
Medium pressure massage	0.92 ± 0.28	0.88 ± 0.26	0.88 ± 0.24		
<b>SCR</b>					
Gentle stroking touch	1.45 ± 1.81	1.20 ± 1.47	1.09 ± 1.52	F <sup>a</sup> = 0.43	.862
Medium pressure massage	2.48 ± 2.15	2.58 ± 2.39	2.49 ± 1.87		
Basal OT concentrations	8.12 ± 0.54	8.49 ± 0.60	9.71 ± 0.48	F = 2.39	.105

826 a: F values of the group × condition interaction analyses.

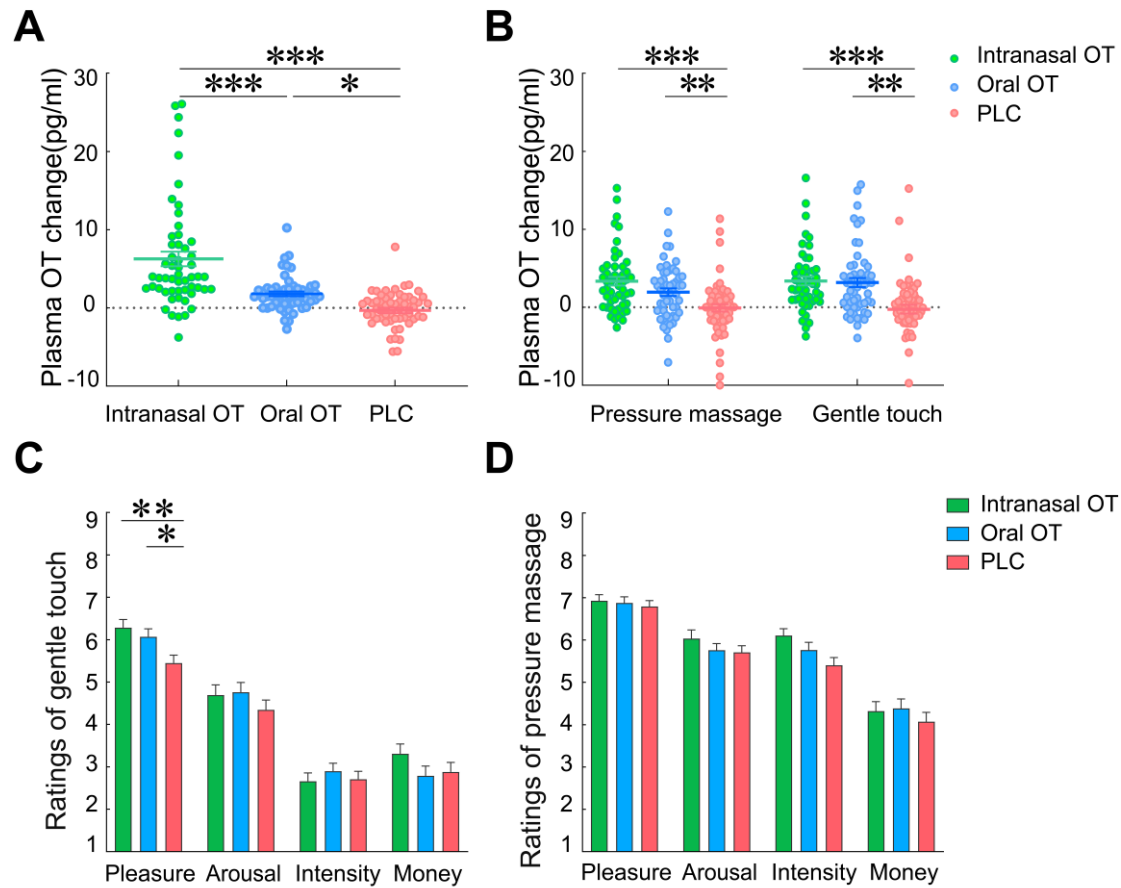




827

828 **Figure 1.** The study procedure and layout of fNIRS optodes and channels. **(A)** The study protocol  
 829 and sequences of the experimental task. Subjects completed the positive and negative affective  
 830 schedule (PANAS) before and after the intranasal/oral OT or PLC treatment and additionally after  
 831 each session. Blood samples (6 ml) were collected for each subject before and after the treatment  
 832 and after each session. Subjects were asked to rate their subjective experience of the  
 833 massage/touch including the perceived pleasantness, arousal, intensity, and willingness to payment  
 834 after each session. **(B)** The array design displayed the locations of the sources (red) and detectors  
 835 (blue). **(C)** Channels according to the international 10-20 placement system. A 26-channel array  
 836 consisting of 12 sources and 13 detectors were used to record hemodynamic activity of the  
 837 bilateral lateral orbitofrontal cortex (lOFC: channels 9, 18), medial orbitofrontal cortex (mOFC:  
 838 channels 12 to 15) and mediolateral orbitofrontal cortex (mlOFC: channels 10, 11, 16, 17),  
 839 posterior superior temporal sulcus (pSTS: channels 1 to 4, 23 to 26) and the somatosensory area  
 840 (S1: channels 5 to 8, 19 to 22).

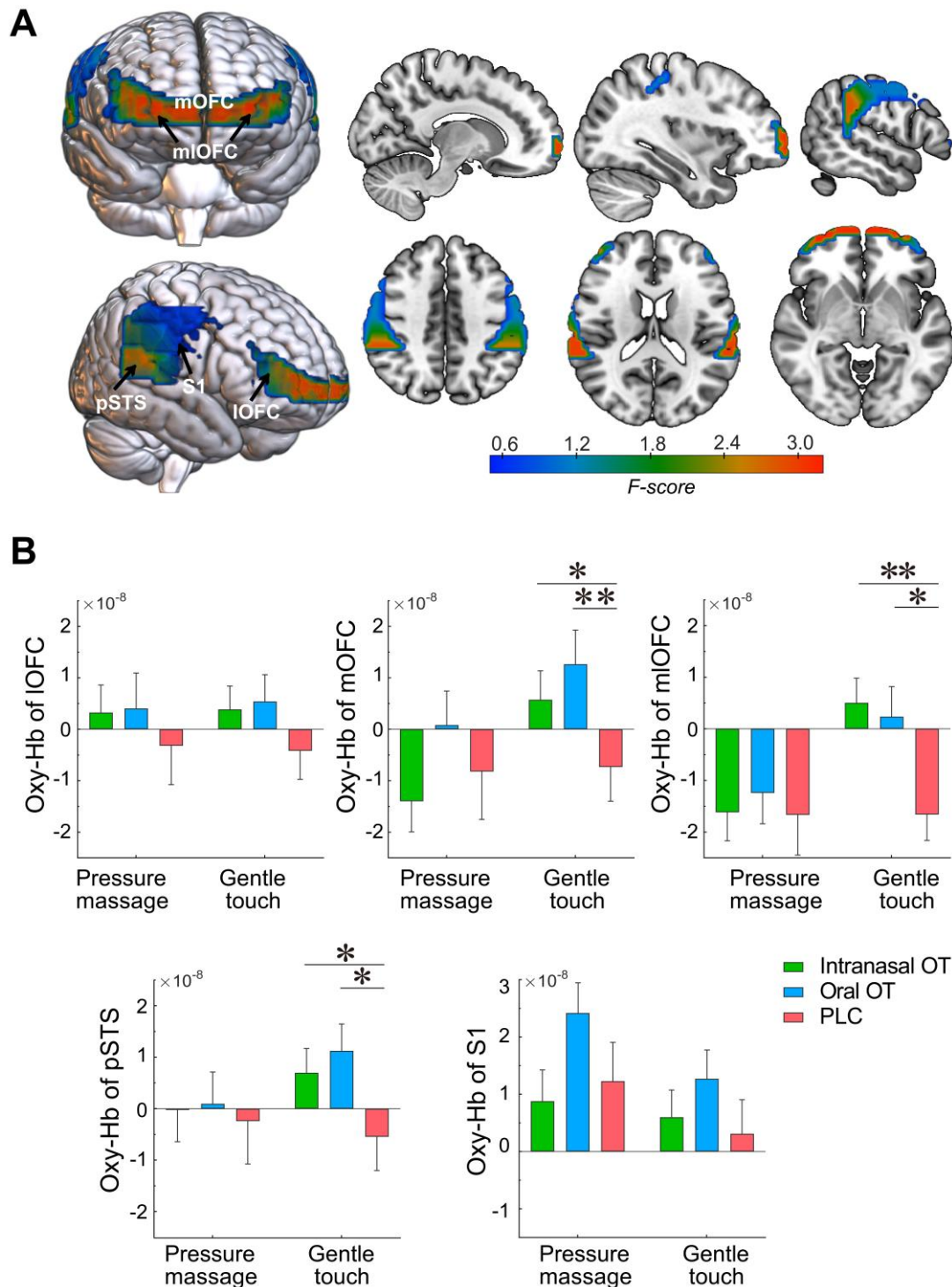
841



842

843 **Figure 2.** Effects of oxytocin on plasma OT concentration changes and behavioral rating scores.  
 844 **(A)** Post-treatment changes of plasma OT concentrations (compared with pre-treatment baseline).  
 845 **(B)** Plasma OT concentration changes (compared with pre-treatment baseline) after gentle stroking  
 846 touch and medium pressure massage following the OT and PLC treatments. Behavioral rating  
 847 scores of pleasantness, arousal, intensity, and payment willingness following intranasal OT, oral  
 848 OT and PLC treatments in response to **(C)** gentle stroking touch and **(D)** medium pressure  
 849 massage. \* $p < 0.05$ , \*\* $p < 0.01$ , \*\*\* $p < 0.001$  between group comparisons.

850



851

852 **Figure 3.** Effects of intranasal and oral OT on neural responses to gentle stroking touch. (A) Heat

853 brain maps show treatment x condition interaction effects (F values) on neural activations in each

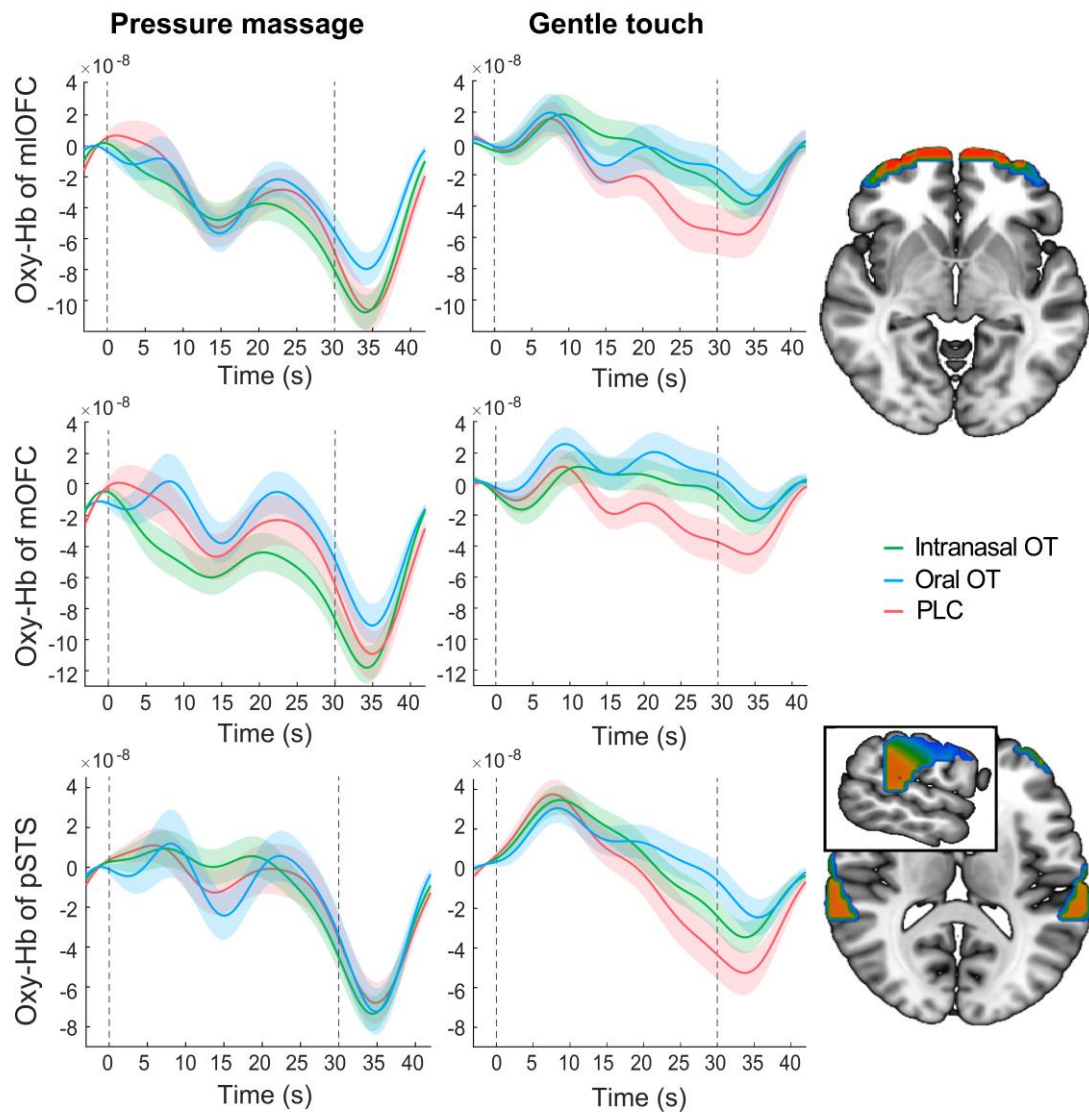
854 ROI using repeated-measures ANOVAs. (B) Averaged oxy-Hb concentration changes in the

855 bilateral IOFC, mOFC, mlOFC, pSTS and S1 (mean ± SEM) in response to the gentle stroking

856 touch and medium pressure massage in intranasal OT, oral OT and PLC groups. \*  $p < 0.05$ , \*\*  $p <$

857 0.01.

858



859

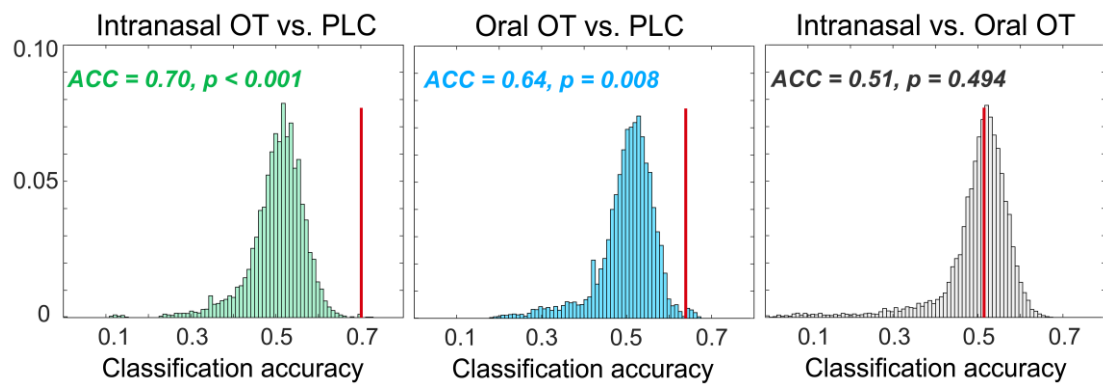
860 **Figure 4.** Time courses of oxy-Hb concentration changes in response to medium pressure massage

861 and gentle stroking touch in the bilateral mLOFC, mOFC and pSTS for intranasal OT, oral OT and

862 PLC groups respectively. The dotted gray lines indicate the onset and offset of the stimulation and

863 the shaded areas represent  $\pm$  SEM.

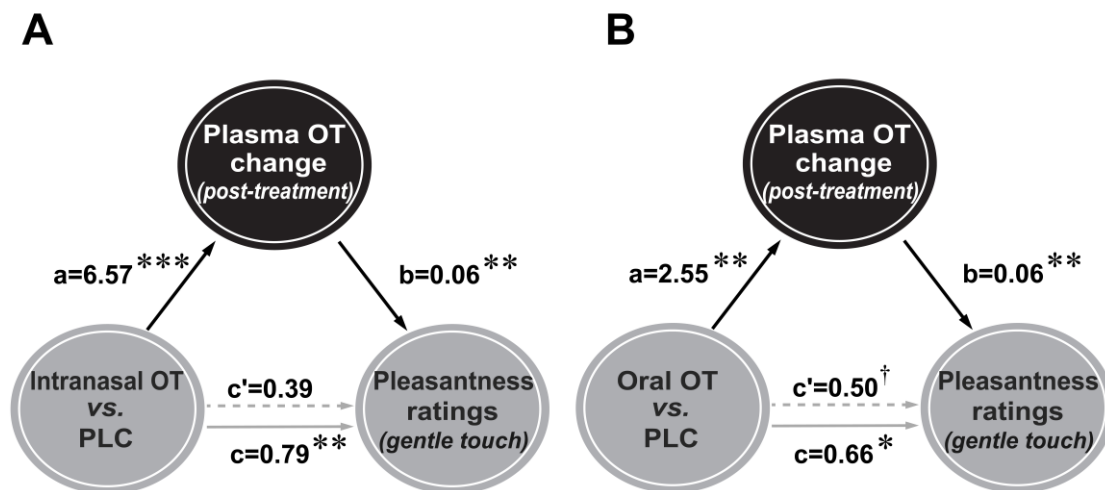
864



865

866 **Figure 5.** Null distribution for classification accuracies for discriminating intranasal OT versus  
867 PLC, oral OT versus PLC, and intranasal versus oral OT groups respectively. Histograms show  
868 the distribution of accuracies from permutation tests (permutations = 10000). The red lines  
869 indicate the actual accuracy and  $p$  values for the actual classification accuracies.

870



871

872 **Figure 6.** Mediation analyses for intranasal (A) and oral (B) oxytocin (OT) effects on pleasantness  
873 ratings via plasma OT concentrations. Enhanced pleasantness ratings in response to gentle  
874 stroking touch following oral and intranasal OT administration were significantly mediated by  
875 post-treatment plasma OT concentration changes.  $^\dagger p = 0.05$ ,  $* p < 0.05$ ,  $** p < 0.01$ ,  $*** p < 0.001$ .