

1 **Time-to-event analysis of factors influencing delay in**  
2 **discharge from a subacute Complex Discharge Unit during**  
3 **the first year of the pandemic (2020) in an Irish tertiary**  
4 **centre hospital**

5 Nithya Rajendran<sup>1</sup>, Puteri Maisarah Rameli<sup>1</sup>, Keneilwe Malomo<sup>2</sup>, Declan Byrne<sup>2</sup>, Joseph  
6 Browne<sup>2</sup>, Ontefetse Ntlholang<sup>2</sup>

7

8 <sup>1</sup>Department of AMAU/ General Internal Medicine, St. James's Hospital, James's Street, Dublin  
9 8, Ireland.

10 <sup>2</sup>Department of Geriatrics/ General Internal Medicine, St. James's Hospital, James's Street,  
11 Dublin 8, Ireland.

12

13

14

15 **Corresponding Author:**

16 Puteri Maisarah Rameli

17 Department of AMAU/General Internal Medicine, St James's Hospital, James Street, Dublin  
18 8, Ireland

19 Email: [ramelip@tcd.ie](mailto:ramelip@tcd.ie)

20 ORCID iD: 0000-0002-0047-6581

**NOTE: This preprint reports new research that has not been certified by peer review and should not be used to guide clinical practice.**

## 21 ABSTRACT

22 **Background:** There is a paucity of data investigating delays in discharges from subacute  
23 complex care units exclusively dealing with complex cases. We aimed to analyse factors  
24 causing delays in discharges and explore their implications on the healthcare system in terms  
25 of length of stay (LOS), during the COVID-19 pandemic, using time-to-event analysis, to assist  
26 in future pandemic healthcare planning decisions.

27 **Methods:** Single-centre, retrospective, cross-sectional study. Demographics, clinical  
28 characteristics and length of stay (LOS) of all patients admitted to our subacute Complex  
29 Discharge Unit at our model 4 hospital during the pandemic were retrieved from electronic  
30 patient records. The outcome variable in our time-to-event analysis was a delay in discharge  
31 with a LOS >15 days. A cox proportional hazards regression model delineated factors  
32 contributing to delays.

33 **Results:** 390 patients were admitted between March 2020 - February 2021 to the subacute  
34 complex discharge unit. Among these, 326 (83.6%) patients were >65 years of age, and 233  
35 (59.7%) patients were female. The median (IQR) age was 79 (70-86) years, with a median  
36 (IQR) LOS of 19.4 (10-41) days. A total of 237 (60.7%) events were uncensored, LOS > 15  
37 days of which 138 (58.2%) were female, 124 (52.32%) had >4 comorbidities, and 153 (39.2%)  
38 were censored into LOS ≤15 days and death 19 (4.8%). Kaplan Meier's plot allowed the  
39 comparison of factors causing a delay in discharge to single factors: age, gender, and  
40 multimorbidity. A multivariate cox regression analysis adjusted to each strata age, gender and  
41 multimorbidity predicted factors affecting LOS: Age strata 65 - 75 & 75 - 85 [HR 0.233; 95%  
42 CI (0.077-.708); p=.010] & [HR .301; 95% CI(.155-.588); p<.001] had common factor patient-  
43 centred needs prolonging LOS. The common factors complications arising from comorbidities

44 in male [HR .145; 95 % CI (.081 -.261);  $p < .001$ ] and female [HR .479; 95% CI (.311 -.737);  
45  $p < .001$ ], and patient-centred needs in male [HR .472; 95 % CI (.243 -.917);  $p .027$ ] female [HR  
46 .361; 95% CI (.215 -.608);  $p < .001$ ] exhibited statistically significant results.

47 **Conclusion:** Reducing LOS is imperative for better patient outcomes and hospital  
48 management. The most common factors delaying discharge were complexities that arose from  
49 primary diagnoses and patient-centred needs such as cognition, psychosocial needs and carer  
50 needs. Further research is needed into exploring multimorbidity as a risk factor for mortality in  
51 patients who experience prolonged LOS within a complex discharge unit.

52 **Keywords:** time-to-event analysis, Kaplan Meier analysis, COX regression analysis, COX  
53 proportional hazard regression model, patient care, delayed transfers of care, delayed  
54 discharge, complex discharge unit, complex care, COVID-19 pandemic

55

## 56 **Background**

57 Length of stay (LOS) is the most common outcome measure of effectiveness.[1] It refers to the  
58 time expressed in days between admission to and discharges from the hospital.[2] Worldwide,  
59 variability in the measure of delayed discharges based on hospital stay exists. Countries like  
60 the Netherlands define delayed discharges as LOS exceeding 50% of the average LOS for the  
61 general population in the previous calendar year. In countries such as Australia and Singapore,  
62 a delayed discharge is defined as LOS exceeding 21 days and 35 days, respectively. A notional  
63 application of the Dutch Model to the hospital inpatient enquiry (HIPE) dataset provides  
64 estimates of possible delayed discharge but does not define delayed LOS days in Ireland.[3]  
65 During the COVID-19 pandemic, the average inpatient LOS was 5.8 days, representing a slight  
66 increase in the average inpatient LOS of 5.7 days between 2016–2019.[2]

67 Tackling delays in patient discharge is an ongoing challenge, and with the emergence of the  
68 COVID-19 pandemic, there has been a greater strain on the Irish healthcare system. Subacute  
69 Complex Discharge Units (CDU) are a subset of intermediate care that provides person-centred  
70 planning[4] through an individualised, integrated care pathway to improve functional outcomes  
71 and reduce LOS.[5] Other factors to consider are defined under Delayed transfers of Care  
72 (DTC): delayed discharges awaiting discharge home, community care provision through the  
73 Home Support Service, or placement or transfer to long-term residential places. Formerly, a  
74 delayed discharge was described as a patient deemed medically fit for discharge from an acute  
75 bed who remained in the hospital because they were awaiting support or care following  
76 discharge.[6] However, the COVID-19 pandemic has caused disruptions in discharge planning,  
77 discontinuity, and incoordination between subacute CDU and community care,[4] due to  
78 service curtailment and limited step-down care options.[7]

79 There is a paucity of data investigating discharge delays from a subacute CDU dealing with  
80 patients with ongoing complex care needs.[8] Multimorbidity (MM) is a term used to define  
81 the presence of 2 or more chronic medical conditions in an individual[9]. Harrison et al further  
82 elaborate complex MM as the co-occurrence of 3 or more chronic medical diagnoses involving  
83 3 or more systems in the body.[10] Frailty[11] and MM are common causes of delayed  
84 discharge among older adults leading to poor functional outcomes. There is also a significant  
85 correlation between cognitive impairment and dependency on overall LOS.[12] Moreover,  
86 patient-centred needs comprising of cognitive dysfunction, psychosocial needs, carer  
87 involvement, and community services linking Home Support Services have also been  
88 described.[5] Prolonged hospital stays could harm patient health, for example, through  
89 deconditioning, increased risk of healthcare-associated infections (HCAI), and mortality.[2]

90 Furthermore, delayed discharges have implications on healthcare costs. According to the  
91 Health Service Executive (HSE) Performance report 2020, DTOC was notable in 11.6% of  
92 patients with complex needs. Furthermore, 5.2% of patients had rehabilitation needs leading to  
93 delays in the transfer of care. In 2020, there were 32 reported cases of hospital-acquired  
94 *Staphylococcus aureus* bloodstream infection and 58 cases of *Clostridium difficile* infection.[2]  
95 This study aims to analyse factors causing delays in discharge from a subacute CDU during  
96 the first year of the COVID-19 pandemic.

## 97 **Methods**

### 98 **Setting**

99 The study was conducted in St James's Hospital (SJH), the largest acute academic teaching  
100 model 4 hospital in Ireland, based in the south inner city of Dublin. Within SJH, there is a 23  
101 bedded CDU, which specialises in coordinating the safe and effective discharge of medically  
102 stable patients. Through early goal-oriented input from multi-disciplinary team members, it is  
103 envisaged that the LOS within post-acute CDU does not exceed six weeks. This retrospective,  
104 cross-sectional study provides valuable insight into factors contributing to delayed discharges  
105 from a subacute CDU, especially during the first year of the COVID-19 pandemic.

### 106 **Data sources**

107 All information was sourced directly from the hospital database via electronic patient records  
108 (EPR). In particular, we focused on all adult patients admitted to the CDU, between March  
109 2020 - February 2021 of the pandemic, with hospital LOS>15 days. Two independent  
110 reviewers extracted and evaluated the suitability of all data. Information collected was stratified  
111 by age, gender, primary diagnoses, the prevalence of MM, corresponding LOS, and causes for

112 delayed discharges. MM was categorised using the Charlson comorbidity index - where 0 was  
113 assigned to no comorbidity and 1 for each comorbidity. All details pertaining to delayed  
114 discharges were extracted directly from inpatient notes and medical discharge summaries.

## 115 **Statistical analyses**

116 All statistical analyses were conducted using IBM SPSS, version 29. Comparative analysis of  
117 LOS between March 2020 - February 2021 was performed using Kaplan Meier for each factor:  
118 age, gender, MM, and common reasons for DTOC. Further analyses with COX regressions  
119 using multiple covariates were used to identify factors causing delays during the period  
120 examined. Patients were compared and analysed by survival analysis, the Kaplan-Meier  
121 method was used for single-factor comparison, and the Cox Regression Model was used for  
122 multi-factor comparison. The event of interest coded with the value of 1 in our study was  
123 delayed discharge; those with LOS<15 days and death were assigned a value of 0 (right  
124 censored events). Our main objective was to predict a delay in discharge. With the standard  
125 cox regression model, we encountered violations of proportional hazard. Therefore, we used a  
126 stratified Cox model allowing for covariates with non-proportional hazard, stratum: age,  
127 gender, and MM.

## 128 **Results**

129 A total of 390 patients were admitted between March 2020 - February 2021 to the CDU.  
130 Among these, 326 (83.6%) patients were >65 years of age with a median age (IQR) of 79 (70-  
131 86) years. The gender distribution of men and women was 40.3% vs 59.7%, respectively, 188  
132 (48.20%) had > 4 comorbidities. For our study, we defined prolonged LOS as a hospital LOS  
133 >15 days. During the COVID-19 pandemic, the CDU median (IQR) LOS was 19.4 (10-41)  
134 days. The most common primary diagnosis on admission was infection or sepsis (23.33%).

135 Each stratum was preliminarily analysed using the Mann-Whitney test and chi-square (Gender)  
136 respectively. (Table 1)

137 Insert Table 1

138 **Table 1: Strata qualitatively assessed using Mann Whitney and Chi-square (Gender)**  
139 **respectively for patients admitted to the complex discharge unit**

	2020 (n=390)		
Patient Characteristics	LOS ≤15 days (n=153)	LOS >15 days (n = 237)	P <0.05 Statistical significance
Age (Mean ± SD)	75.25 ± 12.50	77.51 ± 12.62	p=.038
Gender: Female Male	62.09% 37.90%	58.22% 41.77%	p= 0.51 (yates correction to avoid type 1 error); p 0.46
Multimorbidity: ≤4 >4	15 64	99 124	p <0.05

140

141 Following this, we proceeded with time-to-event analysis. Kaplan Meier's plot allowed the  
142 comparison of factors causing a delay in discharge to single factors: age, gender, and MM. A  
143 total of 237 (60.7%) events were uncensored, LOS > 15 days of which 138 (58.2%) were  
144 female, 124 (52.32%) had >4 comorbidities, and 153 (39.2%) were censored into LOS ≤15  
145 days and death 19 (4.8%).

146 The Kaplan-Meier method allowed a comparison of five major factors responsible for delays  
147 in discharge from the CDU: complications arising from primary diagnoses or MM, HCAI,

148 frailty or falls necessitating integrated rehabilitation, patient-centred needs, and community  
149 services against LOS.

150 Insert Fig. 1

151 **Fig. 1 Kaplan-Meier delay in discharge plots of each variable**

152 **A)** Patients between 65 -75 years of age were more likely to experience prolonged LOS. **B)**  
153 Patients of the female gender were observed to have prolonged LOS in comparison to their  
154 male counterparts. **C)** Patients with >4 MM were most likely to experience a delay in LOS  
155 exceeding >15 days. **D)** Complications arising directly from comorbidities are a non-  
156 contributory factor in prolonging LOS >15 days. The most common complications arising from  
157 comorbidities were cardiovascular: arrhythmias (15.8%) and Left Ventricular dysfunction  
158 (20%), hypertension (25.3%), neurological: cognitive impairment secondary to infection  
159 (17.2%), worsening of Parkinson's disease (8.78%) and respiratory: exacerbation of airway  
160 disease (4.8%). Endocrine complications accounted for 8.1% of patients with diabetes mellitus  
161 and thyroid disorders. **E)** Patients whose inpatient course was complicated by HCAI were not  
162 observed to have prolonged LOS >15 days in comparison to those who did not acquire HCAI.  
163 **F)** Frailty falls and/or integrated rehabilitation did not result in prolonged LOS > 15 days. **G)**  
164 Patient-centred needs were a significant contributing factor to prolonged LOS >15 days. **H)**  
165 Community services were not a significant factor leading to prolonged LOS > 15 days.

166

167 In our study, more female than male patients experienced delays in LOS. (Fig. 1B) The mean  
168 age of patients with delayed LOS was 77.51 years compared to those with normal LOS with a  
169 mean age of 75.25 years. Patients between 65-75 years of age were more likely to experience  
170 prolonged LOS. (Fig. 1A) Furthermore, patients with >4 MM were most likely to experience  
171 a delay in LOS exceeding >15 days. (Fig. 1C) Complications arising directly from



172 comorbidities were a non-contributory factor in prolonging LOS >15 days. The most common  
173 complications arising from comorbidities were cardiovascular: arrhythmias (15.8%) and Left  
174 Ventricular dysfunction (20%), hypertension (25.3%), neurological: cognitive impairment  
175 secondary to infection (17.2%), worsening of Parkinson's disease (8.78%) and respiratory:  
176 exacerbation of airway disease (4.8%). Endocrine complications accounted for 8.1% of patients  
177 with diabetes mellitus and thyroid disorders. (Fig. 1D) Patients whose inpatient course was  
178 complicated by HCAI were not observed to have prolonged LOS >15 days. (Fig. 1E)  
179 Additionally; frailty, falls and/or integrated rehabilitation or community services did not result  
180 in prolonged LOS >15 days. (Fig.1F, H) Patient-centred needs were a significant contributing  
181 factor to prolonged LOS >15 days. (Fig. 1G) Our univariate Km plot analysis showed  
182 statistically significant results  $p < .05$  for age and factors such as complications that arose from  
183 comorbidities, frailty or falls necessitating integrated rehabilitation and patient-centred needs.  
184  
185 Using stratified COX regression analysis, we analysed age, gender and MM against the five  
186 factors associated with delay in discharge. (Table 2) The five main factors discussed were not  
187 responsible for delayed LOS in patients >85 years. In a comparison of each stratum to the five  
188 main factors causing a delay in discharge, it was noted that complications arising from primary  
189 diagnoses and patient-centred needs had statistically significant results  $p < .05$ .

190

191 Insert Table 2

192 **Table 2: Variables independently associated with delay in discharge (LOS >15) from**  
193 **Stratified COX regression analysis.**

194

195 This analysis predicted factors affecting LOS: Age strata 65 - 75 & 75 - 85 [HR 0.233; 95% CI  
196 (0.077-.708);  $p = .010$ ] & [HR .301; 95% CI (.155-.588);  $p < .001$ ] had common factor patient-

197 centred needs prolonging LOS. Interestingly, both genders and individuals with  $\leq 4$  MM and  
198  $>4$  MM had complications arising from primary diagnoses and patient-centred needs  
199 prolonging LOS with  $p < .05$ , statistically significant results. The common factors  
200 complications arising from comorbidities in male [HR .145; 95 % CI(.081 -.261);  $p < .001$ ] and  
201 female [HR .479; 95% CI (.311 -.737);  $p < .001$ ]; and patient-centred needs in male [HR .472;  
202 95 % CI (.243 -.917);  $p .027$ ] female [HR .361; 95% CI (.215 -.608);  $p < .001$ ] exhibited  
203 statistically significant results.

204

## 205 **Discussion**

206 This retrospective cross-sectional analysis of patients admitted within the first year of the  
207 COVID-19 pandemic to a subacute CDU delineated five factors responsible for delays in  
208 discharge. First, it was evident that the COVID-19 pandemic resulted in many patients  
209 exceeding average LOS in hospital with subsequent impact on transfers of care: 37.94% of  
210 patients experienced LOS exceeding  $>15$  days as a result of complications arising from primary  
211 diagnoses or MM, 25.38% due to frailty or falls necessitating integrated rehabilitation, 14.35%  
212 consequent to issues surrounding community services provision, 13.07% due to patient-centred  
213 needs and 10.52% due to HCAI.

214 When comparing our patient demographics to the current literature, we noted that the  
215 distribution of age and gender did not vary significantly pre and during the COVID-19  
216 pandemic. Many patients admitted to our CDU were female, predominantly over 65 years of  
217 age, and affected by three factors common to delaying LOS within their age group. These  
218 factors were complications arising from primary diagnoses or MM, frailty necessitating  
219 integrated rehabilitation, and patient-centred needs.[13] Our findings were similar to a recent

220 Singaporean study that showed how continuity of integrated care in the community was  
221 considerably affected during the COVID-19 pandemic. In their study, reluctance or hesitancy  
222 from formal and informal caregivers to accept community services due to fear of contracting  
223 COVID-19 infection resulted in many patients experiencing delayed LOS.[8] Another study  
224 from the US made similar observations when evaluating discharge processes in a skilled  
225 nursing facility.[14] The pressured situation observed in social care, especially long-term care  
226 facilities, is something that all hospitals are internationally familiar with and continuously  
227 struggle to find resolutions.

228 We acknowledge that the occurrence of MM is associated with higher rates of admission to the  
229 hospital and subsequent readmission.[15] Through the utilisation of the Charlson comorbidity  
230 index scoring, we sub-categorised complex MM as follows:  $\leq 4$  as mild to moderately complex  
231 and those with 5 or more as highly complex MM. [16] In our analysis, we were able to ascertain  
232 the association of MM with LOS. Complications arising directly from comorbidities were a  
233 non-contributory factor in prolonging LOS  $>15$  days. Interestingly, patients admitted to the  
234 CDU with  $\leq 4$  MM and  $>4$  MM experienced the same delaying factors for LOS, including  
235 complications arising from primary diagnoses or MM and patient-centred needs. Further  
236 research is needed into exploring MM as a risk factor for mortality in patients who experience  
237 prolonged LOS within a CDU.

## 238 **Strengths and Limitations**

239 To our knowledge, this is the first study that has investigated the time-to-event analysis of  
240 factors influencing delayed discharges, exclusively in complex patients admitted to a CDU  
241 during the COVID-19 pandemic. The EPR system used for the study allowed for ease in  
242 traceability and transparency of all data. Nevertheless, there were some limitations to the study.  
243 Our study was conducted in a single centre, explicitly focusing on delaying factors as opposed

244 to factors leading to readmission. The study solely focused on patients admitted to the CDU  
245 instead of incorporating all hospital admissions and readmissions during the COVID-19  
246 pandemic. Third, the interpretation of our findings is limited to the sample size; therefore, the  
247 extrapolation and application of data may differ across other centres. Finally, mortality and  
248 readmission were not explored in detail during this study.

## 249 **Conclusion**

250 Reduced length of stay is imperative for better patient and hospital outcomes. The most  
251 common factors delaying discharge were complexities that arose from primary diagnoses and  
252 patient-centred needs such as cognition, psychosocial needs and carer needs. The analysis of  
253 these factors associated with delays in discharge during the pandemic can aid in medical  
254 decisions and form the framework for future contingency planning on resources should we  
255 encounter another pandemic.

## 256 **Abbreviations**

257 **CDU:** Complex discharge unit

258 **DTOC:** Delayed transfers of care

259 **EPR:** Electronic Patient Record

260 **LOS:** length of stay

261 **MM:** multimorbidity

262

## 263 **References**

- 264 1. Chen H, Hara Y, Horita N, Saigusa Y, Kaneko T. An Early Screening Tool for  
265 Discharge Planning Shortened Length of Hospital Stay for Elderly Patients with  
266 Community-Acquired Pneumonia. *Clin Interv Aging*. 2021 Mar 10;16:443-450. doi:  
267 10.2147/CIA.S296390.
- 268 2. Activity in acute public hospitals in Ireland 2020 - HPO November 2021. Available  
269 at: [http://hpo.ie/latest\\_hipe\\_nprs\\_reports/HIPE\\_2020/HIPE\\_Report\\_2020.pdf](http://hpo.ie/latest_hipe_nprs_reports/HIPE_2020/HIPE_Report_2020.pdf)  
270 (Accessed: December 5, 2022).
- 271 3. Independent Expert Review of Delayed Discharges November 2018. Available at:  
272 <https://assets.gov.ie/10858/b63d907d251d47d4a5a58ccbc0f280fc.pdf> (Accessed:  
273 December 5, 2022).
- 274 4. Sezgin D, O'Caoimh R, O'Donovan MR, Salem MA, Kennelly S, Samaniego LL,  
275 Carda CA, Rodriguez-Acuña R, Inzitari M, Hammar T, Holditch C, Bettger JP,  
276 Vernon M, Carroll Á, Gradinger F, Perman G, Wilson M, Vella A, Cherubini A,  
277 Tucker H, Fantini MP, Onder G, Roller-Wirnsberger R, Gutiérrez-Robledo LM,  
278 Cesari M, Bertoluci P, Kieliszek M, van der Vlegel-Brouwer W, Nelson M, Mañas  
279 LR, Antoniadou E, Barriere F, Lindblom S, Park G, Pérez I, Alguacil D, Lowdon D,  
280 Alkiza ME, Bouzon CA, Young J, Carriazo A, Liew A, Hendry A; European Union  
281 Advantage Joint Action Work Package 7 partners in collaboration with the  
282 International Foundation for Integrated Care Special Interest Group on Intermediate  
283 Care. Defining the characteristics of intermediate care models including transitional  
284 care: an international Delphi study. *Aging Clin Exp Res*. 2020 Nov;32(11):2399-  
285 2410. doi: 10.1007/s40520-020-01579-z.
- 286 5. Rameli PM, Rajendran N. Outcomes of complex discharge planning in older adults  
287 with complex needs: a scoping review. *J Int Med Res*. 2022  
288 Jul;50(7):3000605221110511. doi: 10.1177/03000605221110511.

- 289 6. NHS England Statistics. Monthly Delayed Transfer of Care Situation Reports:  
290 Definitions and Guidance, 2015. Available:  
291 <https://www.england.nhs.uk/statistics/statistical-work-areas/delayed-transfers-of-care/>  
292 (Accessed: December 5, 2022).
- 293 7. Rojas-García A, Turner S, Pizzo E, Hudson E, Thomas J, Raine R. Impact and  
294 experiences of delayed discharge: A mixed-studies systematic review. *Health Expect*.  
295 2018 Feb;21(1):41-56. doi: 10.1111/hex.12619.
- 296 8. Yoon S, Mo J, Lim ZY, Lu SY, Low SG, Xu B, Loo YX, Koh CW, Kong LY, Towle  
297 RM, Lim SF, Tan CS, Kwan YH, Low LL. Impact of COVID-19 Measures on  
298 Discharge Planning and Continuity of Integrated Care in the Community for Older  
299 Patients in Singapore. *Int J Integr Care*. 2022 May 13;22(2):13. doi:  
300 10.5334/ijic.6416.
- 301 9. Wallace E, Salisbury C, Guthrie B, Lewis C, Fahey T, Smith SM. Managing patients  
302 with multimorbidity in primary care. *BMJ*. 2015 Jan 20;350:h176. doi:  
303 10.1136/bmj.h176.
- 304 10. Harrison C, Britt H, Miller G, Henderson J. Examining different measures of  
305 multimorbidity, using a large prospective cross-sectional study in Australian general  
306 practice. *BMJ Open*. 2014 Jul 11;4(7):e004694. doi: 10.1136/bmjopen-2013-004694.
- 307 11. Ramdass SK, Brennan MJ, Starr R, Lindenauer PK, Liu X, Pekow P, Stefan MS. The  
308 Association of Frailty with Discharge Disposition for Hospitalized Community  
309 Dwelling Elderly Patients. *J Hosp Med*. 2018 Mar 1;13(3):182-184. doi:  
310 10.12788/jhm.2890.
- 311 12. Challis D, Hughes J, Xie C, Jolley D. An examination of factors influencing delayed  
312 discharge of older people from hospital. *Int J Geriatr Psychiatry*. 2014 Feb;29(2):160-  
313 8. doi: 10.1002/gps.3983.

- 314 13. Fluck D, Fry CH, Rankin S, Lewis A, Robin J, Rees J, Finch J, Jones Y, Jones G,  
315 Tudose J, Taylor L, Han TS. Does the length of stay in hospital affect healthcare  
316 outcomes of patients without COVID-19 who were admitted during the pandemic? A  
317 retrospective monocentric study. *Intern Emerg Med*. 2022 Aug;17(5):1385-1393. doi:  
318 10.1007/s11739-022-02945-7.
- 319 14. Weerahandi H, Mak W, Burack OR, Canter BE, Reinhardt JP, Boockvar KS.  
320 Discharge processes in a skilled nursing facility affected by COVID-19. *J Am Geriatr*  
321 *Soc*. 2021 Sep;69(9):2437-2439. doi: 10.1111/jgs.17228.
- 322 15. Rodrigues LP, de Oliveira Rezende AT, Delpino FM, Mendonça CR, Noll M, Nunes  
323 BP, de Oliviera C, Silveira EA. Association between multimorbidity and  
324 hospitalization in older adults: systematic review and meta-analysis. *Age Ageing*.  
325 2022 Jul 1;51(7):afac155. doi: 10.1093/ageing/afac155.
- 326 16. Australian Institute of Health and Welfare, Chronic condition multimorbidity, AIHW,  
327 Australian Government, 2021. Available: [https://www.aihw.gov.au/reports/chronic-](https://www.aihw.gov.au/reports/chronic-disease/chronic-condition-multimorbidity/related-material)  
328 [disease/chronic-condition-multimorbidity/related-material](https://www.aihw.gov.au/reports/chronic-disease/chronic-condition-multimorbidity/related-material). (Accessed: December 5,  
329 2022).

330

331

332

333

334

## 335 **Declarations**

## 336 **Ethical approval and consent to participate**

337 Approval was sought and granted by both the SJH Research & Innovation Office and St  
338 James's/Tallaght University Hospital Research & Ethics Office before conducting the research.  
339 Informed consent and a data protection impact assessment (DPIA) were not required as no  
340 identifiable information was collected for the study.

341

## 342 **Consent for publication**

343 Not applicable

## 344 **Availability of data and materials**

345 All data relevant to the study are included in the article or uploaded as supplementary  
346 information

## 347 **Competing interests**

348 The authors declare that they have no competing interests

## 349 **Funding**

350 The author(s) received no funding for the research and publication of this article.

351

## 352 **Author's contributions**

353 NR and PMR - Conceptualisation, data collection, interpretation, design analysis, drafting,  
354 revising and approval of the final manuscript. ON and JB - Data collection. DG, JB, KM and  
355 ON - Contributed to the data collection, revising and approval of the final manuscript,

## 356 **Acknowledgements**

357 Not applicable



358

359 **Table 2: Variables independently associated with delay in discharge (LOS >15) from**

360 **Stratified COX regression analysis.**

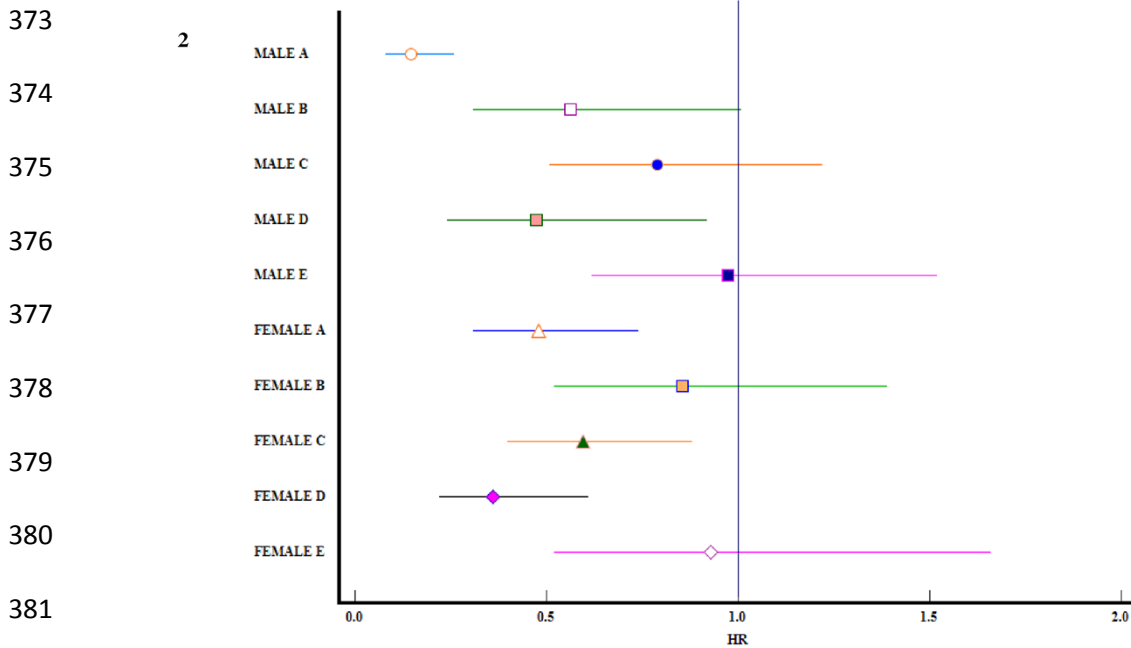
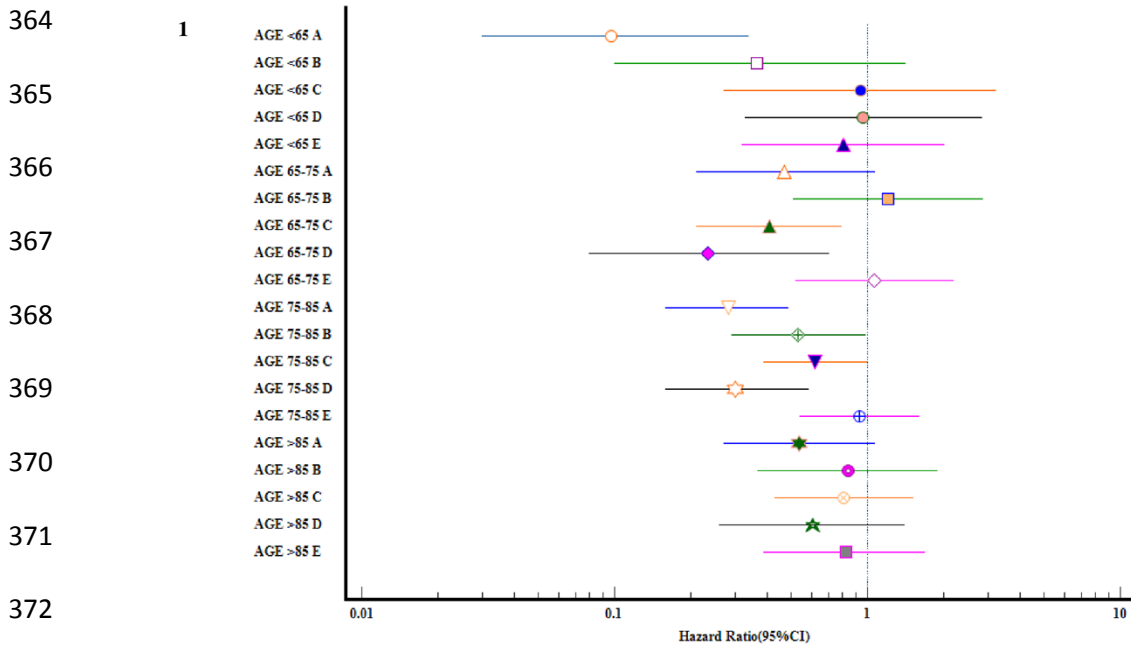
361

Chief Characteristics		Covariates	B Coefficient	Hazard Ratio (95% CI)	P Value
Age	<65	Complications/comorbidities prolonging discharge	-2.329	.097 (.028 -.340)	<.001
		Healthcare-associated infection	-1.005	.366 (.095-1.416)	.146
		Frailty, falls and/or integrated rehabilitation needs	-.063	.939 (.272-3.239)	.921
		Patient-centred needs	-.039	.962 (.325-2.850)	.944
		Community Services	-.216	.806 (.321-2.020)	.645
Age	65 - 75	Complications/comorbidities prolonging discharge	-.759	.468 (.206-1.065)	.070
		Healthcare-associated infection	.190	1.209 (.506-2.887)	.669
		Frailty, falls and/or integrated rehabilitation needs	-.893	.410 (.211-.795)	.008
		Patient-centred needs	-1.455	.233 (.077-.708)	.010
		Community Services	0.67	1.069 (.522-2.188)	.855
Age	75 -85	Complications/comorbidities prolonging discharge	-1.270	.281 (.160-.492)	<.001

		Healthcare-associated infection	-.628	.533 (.288-.987)	.045
		Frailty, falls and/or integrated rehabilitation needs	-.473	.623 (.387-1.002)	.051
		Patient-centred needs	-1.199	.301 (.155-.588)	<.001
		Community Services	-.075	.928 (.536-1.605)	.789
Age	> 85	Complications/comorbidities prolonging discharge	-.619	.539 (.272-1.065)	.075
		Healthcare-associated infection	-.177	.838 (.369-1.904)	.673
		Frailty, falls and/or integrated rehabilitation needs	-.213	.808 (.427-1.531)	.514
		Patient-centred needs	-.498	.608 (.262-1.408)	.246
		Community Services	-.203	.817 (.394-1.693)	.586
Gender	Male	Complications/comorbidities prolonging discharge	-1.930	.145 (.081-.261)	<.001
		Healthcare-associated infection	-.574	.563 (.314-1.010)	.054
		Frailty, falls and/or integrated rehabilitation needs	-.235	.790 (.513-1.217)	.286
		Patient-centred needs	-.751	.472 (.243-.917)	.027
		Community Services	-.027	.973 (.621-1.524)	.905
Gender	Female	Complications/comorbidities prolonging discharge	-.736	.479 (.311-.737)	<.001

		Healthcare-associated infection	-.157	.854 (.524-1.393)	.528
		Frailty, falls and/or integrated rehabilitation needs	-.521	.594 (.401-.880)	.009
		Patient-centred needs	-1.018	.361 (.215-.608)	<.001
		Community Services	-.073	.930 (.520-1.663)	.809
Multi morbidity	≤4	Complications/comorbidities prolonging discharge	-.858	.424 (.267-.672)	<.001
		Healthcare-associated infection	-.351	.704 (.411-1.207)	.202
		Frailty, falls and/or integrated rehabilitation needs	-.843	.431 (.285-.651)	<.001
		Patient-centred needs	-.828	.437 (.247-.772)	.004
		Community Services	-.234	.792 (.501-1.252)	.317
Multi morbidity	>4	Complications/comorbidities prolonging discharge	-1.179	.308 (.190-.497)	<.001
		Healthcare-associated infection	-.086	.917 (.551-1.528)	.740
		Frailty, falls and/or integrated rehabilitation needs	-.256	.774 (.512-1.170)	.224
		Patient-centred needs	-1.045	.352 (.192-.644)	<.001
		Community Services	.196	1.211 (.739-2.002)	.442

363 **Additional File 1: Figure S1**

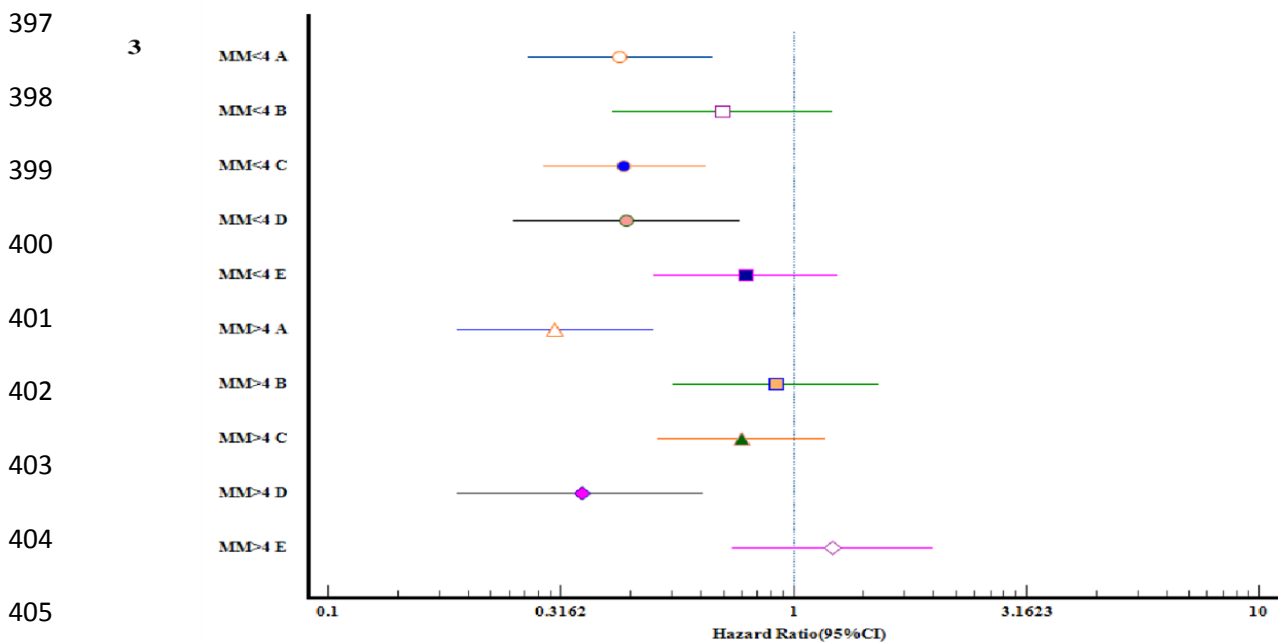


383 Forest plots 1 and 2 depicting age and gender strata associated Hazard ratio (Markers) estimates  
 384 (95% Confidence Interval demonstrated by horizontal line) exhibited statistically significant  
 385 results for individuals < 65 years of age who had a delay in discharge due to complications  
 386 from comorbidities; those in 65-75 years of age category, had prolonged LOS due to admission  
 387 with frailty, falls and/or integrated rehabilitation needs; and 75-85 years of age category

388 showed an association of at least 4 out of the 5 common delaying factors. Strata Gender  
 389 exhibited a significant delay in discharge due to complications from comorbidities and patient-  
 390 centred needs; in comparison to the female gender who also experienced a delay in discharge  
 391 as a result of both factors alongside frailty, falls and/or integrated rehabilitation needs.[A.  
 392 Complications/comorbidities prolonging discharge, B. Healthcare-associated infection, C.  
 393 Frailty, falls and/or integrated rehabilitation needs, D. Patient-centred needs, E. Community  
 394 services]

395

### 396 Additional File 2: Figure S2



406

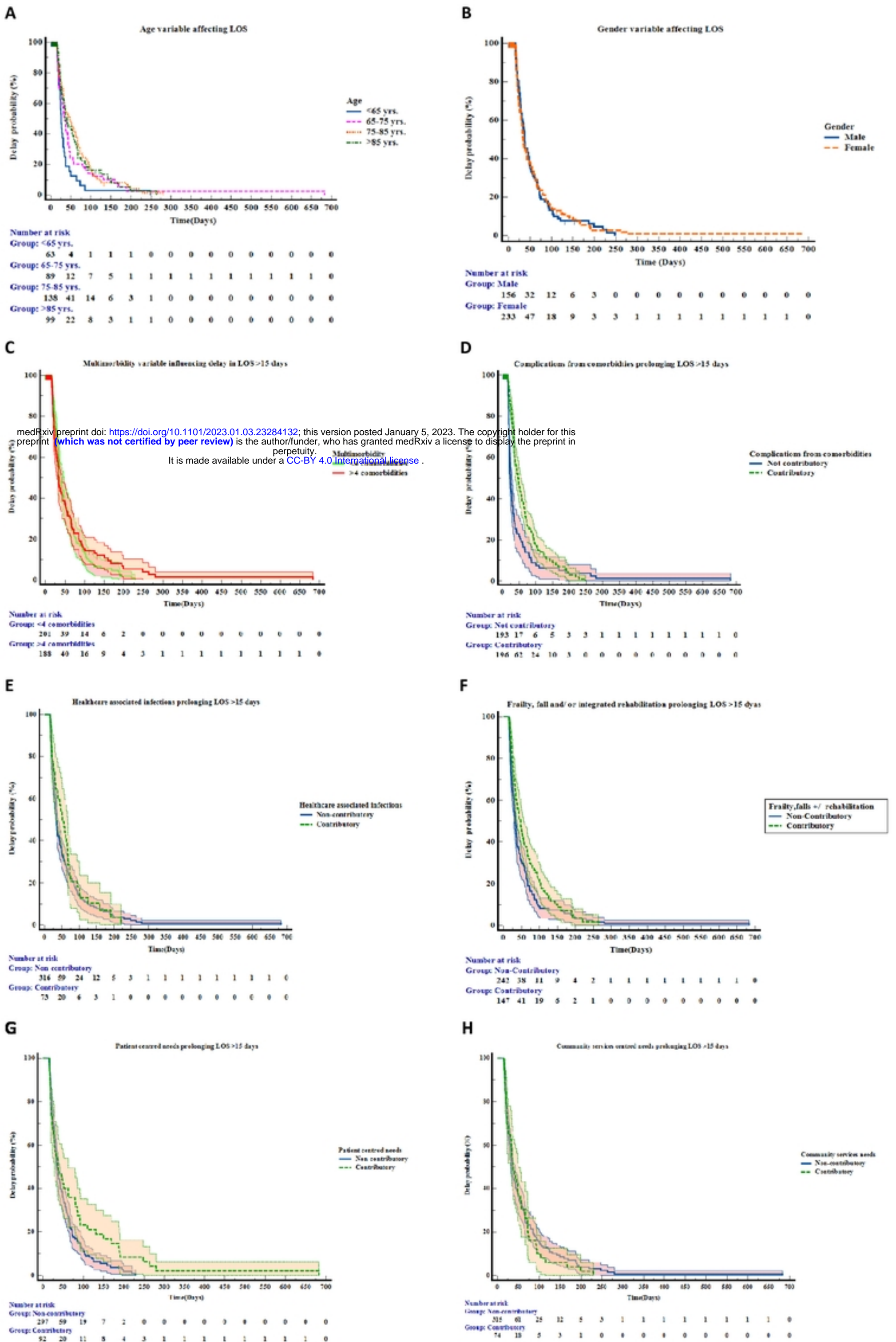
407 Forest plot 3 depicting multimorbidity (MM) strata-associated Hazard ratio (Markers)  
 408 estimates (95% Confidence Interval demonstrated by horizontal line) exhibited a significant  
 409 delay in discharge due to complications from comorbidities, frailty, falls, and/or integrated  
 410 rehabilitation and patient-centred needs in patients with  $\leq 4$  MM. In contrast patients with  $>4$   
 411 MM experienced significant delays in discharge due to complications from comorbidities and  
 412 patient-centred needs.[A. Complications/comorbidities prolonging discharge, B. Healthcare-

413 associated infection, **C.** Frailty, falls and/or integrated rehabilitation needs, **D.** Patient-centred  
414 needs, **E.** Community Services]

415

416

417



Figure