

SARS-CoV-2 seroprevalence and longitudinal antibody response following natural infection in pregnancy: a prospective cohort study

Alison L. Drake PhD, MPH^{1,2*}, #a, Jaclyn N. Escudero MPH¹, Morgan C. Aurelio DNP, ARNP-CNM¹, Sascha R. Ellington, PhD, MSPH³, Lauren B. Zapata PhD, MSPH³, Romeo R. Galang MD, MPH³, Margaret C. Snead PhD³, Krissy Yamamoto MD⁴, Carol Salerno MD³, Barbra A. Richardson, PhD^{1,5}, Alexander L. Greninger MD PhD⁶, Alisa B. Kachikis MD, MS⁴, Janet A. Englund MD^{7,8}, Sylvia M. LaCourse MD, MPH^{1,2,9}

¹ Department of Global Health, University of Washington, Seattle, Washington, United States of America

² Department of Epidemiology, University of Washington, Seattle, Washington, United States of America

³National Center for Chronic Disease Prevention and Health Promotion, Division of Reproductive Health, Centers for Disease Control and Prevention, Atlanta, Georgia

⁴ Department of Obstetrics and Gynecology, University of Washington, Seattle, Washington, United States of America

⁵ Department of Biostatistics, University of Washington, Seattle, Washington, United States of America

⁶ Department of Laboratory Medicine and Pathology, University of Washington, Seattle, Washington, United States of America

⁷ Department of Pediatrics, University of Washington, Seattle, Washington, United States of America

⁸ Seattle Children's Research Institute, Seattle Children's Hospital, Seattle, Washington, United States of America

⁹ Department of Medicine, Division of Allergy and Infectious Diseases, University of Washington, Seattle, Washington, United States of America

#a Current address: Department of Global Health, University of Washington, Seattle, Washington, United States of America

* Corresponding author

Email: Adrake2@uw.edu

34 Abstract

35 **Importance:** Antenatal care provides unique opportunities to assess SARS-CoV-2
36 seroprevalence and antibody response duration after natural infection detected during
37 pregnancy; transplacental antibody transfer may inform peripartum and neonatal protection.

38 **Objective:** Estimate seroprevalence and durability of antibodies from natural infection (anti-
39 nucleocapsid (anti-N) IgG) among pregnant people, and evaluate transplacental transfer
40 efficiency.

41 **Design:** Seroprevalence study: cross-sectional SARS-CoV-2 antibody screening among
42 pregnant people December 9, 2020-June 19, 2021. Cohort study: Pregnant people screened
43 anti-N IgG+ by Abbott Architect chemiluminescent immunoassay in seroprevalence study or
44 identified through medical records with RT-PCR+ or antigen positive results enrolled in a
45 prospective cohort December 9, 2020-June 30, 2022 to longitudinally measure anti-N IgG
46 responses. We collected cord blood and assessed transplacental transfer of maternally-derived
47 anti-N antibodies.

48 **Setting:** Three hospitals and 14 affiliated clinics providing antenatal and delivery care, Seattle,
49 Washington metropolitan area.

50 **Participants:** Seroprevalence study: pregnant people were screened for SAR-CoV-2 anti-N
51 IgG during routine care. Cohort study: Pregnant people with evidence of prior SARS-CoV-2
52 infection (screened anti-N IgG+ from seroprevalence study or identified with a RT-PCR+ or
53 antigen positive result from medical records) were enrolled in a cohort study to longitudinally
54 measure anti-N IgG responses.

55 **Exposure(s) (for observational studies):** COVID-19 diagnosis, symptoms, and disease
56 severity.

57 **Main Outcome(s) and Measure(s):** Presence and durability of SARS-CoV-2 anti-N IgG,
58 transplacental transfer of maternally-derived anti-N IgG.

59 **Results:** Of 1289 pregnant people screened in the seroprevalence study, 5% (65) tested
60 SARS-CoV-2 anti-N IgG+, including 39 (60%) without prior RT-PCR+ or antigen positive results
61 and 53 (82%) without symptoms. Among 89 participants enrolled in the cohort study, 73 (82%)
62 had anti-N IgG+ results during pregnancy. Among 49 participants with delivery samples 33
63 (67%) were anti-N IgG negative by delivery. Of 24 remaining anti-N IgG+ at delivery with paired
64 cord blood samples, 12 (50%) had efficient transplacental anti-N IgG antibody transfer. Median
65 time from first anti-N IgG to below positive antibody threshold was 17 weeks and did not differ
66 by prior RT-PCR+ or antigen positive status.

67 **Conclusions and Relevance:** Maternally-derived SARS-CoV-2 antibodies to natural infection
68 may wane before delivery. Vaccines are recommended for pregnant persons to reduce severe
69 illness and confer protection to infants.

70 **Introduction**

71 Antenatal care offers a unique opportunity to assess SARS-CoV-2 seroprevalence among
72 pregnant people, including those with previously unknown infection [1]. Prior SARS-CoV-2
73 seroprevalence studies among pregnant people have been primarily cross-sectional, often
74 focused at delivery in the hospital, and have potentially missed pregnant people infected earlier
75 in pregnancy whose antibody response has waned by the time of delivery, including those with
76 asymptomatic infection or mild disease [2-4].

77 Natural infection with SARS-CoV-2 during pregnancy may provide some protection against
78 infection during the peripartum period in pregnant people and their infants, but longitudinal
79 immunological responses across the pregnancy-postpartum continuum have not been well
80 characterized. COVID-19 vaccines are recommended for people who are pregnant, recently
81 pregnant (including those who are lactating), trying to become pregnant, or who might become
82 pregnant in the future, regardless of prior infection status [5,6]. Additionally, while COVID-19
83 vaccines are approved in the United States for children as young as 6 months of age, they are
84 not currently available or being studied in infants aged <6 months [7]. Prospective data on
85 antibody responses following infection during pregnancy and evaluation of transplacental transfer
86 of antibodies to neonates has the potential to provide important information on the durability and
87 duration of maternal and neonatal immunity following natural infection during pregnancy [8].

88 We conducted a SARS-CoV-2 seroprevalence study among pregnant people in the Seattle,
89 Washington metropolitan area, examined longitudinal SARS-CoV-2 anti-nucleocapsid (anti-N)
90 IgG antibody responses of participants with evidence of natural infection, and measured
91 transplacental transfer of maternally-derived anti-N antibodies. We hypothesized that 5% of
92 pregnant women would have SARS-CoV-2 infection based on anti-N IgG antibody levels and
93 models of SARS-CoV-2 prevalence in the region [9] and the presence of anti-N IgG antibody will

94 be durable through 4 months post-infection based on prior respiratory syncytial virus studies
95 conducted in pregnancy [10-12].

96 **Materials and methods**

97 **Study setting and participants**

98 **Seroprevalence study**

99 Pregnant people aged ≥ 18 years seeking antenatal care at 14 affiliated clinics, or admitted to
100 three labor and delivery units, at University of Washington (UW)-affiliated medical centers were
101 eligible for participation in the seroprevalence study (S1 Table). Healthcare providers obtained
102 informed consent to screen blood samples collected from pregnant people receiving antenatal
103 care during December 9, 2020 - June 19, 2021 for anti-N IgG antibodies to SARS-CoV-2.
104 Healthcare providers offered consent to pregnant people whenever possible; however, we were
105 only able to offer consent to 29% of all people seeking care due to provider inability to offer
106 consent to people who did not access care during the screening period and individual providers'
107 inability to incorporate consent into clinical care. Samples for screening were derived from
108 samples collected for routine clinical care during December 9, 2020 - June 30, 2021. Individuals
109 who did not have a blood sample available for antibody testing but provided consent for screening
110 (929/2218, 42%) were not screened in the seroprevalence study. History of positive SARS-CoV-
111 2 PCR results and COVID-19 disease severity and symptoms were abstracted from the electronic
112 medical record for people who screened positive for anti-N IgG.

113 **S1 Table. Study Sites**

114

115

116 **Prospective cohort study**

117 Pregnant people with evidence of prior SARS-CoV-2 infection (with either documented RT-PCR
118 positive results via medical record reviews during pregnancy or within 6 months before pregnancy
119 or with anti-N IgG positive results from the seroprevalence study) during December 9, 2020 - June
120 8, 2022 were eligible to enroll in a cohort study evaluating longitudinal SARS-CoV-2 anti-N IgG
121 responses. Beginning in January 2022, pregnant people who self-reported a positive rapid antigen
122 test for SARS-CoV-2 infection were also eligible to enroll. Participants identified with a RT-PCR
123 or rapid antigen positive test had blood samples for the prospective cohort collected following
124 informed consent. For participants identified through the seroprevalence study, the
125 seroprevalence result served as the enrollment sample. All participants were scheduled for follow-
126 up blood sample collection at 1, 2, 3 months post-enrollment and delivery (including maternal and
127 cord blood). Additional blood samples were collected at 1-2, 2-4, and 6 months postpartum if
128 sample collection dates did not fall within the post-enrollment sample collection windows. All blood
129 samples were tested for SARS-CoV-2 anti-N IgG antibodies. COVID-19 disease severity and
130 symptoms were abstracted from the electronic medical record and classified as asymptomatic,
131 mild, severe, or critical; disease severity was reported for the initial infection for individuals who
132 were known to have multiple SARS-CoV-2 infections [13].

133 **Laboratory methods**

134 **SARS-CoV-2 anti-N IgG serology**

135 Samples collected for SARS-CoV-2 serology were tested using the Abbott Architect
136 chemiluminescent immunoassay (CMIA), an automated qualitative test designed to detect anti-N
137 IgG to SARS-CoV-2 (Abbott, Abbott Park, Illinois, USA) at UW. This assay has high sensitivity
138 (100%, 17 days post-infection) and specificity (>99.9%) in the two months after SARS-CoV-2

139 infection [14-16]. Samples with an Abbott index ≥ 1.4 were considered positive per manufacturer
140 recommendations [17].

141 **Exposure and outcome variables**

142 The primary exposures were SARS-CoV-2 diagnosis, symptoms, and disease severity; the
143 primary outcomes were presence and durability of SARS-CoV-2 anti-N IgG, and transplacental
144 transfer of maternally-derived anti-N IgG antibodies.

145 **Statistical analysis**

146 Transplacental transfer ratios were calculated as the Abbott index from cord blood collected at
147 delivery divided by the Abbott index from maternal blood collected at delivery with a ratio of ≥ 1
148 considered as efficient transplacental transfer. Vaccination status based on medical record
149 abstraction and/or self-report was classified as follows: partial with one dose of an mRNA vaccine,
150 fully vaccinated if two doses of an mRNA vaccine or one dose of a viral vector vaccine, and
151 boosted if three doses of an mRNA vaccine (or at least one dose plus a viral vector vaccine) or
152 two doses of viral vector vaccine. Wilcoxon rank sum tests were used to compare distributions of
153 continuous variables. Prevalence ratios were calculated to assess potential sources of bias in
154 people who consented versus declined and those who were screened vs did not have a blood
155 sample collected in the seroprevalence study. We assessed co-factors of SARS-CoV-2 anti-N
156 IgG positive results which were calculated using generalized linear models (GLMs) with Poisson
157 family and log link. Kaplan-Meier analysis was used to calculate time to anti-N IgG Abbott below
158 the positive threshold (index < 1.4); differences in curves by PCR/antigen status were assessed
159 using the log-rank test. Cox proportional hazards regression models were used to explore
160 potential covariates of time to anti-N IgG below the threshold. Anti-N IgG Abbott index results
161 were \log_{10} transformed to reduce skewness, and general estimating equations (GEE) with a

162 Gaussian link and robust standard errors were constructed to measure the rate of change in \log_{10}
163 anti-N IgG response over time since first anti-N IgG positive result and to assess potential co-
164 factors. Potential co-factors for the Cox and GEE models included: trimester of infection, an
165 interaction between pregnancy status and time since first anti-N IgG positive result, presence of
166 symptoms, disease severity, and vaccination status.

167 **Sample size**

168 Seroprevalence study: With a sample size of 1268 pregnant people, we have 1.22% precision to
169 detect seroprevalence based on anti-N IgG results of 5% (95% CI 3-7%) by the end of pregnancy
170 (i.e., at the time of delivery admission); an additional 21 people were enrolled by healthcare
171 providers after the target sample size was reached; therefore, the overall sample size was 1289.

172 Prospective cohort study: We calculated a sample size of 50 pregnant people with evidence of
173 SARS-CoV-2 would be required to measure correlates of infection during pregnancy (to be
174 presented in a future manuscript) with effect sizes of 2.5-3.4 for a range of co-factors for infection
175 with prevalence ranging 10-40%, assuming 80% power, $\alpha=0.05$, and two-sided testing;
176 however, we continued to accrue additional infections in the cohort due to the convenience
177 sample of pregnant people with virologic evidence of SARS-CoV-2 infection available during the
178 study time frame and reported to the study by healthcare providers.

179 **Ethics statement**

180 This study was approved by UW Institutional Review Board and UW Medicine Valley Medical
181 Center Research Oversight Committee. The activity was reviewed by the US Centers for Disease
182 Control and Prevention (CDC) and was conducted consistent with applicable federal law and CDC
183 policy. All participants provided written informed consent prior to study participation.

184

185 **Results**

186 **SARS-CoV-2 seroprevalence study**

187 Overall, we identified 8632 pregnant people who received antenatal care or delivered at UW
188 enrollment sites during the seroprevalence study enrollment period (Fig 1, S1 Table); 2690
189 pregnant people (31%) were offered participation and consent for the study (2218 consented and
190 472 declined). Among the 2218 who consented to blood screening for SARS-CoV-2 anti-N IgG,
191 1289 (58%) had blood samples tested. There were some significant differences in pregnant
192 people who consented to screening and had samples tested by age, race, and ethnicity ($p < 0.05$,
193 S2 Table); notably Black race was more frequently reported among those who declined screening
194 (19%) than those who consented to screening (7%). Among those who consented, Black race
195 was less frequently reported among those who did not have blood tested (1%) than those who
196 were screened (8%). Among pregnant people screened for anti-N IgG, the median age was 32
197 years (interquartile range [IQR] 29-36) with a median gestational age at screening of 16 weeks
198 (IQR 11-38) Table 1.

199

200

201

202

203

204

205

Table 1. Baseline characteristics of pregnant people screened for SARS-CoV-2 anti-N IgG, by anti-N IgG result

	Screened for anti-N IgG (n=1289)	Anti-N IgG- (n=1224)	Anti-N IgG+ (n= 65)	PR ^c (95% CI)	p-value
	<i>n (%) or median (IQR)</i>				
Age ^a	32 (29-36)	32 (29-36)	29 (26-34)	0.92 (0.87-0.97)	0.001
Gestational age (weeks) at screening ^b	16 (11-38)	15 (11-38)	18 (11-38)	1.00 (0.99-1.02)	0.74
Race					
American Indian/Alaska Native	17 (1)	15 (1)	2 (3)	3.99 (1.02-15.70)	0.047
Asian	256 (20)	252 (21)	4 (6)	0.53 (0.18-1.53)	0.24
Black	103 (8)	90 (7)	13 (20)	4.25 (2.20-8.22)	<0.0001
Native Hawaiian/Pacific Islander	31 (2)	26 (2)	5 (8)	5.48 (2.21-13.56)	<0.0001
White	713 (55)	692 (57)	21 (32)	REF	
Other	112 (9)	94 (8)	18 (28)	5.46 (3.00-9.92)	<0.0001
Not reported	57 (4)	55 (4)	2 (3)	-	-
Hispanic ethnicity	138/1244 (11)	120/1244 (10)	18/64 (28)	3.13 (1.87-5.25)	<0.0001

206 PR, prevalence ratio comparing anti-N IgG+ vs anti-N IgG-. CI, confidence interval. Anti-N IgG
 207 tested using Abbott Architect chemiluminescent immunoassay (CMIA), a semi-qualitative test
 208 designed to detect anti-nucleocapsid (anti-N) IgG of SARS-CoV-2. IgG+ if Abbott index ≥ 1.4 .

209 ^aMissing age for 9 IgG- people.

210 ^bMissing gestational age for 9 people (8 IgG- and 1 IgG+ people).

211 ^cper 1 unit increase

212

213 **S2 Table. Pregnant people who consented to screening and had samples tested by age,**
 214 **race, and ethnicity.**

215 SARS-CoV-2 seroprevalence among pregnant people screened was 5% (65/1289), of whom 60%
 216 (n=39) did not have a prior RT-PCR positive test result during pregnancy documented in their
 217 medical record. Monthly seroprevalence was significantly different over time ($p=0.03$), peaking in
 218 December 2020 at 8.2% prior to the World Health Organization variants of concern becoming
 219 dominant in the area, and was lowest in April 2021 before the Delta variant became dominant
 220 (S1A,B Fig) [18]. There were significant differences in seroprevalence by race and ethnicity Table

221 1. Among those who tested negative for anti-N IgG, 57% were White compared with 32% of those
222 testing positive for anti-N IgG. Compared to White pregnant people, seroprevalence was at least
223 3 times as high among those who were Black, Native Hawaiian or Pacific Islander, American
224 Indian or Alaska Native, or identified as another race ($p < 0.05$ for all). Seroprevalence was also 3
225 times as high among pregnant people of Hispanic versus non-Hispanic ethnicity. Older pregnant
226 people were less likely to test anti-N IgG positive with each year increase in age associated with
227 8% lower seroprevalence (PR: 0.92, 95% CI for PR: 0.87-0.97). Among 65 pregnant people
228 identified in the seroprevalence study with anti-N IgG positive results, 23 (35%) had symptoms
229 (21 mild, 2 severe), 2 (3%) of whom were hospitalized for COVID-19. RT-PCR dates were
230 available for 22 of 26 pregnant people with a RT-PCR positive result, with a median time between
231 RT-PCR positive date and blood collection date for anti-N IgG of 7 weeks (IQR 4-15); 4 people
232 were RT-PCR positive before pregnancy.

233 **S1A Fig. SARS-CoV-2 anti-N IgG screening status of pregnant people participating in the**
234 **seroprevalence study.**

235 **S1B Fig. Anti-N IgG seroprevalence by month.**

236 Median Abbott index among 65 pregnant people with anti-N IgG positive results (Abbott index \geq
237 1.4) and available Abbott index in the seroprevalence study was 3.18 (IQR 2.06-5.00). Median
238 Abbott index was significantly higher among those with COVID-19 symptoms reported in the
239 medical record than without (median 4.39, IQR 3.18-5.42 versus median 2.49, IQR 1.92-4.30;
240 respectively; $p = 0.02$) and among those with RT-PCR positive results than without (median: 4.19,
241 IQR 2.87-5.42 versus 2.49, IQR 1.89-4.16; respectively; $p = 0.02$). Fifteen participants received a
242 COVID-19 vaccine (14 fully vaccinated, 1 partially vaccinated) prior to initial anti-N IgG positive
243 test, but no differences in anti-N IgG Abbott index were detected between people who were and
244 were not vaccinated (data not shown).

245 **Prospective cohort study**

246 We enrolled 89 pregnant people with evidence of prior SARS-CoV-2 in the prospective cohort
247 study; 23 (26%) from the seroprevalence study and 66 (74%) identified through medical records
248 (Fig 1). Median age was 32 years (IQR 30-35) and median gestational age at first blood sample
249 collection was 25 weeks (IQR 16-36). Less than 5% of participants identified as either non-binary
250 or did not report their gender; all other participants identified as women. Overall, 16 (18%) were
251 anti-N IgG negative, all with prior RT-PCR positive results. Among 73 of 89 (82%) people with
252 anti-N IgG positive results, most (n=56, 77%) also had a prior RT-PCR positive result, 10 (14%)
253 positive by anti-N IgG alone, and 7 (10%) also had a prior positive antigen test but no prior RT-
254 PCR positive result.

255 **Fig 1. Flowchart of pregnant people enrolled in prospective cohort study with a history of**
256 **SARS-CoV-2 infection***

257

258 **Pregnant people with SARS-CoV-2 anti-N IgG positive results**

259 Of 89 pregnant people enrolled in the prospective cohort, 73 (83%) had anti-N IgG positive results
260 documented at any time during the study Table 2. Among 68 people who were pregnant when
261 the first anti-N IgG positive result was collected, the median gestational age was 22 weeks (IQR
262 15-36). Most (n=56, 77%) had a prior positive RT-PCR result (5 recorded prior to pregnancy
263 [median 8 weeks before; range 0.6-24 weeks], data not shown), 55 (75%) reported having
264 symptoms, and 11 (15%) had neither reported symptoms or a prior RT-PCR positive result (data
265 not shown). Among the 55 people with symptoms reported, 71% (n=55) had mild symptoms and
266 4% (n=3) had severe symptoms; 3 were hospitalized for COVID-19. Median Abbott index at the
267 first anti-N IgG positive sample was 3.53 (IQR 2.33-5.12, range [data not shown] 1.43–9.87), and
268 was not significantly different between those with (3.72, IQR 2.53-5.12) and without (2.65, IQR
269 1.97-5.00) prior RT-PCR positive results (p=0.34) (data not shown). Median Abbott index at the

270 first anti-N IgG positive sample was also not significantly different between those who were
 271 symptomatic versus asymptomatic (3.73 vs 2.5, $p=0.19$) (data not shown). Among 57 pregnant
 272 people with known dates for their prior RT-PCR positive result, the median time from RT-PCR
 273 positive result to first available anti-N IgG positive result was 6 weeks (IQR 4-12) (data not shown).

Table 2. Baseline characteristics of pregnant people enrolled with prior SARS-CoV-2 infection and anti-N IgG+

	Anti-N IgG+ (N=73)	Anti-N IgG+ with ≥ 1 follow-up anti-N IgG result (N=61)
	n (%) or Median (IQR)	
Age (years)	32 (29-34)	32 (30-35)
Gestational age at first blood collection (weeks) ^a	22 (15-36)	20 (14-33)
Prior RT-PCR+ result	56 (77)	44 (72)
Abbott Index at 1 st anti-N IgG+ ^b	3.53 (2.33-5.12)	3.53 (2.35-4.89)
COVID-19 severity		
Asymptomatic	18 (25)	18 (30)
Mild	52 (71)	42 (69)
Critical	0 (0)	0 (0)
Severe	3 (4)	1 (2)
Hospitalized for COVID-19	3 (4)	1 (2)
Vaccination status at 1 st anti-N IgG+ \pm		
None	43 (59)	36 (59)
Partial	3 (4)	3 (5)
Fully	17 (23)	13 (21)
Boosted	10 (14)	9 (15)

274 ^a5 people (1 with ≥ 1 follow-up) whose first blood collection was after delivery ^bAbbott index at 1st anti-N IgG+ ≥ 1.4 . ^cVaccination status
 275 was classified as partial with one dose of an mRNA vaccine or missing vaccine type; fully vaccinated if two doses of an mRNA vaccine,
 276 two doses with missing vaccine type, or one dose of a viral vector vaccine; and boosted if three vaccine doses of any type (three
 277 mRNA vaccines, two doses plus a viral vector vaccine, or three doses with one or missing vaccine types) or two doses of viral vector
 278 vaccine.

279
 280 Among 61 pregnant people with an anti-N IgG positive result and at least one subsequent blood
 281 sample, the median time from the first positive anti-N IgG result to anti-N IgG below the positive
 282 threshold was 17 weeks (95% CI 12-27) and was similar regardless of whether they had a prior
 283 RT-PCR positive result (median 17 weeks for both) (Fig 2a). Median time from first RT-PCR
 284 positive result to anti-N IgG below the positive threshold was 28 weeks (95% CI 19-33) (Fig 2b).
 285 The average rate of change in \log_{10} Abbott index per month was: 0.02 increase since first blood

286 collection (Fig 3a), 0.02 decrease since RT-PCR positive result (Fig 3b), and 0.02 decrease since
287 RT-PCR positive or antigen positive result (Fig 3c). \log_{10} Abbott index was significantly lower at
288 the first blood collection for people who were in the second trimester ($p=0.02$), and a trend toward
289 lower among people in their third trimester ($p=0.09$), compared to the first trimester. The average
290 rate of change in \log_{10} Abbott index per month was significantly higher, with increases for people
291 in both the second and third trimester compared to at or before the first trimester ($p=0.002$ and
292 $p=0.0001$, respectively). There were no differences in the rate of change in \log_{10} Abbott index by
293 disease severity/symptoms, pregnant versus postpartum status, or vaccination status (results not
294 shown).

295 **Fig 2A. Time from first anti-N IgG+ to anti-N IgG below positive threshold.** Anti-N IgG index
296 below positive threshold based on Abbott index <1.4 .

297 **Fig 2B. Time from RT-PCR+ to anti-N IgG below positive threshold.** Anti-N IgG index below
298 positive threshold based on Abbott index <1.4 .

299 **Fig 3A. Abbott anti-N IgG index and timing.** *First sample collected following reinfection with
300 SARS-CoV-2, confirmed with subsequent RT-PCR+ or antigen positive result ($n=3$). Red line
301 represents Abbott index for positive threshold (\log_{10} transformed value of 1.4. Blue line
302 represents lowess smoother; excludes samples collected at or after SARS-CoV-2 infection.

303 **Fig 3B. Time since RT-PCR+.**

304 **Fig 3C. Time since RT-PCR+ (or antigen+).**

305 **Anti-N IgG at delivery and transplacental antibody transfer**

306 Maternal blood samples were collected at delivery from 49 people with prior anti-N IgG positive
307 results; 33 (67%) remained anti-N IgG positive and 16 (33%) were anti-N IgG negative at delivery.
308 Paired maternal and cord blood were collected from 37 of 49 participants at delivery. Delivery

309 samples for people with paired cord blood were collected at a median of 8 weeks after the first
310 anti-N IgG positive result (n=37) and a median 12 weeks after the RT-PCR positive result (n=30).
311 Among 24 participants with anti-N IgG positive results at delivery and available cord blood results,
312 most (n=21, 88%) cord blood samples were also anti-N IgG positive (Fig 4). However, half (n=12,
313 50%) had evidence of efficient transplacental transfer of anti-N IgG with transfer ratio of ≥ 1 . The
314 corresponding median IgG index for maternal blood and cord blood samples above the positive
315 threshold was 3.66 (IQR 2.25-5.27) and 3.06 (IQR 2.73-4.52), respectively. Among participants
316 remaining anti-N IgG positive at delivery, the median placental transfer ratio of maternally derived
317 anti-N IgG was 0.94 (IQR 0.73-1.31). Maternal samples collected at delivery that were anti-N IgG
318 negative were collected at a median of 19 weeks after the initial anti-N IgG positive result and 19
319 weeks after the prior RT-PCR positive result.

320 **Fig 4. IgG index among paired maternal-cord blood samples.** Transplacental transfer ratio
321 (infant anti-N IgG index/maternal delivery anti-N IgG index) is ≥ 1 for circles on or above the blue
322 line (red), < 1 for circles below the blue line (blue); circles below the dashed red lines (threshold
323 for anti-N IgG positive [≥ 1.4]) are cord blood samples below the anti-N IgG positive threshold
324 (light blue).

325 Discussion

326 SARS-CoV-2 seroprevalence among 1289 pregnant people was 5%, in the Seattle metropolitan
327 area between December 2020 and June 2021, with highest prevalence of ~8% in December
328 2020-January 2021. Over half of pregnant people identified with serological evidence of natural
329 SARS-CoV-2 infection did not have a prior RT-PCR or antigen positive test documented in their
330 medical record. Among all people with a prior SARS-CoV-2 infection enrolled in the cohort
331 study, 15% were both asymptomatic and unaware they were previously infected with SARS-
332 CoV-2. While our estimates of asymptomatic (and mild) infections among pregnant people with
333 RT-PCR+ results are similar to other pregnant cohorts [19,20], our assessment of anti-N IgG

334 enabled us to characterize longitudinal antibody responses among people with less severe
335 infections that may be missed in other seroprevalence SARS-CoV-2 studies conducted in
336 pregnancy. In our study, we found that pregnant people with serologic evidence of SARS-CoV-2
337 were more likely to be Black, Native Hawaiian/Pacific Islander, or American Indian/Alaska
338 Native race or Hispanic ethnicity; these observed disparities concur with results from prior
339 studies of SARS-CoV-2 infection conducted among pregnant people King County, WA (location
340 of Seattle metropolitan area) [21] and in other parts of the U.S. [3,21-23]. We found anti-N IgG
341 responses waned over time following natural infection; these results concur with other studies of
342 waning anti-N IgG levels in non-pregnant cohorts, particularly those using the Abbott Architect
343 platform [24-25]. While two-thirds of pregnant people with anti-N IgG antibodies in pregnancy
344 remained anti-N IgG positive at delivery, with most cord blood samples also remaining anti-N
345 IgG positive, less than half of participants remaining anti-N IgG positive at delivery had evidence
346 of efficient transplacental transfer of maternal anti-N IgG with ratio of cord to maternal anti-N
347 antibody ratio of ≥ 1 . Assuming that pregnant people who were anti-N IgG negative at delivery
348 would have had corresponding negative cord samples, we estimate that only 28% of people
349 who had prior evidence of anti-N IgG antibodies efficiently transferred anti-N IgG
350 transplacentally. These results concur with prior studies demonstrating correlations between
351 maternal IgG and cord blood IgG concentrations [3]. Our findings have important implications for
352 conveying information about potential protection following natural infection during (or before)
353 pregnancy. Natural infection may contribute to decisions to delay or decline vaccination under
354 the assumption that natural infection provides sufficient immunity against maternal reinfection,
355 infant infection, and COVID-19 morbidity and mortality. Median time to a decrease in anti-N IgG
356 below the threshold for positive was 4 months after anti-N IgG was first detected and 6.5 month
357 after testing positive by RT-PCR. While this duration was similar to some studies conducted
358 among non-pregnant cohorts [26] and shorter than others [27], it corresponds to one-third of
359 pregnant people with previous SARS-CoV-2 infection no longer having positive anti-N IgG

360 antibodies by the time of delivery – a critical time (including for late pregnancy) for
361 transplacental transfer of protective antibodies to infants.

362 Some studies of transplacental transfer of maternal IgG to SARS-CoV-2 suggest efficiency is
363 greatest when infection occurs during the second trimester, while others have found transfer
364 efficiency is higher in the third trimester [28]. Differences in these studies may be attributed to
365 duration of infection prior to delivery, with potential for antibody waning if infection occurs early in
366 pregnancy, and insufficient time to mount a robust immune response if infection occurs too close
367 to delivery. Alternatively, efficiency of antibody transfer may be related to severity of disease, or
368 disease severity and timing of infection. Continued collection of data on potential correlates of
369 infant protection from severe illness by maternally derived antibodies (whether from natural
370 infection or vaccination) will be important to evaluate the degree of protection afforded by maternal
371 immunity.

372 Our study had several strengths. The seroprevalence study included a large catchment area
373 (medical facilities that capture >6200 deliveries annually) and a similar racial and ethnic
374 distribution to King County and the general Seattle metropolitan area. Since pregnant people are
375 generally healthy, our estimate may be representative of general population prevalence [29].
376 Characterization of antibody responses over time following natural infection includes pregnant
377 people who may have had undiagnosed, mild and/or asymptomatic infection identified through
378 the seroprevalence study. Similarly, we collected cord blood and measured transplacental
379 antibody transfer of anti-N IgG in a cohort of pregnant people that included infections that were
380 less severe. Finally, we were able to longitudinally characterize maternal infection for at least 6
381 months, throughout pregnancy and the early postpartum period.

382 Our study also has some limitations. While the Abbott Architect anti-N IgG sensitivity is high in
383 the weeks to months immediately after infection, the assay preferentially detects low affinity
384 antibodies known to wane [24,30] and it may fail to detect individuals infected with SARS-CoV-2

385 whose anti-N IgG response waned below the positive threshold prior to sample collection [25].
386 Even with detectable levels of anti-N IgG, the degree of potential protection offered by anti-N (vs
387 anti-spike or other immune markers) to neonates or young infants is unknown. Estimates of >50%
388 of pregnant people identified as having serologic evidence of natural infection without a known
389 prior infection history of were based on medical record review; it is possible that some participants
390 may have had a prior positive RT-PCR or antigen test that was not documented in their medical
391 record. During later periods of enrollment for the prospective cohort a self-reported positive
392 antigen test was considered evidence of prior infection, which could introduce bias not present
393 earlier in the enrollment period. While we were unable to determine the timing of infection for 10%
394 of women without a prior RT-PCR or antigen positive result, the duration of anti-N IgG response
395 at or above the Abbott index threshold were similar among those with and without prior RT-PCR
396 or antigen positive results, which suggest our results were robust despite this limitation. Pregnant
397 people with serologic evidence of SARS-CoV-2 were captured when different dominant variants
398 were circulating in the area, thus their antibody responses are likely based on a variety of variants;
399 however, we were unable to characterize responses by variant. In addition, following the
400 circulation of Omicron variants in late 2021 and early 2022, the time between identification of RT-
401 PCR+ or antigen positive result and first blood draw was short (3.5 weeks) compared to 5.7 weeks
402 prior to widespread circulation of Omicron. Lastly, differences in age, race, and ethnicity of
403 participants who consented versus declined and those who did and did not have blood samples
404 available for testing may have biased the results; similarly, there may be differences in people
405 who were and were not offered participation in the seroprevalence study resulting in selection
406 bias. We anticipate SARS-CoV-2 seroprevalence may be biased towards the null due to the larger
407 proportion of participants from minority race and ethnic groups who declined blood screening for
408 anti-N IgG, and these groups are more likely to have become infected with SARS-CoV-2 during
409 the study period.

410 **Conclusions**

411 In conclusion, we found that anti-N IgG levels following natural infection during pregnancy wane
412 over time, with only two-thirds of pregnant people remaining with anti-N IgG positive results at
413 delivery and less than half of these individuals had evidence of efficient transplacental anti-N
414 antibody transfer to their infants. More information is needed on the timing and severity of
415 maternal natural infection provided by anti-N IgG, as well as other immune markers, to better
416 understand the transfer and potential for protection to infants. Anti-N IgG levels may not indicate
417 a sustained immunological response. These data further support the use of vaccines during
418 pregnancy among people, even among those who have previously been infected with SARS-
419 CoV-2 [5,6].

420 **Acknowledgement**

421 The US Centers for Disease Control and Prevention (CDC) provided technical assistance
422 related to analysis and interpretation of data and writing the report. The findings and
423 conclusions in this report are those of the authors and do not necessarily represent the official
424 position of the US Centers for Disease Control.

425 References

426

- 427 1. McClymont E, Elwood C, Sekirov I, Morshed M, Levett P, Liu A, et al. Population SARS-
428 CoV-2 Seroprevalence Using Antenatal Serum Samples in British Columbia, Canada. *J Obstet*
429 *Gynaecol Can.* 2021;43(11):1242-3.
- 430 2. Sharma KA, Singh N, Hillman S, Mathur P, Yadav K, Garg A, et al. Seroprevalence of
431 SARS-CoV-2 antibodies among first-trimester pregnant women during the second wave of the
432 pandemic in India. *Int J Gynaecol Obstet.* 2022.
- 433 3. Flannery DD, Gouma S, Dhudasia MB, Mukhopadhyay S, Pfeifer MR, Woodford EC, et
434 al. Assessment of Maternal and Neonatal Cord Blood SARS-CoV-2 Antibodies and Placental
435 Transfer Ratios. *JAMA Pediatr.* 2021;175(6):594-600.
- 436 4. COVID-19 Vaccination for Pregnant People to Prevent Serious Illness, Deaths, and
437 Adverse Pregnancy Outcomes from COVID-19: Health Alert Network (HAN); 2021 [CDCHAN-
438 00453:[Available from: <https://emergency.cdc.gov/han/2021/han00453.asp>.
- 439 5. COVID-19 Vaccines While Pregnant or Breastfeeding: Centers for Disease Control and
440 Prevention; [updated June 13, 2022. Available from: [https://www.cdc.gov/coronavirus/2019-
441 ncov/vaccines/recommendations/pregnancy.html](https://www.cdc.gov/coronavirus/2019-ncov/vaccines/recommendations/pregnancy.html).
- 442 6. ACOG and SMFM Recommend COVID-19 Vaccination for Pregnant Individuals
443 [Available from: [https://www.acog.org/news/news-releases/2021/07/acog-smfm-recommend-
444 covid-19-vaccination-for-pregnant-individuals](https://www.acog.org/news/news-releases/2021/07/acog-smfm-recommend-covid-19-vaccination-for-pregnant-individuals).
- 445 7. Fleming-Dutra KE, Wallace M, Moulia DL, Twentyman E, Roper LE, Hall E, et al. Interim
446 Recommendations of the Advisory Committee on Immunization Practices for Use of Moderna
447 and Pfizer-BioNTech COVID-19 Vaccines in Children Aged 6 Months–5 Years — United States,
448 June 2022. *MMWR Morb Mortal Wkly Rep.* 2022;71:859–68.
- 449 8. Shook LL, Atyeo CG, Yonker LM, Fasano A, Gray KJ, Alter G, et al. Durability of Anti-
450 Spike Antibodies in Infants After Maternal COVID-19 Vaccination or Natural Infection. *JAMA.*
451 2022;327(11):1087-9.
- 452 9. WA Situation Report 1: COVID-19 transmission across Washington State. 2020
453 [Available from: <https://covid.idmod.org/#/ResearchandReports>.
- 454 10. Chu HY, Steinhoff MC, Magaret A, Zaman K, Roy E, Langdon G, et al. Respiratory
455 syncytial virus transplacental antibody transfer and kinetics in mother-infant pairs in
456 Bangladesh. *J Infect Dis.* 2014;210(10):1582-9.
- 457 11. Falsey AR, Singh HK, Walsh EE. Serum antibody decay in adults following natural
458 respiratory syncytial virus infection. *J Med Virol.* 2006;78(11):1493-7.
- 459 12. Ochola R, Sande C, Fegan G, Scott PD, Medley GF, Cane PA, et al. The level and
460 duration of RSV-specific maternal IgG in infants in Kilifi Kenya. *PLoS One.* 2009;4(12):e8088.
- 461 13. Lokken EM, Walker CL, Delaney S, Kachikis A, Kretzer NM, Erickson A, et al. Clinical
462 characteristics of 46 pregnant women with a severe acute respiratory syndrome coronavirus 2
463 infection in Washington State. *Am J Obstet Gynecol.* 2020;223(6):911 e1- e14.
- 464 14. Alfego D, Sullivan A, Poirier B, Williams J, Adcock D, Letovsky S. A population-based
465 analysis of the longevity of SARS-CoV-2 antibody seropositivity in the United States.
466 *EClinicalMedicine.* 2021;36:100902.
- 467 15. Bryan A, Pepper G, Wener MH, Fink SL, Morishima C, Chaudhary A, et al. Performance
468 Characteristics of the Abbott Architect SARS-CoV-2 IgG Assay and Seroprevalence in Boise,
469 Idaho. *J Clin Microbiol.* 2020;58(8).
- 470 16. Interiano C, Muze S, Turner B, Gonzalez M, Rogers B, Jerris R, et al. Longitudinal
471 evaluation of the Abbott ARCHITECT SARS-CoV-2 IgM and IgG assays in a pediatric
472 population. *Pract Lab Med.* 2021;25:e00208.

- 473 17. Abbott Architect SARS-CoV-2 IgG User Guide [updated July 28, 2021. Available from:
474 <https://manuals.plus/abbott/architect-sars-cov-2-igg-manual#axzz7ZnPlihwS>.
475 18. University of Washington Virology COVID-19 Dashboard: Sequencing Information
476 [March 20, 2022]. Available from: <https://depts.washington.edu/labmed/covid19/#sequencing->
477 [information](https://depts.washington.edu/labmed/covid19/#sequencing-information).
478 19. Buckley A, Mills A, Paul K, Raymond S, Mendu DR, DeBolt C, et al. SARS-CoV-2
479 Antibody Response among Women Infected during Pregnancy. *Am J Perinatol*. 2022;39(7):707-
480 13.
481 20. Edlow AG, Li JZ, Collier AY, Atyeo C, James KE, Boatman AA, et al. Assessment of
482 Maternal and Neonatal SARS-CoV-2 Viral Load, Transplacental Antibody Transfer, and
483 Placental Pathology in Pregnancies During the COVID-19 Pandemic. *JAMA Netw Open*.
484 2020;3(12):e2030455.
485 21. COVID-19 race and ethnicity dashboard - King County. 2022.
486 22. Gonik CO, Alonso AM, Gonik B. SARS-CoV-2 Seroprevalence in Florida Department of
487 Health in Palm Beach County Obstetric Clinics: A Cross-Sectional Study during the First
488 Pandemic Surge. *Am J Perinatol*. 2021.
489 23. Zambrano LDE, S.; Strid, P.; Galang R.R.; Oduyebo, T.; Tong, V.T.; Woodworth K.R.;
490 Nahabedian III, J.F.; Azziz-Baumgartner, E.; Gilboa, S.M.; Meaney-Delman, D.; CDC COVID-
491 19 Response Pregnancy and Infant Linked Outcomes Team Update: Characteristics of
492 Symptomatic Women of Reproductive Age with Laboratory-Confirmed SARS-CoV-2 Infection by
493 Pregnancy Status — United States, January 22–October 3, 2020. *MMWR Morb Mortal Wkly*
494 *Rep*. 2020;1641–1647(69).
495 24. Kerr C, Allen N, Hughes G, Kelly M, O'Rourke F, Lynagh Y, et al. SARS-CoV-2 anti-
496 nucleocapsid assay performance in healthcare workers at baseline and 6 months. *Ir J Med Sci*.
497 2022;191(3):1089-92.
498 25. Van Elslande J, Oyaert M, Ailliet S, Van Ranst M, Lorent N, Vande Weygaerde Y, et al.
499 Longitudinal follow-up of IgG anti-nucleocapsid antibodies in SARS-CoV-2 infected patients up
500 to eight months after infection. *J Clin Virol*. 2021;136:104765.
501 26. Gerhards C, Thiaucourt M, Kittel M, Becker C, Ast V, Hetjens M, et al. Longitudinal
502 assessment of anti-SARS-CoV-2 antibody dynamics and clinical features following
503 convalescence from a COVID-19 infection. *Int J Infect Dis*. 2021;107:221-7.
504 27. Mariam MC, A; Kasparova, I; Hakobjanyan, G; Carrat, F; Sukiasyan, M; Rushanyan, R;
505 Chalabyan, M; Shariff, S; Kantawala, B; Keshishyan, A; Hovhannisyanyan, A; Hakobyan, A;
506 Petrosyan, G; Minasyan, A; Muradyan, A; Mekinian, A; Yenkovyan, K. Kinetics of anti-
507 nucleocapsid IgG response in COVID-19 immunocompetent convalescent patients. *Sci Rep*.
508 2022;12(1).
509 28. Surinach-Ayats B, Carbonell-Estarellas E, Becerra-Hervas J, Lopez-Bernal E, Boronat
510 S, Moliner-Calderon E. [Epidemiology and characteristics of SARS-CoV-2 infection in the
511 newborn and pregnant woman. Transplacental transfer of immunoglobulins]. *Enferm Infecc*
512 *Microbiol Clin*. 2022.
513 29. Angulo FJ, Finelli L, Swerdlow DL. Reopening Society and the Need for Real-Time
514 Assessment of COVID-19 at the Community Level. *JAMA*. 2020;323(22):2247-8.
515 30. Theel ES, Johnson PW, Kunze KL, Wu L, Gorsh AP, Granger D, et al. SARS-CoV-2
516 Serologic Assays Dependent on Dual-Antigen Binding Demonstrate Diverging Kinetics Relative
517 to Other Antibody Detection Methods. *J Clin Microbiol*. 2021;59(9):e0123121.

Figure 3.

b) Time since RT-PCR+

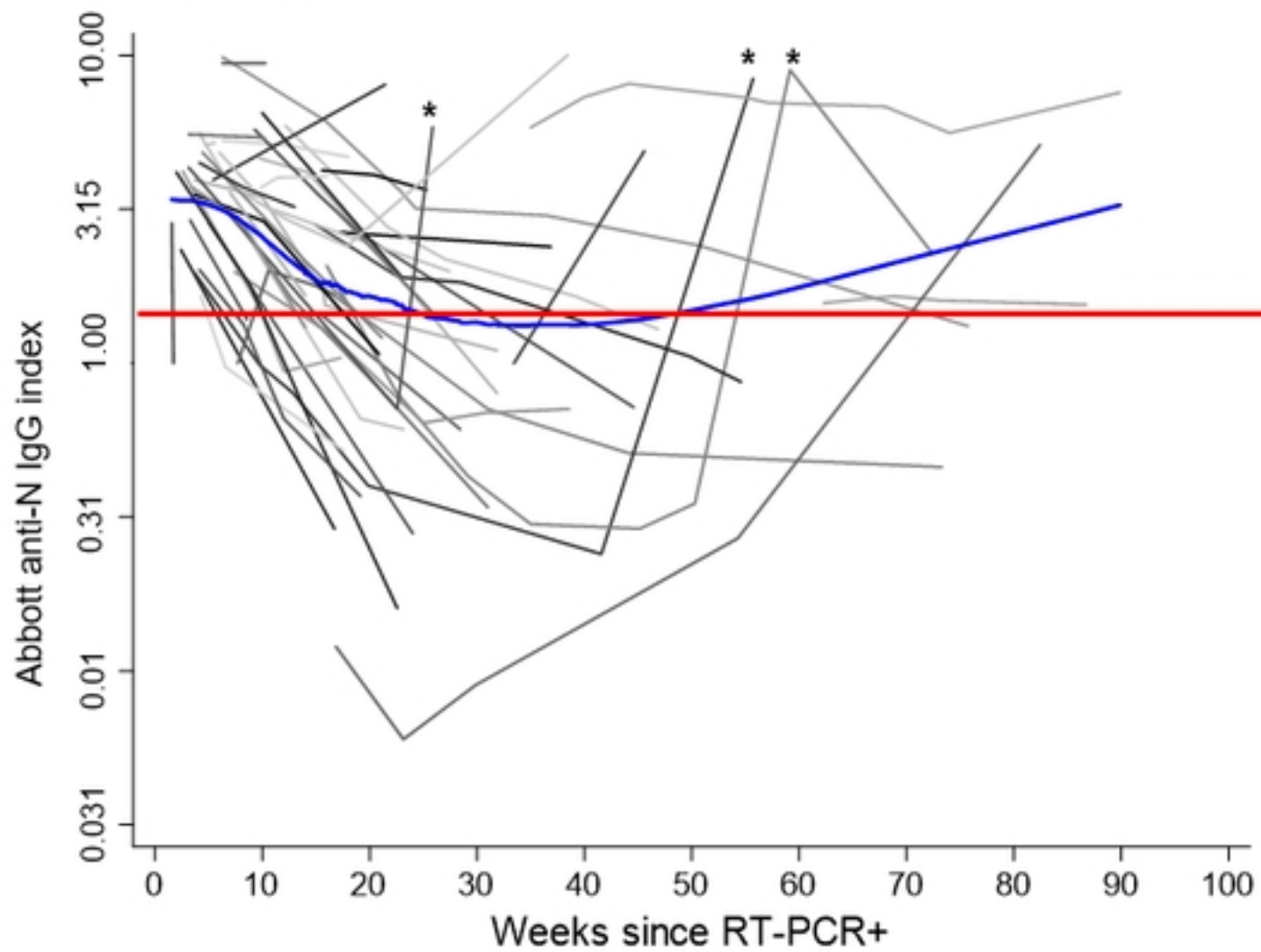


Fig3B

Figure 3.

c) Time since RT-PCR+ (or antigen+)

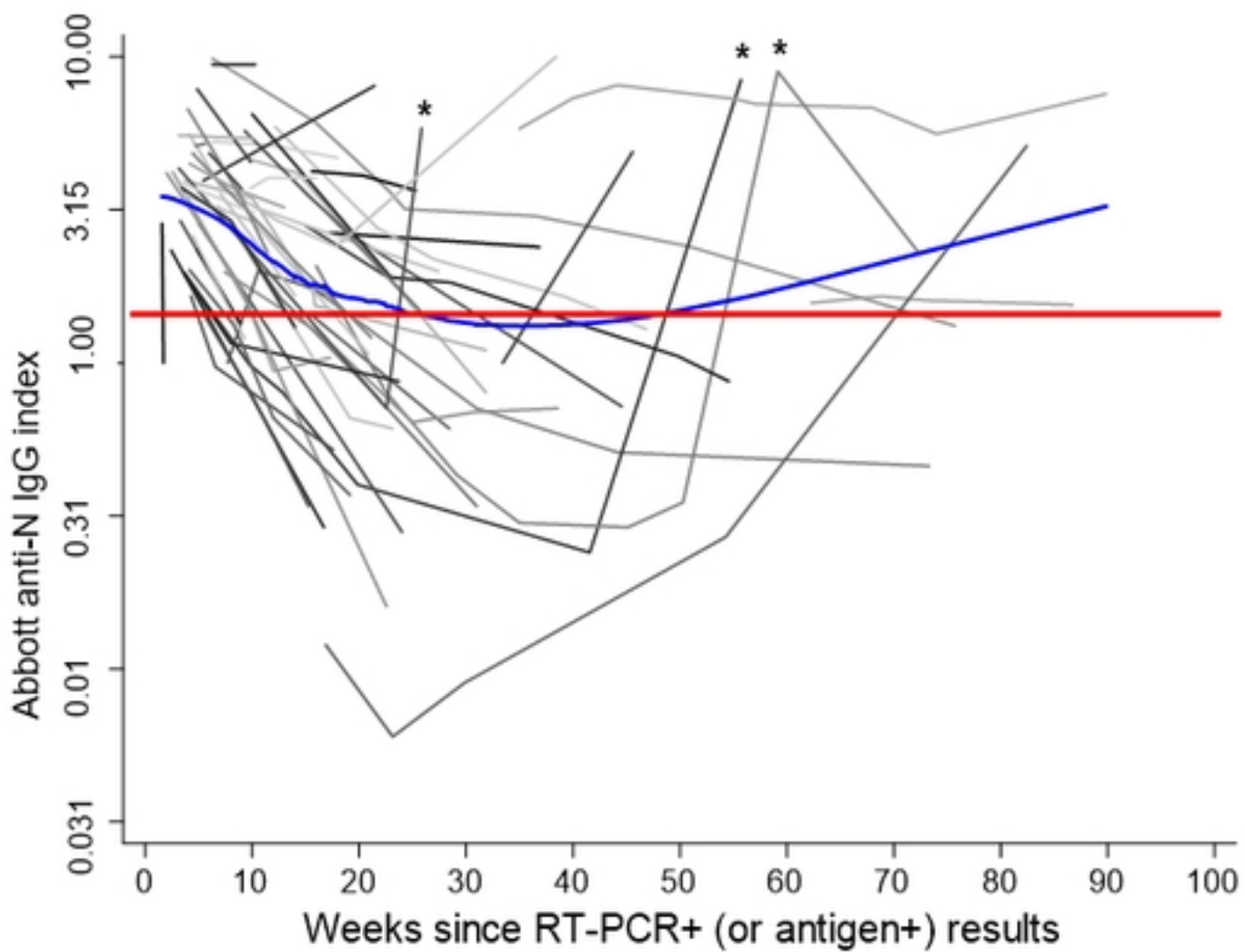
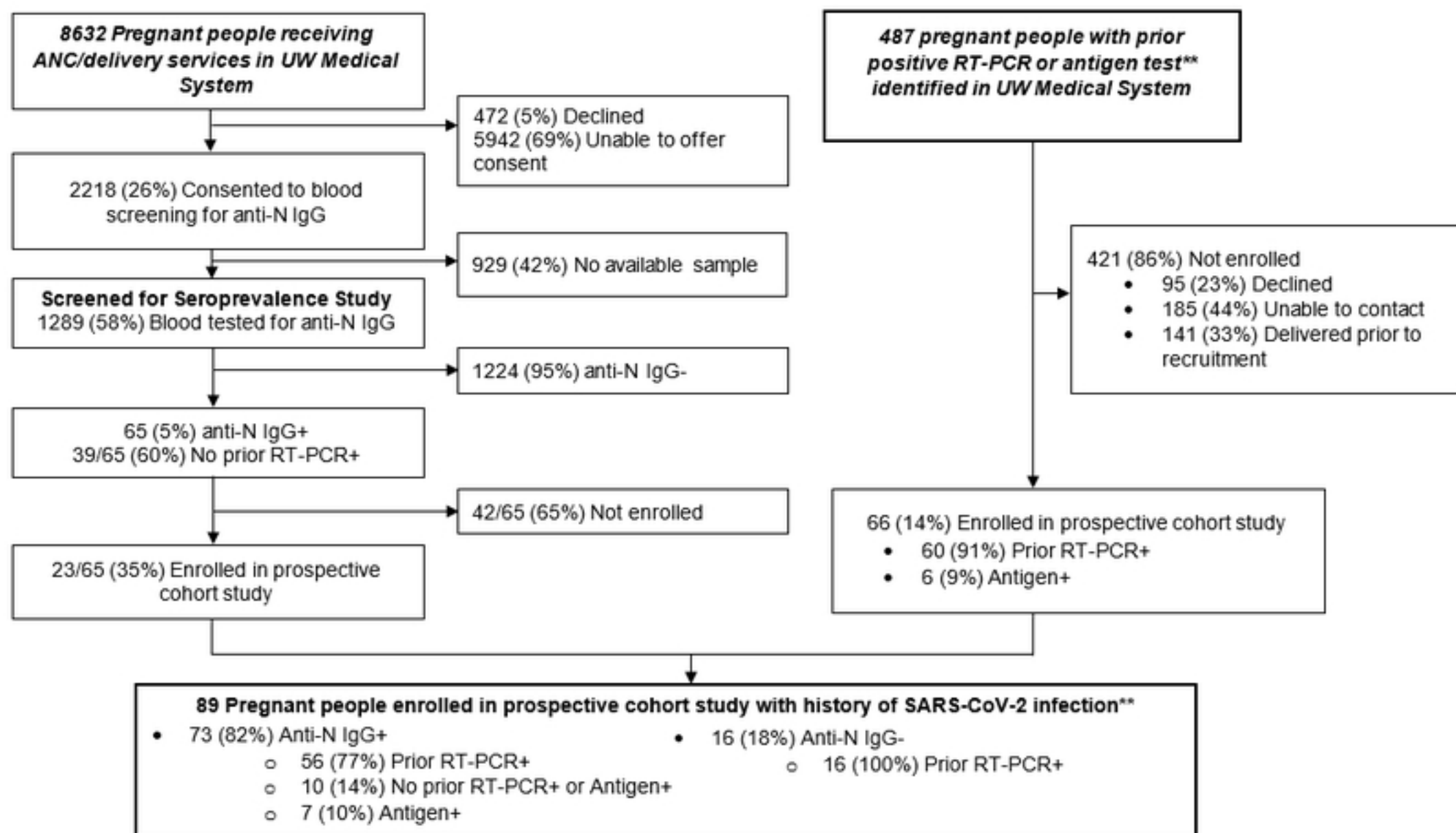


Fig3C

Figure 1. Flowchart of pregnant people enrolled in prospective cohort study with a history of SARS-CoV-2 infection*

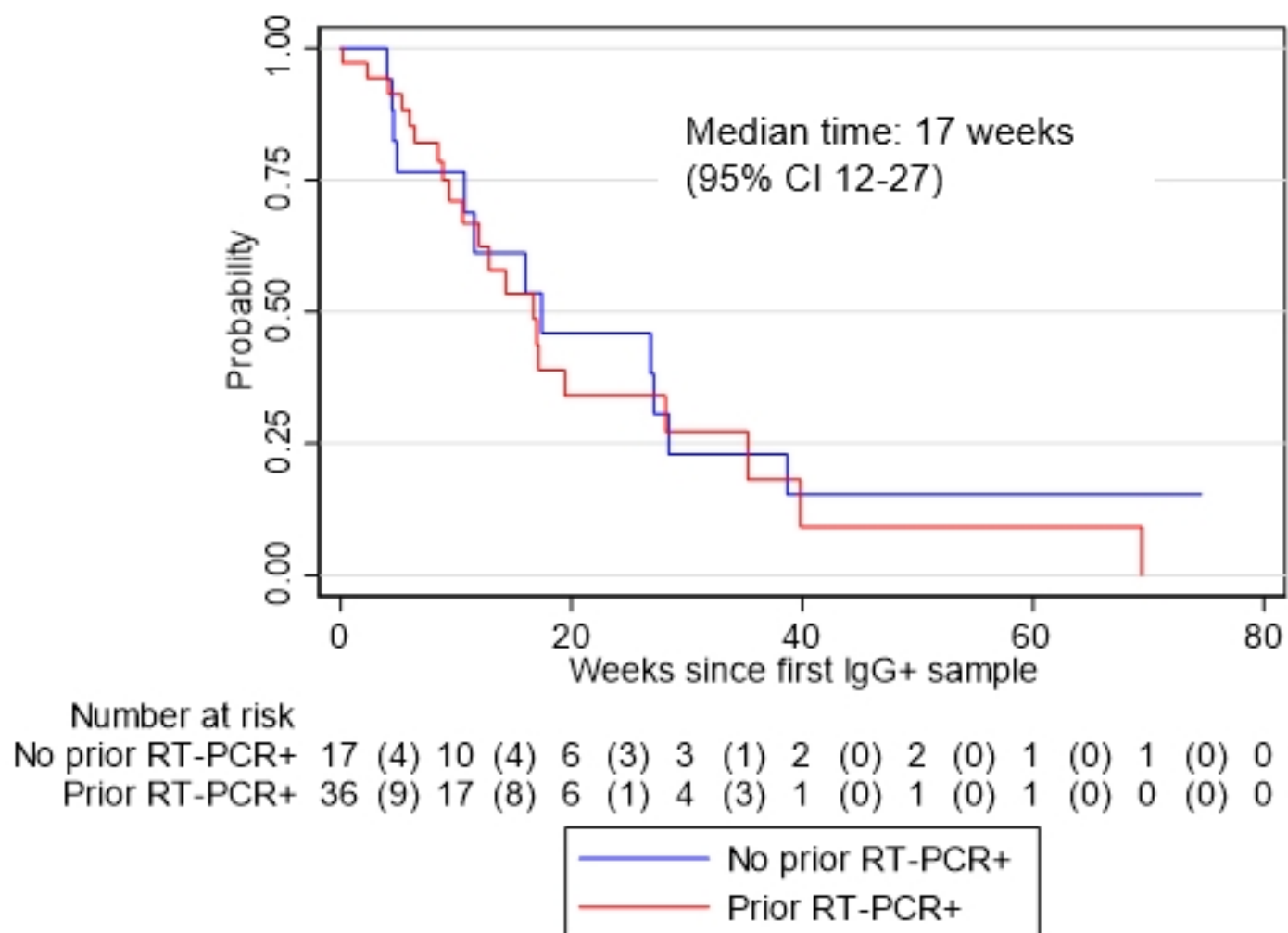


*from seroprevalence study or identified through the medical system as having a prior positive RT-PCR or antigen test, December 9, 2020 – June 30, 2022

**Rapid antigen results used to confirm diagnosis beginning in January 2022 due to regional PCR test shortages. In seroprevalence study, dates of accessing care were December 9, 2020 – June 19, 2021 and dates of sample collection for serology were December 9, 2020 – June 30, 2021. Dates of sample collection for people identified by RT-PCR/antigen test were September 25, 2020–June 8, 2022. IgG+ if Abbott index ≥ 1.4 except 2 people with IgG+ results from the seroprevalence study not enrolled in the prospective cohort who were tested for IgG with the DiaSorin

Figure 2.

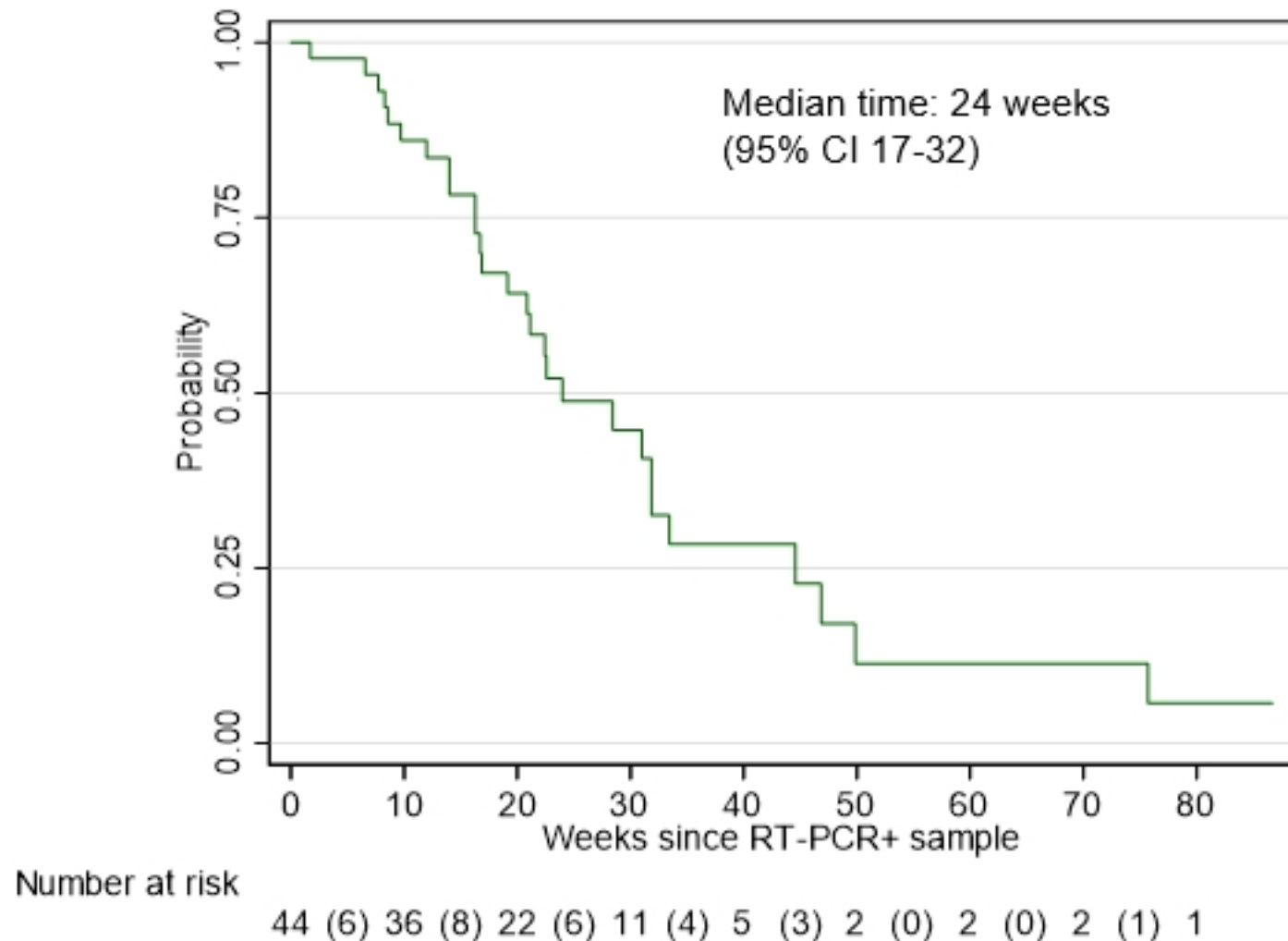
a) Time from first anti-N IgG+ to anti-N IgG below positive threshold. Anti-N IgG index below positive threshold based on Abbott index <1.4.



Time from first anti-N IgG+ to anti-N IgG below positive threshold among pregnant people with serologic evidence of prior SARS-CoV-2 infection (n=53).

Figure 2.

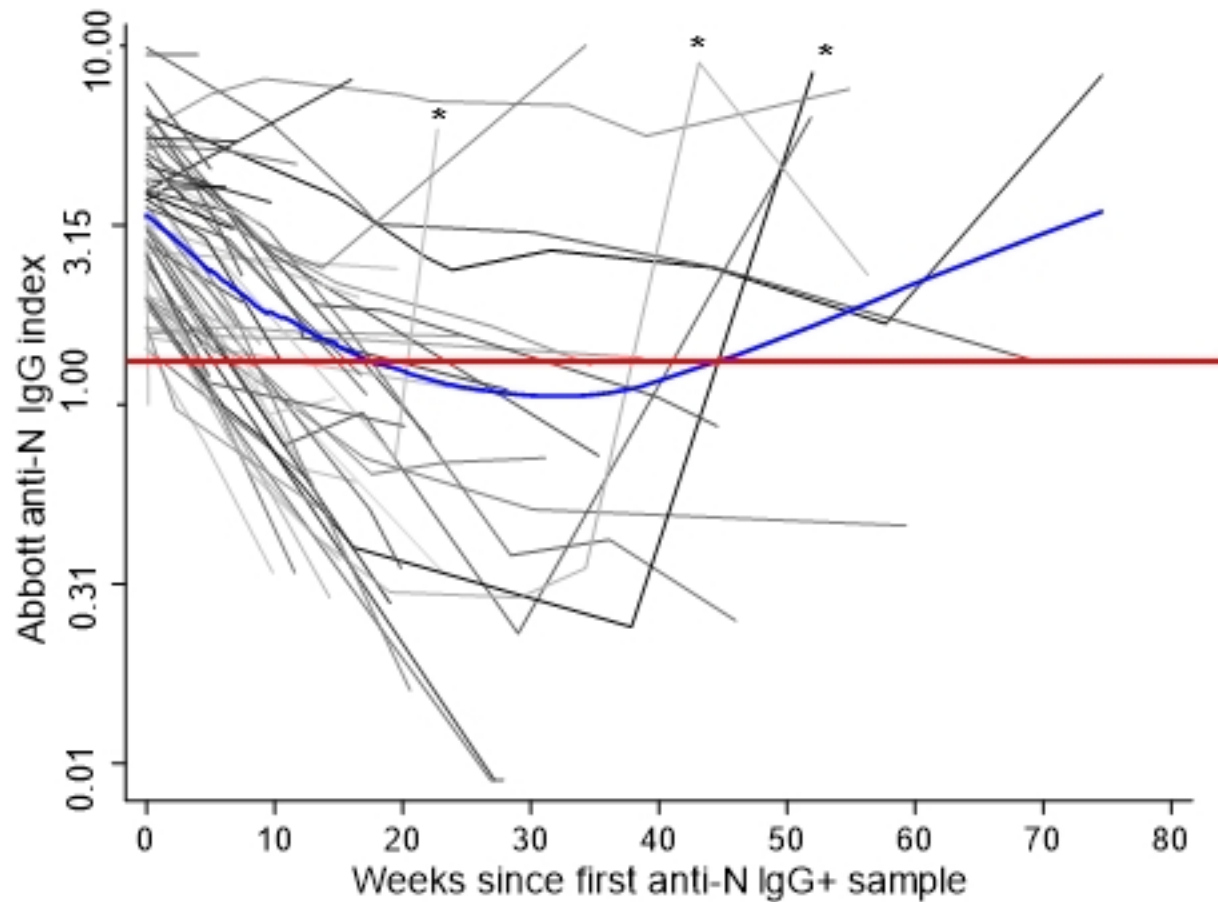
b) Time from RT-PCR+ to anti-N IgG below positive threshold. Anti-N IgG index below positive threshold based on Abbott index <1.4 .



Time from RT-PCR+ date to anti-N IgG below positive threshold among pregnant people with serologic evidence of prior SARS-CoV-2 infection (n=44).

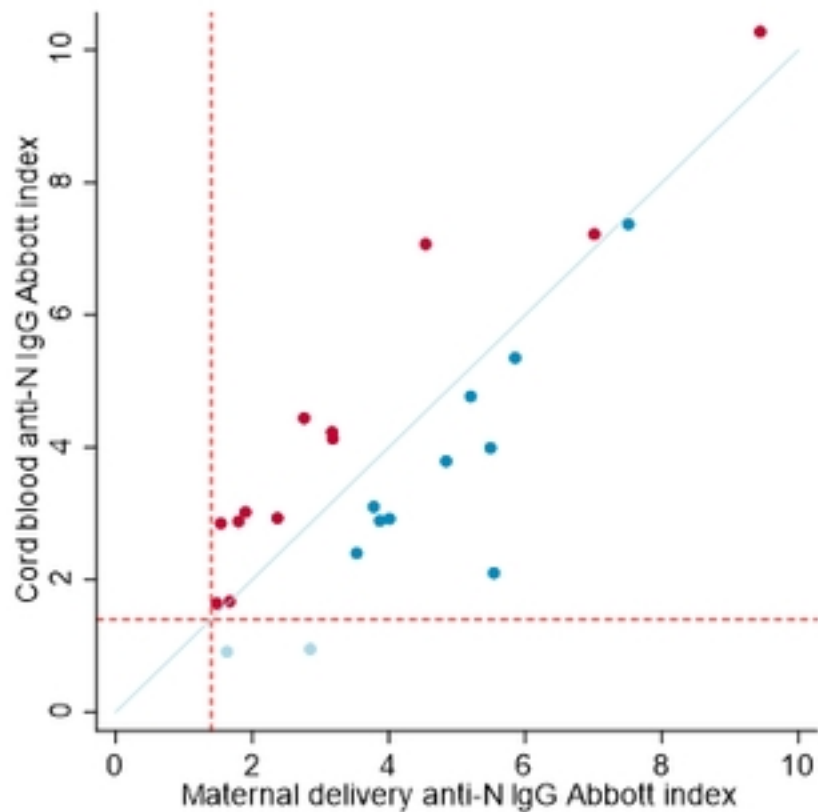
Figure 3. Abbott anti-N IgG index and timing. *First sample collected following reinfection with SARS-CoV-2, confirmed with subsequent RT-PCR+ or antigen positive result (n=3). Red line represents Abbott index for positive threshold (log10 transformed value of 1.4. Blue line represents lowess smoother; excludes samples collected at or after SARS-CoV-2 infection.

a) Time since first anti-N IgG+



Abbott anti-N IgG index and timing among pregnant people with a history of SARS-CoV-2 infection and positive anti-N IgG among those with ≥ 2 samples available (n=60).

Figure 4. IgG index among paired maternal-cord blood samples. Transplacental transfer ratio (infant anti-N IgG index/maternal delivery anti-N IgG index) is ≥ 1 for circles on or above the blue line (red), < 1 for circles below the blue line (blue); circles below the dashed red lines (threshold for anti-N IgG positive [≥ 1.4]) are cord blood samples below the anti-N IgG positive threshold (light blue).



IgG index among paired maternal-cord blood samples among participants with anti-N IgG positive results at delivery (n=24 pairs).