

## **A First in Human Trial to Evaluate the Safety and Immunogenicity of a G Protein Based Recombinant Respiratory Syncytial Virus Vaccine in Healthy Adults 18-45 Years**

Xin Cheng<sup>1</sup>, Gan Zhao<sup>1</sup>, Aihua Dong<sup>1</sup>, Zhonghuai He<sup>1</sup>, Jiarong Wang<sup>1</sup>, Brian Jiang<sup>1</sup>, Bo Wang<sup>1</sup>, Miaomiao Wang<sup>1</sup>, Xuefen Huai<sup>1</sup>, Shijie Zhang<sup>1</sup>, Shuangshuang Feng<sup>1</sup>, Hong Qin<sup>1</sup>, and Bin Wang<sup>1, 2, & 3 \*</sup>

<sup>1</sup>Advaccine Biopharmaceuticals Suzhou Co. Ltd., Suzhou, Jiangsu Province, China.

<sup>2</sup>Key Laboratory of Medical Molecular Virology (MOE/NHC/CAMS), school of Basic Medical Science, Fudan University, Shanghai, China.

<sup>3</sup>Fudan-Advaccine Join-Lab for Vaccine Research, Fudan University, Shanghai, China.

\*Correspondence: [bwang3@fudan.edu.cn](mailto:bwang3@fudan.edu.cn).

Address: 131 Dong An Road, 409 Fuxing Building, Shanghai 200032, People's Republic of China.

### 1 **Abstract**

2 **Background:** With enormous morbidity and mortality induced by respiratory syncytial virus  
3 (RSV) infection among infants and the elderly, vaccines against RSV infection are in huge  
4 market demand.

5 **Methods:** We conducted a First-in-human (FIH), randomized, double-blind, placebo-  
6 controlled dose escalation study to evaluate the safety and immunogenicity response of the  
7 rRSV vaccine (BARS13) in healthy adults aged 18-45. A total of 60 eligible participants were  
8 randomized in a 4:1 ratio to receive one of four dose levels or vaccination regimens of BARS13  
9 or placebo.

10 **Results:** No serious adverse event (SAE) was experienced by any study participant. The  
11 geometric mean fold increase (GMFI) from baseline in all participants post-administration  
12 indicated that compared with single dose regimens, the IgG antibody level from baseline in  
13 participants received repeat dose regimens at Day 60 has increased over a 3-fold.

**NOTE:** This preprint reports new research that has not been certified by peer review and should not be used to guide clinical practice.

14 **Conclusions:** BARS13 has a generally good safety and tolerability profile, and no significant  
15 difference in terms of adverse reaction severity or frequency has been observed between  
16 different dose groups. The immune response in repeat dose recipients shows more potential in  
17 further study and has guiding significance for the dose selection of subsequent studies.

18 **Key words:** Respiratory syncytial virus, Vaccine, Safety, Immunogenicity

## 19 **Background**

20 Respiratory syncytial virus (RSV) infection is a major cause of respiratory tract disease in  
21 children <5 years old. It leads to 64 million cases of bronchiolitis and viral pneumonia [1-5] and  
22 causes ~200,000 deaths annually [4, 6]. A prophylactic treatment using palivizumab, and more  
23 recently, nirsevimab [7] can be used to prevent RSV in premature infants, infants with certain  
24 congenital heart defects or bronchopulmonary dysplasia, and infants with congenital  
25 malformations of the airway. However, antibodies' economic cost limits its use to infants with  
26 identified risk factors residing in the developed world [8]. Besides the huge threat among the  
27 paediatric population, RSV infection is now recognized as a significant problem in elderly adults.  
28 Attack rates in nursing homes are approximately 5-10% per year, with substantial rates of  
29 pneumonia (10-20%) and death (2-5%). Estimates using US health care databases and viral  
30 surveillance results over a 9-year period indicate that RSV infection causes approximately  
31 10,000 all-cause deaths annually among persons >64 years of age [9]. Although the vaccine is  
32 considered a more economical and effective strategy for preventing RSV-infected disease, no  
33 vaccine is currently available. This problem is left from the severity of the pathologic responses  
34 induced by vaccination with formalin-inactivated RSV (FI-RSV) to a large extent.

35 In the 1960s, the FI-RSV vaccine caused severe lung injuries in some paediatric recipients, and  
36 two infants died, resulting from a phenomenon that is now called vaccine-enhanced disease  
37 (VED) or enhanced respiratory disease (ERD) [10]. Pathological analysis showed that the dead  
38 infants had extended peribronchiolitis and alveolitis [11-13]. Subsequent studies have associated

39 Formalin-inactivated RSV (FI-RSV) with low level of antibody responses and CD4+ T priming  
40 in the absence of cytotoxic T lymphocytes resulting in a pathogenic Th2 memory response with  
41 eosinophil and neutrophil [14], and such exacerbated T cell responses have been associated with  
42 immunopathogenesis of RSV in experimental models [15, 16]. Further understanding of the virus  
43 and VED mechanisms entails the new RSV vaccine designs toward being dependent on the  
44 induction of a robust, long-lasting neutralizing antibody response superior to the partial, transient  
45 immunity conferred by natural infection [17]. Various strategies to develop vaccines to target  
46 RSV have been tried. These include using a live-attenuated virus and various non-replicating  
47 virus components such as viral subunits and deoxyribonucleic acid (DNA) [18].

48 As of August 2022, global RSV vaccine development progress shows that only 1 Astra Zeneca  
49 RSV monoclonal antibody for paediatrics has been approved for marketing, 13 trials are at stages  
50 Phase II or Phase III, 11 trials are at Phase I, and more than a dozen candidates are still in  
51 preclinical phase [19]. More recently, one more AstraZeneca RSV antibody, nirsevimab, has been  
52 approved to prevent the RSV lower respiratory tract disease in newborns and infants on  
53 September, the 15<sup>th</sup>, 2022 [7]. The majority of phase II/III clinical trials are focused on paediatric  
54 and the elderly populations. In contrast, the adult population accounts for a minority, and only 3  
55 trials are being carried out. The RSV vaccine based on F protein as the main target has been  
56 considered for RSV vaccine developments, including Pfizer and GlaxoSmithKline's F protein-  
57 based RSV vaccine (for adults and the elderly) at phase III, while Janssen's adenovirus vaccine  
58 and Merck's RSV anti-F mAbs are also in the race.

59 Comparatively, the candidate vaccine (BARS13) is based on recombinant RSV viral G protein  
60 (RSV-G), containing two active components in an optimized ratio which are a purified RSV-G  
61 (expressed in E. coli system), which functions as the antigenic component, and cyclosporine A  
62 (CsA), which functions as an immunomodulator and the diluent to reconstitute the RSV-G. The  
63 G protein has been selected as the RSV immunogenic candidate as it has more stable neutralizing  
64 epitopes that are comparatively independent of its protein structure [20]. G protein functions as  
65 an attachment protein during RSV infection by interacting with the receptor of target cells. A

66 monoclonal Ab against G protein has demonstrated activity inhibiting RSV infection in animal  
67 models [21]. CsA is a widely used immunosuppressant in organ transplantations and  
68 autoimmune diseases. It can induce antigen-specific T regulatory cells (Tregs) to ultimately  
69 achieve tolerogenic responses when combined with a protein antigen at a certain ratio and under  
70 a certain dose level [22]. In the development of BARS13, CsA was successfully used to generate  
71 tolerogenic responses with human PBMC in vitro [23]. As Treg plays an essential role in the  
72 suppression of VED [24], BARS13 was developed using a combination of the RSV-G with CsA  
73 to induce functional Tregs and a high level of neutralizing anti-RSV antibodies.

74 The preclinical studies have been performed in mice, rabbits, and rhesus macaque monkeys to  
75 investigate the immunological response to BARS13 and protective efficacy from the RSV  
76 challenge following immunization. It has been demonstrated that BARS13 not only induces a  
77 high level of neutralizing Abs against RSV, but also suppresses the exacerbated lung  
78 inflammation that occurs in animals vaccinated with either FI-RSV or G-protein based vaccines  
79 after a RSV challenge [25]. Based on these preclinical studies, we sought to test the safety,  
80 reactogenicity, and immunogenicity of the BARS13 investigational vaccine when administered  
81 intramuscularly (IM) to healthy adult participants aged 18 to 45 years.

## 82 **Methods**

### 83 **Participants and study design**

84 We conducted a phase I, first-in-human (FIH), randomized, double-blind, placebo-controlled  
85 dose-escalation study in healthy adults at a single center in Australia (Nucleus Network,  
86 Melbourne) from 16 October 2018 to 05 July 2019. The participants received a single or repeat  
87 vaccination schedule and different RSV-G protein plus CsA dose mixture. Participants,  
88 investigators, and laboratory staff were masked to treatment allocation. The primary objective  
89 was to evaluate the safety and reactogenicity of BARS13, and the secondary objective was to  
90 evaluate the humoral response in terms of immunoglobulin g (IgG) antibody levels to BARS13.  
91 The neutralization antibody response and T-cell response were evaluated as exploratory

92 objective. The trial information can be obtained from Clinical Trial Registration  
93 (<https://clinicaltrials.gov/ct2/show/NCT04851977>).

94 Healthy males or females aged 18-45 years with no history of severe allergy or  
95 immunosuppressive therapy were screened for eligibility. All participants provided written  
96 informed consent before participation. Participants were enrolled and randomized in a 4:1 ratio  
97 sequentially using a dose-escalation protocol to receive BARS13 low dose (one injection of 9.2  
98 µg rRSV-G protein/10 µg CsA to one arm, and one injection of saline/mannitol to the other arm),  
99 BARS13 high dose (one injection of 9.2 µg rRSV-G protein/10 µg CsA per arm) or placebo (one  
100 injection of saline/mannitol per arm). Both of the investigational vaccine and placebo have two  
101 vaccination regimens, single dose on Day 0 or repeat dose on Day 0 and 30 (Table 1). Among  
102 each cohort, 2 sentinels (n=1 active; n=1 placebo) will be assigned for a safety observation. In  
103 the absence of clinically significant safety signals in sentinel participants over a minimum period  
104 of 24 hours following vaccination, the remaining participants in the cohort could be vaccinated  
105 in a sequential manner. Enrolment into high-dose groups occurred only after a safety monitoring  
106 committee reviewed the data following vaccination of the participants in the previous low-dose  
107 group. Participants received vaccinations via intramuscular injection with RSV-G/CsA  
108 reconstituted solution or placebo according to a single (at day 0) or repeat (at days 0 and 30)  
109 vaccination schedule, with follow-up occurring for 60 days (all recipients) and 90 days (repeat  
110 dose recipients only) after the last vaccination.

#### 111 **The vaccine**

112 Advaccine Biopharmaceuticals Suzhou Co. Ltd in China manufactured the lyophilized powder  
113 of RSV-G and CsA diluent. The formulation buffer without active components was used as  
114 placebo. RSV-G lyophilized powder and vaccine diluent sterile solution are mixed together as  
115 the active BARS13 vaccine for injection. The information on study vaccine lots was listed in  
116 Additional file 1.

#### 117 **Ethical compliance**

118 This study was conducted in accordance to the principles of ICH-GCP, the Declaration of  
119 Helsinki, and applicable local regulations for conducting clinical trials on human medicinal  
120 products. This protocol was approved by the Alfred Hospital Ethics Committee. Human sera and  
121 PBMC were prepared in 360Biolabs in Malborne, Australia. Immunological tests were  
122 performed in Agilex Biolabs in Brisbane, Australia (anti-RSV G protein IgG antibody and  
123 neutralizing antibody) and Advaccine Biolabs in Suzhou, China (multiple cytokines assay and  
124 CD4 T cell proliferation test).

### 125 **Adverse events**

126 The severity and relationship of adverse events (AEs) to the vaccine regimens were assessed by  
127 the investigators based on the US Food and Drug Administration (FDA) standards (*FDA 2007,*  
128 *Guidance for Industry: Toxicity Grading Scale for Health Adult and Adolescent Volunteers*  
129 *Enrolled in Preventive Vaccine Clinical Trials*). A placebo group was included in each cohort to  
130 serve as a comparative set that would facilitate the assessment of AEs potentially caused by the  
131 vaccine. Investigators were blinded to treatment assignment during the study to maintain  
132 unbiased assessment of AEs. The study participants were issued a daily diary card to capture  
133 treatment-emergent adverse events (arthralgia, diarrhea, fatigue, fever, headache, myalgia,  
134 injection site pain, swelling, and redness) during the 30-day follow-up period after each  
135 vaccination. Chemistry, haematology, and urinalysis were assessed using clinical samples (blood  
136 and urine) collected pre-vaccination on Days 0 and 30, and Days 7 and 30 after each vaccination.  
137 Vital signs were measured pre-vaccination at 30 and 60 minutes, and 7 days following each  
138 vaccination. Abnormal indicators of laboratory tests and vital signs were collected as AEs if  
139 accessed to be clinically significant.

140 The safety of BARS13 treatment regimens was based on the induction of adverse events (AEs)  
141 that represented both clinical and laboratory evaluations, using criteria that were pre-specified  
142 in the study protocol. We recorded treatment-emergent adverse events during the first 30 days  
143 as solicited TEAEs observation period after each vaccination, including the 30 minutes safety

144 observation period post each vaccination and study days from 0 to 30 and from 30 to 60, and  
145 serious AEs (SAEs) until the last study visit.

#### 146 **Safety data analysis**

147 Since this is a pilot study, the sample size was determined based on practical and logistical  
148 considerations. A sample size of 60 participants is considered appropriate to achieve the defined  
149 objectives for the study. The safety population included all participants who received any study  
150 treatment (BARS13 or placebo) was used to perform safety and tolerability endpoints analysis.  
151 Basic descriptive analysis was used for each treatment regimen to present AEs. The per-protocol  
152 (PP) population consists of all participants in the immunogenicity population who received all  
153 vaccinations with BARS13 or placebo, without any major protocol deviations.

154 Within the PP set, the incidence of TEAEs, along with the  $\geq 8\%$  incidence rate of localized  
155 TEAEs and systematic TEAEs post each vaccination, were presented.

#### 156 **Determination of anti-RSV G protein IgG antibodies with ELISA assay**

157 Serum samples collected from all participants enrolled in the study on day 0 before vaccination  
158 and days 30 and 60 post-vaccination were applied for anti-RSV G protein IgG antibodies  
159 evaluation using a validated sandwich ELISA assay. Plates were coated with the rRSV protein  
160 G, followed by blocking. A standard RSV IgG serum (NIBSC, London, UK, Cat No.: 16/284)  
161 was serially diluted to set the standard curve ranging from 0.156 to 10.0 IU/mL. Human serum  
162 samples were diluted (at MRD of 1 in 1000) and added to the plate for 1hr incubation. After  
163 washes, goat anti-human IgG (H+L) peroxidase-labeled anti-protein G IgG antibodies  
164 (Invitrogen, Carlsbad, US, Cat No.: 31410) were subsequently applied to the plate for 1hr  
165 incubation and followed by washes. A colorimetric signal was developed by the addition of TMB  
166 (Sigma-Adlrich, St. Louis, US, Cat No.: T0440) and stop solution. The signal was read on an  
167 ELISA plate reader (SpectraMax VersaMax, Molecular Devices, Sunnyvale, US). The signal  
168 produced was proportional to the amount of analyte present and interpolated from the calibration  
169 curve presented on each plate. The concentrations of anti-RSV G protein IgG antibodies in

170 samples were determined automatically by software SoftMax Pro (Molecular Devices,  
171 Sunnyvale, US, version 7.1) by reading off the calibration curves (4-PL curve fitting with 1/Y  
172 weighting factor). Data was then exported to Microsoft Excel (version 2021) and GraphPad  
173 Prism (GraphPad, San Diego, US, version 9.3) for further analysis.

174 All participants enrolled in the study were seropositive at baseline, showing a detectable level of  
175 anti-RSV-G IgG in their blood samples prior to the BARS13 administrated. Consequently,  
176 calculations of seropositivity and seroconversion rates were redundant. Due to this reason, the  
177 highest plasma dilution at which anti-RSV G protein antibodies were still detectable in the  
178 ELISA assay showed similar results at all assessed time points, including baseline (day 0 before  
179 vaccination) and days 30 and 60 per immunogenicity population in this study. Therefore, it was  
180 decided to evaluate the humoral response at a serum dilution equal to 1:2000.

#### 181 **Neutralization antibody response with ELISA assay**

182 The neutralization effect of the RSV Protein G vaccine on RSV infection was evaluated via a  
183 direct ELISA assay. The RSV envelope G glycoprotein contains a ~40 amino acid central  
184 conserved domain (CCD; amino acid 162~196) that lacks glycosylation and plays a critical role  
185 in virus infection and pathogenesis. RSV G CCD contains a CX3C motif that facilitates binding  
186 to the CX3CR1 receptor, leading to RSV infection in human airway epithelial cells. The previous  
187 study has shown that RSV G CCD is an exposed region that is accessible to antibody binding,  
188 and the antibody against this region could exhibit strain independence and neutralize RSV  
189 infection of human airway epithelial cells. Herein a direct ELISA assay was designed to evaluate  
190 the anti-CCD IgG level within the serum of participants, which could be considered as the  
191 surrogate of a traditional cell-based assay for neutralizing antibody evaluation. The assay format  
192 was similar to the Anti-RSV G Protein IgG Antibodies ELISA Assay. Plates were coated with  
193 RSV G CCD peptide amino acid 162~196. A standard curve was normalized using NIBSC  
194 standard RSV IgG serum (Cat No.: 16/284) and ranged from 0.60 to 75.00 IU/mL. Human serum  
195 samples were diluted (at MRD of 1 in 200) and added to the plate. HRP Anti-Human IgG (Clone:



196 G18-145) was applied as a detecting antibody. The plates were read at 450 nm and 620 nm on  
197 the VersaMax plate reader.

#### 198 **CD4 T cell proliferation tested with flow cytometry method**

199 Anticoagulant peripheral blood samples collected from all participants in cohort 2 and 4 on day  
200 0 before vaccination, day 7 post first vaccination, and days 7 and 30 post the second vaccination,  
201 and lymphocytes were separated by Ficoll-plaque (Cityva, Logan, Utah, US) and cryo-freeze in  
202 liquid nitrogen for a long-term store. When lymphocyte was applied for CD4 T cell proliferation  
203 evaluation with a flow cytometry method, cells revived from liquid nitrogen tanks were assessed  
204 by live/death ratio and counted. Cells at  $1 \times 10^6$  for each well in a 96-well plate were cultured in  
205 cell incubator at 37°C with 5% CO<sub>2</sub> for 120 hours and then stimulated by 100µL CD3/CD28  
206 beads per well (Gibco, Grand Island, US, Cat No.: 11131D) as a positive control, 2 µg of RSV  
207 G peptide pools per well as antigen-specific stimulation, and 100µL M solution (RPMI1640  
208 spiked with 40ng human-IL-2 (Peprotech, New Jersey, US, Cat No.: AF-200-02) and 40ng  
209 human-CD28 (MiltenyiBiotec, Bergesch Gladbach, Germany, Cat No.: 130-093-375)) as a  
210 negation control, respectively, for 120 hours in-vitro incubation in a cell incubator at 37°C with  
211 5% CO<sub>2</sub>. These cells were stained with anti-human CD4-AF700 (Invitrogen, Cat No.:  
212 5600488Z)/Fixable Viability Dye-eflour 780 (Invitrogen, Cat No.: 650865514) for 30 minutes,  
213 fixed and permeabilized with Fixation/Perm Diluent (Invitrogen, Cat No.: 00-5223-56/00-8333-  
214 56), intra-cellular staining with anti-human Ki67-BV421 (BD Bioscience, New Jersey, USA,  
215 Cat No.: 562899) for 1 hour, and then applied for data acquisition on Flow Cytometer (Attune  
216 NxT, Invitrogen, Carlsbad, US). Data was analyzed using FlowJo (BD Bioscience, version 10.6).  
217 Percentage of Ki67 positive cells gated from living CD4+ lymphocytes represented the  
218 proliferation of CD4 T cells.

#### 219 **Multiple cytokines assay with beads based on flow cytometry method**

220 Anticoagulant peripheral blood samples collected from all participants in cohort 2 and 4 on day  
221 0 before vaccination, day 7 post first vaccination, and days 7 and 30 post the second vaccination

222 were treated similarly as did in above T cell proliferation assay to generate the counted revived  
223 lymphocytes. Cells at  $1 \times 10^6$  per well in a 96-well plate were cultured in cell incubator at  $37^\circ\text{C}$   
224 with 5%  $\text{CO}_2$  overnight (12 to 16 hours) and then stimulated by  $100\mu\text{L}$  CD3/CD28 beads per  
225 well (Gibco, Cat No.: 11131D) as a positive control,  $2\mu\text{g}$  of RSV G peptide pools per well as  
226 antigen-specific stimulation respectively, for 24 hours in-vitro incubation in a cell incubator at  
227  $37^\circ\text{C}$  with 5%  $\text{CO}_2$ . Cell culture supernatants were collected and reacted with a commercial  
228 cytokine detection kit (Human Th Cytokine Panel with V-bottom Plate (Biolegend, California,  
229 US, Cat No.:741028)) for secreting cytokine (including IFN- $\gamma$ , TNF- $\alpha$ , and IL-4) analysis. Data  
230 was acquired on Flow Cytometer (Attune NxT, Invitrogen) and analyzed using the  
231 LEGENDplex Software (Biolegend, version 8).

## 232 **Statistical analysis**

233 No statistical hypothesis was formulated for this study and only descriptive statistics was  
234 performed for all parameters. Immunogenicity figures were plotted using GraphPad Prism 9. To  
235 delineate the GMC differences of binding antibody responses between each Cohorts, a Mann  
236 Whitney test was performed for ELISA results. A Kruskal Wallis test (H test) was performed  
237 for GMFI levels among Cohorts. All statistical tests were two-sided and differences with a  $P <$   
238 0.05 were considered significant.

## 239 **Results**

### 240 **Study design**

241 A total of 92 participants were screened for enrollment in this trial. Among them, 32 participants  
242 were excluded, and 60 eligible participants were enrolled and randomized. All participants  
243 received vaccination by BARS13 or placebo hence were included in the safety population. 56  
244 (93.3%) were included in the immunogenicity population, and 53 (88.3%) were included in the  
245 per-protocol population (Fig. 1).

246 The majority of participants were white females with 46 (76.7%) females, and 14 (23.3%) males.  
247 Demographics and baseline characteristics were comparable between participants vaccinated  
248 with BARS13 or placebo across all cohorts (Table 2).

#### 249 **Vaccine safety**

250 No SAE was experienced by any of the study participant at any time during the study. No TEAEs  
251 were classified as severe or life-threatening. No TEAE leading to study withdrawal during the  
252 30-day follow up period after vaccination except 1 TEAE of moderate asthma exacerbation  
253 reported by a placebo participant in LDR. The majority of the TEAEs recorded were classified  
254 as mild. The frequency of TEAEs and drug-related TEAEs did not increase with vaccine dose  
255 level and frequency. The figures of the overview AEs post each vaccination were attached in the  
256 (Figure. S1, Figure. S2).

257 Local pain/tenderness was the most frequent solicited local adverse reaction in participants  
258 treated with active vaccine. Fatigue was the most frequently reported solicited systemic adverse  
259 reaction, and it was the most frequently reported as severe. The incidence rate of adverse  
260 reactions did not increase with vaccine dose level and frequency. Furthermore, the incidence  
261 rates of most local and systemic adverse reactions have shown a detectable decrease after the  
262 second vaccination at day 30 compared with those after the first vaccination at day 0,  
263 independently of the vaccine dose.

264 The majority of solicited adverse reactions were classified as mild and none were classified as  
265 life-threatening. After the first vaccination on day 0, the most frequent localized adverse reaction  
266 in 24 low dose recipients (LDS and LDR) and 24 high dose recipients (HDS and HDR) was  
267 localized pain/tenderness, with the incidence rate of 45.8% and 66.7%, respectively (Fig. 2a). 5  
268 (20.8%) events of localized pain/tenderness were reported as moderate in high dose recipients.  
269 In 12 placebo-recipients, localized pain/tenderness (8.3%) was also reported after the first  
270 vaccination. Other localized adverse reactions were reported no more than 8.3% in all Cohorts.  
271 After the second vaccination on day 30, 3 localized adverse reactions were reported among 12

272 LDR recipients, 12 HDR recipients and 6 placebo recipients. 2 (16.7%) moderate localized  
273 pain/tenderness were reported in LDR and HDR recipients, respectively. 2 (16.7%) mild  
274 localized pain/tenderness were reported in LDR and HDR recipients, respectively. 1 (16.7%)  
275 mild localized pain/tenderness and 1 (16.7%) mild ecchymosis/discoloration were reported in  
276 placebo recipients. While ecchymosis/discoloration and swelling/induration in LDR and HDR  
277 recipients were reported no more than 8.3% after the second vaccination.

278 After the first vaccination on day 0, the most frequent systematic adverse reactions were fatigue  
279 (41.7%), headache (20.8%), myalgia (16.7%) and malaise (16.7%) in low dose recipients (Fig.  
280 2b). For high dose recipients, the most frequent systematic adverse reactions were fatigue  
281 (33.3%), myalgia (29.2%), headache (16.7%), light headedness (16.7%) and malaise (12.5%).  
282 The incidence of fatigue, headache and malaise were relatively high in the placebo recipients,  
283 with 5 (41.7%), 7 (58.3%) and 3 (25.0%) events reported respectively. Compared with all the  
284 mild and moderate fatigue and headache reported in both low and high dose recipients, 1 (8.3%)  
285 event of fatigue and 1 (8.3%) headache was each reported as severe in placebo recipients. No  
286 severe fatigue was reported in both low and high dose recipients. After the second vaccination  
287 on day 30, 1 (8.3%) fatigue was reported in HDR recipients. Other systematic adverse reactions  
288 were reported as mild in all Cohorts.

### 289 **Specific G protein binding antibody response**

290 In the immunogenicity and per-protocol populations, the value of concentrations and the GMFI  
291 of G protein binding antibodies in terms of the BARS13 dosed cohorts on days 30 and 60 (repeat  
292 dose regimen only) were numerically higher with those on day 0 in anti-RSV-G IgG ELISA  
293 absorbance values using collected serum at 1:2000 dilution.

294 The median antibody concentrations at day 0, 30 and 60 in low dose recipients (Fig. 3a) and high  
295 dose recipients (Fig. 3b) each compared with placebo recipients were presented. The median  
296 antibody concentrations at day 30 was 1049.08 IU/ mL and 1126.61 IU/ mL for participants in  
297 LDS and HDS, respectively. The median antibody concentration of participants in LDR and

298 HDR on day 30 was 763.18 IU/ mL and 885.74 IU/ mL, respectively. On day 60, antibody  
299 concentrations in the LDR and HDR were both higher than the baseline, with median values at  
300 1187.10 IU/ mL and 1482.12 IU/ mL, respectively. From the distribution of antibody  
301 concentrations, after receiving 1 or 2 doses of BARS13, an apparent upward trend in the antibody  
302 concentration of all vaccine recipients was observed. Especially for participants who had a 2-  
303 dose-regimen (LDR and HDR), the increases of their IgG antibody concentrations were much  
304 higher at day 60 than themselves at day 30.

305 The GMFI at day 0, 30 and 60 in low dose recipients (Fig. 3c) and high dose recipients (Fig. 3d)  
306 each compared with placebo recipients were presented. Descriptively, the GMFI for participants  
307 in LDS and HDS with BARS13 single dose at day 30 were 1.72 (95% CI: 1.23-2.41) and 1.75  
308 (95% CI: 1.34-2.29), respectively. Both were higher than the placebo recipients with the GMFI  
309 of 1.01 (95%CI:0.92-1.11) at day 30. The GMFI for participants in LDR and HDR with BARS13  
310 two-dose regimen at day 30 were 2.04 (95% CI: 1.44-2.88) and 1.89 (95% CI: 1.36-2.63), while  
311 at day 60 were 3.17 (95% CI: 1.88-5.36) and 3.16 (95% CI: 1.99-5.03), respectively.  
312 Comparatively, the GMFI for participants received placebo at day 60 were much lower with the  
313 increase-fold down to 0.96 (95% CI: 0.91-1.01).

314 The antibody data analysis demonstrates that levels of anti-G antibodies elicited in all BARS13  
315 recipients were superior to that of the placebo recipients at all sampling time points. The GMFI  
316 of all BARS13 recipients have not shown any obvious increase at day 30, while LDR and HDR  
317 participants who received two-dose regimen have showed a detectable increase in the  
318 concentration of binding antibodies at day 60, suggesting that the two-dose regimen was more  
319 advantageous in terms of generating higher binding antibodies against RSV. In terms of dose  
320 selection, the high-dose cohorts (HDS and HDR) showed higher anti-G antibody concentrations  
321 on days 30 and 60 (LDR and HDR only) than the low-dose groups (LDS and LDR), respectively.  
322 Based on the analysis of the GMFI of BARS13 binding antibodies, the increase of binding  
323 antibodies was positively correlated with the increased doses and dosage of BARS13.

#### 324 **Neutralization antibody response**

325 Per immunogenicity population, the neutralization antibody concentrations at day 0, 30 and 60  
326 in in low dose recipients (Fig. 4a) and high dose recipients (Fig. 4b) each compared with placebo  
327 recipients were presented. The increase of neutralization antibody concentrations in HDS and  
328 HDR were observed 30 days after their last vaccination. The GMC value of neutralization  
329 antibody in LDR and HDR at Day 30 was 1161.1 IU/mL (95% CI: 599.6-2248.4 IU/mL) and  
330 1507.9 IU/mL (95% CI: 1.8997-1.3637 IU/mL), respectively, showing a detectable high increase  
331 compared with baseline GMC value. At Day 60, the GMC value of neutralization antibody  
332 maintained increasing trend and was up to 1683.6 IU/mL (95% CI: 904.1-3135.4 IU/mL) and  
333 2499.6 IU/mL (95% CI: 1195-5228.3 IU/mL), respectively.

334 The GMC value in LDS, HDS and participants dosed with placebo at Day 0 was 791.2 IU/mL  
335 (95% CI: 476.6-1313.6 IU/mL), 1040.9 IU/mL (95% CI: 618.9-1750.8 IU/mL) and 1004.2  
336 IU/mL(95% CI : 552.7-1824.5 IU/mL), respectively. The GMC value with 95% CI of  
337 neutralization antibody in LDS, HDS and participants dosed with placebo at Day 30 was 1163.7  
338 IU/mL (95% CI: 725.1-1867.4 IU/mL), 1595.3 IU/mL (95% CI: 964.7-2638.2 IU/mL) and 1307  
339 IU/mL (95% CI: 259.3-2764.3 IU/mL), respectively. The GMC value of neutralization antibody  
340 in participants dosed with placebo on days 0, 30, and 60 was 1004.2 IU/mL (95% CI: 552.7-  
341 1824.5 IU/mL), 1307 IU/mL (95% CI: 259.3-2764.3 IU/mL) and 846.6 IU/mL (95% CI: 259.3-  
342 2764.3 IU/mL), respectively.

### 343 **Cellular Response**

344 Having been demonstrated in animal studies, BARS-13 immunizations would induce Tregs that  
345 could suppress T cell proliferations when animals were exposed to RSV infection.<sup>25</sup> To test if  
346 this is also true in human setting, we set up a flow cytometry method to explore proliferative  
347 profiles and functions of T-cells being restimulated in vitro by the RSV G peptide from LDR  
348 and HDR groups vaccinated by BARS13 in this trial. This test has been done in post hoc setting  
349 hence subjects have been unblinded and only subjects receiving BARS13 were included.

350 In LDR, compared with the high response readout stimulated by the CD3/CD28, as positive  
351 stimulants, the level of G-peptide stimulated IFN- $\gamma$  and Ki67 were relatively stable with minimal  
352 increase after the second vaccination at day 37 and 60, while the level of G-peptide stimulated  
353 TNF- $\alpha$  has shown no obvious change from days 0 to 30 and actually has decreased at days 37  
354 and 60. The level of IL-4 stimulated by the G-peptide was lower than that stimulated by  
355 CD3/CD28. The median and quartile values of IFN- $\gamma$  stimulated by the G-peptide at days 0, 7,  
356 30, 37 and 60 were 6.13 (2.33, 10.97), 1.93 (1.52, 3.35), 6.32 (6.32, 6.32), 1.78 (1.78, 1.78), and  
357 1.25 (1.12, 3.99) pg/mL, respectively (Fig. 5a).

358 In HDR, all the other Th1 related cellular cytokines (IFN- $\gamma$ , TNF- $\alpha$  and Ki67) have shown no  
359 obvious change from pre-vaccination to post-vaccination timepoints for the G-peptide stimulated  
360 samples. Comparatively, CD3/CD28 stimulated samples have shown higher responses on the  
361 aforementioned cytokines. For Th2 biased cytokine IL-4, a consistent pattern with that of LDR  
362 is also shown, that positive stimulant samples also generate numerically higher readout across  
363 all timepoints (Fig. 5b).

## 364 **Discussion**

365 We have performed a first-in-human phase I trial on BARS13, a novel designed RSV  
366 recombinant G protein vaccine with an immunomodulator, CsA. This RSV vaccine candidate  
367 was designed with the aim to suppress over-reactive T cells related to VED risk that has been  
368 observed in previous RSV vaccine clinical programs [25, 26]. Before this phase I trial, BARS13  
369 vaccinations shown that RSV binding and neutralizing antibodies can be significantly increased  
370 and no VED symptom has been observed following detailed histopathology examination in a  
371 murine model RSV challenge study. This suppressed cellular response was associated with Tregs  
372 induction since Treg-knocked animals lost the ability to prevent VED in the same challenge  
373 study [25]. In a rabbit study, BARS13 vaccinations could induce long durable and recalled anti-  
374 RSV G antibody responses, but without T cells proliferations after being stimulated by the G  
375 peptide in vitro [26].

376 In this phase I trial, the majority of solicited local adverse reactions were classified as mild, and  
377 none as severe, nor life-threatening. No clinically significant vaccine-related safety or  
378 tolerability signals were reported during this study. The administration of BARS13 was generally  
379 tolerable, with no apparent differences between BARS13 and placebo vaccinated participants.  
380 The first-in-human study of the BARS13 has shown a tolerable and promising safety profile for  
381 this RSV vaccine candidate.

382 In the immunogenicity investigations, the anti-RSV-G IgG antibody titers measured by ELISA  
383 were expressed as concentration change from baseline and GMFI from baseline with 95% CIs  
384 for each of the individual treatment groups on days 30, and 60. For the absolute antibody levels  
385 as well as the fold increases from baseline to the post-vaccination, it is clearly exhibited a dose-  
386 dependent increase pattern from the low dose to high dose cohorts. Boost dose also contribute  
387 to the antibody response as shown in repeat dose cohorts, that after the second dose binding  
388 antibody has been increased further.

389 Previous studies have shown that vaccine-enhanced disease (VED) was due to over-reactive  
390 CD4 T cells, but it's not clear how different CD4 T cell subsets lead to increased risk of VED  
391 [27]. In the meantime, human airway epithelial cells and alveolar macrophages can produce  
392 proinflammatory cytokines, such as tumor necrosis factor- $\alpha$  (TNF- $\alpha$ ), which can help stimulate  
393 immune responses to inhibit RSV infection. Similar to children immunized with FI-RSV,  
394 BALB/C mice experimentally exhibited VED associated with Th2-biased immune responses  
395 [28]. In order to explore whether BARS13 vaccination will lead to proinflammatory cellular  
396 response, Th1-type cytokines (IFN- $\gamma$  and TNF- $\alpha$ ) and Th2-type cytokines (IL-4) were assessed  
397 by the flow cytometry to observe the T-cell immune response induced by BARS13 vaccination.  
398 From the PBMC testing results, it can be shown that the G-peptide stimulated PBMCs generally  
399 don't show much obvious response to stimulation, but comparatively, anti-CD3/CD28 positive  
400 stimulant samples exhibited significant response to the in vitro stimulation, demonstrating that  
401 the responsiveness of PBMCs to external stimulant, and could potentially lead to the conclusion



402 that BARS13 vaccination does not induce over-reactive T cell and had less chance to develop  
403 VED once RSV re-exposure occurs in those vaccinated subjects.

404 There are some limitations to this phase I study. First, limited follow-up period may not allow  
405 sufficient observation of potentially delayed reactions. Second, the methods for antibody testing,  
406 especially for neutralization antibody testing in Figure 4, further improvement such as  
407 benchmarking against international recognized standards which could make the results more  
408 comparable with other published RSV vaccine results is required. Third, due to extended long  
409 time cryopreservation of the collected PBMCs (more than 1 year), successful retrieval of cell  
410 samples was variable and rendered the result interpretations of flow analysis to be only tentative.

#### 411 **CONCLUSION**

412 In summary, the first-in-human trial has demonstrated that BARS13 not only induces meaningful  
413 level of anti-RSV-G Abs in a dose-dependent fashion, it also, importantly, demonstrates a well-  
414 tolerable and excellent safety profile from the recombinant RSV G protein with a low  
415 concentration of CsA in the formulation. This novel adjuvant, CsA, has provided potential of  
416 circumventing enhanced respiratory disease in RSV vaccine development history, which  
417 warrants further exploration in future clinical trials.

#### 418 **Supplementary Information**

419 Additional file 1:

420 Figure S1. The incidence rate of TEAEs post 1<sup>st</sup> vaccination by all cohorts

421 Figure S2. The incidence rate of TEAEs post 2<sup>nd</sup> vaccination by repeat dose recipients

#### 422 **Acknowledgements**

423 We are grateful to Yongpeng Xu, Zhonghuai He, and team from Advaccine for their supports and  
424 contributions in the shipping of BARS13 and PBMC samples.

#### 425 **Author Contributions**

426 A.C., H.Q. and B.W., designed the clinical trial; A.D. and Z.H., developed manufacturing process,  
427 produced phase I clinical batch; S.Z. and S. F., participated in the development of flow cytometry  
428 assay; G.Z., J.W., B.J., B.W. and M.W., performed the ELISA and flow cytometry assays; A.C.  
429 and X.H., wrote the original draft; B.W., reviewed and edited the manuscript.

#### 430 **Funding**

431 This work was funded by the National Major Scientific and Technological Special Project for  
432 “Program of Significant New Drug Developments” [2013ZX09102041] and National Natural  
433 Science Foundation of China [81991492 and 82041039].

#### 434 **Availability of data and materials**

435 The data generated or analyzed during this study are included in this published article and its  
436 Additional files.

#### 437 **Declarations**

#### 438 **Ethic approval and consent to participate**

439 Not applicable. No private information of participants has been included in this article.

#### 440 **Competing interests**

441 All the authors are employees of Advaccine Biopharmaceuticals Suzhou Co., Ltd. All authors  
442 have approved the manuscript for submission.

## Reference

1. Hon KL, Leung TF, Cheng WY, Ko NM, Tang WK, Wong WW, et al. Respiratory syncytial virus morbidity, premorbid factors, seasonality, and implications for prophylaxis. *J Crit Care.* 2012;27(5):464-8.
2. García CG, Bhore R, Soriano-Fallas A, Trost M, Chason R, Ramilo O, et al. Risk factors in children hospitalized with RSV bronchiolitis versus non-RSV bronchiolitis. *Pediatrics.* 2010;126(6):e1453-60.
3. Collins, PL, Melero JA. Progress in understanding and controlling respiratory syncytial virus: still crazy after all these years. *Virus Res.* 2011;162(1-2):80-99.
4. Nair, H, Nokes DJ, Gessner BD, Dherani M, Madhi SA, Singleton RJ, et al. Global burden of acute lower respiratory infections due to respiratory syncytial virus in young children: a systematic review and meta-analysis. *Lancet.* **2010**;375(9725):1545-55.
5. Lucion MF, Juarez Mdel V, Viegas M, Castellano V, Romanin VS, Grobaporto M, et al. Respiratory syncytial virus: clinical and epidemiological pattern in pediatric patients admitted to a children's hospital between 2000 and 2013. *Arch Argent Pediatr.* **2014**;112(5):397-404.
6. Welliver RC Sr, Checchia PA, Bauman JH, Fernandes AW, Mahadevia PJ, Hall CB. Fatality rates in published reports of RSV hospitalizations among high-risk and otherwise healthy children. *Curr Med Res Opin.* **2010**;26(9):2175-81.
7. The European Medicines Agency decided that Nirsevimab can be authorised for use in the EU. <https://www.ema.europa.eu/en/medicines/human/EPAR/beyfortus>. Last accessed on 16 Sep 2022.
8. Moghaddam A, Olszewska W, Wang B, Tregoning JS, Helson R, Sattentau QJ, et al. A potential molecular mechanism for hypersensitivity caused by formalin-inactivated vaccines. *Nat Med.* **2006**;12(8):905-7.
9. Falsey AR, Walsh EE. Respiratory syncytial virus infection in elderly adults. *Drugs Aging.* 2005;22(7):577-87.
10. Kapikian AZ, Mitchell RH, Chanock RM, Shvedoff RA, Stewart CE. An epidemiologic study of altered clinical reactivity to respiratory syncytial (RS) virus infection in children previously vaccinated with an inactivated RS virus vaccine. *Am J Epidemiol.* **1969**;89(4):405-21.

11. Bataki EL, Evans GS, Everard ML. Respiratory syncytial virus and neutrophil activation. *Clin Exp Immunol.* **2005**;140(3):470-7.
12. Lindemans CA, Kimpen JL, Luijk B, Heidema J, Kanters D, van der Ent CK, et al. Systemic eosinophil response induced by respiratory syncytial virus. *Clin Exp Immunol.* **2006**;144(3):409-17.
13. Stokes KL, Currier MG, Sakamoto K, Lee S, Collins PL, Plemper RK, et al. The respiratory syncytial virus fusion protein and neutrophils mediate the airway mucin response to pathogenic respiratory syncytial virus infection. *J Virol.* **2013**;87(18):10070-82.
14. Acosta PL, Caballero MT, Polack FP. Brief History and Characterization of Enhanced Respiratory Syncytial Virus Disease. *Clin Vaccine Immunol.* **2015**;23(3):189-95.
15. Hussell T, Baldwin CJ, O'Garra A, Openshaw PJ. CD8+ T cells control Th2-driven pathology during pulmonary respiratory syncytial virus infection. *Eur J Immunol.* **1997**;27(12):3341-9.
16. Hussell T, Spender LC, Georgiou A, O'Garra A, Openshaw PJ. Th1 and Th2 cytokine induction in pulmonary T cells during infection with respiratory syncytial virus. *J Gen Virol.* **1996**;77 ( Pt 10):2447-55.
17. Haynes LM. Progress and challenges in RSV prophylaxis and vaccine development. *J Infect Dis.* **2013**;208 Suppl 3:S177-83.
18. Murata Y. Respiratory syncytial virus vaccine development. *Clin Lab Med.* 2009;29(4):725-39.
19. RSV Vaccine and mAb Snapshot. <https://www.path.org/resources/rsv-vaccine-and-mab-snapshot/>. Last accessed on 1 Aug 2022.
20. Connors M, Collins PL, Firestone CY, Murphy BR. Respiratory syncytial virus (RSV) F, G, M2 (22K), and N proteins each induce resistance to RSV challenge, but resistance induced by M2 and N proteins is relatively short-lived. *J Virol.* **1991**;65(3):1634-7.
21. Choi Y, Mason CS, Jones LP, Crabtree J, Jorquera PA, Tripp RA. Antibodies to the central conserved region of respiratory syncytial virus (RSV) G protein block RSV G protein CX3C-CX3CR1 binding and cross-neutralize RSV A and B strains. *Viral Immunol.* **2012**;25(3):193-203.
22. Tajima K, Amakawa R, Ito T, Miyaji M, Takebayashi M, Fukuhara S. Immunomodulatory effects of cyclosporin A on human peripheral blood dendritic cell subsets. *Immunology.* **2003**;108(3):321-8.

23. Wheeler DJ, Robins A, Pritchard DI, Bundick RV, Shakib F. Potentiation of in vitro synthesis of human IgE by cyclosporin A (CsA). *Clin Exp Immunol.* **1995**;102(1):85-90.
24. Loebbermann J, Durant L, Thornton H, Johansson C, Openshaw PJ. Defective immunoregulation in RSV vaccine-augmented viral lung disease restored by selective chemoattraction of regulatory T cells. *Proc Natl Acad Sci U S A.* **2013**;110(8):2987-92.
25. Li C, Zhou X, Zhong Y, Li C, Dong A, He Z, et al. A Recombinant G Protein Plus Cyclosporine A-Based Respiratory Syncytial Virus Vaccine Elicits Humoral and Regulatory T Cell Responses against Infection without Vaccine-Enhanced Disease. *J Immunol.* **2016**;196(4):1721-31.
26. The rabbit immunogenicity testing method patent with the description of animal study.  
<https://patentimages.storage.googleapis.com/13/58/13/245170d66261f6/CN105983095A.pdf>.
27. Knudson CJ, Hartwig SM, Meyerholz DK, Varga SM. RSV vaccine-enhanced disease is orchestrated by the combined actions of distinct CD4 T cell subsets. *PLoS Pathog.* **2015**;11(3):e1004757.
28. Waris ME, Tsou C, Erdman DD, Zaki SR, Anderson LJ. Respiratory syncytial virus infection in BALB/c mice previously immunized with formalin-inactivated virus induces enhanced pulmonary inflammatory response with a predominant Th2-like cytokine pattern. *J Virol.* **1996**;70(5):2852-60.

443 **FIGURE LEGENDS**

444 **Figure 1. Study profile.** Among each cohort, 2 sentinels (n=1 active; n=1 placebo) will be  
445 assigned for a safety observation at the study site for a minimum period of 60 minutes post-  
446 vaccination. Upon completion of the on-site safety assessments and release from the site, sentinel  
447 participants were monitored by follow up telephone call (at least one call) over a minimum  
448 period of 24 hours following vaccination. In the absence of clinically significant safety signals  
449 in sentinel participants over this period, the remaining participants in the cohort could be  
450 vaccinated in a sequential manner, with a minimum interval between participants of 30 minutes  
451 to allow monitoring of any acute events. During the vaccination period, the 7-day safety data of  
452 Cohort 1 will be reviewed by the safety review committee (SRC) if no safety concern has raised,  
453 the initiation of enrolment for both Cohort 2 and Cohort 3 (Step II; after review of Cohort 1 data)  
454 and Cohort 4 (Step III; after review of Cohort 3 data) could be triggered. 1 placebo-receipt from  
455 Cohort 2 and 2 BARS13 recipients from Cohort 4 failed to complete the second vaccination on  
456 day 30, leading to exclusion in the per-population set.

457 **Figure 2. Incidence of localized and systematic adverse reactions in all Cohorts after each**  
458 **vaccination. a) Incidence of localized adverse reactions after each vaccination. b)**  
459 **Incidence of systematic adverse reactions after each vaccination.**

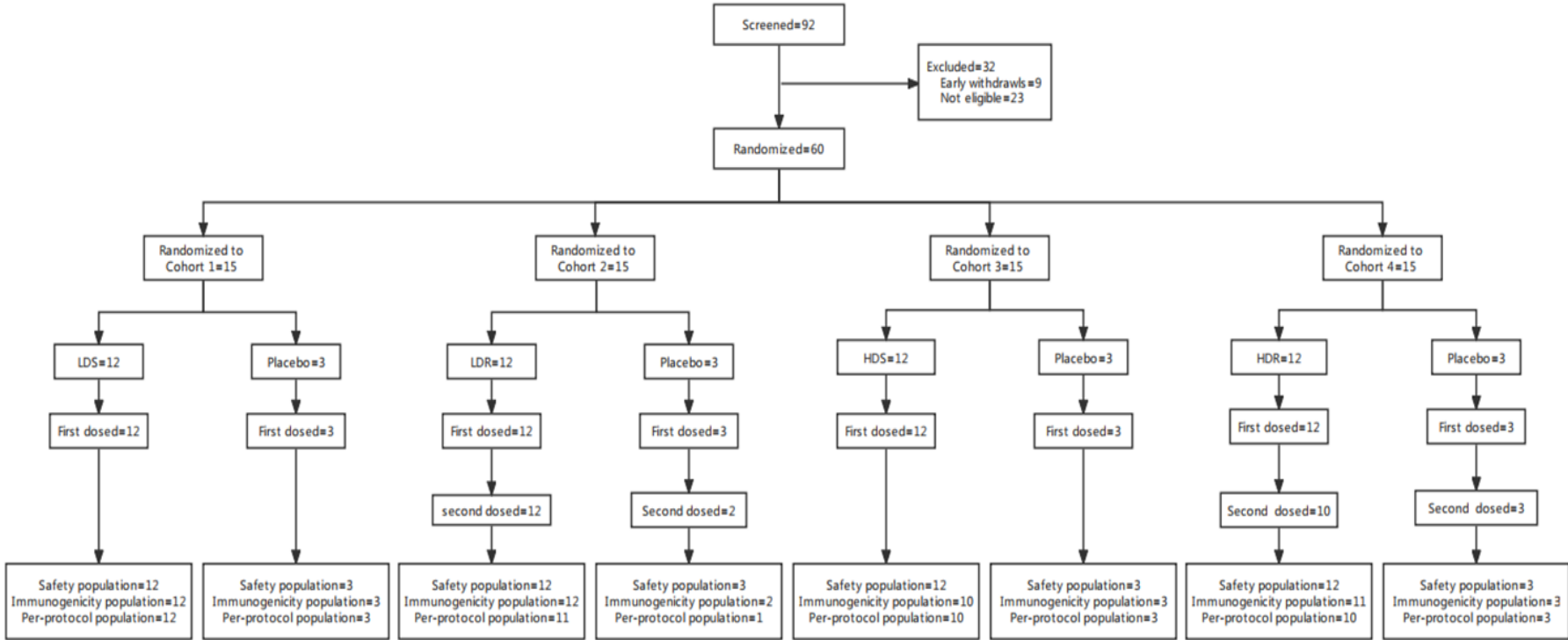
460 **Figure 3. G-protein binding antibodies in all Cohorts. a) The Geometric Mean**  
461 **Concentrations (GMCs) of binding antibodies in low dose recipients compared with in**  
462 **placebo recipients. b) The Geometric Mean Concentrations (GMCs) of binding antibodies**  
463 **in high dose recipients compared with in placebo recipients.** With ELISA test method, the  
464 concentrations of anti-RSV G protein antibodies in the plasma at days 0, 30, and 60 for high/low-  
465 dose and placebo cohorts were quantified using a standard curve prepared with the standard  
466 product antiserum to RSV (\*P≤0.05, ns represents P>0.05). The original concentration is 2000  
467 IU/ml. GMC and 95% confidence intervals are obtained from GraphPad Prism 9. **c) The**  
468 **geometric mean fold increase (GMFI) of binding antibodies in high dose recipients**  
469 **compared with in placebo recipients. d) The geometric mean fold increase (GMFI) of**

470 **binding antibodies in high dose recipients compared with in placebo recipients.** The GMFI  
471 of BARS13 IgG antibody level in all cohorts at days 0, 30, and 60 (LDR and HDR only) and 95%  
472 confidence intervals are obtained from GraphPad Prism 9. P value is tested using Kruskal Wallis  
473 testing method (\* $P \leq 0.05$ , ns represents  $P > 0.05$ ).

474 **Figure 4. Neutralizing antibody tested with direct ELISA format in all Cohorts. a) The**  
475 **Geometric Mean Concentrations (GMCs) of neutralization antibody in low dose recipients**  
476 **compared with in placebo recipients.** The GMCs of neutralization antibody of single dose  
477 regimens and placebo recipients at days 0, 30 and 60. Missing data were imputed using the Last  
478 Observation Carries Forward (LOCF) method. **b) The Geometric Mean Concentrations**  
479 **(GMCs) of neutralization antibody in high dose recipients compared with in placebo**  
480 **recipients.** The GMCs of neutralization antibody of repeat dose regimens and placebo recipients  
481 at days 0, 30 and 60.

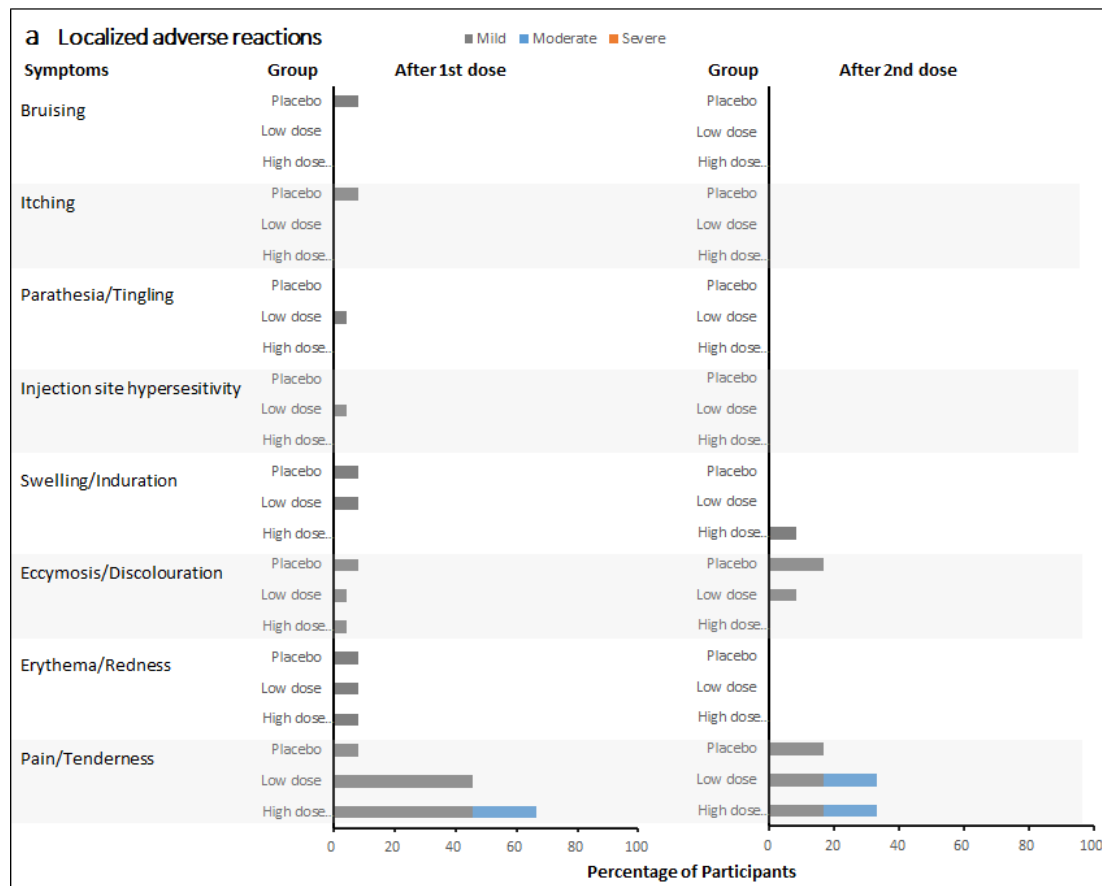
482 **Figure 5. Specific T-cell response. a) T-cell response in low dose repeat recipients.** The  
483 median and quartile values of Th1 cytokines (IFN- $\gamma$  and TNF- $\alpha$ ), Th2 cytokine (IL-4), and Ki67  
484 in LDR were detected at days 0, 7, 30, 37 and 60 with the stimulation of G-peptide as specific  
485 antigen and CD3/CD28 as a positive control on cryopreserved PBMCs. Due to some samples on  
486 Day 0 were not recovered successfully resulting from long time (>1 year) cryopreservation,  
487 several subjects' samples testing results lack baseline control and decision has been made that  
488 only  $\geq 4$  BARS13 recipients with their PBMC samples available at days 0, 7, 30, 37 and 60 in  
489 each Cohort were included in cellular response analysis. Therefore, 4 (33.4%) BARS13-  
490 recipients in LDR has been included in the T-cell immunogenicity analysis. For the percentage  
491 readout of Ki67, a total of 11 (91.7%) BARS13 recipients in LDR were available for the analysis.  
492 **b) T-cell response in high dose repeat recipients.** The Th1 cytokines (IFN- $\gamma$  and TNF- $\alpha$ ), Th2  
493 cytokine (IL-4), and Ki67 in HDR were detected at days 0, 7, 30, 37 and 60 with the stimulation  
494 of G-peptide as specific antigen and CD3/CD28 as a positive control on cryopreserved PBMCs.  
495 4 (33.4%) BARS13-recipients in HDR has been included in the T-cell immunogenicity analysis.  
496 All 12 BARS13 recipients in HDR were included in the Ki67 proliferation analysis.

Figure 1. Study profile





**Figure 2. Incidence of adverse reactions after each vaccination**



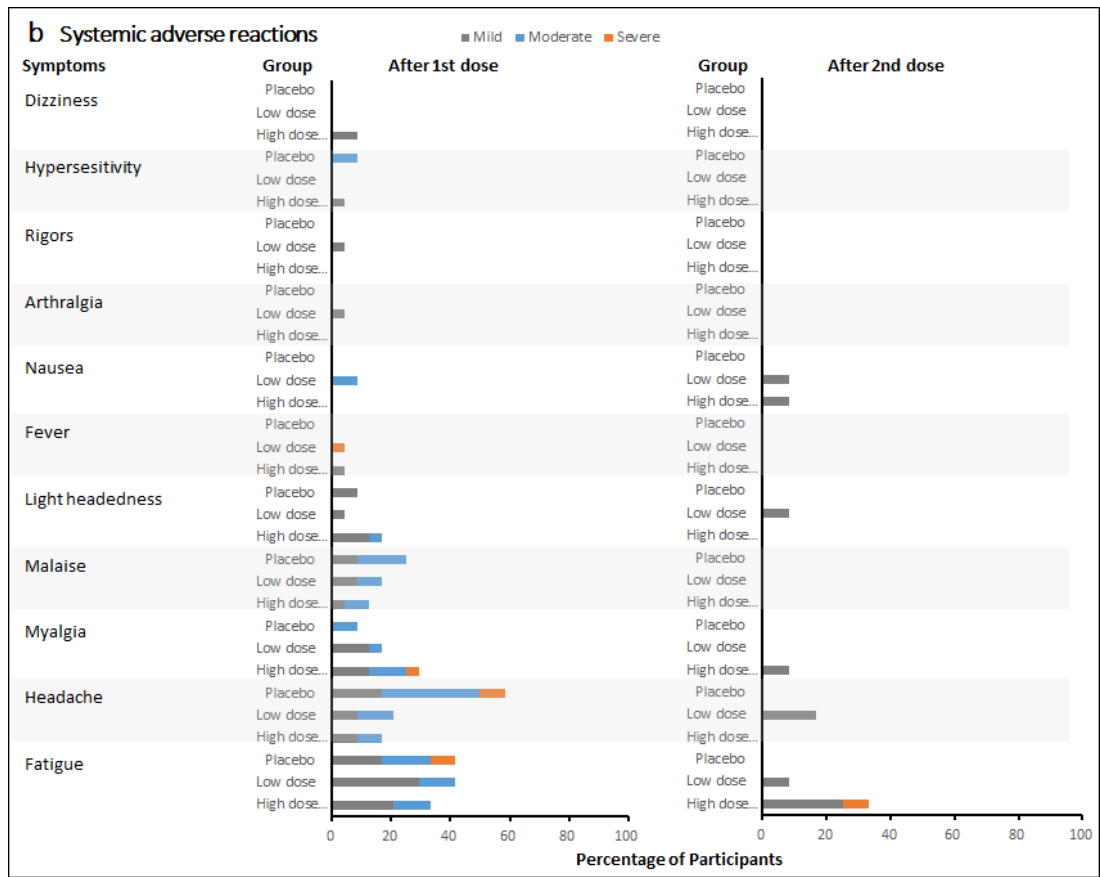


Figure 3. G-protein binding antibodies in all Cohorts

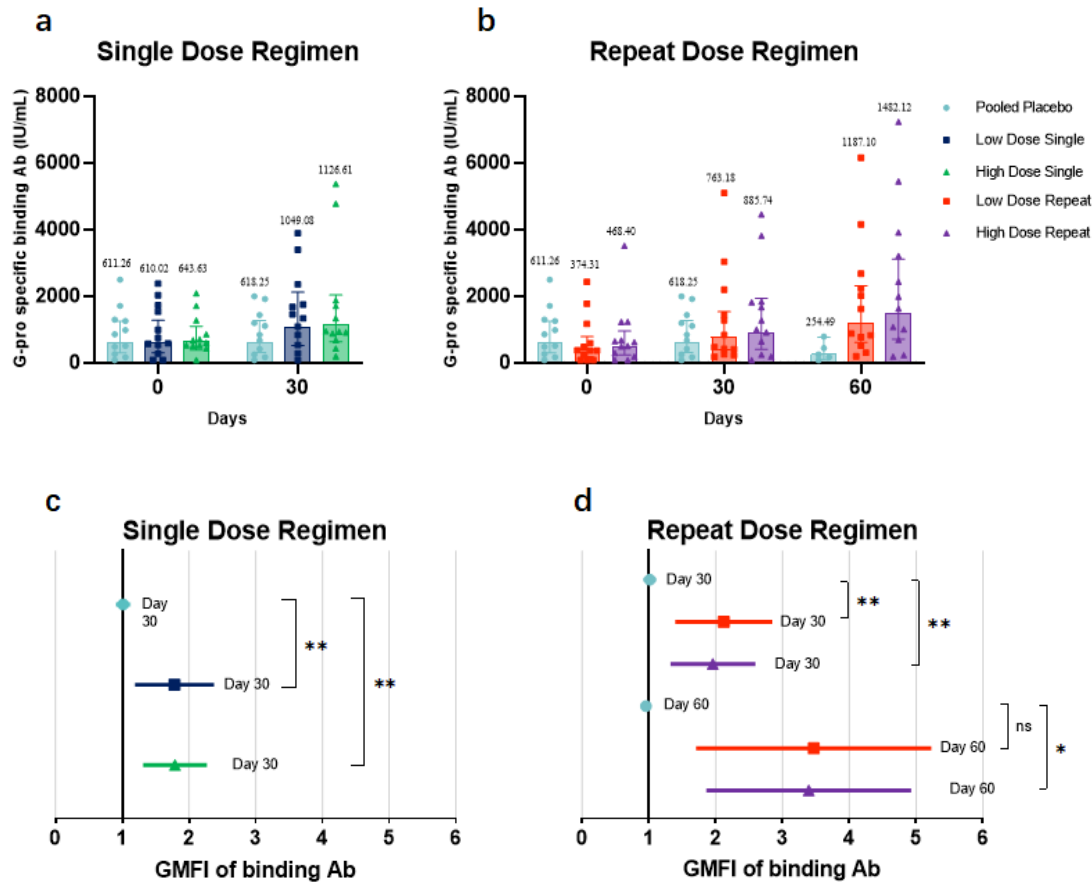


Figure 4. Neutralizing antibody tested with direct ELISA format in all Cohorts.

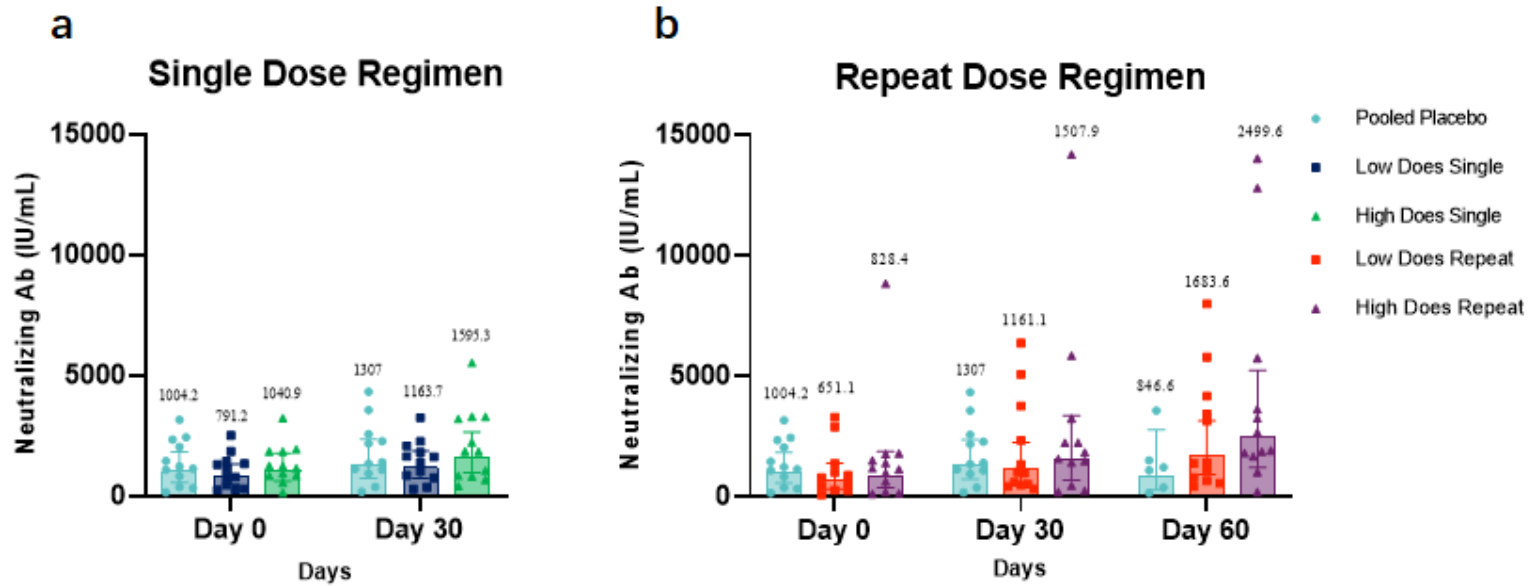
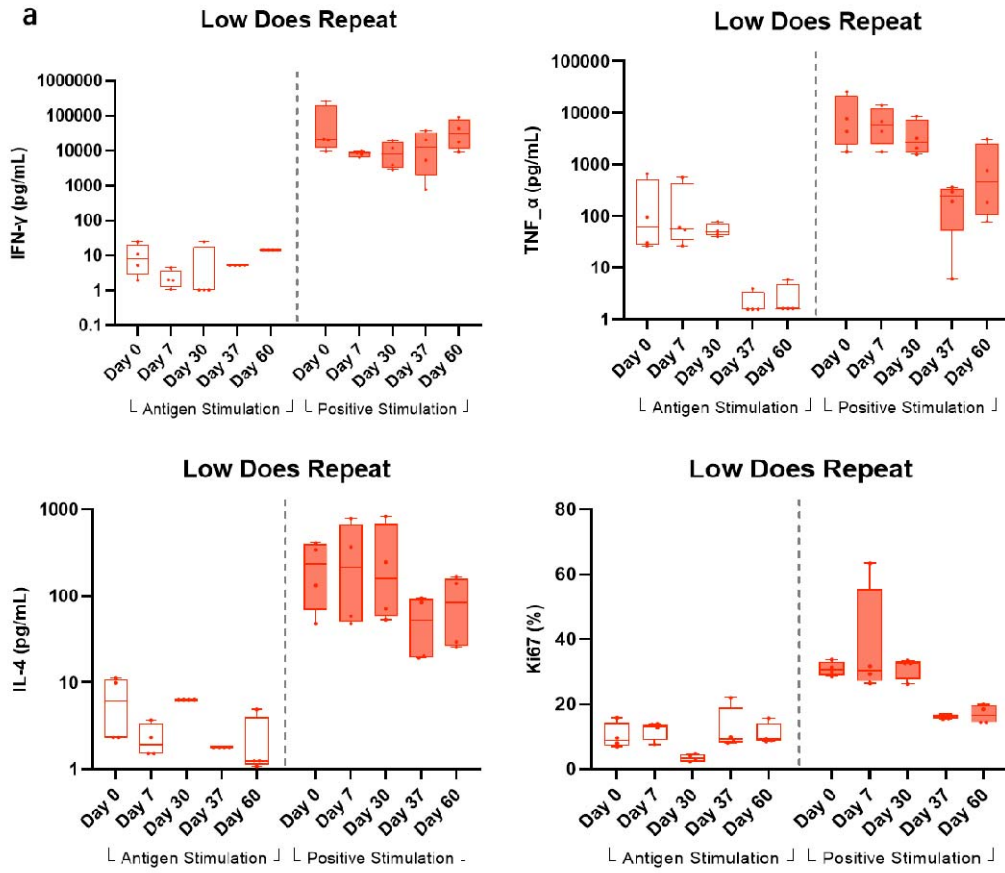
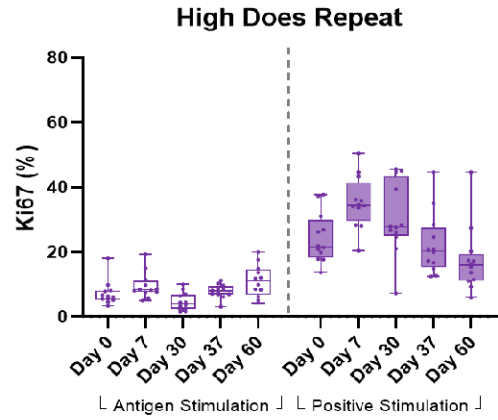
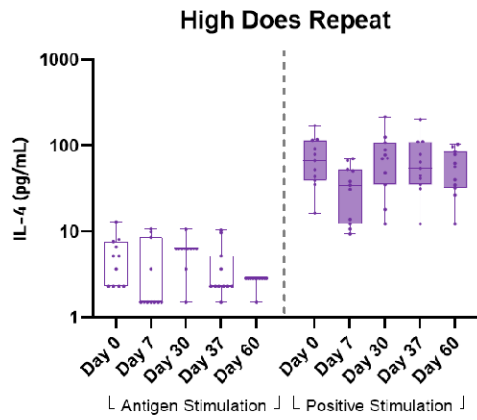
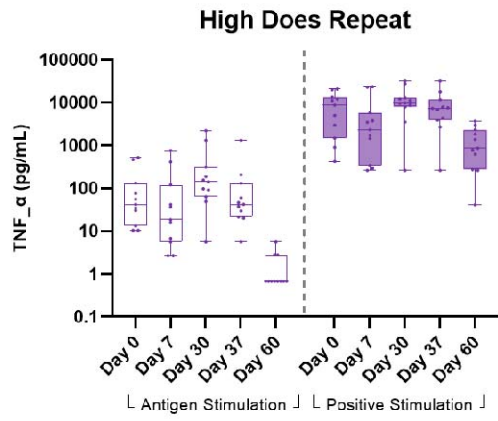
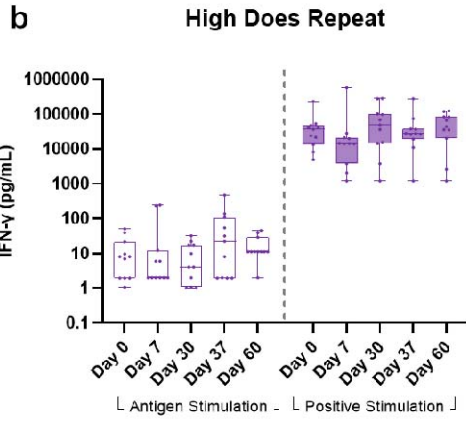


Figure 5. Specific T-cell response





---

## TABLES

**Table 1. Study design**

Step	Cohort	Treatment	Number of Participants	Vaccination Schedule
I	1	BARS13 low dose single (LDS) <sup>a</sup>	12	Day 0
		Placebo <sup>b</sup>	3	
II <sup>d</sup>	2	BARS13 low dose repeat (LDR) <sup>a</sup>	12	Days 0 and 30
		Placebo <sup>b</sup>	3	
	3	BARS13 high dose single (HDS) <sup>c</sup>	12	Day 0
		Placebo <sup>b</sup>	3	
III <sup>d</sup>	4	BARS13 high dose repeat (HDR) <sup>c</sup>	12	Days 0 and 30
		Placebo <sup>b</sup>	3	

---

Note:

a. One dose of 9.2 µg rRSV-G protein/10 µg CsA by IM injection to the deltoid region of one arm, and one dose of placebo [saline/mannitol] by IM injection to the deltoid region of the other arm, given sequentially.

b. IM injection of saline/mannitol administered to the deltoid region of each arm (one injection of saline/mannitol per arm), given sequentially.

c. IM injection of 9.2 µg rRSV-G protein/10 µg CsA was administered to the deltoid region of each arm (one injection of 9.2 µg rRSV-G protein/10 µg CsA per arm), given sequentially. The high dose was twice the strength of the low dose.

d. If no safety holding criteria were met, initiation of both Cohort 2 and Cohort 3 (Step II; after review of Cohort 1 data) and Cohort 4 (Step III; after review of Cohort 3 data) could be triggered for enrolment at the discretion of the SMC.

---

**Table 2. Demographics and Baseline Characteristics (All Participants Population)**

<b>Characteristics</b>	<b>LDS ( N=12 )</b>	<b>LDR ( N=12 )</b>	<b>HDS (N=12)</b>	<b>HDR ( N=12 )</b>	<b>Pooled Placebo (N=12)</b>	<b>Overall ( N=60 )</b>
Age (years)	25.40 (3.99)	27.30 (6.72)	28.80 (7.16)	27.60 (6.76)	28.00 (2.22)	27.40 (5.87)
BMI at screening (kg/m <sup>2</sup> )	25.44 (4.86)	24.11 (5.39)	24.21(4.25)	23.97 (3.21)	24.65 (3.77)	24.48 (4.73)
<b>Gender</b>						
Female	11 (91.7%)	10 (83.3%)	8 (66.7%)	9 (75.0%)	8(66.7%)	46 (76.7%)
Male	1 (8.3%)	2 (16.7%)	4 (33.3%)	3 (25.0%)	4 (33.3%)	14 (23.3%)
<b>Ethnicity</b>						
Hispanic or Latino	1 (8.3%)	2 (16.7%)	1(8.3%)	1 (8.3%)	0 (0.0%)	5 (8.3%)
Not Hispanic or Latino	11 (91.7%)	10 (83.3%)	11 (91.7%)	11 (91.7%)	12 (100.0%)	55 (91.7%)

Notes: Data are mean (SD) or n (%).

Abbreviations: Low dose single (LDS), low dose repeat (LDR), high dose single (HDS), and high dose repeat (HDR).