

Research article: Incidence Rate of Post Coronary Artery Shunt Complications; Age Dependent!

Running title: Current surgical management advances

Authors' list: Basheer Abdullah Marzoog^{1,*}, Ekaterina Vanichkina²

¹ World-Class Research Center «Digital Biodesign and Personalized Healthcare», I.M. Sechenov First Moscow State Medical University (Sechenov University), 119991 Moscow, Russia; postal address: Russia, Moscow, 8-2 Trubetskaya street, 119991.

² National Research Ogarev Mordovia State University

*Corresponding author: Basheer Abdullah Marzoog, Ph.D. student at Sechenov First Moscow State Medical University at the World-Class Research Center "Digital biodesign and personalized healthcare". (marzug@mail.ru, +79969602820). Address: Russia, Moscow, 8-2 Trubetskaya street, 119991. Postal address: Russia, Moscow, 8-2 Trubetskaya street, 119991. ORCID: 0000-0001-5507-2413, Scopus ID: 57486338800

Competing interests: No competing interests regarding the publication.

Abstract:

Background: Several complications reported after coronary artery bypass graft surgery (CABG), such as postoperative arrhythmia and postoperative stroke.

Aims: The study aimed to assess the role of age advancement in the incidence rate of post coronary artery shunt complications.

Objectives: Aging is a pathophysiological process that experience every living cell and starts from the early period of development, before even born.

Materials and methods: A retrospective analysis of 290 patients who underwent a coronary artery bypass graft at Mordovia republic hospital for the period 2017-2021. The sample was subdivided into two groups, the first group 126 patients (mean age: min; max, 55.21:41.00;60.00) and the second group 163 (M age: min; max, 66.11: 61.00; 80.00). For statistical analysis, we used the T test, the one-way ANOVA test, ROC analysis, and the Pearson correlation test using the Statistica 12 programme.

Results: Post-CABG arrhythmia developed in elderly patients, $p < 0.012528$. Subsequently, after CABG arrhythmia, the ICU and total hospitalisation days, $p < 0.000000$; $p < 0.000072$, respectively. Elderly people are at higher risk of psychosis after CABG surgery, $p < 0.007379$. psychosis significantly increases hospitalisation days in the ICU, $p < 0.000140$. Postoperative stroke occurs more frequently in elderly people, $p < 0.037736$. Subsequently, postoperative stroke increases the ICU hospitalization days, $p < 0.000747$. The number of ITAs used is less in the elderly, $p < 0.016145$. In terms of correlation, exist a direct association between age and ICU / total hospitalization days/number of complications, $r = 0.189046, 0.141415, 0.138565$; respectively.

Conclusions: The number of complications is determined by age, CPB time, aortic cross-clamp time, the days of hospitalisation in the ICU and the total days of hospitalisation. Elderly people undergoing CABG are at higher risk of psychosis, arrhythmia, longer total and ICU hospitalization days, and stroke.

Others: Total hospitalization days depend on the presence of arrhythmia, which is commonly seen in elderly patients > 63 years old.

Keywords: Surgery, Myocardial Infarction, Angioplasty, CABG, CVD & CVS, progressive Angina

Background

Coronary artery graft surgery (CABG) performed on patients with ischemic heart disease to relieve the discrepancy between demand and supply of heart tissue. CABG surgery is performed in two versions, with stopped heart (on-pump) or working heart (off-pump) with cardiopulmonary bypass (CPB). CABG surgery involves revascularization of the coronary arteries through grafting of vessels from the saphenous vein, brachial vein, internal thoracic arteries, internal mammary arteries, and intercostal thoracic arteries [1]. The surgical approach to CABG is performed endoscopically or by thoracotomy. Recent surgeries are performed using the Da-Venice robot to minimize the risk of complications and improve prognosis by reducing the recovery period [2,3].

Post CABG complications are frequent and seen in all types of CABG surgery, off-pump and on-pump. The remarkable advancement in the current CABG techniques reduced the complications frequency, but the underlying risk factors and pathophysiological mechanisms of development of each complication remain unclear. Depending on the type of surgery, the risk of development of complication is different. Several complications are reported after the postoperative period, such as postoperative arrhythmia, post-operative psychosis, postoperative stroke, postoperative myocardial infarction, postoperative hydrothorax, re-sternotomy, postoperative dyspnea, and sternal wound infection [3,4]. The risk factors for development of post CABG include diabetes mellites, arterial hypertension, dyspnea, progressive angina, and post myocardial infarction (MI) sclerosis, advanced age, long CPB time, prolonged Aortic cross-clamp time, long ICU hospitalization days, and long total hospitalization days [5,6].

Materials and methods

A retrospective analysis of 290 patients who underwent a coronary artery bypass graft at Mordovia republic hospital for the period 2017-2021. The sample was divided by age into two groups A ($60 \leq \text{age in years} \leq 41$) and B ($80 \leq \text{age in years} \leq 61$). Accordingly, we used the stepwise model builder-logistic regression. The used model variables in the test are ejection fraction, age in numbers, BMI, CPB, XCL time, days reanimation, total days after surgery, and number of complications. We found that age plays important role. (*Figure 1*) (*Table 1*)

Table 1: Predicted and real values of the sample divided by age.

	Classification of cases (stat in copy of post coronary artery shunt complications)Odds ratio: infinityLog odds ratio: infinity					
	Predicted: A	Predicted: B	Percent correct	Predicted: A - Testing	Predicted: B - Testing	Percent correct - Testing

	Classification of cases (stat in copy of post coronary artery shunt complications)Odds ratio: infinityLog odds ratio: infinity					
	Predicted: A	Predicted: B	Percent correct	Predicted: A - Testing	Predicted: B - Testing	Percent correct - Testing
Observed: A	50	0	100	69	5	93.243
Observed: B	0	61	100	7	91	92.857

Therefore, the sample has been divided by age into two groups, the first group included 126 patients (mean age: min; max, 55.21:41.00;60.00) and the second group 163 (mean age: min; max, 66.11: 61.00; 80.00). The data were collected from the archive of the hospital for the period 2017-2021. Retrospective analysis has been carried out to assess the role of age advancement in postoperative complications. The mean age of the sample by year is presented in Figure 2. The missing data in different variables has not been included in the absolute values but included in the total percentage of the presented relative values if exist. Assess the hazard ratio using the special tests because of the inability to follow the patients. Also, we couldn't asses the survival rate due to the same reason.

For statistical analysis, we used the T test, the one-way ANOVA test, and the Pearson correlation test using the Statistica 12 programme. (StatSoft, Inc. (2014). STATISTICA (data analysis software system), version 12. www.statsoft.com.)

Results

In 2017, 33 (11.37931 %) patients performed coronary bypass surgery. In 2018, the number increased to 35 (12.06897 %) patients. In 2019, the number significantly increased to 61 (21.03448%) patients. In 2020, the highest number of bypass surgeries performed, 84 (28.96552 %) patients. In 2021, 77 (26.55172%) patients underwent coronary bypass surgery. Body mass index (BMI) range from 16.360-45.350 Kg/m² (mean; standard error: 45.350; 0.241918). Ejection fraction ranged from 29.000-77.000 % (mean; standard error: 55.772; 0.438403). 278 (95.86207%) patients underwent on-pump CABG surgery and 12 (4.13793 %) patients underwent off-pump CABG surgery. The period of artificial circulation in CPB surgeries ranged from 0.000-431.000 minute (M; ±m: 431.000; 2.661081). The ischemia time ranged from 0.000-147.000 minute (M; ±m: 55.466; 1.341570). Postoperative hospitalisation (hereafter, postoperative and post-CABG will be used interchangeably) in the intensive care unit ranged from 1.000 to 27.000 days (M; ±m: 2.821; 0.140122). The total hospitalization days (ICU hospitalization days plus recovery hospitalization days) after surgery ranged 7.000-50.000 days (M; ±m: 11.722; 0.292762).

In the first group, the mean age is 55.21 years (min; max, 41.00; 60.00) and the mean BMI is 28.8208 kg/m² (min; max, 16.36; 45.35). Moreover, in the first group, mean ejection fraction is 54.85% (min; max, 29.00; 76.00) and the mean CPB 101.19 minutes (min; max, 0.00; 270.00). Furthermore, the mean XCL time is 56.29 minute (min; max, 0.00; 105.00) and the mean hospitalisation days in the intensive care unit is 2.4758 days (min; max, 1.00; 6.00). Furthermore, the mean total hospitalization days after surgery is 10.96 days (min; max, 7.00000; 26.00000) and the mean number of complications is 0.2857 (min; max, 0.00; 3.00). Non-parametric parameters have been evaluated in table 2. With age, the number of shunts increases in the first group. However, a reduction in the incidence rate of complications has been observed in the second group (*Figure 3*).

Table 2: Age in the determination of preoperative conditions and post coronary artery shunt surgery complications. *The missed data are treated as part of the of the relative value but not the absolute value. ** values in bold are statically significant.

Factor	Index	Group A (40-60 years old); 126 patients	Group B (61-80 years old); 164 patients	X ²	P value
Sex	M	121 (96.03 %)	123 (75.00%)	23.616	<0.001**
	F	5 (3.96 %)	41 (25.00 %)		
Progress. Angina	Yes	50 (39.68 %)	62 (37.80 %)	0.081	0.776
	No	76 (60.31 %)	101 (61.58 %)		
DM	Yes	21 (16.66 %)	45 (27.43 %)	4.827	0.029**
	No	105 (83.33 %)	118 (71.95 %)		
DM complication	Yes	9 (7.14 %)	19 (11.58 %)	1.655	0.199
	No	117 (92.85 %)	144 (87.80 %)		
Dyspnea	Yes	25 (19.84 %)	30 (18.29 %)	0.095	0.758
	No	101 (80.15 %)	133 (81.09 %)		
Arrythmia before surgery	Yes	20 (15.87 %)	49 (29.87 %)	7.871	0.006**
	No	106 (84.12 %)	114 (69.51 %)		
Post mi sclerosis	Yes	84 (66.66 %)	94 (57.31 %)	2.432	0.119
	No	42 (33.33 %)	69 (42.07 %)		
Aneurysm LV	Yes	7 (5.55 %)	2 (1.219 %)	4.413	0.036**
	No	119 (94.44 %)	161 (98.17 %)		
Type of surgery	On-pump	121 (96.03 %)	157 (95.73 %)	0.016	0.899
	Off-pump	5 (3.96 %)	7 (4.26 %)		
Number of used internal thoracic arteries	One	68 (53.96 %)	123 (75.00%)	14.018	<0.001**
	Two	58 (46.03 %)	41 (25.00 %)		
Coronary artery shunts and plastic surgery of the LV aneurism	Yes	6 (4.76 %)	1 (0.60 %)	5.215	0.023**
	No	120 (95.23 %)	163 (99.39 %)		
Post-op. aneurism LV	Yes	1 (0.79 %)	2 (1.22%)	0.126	0.723
	No	125 (99.20 %)	162 (98.78 %)		
Post-op. arrythmia	Yes	8 (6.35%)	26 (15.85 %)	6.597	0.011**
	No	118 (93.65 %)	134 (81.70 %)		

Post-op. psychosis *	Yes	3 (2.38 %)	11 (6.70 %)	2.999	0.084
	No	121 (96.03%)	148 (90.24 %)		
post-op. Stroke *	Yes	1 (0.79 %)	3 (1.82 %)	0.584	0.445
	No	123 (97.61 %)	156 (95.12 %)		
Post-operative MI *	Yes	1 (0.79 %)	1 (0.60 %)	0.031	0.860
	No	123 (97.61 %)	158 (96.34 %)		
post-op. hydrothorax *	Yes	13 (10.31 %)	21 (12.80 %)	0.489	0.485
	No	111 (88.09 %)	138 (84.14 %)		
Re-sternotomy *	Yes	5 (3.96 %)	4 (2.43 %)	0.520	0.471
	No	119 (94.44 %)	155 (94.51 %)		
Post operative dyspnea *	Yes	4 (3.17 %)	7 (4.26 %)	0.258	0.612
	No	120 (95.23 %)	152 (92.68 %)		
Postoperative superficial sternum infection *	Yes	0 (0.00 %)	1 (0.60 %)	0.715	0.398
	No	104 (82.54%)	145 (88.41%)		
Postoperative deep sternum infection *	Yes	0 (0.00 %)	5 (3.04 %)	3.634	0.057
	No	104 (82.54%)	141 (85.97 %)		
Status after surgery	Alive	125 (99.20 %)	160 (97.56 %)	1.138	0.286
	Dead	1 (0.79 %)	4 (2.43 %)		

In table 3, a comparative demonstration of various factors in the development of different complications in pre- and post- CABG survivals.

Table 3: Comparison demonstration of various factors in the development of different complications in post CABG survivals.

Variable	T-tests; Grouping: Aneurysm LV (stat in Post cor shunt comp)						
	Group 1: No		Group 2: Yes				
	Mean No	Mean Yes	t-value	df	p	Valid N No	Valid N Yes
Ejection fraction	56.139	44.333	4.85773	287	0.000002	280	9
Variable	T-tests; Grouping: Arrhythmia Before surgery (stat in Post cor shunt comp)						
	Group 1: No		Group 2: Yes				
	Mean No	Mean Yes	t-value	df	p	Valid N No	Valid N Yes
ECMO time	106.507	0.000	9.009503	288	0.000000	278	12
MI	57.860	0.000	9.936552	288	0.000000	278	12
Variable	T-tests; Grouping: Coronary Shunt +plastic LV aneurysm repair (stat in Post cor shunt comp)						
	Group 1: No		Group 2: Yes				
	Mean No	Mean Yes	t-value	df	p	Valid N No	Valid N Yes
Ejection fraction	56.110	42.143	5.10667	287	0.000001	282	7
MI	55.004	74.143	-2.20413	288	0.028306	283	7
Variable	T-tests; Grouping: Post-operative aneurysm LV (stat in Post cor shunt comp)						
	Group 1: No		Group 2: Yes				
	Mean No	Mean Yes	t-value	df	p	Valid N No	Valid N Yes
Ejection fraction	55.682	64.333	-2.01070	287	0.045292	286	3
ECMO time	100.655	240.333	-5.58113	288	0.000000	287	3
MI	54.840	115.333	-4.72802	288	0.000004	287	3
Variable	T-tests; Grouping: Post-operative arrhythmia. (stat in Post cor shunt comp)						
	Group 1: No		Group 2: Yes				
	Mean No	Mean Yes	t-value	df	p	Valid N No	Valid N Yes

	Group 2: Yes						
	Mean No	Mean Yes	t-value	df	p	Valid N No	Valid N Yes
Age	60.976	64.161	-2.51307	281	0.012528	252	31
Days reanimation	2.548	5.032	-5.83306	281	0.000000	252	31
Total hospitalization days after surgery	11.310	15.000	-4.02907	281	0.000072	252	31
Variable	T-tests; Grouping: Post-operative psychosis (stat in Post cor shunt comp) Group 1: Yes Group 2: No						
	Mean Yes	Mean No	t-value	df	p	Valid N Yes	Valid N No
Age	66.000	61.082	2.69885	281	0.007379	14	269
Days reanimation	5.143	2.699	3.86094	281	0.000140	14	269
Variable	T-tests; Grouping: Post-operative Stroke (stat in Post cor shunt comp) Group 1: Yes Group 2: No						
	Mean Yes	Mean No	t-value	df	p	Valid N Yes	Valid N No
Age	68.250	61.226	2.087585	281	0.037736	4	279
Days reanimation	6.750	2.763	3.409293	281	0.000747	4	279
Variable	T-tests; Grouping: Post-operative hydrothorax (stat in Post cor shunt comp) Group 1: Yes Group 2: No						
	Mean Yes	Mean No	t-value	df	p	Valid N Yes	Valid N No
BMI	27.346	29.085	-2.33929	281	0.020021	34	249
ECMO time	123.265	97.044	3.83233	281	0.000157	34	249
MI	64.618	53.827	2.71109	281	0.007119	34	249
Days reanimation	4.912	2.534	5.80811	281	0.000000	34	249
total days after surgery	17.088	10.980	7.37431	281	0.000000	34	249
Variable	T-tests; Grouping: Post-operative dyspnea (stat in Post cor shunt comp) Group 1: Yes Group 2: No						
	Mean Yes	Mean No	t-value	df	p	Valid N Yes	Valid N No
Days reanimation	6.909	2.654	6.22816	281	0.000000	11	272
Total hospitalization days after surgery	21.364	11.324	7.17446	281	0.000000	11	272
Variable	T-tests; Grouping: Post-operative Subendocardial MI (stat in Post cor shunt comp) Group 1: No Group 2: Yes						
	Mean No	Mean Yes	t-value	df	p	Valid N No	Valid N Yes
Total hospitalization days after surgery	11.586	30.000	-3.66815	248	0.000299	249	1
Variable	T-tests; Grouping: Post-operative transmural. MI (stat in Post cor shunt comp) Group 1: No Group 2: Yes						
	Mean No	Mean Yes	t-value	df	p	Valid N No	Valid N Yes
Days reanimation	2.747	5.600	-2.61051	248	0.009591	245	5
Total hospitalization days after surgery	11.404	24.200	-5.87749	248	0.000000	245	5
Variable	T-tests; Grouping: status (stat in Post cor shunt comp) Group 1: live Group 2: died						
	Mean live	Mean died	t-value	df	p	Valid N live	Valid N died
ECMO time	99.937	256.750	-7.50135	288	0.000000	286	4
MI	55.000	88.750	-2.97365	288	0.003192	286	4
Variable	T-tests; Grouping: sex (stat in Post cor shunt comp) Group 1: M Group 2: F						

	Mean M	Mean F	t-value	df	p	Valid N M	Valid N F
Age	60.630	65.239	-4.37030	287	0.000017	243	46
BMI	28.444	30.695	-3.46865	287	0.000603	243	46
Ejection fraction	55.354	57.978	-2.20457	287	0.028278	243	46
Variable	T-tests; Grouping: Progressive Angina (stat in Post cor shunt comp) Group 1: No Group 2: Yes						
	Mean No	Mean Yes	t-value	df	p	Valid N No	Valid N Yes
BMI	28.421	29.406	-1.99512	287	0.046975	177	112
Variable	T-tests; Grouping: DM (stat in Post cor shunt comp) Group 1: No Group 2: Yes						
	Mean No	Mean Yes	t-value	df	p	Valid N No	Valid N Yes
Age	60.794	63.288	-2.65962	287	0.008262	223	66
BMI	28.390	30.196	-3.18160	287	0.001625	223	66
Days reanimation	2.592	3.580	-3.02226	282	0.002739	218	66
Total hospitalization days after surgery	11.229	13.347	-3.10156	282	0.002120	218	66
Variable	T-tests; Grouping: DM complication (stat in Post cor shunt comp) Group 1: No Group 2: Yes						
	Mean No	Mean Yes	t-value	df	p	Valid N No	Valid N Yes
BMI	28.610	30.600	-2.45502	287	0.014681	261	28
Days reanimation	2.582	5.011	-5.41994	282	0.000000	256	28
Total hospitalization days after surgery	11.160	16.854	-6.16561	282	0.000000	256	28
Variable	T-tests; Grouping: dyspnea (stat in Post cor shunt comp) Group 1: Yes Group 2: No						
	Mean Yes	Mean No	t-value	df	p	Valid N Yes	Valid N No
Total hospitalization days after surgery	13.080	11.375	2.25940	280	0.024627	50	232
Variable	T-tests; Grouping: arrythmia. Before surgery (stat in Post cor shunt comp) Group 1: No Group 2: Yes						
	Mean No	Mean Yes	t-value	df	p	Valid N No	Valid N Yes
Age	60.776	63.319	-2.75395	286	0.006265	219	69
Variable	T-tests; Grouping: post MI cardio-sclerosis (stat in Post cor shunt comp) Group 1: Yes Group 2: No						
	Mean Yes	Mean No	t-value	df	p	Valid N Yes	Valid N No
Ejection fraction	53.579	59.288	-6.81607	287	0.000000	178	111
Days reanimation	3.053	2.450	2.10757	282	0.035950	175	109

In terms of post-operative complications, patients with coronary artery bypass graft (CABG) and plastic surgery repair of the left ventricle aneurysm had longer Aortic cross-clamp time, t-value -2.20413, $p < 0.028306$. Additionally, patients with CABG have less ejection fraction, t-value 5.10667, $p < 0.000001$. Patients with post-CABG left ventricle (LV) aneurysm had less ejection fraction, t-value -2.01070, $p < 0.045292$. Furthermore, patients with post-CABG LV aneurysm had a longer CPB time, t-value -5.58113, $p < 0.000000$. Furthermore, patients with LV aneurysm had longer Aortic cross-clamp time, t-value -4.72802, $p < 0.000004$.

Post-CABG arrhythmia developed in elderly patients, t-value -2.51307, $p < 0.012528$. Subsequently, after CABG arrhythmia, the ICU and total hospitalisation days, t value -5.83306, $p < 0.000000$; t-value -4.02907, $p < 0.000072$, respectively. Elderly people are at increased risk of psychosis after CABG surgery, t value 2.69885, $p < 0.007379$. Postoperative psychosis significantly increases ICU hospitalization days, t-value 3.86094, $p < 0.000140$. Postoperative stroke occurs more frequently in elderly people, t-value 2.087585, $p < 0.037736$. Subsequently, postoperative stroke increases the ICU hospitalization days, t-value 3.409293, $p < 0.000747$. The incidence rate of complications in the first and second groups is shown in Figure 4.

The number of ITAs used is less in the elderly, t-value 2.41992, $p < 0.016145$. In terms of correlation, we found a direct association between age and ICU / total hospitalisation days / number of complications, $r = 0.189046, 0.141415, 0.138565$; respectively. No statistical significance in the correlation between number of the complications and the number of the shunts as well as between the number of used internal thoracic arteries and number of complications.

Discussion

In light of results, prolonged Aortic cross-clamp time is observed in coronary artery bypass graft (CABG) and plastic surgery repair of the left ventricle aneurysm and patients with preoperative LV aneurysm. The prolonged Aortic cross-clamp time results in the use of two internal thoracic arteries. The prolonged aortic cross-clamp time increases the risk of hydrothorax and the number of shunts, which subsequently increases the CPB time. Patients with low BMI are at high risk of hydrothorax. Furthermore, hydrothorax and the use of two internal thoracic arteries increase the time of the CPB. The coexistence of CABG and left ventricle aneurysm increases the time required for CPB.

The post CABG ICU hospitalization days is related with the presence of post-operative arrhythmia, post-operative psychosis, post-operative stroke, post-operative hydrothorax, post-operative dyspnea, and superficial sternal wound infection. Total hospitalization days depend on the presence of arrhythmia, which is commonly seen in elderly patients > 63 years old. Additionally, deep sternal wound infection increases total hospitalisation days and hospitalisation days. The ejection fraction and the days of hospitalisation in the ICU are closely associated with the total days of hospitalisation. Ejection fraction is age, sex, and presence of CABG and or CABG with LV aneurysm plastic repair dependent.

Age is a crucial factor in terms of postoperative complications. Where advancement in age increases the days of hospitalisation in the ICU, the total days of hospitalisation, and the

number of complications. Elderly people are at high risk for stroke, psychosis, and arrhythmia [4,7–14]. However, elderly people passed one internal thoracic artery CABG.

The number of complications is not associated with the death and alive status of patients or with the number of shunts. Furthermore, there were no statistical differences in the number of complications and the number of shunts and the number of internal thoracic arteries used. However, the number of complications depends on the existence of preoperative progressive angina and PMIMS. In addition, the number of complications is determined by age increase, CPB time, the Aortic cross-clamp time, the days of hospitalization in the ICU, and total hospitalization days.

The results of our study are consistent with those of other studies. Several studies reported that post-CABG complications include arrhythmia, particularly atrial fibrillation [4,15–21]. However, the potential underlying pathophysiological mechanisms remain unclear and further elaboration is required. However, the potential pathophysiological pathway is multifactorial and involves autophagy dysfunction, upregulated sympathetic tone, mitochondrial dysfunction, inflammation, abnormal atrial conduction, and systemic inflammatory response indicated by elevated C-reactive protein and leukocytes [22–31]. Some studies showed that on-pump CABG surgery has higher risk of atrial fibrillation than off-pump [32–37].

Conclusions

Hydrothorax is seen in a low BMI and a long Aortic cross-clamp time which leads to longer CPB time. Progressive angina and PMIMS increase the risk of postoperative complications, particularly hydrothorax. Elderly people undergoing CABG are at higher risk of psychosis, arrhythmia, longer total and ICU hospitalization days, and stroke.

List of abbreviations

CVD; Cardiovascular disease, COVID-19; Corona virus infectious disease-19, CABG; coronary artery bypass graft, CPB; cardiopulmonary bypass, BMI; body mass index, MI; myocardial infarction, DM; Diabetes mellites, ICU; intensive care unit, PMIMS; post-myocardial infarction myocardial sclerosis, LV; left ventricle, ITA; internal thoracic artery

Declarations

1. Ethics approval and consent to participate: The study approved by the National Research Mordovia State University, Russia, from “Ethics Committee Requirement N8/2 from 30.06.2022”.

2. Consent for publication: Written informed consent was obtained from the participants for publication of study results and any accompanying images.
3. Availability of data and materials: applicable on reasonable request.
4. Competing interests: The authors declare that they have no competing interests regarding publication.
5. Funding's: The work of **Basheer Abdullah Marzoog** was financed by the Ministry of Science and Higher Education of the Russian Federation within the framework of state support for the creation and development of World-Class Research Center 'Digital biodesign and personalized healthcare' № 075-15-2022-304.
6. Authors' contributions: MB is the writer, researcher, collected and analyzed data, and revised the manuscript, EV collected the primary data from the hospital. All authors have read and approved the manuscript.
7. Acknowledgments: not applicable
8. Authors' information: **Basheer Abdullah Marzoog**, Research Center «Digital Biodesign and Personalized Healthcare», I.M. Sechenov First Moscow State Medical University (Sechenov University), 119991 Moscow, Russia; postal address: Russia, Moscow, 8-2 Trubetskaya street, 119991. (marzug@mail.ru, +79969602820). ORCID: 0000-0001-5507-2413. Scopus ID: 57486338800. **Ekaterina Vanichkina**, National Research Ogarev Mordovia State University. ORCID: 0009-0006-3015-2306
9. The paper has not been submitted elsewhere

Reference

- [1] Gaudino M, Benedetto U, Fremes S, Biondi-Zoccai G, Sedrakyan A, Puskas JD, et al. Radial-Artery or Saphenous-Vein Grafts in Coronary-Artery Bypass Surgery. *N Engl J Med* 2018;378:2069–77. <https://doi.org/10.1056/NEJMoa1716026>.
- [2] Leyvi G, Forest SJ, Srinivas VS, Greenberg M, Wang N, Mais A, et al. Robotic Coronary Artery Bypass Grafting Decreases 30-Day Complication Rate, Length of Stay, and Acute Care Facility Discharge Rate Compared with Conventional Surgery. *Innov Technol Tech Cardiothorac Vasc Surg* 2014;9:361–7. <https://doi.org/10.1097/imi.0000000000000095>.
- [3] Pooria A, Pourya A, Gheini A. Postoperative complications associated with coronary artery bypass graft surgery and their therapeutic interventions. *Future Cardiol* 2020;16:481–96. <https://doi.org/10.2217/fca-2019-0049>.
- [4] Palmerini T, Savini C. Risks of Stroke After Coronary Artery Bypass Graft – Recent

- Insights and Perspectives. *Interv Cardiol Rev* 2011;9:77.
<https://doi.org/10.15420/icr.2011.9.2.77>.
- [5] Sabik JF, Blackstone EH, Gillinov AM, Smedira NG, Lytle BW. Occurrence and Risk Factors for Reintervention After Coronary Artery Bypass Grafting. *Circulation* 2006;114. <https://doi.org/10.1161/CIRCULATIONAHA.105.001149>.
- [6] Montrief T, Koyfman A, Long B. Coronary artery bypass graft surgery complications: A review for emergency clinicians. *Am J Emerg Med* 2018;36:2289–97.
<https://doi.org/10.1016/j.ajem.2018.09.014>.
- [7] Brown PP, Kugelmass AD, Cohen DJ, Reynolds MR, Culler SD, Dee AD, et al. The Frequency and Cost of Complications Associated With Coronary Artery Bypass Grafting Surgery: Results from the United States Medicare Program. *Ann Thorac Surg* 2008;85:1980–6. <https://doi.org/10.1016/J.ATHORACSUR.2008.01.053>.
- [8] Roach GW, Kanchuger M, Mangano CM, Newman M, Nussmeier N, Wolman R, et al. Adverse Cerebral Outcomes after Coronary Bypass Surgery. *N Engl J Med* 1996;335:1857–64. <https://doi.org/10.1056/NEJM199612193352501>.
- [9] Palmerini T, Biondi-Zoccai G, Reggiani LB, Sangiorgi D, Alessi L, De Servi S, et al. Risk of stroke with coronary artery bypass graft surgery compared with percutaneous coronary intervention. *J Am Coll Cardiol* 2012;60:798–805.
<https://doi.org/10.1016/J.JACC.2011.10.912>.
- [10] Van Linden J Der, Hadjinikolaou L, Bergman P, Lindblom D. Postoperative stroke in cardiac surgery is related to the location and extent of atherosclerotic disease in the ascending aorta. *J Am Coll Cardiol* 2001;38:131–5. [https://doi.org/10.1016/S0735-1097\(01\)01328-6](https://doi.org/10.1016/S0735-1097(01)01328-6).
- [11] Naylor AR, Mehta Z, Rothwell PM, Bell PRF. Carotid artery disease and stroke during coronary artery bypass: A critical review of the literature. *Eur J Vasc Endovasc Surg* 2002;23:283–94. <https://doi.org/10.1053/EJVS.2002.1609>.
- [12] Charlesworth DC, Likosky DS, Marrin CAS, Maloney CT, Quinton HB, Morton JR, et al. Development and validation of a prediction model for strokes after coronary artery bypass grafting. *Ann Thorac Surg* 2003;76:436–43. [https://doi.org/10.1016/S0003-4975\(03\)00528-9](https://doi.org/10.1016/S0003-4975(03)00528-9).
- [13] Hornero F, Martín E, Rodríguez R, Castellà M, Porrás C, Romero B, et al. A multicentre Spanish study for multivariate prediction of perioperative in-hospital cerebrovascular accident after coronary bypass surgery: The PACK2. *Interact Cardiovasc Thorac Surg* 2013;17:353–8. <https://doi.org/10.1093/ICVTS/IVT102>.

- [14] Mathisen L, Andersen MH, Hol PK, Tennøe B, Lund C, Russell D, et al. Preoperative cerebral ischemic lesions predict physical health status after on-pump coronary artery bypass surgery. *J Thorac Cardiovasc Surg* 2005;130:1691–7. <https://doi.org/10.1016/J.JTCVS.2005.08.008>.
- [15] Khan MF, Herle A, Movahed MR. Risk Factors for Post-Coronary Artery Bypass Grafting (CABG) Atrial Fibrillation and the Role of Aspirin and Beta Blockers in its Prevention. *J Atr Fibrillation* 2013;5:800. <https://doi.org/10.4022/JAFIB.800>.
- [16] Karkouti K, Cohen MM, McCluskey SA, Sher GD. A multivariable model for predicting the need for blood transfusion in patients undergoing first-time elective coronary bypass graft surgery. *Transfusion* 2001;41:1193–203. <https://doi.org/10.1046/j.1537-2995.2001.41101193.x>.
- [17] Sellman M. Reoperations for bleeding after coronary artery bypass procedures during 25 years. *Eur J Cardio-Thoracic Surg* 1997;11:521–7. [https://doi.org/10.1016/S1010-7940\(96\)01111-6](https://doi.org/10.1016/S1010-7940(96)01111-6).
- [18] Horwich P, Buth KJ, Légaré JF. New onset postoperative atrial fibrillation is associated with a long-term risk for stroke and death following cardiac surgery. *J Card Surg* 2013;28:8–13. <https://doi.org/10.1111/JOCS.12033>.
- [19] Amar D, Shi W, Hogue CW. Clinical prediction rule for atrial fibrillation after coronary artery bypass grafting. *ACC Curr J Rev* 2004;13:50. <https://doi.org/10.1016/J.ACCREVIEW.2004.11.027>.
- [20] Villareal RP, Hariharan R, Liu BC, Kar B, Lee VV, Elayda M, et al. Postoperative atrial fibrillation and mortality after coronary artery bypass surgery. *J Am Coll Cardiol* 2004;43:742–8. <https://doi.org/10.1016/J.JACC.2003.11.023>.
- [21] McKhann GM, Grega MA, Borowicz LM, Baumgartner WA, Selnes OA. Stroke and encephalopathy after cardiac surgery: An update. *Stroke* 2006;37:562–71. <https://doi.org/10.1161/01.STR.0000199032.78782.6C>.
- [22] Marzoug BA, Vlasova TI. Myocardocyte autophagy in the context of myocardocytes regeneration: a potential novel therapeutic strategy. *Egypt J Med Hum Genet* 2022;23:41. <https://doi.org/10.1186/s43042-022-00250-8>.
- [23] Carnes CA, Chung MK, Nakayama T, Nakayama H, Baliga RS, Piao S, et al. Ascorbate Attenuates Atrial Pacing-Induced Peroxynitrite Formation and Electrical Remodeling and Decreases the Incidence of Postoperative Atrial Fibrillation. *Circ Res* 2001;89. <https://doi.org/10.1161/hh1801.097644>.
- [24] De Vecchi E, Pala MG, Di Credico G, Agape V, Paolini G, Bonini PA, et al. Relation

- between left ventricular function and oxidative stress in patients undergoing bypass surgery. *Heart* 1998;79:242–7. <https://doi.org/10.1136/hrt.79.3.242>.
- [25] Dimmer C, Tavernier R, Gjorgov N, Van Nooten G, Clement DL, Jordaens L. Variations of autonomic tone preceding onset of atrial fibrillation after coronary artery bypass grafting. *Am J Cardiol* 1998;82:22–5. [https://doi.org/10.1016/S0002-9149\(98\)00231-8](https://doi.org/10.1016/S0002-9149(98)00231-8).
- [26] Kalman JM, Munawar M, Howes LG, Louis WJ, Buxton BF, Gutteridge G, et al. Atrial fibrillation after coronary artery bypass grafting is associated with sympathetic activation. *Ann Thorac Surg* 1995;60:1709–15. [https://doi.org/10.1016/0003-4975\(95\)00718-0](https://doi.org/10.1016/0003-4975(95)00718-0).
- [27] Budeus M, Hennersdorf M, Röhlen S, Schnitzler S, Felix O, Reimert K, et al. Prediction of atrial fibrillation after coronary artery bypass grafting: The role of chemoreflexsensitivity and P wave signal averaged ECG. *Int J Cardiol* 2006;106:67–74. <https://doi.org/10.1016/j.ijcard.2004.12.062>.
- [28] Tsikouris JP, Kluger J, Song J, White CM. Changes in P-wave dispersion and P-wave duration after open heart surgery are associated with the peak incidence of atrial fibrillation. *Hear Lung* 2001;30:466–71. <https://doi.org/10.1067/mhl.2001.118363>.
- [29] Engelmann MDM, Svendsen JH. Inflammation in the genesis and perpetuation of atrial fibrillation. *Eur Heart J* 2005;26:2083–92. <https://doi.org/10.1093/eurheartj/ehi350>.
- [30] Bruins P, Velthuis H te, Yazdanbakhsh AP, Jansen PGM, van Hardevelt FWJ, de Beaumont EMFH, et al. Activation of the Complement System During and After Cardiopulmonary Bypass Surgery. *Circulation* 1997;96:3542–8. <https://doi.org/10.1161/01.CIR.96.10.3542>.
- [31] Abdelhadi RH, Gurm HS, Van Wagoner DR, Chung MK. Relation of an exaggerated rise in white blood cells after coronary bypass or cardiac valve surgery to development of atrial fibrillation postoperatively. *Am J Cardiol* 2004;93:1176–8. <https://doi.org/10.1016/j.amjcard.2004.01.053>.
- [32] Tomic V, Russwurm S, Moßler E, Claus RA, Blaess M, Brunkhorst F, et al. Transcriptomic and Proteomic Patterns of Systemic Inflammation in On-Pump and Off-Pump Coronary Artery Bypass Grafting. *Circulation* 2005;112:2912–20. <https://doi.org/10.1161/CIRCULATIONAHA.104.531152>.
- [33] Puskas JD, Edwards FH, Pappas PA, O’Brien S, Peterson ED, Kilgo P, et al. Off-Pump Techniques Benefit Men and Women and Narrow the Disparity in Mortality

After Coronary Bypass Grafting. *Ann Thorac Surg* 2007;84:1447–56.

<https://doi.org/10.1016/J.ATHORACSUR.2007.06.104>.

- [34] Afilalo J, Rasti M, Ohayon SM, Shimony A, Eisenberg MJ. Off-pump vs. on-pump coronary artery bypass surgery: An updated meta-analysis and meta-regression of randomized trials. *Eur Heart J* 2012;33:1257–67.
<https://doi.org/10.1093/EURHEARTJ/EHR307>.
- [35] Møller CH, Penninga L, Wetterslev J, Steinbrüchel DA, Gluud C. Off-pump versus on-pump coronary artery bypass grafting for ischaemic heart disease. *Cochrane Database Syst Rev* 2012. <https://doi.org/10.1002/14651858.CD007224.PUB2>.
- [36] Marzoog BA, Alexandrovich KO, Nikolaevich TM, Vladimirovich KS. Post-Coronary Artery Bypass Graft Complications; Potential Causes and Risk Factors. *New Emirates Med J* 2023;04. <https://doi.org/10.2174/0250688204666230410084313>.
- [37] Marzoog BA, Alexandrovich KO, Nikolaevich TM, Vladimirovich KS. Post-Coronary Artery Bypass Graft Complications; Potential Causes and Risk Factors. *MedRxiv* 2023:2022.12.29.22284005. <https://doi.org/10.1101/2022.12.29.22284005>.

Figure legend

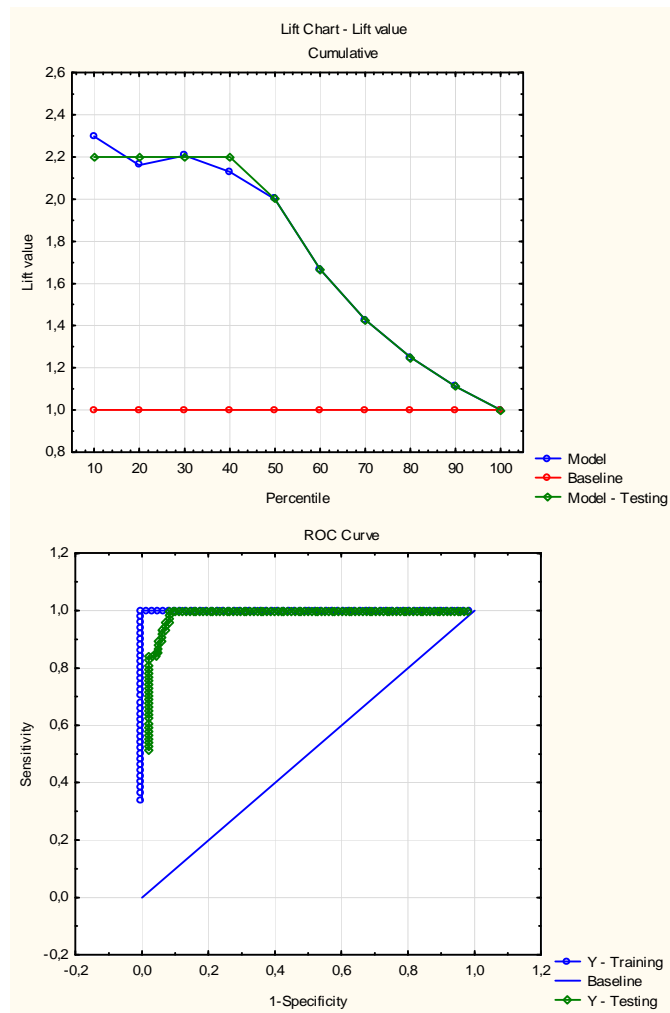


Figure 1: Receiver Operating Characteristic (ROC) Curve Analysis and Area Under the curve (AUC) analysis of the Sample.

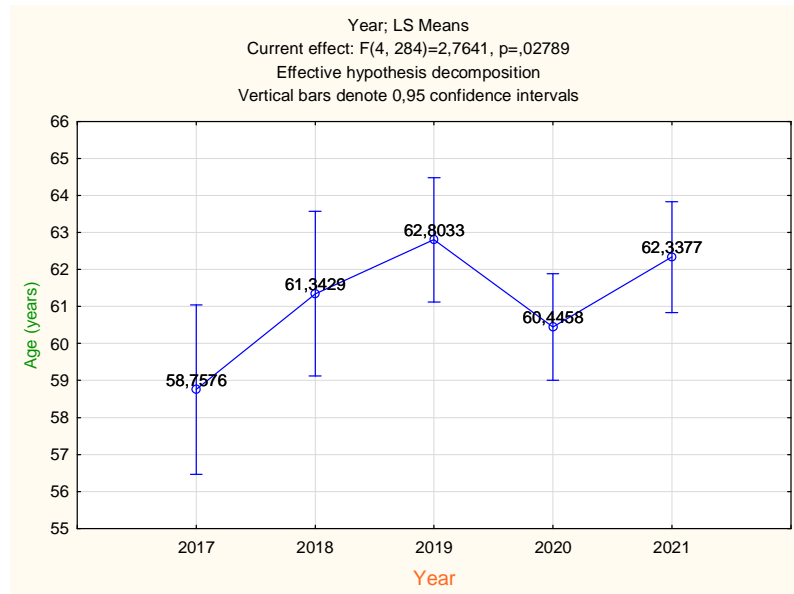


Figure 2: Mean age of the patients who passed coronary artery shunt surgery (whole sample). At the same time this mean age shows average age of occurrence of indications for CABG, which is usually associated with the acute coronary syndrome development.

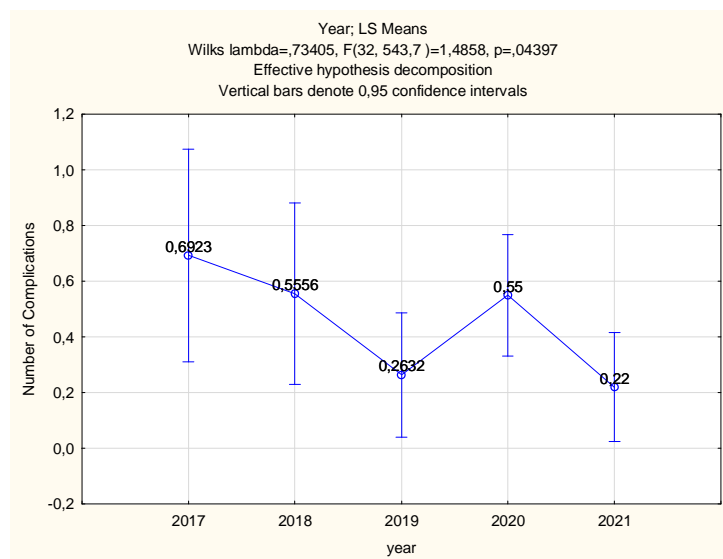


Figure 3: Reduction in the incidence rate of complications in the second group > 60 years.

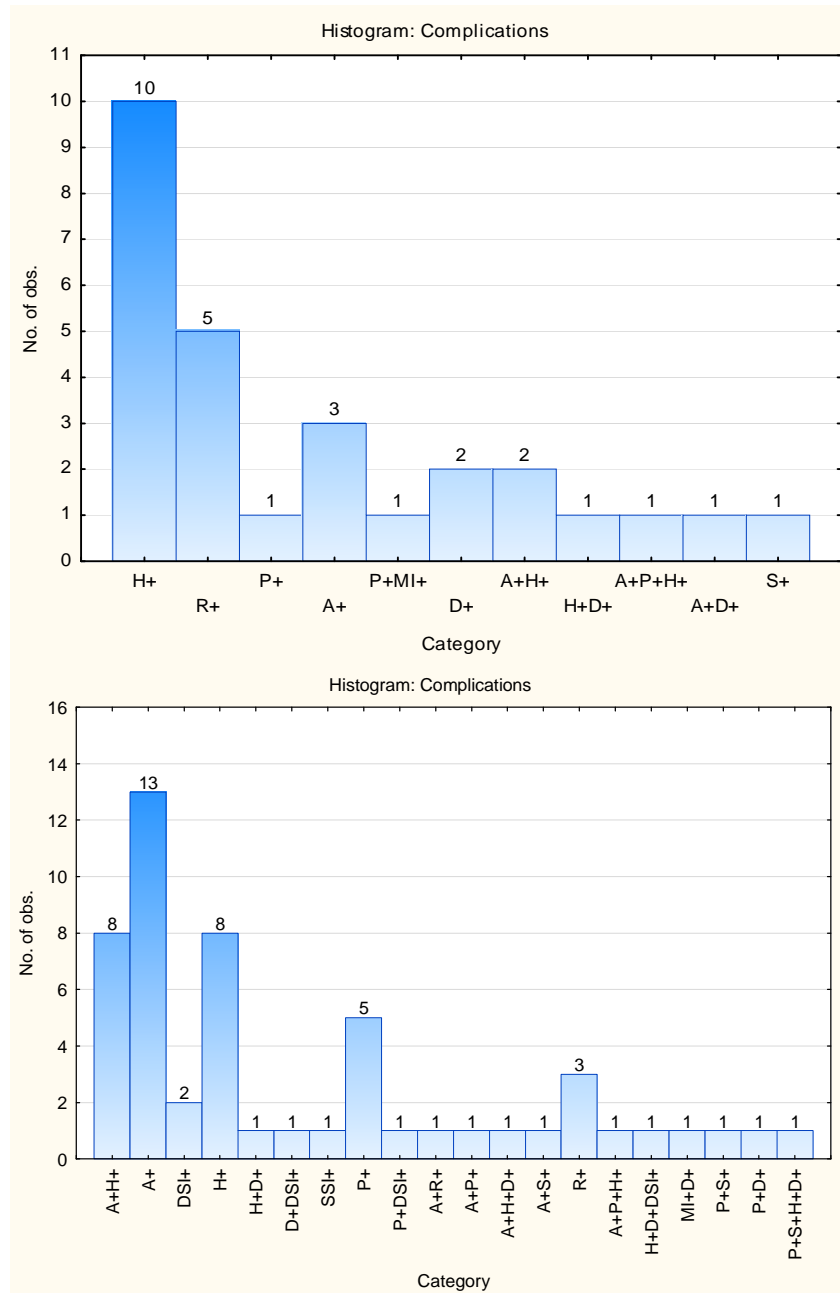
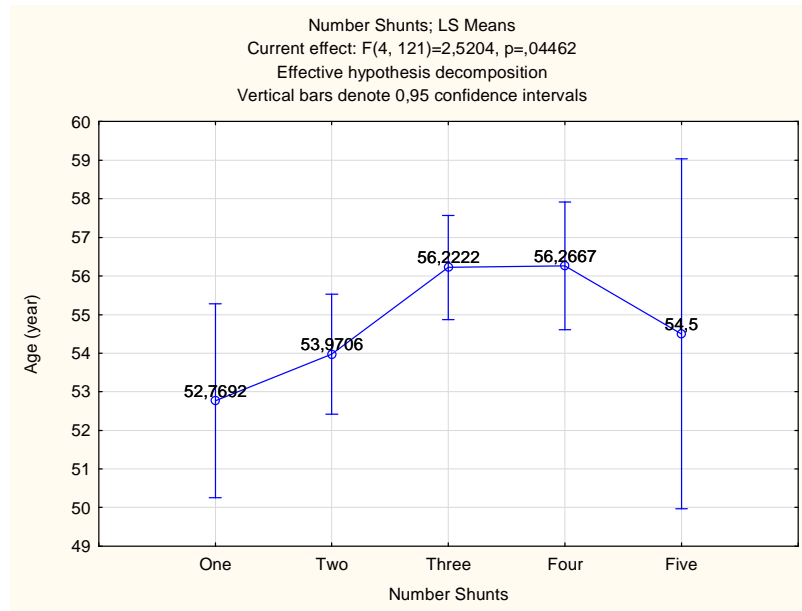


Figure 4: The incidence rate of complications in the first (<60 years) and second group (> 60 years), respectively. (H; hydrothorax, R; re sternotomy, A; arrhythmia, P; psychosis, MI; myocardial infarction, D; dyspnea, DSI; deep sternum wound infection, SSI; superficial sternum wound infection)

Graphical abstract



Graphical abstract: With age, the number of shunts increases in the first group <60 years old.