

- 1 Manuscript Title**
- 2** US Public Opinion as to Whether “The Pandemic is Over,” September to October 2022
- 3 Authors**
- 4** Mark É Czeisler, PhD<sup>1</sup>; Matthew D Weaver, PhD<sup>2,3,4</sup>; Rashon I Lane, PhD<sup>2,3,5</sup>; Shantha
- 5** MW Rajaratnam, PhD<sup>2,3,4,6</sup>; Mark E Howard, MBBS, PhD<sup>4,6,7</sup>; Charles A Czeisler, PhD,
- 6** MD<sup>2,3,4</sup>
- 7 Affiliations**
- 8** <sup>1</sup>Francis Weld Peabody Society, Harvard Medical School, Boston, Massachusetts,
- 9** United States
- 10** <sup>2</sup>Division of Sleep and Circadian Disorders, Departments of Medicine and Neurology,
- 11** Brigham and Women’s Hospital, Boston, Massachusetts
- 12** <sup>3</sup>Division of Sleep Medicine, Harvard Medical School, Boston, Massachusetts
- 13** <sup>4</sup>Turner Institute for Brain and Mental Health and School of Psychological Sciences,
- 14** Monash University, Melbourne, Victoria, Australia
- 15** <sup>5</sup>Sutter Health, Sacramento, California
- 16** <sup>6</sup>Institute for Breathing and Sleep, Austin Health, Heidelberg, Victoria, Australia
- 17** <sup>7</sup>University of Melbourne, Melbourne, Victoria, Australia
- 18 Corresponding Author:** Mark É. Czeisler, PhD, Francis Weld Peabody Society,
- 19** Harvard Medical School, Boston, Massachusetts ([mark.czeisler@fulbrightmail.org](mailto:mark.czeisler@fulbrightmail.org)).
- 20 Manuscript type:** Original Investigation
- 21 Main Text word count:** 2986 of 3000-word maximum
- 22 Submission Date:** 21 December 2022

## 23 Key Points

24 **Question:** As of September to October 2022, what was US public opinion as to whether  
25 COVID-19 remained a pandemic?

26 **Findings:** In this demographically representative survey study of 4985 US adults, only 1  
27 in 3 respondents agreed with the statement “the pandemic is over;” 43% of adults  
28 disagreed. Agreement that the pandemic was over was associated with less  
29 engagement in COVID-19 preventive behaviors and more political conservatism.

30 **Meaning:** As of September to October 2022, US public opinion was divided regarding  
31 the status of COVID-19 as a pandemic and is associated with COVID-19-related  
32 behaviors, underscoring important public health and policy implications of this  
33 designation.

34

## 35 Abstract

36 **Importance:** US public health guidance has increasingly shifted responsibility for  
37 actions to minimize ongoing impacts of COVID-19 onto individuals. During September  
38 to October 2022, the World Health Organization continued to characterize COVID-19 as  
39 a pandemic. Yet, public perceptions of the pandemic status of COVID-19 and its  
40 associations with COVID-19-related behaviors were unknown.

41 **Objective:** To assess US public opinion on the characterization of COVID-19 as a  
42 pandemic.

**43 Design, Setting, and Participants:** The COVID-19 Outbreak Public Evaluation (COPE)

**44** Initiative internet-based surveys, administered to 4985 US adults during September to

**45** October 2022. Demographic quota sampling and survey weighting were employed to

**46** improve sample representativeness of the US population by age, sex, and combined

**47** race and ethnicity.

**48 Exposures:** The COVID-19 pandemic.

**49 Main Outcomes and Measures:** Response to the statement, “The pandemic is over.”

**50** Response options included Strongly agree, Somewhat agree, Neutral, Somewhat

**51** disagree, and Strongly disagree.

**52 Results:** Overall, 5015 US adults completed The COPE Initiative surveys (response

**53** rate, 56.2%), and 4985 (99.4%) provided complete information for all analyzed variables

**54** and were included in this analysis. Only 1657 (33.2%) respondents agreed with the

**55** statement “the pandemic is over,” while 2141 (43.0%) disagreed and the remaining

**56** 1187 (23.8%) were neutral about the statement. Agreement that the pandemic was over

**57** was most strongly associated with having received fewer COVID-19 vaccines, lesser

**58** concern about SARS-CoV-2 variant viruses, and less frequent engagement in COVID-

**59** 19 preventive behaviors, such as mask usage in public spaces, as well as increasingly

**60** conservative political ideology, roles as unpaid caregivers of both children and adults,

**61** younger age, male sex, and significant disabilities.

**62 Conclusions and Relevance:** As of September to October 2022, US public opinion

**63** was mixed on the characterization of COVID-19 as a pandemic. Belief the pandemic

**64** was over was associated with less frequent engagement in COVID-19 preventive

65 behaviors, highlighting the important role of public health communication. Demographic  
66 groups to prioritize tailored public health messaging about the pandemic status were  
67 identified. Continued assessment of public perceptions about the state of the pandemic  
68 is warranted entering Year 4 of the COVID-19 pandemic.

69

## 70 Main Text

### 71 Introduction

72 On March 11, 2020, the Director-General of the World Health Organization (WHO)  
73 officially characterized the coronavirus disease 2019 (COVID-19) outbreak as a global  
74 pandemic.<sup>1</sup> Two days later, the President of the United States proclaimed that COVID-  
75 19 constituted a national emergency.<sup>2</sup> In the initial pandemic months, absent vaccines  
76 to prevent SARS-CoV-2 transmission or COVID-19 medical treatments, community  
77 COVID-19 prevention measures were implemented. Stay-at-home orders and  
78 nonessential business closures were executed worldwide for the first time in a century.  
79 Early support for and adherence with these nonpharmaceutical interventions<sup>3-5</sup> waned  
80 with pressures to reopen economies and resume in-person activities.<sup>6-8</sup>

81 Despite a better understanding of SARS-CoV-2 transmission dynamics, the rapid  
82 development of COVID-19 vaccines, and considerable advances in COVID-19 medical  
83 treatments, COVID-19 has remained a major cause of global morbidity and mortality in  
84 many areas worldwide, with the US among the most adversely impacted nations.  
85 Indeed, COVID-19-involved mortality and excess all-cause mortality were high in the US  
86 relative to comparator countries during the initial pandemic wave through September

87 2020,<sup>9</sup> and throughout the Delta and winter Omicron waves during June 2021 through  
88 March 2022.<sup>10</sup> The prolonged severity of the pandemic is due in part to the emergence  
89 of immune-evasive coronavirus variant viruses and incomplete vaccine uptake, which  
90 have thwarted achievement of sufficient population-level immunity to reduce sustained  
91 transmission. The prolonged waves of coronavirus infections and associated public  
92 health containment measures have induced pandemic fatigue and pandemic-related  
93 political polarization, lowering adherence with nonpharmaceutical interventions such as  
94 masking. Throughout the pandemic, longstanding and worsening social inequities have  
95 predisposed historically marginalized and oppressed groups to both COVID-19-involved  
96 and non-COVID-19-involved adverse health outcomes<sup>11,12</sup> partly due to a higher  
97 prevalence of baseline chronic medical conditions,<sup>13</sup> more frequent exposure to  
98 infections, and less access to healthcare prevention and treatment services.<sup>14</sup>

99 As of mid-September 2022, 18 months after the declaration of the pandemic by the  
100 WHO, there had been approximately 6.5 million COVID-19-involved deaths and 600  
101 million SARS-CoV-2 infections documented globally, with over 1 million deaths and  
102 nearing 100 million infections occurring in the United States.<sup>15</sup> The approximately  
103 400,000-500,000 weekly confirmed cases documented in mid-September 2022 were  
104 higher than the 200,000-250,000 weekly confirmed cases documented in mid-  
105 September 2020 and lower than the 1 million weekly confirmed cases documented in  
106 mid-September 2021, during the wave of the highly transmissible Delta (B.1.617.2)  
107 variant.<sup>15</sup> While comparisons are limited by the variable number and types of tests  
108 performed at different stages of the pandemic (eg, approximate weekly COVID-19  
109 Nucleic Acid Amplification Tests reported to the CDC in mid-September 2020 [6.5 to 7

110 million]; 2021 [11.5-12 million]; and 2022 [3.3-3.5 million]),<sup>16</sup> the persistence of hundreds  
111 of thousands of detected infections despite reduced reported testing serves as evidence  
112 of sustained SARS-CoV-2 transmission in the US.

113 Additionally, though prevalence estimates vary widely due to differing definitions of  
114 post-acute sequelae of SARS-CoV-2 infection—also known as Long COVID and Post-  
115 COVID Conditions—abundant emerging evidence points to long-term sequelae for a  
116 substantial percentage of people following the acute phase of infection, including  
117 pulmonary, cardiovascular, renal, hepatic, neurologic, and mental health sequelae, as  
118 well as functional mobility impairments and general and constitutional symptoms.<sup>17–19</sup>

119 Without an official announcement from the World Health Organization or US Centers  
120 for Disease Control and Prevention (CDC), on September 18, 2022, the President of the  
121 United States twice declared “the pandemic is over” on an American television news  
122 magazine broadcast. On September 20, 2022, the President addressed the  
123 controversial comments at the United Nations General Assembly, clarifying he had  
124 intended to convey that the US was in a different place due to vaccines and post-  
125 infectious immunity. At that same Assembly, the WHO Director-General stated that the  
126 pandemic was not over, and on September 22, 2022, the CDC Director neither directly  
127 agreed nor disagreed with the president's assertion.

128 Public perceptions about the pandemic are consequential. A recent study found that  
129 only 15% of surveyed adults living in areas with high COVID-19 transmission during  
130 May through July 2022 realized that COVID-19 transmission in their local area was high  
131 at that time.<sup>20</sup> Lower perceived local community transmission levels were associated  
132 with having received fewer COVID-19 vaccines, lower concern about SARS-CoV-2

**133** variant viruses, and less frequent engagement in COVID-19 preventive behaviors.

**134** Moreover, respondents indicated that they would change their behaviors in response to  
**135** levels of local COVID-19 transmission, highlighting that keeping the public fully informed  
**136** about the state of the pandemic, which is an essential tenant of public health,<sup>21</sup> could  
**137** influence engagement in behaviors to reduce transmission of SARS-CoV-2.

**138** We therefore sought to estimate the prevalence of US adults who agreed with, felt  
**139** neutral about, and disagreed with the statement, “the pandemic is over,” and to  
**140** characterize the association between agreement with the pandemic-over statement and  
**141** engagement in behaviors to reduce SARS-CoV-2 infections and prevent severe COVID-  
**142** 19 illness. Additionally, we endeavored to characterize demographic associations with  
**143** agreement with the pandemic-over statement to identify groups to prioritize tailored  
**144** public health communication strategies.

## **145** **Methods**

### **146** Setting and Participants

**147** During September 26 to October 15, 2022 (ie, approximately 1 to 3 weeks after the  
**148** President’s “the pandemic is over” statement), US adults aged  $\geq 18$  years completed  
**149** internet-based surveys through Qualtrics for The COVID-19 Outbreak Public Evaluation  
**150** (COPE) Initiative ([www.thecopeinitiative.org](http://www.thecopeinitiative.org)). Demographic quota sampling and survey  
**151** weighting were employed to improve sample representativeness of the US population  
**152** by age, sex, and combined race and ethnicity. Respondents were not informed of  
**153** survey topics prior to commencement.

### **154** Key Definitions

## **155** *Main Outcome*

**156** Respondents were asked, ‘Select your response to the statement, “The pandemic is  
**157** over.’” Response options included Strongly agree, Somewhat agree, Neutral,  
**158** Somewhat disagree, and Strongly disagree.

## **159** *Demographic Characteristics*

**160** Demographic variables included in this analysis were sex at birth, age group in  
**161** years, race, ethnicity, highest education attainment, experience with disability, self-rated  
**162** health, roles as unpaid caregivers, state of residence (categorized as 4 US Census  
**163** Bureau-designated regions), and political ideology. Response options and analytic  
**164** categorizations are detailed in the Supplement.

## **165** *Pandemic-related Characteristics*

**166** Pandemic-related variables included in this analysis were frequency of mask usage  
**167** in public and avoidance of large gatherings, COVID-19 vaccine doses received, and  
**168** concern about the health effects of coronavirus variants circulating at the time  
**169** respondents were surveyed. Response options and analytic categorizations are detailed  
**170** in the Supplement.

## **171** Statistical Analyses

**172** Rounded, weighted counts and percentages were used to describe the sample  
**173** demographics and outcomes. Multivariable Poisson regressions with robust standard  
**174** errors were used to estimate adjusted prevalence ratios (aPRs) and 95% CIs for  
**175** agreement (somewhat or strongly) that the pandemic was over when surveyed,



**176** adjusted for the following: sex, age, combined race and ethnicity, education attainment,  
**177** and unpaid caregiver roles. Separate models were run for collinear variables: disability  
**178** and self-rated health, Census region and political ideology. Calculations were performed  
**179** in Python (V3.7.8) and R (V4.2.0). Statistical significance was defined as 95% CIs  
**180** excluding the null value.

## **181** Study Approval and Consent

**182** The Monash University Human Research Ethics Committee approved the study  
**183** protocol; participants provided informed consent electronically. Detailed Methods are in  
**184** the Supplement.

## **185** Results

**186** Overall, 5015 of 8930 invited eligible participants (56.2%) completed The COPE  
**187** Initiative surveys; 4985 of these respondents (99.4%) met secondary screening criteria  
**188** and were analyzed (Figure 1). Overall, 1657 (33.2%) respondents indicated that they  
**189** agreed with the statement “The pandemic is over” (661 [13.3%] strongly agreed; 996  
**190** [20.0%] somewhat agreed); 2141 (43.0%) indicated that they disagreed (954 [19.1%]  
**191** strongly disagreed; 1188 [23.8%] somewhat disagreed); and 1187 (23.8%) provided a  
**192** neutral response (Table 1).

**193** Responses to the pandemic-over statement also varied by demographic  
**194** characteristics (Table 1). Groups in which more than 40% of respondents agreed the  
**195** pandemic was over included respondents who were unpaid caregivers of both children  
**196** and adults (376 of 609 respondents [53.6%]); those who reported their self-rated health  
**197** as excellent (445 of 846 respondents [52.6%]); those who identified their political

**198** ideology as very conservative (425 of 824 respondents [51.6%]) or slightly conservative  
**199** (349 of 848 respondents [41.2%]); those who identified as having disabilities such that  
**200** they could not do some tasks at all (187 of 379 respondents [49.3%]); and those who  
**201** had education attainment of more than a bachelor's degree (399 of 879 respondents  
**202** [45.3%]). Conversely, groups in which less than 25% of respondents agreed the  
**203** pandemic was over included respondents who identified their political ideology as  
**204** neither liberal nor conservative (327 of 1404 respondents [23.3%]); those who identified  
**205** their combined race and ethnicity of Black, non-Hispanic (147 of 612 respondents  
**206** [24.0%]) and other race or multiple races, non-Hispanic (31 of 129 respondents  
**207** [24.4%]); those who were of age 65 years and over (260 of 1078 respondents [24.1%]);  
**208** and those who self-rated their health as poor (39 of 154 respondents [25.0%]).

**209** Responses to the pandemic-over statement also varied by COVID-19-related  
**210** attitudes and behaviors (Table 2). Groups in which more than 40% of respondents  
**211** agreed the pandemic was over included respondents who in the 2 weeks preceding the  
**212** survey never avoided large gatherings (686 of 1707 respondents [40.2%]) or never  
**213** wore a mask in public spaces (702 of 1537 respondents [45.6%]); those who had  
**214** received only one COVID-19 vaccine dose (163 of 385 respondents [42.5%]); and those  
**215** who were not at all concerned (487 of 934 respondents [52.2%]) or somewhat  
**216** unconcerned (218 of 495 respondents [44.0%]) about current SARS-CoV-2 variant  
**217** viruses. Conversely, groups in which less than 25% of respondents agreed the  
**218** pandemic was over included respondents who had received four or more COVID-19  
**219** vaccine doses (155 of 852 respondents [18.2%]); those who in the 2 weeks preceding  
**220** the survey had sometimes worn a face mask in public (208 of 859 respondents [24.2%])

**221** or not gone to public places (33 of 150 respondents [21.8%]); and those who were  
**222** somewhat concerned (364 of 1484 respondents [24.5%]) or neutral (293 of 1209  
**223** respondents [24.2%]) about current SARS-CoV-2 variant viruses.

**224** The multivariable model adjusting for demographic variables only revealed higher  
**225** odds of agreement with the pandemic-over statement among respondents with  
**226** conservative vs liberal political ideology (eg, very conservative vs very liberal, aOR, 2.6  
**227** [95% CI, 2.1 to 3.3]); those with roles as unpaid caregivers of both children and adults  
**228** vs those without caregiver roles (aOR, 2.1 [95% CI, 1.7 to 2.5]); those of male vs female  
**229** sex (aOR, 1.6 [95% CI, 1.4 to 1.9]); those of younger vs older age (eg, 18 to 24 vs 65 or  
**230** more years, aOR, 1.8 [95% CI, 1.3 to 2.5]); and those with disabilities such that they  
**231** could not do some tasks at all vs without disabilities (aOR, 1.5 [95% CI, 1.1 to 1.9])  
**232** (Figure 2). Lower odds of agreement were found for respondents with worse self-rated  
**233** health (eg, poor vs excellent, aOR, 0.4 [95% CI, 0.3 to 0.7]); those with lower education  
**234** attainment (eg, high school degree or less vs more than a bachelor's degree, aOR, 0.5  
**235** [95% CI, 0.4 to 0.7]); and those who identified their combined race and ethnicity as  
**236** something other than non-Hispanic White (eg, non-Hispanic Black, aOR, 0.6 [0.5 to  
**237** 0.7]).

**238** Multivariable models adjusting for demographic variables plus individual COVID-19-  
**239** related variables revealed higher odds of agreement with the pandemic-over statement  
**240** among respondents who in the 2 weeks preceding the survey never vs always wore  
**241** masks in public spaces (aOR, 3.0 [95% CI, 2.4 to 3.7]); those who had rarely or never  
**242** vs always avoided large gatherings (eg, never, aOR, 2.2 [95% CI, 1.7 to 2.7]) or had  
**243** received fewer vs more COVID-19 vaccine doses (e.g., zero vs four or more doses,

**244** aOR, 3.4 [95% CI, 2.5 to 4.6]); and who were not at all concerned or somewhat  
**245** unconcerned vs very concerned about SARS-CoV-2 variant viruses (eg, not at all  
**246** concerned, aOR, 3.2 [95% CI, 2.5 to 4.0]) (Figure 3).

## **247 Discussion**

**248** Only 1 in 3 US adults in a large scale, demographically representative survey sample  
**249** agreed “the [COVID-19] pandemic is over” in September to October 2022. In contrast,  
**250** 43% of adults disagreed that the pandemic was over, while the remaining 24% were  
**251** neutral about the statement. Agreement with the pandemic-over statement was most  
**252** strongly associated with having received fewer COVID-19 vaccines, lesser concern  
**253** about SARS-CoV-2 variant viruses, and less frequent engagement in COVID-19  
**254** preventive behaviors such as mask usage in public spaces, as well as increasingly  
**255** conservative political ideology, roles as unpaid caregivers of both children and adults,  
**256** younger age, male sex, and significant disabilities. These findings demonstrate how  
**257** divided public sentiments are about the state of the COVID-19 pandemic, and reveal  
**258** associated COVID-19-related attitudes and behaviors that could compromise mitigation  
**259** efforts, as well as associated demographic characteristics that could inform tailored  
**260** messaging strategies.

**261** Inconsistent messaging about the COVID-19 outbreak has been a persistent  
**262** challenge over the course of the pandemic. For example, through February and March  
**263** 2020, many US public health leaders and the WHO advised the public against use of  
**264** face masks to reduce SARS-CoV-2 transmission, even stating that they could increase  
**265** risk of infection, and reported that asymptomatic transmission of SARS-CoV-2 was  
**266** rare.<sup>22–24</sup> In April 2020, the CDC recommended public face mask use for the first time, a

267 stance strengthened by convincing evidence of the effectiveness of masks in reducing  
268 SARS-CoV-2 infections and COVID-19 hospitalizations and deaths.<sup>25-29</sup> However,  
269 revision of the guidance on masking plagued widespread adherence with this  
270 affordable, noninvasive, effective behavior to reduce SARS-CoV-2 transmission due in  
271 part to the complete reversal of prior guidance and continued belief that masks were  
272 ineffective by a portion of the public.<sup>30,31</sup> Similarly, in May 2021 the CDC lifted mask and  
273 social distancing recommendations for fully vaccinated individuals, citing extremely low  
274 risks of infection.<sup>32</sup> The guidance suggested low breakthrough SARS-CoV-2 infections  
275 among vaccinated persons, even indicating that fully vaccinated persons need not test  
276 following exposures, though breakthrough infections associated with severe COVID-19  
277 illness have occurred at non-negligible rates.<sup>33</sup> Mixed messages have continued to  
278 present a challenge for public health leaders for guidance regarding the return to in-  
279 person school and work, aerosolized transmission of coronaviruses, and SARS-CoV-2  
280 variant viruses.<sup>34</sup>

281 Most recently, there has been controversy regarding revised CDC guidelines for  
282 minimizing the impact of COVID-19, published in August 2022.<sup>35</sup> The guidelines, which  
283 do not mention the word pandemic, have been interpreted as transferring responsibility  
284 to individuals to monitor the pandemic and take actions to protect themselves from  
285 severe COVID-19 outcomes<sup>36</sup> at a time when COVID-19 media coverage has  
286 declined.<sup>37</sup> Moreover, the guidelines mention but do not discuss Long COVID, which  
287 can affect people across the spectrum of acute COVID-19 illness, including initially  
288 asymptomatic infections,<sup>38</sup> leading to considerable healthcare costs.<sup>39,40</sup> Despite  
289 evidence that risk of Long COVID increases with reinfections regardless of vaccination

290 status,<sup>41</sup> pandemic-related public health messaging has not yet focused on minimizing  
291 risk of Long COVID, instead focusing on strategies to mitigate severe outcomes in the  
292 acute stage of illness.

293 The findings of the current study are also consistent with those of a study about  
294 perceived local COVID-19 transmission levels,<sup>20</sup> as both studies found that individual  
295 behaviors aligned with peoples' perceptions of important pandemic-related information.  
296 People who agreed the pandemic was over and those who did not accurately perceive  
297 local COVID-19 transmission levels as high had received fewer COVID-19 vaccines,  
298 conveyed less concern about SARS-CoV-2 variant viruses, and reported less frequent  
299 engagement in COVID-19 preventive behaviors compared with other adults. The extent  
300 to which individuals are no longer seeking COVID-19-related information or the  
301 information is not readily available is unclear. Given the association between these  
302 beliefs and non-engagement in COVID-19-related prevention behaviors, public health  
303 communication efforts to fully inform these groups are needed.

304 The findings of demographic characteristics associated with agreement with the  
305 pandemic-over statement have important implications for tailored public health  
306 messaging about the pandemic. Some associations with agreement, such as more  
307 conservative political ideology, were anticipated given political polarization during the  
308 pandemic, as more conservative ideology has consistently been associated with lower  
309 levels of concern about and attention to the pandemic and less frequent engagement in  
310 COVID-19 prevention efforts.<sup>42</sup>

311 However, the findings that agreement with the pandemic-over statement was  
312 associated with significant disabilities and roles as unpaid caregivers of both children

**313** and adults were surprising. People with disabilities are at increased risk of severe  
**314** COVID-19 outcomes, as highlighted in the CDC’s guidance published in August 2022.<sup>35</sup>  
**315** Indeed, COVID-19-associated hospitalization rates among disability-eligible Medicare  
**316** beneficiaries are approximately 50% higher than rates among age-eligible  
**317** beneficiaries.<sup>43</sup> For other major risk factors, such as age and health status, responses to  
**318** the pandemic-over statement reflected risk of severe COVID-19 outcomes, as older  
**319** adults and people with fair or poor vs excellent health more commonly disagreed that  
**320** the pandemic was over. Perhaps not surprisingly, caregivers of children and adults,  
**321** who’s caregiving often puts them at higher risk of SARS-CoV-2 exposures, more  
**322** commonly agreed that the pandemic was over. For caregivers of children specifically,  
**323** perceptions could also be influenced by seasonal outbreaks of influenza and respiratory  
**324** syncytial virus detracting attention away from COVID-19. Further investigation into the  
**325** factors underlying perceptions about the pandemic within these groups is warranted.

**326** Strengths of this analysis include use of a large, demographically representative  
**327** sample of US adults and comprehensive characterization of respondents. There are  
**328** limitations, including English-language-only, internet-based surveys that were  
**329** administered using non-probabilistic sampling methods, limiting the generalizability of  
**330** the findings; however, demographic quota sampling and survey weighting were applied  
**331** to improve demographic representativeness. Additionally, associative findings from  
**332** multivariable models do not reflect directionality or causality.

**333** In conclusion, based on a large scale, demographically representative sample, we  
**334** found that as of late September to mid-October 2022, only 1 in 3 US adults agreed with  
**335** the statement “the pandemic is over” and that 43% of adults disagreed with that

336 statement. Adults who agreed with the pandemic-over statement had higher odds of  
337 being unvaccinated or under-vaccinated against COVID-19, were less concerned about  
338 SARS-CoV-2 variant viruses and were less engaged in behaviors to reduce COVID-19  
339 transmission. We also identified demographic groups to prioritize for tailored public  
340 health messaging about the pandemic status, including people with more conservative  
341 political ideology, with significant disabilities, in roles as unpaid caregivers of both  
342 children and adults, and of younger age or male sex. Continued assessment of public  
343 perceptions about the state of the pandemic is warranted as we enter Year 4 of the  
344 COVID-19 pandemic.<sup>44</sup>

#### 345 **Additional Information**

346 Author Contributions: M. É. Czeisler had full access to all of the data in the study and  
347 takes responsibility for the integrity of the data and the accuracy of the data analysis.

348 *Concept and design:* M. É. Czeisler, Weaver, C. A. Czeisler.

349 *Acquisition, analysis, or interpretation of data:* M. É. Czeisler, Weaver.

350 *Drafting of the manuscript:* M. É. Czeisler.

351 *Critical revision of the manuscript for important intellectual content:* All authors.

352 *Statistical analysis:* M. É. Czeisler.

353 *Obtained funding:* M. É. Czeisler, Weaver, Lane, Howard, Rajaratnam, C. A. Czeisler.

354 *Administrative, technical, or material support:* Weaver, Lane, C. A. Czeisler.

355 **Conflict of Interest Disclosures:** All authors report institutional grants from CDC  
356 Foundation and the US Centers for Disease Control and Prevention. Mark É Czeisler  
357 reports institutional gifts or grants from WHOOP, Inc., HopeLab Foundation, consulting  
358 fees from Vanda Pharmaceuticals, Inc., and Nychthemeron, LLC, and equity interest in  
359 With Deep, Inc. Matthew D Weaver reports institutional grants from Brigham and  
360 Women's Hospital Physician's Organization, Brigham Research Institute, and the  
361 National Heart, Lung, and Blood Institute; and consulting fees from the Fred Hutchinson  
362 Cancer Center, the National Sleep Foundation, and the University of Pittsburgh.



363 Shantha MW Rajaratnam reports institutional grants from Cooperative Research Centre  
364 for Alertness, Safety and Productivity, National Health and Medical Research Council,  
365 CSIRO, the Australian Research Council, Australasian Sleep Association, Wellcome  
366 Trust, Collingwood Football Club, Vanda Pharmaceuticals, Department of Defense,  
367 WHOOP, Inc. HopeLab Foundation; institutional consultancy fees from Teva Pharma  
368 Australia, Circadian Therapeutics, BHP, Roche, Avecho, Vanda Pharmaceuticals;  
369 institutional and personal consulting fees from Cooperative Research Centre for  
370 Alertness, Safety and Productivity; payment for expert testimony from Herbert Smith  
371 Freehills and Maurice Blackburn; Patent for Systems and Methods for Monitoring and  
372 Control of Sleep Patterns; and service as chair for the Sleep Health Foundation Board  
373 of Directors. Mark E Howard reports participation on the ResApp Health Advisory  
374 Board, and honorary board membership for the Institute for Breathing and Sleep.  
375 Charles A Czeisler serves as the incumbent of an endowed professorship provided to  
376 Harvard Medical School by Cephalon, Inc. and as chair of the Sleep Timing and  
377 Variability Consensus Panel, National Sleep Foundation; and reports institutional  
378 support for the Quality Improvement Initiative from Delta Airlines and Puget Sound  
379 Pilots; education support to Harvard Medical School Division of Sleep Medicine; support  
380 to Brigham and Women's Hospital from Jazz Pharmaceuticals PLC, Inc. and Philips  
381 Respironics, Inc; support to Brigham and Women's Hospital from Axome Therapeutics,  
382 Inc., Regeneron Pharmaceuticals, and Sanofi SA; educational funding to the Sleep and  
383 Health Education of the Harvard Medical School Division of Sleep Medicine from  
384 ResMed, Teva Pharmaceuticals Industries, Ltd., and Vanda Pharmaceuticals; royalty  
385 payments on sales of the Actiwatch-2 and Actiwatch-Spectrum devices from Philips  
386 Respironics, Inc.; personal consulting fees from With Deep, Inc. and Vanda  
387 Pharmaceuticals; honoraria for Thomas Roth Lecture of Excellence at SLEEP 2022  
388 annual meeting and from the Massachusetts Medical Society for writing a Perspective  
389 article in the New England Journal of Medicine; payment for expert testimony from  
390 Puget Sound Pilots, Amtrak, Enterprise Rent-A-Car, Dallas Police Association, FedEx,  
391 PAR Electrical Contractors, Inc., Schlumberger Technology Corp., Union Pacific  
392 Railroad, United Parcel Service, Vanda Pharmaceuticals, and the San Francisco  
393 Sheriff's Department; travel support from the Stanley Ho Medical Development  
394 Foundation for travel to Macao and Hong Kong; advisory board membership for the  
395 Institute of Digital Media and Child Development, Klarman Family Foundation, and the  
396 UK Biotechnology and Biological Sciences Research Council; equity interest in Vanda  
397 Pharmaceuticals, With Deep, Inc., and Signos, Inc.; and institutional receipt of  
398 educational gifts to Brigham and Women's Hospital from Johnson & Johnson, Mary Ann  
399 and Stanley Snider via Combined Jewish Philanthropies, Alexandra Drane, DR Capital,  
400 Harmony Biosciences, LLC, and to Harvard University from ResMed, Inc. No other  
401 potential conflicts of interest were disclosed.

402 **Funding/Support:** Funding for survey data collection was supported in part by a  
403 research contract from the US Centers for Disease Control and Prevention and  
404 NTouch-BCT Strategies, LLC, with subcontracts to Brigham and Women's Hospital,  
405 Austin Health, and Monash University.

**406** **Role of the Funder/Sponsor:** The funders had no role in the design and conduct of the  
**407** study; collection, management, analysis, and interpretation of the data; preparation,  
**408** review, or approval of the manuscript; and decision to submit the manuscript for  
**409** publication.

**410** **Disclaimer:** The findings and conclusions in this report are those of the authors and do  
**411** not necessarily represent the official position of the Centers for Disease Control and  
**412** Prevention.

## **413** References

**414** 1. World Health Organization. WHO Director-General's opening remarks at the media  
**415** briefing on COVID-19 - 11 March 2020. Published 2020. Accessed June 20, 2021.  
**416** [https://www.who.int/director-general/speeches/detail/who-director-general-s-opening-](https://www.who.int/director-general/speeches/detail/who-director-general-s-opening-remarks-at-the-media-briefing-on-covid-19---11-march-2020)  
**417** [remarks-at-the-media-briefing-on-covid-19---11-march-2020](https://www.who.int/director-general/speeches/detail/who-director-general-s-opening-remarks-at-the-media-briefing-on-covid-19---11-march-2020)

**418** 2. The White House. Proclamation on Declaring a National Emergency Concerning the  
**419** Novel Coronavirus Disease (COVID-19) Outbreak – The White House. Published  
**420** 2020. Accessed June 20, 2021. [https://trumpwhitehouse.archives.gov/presidential-](https://trumpwhitehouse.archives.gov/presidential-actions/proclamation-declaring-national-emergency-concerning-novel-coronavirus-disease-covid-19-outbreak/)  
**421** [actions/proclamation-declaring-national-emergency-concerning-novel-coronavirus-](https://trumpwhitehouse.archives.gov/presidential-actions/proclamation-declaring-national-emergency-concerning-novel-coronavirus-disease-covid-19-outbreak/)  
**422** [disease-covid-19-outbreak/](https://trumpwhitehouse.archives.gov/presidential-actions/proclamation-declaring-national-emergency-concerning-novel-coronavirus-disease-covid-19-outbreak/)

**423** 3. Czeisler MÉ, Howard ME, Robbins R, et al. Early public adherence with and support  
**424** for stay-at-home COVID-19 mitigation strategies despite adverse life impact: a  
**425** transnational cross-sectional survey study in the United States and Australia. *BMC*  
**426** *Public Health*. 2021;21(1):503. doi:10.1186/s12889-021-10410-x

**427** 4. Czeisler MÉ, Tynan MA, Howard ME, et al. Public Attitudes, Behaviors, and Beliefs  
**428** Related to COVID-19, Stay-at-Home Orders, Nonessential Business Closures, and  
**429** Public Health Guidance - United States, New York City, and Los Angeles, May 5-12,  
**430** 2020. *MMWR Morb Mortal Wkly Rep*. 2020;69(24):751-758.  
**431** doi:10.15585/mmwr.mm6924e1

**432** 5. Nelson LM, Simard JF, Oluyomi A, et al. US Public Concerns About the COVID-19  
**433** Pandemic From Results of a Survey Given via Social Media. *JAMA Intern Med*.  
**434** 2020;180(7):1020-1022. doi:10.1001/jamainternmed.2020.1369

**435** 6. Moreland A, Herlihy C, Tynan MA, et al. Timing of State and Territorial COVID-19  
**436** Stay-at-Home Orders and Changes in Population Movement - United States, March  
**437** 1-May 31, 2020. *MMWR Morb Mortal Wkly Rep*. 2020;69(35):1198-1203.  
**438** doi:10.15585/mmwr.mm6935a2

**439** 7. Adjodah D, Dinakar K, Chinazzi M, et al. Association between COVID-19 outcomes  
**440** and mask mandates, adherence, and attitudes. *PLoS One*. 2021;16(6):e0252315.  
**441** doi:10.1371/journal.pone.0252315

- 442** 8. MacIntyre CR, Nguyen PY, Chughtai AA, et al. Mask use, risk-mitigation behaviours  
**443** and pandemic fatigue during the COVID-19 pandemic in five cities in Australia, the  
**444** UK and USA: A cross-sectional survey. *Int J Infect Dis.* 2021;106:199-207.  
**445** doi:10.1016/j.ijid.2021.03.056
- 446** 9. Bilinski A, Emanuel EJ. COVID-19 and Excess All-Cause Mortality in the US and 18  
**447** Comparison Countries. *JAMA.* 2020;324(20):2100-2102.  
**448** doi:10.1001/jama.2020.20717
- 449** 10. Bilinski A, Thompson K, Emanuel E. COVID-19 and Excess All-Cause Mortality  
**450** in the US and 20 Comparison Countries, June 2021-March 2022. *JAMA.* Published  
**451** online November 18, 2022. doi:10.1001/jama.2022.21795
- 452** 11. Shiels MS, Haque AT, Haozous EA, et al. Racial and Ethnic Disparities in Excess  
**453** Deaths During the COVID-19 Pandemic, March to December 2020. *Ann Intern Med.*  
**454** 2021;174(12):1693-1699. doi:10.7326/M21-2134
- 455** 12. Magesh S, John D, Li WT, et al. Disparities in COVID-19 Outcomes by Race,  
**456** Ethnicity, and Socioeconomic Status: A Systematic-Review and Meta-analysis. *JAMA*  
**457** *Netw Open.* 2021;4(11):e2134147. doi:10.1001/jamanetworkopen.2021.34147
- 458** 13. Price JH, Khubchandani J, McKinney M, Braun R. Racial/Ethnic Disparities in  
**459** Chronic Diseases of Youths and Access to Health Care in the United States. *Biomed*  
**460** *Res Int.* 2013;2013:787616. doi:10.1155/2013/787616
- 461** 14. Boehmer TK, Koumans EH, Skillen EL, et al. Racial and Ethnic Disparities in  
**462** Outpatient Treatment of COVID-19 - United States, January-July 2022. *MMWR Morb*  
**463** *Mortal Wkly Rep.* 2022;71(43):1359-1365. doi:10.15585/mmwr.mm7143a2
- 464** 15. Dong E, Du H, Gardner L. An interactive web-based dashboard to track COVID-  
**465** 19 in real time. *Lancet Infect Dis.* 2020;20(5):533-534. doi:10.1016/S1473-  
**466** 3099(20)30120-1
- 467** 16. US Centers for Disease Control and Prevention. Trends in Number of COVID-19  
**468** Cases and Deaths in the US Reported to CDC, by State/Territory. COVID Data  
**469** Tracker. Published March 28, 2020. Accessed December 2, 2022.  
**470** <https://covid.cdc.gov/covid-data-tracker>
- 471** 17. Fernández-de-las-Peñas C, Rodríguez-Jiménez J, Cancela-Cilleruelo I, et al.  
**472** Post-COVID-19 Symptoms 2 Years After SARS-CoV-2 Infection Among Hospitalized  
**473** vs Nonhospitalized Patients. *JAMA Network Open.* 2022;5(11):e2242106.  
**474** doi:10.1001/jamanetworkopen.2022.42106
- 475** 18. Groff D, Sun A, Ssentongo AE, et al. Short-term and Long-term Rates of  
**476** Postacute Sequelae of SARS-CoV-2 Infection: A Systematic Review. *JAMA Network*  
**477** *Open.* 2021;4(10):e2128568. doi:10.1001/jamanetworkopen.2021.28568

- 478** 19. Perlis RH, Santillana M, Ognyanova K, et al. Prevalence and Correlates of Long  
**479** COVID Symptoms Among US Adults. *JAMA Network Open*. 2022;5(10):e2238804.  
**480** doi:10.1001/jamanetworkopen.2022.38804
- 481** 20. Czeisler MÉ, Lane RI, Orellana RC, et al. Perception of Local COVID-19  
**482** Transmission and Use of Preventive Behaviors Among Adults with Recent SARS-  
**483** CoV-2 Infection - Illinois and Michigan, June 1-July 31, 2022. *MMWR Morb Mortal*  
**484** *Wkly Rep*. 2022;71(46):1471-1478. doi:10.15585/mmwr.mm7146a2
- 485** 21. US Centers for Disease Control and Prevention. Public Health System and the  
**486** 10 Essential Public Health Services. Public Health Professionals Gateway. Accessed  
**487** December 2, 2022. [https://www.cdc.gov/publichealthgateway/zz-](https://www.cdc.gov/publichealthgateway/zz-sddev/essentialhealthservices.html)  
**488** [sddev/essentialhealthservices.html](https://www.cdc.gov/publichealthgateway/zz-sddev/essentialhealthservices.html)
- 489** 22. Miltimore J. Fauci's Mask Flip-Flop, Explained (by Economics) | Jon Miltimore.  
**490** Published June 3, 2021. Accessed November 25, 2022. [https://fee.org/articles/fauci-](https://fee.org/articles/fauci-s-mask-flip-flop-explained-by-economics/)  
**491** [s-mask-flip-flop-explained-by-economics/](https://fee.org/articles/fauci-s-mask-flip-flop-explained-by-economics/)
- 492** 23. WHO's COVID backtrack leaves us wondering who to believe. Healthing.ca.  
**493** Accessed November 25, 2022. [https://www.healthing.ca/opinion/whos-covid-](https://www.healthing.ca/opinion/whos-covid-backtrack-leaves-us-wondering-who-to-believe)  
**494** [backtrack-leaves-us-wondering-who-to-believe](https://www.healthing.ca/opinion/whos-covid-backtrack-leaves-us-wondering-who-to-believe)
- 495** 24. Netburn D. A timeline of the CDC's advice on face masks. Los Angeles Times.  
**496** Published July 27, 2021. Accessed November 25, 2022.  
**497** [https://www.latimes.com/science/story/2021-07-27/timeline-cdc-mask-guidance-](https://www.latimes.com/science/story/2021-07-27/timeline-cdc-mask-guidance-during-covid-19-pandemic)  
**498** [during-covid-19-pandemic](https://www.latimes.com/science/story/2021-07-27/timeline-cdc-mask-guidance-during-covid-19-pandemic)
- 499** 25. Brooks JT, Butler JC. Effectiveness of Mask Wearing to Control Community  
**500** Spread of SARS-CoV-2. *JAMA*. 2021;325(10):998-999. doi:10.1001/jama.2021.1505
- 501** 26. Brooks JT, Butler JC, Redfield RR. Universal Masking to Prevent SARS-CoV-2  
**502** Transmission-The Time Is Now. *JAMA*. 2020;324(7):635-637.  
**503** doi:10.1001/jama.2020.13107
- 504** 27. Chu DK, Akl EA, Duda S, et al. Physical distancing, face masks, and eye  
**505** protection to prevent person-to-person transmission of SARS-CoV-2 and COVID-19:  
**506** a systematic review and meta-analysis. *Lancet*. 2020;395(10242):1973-1987.  
**507** doi:10.1016/S0140-6736(20)31142-9
- 508** 28. Joo H, Miller GF, Sunshine G, et al. Decline in COVID-19 Hospitalization Growth  
**509** Rates Associated with Statewide Mask Mandates - 10 States, March-October 2020.  
**510** *MMWR Morb Mortal Wkly Rep*. 2021;70(6):212-216. doi:10.15585/mmwr.mm7006e2
- 511** 29. Lyu W, Wehby GL. Community Use Of Face Masks And COVID-19: Evidence  
**512** From A Natural Experiment Of State Mandates In The US. *Health Aff (Millwood)*.  
**513** 2020;39(8):1419-1425. doi:10.1377/hlthaff.2020.00818

- 514** 30. Taylor S, Asmundson GJG. Negative attitudes about facemasks during the  
**515** COVID-19 pandemic: The dual importance of perceived ineffectiveness and  
**516** psychological reactance. *PLoS One*. 2021;16(2):e0246317.  
**517** doi:10.1371/journal.pone.0246317
- 518** 31. Rubin O, Rin Kim S, Faulders K. Mixed messages on masks from leaders during  
**519** pandemic has caused confusion for many. *ABC News*.  
**520** [https://abcnews.go.com/US/mixed-messages-masks-critical-tool-slow-pandemic-](https://abcnews.go.com/US/mixed-messages-masks-critical-tool-slow-pandemic-slowed/story?id=70526293)  
**521** [slowled/story?id=70526293](https://abcnews.go.com/US/mixed-messages-masks-critical-tool-slow-pandemic-slowed/story?id=70526293). Published May 6, 2020. Accessed June 28, 2021.
- 522** 32. Cohen E, Bonifield J. People vaccinated against Covid-19 can go without masks  
**523** indoors and outdoors, CDC says. *CNBC*. Published May 13, 2021. Accessed  
**524** December 19, 2022. [https://www.cnn.com/2021/05/13/health/cdc-mask-guidance-](https://www.cnn.com/2021/05/13/health/cdc-mask-guidance-vaccinated/index.html)  
**525** [vaccinated/index.html](https://www.cnn.com/2021/05/13/health/cdc-mask-guidance-vaccinated/index.html)
- 526** 33. Lipsitch M, Krammer F, Regev-Yochay G, Lustig Y, Balicer RD. SARS-CoV-2  
**527** breakthrough infections in vaccinated individuals: measurement, causes and impact.  
**528** *Nat Rev Immunol*. 2022;22(1):57-65. doi:10.1038/s41577-021-00662-4
- 529** 34. Segal E. Mixed Messages From White House And CDC Could Worsen Covid  
**530** Crisis. *Forbes*. Accessed November 25, 2022.  
**531** [https://www.forbes.com/sites/edwardsegal/2021/07/30/mixed-messages-about-delta-](https://www.forbes.com/sites/edwardsegal/2021/07/30/mixed-messages-about-delta-variant-could-worsen-covid-crisis/)  
**532** [variant-could-worsen-covid-crisis/](https://www.forbes.com/sites/edwardsegal/2021/07/30/mixed-messages-about-delta-variant-could-worsen-covid-crisis/)
- 533** 35. Massetti GM, Jackson BR, Brooks JT, et al. Summary of Guidance for Minimizing  
**534** the Impact of COVID-19 on Individual Persons, Communities, and Health Care  
**535** Systems - United States, August 2022. *MMWR Morb Mortal Wkly Rep*.  
**536** 2022;71(33):1057-1064. doi:10.15585/mmwr.mm7133e1
- 537** 36. Sun LH, Achenbach J. CDC loosens coronavirus guidance, signaling strategic  
**538** shift. *Washington Post*. [https://www.washingtonpost.com/health/2022/08/11/cdc-](https://www.washingtonpost.com/health/2022/08/11/cdc-coronavirus-recommendations/)  
**539** [coronavirus-recommendations/](https://www.washingtonpost.com/health/2022/08/11/cdc-coronavirus-recommendations/). Published August 12, 2022. Accessed November 25,  
**540** 2022.
- 541** 37. Pearman O, Boykoff M, Osborne-Gowey J, et al. COVID-19 media coverage  
**542** decreasing despite deepening crisis. *Lancet Planet Health*. 2021;5(1):e6-e7.  
**543** doi:10.1016/S2542-5196(20)30303-X
- 544** 38. Crook H, Raza S, Nowell J, Young M, Edison P. Long covid-mechanisms, risk  
**545** factors, and management. *BMJ*. 2021;374:n1648. doi:10.1136/bmj.n1648
- 546** 39. Cutler DM. The Costs of Long COVID. *JAMA Health Forum*. 2022;3(5):e221809.  
**547** doi:10.1001/jamahealthforum.2022.1809
- 548** 40. Cutler DM, Summers LH. The COVID-19 Pandemic and the \$16 Trillion Virus.  
**549** *JAMA*. 2020;324(15):1495-1496. doi:10.1001/jama.2020.19759

- 550**  
**551**  
**552**
41. Bowe B, Xie Y, Al-Aly Z. Acute and postacute sequelae associated with SARS-CoV-2 reinfection. *Nat Med*. 2022;28(11):2398-2405. doi:10.1038/s41591-022-02051-3
- 553**  
**554**  
**555**
42. Kerr J, Panagopoulos C, van der Linden S. Political polarization on COVID-19 pandemic response in the United States. *Pers Individ Dif*. 2021;179:110892. doi:10.1016/j.paid.2021.110892
- 556**  
**557**  
**558**  
**559**
43. Yuan Y, Thierry JM, Bull-Otterson L, et al. COVID-19 Cases and Hospitalizations Among Medicare Beneficiaries With and Without Disabilities - United States, January 1, 2020-November 20, 2021. *MMWR Morb Mortal Wkly Rep*. 2022;71(24):791-796. doi:10.15585/mmwr.mm7124a3
- 560**  
**561**
44. Gostin LO. The Great Coronavirus Pandemic of 2020-7 Critical Lessons. *JAMA*. 2020;324(18):1816-1817. doi:10.1001/jama.2020.18347

**Table 1. Response to the Statement “The Pandemic is Over” Among US Adults, Overall and by Demographic Characteristics, September to October 2022**

	All respondents	Strongly disagree	Somewhat disagree	Neutral	Somewhat agree	Strongly agree	P
	No. (%)	No. (%)	No. (%)	No. (%)	No. (%)	No. (%)	
<b>All respondents</b>	<b>4985 (100)</b>	<b>954 (19.1)</b>	<b>1188 (23.8)</b>	<b>1187 (23.8)</b>	<b>996 (20.0)</b>	<b>661 (13.3)</b>	
<b>Sex</b>							
Female	2539 (50.9)	577 (22.7)	639 (25.2)	639 (25.2)	450 (17.7)	234 (9.2)	<.001
Male	2446 (49.1)	376 (15.4)	549 (22.4)	548 (22.4)	546 (22.3)	427 (17.5)	
<b>Age group, years</b>							
18 to 24	581 (11.6)	85 (14.6)	118 (20.3)	176 (30.2)	132 (22.8)	70 (12.1)	<.001
25 to 44	1716 (34.4)	267 (15.6)	305 (17.8)	464 (27.1)	380 (22.2)	299 (17.4)	
45 to 64	1611 (32.3)	345 (21.4)	401 (24.9)	349 (21.7)	313 (19.4)	203 (12.6)	
65 and over	1078 (21.6)	257 (23.8)	363 (33.7)	198 (18.3)	171 (15.9)	89 (8.3)	
<b>Combined race and ethnicity<sup>a</sup></b>							
Asian, non-Hispanic	303 (6.1)	61 (20.1)	86 (28.2)	69 (22.8)	61 (20.1)	26 (8.7)	<.001
Black, non-Hispanic	612 (12.3)	160 (26.1)	148 (24.2)	158 (25.8)	99 (16.2)	48 (7.8)	
Hispanic or Latino, any race or races	844 (16.9)	170 (20.2)	190 (22.5)	207 (24.5)	161 (19.1)	116 (13.7)	
Other race or races, non-Hispanic	129 (2.6)	26 (19.8)	20 (15.7)	52 (40.0)	15 (12.0)	16 (12.4)	
White, non-Hispanic	3097 (62.1)	537 (17.3)	744 (24.0)	702 (22.6)	659 (21.3)	455 (14.7)	
<b>Highest education attainment</b>							
High school degree or less	1224 (24.5)	272 (22.2)	226 (18.5)	403 (32.9)	206 (16.9)	117 (9.5)	<.001
College or some college	2882 (57.8)	540 (18.7)	772 (26.8)	635 (22.0)	580 (20.1)	356 (12.3)	
More than bachelor's degree	879 (17.6)	142 (16.1)	190 (21.6)	149 (17.0)	210 (23.9)	189 (21.5)	
<b>Experience with disability<sup>b</sup></b>							
No difficulty with tasks	1954 (39.2)	364 (18.6)	471 (24.1)	491 (25.1)	377 (19.3)	252 (12.9)	<.001
Some difficulty with tasks	1678 (33.7)	366 (21.8)	484 (28.8)	338 (20.2)	316 (18.8)	174 (10.4)	
A lot of difficulty with tasks	974 (19.5)	178 (18.3)	190 (19.5)	254 (26.1)	198 (20.3)	154 (15.8)	
Cannot do some tasks at all	379 (7.6)	46 (12.0)	43 (11.3)	104 (27.3)	105 (27.7)	82 (21.6)	
<b>Self-rated health</b>							
Excellent	846 (17.0)	106 (12.6)	110 (13.0)	185 (21.9)	169 (20.0)	276 (32.6)	<.001
Very good	1561 (31.3)	262 (16.8)	360 (23.1)	355 (22.7)	403 (25.8)	181 (11.6)	
Good	1662 (33.3)	353 (21.2)	433 (26.1)	479 (28.8)	272 (16.4)	124 (7.5)	
Fair	761 (15.3)	184 (24.2)	242 (31.8)	143 (18.8)	124 (16.2)	68 (9.0)	
Poor	154 (3.1)	48 (31.3)	43 (27.6)	25 (16.1)	27 (17.7)	11 (7.3)	
<b>Unpaid caregiver roles</b>							
None	3412 (68.4)	686 (20.1)	873 (25.6)	839 (24.6)	628 (18.4)	387 (11.3)	<.001
Unpaid caregiver of adults only	540 (10.8)	140 (25.9)	119 (22.0)	115 (21.3)	102 (18.9)	64 (11.8)	

Unpaid caregiver of children only	424 (8.5)	58 (13.7)	121 (28.6)	95 (22.4)	109 (25.6)	41 (9.7)	
Unpaid caregiver of both age groups	609 (12.2)	70 (11.5)	74 (12.2)	138 (22.6)	157 (25.8)	170 (27.8)	
<b>US Census region<sup>c</sup></b>							
Northeast	935 (18.8)	175 (18.7)	207 (22.1)	237 (25.3)	182 (19.5)	134 (14.3)	>.99
Midwest	980 (19.7)	166 (16.9)	238 (24.3)	221 (22.5)	217 (22.1)	139 (14.2)	
South	1863 (37.4)	365 (19.6)	434 (23.3)	460 (24.7)	356 (19.1)	248 (13.3)	
West	1206 (24.2)	248 (20.6)	307 (25.5)	269 (22.3)	241 (20.0)	140 (11.6)	
<b>Political ideology<sup>d</sup></b>							
Very liberal	797 (16.0)	190 (23.9)	190 (23.8)	144 (18.0)	158 (19.8)	115 (14.4)	<.001
Slightly liberal	869 (17.4)	214 (24.7)	268 (30.8)	150 (17.3)	173 (19.9)	63 (7.3)	
Neither liberal nor conservative	1404 (28.2)	264 (18.8)	361 (25.7)	453 (32.2)	231 (16.4)	96 (6.8)	
Slightly conservative	848 (17.0)	117 (13.8)	210 (24.7)	173 (20.3)	226 (26.6)	123 (14.5)	
Very conservative	824 (16.5)	113 (13.7)	117 (14.2)	169 (20.5)	182 (22.0)	244 (29.6)	

Abbreviations: COVID-19, coronavirus disease 2019

<sup>a</sup> Includes “American Indian or Alaskan Native,” “Native Hawaiian or other Pacific Islander,” and “Other.”

<sup>b</sup> Based on the Washington Group - Short Set of Questions on Disability. Includes difficulty seeing, hearing, walking or climbing steps, remembering or concentrating, with self-care, and communicating.

<sup>c</sup> A single respondent living in Puerto Rico is not included in the US Census Region rows.

<sup>d</sup> Respondents who preferred not to answer with their political ideology (n = 243) are not included in the Political ideology tables.

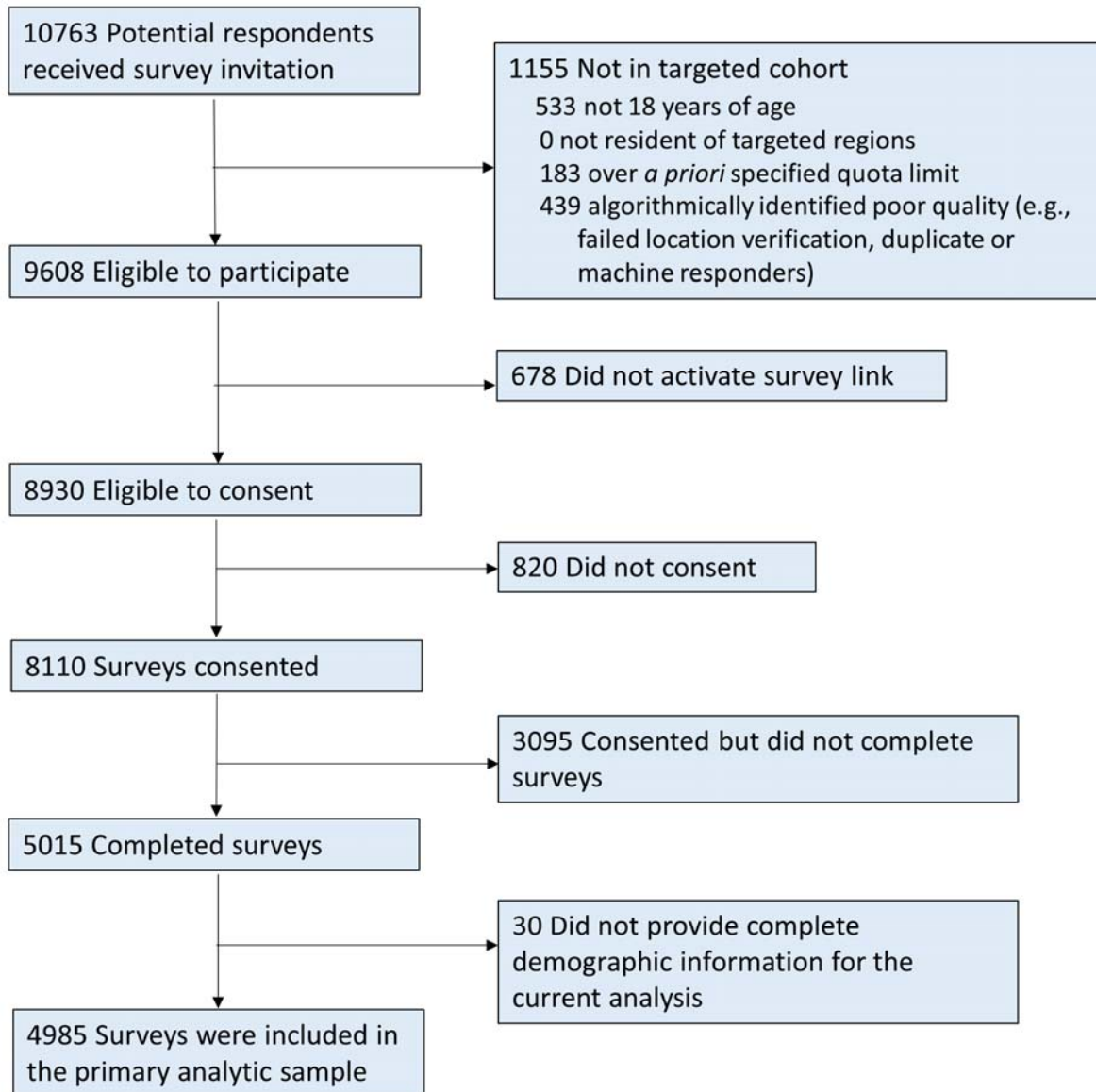


**Table 2. Response to the Statement “The Pandemic is Over” Among US Adults, Overall and by COVID-19-Related Characteristics, September to October 2022**

	All respondents	Strongly disagree	Somewhat disagree	Neutral	Somewhat agree	Strongly agree	<i>P</i>
	No. (%)	No. (%)	No. (%)	No. (%)	No. (%)	No. (%)	
<b>All respondents</b>	<b>4985 (100)</b>	<b>954 (19.1)</b>	<b>1188 (23.8)</b>	<b>1187 (23.8)</b>	<b>996 (20)</b>	<b>661 (13.3)</b>	
<b>Frequency of mask use in public spaces in the past 2 weeks</b>							
Always	1007 (20.2)	329 (32.7)	219 (21.8)	183 (18.2)	157 (15.6)	118 (11.8)	<.001
Often	689 (13.8)	124 (18.0)	175 (25.4)	153 (22.3)	136 (19.7)	100 (14.6)	
Sometimes	859 (17.2)	157 (18.3)	245 (28.5)	249 (29.0)	150 (17.4)	58 (6.7)	
Rarely	743 (14.9)	103 (13.9)	228 (30.7)	209 (28.1)	158 (21.3)	45 (6.1)	
Never	1537 (30.8)	196 (12.7)	295 (19.2)	345 (22.4)	373 (24.3)	329 (21.4)	
Did not go to a public place	150 (3.0)	45 (30.0)	25 (16.7)	47 (31.5)	22 (14.9)	10 (6.9)	
<b>Frequency of avoidance of large gatherings in the past 2 weeks</b>							
Always	843 (16.9)	277 (32.8)	176 (20.8)	143 (16.9)	102 (12.1)	146 (17.4)	
Often	852 (17.1)	197 (23.1)	216 (25.3)	199 (23.3)	166 (19.5)	75 (8.8)	<.001
Sometimes	947 (19.0)	160 (16.9)	232 (24.5)	290 (30.7)	188 (19.8)	76 (8.1)	
Rarely	635 (12.7)	77 (12.1)	194 (30.6)	147 (23.1)	165 (26.0)	52 (8.2)	
Never	1707 (34.2)	243 (14.3)	370 (21.6)	408 (23.9)	375 (22.0)	311 (18.2)	
<b>COVID-19 vaccine doses received</b>							
Zero	1075 (21.6)	179 (16.6)	160 (14.9)	329 (30.6)	205 (19.1)	201 (18.7)	<.001
One	385 (7.7)	56 (14.5)	63 (16.4)	102 (26.6)	92 (23.8)	72 (18.7)	
Two	1351 (27.1)	202 (14.9)	340 (25.2)	315 (23.3)	311 (23.0)	183 (13.6)	
Three	1323 (26.5)	243 (18.4)	341 (25.8)	300 (22.7)	265 (20.0)	173 (13.1)	
Four or more	852 (17.1)	274 (32.2)	283 (33.2)	140 (16.4)	123 (14.5)	32 (3.7)	
<b>Concern about coronavirus variants</b>							
Not at all concerned	934 (18.7)	114 (12.2)	93 (10.0)	240 (25.7)	186 (19.9)	302 (32.3)	<.001
Somewhat unconcerned	495 (9.9)	60 (12.1)	118 (23.9)	99 (20.0)	168 (33.9)	50 (10.1)	
Neutral	1209 (24.3)	107 (8.9)	267 (22.1)	542 (44.9)	229 (18.9)	64 (5.3)	
Somewhat concerned	1484 (29.8)	343 (23.1)	574 (38.7)	203 (13.7)	299 (20.2)	65 (4.4)	
Very concerned	863 (17.3)	330 (38.3)	136 (15.7)	102 (11.9)	115 (13.3)	180 (20.9)	

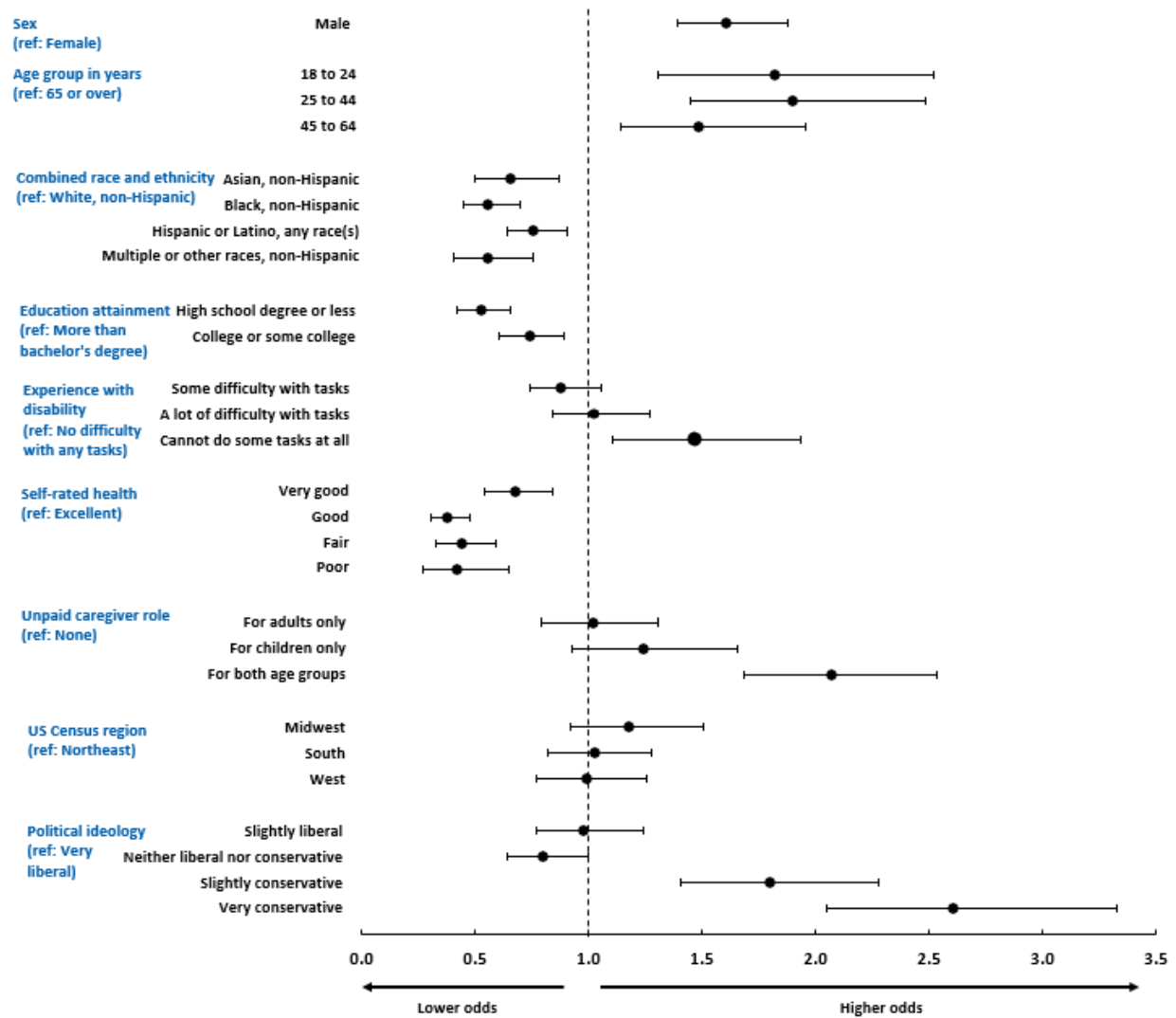
Abbreviations: COVID-19, coronavirus disease 2019

**Figure 1. Flow of The COPE Initiative Survey Respondents, September to October 2022.**



It is made available under a [CC-BY 4.0 International license](https://creativecommons.org/licenses/by/4.0/).

**Figure 2. Adjusted Odds Ratios of Having Agreed that the Pandemic was Over by Demographic Characteristics, September to October 2022.**



It is made available under a [CC-BY 4.0 International license](https://creativecommons.org/licenses/by/4.0/).

**Figure 3. Adjusted Odds Ratios of Having Agreed that the Pandemic was Over by COVID-19-Related Characteristics, September to October 2022.**

