

1 **Clinical validation of novel second-trimester preterm preeclampsia risk predictors combining clinical**  
2 **variables and serum protein biomarkers**

3

4 Louise C. LAURENT, MD, PhD<sup>1\*</sup>, George R. SAADE, MD<sup>2</sup>, Glenn R. MARKENSON, MD<sup>3</sup>, Kent D. HEYBORNE,  
5 MD<sup>4</sup>, Corina N. SCHOEN, MD<sup>5</sup>, Jason K. BAXTER, MD<sup>6</sup>, Sherri A. LONGO, MD<sup>7</sup>, Leonardo M. PEREIRA,  
6 MD<sup>8</sup>, Emily J. SU, MD<sup>9</sup>, Matthew K. HOFFMAN, MD<sup>10</sup>, Garrett K. LAM, MD<sup>11</sup>, Angela C. FOX, MS<sup>12</sup>, Ashoka  
7 D. POLPITIYA, D Sc<sup>12</sup>, Md. Bahadur BADSHA, PhD<sup>12</sup>, Tracey C. FLEISCHER, PhD<sup>12</sup>, Thomas J. GARITE, MD<sup>12</sup>,  
8 J. Jay BONIFACE, PhD<sup>12</sup>, Paul E. KEARNEY, PhD<sup>12</sup>

9

10 <sup>1</sup>Department of Obstetrics, Gynecology, and Reproductive Sciences, University of California, San Diego,  
11 La Jolla, CA

12 <sup>2</sup>Department of Obstetrics and Gynecology, Eastern Virginia Medical School, Norfolk, VA

13 <sup>3</sup>Department of Obstetrics and Gynecology, Boston University School of Medicine, Boston, MA

14 <sup>4</sup>Department of Obstetrics and Gynecology, Denver Health and Hospital Authority, Denver, CO, and  
15 Department of Obstetrics and Gynecology, University of Colorado Denver, Aurora, CO

16 <sup>5</sup>Department of Obstetrics and Gynecology, University of Massachusetts-Baystate, Springfield, MA

17 <sup>6</sup>Department of Obstetrics and Gynecology, Sidney Kimmel Medical College, Thomas Jefferson  
18 University, Philadelphia, PA

19 <sup>7</sup>Department of Obstetrics and Gynecology, Ochsner Health, New Orleans, LA

20 <sup>8</sup>Department of Obstetrics and Gynecology, Oregon Health & Science University, Portland, OR

21 <sup>9</sup>Department of Obstetrics and Gynecology, University of Colorado School of Medicine, Aurora, CO

22 <sup>10</sup>Department of Obstetrics and Gynecology, ChristianaCare Health System, Wilmington DE

23 <sup>11</sup>Regional Obstetrical Consultants, Chattanooga, TN; Department of Obstetrics & Gynecology,  
24 University of Tennessee Health Science Center and College of Medicine, Chattanooga, TN

25 <sup>12</sup>Sera Prognostics, Inc., Salt Lake City, UT

26

27 **\*Corresponding Author**

28 Louise C. LAURENT, MD, PhD

29 Professor

30 Co-Chair, Center for OB/GYN Research Innovation

31 Department of Obstetrics, Gynecology, and Reproductive Sciences

32 Division of Maternal Fetal Medicine

33 The Sanford Consortium for Regenerative Medicine

34 University of California, San Diego

35 2880 Torrey Pines Scenic Dr.

36 La Jolla, CA 92037-0695

37 Phone: 858-246-1405

38 FAX: 858-534-8329

39 [llaurent@ucsd.edu](mailto:llaurent@ucsd.edu)

40

41 **Financial support**

42 Financial support for the study was provided by Sera Prognostics, Inc. The sponsor funded the study,

43 generated biomarker data and discovered and blindly validated the predictors.

44

45 **Short title**

46 Proteomic biomarker risk predictors for preterm preeclampsia

47

48 **Acknowledgments**

49 Study funding was provided by Sera Prognostics, Inc. Jennifer Logan, PhD, an employee of Sera  
50 Prognostics, Inc., contributed to the writing of this article. Babak Shahbaba, PhD (University of California  
51 Irvine), conducted independent validation hypothesis testing. The authors wish to acknowledge the  
52 following co-investigators on the original PAPR and/or TREETOP studies: Kim A. Boggess, MD (University  
53 of North Carolina School of Medicine); Dean V. Coonrod, MD (University of Arizona College of Medicine);  
54 Larry M. Cousins, MD (San Diego Perinatal Center; Rady Children’s Specialists of San Diego); Amy H.  
55 Crockett, MD (University of South Carolina School of Medicine Greenville and Prisma Health-Upstate);  
56 M. Sean Esplin, MD (Intermountain Healthcare); William A. Grobman, MD, MBA (The Ohio State  
57 University Wexner Medical Center); David M. Haas, MD (Indiana University School of Medicine); Angela  
58 F. Hawk, MD (Regional Obstetrical Consultants); Jay D. Iams, MD (The Ohio State University Wexner  
59 Medical Center); Carol A. Major, MD (University of California Irvine School of Medicine); Scott A.  
60 Sullivan, MD (Medical University of South Carolina); and Sarahn M. Wheeler, MD (Duke University  
61 School of Medicine). The authors also thank the study coordinators and research personnel at the study  
62 sites, the clinical study participants, and the Sera Prognostics, Inc. research and development, clinical  
63 laboratory and clinical operations teams.

64

65 **Preprint**

66 A preprint of this manuscript has been posted at

67 <https://www.medrxiv.org/content/10.1101/2022.12.21.22282936>.

68

69 **Manuscript word count: 3372**

70 **Clinical validation of novel second-trimester preterm preeclampsia risk predictors combining clinical**  
71 **variables and serum protein biomarkers**

72

73 **Précis**

74 Combining novel serum protein biomarkers and selected clinical variables for preterm preeclampsia  
75 prediction outperforms widely used clinical risk assessment algorithms currently recommended by  
76 practice guidelines.

77

78 **Abstract**

79 *Objective*

80 To develop and validate mid-trimester preterm preeclampsia (PE) risk predictors combining clinical  
81 factors and serum protein analytes, and to compare their performance with those of widely used clinical  
82 and risk assessment algorithms endorsed by professional societies.

83

84 *Methods*

85 This was a secondary analysis of data from two large, multicenter studies in pregnant individuals (PAPR,  
86 NCT01371019; TREETOP, NCT02787213), originally conducted to discover, verify, and validate a serum  
87 proteomic predictor of preterm birth risk. Serum protein abundances were determined by mass  
88 spectrometry. Classifier models combined one or two novel protein ratio(s) with a composite clinical  
89 variable, denoted as ClinRisk3, which included prior PE, pre-existing hypertension, or pregestational  
90 diabetes. Predictive performance was assessed for the full validation cohort and for a subset that had  
91 early gestational age (GA) dating via ultrasound. Classifier performance was compared directly to the  
92 U.S. Preventive Services Task Force (USPSTF) algorithm for identification of pregnancies that should  
93 receive low-dose aspirin (LDASA) for PE prevention.

94

95 *Results*

96 Nine of nine prespecified classifier models were validated for risk of preterm PE with delivery <37  
97 weeks' gestation. Areas under the receiver operating characteristic curve ranged from 0.72-0.78 in the  
98 full validation cohort, compared to 0.68 for both ClinRisk3 alone and for the USPSTF algorithm. In the  
99 early GA dating subcohort, an exemplar predictor, ClinRisk3 + inhibin subunit beta C chain/sex hormone  
100 binding globulin (ClinRisk3+INHBC/SHBG) showed a markedly lower screen positive rate (11.1% vs  
101 43.3%) and higher positive predictive value (13.0% vs 5.0%) and odds ratio (9.93 vs 5.24) than USPSTF.  
102 Its performance was similar in nulliparas and all parities.

103

104 *Conclusion*

105 Nine preterm PE risk predictors were identified, validated in an independent cohort, and shown to be  
106 more predictive than the USPSTF-endorsed algorithm. Our results indicate that a single blood test  
107 performed in the first half of pregnancy can be used for personalized PE risk assessment, particularly for  
108 pregnancies with minimal or no identified clinical risk factors, including nulliparas. Results can be used to  
109 guide personalized pregnancy management, including but not restricted to LDASA for PE prophylaxis,  
110 and serve as a basis for developing new prevention strategies.

111

112 *Funding Source*

113 Sera Prognostics, Inc.

## 114 **Introduction**

115 Preeclampsia (PE) occurs in ~5-7% of pregnancies<sup>1</sup> and is implicated in 14% of maternal<sup>2</sup> and 10-25% of  
116 perinatal<sup>3</sup> deaths. It is associated with approximately one-quarter of all preterm births (PTBs) and 50%  
117 of medically indicated PTBs.<sup>4</sup> The only cure for PE is delivery, with other therapies focused on preventing  
118 or delaying onset (low-dose aspirin [LDASA]),<sup>5</sup> preventing end-organ damage (antihypertensive  
119 medications to prevent strokes<sup>6</sup> and magnesium sulfate to prevent seizures),<sup>7</sup> and reducing neonatal  
120 complications of prematurity (antenatal steroids).<sup>7</sup> Because PE-associated perinatal morbidity and  
121 mortality and healthcare costs correlate with prematurity,<sup>8,9</sup> accurate prediction of preterm PE  
122 (gestational age [GA] at delivery [GAD] <37 weeks) is of greater clinical and economic value than  
123 prediction of term PE.

124       Until recently, PE prediction relied largely on clinical risk factors, including: PE in a previous  
125 pregnancy; high body mass index (BMI); maternal chronic hypertension, diabetes, renal disease, and  
126 autoimmune conditions; and obstetric characteristics such as multiple gestation and use of assisted  
127 reproductive technologies.<sup>7</sup> PE and gestational hypertension in a previous pregnancy are among the  
128 most predictive and commonly used risk factors but are irrelevant in nulliparous pregnancies.

129       Numerous PE-associated molecular biomarkers have been reported,<sup>10-13</sup> including soluble fms-  
130 like tyrosine kinase 1 (sFlt-1) and placental growth factor (PlGF). In patients with clinically suspected PE,  
131 sFlt-1 and PlGF measurement enables earlier diagnosis and/or modestly decreases adverse maternal  
132 outcomes.<sup>14,15</sup> but do not adequately predict PE risk in asymptomatic pregnancies. Strategies  
133 incorporating combinations of serum analytes, patient history, blood pressure, and uterine artery  
134 pulsatility index accurately predict PE risk in asymptomatic pregnancies but are not widely used, as they  
135 require sophisticated equipment with trained sonographers along with molecular analyses.<sup>16,17</sup> Also,  
136 sFlt-1 and PlGF clinical studies have focused on late-onset PE; included only cases conforming to classical  
137 definitions; or grouped PE cases across all GAs and/or severities together. Since PE is highly

138 heterogeneous,<sup>18,19</sup> biomarker studies should at minimum assess performance for early-onset and late-  
139 onset cases separately.<sup>8,20,21</sup>

140 There is an urgent need for an accurate, safe, and practical predictor for preterm PE, particularly  
141 for nulliparas. A predictor with good AUC (>0.70), sensitivity (>50%), and PPV (>5%) at a reasonably low  
142 screen positive rate (SPR) (<15%) would markedly improve identification of high-risk pregnancies for  
143 LDASA prophylaxis, increased surveillance, and research studies compared to current clinical paradigms,  
144 while a high negative predictive value (NPV; >99%) would enable low-risk patients to safely forgo or  
145 discontinue unnecessary interventions. This study aimed to develop and validate a mid-trimester  
146 predictor comprising molecular biomarkers and relevant clinical factors across demographically,  
147 geographically, and temporally diverse populations, comparing predictive performance to that of  
148 currently used risk assessment paradigms.

149

## 150 **Methods**

151 Biomarker development was based on U.S. National Academy of Medicine guidelines.<sup>22</sup> This was a  
152 secondary analysis, using data from two large, multicenter U.S. cohort studies, conducted to discover,  
153 verify, and validate risk predictors for preterm PE. The Proteomic Assessment of Preterm Risk (PAPR,  
154 NCT01371019)<sup>23</sup> and the Multicenter Assessment of a Spontaneous Preterm Birth Risk Predictor  
155 (TREETOP, NCT02787213)<sup>24</sup> studies were prospective, observational studies conducted to develop a  
156 maternal serum-based proteomic biomarker for PTB risk stratification. Study approvals were provided  
157 by site IRBs, and participants provided written informed consent.

158 PAPR and TREETOP enrolled gravidas  $\geq 18$  years of age with singleton pregnancies from 17<sup>0/7</sup>-  
159 28<sup>6/7</sup> or 17<sup>0/7</sup>-21<sup>6/7</sup> weeks' gestation, respectively, and excluded pregnancies with planned delivery <37<sup>0/7</sup>-  
160 weeks' gestation, major anomalies or chromosomal disorders, or planned cervical cerclage. GA was  
161 determined according to ACOG criteria<sup>25,26</sup>. In TREETOP, progesterone use after 13<sup>6/7</sup> weeks' gestation

162 was an exclusion criterion. Demographic, medical and pregnancy history, medication, and post-delivery  
163 maternal and infant outcome information was collected. No attempt was made to control for LDASA use  
164 in these studies. Adjudication of PE and PTB cases was blinded, occurring prior to database lockdown  
165 and analyses.

166 Discovery was performed in a PAPR-derived cohort that was distinct from the TREETOP-derived  
167 verification and validation cohorts (**Fig. 1**). The discovery and verification/validation cohorts included  
168 blood samples drawn 18<sup>0/7</sup>-22<sup>6/7</sup> and 18<sup>0/7</sup>-20<sup>6/7</sup> weeks' gestation, respectively. The discovery cohort  
169 used a broader GA at blood draw (GABD) window to increase sample size. TREETOP subjects enrolled  
170 before April 18, 2018 were randomly assigned by an independent third-party statistician to blinded  
171 verification (one-third) or validation (two-thirds) cohorts.<sup>24</sup> The validation cohort also included six  
172 months of later enrollment at four additional sites not represented in the verification cohort. Cases were  
173 defined as subjects with PE who delivered <37 weeks' gestation, and controls were defined as noncases,  
174 inclusive of term PE and sPTB.

175 Maternal blood was collected, processed and stored as described previously.<sup>23,24</sup> Serum samples  
176 were depleted of abundant proteins, reduced, alkylated, and digested with trypsin. Stable isotope  
177 standard (SIS) peptides were added post-digest, and peptides were analyzed by a liquid  
178 chromatography-multiple reaction monitoring mass spectrometry assay.<sup>23,27</sup> Quantification was based  
179 on peptide response ratios, wherein the area of each endogenous peptide was divided by that of its  
180 corresponding SIS. Sample batches were required to meet quality control metrics.

181 Biomarker measurements were made for 77 proteins, comprising those enriched for pathways  
182 relevant to pregnancy conditions and quality control proteins. Proteins for building classifier models  
183 were prefiltered using analytical performance criteria, including mass spectrometry peak area cutoffs,  
184 coefficients of variance from replicate quality control samples, and preanalytic stability. Simple models  
185 were then constructed to avoid overfitting and to leverage protein ratios for normalizing and amplifying



186 predictive signals<sup>23</sup>. Models included one novel two-protein ratio and a composite clinical variable.  
187 Based on strong predictive performance in nulliparous individuals, the log ratio of insulin-like growth  
188 factor-binding protein 4 (IBP4) to sex hormone-binding globulin (SHBG) was included in models as a  
189 second two-protein ratio unless SHBG was part of the novel ratio. Among many clinical factors specified  
190 in current practice guidelines,<sup>7,28-32</sup> three (PE in a previous pregnancy, pre-existing hypertension, and  
191 pregestational diabetes) were selected and combined into one variable (ClinRisk3), which was deemed  
192 positive if any was true for the subject. This simple, fixed approach reduced overfitting, leveraged prior  
193 biomarker knowledge, and produced classifiers that followed two model structures:

- 194 1.  $A_1 * \log(\text{IBP4}/\text{SHBG}) + A_2 * \text{ClinRisk3} + A_3 * \log(X/Y)$  or
- 195 2.  $A_1 * \text{ClinRisk3} + A_2 * \log(X/\text{SHBG})$

196 where X and Y are protein analytes, identified herein by Uniprot name without species identifier. Model  
197 coefficients  $A_i$  were fit using logistic regression.

198 In discovery, models were ranked by a combination of area under the receiver operating  
199 characteristic curve (AUC) and correlation with GAD amongst preeclamptic subjects. Candidate models  
200 ascertained in discovery were confirmed and tuned in verification to account for temporal changes in  
201 care and population, then validated by an independent third-party statistician. Each classifier was  
202 initially validated using AUC, then *P*-value, for three score thresholds distinguishing higher from lower  
203 risk. Thresholds were predefined based on discovery performance to allow for sensitivity and specificity  
204 tradeoffs and to enable use in varied clinical settings.

205 Previously we showed that for prediction of spontaneous PTB using protein biomarkers, better  
206 estimation of test performance is obtained in more precisely GA-dated individuals.<sup>33</sup> Since crown-rump  
207 length is more precise when determined prior to 9<sup>0/7</sup> weeks' gestation,<sup>26</sup> post-validation performance  
208 metrics were calculated on a sub-cohort comprised of subjects dated by ultrasound prior to 9<sup>0/7</sup>-weeks'  
209 gestation (early GA dating). Performance metrics were calculated for GA cutoffs of <37 and <34 weeks in

210 all subjects and in nulliparous individuals. PE prevalence was calculated on the TREETOP validation  
211 cohort and was consistent with the broader U.S. population, as represented by National Vital Statistics  
212 System (NVSS) reporting<sup>34</sup> and Lisonkova et al. (2013)<sup>8</sup> (e.g., for PE <34 weeks: TREETOP, 1.13%;  
213 Lisonkova, 1.24%;  $P=0.78$ ).

214 Guidelines<sup>35</sup> set by the U.S. Preventive Services Task Force (USPSTF) for PE clinical risk factor  
215 assessment were compared to the biomarker-driven model. The TREETOP validation dataset contained  
216 most USPSTF-prescribed clinical risk factors, including prior history of preeclampsia, chronic  
217 hypertension, type 1 or type 2 diabetes, kidney disease, multi-gestational birth, elevated pre-pregnancy  
218 body mass index, instances of nulliparous births, and maternal African American heritage (attributed to  
219 socioeconomic factors). Using these variables, a classifier was developed to approximate the USPSTF risk  
220 assessment and compare its performance with biomarker-driven models using the same predefined  
221 benchmarks.

222 Analyses were conducted according to prespecified protocols. Laboratory personnel and  
223 statisticians were blinded to clinical data. Data linked to classifier scores were analyzed by an  
224 independent third-party statistician. Type I error was controlled by fixed sequence hypothesis  
225 testing.<sup>36,37</sup> The sample size of the validation sub-cohort was shown to have 84% power at 5% alpha to  
226 detect by Fisher's exact test an enrichment of spontaneous PTB cases above a predictor score threshold  
227 associated with two-fold increased risk.<sup>38</sup> For the purpose of validating preterm PE classifiers, this sub-  
228 cohort was estimated to show >90% power at 5% alpha to detect by regression test a significant  
229 enrichment above a 75% sensitivity threshold. At such a threshold, the sub-cohort sample size was  
230 estimated to produce a 95% CI width for sensitivity of <25% and for specificity of <5%.

231 Unless otherwise specified, all statistical tests were 2-tailed at significance <0.05 and performed  
232 in R v3.5.1 or higher.<sup>39</sup> Count differences in categorical variables were assessed using the chi-squared  
233 test, and median differences in continuous variables were assessed with the Wilcoxon test.<sup>40</sup>

234 Comparison across cohorts was performed using the Kruskal-Wallis test. Overall predictive performance  
235 was assessed via AUC with direction of effect prespecified, significance assessed with a 1-sided Wilcoxon  
236 test, and confidence intervals (CI) calculated using DeLong's method.<sup>41</sup> Clinical validity was assessed  
237 using predictive performance and statistically significant stratification of preterm PE subjects above vs  
238 below threshold scores. Following validation, sensitivity, specificity, PPV, NPV, SPR, likelihood ratios  
239 (LR+/-), and odds ratios (OR) were calculated for preterm PE (GAD <37 weeks), and early preterm PE  
240 (GAD <34 weeks) for the entire validation cohort (all parities) and for nulliparas only. Calculation of  
241 prevalence-dependent predictor performance used the prevalence of the analysed outcome in the  
242 entire TREETOP-based validation cohort, as well as the early GA dating subset.

243

## 244 **Results**

245 Characteristics of the discovery, verification, and validation cohorts are summarized in **Table 1** and **Fig.**  
246 **1**. Subjects delivering with preterm PE were more likely than controls to have higher BMI, prior PE,  
247 chronic hypertension, pregestational diabetes, and longer neonatal hospital stays. GABD showed no  
248 significant difference between cases and controls in any cohort.

249 No significant differences were seen across cohorts for chronic hypertension and pregestational  
250 diabetes, but prior PE was increased among validation cohort controls (**Appendix 1**). There were also  
251 significant differences between cohorts in race, ethnicity, parity, educational attainment, maternal age,  
252 BMI, and GAD. Despite both case/control and cohort differences, regression analysis showed that  
253 maternal age and BMI did not contribute independently to preterm PE risk. The significant difference in  
254 GABD reflected the broader collection window in the discovery cohort.

255 Nine of nine classifiers ascertained in discovery showed acceptable predictive performance in  
256 verification for risk of preterm PE with GAD <37 weeks. In validation, all nine exhibited significant AUCs  
257 (0.72-0.78) for preterm PE risk prediction, significant risk stratification at three threshold scores, and

258 significant Pearson correlations between predictor score and GAD among individuals with PE (**Appendix**  
259 **2**). ClinRisk3 alone exhibited an AUC of 0.68 for preterm PE, falling below the lower 95% CI of most of  
260 the validated combined classifiers. **Fig. 2** shows ROC curves for the predictor with the largest AUC (0.78),  
261 ClinRisk3 + inhibin beta c chain/SHBG (ClinRisk3+INHBC/SHBG), in the full validation cohort for (A) all  
262 parity and (B) nulliparas.

263 For prediction of preterm PE <37 weeks' gestation in gravidas with any parity or nulliparas,  
264 **Table 2** details ClinRisk3+INHBC/SHBG performance for validation cohort subjects with early GA dating,  
265 and **Appendix 3** shows its performance in the full validation cohort. In the early GA dating sub-cohort,  
266 setting the ClinRisk3+INHBC/SHBG cutoff to achieve a specificity of at least 90%, the sensitivity for  
267 prediction of preterm PE with GAD <37 weeks for all parities was 51.7%, with a SPR 11.1%, PPV 13.0%,  
268 NPV 98.5%, and OR 9.93; the performance for nulliparas was extremely similar, with the exception of a  
269 lower PPV (6.9%) and higher NPV (99.8%). We also applied USPSTF clinical practice guidelines<sup>35</sup> to our  
270 validation cohort – either the entire validation cohort (**Appendix 3**) or the sub-cohort with early GA  
271 dating (**Table 2**). In these comparisons, predictive performance for the combination of ClinRisk3 and  
272 INHBC/SHBG was superior to that of USPSTF guidelines.

273

## 274 **Discussion**

275 Nine classifier models predictive of preterm PE risk were validated, with ClinRisk3+INHBC/SHBG showing  
276 the best overall performance. Requiring simplicity (one or two bivariate protein biomarkers and a  
277 composite clinical variable) and using large, diverse, and temporally divergent cohorts mitigated  
278 overfitting and enabled validation in an independent population. Three clinical features that differed  
279 significantly between cases and controls in the discovery cohort (prior PE, pre-existing hypertension, and  
280 pregestational diabetes) comprised the composite clinical variable. A fourth, BMI, was excluded as it did  
281 not contribute independently to preterm PE risk, perhaps due to strong associations between BMI and

282 both diabetes and SHBG.<sup>42,43</sup> Emphasizing strong predictive performance in both nulliparous and  
283 multiparous pregnancies during discovery ensures broad applicability. In the two source cohorts, Black  
284 (17.8-19.0%) and Hispanic (37.3-41.2%) subjects were represented at proportions higher than those in  
285 the general U.S. birthing population (14.1-15.2% Black; 23.7-24.2% Hispanic),<sup>44,45</sup> ensuring  
286 generalizability.

287         Inhibin and activin, members of the transforming growth factor beta (TGF $\beta$ ) family, are  
288 dysregulated in pregnancy disorders. Elevated maternal serum Inhibin A was first reported as a  
289 biomarker of fetal aneuploidy<sup>46</sup> but is also associated with PE,<sup>47,48</sup> including preclinical PE.<sup>49</sup> However,  
290 Inhibin A, alone or in combination with other aneuploidy and fetal anomaly biomarkers, demonstrates  
291 insufficient predictive performance for clinical use.<sup>50,51</sup> INHBC, a less well-characterized inhibin family  
292 member comprised of activin C homodimers, was recently reported to function through activin  
293 receptor-like kinase 7 (ALK7), which participates in angiogenesis, cytokine activity, hormone signaling,  
294 and embryonic development.<sup>52</sup> Expressed in villous and extravillous trophoblasts, ALK7 is dysregulated  
295 in placentas from individuals with PE<sup>53</sup> and is a mediator of hypoxia-induced impairment trophoblast  
296 invasion.<sup>54</sup> A potential role for INHBC in extravillous trophoblast development and function may help  
297 explain its predictive value for preterm PE (**Fig. 3**).

298         SHBG regulates biologically active free steroid hormone levels,<sup>55</sup> increases up to 10-fold in the  
299 maternal circulation during pregnancy, and is expressed by placental trophoblasts.<sup>55,56</sup> SHBG  
300 transcription is suppressed by pro-inflammatory cytokines, such as tumor necrosis factor-alpha (TNF-  
301  $\alpha$ ),<sup>57</sup> which is relevant because inflammation, along with increased placental<sup>58</sup> and circulating<sup>59</sup> TNF- $\alpha$ , is  
302 associated with PE (**Fig. 3**). Dysregulation of maternal circulating SHBG in PE has been reported by  
303 some<sup>60</sup> and disputed by others<sup>61-65</sup>, perhaps due to variability in PE phenotype and GABD among studies.  
304 Even in studies associating SHBG with PE, its predictive performance is poor.<sup>60</sup> In non-pregnant adults,  
305 low serum SHBG has been associated with insulin resistance,<sup>66</sup> Type 2 diabetes,<sup>67</sup> and endothelial

306 dysfunction.<sup>68</sup> In one study, gravidas with low first-trimester SHBG and PIGF were at highest risk of  
307 developing PE, leading authors to conclude that dysregulated angiogenesis and insulin resistance  
308 exerted additive effects on PE risk.<sup>66</sup> Similarly, these results suggest that SHBG is an independent PE risk  
309 predictor due to potential effects on insulin resistance and endothelial function, and predictive  
310 performance improves markedly when combined with an angiogenic factor such as INHBC.

311         Since the validated ClinRisk3+INHBC/SHBG predictor makes early risk assessment possible for  
312 preterm PE (<37 weeks) in a given pregnancy for any parity, it can enable individualized clinical  
313 management. Individuals at higher risk can be assigned to increased surveillance (e.g., more frequent  
314 antenatal visits, home blood pressure monitoring) for early detection of PE and associated  
315 complications, along with nutritional modification, exercise coaching, and other interventions,<sup>69</sup> while  
316 those at lower risk can safely avoid unnecessary interventions. Determining whether our predictors will  
317 be useful for decision-making regarding LDASA prophylaxis requires more study, to establish LDASA  
318 efficacy among patients for whom guideline criteria and the predictors produce discordant risk  
319 assessments.

320         ClinRisk3+INHBC/SHBG provided excellent stratification of subjects at elevated risk for early-  
321 onset preterm PE (diagnosis <34 weeks' GA), an outcome with a large clinical burden and unmet need.  
322 ACOG recommends delivery for PE diagnosed  $\geq$ 34 weeks' GA and expectant management with close  
323 observation for those diagnosed earlier.<sup>7</sup> Clark et al. (2023)<sup>70</sup> recently recommended changes to  
324 classification of different PE subtypes to better reflect the type and degree of associated organ  
325 dysfunction. We acknowledge that, if adopted, such recommendations may alter clinical decision-  
326 making relevant to timing of delivery for PE. In addition, new prevention or treatment strategies may be  
327 developed. Any of these developments may require us to reassess predictor performance in the  
328 appropriate contexts.

329 Clinical practice guidelines include expectations for test performance, including high PPV, to  
330 limit overtreatment.<sup>7</sup> However, PPV is impacted by a condition's prevalence. This study validated  
331 predictive algorithms for preterm PE, a clinically important yet low-prevalence PE phenotype, in a cohort  
332 with a PE rate similar to the overall U.S. prevalence (2.7% preterm PE, 7.7% all PE). This contrasts with a  
333 recent RNA biomarker study<sup>71</sup> that interrogated PE at any GA in a high-risk population (PE rate of  
334 13.6%), which reported a sensitivity of 75.0% and a PPV of 32.3%. We chose to establish a threshold at  
335 approximately a 10% false positive rate (FPR), as this is a common practice that helps to avoid  
336 overtreatment. It is also common to establish a threshold that results in 10% of a population being  
337 screen positive. As our 10% thresholds result in approximately an 11-12% SPR, the performance  
338 estimates provided here apply generally for both approaches.

339 Importantly, according to the current standard of care, PE risk is assessed using a range of  
340 clinical algorithms. Specifically, in a large Danish mixed parity cohort, National Institute of Health and  
341 Care Excellence (NICE) guidelines<sup>28</sup> had a sensitivity of 47%, PPV of 5.4%, and NPV of 99.6% at a SPR of  
342 8.1%, while American College of Obstetrics and Gynecology (ACOG) guidelines<sup>7</sup> had a sensitivity of  
343 60.5%, PPV of 5.6%, and NPV of 99.7% at a SPR of 18.2% for preterm preeclampsia <37 weeks' GA.<sup>72</sup> In  
344 our validation cohort, we applied USPSTF clinical practice guidelines, which yielded a sensitivity of  
345 79.3%, PPV of 5.0%, and NPV of 99.0% at a SPR of 43.4% for preterm preeclampsia <37 weeks' GA. The  
346 Fetal Medicine Foundation's (FMF) recommended a more involved screening algorithm<sup>73</sup>, including  
347 maternal risk factors, maternal mean arterial pressure, the uterine artery pulsatility index, and serum  
348 PLGF, which has a reported 79.9% sensitivity, 4.4% PPV, and 99.8% NPV at a SPR of 14.7% for all parities,  
349 and 79.0% sensitivity, 3.8% PPV, and 99.8% NPV at a SPR of 19.2% for nulliparas, for preterm PE.<sup>74</sup>

350 Consisting of straightforward measurement of 2 proteins in a single blood sample combined  
351 with easily ascertained clinical factors, the performance of ClinRisk3+INHBC/SHBG in the total validation  
352 cohort (sensitivity 51.7%, PPV of 13.0%, and NPV of 98.5% at a SPR of 11.1%) and specifically in

353 nulliparas (sensitivity 53.3%, PPV of 6.9%, and NPV of 99.8% at a SPR of 11.7%) is superior to standard-  
354 of-care clinical risk assessment approaches endorsed by NICE, ACOG, and USPSTF, and also compares  
355 favorably with the more burdensome approach endorsed by the FMF, which is comprised of not only  
356 clinical factors and a protein biomarker, but also uterine artery Doppler measurement, which is  
357 unfeasible for universal screening. ClinRisk3+INHBC/SHBG and the other predictors validated in this  
358 study can be used to select high-risk pregnancies for interventional studies of prophylactic or  
359 therapeutic agents. Determining whether preventive or therapeutic interventions alter biomarker levels  
360 in maternal serum is also of interest. Clinical application of a screening test is a two-step process: The  
361 first step, reported here, is validation of the biomarkers' predictive abilities. The second, demonstrating  
362 clinical utility – i.e., improved outcomes, cost effectiveness, and ease of implementation – requires  
363 additional work.

364 Strengths of the study include the large, diverse, and temporally distinct datasets used for  
365 discovery, verification, and validation. The composite clinical variable uses readily ascertained factors,  
366 and the biomarkers were prefiltered for excellent performance in ambient temperature sample  
367 transport conditions. These properties support practicality for clinical use. Limitations include the  
368 modest number of early preterm PE cases due to the low prevalence of the condition and a mid-  
369 trimester blood draw window (18<sup>0/7</sup>-22<sup>6/7</sup> weeks' GA) that falls within the guideline-recommended  
370 timeframe for LDASA initiation (12-28 week's GA, optimally <16 weeks' GA).<sup>7</sup>

371 In summary, nine mid-trimester preterm PE risk predictors, designed to assess both proteomic  
372 biomarkers and clinical risk factors from 18-20 weeks' gestation, demonstrated predictive ability  
373 superior to that of clinical factors alone. ClinRisk3+INHBC/SHBG includes biomarkers with functional  
374 relevance to pregnancy. All show promise for detecting risk of PE <34 weeks' GA and identifying pre-  
375 symptomatic individuals who can benefit from increased surveillance, LDASA prophylaxis, and future  
376 therapies.



377 **References**

- 378 1. Rana S, Lemoine E, Granger JP, Karumanchi SA. Preeclampsia: Pathophysiology, Challenges, and  
379 Perspectives. *Circ Res*. Mar 29 2019;124(7):1094-1112. doi:10.1161/CIRCRESAHA.118.313276
- 380 2. Say L, Chou D, Gemmill A, Tuncalp O, Moller AB, Daniels J, et al. Global causes of maternal  
381 death: a WHO systematic analysis. *Lancet Glob Health*. Jun 2014;2(6):e323-33. doi:10.1016/S2214-  
382 109X(14)70227-X
- 383 3. Vogel JP, Souza JP, Mori R, Morisaki N, Lumbiganon P, Laopaiboon M, et al. Maternal  
384 complications and perinatal mortality: findings of the World Health Organization Multicountry Survey on  
385 Maternal and Newborn Health. *BJOG*. Mar 2014;121 Suppl 1:76-88. doi:10.1111/1471-0528.12633
- 386 4. Ananth CV, Vintzileos AM. Medically indicated preterm birth: recognizing the importance of the  
387 problem. *Clin Perinatol*. Mar 2008;35(1):53-67, viii. doi:10.1016/j.clp.2007.11.001
- 388 5. Henderson JT, Vesco KK, Senger CA, Thomas RG, Redmond N. Aspirin Use to Prevent  
389 Preeclampsia and Related Morbidity and Mortality: Updated Evidence Report and Systematic Review for  
390 the US Preventive Services Task Force. *JAMA*. Sep 28 2021;326(12):1192-1206.  
391 doi:10.1001/jama.2021.8551
- 392 6. Chronic Hypertension in Pregnancy. ACOG Practice Bulletin No. 203. American College of  
393 Obstetricians and Gynecologists. *Obstet Gynecol*. Jan 2019;133(1)e26-  
394 e50.doi:10.1097/AOG.0000000000003020
- 395 7. Gestational Hypertension and Preeclampsia: ACOG Practice Bulletin, Number 222. American  
396 College of Obstetricians and Gynecologists. *Obstet Gynecol*. Jun 2020;135(6)e237-  
397 e260.doi:10.1097/AOG.0000000000003891
- 398 8. Lisonkova S, Joseph KS. Incidence of preeclampsia: risk factors and outcomes associated with  
399 early- versus late-onset disease. *Am J Obstet Gynecol*. Dec 2013;209(6):544 e1-544 e12.  
400 doi:10.1016/j.ajog.2013.08.019

- 401 9. Hao J, Hassen D, Hao Q, Graham J, Paglia MJ, Brown J, et al. Maternal and Infant Health Care  
402 Costs Related to Preeclampsia. *Obstet Gynecol*. Dec 2019;134(6):1227-1233.  
403 doi:10.1097/AOG.0000000000003581
- 404 10. Baumann MU, Bersinger NA, Surbek DV. Serum markers for predicting pre-eclampsia. *Mol*  
405 *Aspects Med*. Apr 2007;28(2):227-44. doi:10.1016/j.mam.2007.04.002
- 406 11. Bahado-Singh RO, Syngelaki A, Akolekar R, Mandal R, Bjondahl TC, Han B, et al. Validation of  
407 metabolomic models for prediction of early-onset preeclampsia. *Am J Obstet Gynecol*. Oct  
408 2015;213(4):530 e1-530 e10. doi:10.1016/j.ajog.2015.06.044
- 409 12. Koster MP, Vreeken RJ, Harms AC, Dane AD, Kuc S, Schielen PC, et al. First-Trimester Serum  
410 Acylcarnitine Levels to Predict Preeclampsia: A Metabolomics Approach. *Dis Markers*.  
411 2015;2015:857108. doi:10.1155/2015/857108
- 412 13. Srinivasan S, Treacy R, Herrero T, Olsen R, Leonardo TR, Zhang X, et al. Discovery and  
413 Verification of Extracellular miRNA Biomarkers for Non-invasive Prediction of Pre-eclampsia in  
414 Asymptomatic Women. *Cell Rep Med*. May 19 2020;1(2)doi:10.1016/j.xcrm.2020.100013
- 415 14. Zeisler H, Llorba E, Chantraine F, Vatish M, Staff AC, Sennstrom M, et al. Predictive Value of the  
416 sFlt-1:PIGF Ratio in Women with Suspected Preeclampsia. *N Engl J Med*. Jan 7 2016;374(1):13-22.  
417 doi:10.1056/NEJMoa1414838
- 418 15. Duhig KE, Myers J, Seed PT, Sparkes J, Lowe J, Hunter RM, et al. Placental growth factor testing  
419 to assess women with suspected pre-eclampsia: a multicentre, pragmatic, stepped-wedge cluster-  
420 randomised controlled trial. *Lancet*. May 4 2019;393(10183):1807-1818. doi:10.1016/S0140-  
421 6736(18)33212-4
- 422 16. Di Lorenzo G, Ceccarello M, Cecotti V, Ronfani L, Monasta L, Vecchi Brumatti L, et al. First  
423 trimester maternal serum PIGF, free  $\beta$ -hCG, PAPP-A, PP-13, uterine artery Doppler and maternal history

- 424 for the prediction of preeclampsia. *Placenta*. Jun 2012;33(6):495-501.  
425 doi:10.1016/j.placenta.2012.03.003
- 426 17. Poon LC, Syngelaki A, Akolekar R, Lai J, Nicolaides KH. Combined screening for preeclampsia and  
427 small for gestational age at 11-13 weeks. *Fetal Diagn Ther*. 2013;33(1):16-27. doi:10.1159/000341712
- 428 18. Leavey K, Benton SJ, Gynspan D, Kingdom JC, Bainbridge SA, Cox BJ. Unsupervised Placental  
429 Gene Expression Profiling Identifies Clinically Relevant Subclasses of Human Preeclampsia. *Hypertension*.  
430 Jul 2016;68(1):137-47. doi:10.1161/HYPERTENSIONAHA.116.07293
- 431 19. Roberts JM, Rich-Edwards JW, McElrath TF, Garmire L, Myatt L, Global Pregnancy C. Subtypes of  
432 Preeclampsia: Recognition and Determining Clinical Usefulness. *Hypertension*. May 5 2021;77(5):1430-  
433 1441. doi:10.1161/HYPERTENSIONAHA.120.14781
- 434 20. Robillard PY, Dekker G, Scioscia M, Saito S. Progress in the understanding of the pathophysiology  
435 of immunologic maladaptation related to early-onset preeclampsia and metabolic syndrome related to  
436 late-onset preeclampsia. *Am J Obstet Gynecol*. Feb 2022;226(2S):S867-S875.  
437 doi:10.1016/j.ajog.2021.11.019
- 438 21. Masini G, Foo LF, Tay J, Wilkinson IB, Valensise H, Gyselaers W, Lees CC. Preeclampsia has two  
439 phenotypes which require different treatment strategies. *Am J Obstet Gynecol*. Feb 2022;226(2S):S1006-  
440 S1018. doi:10.1016/j.ajog.2020.10.052
- 441 22. Committee on the Review of Omics-Based Tests for Predicting Patient Outcomes in Clinical  
442 Trials, Board on Health Care Services, Board on Health Sciences Policy, Institute of Medicine. In: Micheel  
443 CM, Nass SJ, Omenn GS, eds. *Evolution of Translational Omics: Lessons Learned and the Path Forward*.  
444 National Academies Press (US)  
445 Copyright 2012 by the National Academy of Sciences. All rights reserved.; 2012.

- 446 23. Saade GR, Boggess KA, Sullivan SA, Markenson GR, Iams JD, Coonrod DV, et al. Development and  
447 validation of a spontaneous preterm delivery predictor in asymptomatic women. *Am J Obstet Gynecol*.  
448 May 2016;214(5):633 e1-633 e24. doi:10.1016/j.ajog.2016.02.001
- 449 24. Markenson GR, Saade GR, Laurent LC, Heyborne KD, Coonrod DV, Schoen CN, et al. Performance  
450 of a proteomic preterm delivery predictor in a large independent prospective cohort. *Am J Obstet*  
451 *Gynecol MFM*. Aug 2020;2(3):100140. doi:10.1016/j.ajogmf.2020.100140
- 452 25. American College of Obstetricians and Gynecologists. Committee opinion no 611: method for  
453 estimating due date. *Obstet Gynecol*. Oct 2014;124(4):863-866.  
454 doi:10.1097/01.AOG.0000454932.15177.be
- 455 26. Methods for Estimating the Due Date. Committee Opinion No 700 American College of  
456 Obstetricians and Gynecologists. *Obstet Gynecol*. May 2017;129(5)e150-  
457 e154.doi:10.1097/AOG.0000000000002046
- 458 27. Bradford C, Severinsen R, Pugmire T, Rasmussen M, Stoddard K, Uemura Y, et al. Analytical  
459 validation of protein biomarkers for risk of spontaneous preterm birth. *Clinical Mass Spectrometry*.  
460 2017/01/01/ 2017;3:25-38. doi:10.1016/j.clinms.2017.06.002
- 461 28. National Institute for Health and Care Excellence (NICE). Hypertension in pregnancy: diagnosis  
462 and management (NICE Guideline, NG 133). Accessed November 22, 2022,  
463 <https://www.ncbi.nlm.nih.gov/books/NBK546004/>
- 464 29. Lowe SA, Bowyer L, Lust K, McMahon LP, Morton M, North RA, et al. SOMANZ guidelines for the  
465 management of hypertensive disorders of pregnancy 2014. *Aust N Z J Obstet Gynaecol*. Oct  
466 2015;55(5):e1-29. doi:10.1111/ajo.12399
- 467 30. Magee LA, Smith GN, Bloch C, Cote AM, Jain V, Nerenberg K, et al. Guideline No. 426:  
468 Hypertensive Disorders of Pregnancy: Diagnosis, Prediction, Prevention, and Management. *J Obstet*  
469 *Gynaecol Can*. May 2022;44(5):547-571 e1. doi:10.1016/j.jogc.2022.03.002

- 470 31. World Health Organization. *WHO Recommendations for Prevention and Treatment of Pre-*  
471 *Eclampsia and Eclampsia*. Geneva: World Health Organization; 2011.
- 472 32. Brown MA, Magee LA, Kenny LC, Karumanchi SA, McCarthy FP, Saito S, et al. Hypertensive  
473 Disorders of Pregnancy: ISSHP Classification, Diagnosis, and Management Recommendations for  
474 International Practice. *Hypertension*. Jul 2018;72(1):24-43. doi:10.1161/HYPERTENSIONAHA.117.10803
- 475 33. Burchard J, Saade GR, Boggess KA, Markenson GR, Iams JD, Coonrod DV, et al. Better Estimation  
476 of Spontaneous Preterm Birth Prediction Performance through Improved Gestational Age Dating. *J Clin*  
477 *Med*. May 19 2022;11(10)doi:10.3390/jcm11102885
- 478 34. Osterman MJK, Hamilton BE, Martin JA, Driscoll AK, Valenzuela CP. Births: Final Data for 2021.  
479 *Natl Vital Stat Rep*. Jan 2023;72(1):1-53.
- 480 35. Bibbins-Domingo K, Grossman DC, Curry SJ, Barry MJ, Davidson KW, Doubeni CA, et al. Screening  
481 for Preeclampsia: US Preventive Services Task Force Recommendation Statement. *Jama*. Apr 25  
482 2017;317(16):1661-1667. doi:10.1001/jama.2017.3439
- 483 36. Dmitrienko A, Tamhane A, Bretz F, eds. *Multiple Testing Problems in Pharmaceutical Statistics*.  
484 CRC Press; 2009.
- 485 37. Dmitrienko A, D'Agostino RB, Sr., Huque MF. Key multiplicity issues in clinical drug development.  
486 *Stat Med*. Mar 30 2013;32(7):1079-1111. doi:10.1002/sim.5642
- 487 38. Burchard J, Polpitiya AD, Fox AC, Randolph TL, Fleischer TC, Dufford MT, et al. Clinical Validation  
488 of a Proteomic Biomarker Threshold for Increased Risk of Spontaneous Preterm Birth and Associated  
489 Clinical Outcomes: A Replication Study. *J Clin Med*. Oct 29 2021;10(21):5088. doi:10.3390/jcm10215088
- 490 39. R Foundation. The R Project for Statistical Computing. Accessed August 1, 2022, [https://www.r-](https://www.r-project.org/)  
491 [project.org/](https://www.r-project.org/)

- 492 40. Yoshida K, Bartel A. tableone: Create 'Table 1' to Describe Baseline Characteristics with or  
493 without Propensity Score Weights; R package version 0.13.2. Accessed November 21, 2022,  
494 <https://cran.r-project.org/web/packages/tableone/index.html>
- 495 41. DeLong ER, DeLong DM, Clarke-Pearson DL. Comparing the areas under two or more correlated  
496 receiver operating characteristic curves: a nonparametric approach. *Biometrics*. Sep 1988;44(3):837-45.
- 497 42. Cooper LA, Page ST, Amory JK, Anawalt BD, Matsumoto AM. The association of obesity with sex  
498 hormone-binding globulin is stronger than the association with ageing--implications for the  
499 interpretation of total testosterone measurements. *Clin Endocrinol (Oxf)*. Dec 2015;83(6):828-33.  
500 doi:10.1111/cen.12768
- 501 43. Birkebaek NH, Lange A, Holland-Fischer P, Kristensen K, Rittig S, Vilstrup H, et al. Effect of weight  
502 reduction on insulin sensitivity, sex hormone-binding globulin, sex hormones and gonadotrophins in  
503 obese children. *Eur J Endocrinol*. Dec 2010;163(6):895-900. doi:10.1530/EJE-10-0538
- 504 44. Osterman MJK, Hamilton BE, Martin, J.A., Driscoll AKV, C.P. Births: Final Data for 2020. Division  
505 of Vital Statistics, National Center for Health Statistics, U.S. Centers for Disease Control and Prevention.  
506 Updated 2022 Feb 7. Accessed February 9, 2022, <https://www.cdc.gov/nchs/nvss/births.htm>
- 507 45. March of Dimes Peristats. Births. Accessed July 1, 2023,  
508 <https://www.marchofdimes.org/peristats/data?reg=99&top=2&stop=10&lev=1&slev=1&obj=3>
- 509 46. Aitken DA, Wallace EM, Crossley JA, Swanston IA, van Pareren Y, van Maarle M, et al. Dimeric  
510 inhibin A as a marker for Down's syndrome in early pregnancy. *N Engl J Med*. May 9 1996;334(19):1231-  
511 6. doi:10.1056/NEJM199605093341904
- 512 47. Muttukrishna S, Knight PG, Groome NP, Redman CW, Ledger WL. Activin A and inhibin A as  
513 possible endocrine markers for pre-eclampsia. *Lancet*. May 3 1997;349(9061):1285-8.  
514 doi:10.1016/s0140-6736(96)09264-1

- 515 48. Fraser RF, 2nd, McAsey ME, Coney P. Inhibin-A and pro-alpha C are elevated in preeclamptic  
516 pregnancy and correlate with human chorionic gonadotropin. *Am J Reprod Immunol*. Jul 1998;40(1):37-  
517 42. doi:10.1111/j.1600-0897.1998.tb00386.x
- 518 49. Muttukrishna S, North RA, Morris J, Schellenberg JC, Taylor RS, Asselin J, et al. Serum inhibin A  
519 and activin A are elevated prior to the onset of pre-eclampsia. *Hum Reprod*. Jul 2000;15(7):1640-5.  
520 doi:10.1093/humrep/15.7.1640
- 521 50. Morris RK, Cnossen JS, Langejans M, Robson SC, Kleijnen J, Ter Riet G, et al. Serum screening  
522 with Down's syndrome markers to predict pre-eclampsia and small for gestational age: systematic  
523 review and meta-analysis. *BMC Pregnancy Childbirth*. Aug 4 2008;8:33. doi:10.1186/1471-2393-8-33
- 524 51. Huang T, Bedford HM, Rashid S, Rasasakaram E, Priston M, Mak-Tam E, et al. Modified multiple  
525 marker aneuploidy screening as a primary screening test for preeclampsia. *BMC Pregnancy Childbirth*.  
526 Mar 8 2022;22(1):190. doi:10.1186/s12884-022-04514-4
- 527 52. Goebel EJ, Ongaro L, Kappes EC, Vestal K, Belcheva E, Castonguay R, et al. The orphan ligand,  
528 activin C, signals through activin receptor-like kinase 7. *Elife*. Jun 23 2022;11doi:10.7554/eLife.78197
- 529 53. Nadeem L, Munir S, Fu G, Dunk C, Baczyk D, Caniggia I, et al. Nodal signals through activin  
530 receptor-like kinase 7 to inhibit trophoblast migration and invasion: implication in the pathogenesis of  
531 preeclampsia. *Am J Pathol*. Mar 2011;178(3):1177-89. doi:10.1016/j.ajpath.2010.11.066
- 532 54. Hu M, Wang Y, Meng Y, Hu J, Qiao J, Zhen J, et al. Hypoxia induced-disruption of lncRNA  
533 TUG1/PRC2 interaction impairs human trophoblast invasion through epigenetically activating  
534 Nodal/ALK7 signalling. *J Cell Mol Med*. Jul 2022;26(14):4087-4100. doi:10.1111/jcmm.17450
- 535 55. Hammond GL. Diverse roles for sex hormone-binding globulin in reproduction. *Biol Reprod*. Sep  
536 2011;85(3):431-41. doi:10.1095/biolreprod.111.092593

- 537 56. Larrea F, Diaz L, Carino C, Larriva-Sahd J, Carrillo L, Orozco H, Ulloa-Aguirre A. Evidence that  
538 human placenta is a site of sex hormone-binding globulin gene expression. *J Steroid Biochem Mol Biol.*  
539 Oct 1993;46(4):497-505. doi:10.1016/0960-0760(93)90104-5
- 540 57. Simo R, Saez-Lopez C, Barbosa-Desongles A, Hernandez C, Selva DM. Novel insights in SHBG  
541 regulation and clinical implications. *Trends Endocrinol Metab.* Jul 2015;26(7):376-83.  
542 doi:10.1016/j.tem.2015.05.001
- 543 58. Rinehart BK, Terrone DA, Lagoo-Deenadayalan S, Barber WH, Hale EA, Martin JN, Jr., Bennett  
544 WA. Expression of the placental cytokines tumor necrosis factor alpha, interleukin 1beta, and interleukin  
545 10 is increased in preeclampsia. *Am J Obstet Gynecol.* Oct 1999;181(4):915-20. doi:10.1016/s0002-  
546 9378(99)70325-x
- 547 59. Conrad KP, Miles TM, Benyo DF. Circulating levels of immunoreactive cytokines in women with  
548 preeclampsia. *Am J Reprod Immunol.* Aug 1998;40(2):102-11. doi:10.1111/j.1600-0897.1998.tb00398.x
- 549 60. Yu CK, Papageorghiou AT, Bindra R, Spencer K, Nicolaidis KH. Second-trimester sex hormone-  
550 binding globulin and subsequent development of pre-eclampsia. *J Matern Fetal Neonatal Med.* Sep  
551 2004;16(3):158-62. doi:10.1080/14767050400013297
- 552 61. Nevalainen J, Korpimaki T, Kouru H, Sairanen M, Ryyanen M. Performance of first trimester  
553 biochemical markers and mean arterial pressure in prediction of early-onset pre-eclampsia. *Metabolism.*  
554 Oct 2017;75:6-15. doi:10.1016/j.metabol.2017.07.004
- 555 62. Sharifzadeh F, Kashanian M, Fatemi F. A comparison of serum androgens in pre-eclamptic and  
556 normotensive pregnant women during the third trimester of pregnancy. *Gynecol Endocrinol.* Oct  
557 2012;28(10):834-6. doi:10.3109/09513590.2012.683061
- 558 63. Tuutti EK, Hamalainen EK, Sainio SM, Hiilesmaa VK, Turpeinen UL, Alfthan HV, Stenman UH.  
559 Serum testosterone levels during early pregnancy in patients developing preeclampsia. *Scand J Clin Lab*  
560 *Invest.* Sep 2011;71(5):413-8. doi:10.3109/00365513.2011.580858



- 561 64. Sun L, Jin Z, Teng W, Chi X, Zhang Y, Ai W, Wang P. Expression changes of sex hormone binding  
562 globulin in GDM placental tissues. *J Perinat Med*. Nov 19 2011;40(2):129-35. doi:10.1515/JPM.2011.128
- 563 65. Anderson DC. Sex-hormone-binding globulin. *Clin Endocrinol (Oxf)*. Jan 1974;3(1):69-96.  
564 doi:10.1111/j.1365-2265.1974.tb03298.x
- 565 66. Thadhani R, Ecker JL, Mutter WP, Wolf M, Smirnakis KV, Sukhatme VP, et al. Insulin resistance  
566 and alterations in angiogenesis: additive insults that may lead to preeclampsia. *Hypertension*. May  
567 2004;43(5):988-92. doi:10.1161/01.HYP.0000124460.67539.1d
- 568 67. Wallace IR, McKinley MC, Bell PM, Hunter SJ. Sex hormone binding globulin and insulin  
569 resistance. *Clin Endocrinol (Oxf)*. Mar 2013;78(3):321-9. doi:10.1111/cen.12086
- 570 68. Maggio M, Cattabiani C, Lauretani F, Mantovani M, Butto V, De Vita F, et al. SHBG and  
571 endothelial function in older subjects. *Int J Cardiol*. Oct 3 2013;168(3):2825-30.  
572 doi:10.1016/j.ijcard.2013.03.083
- 573 69. Roberts JM, King TL, Barton JR, Beck S, Bernstein IM, Buck TE, et al. Care plan for individuals at  
574 risk for preeclampsia: shared approach to education, strategies for prevention, surveillance, and follow-  
575 up. *Am J Obstet Gynecol*. Sep 2023;229(3):193-213. doi:10.1016/j.ajog.2023.04.023
- 576 70. Clark SL, Saade GA, Tolcher MC, Belfort MA, Rouse DJ, Barton JR, et al. Gestational hypertension  
577 and "severe" disease: time for a change. *Am J Obstet Gynecol*. May 2023;228(5):547-552.  
578 doi:10.1016/j.ajog.2022.11.1280
- 579 71. Rasmussen M, Reddy M, Nolan R, Camunas-Soler J, Khodursky A, Scheller NM, et al. RNA profiles  
580 reveal signatures of future health and disease in pregnancy. *Nature*. Jan 2022;601(7893):422-427.  
581 doi:10.1038/s41586-021-04249-w
- 582 72. Rode L, Ekelund CK, Riishede I, Rasmussen S, Lidegaard O, Tabor A. Prediction of preterm pre-  
583 eclampsia according to NICE and ACOG criteria: descriptive study of 597 492 Danish births from 2008 to  
584 2017. *Ultrasound Obstet Gynecol*. Oct 2021;58(4):561-567. doi:10.1002/uog.23693

- 585 73. Chaemsaitong P, Sahota DS, Poon LC. First trimester preeclampsia screening and prediction.  
586 *Am J Obstet Gynecol.* Feb 2022;226(2S):S1071-S1097 e2. doi:10.1016/j.ajog.2020.07.020
- 587 74. Tan MY, Syngelaki A, Poon LC, Rolnik DL, O'Gorman N, Delgado JL, et al. Screening for pre-  
588 eclampsia by maternal factors and biomarkers at 11-13 weeks' gestation. *Ultrasound Obstet Gynecol.*  
589 Aug 2018;52(2):186-195. doi:10.1002/uog.19112
- 590

**Table 1.** Demographic and clinical characteristics of preterm preeclampsia (PE) cases and noncases in the discovery, verification, and validation cohorts.

Cases and noncases	Discovery (PAPR)			Verification (TREETOP)			Validation (TREETOP)		
	Preterm PE <37 weeks' gestation	No PE or PE ≥37 weeks' gestation	P value	Preterm PE <37 weeks' gestation	No PE or PE ≥37 weeks' gestation	P value	Preterm PE <37 weeks' gestation	No PE or PE ≥37 weeks' gestation	P value
Number of subjects (n, %)	45 (3.3)	1307 (96.7)		34 (2.7)	1217 (97.3)		62 (2.7)	2227 (97.3)	
Maternal age (y)			0.586			0.640			0.705
Median	26	27		28.5	30		30	29	
IQR	24–31	23–32		27–32	25–33		25–34	25–33	
Unknown (n)	0	0		0	0		0	0	
BMI			0.003			0.027			<0.001
Median	29.6	26.6		28.3	26.1		30.9	25.8	
IQR	26.17–38.0	22.7–32.4		25.7–32.9	22.6–31.0		25.9–35.5	22.3–31.1	
Unknown (n)	1	23		1	14		1	25	
Maternal race (n, %)			0.114			0.838			0.579
Black	13 (28.9)	224 (17.1)		5 (14.7)	233 (19.1)		14 (22.6)	393 (17.6)	
White	29 (64.4)	952 (72.8)		21 (61.8)	757 (62.2)		34 (54.8)	1411 (63.4)	
None of the above	3 (6.7)	131 (10.0)		7 (20.6)	205 (16.8)		12 (19.4)	370 (16.6)	
Unknown (n)	0 (0.0)	0 (0.0)		1 (2.9)	22 (1.8)		2 (3.2)	53 (2.4)	
Maternal ethnicity (n, %)			0.180			0.104			0.243
Hispanic	12 (26.7)	492 (37.6)		20 (58.8)	495 (40.7)		30 (48.4)	895 (40.2)	
Non-Hispanic	33 (73.3)	815 (62.4)		14 (41.2)	720 (59.2)		32 (51.6)	1332 (59.8)	
Unknown (n)	0 (0.0)	0 (0.0)		0 (0.0)	2 (0.2)		0 (0.0)	0 (0.0)	
Maternal education level (n, %)			0.131			0.329			0.194
No high school graduation	17 (37.8)	338 (25.9)		4 (11.8)	192 (15.8)		10 (16.1)	317 (14.2)	
High school degree/GED	21 (46.7)	635 (48.6)		21 (61.8)	558 (45.9)		35 (56.5)	1033 (46.4)	
College degree	6 (13.3)	323 (24.7)		9 (26.5)	463 (38.0)		16 (25.8)	861 (38.7)	
Unknown (n)	1 (2.2)	11 (0.8)		0 (0.0)	4 (0.3)		1 (1.6)	16 (0.7)	
Parity (n, %)			0.591			0.838			0.307
Nulliparous (P=0)	18 (40.0)	457 (35.0)		13 (38.2)	505 (41.5)		31 (50.0)	950 (42.7)	
Multiparous (P≥1)	27 (60.0)	850 (65.0)		21 (61.8)	712 (58.5)		31 (50.0)	1277 (57.3)	
Unknown	0 (0.0)	0 (0.0)		0 (0.0)	0 (0.0)		0 (0.0)	0 (0.0)	
Previous PE (preterm + term) (n, %)			<0.001			<0.001			<0.001
No	13 (48.1)	777 (91.4)		11 (52.4)	653 (91.7)		18 (58.1)	1102 (86.3)	
Yes	14 (51.9)	73 (8.6)		10 (47.6)	59 (8.3)		13 (41.9)	175 (13.7)	
Unknown	0 (0.0)	0 (0.0)		0 (0.0)	0 (0.0)		0 (0.0)	0 (0.0)	
Chronic hypertension (n, %)			<0.001			<0.001			<0.001
No	35 (77.8)	1229 (94.0)		26 (76.5)	1154 (94.8)		37 (59.7)	2124 (95.4)	
Yes	10 (22.2)	78 (6.0)		8 (23.5)	63 (5.2)		25 (40.3)	103 (4.6)	
Unknown (n)	0 (0.0)	0 (0.0)		0 (0.0)	0 (0.0)		0 (0.0)	0 (0.0)	
Pregestational diabetes mellitus (n, %)			<0.001			0.001			<0.001

	No	31 (68.9)	1250 (95.6)		28 (82.4)	1166 (95.8)		47 (75.8)	2118 (95.1)	
	Yes	14 (31.1)	57 (4.4)		6 (17.6)	51 (4.2)		15 (24.2)	109 (4.9)	
	Unknown (n)	0 (0.0)	0 (0.0)		0 (0.0)	0 (0.0)		0 (0.0)	0 (0.0)	
	Gestational age at blood draw (d)			0.233			0.854			0.600
	Median	137	140		137	136		136.5	137	
	IQR	133–143	132–148		134–140	132–141		130–141	133–141	
	Unknown (n)	0	0		0	0		0	0	
	Gestational age at delivery (d)			<0.001			<0.001			<0.001
	Median	248	274		243.5	275		240	275	
	IQR	236–254	267–279		224–253	269–281		226–252	270–280	
	Unknown (n)	0	0		0	0		0	0	
	Neonatal length of hospital stay (d)			<0.001			<0.001			<0.001
	Median	5	3		13.5	2		11	2	
	IQR	3-13	2-3		6-28	2-3		4-28	2-3	
	Unknown (n)	0	12		0	6		2	7	
	Neonatal gender (n, %)			0.920			0.809			0.676
	Female	23 (51.1)	643 (49.2)		15 (44.1)	603 (49.5)		34 (54.8)	1100 (49.4)	
	Male	22 (48.9)	664 (50.8)		19 (55.9)	613 (50.4)		28 (45.2)	1124 (50.5)	
	Ambiguous	0 (0.0)	0 (0.0)		0 (0.0)	1 (0.1)		0 (0.0)	3 (0.1)	
	Unknown	0 (0.0)	0 (0.0)		0 (0.0)	0 (0.0)		0 (0.0)	3 (0.1)	

Categorical variables are shown with counts and percentages, and continuous variables are shown with medians and interquartile ranges. Comparisons between cases (PE <37 weeks' gestation) and noncases (no PE or PE ≥37 weeks' gestation) were performed using Wilcoxon or chi squared tests as appropriate. Collection of neonatal hospital stay was capped at 28 days according to the PAPR<sup>23</sup> and TREETOP<sup>24</sup> study protocols. BMI, body mass index; IQR, interquartile range; GED, general education diploma; NA, not applicable; PE, preeclampsia; PTB, preterm birth.

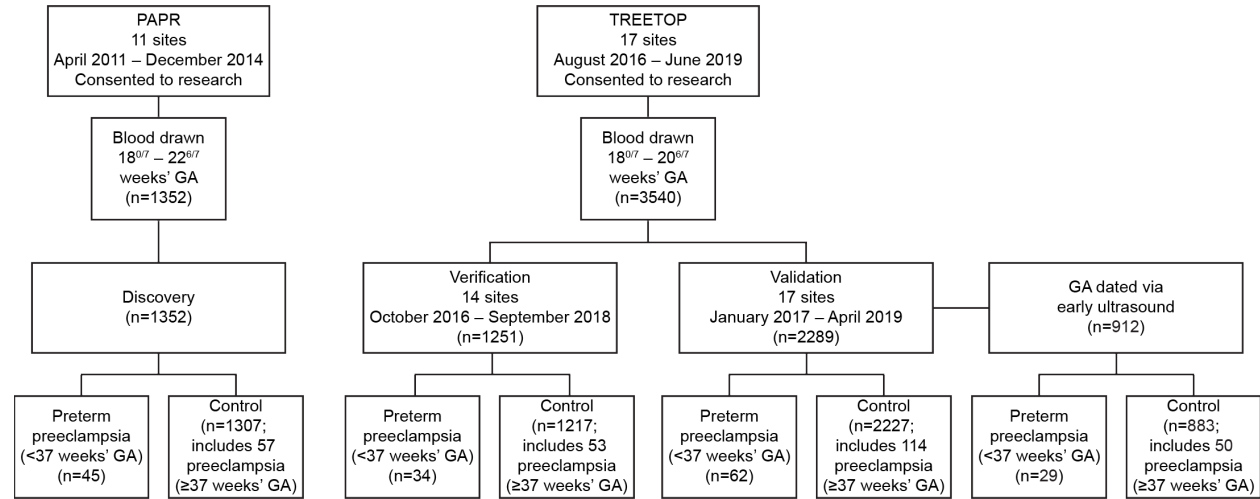
**Table 2.** Predictive performance of ClinRisk3+INHBC/SHBG and a U.S. Preventive Services Task Force clinical risk factor-based classifier (representing standard care) for risk of preeclampsia with delivery <37 weeks’ gestation in the early gestational age dating-restricted population.

Tested population	PE <37 weeks’ GA cases/ total subjects (%)	Predictor	AUC (95% CI)	Sensitivity	Specificity	SPR	PPV	NPV	LR+	LR-	OR
Early GA dating All parity	29/912 (3.2%)	ClinRisk3 + INHBC/SHBG	0.82 (0.75 – 0.89)	51.7%	90.3%	11.1%	13.0%	98.5%	5.31	0.53	9.93
		USPSTF guidelines (standard of care)	0.69 (0.61 – 0.76)	79.3%	57.8%	43.4%	5.0%	99.0%	1.88	0.36	5.24
Early GA dating Nulliparas	15/376 (4.0%)	ClinRisk3 + INHBC/SHBG	0.81 (0.71 – 0.92)	53.3%	90.0%	11.7%	6.9%	99.8%	5.35	0.52	10.32
		USPSTF guidelines (standard of care)	0.70 (0.61 – 0.80)	86.7%	54.3%	47.3%	2.6%	99.1%	1.90	0.25	7.72

AUC, area under the receiver operating characteristic curve; CI, confidence interval; ClinRisk3, composite clinical risk variable including preeclampsia in a previous pregnancy, pregestational hypertension, and pregestational diabetes; GA, gestational age; INHBC, inhibin subunit beta C chain; NPV, negative predictive value; LR+/-, positive and negative likelihood ratios; OR, odds ratio; PPV, positive predictive value; SHBG, sex hormone-binding globulin; SPR, screen positive rate; USPSTF, U.S. Preventive Services Task Force.

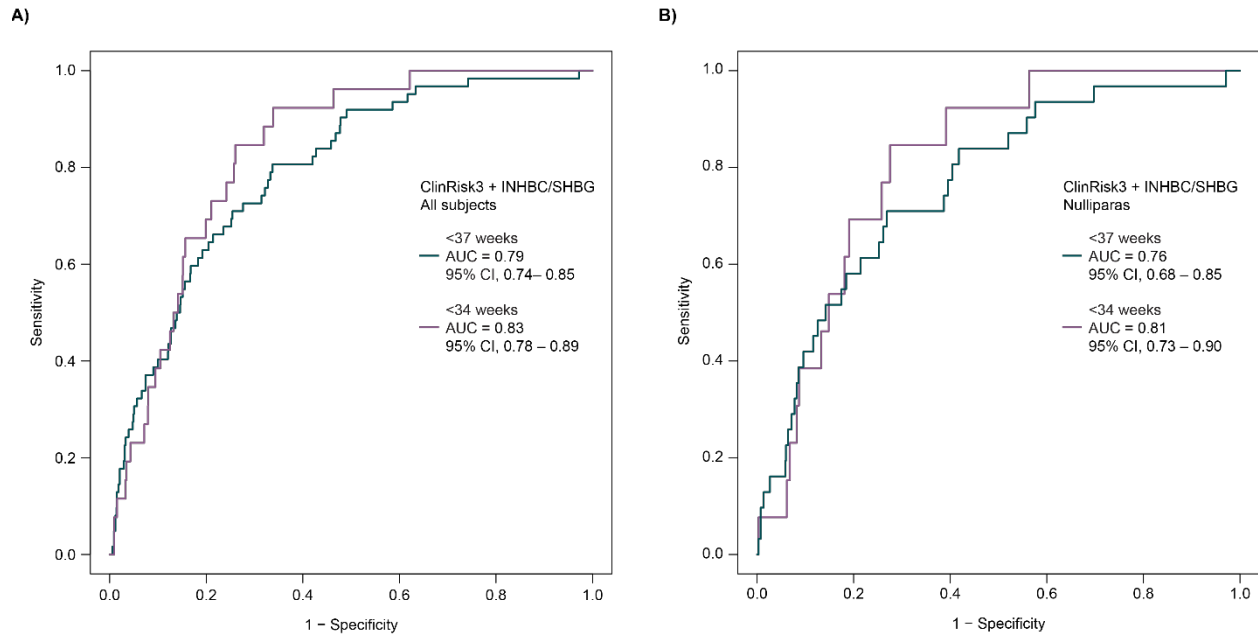
## Figure Legends

**Fig. 1.** Distribution of subjects in the discovery, verification, and validation cohorts.



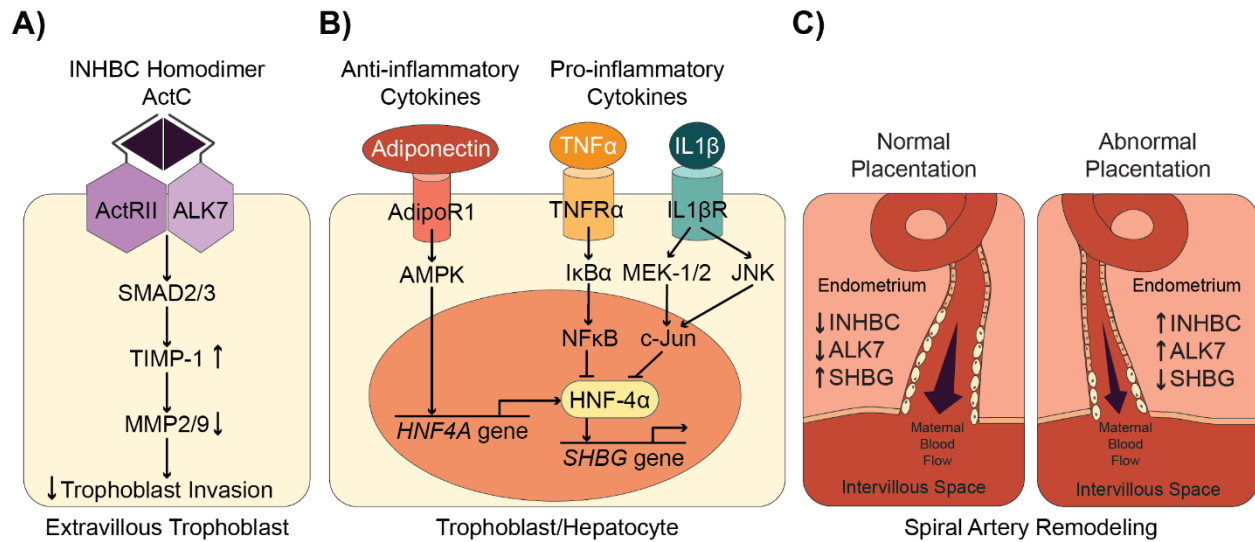
GA, gestational age.

**Fig. 2.** Receiver operating characteristic performance for the preterm preeclampsia (PE) classifier ClinRisk3+INHBC/SHBG in the full validation cohort. The plots graph sensitivity (true positive rate) vs 1-specificity (false positive rate) for preterm PE cases with gestational age at delivery <37 and <34 weeks among (A) all subjects and (B) nulliparous subjects only.



AUC, area under the receiver operating characteristic curve; CI, confidence interval; ClinRisk3, composite clinical variable including preeclampsia in a previous pregnancy, pregestational hypertension, and pregestational diabetes; INHBC, inhibin subunit beta c; SHBG, sex hormone binding globulin.

**Fig. 3.** Potential roles of INHBC and SHBG in placentation. (A) Activin C, a homodimer of INHBC, signals through the ALK7 receptor, which is itself dysregulated in preeclampsia. (B) SHBG expression has been demonstrated to be downregulated by pro-inflammatory cytokines in hepatocytes, and its extra-hepatic expression has been shown to include trophoblasts. (C) A model illustrating the association of INHBC, ALK7 and SHBG with abnormal placentation and aberrant spiral artery remodeling.



ActC, activin C, an INHBC homodimer; ACTRII, activin receptor type 2A; ALK7, activin A receptor type 1C; AMPK, AMP-activated protein kinase; c-Jun, Jun proto-oncogene, AP-1 transcription factor subunit; HNF-4 $\alpha$ , hepatocyte nuclear factor 4 alpha; I $\kappa$ B $\alpha$ , NF $\kappa$ B inhibitor alpha; IL1 $\beta$ , interleukin 1 beta; IL1 $\beta$ R, interleukin 1 beta receptor; INHBC, inhibin subunit beta c; JNK, mitogen-activated protein kinase 8; MEK1/2, mitogen-activated protein kinase kinases 1 and 2; MMP2/9, matrix metalloproteinases 2 and 9; NF $\kappa$ B, nuclear factor kappa B; SHBG, sex hormone binding globulin; SMAD2/3, SMAD family members 2 and 3; TIMP-1, TIMP metalloproteinase inhibitor 1; TNF $\alpha$ , tumor necrosis factor alpha; TNFR $\alpha$ , tumor necrosis factor alpha receptor.



## Supplemental Digital Content

### Appendix 1. Comparison of demographic and clinical characteristics across the discovery, verification, and validation cohorts.

	Discovery (PAPR)	Verification (TREETOP)	Validation (TREETOP)	P value
Number of subjects	1352	1251	2289	
Maternal age				<0.001
Median	27	30	29	
IQR	23–32	25–33	25–33	
Unknown (n)	0	0	0	
BMI				0.005
Median	26.6	26.3	26.0	
IQR	22.7–32.6	22.6–31.0	22.3–31.2	
Unknown (n)	24	15	26	
Maternal race (n, %)				<0.001
Black	237 (17.5)	238 (19.0)	407 (17.8)	
White	981 (72.6)	778 (62.2)	1445 (63.1)	
None of the above	134 (9.9)	212 (16.9)	382 (16.7)	
Unknown (n)	0 (0.0)	23 (1.8)	55 (2.4)	
Maternal ethnicity (n, %)				0.028
Hispanic	504 (37.3)	515 (41.2)	925 (40.4)	
Non-Hispanic	848 (62.7)	734 (58.7)	1364 (59.6)	
Unknown (n)	0 (0.0)	2 (0.2)	0 (0.0)	
Maternal education level (n, %)				<0.001
No high school graduation	355 (26.3)	196 (15.7)	327 (14.3)	
High school degree/GED	656 (48.5)	579 (46.3)	1068 (46.7)	
College degree	329 (24.3)	472 (37.7)	877 (38.3)	
Unknown (n)	12 (0.9)	4 (0.3)	17 (0.7)	
Parity (n, %)				<0.001
Nulliparous (P=0)	475 (35.1)	518 (41.4)	981 (42.9)	
Multiparous (P≥1)	877 (64.9)	733 (58.6)	1308 (57.1)	
Unknown	0 (0.0)	0 (0.0)	0 (0.0)	
Previous PE (preterm + term) (n, %)				<0.001
No	790 (90.1)	664 (90.6)	1120 (85.6)	
Yes	87 (9.9)	69 (9.4)	188 (14.4)	
Unknown	0 (0.0)	0 (0.0)	0 (0.0)	
Chronic hypertension (n, %)				0.495
No	1264 (93.5)	1180 (94.3)	2161 (94.4)	
Yes	88 ( 6.5)	71 ( 5.7)	128 ( 5.6)	
Unknown (n)	0 (0.0)	0 (0.0)	0 (0.0)	
Pregestational diabetes mellitus (n, %)				0.531
No	1281 (94.7)	1194 (95.4)	2165 (94.6)	
Yes	71 (5.3)	57 ( 4.6)	124 ( 5.4)	
Unknown (n)	0 (0.0)	0 (0.0)	0 (0.0)	
Gestational age at blood draw (d)				<0.001
Median	140	136	137	
IQR	132–147	132–141	133–141	
Unknown (n)	0 (0.0)	0 (0.0)	0 (0.0)	
Gestational age at delivery (d)				<0.001
Median	273	275	274	
IQR	266–278	268–281	269–280	
Unknown (n)	0 (0.0)	0 (0.0)	0 (0.0)	
Neonatal length of hospital stay (d)				<0.001
Median	3	2	2	
IQR	2–3	2–3	2–3	
Unknown (n)	12	6	9	
Neonatal gender (n, %)				0.384
Female	666 (49.3)	618 (49.4)	1134 (49.5)	

It is made available under a [CC-BY 4.0 International license](https://creativecommons.org/licenses/by/4.0/) .

	Male	686 (50.7)	632 (50.5)	1152 (50.3)	
	Ambiguous	0 (0.0)	1 (0.1)	0 (0.0)	
	Unknown	0 (0.0)	0 (0.0)	3 (0.1)	

Categorical variables are shown with counts and percentages, and continuous variables are shown with medians and interquartile ranges. Comparison among the three cohorts was performed using Kruskal-Wallis or chi squared tests as appropriate. Collection of neonatal hospital stay was capped at 28 days according to the PAPR<sup>23</sup> and TREETOP<sup>24</sup> study protocols.

BMI, body mass index; IQR, interquartile range; GED, general education diploma; NA, not applicable; PE, preeclampsia; PTB, preterm birth.

**Appendix 2.** Validation performance of nine candidate preeclampsia classifier models. Score thresholds are specific to each classifier and differentiate subjects predicted to be at higher risk for preterm preeclampsia, defined as preeclampsia <37 weeks' gestation, from those predicted to be at lower risk. Three score thresholds distinguishing higher from lower risk were validated for each classifier. The linear relationship between the gestational age at delivery and classifier prediction was assessed by the Pearson correlation coefficient. Validation performance is reported across the nine classifiers without protein specific batch calibration.

Classifier	AUC [95% CI]	1° threshold P value	2° threshold P value	3° threshold P value	Pearson correlation coefficient <i>r</i>	Pearson correlation coefficient P value
ClinRisk3 + INHBC/SHBG	0.78 [0.73-0.84]	$7.26 \times 10^{-13}$	$2.69 \times 10^{-12}$	$3.64 \times 10^{-11}$	-0.275	$2.20 \times 10^{-04}$
ClinRisk3 + IBP4/SHBG + AFAM/PRG2	0.77 [0.71-0.83]	$4.13 \times 10^{-12}$	$1.30 \times 10^{-11}$	$2.26 \times 10^{-11}$	-0.29	$1.19 \times 10^{-04}$
ClinRisk3 + AFAM/SHBG	0.76 [0.69-0.82]	$7.36 \times 10^{-11}$	$7.46 \times 10^{-11}$	$4.22 \times 10^{-13}$	-0.24	$1.25 \times 10^{-03}$
ClinRisk3 + CD14/SHBG	0.76 [0.70-0.82]	$5.27 \times 10^{-12}$	$1.24 \times 10^{-10}$	$3.03 \times 10^{-10}$	-0.26	$4.44 \times 10^{-04}$
ClinRisk3 + IBP4/SHBG + AFAM/CSH <sup>†</sup>	0.76 [0.69-0.82]	$6.04 \times 10^{-12}$	$4.61 \times 10^{-11}$	$4.22 \times 10^{-11}$	-0.25	$9.17 \times 10^{-04}$
ClinRisk3 + IBP4/SHBG + CD14/PRG2	0.76 [0.70-0.83]	$4.61 \times 10^{-11}$	$2.47 \times 10^{-13}$	$1.25 \times 10^{-11}$	-0.29	$7.53 \times 10^{-05}$
ClinRisk3 + IBP4/SHBG + PEDF/CSH <sup>†</sup>	0.76 [0.70-0.82]	$1.89 \times 10^{-11}$	$1.63 \times 10^{-11}$	$1.51 \times 10^{-11}$	-0.26	$4.32 \times 10^{-04}$
ClinRisk3 + IBP4/SHBG + PEDF/CBPN	0.73 [0.67-0.80]	$1.20 \times 10^{-11}$	$2.00 \times 10^{-11}$	$4.22 \times 10^{-10}$	-0.24	$1.16 \times 10^{-03}$
ClinRisk3 + IBP4/SHBG + CD14/CBPN	0.72 [0.66-0.79]	$1.60 \times 10^{-10}$	$3.08 \times 10^{-11}$	$1.28 \times 10^{-10}$	-0.25	$9.96 \times 10^{-04}$

<sup>†</sup>Represents CSH1 and CSH2. The two proteins differ by one amino acid residue, which is not included in the peptide fragment measured by the predictor.

AFAM, afamin; AUC, area under the receiver operating characteristic curve; CBPN, carboxypeptidase N catalytic chain; CD14, monocyte differentiation antigen CD14; CI, confidence interval; ClinRisk3, composite clinical variable including preeclampsia in a previous pregnancy, pregestational hypertension, and pregestational diabetes; CSH, chorionic somatomammotropin hormone 1/2; IBP4, insulin-like growth factor-binding protein 4; PEDF, pigment epithelium-derived factor; PRG2, bone marrow proteoglycan; SHBG, sex hormone-binding globulin.

**Appendix 3.** Predictive performance of the ClinRisk3+INHBC/SHBG classifier model and a U.S. Preventive Services Task Force<sup>35</sup> clinical risk factor-based classifier (representing standard care) for preterm preeclampsia risk in the full validation cohort.

Cohort	Tested population	Preterm preeclampsia GA (weeks)	Cases/Total Subjects (%)	Predictor	AUC (95% CI)
Full validation cohort	All parity	<37	62/2261 (2.7%)	ClinRisk3+INHBC/SHBG	0.79 (0.74 – 0.85)
				USPSTF guidelines (standard of care)	0.68 (0.63 – 0.73)
	Nulliparas	<34	26/2261 (1.1%)	ClinRisk3+INHBC/SHBG	0.83 (0.78 – 0.89)
				ClinRisk3+INHBC/SHBG	0.76 (0.68 – 0.85)
		<37	31/969 (3.1%)	USPSTF guidelines (standard of care)	0.68 (0.61-0.75)
				ClinRisk3+INHBC/SHBG	0.81 (0.73 – 0.90)
<34	13/969 (1.3%)	ClinRisk3+INHBC/SHBG	0.81 (0.73 – 0.90)		

AUC, area under the receiver operating characteristic curve; CI, confidence interval; ClinRisk3, composite clinical variable including preeclampsia in a previous pregnancy, pregestational hypertension, and pregestational diabetes; GA, gestational age; INHBC, inhibin subunit beta C chain; SHBG, sex hormone-binding globulin.