

1 **Title:** The effect of COVID-19 lockdowns on fertility in the Democratic Republic of the
2 Congo

3

4 **Authors:**

5

6 Name: Mr. Shuo Feng

7 Affiliation: Department of Biostatistics, Brown University School of Public Health

8 Email: shuo_feng@brown.edu

9 Orcid: 0000-0003-1772-4016

10

11 Name: Dr. Gabriel Kyomba

12 Affiliation: Kinshasa School of Public Health, Université de Kinshasa

13 Email: gabykyomba@gmail.com

14 Orcid: 0000-0003-2695-7487

15

16 Name: Dr. Serge Manitu Mayaka

17 Affiliation: Kinshasa School of Public Health, Université de Kinshasa

18 Email: sergemaya@yahoo.fr

19 Orcid: [0000-0002-9124-2114](https://orcid.org/0000-0002-9124-2114)

20

21 Name: Dr. Karen Ann Grépin

22 Affiliation: School of Public Health, University of Hong Kong

23 Email: kgrepin@hku.hk

24 Orcid: 0000-0003-4368-0045

25

26 **Abstract**

27

28 Most countries implemented public health measures, including lockdowns, during the
29 COVID-19 pandemic. It has been speculated that the pandemic will affect fertility, but the
30 direction, magnitude, and mechanisms of these effects are not well understood. Using data
31 from the national health management information system and an augmented synthetic control
32 methodology, we examined the impact of a lockdown of Kinshasa in April 2020 on the
33 subsequent fertility of women, which we proxy by the number of births in health facilities
34 months after the policy was implemented. Seven months after the lockdown, we see a large
35 increase in births in Kinshasa, as compared to control areas, which at its peak represents an
36 additional 5000 monthly births, or a 45% increase relative to baseline. We also observe
37 increases in complimentary maternal health services but not in other health services.
38 Increased births were observed among women both older and younger than 20. Lockdown
39 policies have likely affected fertility and future pandemic preparedness plans should
40 anticipate the effects find strategies to mitigate any negative unintended effects.

41

42 **Keywords**

43 fertility, infectious disease outbreaks, non-pharmaceutical interventions, COVID-19,
44 maternal health services, routine health information system data

45

46 **1. Introduction**

47

48 The COVID-19 pandemic led many countries, including many low- and middle-income
49 countries (LMICs), to impose far-reaching public health measures in hopes of reducing viral

1 transmission. However, bans on gatherings, school and business closures, and widespread
2 mobility restrictions also had unprecedented economic and social effects. A large proportion
3 of households in LMICs experienced declines in employment and income (Bundervoet et al.,
4 2022; Egger et al., 2021). About a third of children in households in 31 LMICs surveyed at
5 the end of 2020 were still not learning due to school closures (Bundervoet et al., 2022).
6 Lockdowns, or other stay-at-home orders, were particularly consequential, especially in Sub-
7 Saharan African countries (IMF, 2020).

8
9 Beyond the economic and social effects, government response measures also likely affected
10 women's sexual and reproductive outcomes in these settings, including changes in fertility
11 intention, unintended pregnancies, disruptions in the use of sexual and reproductive health
12 services, and worsened maternal and child health outcomes. Studies of fertility patterns
13 during and in the aftermath of the 1918 influenza pandemic generally found declines in
14 fertility, and while early evidence of the impact of the COVID-19 pandemic on fertility rates
15 on high-income countries (HICs) also generally found lower fertility rates in early pandemic
16 period, substantial heterogeneity was also observed (Aassve et al., 2021). As was the case a
17 century ago, less is known about the impact of the pandemic on fertility in very low-income
18 settings where vital registration systems are incomplete. Survey evidence from Kenya did
19 not find any evidence that the pandemic had led to important changes in fertility intentions
20 (Zimmerman et al., 2022).

21
22 In many LMICs, there are other worrying signs that sexual and reproductive health outcomes
23 have been affected. A systematic review has demonstrated that maternal and perinatal health
24 outcomes worsened in the months immediately following the start of the pandemic across
25 both high and LMIC settings (Chmielewska et al., 2021). A lockdown implemented in Nepal
26 in March 2020, led to steep declines in institutional delivery rates, as well as increases in
27 rates of institutional stillbirth and neonatal mortality (Kc et al., 2020). However, the specific
28 mechanisms through which the COVID-19 pandemic, as well as government response
29 measures, may have affected sexual and reproductive outcomes are less well understood.
30 Prior to COVID-19, studies of the impact of infectious disease outbreaks on sexual and
31 reproductive health outcomes had identified the negative impact of school closures on
32 teenage pregnancies and the short-term disruptive effect of outbreaks on the use of sexual and

1 reproductive health services (Bandiera et al., 2020; Elston et al., 2017; Wilhelm and
2 Helleringer, 2019).

3

4 Following their successful application in Wuhan, China, many countries adopted mobility
5 restrictions during the early waves of the pandemic. The rationale for the use of so-called
6 “lockdown” measures largely stems from the fact that the SARS-CoV2 virus spreads easily
7 from asymptomatic patients and it has a relatively long incubation period. Several countries,
8 including South Africa and India, implemented national level lockdown policies. Despite the
9 widespread use of measures, little is known about how such measures may have affected
10 sexual and reproductive health outcomes. There is very strong evidence that lockdowns were
11 associated with increases in intimate partner violence (IPV). In India, areas of the country
12 with the highest levels of mobility restrictions recorded large increases in domestic violence
13 (Ravindran and Shah, 2020), which could have also affected rates of unintended pregnancies.

14

15 Although there is no commonly agreed definition of a “lockdown”, the term has been
16 frequently used during the COVID-19 pandemic to refer to a range of mobility restrictions,
17 including stay-at-home orders and curfews but the term has also been used to describe other
18 forms of geographic confinement (e.g. cordon sanitaires), forced home confinement, as well
19 as work-from-home policies. The use of such measures was widespread during the pandemic,
20 including in Sub-Saharan African (SSA) countries (Haider et al., 2020).

21

22 Like many SSA countries, the Democratic Republic of the Congo (DRC) has been greatly
23 affected by the pandemic, however, the health effects have been less well documented. It is
24 clear, however, that the country has had important social and economic effects due to the
25 measures. As of April 27, 2022, the DRC had officially recorded over 86,000 cases of
26 COVID-19 and over 1,300 deaths¹, however, it is widely believed that this is only a fraction
27 of the true number of cases. Testing was not widely available and was only available in a
28 small number of cities (Ditekemena et al., 2021b). Testing rates were very low by
29 international standards (Juma et al., 2020). As such, the true number of cases is likely orders
30 of magnitude larger than the officially confirmed number of cases. Indeed, seroprevalence
31 data suggests that the virus had been more prevalent in the country during the first wave than

¹ <http://who.covid19.int>

1 would be suggested based on official case counts (Nkuba et al., 2021). Vaccination rates, as
2 of April 2022, were amongst some of the lowest rates in the world.

3

4 Against this backdrop, this study evaluates the effects of lockdown on the fertility of women
5 in the DRC, which we proxy using the number of births observed in health facilities many
6 months after the implementation of the measure. Specifically, we compare the subsequent
7 births of women in Kinshasa, where the most stringent lockdown measures had been
8 introduced in April 2020, to those of women in other parts of the country using an augmented
9 synthetic control methodology. Although we might expect the use of health services to also
10 be directly affected by the lockdown, if the lockdown were to directly affect fertility, we
11 would only expect to see the effects of the lockdown many months after it was implemented.
12 As school closures had been implemented at the national level, it is important to note that all
13 schools had been closed in the DRC at the time of the lockdown in Kinshasa, therefore any
14 effects that we observe must be interpreted as the impact of a lockdown in a setting in which
15 schools were closed. However, this is not an estimate of the impact of school closure itself.
16 Below we first describe our data and methods, present our main findings, and then discuss
17 and conclude.

18

19

20 **2. Data and Methods**

21 **2.1 Study context**

22 The DRC is one of the largest and most populous countries in Sub-Saharan Africa (SSA), and
23 it is also one of the poorest. Of the roughly 90 million people who live in the country, at least
24 17 million (19%) of them live in Kinshasa, the capital city, although the exact number is not
25 known. It has faced a long history of armed conflict, especially in the eastern part of the
26 country. Outbreaks of infectious diseases are common in the DRC: when the COVID-19
27 pandemic hit in early 2020, the DRC was already dealing with a large-scale outbreak of
28 Ebola Virus Disease in the Eastern part of the country. These experiences had helped it to
29 prepare for the pandemic, but its weak health system and other public infrastructure limited
30 its ability to effectively respond (Ditekemena et al., 2020; Mobula et al., 2020).

31

32 Fertility remains high in the DRC, and it is one of the few countries in the world that has not
33 begun its demographic transition (Romaniuk, 2011). In fact, the total fertility rate increased

1 between 2007 and 2013-14 to 6.6 children per woman (Kwete et al., 2018). As a result,
2 population growth rates remain high. Although rates of uptake of family planning have
3 increased and are higher in Kinshasa, the modern contraceptive prevalence rate overall in the
4 country remains low (Kwete et al., 2018). However, according to the most recent
5 Demographic and Health Survey (DHS) in the DRC, which was conducted in 2013-14, rates
6 of institutional delivery are relatively high by regional standards – almost 80% of women
7 nationally gave birth in a health facility (Gebremichael and Fenta, 2021; Modernité et al.,
8 2014). In Kinshasa, nearly 98% of women had given birth in a health facility.

9
10 The DRC confirmed its first case of COVID-19 on March 10, 2020, in an adult male who had
11 recently returned to Kinshasa from France (Nachega et al., 2020). The government
12 immediately began to implement measures to contain the virus, first by implementing health
13 screening at the airport. National-level school closures were announced on March 18, along
14 with additional measures such as the closing of restaurants and bars, bans on large gatherings,
15 and limitations on travel in and out of Kinshasa. On the following day, all travel in and out
16 of Kinshasa was banned. As the initial measures were not seen as sufficient and following
17 reports of a COVID-19 death and the detection of additional cases, the national government
18 declared a state of emergency on March 24, 2020. On the following day, all international
19 borders were closed and domestic flights between Kinshasa and the rest of the country were
20 suspended. The nationwide state of emergency declaration stayed in force until July 22, 2020,
21 when a reopening plan was also announced. Nationally, schools only reopened on August 10
22 after approximately 5 months of closure.

23
24 From the start of the pandemic, Kinshasa has been seen as the epicenter for COVID-19 in the
25 country. It was also the site of the strictest lockdown imposed during the pandemic. The
26 Governor of Kinshasa initially announced a month-long lockdown of the entire capital region
27 starting on March 28, but the measure was called off due to concerns about the practicality of
28 the strategy. Gombe, a relatively central and affluent neighborhood that was seen as the local
29 hotspot of the outbreak, was subject to a strict lockdown that started on April 6 (Nachega et
30 al., 2020). During the lockdown, all businesses were closed, and public transportation was
31 suspended. Hospitals and pharmacies, however, remained open. Everyone was required to
32 stay at home all day, except for essential outings, such as seeking medical care. Gombe is
33 also the location of the Kinshasa Provincial Hospital, a high-volume referral facility that

1 services the entire Kinshasa Province (Hategeka et al., 2021). The lockdown was initially
2 only supposed to last 2 weeks, but on April 22, the measures were only slightly loosened, and
3 they were not fully lifted for another 6 weeks when businesses and restaurants reopened in
4 Gombe on June 28, 2020.

5
6 Lockdowns, curfews, and other mobility restrictions were also used in other parts of the DRC,
7 but they were not as stringent, nor were they as long, as those put in place in Kinshasa.
8 Lubumbashi, the third-largest city in the DRC and the capital city of Haut-Katanga Province,
9 was the second place in the DRC to detect a case of COVID-19 on March 21, 2020. Two
10 days later, on March 23, Lubumbashi was placed in a 48-hour lockdown after two suspected
11 cases of COVID-19 had disembarked from a flight from Kinshasa. On April 20, Lubumbashi
12 and Lualaba, another urban center in Haut-Katanga Province, both imposed a curfew that
13 prevented people from leaving their homes from 10 p.m. to 5 a.m. On April 29, Lubumbashi
14 and Kasumbalesa, another Haut-Katangan town, were placed on a 24-lockdown to facilitate
15 contact tracing of COVID-19 cases. A 3-day lockdown was also instituted in Lubumbashi,
16 Kasumbalesa, Likasi, and Kipushi on July 11, 2020.

17
18 Cases had also been identified earlier in the Eastern part of the country, especially in North
19 Kivu Province, the centre of an ongoing outbreak of Ebola at the time. On May 20, the
20 Provincial Government of North Kivu placed a nightly curfew on the city of Goma, and
21 travel in and out of the city was suspended. People were also encouraged to stay at home as
22 much as possible and there was a ban on mass gatherings, but businesses remained open and
23 public transportation continued to run. To our knowledge, no other areas in the DRC were
24 subject to formal lockdown measures during the initial wave of the pandemic in early 2020.

25

26 **2.2 Data**

27 To estimate the impact of the lockdowns, we used data on the total number of births and other
28 health services delivered in health facilities, which we extracted from the DRC's Health
29 Management Information System (HMIS) – a routine health information system based on the
30 open-sourced District Health Information System 2 (DHIS2) platform. While the true
31 number of births amongst women in the DRC is not directly observable in the HMIS as we
32 only observe those that take place in a health facility, rates of institutional deliveries are very
33 high in Kinshasa at 98% (Ministère du Plan et Suivi de la Mise en œuvre de la Révolution de

1 la Modernité et al., 2014). A previous study conducted in Kinshasa that looked at the
2 immediate impact of the pandemic on the use of health services did not find any effect of the
3 lockdowns on institutional delivery rates in the months following the lockdown (Hategeka et
4 al., 2021). Other health services, however, had been adversely affected in the short run.

5

6 From the HMIS, we extracted monthly data on the number of deliveries, including the total
7 number of deliveries for the entire population as well the number of deliveries to mothers
8 under the age of 20, the number of fourth antenatal care visits (ANC), which are typically
9 scheduled and usually take place around 36-38 weeks of gestation, and the number of
10 postnatal care visits delivered within 6 hours of birth (PNC). We also extracted the total
11 number of doses of the *Bacillus Calmette-Guérin* (BCG) vaccine, which is used to protect
12 against tuberculosis and is typically given at birth in the DRC, and the *Diphtheria-Pertussis-*
13 *Tetanus-Polio-Hepatitis B-Haemophilus Influenzae Type B* (DTP-HepB-Hib) vaccine, which
14 is usually given in the first few weeks of life. We selected these vaccines because children
15 born in health facilities should be administered these vaccines at birth or shortly thereafter
16 during follow-up health visits. Finally, to control for changes in the delivery of other services,
17 we also collected data on other health services, including total outpatient visits, which
18 excludes maternal health service visits, and visits for diarrhea. While these types of visits
19 may have been affected by the pandemic, we would expect disruptions to these types of
20 health services to occur during or in the immediate aftermath of lockdowns, not with a delay
21 that is suggestive of a human gestational period. We collected data from January 2018, or a
22 little more than 2 years before the start of the pandemic, up until February 2022. More
23 details on how the data used in this study are collected and aggregated are available
24 elsewhere (Hategeka et al., 2021; Yuen W Hung et al., 2020).

25

26 Births are recorded in the HMIS as follows. In each health facility, register books typically
27 collect information on all births recorded in the health facility. The total number of births
28 recorded in a month is then manually calculated and recorded onto tally sheets that are then
29 sent to the health zone office, where the data are inputted into the HMIS. Limited
30 information on the mothers is captured in this system, only the facility of birth, and whether
31 the mother was younger than or older than 20 years old. We are therefore limited in our
32 ability to address questions about the specific groups most affected by the lockdown.

33

1 Although there have been significant improvements in data quality in the DRC HMIS in
2 recent years, data from most national RHIS in LMIC settings face common challenges,
3 including outliers and missing data (Yuen W. Hung et al., 2020). To prepare our data for
4 analysis, extreme values were first detected and removed based on a random forest model
5 trained using the baseline data, and then we used a seasonally decomposed imputation
6 algorithm to fill in the missing values (Feng et al., 2021). To obtain official data on the dates
7 of policy implementation of the lockdown, we used government websites, news media,
8 published reports, and academic journals. Our local authors also confirmed these dates with
9 their colleagues.

10

11 Our dataset is thus the number of births and other health services that were delivered in each
12 health facility in the DRC per month. Our sample includes mainly public health facilities,
13 which include health centres, health posts, and hospitals that report into the central HMIS
14 system. Most private health facilities do not regularly report into the DHIS2 system,
15 although some private facilities are regularly captured in the system. In addition, facilities
16 that were closed or stopped reporting before the start of the pandemic (4,574 out of 18,329
17 facilities, or 29.60%) were also excluded from the study. Monthly aggregated data from
18 January 2018 to February 2020 were considered pre-pandemic, or our baseline period, and
19 April 2020 was set as the start of the lockdown in Kinshasa. We consider all data among the
20 rest of the facilities to be the baseline, upon which we perform data cleaning and construct
21 synthetic controls to mimic the trajectory of Kinshasa (discussed in the following section).
22 Haut Katanga and North Kivu were also excluded from the analysis because they were also
23 exposed to shorter lockdowns and curfews and thus could have also been affected by the
24 measure. They were also removed from our baseline sample. We have also estimated our
25 models with them included, and it has little effect on our results.

26

27

28 **2.3 Statistical Methods**

29 As our goal was to investigate the impact of lockdown on fertility, we defined women who
30 give birth anywhere in Kinshasa to have been exposed to the lockdown, whereas women who
31 gave birth elsewhere were not exposed to the lockdown. Given a standard gestational period
32 is roughly 40 weeks from a women's last menstrual period, which is generally two weeks
33 before conception, if the lockdowns were to have had an effect, we would expect to start to

1 see an effect approximately 7-8 months later, peaking approximately 9-10 months later.
2 While we do not directly observe actual fertility in the population, we do observe the number
3 of women giving birth in health facilities per month. Assuming no major changes in the
4 proportion of women who give birth in a health facility over time, we interpret the
5 proportional increase in the number of births observed in our dataset as a proxy for the
6 proportional increase in fertility that results from the lockdown. In our limitations section
7 below, we discuss the implications of our findings if we assume that women who are the
8 most likely to be affected by the lockdowns became less likely to give birth in clinics over
9 time.

10

11 To estimate the impact of the lockdowns on fertility, we use a synthetic control method
12 (SCM), which is a method that has been developed to estimate the causal effect of
13 interventions on outcomes. In our study, we are interested in the average treatment effect on
14 the treated (ATT), which is the difference between the observed outcomes of the treated unit
15 (i.e., Kinshasa which is exposed to lockdown) and its counterfactual outcomes in the absence
16 of the intervention, which is not observed and thus needs to be estimated via a SCM (Abadie
17 et al., 2015). A traditional difference-in-differences-like approach approximates this causal
18 effect by finding a control unit in the sample and estimates the ATT as the difference in the
19 outcome between the treated and the chosen control unit before and after the intervention.
20 However, this type of method requires us to find a control unit that is very similar to the
21 treated unit in all ways, which is rarely possible because, as in the case of this study, there is
22 no one single province in the control that is comparable to our treated province in every way
23 (e.g., population, geographics, economics, policy, etc.).

24

25 Instead of identifying just one single control unit to be compared to the treated, the SCM
26 constructs an artificial or a “synthetic” control of the treated unit using a weighted average of
27 the control areas in the sample that closely mimics the trajectory of the treated unit up to the
28 intervention. If we manage to construct such a synthetic control that can reproduce the
29 outcomes from the treated unit at all time periods before the intervention, we can then
30 attribute any divergence found in the post-intervention outcomes between the treated and its
31 synthetic control to the intervention (Arkhangelsky et al., 2021). A typical SCM requires the
32 control unit-level weights to be non-negative and sum to one to avoid extrapolation. However,
33 under this restriction, we may not always be able to construct a weighted average of the

1 controls that matches the treated units well, and as a result, the estimated treatment effect
2 following the intervention does not make sense (Abadie et al., 2015).

3
4 An augmented synthetic control method (ASCM) addresses this limitation of the traditional
5 SCM approach by “augmenting” the original SCM using an outcome model (usually a Ridge-
6 regularized regression model) to estimate and correct the bias due to the poor pre-intervention
7 fit where only non-negative weights are allowed (Ben-Michael et al., 2021). By allowing
8 negative weights, ASCM is usually able to achieve a better match between the weighted
9 average of the controls and the treated unit of interest. Note that here extrapolation resulting
10 from allowing negative weights is not a problem because any potential bias introduced by this
11 extrapolation is penalized by the Ridge regression (Cole et al., 2020).

12
13 Formally, let $A \in \{0,1\}$ denote the treatment assignment, where $A = 1$ refers to the treated
14 province, i.e., Kinshasa, and $A = 0$ for all the other control units without a lockdown. Let
15 $i \in \{1, \dots, N\}$ denote each province in the DRC with N being the total number of provinces,
16 and let $t \in \{1, \dots, t_l, \dots, T\}$ denote each month throughout our study, where $t_l = 28$ is the
17 month of lockdown in Kinshasa, and we set the last month to be $T = 44$ which is 16 months
18 after the lockdown, or August 2021. Under a general SCM setting, we establish a latent factor
19 model as follows (Athey et al., 2021; Xu, 2017) :

20

$$Y_{it} = \gamma_i \phi_t^T + \tau_t A_{it} + \epsilon_{it}$$

21

22 where τ_t is our estimate of interest, or the ATT, that is, the averaged difference between the
23 observed number of deliveries in Kinshasa post-intervention versus the counterfactuals of
24 Kinshasa in the absence of the intervention. In addition, γ_i denotes a vector that contains
25 province-level latent factors (e.g., relative population size, economic and social
26 characteristics of each province), ϕ_t contains latent time-related factors (e.g., population
27 growth rate, seasonality), and ϵ_{it} denotes the idiosyncratic errors that are assumed to have
28 mean 0 conditioning on the treatment assignment A_{it} and the mixing of latent factors $\gamma_i \phi_t^T$.

29

30 To estimate the standard errors and construct a 95% confidence interval for inference, we
31 further assume that the errors $\{\epsilon_{it}\}$ are stationary and weakly dependent. An estimate of
32 standard error and confidence intervals can be then obtained through block permutations
33 under the null $H_0: \tau_t = 0$ for every $t = t_l, \dots, T$ (Chernozhukov et al., 2021).

1

2 **2.4 Placebo Tests**

3 In addition to the examination of standard errors and confidence intervals, we also wish to
4 evaluate how well the SCM approach applies to our data in general. Abadie et al. (2015)
5 suggest testing the validity of the treatment effect estimates through placebo studies. The
6 logic of these placebo tests is that if we artificially re-assign the intervention to a control
7 province, we should expect a treatment effect that is much smaller in size than the one we
8 obtained using the true treated unit. If, however, the estimated effects obtained by pretending
9 the controls as the treated are of similar or even larger magnitude, then our confidence in the
10 estimated treatment effect from the true treated unit is also greatly undermined. We
11 conducted placebo tests and report the results in the Findings section below.

12

13 Using ASCM, we, therefore, estimate the total number of additional births per month relative
14 to the pre-pandemic and pre-lockdown baseline number of births in Kinshasa. In the pre-
15 pandemic period, on average we observed approximately 12,035 total births per month in
16 Kinshasa, of which, 1,947 births (16%) were among women under the age of 20. In addition,
17 we also calculate the percentage increase in births per month, again relative to the pre-
18 pandemic reference period. We repeat these calculations for each of the additional health
19 services also investigated.

20

21

22 **3. Results**

23 Table 1 summarizes the monthly number of deliveries in our sample. It also reports the
24 estimated weights from the ASCM, as well as the weights that we would have obtained using
25 a regular SCM for comparison.

26

27 Table 1: Summary statistics of the dataset and ASCM weights

Province	Average Monthly Deliveries in the Baseline	Weights from ASCM	Weights from Regular SCM
Kinshasa (Target Province)	12,035		
Kongo Central	7,505	1.39	0.58
Sud Kivu	18,306	0.51	0.40
Maniema	7,633	0.47	0.00
Kasai	16,209	0.38	0.02
Haut Uele	4,270	0.18	0.00
Haut Lomami	11,496	0.16	0.00
Lomami	10,931	0.14	0.00
Mongala	9,329	0.08	0.00

Maindombe	6,012	0.01	0.00
Bas Uele	2,685	-0.01	0.00
Lualaba	9,683	-0.04	0.00
Tshuapa	6,343	-0.05	0.00
Kwango	8,028	-0.05	0.00
Sankuru	5,599	-0.05	0.00
Kasai Central	16,484	-0.07	0.00
Equateur	7,068	-0.13	0.00
Tshopo	5,776	-0.17	0.00
Sud Ubangi	8,862	-0.18	0.00
Kwilu	15,808	-0.21	0.00
Nord Ubangi	4,538	-0.23	0.00
Kasai Oriental	12,581	-0.26	0.00
Tanganyika	5,136	-0.41	0.00
Ituri	15,051	-0.44	0.00
Haut Katanga (Excluded from Analysis)	17,945		
Nord Kivu (Excluded from Analysis)	24,050		

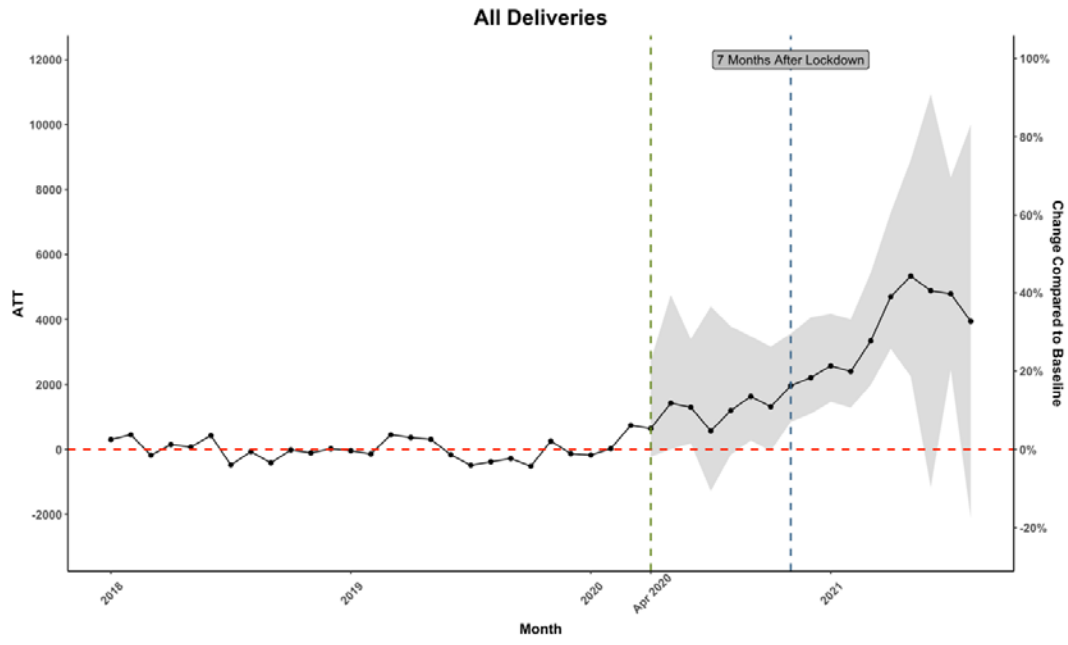
1
2 In Figure 1, we illustrate the estimated monthly average difference in births (ATT) between
3 Kinshasa and its synthetic control before and after the lockdown in Kinshasa (April 2020).
4 We expect the ATT to be small before the intervention but large afterward if there is an effect
5 of the lockdown.

6
7 Figure 1a plots the estimated ATT in all deliveries over time in Kinshasa. We observe that
8 our model was able to closely mimic the trajectory of births in health facilities in Kinshasa in
9 the pre-lockdown period. Following the lockdown, we begin to see an increase in the number
10 of births in Kinshasa as compared to its synthetic control, however, we do not see any
11 significant increases until at least 7 months after the lockdown. Births in facilities continue to
12 increase for approximately 5-6 more months, before declining and no longer being
13 statistically significant. At its peak, Kinshasa recorded an excess of about 5,000 additional
14 births per month, from a base of on average 12,035 births per month in the pre-lockdown
15 period, representing an approximately 45% increase in the monthly birth rate.

16
17

Figure 1a. Estimated ATT in All Deliveries in Kinshasa

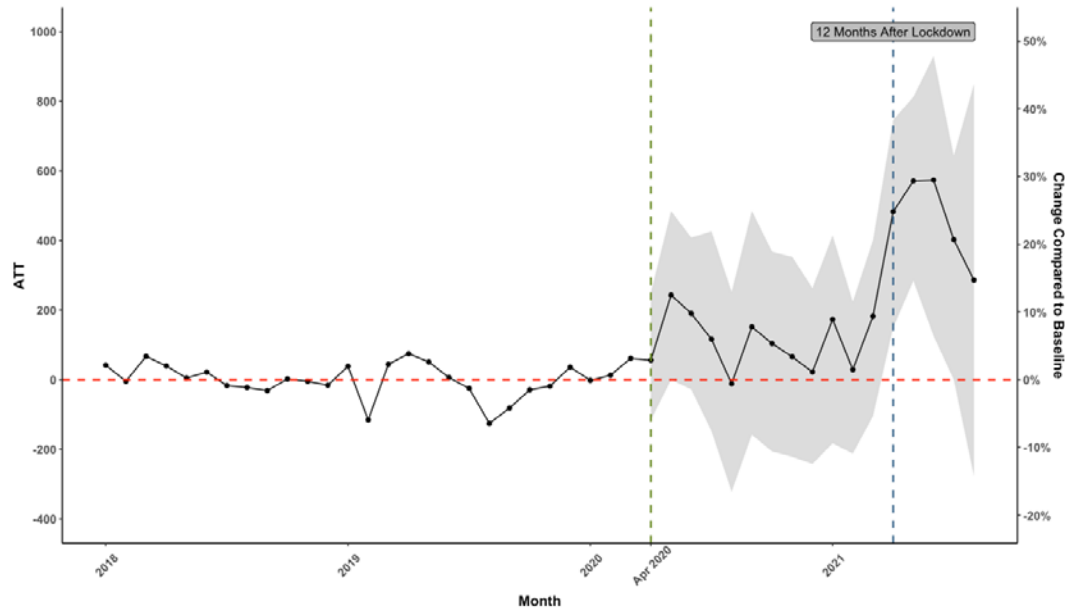
It is made available under a [CC-BY 4.0 International license](https://creativecommons.org/licenses/by/4.0/).



1
2
3

1

Figure 1b. Estimated ATT in Deliveries Under 20 in Kinshasa



2

3 Figure 1b plots the same ATT estimates, but this time only for mothers under the age of 20.

4 While these data are noisier, we do see a large increase in births, which reaches statistical
5 significance 12 months after the lockdown. Again, this represents a large proportional
6 increase of about 20-30% as compared to the baseline levels.

7

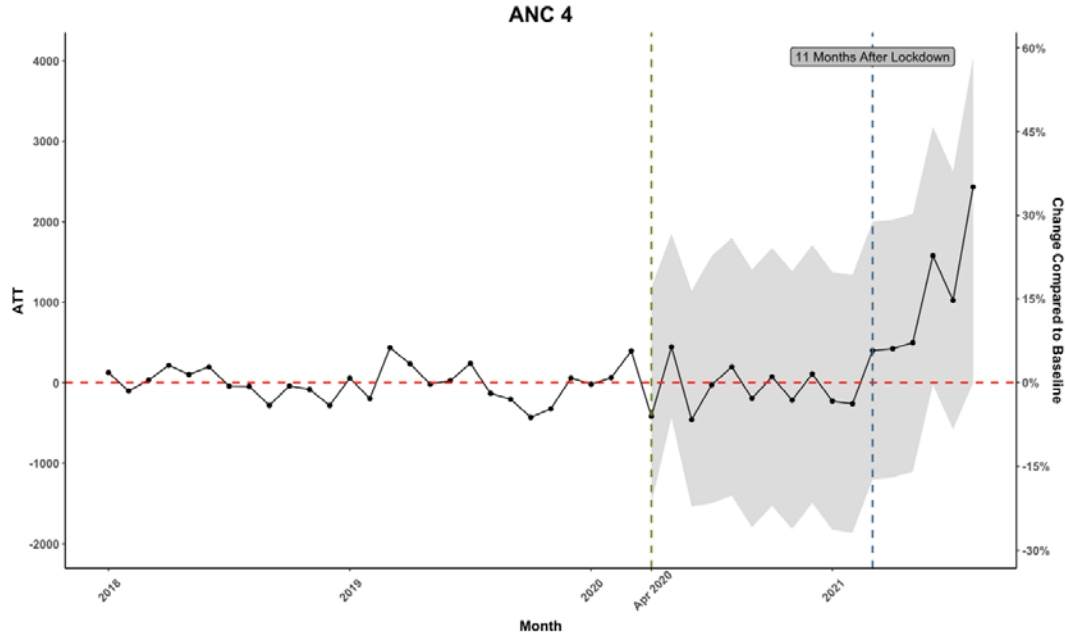
8 Figure 2a investigates the rates of ANC services while Figure 2b investigates rates of PNC
9 services. While we do not generally observe any short-term increase in ANC visits, there
10 does appear an increase in the number of ANC4 visits 11 months after the lockdown.

11

12

1

Figure 2a. Estimated ATT in ANC4 Visits in Kinshasa



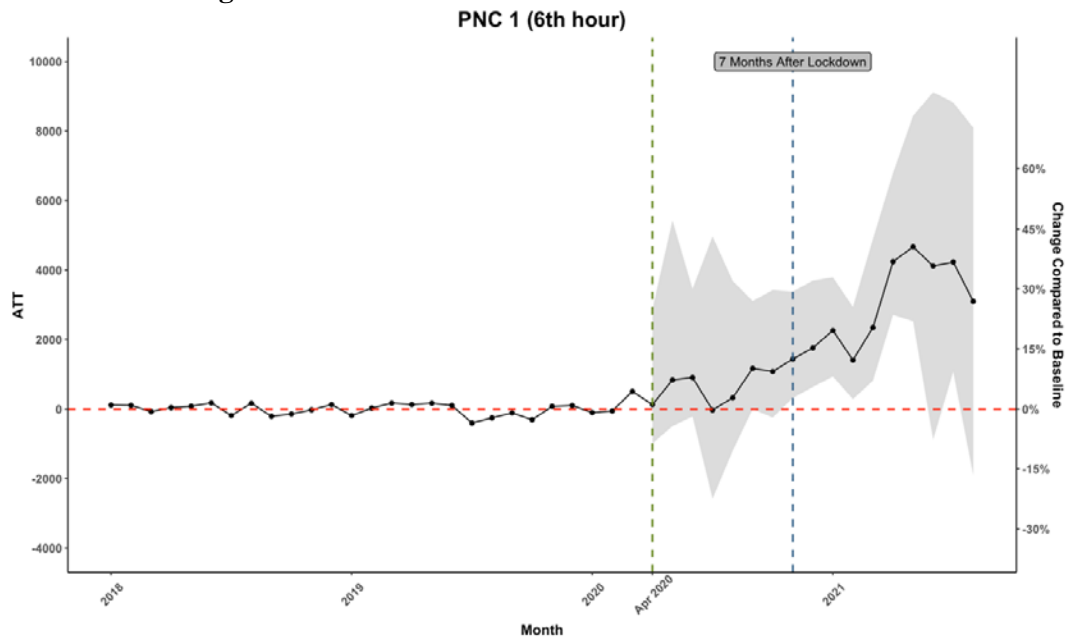
2

3

4

5

Figure 2b. Estimated ATT in PNC1 Visits in Kinshasa



6

7

8 For PNC, Figure 2b shows the estimated ATT for the first PNC visits that happen within 6
9 hours of the delivery. We observe a very similar pattern as with overall deliveries, both of
10 which started to increase 7 months after the lockdown. This is consistent with our observed
11 trends in increased facility births as women who are already in a facility are likely to remain
12 to receive their first PNC visit within 6 hours. On the other hand, we do not observe such a
13 strong significant increase in ANC visits partly because they are optional, and women may

1 tend to avoid attending these sessions when the pandemic is still around, especially when the
2 second wave of COVID-19 hit the DRC in December 2020.

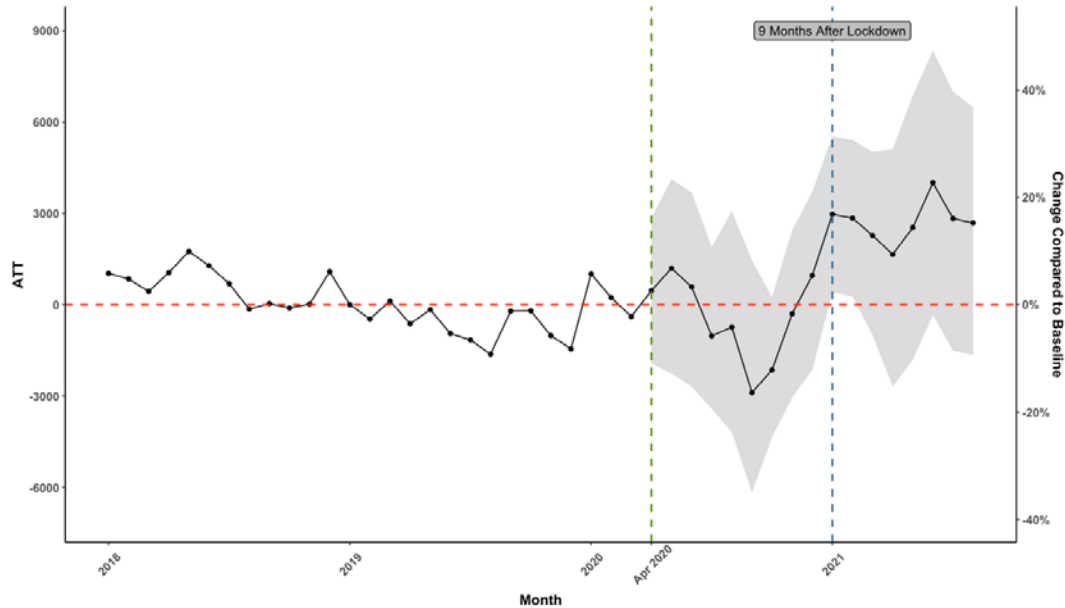
3

4 Further evidence of an increase in facility-based deliveries is also seen in our data on
5 vaccinations of children. If there were more births, we would expect to see an increase in the
6 number of vaccinations given to these children around the same time. In Figure 3a, we
7 present the estimates of the ATT for BCG vaccinations, a vaccine that is recommended to be
8 given at birth in the DRC. Although there is some evidence of an early decline in the rates of
9 BCG vaccination post-lockdown, after 9 months we see a large and significant increase in
10 vaccinations on the order of approximately 3000 additional vaccines. In Figure 3b, we
11 present the results for the DTP-HepB-Hib1 vaccine, which is given in the weeks immediately
12 following birth, we begin to see a large increase in the number of vaccines administered per
13 month approximately 9 months after the lockdown. We observe about 2500 additional
14 vaccines administered per month relative to the baseline numbers of vaccines.

15

16

Figure 3a. Estimated ATT in BCG Vaccination in Kinshasa

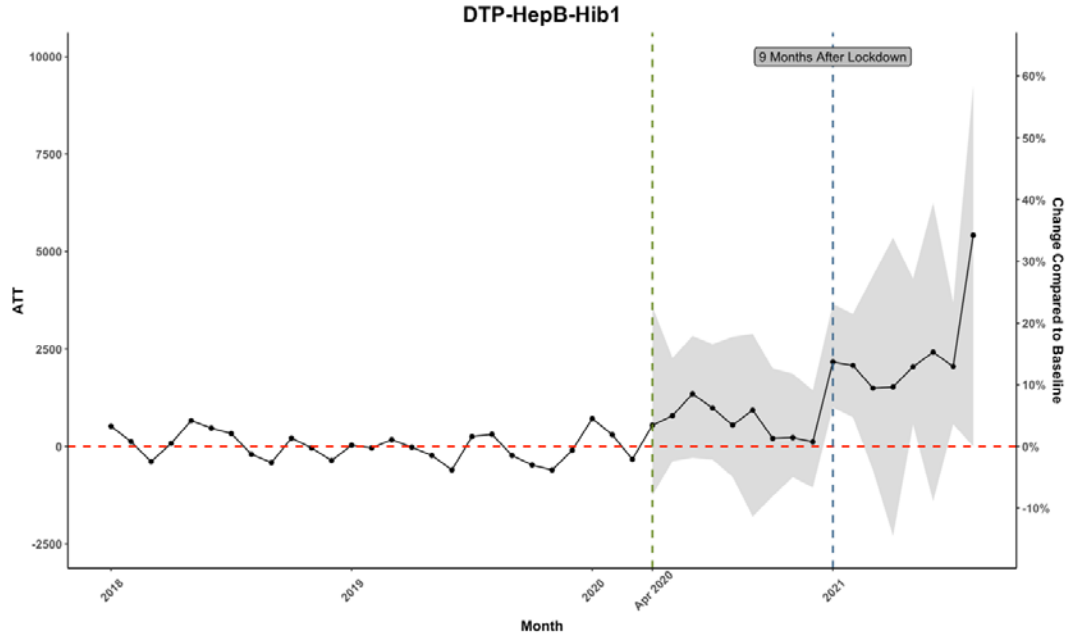


17

18

19

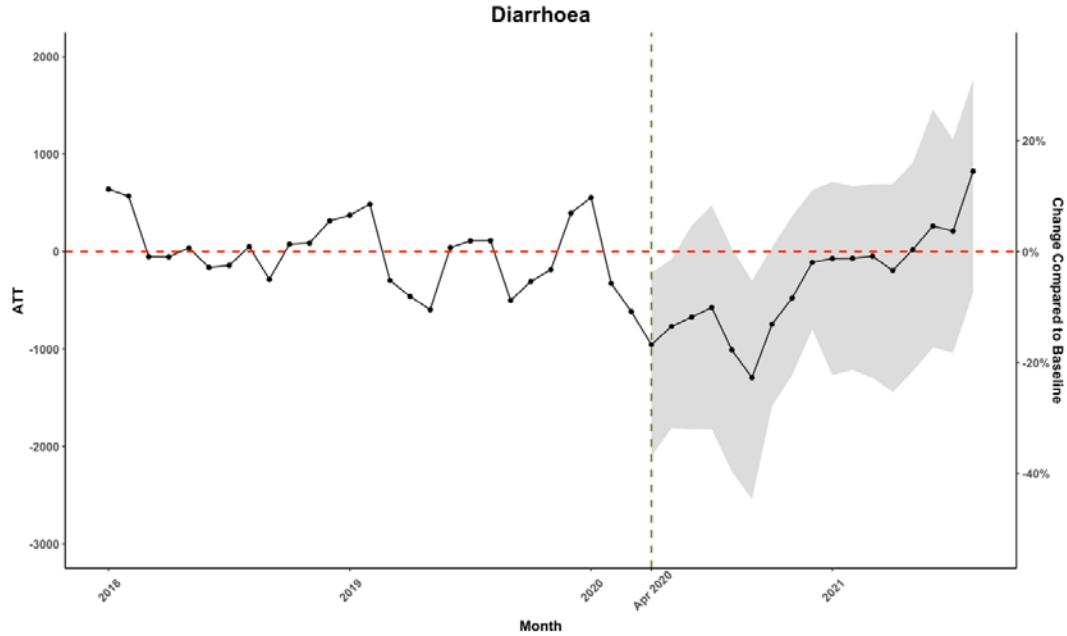
1 **Figure 3b. Estimated ATT in DTP-HepB-Hib1 Vaccination in Kinshasa**



2
3 Finally, in Figure 4 we investigate other health services that should not have been affected by
4 the lockdown many months after its implementation. In Figure 4a, we investigate the number
5 of cases of diarrhea treated in health facilities, however, we observe no significant increases
6 in the use of this service any time after the lockdown in Kinshasa. In Figure 4b, we
7 investigate total outpatient visits. We observe some increases after 10 months of the
8 lockdown; however, this may be attributable to the other health services that went up along
9 with an increase in deliveries, such as the vaccination and ANC/PNC visits. Regardless, the
10 increases in outpatient visits are not statistically significant at any time after the lockdown.
11

1

Figure 4a. Estimated ATT in Diarrhea Cases in Kinshasa

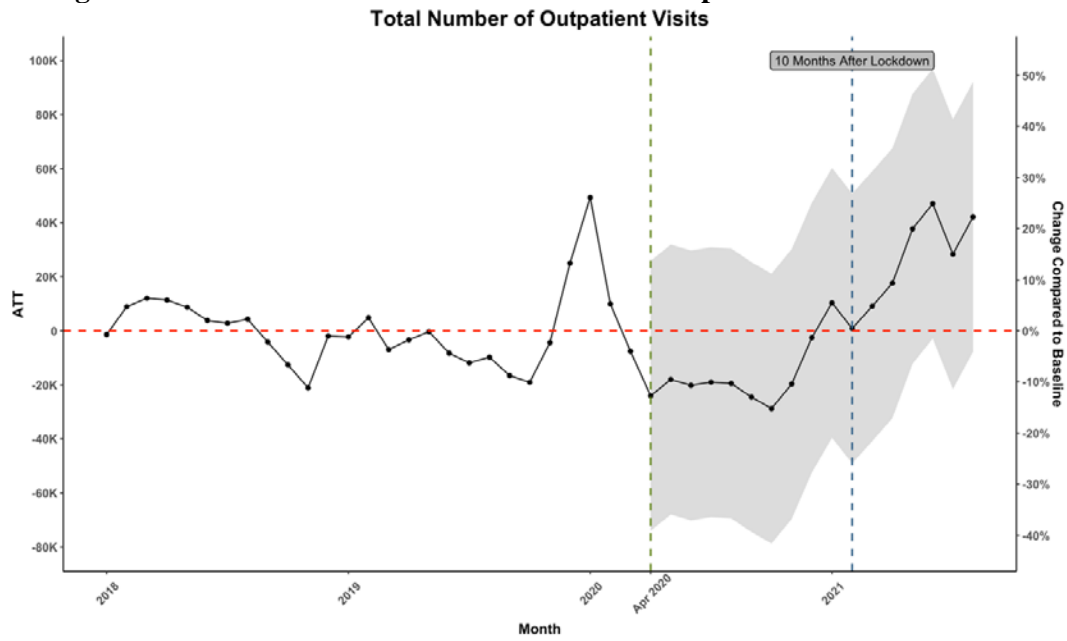


2

3

4

Figure 4b. Estimated ATT in Total Number of Outpatient Visits in Kinshasa



5

6

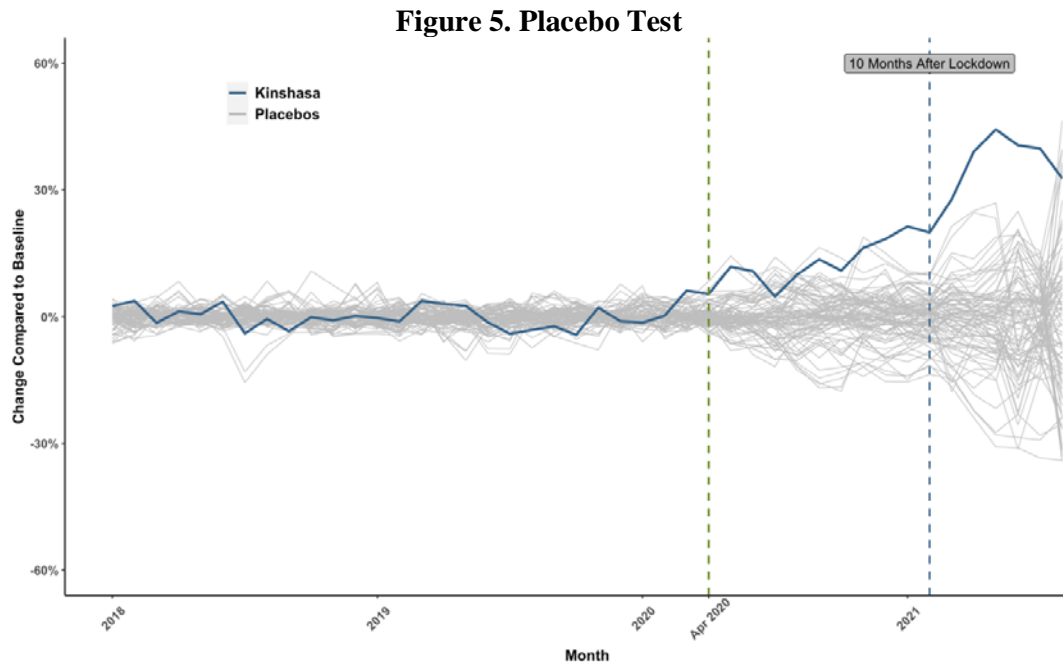
7

8

9

10

1



2

3

4 As discussed in the methods section, if there were a true treatment effect in Kinshasa, we
5 would expect to see the treatment effect from Kinshasa to be at the extreme end in the
6 distribution of estimated treatment effects by pretending different provinces in the population
7 as the treated in a placebo test. Figure 5 is generated by bootstrapping the control units and in
8 each iteration, we artificially assign the treatment to one control unit and estimate its
9 treatment effect. Indeed, the estimated ATT in Kinshasa is the largest in size – by far at all
10 periods after the intervention, which provides evidence supporting a true treatment effect
11 resultant from the lockdown in Kinshasa. All pre-intervention estimates of ATT are clustered
12 and fluctuating around 0, which again indicates a good fit of the ASCM model.

13

14 **4. Discussion**

15 This study investigated the impact of lockdown measures, above and beyond other control
16 measures implemented in the DRC, on fertility, which we proxy by the number of births in
17 health facilities. We find that starting approximately 7 months after the lockdown, and
18 lasting for another 5 months, there were very large increases in the number of women giving
19 birth in Kinshasa. Specifically, we observed approximately 5,000 additional births per month,
20 a nearly 45% increase in deliveries relative to baseline. We also observe important increases
21 in complimentary services that are normally associated with births, especially receipt of PNC
22 within 6 hours of delivery and doses of the BCG vaccine. We did not see any significant
23 increases in ANC visits, nor did we see any major increases in visits for diarrhea or total

1 outpatient visits. Our placebo test provides very strong corroborating evidence that the
2 effects observed in Kinshasa were distinct and more extreme than those observed in the rest
3 of the country. As such, we conclude that the lockdown implemented in Kinshasa in 2020
4 led to a large increase in fertility. We observed important increases in births for both women
5 over the age of 20 as well as those below, however, proportionally increases were larger for
6 older women than for the younger women.

7
8 Given the limitations of our data, we are unable to speculate as to whether the increases in
9 pregnancies we observed were intended or unintended. There is, however, growing evidence
10 globally as well as from the DRC that lockdowns implemented during the COVID-19
11 pandemic had been associated with large increases in intimate partner violence. A national
12 online survey conducted in August-September 2020 reported that the prevalence of IPV in
13 the DRC was about 11% in the past month (Ditekemena et al., 2021a). The study also found
14 that pregnant women were more likely than other women to report IPV, which is suggestive
15 that the rise of these types of behaviours may have contributed to increases in pregnancies in
16 the DRC.

17
18 As previously mentioned, while our identification strategy specifically investigated the
19 effects of lockdowns on fertility, it is important to note that at the time when the lockdown
20 had been implemented in Kinshasa, schools had already been closed both in the capital city
21 and in the rest of the country. As such, our results should be seen as the impact of lockdown
22 above and beyond other public health measures but in a context in which young adolescent
23 girls may have been more vulnerable to getting pregnant. A recent study from Kenya found
24 that adolescent girls that completed school before the start of the COVID-19 pandemic were
25 less likely to have fallen pregnant before completing secondary school, less likely to drop out,
26 and were less likely to have reported that their first sexual experience was desired (Zulaika et
27 al., 2022). While the authors attribute this effect to lockdowns, the two groups of girls in this
28 study were also exposed to the pandemic and all its associated response measures, especially
29 prolonged school closures, not just the lockdown. In our study, while we find increases in
30 pregnancies among younger women, it was by no means only school-aged girls that
31 experienced an increase in pregnancies.

32

1 Another important caveat to our findings that is worth discussing is that while all of Kinshasa
2 had been under government mandated directives to greatly reduce movement and social
3 contact, including school and business closures, it was mainly the central commune of
4 Gombe that had been put under a very strict lockdown. However, even so, it is easy to
5 imagine how the closure of Gombe could have had far-reaching effects well beyond those
6 just in Gombe. As a central business district, many people would normally work or commute
7 through this area, thus not just people in Gombe were affected by the policy. Women of
8 husbands who normally would have commuted outside of Kinshasa also would have seen
9 their husbands more than normal. Bars, nightclubs, and other normal places of entertainment
10 in urban centres had all been closed, which likely led to high levels of idleness amongst many.
11 We considered independently evaluating the impact of the lockdown on births just in the
12 Gombe commune, however, given that most of the increased births we observed in our
13 sample occurred at a time in which Gombe was no longer under lockdown, and given the
14 location of the main provincial referral hospital in this area, it was impossible to distinguish
15 the births amongst women who lived in Gombe at the time of lockdown and those that had
16 not.

17

18 While we believe our study sheds new light on an important mechanism that may have
19 affected fertility during the COVID-19 pandemic, it is not without limitations. First, we do
20 not directly measure the true number of births but instead proxy fertility by the number of
21 women who give birth in health facilities. We speculate that the proportional increase in the
22 number of births observed in health facilities represents a good reflection of the true changes
23 in pregnancy rates in Kinshasa, rather than just a shift in the proportion of pregnant women
24 who give birth in clinics over time. Several factors allow us to draw this inference with
25 reasonable levels of confidence. First, by 2013-14, institutional delivery rates were already
26 nearly universal in Kinshasa and very high in the rest of the country as well (Ministère du
27 Plan et Suivi de la Mise en œuvre de la Révolution de la Modernité et al., 2014). Given the
28 magnitude of the increases in births we observed, it is very likely that the increases that we
29 observe represent actual increases in pregnancies. Second, following a peak in the number of
30 births, we also see a decline in the number of births after 5 months of increases, which again
31 would be consistent with the effects of a short-run measure like lockdown. Another
32 limitation of our study is that our dataset has less complete coverage of health services
33 delivered in private health facilities, which do account for an important proportion of all
34 institutional deliveries, in particular in Kinshasa (Ministère du Plan et Suivi de la Mise en

1 œuvre de la Révolution de la Modernité et al., 2014). It is possible that there may have been
2 important shifts in the mix of births happening in the public vs the private sector and this
3 could also be affecting our results. While an important shift towards the use of private health
4 services has been documented in other contexts during the pandemic and was even part of the
5 public health response in some countries (Williams et al., 2021), had such a shift occurred,
6 they would have most likely happened in the immediate aftermath of the lockdown and not
7 necessarily many months later. Plus, in general, the shifts in the public vs private mix in
8 deliveries that have been observed in other contexts during previous infectious disease
9 outbreaks were mainly in the direction of more private sector deliveries (Blair et al., 2017),
10 not less, and thus it is also not likely the case that this limitation of our dataset that is driving
11 the large increases that we had observed.

12

13 The COVID-19 pandemic led to the adoption of an unprecedented number of policies aimed
14 at containing and mitigating the impact of the virus. Lockdowns were widely used, including
15 by many African countries (Haider et al., 2020). Our study provides evidence that the
16 unintended effects of these policies may have effect long after such policies had been lifted.
17 Before the next infectious disease outbreak, global health experts and national policy makers
18 need to better understand the potential unintended effects of these policies on outcomes, such
19 as fertility, and to develop strategies to mitigate these effects, for example by providing
20 outreach or mobile access to family planning services, support to out of school adolescents,
21 and other support.

22

- 1 **List of Abbreviations**
- 2 **1. LMICs: Low- and Middle-Income Countries**
- 3 **2. HICs: High-Income Countries**
- 4 **3. IPV: Intimate Partner Violence**
- 5 **4. SSA: Sub-Saharan African**
- 6 **5. DHS: Demographic and Health Survey**
- 7 **6. HMIS: Health Management Information System**
- 8 **7. DHIS2: District Health Information System 2**
- 9 **8. ANC: Antenatal Care Visits**
- 10 **9. PNC: Postnatal Care Visits**
- 11 **10. BCG: Bacillus Calmette-Guérin**
- 12 **11. DTP-HepB-Hib: Diphtheria-Pertussis-Tetanus-Polio-Hepatitis B-Haemophilus**
- 13 **Influenzae Type B**
- 14 **12. SCM: Synthetic Control Method**
- 15 **13. ATT: Average Treatment effect on the Treated**
- 16 **14. ASCM: Augmented Synthetic Control Method**

17
18
19
20
21
22
23
24
25
26
27
28
29
30
31
32
33
34
35
36
37
38
39
40
41
42
43
44
45
46
47
48
49
50

1 **Appendices**

2 **Table A.1 Estimated ATTs for deliveries before and after the lockdown period**

	Month	Estimated ATT (% to the Baseline)
Pre-Lockdown Periods	January 2018	301.95 (3%)
	February 2018	450.72 (4%)
	March 2018	-178.53 (-1%)
	April 2018	149.58 (1%)
	May 2018	72.84 (1%)
	June 2018	428.07 (4%)
	July 2018	-479.28 (-4%)
	August 2018	-67.32 (-1%)
	September 2018	-413.28 (-3%)
	October 2018	-15.42 (0%)
	November 2018	-106.43 (-1%)
	December 2018	20.00 (0%)
	January 2019	-39.15 (0%)
	February 2019	-139.92 (-1%)
	March 2019	449.85 (4%)
	April 2019	362.94 (3%)
	May 2019	307.60 (3%)
	June 2019	-163.26 (-1%)
	July 2019	-489.25 (-4%)
	August 2019	-378.00 (-3%)
	September 2019	-278.49 (-2%)
	October 2019	-516.45 (-4%)
	November 2019	256.24 (2%)
	December 2019	-130.18 (-1%)
January 2020	-172.24 (-1%)	
February 2020	24.40 (0%)	
Onset of COVID-19	March 2020	741.72 (6%)
Post-Lockdown Periods	April 2020	644.21 (5%)
	May 2020	1424.37 (12%)
	June 2020	1295.76 (11%)
	July 2020	570.17 (5%)
	August 2020	1195.76 (10%)
	September 2020	1631.45 (14%)
	October 2020	1313.70 (11%)
	November 2020	1960.49 (16%)
	December 2020	2209.20 (18%)
	January 2021	2573.61 (21%)
	February 2021	2399.18 (20%)
	March 2021	3340.70 (28%)
	April 2021	4703.25 (39%)
	May 2021	5334.73 (44%)
	June 2021	4887.01 (41%)
	July 2021	4793.05 (40%)
August 2021	3945.07 (33%)	

3

1 **References**

2

3 Aassve A, Cavalli N, Mencarini L, Plach S, Sanders S. Early assessment of the relationship
4 between the COVID-19 pandemic and births in high-income countries. *P Natl Acad Sci Usa*
5 2021;118:e2105709118. <https://doi.org/10.1073/pnas.2105709118>.

6 Abadie A, Diamond A, Hainmueller J. Comparative Politics and the Synthetic Control
7 Method. *Am J Polit Sci* 2015;59:495–510. <https://doi.org/10.1111/ajps.12116>.

8 Arkhangelsky D, Athey S, Hirshberg DA, Imbens GW, Wager S. Synthetic Difference-in-
9 Differences. *Am Econ Rev* 2021;111:4088–118. <https://doi.org/10.1257/aer.20190159>.

10 Athey S, Bayati M, Doudchenko N, Imbens G, Khosravi K. Matrix Completion Methods for
11 Causal Panel Data Models. *J Am Stat Assoc* 2021;116:1–15.
12 <https://doi.org/10.1080/01621459.2021.1891924>.

13 Bandiera O, Buehren N, Goldstein M, Rasul I, Smurra A. Do School Closures During an
14 Epidemic have Persistent Effects? Evidence from Sierra Leone in the Time of Ebola 2020.

15 Ben-Michael E, Feller A, Rothstein J. The Augmented Synthetic Control Method*. *J Am Stat*
16 *Assoc* 2021;116:1–34. <https://doi.org/10.1080/01621459.2021.1929245>.

17 Blair RA, Morse BS, Tsai LL. Public health and public trust: Survey evidence from the Ebola
18 Virus Disease epidemic in Liberia. *Soc Sci Med* 2017;172.
19 <https://doi.org/10.1016/j.socscimed.2016.11.016>.

20 Bundervoet T, Dávalos ME, Garcia N. The short-term impacts of COVID-19 on households in
21 developing countries: An overview based on a harmonized dataset of high-frequency
22 surveys. *World Dev* 2022;153:105844. <https://doi.org/10.1016/j.worlddev.2022.105844>.

23 Chernozhukov V, Wüthrich K, Zhu Y. An Exact and Robust Conformal Inference Method for
24 Counterfactual and Synthetic Controls. *J Am Stat Assoc* 2021;116:1–16.
25 <https://doi.org/10.1080/01621459.2021.1920957>.

26 Chmielewska B, Barratt I, Townsend R, Kalafat E, Meulen J van der, Gurol-Urganci I, et al.
27 Effects of the COVID-19 pandemic on maternal and perinatal outcomes: a systematic review
28 and meta-analysis. *Lancet Global Heal* 2021. [https://doi.org/10.1016/s2214-109x\(21\)00079-](https://doi.org/10.1016/s2214-109x(21)00079-6)
29 6.

30 Cole MA, Elliott RJR, Liu B. The Impact of the Wuhan Covid-19 Lockdown on Air Pollution
31 and Health: A Machine Learning and Augmented Synthetic Control Approach. *Environ*
32 *Resour Econ* 2020;76:553–80. <https://doi.org/10.1007/s10640-020-00483-4>.

33 Ditekemena J, Doumbia S, Ebrahim SH. COVID-19's final frontier: The central Africa region.
34 *Travel Med Infect Di* 2020;37:101694–101694.
35 <https://doi.org/10.1016/j.tmaid.2020.101694>.

- 1 Ditekemena JD, Luhata C, Mavoko HM, Fodjo JNS, Nkamba DM, Damme WV, et al. Intimate
2 Partners Violence against Women during a COVID-19 Lockdown Period: Results of an Online
3 Survey in 7 Provinces of the Democratic Republic of Congo. *Int J Environ Res Pu*
4 2021a;18:5108. <https://doi.org/10.3390/ijerph18105108>.
- 5 Ditekemena JD, Nkamba DM, Muhindo HM, Siewe JNF, Luhata C, Bergh RV den, et al.
6 Factors associated with adherence to COVID-19 prevention measures in the Democratic
7 Republic of the Congo (DRC): results of an online survey. *Bmj Open* 2021b;11:e043356.
8 <https://doi.org/10.1136/bmjopen-2020-043356>.
- 9 Egger D, Miguel E, Warren SS, Shenoy A, Collins E, Karlan D, et al. Falling living standards
10 during the COVID-19 crisis: Quantitative evidence from nine developing countries. *Sci Adv*
11 2021;7. <https://doi.org/10.1126/sciadv.abe0997>.
- 12 Elston JWT, Cartwright C, Ndumbi P, Wright J. The health impact of the 2014–15 Ebola
13 outbreak. *Public Health* 2017;143:60–70. <https://doi.org/10.1016/j.puhe.2016.10.020>.
- 14 Feng S, Hategeka C, Grépin KA. Addressing missing values in routine health information
15 system data: an evaluation of imputation methods using data from the Democratic Republic
16 of the Congo during the COVID-19 pandemic. *Popul Health Metr* 2021;19:44.
17 <https://doi.org/10.1186/s12963-021-00274-z>.
- 18 Gebremichael SG, Fenta SM. Determinants of institutional delivery in Sub-Saharan Africa:
19 findings from Demographic and Health Survey (2013–2017) from nine countries. *Tropical*
20 *Medicine Heal* 2021;49:45. <https://doi.org/10.1186/s41182-021-00335-x>.
- 21 Haider N, Osman AY, Gadzekpo A, Akipede GO, Asogun D, Ansumana R, et al. Lockdown
22 measures in response to COVID-19 in nine sub-Saharan African countries. *Bmj Global Heal*
23 2020;5:e003319. <https://doi.org/10.1136/bmjgh-2020-003319>.
- 24 Hategeka C, Carter SE, Change FM, Katanga EN, Lurton G, Mayaka SM-N, et al. Impact of the
25 COVID-19 pandemic and response on the utilisation of health services in public facilities
26 during the first wave in Kinshasa, the Democratic Republic of the Congo. *Bmj Global Heal*
27 2021;6:e005955. <https://doi.org/10.1136/bmjgh-2021-005955>.
- 28 Hung Yuen W., Hoxha K, Irwin BR, Law MR, Grépin KA. Using routine health information data
29 for research in low- and middle-income countries: a systematic review. *Bmc Health Serv Res*
30 2020;20:790. <https://doi.org/10.1186/s12913-020-05660-1>.
- 31 Hung Yuen W, Law MR, Cheng L, Abramowitz S, Alcayna-Stevens L, Lurton G, et al. Impact of
32 a free care policy on the utilisation of health services during an Ebola outbreak in the
33 Democratic Republic of Congo: an interrupted time-series analysis. *Bmj Global Heal*
34 2020;5:e002119. <https://doi.org/10.1136/bmjgh-2019-002119>.
- 35 IMF. Regional Economic Outlook, April 2020, Sub-Saharan Africa. *Regional Econ Outlook*
36 2020. <https://doi.org/10.5089/9781513536835.086>.

- 1 Juma CA, Mushabaa NK, Salam FA, Ahmadi A, Lucero-Prisno DE. COVID-19: The Current
2 Situation in the Democratic Republic of Congo. *Am J Tropical Medicine Hyg* 2020;103:2168–
3 70. <https://doi.org/10.4269/ajtmh.20-1169>.
- 4 Kc A, Gurung R, Kinney MV, Sunny AK, Moinuddin M, Basnet O, et al. Effect of the COVID-19
5 pandemic response on intrapartum care, stillbirth, and neonatal mortality outcomes in
6 Nepal: a prospective observational study. *Lancet Global Heal* 2020.
7 [https://doi.org/10.1016/s2214-109x\(20\)30345-4](https://doi.org/10.1016/s2214-109x(20)30345-4).
- 8 Kwete D, Binanga A, Mukaba T, Nemuandjare T, Mbadu MF, Kyungu M-T, et al. Family
9 Planning in the Democratic Republic of the Congo: Encouraging Momentum, Formidable
10 Challenges. *Global Heal Sci Pract* 2018;6:40–54. <https://doi.org/10.9745/ghsp-d-17-00346>.
- 11 Ministère du Plan et Suivi de la Mise en œuvre de la Révolution de la Modernité, Santé M de
12 la, ICF International. République Démocratique du Congo Enquête Démographique et de
13 Santé 2013-2014. 2014.
- 14 Mobula LM, Samaha H, Yao M, Gueye AS, Diallo B, Umutoni C, et al. Recommendations for
15 the COVID-19 Response at the National Level Based on Lessons Learned from the Ebola
16 Virus Disease Outbreak in the Democratic Republic of the Congo. *Am J Tropical Medicine
17 Hyg* 2020;103:12–7. <https://doi.org/10.4269/ajtmh.20-0256>.
- 18 Modernité M du P et S de la M en œuvre de la R de la, Publique M de la S, International I.
19 Enquête Démographique et de Santé en République Démocratique du Congo 2013-2014.
20 Rockville, Maryland, USA: 2014.
- 21 Nachege JB, Mbala-Kingebeni P, Otshudiema J, Mobula LM, Preiser W, Kallay O, et al.
22 Responding to the Challenge of the Dual COVID-19 and Ebola Epidemics in the Democratic
23 Republic of Congo—Priorities for Achieving Control. *Am J Tropical Medicine Hyg*
24 2020;103:597–602. <https://doi.org/10.4269/ajtmh.20-0642>.
- 25 Nkuba AN, Makiala SM, Guichet E, Tshiminyi PM, Bazitama YM, Yambayamba MK, et al. High
26 prevalence of anti-SARS-CoV-2 antibodies after the first wave of COVID-19 in Kinshasa,
27 Democratic Republic of the Congo: results of a cross-sectional household-based survey. *Clin
28 Infect Dis* 2021:ciab515-. <https://doi.org/10.1093/cid/ciab515>.
- 29 Ravindran S, Shah M. Unintended Consequences of Lockdowns: COVID-19 and the Shadow
30 Pandemic 2020. <https://doi.org/10.3386/w27562>.
- 31 Romaniuk A. Persistence of High Fertility in Tropical Africa: The Case of the Democratic
32 Republic of the Congo. *Popul Dev Rev* 2011;37:1–28. [https://doi.org/10.1111/j.1728-
33 4457.2011.00388.x](https://doi.org/10.1111/j.1728-4457.2011.00388.x).
- 34 Wilhelm JA, Helleringer S. Utilization of non-Ebola health care services during Ebola
35 outbreaks: a systematic review and meta-analysis. *J Glob Health* 2019;9:010406.
36 <https://doi.org/10.7189/jogh.09.010406>.

- 1 Williams OD, Yung KC, Grépin KA. The failure of private health services: COVID-19 induced
2 crises in low- and middle-income country (LMIC) health systems. *Glob Public Health*
3 2021;16:1–14. <https://doi.org/10.1080/17441692.2021.1874470>.
- 4 Xu Y. Generalized Synthetic Control Method: Causal Inference with Interactive Fixed Effects
5 Models. *Polit Anal* 2017;25:57–76. <https://doi.org/10.1017/pan.2016.2>.
- 6 Zimmerman LA, Karp C, Thiongo M, Gichangi P, Guiella G, Gemmill A, et al. Stability and
7 change in fertility intentions in response to the COVID-19 pandemic in Kenya. *Plos Global*
8 *Public Heal* 2022;2:e0000147. <https://doi.org/10.1371/journal.pgph.0000147>.
- 9 Zulaika G, Bulbarelli M, Nyothach E, Eijk A van, Mason L, Fwaya E, et al. Impact of COVID-19
10 lockdowns on adolescent pregnancy and school dropout among secondary schoolgirls in
11 Kenya. *Bmj Global Heal* 2022;7:e007666. <https://doi.org/10.1136/bmjgh-2021-007666>.

12

13