

# Predicting Adverse Events in the Cardiothoracic Surgery Intensive Care Unit Using Machine Learning: Results and Challenges

Saeed Amal<sup>1</sup>, Robert Kramer<sup>2</sup>, Douglas Sawyer<sup>2</sup>, Jaime B Rabb<sup>2</sup>, Alanna S Maurais<sup>2</sup>, Cathy S. Ross<sup>3</sup>,  
Alexander Iribarne<sup>3</sup>, Raimond L Winslow<sup>1</sup>

<sup>1</sup> The Roux Institute, Northeastern University, Portland, ME, USA

<sup>2</sup> Maine Medical Center, Portland, ME, USA

<sup>3</sup> Dartmouth Hitchcock Medical Center, Lebanon, NH, USA

## Abstract

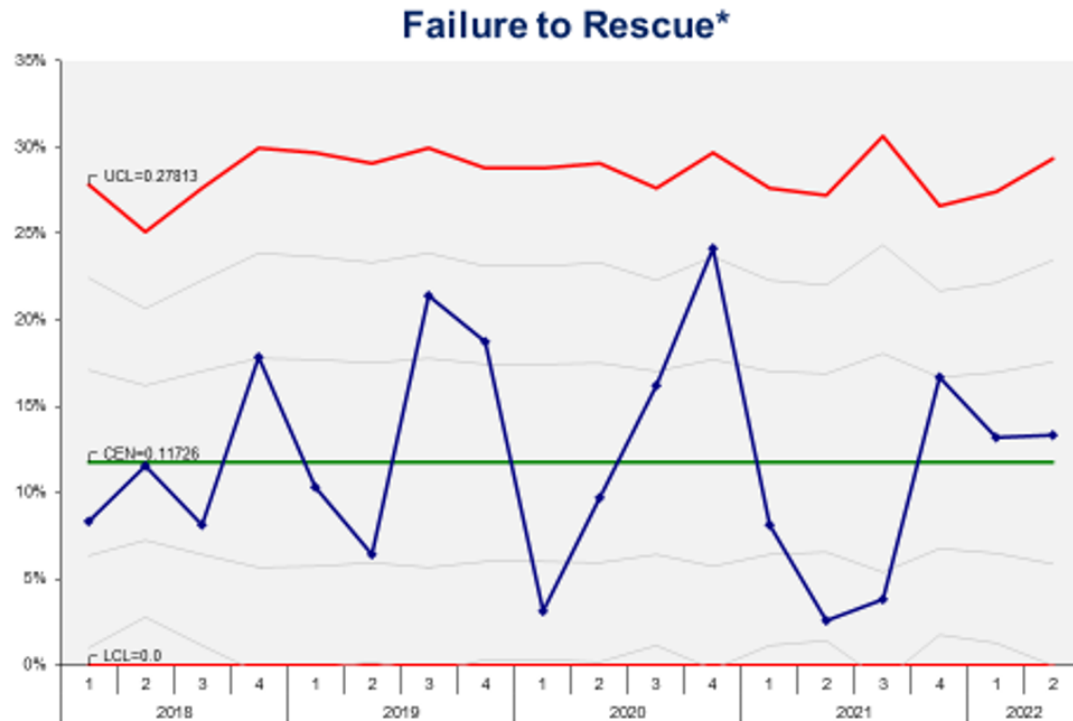
It is highly important to anticipate impending problems in patients in the cardiothoracic intensive care unit (CTICU) and be proactive with respect to prediction of adverse events, enabling interventions to prevent them. In order to develop models that predict the occurrence of adverse events after cardiac surgery, a dataset of 9,237 patients was constructed of a single center's Society of Thoracic Surgeons (STS) internal database. 1,383 of those patients had developed at least one of seven defined adverse events for this analysis. For the control set, we randomly picked 1,383 patients from the group who did not develop any adverse event. The ensemble learning algorithm, random forest, was applied and outperformed the best reported logistic regression models for similar task (c-statistic of ~0.81), by achieving an AUC of 0.86 with a 95% CI of [0.81-0.90], specificity of 0.72, sensitivity of 0.82, PPV of 0.95 and NPV of 0.77. In the future, we plan to run a similar evaluation process on a multicenter dataset, and then use this static prediction model as a context for using time-evolving data to develop algorithms for real-time feedback to care teams. In acute care settings, such as the operating room and intensive care unit, the ability to anticipate potentially fatal complications will be enhanced by using supervised machine learning algorithms.

## Introduction

When untoward events occur after cardiac surgery, a rapid response is needed. The intensive care environment offers the patients the best chance of survival. Risk-adjusted mortality rates following cardiac surgery vary 2.5-fold across low and high-performing hospitals [Ghaferi et al. 2009] and a portion of the variability in hospital mortality rates may be attributed to differences in a concept known as "failure to rescue." Failure to rescue (FTR) is the inability to prevent a patient's death following a complication. Enhancing the ability to predict or respond rapidly and effectively to untoward events translates into lower morbidity and mortality rates. For example, in Reddy et al. [2013], the following seventeen complications were associated with FTR: Multi-system organ failure, coma, cardiac arrest, renal dialysis, sepsis, anticoagulation event, gastrointestinal event, intensive care unit readmission, prolonged ventilation, reoperation for bleeding, pneumonia, stroke, cardiac tamponade, pulmonary embolism, deep sternal wound infection, heart block, and aortic dissection. At Maine Medical Center

(MMC) the FTR metric is tracked on a statistical process control chart that is published quarterly depicting the last 5 years of experience. An example of a statistical process control chart for FTR is shown in Figure 1.

**Figure 1: Statistical process control chart for Failure To Rescue**



**\*Percentage of patients who die after experiencing one of the following 17 post operative events:**

Multi-system Organ Failure, Coma/Encephalopathy, Cardiac Arrest, Renal Dialysis, Sepsis, Anticoagulation Event, GI Event, ICU Readmission, Prolonged Ventilation, Reop for Bleeding, Pneumonia, Stroke, Tamponade, Pulmonary Embolism, Mediastinitis, Complete Heart Block or Aortic Dissection.

Elective/Urgent Procedures Include: Isolated CABG, Isolated AVR, Isolated MVR, AVR + CABG, MVR + CABG, Mitral Valve Repair, Mitral Valve Repair + CABG

Using a different set of four variables (prolonged ventilation, stroke, reoperation, and renal failure), Kurlansky et al. [2021], built the binary classification ability of the task of distinguishing between failure to rescue (FTR) cases or not. However, although we did not evaluate on the same data set, their best performing logistic regression analysis [Sperandei 2014] achieved a c-statistic of 0.81 in the binary classification task of identifying FTR cases. Kurlansky did not report additional performance metrics such as sensitivity, specificity, PPV, NPV or 95% CI. Figure 2 demonstrates the AUC graph of logistic regression and random forest respectively. On earlier works using the STS Adult Cardiac Surgery Database, Shahian et al. [2018] and O'Brien et al. [2018] developed risk scores for nine different outcomes of interest: Operative mortality, stroke, renal failure, prolonged ventilation, reoperation, mediastinitis/deep sternal wound infection (DSWI), major morbidity or mortality composite, prolonged postoperative length of stay

(POLOS), or short POLOS. O'Brien et al. [2018] identified 70 static variables used to construct risk scores for these outcomes. (Supplement 1)

The following are shortcomings of the current works quoted above:

1. The results cannot be replicated because the functional form of the risk estimators is not described in either Shahian et al. [2018], O'Brien et al. [2018], or Kurlansky et al. [2021].
2. The performance of these risk models is not described in a way that supports their full evaluation as predictors.
3. The performance of these risk scores is only assessed by the sole metric provided (the c-statistic, another name for the more commonly used term AUC).
4. The relative weight of each variable used to generate the risk scores (Supplement 1) was not included in the publications.

In our approach, we addressed these limitations by providing insights on the most important variables that affected the predicted outcome. These outcomes are reported through evaluation of the AUC. The curve referred to is the receiver operating characteristic (ROC) curve. In the context of the ROC, sensitivity is the proportion of true cases that are predicted as being true and specificity is the proportion of false cases that are predicted as being false. The positive predictive value (PPV) is the proportion of all true cases that are true, and the negative predictive value (NPV) is the proportion of all false cases that are false.

## **Methods**

### Data source

The Society of Thoracic Surgeons (STS) Adult Cardiac Surgery Database (ACSD) was queried to develop a dataset including cardiac surgery cases from a single center (Maine Medical Center) over a 9-year period from January 1, 2012 to December 31, 2021, which included 9,237 patients. All patient identifiers and private health information (PHI) were removed for patient protection. The project was submitted to the Maine Medical Center (MMC) Institutional Review Board (IRB), who determined the project to be “non-research” in a letter dated September 11, 2021.

### Cohort

The model for identifying patients who would develop one or more of the following seven adverse events (STS NQF endorsed measures) after cardiac surgery included:

1. Reoperation for any cardiac reason
2. Renal failure
3. Deep sternal wound infection
4. Prolonged ventilation
5. CVA (stroke)
6. 30-day mortality

## 7. Mortality status at hospital discharge

We searched the 9,237 patient dataset from the MMC STS registry for patients that developed one of the seven adverse events mentioned above, lumped them, and found 1,383 patients, as seen in Table 1. For the control set, we randomly picked 1,383 patients from those who did not develop an adverse event.

**Table 1 Patient characteristics**

*The T-test was used to calculate p-values for group differences in numerical (continuous) variables and chi-squared tests were used to calculate p-values for group differences in categorical variables. Data presented as either mean (SD) or value (%).*

<b>Variable</b>	<b>Control cases N = 7,854</b>	<b>Adverse event cases N=1,383</b>	<b>p-value</b>
<b>Age (SD)</b>	64.8 (11.9)	66.0 (12.3)	0.0007
<b>Gender (% Female)</b>	2076 (26.4)	446 (32.2)	<0.0001
<b>Race (%)</b>			0.7991
<i>White</i>	7704 (98.1)	1354 (97.9)	
<i>Black</i>	50 (0.6)	13 (0.9)	
<i>Asian</i>	32 (0.4)	5 (0.4)	
<i>Native American</i>	19 (0.2)	2 (0.1)	
<i>Other</i>	49 (0.6)	9 (0.7)	
<b>BMI (SD)</b>	30.0 (8.9)	29.3 (6.4)	0.0009
<b>Ejection Fraction (SD)</b>	55.2 (10.4)	48.6 (14.7)	<0.0001
<b>Clinical Status in OR (%)</b>			<0.0001
<i>Non-Urgent</i>	3415 (43.5)	442 (32.0)	
<i>Urgent</i>	4211 (53.6)	716 (51.8)	
<i>Emergent</i>	227 (2.9)	218 (15.8)	
<i>Emergent Salvage</i>	1 (0.0)	7 (0.5)	

<b>Creatinine (SD)</b>	1.04 (0.71)	1.24 (0.84)	<0.0001
<b>Hypertension (%)</b>	6376 (81.2)	1122 (81.1)	0.9625
<b>Cardiogenic Shock (%)</b>			<0.0001
<i>None</i>	7797 (99.3)	1209 (87.4)	
<i>At Time of Procedure</i>	46 (0.6)	161 (11.6)	
<i>&lt;24hr After Procedure</i>	11 (0.1)	13 (0.9)	
<b>Cardiac Symptoms at Admission (%)</b>			<0.0001
<i>None</i>	193 (2.5)	22 (1.6)	
<i>Stable Angina</i>	241 (3.1)	14 (1.0)	
<i>Unstable Angina</i>	2358 (30.2)	195 (14.1)	
<i>NSTEMI</i>	1717 (21.9)	329 (23.8)	
<i>STEMI</i>	193 (2.5)	107 (7.7)	
<i>Angina Equivalent</i>	209 (2.7)	33 (2.4)	
<i>Other</i>	2933 (37.3)	683 (49.4)	

### Existing models

To compare our results to the performance of existing models, we searched and found the models developed by Shahian et al. [2018], O'Brien et al. [2018], and Kurlansky et al. [2021]. The performance of these risk models in O'Brien et al. are not described in a way that supports their full evaluation as predictors and they are evaluated by only the c-statistic (AUC), which were modest, ranging from 0.57 to 0.81. In O'Brien et al., "...the bootstrap-adjusted c-statistics were lowest for reoperation (range, 0.574 to 0.627) followed by stroke (range, 0.616 to 0.704) and were highest for renal failure (range, 0.749 to 0.810)." AUC of 0.57 is only slightly better than that of a random unbiased coin toss.

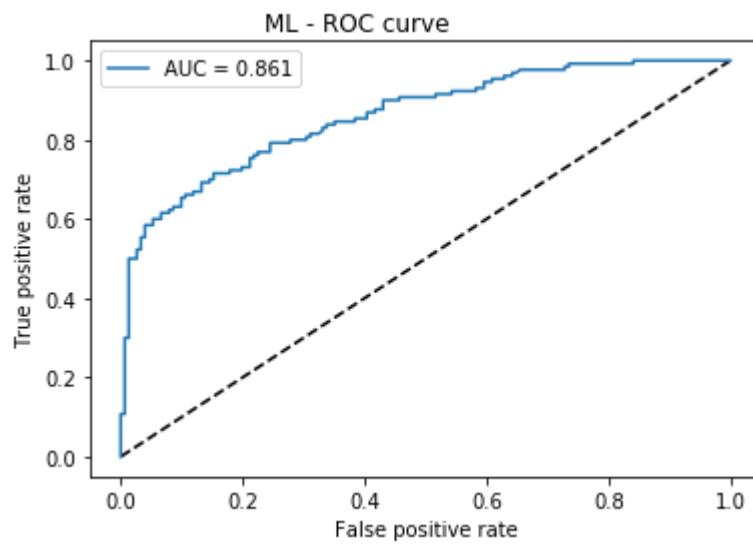
### Our model

We built machine learning models using MMC data divided into cases and controls. For the missing values of the data we used the imputation technique of the most common value in the dataset. We used the ensemble learning technique of random forest [Malley et al. 2011]. 90% of the patients in our dataset were used for building a model and 10% were reserved for accuracy testing.

## Results

After creating the cohort of 1,383 patients with at least one of the adverse events and the control group of 1,383 patients that did not have any adverse events, the patients were randomly sampled in order to build a balanced dataset. They were divided into 90% and 10% training and test set respectively. The random forest model achieved an AUC of 0.86 and better specificity of 0.72, which indicates higher ability of identifying patients that will have complications. The model has a sensitivity of 0.82, which indicates a lower ability of identifying patients that will not have complications, a lower performance on PPV (positive predictive value) of 0.95 and NPV (negative predictive value) of 0.77 and higher confidence with a 95% CI of [0.82-0.9]. Figure 2 shows the area under the curve for this model.

**Figure 2: Area under the curve for the random forest model with all adverse events**



In order to understand the input variables that contributed the most to the model outcome, see supplement 1, a list of all variables used as input to the models and supplement 2, a list of the 20 ranked variables that contributed most to outcomes according to the random forest model.

The top five of the 20 variables that most contributed to outcomes are:

1. When IABP was inserted
2. Lowest measured hematocrit recorded in the operating room
3. Ejection Fraction
4. Platelet count closest to the date and time prior to surgery but prior to anesthetic management
5. Patient age

## Limitations

While this model is based on a large sample size from a nine-year period, it is a single center experience and a considerably smaller sample size than that upon which the existing logistic regression prediction models that we used for comparison are based. Future models will be based on a larger multi-center dataset.

## Summary

We built a machine learning model using the ensemble learning technique, random forest, which employs multiple learning algorithms. Nine recent years of the STS database were queried at a single center. We created a prediction model that out-performed existing logistic regression prediction models in cardiac surgery as our prediction model had an AUC of 0.86 for multiple adverse events. Furthermore, the dynamic design of this multi-algorithmic machine learning model is designed to improve with time and more data. In the future, combining this static data with time-evolving data in dynamic settings such as the operating room or intensive care units will drive real-time feedback to the care team with potential improvement in failure to rescue rates.

## References

1. Ghaferi AA, Birkmeyer JD, Dimick JB. Complications, failure to rescue, and mortality with major inpatient surgery in medicare patients. *Ann Surg*. 2009;250(6):1029-34. Epub 2009/12/03. doi: 10.1097/sla.0b013e3181bef697. PubMed PMID: 19953723.
2. Reddy HG, Shih T, Englesbe MJ, Shannon FL, Theurer PF, Herbert MA, Paone G, Bell GF, Prager RL. Analyzing "failure to rescue": is this an opportunity for outcome improvement in cardiac surgery? *Ann Thorac Surg*. 2013;95(6):1976-81; discussion 81. Epub 2013/05/07. doi: 10.1016/j.athoracsur.2013.03.027. PubMed PMID: 23642682; PMCID: PMC4398337.
3. Surgery Sft. The STS Adult Cardiac Surgery Database. Available from: <https://www.sts.org/registries/sts-national-database/adult-cardiac-surgery-database>.
4. O'Brien SM, Feng L, He X, Xian Y, Jacobs JP, Badhwar V, Kurlansky PA, Furnary AP, Cleveland JC, Jr., Lobdell KW, Vassileva C, Wyler von Ballmoos MC, Thourani VH, Rankin JS, Edgerton JR, D'Agostino RS, Desai ND, Edwards FH, Shahian DM. The Society of Thoracic Surgeons 2018 Adult Cardiac Surgery Risk Models: Part 2-Statistical Methods and Results. *Ann Thorac Surg*. 2018;105(5):1419-28. Epub 2018/03/27. doi: 10.1016/j.athoracsur.2018.03.003. PubMed PMID: 29577924.
5. Shahian DM, Jacobs JP, Badhwar V, Kurlansky PA, Furnary AP, Cleveland JC, Jr., Lobdell KW, Vassileva C, Wyler von Ballmoos MC, Thourani VH, Rankin JS, Edgerton JR, D'Agostino RS, Desai ND, Feng L, He X, O'Brien SM. The Society of Thoracic Surgeons 2018 Adult Cardiac Surgery Risk Models: Part 1-Background, Design Considerations, and Model Development. *Ann Thorac Surg*. 2018;105(5):1411-8. Epub 2018/03/27. doi: 10.1016/j.athoracsur.2018.03.002. PubMed PMID: 29577925.
6. Sperandei S. Understanding logistic regression analysis. *Biochem Med (Zagreb)*. 2014;24(1):12-8. Epub 2014/03/15. doi: 10.11613/BM.2014.003. PubMed PMID: 24627710; PMCID: PMC3936971.
7. Malley J, Kruppa J, Dasgupta A, Malley K, Ziegler A. Probability Machines: Consistent probability estimation using nonparametric learning machines. *Meth Inf Med*. 2011;51(1):74-81.

8. Paul A. Kurlansky, Sean M. O'Brien, Christina M. Vassileva, Kevin W. Lobdell, Fred H. Edwards, Jeffrey P. Jacobs, Moritz Wyler von Ballmoos, Gaetano Paone, James R. Edgerton, Vinod H. Thourani, Anthony P. Furnary, Victor A. Ferraris, Joseph C. Cleveland, Michael E. Bowdish, Donald S. Likosky, Vinay Badhwar, David M. Shahia. Failure to Rescue: A New Society of Thoracic Surgeons Quality Metric for Cardiac Surgery, *The Annals of Thoracic Surgery*, 2021, ISSN 0003-4975, <https://doi.org/10.1016/j.athoracsur.2021.06.025>.

**Supplement 1 Static variables used to construct risk scores for these outcomes identified by O'Brien et al [2018].** ACE = angiotensin-converting enzyme; ADP = adenosine diphosphate; ARB = angiotensin-receptor blocker; AVR = aortic valve replacement; CABG = coronary artery bypass grafting surgery; CAD = coronary artery disease; CBA = catheterization-based assist device; CVA = cerebrovascular accident; CVD = cardiovascular disease; ECMO = extracorporeal membrane oxygenation; IABP = intra-aortic balloon pump; ICD = implantable cardioverter-defibrillator; LAD = left anterior descending artery; PAD = peripheral arterial disease; PCI = percutaneous coronary intervention; TIA = transient ischemic attack.

Operation type	Illicit drug use
Age	Alcohol consumption (drinks per week)
Ejection fraction	Recent pneumonia
Body mass index	Mediastinal radiation
Body surface area	Cancer diagnosis within 5 years
Sex	Diabetes/diabetes control method
Renal function (dialysis/creatinine)	Number of diseased vessels
Hematocrit	Myocardial infarction history/timing
White blood cell count	Cardiac presentation on admission
Platelet count	Race/ethnicity
ADP receptor inhibitor usage/timing of discontinuation	Status
Hypertension	ACE/ARB inhibitor within 48 hours in non-elective operation
Immunosuppressive therapy within 30 days	Heart failure class and timing
Steroids within 24 hours	Recent smoker/timing
Glycoprotein IIb/IIIa inhibitor within 24 hours	Family history of CAD
Inotropes within 48 hours	Home oxygen
Preoperative IABP	Sleep apnea
Shock/ECMO/CBA	Liver disease
PAD	Unresponsive neurologic status
Left main disease	Syncope
Proximal LAD	Previous CABG
Aortic root abscess in AVR/AVR+CABG	Previous aortic valve procedure
Mitral stenosis	Previous mitral valve procedure
Aortic stenosis	Previous transcatheter valve replacement/percutaneous valve repair
Mitral insufficiency	Previous other valve procedure



Tricuspid insufficiency	Number of previous cardiovascular surgeries
Aortic insufficiency	Previous ICD
Arrhythmia and type	PCI history/timing
Endocarditis	Previous any other cardiac intervention
Chronic lung disease	Payer/insurance type
CVD/CVA/TIA	Tricuspid valve repair performed concomitantly
Carotid stenosis	Time trend (surgery date)
Previous carotid surgery	

## Supplement 2 Static variables used in random forest algorithm

Patient Age	Pre Op Transient ischemic attack
Pre Op Ejection Fraction	Carotid stenosis
Body mass index	Illicit drug use
Height (cm)	Alcohol Use (drinks per week)
Weight (kg)	Recent pneumonia
Sex	Pre Op mediastinal radiation
Pre Op Dialysis	Cancer diagnosis within 5 years
Last Creatinine level	Pre Op Diabetes
Pre Op Hematocrit	diabetes control method
Pre Op White blood cell count	Number of diseased vessels
Pre Op Platelet count	Prior myocardial infarction
Pre Op Hypertension	Prior myocardial infarction timing
Immunosuppressive therapy w/in 30 days of procedure	Cardiac presentation on admission
Steroids within 24 hours of procedure	Race Documented
Glycoprotein IIb/IIIa inhibitor w/in 24 hours of procedure	Patient Race
Inotropes within 48 hours of procedure	Hispanic, Latino or Spanish ethnicity
IABP Insertion Timing	Operative Status
Pre Op Cardiogenic shock	Heart failure history
ECMO Insertion Timing	Heart failure timing
Temp assist Device Type (Open or Catheter)	Heart failure type
Catheter based assist device insertion timing	NYHA classification
Peripheral Arterial Disease	Pre Op Tobacco use
Left main coronary artery disease	Family history of Premature CAD

Proximal LAD percent stenosis	Home oxygen use
Aortic valve disease etiology	Pre Op Sleep apnea
Mitral valve stenosis	Pre Op Liver disease
Aortic valve stenosis	Pre Op Unresponsive neurologic status
Pre Op Mitral insufficiency grade	Pre Op Syncope
Pre Op Tricuspid insufficiency grade	Previous CABG procedure
Pre Op Aortic insufficiency grade	Previous valve procedure
Arrhythmia type	Previous valve procedure type
Pre Op Endocarditis	Previous other cardiac procedure type
Pre Op Chronic lung disease	Primary payer/insurance type
Pre Op Cerebrovascular disease	Tricuspid valve repair performed
CVA	Surgery date

### Supplement 3 Top twenty variables with rank of importance

Variable name	Rank of Importance
IABP Insertion Timing	1
Lowest Intra Op Hematocrit	2
Pre Op Ejection Fraction	3
Pre Op Platelets	4
Patient Age	5
Height (cm)	6
Pre Op Tricuspid Regurgitation Grade	7
Pre Op Mitral Regurgitation Grade	8
Pre Op NYHA Classification	9
Operative Status	10
Number of Diseased Vessels	11
Primary Coronary Symptom for Surgery	12
Alcohol use (drinks per week)	13
Last Creatinine Level	14
Aortic Valve Stenosis (Y/N)	15
Proximal LAD Percent Stenosis	16
Prior myocardial infarction timing	17

Pre Op Chronic Lung Disease	18
Home Diabetes Control Method	19
Pre Op Tobacco Use	20

## Glossary

1. ACE: angiotensin-converting enzyme
2. ADP: adenosine diphosphate
3. ARB: angiotensin-receptor blocker
4. ASCD: Adult Cardiac Surgery Database
5. AUC: Area under the curve
6. AVR: aortic valve replacement
7. CABG: coronary artery bypass grafting surgery
8. CAD: coronary artery disease
9. CBA: Catheterization-based assist device
10. CI: Confidence interval
11. CVA: Cerebrovascular accident
12. CVD: Cardiovascular disease
13. CTICU: Cardiothoracic Intensive Care Unit
14. DSWI: Deep sternal wound infection
15. ECMO: Extracorporeal membrane oxygenation
16. FTR: Failure to rescue
17. IABP: Intra- aortic balloon pump
18. ICD: Implantable cardioverter-defibrillator
19. IRB: Institutional Review Board
20. LAD: Left anterior descending artery
21. MMC: Maine Medical Center
22. NPV: Negative predictive value
23. NQF: National Quality Forum
24. PAD: Peripheral arterial disease
25. PCI = percutaneous coronary intervention
26. POLOS: Postoperative length of stay
27. PPV: Positive predictive value
28. ROC: Receiver operating curve
29. STS: Society of Thoracic Surgeons
30. TIA: Transient ischemic attack