

EPHB4 mutations in dilated cardiomyopathy

Guillermo Luxán^{1,2,3}, Marion Muhly-Reinholz¹, Simone F. Glaser^{1,2,3}, Johannes Trebing^{4,5}, Christoph Reich^{4,5}, Jan Haas^{4,5}, Farbod Sedaghat-Hamedani^{4,5}, Benjamin Meder^{4,5}, and Stefanie Dimmeler^{1,2,3}

¹ Institute of Cardiovascular Regeneration, Goethe-University Hospital, Theodor Stern Kai 7, Frankfurt am Main, Germany.

² Cardiopulmonary Institute, Frankfurt am Main, Germany.

³ DZHK, site Rhein/Main, Frankfurt am Main, Germany.

⁴ Institute for Cardiomyopathies Heidelberg (ICH.), Department of Medicine III, University Hospital Heidelberg, INF 410, 69120 Heidelberg, Germany.

⁵ DZHK, Site Heidelberg/Mannheim, Heidelberg, Germany.

Corresponding author

Guillermo Luxán

Goethe University Frankfurt

Theodor Stern Kai 7

60590 Frankfurt; Germany

Phone: +49-69-6301-7357

luxan@med.uni-frankfurt.de

Abstract

Cardiac homeostasis relies on the appropriate provision of nutrients and functional specialization of local endothelial cells. Previously we reported in this journal that the endothelial Eph-ephrin signalling, in particular the ligand EphB4, is required for the maintenance of vascular integrity and correct fatty acid transport uptake in the heart via regulating the caveolar trafficking of the fatty acid receptor CD36. In the mouse, endothelial specific loss-of-function of the receptor EphB4, or its ligand ephrin-B2, induces Dilated Cardiomyopathy (DCM) like defects (Luxán et al., 2019).

Here, we have identified new rare *EPHB4* variants in a cohort of 573 DCM patients. Similar to what we had observed in the EphB4 mutant mice, *EPHB4* variants carrying patients show an altered expression pattern of CD36 and CAV1 in the myocardium.

Our study confirms a crucial role of the Eph-ephrin signalling pathway, and in particular the receptor EPHB4, in the development of DCM in humans.

Introduction

Cardiovascular disease (CVD) is the leading cause of death in the western world (Timmis et al., 2020). Among CVD, dilated cardiomyopathy (DCM) is one the most common type of heart disease with an estimated prevalence of 1:2500 in the general population (Hershberger et al., 2013). DCM patients are characterized by the dilation of the left ventricle and contractile dysfunction (Weintraub et al., 2017). The definition of DCM excludes ischemic heart disease, although ischemic events as induced by myocardial infarction can lead to similar remodelling processes and contractile dysfunction resembling DCM (Reichart et al., 2019).

The most common causes of DCM underlie inflammation, nutritive-toxic influence, or metabolic disorders (McKenna et al., 2017) but mutations on genes encoding cytoskeletal, sarcomere or nuclear envelope proteins account for about 35% of DCM cases (Weintraub et al., 2017). Increasing evidence shows that heart disease is associated with microvascular dysfunction (Luxán and Dimmeler, 2021). Endothelial cell CD36 is required for the uptake of circulating fatty acids into the cardiac muscle (Son et al., 2018). In the mouse, interference with endothelial nutrient transport resulted in reduced cardiac function (Jabs et al., 2018). Specifically, endothelial specific deletion of EphB4, or its ligand ephrin-B2, induces cardiac remodelling and a phenotype that mimics human DCM features and development (Luxán et al., 2019). Mechanistically, EphB4 deficient endothelial cells are characterized by compromised caveolar function and reduced CAV1 phosphorylation. Caveolae are required for the correct membrane translocation of the fatty acid translocase FAT/CD36 (Ring et al., 2006) and fatty acids are used by cardiomyocytes to obtain about 50% to 70% of their energy (Lopaschuk et al., 2010).

In the present study we report the presence of *EPHB4* variant carriers in a cohort of DCM patients. These patients, similar to the EphB4 mutant mice, show dysregulated expression of CAV1 and CD36. Our results confirm a crucial role of the Eph-ephrin signalling pathway in DCM.

Results

To assess if EPHB4 mutations might play a role in human heart failure, we analysed the EPHB4 sequences of in total 573 DCM patients, which were either enrolled in the **Translational Registry for Cardiomyopathies-Plus (TORCH-Plus-DZHK21)** (Seyler et al., 2017), or recruited at the Institute for Cardiomyopathies Heidelberg (ICH). In six patients, of which we also had histology available, we found six new rare variants (**Table 1**). Three of the newly identified variants are located in the extracellular domain of EPHB4, two of them in the ligand binding domain of the protein and another one on the cysteine rich domain before the two fibronectin type III domains. The other three variants are located in the intracellular part of the EPHB4 protein, in the tyrosine kinase domain (**Figure 1A**). In four of these patients we did not detect any mutation in genes previously related to DCM while in the other two patients we could also detect a truncating RMB20 or TTN variants. In order to understand whether these new rare EPHB4 variants could be implicated in the disease, we analysed DCM patients carrying the heterozygous EPHB4 variant and DCM patients no such variant. We furthermore compared the results with a biopsy obtained from a healthy donor. The basal characteristics of the patients can be found on **Table 2**.

Histological analysis of cardiac biopsies obtained from these patients compared to biopsies from DCM patients with reference genotype and healthy donors revealed that, similar to what we found in EPHB4 mutant mice (Luxán et al., 2019), the expression of CD36 and CAV1 is altered in DCM patients. CD36 is highly expressed in the capillaries and in the membrane of cardiomyocytes of healthy hearts, while CAV1 can be detected in the capillary endothelial cells (**Figure 1B**). In DCM patients which carry a wild type EPHB4 sequence, we noted that the expression of CD36 is abrogated and a disorganized expression of CAV1 can be observed in the cardiomyocytes (**Figure 1C**). On the contrary, in the *EPHB4* variant carriers, the expression of CD36 is reduced in the membrane of cardiomyocytes but colocalizes with CAV1 in vesicle structures in the cardiomyocytes, suggesting impaired CD36 caveolar transport (**Figure 1D, arrowheads**).

Interestingly, and different to the data on mouse (Luxán et al., 2019), the mis localization of CAV1 and CD36 was observed in cardiomyocytes.

Analysis of available human cardiac single-nuclei-RNA-sequencing (Nicin et al., 2022) revealed that *EPHB4* is also expressed in human cardiomyocytes (**Figure 1E**) suggesting that EPHB4 signaling might not only occur in endothelial cells but also in cardiomyocytes.

Discussion

Our results suggest that the dysfunction of the EPHB4 receptor and its regulation of caveolae trafficking required for fatty acid uptake as a potential cause for DCM in human patients. Furthermore, our results stress the importance of the endothelium in the onset of cardiac disease as all DCM patients show a downregulation of CD36 in the endothelium. Nevertheless, although more abundantly expressed in endothelial cells, CD36 is also expressed in cardiomyocytes (Shu et al., 2022) and its loss in cardiomyocytes has already been related with the progression of heart failure (Sung et al., 2017; Umbarawan et al., 2018).

Cardiomyocytes are the cells responsible for generating contractile force in the heart and were traditionally at the center of interest in genetic studies. However, only about a third of DCM cases can be explained by mutations on cardiomyocyte genes (Weintraub et al., 2017). It became clear that the complex interplay between cardiomyocytes and the non-parenchymal endothelial, fibroblast and immune cells of the heart is necessary for tissue homeostasis (Tzahor and Dimmeler, 2022). Actually, non-parenchymal cells outnumber cardiomyocytes; about half of the cells comprise fibroblasts, while one forth are endothelial cells. This study suggests that mutations in genes crucial for other cell types beyond cardiomyocytes may contribute to DCM and warrants a more detailed assessment of genes involved in vascular dysfunction (Rhee et al., 2021). Attempts to use single-cell- and single-nucleus-RNA-sequencing of cardiac tissue of patients (Nicin et al., 2021; Reichart et al., 2022) to identify potential genes and pathways in the other cell

types just started and certainly will enrich our understanding of the multi-cellular communication that is necessary to maintain cardiac health.

Our analysis identified several variants in *EPHB4* in a cohort of DCM patients. Interestingly, according to the CADD score prediction (21,64 [IQR 19,41-23,50]), all variants have a deleterious potential. For example, the Pro79Leu amino acid shift in the ligand binding domain can increase helical structure and hydrophobicity around residue 79 (Chang and Tran, 1986) while in the Glu890Asp amino acid shift in the tyrosine kinase domain of the protein, aspartic acid has one methylene group less in its side chain than glutamic acid and the substitution of one with the other alters the unfolding transition temperature of a protein (Lee et al., 2004). A similar substitution is sufficient to alter the substrate specificity and catalytic activity of the β subunit in the tryptophan synthase holoenzyme complex from *Salmonella typhimurium* by altering the tertiary structure of the protein (Brzovic et al., 1992). This suggests that the presence of a Glu-Asp substitution on the tyrosine kinase domain of EphB4 could be deleterious for the human EphB4 protein. Furthermore, the binding of the ligand induces Eph receptor heterotetramers to initiate the signalling via Eph–Eph cis interactions (Pitulescu and Adams, 2010). Thus, variant *EPHB4* molecules could have a dominant negative effect on these heterotetramers explaining why the presence of one variant copy in the DCM patients of our cohort would be sufficient to abrogate the function of the protein. The histology analysis of the cardiac biopsies revealed that independently of where in *EPHB4* the variant was detected, the *EPHB4* variant carrying patients show similar histological features and are different to the other DCM patients with a wild type *EPHB4*. This further supports, independently of the presence of variants in other genes, the importance of *EPHB4* maintaining cardiac homeostasis in humans and its implication on DCM.

Overall, our study supports a critical role of the Eph-ephrin signalling pathway in cardiac endothelial cells but also in cardiomyocytes. Recent studies suggest that Eph receptor genes, including *EPHB4*, were downregulated in hypertrophic human hearts (Nicin et al., 2022)

suggesting that a transcriptional or post transcriptional down-regulation of Eph receptors might also contribute to acquired forms of heart failure. Interestingly, beyond its function in the cellular membrane, circulating EPHB4 is associated with poor prognosis in heart failure (Bouwens et al., 2020).

Finally, this study not only confirms the crucial role of EphB4 in the heart, but it also corroborates the importance of CD36 and CAV1 for the cardiac health, and has the potential to improve diagnosis and risk stratification tools for DCM. In addition, as other genes crucial for fatty acid transport may be involved in cardiac disease, this study may help identify new diagnostic or therapeutic targets.

Acknowledgements

The study was supported by the German Centre for Cardiovascular Research (DZHK). Grant UA.0004.21 to G.L.

Competing interests

None

References

- Bouwens E, van den Berg VJ, Akkerhuis KM, Baart SJ, Caliskan K, Brugts JJ, Mouthaan H, van Ramshorst J, Germans T, Umans VAWM, Boersma E, Kardys I. 2020. Circulating Biomarkers of Cell Adhesion Predict Clinical Outcome in Patients with Chronic Heart Failure. *Journal of Clinical Medicine* **9**:195. doi:10.3390/jcm9010195
- Brzovic PS, Kayastha AM, Miles EW, Dunn MF. 1992. Substitution of glutamic acid 109 by aspartic acid alters the substrate specificity and catalytic activity of the .beta.-subunit in the tryptophan synthase henzyme complex from Salmonella typhimurium. *Biochemistry* **31**:1180–1190. doi:10.1021/bi00119a030
- Chang JY, Tran TH. 1986. Antithrombin III Basel. Identification of a Pro-Leu substitution in a hereditary abnormal antithrombin with impaired heparin cofactor activity. *Journal of Biological Chemistry* **261**:1174–1176. doi:10.1016/S0021-9258(17)36071-4
- Hershberger RE, Hedges DJ, Morales A. 2013. Dilated cardiomyopathy: the complexity of a diverse genetic architecture. *Nat Rev Cardiol* **10**:531–547. doi:10.1038/nrcardio.2013.105
- Jabs, Rose Adam J., Lehmann Lorenz H., Taylor Jacqueline, Moll Iris, Sijmonsma Tjeerd P., Herberich Stefanie E., Sauer Sven W., Poschet Gernot, Federico Giuseppina, Mogler Carolin, Weis Eva-Maria, Augustin Hellmut G., Yan Minhong, Gretz Norbert, Schmid Roland M., Adams Ralf H., Gröne Hermann-Joseph, Hell Rüdiger, Okun Jürgen G., Backs Johannes, Nawroth Peter P., Herzig Stephan, Fischer Andreas. 2018. Inhibition of Endothelial Notch Signaling Impairs Fatty Acid Transport and Leads to Metabolic and

- Vascular Remodeling of the Adult Heart. *Circulation* **137**:2592–2608.
doi:10.1161/CIRCULATIONAHA.117.029733
- Lee DY, Kim K-A, Yu YG, Kim K-S. 2004. Substitution of aspartic acid with glutamic acid increases the unfolding transition temperature of a protein. *Biochem Biophys Res Commun* **320**:900–906. doi:10.1016/j.bbrc.2004.06.031
- Lopaschuk GD, Ussher JR, Folmes CDL, Jaswal JS, Stanley WC. 2010. Myocardial fatty acid metabolism in health and disease. *Physiol Rev* **90**:207–258.
doi:10.1152/physrev.00015.2009
- Luxán G, Dimmeler S. 2021. The vasculature: a therapeutic target in heart failure? *Cardiovascular Research*. doi:10.1093/cvr/cvab047
- Luxán G, Stewen J, Díaz N, Kato K, Maney SK, Aravamudhan A, Berkenfeld F, Nagelmann N, Drexler HC, Zeuschner D, Faber C, Schillers H, Hermann S, Wiseman J, Vaquerizas JM, Pitulescu ME, Adams RH. 2019. Endothelial EphB4 maintains vascular integrity and transport function in adult heart. *eLife* **8**:e45863. doi:10.7554/eLife.45863
- McKenna WJ, Maron BJ, Thiene G. 2017. Classification, Epidemiology, and Global Burden of Cardiomyopathies. *Circulation Research* **121**:722–730.
doi:10.1161/CIRCRESAHA.117.309711
- Nicin L, Abplanalp WT, Schänzer A, Sprengel A, John D, Mellentin H, Tombor L, Keuper M, Ullrich E, Klingel K, Dettmeyer RB, Hoffmann J, Akintuerk H, Jux C, Schranz D, Zeiher AM, Rupp S, Dimmeler S. 2021. Single Nuclei Sequencing Reveals Novel Insights Into the Regulation of Cellular Signatures in Children With Dilated Cardiomyopathy. *Circulation* **143**:1704–1719. doi:10.1161/CIRCULATIONAHA.120.051391
- Nicin L, Schroeter SM, Glaser SF, Schulze-Brüning R, Pham M-D, Hille SS, Yekelchik M, Kattih B, Abplanalp WT, Tombor L, Müller OJ, Braun T, Meder B, Reich C, Arsalan M, Holubec T, Walther T, Emrich F, Krishnan J, Zeiher AM, John D, Dimmeler S. 2022. A human cell atlas of the pressure-induced hypertrophic heart. *Nat Cardiovasc Res* **1**:174–185.
doi:10.1038/s44161-022-00019-7
- Pitulescu ME, Adams RH. 2010. Eph/ephrin molecules—a hub for signaling and endocytosis. *Genes Dev* **24**:2480–2492. doi:10.1101/gad.1973910
- Reichart D, Lindberg EL, Maatz H, Miranda AMA, Viveiros A, Shvetsov N, Gärtner A, Nadelmann ER, Lee M, Kanemaru K, Ruiz-Orera J, Strohmenger V, DeLaughter DM, Patone G, Zhang H, Woehler A, Lippert C, Kim Y, Adami E, Gorham JM, Barnett SN, Brown K, Buchan RJ, Chowdhury RA, Constantinou C, Cranley J, Felkin LE, Fox H, Ghauri A, Gummert J, Kanda M, Li R, Mach L, McDonough B, Samari S, Shahriaran F, Yapp C, Stanasiuk C, Theotokis PI, Theis FJ, van den Bogaerdt A, Wakimoto H, Ware JS, Worth CL, Barton PJR, Lee Y-A, Teichmann SA, Milting H, Nosedá M, Oudit GY, Heinig M, Seidman JG, Hubner N, Seidman CE. 2022. Pathogenic variants damage cell composition and single cell transcription in cardiomyopathies. *Science* **377**:eabo1984.
doi:10.1126/science.abo1984
- Reichart D, Magnussen C, Zeller T, Blankenberg S. 2019. Dilated cardiomyopathy: from epidemiologic to genetic phenotypes. *Journal of Internal Medicine* **286**:362–372.
doi:10.1111/joim.12944
- Rhee S, Paik DT, Yang JY, Nagelberg D, Williams I, Tian L, Roth R, Chandu M, Ban J, Belbachir N, Kim S, Zhang H, Phansalkar R, Wong KM, King DA, Valdez C, Winn VD, Morrison AJ, Wu JC, Red-Horse K. 2021. Endocardial/endothelial angiocrines regulate cardiomyocyte development and maturation and induce features of ventricular non-compaction. *European Heart Journal* **42**:4264–4276. doi:10.1093/eurheartj/ehab298
- Ring A, Le Lay S, Pohl J, Verkade P, Stremmel W. 2006. Caveolin-1 is required for fatty acid translocase (FAT/CD36) localization and function at the plasma membrane of mouse embryonic fibroblasts. *Biochimica et Biophysica Acta (BBA) - Molecular and Cell Biology of Lipids* **1761**:416–423. doi:10.1016/j.bbailip.2006.03.016

- Schwaneberg T, Weitmann K, Dösch A, Seyler C, Bahls T, Geidel L, Stahl D, Lee M, Kraus M, Katus HA, Hoffmann W. 2017. Data privacy management and data quality monitoring in the German Centre for Cardiovascular Research's multicentre Translational Registry for Cardiomyopathies (DZHK-TORCH). *ESC Heart Failure* **4**:440–447. doi:10.1002/ehf2.12168
- Seyler C, Meder B, Weis T, Schwaneberg T, Weitmann K, Hoffmann W, Katus HA, Dösch A. 2017. Translational Registry for Cardiomyopathies (TORCH) – rationale and first results. *ESC Heart Failure* **4**:209–215. doi:10.1002/ehf2.12145
- Shu H, Peng Y, Hang W, Nie J, Zhou N, Wang DW. 2022. The role of CD36 in cardiovascular disease. *Cardiovascular Research* **118**:115–129. doi:10.1093/cvr/cvaa319
- Son N-H, Basu D, Samovski D, Pietka TA, Peche VS, Willecke F, Fang X, Yu S-Q, Scerbo D, Chang HR, Sun F, Bagdasarov S, Drosatos K, Yeh ST, Mullick AE, Shoghi KI, Gumaste N, Kim K, Huggins L-A, Lhakhang T, Abumrad NA, Goldberg IJ. 2018. Endothelial cell CD36 optimizes tissue fatty acid uptake. *J Clin Invest* **128**:4329–4342. doi:10.1172/JCI99315
- Sung MM, Byrne NJ, Kim TT, Levasseur J, Masson G, Boisvenue JJ, Febbraio M, Dyck JRB. 2017. Cardiomyocyte-specific ablation of CD36 accelerates the progression from compensated cardiac hypertrophy to heart failure. *American Journal of Physiology-Heart and Circulatory Physiology* **312**:H552–H560. doi:10.1152/ajpheart.00626.2016
- Timmis A, Group O behalf of the AW, The ESC Atlas of Cardiology is a compendium of cardiovascular statistics compiled by the European Heart Agency a department of the ES of C, Countries D in collaboration with the national societies of the ES of C member, Townsend N, Gale CP, Torbica A, Lettino M, Petersen SE, Mossialos EA, Maggioni AP, Kazakiewicz D, May HT, De Smedt D, Flather M, Zuhlke L, Beltrame JF, Huculeci R, Tavazzi L, Hindricks G, Bax J, Casadei B, Achenbach S, Wright L, Vardas P. 2020. European Society of Cardiology: Cardiovascular Disease Statistics 2019 (Executive Summary). *Eur Heart J Qual Care Clin Outcomes* **6**:7–9. doi:10.1093/ehjqcco/qcz065
- Tzahor E, Dimmeler S. 2022. A coalition to heal—the impact of the cardiac microenvironment. *Science* **377**:eabm4443. doi:10.1126/science.abm4443
- Umbarawan Y, Syamsunarno MRAA, Koitabashi N, Obinata H, Yamaguchi A, Hanaoka H, Hishiki T, Hayakawa N, Sano M, Sunaga H, Matsui H, Tsushima Y, Suematsu M, Kurabayashi M, Iso T. 2018. Myocardial fatty acid uptake through CD36 is indispensable for sufficient bioenergetic metabolism to prevent progression of pressure overload-induced heart failure. *Sci Rep* **8**:12035. doi:10.1038/s41598-018-30616-1
- Weintraub RG, Semsarian C, Macdonald P. 2017. Dilated cardiomyopathy. *The Lancet* **390**:400–414. doi:10.1016/S0140-6736(16)31713-5

Figure legends

Figure 1. EPHB4 mutations in human DCM patients. (A) Scheme depicting the EPHB4 protein with the mutations indicated in the protein domains. (LBD, ligand binding domain; CRD, cysteine-rich domain; FNIII, fibronectin type III; TM, transmembrane domain; TK, tyrosine kinase; SAM, sterile alpha domain). (B, C, D) Immunohistochemistry of cardiac biopsies from healthy donor (B), DCM patients with reference genotype (C), and DCM patients carrying the *EPHB4* variant (D).

CAV1 and CD36 expression is altered in both DCM conditions. CD36 expression is reduced in the *EPHB4* variant carrying patients and it colocalizes with CAV1 in the cardiomyocytes (**arrowheads**). (E) *EPHB4* expression in the human heart analysed by single-nuclei RNA sequencing. Cardiac cells are displayed in a UMAP plot. Although *EPHB4* is mainly expressed by endothelial cells, *EPHB4* is also expressed in some cardiomyocytes. Colour reflects expression levels in each nucleus. (CM, cardiomyocyte; FB, fibroblasts; IC, immune cell; EC, endothelial cell; MC, mural cell).

Table 1. Overview on *EPHB4* variants

Table 2. Baseline characteristics of the patient cohort

Methods

Human samples

All participants in TORCH registry have given written informed consent and the study was approved by the ethic committees of the participating study centres. A peripheral blood sample was collected from each participant. SOP Quality Training and monitoring were performed regularly as described (Schwaneberg et al., 2017). Heart tissue samples were washed in ice-cold saline (0.9% NaCl) and immediately transferred and stored in liquid nitrogen until RNA, DNA or protein extraction.

Immunohistochemistry

Human sample biopsies were fixed with 4% PFA and embedded in paraffin. Rabbit anti-CAV1 (1:100, 3238S, Cell Signaling, RRID:AB_2072166), mouse anti-CD36 (1:50, C114979, LSBio), and Biotinylated Ulex (1:50, B-1065, Vector, RRID:AB_2336766) were applied overnight, followed by a 1 hour incubation at room temperature with donkey anti rabbit Alexa Fluor 555

(1:200, A31572, Invitrogen, RRID:AB_162543), donkey anti mouse Alexa Fluor 488 (1:200, A21202, Invitrogen, RRID:AB_141607), and Streptavidin Alexa Fluor 647 (1:200, S32357, Invitrogen). Researchers were blind to patient genotype and status for immunohistochemistry and analysis. 6 *EPHB4* variant carrying DCM patients, 6 DCM patients with wild type *EPHB4* and one healthy control biopsy.

Single-nucleus-RNA-sequencing

The single-nucleus-RNA-sequencing data set generated in the paper by Nicin et al. (Nicin et al., 2022) was used to explore *EPHB4* expression in human cardiac cells.

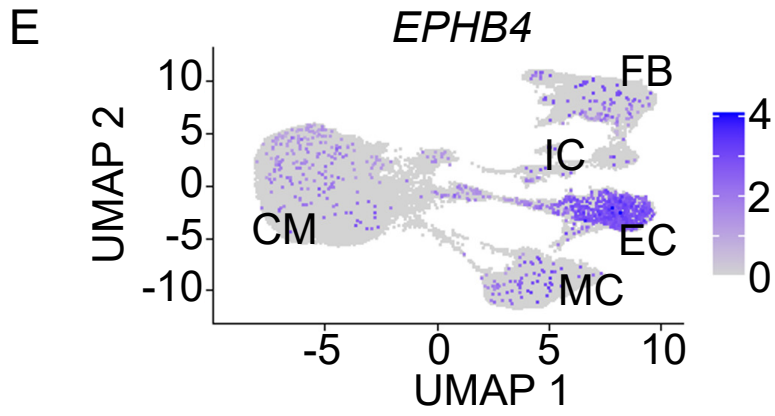
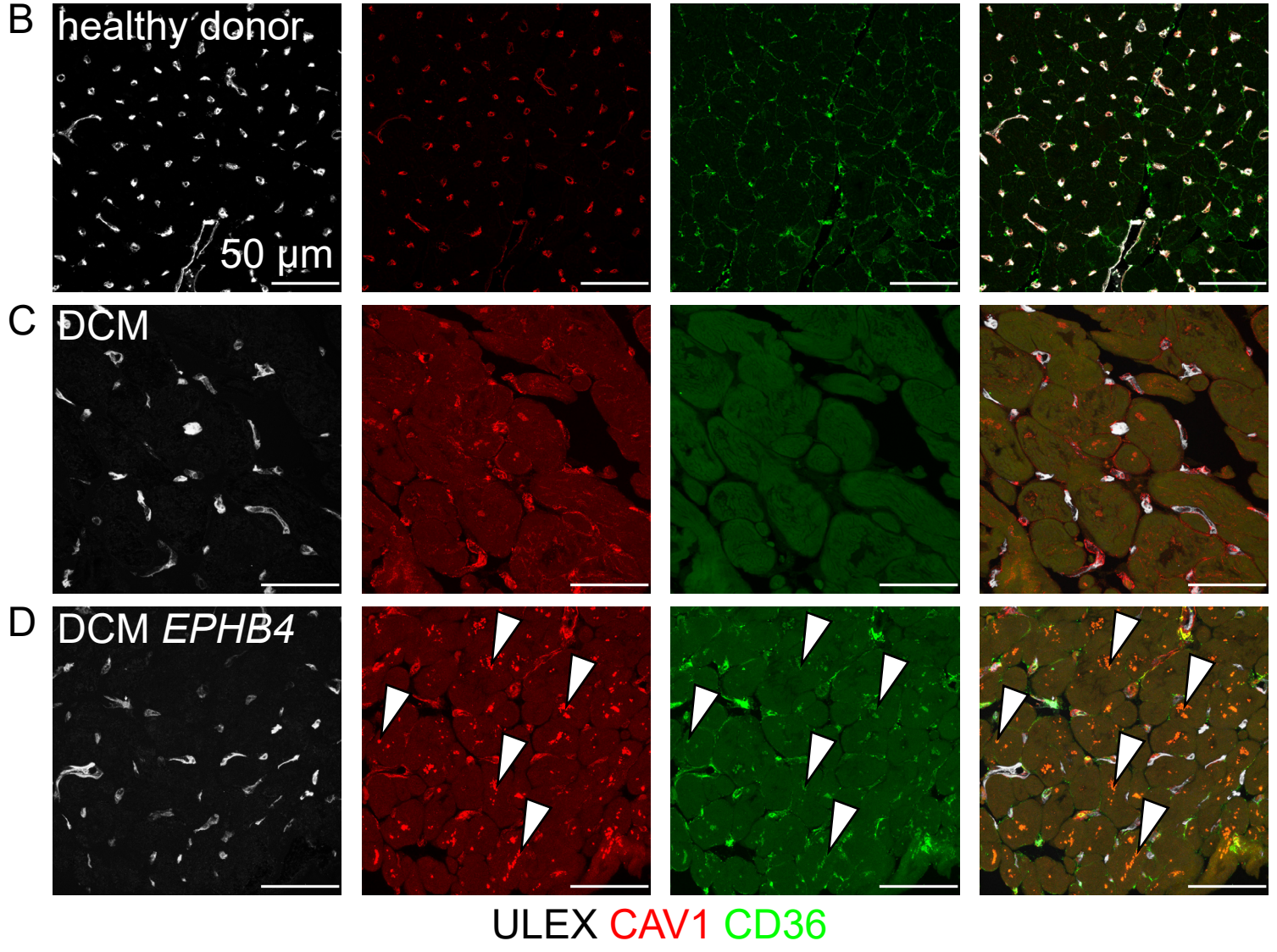
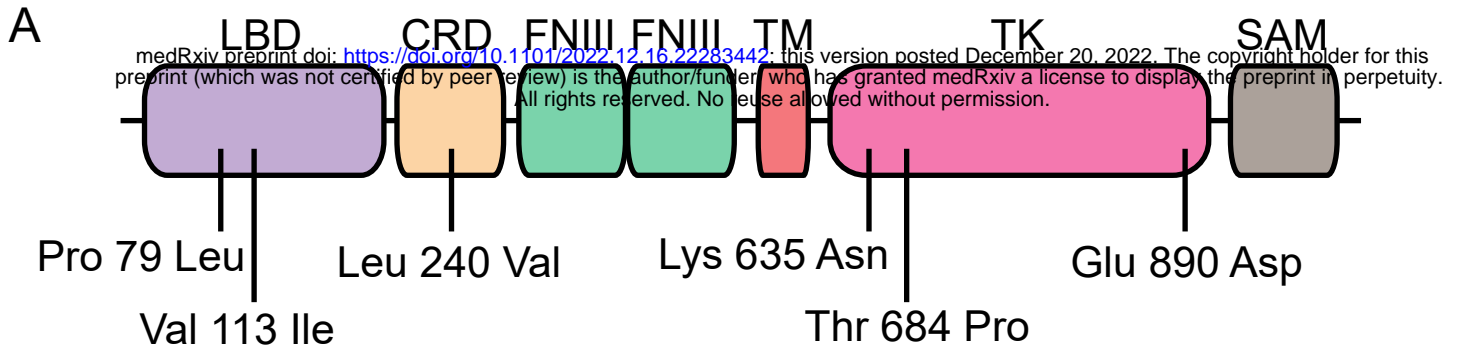


Table1: Overview on EPHB4 variants

Gene	ENSG_ID	ENST_ID	cDNA	AAchange	rs_dbSNP	CADD_phred	gnomAD_exomes_controls_NFE_AF	DCM allele frequency	DCM1	DCM2	DCM3	DCM4	DCM5	DCM6
EPHB4	ENSP00000350896.3	ENST00000358173.8	c.1905G>T	p.Lys635Asn	rs374676243	24.1	0.00002338415	0.0018	1	0	0	0	0	0
EPHB4	ENSP00000350896.3	ENST00000358173.8	c.610C>G	p.Leu204Val	NA	22.9	NA	0.0018	1	0	0	0	0	0
EPHB4	ENSP00000350896.3	ENST00000358173.8	c.337G>A	p.Val113Ile	rs55866373	22.4	0.0003507623	0.0035	0	1	0	0	0	1
EPHB4	ENSP00000350896.3	ENST00000358173.8	c.2670G>T	p.Glu890Asp	rs35638378	17.22	0.008748404	0.0209	0	0	1	1	0	0
EPHB4	ENSP00000350896.3	ENST00000358173.8	c.2051_2052del	p.Thr684Pro	NA	NA	NA	0.0018	0	0	1	0	0	0
EPHB4	ENSP00000350896.3	ENST00000358173.8	c.236C>T	p.Pro79Leu	rs542089930	21.6	0.0003295048	0.0052	0	0	0	0	1	0

Gene= gene name; ENSG_ID=Ensemble gene ID; ENST_ID=Ensemble transcript ID; cDNA=predicted cDNA change for the listed transcript; AAchange=predicted amino acid change for the listed transcript; rs_dbSNP=dbSNP ID; CADD_phred= CADD score prediction; gnomAD_exomes_controls_NFE_AF= gnomad allele frequency in the exome sample of non-finnish european descent; DCM allele frequency= allele frequency of the variant in full cohort of 573 individuals; DCM1-6= genotype for the DCM patients where 0=homozygous reference and 1=heterozygous.

Table 2. Baseline characteristics of the patient cohort

	DCM patients (reference genome)	DCM patients (EPHB4 variant)
n	6	6
Age (years)	60 [IQR 48-75]	43 [IQR 29-56]
Sex (male/female)	3/3	5/1
NYHA class [I/II/III/IV (n)]	1/0/3/1	0/3/2/0
Hypertension [n (%)]	5 (83.3)	3 (50)
Hyperlipidemia [n (%)]	3 (50)	4 (66.6)
Diabetes [n (%)]	3 (50)	2 (33.3)
Smoking [n (%)]	3 (50)	3 (50)
Left ventricular EF (%)	35.17 [IQR 20-48.5]	30.20 [IQR 17.5-40.5]
ACEi or ATRB (%)	6 (100)	4 (83.3)
Beta-blocker (%)	6 (100)	5 (83.3)
Diuretic (%)	4 (66.6)	3 (50)
Aldosterone antagonist	2 (33.3)	3 (50)
Statin	4 (66.6)	4 (66.6)

DCM – dilated cardiomyopathy

EF – ejection fraction

ACEi – angiotensin-converting enzyme inhibitor

ATRb - angiotensin II receptor blocker