

1 **Protocol for a prospective cohort study on the feasibility of application of nutritional**
2 **ultrasound in the diagnosis and follow-up of patients with nutritional risk at hospital**
3 **discharge: Study on body composition and function (DRECO).**

4 José Manuel García Almeida^a, Diego Bellido Guerrero^b, Daniel de Luis Román^c, Germán
5 Guzmán Rolo^d and Gabriel Oliveira^e

6 a) *Department of Endocrinology and Nutrition, Hospital Universitario Virgen de la Victoria, IBIMA, CI-BEROBN, Hospital*
7 *Quirónsalud, University of Málaga, Spain; jgarciaalmeida@gmail.com*

8 b) *Department of Endocrinology and Nutrition, Complejo Hospitalario de Ferrol, A Coruña, Spain; diegobellido@gmail.com*

9 c) *Department of Endocrinology and Nutrition, Institute of Endocrinology and Nutrition, Medicine School and Department of*
10 *Endocrinology and Investigation, Hospital Clínico Universitario, University of Valladolid, Valladolid, Spain; dadluis@yahoo.es*

11 d) *Medical department. Abbott Laboratories. Spain; german.guzman1@abbott.com*

12 e) *Department of Endocrinology and Nutrition. Regional University Hospital of Málaga. University of Málaga. IBIMA BIONAND*
13 *Platform of Málaga, Spain; gabrielm.oliveira.sspa@juntadeandalucia.es*

14

15

16 **SUMMARY**

17 **Background:** The application of nutritional ultrasound for the morphological and structural
18 study of muscle mass is an emerging technique in clinical nutrition. Currently, all definitions
19 of malnutrition include the measurement of muscle mass involvement, however, there is
20 no single way to assess it. It is necessary to develop new techniques to identify muscle
21 involvement in malnutrition that are valid, standardized, reliable, accurate and profitable.

22 **Objectives:** The objective of this study is to value the new muscle ultrasound techniques
23 aimed to measure muscle and functional status, to make a more accurate diagnosis and
24 a better prediction of complications and morbidity and mortality in patients at nutritional
25 risk. Primary outcome: to assess the feasibility of ultrasound or muscle ultrasound
26 techniques in both nutritional diagnosis and follow-up, over 3 to 6 months, in a nutritional
27 intervention program.

NOTE: This preprint reports new research that has not been certified by peer review and should not be used to guide clinical practice.

28 **Methods:** DRECO (Disease-Related caloric-protein malnutrition EChOgraphy) is a
29 prospective, multicenter, uncontrolled clinical study in standard clinical practice to value
30 the usefulness of nutritional ultrasound (muscle ultrasound) in the nutritional diagnosis and
31 follow-up of patients over a period of 3 to 6 consecutive months, after standard nutritional
32 clinical practice intervention, and physical activity to control their disease-related
33 malnutrition.

34 **Discussion:** This study will standardize nutritional ultrasound measures. It will validate
35 and define specific cut-off values for nutritional ultrasound and get its correlation with
36 already well-known nutritional tools such as SGA (Subjective Global Assessment) or GLIM
37 (Global Leadership Initiative on Malnutrition) criteria. Thus, muscle ultrasound will become
38 not only a tool to assess the diagnosis of malnutrition, but it will be integrated in the routine
39 clinical practices to evaluate nutritional interventions.

40 **Registration:** This study is registered at clinicaltrials.gov (NCT05433831), registered on
41 June 27th, 2022. <https://clinicaltrials.gov/ct2/show/NCT05433831>.

42

43

44 **Keywords:** nutritional ultrasound; nutritional biomarker; ultrasound cut-off values; dis-
45 ease-related malnutrition; GLIM; SGA; body composition; sarcopenia; quadriceps femoris
46 muscle; abdominal muscle area, muscle mass.

47

48 **1. INTRODUCTION**

49 Disease-related malnutrition (DRM) can occur when there is a deficient supply of energy,
50 protein and/or other nutrients, depending on the nutritional needs of everyone at different
51 times of their life cycle or health or disease circumstances. This deficiency induces effects
52 on body composition and tissue and organ function and results in clinical consequences:
53 increased morbidity and mortality associated with different disease processes (1).

54

55 In 2019, the GLIM criteria were published (2), providing a different vision of how to assess
56 the malnourished patient. These criteria are divided into both phenotypic and etiological
57 criterion:

58

59 - Phenotypic criterion

- 60 ● Weight loss (%): >5% within past 6 months, or >10% beyond 6 months
- 61 ● Low body mass index (kg/m²): <20 if < 70 years, or <22 if >70 years. Asia: <18.5
62 if < 70 years, or <20 if >70 years
- 63 ● Reduced muscle mass: Reduced by validated body composition measuring
64 techniques

65 - Etiological criterion

- 66 ● 50% of ER (energy requirements) > 1 week, or any reduction for >2 weeks, or any
67 chronic GI (gastrointestinal) condition
68 that adversely impacts food assimilation or absorption
- 69 ● Inflammation: Acute disease/injury or chronic disease-related

70 There are techniques for nutritional assessment using assessment tools aimed at morpho
71 functional diagnosis of malnutrition (3), in addition to the classical nutritional parameters,
72 such as weight loss, BMI (body mass index) , folds, circumferences, albumin,
73 lymphocytes, cholesterol and intake. New advanced parameters are being incorporated
74 into clinical nutrition and their incorporation into clinical practice is of increasing interest,
75 such as measures derived from bioelectrical impedance (BIA) and phase angle (PhA),
76 dynamometry, functional tests, CRP/prealbumin ratio and muscle ultrasound (see Figure
77 1).

78 Figure 1. Update of nutritional evolution parameters. Reproduced with permission from
79 the authors (3).

80

81 From a scientific point of view, the following nutritional assessment techniques are being
82 incorporated:

83 Muscle ultrasound

84 The application of ultrasound for the morphological and structural study of muscle mass
85 is an emerging technique. Currently, there are different validation studies on the
86 measurement technique. The ultrasound technique determines the surface area of the
87 muscle in transverse and longitudinal position. With ultrasound analysis, it is possible to
88 measure key parameters of muscle architecture, such as muscle volume and muscle
89 fascicle length. Although there are different muscle structures that can be evaluated, many
90 of the studies focus on the quadriceps rectus femoris or on combinations of various muscle
91 groups involving large muscle bundles with functional importance to the patient in terms
92 of gait. Measurement of the rectus femoris of the quadriceps is one of the most referenced
93 measurements due to its correlation with strength and tests of execution or functional
94 performance. It is necessary to develop new techniques to identify muscle involvement in
95 malnutrition that are valid, standardised, reliable, accurate and profitable. Currently, all
96 definitions of malnutrition include the measurement of muscle mass involvement,
97 however, there is no single way to assess it. The classic imaging techniques such as
98 DEXA (dual-energy x-ray absorptiometry), CT (computerised tomography) and MRI
99 (magnetic resonance imaging) are considered the gold standard, but they have difficulties
100 in their clinical application under normal practice conditions. Ultrasound has the advantage
101 of being inexpensive, portable, and does not involve ionising radiation. Several studies
102 have confirmed the reliability of this technique to measure the size of the quadriceps
103 muscle in a healthy population (4). Studies on the reliability of rectus femoris ultrasound
104 have been published with an intraclass coefficient of variation (ICC) of 0.97 (95% CI: 0.92-
105 0.99) for the test-retest reliability of ultrasound.

106

107 The American Society for Parenteral and Enteral Nutrition (ASPEN), among the criteria
108 for the diagnosis of malnutrition in adults, recommends including an evaluation of fat and
109 muscle deposits. Specialists must incorporate techniques that properly help to identify the
110 loss of muscle and fat mass for a correct diagnosis of malnutrition. Implementing these

111 evaluation techniques and instruments is challenging and remains a work in progress (5).
112 Muscle ultrasonography correlates with body composition measurement techniques such
113 as BIA and anthropometry in patients with cancer (6). In adults with cystic fibrosis muscle
114 ultrasound measurements, particularly the mean muscular area rectus anterior (MARA),
115 are related to the nutritional status and respiratory function of these patients. (7)
116 The Global Leadership Initiative on Malnutrition (GLIM) has recently appointed a working
117 group to provide consensus-based guidance on assessment of skeletal muscle mass and
118 its role in the malnutrition diagnostic and assessment process. They support the use of
119 US (ultrasound), particularly in settings where its practical applicability provides potential
120 for patient follow-up through repeated measurements, but it requires standardisation
121 through experienced operators, and repeated measurements performed by the same
122 individual. They also encourage further validation studies for the US (8).

123

124 Bioelectrical impedance (BIA)

125 BIA is used as a tool to obtain data that helps to better understand the patient's nutritional
126 status, being a non-invasive, inexpensive, and easily transportable technique. Vector
127 analysis and phase angle provide direct data, not being necessary to be later adjusted
128 using formulas or mathematical models, as it is needed with simple or multifrequency
129 bioelectrical impedance or multifrequency (9). This method is based on the analysis of the
130 two bioimpedance vectors: resistance (R) and capacitive reactance (X_c). Resistance is
131 defined as the opposition to a flow of electric current through a circuit component, medium,
132 or substance, providing information about biological fluids, and therefore, related to tissue
133 hydration. A decrease in the resistance/height ratio will indicate swelling or third space;
134 conversely, an increased ratio will indicate dehydration. Reactance is the effect on an
135 electrical current caused by a material's ability to store energy in cell membranes, so it is
136 related to the cell mass and the integrity of its membranes. A decrease in X_c indicates loss
137 of cell mass. This cell mass is the sum of all metabolically active cells, being the central

138 parameter in the evaluation of nutritional status since the reduction of cell mass is typically
139 related to malnutrition (10).

140 A recent study conducted by Fernandez-Jimenez, *et al* found that a low SPhA
141 (standardised phase angle)-malnutrition value (SPhA < -0.3) was significantly associated
142 with a higher mortality hazards ratio (HR 7.87, 95% CI 2.56–24.24, $p < 0.001$). This
143 biological marker could therefore be incorporated among the screening tools and mortality
144 risk assessment in this population (11).

145

146 Dynamometry

147 Dynamometry is one of the 6 criteria to define malnutrition according to ASPEN (12). It
148 is extremely sensitive to nutritional status changes, so it is particularly useful to track
149 nutritional therapy or interventions results, even in the short and medium term. It has
150 mostly been used to predict post-surgical complications including elderly patients (13).
151 Results obtained are compared to the population averages by age and sex. Sanchez et al
152 (14) presented reference values for hand dynamometry using a Jamar hand dynamometer
153 for a Spanish population, providing cut-off points to define malnutrition. They concluded
154 that hand dynamometry is associated with lean mass, which supports its usefulness in
155 nutritional assessment.

156 Although the new GLIM consensus-based guidance on assessment of skeletal muscle
157 mass do not include dynamometry as a marker of muscle mass (8), the authors hereby
158 signing this article have previously studied dynamometry as a marker of muscle mass
159 suggesting that GLIM criterion and dynamometry are associated to a higher mortality rate
160 in both hospitalised and outpatient oncology patients (15, 16).

161

162 Functional tests

163 These tests are a series of physical activities related to mobility, walking or balance. Their
164 results are related to those of scales that assess instrumental activities of daily living
165 (IADL). The most common are the "Timed Up and Go test" (TUG), the "Gait Speed Test"
166 (GST) and the "Short Physical Performance Battery (SPPB)" test that includes 3 tests
167 (balance, gait speed and get up and walk) (17).

168 Besides, the decrease in physical performance, evaluated by the SPPB test or hand grip
169 strength, has been shown to be elevated in patients with colorectal cancer prior to surgery
170 and it was related to an increase in postoperative complications and mortality (18).

171

172 **1.1. STUDY OBJECTIVES**

173 The objective of this study is to value the new muscle ultrasound techniques aimed to
174 measure muscle and functional status, to make a more accurate diagnosis and a better
175 prediction of complications and morbidity and mortality in patients at nutritional risk. This
176 main objective is developed in primary and secondary objectives as it follows:

177

178 **1.1.1. Primary objective**

- 179 ● To assess the feasibility of ultrasound or muscle ultrasound techniques in both
180 nutritional diagnosis and follow-up, over 3 to 6 months, in a nutritional intervention
181 programme.

182 **1.1.2. Secondary objectives**

- 183 ● To determine the association between muscle morphological parameters (nutritional
184 ultrasound of the leg (area, circumference, axis and adipose tissue), total abdominal
185 and pre-peritoneal parameters measured by nutritional ultrasound and the nutritional
186 and functional status of the patient, as well as their prognostic value in hospitalised
187 patients.
- 188 ● To establish an association between ultrasound as a diagnostic value of malnutrition
189 as compared to the diagnostic gold standard (SGA and GLIM criteria).

- 190 ● To determine the ultrasound cut-off points associated with the diagnosis of malnutrition
191 and sarcopenia using the following tools:
- 192 ○ Measurement of body composition using impedance techniques (Report:
193 Phase angle, body cell mass (BCM), hydration, fat free mass (FFM) and lean
194 mass index.
 - 195 ○ Muscle strength and capacity to perform physical activity after the intervention:
196 dynamometry and Timed Up and Go test (TUG).
 - 197 ○ Criteria for sarcopenia.
 - 198 ○ To assess association with inflammatory activity markers: High-sensitivity C-
199 reactive protein (CRP)/prealbumin.
- 200 ● To assess ultrasound changes in patient follow-up.
- 201 ● To establish an association of ultrasound results as predictors of morbidity and mortality
202 (stay, mortality at 3 and 6 months, readmissions and in-hospital complications).

203 **2. PATIENT PARTICIPANT INVOLVEMENT AND FEASIBILITY OF STUDY DESIGN**

204 DRECO (Disease-Related caloric-protein malnutrition EChOgraphy) is a prospective,
205 multicentre, uncontrolled clinical study in standard clinical practice to value the usefulness
206 of nutritional ultrasound (muscle ultrasound) in the nutritional diagnosis and follow-up of
207 patients over a period of 3 to 6 consecutive months, after standard nutritional clinical
208 practice intervention, and physical activity to control their disease-related malnutrition.

209 The study may be considered non-interventional since patients will undergo nutritional
210 interventions and the standard treatment planned by their physician for treatment
211 according to his/her standard clinical practice, and the only addition to the standard
212 measurement and follow-up techniques of the patient will be the performance of a muscle
213 ultrasound measurement using equipment provided to the centre for this purpose.

214 Patients over 18 years of age who, in the first week of hospital admission in medical-
215 surgical areas, excluding critical patients, have an assessment of risk of malnutrition
216 according to the MUST and SARC-F screening test using R-MAPP. [(MUST: Malnutrition

217 Universal Screening Tool; SARC-F is an acronym of 5 domains included in the
218 questionnaire: 1) Strength, 2) Assistance with walking, 3) Rising from a chair, 4) Climbing
219 stairs, and 5) Falls; R-MAPP (Remote consultation on MAInutrition in the Primary
220 Practice)].

221 If the results show a moderate or high risk of malnutrition, these patients will be invited to
222 participate in the study, and will undergo the morpho functional assessment, an ultrasound
223 study and the Subjective Global Assessment (SGA). This study is registered under
224 ClinicalTrials.gov (NCT05433831).

225 Figure 2 shows the schedule of enrolment, interventions, and assessments.

226

227 **2.1. Inclusion criteria**

- 228 ● Patients admitted to hospital who in the first week of admission have moderate or
229 high risk of malnutrition according to the MUST and SARC-F screening test using
230 R-MAPP.
- 231 ● Patients aged 18 to 85 years.
- 232 ● Patient who agrees to participate in the study and signs the informed consent.

233 **2.2. Exclusion criteria**

- 234 ● Hepatic impairment - AST/ALT (aspartate aminotransferase/alanine
235 aminotransferase) 3 x upper limit of normal.
- 236 ● Chronic kidney failure - GFR (glomerular filtration rate) <45 mL/min).
- 237 ● Patients with previous ICU (intensive care unit) stay during the study admission.
- 238 ● Cancer patients on palliative treatment or ECOG (Eastern Cooperative Oncology
239 Group) ≥ 3 .
- 240 ● Orthopaedic disease that does not allow adequate walking.

- 241 • Patients with known dementia or others not related to a significant neurological or
242 psychiatric disorder, or any other psychological condition that may interfere with
243 the conduct of the study.
- 244 • Patients with eating disorders.
- 245 • Life expectancy of less than 6 months.
- 246 • Patients unable to adequately complete the clinical laboratory assessments
247 required for the study protocol.

248

249 **2.3. Sample size calculation**

250 There are no previous clinical trials focusing on this objective published in the literature.
251 We report a study in patients with chronic kidney disease on haemodialysis (HD) (19)
252 where measurement of the rectus femoris cross-sectional muscle area (RFCSA) was
253 validated for the diagnosis of malnutrition related to this condition. RFCSA compared to
254 bioimpedance spectroscopy had higher area under the curve (AUC, 0.686 vs. 0.581),
255 sensitivity (72.8% vs. 65.8%), and specificity (55.6% vs. 53.9%). The AUC of RFCSA was
256 higher for the risk of protein-energy wasting (PEW) in male (0.74, 95% CI: 0.66 to 0.82)
257 and female patients (0.80, 95% CI: 0.70 to 0.90) (both $p < 0.001$). Gender-specific RFCSA
258 values (males < 6.00 cm²; females < 4.47 cm²) indicated that HD patients with lower
259 RFCSA were 8 times more likely to have PEW (AOR = 8.63, 95% CI: 4.80-15.50,
260 $p < 0.001$).

261 Our study aims to establish the feasibility of nutritional ultrasound measurements at
262 different ages in both sexes to apply to patients with nutritional risk worldwide. For this
263 purpose, the electronic CRF will be programmed with the sample distributed by quotas to
264 cover 50% men and 50% women, as well as 10-year age ranges. Age-stratified sampling
265 is designed to obtain representative results of different ages and could be associated with
266 the results of VGS, BIA, and dynamometry. Variability of measurements should be
267 adjusted for sex, age and anthropometric parameters such as height.

268 It is estimated that 1,000 patients with nutritional risk will be discharged from 20-25
269 healthcare centres throughout Spain and that at least 60% of the population will complete
270 the 3-to-6-month follow-up of the study. Due to the special pandemic situation, a higher-
271 than-expected drop-out rate is expected at 6 months than under normal conditions (40%
272 are estimated not to complete the 6-month follow-up for any reason).

273

274 **2.4. Study conduct**

275 The physicians participating in the study will be responsible for assessing the suitability of
276 inclusion for each patient.

277 Patients will be consecutively recruited by the physician as they are assessed daily in their
278 clinical practice at the hospital and found to have a risk of malnutrition according to the
279 MUST/SARC-F (R-MAPP) screening test.

280 Before inclusion, the investigator must check the inclusion and exclusion criteria and
281 obtain their informed consent.

282 The physician will be responsible for applying nutritional intervention and physical activity
283 treatment according to standard clinical practice, as well as for clinical monitoring of
284 patients. The treatment prescribed to each patient is not the objective of this study and is
285 how the patient will experience changes that must be recorded with the different
286 techniques described and with the muscle ultrasound involved in this study.

287 All physicians participating in the study must have been previously trained in the use of
288 the ultrasound equipment and materials provided for the study, as well as in the use of the
289 electronic CRF for data entry designed for this study.

290 **2.4.1. Nutritional ultrasound techniques and measurements** (ultrasound with 4-10 cm
291 linear tube). The equipment provided for the study is UProbe L6C Ultrasound Scanner
292 (linear transducer 7.5-10 kHz) that allows depths up to 100 mm. Manufactured by
293 Guangzhou Sonostar Technologies Co., Ltd. PR China.

294 **2.4.1a. Quadriceps rectus femoris ultrasound (see Figure 3)**

295 The measurement technique is determined for the patient lying supine with knees
296 extended and relaxed.

297 - Measurement technique:

- 298 • In the lower third of the imaginary line between the antero-superior iliac spine and
299 the superior border of the patella.
- 300 • Correction of leg angle, it is important to focus the image on the rectus femoris.
- 301 • In malnourished patients, loss of muscle tone causes the muscle to move to the
302 sides
- 303 • To minimize variability, measurements must be repeated three times.

304

305 Figure 3 – Comparison of longitudinal and transversal sections of the QRF muscle area
306 ultrasound. Functional measures and main anatomical structures are represented.

307

308 **2.4.1b. Abdominal ultrasound (see Figure 4)**

309 Total, superficial, and pre-peritoneal adipose tissue are measured (centimetres) for the
310 patient lying down.

311 - Measurement technique:

- 312 • The transducer is placed between the xiphoid process and the umbilicus in the
313 midline (in patients with surgery without navel, this would be 10 cm from the xiphoid
314 appendix).
- 315 • Images are taken during non-forced expiration, in a transverse plane with a
316 variable probe depth of 4-10 cm, perpendicular to the skin.
- 317 • To minimize variability, measurements must be repeated three times.

318 - Measurement planes:

319 • Measurement of subcutaneous adipose tissue: the superficial and deep layers are
320 differentiated.

321 • Visceral adipose tissue measurement: it is measured in a transverse position.
322 Measure the distance between the boundary of the parietal peritoneum to the *linea*
323 *alba* on the inner side at the junction of the two-rectus straight abdominis muscles.

324 Figure 4 - Comparison of longitudinal and transversal sections of the QRF muscle area
325 ultrasound. Functional measures and main anatomical structures are represented.

326 • **2.4.2 Follow-up period**

327 The planned follow-up period for each patient will be 3 to 6 months from the inclusion visit.

328 The investigating physician will perform at least one first inclusion visit, and a follow-up
329 visit at 3 and 6 months for each patient.

330 • **2.4.3. Study duration**

331 The study is planned to last 18 months to detect patients at risk of malnutrition,
332 recruitment, field work, monitoring and data analysis.

333 An estimated 2-3 months will be needed to plan the coordination and distribution of the
334 work in the hospitalisation and outpatient clinic areas for the selection of candidate
335 patients. It will take 6 to 9 months to recruit patients. From the start of the study, the
336 database will be completed, and preliminary analyses will be performed. The final analysis
337 will be performed when the follow-up is completed together with writing of the related work
338 that will require 4 to 6 months to complete.

339

340 **2.5. Outcome measures**

341 A list of the outcomes of interest is provided in Table 1.

342

343 **2.6. Data analysis plan**

344 Data analysis will be performed using SPSS 22.0 software (SPSS Inc., Chicago, IL, USA).

345 Quantitative variables will be expressed as mean \pm standard deviation. The comparison
346 between qualitative variables will be performed using the Chi-square test with Fisher's
347 correction when necessary. Quantitative variables will be analysed using a Kolmogorov-
348 Smirnov test. Differences between quantitative variables will be analysed using Student's
349 t or ANOVA tests (for two or more samples, respectively) and non-parametric tests (Mann-
350 Whitney or Kruskal-Wallis) will be used when the variables to be analysed do not follow a
351 normal distribution.

352 Kappa coefficient will be used to assess agreement between techniques in diagnosis of
353 malnutrition.

354 The association between variables will be studied using Spearman or Pearson
355 correlations according to normality.

356 Several cut-off points will be estimated for prediction of diagnosis of malnutrition and
357 sarcopenia using ultrasound by ROC curves.

358 The significant associations between muscle ultrasound parameters and the objective
359 clinical variables in the univariate analysis will then be analysed in multivariate logistic
360 regression models which also control other confounding variables. To assess which
361 nutritional tool best predicts the risk of mortality during admission (and re-admission), we
362 will perform multivariate logistic regression models, in which the dependent variable will
363 be in-hospital mortality (or re-admission) based on the different tools applied (e.g.
364 ultrasound, phase angle, SGA criteria, GLIM, LMI), also controlling for sex, the presence
365 of previous comorbidities and other variables showing association in the univariate study.

366 For all calculations, a probability p less than 0.05 for two tails will be considered significant.

367 • **2.6.1. Recording of adverse reactions**

368 Adverse reactions reporting is not the objective of the study. The investigator should
369 proceed as usual and through the channels established in the healthcare system if any
370 adverse effect occurs during follow-up. It will only be recorded in the follow-up if the patient
371 must leave the study for this reason for statistical purposes.

372 • **2.6.2. Handling of missing data**

373 No formal imputation will be made for the different analyses; therefore, all estimates will
374 be obtained using all available data (available data only, ADO).

375 Since the study will be recorded using an electronic CRF (case report form), the necessary
376 consistency filters and alerts for missing data will be programmed to validate and store the
377 information, in order to minimise missing data and prevent the entry of incorrect or out of
378 range data.

379

380 **3. ETHICS**

381 **3.1. General aspects**

382 This study will be conducted in accordance with current regulations, accepted international
383 ethical standards of Good Clinical Practice (CPMP/ICH/135/95), the principles laid down
384 in the latest version of the Declaration of Helsinki, RD 1591/2009 and Circular No. 07/2004
385 regulating clinical research with medical devices.

386 **3.2. Informed consent**

387 Before inclusion in the study and after considering the suitability of patient inclusion, all
388 participating physicians must offer the patient information about the study using a patient
389 information sheet, invite the patient to participate in it, answer their questions and request
390 completion of the informed consent form that will be kept in their own file.

391 **3.3. Evaluation by an Ethics Committee**

392 All study materials will be submitted to the Provincial mpREC of Málaga for evaluation
393 (Area of the Regional University Hospitals of Malaga and Virgen de la Victoria). The study
394 will be initiated after IRB/IEC approval is obtained.

395 Provincial mpREC of Malaga.

396 Regional University Hospital of Málaga

397 Wing A. General Hospital, 7th floor 9010, Málaga.

398 **3.4. Confidentiality**

399 The study data will be entered into an automated file owned by the sponsor. The analysis
400 of study results will be made from an anonymised database, that is, dissociated, with no
401 personal data, so that no subject can be identified or identifiable. This study database will
402 be extracted from the electronic CRF and will include data from physician records,
403 impedance recordings, and muscle ultrasound images. Data from different sources will be
404 linked from the patient code and will not include personal data. All data in the file owned
405 by the sponsor will be treated confidentially. The sponsor undertakes not to transfer data
406 to third parties.

407

408 **4. DISCUSSION**

409 There is a growing interest in the literature on the evaluation of muscle mass by ultrasound
410 (20). Its current clinical utility focuses on measuring the involvement of muscle mass to
411 assess the nutritional status of a patient (21). The further step that it is being investigated
412 in this clinical study, is that muscle ultrasound becomes not only a tool to assess the
413 diagnosis of malnutrition but to integrate it in the routine clinical practices to evaluate
414 nutritional interventions.

415 The evaluation of the nutritional ultrasound should enable clinical decisions based on its
416 results to permit the adjustment and individualization of the nutritional therapeutic and
417 physical exercise plan, along with functional recovery (20).

418 To the best of our knowledge, this is going to be the largest study (sample size=1,000)
419 using nutritional ultrasound in patients with nutritional risk. Current scientific evidence is
420 limited, and it is expected that such a large population will allow us to validate and define
421 specific cut-off values for nutritional ultrasound and get its correlation with already well-
422 known nutritional tools such as SGA or GLIM criteria (22).

423 The emerging field of ultrasound assessment of muscle mass only highlights the need for
424 a standardisation of measurement technique as Perkisas, *et al* outline in their recently
425 published 2022 SARCUS update. This update provides the approach of muscle
426 assessment according to the most recent literature and anatomical landmarks for 39
427 different muscles. Besides, the discussion about 4 new muscle parameters that are added
428 to the 5 that were previously considered is also presented (23) and some of these
429 parameters have been correlated with PhA (24) and they will be analysed in our present
430 protocol. Our ongoing study is intended to standardize these outstanding technique
431 measures, to apply this technique widely soon.

432

433 **Author Contributions:** All authors have identified the research question and were
434 responsible for the conception and design of the protocol and the study. JM.G.A., D.B.G,
435 D.L.R, and G.O.F. are conducting study investigation. G.G.R has managed funding
436 acquisition. All authors have been involved in drafting the manuscript and revising it
437 critically for intellectual content. All authors read and approved the final manuscript.

438 **Funding:** This study will be conducted thanks to a research grant from Abbott
439 Laboratories.

440 **Conflicts of Interest:** JM.G.A., D.B.G, D.L.R, and G.O.F declare no conflict of interest.
441 G.G.R is an employee of Abbott Laboratories.

442 **Institutional Review Board Statement:** The study was conducted in accordance with the
443 Declaration of Helsinki, and approved by the following Ethical Committees: Comité de
444 Ética de la In-vestigación Provincial De Málaga, Comité de Ética de la Investigación con
445 medicamentos Área De Salud Valladolid, Comité de Ética de la Investigación provincial
446 de Córdoba, Comité de Ética de la Investigación con medicamentos del Complejo
447 Hospitalario Universitario de Canarias (Provincia de Santa Cruz de Tenerife), Comité de
448 Ética de la Investigación con medicamentos del Complejo Hospitalario Universitario de
449 Las Palmas, Comité de Ética de la Investigación con medicamentos y Comisión de
450 Proyectos de Investigación del Hospital Universitari Vall D'Hebron, Comité de Ética de la
451 Investigación con medicamentos del Consorcio Hospital General Universitario de
452 Valencia, Comité de Ética de la Investigación con medicamentos de la Clínica de Navarra,
453 Comité de Ética de la Investigación con medicamentos de Euskadi and Comité de Ética
454 de la Investigación con medicamentos del Hospital Universitario y Politécnico la Fe de
455 Valencia. This study is registered at clinicaltrials.gov (NCT05433831), registered on June
456 27th, 2022. <https://clinicaltrials.gov/ct2/show/NCT05433831>.

457 **Informed Consent Statement:** All participants are provided with a participant information
458 sheet and are required to provide written consent.

459

460 **REFERENCES**

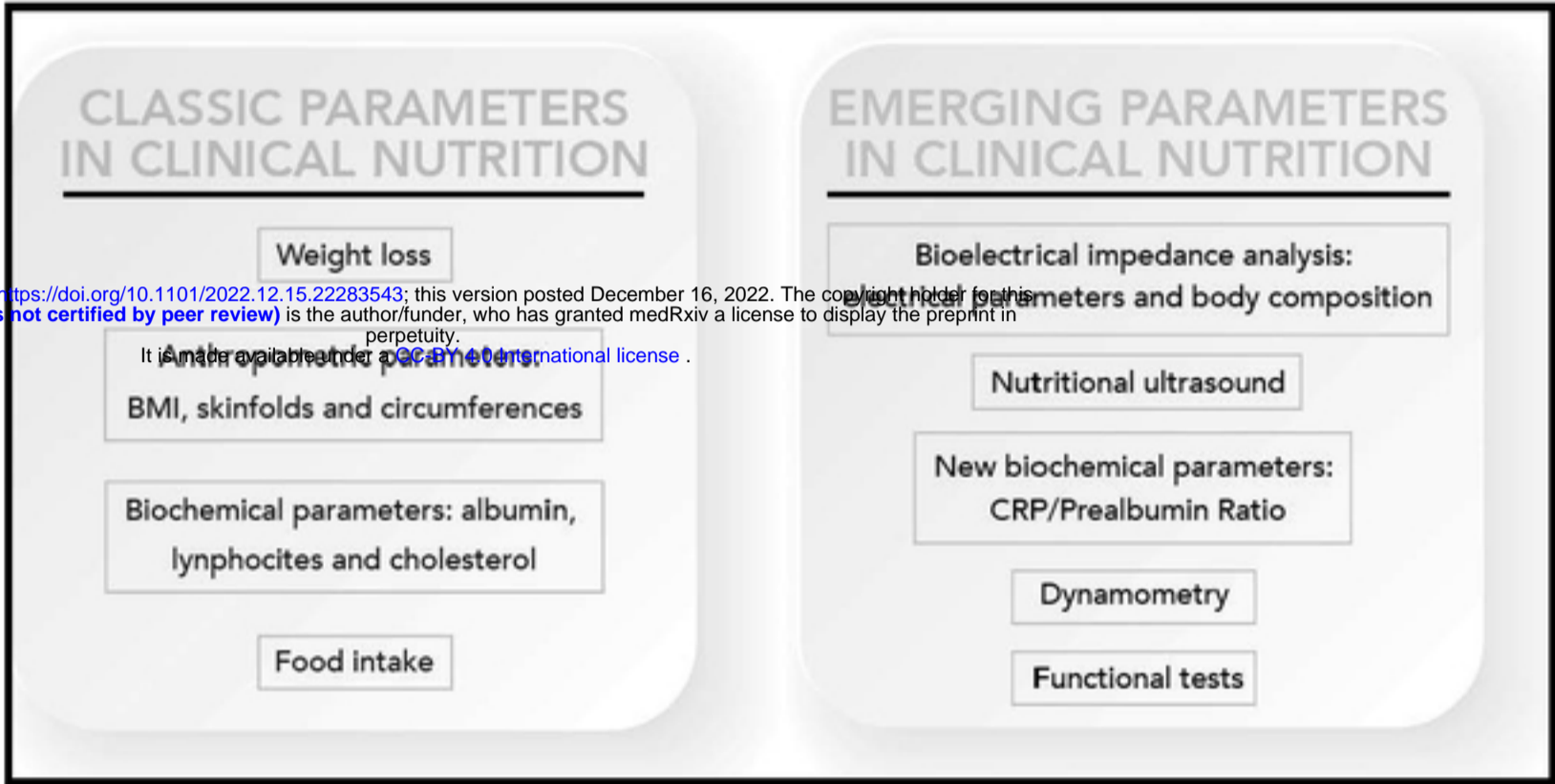
- 461 1. Soeters PB, Reijven PLM, van Bokhorst-de van der Schueren MAE, Schols JMGA,
462 Halfens RJG, Meijers JMM, et al. A rational approach to nutritional assessment. Clin
463 Nutr Edinb Scotl. octubre de 2008;27(5):706-16.
- 464 2. Jensen GL, Cederholm T, Correia MITD, Gonzalez MC, Fukushima R, Higashiguchi
465 T, et al. GLIM Criteria for the Diagnosis of Malnutrition: A Consensus Report From

- 466 the Global Clinical Nutrition Community. *J Parenter Enter Nutr.* enero de
467 2019;43(1):32-40.
- 468 3. García Almeida JM, García García C, Bellido Castañeda V, Bellido Guerrero D. New
469 approach to nutrition. Assessment of the patient's nutritional status: function and body
470 composition. *Nutr Hosp* [Internet]. 4 September 2018 [cited 12 July 2020];35(3).
471 Available in: <http://revista.nutricionhospitalaria.net/index.php/nh/article/view/2027>
- 472 4. Kyle UG, Bosaeus I, De Lorenzo AD, Deurenberg P, Elia M, Gómez JM, et al.
473 Bioelectrical impedance analysis--part I: review of principles and methods. *Clin Nutr*
474 *Edinb Scotl.* octubre de 2004;23(5):1226-43.
- 475 5. Norman K, Stobäus N, Pirlich M, Bosy-Westphal A. Bioelectrical phase angle and
476 impedance vector analysis--clinical relevance and applicability of impedance
477 parameters. *Clin Nutr Edinb Scotl.* diciembre de 2012;31(6):854-61.
- 478 6. López-Gómez, J.J.; Benito-Sendín Plaar, K.; Izaola-Jauregui, O.; Primo-Martín, D.;
479 Gómez-Hoyos, E.; Torres-Torres, B.; De Luis-Román, D.A. Muscular
480 Ultrasonography in Morphofunctional Assessment of Patients with Oncological
481 Pathology at Risk of Malnutrition. *Nutrients* 2022, 14, 1573.
- 482 7. Sánchez-Torralvo FJ, Porras N, Ruiz-García I, Maldonado-Araque C, García-Olivares
483 M, Girón MV, Gonzalo-Marín M, Oliveira C, Oliveira G. Usefulness of Muscle
484 Ultrasonography in the Nutritional Assessment of Adult Patients with Cystic Fibrosis.
485 *Nutrients.* 2022 Aug 17;14(16):3377. doi: 10.3390/nu14163377. PMID: 36014883;
486 PMCID: PMC9415857.
- 487 8. Compher C, Cederholm T, Correia MITD, Gonzalez MC, Higashiguch T, Shi HP,
488 Bischoff SC, Boirie Y, Carrasco F, Cruz-Jentoft A, Fuchs-Tarlovsky V, Fukushima R,
489 Heymsfield SB, Mourtzakis M, Muscaritoli M, Norman K, Nyulasi I, Pisprasert V, Prado
490 CM, de van der Schuren M, Yoshida S, Yu Y, Jensen G, Barazzoni R. Guidance for
491 assessment of the muscle mass phenotypic criterion for the Global Leadership
492 Initiative on Malnutrition diagnosis of malnutrition. *JPEN J Parenter Enteral Nutr.* 2022
493 Apr 19. doi: 10.1002/jpen.2366. Epub ahead of print. PMID: 35437785.

- 494 9. Ní Bhuachalla ÉB, Daly LE, Power DG, Cushen SJ, MacEneaney P, Ryan AM.
495 Computed tomography diagnosed cachexia and sarcopenia in 725 oncology patients:
496 is nutritional screening capturing hidden malnutrition?: Is nutritional screening
497 capturing hidden malnutrition in oncology patients? *J Cachexia Sarcopenia Muscle*.
498 abril de 2018;9(2):295-305.
- 499 10. Van der Werf A, Langius J a. E, de van der Schueren M a. E, Nurmohamed SA, van
500 der Pant K a. MI, Blauwhoff-Buskermolen S, et al. Percentiles for skeletal muscle
501 index, area and radiation attenuation based on computed tomography imaging in a
502 healthy Caucasian population. *Eur J Clin Nutr*. 2018;72(2):288-96.
- 503 11. Fernández-Jiménez R, Dalla-Rovere L, García-Olivares M, et al. Phase Angle and
504 Handgrip Strength as a Predictor of Disease-Related Malnutrition in Admitted
505 Patients: 12-Month Mortality. *Nutrients*. 2022;14(9):1851. Published 2022 Apr 28.
- 506 12. White JV, Guenter P, Jensen G, Malone A, Schofield M; Academy Malnutrition Work
507 Group; ASPEN Malnutrition Task Force; ASPEN Board of Directors. Consensus
508 statement: Academy of Nutrition and Dietetics and American Society for Parenteral
509 and Enteral Nutrition: characteristics recommended for the identification and
510 documentation of adult malnutrition (undernutrition). *JPEN J Parenter Enteral Nutr*
511 2012;36(3):275-83
- 512 13. Barata AT, Santos C, Cravo M, Vinhas M do C, Morais C, Carolino E, et al. Handgrip
513 Dynamometry and Patient-Generated Subjective Global Assessment in Patients with
514 Nonresectable Lung Cancer. *Nutr Cancer*. 2017;69(1):154-8.
- 515 14. Sánchez Torralvo FJ, Porrás N, Abuín Fernández J, García Torres F, Tapia MJ, Lima
516 F, et al. Normative reference values for hand grip dynamometry in Spain. Association
517 with lean mass. *Nutr Hosp* 2018;35:98-103
- 518 15. Sánchez-Torralvo FJ, González-Poveda I, García-Olivares M, Porrás N, Gonzalo-
519 Marín M, Tapia MJ, Mera-Velasco S, Toval-Mata JA, Ruiz-López M, Carrasco-
520 Campos J, Santoyo-Santoyo J, Oliveira G. Poor Physical Performance Is Associated

- 521 with Postoperative Complications and Mortality in Preoperative Patients with
522 Colorectal Cancer. *Nutrients*. 2022 Apr 2;14(7):1484.
- 523 16. Contreras-Bolívar V, Sánchez-Torralvo FJ, Ruiz-Vico M, González-Almendros I,
524 Barrios M, Padín S, Alba E, Oliveira G. GLIM Criteria Using Hand Grip Strength
525 Adequately Predict Six-Month Mortality in Cancer Inpatients. *Nutrients*. 2019 Sep
526 1;11(9):2043.
- 527 17. Podsiadlo D, Richardson S. The timed «Up & Go»: a test of basic functional mobility
528 for frail elderly persons. *J Am Geriatr Soc*. febrero de 1991;39(2):142-8.
- 529 18. Sánchez-Torralvo FJ, González-Poveda I, García-Olivares M, Porrás N, Gonzalo-
530 Marín M, Tapia MJ, Mera-Velasco S, Toval-Mata JA, Ruiz-López M, Carrasco-
531 Campos J, Santoyo-Santoyo J, Oliveira G. Poor Physical Performance Is Associated
532 with Postoperative Complications and Mortality in Preoperative Patients with
533 Colorectal Cancer. *Nutrients*. 2022 Apr 2;14(7):1484.
- 534 19. Sahathevan S, Khor BH, Singh BKS, Sabatino A, Fiaccadori E, Daud ZAM, Ali MS,
535 Narayanan SS, Tallman D, Chinna K, Goh BL, Gafor AHA, Ahmad G, Morad Z, Khosla
536 P, Karupaiah T, On Behalf Of The Patch Study Malaysia Investigators. Association of
537 Ultrasound-Derived Metrics of the Quadriceps Muscle with Protein Energy Wasting in
538 Hemodialysis Patients: A Multicenter Cross-Sectional Study. *Nutrients*. 2020 Nov
539 23;12(11):3597. doi: 10.3390/nu12113597.
- 540 20. J.M. García-Almeida, C. García-García, I.M. Vegas-Aguilar et al., Nutritional
541 ultrasound®: Conceptualisation, technical considerations and standardisation,
542 *Endocrinología, Diabetes y Nutrición*, <https://doi.org/10.1016/j.endinu.2022.03.008>)
- 543 21. Connolly B, MacBean V, Crowley C, Lunt A, Moxham J, Rafferty GF, et al. Ultrasound
544 for the assessment of peripheral skeletal muscle architecture in critical illness: a
545 systematic review. *Crit Care Med*. 2015;43:897-905.
- 546 22. Huo Z, Chong F, Yin L, Lu Z, Liu J, Xu H. Accuracy of the GLIM criteria for diagnosing
547 malnutrition: A systematic review and meta-analysis. *Clin Nutr*. 2022 Jun;41(6):1208-
548 1217. doi: 10.1016/j.clnu.2022.04.005. Epub 2022 Apr 11. PMID: 35504163)

- 549 23. Perkisas S, Bastijns S, Baudry S, Bauer J, Beudart C, Beckwée D, Cruz-Jentoft A,
550 Gasowski J, Hobbelen H, Jager-Wittenaar H, Kasiukiewicz A, Landi F, Malek M,
551 Marco E, Martone AM, de Miguel AM, Piotrowicz K, Sanchez E, Sanchez-Rodriguez
552 D, Scafoglieri A, Vandewoude M, Verhoeven V, Wojszel ZB, De Cock AM. Application
553 of ultrasound for muscle assessment in sarcopenia: 2020 SARCUS update. Eur
554 Geriatr Med. 2021 Feb;12(1):45-59. doi: 10.1007/s41999-020-00433-9. Epub 2021
555 Jan 2. PMID: 33387359.
- 556 24. Primo D, Izaola O, Gómez JLL, de Luis D. Correlation of the Phase Angle with Muscle
557 Ultrasound and Quality of Life in Obese Females. Dis Markers. 2022 Aug
558 9;2022:7165126. doi: 10.1155/2022/7165126. PMID: 35983408; PMCID:
559 PMC9381286.



medRxiv preprint doi: <https://doi.org/10.1101/2022.12.15.22283543>; this version posted December 16, 2022. The copyright holder for this preprint (which was not certified by peer review) is the author/funder, who has granted medRxiv a license to display the preprint in perpetuity. It is made available under a CC-BY 4.0 International license.

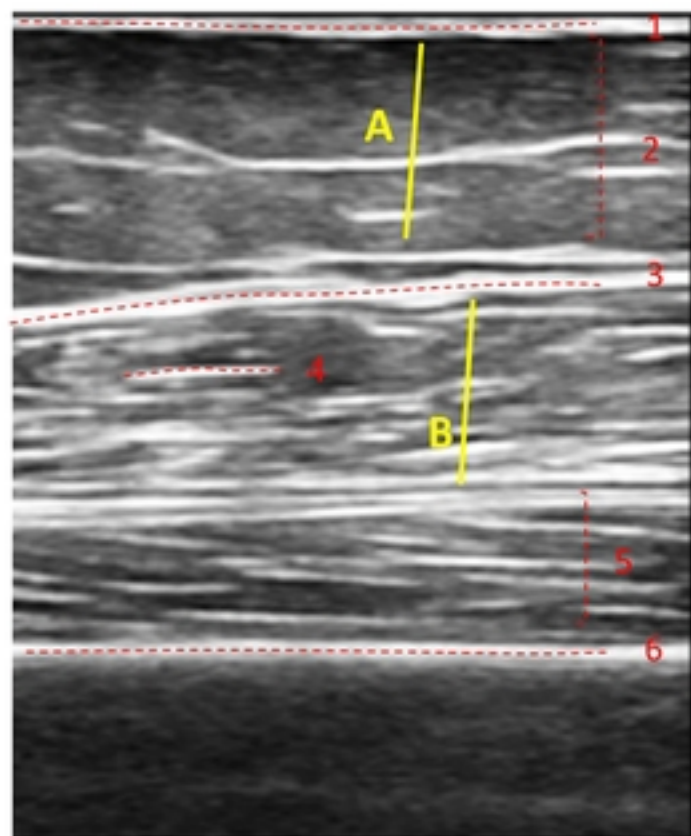
Figure_1

TIMEPOINT (state unit)	Baseline	3 months	6 months
VISIT NUMBER	V1	V2	V3
ENROLLMENT:			
Eligibility screen	X		
Informed consent	X		
INTERVENTION (non-drug):			
Prescription of individualized nutritional regimen and physical exercise	X		
ASSESSMENTS:			
NUTRITIONAL ULTRASOUND <ul style="list-style-type: none"> Abdominal ultrasound Muscle ultrasound 	X	X	X
NUTRITIONAL ASSESSMENTS: <ul style="list-style-type: none"> Subjective Global Assessment (SGA) questionnaire Weight measures (current, usual, and adjusted), height, BMI, and arm circumference Bioelectrical impedanciometry 	X	X	X
FUNCTIONAL PARAMETERS <ul style="list-style-type: none"> Get Up and Go test Dynamometry 	X	X	X
BLOOD BIOCHEMISTRY DATA	X	X	X
ADHERENCE EVALUATION		X	X
CURRENT STATUS OF THE PATIENT		X	X

medRxiv preprint doi: <https://doi.org/10.1101/2022.12.15.22283543>; this version posted December 16, 2022. The copyright holder for this preprint (which was not certified by peer review) is the author/funder, who has granted medRxiv a license to display the preprint in perpetuity. It is made available under a [CC-BY 4.0 International license](https://creativecommons.org/licenses/by/4.0/).

QRF AREA ULTRASOUND

LONGITUDINAL



◀ (1) SKIN ▶

◀ (2) SUBCUTANEOUS FAT ▶

◀ (3) RECTUS FEMORIS MUSCLE ▶

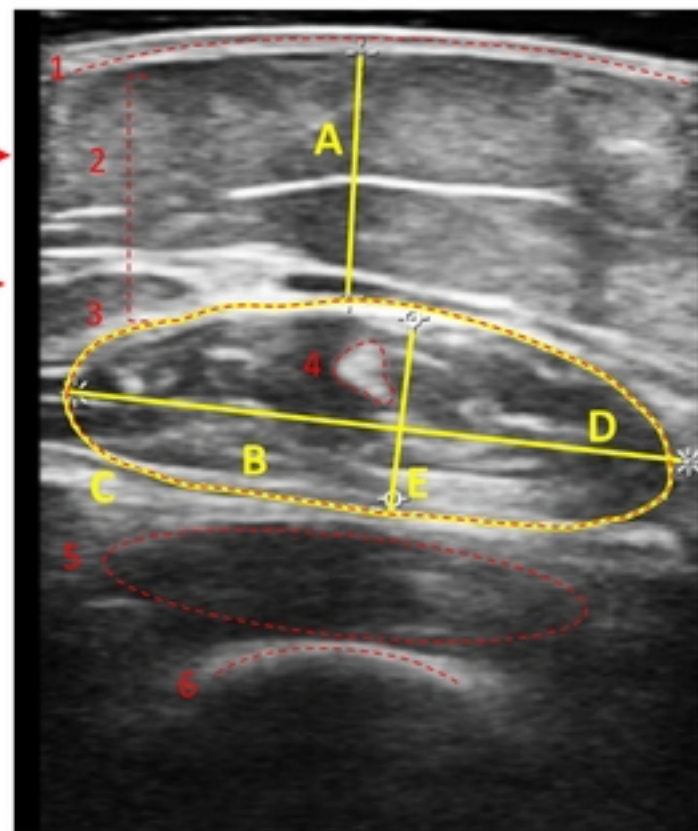
◀ (4) TENDON ▶

◀ (5) VASTUS INTERMEDIUS ▶

◀ (6) FEMUR ▶

A: SUBCUTANEOUS FAT
B: QRF AREA
C: QRF CIRCUMFERENCE
D: X AXIS; E: Y AXIS

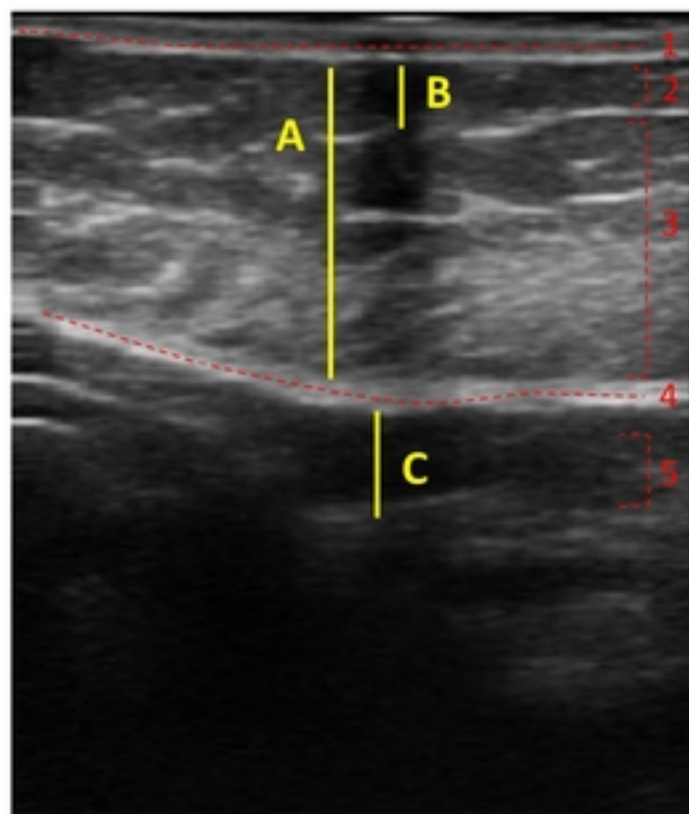
TRANSVERSAL



QRF: Quadriceps Rectum Femoris

ABDOMINAL AREA ULTRASOUND

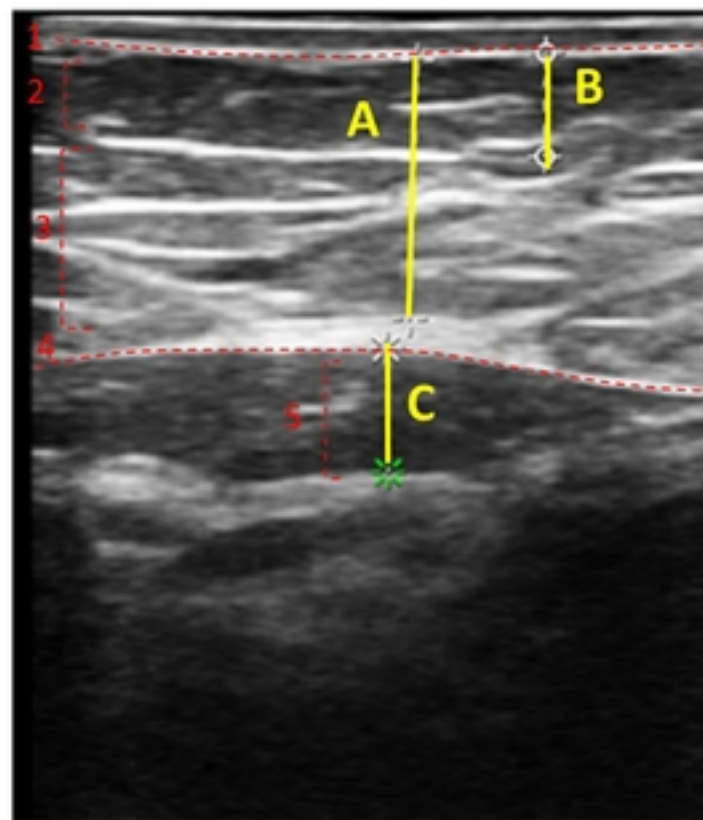
LONGITUDINAL



- ◀ (1) SKIN ▶
- ◀ (2) SUP. SUBCUT. FAT ▶
- ◀ (3) DEEP SUBCUT. FAT ▶
- ◀ (4) RECTUS MUSCLE ▶
- ◀ (5) PREPERITONEAL VISCERAL FAT ▶

A: TOTAL SUBCUTANEOUS FAT
B: SUPERFICIAL SUBCUTANEOUS FAT
C: PREPERITONEAL VISCERAL FAT

TRANSVERSAL



Figure_4

PRIMARY OUTCOMES	
Nutritional ultrasound measurements: ultrasound with 4-10 cm linear probe *	
	<ul style="list-style-type: none"> Abdominal ultrasound: total, superficial and pre-peritoneal adipose tissue (measured in centimetres) Muscle ultrasound: Area, circumference, axes and adipose tissue (measured in centimetres)
SECONDARY OUTCOMES	
Sociodemographic data:	
	<ul style="list-style-type: none"> Age Sex Educational level Toxic habits Medical history Risk of sarcopenia and moderate to high malnutrition based on MUST and SARC-F screening test using R-MAPP
Subjective Global Assessment (SGA) questionnaire	
Anthropometric data:	
	<ul style="list-style-type: none"> Current body weight (measured or estimated) Usual weight Adjusted weight (adjusted weight in obese subjects, dry weight without oedema in malnourished subjects) Height (measured or estimated) BMI Arm circumference
Bioelectrical impedance data (model 50 kHz): **	
	<ul style="list-style-type: none"> TBW (total body water, L) ECW (extracellular water, L) ICW (intracellular water, L) FFM (lean mass, kg) FM (fat mass, kg) BCM (body cell mass, kg) ASMM (appendicular skeletal muscle mass, kg) SMI (skeletal muscle mass index, kg) Percent hydration Body fat (%)
Blood biochemistry data (at baseline visit, at 3 and 6 months):	
	<ul style="list-style-type: none"> Albumin Prealbumin C-reactive protein Total cholesterol Lymphocytes
Bioelectrical impedance data (model 50 kHz): **	
	<ul style="list-style-type: none"> Age Sex Educational level Toxic habits Medical history Risk of sarcopenia and moderate to high malnutrition based on MUST and SARC-F screening test using R-MAPP
Functional parameters	
	<ul style="list-style-type: none"> Timed Up and Go test (TUG): patient sits in a chair and is told to get up (timing starts), walks 3 metres, comes back and sits in the initial chair (timing ends). Interpretation: <20 seconds: normal, > 20 seconds: increased risk of falling. Dynamometry. Three measurements of the dominant hand will be made recording the mean and maximum, measured in kilograms. Jamar® dynamometers are most used in international studies and have several grip positions.
Current patient status	
	<ul style="list-style-type: none"> Hospital stays, mortality at 3 and 6 months, hospital readmissions and complications, if occurring, and their consequences (resolved/unresolved) must be recorded in the form.
Adherence	
	<ul style="list-style-type: none"> Attendance to study follow-up visits.

medRxiv preprint doi: <https://doi.org/10.1101/2022.12.15.22283543>; this version posted December 16, 2022. The copyright holder for this preprint (which was not certified by peer review) is the author/funder, who has granted medRxiv a license to display the preprint in perpetuity. It is made available under a [CC-BY 4.0 International license](https://creativecommons.org/licenses/by/4.0/).

*The equipment provided for the study is the UProbe L6C Ultrasound Scanner (linear transducer 7.5-10 kHz) that allows depths up to 100 mm. Manufactured by Guangzhou Sonostar Technologies Co., Ltd. PR China.

**Each healthcare center could use the BIA device they already owned. The most used device among all participants was AKERN branded.