

1 **Title: Reduced Middle Cerebral Artery Blood Velocity Response during Low-Volume**  
2 **High-Intensity Interval Exercise in Chronic Stroke**

3 Alicen A. Whitaker<sup>1</sup>, DPT, Saniya Waghmare<sup>1,2</sup>, MPT, Robert N. Montgomery<sup>3</sup>, PhD, Stacey E.  
4 Aaron<sup>2</sup>, PhD, Sarah M. Eickmeyer<sup>4</sup>, MD, Eric D. Vidoni<sup>2,5</sup>, PT, PhD, Sandra A. Billinger<sup>2,4,5,6</sup>,  
5 PT, PhD

6 <sup>1</sup>Department of Physical Therapy, Rehabilitation Science, and Athletic Training, University of  
7 Kansas Medical Center, Kansas City, KS

8 <sup>2</sup>Department of Neurology, University of Kansas Medical Center, Kansas City, KS

9 <sup>3</sup>Department of Biostatistics & Data Science, University of Kansas Medical Center, Kansas City,  
10 KS

11 <sup>4</sup>Department of Physical Medicine and Rehabilitation, University of Kansas Medical Center,  
12 Kansas City, KS

13 <sup>5</sup>University of Kansas Alzheimer's Disease Research Center, Fairway, KS

14 <sup>6</sup>Department of Cell Biology and Physiology, University of Kansas Medical Center, Kansas City,  
15 KS

16 **Short Title: Stroke and HIIT**

17 **Corresponding Author:** Sandra A. Billinger, PT, PhD

18 Email: [sbillinger@kumc.edu](mailto:sbillinger@kumc.edu)

19 Address: 3901 Rainbow Blvd, Mail Stop 3051, Kansas City, KS 66160

20 **Abstract**

21 **Background:** High-intensity interval exercise (HIIT) is currently being implemented in stroke  
22 rehabilitation to improve walking function. HIIT alternates between high-intensity and recovery  
23 bouts, which causes rapid increases and decreases in blood pressure, which may impact  
24 cerebrovascular function in people post-stroke. To date, there is no information on the acute  
25 cerebrovascular response in people post-stroke. To address this gap in knowledge, we tested  
26 whether the cerebrovascular response was reduced when compared to sedentary age- and sex-  
27 matched adults (CON) at the following timepoints: 1) baseline (BL), 2) during a single 10-  
28 minute bout of low-volume HIIT, 3) immediately following HIIT, and 4) 30 minutes after HIIT.

29 **Methods:** Middle cerebral artery blood velocity (MCAv), mean arterial pressure (MAP), heart  
30 rate (HR), and end tidal carbon dioxide ( $P_{ET}CO_2$ ) were recorded at all timepoints. A submaximal  
31 exercise test was used to determine the estimated maximal workload. The low-volume HIIT bout  
32 was performed on a recumbent stepper and consisted of 1-minute high-intensity bouts (70%  
33 estimated maximal watts) separated by 1-minute active recovery (10% estimated maximal watts).  
34 Statistical analysis used linear mixed models and ANCOVA.

35 **Results:** Individuals post-stroke demonstrated a reduced MCAv response during HIIT compared  
36 to CON ( $p = 0.03$ ) and MCAv remained lower immediately following HIIT and 30-minutes after  
37 HIIT. MCAv decreased below BL immediately following HIIT in both groups ( $p \leq 0.04$ ) and  
38 returned to BL at 30-minutes after HIIT. No between differences were found for MAP, HR, and  
39  $P_{ET}CO_2$ .

40 **Conclusions:** The key finding from this study suggests a reduced MCAv response during low-  
41 volume HIIT in individuals post-stroke compared to age and sex-matched sedentary adults and  
42 these differences remained up to 30 minutes following HIIT. Future work is needed to better

- 43 understand the reduced MCA<sub>v</sub> response during HIIT despite increased metabolic demand.
- 44 Clinicaltrials.gov #NCT04673994.

## 45 **Introduction**

46 The existing body of literature suggests that high-intensity interval exercise (HIIT) improves  
47 walking function post-stroke, although the evidence is not conclusive.<sup>1-3</sup> HIIT includes bouts of  
48 high-intensity exercise followed by active or passive recovery.<sup>4,5</sup> Our previous work in young  
49 healthy adults performing low-volume HIIT with 1-minute intervals showed rapid increases and  
50 decreases in heart rate (HR), mean arterial pressure (MAP), and middle cerebral artery blood  
51 velocity (MCAv).<sup>6</sup> Several reviews postulated that HIIT, with rapid fluctuations in MAP may  
52 present a unique challenge to the cerebrovascular system in individuals post-stroke, due to the  
53 underlying cerebrovascular injury (reviewed in <sup>7,8</sup>).

54 Individuals post-stroke demonstrate an impaired steady-state MCAv response during  
55 moderate-intensity continuous exercise, potentially due to poor cerebral endothelial function, the  
56 presence of vascular disease, poor cerebrovascular reactivity to end tidal carbon dioxide  
57 ( $P_{ET}CO_2$ ) during exercise, presence of stroke or a combination of these factors.<sup>9-12</sup> Based on our  
58 prior work in young healthy adults, we would expect MCAv to increase with exercise onset and  
59 then decrease as a result of “arterial acidemia and peripheral chemoreceptor mediated  
60 hyperventilation of hypocapnia” typically associated with high-intensity exercise.<sup>6,13</sup> HIIT may  
61 reveal a unique MCAv response in individuals post-stroke due to the repetitive fluctuations in  
62 MAP and  $P_{ET}CO_2$ .<sup>9,10,12,14</sup> However, no studies have examined the physiologic response in  
63 individuals post-stroke during an acute bout of low-volume HIIT.<sup>14</sup>

64 To address the gap in knowledge, we characterized the MCAv response to a single bout of  
65 low-volume HIIT in individuals with chronic stroke compared to age- and sex-matched controls  
66 (CON). We hypothesized that individuals post-stroke would have a reduced MCAv response  
67 during HIIT, immediately following HIIT and 30 minutes after HIIT when compared to CON.

68 As an exploratory analysis, we wanted to determine potential participant and stroke  
69 characteristics that may be related to greater changes in MCAv or MCAv “responsiveness”  
70 during HIIT.

## 71 **Methods**

72 Study procedures were approved by the University of Kansas Medical Center Human  
73 Subjects Committee. Research was conducted in accordance with the principles embodied in the  
74 Declaration of Helsinki and in accordance with local statutory requirements. This study was  
75 registered on clinical trials.gov (NCT04673994).

76 We recruited individuals with chronic stroke between 6-months to 5 years and adults  
77 without stroke who were matched to sex and age  $\pm$  5 years. Inclusion criteria: 1) 40-85 years old,  
78 2) performed < 150 minutes of moderate-intensity exercise per week, and 3) answered  
79 consenting questions and followed 2-step command. Exclusion criteria: 1) COVID-19 stroke  
80 etiology, 2) symptoms of COVID-19 and/or currently positive, 3) could not stand from a seated  
81 position without physical assistance from another person, 4) unable to perform exercise on a  
82 recumbent stepper, 5) currently insulin-dependent, 6) currently using supplementary oxygen, and  
83 7) history of another neurologic disorder.

### 84 *Study Visit 1*

85 Participants were informed of study procedures, benefits, and risks, and provided  
86 voluntary written informed consent. Next, we collected demographics, current medications,  
87 modified Rankin scale (mRS),<sup>15</sup> and the Fugl Meyer Lower Extremity Subscale.<sup>16</sup> Participants  
88 were screened for MCAv signal by an assessor blinded to group.

### 89 Submaximal Exercise Test

90 The total body recumbent stepper (TBRS, T5XR NuStep, Inc. Ann Arbor, MI)  
91 submaximal exercise test is a valid and reliable measure of fitness.<sup>17-20</sup> We have previously  
92 published on the use of the TBRS submaximal exercise test in stroke<sup>18,21</sup> and to determine the  
93 workload for the acute HIIT exercise bout.<sup>6</sup> Following the published protocol, participants began  
94 exercising at 30 watts and stepped at a constant pace between 95-100 steps per minute (spm). We  
95 followed the TBRS submaximal exercise test's protocol for workload progression.<sup>17-19</sup> Heart rate  
96 (HR, Polar electro Inc, New York) and rating of perceived exertion (RPE) were collected every  
97 minute during the submaximal exercise test. Test termination criteria were followed as  
98 previously published.<sup>6,17,21</sup> After the exercise test, participants performed a 2-minute cool-down  
99 and then rested for ~15 minutes to allow HR and blood pressure to return to resting values.

100 The TBRS submaximal exercise test linear regression equation was then used to calculate  
101 the estimated maximal oxygen consumption (estimated $V\dot{O}_{2max}$ ).<sup>17</sup> The linear relationship  
102 between workload and HR (i.e. slope) was plotted to determine the estimated maximal watts  
103 (estimated $Watt_{max}$ ).<sup>20</sup> For individuals on beta-blockers, predicted maximal HR was calculated  
104 from the beta-blocker equation ( $164 - (0.7 \times \text{age})$ ). Similar to previous HIIT protocols in older  
105 adults and clinical populations, high-intensity was ~70% estimated $Watt_{max}$  and active recovery  
106 was 10% estimated $Watt_{max}$ .<sup>5,22-27</sup>

### 107 Exercise Familiarization

108 HIIT familiarization included practicing switching every minute between high-intensity  
109 (~70% estimated $Watt_{max}$ ) and active recovery (~10% estimated $Watt_{max}$ ), while maintaining a  
110 consistent step rate between 95-100 spm, for no more than 10 minutes. Based on previously  
111 published HIIT protocols in individuals with chronic stroke, a HR limit of 85% of age predicted  
112 maximum HR was used.<sup>28</sup>

113 *Study Visit 2*

114 All participants were asked to refrain from caffeine for 8 hours,<sup>29</sup> food for 2 hours,<sup>30</sup> and  
115 vigorous exercise<sup>31</sup> and alcohol<sup>32</sup> for 24 hours. The room was dimly lit with a constant  
116 temperature (21 - 23°C).<sup>6,13</sup>

117 Carotid Ultrasound

118 Participants laid supine for 20 minutes while we conducted bilateral Doppler ultrasound  
119 scans (GE Healthcare LOGIQ Ultrasound, Chicago, IL) of the common and internal carotid  
120 artery. A blinded physician (SE) reviewed images offline and determined the degree of carotid  
121 stenosis based on classifications from the Society of Radiologists in Ultrasound.<sup>6,33</sup>

122 Next, we collected pulse wave velocity (PWV), a measure of peripheral arterial  
123 stiffness.<sup>34</sup> A thigh cuff was placed on the upper right leg and inflated while a sensor was placed  
124 on the right carotid pulse. A higher velocity was indicative of greater arterial stiffness.<sup>34</sup>

125 Experimental Procedure

126 Participants sat quietly for 20-minutes while instrumented with the following equipment:  
127 1) bilateral TCD probes (2-MHz, Multigon Industries Inc, Yonkers, New York) to measure  
128 MCAv, 2) a 5-lead electrocardiogram (ECG; Cardiocard, Nasiff Associates, Central Square,  
129 New York) to measure HR, 3) a nasal cannula attached to a capnograph (BCI Capnocheck Sleep  
130 9004 Smiths Medical, Dublin, Ohio) to measure  $P_{ET}CO_2$  and respiratory rate (RR), 4) a left  
131 middle finger Finometer (Finapres Medical Systems, Amsterdam, the Netherlands) to measure  
132 beat-to-beat MAP, and 5) a gold-standard microphoned, brachial automated sphygmomanometer  
133 (Tango M2; Suntech, Morrisville, NC) on the right arm to ensure accurate calibration of the  
134 Finometer. For participants with left upper extremity spasticity, the Finometer was placed on the  
135 right middle finger.

136 Recordings started with 5-minutes of baseline (BL) seated rest. Participants performed  
137 10-minutes of low-volume HIIT with 1-minute high-intensity (~70% estimatedWatt<sub>max</sub>)  
138 separated by 1-minute active recovery (10% estimatedWatt<sub>max</sub>). As performed previously, we  
139 started with 10% estimatedWatt<sub>max</sub> to avoid a Valsalva maneuver.<sup>6</sup> Following HIIT, participants  
140 performed 2-minute active cool-down with decreased resistance and step rate. After the cool-  
141 down, we continued our recording for another 5-minutes of seated rest to measure recovery  
142 immediately following HIIT and then 30 minutes after HIIT.

#### 143 Data Acquisition

144 As previously published, raw data was sampled at 500Hz and collected via an analog-to-  
145 digital unit (NI-USB-6212, National Instruments) and custom-written software within MATLAB  
146 (v2014a, TheMathworks Inc, Natick, Massachusetts).<sup>6,13</sup> Our prior work showed no significant  
147 difference between right and left MCAv in healthy adults.<sup>13</sup> Therefore, the left MCAv signal was  
148 used for CON. If the left MCA signal was not obtainable, then right MCAv was used.<sup>13</sup> In  
149 individuals post-stroke, we acquired both right and left MCAv.

150 We calculated 5-minute averages for the variables of interest at BL, immediately  
151 following HIIT, and 30 minutes after HIIT. During HIIT, 1-minute averages were calculated for  
152 a total of 10 separate time points.<sup>6,35,36</sup> We calculated pulsatility index (PI;  $PI = \text{Systolic MCAv} -$   
153  $\text{Diastolic MCAv} / \text{Mean MCAv}$ ) as a surrogate measure of cerebrovascular resistance.<sup>12</sup>

#### 154 Power Analysis

155 Sample size was calculated based on our prior work reporting the MCAv response to  
156 moderate-intensity continuous exercise in individuals post-stroke compared to CON, with an  
157 effect size of  $d = 1.36$ .<sup>10</sup> We simulated data for 50 participants (1:1 allocation) for every time  
158 point with an effect size of 1.36 assumed for each time point. Data sets were simulated 1,000



159 times and a linear mixed model was fit for every simulated data set. With  $n = 50$  and if our  
160 assumptions were correct, we would have 98% power.

### 161 Data Analysis

162 Participant characteristics were analyzed using independent t-tests or Mann-Whitney U  
163 test for continuous variables, and Fisher's exact test or Chi-Square test for categorical variables.  
164 Assumptions of the models were assessed using residual analyses, e.g., QQ-plots, predicted vs.  
165 fitted. BL values were compared between groups using independent t-tests or Mann-Whitney U  
166 tests.

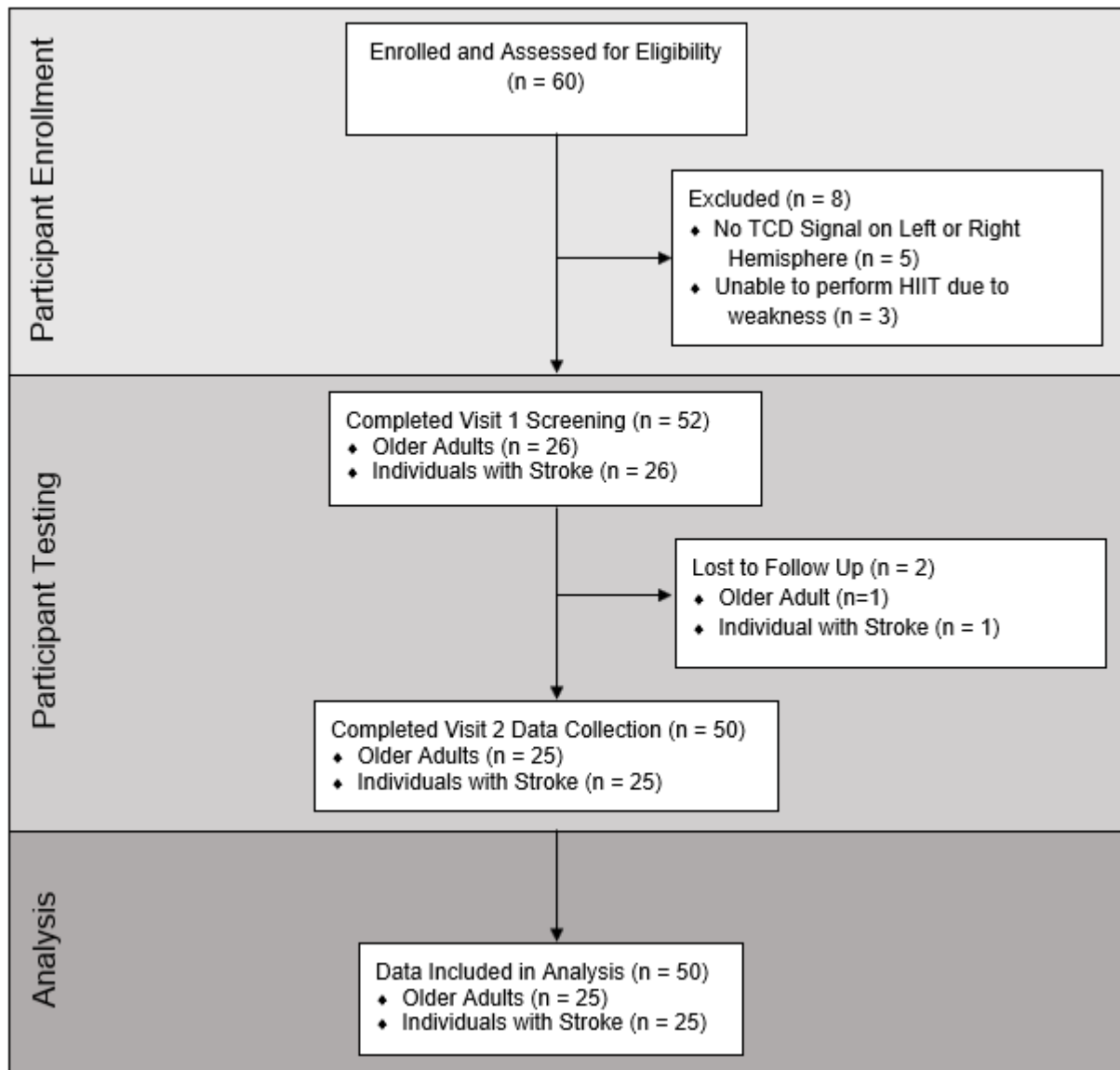
167 To analyze the primary aim, we fit a linear mixed model with MCAv during HIIT as the  
168 response, fixed effects for time and quadratic time (minutes) and group (stroke/CON), and a  
169 random intercept. We used an autoregressive-1, AR(1), correlation structure and a one-sided test  
170 at  $\alpha = 0.05$ .<sup>37</sup> We also fit a linear mixed model for secondary outcomes (MAP, HR,  $P_{ET}CO_2$ , and  
171 RR) as the response, fixed effects for time and group (stroke/CON), and a random intercept. To  
172 determine whether MCAv and other secondary outcomes were decreased during recovery, we  
173 used an ANCOVA adjusted for BL. To determine whether outcomes changed from BL during  
174 recovery immediately following HIIT and 30-minutes after HIIT, we used paired t-tests or  
175 Wilcoxin Signed Rank tests. We also examined PI between groups using Mann Whitney U tests  
176 and within groups using Wilcoxin Signed Rank tests.

177 As an exploratory aim, we calculated the coefficient of variation ( $CoV = MCAv\ SD /$   
178  $MCAv\ average * 100$ ) between high-intensity and active recovery to determine MCAv  
179 "responsiveness". We used univariate linear regressions to determine the association of MCAv  
180 CoV with age, sex, history of stroke, carotid stenosis, PWV, estimated  $VO_2max$ , absolute high-  
181 intensity watts, beta-blocker use, statin use, and BL PI. Univariate linear regressions were also

182 used to explore the association of MCAv CoV with stroke specific variables such as months  
183 since stroke, ischemic stroke, MCA stroke, mRS score, and Fugl Meyer lower extremity score.

## 184 Results

185 Sixty individuals were enrolled within the study. Fifty participants completed this study  
186 and were included in the primary analysis, shown in **Figure 1**. No adverse events occurred  
187 during the study.



188

189 **Figure 1. Flow Diagram.**

190

191 Model assumptions were adequately met using residual analyses. Comparisons of  
 192 participant demographics between individuals post-stroke (n = 25) and CON (n = 25) are shown  
 193 in **Table 1**. Participants returned to the laboratory  $8 \pm 6$  days after their first visit. For one  
 194 individual post-stroke, we were unable to find the ipsilesional MCAv but we were able to find  
 195 the contralesional MCAv.

196 **Table 1. Participant Characteristics**

	<b>Individuals Post-Stroke (n=25)</b>	<b>CON (n=25)</b>	<b>p-value</b>
<b>Age (years)</b>	60 ± 12	60 ± 13	0.92
<b>Female n (%)</b>	9 (36%)	9 (36%)	1.00
<b>BMI (kg/m<sup>2</sup>)</b>	30.6 ± 5.8	28.6 ± 6.6	0.27
<b>Race n (%)<sup>^</sup></b>			0.54
Asian	0	1 (4%)	
Native American	1 (4%)	0	
Black/African American	4 (16%)	2 (8%)	
White/Caucasian	21 (84%)	22 (88%)	
<b>Beta-Blocker Medication n (%)</b>	10 (40%)	1 (4%)	<b>0.01*</b>
<b>Statin Medication n (%)</b>	22 (88%)	11 (44%)	<b>0.002*</b>
<b>Carotid Stenosis n (%)</b>			0.67
Normal	23 (92%)	21 (84%)	

<50%	2 (8%)	4 (16%)	
<b>Pulse Wave Velocity</b>	9.18 ± 1.86	7.63 ± 2.19	<b>0.01*</b>
<b>TBRS estimated <math>\dot{V}\square O_{2max}</math> (ml·kg<sup>-1</sup>·min<sup>-1</sup>)</b>	29.5 ± 9.1	32.3 ± 10.0	0.32
<b>Absolute High-Intensity Watts</b>	80 ± 27	116 ± 35	<b>0.001*</b>
<b>Absolute Active Recovery Watts</b>	16 ± 2	18 ± 4	<b>0.04*</b>
<b>Rating of Perceived Exertion</b>	14 ± 2	14 ± 2	0.73
<b><u>Stroke Characteristics</u></b>			
<b>Months Post-Stroke</b>	31 ± 16		
<b>Ischemic Stroke</b>	19 (76%)		
<b>Stroke Location n (%)†</b>			
MCA & Territories	13 (52%)		
ACA & Territories	6 (24%)		
PCA & Territories	6 (24%)		
Vertebrobasilar	2 (8%)		
Cerebellar	1 (4%)		
<b>Modified Rankin Score n (%)</b>			
No Significant Disability	10 (40%)		
Slight Disability	7 (28%)		
Moderate Disability	8 (32%)		
<b>Fugl-Meyer Lower Extremity Score</b>	23.2 ± 5.3		

---

Means  $\pm$  SD. \* = Significant between groups. ^ = One individual identified as multiple races.

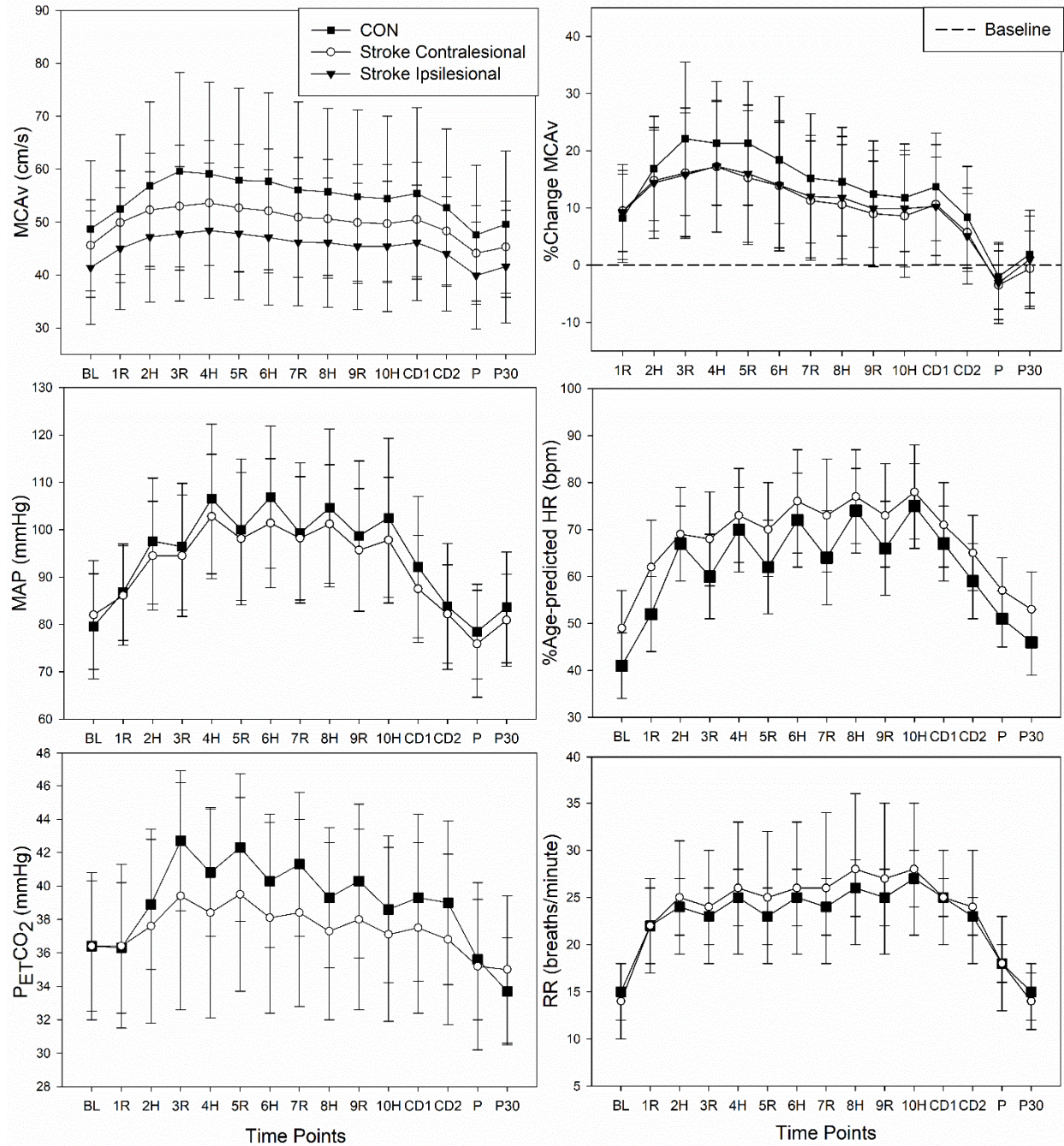
† = Multiple stroke-affected arteries (n = 3). BMI = Body Mass Index. TBRS = Total Body Recumbent Stepper.  $VO_{2max}$  = maximal oxygen consumption.  $ml \cdot kg^{-1} \cdot min^{-1}$  = milliliters of oxygen per kilogram of body weight per minute.

---

197

198 MCAv during HIIT and Recovery

199 At rest, BL MCAv was different between individuals post-stroke ( $\bar{x} = 41.4 \pm 10.7$  cm/s)  
200 and CON ( $\bar{x} = 48.7 \pm 12.9$  cm/s,  $p = 0.04$ , Cohen's  $d = 0.61$ ), shown in **Figure 2**. During HIIT  
201 there was evidence for a strong time ( $p < 0.001$ ) and quadratic time ( $p < 0.001$ ) effect and a  
202 difference between groups ( $\hat{\beta} = -9.33$ ,  $p = 0.03$ ). This difference was in the hypothesized  
203 direction, with individuals post-stroke having MCAv values 9.33 cm/s lower. As a sensitivity  
204 analysis, we included BL MCAv as a covariate in the mixed model. Time and quadratic time  
205 were both still associated with MCAv ( $p < 0.001$ ). However, the group effect was attenuated ( $\hat{\beta}$   
206  $= -1.01$ ,  $p = 0.41$ ). During recovery, MCAv was not different between groups immediately  
207 following HIIT ( $p = 0.42$ ) or 30-minutes after HIIT ( $p = 0.47$ ), when controlling for BL. In both  
208 individuals post-stroke and CON, MCAv decreased lower than BL immediately following HIIT  
209 ( $p \leq 0.04$ ) and returned to BL at 30-minutes after HIIT ( $p > 0.14$ ).



210

211 **Figure 2. Physiologic Response to HIIT in Individuals Post-Stroke and CON.**

212 Controls (CON) = square. Contralateral hemisphere = circle. Ipsilateral hemisphere =

213 triangles. BL = baseline, R = active recovery, H = high-intensity, CD = cool down, P = passive

214 recovery immediately following HIIT, P30 = passive recovery at 30-minutes after HIIT. MCAv



215 = middle cerebral artery blood velocity, MAP = mean arterial pressure, HR = heart rate,  $P_{ET}CO_2$   
216 = expired end-tidal carbon dioxide, RR = respiratory rate.

217

## 218 Secondary Hemodynamics

219 No group differences were observed for BL MAP, HR,  $P_{ET}CO_2$ , and RR ( $p > 0.27$ ).  
220 During HIIT, all measures increased from BL across time ( $p < 0.001$ ) and there was no group  
221 effect. During recovery immediately following HIIT and 30-minutes after HIIT, there were no  
222 group differences in secondary outcomes.

223 Immediately following HIIT, MAP was lower than BL in individuals post-stroke ( $p =$   
224  $0.01$ ), but not CON ( $p = 0.27$ ). HR was elevated above BL immediately following HIIT in both  
225 individuals post-stroke and CON ( $p < 0.001$ ).  $P_{ET}CO_2$  was lower than BL immediately following  
226 HIIT in individuals post-stroke ( $p = 0.002$ ) but not CON ( $p = 0.06$ ). RR also remained elevated  
227 above BL immediately following HIIT in both individuals post-stroke and CON ( $p < 0.001$ ).

228 At 30-minutes after HIIT, MAP returned to BL in individuals post-stroke ( $p = 0.56$ ) but  
229 was lower than BL in CON ( $p = 0.01$ ). HR remained significantly elevated compared to BL in  
230 both individuals post-stroke and CON ( $p < 0.001$ ).  $P_{ET}CO_2$  was decreased compared to BL in  
231 both individuals post-stroke and CON ( $p < 0.001$ ). RR returned to BL values at 30-minutes after  
232 HIIT in individuals post-stroke ( $p = 0.99$ ) and CON ( $p = 0.16$ ).

## 233 Pulsatility Index

234 PI was not different between groups at any timepoint, shown in **Table 2**. Immediately  
235 following HIIT, PI was higher than BL in both individuals post stroke and CON ( $p < 0.001$ ). At  
236 30-minutes after HIIT, PI decreased below BL in the CON group ( $p = 0.001$ ) and returned to BL  
237 in individuals post-stroke ( $p = 0.30$ ).

238 **Table 2. Pulsatility Index**

	<b>Individuals</b>	<b>CON</b>	<b>p-value</b>
	<b>Post-Stroke</b>		
Baseline	<b>0.88 ± 0.20</b>	<b>0.91 ± 0.25</b>	0.87
Immediately after HIIT	<b>1.08 ± 0.27<sup>^</sup></b>	<b>1.12 ± 0.27<sup>^</sup></b>	0.63
30-minutes after HIIT	0.86 ± 0.22	<b>0.84 ± 0.23<sup>^</sup></b>	0.39

Mean ± SD. <sup>^</sup>Significantly different than baseline. CON = age- and sex-matched controls.

239

240 MCAv Responsiveness

241 During HIIT, MCAv CoV was greater in CON ( $\bar{x} = 5.16\% \pm 1.80\%$ ,  $p = 0.01$ ) compared  
242 to individuals post-stroke ( $\bar{x} = 3.84\% \pm 1.39\%$ ). MCAv CoV was associated with sex ( $\hat{\beta} = -1.11$ ,  
243  $p = 0.03$ ), history of stroke ( $\hat{\beta} = -1.32$ ,  $p = 0.01$ ), and PWV ( $\hat{\beta} = -0.31$ ,  $p = 0.01$ ), but not age,  
244 carotid stenosis, estimatedVO2max, high-intensity Watts, beta-blocker use, statin use, or BL PI .  
245 We also found no associations between MCAv CoV and months since stroke, ischemic stroke,  
246 MCA stroke, mRS score, and Fugl Meyer lower extremity score.

247 **Discussion**

248 This is the first study to characterize the MCAv response during an acute bout of HIIT in  
249 individuals post-stroke. We report MCAv was uniformly lower throughout HIIT and during  
250 recovery compared to age- and sex-matched adults. However, the difference between groups  
251 could be accounted for by impaired MCAv at BL. While MCAv was lower at every time point in  
252 individuals post-stroke, they showed a pattern comparable to sedentary CON. However, when  
253 compared to our previous findings in young healthy adults,<sup>6</sup> both individuals post-stroke and



254 CON had a blunted MCAv response to HIIT. While age and estimated  $\text{VO}_2\text{max}$  were not  
255 significantly associated with MCAv responsiveness to HIIT, our prior work in moderate-  
256 intensity continuous exercise shows a typical reduction in the MCAv response with age and low  
257 physical fitness.<sup>38,39</sup>

258 To our knowledge, our study was the first to report reduced MCAv at rest in individuals  
259 with chronic stroke compared to CON. A reduction in resting MCAv post-stroke compared to  
260 CON could be due to stroke pathology or chronic cerebral circulation insufficiency.<sup>40</sup> Chronic  
261 decreases in cerebral blood flow can lead to disruption of glucose use, protein synthesis disorder,  
262 and an increased risk of a secondary stroke.<sup>40</sup> Therefore, we may have identified a potential  
263 impairment in resting cerebrovascular health in individuals with chronic stroke.

264 While not directly measured within this study, cerebrovascular reactivity to carbon  
265 dioxide may play an important role in why individuals post-stroke and CON showed blunted  
266 MCAv responsiveness during HIIT.<sup>9,41-43</sup> During HIIT, young healthy adults began to  
267 hyperventilate during high-intensity which decreased  $P_{\text{ETCO}_2}$  and arterial carbon dioxide  
268 ( $\text{PaCO}_2$ ) causing downstream arteriole vasoconstriction and decreased MCAv.<sup>13</sup> However,  
269 during active recovery, young adults were able to recover their breathing which increased  
270  $P_{\text{ETCO}_2}$  and  $\text{PaCO}_2$ , causing downstream arteriole vasodilation which “rebounded” or increased  
271 MCAv.<sup>6</sup> While both individuals post-stroke and CON showed a similar  $P_{\text{ETCO}_2}$  pattern to young  
272 healthy adults during HIIT, MCAv was blunted in both individuals post-stroke and CON.

273 Some hypothesize that reduced cerebrovascular reactivity with aging and in individuals  
274 post-stroke is due to arterial stiffness and poor vasomotor capability.<sup>44</sup> Our study supports this  
275 hypothesis by showing an association between MCAv responsiveness during HIIT and arterial  
276 stiffness. Prior studies have also shown that statin use may increase cerebrovascular reactivity to

277 carbon dioxide and the MCAv response to moderate-intensity continuous exercise in individuals  
278 post-stroke.<sup>9,11</sup> However, we did not show an association between statin use and MCAv  
279 responsiveness.

280 MCAv responsiveness was associated with sex, with women having higher MCAv  
281 responsiveness. While only 44% of the women within our study were pre-menopausal, our  
282 findings are supported by our previous work showing a greater MCAv response to HIIT in young  
283 women compared to young men.<sup>6</sup> Pre-menopausal women have been shown to have greater  
284 cerebrovascular reactivity to carbon dioxide compared to men,<sup>45</sup> which could have contributed to  
285 a greater MCAv responsiveness. Reduced MCAv responsiveness in men could also be a  
286 protective mechanism, due to having higher resting PI.<sup>46</sup>

287 Immediately following HIIT, MCAv was decreased below BL which could be due to  
288 continued hyperventilation, as shown by decreased  $P_{ET}CO_2$  and increased RR. Breathing and  
289 oxygen uptake during exercise recovery is impaired in individuals post-stroke and has been  
290 shown to be associated with lower skeletal muscle and arterial stiffness.<sup>47</sup> When breathing is  
291 exacerbated by HIIT, individuals post-stroke may continue to hyperventilate during recovery and  
292 decrease  $P_{ET}CO_2$  below BL, causing MCAv to decrease below BL. In individual post-stroke, we  
293 found decreased MAP below BL immediately following HIIT. Post-exercise hypotension in  
294 individuals post-stroke could challenge the ability of the brain to self-regulate, also known as  
295 cerebral autoregulation.<sup>48</sup>

#### 296 Pulsatility Index

297 Immediately following HIIT, PI was elevated in both individuals post-stroke and CON,  
298 which we believe may be a typical vascular response, as it follows the pattern of enhanced  
299 peripheral arterial tone measured via flow mediated dilation.<sup>49,50</sup> A previous study in healthy

300 elderly men reported an initial impairment in flow-mediated dilation immediately following  
301 HIIT, which suggests an initial vascular challenge.<sup>49</sup> However, an hour after HIIT, flow-  
302 mediated dilation was found to be improved.<sup>49</sup> It was hypothesized that HIIT may challenge the  
303 vascular system initially, but over time HIIT may represent a beneficial stimulus for vascular  
304 improvements.<sup>49</sup> Our study supports this hypothesis with the CON group showing an improved  
305 PI at 30-minutes after HIIT compared to BL. However, PI only returned to BL in individuals  
306 post-stroke.

### 307 Limitations

308 While there is controversy as to how much MCA diameter changes with a specific  
309 exercise stimulus,<sup>51,52</sup> TCD is currently the best method to examine the cerebrovascular response  
310 to exercise with high temporal resolution.<sup>53</sup> The middle cerebral artery diameter cannot be  
311 measured during exercise and therefore blood velocity was not an exact measure of blood flow.  
312 While the TBRS submaximal exercise test allows individuals to perform our HIIT protocol  
313 without the need for a maximal exercise test, the prescription of HIIT was based on an estimation  
314 rather than directly measuring the anaerobic threshold.<sup>4</sup> We followed previous recommendations  
315 of a heart limit of 85% age-predicted maximal HR. Exercising at a higher intensity would have  
316 likely decreased  $P_{ET}CO_2$  and  $MCAv$  to a greater extent than reported.

### 317 Clinical Relevance

318 The findings suggest people with chronic stroke are not different in HR, MAP,  $P_{ET}CO_2$ ,  
319 or RR during an acute bout of low-volume HIIT. Our data showed an impaired  $MCAv$  response  
320 during the HIIT bout in individuals post-stroke when compared to their peers. However, these  
321 differences were attenuated when controlling for baseline differences. The blunted  
322 cerebrovascular response to HIIT may be due to stroke pathology, poor vascular health, or

323 sedentary behavior.<sup>11</sup> Future studies are needed to test whether a HIIT intervention could  
324 improve cerebrovascular health in individuals post-stroke and sedentary adults.<sup>54,55</sup>

325

### 326 **Acknowledgements**

327 Thank you, Andrew Geise, Katherine Nguyen, Jake Buchanan, Kailee Carter, Katelyn Struckle,  
328 and Emily Hazen for data collection.

329

### 330 **Funding**

331 AW was supported by NICHD T32HD057850 and AHA 898190. SEA was supported by  
332 NCATS TL1TR002368. SB and EV were supported in part by P30 AG072973. The content is  
333 solely the responsibility of the authors and does not necessarily represent the official views of the  
334 National Institutes of Health. REDCap at University of Kansas Medical Center was supported by  
335 NCRR ULTR000001. The REACH laboratory was supported by Georgia Holland Endowment.

336

### 337 **Disclosures**

338 The author(s) report no conflict of interest.

## 339 References

- 340 1. Boyne P, Scholl V, Doren S, Carl D, Billinger SA, Reisman DS, Gerson M, Kissela B, Vannest J,  
341 Dunning K. Locomotor training intensity after stroke: Effects of interval type and mode. *Top*  
342 *Stroke Rehabil.* 2020:1-11. doi: 10.1080/10749357.2020.1728953
- 343 2. Boyne P, Doren S, Scholl V, Staggs E, Whitesel D, Carl D, Shatz R, Sawyer R, Awosika OO, Reisman  
344 DS, et al. Preliminary Outcomes of Combined Treadmill and Overground High-Intensity Interval  
345 Training in Ambulatory Chronic Stroke. *Front Neurol.* 2022;13:812875. doi:  
346 10.3389/fneur.2022.812875
- 347 3. Boyne P, Billinger SA, Reisman DS, Awosika OO, Buckley S, Burson J, Carl D, DeLange M, Doren S,  
348 Earnest M, et al. A Multicenter Randomized Comparison of High-Intensity Interval Training and  
349 Moderate-Intensity Exercise to Recover Walking Post-Stroke: Results of the HIT-Stroke Trial.  
350 *medRxiv.* 2022:2022.2008.2001.22278246. doi: 10.1101/2022.08.01.22278246
- 351 4. Weston KS, Wisloff U, Coombes JS. High-intensity interval training in patients with lifestyle-  
352 induced cardiometabolic disease: a systematic review and meta-analysis. *Br J Sports Med.*  
353 2014;48:1227-1234. doi: 10.1136/bjsports-2013-092576
- 354 5. Bailey TG, Perissiou M, Windsor M, Russell F, Golledge J, Green DJ, Askew CD. Cardiorespiratory  
355 fitness modulates the acute flow-mediated dilation response following high-intensity but not  
356 moderate-intensity exercise in elderly men. *J Appl Physiol (1985).* 2017;122:1238-1248. doi:  
357 10.1152/jappphysiol.00935.2016
- 358 6. Whitaker AA, Aaron SE, Kaufman CS, Kurtz BK, Bai SX, Vidoni ED, Montgomery RN, Billinger SA.  
359 Cerebrovascular response to an acute bout of low-volume high-intensity interval exercise and  
360 recovery in young healthy adults. *J Appl Physiol (1985).* 2022;132:236-246. doi:  
361 10.1152/jappphysiol.00484.2021
- 362 7. Calverley TA, Ogoh S, Marley CJ, Steggall M, Marchi N, Brassard P, Lucas SJE, Cotter JD, Roig M,  
363 Ainslie PN, et al. HIITing the brain with exercise: mechanisms, consequences and practical  
364 recommendations. *J Physiol.* 2020. doi: 10.1113/JP275021
- 365 8. Lucas SJ, Cotter JD, Brassard P, Bailey DM. High-intensity interval exercise and cerebrovascular  
366 health: curiosity, cause, and consequence. *J Cereb Blood Flow Metab.* 2015;35:902-911. doi:  
367 10.1038/jcbfm.2015.49
- 368 9. Ivey FM, Ryan AS, Hafer-Macko CE, Macko RF. Improved cerebral vasomotor reactivity after  
369 exercise training in hemiparetic stroke survivors. *Stroke.* 2011;42:1994-2000. doi:  
370 10.1161/STROKEAHA.110.607879
- 371 10. Kempf KS, Whitaker AA, Lui Y, Witte E, Perdomo SJ, Ward JL, Eickmeyer S, Ledbetter L, Abraham  
372 M, Billinger SA. The Effect of Stroke on Middle Cerebral Artery Blood Flow Velocity Dynamics  
373 During Exercise. *J Neurol Phys Ther.* 2019;43:212-219. doi: 10.1097/NPT.0000000000000289
- 374 11. Billinger SA, Whitaker AA, Morton A, Kaufman CS, Perdomo SJ, Ward JL, Eickmeyer SM, Bai SX,  
375 Ledbetter L, Abraham MG. Pilot Study to Characterize Middle Cerebral Artery Dynamic Response  
376 to an Acute Bout of Moderate Intensity Exercise at 3- and 6-Months Poststroke. *J Am Heart*  
377 *Assoc.* 2021;10:e017821. doi: 10.1161/JAHA.120.017821
- 378 12. Robertson AD, Atwi S, Kostoglou K, Verhoeff N, Oh PI, Mitsis GD, Marzolini S, MacIntosh BJ.  
379 Cerebrovascular Pulsatility During Rest and Exercise Reflects Hemodynamic Impairment in  
380 Stroke and Cerebral Small Vessel Disease. *Ultrasound Med Biol.* 2019;45:3116-3127. doi:  
381 10.1016/j.ultrasmedbio.2019.08.019
- 382 13. Billinger SA, Craig JC, Kwapiszeski SJ, Sisante JV, Vidoni ED, Maletsky R, Poole DC. Dynamics of  
383 middle cerebral artery blood flow velocity during moderate-intensity exercise. *J Appl Physiol*  
384 *(1985).* 2017;122:1125-1133. doi: 10.1152/jappphysiol.00995.2016

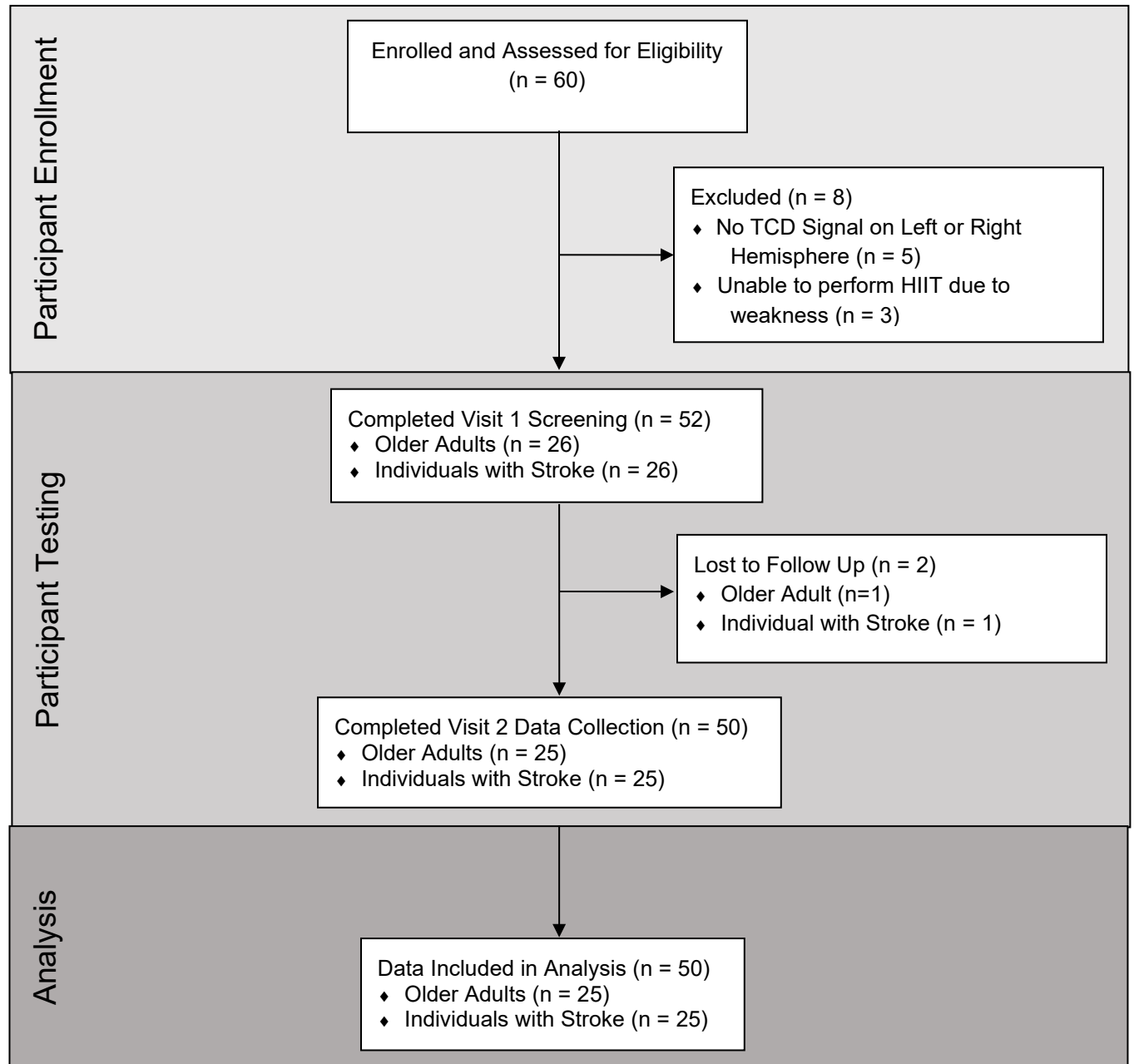
- 385 14. Moncion K, Allison EY, Al-Khazraji BK, MacDonald MJ, Roig M, Tang A. What are the effects of  
386 acute exercise and exercise training on cerebrovascular hemodynamics following stroke? A  
387 systematic review and meta-analysis. *J Appl Physiol (1985)*. 2022;132:1379-1393. doi:  
388 10.1152/jappphysiol.00872.2021
- 389 15. Jurca R, Jackson AS, LaMonte MJ, Morrow JR, Jr., Blair SN, Wareham NJ, Haskell WL, van  
390 Mechelen W, Church TS, Jakicic JM, et al. Assessing cardiorespiratory fitness without performing  
391 exercise testing. *Am J Prev Med*. 2005;29:185-193. doi: 10.1016/j.amepre.2005.06.004
- 392 16. Park EY, Choi YI. Psychometric Properties of the Lower Extremity Subscale of the Fugl-Myer  
393 Assessment for Community-dwelling Hemiplegic Stroke Patients. *J Phys Ther Sci*. 2014;26:1775-  
394 1777. doi: 10.1589/jpts.26.1775
- 395 17. Billinger SA, VanSwearingen E, McClain M, Lentz AA, Good MB. Recumbent stepper submaximal  
396 exercise test to predict peak oxygen uptake. *Med Sci Sports Exerc*. 2012;44:1539-1544. doi:  
397 10.1249/MSS.0b013e31824f5be4
- 398 18. Wilson DR, Mattlage AE, Seier NM, Todd JD, Price BG, Kwapiszeski SJ, Vardey R, Billinger SA.  
399 Recumbent Stepper Submaximal Test response is reliable in adults with and without stroke.  
400 *PLoS One*. 2017;12:e0172294. doi: 10.1371/journal.pone.0172294
- 401 19. Herda AA, Lentz AA, Mattlage AE, Sisante JF, Billinger SA. Cross-validation of the recumbent  
402 stepper submaximal exercise test to predict peak oxygen uptake in older adults. *Phys Ther*.  
403 2014;94:722-729. doi: 10.2522/ptj.20130307
- 404 20. YMCA. *Y's Way to Physical Fitness* 3rd Edition ed.; 1989.
- 405 21. Mattlage AE, Ashenden AL, Lentz AA, Rippee MA, Billinger SA. Submaximal and peak  
406 cardiorespiratory response after moderate-high intensity exercise training in subacute stroke.  
407 *Cardiopulm Phys Ther J*. 2013;24:14-20.
- 408 22. Boyne P, Dunning K, Carl D, Gerson M, Khoury J, Rockwell B, Keeton G, Westover J, Williams A,  
409 McCarthy M, et al. High-Intensity Interval Training and Moderate-Intensity Continuous Training  
410 in Ambulatory Chronic Stroke: Feasibility Study. *Phys Ther*. 2016;96:1533-1544. doi:  
411 10.2522/ptj.20150277
- 412 23. Currie KD, Dubberley JB, McKelvie RS, MacDonald MJ. Low-volume, high-intensity interval  
413 training in patients with CAD. *Med Sci Sports Exerc*. 2013;45:1436-1442. doi:  
414 10.1249/MSS.0b013e31828bbbd4
- 415 24. Nepveu JF, Thiel A, Tang A, Fung J, Lundbye-Jensen J, Boyd LA, Roig M. A Single Bout of High-  
416 Intensity Interval Training Improves Motor Skill Retention in Individuals With Stroke.  
417 *Neurorehabil Neural Repair*. 2017;31:726-735. doi: 10.1177/1545968317718269
- 418 25. Crozier J, Roig M, Eng JJ, MacKay-Lyons M, Fung J, Ploughman M, Bailey DM, Sweet SN,  
419 Giacomantonio N, Thiel A, et al. High-Intensity Interval Training After Stroke: An Opportunity to  
420 Promote Functional Recovery, Cardiovascular Health, and Neuroplasticity. *Neurorehabil Neural*  
421 *Repair*. 2018;32:543-556. doi: 10.1177/1545968318766663
- 422 26. Bailey TG, Perissiou M, Windsor MT, Schulze K, Nam M, Magee R, Leicht AS, Green DJ, Greaves  
423 K, Golledge J, et al. Effects of acute exercise on endothelial function in patients with abdominal  
424 aortic aneurysm. *Am J Physiol Heart Circ Physiol*. 2018;314:H19-H30. doi:  
425 10.1152/ajpheart.00344.2017
- 426 27. Windsor MT, Bailey TG, Perissiou M, Meital L, Golledge J, Russell FD, Askew CD. Cytokine  
427 Responses to Acute Exercise in Healthy Older Adults: The Effect of Cardiorespiratory Fitness.  
428 *Front Physiol*. 2018;9:203. doi: 10.3389/fphys.2018.00203
- 429 28. Carl DL, Boyne P, Rockwell B, Gerson M, Khoury J, Kissela B, Dunning K. Preliminary safety  
430 analysis of high-intensity interval training (HIIT) in persons with chronic stroke. *Appl Physiol Nutr*  
431 *Metab*. 2017;42:311-318. doi: 10.1139/apnm-2016-0369

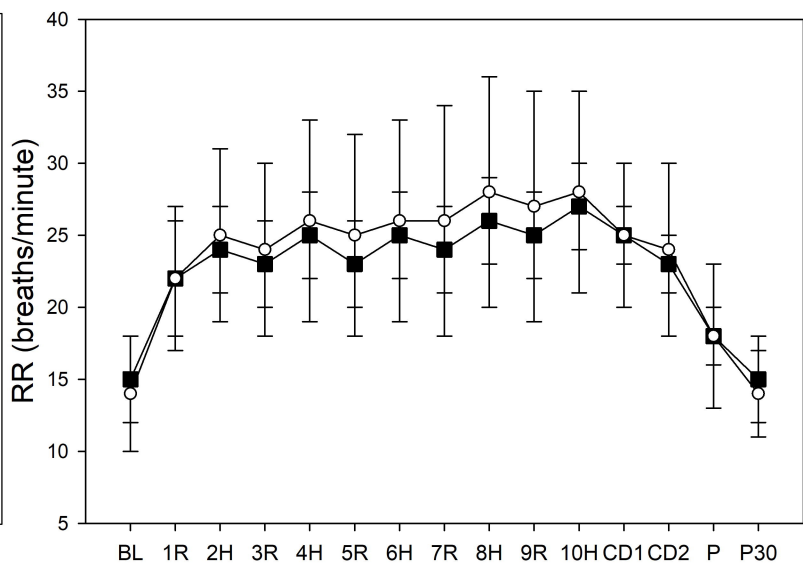
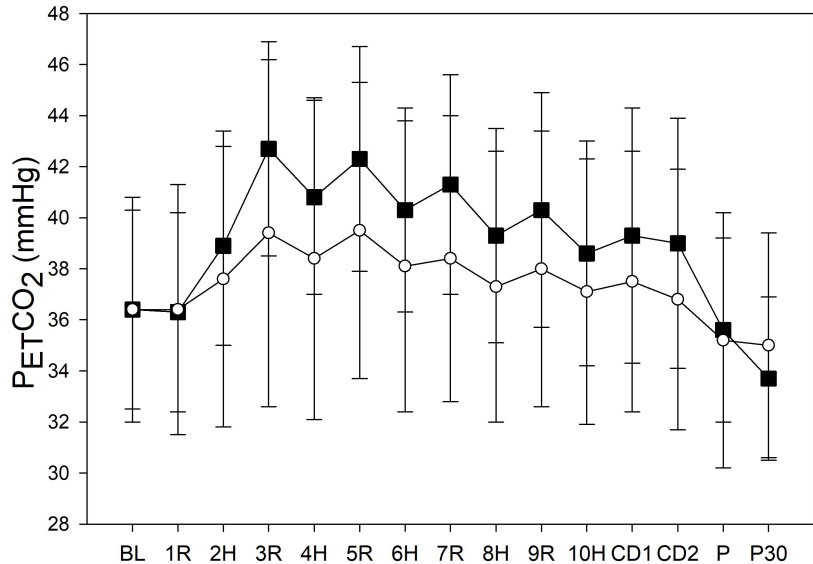
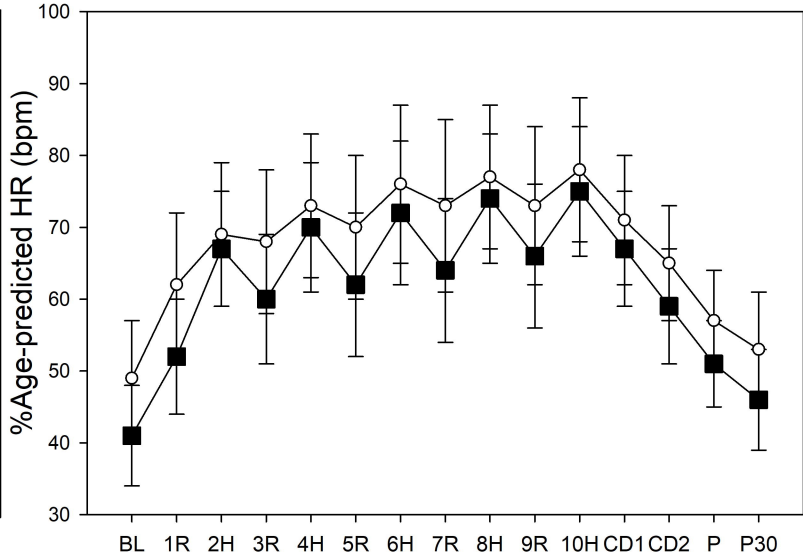
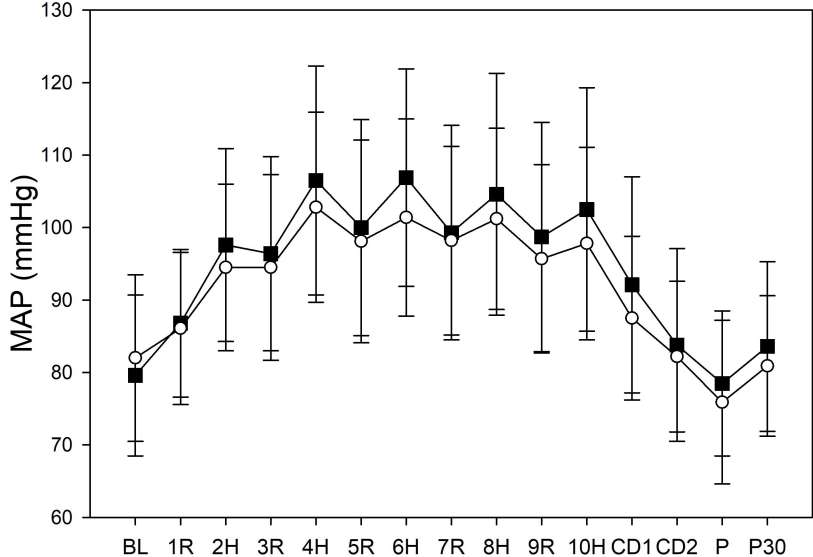
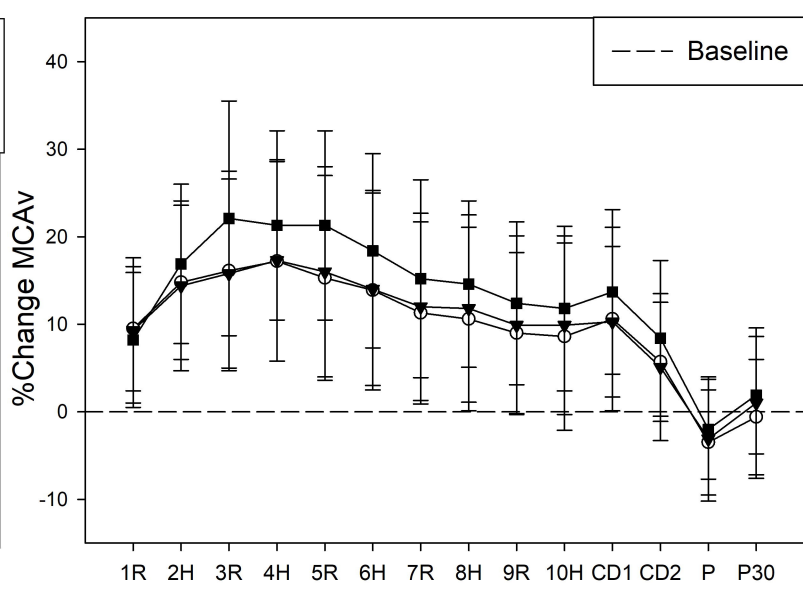
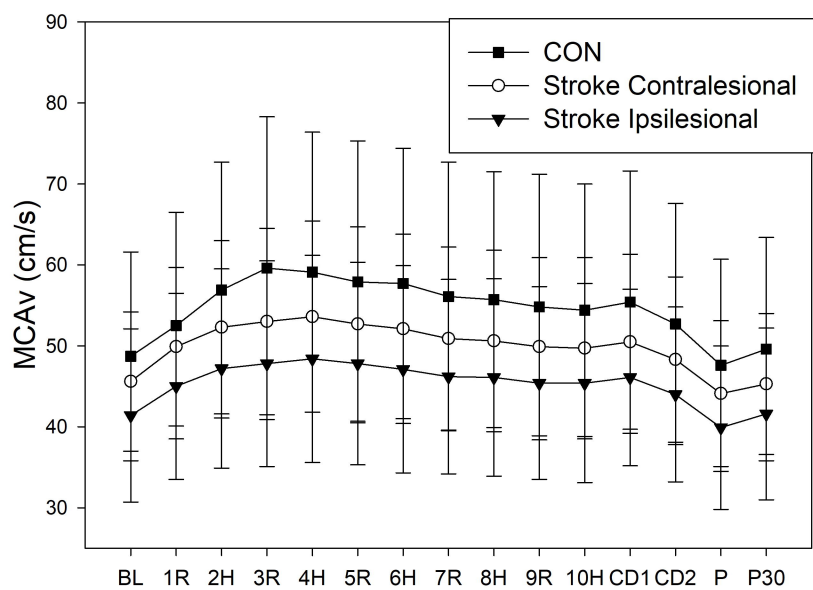
- 432 29. Addicott MA, Yang LL, Peiffer AM, Burnett LR, Burdette JH, Chen MY, Hayasaka S, Kraft RA,  
433 Maldjian JA, Laurienti PJ. The effect of daily caffeine use on cerebral blood flow: How much  
434 caffeine can we tolerate? *Hum Brain Mapp.* 2009;30:3102-3114. doi: 10.1002/hbm.20732
- 435 30. Marley CJ, Hodson D, Brugniaux JV, Fall L, Bailey DM. Post-prandial hyperlipidaemia results in  
436 systemic nitrosative stress and impaired cerebrovascular function in the aged. *Clin Sci (Lond).*  
437 2017;131:2807-2812. doi: 10.1042/cs20171406
- 438 31. Burma JS, Copeland P, Macaulay A, Khatra O, Wright AD, Smirl JD. Dynamic cerebral  
439 autoregulation across the cardiac cycle during 8 hr of recovery from acute exercise. *Physiol Rep.*  
440 2020;8:e14367. doi: 10.14814/phy2.14367
- 441 32. Mathew RJ, Wilson WH. Regional cerebral blood flow changes associated with ethanol  
442 intoxication. *Stroke.* 1986;17:1156-1159. doi: 10.1161/01.str.17.6.1156
- 443 33. Grant EG, Benson CB, Moneta GL, Alexandrov AV, Baker JD, Bluth EI, Carroll BA, Eliasziw M,  
444 Gocke J, Hertzberg BS, et al. Carotid artery stenosis: gray-scale and Doppler US diagnosis--  
445 Society of Radiologists in Ultrasound Consensus Conference. *Radiology.* 2003;229:340-346. doi:  
446 10.1148/radiol.2292030516
- 447 34. Gurovich AN, Braith RW. Pulse wave analysis and pulse wave velocity techniques: are they ready  
448 for the clinic? *Hypertension Research.* 2011;34:166-169. doi: 10.1038/hr.2010.217
- 449 35. Whitaker AA, Alwatban M, Freemyer A, Perales-Puchalt J, Billinger SA. Effects of high intensity  
450 interval exercise on cerebrovascular function: A systematic review. *PLoS One.*  
451 2020;15:e0241248. doi: 10.1371/journal.pone.0241248
- 452 36. Tallon CM, Simair RG, Koziol AV, Ainslie PN, McManus AM. Intracranial Vascular Responses to  
453 High-Intensity Interval Exercise and Moderate-Intensity Steady-State Exercise in Children.  
454 *Pediatr Exerc Sci.* 2019;31:290-295. doi: 10.1123/pes.2018-0234
- 455 37. Labrecque L, Drapeau A, Rahimaly K, Imhoff S, Billaut F, Brassard P. Comparable blood velocity  
456 changes in middle and posterior cerebral arteries during and following acute high-intensity  
457 exercise in young fit women. *Physiol Rep.* 2020;8:e14430. doi: 10.14814/phy2.14430
- 458 38. Witte E, Liu Y, Ward JL, Kempf KS, Whitaker A, Vidoni ED, Craig JC, Poole DC, Billinger SA.  
459 Exercise intensity and middle cerebral artery dynamics in humans. *Respir Physiol Neurobiol.*  
460 2019;262:32-39. doi: 10.1016/j.resp.2019.01.013
- 461 39. Ward JL, Craig JC, Liu Y, Vidoni ED, Maletsky R, Poole DC, Billinger SA. Effect of healthy aging and  
462 sex on middle cerebral artery blood velocity dynamics during moderate-intensity exercise. *Am J*  
463 *Physiol Heart Circ Physiol.* 2018;315:H492-H501. doi: 10.1152/ajpheart.00129.2018
- 464 40. Zhou D, Meng R, Li SJ, Ya JY, Ding JY, Shang SL, Ding YC, Ji XM. Advances in chronic cerebral  
465 circulation insufficiency. *CNS neuroscience & therapeutics.* 2018;24:5-17. doi:  
466 10.1111/cns.12780
- 467 41. Maeda H, Matsumoto M, Handa N, Hougaku H, Ogawa S, Itoh T, Tsukamoto Y, Kamada T.  
468 Reactivity of cerebral blood flow to carbon dioxide in various types of ischemic cerebrovascular  
469 disease: evaluation by the transcranial Doppler method. *Stroke.* 1993;24:670-675. doi:  
470 10.1161/01.str.24.5.670
- 471 42. Miller KB, Howery AJ, Rivera-Rivera LA, Johnson SC, Rowley HA, Wieben O, Barnes JN. Age-  
472 Related Reductions in Cerebrovascular Reactivity Using 4D Flow MRI. *Front Aging Neurosci.*  
473 2019;11:281. doi: 10.3389/fnagi.2019.00281
- 474 43. Aaron SE, Tomoto T, Zhang R, Thyfault JP, Vidoni ED, Montgomery RN, Burns JM, Billinger SA.  
475 Statin contribution to middle cerebral artery blood flow velocity in older adults at risk for  
476 dementia. *Eur J Appl Physiol.* 2022;122:2417-2426. doi: 10.1007/s00421-022-05022-1
- 477 44. Krishnamurthy V, Sprick JD, Krishnamurthy LC, Barter JD, Turabi A, Hajjar IM, Nocera JR. The  
478 Utility of Cerebrovascular Reactivity MRI in Brain Rehabilitation: A Mechanistic Perspective.  
479 *Front Physiol.* 2021;12:642850. doi: 10.3389/fphys.2021.642850

- 480 45. Kastrup A, Thomas C, Hartmann C, Schabet M. Sex dependency of cerebrovascular CO<sub>2</sub>  
481 reactivity in normal subjects. *Stroke*. 1997;28:2353-2356. doi: 10.1161/01.str.28.12.2353
- 482 46. Alwatban MR, Aaron SE, Kaufman CS, Barnes JN, Brassard P, Ward JL, Miller KB, Howery AJ,  
483 Labrecque L, Billinger SA. Effects of Age and Sex on Middle Cerebral Artery Blood Velocity and  
484 Flow Pulsatility Index Across the Adult Lifespan. *J Appl Physiol (1985)*. 2021. doi:  
485 10.1152/jappphysiol.00926.2020
- 486 47. Ribeiro JAM, Oliveira A, Thommazo-Luporini LD, Monteiro CI, Ocamoto GN, Catai AM, Borghi-  
487 Silva A, Phillips SA, Russo TL. Underlying mechanisms of oxygen uptake kinetics in chronic post-  
488 stroke individuals: A correlational, cross-sectional pilot study. *PLoS One*. 2020;15:e0241872. doi:  
489 10.1371/journal.pone.0241872
- 490 48. Marzolini S, Robertson AD, Oh P, Goodman JM, Corbett D, Du X, MacIntosh BJ. Aerobic Training  
491 and Mobilization Early Post-stroke: Cautions and Considerations. *Front Neurol*. 2019;10:1187.  
492 doi: 10.3389/fneur.2019.01187
- 493 49. Bailey TG, Perissiou M, Windsor M, Russell F, Golledge J, Green DJ, Askew CD. Cardiorespiratory  
494 fitness modulates the acute flow-mediated dilation response following high-intensity but not  
495 moderate-intensity exercise in elderly men. *Journal of Applied Physiology*. 2017;122:1238-1248.  
496 doi: 10.1152/jappphysiol.00935.2016
- 497 50. Birk GK, Dawson EA, Batterham AM, Atkinson G, Cable T, Thijssen DH, Green DJ. Effects of  
498 exercise intensity on flow mediated dilation in healthy humans. *International journal of sports  
499 medicine*. 2013;34:409-414. doi: 10.1055/s-0032-1323829
- 500 51. Valdueza JM, Balzer JO, Villringer A, Vogl TJ, Kutter R, Einhaupl KM. Changes in blood flow  
501 velocity and diameter of the middle cerebral artery during hyperventilation: assessment with  
502 MR and transcranial Doppler sonography. *AJNR Am J Neuroradiol*. 1997;18:1929-1934.
- 503 52. Hoiland RL, Ainslie PN. CrossTalk proposal: The middle cerebral artery diameter does change  
504 during alterations in arterial blood gases and blood pressure. *J Physiol*. 2016;594:4073-4075.  
505 doi: 10.1113/JP271981
- 506 53. Ainslie PN, Hoiland RL. Transcranial Doppler ultrasound: valid, invalid, or both? *J Appl Physiol  
507 (1985)*. 2014;117:1081-1083. doi: 10.1152/jappphysiol.00854.2014
- 508 54. Ramos JS, Dalleck LC, Tjonna AE, Beetham KS, Coombes JS. The impact of high-intensity interval  
509 training versus moderate-intensity continuous training on vascular function: a systematic review  
510 and meta-analysis. *Sports Med*. 2015;45:679-692. doi: 10.1007/s40279-015-0321-z
- 511 55. Hsu CC, Fu TC, Huang SC, Chen CP, Wang JS. Increased serum brain-derived neurotrophic factor  
512 with high-intensity interval training in stroke patients: A randomized controlled trial. *Ann Phys  
513 Rehabil Med*. 2021;64:101385. doi: 10.1016/j.rehab.2020.03.010

514







Time Points

Time Points